



From San Francisco: Korea Oct. 12 For San Francisco: Alameda Oct. 7 From Vancouver: Narama Oct. 16 For Vancouver: Aorangi Oct. 14

New Matson Steamer

Matson Company To Build Big Steamer To Replace Hilonian

STRAIGHT TALK TO SHIPPERS ON RATE CUTTING

A new steamer to take the place of the Hilonian on the run to San Francisco, a steamer with room for 125 cabin passengers, with a capacity of at least 6000 tons of freight...

That it is the natural desire of the company to make this proposition a success goes without saying. And to do this the company must satisfy its patrons, he said. He introduced Captain Matson.

At 10 o'clock a score and more of the shippers of this city met in the office of E. D. Tenney, in accordance with an invitation to meet and talk with Captain Matson.

Mr. Tenney explained that there had been talk of the establishing of a Puget Sound service, by the Matson Navigation Company, and that the present meeting had been called for the purpose of discussing matters in connection with this new service.

Puget Sound But No Fleet By Wireless

Though the wireless operator at Kahuku last evening heard a message flashed all the way from Tatoosh Island, Straits of Juan de Fuca, for the transport Sheridan, not a spark came in from the Pacific Fleet, which should be in port today.

last evening, and if the cruisers had been talking at all, it seems that Expert Labell would have heard them at Kahuku.

Cable advices were received last week that the departure of the Selace from Pago Pago had been delayed by a fire in the coal bunkers, and she left only last Sunday for this port.

A very fine line of men's white canvas Oxfords and Bals have just arrived by the Alameda for the Manufacturers' Shoe Co. They are nobby and up-to-date, and prices are right.

A furnished cottage of two bedrooms is wanted. See ad in this issue.

REGISTER!

New Point Is Raised

A new point has been raised in connection with the law against campaign contributions by corporations, which may carry the legal test to the Supreme Court of the United States.

Attorney Lewis has raised the point of the constitutionality of the law passed by Congress. This brings the matter before the court in a new form and it may have a very far-reaching effect.

(Continued on Page 3)

Knifing In Fifth

Split tickets in the Fifth District are what is worrying the leaders of the Republican party today. The campaign managers feel that in the Fourth they have the situation well in hand, but in the Fifth the organization does not seem to be working well, and the ranks of those who are dissatisfied are gradually being swelled.

That there is some reason to fear that several candidates are being prepared for the butcher knife is shown by the fact that a number of prepared tickets are being circulated, from which the names of several Republican candidates have been cut, and the names of candidates of the other parties substituted in their places.

(Continued on Page 3)

FOR AMERICANS SHIPS

SAN FRANCISCO, Calif., Oct. 7.—The Hawaiian members of the Trans-Mississippi Congress introduced a resolution today pledging the delegates to urge upon the United States Congress action that will insure the supremacy of American shipping in the Pacific.

Crete Leaves Turkey

CANEA, Crete, Oct. 7.—The island of Crete, one of the Turkish possessions, has proclaimed a union with Greece.

ANNEXED BY AUSTRIA VIENNA, Austria, Oct. 7.—A proclamation has been issued by the Government formally annexing the provinces of Bosnia and Herzegovina. Turkey has made a protest against this action.

BOSTON BOYS BEATEN

NEW YORK, N. Y., Oct. 7.—The National League game here today resulted in a score of New York 7, Boston 2.

REFINED SUGAR DROPS

NEW YORK, N. Y., Oct. 7.—Refined sugar was reduced today 20 cents a hundred.

EVIDENCE FAVORS EVANS

MANILA, P. I., Oct. 7.—The court-martial held today heard the evidence of the case against Lieut. Evans. The drift of events appeared favorable to Evans.

TAFT AT WATERWAYS CONVENTION

CHICAGO, Ill., Oct. 7.—Wm. H. Taft addressed the National Waterways Convention here today.

TO REFUND BONDS OF OAHU RAILWAY

Refunding of the Oahu Railway bond issue of two millions of dollars is one of the probabilities of the new year.

The railway bonds are now drawing interest at 6 per cent, and may be taken up on the next interest date. These bonds are now considered preferred security and with money reasonably easy in the Territory, it is believed that the whole issue can be refunded at 4 1/2 per cent.

The bonds are held largely in this city. It is believed that the whole issue could be refunded in any of the mainland bonding centers, and, on the other hand, the amount of money seeking investment already makes it probable that a good share of the local bondholders would exchange their 6 per cents, for the four and a half per cents, if they have to.

B. F. Dillingham, speaking of the matter this morning, stated that the proposition had been talked of, but so far as he knows no definite steps have been taken. Mr. Dillingham is particularly interested in the Oahu bonding proposition, it being possible after the first of the year to take up the first-mortgage bond issue, and if the money is available refund the whole plantation loan. The plantation is in splendid shape and it is certain that the next crop will run over twenty thousand tons.

Mandamus Mott-Smith

Judge Edging this morning filed the mandamus proceedings against Secretary Mott-Smith to compel him to receive the nomination of John S. Chandler, candidate for Senator from Kauai. Edging goes into the matter in detail, alleging that Chandler was duly nominated, and stating that on October 3, 1908, he deposited the nomination accompanied by the necessary \$25, addressed to John Emmeluth, in the postoffice at Elele, Kauai.

NEW BUILDING FOR HANAPEPE

Among the matters that will be called to the attention of Governor Frear when he starts out on his trip over the island of Kauai is the need of a new school building at Hanapepe. Governor Frear and Reclamation Expert Nowell are at present on a tour of the islands of Hawaii and Maui, and will return to Honolulu before going to Kauai.

Superintendent of Public Instruction Babbitt will speak to the Governor, however, regarding the pressing need for a new building at Hanapepe before he leaves, and it is probable that the Chief Executive will look into the matter. Mr. Babbitt has just received a letter from H. H. Brodie, principal of the Hanapepe school, in which it is stated that with a seating capacity of 274 there are now 331 pupils enrolled.

This, according to Mr. Babbitt, is no worse than conditions were last year, but the future promises still more pupils without adequate room. Mr. Babbitt will try to get some land on which he can build a new building. He is at present waiting on the return of Governor Frear to put the matter before him.

Thirteen Chinese palkau players were arrested in the Ah Leong block in Kakaako this afternoon.

1908 Campaign Book Free!! Gives a record of all the Presidential elections from 1789. Map and statistics showing how the different States voted in 1904, with number of electoral and popular votes of each State, then and now.

ASK FOR THIS BOOK AT THE INSURANCE DEPARTMENT OF the Hawaiian Trust Co. Ltd. 923 FORT ST.

Made in New York The identical styles of Correct Clothes for Men Made for fashionable New Yorkers by Alfred Benjamin & Co. Can be bought only at this store. The prices are right. The Kash Co., Ltd., Leading Clothiers and Haberdashers

Ice Cream Take Home a Package of OUR ICE CREAM. Hollister Drug Co., Ltd. FORT STREET

FOR THE BEST FRUIT FOR SHIPING leave your order with Island Fruit Co., 78 S. KING. PHONE 18. FOR A CUP OF Really Good Coffee TRY THE Alexander Young Cafe Pay A-Little-At-A-Time FURNITURE J. Hepp & Co., 185 S. KING STREET. Quick Service and good, always. Our messengers Keep Going! TERRITORIAL MESSENGER SERVICE PHONE 361

NOTICE! Men's White Canvas Oxfords and Bals. DON'T LOSE SIGHT OF THE FACT THAT THESE ARE NOBBY AND UP-TO-DATE, AND THAT THE PRICES ARE RIGHT. Let us show them to you. Manufacturers Shoe Co., Ltd. FORT STREET, 4 DOORS BELOW HOTEL.

MASONIC TEMPLE
WEEKLY CALENDAR

MONDAY
Hawaiian—Statd.
TUESDAY
WEDNESDAY
Pacific—Third Degree.
THURSDAY
Honolulu Comendary—Reg- ular, 5 P. M.
FRIDAY
Hawaiian—First Degree.
SATURDAY
Lai Aloha Chapter No. 3— Regular.
All visiting members of the Order are cordially invited to attend meetings of local lodges

HARMONY LODGE, No. 3, I. O. O. F.

Meets every Monday evening at 7:30 in I. O. O. F. Hall, Fort Street. R. H. HENDRY, Secretary.
HEN. P. VICKERS, N. G.
All visiting brothers very cordially invited.

MYSTIC LODGE, No. 2, K. O. F. P.

Meets every 2d and 4th Tuesday of each month at 7:30 p. m. at K. P. Hall, corner Fort and Beretania Sts. Visiting Brothers cordially welcome.
W. L. LYER, C. C.
F. WALDRON, K. of R. & S.

OAHU LODGE, No. 1, K. of P.

Meets every first and third Friday evening at 7:30 in K. of P. Hall, corner Fort and Beretania. Visiting brothers cordially invited to attend.
A. G. DEERING, C. C.
JAS. W. WHITE, K. R. S.

HONOLULU LODGE 616, B. P. O. E.

Honolulu Lodge No. 616, B. P. O. E., will meet in their hall on King near Fort Street every Friday evening.
By order of the E. R.:
HENRY C. EASTON,
Secretary.
WM. H. McINERNEY, E. R.

Wm. McINERNEY Lodge No. 8, K. of P.

Meets every 2nd and 4th Saturday evening at 7:30 o'clock in K. of P. Hall, cor. Fort and Beretania. Visiting brothers cordially invited to attend.
W. L. FRAZEE, C. C.
E. A. JACOBSON, K. R. S.

HONOLULU AERIE 140, F. O. E.

Meets on the 2nd and 4th WEDNESDAY evenings of each month at 7:30 o'clock in K. of P. Hall, corner Beretania and Fort streets. Visiting Eagles are invited to attend.
W. L. FRAZEE, W. Prost.
H. T. MOORE, Secy.

HAWAIIAN TRIBE No. 1, I. O. R. M.

Meets every first and third Thursdays of each month at Knights of Pythias Hall. Visiting brothers cordially invited to attend.
A. B. ARLING, Sachem.
A. E. MURPHY, C. of R.

Star Restaurant

BEST MEALS IN TOWN AT ALL HOURS.

Convenient for Orpheum Attendants.

BERETANIA STREET

1st Door Waikiki of Central Fire Sta.

Criterion Grill

Waverley Building, Bethel St.

Personal Attention Given to Cuisine and Table Service at All Hours. Best Meals at Reasonable Prices.

CHARLES H. EICHLER, Prop.

CITY MESSENGER SERVICE

PHONE 422

J. SANTOS, MANAGER

Union Street near Hotel.

EXCELLENT LAUNDRY WORK

done by the

FRENCH LAUNDRY

with their new FRENCH dry-cleaning process.

257 Beretania St. Phone 1491.

BAMBOO FURNITURE

Of All Kinds And Descriptions At Reasonable Prices.

SEE OUR DISPLAY.

S. TATANI

Emma St. near Beretania.

"For Sale" cards at Bulletin.

Better Cooked Meals means Better digestion; Better health.

Cook with Gas

We sell you stoves on once-in-a-while payment plan.

Honolulu Gas Co. LIMITED Bishop Street

Lehnhardt's Unexcelled Candies

Lehnhardt's Unexcelled Candies

Always Fresh at

CHAMBER'S DRUG CO., Fort and King St.

Turkeys, Ducks and Chickens

CLUB STABLES Tel. 109

Millinery

LADIES' FELT HATS, FEATHERS, RIBBONS, FLOWERS, CHIFFONS, WIRES. Are Sold at Very Reasonable Prices. Wire Frames Made to Order.

K. Isoshima, 30 KING ST.

VOTE FOR Tom Sharp

TO MAKE YOU Campaign Banners, Posters, etc.

ELITE BUILDING. PHONE 397. House and General Painting.

MISS POWER'S Millinery Parlors, BOSTON BLDG., 2ND FLOOR.

OWL 5 C.—CIGAR.—5 C.

M. A. Gunst & Co. DISTRIBUTORS.

AGENTS FOR EDGEWORTH and QBOID Tobacco

The only two good smoking Tobaccos in the Market.

FITZPATRICK BROS. and MYRTLE CIGAR STORE.

LOCAL AND GENERAL

To find a house, a bargain, a servant, anything but trouble, use a Bulletin Want Ad.

REGISTER!

Thurlo's for a lunch or dinner. Rent Franklin cars. Skyyds, Sbbis. Emil A. Berndt of W. W. Dimond & Co. left this morning in the Alameda for the States.

Everything is ready for the Alameda College fair to be held Saturday.

Take your carriage or automobile to Hawaiian Carriage Manfy. Co. for up-to-date repairs.

Eliza Gilman charges non-support against George Gilman, and asks that she be allowed a divorce.

Eddie Finn and Geo. Reid of the Alameda, the popular mixologists, are now easing thirsts at Al Thurlow's "Royal Annex."

The accounts of Marshal Hendry, approved by Judge Dohc, were sent out in this morning's mail to Attorney General Bonaparte.

A meeting of all the Republican candidates who are to run at large will take place this evening at 7:30 o'clock at headquarters.

W. C. Aehl has been garnished, G. C. Beckley and L. L. McCandless being named as garnishers, by Harry T. Mills, on an old bill of \$22.90.

Samuel K. Kaahu has brought suit for divorce against Lokka Kaahu, alleging that she has deserted him for more than three years past.

Owing to the late arrival of many imported hats and millinery goods, ladies who visit Sachs' in the next few days will find many pleasant surprises.

The cut-price sale is still on at Blom's and the bargains are attracting many shoppers. The prices are cut down from one-third to one-half in every instance.

Like a Japanese woman from Iwilei, appeared in the Police Court today on a charge of having taken a large sum of money from a Chinese. The case was continued.

The cases of Muranaka and Yamane, the Japanese who are charged with violating the new ordinance by building a tenement house within five hundred feet of a school, came up in the Police Court this morning, but were, at the request of the prosecution, continued until Friday.

The cases are of great interest to the residents of the Makiki section, as the defense expects to knock out the ordinance by which they have hoped to save their quarter from the inroads of the Japanese camps.

Father Ulrich of the Catholic mission, who went to Germany several months ago for special eye treatment, will leave Antwerp today for Honolulu, his eyesight very much improved.

He will be accompanied by Father James and three new priests who will be sent to various stations in the islands. Two of them have been in England for some time.

Father Joseph is soon to return to Honolulu and with him will come several sisters, who will take charge of the new orphanage in Kailahi valley.

MATSON COMPANY TO BUILD

(Continued from Page 1) plemented the remarks of Captain Matson somewhat. "I have been discussing with Captain Matson, here," he said, "matters in connection with freight to be shipped to this place from the Sound. In my opinion, no favors should be shown, to large or small. They have been shown in the past, but whether the system will continue, I don't know."

He pointed out that discrimination in rates in any line of business affects not only those in that line of business, but those in other lines of business as well. It would tend to eliminate the less favored party as a business factor in this city and in these islands.

Will Meet Cuts. "It is the intention of the Matson Navigation Company," he said, "to deal with all fairly. As Captain Matson said, it is our intention to meet any competitive rate which is extended. We are not desirous of slandering rates or of doing any indiscriminate cutting, which would be suicidal. We are in the business and propose to remain in the business. If, in order to remain in business, it is necessary to do it for a time, and to operate even at a loss for a time, we will do it."

"We want the good will, cooperation, and assistance of the shippers, and in return will extend good will, cooperation, and assistance to the shippers on our part."

He asked for any questions which those present might wish to ask.

As everyone was silent, he resumed his talk, taking up the matter of the American-Hawaiian rates.

Inter-State Rates. Speaking of the far-reaching effects of proposed rates, in his mind, he said: "There is a movement among the smaller people to take up the question of Inter-State freight rates on the ocean, proposing to put through Congress an amendment to present laws regulating Inter-State commerce so as to extend the action of the laws to cover the Territory of

Hawaii.

"The proposition which the American-Hawaiian Company recently submitted to the shippers is this: the execution of the carrying of freight for a certain term; if the shipment amounts to \$5000, with a rebate of 2-1-2 per cent.; if it amounts to \$10,000 and is less than \$20,000, a rebate of 5 per cent.; from \$20,000 to \$30,000, a rebate of 7-1-2 per cent.; from \$30,000 to \$40,000, a rebate of 10 per cent.; and for shipments of over \$50,000, 15 per cent."

"My own opinion of such an arrangement is that it is outrageous, to say the least, and proposes rebates along those lines which have aroused the American people to fight and struggle against trusts and combinations."

He prophesied that the extension of this rebating system to the sea trade would soon bring legislation to stop it, legislation which would be extended to Hawaii.

He closed with a reference to the fact that the American-Hawaiian

people have done much to build up the prosperity of the islands, and said they deserved support. But he showed that the Matson Company has the same claims for support.

The Sound Service. After a few words, recalling that he has been in business here since 1882, Captain Matson answered questions in regard to the Sound service. He stated that there would be a forty days' service, the boat to go to Kahului, to San Francisco, and then return to Honolulu by way of the Sound.

He stated that the service would be begun about Dec. 1st. He further stated that there would be no boat direct from here to the Sound.

Fruit-Carrying Discussed. Moore suggested that a vessel to the Sound for fruit-carrying would be a good thing. Captain Matson replied that he didn't think it would be justified, as the steamer would have to depend on bananas and pines, which alone would not keep a steamer running. The matter of

A Most Excellent Assortment of

SUITINGS

W. W. Ahana Co., LIMITED 62 S. KING ST. PHONE 525. THE BEST "FITTERS" IN TOWN.

READY FOR WAR

TIRNOVA, Bulgaria, Oct. 6.—Prince Ferdinand has accepted the title of King and has called 120,000 reservists to the colors.

SERVIANS WOULD FIGHT AUSTRIA. BELGRADE, Servia, Oct. 6.—The Servians are demanding war with Austria rather than annexation. The Government will appeal to the Diplomatic Corps.

CONFERENCE WILL BE PEACEFUL. PARIS, France, Oct. 6.—A harmonious Bulgarian conference is assured. Great Britain, France, and Russia will take part.

EMPEROR JOSEPH TAKES HAND. VIENNA, Austria, Oct. 6.—The Emperor Francis Joseph will proclaim the Austrian rights of succession as regards Bosnia and Herzegovina, and will grant them a constitution and representation.

WRIGHT'S PATENTS SOLD TO FRANCE. LE MANS, France, Oct. 6.—In today's flight Wright made a record with one passenger of an hour and four minutes, thus fulfilling the contract by which he will sell his French patents to a syndicate for \$100,000. Fifty machines have been ordered.

MORGAN AND PINKHAM AT TRANS-MISSISSIPPI. SAN FRANCISCO, Calif., Oct. 6.—J. F. Morgan and L. E. Pinkham of Honolulu were appointed on the Committee on Resolutions of the Trans-Mississippi Congress. Mr. Morgan addressed the Congress today.

CAMPAIGN TREASURER CALLS ON ROOSEVELT. WASHINGTON, D. C., Oct. 6.—Treasurer Sheldon of the Republican National Committee is here in conference with President Roosevelt, who approves the plan to finance the campaign.

FLEET DATE FOR LEAVING. MANILA, P. I., Oct. 6.—The Atlantic Fleet will leave here on December 1. Residents of this city are protesting over the decision not to have a public reception ashore.

TAFT AND BRYAN WILL MEET. CHICAGO, Ill., Oct. 6.—Mr. Taft will address the Waterways Convention Wednesday and will meet Mr. Bryan at a banquet in the evening.

people have done much to build up the prosperity of the islands, and said they deserved support. But he showed that the Matson Company has the same claims for support.

After a few words, recalling that he has been in business here since 1882, Captain Matson answered questions in regard to the Sound service. He stated that there would be a forty days' service, the boat to go to Kahului, to San Francisco, and then return to Honolulu by way of the Sound.

He stated that the service would be begun about Dec. 1st. He further stated that there would be no boat direct from here to the Sound.

Moore suggested that a vessel to the Sound for fruit-carrying would be a good thing. Captain Matson replied that he didn't think it would be justified, as the steamer would have to depend on bananas and pines, which alone would not keep a steamer running. The matter of

Questions were brought up by Mr. Lovested as to the difference in rates from the Middle West to Honolulu by New York and by the Western ports. The matter was gone into in a cursory way only, as it appeared no one could give the figures, but it was shown that the railroads made distinctions by which it was possible to ship out by New York and Tehuanepac more cheaply than out by some Western port. Captain Matson stated that he had in-

quired into these matters, and that he had found these distinctions were to be abolished on Oct. 30th.

The New Steamer. Captain Matson then sprung the big proposition of the new steamer. He said, "It is my intention to place an order for a steamer which will carry 125 passengers, and which is to take the place of the Hiltonian on the San Francisco run."

Mr. Tenney added some remarks: "It is to be of at least 6500 tons, and will be able to make the trip in six days, though it won't be a turbine, as Johnny Soper said he would build if he had someone's millions." It was further developed that the craft would be about the size of the Lurline, though she would be of greater beam, and steadier.

G. W. Smith moved a vote of thanks to the Matson Company, and as it was mentioned that Alexander & Baldwin and Brewer & Company had helped in this proposition, the motion was extended to cover these firms. It was passed by acclamation.

IN FOREIGN PORTS. Wednesday, Oct. 7, 1908. YOKOHAMA—Sailed Oct. 7: S. S. China, for Honolulu.

SYDNEY—Arrived Oct. 6: S. S. Manuka, from Honolulu. SAN FRANCISCO—Sailed Oct. 7: U. S. S. Colorado, for Honolulu.

SAN FRANCISCO—Arrived Oct. 7: Sch. Alice McDonald, from Anahulu, Sept. 7. 4 p. m., S. S. America Maru, hence Oct. 1.

HILO—Sailed Oct. 6: S. S. Virginian, for San Francisco.

TIDES. Full moon Oct. 9 at 10:45 a. m. Hawaiian standard time is 10 hours 30 minutes slower than Greenwich time, being that of the meridian of 157 degrees 30 minutes. The time whistle blows at 1:30 p. m., which is the same as Greenwich, 0 hours 9 minutes. Sun and moon are for local time for the whole group.

ARRIVED. Wednesday, Oct. 7. Stmr. Kinau, Gregory, from Kaula, a. m.

DEPARTED. Tuesday, October 6. Stmr. W. G. Hall, for Kaula ports, 5:15 p. m.

Stmr. Mikahala, for Molokai and Maui port, 5:20 p. m.

Stmr. Nocuau, for Mahukona, Honokaa, Kukuhale and Kawaihale, 4:40 p. m.

Wednesday, October 7. O. S. S. Alameda, Dowdell, for San Francisco, 10 a. m.

PASSENGERS ARRIVED. Per stmr. Kinau, Gregory, from Kaula, Oct. 7.—Miss E. D. Sutherland, Mrs. E. C. Ewell, Miss D. McKeague, J. Yamauchi and wife, Nakagawa, Y. Ichii, O. Blackstad, E. C. Rhodes, Mrs. A. F. Knudsen and maid, Mr. and Mrs. Y. M. Jansen, Mr. and Mrs. F. Schmidt, Miss B. Schmidt, F. Schmidt, Jr., G. Schmidt, Mrs. R. L. Wilcox, Miss Labenz, Mrs. C. P. Rees, E. O. Boyer, T. Watta, C. Schroeder, W. Matsushita, Fong Kum, T. Moffitt and 29 on deck.

PASSENGERS DEPARTED. Per O. S. S. Alameda, Dowdell, for San Francisco, Oct. 6.—E. A. Berndt, W. A. Bryan, W. W. Bryan, Miss P. Burns, A. W. Church, C. K. Shaw, C. P. Colburn, Dr. J. H. Dawson, Mrs. Dawson, H. S. Hopkins, J. P. Johnson, W. R. Kinolea, Mrs. G. L. Leonard, Geo. Odling, H. H. Perry, J. W. Prendergast, F. H. Percy, Master Prendergast, R. E. Pritchard, Mrs. W. A. Ridout and child, Miss P. Scott, Miss E. M. Sanders, Mrs. L. B. Simon, D. P. Thoma, E. V. Todd, Mrs. D. L. Van Dine and 2 children, F. M. Van Horn, H. H. Williams.

Per stmr. Mikahala, Phillips, for Molokai and Maui, Oct. 6, 5 p. m.—V. Von Hart, P. L. D. McVeach, P. W. Pease, J. D. McVeach.

Per stmr. W. G. Hall, Thompson, for Kaula, Oct. 6, 5 p. m.—C. A. Bruna, L. Welzheim, Miss Miller, Haroniki.

THE OCEANIC steamship Alameda departed this morning for San Francisco carrying mails, but a rather light passenger list. In fact, the great number of departures of steamers for the Hiltonian and the Alameda, which have to compete with Siberia, at the end of the present week.

THE KINAU came in this morning from Kaula, with cargo as follows: 1123 bags sugar, 100 bags rice, 110 bags rice bran, 110 bags taro, 17 empty wine casks, 1 buggy, 3 horses, and 140 packages sundries.

Sea Wrens! Sea Wrens!

It is very well to see a Wren, but the place to get one is at the CHARLES D. WALKER'S BOAT and MACHINE WORKS, KING ST., opposite SOUTH.



a cold-storage steamer was brought up also, but it developed that beer and butter would be about the only imports which would justify this.

Geo. W. Smith asked the amount in dollars per voyage which would justify the running of a steamer from here to the Sound. Captain Matson named \$12,000, at the inside.

"But," he said, "I think that in a few years the Hiltonian may be put on that run, from here to San Francisco, and back by the Sound, and will have both cold storage and good accommodations for passengers."

Someone reflected that this would not help the fruit people.

It transpired that pines will keep from two to three weeks, according to the condition in which they are shipped, and the opinion was advanced that these might be shipped to a proposed market in the Northwest by way of San Francisco, and still keep good. The difficulty that long delays might result in San Francisco, however, looked like a big obstacle here.

Flat Rate Wanted. F. L. Waldron said, "I want to express myself in favor of a flat rate, which shall be the same for everybody. These distinctions in rates cause guesswork among the shippers. I also want to express an acknowledgment, which I think is that of the community, of the uniform courtesy which has been received from the Matson Company both here and in San Francisco."

E. D. Tenney replied that it is the desire of the company to extend the flat rate, which, he said, the only fair way.

Questions were brought up by Mr. Lovested as to the difference in rates from the Middle West to Honolulu by New York and by the Western ports. The matter was gone into in a cursory way only, as it appeared no one could give the figures, but it was shown that the railroads made distinctions by which it was possible to ship out by New York and Tehuanepac more cheaply than out by some Western port. Captain Matson stated that he had in-

quired into these matters, and that he had found these distinctions were to be abolished on Oct. 30th.

The New Steamer. Captain Matson then sprung the big proposition of the new steamer. He said, "It is my intention to place an order for a steamer which will carry 125 passengers, and which is to take the place of the Hiltonian on the San Francisco run."

Mr. Tenney added some remarks: "It is to be of at least 6500 tons, and will be able to make the trip in six days, though it won't be a turbine, as Johnny Soper said he would build if he had someone's millions." It was further developed that the craft would be about the size of the Lurline, though she would be of greater beam, and steadier.

G. W. Smith moved a vote of thanks to the Matson Company, and as it was mentioned that Alexander & Baldwin and Brewer & Company had helped in this proposition, the motion was extended to cover these firms. It was passed by acclamation.

IN FOREIGN PORTS. Wednesday, Oct. 7, 1908. YOKOHAMA—Sailed Oct. 7: S. S. China, for Honolulu.

SYDNEY—Arrived Oct. 6: S. S. Manuka, from Honolulu. SAN FRANCISCO—Sailed Oct. 7: U. S. S. Colorado, for Honolulu.

SAN FRANCISCO—Arrived Oct. 7: Sch. Alice McDonald, from Anahulu, Sept. 7. 4 p. m., S. S. America Maru, hence Oct. 1.

HILO—Sailed Oct. 6: S. S. Virginian, for San Francisco.

TIDES. Full moon Oct. 9 at 10:45 a. m. Hawaiian standard time is 10 hours 30 minutes slower than Greenwich time, being that of the meridian of 157 degrees 30 minutes. The time whistle blows at 1:30 p. m., which is the same as Greenwich, 0 hours 9 minutes. Sun and moon are for local time for the whole group.

ARRIVED. Wednesday, Oct. 7. Stmr. Kinau, Gregory, from Kaula, a. m.

DEPARTED. Tuesday, October 6. Stmr. W. G. Hall, for Kaula ports, 5:15 p. m.

Stmr. Mikahala, for Molokai and Maui port, 5:20 p. m.

Stmr. Nocuau, for Mahukona, Honokaa, Kukuhale and Kawaihale, 4:40 p. m.

Wednesday, October 7. O. S. S. Alameda, Dowdell, for San Francisco, 10 a. m.

PASSENGERS ARRIVED. Per stmr. Kinau, Gregory, from Kaula, Oct. 7.—Miss E. D. Sutherland, Mrs. E. C. Ewell, Miss D. McKeague, J. Yamauchi and wife, Nakagawa, Y. Ichii, O. Blackstad, E. C. Rhodes, Mrs. A. F. Knudsen and maid, Mr. and Mrs. Y. M. Jansen, Mr. and Mrs. F. Schmidt, Miss B. Schmidt, F. Schmidt, Jr., G. Schmidt, Mrs. R. L. Wilcox, Miss Labenz, Mrs. C. P. Rees, E. O. Boyer, T. Watta, C. Schroeder, W. Matsushita, Fong Kum, T. Moffitt and 29 on deck.

PASSENGERS DEPARTED. Per O. S. S. Alameda, Dowdell, for San Francisco, Oct. 6.—E. A. Berndt, W. A. Bryan, W. W. Bryan, Miss P. Burns, A. W. Church, C. K. Shaw, C. P. Colburn, Dr. J. H. Dawson, Mrs. Dawson, H. S. Hopkins, J. P. Johnson, W. R. Kinolea, Mrs. G. L. Leonard, Geo. Odling, H. H. Perry, J. W. Prendergast, F. H. Percy, Master Prendergast, R. E. Pritchard, Mrs. W. A. Ridout and child, Miss P. Scott, Miss E. M. Sanders, Mrs. L. B. Simon, D. P. Thoma, E. V. Todd, Mrs. D. L. Van Dine and 2 children, F. M. Van Horn, H. H. Williams.

Per stmr. Mikahala, Phillips, for Molokai and Maui, Oct. 6, 5 p. m.—V. Von Hart, P. L. D. McVeach, P. W. Pease, J. D. McVeach.

Per stmr. W. G. Hall, Thompson, for Kaula, Oct. 6, 5 p. m.—C. A. Bruna, L. Welzheim, Miss Miller, Haroniki.

THE OCEANIC steamship Alameda departed this morning for San Francisco carrying mails, but a rather light passenger list. In fact, the great number of departures of steamers for the Hiltonian and the Alameda, which have to compete with Siberia, at the end of the present week.

THE KINAU came in this morning from Kaula, with cargo as follows: 1123 bags sugar, 100 bags rice, 110 bags rice bran, 110 bags taro, 17 empty wine casks, 1 buggy, 3 horses, and 140 packages sundries.

Sea Wrens! Sea Wrens!

It is very well to see a Wren, but the place to get one is at the CHARLES D. WALKER'S BOAT and MACHINE WORKS, KING ST., opposite SOUTH.

Suppose you look at it this way; many a tonic and medicine has over 10 per cent. alcohol in it — plainly marked on the label.

Yet people take it, no matter how strong their Prohibitionistic tendencies, because it is a tonic.

Primo Beer is a tonic of the first class and an aid to digestion. It contains less than three per cent. alcohol.

And it is a delicious table beverage. A glass with your meals will make them taste better and help your digestion.

Notice!

OWING to the late arrival of many of our Imported Hats and Millinery Goods,

we shall have many pleasant surprises for the ladies who visit our store during the next few days.

We are pleased to say that our Millinery opening has so far been a most successful one.

N. S. SACHS DRY GOODS CO.
LIMITED

College of Hawaii Offers Household Course

History records no greater monument to education than the Land Grant Act of 1862. This Act provides for a college in each State and Territory, the leading object of which shall be to teach such branches of learning as are related to agriculture and the mechanic arts, without excluding, however, other scientific and classical studies. This lays the foundation for practical courses of study and emphasizes the principle that men and women may be educated by and for these practical subjects as well as by the classics.

The College of Hawaii stands for this broad and efficient basis for education and has accordingly arranged technical courses in Agriculture, Mechanical Arts, Household Economics, as well as for General Science. Below is the synopsis of the course in Household Economics. Similar synopses of the other courses will be published later:

The entrance requirements for this course are of the same high standard as those for the other courses; that is, the High School or Oahu College diploma or its equivalent. The course requires four years for completion or the requirement of 159 credits, a credit being the equivalent of two and one-half hours of recitation and its preparation or in laboratory. Special students are provided for in subjects which they may choose.

The conception of Household Economics may be held in two phases, one pertaining to the sciences bearing upon the procuring and preparation of food, fuel, and shelter, and the other pertaining to the arts of these necessities, and also to the delineation of colors and forms in their relations to our pleasures. At the same time a sufficient amount of studies in the sciences, languages, and mathematics is introduced so as to give the students a well-developed course of training. During the first year the courses in Drawing, Textiles and Home Architecture appeal especially to the student of Household Science and Art. The preliminary drawing is designed to give one a knowledge of delineation of forms and is a good preparation for the work in Home Architecture. That there is need for this subject is attested by the fact that women are often wearied of their work in the home because they have to climb awkward stairs to travel several miles each day, looking after the poorly arranged rooms, and often their work embodies sufficient exercise, but this is mitigated by poor ventilation or poor sanitary conditions. The course in Textiles is designed to cover the useful fibers used in textile manufacture, their manufacture, care and handling, and specific uses.

In the second year the subjects of Home Decoration, Art and Design and Food selection and preparation are those especially appropriate to this course. The work in Drawing and Home Architecture have laid the foundation for these courses in decoration and the use of color. During the entire course Food receives due attention, both from the standpoint of its preparation and use. A well-equipped kitchen and dining-room will be provided and the student will have practice in all activities pertaining to the preparation and serving of food.

In all these practical subjects, however, the student keeps constantly in mind the importance of training the intellect and artistic senses as well as the mind. To this end the courses in the order related, sciences of Botany, Geology, Chemistry, Physics, and Zoology and courses in the Humanities and Ceramics are given. The refinement of taste and development of the power of discrimination is especially helpful in the home; hence the work in art is being adapted to the requirements of students in Household Economics. The subject of Art History is also being provided. Sculpture and painting will be considered as a means of cultivation in art appreciation and art criticism. A collection of antique and modern casts will be provided for use of students in art and design.

Following is a synopsis of the course in detail:

- COURSE IN HOUSEHOLD ECONOMICS**
- First Year—First Semester: Geometry, 3 credits; textiles, 3 credits; English, 4 credits; botany, 4 credits; German or French, 3 credits; art and design, 2 credits; total credits, 19.
 - Second Semester: Home architecture, 3 credits; English, 4 credits; chemistry, 6 credits; German or French, 3 credits; botany, 4 credits; total credits, 20. Beginning with 1909, chemistry will be given throughout the year (3 hours); drawing first semester, art and design, second semester.
 - Second Year—First Semester: German or French, 3 credits; chemistry (qual. anal.), 3 credits; home decoration, 3 credits; art and design, 2 credits; English, 3 credits; zoology, 3 credits; physiology, 3 credits; total credits, 20.
 - Second Semester: German or French, 3 credits; chemistry, organic, 4 credits; food selection and preparation, 3 credits; English, 3 credits; zoology, 3 credits; geology or art and design, 4 credits; total credits, 20.
 - Third Year—First Semester: Food chemistry, 3 credits; bacteriology, 4 credits; economic uses of food, 3 credits; advanced algebra, 3 credits; economics, 4 credits; electives, 3 credits; total credits, 20.
 - Second Semester: Food chemistry, 3 credits; dietetics, 4 credits; hygiene, 2 credits; economics, 4 credits; trigonometry, 3 credits; electives, 4 credits; total credits, 20.
 - Fourth Year—First Semester: History, 4 credits; principles of nutrition, 5 credits; history of home economics, 2 credits; psychology, 3 credits; electives, 6 credits; total credits, 20.
 - Second Semester: History, 4 credits; teachers' course, 2 credits; household management, 3 credits; logic, 3 credits; electives, 8 credits; total credits, 20.

Cutting Out Senators.
All the tickets have leveled their main attack on the Republican Senatorial ticket. It appears that John Hughes has been cut from all of them, while in some Henriques and in others Quinn has been chosen as the sacrifice. In the place of the two candidates who have been scratched off the names of Frank Harvey, the Democratic candidate, and of Broad, the Laborite, have been placed, and there are many who believe that unless the Republican party makes a very determined effort, it will lose two of its Senators. Among the Supervisorial candidates Watkins and Logan have been scratched from many of these tickets, but it is probable they will gather strength when they get on the stump.

Meeting at Kakaako.
This evening there will be a great meeting at Kakaako, at the corner of South and Queen streets. The speakers will be all the candidates who are running at large and the Representatives from the Fourth District. A quartet club will entertain the crowd between the speeches.

Trip Around Island.
At a meeting held at headquarters by the Republican candidates it was decided to start the tour around the island tomorrow at 9 o'clock. The party expects to return to town Saturday night.

The Itinerary will be as follows:
Meeting at Kaneohe courthouse at noon.
Meeting at Waikane, 3 p. m.
Meeting at Laie, 7:30.
Friday evening—meeting at Waihi, 7:30.
Saturday, meeting at Pearl City, 7:30 p. m.

Three automobiles will convey the fourteen candidates and Stephen DeShazo and Bernard Kekoaiki, who will accompany them.
Chairman Judd of the County Committee states that this will be in the main an introductory trip for the purpose of introducing the candidates to the outside district voters.

Money for Bryan.
The local Democrats seem to take quite an interest in the National campaign. They have shown this in a very striking form by getting together a fund, which will be sent to the Bryan managers to assist his campaign. Col. McCarthy stated this morning that almost every precinct club in the city, especially those in which the Hawaiians were in the majority, had contributed to this fund, and although the sums contributed were not very large they showed the strong interest which prevailed among the voters.

Fusionist Meeting.
Tonight, commencing at 7:30 o'clock the Home Rulers and Laborites will conduct a political meeting at Moiliili, maula of the church. They will hold no other meeting and on that account, it is expected that it will be largely attended by the residents of Moiliili and Palolo valley.
The speakers will include almost all the candidates of the joint ticket.

Feds for Monarrat.
Bonnie Monarrat, the independent candidate for Deputy Sheriff, and running-mate of Iauka, this noon filed his nomination papers. They contain enough names of Civic Federationists to indicate that, if the supposition that a man will vote for the candidate whose nomination he endorses, is correct, the Civics will probably endorse him.
The full list is as follows: W. R.

ANDRADE FINDS PIPER GUILTY

Young German Convicted Of Annoying Small Girls

C. Piper, a German lad, nineteen years of age, was this morning found guilty by Judge Andrade of indecent exposure. The case was a hard fought one. E. M. Watson, who appeared for the defendant, trying to prove an alibi. The witnesses for the prosecution were three small girls, pupils attending the Kaahumani school, who testified that last Wednesday the defendant had been annoying them by his actions, although he did not speak to them or attempt any violence. This, they said, happened at about 8:30 a. m. on Lumailo street as they were on their way to school.

The father and mother of the defendant, two worthy old-fashioned Germans, testified that their son had been in bed on the morning in question, and that he had not risen before 9 o'clock. They stated that he had been out of work for a couple of months, and that he had been in the habit of lying in bed until 9 every morning while he was unemployed. The defendant testified to the same effect. On cross-examination he admitted that he had been once convicted, but insisted that he did not remember for what offense. On examination of the court record it was shown that in 1905 Piper had been sent to the Reform school for one year. He had pleaded guilty to being found on the premises of a boarding school for girls.

Prosecutor Brown asked, after the Court had found defendant guilty, that sentence be deferred, as he had a couple of other charges of a similar nature which he wished to press against Piper. This was granted, and the two new charges were entered. One of these alleges that on October 1 Piper had been guilty of misconduct at 8:30 a. m. on Thurston avenue while the other alleges that he had been annoying the small children of the Susanna Wesley Home on King street at 2:30 p. m. of the same day. The defendant was released on a bond of \$1800, the cases being set for hearing on next Monday.

HONOLULU WEATHER

Wednesday, Oct. 7.
Temperatures—6 a. m., 72; 8 a. m., 75; 10 a. m., 78; noon, 79; morning maximum, 72.
Barometer, 8 a. m., 29.98; absolute humidity, 8 a. m., 6.549; relative humidity, 8 p. m., 70 per cent; dew point, 8 a. m., 65.
Wind—6 a. m., velocity 5, direction N. E.; 8 a. m., velocity 11, direction N. E.; 10 a. m., velocity 20, direction N. E.; noon, velocity 15, direction N. E.; rainfall during 24 hours ended 8 a. m., .02 inch.
Total wind movement during 24 hours ended at noon, 145 miles.
WM. B. STOCKMAN,
Section Director, Weather Bureau.
Harry Darlington Jr. of Pittsburgh married Miss Lofreda Weir, daughter of Levi Weir of New York, in London.

All Los Angeles clubs go on a temperance basis as a result of the campaign made by city prosecutor.
Bluejacket is arrested and charged with writing scurrilous letter to Roosevelt.

Castle, R. Verne Mitchell, W. L. Castle, J. B. Castle, W. C. Ponceok, C. E. King, R. L. Auerbach, Harry Arncliffe, E. H. Wodehouse, W. M. Buchanan, C. F. Peterson, W. F. Johnstone, C. E. H. D. Mariner, H. M. Whitney, C. C. Rhodes, E. M. Veltosen, E. M. Campbell, F. E. Steere, H. B. Giffard, J. D. McInerney, Jason Andrade, H. W. Adams, M. D. Monsarrat, E. J. Ferreira, A. F. Wall, Wm. W. Hall, J. D. Deter, Democratic Mulletts.

Sam Kaloa, a well known Democratic speaker, admitted today at noon the strength of the Republican party. "The Republican party is the strongest party in Honolulu," said Kaloa, "but it is like a salt salmon. Its savor is no longer effective. The Democratic party is like a fat mullet. It tastes good and those who partake of it will have no 'kick' coming. It is money for every sensible voter to cast his vote for the Democrats, the mullets."
Kaloa made a strong appeal this noon for the Democratic ticket, stating that its ticket, headed by Link McCandless and Fern, included the best men in the county. He denounced Kauaiakalani and Achi for running the Home Rule-Laborite convention to suit their convenience. "This," Kaloa said, "angered the Home Rulers of Laie, who announced that they would only vote for Notley."
"Ware the Hoodoo."
These are days of ill-omens. Whether they are attributable to our famed kahunas or not, remains for the devotees of the craft to decide. We are sure, however, that Pete shock and scattered the Democrats at Kalapana, while a very much dead whale awaited the returning Home Rulers in Hilo Bay.—A Setta.

Flock by Themselves
Hearst has a disciple true blue in Honolulu. Having been a Home Ruler, a Republican and a Democrat all within a short period of time, Iauka is now an independent candidate for Sheriff of Oahu County. He is not, however, the only sorehead, as we note that Beckley, Carlo Long, and divers others are also independents, and being so independent the voters will doubtless allow them to vote for themselves alone.—A Setta, Hilo.

We're Willing to give you a Ten Days' Free Trial in order to prove to you that the

PARKER Lucky Curve FOUNTAIN PEN

WILL NOT LEAK OR BLOT OR STAIN THE FINGERS. It won't because it can't: the Lucky Curve won't let it. Call and ask us for a PARKER PEN to try out.

HAWAIIAN NEWS CO., LTD.,
YOUNG BUILDING.

Heinz RED KIDNEY BEANS

Beans that are Really Baked!
We want you to try them—they are really delicious. You'll Never Eat Better Beans. INSIST upon getting HEINZ. New Shipment of DILL PICKLES just in.

H. Hackfeld & Co., Ltd.,
DISTRIBUTORS.

Too Fat for Comfort! GRUNDMAN'S TEA

will reduce your weight and keep you in a healthy condition. It is used here with great success.

SOLD ONLY BY **BENSON, SMITH & CO., Ltd.**
Hotel and Fort Sts.

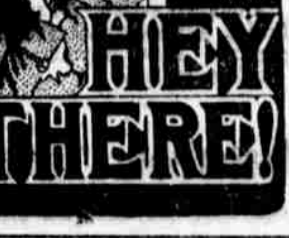


These Shoes

are low-priced, yet good and strong—the ideal shoes for a healthy boy.
We have Buster Brown Shoes for Girls, Misses, and Children.

REGAL SHOE STORE,
M'CANDELLS BLDG. King and Bethel

Good Folks Take Notice



It's a Good Sign If it's painted by **Stanley Stephenson,**
The Paint Shop. 134 King St.

K. Daimaru, First-Class Furniture Store

134 Beretania near Fort St. Telephone 214.

AN OUTING

in an automobile is just the thing. Call up 200-388—or 1458 and ask for **C. H. BEHN**
Choice FERNS, ROSES and CARNATIONS

Mrs. E. M. TAYLOR
THE FLOREST, HOTEL YOUNG BLDG. Telephone 339.

POST CARD ALBUMS

New Assortment. Large Stock

OUR LARGE NEW STOCK is made up almost entirely of low-price albums that are attractive too. We make a specialty of getting moderately-priced albums, but we have more expensive ones also.

All Grades, Sizes and Kinds
Honolulu Photo-Supply Co., Ltd.,
FORT STREET. "EVERYTHING PHOTOGRAPHIC"

The Encore Saloon Absolutely Certain

Try a drink at the new place and have "MATT" HEFFERN serve you.
COR. HOTEL and NUUANU.

McTighe Favorite

The Best Whiskey on the Market. THOS. F. MCTIGHE & CO., AGENTS. 101-105 KING ST. PHONE 140. P. O. BOX 755.

Bread

The Best in Town.

SINGER'S BAKERY. TEL. 527. KING ST.

S. SAIKI,

Bamboo Furniture Made to Order. Picture Framing a Specialty. 563 S. BERETANIA ST. TELEPHONE 497.

BOOT and SHOE MANUFACTURER

By the Latest Improved Machines. Men's Soles, 75 cents (sewed); Men's Heels, 25 cents. Repairing Neatly Done. **Lin Hop,** 240 NORTH KING ST.



You save! When you get us to make your clothes at ready-to-wear prices. Our \$25 suits have no comparison. Tuxedo Suit \$30. up.

GEO. A. MARTIN, Hotel St.

FOR SALE
4000 Green Ironing Slate 10"x10". 500 One and Two Prong Iron Fence Posts.
1 25-gallon Drum Commercial Ether.
1 Cast Iron Fitting with Flanges, for 12" Wrought Pipe.
EMMELUTH & CO., LTD., 145 King Street. Phone 211.

EVENING BULLETIN

DAILY and WEEKLY Published by BULLETIN PUBLISHING CO., LTD.
At 120 King Street, Honolulu, Territory of Hawaii.

Daily every day except Sunday. Weekly issued on Tuesday of each week.

MEMBER OF THE ASSOCIATED PRESS.

Wallace R. Farrington, Editor

SUBSCRIPTION RATES PAYABLE IN ADVANCE.

EVENING BULLETIN	WEEKLY BULLETIN
Per Month, anywhere in U.S.75	Per Six Months..... 4.50
Per Quarter, anywhere in U.S. 2.00	Per Year, anywhere in U.S. 1.00
Per Year, anywhere in U.S. 12.00	Per Year, anywhere in Canada... 1.50
Per Year, postpaid, foreign, 12.00	Per Year postpaid, foreign..... 2.00

CIRCULATION LARGEST OF ANY NEWSPAPER PUBLISHED in the Territory of Hawaii.

Tel. Editorial Rooms, - 185
Business Office, - 256

Entered at the Postoffice at Honolulu as second class matter.

WEDNESDAY OCTOBER 7, 1908

Straight-ticket talk is common talk. But have you registered?

Partisanship and Principle appeal to the people with far greater force than Petty Personalities.

The Fleet? Will give Honolulu information as to its whereabouts when Admiral Swinburne issues the order.

You can't strengthen a good political organization by doing your utmost to discredit the ticket it is working to elect.

The Star-Spangled Banners still wave, but we hope Honolulu's patriotism is not to be gauged by the frazzled appearance of those overhead in the streets.

Honolulu's business men are entitled to sympathy. Honolulu can well understand what it means to our trans-Pacific neighbor to have made all preparation for entertainment of the Fleet, and have the town shut up by quarantine.

When the citizens of Hawaii unite to give the Territory and its people a good name, even the military men will forget to talk of the character of our population and possible necessity of its being ruled, rather than ruling itself.

ORGANIZATION AND THE TICKET.

It is fortunate that any person contemplating a departure from the straight Republican ticket should be convinced thus early in the campaign that the gentlemen in charge of the party organization are exceptionally good men.

The rank and file of the party knew this long ago.

When the civic sleeper awakes on another occasion, he should recall that the convention that created the campaign organization was also responsible for the candidates the Republican party put in the field.

It is not possible to smash the ticket which the Republican organization is trying to elect without thereby smashing the standing and strength of the organization.

DEFEAT OF THE TICKET means DEFEAT for the ORGANIZATION.

NO PRACTICAL USE.

It is a source of great satisfaction to hear that Government by Commission is purely an academic question.

The Bulletin has felt that the matter was originally brought up merely for purposes of discussion among a very small minority of our population that is not and never has been in favor of the American form of government, although taking most kindly to all the promise of stability the presence of the flag may afford.

Happily, their campaign has not been and cannot be successful, because it appeals neither to the good sense of the American people nor has it the force of National necessity.

Consequently, of course, Government by Commission becomes a purely academic question, Hawaii has no practical use for it.

THE NEW MATSON STEAMER.

The new passenger steamer to be built for the local service of the Matson Navigation Company appears to be a development of the plan which the Bulletin has insistently espoused—that carriers of freight should also be carriers of passengers.

When every steamship that comes into this port for the freights to and from the mainland is equipped for passengers, a long advance step will be taken in the solution of the transportation problems of the islands. It is not necessary that every steamship offered to the people of Hawaii should be a palatial liner. Far better is it for this Territory that all the steamers of large freight-carrying capacity should carry passengers

Buy a Lot at Kaimuki

\$395 Not too far from car line on 12th Ave. 100 x 150; partly cleared; splendid view.

\$400 One-half block from car line; 75x200; entirely cleared; good view of mountains and sea; m a c a d m street; 12th Ave.

\$250 Two blocks from car line; 100x150; good view of city; partly cleared; m e c a d m street; 11th Ave.

YOU Won't have to be told that these are great bargains. If you are looking for Kaimuki property, see us. There are no better lots on the summit of the hill at any price!

Trent Trust Co., Ltd.

sisted, prosperity is not guaranteed, by investments abroad, when there is opportunity to help the pioneers and workers at home.

The capitalist or the man working for wages sometimes points to the other as proof that he is not the only one. That shows neither believes he is RIGHT.

At the present time Honolulu has great opportunities offering. The cash surpluses for investment are said to be reasonably large; the workers and the salaried men are well paid.

All that's needed is to form the HABIT of home purchase and home investment. The combination will cause this town and every other town of the Territory to grow and prosper as never before. This is an object WORTH STRIVING FOR.

THE TREATY OF BERLIN.

The treaty of Berlin to which the world's attention is now directed was a "settlement" of the differences between Russia and Turkey which have always kept the Balkans in turmoil.

In 1875, some of the Turkish provinces began a revolt; Herzegovina took the lead and was soon followed by Serbia and Montenegro. But it was not until later that the countries became free, to any extent, of Turkish rule. The differences between Turkey and Russia were growing to an importance not only to the two empires but to the whole of Europe.

None of the European nations wished to have Russia enlarge her territory or increase her power. Left to themselves it seemed as if the absorption of Turkey by Russia might be possible.

In 1876 the great European Powers decided to interfere and the first reform they asked of Turkey was better treatment of her Christian provinces. Representatives of the "six great Powers" met in Constantinople, but Turkey rejected their overtures and interference. Russia announced herself as defender of the Christian provinces and war with Turkey was declared, April 12, 1877.

Roumania declared its independence the following month. Turkey was forced to accept Russia's terms as made in the treaty of San Stefano signed March 3, 1878. This was modified in 1879 by the treaty of Berlin, which provided that Montenegro, Roumania, and Serbia should be independent. Russia obtained Roumanian Bessarabia, but gave Dobruja to Roumania. A portion of Armenia, including Bartoum, was also given to Russia. Bosnia and Herzegovina were given to Austria. Bulgaria north of the Balkans was erected into a principality still under the sway of Turkey and Bulgaria south of the Balkans was made an autonomous province called Eastern Roumania.

Other changes not decided upon at Berlin but which went into effect in 1877 and succeeding years, were the right granted England by Turkey to

WE ARE SHOWING A SWELL

New Lot

Ladies' Shower-Proof Coats

Prices \$15 up

EHLERS



"REPETITION IS REPUTATION." As a citizen of the Territory of Hawaii and of the City and County of Honolulu, don't you feel that it is BETTER TO SPEAK WELL OF THE PLACE, ITS PEOPLE, ITS POLITICS, and its BUSINESS, than to be complaining, misrepresenting, gossiping, and repeating that which you know is either not true or not helpful?

Remember that "REPETITION IS REPUTATION," and if you condemn your own town and your own people as a matter of habit, an evil reputation will be established.

occupy Cyprus; the transfer by Turkey of Thessaly to Greece; placing Tunis under the protection of France. Eastern Rumelia was annexed to Bulgaria in 1885.

'TIS GOOD TEXT

Editor Evening Bulletin: The splendid editorial in last night's Bulletin, "Your Business Duty to Hawaii," should be used as a text in Honolulu's schools. It hits the nail on the head. Where is all the money going that is received in dividends and redemption of bonds? It is not finding investment in Hawaii.

As to one of the lesser things you mention, it is common report that certain business houses, depending upon the community for trade, combine amongst proprietors and employes to purchase groceries, shoes, etc., on the mainland. Where would these firms be if everyone did likewise? They need a warm application of the Golden Rule.

"BUSINESSMAN."

Honolulu, Oct. 7, '08.

REGISTER!

REAL ESTATE TRANSACTIONS.

*Entered for Record Oct. 6, 1908, from 10:30 a. m. to 4 p. m.

Caesar R Jarvin to James K Kula. BS William Charman to James K. Kula. L. Palma Nuholo (w) to Tr of Church of Latter Day Saints

Kallina to Tr of Church of Latter Day Saints

Mary Mansmann and hab to Tr of Church of Latter Day Saints

Senzo Honda to Santaro Taniguchi

Arvilla S McWayne by atty. Notice Trent Trust Co Ltd to Abel A Carreiro

Abel A Carreiro and wf to Julia H Along

Arroll Bros to Olaya Sugar Co Ltd. CM Y M Wee and wf to James B Castle. D G N Alapai to Yuen Fat

Yuen Fat & Co to Y M Wee

Yuen Fat & Co to Y M Wee

Nauuna (k) et al to Akuna

C K Chow to Chun Kam Moon et al

C K Chow & Co to Chang Kam Chun et al

Henry E Cooper to Bank of Hawaii Ltd

Manuel Francisco to S K Sylva

Entered for Record Oct. 7, 1908, from 9 a. m. to 10:30 a. m.

F B McStocker Tr to Tr of Violet L Kamakawioole et al

Tong Yick Wai Co to Chang Susie Mee

YOUR VOTE can't be counted unless you REGISTER.

A very timely pamphlet is being distributed by the Bishop Insurance Agency, being "The North British & Mercantile Insurance Company's Political Atlas." This is a complete compendium of the facts, figures, platforms, men and issues of the Presidential campaign of 1908. The publishers are Rand, McNally & Co. It is very handy for the election information which everybody "knows" but just can't think of at the time when it's wanted.

Registration Hours 8 to 10, 12 to 1, 4 to 7.



Rich Cut Glass

MAKES AN APPROPRIATE GIFT.

We beg to call attention to our stock of FINE CUT GLASS, among which will be found articles at All Prices.

We invite your inspection of our Large Stock.

H. F. Wichman & Co. LIMITED.
Leading Jewelers.

A Popular Insurance Man.

Mr. I. Barton Yourex, 110 Carlton Street, Toronto, Canada, widely known throughout Canada as agent for the Equity Fire Insurance Company, Toronto, Canada, and who is also a local preacher and was for over twenty years a successful school teacher, writes an interesting letter to Peruna.



I. BARTON YOUREX.

"It is only fair to give praise where it is due. Some time ago I contracted a cold, which being repeated caused catarrh in my head. I had seen Peruna advertised frequently, and upon inquiry was advised by a friend to try it. The help it gave proved its merit beyond a doubt, very beneficial indeed."—MR. I. BARTON YOUREX.

It may seem a small matter to some people to cure a cold. But experienced physicians not only realize the importance of neglecting a cold, but the difficulty that sometimes attends upon the curing of one.

Colds are the cause of more acute diseases than all disease germs combined.

More people lose their lives as the direct result of catching cold than from all other causes put together.

The following wholesale druggists will supply the retail trade: BENSON, SMITH & CO., HONOLULU, HAWAII.

The Ghost Iron Beds

Has Left Punchbowl For The Orpheum Saloon

TOWNSEND UNDERTAKING COMPANY

EMBALMING A SPECIALTY Kapiolani Bldg., Cor. King & Alakea. Phone 411.

KEEP

Coyne Furniture Co.

AUTO and CARRIAGE Repairing

SCHUMAN CARRIAGE CO., LTD. Merchant St. bet. Fort and Alakea.

J. M. LEVY & CO.

Family Grocers

King St. near Bethel. Phone 76.

Wah Ying Chong Co.

King Street, Ewa of Fishmarket. DRY GOODS AND FURNISHING GOODS OF EVERY DESCRIPTION.

The latest and largest assortment of hand-made and painted leather postcards in Hawaiian Views, Flowers and Fruits, at WEEBON'S CURIOSITY BAZAAR

Alakea St., bet. King and Merchant.

Nothing Excels

THE HAWAIIAN ANNUAL — for facts and figures of Island information, past and present, or HAWAIIAN FOLK TALES — for the legends and traditions of this interesting race. These, with other current books relating to Hawaii, and many out of print, may be had at Thos. G. Thrum, Agent for Hawaiian Islands.

JEWELRY

from us, besides getting satisfaction, you save money.

J. A. R. Vieira & Co.
113 HOTEL ST.

ART THEATER

Wonderful Motion Pictures. Two changes each week.

Monday and Thursday

Picturesque Java, Forty Winks, Stag Hunt, How To Make Time Fly, Shoeing the Mail Carrier, Transformation.

Admission 10c. Children 5c. Seats in boxes, 25c.

The Pianola

Call and hear it and see what you can make it do.

BERGSTROM MUSIC COMPANY, LD.

Auto for Hire

MANUEL REIS—Call up at any time by telephone any one of these numbers: 280, 200, 1097.

Unique Chinese Goods

Wing Wo Tai & Co.

941 NUUANU ST.

The Fashion Saloon,

Hotel St. near Fort. Jack Scully. Jack Roberts.

PAINTING, PAPERHANGING AND TINTING.

General Jobbing A Specialty. Dealers in Wall Paper, Paints, Oils, etc. P. O. Box 914. 221 No. King St., opp. Ala Park. W. B. Kam, mgr.

Arctic Soda Water Works

1263 Miller St. M. R. DE SA.

BULLETIN ADS PAY

WHAT'S IN A NAME?

Nothing, unless that name has been made to stand for something.

"Stein-Bloch" on a suit means that it has been carefully and correctly tailored from pre-shrunk material by the greatest collection of tailors in the United States.

Come and try a try-on---you'll see what we mean.

M. McINERNY, Ltd., Fort and Merchant



'MOST GONE!

We have only 20 Pairs left of Laird, Schoeber & Co.'s

Red Kid Slippers

at \$2.50 a pair.

French Heels, Three Straps, and Cinderella Styles. Just the thing to wear for the GIPSY ENCAMPMENT.

McINERNEY SHOE STORE, FORT STREET, A FEW STEPS ABOVE KING.

We want you to see the Eddy Refrigerator; you'll understand at once why it is so superior.

You'll see why it saves more ice, preserves food better, and lasts longer than any other.

See the EDDY before you buy your refrigerator

Theo. H. Davies & Co., Ltd., HARDWARE DEPARTMENT.

Nickle Ware

CHAFING DISHES with patent Ivory Enamelled Food Pans; CRUMB TRAYS and SCRAPERs; CREAM and SUGAR SETS (gold lined); ICE WATER FILTERS; COLLAPSING DRINKING CUPS; POCKET FLASKS; ICE-HOLDERS; COCKTAIL SHAKERS. A Complete Line of BATH-ROOM SPECIALTIES.

LEWIS & CO., Ltd.

189 Ing St. HOUSEHOLD EMPORIUM. Phone 240.

Apricot Nougat

entirely new to this city and the most delicious sugar plum eaten by lovers of good candy. This with our assortment of PALM Chocolates should be in every home. Pure and Perfect.

The Palm Cafe

Hotel Street near Fort St.

TOILET SOAP

A splendid assortment ranging in price from 15 cents a box of three cakes to the highest grade at 75 cents a box.

Workman's Tar, 5c a cake; Violet Toilet, 10c a box of 3 cakes.

L. Ahoy, Nuanu below Hotel



Monuments, Safes, Iron Fence

Hawaiian Iron Fence and Monument Works NEXT TO YOUNG BLDG., 176-190 KING STREET. PHONE 237.

WANTS ADMINISTRATOR FOR HASTINGS ESTATE

E. S. Cunha has filed a petition in the Circuit Court asking that the Bishop Trust Company be appointed the administrators of the estate of Ana Hastings, deceased, the old man who dropped dead in the back of the Union Grill. Cunha says that the estate of Hastings amounts to the sum of \$1244.70, which is made up by the following items: 19 shares of stock in the Oahu Sugar Company, of which the par value of each is \$20; 29 shares of Ewa Plantation, par at \$20; a note of E. S. Cunha for \$500; and personal effects valued at \$10. Cunha stated that the only heir of which he is aware is Bessie B. Hastings, a niece who resides at 14 Chestnut street, Natick, Mass.

COMMERCIAL CLUB LUNCH

Rev. J. H. DeForest and Mr. J. H. Mitchell will be the guests of the Commercial Club at luncheon on Friday noon next. Mr. De Forest will address the members and their guests on Japan and matters of the Orient, on which he speaks with authority. Mr. Mitchell is of the Consular corps and will also address the Club.

A NEW THEATER.

Plans are being perfected for a new moving picture theatre to be located on Hotel street near Bethel street. The public seems to demand this class of entertainment and the management of the proposed new place promises fine accommodations with good ventilation, with a high class of views.

Charles K. Notley, Home Rule-Laborite candidate for Delegate to Congress, went to Kaula yesterday afternoon in the Hall. He will return on Sunday.

COMMISSIONER'S SALE

Valuable Land SITUATE ON Tantalus, Honolulu.

COUNTY OF OAHU, TERRITORY OF HAWAII.

Pursuant to a decree of foreclosure and sale made by the Honorable Alexander Lindsay, Jr., Second Judge of the Circuit Court of the First Judicial Circuit, said Territory, on October 5th, 1908, in a suit Equity No. 1636, entitled First American Savings and Trust Company of Hawaii, Limited, Complainant, versus A. V. Gear and Addie B. Gear, his wife, and William O. Smith, William H. Baird and David W. Anderson, Trustees, and Jerusha M. Peterson, Respondents, the undersigned appointed as Commissioner by said Decree, will sell at public auction to the highest bidder for cash, subject to confirmation of Court, on

Saturday, Oct. 31st, 1908,

at 12 o'clock noon, at the front mauka entrance to the Judiciary Building, said Honolulu, the mortgaged property following, to-wit:

All that certain piece or parcel of land situate on Tantalus, Honolulu aforesaid, known as Lot 14, and more particularly described as follows:

LOT NO. 14, Beginning at the south corner of Lot No. 13, on the North side of Kukui Drive, as shown on Government Survey Registered Map No. 1968, and running by true bearings:

First: Along Kukui Drive direct bearing and distance being S. 60° 00' W. 260 5-10 feet; thence N. 23° 00' W. 268 feet along Lot No. 15; N. 81° 25' E. 69.3 feet along ridge, Gov't; N. 44° 40' E. 94.3 feet along ridge, Gov't; N. 64° 00' E. 96.8 feet along ridge, Gov't; S. 24° 40' E. 260 feet along Lot 13 to the initial point. Area 15-10 Acres.

The above premises being the same as were conveyed to the said A. V. Gear by Land Patent Number 4544, dated the 13th day of February, 1902.

Terms of sale: Cash, U. S. Gold Coin, 10 per cent. at time of sale, balance on confirmation by Court and delivery of deed.

Deed at the Expense of Purchaser. For further particulars apply to Thompson & Clemons, Attorneys for Complainant, at 8-11 Campbell Block Honolulu, or to James P. Morgan, Auctioneer, 857 Kaahumanu Street, said Honolulu, or to the undersigned at the Judiciary building, said Honolulu.

JOHN MARCALLINO, Commissioner. Dated October 7th, 1908. 4125-Oct. 7, 14, 21, 28.

HONOLULU STOCK EXCHANGE

HONOLULU, Oct. 7, 1908

Table with columns: Name of Stock, Par Value, Bid, Ask, Last. Includes categories like SUGAR, MERCHANDISE, MISCELLANEOUS.



Copyright 1908 by Hart Schaffner & Marx

WHEN you are "looking at" a suit, there are three things you want to know about it: Is it correctly tailored, does it fit, and will it wear?

When you see on a suit the label of

Hart, Schaffner & Marx

you have the answer to all three questions.

Their tailors MAKE clothes to FIT and WEAR, and make them in the latest correct mode.

Honest Goods, Honest Tailoring, Honest Prices.

SILVA'S TOGGERY, ELKS' BUILDING, KING near FORT. PHONE 651.

LOCAL AND GENERAL

One-cent-a-word Bulletin Want Ads. are cheaper than carfare and shoe-leather.

REGISTER!

Thurlow's for a lunch or dinner. Ring up No. 6. Go home in an auto back, 50c.

One or two rooms, with or without board, are being advertised for rent in this issue.

All kinds of beer, wines and mixed drinks are served in the best manner at the Fashion. Just give us a try. H. S. J. Damon, accompanied by G. Nakamura of Bishop Bank, called on the new Japanese Consul General Uno yesterday.

Primo Beer is a tonic of the highest quality and an aid to digestion. It makes a delicious table beverage. Try a glass with your meals.

Walter Doyle returned yesterday from a trip to the country where he secured information against a couple of blind pigs and raised them.

If you appreciate a cup of really good coffee or tea, pay a visit to the Alexander Young Cafe and try it. Fine cup of coffee in Honolulu.

On installments of \$3 per month you can purchase a White Family Rotary sewing machine. Benny & Co., Ltd., agents, 1256 Fort St. Phone 488.

Miss Maroni, who was injured last week in an accident on the Rapid Transit, is still confined to her room, at Mrs. McLean's, Beretania avenue.

President Isenberg has called a meeting of the Honolulu Symphony Club at the Kihohana Art League rooms for Friday evening at 8 o'clock.

B. F. Beardmore of the Hawaiian Association Football League has called a meeting of those interested in the game for Friday evening, October 9, at 8 o'clock.

Cont your iron roofs with "Arabic." You will be surprised at its cooling and preservative properties California Food Co., agents.

John P. Kahaloawai, Ed. I. Libe and S. K. Mahoe, candidates for the Legislature from the Fifth representative district, have filed their nominations with the Secretary.

Registration Hours 8 to 10, 12 to 1, 4 to 7.

We want you to call and hear the Pianola and see for yourself what it can do. With its help you can make the world's best music your own. Bergstrom Music Co., Ltd.

Use Centennial's Best Flour whenever you want to be sure of getting the best results. Anyone who has tried it will recommend it to you. Henry-May & Co., Ltd., phone 22.

The label of Stein Bloch on a suit means that it has been carefully and correctly tailored by the greatest expert tailors in the United States, Come and try on a suit. M. Melnoray, Ltd.

Benjamin clothes are tailored in the very latest New York styles, and are worn by particular dressers all over the United States. The Kosh Co., Fort and Hotel streets, are sole agents.

J. K. Waisman, candidate for sheriff of Kalawao County, filed his nomination with the Secretary on Monday. Candidates for this office are not required to file their nominations so long before election as Senators and Representatives.

At the meeting of the Social Science Club, held at the residence of A. F. Judl, officers of the association were elected for the coming year as follows: Dr. W. D. Alexander, president, and W. L. Whitney, secretary and treasurer. Hon. Gorman D. Gilman of Boston was also elected an honorary member of the association.

W. A. Bryan, president of the Pacific Scientific Institution, left this morning by the Alameda for the mainland. He will attend the January meeting of the American Society for the Advancement of Science at which it is to be determined whether or not the society will hold its 1910 meeting in Honolulu. Mr. Bryan will also attend the meetings of other learned societies.

The Rev. Father Powell will hold a series of Bible readings with expounding at St. Andrew's Cathedral. The first reading will be given today at 5 o'clock p. m., and all are invited to attend. Those who have heard the wonderfully clear and simple expounding of the Scriptures by Father Powell, and his practical and direct application of the same will be glad to hear him again. The readings will continue on Thursday and Friday at the same time and place.

YOUR VOTE can't be counted unless you REGISTER.

COMES TO HONOLULU

Fred. Schmidt, the popular and well-known irrigation overseer of Lihue plantation, came to town this morning. Mr. Schmidt comes to remain permanently, being accompanied by his wife and family. He has been with the Lihue plantation for seven years, and on his departure Manager Weber spoke in the highest terms of his ability and honesty. Mr. Schmidt makes Honolulu his home in order that his children may have better advantages. For a few months he will take a complete rest, which he has earned by his years of close attention to plantation work.

EXCESSIVE DRINKING

Orrine Destroys the Craving for Drink—Cure Effectual or Money Refunded.

Excessive or continued use of alcoholic beverages always results in a diseased condition of the nervous system.

The drinking man is often heard to say, "I can stop of my own free will and when I wish," but the poor fellow is now devoid of the power to act at the proper time and in the right way.

It's too late, the craving has secured a firm hold and because of the diseased nervous system he has not the ability for sustained effort. The result we all know.

Drunkenness is no longer considered a crime; eminent scientists and physicians have agreed that it is a disease and must be treated as such.

The home treatment that has been used for a number of years, and is highly successful, is Orrine. It is sold under a positive guarantee that if it does not effect a cure your money will be refunded.

Orrine is in two forms. When desiring to give secretly, purchase Orrine No. 1, and if the patient will voluntarily take the treatment, Orrine No. 2 should be given. The guarantee is the same in either case. Orrine costs but \$1.00 per box. Mailed in plain sealed wrapper on receipt of price. Write for free booklet on "Drunkennes," mailed in sealed envelope by The Orrine Company, Washington, D. C. Sold in this city by Honolulu Drug Co., Fort street.

WANTED

Furnished cottage, two bed rooms, close to car line. Address "C.C." Bulletin office. 4125-1f

Centennial's Best Flour

HENRY MAY & CO., LTD. PHONE 22.

QUANTITY and QUALITY of LIGHT

Three times the quantity and a light of much better quality secured by the use of

TUNGSTEN LAMPS

WITHOUT ANY INCREASE IN THE COST.

Hawaiian Electric Company, Ltd.

KING STREET near ALAKEA. PHONE 390.

35 cents a dozen

FOR THE BEST SODA WATER IN THE CITY. Made of pure juice syrups and extracts and prepared by men who know their business.

Distilled water to office or house.

CONSOLIDATED SODA WORKS CO., LTD

G. S. LEITHEAD, Manager. TELEPHONE 71.

Joseph A. Gilman,

SHIPPING AND COMMISSION MERCHANT. INSURANCE—FIRE AND MARINE.

Agent for ARTHUR SEWALL & CO., Bath, Maine; FARROTT & CO., San Francisco.

P. M. Pond, Contractor

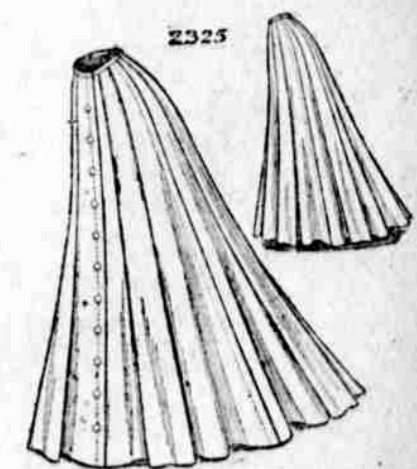
JUST FINISHED 3500 cu. yds. excavation at Manoa Girls' School. WE WANT the opportunity of submitting figures on excavating, grading, rock, or concrete jobs.

P. M. POND. TEL. 890.

OPENING TODAY One of McCall's Patterns

LADIES' SHIRT WAISTS

No Two Alike Bought Right. Will sell at LOW PRICES



E. W. JORDAN & CO., LTD.

Oceanic Steamship Company TIME TABLE

The steamers of this line will arrive and leave this port as hereunder:

Table with columns for destination (FROM SAN FRANCISCO, FOR SAN FRANCISCO) and dates (OCT. 23, NOV. 13, OCT. 7, OCT. 28, NOV. 18).

NOTICE.—On and after June 24th, 1908, the SALOON RATES will be as follows: Single Fare, \$65; Round Trip, \$110. Family rooms extra.

Wm. G. Irwin & Co., Ltd OCEANIC S. S. CO. GENERAL AGENTS.

Pacific Mail Steamship Co. Occidental and Oriental Steamship Co., and Toyo Kisen Kaisha

Steamers of the above companies will at Honolulu and leave this port on or about the dates below mentioned:

Table with columns for destination (FOR JAPAN AND CHINA, FOR SAN FRANCISCO) and dates (OCT. 27, NOV. 2, OCT. 10, OCT. 21).

H. Hackfeld & Co., Ltd, Agents

AMERICAN-HAWAIIAN STEAMSHIP COMPANY.

Weekly Sailings via Tehauapeee. FROM NEW YORK TO HONOLULU. Freight received at all times at the Company's Wharf, 41st Street, South Brooklyn.

FROM SAN FRANCISCO TO HONOLULU DIRECT. FROM SEATTLE AND TACOMA TO HONOLULU DIRECT.

FROM HONOLULU TO SAN FRANCISCO. VIRGINIAN, TO SAIL, OCT. 2

Freight received at Company's wharf, Greenwich Street.

Canadian-Australian Royal Mail Steamship Company.

Steamers of the above line, running in connection with the CANADIAN PACIFIC RAILWAY CO. between Vancouver, B. C., and Sydney, N. S. W., and calling at Victoria, B. C., Honolulu and Suva, Fiji, and Brisbane, are DUE AT HONOLULU on or about the dates below stated, viz:

Table with columns for destination (FOR FIJI AND AUSTRALIA, FOR VANCOUVER) and dates (OCT. 14, NOV. 11, NOV. 18, DEC. 8).

Through Tickets issued from Honolulu to Canada, United States and Europe. For Freight and Passage and all general information, apply to Theo. H. Davies & Co., Ltd. General Agents.

Matson Navigation Company

The S. S. "HILONIAN" and "LURLINE" of this line, carrying passengers and freight, will run in a direct service between this port and San Francisco, sailing and arriving on or about the following dates:

Table with columns for ship name, departure date, arrival date, and passenger rates.

For further particulars apply to CASTLE & COOKE, LTD., Agents.

Union-Pacific Transfer Co., Ltd. Baggage Shipping, Storage Wood, Packing Coal. PHONE 58

Hustace-Peck Co., Ltd. Phone 295. DRAYMEN 63 Queen Street. P. O. Box 212. Estimates Given on all kinds of teaming.

Dealers in FIREWOOD, STOVE, STEAM AND BLACKSMITH COAL. CRUSHED ROCK, BLACK AND WHITE SAND, GARDEN SOIL, HAY, GRAIN, CEMENT, ETC.

Weekly Bulletin, \$1 Year

Don't Worry Fast Schooner CONCORD

We will buy your Diamonds, Old Watches, and Jewelry for Spot Cash. J. CARLO, 1018 NUUANU AVE. and BRANCH, FORT ST. near HOTEL.

BISHOP & CO. BANKERS. Commercial and Travelers' Letters of Credit issued on the Bank of California and The London Joint Stock Bank, Ltd., London.

Claus Spreckels & Co. BANKERS. HONOLULU, T. H.

San Francisco Agents — The Nevada National Bank of San Francisco. Draw Exchange on the Nevada National Bank of San Francisco.

The First AMERICAN SAVINGS AND TRUST CO. OF HAWAII, LTD. SUBSCRIBED CAPITAL, \$200,000.00 PAID UP CAPITAL, \$100,000.00

The Yokohama Specie Bank, Limited. Established 1880. Capital (Paid up) Yen 24,000,000

Oahu Railway Time Table. OUTWARD. For Waianae, Waiulua, Kahuku and Way Stations—9:15 a. m., *9:20 p. m.

* Daily. † Ex. Sunday. ‡ Sunday Only. The Haleiwa Limited, a two-hour train only first-class tickets honor.

Alexander & Baldwin LIMITED. J. P. COOKE, Manager. OFFICERS AND DIRECTORS: H. P. Baldwin, President

SUGAR FACTORS, COMMISSION MERCHANTS and INSURANCE AGENTS. Agents for Hawaiian Commercial & Sugar Co. Haiku Sugar Company.

Castle & Cooke, Ltd Honolulu, T. H. SHIPPING AND COMMISSION MERCHANTS, SUGAR FACTORS and GENERAL INSURANCE AGENTS

Wm. G. Irwin & Co. LIMITED. SUGAR FACTORS and COMMISSION AGENTS. Wm. G. IRWIN, President

C. Brewer & Co., Ltd. QUEEN STREET, HONOLULU, T. H. AGENTS FOR: Hawaiian Agricultural Co., Ooala Sugar Plant Co., Onomea Sugar Co.

FIRE INSURANCE THE B. F. DILLINGHAM CO. LIMITED. General Agent for Hawaii: Atlas Assurance Company of London.

New England Mutual Life Insurance Co., OF BOSTON, MASSACHUSETTS. If you would be fully informed about these laws, address Castle & Cooke, GENERAL AGENTS, HONOLULU, T. H.

Wm. G. IRWIN & CO., LTD. AGENTS FOR THE Royal Insur. Co. of Liverpool, Eng. Commercial Union Assurance Co., Ltd., of London, England.

ANNOUNCEMENT

To the Electors of the City and County of Honolulu:

I hereby announce my candidacy for the office of Treasurer for the City and County of Honolulu and ask your support. My independent candidacy has received the endorsement of the joint Home Rule and Labor party convention, and I believe my ability to perform the duties of the office will be recognized by a majority of the voters of this City and County.

Your Obedient Servant, GEORGE C. BECKLEY.

POLITICAL NOTICES. I have been regularly nominated by the Democratic County Convention for the office of MAYOR OF THE CITY AND COUNTY OF HONOLULU

POLITICAL NOTICES. I have been regularly nominated by the Democratic County Convention for the office of SHERIFF, COUNTY OF OAHU,

POLITICAL NOTICES. I have been regularly nominated by the Democratic County Convention for the office of DEPUTY SHERIFF, DISTRICT OF HONOLULU,

POLITICAL NOTICES. I have been regularly nominated by the Democratic County Convention for the office of SENATOR, TERRITORY OF HAWAII,

POLITICAL NOTICES. I have been regularly nominated by the Democratic County Convention for the office of SENATOR, THIRD DISTRICT,

POLITICAL NOTICES. I have been regularly nominated by the Democratic County Convention for the office of SUPERVISOR, COUNTY OF OAHU,

POLITICAL NOTICES. I have been regularly nominated by the Democratic County Convention for the office of SUPERVISOR, COUNTY OF OAHU,

POLITICAL NOTICES. I have been regularly nominated by the Democratic County Convention for the office of REPRESENTATIVE OF THE FOURTH DISTRICT

POLITICAL NOTICES. I have been regularly nominated by the Republican County Convention for the office of REPRESENTATIVE OF THE FOURTH DISTRICT

POLITICAL NOTICES. I have been regularly nominated by the Republican County Convention for the office of COUNTY ATTORNEY

POLITICAL NOTICES. I have been regularly nominated by the Republican County Convention for the office of REPRESENTATIVE OF THE FOURTH DISTRICT

POLITICAL NOTICES. I have been regularly nominated by the Republican County Convention for the office of REPRESENTATIVE OF THE FOURTH DISTRICT

POLITICAL NOTICES. I have been regularly nominated by the Republican County Convention for the office of REPRESENTATIVE OF THE FOURTH DISTRICT

POLITICAL NOTICES. I have been regularly nominated by the Republican County Convention for the office of REPRESENTATIVE OF THE FOURTH DISTRICT

EVERY CHILD TO RECEIVE ATTENTION

Superintendent Babbitt's Plan of Medical Inspection

"Hawaii's Need of Medical Inspection in Schools" is the title of a pamphlet which has just been published by Superintendent of Public Instruction Babbitt, and it amply illustrates the fact that there is a crying need here at the present time, and that there will be in the future also, for a system of inspection by physicians in the public schools of the Territory.

METEOROLOGICAL SUMMARY FOR MONTH OF SEPTEMBER

U. S. Department of Agriculture Weather Bureau Station, Honolulu, T. H.; month, September, 1908.

Atmospheric Pressure (reduced to sea level; inches and hundredths)—Mean, 30.63; highest 30.93, date 13th; lowest 29.93, date 29th.

Precipitation—Total this month, 0.75. Greatest precipitation in 24 hours 0.47, date 1st. Total precipitation this month in 1877, 1.12; 1878, 0.62; 1879, 0.65; 1880, 1.22; 1881, 1.56; 1882, 1.94; 1883, 0.36; 1884, 0.54; 1885, 2.31; 1886, 2.91; 1887, 0.72; 1888, 2.95; 1889, 1.52; 1890, 0.69; 1891, 1.06; 1892, 0.85; 1893, 1.29; 1894, 0.77; 1895, 1.49; 1896, 1.82; 1897, 1.19; 1898, 0.30; 1899, 0.75. Average of this month for 23 years, 1.29. Deficiency of this month as compared with average of 23 years, 0.45. Accumulated deficiency since January 1, 4.79.

Wind—Prevailing direction, NE.; total movement, 5,741 miles; average hourly velocity, 8.0; maximum velocity (for five minutes), 26 miles per hour, from NE. on the 12th. Average relative humidity, 68.1 per cent.

Miscellaneous Phenomena (dates of)—Lunar halo, 7th.

BAND CONCERT

Commencing at 7:20 o'clock this evening the Hawaiian band will render the following program at Aala Park: PART I March: "Liberty Bell" ... Souza Overture: "Jolly Robbers" ... Suppe Intermezzo: "From House to House" ... Faust Selection: "Jolly Jingles" ... Neat

NO UNCERTAINTY AS TO WHAT DIVIDENDS SHALL BE.

The Pacific Mutual Life Ins. Co., with assets of over \$14,000,000, and a surplus of over \$1,300,000, is now issuing a Guaranteed Investment Contract, with Guaranteed Annual Earnings added, on payment of second and subsequent deposits. In case of Permanent Disability the contract will mature and be paid during life.

BUSINESS DIRECTORY

REPAIRING.
Woven Wire Mattresses repaired at the Factory Honolulu Wire Bed Co., 1259 Alapai St. Telephone 535. 3945-1f

UMBRELLAS.
Umbrellas made and re-covered. O. Mizuta, Fort near Kukul.

PLUMBING.
Yee Sing Kee—Plumber and Tinsmith, Smith St., bet. Hotel and Paunahi.

OSTEOPATHY.
Dr. F. Schurman.—Hours 5-7 p. m. 224 Emma Square. 4983

PIANO AND ORGAN.
James Sheridan—Pianoforte Maker and Tuner. 162 Hotel St. or Hawaiian News Co. For sale, very cheap, slightly used, full Grand Ducker Piano, Aeolian Organs and Upright Pianos, guaranteed.

Prof. N. M. Lewis, 1462 Emma St., teacher of Piano and Organ. Graduate of Boston Conservatory. 4101-1m

EMPLOYMENT BUREAU.
For house-help, phone White 2881, Makiki. General Employment Office, cor. Pensacola and Beretania.

"For Sale" cards at Bulletin.

FOR RENT

Offices

in the
Waity Building,
King St.

\$10.00 per month and upwards.
Free Janitor Service.

Bishop Trust Co. Ltd.

924 Bethel Street,

The

Kissel Kar

They Have Arrived

Come and see both the touring car and the roadster.

ASSOCIATED GARAGE, Ltd

MERCHANT ST. TEL. 388.

Mrs. Winslow's Soothing Syrup has been used for over SIXTY YEARS by MILLIONS of Mothers for their CHILDREN who SUFFER from COLIC, CROUP, SOOTHEN the GUMS, ALLAYS all pain, CURES WIND COLIC, and is the best remedy for DIARRHOEA. Sold by Druggists in every part of the world. Be sure and ask for Mrs. Winslow's Soothing Syrup and take no other kind. 25 Cents a Bottle.

An Old and Well-tried Remedy

LOVEJOY & CO.

WHOLESALE DEALERS AND IMPORTERS OF WINES AND LIQUORS.

TEL. 308. 902 NUUANU.

Sanitary Steam Laundry

PHONE 71.

Branch: TERRITORIAL MESSENGER SERVICE. PHONE 361.

BUILDING MATERIAL OF ALL KINDS. DEALERS IN LUMBER.

ALLEN & ROBINSON. Queen Street :: :: Honolulu.

M. Phillips & Co.

Wholesale Importers and Jobbers

EUROPEAN AND AMERICAN DRY GOODS. FORT and QUEEN STS.

Steinway AND OTHER PIANOS. THAYER PIANO CO. 163 HOTEL STREET. Phone 218. TUNING GUARANTEED.

Meats

Fresh, wholesome, and of every variety at

THE PARAGON

Beretania, Alaka, and Union.

'Phone 104.

Sweet Violet Butter

The Best Made.

2 Lbs. for 75c

C. Q. YEE HOP & CO.,

TELEPHONE 251.

Autos Repaired

And kept in repair by men who know their business. No amateurs do the work in our Garage.

Von Hamm - Young Co., Ltd.

KANE OHE BEEF

Always on Hand. Young Figs, Poultry, Eggs, Fresh Butter and Cheese.

Sam Wo Meat Co., King Street Market. Tel. 288. YOUNG TIM, Manager.



MR. and MRS. **G. Sakata,** MASSEURS.

Bruises, Sprains, Tired Feeling and other ailments quickly relieved. Res. 1707 Liliha St. above School. Telephone 1624.

DAVID DAYTON

137 MERCHANT STREET. LOTS FOR SALE IN KAPIOLANI PARK ADDITION and other desirable localities.

ICE

manufactured from pure distilled water. Delivered to any part of city by courteous drivers.

OAHU ICE AND ELECTRIC CO., Kewalo. Telephone 528.

PAPER

All kinds in rolls and sheets.

AMERICAN-HAWAIIAN PAPER & SUPPLY CO., LTD. Fort and Queen Sts., Honolulu. Tel. 410. George G. Guild, Gen. Mgr.

P. L. PETERS

NOTARY PUBLIC at BULLETIN OFFICE. Phone 256.

"For over 50 years I have always kept Ayer's Cherry Pectoral in the house. My father often told me that it saved my life when I was very young."



In thousands of homes Ayer's Cherry Pectoral is a household word. It has been used first by the grand-

parents, then by the parents, and now by the children. For colds and coughs, croup, bronchitis, la grippe, inflammation in the throat or in the bronchial tubes,

Ayer's Cherry Pectoral

is the standard remedy the world over. It contains no narcotic or poison. Accept no substitute. Put up in large and small bottles.

Prepared by Dr. J. C. Ayer & Co., Lowell, Mass., U. S. A.



The Monarch Typewriter

The Leading Visible Typewriter

Be sure and see this machine before making a purchase elsewhere.

Wall, Nichols Co. Ltd.

Agents for the Hawaiian Islands.

Holiday-Seeking Public

What spot in these Islands can exceed the great Waimea Plains in beauty, climate and diversity of scenery? City folk in want of rest and recreation will learn with pleasure that the Waimea Home of Mr. David Forbes, late Manager of Kukuihaele, is now in the hands of Mr. H. Akona, the well-known Chef.

The premises may be rented furnished by week or month on reasonable terms. Apply to

H. AKONA, WAIMEA, HAWAII. P. O. Address, Kawaihae.

Globe-Wernicke Filing Cabinet

Remington Typewriters, Universal Adding Machines

Edison Mineographs Edison Business Phonographs

Supplies For All The Above Carried in Stock.

Office Supply Co., LIMITED 931 FORT STREET.

GOLF

AND

HALEIWA

WIN THE PEOPLE

WAIKIKI INN

"The Finest Bathing on the Beach." Meals At All Hours.

WINES, LIQUORS, AND CIGARS. W. C. BERGIN, Proprietor.

Bulletin Business Office Phone 256. Bulletin Editorial Room Phone 185.

AMOY PLANS FOR THE FLEET

China's Reception To Be Most Elaborate Function

The official program for the entertainment to be tendered to the American Fleet at Amoy has been arranged by Taotai Mak, at Hongkong, deputed from Pekin for the purpose. It is expected that the Fleet will arrive at Amoy Oct. 29, when it will be received by Prince Pulan, representing the royal family; the Viceroy of Fukien, the Governor of the province, the Admiral and the commander-in-chief of the forces, the Taotai of Amoy, Taotai Mak, and other minor officials.

The Fleet will be entertained with feasts, fireworks, theatricals, visits to the ancient temples, baseball, and rowing events, for which two silver cups, each valued at \$2,500, having been presented. The city will be elaborately decorated and the visit will be permanently commemorated by the opening of the new road from the sea to the parade ground, the renovation of many temples, and the construction thereto of new roads, along which bamboos will be planted, and they will be decorated with Chinese lanterns during the visit of the Fleet. Spacious mat sheds, capable of seating 3000, and two large match-shed theaters, have been specially erected, all lighted with electricity.

The program for October 29 as now arranged is as follows: In the evening the American Consul will dine with Chinese officials and Fleet officers.

On October 30, in the morning officials will exchange visits; from 12:30 until 4:30 o'clock a baseball game, and from 9 to 10 o'clock there will be a Chinese dinner of 2000 officers and men.

On Oct. 31, in the morning there will be an exchange of calls until 12:30 o'clock, when there will be a baseball game. From 2:30 to 5:30 o'clock aquatic events and from 7 to 10 o'clock a Chinese dinner to 300 officers and men.

Nov. 1 there will be visits to the temples.

Nov. 2 in the morning baseball; from 2 to 4:30 o'clock a reception by the foreign Consuls, followed by an exhibition in physical drill by the Fleet. From 7 to 10 o'clock a dinner to the sailors; at 9 o'clock a dinner and ball to the officers; followed by fireworks.

Nov. 3 is the birthday of the Empress. There will be an official reception from 9:30 to 11 o'clock. In the afternoon the officials will receive the men of the Fleet. At 4:30 o'clock there will be baseball and a presentation of prizes. From 10 to 11 o'clock a dinner and fireworks.

Nov. 4 is the day set for the Fleet's departure. It is reported that 144,000 pints of wine have been ordered from America. European food will be supplied by the Shanghai Hotel at a cost of 100,000 taels.

YOUR VOTE can't be counted unless you REGISTER.

BIRTHS, DEATHS, AND MARRIAGES

The summary of vital statistics for the month of September is given as follows by Registrar Lawrence of the Board of Health:

Population of Honolulu, official census 1909, 39,304. Mortality for month of September, 1908: Males, 52; females, 25; total, 77. Annual death rate per 1000 of population, 23.5. Non-residents, 2; deaths investigated, 8; post-mortem examinations, 3; coroner's inquests, 2; stillbirths, 4; births reported, 80; marriages reported, 61.

The total number of deaths for the month of September, 1908, were 77, an increase of 22 compared with the corresponding month of 1907.

Registration Hours 8 to 10, 12 to 1, 4 to 7.

HAWAII'S EXHIBIT AT FAIR PROGRESSING

Relief maps of the Hawaiian Islands, resting in a cement tank of water, the maps being arranged to show the relative size and position, will form one of the most interesting as well as novel features of Hawaii's exhibit at the Alaska-Yukon-Pacific Exposition in 1909. All the sugar plantations, ranches, coffee, and pineapple region will be marked on the maps, and everything will be as realistic as possible, even the water being colored blue and continually slightly agitated, to represent the sea.

REGISTER!

"Old Continental"

Old-style straight Kentucky Bourbon. Continental was the favorite of the Southern gentry of "befoah the war" period. "A good, honest, friendly old whiskey."

W. C. Peacock & Co., Ltd., Sole Agents.

Business Notices.

NOTICE TO REPUBLICANS.

The President and Executive Committee of each precinct club are hereby earnestly requested to see that the voters of their respective precincts are registered, make as complete a canvass as possible and to report to the County Committee at their meeting next Wednesday evening, October 7, 1908, at 7:30 p. m., at Republican headquarters.
Per order:
E. J. CRAWFORD, Secretary County Committee. 4123-3t

Business Notices

MEETING NOTICE.

Kaahumanu Improvement Club.
The Regular Quarterly Meeting of the Kaahumanu Improvement Club will be held at the residence of Mr. T. J. King, corner of Pihikoi and Luualilo streets, on Thursday evening, Oct. 8th, at 7:30 o'clock. All residents and property owners of the district mentioned below are earnestly requested to be present.
District:—Between Alapai and Punahou streets mauka of King street to Mountain Ridge. Between Pihikoi and Punahou streets makai of King street to Ocean.
By order of the President:
JAS. L. McLEAN, Secretary. 4124-3t

Corporation Notices

NOTICE.

The Board of Directors of the Wainiha Hui Land will meet at 10 o'clock a. m. at Wainiha on the 26th day of October, 1908, for the purpose of hearing all claims against said Hui and also for paying dividends to shareholders.
JAMES K. LOTA, Pres. Wainiha Hui Land. 4113-3w

If You're Thinking Wall Paper

of re-papering your house, a visit to our special show-room will decide you. Our selected stock of
Wall Paper
of every color, shade, and design, will suit any home. We have many new and artistic patterns. Call and see them.

Lewers & Cooke LIMITED 177 S. King St. Phone 775.

KEYSTONE-ELGIN WATCHES

At All Watchdealers.

Jos. Schwartz, Agent for Hawaiian Islands, Cor. FORT and KING STs., Honolulu.

The Manhattan Cafe

Is The Most Popular. FORT STREET just above HOTEL R. WILLIAM WARHAM, Prop.

Wong Wong, CONTRACTOR and BUILDER. PLUMBING and PAINTING. Office: Honolulu Painting Co., 221 King St.; P. O. Box 914.

WANTS

ONE CENT A WORD

WANTED FOR SALE

Advertisements Under this Heading One Cent Per Word Each Day. No Advertisements Inserted for Less Than Ten Cents.

Experienced cook and first-class baker for a cafe; state experience and salary. Apply in own handwriting to M. C. & B. Co., Ltd., Waialuku, Maui, c/o B. J. Guerrero. 4120-1w

Furnished cottage, suitable for two gentlemen; close to business district. Address "AAA," Bulletin. 4113-tf

Bright young lad or girl wanted for bill work; must be good penman. Address "Q," Bulletin. 4125-3t

German woman wishes position either for care of children or as cook. Address "S," this office. 4112--

Position by expert bookkeeper and statistician. Address "J. G. B.," Bulletin office. 4090-tf

Second-hand fat-top desk; must be reasonable. Address "L.P.," this office. 3955-tf

A second-hand showcase, about 6x2x1 feet. Address with price "P," this office. 3951-tf

A baby carriage. State condition and price to "J. K.," Bulletin office. 4079-tf

Clean wiping rags at the Bulletin office.

SITUATION WANTED

Stenographer now holding position with well known San Francisco firm, desires to come to Hawaii. Experienced. Can furnish excellent references from present and previous employers. Capable of holding responsible position. Address D. H. Angle, 403 Monadnock Bldg., San Francisco. 4122-1w

Young man now holding position of trust in San Francisco, with large experience in handling men on Southern plantation, desires position as overseer. Has also had considerable experience in general office work. Address J. A. Angle, Winchester Hotel, Third St., San Francisco. 4122-1w

Expert accountant and cashier with large corporation in San Francisco, wishes position in Hawaii. Capable of taking entire charge of office. Excellent references. Address J. W. Whitehead, 459 Haight St., San Francisco. 4122-1w

Position as general blacksmith; 25 years' plantation experience; horse shoeing a specialty; satisfaction guaranteed. Address "H.," this office. 4123-3t

Position by German girl; housework or care of children. Address "B.," this office. 4123-tf

Position as carpenter on plantation; 12 years' experience. Address "L.," this office. 4122-1w

FURNISHED ROOM.

One or two rooms, with or without board. Apply "H.," this office. 4124-tf

TO LET

Cottage, 5 rooms, etc., 1415 Alapai near Quarry St.; \$18, water included; modern improvements. 4123-1w

Six-room modern house, electric lights, gas, mosquito proof. Inquire at 1337 Pensacola St.

Furnished cottage at Cottage Grove, King St. Inquire No. 8. 4111-tf

Two furnished rooms. Apply Mrs. D. McConnell, 1223 Emma St.

Furnished house, 1713 Beach Road. Apply on premises. 4067-tf

COCA-COLA
The Hot-Weather Beverage.
HAWAIIAN SODA WORKS Phone 516

185 editorial rooms—256 business office. These are the new telephone numbers of the Bulletin office.

Advertisements Under this Heading One Cent Per Word Each Day. No Advertisements Inserted for Less Than Ten Cents.

A valuable collection of stamps. This collection is the property of the widow of the late H. W. Bowen, and is the result of his effort in many years of labor; they can be seen at the Hawaiian News Co., Young building. 3911-tf

Fine corner lot in Makiki. Curbing, water, fruit and ornamental trees and all improvements. Two minutes' walk from cars and Punahou College. Address R. F., this office.

A gentle driving and riding mare, 7 years old; 2-seated Watertown road buggy, canopy top, and harness in use one year. P. O. Box 162. 4110-1m

Cheap—Stable, in good condition, corrugated roof. Apply Bulletin office. 4052-tf

LOOK

at the automobiles, buggies and carriages we have recently overhauled and painted

THEN SEE US.

W. W. Wright Co., King Street near South Tel. 252

Suits Pressed

At Short Notice and Quick Delivery.

EAGLE DYEING AND CLEANING WORKS. Fort Street. Phone 575.

Cut Prices

Our Sodas 30c per doz.

FOUNTAIN SODA WORKS, PHONE 270

C. O. Hottel is authorized to collect and receipt for the undersigned.

A. R. Rowat, D.V.S.

NEW ASSORTMENT OF Honolulu Views

Either With or Without Frames.

PACIFIC PICTURE FRAMING CO., 1060 Nuuanu.

WHEN

You Want Electric Wiring Done or Private Telephone Installed or Dry Batteries, call the

UNION ELECTRIC CO., 69 Beretania St. Phone 315.

Japanese Curios, Silk Kimonos, Shirts, Pajamas, Shirt Waists, Fancy Embroidered Goods.

K. Fukuroda, HOTEL STREET NEAR BETHEL.

LADIES' AND GENTLEMEN'S HATS

Of All Kinds.
K. UYEDA, 102 NUUANU.

WING CHONG CO

KING ST. NEAR BETHEL. Dealers in Furniture Mattresses, Etc., Etc. All kinds of KOA and MISSION FURNITURE Made To Order.

Vienna Bakery

is making the Best Home-made Bread in town. Be sure and try it. The wagon will deliver at your door.
CALL UP 197.

R. MIYATA & CO., CONTRACTORS, BUILDERS, PAINTERS, PAPER HANGERS and MASON WORKERS.

Second Hand Lumber, Doors and Sashes Bought and Sold. KING ST., PALAMA JUNCTION Phone 594.

HAWAIIAN FERTILIZER CO., LTD. Dealers in FERTILIZERS suitable for all crops, climatic and soil conditions. OFFICE—Brewer Building, Honolulu; Tel. 272. FACTORY at Iwilei; Tel. 430.

"For Sale" cards at Bulletin.

Bicycles

Another shipment of the famous
Columbia and Tropic

BICYCLES JUST RECEIVED. We can furnish you a wheel anywhere from \$25. up to \$80. We have chain and chain-sets, with and without coaster brakes.
The bicycle is still the popular mount for all who have to get about daily and have to cover much ground and wish to do it quickly and at little expense. **ALL KINDS OF BICYCLE SUNDRIES AND PARTS CARRIED IN STOCK,** and a Well-Equipped Shop Ready to Do All Kinds of Repair Work.

E. O. HALL & SON, LTD.

Life in the Tropics

Requires something to put vim and vigor in one's system. There is nothing so satisfying as

RAINIER BEER

ROYAL ANNEX CAFE

AL. THURLOW—Proprietor; late Chief Steward of the S.S. Alameda.
Steaks, Chops, Lobsters, Oysters, and Frogs' Legs
Cooked to a Turn and Served to the Queen's Taste.
A Royal Welcome Here. Cor. Nuuanu & Merchant.

Pottie's Celebrated Stock Remedies



Electric Oil

This is considered the best all-around Remedy on the market for Rheumatism, Lumbo, Weak Loins, Sore Throat, Shoulder Hip, Stifle, and Tendon Lameness.
No Stable Should Be Without It. **BENSON, SMITH & CO.** and HOLLISTER keep it.

Pottie, Honolulu Tel. 1189

Honolulu Construction and Draying Co., LIMITED.
GENERAL CONTRACTORS.
PHONE, OFFICE 291. P. O. BOX 154.
Fort St., Opp. W. G. Irwin & Co., Ltd.
We do all kinds of Teaming; also deal in Crushed Rock, White and Black Sand, Broken Coral, Garden Soil, Etc. **SAFE MOVING A SPECIALTY.**

STYLISH SHOES

A pair of shoes that wears long and keeps its shape well.
A shipment of up to date Tan Shoes for ladies was received per last S. S. Alameda.

L. AYAU SHOE CO.,
1005 NUUANU ST. NEAR KING ST.

Andrew Usher's Scotch Whiskey
O.V.G. Special Reserve
W. C. Peacock & Co., Ltd., Agents.

SPORTS

Local and National

Leahy and Reilly Get Down To Work

With articles signed, Leahy and Reilly today have been engaged in getting established for training. They will change about in their camps, Leahy taking Reilly's recent stand at the Orpheum, and Reilly going down to the marine barracks, where one of the neatest little open-air gymnasiums imaginable will give him ideal opportunities for getting into the very finest shape.
The men signed articles yesterday afternoon, after wrangling over the matter for about an hour. They are to box 15 rounds on the evening of the 17th at the Orpheum. They are not to exceed 131 pounds at 5 p. m. on the day of the contest. This weight agreement settles one of the knottiest points in connection with the match. Reilly is at about 132 pounds, and refused positively to come down to 128, at which weight Leahy wished to box. Both conceded something in fixing on 131.
Leahy began work at the Orpheum as soon as the articles were signed. Reilly began his work this morning at the marine barracks, with Weber and Boquet for sparring partners.
"I am glad that I shall be where I'll get into the very best condition," he said this morning. "It's a fine place down there at the marine camp. But, you see, I've simply got to be in the best fix when I go in for this match."
By all of which he strongly implied a very decided respect for the powers of Joe Leahy.
The referee will have to be picked yet, as nothing was said on this proposition in the articles. But there are yet two weeks in which to agree on the third man in the ring.
The preliminary will more than likely be a bout between Lamphere, newly arrived from China, and Silva, known as the Punchbowl Wonder, who has been in the ring here before.
All this looks much like a very classy card.

Soccer Players Don't Seem Anxious To Work

Soccer players are not on the alert for an opportunity to get in the game just now, as was proven by a rather small attendance at the meeting held at the Y. M. C. A. last evening for the purpose of organizing three teams to do some preliminary work before the opening of a season by the regular soccer league. Eleven men out of a possible fifty-seven expected, turned out to hear of Dr. Hand's plan.
This plan is to organize three teams from all the soccer players in town and play off a schedule for the purpose of giving the men the most common sense sort of practise—that is, actually playing the game. As the number of those present was too small to serve for the organization of three teams, a committee of three men was appointed for the purpose of seeing soccer players and getting teams together. The games will probably be played at the Boys' Field, on Liliha street. A banquet at the others' expense is held out as an inducement to the winners.
Rudolph Spreckels, whose colors have been seen so often at the coast racetracks, announces his retirement from the turf and all of the horses which he owns are to be disposed of soon. Mr. Spreckels' desire to quit the racing game is not because he does not think highly of the sport or because he has not been successful in campaigning his thoroughbreds. It is owing to mismanagement on the part of the present officials of the jockey club that he desires to withdraw from active participation in the sport of kings.
Bill Papke was given a rousing reception upon his return to Keweenaw, his home town. A brass band was at the station to meet him and a big banner, with the following inscription, "Welcome Home, Bill," was stretched across the street at the railroad depot. After parading up the street with a big crowd of admirers Papke was tendered a banquet, at which he told those present that he was ready and willing to defend his newly acquired championship title against all comers.
Battling Nelson's great success at the Central Theater, San Francisco, prompts him to accept more stage offers.
President Thomas H. Williams of the New California jockey club will campaign a formidable stable during the winter race meeting.
A public schools athletic league is organized in San Francisco and first competitive field day will be held in October.
Stable accommodations at Emeryville are insufficient for the needs of the army of horsemen planning to race there.
More than 300 aristocratic dogs were benched at the ladies' kennel club show, which opened at Idora park recently.

Dr. Roller Is Made Honorary Member Of D. H. A. C.

The Diamond Head Athletic Club elected Doctor Roller, the wrestler, an honorary member last evening, by acclamation. They also made the meeting memorable by a formal good bye to Professor "Pete" Baron, who has worked with this club for some time past. He made a speech in which he thanked them for their interest in him, and outlined something of what Dr. Roller expects to do on the mainland. The departure of this veteran and fine old athlete leaves quite a gap to be filled in the ranks of the Diamond Heads.
Carl Oms was elected captain of a soccer team for the club, and appointed a committee of one to rustle up players.
TENNIS PEOPLE SLOW
Entries for the championship tennis events are coming in slowly. Local and outside players always wait until the last week to put down their names. The entries for men's singles close Oct. 15 at 5 p. m. The entry-book is open in the sporting department of E. O. Hall & Son.
SPORTIVE SPLURGES
Dr. Roller is to make a talk on "Athletics: The Life of an Athlete," at the Y. M. C. A. this evening. The lecture is open for all.
The Sweet Violets, the well known baseball team, have also organized a football team, and are willing to challenge any team of their size.
Jockey E. Dugan's rough riding caused two horses to fall at Gravesend and Jockeys Smith and Yorke are badly injured.
The C. A. C.'s will meet tomorrow evening at the Chinese Y. M. C. A. hall, at 7:30 o'clock.
Ruth Dillon surprised 15,000 race goers at Columbus by winning all three heats in \$10,000 stake.
Lillian R trotted a mile in 2:04 1/2 at Columbus, the fastest time made by a mare this year.
Harry Maynard, one time champion pugilist, dropped dead on a train near Marysville.
Minor Heir was outpaced in three straight heats by The Eel on Columbus track.
Packer McFarland will have to go 45 rounds if he expects to get on with Nelson.
Arasee won the Speculation stake at Gravesend.

NEW AUTOMOBILE RATES

The Auto Livery will from this date reduce all automobile work 25 per cent. 1 passenger inside city limits Punahou St., Wylie St., or Kamehameha Schools, 50 cents; calling or shopping \$3 per hour; continuous driving \$5 per hour; \$4 second, \$3 for third. Around Island \$10. E. H. LEWIS, Proprietor, Tel. No. 6.
STODDARD DAYTON
7-Seated
By Hour or Trip.
G. C. Beckley, Jr.
PHONE 200.

WAR IS DECLARED!

The Citizens' Health Committee has declared war against the rat in the following bulletin:
"It is incumbent upon all to wage a relentless war on the rat, the source and breeder of the plague."
Even if you do not think there are rats on your premises, you should use Stearns' Electric Rat and Roach Paste, for rats travel all over the city and are liable to camp with you if your premises are not protected by Stearns' Electric Paste.
This reliable exterminator is sure death to all rats and usually kills them off in a single night. It is the best weapon in the war against rats, and every citizen should use it and protect our city.
2 ea. box 25c; 16 ea. box \$1.00
Sold by Druggists and General Stores every where or sent direct prepaid on receipt of price.
STEARNS' ELECTRIC PASTE CO. - Buffalo, N. Y., U. S. A.

Now on Display.
Inspection Invited.

IMPORTATION

- Chinese Silks
- Grass Linens
- Pongees
- Embroideries
- Shawls
- Handkerch'fs

Yee Chan & Co.

King and Bethel Sts.
Phone 627.

FINEST FIT

and cloth of A-1 quality can be purchased from
SANG CHAN,
McANDLESS BLDG.,
P. O. Box 961. Telephone 931.

SHELL LEIS
—SEED LEIS
—CURIOUS
Woman's Exchange
HOTEL STREET.....NEAR FORT
HONOLULU IRON WORKS
Improved and Modern SUGAR MACHINERY of every capacity and description made to order. Boiler work and RIVITED PIPES for irrigation purposes a specialty. Particular attention paid to JOB WORK, and repairs executed at shortest notice.
Los Angeles, Calif., Sept. 19.—The first baseball school for professional players ever organized is to be conducted by Manager Henry Berry of the Los Angeles team of the Pacific Coast League and Manager J. B. Lehigh of Chutes Park.
Southern California is a Mecca of a large number of young ball-players during the winter and hundreds of amateurs are developed, many of whom are willing to take up professional baseball and are capable of doing so if given the chance and a little assistance.
It is proposed to sign all aspiring players to contracts of the Los Angeles team and then put them under the instructions of two or more of the veteran members of the Coast League team. All such as show aptitude for the professional game will be retained and taught the fine points of the game. Others will be released and new men taken on in their places.

Irish-American Athletic Club of New York was victorious in the National field and track championships.

WE are showing some
High Class Novelties
in
Silk Braid Coats
in Short, Three-quarter, and Full Length. They come in WHITE, BLACK, CREAM, NAVY, and BROWN. No Two Alike. Also—
NEW PARASOLS
Whitney & Marsh

KILOHANA ART LEAGUE ROOMS
Katherine Oliver, Dramatic Recitals
Tuesday, Oct. 13, "The Little Minister"; Thursday, Oct. 15, "The Confessions of a Literary Pilgrim"; Monday, Oct. 19, "Dr. Luke of the Labrador"; Wednesday, Oct. 21, "King Henry VIII". Season tickets for the course may be obtained at Bergstrom Music Company, Wall, Nichols Co., R. W. Perkins' Studio, and the Kilohana Art League.

Pullets and Salmon
The Alameda brought them to us and they are fine, fat, tender, and juicy. Put these on any Honolulu table tomorrow and you could entertain a king. Order Today.
METROPOLITAN MEAT CO, Limited
Telephone 45

On Monday, October 5,
we will show, ex Alameda,
\$7.50
Ladies' Silk Petticoats
FULL CUT, in Black, Tan, Grey, Pink, White, and Blue. These are superior goods, with a deep dust ruffle, and of a good dependable silk.

HeatherBloomPetticoats
All Colors, wide cut, deep flounce
at \$1.75
New White
Wash Walking Skirts
All sizes, from 23 waist measure to extra large sizes up to 34 waist. Stylishly cut, up-to-date,
at \$2, \$2.75, \$3, \$3.50
IT WILL PAY YOU TO COME TO OUR STORE.
L. B. Kerr & Co., Ltd.,
HONOLULU DEPARTMENT STORE, ALAKEA ST.