

TELEPHONE 365  
STAR  
BUSINESS OFFICE

# The Star Is An Intelligent, Progressive Newspaper

# HAWAIIAN STAR

Want Ads—Three Lines, Three Times, 25 Cents

SECOND  
EDITION

VOL. XVI.

HONOLULU, HAWAII, TUESDAY, AUGUST 4, 1908.

No. 5100

# IAUKEA ASKS FOR INVESTIGATION

## SINCLAIR'S OPINION OF YACHT HAWAII

Commodore Sinclair of the yacht Lurline said on the race to Hilo that the Hawaii was evidently underspurred. He noted with surprise how the local yacht stood up in the squalls off Koko Head. Further, Mr. Sinclair said to members of the Hawaii Yacht Club at Hilo that, when he had seen the Hawaii hauled up on the marine railway, he knew the Lurline could outpoint her. In his opinion her under works were too short for her waterline.

## RELEASE NIGH HALF A MILLION

BOND REDEMPTIONS OF FOUR SUGAR COMPANIES WILL THROW \$462,500 ON LOCAL MONEY MARKET BY FIRST OF OCTOBER—AN ADVANTAGE IN CASHING BONDS IN ADVANCE OF DATES OF REDEMPTION IS POINTED OUT.

On the two days, September 30 and October 1, \$462,500 of money will have been thrown upon the local market. This is in the redemption of bonds already in progress, at Alexander & Baldwin's office, on behalf of Paha, Haku, Kahuku and Hawaiian Sugar Companies.

Kahuku will retire \$75,000 of its total issue of \$200,000 of six percents on September 30.

Paha will retire \$112,500, being one-fourth of its total issue of six percents, on October 1. On the same day Haku will retire \$75,000, being one-fourth of its total issue of six percents.

At a meeting of the directors of Hawaiian Sugar Company it was decided to retire \$200,000 of its bonds, making a retirement of \$225,000 for this year, \$25,000 having been redeemed on April 1. This will reduce the outstanding six percents of the company to \$250,000. The original issue was half a million.

John Waterhouse, who has charge of the redemption business in Alexander & Baldwin's office, said this morning:

"We are now willing to give holders of these bonds that are to be redeemed par value for them plus accrued interest at date of presentation.

"No, I do not think there is any great degree of reluctance on the part of holders of the bonds to cash them before the dates of redemption for the sake of the interest. Of course some estates will have a little difficulty in finding ready reinvestments for the money, yet there is a considerable ad-

vantage probably to be gained by those who cash their bonds now.

"You see the throwing of \$462,500 cash into the market by the due dates of the bonds will very much ease up the money situation. As the capital must be reinvested in some way, there will be a better chance at the choicer securities now than when that large amount has been placed in seeking position. It would seem to be good business to reinvest now before all this money is turned loose."

Payments are being made by lot and some by those elected have been heard to talk as if the case were not the best of fortune. Six per cent bonds of glittered properties are becoming as scarce as hen's teeth, so no wonder if holders should like to enjoy the usufruct for two months longer.

### THE SOLE AGENCY.

Through his agents in Japan, K. Yamamoto, wholesale merchant, secured the sole agency for Tengu Brand Japan Rice. The sale of this well known brand is daily increasing. Phone 399 Hotel street near Nuuanu.

Best cup of coffee in the city at New England Bakery.

### REMNANT SALE WEEK.

This week the annual remnant sale will be held at Sachs'. Great bargains in a big variety.

Stone tools, machinery and polishing supplies. Hawaiian Iron Fence & Monument Works Ltd.

## ALLISON IS DEAD

## ONE OF THE BIG SENATE LEADERS

(Associated Press Cable to The Star.)

DUBUQUE, Iowa, August 4.—Senator Allison of this state died here of heart failure today.

William Boyd Allison was born at Perry, Ohio, March 2, 1829. He was educated at the Western Reserve College, Ohio, and studied law, practicing in Ohio till he removed to Iowa in 1857. He served on the staff of the Governor of Iowa and aided in the raising of volunteers in the beginning of the Civil War. He was a Republican in politics and was elected a representative in the Thirty-eighth, Thirty-ninth, Fortieth and Forty-first Congresses and was first elected to the United States Senate in 1873. From that time until the present he has been a member of the Senate without break. His present term would have expired on March 3 of next year.

Of all the members of the Senate it is doubtful if there was one of greater influence than the late Senator Allison. He was the chairman of the committee on appropriations and a member of the finance committee, besides being on various of the less important committees. In addition to this he has on several occasions been one of the leading candidates for the Republican nomination for President.

## EARTHQUAKE IN ALGERIA

CONSTANTINE, Algeria, August 4.—A terrific earthquake occurred here this morning at 9:20. Great damage was done and a number of lives were lost.

## BRONSON HOWARD PASSES AWAY

NEW YORK, August 4.—Bronson Howard, the famous dramatist, died here today.

Howard was one of the leading dramatic writers of America. His most famous pieces included "Shenandoah", "The Henrietta" and "Peter Stuyvesant."

### PERFECT CONTROL OF HIS AIRSHIP.

OPPENHEIM, Germany, August 4.—Count Zeppelin landed his airship on an island in the Rhine river here today after a flight of over twelve hours. He passed over several cities and covered hundreds of miles in that time. His control of the machine by means of a motor has been perfect and he will continue the trip from this point.

### RELEASES POLITICAL PRISONERS.

WASHINGTON, D. C., August 4.—President Cabrera, the president of Guatemala, has released forty-three political prisoners.

## KEPOIKAI CASE AND OTHER MAUI OFFICIAL TROUBLES

Dan H. Case, county attorney of Maui, left on the Mauna Kea today for home. His repeated resignation takes effect on August 15, and there seems to still be a question whether the Board of Supervisors will accept it or ask him to serve again. Case before declined to reconsider, but held on for a while to fill in a gap.

Former Judge Kalua is an aspirant for the office, if Case finally gets out. Kahalelo is another aspirant. It is stated that the Board is divided, with two members for Kalua and two for Kahalelo and one for F. W. Crockett.

This makes a practical deadlock. Kalua is the circuit judge who was removed for cause and succeeded by Kepoikai.

The defense of Kepoikai was given in Honolulu today by one of his friends in the matter of the Mori estate note.

(Continued on Page Eight.)

### DESERVEDLY POPULAR.

The Young Cafe is deservedly popular with those who appreciate having the best of everything at popular prices.

## BIG EXTRA DIVIDEND

HAWAIIAN COMMERCIAL WILL  
DISTRIBUTE \$250,000 VELVET ON  
THE TENTH OF AUGUST.

At a meeting of the directors of Hawaiian Commercial & Sugar Company held in San Francisco it was decided to pay an extra dividend of \$2.50 a share on August 10. This is in addition to the regular monthly dividend payable tomorrow. Late in this company increased its monthly dividend from 65 cents to 80 cents a share. This large extra dividend now announced will be glad news to the stockholders. It means \$250,000 going into their pockets and half of the amount comes to Honolulu. Before the information was officially confirmed here local brokers had received it by cable. In consequence 105 was asked for H. C. & S. Co. on the Stock Exchange this morning. The books of the company will be open for transfers tomorrow, August 5, and not again until after the special dividend is paid.

## BASEBALL GAMES

The following baseball games have been scheduled for Saturday: Picked team vs. Punahou. Santa Clara vs. Kelo. For Sunday the games will be Chinese A. C. vs. Kelo, Santa Clara vs. St. Louis.

## EXCHANGE OF LANDS

Among the callers on Governor Frear this morning were H. P. Baldwin, of Maui, and J. P. Cooke, of this city. The main object of their visit was to talk over the matter of exchanging what is known as the Amoaipo land for certain areas fit for the raising of pineapples, and lying near Haku.

The Amoaipo land is at present dry, but can be watered by a short extension of the Hawaiian Commercial and Sugar Company's ditch. In its present condition it would not support a single homesteader, though the tract amounts to something like 830 acres.

Another matter which was taken up during the call was the offer of Mr. Baldwin to surrender the lease on 336 acres of land near Keanae, which is suitable for pineapples or for rubber. In addition to this a water license near Haku was touched on. This is an old license which originally belonged to Spreckels and which was for a period of thirty years, with the privilege of renewal for another period of the same length. A clause was inserted, however, that at the end of the first period, if renewal was desired, the value of the license should be fixed by a board of appraisers each ten years. As the time under the old license has expired, the matter of appointment of appraisers was taken up.

In speaking of the exchanges of land, Governor Frear mentioned and called particular attention to the small amount of exchanges which had been made in the past year. He stated that in the last twelve months the sum total of all the land which had been exchanged through the land department was 22.93 acres. Of this he stated that five acres of the land on the Makiki slope back of the Howard property had been given in exchange for fifteen acres of the Highland Park land, where the new College of Agriculture and Mechanic Arts is to be located.

## SUSPENDS TALK FOR PUBLICATION

COUNTY SHERIFF HAS LONG INTERVIEW WITH ATTORNEY GENERAL WHOM HE DESIRES SHALL MAKE AN OFFICIAL INQUIRY INTO ALL ISOI MATTERS—MAY POSSIBLY TRY TO IMPLICATE FIDUS ACHATES TOWNSEND IN BRIBERY.

Sheriff Iaukea paid a visit to the office of Attorney General Hemenway this morning and asked the Territorial officer to make an investigation of all the circumstances connected with the alleged attempt made by Isoi to bribe him. The call was a long one, the Sheriff and the Attorney General remaining closeted for about an hour. When Iaukea came out he was asked for information but did not care to talk, referring the reporter to Hemenway.

When questioned on the subject the Attorney General stated that the Sheriff had asked him to make an investigation of all the Isoi matters. He said that Iaukea had made a full statement to him of all the transactions and conversations which had taken place, but that nothing new or further than had already been published, had developed. He further stated that he would conduct the investigation asked and would go into the matter as deeply as possible.

In reply to a question about the manner in which the investigation would

be conducted, particularly whether the matter would be taken before the grand jury, the Attorney General was non-committal.

When seen a few moments later, in earnest conversation with an Advertiser reporter evidently talking of the same subject, the sheriff still refused to say anything further, though in relation to Townsend, whom he has brought into the matter in the published reports, the Sheriff stated that he was loath to charge him with being a party to the alleged bribery, but still that things looked very suspicious.

The grand jury will meet tomorrow morning at 10 o'clock in the throne room of the Executive building. Whether they will take the matter up or not is a question. It is hardly likely that they will at present, unless it is turned over to them by Attorney General Hemenway. Later on they may delve into the depths of the matter and investigate not only the alleged bribery, but also the famous note upon which Iaukea borrowed the \$100 which was loaned him by the alleged briber.

## TRUST CO. WINS OUT

COMPANIES' LICENSE AS A TRUST COMPANY COVERS THE BROKERAGE BUSINESS.

The question of whether the trust companies of the city should be compelled to pay a special license for acting as stock and bond brokers was decided in their favor by an opinion given this morning by Attorney General Hemenway. The question was brought up by the Hawaiian Trust Company some days ago, that concern claiming that in paying the license of \$250 as a trust company they had fulfilled all their obligation in this line, the privilege of carrying on the business of stock and bond brokers being included in the trust business.

The Waterhouse Trust Company has been the only concern stung in this affair. Without taking into consideration the legal technicality which might be brought up, this company paid both the \$250 and the \$100 licenses. Now the only recourse that they have is the passage of a bill by the Legislature refunding the sum of \$100. It is a question whether the

generosity of the firm will be such that will donate the amount to the Territory.

## THE ESCAPE IS CAUGHT

(Associated Press Cable to The Star.)

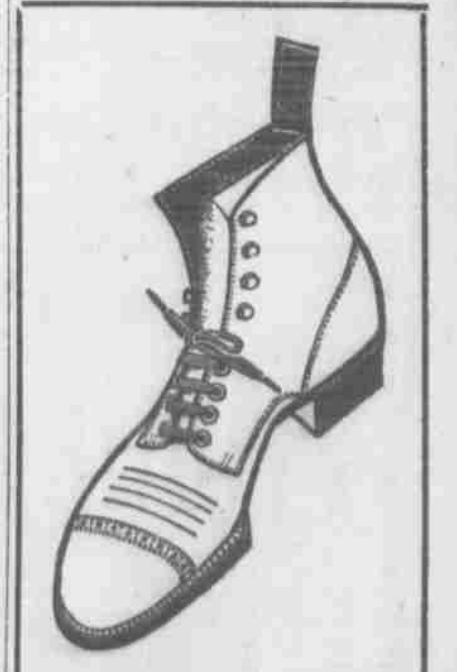
SAN QUENTIN, Cal., August 4.—Charles Ross, the Russian exile who had been convicted of burglary and who escaped from the prison here last week, has been recaptured.

## GREAT FIRE DYING OUT

(Associated Press Cable to The Star.)

PERNIE, Manitoba, August 4.—The forest fires are still burning but at present are confined at a thinly settled section of the province.

Fine Job Printing, Star Office.



Our No. 305.....Price \$2.00  
Made of Calf Leather.

MANUFACTURERS' SHOE CO.  
LIMITED.

1051 Fort Street. Tel. 588

Be sure that the Executor you name is Honest, as well as Competent.  
We charge no more than the regular fee allowed by the courts for Executors.

Hawaiian Trust Co., Limited,  
923 Fort Street

## The Drive of The Year

A regular round up of good things for men. Prices have no comparison with the values we offer this time. We have never done so much for our customers as we are going to do during the big drive which we will start on Friday.

Men's Suits, Men's Cut-Away Coats, Men's Blue Serge Suits, Men's Trousers. All at the lowest prices ever heard of in Honolulu.

Remember the Date  
FRIDAY, JULY 31

L.B. Kerr & Co., Ltd  
ALAKEA STREET.

## KEPOIKAI CASE AND OTHER MAUI OFFICIAL TROUBLES

Dan H. Case, county attorney of Maui, left on the Mauna Kea today for home. His repeated resignation takes effect on August 15, and there seems to still be a question whether the Board of Supervisors will accept it or ask him to serve again. Case before declined to reconsider, but held on for a while to fill in a gap.

Former Judge Kalua is an aspirant for the office, if Case finally gets out. Kahalelo is another aspirant. It is stated that the Board is divided, with two members for Kalua and two for Kahalelo and one for F. W. Crockett.

This makes a practical deadlock. Kalua is the circuit judge who was removed for cause and succeeded by Kepoikai.

The defense of Kepoikai was given in Honolulu today by one of his friends in the matter of the Mori estate note.

(Continued on Page Eight.)

DESERVEDLY POPULAR.

The Young Cafe is deservedly popular with those who appreciate having the best of everything at popular prices.

## ROYAL BAKING POWDER

Absolutely Pure

The only baking powder made with Royal Grape Cream of Tartar

No Alum, No Lime Phosphate



# Oceanic Steamship Company

## Alameda Schedule

ARRIVE MONOLULU.	LEAVE HONOLULU.
ALAMEDA ..... JULY 31	ALAMEDA ..... AUGUST 5
ALAMEDA ..... AUGUST 21	ALAMEDA ..... AUGUST 26
ALAMEDA ..... SEPT. 11	ALAMEDA ..... SEPT. 16

On and after June 24th, 1908, the SALOON RATES between Honolulu and San Francisco will be as follows:  
 ROUND TRIP, \$110.00. SINGLE FARE, \$65.00.

In connection with the sailing of the above steamers, the Agents are prepared to issue to intending passengers coupon through tickets by any railroad from San Francisco to all points in the United States and from New York by steamship line to all European Ports.

FOR FURTHER PARTICULARS, APPLY TO

# W. G. Irwin & Co., Ltd

AGENTS FOR THE OCEANIC S. CO.

# Canadian-Australian Royal Mail Steamship Co

Steamers of the above line running in connection with the CANADIAN-PACIFIC RAILWAY COMPANY between Vancouver, B. C., and Sydney, N. S. W., and calling at Victoria, B. C., Honolulu and Brisbane, Q.

FOR FIJI AND AUSTRALIA. FOR VANCOUVER.

AORANGI ..... AUGUST 22	MANUKA ..... AUGUST 19
MANUKA ..... SEPT. 19	MARAMA ..... SEPTEMBER 15
MARAMA ..... OCTOBER 16	AORANGI ..... OCTOBER 14

\* Will call at Fanning Island.

CALLING AT SUVA, FIJI, ON BOTH UP AND DOWN VOYAGES

# Theo. H Davies & Co., Ltd., Genl Agents

# American - Hawaiian Steamship Company

From New York to Honolulu---Weekly Sailings via Tehuantepec

Freight received at all times at the Company's wharf, 41st Street, South Brooklyn.

FROM HONOLULU TO SAN FRANCISCO. FROM SEATTLE AND TACOMA TO HONOLULU.

ALASKAN ..... TO SAIL AUGUST 8	ARIZONAN ..... TO SAIL AUGUST 9
ARIZONAN ..... TO SAIL AUGUST 9	ALASKAN ..... TO SAIL AUGUST 30
FROM SAN FRAN. TO HONOLULU	COLUMBIAN ..... TO SAIL JULY 29
MEXICAN ..... TO SAIL AUGUST 12	

H. HACKFELD & CO., LTD., Agents, Honolulu.

C. P. Morse, General Freight Agent.

# Pacific Mail Steamship Co. Occidental & Oriental S. S. Co. Toyo Kisen Kaisha S. S. Co.

Steamers of the above companies will call at Honolulu and leave this port on or about the dates mentioned below:

FOR THE ORIENT.		FOR SAN FRANCISCO.	
AMERICA MARU ..... AUGUST 8	CHINA ..... AUGUST 1	SIBERIA ..... AUGUST 17	MANCHURIA ..... AUGUST 10
CHINA ..... AUGUST 24	MANCHURIA ..... AUGUST 14	MANCHURIA ..... AUGUST 31	NIPPON MARU ..... AUGUST 24
NIPPON MARU ..... SEPT. 6	ASIA ..... AUGUST 23	ASIA ..... SEPT. 15	MONGOLIA ..... AUG. 29
MONGOLIA ..... SEPT. 21	TENYO MARU ..... SEPT. 21		

FOR FURTHER INFORMATION APPLY TO H. HACKFELD & CO., LTD

# MATSON NAVIGATION COMPANY

Arrive Honolulu.	Leave Honolulu.
S. S. HILONIAN ..... AUG. 2ND.	SEPT. 8TH.
S. S. LURLINE ..... AUG. 9TH.	SEPT. 1ST.
S. S. HILONIAN ..... SEPT. 5TH.	AUG. 11TH.

PASSENGER RATES TO SAN FRANCISCO: FIRST CABIN, \$60.00. ROUND TRIP, FIRST CLASS, \$110.00.

Castle & Cooke Limited, Agents

# Union-Pacific Transfer Co., Ltd

Baggage Shipping  
Storage Wood  
Packing Coal

PHONE 58

133 King Street. FURNITURE AND PIANO MOVING.

# STAR Printing Office

For years the Star's printing office has been a busy place. We have gained a reputation for doing good work at fair prices and delivering the job when promised. Few printing offices can make a similar claim. With addition to our plant we are in a better condition than ever to handle commercial printing. Our three Linotypes are at your service for book and brief work. If you are not a Star customer, send us a trial order; you will be pleased with the result.

# Star Printing Office

McCandless Building.

Telephone 365

# SHIPPING INTELLIGENCE

## TIDES, SUN AND MOON.

First Quarter of the Moon Aug. 4th.

Day	High Tide	Low Tide	High Tide	Low Tide	High Tide	Low Tide	High Tide	Low Tide	Sun Sets	Moon Rises
July										
3	6:20	1:1	7:18	1:30	1:50	3:35	6:26	11:31		
4	9:20	1:3	8:45	2:15	3:35	5:35	6:33	11:36		
5	10:45	1:4	9:52	3:00	5:15	5:36	6:35			
6	11:50	1:6	10:30	4:00	7:20	5:36	6:34	0:18		
7	12:45	1:8		5:00	8:25	5:36	6:33	1:00		
8	1:30	2:0	10:15	6:54	9:07	5:37	6:33	1:50		
9	2:15	2:1	1:00	8:50	9:45	5:37	6:32	2:45		

Times of the tide are taken from the U. S. Coast and Geodetic Survey tables. The tides at Kahului and Hilo occur about one hour earlier than at Honolulu. Honolulu standard time is 10 hours 30 minutes slower than Greenwich time, being that of the meridian of 157 degrees 30 minutes. The time whistle blows at 1:30 p. m. which is the same as Greenwich, 0 hours, 6 minutes. The Sun and Moon are for local time for the whole group.

Lieut. Turner, Captain Bakkr, Sam Parker and wife, Miss Beatrice Campbell, Miss Muriel Campbell, F. Klamp, Miss S. M. Reid, Miss H. E. McCrocker, Miss Filkes, Miss McKay, Miss Allyn, Mrs. Spencer and two children, H. R. Bryant and wife, Miss Ella Parker, Miss Nichols, the three Misses McClean Mrs. A. S. Wight, Mrs. Evans, Miss Taylor, T. Lovell, L. Kincald, C. Stevens, three more of those Santa Clara ball players, Richard Buhler, E. Ballard, G. R. Lumley and yet another trio of Santa Clara ball players, Miss N. A. Mackes, Miss M. J. Moyer, Miss F. L. Turner, Mrs. L. C. Train, Dr. J. M. Whitney and wife, Chong Loy, C. Akina, O. A. Berndt, Mrs. M. F. Potter, Elizabeth K. Victor, W. L. Howard, A. C. Saylor, Peter Lee, Mrs. C. Gay, A. L. Castle, R. A. Young, H. L. Norris, W. R. Kelker, R. S. Houget, C. F. Robins, M. de F. Spinola, E. S. Capellas, L. A. Andrews.

## FOREIGN MAIL SERVICE

Date.	Name.	From.
29	Korea	San Francisco
31	Alameda	San Francisco
Aug. 1	China	Yokohama
5	Hilsonian	San Francisco
6	Columbian	San Francisco
8	America Maru	San Francisco
10	Manchuria	Yokohama
14	Nippon Maru	Yokohama
17	Siberia	San Francisco
19	Lurline	San Francisco
19	Manuka	Colonies
20	Mexican	San Francisco
21	Alameda	San Francisco
22	Aorangi	Victoria
23	Asia	Yokohama
24	China	San Francisco
25	Mongolia	Yokohama
31	Manchuria	San Francisco
Sept. 2	Hilsonian	San Francisco
3	Texas	San Francisco
5	Nippon Maru	San Francisco
9	Tenyo Maru	Yokohama
11	Alameda	San Francisco
15	Asia	San Francisco
15	Marama	Colonies
17	Virginian	San Francisco
19	Manuka	Victoria
21	Mongolia	San Francisco
21	Korea	Yokohama
22	Lurline	San Francisco

## Shipping in Port

(Army and Navy).  
 U. S. S. Iroquois, Moses, station tug.  
 (Steamships).  
 O. S. S. Alameda, Dewden, S. F., July 31.  
 A. H. S. S. Alaskan, Puget Sound, July 30.  
 (Sailing vessels.)  
 Br. bk. Hollywood, Smith, Junia, May 7.  
 Br. bk. Carracale, Smith, Newcastle, July 20.  
 Am. sc. Mary E. Foster, Johnson, Taita, July 25.  
 Am. bkt. Irmgard, Christiansen, S. F., July 30.

## The Mails

OUTGOING.  
 For S. F., Alameda, Aug. 5.  
 For Orient, America Maru, Aug. 8.

INCOMING.  
 From S. F., Hilsonian, Aug. 5.  
 From S. F., America Maru, Aug. 8.

U. S. A. TRANSPORTS.  
 Thomas left Hon. for Manila, July 15. Logan at San Fran.  
 Buford left Guam for Manila, July 1. Dix at Manila.  
 Sherman at S. F.  
 Warren at Manila.  
 Crook at Nome.  
 Sheridan at S. F.

Boozes.  
 Per O. S. S. Alameda, for San Francisco, August 5—S. A. Crook, D. McKay, Mrs. J. McDonald, Miss C. A. Tisdale, Mrs. A. B. Arleigh, Miss Duke, Mrs. F. B. Whiting, Mrs. W. C. Crook, Miss Julia Gallek, Miss N. B. Stephen, Miss Uecke, Mrs. May Winston, Gus Riley, Miss M. Loomis, Miss Wirt, Mr. and Mrs. Bergstrom and two children, Miss McClean, Mr. and Mrs. E. G. Keene, Mr. Giles, L. V. T. Lou, Aloy Soong, Miss E. Kamaka, E. S. Barry and wife, Mrs. G. C. Perkins and friend, W. M. Cooper, Mrs. M. Langton, Mrs. J. Early, Miss B. Brimmell, Miss Grace Hortense Tower, F. Enday, E. T. Winant, S. C. Kennedy, Rifle team—Lieut. Col. John W. Short and wife, Maj. W. R. Riley and wife, Sergt. E. S. Barry and wife, Lieut. Col. Arthur Coyne, Capt. M. M. Johnson, Capt. A. W. Neely, Lieut. O. J. Whitehead, Pvt. A. S. Weber, Capt. Charles Costa, Lieut. L. A. K. Evans, Pvt. W. Chillingworth, Pvt. D. K. Lemon, Sergt. J. Ferreira, Corp. Joe Gouveia, Corp. John Stone, Pvt. Blanchard or Sumner and about six members of the Orpheum company.

Per S. S. Mauna Kea, August 4, for Hilo and way ports: R. J. Buchley, H. C. Bawe, Mrs. Bawe, Miss Bawe, Sam McCall and wife, Mrs. F. W. Carter, Miss Sybil Carter, Mrs. L. A. Andrews, D. F. Thrum, wife and child, Carl Wideman and wife, J. F. Woods, wife and children, James L. McClean and party, E. T. Cooper and wife, Miss V. Thurston, Miss H. Brandon, Miss H. Joelson, three Santa Clara ball players, W. Lee Kwal, J. Lee Kwal, W. Prestige, O. Clemm, D. Makena and wife, F. H. Burch, Miss Andrews, Mrs. Dagg, Miss Carroll, W. R. Castle, Alf R. Brown, L. Lewton Brain, Beatrice Castle, Margaret Castle, Miss M. Coulter, Miss Castle, Linda Chaefer, Miss Ethel Le Torres, En Ton Lee, Mrs. C. K. Sullivan, Mrs. H. L. Ross and infant, Mrs. L. de L. Ward, Miss Ross, Mrs. Jacobs, Mrs. Colburn, Miss Edyth Hall, Miss Emma Hall, Miss Elizabeth Long, J. Perreira, A. Hall, Fred Cliston, Harry Saylor, Mr. Hines, M. Cooley, Miss Ballard, Mrs. Buhler, Mrs. Brandon, three more Santa Clara ball players.

## A WELL KNOWN REMEDY.

There are few people in this country who have not used or at least heard of Chamberlain's Colic, Cholera and Diarrhoea Remedy. It is the first thing they think of when they or any member of the family are stricken with diarrhoea, pain in the stomach or cramp colic. It has probably saved the lives of more people than any other medicine in use, and once it has been used in a home and its valuable properties become known, they rely upon it as confidently as on their family physician. For sale by all dealers, Benson, Smith & Co., agents for Hawaii.

## FINAL TEST.

Spongem—"I say, old man, in case I should die suddenly, will you make sure that I am really dead before they bury me?"

Knox—"Yes; you may depend on me. I'll ask you to have a drink, and if you don't sit up and take notice, I'll tell the undertaker to go ahead and plant you."

## GRAIN ELEVATORS BURN.

CHICAGO, August 4.—A fire in the grain elevator district yesterday has resulted in a loss of \$700,000.

## GETTING BACK AT HIM.

He (peevishly)—"Here and now I wash my hands of the whole affair."  
 She (calmly)—"And don't forget your face and neck while engaged in the laundry act."

# NATURE AND A WOMAN'S WORK



LYDIA E. PINKHAM

Nature and a woman's work combined have produced the grandest remedy for woman's ills that the world has ever known.

In the good old-fashioned days of our grandmothers they relied upon the roots and herbs of the field to cure disease and mitigate suffering.

The Indians on our Western Plains to-day can produce roots and herbs for every ailment, and cure diseases that baffle the most skilled physicians who have spent years in the study of drugs.

From the roots and herbs of the field Lydia E. Pinkham more than thirty years ago gave to the women of the world a remedy for their peculiar ills, more potent and efficacious than any combination of drugs.

Lydia E. Pinkham's Vegetable Compound is now recognized as the standard remedy for woman's ills.

Mrs. Bertha Muff, of 515 N.C. St., Louisiana, Mo., writes:

"Complete restoration to health means so much to me that for the sake of other suffering women I am willing to make my troubles public."  
 "For twelve years I had been suffering with the worst forms of female ills. During that time I had eleven different physicians without help. No tongue can tell what I suffered, and at times I could hardly walk. About two years ago I wrote Mrs. Pinkham for advice. I followed it, and can truly say that Lydia E. Pinkham's Vegetable Compound and Mrs. Pinkham's advice restored health and strength. It is worth mountains of gold to suffering women."

What Lydia E. Pinkham's Vegetable Compound did for Mrs. Muff, it will do for other suffering women.

# WEEKLY WEATHER BULLETIN

FOR THE WEEK ENDED JULY 25, 1908.  
 Honolulu, July 27, 1908.

## GENERAL SUMMARY.

The mean temperatures were lower than those of the preceding week at all stations in the section, excepting at two in the Kohala district of Hawaii, one in the Kula district of Maui, and one in the Koolau district of Oahu. The deficiencies, as a rule, were less than 1.0 deg., and the greatest reported was 1.8 deg.

The rainfall was below the average of ten or more years at all stations in the section having such records, excepting at those in the northern portion of the Hilo district of Hawaii. The deficiencies, in inches, in the several districts were: Hawaii—Kohala and Hamakua 0.02 to 0.31, Puna and southern Hilo 0.48 to 0.53, Kau 0.22 to 0.26, and Kona 0.12; Oahu—Koolau and Ewa 0.09 to 0.16, Koolau 0.23 to 0.68, and Honolulu 0.32; Kauai—Kona 0.01 to 0.02, and Koolau 0.23.

The greatest amounts of rainfall, in inches, were reported from the central and northern portions of the Hilo district of Hawaii, and ranged from 2.98 to 4.20. In the remaining portions of Hawaii the amounts were: Kohala 0.67 to 0.98, Hamakua 0.82 to 1.05, southern Hilo 1.61 to 1.77, Puna 0.76 to 1.31, Kau 0.00 to 0.24 and Kona 1.76. The amounts on the other Islands were: Maui—Hamakua 0.04 and Koolau 2.02 to 2.36, Hamakua 1.32, Hana 0.31, Kula and Lahaina 0.00, and Wailuku 0.04 to 0.16; Oahu—Koolau and Koolau 0.04 to 0.29, and trace to 0.02 in the remaining districts; Kauai—Puna and Koolau 0.63 to 0.88, and Kona 0.12 to 0.97; and Molokai 0.03.

There was 0.12 to 0.87 inch more rainfall than during the preceding

# HAWAIIAN Macaroni Manufacturing Co., LIMITED

Beretania Street near Aala Street.  
 MANUFACTURERS OF  
**MACARONI (HOSHI UDON)**  
 and  
**BUCKWHEAT (HOSHI SOBA)**

The largest and only incorporated concern of its kind in Honolulu.  
 A new enterprise launched by enterprising merchants.

# K. Yamamoto

SALES AGENT.  
 Tel. 399. Hotel St. near Nuuanu. P. O. Box 810

# 日布時事社

To ATTRACT THE JAPANESE TRADE advertise in THE DAILY NIPPUN JIJI, the most popular and widely circulated evening paper among the Japanese colony.  
 THE JOB PRINTING A SPECIALTY with either language of Japanese, Chinese, Korean or English.

The Nippu Jiji Co., Ltd.,  
 Y. SOGA, Manager. Hotel Street near Nuuanu.

week at all stations on Kauai. On the remaining Islands the changes, in inches, were: Molokai—0.01; Oahu—Koolau +0.13; Koolau-poko—0.06 to +0.11, and 0.00 to +0.01 in the remaining districts; Maui—Koolau +0.92, Hamakua +0.48, Hamakua-poko +1.31, Hana—0.20, Kula 0.00, and Wailuku +0.04 to +0.12; and Hawaii—Kohala—1.35 to—1.81, Hamakua—0.25, Hilo +0.06 to +1.55, Kau and Puna +0.03 to +0.09, and Kona +1.44.

The following table shows the weekly averages of temperature and rainfall for the principal Islands and for the Group:

	Temperature	Rainfall.
Hawaii	72.3 deg.	1.57 inches.
Maui	74.8 deg.	0.92 inch.
Oahu	76.9 deg.	0.11 inch.
Kauai	75.6 deg.	0.64 inch.
Molokai	74.2 deg.	0.03 inch.
Entire Group	74.3 deg.	1.02 inches.

At the local office of the U. S. Weather Bureau in Honolulu partly cloudy weather obtained, with .02 inch of rainfall on the 25th, .33 less than the normal for the week, and .01 more than during the preceding week. The maximum temperature was 84 deg., minimum 70 deg., and mean 76.8 deg., 1.2 deg. below the normal, and 0.2 deg. lower than last week's. The mean daily relative humidity ranged from 64 per cent to 67 per cent, and for the week was 64.3 per cent. Northeast and east winds prevailed, with an average hourly velocity of 8.4 miles. The mean daily barometer ranged from .01 to .07 inch above the normal, and the mean for the week, 30.06 inches, was .05 inch above normal.

## U. S. DEPARTMENT OF AGRICULTURE, WEATHER BUREAU.

The following data, covering a period of 33 years, have been compiled from McKibbin and the Weather Bureau records at Honolulu, T. H. They are issued to show the conditions that have prevailed, during the month in question, for the above period of years, but must not be construed as a forecast of the weather conditions for the coming month.

Month August for 33 years.

TEMPERATURE.  
 (1890-1907). 18 years.  
 Mean or normal temperature, 78 deg.  
 The warmest month was that of 1900, with an average of 80 deg.  
 The coldest month was that of 1894, with an average of 77 deg.  
 The highest temperature was 88 deg. on the 10th, 11th, 15th, 1896; the 4th, 1897; and the 9th, 1901.

The lowest temperature was 63 deg. on the 23d, 1894.

PRECIPITATION,  
 (Rain, 1877-94, 1905-7). 21 years.  
 Average for the month, 1.50 inches.  
 Average number of days with .01 of an inch or more, 14.  
 The greatest monthly precipitation was 4.47 inches in 1888.  
 The least monthly precipitation was 0.16 inch in 1894.  
 The greatest amount of precipitation recorded in any 24 consecutive hours was 2.51 inches on the 13th, 1883.

RELATIVE HUMIDITY.  
 Average 9 a. m., 66 per cent; average 9 p. m., 72 per cent; (1893-1904.)  
 Average 8 a. m., 68 per cent; average 8 p. m., 70 per cent; (1905-7.)

CLOUDS AND WEATHER.  
 (1890-1907.) 18 years.  
 Average number of clear days, 11; partly cloudy days, 18; cloudy days, 2.

WIND.  
 (Direction 23 years; velocity 3 years.)  
 The prevailing winds are from the N.E., (1875-94, 1905-7.)  
 The average hourly velocity of the wind is 8.9 miles (1905-7.)  
 The highest velocity of the wind was 31 miles from the N.E., on the 10th, 1907.

Station: Honolulu, T. H.  
 Date of issue: July 30, 1908.  
 \* 9 o'clock averages from records of Territorial Meteorologist; 8 o'clock averages from Weather Bureau records.

WM. B. STOCKMAN,  
 Section Director, Weather Bureau



FOR RENT OR SALE

Cottage in Makiki District, ten minutes walk from car line; living room, dining room, three bedrooms, bath, kitchen and pantry.

Rental, \$27.50 per month. Selling Price, \$3,500.00

BISHOP TRUST CO., LTD.

824 BETHEL ST.

SUPPLIES

ALL KINDS Cash Register Typewriter Mimeograph and Globe Wernicke CARD SYSTEMS

Hawaiian Office Specialty COMPANY

931 Fort Street, Telephone 143.

C. BREWER & CO., LTD. QUEEN STREET, HONOLULU, T. H.

AGENTS FOR Hawaiian Agricultural Company, Omeo Sugar Company, Honomu Sugar Company, Waialua Sugar Company, Okaia Sugar Plantation Company, Popeo Sugar Co., Kapapala Ranch

Y. WO SING CO. GROCERIES, FRUITS, VEGETABLES, ETC.

California Butter, 40c lb; Cookin' Butter, 30c lb.; Island Butter, 35c lb. 1188-1189 Nuuanu Street. Telephone Main 238. Box 953

ALEXANDER & BALDWIN LTD J. P. COOKE, Manager.

OFFICERS AND DIRECTORS. H. P. Baldwin, President; J. B. Castle, 1st Vice-President; W. M. Alexander, 2nd Vice-President; J. P. Cooke, 3rd Vice-President; J. Waterhouse, Treasurer; E. E. Paxton, Secretary; W. O. Smith, Director; G. R. Carter, Director; W. R. Castle, Director

SUGAR FACTORS AND COMMISSION MERCHANTS

AGENTS FOR Hawaiian Commercial & Sugar Company. Haku Sugar Company, Pala Plantation, Maui Agricultural Company, Kihel Plantation Company, Hawaiian Sugar Company, Kahuku Plantation Company, Kahului Railroad Company, Halekaha Ranch Company, Honolulu Ranch.

BOOKS (Second Hand) TO LOAN FOR SALE and in EXCHANGE

San Antonio Building—303 Vineyard Street.

Wall, Nichols Co., STATIONERS, BOOKSELLERS AND MUSIC DEALERS. Subscriptions taken for COAST AND EASTERN PAPERS AND PERIODICALS.

W. G. IRWIN & Co.

AGENTS FOR THE Royal Insurance Co. of Liverpool, Eng. Scottish Union & National Ins. Co., of Edinburg, Scotland. Commercial Union Assurance Co. of London. The Upper Rhine Ins. Co., Ltd.

Y. ISHII JAPANESE DRUGGISTS GENERAL MERCHANDISE

All kinds of American Patent Medicines at Low Prices. Is there any reason why our advertising matter should not help your business? Let's see.

HAWAII PUBLICITY CO. Telephone 173.

CASTLE & COOKE, LTD. Honolulu, T. H.

SHIPPING AND COMMISSION MERCHANTS. SUGAR FACTORS AND GENERAL INSURANCE AGENTS. Ewa Plantation Co. Waialua Agricultural Co., Ltd. Kohala Sugar Co. Waimea Sugar Mill Co. Apokaa Sugar Co., Ltd. Fuiton Iron Works of St. Louis. Blake Steam Pumps. Westons Centrifugals. Babcock & Wilcox Boilers. Green's Fuel Economiser. Marsh Steam Pumps. Matson Navigation Co. Planters Line Shipping Co. New England Mutual Life Insurance Company of Boston. Aetna Insurance Co. National Fire Insurance Co. Citizens' Insurance Co. (Hartford Fire Insurance Co.) Protector Underwriters of the Property of Hartford.

F. S. NAGAMI - Photographer Kodak Developing, Printing, Enlarging and Interior Photographing. GOOD WORK GUARANTEED. 220 Hotel St., bet. Nuuanu and Betae Sts., Honolulu, T. H.

NEW CHOP HOUSE. P. John, late of the Manhattan Lunch Rooms, has opened a new Chop House on Hotel street near Nuuanu. First class meals served at all hours. HOFFMAN CHOP HOUSE.

Misses Johnson & Olsen Dressmaking and Tailoring

Are now in their new quarters, Elite Building. The latest New York and Parisian styles. 170 Hotel street, opp. Young Hotel.

Union Pacific Railroad SUGGESTS Speed and Comfort

Three trains daily, through cars first and second class to all points. Reduced rates take effect soon. Write now.

S. F. Booth GENERAL AGENT. NO. 1 Montgomery Street, SAN FRANCISCO.

CHOICE EGGS FOR HATCHING - from PRIZE WINNER STOCK. "Crystal" White Orpingtons, S. Gray Jorkings, Black Minorcas, White Leghorns, "Nonpareils," Brown Leghorns and Buff Wyandottes. Orders filled in rotation and carefully packed. WALTER O. WERDON, F. O. Box 658, Honolulu.

ASSIGNMENTS OF TEACHERS

With the exception of about thirty positions the appointments of the teachers for the Territorial schools were made yesterday by the Board of Education. Several other important matters were taken up among which was the suggestion to place the Central Grammar and Central Primary schools under one principal, which was offered by the teachers' committee and turned down by the board. The schools at Manoa, Kalaupana and Kuloua will be reduced from two rooms to one and that at Kailua from three rooms to two.

The following teachers' assignments were made: Waipuu—Miss E. Kaipu. Manoa—Mrs. M. D. Brown. Kalaupana—Miss A. M. Felker, Miss E. Monsarrat, Mrs. H. E. Kelsey, Miss Mary Aylett, Miss B. Weight, Mrs. E. Deacon, Miss Gurney, Miss Wolfe, Miss Goo Kim, Miss Nellie McLain, Miss E. Lyons, Miss A. Judd, Miss B. Cooke, Mrs. Winter, Mrs. Creighton.

Central Grammar—Miss H. Needham, Miss Yoder, Miss I. Kelley, Mrs. Hendricks, Miss N. Craig, Mrs. Gregory, Miss Deas, Miss Maxwell, Miss A. Mason.

Royal—J. C. Davis, Miss I. Dayton, Miss J. Toner, Miss Jean Angus, Miss Annie Goo Kim, Mrs. A. Brown, Miss Pihoi, Mrs. Douglas, Miss L. Brickwood, Miss M. Grace, Miss A. Sorenson, Miss A. Lycett, Miss M. Starbird, Miss G. Whitman, Miss Sadie McLain, Miss B. Bindt, Mrs. Marcellino, Miss M. Morris, Miss L. Ladd.

Pauoa—Mrs. Louisa Lucas, Miss M. J. Tioer. Maemae—Miss Myra Angus, Miss V. Jordan, Miss M. Jordan, Mrs. C. A. Vickery.

Kailua—Mrs. Fraser, Miss Snow, Miss L. Ayau, Miss Loquist, Miss R. Soares, Miss Lynch, Miss Giles, Miss Beerman.

Waikiki—Mrs. E. Keaway, Miss M. Kinney. Moiliili—Mrs. J. N. Bell, Miss Emma Pauohau, Miss Agnes Creighton.

Pohukaina—Mrs. Mary W. Gunn, Miss L. Cameron, Mrs. Wilkins, Miss E. Goo, Miss Melim, Miss Lillian Aki-na, Miss M. Paty, Mrs. J. Minton.

Hig—M. M. Scott, E. B. Blanchard, Mrs. S. Kinney, Miss Dow, Miss Woodford, Miss Tucker, Mrs. Crockett, Mrs. Whitford, Miss McGregor.

Central Primary—Mrs. S. E. Greene, Mrs. F. W. Carter, Miss G. Schlemmer, Mrs. Sinclair, Miss Greene, Miss A. Z. Hadley.

Normal—Edgar Wood, Mrs. Wood, V. McCaughey, Miss MacDonald, Mrs. Marshall, Miss Bell, Miss Deane, Miss Ziegler, Miss Soper, Miss Freeth, Mrs. E. B. Bridgewater, Miss Douglas, Miss Cooke, Miss Peck, Miss Gulick, Miss Winter, Miss Kluegel.

Kaulawela—C. W. Baldwin, Miss V. Estrand, Miss Ayau, Leinaala Smith, Miss H. Johnson, Miss Nichols, Mrs. Yap, Miss Lan Yin Ching.

Kailua—Miss McIntyre, Miss Mossman, Miss Ferreira, Mrs. Walker, Mrs. France, Mrs. Knight.

Kailua—Mrs. J. Mascoto. Moanala—Mrs. C. Mokumala. Girls' Industrial—Miss Keauu, Miss K. Broad.

Aiea—Miss C. Claypool, Miss L. Claypool, Miss Philomina Perry, Mrs. Eskew, Miss Daisy Akana.

Pearl City—Principal not appointed; Miss Hookano, Miss Esther Kabele. Honolulu—Miss M. A. Smith, Miss N. Boswell, Miss Franca, Miss Dyke, Miss M. Tolan.

Wahiawa—Mrs. H. C. Brown. Kawaihapai—H. Stainaker. Boys' Industrial—O. T. Boardman, J. M. Johnson, M. Kane. Kaaawa—James Kamakawai. Waiholo—Miss Mudge, Miss A. Winter.

Kailua—Akuni Ahau. Hilo Union—Josephine Deyo, Miss McCord, Miss H. Severance, Miss Guard, Miss Mary Deyo, Miss L. Hapai, Miss Bohnenberg, Mrs. Beers, Miss Kai, Mrs. Saki, Miss Lyman, Miss West, Mrs. Stone.

Popeo—Miss Dillon, Miss E. Dunn. Kailiwaena—J. N. Taggard, Mrs. Taggard, Miss C. Gertz, Miss C. Horner, Mrs. Hottel, Miss Naopala, Miss Steinhauer, Miss McCorriston, Mrs. M. A. Lee, Miss Ethel Horner.

Special—Mrs. Tucker, Miss Roseman, Miss Adams, Miss Winne, A. C. Maby, C. Evenson, Miss Apana, Mrs. Hu, Mrs. Lewis, T. N. Wahiva.

Waipahu—Mrs. Overend, Miss Danford, Miss Nielson, Mrs. P. Makaena, Miss C. Afague, Miss L. Richardson. Waiailua—Mrs. Churchill, Miss Nicholson, Miss M. Johnson, James Awat, Miss Kepaa, Mrs. Rose Alau.

Waianae—F. J. Nobriga, Mrs. Nobriga, Mrs. Kekala, Miss H. Iopa. Kahuku—Mrs. L. M. Smith, Mrs. Lowden. Haunala—Miss Christopher, Mrs. McKenzie.

Kaneohe—Zach McKeague, H. K. Domingo. Waimanalo—J. K. Kaaha. Kaunama—S. Desha. Waiakouka—Miss Louise Hapai. Kaitiki—Miss K. Ewaliko, Miss B. Ewaliko.

Hahaione—Mrs. Ludloff, Miss E. Akamu, Miss Porter. Puuoa—Miss Amoy Ahin. Hilo High—F. A. Richmond, Miss Potter, Miss L. Deyo, Miss Sandrey, Miss Pomroy, Miss Jennie Allen. Pohakupuka—A. J. Ignacio, Miss E. Macey. Hakaluu—E. S. Capellas, Mrs. Capellas, Katie Sadler. Honouliuli—V. A. Carvalho, M. C. Baptiste, Sarah Alona, Mrs. Carvalho, Edna Akau.

Kaunaea—David Keawehano. Mountain View—Mrs. Wakefield, Miss A. P. Chung, Ivy Borden. Pahoa—Mrs. Carpenter, Margaret Mamakalwi.

Olaa Twelve Miles—Mrs. King, Miss Nallima, Miss Nallimu, Mrs. Coleman. Hilea—H. E. Wilson, Miss Waiua. Waiholu—Miss B. B. Taylor, Miss Auld, Miss Jones.

Aiea—George Baker, Elizabeth Tonn. Papa—E. K. Iona. Hookeana—Phos. Haao, Kate Khai. Napoopoo—Charles Langier. Holouloa—Mrs. Scott, Miss Charlotte Cowan, Mrs. Jaydwell, Manuel De Corte, Mrs. Gomes, Miss Vroom, Makalawena—H. Komomua. Waimea—Robert Kibol, Mrs. J. D. Koki.

Laupahoehoe—J. V. Marciel, Miss G. Haina, Sari Maluo. Ookalai—Onomea—Leon Malterre, Miss Mary Cabrinha. Papeaiea—W. McCluskey, Miss E. Osorio, Miss Ida Yowell, Manuel Dias, Mrs. C. W. Hill, Mrs. Payne.

Olaa Nine Miles—Miss Ward, Mrs. Holland, Alice Carvalho, Mrs. Finche Kapoho—Mrs. Lyman. Kalaupana—Dan Kaloi. Pahala—Miss Quinn, Miss Lewis, Miss Marcos.

Honoupa—Moses Malakaua. Miloliu—Abraham Pohina. Konawaena—Daza Barnes, Miss L. Meinecke, Mae Paris, Mrs. Bickford. Honouana—Lot Kauwe. Keahou—Mrs. Ura Storm, Mrs. Julia You.

Kailua—E. A. Muller, T. Aiu. Honokohau—Alice Muller, Kate Clark. Kalaoua—J. N. Komomua. Puuanahulu—Gussie Muller. Puaho—Miss M. Payne. Mahukona—Mrs. K. Lincoln. Honoiupu—Emil de Harne. Honomakaua—Mrs. A. M. Bond, Nora Keawe, Mrs. M. C. Austin, Miss Eliza Atkins.

Makapala—Miss E. Bicknell, Aoe Aikina, Mrs. Tamar Hussey. Waipio—J. K. Kealoha, Miss V. Kuhns. Keehia—Mrs. J. K. Haa. Ahualoa—Daniel Kuhns, J. Cypriano, Edith Hall.

Kapahu—D. Lonohiwa, M. Teixeira. Paauhau—Emma Hall. Olowalu—Edward Smythe. Honokahau—O. W. Hennig. Lahainaluna—C. A. MacDonald, Mr. Wilson, Rev. Kapu, Marlan Roberts, Mrs. MacDonald, Sam Hookini.

Honokowai—William Hoopii, Rose Alona. Wailuku—C. E. Copeland, Mrs. Copeland, Miss Ontal, Miss Hanson, Miss Crickehart, Mrs. Mokay. Makana—Sam Nahaie. Ulupalakua—J. P. Cockett, Mrs. Cockett.

Kealahou—J. Vincent, Mrs. Vincent, Rose Hall. Kaupakalua—W. I. Wells, A. S. Medeiros, A. Franklin. Haiku—Ben. Brightwell, Susie Kikona. Kapaau—Miss Cowan. Halawa—Maude Woods, Emily Kahohi, Jessie Anneda, Mrs. G. P. Tutolo.

Poloa—Miss M. Makekau. Waimanu—J. K. A. Kaimana. Kukulhaele—Joseph da Silva, Myrtle Kuhns. Kaunahu—Hattie Saffrey. Honokaa—John Ferreira, Mrs. Olney, Mrs. Overend, Mrs. Ferreira. Paanilo—Eugene Horner, Mrs. Askew, Maud Horner. Lahaina—R. Law, Miss Kaukau, Mrs. Hose, Miss M. Gohler, Achoy Abu, Florence Ho, Daisy Apo. Kahakulua—Miss Nancy Aki. Lanai—Alfred Mia. Waihee—Mrs. Austin, Miss L. Lani, Hattie Maule.

Waikapu—Miss Z. Rogers. Kahului—Moses Kauhimahu. Puunene—Miss A. J. Galt, Miss N. Daniels. Spreckelsville—Mrs. Sabey, Miss Peplowski. Makawao—F. W. Hardy, Irene Crook Rose Crook. Hamakunapoko—Miss M. E. Fleming, Ethel Smith, Nellie Smith. Kihel—Manuel Anjo, Joseph Anjo. Huelo—Mary Miller. Halehaku—Miss Scholtz. Keakoa—D. Kapohakimohewa, Mrs. Kapohakimohewa, Ellen Copp. Nabiku—W. A. Weate. Haou—R. O. Ogiyie, Miss Kawalaea. Kaupo—Mrs. Marciel, Sam Kawaiua. Kalae—Ellen Sabey. Waiailua—A. K. Cathcart. Halawa—Matthew Kane. Kaunakakai—W. D. Kaai. Haena—Mrs. W. Keawe, Miss Titcomb. Koolau—Mrs. L. M. Medick, Miss Huddy. Kapaau—Cyril O. Smith, Miss Pihl, Miss Aloia, Miss Wheeler, Jennie Keamanu, Miss Medjell, J. Bettanourt, Lihue—J. B. Alexander, Mrs. Alexander, Mrs. Jennie Smythe, Miss D.

Sheldon, Miss H. Sheldon, Mrs. Kau-III. Anahola—W. J. Iona. Hanapepe—H. H. Brodie, Mabel Hastie, J. Hastie, M. Hastie, A. R. Lennox, Mrs. Brodie. Waimea—Mrs. Onsted, Mrs. La Wright, Rose Aea, Miriam Kauhane. Paia—W. C. Crook, Miss de Lima, Agnes Pieper, Mollie Cummings. Ulaioa—Robert Benjamin. Hana—Mrs. Frain, Mrs. John Medeiros, J. Medeiros. Kipahulu—W. W. Taylor, Mrs. Taylor.

Keanae—Abel Ah You. Kalaupana—Mrs. Anahu. Pelekunu—D. P. Kapewa. Wailua—Emma Kane. Kamalo—Mrs. L. Dudoit. Kalaupapa—John T. Unea. Hanalei—Miss F. Deverill, Chin Kim Amona, Mrs. Ahi. Kilauea—Gladys Rickard, Mrs. Huddy, Mrs. Chamberlain, Mrs. Yanagibara. Hanamaulu—Miss Mumford, Miss Lottie Jordan, Miss M. Ellis. Muleia—Koloa—John Bush, Mrs. Blake, Ellen Kalawe, Mrs. Kula. Kalaheo—Mabel Suter, Miss Bessie Fox, Mrs. Abbey. Makaweli—Miss E. Cameron, Miss L. K. Iauka. Kekaha—Miss Finkler, Ahgunf Ontal, Miss C. Fassoth. Mana—D. Prigge. Nihaa—S. Kahale.

Keanae—Abel Ah You. Kalaupana—Mrs. Anahu. Pelekunu—D. P. Kapewa. Wailua—Emma Kane. Kamalo—Mrs. L. Dudoit. Kalaupapa—John T. Unea. Hanalei—Miss F. Deverill, Chin Kim Amona, Mrs. Ahi. Kilauea—Gladys Rickard, Mrs. Huddy, Mrs. Chamberlain, Mrs. Yanagibara. Hanamaulu—Miss Mumford, Miss Lottie Jordan, Miss M. Ellis. Muleia—Koloa—John Bush, Mrs. Blake, Ellen Kalawe, Mrs. Kula. Kalaheo—Mabel Suter, Miss Bessie Fox, Mrs. Abbey. Makaweli—Miss E. Cameron, Miss L. K. Iauka. Kekaha—Miss Finkler, Ahgunf Ontal, Miss C. Fassoth. Mana—D. Prigge. Nihaa—S. Kahale.

Keanae—Abel Ah You. Kalaupana—Mrs. Anahu. Pelekunu—D. P. Kapewa. Wailua—Emma Kane. Kamalo—Mrs. L. Dudoit. Kalaupapa—John T. Unea. Hanalei—Miss F. Deverill, Chin Kim Amona, Mrs. Ahi. Kilauea—Gladys Rickard, Mrs. Huddy, Mrs. Chamberlain, Mrs. Yanagibara. Hanamaulu—Miss Mumford, Miss Lottie Jordan, Miss M. Ellis. Muleia—Koloa—John Bush, Mrs. Blake, Ellen Kalawe, Mrs. Kula. Kalaheo—Mabel Suter, Miss Bessie Fox, Mrs. Abbey. Makaweli—Miss E. Cameron, Miss L. K. Iauka. Kekaha—Miss Finkler, Ahgunf Ontal, Miss C. Fassoth. Mana—D. Prigge. Nihaa—S. Kahale.

Keanae—Abel Ah You. Kalaupana—Mrs. Anahu. Pelekunu—D. P. Kapewa. Wailua—Emma Kane. Kamalo—Mrs. L. Dudoit. Kalaupapa—John T. Unea. Hanalei—Miss F. Deverill, Chin Kim Amona, Mrs. Ahi. Kilauea—Gladys Rickard, Mrs. Huddy, Mrs. Chamberlain, Mrs. Yanagibara. Hanamaulu—Miss Mumford, Miss Lottie Jordan, Miss M. Ellis. Muleia—Koloa—John Bush, Mrs. Blake, Ellen Kalawe, Mrs. Kula. Kalaheo—Mabel Suter, Miss Bessie Fox, Mrs. Abbey. Makaweli—Miss E. Cameron, Miss L. K. Iauka. Kekaha—Miss Finkler, Ahgunf Ontal, Miss C. Fassoth. Mana—D. Prigge. Nihaa—S. Kahale.

Keanae—Abel Ah You. Kalaupana—Mrs. Anahu. Pelekunu—D. P. Kapewa. Wailua—Emma Kane. Kamalo—Mrs. L. Dudoit. Kalaupapa—John T. Unea. Hanalei—Miss F. Deverill, Chin Kim Amona, Mrs. Ahi. Kilauea—Gladys Rickard, Mrs. Huddy, Mrs. Chamberlain, Mrs. Yanagibara. Hanamaulu—Miss Mumford, Miss Lottie Jordan, Miss M. Ellis. Muleia—Koloa—John Bush, Mrs. Blake, Ellen Kalawe, Mrs. Kula. Kalaheo—Mabel Suter, Miss Bessie Fox, Mrs. Abbey. Makaweli—Miss E. Cameron, Miss L. K. Iauka. Kekaha—Miss Finkler, Ahgunf Ontal, Miss C. Fassoth. Mana—D. Prigge. Nihaa—S. Kahale.

Keanae—Abel Ah You. Kalaupana—Mrs. Anahu. Pelekunu—D. P. Kapewa. Wailua—Emma Kane. Kamalo—Mrs. L. Dudoit. Kalaupapa—John T. Unea. Hanalei—Miss F. Deverill, Chin Kim Amona, Mrs. Ahi. Kilauea—Gladys Rickard, Mrs. Huddy, Mrs. Chamberlain, Mrs. Yanagibara. Hanamaulu—Miss Mumford, Miss Lottie Jordan, Miss M. Ellis. Muleia—Koloa—John Bush, Mrs. Blake, Ellen Kalawe, Mrs. Kula. Kalaheo—Mabel Suter, Miss Bessie Fox, Mrs. Abbey. Makaweli—Miss E. Cameron, Miss L. K. Iauka. Kekaha—Miss Finkler, Ahgunf Ontal, Miss C. Fassoth. Mana—D. Prigge. Nihaa—S. Kahale.

Keanae—Abel Ah You. Kalaupana—Mrs. Anahu. Pelekunu—D. P. Kapewa. Wailua—Emma Kane. Kamalo—Mrs. L. Dudoit. Kalaupapa—John T. Unea. Hanalei—Miss F. Deverill, Chin Kim Amona, Mrs. Ahi. Kilauea—Gladys Rickard, Mrs. Huddy, Mrs. Chamberlain, Mrs. Yanagibara. Hanamaulu—Miss Mumford, Miss Lottie Jordan, Miss M. Ellis. Muleia—Koloa—John Bush, Mrs. Blake, Ellen Kalawe, Mrs. Kula. Kalaheo—Mabel Suter, Miss Bessie Fox, Mrs. Abbey. Makaweli—Miss E. Cameron, Miss L. K. Iauka. Kekaha—Miss Finkler, Ahgunf Ontal, Miss C. Fassoth. Mana—D. Prigge. Nihaa—S. Kahale.

Keanae—Abel Ah You. Kalaupana—Mrs. Anahu. Pelekunu—D. P. Kapewa. Wailua—Emma Kane. Kamalo—Mrs. L. Dudoit. Kalaupapa—John T. Unea. Hanalei—Miss F. Deverill, Chin Kim Amona, Mrs. Ahi. Kilauea—Gladys Rickard, Mrs. Huddy, Mrs. Chamberlain, Mrs. Yanagibara. Hanamaulu—Miss Mumford, Miss Lottie Jordan, Miss M. Ellis. Muleia—Koloa—John Bush, Mrs. Blake, Ellen Kalawe, Mrs. Kula. Kalaheo—Mabel Suter, Miss Bessie Fox, Mrs. Abbey. Makaweli—Miss E. Cameron, Miss L. K. Iauka. Kekaha—Miss Finkler, Ahgunf Ontal, Miss C. Fassoth. Mana—D. Prigge. Nihaa—S. Kahale.

Keanae—Abel Ah You. Kalaupana—Mrs. Anahu. Pelekunu—D. P. Kapewa. Wailua—Emma Kane. Kamalo—Mrs. L. Dudoit. Kalaupapa—John T. Unea. Hanalei—Miss F. Deverill, Chin Kim Amona, Mrs. Ahi. Kilauea—Gladys Rickard, Mrs. Huddy, Mrs. Chamberlain, Mrs. Yanagibara. Hanamaulu—Miss Mumford, Miss Lottie Jordan, Miss M. Ellis. Muleia—Koloa—John Bush, Mrs. Blake, Ellen Kalawe, Mrs. Kula. Kalaheo—Mabel Suter, Miss Bessie Fox, Mrs. Abbey. Makaweli—Miss E. Cameron, Miss L. K. Iauka. Kekaha—Miss Finkler, Ahgunf Ontal, Miss C. Fassoth. Mana—D. Prigge. Nihaa—S. Kahale.

Keanae—Abel Ah You. Kalaupana—Mrs. Anahu. Pelekunu—D. P. Kapewa. Wailua—Emma Kane. Kamalo—Mrs. L. Dudoit. Kalaupapa—John T. Unea. Hanalei—Miss F. Deverill, Chin Kim Amona, Mrs. Ahi. Kilauea—Gladys Rickard, Mrs. Huddy, Mrs. Chamberlain, Mrs. Yanagibara. Hanamaulu—Miss Mumford, Miss Lottie Jordan, Miss M. Ellis. Muleia—Koloa—John Bush, Mrs. Blake, Ellen Kalawe, Mrs. Kula. Kalaheo—Mabel Suter, Miss Bessie Fox, Mrs. Abbey. Makaweli—Miss E. Cameron, Miss L. K. Iauka. Kekaha—Miss Finkler, Ahgunf Ontal, Miss C. Fassoth. Mana—D. Prigge. Nihaa—S. Kahale.

Keanae—Abel Ah You. Kalaupana—Mrs. Anahu. Pelekunu—D. P. Kapewa. Wailua—Emma Kane. Kamalo—Mrs. L. Dudoit. Kalaupapa—John T. Unea. Hanalei—Miss F. Deverill, Chin Kim Amona, Mrs. Ahi. Kilauea—Gladys Rickard, Mrs. Huddy, Mrs. Chamberlain, Mrs. Yanagibara. Hanamaulu—Miss Mumford, Miss Lottie Jordan, Miss M. Ellis. Muleia—Koloa—John Bush, Mrs. Blake, Ellen Kalawe, Mrs. Kula. Kalaheo—Mabel Suter, Miss Bessie Fox, Mrs. Abbey. Makaweli—Miss E. Cameron, Miss L. K. Iauka. Kekaha—Miss Finkler, Ahgunf Ontal, Miss C. Fassoth. Mana—D. Prigge. Nihaa—S. Kahale.

Keanae—Abel Ah You. Kalaupana—Mrs. Anahu. Pelekunu—D. P. Kapewa. Wailua—Emma Kane. Kamalo—Mrs. L. Dudoit. Kalaupapa—John T. Unea. Hanalei—Miss F. Deverill, Chin Kim Amona, Mrs. Ahi. Kilauea—Gladys Rickard, Mrs. Huddy, Mrs. Chamberlain, Mrs. Yanagibara. Hanamaulu—Miss Mumford, Miss Lottie Jordan, Miss M. Ellis. Muleia—Koloa—John Bush, Mrs. Blake, Ellen Kalawe, Mrs. Kula. Kalaheo—Mabel Suter, Miss Bessie Fox, Mrs. Abbey. Makaweli—Miss E. Cameron, Miss L. K. Iauka. Kekaha—Miss Finkler, Ahgunf Ontal, Miss C. Fassoth. Mana—D. Prigge. Nihaa—S. Kahale.

Keanae—Abel Ah You. Kalaupana—Mrs. Anahu. Pelekunu—D. P. Kapewa. Wailua—Emma Kane. Kamalo—Mrs. L. Dudoit. Kalaupapa—John T. Unea. Hanalei—Miss F. Deverill, Chin Kim Amona, Mrs. Ahi. Kilauea—Gladys Rickard, Mrs. Huddy, Mrs. Chamberlain, Mrs. Yanagibara. Hanamaulu—Miss Mumford, Miss Lottie Jordan, Miss M. Ellis. Muleia—Koloa—John Bush, Mrs. Blake, Ellen Kalawe, Mrs. Kula. Kalaheo—Mabel Suter, Miss Bessie Fox, Mrs. Abbey. Makaweli—Miss E. Cameron, Miss L. K. Iauka. Kekaha—Miss Finkler, Ahgunf Ontal, Miss C. Fassoth. Mana—D. Prigge. Nihaa—S. Kahale.

Keanae—Abel Ah You. Kalaupana—Mrs. Anahu. Pelekunu—D. P. Kapewa. Wailua—Emma Kane. Kamalo—Mrs. L. Dudoit. Kalaupapa—John T. Unea. Hanalei—Miss F. Deverill, Chin Kim Amona, Mrs. Ahi. Kilauea—Gladys Rickard, Mrs. Huddy, Mrs. Chamberlain, Mrs. Yanagibara. Hanamaulu—Miss Mumford, Miss Lottie Jordan, Miss M. Ellis. Muleia—Koloa—John Bush, Mrs. Blake, Ellen Kalawe, Mrs. Kula. Kalaheo—Mabel Suter, Miss Bessie Fox, Mrs. Abbey. Makaweli—Miss E. Cameron, Miss L. K. Iauka. Kekaha—Miss Finkler, Ahgunf Ontal, Miss C. Fassoth. Mana—D. Prigge. Nihaa—S. Kahale.

Keanae—Abel Ah You. Kalaupana—Mrs. Anahu. Pelekunu—D. P. Kapewa. Wailua—Emma Kane. Kamalo—Mrs. L. Dudoit. Kalaupapa—John T. Unea. Hanalei—Miss F. Deverill, Chin Kim Amona, Mrs. Ahi. Kilauea—Gladys Rickard, Mrs. Huddy, Mrs. Chamberlain, Mrs. Yanagibara. Hanamaulu—Miss Mumford, Miss Lottie Jordan, Miss M. Ellis. Muleia—Koloa—John Bush, Mrs. Blake, Ellen Kalawe, Mrs. Kula. Kalaheo—Mabel Suter, Miss Bessie Fox, Mrs. Abbey. Makaweli—Miss E. Cameron, Miss L. K. Iauka. Kekaha—Miss Finkler, Ahgunf Ontal, Miss C. Fassoth. Mana—D. Prigge. Nihaa—S. Kahale.

Keanae—Abel Ah You. Kalaupana—Mrs. Anahu. Pelekunu—D. P. Kapewa. Wailua—Emma Kane. Kamalo—Mrs. L. Dudoit. Kalaupapa—John T. Unea. Hanalei—Miss F. Deverill, Chin Kim Amona, Mrs. Ahi. Kilauea—Gladys Rickard, Mrs. Huddy, Mrs. Chamberlain, Mrs. Yanagibara. Hanamaulu—Miss Mumford, Miss Lottie Jordan, Miss M. Ellis. Muleia—Koloa—John Bush, Mrs. Blake, Ellen Kalawe, Mrs. Kula. Kalaheo—Mabel Suter, Miss Bessie Fox, Mrs. Abbey. Makaweli—Miss E. Cameron, Miss L. K. Iauka. Kekaha—Miss Finkler, Ahgunf Ontal, Miss C. Fassoth. Mana—D. Prigge. Nihaa—S. Kahale.

Keanae—Abel Ah You. Kalaupana—Mrs. Anahu. Pelekunu—D. P. Kapewa. Wailua—Emma Kane. Kamalo—Mrs. L. Dudoit. Kalaupapa—John T. Unea. Hanalei—Miss F. Deverill, Chin Kim Amona, Mrs. Ahi. Kilauea—Gladys Rickard, Mrs. Huddy, Mrs. Chamberlain, Mrs. Yanagibara. Hanamaulu—Miss Mumford, Miss Lottie Jordan, Miss M. Ellis. Muleia—Koloa—John Bush, Mrs. Blake, Ellen Kalawe, Mrs. Kula. Kalaheo—Mabel Suter, Miss Bessie Fox, Mrs. Abbey. Makaweli—Miss E. Cameron, Miss L. K. Iauka. Kekaha—Miss Finkler, Ahgunf Ontal, Miss C. Fassoth. Mana—D. Prigge. Nihaa—S. Kahale.

Keanae—Abel Ah You. Kalaupana—Mrs. Anahu. Pelekunu—D. P. Kapewa. Wailua—Emma Kane. Kamalo—Mrs. L. Dudoit. Kalaupapa—John T. Unea. Hanalei—Miss F. Deverill, Chin Kim Amona, Mrs. Ahi. Kilauea—Gladys Rickard, Mrs. Huddy, Mrs. Chamberlain, Mrs. Yanagibara. Hanamaulu—Miss Mumford, Miss Lottie Jordan, Miss M. Ellis. Muleia—Koloa—John Bush, Mrs. Blake, Ellen Kalawe, Mrs. Kula. Kalaheo—Mabel Suter, Miss Bessie Fox, Mrs. Abbey. Makaweli—Miss E. Cameron, Miss L. K. Iauka. Kekaha—Miss Finkler, Ahgunf Ontal, Miss C. Fassoth. Mana—D. Prigge. Nihaa—S. Kahale.

Keanae—Abel Ah You. Kalaupana—Mrs. Anahu. Pelekunu—D. P. Kapewa. Wailua—Emma Kane. Kamalo—Mrs. L. Dudoit. Kalaupapa—John T. Unea. Hanalei—Miss F. Deverill, Chin Kim Amona, Mrs. Ahi. Kilauea—Gladys Rickard, Mrs. Huddy, Mrs. Chamberlain, Mrs. Yanagibara. Hanamaulu—Miss Mumford, Miss Lottie Jordan, Miss M. Ellis. Muleia—Koloa—John Bush, Mrs. Blake, Ellen Kalawe, Mrs. Kula. Kalaheo—Mabel Suter, Miss Bessie Fox, Mrs. Abbey. Makaweli—Miss E. Cameron, Miss L. K. Iauka. Kekaha—Miss Finkler, Ahgunf Ontal, Miss C. Fassoth. Mana—D. Prigge. Nihaa—S. Kahale.

Keanae—Abel Ah You. Kalaupana—Mrs. Anahu. Pelekunu—D. P. Kapewa. Wailua—Emma Kane. Kamalo—Mrs. L. Dudoit. Kalaupapa—John T. Unea. Hanalei—Miss F. Deverill, Chin Kim Amona, Mrs. Ahi. Kilauea—Gladys Rickard, Mrs. Huddy, Mrs. Chamberlain, Mrs. Yanagibara. Hanamaulu—Miss Mumford, Miss Lottie Jordan, Miss M. Ellis. Muleia—Koloa—John Bush, Mrs. Blake, Ellen Kalawe, Mrs. Kula. Kalaheo—Mabel Suter, Miss Bessie Fox, Mrs. Abbey. Makaweli—Miss E. Cameron, Miss L. K. Iauka. Kekaha—Miss Finkler, Ahgunf Ontal, Miss C. Fassoth. Mana—D. Prigge. Nihaa—S. Kahale.

Keanae—Abel Ah You. Kalaupana—Mrs. Anahu. Pelekunu—D. P. Kapewa. Wailua—Emma Kane. Kamalo—Mrs. L. Dudoit. Kalaupapa—John T. Unea. Hanalei—Miss F. Deverill, Chin Kim Amona, Mrs. Ahi. Kilauea—Gladys Rickard, Mrs. Huddy, Mrs. Chamberlain, Mrs. Yanagibara. Hanamaulu—Miss Mumford, Miss Lottie Jordan, Miss M. Ellis. Muleia—Koloa—John Bush, Mrs. Blake, Ellen Kalawe, Mrs. Kula. Kalaheo—Mabel Suter, Miss Bessie Fox, Mrs. Abbey. Makaweli—Miss E. Cameron, Miss L. K. Iauka. Kekaha—Miss Finkler, Ahgunf Ontal, Miss C. Fassoth. Mana—D. Prigge. Nihaa—S. Kahale.

Keanae—Abel Ah You. Kalaupana—Mrs. Anahu. Pelekunu—D. P. Kapewa. Wailua—Emma Kane. Kamalo—Mrs. L. Dudoit. Kalaupapa—John T. Unea. Hanalei—Miss F. Deverill, Chin Kim Amona, Mrs. Ahi. Kilauea—Gladys Rickard, Mrs. Huddy, Mrs. Chamberlain, Mrs. Yanagibara. Hanamaulu—Miss Mumford, Miss Lottie Jordan, Miss M. Ellis. Muleia—Koloa—John Bush, Mrs. Blake, Ellen Kalawe, Mrs. Kula. Kalaheo—Mabel Suter, Miss Bessie Fox, Mrs. Abbey. Makaweli—Miss E. Cameron, Miss L. K. Iauka. Kekaha—Miss Finkler, Ahgunf Ontal, Miss C. Fassoth. Mana—D. Prigge. Nihaa—S. Kahale.

Keanae—Abel Ah You. Kalaupana—Mrs. Anahu. Pelekunu—D. P. Kapewa. Wailua—Emma Kane. Kamalo—Mrs. L. Dudoit. Kalaupapa—John T. Unea. Hanalei—Miss F. Deverill, Chin Kim Amona, Mrs. Ahi. Kilauea—Gladys Rickard, Mrs. Huddy, Mrs. Chamberlain, Mrs. Yanagibara. Hanamaulu—Miss Mumford, Miss Lottie Jordan, Miss M. Ellis. Muleia—Koloa—John Bush, Mrs. Blake, Ellen Kalawe, Mrs. Kula. Kalaheo—Mabel Suter, Miss



# The Hawaiian Star

DAILY AND SEMI-WEEKLY.

Published every afternoon (except Sunday) by the HAWAIIAN STAR NEWSPAPER ASSOCIATION.

## SUBSCRIPTION RATES.

Local, per annum ..... \$ 8.00  
Foreign, per annum ..... 12.00

Payable in Advance.

Entered at Post Office at Honolulu, Hawaii, as second class mail matter.

Subscribers who do not get their papers regularly will confer a favor by notifying the Star Office; Telephone 365.

The Supreme Court of The Territory of Hawaii has declared both THE HAWAIIAN STAR (daily) and THE SEMI-WEEKLY STAR newspapers of general circulation throughout the Territory of Hawaii, "suitable for advertising proceedings, orders, judgments and decrees entered or rendered in the Courts of the Territory of Hawaii."

Letters to THE HAWAIIAN STAR should not be addressed to any individual connected with the office, but simply to THE HAWAIIAN STAR, or to the Editorial or Business Departments, according to tenor or purpose.

GEORGE F. HENSHALL ..... MANAGER

TUESDAY ..... AUGUST 4, 1908

### IF THE POLE IS REACHED THIS TIME.

A brief cable the other day stating that Commander Robert E. Peary had sailed from Sydney, Nova Scotia, in the steamer Roosevelt, in another attempt to reach the North Pole, marked the starting of the most elaborate, scientific and promising effort yet made to reach the long sought spot. Peary's last remark as he said good-byes was that he expected to accomplish his purpose. Other explorers have had similar hopes, of course, but has any in the long list ever had such good reason for hope? Peary is an old hand now in the struggle with the conditions of farthest north. He is in command of a steamer constructed especially to meet the difficulties which experience has revealed. It has always seemed to many that final success in the great journey was simply a matter of sufficient equipment, supplies,—and physical perseverance. In all of these matters and in the knowledge born only of lengthy experience, Peary's expedition excels all previous ones. The problems have been attacked with physical strength and heroism before, but added to these now are scientific equipments never before employed. It is by no means improbable that the long silence into which Peary is plunging will be broken by the electrifying news that he was won at last,—has placed the Stars and Stripes at the North Pole.

After discovery, what? The Pole may remain unvisited for generations. Humanity will be satisfied at having accomplished a task for which the race has battled with nature for centuries, and Americans, especially will take pride in the fact that their country was the one to win the contest of ages. Perhaps some scientific discoveries of importance may result,—certainly there will be important news for some of the hollow-earth cranks who demonstrate (on paper) that at the pole there must be an opening into the nether regions of our whirling ball. But after Peary's call,—if he gets there,—the Pole may know no more human visitors. What will there be in such a visit to compensate for the vast expense it requires? Whether he is successful or not it will be a thrilling tale,—one more,—of the dreary north that Peary's expedition will have to relate. The Roosevelt, if there is anything in a name, should "get there."

### MET A TERRIBLE FATE.

A ten million dollar forest fire is a blow which will increase the attention given to forest preservation and general conservation of natural resources. Such a destruction of forest area has long standing climatic and other effects. The fire which raged so long in upper Hamakua a few years ago left effects that will long be felt. The fact that 200 lives were lost in the fire near Fernie indicates that it travelled through the immense forests with tremendous speed. It probably altogether cut off several settlements, entrapping the inhabitants before they had time to move out and then closing in on them. A fate more horrifying would be hard to conceive.

### THE COCOANUT STATE.

The success of "Jim" McCandless with his cocoanut souvenirs suggests the desirability of growing more of this product. There is no other growth so effective in our landscapes, in the eyes of most visitors here for the first time, as the cocoanut. Recognition of this fact is shown by most artists, in the unvarying prominence they give to the cocoanut palm in all their island landscape scenes. Hawaii might adopt the cocoanut as her emblem, like California the poppy, Kansas the sunflower, Arizona the cactus, New Jersey the sugar maple, shrinking little Rhode Island the violet, etc. We should have it all to ourselves. As a feature of decorations, it possesses qualities none of the others have. It will last indefinitely and is capable of various picturesque treatments at the hands of artists, witness some of the outlandish caricatures made with nuts. What's the matter with the "Cocoanut State."

When the Nuuanu reservoir is completed and once gets its depth of water, Honolulu will not need to worry about water supply in a dry spell like the present.

European immigrants arriving at Ellis island would not hesitate long if they could know the conditions, between work in Hawaii and a job, for example, in the Pennsylvania mines.

Germany's naval programme for this year,—seven first class battleships and nine armored cruisers,—is a tremendous one. It will inevitably stimulate the other powers. Where is the competition to end?

The Advertiser does not regard Sheriff Iaukea as dishonest, but he certainly needs a steering committee.—Advertiser. We understood that he had for a steering committee the Advertiser and the Rev. E. W. Thwing.

The following from the Advertiser's news columns of this morning fully bears out predictions that the so-called anti-haole movement would die aborning:

There is much less talk of color line now than two weeks ago, and probably by election time there will be no more than what is ordinarily the case. Better counsels have commenced to prevail, and those who expected to have an easy thing of it in the election will have to get out and hustle like the rest, with no better prospects for election than their qualifications deserve.

It isn't going to be any easier this time to herd Hawaiian voters like sheep, or vote them in blocks of five, than it has been before.

The dry weather has forcibly brought out the need of better covered streets in many parts of the city. In the central business district the dust has become a very bad nuisance. An occasional sprinkling of streets with water is entirely inadequate, and offices with

# THE "STAR" SPECIAL ARTICLE PAGE---

Wit, Wisdom, Humor  
Politics and Nonsense

## CARELESS CARTUNES, By Nibas.

### WHEN THE TOWN BLOWS ITSELF.

At dead of night or at hot, high noon,  
Jolting the heart with its devil tune,  
The steam alarm that signals fire  
And shocks and startles, and stirs our ire,  
Shatters the people's peace and play  
And scatters the business clerks away,  
Or rouses the city from gentle sleep  
With a fear that the flames are about to creep  
In through the windows of each room  
Like a hungry hell that would swift consume  
And lick out lives with its lurid lust!  
Must we endure it? Must we? Must?  
This is no two-for-a-nickle-town  
To turn all its businesses up-side-down,  
Or wake all its citizens, night by night,  
For a spark in an ash-tray or a feeble light  
In some old chimney foul with soot  
With a horrible, terrible "Toot! Toot! Toot!"  
Are we a city, or a backwoods farm?—  
What's the matter with a still alarm?"

# WHERE WILL NEGRO VOTE LAND THIS YEAR?

(From The Hawaiian Star's Washington Correspondent.)

WASHINGTON, D. C., July 21.—It is impossible at this early day to determine just where the negro vote will land in November. In years past the negroes have very generally supported the republican ticket, but the Brownsville incident promises to have some effect upon the colored vote this fall, and the democrats contemplate using that question in doubtful states where there is a material negro element, especially in Ohio, Indiana and Illinois.

At one time, when Foraker was bitterly attacking Taft and making all manner of threats against him, the negro question promised to be a vital issue, but after Taft was nominated, Mr. Foraker promptly announced that he would support him, and forthwith Brownsville was heavily discounted. Many negroes who looked upon Foraker with utmost admiration, quickly declared that if Foraker was for Taft, they would support him also. Others who had felt unkindly towards the late Secretary of War, looked over the situation, and concluded that they could expect nothing from the democratic party, as the democrats would be very likely to turn upon them, once Roosevelt was out of the White House.

Within the past week a number of prominent negro leaders have been interviewed upon Taft and the Brownsville, and from the statements quoted below it would seem that many, at least, of the negro voters intend to support the republican ticket.

Bishop George W. Lee of this city, while not a voter, is in touch with his people. He said: "The negro had better give the Republican party another chance as the only party that promise him anything. I believe the Brownsville affair will cost the party many votes unless it can give him some assurance of a favorable settlement. I shall cast my destiny with the destiny with the G. O. P. once more; trusting it will redeem itself from any error that it has made."

Over in Philadelphia Bishop L. J. Coppin, another influential colored man, expressing this view:

"The conservative leaders among our people do not hold the Secretary of War responsible for the unfortunate Brownsville affair and they will advocate the election of Mr. Taft to give him an opportunity to act in the interest of fair play and equal justice for all, as expressed in the republican platform. Mr. Bryan and his party do not want and do not deserve our support."

From Atlanta, Ga., comes the following statement of Bishop H. M. Turner, a negro:

"A large portion of the colored people will vote and support Mr. Taft for party sake. But more will not vote at all, and others will vote for Bryan. The contest between Taft and Bryan will be close. Thousands of colored voters are indignant over the disfranchisement of the negro by whole states."

A much more radical view is taken by J. Milton Waldron, president of the National Negro American Political League, who resides in Washington. Dr. Waldron, also a minister, recently telegraphed Bryan giving assurance that he would receive 75 per cent of the negro vote of the country. This assurance is discounted, however, by reason that practically all the members of the organization of which Waldron is president reside in Washington city, and have no vote, and this association has no branches extending out over the country. Bishop Waldron was one of the hot-headed negroes who undertook to bulldoze the Senate last session into voting with Foraker on the Brownsville matter. The Bishop says he is sore because he feels that every "intelligent, self-respecting negro knows that he will be read out of the republican party if Mr. Roosevelt's policy triumphs next November and Mr. Taft is elected."

How many negroes are willing to join Bishop Waldron in jumping into the hostile democracy is yet to be demonstrated. Bishop Waldron's view does not entirely coincide with that of his fellow bishops in other cities.

Aside from the views of colored churchmen is the view of Booker T. Washington, who stands at the head of his race, and is more influential than the biggest churchman. He appeals to a different class, and to a great many of that better class, who, however, are themselves in the minority. Booker Washington up to the present writing, is on the best of terms with President Roosevelt, and has failed to find sufficient excuse to justify him in changing his political faith. When Washington bolts it will be time to look for a general stampede. Meanwhile both parties are playing for the colored vote, and there is little doubt but what the democrats will get a larger number this year than in any previous campaign.

Colorado and Montana have been set down in the sure column by friends of W. J. Bryan, and among the friends of the "Peerless" it is not even admitted that there is any doubt about these two states. Bryan, it is said, is looking to the American Federation of Miners to carry Colorado and Montana, and for this reason there will be an "undesirable citizen" issue in these two states. Not that Taft is held responsible for the actions of President Roosevelt, but that Taft, at the request of the President, went to Idaho two years ago and made a law and order speech which was not pleasing to the ears of Federation men. Former Senator Dubois of Idaho is said to be largely responsible for this appeal to the Federation, and he wants

open doors or windows find almost layers of dust accumulating several times a day. The central portion of Honolulu needs well laid and oiled streets.

The Star doesn't propose to bother itself or its readers about a few petty expenses of the Fleet Press committee. We don't think many people are interested. And if they are, we don't think it would be proper courtesy to the gentlemen whom the committee aided, to publish financial accounts making public in detail every little aid guests may have accepted from the local Press committee. They are more than welcome to what was done for them and, in the general spirit of all the fleet entertainment, we wish the Press committee had been able to spend a bit more on them.

the same issue used in his own state, for Dubois has never forgiven Taft for his "law and order" speech in Boise. He in part attributes his own defeat to Taft's interference, and he is anxious to square accounts. In Idaho, however, the democrats are hopelessly split, and no evenly are they divided that the Bryan people have listed Idaho as a very doubtful state. Such an admission from them is equivalent to acknowledging that Idaho will almost certainly go for Taft. Down in their hearts, Bryan democrats hold Dubois personally responsible for the split in the Idaho democracy, for the split occurred over the Mormon issue, for which he alone was responsible.

If John W. Kern carries Indiana for the democratic ticket next November, he will have to win over many men who were unwilling to vote for him for Governor. Kern, as a candidate for Governor of Indiana, was about as successful as Bryan grasping for the Presidency. When he first ran in 1900, Kern was defeated by 23,163 votes; four years later, when he made his second race, he was defeated by 84,364. Of course Kern, on the national democratic ticket, will do better than he did on a state ticket; and there is no doubt, even in republican minds but what Bryan and Kern will come much nearer carrying Indiana than Kern did in either of his lone campaigns. Bryan will get votes that Kern probably never got, and Kern will get votes in Indiana that would not go to Bryan if some other man had been named as his running mate.

Judging by his record, Kern has no particular advantage over James Hamilton Lewis or Charlie Towne when it comes to availability for running mate for Bryan. The shiftiness of Lewis and Towne is well known through the West, but Kern, it develops, was a gold democrat in the fore part of 1896; later became a vociferous shout for Bryan and free silver. He has been an imperialist and an anti-imperialist; he has favored non-interference with the issuance of injunctions, and now he is "delighted" with the injunction plank of the Denver platform. Kern has demonstrated his fitness to run with Bryan.

### SETTING HIM RIGHT.

Said He—"Miss Peachy has a beautiful complexion. I wonder if she takes anything for it."

Said She—"Oh, no; Miss Peachy is not a kleptomaniac. She pays for her complexion material."

### IN THE SWIM.

"By the way," queried Miss Blowitz, who had recently entertained a duke, "have you ever had any foreign noblemen as guests?"

"No," answered Mrs. Uppson; "only as servants."

# NOTICE!

On and after AUGUST 1st I will be located in the ELITE BUILDING, corner of Adams Lane, where I shall give my personal attention to all branches of work in the

### PAINTING BUSINESS

and shall be pleased to have both old and new friends call on me. And, as usual,

### A SIGN

from the

### SHARP SIGN SHOP

will still have the merit so well known. Yours for Trade,

TOM SHARP.

Phone 397.

# PORTIA ..REGAL..

One of the most fascinating models seen this season in the women's shoe-stores of Paris was the original of the Portia. This Pump has a beautiful pointed toe and a neat-trimmed sole—features which give the foot a slim, graceful appearance that will appeal to every woman.

A high degree of skill is required in the fashioning of the one-piece Patent leather vamp and the fitting of the special pump counter.

The result is a pump that fits perfectly. The inside lining is of Black Kid. The snap and crispness of this style are further enhanced by a chic pump bow of Patent leather.

Expert Repairing done while you wait.

# Regal Shoe Store

McCandless Building, Corner of King and Bethel Sts.

# It Never Pulls

Does the Gillet. The blades are perfectly made and tested before leaving the factory. No other razor gives half the satisfaction.

# BENSON, SMITH & CO., Limited

HOTEL AND FORT STREET.

# PURE ICE-CREAM

Our Ice Cream is made from the best Pond's Dairy cream and unskimmed milk.

You can tell that there are real cream and milk in it; it leaves a creamy taste that is rich and satisfying.

And there is no corn starch or condensed milk used in our Ice Cream.

Ask our Soda Man for it.

# HOLLISTER DRUG CO. LIMITED.

FORT STREET.

### KNOX HATS

See Them at  
King Street near Fort.  
SILVA'S TOGGERY  
King Street near Fort

# Good Lenses

ground right are necessary to give relief to defective eyes. Our specialty is grinding lenses for oculist prescriptions.

# H. F. WICHMAN & CO., LTD

OPTICAL DEPARTMENT.

DR. F. SCHURMANN,  
Graduate Optician.

### STEINWAY

STARR AND OTHER PIANOS.  
THAYER PIANO CO.  
156 Hotel St., Opp. Young Hotel.  
Phone 218.  
TUNING GUARANTEED.

### PAPER

All kinds WRAPPING PAPERS and TWINES, PRINTING and WRITING PAPERS.

AMERICAN-HAWAIIAN PAPER & SUPPLY CO., LTD.  
GEO. G. GUILD, General Manager.  
Fort and Queen Streets,  
Honolulu. PHONE 410.

### FOR SALE.

French Ranges—Brick setting sizes 4 ft. to 9 feet at right prices. Set up ready for a fire. Zinc lined Redwood Bath tubs complete. Wind mill force pumps, all brass cylinders. Large variety of special pipe and fittings. Prompt attention to job work in plumbing.

EMMELUTH & CO., LTD.  
Phone 211. 145 King Street.

### SEMI-ANNUAL

# Remnant SALE

Cottons, Linens, Etc.  
—BEGINNING—  
Monday, Aug. 3rd.  
AT 8 O'CLOCK.

# EHLERS

Whose Sales Are Sales

# SUN CHUNG KWOCK BO, LTD

CHINESE NEWS-PAPER PUBLISHING AND JOB PRINTING.

No. 49 Cor. of Smith and Hotel Sts.

# Koa Furniture

UPHOLSTERING AND REPAIRING

WING CHONG CO.

Cor. King and Bethel. P. O. Box 1999



**RAINIER**  
The Beer That Will Stand All Tests...  
Rainier Bottling Works  
Telephone 1881

**Smith Premier**  
This machine represents the highest point of attainment in typewriters. It is easy-running, simple in operation, and rarely gets out of order. If it does, it is easily repaired. All the most modern improvements are embodied in this machine. Over 300,000 users will have no other.  
Hawaiian News Company, Ltd.  
AGENTS—Young Building.

REOPENING OF  
**SCOTT'S CAFE**  
Under the Management of Al Thur low, late Steward of the S. S. Alameda.  
Fine Merchants' Lunch 25 Cents.

**Glass Comfort**  
depends to a great extent upon accuracy in frame adjustment especially in Double Vision lenses.  
OUR GLASSES ARE JUST RIGHT.  
W. S. Safford  
OPTICIAN  
Boston Building, Fort St.

**NEW ENGLAND MUTUAL LIFE**  
INSURANCE CO.  
of Boston, Massachusetts  
New Policy  
The contract embodies, in an absolutely COMPLETE and PERFECT form, the principle of strictly MUTUAL life insurance.  
CASTLE & COOKE, LTD.  
AGENTS.  
Also representing  
Aetna Insur. Co.  
National Fire Insurance Co.  
Citizens Insurance Co.  
Protector Underwriters.

**Don't Think**  
that you save had the best Sundae in town till you have tried our very latest—the  
**Guava Sundae**  
Honolulu Drug Co., Ltd., FORT STREET, ABOVE KING

**YAMATOYA**  
Grade Mark  
**IWAKAMI & CO.**  
Sole Agents For  
**Yamatoya's Crepe Shirt**  
New Shipments Received by Every Steamer.  
88 and 43 Robinson Block, HOTEL STREET.  
Fine Job Printing, Star Office.

**HOME RACE FROM HILO**  
LITTLE KAMEHAMEHA LEADS HAWAII HOT STERN CHASE AND NEARLY WINS FINISH.

No doubt the most closely contested yacht race ever taken place in Hawaiian waters was the informal one between the Hawaii and the Kamehameha from Hilo to Honolulu which ended last night. Starting home from the Honolulu to Hilo race of the three visiting and the three local yachts, the Kamehameha left the whistling buoy in Hilo bay about ten minutes before the Hawaii. The little vessel gained a far lead in getting beyond the heads, owing to the light winds that prevailed inside. She tacked inshore and before dark was out of sight. Meantime the Gladys was seen coming out at a good pace in the rear.  
At 2 a. m. a sloop was passed by the Hawaii which was entered in the log as the Kamehameha, but after daylight the latter was described a mile or two ahead of the windward coast of Maui. Then a chase began with varying fortune given by the winds to the Territorial defender, which lasted all day and until after the moonlight beautified the contest in the Molokai channel. Then, with the Hawaii's sails all pulling together for the first time since a splendid run along the coast of Hawaii and across the first channel, the sloop little sloop was overhauled by degrees. Yet it was not until abreast of the Diamond Head light, in full view of Honolulu, that she was passed and then beaten by perhaps half a mile at the bell buoy from which the race to Hilo had started. In actual time the Hawaii was 29 hours and twenty minutes from buoy to buoy. Both yachts burned flare lights at Diamond Head, being answered from the signal station, and again on heading into the channel off Waikiki.

**Amusements**  
**Orpheum Theatre**  
COMMENCING AUGUST 6TH.  
**Henri French, Hallen and Fuller**  
ALL STAR  
**Advanced Vaudeville Co.**  
10 BIG ACTS BY WORLD RENOWNED  
**Head Liners**  
—POPULAR PRICES—  
TICKETS NOW ON SALE, 75, 50, 25c

**Art Theater**  
MATINEE, 2:30 TO 4 P. M.  
EVENING, TWO PERFORMANCES, 7 TO 8:30; 8:40 TO 10:15.  
**Illustrated Songs**  
Accompanied by the Piano  
Change Mondays and Thursdays.  
POPULAR PRICES.

**EMPIRE THEATER**  
HOTEL AND BETHEL STREETS.  
Up-to-Date Vaudeville and  
**New Moving Pictures**  
TONIGHT, TONIGHT.  
NEW FILMS.  
FRANK VIERRA, Pianist.  
Program Changed Monday, Wednesday and Fridays.

**Baseball**  
LEAGUE GROUNDS  
SATURDAY, AUGUST 8  
1:30 p. m.  
Admission 25c and 50c.  
Reserved Seats Grandstand 25c extra  
New Oahu Carriage Mfg. Co.  
Removed to Cor. Queen and River Streets.  
Telephone 202—P. O. Box 970

**New Suitings**  
JUST RECEIVED  
Suits Made to Order at "Ready Made" prices.  
**Sang Chan**  
McCandless Building, King Street next to W. W. Dimond & Co.  
It may not be immoral for a girl to say "damn," but it affects a man just as it would to hear a dove or a canary bird shrieking like a parrot.

**GREAT ACTIVITY IN THE VOLCANO**


THE FLOW OF LAVA AND PLAY OF FOUNTAIN IN PIT OF HALA-MAUMAU.

At a depth of but little less than two hundred feet below the pit, Halemau mau was giving an exhibition last week that can hardly be surpassed. On Friday night the fire was intensely active covering fully three-fourths of the entire surface below. For an hour there were eight large fountains playing each of them to a height of from thirty to forty feet. Around the pit, close to the crater's wall is a black surface and, at both the east and west ends, the fire overflowed this, clearly showing that the bottom of the pit was rising.  
On Saturday night Surveyor Baldwin gave his opinion that the depth, from the rim of the crater was not more than 190 feet, and his is an experienced eye in regard to measurements. It is no wonder that visitors keep flocking to the Volcano House, last Saturday seeing fully fifty there while a large party came by the Mauna Kea, some leaving yesterday, others going up this morning.

On Friday evening, at six o'clock, the fire was decidedly active with as many as nine to eleven fountains playing though many of them were small. As darkness came on the heat grew greater, the fountains of fire ascended higher and the extent of activity spread over a wider surface. Near the center there was always one fountain playing incessantly, a large one. This was followed by a second and a third, all close together and all of equal size, from time to time merging into one and dashing against the black surface on the north side of the pit, right under the bench placed for visitors.  
This fire play lasted for a long time, the activity continually increasing till the lights on the southern and western sides began to attract attention, and soon there were large fountains on the south, while the red hot lava was rising to the west, till it crept over blackened borders that had previously encircled the fire. The same thing happened at the eastern end though not so actively. On the south two fire fountains started, seemingly determined to out rival those in the center and to the north, till there were eight large fountains incessantly shooting their fire upward.

Meantime the blackened surface in the center of the pit was gradually being diminished as it was dragged into the fiery furnace by the liquid flames that were dashing to and fro, gambling with and chasing each other as the waves toss upon the ocean. The cracks, the few that were left, grew wider and the reddened surface beneath became more vivid through them. Had this activity continued for an hour or two hours longer, the whole pit would have been alive with fire. But it gradually quieted down apparently being exhausted by the fury into which it had lashed itself. The heat at the side of the pit is intense, so much so that all visitors should take masks to protect their faces. At times the fumes of sulphur are hellish, and then the masks come into use as fans but this unpleasantness, while often repeated, does not last for any great length of time. Perhaps the strongest sulphur fumes come from the Devil's kitchen, some little distance from the pit, which is belching forth the yellow mineral till the surrounding surface is colored with it, and the lava is gaping open suggestive of a possible outbreak should the activity at Halemau mau continue and increase.—Herald

**WHY HE JOINED**  
"Tommy," said a young lady visitor at his home, "why not come to our Sabbath school? Several of your little friends joined us lately."  
Tommy hesitated a moment, then suddenly he exclaimed: "Does a red-headed kid by the name of Jimmy Brown go to your school?"  
"Yes, indeed," replied the new teacher.  
"Well, then," said Tommy, with an air of interest, "I'll be there next Sunday, you bet. I've been layin' for that kid for three weeks and never knew where to find him."  
The finest lunch in the city was served at Scott's Cafe this noon. Al Thurlow, late steward of the S. S. Alameda, has taken entire charge of the place, and what he doesn't know about catering isn't worth knowing. The Cafe was crowded with prominent business people and the lunch was certainly appreciated.  
**ARRIVING.**  
Tuesday, August 4.  
Am. bark Kalinani, Colly. from San Francisco, a. m.  
**DEPARTING.**  
Tuesday, August 4.  
Stmr. Keaouhu, Pederson, for Kauai, 5 p. m.  
Stmr. Mikahala, Self, for Molokai and Maui, 5 p. m.  
Stmr. W. G. Hall, Thompson, for Kauai, 5 p. m.  
Stmr. Mauna Kea, Freeman, for Maui ports and Hilo, 12 m.  
Stmr. Helene, Nelson, for Hawaii, 12 m.  
Stmr. Nouau, Mitchell, for Hoopaka and Kukuhaele 12 m.  
Wednesday, August 5.  
O. S. S. Alameda, Dowdell, for San Francisco, 10 a. m.  
Frank E. Hime of Hilo has been operated on for appendicitis in the Queen's Hospital and is doing very well. He is a member of the Elks.

**THE MAN WHO WILL CUT CAPE COD CANAL.**  
  
**THE LLOYD BETTING ON BRYAN**  
NEW YORK, July 16.—Under the new anti-betting law in this state, betting on election as a great crime may be visited with as dire punishment, as betting on the race-track, but the London Lloyds will write policies against the election of W. J. Bryan, just as, in many cases, these venturesome brokers have written policies against the birth of twins, and in at least one recent case have insured against a man's molesting his mother-in-law.  
The policy is of the form sometimes loosely described as a wager, or honor policy, and while it may not be enforceable at law, the standing of the Lloyds gives the bettor, or insured, ample protection against any wailing on the part of the broker.  
The taking of such policies in large numbers today practically opened the betting on the presidential election. In the morning the premium, or odds, was 8-1-2 to 1 against Mr. Bryan. At the close the odds went down to 5-3-4 to 1 against the Nebraskan.  
**MANUFACTURER STARTS NEW BETTING.**  
The new method of election betting owes its origin to a manufacturer who felt confident of a sharp revival of business following the election of Mr. Taft, and was anxious to run his plant at full capacity during the months preceding the election, if only he could protect himself against the contingency of Mr. Bryan's successor.  
In his predicament, the manufacturer went to a prominent firm of insurance brokers in this city and asked them for a policy insuring his business against Mr. Bryan's election. They agreed to Lloyds for terms, and received offhand a quotation of 20 per cent, which is equal to odds of about 4 to 1 against Mr. Bryan's victory. The manufacturer considered the rate too high. Today, after reflection, he Lloyds offered to write a policy at 10-1-2 per cent. The offer was accepted, and insurance to the amount of more than \$100,000 was taken at the quotation named. The manufacturer will put all hands to work immediately.  
**MANY BROKERS TAKE "POLICIES."**  
Wall street brokers and stock market operators hearing of the policy taken by the manufacturer, applied for policies in large numbers this afternoon. Some wanted policies as a hedge on purchases of stock, fearing a break in the market in the event of Mr. Bryan's election.  
Others considered the odds inviting at this uncertain stage of the campaign and took policies as pure wagers, either for the reason it is a good long-chance speculation, or in expectation of hedging profitably on later campaign betting.  
The amount thus hazarded is variously estimated. A cable to one prominent insurance firm placed the aggregate at \$250,000. This is the minimum estimate. The maximum, including offers not yet accepted, was \$1,500,000.  
**GOOD AS ANY CONTRACT.**  
This form of contract insurance or wager comes under Lloyd's classification of commercial hedges. In this classification it is known in the parlance of international insurance men as a "P. P. I." policy, that is, a policy with proof of interest. The contract provides that the insured must state the estimated loss in the face of the policy and, according to a strict term of the policy, the insurer may demand proof of loss in case of its happening on a particular contingency.  
The clause to that effect, however, is entirely formal and is designed to protect the contract in accordance with the English law. As a matter of practice the contract is as inviolable as that of a life insurance contract written "incontestable from date of issue." An insurance broker who would refuse to pay face value would be treated in the same manner as a bookmaker who welves at Tattersalls.

**FOR SALE!**  
Building lots in the Puapueo Tract. Size and price of lots to suit purchasers.  
If you are contemplating building, do not fail to consider this tract before deciding.  
Here are fine marine and mountain views, good soil and drainage and location convenient to the car line.  
We are ready to assist in building homes on these lots.  
"Waterhouse Trust"  
Corner of Fort and Merchant Sts.

**The Wireless**  
for Business Deas with Other Islands

**Classified Advertising**  
LOST.  
Child's gold chain and heart locket, probably at ball grounds. \$5 reward at The Star office.  
FOR RENT.  
Furnished cottage and housekeeping rooms. Apply Cottage Grove, King St.  
First class furnished rooms centrally located. Hot and cold baths, Arlington Hotel, 215 Hotel St.  
House, eight rooms, with modern conveniences; pleasant grounds. In Panahou district, convenient to car lines. Enquire W. C. Weedon, Stangenwald Bldg or P. O. Box 658.

**WANTED.**  
Pupils for Pianoforte. Concert and dance music a specialty; one hour per week, 75c. Apply for particulars at Star Office.  
We want you to try a massage with our Electric Vibrator that throes feeling and headache. Nothing better in town. Union Barber Shop.

**TRY IT FOR A DAY.**  
There is something about the atmosphere of Haleiwa that builds up the system quicker than any tonic one may take. Maybe it's the food and the atmosphere combined; they're both pure and there is plenty of each. The rooms at Haleiwa are mosquito-proof, the service is good and the golf links all that the most enthusiastic golfer could dream of. Take a run down a day, letting Manager Bidgood know if you will remain longer, and see if you are not benefited.  
**OF COURSE.**  
Mrs. De Style—So your baby girl is three weeks old; my, how time flies.  
Mrs. Gunbusta—Yes; just think in thirty years from now she will be 21 years old.

**New Advertisements**  
**SPECIAL MEETING.**  
**PACIFIC SUGAR MILL.**  
A special meeting of the stockholders of the Pacific Sugar Mill will be held at the office of F. A. Schaefer & Co., Ltd., in Honolulu, on Wednesday, 5th August, 1908, at 2 o'clock p. m.  
J. W. WALDRON,  
Secretary, Pacific Sugar Mill, Honolulu, August 1st, 1908.  
**ELECTION OF OFFICERS.**  
W. C. PEACOCK & CO., LIMITED.  
At the annual meeting of the stockholders of W. C. Peacock & Company, Limited, held on Friday, July 31st, 1908, at the office of the corporation, the following officers were elected to serve during the current year:  
W. C. Peacock, President  
R. J. Buchly, Vice-President  
R. I. Auerbach, Treasurer  
C. E. King, Secretary  
T. F. Launing, Auditor  
The above officers constitute the Board of Directors.  
C. E. KING,  
Secretary.

**COMPENSATION.**  
Mrs. Baker—My husband costs me a good deal of money.  
Mrs. Barker—Yes, and he isn't very good to you, either.  
Mrs. Baker—I know it, but I got a dandy lot of wedding presents with him.





The woman on the right never used Ayer's Hair Vigor. She neglected her hair, and now herself suffers from neglect. On the contrary, the woman on the left has always used Ayer's Hair Vigor, and owes to it much of her youthful appearance and attractiveness.

## Ayer's Hair Vigor

produces beautiful hair. Long, rich, heavy hair. Soft and silky hair, free from dandruff.

Prepared by Dr. J. C. Ayer & Co., Lowell, Mass., U. S. A.

## PURE PREPARED PAINT

There is no other paint that is so pure, so lasting, so beautiful, or so economical in the long run. Have your house painted with W. P. Fuller & Co.'s Pure Prepared Paint, and it will look well long after other paints peep and look shabby. Let us see you about it.

## LEWERS & COOKE LIMITED.

177 S. King Street. Phone 775.

## 68 HOURS To Chicago

From San Francisco, The Fastest transcontinental train.

## OVERLAND LIMITED

Electric lighted, Buffet, Library and Drawing room compartment, observation car, with dinner. Telegraphic news posted on train.

## Southern Pacific

## J. CARLO

Buys old Watches and Diamonds at both stores, Nuuanu street and Fort above Hotel.

## EXCELLENT LAUNDRY WORK done by the FRENCH LAUNDRY with their new FRENCH dry cleaning process

258 Beretania St. Phone 1491

## Removal Notice.

M. Ohta removed to 636 South Hotel Street between Punchbowl and Beretania.

**MATTER OF EXPERIENCE.**  
Hyker—"Did you read that article in Blank's magazine on the 'Pussing of the Horse'?"  
Pyker—"No; but I know all about it. The horse that carried my money was passed by all the other skaters in the race."  
Fine Job Printing, Star Office.

# SPORTS

## LOGS OF YACHTS IN RACE TO HILO

THE GAME RUN MADE BY THE LITTLE SLOOP GLADYS OF HONOLULU.

HILO, July 31.—This is a general record of the cruise of the yacht Gwendolyn II of Seattle in the Honolulu to Hilo race.  
The ship's company consisted of L. B. Johnston, master; D. B. Johnston, his brother; Captain Redfern, navigator; Ed. Russell, chef; W. B. Jack, boatswain; Jack Young and Ed. Arnold of Honolulu, guests. The master says of the trip:  
"Nothing carried away. We were absolutely intact when we reached here. We were in cruising, not racing trim, having one ton of water and half a ton of coal aboard.  
"Met weather same as the others. The boat shipped seas over her all the time. It was very sloppy, due to the heavy sails we were carrying.  
"Got in fourth at 11:30 last night."  
THE LADY MAUD.

Captain Lew B. Harris, of the Lady Maud, gives the following account of his yacht, Mr. Kyle's of San Diego, in the Honolulu-Hilo race:  
"Shortly after getting abreast of Diamond Head, at 11 o'clock on July 28, we double-reefed the mainsail, single reefed the foresail, took in the jib and let her go under easy sail, as the crew was knocked out by seasickness, only four men being left free for duty.  
"Let her go northward under easy sail. About ship at 10 o'clock p. m., standing toward Moakal. Made the east end of Moakal about 6 o'clock a. m. and about ship, being in Kahului light about 2 in the afternoon.  
"About ship at that time, starting on the starboard tack until 10 o'clock at night, when we had expected to make Laupahoehoe right. We then went about. Still on the port tack, getting various winds and heavy squalls in Hawaii channel until 5 o'clock p. m., off Laupahoehoe light. Sighted the Gladys.  
"In company with the Gladys until off Pepeekeo lighthouse. Light winds, variable weather. Crossed the finish line at 12 o'clock last night.  
"On the trip carried away foretopmast stay and staysail halliards, and in consequence could not carry any driving sail on the ship, the headsail being all disabled. Wore her in under easy sail."  
Prof. J. Kyle, owner of the yacht Lady Maud, received a letter on leaving San Diego, "to be opened three days out, accompanied with a neat pocket book. On opening the missive he found this bon voyage:  
With the blue sky above you  
And the blue sea below,  
As the stiff breezes rock you  
In their arms to and fro;  
With old friends behind you  
And new ones ahead,  
You crawl from your bed  
(Called respectfully, bed).  
Not a landubber now in sight,  
Gone strife care and fraud,  
Come, fill up and drink with me  
"To the Lady Maud!"  
THE LITTLE KERRS,  
7190 Campus Av.,  
San Diego, Cal.

Nothing was more gony in the yacht race than the little sloop Gladys with her crew, namely: Captain F. V. King, Leslie Scott, O. Surason, George Crozier and the native boy Kaleo.  
"We were ahead of the Hawaii and the Gwendolyn off Hana on Wednesday night," Captain King said this morning.  
"We were to windward of both and kept it up till 1:30 next morning. Then our port shrouds gave way and we had to heave to and sail under jib. We reefed down the mainsail, taking three reefs, and came near turning back and running in to Hana for repairs. Crozier got busy, though, and sent the native boy aloft.  
"We kept inshore, going until 5 o'clock, when we came about and made for Hilo. We were off Laupahoehoe at 5 last night. Just before sunset we sighted the Lady Maud, splitting tacks with her, we keeping inshore. There was no wind from 10 last night until daylight. About 7 o'clock this morning we shook out reefs and came ahead."  
DANIEL LOGAN.

**CONCERNING WOMEN.**  
There is one sudden death among women to eight among men.  
One in each 1000 couples lives to celebrate the golden wedding.  
A club woman who is considered an authority on archaeology is Mrs. Morton Worthan Sloan of West Virginia. Mrs. Sloan is a native of Richmond, Va., but at present lives in Huntington, W. Va., where she has been president of a club for ten years. She is also president of the West Virginia State Federation.  
One hears of many funny devices in-

vented by "bachelor" women as a means of protection against an inroad by the long-looked-for burglar. One ingenious flat-owner stretches a piece of wool across the door-way when she goes out, which would, of course, be broken by an unlawful intruder. Another hangs two men's hats in her passage to make him believe she has adequate male defenders; while a third—much more valiant—always sleeps with the pepper-pot beside her bed to throw in the face of any unfortunate thief who ventures near her. The simplest way of dealing with a burglar is to bury one's head in the bedclothes and pretend to be sound asleep until he chooses to go.  
In Holland, where qualified women

have long had municipal suffrage, the committee on revision of the constitution has reported in favor of giving women proportional representation and making them eligible to parliament.  
There will not be many historic mansions left on the market after the Americans get through buying in Europe, according to reports on the subject. Mrs. Collis P. Huntington will shortly move into one, which has recently purchased on the Rue de l'Elysee. It has been called the Hotel de Hirsch for some time, but was built by a general in the time of the French revolution and became the property of the Empress Eugenie.  
Bernard Snow's wife is a suffragist

and marched the other day in London. Her husband told her that he would get into the procession, too, if she would push a bath chair in which he would sit. He said that the funniest thing he saw in the procession was a man with a baby, marching next to a woman carrying a poodle dog. "Only one baby and that carried by a man," he said. "Only one dog; and that carried by a woman."  
AT THE CLUB.  
Miss A.—Do you get a new umbrella very often?  
Miss B.—No. Every one I've picked up here for the last six months has been full of holes.

In bringing out this new model we do not in any way retract any claims that we have made for the six-cylinder car, which we are firmly convinced is the highest type of automobile construction. In response to a demand for a larger and roomier car than our twenty horsepower, four-cylinder Model R, and more moderate in price than our Light Six, we have produced the Model X. This model supplies a demand for a four-cylinder car a little larger and more powerful than the Model R, which has been discontinued. The owner of the Model X can feel that the well-known features of the Model R are embodied in his car, together with the advantages of more room and power. In brief, the Model X is an enlargement and refinement of the Model R, representing the most advanced ideas in automobile designs, together with Stevens-Duryea construction and workmanship, which have been proven absolutely correct.

# 1909 Four-Cylinder STEVENS-DURYEA MODEL X

**The Unit Power Plant AND Three-Points Support**  
This construction, which has made the name "Stevens-Duryea" synonymous with motor car efficiency, is retained. Stevens-Duryea cars were built on correct principles in the beginning, and at no time have any radical changes been made in their design.  
4 3/4 BORE 4 1/2 STROKE  
TIRES 34 x 4  
WEIGHT, 2650 Pounds.  
For detailed specifications send for catalog.  
PRICE ..... \$2750.00  
Folding top with side curtains, storm front, celluloid windows and slip cover extra ..... 150.00  
Magneto ..... extra 200.00  
Chassis ..... 2400.00

## Von Hamm-Young Co., Ltd. AGENTS

STEVENS-DURYEA COMPANY,  
Chicopee Falls, Mass.

# GUT PRICES

Soda Water Prices have been cut from 35c. to 30c. a dozen. (60c. per case)

Although our soda is known to be far superior to any other made in this city, we have met the cut, and will supply any of our popular flavors at 30c. per dozen until further notice.

NO ONE can beat this offer---the BEST QUALITY at the Lowest price. This is your chance---don't miss it.

## Fountain Soda Works

PHONE 270

Try our Distilled Water. Special Soda made from Distilled Water, Fifty Cents per Dozen.

**The Newest Thing IN Ladies' Neck-wear Ruching, Fancy Belts India Linon, Nainsook Linen Lawn 36 in. wide at 35c. a yard**  
Also Ladies' Lingerie Waists  
AT E. W. Jordan & Co., Ltd.

**WHY** use either a dim or unsteady light?  
**WHY** use too strong a light?  
**WHY** let spots or streaks of light fall on work or book?  
**WHY** indeed, do any of these things when eyes are too precious to be endangered and electric light permits you to avoid them all?

**Hawaiian Electric Co., Ltd**  
King Street near Alakea. Telephone 390

**Fresh and Tender**  
We received a small invoice of fresh SALMON, tender GEESE and TURKEYS by the Lurline. They are first quality and extra fine. Your order, sir?  
**The Metropolitan Meat Co.**  
TELEPHONE 45.

**HEINZ**  
**Apple Butter**  
IN SANITARY TINS.  
You know Heinz Apple Butter; but do you know that you can get this delicious relish in a sanitary tin?  
Owing to the special construction of this tin, there is absolutely no chance of contamination from the solder.  
Order a can from your grocer.  
**H. Hackfeld & Co., Ltd**  
WHOLESALE GROCER.

**Garden Tools**  
What do you think of a nice little set of weeding and cultivating tools for 35c? We have just received a lot and they are just the thing for ladies. Our assortment of Hoes, Rakes, Shovels, Mattocks, Axes, Hedge Shears, Border Trimmers, Lawn Mowers and every tool used about a garden, or small farm, is most complete.  
Now that you are doing a little gardening try a little FORCE-GROWTH, nothing like it to make the grass and plants grow fast and bright green.  
**E. O. Hall & Son, Limited**



**BANK OF HAWAII**  
LIMITED.

Incorporated Under the Laws of the Territory of Hawaii.

CAPITAL, SURPLUS AND PROFITS,  
**\$1,025,982.39**

OFFICERS:  
Chas. M. Cooke, President  
F. W. Macfarlane, 2nd Vice-President  
C. H. Cooke, Cashier  
C. Hustace, Jr., Asst. Cashier  
F. B. Damon, Asst. Cash. & Secy  
Z. K. Meyers, Auditor

Board of Directors: Chas. M. Cooke, P. C. Jones, F. W. Macfarlane, E. F. Bishop, E. D. Tenney, J. A. McCandless, Geo. R. Carter, C. H. Atherton, F. C. Atherton, C. H. Cooke, F. B. Damon.

COMMERCIAL AND SAVINGS DEPARTMENTS.

Strict attention given to all branches of Banking

JUDD BUILDING, FORT STREET.

Claus Spreckels, Wm. G. Irwin.

**Claus Spreckels & Co.**  
BANKERS

HONOLULU, H. T.

San Francisco Agents—The Nevada National Bank of San Francisco.

DRAW EXCHANGE ON

SAN FRANCISCO—The Nevada National Bank of San Francisco.

LONDON—Union of London & Smith's Bank, Ltd.

NEW YORK—American Exchange National Bank.

CHICAGO—Corn Exchange National Bank.

PARIS—Credit Lyonnais.

BEHLIN—Dresdner Bank.

HONGKONG AND YOKOHAMA—The Hongkong and Shanghai Banking Corporation.

NEW ZEALAND AND AUSTRALIA—Bank of New Zealand, and Bank of Australasia.

VICTORIA AND VANCOUVER—Bank of British North America.

TRANSACT A GENERAL BANKING AND EXCHANGE BUSINESS.

Deposits Received, Loans Made on Approved Security, Commercial and Travellers' Credits issued. Bills of Exchange Bought and Sold.

COLLECTING PROMPTLY ACCOUNTED FOR.

ESTABLISHED IN 1830.

**BISHOP & CO.**  
BANKERS

Commercial and Travellers' Letters of Credit issued on the Bank of California and The London Joint Stock Bank, Limited, London.

Correspondents for the American Express Company, and Thos. Cook & Son.

Interest allowed on term and Savings Bank Deposits.

**THE YOKOHAMA SPECIE BANK**  
LIMITED.

Capital (Paid Up) Yen 24,000,000.00  
Reserved Fund..... 15,050,000.00  
Special Reserved Fund 2,000,000.00

HEAD OFFICE, YOKOHAMA.

Branches and Agencies:

Tokio, Kobe, Osaka, Nagasaki, London, Lyons, New York, San Francisco, Bombay, Hong Kong, Shanghai, Hankow, Chefoo, Tientsin, Peking, New-chang, Dalny, Port Arthur, Antung-Hsien, Liao-yang, Mukden, Tientsin, Chungchun.

The bank buys and receives for collection bills of exchange, issues Drafts and Letters of Credit, and transact a general banking business.

Honolulu Branch 67 King Street

**Fire Insurance**

Atlas Assurance Company of London

New York Underwriters Agency

Providence Washington Insurance Company

**The B. F. Dillingham Co., Ltd.**

General Agents for Hawaii.

Fourth Floor, Stangenwald Building.

**IF YOU WISH TO ADVERTISE IN NEWSPAPERS**

ANYWHERE AT ANYTIME

Call on or Write

**C. C. DAKE'S ADVERTISING AGENCY**

124 Sansome Street

SAN FRANCISCO, CALIF.

**HILO DISPLAYS ITS FINE HOSPITALITY**

CITIZENS ENTERTAIN THE VISITING YACHTSMEN AT A SUMPTUOUS LUNCHEON—THE VISITORS EXPRESS THEIR APPRECIATION IN WARMEST TERMS—ATTICTIONS OF THE BIG ISLAND AND THE VOLCANO TRIP PRAISE D.

HILO, August 1.—This afternoon a fine luncheon was given to the visiting yachtsmen by the citizens of Hilo, at the Demosthenes Cafe. Unfortunately, through some crossing of the lines, the invitation did not connect with Commodore Sinclair in time. Consequently he stopped off at Glenwood from the volcano trip without knowing of the luncheon. It was a great disappointment to their fellow-yachtsmen as well as the Hilo people to miss Commodore Sinclair, Mr. Poole, the Lurline's mate, and Messrs. Savage, Pyle and Stewart, the commodore's guests. However, the owner of the winning yacht and his shipmates were not forgotten in the sentiments of the occasion.

William McKay, local superintendent of the Inter-Island Steam Navigation Co., presided and introduced the speakers with concise and often witty remarks. A very choice menu was served upon a beautifully decorated table in hollow square form. Many business, professional and planting men joined the guests of the day at table. There was no set program and the speeches were unstudied expressions of the good feelings of the occasion.

Charles T. Wilder of the Hawaii Yacht Club was called on to respond to the health of the yachtsmen as well as to introduce others. After making a neat acknowledgment on his own part, he introduced Lloyd Johnston, owner of the Gwendolyn II.

Mr. Johnston happily disclaimed having come to Hilo for the race. It was rather a cruise to visit the island of Hawaii and city of Hilo, and "a swell time" was the result. It would take an old-fashioned boat to beat the Lurline. He did not believe the Columbia could have won the transpacific race from the fine old pleasure cruiser of Commodore Sinclair. It was a contest for a long-keeled vessel.

Bob Scott, designer and builder of the second boat to arrive, said there was not much design about the Kamehameha—simply a little horse sense. "Still we are satisfied," he playfully added, "we can lick anything in the Pacific." He was in the Hawaii last Sunday and her performance was very creditable. "Her crew and not the ship must be to blame."

"Old Bill Stroud" was the burden of a song wherewith this representative of the Hawaii was greeted. He said that by 1910 the Hawaii would have improved 90 per cent. She sailed from San Pedro this year with excessive ballast.

T. V. King had no excuse to offer for the Gladys. She had had no intention of winning the day. Her crew were ready to enter Eben Low's wild west show as broncho-busters after their experience on the cruise. Still if it had not been for accidents the Gladys would have come in second. Just as well, though, her rigging had broken, as otherwise Bob Scott's prestige would have been lowered.

O. Sorenson declined an invitation to explain why the rigging of the Gladys gave way, only denying that he had been in any plot to favor the boat his firm had built.

Captain Lew B. Harris of the Lady Maud told how his boat had executed a haul with half her clothes on, and as he had a modest lot of seamen it made them sick. "But the boat arrived all right and we have had the time of our lives and nobody will ever regret the voyage. We will remember it as long as we live and will leave your shores with the keenest feelings of pleasure at having visited this beautiful island and its marvelous volcano. Two years from now we hope to visit you again—if not the winner close behind her—and I should be awfully sorry if the winner did not carry the Hawaiian colors."

Captain Kyle of the Lady Maud gracefully responded for the ladies.

Daniel Logan, called with the local press, doubted his position. His vacation having not expired he might not be qualified to represent his paper. Having been discharged from the Lurline he questioned if he could speak as a yachtsman. (Mr. Wilder—"I have signed you on the Hawaii.") The responder took occasion to mention Commodore Sinclair as the originator of the Honolulu-Hilo race which had brought such a pleasant company of entertainers and entertained together. Presuming he was not violating any confidence he assured the people of Hilo that Commodore Sinclair and Mrs. Sinclair regarded Hilo and vicinity as the most beautiful place in the Pacific, having heard the Lurline's owner quoting his wife's opinion while giving his own. For the rest the responder spoke of the incomparable delights of the volcano trip as a whole and of the certain destiny of Hilo as a great commercial port after its breakwater is completed.

W. H. Smith, editor of the Tribune, responded humorously for the Hilo press. "When the breakwater is finished," he said, "we will have the finest harbor in the Pacific ocean."

"Hilo is not afraid of Honolulu," Toastmaster McKay said in rejoinder to a disclaimer of antagonism of Honolulu made by the second previous speaker. "Hilo will be a big city, and Honolulu fall back to a little town." The remark, "You have had no rain since coming here," was greeted with the rollicking chorus, "You are only dreaming," from the vocal boys of the company.

Mr. Muir of Hakalau having been mentioned as a former winning yachtsman on the Great Lakes, who could have put the Hawaii over the finish line first, Mr. McKay exclaimed: "What's the odds? It takes losers as well as winners to make a race."

Having been called on, Mr. Muir said: "I did give sailing directions to the captain of the Hawaii, but he didn't follow them within hundreds of miles. The Lurline's course was within two and a half miles of the one I had indicated, while the Hawaii was 241 miles out. Yachting is my hobby and I would have been glad to have been on the Hawaii. Two years hence if things happen that way I should be delighted to act as executive officer of the Hawaii." He expressed his pleasure in meeting with yachtsmen. Sixteen years ago he was one on the Great Lakes and he could appreciate the action of the officers of the Gwendolyn.

"The Big Island and the Bay of Naples of the Western Hemisphere" was proposed by Mr. Logan.

E. E. Richardson, first to respond, said he would like to see this yacht race from Honolulu to Hilo made an annual affair. "You furnish the lunch." (Applause.)

C. C. Kennedy uttered his cordial appreciation of the coming of the yachtsmen to Hilo. He had come to the country thirty years ago, when there was not a carriage in the place, not a

**Trent Trust Company, Ltd**

STATEMENT OF CONDITION, JUNE 30, 1908.

ASSETS.	
Cash on Hand and in Bank.....	\$ 9,288 35
Stocks and Bonds.....	5,970 40
Loans on Real Estate.....	61,773 92
Loans, Demand and Time.....	10,453 58
Real Estate.....	9,047 10
Furniture & Fixtures.....	4,457 22
Other Assets.....	6,361 09
	<b>\$107,351 66</b>
LIABILITIES.	
Capital—	
Subscribed.....	\$100,000 00
Paid in.....	50,500 00
Stockholders Liability.....	49,500 00
Trust & Agency Accounts.....	34,771 37
Bills Payable.....	9,500 00
Undivided Profits.....	4,164 74
All other Liabilities.....	8,415 55
	<b>\$107,351 66</b>

I, Richard H. Trent, President of the Trent Trust Company, Limited, do solemnly swear that the foregoing statement is true to the best of my knowledge and belief.

RICHARD H. TRENT,  
President.

Subscribed and Sworn to before me this 24th day of July, A. D. 1908.

M. G. K. HOPKINS,  
Notary Public, First Judicial Circuit,  
Territory of Hawaii.

**Mutual Building & Loan Society of Hawaii, Limited**

STATEMENT OF CONDITION, JUNE 30, 1908.

ASSETS.	
Cash on Hand and in Bank.....	\$ 1,923 16
Real Estate Loans.....	42,174 60
Stock Loans.....	3,932 00
	<b>\$ 48,029 76</b>
LIABILITIES.	
Installment Stock.....	42,202 70
Paid-up Stock.....	4,640 75
Reserve Fund.....	1,000 00
Undivided Profits.....	185 31
	<b>\$ 48,029 76</b>

I, Richard H. Trent, Secretary of the Mutual Building & Loan Society of Hawaii, Limited, do solemnly swear that the foregoing statement is true to the best of my knowledge and belief.

RICHARD H. TRENT,  
Secretary.

Subscribed and Sworn to before me this 24th day of July, A. D. 1908.

M. G. K. HOPKINS,  
Notary Public, First Judicial Circuit,  
Territory of Hawaii.

Trent Trust Co., Ltd., Agents, Honolulu

**PRESCOTT'S COUPONS**

August 1, 1908.

The automobiles are keeping up (fire) their reputation, for keeping down the population. Seven, in California, within two days is good mowing work.

**MORE BIDS.**

(Yesterday Noon.)  
I read the successful bids of Metropolitan Meat Co. and Davies & Co., for the Pacific Fleet, gives us joy even if we should have to go without our rations (grub) of beef and Irish potatoes. (A good times coming.)

**THE SAILORS.**

We're not all appointed (not our vocation) to feed or to entertain the Navy or ships of any nation; but, we can all cry: "Welcome, Aloha," and help to make them love Hawaii and so carry our little message around the globe.

**OUR DAISY.**

The "Hawaii" is a perfect beauty, everything in most exquisite task and (not at all too slow.) We'll stick to that point of the compass and be calm.

The appointments are made and the teachers can now draw a long breath and make the most of the rest of the vocation.

**THE CHILDREN!**

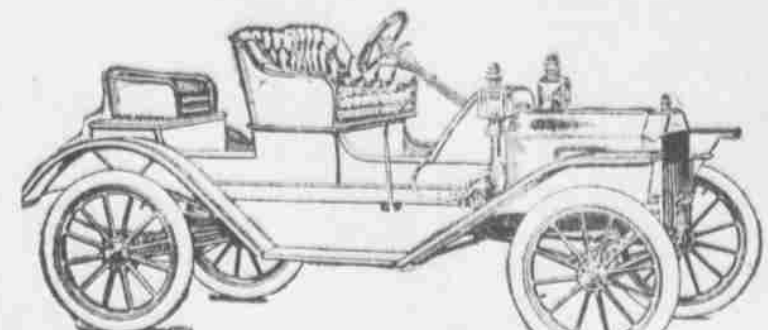
We can live and die without more children but the pitiful cry is: "No hospital for a poor sick baby." ("How long, O Lord, how long.")

**EDITOR TIMES.**

cart, everything was landed on the beach and everybody packed away his own things. There was no road to the volcano for many years and to take the trail was like walking upon a stone fence. He compared the present facilities of travel with those even of fifteen years ago to show the vast improvement.

"Good, clean yachting, win or lose," was the concluding toast, drank with loud cheers, and at 3 o'clock "Auld Lang Syne" sung with great animation ended the most pleasant feast.

DANIEL LOGAN.



**Ford S Roadster**  
"A Satisfactory Car at A Satisfactory Price"

This car is the result of the recent evolution in car manufacture. It is built and designed for simplicity, service, and low operating expense. This is a 15 H. P., four-cylinder car of rakish appearance, and capable of making any speed from 3 to 45 miles per hour on any road without change of gear. It lasts longest and costs least while it lasts. And the original cost is down to bed-rock.

Come and see this Model  
**Schuman Carriage Co.,**  
LIMITED  
Merchant Street, between Fort and Alakea



**GOOD TASTE AND JUDGMENT**  
are more essential to having a beautifully appointed table, than large expenditure. Let us show you unusual patterns in  
**Community Silver**  
It has a distinct richness of appearance and charm of design which rival sterling. It's more than triple plate—it costs but a trifle more than ordinary plated ware—it lasts a life time.

W. W. DIMOND & CO., LTD.  
23-7 KING STREET.



Large Assortment

Always on Hand Calabashes, Coral, Seed and Shell Lots, Tapes, Mats, Necklaces and Fans.

Woman's Exchange

Hotel St. near Union.

W.G. Irwin & Co., Ltd

SUGAR FACTORS, COMMISSION AGENTS

Wm. G. Irwin, President and Manager John D. Spreckels, First Vice-President W. M. Giffard, Second Vice-President H. M. Whitney, Treasurer Richard Ivers, Secretary D. G. May, Auditor

AGENTS FOR

Oceanic Steamship Co., San Francisco, Cal. Baldwin Locomotive Works, Philadelphia, Pa. Hakalau Plantation Co., Hilo Sugar Company, Honolulu Plantation Co., Hutehinson Sugar Plantation Co., Kilauea Sugar Plantation Co., Olowalu Company, Paauhau Sugar Plantation Co., Waimanalo Sugar Co.

Pure Distilled Water

delivered anywhere by

CONSOLIDATED SODA WATER WORKS COMPANY, LTD. TELEPHONE 71.

Why be pestered by the heat when a GAS STOVE in the kitchen will keep you cool.

GAS STOVE

in the kitchen will keep you cool.

HONOLULU GAS CO., LIMITED. Bishop Street.

OAHU TAILORING CO. Merchant Tailors. Cigar Stand on the Corner. Seretania and Emma Streets.

Catton, Neill & Co. LIMITED. Engineers, Machinists, Blacksmiths and Boiler-makers. First class work at reasonable rates.

Honolulu Iron Works.

STEAM ENGINES, SUGAR MILLS BOILERS, COOLERS, IRON, BRASS AND LEAD CASTINGS.

Machinery of Every Description Made to Order. Particular Attention paid to Ship's Blacksmithing. Job Work Executed on Short Notice.

PORTO RICAN HATS.

A large assortment of the best Porto Rican Hats just received. Lowest Prices prevail. See our window display.

LEADING HAT CLEANERS.

Fort Street, Opposite the Convent. TELEPHONE 492.

Choice

Kaneohe Beef

Always on Hand

YOUNG PIGS POULTRY EGGS FRESH BUTTER AND CHEESE

SAM WO MEAT COMPANY

King Street Market, next C. Q. Yee Hop & Co.

YOUNG TIM, Manager.

Tel. 395.

NEW ADVERTISEMENTS.

Hollister Drug Co., Page 4 Hawaiian Trust Co., Page 1 Hawaiian News Co., Page 4 Lewers & Cooke, Page 6 Honolulu Gas Co., Page 8 Rainer Bottling Works, Page 5 Consolidated Soda Works, Page 8 Palm Cafe, Page 3

THE WEATHER.

Local Office, U. S. Weather Bureau, Young Building.

Honolulu, T. H., August 4, 1908. Temperatures, 6 a. m.; 8 a. m.; 10 a. m.; and morning minimum. 71; 78; 78; 81; 71. Barometer reading: absolute humidity (grains per cubic foot); relative humidity and dew point at 8 a. m.: 80.95; 6.474; 63; 64. Wind: Velocity and direction at 6 a. m.; 8 a. m.; 10 a. m.; and noon: 5 NE.; 12 NE.; 20 NE.; 18 NE. Rainfall during 24 hours ending 8 a. m.: .02 inch. Total wind movement during 24 hours ended at noon 295 miles.

WM. B. STOCKMAN, Section Director.

NEWS IN A NUTSHELL.

Paragraphs That Give Condensed News of the Day.

The purest distilled water delivered to your office or home by the Consolidated Soda Water Works Co.

Rainier beer is to be had at any bar in the city or wholesale at the Rainier Bottling Works. Telephone 1331.

There is no reason for the wife in heat. Cook with gas. See the Honolulu Gas Co.

This evening's hand concert will be at Emma square, not Thomas, being in place of the usual Monday evening concert omitted for cause yesterday.

Deaths from contagious diseases in Honolulu district for the fifteen days ended July 31 comprised one from typhoid fever and five from tuberculosis.

The Palm Cafe on Hotel street near Fort has just received a large assortment of Guntler's celebrated candles. They are in many tempting forms and very fresh.

The best ice cream in the city is made by the Hollister Drug Co., Ltd. Nothing but the purest cream and milk is used—No corn starch or condensed milk. It tastes creamy.

Governor Frear is preparing to start the hard work of preparing his annual report to the President. While this work is being done he will not see visitors during the afternoon.

When you are ready to appoint your executors, select those who cannot afford to misappropriate funds. The Hawaiian Trust Co. has a reputation for honesty and competency that is a guarantee.

Secretary of the Territory E. A. Mott-Smith has gone on a two weeks' vacation. With his family he has gone to Wailalea, where he will do fishing on the reef and goat shooting in the mountains.

Miss Grace Hortense Tower will not leave in tomorrow's steamer, having cancelled her booking therefor. She will remain until August 26. Misses Bunnell and Earley will leave for the coast tomorrow as announced.

A reception was given to the visiting Japanese team, the Kelos, by Theodore Richards at his residence on Kinau street last evening. The Royal Hawaiian band played during the evening and the ball players from the country of the Mikado enjoyed a thoroughly good time.

Whether or not the planters will bear the expense of transportation by rail and steamer, from the Atlantic ports of entry, of European families for work in the plantations of the islands, was discussed at a special meeting of the Board of Immigration yesterday, at the offices of Alexander & Baldwin.

The South Premier is easily the most popular typewriter used today. Every convenience that has proved practicable is embodied in this perfect machine. Hawaiian News Co., agents. If you want your house to look clean and fresh three or four years after being painted, have the painter use Pure Prepared Paint now. Lewers & Cooke Ltd., agents.

AS DARK AS EGYPT.

"Are you able to make any plants grow in your apartment?" "Yes—a night-blooming cereus in the kitchen."

\$2500

will buy a fine home. Easy terms.

IRENT TRUST CO

A PERFECT FIT

Guaranteed

With our expert cutter who has just returned from the coast we guarantee every suit to fit.

W. W. AHANA CO., LTD.

Merchant Tailors. Wally Building King Street.

AUTOS' INCREASE

TAX RECORDS SHOW MANY MORE MACHINES HERE NOW THAN IN 1907.

The manner in which the number of automobiles has been increasing in this Territory is interesting and is well shown by the records in the office of Territorial Treasurer Campbell. The tax on automobiles in this Territory, no matter what their cost, is \$20 per year, a matter which may be changed by the Legislature at its next session as it is thought hardly fair that a man owning a machine worth only \$500 should pay the same tax as a richer man whose auto cost him over \$5,000.

The following record, showing the taxes on automobiles in the four taxation districts of the Territory for the first six months of the current year and also for the first six months of 1907 should prove interesting:

Table with columns for District, 1907, 1908. Rows for Oahu, Maui, Hawaii, Kauai, Totals.

IMPORTANT CONTRACTS ON

BIDS TO BE OPENED TOMORROW MORNING IN SUPERINTENDENT CAMPBELL'S OFFICE.

Two sets of bids will be opened tomorrow at noon in the office of Superintendent of Public Works Marston Campbell. The first of these will be the tenders for the building of the Paumotu road. This road is a little over a mile in length and runs from the main side of the main road in Kaula into the middle of the homestead lands.

The second job is one which will please the people of Hanalei, Kauai, and also Superintendent of Public Instruction Babbitt. It is a contract for which tenders will be received for the doubling of the capacity of the school building at Hanalei, something which has been needed for many months. The building will be similar to that which is now in existence and will be of frame construction.

BIG NEW COLLEGE

A meeting of the Territorial Board of Regents was held yesterday, at which were present Judge H. E. Cooper, Ralph Hosmer, Professor Pope and Walter G. Smith. Authorization was given to change the interior of the cottage now used by the College of Agriculture and Mechanical Arts, to accommodate the library of several thousand volumes which has been contracted for.

The regents cabled to President Gilmore to find out whom he has engaged as professors. As he desired to begin work with eleven departments and has cabled about transportation, it is barely possible that at least thirty professors and their families will be here about September 1.

BAND TONIGHT.

The Hawaiian band will have a moonlight concert this evening at 7:30 o'clock at Emma Square.

PART I.

March, "King Radium" (new). "Chambers Overture, "Edisa and Claudio". "Mercedante Ballad: "Thoughts and Tears". Selection: "Tannhauser". Wagner

PART II.

Vocal: Hawaiian Song. Ar. by Berger "The Entrance of the Cortage" (new). Vanderpoel "An Oriental Patrol: "Hallmar" (new). "The Dervishes" (new). Bendix Galop: "Light as a Feather". "Nicotian "The Star Spangled Banner".

LIQUOR COMMISSION.

A short meeting was held by the Board of Liquor Commissioners yesterday afternoon at which all the members including Norman Watkins, newly appointed by the Governor, were present. The application for a transfer of the license for the Royal Annex restaurant from W. C. Peacock to Al Thurlow, was approved. The matter of granting Sunday privileges to Mrs. Klemme, for the Aloha Aina restaurant without advertising was turned over to Attorney General Hemenway for an opinion in regard to the law. The manner in which the Pa'u-ace restaurant is being conducted was talked over and it was decided to ask C. J. McCarthy, its owner, to be present at the next meeting of the Board to talk the subject over.

SUGAR QUOTATIONS

96° TEST

Table with columns Date, Per Lb., Per Ton. Rows for July 15, 17, 18, 20, 21, 22, 23, 24, 25, 27, 28, 29, 30, 31, August 1, 3.

LONDON BEETS

Table with columns Price. Rows for 11 shillings 1-2 pence, 11 shillings 3 pence, 11 shillings 7 1-2 pence, 10 shilling 11 1-4 pence, 10 shillings 10 1-2 pence, 11 shillings, 10 shillings 10 1-2 pence, 10 shillings 8 1-4 pence, 10 shillings 6 3-4 pence, 10 shillings 6 pence, 10 shillings 6 3-5 pence, 10 shillings 9 pence, 10 shillings 18 1-4 pence, 10 shillings 5 1-4 pence, 10 shillings 6 pence.

James F. Morgan's

AUCTIONEER AND STOCK BROKER

Member of Honolulu Stock and Bond Exchange. Stock and Bond Orders receive prompt attention. Information furnished relative to all STOCKS AND BONDS. LOANS NEGOTIATED. Phone 72 P. O. Box 594.

Hawaiian Tobacco Plantation Co., Limited

Capital Stock \$100,000.00 5000 Shares Par Value \$20.00

Subscription list now open at the office of HARRY ARMITAGE, Broker, Campbell Block, Merchant Street. Prospectus may be had on application.

Table with columns Waimea, Hawaiian Electric, Hon. R. T. Co. com., O. R. & L. Co., Hon. B. & M. Co., Haiku 6s., Hamakua Ditch 6s., Hawaiian Sugar 6s., McBryde 6s., O. R. & L. Co. 6s., Pala 6s., Pioneer 6s., Wailua Agri. 6s.

THE WOMAN ON THE SIDEWALK

Women are lacking in sidewalk manners. The fact that men are lacking similarly, even if in a less degree, is no excuse.

The simple rule of turning to the right is with most annoying serenity ignored when women want to gaze into a shop window.

Often they do not take the trouble to get close to the window, but plant themselves in the middle of the walk, frowning in superior but ineffective disdain at those who are forced by circumstances to jostle them.

They form coteries on the thoroughfare for the promulgation of gossip. Sometimes they have the children along, and permit these to string across from wall to curb.

The lone female may be observed cleaving the throng with all the abandon of a rotary plow attacking the winter snow. Some of them pay not the slightest attention to where they are going, but they go.

They look in one direction and progress in another. They zigzag, amble, loll. They get in the way and don't care until bumped and even then they neither reform nor accept any part of the blame.

A woman with an umbrella is a thing to fear. From one with the serrate and monstrous hat wise men flee, knowing that she is too busy thinking of spectacular effect to consider possible catastrophe.

A little regard for public rights is needed. There are traffic rules easy of comprehension, and the observance of them would make life more tolerable and render easier the masculine duty of being polite.

CONTEST OVER TAXES.

The master's report in the matter of the Cummins heirs estate came up before Judge De Bolt this morning, the fight coming over the recommendation that the guardian be assessed with the penalties, interest and costs of the taxes which have been left unpaid since 1902. The attorney for the guardian put in the claim that the taxes had been assessed against the estate, instead of against a person, which made them invalid.

Attorney General Hemenway was sent for by Judge De Bolt to look into this matter and, upon the suggestion of the court, the matter went over till tomorrow afternoon at 2 o'clock. An investigation of the books of the tax office showed that the taxes were being assessed against Cecil Brown, administrator, though he was discharged from this position many years ago.

DAILY STOCK REPORT

Table with columns Session Sales, Between Boards, Stock, Ewa Plant Co., Hawaiian Com., Hawaiian Sugar, Honokaa, Koloa, McBryde Sugar Co., Oahu Sugar Co., Onomea, Okala, Oiaa Sugar Co., Paauhau, Paha Plant Co., Pepeekeo, Pioneer, Wailua Agri.

ANNUAL Remnant Sale Now In Progress

A SALE OF EXTREME IMPORTANCE.

A gigantic collection of remnants accumulated from our big Sale. Many of these remnants are in lengths sufficient for dresses others will make Skirts or Waists. In short, there are lengths for most any purpose.

N. S. Sachs' Dry Goods Co., Ltd THE STORE WITH THE MONEY-BACK POLICY.

Better THAN ANYTHING ELSE YOU CAN TAKE AS A GENERAL TONIC. A GLASS OF PRIMO BEER WITH YOUR MEALS.

HUSTACE-PECK CO., LTD. - DRAYMEN -

ESTIMATES GIVEN ON ALL KINDS OF TEAMING DEALERS IN FIRE WOOD, STOVE, STEAM AND BLACKSMITH COAL Crushed Rock, Black and White Sand, Garden Soil, HAY, GRAIN, CEMENT, ETC., ETC.

Honolulu Construction & Draying Co., Ltd., GENERAL CONTRACTORS.

Fort St., Opp. W. G. IRWIN & CO., LTD. We do all kinds of Teaming; also deal in Crushed Rock, White and Black Sand, Broken Coral, Garden Soil, Etc. SAFE MOVING A SPECIALTY.

Cut Price Household Store! One-Third Off For 3 Weeks

33 1/3% Special Sale On! 33 1/3% Agate Ware, Glass Ware, Crockery Ware, Household Utensils. NOW'S YOUR OPPORTUNITY! LEWIS & COMPANY, Ltd. CUT PRICE HOUSEHOLD EMPORIUM. 169 King Street. Telephone 240.

GURNEY Patent Refrigerator THE ONLY CLEANABLE REFRIGERATOR. MANUFACTURED BY THE GURNEY REFRIGERATOR CO., TORONTO, CANADA.

THE KING OF ICE SAVERS With the famous "Gurney" has all other refrigerators beaten a mile. We back our assertion. It is the Best by actual Test. Made in 45 styles. Sold on the installment plan. W. W. Dimond & Co. - 53-57 King St.