

If You want today's News, today you find it in THE STAR

THE HAWAIIAN STAR.

SECOND EDITION

Classified Ads, Three Times, 25 Cents

VOL. XIV.

HONOLULU, HAWAII, FRIDAY, MAY 4, 1906.

No. 4404

SPLIT IN THE COAST RANGE

(Associated Press Cable to The Star.)

OAKLAND, May 4.—Geologists have made a most important discovery in connection with the recent earthquake. A split in the Coast Range Mountains has been discovered near Redwood City. One crevasse is four miles long at the summit, while the western side of the range has been found to have slipped several inches toward the ocean.

THOUSANDS OF LABORERS

OAKLAND, May 4.—Ten thousand union laborers are working in San Francisco and 11,000 more have registered. The marines have arrested 20 members of an organized band of looters.

AFTER THE OIL TRUST

WASHINGTON, D. C., May 4.—President Roosevelt has sent Commissioner Garfield's report on Standard Oil to Congress, with a special message demanding reforms.

KILLED BY ZULUS

PIETERSMARITZBURG, May 4.—Stainbank, a British magistrate, has been killed by Zulus, while collecting taxes.

AFTER TURKEY

LONDON, May 4.—Great Britain has sent an ultimatum to Turkey, demanding that she evacuate Egyptian territory. Ten days are given the Turkish government within which to reply.

Praise From Our Morning Contemporary

The Star, which also seems to have "press facilities" got out the only extra yesterday morning, scooping the other afternoon paper by several hours with interesting fresh news and with a verification from Seattle of the Advertiser's Fiji story.—The Advertiser.

IT IS WORTH KNOWING

That the Underwood Typewriter, Model No. 3xw, takes paper 20 inches wide and writes a line 18 inches long. Arleigh & Co., Agents.

ALL WOOL TWILLED FLANNEL. Good for men's wear. Navy blue and scarlet. Regular 60c quality, slightly imperfect. On sale at 37½ cents yard. N. S. Sachs Dry Goods Co. Ltd.

Hawaiian Trust Co.

LIMITED

Will act as Executor, Trustee or Guardian.



Fort St., Honolulu.

VIGILANCE CHIEF WELL KNOWN HERE

DR. GEDGE HAS A BROTHER LIVING IN HONOLULU—PRACTICED MEDICINE A SHORT TIME HERE

Dr. Donald McCulloch Gedge who is the chief of the San Francisco Vigilance Committee is well known in Honolulu. He is a brother of Norman Gedge of the Inter-Island Steam Navigation Company. Dr. Gedge lived in Honolulu about 8 or 10 years ago and practiced medicine here for a few months. His office was located on Beletania street. Subsequently he went to San Francisco where he has a very fine practice.

Dr. Gedge also worked for the old firm of G. W. Macfarlane and Company. He has visited Honolulu on a number of occasions. He married a sister of H. H. Williams of this city.

Dr. Gedge was always of a more or less adventurous disposition. When the French war in Tonquin broke out, he left Honolulu and went out to China and fought on the side of the French.

YOUR ATTENTION.

K. Yamamoto wholesale dealer in Japanese goods, will show you choice samples. Special attention given to plantation orders. Telephone Main 399. P. O. Box 310. Hotel street near Nuuanu.

LAME BACK.

This ailment is usually caused by rheumatism of the muscles and may be cured by applying Chamberlain's Pain Balm two or three times a day and rubbing the parts vigorously at each application. If this does not afford relief bind on a piece of flannel slightly dampened with Pain Balm, and quick relief is almost sure to follow. For sale by all dealers, Benson, Smith & Co., agents for Hawaii.

MUSIC.

The Charles Guitars and Mandolin Studio has been removed to the residence, 762 Lunalilo street. Instruments given to pupils without extra charge.

Fine Job Printing, Star Office

La Paloma Still On The Ocean

“Associated Press, Oakland :

“Has La Paloma arrived ?

“STAR.”

“Hawaiian Star, Honolulu :

“ Not reported.

“ASSOCIATED PRESS.”

The above cables passed this morning between here and Oakland. The failure to connect with Macfarlane by cable led to suspicions here that the yacht had not yet arrived at San Francisco, in spite of reports that she got there on May 1. The Star therefore cabled an inquiry to the Associated Press and an answer was promptly received, stating as above, that the yacht was not yet reported.

ACHI AFTER WRIT TO STOP BOARD

SUPREME COURT WILL TAKE UP THE QUESTION OF THE POWER OF SUPERVISORS TO IMPEACH.

A writ of prohibition was signed this morning by Chief Justice Frear of the Supreme Court, on petition of Senator Achi as counsel for Deputy Sheriff Kekauoha, against the Oahu County Board of Supervisors and County Attorney Douthitt, restraining them from proceedings in the impeachment of Kekauoha and directing them to appear on May 7 and show cause why the writ should not be made perpetual. The writ is in the following language:

“Upon reading the annexed petition of George K. Kekauoha, Deputy Sheriff of the District of Koolauloa, County of Oahu, and it appearing to me that a writ of prohibition should issue as prayed for.

“And whereas, George K. Kekauoha, of Koolauloa, County of Oahu, Territory of Hawaii, lately in our court, on the 3rd day of May, A. D. 1906, represented to our said court, that a petition signed by 27 alleged legal voters of Koolauloa, was filed in the office of the Board of Supervisors of the said County of Oahu, asking the Board of Supervisors for the removal from office of George K. Kekauoha, from the office of Deputy Sheriff of the District of Koolauloa, upon the alleged grounds of maladministration and malfeasance.

“That the defendant claims that the Board of Supervisors has no jurisdiction in the matter, and further claims that there are only 19 legal voters who signed said petition or complaint.

“Nevertheless, you, the said supervi-

(Continued on Page Five).

Stackable Gets Cable

Collector Stackable this afternoon received the following cable:

“San Francisco, May 4, 1906.

“To Collector Customs, Honolulu:

“Oakland in complete harmony with San Francisco.

“Advise leaving financial matters to your local committee here.

“STRATTON, Collector Customs.”

THE VERY LATEST IN BOOKS.

The most up-to-date list of books. The largest assortment in Blank Books and Office Supplies and all at the lowest prices. Wall, Nichols Co., Ltd.

Fine Job Printing, Star Office.

TAXES WILL ABSORB MUCH MONEY

TERRITORY WILL TAKE A HALF MILLION FROM CIRCULATION ON THE FIFTEENTH IN TAXES.

Owing to the fact that the Territorial taxes amounting to nearly a half million of dollars are to be paid before May 15, causing that amount of gold coin to be taken from circulation and locked up in the Territorial vaults, considerable speculation is going on as to a shortage of money for general circulation.

There was some talk among the brokers here that the Territory would deposit the coin in the banks down town in case of a shortage of coin. This however is against the law as the Territory has no depository law. Even if the banks offered a high security the Territory could not put the coin into circulation excepting through the usual course of events and in the usual manner.

It is not known definitely whether the mint in San Francisco can not furnish coin. It may be that a sufficient amount can be obtained in the usual way. Very little coin has been sent out from this place for relief. About \$15,000 was sent in gold. The remainder was sent by draft.

The stock market at present is very quiet. Very few stocks are being sold. People are evidently waiting for the reports from San Francisco. It is thought that San Francisco will buy very little stocks for some time yet and that more will be placed for sale upon the local market. It is thought that people here will buy the ones placed here readily.

GETS FIVE YEARS

Yamamoto, charged with assault with intent to commit murder, was this afternoon found guilty of assault with intent to commit manslaughter. Judge De Bolt sentenced him to pay a fine of \$25 and costs and to five years hard labor.

MAIL GOES BY OLYMPIA.

Mail will be sent to the mainland by the S. S. Olympia tomorrow. She will depart at 8 a. m. She may be sent to another island port but the destination is being kept secret until she sails.

SMALL ROBBERY WEDNESDAY. The servants quarters of W. H. Baird at the corner of Penanoola and Kinan streets, were robbed night before last of about \$50 in cash and some clothing.

The Star has received many compliments for its complete presentation of the news of the San Francisco disaster yesterday.

FEAR ALAMEDA SURVIVORS WILL SHOW DISASTER WORSE

GREATEST POSSIBLE INTEREST BEING TAKEN IN THE ARRIVAL OF THE STEAMER FROM SAN FRANCISCO TOMORROW WITH THE FIRST SURVIVORS OF THE DISASTER—THEIR EXPERIENCE WILL BE EAGERLY READ.

The arrival of the S. S. Alameda with aster. Coming from people who are survivors of the San Francisco disaster well known to this community the accounts being awaited with the deepest pos-

sible interest. Aboard the vessel will be over a hundred people, all of whom were undoubtedly in San Francisco at the time of the disaster. The experiences of these people will have a double significance to the Honolulu community. Most of the people who are coming will have experiences of the most exciting character to relate. Beyond doubt they will be able to tell of other Honolulu and island people who were in San Francisco at the time of the disaster.

(Continued on Page Five).

UTOPIA.

Some day everyone will drink Rainier Beer—everybody that tries it likes it.

RESUMED PRACTICE.

George D. Gear has opened law offices in the rooms formerly occupied by Justice Hatch on Kaalumanu street. Telephone Main 214.

ALPHA AND OMEGA.

For your eye-opener and night-cap, go to the Criterion.

Automobiles can be hired day or night at Club Stables, Fort Street.

A Shoe for Strenuous Wear

We are showing a Men's VICI BLUCHER, OXFORD, "DIXIE LAST" which is essentially a shoe for strenuous wear. And at that it is a shoe which is uncommonly good-looking, and may be worn anywhere and in any company. The price is \$4.50. The splendid value offered in this shoe, should appeal to all who are looking for a reasonably priced, long-wearing, well-appearing article of footwear.

MANUFACTURERS' SHOE COMPANY, LIMITED

1051 Fort Street

A MATTER OF HEALTH



ROYAL BAKING POWDER

Absolutely Pure HAS NO SUBSTITUTE

Oceanic Steamship Company

TIME TABLE

The fine Passenger Steamers of this line will arrive at and leave this port as hereunder:

FROM SAN FRANCISCO.		FOR SAN FRANCISCO.	
SONOMA	APRIL 25	VENTURA	APRIL 24
*ALAMEDA	MAY 4	*ALAMEDA	MAY 9
VENTURA	MAY 16	SIERRA	MAY 15
*ALAMEDA	MAY 25	*ALAMEDA	MAY 30
SIERRA	JUNE 4	SONOMA	JUNE 5
*ALAMEDA	JUNE 15	*ALAMEDA	JUNE 20
*ALAMEDA	APRIL 18		

In connection with the sailing of the above steamers, the Agents are prepared to issue to intending passengers coupon through tickets by any railroad from San Francisco to all points in the United States, and from New York by steamship line to all European Ports.

W. G. Irwin & Co.

General Agents Oceanic S. S. Company.

Canadian-Australian Royal Mail Steamship Company

Steamers of the above line running in connection with the CANADIAN-PACIFIC RAILWAY COMPANY between Vancouver, B. C., and Sydney, N. S. W., and calling at Victoria, B. C., Honolulu and Brisbane, Q.

FOR AUSTRALIA.		FOR VANCOUVER.	
MOANA	MAY 5	MAHENO	MAY 2
MAHERO	JUNE 2	MIOHERO	MAY 30
MIOHERO	JUNE 30	AORANGI	JUNE 27
AORANGI	JULY 28	MAHENO	JULY 25

THEO. H. DAVIES & CO., Ltd., Gen'l Agts.

AMERICAN HAWAIIAN STEAMSHIP COMPANY.

DIRECT MONTHLY SERVICE BETWEEN NEW YORK AND HONOLULU, VIA PACIFIC COAST. FROM NEW YORK TO HONOLULU. S. S. TEXAN... To sail May 25th. S. S. ARIZONAN... To sail June 15th.

Pacific Mail Steamship Co. Occidental & Oriental S. S. Co Toyo Kaisen Kaisha S. S. Co.

FOR CHINA AND JAPAN.		FOR SAN FRANCISCO.	
AMERICA MARU	APRIL 21	NIPPON MARU	APRIL 24
MONGOLIA	MAY 2	DORIC	MAY 8
CHINA	MAY 9	MANCHURIA	MAY 15
NIPPON MARU	MAY 17	HONGKONG MARU	MAY 22
DORIC	MAY 24	KOREA	MAY 28
MANCHURIA	JUNE 1	COPTIC	JUNE 7
HONGKONG MARU	JUNE 12	SIBERIA	JUNE 18
KOREA	JUNE 19	AMERICA MARU	JUNE 25
COPTIC	JUNE 26	MONGOLIA	JUNE 28
SIBERIA	JULY 3	CHINA	JULY 9
		NIPPON MARU	JULY 10
		DORIC	JULY 17
		MANCHURIA	JULY 27
		HONGKONG MARU	AUGUST 7
		KOREA	AUGUST 14
		SIBERIA	AUGUST 21

H. Hackfeld & Co.

Soft Beverages Made at Home

For lunch, for dinner, or in the evening after a rubber at bridge, you can make a simple and delicious drink by using LYON'S CALIFORNIA FRUIT SYRUPS.

Henry May & Co., Ltd.

SHIPPING INTELLIGENCE

(For additions, and later shipping see pages 4, 5 or 6.)

TIDES, SUN AND MOON.

First Quarter of the Moon May 1st.

Date	High Tide	Low Tide	High Tide	Low Tide	Sun Rise	Sun Set	Moon Rise	Moon Set
May 1	10:25	1:4	10:48	5:05	5:18	5:29	6:25	6:30
May 2	11:26	1:4	12:09	5:48	4:56	5:28	6:25	6:13
May 3	12:46	6:25	6:16	6:28	6:20	6:20	6:20	6:20

Times of the tide are taken from the U. S. Coast and Geodetic Survey tables. The tides at Kahului and Hilo occur about one hour earlier than at Honolulu, Hawaiian standard time is 10 hours 30 minutes slower than Greenwich time, being that of the meridian of 157 degrees 30 minutes.

U. S. DEPARTMENT OF AGRICULTURE.—WEATHER BUREAU.

The following data, covering a period of 29 years, have been compiled from the Weather Bureau and McKibbin records at Honolulu, T. H. They are issued to show the conditions that have prevailed, during the month in question, for the above period of years, but must not be construed as a forecast of the weather conditions for the coming month.

Month May for 29 years. TEMPERATURE. (1876-1905.) Mean or normal temperature, 75°. The warmest month was that of 1895, with an average of 76°.

Precipitation (rain 1877-1894 and 1905.) Average for the month, 2.27 inches.

RELATIVE HUMIDITY. Average, 9 a. m., 67%; average, 9 p. m., 66%.

CLOUDS AND WEATHER. (1890-1905.) Average number of clear days 14; partly cloudy days, 17; cloudy days, 3.

WIND. The prevailing winds have been from the northeast.

The average hourly velocity of the wind during May, 1905, was 9.9 miles.

The highest velocity of the wind during May, 1905, was 28 miles from the northeast on the 13th.

Station: Honolulu, T. H. Date of issue: April 28, 1906.

T. F. DRAKE, Weather Bureau.

ARRIVING.	
Friday, May 4.	S. S. Moana, Neville, from Victoria and Vancouver, due in afternoon.
Saturday, May 5.	S. S. Alameda, Dovedell, from San Francisco, due in forenoon.
Sunday, May 6.	Stmr. Kinau, Freeman, from Hilo and way ports, due in forenoon.
Monday, May 7.	Stmr. Likelike, Napanu, from Molo-kai, Lanai and Maui ports, due.
Tuesday, May 8.	Stmr. W. G. Hall, S. Thompson, from Kauai ports, due early in morning.
Wednesday, May 9.	U. S. A. T. Logan, Stinson, from Manila and Nagasaki, due.

DEPARTING.	
Thursday, May 3.	Am. schr. Aloha, Dabel, for Kaunapali, in tow of tug Fearless, at 5:35 p. m.
Friday, May 4.	Tug Fearless, Olsson, for Kaunapali, with schr. Aloha in tow, at 5:35 p. m.
Saturday, May 5.	Stmr. Iwaland, Pittz, for Elsie, at 3 p. m.
Sunday, May 6.	Stmr. Claudine, Parker, for Maui and Hawaii ports, at 5 p. m.
Monday, May 7.	S. S. Moana, Neville, for the Colonies and Auckland, probably sail at night.
Tuesday, May 8.	Stmr. Mauna Loa, Simson, for Maui and Hawaii ports, at noon.
Wednesday, May 9.	Stmr. Nihau, W. Thompson, for Kauai ports, in afternoon.

PASSENGERS. Arriving. Per stmr. Claudine, May 3, from Honolulu, Albert Horner, from Kipahulu.

Per stmr. Mikohala, May 3, for Kauai ports: E. A. Knudsen, F. Crawford, Rev. G. L. Kopa, Miss Mary R. Jardin, Mrs. E. M. Scholtegard.

ALOHA DEPARTED YESTERDAY. The schooner Aloha departed yesterday afternoon for Kaunapali, in tow of the tug Fearless.

SEATTLE, April 23.—J. C. Ford, vice-president and general manager of the Pacific Coast Company, will go to San Francisco within a few days to direct the reconstruction of the company's docks, destroyed by the earthquake and fire.

THE DOCKS FALL INTO THE BAY

DOCKS OF THE PACIFIC COAST STEAMSHIP COMPANY DESTROYED—WILL BE REBUILT AT ONCE.

SEATTLE, April 23.—J. C. Ford, vice-president and general manager of the Pacific Coast Company, will go to San Francisco within a few days to direct the reconstruction of the company's docks, destroyed by the earthquake and fire.

STEAMERS METEOR AND EUREKA, which are here under charter to the Pacific Coast Company, will be used to carry building supplies to San Francisco.

It has been impossible for the Pacific Coast Company to get detailed reports on the condition of the company's property, owing to the overcrowding of telegraph wires with personal messages.

FEARED HONOLULU HAD BEEN DESTROYED

When the S. S. Olympia left Seattle for Honolulu, the officers did so with a mental reservation, for they did not know whether they would find Honolulu in existence, when they arrived.

"We thought we might not find you here," said Purser Dewar, "we did not know but what we might have to go to some other island."

Mildred Hushaw wrote to J. Marchalino per the Olympia.

FARMERS' INSTITUTE

The next regular meeting of the Farmers' Institute of Hawaii will be held at the library of the Territorial Board of Agriculture and Forestry on King street, Saturday, May 12, at 7:30 p. m.

The important subject of co-operative marketing of Hawaiian agricultural products is to be thoroughly discussed at this meeting.

ALL ARE SAFE. Patrol Driver Toomey had a father, three brothers and a sister living in San Francisco at the time of the disaster.

MAIL TO OTHER ISLANDS. There will be mail to Kauai, Maui and Hawaii tomorrow upon the arrival of the S. S. Alameda.

ENOUGH FOR BOTH. (From the Cleveland Plain Dealer.) Says William Taft to Billy Taft.

MAIL TO OTHER ISLANDS. There will be mail to Kauai, Maui and Hawaii tomorrow upon the arrival of the S. S. Alameda.

WASHINGTON GETS RECORD OF QUAKE

THE SEISMOGRAPH AT WEATHER BUREAU IN WASHINGTON REGISTERED THE SHOCK.

WASHINGTON, D. C., April 18.—The weather bureau this afternoon issued the following report regarding the San Francisco earthquake.

The great San Francisco earthquake of April 18, 1906, as registered upon the seismograph at the weather bureau office at Washington, began at 8 hours, 19 minutes, 20 seconds, 75th meridian time.

The stronger wave motion began at 8:25 a. m., that is about five minutes after the first imperceptible tremors.

The vibratory motion of the ground at Washington was really a comparatively slow and deliberate motion, each back and forth motion taking 15 to 20 seconds of time.

(Signed) WILLIS MOORE, Chief of Bureau.

CHE FA BANKS TO START TODAY

FAVORABLE RULINGS AND ACTION IN CIRCUIT COURT CAUSES FOUR INSTITUTIONS TO OPEN.

Four che fa banks will open today, it is understood. The recent ruling of Judge De Bolt, to the effect that the prosecution would have to show in che fa prosecutions, that a drawing had actually taken place and also to connect the ticket offered in evidence with some drawing of a lottery, has resulted in the che fa men taking heart.

They say that they can afford to stand arrests by the police and even convictions in the lower court, if they can win on appeals to the circuit court.

PRIVATE NEWS RECEIVED YESTERDAY

A NUMBER OF LETTERS WERE RECEIVED BY THE S. S. OLYMPIA FROM SAN FRANCISCO.

"OAKLAND, MOLE, April 19, 3 p. m.—San Francisco is a smoldering ruin. Our house and most of stuff burned.

The Hushaws resided in Honolulu about three years up to 1902. Mr. Hushaw was connected with the Christian church here.

IN A PRIVATE LETTER received yesterday by Mrs. U. Thompson, from her children at Berkeley, Cal., the damage to the University buildings there is stated to be very slight.

GOOD FOR THE KIDNEYS. At All Druggists.

son to refer to the affiliated medical and law schools in San Francisco. The Thompson children are safe and well.

OLYMPIA SAILS TOMORROW

The S. S. Olympia will depart tomorrow morning for Seattle via Hilo. On her way down to this port her propeller shaft got loose and she had to delay several hours repairing.

W. G. Irwin & Co., Ltd

Wm. G. Irwin, President and Manager John D. Spreckels, First Vice-President W. M. Giffard, Second Vice-President H. M. Whitney, Treasurer Richard Ivers, Secretary G. I. Spalding, Auditor

SUGAR FACTORS, COMMISSION AGENTS

AGENTS FOR Oceanic Steamship Co., San Francisco, Cal. Western Sugar Refining Co., San Francisco, Cal. Baldwin Locomotive Works, Philadelphia, Pa.

Von Hamm-Young Co

Has a fully equipped machine shop for manufacturing and making repairs.

Fire Insurance!

Atlas Assurance Company of London, Phoenix Assurance Company of London, New York Underwriters Agency, Providence Washington Insurance Company.

Best Meal in Town CALIFORNIA RESTAURANT

Hotel Street near Nuuanu. T. ODA, MANAGER. OPEN ALL NIGHT.

Y. WO SING CO.

GROCERIES, FRUITS, VEGETABLES, ETC. 1186-1188 Nuuanu Street. Telephone Main 238. P. O. Box 552.

HAVE A BEER WITH YOUR RACKET
MAKE A RACKET IF YOU DON'T GET Rainier
 Rainier Bottling Works
 Telephone Main 1331.

If You Love Your Wife

THIRD MUSIC FESTIVAL

Boys' Field
FRIDAY, MAY 4th.

Proceeds for San Francisco Relief

Boys' Field
FRIDAY, MAY 4th.

TICKETS AT WALL, NICHOLS CO.

Moana Hotel

Summer Rates:

On and after May 1 the Moana Hotel at Waikiki will offer special rates for the summer season, up to November 1. The Moana Hotel is located on the most delightful curve of Waikiki Beach and, with the bathing facilities, added to the excellent cuisine, service and cool rooms, single and en suite, make the Moana Hotel a delightful summer home. The Moana is a modern, thoroughly up-to-date hotel and its superb location makes its doubly attractive to townfolk.

J. H. Hertsche,
MANAGER.

American Mercantile Company (Inc. 1898)
Tacoma, Washington
Importers, Exporters and
General Commission Merchants
Honolulu orders solicited.
Cable Address "AMERCO." A. B. C.
5th Edition.
Honolulu Reference A. F. Cooke.

ASummer Proposition

Well, now, there's the ICE QUESTION!

You know you'll need ice, you know it is a necessity in hot weather. We believe you are anxious to get that ice which will give you satisfaction, and we'd like to supply you. Order from
THE OAHU ICE AND ELECTRIC CO.
Telephone 2151 Blue, Postoffice Box 600

City Meat Market

All Kinds of
FRESH MEAT, FRUIT
VEGETABLES AND
CALIFORNIA BUTTER
FRESH TURKEY AND CHICKEN.

Island beef sirloin steak 10c a pound.
Choice rib roast 10c a pound.

TELEPHONE MAIN 78.

Fine Job Printing, Star Office.

Y. WO SING CO.

WHOLESALE AND RETAIL GROCERS.

Now located at 1186-1188 Nuuanu Street, between Beretania and Pauahi Streets.

CALIFORNIA ROLL BUTTER, 35c. PER LB.

Groceries, Fruits, Vegetables, Etc.

PRICES LOW AND QUALITY THE BEST.

Telephone, Main 238.

P. O. Box, 952.

The Great Disaster

SMILES ARE SEEN
INSTEAD OF TEARS

REIGN OF TERROR
PRACTICALLY OVER

THE PEOPLE OF SAN FRANCISCO
WORK HARD AND MAKE JOKES
OF THE AFFAIR.

PUBLIC CONFIDENCE IN THE FUTURE
OF SAN FRANCISCO RESTORED.

SAN FRANCISCO, April 22.—One man has built a tower of evergreen boughs and he sits inside, the proud possessor of the only silk hat in the Panhandle and a banjo with broken strings. Three days ago that man had a wife and a comfortable home. Now he trusts bacon over a fire and eats it with his fingers. If he can locate his wife he will be perfectly happy.

One very prominent woman in an expensive tailor-made costume, sadly stained and torn, had lost her little girl.

SAN FRANCISCO, April 22.—Able to see the appearance of small-pox and typhoid and the general belief of all physicians that much sickness and insanity will follow the disaster the reign of terror is over in this stricken city and reason has returned to its throne.

Public confidence in the future of San Francisco—the belief that the worst has happened and that the day has passed for grieving, was made manifest today by a return flow of refugees who fled from the city while it was rocking on its foundations and withering beneath the flames.

Look For The Perforation!

The word "Cremo" is perforated in the wrapper of every one of our celebrated

Cremo 5c. Cigars

THEY HAVE NO BANDS.

H. HACKFELD & CO., Ltd.,

WHOLESALE DISTRIBUTORS.

Cool Breezes All Summer

Electric Fans provide comfort for the business man at his work, and for his entire household with but little expense and no trouble.

An Electric Fan once purchased will last for years, is useful in a number of ways, and needs no repairs.

In the dining room, the library, or sleeping room, in kitchen or parlor, the Electric Fan is always at your service.

Electric Light and Electric Fan makes a strong combination for summer comfort. Order your fan today.

Hawaiian Electric Co., Ltd

Office, King near Alakea St. Phone Main 390.

The Standard Pen Fills Itself

No need to soil fingers when you have a Standard pen and it never leaks. If you have lost faith in fountain pens remember that the Standard is new on the market and is guaranteed for two years.

Sold by
HAWAIIAN NEWS CO., LTD
YOUNG BUILDING STORE.

Spend \$1.25 a Month

INSTEAD OF

17 (\$1.25)

EVERY SIX MONTHS 'AND

ALWAYS

HAVE YOUR TYPEWRITER IN COMMISSION.

That's what our INSPECTION CONTRACT does for you.

Just a word—phone, postal or personal. We'll do the rest for \$1.25 a month.

HAWAIIAN OFFICE SPECIALTY CO.,

EVERYTHING FOR THE OFFICE!

Palm Ice Cream Parlor

115 HOTEL ST., NEAR FORT.
LUDWIGSEN & JUNGCLAUS, PROPRIETORS.
OPEN SUNDAY, 7 A. M. TO 8 P. M.
The installation of electric fans makes this the most comfortable lunch room in the city.
Civility and prompt attention to patrons by capable waiters.
CANDIES AND ICE CREAM ARE SPECIALTIES.

HATS!

LADIES, MISSES AND CHILDREN'S TRIMMED HATS IN ALL THE LATEST STYLES.

No. 30, King Street

K. ISOSHIMA

HOW MAJOR TILDEN WAS KILLED

ONE OF THE MOST PROMINENT MEMBERS OF THE GENERAL RELIEF COMMITTEE WAS SHOT.

SAN FRANCISCO, April 22.—H. C. Tilden one of the most prominent members of the general relief committee, was shot and instantly killed in his automobile about 12 o'clock last night, while returning from Menlo Park, by men supposed to be members of the Citizens Patrol. Hugo Altschul, a coachman who was in the automobile, was cut in the face by a bullet, and another pierced the seat and struck R. G. Seaman, acting lieutenant of the second company of the Signal Corps in the back. The force of the bullet had been spent and Seaman, who had been detailed on special duty with Tilden, picked the ball out of his cartridge belt. The shooting occurred at Twenty-second and Guerrero streets. Three men suspected of having done it are under arrest at the police station at Twenty-second and Mission streets.

Major Tilden was a prominent commission merchant of this city, a member of Governor Pardee's staff, and was one of the foremost workers in the general relief work.

He had taken his three children and a nurse from the Fourteen-Mile House, where they had been since the earthquake, to Menlo Park, where he had a summer cottage. His automobile had been used as an ambulance in conveying sick and wounded to the hospitals and he was carrying the Red Cross flag prominently displayed on his car. Besides this, he had the Red Cross insignia on his right arm.

According to Acting Lieutenant Seaman, Tilden was his own chauffeur and left Menlo Park about 9 o'clock. At Twenty-eighth and Guerrero streets they were challenged by the first of the chain of patrols and upon calling out "Red Cross" were allowed to pass. At Twenty-fifth streets, a second guard challenged them and immediately gave way upon perceiving the Red Cross flag. Crossing Twenty-second street at about fifteen miles an hour, according to Seaman, six men stood in the middle of the road, separating when the car got within fifty feet of them. When within ten feet of the guards, Seaman claims, they began shooting without warning or challenge and kept on firing after the car had passed them. Shots from in front took no effect with the exception of a bullet reaching the face of Tilden's friend.

"The machine had gone about fifty feet past the patrol," said Seaman, "when the car stopped suddenly. Tilden fell over towards me saying: 'Well, they got me—they killed me.' Flopped back in the seat and rolled out of the car. I sprang up and fired five shots in quick succession at the man who was still shooting behind us. About the same time Tilden fell in my lap, a bullet struck me in the back and nearly knocked me out of the seat. I put my hand to my Webb cartridge belt and pulled out the bullet, which had come through the seat. The man who did the shooting was in khaki uniform. A doctor came running from a house nearby and after examining Tilden, said he was dead. Several policemen came running up and arrested three of the men who did the shooting."

The three men under arrest are S. Boynton, a telephone inspector in the employ of the Pacific States Telephone Company; George Simmons and Malcolm Vance. They are all young men and members of the Citizens' Patrol. Boynton declares that he did not see the Red Cross flag on Tilden's car and when the latter did not stop when challenged he fired. The coachman in the car then began shooting and Simmons and Vance replied. The killing of Tilden created the greatest indignation.

Fine Job Printing, Star Office.

"I do not think anything has happened to her," said she, hopefully. "She is almost 11 years old and some one would be sure to take her in and care for her. I only want to know where she is. That is all I care about now."

Two race track men met in the driveway.

"Hallo, Bill, where are you living now?" asked one.

"You see that tree over there—that big one?" said Bill. "Well, you climb that and my room is in the top branch to the left," and they went away laughing.

Another man wanted to know whether the fire had reached his home. He was informed that there was not a house standing in that section of the city. He struggled his shoulders and whistled. "There's lots of us in the same boat," said he as he turned away. And these men who have lost everything are planning to begin all over again.

"Going to build?" asked one man, who lost fortune and home inside of two hours. "Of course I am. They tell me that the money in the banks is all right and I have some insurance. Fifteen years ago I began with—" showing his hands, "and I guess I'm game to do it over again. Build again? Well, I wonder?"

These little things show the spirit with which the people of San Francisco have faced the worst that the fates could send. They are down but not out.

The park is under military control. Armed guards are everywhere, and while there have been hundreds of rumors of shooting because of lawless acts actual cases are very rare.

At 7:30 all fires must be extinguished in the park. One negro lit a cigar and refused to put it out when ordered to do so. "Put it out or I'll shoot it out," said the soldier, leveling his revolver, and the negro put it out.

Every effort is being made to keep the great encampment in a sanitary condition. The board of health meets in the park lodge, and the military is there to enforce all orders on the spot. Hundreds of barrels of lime are needed and needed badly.

POSTOFFICE BUILDING WAS DESTROYED

THE BEAUTIFUL NEW STRUCTURE ERECTED AT AN EXPENSE OF \$2,000,000 DESTROYED.

SAN FRANCISCO, April 19.—Two blocks west of the mint stood the splendid new Postoffice building, finished about six months ago, and erected at a cost of \$2,000,000 for actual construction. It is one of the most beautiful buildings in the United States, said to have been equalled in architectural excellence only by the new Congressional Library at Washington. It was destroyed.

Down in the older buildings sections were many old landmarks, but they exist no longer. The Occidental Hotel on Montgomery street, for years the headquarters for army officers visiting San Francisco; the old Lick House, built by the philanthropist, James Lick; the old Russ House, also on Montgomery street; the Nevada National Bank block; the Haywards building, at California and Montgomery, a modern structure of ten stories; then to the eastward the splendid example of the severe Gothic style, the California National Bank; the First National Bank; the First Canadian Bank of Commerce; the London & San Francisco Bank, on California; the London, Paris & American Bank, and the Bank of British North America, on Sansome street; the large German-American Savings Bank, also on California—these are a few of the notable buildings destroyed in that district. The California Hotel and Theater on Bush street, near Montgomery; the Grand Opera House, on Mission street, where the Conried Grand Opera Company had just opened for a series of three weeks of opera; the Orpheum, the Columbia, the Alcazar, the Majestic, the Central, Fishers, were some of the playhouses to which pleasure-loving San Francisco was wont to flock.

SLEEPLESSNESS.

You will have no difficulty in procuring rest and sleep if you will let Dr. Miles' Nervine soothe and strengthen the tired, agitated, weakened brain nerves. So long as they remain in this condition, will be restless, irritable, melancholy. You are welcome to your money back if first bottle does not help.

SIGHTS SEERS WILL BE MADE TO WORK

THERE IS TO BE NO LOAFING IN THE STRICKEN CITY OF SAN FRANCISCO.

SAN FRANCISCO, April 22.—The man who comes to San Francisco as a seeker of sensations, out of mere curiosity, to see the ruins and to watch the homeless throngs in the parks, will be given a pick and shovel and put to work clearing up the wreck. It is no place for idle curiosity seekers, and they will not be tolerated. Every man in the city is being made to work, and to work hard, and no exceptions will be made in the case of outsiders, unless they can show proof of urgent business of their own.

Railroad officials, and the authorities of other cities have been notified that San Francisco wants no visitors of this kind, and have been requested to see that the trains are not burdened with those who will be turned back, or at least will be sorry that they came.

Thousands, impelled by mere curiosity, have already come from neighboring cities, and reports indicate that thousands more are on the way. In the first place, their money is useless in the way of providing food and shelter for themselves, and their presence merely adds to the burden of the authorities.

Humanity will not allow them to starve, and even savages share such shelter as they have with unwelcome visitors, but the presence of each drone adds just that much to the labor of the overworked faithful men and women who are toiling for the relief of the stricken and helpless.

There seem to be thousands of people with money enough to get to San Francisco, to whom the calamity has appealed merely in its spectacular effect. They seem to consider it a stupendous dramatic production, arranged for their pleasure. It is a mammoth, wonderful scene, such as has never before been witnessed on so grand a scale. But it is not on view to the merely curious. Those who see it must pay the price in toll for others and in privation for themselves.

Skilled workmen who come with their own tools to aid in the work of rebuilding the city are gladly welcomed and hundreds of such men are badly needed. Many are coming and find ready employment, although in the matter of food and shelter they must take their chances with the others.

BORN

CHUNG HOON—In Honolulu, Hawaii, May 3, 1906, to the wife of William Chung Hoon, Jr., a daughter.

The Hawaiian Star, DAILY AND SEMI-WEEKLY.

Published every afternoon (except Sunday) by the Hawaiian Star Newspaper Association, Limited.

SUBSCRIPTION RATES.

Local, per annum \$ 8.00
Foreign, " " " " " " " " 12.00
Payable in advance.

Entered at Post Office at Honolulu, Hawaii, as second class mail matter.

FRANK L. HOOGS.....MANAGER.

FRIDAY.....MAY 4, 1906

A Journalistic Triumph

The Star yesterday gave the people of Honolulu the first complete and detailed account of the terrible disaster to San Francisco that has been given. In its regular edition it published more than thirty columns of matter treating every phase of the earthquake, the fire that followed, the disorder, the suffering, the efforts at relief, the losses, of lives and property, the action by the President, the action taken by Mayor Schmitz, Governor Pardee, General Funston and other officials, civil and military. The action taken by the American people to meet the emergency was treated in considerable detail. The scientific aspect of the earthquake that caused the disaster was not overlooked. There were published stories of eyewitnesses, and accounts of many of the striking incidents, among the millions that must accompany such a great casualty.

Never before in Honolulu has any event of great news importance been so completely and so thoroughly handled. Never before has anything of the kind been handled with such promptness. The steamship Olympia was not sighted until about 7:30 o'clock yesterday morning. She was then off Koko Head. Representatives of The Star at once went out in launches to meet the steamship. The newspapers of Seattle and Tacoma containing voluminous accounts of the disaster were secured, and before the representative of a contemporary had left the Olympia, the Star's linotype machines were at work setting up accounts of the earthquake and fire. By 10 o'clock, an extra edition of The Star, containing a complete and more detailed account of the disaster than had yet been published in Honolulu concerning the great calamity, was on the street. From that time until after 6 o'clock in the evening the presses of The Star were kept going, practically continuously, to meet the demand for the news.

Knowing the intense and profound interest felt in every detail of the news, having complete and later files of the Seattle and Tacoma papers,—the only ones brought by the Olympia,—at that time, than any other newspaper in Honolulu, The Star determined to do everything possible to give the public all the news. Arrangements—long before in contemplation—were promptly made with the Gazette Company for the use of two of its linotype machines, giving The Star the use of a larger battery of linotypes than any single office in the city has, or than had ever before been put in the service of a Honolulu newspaper. The result was that The Star was able to issue at the regular hour in the afternoon, a twelve-page edition, containing more than thirty columns devoted to the San Francisco disaster.

There can be no doubt that this is the most important journalistic achievement up to this time ever scored in Honolulu.

The Star's record in connection with the news of the San Francisco disaster is one to be proud of.

It was the first to announce the great disaster, having an extra issue on the street with all the information then available, ahead of any of its competitors.

It was the first to publish further news concerning the disaster, following the long interruption of all communication, when dispatches finally began coming by way of New York and Europe, getting the Bottomley dispatch to Bishop & Co. from Glasgow and the Hackfeld dispatch from Bremen before the public in Extras ahead of any of its competitors.

It was the first to publish a complete and detailed account of the great disaster from the coast newspapers.

Yesterday's Fateful News

It is clear from the detailed accounts The Star presented exclusively yesterday, that the disaster which has overtaken San Francisco is much more serious than we had begun to hope it would prove. As day by day the reports from cable reports kept the estimates of the dead down, the hope began to rise that the destruction was not so complete nor extensive as the first reports had seemed to indicate. It seemed impossible that a great city like San Francisco could have been almost wiped out by earthquake and fire, and still the number of the killed remain at the relatively low figures at which all estimates placed them. Then, too, the cables day by day spoke of one building after another that had not been totally destroyed, or which was to be reconstructed or rebuilt. Throughout the news there has been the dominant note of confidence and determination to rebuild.

But the detailed and complete accounts received and published yesterday by The Star have taken away all such ground of hope. There remains only the hard heart-breaking fact that a calamity almost without parallel has overtaken the city by the Golden Gate; that thousands and thousands of her people are suffering and will suffer; that thousands and other thousands have lost all they had; that many in the evening of life look penury in the face; that suffering, under the best conditions must continue for a long time.

On the other side is the fact that men and women have risen to the need of the hour; that conditions have bred heroes and heroines. Brave men are facing the situation as it is, and are determined to do what brave men should.

Not in the suddenness and awfulness of the shock, but in the fatefulness of it, yesterday's news is almost as appalling as that of the morning of April 18.

The Unrest In China

The San Francisco Chronicle thinks the much talked of troubles in China are really in the nature of an anti-dynastic movement. It says:
It has been repeatedly asserted that the anti-foreign movement in China is in reality a veil designed to conceal the anti-dynastic revolution which its leaders have planned and are preparing to carry out. Many things are occurring in and out of the empire which tend to confirm this theory. The anti-foreign movement is assumed to have been started by the Chinese reform societies, which have an extensive membership on this continent. These societies have been aiding and abetting the movement since its inception. They are strongly opposed to the present dynasty. The Chinese reform societies located in Portland, Seattle and Vancouver, B. C., have, in fact, come boldly out in the open by presenting a joint petition to the Imperial Chinese Commissioners, who arrived at the Sound port, in which they call upon the Empress Dowager to abdicate and restore the Emperor to author-

MALT-NUTRINE

The Best Malt Preparation in the market, recommended by Physicians. Manufactured by the Anheuser-Busch Co.

Hollister Drug Co.
AGENTS

NOTICE.

Beginning November 15, 1905, owing to a change in the price of certain sizes of crushed rock, prices will be as follows:

No. 1—\$1.55 per cubic yard.
No. 2—\$1.80 per cubic yard.
No. 3—\$2.05 per cubic yard.
No. 4—\$1.80 per cubic yard.

We wish to call attention to the fact that No. 4 has been reduced to practically the price of white sand, making it available for all kinds of concrete work for which it is far superior to any other sand.

LORD & BELSER

HUSTACE PECK CO., LTD
QUEEN STREET
DEALERS IN

**Firewood, Stove,
Steam and Blacksmith
Coal**

WHOLESALE AND RETAIL.

Special Attention Given To

DRAYING

ALSO, WHITE AND BLACK SAND.

STEINWAY

AND OTHER PIANOS.
THAYER PIANO CO.
156 AND 158 HOTEL STREET.
Opposite Young Hotel.

M. OHTA,
Contractor and Builder
House Painter

No. 762 Sheridan Street, near King.
Honolulu, H. I.
Telephone White 601.

**Pay Rent to
Yourself**

W. Matlock Campbell
ARCHITECT AND CONTRACTOR.

Will build you a home in any part of the city on easy payments.

TELEPHONE WHITE 551.

The ground taken by the petitioners is that the Emperor has reached mature years and is competent to rule his people. The real reason for their desire to secure the abdication of the Empress Dowager is a belief that she is opposed to the introduction of any genuine reform in the empire, while the Emperor is assumed to be favorable to the adoption of such changes in the conduct of the affairs of state and in the political conditions of the people as their societies are endeavoring to obtain.

It will be remembered that the Boxer uprising, which sought to overthrow the Manchu dynasty, adopted similar tactics at its inception. While the Boxers waged open war on foreigners in the two provinces in which the insurrection occurred, the Government realized its own peril and the true purpose of the revolt. With characteristic artfulness, however, it first opposed the Boxers and afterward sided with them to secure its own safety. Possibly the Empress Dowager and her advisers may adopt the same tactics again, hoping thereby to save the dynasty from being overthrown as before. But the danger now threatening the dynasty and foreigners in China is more serious than it was at any time during the Boxer uprising, for the reason that the present anti-foreign crusade is not confined to the northern provinces only, but has extended all over the empire. Perhaps the only hope of stopping the movement is the abdication of the Empress Dowager in obedience to the demands of the reform societies.

There are not two sides to the question of whether a filtration plant is needed. Medical authority settles that matter and it is a public duty for Honolulu to get a plant just as soon as possible.

The mainland newspapers so far received here, of the dates following the San Francisco earthquake, do not indicate that there was much sleeping done by the Associated Press men in the stricken city. As before suggested, they worked eastward, in the quickest available way, sending their news as fast as it could be obtained.

It is certainly true that there is lit-

Music

AT THE

ZOO

Kaimuki.

SUNDAY

From 2 to 5 P. M.

DON'T MISS IT.

BEAVER LUNCH ROOM
H. J. NOLTE, PROP'R.

Frozen Oysters
Just Received
First-Class Lunches served with tea, coffee, soda water, ginger ale or milk.

WE PRINT

Cards

Fine Copper Plate and Steel Die Work is a Specialty with Us.

WE KEEP
ABREAST OF
THE

STYLE

H. F. WICHMAN
& CO., LTD

LEADING JEWELERS.

Honolulu Iron Works.

STEAM ENGINES, SUGAR MILLS,
BOILERS, COOLERS, IRON, BRASS
AND LEAD C. ST' IS.

Machinery of Every Description Made to Order. Particular attention paid to Ship's Blacksmithing. Job Work Executed on Short Notice.

Telephone Main 101
P. O. Box 683.

HARRY ARMITAGE
Stock and Bond
Broker....
Members of Honolulu Stock and Bond Exchange.

Few shares of following stocks for sale: Pioneer Mill Co., Oahu Sugar Co., Ewa Plantation Co., Hawaiian Sugar Co., Waialea Agricultural Co., etc.

Office, Campbell Block... Merchant St.
Honolulu, T. H.

The danger of any innocent man being convicted in our courts. As for the escapes of the guilty, we ought to be used to it by this time.

The San Francisco earthquake seems likely to break all scientific records for the wideness of the area it affected. The reports so far indicate that there were seismic disturbances recorded from Tokyo to Washington.

FACTS AND FANCIES.

(From the Public Ledger, Philadelphia)
There is a suspicion that Greene and Gaynor thought they were guilty even before the jury had taken them into its confidence.

Bourke Cockran complains of the "incoherence, discordance and dissonance of debate," and proceeds to contribute a quota of all these elements.
Of course, Mount Tacoma is reported active. It always has been so reported when there has been volcanic disturbance anywhere. The best evidence, however, tends to show that Tacoma has not been in eruption for at least 5000 years.

Gorky is getting Americanized so fast that he declares Gapon a "faker," and seems to understand the term.

Girl students of Hiram College are inclined to rebel because the faculty desires to withhold from them the privilege of playing poker. It may be the learned gentlemen know no girl plays this game so well that she can afford to play.

You Save Money When You Buy Armorite!

If you do not buy and apply paint when your buildings need it your buildings deteriorate and you lose more from this than you save by not buying paint.

The reason that ARMORITE READY MIXED PAINT is preferred to any other is because it is—

MADE ON HONOR and GUARANTEED to contain only the best and Absolutely Pure Linseed Oil, Lead, Zinc and Pigments.

It is made for this climate.

Send for sample card of colors.

PACIFIC HARDWARE COMPANY, LIMITED

FORT AND MERCHANT STREETS

We Buy Right--We Sell Right

2331 Customers supplied during March will prove this. We ask 2331 New Customers to prove that

We Buy Right -- We Sell Right

E. W. Jordan & Co., LIMITED.

M. PHILLIPS & CO.,
Wholesale Importers
And Jobbers of

AMERICAN AND EUROPEAN DRY GOODS
Corner of Fort and Queen Sts.

W. G. Irwin & Co.

AGENTS FOR THE

Royal Insurance Co., of Liverpool, Eng.
Alliance Assurance Co., of London, Eng.
Scottish Union & National Ins. Co., of Edinburgh, Scotland.
Fire Association of Philadelphia.
Alliance Insurance Corporation Ltd.
Wilhelm of Magdeburg General Insurance Company.

Special Sale!
KOA AND EBONY.

Reduced prices on all kinds of furniture.

FONG INN CO.,
1152 Nuuanu Street.
P. O. Box 999.

Telephones—Residence, White 861; Office, Main 298.

GOMES' EXPRESS CO
Furniture 3 ve. with Care to all Parts of the City.
OFFICE, 115 FORT STREET.
Near Queen, pp. Hackfeld Building.

A Columbia Graphophone is given pag. 7.

The Master Grocers

LET US SERVE YOU

Our supply is not affected by the great disaster, no rise in prices, no shortage, no difficulty; fresh goods on the Alameda and Nevada, due this week.

LEWIS & CO., LTD, - Food Specialists

Telephone 240.

169 King Street.

WHEN A MAN

Wishes a Suit quickly and wants to be sure that it will be right in every detail,
Alfred Benjamin & Co.'s Clothing is best

WHEN A MAN

Doesn't want to risk the mistakes that all tailors make and wants to wear the Best Tailoring on earth, then
Alfred Benjamin & Co.'s Clothing is best

WHEN A MAN

Wants the broadest variety of Suits to select from, exclusive patterns and expert assistance,
THE KASH CO., LTD., is best

Alfred Benjamin & Co.,

Instead of reaching out for cheap popularity, have brought their clothing to that high stage of perfection which appeals to the man who wishes the best.

There are many other makes of clothing—some good, some fair, some bad—but ALFRED BENJAMIN & CO.'S is distinguished from these by many radical differences.

You will find these suits fit you more perfectly and have infinitely more style, while they cost half a tailor's price.

THE KASH CO., Ltd

EXCLUSIVELY HIGH GRADE CLOTHING.

Telephone Main 25

Corner Fort and Hotel Streets

MAKE ROOM SALE BEGINNING MONDAY, APRIL 30, 1906

Table with 2 columns: Children's Muslin and Embroidery Hats. Items include .75 hats for .45, .90 hats for .50, 1.00 hats for .60, 1.25 hats for .80, 1.50 hats for .90.

CHILDREN'S POKE BONNETS. Very stylish and becoming. Washable and nicely trimmed with lace or embroidery. In all white, light blue, pink and cardinal.

Table with 2 columns: Children's Poke Bonnets. Items include .75 Bonnets for .40, 1.00 Bonnets for .50, 1.25 Bonnets for .60.

INFANTS' MUSLIN BONNETS: all washable, cute styles, including the Dutch and French Bonnets.

Table with 2 columns: Infants' Muslin Bonnets. Items include .25 Bonnets for .10, .50 Bonnets for .25, .75 Bonnets for .40, 1.00 Bonnets for .60, 1.25 Bonnets for .80.

SUN BONNETS: Made of good material, trimmed with neat embroidery or lace.

Table with 2 columns: Sun Bonnets. Items include 25c Sun Bonnets for .15c, 50c Sun Bonnets for .37 1/2, 75c Sun Bonnets for .45, 90c Sun Bonnets for .65.

POKE SUN BONNETS: .50 Bonnets for .25c, 1.25 Bonnets for .65.

N. S. SACHS' DRY GOODS CO. LTD., Cor Fort and Beretania Sts.

SAN FRANCISCO IN PRAYER

A LETTER TO HARRY H. TOMLINS FROM HIS SISTER WHO SAW THE DESTRUCTION OF SAN FRANCISCO, SAYS PUBLIC WORSHIP IS GOING ON EVERY EVENING IN THE REFUGE CAMPS—THE BURDEN OF THE PRAYERS.

A letter was received on the S. S. Olympia yesterday by Harry H. Tomlins from his sister, Mrs. W. H. Ely, who was stopping at the St. Francis Hotel at the time of the earthquake.

"SAN FRANCISCO, April 29, 1906 on somebody's doorstep, near entrance to Presidio.

"Dear Brother: You probably know better than I do what has happened to San Francisco. I dated this letter 1906 but it seems as if it were centuries since day before yesterday.

"When I got into the street I could not think of the noise of falling walls and the wails and cries of the injured. Everything seemed to join in the uproar. I was nearly deafened by an explosion which I learned afterwards came from the gas plant.

"As I had my purse I got a man for \$50 to take me into the uptown district. As we were going in an express wagon, I noticed a little girl standing alone in the street.

"This is the second day since the accident and the fire down town are still raging unchecked. All of the city is gone I guess. I was brought to the Presidio and given a tent.

"The judges of the Supreme and Circuit courts held a meeting this morning to consider some reforms in the clerical work of the courts.

REFORMS IN THE JUDICIARY DEPARTMENT

SUPREME AND CIRCUIT JUDGES DISCUSS THE CLERICAL WORK OF THE COURTS AND DECIDE UPON SOME RULES—WILL REQUIRE CLERKS TO KEEP OFFICE HOURS AND ALSO TO KEEP THEIR WORK UP TO DATE.

The judges of the Supreme and Circuit courts held a meeting this morning to consider some reforms in the clerical work of the courts.

The judges decided that arrangements should be made whereby at least one clerk, qualified to file papers and administer oaths should be in attendance at the office.

Another rule to be enforced is that prohibiting outsiders from going behind the counter of the judiciary clerk's office.

with the result in many cases that the papers did not get into the usual files promptly as they should.

CHILDREN AT THE RINK

A special attraction will be made for children at the rink tomorrow morning. With each admission ticket will be given a coupon for soda water.

GOVERNOR GETS A REVELATION

ARMAGEDDON, SEVEN LAST PLAGUES, THE EARTHQUAKE AND IMPORTING PORTUGUESE.

Acting Governor Atkinson has received a letter indicating that in some mysterious way there is a connection between the San Francisco earthquake and the plan to bring Portuguese to Hawaii.

RETURNED FROM KANAPALI. The tug Fearless returned this morning, 6 hours and 2 minutes from Kanapali.

LABORERS WILL NOT BE WHERE THEY BELONG. Atkinson's duty, in view of all this, is clearly to use his influence as a member of the Board of Immigration, to prevent the importation of Portuguese.

ACHI GETS A WRIT

(Continued from Page One).

sons aforesaid, and the said K. A. Douthitt, County Attorney aforesaid, well knowing the premises, yet contriving as it is said, the said George K. Kekauoha unjustly to aggrieve and oppress, have assumed jurisdiction in the case of impeachment against George K. Kekauoha against the laws and customs of our Territory.

"Wherefore, the said George K. Kekauoha has prayed relief, and our writ of prohibition in that behalf.

"We, therefore, being willing that laws and customs of our said Territory should be observed, and that our citizens should lawfully be oppressed, do command you that you desist and refrain from any future proceedings in the matter of the impeachment of George K. Kekauoha, until the 7th day of May, A. D. 1906, and until the further order of this court thereon; and that you show cause before our said court at the time last aforesaid at the court room of this court in Honolulu, County of Oahu, why you should not be absolutely restrained and prohibited from any future proceedings in such suit or matter.

"And have you then and there this writ. Witness, Walter F. Frear, Chief Justice of the Supreme Court of the Territory of Hawaii, this 2nd day of May, A. D. 1906. (Seal) J. A. THOMPSON, Clerk."

The petition for the writ set forth that the county attorney and supervisors were impeaching Kekauoha and proposed to try the case against him, for malfeasance in office.

"I am here on somebody's doorstep. I am as close to the town as I can go. A soldier is just a little way from me. He looks as if he could eat a horse.

"They say that 5000 people were killed. I saw hundreds myself. At one place my driver pulled three bodies aside so he could pass. Oh! but it was terrible. Public worship is going on every evening in the camps.

"Don't worry about me, I have money and a place to sleep. I will be alright soon."

As the envelope was stamped Berkeley, 8 p. m. it is thought that Mrs. Ely reached Berkeley where she has a large circle of friends who would attend to her needs.

The owners of the Olympia have had such pressing invitations to visit Kauai that there was no refusal to be considered.

It is hereby ordered, that Wednesday the 30th day of May, A. D. 1906 at 10 o'clock a. m. of said day, at the Court Room of said Court at Wailuku, County of Maui, Territory of Hawaii be and the same hereby is appointed the time and place for proving said Will and hearing said application.

It is further ordered, that notice thereof be given by publication once a week for three successive weeks, in the "Hawaiian Star," a newspaper published in the English language, the last publication to be not less than ten days previous to the time therein appointed for hearing.

(Signed) A. N. KEPOKAI, Judge Circuit Court, 2nd Circuit. Dated at Wailuku, Maui, April 23, A. D. 1906. Attest: (Seal) (Sd) EDMUND H. HART, Clerk.

4th-April 27, May 4, 11 and 18.

IN THE CIRCUIT COURT OF THE First Circuit, Territory of Hawaii—At Chambers.—In Probate.

In the Matter of the Estate of Catherine Steward, of Honolulu, Deceased. Order for Notice of Hearing Petition for Probate of Will.

A Document purporting to be the Last Will and Testament of Catherine Steward, deceased, having on the 19th day of April, A. D. 1906, been presented to said Probate Court, and a Petition for the Probate thereof, and for the issuance of Letters Testamentary to Father H. Valentin, having been filed by said Father H. Valentin.

It is hereby ordered, that Monday, the 28th day of May, A. D. 1906, at 10 o'clock a. m. of said day, at the Court Room of said Court, at the Judiciary Building, Honolulu, Oahu, be and the same hereby is appointed the time and place for proving said Will and hearing said application.

It is further ordered, that notice thereof be given, by publication, once a week, for three successive weeks, in The Hawaiian Star, a newspaper published in the English language, the last publication to be not less than ten days previous to the time therein appointed for hearing.

Dated at Honolulu, Oahu, April 19, 1906.

W. J. ROBINSON, Third Judge Circuit Court, First Circuit. Attest:

J. A. THOMPSON, Clerk Circuit Court, First Circuit.

4th-April 20, 27, May 4, 11.

TOMORROW WILL BE EXCITING DAY

ARRIVAL OF S. S. ALAMEDA FROM SAN FRANCISCO WILL AROUSE KEENEST INTEREST IN CITY.

The arrival of the S. S. Alameda tomorrow from San Francisco will probably be greeted with the largest crowd that has gone to the water front in many a year.

The post office will be the next scene of interest and scores of people will crowd about the place waiting for the distribution of mail.

NEW ADVERTISEMENTS

IN THE CIRCUIT COURT OF THE Second Circuit Territory of Hawaii At Chambers.—In Probate. In the Matter of the Estate of Emma Metcalf Ikaika, late of Kalaupapa, Molokai, Deceased. Order for Notice of Hearing Petition for Probate of Will.



FOR SALE!

Kapiolani Park Addition, Moanalua Avenue: Five lots 200 ft. frontage. Best view in Tract. Lots graded ready for building. Low price for quick sale.

Henry Waterhouse Trust Co., Ltd. Corner Fort and Merchant Streets, Honolulu, - - - - Hawaii.

Classified Advertising

LOST

A brown mare. Suitable reward. Return to E. C. Peters, 22 Kuakini road.

For Sale

Kroeger Piano in first class condition, as good as new, to be seen evenings at 1225 Makiki street above Lanalua.

Electric fan also 14 even ft. window shade at the O. K. Barker shop, Bethel Street near King.

Position Wanted

Young man, well educated, 22, desires a position in store or office work. Best reference given. K. L., this office.

WILL TRY KAUI

The owners of the Olympia have had such pressing invitations to visit Kauai that there was no refusal to be considered.

It is hereby ordered, that Wednesday the 30th day of May, A. D. 1906 at 10 o'clock a. m. of said day, at the Court Room of said Court at Wailuku, County of Maui, Territory of Hawaii be and the same hereby is appointed the time and place for proving said Will and hearing said application.

It is further ordered, that notice thereof be given by publication once a week for three successive weeks, in the "Hawaiian Star," a newspaper published in the English language, the last publication to be not less than ten days previous to the time therein appointed for hearing.

(Signed) A. N. KEPOKAI, Judge Circuit Court, 2nd Circuit. Dated at Wailuku, Maui, April 23, A. D. 1906. Attest: (Seal) (Sd) EDMUND H. HART, Clerk.

4th-April 27, May 4, 11 and 18.

ALAMEDA SURVIVORS

The arrival of the S. S. Alameda tomorrow from San Francisco will probably be greeted with the largest crowd that has gone to the water front in many a year.

The post office will be the next scene of interest and scores of people will crowd about the place waiting for the distribution of mail.

It is impossible to state when the vessel is likely to arrive here. She sailed about five hours later than her usual time so she may be a corresponding period late arriving here.

It is impossible to state when the vessel is likely to arrive here. She sailed about five hours later than her usual time so she may be a corresponding period late arriving here.

RETURNED FROM KANAPALI. The tug Fearless returned this morning, 6 hours and 2 minutes from Kanapali.

LABORERS WILL NOT BE WHERE THEY BELONG. Atkinson's duty, in view of all this, is clearly to use his influence as a member of the Board of Immigration, to prevent the importation of Portuguese.

SHIPPING INTELLIGENCE

ARRIVING.

Friday, May 4. Tug Fearless, Olson, from Kanaoia, at 10 a. m.

DEPARTING.

Saturday, May 5. S. S. Olympia, Truebridge, for Seattle, at 8 a. m.

SPECIAL MEETING.

A special meeting of the Board of Supervisors was called by the chair this morning for action upon the payroll for the road department for the past two weeks.

HALEIWA.

The Haleiwa Hotel, Honolulu's famous country resort, on the line of the Oahu Railway, contains every modern improvement and affords its guests an opportunity to enjoy all amusements—golf, tennis, billiards, fresh and salt water bathing, shooting, fishing, riding and driving. Ticket, including railway fare and one full day's room and board, are sold at the Honolulu Station and Trent & Company for \$5. For departure of trains, consult time table. On Sundays, the Haleiwa Limited, a two hour train, leaves at 8:22 a. m.; returning, arrives in Honolulu at 10

Ironbrew

The Ideal American Drink Delicious, Wholesome, Pure and Satisfying. Hawaiian Soda Works SOLE MANUFACTURERS Phone Blue 1871

Saturday, May 5

MAMMOTH FAIR

AT HAALELEA LAWN, UNDER THE AUSPICES OF LEAHI CHAPTER No. 2, EASTERN STAR.

AN AFTERNOON AND EVENING OF AMUSEMENT. YOUR MONEY'S WORTH

FOR EVERYTHING YOU BUY.

"EVERY LITTLE BIT HELPS."

REMEMBER THE DAY, NEXT SATURDAY, MAY 6TH.



When You Want

glasses you want them right.

Spectacles and Eyeglasses

made by us will always be

Right

and guaranteed so. A. N. SANFORD, Optician, Boston Building, Fort St., over May & Co.

DAILY STOCK REPORT

Table with 2 columns: Stock prices. Items include Between Boards: 10 Haw. Com. \$33.50, 25 Wailuku, \$60.25, Session Sales: \$1090 Kahuku 6s. \$100, C. Brewer & Co. \$405.00, Ewa Plan. Co. 25.00, Haw. Agr. Co. 100.00, Haw. Com. 78.00, Hawaiian Sugar, 32.50, Honokaa Sugar Co. 19.00, Haiku 195.00, Kahuku 20.00, Kihel Plan. Co. 7.00, McBryde Sugar Co. 5.00, Oahu Sugar Co. 89.00, Onoaea 25.00, Okala Sugar Co. 6.00, Olaa Sugar Co. 2.75, Pahuhan Sugar Co. 14.00, Pacific Mill. 200.00, Paha Plantation. 175.00, Pepeeeko 160.00, Pioneer Mill Co. 125.00.

Table with 2 columns: Shipping intelligence. Items include Wailuku Agr. Co. 61.00, Waimanalo Sugar Co. 150.0, Malmea Sugar Mill. 60.00, Inter-Island 125.00, Haw. Elec. 100.00, Hon. R. T. Co. com. 67.50, Oahu Railway 94.50, Honolulu R. & M. Co. 26.00, Cal. Ref. Co. 6s. 103.00, Haiku 6s 100.00, Haw. Sugar 6s 100.00, Hilo R. R. Co. 6s. 75.00, Hon. R. T. 6s. 103.50, Kahuku Plan. 6s 100.00, Oahu Railway 6s 100.00, Paha Plan. 6s 100.00, Pioneer 6s 105.00, Wailuku Agr. Co. 6s. 98.00, McBryde Sugar Co. 6s. 100.00.

SHIPPING INTELLIGENCE

ARRIVING.

Friday, May 4. Tug Fearless, Olson, from Kanaoia, at 10 a. m.

DEPARTING.

Saturday, May 5. S. S. Olympia, Truebridge, for Seattle, at 8 a. m.

SPECIAL MEETING.

A special meeting of the Board of Supervisors was called by the chair this morning for action upon the payroll for the road department for the past two weeks.

HALEIWA.

The Haleiwa Hotel, Honolulu's famous country resort, on the line of the Oahu Railway, contains every modern improvement and affords its guests an opportunity to enjoy all amusements—golf, tennis, billiards, fresh and salt water bathing, shooting, fishing, riding and driving. Ticket, including railway fare and one full day's room and board, are sold at the Honolulu Station and Trent & Company for \$5. For departure of trains, consult time table. On Sundays, the Haleiwa Limited, a two hour train, leaves at 8:22 a. m.; returning, arrives in Honolulu at 10

Try RUBEROID

Roofing and Your Troubles Will Cease.

LEWERS & COOKE, LTD.
177 S. King Street.



It's an easy job for the barber to part the hair on a head like this. It's just as easy to prevent baldness if you only do the right thing. Baldness is almost always a sure sign of neglect; it is the story of neglected dandruff. Dandruff is untidy, unnecessary, and unhealthy.

Ayer's Hair Vigor

cures dandruff and prevents baldness. You save your hair and you are spared the annoyance of untidy clothing. It also stops falling of the hair, and makes the hair grow thick and long. Do not be deceived by cheap imitations which will only disappoint you. Be sure you get AYER'S Hair Vigor. Prepared by Dr. J. C. Ayer & Co., Lowell, Mass., U.S.A.

Hawaiian Carriage Manufacturing Company

427 QUEEN ST. TEL. MAIN 47.
P. O. BOX 123.

Manufacturers of all kinds of Carriages and Vehicles, Wagons, Wagon Materials of all descriptions supplied; Rubber Tires put on at reasonable prices; Repairing, Painting and Trimming; satisfaction guaranteed; estimates given.

C. W. ZEIGLER, Manager.

HART & CO., LTD

The Elite Ice Cream Parlors. Chocolates and Confections. Ice Cream and Water Ices. Bakery Lunch.

THE FINEST RESORT IN THE CITY

Oahu Railway and Land Co.'s

TIME TABLE

OCTOBER 6, 1904.

OUTWARD

For Waianae, Waialae, Kahuku and Way Stations—9:15 a. m., 3:20 p. m.
For Pearl City, Ewa Mill and Way Stations—7:50 a. m., 9:15 a. m., 11:05 a. m., 12:15 p. m., 3:20 p. m., 5:15 p. m., 7:30 p. m., 11:15 p. m.

INWARD

Arrive Honolulu from Kahuku, Waialae and Waianae—5:35 a. m., 9:31 p. m.
Arrive Honolulu from Ewa Mill and Pearl City—7:46 a. m., 9:30 a. m., 10:35 a. m., 1:40 p. m., 4:31 p. m., 6:31 p. m., 7:39 p. m.

*Daily.
†Sunday Excepted.
‡Sunday only.

The Haleiwa Limited, a two-hour train, leaves Honolulu every Sunday at 8:22 a. m., returning arrives in Honolulu at 10:10 p. m. The Limited stops only at Pearl City and Waianae.

E. P. DENISON, F. C. SMITH, Supt. G. P. & T. A.

CASTLE & COOKE LTD

Commission Merchants Sugar Factors.

AGENTS FOR

- The Ewa Plantation Company,
- The Waialua Agricultural Co., Ltd.
- The Kokala Sugar Company,
- The Waimea Sugar Mill Company,
- The Fulton Iron Works, St. Louis, Mo.
- The Standard Oil Company,
- The George F. Blake Steam Pumps,
- Weston's Centrifugals,
- The New England Mutual Life Insurance Company of Boston,
- The Aetna Fire Insurance Company of Hartford, Conn.,
- The Alliance Assurance Company of London.

THE HAWAIIAN REALTY AND MATURITY CO. Ltd.

Real Estate, Mortgages, Loans and Investment securities. Homes built on the installment plan.
Home Office: McIntyre Building, T. H. L. K. KENTWELL, General Manager.

REMOVAL NOTICE

DR. T. MITAMURA.
Residence: No. 50 Vineyard street on main side 2nd gate Ewa side from Nuuanu.
Office: No. 142 Nuuanu street on Ewa side corner Vineyard.
Office Hours: 9-12 a. m.; 5:30-7:30 p. m.
Sunday by appointment.
Telephone: Office White 151; residence White 152.
P. O. Box 842.

Castle & Cooke, Ltd

Life and Fire

Insurance Agents

AGENTS FOR

- New England Mutual Life Insurance Co OF BOSTON.
- Aetna Fire Insurance Co., OF HARTFORD, CONN.

ALEXANDER & BALDWIN, LTD

J. P. Cooke, Manager.

OFFICERS:

- H. P. Baldwin.....President
- J. B. Castle.....First Vice-President
- W. M. Alexander.....Second Vice-President
- L. T. Peck.....Third Vice-President
- J. Waterhouse.....Treasurer
- E. E. Paxton.....Secretary
- W. O. Smith.....Director

Sugar Factors and Commission Merchants

AGENTS FOR

- Hawaiian Commercial & Sugar Company,
- Haiku Sugar Company,
- Pala Plantation,
- Maui Agricultural Company,
- Kihikihi Plantation Company,
- Hawaiian Sugar Company,
- Kahuku Plantation Company,
- Kahului Railroad Company,
- Maekala Ranch Company.

C. BREWER & CO. LTD,
QUEEN STREET,
HONOLULU, H. T.

AGENTS FOR

- Hawaiian Agricultural Company, Onomea Sugar Company, Honomu Sugar Company, Aliuku Sugar Company, Ookala Sugar Plantation Company, Haleakala Ranch Company, Kapapala Ranch,
- Planters' Line Shipping Company,
- Charles Brewer & Co's Line of Boston Packets.

LIST OF OFFICERS.

- Charles M. Cooke.....President
 - Geo. H. Robertson.....V-Pres. & Mgr.
 - E. Faxon Biel.....Treas. & Secy.
 - F. W. Macfarlane.....Auditor
 - P. J. Jones.....Director
 - C. H. Cooke.....Director
 - J. R. Galt.....Director
- All of the above named constitute the Board of Directors.

Store To Let

Fort street next to Club Stables. Now occupied by Y. Wo Sleg Co. Possession given May 1. Inquire Club Stables. Telephone Main 199.

FIELD DAY PROGRAM

The following program will be given this afternoon at the Boys' Field, Liliha street:
PART I.
Hawaiian Band.....Led by H. Berger
Chorus—
(a) "Bright Morning Land".....German
(b) "My Own Native Land".....
.....W. W. Balfe
Six hundred voices from Grades III to

The New San Francisco

The Advertiser this morning in its leading editorial discussing the San Francisco disaster thus speaks of The Star's early and exclusive extra, which contained the first publication in Honolulu of the accounts of the disaster from the Coast papers: Yesterday's earliest extra repeated in detail the earthquake and fire news which the Advertiser received via Fiji and published some days ago. This time the news came via Seattle as a regular Associated Press dispatch, thus disposing of the cry of "fake" raised by an envious and completely scooped contemporary.

These verified details and more which came by mail reveal the clear fact of a gigantic catastrophe. Owing to contradictions in the previous news and the censorship of promotion bodies, a hope was built up here, that the story had been magnified by excited reporters and that fuller data would lessen the totals of destruction. But the more we learn the more certain it is—to borrow the phrase of the Bank of California—that "the worst has not been exaggerated."

The rebuilding spirit which is understood to prevail, should, if nothing changes its mood, be the means of making San Francisco one of the most beautiful of American cities. One thing of which the fire has forced the recognition, is the need of several wide avenues like Van Ness and of larger parks in the districts likely to be congested with population. When a city burns, there cannot be too broad avenues at strategic points for fire-fighting nor too many parks in which to take refuge from flames and falling walls. All the mistakes of city-planning which the late fire has exposed and all those which engineers have hitherto recognized may be avoided in the new San Francisco and the best suggestions of city beautifiers like Burnham and Robinson adopted. Should the city grow again upon its old site it ought to be the Paris of America.

There is nothing reassuring, however, in the fact that the actual damage done was chiefly by fire. The earthquake started the fire and broke the water mains. One of the problems before the insurance companies, therefore, upon the attitude of which much depends, will be the construction of some new kind of mains which earthquakes are not likely to destroy. Here is a chance for the most consummate skill of invention.

The project to rebuild on the old site has behind it the great force of the property-owning class, a body which can either restore the land to something of its old value by reconstruction or reduce it to sand-patch value by abandonment. There will be no abandonment, San Francisco says, and the chances, now that the early reports of land subsidence are disproved, favor that conclusion.

Probably the proposed new San Francisco will cease to be a town of wooden buildings. Before the fire the place was, perhaps, the largest wooden city in the world. A good water-supply and fire department, the resisting qualities of redwood, etc., were depended on to save it from a conflagration. In the new era construction will doubtless be in the fashion of European cities, except in the business district where steel and granite cage-structure are likely to prevail.

BALL MEN MEET TO DISCUSS BUSINESS

THE BASE BALL LEAGUE MET YESTERDAY AFTERNOON TO DISCUSS OPENING OF SEASON.

Yesterday afternoon at 5 o'clock the Baseball League held a meeting at the Young Hotel. All of the teams had a representative present aside from the president and secretary of the league.

The matter of a sewer was discussed but nothing definite was settled as that was left to the president of the league. It was decided to learn from the trustees of the ball grounds as a matter of business what the receipts were at each game. T. J. King will attend to the matter.

The Spalding 1906 rules were adopted. Plans for opening the season were discussed. Governor Atkinson will probably be asked to pitch the first ball after a procession had been about town consisting of the teams and the band in the lead. This will be decided at the next meeting of the managers.

VIOLINISTS TO PROVIDE FOR

- Girls' Glee Club.....
-Led by Mrs. Anna B. Tucker
- Chorus, "Violet Hunting".....
-Arr. from Il Trovatore
- Trío, "Sweet May".....J. Barnby
- Chorus, "Roaming".....Franz Abt
- Clarinet Solo—Air Variés, "My Normandy".....H. Lazarus
-Mr. J. H. Stockton.
- Chorus, "Battle Hymn of the Republic".....
- PART II.
- Hawaiian Band.....
- Chorus, "The Lord is King" Beethoven
- (a) "Mikto".....Kalakaua
- (b) "Liliuokalani's Prayer".....
-Liliuokalani
-Kauhanuani School.
- Led by Miss Bernice Cook.
- Chorus—"Onward Christian Soldiers".....
-Sir Arthur Sullivan
- Chorus, "Home Sweet Home".....
-John Howard Payne
- Trío, "Down in a Dewy Dell".....Smart
- Chorus—
- (a) "Hawaii Hono".....
- (b) "America".....
- (c) "Star Spangled Banner".....
- Conductor, Mrs. Anna B. Tucker.
- Accompanist, Mrs. Theodor Richards.

TAKE IT NOW.

It's not too late to prevent serious heart troubles if you will take Dr. Miles' Heart Cure at once, when you have dizzy spells, shortness of breath, fluttering of the heart, irregular pulse, weak or lumpy spells. These are early, but urgent symptoms of heart weakness, and must be given immediate attention. Money back if first bottle fails to benefit.

YACHT CUP PROBABLY LOST

PRIZE TO BE OFFERED WAS BEING MADE IN SHREVE'S STORE.

The Hawaii Yacht Club cup, to be raced for in the transpacific race, is probably destroyed by the San Francisco fire. At last accounts the cup was not finished. It was in the Shreve jewelry store in San Francisco and this is one of the big stores to go down in ruins.

It is not impossible that the cup may have been in fire proof vaults, in which event it is probably safe. If it was destroyed, another one will be ordered begun at the earliest possible moment, following the same design as the one upon which Shreve was at work.

LACE MAKING IN ROYAL SCHOOL

BOARD OF EDUCATION PASSES A RESOLUTION TO PROVIDE FOR IT.

The Board of Education yesterday afternoon discussed lace making in the Royal School. The following resolution, offered by Commissioner von Holt and seconded by Farrington was adopted:

"Resolved, That it is the sense of the Board that lace-making should be carried on at the Royal School for those desiring to take it, and that the proper officers with the Superintendent take the matter up."

Superintendent Babbitt submitted lists of examiners of teachers, as follows:

- Primary—C. W. Baldwin, chairman; methods of teaching, geography; Rhoda Green, mathematics; Margaret Mossman, music; W. T. Pope, physical geography, hygiene and nature study; Mrs. Marshall, drawing; Mrs. Crockett, history; Mrs. Creighton, English and composition.
- Grammar—W. T. Pope, chairman; physiology, hygiene and nature study; Mrs. Tucker, music; Miss Ziegler, mathematics; Miss Snow, history; Mr. Donagho, English; Mrs. Marshall, drawing; C. W. Baldwin, methods of teaching geography.

Babbitt appointed Von Holt and Mrs. Jordan as a committee to draw up a suitable memorial resolution on the late A. T. Atkinson.
Miss Peterman made application for the teacher's vacancy at Waiolihi, Kau. Mrs. Anna M. Lennox resigned her place in Makaweli school.
Miss Claypool was granted a Hawaiian first-class primary certificate on



Absolutely Pure Not Fortified

Union Express Co., BRANCH HUSTACE PECK CO., LTD. 63 Queen Street

Having baggage contracts with the following Steamship Co.'s Lines:
Oceanic Steamship Co.
Occidental & Oriental Steamship Co.
Pacific Mail Steamship Co.
Tayo Kisen Kaisha Steamship Co.

We check your outgoing baggage at your homes, saving you the trouble and annoyance of checking on the wharf. Incoming baggage checked on steamers of above companies and delivered with quickness and dispatch at your homes.
Telephone /Main 86

CHICAGO... IN LESS THAN 3 DAYS

and over The Only Double-Track Railway between the Missouri River and Chicago.

Three Fast Trains Daily VIA SOUTHERN PACIFIC, UNION PACIFIC AND CHICAGO & NORTHWESTERN RAILWAYS.

OVERLAND LIMITED, VESTIBULED. Leaves San Francisco daily 11:00 a. m.

The most luxurious train in the world. New Pullman drawing room and stateroom cars built expressly for this famous train. Gentleman's buffet and Lady's parlor observation car. Book-lovers library. Dining car—meals a la carte. Electric lighted throughout.

EASTERN EXPRESS, VESTIBULED. Leaves San Francisco at 6:30 p. m. Daily. Through Pullman Palace and Tourist Sleeping Cars to Chicago. Dining Cars. Free Reclining Chair Cars.

ATLANTIC EXPRESS, VESTIBULED. Leaves San Francisco at 6:00 p. m. Daily. Standard and Tourist Sleepers. PERSONALLY CONDUCTED EXCURSIONS Wednesday, Thursday and Fridays. The best of everything.

Chicago & Northwestern Ry R. R. RITCHIE, G. A. P. C., or S. P. Company's Agent. 617 Market St. (Palace Hotel) San Francisco.



California Limited TO Chicago in 3 Days

Leaves Mondays and Thursdays At 9:30 a. m. With Dinners and Sleepers.

Passenger Agent, W. G. Irwin & Co., Office

Union Pacific Railroad SUGGESTS Speed and Comfort

Three trains daily through cars, first and second class to all points. Reduced rates take effect soon. Write now.

S. F. Booth General Agent. No. 1 Montgomery Street, San Francisco.

the strength of a similar grade certificate from California.

MOANA EXPECTED TODAY. The S. S. Moana is expected this afternoon from Victoria and Vancouver en route to the Colonies.

Travellers Agree THAT The Overland, Limited IS Quickest, Finest, Best

A Train that Supplies All Demands

To St. Louis or Chicago IN 3 DAYS from San Francisco. ELECTRIC LIGHTS READING LAMPS. CLUB CARS—ALL GOOD SEATINGS

Southern Pacific Information Bureau 514 Market Street, San Francisco.

Fine Job Printing, Star Office.

THE BANK OF HAWAII LIMITED.

Incorporated Under the Laws of the Territory of Hawaii.

PAID-UP CAPITAL.....\$600,000.00
SURPLUS 300,000.00
UNDIVIDED PROFITS..... 78,691.53

OFFICERS.

Charles M. Cooke.....President
P. C. Jones.....First Vice-President
F. W. Macfarlane.....2nd Vice-President
C. H. Cooke.....Cashier
C. H. Cooke.....Assistant Cashier
F. B. Damon.....Assistant Cashier
Zeno K. Myers.....Auditor
DIRECTORS: Chas. M. Cooke, P. C. Jones, F. W. Macfarlane, E. F. Bishop, E. D. Tenney, J. A. McCandless, C. H. Atherton, C. H. Cooke, F. B. Damon, F. C. Atherton.

COMMERCIAL AND SAVINGS DEPARTMENTS.

Strict attention given to all branches of Banking

JUDD BUILDING, FORT STREET.

ESTABLISHED IN 1858.

BISHOP & CO.

BANKERS

Commercial and Travelers' Letters of Credit issued on the Bank of California and N. M. Rothschilds & Sons, London.

Correspondents for the American Express Company, and Thos. Cook & Son.

Interest allowed on term and Savings Bank Deposits.

Claus Spreckels & Co. Wm G. Irwin.

Claus Spreckels & Co. BANKERS

HONOLULU, H. I.

San Francisco Agents—The Nevada National Bank of San Francisco.

DRAW EXCHANGE ON SAN FRANCISCO—The Nevada National Bank of San Francisco.

LONDON—Union of London & Smith's Bank, Ltd.

NEW YORK—American Exchange National Bank.

CHICAGO—Corn Exchange National Bank.

PARIS—Credit Lyonnais.

BERLIN—Dresdner Bank.

HONGKONG AND YOKOHAMA—The Hongkong and Shanghai Banking Corporation.

NEW ZEALAND AND AUSTRALIA—Bank of New Zealand, and Bank of Australasia.

VICTORIA AND VANCOUVER—Bank of British North America.

TRANSACT A GENERAL BANKING AND EXCHANGE BUSINESS.

Deposits Received, Loans Made on Approved Security, Commercial and Travelers' Credits issued. Bills of Exchange Bought and Sold.

COLLECTIONS PROMPTLY ACCOUNTED FOR.

THE YOKOHAMA SPECIE BANK Limited.

ESTABLISHED 1880.

Capital SubscribedYen 24,000,000
Capital Paid Up..... 15,000,000
Reserve Fund 9,940,000

HEAD OFFICE, YOKOHAMA.

Branches and Agencies:

Honolulu, New York, San Francisco, London, Lyons, Bombay, Hongkong, Newchwang, Peking, Shanghai, Tientsin, Kobe, Nagasaki, Tokio, Osaka.

The Bank buys and receives for collection Bills of Exchange, issue Drafts and Letters of Credit, and transacts a general banking business.

Honolulu Branch 67 King Street

Shogetsu Restaurant JUST OPENED

17 Hotel Street, Near Nuuanu MEALS SERVED AT ALL HOURS
Ice Cream and Cakes.
Served on Ground Floor.
RESTAURANT UP-STAIRS.

Y. ISHII, Corner Beretania and Nuuanu Sts.

JAPANESE DRUGGISTS GENERAL MERCHANDISE

All kinds American patent medicines at low prices.

IF YOU WISH TO ADVERTISE IN NEWSPAPERS ANYWHERE AT ANYTIME Call on or Write E.C. DAKE'S ADVERTISING AGENCY 124 Sansone Street SAN FRANCISCO, CALIF.

Fine Job Printing, Star Office.

HOW THE RAIN FELL UPON SAN FRANCISCO

UPON THE MORNING OF THE 3RD RAIN FELL FROM MIDNIGHT UNTIL THREE O'CLOCK.

SAN FRANCISCO, April 22.—A drenching rain fell upon San Francisco last night. From midnight until three o'clock, it poured and drizzled at intervals, while a high wind added a melancholy accompaniment, whistling and sighing about the buildings in the burned district. Five days ago, when the fire catastrophe was in its infancy, this down pour would have been regarded as a God-send. This morning, it could be looked upon in no other light than as an additional calamity. It meant indescribable suffering to the tens of thousands of people camped upon the naked hills, and in the parks and open places of the city.

Few of these were provided with waterproof covering. For the most part, their only protection from the wet was a thin covering of sheeting tacked upon improvised poles. Through this the water poured as through a sieve, wetting the bedding and soaking the ground upon which the refugees lay. When it is understood that thousands upon thousands of delicately nurtured women, and infants in arms, and old and feeble people were in this plight, nothing need be added to describe the misery of their condition. The down-pour has aggravated the already insanitary conditions of the camps, and will doubtless add a great number of pneumonia cases to those already crowding the regular and temporary hospitals of the city.

What could be done was done by the guards in charge of the camps to relieve distress. Wherever covering could be had for women and children, it was taken advantage of. They were housed in the chill and cheerless churches, garages and barns, and those who had been fortunate enough to save their homes were called upon to take care of these unfortunates. With few exceptions, these people responded readily to the new call made upon them, and where they did not, the butt ends of Krug rifles quickly forced a way through their inhospitable doors.

While the storm has added to the difficulties of the general committee, and especially of those having in charge the care of the sick, the sanitation of the city, it has been a spur to even greater efforts to bring order out of the chaos prevailing. Regular shelter tents will be provided, as well as coats standing off the ground. It is realized that these provisions are imperative, as much so as the provision of food.

After several hours of clear weather, there was another precipitation at 8 a. m. and at 9 o'clock the fall was resumed and continued at intervals throughout the day.

Of individual cases of suffering, the number is legion, but one will tell the story of them all. About 4 o'clock when the rain had been falling heavily for an hour, a middle-aged man, white faced in his distress and fatigue, appeared at the headquarters of the general committee. He had walked two miles from his camping place in the park to make an appeal for his suffering wife and little ones. As he told of their distress the tears welled up in his eyes and coursed down his cheeks.

They were, he said, without covering other than a sheeting overhead, and were lying on the naked ground, their bodies protected only by a quilt and blanket, which was all that he had managed to save of his household bedding. These had quickly been soaked, and while unwilling to complain on his own account he had been unable to listen to the wails of his little ones, and had tramped all the way from his camping place to the committee headquarters in the forenoon hope of there finding some means to get his family under shelter.

San Francisco has a Vigilance Committee, the first organization of the kind since the early fifties, Dr. Donald McCulloch Gedge is the chief of it. He fought with the French army, with the United States army and in the China war, and was at one time a resident of Honolulu. His chief of staff is ex-Auditor Harry Beach. The headquarters of the committee is at 224 Steiner street. One hundred and thirty persons have joined the organization. Applicants for membership are coming in rapidly. The committee has charge of the Golden Gate Valley district near the Presidio.

The military authorities of North Beach are separating the Asiatics from the Caucasians and putting them in camps of their own nationalities. Many large manufacturing companies have arranged to receive and care for refugees at their respective plants along the eastern shores of the bay. Two thousand seven hundred and fifty persons can be accommodated.

Arrangements are now being made to provide for the gubernatorial election which must be held in the city next fall, and the meetings of the conventions to nominate candidates.

The San Francisco real estate board met in its local synagogue yesterday and took measures for the protection of tenants who have suffered through the fire. Steps were also taken to secure a remission of the penalty imposed upon tax-payers for non-payment of the second instalment of taxes, for the fiscal year ending June 30.

Fully thirty thousand refugees are being fed by the government at the Presidio and North Beach. Provisions are being bountifully supplied to all who make application, and as yet there is no suffering from hunger. Tents are still being distributed. More than ten thousand have been given out, and the authorities intend continuing the distribution as long as the supply lasts. Barracks are to be erected in Golden Gate Park to accommodate fifteen thousand persons. The building will be

EXPERIENCE OF A HONOLULU GIRL

MISS EDITH SPALDING WRITES WHAT SHE SAW IN SAN FRANCISCO DURING THE DISASTER.

Among the Honolulu girls in San Francisco, during the earthquake, was Miss Edith Spalding, daughter of E. L. Spalding, who was a guest at the Occidental Hotel. The following extracts are from a letter received yesterday by Mr. Spalding, given to the press by him because of the intense interest of Honolulu girls in the details of the catastrophe. It is dated April 19, the day after the earthquake.

Dear Mother: Such an awful experience that we have just gone through. I will never forget it as long as I live.

I was awakened by something striking me on the arm. My room was swinging back and forth and I expected every minute that the hotel would go down with a crash. Pieces of plaster a foot in diameter fell on my bed, but after the first piece struck me I was not touched. I cannot tell why I did it, but as soon as I felt the room rocking, I got up and went to look at my watch and found it. It was fifteen minutes past five o'clock. I went to the door of my room and opened it and looked out, but I could see no one in the hallway. So I went back and put on my kimono and slippers. All this time pieces of plaster were falling about me from the ceiling and the room was shaking awfully.

I was just going out of my room to go to Aunt Leonora's apartment, when I met her. I went with her to her room and we had been there only a few minutes when a porter called "Fire!" and everybody made for the stairs. Before we had reached the sidewalk someone said it was only a slight fire in the basement and that it had been put out. So we went up again and got dressed.

Within half an hour twenty-five fires had started near the hotel and we went up to pack what we could. I emptied everything that was in my bureau drawers into a sheet and got my dresses out of the closets. We got the sheet full and two satchels down stairs. Aunt Leonora wanted her trunks to be brought down, but there was no porter to be had. Allen Robinson, who happened to be in the hotel and who was helping the Ward girls, told me to go upstairs and we could bring them down together, which we did. After all of Aunt Leonora's things were down Mr. Robinson went up and carried my steamer trunk down.

By this time the lobby of the hotel was filled with trunks and bundles, so my larger trunk was left behind. We got an express wagon and had to get up on the seat with the driver. The expressman took us to a little park at the corner of Stockton and Union streets, and it was already crowded, but there was not a soul that we knew. The driver charged us four dollars. We learned that Mrs. Stevens, who was stopping at the Occidental Hotel, offered the driver forty dollars to take her trunk from the Occidental to the St. Francis Hotel and he would not do it. Conveyances could not be had at any price. They had all they could do to save their own things.

We staid at the park until the evening, not daring to leave our satchels and go and look around for something to eat. We would have gone to Aunt Ermie's (Washington near Larkin), but we could not get any conveyance. Near evening, Aunt Leonora went over to a house and asked if they could take us for the night. They said they were already crowded, but would do what they could. So we had our trunks moved over there and then we went out to see what we could get to eat, for we had had nothing but some coffee since six o'clock in the morning. We could not buy tea or coffee, or anything to eat—not even a piece of bread. When we got back to the house we had a small glass of wine. That was all we had until today (the 19th) at lunch. The fire was drawing near and I sat on the steps all night, watching it.

At five o'clock it was within a block of us and it was necessary for us to rush as quickly as we could if we wished to save anything. We had been trying to get an express wagon for hours and could not, but at last one came along and agreed to take some of our trunks out; but we had to leave one. We had to pay the expressman twenty dollars. Aunt Leonora sat on the seat with the driver and I walked. We went way out to the Presidio, where everybody was going. We hadn't been there two hours before the flames came rushing right up Van Ness avenue, and the Presidio is right at the end, you know. So we got another express and went to the ferry and came over to Berkeley, where we are safe.

SYMPHONY CONCERT.

The following is the program to be given this evening at the benefit concert to Director J. H. Stockton by the members of the Honolulu Symphony Club at Haalelea Lawn:
Overture, "Pique Dame".....Suppe
Violin Concerto—G Minor, Max Bruch
Mrs. I. B. Ingalls, Violin.
Miss Werthmuller, Piano.
Selection, "La Traviata".....Verdi
Vocal solo, (Selected) Mrs. W. Hoffman
Waltz, "Morgenblätter".....Strauss
March, "A Prince of Good Fellows".....Clouder

25x150 feet and will contain thirty rooms in two-room apartments, with kitchens arranged so as to suit families or to be shared by single persons.

HEADACHE.

Frequent, or periodical headaches, weaken the brain, and very often extinguish the light of reason. Dr. Miles' Anti-Pain Pills will cure headache quickly, by soothing the irritated nerves of the brain. They also prevent pain if taken when first symptoms of headache appear. 25 doses, 25c. Never sold in bulk.

WHAT CAN YOU DO?

to entertain your friends in your own home. Are you an accomplished pianist? Are you a talented singer? Are you possessed of great reading or dramatic ability? Probably not for these are the exception not the rule. Do you ever run a little short on conversation and wish you had some little diversion for those friends you wish to entertain? No doubt you do and here is the very thing you have been looking for. It is a want and a necessity as well as a luxury for every home and through this

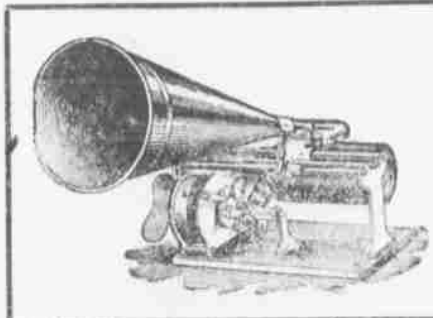
Unparalleled FREE OFFER

the Hawaiian Star is now enabled to present to each of its readers, old and new, one of these rich toned instruments,

\$7.50 Columbia Graphophone FREE - absolutely - FREE

It brings to your home all of these accomplishments you would so like to possess and it is so simple in construction your little child can easily operate it.

This is a reduced reproduction of the \$7.50 COLUMBIA GRAPHOPHONE. It cannot be bought for less.



The Columbia Graphophone RECEIVED THE HIGHEST AWARD AT THE ST. LOUIS WORLD'S, 1904; PARIS EXPOSITION, 1900

Given Free With a Subscription to this Paper

CUT THIS OUT AND MAIL TODAY

Circulation Department, Hawaiian Star, Box 366, City.
Please send your representative to my address, as given below, to show the Graphophone you offer with a year's subscription to the Hawaiian Star.
NAME.....
ADDRESS.....
Date.....

Daily Demonstrations at A. B. Arleigh & Co., Fort and Hotel Sts., Distributing Agents for Columbia Phonograph Company

TOURISTS ATTENTION!

We have the most complete line of Hawaiian and Samoan curios in town. Just the things you want to take home.

WOMAN'S EXCHANGE



Everybody Admires

Nice, soft, silky hair. PACHECO'S DANDRUFF KILLER does not only promote the growth of soft, silky hair, it feeds the hair follicles and keeps the scalp in a healthy condition.

DR. A. J. DERBY, DENTIST

Office in Boston Building. Hours: 9 a. m. to 12 noon; 1 p. m. to 4 p. m.

CONSOLIDATED SODA WATER WORKS COMPANY LTD.

Sole manufacturers and agents of genuine Kola Mint. (Don't buy poor imitations.) Phone Main, 71.

S. SAIKI, Bamboo Furniture AND PICTURE FRAMES.

Neat and Handsome Designs made to order. 383 Beretania Street, near Punchbowl. TELEPHONE BLUE 881.

TELEPHONE Office, Main 313. Residence, Blue 2291

Wallace Jackson General-Baggage EXPRESS and Dray Business

DELIVERY TO ALL PARTS OF THE CITY. LARGE OR SMALL PARCELS.

Office and Stand: Market and Nuuanu streets.



Carriage Repair We are paying special attention to Carriage and Wagon Repairing and in our fully equipped premises on Queen street are prepared to turn out the best of work.

Schuman Carriage Company, Ltd

CARRIAGE REPAIR DEPT., Queen St., between Fort and Alakea.



Its to Eat

and the smile goes with the dinner when the farder has proper attention.

The Alameda will arrive on Saturday and in addition to old friends there will be a large supply of edibles including California Game and poultry, Salmon and Mackarel Swiss, Roquefort and Gorgonzola and California cream cheese. Place your orders today to insure prompt delivery.

METROPOLITAN MEAT CO. Limited

Telephone Main 45

HATS

Straw, felt and Panama hats always on hand. Ladies hats to order a specialty.

K. UYEDA

Nuuanu St., between Hotel and King

"He told her she was the only girl he ever loved." "Well, by the way he's spending money on her it will be no use for him to love another."—Half Holiday.

NEW ADVERTISEMENTS

NEWS IN A NUTSHELL

Paragraphs That Give Condensed News of the Day.

It doesn't make any difference what you want or what you have but don't want. Star Classified Ads will help you out with absolute certainty. Want Ads inserted three times for 25c.

THE WEATHER

Local Office, U. S. Weather Bureau, Young Building, Honolulu, T. H., May 4, 1906.

Temperature: 6 a. m. 74; 8 a. m. 75; 10 a. m. 76; noon 77; morning minimum 73.

Barometer 5 a. m. 29.85; absolute humidity 5 a. m. 0.19 grains per cubic foot; relative humidity 8 a. m. 64 per cent; dew point 5 a. m. 65.

Wind velocity 6 a. m. 2 northeast; 8 a. m. 5 southwest; 10 a. m. 12, south; noon 14, south.

Rainfall during 24 hours ended 8 a. m. .01 inches.

Total wind movement during 24 hours ended at noon 119 miles.

T. P. DRAKE, Acting Section Director.

LONDON BEETS: April 5, 8 shillings 6 pence; last previous quotation, April 5, 8 shilling, 5-1-4 pence.

SUGAR: New York, April 27, 3.37 cents a pound or \$67.40 a ton, last previous quotation April 17, 3.42 cents a pound.

There was a short meeting of the Board of Supervisors this morning.

Leslie Scott took his oath this morning as clerk of the Supreme Court, and entered upon his duties.

Judge Robinson yesterday granted a divorce to Marie Forba against Mammal J. Forba, on the ground of desertion.

The meeting last evening in the rooms of the Theosophical Society in the Kaplalan Building was well attended.

Have you heard about the "Country Store" at the Eastern Star Fair? Be sure to take it in tomorrow at Haleleala Lawn.

Remember the fair tomorrow at Haleleala Lawn. Five lunch served from 11 to 2:30. Tickets 50 cents including admission and lunch.

Go to the Eastern Star Fair and cast your votes for your favorite boy and girl friend for the big doll and the nickel plated roller skates.

The letters received yesterday by the Olympia from San Francisco seem to have been only those mailed within a day or two after the disaster.

Reports from Kona are to the effect that all of the county officers of that county are candidates for reelection. There are other aspirants also.

A decree of divorce has been granted by Judge Hardy in the case of Arthur G. Hime against Annelle B. Hime for desertion. The parties lived at Waikele.

S. H. Derby was commissioned as Second District Magistrate of Honolulu, in place of Charles S. Dole, resigned, by Chief Justice Frear yesterday afternoon.

Mr. Hittel, who has been awarded the contract for the election of Mr. Brandt's new home at Waimoa, Kona, arrived there last week and will start operations within a week or so.

Judgment by Judge Robinson in the jury-walved case of Bow Sing Wal Co. vs. Namura for \$78.25 with interest at 6 per cent from August 29, 1904, and costs.

R. C. L. Perkins read a paper on "Tomocera," a genus of scute bug parasites, at the sixteenth regular meeting of the Hawaiian Entomological Society, held last night at Board of Agriculture headquarters.

A concert for the benefit of the Mission church will be given in Kawalaha church basement at 7:30 this evening. There are 28 numbers on the program and for lovers of Hawaiian singing the concert will be a feast of music.

J. Holt, of Cape Breton, N. S., arrived in Waimoa last week. Mr. Holt who is the constructing engineer of the Cape Breton Iron Works is on a trip round the world but stepped off at Honolulu in order to shake hands with friends in Waimoa and incidentally to have a peep at the Garden Island.—The Garden Island.

Those master grocers Lewis & Co., Ltd., are prepared to serve the public in the same satisfactory way as in the many years past. This notwithstanding the great disaster. They have in stock abundance of fresh supplies, also to arrive on the Nevada and Alameda and at the same low prices as have always prevailed at this popular store. Telephone Main 240 169 King street.

LETTER FROM OAKLAND. A. Gartenberg of Grinbaum & Company received a letter from a member of the firm in Oakland. The letter dwelt with personal matters. It was written the day after the disaster. The letter stated that the city of San Francisco had been destroyed and that the harvesting machinery had been destroyed.

CHOICE ALGAROBIA FIRE WOOD

SAWED AND SPLIT OR IN 4 FEET LENGTHS

DELIVERED TO ANY PART OF THE CITY. LEAVE ORDERS WITH

W. W. DIMOND & CO

Agents for East Niu Ranch.

THAT "ROBBERY" IS ABOUT ENDED

POLICE WILL NOT WASTE MUCH MORE TIME IN INVESTIGATING THE PALACE GRILL AFFAIR.

The police will not waste much more time investigating the "robbery" of the Palace Grill. Last night Tom Wai one of the partners of the company appeared at the police station and asked for a search warrant against Ah Sam his partner. Tom seemed to think that Ah Sam was to put it mildly, "jobbing" him. Subsequently Tom announced that he did not desire the search warrant for the reason that Ah Sam had agreed to reimburse him for the share in the stolen money. Tom claimed that he owned all of the missing jewelry, except the gold watch.

CONGRESS OF SONG MAKES A HIT

THE AUDIENCE SEEMED TO ENJOY SINGING OF SCHOOL CHILDREN MUCH LAST EVENING

The congress of song was given last evening in the Opera House and was a success in every way. The singing by the school children was exceptionally good and the accompaniment by Mrs. L. T. Peck was splendid throughout.

Hugo Herzer was in his usual fervor and as usual the audience made much of him.

The Queen was there and seemed to enjoy the music very much.

At the end of the program the children's chorus sang "March of Our Nation." It was exceptionally fine as the children sang it with the fervor that such a song should be sung. The crowd seemed to think that they had been given a treat.

MAIL ADVICES FROM BERKELEY

MISS JULIE DAMON WRITES TO HER BROTHER THE MORNING FOLLOWING DISASTER.

Fred B. Damon of the Bank of Hawaii was one of the few Honolulu people to receive any mail yesterday from the vicinity of San Francisco. His communication came in the form of a brief postal card from his sister, Julie, who wrote from Berkeley. She wrote as follows:

"April 18. "Dear Fred—I just wanted to let you know that Berkeley is all right, so don't worry. San Francisco, Stanford and San Jose pretty well burned out. Haven't heard from mother as the telegraph system is not working. She probably arrived yesterday. They say the earthquake has spread out west. Hope you didn't get it. I have never experienced such an awful thing in my life and seen such misery. "JULIE."

PATRONESSES OF THE FAIR. The following ladies have kindly consented to act as patronesses at the Eastern Star Fair: Mrs. J. S. Walker; Sr. Mrs. Samuel Parker; Mrs. H. E. Cooper; Princess Kawanamaka; Mrs. E. D. Tenney; Mrs. J. A. McCandless; Mrs. E. F. Bishop; Mrs. C. P. Haukea and Mrs. C. S. Holloway.

A FINE LUNCH. The following is the menu for the lunch at the Eastern Star Fair tomorrow at Haleleala Lawn from 11 to 2:30: Fish Chowder, Pork and Beans, Roast Turkey, Duck and Chicken, Boston Brown Bread, Potato and Cabbage Salads, Cold Boiled Ham, Olives, Pickles, Apple and Pumpkin Pies, Cheese, Coffee.

OLYMPIA SAILS TOMORROW. The S. S. Olympia is scheduled to sail at 8 a. m. tomorrow for Seattle. She may go to another island port. She will get a full load of Japanese passengers, it is thought.

A Letter From Miss Marshall

SHE WRITES HER MOTHER THAT NO DAMAGE WAS DONE UNIVERSITY BUILDING IN BERKELEY.

Mrs. Lilla G. Marshall yesterday received a letter by the Olympia from her daughter who is a student at the University of California. It was written in Berkeley the day after the earthquake.

In this letter Miss Marshall says that no damage was done to the buildings of the University in Berkeley. From this Mrs. Marshall draws the conclusion that the million and a half damages sustained by the University, as reported by the Associated Press some days ago, must be due to the loss of buildings and property of the University in San Francisco, so that an immense amount of property of the institution was there to be destroyed, and could easily account for a loss of a million and a half.

Mrs. Marshall also received a letter from her son, who was at Lodi near Stockton at the time of the earthquake. He says that the shock was severely felt there, and some damage was done.

James F. Morgan, AUCTIONEER AND BROKER, 517-527 Kaahumanu St. Tel. Main 72. P. O. Box 594.

Without Reserve PROPERTY AT AUCTION

ON SATURDAY, MAY 5, AT 12 O'CLOCK NOON.

I will sell at my salesroom, 557 Kaahumanu street.

PROPERTIES. Without Reserve.

LOTS 1, 2, 3 and 4, Block M—Kapahulu.

LOTS 43 and 44, Block B—Kapiolani Park Addition.

LOTS 26, 27 and 28, Block H; Portion of Lot 1, Block 12E—Kapahulu Tract.

The list will be added too before day of sale.

Send in yours.

JAS. F. MORGAN, AUCTIONEER.

Mortgagees' Sale!

At my salesroom, 557 Kaahumanu street—

SATURDAY, MAY 5—Corner Punchbowl and Beretania streets.

SATURDAY, MAY 12—Valuable real estate and stocks. Hawaii Land Co. to R. D. Mead.

SATURDAY, May 12—Property on King also 1150 share Kihel Plantation Co., Ltd.

SATURDAY, MAY 26—Property on King street, near Kamehameha IV, road—good buildings.

All particulars at my office.

JAS. F. MORGAN, AUCTIONEER.

BOGUS BANK NOTE CASE STARTS

JUDGE DOLE TRYING THE ALLEGED COUNTERFEITERS FROM TRANSPORT SHERMAN.

United States Judge Dole this morning began the trial of the counterfeiting case of William Moore and J. Duffy, with a prospect of a lively time ahead, for there seemed to be a considerable mix-up among counsel. Moore is defended by W. T. Rawlins and Duffy by L. M. Strauss. The two attorneys are conducting their cases independently of each other and do not agree. J. J. Dunne is prosecuting.

The attorneys for the defense disagreed as to the rights of challenges. Rawlins raised a question as to whether the defendants each had a right to ten peremptory challenges, or whether the trial was all one case, with ten challenges for the defense. Dunne claimed only ten could be allowed for the case, not ten for each defendant. "If there were ten defendants, they would claim a hundred challenges, which is absurd," said Dunne.

The court agreed with this view and Rawlins accepted the ruling. Strauss took an exception.

The defendants were employees of the transport Sherman and were accused of trying to pass a counterfeit bank note. The following were called to the jury box to be examined: John S. Walker, H. Dillingham, J. S. McGuire, E. M. Cheatham, C. S. Weight, R. McCriston, John Duncan, F. J. Lowrey, R. H. Worrall, F. D. Wicke, George C. Cooper, R. E. Mist, W. F. Dillingham, Edward Campbell, Duncan and Lowrey were challenged by Strauss and Worrall by Dunne.

GOING TO JURY.

The case of Yamamoto, charged with assault with intent to commit murder, is going to the jury in Judge De Bol's court. He is being prosecuted by Deputy Attorney General Fleming and defended by J. W. McHeart, the evidence closed this morning. The following are the jurors: H. E. Gares, Nelson Lansing, Frank J. Dutra, J. K. Isaac, J. D. Cockett, J. Ordenstein, W. P. O'Brien, Howard Adams, A. C. Dowsett, George E. Rugg, E. Drew and E. M. Lovsted.

CABLE DRAFTS NOW.

The Bank of Hawaii received a cable this morning from Oakland saying that cable drafts and transfers of money could now be arranged.

The suspicion that the La Paloma has not arrived in San Francisco began to be felt this morning among the people immediately interested in the yacht and the yacht race. There was a disposition to believe that the Associated Press cablegram published the morning of May 2 was in error.

Expert and Oval Rackets. The latest rackets on the market. They are beauties, call and examine them. We have a good supply of Tennis Balls, Tapes, Nets, Shoes, and all sorts of Tennis Goods. Rackets re-strung with the best of English Gut and work guaranteed. E. O. HALL & SON, Ltd.

To the Public! We always welcome a comparison of prices and an examination of our Fresh Meat. This applies to our Meat Business, on all of which our prices are as reasonable as is consistent with the standard of quality, and strictly maintained in a most sanitary condition. TELEPHONE ORDER DEPARTMENT. Patrons unable to visit our establishment are assured of expeditious service and the same careful attention as is given to purchases made in person. C. Q. YEE HOP & CO., KING STREET. TELEPHONE MAIN 251.

WHO'S ALL RIGHT! STANLEY STEPHENSON. THE PAINTER. HE'S ALL RIGHT. S. S. SIGNS ARE ALWAYS RIGHT. Camara & Co. LIQUOR DEALERS. Corner Queen and Alakea Streets. Orders Delivered to All Parts of the City. Phone Main 492 Honolulu, T. H.

For Your Bath Room. We have every convenience for fitting up the Bath Room. In the way of Nickel plated Towel bars, Double and Single Soap and Sponge Holder Combination, Tooth brush and Tumbler Holders, Single Soap and Sponge Holders, Comb and Brush Racks, Robe Hooks, small, medium and large, Fountain Brushes, Bath Tub Seats and many other useful and necessary appliances which add materially to comfort and economy in the Bath Room. Little Beauty Night Lamp. W. W. DIMOND & CO., LTD. THE LEADERS IN HOUSEFURNISHINGS, 63, 65, 67 KING ST. Fine Job Printing, Star Office.