

SEMI-WEEKLY MAUI NEWS

FOR THE VALLEY ISLE FIRST

WAILUKU WEATHER table with columns for Max, Min, R'fall and rows for Sept. 15-18, 12, 13, 14.

THIS WEEK'S MAILS table with columns for From the Coast, To the Coast, From the Orient.

22nd. YEAR—No. 1202.

SEMI-WEEKLY MAUI NEWS, TUESDAY, SEPTEMBER 19, 1922.

PRICE 5 CENTS

Three Hundred Visitors Are Seeing Maui Hastily

Big Steamer Does Not Arrive In Harbor Until Ten And Plans For Morning Entertainment Have To be Changed Hastily; One Motor Trip Abandoned; Guests Given Choice

It was ten o'clock this morning when the great steamer City of Los Angeles bearing some 300 passengers, the Los Angeles Chamber of Commerce excursionists swung around the end of the breakwater and made her way slowly and majestically toward her moorings out from where the new Kahului wharf is building.

Telephone advices from Hana said the big ship was off Kaeleku point at 7:45. This made it evident she would be late in arrival and the committee got busy altering plans.

At 7:30 o'clock this morning the reception committee composed of Worth O. Aiken, chairman; John J. Walsh, vice-president of the Maui Chamber of Commerce, Judge D. H. Case, county Attorney E. R. Bevins, W. A. Baldwin, H. K. Duncan, Lorrin K. Smith, Maui member of the Hawaii Tourist Bureau, and J. H. Gray, secretary of the Maui Chamber of Commerce met at the wharf and boarded ship on the first barge accompanied by a bevy of girls whose pleasant duty it was to decorate with yellow Maui no ka oi hat bands the headwear of the visiting excursionists.

Guests Are Welcomed
Aboard ship Vice-President Walsh introduced Judge Case as the welcoming speaker. Judge Case bade them welcome in his opening words and expressed regret that the visit would be so short and the hope that they would see much in the little time they would be here on this occasion that would interest and please them so that they would come back on later occasions when they could remain longer.

Entertainment Follows
The luau ended an adjournment will be taken to the Territorial Building where "A Night on Maui" will be presented, staged under the direction of Mrs. A. Garcia.

Frank Crockett Made Prosecuting Officer Maui Criminal Cases
Wendell F. Crockett has been appointed special deputy attorney general by Attorney General Mathewman for a period of three months.

Polo Game Staged
At 4 o'clock at the Polo Grounds there will be an exhibition match between two teams that will line up as follows:

Blues—Dr. J. C. Fitzgerald, Sam. A. Baldwin, Errot von Tempsky, and W. A. Clark.

Whites—Dr. W. D. Baldwin, Hosmer Rolph, Harold W. Rice, D. T. Fleming and Jack Moir substitute.

Luau This Evening
After the polo game the rendezvous will be the Fair Grounds where the luau committee, W. A. Clark and H. K. Duncan, have arranged for an elaborate native feast.

At a recent meeting of the board of directors of the Honolulu chamber it was thought that the idea of holding a civic convention this year would have to be abandoned because of the lack of interest shown on the other islands.

Civic Convention Put Off To December
The civic convention will be held some time in December, it now appears, following a conference between C. H. Cooke and E. B. Clark, president and secretary, respectively, of the Honolulu Board of Trade, reports the Honolulu Star-Bulletin.

At Keahua is the polo ground where the match will be played this afternoon, the finest grounds in the Islands and headquarters for the champion polo team of Hawaii.

On the drive from Kahului to Wailuku on the right side of the road is Malulani Hospital, a county built and county maintained institution complete and comfortable with accommodations for nearly 60 patients.

Further north is St. Anthony's Catholic Church. Still further north is the Wailuku Sugar Company mill along some of the cane fields of which the road that is being traversed runs.

This company had a production of 14,168 tons this year. Its lands com-

Today's Program
7:30—Reception Committee met at Claudine Wharf. Boarded steamer by first barge. Welcoming address by Circuit Court Judge D. H. Case.

Visitors entered cars as fast as they disembarked from steamer with a Maui escort and guide for each car, and took short trips to nearby points.

12:00 to 2:00—Luncheon at the Grand Hotel.

1:00 to 2:00—Sight seeing drives resumed the party that visited East Maui this morning to go up Iao Valley and to Lahaina this afternoon and those who visited West Maui in the morning to make the East Maui trip through the cane and pineapple country, with stops at the pineapple canneries.

4:00—Polo Game.

6:30—Luau (Native Feast) at the Commercial Building, Fair Grounds.

8:30—Entertainment, a "Night on Maui," typical of the old Hawaii and its music and dances.

Committee will escort visitors back to Claudine wharf to board ship for Honolulu.

Forty-Two Dead In Argonaut Mine, Five Are Missing

(ASSOCIATED PRESS)
JACKSON, Calif., Sept. 19—The bodies of 42 of the 47 men who were entombed in the Argonaut mine on August 27th were found tonight by rescue crews headed by Byron O. Pickard of the United States mine bureau.

The rescuers are positive the bodies of the others are behind a second bulkhead that was built by the entombed miners. It is believed the men had been dead several days.

An earlier report from Pickard, telephoned from the 4200 foot level, said there were no indications then that any men had climbed into this level recently and said a bulkhead would be built immediately. Exploration started above this level. The significance attached to the early report was that the entombed men may be alive because Pickard said the fire had not gone down to the 4200 foot level.

Reach Entombed
JACKSON, Calif., Sept. 18—The rescue crew working from the 3600 foot level of the adjoining Kennedy mine finally drilled a hole into the Argonaut at five o'clock this morning and inter blasted an enlarged hole. Heavy draughts rushing through the hole into the Argonaut is believed to indicate there is no cave-in that will further retard the rescue work. Gas masked government rescue men are standing by in readiness to rush into the Argonaut immediately upon the clearance of the entrance.

It was officially announced that the gases and fire in the Argonaut had decreased since a shaft was broken through from the Kennedy mine. The opening into the Argonaut is being timbered to prevent a cave-in before the rescuers enter.

James Fitzgerald whose brother Charles is one of the entombed was the first man to break through from the Kennedy mine into the Argonaut. The bonus of \$5000 for the crew effecting the first entrance goes to the 3600 foot level crew all of whom are members of the Argonaut mine.

Later dispatches say the work of timbering the opening into the Argonaut has been completed. Two men entered the Argonaut on the 4200 level at 11 o'clock this morning to shovel out the muck. A few minutes later rescuers entered equipped with masks and a two hours supply of oxygen to begin the search.

The work of bringing the bodies of the Argonaut victims to the surface will be begun this afternoon. The bodies are badly decomposed and are being wrapped in canvas. A slow and hard job is expected in bringing the bodies to the surface.

The men had built two bulkheads and started a third when the gas overtook them. A number of bodies were found nude, the clothing having been used to plug the bulkheads in an effort to stop the advancing gas. A full investigation is to be started by the State Industrial Accident board and the commission will pay the families of the victims upwards of \$100,000.

At Makawao is the Makawao Union Church, a memorial building, on the left side of the road going up, also the Fred Baldwin Memorial Home for aged men, and the Maunaloa seminary for Hawaiian girls.

At Keahua is the polo ground where the match will be played this afternoon, the finest grounds in the Islands and headquarters for the champion polo team of Hawaii.

On the drive from Kahului to Wailuku on the right side of the road is Malulani Hospital, a county built and county maintained institution complete and comfortable with accommodations for nearly 60 patients.

Further north is St. Anthony's Catholic Church. Still further north is the Wailuku Sugar Company mill along some of the cane fields of which the road that is being traversed runs.

This company had a production of 14,168 tons this year. Its lands com-

WELCOME LOS ANGELES CHAMBER OF COMMERCE
With a full appreciation of the importance of your coming to Hawaii, the people of Maui, through their Chamber of Commerce, cordially extend a hearty welcome.

ALOHA MAUI CHAMBER OF COMMERCE. By A. W. COLLINS, Its President.

What The Visitors Will See

Maui contains an area of approximately 725 square miles, 400,000 acres, and in area is second in size in the group. Its population is approximately 40,000 and assessed valuation is \$38,795,000.

It has seven sugar plantations and three pineapple canneries. Its sugar production this year has been 125,000 tons and its pineapple canneries will turn out between 900,000 and 1,000,000 cases of 24 cans to the case.

It has several large cattle ranches, produces more than enough beef for its own needs and ships to the Honolulu markets.

The island consists of two distinct volcanic groups connected by a long, low isthmus. Haleakala occupies the greater part of the Eastern section of the island and has an altitude of 10,932 feet.

It contains the largest extinct crater in the world, the circumference of its rim being 20 miles and the area within the crater 10 square miles. On its brink is the Haleakala Rest House where tourists may spend the night.

West Maui is largely mountainous some of its peaks attaining an altitude of 5800 feet. These mountains are cut by canyons and valleys which have given to Maui the name of the Valley Isle.

Kahului harbor is the chief port of East Maui and the largest shipping port of the island for sugar and canned pines. There is building a new wharf which will be the largest in size outside of Honolulu harbor.

Bonds for its construction were taken entirely by Maui interests or interests connected with Maui in the amount of \$650,000.

At Kahului are the County Fair Grounds at which the luau will be held this evening. The grounds and buildings are a community enterprise, represent an expenditure of about \$200,000 and have an indebtedness of only \$50,000.

It is the only community enterprise of its kind in the Islands.

At Puuene is the 15 roller sugar mill of the Hawaiian Commercial and Sugar Company, the largest single producer in Hawaii. It has produced 59,000 tons of sugar in a season but owing to labor shortage its production this season has been 51,000 tons. It has a world's record of 99.07 extraction for an entire season's crop. Last season it ground 376,877 tons of cane. It has a total area of 31,267 acres.

At Paia is the sugar mill of the Maui Agricultural Company. It has produced more than 36,000 tons of sugar in a season but several seasons of drought and acute labor shortage reduced the production this year to 25,326 tons.

This plantation has a cement plant it works in connection with its other industries and was the first plantation in the Islands to manufacture fuel alcohol for its own purposes from molasses. It makes all its own motor fuel and is supplying its workers with fuel alcohol instead of wood for cooking purposes.

It is a combination of Haiku and Paia Plantations and has an area of 34,061 acres.

Haiku Fruit and Packing Company is the largest and the first pineapple packing enterprise on Maui and one of the most complete and efficient in the Islands. Its production this year will be between 700,000 and 750,000 cases of canned pines.

Some of its fruit is grown on its own lands, some grown under contract and some purchased from individual land owners.

Pauwela Pineapple Company cannery is also at Haiku and is the youngest enterprise of its character on Maui. It will have a production this year of about 150,000 cases according to estimates that have been made.

Its plans have been built so as to expand and its camp is one of the most attractive furnished by any Pineapple Company for workers.

At Makawao is the Makawao Union Church, a memorial building, on the left side of the road going up, also the Fred Baldwin Memorial Home for aged men, and the Maunaloa seminary for Hawaiian girls.

At Keahua is the polo ground where the match will be played this afternoon, the finest grounds in the Islands and headquarters for the champion polo team of Hawaii.

On the drive from Kahului to Wailuku on the right side of the road is Malulani Hospital, a county built and county maintained institution complete and comfortable with accommodations for nearly 60 patients.

Further north is St. Anthony's Catholic Church. Still further north is the Wailuku Sugar Company mill along some of the cane fields of which the road that is being traversed runs.

This company had a production of 14,168 tons this year. Its lands com-

prise 20,000 acres of which about 5,000 are in cane.

Wailuku is the county seat and the largest settlement on Maui. There is the circuit court building, a stone affair, county offices, County Free Library, Kaahumanu Hawaiian Church and Wailuku Union Church.

Iao Valley has been called the Yosemite of Hawaii. At its mouth is Wailuku. The valley cuts up into the West Maui mountains about five miles and the automobile road extends about three miles. From the end of the road is a view of the "Needle" rising sheer to a height of 200 feet from the river bed. Toward the head of the valley, reached by trail from the end of the road, the walls rise to a height of nearly 4000 feet.

Proceeding from Wailuku to Lahaina and West Maui the road passes through Waikapu, a camp of Wailuku Sugar Company and proceeds on through the fields of that company and then those of Hawaiian Commercial and Sugar Company, the latter on the left of the road, to Maalaea and Maalaea bay where formerly was the landing for the Inter-Island steamers.

From Maalaea on the road climbs along a cliff side (a pali). Looking off a tiny inlet is espied. This is Mokolini, the finest fishing ground for tuna and ono, about the Islands where also lurk enormous shark. A larger island, red and barren looking is Kahoolawe which was devastated by goats, many thousand of which had to be slaughtered before they were exterminated. That island is now being revitalized with vegetation since the goats have been disposed of.

Proceeding along the Pali road the still larger island of Lanai comes into view. That island is almost directly out from Lahaina and is now used chiefly as cattle grazing land. Olowalu plantation is passed on the right a few miles before reaching Lahaina.

Lahaina was one of the first points in the Islands where the missionaries established themselves. It was the chief port on those days and then and later was an important port for whalers. On the hills back of Lahaina is Lahainaluna school one of the first institutions of learning established by the missionaries. In location and setting Lahaina is one of the most beautiful spots in the Islands. Formerly it was the county seat of Maui.

The cane fields passed through before reaching the West Maui port are those of the Pioneer Mill Co. At Lahaina its mill, which this year produced 26,246 tons of sugar, affected as were the other plantations by droughts and labor shortage. Its 1917 crop under the most favorable conditions was 32,500. It has an area of about 9000 acres.

Beyond the Pioneer Mill is the new cannery of Baldwin Packers which has had an output this year of 145,000 cases of canned pines. Its fields are further on at Honolulu ranch. This cannery is the best located for steamship loading of any in Maui, in close proximity to Mala wharf.

Mala wharf was completed and opened for use in April of this year. It is of reinforced concrete, 962 feet, 6 inches in length, 55 feet in width and has a depth of water at its end of 32 feet. Maui floated the territorial bonds for this structure as it has done for the wharf now building at Kahului on the other side of the Island.

From the end of Mala wharf there are views of the Islands of Lanai, Mokolai and Kahoolawe.

Doublets other sights will be shown the visitors today but these are some of the most outstanding things for them to see during their brief busy sightseeing trip.

Britain Will Use Force To Protect The Dardanelles

English Cabinet Votes To Act Independently Of France And Italy; Poincare Wants Diplomacy

(ASSOCIATED PRESS)
LONDON, Sept. 19—It was authoritatively stated following a lengthy cabinet meeting that Britain will undertake military action to protect the freedom and neutrality of the Dardanelles independent of France and Italy, if necessary.

Will Use Diplomacy
PARIS, Sept. 19—The French cabinet approved Premier Poincare's order to withdraw the French troops from Asia-minor to the French side of the Dardanelles straits and to settle the near-east question by diplomacy.

Believe Kemal Lost
CONSTANTINOPLE, Sept. 19—British military experts believe Mustafa Kemal's chances for a coup against Constantinople are lost owing to a speedy strengthening of the allied defenses.

The situation at Smyrna remains grave and the reign of terror continues. Greeks and Armenians are dying by scores. Food supply is exhausted and the people are eating horseflesh. American relief associations are distributing flour among the refugees who are devouring it raw.

Nations League Considers
GENEVA, Sept. 19—Proposals for intervention by the League of Nations for the pacification of Asia-Minor is monopolizing the attention of the Assembly today.

CONSTANTINOPLE, Sept. 18—The angora government has informed the allies that if the remainder of the Greek army in Asia-Minor attempts a retreat across the neutral zones of the Dardanelles, then the Kemalists will disregard the Straits neutrality and pursue.

Americans from Smyrna graphically described the holocaust. American sailors perilled their lives rescuing fire refugees. Many refugees jumped in to the waters, preferring drowning to being burned alive. H. A. Jaquith of Darien, Connecticut, said the American people should be proud of the valor and intrepidity of their sailors.

Britain Demands Munitions
PARIS, Sept. 18—Private advices say the British government has ordered all small arms and munition factories in Britain to work 24 hours daily at full capacity in preparation of Turkish eventualities.

Asks League Aid
MELBOURNE, Sept. 18—Australian premier Hughes has cabled Sir Joseph Cook, the Australian delegate requesting him to bring the near-east dispute before the league of nations with the view of securing peace.

Option On Lanai Is Given Hawaiian Pine Company By Baldwins

Option for the purchase of the Island of Lanai within a period of three months has been given the Hawaiian Pineapple Co., by Delegate Harry A. Baldwin and Frank F. Baldwin, was the news published in yesterday's Star-Bulletin and brought to Maui this morning. The newspaper article does not mention the purchase price but other sources of information say it is to be \$1,200,000 if the option be exercised.

Formerly it was claimed that Lanai was not suitable for pine growing but experiments made by the Haiku Fruit and Packing Company have demonstrated the contrary and this morning disappointment was expressed that another company than the big Maui concern might get the large acreage that could be made available.

Lanai has an area of about 100,000 acres and it has been estimated that as much as 25,000 acres, perhaps more, is available for pineapple growing. With the exception of a few small kuleanas it is the property of the Baldwins.

At the same time with the breaking of this news comes the announcement that Wailuku Agricultural Company of Oahu will secure a third interest in the Hawaiian Pineapple Company in exchange for leases on 12,000 acres of land and a cash consideration of a million and a quarter.

MILLIONAIRE EXPLORER
(ASSOCIATED PRESS)
HONOLULU, Sept. 19—Captain E. A. Sealbury a Los Angeles Millionaire and explorer arrived here on the President Taft. He is enroute to the Malay peninsula where he will seek humans with tails, saying that he intended to prove Darwin's theory on the descendant of man.

BOARD ABOLISHED
(ASSOCIATED PRESS)
TOKIO, Sept. 18—The diplomatic advisory board composed of members of the Japanese cabinet and leaders of various political parties that was established at the outbreak of the world war to advise the government has been abolished.

Marius Matsuka, keeper of the privy seal, has resigned and Viscount Hirata named to succeed him.

CENTRAL UNION PROTESTS
(ASSOCIATED PRESS)
HONOLULU, Sept. 18—The Central Union congregation this morning sent a telegram to Secretary of State Hughes, "Urging the securing of international action to protect the Armenians and all other peoples of Asia-Minor from Further atrocities."

**HEALANI FINISHES IN THRILLING RACE
HILO'S JUNIORS TAKE SECOND EVENT**

(ASSOCIATED PRESS)

HONOLULU Sept 17—Healani's senior crew of youngsters, rowing in an uphill race, sprang a huge surprise by defeating Hilo the favorite crew in a hair raising finish by less than half a length in the six oar sliding-seat barge race, the classic event of the regatta, thereby repeating the trick turned by the Blue and White in 1919. Myrtle was third by a length.

For Hilo it was a heartbreaking finish as the Crescent City crew had led from the start until the last two lengths with Healani on her heels most of the way. Two lengths from the finish Healani spurred ahead despite Hilo's frantic efforts to hold the lead.

From the start and down the course the crews swept majestically in a V formation with Hilo and the Myrtles almost neck and neck on the outside courses and Healani in the center about a length behind. At the turn it was Hilo, Healani, and Myrtle until when but two lengths from the finish Healani spurred to victory. The winning time was 12:43 3-5 and regarded as exceptionally fast.

Canoe Race

By two feet gained in a spurt on the last 500 yards, the intermediate crew of the Outrigger Canoe Club won the six paddle canoe race, the first on the program of the 1922 regatta.

The early favorites in the race, the Junior crew, finished second and the senior's who won the honors in the event last year were third by half a length. It was one of the closest finishes in a canoe race yet witnessed by local sportsmen. The time was 2:56.2.

Hilo Wins Junior Event

By a single boat length the junior crew from the Crescent City won the junior six oar sliding seat barge race in one of the most spectacular junior races staged in the islands regattas. Entering the home stretch a half length ahead of Myrtle, Hilo slowly increased her lead until at the finish there was clear water between the boats. Healani was hopelessly out of the race from the very start.

The Honolulu Girls Rowing club beat the Kunalus by little more than a boat length in the senior girls six oar sliding seat barge event. The time was 7:39. Kunalu led the race most of the way to the finish but lost out as they neared the tape.

Regatta day broke fair and clear with scarcely a ripple disturbing the serenity of the harbor waters. The captains of all crews reported their men in good shape. Myrtle won the pick of the courses and chose the Waikiki course. Healani won second choice and took the middle lane. Hilo got the outside lane. Judge A. G. M. Robertson known as "Father of Regatta Day" fired the pistol at the finishes of the races as the boats crossed the line.

The crowd was declared the largest that ever saw a local regatta and not only pier 10 but every other pier in the harbor was lined with fans. Some were even perched atop the inter-island coaling plant.

**Hawaii Championship
Tennis Tilt Going
Full In Honolulu**

Yesterday afternoon at four o'clock on the Bereania courts saw the opening play of the Hawaiian island tennis championship tournament. The entries for the title closed at 10 o'clock yesterday morning and drawings were to be made immediately following. Up to Saturday evening 11 entries had been made in the men's singles and six entries in the men's doubles.

Among the island players entered in the tournament is W. N. Eklund, five times the singles champion of Hawaii. Bowie Detrick of Hilo, a close championship contender is also entered. Experts predict the finals will again be played between Eklund and Detrick.

Other entries on the list include Van Dyke Johns, William H. Hoogs, A. L. Castle, W. H. Balthis, H. A. Asch, Fred Biven and W. Gurnsey.

**Tam and Ting To
Play Semi-Finals**

Two further matches have been played in the All-Maui men's singles championship tournament with the following results:

Eddie Tam defeated Young 6-0, 6-3.
E. J. Walsh defeated R. B. Reittow 7-5, 6-4.

Semi-finals Saturday

On Saturday afternoon on the Puunene courts Eddie Tam will play E. J. Walsh in the first round of the semi-finals.

33 FOR RUTH

(ASSOCIATED PRESS)

ST LOUIS, Sept 18—Babe Ruth drove out his 33rd home run of the season here today.

WORLD'S SERIES DATES FIXED

(ASSOCIATED PRESS)

CHICAGO, Sept 18—Presidents of the National and American Leagues have fixed the date of the world's series to open at New York on October fourth. Last years prices will prevail.

**Maui Unable To
Annex A Victory
In Title Series**

**Drops First Contest to Hiloites
By Count Of 6 To 2; Kauai
Noses Out In Eighth 12 to
10**

Hilo's baseball team, representing the Island of Hawaii, made up for the downfall of the Hilo crew in the regatta by taking Senator Rice's Maui aggregation over 6 to 2 in the first of the island championship games at Moiliili Field yesterday afternoon before a large crowd. In the second game the Chinese, representing Oahu, bumped off Kauai 14 to 7, but not before Wong Chow, the youthful pitcher, had been batted from the box and the Garden Islanders were well on their way to victory. Luck Yee relieved Chow and kept the Kauai team in check while his teammates went out and piled up enough runs to win.

The initial game of the afternoon saw better baseball on display. The teams were more evenly matched and there was none of that weird stuff on exhibition. Low pitching for Hawaii hurled tight ball, letting Maui off with six scattered hits. Reis starting for Maui retired in the eighth, Robinson taking up the duties.

The Hilo crowd plied the stick work freely grabbing 14 bingles, all singles. The only extra base hits of the game came from the bats of the Maui team, Chartrand getting a triple and Wakayama a double. This game saw some excellent fielding on the part of both teams. Baptiste made a couple of stellar catches in right field for Hawaii.

Hawaii got off to an early lead and was never headed. Maui did not register until the fifth and another came over in the sixth.

Hits and Runs By Innings

Hawaii	1	0	2	0	0	0	1	2	—	6
Basehits	3	1	2	3	0	0	1	1	3	—
Maui	0	0	0	1	1	0	0	0	2	—
Basehits	1	0	2	2	1	0	0	0	6	—

Maui Second Game

After having once apparently cinched the victory, Kauai won out yesterday in the game with Maui by a slim margin of two runs, the final score being 12 to 10. Oahu shut out the Hawaii delegation by a score of 7 to 0, thereby settling all doubts on the question of supremacy.

The first few innings of the Maui-Kauai game were rather uneventful beyond a run here and there.

The celebrated virtues of the seventh inning were proved beyond doubt yesterday. After Kauai had registered 8 counters the Maui team gave a display of activity during this frame that took away Kauai's collective breath and filled the air with yells in at least three languages. Masachi was first to bat and walked. Bal was more ambitious and wound the old bat around a two-base hit that put Masachi on third. Enos was hit by a pitched ball and stroled to first. Every thing was ready when Souza connected with one and Masachi and Bal scampered home. Silva got away with a fly that brought Enos home. Chartrand walked and the bags were refilled. A pitched ball collided with Cockett and Souza came home by the pedestrian route. At this point Costa replaced Wramp on the mound. It didn't seem to make any difference to Robinson, who promptly singled and brought home Chartrand and Silva. Shim hit one that took him to first and brought in Cockett and Robinson, thanks to a wild pitch. Shim took second when Masachi filed out and went out himself a few minutes later between second and third. Enos wound up the inning by a foul fly, Maui having eight runs to her credit, which placed her total one ahead of the Kauai gang.

Kauai however, added four more runs to her total in the next stage and the game was over.

Hits and Runs By Innings

Maui	0	0	0	0	1	8	0	1	—	10
Basehits	0	0	1	0	1	2	2	0	—	7
Kauai	0	1	2	2	0	5	0	—	—	12
Basehits	0	0	0	3	2	1	4	0	—	11

**East Maui Champions Wallop
Paia In Sunday Benefit Game**

Halku walloped Paia by a score of 12 to 4 in the benefit game for the Halku Catholic church, at the Paia diamond Sunday afternoon.

Nips and Fatale worked the batteries for the Halku team and Simeon and Joe To Rego worked for Paia. A good crowd turned out to witness the match and a fair sum was realized.

Major and Minor Ball

Coast League

Sunday, Sept 17—San Francisco 5, 6, Portland 4, 2; Sacramento 2, 1, Vernon 8, 9; Oakland 4, 2, Salt Lake 8, 1; Los Angeles 5, 1, Seattle 0, 4.

American League

Sunday, Sept 17—Boston 3, Chicago 2; Cleveland 4, Philadelphia 2; Washington 6, Detroit 2; New York 1, St Louis 5.

National League

Sunday, Sept 18—Chicago 6, Brooklyn 2; Cincinnati 4, New York 3. No others.

Additional Sports on Page Seven

Stores to Close

**Puunene Store
AND
Kahului Store**

Will be closed on Monday and Tuesday, September 25th and 26th for Stock taking.

STORES TO CLOSE

FOR THE PURPOSE OF TAKING OUR ANNUAL ACCOUNT OF STOCK

The Paia and Hamakuapoko Stores

WILL BE CLOSED ON

Monday and Tuesday, September 25th and 26th.

ALOHA ANGELENOS!

Our cordial welcome is extended to the visiting members of the Los Angeles Chamber of Commerce and their fellow excursionists and we rejoice in the opportunity to give you a glimpse of our Island today. Your visit we regard as the herald of a close friendship between Hawaii and Southern California.

BANK OF MAUI, LTD.

WAILUKU

LAHAINA

PAIA

HORSE RACES

ATTENTION OWNERS

Maui County Fair, October 12, 13 and 14

Entries Close Tuesday, October 3

For program, full particulars and entry blanks, apply or address W. H. Engle, Secretary Racing Committee, Baldwin Bank, Kahului.



**Every Tire
Is Signed**

Two men sign every Miller Tire—the maker and the inspector. Both are penalized if a tire comes back.

Under this method, defects have become extremely rare. Not a tire came back for adjustment to many Miller dealers last year.

Over 1,000 tires yearly are worn out in Miller factory tests.

All the best rival tires are constantly compared with the Miller, with these results:

Millers now excel all rivals, both in average and in uniform mileage.

Miller treads outwear rival treads by 25 per cent on the average.

Miller Cords average 15,000 miles—Miller Fabrics from 8,000 to 9,000 miles—in rear-wheel tests under extreme conditions.

You will gain a new idea of modern tires when you test a new-type Miller. Get one now and watch it. The super-service of the Miller Tire is now everywhere discussed.

Tread Patented

Center tread smooth, with suction cup, for firm hold on wet asphalt. Geared-to-the-Road side treads, mesh like cogs in dirt.



Miller Tires

Now the Record Makers

Cords or Fabrics

Geared-to-the-Road

DAN T. CAREY

MAUI DISTRIBUTOR

Main Street Mauka of Market, Wailuku

AMERICAN LEGION DANCE

TERRITORIAL BUILDING, KAHULUI, SATURDAY EVENING, SEPTEMBER 23rd.
TICKETS \$1.00—LADIES ADMITTED FREE.

MARY HOFFMAN ORCHESTRA



With the Alert Boy Scouts of Maui

Thrift. IV. Joe Hu, Samuel Kahalauaha, Tommy Kaikala. XI. Toshio Higuchi.
Compass. XI. Tony Kaiama, Khan Idemoto.

First Class

Thrift. IV. Tommy Kaikala, V. Chas. Apo, Sam. Kahulla, Sam. Kahalauaha. 14 mile hike. V. S. Takatsuka, T. Shimokawa, Kapoi Aalona.
Mapping. IV. L. H. Hashimoto, Ah Chong, Kapoi Aalona.

Handicraft. IV. Lawrence Hashimoto, Kapoi Aalona, Jno. Kaalakea.
Judging. IV. Ah Chong, Wing Hong, Swimming. IV. Tommy Kaiagata, Sam. Kahulla.

Cooking. IV. Kapoi Aalona, John Kanoho, Lawrence Hashimoto, Kauli Kahulla, John Kaalakea.
Practice Scout Law. IV. Lawrence Hashimoto.

Troop 4. (Diamond F.) Kipahulu Kipahulu, Maui, Sept. 11.
"Maui Council Boy Scouts of America."
"Dear Pop:"
"On Friday night September 8 we had a most enjoyable cooking test

First and Second Class.
"At 7 p. m. we all gathered at the Scoutmaster's office. He supplied us with the meat, potatoes and onions, etc. We hiked to Public School and stopped where the boys of the big hike did our cooking before. As soon as we reached there we went out to gather wood as no shingles, box wood and old lumber was allowed to be used.
"Each scout built his own fire and did his own cooking or roasting.
"Some busy on their stews and others busy on their meat roasting tests. Everything went on fine and soon we were ready to eat.
"Mr. Jos. Fassoth, our scoutmaster, tasted every scout's meat and stews and said they were all well done.
"We were all anxious to have our bite of the out door cooking and let me tell you Pop we didn't wait for our stews and meat to get cool but just did "Go and get 'em." Some "luau."
"After the luau was over we all made sure that the fires were put out thoroughly and hiked home. We reached home at 9:15 p. m.
"Guess that's all Pop. Aloha nui to you and our brother scouts over there, from all the scouts of Diamond F., I am.

"Your scout,
LAWRENCE HASHIMOTO,
"Scribe Troop No. IV, Kipahulu."

Troop Notes

Did the big hike do any good as far as Scouting is concerned? Just cast

your eye over the returns from Kipahulu and see one of the results in the test slips that came from there this week.

Deputy Commission Jos. B. Fassoth writes that the Hana scouts have been greatly stirred up and are determined to do good work from now on.

Mr. Fassoth and Dr. Lichenfels are to see Mr. Dyson of Kaieku to take over the troop. If this can be accomplished the troop is bound to forge ahead as Dyson is a great hand with the boys.

Scoutmaster Langa of the Makawao troop has sent in his resignation to Commissioner Childs. This is a hard blow to Makawao and the Bronco Busters will miss him terribly. Langa has been a hard working conscientious worker, and we are sorry to lose him.

Wesley James Ross formerly a scout in Syracuse N. Y., and at present employed by the K. R. R. Co., has filed his application as scoutmaster of a troop. He has had years of experience in Syracuse, New York and will make a valuable addition to the work on Maui.

Gay Harris formerly of the executive troops in Honolulu is now working in the machine shop at Punene. He holds the island record for making fire without matches, 17 seconds, just six seconds above the world's record. He will also be a help to the scouts of Maui.

The Court of Honor is the next big thing on the program. This body will meet in Judge Case's court room some time the latter part of this month. There will be many first class diplomas given out, also a number of merit badge applications to act on and present, and two cases of presentation of medal for life saving. The public is welcome to this affair and it is hoped that many will attend and hearten the scouts by their interest in the work.

Then comes the Maui County Fair. The scouts who will be chosen for the work this year will be those who have shown interests in their work by passing tests and attendance, etc., Mr. Tam states that they will need about 100 scouts. They will camp on the grounds as usual. Special passes will be issued also meal tickets. Some of the older scouts can secure jobs at the concessions and be paid for their services. Those who would like these positions must have their Scoutmasters make application for these jobs. These scouts will not be in uniform.

The Big Hike

In last Tuesday's issue of this paper we took occasion to thank those who so kindly assisted in making the big hike the success it was and now we are going to tell about the hike itself.
The hike was given as a reward to scouts who faithfully attended their scout meeting and make advancement in their tests.
From each troop two scouts were chosen as the ones to represent their troop, besides a number of scouts from Troop 4 Honolulu, the executive's old troop, and a few others who paid their way.

We started from Wailuku on Monday morning, August 28, at 8 a. m. taking autos from in front of the Settlement office. These machines picked up the scouts at Kahului, Punene, Spreckelsville, and also the Lahaina scouts who came over on Sunday and stayed with the executive. The Hana and Kipahulu scouts were guests of the executive from Wednesday, August 23, having come over on Wednesday's steamer. The Haiku, Hamakua and Paia scouts were met at the Paia depot. The Makawao scouts in charge of scoutmaster Langa left the Makawao scout house early Monday morning in charge of the five pack animals, loaded with the kaukau.
At the Paia depot were two trucks from Paia and Haiku into which the scouts piled and were off to Olinda. One truck was in charge of Councilman A. B. Brown and the other in charge of the executive. The run to Olinda was made in short order and there a short rest was taken while the bedding, tents, etc., were packed on the animals. The start to the Rest House was made about one p. m. Mr. Brown started off with the gang and Mr. Langa in charge of the pack animals. It was a long hard climb and the scouts reached the top all the way from six to ten p. m.

As usual Pop brought up the rear of the line to see that there were no stragglers lagging behind. He succeeded so well that he did not reach the top that night, but rested in the old galvanized shack about three miles from the top. About half a mile above him three of the older boys had crawled into the brush where they lay shivering until dawn when they continued their way to the top. Pop started out about 5:30 a. m. on Tuesday and met Mr. Brown and some of the scouts who had come back to find him.
After breakfast on Tuesday morning the animals were packed by Scoutmaster Langa who was to have entire charge of that work assisted by a picked team of his own choosing. Councilman Brown took charge of the commissary and Pop was generalissimo. The hike along the rim was hot and rough and all were glad when the descent was begun. Then the long monotonous downward trip to the floor of the crater. Many were the stops to dump the cinders out of shoes and shake out the dusty socks and stockings. A heavy fog was in the crater and only fleeting glimpses of the cones and cliffs were had. All stuck close to the trail until the clouds disappeared. Then many of the scouts made side trips to examine the silver sword plants and cones. No stop was made at the celebrated (?) huddle as we wished to get camp for the night and locate water. By four in the afternoon the last of the party in charge of the executive were at camp. The site was at Pali-ku where plenty of water, fire wood, and about grass was in evidence for the animals. Mr. Sam Baldwin and party were camping here also some of the scouts who came up from Kipahulu to meet us. Mr. Baldwin presented us with a kid for the scouts. All tents were pitched for the night and then supper was served. It was wet and drizzly so all got under cover as soon as supper was finished.
(To Be Continued.)

It's Good For the Children

Children always like Maile butter because it tastes good and satisfies their hunger. Appetizing in smell and appearance. Maile butter should be on your table at every meal. Let the children eat it on bread for a "between-meals snack." It is good for them.

Metropolitan Meat Market

HONOLULU
AGENTS FOR TERRITORY

REDUCED PRICES

FOR ONE WEEK ONLY

From September 25th to October 2nd

Rosey's Best Soap	6 Cakes for	.25
White Persian Soap	6 " "	.25
Velvo Toilet Soap	3 " "	.25
Soap Chip	3 lbs. "	.25

The above prices will take effect in all Maui Dry Goods & Grocery Company's Stores, including CENTRAL STORE at Wailuku.

Maui Dry Goods & Grocery Co. Ltd.

The Money-Saving Stove

Many makes of oil stoves were tested out by the Hawaiian Sugar Planters' Association to determine which was best suited to the needs of plantations that are substituting other fuels for wood. Original cost, length of life, expense of upkeep, fuel consumption and satisfaction in use all entered into consideration and from them all as easily superior the choice was the

Auto Feed

Because they proved it to be

Cheapest in first cost	Longer lived parts
Strongest in construction	Quickest in action
Lowest in fuel cost	Simplest in use

And after making tests for itself the M. A. Co., found the same thing and that is why it adopted it for plantation use.

NOTE THESE PRICES

2 Burner AUTO-FEED Stove	\$19
3 Burner AUTO-FEED Stove	\$24
4 Burner AUTO-FEED Stove	\$29
2 Burner Oven	\$6

SPLASHER BACKS EXTRA

See models of these Stoves on exhibition in the window of

PAIA STORE

PAIA, MAUI

Maui's Fifth Annual County Fair

FRUIT EXHIBITS

Entries of Fruit From Every
Isle Welcomed

PRIZES

Cash prizes of \$5.00, \$3.00 and \$1.00 awarded to three best baskets of assorted fruit.

Pruning saws, pruning shears, pruning knives, choice fruit trees, and works on horticulture awarded exhibitors allotted blue and red ribbon.

A silver cup, based on credits received (blue 3, red 2, white and special each 1) will be awarded.

EXHIBIT OF COLD STORAGE FRUIT

If you have choice fruit maturing before Fair time we would like to have you exhibit it, and upon request, will tell you just how, and will help you, to do it.

Remember: Award of Prizes will depend largely upon

Cleanliness—very important)	
Quality)	of fruit
Uniformity in size, and)	
Freedom from blemish)	

Printed copy of regulations, premium list, and classification of fruit, furnished upon request.

To a large extent the success of every Department of the Fair depends upon your cooperation. If in a position to do so be one of those who propose not only to enjoy, but aid in making, this our BEST FAIR.

(Mr. and Mrs. D. H. Case,
Mrs. Frank Hoogs-
Committee in Charge—(Dr. W. D. Baldwin,
Mr. W. F. Pogue,
Mr. James Lindsay,
Mr. Wm. A. Robbins.

RESTAURANT

Food to tempt the appetite of the most fastidious and delicious enough to set before a king.
T. AH FOOK ———— Kahului

YOUR SUMMER OUTING

SEE MAUI FIRST

Horses and Competent Guides For Your Trip at Reasonable Rates.
TO THE CRATER: Horses \$8 each; Guide and Horse \$8.
AROUND THE ISLAND: To and through the Crater and back by way of the Famous Ditch Trail, \$20 each horse; Guide and horse \$25.
KEANAE AND BACK: Over the beautiful Ditch Trail, \$10 each horse; Guide with horse, \$14 for the trip.

YOU'LL LIKE OUR SERVICE

JOE SILVA

PHONE 463-L, MAKAWAO
Main Road Olinda Homesteads P. O. Address, Makawao

MATSON NAVIGATION COMPANY

DIRECT SERVICE BETWEEN HONOLULU, HILO
AND SAN FRANCISCO

For San Francisco:

MATSONIA	September 20, 10 a. m., Pier 15
MANOA	September 27, 10 a. m., Pier 15
MAUI	October 4, 10 a. m., Pier 15

For particulars apply to—

CASTLE & COOKE, LTD.

AGENTS, HONOLULU

FORT AND MERCHANT STS.

ALL MAUI READS MAUI NEWS WANT ADS.

SEMI-WEEKLY MAUI NEWS

"FOR THE VALLEY ISLE FIRST"

A Republican Paper Published in the Interests of the People
Issued Every Tuesday and Friday

MAUI PUBLISHING COMPANY, LIMITED
Proprietors and Publishers

M. R. PEREIRA, Manager

SUBSCRIPTION RATES: \$4.00 PER YEAR IN ADVANCE

Entered at the Post Office at Wailuku, Maui, Hawaii, as second-class matter.

MEMBER OF THE ASSOCIATED PRESS—The Associated Press is exclusively entitled to the use for republication of all news dispatches credited to it or not otherwise credited in this paper and also the local news published herein.

JOSEPH H. GRAY

EDITOR

TUESDAY

SEPTEMBER 19, 1922

ALOHA ANGELENOS

Ever ready with a welcome for visitors the one which Maui extends to the Los Angeles Chamber of Commerce Excursionists to day is warmer and more than ordinarily cordial since more than ordinary significance attaches to the visit.

This morning there steamed into Kahului harbor a fine and stately steamer bringing to the Valley Isle more than 300 guests for the day and inaugurating a new transportation service which is to link up Southern California with the Isles of Hawaii, to bind them together with ties of business and commerce and bring about an intimacy of acquaintance between their peoples.

The advent of 300 guests on one steamer is memorable, the fact that those guests are largely members of one of the greatest and most successful civic organizations in the world is momentous; the inauguration of the steamship service with its significance as to tourist travel is epoch making.

Los Angeles is the greatest center of tourist travel in the United States. Its Chamber of Commerce is the organization which made it so and built the city up from a little town into a great metropolis of the Western Coast. The Chamber of Commerce party comes offering to share with Hawaii Southern California's great source of wealth, tourist travel, makes a neighborly call and brings with it on that call rich gifts. Thus it is that the sentiments of hospitality and of gratitude mingle in the welcome that is being extended.

From the social aspect, today's visit is pleasurable for the guests are nearest neighbors in point of distance though only by means of the new steamship line have they been brought into a contact similar to that which has existed between Hawaii and San Francisco. It marks the beginning of an acquaintance destined, it is hoped, to ripen into close, warm friendship. It is the step to business associations and commercial understandings between Los Angeles and Hawaii which will carry to the Californians a knowledge of the needs as well as the resources of Hawaii with resulting cooperation in matters mutually beneficial.

This morning on shipboard words of welcome were spoken by Judge D. H. Case and the sentiments and expressions he voiced were those of the whole Maui community. This morning the visitors were taken on sight seeing trips and this afternoon those trips will be continued with Maui residents as personal guides and conductors to tell the honored guests of what they are seeing. But the time is all too short. The visitors can have only a superficial glance at the two great industries, sugar production and pineapple canning. They can see only the most accessible scenery.

Maui would like to have her guests with her long enough to tell them the details of her industrial methods, to show irrigation and other projects, to give them an insight on her methods of handling racial problems, to show what she does in social welfare work and for the comfort of the great mass of workers. She would like to take them to the summit of Haleakala whence they might look down upon the world from the height of more than 10,000 feet and gaze upon the marvelous and ever changing scenery of the great, dead volcanic pit. She would like to take them over the Ditch Trail with all its charm and wondrous scenic beauty.

There are many things Maui would like to do, but lack of time forbids and so, today, she can only express the sincere hope that her guests will come again to the shores of the Valley Isle and remain long enough on future occasions to receive in full the hospitality of which that extended today is only a taste.

POINTS OF DIFFERENCE

Maui's guests of today, at least those of them who have not visited the Islands before, are finding the Islands different from what they expected and conditions here very different from what they know at home. The entertainment which will be presented to their eyes tonight will give them entirely dissimilar impressions of old Hawaii, the Hawaiian people, their music and dances from anything they may have conceived from the "Hawaiian shows" and entertainments they may have seen at home.

So also what they are seeing today is in striking contrast to what they are accustomed to. They see towns and plantation villages nesting in the very midst of cane and pineapple fields, their further growth restricted by those fields. They see great sugar making factories with the cane growing almost at their doors, canneries with pineapple fields at their entrances, water being brought through tunnels and in ditches and flumes to be poured back onto the earth instead of being used for household and domestic purposes.

They are used to look upon unoccupied lands with a possibility of their utilization for suburban homes, here they will see no such attitude. In the towns they will not see a sign announcing a real estate office. They have come into a section where agriculture in intensified form holds first place and productivity is all important. The camps are to accommodate workers needed for such productivity and each and every little home therein is needed for that purpose and for that purpose is more valuable than the cash for which it might sell. The towns are designed to handle the business arising from the needs of agricultural industries and their employees and to house those whose business it is to meet those needs. They will see little opportunity for expansion and spreading growth in those towns without infringing unduly upon agricultural activity.

Should they go up country further into the homesteads of Haiku, Olinda, Kula and elsewhere, they will see smaller tracts of lands which produce for the owners in crops a greater cash return than would their worth in money put out at interest. These are some of the things the visitors will find it hard to understand.

At home they are used to seasonal labor problems. There are times when they have acute labor shortages and other times when workers are turned away from ranches or orchards. Here, in the sugar plantations they will see a constant and never changing demand for labor. There are no seasons of unemployment for field workers or factory hands in the sugar industry. The work is there for every worker day in and day out, from year end to year end. In the pineapple fields they will see a similar condition and only in the canneries are extra helpers needed at certain periods. They will see racial conditions handled differently also. Japa-

THE OPTIMISTIC PESSIMIST

Reports from the East say that women are wearing their skirts longer but hubby says the bills keep coming in just as often so that he can't see it.

The man who talks least about what he is going to do has time to accomplish more than the braggart.

The wife whose husband never uttered a word of criticism is in a quandry to determine whether he has a most wonderful, amiable disposition or merely lacks courage.

Howard Case remarks that Miss Marguerite Waltz runs a dancing school in Chicago. Sort of a running waltz, eh, Howard? Perhaps its a variation of the Fox trot.

When envy is cast aside one begins to take enjoyment in the enjoyment of others and really tastes the joy of life.

While a woman hates to be reminded of her years she cannot forgive one who forgets her birthdays and wedding anniversaries.

If the average man were permitted to select table decorations he would have for a center piece a juicy beef steak surrounded by French fried potatoes and declare the perfume more exquisite than that exhaled from the most fragrant flowers.

A writer in a "woman's column" says there are plenty of short cuts to a man's heart. Yes, but some times it takes longer to find the short cut than to take the longer way around.

Putting oil on troubled waters may smooth things out but putting oil on harbor waters in Honolulu seems to be a continual source of trouble.

Sometimes it takes longer to undo plans than it does to make them originally or even to carry them out.

ness, Filipinos, Portuguese, Porto Ricans, Koreans and a few Chinese work altogether, live side by side. They will see homesteads rented to and cultivated by the Japanese for pineapple growing. They will see less jealousy manifested toward the Japanese than they see at home though they may get a glimpse of matters that will show that Hawaii also has its Japanese problem.

Another difference they will note is that no provision is made for housing winter visitors in homes. If they will inquire they will find no furnished houses for rent in the towns, hardly an unfurnished house that can be rented. And up the mountain side or at the beaches the only houses they will see are mountain or beach homes of Island residents needed for their own use.

They will not have the opportunity to learn from their own observation of the miles and miles of grazing land that make Maui more than self supporting in meat production. They will not on this visit be able to note the varying climatic conditions up the slope of Haleakala that give promise of a great and varied fruit production, not now fully realized by most Maui folk themselves.

To them it may seem that Maui is not making the most of her opportunities but were they to remain a time, such point of view would change and they would recognize the real and genuine community spirit and cooperative energies that go to spell Maui no ka oi.

Postponement of the Civic Convention that was to have been held in Honolulu this month until some time in December is reported by the Star-Bulletin. Lack of interest at this time is the reason assigned. If the small amount of interest displayed on Maui is any criterion there was good reason for a postponement.

Those who went on the Kilauea excursion that coasted Molokai on Saturday report a thoroughly enjoyable trip and pleasurable day's outing and express the hope that more such excursions may be run on the Inter-Island Company's steamers.

Teamwork wins. Maui uses team work in all its undertakings except when she sends a baseball team away and then picks best players from various organizations who have not had the opportunity to play together in one organization in several games as have the opponents they are called upon to meet.

Reports from Asia Minor indicate that the powers may finally realize that they will have to put a check upon the Turks whether or not it interferes with their business relations with the Moslems. Christian Churches raise funds for the relief of the sufferers from Turkish atrocities and supposedly Christian business men and governments reap profits from the Turks in permitting such atrocities to continue. The churches are powerless to stop massacres and rapine except through such influence as they may wield upon the generals of commerce of the "Christian" nations.

The editor of Wela Ka Hao, the Honolulu Ad Club organ, took occasion to criticize an Advertiser cartoon as "bad publicity" and owner Thurston of the Advertiser is irate. At the head of the editorial columns on Friday he promises to make an interesting reply on his return from Hilo. And all the pilikia has grown from a pictured joke about grass skirts.

Parents who want transportation to and from schools for children in remote districts have their inning now. They can pledge the candidates to secure the necessary appropriations and the time to secure such pledges is now, before the elections are held.

WE'RE TELLING YOU AGAIN

THAT THE PACIFIC MUTUAL FIVE-WAY POLICY PAYS:
Clip and Mail the Coupon for Additional Information.

WATERHOUSE TRUST CO., LTD.
Fort and Merchant Sts., Honolulu
Phone 5701

Please send book descriptive of the new multiple protection policy of the Pacific Mutual Life Insurance Co., that "pays five ways."

Name Street
No.
Occupation
Date of Birth: Month Day Year

WATERHOUSE TRUST CO., LTD.
HONOLULU.

HEMSTITCHING, PICOTING AND DRESSMAKING

MRS. S. SAKAKIHARA
Vineyard Street, Second House above High, Wailuku

3800 Americans To Die Tomorrow

Statistics show that in America 3800 persons die daily, as an average. This year nearly a million four hundred thousand will pass on. You may be one of them but there is no use worrying and the best way to end worry as to what may become of your dependents if you should go is to take out a policy of life insurance now.

The Baldwin Bank, Ltd.

Kahului Insurance Department Wailuku

HEMSTITCHING—PICOTING

MRS. C. L. BOWKER

REAR MAKAWAO UNION CHURCH, PAIA

Orders received and delivered at the Paia Store.

YOU CAN HAVE



American-Maid, or Cream Bread

(Made with Fleischman's Yeast)

Sent to you by Parcel's Post

LOVE'S BISCUIT AND BREAD CO.
HONOLULU

Just give your standing order to

The Ability To Pay---

depends upon the Companies whose financial and moral standing guarantees the reliability of their insurance contracts, both under ordinary conditions and in settling claims which have arisen in conflagrations.

Why Stand In Jeopardy?

We represent leading companies of the world.

C. Brewer & Company (Limited)
(Insurance Department)

P. O. Box 347 : : Honolulu, T. H.

WILLIAM D'ESMOND Engineer and Architect

(Member American Association Engineers)

Designer and Builder of Homes for Particular People

Opposite Maui Book Store
WAILUKU, MAUI

NOTICE

All persons are hereby forbidden to hunt upon any and all lands owned or controlled by the Raymond Ranch without first having obtained permission in writing from the manager of said ranch. Said permit must be carried at all times and shown upon demanded by any employee of the Ranch.

Any persons caught hunting on the above mentioned lands without such permit will be prosecuted as provided for in Act 4, S. L. 1919, amending Section 607 of the Revised Laws of Hawaii, 1915, relative to unauthorized hunting upon private lands, and to provide for the punishment thereof.

RAYMOND RANCH

(SIGNED) ANGUS MCPHEE, MANAGER.

Paia Mercantile Co.
GENERAL MERCHANDISE
Groceries, Cigars, Refreshments
Lower Paia, Maui.

S. MAKINO
HARNES AND SHOEMAKER
Latest model Landis' Stitching Machine. We repair Shoes While You Wait
Market St. Wailuku, Maui

U. OGAWA
JEWELERS and WATCHMAKERS
We cater to the highest and lowest class trade. Watch and clock repairing.
P. O. Box 315—Phone 265, Wailuku

Japanese Mercantile Company
GENERAL MERCHANDISE
PHONE 281-A. KAHULUI.

PHOTO STUDIOS
A. Kutsunai, Kahului
Kodak Developing and Printing Enlarging
Formerly S. S. Kobayashi Store
N. Kutsunai, Lahaina

Honolulu Paper Co., Ltd.
Everything in paper, stationery and supplies. Prices quoted on application and samples submitted

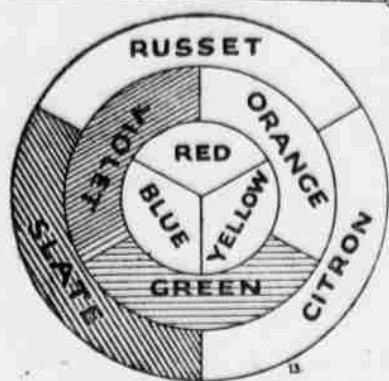
QUICK SERVICE
Clothes, suits and hats cleaned and dyed. Good work assured
YOSHIZAWA CLEANING SHOP
Puunene Ave. Kahului
P. O. Box 131

JAPANESE GOODS
A SPECIALTY
J. ONISHI
GENERAL MERCHANDISE
KAHULUI.

ALL MAUI READS MAUI NEWS WANT ADS.

THE HOME IN GOOD TASTE

By Harold Donaldson Eberlein
Joint Author of "Practical Book of Interior Decoration," Etc.



VIOLET GREEN & SLATE = NEUTRAL
VIOLET = 1/2 BLUE 1/2 RED
GREEN = 1/2 BLUE 1/2 YELLOW
SLATE = 1/2 BLUE 1/2 YELLOW & RED

No. 13—Neutral Colors

Neutral colors are so named because they are neither warm and advancing nor cool and receding. In other words, the warm or advancing elements and the cool or receding elements are evenly balanced in their make-up. Thus, for example, a pure green, exactly one-half yellow, which is warm or advancing, and exactly one-half blue, which is cool or receding, is neutral. Also, a pure, violet, exactly one-half red and one-half blue is neutral. Such color seem neither to come toward you nor to go away from you.

Many neutral colors that are composed of a large number of mixed elements are of a dull hue, such as some of the grays and drabs. By no

means all dull colors, however, are neutral. Russet, for instance, is advancing because the amount of red and orange in its make-up for out-balances the blue element.

One of the most useful qualities of neutral colors is that other colors may be placed against them without clashing. This makes them valuable as backgrounds that can easily be managed. The grays in general although many of them are not strictly speaking neutral in their composition, commonly possess neutral qualities. Neutral-colored walls do not seem to come together toward you. Their tendency, if anything, is to increase apparent size.

Friday—"Color Properties"

FAVORITE RECIPES OF FAMOUS WOMEN

No. 25—By Mrs. William G. McAdoo.
(Wife of Secretary of Treasury in President Wilson's Cabinet)

Candied Sweet Potatoes
Boil five large sweet potatoes and cut them crosswise in pieces 1 1/2 inches in thickness; lay in pan and put two tablespoonfuls of butter, cut in dice over them, then three tablespoonfuls of powdered sugar and two tablespoonfuls of Porto Rico molasses and cook in oven for ten minutes to get nice and brown.

Tomorrow—Corned Beef and Cabbage By Mrs. Jack London.

The Latest

Father—"That child of ours is altogether too annoying with his toy boat."

Mother—"What does he want now?"
Father—"He wants to have it fitted out with a wireless."—Le Journal Amusant (Paris).

The Daily Fun Hour

Follow-Ball Race

This game is usually played with a medicine ball, but a basketball or any other sort of air-ball will serve the same purpose. The players stand in two lines, facing one another. The lines should be about twenty-five feet apart, forming what is called a hollow square, open at both ends. Four pegs may be driven into the ground, one at the beginning and one at the end of each line of players, or flat stones may be used to mark the corners of the hollow square.

The first player at the right end of each line takes the ball for his side and runs all around the square, behind each row of players. Each ball runner attempts to "tag" his opponent with the ball and also tries to avoid being tagged himself. When he returns to his starting point with out being tagged he passes the ball to the next player in line, who immediately runs with it, following and being followed by the second player in the opposing line.

The first player then goes to the foot of the line, and the whole line moves up one space. This follow-ball race continues until a running player from one side ball-tags the runner of the other side. This counts ten points for his side. Game is fifty points. This game is sometimes called "Medicine Ball Pursuit." The medicine ball, which is sold in all first-class sporting goods stores, is, as its name indicates a favorite ball for healthful exercise, but is rather heavy for general use.

DREAMLAND ADVENTURES

The Slumber Sprites
By DADDY
Copyright 1921, by Public Ledger Co.

Jack and Janet go underground with Dame Instinct seeking a summer bird that sings spring songs in the autumn. Chip and Chipper Chipmuck take them to where Sleepy Woodchuck is having his long winter sleep. When they tease Sleepy Woodchuck he causes them to change in to Slumber Sprites and starts off to show them where he goes when he goes to sleep.

CHAPTER III The Two Orphans

JACK and Janet opened their eyes wide in surprise when they saw Sleepy Woodchuck walk across the river. The rippling water held him up as though it had been frozen into solid ice.

"H-s-s-s-s! You, too, can walk on the water now that you are Slumber Sprites," hissed Black Snake. To show them how easily it was done he glided down the bank and out upon the river. After him hopped Colonel Croaker, the frog. Chip and Chipper Chipmuck followed, and they didn't seem to get wet enough even to need rubbers.

"If they can do that, we can too," said Jack to Janet. Taking her by the hand he jumped down to the river's edge and ventured one foot upon the water. He didn't sink. Then he put his other foot, and that didn't sink. Janet did the same, and there they both were standing on the water "Come on," cried Jack, and he raced across the river as fast as he could go, dragging Janet after him.

They ran fast because they were scared. What if the water should suddenly open and swallow them?

But the water didn't open. It held them up and they soon reached the other shore.

WHY AT EN HERE?

DO YOU KNOW—

WHO wrote "The Deserted Village"?
WHY are "currents" so called?
WHAT is a guillotine?
WHEN was the first declaration of war against Germany in the World War.
WHERE is the capital of New Jersey?

ANSWERS TO FRIDAY'S QUERIES

Auguste Rodin was famous French sculptor who died in 1917.
As cold drives the blood away from the surface of the body, it naturally interferes with the sensitiveness of the nerves of touch and makes these "numb."
The best grades of wool comes from the shoulders and sides of the sheep.

June 14, the anniversary of the adoption of the flag, is Flag Day.
Brazil is the largest country in South America.

DANCING

Private instruction in dancing wanted by a young man. Address P. O. Box 334, Wailuku.—Adv.

DO YOU WANT

Tables, Chairs, Beds, Stoves, or anything else to make a house a home?
We have a large stock of second hand and rebuilt furniture and our prices are right.

K. HIROSE

Vineyard St., opposite Edwards Garage.
Furniture bought and sold.



"You shall go with me on my trip"

There Sleepy Woodchuck, Black Snake, Colonel Croaker, and Chip and Chipper Chipmuck were waiting for them.

"The steamship is nearly ready to sail for Egypt," barked Sleepy Woodchuck. We must hurry aboard."

Jack and Janet didn't know whether they wanted to go to Egypt. It seemed very far away. But they ran after Sleepy Woodchuck as he lay, pouring smoke from his funnels and throbbing as if eager to be off.

As they scampered across the docks they heard the sound of sobbing. All stopped in surprise to listen. The sobbing seemed to come from a large box. They looked within, and there was a ragged little girl crying as if her heart were breaking. A ragged little boy was trying to comfort her. "Don't cry, little sister," said the boy. "We will make our home in this box, and I will run errands to get money to buy us food."

"I am cold," sobbed the little girl. "I am hungry, too."

A heavy step sounded on the dock, and a whiskered man wearing a ship officer's uniform looked down upon the ragged girl and boy.

"Why is the little girl crying?" asked the man in a kindly voice.

"She is crying because we are orphans and have no home except this old box," said the ragged boy. Sister is afraid we will freeze."

"H-m-m-m!" said the whiskered man, who was none other than the captain of the ship. "I should say you would freeze when Old Man Winter comes along with his blizzards and ice. You can't keep warm in that box."

The ragged little girl sobbed harder than ever.

"There! there little sister!" said the ragged boy, hugging her tight. "Perhaps Santa Claus will find us and give us a nice warm home and plenty to eat."

"Ho! ho! ho!" laughed the Kindly Captain. "I will be Santa Claus to you and give you a nice warm home on my ship, and plenty to eat if the pesky rat don't gobble all our food first. You shall go with me on my trip."

"Are you going to the North Pole?" asked the ragged lad, shivering. "Little sister is too cold now."

"No, we are going to the land of the Nile, where summer never ends," laughed the Kindly Captain. "All aboard for Egypt!"

He picked up the ragged little girl and ragged little boy and carried them aboard the steamship.

"Hurry! urged Sleepy Woodchuck to Jack and Janet, Black Snake, Colonel Croaker, and Chip and Chipper Chipmuck. They ran across the gang-plank to the deck of the ship just as the sailors drew the gang plank in, and the boat started on its long trip to Egypt.

(In Friday's chapter will be told how they find foes aboard the ship—but foes that cannot harm them.)

Both Ways

"What I say is that if a woman is good-looking the higher education is unnecessary."
"Yes, and if she isn't, it is inadequate."—Life.

MAILE BUTTER
60 CENTS A POUND
You'll enjoy its fresh and delicious flavor. It is the brand for New Zealand's choicest product, the finest in this Territory.
MAUI SODA & ICE WORKS, LTD.
"We Serve Your Needs" Phone, 128 Wailuku.

good meals in Honolulu
AWAIT YOU AT CHILD'S
New, modern, high class restaurant, centrally located. Good and comfortable. Intelligent, courteous service. European plan. Operated in connection with the
Blaisdell Hotel
J. F. CHILD, PROPRIETOR.

Of Course
We don't need to tell you that. Just wanted you to form the good habit of asking your grocer for the Kona Coffee with the red label in one pound packages or five pound cans.
Hawaiian Kona is the Best
AMFAC
SPECIAL KONA COFFEE
THE CHOICE OF THE PICK
AMERICAN FACTORS LTD.
WHOLESALE DISTRIBUTORS

LAHAINA ICE CO., LTD.
MANUFACTURERS OF ICE, PURE SUGAR SYRUPS, DELICIOUS AND REFRESHING SODA WATER
SODA WATER PER CASE, MIXED FLAVORS, 30 CENTS.
DISTRIBUTORS OF ELECTRIC POWER AND LIGHT
Reasonable Estimates on Housewiring and Housewiring Supplies.

JAMES M. CAMERON
SANITARY PLUMBER
Estimates Furnished. Old Post Office Building, Wailuku

HOW ABOUT THE JAPANESE?
Are you getting all the business from them you want? If not, you can reach them in only one sure way, in their own language. Tell them what you have that they want in advertisements and in hand-bills.
Issued Semi-Weekly **MAUI RECORD** N. K. Otsuka, Prop.
JOB PRINTING
Translations from English to Japanese and Japanese to English

WE ARE PLEASED TO ANNOUNCE THAT
The Wailuku Hardware & Grocery Co., Ltd.
WAILUKU, MAUI
HAVE BEEN APPOINTED AGENTS FOR EAST MAUI, FOR
A. G. Spalding & Bros.
FAMOUS
TENNIS, BASEBALL AND ATHLETIC GOODS
E. O. Hall & Son, Ltd.
Distributors for the Territory.

IT'S A PLEASURE TO SHOP
In the handsomest store on Maui, where one finds a complete stock of Dry Goods, Furnishings, Notions, Groceries and general merchandise, where service and attention are the best
THE LAHAINA STORE
Phone 27-B, Lahaina. Branch at Puukoli.

New Federal Building, Honolulu, Furnished With
THE PERENNIAL WINDOW SHADE
Jack Drew
Sole Agent
P. O. Box 3135—Honolulu, T. H. Information Upon Request

ARCHITECTS SPECIFY ARMCO
Iron for every purpose where iron is used is the attainment of the American Rolling Mills company, manufacturers of Armco Ingot Iron. Armco iron is specified in architect's recommendations because of its well known resistance to rust. With Armco iron on the job the danger of construction weakened by rust is minimized. We are wholesale Distributors.
Honolulu Iron Works Co.

Kahului Railroad Company's
Merchandise Department
Aloha
Members of the Los Angeles Chamber of Commerce and other Southern California visitors, it is a pleasure to extend to you this Hawaiian Greeting of Welcome and to express the hope that your all too brief visit will leave with you the pleasantest of memories of Maui, the Valley Isle.
KAHULUI MAUI, T. H.
TELEPHONES 201—202—203

MAUI TWENTY YEARS AGO

(From Maui News of Sept. 20, 1902)

Charles Tetzlaff, C. Broock and P. Johnson tell of an adventure with a monster shark about four miles off the coast at Olowalu while fishing in a square sterned gander boat at anchor. They had made quite a catch and had their fish attached to a heavy cord hanging overboard. About two hours after sunset they rebaited their hooks and lay down in the bottom of the boat and a little later heard a noise like thunder under the boat which was lifted out of the water and almost upset. Thinking there was a submarine eruption Tetzlaff yelled to the man in the bows to cut the anchor rope. The boat was lifted again and dragged in a circle, and then carried about 50 yards at a terrific speed dragging the anchors. By that time they realized they were tangled up with an enormous shark which had been attracted to the boat by the fish hanging overboard. Broock jumped forward and cut the bow anchor rope before the boat was

dragged entirely under water. They took the oars but could make no headway for the shark had come up under the stern of the boat, holding it and lashing the water with tail and fins. Tetzlaff thought of the bait and threw overboard about 40 opepus which attracted the shark so they were able to break away. Broock says he got a good look at the shark and that it was more than 30 feet in length. He is sure it was not a whale.

There are many miles of land on Haleakala on which sisal could be grown and if the Oahu experiments are a success they will probably be set to that plant.

The Republican legislative candidates who went to Molokai this week report that Prince Cupid and the Republican ticket generally stand a good chance on that Island.

Honolulu is overstocked with coal

and several colliers expected from Newcastle may be sent on to the coast to unload.

Honolulu has a rat scare and a bitter war on rodents is in progress.

Coffee growers of the Islands are missing a golden opportunity in not presenting to congress claims for a protective tariff on the berries.

Telegraph News

Sir Thomas Lipton will make another attempt to lift the Americans cup.

The populists of South Dakota have resented the visit of Theodore Roosevelt to their state and refused to permit him to shoot prairie chickens on their farms.

The recent eruption of Mount Pelee cost 1000 lives and injured 500 others.

The Islands of the West Indies are again in a state of semi darkness on account of recent volcanic disturbances.

British shipyards are almost idle as a result of low transoceanic freights.

Great Britain has been visited by torrential rains and Belfast and other cities of Ireland are reported to have been flooded.

An immense landslide in Transcaucasia, Russia, wiped out 20 villages and cost 700 lives.

The Russian minister of finance has refused to grant permission for the formation of an oil trust.

French and Swiss experimenters are said to have solved the problem of color photography.

FOR REPRESENTATIVE

I hereby announce my candidacy for the nomination for member of the Territorial House of Representatives on the Republican ticket to be selected at the primary election which will be held on October 7, next, subject to the will of the electors of this district, the County of Maui.—Adv. ANTON V. MARCIEL JR.

FOR REPRESENTATIVE

I hereby announce my candidacy for nomination for member of the house of representatives on the Republican ticket subject to the will of the voters of this district to be expressed at the primary election to be held on October 7, and solicit your support in my candidacy. THOMAS HOLSTEIN

BOARD OF REGISTRATION NOTICE

NOTICE IS HEREBY GIVEN that the Board of Registration for the Third Representative District, Territory of Hawaii will sit at the office of the County Clerk, County of Maui, in Wailuku, Maui, on Wednesday, September 20, 1922, between the hours of 8 A. M. and 4 P. M., on Friday, October 6, 1922, between the hours of 8 A. M. and 4 P. M., and on Saturday, October 7, 1922, between the hours of 7 A. M. and 5 P. M., for the purpose of hearing and determining all appeals from the rulings of the County Clerk aforesaid and to order such changes and corrections made in the General County Register as said Board may be directed or authorized by law to make. Dated at Wailuku this Sixth day of September, 1922. Board of Registration for the Third Representative District, Territory of Hawaii. (By) MANUEL C. ROSS, Chairman of said Board. (Sept. 8, 12, 15, 19, 22, 29, Oct. 3, 6.)

SEALED TENDERS

Notice is hereby given that sealed tenders for furnishing Automobile Number Plates for 1923 will be received at the office of the County Clerk at Wailuku, Maui, T. H., until 10 A. M., Tuesday, September 26th, 1922, at which place and time they will be publicly opened and read.

Proposal blanks are now on file at the County Treasurer's Office, Wailuku, Maui, T. H., and can be obtained upon application.

The right is reserved to reject any and all bids.

By Order of the Board of Supervisors Within and for the County of Maui. (Sept. 5, 8, 12, 15, 19, 22.)

TERRITORY OF HAWAII

Treasurer's Office, Honolulu, Oahu

In re Dissolution of The Wailuku Market and Land Company, Limited. Whereas, The Wailuku Market and Land Company, Limited, a corporation established and existing under and by virtue of the laws of the Territory of Hawaii, has pursuant to law in such cases made and provided, duly filed in this office, a petition for the dissolution of the said corporation, together with a certificate thereto annexed as required by law.

Now, therefore, notice is hereby given to any and all persons that have been or are now interested in the said corporation, that objections to the granting of the said petition must be filed in this office on or before November 4, 1922 and that any person or persons desiring to be heard thereon must be in attendance at the office of the undersigned, in the Executive Building, Honolulu, at 12 o'clock M. of said day, to show cause, if any, why said petition should not be granted. A. LEWIS, JR., Treasurer Territory of Hawaii. Honolulu, August 24, 1922. Aug. 29, Sept. 5, 12, 19, 26, Oct. 3, 10, 17, 24, 31.)

OCEANIC STEAMSHIP CO.

SIDNEY SHORT LINE

Sonoma to San Francisco, Sept. 26 5 1/2 days to Coast

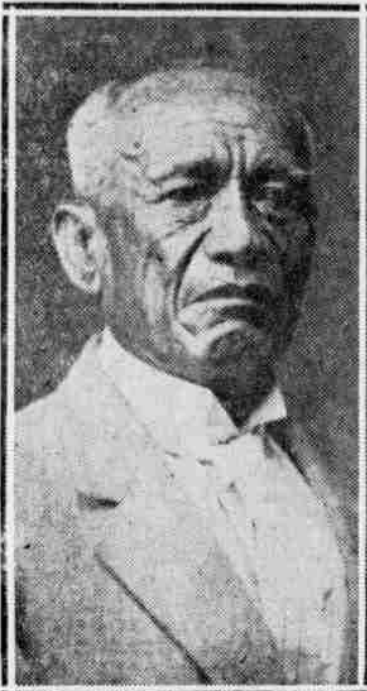
Ventura From San Francisco, Sept. 25

For particulars, etc., apply

C. BREWER & CO. LIMITED

GENERAL AGENTS, HONOLULU

FOR REPRESENTATIVE



SAM KUULA

I hereby announce my candidacy for the Republican nomination for member of the House of Representatives to be selected at the Primary Election on October 7, 1922 and solicit your support in my campaign for the office.—Adv.

SAM KUULA.

FOR SENATOR

I hereby announce my candidacy for the Republican nomination for the short term, that made vacant by the resignation of former senator Harry A. Baldwin, subject to the will of voters to be expressed at the Primary election to be held October 7, next and solicit your support in my campaign. L. B. KAUMEHEIWA

FOR SENATOR

I hereby announce my candidacy for nomination for the short term Senator on the Republican Ticket at the October Primaries subject to the will of the voters of Maui County expressed at the said Primary Election.—Adv. PERUVIA J. GOODNESS.

FOR REPRESENTATIVE

I hereby announce my candidacy for the Republican Nomination for member of the Territorial House of Representatives to succeed myself, subject to the will of the voters to be expressed at the primary election to be held October 7, next, and solicit your support. J. W. KALUA.

FOR REPRESENTATIVE

I hereby announce my candidacy for nomination on the Republican ticket for member of the Territorial House of Representatives from the Third Representative District subject to the will of the voters of that district as expressed at the primary election.—Adv. JOHN FERREIRA.

K. Machida Drug Store

ICE CREAM

The Best in Town

And a Up-To-Date Soda Fountain Give Us a Trial

KAHULUI WAILUKU

M. KATO

CONTRACTOR AND BUILDER PLUMBER AND TINSMITH Wailuku, Maui—Vineyard St. near High

ALOHA LODGE NO. 3 KNIGHTS OF PYTHIAS.



Regular meetings will be held at the Knights of Pythias Hall, Wailuku, on the second and fourth Friday of each month, at 8 p. m. All visiting members are cordially invited to attend.

H. ALFRED HANSEN, C. C. A. MARTINSEN, P. C., K. R. & S.

LODGE MEET. No. 472, E. & A. M.



Stated meetings will be held at Masonic Hall, Kahului, on the first Saturday night of each month at 7:30 o'clock. Visiting brethren are cordially invited to attend.

GEO. N. WEIGHT, W. M. W. A. ROBBINS, Secretary

TO EQUIP YOUR CAR WITH

Norwalk Tires and Tubes

IS TRUE ECONOMY!

These tires have established a record here in the Islands second to none for dependability and long service. A trial will convince you of NORWALK superiority. Handled by Garages and Dealers everywhere. Look for the NORWALK Sign! Distributed by

Theo. H. Davies & Co., LIMITED HONOLULU and HILO

Hiro, The Tailor

is Ready to Make Your Latest Style Spring Suit

Good Fit Guaranteed

Tel. 213-A Market St. Wailuku

TIME TABLE—KAHULUI RAILROAD CO.

Daily Passenger Train Schedule (Except Sunday)

The following schedule went into effect November 18, 1918.

TOWARDS WAILUKU					TOWARDS HAIKU												
9	7	5	3	1	Distance	STATIONS	Distance	2	4	6	8	10					
					Miles		Miles										
P	M	P	M	A	M			A	M	P	M	P	M				
5	33	3	30	1	25	8	25	5	35	5	38						
5	23	3	20	1	15	8	23	5	25	5	48						
					15.3	A. Wailuku	0	6	40	8	40	1	30	3	35	5	38
						L. Kahului	3.3	6	52	1	42	3	47				
5	20	3	17		8	20		7	62		1	52	3	57			
5	10	3	07		8	10		7	02								
					12.0	L. Spreck	6.9	7	03		1	53	3	58			
5	09	3	05		8	05		7	03		1	53	3	58			
5	00	2	55		8	00		7	12		2	05	4	19			
					8.4	A. Elsville	9.8	7	12		2	05	4	19			
						L. Paia		7	15		2	07	4	12			
4	58	2	53		7	57		7	20		2	14	4	19			
4	52	2	47		7	52		7	20		2	14	4	19			
					5.5	L. Hamo	11.9	7	22		2	15	4	20			
4	51	2	46		7	50		7	22		2	15	4	20			
4	45	2	40		7	45		7	30		2	23	4	28			
					3.4	L. Kuapoko		7	30		2	23	4	28			
4	44	2	39		7	44		7	32		2	25	4	30			
4	40	2	35		7	40		7	36		2	30	4	35			
					1.4	L. Pauwela	13.9	7	36		2	30	4	35			
					0	L. Haiku	15.3	7	36		2	30	4	35			

PUUNENE DIVISION

TOWARDS PUUNENE			TOWARDS KAHULUI						
3	1	Distance	STATIONS	Distance	Passenger	Passenger			
				Miles	A M	P M			
Passenger	Passenger	Miles		Miles	A M	P M			
P M	A M								
2	50	6	09	0	2.5	6	22	3	15
3	00	6	10	2.5	0	6	18	3	05

- All trains daily except Sundays.
- A Special Train (Labor Train) will leave Wailuku daily, except Sundays, at 5:30 a. m., arriving at Kahului at 5:50 a. m., and connecting with the 6:00 a. m. train for Puunene.
- BAGGAGE RATES: 150 pounds of personal baggage will be carried free of charge on each whole ticket, and 75 pounds on each half ticket, when baggage is in charge of and on the same train as the holder of the ticket. For excess baggage 25 cents per 100 pounds or part thereof will be charged.
- For Ticket Fares and other information see Local Passenger Tariff I. C. C. No. 12 or inquire at any of the Depots.

Vote for
JOHN J. WALSH
Candidate for Republican Nomination for
Senator
For the short term

MACHINE SAVES TIME
My new HEMSTITCHING MACHINE has arrived and enables me to turn out such work more rapidly. Dresses, shirts and pyjamas made to order.
TATSUE HANAKA
DRESS MAKING PARLORS
In Taisho Shoten Pūnere Ave., Kahului Phone 68-A

WAILUKU HIPPODROME
"DICK" P. HARRIS, Mgr.
TUESDAY, SEPTEMBER 19
DOROTHY DALTON in "THE CRIMSON CHALLENGE" And A GOOD COMEDY
WEDNESDAY, SEPTEMBER 20
BETTY COMPSON in "THE GREEN TEMPTATION" And "THE DIAMOND QUEEN"
THURSDAY, SEPTEMBER 21
CONSTANCE BINNEY in "THE SLEEP WALKER" And The Fifth Chapter of "THE MIRACLES OF THE JUNGLE"
FRIDAY, SEPTEMBER 22
FEATURE PRODUCTION JACKIE COOGAN in "MY BOY"

KAHULUI THEATER
C. E. CHATTERTON, Mgr.
TUESDAY, SEPTEMBER 19
FEATURE PRODUCTION JACKIE COOGAN in "MY BOY" Also A GOOD COMEDY and "FOX NEWS"
WEDNESDAY, SEPTEMBER 20
DOROTHY DALTON in "THE CRIMSON CHALLENGE" And A GOOD COMEDY
THURSDAY, SEPTEMBER 21
EILEEN PERCY in "LITTLE MRS. HAWKSHAW" And A GOOD COMEDY
FRIDAY, SEPTEMBER 22
CONSTANCE BINNEY in "THE SLEEP WALKER" And The Fifth Chapter of "THE MIRACLES OF THE JUNGLE"

For Sale
HOUSE AND LOT ON HIGH STREET
Former Residence of V. A. Vetlesen Containing an Area of Aproximately 8000 Square Feet Frontage on High Street, 94 Feet
Inquire at
MAUI NEWS OFFICE
Or Phone 24, Wailuku

JACKIE COOGAN—in—"MY BOY"
This boy wonder was paid \$75,000 for appearing in this one great production. You remember him as the boy who played opposite Charlie Chaplin in "The Kid." In this production he backs his former work off the boards.
ONE OF THE GREATEST ATTRACTIONS OF THIS GREAT SEASON
TUESDAY AT KAHULUI ON THE MAUI CIRCUIT NEXT WEEK FRIDAY WAILUKU

KODAKS

and Photo Supplies

SEND FOR CATALOG
SPECIAL ATTENTION TO MAIL ORDERS

Honolulu Photo Supply Co.
"EVERYTHING PHOTOGRAPHIC"
P. O. BOX 1059 FORT ST.

Singer Sewing Machines
Cash or Easy Payments
K. OHTA, Agent.
Phone 160c. Wailuku. Main Street.

Better Lighting Brings quick decisions



Don't blame the shopper for hesitating. The color, finish and quality can only be seen where the lighting is correct. For expert advice on lighting, consult—

JOHN A. ROBINSON
ELECTRICAL CONTRACTOR
Lahaina, Maui, T. H.

BEST SERVICE ON MAUI

With our new equipment we are able to give the most dependable, prompt and efficient service in cleaning, pressing, repairing and dyeing of Men's and Women's Clothing. Our steam presser can do the work in 15 minutes.

Satisfaction Guaranteed
MAUI CLOTHES CLEANING SHOP
Market St., opp. Kalua Ave.

ICHIKI HOTEL
ROOMS \$1.00 PER NIGHT
Reasonable rates by the week or month.
Wailuku, Phone 136-A Maui, T. H.

ALEXANDER & BALDWIN LIMITED

Sugar Factors
Commission Merchants and Insurance Agents

AGENTS FOR—
Hawaiian Commercial & Sugar Company
Maui Agricultural Company
Hawaiian Sugar Company
Kahuku Plantation Company
McBryde Sugar Company
Kahului Railroad Company
Kauai Railroad Company
Honolulu Ranch
Kauai Fruit & Land Company

Maui Team Invades Lonely Isle And Cops Two Games

Grand Old Time Accorded Visitors; Luau, Dancing and Scenic Trips Between Baseball Games

Unofficial Maui went to Molokai Saturday morning to play baseball. And Maui won two games! They only won two games because that's all they played! And—they didn't just play baseball, but they also danced, sang, and ate. And they drank—Oodles and oodles of soda pop, lemon, strawberry, and sarsaparilla. They came as fast as anybody wanted them.

George Malkal, alias "Hoki" Wilhelm was the dimutive Roscoe of the party. He sang—he danced—he hula'd and he impersonated. As the leader of the Maui jazz band his name will be held immortal by the Molokai public that joined in on the celebration.

Plenty Of Fun
And that wasn't all either. Automobiles and plenty of them took the visiting ball players for a drive over the pali where far below them was the settlement at Kalaupapa. Molokai gave Maui a hearty welcome and every one of the boys that made the trip on the Makaiwa have voted a hearty appreciation.

Luau And Dance
That night a luau was tendered the visiting team at Kaunakakai and a dance followed. It was at this dance that Maui jazz orchestra found its way into the hearts of the merry-makers and that Wilhelm proved his worth as a leader of merriment. Arthur Enos and Johnny Waiama, the saxophone artists of the orchestra played to their best form and received a huge ovation. It was really good.

During both voyages, to and from the valley island, the Makaiwa plunged and silted as though in great grief of the burden she bore. On the returning trip the bucking was a trifle too strenuous and resulted in Manager Engle landing the boys at Lahaina from where they proceeded home by automobile. They will all tell you it was a great trip and a grand old party.

Mainland Basketball Tour Of All-Hawaii Endorsed By A. A. U.

The proposed Pacific Coast tour to take place early next year, of an all-Hawaiian basketball team has been sanctioned by the Hawaiian A. A. U., reports the Star-Bulletin, and President George (Dad) Center will appoint a committee to select the team of eight men who will go with Percy Nottage, the manager.

Games Lined Up
Nottage has lined up games with most of the Pacific Coast colleges and according to plans the tour will start from the north and work south. The present plans are to go to Vancouver and Victoria B. C., and to work from there south, visiting the cities of greater importance as far south as San Diego. If the finances permit and the team can stand against the gaff of the mainland quintets, it is thought possible they may go to Kansas City for play in the national championships.

Oh, Yes
The Literary Digest says that books have a curative power. Yes; there are some which cure insomnia.



Pianos sold on the easy payment plan
Latest Records and Music Rolls
Organs, Phonographs, Musical Instruments
Pianos Repaired and Tuned
JACK BERGSTROM
Main and High Streets, Wailuku
AGENT FOR HONOLULU MUSIC CO.

TILDEN AGAIN IS SINGLES CHAMPION

(ASSOCIATED PRESS)
PHILADELPHIA, Sept. 16.—For the third time in three years, William Tilden II is national lawn tennis champion of the United States, he having defeated William H. Johnston, the runner-up today in three out of five sets. The results were 4-6, 6-3, 2-6, 6-3 and 6-4.

Supervisor physical stamina and almost unbelievable court covering ability in the final sets of the match even tually won for Tilden after a battle requiring one hour and forty minutes actual playing.

As a setting for the match there was a gallery of 14,000 spectators rooting like baseball fans for their favorites.

The Sportfolio

Why was there no World Series in 1904? (L. S.)
Is Jimmy Wilde an Englishman? (N. W. N.)
What is an "ace" in tennis? (R. M. P.)
What is the fastest time ever made by a motorcyclist? (C. H. T.)
Did Hal Chase ever lead the National League in batting? (W. F. Q.)

ANSWERS TO FRIDAY'S QUERIES

The Yankees made six errors and the Giants five during the 1921 World series.
Jack (William Harrison) Dempsey was addressed in care of "The Hippodrome, New York City."
In ski-jumping the contestants jump for distance, not height.
The first Harvard-Yale football game was played in 1875 Harvard winning.
Ruth made forty-seven home runs during the period from May 20 to the end of last season.

Molokai Excursion Pleases Good Crowd And Others Wanted

One hundred and thirty five Mauiites thoroughly enjoyed the Molokai excursion arranged by Lorrin K. Smith on the Inter-Island Steamer Kilauwa on Saturday. The weather was fine and the sea remarkably smooth so that the steamer was able to skirt in close to the shore giving to the excursionists some splendid views of the wonderful Molokai coastal scenery and something more than glimpses into the valley that run back from shore into hills and mountains. Though the steamer did not completely circle the island, going only to Kalaupapa and return, no complaints on that score were voiced. Even off Kalaupapa, where ordinarily it is rough and choppy, the seas were small and placid and the steamer was able to give its passenger a fine view of the settlement.

When the Kilauwa arrived at Kahului on Saturday morning Smith found there was no orchestra aboard. This he speedily rectified by securing the services of a Maui orchestra and the promised music for the trip was duly furnished. An excellent luncheon was furnished and W. J. Coelho pointed out places of interest and of beauty as they were reached and passed so that the trip was made interesting throughout.

New Dramatic Club Forms In High School

Under the leadership of Miss Johnson, the English teacher, six ambitious students of Maui High started a dramatic club on Friday afternoon. The following officers were elected for the year:

President, Floyd Brown; vice-president, Elizabeth Walsh; secretary-treasurer, Lucy Baldwin; advertising manager, Sadie Whitehead.
The object of the club is to study the drama, to do dramatic work and to promote social activities in other ways. Meetings will be held on the first and third Friday's of each month. At the meetings papers will be read by various members and plays will be discussed. Membership will be confined to students in the sophomore, junior, and senior years. This will make a fairly large club and it is expected that much pleasure as well as instruction will be afforded.

SEALED TENDERS

Proposals for construction of Maui Children's Home will be opened in the presence of bidders at the office of William D'Esmond, engineer and architect, Wailuku, Maui at 11 o'clock a. m., on Saturday, September 30, 1922. Plans specifications and blank proposals can be secured from the architect on Thursday, September 21st.
Trustee Children's Home Fund (Sept. 19, 22, 26.)

INDUSTRIAL ACCIDENT BOARD

The monthly meeting of the Industrial Accident Board for the County of Maui will be held in the Wailuku District Court Room, Wailuku, next Thursday morning, Sept 21 st at 10:30 o'clock. All persons having business with the Board are asked to be present.
F. S. WADSWORTH, Secretary.

Welcome to Maui

To all of our visitors from off the Steamship City of Los Angeles and most especially to the

MEMBERS OF LOS ANGELES CHAMBER OF COMMERCE

we extend our sincere wishes for an enjoyable Day of sightseeing and we trust the occasion is only the beginning of a more intimate acquaintance that will ripen into the warmest friendship between Southern California and the Hawaiian Islands.

Maui Motors, Ltd.

Maui Distributors For Ford Cars and Trucks
WAILUKU, MAUI.

MEMBERS OF THE LOS ANGELES CHAMBER OF COMMERCE

May your brief visit to Maui, be one of great happiness, that the future will for ever be a pleasant remembrance of

MAUI NO KA OI—ALOHA

MAUI AMUSEMENT CO., LTD.

Joyous Tales of Help Secured Through B. B. C.

Phenomenal Success of B. B. C. Is Town Talk

Wonderful Recovery of Mrs. Hiram Huff

Mr. Huff of 713 Melvin St., Cincinnati, O., stated: "My wife has been sick for over fifteen years, practically helpless and bedridden at most times—rheumatism, general ailments and a rundown condition. I was told that all had been done for her that could be done, and it was a settled conviction in my mind that there was no help for her. But a seeming miracle was accomplished by B. B. C. for after eight to ten weeks' use my wife is up and about and doing the housework, washing and cooking for the first time in years." Said Mrs. Huff: "I knew when they brought me back from the hospital that my husband and relatives thought that I would never get well, but I just couldn't give up hope. We had done everything and I seemed of no use. I had read and heard of the new remedy, B. B. C., and I just felt that it would help me and bring back my health again. I commenced to use it faithfully and it worked wonders for me. My appetite returned, my pain disappeared, I slept well, my nervous feeling and weakness left me and I felt myself gaining and getting stronger every day until now I am up and around and do my own cooking, washing and housework. It is a wonderful recovery for a woman that has been bedridden and practically helpless for years, and Mr. Huff and I recommend highly B. B. C., to which we owe our good fortune."

Many hundreds of prominent Honolulu men and women testify to the great merit of B. B. C.

We select a few at random:

MR. S. FURUKAWA, Nippon Jiji—B. B. C. is a splendid stomach remedy and system tonic.

WM. KAWOHONALANI, Waikiki—I consider B. B. C. a wonderful remedy for blood impurities and lack of circulation.

MR. WM. KALAMA, 500 Wainamika Road—B. B. C. is fine for Stomach and Nerves—Good Blood Purifier.

MARY KALAUKOA, Gulick Ave.—B. B. C. gives you an appetite and is fine for stomach.

GEORGE PEHU, Kapahulu and Wai-alea Roads—B. B. C. is a wonderful medicine. Used it and now feel fine.

MRS. J. WARBOYE, Beach Walk, Waikiki—I consider B. B. C. a splendid stomach and nerve remedy.

MR. DAVID KAKALLA, 71 Beretania, corner Smith—B. B. C. is a great blood medicine and system tonic—good for rheumatism.

MR. JAS. BORGES, 470A Self Lane—B. B. C. is a fine stomach and liver remedy—builds you up.

MR. JOHN DALY, Steamer Matsuda—B. B. C. restored my health—nervous breakdown and stomach.

MR. MANUEL DE MELLO, Kona, Hawaii—B. B. C. is a great remedy for stomach and rundown system.

MR. JOS. AMIEL, Boston Store, 150 N. King St.—B. B. C. is a great tonic for a rundown system.

CAPT. H. BLANCHARD, 1028 Ala-pai St.—For years troubled with gas on stomach—now well.

A. GUINDUIN, 820 Mokuauia Road—B. B. C. Remedies are good—especially the Cough Remedy for Asthma and Bronchial Cough.

MRS. CHAS. S. WAKITA, 1902 Luso St.—As a stomach and general system tonic B. B. C. has no equal.

MR. ESMARL SEBILIA, Boston Store—B. B. C. for stomach, liver and nerves is without an equal.

MR. A. WILLIAMS, 904 First Ave., Kaimuki—B. B. C. is a marvelous stomach remedy and general tonic.

MR. PETER PASCAL, 1105 Kama Lane, Palms—B. B. C. restored my health—saving long time.

MR. W. L. THORNE, Blaisdell Hotel Building Compound, It certainly does that.

MRS. O. R. LOVER, Allen St.—B. B. C. helped when everything else failed—stomach disorders and general weakness.

MR. SAMUEL KIND, Monsarrat Ave.—B. B. C. is the best remedy for a rundown system.

MR. J. K. MOKUMAI (Two Guns)—I have used B. B. C. and found it a good medicine.

MR. K. HIGASHI, Fish Market, flower dealer—B. B. C. is a splendid medicine for kidney and rheumatism.

MR. W. LEGROS, Gazette Ave.—Recommends B. B. C. for stomach, nerves and general rundown system.

MR. CHAS. AKANA, Liliha and King—B. B. C. is the best medicine in the world for general weakness.

B. B. C. (Body Building Compound) is a marvelous reconstructive tonic. It infuses the system with youthful vigor and reserve power to a marked degree, building on the body stronger than sickness and disease, and health is the result. If the body is strong and normal and the organs of it well-regulated and performing their functions, there is no sickness. That's why stomach disorder, indigestion, heart palpitation, rheumatism, blood impurities, sick headaches, nervous depressions, sleepless nights, anemic and rundown condition, listlessness, torpid liver, constipation, kidney and bladder ailments, give way to an extended course of B. B. C. even in cases of long standing, as is proved by the many prominent local people who have testified to that effect. B. B. C. is sold by all Maui druggists and jobbing stores. Prices \$1.50.

We pay parcels post charges on all \$5.00 cash orders. Send money order and shipping direction to Benson, Smith & Co., Ltd., Honolulu, Special Distributors.

Personal Mention

Clinton S. Childs returned from his vacation on Saturday.
 Manager Frank F. Baldwin went to Honolulu last night.
 Delegate Baldwin took the Mauna Kea to Honolulu Friday night.
 Mrs. J. H. Gray is booked to take the next Mauna to the mainland.
 Dr. J. C. Fitzgerald returned from Honolulu Saturday on the Kilauea.
 Miss Marion Morse is the guest of Lady Macfarlane at her Kula home.
 J. H. Kunewa, tax assessor, has been in Honolulu on official business.
 W. A. Robbins returned Saturday from the American Legion in Honolulu.
 Dr. W. D. Baldwin was a home-comer Saturday morning on the Kilauea.
 Frank Crockett returned from a business trip to Honolulu Saturday morning.
 Mrs. Macfarlane is down from Kula visiting her daughter Mrs. Russell Bridgford.
 Paul Lada returned Saturday from Honolulu where he attended the American Legion Convention.
 Frank Larkin returned Friday night from a visit with his mother who is at the Volcano House on Hawaii.
 M. R. Pereira, manager of Maui Publishing Co. will return from a business trip to Honolulu tomorrow.
 R. E. Howe, manager of Maui Drug Company, returned Saturday morning from a business trip to Honolulu.
 Paul W. Eichinger, superintendent of the Wailuku Sugar Co. diary, while

handling cattle last week was injured sustaining a fracture of the same shoulder which he had injured previously.
 R. C. Searle, Jr. for 20 years connected with Honolulu Ranch for the past year in charge of the poi factory has resigned and left for Honolulu Saturday night.
 Henry J. W. Bredhoffis came over from Honolulu to meet the Los Angeles excursionists as special representative of the Honolulu Ad. Club and expects to accompany them to the Capital City tonight. While on Maui he has been guest in the home of Mr. and Mrs. P. H. Ross.
 High Sheriff John Lane is on Maui today having come over from Hawaii last night.
 John Ness of the Honolulu Advertiser was an arrival from Honolulu by the Kilauea this morning.

Student Body Maui High School Meets

The Student body of the Maui High School held its first meeting of the year Friday at noon in the School assembly hall. The organization has grown so in numbers that there were not seats enough to accommodate the students, but the boys found places along the walls.
 The new president, Floyd Brown, brought the meeting to order and laid before the students the matters for discussion. The question of paying 50 cents per student as dues for the year was voted upon and unanimously passed. Nominations were then in order for a treasurer and two yell leaders. Thomas Hirota was elected treasurer and Clarence Pereira and John Telles were elected yell leaders.
 After a short explanation as to the purpose of a Student Body Association, given by the secretary, the meeting was adjourned. All business having been carried out successfully.

FAREWELL DANCE

For Mrs. F. E. Sabin, who is to take the next Mauna to the Mainland Mrs. Charles E. Houtchens tendered a most enjoyable party at the Punene Club Saturday night. First there was a swimming party at the Punene tank and then followed a dance at the club house with the music furnished by Maples Orchestra. In the course of the evening punch and refreshments were served and the wee sma' hours had arrived ere the party regretfully broke up and said au revoir to the guest of honor. About 40 guests enjoyed Mrs. Houtchens' hospitality.

Pertinent Paragraphs

Hyades At Kahului—The Matson freighter Hyades was due to arrive in Kahului this morning and to depart tomorrow night.
Masons To Meet—There will be a Stated Meeting of the Kahului Scottish Rite Bodies on Thursday September 21, at 7:30 P. M.
Services Sunday—In the Church of the Good Shepherd there will be services held next Sunday morning. Rev. Frank N. Cockerott will officiate.
Bids Called For—Tenders are asked for the construction of the Children's Home building according to plans and specifications prepared by architect William D'Esmond.
Manoa Indefinite—Kahului Railroad Company was not advised up to yesterday afternoon of the definite dates for the arrival and departure of the Manoa at the end of the week.
Industrial Accident Board—Maui's industrial accident board will meet Thursday morning. It will be the first meeting for three new members, Messrs. Carey, Conrad and Wilson.
Fire Film Enjoyed—An excellent house greeted Douglas Fairbanks in the "Three Musketeers" at the Hipp Saturday night and the film is declared to be one of the best ever shown on Maui.
Rehearsals Progress—Rehearsals in preparation for the benefit performance of Manager Dick Harris to be given October 5, are going forward well. The sketch, which is a feature of the program, is reported to be a riot of fun.
Industrial Supervisor—H. Alton Rogers has been named industrial supervisor for the Maui schools. He has been employed by Wailuku Plantation, Oahu, and was unable to leave at once but is expected to arrive on Maui soon.
Makawao Ladies Busy—In preparation for the bazaar and entertainment by the Makawao Ladies Aid to be held October 7, preparations are going forward busily. Rehearsals for the entertainment, largely musical, are reported as thoroughly satisfactory and goods for the various booths are being assembled.
Delegates Return—Maui's delegation to the American Legion convention in Honolulu have returned. The delegates were Paul Lada, Frank Crockett, W. A. Robbins, W. W. G. Mohr, Wong and Ho. Maui could have had the next convention if she had gone after it, reports Paul Lada who headed the delegation.
Kilauea Off Run—Advices from the Kahului Railroad Company late this morning say the Kilauea will be taken off the Maui-Malukona run upon her arrival in Honolulu on Thursday, September 21. She will return to her regular schedule on Monday, October 1st when she will sail for Kahului, Keanae, Hana, Mokuauia and Mahukona. The Claudine will substitute for the Kilauea for three trips.

IRISH BLOODSHED
 (ASSOCIATED PRESS)
 BELFAST, Sept. 19—Eleven insurgents and nine nationalists were killed in clashes in Counties Mayo and Tipperary today.
GRAND JURY INVESTIGATES
 (ASSOCIATED PRESS)
 LOS ANGELES, Sept. 19—The federal grand jury began an investigation today of charges of conspiracy to impede interstate commerce during the shopmen's strike.
IRISH TRAGEDIES
 (ASSOCIATED PRESS)
 BELFAST, Sept. 18—According to figures made public here today, 436 persons, of whom 189 were protestants, were killed since July 21, 1920. Ninety-two protestants and 133 Catholics were killed since January first of this year, the report adds.

IMPEACHMENT SIDETRACKED
 (ASSOCIATED PRESS)
 WASHINGTON, Sept. 18—The house judiciary committee postponed the hearing of the Keller impeachment charges against Attorney General Daugherty until December.
CALIFORNIA FORESTS BURN
 SAN FRANCISCO, Sept. 18—The forest reserve bureau here announced that two fires are raging uncontrolled over 20,000 acres on Mendocino and Madera counties.
Entered of Record
Deeds
 David P. Keawehaku to Dick K. Diamond various pes. land Ulupalaua, Molokai, R P 3609 Kul 196, Richards St., Honolulu, Oahu, Sept. 9, 1922 \$500.
 Dick K. Diamond to David P. Keawehaku, 1-2 int in various pes land, Ulupalaua, Molokai, 1-2 int in R P 3609 Kul 196 Richards St., Honolulu Oahu, Sept. 9, 1922, \$250.
 Harold W. Rice & wf to William H. Engle various pes land, Kula & Maui, July 1, 1922, \$1.
 William H. Engle & wf to Charlotte B. Rice various pes land, Kula & Maui, July 1, 1922, \$1.
 Peter Heulu to Wong Hin, Lot 15, hui land, Hamakua, Maui, Sept. 9, 1922, \$225.
Mortgages
 Harry Bailey & wf to Young Men's Sava Socy Ltd., 2 pes land Mokuauia, Wailuku, Maui, July 12, \$200.
 Adele K. Cornwall to Young Men's Sava Socy Ltd., 1/2 int in pers Kul 205, Hallipalali, Waikapu, Maui, July 29, 1916, \$150.
 Johi A. amaka & wf to Young Men's Sava Socy Ltd., 55-100 A of R P 4104, Kul 3381, Keheva, Wailuku, Maui, Oct 21, 1909, \$125.
 Moses Kaubimahu & wf to Young Men's Sava Socy, Ltd R P's & 5922 & 1/2 int in R P 6231, Kul 3339, Kalua, Wailuku, Maui, Nov. 15 1916, \$800.
 Moses Kaubimahu & wf to Young Men's Sava Socy, Ltd, R P 4106, Kul 410035 & 1/2 int in R P 6251 Kul 3339, Kalua, Wailuku, Maui, Apr 22, 1919, \$400.

American Legion To Hold Dance Saturday Territorial Building

Maui Post No. 9, American Legion, Department of Hawaii will hold a dance at the Territorial Building, Kahului to raise funds for the maintenance of its membership in the National organization. It is two years since it held a dance for which an admission was charged and last year it tendered a dance to the public for which no charge was made.
 On Maui, the American Legion has not had cause for the past two years to call for public support. Its expenses here are not large and the chief item it has to meet is the annual dues to the National organization. The dance of two years ago met the assessment for that year and last as well. When there are conventions the delegates defray their expenses and generally the organization is as independent as well can be.
 But there are many members of the Legion who have very small means and so the meeting of the National organization becomes a matter of interest.
 Services of the Legion to the Islands did not end with the discharge from military duty of its members. Only one year ago at the Hilo convention of the Legion resolutions of great value to the Islands were passed in relation to the labor shortage problem, favoring the passage of the pending congressional legislation. Those resolutions were sponsored by Maui post and their passage largely resulted from the work of Maui delegates. They have shown in civic affairs the same spirit they showed when came the call of the country in time of need.
 For the dance on Saturday the Mary Hoffman orchestra has been engaged to furnish the music, the decorations will be of patriotic nature and the affair promises to be thoroughly enjoyable as well as giving the community an opportunity to show that it has not forgotten.

VETO EXPECTED TODAY
 (ASSOCIATED PRESS)
 WASHINGTON, Sept. 18—Advices of President Harding who gave out the intimation on Saturday that the president was determined to veto the soldiers bonus bill, said a canvass of the senate assured them of sufficient votes to sustain the veto, should it be made.

FLYER IS KILLED
 (ASSOCIATED PRESS)
 SAN FRANCISCO, Sept. 19—Lieut. Frank E. Steckler, the son of the late Admiral A. F. Steckler, was killed in an airplane crash at Selvidge Field, Michigan.
ITS "DAD" CENTER AGAIN
 (ASSOCIATED PRESS)
 HONOLULU, Sept. 19—George "Dad" Center was reelected president and Mrs. Leo Fullard secretary of the Hawaiian A. A. U.
 On the first ballot Center and D. L. Conkling each received four votes and W. T. Rawlins, two. Conkling then asked that his name be withdrawn and Rawlins moved that Center be elected unanimously. An annual report of the detailed activities was submitted at the meeting.

NEW MAIL SERVICE
 (ASSOCIATED PRESS)
 HONOLULU, Sept. 19—Postmaster Macadam received notice that the Los Angeles Steamship Company has applied for permission to carry mails between California and Honolulu on a direct mail service. The service is to begin with the City Of Los Angeles return trip. Macadam said the new service would greatly facilitate the Islands mails.
MAUNA KEA QUARANTINED
 (ASSOCIATED PRESS)
 HONOLULU, Sept. 19—The Inter-Island Steamer Mauna Kea was held in quarantine several hours this morning on her arrival from Hilo owing to the death of a Japanese member of the crew from unknown causes.

IGNORANCE FATAL
 (ASSOCIATED PRESS)
 ATLANTIC CITY, Sept. 19—Half of those who lost their lives in the World War did so because they did not know how to fight, Maj. Gen. George P. Harris told the convention of the Military Order of the World War today.

WANT ADS
 FOR SALE—One 1920 model Cole Speedster. Guaranteed in A. No. 1 Condition. Mechanically excellent. Apply at Moura's garage, Wailuku
 FOR SALE—One Brunswick Phonograph in perfect condition with 50 records. Price \$150.00—Jack Bergstrom Wailuku, Maui.
 LOST—August 15th, 1922 at Claudine Whart, Kahului, one only 3A Folding Camera. Finder kindly return same to Maui News office. (Sept. 5, 8, 12, 15).
 FOR SALE—One 8 foot fountain in A 1 condition. Inquire by mail—P. O. Box 141 Kahului.

FOR SALE—Potted plants, ferns, hanging baskets, Hawaiian rug, one burner oil stove, two screens, etc. Low price to one who takes all. See Gray, Maui News.

FOUND—Ladies scarf on road near Kahului. Owner may recover same by proving property at Maui News office and paying for this advertisement.

The Stock Market

Ewa	34%
H. C. & S. Co.	42%
McBryde	7%
Oahu	31%
Olaa	7%
Pioneer	24%
Wailuku	29%
Engels	1.27
Wailuku	27
Haiuku	Unquoted
Sugar	4.73
Honolulu Oil	Unquoted
San Carlos	25%

Coming Events

Tuesday, September 19—Los Angeles Chamber of Commerce Excursion on Maui. Registration for primary election closes.
 Wednesday, September 20—Board of Registration meets.
 Thursday, September 21—Maui Industrial Accident Board meets. Stated Meeting Scottish Rites Bodies in Masonic Hall, 7:30.
 Friday, September 22—Reception to Teachers by Makawao Ladies Aid in Paia Community House.
 Saturday, September 23—American Legion Dance at Territorial Building.
 Thursday, October 6—Managers night with Dick P. Harris at Wailuku Hippodrome.
 Saturday, October 7—Primary election. Makawao Ladies Aid annual bazaar at Paia Community house. Concert and dance benefit L. D. S. at Kahului Community House.
 Thursday, October 12—Maui County Fair Opens, Japanese Day.
 Friday, October 13—Maui County Fair, Children's Day.
 Saturday, October 14—Last day of Maui County Fair.

Today's Quotation on RAW SUGAR:

4.99

CENTS PER POUND
 Copper 137 1/2 lb.
 Rubber, N. Y. 14c lb.
 Rubber, Singapore 12c lb.
 For further information regarding local and foreign securities see—

WATERHOUSE TRUST CO., LTD.
 PHONE 5701

RECEPTION TO TEACHERS
 The Makawao Ladies Aid Society will hold a Reception for all of the Maui Teachers on the afternoon of Friday, September 22, from 3 to 5 o'clock at the Paia Community House. A pleasing program will be rendered and refreshments served. A cordial invitation is extended the public as well as the teachers. (Sept. 8, 12, 15, 19.)

Shirts and Pyjamas
 Made to Order in Wailuku
 No need to get something that doesn't fit and please. You may select your goods from those on our shelves or bring your own goods and we will make them up. Neckties to match your shirts. Ready made shirts bought elsewhere altered to fit.

A. YAMOTO
 Market St., Wailuku next to Ichiki Hotel.

Make Sure Your Widow Will Dress As Well As Your Wife

INSURANCE

WE CAN FIX IT
INSURANCE DEPT.
Bank of Maui, Ltd.

LOST—FINDER REWARDED
 One brown leather wallet—containing Insurance Books and Prudential Specimen Policies.

Return to P. H. Ross
 REWARD AND NO QUESTIONS ASKED

MAKAWAO LADIES AID BAZAAR AND ENTERTAINMENT
 PAIA COMMUNITY HOUSE, SATURDAY, OCTOBER 7.
 Keep the date free for it

Certain-teed SHINGLES

Literally hundreds of buildings in Honolulu and on the other islands have been roofed with Certain-teed shingles in the past two years since this wonderful material has been on the general market in Hawaii. Less expensive than wood shingles with no waste of material or time in laying; fire resistant and long life—these are the primary reasons why Certain-teed has won the favor of property owners and builders.

Distributed in Hawaii by the **PAN-PACIFIC TRADERS LTD.** Hotel and Bethel Honolulu

N. SANO
 of Wailuku
 Distributor on Maui
 Paint, Varnish, Roofing and Related Building Products



YOUR DRUGGIST IS MORE THAN A MERCHANT

Try the Drug Store First

The Maui Drug Co., Ltd.
 "The Home of Service"
 PHONE 232-A WAILUKU, MAUI, T. H.

"LANAI"

There is no word in any language (or slanguage) that means just that. But a lanai deserves a rug to help it live up to its reputation as a fine place to lounge or do petting in.

NEW MIAMI RUGS

of strong twisted fibre are the thing to use. In all sizes from 2 by 3 ft. to 9 by 12 ft. and from 85 cents to 15 dollars.
 Borders of blue-green-Henna brown—also plain
 Clean them with a hose. The colors won't run, they are dyed before weaving.

Lewers & Cooke, Ltd.
 169—177 SOUTH KING ST.
 P. O. Box 2930 Honolulu

YOUR DOLLARS INVESTED
 In Made-to-Measure Clothing
 bring you the greatest returns in clothes

SATISFACTION

If you really appreciate servicable and stylish clothes, come in and inspect our new fabrics and latest fashions
WE GUARANTEE PERFECT FIT

MAUI UNION TAILORS
 Corner Main and High Streets, Wailuku
ENOS BUILDING