



**THE DAILY Commercial Advertiser**  
 PUBLISHED—  
 Morning Except Sundays,  
 At No. 46 Merchant St.  
 SUBSCRIPTIONS:  
 ADVERTISER, one year \$5 00  
 six months 3 00  
 per month 50  
 FOREIGN (including postage) 6 00  
 Single Copies 10 Cts.  
 Sentable Invariably in Advance.  
 HAWAIIAN GAZETTE CO.,  
 46 Merchant St.,  
 Honolulu, H. I.

**Business Cards.**  
**WILLIAM C. PARKE,**  
 Attorney-at-Law.  
 No. 13 Kaahumanu Street, Honolulu, H. I.

**LEWERS & COOKE,**  
 Successors to Lewers & Dickson  
 Importers and Dealers in Lumber  
 and all kinds of Building Materials.  
 125 FORT STREET, Honolulu.

**JOHN T. WATERHOUSE,**  
 Importer and Dealer in  
 GENERAL MERCHANDISE.  
 No. 25-31 Queen Street, Honolulu. 11f

**H. HACKFELD & CO.,**  
 General Commission Agents  
 111 Fort & Queen Sts., Honolulu. 11f

**BEAVER SALOON,**  
 125 Street, Opposite Wilder & Co.'s,  
 H. J. NOLTE, PROPRIETOR.  
 Refreshing Lunches Served with Tea, Coffee,  
 Soda Water, Ginger Ale or Milk.  
 Open From 3 a. m. till 10 p. m.  
 Smokers' Requisite a Specialty. 11f

**HONOLULU IRON WORKS CO.,**  
 Steam Engines,  
 Millers, Sugar Mills, Coolers, Brass  
 and Lead Castings,  
 and machinery of every description made to  
 order. Particular attention paid to ships' black-  
 smithing, job work executed on the shortest  
 notice. 11f

**THE ROYAL SALOON,**  
 125 N. Nuanu and Merchant Streets  
 Under the Management of  
**E. H. F. WOLTER,**  
 Always in stock a variety of the best Wines,  
 Beers, and Ice cold beers on draught at  
 10 cents per glass.  
 Call and See Us. 11f

**WONG SAI,**  
 Manufacturer of  
 Gentlemen's Underclothing  
 Wollen and Pongee Coats,  
 Wool, Calico, German and Linen  
 Shirts.  
 125 N. Nuanu Street, next door to E. B. Thomas'  
 14-3m

**WILLIAM C. ACHL,**  
 Attorney and Counsellor at Law, and  
 Real Estate Broker.  
 Attends all the Courts of the Kingdom.  
 Office—36 Merchant St., Honolulu.  
 7-3m

**J. C. MARCHANT,**  
 Book-binder & Paper Ruler  
 Bethel St., Press Pub. Co. Building.  
 2-1f

**NEW GOODS!**  
 Received per Bark Aron from Hongkong.  
 No. 1 Contract Mattings,  
 Assorted Colors;  
 Rattan Chairs and Lounges  
 New patterns and styles;  
 Assorted Shades of Silk,  
 Choice Manilla Cigars,  
 Flower Pots, assid sizes;  
 Also, an assortment of  
 Mosquito Urns.  
**WING WO TAI & CO.,**  
 58 1289-1m  
 Nuanu Street.

**READ THE DAILY ADVERTISER**  
 if you want the latest news.

**Business Cards.**  
**GARDNER K. WILDER,**  
 Attorney-at-Law.  
 OFFICE—Honolulu Hale, Merchant Street,  
 77 1264-ly

**DR. OLIVER,**  
 194 Fort Street, next door to Dr.  
 Emerson's.  
 OFFICE HOURS—9 to 12 A. M., 7 to 10 P. M.  
 Telephones—Mutual 608; Bell 475.  
 124-1f

**GOO KIM,**  
 Merchant Tailor,  
 HAS ON HAND;  
 Cashmere, Diagonals, Tweeds and  
 Serges, Etc.  
 A perfect fit guaranteed.  
 NUUANU STREET, HONOLULU.  
 76-3m

**ENTERPRISE**  
 PLANING MILL,  
 ALAKEA, NEAR QUEEN STREET.  
 174 Telephone 55.


**SUN FIRE OFFICE,**  
 OF LONDON.  
 Established 1710.  
 Insurance effected upon every description of  
 property at current rates of premium.  
 Total Sum Insured in 1888 ..... £227,333,700  
 Claims arranged by the Local Agents, and paid  
 with promptitude and liberality. The jurisdic-  
 tion of the Local Tribunals recognized.  
**G. W. Macfarlane & Co.**  
 1m Agents for Hawaiian Islands.

**C. BREWER & COMPANY,**  
 (Limited).  
 GENERAL MERCANTILE  
 AND  
 COMMISSION AGENTS.  
 LIST OF OFFICERS:  
 P. C. Jones, Jr., President and Manager  
 J. O. Carter, Treasurer and Secretary  
 Hon. W. F. Allen, Auditor  
 DIRECTORS:  
 Hon. C. R. Bishop. Hon. H. Waterhouse

**PIONEER**  
**Steam Candy Factory**  
 AND  
**BAKERY.**  
**F. HORN.**  
 Practical Confectioner, Pastry Cook and Baker.  
 Rich and Delicious Ice Cream made by Steam.  
 71 Hotel Street.  
 Claus Spreckels Wm. G. Irwin.

**CLAUS SPRECKELS & CO.,**  
**BANKERS.**  
 HONOLULU HAWAIIAN ISLANDS  
 Draw Exchange on the principal parts of  
 the world.  
 Will receive deposits on open account, make  
 collections and conduct a general banking and  
 exchange business.  
 Deposits bearing interest received in their Sav-  
 ings Department subject to published rules and  
 regulations. 170c2f

**CALL FOR**  
**DIAMOND CREAMERY**  
**BUTTER**  
 in 1lb., 2lb., 3lb. and 7lb. Tins.  
 Finest Article for  
 Warm Climates.  
**S. FOSTER & Co.**  
 Wholesale Grocers,  
 SOLE AGENTS.  
 23 and 25 California St., San Francisco.  
 Tel. 1,896245-1y

**Advertisements.**  
**Australian Mail Service**  
  
 FOR SAN FRANCISCO.  
 The new and fine Al steel steamship  
 "ALAMEDA"  
 Of the Oceanic Steamship Company, will be due  
 at Honolulu from Sydney and Auckland  
 on or about  
**Dec. 14, 1889,**  
 And will leave for the above port with mails and  
 passengers on or about that date.  
 For freight or passage, having SUPERIOR  
 ACCOMMODATIONS, apply to  
**Wm. G. Irwin & Co.,**  
 AGENTS.  
 For Sydney and Auckland.

The new and fine Al steel steamship  
 "ZEALANDIA"  
 Of the Oceanic Steamship Company, will be  
 due at Honolulu from San Francisco  
 on or about  
**Dec. 21, 1889.**  
 And will have prompt dispatch with mails and  
 passengers for the above ports.  
 For freight or passage, having SUPERIOR AC-  
 COMMODATIONS, apply to  
**Wm. G. Irwin & Co.,**  
 AGENTS.  
 Chas. Brewer & Co.'s  
 Boston Line of Packets!  
 IMPORTERS WILL  
 please take notice that the  
 fine bark Martha Davis will  
 be land on the berth in Bos-  
 ton to load for this port dur-  
 ing February next, to sail on or about the  
 first day of March, 1890.  
 For further particulars apply to  
 120 1298 C. BREWER & CO.

**J. N. S. WILLIAMS,**  
 ENGINEER AND CONTRACTOR,  
 IS PREPARED TO DESIGN AND  
 contract for all classes of Sugar Ex-  
 traction Machinery, Irrigating Machinery,  
 Evaporating Apparatus, Vacuum Pans,  
 Engines of all kinds and for all purposes,  
 Water Wheels, Water Conduits, both Pipes  
 and Flumes, Steam Boilers of various  
 kinds, etc., etc.  
**Diffusion Machinery**  
 In all its branches a specialty;  
 Plantations supplied with Chemical and  
 Analytical Apparatus of the very best de-  
 scription to order.  
 Close attention paid to all orders and  
 satisfaction to the purchaser guaranteed.  
 P. O. Box 380, Fort St., Honolulu.  
 57 1287-1y

**SOMETHING NEW!**  
 To be able to get your  
**SPRING BEDS & PARLOR SETS**  
 And Every Description of Furniture,  
 Restuffed and Covered,  
 At Reasonable Rates and in the  
 Best Manner.  
 Deal direct with the workman,  
**D. M. CROWLEY, Working Upholsterer**  
 110 King St., near Alakea, directly  
 opp. Cal. Fruit Store.  
 New Bedding, Lounges, etc., to order.  
 Designs and estimates submitted. 129

**ANDERSON & LUNDY,**  
 Dentists.  
 ARTIFICIAL TEETH  
 from one to an entire set in-  
 serted on gold, silver, alumi-  
 num and rubber bases.  
 Crown and bridge work a specialty. I  
 persons wearing rubber plates which are a  
 constant source of irritation to the  
 mouth and throat, we would recommend  
 our Prophyllactic Metal Plate. All opera-  
 tions performed in accordance with the  
 latest improvements in dental science.  
 Teeth extracted without pain by the use of  
 Nitrous Oxide Gas.  
 207 Hotel street, Trelohan premises.  
 55-1y

**Walker & Redward,**  
 Contractors & Builders  
 Brick, Stone and Wooden Building  
 Estimates Given.  
 Jobbing Promptly Attended to.  
 76 KING STREET.  
 Bell Telephone No. 2. P. O. Box 423. 5234

**Advertisements.**  
**NEW YORK**  
**Life Insurance Company**  
 Assets: \$95,000,000.00.  
 "Facts are stubborn things."  
 AT EVERY AGE, AT EVERY  
 premium table, and in every year, the  
 ACTUAL RESULTS of Tontine Policies  
 of the New York Life Insurance Co.  
 have been LARGER than those OF  
 ANY OTHER COMPANY issuing  
 similar policies.  
 For particulars apply to  
**C. O. BERGER,**  
 Gen'l Agent Hawaiian Islands.  
 149-1f

**FOOK LUN & CO.,**  
 108 Nuanu Street,  
 (Opp. Queen Emma Hall.)  
 Have Just Received  
 Per Late Arrivals from Japan and  
 China, a Fine Assmt. of  
**Christmas & Holiday Goods**  
 SILKS in assorted colors;  
 Chinese Porcelain Dinner and Tea Sets,  
**JAPANESE CABINETS!**  
 Trays, Screens, Tortoise Shell  
 Glove and Handkerchief Boxes  
 Tortoise Shell Tea Tables,  
 Card Receivers, Paper Cutters,  
 Salad Forks and Spoons,  
 Bronze Inkstands,  
**SANDAL WOOD FANS**  
 GLOVE BOXES, CARD CASES  
 and HANDKERCHIEF  
 BOXES;  
**Mosquito Urns**  
 ETC., ETC., ETC.  
 101-1m

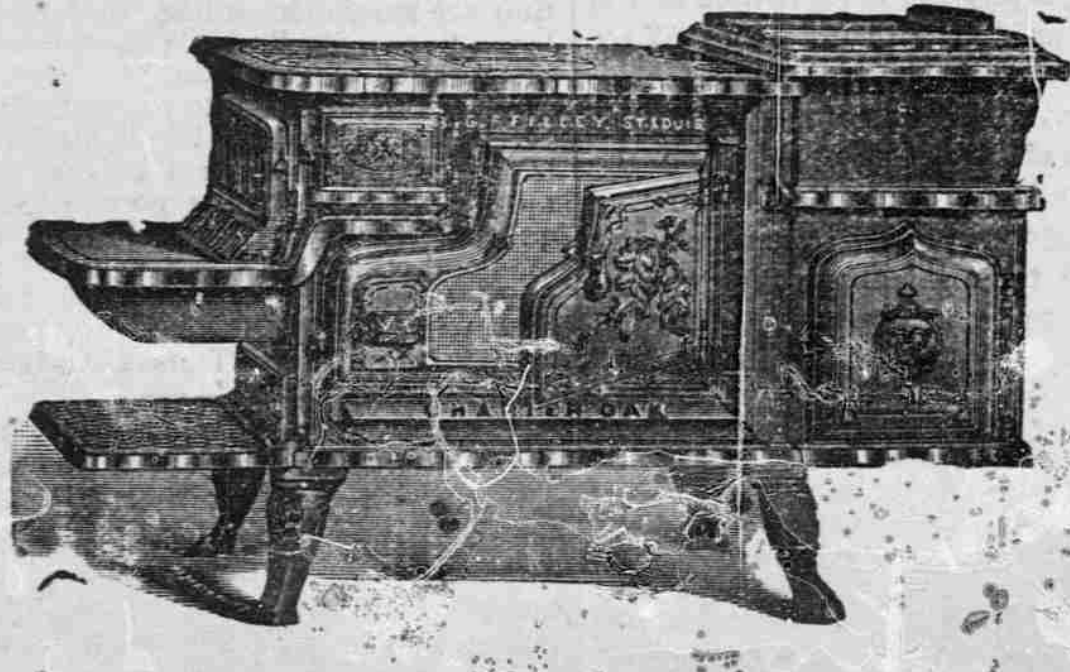
**HARRY'S LUNCH ROOMS**  
 HOTEL STREET.  
 Open Day and Night  
**BILL OF FARE:**  
 Tea, Coffee or Chocolate with  
 Ham and Eggs..... 25 cents  
 Eggs to order..... 25  
 Porterhouse Steak..... 25  
 Mutton Chops..... 25  
 Pork Chops..... 25  
 Hamburg Steak..... 25  
 Steak and Eggs..... 35  
 Steak and Chops..... 35  
 Fish..... 25  
 Tea, Coffee & Chocolate with Bread  
 and Butter or Cakes..... 10  
 Mush and Milk..... 10  
 Fresh Wild Game to order every  
 Tuesday, Thursday and Saturday.  
 Extra dishes cooked to order.  
 Dinner from 11 a. m. to 2 p. m.  
 Dishes cooked to order up to 8:30 p. m.  
 19-1f

**FILTER PRESSES.**  
 PAUHAU PLANTATION,  
 HAWAII, March 9, 1888.  
 Risdon Iron and Locomotive Works, San Fran-  
 cisco.  
 Gentlemen—We have used two of your 30-  
 chambered Filter Presses this season. They  
 are convenient, easily handled and are working  
 entirely to our satisfaction. I can recommend  
 no improvement on them.  
 Very respectfully yours,  
 GEO. R. MOORE,  
 Manager Pauha Plantation.  
 HERRIA, Sept. 28, 1889.  
 Mr. JOHN DYER, Agent Risdon Iron Works,  
 Honolulu.  
 Dear Sir: Please ship us one of your 30  
 chambered Filter Presses, 240 square feet  
 surface, same as the one supplied us last season,  
 which I am pleased to say has given us entire  
 satisfaction. Yours truly,  
 GEO. R. EWART,  
 Manager Heela Agricultural Co.  
 These Presses are made extra heavy for  
 high pressures, occupies a floor space of 11x  
 4 ft., and presents a filtering surface of 240  
 square feet. A limited number in stock in  
 Honolulu and are sold at very low prices.  
 Risdon Iron & Loco. Works,  
 San Francisco.  
 For particulars enquire of  
 JOHN DYER,..... Honolulu  
 Room No. 8 Spreckels' Block;  
 W. G. IRWIN & Co., Agents

**Advertisements.**  
**CASTLE & COOKE,**  
 Shipping and Commission Merchants,  
 IMPORTERS AND DEALERS IN  
 General Merchandise.  
 ALSO, AGENTS FOR—  
 Grove Ranch Plantation,  
 R. Halsted's Plantation.  
 A. H. Smith & Co., Koloa, Kauai,  
 G. F. Blake's Steam Pumps.  
 Kohala Sugar Co.,  
 Haku Sugar Co.,  
 Paila Plantation,  
 Papekoni Sugar Co.  
 Union Fire and Marine Insurance Co., of San Francisco.  
 Etna Fire Insurance Co., of Hartford.  
 The New England Mutual Life Insurance Co., of Boston.  
 D. Weston's Patent Centrifugal Machines.  
 The New York and Honolulu Packet Line  
 The Merchants' Line, Honolulu and San Francisco.  
 Dr. Jayne & Sons Celebrated Medicines.  
**Wilcox & Gibbs, Remington and Wheeler & Wilson**  
**SEWING MACHINES.**  
**H. E. McIntyre & Bro.**  
 IMPORTERS AND DEALERS IN  
**Groceries, Provisions and Feed.**  
 EAST CORNER FORT AND KING STREETS.  
 New Goods received by every packet from the Eastern States and Europe. Fresh California  
 Produce by every steamer. All orders faithfully attended to, and Goods delivered to any part of the  
 city free of charge. Island orders solicited. Satisfaction guaranteed. Postoffice Box No. 418  
 Telephone No. 52 149-1f

**GEO. W. LINCOLN,**  
 THE WELL-KNOWN BUILDER, IS STILL IN THE FIELD AS A CON-  
 tractor, and is now better prepared to do any and all kinds of work  
 appertaining to contracting or any other class of work belonging to his trade, in  
 the same good and workmanlike manner as heretofore; having curtailed my shop  
 expenses and still retain plenty of room to do any and all kinds of work appertain-  
 ing to the building trade that may be entrusted to my care. I am enabled to do  
 the same at very low rates, to suit the extremely dull times, and at the same time  
 bearing in mind that what is worth doing at all is worth doing well.  
 Thanking the public for past favors,  
 I remain respectfully yours,  
 GEO. W. LINCOLN.  
 65


**HAWAIIAN BUSINESS AGENCY,**  
 Corner of Fort and Merchant Streets, Honolulu,  
 Hawaiian Islands.  
**GENERAL AGENTS, EXPERT**  
**ACCOUNTANTS AND**  
**COLLECTORS,**  
 REAL ESTATE, FIRE AND LIFE INSURANCE AGENTS, CUSTOM  
 HOUSE, LOAN AND EXCHANGE BROKERS.  
 BOOKS AND ACCOUNTS accurately kept and properly adjusted.  
 COLLECTIONS will receive special attention and returns promptly made.  
 CONVEYANCING A SPECIALTY. Records searched and correct Abstracts of Titles furnished  
 LEGAL DOCUMENTS and PAPERS of every description carefully drawn and handsomely  
 engrossed.  
 COPYING AND TRANSLATING in all languages in general use in this Kingdom.  
 REAL ESTATE bought and sold. Taxes paid and Property safely insured.  
 HOUSES, Cottages, Rooms, Offices and Land leased and rented, and rents collected.  
 FIRE AND LIFE INSURANCE effected in first-class Insurance Companies.  
 CUSTOM HOUSE BUSINESS transacted with accuracy and dispatch.  
 LOANS NEGOTIATED AT FAVORABLE RATES.  
 ADVERTISEMENTS AND SUBSCRIPTIONS solicited for Publishers.  
 SKILLED AND UNSKILLED LABOR FURNISHED.  
 ANY ARTICLE PURCHASED or sold on commission.  
 INTER-ISLAND ORDERS will receive particular attention.  
 ALL BUSINESS ENTRUSTED TO OUR CARE WILL RECEIVE PROMPT  
 AND FAITHFUL ATTENTION AT MODERATE CHARGES.  
 Having had an extensive business experience for over twenty-five years in  
 New York City and elsewhere, we feel competent to attend to all business of an  
 intricate and complicated nature, or requiring tact and discretion, and respectfully  
 solicit a trial.  
**HAWAIIAN BUSINESS AGENCY.**  
 Bell Telephone No. 274. 29 1277-1f

**JOHN NOTT,**  
 DIMOND BLOCK, 95 AND 97 KING STREET.  
  
 Stoves, Ranges and Housekeeping Goods.  
 Plumbing, Tin, Copper and Sheet Iron Work

**A SHIP OF ICE.**  
 Among the arrivals from the  
 Arctic ocean says the S. F. Chron-  
 icle, was the whaling bark Reindeer,  
 Captain Baker, from Fox island.  
 Captain Baker states that the whal-  
 ing bark Young Phoenix, which was  
 lost in the Arctic over a year ago,  
 was seen again last May.  
 The Young Phoenix left San Fran-  
 cisco in December, 1887. Captain  
 Millard was in charge of her, and  
 he, in company with the Fleetwing,  
 Mary and Susan and the Jane Gray,  
 was caught in the ice nine miles  
 north of Point Barrow on August 5,  
 1888. He and his crew stayed with  
 the vessel for three days, when, find-  
 ing that they could do nothing to  
 save the vessel, they abandoned her  
 and made their way out of the ice to  
 Point Barrow. The Jane Gray was  
 afterward picked up by the Bear  
 and brought to San Francisco,  
 while the other vessels were reported  
 lost.  
 A man named Leavitt has charge  
 of the Pacific Steam Whaling Co.'s  
 station at Cape Smith, which is nine  
 miles to the southward of Point  
 Barrow. He spent last winter in  
 the ice. One morning last May he  
 was astonished to see a ship stand-  
 ing out about a mile from shore,  
 hemmed in by ice. He thought he  
 saw a specter; but there was the  
 Young Phoenix, just as she had been  
 left when abandoned. Her deck was  
 above the ice; from her houses and  
 rigging depended icicles; two sails  
 flapped idly in the breeze, while the  
 rest were furled and frozen to the  
 yards. She looked like a ship of ice.  
 Leavitt went out to the vessel and  
 found several articles, which he took  
 ashore. The Young Phoenix re-  
 mained in sight for several days and  
 then drifted away, and has not since  
 been seen.  
 When petroleum was first dis-  
 covered in the United States it was  
 bottled and sold for medicinal pur-  
 poses under the name of rock oil.  
 It was good for rheumatism.

**Advertisements.**  
**THE RISDON**  
 Iron and Locomotive Works,  
 Corner of Beal and Howard Streets,  
 San Francisco..... California  
 W. H. TAYLOR..... President  
 R. S. MOORE..... Superintendent

**Builders of Steam Machinery**  
 In all its branches.  
 Steamboat, Steamship, Land Engines & Boilers,  
 High Pressure or Compound.  
 STEAM VESSELS of all kinds built complete,  
 with hulls of wood, iron or composite.  
 ORDINARY ENGINES compounded when ad-  
 visable.  
 STEAM LAUNCHES, Barges and Steam Tugs con-  
 structed with reference to the trade in which  
 they are to be employed. Speed, tonnage and  
 draft of water guaranteed.  
 SUGAR MILLS and Sugar Making Machinery  
 made after the most approved plans. Also, all  
 Boiler Iron Work connected therewith.  
 WATER PIPE, of Boiler or sheet iron, of any  
 size, made in suitable lengths for connecting  
 together, or Sheets rolled, punched and packed  
 for shipment, ready to be riveted on the  
 ground.  
 HYDRAULIC RIVETING, Boiler Work and Water  
 Pipes made by this establishment, riveted by  
 hydraulic riveting machinery, that quality of  
 work being far superior to hand work.  
 SHIP WORK, Ship and Steam Captains, Steam  
 Winches, Air and Circulating Pumps, made  
 after the most approved plans.  
 SOLE Agents and manufacturers for the Pacific  
 Coast of the Heine Safety Boiler.  
 PUMPS—Direct Acting Pumps for irrigation or  
 city works' purposes, built with the celebrated  
 Davy Valve Motion, superior to any other  
 pump.  
**JOHN DYER..... Honolulu**  
 —13m Room No. 3, upstairs, Spreckels' Block

**HONOLULU MARKET.**  
 (Successor to Wm. McCandless.)  
 No. 6 Queen Street, Fish Market, Ho-  
 nolulu, H. I.  
 Choicest Beef, Mutton, Pork, Fish  
 VEGETABLES, ETC.,  
 Always Kept on Hand.  
 Family and Shipping orders Carefully  
 Attended to.  
 Live Stock Furnished to Vessels at short  
 notice.  
 Telephones No. 212  
 H. R. FITCHCOCK J. McQUEEN  
**Hawaiian Transfer Co.**  
  
 EXPRESSING & DRAYING  
 FAITHFULLY ATTENDED TO.  
 Mutual Telephone 565. Bell Telephone 160.  
 103-3m



THE ADVERTISER CALENDAR.

Calendar table for December 1889 showing days of the week, moon phases, and tide information.

Tides, Sun and Moon table with columns for High Tide, Low Tide, Sun, and Moon.

Meteorological table with columns for Barom., Therm., Wind, Clouds, and Rain.

N. B.—Barometer corrected to sea level. Aneroïd's std. read .01 lower for every 10 feet elevation.

THE DAILY Pacific Commercial Advertiser.

Be just and fear not: Let all the ends thou aim'st at be Thy Country's, thy God's, and Truth's.

MONDAY, DEC. 9, 1889.

OUR SAN FRANCISCO LETTER.

Per S. S. Hawaii, San Francisco, November 27, 1889.

(From our special correspondent.)

LYONS, Mass., Nov. 26.—Lynn, the city of shoes, was visited this afternoon by the greatest fire in its history, and, with two exceptions, the conflagration is the most disastrous that ever visited New England.

Sugar.

The local market is slow and without change, the quotation for granulated being 7 3/4 cents and other grades in proportion.

Van Tassel's Death.

The news of the horrible death of the aeronaut in Honolulu bay Nov. 16th, created a great stir here where Van Tassel was known by thousands.

Malletta Made King.

Another dispatch has been received at London by way of Auckland regarding the rulers of Samoa. It states that Malletta was re-instated as king and great rejoicing on the 9th of November.

The Revolution in Brazil.

The revolution in Brazil is over and the republic is firmly established. Not only is this true in Rio de Janeiro but in all the provinces.

San Francisco News.

His Ex. C. W. Ashford the Hawaiian Attorney-General arrived by the steamer Zealandia and will go east shortly.

The latest highlander murder is that of Pan Garp.

The Pacific Postal and Telegraph Company has bought out the telegraph line on the Pacific coast from Bush street for \$157,000.

would have been impossible to have prevented the landing of a Chinese... Joseph W. Wallace, an ex-policeman was on the 22d inst, sentenced to hang on January 10th.

John D. Spreckels & Bros. owners of the tug Alert and Vigilant have libelled the steamer Hawaii for salvage.

Robert Bonner the owner of Maud S., Rarus and others, and the purchaser of California's crack trotter is in California, the guest of Senator Stanford.

General American News.

The Pan-American delegates have returned to Washington after their tour through the Northern States.

The recent action of the Catholic Congress in Baltimore in adapting high license as the remedy for the liquor evil has created a great stir all over America.

Another Mormon sensation has been sprung. The disciples of Utah are resisting the naturalization of alien Mormons on the ground that no Mormon can be a good citizen because his first duty is to his church.

The Union Pacific officials announce authoritatively that their line will be built to the Pacific in two years.

A new organization representing \$25,000,000 and including all the mineral water manufacturers in America has been formed.

Foreign Affairs.

The story of Henry M. Stanley's latest march to the interior of Africa will, when told, form one of the most exciting tales of the great explorer's life.

The English language is spreading. Most of the large cities of Europe and many small ones now have their English newspapers.

A woman's hair may grow to the length of six feet. Mme. Hess of Paris refused 5,000 francs for her "crown of glory," which was about that length.

The new apparatus for feeding fires of electric light plants does away entirely with the necessity of handling coal after it has been dumped into the fuel-room.

Advertisements.

ROYAL BAKING POWDER Absolutely Pure. This powder never varies. A marvel of purity, strength and wholesomeness.

Executors Notice.

THE UNDERSIGNED HAVING BEEN appointed executor of the estate of Charles Jay Hardee, deceased, hereby notifies all persons having claims against the estate to present them, properly certified, for settlement.

Meeting Notice.

A SEMI-ANNUAL MEETING OF THE Board of Trustees of the Queen's Hospital will be held on THURSDAY, the 12th of December, 1889, at the rooms of the Chamber of Commerce, at 10 o'clock a. m.

Notice.

NEITHER THE CAPTAIN nor the owners of the British barque "Omega" will be responsible for any debts contracted by her officers or crew.

To the Public!

THE UNDERSIGNED WILL PAY ALL bills which will be contracted by his daughter, Louise R. Rose Ebeling, from this date.

system of fraud and injustice? But how can we hope for success in the contest between good and evil unless good men will unite when bad men combine? Union can only be secured by intelligent comprehension of the necessities of the case and hearty co-operation in proper means and methods for the promotion of the liberties and privileges of the community.

But now that they have had the privilege of constitutional government, and had a foretaste of the government of the world, although the men of Paisley declare that they have one 500 feet high. In Halifax, England, there is an octagon tower rising 381 feet, with a base of 30 feet and weighing 10,000 tons.

Items.

Seattle, Wash., has 200 lawyers. The United States contain 3,200,000 square miles.

The postal card was twenty years old on the 1st of this month.

The Argentine Republic has the greatest debt per capita of any nation in the world.

An electric launch in England recently made sixty miles without recharging accumulator.

Canada's production of minerals last year amounted to \$16,500,000. The most valuable product was coal.

It is estimated that 20,000 Indians will be entitled to vote at the next Presidential election in the far Western States.

The English language is spreading. Most of the large cities of Europe and many small ones now have their English newspapers.

A woman's hair may grow to the length of six feet. Mme. Hess of Paris refused 5,000 francs for her "crown of glory," which was about that length.

The new apparatus for feeding fires of electric light plants does away entirely with the necessity of handling coal after it has been dumped into the fuel-room.

Advertisements.

ROYAL BAKING POWDER Absolutely Pure. This powder never varies. A marvel of purity, strength and wholesomeness.

Executors Notice.

THE UNDERSIGNED HAVING BEEN appointed executor of the estate of Charles Jay Hardee, deceased, hereby notifies all persons having claims against the estate to present them, properly certified, for settlement.

Meeting Notice.

A SEMI-ANNUAL MEETING OF THE Board of Trustees of the Queen's Hospital will be held on THURSDAY, the 12th of December, 1889, at the rooms of the Chamber of Commerce, at 10 o'clock a. m.

Notice.

NEITHER THE CAPTAIN nor the owners of the British barque "Omega" will be responsible for any debts contracted by her officers or crew.

To the Public!

THE UNDERSIGNED WILL PAY ALL bills which will be contracted by his daughter, Louise R. Rose Ebeling, from this date.

TALL CHIMNEYS.

The tallest chimney in the United States is claimed by Kearney, near Newark, N. J., it being 355 feet high, 28 feet in diameter at the base, and containing no less than 1,697,000 bricks.

But to this end we need to lay aside the prepossessions of education and the prejudices of habit, and have that true sympathy with others which enters into their ideas and desires, and views the situation from the standpoint of their circumstances and standards of thought.

Advertisements.

ROYAL BAKING POWDER Absolutely Pure. This powder never varies. A marvel of purity, strength and wholesomeness.

Executors Notice.

THE UNDERSIGNED HAVING BEEN appointed executor of the estate of Charles Jay Hardee, deceased, hereby notifies all persons having claims against the estate to present them, properly certified, for settlement.

Meeting Notice.

A SEMI-ANNUAL MEETING OF THE Board of Trustees of the Queen's Hospital will be held on THURSDAY, the 12th of December, 1889, at the rooms of the Chamber of Commerce, at 10 o'clock a. m.

Notice.

NEITHER THE CAPTAIN nor the owners of the British barque "Omega" will be responsible for any debts contracted by her officers or crew.

To the Public!

THE UNDERSIGNED WILL PAY ALL bills which will be contracted by his daughter, Louise R. Rose Ebeling, from this date.

General Advertisements.

SPECIAL HOLIDAY SALE AT MY Millinery Department! LADIES', MISSES' and CHILDRENS' Trimmings, Hats and Bonnets.

Advertisements.

ROYAL BAKING POWDER Absolutely Pure. This powder never varies. A marvel of purity, strength and wholesomeness.

Executors Notice.

THE UNDERSIGNED HAVING BEEN appointed executor of the estate of Charles Jay Hardee, deceased, hereby notifies all persons having claims against the estate to present them, properly certified, for settlement.

Meeting Notice.

A SEMI-ANNUAL MEETING OF THE Board of Trustees of the Queen's Hospital will be held on THURSDAY, the 12th of December, 1889, at the rooms of the Chamber of Commerce, at 10 o'clock a. m.

Notice.

NEITHER THE CAPTAIN nor the owners of the British barque "Omega" will be responsible for any debts contracted by her officers or crew.

To the Public!

THE UNDERSIGNED WILL PAY ALL bills which will be contracted by his daughter, Louise R. Rose Ebeling, from this date.

Advertisements.

PACIFIC HARDWARE COMPANY, Ltd. Fort and Merchant Streets. INVITE ATTENTION TO THEIR New Goods For Holiday and Wedding Presents!

Advertisements.

ROYAL BAKING POWDER Absolutely Pure. This powder never varies. A marvel of purity, strength and wholesomeness.

Executors Notice.

THE UNDERSIGNED HAVING BEEN appointed executor of the estate of Charles Jay Hardee, deceased, hereby notifies all persons having claims against the estate to present them, properly certified, for settlement.

Meeting Notice.

A SEMI-ANNUAL MEETING OF THE Board of Trustees of the Queen's Hospital will be held on THURSDAY, the 12th of December, 1889, at the rooms of the Chamber of Commerce, at 10 o'clock a. m.

Notice.

NEITHER THE CAPTAIN nor the owners of the British barque "Omega" will be responsible for any debts contracted by her officers or crew.

To the Public!

THE UNDERSIGNED WILL PAY ALL bills which will be contracted by his daughter, Louise R. Rose Ebeling, from this date.

Advertisements.

PACIFIC HARDWARE COMPANY, Ltd. Fort and Merchant Streets. INVITE ATTENTION TO THEIR New Goods For Holiday and Wedding Presents!

Advertisements.

ROYAL BAKING POWDER Absolutely Pure. This powder never varies. A marvel of purity, strength and wholesomeness.

Executors Notice.

THE UNDERSIGNED HAVING BEEN appointed executor of the estate of Charles Jay Hardee, deceased, hereby notifies all persons having claims against the estate to present them, properly certified, for settlement.

Meeting Notice.

A SEMI-ANNUAL MEETING OF THE Board of Trustees of the Queen's Hospital will be held on THURSDAY, the 12th of December, 1889, at the rooms of the Chamber of Commerce, at 10 o'clock a. m.

Notice.

NEITHER THE CAPTAIN nor the owners of the British barque "Omega" will be responsible for any debts contracted by her officers or crew.

To the Public!

THE UNDERSIGNED WILL PAY ALL bills which will be contracted by his daughter, Louise R. Rose Ebeling, from this date.

Mrs. Good, Fort St. 130-1m. Auction Sales. LEWIS J. LEVEY, REAL ESTATE AND GENERAL AUCTIONEER. FORT AND QUEEN STS.

Credit Sale On Liberal Terms! I am instructed by Messrs. THEO. H. DAVIES & Co. to sell at Public Auction at my Salesrooms, corner Fort and Queen street, ON WEDNESDAY DEC. 11 At 10 o'clock A. M., A Fine Ass't of New and Desirable Goods

For Sale! TURKEYS Suckling Pigs. HENRY DAVIS & CO., 52 Fort Street. Parties desiring should leave their orders at once, as the number is limited. 113-2m

J. E. GOMES, Has REMOVED to McInerney Block, where he is prepared to execute first-class work in his line. Watch Work and Diamond Setting A SPECIALTY. Do no fail to inspect his new and elegant Stock of Goods suitable for Xmas & New Year Presents! Including latest designs in Watches, Diamonds, Jewelry, Etc. 131-1m

ARE YOU ILL? Dr. Pierce's... THE STRM. AKAMAI Capt. K. K. Akamai will sail regularly for following ports: Naviwili, Koloa, Eleele, and Waialeale, apply on board, or to DAVID DAYTON, Agent, 115-1y No. 91 King St., up-stairs.

Notice of Election. AT AN ANNUAL MEETING OF THE Waiehe Sugar Co., held this day, the following persons were duly elected for the ensuing year: Col. Z. S. Spalding... President Mr. E. D. Tenney... Vice-President Mr. J. O. Carter... Secretary and Auditor Mr. P. C. Jones... Treasurer Secretary Waiehe Sugar Co. Honolulu, Nov. 11, 1889. 112-1m

PROF. G. SAUVALET, Piano, Violin and Singing Lessons. AT RESIDENCE—135 Nuuanu Ave. -Tele. 590, or will visit pupils at their residence. 84-1m

Pianos For Rent. PIANOS IN GOOD ORDER from \$4.00 to \$7.00 per month. MUSIC DEPARTMENT OF THE HAWAIIAN NEWS COMPANY. 123-1f

PLUMES, Long, GENUINE OSTRICH Assorted Colors. Formerly \$12 Reduced to \$8 Each. " \$5 " \$3 "

For Sale! TURKEYS Suckling Pigs. HENRY DAVIS & CO., 52 Fort Street. Parties desiring should leave their orders at once, as the number is limited. 113-2m

J. E. GOMES, Has REMOVED to McInerney Block, where he is prepared to execute first-class work in his line. Watch Work and Diamond Setting A SPECIALTY. Do no fail to inspect his new and elegant Stock of Goods suitable for Xmas & New Year Presents! Including latest designs in Watches, Diamonds, Jewelry, Etc. 131-1m

ARE YOU ILL? Dr. Pierce's... THE STRM. AKAMAI Capt. K. K. Akamai will sail regularly for following ports: Naviwili, Koloa, Eleele, and Waialeale, apply on board, or to DAVID DAYTON, Agent, 115-1y No. 91 King St., up-stairs.

Notice of Election. AT AN ANNUAL MEETING OF THE Waiehe Sugar Co., held this day, the following persons were duly elected for the ensuing year: Col. Z. S. Spalding... President Mr. E. D. Tenney... Vice-President Mr. J. O. Carter... Secretary and Auditor Mr. P. C. Jones... Treasurer Secretary Waiehe Sugar Co. Honolulu, Nov. 11, 1889. 112-1m

PROF. G. SAUVALET, Piano, Violin and Singing Lessons. AT RESIDENCE—135 Nuuanu Ave. -Tele. 590, or will visit pupils at their residence. 84-1m

Pianos For Rent. PIANOS IN GOOD ORDER from \$4.00 to \$7.00 per month. MUSIC DEPARTMENT OF THE HAWAIIAN NEWS COMPANY. 123-1f

ARE YOU ILL? Dr. Pierce's... THE STRM. AKAMAI Capt. K. K. Akamai will sail regularly for following ports: Naviwili, Koloa, Eleele, and Waialeale, apply on board, or to DAVID DAYTON, Agent, 115-1y No. 91 King St., up-stairs.

For Sale! TURKEYS Suckling Pigs. HENRY DAVIS & CO., 52 Fort Street. Parties desiring should leave their orders at once, as the number is limited. 113-2m

J. E. GOMES, Has REMOVED to McInerney Block, where he is prepared to execute first-class work in his line. Watch Work and Diamond Setting A SPECIALTY. Do no fail to inspect his new and elegant Stock of Goods suitable for Xmas & New Year Presents! Including latest designs in Watches, Diamonds, Jewelry, Etc. 131-1m

ARE YOU ILL? Dr. Pierce's... THE STRM. AKAMAI Capt. K. K. Akamai will sail regularly for following ports: Naviwili, Koloa, Eleele, and Waialeale, apply on board, or to DAVID DAYTON, Agent, 115-1y No. 91 King St., up-stairs.

Notice of Election. AT AN ANNUAL MEETING OF THE Waiehe Sugar Co., held this day, the following persons were duly elected for the ensuing year: Col. Z. S. Spalding... President Mr. E. D. Tenney... Vice-President Mr. J. O. Carter... Secretary and Auditor Mr. P. C. Jones... Treasurer Secretary Waiehe Sugar Co. Honolulu, Nov. 11, 1889. 112-1m

PROF. G. SAUVALET, Piano, Violin and Singing Lessons. AT RESIDENCE—135 Nuuanu Ave. -Tele. 590, or will visit pupils at their residence. 84-1m

Pianos For Rent. PIANOS IN GOOD ORDER from \$4.00 to \$7.00 per month. MUSIC DEPARTMENT OF THE HAWAIIAN NEWS COMPANY. 123-1f

ARE YOU ILL? Dr. Pierce's... THE STRM. AKAMAI Capt. K. K. Akamai will sail regularly for following ports: Naviwili, Koloa, Eleele, and Waialeale, apply on board, or to DAVID DAYTON, Agent, 115-1y No. 91 King St., up-stairs.

Notice of Election. AT AN ANNUAL MEETING OF THE Waiehe Sugar Co., held this day, the following persons were duly elected for the ensuing year: Col. Z. S. Spalding... President Mr. E. D. Tenney... Vice-President Mr. J. O. Carter... Secretary and Auditor Mr. P. C. Jones... Treasurer Secretary Waiehe Sugar Co. Honolulu, Nov. 11, 1889. 112-1m



PORT OF HONOLULU, H. I.

ARRIVALS.

SATURDAY, Dec. 7. Wainaleale, Chaney, from Kauai. Larina from Ewa. SUNDAY, Dec. 8. Hawaii, King, 9 1/2 days from San Francisco via Kahului. Mikahala, Campbell, from Kauai. Macaulay, from Kapaa. Likelike, Davies, from Maui. Mille Morris from Koolau.

DEPARTURES.

SATURDAY, Dec. 7. Kona for Orono, Hawaii. Larina from Ewa. SUNDAY, Dec. 8. Hawaii, King, 9 1/2 days from San Francisco via Kahului. Mikahala, Campbell, from Kauai. Macaulay, from Kapaa. Likelike, Davies, from Maui. Mille Morris from Koolau.

Expected in Port from Foreign Ports.

Esperle, Clark, from a cruise. Fanning's Island. Coghlan, Callao, S. A. Howard, Burrard Inlet. Oleson, Port Townsend. Dabel, Puget Sound. Gifford, San Francisco. Hubbard, San Francisco. Dimond, Drew, San Francisco. Planter, Dow, San Francisco. Omega, Brown, Hongkong. Hawaii, King, San Francisco.

Expected in Port from Foreign Ports.

Where from. Due. Turner, Boston, Dec 10. Pendergast, Liverpool, Dec 27. Blackfield, Liverpool, Dec 29. East Levee, Port Townsend, Dec 10. Consuelo, San Francisco, Nov 28. Puget Sound, Dec 15. W. S. Bowne, San Francisco, Dec 15. Discovery, San Francisco, Dec 15. Olga, San Francisco, Dec 15. Amelia, Eureka, Dec 15. O. Whitmore, Puget Sound, Dec 15. A. King, Puget Sound, Dec 15. Peyton, Puget Sound, Dec 15.

PASSENGERS.

ARRIVALS. From Kauai, per str. Mikahala, Dec 8. G. N. Wilcox, H. Berger, Miss Beane, Titcomb, Hawaiian Band, Miss H. J. Andrews. From Maui, per str. Likelike, Dec 8. Madame de Amerling, Mrs. Brickwood and Mrs. Rodgers, Miss Hammer, V. V. Gifford, G. Gilmer, A. Fernandez, Jr., R. A. Borah, S. L. Austin and wife, Mrs. J. F. Hamburg, A. P. Peterson, Judge Bickerton, W. J. Sheldon and wife, G. Evans, Mrs. Kamahala, R. W. Meyer, O. Meyer, S. M. Kamahala, Dr. Peterson, Miss C. Copeland, Lee Chung, and 40 passengers; also 5 prisoners and 1 dog.

SHIPPING NOTES.

The Wainaleale is off the Marine railway. The S. G. Wilder is being painted at Wilder's wharf. The S. N. Castle went on the Marine railway Saturday. The Likelike brought 748 bags sugar, 94 bales, and 150 packages sundries from last Sunday morning. The Wainaleale brought 154 bags of sugar, 23 head cattle, 4 Chinese and 5 deck passengers from Kilauea and Hanalei. The Mikahala brought the following cargo from Kauai: 3,210 sacks sugar, 649 sacks paddy, and 140 sacks rice. SAN FRANCISCO SHIPPING NEWS. Arrival—Nov. 18th bark Min 21 days from Honolulu. Nov. 23d S. S. Zealandia 4 days from Honolulu. DEPARTURE—Nov. 21st arrived bark Ophir from Honolulu. DEPARTURE—Nov. 15th arrived S. S. Albatross from Honolulu. DEPARTURE—Nov. 21st arrived bark Ewa from Honolulu; bark G. N. Wilcox from Honolulu. DEPARTURE—Nov. 16th, sailed bark Ewa for Honolulu, from Port Townsend on the 21st. DEPARTURE—Nov. 23d, sailed schooner Lewers for Honolulu.

Baseball.

The usual baseball games were played at the Recreation grounds on the afternoon of the 7th inst. The first was between nine of the Roads and Bridges and the Alliolani clubs and was won easily by the first mentioned club. The second game was between nine of the Alliolani and Valley Boys clubs. A large crowd was present to witness this game and considerable interest was manifested by the outsiders who occupied the "bleaching boards" and even crowded on the players. The game was a walk-over for the Iolani club, they winning by a score of 17 to 8. George Miller, captain of the ball team of the U. S. S. Nine, umpired the game. Following is the score by innings: Valley Boys 0 0 0 5 1 3 0 0 0-11 Iolani 4 2 0 2 1 1 0 6 \*-11

How They Stand.

Following is the standing of the baseball clubs in the Junior League, to date, each club to play six games:

Table with columns: CLUB, PLAYED, LOST, WON. Iolani 5 0 5, Kamehameha 4 2 2, Punahou 6 3 2, Valley Boys 5 4 \*

LOCAL AND GENERAL.

Mud again.

The Supreme Court sits in banco on the 11th inst. Sunday services were well attended at all the churches. Have you inspected King Bros. specialty in Hawaiian Christmas cards? The steamer Rio de Janeiro is due here to-morrow from San Francisco, en route to Yokohama. The moon got full again on the 7th inst., and the clouds have been weeping, spasmodically, ever since. Joseph O. Carter, Esq., presents a notice in this issue, as assignee of the estate of C. J. Hardee, deceased. Judge Bickerton and Deputy Attorney-General Peterson have returned again to town from judicial labors on Maui. Tickets are now being circulated for admittance to the fair at St. Andrews cathedral to be held on the 12th inst. Commander Lyons, of the U. S. S. Nisic, states that that vessel will not sail until after the mail steamer arrives. There will be a special meeting of the staff and line officers of the Honolulu Rifles battalion this evening at headquarters. Members of Hawaiian Rifle Association held a meeting in the parlors of the Hawaiian Hotel on the evening of the 7th inst. Persons having books on photography and who should feel so inclined can find an excellent repository with the Camera club. Thanks are tendered to Captain King, purser Wallace and engineer Thiron of the Hawaii and to pilot Babcock for new favors received. Thos. E. Evans the proposed new assistant superintendent of the leper settlement at Kalaupapa arrived in town yesterday from Lahaina. Purser Charles Kibbling of the steamer Likelike furnishes accurate lists, to press people, of passengers and freight on each trip of the vessel. Information is obtained, through the letter of the ADVERTISER'S San Francisco correspondent, that the steamer China will not call here en route to San Francisco. Weather yesterday was pleasant in the morning, but in the afternoon wind and rain squalls were very frequent. At night the rain squalls increased in number and duration. Five prisoners tried and found guilty of various crimes were brought to this city from Maui by the steamer Likelike. One, a Chinese, is sentenced to fifteen years imprisonment for robbery, two Japanese for arson, one Chinese for receiving stolen goods, and a native for adultery. The mongooose has turned up as domesticated among the wharf rats along the city front. Two of them were seen last Saturday, and they appear to make the coal pile back of the Oceanic wharf their home. Would it not be well to have a search made and if found exterminate these nuisances? However valuable they may be on plantations, they are not wanted here in Honolulu. The members of the Camera club held a meeting at the rooms on the evening of the 6th inst. Ten new members were added to the list, by election. A committee was appointed to choose and offer a subject which would be worked up by the members in producing pictures applicable to the subject given. A committee was also appointed to take charge of the library of the club and to arrange and catalogue the books belonging thereto. Berger and the band boys are back again from Kauai and the Professor reports having had a very enjoyable time, their stay at Lihue being made most pleasurable by the kindness shown them by Hon. W. H. and Mrs. Rice. The band on Wednesday last played at the residence of Hon. W. H. Rice, on Thursday for the benefit of the laborers on the Lihue plantation, Friday at the residence of Hon. G. N. Wilcox, and on Saturday afternoon at the fair held at Lihue. The Hawaii Arrives. The Hawaii steamer Hawaii, Capt. James King, one of the latest additions to the fleet of coasting steamers of this port and which is enrolled under the flag of the Wilder S. S. Co., arrived in port here at 5:45 a. m. yesterday, ten days from San Francisco via Kahului, Maui. Captain King reports that the vessel "sailed from San Francisco on November 27th; first three days had rough weather, wind S.E., sea choppy; from thence to Kahului had fair weather. Arrived at Kahului at noon on the 7th inst. and discharged 26,000 feet of redwood lumber and 3,000 railroad ties, and landing one (and the only) passenger, Mr. Christian Linder. Arrived in Honolulu at 6 a. m. on the 8th inst. Capt. King further reports that the vessel was found to be uninjured by the fire the only damage occurring being that to goods on board which were wet. The vessel is lying at the mauka side of the O. S. S. Co.'s wharf. Maui News. East Maui has had several good showers lately, and everything looks nice and green. The mills are getting ready to start grinding, and the crop looks promising, considering the long spell of dry weather. The literary at Hon. H. P. Baldwin's residence at Haiku, on the 6th, was a grand success, and everybody seemed to enjoy themselves. The evening was very pleasant, splendid moonlight and little wind. Several strangers were present—visitors from Honolulu and elsewhere. The shooting match to take place on the 25th of December is looked for with great interest, and it is not at all certain that the Captain (which one?) will get the medals. In politics Makawao is too quiet, it seems they are all asleep, but maybe they sleep with the weather eye open. A grand entertainment is to take place at Paia railroad depot on New Year's eve. HYDRA. Makawao, Dec. 7.

To-Night's Organ Recital.

This evening at 7:45 o'clock will occur at Kaunakapili church, and under the direction of Mr. Wray Taylor, one of those periodic organ recitals which have become so much a favorite with the music-loving public. The programme of events is sufficient to warrant a promise of a very enjoyable performance, the numbers of which are as follows: 1. Harvest Thanksgiving March... Calkin 2. Christmas Pastoral... Moriconi Wray Taylor. 3. Chorus... Kamehameha School. 4. Violin solo—Beethoven... Sauviet Prof. G. Sauviet. 5. Song—Dreams... Strelzki Miss M. Nelson. 6. Andante in G... Batieste 7. Fanfare in D major... Lemmens Wray Taylor. 8. Song—Best of All... Moir Mr. Theo. Richards. 9. Chorus... Kamehameha School. 10. Hawaii Pono... Hawaii Pono.

Public Concert.

The Royal Hawaiian Band will give a concert this evening, at Emma square, commencing at 7:30 o'clock. Following is the programme: 1. Overture—Masaniello... Auber 2. Finale—Tannhauser... Wagner 3. Two new marches (a. Carry Arms (b) Lehnhardt... (b) Pass in Review 4. Selection—Paul Jones (new) Pianquette Like a Like, Moa Ula, Nua o ka Paia. 5. Medley—A Night in New York... Brooks 6. Cornet Polka—A Mute Smile... King 7. Waltz—Morgenblatter... Strauss 8. Quadrille—Bon Jour... Zikoff Hawaii Pono.

New Advertisements.

TENDERS.

THE UNDERSIGNED, EXECUTOR of the estate of CHAS. JAY KIDEE, will receive tenders for the purchase of the property known as the Enterprise Planning Mill, at the office of C. Brewer & Co., up to 10 o'clock a. m. of WEDNESDAY, December 11th. Reserving the right to decline any or all bids. J. O. CARTER. Honolulu, Dec. 7, 1889. 135-3c.

NOTICE.

HAVING BOUGHT OUT MR. W. H. Page in the Honolulu Carriage Manufactory, at 128 Fort Street, I am prepared to continue the above business under the old name of Honolulu Carriage Manufactory, and being an old experienced carriage builder, I solicit the patronage of my old friends and the public in general, and with my thorough knowledge of the business and with experienced workmen and using only the best material I guarantee general satisfaction. Please call and see me before going elsewhere. (Signed) GIDEON WEST. Honolulu, Oct. 28, 1889. 105-4f

Hawaiian Tramways Co., (LIMITED).

Alteration of Time Tables ON AND AFTER WEDNESDAY, DEC. 4. CARS WILL RUN AS FOLLOWS: Kapalama, King Street and Waikiki Service. TO WAIKIKI.—A half-hourly THROUGH SERVICE will be maintained throughout the day. The first car will LEAVE THE COMPANY'S STABLES at KAPALAMA at 5:47 a. m., the next 6:17, 6:47 a. m., etc., and the last at 9:47 p. m., all running through to Waikiki. These cars will pass Fort street at 2 and 32min. past every hour and the Rifle Range at 23 and 53min. past Saturdays, Sundays and Kapalama at 10:47 p. m. for the Rifle Range only. FROM WAIKIKI.—CARS will LEAVE WAIKIKI BRIDGE at 5:47, 6:17, 6:47 a. m., and every half hour, running through to Kapalama, and passing the Rifle Range at 8 and 35min. past every hour; Fort street at 23 and 53min. past. The 10:17 p. m. from Waikiki runs to the Rifle Range only (except on Saturdays and Sundays, when it runs through to Maunakea street); and the 10:47 p. m. from Waikiki is the last through car. EXTRA SERVICE ON SATURDAY AND SUNDAY AFTERNOONS. During the busy portion of Saturday and Sunday afternoons the service will be doubled between the new loop on the Waikiki Road and the Chinese Theatre—that is, four cars will run each way within the hour instead of two, as at other times. FOR TOWN.—CARS will leave the new loop on Waikiki Road at 12:46, 1:00, 1:16, 1:30, etc., until 6:30 p. m., passing the Rifle Range 7min. later, after which the service will be half-hourly. FROM CHINESE THEATRE.—CARS will leave for the Waikiki Road proceeding as far as the new loop, at 1:00, 1:16, 1:30, 1:46, etc., until 7 p. m., passing Fort street 6min. later, after which the service will be half-hourly as usual. Nuanuu Valley Service. TO THE WHARF.—CARS will LEAVE PAUOA every fifteen minutes, commencing at 6:32, 6:47, 7:02, 7:17, etc., and so on until 7:47 p. m., after which they will leave every half hour until 10:02 p. m. Those leaving at 10 p. m. past the hour, will proceed via Fort and School streets; all others except the 8:02, 9:02 and 10:02 p. m., via Queen street. On Sundays the first car will leave the wharf at 8:32 a. m. and thereafter as on week days. FROM THE WHARF.—CARS will LEAVE THE INTER-ISLAND WHARF every fifteen minutes, commencing at 6:47, 7:02, 7:17, 7:32 a. m. and so on until 7:32 p. m., after which they will run every half hour until 10:02 p. m. Those leaving at 10 p. m. past the hour, will proceed via Fort and School streets; all others except the 8:02, 9:02 and 10:02 p. m., via Queen street. On Sundays the first car will leave the wharf at 8:32 a. m. and thereafter as on week days. Beretania Street Service. FROM THE WHARF.—CARS will leave the Inter-Island Wharf at 6:30 a. m., and every half hour until 10 p. m. They will pass the Central Union Church 5 minutes after starting. Those leaving at the hour will run to the Rifle Range, and at the half-hour to Oahu College. FROM THE COLLEGE.—CARS will leave Oahu College for the Inter-Island Wharf at 7:06 a. m., and every hour until 9:06 p. m. FROM THE RIFLE RANGE.—CARS will leave the Rifle Range for the Inter-Island Wharf, traversing Beretania street, at 7:38 a. m., and every hour until 9:38 p. m. FROM PUNAHOU.—These cars will pass the corner of Punahou and Beretania Wharf at 7:06 a. m., and every hour until 9:06 p. m.

Advertisements.

EX S. S. "MARIPOSA,"

NOVEMBER 25, 1889. Attractions at the Double Store of the Hawaiian News Co., 25 and 27 Merchant Street. Our Holiday stock of Novelties Comprise the Largest and Choicest Line of ART GOODS! By "Frang" of Boston; and R. Tuck & Sons, of London; ever before shown in Honolulu. Xmas Cards by the Million From 5cts to \$5. BOOKS AND BOOKLETS For young and Old! Goods impossible to enumerate. Call early and get first choice.

The Hawaiian News Co.

129-4f

OAHU RAILWAY AND LAND CO.'S

TIME TABLE.



TRAINS WILL LEAVE HONOLULU

for the Oahu Railway & Land Co. as follows: TRAINS LEAVE HONOLULU—8:00 a. m., 11:00 a. m., and 3:00 p. m. ARRIVE HALAWA—8:45 a. m., 11:45 a. m., and 3:45 p. m. LEAVE HALAWA—9:30 a. m., 12:30 p. m., and 4:15 p. m. ARRIVE HONOLULU—10:15 a. m., 1:15 p. m., and 5:00 p. m. SUNDAY TRAINS. LEAVE HONOLULU—9:30 a. m., 12:30 p. m., and 3:00 p. m. ARRIVE HALAWA—10:15 a. m., 1:15 p. m., and 3:45 p. m. LEAVE HALAWA—11:00 a. m., 1:45 p. m., and 4:15 p. m. ARRIVE HONOLULU—11:45 a. m., 2:30 p. m., and 5:00 p. m. 125 129c

NOTICE.

CHRISTMAS DAY FALLING on Wednesday, the Kinohiwi will arrive back to Honolulu Tuesday morning, Dec. 24, 1889. WILDER'S STEAMSHIP CO. 134-3f

WILLIAM C. ACHI,

ATTORNEY AND COUNSELLOR AT LAW, Notary Public and Real Estate Broker. OFFICE—36 Merchant Street. 131-3m

NOTICE.

DURING MY ABSENCE FROM THE Kingdom, J. Alfred Magoon will act for me under power of attorney. W. M. McCANDLESS. Dated Honolulu, Nov. 12, 1889. 114-1m 1297-2f

FOR SALE.

FIVE VOLUMES OF BINGHAM'S History of the Hawaiian Islands. Inquire of J. M. Vivian, 42 Merchant street. 132-2f

LEWIS & CO.,

Wholesale and Retail Grocers, 111 FORT STREET. Telephone 240. 81-3y P. O. Box 297.

Picture and Art Novelties!

Have the Finest Line of SUITABLE FOR HOLIDAY PRESENTS. Store Open Evenings. 135-4f

TO LET.

A LARGE FRONT ROOM, nicely furnished, on Nuanuu Av. directly opposite U. S. Legation. 124-4f

New Advertisements.

T. H. Davies & Co.,

HAVE RECEIVED BY LATE ARRIVALS FROM LIVERPOOL AND SAN FRANCISCO. Dry Goods IN GREAT VARIETY. FANCY AND CHRISTMAS GOODS Ornamental Ware, Glassware, Crockery, Etc., Dinner Sets, Tea Sets, Breakfast Sets, Toilet Sets, Nappies, Plates, Bowls, Fancy and Plain Crockery, Perfumery, Soaps, Etc., BAGS and BAGGING! IRON and TIN WARE, Corrugated, Plain and Agate; Galv. Water Pipe, and Tubes, Hollow Ware, Fence Wire, PAINTS, OILS, SHEET IRON, SHEET ZINC, NETTING, CUTLERY, Crosse & Blackwell's MORTON'S GROCERIES JAMS and JELLIES, RAISINS, CURRANTS, Etc. ALSO—By Steamer and Sail, from the United States, a FULL LINE OF American Groceries, PROVISIONS, FEED, FLOUR, And Other Requirements for COUNTRY STORES. A Liberal Discount TO THE TRADE! 133 1200-1y

New Advertisements.

H. F. WICHMAN,

No. 93 Fort Street, Has opened out a FINE ASSORTMENT OF GOODS in his line, of the very latest patterns. A beautiful line of those Stylish TORTOISE SHELL, Gold and Silver Mounted HAIR PINS AND COMBS, GOLD AND SILVER BEAD NECKLACES, one, two and three strands, in plain, chased, and flagree Beads. LARGE SPIDER LACE PINS Mounted in OPALS, DIAMONDS, RUBIES, Etc., Etc., ALL THE RAGE THIS SEASON. ALSO, NOVELTIES IN GOLD & SILVER STAMP and MATCH BOXES, KEY CHAINS and RINGS, BOOK MARKS, PAPER CUTTERS, LADIES' GLOVE COLOGNE BOTTLES, COURT PLASTER CASES, PEN KNIVES, Etc., Etc. ALL STAPLE ARTICLES IN GREAT VARIETY Howard. Waltham and Elgin Watches, MOUNTED & DIAMONDS UNMOUNTED And Everything usually found in a well appointed Jewelry Store. 128-1m

New Advertisements.

W. M. G. FISHER'S

FAMOUS GRAND ACTIVE AND GOLDEN ANVIL Wrought Steel Cooking Ranges With Broiler and Hot Water Attachments. Consuming one-third LESS FUEL, either wood or coal, than any other Stove in existence. No brick work about it, just a clean cut Stove, whose Baking qualities are unsurpassed. Reversible Grates. This Grate is of a triangular form, having three surfaces which are reversible, so that a separate top surface can be used on alternate days; or if the one surface in course of use shows any wear then the other can be turned up, and so on the other, making it equal in durability to three distinct Grates. FOR SALE BY THE HAWAIIAN-HARDWARE CO., 128-1m FORT STREET, (opposite Spreckels' Bank), Honolulu.

NOTICE.

Having purchased from J. J. Melchers, W. Z. Schiedam, Holland, the sole right to use his "Elephant Label" For GIN in this Kingdom, which label bears the picture of an elephant, under palm trees, printed in different colors, and also the words "Greatest Gin Distillery of the Netherlands, registered; J. J. Melchers, W. Z. Schiedam," And having been granted a Certificate of Registration for the term of twenty years, dating from the 17th day of September, A. D. 1889, under the hand and seal of L. A. Thurston, Minister of the Interior, for the Hawaiian Islands, for the exclusive use of the said label throughout the Hawaiian Kingdom, all persons are hereby warned not to use the said label, or any imitation thereof, under penalty of law. W. C. PEACOCK. 76-3m

NOTICE.

Having purchased from J. J. Melchers, W. Z. Schiedam, Holland, the sole right to use his "Elephant Label" For GIN in this Kingdom, which label bears the picture of an elephant, under palm trees, printed in different colors, and also the words "Greatest Gin Distillery of the Netherlands, registered; J. J. Melchers, W. Z. Schiedam," And having been granted a Certificate of Registration for the term of twenty years, dating from the 17th day of September, A. D. 1889, under the hand and seal of L. A. Thurston, Minister of the Interior, for the Hawaiian Islands, for the exclusive use of the said label throughout the Hawaiian Kingdom, all persons are hereby warned not to use the said label, or any imitation thereof, under penalty of law. W. C. PEACOCK. 76-3m

NOTICE.

Having purchased from J. J. Melchers, W. Z. Schiedam, Holland, the sole right to use his "Elephant Label" For GIN in this Kingdom, which label bears the picture of an elephant, under palm trees, printed in different colors, and also the words "Greatest Gin Distillery of the Netherlands, registered; J. J. Melchers, W. Z. Schiedam," And having been granted a Certificate of Registration for the term of twenty years, dating from the 17th day of September, A. D. 1889, under the hand and seal of L. A. Thurston, Minister of the Interior, for the Hawaiian Islands, for the exclusive use of the said label throughout the Hawaiian Kingdom, all persons are hereby warned not to use the said label, or any imitation thereof, under penalty of law. W. C. PEACOCK. 76-3m

NOTICE.

Having purchased from J. J. Melchers, W. Z. Schiedam, Holland, the sole right to use his "Elephant Label" For GIN in this Kingdom, which label bears the picture of an elephant, under palm trees, printed in different colors, and also the words "Greatest Gin Distillery of the Netherlands, registered; J. J. Melchers, W. Z. Schiedam," And having been granted a Certificate of Registration for the term of twenty years, dating from the 17th day of September, A. D. 1889, under the hand and seal of L. A. Thurston, Minister of the Interior, for the Hawaiian Islands, for the exclusive use of the said label throughout the Hawaiian Kingdom, all persons are hereby warned not to use the said label, or any imitation thereof, under penalty of law. W. C. PEACOCK. 76-3m

NOTICE.

Having purchased from J. J. Melchers, W. Z. Schiedam, Holland, the sole right to use his "Elephant Label" For GIN in this Kingdom, which label bears the picture of an elephant, under palm trees, printed in different colors, and also the words "Greatest Gin Distillery of the Netherlands, registered; J. J. Melchers, W. Z. Schiedam," And having been granted a Certificate of Registration for the term of twenty years, dating from the 17th day of September, A. D. 1889, under the hand and seal of L. A. Thurston, Minister of the Interior, for the Hawaiian Islands, for the exclusive use of the said label throughout the Hawaiian Kingdom, all persons are hereby warned not to use the said label, or any imitation thereof, under penalty of law. W. C. PEACOCK. 76-3m

NOTICE.

Having purchased from J. J. Melchers, W. Z. Schiedam, Holland, the sole right to use his "Elephant Label" For GIN in this Kingdom, which label bears the picture of an elephant, under palm trees, printed in different colors, and also the words "Greatest Gin Distillery of the Netherlands, registered; J. J. Melchers, W. Z. Schiedam," And having been granted a Certificate of Registration for the term of twenty years, dating from the 17th day of September, A. D. 1889, under the hand and seal of L. A. Thurston, Minister of the Interior, for the Hawaiian Islands, for the exclusive use of the said label throughout the Hawaiian Kingdom, all persons are hereby warned not to use the said label, or any imitation thereof, under penalty of law. W. C. PEACOCK. 76-3m

NOTICE.

Having purchased from J. J. Melchers, W. Z. Schiedam, Holland, the sole right to use his "Elephant Label" For GIN in this Kingdom, which label bears the picture of an elephant, under palm trees, printed in different colors, and also the words "Greatest Gin Distillery of the Netherlands, registered; J. J. Melchers, W. Z. Schiedam," And having been granted a Certificate of Registration for the term of twenty years, dating from the 17th day of September, A. D. 1889, under the hand and seal of L. A. Thurston, Minister of the Interior, for the Hawaiian Islands, for the exclusive use of the said label throughout the Hawaiian Kingdom, all persons are hereby warned not to use the said label, or any imitation thereof, under penalty of law. W. C. PEACOCK. 76-3m

NOTICE.

Having purchased from J. J. Melchers, W. Z. Schiedam, Holland, the sole right to use his "Elephant Label" For GIN in this Kingdom, which label bears the picture of an elephant, under palm trees, printed in different colors, and also the words "Greatest Gin Distillery of the Netherlands, registered; J. J. Melchers, W. Z. Schiedam," And having been granted a Certificate of Registration for the term of twenty years, dating from the 17th day of September, A. D. 1889, under the hand and seal of L. A. Thurston, Minister of the Interior, for the Hawaiian Islands, for the exclusive use of the said label throughout the Hawaiian Kingdom, all persons are hereby warned not to use the said label, or any imitation thereof, under penalty of law. W. C. PEACOCK. 76-3m

NOTICE.

Having purchased from J. J. Melchers, W. Z. Schiedam, Holland, the sole right to use his "Elephant Label" For GIN in this Kingdom, which label bears the picture of an elephant, under palm trees, printed in different colors, and also the words "Greatest Gin Distillery of the Netherlands, registered; J. J. Melchers, W. Z. Schiedam," And having been granted a Certificate of Registration for the term of twenty years, dating from the 17th day of September, A. D. 1889, under the hand and seal of L. A. Thurston, Minister of the Interior, for the Hawaiian Islands, for the exclusive use of the said label throughout the Hawaiian Kingdom, all persons are hereby warned not to use the said label, or any imitation thereof, under penalty of law. W. C. PEACOCK. 76-3m

NOTICE.

Having purchased from J. J. Melchers, W. Z. Schiedam, Holland, the sole right to use his "Elephant Label" For GIN in this Kingdom, which label bears the picture of an elephant, under palm trees, printed in different colors, and also the words "Greatest Gin Distillery of the Netherlands, registered; J. J. Melchers, W. Z. Schiedam," And having been granted a Certificate of Registration for the term of twenty years, dating from the 17th day of September, A. D. 1889, under the hand and seal of L. A. Thurston, Minister of the Interior, for the Hawaiian Islands, for the exclusive use of the said label throughout the Hawaiian Kingdom, all persons are hereby warned not to use the said label, or any imitation thereof, under penalty of law. W. C. PEACOCK. 76-3m

NOTICE.

Having purchased from J. J. Melchers, W. Z. Schiedam, Holland, the sole right to use his "Elephant Label" For GIN in this Kingdom, which label bears the picture of an elephant, under palm trees, printed in different colors, and also the words "Greatest Gin Distillery of the Netherlands, registered; J. J. Melchers, W. Z. Schiedam," And having been granted a Certificate of Registration for the term of twenty years, dating from the 17th day of September, A. D. 1889, under the hand and seal of L. A. Thurston, Minister of the Interior, for the Hawaiian Islands, for the exclusive use of the said label throughout the Hawaiian Kingdom, all persons are hereby warned not to use the said label, or any imitation thereof, under penalty of law. W. C. PEACOCK. 76-3m

NOTICE.

Having purchased from J. J. Melchers, W. Z. Schiedam, Holland, the sole right to use his "Elephant Label" For GIN in this Kingdom, which label bears the picture of an elephant, under palm trees, printed in different colors, and also the words "Greatest Gin Distillery of the Netherlands, registered; J. J. Melchers, W. Z. Schiedam," And having been granted a Certificate of Registration for the term of twenty years, dating from the 17th day of September, A. D. 1889, under the hand and seal of L. A. Thurston, Minister of the Interior, for the Hawaiian Islands, for the exclusive use of the said label throughout the Hawaiian Kingdom, all persons are hereby warned not to use the said label, or any imitation thereof, under penalty of law. W. C. PEACOCK. 76-3m

NOTICE.

Having purchased from J. J. Melchers, W. Z. Schiedam, Holland, the sole right to use his "Elephant Label" For GIN in this Kingdom, which label bears the picture of an elephant, under palm trees, printed in different colors, and also the words "Greatest Gin Distillery of the Netherlands, registered; J. J. Melchers, W. Z. Schiedam," And having been granted a Certificate of Registration for the term of twenty years, dating from the 17th day of September, A. D. 1889, under the hand and seal of L. A. Thurston, Minister of the Interior, for the Hawaiian Islands, for the exclusive use of the said label throughout the Hawaiian Kingdom, all persons are hereby warned not to use the said label, or any imitation thereof, under penalty of law. W. C. PEACOCK. 76-3m

NOTICE.

Having purchased from J. J. Melchers, W. Z. Schiedam, Holland, the sole right to use his "Elephant Label" For GIN in this Kingdom, which label bears the picture of an elephant, under palm trees, printed in different colors, and also the words "Greatest Gin Distillery of the Netherlands, registered; J. J. Melchers, W. Z. Schiedam," And having been granted a Certificate of Registration for the term of twenty years, dating from the 17th day of September, A. D. 1889, under the hand and seal of L. A. Thurston, Minister of the Interior, for the Hawaiian Islands, for the exclusive use of the said label throughout the Hawaiian Kingdom, all persons are hereby warned not to use the said label, or any imitation thereof, under penalty of law. W. C. PEACOCK. 76-3m

NOTICE.

Having purchased from J. J. Melchers, W. Z. Schiedam, Holland, the sole right to use his "Elephant Label" For GIN in this Kingdom, which label bears the picture of an elephant, under palm trees, printed in different colors, and also the words "Greatest Gin Distillery of the Netherlands, registered; J. J. Melchers, W. Z. Schiedam," And having been granted a Certificate of Registration for the term of twenty years, dating from the 17th day of September, A. D. 1889, under the hand and seal of L. A. Thurston, Minister of the Interior, for the Hawaiian Islands, for the exclusive use of the said label throughout the Hawaiian Kingdom, all persons are hereby warned not to use the said label, or any imitation thereof, under penalty of law. W. C. PEACOCK. 76-3m

NOTICE.

Having purchased from J. J. Melchers, W. Z. Schiedam, Holland, the sole right to use his "Elephant Label" For GIN in this Kingdom, which label bears the picture of an elephant, under palm trees, printed in different colors, and also the words "Greatest Gin Distillery of the Netherlands, registered; J. J. Melchers, W. Z. Schiedam," And having been granted a Certificate of Registration for the term of twenty years, dating from the 17th day of September, A. D. 1889, under the hand and seal of L. A. Thurston, Minister of the Interior, for the Hawaiian Islands, for the exclusive use of the said label throughout the Hawaiian Kingdom, all persons are hereby warned not to use the said label, or any imitation thereof, under penalty of law. W. C. PEACOCK. 76-3m

NOTICE.

Having purchased from J. J. Melchers, W. Z. Schiedam, Holland, the sole right to use his "Elephant Label" For GIN in this Kingdom, which label bears the picture of an elephant, under palm trees, printed in different colors, and also the words "Greatest Gin Distillery of the Netherlands, registered; J. J. Melchers, W. Z. Schiedam," And having been granted a Certificate of Registration for the term of twenty years, dating from the 17th day of September, A. D. 1889,



Advertisements.

**J. E. GOMES,**  
(Formerly of Gomes & Wichman.)  
McInerney Block, No 79 Fort Street,  
Manufacturing Jeweler,  
Island orders promptly attended to. P. O. Box No. 488, Honolulu. 48-3m

"BAY VIEW"

**RESORT**

King St, opp. Oahu Railway Depot,  
Billiards, Bowling Alley  
SHOOTING GALLERY, SHUFFLE BOARD AND SPARRING.

**Cold Lunches! Cold Drinks!**

The Best of Coffee, Tea and Chocolate.  
Finest Brands of  
CIGARS AND TOBACCO.  
Oysters and Game by every California steamer.

**E. M. SNIFFEN,**  
111-ly MANAGER.

**The Liverpool and London and Globe**

**INSURANCE CO**

(ESTABLISHED 1836.)  
Assets.....\$ 40,000,000  
Net Income..... 9,079,000  
Claims Paid..... 112,569,000

Takes Risks against Loss or Damage by Fire on Buildings, Machinery, Sugar Mills, Dwellings and Furniture, on the most favorable terms.

**Bishop & Co.**  
1188-6m 1-6m

**JUST RECEIVED**

By the S. S. City of Peking, and BK. Velocity, for and Sale by

**WING WO CHAN & CO.**

No. 22 NUUANU ST.  
Japan Fire Screens, Picture Frames, Bronze Vases, different kinds; Card Cases, ivory, bronze, sandal wood, etc., etc.  
Fans, a large assortment; Framed Japanese Pictures, Ink Stands, bronze; Paper Knives, ivory, bronze, etc.; Bronze Plaques, Canes, all kinds and very choice; Dinner and Tea Sets, Hand Painted. Ladies' Bronze Baskets, Japanese Fancy Towels, Jap. Morning Gowns, cotton, silk, etc.; Silk, Grasscloth, and Ladies' Fancy Handkerchiefs, Crepe Shawls, Japanese Sauce, Rattan Chairs, assorted varieties; Chinese Plants, Paving Stones, Chinese Matting, white and colored; Row Boats, etc., etc. 155-ly

**Fruit Trees**

**Plants.**

10,000 FRUIT TREES AND PLANTS  
From our Orchard and Nurseries in Alameda Co. California.

ORANGE, LEMON, OLIVE, WALNUT, ALMOND; 2 years old; \$2 each.  
APPLE, PEACH, PEAR, APRICOT, FIG, NECTARINE, QUINCE, PRUNE, FILBERT and PECAN; 1 to 2 years old; \$1.50 to \$1.75 each.  
ROOTED GRAPE VINES; 10 varieties of Table and Wine Grape; 20 to 40 cents each. Grape and Olive Cuttings.  
ROSES; 10 choice varieties; 1 year old; 30 to 40 cents each.  
Ten thousand ASPARAGUS ROOTS at Kahihi; 2 years old; strong, can be cut the first year after transplanting; \$5 per 100.

It is our purpose to recommend nothing but what we know to be of value and what we know from experience will grow in the Islands.  
Parties sending in their orders before the end of DECEMBER will receive their Trees and Plants in January and February, the best time to plant.  
Full particulars will be given how to plant and when, with every \$25 order.

Address **A. HERBERT,**  
Honolulu;  
Or 302 California St., San Francisco, Cal. 114 1297-1m

**LOVE'S BAKERY.**

No. 73 Nuuanu Street.  
MRS. ROBT. LOVE, Proprietress.

Every Description of Plain and Fancy.

**Bread and Crackers,**

Soda Crackers

**MILK BREAD**

Island Orders Promptly Attended to, 173-3m

New Advertisements.

**GRAND OPENING!**

— OF THE —  
**Latest Novelties in Millinery**

— AT THE —  
**POPULAR MILLINERY HOUSE**

104 Fort Street, : : : Honolulu,  
**N. S. SACHS, Proprietor.**

We have NOW OPEN FOR INSPECTION, a Choice Assortment of FINE MILLINERY GOODS. Latest Designs in

**Bonnets, Hats and Fancy Trimmings!**

A Large Assortment of Elegant PLUMES, TIPS, EGRETTES, WINGS.  
A NEW LOT OF FINE FLOWERS.

**New Ribbons, New Ribbons.**

BRIDAL · WREATHS · AND · ORANGE · BLOSSOMS. ·

INSPECTION SOLICITED. 105-3w

**E. R. HENDRY, President and Manager.**  
**GODFREY BROWN, Secretary & Treasurer.**  
**JOHN ENA, Vice-President.**  
**CECIL BROWN, Auditor.**

**HAWAIIAN HARDWARE CO.,**

(LIMITED).  
Opp. Spreckels' Bank, Fort Street, Honolulu,  
Importers and Dealers in

**Hardware, Crockery, Glassware,**

Chandeliers, Electoliers, Lamps and Lamp Fixtures,

**HOUSE FURNISHING GOODS**

Paints, Oils and Varnishes, Lard Oil, Cylinder Oil; Powder, Shot and Caps, Machine-loaded Cartridges, Chamberlain's Patent; Silver-plated Ware, Table and Pocket Cutlery; Plows, Planters' Steel Hoes, and other Agricultural Implements; Handles of all kinds;

**Plantation Supplies of every description**

Hart's patent "Duplex" Die Stock for Pipe and Bolt Cutting; Manila and Sisal Rope, Rubber Hose, Wire bound Rubber Hose, Spincter-grip; Sprinklers and Sprinkler Stands.

**AGENTS FOR:**  
Union Metallic Cartridge Co.,  
"New Process" Rope,  
Hartman's Steel-wire Fence and Steel-wire Mats,  
Neal's Carriage Paints,  
Wm. G. Fisher's Wrought Steel Ranges,  
Gate City Stone Filters,  
"New Process" Twist Drills,  
Hart's Patent "Duplex" Die Stocks.  
100-ly

**If You Want to Furnish Your House**

— GO TO: —  
**B. F. EHLERS & CO.'s, 99 FORT ST.,**

For all kinds of CURTAINS, BEDSPREADS, SHEETINGS, MOSQUITO NETS

And PLUSH RUGS in all sizes, at very low prices, in great variety.

**PLUSH GOODS FOR THE COMING HOLIDAYS**

1-ly JUST OPENED.

**JAS. DODD,**

**CRITERION SALOON, FORT ST.**

Honolulu, Hawaiian Islands,

**SOLE LOCAL AGENT**

For the Sale of

**JOHN WIELAND'S**

**CELEBRATED BEERS**

SOLD DURING THE YEAR 1888,

**122,173 BARRELS!**

Full Importations by Every Coast Steamer.

2-ly

New Advertisements.

**CRYSTAL SODA WORKS**

JOHN GRACE, Proprietor. - NO. 54 KING STREET.

SOLE MANUFACTURER OF THE  
GREAT BLOOD PURIFIER

**SARSAPARILLA AND IRON WATER!**

**GINGER ALE,**

Sarsaparilla, Lem on, Cream and Plain Soda,  
Champagne Cider, Etc., Etc.

ALL AREATED WATERS GUARANTEED PURE.

Mutual 330---TELEPHONES---Bell 298.

ISLAND ORDERS PROMPTLY ATTENDED TO.  
111 1296-ly

**GENT'S FINE BLUE**

**FLANNEL SUITS**

YOUNG MEN'S BLACK FRENCH DIAGONAL SUITS.

BOYS' FINE LIGHT WEIGHT CASSIMERE SUITS.

GENT'S FINE NECKWEAR, HOSIERY, UNDERWEAR.

Gent's Black, Brown and Grey

**FINE STIFF FELT HATS**

All the above Goods are NEW GOODS and NEW DESIGNS, and will be sold at VERY LOW FIGURES at

**THE LEADING MILLINERY HOUSE } CHAS. J. FISHEL.**  
Corner of Fort and Hotel Streets.  
37 1289

**1889 - CHRISTMAS - 1889.**

A New Departure! A New Departure!

Beginning on Saturday, Nov. 23d.

I beg to state to my patrons and the public in general that my Store will be open for business

**EVERY SATURDAY NIGHT UNTIL 9:30 O'CLOCK**

And during the period known as Christmas week we will open EVERY NIGHT IN THE WEEK.

**TO THE LADIES**

I beg to state that I have made extensive alterations and improvements on my lower floor and am prepared to show the most

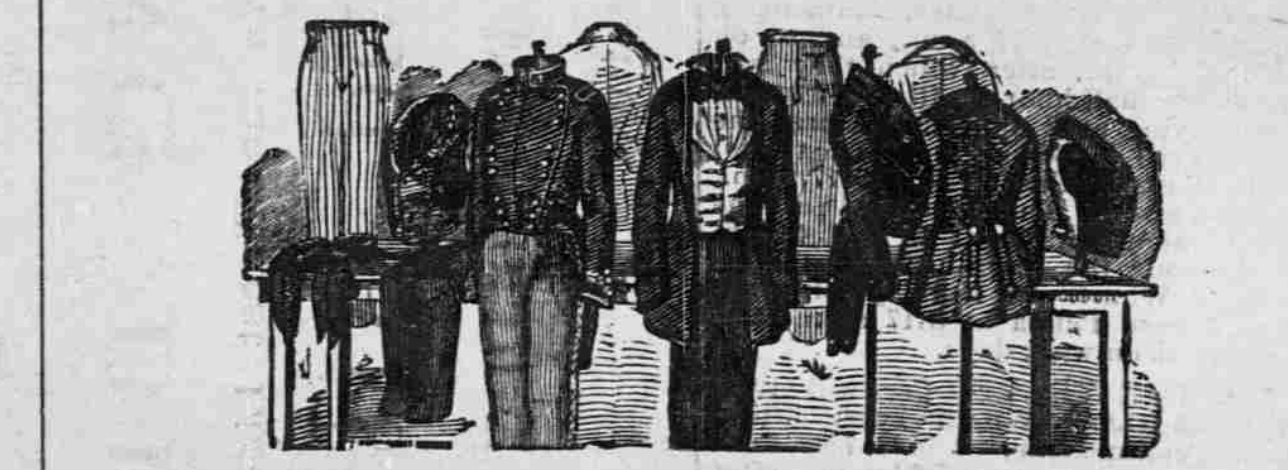
Elegant Assortment of Boys' and Children's Clothing  
Ever before offered for sale in Honolulu.

JOSEF HOFMAN FIFTH AVE. BRITANNIC SUITS FOR CHILDREN  
My Stock of

Ladies' Misses' and Children's Shoe Wear  
is replete with the Latest and Best of Everything.

**TO THE GENTS**

I would say that I have laid in an immense stock of all the latest novelties in GENTS' FURNISHINGS.



I am offering a magnificent line of Gent's Silk silk-stripped and Zephyrd weight Over Shirts, Tennis Coats and Belts in endless variety, Full dress Shirts, Suits and Ties; a handsome line of White Flannel, Blue Serge and Fancy mixed and Stripped  
Flannel Coats and Vests and Suits, all light weight goods,  
Suitable for this climate and made specially for me.

GAITERS, BALMORALS and RUSSETT LEATHER SHOES, the FINEST ever offered to the Honolulu public.

Call and see us or ring up Bell Telephone No. 269 and your wants will be fully attended to.

Sole Representative of the American Waltham Watch Co. in the Hawaiian Islands

**M. McINERNEY,**

FORT AND MERCHANT STS.  
123-2w

Advertisements.

**TAHITI LEMONADE WORKS CO.,**

**D. T. BAILEY, Manager.**

MANUFACTURERS OF

**Tahiti Lemonade,**

Lemon, Cream and Plain Soda,

Ginger Ale, Hop Ale, Grenadine, Raspberryade, Sarsaparilla,

**MINERAL WATERS, ETC., ETC.**

TELEPHONE 297.

All communications and orders should be addressed to

**BENSON, SMITH & CO.,**

64 1287-ly AGENTS.

**BUHACH!**

The Genuine Article. In Quantities to Suit.

**COLGATE'S**

**SOAPS AND PERFUMES**

A Full Assortment Just to Hand ex Stmr Australia.

**Depot for Joy's Vegetable Sarsaparilla.**

**WYETH'S**

**Extract Malt, Etc.**

**HOLLISTER & CO.,**

109 Fort St., Honolulu  
148 1276

**HAWAIIAN**

**CARRIAGE MANUFACTURING CO,**



Carriages, Phaetons, Buggies, Brakes, Wagons. Etc.,

FOR SALE AT A BARGAIN. ALL KINDS OF

**CARRIAGE AND WAGON REPAIRING**

Solicited at very low prices.

**OUR PATENT BRAKES**

Originated in Honolulu by us have been reduced 25 per cent. in price.

Just Received a large invoice of

**Second Growth of White Oak Spokes.**

HUBS, FELLOES, RIMS, PLANK, ETC.; HEAVY HICKORY WAGON,  
SINGLE and DOUBLE TREES, ETC., ALL AT A GREATLY

**Large Assortment of Bar Iron.**

26 1282-3m

**Pioneer Shirt Factory, of Honolulu.**

No. 104 Fort Street.

The undersigned begs to inform the public of these islands that he is making Shirts of measurement. Directions for self-measurement will be given on application.

**White Shirts, Over Shirts and Night Gowns.**

A fit guaranteed by making a sample Shirt to every order. Island orders solicited.

**A. M. MELLIS.**

Bell Telephone 410.