

The Pacific Commercial Advertiser

U. S. WEATHER BUREAU, October 12.—Last 24 hours' rainfall, .00. Temperature, Max. 84; Min. 76. Weather, fair.

SUGAR—96 Degree Test Centrifugals, 4c.; Per Ton, \$80.00. 88 Analysis Beets, 9s. 61.; Per Ton, \$79.80.



ESTABLISHED JULY 2, 1856

VOL. XLIV., NO. 7545.

HONOLULU, HAWAII TERRITORY, SATURDAY, OCTOBER 13, 1906.

PRICE FIVE CENTS.

DEMOCRATS HAVE THE EVENING TO THEMSELVES

Hold a Meeting at Moiliili and Another at Kalihi, Which Were Addressed by Most of the Candidates.

The rain falls upon the just and the Democrats but it did not keep a hundred or more people from a meeting of Democratic candidates near Kaulani school last night.

KAMAHU WON VOTE.

Daniel Kamahu, candidate for Representative from the Fifth, acted as chairman and did well. One Home Ruler was heard during a stage of the proceedings to say he would vote for Dan'l but for none other.

There were no conveniences for either speakers or press. A Honolulu soap box was utilized as a platform and the reporters managed to get along by the flickering light of a kerosene torch. Most of the speakers used the Hawaiian language and there was no interpreter to let the English speaking people in the audience know what was doing.

FERN AND THE MACHINE.

Joe Fern occupied the time of the people for twenty-five minutes and Frank Harvey followed. He touched every candidate on the ticket during his remarks and made an attack on the machine that brought out a plentiful supply of enthusiasm. Once he was interrupted by a person in the next lot but he closed him up with a word. Tom Gandall spoke for a few minutes on the tariff and David Kahalaahu, another candidate for Representative, followed with a demand for votes for the straight Democratic ticket. David is as dry as a Kansas Sunday, when it comes to campaign oratory, and he does not often get through telling of the good qualities of each candidate under thirty-five minutes.

MOORE DOES SOME.

H. T. Moore was a sort of oasis in a desert of foreign language. He made his address in English and it was interpreted for the benefit of the Hawaiians. He told of his experience in the Board of Supervisors during the past few months. He said it would be of benefit to him should he be returned at this election. Having served as a supervisor he believed he would do better than a man who had never done so. He had missed but one meeting of the board, he said, and had been faithful to the trust. In every instance where a measure was introduced that would help the laboring man he had voted for its passage. Every man working for the government in the road, police and garbage department would verify this statement. He said his efforts had been in the interest of all rather than a special class. He thought he had accomplished a great deal, for one lone Democrat, and it was easy to believe that if more Democrats were elected

more could be done for the people. The claim made by the Republican party that they had provided the money and the work is nonsense, said he. It is the taxpayers who provide the money and the Democrats will have the same chance to appropriate it as the Republicans and they would probably make better use of it.

Mr. Moore said in closing, "Cast your ballots as independent citizens for the men in whom you have confidence."

CURTIS AND THE REST.

The chairman then introduced Curtis Laukea. He was cheered lustily as he approached the soap box.

His address was in a pleasant voice and his remarks, which were in Hawaiian, were frequently applauded. He dwelt principally upon the urgent necessity for breaking up the machine and called upon every voter present to aid in doing so.

Jack Kalakiela, "the reformed Republican," came forward amid the cheers of the crowd and roasted Brown principally and the machine generally. He said he had recently been asked by Brown to remain in the employ of the police department but had declined. There were frequent signs of approval of his utterances and he was frequently encouraged by cries of "Good boy, Jack."

Charlie Rose followed and spoke in Hawaiian. He seemed easier than when he spoke in English Thursday night and was well received.

Col. McCarthy arrived late from Kamoihihi and delivered his address on the tariff which was well received.

The showers of rain during the meeting drove many persons from the ground.

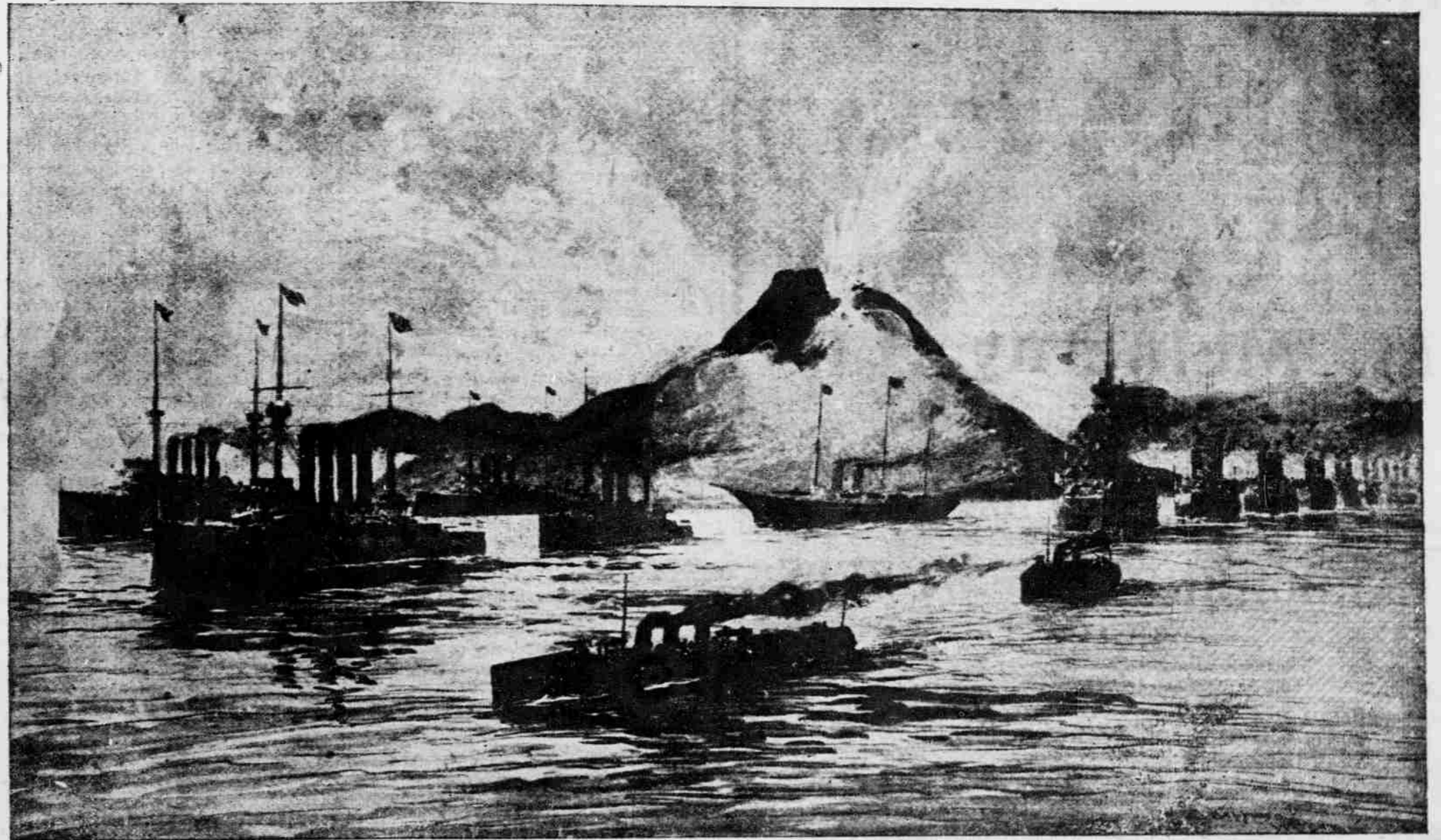
DEMOCRATS AT MOILILILI.

Out at Moiliili the Democrats held forth near the church. Within a circle of torches a platform was raised and there Chairman Charles Kauai presided, introducing each speaker with remarks concerning their candidacy.

The first speaker was Charles Broad, candidate for the Senate. He said that since county government was instituted here there had been really little work for the voters on account of the lack of funds. Good roads are started, but are generally left unfinished. What caused this? The careless way of those handling the road money. County government is a government of and for the people, but here it has been controlled by the Republican party. In the last campaign the Republicans promised plenty of work. How much did the Hawaiians get? The Republicans were

(Continued on page 7).

SICILY AND CALABRIA SHAKEN



STROMBOLI IN ACTION.

COOPER IS PRESIDENT

Manoa and College Hills Clubs Are One.

An enthusiastic meeting of the Manoa Improvement Club was held last evening at the residence of Judge H. E. Cooper, Manoa Valley, to discuss many matters of general interest to the increasing population of that suburb. In addition to the Manoa Club there were many members of the College Hills Club present, the whole assemblage numbering thirty-five.

One of the most important features of the meeting was the determination to amalgamate the two organizations into one, continuing them under the name of the Manoa Valley Improvement Club. This amalgamation will formally take place at the next meeting, although about fifteen of the College Hillites attached themselves to the Manoa club yesterday.

The principal item for discussion afterwards laid before the meeting was the plan for obtaining a chemical fire engine, to be located in the valley, for fire protection. Such an engine, it was said, could be procured for \$400, and it was proposed to ask the county to buy a portion of the gore of the Montana property lying between the upper and lower Manoa roads whereon to erect a suitable structure in which to keep the engine.

It was also proposed to acquire as much as necessary of the Montana property adjoining the fire engine house on which to erect a schoolhouse. A committee, comprising Messrs. Cooper,

(Continued from page 4.)

SONOMA IS VERY LATE

Fears Felt for Liner Now Two Days Delayed.

The long delay in the arrival of the Oceanic steamship Sonoma, which was due here on Thursday morning, is exciting some little apprehension, in spite of the fact that the steamships of the Oceanic line have all been running considerably behind their schedule for the past few months. The Sonoma left San Francisco a day late, but even at that should have been here on Thursday. There has been no rough weather that is known of here, and it seems somewhat remarkable that the liner should be eight days arriving from the Coast, which she will be if she makes port this morning. On her trip from the Colonies, when she passed through here last, she had lost much time, placing the blame at that time upon her firemen. The steamer Ventura, two days late, also blamed her firemen for not being able to furnish a sufficient head of steam to keep the vessel on her normal time. The Alameda, too, was a day late in arriving at the Coast on her last run, something decidedly out of the ordinary for her.

It is pointed out that it is exceedingly difficult for any line of steamships running out of San Francisco at the present time to ship a satisfactory lot of firemen. In that city there is plenty of work for all at wages that put the scale paid to firemen into the also ran class, and to get any men at all the steamship companies have to ship the very poorest.

If this morning fails to bring any report of the Sonoma it is quite probable that the revenue cutter Manning will be dispatched in search of her.

Much Damage Done on the Island and One Hundred Shocks on the Peninsula.

(Associated Press Cablegrams.)

PALERMO, October 13.—Earthquakes have done great damage in Sicily. There have been one hundred shocks in Calabria within five days.

Calabria is the extreme southern province of Italy, divided from Sicily by the narrow strait of Messina. The volcano of Stromboli is on an island north of Sicily and west of Calabria and the volcano of Etna is on the east coast of Sicily. The whole region has been subject, since ancient times, to devastating seismic phenomena.

SAN FRANCISCO'S NEW VIGILANCE COMMITTEE

SAN FRANCISCO, October 13.—A meeting of citizens will be held today to form a committee of safety and rid the city of petty thieves.

INTERVENTION WILL END WHEN ELECTIONS ARE FAIR

HAVANA October 13.—Secretary Taft has told the Cubans that the United States will withdraw its government from the islands as soon as fair elections can be assured.

NEWFOUNDLAND OPPOSES ANGLO-AMERICAN COMPACT

ST. JOHNS, N. F., October 13.—The cabinet has decided to oppose the modus-vivendi regarding the Newfoundland fisheries, which has been reached by the United States and Great Britain.

WITTE HAS ENOUGH.

PARIS, October 13.—Count de Witte, former premier of Russia, is in this city. He declares he will never return to office.

THE FRENCH PARLIAMENT.

PARIS, October 13.—Parliament will convene October 25.

SANTIAGO DE CHILI, October 12.—Congress, during the coming session, will consider a bill providing \$25,000,000 for the reconstruction of the places destroyed by the earthquake at Valparaiso and other places near by which suffered.

CHICAGO, October 12.—In the fourth game today for the championship of the world the Nationals won from the Americans by a score of 1 to 0. This makes the two teams break even.

ALASKAN'S SUGAR CARGO CAUGHT FOUR CENT RATE

Big American-Hawaiian Freighter Landed About a Million Dollar Cargo From Hawaiian Plantations.

The arrival of the American-Hawaiian company's big freighter Alaskan at New York on October 9 with 11,540 tons of sugar from island plantations was good news to the planters for the sugar caught the four cent rate just then prevailing.

Eleven thousand five hundred and forty tons of sugar is 23,080,000 pounds, and at 4 cents per pound this would make a value of \$923,000 or close to a million dollars for the cargo.

The Texan is on the way to New York via the Horn with another big cargo of sugar. The next movement of sugar to New York and Delaware Breakwater will be by way of the Tehuantepec Railway, the American-Hawaiian freighters transhipping their cargoes at the Pacific terminus of the railway to the cars and other vessels, reloading it on the Atlantic side. This movement is expected to start some time in November or early in January. Mr. Morse of the local A.-H. agency has not yet been apprised of the date of sailing of the first steamer on this route. The schedule will be completed in the New York office.

The Nevada is the next A.-H. steamer to leave the Sound. She will depart on October 23 and calling at San Francisco will sail direct therefrom for Honolulu on October 31.

ANEGAWA REFUSES TO ENTER KAHULUI PORT

(By Wireless Telegraph.)

KAHULUI, October 12.—The Anegawa arrived at eleven a. m. and anchored off port. A committee of Japanese went to the Anegawa and induced the captain and two officers to come ashore but the captain refused to bring in his ship. The officers stayed ashore about an hour and speeches were made from the balcony of the Masonic building. There were no sports. The officers returned to their ship at 4 p. m. and the vessel expects to sail for Honolulu at 6 p. m. She left Hilo at 6:30 p. m., Wednesday, and it is not known where she cruised before arriving at Kahului.

AFTERNOON CABLE REPORT.

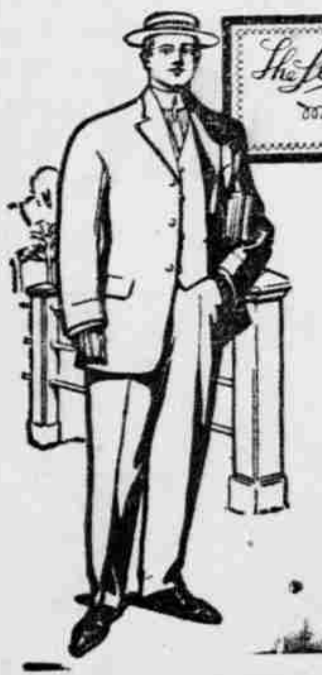
BASSETTERRE, Guadeloupe, October 12.—Mount Pelee is in state of eruption again.

NEW YORK, October 12.—Refined sugar was today reduced ten cents a hundred pounds.

SAN FRANCISCO, October 12.—Denicke, the man who shot and killed a man on a wharf in San Francisco during the days of the disaster, has been held for manslaughter.

HAVANA, October 12.—Secretary Taft is conferring with a committee appointed by the insurgents to carry on negotiations for peace.

We do not expect you to buy



when you come in our store. We are pleased when you do—but just come in. There are a hundred things to interest you, and we have your size in Stein-Bloch fall business suit or overcoat—fresh from the shops and breathing new, crisp style in every line. Try? It will be a fit.

M. McInerny, Ltd.
MERCHANT AND FORT STREETS.

CARBORUNDUM WHEELS

THE GREATEST SHARPENER KNOWN TO SCIENCE.
The only abrasive that does not draw temper from the finest steel. Is a necessity in the hands of any one who uses tools. Not an experiment but a tried and proven article. Inspection is invited. This wheel comes in various sizes suitable to the needs of different lines of business or the professions.
GEORGE E. LA MONT, Sole Agent.
Room 4, Waity Building, King Street. Cable Address Gacy

**Pennsylvania Lawn Mowers
Make Happy Yard Boys**

Don't send the yard boy out to cut the grass with a cheap, ponderous lawn mower. If lawn mowers were sold by weight some would bring extraordinary prices. Think what a difference it makes in his labor to push the light easy running PENNSYLVANIA.
The PENNSYLVANIA LAWN MOWER is simple, strong, light and durable. It will outwear two or three ordinary mowers and is so light running that any woman can easily run it. No getting out of order. No frequent repairs. Stays sharp a long time.
We also have large mowers for horse power suitable for expansive lawns.

E. O. HALL & SON, LTD.
CORNER FORT AND KING STS.

J. LANDO

**Depot for BOSS OF THE ROAD OVERALLS
PORUSKINT UNDERSHIRTS
DRESS SUIT CASES**
NEW LINE OF SHIRTS, TIES, HATS AND CAPS. SEE DISPLAY IN OUR WINDOW.
Fort Street Odd Fellows Building.

Just Received

LARGEST ASSORTMENT OF

Pineapple Silks

ALSO A FULL LINE OF KIMONOS.

— BY —

K. ISOSHIMA

Telephone, Main 136. 30 King Street.

FRENCH LAUNDRY

All work carefully done by hand. Shirts, collars, ladies' and gent's suits washed. Dry Cleaning also. Goods called for and delivered.

J. ABADIE, Proprietor.

323 Beretania Street, opposite rear entrance Hawaiian Hotel. Phone Blue 5558.

SOMETHING NEW!

Hand Carved Ivory Hat Pins

From Japan at prices from 60c. to \$1.00. Call and see them. Stock will not last long.

OUR

SILK KIMONOS AND SHIRT WAIST PATTERNS are the talk of the town.

Sayegusa's

1120 Nuuanu street near Hotel.

New goods by every steamer from the Orient.

PROGRESS OF CAMPAIGN

Much Personal Work From House to House.

The Republican campaigners now going about the island are making good progress, and while it is early to prophesy, there is a hope among them that votes are being landed. There was no meeting of the party in Honolulu last night, but there will be a big one tonight at Aala park, and all of the candidates will be on hand. The Democrats are on a different and more active lay, for they hit both districts every night.

Most of the candidates of both parties are doing quiet personal work, and it is considered the best they can do for themselves, and the party. Gear is making great strides in that direction, and last week he showed the workers in the road department how well he knew them and how much he was interested in their welfare by making a personal inspection of the class of work they are doing and promising to have their wages raised to \$1.50, or more, a day if they will land him in the Board of Supervisors. To prove his personal interest in their welfare he placed his portrait, surrounded with advertising matter, in the hat band of each of the men and shook hands with a cordiality that was pleasing.

Nor is Curtis far behind in this line. He is making a quiet canvass that may show results in November. The house to house business seems to indicate a personal interest that is satisfying to the average Hawaiian. His visits are among people of that race, many of whom are known to him from the old days.

A Hawaiian speaker on the corner of Bethel and King streets yesterday was clearly a Gear worker. He harangued the crowd on the good qualities of the Republican party as a whole and wound up by taking his favorites individually. Gear seemed to be the star of all, for he pointed to him, or to his campaign card, and said: "Now look at Gear. What did he do for you? He paid your carfare to the Zoo so you could see the animals."

And this carfare charge opens up a new scheme for graft, and the graft is not on the part of the employees of the government, but the people. Gear did not furnish the carfare; that part was in the hands of the campaign manager and he spent one hundred dollars of the fund put up by the merchants in order that twenty-five hundred persons would have the opportunity to hear the spellbinders. It is needless to say that a number of the tickets were used to carry persons to Kahlia camp and to the Democratic meeting at Punchbowl. It is questionable whether such an investment is a paying one. A better plan would be to get the people to the ground and then give them their carfare to ride home. But that is a matter for the committee and the men who contributed toward the fund.

At Aala park tonight there will be a fine glee club and Mrs. Alapai to render the songs that will keep the audience in good humor while there is an intermission for the benefit of the speakers. The crowd promises to be a large one.

REALTY TRANSACTIONS.

Entered for Record October 12, 1906.
From 9 a. m. to 4 p. m.
Helen C Smith to Mutual Bldgs & Loan Soc of H Ltd. M
Manuel Cabral and wf to Augusto da Costa D
Augusto da Costa and wf et al to William R Castle, tr M
Est of S C Allen by trs to Maleka Nahalau et al Rel

Recorded October 6, 1906.

Ho Sun to Tong Yak Wai Co, Rel; leaseholds, mill, bldgs, mchry, livestock, rice, paddy, etc. Waikaele, Ewa, Oahu. \$5000. B 281, p 383. Dated Oct 6, 1906.

Abigail K Parker by atty to Tr of Samuel Parker Rel; 3 pcs land, King and Young Sts, Honolulu, Oahu; lands, leaseholds, livestock, etc. Waipio, etc. Hamakua, etc. Hawaii; ap 19, kul 8558B, livestock, etc. Kipahulu, Hana, Maui; \$46,000. B 281, p 384. Dated Sept 29, 1906.

Erma McL Wood to T H Gibson, Rel Dow; por lot 9 of patent 4621, Waialua Colony Tract, Waialua, Oahu. \$1. B 286, p 17. Dated Oct 3, 1906.

William O Smith, tr, to W M Minton, Par Rel; lot 22, blk B, Minton Tract, Honolulu, Oahu. \$100. B 281, p 385. Dated Oct 5, 1906.

Isaac S Kau and wf to J Alfred Magoon, M; 15 pcs land and leasehold, Waiohi, etc. Halealea, etc. Kauai. \$250. B 281, p 385. Dated Oct 4, 1906.

Abigail K C Parker by atty to Samuel Parker and as Tr of Rel; add secy on int in ap 1, R P 2237, kul 8518, Waimea, S Kohala, Hawaii. \$1. B 281, p 384. Dated Sept 29, 1906.

Kaeleku Sug Co Ltd to Hana Pupuhl, Ex D; por gr 883, Wananalua, Hana, Maui. B 286, p 13. Dated Aug 24, 1906.

Hana Pupuhl and hsb (S) to Kaeleku Sug Co Ltd, Ex D; por grs 2862 and 1656 and R P 4862, Paauhau, Hana, Maui. B 286, p 13. Dated Aug 24, 1906.

AN ANTISEPTIC LINIMENT.

For wounds, bruises, burns and like injuries there is nothing better than Chamberlain's Pain Balm. It acts as an antiseptic, forming a thin, imperceptible film over the injured parts, which excludes the air and causes the injury to heal without matter being formed, and in much less time than by the usual treatment. In cases of burns it allays the pain almost instantly. Sold by Benson, Smith & Co., Ltd., agents for Hawaii.

LIBRARY IS PROSPEROUS

Annual Meeting Reports Show Pleasing Progress.

The board room at the Honolulu Library was well filled last night by members of the association at the regular annual meeting, Prof. M. M. Scott being in the chair. Two most interesting reports were read, that of Miss Helen L. Hillebrand, librarian, and W. C. Parke, treasurer.

Following the report of the librarian the chairman remarked on the number of books on sociology purchased, showing the trend of public thought along these subjects. A few years ago if the library had added a dozen volumes on this subject during a year it would have been thought extraordinary, but last year 71 volumes had been purchased. Mr. Scott also referred to that portion of the report dealing with the falling off in the number of school children among the library patrons. Owing to the multiplicity of subjects taken up by the more advanced pupils in the schools now it was found that they had little time for general reading, and this probably accounted for the falling off here.

Miss Hillebrand was of the opinion that there was not enough attraction around the present library to attract the children and expressed the hope that Honolulu would soon have a building where there could be a children's department and also a room where those desiring to consult books of reference could do so undisturbed.

Miss Hillebrand's report was as follows:

To the Trustees of the Honolulu Library and Reading Room Association. Gentlemen: At the end of this library year, from 1905-1906, your librarian has not much that is new to report, with the exception of a temporary change in the staff. Miss Carrie Green, who has been the assistant since she has been in charge, was granted a leave of absence for a year, on account of ill health. We hope that a winter in the East may enable her to resume her duties at the end of that time.

Miss Helen Sprinks has been appointed to fill her place meanwhile.

The accession of books for the year is as follows:

	Vols.
General works	64
Philosophy	6
Religion	18
Sociology	71
Philology	4
Science	22
Useful arts	27
Fine arts	28
Literature, not including fiction	117
Travel	29
Biography	83
History	83
Fiction	402
Total	954

Books purchased	688
Gifts	189
Juvenile books	36
Reference books	37
Bound magazines	70
French books	9
German books	2
Worn-out books	24
Discarded books	48
Books lost and paid for	8
Replaced books	41
Books lost	2
Books missing at inventory	9
Number of periodicals in reading-room	126
Gifts	26

Donors of books: Mrs. W. F. Allen, Dr. W. D. Alexander, Huron Ashford, Mrs. N. L. D. Fraser, J. T. Gulick, W. E. Kimball, G. P. Castle, W. C. Lyon, R. Martinoff, F. R. Marvin, Miss C. D. Parker, Mrs. Prime, Mrs. J. R. Slattery, Dr. D. Scudder and W. C. Streeter.

Other donations:

Bureau of Fisheries, Aquatic Resources of the Hawaiian Islands, part 3. Congress, Library of, Report of the Librarian, 1905.

Lowell Observatory, Annals, Vol. 3. St. Louis Public Library, Annual Report, 1905.

Seattle Public Library, Annual Report, 1905.

New Zealand Official Year Book, 1905. Oahu College, Catalogue, 1905-06.

United States War Department, History of the Battle Monument at West Point.

Louisiana Purchase Exposition, Report of Board of Lady Managers.

The circulation of books has been:

Unbound magazines and other general works	166
Philosophy	118
Religion	214
Sociology	246
Philology	7
Science	232
Useful arts	131
Fine arts	251
Literature not including fiction	722
Travel	883
Biography	693
History	579
Fiction	13,161
Total, 1905-06	17,330
Total for 1904-05	17,798

Decrease

Largest circulation in any one month (March, 1906)	1639
Smallest circulation in any one month (June, 1906)	1016
Average monthly circulation	1444
Average daily circulation	56
Largest circulation in any one day (March 12, 1906)	124
Smallest circulation in any one day (September 3, 1906)	25
Number of readers in reading-room	7313

YOU SHOULD NOT MISS THIS SPECIAL SALE!

A sale at Blom's is no ordinary sale, as the majority of women discovered long ago. But the sale this week borders on the extraordinary as you will see by noting the following prices:

LACE CURTAINS
Newest designs in bounteous assortment.
Regular \$1.00 pairs, 2 3/4 yards wide at .65
Regular 1.25 pairs, 3 yards wide at .90
Regular 1.50 pairs, 3 yards wide at 1.10
Regular 2.00 pairs, 3 1/2 yards wide at 1.50
Regular 2.75 pairs, 3 1/2 yards wide at 2.00

HOSIERY
A sample line of about 300 pairs in all desirable colors will be closed out at half prices.

ALL-OVER LACES
25 pieces in white and cream. Regular 50c. a yard. THIS WEEK 25c. A YARD.

A. BLOM, MODEL BLOCK, FORT STREET.

Heinz "57"

Every Heinz product is pure in the strictest sense of the word. They are made not only to conform to but actually exceed the requirements of all State and national pure food laws.

Heinz's Sweet Pickles, Preserved Fruits, Baked Beans, Vinegars and Apple Butter.

AT ALL GROCERS.

H. Hackfeld & Company, Ltd.
Wholesale Distributors.

Blended Whiskeys

are considered by connoisseurs to be superior to what is known to the trade as two stamp goods. The I. W. Harper whiskey stands at the head of this class of liquor and it is becoming the favorite of the men who know the best points in whiskey.

WE HAVE the celebrated Harper Premium A A A put up in imported amber bottles five to a gallon. And the equally famous Old Continental, hand-made sour mash, in full quart flint glass containers. Each bottle is covered with wire mesh.

We feel that we can recommend these goods as superior products, something you may offer to your friends. For bar trade it is the best whiskey and a trade bringer.

W. C. Peacock & Co., Ltd.

the expenses \$6357.99, as follows:
Cost of magazines, books, etc., \$1,544.29.
Salaries, \$1928.75.
Ice, \$18.40.
P. O. Box, \$6.
Sundries, \$102.20.
Telephones, \$51.35.
Advertising, \$6.00.
Investment account, \$5000.00.
Total, \$6657.99.

The receipts consisted of \$1447.00 received in fees, \$37.83 as payment for books sold or destroyed, \$21.50 for fines, \$5384.75 balance on hand \$7891.92 income from investments.

These investments are, the secretary explained, in mortgages on real estate and bonds. The mortgages draw seven and eight per cent, and the bonds five and six per cent. Of the balance on hand at present it would require \$2000 for the running expenses of the library, leaving \$4000 available for further investment.

The report was received and turned over to the auditing committee.

ELECTION OF TRUSTEES.

As trustees to fill the places of C. T. Rodgers, J. H. Fisher and A. Gartley, whose terms had expired, the retiring members were re-elected by a unanimous vote.

It was also decided that the board of trustees should meet monthly hereafter instead of quarterly.

There is great need of reference room where those consulting reference works may be undisturbed and where there is ample room for shelving these books and the bound magazines, which are now very much crowded on the shelves.

More important than all is the relation of the library to the children. They should have their own department, where they may come at all times and receive the proper attention. I have not given up the hope that some of our loyal friends may become sufficiently interested to give Honolulu a library, such as she ought to have. I regret to report that the library has suffered from the theft and mutilation of valuable magazines for more than a year past.

The thief does not take the cheaper and more popular ones, but shows his good taste by choosing the Fortnightly Review, Popular Science, etc.

The only remedy I have been able to provide is to remove them from the tables in the readingroom, where they properly belong, and place them where they can be taken only with the knowledge of the attendant in charge.

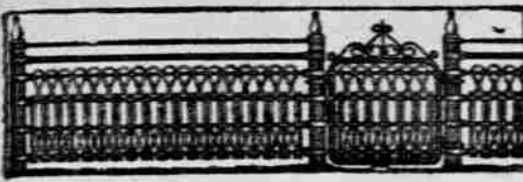
We are indebted to the local press for their courtesy in supplying us with their various publications, free of charge, and especially to the Pacific Commercial Advertiser for publishing our monthly book lists and other notices. Respectfully submitted,
HELEN S. HILLEBRAND, Librarian.

TREASURER'S REPORT.

The report of W. C. Parke, treasurer, showed a satisfactory increase in the available cash balance during the year of \$751.26, the balance on September 30 having been \$6090.01. The receipts for the year, including the cash balance of \$5384.75, were \$14,747.00 and



Castle & Cooke, Ltd HONOLULU. COMMISSION MERCHANTS SUGAR FACTORS. AGENTS FOR: The Ewa Plantation Co. The Wai'alea Agricultural Co., Ltd. The Kohala Sugar Co. The Waimea Mill Sugar Co. The Fulton Iron Works, St. Louis. The Standard Oil Co. The George F. Blake Steam Pump & Weston's Centrifugals. The New England Mutual Life Insurance Co., of Boston. The Aetna Insurance Co., of Hartford, Conn. The Alliance Assurance Co., of London.



50c. PER ROD UP. Monuments, Safes. J. C. Axtell & Co. 1048-50 Alakea St. Phone Blue 1801 P. O. Box 648

"HOW SAVINGS GROW." Our little booklet with the above title free for the asking. FIRST AMERICAN SAVING AND TRUST CO. OF HAWAII, LTD.

OAHU ICE & ELECTRIC Co. Ice delivered to any part of the Oahu Island orders promptly filled. Tel. Blue 3151 P. O. Box 600. Office: Kewalo.

HORSE SHOING! W. W. Wright Co., Ltd. have opened a horse-shoeing department in connection with their carriage shop, etc. Having secured the services of a first-class shoer, they are prepared to do all work intrusted to them in a first-class manner.

JAPANESE AND AMERICAN Dry and Fancy Goods Manufacturers of Straw Hats. IWAKAMI & CO. HOTEL STREET.

Dry Cleaning Garments cleaned by this process at Mrs. A. M. Mellis' Dressmaking Establishment. Sachs Block, Honolulu. SATISFACTION GUARANTEED.

TRY OUR DELICIOUS "Peach Mellow" and "Raspout" AT CONSOLIDATED SODA WATER WORKS G. S. LEITHEAD, Manager. PHONE : : : : : MAIN 1

THE HAWAIIAN REALTY AND MATURITY CO. Limited. REAL ESTATE, MORTGAGE, LOANS AND INVESTMENT SECURITIES. Office: McIntyre Bldg., Honolulu. H. P. O. Box 285. Phone Main 141.

Occidental Restaurant Changes Hands. Everything new. First-class cooks, courteous waiters. BEST MEAL TO BE HAD IN TOWN. Open from 5 a. m. to 8 p. m. Private Dining Room for Ladies. 7320 LEONG HOY, Proprietor.

F. D. WICKE, CONTRACTOR AND BUILDER. Store Fittings a Specialty. Repairing, Cabinet Work and Polishing. 1082 Alakea St., rear of Y. M. C. A. Phone M. 447; residence, Phone W. 1611

HAWAII SHINPO SHA. THE PIONEER JAPANESE PRINTING office. The publisher of Hawaii Shinpo, the only daily Japanese paper published in the Territory of Hawaii. C. SHOZAWA, Proprietor. Editorial and Printing Office—1029 Smith St., above King. Phone Main 41

C. BREWER & CO., LTD. Sugar Factors and Commission Merchants. LIST OF OFFICERS: C. M. Cooke, President; George M. Robertson, Manager; E. F. Bishop, Treasurer and Secretary; F. W. Macfarlane, Auditor; P. C. Jones, C. M. Cooke, J. R. Galt, Directors.

Bicycle Repairing Punctures and all parts of the bicycle neatly and quickly repaired. Prices reasonable. Also bicycle tires for sale, at YOSHIKAWA CYCLE CO. King Street, Opposite Young Hotel.

AT AUCTION BY WILLE E. FISHER AUCTIONEER Telephone Main 424.

THIS DAY At Auction Saturday, Oct. 13, '06

I will sell, at my salesroom, corner Fort and Queen streets, a fine variety of

PLANTS Also FRUIT TREES, ETC. ALSO Household Furniture

being: CHIFFONIER, DINING EXTENSION TABLE, SIDEBOARD, CHAIRS, ETC., ETC. ALSO Ferns Palms

Raisins, Lead Pencils, Buttermilk Soap, Handkerchiefs. ALSO Elegant Maidenhair Ferns Fantail Pigeons Chickens

WILL E. FISHER, AUCTIONEER.

FOR SALE A Fine Residence Site in Nuuanu Valley

Directly opposite the residence of Mr. Schultze. The lot comprises 2 1/2 acres and is one of the finest sites in Nuuanu. Price \$4500. A bargain!

JAS. F. MORGAN, AUCTIONEER.

TO LET. THE BUNGALOW SIX ROOMS, BATH, STABLE AND SERVANTS' QUARTERS

Adjoining the tennis court on mauka side of Young street, near Kapiolani street. Rent \$18. First come, first served.

WILL E. FISHER, AGENT.

Chicken Feed Beef Scraps, Scratch Feed, Egg Food, Chick Feed, Grit, Charcoal, Clam and Oyster Shell, All Chicken Remedies, Lice Killer, Insect Powder.

All fresh and for sale at lowest market rates in lots to suit—delivered free of charge. Telephone 424.

WILL E. FISHER, AUCTIONEER.

SCHEDULE FOR SOCKER

League Committee Has a Very Busy Meeting.

A meeting of the executive committee of the Hawaiian Association Football League was held last night in the rooms of the Scottish Thistle Club. Present were R. Churton, E. Fernandez, Major R. C. Van Vliet, Allan Lowrey, H. Bailey, R. Catton, B. F. Beardmore, J. C. McGill, R. Anderson, J. L. Cockburn, J. C. Anderson, C. Mayall and H. Bruns.

The following correspondence relative to a Camp McKinley team was read: Honolulu, T. H., October 5, 1906. Major R. C. Van Vliet, Camp McKinley, Waikiki, Honolulu.

Dear Sir: At a meeting of the Hawaiian Association Football League, held last evening a unanimous opinion was expressed by those present that they would like to see a team entered in the league from Camp McKinley, to be known as the Infantry team.

We have now four teams entered and would like to have yours as the fifth. We feel that you have the material among the men if they are only worked into shape, and members from every club represented last evening expressed a willingness to coach and practice with your players, and give them all necessary pointers, if desired. It is suggested that the season commence about the end of November, so this would give about two months to get in trim.

We would like to hear from you as soon as possible as to whether you think you can enter a team, as the league, according to its by-laws, must meet and arrange a schedule for the coming season before the 14th inst.

I might say the only monetary item is an entrance fee of \$10 to the league from each team, but, as in baseball, the clubs take an equal share in the gate receipts after expenses have been deducted.

Trusting to hear from you favorably in reply, I remain Yours very truly, B. F. BEARDMORE, Secretary Hawaiian Association Football League.

Camp McKinley, Honolulu, October 8, 1906. Mr. B. T. Beardmore, Secretary H. A. F. L., Honolulu.

Dear Sir: The invitation of the football league for the troops at this post to join the league is accepted with thanks and we will endeavor to learn the game well enough so as not to be a detriment. The Diamond Head team gave us instruction last evening and we will have another lesson tomorrow. If the association furnishes the balls, as I understood you to say, would it be possible to get a practice ball?

Thanking you for your kindness, Very sincerely, R. C. VAN VLIET, Major Tenth Infantry, for Infantry Team.

P. S.—If agreeable to the association our uniform will be light blue shirts, khaki pants. It was unanimously decided to admit the Infantry to the league.

The captains and secretaries of the league clubs were announced to be as follows: Punahou—Captain, R. R. Catton; secretary, A. J. Lowrey. Mailles—Captain, H. S. Gray; secretary, H. Bruns.

Diamond Heads—Captain, E. Grune; secretary, S. Chillingworth. Y. M. C. A.—Captain, R. A. Churton; secretary, Dr. Hand, Infantry—Captain, Major R. C. Van Vliet.

At the meeting the Punahou registered Mon Yin, John Woo, J. Macaulay, J. Macconel. The Diamond Head registration of players is as follows: G. Desha, Ed. Desha, D. Desha, W. Desha, D. Sherwood, J. Anderson, J. Clarke, R. Clarke, Ben Clarke, P. Gleason, E. Grune, H. Burden, J. H. Fiddes, John Woo, J. Kellett, Ed. Kellett, Tom Carter, H. Chilton, W. Hampton, H. Sheldon, J. Fern, A. Akana, W. Vannatta, K. Crewes, U. Lemon, Mon Yin, En Sue, John Lo, A. Williams, Mathieson, E. Fernandez, S. Chillingworth, W. Chillingworth, L. A. C. Parish, J. Bolster, W. B. Sumner, Alex. Morrison, R. Chillingworth, F. Harrison, H. M. Ayres, a total of forty players.

It was decided to play the first league game on November 17. Two games will be played every Saturday and each team will play the other twice. Regular league matches will be played on Thanksgiving Day, provided there is no game under intercollegiate rules on the holiday.

The drawings for the first games of the season's schedule resulted as follows: Mailles vs. Y. M. C. A. Diamond Heads vs. Infantry. Punahou, a bye.

It was decided that the official referees for the season should be J. W. Waldron and J. L. Cockburn.

The draw for practice nights at Makiki resulted as follows: Monday—Mailles. Tuesday—Y. M. C. A. Wednesday—Diamond Heads. Thursday—Mailles. Friday—Y. M. C. A. Saturday—Diamond Heads.

BOSTON BAKED BEANS AT SAMPLE PRICES

Special Sale For a Few Days To Introduce Booth's Famous Brand.

So that you may become acquainted with Booth's celebrated Boston baked beans we will sell them for a few days at about half price. Sample them before you buy them. We will serve them piping hot in a chafing dish every day. You will find them dainty and delicious.

3-pound Cans, Regular 25c; SAMPLE PRICE 15c 2-pound Cans, Regular 20c; SAMPLE PRICE 10c. Remember! The sample prices only for a few days.

King Street Near Fort J.M. LEVY & CO. Phone Main 149

Punahou will practice on the Oahu College ground and the Infantry at Kapiolani Park.

The following schedule for the season is as follows: 1906.

- Nov. 17—Mailles vs. Y. M. C. A.; Diamond Heads vs. Infantry. 24—Infantry vs. Punahou; Mailles vs. Diamond Heads. 28—Y. M. C. A. vs. Diamond Heads; Punahou vs. Mailles. Dec. 1—Mailles vs. Infantry; Y. M. C. A. vs. Punahou. 8—Diamond Heads vs. Punahou; Y. M. C. A. vs. Infantry. 15—Mailles vs. Y. M. C. A.; Diamond Heads vs. Infantry. 22—Infantry vs. Punahou; Mailles vs. Diamond Heads. 25—Scotland vs. The Rest. 29—Y. M. C. A. vs. Diamond Heads; Punahou vs. Mailles.

1907. Jan. 1—Mailles vs. Infantry; Y. M. C. A. vs. Punahou. 5—Diamond Heads vs. Punahou; Y. M. C. A. vs. Infantry.

On Christmas Day Scotland will play the Rest of the League. New Year's Day will be included in the regular schedule. It was moved and carried, subject to the approval of the ground trustees, that school children be admitted to all games at a rate of 10c each.

STEAMER CUMMINS CLAIM OF SALVAGE

Waimanalo Sugar Company claims \$4000 salvage money of Pacific Mail Steamship Company on account of services rendered by the libellant's steamer, John A. Cummins, in transporting passengers, baggage and treasure from the stranded steamer Manchuria to the ports of Waimanalo and Honolulu respectively.

A libel in admiralty bearing the claim was filed in the United States District Court yesterday. Under a stipulation between H. E. Cooper, proctor for libellant, and H. Hackfeld & Co., Ltd., agents of libelee, a citation in the nature of a warrant of arrest against the Pacific Mail Steamship Company was issued in place of an attachment of libelee's property. This instrument was served on W. Pfothenhauer, vice president of the Hackfeld corporation, by Marshal E. R. Hendry. It does not mean a personal arrest, but Mr. Pfothenhauer will appear in court for the libelee on return day. The stipulation is that the libelee duly appear and abide by such decree as may be rendered.

It is related in the libel how, at the times from August 29 to August 27 inclusive, the John A. Cummins answered calls for her services to the stranded steamer.

In going alongside the Manchuria to take off the passengers the little steamer had to go through the surf and pass over the reef. Several of the passengers offered Captain J. B. Searle, master of the Cummins, \$100 each to land them, so excited were they in their predicament. No count was made, but it is figured in the libel that 197 passengers, with their hand baggage, were transferred from the Manchuria to the port of Waimanalo. Again, the Cummins transported the heavy baggage and treasure boxes containing \$75,000, to Honolulu. The Cummins is said to have a value of \$15,000 and, on the occasions in question, had a crew of fifteen men, together with her master, on board.

Your grocer sells Poi Breakfast Food.

EAGLE CLEANING AND DYEING WORKS. LADIES' AND GENTS' CLOTHING CLEANED AT LOWEST PRICES. Fort Street, opposite Star Block. Phone White 2362.

Use Novelty Mills EXCELLENT FLOOR CALIFORNIA FEED CO., Agents

Primo Beer Cool as the stream that flows from the snows of Mauna Kea is a limpid, refreshing glass of Primo Beer The Ideal Beverage for Allaying TROPIC THIRST.

C. R. COLLINS Est. 1889 Hand-made Harness and Saddlery. Full line of all Horse Goods. Repairs to Harness, Saddles, Trunks, Suit Cases and Bags. ALL WORK CALLED FOR AND DELIVERED. 62 King Street, near Fort Tel. M. 427

EVERY DAY AFTER JUNE 20, W. Matlock Campbell Can be seen at his office 122 King St., between 10 a. m. and 3 p. m. Builder, Contractor and Real Estate

HUDNUT'S PERFUMES And Aids To Beauty VIOLET SEC Toilet Water; EXTREME VIOLET Perfume; CHRYSIS Sachet Powder; VIOLETTE SUPERBA Face Powder; VIOLET Toilet Soap; MARVELOUS COLD CREAM for the skin; VIOLET ALMOND MEAL for the skin; TOILET CERATE SKIN FOOD; NAILUSTRE for the Finger Nails; NAIL POWDER; ORANGE WOOD STICKS; PURE OLIVE OIL SOAP. Lewis & Co., Ltd. 169 KING STREET. PHONE 240.

HENRY H. WILLIAMS Has moved his residence from the corner of BERETANIA and RICHARDS Streets to 240 King Street near Richards New Telephone Number—BLUE 1011.

IN FOREIGN LANDS or in your native land when you are away from home, the SEMI-WEEKLY GAZETTE will be found a most welcome visitor; giving as it does a condensed summary of all the local news of the Islands and Honolulu. Subscribe before you start on your travels and you won't need to "wonder what is happening at home" while you are away. Price 50 cents per month or \$5.00 per year postpaid to any part of the United States. Foreign postage extra. HAWAIIAN GAZETTE CO., LTD. PUBLISHERS. 65 South King St. Phone 88. Honolulu, Hawaii.

READ THE ADVERTISER World's News Daily.

THE PACIFIC.

COMMERCIAL ADVERTISER.

WALTER G. SMITH

EDITOR

SATURDAY

OCTOBER 13.

THE ANTI-SALOON LEAGUE.

The Anti-Saloon League is naively advised by the ring organ to keep out of elections which it may help to carry if it is not able to get what it wants through the primaries that are usually packed against it. "Do your work in the primaries and abide by the results," is the favorite shibboleth of rings. In the ring code there can be no appeal from the primary; it must decide all for a voter's conscience as well as his ticket.

There might be a shadow of plausibility in some of this were it not for the fact that the party organization or machine invariably jams its slate through at a primary, giving the unorganized citizen little chance to object. At an early hour of the appointed time the hirelings of the ring, recruited from any old party, crowd into the meeting places and proceed to business. Everything has been settled in advance. Each machine man knows precisely what is wanted of him; and in eight cases out of ten the ring has its way. An Anti-Saloon Leaguer might as well try to whistle against a hurricane as to raise his lone cry against the whoop and halloo with which a primary slate is carried into effect.

It is for this reason that good citizens with moral causes to serve, have come to avoid primaries as things calling for a useless expenditure of breath and force. Knowing that they will have a fair show to make their wishes tell at the polls, where slates are beaten so much more easily, they wait until then, and sometimes as in the case of the Parkhurst reform in New York city, they sweep the field. Parkhurst was laughed out of the primaries; but he had his day in court when the "ides of November" came.

The Anti-Saloon League of Honolulu need make no apologies for choosing to work in the field where it can make itself felt. It knows its business. Its cause is one upon which an electoral battle may be properly fought and its complaint that county officers seeking re-election have refused to enforce the laws in which it is morally and politically interested, is just as valid in a county campaign as it could be in a precinct one.

CURTIS P. IAUKEA.

It comforts the other side to quote criticisms from these files of Curtis Iaukea's political changes of allegiance. The criticisms seemed justified at the time they were made and they might have been extended, if one had wished, to the head of the present Republican ticket. In the new era here American parties were novel to the Hawaiians and they were inclined to try them all on. Party ties hung lightly, like tropical garments. But as time went by, the Hawaiians became more stable in their politics and while reasonably independent in local voting, they are not now so likely as they were to be Home Rulers today, Republicans tomorrow and Democrats next week.

But what of it, anyway? This shrewdly campaign is not being run on the issue of any man's politics as they were last year or the year before out upon the issues of change and reform in police management. It is contended that Iaukea, if elected Sheriff, would clean house; that he would discharge the grafters and politicians who now man the police and appoint peace officers in their stead; that he would use the force strictly for the purposes for which it is constituted and paid; that he would compel the dangerous classes to obey the law. If he will do that, it will not matter to the people of this county how wide his experience has been in respect of party affiliation.

As to his personal character Mr. Iaukea himself is the author of the only reflections upon it we have seen. One time in a burst of forensics he spoke of having indelible spots upon his skirts—but he wasn't able to prove it. His political opponents, including this paper, searched his official record with microscopes and could find no flaw of dishonesty. The oldest inhabitants could remember nothing of the kind against Curtis Iaukea, as chamberlain, as Crown commissioner in charge of lands or as anything else. A search of the archives brought to light many of his official letters and all of them bore marks of personal integrity and efficiency. Try as it might the Advertiser could not interpret Iaukea's allusion to "spotted skirts" by any act or policy of his official career; and it was forced to class it among the conventional displays of humility one sometimes sees in prayer meetings where the good old deacon, who never did anything worse than "swop" jackknives, gets up, with tears in his voice, and introduces himself as the "chief of sinners."

So we must accept Mr. Iaukea, despite impressions which he once seemed to take a mournful delight in spreading, as an honest and competent official, just the sort of a one that is needed at the police station. If we are mistaken in that view we are still open to light and will impartially deal with any proof to the contrary. So bring it along if it exists. Until then we must accept the story of the records and respect the assurances of the Bulletin, made at the time it was last supporting him, that Iaukea is "a man of honest motives" and that "he certainly does not come under the head of an official who has left office with funds unaccounted for."

COMMERCE OF THE PACIFIC.

The Japanese papers still insist that the little brown men intend to buy the Pacific Mail deep-sea boats and the vessels of the Oceanic line. Japan has a natural ambition to become the England of the Pacific; to control the commerce of this ocean and make its shores tributary to her wealth. She has lines to Australia, to Washington and California, to South America and along the whole Oriental shore to Suez and beyond; and being able to build, equip and man her vessels more cheaply than the United States can build, equip and man hers, she sees no reason why she cannot compel the American lines to make way for her.

Certainly, under these circumstances, the Pacific Mail and all the trans-Pacific American lines, are handicapped. Before long they will have to compete, not only with Japanese, but with a subsidized French line. Except for the monopoly they have of so-called coastwise commerce, between California, Hawaii and the Philippines, they might have to consider the advantage of going out of business; but while that monopoly lasts, the Pacific Mail boats, at least, should find enough to do. They are not suffering for the want of freight and passengers now, nor are they very likely to be. The real trouble is that the company may not be able to expand their fleet very much and that more American trans-Pacific lines, with Oriental competition so fierce, are not likely to be started.

Upon the question of an American ship-subsidy there is much to be said on both sides, but some good things it would do and that surely; it would save and expand America's Pacific shipping and give this country a chance to control a goodly share of the business of this sea. The unsolved problem seems to be whether the game would be worth the candle; whether the people, as a whole, would get enough more out of it to reconcile them with the enhanced profits of the shipowners.

A COMPREHENSIVE PROGRAM.

The whole plan of the police machine in this canvass is not embraced in the desire to re-elect the present administration of the Sheriff's office. There is a much wider proposition; one that reaches into the Legislature and aims at complete control of the Board of Supervisors and the County Attorney's office.

What the machine wants, especially, of the Legislature, is a change of the law giving into the hands of the Sheriff the right formerly held by the High Sheriff to summon grand and petit juries, and which is now exercised by a board of bipartisan jury commissioners. Evidence of this design has been noted for months back in the Bulletin's attacks upon the juries provided under the present law—juries which have averaged higher in personal quality than any this judicial district had previously seen since annexation. What the police machine desires is the power to plant enough of its friends in each jury box, grand or petit, to control investigations of police or other county affairs and to prevent or secure convictions as circumstances may suggest. Not only is the election of men like Chillingworth desired for the Senate and House from this island, but the election of personal friends of Sheriff Brown from the other islands, such as ex-Sheriff Coney of Kauai, is desired as a necessary part of the general program of legislative control for ulterior purposes.

The Board of Supervisors, as at present constituted, has, in the main, co-operated with the police; but it was not so far in hand when Mr. Adams was here, as to head off the report which accused the police department of "indifference, incompetence or corruption." Still it has whitewashed the police whenever charges of brutality were brought and it permitted the Sheriff, as the canvass approached, to draw the extravagant sum of \$10,000 per month for "police expenses." The result of the outlay of whatever surplus appropriation is embraced in this sum is not seen in any better protection from crime but in the employment of between thirty and forty small politicians in the

Fifth district who, paid from the police fund, are out working for Brown and Vida among the voters.

It is necessary for the police machine if it is to control the whole situation, to perfect and continue its ownership of the Board of Supervisors, hence the special Brown ticket we discovered and printed yesterday. The machine wants to make sure that, if it needs larger sums of money from the Board it can get them for the asking; and it intends if it can to dictate any and all reports which that body may be compelled by public sentiment to make upon details of police administration. Next to securing his own election, Brown is most anxious to secure that of friendly candidates for Supervisor on either ticket.

The County Attorney may be a useful ally or a dreaded foe of the police establishment. He may, if an ally, not-pros cases against those whom the police want to clear, such as protected gamblers and prostitutes whose arrest has been compelled by warrants issued from the district court; or, if an honest prosecutor, he may send valued clients of the police machine to jail. Naturally the police machine, having a candidate of its choice, is bending every energy to elect him.

Think what a powerful and profitable thing the police machine would be, so guarded and buttressed—as impregnable a stronghold for predaeous work as were those old castles of the robber barons along the Rhine. Who could say a disturbing word then against the cultivation of vice as an asset? Who could indict gamblers or prostitutes or men who lease property for immoral purposes? Who could hope to close the all-night saloons or improve the liquor law? Who could hope for a fair show in any of the political conventions of either party? Who could protect reformers from being badgered under guise of law for all sorts of trumped-up offenses as some of them were when Humphreys and Gear were on the bench, with juries packed for the purpose by their own bailiffs? Once carry out the program of the police machine which calls, not for a straight ticket but for a Brown ticket, and Oahu county taxpayers will be as prostrate under the feet of the police as the taxpayers of New York were in the palmiest days of Tweed and Sweeney and Genet.

The ring runs primaries; the people decide elections; the Anti-Saloon League prefers to appeal to the people rather than to the ring.

Ocean greyhounds no more, the Australian boats. They are ocean dachshunds.

POLICE ORDERED TO DO POLITICS

The other evening a motorman of the Rapid Transit Company, while off duty, came across a large group of natives listening to a political harangue from a policeman at a corner upon his beat.

Asked by the motorman how he came to be doing politics while on duty, instead of walking his appointed round, the officer replied:

"I can't help it. Sheriff Brown told us to do it."

COOPER IS PRESIDENT

Continued from page 1. Hemenway and Waldron, was appointed to look after these items.

Other committees were appointed to look into the question of a proper water supply for the valley, securing the services of a police patrolman and to ascertain why Manoa Valley and College Hills are not supplied with government electric lights. The latter item has been promised for months and the residents are still waiting. Manoa is badly in need of lights. There are long, lonely roads in that suburb, which residents are compelled to traverse without a ray of light to aid them. Lights would be a protection.

Judge Cooper was elected president of the club, vice Judge W. J. Robinson, who has removed to town.

"See that man there?" "Yes; what about him?" "One of our great millionaires, but he's lost his appetite. The poor devil lives on milk and crackers. Pass the corned beef and cabbage. Please, and praise the Lord."—Atlanta Constitution.

OF THE MULTITUDES


who have used it, or are now using it, we have never heard of any one who has been disappointed in it. No claims are made for it except those which are amply justified by experience. In commending it to the afflicted we simply point to its record. It has done great things, and it is certain to continue the excellent work. There is—we may honestly affirm—no medicine which can be used with greater and more reasonable faith and confidence. It nourishes and keeps up the strength during those periods when the appetite fails and food cannot be digested. To guard against imitations this "trade mark" is put on every bottle of



"Wampole's Preparation," and without it none is genuine. It is palatable as honey and contains the nutritive and curative properties of Pure Cod Liver Oil, extracted by us from fresh cod livers, combined with the Compound Syrup of Hypophosphites and the Extracts of Malt and Wild Cherry. Taken before meals it creates an appetite, aids digestion, renews vital power, drives out disease germs, makes the blood rich, red and full of constructive elements, and gives back to the pleasures and labors of the world many who had abandoned hope. Doctor S. H. McCoy, of Canada, says: "I testify with pleasure to its unlimited usefulness as a tissue builder." Its curative powers can always be relied upon. It makes a new era in medicine, and is beneficial from the first dose. "You can trust it as the Ivy does the Oak." One bottle convinces. Avoid all unreliable imitations. Sold by chemists throughout the world.

AN INEXPENSIVE PRESENT

STERLING SILVER MOUNTED COMBS

\$1.00		Beautiful, Useful, and CHEAP
1.25		
1.50		
1.75		
2.00		
2.25		
2.50		
2.50		

H. F. WICHMAN & CO., LTD. Leading Jewelers.

It's Here

Your fountain and the best soda water to be had in Honolulu. The kind with the snap that makes it relished by everyone. And we have seventy flavors.

Benson, Smith & Co., Ltd

See our windows for the particulars of our

"MONDAY, the 15th" SALE

Ladies' Neckwear, Embroideries, Linen Squares and Scarfs, Laces, etc.

As the name suggests, this sale will begin MONDAY, OCT. 15, at 8 a. m. Good goods in variety will be sold at the low prices that have made Ehlers' sales famous.

EHLEERS

"OLDEST and BEST"

Automobilists Attention!

Columbia Automobile Batteries for sparking are made especially for the purpose and are more satisfactory than any other dry battery in the market. We have a large new stock ready for delivery.

Hawaiian Electric Comp'y, Ltd.

PHONE MAIN 390.

Pot Roasts

Our butchers prepare pot roasts in a way that would encourage the envy of any coast meat cutter. If you care for meat cooked that way get it here and the dish when ready for the table will make the mouth water.

Metropolitan Meat Co. LIMITED.

PRETTY DRESSED FEET

are absolutely necessary to complete a becoming costume. We are naturally proud of our E. P. Reed & Co.'s patent colt ties. Just now we are showing them in the Christy style. Light turn sole—with bevel edge, plain toe—military heel of regulation height. A more popular shoe could not be selected for dress and semi-dress occasions.

Our prices make you feel like buying. \$3.50 and \$4.00

Manufacturers' Shoe Co., Ltd.

1051 Fort Street. Tel. Main 282.

Quality in the Food— Excellence in the service. The highest standard in everything at the PALM RESTAURANT

The business man, with particular ideas regarding cooking, and fastidious people, who make the table service of first importance, find no fault with any of our features; we cater to their needs and supply them satisfactorily. The same people lunch or dine here day after day, and they do so regardless of the fact that our meals are inexpensive: it is because we meet their ideas of cooking and service.

LUDWIGSON & JUNGCLAUS, PROPRIETORS. 116 Hotel Street, around the corner from Fort Street.

Noiseless— Easily Repaired

"NEW DOME"

Siphon jet low down closet, embossed bowl, bent oak, piano finish and paper lined tank. Natural oak, never splits seat, and Douglas siphon valve. Sample in our show window.

JOHN NOTT, The Plumber. 85 King Street.

Go to Bellair and See the Pineapples Grow.

BELLAIR is situated in KALUHI VALLEY within two and a half miles of Honolulu's business center.

BELLAIR is the ideal spot for Summer residences, and one which will pay your living expenses while occupying your own home.

BELLAIR is acknowledged to be the healthiest place for poultry.

BELLAIR is free from extreme wind and rainstorms. BELLAIR is laid out in ACRES, allotments large enough to grow your own fruits, vegetables and poultry; it will support your horse and cow without any further outlay; the price of one acre is only Two Hundred and Fifty Dollars (\$250.00), you pay only Sixty-Two Dollars and Fifty cents cash and we will carry you for two years for the balance, at six per cent interest.

We shall be pleased to show this property to you at any time. Phone Main 480 and make appointment, or see

CHAS. S. DESKY

Campbell Block, Opposite W. G. Irwin & Co.

COOK WITH GAS



To attract the attention of the shrewd housewife is our mission in advertising. We wish every woman to know that the best product of the market in the way of Meats, Fish, Fruits, Vegetables and Poultry are here for their selection.

Try our Boiled Ham today.

C. Q. Yee Hop & Co.
MAIN 251.

UP-TO-DATE

STATIONERY

NOTE PAPER in ream, box or tablet form, various weights, with or without Envelopes.

TYPEWRITER PAPER, cap and letter size, light and heavy, with other staple goods and late works of fiction, at

Thos. G. Thrum's

1063 Fort Street, Honolulu.

T. B. WALKER

CONTRACTOR AND BUILDER

Jobbing promptly attended to, 1705 King Street, Pawaa. Phone Blue 2226. P. O. Box 302.

ALL KINDS OF BUILDING AND REPAIR WORK DONE ON SHORT NOTICE

Wm. T. Patv.
1045 ALAKEA STREET.

OPIA CIGAR

BEST 5c. CIGAR.

HAYSELDEN TOBACCO CO.

Distributors.

FOUND.

The J. Carlo Pawnbroking Co.
At 1154 Fort Street, opposite Catholic Mission.

Money to Loan on Diamonds, Jewelry, Etc.

Transactions Confidential. Unredeemed Pledges Very Cheap. OPPOSITE CATHOLIC MISSION. Open at Night. NO BRANCH STORE.

Fire Insurance

THE B. F. DILLINGHAM CO. LTD.

General Agents for Hawaii.

Atlas Assurance Company of London. New York Underwriters' Agency. Providence Washington Insurance Company.

Fourth Floor, Stangenwald Building.

YAMATOYA

Shirt Makers,

have moved to 22 Pauahi street, near Nuuanu street.

R. Kuwa

Punchbowl Street, below King and Queen

CONTRACTOR

PAINTING and PAPER HANGING

Catton, Neill & Co., Ltd

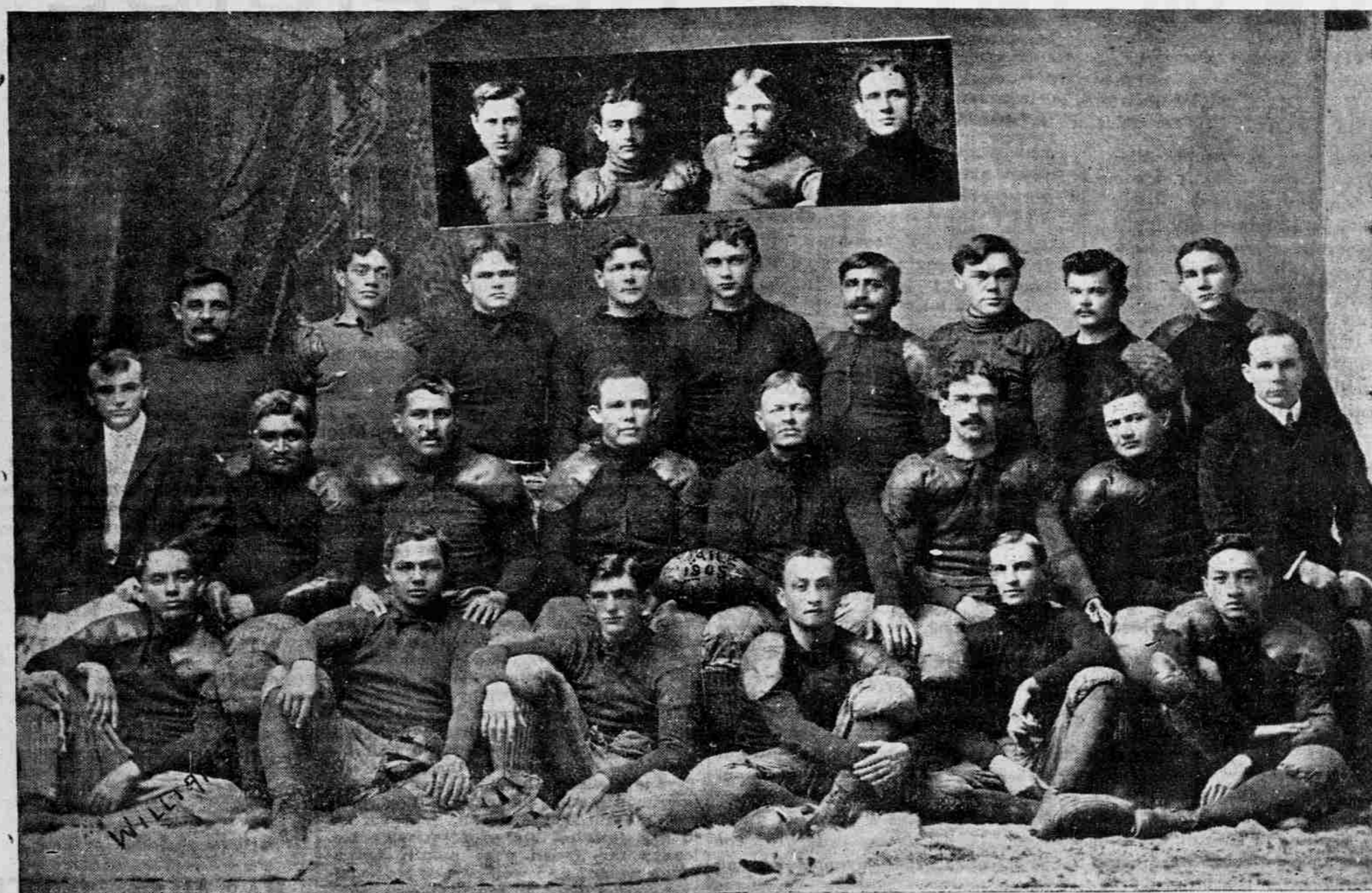
ENGINEERS and MACHINISTS
NUNEN AND RICHARDS STREETS.

Boilers re-tubed with charcoal-iron or steel tubes; general ship work.

CLOTHES THAT SHOW STYLE AND FIT
200 PATTERNS OF CLOTH.

George A. Martin,
Arlington Block, Hotel St.

AMATEUR SPORTS PROFESSIONAL



MAILE ILIMA FOOTBALL CLUB.

This Year's Maile Ilima Team Will Be Drawn From the Above Squad of Players.

MAILES WILL HAVE TEAM

Green and Gold Players Announce First Practice.

In view of an intercollegiate football game or two, Bob King is drumming up Maile Ilima talent and will soon have a bunch of boys out at practice. It is greatly to be regretted that that past-master of the game, Percy Benson, will not be able to coach the Mailes this season. He leaves shortly for the Coast on an indefinite visit.

The Maile line-up is expected to include such well known players as, Buckle, Houghtailing, Jarrett, Heilbron, Joy, Gleason, Akina, Freeth and Lightfoot.

Prof. Reed of the Punahou would greatly like to get a team together, but it is unlikely that he will be able to do so as most of the old players are unavailable and the uniforms have been turned over to the college.

Camp McKinley will possibly put a team in the field. The soldiers are playing soccer, but may take a hand at the old game under new rules. If the Infantry fail to organize a team a combination team of old players of various clubs will probably be got together to oppose the Mailes.

The Maile Ilima football team will commence practice on Monday next at 5 p. m.

GRIDIRON HAPPENINGS

The first intercollegiate football game of the season will be played three weeks from today, between those old opponents, the Punahou and the Kamehamehas. The game will be played on the Kamehameha campus.

A second game will be played on November 12. If each team wins a game a third and deciding game will have to be played.

Oahu College has thirty boys out trying for the team, under the expert coaching of Prof. Reed who is said to be moulding the material at his disposal into fine shape.

Coach Hopwood, an enthusiastic intercollegiate man, is looking after the training of the Kamehameha squad and is well satisfied with the progress his boys are making.

TO SECRETARIES:

Secretaries of athletic clubs wishing the names of their teams inserted in the Advertiser, the morning of a match, are requested to forward same to this office not later than 2 p. m. of the previous day.

STATIONERS FORM NINE

The latest thing in baseball is an All Stationers nine composed of players working in book stores and stationery establishments.

The personnel of the team is as follows:

C. Jones (capt.) 2b; Raposo, 1b; Medeiros, c; Tom Ulukou, p; Aug. Guerra, 3b; H. Pahu, ss; J. Shaw, rf; Joe. Kuna, cf; Jno. Duncan, lf; subs, Henry and Simpson.

The All Stationers hereby challenge the Dry Goods champions to a battle to the death.

The team is composed of some of the Cossack players in town including such men as Chas. Simpson, catcher for the St. Louis nine which made the Hilo boys go home; W. Patten, who held down center territory for the Chicago Nationals; Raposo, who showed in his last two games with the Alohas that he can play gilt-edge ball; Chas. Jones, another good old-timer; and J. Duncan, of the Kaunakakai team.

Tom Ulukou of the Mets, will do the twirling, and Tom is all right.

FIRST MATCH OF SEASON

The Diamond Head soccer players will oppose a Y. M. C. A. eleven at the ball park this afternoon, the game commencing at 3:30 o'clock.

The Heads will line-up as follows:

Goal, H. Chilton; backs, E. Grano, Tom Carter; halves, J. C. Anderson, W. Hampton, W. Chillingworth; forwards, H. Sheldon, J. Woo, E. Fernandez, George Desha, Sam Chillingworth; reserves, H. Burden, J. Bolster. All Diamond Head men are requested to be present as a captain for the ensuing season will be chosen on the ground.

DRY GOODS CHAMPIONSHIP

Tomorrow morning at Kapiolani Park, commencing at 9 o'clock, the baseball nine of B. F. Ehlers & Co., will play a game with a nine recruited from the employes of Sachs & Co. and Whitney & Marsh.

The game will be for the Dry Goods championship. Both nines will include minor league players and the game should be a good one.

Cricket Today.

There will be a cricket match at Makiki today, commencing at 2 p. m., between the Seniors and Juniors of the Honolulu Cricket Club.

MERCANTILE BALL PENNANT

Hall and Davies Nine to Play This Afternoon.

There will be free baseball at the ball park this afternoon, commencing at 1:30 o'clock.

The competing nines will represent the firms of E. O. Hall & Son and Theo. H. Davies & Co.

Other games will be played later on between these teams and the winner of the best two in three will annex the Mercantile championship of the present year of grace.

Sol. Koki will captain the Halls and Archie Robertson the Davies lads.

The nines will be as follows: Davies & Co.—M. Joseph, c.; P. Burns, p.; A. S. Robertson, lb.; J. Kia, 2b.; En Sue, 3b.; Geo. Bruns, ss.; Sumner, r.f.; Smythe, c.f.; Ah Sin, lf. Hall & Son.—J. Ordenstein, c.; Kupa or Lemon, p.; En Sang, lb.; S. D. Koki, 2b.; W. C. Hoon Jr., 3b.; A. Jacobson, ss.; Joe Santos, r.f.; Ah Yet, c.f.; M. Moses, lf.

Substitutes: Davies & Co., Pihanaia, Freitas and Gomez.

EVER THINK ABOUT IT?

Many a Resident of Honolulu Will Tell You.

We are living in a very rapid age. Few of us bother our heads about small things, and so many persons look upon a pain, ache or lameness in the back as a small thing. They wait for it to pass off, giving no thought to the cause. Remember; The kidneys are the sewers of the system; they carry off the impure matter, but sewers sometimes become clogged up. So do the kidneys. The kidneys are located near the small of the back, hence any stoppage affects the back. This means backache, lame back, weak back and many other distressing symptoms. There is lots more to tell on this subject, but we won't do it here, for we want to show you how to keep the kidneys so the back will have no cause to ache. You might not believe us, so we will let one of your own citizens tell their experience: W. F. Williams of this city, is a light-house keeper, and he has held this position for the last 30 years. He says: "I was for a number of years, one of that numerous army of people who suffer with their backs. Mine ached and pained me to no small extent, so that I was glad when I heard of a remedy for it. Doan's Backache Kidneys Pills. I obtained some of these at the Hollister Drug Co.'s store, and took them. They gave me great relief, and I make this short narration of my experience for the benefit of others who perhaps do not know that nearly

all backache arises from the kidneys, and the best medicine for it is Doan's Backache Kidneys Pills."

Doan's Backache Kidneys Pills are 50 cents per box, for sale by all druggists; sent by mail on receipt of price by the Hollister Drug Co., Honolulu, wholesale agents for the Hawaiian Islands.

Your grocer sells Pol Breakfast Food.

HIGHLAND LINEN TABLETS.
The large new size contains paper that folds twice to fit in the ordinary oblong envelope. Very popular.

HAWAIIAN NEWS CO
Alexander Young Building.

S. FUJIMURA

MASSAGE
Rheumatism, Bruises, Sprains, Tired Feeling and other Ailments QUICKLY RELIEVED.
444 King Street, Palama.
Phone White 1351.

SHEET MUSIC

We have the largest stock of vocal and instrumental music in the islands. We keep it up-to-date.

Bergstrom Music Co., Ltd.
Odd Fellows' Building.

Horse Clipping

Best of Care Given.

CLUB STABLES

Fort Street : : : Tel. Main 109

California Rose Creamery Butter

The highest grade of butter sold in this market. New supply just received.

Henry May & Co., Ltd.
Phone Main 22.

DO YOU HAVE HEADACHES?

Headache cured in one minute. External use only. No cure, no pay.

F. J. BENNY.
1266 Fort Street. Phone Main 488.

May's Ice Cream

Wholesome and Refreshing. The Best in Town.

Delivered, packed in ice, at 50c. a quart, and in any quantity. Orders Solicited.
141 Emma Street and 280 Beretania.

Beware of Thieves

A great many more burglaries occur than are made public, because most people choose to avoid publicity.

If you have any valuables about the house not in constant use, why not keep them in a safe deposit box at



HAWAIIAN TRUST CO., Limited,
Fort St., Honolulu.

Bishop Trust Company, LIMITED.

For Rent

One store on Fort street, \$25.00 per month.

Dwelling house, Pensacola and Wilder avenue, \$25.00 per month.

For Sale

2 1/4 acres adjoining Baseball Grounds. Rental \$35 per month. Could be increased.

Kaimuki—120,000 square feet; \$300 per lot.

Puunui—50,000 square feet; cleared; between car and Country Club. A bargain.

Oahu Railway TIME TABLE.

OUTWARD.

For Waianae, Waiolu, Kahuku and Way Stations—9:15 a. m., *3:20 p. m.
For Pearl City, Ewa Mill and Way Stations—7:30 a. m., *9:15 a. m., *11:05 a. m., *2:15 p. m., *3:30 p. m., *5:15 p. m., *9:30 p. m., *11:00 p. m.
For Wahiawa—9:15 a. m. and *5:15 p. m.

INWARD.

Arrive Honolulu from Kahuku, Waiolu and Waianae—8:36 a. m., *5:31 p. m.

Arrive Honolulu from Ewa Mill and Pearl City—7:46 a. m., *8:36 a. m., *10:38 a. m., *1:40 p. m., *4:31 p. m., *5:31 p. m., *7:30 p. m.

Arrive Honolulu from Wahiawa—*8:36 a. m. and *5:31 p. m.

*Daily. † Ex. Sunday. ‡ Sunday Only

The Haleiwa Limited, a two-hour train (only first-class tickets honorably leaves Honolulu every Sunday at 8:21 a. m.; returning, arrives in Honolulu at 10:10 p. m. The Limited stops only at Pearl City and Waianae.

G. P. DENISON, Supt. F. C. SMITH, G. P. & T. A.

WM. G. IRWIN & CO., LTD.

Wm. G. Irwin—President and Manager
John D. Spreckels—First Vice-President
W. M. Giffard...Second Vice-President
H. M. Whitney...Treasurer
Richard Ivers...Secretary
W. F. Wilson...Auditor

SUGAR FACTORS AND COMMISSION AGENTS.

AGENTS FOR
Oceanic Steamship Co., San Francisco, Cal.
Western Sugar Refining Co., San Francisco, Cal.
Baldwin Locomotive Works, Philadelphia, Pa.
Newall Universal Mill Co., Manufacturers of National Cane Shredder, New York, N. Y.
Pacific Oil Transportation Co., San Francisco, Cal.

WM. G. IRWIN & CO., LTD.

AGENTS FOR THE

Royal Insurance Co., of Liverpool, England.
Alliance Assurance Co., of London, England.
Scottish Union & National Insurance Co., of Edinburgh, Scotland.
Fire Association of Philadelphia.
Alliance Insurance Corporation, Ltd.
Wilhelma of Magdeburg General Insurance Co.

Brasses, Pottery, Mill Cloths, Fans, Baskets, Calabashes.

HAWAII & SOUTH SEAS CURIO CO.,
Young Building.

W. R. PATTERSON & CO.

General Contracting and Jobbing. Housepainting, Paperhanging, Graining, Kalsomining, Brick, Cement and Stone Work. Shop with Whittle, the sign painter, corner Hotel and Union streets. PHONE MAIN 361.

PHOTOGRAPHY OF AMATEURS

Coming Exhibition at the Promotion Rooms.

Amateur photography in Hawaii is to be given a boost through an exhibition to be held at the Promotion Committee rooms in the near future. At a meeting held on Wednesday, Messrs. Perkins, Warren and Dr. Sinclair were appointed a committee to arrange the details for the exhibit. The committee will make up the classification for photos, comprising portraits, landscapes, marines, etc.

A. Gartley, one of the best amateur photographers in the Hawaiian Islands, is secretary, and this insures a fine exhibit. The Gartley photographs are becoming famous, not only in Honolulu but on the mainland. There are numbers of amateurs in the islands and some beautiful pictures have resulted through their efforts, but they are seldom shown in public. The exhibition will doubtless prove valuable in many ways for the islands, and the promotion committee is favoring the project in every way possible.

There will shortly be a new opportunity for amateurs to display their art. The Ridgways of New York have sent out circulars to photographers all over the United States drawing their attention to a weekly sixteen page publication they will soon issue, which is to be devoted largely to new photographs from all parts of the United States. Hawaii is asked to be a contributor. All photographs which bear any relation to news dispatches, etc., will be acceptable and Hawaii is asked to send on whatever photo news it may have. Pictures of wrecks, prominent men and women visiting here, and all strange features which have a news value are acceptable.

With this opportunity in view and the growing demand of mainland publications for photographs, the coming exhibit should be a very successful one.

Photographers generally hope that the Hawaiian edition of the New York Independent will be replete with photographs of island scenes.

Your grocer sells Poi Breakfast Food.

ATTRACTIONS
— AT THE —
ZOO
KAIMUKI HEIGHTS.
ANY TIME EVERY DAY
CAMERA OBSCURA!
HAWAIIAN GRASS HUT!
OPEN-AIR SKATING RINK!
ANIMALS, BIRDS, ETC., ETC.
MUSIC SATURDAYS
AND SUNDAYS
DON'T MISS A GOOD TIME!

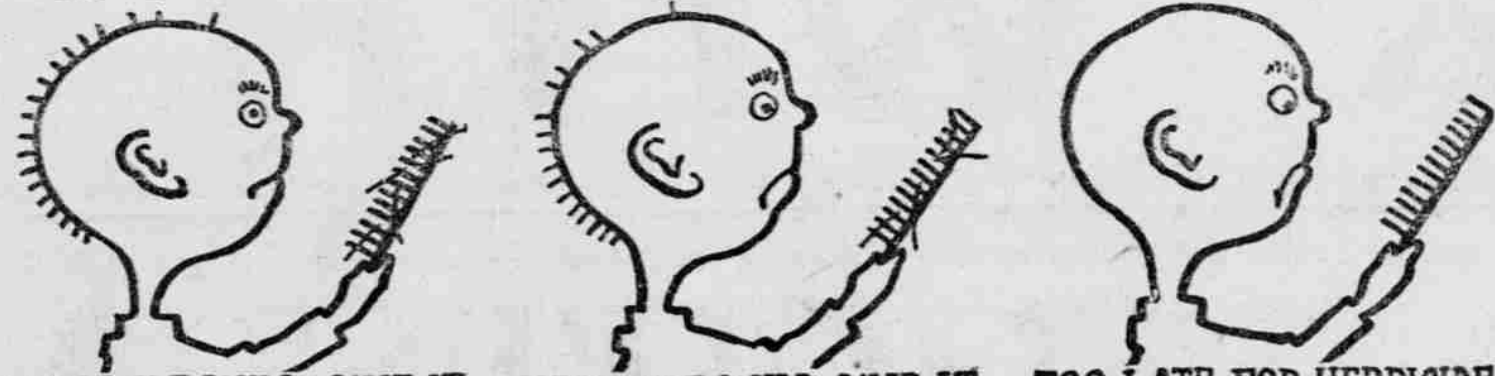
COTTON BROS. & CO.
ENGINEERS AND GENERAL CONTRACTORS.
Plans and Estimates furnished for all classes of Contracting Work.
Boston Block Honolulu.

Cleanliness
is next to our soap. \$3.75 a case delivered by your grocer.
Honolulu Soap Works Co.
F. L. WALDRON, Agent.

A. N. SANFORD
GRADUATE OPTICIAN
Boston Building : : Fort Street
Over May & Co.

HONOLULU IRON WORKS COMPANY.
Machinery, Black Pipe, Galvanized Pipe, Boiler Tubes, Iron and Steel, Engineer's Supplies.
Office—Nuuanu street.
Works—Kakaako.

GOING! GOING!! GONE!!!



SAVE YOUR HAIR WITH NEWBRO'S HERPICIDE

THE TIME TO SAVE YOUR HAIR, IS WHILE YOU HAVE HAIR TO SAVE. NEWBRO'S HERPICIDE KILLS THE GERM THAT CAUSES DANDRUFF, ITCHING SCALP AND FALLING HAIR, AFTER WHICH THE HAIR IS BOUND TO GROW AS NATURE INTENDED (EXCEPT IN CASES OF CHRONIC BALDNESS). HERPICIDE STOPS ITCHING OF SCALP ALMOST INSTANTLY.

I find that Herpicide will do all you claim for it. I am now on my second bottle and it has cleansed my head nicely, and I can see new hair coming in. It also stopped my hair from falling out and I am well pleased with it and will and do recommend it to all.
(Signed) R. L. LEIGH.
Hopkinsville, Ky.

I wish to say that I have used part of the bottle of Herpicide that you sent me and I think it is a good tonic and have recommended it to quite a number of my friends. I believe it will cure dandruff and it is a splendid and delightful hair dressing.
(Signed) H. J. FORSDICK
Memphis, Tenn.

I have given your Herpicide a thorough test. I can cheerfully say that it is the best Hair Tonic I have ever used. It will be one of our household remedies from now on and will surely recommend same to all my friends and acquaintances.
(Signed) PETER PEHL.
Sedalia, Mo.

You very kindly sent me a bottle of your Herpicide and I gladly answer your inquiry as to its qualities. I have used it now for some time and know it to be the best thing for the hair I have ever used and it keeps my hair free from dandruff and as soft as silk. I have induced several of my friends to use it and they are pleased with it.
(Signed) W. M. SHOOK.
Nashville, Tenn.

At Drug Stores. Send 10c in Stamps to The Herpicide Co., Dept. N. Detroit, Mich., for a Sample.

HOLLISTER DRUG COMPANY, Special Agents

BUDDHISM IN HAWAII.

By Lilian Shrewsbury Mesick in the Paradise for October.

On Sunday, August 12, at Hongwanji Temple, Honolulu, the Japanese Buddhists of the Shin Shu sect celebrated the tenth anniversary of their first regular Buddhist service held here. There are two distinct Buddhist sects working in Hawaii, the Shin Shu and the Jiodosu, the former being much in advance of the latter as regards membership, number of temples, etc.

For many years Japanese Buddhists who had left their native land to journey to Hawaii were deprived of the privilege of attending Buddhist services except at such times as a priest happened to be passing through Hawaii. Mr. S. Kimura of Honolulu had, in 1889, erected a temple in Hilo for the use of these visitors, but the great majority of Buddhists were shut out from the benefit of even these occasional services.

In the fullness of time, however, the Right Reverend Count Kosen Otani, the head priest of the Hongwanji mission at Kioto, learned from the priests who had visited Hawaii of the earnest desire on the part of Buddhist followers here, for the establishing of a mission in their adopted country, and therefore sent the Rev. Miyamoto to investigate conditions. As the result of this investigation Rev. S. Yamada was sent out to begin the work of Buddhist propaganda in Hawaii. The first service presided over by the Rev. Yamada was held in a private residence on Fort street at the Waikiki end of Kukul street. In addition to the church service, Mr. Yamada started a night school, which was well attended from the beginning.

So great an interest was taken in the work that it was decided by the head of the Hongwanji mission in Japan to extend the propaganda to the other islands of Hawaii, and, in consequence, the Rev. H. Satomi was sent to take charge of the Honolulu branch while Mr. Yamada went to Kauai, where he built a mission and conducted the first services of his faith on that island.

Meanwhile the people of the island of Hawaii had asked that a priest might be sent to the mission already erected at Hilo by Mr. S. Kimura, and therefore Rev. Satomi, giving the Kauai work into other hands, journeyed to Hilo and began the work he is still conducting there.

At this time Buddhist propaganda received its first setback. The Rev. Satomi, who had endeared himself to his people here by his earnest endeavors in their behalf, became ill and was compelled, much against his wishes, to return to Japan.

In his stead was sent the Rev. Y. Imamura, a man whose work here has given results that prove him to have been the man for the place. He arrived in Honolulu in 1899. At that time there was one temple in Hawaii. Since coming here he has, despite many discouragements, built 23 temples, making in all twenty-four Buddhist temples, beside the five belonging to the Jiodosu sect in Hawaii.

Naturally the most important work is carried on in Honolulu at the headquarters on Fort street and the largest temple is situated here. The building stands in about the center of a lot which covers about half an acre of ground. It is a two-story structure, the church proper being situated in the upper story, which is reached by a broad flight of stairs that reach from Fort Lane to the large veranda that serves as a sort of an ante-room, where

the worshippers leave their sandals before entering the place of worship.

The haole who sometimes ventures into finds himself comparing the interior arrangement, as well as the form of worship, to that of the Catholic Church. The shrine occupies a platform about fifteen feet square opposite to the front entrance. It is surrounded by an elaborate giltwork facade which is supported by four massive and highly polished wooden pillars. The altar is at the extreme end of the shrine and is of the finest class of Oriental workmanship. Until recently a piece of white pine with the sacred name of Buddha written thereon occupied the central part of the altar. Now, however, a very interesting image of Buddha has taken its place. This figure (unlike the sitting Buddha of the Jiodosu faith) stands in a lotus blossom with hands extended as though to aid.

Hanging from the ceiling of the shrine are two gilt lamps from which, during the services, the smoking incense fills the temple with a spicy odor. Then the priest in his black robes takes his place in the center of the shrine facing the altar and begins the service. Save the sound of the chanting of the hymns of the Tathagata by the priest all is stillness. Around the devout worshippers are bowing their heads over their rosaries. A gong is struck at intervals by the altar boy. The spectator cannot fail to be impressed by it all. It is the spirit of the Orient which beckons to him luridly. He hears the call of the mysterious East. The odor of the incense is in his nostrils, the voice of the priest and the sound of the gong appeals to him strangely and the carved Buddha, standing in the lotus blossom, has for him a message which he feels for the time he can almost understand. It is the realization of something he has dreamed of and longed for and has nothing in common with the spirit of the Occident which meets him everywhere else.

Let the reader not be misled, however, by the suggestion of the languorous East, for the work done by these people is most practical. In addition to the church services and the Sunday schools for the children afternoon schools are held at several of the temples as well as night school for the laborers. In Honolulu the Young Men's Buddhist Association, which is an organization closely resembling our Young Men's Christian Association, is a power for good to its many members. Dr. S. Kobayashi is its president and Mr. K. Wada vice president, and some of the most prominent professional men as well as successful business men of Hawaii are active members of this association. The Y. M. B. A. publishes a monthly magazine, The Dobo, which has a larger circulation than any other Japanese publication in Hawaii. The Woman's Association is another helpful organization of the Honolulu mission. Its purposes are mutual improvement and charity. The great hope for years of the high priest and his associates has been to establish a boarding school in Honolulu for the benefit of pupils of both sexes. After years of endeavor and discouragement the generosity of Mr. W. U. Kobayashi, in presenting to the Buddhist organization the property which was formerly Kobayashi's Hotel, has brought about the desired result.

This property is pleasantly situated close to the water's edge in Palama and is now being prepared to receive the young men and women who wish to come to Honolulu to study. Three teachers, all Normal graduates, are to reside in the building and look after the moral welfare of their charges.

The good influence wielded by these various organizations cannot be lightly estimated. The great majority of Japanese here are away from their families and home influences, and are consequently surrounded by temptations at every hand. Those who have seen their way clear to do so have accepted Christianity and have found therein their inspiration. But the teachings

of Christianity are usually as difficult for the average Oriental mind to grasp as we, of the Occident, find those of Buddhism; and but for the influence of the Buddhist church here the government might have found dealing with so many of these people a very difficult problem. The priests have worked early and late. Many of them have sacrificed health by working too earnestly. The present high priest, Rev. Y. Imamura, who has now as his assistants the Revs. T. Kato and T. Tatsuura, has stayed on through it all. Through discouragement and disappointment he has looked into the future and measured the result, and surely it has fulfilled his expectations. He leaves for Japan next month for a much needed and well-earned rest and the good wishes of his people as well as those of his many Christian friends will follow him.

INFLAMMATORY RHEUMATISM.

Anyone who has ever experienced the excruciating and almost unbearable pains incident to inflammatory rheumatism, will be pleased to know that prompt relief may be had by applying Chamberlain's Pain Balm. Mr. D. Snyder, of Roseville, Ontario, Canada, says: "I have been troubled with inflammatory rheumatism for the past two years and unable to sleep at night. I have taken many remedies but must say Chamberlain's Pain Balm is the best liniment I have ever tried." For sale by Benson, Smith & Co., Ltd., agents for Hawaii.

Your grocer sells Poi Breakfast Food.

THE NEW FRENCH REMEDY, THERAPIOL.

This successful and popular remedy, used in the Continental Hospitals by Meurd, Rostan, Jobert, Volpeau, and others, combines all the desiderata to be sought in a medicine of the kind, and surpasses everything hitherto employed.

THERAPIOL NO. 1 maintains its world-renowned and well-merited reputation for de-railments of the kidneys, pains in the back, and kindred ailments, affording prompt relief where other well-tried remedies have been powerless.

THERAPIOL NO. 2 for impurity of the blood, scurfy, pimples, spots, blotches, pains and swelling of joints, gout, rheumatism, and all diseases for which it has been too much a fashion to employ mercury, sarsaparilla, etc., to the destruction of sufferer's teeth and ruin of health. This preparation purifies the whole system through the blood, and thoroughly eliminates all poisonous matter from the body.

THERAPIOL NO. 3 for exhaustion, sleeplessness, and all distressing consequences of dissipation, worry, overwork, etc. It possesses surprising power in restoring strength and vigor to those suffering from the enervating influences of long residence in hot, unhealthy climates.

THERAPIOL is sold by the principal Chemists and Merchants throughout the world. Price in England, 2s. 6d. and 4s. 6d. In ordering, state which number is required, and observe that the word "Therapion" appears on the British Government Stamp (in white letters on a red ground) affixed to every genuine package by order of His Majesty's Hon. Commissioners.

ORCHIDS AND ROSES A SPECIALTY

— AT —
Mrs. E. M. Taylor
— YOUNG BUILDING.

CARRIAGE REPAIRS
We maintain a first-class repair department.
Schuman Carriage Co., Ltd.

Money Loaned
At the
— HAWAIIAN PAWN CO. —
Nuuanu Street, Near King,
On Jewelry and Precious Stones.
Open until 8:30 at night.

Miss Power's

MILLINERY PARLORS, BOSTON BUILDING, FORT STREET.

DO YOU BELONG?

Every man, woman and child should be a member of the Harrison Mutual Burial Association. See J. H. TOWNSEND, Secy. Kapoli Building, Alaekaa Street.

YOU KNOW WHAT A REMINGTON WILL DO. WHY EXPERIMENT WITH THE OTHER KIND?
HAWAIIAN OFFICE SPECIALTY CO.

A Contented Woman



is one whose house is well and artistically painted. Just think how many houses need painting in Honolulu and how many women are—well, we won't say the word; but just let us give you an estimate on that house of yours. Our motto: "Honest Work at Honest Prices."
STANLEY STEPHENSON, The Painter.
Phone 426.

Pure Soda Water
You can't get better Soda Water than that bearing the FOUNTAIN brand, for the simple reason that there isn't any better made.
Fountain Soda Works, Sheridan Street, near King. Phone Main 270.

NEW SUITINGS

We are in receipt of a line of the swellest suitings that it has been our pleasure to show. They are in French grays, both solid, check and plaid effects. We guarantee a fit and low prices.
STORE OPEN EVENINGS TILL 6 O'CLOCK; AND SATURDAY TILL 8 O'CLOCK.

W. W. AHANA & CO, LTD.
Opposite Gazette Office.

Hotel Belvedere
BELVEDERE, CAL.
30 Minutes From San Francisco, Tiburon Ferry.
Now the HAWAIIAN HEADQUARTERS.
MRS. A. F. MOORE, Owner.

J. Hopp & Co.
YOUNG BUILDING FURNITURE STORES.
New Goods Just Arrived Include:
Couch Covers,
Rope Portieres,
Tapestry Portieres,
Large and Small Rugs,
Iron Beds,
Cribbs,
Parlor Chairs and Rockers,
Dining Chairs,
Inexpensive Rockers.

IRON BEDS
BIG STOCK TO PICK FROM.
We carry the guaranteed — SANITARY IRON BED — The Best Iron Bed Made. Our Prices the Lowest. Our Goods the Best.
COYNE FURNITURE CO.
Hotel and Union Streets.
10 and 25 Cents
REAL BARGAINS
Peoples' Bargain Store Progress Block

NOTICE.
ANY WOMAN OR GIRL NEEDING help or advice, is invited to communicate, either in person or by letter, with Ensign L. Anderson, matron of the Salvation Army Woman's Industrial Home, No. 1680 King street.

ALL KINDS OF **RUBBER GOODS**
GOODYEAR RUBBER CO.
R. H. PEASE, President.
573-575-577-579 Market Street. San Francisco, Cal., U. S. A.

Wood Stoves
OILS, HARDWARE AND TOOLS.
Abraham Fernandez & Son,
44 to 50 King Street.

Consider Cost of Framing
When you can save from twenty-five to thirty-five per cent. on the cost of framing a picture it is time to think of us. We have the mouldings to select from.
THE **PACIFIC PICTURE FRAMING COMPANY.**
Nuuanu below Hotel.

GEMS, GOLD AND SILVER JEWELRY.
UP-TO-DATE STYLES.
Ready-made or by special order. Prices reasonable. Call on us.
SUN W O
No. 1208 Maunakea St. P. O. Box 948

DRINK —
Rainier Beer
RICE & PERKINS,
ARTISTIC PHOTOGRAPHERS.
Studio: Hotel Street, near Fort.

K. FUKURODA
has just received the very best Bamboo Screens for verandas. Try one. Price \$1 and \$1.25 a foot. 28 and 32 Hotel Street.

3 FOR \$1.00
MEN'S BALBRIGGAN SHIRTS
ALSO
ELASTIC SEAM DRAWERS — 3 PAIRS FOR \$1.00 —
UNDERSHIRTS 25c EACH
We have just received a new line of Ribbons and Dress Goods per S. S. Alameda.
L. AHOY
Nuuanu, near Hotel Street.

Only One

Grade of

DRUGS, CHEMICALS,
MEDICINES, TOILET
ARTICLES, ETC.

and that is

The Best

Our prices are right.

**HOLLISTER
DRUG CO.**

ESTABLISHED 1879.

To Builders, Contractors and Others.

Clearing out sale of DOORS and
SASHES at cost price for cash.

C. B. Reynolds & Co
157 Alakea Street, Next Sailors' Home.

Make Your House Look Like New

Walls freshly covered with a
neat pattern of wall paper will
make a house look like new.

A new house with discolored
or faded paper looks old and un-
cared for.

Now is the time to repaper your
house, while we have such a large
and beautiful assortment to
choose from. Prices low.

Lewers & Cooke,

Limited.

177 S. King Street.

The Cobweb Cafe

QUEEN AND ALAKEA STS.

THE FINEST MEALS,
WINES, LIQUORS, ETC.
TO BE HAD IN THE CITY.

CAMARA & COMPANY Prop.

Standard Books

SOLD ON EASY PAYMENTS AT

WM. C. LYON CO., LTD.

Cor. Fort and Hotel Sts.; Upstairs.

Let me give you an
estimate on that cottage
you intend to build.

CHAS. R. GILMAN,

CONTRACTOR.

405 Judd bldg. Phone Main 50



The Man Who Figures.

In figuring on Job Printing, we take
into consideration the putting of good
qualities into your work. We make it
right—that's why our work is so satis-
factory. We watch the work through
every step to its completion. It's well
done when we do it. You know that
means a great deal to you.

HAWAIIAN GAZETTE CO.,
LTD.



With the exception of two short
gaps of fourteen feet each, one of
which will be completed tonight, the
form wall of the wharf under construc-
tion between the Alakea and Kilaua
slips is completed and already some of
the forms are in position for the con-
struction of the top walls. The wall
to mean tide construction is the big
part of this work and the completion
of the top walls will not long be de-
layed. The work to be done above the
tide level is a bagatelle compared to
that done below water, which required
the services of a diver to place the
forms for the cement mixture and
necessitated the use of a powerful cen-
trifugal pump to clean out the bottom
of the forms down to bedrock to se-
cure a proper foundation for the ce-
ment retaining walls.

The dredging contract for the Kilaua
slip is completed and has been accept-
ed by the Department of Public Works.
The letting of a further dredging con-
tract at this point is now under con-
sideration. It being proposed to clear
out the corner running to the old
Kinau wharf so that vessels leaving
the slip can swing around when pulling
out instead of having to back straight
into the stream before turning. This
will necessitate the dredging out
of some 8000 yards and it is probable
that advertisements calling for tend-
ers for this work will be given out
within a few days by the department.
The materials for the Alakea wharf
are to arrive here on Monday on the
steamer Hilonian from the Sound. It
is understood that the original plan
to build a two-story shed, the lower story
for freight and the upper for passen-
gers, has been abandoned because of
lack of funds. It was also the original
idea to build a narrow coaling dock
on the Waikiki side of the Alakea
slip, just beside the naval dock No. 1,
but this will be postponed for the pre-
sent, the department confining its work
to the one dock and shed between the
two new slips.

ARCHER AT TACOMA.

The barkentine Archer is now load-
ing coal at Tacoma for Kahulu and
her reappearance on the Sound, where
she had not been for years, was wel-
comed by the Tacoma press and the
friends of Captain Lancaster along
that waterfront.
It is her first visit to Tacoma, at
least since she has been flying the
American flag, now twelve years, says
the Tacoma Ledger. She was formerly
the British bark Archer. In the spring
of 1894 she was bound for the Sound
in ballast. While attempting to make
the Straits she met a terrific storm
and was dismantled. For a time it was
believed she would be dashed against
the rocks of Vancouver Island and de-
stroyed. The crew took to the boats
and succeeded in reaching safety after
a hard struggle with the elements.

The weather moderated and the aban-
doned vessel was picked up by a pass-
ing steamer and towed to Victoria,
where she lay for some time. She was
finally purchased by Americans and
repaired. Her rig and flag were both
changed, and from a British bark she
became an American barkentine. Her
first cargo after being re-rigged was
lumber from Port Blakeley. She was
then in command of Captain Calhoun,
who was well known all over the Pa-
cific. Since then she has never return-
ed to the Sound until she passed in
Saturday. During much of the past
fourteen years she has been engaged in
the Hawaiian Island trade, carrying
general merchandise from San Fran-
cisco and packing sugar in return.
The Archer is an iron vessel and was
built at Sunderland, England, in 1878.
She has a gross tonnage of 900 and her
registered tonnage is 845. She is said
to be the only iron barkentine on the
Pacific Ocean and perhaps the only
one flying the American flag. Her
present trip will be the first occasion
she has ever taken on coal cargo and
hence is unique in more than one way.
It will also be the first cargo of coal
dispatched from here for several
months in a sailing vessel.
Captain Lancaster is accompanied on
the passage by his mother, who is tak-
ing the voyage for her health. Cap-
tain Lancaster has been in command
of the Archer for the past two years.
First Officer Charles J. Moore has just
joined the vessel. He came out a few
weeks ago from Boston and is making
his first passage on a sailing vessel
for several years, having been on a
steamer recently. He has a wide ac-
quaintance on the Pacific coast, as he
spent many years here. At the time
of the accident to the Archer he was
on the old bark Toppalant, which is
principally known to fame as having
made the second fastest sailing passage
from San Francisco to the Sound, log-
ging the distance off, a few years ago,
in eighty-four hours.

PEABODY THANKS ASSISTORS.
To show his appreciation of the good
work done for his vessel, the transport
Sheridan, by the revenue cutter Man-
ning and the U. S. S. Iroquois, Cap-
tain Peabody visited those vessels at
the Naval wharf on Thursday to thank
their captains and crew officially.
Captain Peabody expressed his regret
that the rules of the service prevented
him from showing his appreciation to
the men in some more substantial
manner.

MARINE NOTES.

The schooner Robert Lewers sailed
at noon yesterday for Port Townsend,
where she will load another lumber
cargo.
Captain Parker of the steamer Claud-

line is on a two weeks' vacation and
will be relieved by Captain Bennett,
of the steamer Maul.

The schooner Kineo is now out 175
days from Kahulu for the Breakwater
and her long passage is creating some
little apprehension for her safety
among the owners and the friends of
the crew.

The steamer Iwalani is still making
regular runs to Barber's Point and to
Pearl Harbor, picking up the wrecking
gear left at those points by the Sheri-
dan and her helpers. She went out to
Barber's Point yesterday morning. The
gear left in the water at Waimanalo
by the steamship Manchuria is being
picked up by the steamer James Makee,
the owners, the Miller Salvage Com-
pany, having the contract for the work.
So far the company has secured ten
big anchors, from three to seven tons
weight each, and a quantity of chain.

DEMOCRATS

(Continued from Page 1.)

coming to the Hawaiians today with
more promises of work. The same old
cry. He said he was in the last Legis-
lature—a Republican—and helped frame
the county act. He exhausted every
means to secure to the counties a prop-
er proportion of government funds, but
was blocked. There are only enough
funds to pay salaries of county officers
and some to do a little work. The Re-
publicans come to the Hawaiians this
campaign with the plea that they are
going to try to change the county act
to secure more funds for the county.

BROAD WAS JOBBED.

"I believe in putting mechanics into
the Legislature," said the speaker,
"then we may expect to have something
done for the benefit of all. Instead, we
have a lot of politicians there who sing
the same old song."

Broad said he was jobbed at the last
Republican convention and prevented
from getting on the ticket. Therefore,
at the request of the Labor party he
and Joe Fern permitted their names to
go on the Democratic ticket.

"Some of the most outrageous items
of expense incurred by the county,"
added Broad, "were made by the Re-
publican party in buying mules at \$300
apiece."

M'CARTHY AND WILCOX.

Col. McCarthy, on mounting the
stand, said that the last time he spoke
at Mollili he was on a ticket running
with R. W. Wilcox and John E. Bush.
"The same opinions I held then I hold
now," said the Colonel.

The Colonel went into a lengthy ex-
planation of his hobby for redistricting
the islands so that each district could
send its own representative to the Leg-
islature.

Moses Palau played upon the one
string of his hopes for election as a
Representative, and that was the lep-
rosy plank of the Democratic party.
He wanted the opportunity left open
to anyone with a "cure" to go to the
Settlement and try it on the inmates
there.

SCORES DENS OF VICE.

Edward Ingham said that the pres-
ent campaign was a test of whether
or not the people were to have a voice
in the administration of local affairs,
or to be controlled by the few.

Mr. Ingham then roasted the dens of
iniquity, recently exposed by the Ad-
vertiser, where, he said, young Hawai-
ian girls were being ruined. The price
of the Hawaiian's ballot was the price
of the honor of these girls if it was
cast for the Republican nominees, or to
continue those in power.

"Are you Hawaiians going to cast
your ballot to keep open these dens of
iniquity, dens that will be maintained
for the ruin of your girls?" asked the
speaker.

There was a chorus of "Aoles" from
the crowd, especially from the women.
"We want to see the laws carried
out," said Mr. Ingham. "We don't be-
lieve in whitewashing anybody. Let
us call a spade a spade. No whitewash-
ing. Let us tell the truth about these
things."

"I hope the next time we meet here
at Mollili, near this graveyard, it will
be to attend the obsequies of the Re-
publican party, and that its tombstone
shall bear this inscription: 'Here lies
the Republican machine.'"

Other speakers were Frank Harvey,
C. L. Rhodes, Joe Fern, F. W. Weed
interpreting.

JAPS AND PACIFIC MAIL.

The disappearance of the American
flag from the China seas seems cer-
tain. A cable to the New York Times
from Yokohama, says: The competi-
tion of the trade of the Pacific between
the various steamship companies is ex-
citing lively interest in Japan and Chi-
na. Shipping men here are positive
in their belief that the Japanese com-
panies will force their rivals out of
business. It is definitely understood
that since the failure of the shipping
subsidiary bill in America, the Toyo Yusen
Kaisha Company will buy out the Pa-
cific Mail Company. Its fleet consists
of the Mongolia, Korea, Siberia and
China, all fine steamers, 10,000 to 15,000
tons burden. The lost Manchuria be-
longed to this fleet.

Henry Skerritt, of Oswego, ran away
from his family a year after his mar-
riage. That was about 1880, and a few
months ago, taking up a local paper in
Chicago, the deserter read in the "per-
sonal" column:

"If Henry Skerritt, who, twenty-
three years ago, deserted his poor wife
and babe, will return home, said babe
will be glad to knock the stuffing out
of him."

COMMISSIONER'S SALE

Of Valuable

Real Estate

Situate at Honolulu,

Island and County of Oahu, Territory
of Hawaii.

Pursuant to a Decree of Foreclosure
and Sale made by the Honorable J. T.
De Bolt, First Judge of the Circuit
Court of the First Judicial Circuit,
Territory of Hawaii, at Chambers, in
Equity, on the 11th day of October,
A. D. 1906, in an action entitled E. H.
F. Wolter, Trustee, complainant, vs.
Henry Vieira, Senior, respondent, peti-
tion for foreclosure of mortgage
(Equity Division No. 1543), the under-
signed, as Commissioner duly appoint-
ed by said Decree, will sell at public
auction to the highest and best bidder
for cash, subject to confirmation of the
Court, on

Wednesday, 24th day of October, 1906,

at 12 o'clock noon of said day, at the
front (mauka) entrance to the Judi-
ciary Building, in Honolulu, Island and
County of Oahu, Territory of Hawaii,
all and singular the mortgaged prem-
ises mentioned in said Decree and de-
scribed as follows, to wit:

All that certain lot, tract, piece or
parcel of land situate, lying and being
on the northwest side of Nuuanu
street, Honolulu, Island of Oahu, Terri-
tory of Hawaii, being a portion of the
land described in Royal Patent Number
1647, Land Commission Award Number
555 to Isaac Lewis, and particularly
bounded and described as follows, to
wit:

Beginning at the northwest side of
Nuuanu street 31 1-2 feet makai of the
south corner of the Robinson Lot, and
running:

N. 41° 30' W., Magnetic, 55 feet along
the Manohia half of the Hoomau Lot;
thence

S. 40° 20' W., 33 feet along the Bell
Lot; thence

S. 41° E., 50 1-4 feet along Antone
Manuel's Lot; thence

N. 49° 05' E., 33 feet along Nuuanu
street to the initial point.

Containing an area of 1740 square
feet, and being the same premises con-
veyed to said respondent, the mort-
gagor, by the following deeds: (a) Joa-
quim Pereira to Henry Vieira, dated
May 27, 1877, and recorded in the Reg-
istry Office in said Honolulu in Liber
49, page 435; (b) Joaquim Pereira to
Henry Vieira, dated January 5, 1881, and
recorded in said Office in Liber 67, page
171.

Terms of Sale: Cash in United
States gold coin; ten (10) per cent, of
the amount to be paid at the time of
sale, balance upon confirmation of sale
and execution and delivery of deed by
the Commissioner. Deed at expense of
purchaser.

For further particulars apply to
Messrs. Thompson & Clemons, attor-
neys for complainant, at their office,
8-10 Campbell Block, Honolulu, or to
the undersigned, at his office, Kaahu-
manu street, Honolulu, aforesaid,
JAMES F. MORGAN,
Commissioner.

Honolulu, October 12, 1906. 7545

Auction Sale AT WAIALUA

IN THE DISTRICT COURT OF THE
UNITED STATES, DISTRICT OF
HAWAII—IN BANKRUPTCY.

In the Matter of Waiialua Mercantile
Company, Ltd., Bankrupt.

To the creditors of Waiialua Mercan-
tile Company, Ltd., of Waiialua, Island
of Oahu, Territory of Hawaii.

Take notice that there will be sold at
public auction, on Saturday, the 13th
day of October, 1906, at 10 o'clock a.
m., at the store of the above-named
bankrupt at Waiialua aforesaid, by the
undersigned, all the personal property,
store fixtures and stock in trade of the
said Waiialua Mercantile Co., Ltd., con-
tained in the store of said bankrupt at
said Waiialua, Island of Oahu.

Said property will be sold to the
highest bidder for cash, and subject to
the approval of the District Court of
the United States for the District of
Hawaii, pursuant to the order of Hon-
Sanford E. Dole, Judge of said Court.
Dated at Honolulu, this 1st day of
October, 1906.

ARTHUR H. PERRY,
Trustee of Waiialua Mercantile Co.,
Ltd., Bankrupt.
WADE WARREN THAYER,
Attorney for Trustee.
7535—Oct. 2, 6, 12.

POWER OF ATTORNEY.

NOTICE.

Notice is hereby given that R. C. A.
Peterson, Esq., will transact all busi-
ness matters for me under full power
of attorney.
(Signed)
PRINCESS KAWANAKOIA.
Dated September 27, 1906. 7542

FOR SALE.

House lot near Punahou, size 400x155
feet, with half interest in artesian well.
Lot well shaded with fine trees. Co-
conut trees in bearing, pears, man-
goes, bananas, fig, orange, breadfruit
and several other fruits. Sewer con-
nection; 100 feet of 4-inch iron pipe into
lot.

Water pipes laid all over and taps
convenient.
Lot fronts on two streets, one block
from car line, and contains nearly an
acre and a half. No government water
rates here, but the finest artesian water
on the islands. Easy terms.
Address, "Farmer," Box 347, Hono-
lulu. 7542

**Sunday
Advertiser**

PUBLIC LANDS NOTICE.

Office of the Commissioner of Public
Lands, Honolulu, T. H.

NOTICE OF DISPOSAL OF GOV- ERNMENT LANDS.

On the dates and at the places, and
under the provisions of the Land Act,
1895 (Chapter 22, Revised Laws of Ha-
waii), as herebelow stated, applications
will be received for the following lots
of Government Lands:

At the Office of the Sub Land Agent,
Hilo, Hawaii, at and after 9 o'clock
a. m., Wednesday, October 31, 1906,
under the provisions of Part VII (Sec.
313, Rev. Laws of Hawaii), Right of
Purchase Lease:

Upper Maulau, North Hilo, Hawaii:
Lot 55, class agricultural, area 100.0
acres, appraised value \$350.00.

Lot 56, class agricultural, area 100.0
acres, appraised value \$250.00.

Lot 57, class agricultural, area 100.0
acres, appraised value \$350.00.

Lot 58, class agricultural, area 100.0
acres, appraised value \$350.00.

Lot 60, class agricultural, area 100.0
acres, appraised value \$250.00.

Lot 61, class agricultural, area 100.0
acres, appraised value \$350.00.

Lot 63, class agricultural, area 99.9
acres, appraised value \$399.90.

Lot 65, class agricultural, area 100.0
acres, appraised value \$300.00.

Lot 66, class agricultural, area 100.0
acres, appraised value \$300.00.

Lot 54, class agricultural, area 100.0
acres, appraised value \$350.00, plus
appraised value of improvements,
\$150.00, to be paid for in cash at
time of approval of application.

Lot 59, class agricultural, area 100.0
acres, appraised value \$250.00, plus
appraised value of improvements,
\$10.00, to be paid for in cash at
time of approval of application.

Lot 62, class agricultural, area 99.5
acres, appraised value \$398.00, plus
appraised value of improvements,
\$25.00, to be paid for in cash at
time of approval of application.

Lot 64, class agricultural, area 100.0
acres, appraised value \$400.00, plus
appraised value of improvements,
\$945.00, to be paid for in cash at
time of approval of application.

LAUFAHOEHOE HOMESTEAD LOTS
Forty (40) Lots, numbered 1 to 40, in-
clusive, average area 24.0 acres each,
class agricultural, appraised value \$3.90
and \$4.00 per acre.

Lot 7 (mauka half), Ophikao, Puna,
Hawaii, class, part waste, part ag-
ricultural, area 12.2 acres, appraised
value \$42.70.

Lot 4, Kaimu, Puna, Hawaii, class, part
waste, part agricultural; area
24.55 acres, appraised value \$73.75.

Lot 99, Olaa Reservation, Puna, Ha-
waii, class agricultural, area 50
acres, appraised value \$250.00.

Lot 104, Olaa Reservation, Puna, Ha-
waii, class agricultural, area 50
acres, appraised value \$250.00.

On Thursday, November 1, 1906, at
12 o'clock noon, at the office of the Sub
Land Agent, Hilo, Hawaii, under Sec.
17, Land Act 1895 (Rev. Laws of Ha-
waii, Sec. 276), at Public Auction:

Government remnant at Kilauea, North
Hilo, Hawaii, class agricultural, area 5
acres, more or less, terms cash, upset
price \$75.00.

Lot 11, Nanawale, Puna, Hawaii, class
agricultural, area 3.65 acres, terms
cash, upset price \$73.00.

Lot 5, Waipunaie, North Hilo, Hawaii,
class agricultural, area 10.17 acres,
terms cash, upset price including
improvements \$592.55.

Lot 15, Kamaui, Puna, Hawaii, class
waste with pockets of soil, area
70.50 acres, terms cash, upset price
\$251.50.

SPECIAL AGREEMENTS, TIME PAYMENTS:

Lot 3, New Olaa Tract, Puna, Hawaii,
class agricultural, area 42.80 acres,
upset price \$172.00.

Lot 8, New Olaa Tract, Puna, Hawaii,
class agricultural, area 45.22 acres,
upset price \$180.88.

At the Court House, North Kohala,
Hawaii, at 12 o'clock noon, Saturday,
November 3, 1906, under Part VII, Land
Act 1895 (Revised Laws Hawaii, Sec-
tion 323), Cash Freeholds, at Public
Auction:

Lot 14, Kaauhuhu, N. Kohala, Hawaii,
class agricultural, area 10.0 acres,
upset price including improvements
\$110.00.

Lot 22, Kaauhuhu, N. Kohala, Hawaii,
class agricultural, area 10.54 acres,
upset price including improvements
\$133.25.

Lot 37, Kaauhuhu, N. Kohala, Hawaii,
class agricultural, area 33.80 acres,
upset price including improvements
\$192.00.

Lot 41, Kaauhuhu, North Kohala, Ha-
waii, class agricultural, area 32.26
acres, upset price \$161.30.

At the Court House, Honokaa, Hama-
kua, Hawaii, on Wednesday, November
7, 1906, at 9 o'clock a. m., under Part
VII, Land Act 1895 (Revised Laws Ha-
waii, Section 313):

Lot 2, Paaulo, Hamakua, Hawaii, class
agricultural, area 32.37 acres, more
or less, appraised value of land
\$323.70, plus value of improvements,
\$971.10, to be paid for in cash at
time of approval of application.

Lot 2R, Paaulo, Hamakua, Hawaii,
class agricultural, area 32.37 acres,
more or less, appraised value of
land \$323.70, plus value of improve-
ments, \$971.00, to be paid for in cash
at time of approval of application.

At 12 o'clock noon on said day
and at the said place:

Under Section 17 Land Act 1895
(Section 276 Rev. Laws Hawaii),
Special Agreement, Time Payment:

Lot 19, Paaulo, Hamakua, Hawaii,
class agricultural, area 103.14 acres,
including former reserves; reserv-
ing, however, a 30-foot right of way
on former reserve between lots 19
and 20; upset price of land \$1289.25,
plus appraised value of improve-
ments, \$1200.00, to be paid for in
cash at time of sale.

Under above-named Section
Land Act 1895, Cash Sale:

Lot 16, Ahualoa, Hamakua, Hawaii,
class agricultural, area 78.65 acres,
upset price including improvements
\$17

Hawaiian Trust Co., Ltd. 923 FORT STREET OFFICES FOR RENT.

We have a few desirable offices in the Judd and Boston buildings.

STORES FOR RENT.

Corner of Emma and Beretania streets: a good business location. Hotel street, near Fort; half of a fine store.

HOUSES FOR RENT.

PACIFIC HEIGHTS—Cottage partly furnished. 565 BERETANIA STREET—Desirable cottage.

QUARRY and LUNALILO STREETS—Two-story house.

PUNCHBOWL STREET, below QUEEN—Two-story house.

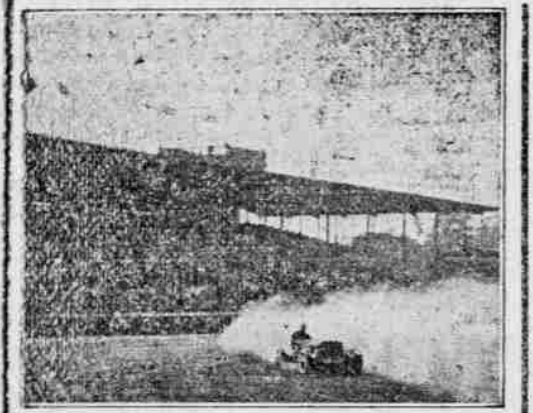
NUUANU AVENUE—Cottage partly furnished; suitable for light housekeeping or for two gentlemen.

KING STREET, near VICTORIA—Cottage with fine grounds.

FOR SALE.

"Kraft property," corner Lunaliilo and Kowalo streets. Also fine building lots at Tantalus, Makiki, Palolo, Kaimuki, Waiialea and other districts.

HAWAIIAN TRUST CO., Ltd. 923 Fort Street. Telephone Private Exch. 14.



Rapid-motion pictures can not be taken with an ordinary lens, because it lacks speed.

If you have a ZEISS TESSAR you can take pictures of rapidly-moving objects.

you can also get much finer results on pictures of stationary objects, because "it's all in the lens." Come and see this new lens at

HONOLULU Photo-Supply Co. FORT STREET. "Everything Photographic."

Mrs. Annie Kearns' Island Jams, Jellies and Chutney are carried by all the large grocery stores and supplied to the hotels and passenger steamers.

BUY NOW! The Von-Hamm Young Co., Ltd. is constantly receiving the

BEST LINES OF MERCHANDISE DRY GOODS, TRUNKS, LEATHER ARTICLES. ENGINES AND SUPPLIES ON HAND AUTOMOBILES and REQUISITE Alexander Young Building.

Smoke General Arthur Cigars GUNST-EAKIN CIGAR CO Distributor.

JOHN NEILL, Engineer, Dealer in NEW AND SECOND-HAND MACHINERY. Repairing of All Kinds. MASOLINE ENGINES A SPECIALTY 135 Merchant Street. Tel. 116.

RED CROSS SELTZER Now is the time to reduce your doctor bill, by drinking Red Cross Seltzer. Made from Red Cross Medical Natural Water from Big Rapid, Michigan. Bottled and sold only by the ARCTIC SODA WORKS, AGENT FOR THE TERRITORY OF HAWAII. Phone W. 911. 1263 Miller Street

Waikiki Inn Now owned by W. C. Bergin. Accommodations, supplies and attendance absolutely first-class.

Fine Bathing Beach Y. WO SING, WHOLESALE AND RETAIL GROCERS. Now at 1186-1188 Nuuanu Street. CALIFORNIA ROLL BUTTER, 5c per pound. Phone Main 238. Orders promptly attended to.

FRATERNAL MEETINGS POLYNESIA ENCAMPMENT, NO. 1, I. O. O. F. Meets every first and third Friday of the month, at 7:30 p. m., in Odd Fellows' Hall, Fort street. Visiting brothers cordially invited to attend.

EXCELSIOR LODGE NO. 1, I. O. O. F. Meets every Tuesday evening, at 7:30, in Odd Fellows' Hall, Fort street. Visiting brothers cordially invited to attend.

HARMONY LODGE NO. 3, I. O. O. F. Meets every Monday evening, at 7:30, in Odd Fellows' Hall, Fort street. Visiting brothers cordially invited to attend.

PACIFIC REBEKAH LODGE, NO. 1, I. O. O. F. Meets every second and fourth Thursday, at 7:30 p. m., Odd Fellows' Hall, Fort street. Visiting Rebekahs are cordially invited to attend.

OLIVE BRANCH REBEKAH LODGE NO. 2, I. O. O. F. Meets every first and third Thursday, at 7:30 p. m., in Odd Fellows' Hall, Fort street. Visiting Rebekahs are cordially invited to attend.

OCEANIC LODGE NO. 371, F. & A. M. Meets on the last Monday of each month, at Masonic Temple. Visiting brethren and members of Hawaiian and Pacific are cordially invited to attend.

LEAHI CHAPTER NO. 2, O. E. S. Meets every third Monday, at 7:30 p. m., in the Masonic Temple. Visiting sisters and brethren are cordially invited to attend.

LEI ALOHA CHAPTER, NO. 3, O. E. S. Meets at the Masonic Temple every second Saturday of each month, at 7:30 p. m. Visiting sisters and brothers are cordially invited to attend.

LADIES' AUXILIARY, A. O. H., DIVISION NO. 1. Meets every first and third Tuesday, at 8 p. m., in C. B. U. Hall, Fort street. Visiting sisters are cordially invited to attend.

ANCIENT ORDER HIBERNIANS, DIVISION NO. 1. Meets every first and third Wednesday, at 8 p. m., in C. B. U. Hall, Fort street. Visiting brothers cordially invited to attend.

WILLIAM MCKINLEY LODGE, NO. 8, K. of P. Meets every Saturday evening, at 7:30 o'clock, in Harmony Hall, King street. Visiting brothers cordially invited to attend.

HONOLULU TEMPLE NO. 1, BATH-BONE SISTERS. Meets every second and fourth Monday, at Knights of Pythias' Hall, King street. All visitors cordially invited to attend.

COURT CAMOES, NO. 8110, A. O. F. Meets every second and fourth Tuesday of each month, at 7:30 p. m., in San Antonio Hall, Vineyard street. Visiting brothers cordially invited to attend.

COURT LUNALILO, NO. 6600, A. O. F. Meets every first and third Wednesday evenings of each month, at 7:30, in K. of P. Hall, King street. Visiting brothers cordially invited.

CAMOES CIRCLE NO. 240, C. O. F. Meets every second and fourth Thursday of each month, at 7:30 p. m., in San Antonio Hall, Vineyard street. Visiting companions are cordially invited to attend.

THEODORE ROOSEVELT, CAMP NO. 1, U. S. W. Department Hawaii. Meets every first and third Wednesday, Waverley Block, cor. Bethel and Hotel, at 7:30 p. m. Visiting comrades cordially invited to attend.

HONOLULU HARBOR NO. 54, A. A. of M. & P. Meets on first and third Sunday evenings of each month, at 7 o'clock, at K. of P. Hall. All sojourning brethren are cordially invited to attend.

HONOLULU AERIE 140, F. O. E. Meets on second and fourth Wednesday evenings of each month, at 7:30 o'clock, in K. of P. Hall, King street. Visiting Eagles are invited to attend.

HAWAIIAN TRIBE NO. 1, I. O. R. M. Meets every second and fourth Friday of each month, in I. O. O. F. Hall. Visiting brothers cordially invited to attend.

LOW MAKES FULL DENIAL

As His Own Lawyer Answers in Beef Trust Case.

James S. Low in person yesterday filed his answer in the Beef Trust case in the Federal court. As one of the defendants named in the petition of the United States of America against Metropolitan Meat Co. and others he says: "I have read and studied said petition or bill of complaint, and do herewith make answer to the best of my ability, knowledge, information and belief."

As to the statement that the suit is brought "under the direction of the Attorney General of the United States," he says he knows nothing about it other than what he has read in the bill. The same reply is made to the next section declaring that certain defendants are corporations and copartnerships. Mr. Low adding that "he has no personal interest in any of the corporations or copartnerships named."

He naively replies to the third section, dealing with the fictitiously named defendants "John Hawaii, Richard Maui, Thomas Oahu, Henry Kauai, William Niihau, Horace Kahoolawe, Peter Lanai and Francis Molokai," saying that as he had been cited under his true name the allegations therein did not apply to him.

Mr. Low admits that he has been since annexation and now is, "and hereafter expects to continue to be, as long as there is any reasonable profit therein," engaged in the business of delivering beef cattle and fresh beef to dealers and consumers in the Territory, for himself personally and as an agent for others.

In the most candid manner this defendant also admits "the geographical situation of Honolulu," also the allegation that "Honolulu is one of the principal beef markets and distributing centers in the Territory," but denies that it is absolutely the "principal market and distributing center," as alleged by "your Orator."

Then comes the strongest point in his line of defense, where he says: "This defendant not being a stockholder of the Metropolitan Meat Co., Limited, one of the defendants named in said petition or bill of complaint, knows not whether or not it will continue to be engaged in the business of selling, shipping and delivering beef cattle and fresh beef to dealers and consumers in said city of Honolulu, and he declares that it concerns him not, as he is associated extensively with dealers and consumers of beef in said city of Honolulu, other than the said Metropolitan Meat Co., Limited."

Mr. Low disputes the estimates of the complainant in the allegation that about 3,697,405 pounds weight of beef cattle, of the value of \$347,173.25, are consumed annually by the inhabitants of Honolulu and of the Territory of Hawaii, and denies every allegation or charge made against him in sections 8 to 22 of the complaint, "excepting therefrom such technical matters as are of proper record and law quoted which this defendant is not versed in."

He leaves such estimates and all other matter not within his knowledge to District Attorney Breckons to prove. And, last preceding his prayer "to be hence dismissed with his reasonable costs and charges in this behalf most wrongfully sustained," Mr. Low makes this declaration: "Further answering this petition or bill of complaint, this defendant denies that he has violated, is now violating, or does intend to violate any of the laws of the United States, as quoted by your learned 'Orator'; but, on the other hand, this defendant declares herewith that he has always dealt in open competition, is now in competition, and expects to be in competition, for the best interests and welfare of those associated with him in the beef industry and that without any violation of any of the laws of the United States of America."

At the hearing of the Galbraith will case, concluded yesterday morning, Ballou & Marx filed an opinion by Prof. John C. Gray of Harvard University, which holds that the trust created in the will is valid. The testator expressed a desire to have the estate, after the payment of the smaller legacies, held in trust as long as the law would permit. The estate is worth a quarter of a million dollars.

CHILDREN. In buying a cough medicine for children never be afraid to buy Chamberlain's Cough Remedy. There is no danger from it and relief is always sure to follow. It is especially valuable for colds, croup and whooping cough. For sale by Benson, Smith & Co., Ltd., agents for Hawaii.

Your grocer sells Poi Breakfast Food. HONOLULU SCOTTISH THISTLE CLUB. Meets on the first and third Friday, at 7:30 o'clock p. m., in rooms in Oregon Block, entrance on Union street. JAS. L. COCKBURN, Chief. JOHN MACAULEY, Secy.

TREASURY'S COLD DAY

Some Heavy Tax Cases Decided Against Assessor.

It blew cold for the revenue from the Supreme Court bench yesterday when a batch of sugar plantation appeals on the income tax were lost by the government.

In these cases the government complained that, by a change in the mode of making their returns, these sugar planting corporations had doubly discounted their incomes. This was the first year that the law could reach an entire year's business of the plantations. Up till now they had received the benefit of deducting the expenses of cultivating the crop—a process of eighteen months—from which their incomes were derived.

It was contended by the government that the income of a corporation should represent its actual net profits for the preceding year. This was impossible to reach when the plantations, by a change of bookkeeping with the government, charged their income with the expenses of the six months before such preceding year.

However, the Tax Appeal Court was sustained in its decision favorable to the plantations. Many thousands of dollars in taxes claimed were involved. Another reverse to the government was experienced in the matter of James B. Castle's appeal from the levying of income tax on the profits he made from the sale of about \$300,000 worth of H. C. & S. Co. stock, which amounted to something like \$120,000. At two per cent, the tax on this would be \$2400. The appeal was sustained.

TAX CASES HEARD. Oral decisions were given by the Supreme Court yesterday, affirming the decisions of the Tax Appeal Court against Tax Assessor Holt in the cases of Laupahoehoe Sugar Co., Waialea Mill Co., Hamakua Mill Co. and Union Mill Co. Deputy Attorney General Prosser appeared for the appellant, and Kinney, McClanahan & Derby for the appellees.

In the case of James B. Castle's appeal from the Tax Appeal Court, an oral decision was given reversing the decision of the lower court. Mr. Prosser for the assessor; Castle & Withington for the appellant.

Honolulu Rapid Transit & Land Co.'s income tax appeal was argued and submitted by Mr. Prosser for the assessor and Castle & Withington for the taxpayer. The property tax case of the Rapid Transit Co., comprising cross appeals from the Tax Appeal Court, was submitted on briefs.

Cross appeals from the Tax Appeal Court in the case of Oahu Sugar Co. against Tax Assessor J. L. Holt formed the last matter heard for the day. Mr. Prosser appeared for the assessor and Thompson & Clemons for the taxpayer. At the conclusion the court rendered an oral decision to the effect that, as the bone of contention was the question of valuation, the decision of the lower court should be affirmed.

Waialea Agricultural Co. vs. Oahu Railway & Land Co., cross exceptions, will be heard today. Judge De Bolt will sit in place of Chief Justice Frear, disqualified.

CRIMINAL CASE. Pahau, an old native, was placed on trial before Judge Lindsay yesterday for criminal intercourse, the other person being under fourteen years of age. Deputy Attorney General W. S. Fleming appeared for the Territory, and W. T. Rawlins for the defendant. The jurors trying the case are C. M. Lovestead, H. M. Rodgers, J. M. McDonald, W. O. Barnhardt, Chas. Spencer, Sol. D. Koki, T. W. Chase, W. K. Waiamanu, W. Starbird, C. J. Ludwigen, C. J. Falk and S. W. Spencer. At 4 o'clock the trial went over to Monday.

MORTGAGE FORECLOSED. A decree of foreclosure was made yesterday by Judge De Bolt in the suit of E. H. F. Wolter, trustee, vs. Henry Vieira. James F. Morgan is the commissioner of sale. The debt is \$6146.95 and the mortgage is on Nuuanu avenue premises, containing an area of 1749 square feet. The decree was based on judgment of default.

Vieira is the old gentleman who deeded all of his property—a large estate—other than that covered by this mortgage, to his children, according to an equity suit lately brought to cancel the deed on the ground of undue influence. One of the averments of the complaint was that Wolter's rights, in regard to a deficiency judgment, were liable to be prejudiced by the conveyance in question.

MRS. MAILE CITED. In the matter of J. O. Carter's action on judgment against Koolau Maile and her children, the Kakaianaha minors, with the S. C. Allen estate trustees as garnishees, Judge Robinson has made an order citing Mrs. Maile to appear on Monday next and show cause, if she can, why she has not filed any answer or other pleading on behalf of the minor defendants as their guardian ad litem.

DEAD OIL STOCK. Magdalena Bergersen, executrix of the estate of Bernhard Bergersen, petitions for approval of accounts and discharge. She received \$458.95 and paid out \$68.25. Her inventory of the estate shows its total value as \$3,558.95, of which \$2500 represents a residence at Kapiolani Park Addition. One hundred shares in California Rock Oil Compound is put down as of no value.

ring the cause to Robbins B. Anderson as master, with full power to summon witnesses and compel their attendance and fully hear and determine the matters in controversy. It is further ordered that the master file a report of his acts on or before November 1.

LAW OF REPLEVIN. W. C. Achi for defendant in the replevin suit of Uchiyama Yoozo vs. Takahashi Kotaro will move before Judge Lindsay this morning to dissolve the attachment on the grounds that the bond of plaintiff is insufficient and that the court has no authority under the laws of the Territory to issue attachment in replevin suits. Philip L. Weaver is attorney for plaintiff. Defendant has filed a general denial of the allegations in the complaint.

LIBEL CASES DROPPED. Deputy Attorney General Fleming yesterday entered a nolle prosequi in each of the libel suits against C. Shiozawa and Noyawa Tokichi, based on articles in the Hawaii Shinpo attacking Consul Miki Saito of Japan. Since the consul's return from Japan peace has been made between him and his former enemies and, as the private counsel for the prosecution had withdrawn, the Attorney General's Department had no desire to press the cases.

COURT ITEMS. Judge De Bolt yesterday ordered judgment entered in favor of Mary Lucas against Territory of Hawaii for a vested right as owner in the sea fishery of Niu, Oahu, containing 228 acres more or less.

Theo. H. Davies & Co., Ltd., has brought suit against Peter Whyte for \$949.63, balance of an account stated. Interest, costs and attorney's fee are claimed in addition.

A. G. Correa for defendant has filed a motion for a new trial of the action for wages of Francisco de Souza against J. J. Souza, in which judgment for the amount claimed was rendered for plaintiff.

Judge Robinson appointed Clarence W. Ashford, M. T. Simonton and Clem K. Quinn as appraisers of the estate, in this Territory, of the late Samuel T. Alexander, to serve without compensation.

Mrs. Lansing's petition for a registered title to land at Kaneohe, contested by L. L. McCandless, is still on before Judge P. L. Weaver in the Court of Land Registration.

The Supreme Court has thus far withheld its consent from the filing, or even opening, a deposition of H. C. Kellogg, the hydraulic engineer, sent from San Francisco for the Palolo water right appeal case. Attorney General Peters makes the tender of the deposition for the Territory.

Judge De Bolt yesterday began the trial of the Oriental Insurance Co.'s case against Kwai Fong.

MORGAN THIS DAY At Auction On Saturday, Oct. 13, '06 AT 12 O'CLOCK NOON.

at my salesroom, 857 Kaahumanu St., I will sell at public auction, by order of J. O. Carter, trustee for John A. and Kahalewai Cummins—

1. The lease of the land of Keolu, Kailua, Oahu, R. P. 2909, 399 1-2 acres, a little more or less, same being good pasture land.

Term, 10 years from November 1, 1906; rent payable quarterly in advance. Upset rental \$300 and taxes per year. The shooting privilege over this land is reserved by the lessor from this lease.

2. The shooting privilege for the same term is offered at an upset rental of \$100 and taxes per year, payable semi-annually in advance.

3. That land situate in Palama, Honolulu, off the mauka side of King street, same being kula and kalo land, in area 2.61 acres, more or less, at present occupied by Ah Ko and Benj. R. Campbell, land described in L. C. A. 4679, R. P. 2515, to Paewahine.

MORGAN BUILDINGS AT AUCTION

On Wednesday, Oct. 17, 1906, AT 12 O'CLOCK NOON, There will be sold, on the Executive Building grounds, near the Archives Building—

One F. & C. building; length 41 ft., width 35 ft.; covered with about 150 sheets corrugated iron. Building known as the Government Carpenter Shop.

One brick building, 14 ft. square, containing about twelve thousand bricks, more or less. Formerly known as the Magazine.

JAS. F. MORGAN, AUCTIONEER. Executrix Sale of Real Estate.

By order of Jane Lishman More, executrix of the estate of Jane Wilson, deceased, I will sell at public auction, at my salesroom, 857 Kaahumanu St., Saturday, Oct. 20, 1906, AT 12 O'CLOCK NOON,

The following property, situate on NUUANU STREET, near KUKUI STREET: Property known as the Wilson residence, situate on the east side of Nuuanu street, about 100 feet from Kukui street, and adjoining the Lyceum property.

The property has a frontage of 29 feet on Nuuanu street, a depth of 151.4 to 152.3 feet, and an easterly boundary of 25 feet.

This lot is filled to the height of Nuuanu street. On the property there is a dwelling-house, comprising parlor, dining-room, three bedrooms, kitchen, pantry and bath. Property is now under monthly rental.

The household furniture will be sold after the sale of the residence. Terms, cash; deeds at purchaser's expense. For further particulars apply to JAS. F. MORGAN, AUCTIONEER.

At Auction A Sheriff's Sale of 4 Valuable Residence Lots

on Wyllie street, near Liliha street, will be held at the Capitol Building On Monday, Oct. 22, 1906. AT 12 O'CLOCK NOON.

These lots are adjacent to the residences of Mr. R. Andrews and Dr. ... The lots are nicely situated on elevated land and command a lovely view of sea and mountains.

The lots contain nearly one acre each. For further particulars enquire of JAS. F. MORGAN, AUCTIONEER.

COMMISSIONER'S SALE 30 Shares of Stock OF MACFARLANE & CO., LTD.

In accordance with the terms of a certain decree of foreclosure made and entered in the Circuit Court of First Judicial Circuit, Territory of Hawaii, on the 20th day of April, 1906, by the Honorable W. J. Robinson, Third Judge of said court, in a matter then pending before the said Judge wherein J. J. Newcomb was complainant, and Henry R. Macfarlane respondent, notice is hereby given that the undersigned will, on SATURDAY, the 29th day of September, 1906, at 12 o'clock noon of said day, at the auction rooms of J. F. Morgan, No. 857 Kaahumanu street, in said Honolulu Island and County of Oahu, Territory of Hawaii, sell at public auction thirty shares of the capital stock of Macfarlane and Company, Limited, evidenced by Certificate No. 19.

Terms of sale: Cash, United States gold coin; 10 per cent. of the purchase price to be paid upon the fall of the hammer, balance upon confirmation by the court.

MISUSE OF MATCHES.

A match is a piece of wood about two inches long with one end containing a coating of sulphur and phosphorus. One match doesn't amount to much, but Robinson Crusoe wanted one awfully bad. While matches are useful, one solitary match can do more damage in a few minutes than a baseball bat can in a year. If you think not, better ask someone who has had his home burned. Insure your home and furniture and matches can not cause you loss.

TRENT & COMPANY.

GOOD OLD BOURBON WHISKEY

IN BULK

TRY a gallon of our fine Kentucky Bourbon. Not rectified nor adulterated. Guaranteed pure.

CRITERION JOBBING DEPT

Phone Main 36.

Isn't it about time you were thinking of protecting your valuables by depositing them with the Henry Waterhouse Trust Co., Ltd.? The price for the safety is so small that you will not miss it.

BUSINESS LOCALS.

Your grocer sells Pol Breakfast Food. Six neck ruches in a box for 35 cents at Sach's. See Fisher's auction column for today's sale. A good cow is offered for sale. See ads on last page. Fisher will sell fantail pigeons at his auction room today at 10 a. m. Some very choice furnished rooms can be had at Helen's Court, Adams lane. Last day for specials in walking skirts, portieres and Victoria lawns at Sach's. Whitney & Marsh are showing a pretty line of new wash goods from 10c a yard up. Try a meal at the Occidental Hotel restaurant, corner Alakea and King streets. Meals only 25c. Lunch today at Scotty's Royal Annex Cafe. Lunch 25c, with tea, coffee or beer. Dinner from 5 to 8 at 50c. Good old Kentucky Bourbon whiskey can be obtained in bulk at the Criterion Jobbing department. Phone Main 36. James F. Morgan offers a fine residence site in Nuuanu valley, directly opposite the residence of Mr. Schultz. Pretty hats at Madame Josephine's. Call in and see them. Parlors at 162 Hotel street, opposite the Young hotel. Today at 10 a. m. a lot of elegant maldenhair ferns, palms, fruit trees, etc., will be sold by Fisher, the auctioneer. There is only one Herpicide and that's Newbro's. All druggists and barber shops carry it. Hollister Drug Company, agents. First-class tickets to all stations on the Oahu Railroad and Haleiwa coupon tickets are now on sale at the office of Trent & Co., 936 Fort street. The building known as the government carpenter shop, in the Executive building grounds, will be sold at public auction next Wednesday at noon. Prettily dressed feet are absolutely necessary to complete a becoming costume. Fine new line of E. F. Reed & Co.'s shoes for women at Manufacturers' Shoe Co. Choice lots are being sold in Wai-alea heights, 75x150, cleared and curbed, for \$50 cash and \$10.10 monthly installments. See W. M. Minton at 122 King street for particulars. A large mirror, curtain poles, inside blinds, koa tables, etc., will be sold at public auction next Wednesday, on the Executive building grounds, near the Archives building. James Morgan will conduct the sale.

THE SALVATION ARMY.

Meetings every night, except Monday and Wednesday, in the hall, corner of King street and Nuuanu avenue, commencing at 8 o'clock. Sunday services: Holiness meeting at 11 a. m., junior meeting and Bible class at 3 p. m., Young People's Legion meeting at 6 p. m., salvation meeting at 8 p. m. The brass band will play. At the out-post, 158 North Beretania avenue, meetings every evening except Sunday at 6:30 o'clock. Sunday school at 9 a. m. Sunday school every Sunday afternoon at 2:30 on School street, near Liliha street. Everybody is cordially invited to attend these meetings. Adjutant and Mrs. Bamberry in charge.

Governor Carter left for his usual weekend rest at noon yesterday. He has been working under high pressure on his report to Washington for several weeks, besides receiving a constant run of visitors.

LOCAL BREVITIES.

Miss E. Lycett, of L. B. Kerr & Co., is seriously ill at the Queen's Hospital. Mrs. C. L. Wight will arrive from the mainland on the Sonoma. William McKinley Lodge, No. 8, meets this evening in Harmony hall, on King street. Abbie Kahilahaia was sent to the Girls' Reform School by Judge Whitney yesterday for a two-year term. Daniel Pohakala is in the toils, his trouble resulting from a beating he is said to have given to Keliokawahine. Mrs. Henry E. Cooper and Mrs. Derby have cards out for a reception on Wednesday afternoon to the ladies of Manoa valley, at the Cooper mansion. Regular meeting of Lel Aloha Chapter No. 3, O. E. S., this evening in Masonic Temple. Visiting sisters and brothers are cordially invited to attend.

Treasurer Campbell has continued for two weeks the hearing of the matter of the dissolution of Pacific Hardware Co., Ltd.

Miyamoto has complained that his house on Kukui street was entered through a window and \$63.70 stolen therefrom.

Seven stowaways were landed from the Ventura. Two of them will be returned to Sydney. The others being American citizens are allowed to remain.

Miss Helen Wilder is expected home on the Sonoma for a visit of a few months with her relatives. Miss Wilder is now owner of a large ranch in California.

Frank Grau, plain drunk, was sentenced to ten days in jail yesterday. Kaanauna, suffering from the same complaint, was prescribed for to the amount of \$3 and costs.

A. J. Jenkins will leave for the Coast in the Korea on November 2, and his position with the Honolulu Gas Co. will be taken by O. W. Scott, now with the Inter-Island Steam Navigation Co.

Miss Edna Lloyd, who underwent an operation on Tuesday last at the Queen's hospital for appendicitis, is said by her physician, Dr. Judd, to be doing as well as can be expected.

Antone Silva is in trouble again, a warrant for his arrest for malicious injury having been issued yesterday. Smashing off the door in the lodging house of S. Mathews is the specific charge made.

Ah Soon was caught disposing of Uu which had passed the age limit and were unfit for food. Lieutenant Willis, of the police force, is the complainant on the warrant upon which Ah Soon was yesterday arrested.

The Paradise for October is out. Its leading descriptive article has to do with the visit of the California editors. Another interesting article, "Buddhism in Hawaii," written by a white convert to the Oriental faith, is republished in these columns.

Mrs. Ph. Frear will have charge of the children's table, Mrs. Joe Gilman the candy table, Mrs. Z. K. Myers the fancy table and Mrs. Peterson the refreshments at the fair given by the ladies of Central Union Church, at the residence of F. J. Lowrey, November 17.

A rice binder made by the McCormick Company was tried by Fred. G. Krauss of the Bureau of Agriculture and Forestry yesterday. Owing to softness of the ground the trial was unsatisfactory, but Mr. Krauss is confident that under proper conditions it will do its work well.

Judgment was rendered yesterday in the District Court in the case of R. H. Trent against E. K. Duvachelle et al. for the collection of a \$70 balance on a promissory note. There was no appearance of the defendants and judgment for the full amount of the claim and for \$16.54 costs and fees was rendered.

From now on until the return of Rev. Mr. Sylvester, November 1, the services at Central Union Church will be under the care of Rev. Doremus Scudder. At the morning service tomorrow (11 a. m.) the text of the sermon will be "We Are Able." In the evening Dr. Scudder will preach on "The Prisoner in the Lord." Besides the usual choir music Mrs. Otis and Mrs. Hoffman will sing "The Invisible Land" at morning worship. Mr. Howland and the choir will sing Himmel's "Incline Thine Ear" at the 7:30 service.

SACHS' BARGAINS

— FOR —

THURSDAY, FRIDAY and SATURDAY

\$2.00 Skirts for \$1.35

LADIES' WALKING SKIRTS.

In white and of different styles. The regular \$2.00 value at... \$1.35

PORTIERES.

Broadened effects, Roman stripe and solid colors:
\$ 7.50 quality for.....\$5.90
8.50 quality for..... 6.40
9.00 quality for..... 7.35
12.00 quality for..... 9.75

85c Victoria Lawns for 75c piece

VICTORIA LAWNS.

10 yards to the piece; regular 85c, quality for.....75c. pc.



FREEZING COLD

Ice Cream is Simply Delicious and Refreshing These Hot Days



There is one Freezer—**LIGHTNING**, in which it is real fun to make Ice Cream; it runs so easy.

Tripple Motion. Freezes Quicker, and Uses Less Ice Than Any Other Freezer on the Market.

"Time is money", "economy is wealth". When you buy a "LIGHTNING" you get both.
W. W. DIMOND & COMPANY, LTD.
53, 55, 57, King Street, Honolulu.



Lunch Today
AT
SCOTTY'S
Royal Annex Cafe
Noon Lunch, 25c. with tea, coffee or beer.
Dinner, 5 to 8, 50c.
MERCHANT ST. COR. NUUANU

Whether as an ideal food for infants or for general household use
Borden's Eagle Brand Condensed Milk
stands without a peer
You Can't Improve on Borden's
SOLD BY ALL GROCERS.
Theo. H. Davies & Co., Ltd,
Wholesale Distributors.

Repairing
If you wish your sewing machine repaired by competent machinists, phone or write to us and we will guarantee the work.
CRANE & SPENCER
P. O. Box 549, Phone Main 494 Office, 108 King Street near Maunakea.

LOCAL BREVITIES.

The Governor will not be at the Capitol today. High surf prevails on the leeward shores of this island. Governor Carter has proclaimed November 2 as Arbor Day. Efforts to remedy traction defects in the Ginaca cane harvester are being made. Land Commissioner Pratt visited Wai-alea yesterday, returning in the afternoon train. Fred. Harrison has begun work on the construction of the Alexander Young Hotel bakery. U. S. Judge Dole will hold court today and perhaps receive a report from the grand jury. Sugar grinding on this island, excepting on Wai-alea plantation, is practically ended for the season. Collector Stackable, special immigration agent, has cabled to Washington for extension of his leave of absence. He wishes to spend more time in the Azores and may go to Italy. A sailor from the transport Buford was taken to the Queen's Hospital yesterday, suffering from a wrench of the kneecap sustained while the Buford was aiding to pull the transport Sheridan off the reef. Figures compiled at Republican headquarters show the following distribution of races in the lists of voters for the eight town precincts of the Fifth District: Hawaiian, 1786; foreign, 354; Portuguese, 126; Chinese, 131; Japanese,

2. The increase of Chinese voters in these precincts since two years ago is 30.
Through an appeal made by H. P. Baldwin to Consul Miki Saito, the Japanese trading ship Anegawa visited Kahului yesterday. Owing to shortage of coal the vessel was going to cut Kahului out, but Mr. Baldwin wrote to the consul telling him the omission of the promised visit would be a serious disappointment to the Japanese of Maui. The people had raised a large sum of money for a celebration, to which Mr. Baldwin and others had added contributions.
LEARN
— Stenography —
— Perno System —
BOOKKEEPING
MECHANICAL DRAWING
COMMERCIAL ARITHMETIC
BUSINESS ENGLISH
IN THE
Y. M. C. A. Night School
NOW OPEN.
Experienced Teachers. Prices Low. Call and talk it over.

NEW WASH GOODS
FANCY BATISTE RAYE, pretty designs, lace stripes..... 10c.
CREPE CHIFFON, a handsome crepe effect, new..... 25c
FLORAL DESIGNS
SHADOW CHECKS, in greys, just right for skirts, looks like wool, 34 inches 25c.
COTTON VOILES, in navy, brown and tan..... 15c.
SEE WINDOW DISPLAY.

HOLLY FLOUR
In Holly Flour it is not enough that the dust be removed from the wheat, but each grain is cleaned and the crevices and irregularities scoured by special machinery, thus securing an absolutely clean, pure flour.
ALL GROCERS SELL IT.
Theo. H. Davies & Co., Ltd.
Wholesalers.

SALE BEGINS TODAY
L. B. KERR & COMPANY'S, Alakea Street

This is an era of good values in this store. We have never made such good offerings, and you have never had such an opportunity to learn how much a dollar will buy in this store. The goods are exceptionally good in value; the muslins are close weave and soft finish and the insertion and lace trimmings on the underwear indicate taste and refinement in the selection, a distinguishing feature in all of our goods that reflects as well upon the wearer. This sale is not a catchpenny affair but one of which we are proud. It is a value-giving chance we are taking to divide profits with our customers.

Note the Prices
SUITS OF CLOTHING—Good material and stylishly cut, from \$8.50 to \$20.00.
MEN'S TROUSERS—All good patterns and late cut, from a dollar to \$6.00 the pair. White Duck, all sizes and all girths, \$1.50 to \$2.00. For Boys' and Youths; good material; well made, from 25c to \$2.00.
Ready to Wear Clothes for Boys
FULL SUITS KNEE PANTS—Material Kahki, White Drill, Striped and Tan Drill and Tweed and Serge; no better ever offered and the finish is equal to any made-to-order clothing; go to you during this sale at ridiculously low prices, from \$1.00 to \$8.00 the suit.
PANAMA HATS—London made, \$6.00 and \$8.00 each. Never sold anywhere for less than double the price. Manila Double Plait, regular at \$3.50 now \$1.75.
HOSIERY AND SOCKS AT LOWEST PRICES, from two pairs for a quarter to seventy-five cents a pair.
ALL FAST COLORS AND FASHIONABLE SHADES women's hose, from ten cents to fifty cents a pair.
UNDERWEAR FOR MEN AND WOMEN—Fine grades at the price of a cheap article. Men's Undershirts, at 25c to 75c; Mesh-work, at 75c, worth double; Drawers, 25c to 75c a garment; Neckties, Handkerchiefs, Belts and Suspenders, at give-away prices.
LADIES' WHITE JACKETS—Eton cut. Skirts galore.
DIMITY STRIPES—29 inches wide; tropical suitings. Crepe du Chene, Organidies Figured Lawns, etc., at never-heard-of prices.
SKIRTS, from 65c to \$1.60.
DRAWERS, from 35c to \$1.60.
GOWNS, beautifully trimmed, from 50c to \$1.60.
SHOES FOR \$1.00 A PAIR, SHOES FOR \$1.25 AND SHOES FOR \$1.50.
COME AND SEE OUR MILLINERY.
L. B. KERR & CO. ALAKEA STREET

Canadian-Australian Royal Mail Line RECEPTION FOR NEW OFFICIALS

Steamers running in connection with the Canadian Pacific Railway Co. call at Honolulu on or about the following dates:

Through tickets issued to all points in Canada, United States and Europe. THEO. H. DAVIES & CO., LTD. GENERAL AGENTS.

Pacific Mail S. S. Co., Occidental & Oriental S. S. Co., and Toyo Kisen Kaisha.

Steamers of the above companies will call at Honolulu and leave this port on or about the dates below mentioned: FROM SAN FRANCISCO TO THE ORIENT.

Oceanic Steamship Co. TIME TABLE

The fine passenger steamers of this line will arrive and leave this port as hereunder: FROM SAN FRANCISCO.

In connection with the sailing of the above steamers the agents are prepared to issue, to intending passengers, Coupon Through Tickets by any railroad, from San Francisco to all points in the United States, and from New York by any steamship line to all European ports.

American-Hawaiian Steamship Company.

FROM NEW YORK TO HONOLULU. S. S. Californian.....Oct. 15 S. S. Alaskan.....Nov. 10

H. HACKFELD & CO., LTD., Agents. C. P. MORSE, General Freight Agent.

Pacific Transfer Co. WILL CALL FOR YOUR BAGGAGE.

We pack, haul and ship your goods and save you money. Dealers in stove wood, coal and kindlings.

Union Express Co. Branch of Hustace, Peck Co., Ltd. 63 Queen Street.

Having baggage contracts with the following steamship lines: Oceanic Steamship Co., Pacific Mail Steamship Co., Occidental & Oriental Steamship Co., Toyo Kaisen Kaisha Steamship Co.

Telephone Main 86

Hustace-Peck Co., Ltd. DRAYMEN, 63 Queen Street. DEALERS IN FIREWOOD, STOVE AND STEAM COAL.

Commercial Advertiser Entered at the Post Office at Honolulu, T. H., as second-class matter. SUBSCRIPTION RATES: One Year \$12.00 Six Months 6.00

METEOROLOGICAL RECORD. Issued Every Sunday Morning by the Local Office, U. S. Weather Bureau.

LOCAL OFFICE OF THE UNITED STATES WEATHER BUREAU. Alexander Young Building, Honolulu. Friday, October 12, 1906.

TIDES, SUN AND MOON. September 30. High Tide 8:00, Low Tide 2:00.

HATS CLEANED AND BLOCKED. Globe Clothing Co. 107 N. STREET.

About 300 people assembled last evening to receive Paul Super, the new Y. M. C. A. secretary and his wife; Dr. Hand, the physical director of the Y. M. C. A., and Miss Meyer, the new secretary of the Y. W. C. A., and her assistant, Miss Stuhr.

The reception committee, on behalf of the Y. M. C. A., was: Mr. Dutot, F. C. Atherton, Rev. E. B. Turner and M. M. Johnson. The Y. W. C. A. committee was the Board of Directors, Mrs. Jordan, president; Mrs. von Holt, Mrs. J. A. McCandless, Mrs. B. L. Marx, Mrs. Dr. Hoffmann and Mrs. Halsey, who has been temporary secretary for some time past.

A program of a pleasing nature, consisted of a violin solo by Miss White, accompanied by Miss Robinson, a reading by Miss Paty, humorous reading by Rev. E. B. Turner and a trio by Dr. Ramus, B. L. Marx and Mrs. Whitney.

KINAU PASSENGER LIST. (By Wireless Telegraph.)

HILO, October 12.—Following is the list of Kinau passengers for Honolulu: Mrs. Katie Moore, W. H. Campbell, W. Todd, Carl Smith and son, Thomas H. Taylor, Mrs. C. E. Allen and child, V. Hurd, Mrs. E. H. Austin, C. W. Milverton, W. P. Harvey, S. Grace, R. Catton and wife, J. A. Lawelawe and wife, Miss E. Pomeroy, C. Casterdyk, P. W. Bergstrom, Lord and Lady Playfair, Miss Lucy Peabody.

POLITICAL POLICE. Sixteen regular foot and mounted police and specials, in and out of uniform, were gathered about the political rostrum at the corner of King and Bethel streets yesterday noon, listening to the harangues of the orators. The police station was almost deserted.

INGALLS' SARCASM.

Senator Ingalls, during his early life, was unable to restrain his propensity to indulge in sarcasm. This habit eventually lost him his place and his popularity. On one occasion an intimate friend wrote to him urging the appointment of another friend to a position under the government. To this letter the Senator returned a very sarcastic answer, and received the following reply: "My Dear Senator: I think it would be well for you to reserve your sarcasm for the rapidly increasing number of your enemies, instead of offering it to the decreasing number of your friends, of whom I am one."

The cause of hay fever in men is the kissing of grass widows.—Kansas City Journal.

SHIPPING INTELLIGENCE.

DEPARTED. Friday, October 12. Am. scr. Robert Lewers, Underwood, for Port Townsend, 12 m.

DUE SATURDAY. O. S. S. Sonoma, Trask, from San Francisco.

PASSENGERS. Departed. Per str. Claudine, October 12, for Maui and Hawaii ports.—F. L. Winters, D. B. Murdock, A. Haneberg, J. M. Tucker, Richard Weedon, Geo. H. Dunn, Dr. Froar, Miss C. L. Turner, Mrs. C. Blaisdell, Mrs. C. H. Atherton, Mrs. Nora Gouveia, Mrs. Mary Blackburn, A. E. Douglass, Eld. E. J. Neff, Miss Mary Bailey, Mrs. E. G. Scholtz, Mrs. Mary A. Kolomoku, G. K. Look, Chang Yuen Loy, S. Ami, N. Takel, L. A. C. Parish, Miss Nellie Burk, Rev. C. P. Heung, Mrs. Cheong Chong and three children.

VESSELS IN PORT. (Army and Navy). U. S. S. Iroquois, Carter, Midway, Oct. 2.

U. S. A. T. Buford, Oct. 6. U. S. A. T. Sheridan, Peabody, Manila via Barber's Point, stranded, Oct. 6. (Merchant Vessels). Australian, Br. sp., Joffe, Hamburg, Sept. 29.

Gerard C. Tobey, Am. bk., Scott, from San Francisco, Oct. 11. Marie Hackfeld, Gr. sp., Grube, Bremen, Oct. 10.

Restorer, Br. cables, Combe, Midway, Oct. 3.

TRANSPORT SERVICE. Thomas, at Manila. Logan, sailed for San Francisco, Oct. 10.

Sheridan, at San Francisco. Buford, in port. Sheridan, in port. Lawton, sailed for San Francisco, October 7.

THE MAILS. Mails are due from the following points as follows: San Francisco—Per Sonoma, today.

Orient—Per Hongkong Maru, Oct. 23. Colonies—Per Moana, Oct. 18.

Victoria—Per Aorangi, Oct. 20. Mails will depart for the following points as follows: San Francisco—Per Nebraskan, Oct. 21.

Orient—Per Nippon Maru, Oct. 19. Victoria—Per Moana, Oct. 18. Colonies—Per Sonoma, today.



FOR RENT. 711 Prospect St. \$30.00. Corner Hackfeld and Prospect. 35.00.

FURNISHED. Young St. \$50.00.

HENRY WATERHOUSE TRUST CO., LTD., Real Estate Department, Corner Fort and Merchant Streets, Honolulu.

TRENT AND COMPANY TO LET.

Manoa, 2 B. R. \$24.00. Emma St., 3 B. R. 20.00. Emma St., 2 B. R. 20.00. Vineyard St., 3 B. R. 30.00.

TRENT AND COMPANY 938 Fort Street.

Classified Advertisements. SITUATIONS WANTED. LADY (English) seeks situation as nursery governess or companion.

FOR RENT. FURNISHED 8-room house, 1255 Lunaliho street. Inquire Stockyards Stables. 7535

A FURNISHED, mosquito-proof house at Punahou. For particulars apply to "P.", Gazette office. 7493

OFFICES FOR RENT. "THE STANGENWALD," only fire-proof office building in city.

ALEXANDER YOUNG BUILDING, Honolulu's only up-to-date fire-proof building; rent includes electric light, hot and cold water and janitor service. Apply the Von Hamm-Young Co., Ltd. 7276

ROOM AND BOARD. FOR gentleman or lady in private family; Makiki district. Address, "F.", this office. 7541

DESIRABLE room and board—mosquito-proof, running water, electric light, etc.—at 488 King street. 196

FURNISHED ROOMS. ROOM in good location—quiet neighborhood—at Helen's Court, in Adams lane. 7545

FOR SALE. A COW. Ring up Telephone White 2072.

A HANDSOME half Shetland saddle pony, warranted sound and gentle. Any trial given. Suitable for lady or children. Address "W. C." 7544.

A SWIFT PONY, ridden by a girl the last two or three years, for sale with saddle and bridle. May be tried. Call for "S." at Advertiser office. 7544.

A LOT of imported game chickens (all prize winners), some geese and young parrots for sale at a sacrifice. Particulars, Paddy Ryan, Occidental Hotel. 7542

ENGRAVINGS. HAWAIIAN GAZETTE CO.

HONOLULU STOCK EXCHANGE.

Honolulu, Friday, Oct. 12, 1906. TABLE OF STOCKS. NAME OF STOCK, Capital, Paid Up, Val., Bid.

* 32.1275 paid. † 85 per cent. paid. SESSION SALES. (Morning Session.)

\$1000 Waiialua 58, 99; 50 Ookala, 8.25.

SALES BETWEEN BOARDS. \$1000 O. R. & L. Co. 68, 103.50; \$20,000 Cal. B. S. & Ref. 68, 102.25; 75 Hon. B. & M. Co. 27; 120 Ewa, 25; 25 Kihel, 8.50.

THIELSEN & WILLIAMSON FOR SALE.

A \$6000 house and lot for \$3600, in the most desirable part of the city.

14 lots in the Kapopolani Park addition. Suitable for a chicken ranch. Make us an offer for all or any part.

A few acres at Wahiawa. The choicest piece of land in the Colony.

A house and lot on Young street, at a bargain. \$1000 cash and the balance on mortgage.

912 FORT STREET.

ALEXANDER YOUNG HOTEL CENTRAL ABSOLUTELY FIRE-PROOF Honolulu

MOANA HOTEL Waikiki Beach

J. H. HERTSCHE, GENERAL MANAGER.

CHAS. BREWER & CO.'S NEW YORK LINE Regular line of vessels plying between New York and Honolulu.

FREIGHT TAKEN AT LOWEST RATES. For freight rates apply to CHAS. BREWER & CO., 27 Kilby St., Boston, or THEO. H. DAVIES & CO., Honolulu.

WAIALAE HEIGHTS. LOT 75x150. CLEANED AND CURBED. Water laid on. \$50 cash; \$10 monthly instalment. NO INTEREST.

Three minutes from Rapid Transit car. Telephones and electric lights. Butcher, grocer, ice man, come to your door. Special inducements offered to those building home in the immediate future. W. M. MINTON. 122 King Street. OWNER.

RUBBER STAMPS. HAWAIIAN GAZETTE CO.

Halstead & Co., Ltd.

STOCK AND BOND BROKERS. LOANS NEGOTIATED. Members Honolulu Stock and Bond Exchange.

W. L. HOWARD FOR RENT—Residence, Palolo Heights, lately occupied by A. R. Gurry, Jr.

FOR SALE—Palolo lots, on easy terms. House lots and pineapple land, Wahiawa. MONEY TO LOAN. 5—McIntyre Building—5

For Rent. Furnished house at Peninsula (windward side) \$30.00.

House on School street, Waikiki of Nuanu 20.00

House on Nuanu avenue, near School street 35.00

House on Fort street 30.00

House on Adams lane 20.00

Warehouse in town 50.00

Store on Queen street 75.00

For Sale. House and lot for \$8000.00

House and lot for 5000.00

House and lot for 7500.00

The Waterhouse Co. JUDD BUILDING. Telephone : : : : Main 122

FOR SALE! A large house (almost new) and 3-4 acre lot, in best neighborhood, close to Kamehameha Schools, for cost of building alone. Good terms.

A house and large lot in good location on Young street past the H. R. T. & L. Co.'s depot; 1-3 cash, balance on mortgage at 6 per cent. Present income almost 8 per cent on price asked; can be doubled. A bargain.

Choice Kaimuki lots near car line. Half acre lots on Manoa Heights, fine view and good soil, at prices to suit the times.

Several complete and ready homes, both in and out of town. Also for rent cottages close to center of city. J. H. SCHNACK. 137 Merchant St.

Telephone Main 407. P. O. Box 798.

ALBERT F. AFONG 832 Fort Street.

STOCK AND BOND BROKER MEMBER HONOLULU STOCK AND BOND EXCHANGE.

REAL ESTATE FOR SALE. 5 building lots in Manoa Valley, 1-2 acre each, \$1000 a lot. Beautiful site, bracing air, magnificent view.

FOR RENT. Cottage, Kaimuki, on King St. \$30.00. FOR SALE. House and half-acre of land, Kaimuki. Cheap for cash or on easy payments. Real estate for sale in all parts of the city. Money to loan on good security. W. W. CHAMBERLAIN, Room 206, Judd Bldg.

Professional Cards ARCHITECTS. W. MATLOCK CAMPBELL—Fram White 961.

MUSIC. HUGO HERZER—Teacher of singing. Studio, 1522 Thurston Avenue.

MISS WERTHMUELLER—Piano instruction, Studio, 1418 Punahou street, opposite Bingham.

NOTICE. I can sell you the finest kind of residence property in COLLEGE HILLS TRACT, MAKIKI DISTRICT, PUNAHOU, NUUANU AND PUNUI SUB - DIVISION, from \$1000 to NOT MORE than \$2000 per acre.

These properties I control and am SELLING at what REAL ESTATE is ACTUALLY WORTH. PART CASH and BALANCE at 6 per cent.

The properties have the ocean, mountain and city views. High elevation, good streets and are the choice of Honolulu improved real estate. R. C. A. PETERSON. Tels.: Main 163; Red 431.

STEINWAY AND OTHER PIANOS. THAYER PIANO CO. 154 AND 158 HOTEL STREET, Opposite Young Hotel.