



PROFESSIONAL CARDS.

Professional cards for J. Q. Wood, A. L. C. Atkinson, Dr. C. B. High, Dr. A. Gordon Hodgins, Dr. A. C. Wall, Dr. O. E. Wall, M. E. Grossman, D.D.S., Geo. H. Huddy, D.D.S., Dr. Walter Hoffmann, Dr. I. Mori, Dr. A. N. Sinclair, C. L. Garvin, M. D., T. B. Clapham, Cathcart & Parke, F. M. Brooks, Lorrin Andrews, Francis J. Berry, Chas. F. Peterson, Lyle A. Dickey, J. M. Kaneakua, and P. Silva.

Professional cards for T. McCants Stewart, T. D. Beasley, Dr. Tomizo Katsunuma, Dr. A. C. Posey, Dr. T. Mitamura, Miss F. Washburn, William Savidge, C. J. Falk, A. J. Campbell, Wm. T. Paty, O. G. Traphagen, James T. Taylor, M. Am. Soc. C. E., Burnette & Co., Annis Montague Turner, Cook's Music School, Woman's Exchange, Honolulu Sanitarium, and S. E. Lucas, Parisian Optician.

OFF TO MOLOKAI

Departure of the Board of Health and Guests.

THE W. G. HALL CROWDED

Minister Cooper's Views on Allowing Relatives to Visit Inmates of the Settlement.

Articles discussing the departure of the W.G. Hall to Molokai, the crowded conditions at the settlement, and Minister Cooper's views on allowing relatives to visit inmates.

Moanalua Church.

Artillery Changes.

THE NEW TREATIES.

Have Already Gone Into Effect in Japan

Articles discussing the Moanalua Church, artillery changes, and the new treaties that have gone into effect in Japan.

FOUR DAYS LATER

Interesting Telegrams From the Outside World.

PRINCE HENRY REACHES KOBE

Boers Casting Dynamite Guns at Johannesburg—Official Account of the Czarvitch's Death.

A collection of international news items including Prince Henry's arrival in Kobe, Boer activities in Johannesburg, and the death of the Czarvitch.

Asama in Shinano province burst into eruption on the evening of the 19th inst.

BRITISH CRUISER ASHORE.

THE FRENCH NATIONAL FETE.

SAIGON, July 16.—The review at Longchamps (i. e. the annual review held on the day of the national fête in the presence of the President of the Republic) was very brilliant.

A collection of news items from various international locations including Asama, British cruisers, the French National Fete, and other global events.

Advertisement for ROYAL BAKING POWDER, featuring the text 'ROYAL BAKING POWDER ABSOLUTELY PURE' and 'Makes the food more delicious and wholesome'.



# TANKS!

This is the season of the year when TANKS interest those who like to be sure of water for the garden, house or stock. If you are provided with one of our

## Pat. Non-Shrinking Redwood Tanks

there will be none of this 6 to 8 a. m. and 4 to 6 p. m. business. You will be able to use water all day if you wish.

## The Pat. Non-Shrinking Tank

has no equal. Many try to imitate it, but you want the genuine.

Sold by  
**E. O. HALL & SON,**  
—LIMITED.—

## Ready = Rock Asphalt ROOFING.

It is a NON-CONDUCTOR OF HEAT, which, together with the fact that it is practically indestructible, particularly recommends it for this climate.

Call and see it on roof at office.

## Asphaltum Piping

FOR WATER MAINS, SEWERS AND ELECTRIC CONDUCTORS.

AGENTS FOR—

CALIFORNIA CANNERIES CO., LTD. FRUITS AND JELLIES.  
VITAX DRY BATTERIES. Best in the market.  
STANDARD BISCUIT COMPANY.  
HIGHLAND AND PET CREAMS.  
C. F. MACKENZIE & CO. BROOMS, ETC. ETC. ETC.

Hawaiian Trading Co., Ltd.  
Office: No. 6 Love Building, Fort St.



ATTENTION TO PLANTATION MANAGERS. CALIFORNIA HARNESS SHOP is now prepared to furnish at short notice all Plantation Supplies. A full line of goods in our line at

Rock Bottom Prices.

We use the Extra Heavy Hames and Best English Chains, Stock and work throughout No. 1.  
SAMPLE : ORDER : IS : RESPECTFULLY : SOLICITED.

## California Harness Shop

NO. 639 KING STREET, LINCOLN BLOCK,  
Telephone 641. Just Below The Arlington Hotel.  
D. O. & M. S. HAMMAN.

## Honolulu Tobacco Co., Ltd.

IMPORTERS OF  
HAVANA AND MANILA CIGARS

SMOKERS' ARTICLES.

Fine Grades of Smoking Tobacco.  
Corner Fort and Merchant Sts., Honolulu.



## K. Isoshima,

HAT MANUFACTURER,  
GENTS' FURNISHINGS.

KING ST., Next to Castle & Cooke.

EX CARMATHENSHERE.

## STRAW HATS.

Large shipment of the latest styles in  
New Style Shirts, Neckwear,  
Gents' Furnishings, Etc., at the lowest reasonable prices.

## ON WATER RIGHTS

### Judge Perry's Latest Decision.

Rights of Rival Chinese to Manoa Valley Water Laid Down in an Oral Opinion.

In the case of Ung Lin et al vs. Leong Hop et al, a bill for injunction to restrain the defendants from interfering with certain water rights in Manoa valley and in which one of the defendants is now undergoing a sentence for contempt of court, Judge Perry has rendered an oral decision, as follows:

"This is solely a question of fact, and I know of no advantage to be gained by taking any further time. The evidence is now fresh in mind, and my only regret is that the Court is not at liberty to apportion water as it might want to if no rights had been acquired by the parties. Its duty, of course, is simply to state what the rights are that each party has in water, as established by the evidence adduced here in court.

"The decision of the commissioners touches only upon the rights of these parties as distinguished from those of neighboring owners of land, and leaves the question open as to what the rights are between those holding different portions of the same land—the Stevenson land.

"I believe, from the evidence, and find that the right acquired by the upper land, that held by the plaintiff, is to receive the water into the main patch, Keanawaawa, and the smaller patch next below on Monday between 3 and 6 o'clock in the afternoon, and that the patches below, now cultivated by the defendants, are only entitled to such water as overflows after the plaintiff's said patches have received their share sufficient to keep their taro growing.

"I also believe, from the evidence, and find that when the water has risen in Keanawaawa to the top of the rock, which is placed at the outlet, that that patch has then sufficient water for its purposes, and that what there is flowing into it after that should flow into the patches below, so that I think the respondents ought to be restrained from taking more water than they are entitled to, as now found by me, and they should allow Keanawaawa to become full first to the top of the rock and then to flow on to the patch below and from that into their own patches.

"I also think, whether or not the plaintiffs have heretofore diverted from the Kaaiu ditch water on Monday afternoons between 3 and 6 o'clock, that they have not the right to do so, and that all of that water must be allowed to flow into Keanawaawa and the patch next below, so that the defendants may have the benefit of any overflow after the plaintiffs' patches are provided for.

"I award no damages. The plaintiff is entitled to costs.  
"A decree will be signed accordingly."

### Police Court

Yee Lam opium in possession, was fined \$50 costs.

Eight of the young gamblers arrested at the mail dock by David Kaapa were fined \$2 costs. Sentence was suspended for six months on the others.

"Calumet" makes the lightest, sweetest and most wholesome bread and pastry.

## CALUMET Baking Powder

NONE SO GOOD.

## MAUNA KEA VIEW HOTEL.

IS NOW OPEN TO THE PUBLIC.

Carriages and saddlehorses will meet the arrival and departure of every Kinau at Kawaihae; also for any other point.

SHERIFF ANDREWS OF HAWAII says: "The only way of reaching the present lava flow by wagon road is via Waimea carriages; can go within two miles of the flow.

For particulars apply to

H. AKONA,  
Proprietor,  
Waimea, Hawaii.  
5287

## Rosenberg & Rosenberg.

Pay the highest prices for

OLD COPPER, BRASS, LEAD, ZINC, IRON and all kinds of bottles, OLD PLANTATION MILLS a specialty.

P. O. Box 40. 207 QUEEN ST.  
Honolulu, H. I.  
Prompt attention to all Island trade.  
6254

### St Augustine Chapel.

The soldiers stationed at the Waikiki barracks are making good use of St. Augustine chapel which was built for their benefit by the Catholic Mission. The reading room and library are well stocked with papers, magazines and books. Some amateur theatricals are contemplated and now that Battery I, said to contain the dramatic talent of the battalion, has moved to Waikiki there will probably be some performances.

A fine picture of the patrol wagon, with Jim McKeague and Walter Bixby on the front seat, is hung up in the Police Station.

## KINDERGARTEN AND PRIMARY.

MISS MARTHA HITCHCOCK AND Miss Ada R. Whitney will open a private school in the Child-Garden, corner of Alapai and Beretania streets. Miss Hitchcock will conduct the Kindergarten department. Miss Whitney, who has taught the past year with Mrs. P. H. Dodge, will conduct the two grades above the Kindergarten. The school will open with the public schools.

## "The Mills Will Never Weave Again at Prices of the Past."

All grades of wovens and worsted fabrics have been advanced five to fifteen per cent.

But our prices will remain unchanged. We are offering a better and larger line of clothing this season than ever before at prices that can't help but meet with your approval. All you will have to do is to come and tell us your wants—we will do the rest.

We are now ready to show you a fine line of KNOX HATS in Mackinaw and Milan straws. These goods are unsurpassed in style and finish.

Have a try at our Delmel linen-mesh underwear.

## THE KASH

9 Hotel Street : : Waverley Block.

WE MAKE SHIRTS TO ORDER.

Telephone No. 676. No. 9-11, Hotel St.

## MORE NEW BOOKS!

At Publisher's Prices.

- THE SWALLOW.
- GADFLY.
- GARDEN OF SWORDS.
- REAL HAWAII.
- DROSS.
- CAPT. COURAGEOUS.
- DAY'S WORK.
- LADY URSULA.
- PRINCESS OF HOPE.
- DREYFUS CASE.
- ENCHANTED STONE.
- ISLAND EMPIRE.
- TRELAWNY OF WELLS.
- OUTSIDERS.
- And a large number of others.

LEAVE YOUR ORDERS FOR PROFESSOR BLACKMAN'S MAKING OF HAWAII. A few copies just received, more on the way.

## Thos. G. Thrum.

### GOLDEN RULE BAZAAR'S New Book Bulletin!

BOOKS : AND : STATIONARY.  
316 FORT STREET.

- "The Development of English Thought," by Simon N. Patten, Ph.D.
- "Swallow," by H. Rider Haggard.
- "The Wizard," by H. Rider Haggard.
- "The Fowler," by Beatrice Harraden.
- "The Rough Riders," by Theodore Roosevelt.
- "The Trail of the Gold Seekers," by Hamlin Garland.
- "The Downfall of the Dervishes," by E. N. Bennett.
- "Waldtraut," by M. Rudiger; translated by G. LeDuc Crook, Ph.D.
- "The Minor Tactics of Chess," by F. K. Young and E. C. Howell.
- "The Major Tactics of Chess," by F. K. Young.
- "Outsiders," by Robert W. Chambers.
- "Dross," by Henry Seton Merriman.
- "With Kitchener to Khartum," by G. W. Stevens.
- "Prisoners of Hope," by Mary Johnston.
- "The Open Question," by Elizabeth Robins.

## THE ORPHEUM FAMILY THEATRE.

TONIGHT! TONIGHT!  
CURTAIN RAISER—Laughable Farce Comedy Entitled  
**Senator McFee.**

First appearance of the Charming Contralto Vocalist  
**Ethel Dixon.**

Post and Marion in  
**The Rival Lovers.**

Boggs and Haeward in the Dramatic Sketch  
**Drifted Apart.**  
(by request.)

**The Hartwell Sisters.**

General Admission, 25c and 50c. Last six rows for Children under 12 years, 10c. Reserved Chairs, 50c. Seats can be booked by ringing up telephone 549.

T. G. BALLENTYNE.

H. P. EAKIN.

## Ballentyne & Eakin, Real Estate and Stock Brokers.

If you want to buy or sell either Real Estate or Sugar Stocks call and see us.

Careful attention given to every commission.  
MCINERNEY BLOCK, FORT STREET, HONOLULU.

## H. Hackfeld & Co., Ltd.

Beg to announce the arrival of

Iron Ship "KILMORY" From London.

Iron Ship "WEGA" From London.

Iron Bark "H. HACKFELD" From Liverpool.

With a large assortment of

EUROPEAN GROCERIES,

OILS AND PAINTS,

CEMENT, FIREBRICKS,

CORR. and PLAIN IRON.

FENCE-WIRE,

BUCKETS and TUBS,

SAUCEPANS, TEAKETTLES,

FILTERS, CROCKERY,

DEMJOHNS, ETC., ETC.

For Sale at Lowest Prices.

H. Hackfeld & Co., Ltd.

## There Are Plumbers and Plumbers.

OUR SPECIALTY IS

## Sanitary Plumbing.

There's as much difference between plumbing and SANITARY PLUMBING as there is between daylight and darkness. Anyone can put a lot of pipes together and run them off anywhere, but with Honolulu's surface sewerage the essential point is to have the plumbing done in a way that makes the Sanitary conditions perfect.

## JOHN NOTT.

75-79 KING ST.

TEL: NO. 81

## ALL NEW GOODS! AT GOO KIM'S.

210 Nuuanu Street, Above Hotel.

The clearance sale is over and the new stock opened up. Here are some of the latest:

- Chinese Grass Cloth in White, Brown and Light Blue.
- Embroidered Silk Handkerchiefs, and Colored.)
- Fancy Carved and Scented Wood Boxes.
- Farwell Cotton, 26-in. wide, 16 yds. \$1.00.
- Ginghams, 20 yds. \$1.00.
- Fast Color Calicoes, 20 yds. \$1.00.
- New Tailoring Goods.
- Silk Crepe Shawls. (Black, White and Colored.)
- Colored Lawns, 20 yds. \$1.00.
- Victoria Lawn, 75c the piece of 10 yds.
- Laces. (Black, White and Cream.)
- Hats, Caps, etc.

## THOSE Baby Carriages

HAVE ARRIVED AT THE

## City Furniture Store.

H. H. WILLIAMS, Manager.

Love Building, 534-536 Fort St.

TELEPHONE 846: RESIDENCE, 849.



**We have the  
BULGE on  
Bulging Shirt Bosoms**

Does your Shirt Bosom bother you?

**Of course it does!  
Of course it will!**

Unless your Full Dress Shirts are equipped with

**THE  
MacHurdle Dress Bosom Retainer**

which absolutely prevents the Bosom from BULGING and presenting an unsightly appearance.

**For sale by  
M. McINERNY,  
Haberdasher.  
Merchant and Fort Streets, Honolulu.**

**LAVA FLOWS STOP**

**Pele Has Allowed Her  
Fires to Go Out.**

Hawaii Shaken by Earthquakes  
Which Have Done No Damage.  
Kilauea is Still Quiescent.

Passengers by the Mauna Loa report that the recent volcanic outbreak has ceased and the lava flows stopped. The cessation of the flow occurred almost as suddenly as the outbreak. Those who took their last glance at Mauna Loa's stream of fire on the evening of the 23d inst., were astonished to find on the next morning that all was quiet. The eruption had ceased. During the day the whole Island of Hawaii was shaken with earthquakes of various degrees. None were very heavy and no damage was done. Many of the old Kamaainas say that these disturbances are sure signs that Madame Pele is taking a short rest only to break forth with redoubled energy in a few days.

There have been no signs of activity in Kilauea further than those already reported.

Writing from Punaluu, the Advertiser's special correspondent says: "On Monday about lunch-time Hawaii had a heavy earthquake. It was most severe at Hilo and vicinity, and very light here. We have not seen any reflection from the volcano since the smoke that enveloped the island for several days disappeared. According to all accounts the fire has ended and the lava flows have ceased. We are expecting a party from the scene of the eruption almost hourly, but it will be too late to reach you by this mail."

Telephone messages from the Volcano House to Captain Simerson of the Mauna Loa state that the flow must have ceased on Sunday night or Monday morning, and numerous private letter received here yesterday are to the same effect.

**THE CAMERA CLUB.**

**And Other Matters Under Y. M. C. A. Auspices.**

The Camera Club of the Y. M. C. A. will meet this evening. This organization now numbers about twenty members. It has been quiescent for some time, but intends now to have regular meetings. A number of plans have been suggested for keeping up the interest. There will be short lectures on photographic subjects, discussions, expeditions, contests for the best amateur work, and occasional entertainments. The dark room has been completed, and it is a gem. Everything is handy and there is nothing lacking for the dabbler in light and shadow. Camera Clubs have grown to be quite a feature in Y. M. C. A. work in the States and there is no reason why this one should not prove popular. Association work in general is somewhat quiet, as it always is at this season of the year. An order for \$200 worth of books for the library was sent forward a few days ago. This will be a valuable and needed addition.

Word is expected from President Weedon by the next steamer. It will then be learned who is to be the successor of Mr. Brock, who resigned the post of assistant secretary to accept a position with the Mott-Smith estate.

**BASEBALL MATTERS.**

**New Series of Games Between Stars and Kams.**

There has been a change in the plans of the baseball league. Instead of today's game between the Stars and the Kamehamehas being the final struggle it will now be one of a series of three out of five for the championship. The Artillery team is considered as dropped and the games will be played between the Stars and Kamehamehas.

Today's game according to the schedule would really be between the Stars and the Artillery. Early in the week it was proposed that the soldiers withdraw, in order that the Stars and Kamehamehas, who have even percentage, meet today in the penultimate game. The Stars made preparation accordingly. The Kamehamehas did not learn of the proposed plan and consequently did not practice. As the matter stood the Kamehamehas did not feel justified in playing a championship game. There was a hurried gathering of the leading lights of both teams yesterday and all was amicably settled.

**THE MENGITZ AFFAIR.**

PEKING, July 19.—It is generally believed that France will probably come to terms with regard to the recent Mengitz outrages by having its Consulate rebuilt at the expense of the Chinese government and the sufferers' properties recompensed.

**THE VON HAMM-YOUNG**

COMPANY, LIMITED.

**Importers AND Commission Merchants**

Respectfully announce herewith the  
OPENING of their New Store

**On Queen Street,  
Between Nuuanu and Kaahumanu Streets**

**On or About August 1st, 1899.**

A full line of

**DRY GOODS,**

OF AMERICAN AND EUROPEAN MANUFACTURE,

In the latest and newest designs will always be on hand.

ALSO,

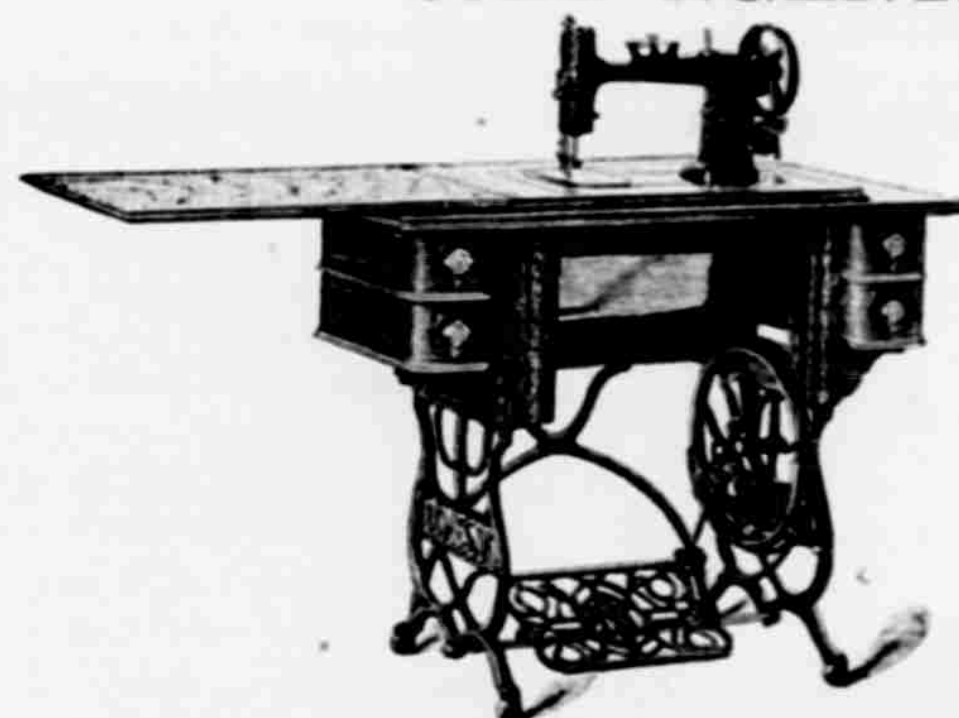
**TWEEDS, SUITINGS, COATINGS, TROUSERINGS,**

In new modern styles only to suit everybody.

**TAILORING GOODS AND TRIMMINGS of all descriptions.**

**SOLE AGENTS FOR THE  
CELEBRATED**

**DOMESTIC  
Sewing  
Machines.**



With the latest and best improvements.

Also, for the light-running, well known Hand Sewing Machine

**"NEW PACIFIC,"**

The Delight of Tailors and House-keepers.

**OUR  
NOTION  
DEPARTMENT**

Will be a specialty in its kind.

A large variety of the best made Saddles, Belts, Umbrellas, Hats, Shoes, Parasols, Clocks, etc., etc., Baby Carriages, Chairs, Glassware, Straw Hats, Fur Hats and Crash Hats a specialty.

Sole Agents for the Unsurpassed

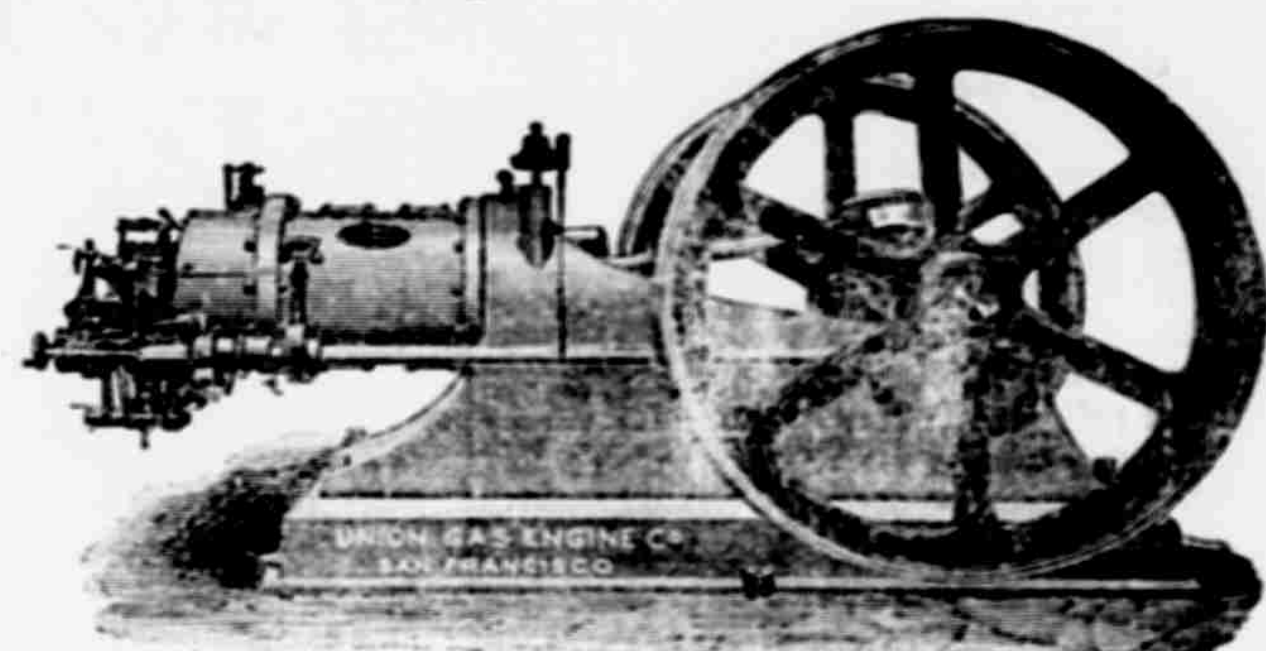
**SPELTERINE,**

the only and sure remedy to preserve and strengthen Horses' Hoofs in this climate. Try it and be convinced.

**SOLE AGENTS FOR THE Union Gas Engine Co. OF..... SAN FRANCISCO.**

These Engines being the most economical of this kind and well adapted to all kinds of work

**Land  
and  
Marine.**



**AGENTS FOR THE Lancashire Insurance Co.**

CAPITAL, £3,000,000.

Paid Up Capital and Funds, £1,687,162.

Insurances effected against loss or damage by Fire on Buildings and Contents of Warehouses, Office and Store Premises and Private Dwellings at moderate rates. Prompt and equitable settlement of losses. Life business also transacted on favorable terms.

**WHY!**

**GREEN RIVER**

IS THE WHISKY WITHOUT A HEADACHE.

WE HAVE BEEN AUTHORIZED TO SELL

**HARZER  
SAUERBRUNNEN**

At \$5.00 per case of 50 bottles.

Owing to Spurious Imitations having been brought to this market, the public is hereby notified that the only

**"GENUINE SAUERBRUNNEN"**

IS BOTTLED BY THE

**Harzer Koenigsbrunnen-Quelle,**  
and every bottle bears their trademark and stamp.

**H. Hackfeld & Co. Ltd.**

SOLE AGENTS, HAWAIIAN ISLANDS.

**CATTON, NEILL & CO.**

FOUNDERS AND MACHINISTS.

213 Queen St., bet. Alakea and Richards Sts., Honolulu.

Invite Enquiries for General Ironwork; Iron and Brass Castings, Steam Boilers, Water Pipe and All Kinds of Sheet Iron Work Made and Repaired Machine and Ships' Blacksmithing.

REPAIRS PROMPTLY ATTENDED TO. TEL 410

**Read the Advertiser.**



**THE PACIFIC Commercial Advertiser.**

W. N. ARMSTRONG - EDITOR.

SATURDAY : : : JULY 29

HAWAII NO COLONY.

The debates in Congress, during its last session, show that the statesmen and politicians, and the law professors, cannot agree about the inherent power of expansion in the Constitution, over the territories. The Judiciary has at no time passed directly on the question, though it has held in several special cases that Congress may, in its wisdom, hold that the relations of Hawaii, the Philippines and Porto Rico to the United States are the same, and if they are, Congress is possessed of the power to discriminate against them by tariff legislation. If, however, it can be established that the blanket of the Constitution covers Hawaii, then Hawaii is in a warm and comfortable bed of protection, while the Philippines and Porto Rico are left out in the snowdrifts and icy blasts of discrimination.

Now, whatever speculative constructions may be put upon the extension of the Constitution, regarding the other territories, the relation of Hawaii is to be settled by the terms of the formal contract between the United States and Hawaii, which is expressed in the Newlands' Resolution. If a careful examination of this contract is made, it will be seen that there is not the least analogy between the Hawaiian and the Porto Rico case. Hawaii enters the Federal Union by contract, and not by sale or conquest.

That part of the contract which forbids discrimination is contained in the provision: "Until legislation shall be enacted extending the United States customs laws and regulations to the Hawaiian Islands the existing customs relations of the Hawaiian Islands with the United States and other countries shall remain unchanged." Hawaii accepted annexation on these terms, and they are binding.

This is a contract which calls for the extension of the customs laws and regulations of the United States,—the laws that prevail throughout the national domain. There is no qualification whatsoever that Congress may enact "such custom laws and regulations" as it may elect. The use of this language might open the way for discriminations. The language used forbids any special legislation. It calls plainly for "the customs laws and regulations" as they exist and are applicable to the existing States and territories. These laws contain no discriminations whatsoever against any State or territory and provide for no colonial rule.

The contract of annexation goes further; it provides that until Congress shall enact the extension of these laws to Hawaii, the existing customs relations of the Hawaiian Islands with the United States shall remain unchanged. The free entry of Hawaiian sugar into the ports of the Mainland is promised and guaranteed until the extension of other laws are made which continue the free entry of our sugars.

There are no vague provisions in this article of the annexation contract. Whatever the views of public men, influenced by party interests, may be regarding the Constitution itself, whose provisions are wisely made general and elastic in many respects, there remains for guidance in legislation upon Hawaiian matters, a formal contract which Congress will execute according to its terms.

Any attempt, on our behalf, or on behalf of individuals, to throw up this contract, and ask our courts to substitute for it the vague rights under the Constitution, before Congress has acted in the matter, might launch us upon a sea of political trouble.

A contract with the United States which excludes legislation which discriminates against us is quite sufficient as it stands. Congress may hold that the Constitution covers Porto Rico and the Philippines, but at the same time, that it does not prevent discriminating legislation against territories which are annexed without any conditions. When it deals with Hawaii, it will execute its contract.

One of the oppressive features of our land system is that there is little available land for market gardening. The Portuguese who are model cultivators of small parcels still complain that they cannot buy land near the city at reasonable prices, for the cultivation of "garden truck." A large dealer in fruit says that while watermelons may be purchased in the San Francisco market at 15 and 25 cents apiece, the same fruit sells in local market at 50 and 75 cents apiece. The same remark

applies to grapes. This dealer states as the reason, for these high prices, the scarcity of land, and the inability of small farmers to purchase it. Several attempts to purchase land near the city for the general cultivation of market produce, have failed. Possibly the colonists on the Waialua plateau may be able to supply the demand. But the item of transportation will be a costly one with them. The Paradise of the Pacific needs cheaper watermelons and other fruits.

**"RUM IN HISTORY."**

Among the interesting papers published in the "Hawaiian Spectator" of the year 1838, are translations of articles written by intelligent natives on the subject of the abolition of idolatry before the missionaries arrived.

In one of the articles the native author says: "The natives frequently heard foreigners say that the tabu system was foolish. Moreover, females often ate in secret, food prohibited to them and yet their lives were not cut short; the men did the same thing and continued to live. Another thing observed was, that after intoxicating drinks were obtained and the chiefs became inebriated, they did not themselves then observe the tabu, and the god did not destroy them for their temerity."

Immediately after the death of Kamehameha I, his successor Lunalilo celebrated his accession to the throne (of grass). The native historian says: "He sent the overseer of the rum department to obtain the good creature for a drunken session which was held on the ocean in canoes, and continued two days at Kailua."

"When the King landed, the men stood in a troop of wonder to see their chief regaling himself with his female coadjutors with the luxury of the glass and the pipe. Strange as it may seem, this shook the tabu system to ruin." When notice of these doings was sent to the other islands, "Kauai, Oahu, and Maui, united with Hawaii in a general jubilee at this emancipation of the kingdom."

A cynical essayist might well choose for his subject: "What has the saloon done for Hawaii?" or "The Jag in history" and assign it an honorable place in the agencies which abolished idolatry.

From our own standpoint the discussions among the native theologians of those days had a humorous side to it. Some of the old priests who refused to follow the "higher criticism" of the traditional idolatry, as it was pronounced by Lunalilo, under the influence of rum, stood steadfastly for the ancient faith. They, like strict Romanists, believed in the religion which they had inherited. They spurned the Robertson Smiths and the Briggses and the Lyman Abbots of those days, who were destroying the old landmarks. One recognizes the oneness of human nature, when he reads what the native historian writes. "These priests who favored the old idolatry, repeated also this proverb of the ancient Hawaiians,—'Righteousness enriches a nation, but wicked kings make it poor.'" So that before Christianity touched them, these

pagans had a proverb which King Solomon may have sent centuries ago by special messenger to one of the kings of Hawaii. And, no doubt, as these pagan theologians discussed the overthrow of their time honored idolatry, they said to each other with one accord, "what a terrible thing the saloon is,"—"the 'jag' is our destruction." We have in this, evidence that the ancient pagan priests agreed cordially with the modern Temperance people that rum is a dreadful evil.

The scientists insist, of course, that these events were the phenomena of evolution, in which both evil and good are active agencies. This is denied by those who regard evolution as a pernicious doctrine. Whatever the truth may be, it in no way lessens the value of the work of the men who opportunely came and gathered together the disorganized elements and with them built a new nation.

It is folly to suffer from that horrible plague of the night, itching piles. Doane's Ointment cures quickly and permanently. At any chemist's.

**Nothing So Bracing —AS— PURE AIR**

Everyone enjoys it; your health depends upon it. You can just as well have it as your prudent neighbor. Old and young alike endorse it.

**DISINFECTINE**

With the heat of summer comes the foul and disease producing air from the cesspool, vault and cellar. You must be on your guard against the accumulation of trash, garbage, etc.; it is dangerous to have around.

**INSURES**

No skill is required to have the air about your home pure. The cost is trifling and effect is wonderful. Disinfectine as prepared by us will serve the purpose.

**PURE AIR.**

We have it prepared in quantities to supply any or all demands. We will deliver to your home, if within the city limits, a trial bottle at 25 cents. Don't neglect to order a bottle at once.

Those who are familiar with the article order it by the gallon, which proves beyond all doubt that it is the proper thing.

Manufactured only by **HOLLISTER DRUG CO.** SOLE AGENTS.

**SEATTLE BEER** —AT THE— **CRITERION SALOON.**

**Almost Blind**

Scrofula Affects the Eyes—Little Boy Treated by an Oculist Without Relief—But Now He Is Well.

"When my little boy was three months old his eyes became very sore and he was almost blind. I took him to an oculist who treated him for six months, and left him as bad as he was at the beginning. Finally Hood's Sarsaparilla was recommended and I began giving it to him. In less than three weeks he was able to go into the sun without covering his eyes, and today his eyes are perfectly well, and his ears and nose, which were badly affected, are also well. Hood's Sarsaparilla has certainly done wonders for my boy." Mrs. JAMES H. PAINTER, Amador, California. Remember

**Hood's Sarsaparilla** is the One True Blood Purifier. All druggists. \$1.50 for \$3. Get Hood's Pills are the only pills to take with Hood's Sarsaparilla.

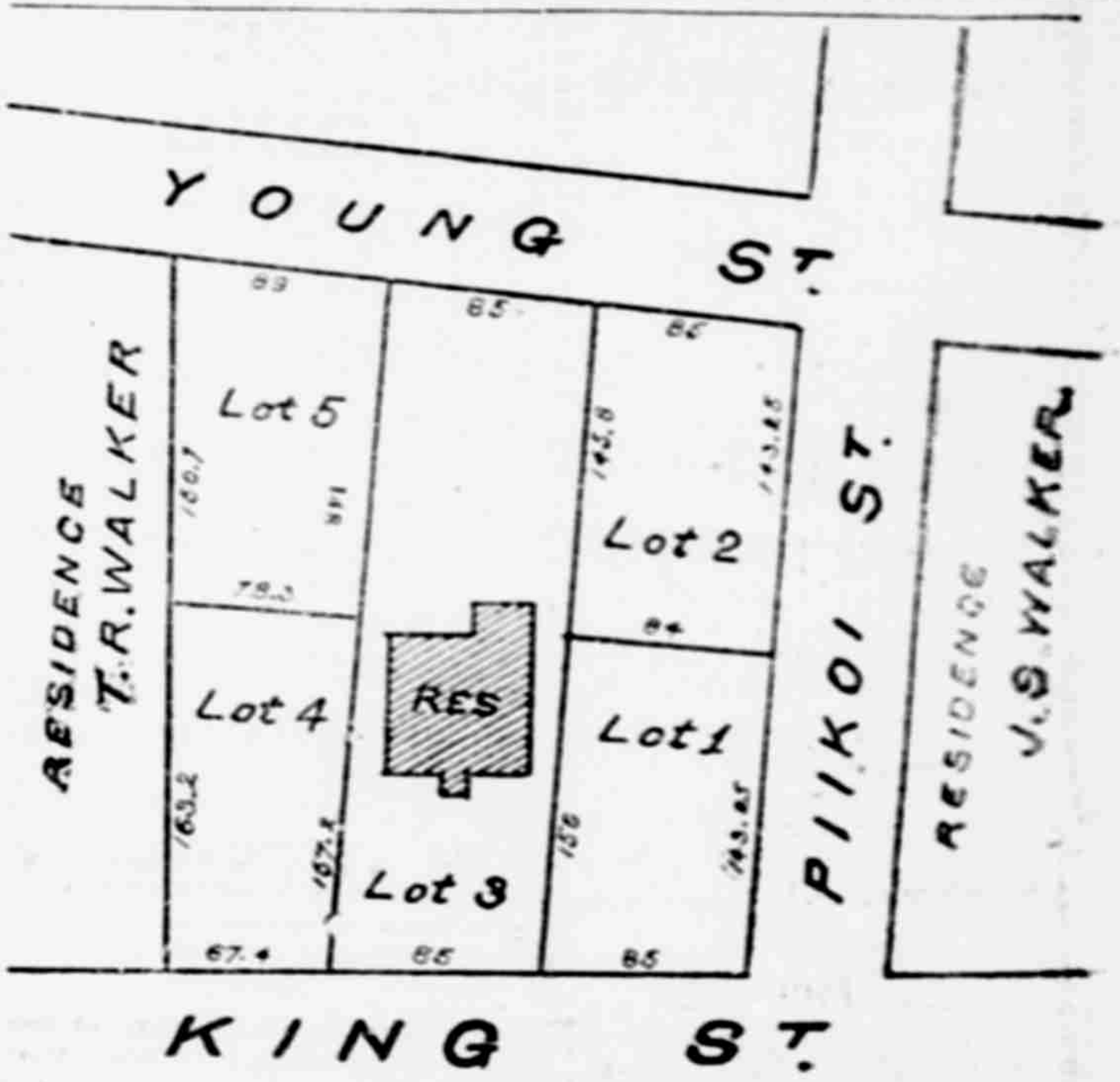
**TIMELY TOPICS**

June 1st, 1899

Now that spring time is here, have you given a thought about renovating your home. The nasty, wet weather we have had for the past month has delayed the usual spring work, but better late than never. We kindly ask you to read this list and then call into our store and get the prices. We have just received a large shipment of the following:

- WHITE LEAD in Oil.
  - PAINT OIL.
  - MIXED PAINT, assorted colors.
  - COAL TAR, in barrels.
  - CAR BOX OIL, in barrels.
  - CARBOLINEUM, in barrels.
  - STOCKHOLM TAR, in 10 gallons and barrels.
  - METALLIC PAINT, ground in oil.
  - MIXED COLORS, in 1 lb. tins (Masury's or Fuller's)
  - VARNISH of various kinds for carriage and house building purposes.
  - FLAT PAINT BRUSHES, Adams.
  - VARNISH : BRUSHES, Adams.
  - WHITE WASH BRUSHES, cheapest and best.
- These goods have just arrived from the East and
- Perfectly Fresh.
- The Hawaiian Hardware Co. Limited. 307 FORT ST.
- IF YOU LOVE your wife take her to the ORPHEUM tonight.

**SUB-DIVISION OF THE BICKERTON HOMESTEAD.**



These finely improved Lots for sale. Location excellent. Lots planted with choice trees and shrubbery. Prices reasonable. Lots 1, 2, 4 and 5 are sold. Lot 3—A Beautiful Lot. Best bargain in town. Easy terms to purchase.

Inquire of **Bruce Waring & Co.** **PROGRESS BLOCK, HONOLULU.**

E. JOHNSON, President. DR. W. S. NOBLITT, General Manager and Medical Director. LEO SCHELLBERG, Assistant Mgr.

**Hawaiian Medicine Co**

LINCOLN BLOCK (upstairs). KING ST., HONOLULU.

We Manufacture a Line of **Pure Family Medicines.**

One is the **PAUEHA COLIC MEDICINE.** It is the best medicine in the world for colic in infants, children or adults. RELIEVES as though by MA GIC all abdominal and stomach pains. It contains no morphine, laudanum or other preparations of opium, and can be given with safety to the youngest infant.

FREE CONSULTATION to purchasers from 11 a. m. to 12 m. Salesroom open from 9 a. m. to 6 p. m.

**Mosquitoline**

Will Drive Mosquitoes Away.

**Cures the Bites!**

**Brings Comfort!**

—ONLY AT—

**BENSON, SMITH & CO**

—LIMITED—

Fort and Hotel Streets.

**DEPARTURE SALE**

**AT L. B. KERR'S, QUEEN STREET.**

On August 18th I am going away and the **WHOLE STOCK IS TO BE SOLD**

At prices that will make competition impossible. It now comprises a large and complete line of the

**NEWEST SHADES**

BEST QUALITIES

Of imported Dry Goods, purchased from the Eastern Factories. Now is your time to buy at the right price. Everything must go.

**QUEEN STREET, L. B. KERR, IMPORTER.**



# "A Place For Everything"

is even more essential in the office than at home. Business men occasionally suffer heavy pecuniary losses because of an important paper mislaid. This can be guarded against by providing yourself with one of our new roller-top desks, with the latest, up-to-date time-saving devices and conveniences. A large assortment of fat-top, roll-top and standing desks, book-cases, press stands, letter files, document files, chairs, stools, etc., has just been received ex "Mohican." All styles and prices.

**HENRY WATERHOUSE & CO.**  
OFFICE, QUEEN STREET.  
Telephone 313.

**Castle & Cooke, LIMITED.**

**LIFE AND FIRE INSURANCE AGENTS**

AGENTS FOR  
New England Mutual Life Insurance Co OF BOSTON.  
Etna Fire Insurance Company OF HARTFORD.

**CASTLE & COOKE, Ltd**  
HONOLULU.  
COMMISSION MERCHANTS.  
SUGAR FACTORS

AGENTS FOR—  
The Ewa Plantation Co.  
The Waiialua Agricultural Co., Ltd.  
The Kohala Sugar Co.  
The Waimea Sugar Mill Co.  
The Koloa Agricultural Co.  
The Fulton Iron Works, St. Louis, Mo.  
The Standard Oil Co.  
The George F. Blake Steam Pumps, Weston's Centrifugals.  
The New England Mutual Life Insurance Co., of Boston.  
The Aetna Fire Insurance Co., of Hartford, Conn.  
The Alliance Assurance Co., of Boston.

## FOR SALE.

THE COMFORTABLE TWO STORY COTTAGE off Beretania St., between Miller and Punchbowl Street, and now occupied by James Nott, Jr., partly mosquito proof. A bargain for the right party.

Apply at  
**P. E. R. STRAUCH.**  
Real Estate Broker  
LINCOLN BLOCK,  
639 King Street. Telephone 641.

## Boxing Taught

—BY—  
**MARTIN DENNY**  
Champion light weight of Australia, at Long Branch, Waikiki.  
Terms reasonable. Given on application.  
PRIVATE LESSONS GIVEN.

## PROCESSION VIEWS!

MANY CHOICE VIEWS OF THE funeral procession of the Queen Dowager. Single pictures or complete sets cheap. A few Kaulani and Kapiolani buttons still in stock.  
LICHTIG, Fotografier,  
606 Fort Street.  
Above Dewey Restaurant.

**COMPLETE** We have the most complete line of **CLEVELANDS** ever shown here. \$40 to \$85.  
The \$40 kind is the equal of any other make at ANY PRICE.  
INSTALLMENTS \$10 PER MONTH.  
  
**Honolulu Bike Co.**  
209 Hotel Street.

Only the highest grade of RED RUBBER is used in the Stamps made by the HAWAIIAN GAZETTE CO.

The best at the lowest price at HOPP'S.  
**In Solid Mahogany**  
We have just opened up the most elegant line of Parlor Furniture seen here. Everything in Solid Mahogany.

**Cabinets AND Whatnots.**  
That are just the articles you have waited so long for to complete the artistic effect of your parlors.  
**Chairs AND Tables.**  
Dainty and elegant, yet withal, strong and serviceable.  
This is no everyday selection and we anticipate a speedy clearance.

A few nice **CHILD'S SWINGS.**  
**J. HOPP & CO.**  
Leading Furniture Dealers  
KING & BETHEL STS.

## THE NEW ENGLAND BAKERY AND CANDY CO.

Manufacture a full line of Bread, American and German. Schwartzbrod mit kumel, milk brod and twist with mohnsamen, French Splits, Whole Wheat, Graham, Hot Buns, Snails, Jenny Linds.  
Also the most complete and extensive line of CAKE in the city.  
Jelly Rolls, Angel Food, Wine, Citron, Walnut, Sponge and Marble Cake, Lady Fingers, Cup Cakes, Almond, Macaroons; all kinds of cookies, fresh every day.  
WEDDING CAKES from \$5 upwards.  
Delicious highly frozen Ice Cream and Sherbets, any flavor.  
French Cream Bonbons and Chocolate Cream Drops—our own make—packed in elegant boxes from \$1.00 upwards.  
**J. OSWALD LUTTED,**  
Manager.

## TO OUR FRIENDS AND PATRONS.

Have you tried any of those CHOCOLATE or COCOANUT (fresh) cakes from the German Bakery? They are only 25 and 50c each and pronounced delicious by those who have tried them. Order one for your Sunday dinner. We also have a sponge cake which we sell for the moderate sum of five cents each.  
—THE GERMAN BAKERY,  
833 Fort Street,  
—Headquarters for genuine ginger-snaps, sugar cookies, etc.  
—Telephone 677.

EAT . . . .  
**Pettijohn's Breakfast Gem.**  
ASK YOUR GROCER FOR IT

**The Silent Barber Shop**  
Ladies' Boot-Black Stand  
In rear of shop.  
**JOSEPH FERNANDEZ, Propr**  
Arlington Hotel, Hotel Street.

## PROBATE CASES

Petitions for Letters of Administration.

Inventory of the Robert Grieve Estate - Adopted Child Who Is Not an Heir.

Jennie Grieve has presented her petition to Judge Stanley praying that letters of administration on the estate of Robert Grieve, deceased, may be granted to James L. McLean.

The petition sets forth the value of the estate as about \$41,462.50, consisting as follows: House and lot on Beretania street, near Pensacola, \$4,700; house and lot on Beretania street, near Kapiolani, \$5,600; house and lot on Nuuanu street, near Kukui, \$2,900; house and lot on Kukui place, \$2,000; leasehold of old Gazette building on Merchant street, \$7,000; printing office, \$4,000; cash in Bishop & Co.'s bank, \$1,500; household furniture, \$300; 25 shares Inter-Island S. S. Co. stock, \$2,500; 5 shares Wilder S. S. Co. stock, \$500; 2 shares People's Ice Co. stock, \$200; 5 shares Hawaiian Construction Co. stock, \$500; investments and cash in hands of W. R. Castle, \$10,262.50.

The heirs of deceased are Jennie Grieve, widow; W. L. Grieve, son; Mrs. Jennie R. McLean, daughter.

The usual order of publication of notice of time and place of hearing has been made.

Judge Perry has granted the petition of Frederick J. Wilhelm for letters of administration on the estate of Kamilla Paulo Wilhelm, his deceased wife, who died in Honolulu on June 9th. The estate is valued at about \$10,000 and consists of the residence on Keamoku and Young street, four houses on King street, opposite Catholic Cemetery; twelve acres of land in Na'aua, Molo'kai, and thirteen fully paid up shares of the Oahu Sugar Company.

The heirs of the deceased are Frederick J. Wilhelm, Libby Hill Smithies. An adopted child, Frederick Albert Smith Wilhelm, is not entitled to participate in the estate under a special clause in the agreement of adoption. The bond of the administrator is fixed at \$3,000.

### SCANDALOUS MUTILATION.

The following are a few extracts from a poem butchered by a nearsighted compositor:

Manuscript—"Surcease of sorrows."  
In Print—"Smearcase tomorrow."  
Manuscript—"Lying by a weeping willow, underneath a gentle slope."  
In Print—"Lying to a weeping widow to induce her to slope."

The P. C. & M. Co., on Fort street, have just received a large shipment of Crescent bicycles. They will be sold considerably cheaper than the Sterling.

Manuscript—"Cast thy pearls before the swine, and lose them in the dirt."  
In Print—"Cast thy pills before the sunrise, an love them if they hurt."

The P. C. & M. Co. will sell you a high-grade Sterling bicycle for \$60.00 on small weekly or monthly installments.

Manuscript—"Take away the jingling money; it is only glittering dross."  
In Print—"Take away the tingling honey; put some flies in for the boss."

The P. C. & M. Co. have just received a select variety of Winchester rifles and a fresh stock of ammunition.

Manuscript—"I am weary of the tossing of the ocean as it heaves."  
In Print—"I am wearing out my trousers till they're open at the knees."

The P. C. & M. Co. have a new lot of bicycles to rent by the day, week or month at very reasonable rates.

At Makee Island.  
The selections to be rendered by the Government band at Makee Island on Sunday afternoon are as follows:

- PART I.  
Overture—"The King's Lieutenant"  
Finale—"Rigoletto" . . . . . Verdi  
Selections—  
(a) "Pilgrim Chorus" . . . . . Wagner  
(b) "Evening Star" . . . . . Wagner  
Grand Selection—"I Martiri" . . . . . Donizetti  
PART II.  
Cornet Solo—"Alice Where Art Thou" . . . . . Asher  
Mr. Charles Kreuter.  
"Melodies of Northern Europe" . . . . . Kuhnert  
Gavotte—"Soft Glimpses" . . . . . Nevaux  
Overture—"La Dame Blanche" . . . . . Boieldieu  
"The Star-Spangled Banner."

Accounts Approved.  
In the matter of the estate of Elizabeth H. Robinson and Isaac J. Robinson, minors, Judge Perry yesterday approved the account of sales presented by S. K. Kane as guardian, showing that he had realized the sum of \$4677.38 over and above expenses from the sale of certain real estate belonging to the wards to Henry Smith.

to be drank with soda



a high-ball whiskey

Crown Distilleries Co.  
San Francisco

ALL KINDS OF  
Apples, Cherries, Plums, Peaches, Muscat Grapes  
Oranges, Limes and Lemons  
Eastern Oysters, Etc., Etc., Etc.  
**E. HENRIQUES,**  
MASONIC TEMPLE.  
Telephone 444.

TO ARRIVE:  
Ex. America Maru.  
HANDSOM: SILK DFD-SPREADS, TABLE COVERS, GRASS, CLOTH CENTRE PIECES  
These are of very dainty patterns.  
Also, a new line of Pajamas, Neckties, Suspenders, Handkerchiefs.  
Some New Goods to arrive soon!

**Murata & Co.**  
HOTEL ST., COR. NUUANU.  
Branch Hat Store, Nuuanu St

**FOR SALE.**  
Two Lots at Kalihi, on main road, 60x102 each. A bargain.  
Two Lots at Kalihi, 75x150 each. A bargain. Easy terms.  
Lot on Young street, this side of Thomas Square, 52x155. Fine location to build.  
Residence at Waikiki on the beach. Good location and bathing.  
**TO LET.**  
Unfurnished cottage on Liliha street. Unfurnished house of four bed rooms on beach at Waikiki.  
Unfurnished cottage at Pawaa, King street. Apply to  
**WILLIAM SAVIDGE,**  
310 Fort Street

**HONOLULU IRON WORKS CO.**  
Steam Engines, BOILERS, SUGAR MILLS, COOLERS, BRASS AND LEAD CASTINGS. And machinery of every description made to order. Particular attention paid to ship's blacksmithing. Job work executed on the shortest notice

**NOVELTIES**  
for dinner giving and for luncheons and for entertaining may be had here constantly.  
**LEWIS & CO. Grocers**  
111 FORT STREET.  
Telephone 240. : : P. O. Box 207.

**J. MORGAN,**  
OPAL MERCHANT  
**JEWELER**  
AND LAPIDARY  
OPAL CUTTING A SPECIALTY.  
No. 2 School St., Near Smith's Bridge.

## THE DOCTORS

—SAY THAT—  
**Malaria AND Microbes**  
Have small chances when PURE WATER is provided

## THIS IS THE SEASON

When drinking water needs to be purified.  
You can get the most perfect

## Water Filters AND Coolers

From  
**THE PACIFIC HARDWARE CO.**  
At their  
Fort Street Store  
And at their  
Household Supply Department  
On Bethel Street.

New Shipment  
OF  
**SILK GOODS.**  
—ALSO—  
FRASES: CLOTH; HANKERCHIEFS, DOYLIES; TABLE COVERS  
SILK SHIRTS, SILK PAJAMAS, ETC

Handsome Carpets for Halls and Stairs.  
**JAPANESE RUGS, VERY PRETTY PATTERNS.**  
A large stock on hand to select from, at prices that will surprise you.  
**S. OZAKI,**  
WAVERLEY BLOCK - - - HOTEL STREET

**IT IS CHEAPER**  
to pay a fair price to have your watch repaired by . . .  
**AN EXPERT WATCHMAKER**  
than to risk having it ruined in order to save a few cents.  
**M. R. COUNTER,**  
Practical Watchmaker  
607 Fort St.  
Gives personal attention to repairing fine and complicated watches.

**LOWEST PRICES**  
CONSISTENT WITH  
**GOOD WORKMANSHIP.**  
**CITY MILL CO., LTD.**

**Builders and Contractors.**  
QUEEN & KEKAULIKE STREETS. (Ewa Side of Old Fish Market.)  
Beg to announce that they are now prepared to undertake all branches of the above business.  
Work undertaken by the day or by contract; estimates furnished.

## Have You Seen

The Rotary Motion and Ball Bearing  
**Wheeler**  
—AND—  
**Wilson**

## Sewing Machines?

If not it will serve your interests to call and see them on display at

**F. L. Prescott's**  
FORT STREET.

A look will convince you that they are the simplest machine made and three times the value of any other.

## ARE YOU LOOKING FOR

Stocks or Bonds, Investments or Loans, Offices or Fire Insurance, Safe Deposit Boxes or,  
A COMPANY - Responsible, Reliable and Accessible, to act as TRUSTEE, EXECUTOR, ADMINISTRATOR or GUARDIAN?  
If so, call on  
**The Howland Trust & Investment Co.**  
GEO. R. CARTER, Treasurer,  
407 Fort Street, Honolulu.

**Uncle Sam's Cafe.** 512 Fort Street.

Open from 5 a. m. to 12 p. m.  
Excellent menu at all meals.  
First-class French chef employed.  
All the delicacies of the season.  
Ham or Egg Sandwiches with Coffee, Tea or Milk, 15 cents.

## Look Wo Sing Co.

A LARGE ASSORTMENT OF **LINK CUFF BUTTONS.**  
In Numerous Designs.  
Also a handsome display of **LADIES' AND GENTS' RINGS.**  
**JEWELRY**  
Of all kinds made to order.  
**BIART** 404 1/2 FORT ST  
**JEWELER.**

## ALEXANDER & BALDWIN

**Sugar Factors**  
—AND—  
**Commission Merchants**  
**JUDD BUILDING.**  
**HAWAIIAN CARRIAGE MFG. CO., Ltd**  
121 Queen Street.

**CARRIAGE AND WAGON BUILDERS**  
LUBBER TIRES AND ROLLER BEARING AXLES.  
**HAWAII SHINPO SHA**  
THE PIONEER JAPANESE PRINTING OFFICE.  
The publishers of "Hawaii Shinpo."  
The only daily Japanese paper published in the Islands.  
EDITOR . . . . . M. TAKAHASHI.  
PROPRIETOR . . . . . C. SHIOZAWA.  
Office: Nuuanu avenue, above Beretania. 5215



**FLOOR LINOLEUMS**  
AND OILCLOTH.  
**HALL LINOLEUM CARPET**  
AND FIBRE MATTING.

**Rugs,**  
CENTER, SOFA AND STAND  
Heavy Stock and Great Choice.

Portieres, Curtains,  
Table Covers, Etc.  
Of Best Value Ever Imported

**E. W. JORDAN**  
No. 10 STREET

L. KONG VEE.  
MERCHANT TAILOR  
623 1/2 Fort St., Opp. Club Stables.

FINE SUITS TO ORDER AT REASONABLE RATES  
Suits cleaned and repaired. Satisfaction guaranteed.

Only the highest grade of RED RUBBER is used in the Stamps made by the HAWAIIAN GAZETTE CO.

**HENRY R. WORTHINGTON, (INC.)**  
**Engineers and Builders**  
Of High Duty Pumping Engines for Water Works and Irrigation

THE SPECIAL ATTENTION OF PLANTATION MANAGERS AND AGENTS is called to the fact that we carry in stock at our Queen Street warehouse a large assortment of pumps for all kinds of sugar house service, including vacuum pumps, air pumps, condensers, feed pumps, juice pumps, molasses pumps, etc., together with a complete stock of spare parts and valves for all sizes. Careful attention given all orders and prompt shipment guaranteed.  
ESTIMATES FURNISHED FOR COMPLETE IRRIGATION PUMPING PLANTS OF ANY CAPACITY OR POWER.

Honolulu, H. I. CORNER FORT AND QUEEN STREETS. Telephone 594.

**35 Different Styles!**  
**Gold Oak Bedroom Sets,**

Cheval and Duchesse  
IN ELEGANT AND VARIOUS DESIGNS.....

Extension Dining Tables,  
Parlor and Dining Chairs  
Just to hand Per "S. C. Allen."

**COYNE-MEHRTEN FURNITURE COMPANY.**  
J. A. MEHRTEN, MANAGER  
Progress Block.

**COMING CONCERT**

Program for the Event of Tuesday

Delightful List of Selections at the Benefit for the Amateur Orchestra at Progress Hall.

On Tuesday evening next at Progress Hall the long expected concert for the benefit of the music fund of the Amateur Orchestra comes off, the program for which is presented to the public for the first time. Such an array of musical talent as is presented should draw out a big house, irrespective of the claims of the Amateur Orchestra itself on the public. The concert will commence at 8 o'clock sharp and the price of admission is but fifty cents. Tickets are for sale at the different stores in town and may also be obtained at the door on the evening of the concert.

Following is the program of selections to be rendered:

- Overture—"The Bridal Rose" ... Lavallee Amateur Orchestra.
  - Bass Solos—  
(a) "The Carbine Song" ... Herbert  
(b) "Once in the Purple Twilight" ... Mr. J. B. O'Sullivan.
  - Double bass solo—"Romance" ... Bennet Mr. George Brand.
  - Song—"O Divine Redeemer" ... Gounod Annis Montague Turner.  
(Violin obligato, Dr. O. E. Wall; piano, Miss L. M. Krueger; organ, Wray Taylor.)
  - "Wedding Serenade" ... Pedro Silva Amateur Orchestra.
  - Bass solo—"Connemara" ... Wilson Mr. J. B. O'Sullivan.
  - Recitation—"The Old, Old Story" ... Mrs. James W. Bergstrom.
  - Song—"Dost Thou Know that Sweet Land" (from "Mignon") ... Thomas Annis Montague Turner.
  - Pizzicato Gavotte—"Heart and Heart" ... Latann Amateur Orchestra.
  - Tenor song—"A Youth Once Loved a Maiden" ... Maud White Mr. J. T. Irvine.
  - "Roman Carnival March" ... Mendelssohn Amateur Orchestra.
- Accompanists—Miss L. M. Krueger and Mr. E. H. Offley.  
Musical Director—Wray Taylor.

Houses for Rent  
Properties for Sale.  
Stocks and Bonds.  
Loans Negotiated.  
R. C. A. PETERSON,  
Broker, Real Estate and Financial Agent.  
HONOLULU : : : : H. I.  
Office: 15 Kaahumanu St.  
P. O. Box 365.

**WM. G. IRWIN & CO.**  
—LIMITED—

Offer for Sale:  
**REFINED SUGARS.**  
Cube and Granulated.

**PARAFINE PAINT CO.'S**  
Paints, Compounds and Building Papers.

**PAINT OILS,**  
Lincol—Raw and Boiled.  
Linseed—Raw and Boiled.

**INDURINE,**  
Water-proof cold-water Paint. Inside and outside; in white and colors.

**FERTILIZERS,**  
Alex. Cross & Sons' high-grade Scotch fertilizers, adapted for sugar cane and coffee.  
N. Ohlandt & Co's chemical fertilizers and finely ground Bone Meal.

**STEAM PIPE COVERING,**  
Reed's patent elastic sectional pipe Covering.

**FILTER PRESS CLOTHS,**  
Linen and Jute.

**CEMENT, LIME & BRICES.**

**AGENTS FOR**  
WESTERN SUGAR REFINING CO.,  
San Francisco, Cal.

BALDWIN LOCOMOTIVE WORKS,  
Philadelphia, Penn., U. S. A.  
NEWELL UNIVERSAL MILL CO.,  
(Manf. "National Cane Shredder"),  
New York, U. S. A.

OHLANDT & CO.,  
San Francisco, Cal.

RISDON IRON AND LOCOMOTIVE WORKS,  
San Francisco, Cal.



**Hoffman Saloon**

**BAVARIAN ALE**

—And—

**OLYMPIA BEER**

ON DRAFT.

**L. H. DEE**

—PROPRIETOR—

Cor. Hotel and Nuuanu Sts.

**E. E. HITCH**

Market Warehouse Building,  
Queen Street.

**Practical Sail Maker**

Estimates Given for all Kinds of AWNINGS, TENTS, TRUNK COVERS, TARPULINS, WAGON COVERS, FIELD COVERS, ETC.

Stock Furnished at Fair Prices. All Work Done Satisfactorily.

**CHOICE VEAL, MUTTON**

—AND—

**BEEF, PORK**

Always On Hand.

Sausages, Liver, Head Cheese and Breakfast Bolognae at the

**CENTRAL MEAT MARKET.**

214 Nuuanu St. Tel. 104.

**FIRST CLASS Bicycle Repairing**

Done at Very Reasonable Figures.

GIVE US A TRIAL.

**CLEVELAND BICYCLES FOR RENT.**

We have a few second hand wheels which we are selling at cut rate prices.

**CITY REPAIR SHOP**

E. Jones. R. Clark.  
115 Bethel Street  
Opposite Waterhouse Grocery Co.

**Consolidated Soda Water Works Co.**

—LIMITED—  
Esplanade, Cor. Allen and Fort St.

HOLLISTER & CO., - - AGENTS

A Model Plant is not complete without Electric Power, thus dispensing with small engines.

Why not generate your power from one CENTRAL Station? One generator can furnish power to your Pump, Centrifugals, Elevators, Plovs, Railways and Hoists; also, furnish light and power; for a radius of from 15 to 30 miles.

Electric Power being used, saves the labor of hauling coal in your field, also water, and does away with high-priced engines, and only have one engine to look after in your mill.

Where water power is available it costs nothing to generate Electric Power.

THE HAWAIIAN ELECTRIC COMPANY is now ready to furnish Electric Plants and Generators of all descriptions at short notice, and also has on hand a large stock of Wire, Chandeliers and Electrical Goods.

All orders will be given prompt attention, and estimates furnished for Lighting and Power Plants; also, attention is given to House and Marine Wiring

THEO. HOFFMAN, Manager.

**WM. G. IRWIN & CO.,**  
—LIMITED—

Wm. G. Irwin, President and Manager  
Clas Spreckels, Vice President  
W. M. Giffard, Secretary and Treasurer  
H. M. Whitney, Jr., Auditor

SUGAR FACTORS

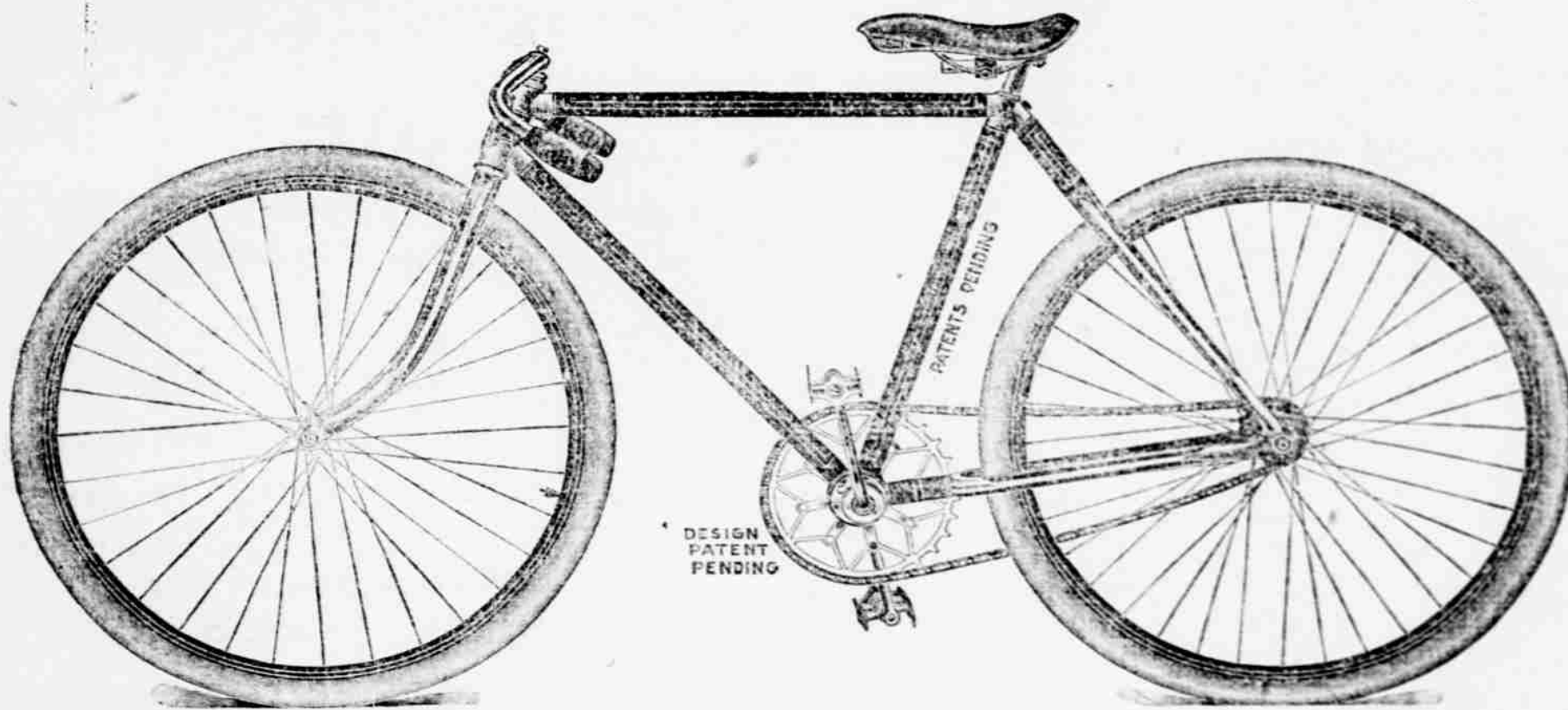
—AND—

**COMMISSION AGENTS**

AGENTS FOR THE  
**Oceanic Steamship Company**  
Of San Francisco, Cal.

**BAILEY'S BIKE BITS.**

Telephone 398.  
P. O. Box 441.



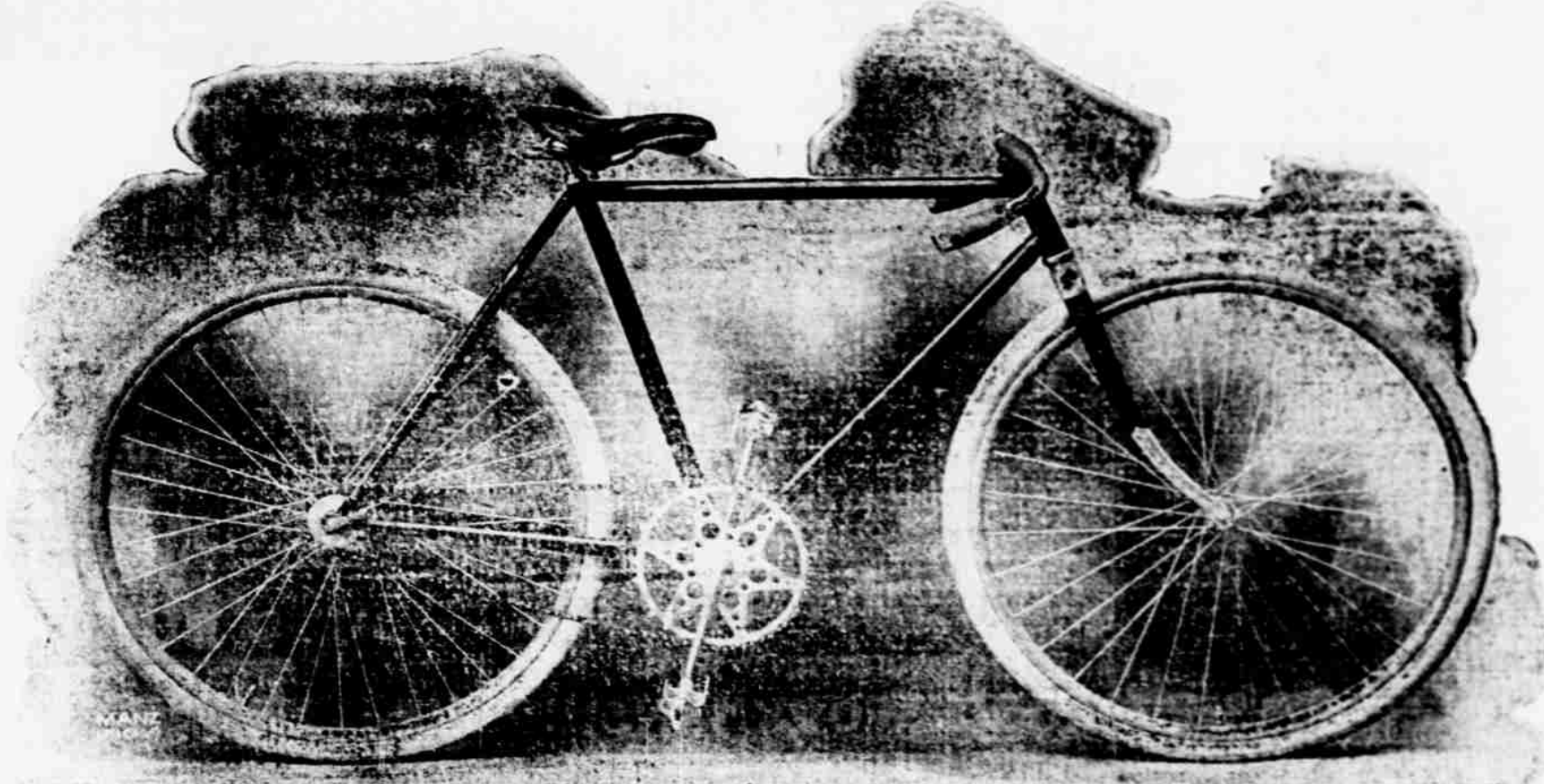
**The Manson Three Crown Bicycle.**

The handsomest Wheel made. If you put its exquisite appearance, the excellency of its workmanship, and its light running qualities, alongside the ordinary wheel sold in Honolulu, no one of our nicely discriminating Honolulu people will for a moment hesitate which wheel to purchase. The Manson Three Crown Bicycle is the "Edition de Luxe" of the bicycle world.

**BAILEY'S HONOLULU CYCLERY, Sole Agents for Hawaiian Islands.**

**OPTIONS:— Any Saddle, Tire or Chain. - - - PRICE, \$60.**

SOLE AGENT FOR THE MILWAUKEE PUNCTURE-PROOF TIRE—THE BEST.



**THE BEEBE BICYCLE**

A fine wheel at a very low price. A hundred of them in use in Honolulu and no kick coming. Cones and Cups equal to the best [Always Excepting Manson].

Price Single Tube Tires : : : : \$30 00 35 00:  
Price Double Tube Tires : : : : 35 00 40 00.  
Price Milwaukee Puncture Proof Tire : : : : 40 00 45 00.

\*\*\*\*\*  
**AT Bailey's Honolulu Cyclery 231 KING ST.**  
The Pioneer Repair Shop.

**A LOCAL ITEM.**

There are a great many of them. Every paper has its share. Statements hard to believe; harder to prove.

Statements from far-away places. What people say in New York. Public expression from California. Oft times good endorsement there. But of little service here at home. Honolulu people want local proof. The sayings of neighbors, friends and citizens.

Home endorsement counts. It is beyond dispute.

This is the backing that stands behind every box of Doan's Backache Kidney Pills.

Mr. John E. Bush of Punchbowl st., this city, is attached to the Hawaiian interpretation staff at the Supreme Court. He says: "I had kidney trouble, and, acting on the recommendation of a friend, who had tried your invaluable remedy, I got some of Doan's Backache Kidney Pills at Hollister Drug Co.'s store. They were just as beneficial to me as they had been to my friend. It is well the virtues of these pills should be made known, for they really are an excellent medicine for kidney trouble."

This is only one case in hundreds right here in Honolulu—people whom you may know—people whose statements can not be disputed.

Doan's Backache Kidney Pills are for sale by all dealers. Price 50 cents per box, or sent by mail on receipt of price by the Hollister Drug Co., Honolulu, wholesale agents for the Hawaiian Islands.

Remember the name—DOAN'S—and take no other.

**BIG STOCK DEAL.**

Three Hundred Shares of Oahu Changed Hands Yesterday.

The sale of 300 shares of the paid-up stock of the Oahu Sugar Company reported on the Honolulu Stock Board yesterday morning was the largest single transaction that has taken place for some weeks. The price was \$183 1-3, the total amounting to \$55,000. Chas. J. Falk was the seller and Albert Raas the buyer. Both brokers were extremely reticent concerning the matter. Mr. Falk acknowledging that he had received his money and Mr. Raas that he had the stock in his pocket. The latter broker, however, said finally that the purchase was made for account of parties living on the Mainland, and that he considered it by far the best investment made in the stock market this season.

New bill at the Orpheum tonight.



# W.C. Achi & CO.

## Stock Brokers

10 West King Street.

# FOR SALE

### Honolulu Brewing & Malting Co.

Oahu,

Kihei,

Ookala,

Nahiku,

Waimea,

Waimanalo,

Etc., Etc., Etc.

### Children's Photos

Are the hardest of all to make well until you become accustomed to the task. Mothers tell us we are at our best when making photos of the little ones. Our quaint, unique poses—faithful likenesses—and dainty style of finishing photos find favor in every mother's eyes.

Preserve baby's pretty face in one of Williams' photos.

**J. J. WILLIAMS,**  
**WILLIAMS' ART STUDIO.**  
Fort Street.

### C. BREWER & CO. L'D.

Queen Street : Honolulu, H. I.  
AGENTS FOR  
Hawaiian Agricultural Company, Onomea Sugar Company, Honomu Sugar Company, Wailuku Sugar Company, American Sugar Co., Makee Sugar Company, Ookala Sugar Plantation Company, Haleakala Ranch Company, Kapapala Ranch, Molokai Ranch.  
Planters' Line, San Francisco Packets, Charles Brewer & Co.'s Line of Boston Packets.  
Agents Boston Board of Underwriters.  
Agents for Philadelphia Board of Underwriters.  
Standard Oil Co.

#### LIST OF OFFICERS.

C. M. Cooke, President; George H. Robertson, Manager; E. F. Bishop, Treasurer and Secretary; Col. W. F. Allen, Auditor; P. C. Jones, H. Waterhouse, G. R. Carter, Directors.

## Jas. H. Love, Stock Broker

FORT ST.,  
Next Biart's Jewelry Store.

### For Sale:

KIHEI.  
McBRYDE SUGAR CO.  
NAHIKU.  
OOKALA.  
KAHUKU.

Importers and Dealers in Lumber and Building Materials. Office, 414 Fort St.

## What can you do -TO- Have Them

### Mauna Loa Duplicate.

With plates or films on which are exposures you can never hope to

### Duplicate.

They are probably chemically affected by the sulphur fumes and other vapors rising from the

### Bowels of the Earth.

We are chemists and know how to develop these plates and films, and

### SAVE THEM

for you. Do not delay one moment, for delay

## May Be Fatal.

# THE Le Munyon

PHOTO SUPPLY CO.  
426 Fort Street

## FOR SALE.



A LOT OF FINE, WELL BRED Milch Cows, Heifers, Horses, tame and gentle; a child can handle them. Will be sold single or by lots.

A large number of well made milking cans will be sold in lots of one or a dozen.

For further particulars apply to A. A. Montana, Kaapu Dairy, opposite Minister H. E. Cooper's residence, Maunaloa Valley.  
Terms Cash. 5269

## FOR SALE.

16 1-38 ACRES COFFEE LAND AT HONOKAA. 8 acres in full bearing, 8 acres planted with trees from 1 to 2 years old. Over 200 Alligator Pear trees, with other fruits, oranges and peaches, and about 500 Banana trees. This land is all fenced and there is also a 20x20 building, containing a coffee pulping machine, etc., on property. A bargain.

5272 Address X. L., this office.

## Beach Lots AT KULIQUOU

THE UNDERSIGNED OFFERS ON long leases at reasonable rentals four very desirable beach lots at Kuliouou of two acres each, with water laid on. For plats of lots and further particulars apply to

J. M. MONSARRAT,  
Cartwright Block, Merchant St.  
5250

### WEAK MEN

And women—those lacking in energy and vigor, will find Electricity, as applied by the great American invention, "Dr. Pierce's Electric Belt," a most useful restorative.

Send for a free copy of our new "Book No. 2." Address  
Pierce Electric Co., 620 Market St., San Francisco.

**TOURISTS' GUIDE THROUGH HAWAII.**  
PRICE, 60c.  
BEAUTIFULLY ILLUSTRATED.  
FOR SALE BY ALL NEWSDEALERS.

### SUNDAY SERVICES.

Central Union Church, corner Beretania and Richards streets. Rev. W. M. Kincaid, pastor.—9:55 a. m., Sunday school; 11:00 a. m., public worship and sermon; 6:30 p. m., Y. P. S. C. E. prayer meeting; 7:30 p. m., public worship and sermon. Wednesday, 7:30 p. m., prayer meeting. Palama Chapel—9:30 a. m., Sunday school; 7:30 p. m., Gospel service. A welcome for all at every service.

St. Andrew's Cathedral—The ninth Sunday after Trinity, July 30; 7 a. m., holy communion; 11 a. m., holy communion, choral; 3:30 p. m., pulp altitudes; 7:30 p. m., evensong and sermon.

Services at St. Clement's Chapel (Episcopal) Wilder avenue, Punahou—Celebration of the Holy Communion: First Sunday of the month, 11:05 a. m.; every other Sunday, 7:15 a. m.; Saints' days, 6:45 a. m.; matins and sermon, 11:05 a. m.; Evensong and sermon, 7:05 p. m.; daily prayer at 6:45 a. m. Beretania street cars run to the Chapel. Twenty minutes from Fort street. Seats free and unappropriated. Vested choir.

Reorganized Church of Jesus Christ—Services next Sunday in Milliani Hall, rear of Opera House, as follows: Sunday school, 10 a. m.; Hawaiian services, 11 a. m.; 6:30 p. m.; English service, 7:30 p. m.; preaching by Elder U. V. Greene; subject, "Signs of the Harvest of the World," illustrated.

Methodist Episcopal Church, corner Beretania and Miller streets, G. L. Pearson, pastor.—The public is invited to attend the following regular services: Sunday, 10 a. m., Sunday school; 11 a. m., public worship and service; 6:30 p. m., Epworth League, and 7:30 p. m., public worship and sermon. Wednesday, 7:30 p. m., prayer meeting.

Seventh-Day Adventist Chapel—Located at the end of Hotel street, one block from Punchbowl street. Services: Saturday Sabbath school, 10 a. m.; preaching, 11 a. m. Tuesday, prayer and missionary meeting, 7:30 p. m. All are welcome. B. L. Howe, pastor.

Christian Church, Alakea street near King.—Rev. Wm. A. Gardner pastor, W. C. Weedon, superintendent of Sunday school, Richard Weedon, president of the Young People's Society, Professor L. Cook, choir master and organist. Preaching at 11 a. m. and 7:30 p. m. on Lord's day. Prayer meeting Wednesday at 7:30 p. m. A cordial welcome to all. Sociability a specialty.

### INTERESTING EXHIBIT.

#### Specimens of Lava From Old and New Flows.

The Pearson & Potter Co. have on exhibition in one of their show windows a number of specimens of lava that are of especial interest just now. Samples of aa are shown from the flow of 1880-81, as well as from the present flow; and also some specimens picked up on the latest active crater while it was actually in eruption. These latter are the trophies of A. M. Atherton, who climbed the fiery cone and who is said to have made the nearest approach of anyone to the mouth of the crater.

There is also shown one sample of yellow sulphur rock from Kilanea. Taken as a whole, the exhibit is an exceedingly interesting one. The same firm hopes to secure today some of the latest and best views that have been taken of the eruption and flow.

#### Wray Taylor's Long Service.

On next Sunday Wray Taylor, the organist of St. Andrew's Cathedral, will have completed exactly nineteen years of consecutive service in that position, during which he has only been away twice on short vacations. Every Sunday for this long period Mr. Taylor has played the organ for four or more services, not including funerals and weddings. Of these latter he has kept a record during his connection with the cathedral and some day intends to calculate the exact number.

#### The Dowsett

John M. Dowsett has filed his first annual account as administrator of the estate of J. I. Dowsett, deceased, together with the usual petition for its allowance. The account covers twenty-nine pages of bill paper, showing receipts amounting to \$115,146.04, expenditures \$113,429.32, leaving a balance on hand of \$1,716.62.

#### Will Visit Kona.

Jesse McChesney of the firm of McChesney & Sons leaves on the Mauna Loa next Tuesday for a three weeks' visit to the Kona Sugar Company's property, of which his firm are the Honolulu agents.

"Calumet" Does Not Belong to a Baking Powder. Trust Consumers are Rapidly Learning to Place Their Trust in "Calumet."

**CALUMET Baking Powder**  
NONE SO GOOD.

### Came Very Near Dying

Blood Bad; Abscesses Formed; Health Gone. We are glad to publish the testimonial of Miss Annie Smith of Auckland, New Zealand, who suffered intensely for years, and who was quickly cured when she obtained the right remedy.



"I was a strong, healthy woman until about five years ago, and while living in London I took a chill, had a fever, and came very near dying. My blood was left in a very bad state, abscesses formed on my body. I was confined to my bed two-thirds of the time. At times I was unable to move. For two years I failed to obtain any relief. So finally I was obliged to come to New Zealand. After coming here I remained about the same, trying many remedies without obtaining any benefit. About a year ago after reading one of your advertisements I determined to try

### DR. AYER'S Sarsaparilla

Very soon after using it the abscesses began to heal and my general health very greatly improved. I followed up the treatment and now am as strong as ever. I cannot too highly recommend Ayer's Sarsaparilla as a blood purifier and tonic."

For complete particulars of Dr. Ayer's Pills, they are sent by mail and without charge. Take them with Dr. Ayer's Sarsaparilla, one aids the other.

HOLLISTER DRUG CO., AGENTS.

### Your Note Cur List of POPULAR AND NEW BOOKS

And we will note the ones that you buy!!!

- THE CRUISE OF THE CACHALOT, by F. T. Bullen.
- DAVID HARUM, by Wescott.
- WITH KITCHENER TO KHARTOUM, by Stevens.
- ADVENTURES OF CAPT. KETTLE, by C. Hynes.
- THE RIVER SYNDICATE, by C. E. Carryll.
- THE ASSOCIATE HERMITS, by F. Stockton.
- BARRACK-ROOM BALLADS, by Kipling.
- THE AMATEUR CRACKSMAN, by Hornung.
- ON THE EDGE OF THE EMPIRE, by E. Jepson.
- ANGLO-SAXON SUPERIORITY, by E. Demolins.

### HAWAIIAN NEWS CO., LIMITED.

MERCHANT STREET.

### J LANDO, OUTFITTER AND FURNISHER

Has on hand a new line of

### Shirts in Golf, Stanley, Neglige.

WOOL AND COTTON UNDERWEAR.  
HOSE, in Fancy Lytle and Cotton.  
HATS AND CAPS in endless varieties.  
MEN'S AND BOYS' CLOTHING.  
STAR and MOTHER'S FRIEND SHIRT WAISTS.

Successor to  
**L. E. TRACY,**  
Fort Street near King.

### Palama Lots....

Next to Insane Asylum Pasture.

### 22 Fine Desirable House Lots For Sale.

Those desiring further information regarding these desirable lots inquire of J. F. MORGAN, Queen street, or MRS. THERESA WILCOX, Bethel street, opposite Bishop Savings Bank.

**10 Houses and Lots For Sale.**  
On Lanawai and Cooke streets terms reasonable.  
MRS. THERESA WILCOX,  
Bethel Street.

## W. J. GUNN, Real Estate Agent.

410 Montgomery St.  
San Francisco, California

The attention of those having capital to invest is called to the fact, that no city in the United States or probably no city in the world offers better opportunities to make profitable or fortunate investments in Real Estate than does the city of San Francisco at the present time.

A great many reasons can be given why San Francisco realty will advance in value from now on.

I offer my experience and knowledge of values to intending buyers of business properties or residence sites. I can submit some very desirable purchases of Real Estate that will yield a fine income and steadily advance in value.

Information cheerfully given. Parties coming from the Islands who desire to invest are requested to call. I will be happy to correspond with any who may wish to obtain information in regard to San Francisco Real Estate.

Full charge taken of property and taxes paid for absent owner.

**W. J. GUNN,**  
410 Montgomery St., San Francisco, California.

### THE CLUB STABLES (Limited.)

C. BELLINA, Manager.  
Fort St., near Hotel. Telephone 477.

Livery, Boarding and Sales Stables. PROMPT SERVICE, STYLISH TURN-OUTS, SAFE DRIVERS.

### Club Stables Hack Stand

Corner Union and Hotel Streets. (Old Bell Tower.)

### CLUB STABLES HACK STAND ANNEX

TELEPHONE 777. (Corner King and Bethel Streets.)

CAREFUL AND WELL INFORMED DRIVERS.  
FIRST CLASS CARRIAGES.  
HACKS AT ALL HOURS.

Orders for Surreys, Wagonettes, Single or Double Teams at a moment's notice.  
HACKS Nos.—45, 65, 70, 77, 97, 125 and 180.

### C. BELLINA, Mgr.

### METROPOLITAN MEAT CO

108 KING STREET.  
G. J. WALLER : : MANAGER.

### NAVY CONTRACTORS.

Wholesale and Retail  
**BUTCHERS**  
—AND—  
**NAVY CONTRACTORS.**

### Orpheum Cafe

ABOVE ORPHEUM THEATRE, FORT ST.  
OPEN DAY AND NIGHT  
Meals Served at All Hours.

25c REGULAR DINNER, 25c  
From 12 Till 2 o'clock.

FAMILY DINING ROOM IN CONNECTION.  
TABLES RESERVED FOR LADIES, WHITE LABOR EXCLUSIVELY.

C. T. GOW, Manager,  
JUST ARRIVED

New Importation of SILK GOODS, in the piece, SILK HANDKERCHIEFS, SILK SHAWLS, DECORATED FLOWER POTS, NEW PORCELAIN CUPS AND SAUCERS, TEA AND DINNER SETS, CARVED IVORY, RATTAN CHAIRS, CARVED SANDALWOOD BOXES.  
THESE GOODS ARE THE HANDSOMEST IN ALL HONOLULU.  
**WING WO CHAN & CO.**  
210-212 Nuuanu Street.

## THE BANK OF HAWAII

—LIMITED.—

Incorporated Under the Laws of the Republic of Hawaii.  
CAPITAL ..... \$400,000.00  
OFFICERS AND DIRECTORS.  
Chas. M. Cooke ..... President  
P. C. Jones ..... Vice President  
C. H. Cooke ..... Cashier  
F. C. Atherton ..... Assistant Cashier  
Directors—Henry Waterhouse, Tom May, F. W. Macfarlane, E. D. Tenney, J. A. McCandless.

Solicits the Accounts of Firms, Corporations, Trusts, Individuals, and will promptly and carefully attend to all business connected with banking entrusted to it. Sell and Purchase Foreign Exchange, Issue Letters of Credit.

SAVINGS DEPARTMENT.  
Ordinary and Term Deposits received and Interest allowed in accordance with rules and conditions printed in pass books, copies of which may be had on application.  
Judd Building, Fort Street.

### CLAUS SPRECKELS, WM. G. IRWIN, CLAUS SPRECKELS & CO., Bankers,

HONOLULU - - - H. I.  
SAN FRANCISCO AGENTS—THE NEVADA NATIONAL BANK OF SAN FRANCISCO.

—DRAW EXCHANGE ON—  
SAN FRANCISCO—The Nevada National Bank of San Francisco.  
LONDON—The Union Bank of London. (Ltd.)

NEW YORK—American Exchange National Bank.  
CHICAGO—Merchants' National Bank.  
PARIS—Credit Lyonnais.  
BERLIN—Dresdner Bank.  
HONGKONG AND YOKOHAMA—Hongkong and Shanghai Banking Corporation.

NEW ZEALAND AND AUSTRALIA—Bank of New Zealand.  
VICTORIA AND VANCOUVER—Bank of British North America.

Transact a General Banking & Exchange Business.  
Deposits Received. Loans made on Approved Security. Commercial and Travelers' Credits Issued. Bills of Exchange Bought and Sold.  
COLLECTIONS PROMPTLY ACCOUNTED FOR.

## BISHOP & CO. SAVINGS BANK

On October 1st, 1898, and continuing until further notice, Savings Deposits will be received and interest allowed by this Bank at four and one-half per cent per annum. The terms, rules and regulations of the Hawaiian Postal Savings Bank will be adopted as far as it is practicable to apply them, and the Cash Reserve of \$50,000 as required under the Postal Act will be maintained.  
Printed copies of the Rules and Regulations may be obtained on application.

### BISHOP & CO.

### BISHOP & CO. -Bankers-

TRANSACTION A GENERAL BANKING AND EXCHANGE BUSINESS.  
Commercial and Travelers' Letters of Credit issued, available in all the Principal Cities of the World.

INTEREST allowed after July 1st, 1898, on fixed deposits: 3 months 3 per cent; 6 months 3½ per cent; 12 months 4 per cent.

### THE YOKOHAMA SPECIE BANK LIMITED.

Paid Up Capital ..... Yen 12,000,000  
Reserve Fund ..... Yen 7,300,000

HEAD OFFICE: YOKOHAMA.  
BRANCHES AND AGENCIES: Kobe, London, Lyons, New York, San Francisco, Shanghai, Bombay, Hong Kong, Tokyo.

INTEREST ALLOWED:  
On Fixed Deposit for 12 months 4 p. c. p. a.  
On Fixed Deposit for 6 months 3½ p. c. p. a.  
On Fixed Deposit for 3 months 3 p. c. p. a.

INTEREST ALLOWED BY THE HEAD OFFICE AT YOKOHAMA.  
On Current Deposit 1-2-10 per cent per day.  
On Fixed Deposit for 12 months, 5½ per cent. p. a.

The Bank buys and receives for collection Bills of Exchange, issues Drafts and Letters of Credit on the above Branches and Agencies and transacts a general banking business.

Agency Yokohama Specie Bank: New Republic Bldg., Honolulu, H. I.

### JUHEI ISHIZUKA AGENCY OF KEI HIN BANK, LTD. Vineyard Street.

Transact General Banking and Exchange Business.  
HEAD OFFICE - - - TOKYO, JAPAN.  
Draw exchange on FIRST NATIONAL BANK, YOKOHAMA.

**M. W. McCHESNEY & SONS.**  
Wholesale Grocers and Dealers in Leather and Shoe Findings.  
Agents Honolulu Soap Works Company, Honolulu, and Tannery.







### Tons and Tons of New Goods

And no place to put them.

A Special Sale of

## CHINA AND ART POTTERY

For a short time, to make room for this season's immense shipments arriving by every steamer.

A Discount of

# 25 Per Cent

off Regular Prices For Cash

On all Potteries and China

## COMMENCING THIS DAY!

Goods will go fast.

## Better Come Early.

# H. F. WICHMAN.

### NOTICE TO WAIALUA STOCK-HOLDERS.

NOTICE IS HEREBY GIVEN THAT in accordance with the by-laws of the Waialua Agricultural Co., Ltd., interest will be charged on all assessments remaining unpaid from and after July 31st, 1899. W. A. BOWEN, Treasurer Waialua Agricultural Co., Limited. 5294

### KAHUKU PLANTATION.

A DIVIDEND WILL BE DUE AND payable to the shareholders of the Kahuku Plantation Co. on Monday, the 31st inst. The stock books of the company will be closed to transfers on the 29th and 31st insts. C. BOLTE, Treasurer Kahuku Plant. Co. Honolulu, July 26, 1899. 5296

### ASSESSMENT NOTICE.

NOTICE IS HEREBY GIVEN THAT at a meeting of the directors of the HONOLULU RAPID TRANSIT & LAND CO., held at the company's office on the 1st instant, an assessment of ten (10) per cent was levied on the Capital Stock of the Company, due and payable at the Company's office, No. 411 Port street, Honolulu, from and after this date. The shares upon which any assessment may remain unpaid after thirty (30) days from this date will be declared delinquent. Honolulu, H. I., 5th July, 1899. J. A. GILMAN, Secretary H. R. T. & L. Co. 5277

### NOTICE.

AT A MEETING OF THE MERCHANTS' STEVEDORE CO., Ltd., held today, the following officers were elected: J. H. Fisher, President; W. Waters, Vice President; W. Lishman, Secretary; A. W. Keech, Treasurer; C. H. Atherton, Auditor. Who also constitute the Board of Directors. W. LISHMAN, Secretary. Honolulu, July 25, 1899. 5294

### NOTICE.

NOTICE IS HEREBY GIVEN TO all persons indebted to us whose accounts date prior to June 1st, 1899, that unless settlements are made by the first day of August, next, the accounts will be placed in the hands of our attorney for collection. J. T. WATERHOUSE, Honolulu, July 21, 1899. 5291

### NOTICE

THE TIVOLI OPERA CO.'S subscription list for season tickets will open at 9 a. m. Wednesday, July 26, at Bergstrom Music Store, Fort and Beretania streets, Progress block. 5292 R. L. SCOTT.

## A Good Thing

To know about your food is its purity. No one can afford to overlook this important thing in beverage. People who know, say that women and children can use—and be sure of it's absolutely purity—mild and delicious

## RAINIER BEER

It's ideal for home use—a trial convinces.

## BY AUTHORITY.

### PUBLIC LANDS NOTICE

On July 29th, at 12 noon, at front entrance of Judiciary Building, Honolulu, will be sold at public auction, lease of the mauka portion of lands of Aliomani, Papa and Moloaa, Kawaii. Area 2600 acres more or less. Upset price \$500 per year, semi-annually in advance.

Lease will be subject to conditions for forest protection and for reservations for settlement if required.

For further particulars, apply at Land Office, Honolulu.

J. F. BROWN, Agent Public Lands.

June 29, 1899. 2085-1d

### IRRIGATION NOTICE.

Holdes of water privileges, or those paying water rates, are hereby notified that the hours for irrigation purposes are from 6 to 8 o'clock a. m. and from 4 to 6 o'clock p. m.

ANDREW BROWN, Supt. Honolulu Water Works.

Approved by: J. A. KING, Minister of Interior. Honolulu, June 14, 1899. 5255

### DIVIDEND NOTICE.

A DIVIDEND IS DUE AND WILL be payable to the shareholders of the Kipahulu Sugar Co. on August 2d. The stock books of the company will be closed to transfers on July 31st and August 1st. E. SUHR, Sec. Kip. Sugar Co. Honolulu, July 30th, 1899. 5297

### NOTICE.

NOTICE IS HEREBY GIVEN THAT the partnership heretofore existing between A. W. Keech and T. McLean, stevedores, has been dissolved, said business now being incorporated with the Merchants' Stevedore Co., Ltd., with A. W. Keech as treasurer and T. McLean manager. Honolulu, July 28, 1899. 5297

### NOTICE.

THE ADJOURNED QUARTERLY meeting of the Union Feed Company, Ltd., will be held at the company's office in the Julia building on Saturday, the 29th inst., at 10:30 o'clock a. m. F. R. VIDA, Secretary Union Feed Co., Ltd. 5295

### NOTICE.

ALL PERSONS WHO ARE TENANTS of what has been known as the Kapiolani estate are hereby requested to make prompt payment of the amounts due by them to the undersigned at their office on Kahanuanu street. D. KAWANAKAOKA, J. KALANIANA'OLE. 5283

### NOTICE

NEITHER THE CAPTAIN NOR the owners of the British ship Amphitrite will be responsible for any debts contracted by the crew of said vessel. C. A. ANDERSON, Master. Honolulu, H. I., July 15, 1899. 5286

### NOTICE

THE STOCK BOOKS OF THE HAWAIIAN SUGAR CO. will be closed to transfers from the 27th inst. to the 31st inst., both inclusive. W. L. HOPPER, Secretary Hawaiian Sugar Co. 5294

### NOTICE.

NOTICE IS HEREBY GIVEN THAT the stock books of the Honokaa Sugar Company will be closed to transfers from Thursday, July 27, to Monday, July 31, inclusive. W. LANZ, Secretary. 5294

### NOTICE.

NOTICE IS HEREBY GIVEN THAT the meeting of stockholders of the Hawaiian Fertilizer Co. has been postponed till 2 p. m. on Monday next, 31st inst. J. B. ATHERTON, President. Honolulu, H. I., July 26, 1899. 5295

## POWERFUL LIGHT

At the Diamond Head Light House.

Fifteen Hundred Candle Power Out of Three Quarters of a Gallon of Kerosene.

The new lighthouse at Diamond Head is admirably serving the purposes for which it was erected. Everything is running as smoothly as could be desired, and every night the new beacon shines out as a guide for mariners. The light is furnished by the Washington lamp and is of 1,500 candle-power. A person standing in close proximity to the lighthouse at night-time would not realize that the beacon had any such power. But some distance out to sea an idea of the light's full strength is gained. A few nights ago the light was observed twenty-two miles away by one of the inter-island captains. That fact will give an idea of its intensity.

The plant is arranged with a duplicate system. There are two separate vaporizers, two separate valves, everything is duplicated. This is in case something should happen to the light that is burning. The mechanism is so perfect and yet so simple that in a little less than a minute and a quarter after the first light went out the second would be burning. This was learned by actual test a few nights ago.

The disc is three feet in diameter and five feet high and is made up of various prisms. Through one of these a sector of red light is thrown whose ray strikes the water a quarter of a mile beyond the bell buoy.

It takes just three-quarters of a gallon of kerosene to run this powerful light eleven hours, or an actual cost of about 25 cents a night.

The quarters of Captain Christian, the keeper, are nicely fitted up with everything that goes to lessen the tedium of the position.

### A YOKOHAMA HORROR.

Young American and Two Japanese Women Murdered.

A terrible triple murder was committed at a Yokohama saloon early on the morning of the 17th inst., the victims being a young American, rather unfavorably known in the Settlement as Nelson Ward, and two young Japanese women, named respectively Tonokura Suze, aged 24, and Suzuki Aki, aged 19. An American named R. Miller has been arrested on suspicion. The saloon in question was kept by Suze herself, and Suzuki was one of the maidservants. The crime was first discovered by a third maid-servant, named Tanska Tomi, who had been absent during the night, but who returned at about 7 o'clock in the morning, when, to her horror, she found the body of young Ward lying in a pool of blood, on his left side, near a sofa in a room opening out of the bar. The blood had issued from a frightful wound in the throat, evidently inflicted with a knife or some sharp cutting instrument. Her suspicions being roused by this awful discovery, as to the possible fate of her mistress, she hurried upstairs, where, on entering the latter's bedroom, her fears were verified by the sickening spectacle of Suze lying dead on the bed, which was a foreign one, from the effects of a gaping wound behind the left ear, while in the adjoining room Suzuki also lay dead on a Japanese futon, as the result of a wound inflicted in the same spot—behind the ear. Not content with simply killing the unfortunate women, the perpetrator of the crime had actually severed one of Suze's ears from her head, and the member was seen lying on the floor near the bed. The maid-servant at once informed the momban of her discovery, and he in his turn lost no time in notifying the police, who were quickly on the spot in force, and took possession of the premises.

Miller, the man arrested on suspicion, is said to be an American of Irish extraction, belonging to Buffalo, New York. He went to Japan on the ship Sam O'Shanter, from which he deserted. He was seen in the neighborhood about the time of the tragedy and had frequented the place before. When arrested his face was badly scratched up. It was rumored that he had made a confession to the authorities implicating an accomplice. The Public Prosecutor was to enter a charge of premeditated murder against him.

## New Upright PIANOS

—FOR—  
**\$250.00**

ON INSTALLMENTS OF  
**\$10 PER MONTH**

—TILE—  
Bergstrom Music Co.,  
Progress Block.

## Nervous Debility

is often one of the most distressing after effects of the Grip. It may also be caused by overwork, worry, mental strain or excesses of almost any nature. Whatever the cause, a debilitated nervous system means that the nerves lack nutrition. Feed the nerves and life will renew its joys for you.

The best nerve food, and the most valuable tonic (because it both builds up the blood and strengthens the nerves) is Dr. Williams' Pink Pills for Pale People. Hundreds of worn-out, depressed men and women have been made strong-nerved, ambitious, energetic and healthful by this remedy.

Among the well-known men of the newspaper profession is J. J. Lawrence, of the Fourth Avenue, Detroit, Mich., who for the past eleven years has been at his desk every day. He says: "At one time I was in such a condition that my physician said I would have nervous prostration; that I would have to stop newspaper work, or I would go to pieces if I persisted in doing it, as I was destroying what nerve force I had left. I lost flesh and had a complication of ailments which baffled skillful physicians. An associate recommended Dr. Williams' Pink Pills for Pale People and I gave them a trial. I can't say that I received any benefit from the first box, but derived very good results from the second. They gave me strength and helped my shattered nerves so that I could get a full night's rest." "A great deal of pain in the small of the back I attributed to a derangement of the kidneys. For this complaint Dr. Williams' Pink Pills for Pale People worked wonders. Soon after I began taking them regularly, the pain ceased, and I felt like a new man." "I am greatly encouraged from the results of using a few boxes and am confident that the pills will work a complete restoration of my former condition."—Press Evening News, Detroit, Mich.

Sold by all druggists or sent, postpaid, by the Dr. Williams' Medicine Co., Schenectady, N.Y., on receipt of price, 50 cents per box, 6 boxes, \$2.50

## HAWAIIAN Dry Goods Association

TEMPLE OF FASHION.

## SPECIAL SALE

FOR THIS WEEK ONLY!

Fine Figured Organdies at 20 yards for \$1.00.  
Farwell Cotton at 20 yards for \$1.00.  
Fine Gingham at 15 yards for \$1.00.  
Fine Gingham at 35 yards for \$1.00.  
Ladies' Shirt Waists at 25 cents each.  
Ladies', Men's and Children's Shoes at 25¢ below cost.

M. PALAU, Manager.

A. V. GEAR ..... PRESIDENT.  
DR. HUDDY ..... VICE PRESIDENT.  
EDWARD HANAPI ..... SECRETARY.  
N. FERNANDEZ ..... TREASURER.  
CHAS. WI CO ..... AUDITOR.

## TRAVEL EXCITEMENT.

### IRREGULAR MEALS

TEND TO PRODUCE CONSTIPATION. DR. McCARD'S IMPROVED Vegetable Anti-Bilious Pills should be in your grip whether you leave town for three days or as many months. No need to give you a score of medical terms to explain their action. They bring relief from constipation and constipation is responsible for lots of mean little complaints you know. Easily taken—prompt in effect.

## Honolulu Drug Co.

TELEPHONE NO. 364. P. O. BOX NO. 679

## ARTESIAN WELLS!

L. E. PINKHAM, CONTRACTOR.

Office with the Pacific Hardware Co., Honolulu H. I.

Estimates given and contracts made for wells on any of the Islands.

SIX NEW PLANTS For heavy work operated by the most skillful highest class drillers.

## THE HOME BAKERY CAFE A SNAP!

### DINNER.

SUNDAY, JULY 30.

SOUP.

Consomme a la Royale.

FISH.

Smelt a la Tortare.

ENTREES.

Boiled Fowl with Macaroni.

Stewed Steak with Oysters.

Mutton Cutlets Crumbed.

Cheese Souffle.

VEGETABLES.

Boiled Potatoes. Boiled Rice.

Mashed Potatoes.

Spinach. Tarro.

Asparagus with Cream.

ROAST.

Turkey with Chestnut Stuffing.

Leg of Venison.

PASTRY.

Lemon and Apple Pie.

Assorted Cakes.

DESSERT.

Nuts, Raisins, Bananas.

Oranges.

Apple Meringue Pudding.

Tea, Coffee.

Ice Tea, Lemonade.

Dinner from 5 to 8 p. m.—50 cents.

### NOTICE.

DR. H. V. MURRAY WILL OPEN his office on the Porter premises, Alaheea street, near the Pacific Club, on Monday, July 31st. 5295

## REAL ESTATE FOR SALE.

1--A few elegant lots at Manoa on the road, with unsurpassed view and climate. On line proposed Rapid Transit. Easy terms.

2--Several town lots on Beretania Street, Ewa side of Geo. Ross.

3--One house and lot on Beretania Street.

4--Lots in different parts of Kewalo Tract.

5--Kapiolani Park Addition Lots, on installments.

8--One homes. New houses and high grounds at Kewalo, \$1100 each. Cheap.

10--Lands in Nuuanu valley.

11--Long leasehold at Kakaia with good returns

13--Only 6 more lots of all sizes in different parts of the most desirable sections of Kalihi, with fine views, macadamized streets, and water supply from city. These lots we sell at lowest figures in monthly installments without interest so as to put them within reach of anybody who wants a home.

17--House and lot, well improved, on wide, macadamized street in Kalihi, just past Kamehameha Schools. Price \$2,250.

21--FOR SALE--A house lot 100x200 in block 17 on Lehua Avenue, Pearl City.

22--A few of the very choicest lots, of various sizes, in all Kalihi, Ewa side of H. C. Myers, Esq., commanding an unsurpassed view, on fine street with water from city. A visit to the grounds will convince. Terms to suit yourself.

## STOCKS AND BONDS For Sale!

Buy and sell outright City and Suburban Real Estate.

Apply to  
**J. H. Schnack**  
DEALER IN  
Real Estate and  
Stock Broker.  
223 Merchant St.  
P. O. Box No. 142.



OUR FACILITIES FOR PLACING

### MARBLE AND GRANITE Monuments

At reasonable prices, are unexcelled.

Drop us a card and our representative will call on you.

**THE HAWAIIAN IRON FENCE AND MONUMENTAL CO.**  
P. O. Box 627. 641 King Street. Telephone 502.

### Minerva Mirillo.

The new effervescent aperient for the Liver, Blood and Stomach.

Invaluable for persons of sedentary habits

SOLD EVERYWHERE.

### Minerva Mirillo

Is a mild and pleasant, but exceedingly effective aperient, keeping the blood pure, regulating the liver, clearing the complexion, removing gouty matter from the system, and generally warding off disease. Made from, and containing all the valuable properties of, ripe fruit. Prized by travelers, seafaring men, and residents in hot climates. A sure preventive of diarrhoea, and a delightful invigorator of the constitution. When used simply as an effervescent beverage, it has most salutary results. Valuable for all persons of sedentary habits, removing depression and head affections, and generally bracing up the nervous system.

### Gonsalves & Co.

Sole Agents for Hawaiian Islands for the Minerva Preparations.

### BEAVER LUNCH ROOMS.

Fort Street, Opp. Wilder & Co. H. J. NOLTE, Prop.

### First-Class Lunches Served

With Tea, Coffee, Soda Water, Ginger Ale or Milk. Open from 3 a. m. to 10 p. m. Smokers' Requisites a Specialty.

## SORGHUM and ALFALFA SEED

Just received at

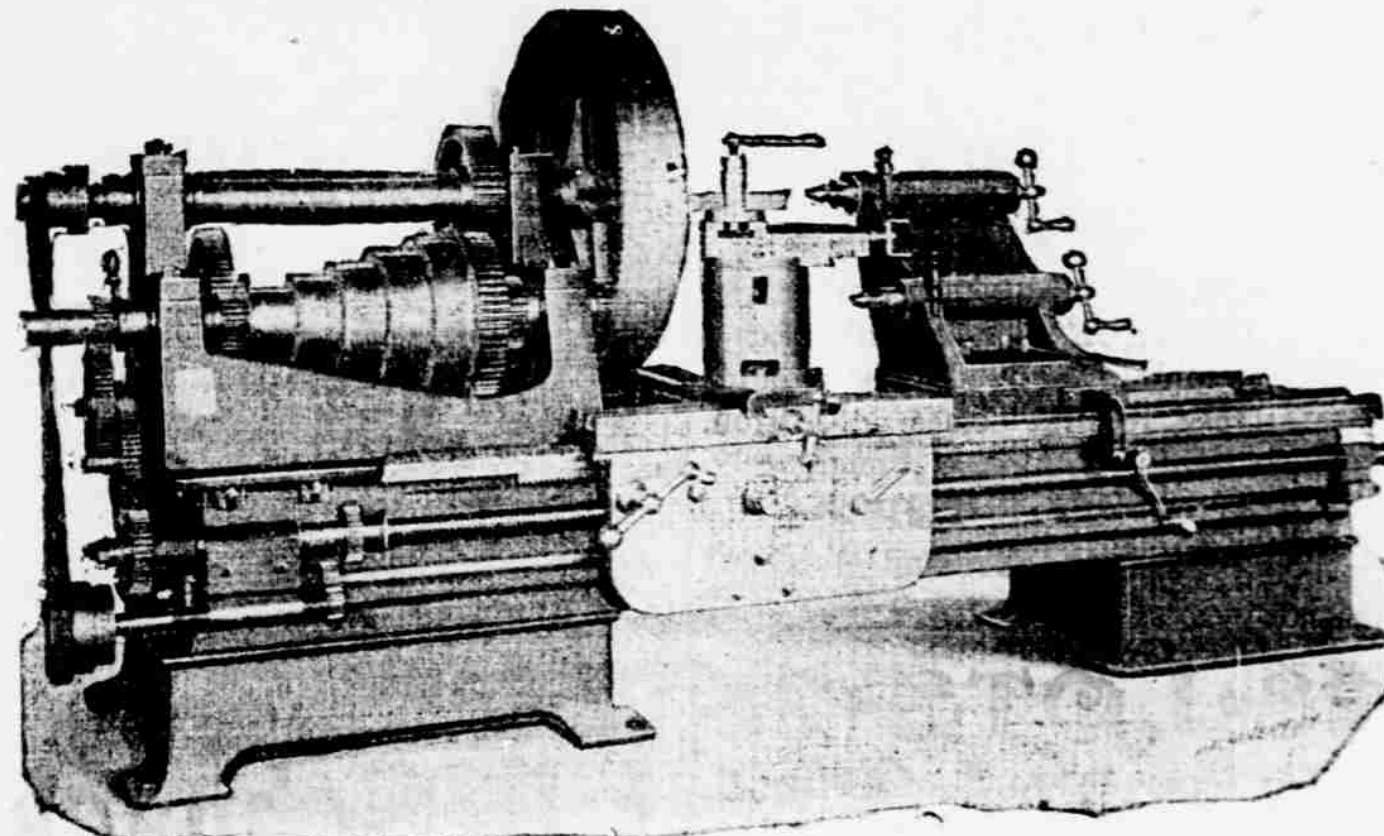
**Salter's Grocery**  
ORPHEUM BLOCK. FORT ST.

### Read the Hawaiian Gazette

### Special Machinery.

### J. J. McCabe Double Spindle Lathe

Heaviest Lathe Work. Two Lathes in One. Direct Acting Electric Motor When Desired.



IN USE BY—O. R. & L. CO.  
ORDERED BY—OAHU SUGAR CO., WAIALUA AGRICULTURAL SUGAR CO., HONOLULU SUGAR CO., KIHAI SUGAR CO.

OTHER SPECIALTIES:—Gray Planers, Barnes & McCabe Drill Presses, Combined Upright and Radial Drills, Shapers, Universal Milling Machines, Combined Bolt and Pipe Cutters.

**Henry D. Roberts, Agent,**  
Pacific Hardware Co. Ltd. Machinery Department.

## 2-Two Leaders-2

One for the table, the other for the yard—both for you.

Fine quality of BLOWN TUMBLERS, engraved in 3 designs.

Your choice at 75 cents per dozen. You know the regular price.

Rattan Yard Brooms, 25 cents each; regular price, 65 cents. [These are slightly damaged by salt water.]

**\$75.00.**

Complete outfits in Crockery, Glass, Cutlery, Plated Ware and Kitchen Utensils, including Stove and Refrigerator for

**\$75.00.**

Estimates and lists given on application.

When you are in our store always inspect the Bargain Tables on the second floor (take elevator).

You are sure to see something you want and the price will not stop you.

### W. W. DIMOND & CO. LIMITED.

SOLE AGENTS

"JEWEL" STOVES for coal or wood. "GURNEY" CLEANABLE REFRIGERATORS.

NEW WICKLESS BLUE FLAME OIL STOVES.

GERM PROOF FILTERS. "PRIMUS" OIL STOVES.

### MASTER'S REPORT

Brings Up an Interesting Question.

As to Liability of Guardians and Administrators for interest on Uninvested Funds.

Judge Perry has made an order in the matter of the estate of Evelyn Nichols Bidwell, by which Jonathan Shaw, the guardian, is ordered to forthwith deliver to Fannie B. Nichols, mother of said minor, a certain trunk and lady's gold watch now in his possession, for the use of said ward; also that he do forthwith pay the said Fannie B. Nichols the sum of \$150 to be used in providing a suitable wardrobe for said minor and the payment of her traveling expenses to California.

In the same estate Henry Smith, as master, has filed his report on the account of Jonathan Shaw as guardian in which an interesting question is raised by the master, who says: "No annual accounts having been filed for the period from September 21, 1893, to June 30, 1899, the question arises, is the guardian chargeable with interest for credit balances from year to year? A careful analysis of the account shows that, in round numbers, the guardian has had uninvested cash balances in his hands of about \$100 for five years, \$50 for four years, \$389 for three years, \$550 for two years and \$550 for one year. At 6 per cent per annum, interest would have been about \$189 on all these balances, or 50 per cent more if the rate was 3 per cent. The guardian has charged only \$150 for commissions, though he would have been entitled to charge \$171.47 on income and \$116.40 on principal received. Possibly the difference is now waived so as to make it appear about an even thing, which, under the circumstances, would appear to be as fair as could possibly be, unless it is held that the guardian should have lost no time in looking around for safe securities in which to make investments. In all probability, too, the guardian may have entertained an idea that he was not called upon to invest his income receipts, his principal receipts being only so recently received."

In conclusion the master states that he knows of no reason why he should not recommend approval of the account and he so does.

### A SISAL PLANTER.

Tells of Operations on His Farm. Machinery Next Year.

Manager A. S. Turner of the Hawaiian Fibre Co., was in Honolulu yesterday. He reports that everything is looking in first-class shape at Sisal, where the company's farm is located. This is on the line of the O. R. & L. Co., a few miles beyond Ewa.

"We all still have a firm faith in the sisal industry," said Mr. Turner. "We have about 160 acres out now, which is about double what we had when the industry was first brought to the people's notice in the Advertiser some time ago. The plants are coming up in first-class shape, despite the fact that there has been no rain for some time. We have lately purchased all of the plants which were owned by Ewa plantation."

"We shall put in the machinery for the shredding and refining next year. Then it will not be long before the fibre imported into these Islands will be conspicuous by its absence. Anyone who cares to go up to the office of the Bureau of Agriculture can see for himself the quality of the fibre being grown right here on Oahu."

### Home Bakery Cafe.

The Home Bakery Cafe is filling that long-felt want. The improvements recently made are extensive and artistic. The decorations are of blue and white. A number of mirrors add to the elegance. The booths, which have been conspicuous by their absence in other restaurants, are artistically fitted up. Other improvements, such as the extension of the ground floor and the addition of a second story will be made in the near future. The service is excellent in every detail.

### Football Meeting.

There will be a meeting of the football players in the offices of the Safe Deposit Co., at 12:30 this afternoon. The report of last year's manager will be read and a new manager and captain for this year will be elected. There is no reason why there should not be a good season of football this fall, and the best way to insure this is to get started early. All lovers of the game are invited to attend.

### Demurrer Filed

In the case of Rose K. Anahu et al. vs. Mary Kamiki et al., S. K. Kane, one of the defendants, has filed a demurrer setting forth that the complaint does not state facts sufficient to constitute a cause of action; that it is ambiguous, unintelligible and uncertain and that there is a misjoinder of parties defendant.

**JAS. F. MORGAN**  
Auctioneer and Broker,  
33 Queen Street,  
P. O. Box 594. Telephone 72.

### Residence Sites FOR SALE.

HAVING PURCHASED A TRACT of the finest land in Manoa for residence sites, I will now receive applications from parties desiring to purchase. These lots are immediately in front of the residence of H. E. Cooper, Esq., and command a grand view of Manoa Valley and the picturesque country to Diamond Head. There are 10 lots in 2 series, 5 fronting on the west, or main, Manoa road, and 5 facing on \_\_\_\_\_ street. The lots are each 100 feet wide and from 100 to 280 feet deep. Government water main laid past the lots on West Manoa road. Early applications necessary. Map of the property and all information in regard to terms of purchase, etc., at my office.

**JAS. F. MORGAN.**  
33 Queen street.

### THIS DAY. Executor's Sale WINES!

By order of the executors of the estate of the late H. A. Wideman, I will sell at Public Auction, at my salesroom, 33 Queen street, on **SATURDAY, JULY 29, 1899.** AT 12 O'CLOCK NOON. A large variety of valuable WINES from the cellars of the above estate. Wines now on view at my salesroom.

**JAS. F. MORGAN, Auctioneer.**

### Auction Sale Boathouse and Boats.

ON TUESDAY, AUG. 1, 1899, AT 12 O'CLOCK NOON. At the boat house, foot of Punchbowl street, known as the King's boat house, I will sell at Public Auction: THE LARGE BOAT HOUSE, Having a Corrugated Iron Roof. About 600 feet of Water Pipe. ONE BOAT WITH 8 OARS. ONE WHALE BOAT AND 6 OARS. ONE MAST, TWO FLAG POLES. Building to be removed within 15 days from day of sale.

**JAS. F. MORGAN, Auctioneer.**

### Auction Sale HOUSEHOLD FURNITURE

On Wednesday, August 2, '99 At the residence of Mr. J. W. Podmore, Emma street (above the residence of President S. B. Dole), I will sell at Public Auction: The entire household furniture, comprising, in part,

- Handsome Ferns and Palms
- One George Steek & Co. Piano (a fine instrument)
- Parlor Divans and Chairs
- Center and Sofa Rugs
- Oak Bookcase, Curtains and poles
- One Oak Dining Set (table, sideboard and chairs)
- Crockery and Glassware
- Two Royal Hawaiian Decanters
- Oak Bedroom Set, Iron Bedsteads
- Toilet Sets, Large Kitchen Stove and Utensils, White Leghorn and other Fowls, etc., etc.

**JAS. F. MORGAN, Auctr.**

### Residence Property AT AUCTION.

On Saturday, August 5, '99, AT 12 O'CLOCK NOON.

At my salesroom, 33 Queen street, I will sell at PUBLIC AUCTION 3 FINE RESIDENCE SITES ON KEWALO STREET, NEAR LUNALILO STREET.

Each lot has a frontage of 100 feet on Kewalo street and a depth of 270 feet. These are all fine, level lots, containing 2,700 square feet each. Maps and further particulars at my office.

**JAS. F. MORGAN, Auctioneer.**

## RETIRING FROM BUSINESS SALE

TO THE PUBLIC: The firm of A. E. Murphy & Co. will retire from the shoe business, commencing July 24th, 1899. We intend to close out within two months' time, and to do so will reduce the price of our stocks of shoes BELOW COST.

This is a bona fide sale; no catch trap; no buncombe about it—a genuine retiring sale.

Now is the time to get shoes, and our shoes are all new and the correct shapes.

The sale will be for cash only.

### A. E. MURPHY & CO.

205 Hotel St. Arlington Block.

### Just Received 18 HEAD YOUNG MULES Large and Sound.

**HONOLULU STOCK YARDS Co.**  
W. S. WITHERS, Manager.  
COR. QUEEN AND ALAKEA STREETS.

### Nice Roomy PHAETONS



### Surreys AND Road Wagons

A Particularly attractive line arrived by the S. S. "Australia" and by the bark "W. H. Dimond."

### CALL AND INSPECT. G. SCHUMAN, FORT ST.

### THE Finest, Largest, Up-To-Date STOCK OF Harness, Saddlery and Carriage Goods, IN THE ISLANDS.

When you can't find what you want elsewhere call here, and get it. F. PHILP is in charge of MANUFACTURING DEPARTMENT. ISLAND ORDERS promptly and satisfactorily filled.

### C. R. COLLINS. ESTABLISHED 1891. KING ST., near NUUANU ST.



**LOCAL BREVITIES.**

Orpheum tonight.  
 Elegant millinery at Mrs. Haana's.  
 It takes power to walk, but not to ride a Cleveland bicycle.  
 A medium-size roll-top desk is wanted. Address P. O. box 139.  
 The Bishop of Panapolis is expected back from Maui tomorrow.  
 August Dreier and family returned by the Mauna Loa yesterday.  
 Two natives were arrested yesterday afternoon for broaching cargoes.  
 Fresh poi Tuesdays and Fridays at the Woman's Exchange. Tel. 659.  
 J. F. Humburg has filed his oath of office as guardian of the Podyen minors.  
 The Hongkong Maru will leave for San Francisco at 4 o'clock this afternoon.  
 The Amateur Orchestra had a spirited rehearsal in the Y. M. C. A. last evening.  
 H. C. Oveden, at Tax office, has a large furnished room on Young street for rent.  
 A. S. Armstrong and O. Knox arrived from San Francisco on the Mary E. Foster.  
 The Stars and the Kams meet today in the first game of the new championship series.  
 Mr. Walter Thurtell represents this paper on the Board of Health expedition to Molokai.  
 Alex Cockburn, the Kaihua merchant, is in the city. Mrs. Cockburn accompanies him.  
 The program for the Sunday afternoon concert at Makee Island appears in another column.  
 Miss Ethel Dixon, a charming contralto, makes her first appearance at the Orpheum tonight.  
 More loose stock was running about the neighborhood of King street and the Waikiki road yesterday.  
 There will be no cricket today, as the concrete wicket will not be finished until some time next week.  
 Deputy Marshal Chillingworth arrested two Chinese last evening for having opium in possession.  
 A window counter is being put in at the station-house, opening from the Marshal's office into the hall.  
 George P. Castle is making considerable improvements to property he has recently purchased at Waikiki.  
 The football players and enthusiasts are requested to meet at the Safe Deposit offices at 12:30 this afternoon.  
 Mr. P. L. Weaver, the attorney-at-law, has not gone to the Coast. Mr. P. L. Weaver, a mechanic, has gone.  
 A guard-rail has been erected in front of the excavation for the new Thurston building on Merchant street.  
 Professor Berger's stringed orchestra has been engaged to furnish the music for the Government ball on August 12.  
 Mild and delicious is Rainier beer— for sale by all liquor dealers. Lovejoy & Co., distributing agents for Hawaiian Islands.  
 The adjourned quarterly meeting of the Union Feed Co., Ltd., will be held at the company's office, Judd building, at 10:30 a. m. today.  
 The Mary E. Foster arrived in port yesterday morning with a large consignment of horses and mules for the Honolulu Stock Yards Co.  
 Permission having been granted the band to play at the ball game this afternoon, the usual concert at Emma Square will not take place.  
 The net proceeds of last Saturday's festival at Kamaikapili Church was \$69.50, which has been placed to the credit of the church fund.  
 It was reported that an effort had been made to burglarize the Silent Barber Shop yesterday morning, but the thieves were scared away.  
 On Wednesday next at the residence of Mr. J. W. Podmore, Emma street, J. F. Morgan will dispose of the entire household furniture at auction.  
 Schroeder's Waituku Hotel has been removed to the building next to Hoffmann & Vettesen's store and a few doors away from the old location.  
 At noon today at the front entrance of Judiciary building will be sold at auction lease of the mauka portion of lands at Aliomanu, Papaa and Moloaa, Kauai.  
 The arrival of the Hongkong Maru was somewhat unexpected yesterday afternoon, as the impression prevailed that she had been laid up for a couple of trips.  
 At noon today at his salesrooms Jas. F. Morgan will sell at public auction by order of the executors of the H. A. Widemann estate, a large variety of valuable wines.  
 Mail arrangements were changed last night owing to the arrival of the Hongkong Maru. This steamer will take the mail for the Mainland instead of the Badger.  
 A dividend is due and payable to stockholders of the Kipahulu Sugar Co. on the 2d of August. The books of the company will be closed to transfers on July 31 and August 1.  
 A commissioner's sale of portion of the Morris estate, situate on the mauka side of King street, Kapalama, will be held at the auction rooms of J. F. Morgan this day at noon.  
 Rev. Mr. Kincaid will preach at the Central Union Church on Sunday morning on "Jesus at Bethany." In the evening his topic will be "The Great Imperative of the Gospel."  
 Tailor-made costumes of latest cut and elegant finish; midsummer gowns of daintiest fabrics, made to suit individual wearer at Madame LeVanway's, 73 Beretania street, opposite Hawaiian Hotel.  
 One of the best Sunday dinners ever cooked will be served at the Home Bakery Cafe tomorrow evening between the hours of 5 and 8 p. m. This is one of the select table d-hote dinners included in the new arrangement.  
 The partnership of A. W. Keech and Thomas McLean as stevedores has been dissolved, the said business now being carried on by the Merchants' Stevedore Co., Ltd., with Thomas McLean as manager and A. W. Keech treasurer.

**LOCAL BREVITIES.**

The Badger leaves for San Francisco at 10 o'clock this morning.  
 Two Chinese are held at the Police Station for entering the Islands without a permit.  
 The City of Columbia is billed to make the start for Hongkong again in about a week.  
 "Senator McFee," in which Post and Marlon explain jealousy, will be the eye-opener at the Orpheum tonight.  
 All doubt has vanished as to the success of the concert benefit for the Amateur Orchestra next Tuesday evening.  
 Several new members have been added to the membership roll of the Waverley Club during the last few days.  
 Contractor Hoffman, who was to build the Beretania street school, has had to send to the Coast for workmen, as there is a scarcity of skilled labor here.  
 J. F. Crowell, the accommodating clerk of the Deputy Marshal's office, was under the weather yesterday. He will figure in today's baseball game, however.  
 The Chinese Consul will hold a reception at his residence on August 2d in honor of the Emperor's birthday. The Government band will be in attendance.  
 Malehini, an old-time offender, was sentenced to six months' imprisonment yesterday for larceny in the second degree. He was caught rumaging in the till of a Chinese store in Palama.  
 A man and a bulldog were looked up at the station-house last evening for "investigation." It is said the man was creating a disturbance by getting his dog to fight with every other canine that came along.  
 A German called at the station-house last evening and offered a reward of five dollars to anyone who would return his daughter, who is missing. The description of her was that she was 15 years old and wore a straw hat.

**The Ke Auhou Arrives.**  
 The Ke Auhou, with 4,116 bags of sugar on board, arrived in port at 1 o'clock this morning. Purser Clapham reports that there are 15,686 bags on Kauai awaiting shipment.

**N. S. Sachs**  
 DRY GOODS CO. LTD.  
 THE PROGRESSIVE STORE

We have bought at a large discount the entire stock of  
**TRIMMED AND UNTRIMMED**  
**Millinery,**  
**FLOWERS and FEATHERS**

Recently imported by Miss Pauline Dinan, of San Francisco, and shall offer same on  
**Wednesday**  
 And Following Days  
 AT ABOUT  
**50c ON THE DOLLAR.**

**N. S. Sachs Dry Goods Co.**  
 LIMITED.  
 THE PEOPLE'S PROVIDERS.

**VOLCANOES**  
 Vomiting Stones  
 —UPON—

**MAUNA LOA**

**THE ONLY**  
**Photographs**  
 MADE.

**Daveny**  
 PHOTOGRAPHIC CO.  
 LIMITED.

MOTT-SMITH BLOCK.  
 Corner Fort and Hotel Streets.

AT THE GAZETTE OFFICE.

**HEYWOOD**  
 TRADE MARK  
**SHOE**  
 1864

OUR PATROL SHOE  
 Extra Quality, Calf Vamr.  
 Leather Lined Rubber heel.

Positively  
**Waterproof**  
 Sole.

Manufacturers' Shoe Store

**PHOTOGRAPHY.**  
 Everybody is interested in  
**PHOTOGRAPHY.**

**Kodaks.**  
 All kinds, prices and sizes.  
 We sell them and teach you how to use them.

**Films.**  
 Fresh supply always on hand.

**Papers.**  
 A large assortment in stock.

**SOLIO,**  
**ARISTO PLATINO,**  
**BROMIDE,**  
**VELOX.**

**VELOX**  
 We have in six kinds.  
 Suitable for all kinds of negatives.

We instruct you to use all the above, **FOR THE ASKING.**  
**Hobron Drug Company**  
 COR. KING & FORT STS.

**STOP!!!**  
 and see what you need before starting for the Crater.  
**YOU WILL WANT A**  
**SWEATER**  
 AND **LEGGINS.....**  
 We keep the Most Complete and Best Assorted Line in the city.  
 The hotels are crowded beyond their limits. Get a tent and be independent of them, and make the trip to the outbreak in comfort, and at the same time have a genuine outing.  
**A FEW MORE LEFT.**  
 Be in comfort on board the steamers and buy  
**A Reclining Steamer Chair.**  
**Fire Arms and Ammunition.**  
**Pearson & Potter Co., Ltd.**  
 312 FORT STREET. TEL. 565.

**JUST ARRIVED**  
 A new line of **JEWELRY** consisting of Watches, Chain Bracelets, Pins, Buttons, etc. Also very handsome **EMBROIDERY** Cushion Covers, **DAINTY CENTER PIECES, DOYLIES,** and many other **SILK GOODS** at reasonable Prices.  
**ASADA & CO.**  
 Japanese Importers and Dealers.  
 Hotel Street - - Robinson Block.

**EGAN**  
**Dry Goods Co**  
 Fort Street.

Are showing a new line of  
**Purses,**  
**Side Combs,**  
**Ribbons,**  
**Veilings,**  
**Belts**  
**AND Belt Buckles**  
 at very low prices.

And a complete line of  
**Gents' Furnishings!**

**Egan Dry Goods**  
 COMPANY.  
**Fort : Street.**

**THEO. H. DAVIES & Co**  
 —LIMITED—  
 Merchants and Commission Agents,  
 Beg to call the attention of the trade to their complete line of—  
**Hardware : Crockery : Saddlery : Etc**  
**PAINTS AND OILS.**  
**GENERAL PLANTATION SUPPLIES.**  
 A fine assortment of Kitchen Furnishings.  
**GRAY AGATE WARE** a Specialty  
**Kaahumanu Street.**

**SPECIAL INDUCEMENTS**  
**THIS WEEK!**  
 \*\*\*\*\*  
**Ladies' White Lisle Thread Vests,**  
 3 for \$1. Regular price, 50 cents.  
**90in. Mosquito Netting in 10yd. Pieces,**  
 \$1. Regular price, \$1.50.  
 \*\*\*\*\*  
 We also received a fine line of **LADIES' BLACK**  
**Capes and Children's Jackets,**  
 which will be on exhibition in our window.  
**WE DO STAMPING!**  
 A large assortment of patterns to make selection from.  
 \*\*\*\*\*  
**B. F. Ehlers & Co**  
**FORT ST.**

**EX AUSTRALIA:**  
 A Large Invoice of  
**NEW AND ELEGANT**  
**GOODS!**  
 COMPRISING:—  
 Elegant Imported Millinery  
 Dress Findings, Ribbons, Etc., at  
**MISS KILLEAN'S**  
 ARLINGTON BLOCK. HOTEL STREET.

The hairdressing and manicuring department is now under the supervision of Miss De Lartigue, a first class artiste just from the coast.  
**OUR CLOTHING**  
 Is Up to the Top Notch.  
**Men's Strictly All Wool Suits,**  
 made of Cheviot and Fancy Casimers, lined with good Italian cloth. A suit that is in every way desirable for business, a suit that will fit you well. This suit would be considered an excellent value at the regular retail price of \$12.50.  
**THE HUB price is..... \$ 6.50.**  
**Men's Serge Suits,**  
 made from Pure Worsted, cut in the very latest styles. Made with piped French facing. Is lined throughout with the best Farmer's Satin and Serge Linings. A tailor would charge you at least \$28.00 to make it.  
**THE HUB price is .... \$12.50 to \$14.50.**  
**J. S. SPITZER.**  
 HOTEL STREET NEAR FORT.



The Pacific Commercial Advertiser
Issued Every Morning, Except Sunday, by the
HAWAIIAN GAZETTE COMPANY,
Von Holt Block, King Street.
A. W. PEARSON,
Business Manager.

OAHU RAILWAY & LAND CO.'S
TIME TABLE
From and After Jan. 1, 1899.

Table with columns for Stations, Daily, and Weekly schedules for Oahu Railway & Land Co.

SHIPPING INTELLIGENCE.

ARRIVED AT HONOLULU.

Friday, July 28.
Stmr. James Maceo, Tulett, from Kapa-
aia: 2,500 bags sugar, 200 bags rice, 22
sundries.

SAILED FROM HONOLULU.

Friday, July 28.
Stmr. Iwalani, Gregory, Honokaa.
Schr. Kaukaeouli, Ialua, Elelele.

ISLAND PORTS.

MAHUKONA—Arrived, July 22d,
schr. Jennie Wand, Christensen, 21
hours from Kihai in ballast, to Ha-
waii Railway Co. Sailed, July 25th,

MOVEMENT OF STEAMERS.

Steamers due and to sail today and
for the next six days are as follows:
ARRIVE.

DEPART.

Steamers for Sails
Hongkong Maru—S. F. July 29
America Maru—Yokohama July 29

VESSELS IN PORT.

ARMY AND NAVY.
U. S. S. Iroquois, Pond, Hilo, March 19.
U. S. S. Badger, Miller, Apla, July 26.

MERCHANTMEN.

(This list does not include coasters.)
Am. ship George Curtis, Sproule, New
York, May 31.

WANTED.

ROLL-TOP DESK, MEDIUM SIZE.
Address P. O. box 139. 5297

WANTED.

TO RENT OR LEASE A HOUSE OF
six or seven rooms, near town, by a
permanent tenant. Address A. B., this
office. 5296

WANTED.

ENGINEER FOR HONOLULU FIRE
Department; must be thoroughly qual-
ified mechanic and pass medical exam-
ination. Applications received until
July 29th, 1899. Address
W. R. SIMS,
Secretary Board Commissioners H. F.
D., P. O. Box 305,
Honolulu, July 25, 1899. 5294

SITUATION WANTED.

BY BOOKKEEPER; HIGHLY EDUC-
ated; long experience; desires perma-
nent employment; good references. Ad-
dress Y. Advertiser office. 5293

WANTED.

A PHYSICIAN TO FILL POSITION
on a plantation in one of the pleasant-
est locations in the country. Apply
immediately to C. BREWER & CO.,
Queen street, Honolulu. 5291

City of Adelaide, Br. bk. ... Newcastle
King Arthur, Br. ship ... Newcastle
Badmore, Br. ship ... Newcastle

COMMISSIONERS SALE OF REAL
ESTATE, SITUATED AT KAPA-
LAMA, HONOLULU, OAHU.

In compliance with an order of the
Hon. A. Perry, First Judge of the Cir-
cuit Court of the First Judicial Cir-
cuit, dated July 3rd, 1899, and filed in
the clerk's office of the Judiciary De-
partment, in a cause entitled "Antone
Morris et al. vs. Joe Morris et al., a
Bill for Partition of the Morris Estate,"
the undersigned, as commissioner, duly
appointed, will expose for sale at pub-
lic auction on Saturday, July 29th,

COMMISSIONERS SALE OF REAL
ESTATE, SITUATED AT KAPA-
LAMA, HONOLULU, OAHU.

COMMISSIONERS SALE OF REAL
ESTATE, SITUATED AT KAPA-
LAMA, HONOLULU, OAHU.

COMMISSIONERS SALE OF REAL
ESTATE, SITUATED AT KAPA-
LAMA, HONOLULU, OAHU.

COMMISSIONERS SALE OF REAL
ESTATE, SITUATED AT KAPA-
LAMA, HONOLULU, OAHU.

COMMISSIONERS SALE OF REAL
ESTATE, SITUATED AT KAPA-
LAMA, HONOLULU, OAHU.

COMMISSIONERS SALE OF REAL
ESTATE, SITUATED AT KAPA-
LAMA, HONOLULU, OAHU.

COMMISSIONERS SALE OF REAL
ESTATE, SITUATED AT KAPA-
LAMA, HONOLULU, OAHU.

COMMISSIONERS SALE OF REAL
ESTATE, SITUATED AT KAPA-
LAMA, HONOLULU, OAHU.

COMMISSIONERS SALE OF REAL
ESTATE, SITUATED AT KAPA-
LAMA, HONOLULU, OAHU.

COMMISSIONERS SALE OF REAL
ESTATE, SITUATED AT KAPA-
LAMA, HONOLULU, OAHU.

COMMISSIONERS SALE OF REAL
ESTATE, SITUATED AT KAPA-
LAMA, HONOLULU, OAHU.

COMMISSIONERS SALE OF REAL
ESTATE, SITUATED AT KAPA-
LAMA, HONOLULU, OAHU.

COMMISSIONERS SALE OF REAL
ESTATE, SITUATED AT KAPA-
LAMA, HONOLULU, OAHU.

COMMISSIONERS SALE OF REAL
ESTATE, SITUATED AT KAPA-
LAMA, HONOLULU, OAHU.

COMMISSIONERS SALE OF REAL
ESTATE, SITUATED AT KAPA-
LAMA, HONOLULU, OAHU.

COMMISSIONERS SALE OF REAL
ESTATE, SITUATED AT KAPA-
LAMA, HONOLULU, OAHU.

COMMISSIONERS SALE OF REAL
ESTATE, SITUATED AT KAPA-
LAMA, HONOLULU, OAHU.

COMMISSIONERS SALE OF REAL
ESTATE, SITUATED AT KAPA-
LAMA, HONOLULU, OAHU.

COMMISSIONERS SALE OF REAL
ESTATE, SITUATED AT KAPA-
LAMA, HONOLULU, OAHU.

COMMISSIONERS SALE OF REAL
ESTATE, SITUATED AT KAPA-
LAMA, HONOLULU, OAHU.

COMMISSIONERS SALE OF REAL
ESTATE, SITUATED AT KAPA-
LAMA, HONOLULU, OAHU.

COMMISSIONERS SALE OF REAL
ESTATE, SITUATED AT KAPA-
LAMA, HONOLULU, OAHU.

COMMISSIONERS SALE OF REAL
ESTATE, SITUATED AT KAPA-
LAMA, HONOLULU, OAHU.

COMMISSIONERS SALE OF REAL
ESTATE, SITUATED AT KAPA-
LAMA, HONOLULU, OAHU.

COMMISSIONERS SALE OF REAL
ESTATE, SITUATED AT KAPA-
LAMA, HONOLULU, OAHU.



A Superb Train
Every Day in the Year
VIA THE
UNION PACIFIC.

UNION PACIFIC.
SAN FRANCISCO TO CHICAGO
WITHOUT CHANGE.

BUFFET SMOKING AND LIBRARY
CARS WITH BARBER SHOP.
DOUBLE DRAWING ROOM SLEEP-
ERS.
FREE RECLINING CHAIR CARS.
PULLMAN TOURIST SLEEPERS.
DINING CARS (A LA CARTE).
ONLY 3 1/2 DAYS TO CHICAGO.

STEAMER UPOLU
Will leave Honolulu at 10 o'clock a.
m., touching at Honolulu, Mahukona,
Kauai and Kona ports, as follows:
LEAVE HONOLULU.

MEETING NOTICE.
THE ANNUAL MEETING OF THE
stockholders of the Waimea Sugar
Mill Co. will be held at the office of
Castle & Cooke, Ltd., on Monday July
31st at 2:30 p. m. E. D. TENNEY,
Sec'y, Waimea Sugar Mill Co.
5296

TO LET.
A LARGE, AIRY FURNISHED
room on Young street, town side of
Thomas Square; rent reasonable. For
further information apply to H. C.
Ovenden, at Tax office, Judiciary build-
ing. 5297

FOR RENT.
AFTER JUNE 30th, THE PREM-
ises corner Hotel and Richards streets,
known as the "Gedge Cottage," at
present occupied by U. S. Com. Dept.
Particulars of
N. E. GEDGE,
Inter Island Office.
5251

HOUSEKEEPING ROOMS TO LET.
FURNISHED OR UNFURNISHED;
also furnished rooms with or without
board. Apply at Temperance Hotel,
Nuuanu, near Vineyard. 5291

FOR SALE.
A MAGNIFICENT GREAT DANE;
registered pedigree; winner of five first
and three special prizes. Inquire ship
Euterpe, Kinu wharf. 5295

FOR SALE.
BEACH LOT AT PENINSULA. FOR
particulars apply to
C. J. FALK,
5278 Room 391 Judd Building.

FOR SALE.
THE STEAMER "KAENA," in
perfect condition, with chains, anchor,
etc., complete; carrying capacity
about forty tons. For further particu-
lars inquire at office of Inter-Island
Steam Navigation Co., Queen Street.
5250

FOR SALE.
A NEW PHAETON WITH RUBBER
tires; can be seen at residence of G. P.
Castle, corner Kinau and Kapiolani
street. For terms apply to G. T. Kien-
gal, at Pacific Hardware Co. 5294

FOR SALE.
A FEW VERY DESIRABLE BUILD-
ING LOTS on Nuuanu avenue, at Ni-
lopa, Nuuanu valley for sale. Apply to
J. M. MONSARRAT,
Cartwright Block, Merchant St.
5267

Oceanic Steamship Company.
TIME TABLE:

Table showing shipping schedules from San Francisco to various ports including Australia, Moana, and Alameda.

In connection with the calling of the above steamers, the Agents are
prepared to issue, to intending passengers, coupon through tickets by any
railroad from San Francisco, to all points in the United States, and from
New York by any steamship line to all European Ports.

Wm. G. IRWIN & Co.
General Agents Oceanic S. S. Co.

Pacific Mail Steamship Co.
Occidental & Oriental Steamship Co.
AND
Toyo Kisen Kaisha.

Table showing shipping schedules for Pacific Mail, Occidental & Oriental, and Toyo Kisen Kaisha to various international ports.

H. HACKFELD & Co., Ltd. Agents

CANADIAN-AUSTRALIAN ROYAL
MAIL STEAMSHIP CO.

DUE AT HONOLULU

Table listing arrival dates for ships from Vancouver and Victoria, B.C., and Sydney, Brisbane, and Suva.

BETWEEN VANCOUVER AND MONTREAL

Theo. H. Davies & Co., Ltd., Gen'l Agts.



Ex S. C. Allen
A LARGE SHIPMENT
HANDSOME PHAETONS

Surreys, Road Carts, Etc.

Also, a new line of
Harness, Laprobes,
Sheep Skin Buggy Mats,
Whips, Lanterns.

HONOLULU CARRIAGE MANUFACTORY,
W. W. WRIGHT, Prop.

ALL STYLISH AND UP-TO-DATE.