

Commercial



Advertiser.

VOL. XXXV. NO. 6202.

HONOLULU, HAWAII TERRITORY, MONDAY, JUNE 23, 1902.

PRICE FIVE CENTS.

BUSY RUMOR STIRS HILO

Groundless Yarns of Volcanic Antics.

SEA DISCOLORED BY MOLASSES

Hilo's New Dock Assured—Volcano Mineral Water May Be a Big Export.

(Special Correspondence.)

HILO, June 26.—The condition of the volcano is practically unchanged during the past week; that is to say, there is molten lava visible in the inner body of the crater at a depth of about 500 feet from the rim. Dense clouds of sulphur vapor still continue to come from the bottom and sides of the pit, but not in such large quantities as was the case a couple of weeks ago. The people of Hilo look upon the activity of the volcano very much as a mother does when she is watching the development of her baby's first tooth. Activity in Kilauea does not mean danger to anybody, but it does mean an increase of tourist travel, which incidentally sheds shekels upon Hilo and vicinity. Various mythical stories of volcanic activity in sections other than the crater have little more than imagination of the originators for foundation. The statement that steam cracks were opening up near Kilauea; that the warm springs in Puna were heating; that the soil around Hilo was warming up from the effect of subterranean fires; that the volcanic disturbances had muddled the harbor of Hilo, are all of this character.

IT WAS MOLASSES WATER.

The discolored water in Hilo harbor which was so "suddenly" discovered by a citizen a couple of days ago, has been visible for several weeks, being due to the discharge of waste molasses into the bay from Wainaku mill.

AT THE VOLCANO HOUSE.

The number of travelers at the Volcano House has been largely increased by the reports of activity as well as by those who go there for cool weather. Hilo has been suffering from the same hot wave that has afflicted Honolulu, and the delightful change to a temperature in the 50s, with a comfortable wood fire at night and a full-fledged ping-pong table to exercise upon, has determined many to take advantage of the hospitality of Manager Waldron.

HILO'S NEW DOCKS.

F. J. Amweg of the Hawaiian Construction Company, the contractors to whom has been awarded the contract for building the Hilo new 500-foot wharf, was a passenger on the Kinau for Honolulu, after having closed arrangements for beginning construction. The Hilo Mercantile Company has been awarded the contract for furnishing piles and lumber to be used in the construction work. Mr. Amweg has also closed arrangements with the Hilo Electric Light Company, under which it furnishes him with power to run the dredge with which he will dredge out the sand alongside the dock, giving a depth of thirty feet. Mr. Amweg expects to get his material on hand and be in full swing about September 1. His contract calls for completion about January 1, with a heavy forfeit for each day's delay, so the opening of the new year will undoubtedly see the fully completed dock, at which the deepest draught vessels can lay, thus realizing Hilo's dream of many years' standing.

BOYD AND DICKENSON.

Land Commissioner Boyd is making a tour around the Island of Hawaii for the purpose of inspecting the Government lands and familiarizing himself with the status of the lands to be opened for homesteading purposes. He will visit Puna and Olaa districts, and then by way of the volcano through Kau, North and South Kona, and will take the Kinau next week at Kawaihae on his return trip to Honolulu. Mr. Dickenson of the Mackay Cable Company is accompanying Mr. Boyd

SAW ALL ISLANDS BUT NIIHAU

Passengers who were aboard the Kinau on Saturday saw a sight which is not witnessed in this country once in a generation. When the vessel was off Kaunakakai, Molokai, the weather was so clear that both Mauna Kea, on the Island of Hawaii, and the entire Island of Kauai were plainly visible from the deck, and included in the geographical array were also the islands of Maui, Kahoolawe, Lanai and Oahu. The whole group, except Niihau, was visible at once.

Purser Beckley stated that in all the years he had been in the island steamer service he had never seen Kauai from this point. The mountains of Kauai were distant approximately 185 miles from the position of the Kinau. This island is ordinarily visible only from the nearest point on Oahu in clear weather.

The late Captain Crane once saw the Island of Kauai from a point at sea near the port of Lahaina, Maui, but this was many years ago.

as his guest. Mr. Dickenson in conversation stated that he should remain in the Islands until the cable was in working order between Honolulu and San Francisco, which he expected would be in the latter part of October next.

WIRELESS TELEGRAPH.

It is announced from Mahukona that an agent of the Wireless Telegraph Company is putting the station in condition to transmit messages. No message has yet come through from Honolulu since the reorganization, but re-establishment of communication is daily expected, as the system is now working finely between Honolulu and Maui.

THE WEATHER.

The weather has been unusually hot for June, and until yesterday had been almost rainless, only a trifle over an inch having fallen during the month. Yesterday afternoon heavy rains began at Hamakua, which have since extended to Hilo and the Olaa district, and all three have had a good soaking. Kohala and Kona districts have been having liberal rains for the past week. The warm weather has given the cane a fine start and the rains at this juncture are of great value to the sugar crop.

ALL ABOUT SUGAR.

The next Hawaiian-American steamer is due to leave Hilo for New York about July 1. She will take a large amount of sugar. The Olaa Company is now accumulating 2500 tons to be shipped by her.

The crop of the Puna plantation is about harvested, only fifty acres remaining to be cut. The Olaa has about 1000 acres to cut. It has stopped grinding double time and is now grinding in the day time only so as to make the top seed available for planting and also to use labor for putting in the early crop. It now has over one-half of its crop for 1902 planted. It will probably complete grinding during the middle of August.

Puna plantation is installing its new railroad system, eight miles now being under construction.

The Hilo Railroad is now running three trains a day through from Hilo to Mountain View, a distance of 17 miles, or within 14 miles of the volcano. The Volcano Stables Company runs stages and rigs from the terminus to the volcano, meeting trains both ways.

Superintendent Lambert of the railroad is somewhat under the weather, and has been advised by his physician to take a trip to the coast. He accordingly leaves in the steamer Enterprise next week, to be gone about a month. His place will be taken temporarily by Superintendent Denison of the Oahu Railway, who will take a vacation by coming to Hilo and keeping an eye on the Hilo Railroad business incidentally.

VOLCANO WATER COMPANY.

The Kawaiakua Volcano Water Company has made contracts in San Francisco for the delivery of 75,000 quarts of water per month, and is now erecting the largest bottling works in this Territory. Manager Williams states that this contract is for San Francisco only, and is simply a beginning of a demand for their water which is higher in certain valuable chemical constituents than any other water in the world. The company expects its first invoice of bottles for the steamer

(Continued on page 4.)

PAIN'S GIRDER RAILS ON KING STREET ARE TORN UP

Rapid Transit Company Makes a Midnight Move on the Enemy With 250 Men.

A Battalion of Laborers Remove the Trackage Laid by Pain on the Franchise Owned by the New Company.

AT 12:30 o'clock this morning 250 laborers marched into Palace Square behind wagons loaded with picks, shovels and crowbars and set to work tearing out the girder rails which the Hawaiian Tramways Co. laid there more than a year ago to prevent the Rapid Transit Company from getting a foothold. By daylight today Manager Ballentyne expects to have the entire track from the King street entrance to the Capitol grounds to a point in front of Camarinos' store ripped out and the street excavated so that the tracks of the Rapid Transit can be put in.

The invasion of the square was planned with secrecy and few people knew that the Rapid Transit contemplated a coup d'etat on the rival company. The two hundred and fifty workmen were notified during the afternoon to report at the power house on Alakea street at midnight. Half an hour before that time the men began to arrive and were taken to the mauka side of the big barn, where they were kept in the shade of the structure and told to keep quiet. Gang bosses remained in the vicinity and kept watch to prevent intrusion from outsiders. Other than the sound of whispering voices there was no sign to the casual pedestrian on Beretania or Alapai streets that so large a gang of men was waiting for the order to send them to the square. The electric cars came in and were housed and the motormen and conductors went to their homes, few of them having any knowledge of what was going on. Manager Ballentyne, Colonel J. H. Fisher, Superintendent Pratt, Mr. Charles Rohrer, Mr. Campbell and others



C. G. Ballentyne, Manager Honolulu Rapid Transit & Land Co.

ers of the company were present and were on the lookout for the last tram car to pass along King street bound for the car stables at Punahou.

At 12:15 the manager gave the order to advance and three wagons trundled out and down Beretania street, followed by twenty-five men, all carrying picks. The procession went to Richards street and thence to the square. The first gang to arrive was put at work at the end of the track opposite the King street Capitol entrance and the hard-packed earth around the rails

BERGER'S BAND HAD A FINE TIME ON THE ISLE OF KAUAI

KAPPELMEISTER BERGER and the members of the Hawaiian Band returned to Honolulu yesterday morning in the steamer W. G. Hall, from a two weeks' musical tour of Kauai, and tonight will again delight Honolulu with a concert at Emma Square. The band boys had a good time on Kauai, and also a very hard trip, with plenty of work. The story of the last stages of the tour is told by Captain Berger in his characteristic way. He says:

"We played eighteen different times in eighteen different places. It is needless to say that every time we played we had big audiences, but on the other hand it was a very hard trip for the band to play at so many places and so often. We had to pack everything along, and this included two sets of instruments, brass and string, two singers, music stands, etc. We used busses, wagons and steamers to make the tour. 'However, 'All's well that ends well,' and we are home again and right glad we are, too. It was very warm on Kauai and there is any quantity of red dust. There are also a lot of very generous people on the Garden Isle, and I wish to thank one and all of them. We arrived at Nawiliwili from Waimea on the steamer Mikahala on Tuesday evening at 6 o'clock and a committee was there to direct us when and where we had to play while at Lihue and vicinity. We had to take to wagons right away to play at Hanamaulu. We arrived there about 8 o'clock and played to an immense audience. On Wednesday afternoon at the Lihue Hotel we played to a select audience, because it was raining and everybody couldn't attend. On Wednesday evening at the residence of Dr. Watt we played in the presence of the biggest audience during our stay.

"On Thursday afternoon we gave a concert in the park of the church, a beautiful spot covered with immense trees which seemed like a real Paradise. That evening we were at the

beach of Nawiliwili. There was fine, cool weather, a beautiful moon and gentle waves. Afterwards we went to an entertainment at Kalapaki, given by the Rices. Friday morning we went to the Government School. It was a pleasure to see the hundreds of women and children, the fine dresses showing in all the colors of the rainbow. And what different races! Hawaiians, beat all the nations of the earth, and they will all be good Americans by and bye. Friday evening," continued the Kappelemeister, "we went to the beautiful home of George Wilcox. The evening was perfect and the place ideal. We played the echo pieces when the band has to divide and go into four different places, and the effect was marvelous.

"Saturday morning we gave a very select concert at the home of the Rices, where the girls sang opera, and then we sat down to a spread as only Mr. and Mrs. Rice can spread. Even Paul Isenberg helped the band and sang 'Like no Like.' Then we packed up and went to the landing, where we played for an hour and then took to the boats. Let me end my narrative with his, Fare thee well, beautiful Kauai, Aloha Nui."

The band will play this evening at Emma Square. The program is as follows:

March—"Our Guiding Star".....Wright
Overture—"Semiramide".....Rossini
Selection—"A Runaway Girl".....Monckton
Songs
(a) "My Adeline".....
(b) "The Gray and the Blue".....
 Mrs. N. Alapai.
(c) "Marie Louise".....
(d) "Cora".....
 Miss I. Keliia.

PART II.

Selection—"Musical Revue".....Riviere
Waltz—"The Wandering Minstrel".....
Mazurka—"The Czarina".....Kiesler
Finale—"Florodora".....Stuart
"Johns Oe." "Hawaii Honolulu"
"The Star Spangled Banner".....

TROLLEYS WERE ALL CROWDED

Another rivet in the doom of the old tram cars was driven Saturday when the new King street extension of the Honolulu Rapid Transit Company was formally opened to the public. All day yesterday the cars on the extension were loaded to the guards with passengers who hurled derisive remarks at the drivers of the almost empty arks, as they whirled swiftly by the slow-plodding mules.

The line was in fine running shape, and the road bed is one of the best pieces of work on the system, even though hurriedly done. At present the cars run only to the turn, though the rails have been laid across the tramways track to the McCully property. As soon as the lowland there is filled in the extension will be completed on to Waikiki.

The electric cars got the bulk of the traffic from Waikiki yesterday, the people taking the mule cars to the turn and completing their journey on the Rapid Transit. It was the same way going out, and though the tram cars did a fairly good business from the turn to Waikiki, the mule cars were almost empty into town, the people preferring the ride in the electric cars, even though coupled with it was the inconvenience of changing cars.

The King street cars are marked with special signs and are of a new type of car with straight sides instead of curved. The cars are marked "Ka-lihi to Waikiki Turn," and will, in the evening, carry red lights to make them distinguishable at a distance. The Punahou cars will use green lights.

soon began to fly. These were soon joined by other gangs until the entire aggregation was strung along the track on both sides, a dense mass of working humanity which extended to Richards street in double file. Under the energetic bosses the picks were wielded with a vim and in a short time trenches were opened up around the rails. As soon as the gang at the end where the work commenced had loosened up the earth to the ties they were moved down the street and in this rotation they will be worked until the entire track can be removed.

The officers of the company were vigilant and assisted the bosses in directing the men. As an indication of the secrecy with which the work was planned there was not a soul in the Palace Square other than the Rapid Transit officials when the army of laborers started from the power house. Shortly after their arrival Chester Doyle appeared and he remained on duty for the police department, ready to send the word to the station if any resistance was offered, or if trouble of any kind occurred. The workmen themselves were in ignorance of the real character of the work they were expected to perform and about their first intimation of it was when they were directed to the tram tracks in the square.

At 7 o'clock this morning the first crowd of laborers will be called off and 100 Hawaiians will take their places, and gangs will be worked day and night until the Rapid Transit tracks are laid. The present Rapid Transit tracks terminating at Alapai on King, and those at the intersection of King and Liliha streets, will be connected as soon as possible, thus making a complete electric line from Ka-lihi to the Waikiki road.

When the Rapid Transit first undertook to lay tracks on King street, nearly two years ago, the Tramways Company blocked their work by laying tracks directly in their path. Manager Pain of the Tramways laid a section of track on Palace Square paralleling the present line as far as the old fire station next to the Hawaiian Electric Company building. The Rapid Transit laid a section of track there which the Tramways tore out and replaced with their own. The Rapid Transit then laid a temporary track from Fort street to Camarinos' store, where Pain made an ineffectual attempt to put in a switch, and was placed under arrest for the part he took, when the opposing gangs of workmen almost came to blows. In the courts Manager Pain applied for an injunction against the Rapid Transit to prevent them using King street for their tracks, but failed. Superintendent Boyd of the Public Works Department recently notified the Tramways Company that its additional track on Palace Square was a nuisance, at the same time requesting that the girder rails be removed. The Tramways Company has ignored the order and the Rapid Transit resolved to take

(Continued on Page 4.)

POLICE AND THE PAKE

Another Big Raid On Celestial Gamblers.

THE CHINESE HAD A GAMING FORT

Under Sledge Hammer Blows the Doors Yielded and About a Hundred Were Caught.

SLEDGE hammers from the iron works and a ladder from the Fire Department were used last night by a group of police officers in effecting entrance to one of the largest Chinese gambling resorts in the city. As a result 105 Chinamen were taken to the police station. The raid was conducted by Captain Parker and David Kaapa, assisted by Chester Doyle, Joe McKinnon, A. L. Duncan, Lieutenant Gardner, Alfred Mossman, John Thomas, Bishaw and Nilsson. The gambling house is located on the Waikiki side of Kekaulike street, just above King street, and every device had been used in the construction of the entrances, staircases, doorways and windows to make the joint a safe one. When the aggregation of peeping Chinese was taken to the police station the patrol wagon had to be left in the street in order that the stable quarters could be used as a place of detention for the prisoners. All were released before midnight, \$15 cash bail being put up for each one.

The raid started from David Kaapa's house in Kakaako in order that the Chinese spies, who are generally watching the police station, would have no knowledge of the matter. Three hacks were used to carry the officers, while an express wagon came at the rear, bearing the ladders. The police were divided, one section going to the rear of the buildings. There the ladders were raised so that the roofs of buildings near by could be mounted. Another detachment of police went to the front of the structure. A section of the front of a store on the ground floor was opened to admit a supposed gambler, and behind him the police made a rush, overpowering the guard behind. Those armed with sledge hammers went ahead and at the peep hole door met with the first resistance. The heavily barred door was broken open and the party came into a small room from which a staircase led to the upper floor. Another door made of heavy timbers with the cross pieces lined with iron bands, succumbed to the blows of the sledges, and entrance was gained to a narrow, tortuous staircase. At the top of the landing the police came across a door heavier than the rest. The boards at the side of the staircase, however, were thin and one or two had been removed to give ventilation. Doyle sprang upon an iron barred window, and leaning across, ripped off enough of the wall to permit ingress. Once inside the room above, he forced the wooden bar from the door and opened it so that the party could enter. The rooms were four in number and were jammed with a sweating mass of Mongol humanity. Not one gambler had been able to get out. Each room had a gaming table and fan-tan and other games had been in progress. One fan-tan room was divided by a sliding grated doorway, so that when a certain number of gamblers were inside the door could be closed and prevent others from entering. Soda water was the chief refreshment sold in the rooms, while a big pot filled with warm tea was handy for any one who thirsted. Two rooms were fitted up with bunks and several men were found in them "bitting the pipe."

During the melee which followed the entrance of the officers, Officer McKinnon was struck by what seemed to be a deadly weapon, and for a few seconds his comrades thought he might bleed to death. On closer examination, however, it was found that the missile was a section of watermelon.

Cable at Sans Souci.

The Honolulu end of the Mackay cable will in all probability be landed at Sans Souci. Superintendent Dickenson of the Mackay company is quoted at Hilo as having said arrangements are completing for the acquisition of a landing place there, and the report was partially confirmed yesterday by F. M. Hatch in Honolulu. Mr. Hatch said that negotiations were pending but had not been completed for the sale of a strip of land at Sans Souci to the Mackay company. Only sufficient for a landing station is desired and only a narrow strip will be taken by the company.

Carpenters' Tools

Are you about to buy a new set or any part of a set of tools? If so our stock you will find absolutely new and includes the very best on the market.

Machinists' Tools

Starrett's machinists' tools and other fine tools, all entirely new stock. Masons' and Bricklayers' supplies in full assortment.

Plumbers' Supplies

This department is fully stocked and we have the finest line of blow torches and furnaces in the city.

E. O. Hall & Son, Ltd.

New Building, Corner Fort and King Streets.

Advertisement changed Mondays.

Muslin Underwear Sale

You can't afford to overlook this sale. We bought the goods way below the regular wholesale price—they being a sample line. This week's bargains are of unusual importance—Materials are fine, garments are new and beautifully made. See them displayed in our windows with prices plainly marked.

Special Sale of Shirt Waists

Prices cannot be told here for lack of space—All on display in our window. We promise you will not be disappointed.

Childrens' Bonnets and Sun Hats

Handsome assortment in pretty shades and we have imported an elegant line of

Ladies' Fancy Neckwear and Fancy Dress Trimmings.

A Blom, PROGRESS BLOCK
Fort Street.

Pure Cane Sugar Only!

NO SWEETENING SUBSTITUTES

Used in the manufacture of the high grade and popular products of the old reliable

CONSOLIDATED Soda Water Works,

COMPANY, LTD.

Works—601 Fort St.

Telephone Main 71.

Prompt delivery anywhere in the city and Waikiki.



Are You Going Away?

Is the summer vacation to be on the Coast or the other Islands? In either event we can fit you out with clothes, dress suit case, etc., at the lowest prices.

Stock always up-to-date

Kash Clothing Co. Limited

TWO STORES
Corner Hotel and Fort Sts., and Hotel St. near Bethel.

Postponed to June 30.

Closing Out Sale

Go Kim, 116 Nuuanu St.

Fine Stock of Grass Linen Just Received.

VISIT TO THE CRATER

Fresno Man's Story of the Kilauea Scenes.

A TOURIST'S IMPRESSIONS

Interesting Tales of a Visit to the Greatest of the Active Volcanoes.

(Special to the Advertiser.)
SAN FRANCISCO, June 6.—J. L. McClelland writes to the Fresno Republican as follows:

Crater of Kilauea, Hawaii, May 14, 1902.

Editor Republican:—I am sitting on the lava rocks at the brink of this greatest active crater in the world—an odd place to write a letter! May be in a few weeks it will be impossible to do this, as the volcano shows signs of greater activity than it has shown for several years, and this ledge of rocks is likely to be engulfed and included within the extent of the main crater, which is said to be 700 feet deep, and nine miles in circumference. This statement I take on faith, as it appears to have bottom as far as I can judge from observation. The entire pit is filled up with a dense sulphur smoke, making it impossible to see even a hundred feet down the sides. We have been pitching rocks over the edge of the wall, but no sound of their striking is heard. It reminds me of St. John's description of the "bottomless pit"—see Rev. chap. ix, verse 2. We can hear strange noises like crackling and bubbling, and occasionally rocks are heard breaking loose from the walls, and carrying a long train of lesser sounds in their wake. At the present moment, a strong breeze is blowing the smoke away from us; but occasionally a slight shifting of the wind permits the heavy sulphur fumes to come this way, and then we have to retreat. Sitting on this lava bed, we are really within a greater crater of less depth, surrounded by a steep rim of lava rocks 150 feet or more in height. This crater includes the more active pit, and is nearly thirty miles in circumference. To reach this point we came from the Volcano house, where we spent last night, on the margin of this larger crater, and walked across nearly three miles of rough lava rocks. A stranger to these scenes regards the path we passed over as dangerous, and views with nervousness the smoking pits by the way. From a thousand cracks and "blowholes" in the bottom and walls of this greater crater, the steam and sulphur smoke is rising. In some places, a bit of paper readily blazes when put into the cracks across the path you tread, so hot as to compel you to step quickly in passing over them. But as these conditions have existed for several years without much change, people call the shallow portion of the crater inactive. The pit in front of us, until four years ago, was full up to the brim with fiery waves of lava, that beat against the iron walls with terrific noise; but suddenly "the bottom fell out" and it has continued about as at present since that time. But such a subsidence has before occurred in its history. Some of these days, according to its habit, it will boil up full of fiery liquid, and spill over the sides, and a molten river a mile wide goes hissing and crackling over the barren deserts and green cane fields to the sea, leaving black desolation and death in its path.

The old tyrant has remained quiet longer than usual, they say, and judging from present signs, the volcano prophets say there is likely to be an outbreak soon. The people of Hilo are wishing for a little more activity up here. It presents a grand sight when the crater fills up, and people come from all parts of the world, and patronize the hotels, and the transportation lines reap a harvest.

Hilo is on the edge of the bay of the same name, thirty-one miles away, and 4,000 feet below us. It is a fine little town, surrounded by a very fertile country, mostly occupied by immense sugar plantations. A little railroad runs out seventeen miles of the way from Hilo toward this place, that is, to the end of the sugar plantations at Mountain View. There you take a stage and with a gradual climb up a good road, you travel the remaining fourteen miles, through dense tropical forest most of the way, to the Volcano house, which is several miles beyond the forest, surrounded by a rather barren landscape.

They will tell you, at Hilo, and in most localities, that nothing pays on these islands but sugar. Bananas, pineapples, coconuts and other tropical fruits that we of the temperate zone think of in connection with these islands flourish; but people say there is no home market for them, and transportation to the mainland is too high.

Hilo contains about 1,000 white people, 2,000 or 4,000 Asiatics and about 1,000 Kanakas. It is the chief city of this island, and next to Honolulu in size and importance. But the transportation companies all work there, that is, to the end of the movement of vessels that it is easier and cheaper to go from any part of the island to Honolulu than to Hilo. As a consequence Hilo has the trade of only a small fraction of its own island, and the merchants there are so mixed up in business with the monopolists of Honolulu that they have not dared to oppose them by running an independent steamer or schooner between their town and other parts of their island. But they have recently started an independent steamer between Hilo and San Francisco and propose other like innovations in the near future. Hawaii is a very rough country. The building of roads is exceedingly expensive, and the care for them afterward, on account of the heavy rains is a great tax. If rains at Hilo 120 inches during the year—heaviest in winter, but plenty in summer—but as it generally comes in the night, people don't mind it much. It has a pleasant climate, 68 in the morning and 78 at noonday—rather cooler and less oppressive than Honolulu. Up here at the volcano the climate is very pleasant and cool, so that we don't mind a walk of seven miles during the morning hours in looking at these wonders. But we leave now for Naalehu, a village away down near the southern end of the island, about forty miles from here. We shall then have traveled almost the entire length of this island within the past week, since leaving Honokaa near the north end.

SECOND ANNUAL Great American Sale

We propose to assist, in a very substantial manner, every woman and girl in Hawaii to celebrate the National Holiday, gowned in a proper and becoming manner.

This is our plan. We shall, during the six days beginning June 23 and ending June 28, offer ten thousand yards of choice washable dress goods, American made for American trade, at reductions averaging about 50 per cent. It should not be necessary to repeat the statement we have often made in these columns, that American looms produce the choicest, daintiest and best wearing cotton dress fabrics on earth. It is also well known that we carry a superb stock of these goods, and an opportunity to buy them for less than our prices, marked in plain figures, means money saved by you and makes new friends for us.

We intend that this "American Sale" shall take front rank among our famous Special Sales and have made plans accordingly. Each piece of goods offered bears the original price, also a Special Sale tag, showing the SALE price.

We quote a few examples:

- 15c Blondin Batistes for..... 5c Yard
- 15c Empire Foulards for..... 1-3c Yard
- 15c Haveville Batistes for..... 5c Yard
- 20c Fancy American Swisses for..... 10c Yard
- 25c Mognon Foulards for..... 10c Yard
- 25c Pongee Foulards for..... 10c Yard
- 25c Ondaline Brodes for..... 10c Yard
- 25c English Style Madras for..... 10c Yard
- 50c Silk Stripe Soft Mulls for..... 25c Yard
- 50c Embroidered Etamines for..... 25c Yard
- 60c Superfine Plummets for..... 30c Yard

BEAR IN MIND THE DATES—JUNE 23 TO 28 INCLUSIVE.

Whitney & Marsh, Ltd.

THE CATHOLIC SCHOOL AT LAHAINA

Program of the Closing Exercises of Father Julian's School.

The entertainment given by the pupils of the Catholic school at Lahaina on Thursday evening was a brilliant success.

The doors opened at 6:30 p. m. and when the curtain rose at 7 o'clock the song, "Welcome, Kind Friends," was greeted by the applause of a full house. By the time the second song, "Malanai-anu," was over, standing room was at a premium, and many listened to the sweet melody without being able to get a glimpse of the singers.

"The Troubles of the Little Folks," a dialogue in which nine characters were introduced, created considerable amusement among the elder portion of the audience by the comic interpretations the little ones gave to every-day maxims.

"The Golden Shore," a duet, was touchingly rendered by Miss M. Paona and Miss A. Lumsung. "Moonbeams Streaming," a chorus, was next on the program, and received well merited applause.

Then came the "Grand Baby Show," in which the junior misses displayed their children (dolls) and caused considerable amusement, each setting forth the particular beauties of her little darling, each one claiming the prize, and the indignation of the little mothers when they did not get it.

"Ei-ei," a Hawaiian song, was well rendered and caused considerable hand clapping. "The Frog Song" of the primary class contained a lot of croaking and produced a good deal of mirth amongst the youngsters.

The action song, entitled "The Ten Chinamen," was one of the features of the evening and the dusky little lads, with their broken dialect, seemed for all the world like so many heathen upstarts.

"Sweet Birdie," a soft little carol, was well fitted to the young and melodious voices of the primary.

"The Enchanted Apple," an operetta in three acts, was the last, but by no means the least of the program; in fact it was the feature of the evening and called for a good deal of real acting talent. Miss Martha Moses as Judith, Miss Mary Kauhane as Mother and Fairy, and Miss Mary Kaahanui as Nurse, and Miss Carrie Freltas as Betsy, deserve special mention for their splendid acting and perfect articulation.

Gold medals were awarded to Miss Mary Kaahanui and Master John Vierer for general good conduct during the year.

Before closing the entertainment Rev. Father Julian made a complimentary speech to the pupils, and to their teachers, Miss Helen and Miss Lucy Moses, for their hard efforts during the year; he also thanked the parents and friends for their kind attendance and hearty approbation.

The stage has been refitted and new scenes painted, and Mr. William Kane, the artist, deserves special mention for his painting of Diamond Head on the drop curtain. Following is the program:

- Welcome, Kind Friends.....Chorus
- Malanai-anu ka Makani—Hawaiian song.....Primary
- The Troubles of the Little Folks—Dialogue.....Nine Characters
- The Golden Shore—Duet.....Miss M. Paona and Miss A. Lumsung
- Moonbeams Streaming.....Chorus
- The Grand Baby Show—A play for Little Girls.....Chorus
- Ei-ei—Hawaiian Song.....Chorus
- The Frog Song.....Primary
- The Ten Chinamen—Action Song.....Pete and the Peddler—Dialogue.....Three Characters
- Sweet Birdie—Song.....Primary
- The Enchanted Apple—Operetta in Three Acts.....Primary
- Hawaii Ponoi and the Star Spangled Banner.....Chorus
- The Enchanted Apple—Operetta. Characters:
Judith.....Miss Martha Moses
Nurse.....Miss Mary Kaahanui
Betsy.....Miss Carrie Freltas
Mother.....Miss Mary Kauhane
Fairy.....Miss Mary Kaahanui
Wagoners, Haymakers, Laborers, Milkmaids, School Children.....

And Still They Are Coming



CARLOAD AFTER CARLOAD of the Celebrated Anheuser-Busch Brewing Association

Premium Pale AND Pale Lager Beer

In cases and barrels, quart and pint bottles. AMERICA'S STANDARD BEER AT POPULAR PRICES. Don't let the warm weather find you without it.

H. Hackfeld & Comp'y, Ltd.

SOLE AGENTS for the Hawaiian Territory.

IF YOU ARE



Call and See Us and We Will Enlighten You **Bergstrom Music Co., Ltd.**
Fort Street, Honolulu

HONOLULU BRANCH OF The Harrison Mutual Burial Association

This association so well known throughout the Mainland is now established in Honolulu. A Friend in need is a Friend indeed. This association is a friend to the family upon whom affliction and death has come. Membership fee is only \$1.50. For particulars apply at office of secretary, 393 Beretania street, or any member of the association. Phone Blue 571.

A Few Epicurean Canned Soups

" Fish
" Vegetables
" Fruits

On your pantry shelf make a short notice dinner a success and your unexpected guest welcome.

Packed by H. LEVY & Co., San Francisco. Sold by all First Class Grocers.

California Calimyrna Figs

NOW ON SALE AT **OCCIDENTAL FRUIT STORE**
521 King Street. 25c a Box.

Oriental Bazaar

We have just received by last steamer 100 cases of hand decorated chinaware: there is none better anywhere. Also 100 pieces of silk goods, pounce, pineapple and all colors. By same steamer a large shipment of best Chinese teas, put up in pretty louvered boxes, one pound, and one-half pound sizes. Come in and see our new goods in all departments.

66-72 King Street, corner of Smith.

WORLD RENOWNED

The Wines of Asti

ITALIAN SWISS COLONY

Who own and conduct the

Largest Vineyard in the World

Have done more to make California famous than any other industry in the State.

The wonderful success of

ASTI WINES

Is due to their UNIFORMITY, PURITY AND EXCELLENCE OF QUALITY. All varieties are bottled for family use and are justly acknowledged to be the

Best Table Wines

Are served in all the leading Hotels and Cafes of the world.

The Italian Swiss Colony Label

On each bottle guarantees the quality. Trade supplied by following jobbers:

WOLTERS-WALDRON CO., LTD.
GOMES & MCGIGHEE
GONSALVES & CO.

JOS. HARTMANN & CO.
S. I. SHAW & CO.
CAMARA & CO.

115 N. KING ST.

PHONE MAIN 289.

S. OZAKI

Hardware, Glassware,

Crockery, Paints, Oils, Etc.

WHOLESALE AND RETAIL.

Call and Inspect our Complete Lines.

SPECIAL SALE OF CREPES

AT OUR

Hotel Street Store.

Just received a new consignment of CREPES, 20 inches wide, all Patterns and Shades; also 30 inches wide patterns.

178 Hotel Street.

'Phone Main 197.

Clinton J. Hutchins,
INSURANCE.

Life

Ax

Fire

Marine

Mainery Block Fort Street.

James F. Morgan, President; Cecil Brown, Vice President; F. Hus-tack, Secretary; Charles H. Atherton, Auditor; W. H. Hoogs, Treas-urer and Manager.

Hustace & Co., Ltd.
WHOLESALE AND RETAIL DEALERS IN

Firewood, Stove, Steam, Blacksmith's Coal

Also Black and White Sand. Telephone Main 295.
Special Attention Given to Draying.

Read the Advertiser.

PAIN LOSES ONCE AGAIN

Rapid Transit May Build Road to Waikiki.

NO INJUNCTION FROM HUMPHREYS

Another Application for Injunction Will Be Presented to Judge Estee Today.

By the decision of Judge Humphreys on Saturday the Honolulu Rapid Transit & Land Company is allowed to complete its extension through the McCully tract to Waikiki, which on the same day was finished as far as the Waikiki turn. The temporary injunction formerly granted by Judge Humphreys at the instance of the alleged Chinese lessors of the McCully property is dissolved, and the defendants are at liberty to continue their construction work through the disputed premises. The opinion is based largely upon the public utility of the Rapid Transit, as well upon the failure of the plaintiffs to prove title to the property.

Manager Pain has not, however, given up hope of stopping the inroads of the electric traction upon what he claims is his exclusive property and a suit somewhat similar in nature to the one decided by Judge Humphreys is already under way in the Federal Court. In this case the Hawaiian Tramways Co. comes out openly as the plaintiff and asks Judge Estee for an injunction to restrain further work upon King street, because of the alleged violation of the rights of Pain. The hearing of the new case upon an application for a temporary injunction comes up in the United States Court this morning and more interesting developments are to be anticipated. Pain already has given notice of his intention to appeal and will carry the cases, which have been universally decided against him, to the United States Supreme Court. On different propositions affecting his franchise and the rights of the Honolulu Rapid Transit & Land Co., to the use of city streets, decisions adverse to Pain have already been given by the Supreme Court, United States Court, Judge Humphreys and Judge Gear. In several of the courts he has had two and three adverse opinions.

The case of the Sun Kwong Mau Co. vs. Waikiki Land & Loan Association and Honolulu Rapid Transit & Land Co. was argued Saturday morning very briefly. Judge Humphreys inquired before the argument began if it was admitted that the original plaintiffs had disposed of their interests in the disputed property, before or since the suit had been instituted. To this Attorney Breckons for the plaintiffs replied that five of the plaintiffs had done so, but three still retained their interest in the lease. He contended, however, that the suit should be considered as it was, when begun, and the subsequent acts of a part of the plaintiffs did not affect the case as a whole. Mr. McClanahan replied briefly and argued that Pain, who was not a party to the suit in any way, was at the bottom of the matter, and that the plaintiffs were not entitled to the relief by injunction. If entitled to anything the proper procedure was through equity and they would be awarded whatever damages were shown to have been done to them.

Immediately at the conclusion of the argument Judge Humphreys awarded his decision in favor of the defendants, dissolving the injunction already granted and dismissing the complaint.

"The authorities are uniform," said the court, "that where an injunction would operate to the inconvenience of the public and where the balance between the rights and wrongs of plaintiff are nicely balanced, the court will be extremely reluctant to grant an injunction."

The Court referred further to the legislative act under which the Honolulu Rapid Transit & Land Company was operating, and said that by reason of this it became a public corporation, in which the public at large had an interest, and though this gave it no right to override private property owners, yet the court was compelled to consider the great interest the public had in the company's work.

"The Court will take judicial knowledge of the conditions in this community, and the fact that the Rapid Transit Company is filling a long-felt want, by providing a better, cleaner and more rapid means of transportation," said Judge Humphreys. "The building of this road will increase the value of property and benefit the health of the city by making swamp lands more valuable, so that they will be filled in."

Judge Humphreys held also that the title to the property had not been satisfactorily proven, that the Chinese appeared to have sold whatever interests they might have possessed and that Pain was apparently more interested than the original plaintiffs in the outcome of the case. The fact that it was admitted that the Hawaiian Tramways Company had been furnishing the funds for the prosecution of the case was also taken into consideration by the court.

Even if the plaintiffs were damaged by the alleged wrongful acts of the defendants, they had their remedy through equity proceedings. Judge Humphreys, in dismissing the case called attention also to a ruling which he had made in opening it, which he now considered to have been erroneous. This was the upholding of the motion made by plaintiffs, striking out the portion of the reference to Manager Pain of the Tramways Company. The evidence in the suit showed that Pain had been connected with the case, and the Court stated that new authorities had been found which convinced him that the original ruling was wrong.

REAFFIRMS ORDER.

Judge Gear has reaffirmed the former

Sale of Laces This Week

We expect every lady in Honolulu to be interested in our lace department this week—The laces are an entirely new importation and of exceptional value—About 75 different patterns in all to select from, and prices far below the regular values. You can buy very handsome laces at from 10c to 20c per yard.

Black Cloth Capes

A large new shipment just opened. We will sell them at great bargain. We won't take the space to describe them here but invite you to see them

Sailor Collars for Children

150 attachable sailor collars in white materials all washable. On sale this week at exactly half price. Entirely New Goods.

Boys' Linen Knee Pants

45c per pair

Also new stock of wash suits, all sizes

Jersey Ribbed Vests

Ladies' Jersey ribbed vests are just the thing for summer weather. We are offering them this week 1/2 doz. to the box @ 70c per box.

Pearl Buttons

500 dozen, sizes 14, 16, 18 and 20. No seconds in the lot. 5c per doz.

Crochet Cotton

500 boxes, silk finish, in all shades and colors 5c per spool.

Chatelaines and Wrist Bags

Handsome stock just opened; also the new styles of pocket books and other Leather goods. Come and see them.



Ladies' Shirt Waists

Our stock the most complete and finest in the city. Every lady who has seen this stock and purchased from it has been more than pleased, both in quality of goods and prices.

PACIFIC IMPORT CO.

MODEL BLOCK, FORT STREET

Telephone Main 396. P. O. Box 820.

Hawaiian Japanese Ballasting Co.

Office:

1018 Smith St., near King.

Filling in material either earth or coral, furnished at a very low price, as we have a large stock on hand.

CONCRETE WORK guaranteed, and done at a very low price.

BLACK AND WHITE SAND sold from \$1.50 to \$1.75 per cubic yard, delivered.

Special low price in CRUSHED ROCK of all grades from No. 1 to No. 5, or rock sand.

COMMON DRAY, \$5.00 per day.
LARGE DRAY, \$6.00 per day.

Honolulu Iron Works Co.

STEAM ENGINES

BOILERS, SUGAR MILLS, COOLERS, BRASS AND LEAD CASTINGS and machinery of every description made to order. Particular attention paid to ship's blacksmithing. Job work executed on shortest notice.

Keystone-Elgin WATCHES

DURABLE AND ACCURATE

The Keystone Watch Case Co.

ESTABLISHED 1852 Philadelphia, U.S.A.

America's Oldest and Largest Watch Factory

For sale by The Principal Watch Dealers in Hawaiian Islands



A \$20 Belt for \$5.

The "Dr. Alden Electric Suspensory" is guaranteed to possess all the curative properties of the expensive belts now sold by doctors and druggists. It gives a very strong current of electricity and is easily regulated. Bound to supersede others. Can be had from the undersigned only; NO AGENTS; NO DISCOUNT. Circular free. Address PIERCE ELECTRIC CO., 206 Post St., San Francisco. Sent free to Hawaii on receipt of \$5.

COLLEGE HILLS

LOTS FOR SALE.

The Trustees of the Oahu College offer for sale at very low prices, and on

VERY FAVORABLE TERMS

(One-third cash; one-third one year; one-third two years' time, with interest at 6 per cent per annum) some very choice lots at College Hills. The

RAPID TRANSIT

Company performs a twenty minute service through the property, the College has provided a splendid and abundant supply of artesian water reaching over the entire tract, and the charges are reasonable.

This is

A MOST HEALTHY LOCATION

and is entirely free from objectionable surroundings. No saloons, wash houses, ivery stables, poi shops and other nuisances of like character are allowed, and by all means is the most attractive suburban district near Honolulu.

Persons desiring lots in this locality will be able to secure full particulars in regard to these lots by applying to Mr. P. C. JONES or Mr. JONATHAN SHAW at the office of the Trustees, No. 404 Judd Building.

P. C. JONES, Treasurer.

Commercial Advertiser

WALTER G. SMITH - - EDITOR.
MONDAY : : : : JUNE 2

PAIN'S TACTICS.

It is Mr. Pain's own fault that he is not at the head of a fine rapid transit system in Honolulu. He had years in which to introduce it—years in which the wrath of the public at his mule system bubbled over and in which local money could have been gathered in bushel-measures for the purpose of building up the line. He was the agent of a corporation, largely foreign, which looked to him to advise its policy; but those who tried for years to get him to show an interest in rapid transit met nothing but indifference. His mule line was paying well—some said it made fifty-seven per cent—and he was disposed to let well enough alone. Meanwhile the sentiment for a change swung towards the breaking of all bounds.

Finally a modern up-to-date electric traction road was started and Pain, obstinate as one of his own mules, got in the way, only to be bunted, time and again, off the track. Every device that he could think of, from the actual holding down of a franchise rail in the street to the subsidizing of Chinese land-holders, has been tried to keep the Rapid Transit from getting in a position to serve the whole Honolulu public. The dog-in-the-manger is nothing to Pain. He is a veritable mule-in-the-manger, biting ingloriously at one end and kicking persistently at the other.

Meanwhile the Rapid Transit road goes steadily on, reaching out into fresh pastures and increasing in business and popularity every day. It is now one of Pain's dodges to say that the final object of his obstructive policy is to give Honolulu another and a better electric line, to change from the mule to the trolley as soon as the authorities will let him. But this bid for sympathy has not brought results. The public knows that the franchise bill which he tried to put through the Legislature did not compel him to put in electricity and they know the same to be true of his Congressional bill; and they suspect that all he wants of an omnibus charter is to use it as a piece of merchandise which the Rapid Transit might feel compelled to buy at a large price to get it out of the way. In furthering this brilliant scheme neither courts nor public seem disposed to lend assistance.

The New York World in commenting on the fact that the "most talked-about woman" in Wilmington, Del., is a society belle who appeared at the horse show riding astride, wisely says:

The lady in this instance did not ride for complicity. In New York she would not be conspicuous. She rode, according to the best modern opinion, for health, safety and good form. The side saddle is against these three desirable things. It is an awkward and antiquated arrangement—a survival of the fittest. Medical men have advised against the old rigging; accident after accident in which fair riders have been dragged to serious or fatal hurt has demonstrated its perils.

Sitting astride, the wide-awake modern woman rides straight, fair and free, and there is no longer the least question as to the modesty of her so riding. At an early day, if sound sense prevails, the women on horseback most talked about will be those who cling to the old style.

Riding astride has long been the Hawaiian fashion; and while the bicycle cut short the very prevalent vogue of horseback riding, those Hawaiian ladies who still ride do so in the old way. Wearing a divided skirt a woman astride a fine horse becomes the personification of graceful equestrianism.

The volcano is well worth visiting. It is giving just enough of a show to please everybody without causing alarm; and it is not likely to do worse. One difference between Mt. Pele and Kilauea is that the latter has two chimneys, its own and the crater of Mauna Loa, which can take care of surplus gases. There are, besides, numberless vents large enough to let out jets of steam. Mt. Pele was closed up and had a lake in its crater, the dropping of which through an earthquake rift may have started the trouble by an explosion of steam. When a volcano, known to be dormant, not extinct, becomes clogged up, one may look for trouble. But the Hawaiian outlets appear to be as clear as a new chimney.

The Salt Lake sceptic who thinks that the Martinique disaster could not have brought on our crimson afterglows, should give a better explanation of them. They are indubitably here and have a most uncanny effect at a time, long after sundown, when the western sky should be dark. Our own slight eruptions came after the red glow had appeared and could not, in the nature of things, have affected them. It may be added for the benefit of the doubting Thomas of Salt Lake that the eruption at Martinique had a marked influence upon the magnetic needle here, disturbing it radically for several hours.

Hilo has had the creeps because of a discoloration of the sea near shore. Of course it is laid to the volcano. Examination shows that the dark brown hue is caused by refuse molasses from a sugar mill. Poor old Pele had nothing to do with it.

Judge Humphreys' decision in the Tramways case was clearly in the public interests. The only ones to complain of it are those to whom the interests of the public are secondary.

VOLCANOES OF AMERICA.

Professor Israel C. Russell in his book on the "Volcanoes of America" says that they form a part of a great system of volcanic vents which may be said to surround the Pacific Ocean. This "chain of fire" extends along the west border of South America, where its course is marked in the Andes by some of the loftiest igneous mountains in the world; it is narrow and well defined on the west border of Central America and far into Mexico, where still steaming craters define its position.

The volcanic belt broadens in the northern part of Mexico and the United States, but is unmarked by active craters. Again contracting and approaching close to the ocean shore, and in several instances marked by island volcanoes, the igneous belt follows the coast of British Columbia and Alaska, and extends westward throughout the length of the Aleutian Islands. Still active craters in Alaska show the positions of earth fractures, which unite the volcanic belt of the New World with the still more energetic volcanoes of Kamchatka, Korea, Japan, Formosa, the Philippine Islands, New Guinea, New Hebrides, New Caledonia and New Zealand.

Interesting in connection with the Martinique disaster and the statements of eminent scientists, and particularly geologists, says the New York Times, is the fact that they ascribe the growth of the American continent to a circle of volcanoes in the original archaic nucleus, and the sea, which occupied what is now the Mississippi valley and the northward extension of the same interior basin on the arctic regions. They think they see the growth of another continent in the West Indies through the recent terrific volcanic action there.

Recent as have been the migrations of civilized people into North America they have witnessed volcanic outbreaks that are scarcely second to any that have occurred elsewhere on the earth during the same period. There are 13 volcanoes in the United States and 11 in Alaska. There are none in the Eastern States—that is, none that have been active in millions of years. Several of the Western volcanoes have shown signs of life in the past, and may not now be dead.

Cinder Cone, near Lassen's Peak, California, has been twice in eruption within 200 years. At the summit of the cone there is a well-developed crater with a double rim. The whole aspect of Cinder Cone suggests recent disturbance, yet there is evidence that the earliest eruption occurred before the beginning of the last century. Its age is shown by the relations of the old and new forest trees to the volcanic sand of the first eruption there.

Mount Hood, in Northwestern Oregon, was ascended in 1883 by M. W. Gorman, who reported that there are still steaming rifts on the south side of the mountain. He stated that the sulphurous fumes from the openings will discolor silver at a distance of half a mile. Clouds gather above the crater and have more than once in recent years given rise to reports in Portland that Mount Hood threatens an eruption. Arnold Hayne, who has examined the summit, however, says that there have been no eruptions of Mount Hood within the memory of man.

It is stated by George Gibbs, of the American Geographical Society, that stumps of trees occur in abundance on the side of Mount Hood, above the present timber line, suggesting that formerly the heat of the mountain was sufficient to encourage the growth of forests at an elevation impossible when the mountain grew cold.

Mount St. Helena, in Washington, according to scientists, is extinct. Frontiersmen, however, state that it has been active within the last 50 years. The most northerly of the volcanic piles connected with the Cascade Mountains south of the United States-Canadian boundary is Mount Baker. On clear days it can be seen from Puget Sound. George Gibbs wrote in 1873 that he had been told by officers of the Hudson Bay Company, and also by Indians, that Mount Baker was in simultaneous eruption with Mount St. Helena, covering the whole country with ashes. It was reported that during the eruption the neighboring river, the Skagit, was obstructed, and that the country for miles around was covered with fire. Scientists are skeptical. They say the flames were forest fires.

Mr. Pain subsidizes Chinamen here to fight his Tramway battles. Whom does he subsidize in Washington? That might be a fair subject for investigation.

Hayti has solved the problem of what shall be done with her ex-Presidents. She offers a reward for them.

BUSY RUMOR STIRS HILO.
(Continued from Page 1)

Enterprise due here tomorrow. The manager is experiencing some difficulty in getting sufficient bottles, but after the business is once started, he expects to rapidly build up such a business as to make the shipment of such a water one of the leading items of Hilo's exports. The high medicinal qualities of the water are such that the company is actively considering the construction of a hotel or baths in Puna where persons needing treatment can have the benefit not only of the water as an internal remedy, but for baths as well.

DR. SLOGGETT'S VISIT.
The visit of Dr. Sloggett, the president of the Board of Health, is one which Hilo approves. One of the main difficulties of this district is that owing to the distance of Hilo from Honolulu, the principal officials seldom show their faces here, and consequently know very little of what is going on. Dr. Sloggett's trip included both business and pleasure, he spending several days at the volcano during the hot weather.

THE STEAMER ENTERPRISE.
The steamer Enterprise of the Matson line is filling a long felt want in Hilo. It gives quick communication and good passenger accommodations and the people of Hilo have not been slow in taking advantage of it. A large number of people have taken passage by her to San Francisco for her return next week.

THE AFTERGLOW.
The afterglow spoken of in the Honolulu papers is also plainly visible from here. Night after night the glow over Mauna Kea and Mauna Loa lasts longer after the usual twilight, making a superb spectacle.

PAIN'S GIRDER RAILS ON KING STREET TORN UP

(Continued from Page 1)

the rails out themselves. They have permission to use King street its entire length for their track and the location of the same has been approved by Superintendent Boyd. The Rapid Transit track through the square will occupy almost the identical roadbed which Manager Pain used in laying his "obstruction" track.

A bystander while watching the way in which the dirt was flying jocosely remarked that Manager Ballentyne was giving a "pick-pong" party. Another thought it was a case of moonshining.

"The right of way occupied by the track we are tearing up is ours," said Manager Ballentyne last night. "Our franchise covers it, and, as readers of The Advertiser know, Mr. Pain was ordered to remove the rails and did not do so. Wishing to take possession of our property, we are acting in as prompt and business-like a way as we know how. As for the particular time we take, that is chosen so that we shall neither impede traffic nor be impeded by it; and so as to avoid any breaches of the peace."

THE CRICKET MATCH.

Blackman Makes a Sensational Run in Saturday's Game.

The feature of Saturday's game of cricket at Makiki was the sensational run of 41 points made by Blackman of the Beardmore team. It was the last practice before the coronation cricket game, and the two opposing teams were captained by L. Beardmore and C. P. Morse respectively, the former team winning. The score was as follows:

BEARDMORE'S TEAM.	
Blackman, L., not out	41
Jordan, R. A. c. von der Heyde, b. Morse	1
Beardmore, S. b. von der Heyde	0
Pilanaia, A. St. C. b. von der Heyde	13
Gill, F. b. Morse	5
Anderson, R. b. von der Heyde	2
Glass, D. st. Beardmore, b. Morse	13
Harvey, J. st. Beardmore, b. Morse	5
Extras	5
Total	80
MORSE'S TEAM.	
Miles, A. T. c. Beardmore, b. Anderson	12
Von der Heyde, b. Beardmore	4
Morse, C. P. c. Faraday, b. Harvey	27
Glass, H. b. Beardmore	5
Prince Cupid, b. Anderson	3
Picker, H. b. Anderson	2
Irish, C. W. not out	12
Faraday, J. H. st. Pilanaia, b. Anderson	6
Extras	9
Total	75

Today the sports committee will meet and select the twenty-two players who are to compete in the coronation games.

ODD FELLOWS MEMORIAL.

Services Held Yesterday in Honor of Departed Ones.

Memorial services for their departed dead were held Sunday by the Odd Fellows of this city. At the service in the hall E. R. Hendry acted as district deputy in place of J. D. McVeigh, who was absent, and D. P. Lawrence acted as secretary. Rev. A. McIntosh served as chaplain in the hall and Dr. Rodgers performed the same service in Nuanuu cemetery. Remarks were made at the cemetery by Rev. A. McIntosh, Mr. Lightfoot and C. J. Fisher. The graves of departed brethren were decorated at Nuanuu, Makiki and Kawaiahaeo cemeteries.

About one hundred members of the order participated in the solemn services.

STOCKHOLDER'S MEETING.

KOHALA SUGAR CO.

BY AUTHORITY OF THE PRESIDENT, a special meeting of the shareholders of the Kohala Sugar Company will be held in the assembly room of Castle & Cooke, Limited, on Tuesday, the 24th inst., at 10 a. m. Object of meeting, ratification of the charter extension, bonded issue, and any other matters that may be presented for consideration.

Honolulu, June 17, 1902.
J. B. ATHERTON,
6197 Treasurer, Kohala Sugar Co.

NOTICE TO SHIPPERS.

SHIPPERS OF FREIGHT BY STEAMERS of the Inter-Island Steam Navigation Company, Ltd., are hereby notified that a new form of shipping receipt has been adopted by the company to go into effect at once. Freight will be accepted, however, on the old form of receipt up to October 1st, 1902, after which date freight will be received only on the new form of receipt, a copy of which can be seen at the office of the Company, Queen street. INTER-ISLAND STEAM NAVIGATION CO., LTD.
6191 J. BNA, President.

NOTICE TO SHIPPERS.

ON AND AFTER THIS DATE bills of lading will be issued by this company, instead of shipping receipts as heretofore. Freight will be received under the old form of receipt up to October 1st, 1902, but after that date the bill of lading only will be accepted. WILDER'S STEAMSHIP COMPANY,
C. L. WIGHT,
President.
Honolulu, June 18th, 1902. 6192

YOSHINAGA

184 N. Hotel and
163 S. King St.
Bicycles Exchanged, Repaired, Bought and Sold. Prices Reasonable.

Aching Joints

In the fingers, toes, arms, and other parts of the body, are joints that are inflamed and swollen by rheumatism—that acid condition of the blood which affects the muscles also.

Sufferers dread to move, especially after sitting or lying long, and their condition is commonly worse in wet weather.

"It has been a long time since we have been without Hood's Sarsaparilla. My father thinks he could not be without it. He has been troubled with rheumatism since he was a boy, and Hood's Sarsaparilla is the only medicine he can take that will enable him to take his place in the field." Miss ADA DORT, Sidney, Iowa.

Hood's Sarsaparilla and Pills

Remove the cause of rheumatism—no outward application can. Take them.

PALMERS' KING VIOLET

Although the most expensive Perfume in the world it is more sought after than any other product of Violet, because a single drop will perfume the handkerchief for many days and defy even the laundry. Sold the world over for

\$1.50 per oz.

PALMERS' GARLAND OF VIOLETS

A great favorite, fragrant and lasting. Sold at

\$1.00 per oz.

PALMERS' ROSE LEAVES

American Carnation Pink, Lilac Sweets, White Heliotrope, Violet Leaves, Violet Bloom. Are among the latest Palmers' creations. Sold at

75c per oz.

PALMERS' GARLAND OF VIOLET SACHET

Garland of Heliotrope Sachet, Garland of Rose Leaves Sachet, Garland of American Carnation Pink Sachet, sold at

50c per oz.

Hollister Drug Co.

FORT STREET.

WM. G. IRWIN & CO., LTD

Wm. G. Irwin, President and Manager
Claus Spreckels, First Vice-President
W. M. Giffard, Second Vice-President
H. M. Whitney Jr., Treasurer and Sec.
George W. Ross, Auditor

SUGAR FACTORS AND Commission Agents

AGENTS FOR THE Oceanic Steamship Company Of San Francisco, Cal.

Mortgage Loans

We shall be pleased to receive applications for loans upon choice business or residence real estate security.

In the scrutiny of such applications the following points will receive consideration:
1st—The Borrower.
2nd—The Security as to Title, Improvements, Margin of Protection, etc.

The amount applied for must not be greater than 50 per cent of the value of the security conservatively estimated.

Henry Waterhouse & Comp'y.

Stock, Bond, Insurance and Real Estate Brokers, FORT AND MERCHANT STS. Tel. Main 313.

ANTI-TRUST
OLD JAS. E. PEPPER
WHISKEY
HENRY CLAY RYE
OLDEST, BEST, PUREST
DISTILLED ONLY BY
JAS. E. PEPPER & CO.
LEXINGTON, Ky.
Established 1780
Distilled under the same formula for over a hundred years
LOVEJOY & CO.
Sole Distributors for the Territory of Hawaii.

El-Principe
De Gales
Havana Cigars
The Standard for Over Half a Century
Imperial Cigar Store
FORT STREET
Distributing Agents

Electric Fan Weather

The man who says whew! warm! and mops his face with a large size handkerchief could have cool comfort by investing \$15 in an electric fan.
We have all sizes in desk and ceiling fans. Telephone and we will send one to you.
Hawaiian Electric Co., Ltd.
King Street near Alakea. Tel. Main 390.

Smoke American Insular Cigar
MANILLA
RISDON IRON WORKS
Mechanical and Hydraulic Engineers
E. P. JONES, Agent
Spreckels' Building HONOLULU

THE V-A-S-E.

From the madding crowd they stand apart,
The maidens four and the work of Art;
And none might tell from sight alone
In which had Culture ripest grown—
The Gotham Million fair to see,
The Philadelphia Pedigree,
The Boston Mind of azure hue,
Or the soulful Soul from Kalamazoo—
For all loved Art in a seemly way,
With an earnest soul and a capital A.
* * * * *

Long they worshipped; but no one broke
The sacred stillness, until up spoke
The Western one from the nameless place,
Who, blushing, said: "What a lovely vase."
Over three faces a sad smile flew,
And they edged away from Kalamazoo.
But Gotham's haughty soul was stirred
To crush the stranger with one small word.
Defly hiding reproof in praise,
She cries: "'Tis, indeed a lovely vase!"
But brief her unworthy triumph, when
The lofty one from the house of Penna,
With a consciousness of two grandpas,
Exclaims: "It is quite a lovely vase!"
And glances round with an anxious thrill,
Awaiting the word of Beacon Hill.
But the Boston maid smiles courtzoesue,
And gently murmurs: "Oh, pardon me!
I did not catch your remark, because
I was so entranced with that charming vase!"
—James Jeffrey Roche in Life.

The large demand for Vases has induced the Pacific Hardware Co. to place on sale at their Bethel Street Department, an invoice intended for the Holidays:
Fine Cut Glass, Bohemian Glass, Florentine Faience, Majolica, etc., etc., in every variety of design and shape.

PACIFIC HARDWARE CO., Ltd.
BETHEL STREET, ABOVE CASTLE & COOK'S.

THE ISLANDS' WILD GEESE

Native to Hawaii and Can Be Easily Domesticated.

The regular annual fall flight of wild geese from Arctic regions to greener pastures in southern lands never extends to Hawaii, and yet we have a wild goose, native to the Islands, and which never leaves land. This goose, which resembles the brant, is found in large numbers on the Island of Hawaii, and a few are always seen about the crater of Haleakala.

It is supposed that they were formerly found on the plains nearer the sea, for the reason Puanene plantation derives its name from puanene (goose hill), a low elevation standing in the midst of the plantation.

Dr. Edward Armitage of Wailuku some years since procured a pair of these birds and succeeded in domesticating them, so that they remained in his yard, pensioners in common with the domestic breed of geese. They have mated and bred and the result is that he has a flock of half a dozen. True to their native instincts, however, they are not always content with home life, and occasionally the whole flock rise in the air and fly away, the leader uttering the well-known "honk" of the ordinary wild goose. For hours they will float high in the air, in a triangular body, calling faintly down to earth.

Tiring of their explorations, they gradually circle downward and homeward, finally fluttering through the tops of the mango trees into their own barnyard, where they seem to have forgotten their aerial ride and vie in sedateness with their domestic associates.—Maui News.

"INTELLECTUAL INDEPENDENCE"

The usual annual baccalaureate sermon to the graduates of Punahou College was replaced this year by a discourse to students generally. President Arthur Maxson Smith of Punahou delivered the address to the students last night at Central Union Church, his subject being "Intellectual Independence."

The speaker classified the subject in three different types of mind or man. First was the man that took a group of facts, refusing the suggestions or opinions of others and forming a selfish opinion from the facts to the entire satisfaction of himself but unjust to others.

This type paid perhaps but little attention to the facts unless they helped to form the opinion wanted, and the extreme type ended in bigotry.

The second extreme was the type that takes into account a group of facts, yet forms no opinion from them, taking the suggestion of others, whether right or wrong, and ending perhaps in mental imbecility.

Between these two extremes was a third type, which all students should cultivate and seek to attain. This type takes all the facts, and receives the suggestions and opinions of others, then fairly and impartially, forms a conclusion for himself. Religion and religious works the speaker considered an absolute necessity for the attainment of this type of mind. The world's religions in general contributed more than anything else to the intellectual independence of the student. This independence was attainable only after a hard struggle, but the Gospel of Jesus Christ gave the courage to overcome the almost insurmountable difficulties in the way. Unless the student was willing to strive against many temptations and barriers, said the speaker, he should be willing to content himself with being a clerk or engaging in some other minor occupation.

ARRESTED ON SERIOUS CHARGE

The police last night placed under arrest one J. Edward Langren, on the charge of assaulting a native girl about 11 years old at the Relief Camp near Vineyard street. The girl was removed to the Queen's hospital and Langren is meanwhile held at the station for investigation. At the station a "License to Marry" blank, such as is used by agents for granting marriage licenses in the Hawaiian Islands, was found in one of his pockets. Some of the blank spaces in the license were regularly filled out with queer fancies as to names. This bogus license Langren is said to have used for certain purposes. The license as filled out in ink reads:

LICENSE TO MARRY.
Liberty is granted to J. Edward Langren, residing at Honolulu, in the Island of Oahu, to marry Hannah Smith, residing at Honolulu, in the Island of Oahu, there appearing no legal impediment to the said marriage.

Given under my hand, at Honolulu, Island of Kona, this 57 day of June, A. D. 1902.

(Signed) **COUNT BLANK.**
Agent for Granting Licenses.
In the District of Oghaha, Island of Kona.

At one side, printed with a rubber stamp: "Remains to be enclosed in a sealed metallic case or coffin."
On the back is a gold seal.

BY AUTHORITY.

TENDERS FOR SUPPLIES.

Office of the Board of Health, Honolulu, H. T., June 23rd, 1902.
Tenders for furnishing the Board of Health with supplies specified in the following schedules, for the period of six months ending December 31, 1902, will be received at the office of the Board until 12 o'clock noon, Wednesday, June 25th, 1902.

Bids for items of each schedule must be made separately, and each tender endorsed "Tender for Supplies." The Board does not bind itself to accept the lowest or any bid.

H. C. SLOGGETT,
President Board of Health.

SCHEDULE "A."

Materials and supplies of the best quality for the Leper Settlement, Molokai, to be delivered in quantities ordered, f. o. b., island steamers, and subject to inspection and approval by agents of the Board of Health.

BUILDING MATERIALS.

- Lumber, N. W. Rough, 2x4 up, per M.
- Lumber, T. & G., N. W., 1x6, per M.
- Lumber, N. W. Rough, below 2x4, per M.
- Lumber, R. W. Surfaced, per M.
- Shingles, R. W., per M.
- Battens, 1/2x3, R. W., per M.
- Doors, 2 1/2x6 1/2, 1 1/2 inch, each.
- Window Sash, 10x12, per pair.
- Window Sash, 10x14, per pair.
- Nails, Iron Cut, 8d basis, per keg.
- Nails, Galv'd., 8d basis, per keg.
- Nails, Galv'd., 3d., per keg.
- Boiled Oil, brand to be stated, per gal.
- White Lead, brand to be stated, per lb.
- Turpentine, per gal.
- Lime, per bbl.
- Galv'd. Iron Pipe, 1/2-in. to 4 ins., each size, per ft.

PROVISIONS AND SUPPLIES.

- Bread, Medium, sample to be furnished, per lb.
- Baking Powder, Royal, 4-oz. tins, per gross.
- Bran, Wheat, per ton.
- Beef, Extra Measled Corned, in 200-lb. barrels, per bbl.
- Coffee, Green Kona, per lb.
- Coffee, Roasted Kona, per lb.
- Charcoal, Guava, per bag.
- Coal, in bags, kind to be stated, per short ton.
- Flour, No. 1 Golden Gate, per ton.
- Matches, Boston Long Card, per gro.
- Milk, Condensed, Milk Maid, per case.
- Milk, Condensed, Rose brand, per case.
- Milk, Condensed, Eagle, per case.
- Oil, Kerosene, per case.
- Rice, Hawn, No. 1, per 100-lb. bag.
- Sugar, Raw No. 1, per bbl.
- Salmon, Best Red, per bbl.
- Soap, Brown, 100-lb. boxes, 2-lb. bars, per case.
- Salt, Coarse, per ton.
- Wheat, per ton.

SCHEDULE "B."

Supplies of the best quality, to be delivered at the Insane Asylum in quantities required, and subject to inspection and approval of the Medical Superintendent.

- Beef, one fore quarter, rumps and rounds, per lb.
- Beefsteak, loin, per lb.
- Bread, Fresh, 1-lb. loaves, per loaf.
- Bread, Medium, per lb.
- Beans, Bayo, per lb.
- Beans, White, per lb.
- Baking Powder, Royal, 8-oz. tins, per doz.
- Brooms, Steamboat, per doz.
- Brooms, Mill, per doz.
- Brooms, Yard (state kind), per doz.
- Coal, kind to be stated, per long ton.
- Coffee, Green Kona, per lb.
- Flour, per bbl.
- Onions, per lb.
- Pork, Extra Clear, per 1/2-bbl.
- Rice, Hawn, No. 1, per 100-lb. bag.
- Salmon, Best Red, per bbl.
- Prunes, per lb.
- Sugar, No. 1 Raw, per lb.
- Tomatoes, Canned, per doz.
- Tea, China Pouchong, per lb. \$201

WATER NOTICES.

In accordance with Section 1 of Chapter XXVI of the laws of 1880: All persons holding water privileges or those paying water rates are hereby notified that the water rates for the term ending Dec. 31, 1902, will be due and payable at the office of the Honolulu Water Works on the 1st day of July, 1902.

All such rates remaining unpaid for fifteen days after they are due will be subject to an additional 10 per cent.

All privileges upon which rates remain unpaid August 15, 1902 (thirty days after becoming delinquent), are liable to suspension without further notice. Rates are payable at the office of the Water Works, in the basement of the capitol building.

ANDREW BROWN,
\$200 Supt. Honolulu Water Works.

NOTICE OF SIGNMENT.

NOTICE IS HEREBY GIVEN THAT the copartnership heretofore existing under the name of Hop Kee Company, composed of Ah Pon, Ah Moo and Yee One, all of Koloa, Island of Kauai, has made an assignment for the benefit of its creditors to E. E. Conant, of Koloa, Island of Kauai, to whom all debts due and owing said firm must be paid.

All parties having claims against the said Hop Kee Company are requested to file the same with the undersigned within thirty days from the date hereof.

Dated Koloa, Kauai, June 7th, 1902.
E. E. CONANT,
Assignee of Hop Kee Company.
4190

FORT EMPLOYMENT OFFICE
168 S. King St.

WE SUPPLY COOKS, WAITERS, yard boys, help for housework and day work; carpenters for contractors, cooks and boys for marine service.

Thos. G. Thrum's
Imprint Stands
For Quality

Wedding, Reception, Society Note Paper
AND
High Grade Tablets

We are showing quite an extended line of hand-some note paper with envelopes to match, six styles of which we ask your inspection. Engraving and printing done at short notice. Write for samples and prices.

Thos. G. Thrum,
Box 205. - HONOLULU.

You can't expect half starved hair to grow. Growth demands Food. Feed your hair with

Pacheco's Dandruff: Killer

Sold by all druggists and at the Union Barber Shop.
Tel. Main 232.

Go for the Mountains or the Seaside.

VACATION IS HERE

We furnish GROCERY CAMPING OUTFITS.
\$20.00

For two persons camping ten days; or for three persons camping ten days; or for four persons camping one week; or for four persons camping ten days.

\$20.00

THE GROCERS.
LEWIS & CO.
240—Two Telephones—240
1066 FORT STREET.

More About Fine Varnishes

Best way to learn about them is to come to the store. If you cannot do this, read our advertisements.

Crystalite Finish

Is an excellent pale varnish, made of purest materials for finishing delicate white woods. It makes a superb surface and surpasses in paleness and drying properties any similar product.

Lewers & Cooke
LIMITED.
Fort Street.

Loo Joe Co.
Merchant Tailors
AND IMPORTERS

1111 Nuuanu Avenue
Opposite Geo Kim Near M. Chy's
Next to Corner Hotel and Sunau

Suits Made to Order in the Latest Styles and a Good Fit Guaranteed

Latest patterns and styles in Tailors' Goods
Clothes Cleaned and Repaired

ALL KINDS OF Rubber Goods

Goodyear Rubber Co.
W. E. PEASE, President,
San Francisco, Cal., U. S. A.

Something New

In the furniture line—Wardrobes and chiffoniers combined, with full length French plate mirrors in the doors. Also double door wardrobes, with full length French plate mirrors in the doors. While being useful, these wardrobes are a handsome piece of furniture, and add to the appearance of any well furnished house. They are of special construction, and are ABSOLUTELY INSECT PROOF.

Our stock of secretary bookcases and library cases was never as large as at present. We have the library bookcases in large and small, with one, two and three doors.

Gentlemen's shaving stands and chiffoniers—just the thing to fill in some unfurnished corner.

Shoe Blacking Cases

Something neat and useful. By using one a short time it will pay for itself.

A full line of LINOLEUM, RUGS, MATTING and SHADES.

J. Hopp & Co.
LEADING FURNITURE DEALERS
Corner King and Bethel Sts.

Castle & Cooke
LIMITED.
LIFE and FIRE Insurance Agents

AGENTS FOR
NEW ENGLAND MUTUAL LIFE INSURANCE CO OF BOSTON
METROPOLITAN FIRE INSURANCE CO OF HARTFORD.

A. C. Lovekin
Stock and Bond Broker.
Real Estate and Insurance.
403 Judd Building.



"IF YOUR EYES COULD TALK"
—what a story of suffering, abuse and neglect would many tell. How they cry for help as you turn the pages of this interesting book, near the midnight hour. How they blink and wink as the bright sunlight traveling ten feet from the glaring pavement, or its 35,000,000 miles thro' space, hurls its rays upon a delicate and over-worked retina. If your eyes could talk they would lead you to our doors, and later thank you for the relief and comfort, and easy restful vision our glasses afford. In lieu of words they cry and ache—thus hint and warn—will you take the warning?

A. N. Sanford,
Manufacturing Optician,
Boston Building, Fort Street.
Over May & Co.

Well done CLOTHES MADE BY **W. W. AHANA & CO.** Merchant Tailors, 1038 Nuuanu Ave. You get latest styles, a good fit and the prices are right.

EIGHTEEN HEAD OF Riding and Driving Horses
To arrive per "S. C. Allen," due on or about the 15th.

CLUB STABLES

No. 616.
MONOLULU LODGE No. 616, B. P. O. E. will meet in their new hall, on Miller and Beretania streets, every Friday evening.
By order of the E. R. D. L. CONKLING, Secretary.
F. M. BROOKS, E. R.

Wing Wo Chan & Co
Ebony Furniture, Cigars and Tobaccos, Chinese and Japanese Tea, Crockery, Mattings, Vases, Camphorwood Trunks, Mattan Chairs.

SILKS AND SATINS OF ALL KINDS.
116-118 Nuuanu Street

If In Bad Humor DROP INTO THE **HONOLULU BOWLING PARLORS** and chuck a few ligum vitae balls at our temples.

AUCTION SALE UNDER FORECLOSURE!

NOTICE IS HEREBY GIVEN THAT the undersigned, manager of the Territory Stables Company, Limited, will on the 2nd day of July, 1902, at 12 o'clock noon, cause to be sold at public auction, for cash, at the auction rooms of Jas. F. Morgan, No. 65 Queen street, Honolulu, Oahu, two bright bay horses, for the payment of the charges and expense of feeding and sheltering said horses and of the advertising and sale thereof, the Star Soda Water Works Company, Limited, having failed to pay said charges within thirty days after demand therefor.

J. C. QUINN,
Manager Territory Stables Co., Ltd.
6195

FLEUR-DE-LIS Ice Cream Parlors
Alakea St. between King and Hotel
G. E. MORSE & COMPANY.
PHONE BLUE 1301.

Our wagon will deliver orders promptly without extra charge.

Special attention given to supplying Receptions, Parties, Weddings and Church Gatherings.

Theosophical Society
MR. THOMAS PRIME
Will Lecture on **Thought Power**

Thursday, June 26, 1902, 8 P. M.
At ARION HALL (Back of Opera House).
A cordial welcome extended to all.
MARY D. HENDRICKS,
President, Aloha Branch, T. S.

Desirable Home
Within easy walking distance of Honolulu Iron Works. Part of the price can remain on mortgage.

Building Lots
Close to town, on installments.

R. R. REIDFORD
Room 4, Campbell Block.

HAWAIIAN ENGINEERING AND CONSTRUCTION CO.

Rooms 508-510 Stangenwald Bldg.
ENGINEERS AND CONTRACTORS.
Box 537. Phone Main 50.

COTTON BROS. & CO.
ENGINEERS AND GENERAL CONTRACTORS.

Plans and Estimates furnished for all classes of Contracting Work.
Boston Block, Honolulu

WAVERLY
Shaving Parlors,
Corner Bethel and Hotel Streets.

Gus Bidinger, Mgr.

The Silent Barber Shop
OUR RAZORS are thoroughly disinfected before using.
JOSEPH FERNANDEZ, Prop.
Arlington Hotel.

L. B. KERR & CO.

LIMITED.

Cor. Hotel and Fort Sts.

An Important Announcement

We take pleasure in informing the public that we have secured for this city the exclusive representation and selling rights of

Queen Quality
THE FAMOUS
SHOE FOR WOMEN

This announcement comes after a long continued effort on our part to secure for our own selling, that make of shoes that best combined the feature of "graceful and correct design, wide choice in styles, exquisite workmanship, greatest wear and durability," with a moderate price.



After a thorough search of the market we have found these factors so artistically united in the

QUEEN QUALITY

SHOE that we have no hesitation in assuring our customers that they will find it in all respects "the handsomest, the best fitting and the most generally satisfactory shoe that money will buy."

HEAVY SOLES

THAT ARE

Not Clumsy



We hear many women say they can't wear heavy-soled shoes; too stiff and clumsy they say. We change the minds of such women every time; we fit them with

Queen Quality

Queen Quality Shoes are always flexible, always comfortable. They make women forget their foot troubles and they don't cost any more than the common kind.

Price for any style of BOOT OXFORD

\$3.25

\$2.75 AND \$3.25

L. B. Kerr & Co

LIMITED.

Cor. Fort and Hotel Streets

FUNERAL OF G. E. THURM

Well Known Honolulu Passes Away After a Lingered Illness.

The funeral of George Ernest Thrum, who died at 3:30 o'clock Saturday morning at the Beretania avenue residence of his parents, Mr. and Mrs. T. G. Thrum, took place yesterday afternoon at 3:30. There was a large attendance of the friends of the deceased and many flowers were sent. The funeral was conducted under the auspices of the Masons, the deceased having been one of the original members of the Hilo lodge. A choir composed of Mrs. Cornelia Damon, Mrs. J. T. McDonald, H. F. Wichman and Ernest Ross sang during the services, which were conducted by Rev. W. M. Kincaid of Central Union church. The casket was conveyed to the hearse by W. H. Wright, Charles Atherton, Charles Ramsay, Henry Giles, James Lloyd and Otto Bierbach. Mr. T. G. Thrum was prostrated by his son's death and was unable to follow the remains to the cemetery. The interment took place in Nuuanu cemetery.

The deceased had been in ill health for several years, and in the last few months rapidly declined. For three or four weeks he had been confined much of the time to his bed and on two or three occasions it was thought he would pass away, but he rallied with seemingly a better hope for life than before.

Ernest Thrum was born in Kohala, Hawaii, July 24, 1869, but spent most of his life in Honolulu, where he attended school. The first position he held was a clerkship in the Honolulu postoffice. He went to Onomea plantation in 1893, remaining there as a bookkeeper under Manager Goodale until 1898, when he took passage for New York via the Horn in the ship Kenilworth, a voyage which nearly cost him his life. The vessel was loaded with sugar and took fire while off the Pacific coast of South America. The fire crept into the cargo and one night the captain, first mate and cabin boy were asphyxiated in their cabins. Mr. Thrum was also a sufferer and was removed from his cabin unconscious. The members of the crew worked over his almost lifeless body until he was brought back to consciousness. The ship was finally taken into Valparaiso harbor and instead of completing his voyage, Mr. Thrum returned to Honolulu. The experience was a horrible one and his health was shattered. Since his return Mr. Thrum entered the bookstore of his father, remaining there until his last illness.

NOW A MINISTER OF THE GOSPEL

Interesting Ceremony of Ordination at Fort Street Chinese Church.

The ordination of the Rev. Wong Shing Yuk as a minister of the gospel was a ceremony of much interest in the Fort street Chinese church yesterday morning, and was regarded as a stepping stone to far-reaching results amongst the Chinese population of Honolulu. The newly ordained minister is a young Chinese, who, although he does not speak the English language, is nevertheless well equipped to serve his people in the work for Christ.

The regular 11 o'clock divine service was omitted and that of the ordination used instead. The body of the church was well filled with the Chinese members of the congregation, and several foreigners were also present. Upon the platform were Rev. W. D. Westervelt, Rev. O. H. Gulick, Rev. Mr. Leadingham, Rev. O. P. Emerson, Dr. J. M. Whitney, Rev. Mr. Thwing and three Hawaiian ministers, Rev. Mr. Wong also occupying a seat amongst them. The services were for the most part conducted in the Chinese language, with brief English addresses by the foreign ministers, Rev. Mr. Thwing interpreting for them.

The services were opened with prayer by Rev. Mr. Wong, followed by a reading of scripture lessons by Rev. Mr. Thwing in Chinese. Mr. Westervelt, the scribe of the council which examined Mr. Wong on Friday, made the announcement of the results of the same, stating that all the ministers had been well satisfied with Mr. Wong's fitness to preach the gospel to his people. His remarks were interpreted by Mr. Thwing, who also made an address on the duties of ministers and the work they were expected to perform.

At the conclusion of the address Mr. Wong was called to the center of the platform, where he knelt while Mr. Leadingham said the ordination service. All the ministers and laymen present on the platform then laid their hands upon the candidate's head and he was duly pronounced clothed in all the rights and authority of the church. The right hand of fellowship was extended by each one to the young minister when he arose to his feet.

THISTLES AND DANDRUFF.

An Interesting Parallel and a Valuable Deduction Therefrom.

Cutting down thistles no more relieves the land of thistles than does scouring the scalp cure dandruff. In each case permanent relief can come only from eradicating permanently the cause. A germ that plows up the scalp in searching for the hair root where it saps the vitality, causes dandruff, falling hair, and baldness. If you kill that germ, you'll have no dandruff, but a luxuriant suit of hair. Newbro's Herpicide is the only hair preparation in the world that cures dandruff, falling hair and baldness by killing the germ. "Destroy the cause, you remove the effect."

JAS. F. MORGAN,
Auctioneer and Broker
65 QUEEN STREET,
P. O. Box 594. Telephone 72

Auction Sale OF Household Furniture

ON TUESDAY, JUNE 24,

AT 10 O'CLOCK A. M.
At the residence of Mr. J. H. Kohn, 208 School street, next to the bridge, I will sell at Public Auction the entire household furniture consisting of bedroom sets, wardrobes, center tables, rockers, chairs, square piano, sideboard, pictures, mirrors, curtains, rugs, portieres, hanging lamps, wood stove, oil stove, meat safe, ice box, ferns and plants and a few chickens.

JAS. F. MORGAN,
AUCTIONEER.

Auction Sale OF Household Furniture

ON THURSDAY, JUNE 26,

AT 10 O'CLOCK A. M.
At the residence of Miss Agnes McIntyre, Keeaumoku street, corner of Young street, in the residence formerly occupied by Mr. J. A. Hassinger, I will sell at Public Auction the entire household effects, consisting of some very fine furniture.
* Upholstered parlor set, large center rug, pictures, large mirrors, lace curtains, matting, handsome Steinway square piano, heavy oak dining chairs, handsome heavy oak sideboard, oak china cabinet, cutlery, handsome black walnut bedroom sets, black walnut writing desk, book case, office desk, book rack, sofa, rockers and chairs, hair mattresses, wardrobes, towel racks, skin rugs, hall carpet, letterpress, ice box, meat safe, filter, kitchen utensils, Jewel stove, water boiler, and ferns and palms.

JAS. F. MORGAN,
AUCTIONEER.

Trustee's Sale in Bankruptcy

ON SATURDAY, JUNE 28,

AT 12 O'CLOCK NOON.
At my salesroom, 65 Queen street, I will sell at Public Auction, by order of Mr. Daniel Logan, Trustee for the Austin Publishing Co., Ltd., a bankrupt, the entire plant of the Austin Publishing Co. The stock consists of paper, a very large and splendid stock of job type; sufficient body type for two large weekly newspapers. Also a large stock of artistic and up-to-date type, some of which has hardly been seen in.

Also all the presses, tools, instruments, shafting, pulleys, belting, office desks, etc., etc.

The sale will also carry with it the name and good will of the "Paradise of the Pacific."

In case of the non-disposal of the stock as a whole the sale will be transferred to the premises of the Austin Publishing Co., and will be held on the same day.

JAMES F. MORGAN,
AUCTIONEER.

House For Rent

By order of Mr. H. E. Walty, I offer for rent the home formerly occupied by him on Beretania street, between Piikoi and Keeaumoku streets.

JAS. F. MORGAN,
65 Queen street.

Do You Know S & W?

Heard of him perhaps! S. & W. isn't a him—it is the brand of the choicest canned fruits and vegetables on the market. Do you ever think to look at the label on the can when you open goods that are really choice and be careful to order the same kind again. S. & W. is a guarantee of quality. If you open a can that it not entirely satisfactory, send it back—we will stand the loss. This offer is always open to our customers, and we have never yet had a complaint. Here is a list of some of the S. & W. goods: White Cherries, Preserved Pitted Red Cherries, Preserved Raspberries and Strawberries, Sliced Lemon, Cling Peaches and Sliced Apricots, Yellow Crawford Peaches, Lemon Cling Peaches, Golden Drop Plums, Green Gage Plums, Bartlett Pears, Peeled Apricots. Jams: Strawberry, Raspberry, Blackberry, Plum, Pineapple, Currant. Vegetables: Sugar Peas, and Corn, Succotash, Asparagus Tips, String Beans, Lima, etc.

H. MAY & CO.
LIMITED.

22--Telephones--24

The Pride of the Home is a White Sewing Machine

A Combination of Art and Utility

Used by many in preference to other makes of the same price. It is demonstrating its merits:

Built to Sew Well and to Last

Call and inspect the different styles

H. Hackfeld & Co.,
LIMITED.

Sole Agents for the Hawaiian Islands.

At the Table



Whether at the tea table or at the dinner table, the quality of your butter is an important factor. Users of

Crystal Spring Butter

Are never disappointed in the quality. Why take chances when you can get the best? Don't ask merely for the best—your dealer probably will give you the best—the best he has—Insist on having Crystal Spring Butter. Costs no more than other good butter, and the quality is guaranteed. Get it at Don't neglect asking for our booklet.

Metropolitan Meat Co.

LIMITED.

TELEPHONE MAIN 45.

Japanese Goods
American Goods

and CURIOS

AT CHIYA'S

Corner of Nuuanu and Hotel Streets.

NEW GOODS received by every steamer from Japan.

New Store New Goods

JAPANESE AND AMERICAN

DRY GOODS

MERCHANT TAILOR

K. Fukuroda,

Robinson Block. Phone White 2421. 14 Hotel Street.

They say that it is as if wind that blows no one any good, and so it is with this hot weather.

HAWAIIAN SODA WORKS

Are rushed to their full capacity to supply the demand for their celebrated refreshing drinks. The best cost no more than inferior goods. Telephone your orders. Blue 1421.

THE RACES AT KAHULUI

Good Ones Are Assured for the Fourth of July.

The Maui News says: It may now be stated with certainty that a successful day's racing will be held at Kahului on July 4. A large number of horses are in training, quite a number of which are already installed at the track. Many others are brought down to the track and exercised every afternoon and there is no doubt but that all the races will be filled.

One of the most interesting races on the Fourth will be the Corinthian cup race, ridden by the members of the association on their own mounts. Attorney Coke and W. H. Cornwell, Jr., on their respective bucephali, are the favorites in this race, but a dark horse and rider are hinted at, which may change the complexion of the race.

Indications point to the fact that the race on August 12 will be worthy of Maui in her earliest days, when even royalty descended to patronize the turf on Maui. The due of the purses offered is a sufficient guarantee that the best racing blood on the Islands will be represented, and that of itself will insure a large attendance and a successful meeting.

Arrangements will be made if possible to have the Claudine extend her run to Hilo after the races there and land the Hilo and Honolulu horses at Kahului, where they will be housed and exercised preparatory to the great meet of August 12.

HILLO REPUBLICANS.

Precinct Club Holds Meeting to Nominate Candidates.

The Hilo Republican Precinct Club met at E. W. Smith's Hall last Friday evening. E. W. Smith presided and J. B. Smith was made temporary secretary. The meeting at once got down to business, which was that of nominating candidates for the club's offices for the coming year. The names of E. B. Richards and T. C. Ridgway were proposed for the office of president. A. S. Leobenschein stated that he was authorized to say that Mr. Richards would not be a candidate, whereupon T. C. Ridgway was made the sole nominee of the meeting. In announcing the nomination of Mr. Ridgway, Mr. Leobenschein made a sweeping speech of a few minutes, in which he outlined the duties of Republican workers this campaign. His remarks were greeted with enthusiastic cheers.

The nominations further made were: First vice president, Dr. Milton Rice; second vice president, A. C. McKenney; secretary, C. N. Frost; assistant secretary, A. Nicholas; treasurer, William Manning; Bert Eakson and N. C. Williams; judges of election, F. S. Lyman, J. S. Stauffer, J. D. Marlin and Jim Moran; executive committee, G. F. Adams, I. A. Andrews, E. E. Richards, J. B. Brown, William Todd, S. L. Doolan, J. B. Smith, R. T. Guard, William Vassatta, Joe Viera and W. H. Lane.

The election of officers for these nominations will be held Friday evening, June 27.—Hilo Tribune.

BUSINESS LOCALS.

A gold watch fob has been found. See classified advertisements.

Latest Butterick patterns and the delineator for July at Mrs. Hanna's. Sale of lace at Pacific Import Co. this week. See advertisement page 3.

Read N. S. Sachs' advertisement next to this column. Many attractive offerings this week.

Typewriters, new and second hand, for sale at the Remington typewriter office, Hotel street.

"Arable" is the only guaranteed mineral refrigerator used in the Islands. Cheap and everlasting.

Good living at the Hawaiian Restaurant. Experienced cook. Punched bowl, opposite Honolulu Iron Works.

Our subscribers will be pleased to know that Hoffschlaeger Company are the pioneers for pure table wines.

Telephone, electric, light and power systems installed by Guy Owens, room 6 McIntyre building. Plantation work a specialty.

A furnished house of seven rooms in Punahou district is offered for rent at reasonable rate. See our classified ads for particulars.

Low price sale of muslin underwear for ladies at A. Blom's in Progress block. This week's sale will be of unusual importance.

One furnished room or suite of rooms; also suitable for physician or dentist, centrally located, on car line, are advertised for rent. Address M. Advertiser office.

Auction sale of household furniture at the residence of Mr. J. H. Kohn, 308 School street, near the bridge, tomorrow at 10 o'clock. Jas. F. Morgan will conduct the sale.

M. Brasch & Co. of the Lace House have made further reductions in their laces and are showing the cheapest line ever offered in Honolulu. It is a good time to save money on such goods.

E. R. Bath is fitting up an up-to-date plumbing shop on King street opposite the Young building. There will be one of the finest show rooms in the city fitted up in the front part of the building, which will also contain the office.

There will be sold, on next Thursday at 10 o'clock, a lot of fine household furniture and furnishings belonging to Miss Agnes McIntyre. A fine Steinway piano, pictures, side-board, etc., included in the list. For further particulars see Jas. Morgan's column.

Chinaman Drowned.

On Tuesday evening the body of an unknown Chinaman was washed up on the beach near McGregor's Landing, beyond Maalaea Bay. No wounds were found on the body, and he had apparently been dead about three days when discovered. A coroner's inquest was held but no clue was discovered as to his identity or the cause of drowning. A Chinese store keeper at Kihai states that a Chinese tailor has been missing from Kihai since Saturday night, and he examined the remains, which had been so disfigured by the action of the waves that he could not identify the man as the missing tailor.—Maui News.

LOCAL BREVITIES.

Hirma, a native, injured by being run over by a hack a week ago, died Saturday at the Queen's hospital.

Jared Smith has received cotton samples from the Department with which experiments are to be tried.

Tenders for supplying the Board of Health with supplies will be received up to June 25th, at 12 o'clock noon.

Supt. McVeigh of the leper settlement has raised about \$200 for use in giving a Fourth of July celebration at Kalapapa.

Charles Robert Roe, son of W. C. Roe of the Honolulu Iron Works, having served his time as engineering draughtsman for the Iron Works, leaves today in the S. N. Castle for San Francisco for a three months' vacation on the mainland. This is the young man's first trip away from the Hawaiian Islands.

The assets of the bankrupt estate of Dr. Nichols were sold at auction Saturday by J. F. Morgan. The residence of Dr. Nichols at Makiki brought \$1500. Clarence H. Cooke was the purchaser, buying the property for his brother. A horse and buggy was sold for \$200 and two cows brought \$150. John Emmeluth bought a golfing outfit for \$450. He says politics are dull and he needs sport.

A runaway horse from the Club Stables created a little excitement on downtown streets yesterday afternoon. The animal, which was attached to a two-seated buggy, started from near the stables, ran down Fort street to Hotel, where it nearly collided with an electric car, and made a woman seek safety on the fence in front of the Young building. The animal then continued up Hotel street to Richards and turned down to King street, where it was stopped. A native boy did the work, catching the runaway by the ear, as there was no sign of a bridle or rein.

Inter Island Cable.

Mr. Dickenson, representing the Mackay Cable Company, arrived in Hilo by the Kinau to investigate the situation with reference to the advisability of connecting the Island of Hawaii with Oahu by cable. It has been practically determined that a cable between Honolulu and the mainland will be completed by the end of the year. Upon the representations made by Hilo business men Mr. Dickenson has come to see for himself and report either for or against an inter-island cable. Mr. Dickenson is accompanied by E. E. Boyd and Mr. Perkins. At the hotel yesterday morning Mr. Perkins met and discussed the situation with a number of Hilo business men. He went to Puna by the 11 o'clock train and will visit all portions of the island, sounding the opinion of the business public on the cable question. Mr. Perkins will return to Honolulu by the next Kinau.—Hilo Tribune.

The Vanilla Bean.

There is not a sugar plantation on the Islands that could not and should not establish a small experimental farm, in connection with the plantation. The cost would be nominal, and with a practical man at the head would make rather than lose money by the experiment, while the few acres devoted to experiment would scarcely be missed. Suppose for instance that all the plantations on Maui should co-operate in the matter of vanilla bean culture with one superintendent to overlook all the crops. The plantations, without feeling the burden of individual expense, would thus build a flourishing and profitable industry on Maui, in which they would be joined by many small landholders.—Maui News.

Oahu Commencement.

The commencement program of Oahu College is as follows:

Tuesday, June 24, 8 p. m.—Oratorical contest, Pauahi Hall.

Wednesday and Thursday, June 25 and 26, 9 a. m. to 1 p. m.—Final examinations, Pauahi Hall.

Thursday, June 26, 10 a. m.—Graduation exercises, Punahou Preparatory.

Friday, June 27, 8 p. m.—Oahu College Academic Department. Graduation exercises, Pauahi Hall.

BOUNTEOUS DISPLAY OF Summer Goods

Unless you visit our store frequently you can scarcely know of the attractiveness of new arrivals in the different departments. There is not a steamer comes in but what brings us new materials. This week we advertise

COTTON COVERT CLOTH FOR OUTFITTING AND VACATION SKIRTS.

We have it in Blue, Brown and Green, also in checks and stripes. 28 inches wide.

7 yards for \$1.00.

New White Piques

Very best quality of goods in figures and plaid.

25c and 30c per yard.

All Wool Goods

Embroidered Stripes, in Red, Green, Old Rose, Grey, Brown and Lavender. Width 28 inches. Specially beautiful for steamer waists.

\$1.00 per yard.

Quilts

You ought certainly to see these. Full sizes, good quality white quilts worth \$1.00.

Our price 85c.

We also have a complete line of French Flannels.

N. S. Sachs' DRY GOODS CO., LTD.

FORT STREET.

PASTURAGE.

Fine pasturage close to Honolulu, 300 acre run; for farms, etc., apply to

room 606 Stangenwald building. 61%

This is 'It'



Prices \$5 00 and \$6 00

The BANISTER is the best shoe sold in Honolulu. Everybody knows that. For dress, there's nothing that quite compares with the

James A. Banister Shoe

They are best in every sense of the word—best in quality, best in fit, best in style and as a natural consequence, best in value

Manufacturers' Shoe Co., Limited
1057 FORT STREET.

The Lace House

Cheaper Than Ever!

LACES LACES

We have a BIG STOCK of laces on hand yet and they must be SOLD, and so you can get the benefit of it if you come in time. We have made FURTHER REDUCTIONS in order to CLOSE OUT on COTTON, LINEN, TORCHONS, VALS, DUCHESS.

Hobron Drug Company
LOOK FOR THE YELLOW STORE
EHLERS' BLOCK, FORT ST.

M. BRASCH & CO.

AN ATTRACTIVE ARRANGEMENT

The possibilities of arrangement of the

Globe-Wernicke
Elastic Book Cases

are almost unlimited. This feature alone enhances the value of the Globe-Wernicke Case, as it can always be disposed of at nearly its face value.

Dust Proof, Insect Proof

Roller Bearing Retiring Door Feature. Call in and inspect them.

Pearson & Potter Co., Ltd.
Union and Hotel Sts. Phone Main 317.

IN THE FAMILY CIRCLE

Telephone Main 341.

IN THE FAMILY CIRCLE there is constant need of a beverage that is also a tonic—that refreshes and vitalizes young and old. Just such a drink is

Primo Lager

It is peculiarly rich in that pure hop flavor that makes it the most delightful and healthful of all beverages. Order from Brewery.

Don't Go on Worrying



With inferior or needlessly expensive illumination in your home. There is absolutely no occasion for it. Thousands of housekeepers throughout the islands have removed this annoying problem entirely by acquainting themselves with the ideal perfect light for the home. It is as brilliant as gas or electricity, never smokes, smells or gives any trouble, is lighted and extinguished as easily as gas, and burns but little kerosene oil. Our catalogue shows all styles from \$1.80 up, and is sent for the asking.

THEO. H. DAVIES & CO., Limited
Hardware Department.

WEDNESDAY, June 25 to Saturday Night, June 28 at

B. F. EHLERS & CO. FORT ST.

Stupendous Reduction in Price of Fans and Parasols

SALE BEGINS WEDNESDAY 25.

These are very saleable goods during the warm weather and we offer them at ridiculously low prices in order to give them an extra strong push.

WHY THE LOW PRICES? We want to dispose of this stock at any price to make room for a new lot now on the way. We would lose heavily on these goods rather than carry any of them over with the expected new goods. Note these prices:

Fans, White and Black

All in perfect condition and beautiful assortment. See some of them displayed in our windows. No hesitation on our part about the price. We have marked them: \$6 00 kinds to \$1.50 kinds

All at \$1.00 Each

Parasols

Some remarkable reductions in this line, average reduction of over 66 2-3 per cent. For example we have some \$12 00 Parasols for \$4. Others that are very slightly shopworn, at 25c. See display in window.

Mosquito Netting Sale

We bought more than we need and in order to more rapidly reduce the stock we offer following reduction: 10 yard pieces, 90 inches wide, regular price \$4 00; on sale at \$3. 10 yard pieces, 90 inches wide, better quality, regular \$5.00; sale price \$3.50.

Novelty Dress Patterns

We have a limited number of latest novelties just opened. Some handsome Batiste with Persian stripes and Indian Madras with raised embroidered stripes:

Dress Lengths, \$6 00
Waist Patterns, \$1.25

Traveling Shawls

Fine imported goods, attractively displayed in our show windows.

Prices \$6 and \$8.

Rubens' Infant Shirt

These are dainty shirts and our stock is complete.

Prices 65c and 75c.



Healthful and Invigorating

RAINIER BEER

A PURE BEER

Japanese Silk AND Cotton Goods

Also new assortment of Gent's Furnishing Goods from the Coast. We also carry a Large Stock of Japanese Provisions—Wholesale Dealers.

SAYEGUSA
1120 NUANU AVENUE.
Branch Store: King and Liliha Streets.

Canadian-Australian Royal Mail Steamship Company

Steamers of the above line running in connection with the CANADIAN PACIFIC RAILWAY COMPANY between Vancouver, B. C., and Sydney, N. S. W., and calling at Victoria, B. C., Honolulu, and Brisbane, Q., are

Due at Honolulu.

On or about the dates below stated, viz: From Sydney and Brisbane, for Victoria and Vancouver, B. C., and from Victoria and Vancouver, B. C., for Brisbane and Sydney:

Table with columns for ship name, date, and destination. Includes MOANA, AORANGI, MOANA, AORANGI.

Steamers now call at Suva, Fiji, on both up and down voyages. The winter service is now running daily BETWEEN VANCOUVER AND MONTREAL, making the run without change.

Theo. H. Davies & Company, Ltd. GENERAL AGENTS.

Oceanic Steamship Co. TIME TABLE

Table with columns for destination (San Francisco, Honolulu, etc.), ship name, and dates. Includes ALAMEDA, SONOMA, etc.

In connection with the sailing of the above steamers, the Agents are prepared to issue, to intending passengers, Coupon Through Tickets by any railroad from San Francisco to all points in the United States, and from New York by any steamship line to all European ports.

WM. G. IRWIN & CO. LIMITED. GENERAL AGENTS OCEANIC S. S. CO.

Pacific Mail Steamship Co. Occidental & Oriental S. S. Co. and Toyo Kisen Kaisha.

Steamers of the above companies will call at Honolulu and leave this port on or about the dates below mentioned:

Table with columns for ship name, date, and destination. Includes CHINA, DORIC, NIPPON MARU, etc.

H. Hackfeld & Co., Ltd. AGENTS.

American-Hawaiian Steamship COMPANY.

DIRECT MONTHLY SERVICE BETWEEN New York to Honolulu via Pacific Coast

Table with columns for ship name, date, and destination. Includes OREGONIAN, ALASKAN, NEBRASKAN, AMERICAN.

H. Hackfeld & Co., Ltd. C. P. MORSE, General Freight Agent.

GLOBE NAVIGATION COMPANY, LTD. PUGET SOUND-HONOLULU ROUTE

Connecting direct, without transfer, with the G. N. Ry., N. P. R. R., and U. P. R. Lowest rates of freight from all Eastern points; shortest possible time.

THE PACIFIC Commercial Advertiser

Entered at the Postoffice at Honolulu, H. T., Second-class Matter. Issued Every Morning Except Sunday by the HAWAIIAN GAZETTE COMPANY.

OAHU RAILWAY & LAND CO. TIME TABLE.

Table with columns for station, time, and direction (Outward, Inward). Includes Honolulu, Pearl City, Waianae, Kahuku.

METEOROLOGICAL RECORD.

Table with columns for date, barometer, thermometer, wind, etc. Includes Mon. 23, Tues. 24, etc.

TIDES, SUN AND MOON.

Table with columns for date, tide, sun, moon, etc. Includes Mon. 23, Tues. 24, etc.

WHAT AND WAVE.

DIAMOND HEAD SIGNAL STATION, June 22, 10 p. m.—Weather clear, wind light northeast.

WEATHER BUREAU.

Honolulu, Alexander St., June 22. Mean temperature—74.7. Maximum temperature—85.

ARRIVED.

Saturday, June 21. Stmr. Kinau, Freeman, from Hilo and way ports.

DEPARTED.

June 21. Am. bk. Pactolus, Dodge, for San Francisco.

DUE TODAY.

S. S. Peking, from San Francisco, early in the morning.

DEPART TODAY.

S. S. Peking, for the Orient, probably in the evening.

HILO SHIPPING.

ARRIVED. June 12—Am. bk. Santiago, Ingalls, 14 days from San Francisco; general

merchandise consigned to Matson Navigation Co. Passengers—B. Carter, P. Carter, Mrs. C. W. Kellogg, Miss A. Kellogg, James K. Kinney, Mr. Samuels, Mr. Brewer, R. I. LAW.

SAILED. June 19—Bktn. Skagit, Robinson, in ballast for Port Townsend.

TO SAIL. June 20—Am. bk. St. Katherine, Saunders, for San Francisco, and Am. bk. Annie Johnson, Williams, for San Francisco.

CHARTERS FOR HILO. Am. schr. Nokomia, Port Gamble. Am. schr. O. M. Kellogg, Eureka.

TO THE COAST. The following passengers have booked for the coast on the S. S. Enterprise this trip: J. A. Scott, wife and three children; Mrs. Furneaux, Mrs. M. Rice and child; Mrs. W. T. Bolding and two children; J. W. Mason, E. H. Richards, W. H. Lambert and wife, Peter Lee and wife, Miss H. Lee, Mrs. C. C. Kennedy, Bruce Kennedy, E. W. Estate and wife, Miss Potter and Miss McCord.

PASSENGRS. Arrived. Per stmr. Kinau from Hilo, June 21—Col. W. H. Cornwell, T. S. Lippy, Mrs. T. S. Lippy, J. H. Lodi, Miss Leland, Miss Bixby, Miss E. M. Choek, Miss M. B. Comb, Mrs. L. P. Dreyer, Mrs. Alex. Russell, L. P. How, H. B. Paxton, wife and baby, Mrs. F. B. McStocker, Master F. B. McStocker, J. M. Coulson, Mrs. C. W. Kellogg, Mrs. A. C. Kellogg, Dr. Stoggett, P. T. Sullivan, L. A. Thurston, Dr. W. S. Paty, Judge G. F. Little, C. Noddy, J. K. Noddy, P. T. Merry, S. C. Lucas, C. Creighton, Mrs. J. W. Chapman and child, Rev. S. W. Kekuewa and son, Miss Ella Quinn, Miss Mary Logan, Miss H. Van Deerlin, John Cullen, E. Akana, R. S. Steele, E. P. Low, Judge W. McKay, W. Garcia, J. L. Cooke, H. Miki, M. Nawai, F. Enos, A. Garcia, A. Martensen, Miss A. M. Cooke, G. Schuman, T. P. Dubose and 103 deck passengers.

VESSLS IN PORT. ARMY AND NAVY. U. S. S. Iroquois, Rodman.

MERCHANTMEN. (This list does not include coasters.) Albert, Am. bk. Tume, Laysan Island, June 18.

Alice Cooke, Am. schr., Penhallow, Port Gamble, June 22.

Archer, Am. bktn., Calhoun, San Francisco, May 27.

Alsterchwan, Gr. bk., Erdmann, Hamburg, June 15.

George C. Perkins, Am. bktn., Nielsen, Eureka, June 19.

Georgiana, Am. bk., Brandt, Newcastle, June 21.

Gerard C. Tobey, Am. bk., Give, San Francisco, June 19.

Kona, Am. schr., from airtate ports, June 12.

Irmgard, Am. bktn., Schmidt, San Francisco, May 25.

Olympic, Am. bk., Evans, San Francisco, May 22.

Prussia, Am. bk., Ft. Blakeley, June 21.

Servia, Am. sp., Nelson, Newcastle, May 22.

S. C. Allen, Am. bk., Johnson, San Francisco, June 16.

S. N. Castle, Am. bktn., Nilson, San Francisco, June 1.

Schome, Am. schr., Peterson, nitrate ports, June 16.

W. H. Marston, Am. schr., Curtis, San Francisco, May 17.

Yola, Br. sp., Pennicull, Liverpool, June 18.

WHOSE FAULT IS IT

A Local Occurrence That Will Interest Many Readers in Honolulu.

If, when a fog horn warns the mariner to sheer off the coast, he still hugs the shore and wrecks upon it, whose fault is it? If the red switch light it up and the engine driver deliberately pulls ahead and pitches into another train, blame the driver. If a careless workman will in spite of warning try to find out how many teeth a buzz saw has, and the saw tries to find out how many fingers the workman has, blame the workman, not the saw.

Mr. John E. Bush of Punchbowl st., this city, is attached to the Hawaiian interpretation staff at the Supreme Court. He says: "I had kidney trouble, and, acting on the recommendation of a friend, who had tried your invaluable remedy, I got some of Doan's Backache Kidney Pills at Hollister Drug Co's store. They were just as beneficial to me as they had been to my friend. It is well the virtues of these pills should be made known, for they really are an excellent medicine for kidney trouble."

Doan's Backache Kidney Pills are for sale by all dealers. Price 50 cents per box, or sent by mail on receipt of price by the Hollister Drug Co., Honolulu, wholesale agents for the Hawaiian Islands.

Remember the name—DOAN'S—and take no other.

HONOLULU STOCK EXCHANGE.

Table with columns for stock name, capital, and price. Includes Mercantile, Sugar, and Miscellaneous stocks.

Classified Advertisements.

WANTED. YOUNG man, 18 to 25 years of age, as general all round man and porter. Salary \$10 per week with chances of promotion. Must be a hustler. Address this office, "M. O." 6300

FOR RENT. ONE furnished room, or suite of rooms; also suitable for physician or dentist. Very centrally located, on car line. Address "M." this office. 6202

A FURNISHED house of 7 rooms in Punahou district. Address F., this office. 6202

FOUR rooms, furnished for housekeeping. 520 Young street. 6199

FURNISHED rooms, \$1.50 to \$3.00 per week. Also room for light house-keeping. \$10.00 per month, at Alakea House. 6195

FIVE-ROOM cottage with bath room and small kitchen. Modern plumbing. At "Little Village," Beretania street. Inquire at "Genesee," Beretania street, near German Lutheran Church. 6194

FURNISHED room, mosquito proof. Mrs. D. W. Roach, Hotel and Adams lane. 6185

COTTAGE in Palama, near Rapid Transit Line. Apply to C. F. Peterson, 15 Kaahumanu street. 6155

OFFICES FOR RENT. A FEW choice offices in the Boston building, Fort street, with electric lights, elevator and janitor service. Apply to Hawaiian Trust Company, Ltd., agents, 923 Fort street. 6188

IN BREWER building, Queen street, or reasonable terms. Apply to C. Brewer & Co., Ltd. 6187

FOR SALE. TWO pool tables, at a bargain, at Brunswick Billiard Parlors. 6197

GASOLINE engine, 44 horse-power. In excellent condition. Apply to M. L. Smith, Telephone White 2321. Or Castle & Lansdale, Main 70, Stangenwald building. 6186

ONE 14-inch condenser, 16 inches in diameter, and iron frame for same, can be seen at this office. 6109

FOLMER & SCHWING 8x10 long focus Graphic camera; 36-inch leather bellows; reversible, double-swing back; rising, falling and sliding front; top and side made to open for use as a short focus camera; level finder, one plate-holder and tripod; also, a Bausch & Lomb telescopic lens for use with above camera. Can be seen at Advertiser office. 6105

AN 8x10 rectilinear lens; no name; with Bausch & Lomb iris diaphragm shutter. For particulars and price, call at this office.

ONE 5x8 Bausch & Lomb Rapid Universal lens, with iris diaphragm. Can be seen at this office.

LOST. A MANUSCRIPT, on Waiialea Road, beyond Moihili Church. Suitable reward if returned to this office. 6260

FOUND. GENT'S gold watch fob. Owner can have same by proving property and paying advertising expenses at Hawaiian Hotel hack stand. 6202

NOTICE TO CREDITORS. ALL BILLS AGAINST THE HAWAIIAN NAVIGATION CO., LTD., must be presented on or before July 1, 1902.

JAS. T. TAYLOR, Secretary, Hawaiian Navigation Company, Limited.

Halstead & Co., Ltd. STOCK AND BOND BROKERS

Money Advanced on Sugar Securities.

921 Fort Street. Tel. Main 188.

THE ONLY DIRECT LINE



DENVER, KANSAS CITY, ST. LOUIS, OMAHA, ST. PAUL, CHICAGO, AND ALL Principal Eastern Points

Three Trains Daily from SAN FRANCISCO. Two Trains Daily from PORTLAND.

THE QUICKEST TIME BY MAIN ROUTE.

UNION PACIFIC TRAINS ARE PALACES ON WHEELS. New and Modern Equipment. Double Drawing Room Palace Sleeping Cars. Buffet Smoking and Library Cars. Free Reclining Chair Cars. Ordinary Sleeping Cars. Dining Cars, Meals a la carte.

D. W. HITCHCOCK, G. E. Montgomery, San Francisco, Cal. A. L. CRAIG, G. P. & T. A., O. R. & N. Co., Portland, Oregon.

For Sale

MAKIKI Good Building Lots. On Keeaumoku Street, one minute from Rapid Transit Cars. Easy Terms.

CASTLE & LANSDALE

Real Estate, Insurance, Investments. Telephone 70 Main. 506 and 507 Stangenwald Bldg.

CHAS. BREWER & CO'S. NEW YORK LINE

Bark Foohing Suey Sailing from NEW YORK to HONOLULU About July 1st. For freight rates apply to CHAS. BREWER & CO., 27 Kilby St., Boston. OR C. BREWER & CO., LIMITED, HONOLULU.

W. T. Paty Contractor and Builder

Does any and all kinds of work well, promptly and at reasonable prices. Office 1048 Alakea street, between King and Hotel. Phone Blue 1801.

Seasonable Millinery

Shirt Waist Hats and all the most stylish millinery shown at parlors of Miss N. F. Hawley. BOSTON BLOCK.

MRS. LE BEUF

42 S. Vineyard Street. Ladies' and children's fine clothes done up first class. White hats and shoes cleaned; also gloves, silks, and gentlemen's clothes cleaned and pressed. Prices reasonable. WHITE PANAMA HATS CLEANED.

SEATTLE BEER AT THE CRITERION SALOON.

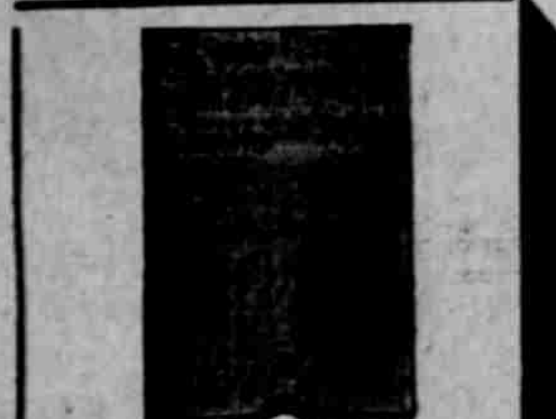
HOSTETTER'S CELEBRATED



STOMACH BITTERS WEAK KIDNEYS

When you have pains in the back and are unable to sleep, your kidneys are weak. Heed these danger signals by giving nature the aid she requires.

HOSTETTER'S STOMACH BITTERS



Preserve Your Negatives

The most convenient and reliable means of the preservation of plates is by means of our indexed boxes and envelopes.

The cost is very little, but the saving to you inestimable.

Honolulu Photo Supply Co. LIMITED. Fort Street near Hotel.

Received Per "SIERRA" S. S.

PING PONG BALLS

Five different styles of Rackets.

Newest PING PONG Sets at all prices.

PICK UPS --- PICK UPS

E. W. Jordan's

No. 10 STORE. FORT STREET.

Summer Clothing LATEST PATTERNS

All the Desirable Shapes for Gentlemen, also Swell Neckwear

Lando's New Store, Oregon Block, Hotel Street.

SATURDAY BASEBALL



THE BUNCH OF JAPS WHO BUTTED IN AND GOT THE RUN FROM THE BULL



IN HIS BLACK HAT



RUFFHAUSE RICHARDSON SAW THE GAME WITH BOTH EYES



ALLAN DUNN WORKED THE GONG

STUMPS MOORE SAW ONE COMING

MAILES AND PUNAHOU DEFEATED ON DIAMOND

Punahou Athletic and Maile-Ilima baseballists got it nicely on Saturday in the neck. The Custom House smugglers and the sons of Kamehameha handed them scores which, however, were entered on the wrong side of the card.

Kamehamehas seryed the Punahous with a beautifully dished up score of 12 to 5. The graduates of Oahu College weren't in it at all. It was their off day, and they also had the misfortune to lose the services of Tony Marcellino in the fifth inning, a slide to third base giving him a wrenched leg, necessitating his removal from the diamond.

Stops colds

What's the use or sense of your going about suffering and watering at the nose and eyes, with a cold in the head, when you can get rid of the cold at once if you will use Halpruner's Wonderful Medicine?

Take a teaspoonful internally in a glass of water or milk every hour, and also pour a few drops on your hands and then hold under the nose and inhale it. The inhalations will clear out your head at once—the internal dose will stop the cause, and before you know it the cold is gone and you feel all right.

Halpruner's

All druggists sell it—50c and \$1 a bottle. If your druggist won't supply you or offers a substitute, send to Halpruner Medical Manufacturing Co., 28 California St., San Francisco.

Order from J. E. Goess

Queen Taste Hams and Bacons Heinz's Relish Heinz's Jam Heinz's Sweet Pickles Stuffed Olives Pim Olas Olives Catsup. Tel. Blue 2312

PRETTY EXHIBITION OF DANCING BY CHILDREN

A large and fashionable audience enjoyed the exhibition given by Mrs. Gunn's dancing classes in the opera house on Saturday evening, and it is certain that the prettily gowned children who appeared upon the stage enjoyed their view of the audience over the flashing footlights. There was a charming warmth of cordiality between audience and the diminutive disciples of Terpsichore which created tremendous enthusiasm, both on the stage and in the auditorium, and no dancing exhibition has ever been held so successfully in Honolulu before.

All the dances were pretty given, and dainty costumes added a winsome touch to the varied scenes. Each number was appropriately costumed, among those which attracted attention being the chic and natty uniforms worn in the Volunteer dance and the Grecian girls shown in the grace culture drill.

In every part of the house were fond mothers and fathers and a host of relatives and it was in all respects a representative Honolulu audience. All the boxes were occupied. An orchestra of Hawaiians furnished delightful music, and the lively and always entertaining native airs kept the audience in a jovial mood.

A march and drill in which all the pupils of Mrs. Gunn's classes participated, was a pretty affair. This was led by Mrs. Gunn, and many new march figures were given. A baby dance by wee tots followed, which furnished plenty of amusement for the audience. The hornpipe, danced by Gertrude Traphagen, Camille Raas and Ernest Raas was prettily executed. The dance of the fairies was an attractive number, the fairies being represented by Beatrice Campbell, Violet Lucas, Lillian McChesney and Sybil Robertson.

The minuet, danced in the costumes in vogue two centuries ago, was a delightful number. With slow, measured steps and dignified bearing these miniature Marthas Washingtons presented the dance in a delightful manner. Those who took part in the two sets were Muriel Howatt, Fannie Hoogs, Esther Kopke, Cordelia Gilman, Helen Hobron, Marjorie Logan, Helen Wilder, Simpson, Zola Logan, Helen Lucas, Gertrude Traphagen, Violet Lucas, Carol Low, Thelma Murphy, Madeline Burnette, Margaret McCarthy, Elsie Wilkinson.

The drill in grace culture was the vogue number of the second part of the program. Those taking part in the drill were the older members of the class and all showed remarkable grace and movements in which the arms and hands were important to its success. Gunn has given much of her attention to this feature of the dance lessons, and the pupils have been

app learners. All wore Grecian costumes and Psyche knots were the vogue.

GIRLS IN GRACE CULTURE. Nora Swanzy, Ida Kopke, Amette Steele, Alice Green, Bella McCarriston, Agnes Smith, Edith Smith, Harriet Hatch, Edna Gunn, Freda Gay, Helen Gay, Ruth Lindley, Linaala Smith, Hilda Smith, Vera Herbert, Sarah Lucas, Hattie Lucas, Lydia Wagner.

"Coming Thro' the Rye" was prettily given by Dorothy Freeth, Alice Brickwood, Sybil McInerney, Abbie Lucas, Mary Lucas, Zola Logan, Camille Raas and Gertrude Traphagen. "Volunteer Drill" was a captivating number and was greatly enhanced by the smart uniforms patterned after those worn in the British army. There were the red jacket and little round hat worn ever so jauntily, and then white pique skirts. This was danced by Muriel Campbell, Marguerite Creighton, Louise McCarthy, Henry Smith, Myrtle Schuman, Ruth McChesney, Myrtle Schuman, Martha McChesney, Grace Robertson, Martha McChesney, Lydia Wagner was a dainty little miss who went through the sinuous movements of the Serpentine dance and was accorded generous applause. The class then joined in dancing the Oxford, which completed the entertaining program. The list of pupils in Mrs. Gunn's classes is as follows:

(Continued on Page 2.)

SEND FOR FREE ILLUSTRATED CATALOGUE OF LADIES', CHILDREN'S AND INFANTS' WEAR. I. MAGNIN & CO. 215-222 MARKET ST. SAN FRANCISCO, CAL.

"A SAFE THING TO TIE TO" A Wrought Iron Hitching Post. For sale by J. C. Axtell, 393 Beretania Street. Phone Blue 571. P. O. Box 642.

Y. YUEN TAI, No. 1272 Fort Street, near Kukui. Dressmaker, Ladies' Underwear, Skirts, Chemises, Etc. A large line of ready-made Mosquito Nets always on hand.

The Pacific Hotel 1182 Union St., Opp. Pacific Club. Newly furnished Rooms, mosquito-proof, electric lights, hot and cold water. First-class Table Board. MRS. EANA, Proprietor.

PROFESSIONAL CARDS.

ARCHITECTS. BEARDSLEE & PAGE, Architects and Builders.—Office, 2d floor, White Building, Hotel street; sketches and correct estimates furnished at short notice; Tel. 229; P. O. box 773.

ATTORNEYS. THOMAS FITCH.—Offices 601 Stangenwald building, Honolulu, T. H. Will practice in all the courts.

THAYER & HEMENWAY.—Office 603 and 604 Stangenwald building; Telephone 388 Main.

BROKERS. E. J. WALKER, Coffee Broker. Highest prices paid for No. 1 Pareman Coffee. Send samples.

CHIROPODIST. D. M. THOMSON.—Expert Chiropodist. No. 11 Garden Lane, between Union and Beretania streets.

DR. W. R. BOGLE.—Office, Oregon block, Hotel and Union Sts.

CONTRACTORS. WM. T. PATY.—Contractor and Builder, store and office fitting; show place St., between King and Hotel; res., 1641 Anapuni.

DR. H. BICKNELL.—Medicine bldg., rooms 2 and 14; office hours, 9 to 4.

ALBERT B. CLARK, D.D.S.—Beretania and Miller; office hours, 9 to 4.

I. E. GROSSMAN, D.D.S.—Alakea St., three doors above Masonic Temple, Honolulu; office hours, 9 a.m. to 4 p.m.

DR. A. C. WALL, DR. O. E. WALL.—Office hours, 8 a. m. to 4 p. m.; Love bldg., Fort St.; Tel. 454.

ELECTRICAL ENGINEERS. JAS. S. MCKEE.—Electrical, Mechanical and Consulting Engineer; office, rooms 11 and 12, Progress block.

ENGINEERS. ARTHUR C. ALEXANDER.—Surveyor and Engineer, 409 Judd bldg.; P. O. box 722.

TATTON NEILL & CO., LTD.—Engineers, Electricians and Boilermakers, Honolulu.

E. TAPPAN TANNATT.—Civil and Electrical Engineer, Office, Room 4, Spreckels block, Residence, 1313 Wilder Ave., Telephone, Main 132.

JAMES T. TAYLOR, M. Am., Soc. C. E.—Consulting Hydraulic Engineer; 303 Judd bldg., Honolulu; P. O. box 799.

ENGRAVERS. W. BEAKBANE.—Card Engraving and Stamping; room 3, Elite building.

INSURANCE. THE MUTUAL LIFE INSURANCE CO. OF NEW YORK. S. B. ROSE, Agent, . . . Honolulu.

MUSICIANS. COOK'S MUSIC SCHOOL.—Love bldg., will hold summer term during July and August.

PHYSICIANS. DR. W. HOFFMANN.—Beretania St., opposite Hawaiian Hotel, Hours, 9 to 11 a. m.; 1 to 3, and 7 to 8 p. m. Phone White 481.

DR. T. MITAMURA.—Office, 1468 Nuuanu St.; residence next door. Tel. White 122; office hours, 9 to 12 a. m., and 6 to 8 p. m., except Sundays.

DR. J. UCHIDA.—Physician and Surgeon; office, Beretania, between Fort and Nuuanu streets; office hours, 9 to 12 p. m., 7 to 8 p. m.; Tel. 1211 White.

NOTICE.

PERSONS needing, or knowing of those who do need, protection from physical or moral injury, which they are not able to obtain for themselves, may consult the Legal Protection Committee of the Anti-Saloon League, 9 McIntyre building, W. H. RICE, Supt. 6145

THE First Consideration

When one decides to have their dental work attended to, it is to have it done in the best possible manner, and the second consideration is the price.

The high class of work turned out at the NEW YORK DENTAL PARLORS every day counts, and more people are realizing that they can get better work done there and at lower prices than anywhere else.

Each department in charge of a specialist, our operators are graduate dentists of the best recognized schools in the United States, or of the world. And have had many years of experience in their chosen profession.

Hawaii Shinpo Sha THE PIONEER JAPANESE PRINTING office. The publisher of Hawaii Shinpo, the only daily Japanese paper published in the Territory of Hawaii. C. SHIOZAWA, Proprietor. Y. SOGA, Editor. Editorial and Printing Office, 1039 Smith St., above King. P. O. Box 507. Telephone Main 97.

Lands For Sale.

LOTS IN KING STREET TRACT, from \$1,400 to \$1,250 a lot, formerly known as G. N. Wilcox's premises.

TWENTY LOTS IN MANOA VALLEY, formerly Montano's Tract, \$2,500 a lot.

FOUR HUNDRED LOTS IN KAIULANI TRACT, from \$200 to \$250 a lot.

FIFTY LOTS IN KEKIO TRACT, opposite Makee Island \$600 a lot.

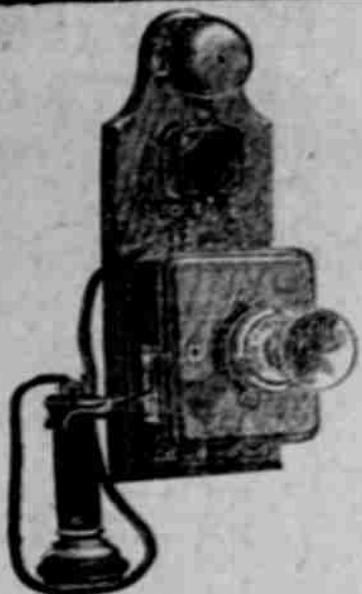
ONE HUNDRED LOTS IN KAPIOLANI TRACT, at \$500 a lot.

Etc., Etc.

For further particulars apply to

W. C. Achi & Company

REAL ESTATE BROKERS.
Campbell Block, Fort Street



Have you seen anything neater or more compact than this? It is never out of order and always ready for immediate use. Bear this in mind, WE INSTALL ALL OUR TELEPHONES UNDER A GUARANTEE FOR ONE YEAR. CAN YOU ASK MORE?

We have a number of other styles in stock, and you can choose which you like, they are uniform in service.

Will you not let us give you an estimate on a complete installation?

The Oceanic Gas and Electrical Co.

Contractors for everything electrical.
Magoon Block, Merchant St. Phone Main 84.

A Dozen New Books

Selected at random from the many new ones to be found at

The Golden Rule Bazaar

- "The Sandals," a story of Palestine, by Z. Greuell.
- "Lachmi Bai," by Michael White.
- "The Hound of the Baskervilles," by A. Conan Doyle.
- "The Hero of the Unconquered," by Ted Dalton.
- "The House With the Green Shutters," by Grace Douglas.
- "The Wooting of Sheila," by Grace Rhys.
- "Up From Slavery," by Booker T. Washington.
- "Let Not Man Put Asunder," by Basil King.
- "The Golden Pippin," by Emory E. Smith.
- "Honor Blair," by Wm. H. Caruso.
- "A Soldier's Log," by Admiral Evans, U. S. N.
- "Woodville Days," by A. F. Lewis.

Rubber stamps of all kinds on short notice at the Gazette office.

The Craze The Rage

Ping Pong

Our stock received by the S. S. Alameda went last long.

Buy Now

Full assortment at all prices at

Wall, Nichols Co., Ltd.
REPUBLIC BUILDING.

Delightful Climate.

Lovely Views.

Pure Water.

Kaimuki Tract offers the best inducements to all classes desiring good residence property.
Lots 75x200 and 100x150.

Terms, \$20 cash and \$10 per month

until fully paid, possession immediate. APPLY TO—

Trustees: Gear, Lansing & Co.
Judd Bld., Fort St.

Our Wines

ARE PURE

AND OUR

Prices Are Right

TOKAY
SHERRY
PORT
RIESLING
ZINFANDEL

75c per Gallon

CHOICE TABLE CLARET

50c per Gallon

Hoffschlaeger Co.,

LIMITED.

25 King near Bethel St.

THE NEW ENGLAND BAKERY

is serving a light breakfast and lunch suitable for this climate, and costs only 10c up, according to the order.

Everything served in generous quantity, which only a first-class bakery could afford to do.

Our rooms are supplied with electric fans, electric lights, cool, clean and prompt service.

Doors open from 6 a. m. till 11 p. m.

You will meet all your friends at the

New England Bakery

Tom Been's Planing Mill
CONTRACTOR AND BUILDER.

Carpenter work of all kinds. Large assortment of brackets and mouldings always on hand.

Old Union Feed Co. warehouse.

BEAVER LUNCH ROOMS

H. J. NOLTE, Proprietor.
Fort Street, Opposite Wilder & Co.
FIRST-CLASS LUNCHEONS SERVED.
With Tea, Coffee, Soda Water, Ginger Ale or Milk.
Open from 7 a. m. to 10 p. m.
Lunches' Requisites a Specialty.

WATER FRONT NEWS

FOUR STEAMERS FREIGHTERS CUT ARRIVED SUNDAY OUT THE SAILORS

Nothing Seen of the Kerr—News of the Volcano—Other Notes.

The W. G. Hall arrived early yesterday morning from Kauai ports and brought the following passengers: A. S. Wilcox and wife, G. N. Wilcox, W. Wolters, G. B. Curtis, Mrs. J. K. Hjorth, Miss Munford, Mrs. A. J. French, Miss B. Wirkbe, Mrs. Jostuoka, Rev. A. M. Mitchell, G. H. Bergstrom, E. Hutchinson, H. A. Hadley, W. Berlowitz, H. Berger and thirty members of the Hawaiian Band, Lon Agnew, K. Kobashi, See Yen, Kewaha, twenty cabin and fifty-two deck.

She brings 2663 bags of sugar consigned to H. Hackfeld & Co., together with thirty-eight packages sundries and forty bags of rice. The purser reports good weather at Kauai with light northeast winds and smooth seas crossing the channel. The derelict Fannie Kerr was not sighted by the Hall, which puts again the stamp of unlikelihood on the report brought by the China.

The Noeou Arrives

Four cabin passengers arrived per S. S. Noeou, which docked at 5:30 p. m. yesterday: Mr. Ennis, J. Silva, J. Vierra and L. Langham. She brought eleven deck passengers.

Her cargo consisted of 1731 bags of sugar, consigned to the H. S. Co., 2047 bags of sugar for the P. S. M. Co., and 20 packages of sundries.

The Noeou reports fair weather crossing the channels to Hawaii. She was delayed two days at Hanalei on account of a heavy shower. The rain stopped, however, on Saturday morning and she took in all the sugar of two plantations. She brings the news that the H. S. Co.'s mills have shut down for two months, and that the P. S. Co. expects to have about 1500 bags of sugar ready for shipment on Saturday next.

The Mauna Loa, reported at Honolulu, says that she has experienced fine weather on that side of the island.

Sailing Vessels Arrive.

The Prussia, Captain Jensen, was towed into harbor by the Fearless yesterday. This is her first appearance in Honolulu. She brought a load of lumber, though she formerly was used for carrying salmon, but was found too small for her old trade.

The Prussia was twenty-nine days out from Port Blakely; owing to the light southerly winds experienced. She may load sugar for San Francisco after unloading.

Seventy days out from Newcastle with a full cargo of coal, the Georgina docked yesterday after a rough trip from Australian ports. After the first third part of her trip she had light winds, no serious mishaps occurring to mar her homeward trip.

Sailing Vessels Depart.

The Oregon, an American bark, was towed outside by the Fearless early yesterday morning. She is bound for Port Townsend under orders and she may be loaded there for Seattle. Denver Ed Smith was a passenger on her for the coast.

The Pactolus, loaded heavily with a sugar cargo, left for Frisco late yesterday afternoon. Captain Dart is not sure as to the future movements of his vessel, but it is quite possible that he may load lumber for Australian ports, thence bringing back a coal cargo to Honolulu. It is reported that the Pactolus may get in on the San Francisco-Honolulu run.

S. S. Maui Arrives.

The Maui arrived yesterday morning with the following passengers: J. A. Merrick, H. A. Merrick, Miss M. Pilkol, A. T. H. Jackson, E. Goldberg, S. N. Palmer, H. Howell, C. Lake, J. H. S. Kakeo, Miss B. Panso, Mrs. Keana, Master Keana, Miss Mosser, Miss N. B. Simmonds, C. H. Smith, Mrs. W. O. Smith, W. E. Reavis, E. H. Carleton, G. Ahee, M. McCann and fifty-one deck. Her cargo was: Fifty head of cattle, 26 hogs, 1360 sheets corrugated iron, 69 bundles corrugated iron, 3522 feet lumber, 58 bags taro, 56 packages liquor, 1 roller and shaft, 142 packages sundries.

Kauai Brings Sugar.

The Kauai arrived at 1:10 yesterday morning, bringing only one deck passenger. She left Waimea at 2 p. m. on the 21st inst., and brought 2200 bags of A sugar, consigned to K. S. M. Co., one twelve-ton roller, two eleven-ton rollers, and 36 packages of sundries. William Clark, purser, reports the Mikahala at Waimea discharging freight; the schooner Kallua at Makawell loading sugar; the Geneva at Elele discharging coal. Fine weather throughout the trip was enjoyed, smooth seas and fair winds. The weather at Kauai is reported fine.

Iwalani's Small List.

The S. S. Iwalani arrived at 4:50 p. m. yesterday, bringing but one passenger, T. F. Sanborn. Her cargo was made up of 5000 bags of sugar and five packages of sundries. Fine weather is reported on Kauai. Her log says that the Kallua has 8500 bags of sugar aboard at Makawell.

The S. S. City of Peking is expected to arrive from the Coast with four days later mail this evening or early tomorrow morning.

Barkentine S. N. Castle will sail for San Francisco today.

Captain Bray Sees Hard Times Until the Canal is Put Through.

The fast freight steamers which are being constantly added for the Honolulu trade are seriously crippling the shipping business of Hawaii, so far as this port receives support through the expenditures made by sailors. The digging of the Isthmian canal is the only thing which will save the commerce of the islands, according to Captain Bray of the Sailors' Home.

"There were forty or fifty sailing vessels in port a year ago where there are but four or five now," said Captain Bray the other day. "The only way to account for it is the inroads which the new fast freight steamers have made upon the business formerly held by the sailing fleet. Every month sees fewer sailing vessels in port, while the steamers do not by far make up for their loss, even though they bring as much merchandise and carry away as much sugar as was formerly the case when the sailor was in his prime in Hawaii.

"Though the freighters may have caused a big reduction in rates between Honolulu and the Coast, they have not been beneficial to the islands in other ways. For instance, the average sailing vessel left more money in Honolulu than does one of the big freighters which carries probably ten or twenty times as much merchandise. The sailors were paid off here, and spent their money freely while in port, and there was always lots of business when the sailing fleet was in the harbor. The steam vessels do not carry any larger crews than the average sailing vessel, and what's more, take the place of a half dozen of them. The sailing vessels always received supplies for their long voyages in Honolulu, but the big freighters carry enough provisions for the entire voyage and seldom spend money here. The crew probably is paid off in San Francisco and hardly has time to go ashore while the vessel is discharging.

"There is little prospect for a sailor here now, and there are very few around. The San Francisco Shipping Union now has an agent here which furnishes crews for all union vessels, and the shipping masters have a hard time of it. The union agent takes the men as they sign, and they are shipped according to the length of time they have been waiting.

"Shipping business is in a bad way at present, but I think that as soon as the canal project is put through Honolulu will more than recover what she has lost and will be one of the greatest shipping centers in the world. This will be the half way port for all the large ships, and we will get not only merchant, but war vessels, and the harbor will be filled all the time, as in the old whaling days or when the sailing vessels did all the business."

The Claudine, it is said, will resume her run today for Maui ports.



BOARDMAN LOTS

KINAU STREET, KAPIOLANI and LUNALILO STREETS.

\$1500 and \$1700 EACH!

1-3 CASH

Balance on time.

WILL E. FISHER,

Real Estate Agent and Auctioneer.

Cor. Merchant and Alakea Sts.

For San Francisco



Bktn. S. N. Castle

Will have despatch for San Francisco On Monday, June 23 at 2 P. M.

Passengers desiring superior accommodations will apply to the agents, W. S. IRWIN & CO.

FOR THE RACES

GET A NEW CARRIAGE FROM US

Until June 11th we will give everyone an opportunity to purchase a new rig at

Greatly Reduced Figures

AND Exceptionally Easy Terms

AND THUS Go Out in Style to the Races

New Harness of every description. We will take your old harness or carriage in exchange.

Pacific Vehicle & Supply Co. Ltd.

Beretania St, Near Fort.

Grand Reduction Sale

For 3 Weeks

Every Article Reduced

Beginning Saturday, June 7th.

Don't Delay Come Early

See Our Windows

IWAKAMI, HOTEL STREET

ROACH SAULT

....DESTROYS ALL....
ROACHES, WATER BUGS, ETC.
CLEAN, ODORLESS, EFFECTIVE,
10c, 25c, 50c.

ONLY AT
HONOLULU DRUG CO.

926 Fort Street.
A. H. OTIS. OTTO A. BIERBACH.

Golf Shirts for Summer Wear

The cloth used in our shirts came from England and was made up here. AN our custom made shirts—
Lowest Prices

Watches, Chains, Sterling Silver Knives, Nail Files, Charms, etc., sold for a short time only, 30 per cent off regular price.

ASADA & CO. 28 HOTEL STREET.

THE VON HAMM-YOUNG Co. LIMITED.

Have just received a full line of Trunks and Bags and can now fill your needs in these lines for the trip you are intending to make this summer.

TRUNKS BAGS

SQUARE SARATOGA STEAMER HAT

DRESS SUIT CASES COAT CASES CABIN BAGS ROADSTONE BAGS

All Sizes and Prices. Alligator and Best Tanned Leather.
LOOK AT THEM BEFORE BUYING ELSEWHERE.

Bank of Hawaii

LIMITED.
Incorporated under the Laws of the Territory of Hawaii.
Paid-Up Capital . . . \$600,000
Reserve . . . 50,000
Undivided Profits . . . 163,000

OFFICERS AND DIRECTORS.
Charles M. Cooke . . . President
P. C. Jones . . . Vice President
C. H. Cooke . . . Cashier
W. C. Atherton . . . Assistant Cashier
H. Waterhouse, F. W. Macfarlane,
S. D. Tenney, J. A. McCandless and
C. M. Atherton.

Commercial and Savings Departments.

Strict attention given to all branches of Banking.

Judd Building - - - Fort Street

Hawaii Land Co.

LIMITED.
Capital Stock \$100,000
Capital, paid up \$58,080

OFFICERS.
W. C. Achi . . . President and Manager
M. K. Nakuna . . . Vice-President
J. Makinai . . . Treasurer
Snoek Johnson . . . Secretary
C. J. Holt . . . Auditor

BOARD OF DIRECTORS:
Senah Kumalea, S. M. Kanakanui,
J. M. Kea.

The above Company will buy, lease or sell lands in all parts of the Hawaiian Islands, and also has houses in the city of Honolulu for rent.

The Yokohama Specie Bank, Ltd

Subscribed Capital, - - Yen 24,000,000
Paid Up Capital, - - Yen 18,000,000
Reserved Fund, - - Yen 8,710,000

HEAD OFFICE: YOKOHAMA.
Interest Allowed.
On fixed deposit for 12 months, 4 per cent per annum.
On fixed deposit for 6 months, 3 1/2 per cent per annum.
On fixed deposit for 3 months, 3 per cent per annum.
The bank buys and receives for collection Bills of Exchange, issues Drafts and Letters of Credit, and transacts a general banking business.

Branch of Yokohama Specie Bank, New Republic building, Honolulu, H. T.

Claus Spreckels, Wm. G. Irwin.

Claus Spreckels & Co., Bankers

HONOLULU, H. T.

SAN FRANCISCO AGENTS—THE NEVADA NATIONAL BANK OF SAN FRANCISCO.

DRAW EXCHANGE ON SAN FRANCISCO—The Nevada National Bank of San Francisco.
LONDON—The Union Bank of London, Ltd.
NEW YORK—American Exchange National Bank.
CHICAGO—Merchants' National Bank.
BERLIN—Credit Lyonnais.
HONGKONG AND YOKOHAMA—Hongkong and Shanghai Banking Corporation.
NEW ZEALAND AND AUSTRALIA—Bank of New Zealand.
VICTORIA AND VANCOUVER—Bank of British North America.

Transact a General Banking & Exchange Business
Deposits Received, Loans made on Approved Security, Commercial and Travelers' credits issued, Bills of Exchange Bought and Sold.
COLLECTIONS PROMPTLY ACCOUNTED FOR.

C. BREWER & CO., LIMITED.

AGENTS FOR
Hawaiian Agricultural Company, Onomea Sugar Company, Honoma Sugar Company, Walluku Sugar Company, Mahee Sugar Company, Ooaka Sugar Plantation Company, Haleakala Ranch Company, Kapapala Ranch-Planters' Line and Shipping Company, San Francisco Packets, Chas. Brewer & Co's Line of Boston Packets, Agents Boston Board of Underwriters, Agents for Philadelphia Board of Underwriters, Standard Oil Company.

LIST OF OFFICERS:
C. M. Cooke, President; George E. Robertson, Manager; E. F. Bishop, Treasurer and Secretary; Col. W. F. Allen, Auditor; P. C. Jones, H. Waterhouse, G. R. Carter, Directors.

JUHEI ISHIZUKA

KEI HIN BANK, LTD

Transact General Banking and Exchange business.
HEAD OFFICE, TOKYO, JAPAN
DRAW EXCHANGE ON FIRST NATIONAL BANK, YOKOHAMA.

BISHOP & CO., BANKERS

ESTABLISHED IN 1858.
Banking Department.
Transact business in all departments of banking.
Collections carefully attended to.
Exchange bought and sold.

Commercial and Travelers' Letters of Credit issued on the Bank of California and N. M. Rothschild & Sons, London.
Correspondents: The Bank of California, Commercial Banking Co. of Sydney, Ltd., London.

Drafts and cable transfers on China and Japan through the Hongkong and Shanghai Banking Corporation and Chartered Bank of India, Australia and China.

Interest allowed on term deposits at the following rates per annum, viz: Seven days' notice, at 2 per cent. Three months, at 3 per cent. Six months, at 3 1/2 per cent. Twelve months, at 4 per cent.

Trust Department.
Act as trustees under mortgages. Manage estates, real and personal. Collect rents and dividends. Valuable papers, wills, bonds, etc., received for safe keeping.

Accountant Department.
Auditors for corporations and private firms. Books examined and reported on. Statements of affairs prepared. Trustees on bankrupt or insolvent estates.
Office, 924 Bethel street.

Savings Department.
Deposits received and interest allowed at 4 1/2 per cent per annum, in accordance with rules and regulations, copies of which may be obtained on application.

Insurance Department.
Agents for FIRE, MARINE, LIFE, ACCIDENT and EMPLOYERS' LIABILITY INSURANCE COMPANIES.
Insurance office, 924 Bethel street.



Hawaiian Trust Co., Ltd.

923 Fort Street

Proper Management

The proper management of an estate involves great care and responsibility, which the Trust Company is prepared to give.

ALEXANDER & BALDWIN

LIMITED.
OFFICERS.
H. P. Baldwin . . . President
J. B. Castle . . . First Vice-President
W. M. Alexander . . . Second Vice-President
J. P. Cooke . . . Treasurer
W. O. Smith . . . Secretary
George R. Carter . . . Auditor

Sugar Factors

Commission Merchants

AGENTS FOR
Hawaiian Commercial and Sugar Co., Haku Sugar Company, Paia Plantation Company, Nahiku Sugar Company, Kihai Plantation Company, Haw Iian Sugar Company, Kahului Railroad Company, and A. and B. Line, Edward May, Emily F. Whitney, W. B. Flint.

THE FIRST American Savings & Trust Co.

OF HAWAII, LTD.
Capital, \$250,000.00.

President . . . Cecil Brown
Vice-President . . . M. F. Robinson
Cashier . . . W. G. Cooper
Principal Office: Corner Fort and King streets.

SAVINGS DEPOSITS received and interest allowed for yearly deposits at the rate of 4 1/2 per cent per annum. Rules and regulations furnished upon application.

JOSEPH HARTMANN & CO.

WHOLESALE
Wine and Liquor Dealers
Waverley Block, BETHEL ST

SCHOOLS OF VALLEY ISLE

Commencement Week on Maui.

SESSION OF CIRCUIT COURT

Politics Not Lively Now—Baseball Notes—A Rainy Spell. Personal Notes.

MAUI, June 21.—The past week on Maui has been chiefly remarkable for the closing exercises of the various schools prior to the long summer vacation. To the uninterested observer the exercises of "pau kula" day in the ordinary district school seem rather flat, stale and unprofitable, for the program of events is ever the same, and is often monotonous with the constantly recurring speech, dialogue, song imperfectly rendered by childish lips. But all this is another story when the fond parent and admiring friend are brought into consideration.

During the morning of the 15th Maunaloa Seminary of Paia held its annual reception, day before a large audience of Maui residents. The girls were all assembled in "Baldwin Hall," at 9 a. m., and for several hours showed their proficiency in the various studies. Beautiful songs, perfectly rendered, gave variety to this exhibition of their scholarship. In an adjoining room was held a most successful sale of fancy articles, bamboo and lauhala work, and bread, cake and candy.

On the evening of the 20th, the large hall of the Walluku Union School was packed to the doors with the people of the town who frequently applauded a most interesting rhetorical program. The entertainment was a long one, consisting of twenty events, among which may be mentioned Japanese songs, given in costume, a fan drill, a burlesque on the fan drill, a cantata, and as a finale, a minstrel show in which 24 boys and girls took part. A cake walk by the minstrels created much merriment. Mrs. W. A. McKay is the principal of this school and her assistant teachers are Mrs. Harry and Miss Pihl.

During Friday, the 20th, from 9 a. m. to 2 p. m., nearly every Maui school gave some sort of an entertainment.

At Waikapu there was a pleasing program of music and rhetorics. At Paia nearly every child had a speech and it was the same at Hamakua. The Paia kindergarten, under Miss Mosser, and the Hamakua kindergarten, in charge of Miss Steele, vied with the public schools in attracting local residents. At Kealahou, Kula, Mr. Copeland issued printed programs executed on the school press. Their entertainment was varied by the introduction of instrumental music on the organ, flute and guitar. At Kaupakula the list of exercises was a long one, consisting of recitations and songs. At Makawao in addition to recitations, dialogues and songs, there was a cantata, entitled "Little Red Ridinghood," the execution of which devolved much credit upon Miss Fleming, who had carefully trained the children.

Though to the pupils and their relatives and friends the day was one of pleasure, to the teachers it represented much hard work.

COURT PROCEEDINGS.

The Second Circuit Court of Walluku has been in session all the week. The trial jury hope to terminate their labors some time next week. It has still six or more civil cases to try. This morning (the 21st) a "hung" jury reported to Judge Kalua. The case concerned was the Territory of Hawaii vs. Entario Valez, assault with deadly weapon. Valez, a Porto Rican, resident of Hamakua, had a narrow escape, for the jury stood 11 to 1 against him, after discussing the matter all yesterday afternoon and last night.

BASERBALL.

At Wells' Park, Walluku, a short game of baseball took place between the Waikapu and Maui Alerts, on the 15th. During the last half of the first inning the game was declared drawn on account of rain. The score stood 2 to 2 in favor of the Waikapu, though only two men of the Alerts were out at the time the game was stopped.

MISCELLANEOUS.

Politics comes hard to Maui people. Few if any of the Republican precinct clubs have held the June meeting called for by their by-laws. They probably intend to nominate and elect all officers at the meeting in July.

By the steamer of the 18th, Mr. and Mrs. C. H. Dickey, Miss Belle Dickey and Mrs. Grace Waterhouse of Honolulu arrived on Maui. They are at their Haku residence to spend the summer.

Mr. and Mrs. W. O. Aiken and Miss Forbes are at "Idlewild," Olinda. School Inspector C. W. Baldwin is at Haku.

Harry Baldwin of Stanford University is visiting his brother, George Baldwin, the chemist of Hamakua plantation.


By today's steamer, Mrs. W. O. Smith and Mr. Clarence Smith depart for Honolulu. They have been visiting at Hamakua.

The Makawao "literary" was postponed from the evening of the 20th until tonight, on account of inclement weather.

Weather quite rainy all the week; four or five inches of rain have fallen in localities. The trade winds are blowing today.

MEN! WAKE UP!

Is Your Back Weak?
Have You Dragging Pains?
Are You Easily Tired?
Have You Varicocele?



Have you lost the fire and strength of your youth? Have you "come and go" pains in your back and shoulders? Are you growing old too soon?
If you have these symptoms or any other sign of breaking down of your nerves and vitality you will find new life in Electricity as applied while you sleep.

DR. McLAUGHLIN'S ELECTRIC BELT

is made for you. It is the best way to use electricity. It pours a gentle stream of life into the weak parts continually for hours every night. It refreshes the nerves, expands the vital powers, enriches the circulation and makes you feel bright, active and vigorous in one night's use. You get stronger each day, and in a few weeks you are a new man—stronger and younger in the fire of youth. It is grand, the method of mine, and every man who has ever used it is praising it.

TRY IT NOW!

Don't delay trying it. Your future happiness depends on your checking this drain upon your vitality, so stop it now, and you can be sure of a long and vigorous life, full of the joys of a healthy vigor.
Don't drug. Drugs can't cure you, as you know if you tried them. My Belt cures because it increases your nerve power and your vitality. If you will call I will give you a free test of what I can do. If you can't call send for my beautifully illustrated book, telling about my method. I send it sealed free. I have 50,000 cures. Call or write today. Send this ad.

Dr. M. G. McLaughlin, 906 MARKET ST
San Francisco.
Office Hours: 8 a. m. to 8:30 p. m.; Sundays 10 to 1.

EASY TO BUY

"Yukon" Refrigerators

Sold on Installments

We sell them on easy payments. A little money down and small weekly payments soon pays for one. While it is being paid for you have the use of the refrigerator. The "Yukon" is the best refrigerator made. Preserves the food best with least ice. Made of thoroughly kiln dried wood, has moveable shelves and flues, larger ones with enameled lining and all sizes; some with water cooler.

Prices from \$10.50 Upward

Coyne Furniture Co., Ltd.

Progress Block, corner Fort and Beretania.

Liberal Reductions from Publishers Prices.

Latest Novels

\$1.50 Books for \$1.20

The Emporium—San Francisco's great Department Store—keeps constantly in stock a quarter of a million volumes, embracing Fiction, History, Science, Biography, Belle Lettres, School Text Books and the only complete line of Medical Works in California. Here are a dozen of the newest and best selling books.

The Crisis—by author of Richard Carrel—published at \$1.50—our price \$1.20—postage 5c extra.
The Helmet of Navarre—a fascinating story of France in the 15th century—published at \$1.50—our price \$1.20—postage 5c extra.
The Puppet Crown—an entertaining story of the life of a young girl—published at \$1.50—our price \$1.20—postage 5c extra.
Like Another Helen—a charming story of the Turko-Grecian War—published at \$1.50—our price \$1.20—postage 5c extra.
Teeth Dexter—the most lovable heroine of modern fiction—published at \$1.50—our price \$1.20—postage 5c extra.
Billy Baxter's Letters—one of the most amusing books published—75c post-paid.

Masters of Men—a powerful story of the new navy—published at \$1.50—our price \$1.20—postage 5c extra.
An Eagle Flight—a Filipino novel by Dr. Jose Rizal—published at \$1.25—our price \$1.00—postage 5c extra.
Visits of Elizabeth—a most entertaining series of letters from a young girl—published at \$1.50—our price \$1.20—postage 5c extra.
The Octopus—a story of California by Frank Norris—published at \$1.50—our price \$1.20—postage 5c extra.
Penelope's Irish Experiences—a continuation of Penelope Progress—published at \$1.50—our price \$1.00—postage 5c extra.
John Henry—a humorous book, that is creating laughs all over the United States—75c post-paid.

Our Mid-Summer Book Bulletin and our monthly Music Bulletin, giving complete lists of the most recent publications in literature and music mailed free to any address. Send for our mammoth general catalogue—also free—illustrating, describing and giving prices of everything to eat, drink, wear or use.

THE EMPORIUM

San Francisco, U.S.A.

Oil and Steam

THE COMING FUEL IS OIL.
The best burner for oil is that of the W. N. Best Oil Burning System.
Lambert's Steam Meter is ahead of the ordinary engine for convenience, simplicity and economy.

For particulars inquire of
W. E. ROWELL
Room 511 Stangenwald Bldg.

Barnard's BEST Coffee

E. J. WALKER, Agent

At Your Crocker's 35c Pound

MILK MILK MILK

CREAM AND BUTTER

Milk supplied Wholesale and Retail from Principal Dairies on this Island. NOTE THE ADDRESS
Honolulu Dairymen's Assn., Ltd.
Phone White 241. Office, Shevidan Street.

When You Call and Leave a Card . . .

and that card is shoddy, one you should be ashamed of:
WHAT IMPRESSION do you leave behind?
You say you don't care; yes, but you should care.
You cannot afford to be careless about the kind of card you use; it does make a difference, whether you believe it or not.
Besides, there's no excuse for using the wrong kind; as the right kind, barring the first cost of the engraving costs no more than the wrong. We have two presses constantly going, doing nothing but turning out the RIGHT kind of card, the kind that will not be criticised.
You will have no reason to be ashamed or fear criticism if your cards are made by us.

H. F. WICHMAN,

FORT STREET.

PHOTOGRAPHIC PORTRAITS

Fine Assortment of ISLAND VIEWS. Send for list.
First Class Work Guaranteed



Dovey PHOTOGRAPHIC CO., LIMITED.

MOTT-SMITH BLOCK, Corner Fort and Hotel Streets.

CASTLE & COOKE CO., LTD.

HONOLULU.
Commission Merchants
SUGAR FACTORS.

AGENTS FOR
The Ewa Plantation Company, The Wai'alea Agricultural Co., Etc., The Kohala Sugar Company, The Waimea Sugar Mill Company, The Fulton Iron Works, St. Louis, Mo., The Standard Oil Company, The George F. Blake Steam Pump, Weston's Centrifugals, The New England Mutual Life Insurance Company, of Boston, The Aetna Fire Insurance Company, of Hartford, Conn., The Alliance Assurance Company, of London.

THE RESULT.

A sitter can not be posed in a moment. To secure good pictures one must take time to study the moods of the sitter and give him the opportunity to become at ease.
We pursue this course and the result justifies the time and patience used.

J. J. WILLIAMS,

Photographer.

Will Make Your Clothes Look Like New

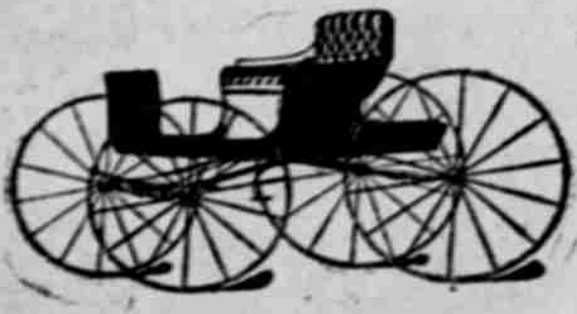


IF YOU TAKE THEM TO THE
EAGLE
Cleaning and Dyeing Works.
Fort St., Opposite Star Bldg.
Tel. White 2362.

PAUL R. ISENBERG, President.

Chas. F. Herrick Carriage Company, Ltd.

G. F. HERRICK, Manager.



There is nothing else anywhere so exclusive in style, design and finish and nothing of such superior quality and workmanship as the COLUMBUS BUGGY CO'S goods...



On the day you celebrate, whether it be the glorious Fourth of July or Coronation day don't forget that when ordering

Pommery Champagne

you are being served with a superior article at the same cost as other champagnes, for notwithstanding Pommery is sold at a considerably higher figure per case than other wines...

GUY OWENS ELECTRICAL ENGINEER

Room 6, McIntyre Building

'Phone Main 368

Telephone, Electric Light and Power Systems Installed.

Plantation Work a Specialty

Your Letter Yesterday

was on paper different from the envelope. Too bad—evidently you are not acquainted with our Beam Scheme in buying writing paper...

Hawaiian News Company, Ltd. MERCHANT STREET.

Our Great Reduction Sale

Closes Saturday, June 14th

HATS—HATS—HATS SHIRTS—SHIRTS—SHIRTS

K. ISOSHIMA

King Street, next to Castle & Cooke.

Cordova Wines OF THE California Winery

Are procured from Grapes grown in their own Vineyards, and are guaranteed absolutely free from adulteration.

WOLTERS, WALDRON CO., Ltd. SOLE AGENTS.

QUEEN STREET. HONOLULU, H. T.

H. McKechnie

House, Sign and Decorative Painting Graining, Glazing, Paper Hanging and Tinting.

761 Alakea Street.

P. O. Box 522. Telephone Main 62.

MAILES AND PUNAHOU DEFEATED ON DIAMOND

(Continued from Page 3.)

ing this season which is not to be overlooked, and this is the exceptionally fine umpiring by Lieut. Newton of the United States Artillery...

Table showing scores for MAILE-ILIMA ATHLETIC CLUB and A. R. H. O. A. E. with columns for runs, hits, errors, and innings.

Total 2 4 24 10 2 Desha batted for Bush in ninth inning.

Table showing scores for U. S. CUSTOMS and A. R. H. O. A. E. with columns for runs, hits, errors, and innings.

Total 3 4 27 14 4 Score by innings: M-I. A. C. 0 0 0 0 0 0 0 0 0 0 0 0 0 0 0 0 0 0 0 0 0 0 U. S. Customs 1 0 2 0 0 0 0 0 0 0 0 0 0 0 0 0 0 0 0 0 0 0

KAMEHAMEHA

Table showing scores for KAMEHAMEHA and A. R. H. O. A. E. with columns for runs, hits, errors, and innings.

PUNAHOU ATHLETIC CLUB

Table showing scores for PUNAHOU ATHLETIC CLUB and A. R. H. O. A. E. with columns for runs, hits, errors, and innings.

Total 5 7 24 7 8 Score by innings: P. A. C. 0 0 1 0 0 0 0 2 2 - 5 Kams 0 0 1 0 3 5 5 * - 12

Table showing scores for W. L. T. Pct. with columns for runs, hits, errors, and percentage.

HOPES OF HILO.

Expects to Resume Wireless Connection With Territorial Capital. Hilo is or will be in a day or two again in communication with Honolulu by wireless telegraphy.

PRETTY EXHIBITION OF DANCING BY CHILDREN

(Continued from Page 3.)

LIST OF PUPILS.

Bertha Lanz, Bernice Halstead, Gladys Halstead, Lucia Halstead, Muriel Halstead, Hazel Halstead, Mary Lucas, Hattie Lucas, Abbie Lucas, Violet Lucas, Jimmie Lucas, Dorothy Ashley, Catherine Ashley, Adelaide Pratt, India Wayson, Elsie Wilkinson, Thelma Lindley, Ruth Lindley, Henrietta Schwartz, Wilda Shaw, Allene Downett, Helen Wilder, Winona Wallace, Mary von Holt, Herman von Holt, Hilda von Holt, Ronald von Holt, Dorothy Guild, Rosie Herbert, Wilhelmina Tenney, Jack Galt, Carter Galt, Kathleen Taylor, Gertrude Traphagen, Geraldine Traphagen, Libbie Peck, Sybil McInerney, George McInerney, Charlie Herrick, Henrietta Schwartz, Sallie Adams, Elizabeth Carter, Phoebe Carter, Violet Swift, Dorothy Wood, Nora Swamy, Rosamond Swamy, Ruth McChesney, Martha McChesney, Lillian McChesney, Grace Robertson, Sybil Robertson, Annabel Low, Eola Logan, Cornance Simpson, Pauline Greene, Maurice August, Harriet Hatch, Gilchrist Hatch, Alice Brickwood, Eloise Wichman, Jessie Kennedy, Marguerite Creighton, Myrtle Schuman, Dorothy Hoogs, Fannie Hoogs, Madeline Burnette, Douglas Damon, Marjorie Nichols, Ovan Graham, Charles Gunn, Laura Nott, Kawikiwi Boyd, Violet Boyd, May Fraser, Annette Steele, Kathleen Radway, Ruth Norris, Florence Gurrey, Sara Lucas, Minnie Cantin, Esther Lando, Bella McCarriston, May Ferguson, Spencer Bickerton, Richard Oliver, Amy Greenwell, Marie Hughes, Albert Greene, Marion Greene, Helen Gay, Freda Gay, Chris. Bertelman, Ruth Soper, Russel Walbridge, Thelma Murphy, Agnes Smith, Mildred Smith, Edith Smith, Adolph Schnack, Alapak Smith, Hilda Smith, Linnaia Smith, Henrietta Smith, Margaret Thurston, Robert Thurston, Helen Jones, Margaret Jones, Sara Pratt, Ernest Raas, Camille Raas.



Coronation Day

THURSDAY, JUNE 26, 1908.

In celebration of "Coronation Day" there will be held on Thursday, the 26th inst.:

At 9:15 a. m. in St. Andrew's Cathedral, a special service, which will include a part of the Historic Coronation Service. At 2 p. m. there will be a garden party and cricket match on the grounds of the Oahu College...

Tickets for the ball, price \$2 each, may be had of any of the members of the ball committee or of E. W. Jordan's store, No. 16 Fort street.

Chairmen of committees: Finance—Mr. W. M. Giffard. Cathedral Service—Mr. T. C. Davies. Cricket Match, etc.—Mr. E. H. Wodehouse. Ball—Mr. D. W. Anderson.

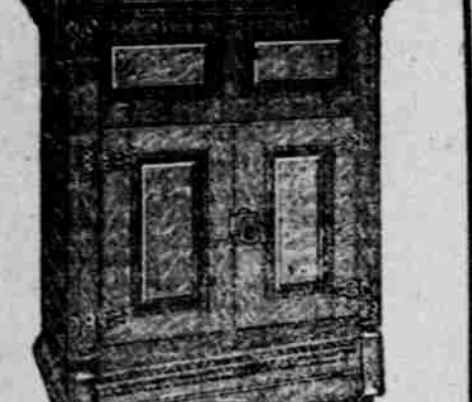
SPECIAL TRAMWAY SERVICE.

For Evening of Thursday, June 26th. A special through car will leave the Hawaiian Tramways Co's terminus on Nuuanu avenue at 8 o'clock p. m.

NOTICE

FRED PHILP & BRO. BEG TO NOTIFY their patrons and the public that they have purchased the stock in trade and good will of the Manufacturing Harness Co. and will continue their business at the old stand...

Cold Wave Refrigerators



We have just received our new style Cold Wave Gurney Cleanable Refrigerators with beautiful white enameled provision chambers.

The cost of these new Cold Wave Goods is not ten per cent over the regular zinc lined Gurney.

Garden Hose A Special Drive

5000 feet 1/2 in. rubber hose will be sold at 7c per foot, which is \$3 50 for 50 feet.

W. W. DIMOND & CO. LIMITED.

Dealers in Crockery, Glass and House Furnishing Goods.

53, 55, 57 KING ST., HONOLULU.

Wm. G. Irwin & Co. LIMITED.

P and B

ROOFING BUILDING PAPER PRESERVATIVE PAINT BOILER AND STACK PAINT INSULATING COMPOUND BRIDGE AND ROOF PAINT

REFINED SUGARS.

PAINT OILS.

STEAM PIPE COVERING.

INDURINE.

FILTER PRESS CLOTH

CEMENT, LIME AND BRICKS

AGENTS FOR

WESTERN SUGAR REFINING CO. SAN FRANCISCO, CAL. SALADIN Locomotive Works PHILADELPHIA, PA.

The Fountain

Delivers to all parts of the city chemically pure and palatable distilled water for drinking purposes in 3-gal. dem.

DRINK Distilled Water

And avoid kidney troubles and rheumatism. In the Eastern States the best physicians are treating kidney complaints entirely with just such water as I am offering you.

Ring Up 270

for water or pure soda made from this water.

M. S. Grinbaum & Co. LIMITED.

BLANCHE BATES 50 CIGAR.

REMOVED WOMAN'S EXCHANGE

Hotel St., Arlington Annex.

NEW TERRITORY RESTAURANT

Just opened in the new building opposite Club Stables.

G. G. YEE HOP & CO KAHIKIUI MEAT MARKET