

# The Pacific Commercial Advertiser

VOL. LIII, NO. 8768.

HONOLULU, HAWAII TERRITORY, THURSDAY, SEPTEMBER 15, 1910.

PRICE FIVE CENTS.

## DEMOCRATS TO CRACK NUT TODAY

Territorial Convention to Meet and Settle Question of Immigration.

### MCANDLESS STANDS FIRM

Party Inclined to Resent His Pill Even Though It Has Been Heavily Gilded.

Although the Democratic territorial convention convenes for business this morning at ten o'clock, and although there has been held among the leaders of the party a number of conferences, the party appears no closer to an amicable adjustment of its differences over the immigration question than ever. It may be that before the convention on platform has finished its deliberations the members will have seen their way out of the deadlock. It is, however, about ten thousand dollars' worth of money that Link McCandless should be able to have his own way, and that the advice of old-time leaders of Democracy, like Charles McCarthy and R. E. Trent, should be relegated into the past, in which event there will be money in the convention and mighty candidates.

On the other hand, it may be that McCandless' persistence will be further weakened, in which event there will be no money for him. In either case, the party is up against a hard proposition, with internal discord and a practically united Republican party to face.

McCandless' idea has been to have money in the convention, even if he had to drop everything but immigration and pay heavily for being allowed to keep that. He has been calling and sending precinct caucuses for the past two weeks and threshing out the immigration matter. Last week he called a caucus of all the Oahu Democrats and presented the meeting with a neatly printed typewritten platform, informing them that that was what he wanted ready for the convention O. K. Then the storm he supposed he had bottled up broke out again, and the caucus of the caucus refused to stay longer, lest Link succeed in jamming the plank down their necks in the name of themselves.

**Rumored Changes.**  
One persistent rumor about town yesterday was that if Colonel McCarthy did not run for the senate, Mayor Fern would take the chance; Sheriff Jarrett would run for mayor and Deputy Sheriff Rose for sheriff, with Chief Cook Ash of the police department a candidate for deputy sheriff. When asked if this was true, the ordinary Democrats smiled slyly and refused to affirm or deny, but McCandless spoke up for his party and denied it.

Another rumor in Republican ranks is that Fred Turrill, an old Democratic warhorse, one of the old original campaigners for Democracy, intended to bolt the Democratic party if a anti-immigration plank was inserted in the Democratic platform. As Link is a county employee working under Democratic City Treasurer Trent, Republicans attached more than ordinary meaning to this alleged statement, believing that it represented Trent's position to a large extent.

That Deacon Trent is over a barrel is now current news among the Republicans as well as Democrats. He is not afraid, say Democrats who believe in immigration, to risk his business reputation by opposing immigration, as many projects which he handles as a business man, entirely independent of his county citizenship, have a bearing financially on the results of immigration.

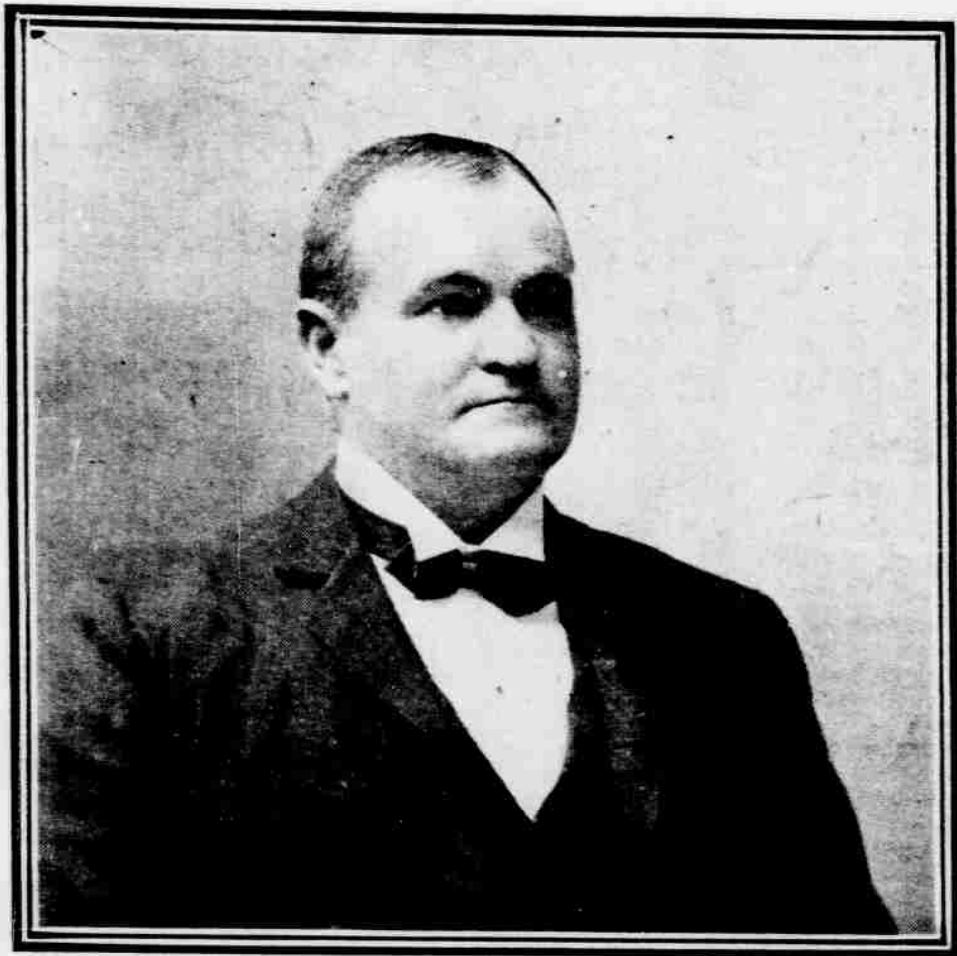
Link McCandless will not recede from his position and insists that the plank be inserted. The prize for setting this plank is a \$10,000 contribution.

(Continued on Page Four.)

Wireless to The Advertiser.  
Hilo, September 14.—The Republican county convention of Hawaii convened here yesterday, with John T. McCall as chairman, adjourning after a temporary organization until last night to give the committees on platform and platform an opportunity of presenting their reports.

The platform committee is made up of W. P. Miller, Kaunahine, Judge Hall, Coleman of Puna and Vasco E. M. When the committee retired it was reported that an attempt would be made to amend the band and immigration

## His Candidacy Has Put His Party in a Hole



L. L. MCANDLESS.

Whose insistence on an anti-immigration campaign will split Democratic party wide open.

## MAY ASK FOR A NEW PRISON

Governor Says Penal Institution Is Too Small and Not Up to Date.

The question as to whether or not Oahu penitentiary should be moved from its present site to another location is one that will probably come before the next session of the legislature. Governor Peary suggested yesterday that something will have to be done in regard to enlarging the prison and bringing it up to date, and he said that as long as radical changes will have to be made, it might be as well for the legislature to consider the matter of location and the possible building of a new jail.

The Governor spent most of yesterday delving into the figures submitted by the various heads of departments, with a view to finding out how well the departments are keeping within their appropriations and also to see where he can best spend the remainder of the \$50,000 contingency fund.

Particular attention was paid to the prison and the Governor has made the painful discovery that the increased cost of living is being felt by the prison officials as well as by ordinary mortals. Prison figures are based on the cost per day per prisoner, and the figures show that it costs several cents a day more now to keep each prisoner than it did a short time ago. The higher price of various commodities is largely responsible for this, but there are also other reasons. For one, the county jail is now separate from the territorial prison and consequently there are fewer prisoners in the penitentiary than formerly. Naturally, the prison officials are not able to buy at as advantageous figures as before. Besides this, more of the prisoners have to be kept at work in the institution as cooks, servants and so forth, and this reduces the earning capacity of the prison as a whole.

Governor Peary says that the prison is not up to date. It is too small for one thing, and the arrangements are by no means perfect. The sanitary arrangements are not what they should be and the legislature will be asked to do something to remedy this. Also, under the present system, each of the cells has to be locked separately. This would prove dangerous in the event of fire and some new system is needed.

In view of the radical changes that

(Continued on Page Four.)

tion planks in the draft, drawn to conform to the territorial platform.

It is believed at this time that the result of the caucus of the Hilo delegates will be to defeat Cabrera for nomination as supervisor and Alfonso as a candidate for reelection to the house. It is also predicted that if this be done the action will be followed by an announcement that the Portuguese will withdraw their support from the party.

**Harmony Prevails.**  
HILO, September 14 (Later).—As a result of the Hilo caucus, Cabrera has withdrawn from the supervisory race in the interest of harmony, while Alfonso has been assured of support in his candidacy.

## PASS REPORT ON HILO BREAKWATER

Chamber of Commerce Agrees With Committee—Endorses the Panama Exposition.

The chamber of commerce trustees, at a meeting yesterday, accepted and filed the joint report of their own committee and one from the merchants' association on a complaint of the Hilo Board of Trade regarding the construction of the Hilo breakwater. This report, which has already been published, was accompanied by the following letter from the committee, Elmer Paxton and James A. Kennedy:

"On July 21 a communication from the Hilo Board of Trade was referred to the undersigned committee, together with a proposed letter which the said Hilo Board of Trade requested the Honolulu Chamber of Commerce to sign and forward to Brigadier-General William H. Bixby, chief of engineers, Washington, D. C.

The letter referred to protests against the proposition made by Major Winslow, Corps of Engineers, U. S. A., to use the appropriation of \$200,000 made by the last congress for the purpose of building a substructure by means of scows in extending Hilo breakwater, instead of making a completed structure as far as said appropriation will go, it being Major Winslow's plan to complete said substructure from the appropriation to be secured from the next congress.

"As the merchants' association of Honolulu also had the matter under consideration, it was subsequently decided to make a joint report. Your committee met with a like committee from the merchants' association, and have given the matter very careful attention.

(Continued on Page Four.)

## ZEPPELIN SUFFERS ANOTHER DISASTER

BADENBADEN, September 14.—One more disaster has waited upon Count Zeppelin, the famous German aeronaut, when the Zeppelin IV, another of his great airships, exploded today. A defective engine was the cause, the motor exploding and igniting the gas in the great bag, the explosion inuring three persons. The great machine is a total wreck.

The most alarming series of accidents has attended upon Zeppelin's attempts to conquer the air, the first three "Zeppelins" meeting equally serious fates, either through explosions or by untimely descents at inconvenient places.

On June 29, his Deutschland, the great passenger car that carried twenty-four passengers, fell a total wreck in Teutoburger forest, costing the count a considerable sum of money. On the nineteenth of July the Zeppelin gas works at Friedrichshafen blew up. Only funds that are continually raised by his countrymen enable Zeppelin to carry on his great work in the face of these disasters.

**SHAFROTH RENOMINATED.**

DENVER, Colorado, September 15.—John F. Shaforth was yesterday nominated by the Democratic convention for reelection as governor.

## FEDERAL AID IS REQUESTED

United States Will Be Asked to Help Eradicate Bovine Tuberculosis.

### THE THIMBLE BERRY PEST

Ehrhorn Hopes He Has Found a Cure for One of the Enemies of the Farmer.

The federal government is to be called upon by the territorial board of agriculture and forestry to aid in suppressing bovine tuberculosis. At the meeting of the board held yesterday afternoon a letter from Marston Campbell to the head of the bureau of animal industry was approved and ordered sent, in which Mr. Campbell, at the suggestion of Doctor Norgaard, requests the bureau to detail two or more federal inspectors to come to Hawaii and lend their aid in the effort to eliminate the disease.

The board has made up its collective minds that bovine tuberculosis must be eradicated, as an important step in the wiping out of human tuberculosis. And notwithstanding the fact that the board of supervisors refuses any longer to cooperate with the board of agriculture and forestry to the extent of contributing financially to the campaign, the territorial board does not propose to abandon its efforts.

Doctor Norgaard still takes it much to heart that The Advertiser's campaign has put a stop to the selling of tubercular meat. In a letter written by him to A. D. Melvin, head of the United States bureau of animal industry, Doctor Norgaard complained that the stories published in one of the influential daily papers of Honolulu—which was The Advertiser—had aroused such a sentiment that it is no longer possible for the dairymen to realize anything from the sale of their tubercular cows. He said that one of the leading dairymen, Paul Isenberg, had given orders to have all his tubercular cows destroyed, but that dairymen less rich could not afford to do this without being compensated for the loss.

Doctor Norgaard in a statement before the board, said that up to date 1478 cows had been tested and a large proportion of them had been found to be tubercular. Most of the Honolulu cattle have already been tested, but there are quite a number of owners of one or two cows each who have applied to the board of supervisors for permits to sell milk and their cows have not yet been tested. It would cost a good deal to make the tests and the veterinarian wanted to know what he was to do about it. The board instructed him to go ahead with the work, even if the supervisors will not contribute financial aid to the cause, for it is the principal object of the territorial board at present to wipe out bovine tuberculosis.

It is probable that an effort will be made to test the cows of the various small owners at one time if possible, and if they will consent to allow the veterinarian to dispose of such cows as react to the tuberculin test.

### Thimble Berry Pest.

Professor Ehrhorn, the entomologist, stated to the board that he hoped he had found a remedy for the dangerous thimble berry pest. Brother Newell, thimble berry pest, of Hilo, had sent him specimens of thimble berry which had been killed, apparently by some fungus, and he was going to make further investigations in the hope that the fungus might prove to be effective in destroying the pest.

Mr. Ehrhorn submitted his usual report, of which the following are important extracts:

### Pests Intercepted.

Probably the most important find for many months was taken this time. It consisted of a bag of sugar cane containing about fifty pieces of cane cut into 12-inch lengths. This cane was without question badly infested with the Fiji disease as we were able to compare it with alcohol specimens of the Hawaiian Sugar Planters' experiment station. This disease would raise havoc with the sugar industry of these islands should it ever get a foothold. We took the cane to the Lucas mill and burned it at once. Here is an illustration of the great necessity to watch the travelers' baggage, and we are indeed thankful to state that the friendliest cooperation now exists between our division and the U. S. customs, which really means half the battle. Nothing can now pass into the Territory until we see it and every customs inspector may be rightly considered a deputy of my department, thanks to the great kindness and interest of the collector of the port.

One lot of apples from California was very seriously infested with the codling moth and the shipment was burned. A lot of onion sets from Japan were found infested with epispids and the lot was fumigated with carbon bisulphide.

### Newell's Good Work.

During the month your superintendent was able to visit Hilo and go over the work of the inspector, Brother M. Newell. I desire to state that I was greatly pleased to find the inspector's work very satisfactory. The equipment

(Continued on Page Two.)

## HARMONY AROUND FESTIVE BOARD

Republicans Eat Poi and Exchange Expressions of Mutual Good Feeling.

### MCANDLESS GRILLED SOME

Shingle Pays Respects to Hus-tace and Kuhio Invites Hunt for Yellow Dogs.

The Republican campaign opened in earnest last night at a luau given for all the candidates, officers of the convention, members of the convention and all the candidates who were defeated in the balloting for places on the county and legislative tickets. The campaign was opened with speechmaking which indicated the trend of some of the arguments to be used on the stump.

It was a harmony meeting, and all those present indicated that they were ready to put their shoulders to the wheel and carry the ticket to victory.

The luau was one of the largest ever served for party workers, and was a feast at which many Hawaiian delicacies were at hand. Long tables were laid the entire length of the new Hirano Hall, and at the head of each was a politician prominent in the work of the party. At the first table sat R. W. Breckons, the chairman of the convention; at the next Prince Kalaiananale, who was nominated to succeed himself as delegate to congress; at others, Col. Samuel Parker, chairman of the county committee; Charles Achi, defeated in the race for the senate nomination, and John C. Lane, candidate for mayor.

### No Promises Made.

Mr. Lane opened the speechmaking in Hawaiian, followed by a brief address in English. He said the luau was intended to bring together the party men, that all differences that may have existed among factions could be buried. The nominating convention was created, he said, for the purpose of selecting candidates, and that all had an even chance. The rules were all above board, and every delegate was given a chance to vote according to the dictates of his conscience. The Republican party was above board. If the delegates were to take their individual rights into consideration

(Continued on Page Four.)

## COL. BULLARD NOW IN TOWN

Transport Logan Arrives From Coast. Will Resume Voyage Tomorrow.

Leaving San Francisco several hours late owing to delay occasioned by the non arrival on schedule of some of the field artillery destined for the Philippines, the United States Army transport Logan did not arrive in the harbor until after seven o'clock last night, mooring at the Matson wharf. The vessel will discharge 180 tons of supplies for the army posts and will take on about 600 tons of coal, necessitating her remaining here until tomorrow morning, when she will continue her voyage to Guam and Manila.

About twenty passengers arrived for Honolulu, among them being Lieut. Col. R. L. Bullard, Eighth Infantry, who will direct the camp of instruction from September 17 to 24 inclusive for officers of the National Guard of Hawaii. Major-General McCaskey, U. S. A. (retired), accompanied by Mrs. McCaskey, will stop off here for a visit. C. J. DeRoo, chief clerk of the depot quartermaster's office, returned from a vacation, accompanied by Mrs. DeRoo and family. George D. Graham, dental surgeon, U. S. A., arrived for duty at Fort Shafter. He is accompanied by Mrs. Graham, Lieutenant Rodney, Fifth Cavalry, and Mrs. Rodney, are back from a trip to California, and will take up quarters again at Schofield Barracks. Grover C. Strong is a veterinarian to be attached to the quartermaster's department. Captain Winters, Third Cavalry, has returned to resume his duties as military instructor at the Kamehameha Schools.

The troopship carries four batteries of field artillery and a coast artillery. The ranking officer will be Captain Doley.

## ONE HOP DEALER HOPPED TOO HIGH

NEW YORK, September 15.—Adolph Rothbarth, an employee of a leading firm of hop dealers, pleaded guilty yesterday to the larceny of ten thousand dollars from the Mercantile National Bank, which he lost in speculations. Four other banks are also losers through his thefts.

## QUIT QUARRELING AND GET IN AND WORK

Such Is Roosevelt's Advice to the Republicans of the State of Washington.

### ALL BE FOR THE PARTY

Urges Regulars to Support the Candidates of Insurgents at the Polls.

OYSTER BAY, September 15.—Theodore Roosevelt yesterday sent a message to the Republicans of the State of Washington, in which he urged the regulars to forget whatever bitterness may have arisen during the recent factional fight with the insurgents and get in line behind Poindexter and the insurgent nominees for the house during the rest of the campaign.

He also urged the insurgents to reunite with the regulars for the victory of the party in November.

Roosevelt avoided expressing any pointed advocacy of either faction, addressing his message to both sides equally in the name of the Republican party.

## INDICTED IN FEBRUARY. ARRESTED YESTERDAY

CHICAGO, September 15.—Former Cashier Fitzgerald of the United States subtreasury, who was dismissed early in the year, was placed under arrest yesterday on an indictment for theft returned by the federal grand jury on February 17 last. The indictment was drawn up at that time to avoid the statute of limitation, but was suppressed in order that the stolen money, amounting to \$17,500 might possibly be recovered.

Fitzgerald was discovered to have been in extensive speculations, requiring a cash capital greater than his resources. He also lived extravagantly and had purchased a residence at a cost of ten thousand dollars.

## CELEBRATED RECORD AND ARE POISONED

SAN FRANCISCO, September 15.—Twenty-five members of the Twenty-Seventh Company, Coast Artillery, were taken seriously ill last night with ptomaine poisoning, the result of eating canned shrimp. The artillerymen were celebrating yesterday at a luncheon, given to honor those who had made a record at target practice, the poisoned dainties being serve up as one of the courses.

## HUMPHREY IS CHOSEN AGAIN AS CANDIDATE

Election of Leader of Subsidy Movement May Be Yet Contested.



CONGRESSMAN HUMPHREY. Father of the Ship Subsidy Bill.

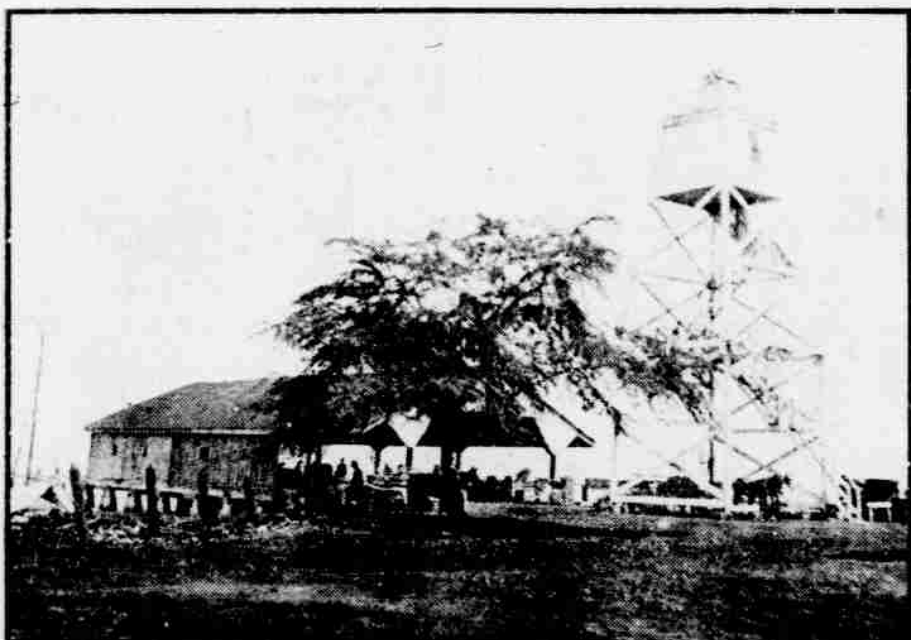
SEATTLE, September 14.—Representative William E. Humphrey was chosen at the Republican convention today as a candidate to succeed himself to the house. This will be his second term if elected, having made a record for himself in the first that has made him conspicuous in national politics. He is the leader of the ship subsidy movement in congress.

It is probable that his nomination at the primaries will be contested by the insurgents, Humphrey being strongly linked with the regular wing of the party.



## FISHERMAN'S LUCK IN THE CHANNEL OFF MOLOKAI ISLE

Where the Game Fish Run in Plenty---Sport for the Sportsman and Business for the Fisherman.



THE LANDING AT LAHAINA.

LAHAINA, September 13.—Here, in the sleepiest, prettiest town in the whole group, is to be enjoyed sport which would gladden the heart of any angler.

Maikai Keliilike and Jim Roberts both own power sampans and fish regularly for the local market, which is controlled by Japanese. Maikai is the champion cowboy of the Territory and Roberts is captain of police; both are good sportsmen and only too glad to take a visitor on their boats to the fishing grounds.

I went out with Maikai yesterday to a location off Molokai. With us were Harris Hula, an old Kamehameha boy; Aluno, one of Lahaina's veteran fishermen, and another.

We anchored in forty fathoms and let down our lines. Two hooks went to each line and were suspended about six feet below the six-pound sinker. They were the old style Hawaiian barbless hook in which I had not previously had much faith. A piece of cocoanut fiber was attached to the lead, measuring about eight inches by five inches.

On our way to the fishing grounds we had stopped and obtained a lot of opelu from a couple of natives who were catching them in a net from a canoe, using crushed pumpkin for ground bait. All the sampans here get their bait in the same way and two canoes are regularly kept busy.

### Modus Operandi.

The modus operandi on board our boat was to split an opelu in two and to fasten a half on each hook, impaling it carefully so as to protect it from too speedy loss at the mouth of the ever present bait thieves. Then the hauna had to be adjusted. This was done by mashing up a quantity of opelu and depositing some on the flat surface of the sinker. Next the hook leaders were coiled and laid on the hauna, the baited hooks being placed in the center of the coil. After this the cocoanut fiber was wrapped round the whole and several turns of the line taken around it. Then a loop in the line kept the hauna from unwinding until the proper depth was reached.

The sinker and hauna were next thrown into the sea and the line allowed to pay itself out until a slackening told that the bottom had been reached. The line was then drawn up two or three fathoms and a sharp jerk released the loop and the lead could be felt rolling down the line.

As soon as the cocoanut fiber opened, the hauna floated down the current and the fish in the vicinity followed it up until the baited hooks were come upon. Then the man at the end of the line was generally rewarded by a bite and a fish was sometimes pulled into the boat.

### Much Depends.

Successful fishing in this way depends in great measure on the state of the current. When the current is setting right the fish take the bait so quickly that the supply of opelu is soon exhausted and the boat crew return to Lahaina to sell their fish and to lounge in the sun, telling fish stories and conscious of a day's work well and quickly done. Should the tide be kapakali, however, many hours of patient fishing under a broiling sun have to be spent before the catch is large enough to warrant heading the sampan for home.

As a rule the hooks are kept a fathom or so from the bottom, a knot taken in the line guaranteeing the bait's return to the depth at which the fish are feed-

ing. Sometimes, however, without apparent cause, the fish which have been feeding near the bottom choose to take the bait in midwater and when this is the case the fisherman discovering it immediately notifies all lines in the boat.

We had not been fishing long before Maikai landed a moelua of six pounds, a beautiful red fish with yellowish banding, and looking like an enormous weke. Then he brought up an upakapaka of fifteen pounds which fought gamely before pulled into the boat.

Hula came through next with a five-pound lehe and the old man, who was operating from the bow, had his efforts rewarded with a nice kawalea, a very near relative of the barracouta, if not the true "barrecoot" itself. The lehe is almost toothless and has a silvery tongue and palate.

### "Biggest Got Away."

I managed to land a small upakapaka and then sport reigned quiet for a time, so quiet in fact that a change of location was made and when we next dropped anchor it was in seventy fathoms of water. I felt a gentle bite, struck quickly, and was soon made aware that I was fast in a big fish. I must have got it half of the way up when it made a terrific dash for liberty, the line burning the skin of my fingers, as I essayed to hold onto my hefty customer. He must have torn the hook out of his jaws, however, for when I again started to pull up the line, it came in with a humiliating lightness.

Upakapaka were landed by the party with fair frequency, and Aluno caught a hapuu, a dark-colored, repulsive-looking fish. Also they invited me vainly to make another trip with them before leaving Lahaina.

With power turned on we started to return and a very pretty trip it was, with the warm afternoon sun lighting up the picturesque canyons and gulches of leeward Molokai, revealing distant Ulupalakau, and throwing brown little Kanaloawe into bold relief against the brazen sky. The fringe of palms along Lahaina's shore looked pleasantly inviting after the grilling day and as the current was flowing adversely we hoisted sail and were soon bowling home right merrily.

### Disposing of the Catch.

Arrived at Lahaina the fish were spread on the wharf for inspection and after the catch had been disposed of to the owner of one of the Japanese fishmarkets, a cool drink and a dip in the lagoon put me on the best of terms with myself and sent me to supper, well satisfied with the day's sport.

The two sampans mentioned take as many fishermen out as care to go. The owner of each boat reserves his own catch for himself and, in addition, takes one out of every three fish caught by the others.

The market is controlled by four Japanese who run separate markets. When a catch is brought to the wharf the Japanese hand in sealed bids to the owner of the boat and the highest takes the catch. Last Saturday the four bids on a catch of forty-three upakapaka and three small sharks didn't vary more than a dollar and a few cents from highest to lowest. The catch brought \$24.45.

### Good Fishing Ground.

A fish greatly esteemed here for its gamy and toothsome qualities is the kahala moelua. Many other varieties are taken from the sampans, including most of the game fish which attract tourists to California.

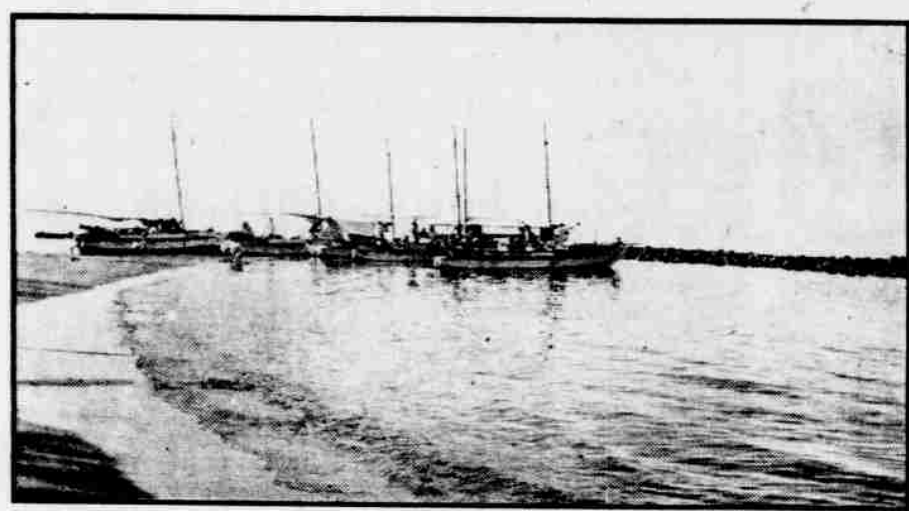
There is little doubt, were the fact that good fishing can be obtained here, generally known, that fishing parties from Honolulu who put in many a week-end at Kaena Point and elsewhere would run over to Lahaina to try their luck in deep water. The trip is a short one, but little time need be missed from business, the catch at the end of the day would be well worth while, and the visitors would return to the metropolis with the kindest remembrances of old Lahaina, once the capital of the group and today the most tropical spot from Hawaii to Nihaa.

### Few Native Fishermen.

Years ago numerous Hawaiians used to be engaged in the fishing but one by one they dropped until today it may truly be said that only the fittest survive. Those who engage in fishing now make good money, it being no unusual thing for a boat to dispose of its catch for close on a hundred dollars. When the aku are running the profits of one day's work sometimes amount to over three hundred dollars.

The aku come in vast schools and are fished for with iao, or small fish, similar in appearance to the naha of the Honolulu market. The presence of screening sea fowl indicates the locality of a school. Also they may be located by the rattle they make on the water, for they are surface feeders.

The sampans take an abundant supply of iao and when the aku are located one or more of the crew throw



LAHAINA FISHING FLEET.

ing chap, reminding me much of the Jew-fish of the Gulf waters; he also brought to boat a fair-sized aawa or ea.

Again the fish ceased biting and another change was made, much to the disgust of the old man, who said that "too much he" was no good. His theory is that the boat that remains in one place all the time will, in the end, make a bigger catch than the one that travels around looking for fish. He is of the opinion that the fish range from feeding ground to feeding ground, and that sooner or later they are sure to come where you are.

### Fresh Fish and Stale Water.

Anchoring again in forty odd fathoms we made a lunch of poi and fresh-caught fish, washed down with water that had become lukewarm beneath the tropical sun. One watch ate while the other fished and vice versa. Finally all hands settled down to steady fishing. None of us caught any new variety, however, and nothing of unusual size was hooked. At half-past three, the holds being respectfully full, the "pa ka kope" or final cast was made and, as it turned out, the last fish caught that day came up on my line. The men in the boat said that if I went out when they were biting freely, I would make a good

the live fish overboard. They follow the wake of the boat and after them come the greedy aku; last of all follow the sharks.

In the stern of the boat the strongest men aboard operate a stiff bamboo pole to lines on which are fastened hooks which have been dipped in lead, giving them a silvery appearance. No bait is put on the hooks, the aku mistaking their flash for iao in the whirl of water.

The aku are hauled out by the dozen and score when they are properly on the feed and one boat has been known to catch several hundred in one day. On better occasions like this all hands, with the exception of the iao throwers, handle a bamboo pole.

### HARVEST FESTIVAL.

Once again, a bounteous harvest has been given us, and everyone has reason for gratitude.

The Salvation Army, at this season of the year, call upon the people to contribute of their bounty to help support the work of love among the poor and needy of the city and community.

Gifts of money, or of goods, where cash is not available, are received as thank offerings and used to maintain and extend the army's beneficent operations.

The local corps carries on four Sunday schools among Hawaiians, Japanese, Chinese, Korean and Porto Ricans and two week-day industrial classes for children. A good public children's character are held regularly out of doors and in the army's hall.

These have a tendency to enlighten and elevate the moral tone of a sleepy conscience on the part of the public. The work of the army is not accomplished without strenuous and continued effort on the part of the workers.

This they freely and cheerfully give, and they call upon the citizens to, as heretofore, generously supply the "shew of war" and as liberally as possible as the cause is a worthy one.

## FEDERAL AID IS REQUESTED

(Continued From Page One.)

is good and everything appeared to be kept in a very neat condition. From general appearances of the growth of Hilo we shall have to be prepared to broaden our work shortly and we shall have to provide something in the way of transportation for the inspector, who now pays his own traveling expenses to and from the wharf, sometimes twice a day.

I also had an opportunity to visit some of the homesteads in Oahu as far as Mountain View. It was in this district that Brother Matthias liberated the large colonies of Hippodamia convergens, the aphid eating ladybird. We found no indication of aphids on the orange trees, where at the time of liberation the new growth was completely covered and the growth badly dwarfed. The trees now look clean and were making new growth. We did not find any Hippodamias, but as there was no food for them present, we could hardly expect this.

### Inter-Island Inspection.

I also visited parts of Kauai during the latter part of this month and called on W. D. McBryde, our honorary inspector. I was agreeably surprised to find the new forest plantings looking so well. Even new plants, only in the ground a short time, were making good headway. Mr. McBryde states that there were never any shipments of plants going from outside ports to Kauai and that all the shipments pass through Honolulu. This, of course, is the law but now that homesteads are being established not only in Kauai, but on the other islands, we shall have to be prepared to sooner or later establish a thorough interisland inspection, and I would recommend that this matter be taken up by the board of agriculture and forestry and presented to the incoming legislature. We have now certain pests on some of the islands which do not exist on others. By establishing interisland inspection it will be possible to prevent the spread of these pests into new territory.

### Bovine Tuberculosis.

Doctor Norgaard's report contained the following:

During the month of August a number of the dairy herds which had previously been tested have been inspected and all of the animals which had not been either slaughtered or turned into pastures have been supplied with official ear tags or else branded in accordance with whether they have passed the test or reacted.

With a very few exceptions it may therefore be said that practically all of the animals which have been tested during the past four months are marked in such a way that they can be found again, and a complete record of the test numbers in serial order is being kept in the office so that the owner of each individual animal can be located without effort.

On August 25 to 26 sixty-eight additional head of cattle belonging to Mr. Isenberg were tested at the Waiata Ranch. Of this number twenty-nine head reacted to the test and one was found suspicious. The remaining ones were all ear-tagged while the reacting ones were plainly marked by cutting off half of the right ear. For some reason or other the manager of this ranch, Mr. Bailey, strongly objected to the branding of the reacting animals and the committee on animal industry has, under these circumstances, permitted the marking of the reacting animals as above indicated with the understanding, however, that none of the reacting animals are to leave the ranch without being branded.

On September 7 a seventy-four additional cattle were tested on the same ranch with the result that twenty-four gave a reaction while fifty passed the test. This makes a total of 331 head of cattle tested for Mr. Isenberg with 286 reactors. There still remains between sixty and eighty head on the same ranch which will be tested this week on the 14th and 15th of September.

On August 23d Mr. Isenberg's manager notified this office that he intended killing eighteen head of reactors including all of the reacting bulls, having received orders from Mr. Isenberg to do so. I immediately went out to the ranch and found that twelve animals had been killed and skinned and that a trench had been dug in which to bury them. A post mortem examination for which I was entirely unprepared, having gone directly to the ranch without bringing any post mortem instruments with me, showed that eleven out of these twelve animals were affected with tuberculosis to a more or less extensive degree, while six more which were killed later and after post mortem instruments had arrived also showed the presence of the disease. The one in which no lesions were found had in the meantime been inadvertently buried, the carcass being mistaken for that of another animal, but it is safe to presume that lesions would have been found in case a careful post mortem had been made.

As stated in a letter appended to this report it is Mr. Isenberg's desire that all reacting animals be disposed of with as little delay as possible and regardless of cost, and further, that no milk be sold or otherwise disposed of from any of the reacting animals. It is, however, left to the discretion of the manager as to how these animals are to be disposed of with the exception of the bulls which Mr. Isenberg insisted on should be shot.

### Heavy Loss.

The absolute destruction of nearly 300 head of animals without realizing anything from the carcasses except the hide would entail a loss of several thousand dollars and the subject of how these animals could be most economically disposed of was therefore given full consideration in various meetings and conferences between the members of the committee on animal industry, the manager of the Waiata ranch, and Mr. Isenberg's representative here, Mr. Alexander McBryde. The ultimate result of these conferences led to the acceptance by Mr. Bailey of an offer from Charles Bellina to take off his hands all such reacting animals which under no circumstances are to be retained, they either being too old or too poor to warrant further use even as breeding animals. Mr. Bellina to destroy

## Yachtsmen, Ahoy!

Saturday night will be yours. Are you fixed with sea togs for shore duty?

The finest of White Serge, Flannel and Duck Suits and single garments are here for you.

This year the Yacht Ball is to be the best ever if the efforts of the individual members bring about the results aimed at. But you must have comfortable, stylish clothing, such as we sell, to enable you to get out of it all the enjoyment there is. First buy a white suit and then a ticket. You'll have money enough for both and some to burn.

## M. MCINERNEY, LTD.

Fort and Merchant Streets.



**DON'T—**  
Wear Ordinary Low-Cuts Like This

Ordinary Oxfords break down at the heel, sag at the ankle and wrinkle up the toe after you have worn them but a short time. When in this condition, they are unsightly, and greatly detract from your appearance.

**DO—**  
Come To Us For A Pair Of Smart New REGAL OXFORDS

made on special Oxford lasts that insure smooth, snug fit at the heel and around the ankle. Regal Oxfords retain their smart custom shape throughout long service, and Regal quarter-zippers insure perfect fit and comfort.

**\$3.50**  
**\$4.00**

Regal Shoe Co.

## Audit Company of Hawaii

P. O. Box 646. 924 Bethel St. Telephone 708.

Conducts all classes of Audits and Investigations, and furnishes Reports on all kinds of financial work.

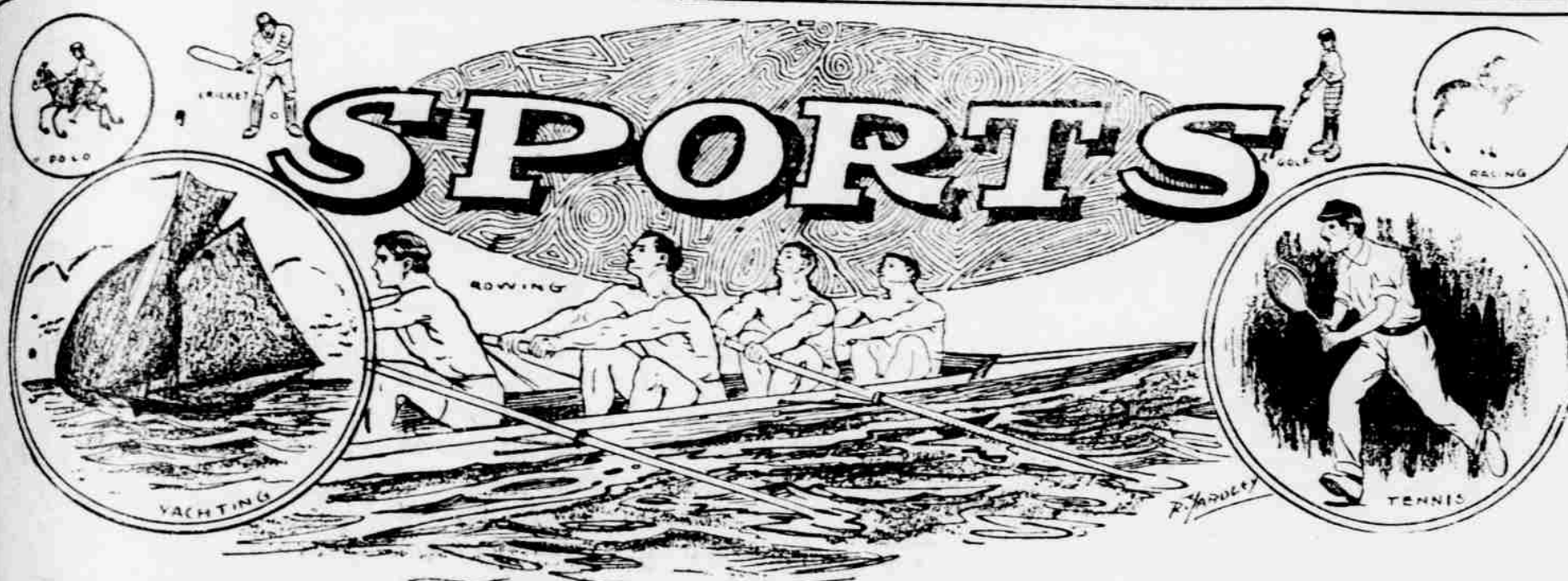
Suggestions given for simplifying or systematizing office work. All business confidential.

the City and County of Honolulu at least can be entirely freed from bovine tuberculosis in the course of one and one-half to two years.



"WHERE BROWN-SKINNED CHILDREN IN THE BREAKERS PLAY."





## CLUBS BURY HATCHET, CREWS GET TO WORK

Sam Parker Puts Up Cup for  
Fat Men's Race—Hawaiian  
Paddlers Shifty.

There has been considerable stimulus infused into rowing circles of late, and rivalry between factions has been keen for the past two days that it almost superseded politics in intensity. A discourse on the streets. Basking under the enervating lotions of soft soap and much much about what a nice lot of fellows the Healanis and Myrtles are, how hard they are working to pull a high-pressure regatta and what a lot of races they are going to have for sure, they lapsed into fraternalism and began to brood over the hallucinations of ulterior motives, which in some instances developed dark and dismal forebodings threatening dissolution of crews.

The mutterings that emanated from the ears of the restless spirits tickled the ears of their adversaries, and the latter started it right out that they were angry. This awoke the ones with the spitfire, and they got up with a bad case in their mouths.

After waging a war of words, all hands are now straining with renewed vigor to take redress for imaginary wrongs. If they can keep themselves straight up just a few days longer, the pessimistic might in spite of themselves win out.

**Chillingworth Shrinks.**

Charlie Chillingworth has got his minimal dimensions down to a circumference that slips through his black belt cinched up to the last hole, and he was out yesterday buckled up in a white girth of more limited extent. Frank Thompson has converted his ex-tensions into muscle. This crew think they have it on Prince Cupid and Alex Robertson for endurance. They insist on lengthening the pair-oar race on Regatta Day to a half-mile. It was originally intended to have the pull over a half-mile, but when the course was capped out it was found to be about a quarter. As these endurance men row in their belts the course is let out approximately in proportion.

Cupid and Robertson were feeling

## PROGRAM —OF THE— FOURTEENTH CELEBRATION —OF— REGATTA DAY TO BE HELD Saturday, Sept. 17, '10, IN HONOLULU HARBOR Commencing at 9 A. M.

Senior Six-Oar Sliding Seat Barge. Prize, \$25 Trophy.

Six-Paddle Canoe, First Prize, \$20; Second Prize, \$15.

Freshman Six-Oar Sliding Seat Barge. Prize, \$25 Trophy.

Four-Paddle Canoe, First Prize, \$20; Second Prize, \$10.

Senior Pair-Oar Boats (sliding seats). Prize, \$20 Trophy.

Four-Paddle Canoe (modern). First Prize, \$20; Second Prize, \$10.

Junior Pair-Oar Boats (sliding seats). Prize, \$20 Trophy.

Special Pair-Oar Boats (sliding seats).

Sailing Race for Sea Wrens. Prize, \$15 Cup.

Sailing Race for Pearls. Prize, \$15 Cup.

Sailing Canoe Race, First Prize, \$15; Second Prize, \$10.

Sailing Canoe Race (modern). First Prize, \$15; Second Prize, \$10.

Four-Oar Shell Race. Prize, \$20 trophy.

Races open to all. No entry fees. Rowing races to be governed by racing rules of the Hawaiian Rowing Association.

Each entry shall include the name of the boat, or, if it has none, the name of the person who enters it.

There must be at least three boats entered before a second prize will be awarded.

Entries will open at 8 a. m., Tuesday, September 13, at the Hawaiian News, Alexander Young Building, and close Thursday, September 16, at 5 p. m.

For further particulars apply to the Regatta Committee—T. V. King, Bert Heilbron, Irwin Spaulding.

quite chipper yesterday afternoon when they came in from training, and the Prince said he would like to keep at it for a full month.

Sam Parker has come through with a handsome silver cup to egg on the big fellows to pull themselves out of joint. The big trophy was secured last night and will be placed on exhibition in the display window of McInerney's haberdashery on the corner of Fort and Merchants streets today.

### Hawaiian Crew Husky.

The Hawaiian outrigger crew has arrived from Kona and they are a husky looking lot, much larger on the average than the haoles. They paddle very differently than the local crew, but Capt. Rusty Brown thinks his crew has the better stroke. The Hawaiians do four short strokes and shift while the haoles execute fifteen long sweeps between shifts. The Kona crew tears it off at a high rate but Brown's men seem to hold their own at the pace. Rusty says theoretically the fifteen stroke way is the best.

"Any paddler who can't go fifteen strokes without tiring," he explains, "has no business in a canoe. The shift is made as a restful change and I should think that shifting at every fourth short stroke would be more tiresome than going it the same way all the time. Of course, you can work up a lot of speed with these short quick strokes but you are bound to lose some on the shifts." Brown thinks that the haole crew is stronger than the Hawaiians, but the latter have the best canoe. The lineup of the Hawaiian crew is Kula, Paikaka, David Makanoale, Maunupua, John Kanihawa, Paikaka and Una, stroke.

### Shell Race Sure Off.

The Myrtle shell crew made an informal call upon the Healanis yesterday to ask their pleasure regarding the proposed shell race and the Healanis' final answer was that it was off. The Myrtle four have put in some strenuous training for this event and they feel so much physical benefit from the exercise that they have decided to keep up the good work anyhow.

Bob Thompson, who has been pulling stroke on the Healanis crew has strained himself and has been obliged to quit the game for a while. Frank James, who originally held this position will go back on the job. Capt. Bert Heilbron has picked his two-pair-oar crews. Bill James and Charles Brown make up the freshmen pair and the seniors are Bert Heilbron and Joe Kanihawa. Harold Dillingham had the Healanis freshmen in hand yesterday afternoon and Paul Jarrett was back on the job with the seniors. The Healanis are the only ones who think they haven't got a chance. The official photographer from The Advertiser went yesterday afternoon and they said, "What's the use. We're not going to win."

## GARDEN ISLAND HAS STRONG BALL LEAGUE

LIHUE, Kauai, September 10.—The Lihue Baseball League was organized a short time ago, with the election of the following officers: Rev. Hans Isenberg, president; C. A. Rice, vice president; C. S. Dole, secretary; W. H. Rice Jr., treasurer.

Six teams compose the membership of the league—Lihue, Kapala, Niumalu, Yamato, Asahi and Helwa—the last three being Japanese. The official umpire is William Kamaui, and the scorer is Yoshimoto, these two being the same ones who have been acting in the same capacities for the past season.

An interesting list of games has been scheduled, and there will be two games played every week, the usual time for play to commence being half past one Sunday afternoon.

It is expected that a suitable trophy, consisting of a flag or cup, will be put up soon for the teams to strive for.

## WILKINSON WILL RACE JOE FREITAS AT RINK

George Wilkinson, the Oregon Wonder, is going to skate against Joe Freitas, one of the local speed artists next Sunday night at the rink. Young Freitas has made a pretty good showing in skate marathons and he isn't afraid to take on the Portland boy whom Joe Forrest defeated two weeks ago. The race will be for a purse.

### COLDS CAUSE HE-DACHE

LAXATIVE BROMO-QUININE, removes the cause. Used the world over to cure a cold in one day. E. W. GROVE'S signature on each box. Made by PARIS MEDICINE CO., Saint Louis, U. S. A.

## SUGGEST CHICAGO TEAM COME HERE

Promotion Committee Might Arrange for Series Following Schedule in Japan.

The Chicago University baseball team, now on the way to Japan, will finish its series with the Wasedas and Keios by November.

Why not invite the bunch to stop off here on their return for a short series with two or three of the strongest teams that could be picked in Honolulu?

So ask some who would be willing to take a chance at the Windy City aggregation, only who could promote it properly?

That big league series out at the league grounds, they say, was a farce. There was not much management to it; the grounds were neglected entirely, when it would only have cost about twenty dollars to put them in shape. Lieutenant Bowen, who proposed the series that was played there, was in evidence at two or three of the games, but the public didn't take any interest and the affair seemed to run itself. Shower baths are now being installed under the grandstand, making the place less objectionable to the players, it was said yesterday, but the crowds don't appear to tend that way. The Military Athletic Association holds the lease on the league grounds from the Rapid Transit company, and any live promoter who might be induced to arrange an engagement there would have to make a deal with the association.

The Athletic Park management was suggested, but their aversion to final settlements was mentioned as an impediment in the way of getting teams into a series. If it didn't rain too much in November, it was thought that Athletic Park would be a good place to draw the crowds, but with heavy rains the diamond there is only fit for aquatic sports.

The Chicagoans will arrive in Japan about the twenty-sixth of this month, and whoever has the gumption to get busy and work it up will have to cable some kind of an offer to the traveling team pretty soon, so that negotiations can be consummated and arrangements completed here, for November is only about six weeks off. It might be that the Chicagoans could only be induced to stay over one steamer, and the number of local teams to take them on would have to be limited according to their time allowance in Honolulu. Baseball has about petered out here just now, and with six weeks' rest it is thought that lively interest would seize the fans again, especially in a combat between the local talent and a strong university team from the metropolis of the middle West.

To get a Chicago team here would be a good stroke of promotion work, and here presents an opportunity for the Hawaii Promotion Committee to start the sport-boasting movement which was suggested by R. A. Jordan about a week ago.

## SAINTS CAN'T MUSTER TEAM TO PLAY PUNS

George Bruns and Pat Gleason have been hustling around to try and get the St. Louis baseball team together to accommodate the Puns with a game on the afternoon of regatta day and Jim Cooper, the haberdasher, has offered to put up a cup as a championship trophy for the Saints and Puns to play for, but Bruns and Gleason were unable to muster a sufficient force of their veterans to take the field.

Johnny Williams picked a pimple on his twirler hand and blood poisoning set in a few days ago so Johnny can't wind up his arm. Then again Barney Joy, the target end of the battery, is too closely confined at his business to be able to get away on Saturdays, and one or two others are likewise restrained from indulging their sportsmanship proclivities by reason of the rush of business. In consequence whereof the Puns must be denied the opportunity of proving their assertion that they are at least in the same class with the Saints in the arbitrament of the bat.

Notwithstanding the aforesaid the Puns plead that next Saturday is a holiday and no business demands could prevent their keeping a baseball engagement and a schedule could be arranged to suit if the Saints were not afraid to chance it. The Saints say that if the Puns would only play on Sundays a series could be arranged without any hitch.

As to the assertion that they played a tie game one time with the Saints and claimed the championship, refusing to meet their adversaries again, the Puns say that they once played a tie game with the Diamond Heads and the league busted before another match could be arranged with the Saints holding about fourth place in the standing of the teams.

## STATES MARATHONER WANTS TO RACE, KAOO

Soldier King Who Claims American Title Challenges Local Champion.

The fame of Antone Kaoo, the old Waialua horse, has aroused the aspirations of the national champion marathoners of the United States and they are hankering to annex the honors of the mid-Pacific. Soldier King of the Coast Artillery service at the San Francisco Presidio, who claims the American title, invites the Hawaiian champion to go on a jaunt of five to fifteen miles in Honolulu some time in November. King won the big marathon race held in the Auditorium pavilion at San Francisco a year ago last April.

Just to show how fresh he was Soldier King turned a handspring last night after having won the marathon race at the Auditorium pavilion," says the San Francisco Examiner in an account of the event. "Uncle Sam's representative assumed a commanding lead before the race was half over and finishing with a great burst of speed in the final 385 yards, completed the full distance in 3:21:20, rather slow time. While the balance of the men on the track hadn't gone the required distance the officials awarded second money to Allan Garcia and third money to William Stanley, the champion distance runner of Denmark, although both were in distress and Sailor Cusick, the Indian from the West Virginia, was gamely endeavoring to overhaul them in order to get a portion of the prize money."

King made a great record at San Jose, California, about this time racing against Dorando Pietri. He plodded three miles through slush and mud after the Italian had quit because he said he could not keep his feet under him.

Fred L. Grasell of the United States transport Logan, which arrived here last night from the Coast, is acting as King's advance agent. He said last night that King had heard of Kaoo and he wanted a race with him. The soldier's enlistment is up about the first of November, Grasell said, and then he expects to come down to the Islands provided he can secure a race with the local champion. The Logan proceeds to the Orient today or tomorrow and he wants Kaoo to answer the challenge through the columns of The Advertiser as soon as possible. He has left instructions to have the copy of The Advertiser containing Kaoo's reply to King at Frisco and he hopes to hear from Kaoo himself before the transport leaves here, but if not he will get the news at Nagasaki.

The Logan will get back here in October, Grasell said, and if the race is to come off he will be here to act as King's manager.

The soldier sprinter will run for a purse of anything declares Grasell and will make it any distance from five to fifteen miles.

King is about thirty-five years old.

## SCOUT COMMITTEE WILL TACKLE BULLARD TODAY

The committee of five who are boosting the Boy Scout movement here held a meeting at the Y. M. C. A. yesterday afternoon and decided that they couldn't do anything until Lieutenant-Colonel Bullard landed here. He came in on the transport Logan from the Coast last night to preside over the school of instruction to national guard officers which opens at Fort Shafter on Saturday.

Lieutenant-Colonel Bullard is a Boy Scout advocate and the local committee, consisting of Paul Super, Ed Towse, D. Howard Hitchcock, T. R. Biddle and A. H. Dondoro came to the conclusion that they would get in touch with the army officer this morning and try to arrange two public meetings, with the lieutenant-colonel as the principal speaker. They want to have one meeting for the boys and one for grownups.

A number of Honolulu business men who have experience in woodcraft, first aid and hiking, Paul Super said yesterday, have offered to help the movement along. This local committee expects to increase its membership and style itself the Scout Council, affiliating with the national council.

## WHITE MASTERING TRAIN OF THOUGHT FOR CHESS ORDEAL

J. W. White, the young chess wonder, is training hard for his session with Judge Sidney M. Ballou and it was said yesterday that he would have his train of thought in control by the first of next month for the silent seance.

### A DANGER AVOIDED.

There is no danger from blood poisoning resulting from a wound when Chamberlain's Pain Balm is applied. It is an antiseptic liniment. For sale by all dealers. Benson, Smith & Co. agents for Hawaii.

## BARGAINS FOR WOMEN WITH Small Feet

50 pairs Odds and Ends in Women's Slippers and Strap Sandals—One and Two Strap Beaded Effects. Mostly Laird Shober & Co. make. Sizes 2 to 4½, A B and C wide.

## THE PAIR \$1.00

75 PAIRS WHITE CANVAS Oxfords and Ribbon Ties. Variety of toe shapes to choose from. Nearly all sizes in this lot. Excellent shoes for house or every day wear.

Manufacturers' Shoe Co., Ltd.  
1051 Fort Street

## MISS KELLY MANICURE

HAIRDRESSING. SHAMPOOING.

## Brown & Lyon

NEW BOOKS BY EVERY MAIL.

Popular Fiction. Travels. Scientific. Young Building.

## Men's Clothing

NOW:

If you knew that you could come to our shop and obtain a suit made in the most recent New York style, wouldn't you buy it in preference to any other? You can: It is simply a matter of coming; they have all the cleverness that the best designers can put into them and all the splendid, high class tailoring that the best workmen can give.



The Parion  
FORMERLY THE KASH COR. HOTEL & FORT STS.



# Pacific Commercial Advertiser

A MORNING PAPER.

RODERICK O. MATHESON

EDITOR

THURSDAY

SEPTEMBER 15

SUGAR.—96 Degree Test Centrifugals, 4.36c. Per Ton, \$87.20.  
88 Analysis Beets, 12s. 2½d. Per Ton, \$91.67.

U. S. WEATHER BUREAU, September 14.—Last 24 Hours' Rainfall, .02.  
Temperature, Max. 82; Min. 72. Weather, fair.

## IMMIGRATION AND DEMOCRACY.

The burning desire L. L. McCandless had evinced during the past few months to join issues with the Republicans in the matter of assisted immigration will probably be gratified very shortly, but the results probable are certainly not those that the Kuleana Statesman has been looking forward to with such gusto. Two weeks ago the Democratic leader was one broad grin at the predicament he believed the Republicans to be in; now the grin has shifted to the faces of the Republicans and the immigration plank of Democracy has become its greatest worry.

The condition of affairs that has developed during the last ten days justifies the bold stand taken by the Republican leaders in meeting the immigration question manfully and not straddling, as some few timid ones desired. It is recognized now that to have equivocated or backed and filled on this question would have been the worst thing the Republicans could have done. The very boldness of their stand has drawn the public attention away from the side held up by the demagogues and has directed the attention of the electorate to the side of reason.

Instead of being a Democratic plank to victory, the immigration question appears to be the plank that the Democrats, led by their apostle Link, will have to walk in November.

## PHILIPPINE LABOR TROUBLE.

That plantation managers other than those of Hawaii have their labor troubles is evidenced in the tale of woe that comes from Mindanao, Philippine Islands. It is reported in the Mindanao Herald, as follows:

The Mindanao Estates Company has had another costly labor importing experiment. After several months of hard and tedious work several of their agents in the Visayas boarded about twenty men on one of the interisland boats. Arriving at Iligan and Zamboanga, they were enticed to leave the ship. Not one of them arrived on the plantation of the people who spent time and money to get them. A large sum of money had been advanced to the men to pay off some debts in their home town, as well as to leave money with their families. Signs like these are discouraging and tend to prove the often mentioned unreliability of the natives. Worse than this though is the lamentable fact that there is no law protecting the employer, while the employee can quit, strike, insult, calumniate and slander their employer whenever they feel so inclined.

The difficulty experienced by the Mindanao planters is one hard to overcome. Their trouble does not consist in the fact that there is not an available labor supply close at hand, nor that the Filipinos will not work, because it is from the nearby islands of Samar and Luzon that the agents of the Hawaiian planters are recruiting labor for here. The trouble comes in the fact that the Filipino from the other islands will not go to Mindanao because that island is haunted. He will come to Hawaii because the particular spooks of which he is afraid do not live here, but Mindanao is a place to be shunned. As it is in Mindanao that the largest Philippine sugar plantations are being started, this spook business is not amusing to the Philippine planter.

## RECIPROCITY IN OUR FAVOR.

The Canadian government is reported to be arranging for immediate conferences with representatives of the American government with a view of closer trade relations. Sir Wilfrid Laurier has just returned to Ottawa from a tour of the Canadian West, where he found unmistakable evidence of the desire of the people for a breaking down of the trade barriers between the two nations. William Patterson, the minister of customs, and W. S. Fielding, the minister of finance, are also just back in the Canadian capital, after trips abroad, and the three are canvassing the reciprocity situation.

Hawaii can afford to welcome the day when the two North American nations reach a reciprocity basis. We have much to sell that Canada would buy, while none of the products of the Dominion would come into competition with the products of the Islands on the mainland. On the other hand, Western Canada as a grain producing country and a region rich in timber could supply Hawaii with feed and building material at prices lower than we are now paying. We stand to gain coming and going in the matter of reciprocity or free trade with the Dominion.

This talk from Hilo of the Portuguese deserting the Republican party in a body because something in the nominations does not or will not suit them is foolishness. In the first place the Portuguese as a class are not the kind that get up and leave because they cannot have all things their own way, while there is absolutely no good reason why the Republican party should not claim the faithful allegiance of every thinking Portuguese voter. The Portuguese-Hawaiians owe their presence here mainly to Republicans; the land laws under which they have taken up their now thrifty homesteads were passed by Republican legislatures and congresses; the latest amendments to the Organic Act contain clauses passed expressly for the benefit of the Portuguese on Punchbowl. In the face of this, to have said that the Portuguese are ready to desert the party over a question of the personal ambitions of one or two men, is trifling with the credulity of the people of the Territory and belittling the people about whom the reports are told.

Laying aside politics for the time being, allow us to remark that if those twenty thousand Filipinos come whom the planters' association is after, Governor Frear's suggestion for a bigger penitentiary is well made. Provision ought also to be made for an annex for Porto Ricans, in case the anti-immigrationists win.

R. H. Trent states that he is preparing a treatise on the immigration question to be made public. He need not go to all that trouble. The columns of The Advertiser are open to anything concerning immigration he may have to say.

Delegate Kuhio stated last night that The Advertiser is good at picking out yellow dogs. We are, but unfortunately so many people are color blind and fail to agree with us.

Count Zeppelin has now been worried by fire, wind and water. When the elements thus combine, what can a poor man do?

It commences to look as if the Democratic party would have to run independent.

Roosevelt appears to have struck a combination that he can not bluff.

## MAY ASK FOR A NEW PRISON

(Continued From Page One.)

need to be made and the value of the present prison site, Governor Frear says it might be as well for the legislature to consider the matter of selling the present site and moving to another location, preferably one nearer the quays where most of the prisoners now work. As this would probably take the jail into a residence section, there is the probability that any such suggestion will meet with strong disapproval.

### Contingency Fund.

Governor Frear says that fourteen of the twenty-four months of the legislative period have now passed and so he can judge pretty well what demands will be made on his contingency fund. So he is now figuring on how best to apply what is left of the fund. The

prison has been running behind for some time, on account of the increased cost of living, and a draft must be made on the contingency fund to keep the institution out of debt. There are plenty of other calls on the fund and the question is to find out what is most necessary and what can be eliminated.

### SURE CURE FOR DIARRHOEA.

An ordinary attack of diarrhoea may be cured by a single dose of Chamberlain's Colic, Cholera and Diarrhoea Remedy. Only in the more severe cases is a second or third dose required. Try it. It has a reputation of over thirty-five years behind it and is everywhere recognized as the most reliable remedy in use for diarrhoea. For sale by all dealers. Benson, Smith & Co. agents for Hawaii.

## MOROS SATISFIED WITH AMERICAN RULE

ZAMBOANGA, August 23.—Secretary of War Dickinson and party arrived here this morning. They were greeted by a mammoth reception participated in by all elements of the population. Immediately upon landing the party proceeded to Camp Pettit accompanied by General Pershing and staff where a brief reception was held. This was followed by a grand parade participated in by both the military and the civil population. An athletic tournament and games and Moro dances followed. At eleven o'clock a public reception was held in the Zamboanga theater. During this function Manuel Quezon attempted to get up a demonstration in favor of independence among the Filipinos of Zamboanga. In response to the movement Secretary Dickinson counseled them to turn to and work with the present administration to bring about a condition of affairs under which independence would be possible. In the course of this address he took occasion to praise the American administration in uplifting the people and in preparing them for the duties of citizens under an independent government when the time should come.

Lawyer Mendoza and Editor Lim of the *Voz de Mindanao* made fiery speeches in favor of incorporating the Moro province in the Philippine Islands proper and extending the jurisdiction of the assembly to that territory.

Secretary Dickinson replied that it appeared best to let it remain separated as it now is and that such a separation would probably be continued indefinitely.

On this subject Dato Mandi and other Moro chiefs also spoke. They said they were well contented with the American government and had no desire for a change. "But," said they, "if the Americans are to give up Mindanao, they should return it to the Moros and not to the Filipinos." Secretary Dickinson made a strong speech on this subject and the attempted demonstration on the part of the Filipinos fell flat in the face of the speeches of the Moros.

At seven-thirty the entire party were the guests of the officers of the post for dinner. After dinner General Pershing held a reception at his quarters.

## PASS REPORT ON HILO BREAKWATER

(Continued From Page One.)

"You will note that the joint committee, after carefully considering all of the various phases of this question, has recommended against signing the letter proposed by the Hilo Board of Trade and supports the plans adopted by Major Winslow as being in the best interests of the Territory in general."

"You will also note that in case the report of the joint committee is adopted, a copy of said report is to be forwarded to the Hilo Board of Trade and Major Winslow."

It was explained in the meeting that since the Hilo Board of Trade made the request to have the letter to Bixby signed, the Hiloites had reconsidered their attitude. The complaint, it seems, had arisen through a misunderstanding of the plans, a general agreement being reached when the plans were more fully explained. Under these conditions, the local bodies are acting in accordance with, rather than against, the Hilo Board of Trade and the other associations of the southern town.

### Panama Exposition.

At the meeting yesterday a resolution was passed at the request of the San Francisco merchants, endorsing the Panama exposition for the city by the Golden Gate. The resolution is as follows:

"Whereas, The Panama Canal, now in process of construction, will have been completed in the year 1915, uniting the waters of the Pacific and Atlantic oceans, and

"Whereas, There is a unanimous sentiment that the completion of this gigantic work should be celebrated in fitting and memorable manner, and

"Whereas, It is the consensus of opinion of the President of the United States, the members of congress, other officials and the citizens generally that an international exposition be held commemorating that great event; therefore, be it

"Resolved, That we most heartily endorse the proposed Panama Pacific International Exposition to be held in San Francisco in 1915, and pledge our cooperation and assistance; and be it further

"Resolved, That the delegate to congress from our Territory be requested to use his influence to secure for the exposition in San Francisco, government endorsement and recognition."

A letter was read from the San Francisco Chamber of Commerce explaining the steps that have already been taken in regard to the exposition. The letter is as follows:

"The Panama-Pacific International Exposition will celebrate the completion of the Panama Canal and promises to be the greatest exposition ever held."

"The citizens of San Francisco will have raised, by popular subscription, \$7,500,000; through State tax, \$5,000,000; and others making a total of at least \$17,500,000. This sum will be ready when congress convenes in December next. A \$50,000,000 exposition will be ready at the opening of the Panama Canal. No appropriation will be asked of the federal government."

"Another city besides San Francisco is making an effort to secure recognition by congress, and we appeal to you for your endorsement of this city as the ideal site for a great world's exposition."

"A people that can rebuild a great city in four years, spending hundreds of millions of dollars, as have the people of this city, can certainly conduct a successful exposition. Every exposition in the West has been a financial success, and this one assuredly will be."

## REPUBLICAN GETS THE DEMOCRATIC SUPPORT

NASHVILLE, September 14.—The Independent Democrats have endorsed Hoover, the Republican candidate for governor.

## HARMONY AROUND FESTIVE BOARD

(Continued from Page One.)

eration, the party would not be successful. There were no promises to be made by any candidate. He should, if elected, recognize the party's needs first. All the candidates belong to the party, and every man elected will owe his election to the Republican party.

Mr. Lane said the issue of immigration was the issue upon which the form of government of the United States has been carried on. Immigration has been the making of the United States. It is a national issue, and the Republican party in the Territory has able men to carry out an issue of that kind with success. The immigration feature of Mr. Lane's address was applauded.

### Parker Predicts Victory.

Colonel Parker was named as master of ceremonies, and he responded in his humorous way. He asked the members to put it in their pipes and smoke it, that Lane would easily defeat Fern or any one else placed in nomination, even Jarrett. He predicted a big Republican victory. He didn't believe much in hurrahing. He had heard enough of that when he was a candidate for congress and was defeated by Wilcox. There was too much hurrahing then. Now work was wanted. He said he had been chosen chairman of the committee and would work. If he didn't like the job after a week's trial, he would let some one else take hold.

Colonel Parker spoke of knifing, and referred to his own case when he was knifed right and left.

### Scrapping Is Over.

R. W. Breckons said: "We have got a good ticket and a good platform and we can lick the other fellows." He said the party was through with its scrapping and if anybody butted into its affairs from now on they would get at least three black eyes, and he referred particularly to the Democratic party. He congratulated the party on the kind of ticket put up, and the platform couldn't be beat, neither could the entire ticket.

### Hustace Out of Party.

R. W. Shingle, candidate for city treasurer, first of all proposed a health to John Hughes, who although defeated came to the luau. He said he had been disappointed during the forenoon to hear that Charles Hustace had resigned from the county committee. He said that if Mr. Hustace could not support the ticket, which the press of the city had conceded to be the best all round ticket ever advanced by the party, then the Republican party must go its way and Mr. Hustace the other. Mr. Shingle stated that in the convention he supported Mr. Hustace as against Lane. Mr. Shingle's remarks were greeted with applause.

Now was the time, he said, to unite and go in and fight for a big victory. He believed there were a few candidates, like Mr. Lane, Mr. Cox and himself, who, when they emerged from the battle in November, would know they had been in a mixup.

### Back Up Immigration.

He hoped that none of the workers would back and fill on the immigration question, but stand on that plank as if it were the rock of Gibraltar. He knew that very careful thought had gone into that plank. This country is prosperous by reason of the sugar industry and every one must turn to to keep it prosperous. If the Republican party wins at the next election we will have a luau of poi and pig, and if the Democrats win it will be a luau on paani.

### Link Favored Immigration.

Mr. Achi made a long speech in Hawaiian, the principal features of which were devoted to Link McCandless, and he referred to some ancient history when McCandless was in the senate and voted with Achi and Brown on an immigration measure, but that was when he was a Republican.

### The Short and Ugly.

"Billy" Hoogs, when called upon, arose with alacrity and proceeded to deliver an exposition of the motives of Link McCandless as he saw them. McCandless, he said, is always posing as the great friend of the Hawaiians and is always ready to shed tears over them. But McCandless' motives are purely selfish. All he thinks of is himself and all he loves the Hawaiian for is because the Hawaiian is honest, trusting and unsophisticated enough to believe that what McCandless says is the truth.

"McCandless is a liar," said Hoogs, "when he says he is working for the interests of the Hawaiians. All he is working for is himself. I understand that he is getting rid of all his sugar stock, so that whatever happens, he will be safe."

Hoogs went on to state that he did not believe McCandless to be sincere in his views on the immigration question. Further he said that although McCandless has given ten thousand dollars to the Democratic campaign fund and it will take a lot of money to beat him, the money will be forthcoming and it will not come from any one man but from the rank and file of the Republican party.

Hoogs was roundly applauded throughout his fiery speech. When he sat down, Chairman Parker called on the Delegate, who had once before refused to speak.

### Kuhio and The Advertiser.

The Delegate, who was thought by some to have made an attack on The Advertiser, really talked in the other direction. Prince Kuhio stated after the luau that what he did say was this:

"The Advertiser is good at picking yellow dogs, and if The Advertiser will pick a yellow dog in our ticket this year, then I will get out and help defeat that yellow dog, but if The Advertiser can not find a yellow dog on the ticket and finds that the ticket as a whole is a good ticket, then The Advertiser ought to back up the ticket."

"No, I certainly did not attack The Advertiser," said Prince Kuhio, "and no words of mine should have given that impression."

The luau came to a close shortly after Kuhio's speech with general assurances that all would support the straight Republican ticket.

The ratification of the ticket will take place on September 24.



**Are You Thin? Pale?**  
All run down, easily tired, nervous? And do not know what to take? Then go direct to your doctor. Ask his opinion of Ayer's Sarsaparilla. It contains no alcohol, no stimulation, and is a blood purifier, a nerve tonic, a strong alternative, an aid to digestion. Ask your doctor about Ayer's non-alcoholic Sarsaparilla as a strong tonic for the weak.

**Ayer's Sarsaparilla**

Prepared by Dr. J. C. Ayer & Co., Lowell, Mass., U. S. A.

## POLITICAL NOTICES.

### ANNOUNCEMENT

I hereby announce myself as a candidate for nomination for the office of

### CITY AND COUNTY TREASURER

subject to the action of the Democratic County Convention.

**RICHARD H. TRENT.**

### Announcement

I hereby announce myself as a candidate for nomination as Supervisor, subject to the action of the Democratic County Convention.

**M. C. PACHECO.**

### DO IT NOW

Honolulu People Should Not Wait Until It Is Too Late.

The appalling death-rate from kidney disease is due in most cases to the fact that the little kidney troubles are usually neglected until they become serious. The slight symptoms give place to chronic disorders and the sufferer goes gradually into the grasp of diabetes, dropsy, Bright's disease, gravel or some other serious form of kidney complaint.

If you suffer from backache, headaches, dizzy spells; if the kidney secretions are irregular of passage and unnatural in appearance, do not delay! Help the kidneys at once.

Doan's Kidney Pills are especially for kidney disorders—they cure where others fail. Over one hundred thousand people have recommended them. Here's a case at home:

James C. L. Armstrong, Nuanu Valley, Honolulu, Hawaii, says: "I was a sufferer from kidney trouble for three years and Doan's Backache Kidney Pills completely cured me. I have had no return of the complaint during the past year. I cannot recommend this remedy too highly."

Doan's Backache Kidney Pills are sold by all druggists and storekeepers at 50 cents per box (six boxes \$2.50) or will be mailed on receipt of price by the Hollister Drug Co., Honolulu, wholesale agents for the Hawaiian Islands. Remember the name, Doan's, and take no substitute.

## DEMOCRATS CONTEST GUERNSEY'S ELECTION

AUGUSTA, September 14.—The Democrats will protest the election of Congressman Guernsey, Republican from the third Maine district. The count was very close and unfair means are charged in giving the Republican candidate a majority. Should the contest be successful, the Democrats will have three out of the four Maine representatives.

## ANOTHER WEE BOOM STARTED FOR FOLK

JEFFERSON CITY, Missouri, September 14.—The Democratic State convention today adopted a resolution endorsing Joseph W. Folk for the Democratic ticket in 1912.

## DEMOCRATS TO CRACK NUT TODAY

(Continued from Page One.)

tribution to the campaign fund. If he has it inserted Leslie Petrie, Mr. Foster and many other prospective supervisory and legislative candidates will not run for office, and most likely Trent will pull out, leaving Link monarch of all he surveys, but leaving him marooned politically, a small frog in a big political puddle, much stirred up.

If the antiplank is not inserted, leaving the general candidates free to have their names placed on the ticket, then Link can not consistently run, as he can not endorse such a platform.

Without Link there are no campaign funds, and without campaign funds the Democrats will have a sorry campaign, and in the middle the Republicans expect to regain many of the offices they have lost in the past due to factional fights.

## "Seven Falls of Palolo"

Most beautiful scenery in the Islands.

Call and see the photos taken with a 3A Kodak.

**Hollister Drug Co.**



## Take Care of Your Watch

Don't wait until your watch is worn out from lack of a little oil, and cleaning once in a while. Many fine watches are ruined by neglect. No watch was ever intended to run indefinitely without some care, and yours is no exception.

Our watchmakers are thorough mechanics, and each watch brought to us for repairs receives careful and expert attention.

We guarantee our work. Watches we repair run right.

**H. F. Wichman & Co.**  
— LIMITED —  
LEADING JEWELERS

## For Rent or Lease

3.97 Acres of Land at



Beach Frontage of about 150 feet. Near the carline. One of the few desirable pieces of Beach Property left.

**Real Estate Department Hawaiian Trust Co., Ltd.**  
923 Fort Street.

## ODD BITS

From the

### BAZAR NIPPON

King Street, Next to Advertiser

## FREE THE BIG 4 CALIFORNIA OIL PUBLICATIONS

1—Monthly Journal "California Oil Fields" 2—Oil Booklet, "Questions and Answers about California Oil." 3—Map showing all the California Oil Fields. 4—Special Map Ventura County Field. California Oil Stocks are paying dividends over \$1,000,000.00 a month. One percent a month is an average dividend paid. Everybody should know about this wonderful industry. You are under no obligations to us when you send for these big four oil publications free. Our object is to advertise to the world the wonderful opportunities California presents to investors. Phelan Building SAGAR-LOOMIS CO., San Francisco, Cal.







## Fraternal Meetings

**DAMIEN COUNCIL NO. 563, Y. M. I.**  
Meets every second and fourth Wednesday at 7:30 o'clock p. m., in St. Louis College Alumni Hall (Dreier Hall), Union street. Visiting members are always welcome.  
F. D. CREEDON, President.  
H. P. O'SULLIVAN, Secretary.

**THEOSOPHICAL SOCIETY.**  
The Honolulu branch of this society meets in the Kihuna Art League building on Miller street, ground floor, every Wednesday evening at 7:30. Visitors are cordially welcomed.  
JAS. J. YOUNG, President.

## NOVELTY THEATRE

Cor. Nuuanu and Pauahi Sts.  
**RANCE SMITH,**  
The Banana Man.  
**Wise and Milton**  
Singing, Dancing and Comedy Artists  
—and—  
**Latest Motion Picture**



**MISS LAURA ATKINS.**  
**MR. FRANK BLAIR.**  
**CONNIE MARINA.**  
—and—  
**MOTION PICTURES.**

## THE EMPIRE THEATRE

2—Changes a Week—2  
Admission ..... 15c-10c-5c

## HOTEL STEWART

**SAN FRANCISCO**  
Geary Street, above Union Square  
Just opposite Hotel St. Francis  
European Plan \$1.50 a day up  
American Plan \$3.00 a day up  
Steel and brick structure, furnishings cost \$200,000. High class hotel at moderate rates. Center of theatre and retail district. On car lines transferring all over city. Omnibus meets all trains and steamers. Send for booklet with map of San Francisco. Hotel Stewart now recognized as Hawaiian Island headquarters. Cable address, "Trawets." A B C Code.

## HOTEL STEWART

**POPULAR HOTELS IN JAPAN.**  
**MIYAKO HOTEL**.....KYOTO  
**NARA HOTEL**.....Nara near Kyoto  
**GONIKAI HOTEL**.....Isse, near Nara

**Apartment, Cuisine and Service Highest Standard**  
**PLEASANTON HOTEL**  
Wilder Ave. and Punahou.

## THE NUUANU

1634 Nuuanu Ave., near School St.  
Large and airy furnished rooms and cottages, with board. \$2.00 a day; special rates by the month.

## Hotel Monroe

—a high-class, American plan, family hotel, situated in the heart of the city, where one can have the comforts of home life so essential to an enjoyable visit to the city. Special rates for the summer months.  
Sacramento and Franklin Sts.  
**SAN FRANCISCO**

## William O. Smith Trust Department

**ESTATES MANAGED. REVENUE COLLECTED. LOANS AND INVESTMENTS MADE.**

## Fire Insurance

## Real Estate

## LOCOMOBILE

"The Best Built Car in America."  
**BOHUMAN CARRIAGE CO., LTD.,**  
AGENTS.

## Fraternal Meetings

**POLYNESIAN ENCAMPMENT NO. 1, I. O. O. F.**  
Meets every first and third Friday of the month, at 7:30 p. m., in Odd Fellows' Hall, Fort Street. Visiting brothers cordially invited to attend.  
J. A. LYLE, C. P.  
L. L. LA PIERRE, Scribe.

**EXCELSIOR LODGE NO. 1, I. O. O. F.**  
Meets every Tuesday evening at 7:30, in Odd Fellows' Hall, Fort Street. Visiting brothers cordially invited to attend.  
K. C. HOPPER, N. G.  
L. L. LA PIERRE, Sec'y.

**HARMONY LODGE NO. 3, I. O. O. F.**  
Meets every Monday evening at 7:30, in Odd Fellows' Hall, Fort Street. Visiting brothers cordially invited to attend.  
HUGH E. MCCOY, N. G.  
E. R. HENDRY, Sec'y.

**PACIFIC REBEKAH LODGE NO. 1, I. O. O. F.**  
Meets every second and fourth Thursday, at 7:30 p. m., in Odd Fellows' Hall. Visiting Rebekahs are cordially invited to attend.  
MARION FAUTH, N. G.  
ALICE NICHOLSON, Sec'y.

**OLIVE BRANCH REBEKAH LODGE NO. 2, I. O. O. F.**  
Meets every first and third Thursday, at 7:30 p. m., in Odd Fellows' Hall. Visiting Rebekahs are cordially invited to attend.  
MARGARET SIMONTON, N. G.  
SALLIE L. WILLIAMS, Sec'y.

**OCEANIC LODGE NO. 371, F. & A. M.**  
Meets on the last Monday of each month, at Masonic Temple, at 7:30 p. m. Visiting brethren are cordially invited to attend.  
J. A. PALMER, W. M.  
W. H. GOETZ, Sec'y.

**LEAHI CHAPTER NO. 2, O. E. S.**  
Meets every third Monday of each month, at 7:30 p. m., in the Masonic Temple. Visiting sisters and brothers are cordially invited to attend.  
NELLIE J. STEPHENS, W. M.  
ADELAIDE M. WEBSTER, Sec'y.

**LEI ALOHA CHAPTER NO. 3, O. E. S.**  
Meets at the Masonic Temple every second Saturday of each month, at 7:30 p. m. Visiting sisters and brothers are cordially invited to attend.  
CORA A. BLAISDELL, W. M.  
MARGARET HOWARD, Sec'y.

**COURT CAMOES NO. 8110, A. O. F.**  
Meets every second and fourth Tuesday of each month, at 7:30 p. m., in San Antonio Hall, Vineyard street. Visiting brothers cordially invited to attend.  
N. K. HOOPI, C. R.  
H. PEREIRA, F. S.

**CAMOES CIRCLE NO. 240, C. O. F.**  
Meets every second and fourth Thursday of each month, at 7:30 p. m., in San Antonio Hall, Vineyard street. Visiting companions are cordially invited to attend.  
MRS. H. H. WILLIAMS, C. C.  
LOUIS A. PERRY, F. S.

**COURT LUNALILO NO. 6600, A. C. F.**  
Meets every first and third Wednesday evenings of each month, at 7:30 p. m., in Pythian Hall, corner Fort and Beretania streets. Visiting brothers cordially invited to attend.  
F. J. ROBELLO, C. R.  
JAS. K. KAULIA, P. C., F. S.

**HONOLULU AERIE 140, F. O. E.**  
Meets on the second and fourth Wednesday evening of each month at 7:30 o'clock, in Pythian Hall, corner Beretania and Fort streets. Visiting brothers are invited to attend.  
W. R. RILEY, W. P.  
F. C. MCCOY, Sec'y.

**OAHU LODGE NO. 1, K. of P.**  
Meets every first and third Friday at 7:30 o'clock, Pythian Hall, corner Beretania and Fort streets. Visiting brothers cordially invited to attend.  
WM. JONES, C. C.  
O. HEINE, K. of R. & S.

**WILLIAM MCKINLEY LODGE NO. 8, K. of P.**  
Meets every second and fourth Saturday evening at 7:30 o'clock, in Pythian Hall, corner Beretania and Fort streets. Visiting brothers cordially invited to attend.  
H. A. TAYLOR, C. C.  
E. A. JACOBSON, K. R. S.

**HONOLULU HARBOR NO. 51, A. A. of M. M. & P.**  
Meets on the first Sunday evening of each month, at 7 o'clock, at Odd Fellows' Hall. All sojourning brethren are cordially invited to attend.  
By order Worthy President,  
WM. E. YOUNG,  
FRANK C. POOR, Sec'y.

**THEODORE ROOSEVELT CAMP NO. 1, S. W. V.**  
Meets every second and fourth Saturday of each month in Waverley Hall, corner Bethel and Hotel streets, at 7:30 p. m.  
By order of the Camp Commander,  
J. K. BROWN,  
Adjutant.

**HAWAIIAN TRIBE NO. 1, I. O. E. M.**  
Meets every first and third Thursday of each month, in K. of P. Hall, corner Fort and Beretania streets. Visiting brothers cordially invited to attend.  
E. V. TODD, C. of R.  
A. L. EAKIN, Sachem.

**HONOLULU LODGE 616, E. P. O. E.**  
Will meet in their hall, King street, near Fort, every Friday evening. Visiting brothers are cordially invited to attend.  
JAS. D. DOUGHERTY,  
E. R.  
GEO. T. KLUEGEL, Sec'y.

**HONOLULU SCOTTISH THISTLE CLUB.**  
Meets every second and fourth Friday in the month at 8 o'clock, in Rooms 11 and 12, Alexander Young Building.  
JAS. H. FIDDES, Chief.  
JAS. C. MCGILL, Sec'y.

## KOREANS ARE NOT DRILLING FOR WAR

Recognize Hopelessness of Their Cause and See No Way to Save Their Homeland

"We recognize that our cause is hopeless," writes a Korean leader of Honolulu in a communication to this paper, denying that the drilling of Koreans on the various islands of the group has any significance or is connected with the recent annexation of Korea by Japan. "Patriotism is a cause which is hopeless as the blast of the lamb before the wolf," the writer states, in extenuation of the fact that the Koreans of Hawaii can see no way to help their homeland, concluding with the statement that here, beneath the Stars and Stripes, the Korean colony hopes to live, with the members of it helpful residents.

The letter, which has a pathetic note throughout, is:

Editor Advertiser:—In your issue of the 12th inst., under heading, "Koreans busily drilling for war," you say in effect that the Korean society in Honolulu has the reputation in official circles as that of a body of anarchists.

The only Korean society in Honolulu is the Korean National Association of Hawaii, a society formed for the promotion of the well being of the Koreans in Hawaii and also, in every lawful way try to preserve the independence of our own loved land.

In the annexation of Korea by Japan, the world has tamely witnessed a powerful nation, without a pretense of right, rob a defenseless people of their birthright. Not a single act on the part of Korea is claimed by Japan as a justification of this atrocity. It is merely a thirst for dominion, that has prompted it. It is just what would have happened to Hawaii, had not the United States of America annexed this country. But we are powerless.

The 5000 Koreans in this country are not fanatical enough to think they could do anything to prevent the spoliation of Korea.

They are not drilling with a view to create an insurrection in Korea, much less in this country.

We recognize that our cause is hopeless. The work of extermination has begun and as effectually as William the conqueror wiped out the Britons, so may the Koreans expect to be wiped out. We are patriots, but patriotism in a cause which is hopeless as the blast of the lamb before the wolf.

We are not anarchists. We, with broken hearts, are resigned to our fate and under the protection of the Stars and Stripes are doing everything we can for our people in Hawaii. Our aim is to educate the young, take care of the sick, inculcate morality and industry among the Korean people, only this and nothing more.

## ITINERARY OF SAN FRANCISCO SHRINERS

Castle & Cooke, agents for the Matson line, have been officially notified by cable by the San Francisco office that the Wilhelmina has been chartered by San Francisco shriners for an excursion to Honolulu, taking the boat for the February voyage. The local, as well as the San Francisco, agents, will not of course book any other passengers for the February run of the Wilhelmina, as she is already booked full for the round trip. The itinerary of the Shriner will be as follows:

Leave San Francisco Wednesday, February 15, 1911; arrive Honolulu Tuesday morning, February 21; proceed to different hotels and rooming houses. Balance of the day to be spent in getting located and getting acquainted with the Nobles of Aloha Temple; in the evening the local Nobles will have an opportunity to entertain the visitors at dinner parties, etc. The Elks will no doubt open their carnival on this evening.

Wednesday, February 22.—See Floral Parade and other sports of the day; attend Elks' carnival in the evening. Board steamer Wilhelmina at 12 o'clock midnight or thereabouts and sail for Hilo.

Thursday, February 23.—Arrive at Hilo about noon, leaving promptly for the Volcano House; thence down to the crater, where Nobles and their ladies may remain as long as they wish.

Friday, February 24.—After lunch at the Volcano House, return to Hilo. Dinner at the Hilo hotel. (Other arrangements may be made by Hilo Nobles, as the return to Honolulu will not be made until midnight.)

Saturday, February 25.—Arrive Honolulu about noon. Balance of the day resting and shopping. In the evening about 6 o'clock, Nobles and their ladies will be entertained at a luau and hula (Hawaiian feast and dance).

Sunday, February 26.—Local Nobles will take visiting Nobles and their ladies on auto trip around the island or via train to Haleiwa hotel. The evening will be devoted to private dinner parties and other entertainments.

Monday, February 27.—Sight-seeing trips in and around Honolulu; also giving those who may desire to do so an opportunity to witness a sugar mill in full operation. A kind of an open, go-as-you-please day. Grand Shrine hall at the Alexander Young hotel at 9 p. m. Tuesday, February 28.—Street parade and ceremonial session to commence at 2 p. m. Banquet at the Alexander Young Hotel to commence at 8 p. m. Wednesday, March 1.—Farewell to the visitors and a send-off such as Honolulu only knows how to give. Arrive at San Francisco, Tuesday, March 7, 1911.

## COURT NOTES.

Manuel Costa, who was found guilty by Judge Robertson's jury of violation of the Edmunds Act, was yesterday sentenced to six months imprisonment and to pay the costs of court. Incidentally, he got a severe roast from the judge

for taking a woman away from her happy home and inducing her to obtain a divorce so she could take up with him. The woman in the case is the one who attempted to commit suicide in a Chinese back some time ago by taking carbolic acid when she found that Costa had tired of her. The court also said that the prisoner had committed perjury on the witness stand, and for that reason he was not inclined to deal leniently with him.

**Edmunds Act Case.**  
The trial of Lee Sa Kee, charged with violation of the Edmunds Act, was begun in the federal court yesterday. Attorney Magoon appears for her and also for Dai Pook Tai, whose trial will follow that of the woman with whom he is accused of having been unduly intimate.

**Mercy Recommended.**  
Judge Robinson's jury, in finding Ramon Camacho guilty of assault on a female child under ten years of age, recommended him to the mercy of the court on account of his previous good reputation. Camacho will be sentenced next Monday afternoon.

**Supreme Court Opinion.**  
The supreme court handed down an opinion yesterday affirming the judgment of the circuit court which found Pong Cheong and Chong Duck guilty of burglary in the second degree. The men appealed on the ground that the evidence did not sustain the verdict but the supreme court found otherwise.

## EARNESTNESS MAN INVITED TO REPLY

Here is a chance for some philatelist to get busy. Uhei Matsutani, whose address is Satsunabori, Nishiku, Osaka, Japan, is ready to do some business on the exchange basis, writing to Messrs. Chas. Spreckels & Co. as follows:

"Gentlemen—I like very much for used postage stamps and to correct many different varieties. Indeed so I hope to change with an earnestness man. Is not there an applicant. If anyone hopes to my application, please will send me some of them."

Before laughing at the above, however, let the earnestness one who answers the application tackle the reply in Japanese.

## Jas. W. Pratt REAL ESTATE, INSURANCE LOANS NEGOTIATED

## CITY AUCTION CO. 125 Merchant St.

## AT AUCTION

At our salesroom, 125 Merchant St.  
**FRIDAY, SEPT. 16, 1910,**  
At 10 o'clock a. m.

Refrigerators, Mission round table, Dinner set, lauhala cushions, Lauhala mats, Wilcox & Gibbs sewing machine, Garden hose, lawn mower, lanterns, Student lamp, hanging lamps, Large Jewel stove, grindstone, Blankets, shirts, ladies' hats, etc.

**JAS. W. PRATT, Auctioneer.**

## AT AUCTION

On Account of Whom It May Concern:  
**ON FRIDAY, SEPT. 16, 1910.**  
At 10 o'clock a. m.

At the City Auction Room, 125 Merchant street, I will sell at public auction "for account of whom it may concern" the following undershirts and hats, said to have been shipped from New York, as follows:

7 cases of hats per Texan about May 14, 1910.  
1 case undershirts per Massachusetts about May 20, 1910, to Puerto, Mexico, per rail to Salina Cruz and thence per Alaskan to San Francisco, transhipped per Missouriian, which steamer arrived here August 27, 1910.

Marked "L. H. & C., Honolulu."  
Case No. 1152—34 doz. undershirts.  
Case No. 2832—1 case hats, 5 10-12 doz.  
Case No. 2860—1 case hats, 4 8-12 doz.  
Case No. 2861—1 case hats, 5 7-12 doz.  
Case No. 5389—1 case hats, 2 4-12 doz.  
Case No. 97,583—1 case hats, 4 5-12 doz.  
Case No. 98,449—1 case hats, 5 5-12 doz.  
Case No. 99,239—1 case hats, 5 5-12 doz.  
Terms Cash, U. S. Gold Coin.

**JAS. W. PRATT, AUCTIONEER.**

## AT AUCTION

At the residence of MRS. W. O. AT WATER, 1221 Pensacola St.,  
**Wednesday, Sept. 21, 1910**  
at ten o'clock a. m.,

## The entire Household Furniture

**JAS. W. PRATT, Auctioneer.**

## For Sale or Lease

Two story, mosquito-proof cottage, practically new, seven rooms, all modern conveniences; grounds well planted with fruit and foliage trees; good neighborhood, and convenient to cars.

**JAS. W. PRATT, AUCTIONEER.**

## Jas. F. Morgan STOCKS, BONDS AND REAL ESTATE

## REALTY AUCTIONEER

**No. 857 Kaahumanu St.**

Regardless of the lots we are offering at auction we want to sell

**A home at the Peninsula.**

**A bungalow in College Hills.**

**A three-bedroom house in good neighborhood.**

**A cottage in Puunui, lot 75 by 300, near carline. A bargain at \$1600.**

**A house and lot in Kaimuki for \$1000, near carline.**

**A few remaining lots in block 17, Kaimuki, 15,000 square feet each.**

**JAS. F. MORGAN.**

## HAVE YOUR ELECTRIC WORK DONE BY THE

**UNION ELECTRIC CO.**  
Harrison Bldg., Beretania St.  
Telephone 2617.

## HONOLULU MUSIC CO.

**CENTRAL BUILDING**  
King and Fort Streets  
PHONE 2226.

## BLOOD TONIC

**Keeps Stock Well**  
**H. J. POTTIE'S STOCK REMEDIES CO.**  
Hotel and Union.

**H. M. AYRES, Manager.**

## C. BREWER & COMPANY, LTD.

**AGENTS FOR THE**  
Royal Insurance Co., of Liverpool, England.  
London Assurance Corporation.  
Commercial Union Assurance Co., Ltd. of London.  
Caledonian Insurance Co.  
The Upper Rhine Insurance Co., Ltd. (Marine).  
Scottish Union & National Insurance Co., of Edinburgh, Scotland.

## Scandinavia Belting

**HONOLULU IRON WORKS CO.**  
AGENTS.

## OLD KONA COFFEE

**McCHESNEY COFFEE CO.,**  
16 Merchant St.

**Kodak Developing and Printing**  
Immediate Delivery.  
Hawaii & South Seas Curio Co., Young Building.

## Pau Ka Hana

And the dirt moved.  
Get it from your grocer.

## PAPER

FOR ALL PURPOSES.  
**AMERICAN HAWAIIAN PAPER AND SUPPLY CO., LTD.**

## CASTLE & COOKE, Ltd.

**SHIPPING AND COMMISSION MERCHANTS.**

**SUGAR FACTORS AND GENERAL INSURANCE AGENTS.**

**REPRESENTING**  
New England Mutual Life Insurance Company of Boston.  
Aetna Fire Insurance Company.

National Fire Insurance Company.  
Citizens' Insurance Company (Hartford).  
Fire Insurance Company.  
London Assurance Corporation.

## HAWAIIAN DEVELOPMENT CO. Limited.

**STANGENWOLD BUILDING.**  
F. B. MCSTOCKER, Manager.  
P. O. Box No. 268. Cable: Develop.

## For Sale

One of the most beautiful homes in Manoa Valley. Contains three large, airy bedrooms, den, dining-room, parlor and roomy kitchen.

Has gas and electric lights and hot water heater. Rooms mosquito proof. Sanitary plumbing throughout.

Dwelling is in large lot and commands both marine and unobstructed view of the mountains from its elevated position.

Grounds planted in ornamental shade and fruit trees. Servants' house and chicken yards at an agreeable distance from the dwelling.

Lot faces a well-built and well-kept street and is within short distance of car line. This is one of the most desirable homes in the valley and one of the best offerings in real estate within the last twelve months.

For particulars apply to

## The Waterhouse Trust Co. Ltd.

Fort and Merchant Sts.

## Mr. and Mrs. Hashimoto MASSEURS

Rheumatism, Bruises, and other Ailments Quickly Relieved.  
Telephone 287.

## THE EAGLE

TELEPHONE 2575.  
CLEANING, DYEING and PRESSING WORK  
FORT AND KUKUI STREETS.

## WE FRAME PICTURES

According to Their Requirements and with Artistic Taste.  
**PACIFIC PICTURE FRAMING CO.**  
Nuuanu, below Hotel.

## Wing Tai & Co.

**Contractors and Builders.**  
Furniture, Wall Paper, Painting  
1216 Nuuanu Ave.

## "Yamatoya"

**ALL KINDS OF SHIRTS AND PAJAMAS MADE TO ORDER**  
1250 Fort St., just above Orpheum.

## FRENCH LAUNDRY

**J. ABADIE - PROPRIETOR**  
PHONE 1491  
777 King Street

## The Yokohama Specie Bank Ltd.

Capital (Paid up).....Yen 24,000,000  
Reserve Fund.....Yen 18,250,000

## HEAD OFFICE YOKOHAMA.

The bank buys and receives for collection bills of exchange, issues Drafts and Letters of Credit, and transacts a general banking business.

The Bank receives Local Deposits and Head Office Deposits for fixed periods.

Local Deposits \$25 and upwards for one year at rate of 4 per cent. per annum.

Head Office Deposits Yen 25 and upwards for one-half year, one year, two years or three years at rate of 4-1/2 per cent. per annum.

Particulars to be obtained on application.  
Honolulu Office—Bethel and Merchant Streets.  
YU AKAI, Manager.

P. O. Box 168.

## PAPER

FOR ALL PURPOSES.  
**AMERICAN HAWAIIAN PAPER AND SUPPLY CO., LTD.**



## GURNEY Refrigerator

is the only  
CLEANABLE  
King of Ice-Savers.  
We Back Our Assertions.  
This is the time one appreciates a  
Refrigerator—the Gurney is the  
best by actual test. Made in 45 styles.  
Special Midsummer Sale will con-  
tinue for only Two Weeks.  
Refrigerators at \$9.50, \$12.50, \$15.00,  
\$25.00, \$35.00, \$45.00, etc.  
Ice Boxes at \$7.50, \$8.75, \$10.00,  
\$11.00, \$15.00, \$17.50, etc.

W. W. DIMOND & CO., Ltd.  
53-57 King Street.

**SCHOOL BOOKS!**  
**SCHOOL SUPPLIES!**  
Children, your attention is called to  
immense stock of School Supplies  
this year.  
Your money savers,  
Wall, Nichols Company, Ltd.  
69-71 King Street.

**WANTED**  
Once, Experienced Milliners  
Apply  
**K. UYEDA**  
Nuuanu Avenue.

**Leading Barbers**  
IN HONOLULU  
Have Adopted the Following  
Tariff:  
**HAIR CUT,**  
**35 CENTS**  
**FACE MASSAGE,**  
**35 CENTS**  
Effective October 1st.

**A. BLOM**  
**DRY GOODS**  
Opposite Catholic Church  
**SALE OF HANDKERCHIEFS**  
**BEGINS MONDAY, THE 19TH**  
Many lines of Ladies' and Children's  
Handkerchiefs at very low prices.  
**EHLERS'**  
**THE ROYAL ACADEMY OF DANC-**  
**ING**, through its instructor, announces  
that they have engaged a Hawaiian  
pianist club to furnish music for their  
socials, which take place every Friday  
evening from 8 to 10:45 o'clock. In-  
structions from 7 to 8 p. m.

**Dance at the**  
**Moana Tonight**

The postponed dance for the trans-  
port Logan will be given tonight at the  
Moana Hotel, the Artillery band from  
the transport playing during intermis-  
sions.

### BUSINESS LOCALS.

Territorial Mess. Service. Tel 1861.  
The Royal Hawaiian Garage has the  
best class of automobiles in the city  
at rent service. Telephone 1910.  
During my absence from Honolulu  
Mr. George Paul will receive subscrip-  
tions to stock in Lakeview No. 2 Oil  
Company at 1139 Fort Street, next to  
the convent. J. Oswald Luttet, agent  
for the Hawaiian Islands.

### WHAT THE PRESS AGENTS SAY

The Empire.  
The Empire has had full houses this  
week. Jolly Trixie has been the star  
attraction. Those who have not seen  
her have one chance left as tonight is  
her last. She sails for Australia Fri-  
day.

Park Theater.  
Owing to the death of one of the  
members of the "Do-Ra-Me" com-  
pany, which was to have arrived to play  
at the Park this week, Manager Cong  
has been forced to look elsewhere  
for able artists to please the patrons of  
the house, and has been more than suc-  
cessful in securing Frank Blair, Miss  
Clair Atkins and Connie Marine who  
were consented to stay over.

Miss Atkins, who needs no word of  
praise, will introduce specialties, as  
will Connie Marine, while the three  
will be seen nightly in a one act farce.  
They say that these will be good with  
and stars playing the parts is but a  
trifle of words.  
They will be seen tonight for the  
first time in "The Man Who Looks  
Like Me," while Mr. Marine will have  
some new songs and stories. Miss At-  
kins will appear in a comedy single  
act as only she is able to give.

**READ THE ADVERTISER.**  
**WORLD'S NEWS DAILY**

### LOCAL BREVITIES.

**ADVERTISER**—New phone number  
—2148.

**GAZETTE COMPANY**—Business of-  
fice—New phone number—1478.

Hawaiian Tribe No. 1, I. O. R. M.,  
will meet in K. of P. hall at half-past  
seven this evening.

Oliver Branch Rebekah Lodge No. 2,  
I. O. O. F., meets at half-past seven  
o'clock this evening in Odd Fellows hall  
for initiation.

Y. Soga, formerly editor of the Nippon  
Jiji, writes to The Advertiser that he  
has arrived safely in Yokohama, after  
a pleasant voyage.

G. E. H. Baker, county auditor of  
Kauai, has resigned owing to ill health.  
C. Maser, principal of the Lihue Ger-  
man school, has been named to succeed  
him.

This is the night when there will be  
a card and grab social at Odd Fellows  
hall under the auspices of Oliver Branch  
Rebekah Lodge No. 2, I. O. O. F. All  
Rebekahs and Odd Fellows will be made  
welcome.

The ladies of the Society of the Cen-  
tral Union Church will hold a lawn  
social at the home of Mrs. Theodore  
Richards, Kapohalah and Kinuau streets,  
this afternoon from half-past three to  
six o'clock. Not only all the ladies of  
the church, but all visiting ladies are  
invited to attend. A cordial welcome  
awaits all.

Dr. Andrews, professor of English at  
the College of Hawaii, will offer a  
course in public speaking and also a  
course in the study of the novel, both  
of which will be open to special stu-  
dents. Any one desiring to take these  
courses should meet at the college, for  
public speaking at half-past two, and  
for the novel at three o'clock this  
afternoon.

Garden Island:—While on the Hale-  
mauaka ridge, back of Kalaheo, re-  
cently, Rev. J. M. Lydgate, who is an  
expert botanist, had the good fortune  
to discover a new and very pretty  
species of wild violet. The flower is a  
delicate lavender pink, about the size  
of an ordinary garden violet, but the  
plant is somewhat different from the  
common species, as it grows into a little  
bush about a foot high. The leaves are  
like the ordinary violet leaf, except  
that they are more pointed, growing  
to be about three inches long. No  
name has been given the plant by its  
discoverer as yet.

### PERSONALS.

Supervisor Ben Lyons of Wailuku  
arrived yesterday from Maui on the  
Claudine.

Mrs. Harold Dillingham is expected  
home from San Francisco on the Si-  
beria next Monday.

The engagement is announced of Miss  
Vera Laura Elizabeth Lee of Sydney, to  
Mr. Sidney Jordan of Honolulu.

Mrs. Alva R. Small, a sister of Mrs.  
Thos. Burningham, will arrive on the  
Sierra tomorrow from Chicago, to visit  
here for several months.

Miss Dwight of the superintendent  
of public works office departed on the  
Manchuria for the mainland for a vaca-  
tion, accompanying Mr. and Mrs. Brain-  
ard.

A. Schnack left on the Wilhelmnia  
to take up postgraduate work in chem-  
istry at Yale University. F. Schnack has  
entered the office of E. C. Peters, at-  
torney-at-law.

Senator Hayselden of Lahaina, Maui,  
and Mrs. Hayselden, departed on the  
Wilhelmnia yesterday, on a recreation  
tour of six months to be spent mostly  
on the mainland.

Sam Mahelona of the First National  
bank, accompanied by Mr. and Mrs. A.  
S. Wilcox of Kauai, departed on the  
Manchuria Tuesday. They will be  
away from the Islands for several  
months.

### "WASEDA WAYS."

Philip H. Dodge, formerly of Hon-  
olulu and now of Japan, has written a  
class song for the Waseda English  
Speaking Society, entitled "Waseda  
Ways." One verse of the song is:  
Long after graduation day,  
If we are near or far away,  
We'll not forget old Waseda, Waseda.  
We shall cherish Waseda, Waseda;  
That's the way that students should do.

### Some Excellent Showings

—AT—

### Sachs' Popular Store

#### STENCILLED BURLAP

For draping and couch covers, in pretty  
art patterns, 36 inches wide, 25c. a yard.

#### FANCY SILK FOULARDS

in handsome designs. All the season's  
latest showing and only one dress-  
length of each. They are all exclusive  
patterns.

#### A NEW STOCK

of Nainsook, Handkerchief Linen and  
Longcloth in many qualities.

#### CREAM HENRIETTA

All Wool, very handsome; combines the  
necessary warmth with lustrous light  
finish, \$1.25 per yard.

#### NEW MILLINERY

The cases containing our supply for the  
Fall Showing are now being unpacked.

#### WATCH FOR OUR OPENING

**The October Delineator**  
is now on sale

Ring up our New Phone Number.

**1165**

**SACHS DRY GOODS CO.**

Cor. Fort and Bereftania Sts.  
Opp. Fire Station.

### MADAME PELE IS RECEIVING MANY GUESTS

Madame Pele has been receiving  
many guests from widely separated  
places of the world recently, accord-  
ing to the names on the Volcano House  
Register. Since August 25 the register  
shows the following:

August 28—Warren H. Colson, Bos-  
ton; W. H. Hoogs, Miss Ethel May,  
Honolulu.

August 30—E. P. Irwin and Emma  
C. Lyons, Honolulu; Dr. Henry Hayes,  
Hilo.

August 31—H. V. Patten, Gilbert Pat-  
ten, Zeno K. Myers, Hilo; F. L. Hill,  
San Francisco; Mrs. R. R. Benton, Ho-  
olulu; Elizabeth Shates and Miss Jean  
C. Stetson, New York; Maj. J. Reum,  
Germany; S. K. Sydes, Los Bagos, New  
Mexico; D. A. Megowan, Sacramento;  
U. F. Lemon, Honolulu; Joseph Girard  
and family, Los Angeles; Mr. and Mrs.  
Jared G. Smith, Master Werner Smith,  
Kona; Jesse Smith, Lincoln, Nebraska;  
Amy F. Williams, Mrs. Geo. H. Wil-  
liams, Hilo.

September 1—Mrs. T. M. Flournoy,  
Chicago; Cyril J. Hoogs, W. H. Hoogs,  
Honolulu.

September 2—Miss A. Kekoa, Mrs.  
Arthur Richardson, Hilo; Miss Adelaide  
Ward, Keaua; Miss Esther Pomeroy,  
Hilo.

September 3—F. J. Lindeman, Hon-  
olulu; L. Chong, Leon Fey, Naelehu;  
Ivan M. Graham, Honolulu; P. Bartels  
and family, W. H. Hiserman, Hilo; A.  
Thomson, Port Gamble, Washington;  
R. Thome, Port Townsend; Mary Stev-  
ens Compton, Hilo; W. Sidney Smith,  
H. A. Walton, Esperanza, Mexico; J.  
W. Hamilton, I. P. Davies, W. W. Beers,  
Mrs. W. W. Beers, Miss Edna Beers,  
New York City; E. A. Ludke, Tacoma;  
W. H. Sparling, Folsom City, Califor-  
nia; Mrs. Eleanor Patten, Mrs. H. V.  
Patten, Mrs. Gilbert Patten, Hilo; Capt.  
Wm. Lyons, S. S. Missourian; Mr. and  
Mrs. I. Guard, Miss Louisa Hapai, Mas-  
ter W. Downer, Hilo.

September 5—Mrs. Geo. W. Townsend,  
Honolulu; Mrs. L. L. Austin, Naelehu;  
Maui; J. Watt, Olatz, Mrs. Severance,  
Hilo; W. C. Lockhart, New York; H. S.  
Smith, Oakland; H. J. Ench, East Oak-  
land; Collin Campbell, Ottumwa, Iowa.

September 6—L. Chong, Naelehu; E.  
H. Ackley, Portland.

September 7—Jessie Hamilton, K5-  
hala; Jane F. Lane, Columbusburg,  
Pennsylvania; May V. Platter, Deni-  
son, Texas; Miss W. H. Park, Los An-  
geles; J. Mengel, W. E. Galloway, W.  
D. Lowell, Mrs. D. E. Cutter, Honolulu.

September 9—Mrs. C. Wolters,  
Helene Charlotte Wolters, Naelehu;  
Mrs. B. W. Warham, Honolulu; Dr. E.  
V. Rice and wife, Mr. and Mrs. J. H.  
Simpson, Los Angeles; Mr. and Mrs.  
H. D. Porter, Woodland, California;

Miss Emelda White, San Francisco;  
Miss Helen White, Mr. and Mrs. H. R.  
White, Oakland; Mr. and Mrs. St.  
L. West, Hamilton City, California; Mr.  
and Mrs. J. H. Drew, Miss Louise Drew,  
Honolulu; Chas. Drew, Capt. P. John-  
son, S. S. Wilhelmnia; R. Backholtz,  
San Francisco; Peter McRae, Hoopuloo;  
H. V. Patten, Hilo; Estelle H. Dreyfus,  
Los Angeles; Mrs. R. T. Moses, Edie  
Glennie, Mrs. Wm. Jamieson, Hilo; T.  
K. Beard and wife, Mrs. A. E. Beard,  
Modesto, California; Miss Alice Beard,  
W. F. Dillingham and wife, H. G. Dil-  
lingham, Honolulu; Barnard A. Kele-  
lingham, Honolulu; Fred Lauck, Honolulu; J.  
Forrest, Aien; Mr. and Mrs. M. K.  
Lyman, Hilo; Dr. W. B. Deas, Hana.

September 11—Miss R. M. Deas,  
Hana; Hannah Wailani, Mary Wail-  
ani, Mrs. Rose Cooke, Hilo; Miss Lena  
Cameron, Oakland; H. C. Cressman,  
Hilo; Earl Cameron, Papaikou; C. B.  
Clark, Jr., Honolulu; Mrs. Chas. E.  
Sedgwick, Dixon, California; Miss Har-  
riet Bolding, Miss Caroline Bolding,  
Geo. A. Cool, E. R. Bolding, R. A.  
Lucas, Casay, Capt. J. S. Maby, Miss  
L. Canon, Mrs. R. Cooke, Hilo.

### "LOST" AD LOCATES MISSING BUNCH OF KEYS

The "Lost" column in The Adver-  
tiser has again made good, this time  
in locating a bunch of keys. The owner  
inserted a notice of his loss in yester-  
day morning's Advertiser and last  
night T. S. Sewell, a guest at the Mo-  
ana Hotel, dropped into the editorial  
rooms to announce that he had found  
the keys lying in the road in front  
of the hotel at Waikiki and, noticing  
the advertisement, he called to see  
about returning them. Mr. Sewell  
stated that he left the keys at the  
hotel and the owner could have them  
if he called there or he would bring  
them in this morning and leave them  
in the business office of The Advertiser.

### NO HAWAIIAN UNREST SAYS JUDGE HARTWELL

NEW YORK, August 31.—General A.  
S. Hartwell, Chief Justice of the Su-  
preme Court of Hawaii, is in New York  
en route from Europe to San Francisco,  
from whence he sails for Honolulu Sep-  
tember 13th. In commenting on alarm-  
ing rumors of unrest among the Japa-  
nese in Hawaii, General Hartwell said:

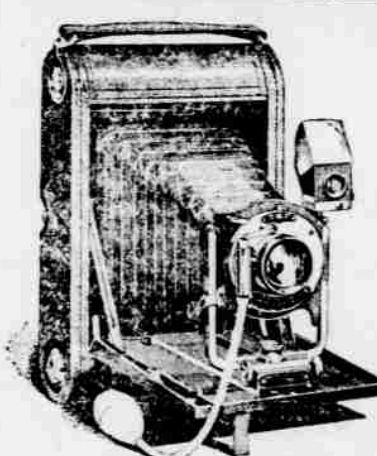
"There is no unrest among the Japa-  
nese in Hawaii, although it is true  
many of them are ex-soldiers. Not a  
sign of trouble from this source is to  
be found by the Americans, who are  
closely observant.

"It is my understanding that the  
four Japanese convicted for conspiring  
to stir up labor troubles were after-  
ward pardoned by the Governor, which,  
I believe, was a wise and just act."

### MOONLIGHT BAND CONCERT.

A moonlight band concert will be  
given this evening at the Seaside Hotel,  
Waikiki, beginning at half-past seven.  
The program will be:

Overture: Martha ..... Flotow  
Intermezzo: Vision of Salome ..... Joyce  
Miserere: B. Trovatore ..... Verdi  
Selection: The Lombardians ..... Verdi  
Vocal: Hawaiian Songs. Ar. by Berger  
Selection: The Dollar Princess. Fall  
Ballad: La Paloma ..... Gradier  
Waltz: Golden Showers ..... Waldteufel  
The Star Spangled Banner.



HERE YOU WILL FIND  
a complete line of the latest  
models of the  
**EASTMAN KODAK**  
FROM \$5 TO \$100  
**Honolulu Photo Supply Co.**  
Fort Below Hotel

**VICTOR RECORDS**  
For September  
HEAR THEM  
**BERGSTROM MUSIC CO.**

**ROMAN & FRIETAS**  
**HAT COMPANY.**  
OPP. CLUB STABLES.  
**Felt and Straw Hats**  
**Panamas**

## Scarf Pins

In many new designs, have  
arrived, and are ready for  
your inspection.

They will add a great  
deal to your neckwear at  
considerably little cost.

**ALL THE WAY FROM**  
**\$1.50 TO \$100.**

...

**J. A. R. Vieira & Co.**

113 Hotel Street

**Fine Wines and Liquors**  
**LOVEJOY & CO.**

902 NUUANU STREET.  
TELEPHONE 2708.

**Pencils**  
**Composition Books**  
and Stationery for School.  
**HAWAIIAN NEWS CO., LTD.**

### FOR SALE

Very desirable home, corner Pen-  
sacola and Kinuau streets. Your  
choice of two properties. Call at  
our office and we will take you  
out to see them.

The price is right and terms  
can be arranged.

**BISHOP TRUST CO.,**  
**Limited**

924 Bethel Street.

**ALIOLANI COLLEGE.**  
Boys' Boarding and Day School  
**KAIMUKI**  
Next term commences Sept. 12.  
Write or see Principal, 8-10 o'clock

**Elite Laundry**  
**W. D. McINTYRE, Superintendent.**  
Phone 1973

## Earl & Wilson

Makers of the celebra ed

## E. & W. SHIRTS

Made of sheerest materials woven in  
beautiful designs. Some are made of  
silk flannel, self striped and contrast-  
ing shades.

**Priced at \$2.50 and \$3.00**

**Silva's Toggery, Ltd.**

ELKS' BUILDING, KING STREET  
Phone 1751

## DANCING SHOES

In all Leathers and Canvas  
Wide range of shades

We call special attention to our special assort-  
ment of Cravenette and Metal finish dancing shoes.  
There are many styles and in all of the fashionable  
shapes.

There will be need for good dancing shoes next  
Saturday night. We can fit you in styles that will be  
comfortable and with all the latest style features.

**McInerny Shoe Store**

Fort Street Above King Street

**The Honolulu Home Building and Loan Association**  
—BUILDERS AND CONTRACTORS—

### GET OUR BID

On that Bungalow you have in mind.  
Our figures are the lowest in Honolulu for good work.  
We can finance you, if that is all that delays you.  
ADDRESS P. O. BOX 365, CITY.

## Fine Cotton Crepe

DRESS PATTERNS,  
SILK AND COTTON CREPE WAIST PATTERNS,  
STRIPED COTTON CREPES BY THE YARD.

## SAYEGUSA

Nuuanu Street Above Hotel

## Hair Brushes

AT A BIG REDUCTION  
We are selling this week \$1.25 Brushes  
**70 cents**

Buy before the last is gone. They're good.

**BENSON, SMITH & CO., Ltd.**

Fort and Hotel Streets.

**READ THE ADVERTISER**



## OCEANIC STEAMSHIP COMPANY TIMETABLE.

Direct Service to San Francisco.  
The favorite S. S. SIERRA, 10,000 tons displacement, sailing from Honolulu September 21, October 12, November 2, 23, December 14.  
\$65 first-class single to San Francisco; round trip, \$110. Direct service from San Francisco to Tahiti connecting with U. S. S. Co. service to New Zealand.  
C. BREWER & CO., LTD., General Agents.

## CANADIAN-AUSTRALIAN ROYAL MAIL LINE.

FOR FIJI AND AUSTRALIA. FOR VANCOUVER.  
MAKAMA ..... SEPTEMBER 16 MARAMA ..... SEPTEMBER 13  
MAKAMA ..... OCTOBER 14 MARAMA ..... OCTOBER 11  
MAKAMA ..... NOVEMBER 11 MARAMA ..... NOVEMBER 8  
\*Will call at Fanning Island.  
THEO. H. DAVIES & CO., LTD., General Agents.

## AMERICAN-HAWAIIAN STEAMSHIP COMPANY.

FROM NEW YORK TO HONOLULU, via Tehuantepec, every sixth day. Freight received at all times at the company's Wharf, Forty-first street, South Brooklyn.  
FROM SEATTLE AND TACOMA TO HONOLULU DIRECT:  
S. S. ALASKAN, to sail ..... September 11  
S. S. ARIZONA, to sail ..... September 23  
For further information apply to  
H. HACKFELD & CO., LTD., Agents, Honolulu.  
S. P. MORSE, General Freight Agent.

## PACIFIC MAIL S. S. CO. AND TOYO KISEN KAISHA

Steamers of the above companies will call at Honolulu and leave this port on or about the dates mentioned below:  
FOR THE ORIENT. FOR SAN FRANCISCO.  
SIBERIA ..... SEPTEMBER 19 CHIYO MARU ..... SEPTEMBER 17  
CHINA ..... SEPTEMBER 26 ASIA ..... SEPTEMBER 24  
MANCHURIA ..... OCTOBER 3 MONGOLIA ..... OCTOBER 8

H. HACKFELD &amp; CO., LTD., Agents.

## MATSON NAVIGATION COMPANY'S SCHEDULE, 1910.

Direct Service Between San Francisco and Honolulu.  
Arrive from San Francisco. Sail for San Francisco.  
Wilhelmina ..... September 6 Wilhelmina ..... September 14  
Lurline ..... September 28 Lurline ..... October 4  
Wilhelmina ..... October 4  
S. S. NEVADA of this line sails from Seattle for Honolulu direct on or about September 17, 1910.  
CASTLE & COOKE, LTD., Agents, Honolulu.

## CRUSHED ROCK AND ROCK SAND.

## Hustace-Peck Company, Ltd.

65 QUEEN STREET. PHONE 2295.  
We crush our own rock and deliver to all parts of the city. Estimates given on all kinds of road work and grading. Reasonable prices.

LET YOUR TRUNKS HAVE A

# JOY

# RIDE

IN OUR AUTO TRUCK.

YOUR TRUNKS WILL LIKE IT AND SO WILL YOU AND SO WILL WE

City Transfer Co. PHONE 1281  
Jas. H. Love

We have experienced men and specially designed wagons

For Moving Household Goods and Furniture

Wood &amp; Coal

Telephone

Shipping

Storage

1875

Packing

## Union Pacific Transfer Company

King Street Next to Young Hotel

## Heavy and Light Draying

WOOD and COAL Phone 2281 SAND and CORAL

HONOLULU CONSTRUCTION &amp; DRAYING CO., LTD.

Queen St., opposite Kaahumanu.

Telephone 2281.

## SIGHT SEEING TALLYHOS

Leaving Hawaii Promotion Committee Headquarters

Pali 10:30 A. M. DAILY Moanalua or Diamond Head 3 P. M.

Charge Per Passenger, \$1.00

Tallyhos seat 12 persons, and can be hired for \$5.00 per hour.

For further particulars, apply

Phone 2166

HONOLULU POWER WAGON CO.  
875 South Street, near King.

## HENRY WATERHOUSE TRUST CO., LTD.

## "SPECIAL OPPORTUNITY"

During this month only, we offer the following choice Kaimuki residences for purchase, upon terms within the reach of anybody desirous of acquiring a home. Small cash payment and balance in monthly installments. Call and get particulars of these two special bargains before they are withdrawn.

NO. 1—Three bedroom house on car line. Spacious lanai. Newly papered and painted throughout. Lot 100x225, covered with shade and fruit trees. Stables and servants' quarters.  
NO. 2—New two-bedroom bungalow. Magnificent view of two oceans, adjoining Kaimuki Crater (reserved as a park). Either one or two lots as desired.

## We also offer for lease

Three-bedroom furnished bungalow on the Kaimuki car line. One of the most comfortable homes in Honolulu.  
FOR LEASE NEAR TOWN.—A Furnished Rooming House.

## HENRY WATERHOUSE TRUST CO., LTD.

## THE PACIFIC Commercial Advertiser

Entered at the Postoffice at Honolulu, T. H., as second-class matter.  
SUBSCRIPTION RATES:  
One year ..... \$12.00  
Advertising Rates on Application.  
HAWAIIAN GAZETTE CO., LTD.  
Von Holt Block, No. 65 South King St.  
C. S. CRANE : : : : Manager

## CHIEF JUSTICE SELLS PROPERTY

Part of Judd Street Land Is Acquired by C. J. Hedemann.

By deed yesterday Chief Justice A. S. Hartwell of the Supreme Court conveyed to Christian J. Hedemann six and five-hundredths acres of land, having a frontage of 687.3 feet on the makai side of Judd street, about 245 feet west of the corner of Judd and Liliha streets, the consideration being \$13,000. This is one of the largest real estate deals in that section for some time and gives property owners an opportunity to establish a value on their holdings. The property is in the exclusive residence section of the city known as "Judd street" and is very attractive. It is understood that a handsome residence will be built on the property by the new owner.

## FAMOUS BROTHER OF HONOLULU RESIDENT DEAD

Commander James Gordon Bremer, R. N., a brother of Mrs. A. W. Maclean of Honolulu, and John De Courcy Bremer, died in a private hospital in Darlinghurst, Australia, on August the fifth. He was the eldest son of John de Bremer, of Clarendon, Rose Bay, and grandson of the late Admiral Sir James John Gordon Bremer, R. N., K. C. B., K. C. H., who was commander of the British squadron at the capture of the Island of Chusan on July 5, 1840.

The late Commander Bremer entered the service as a cadet in 1866 and retired with the rank of commander in 1891. He took part in the Egyptian war and received the Egyptian medal and Khedive's bronze star. He also commanded the H. M. S. Royalist, which was in commission about Australia. The interment was at the South Head cemetery.

## TRANSPORT ARRIVALS.

The passengers who arrived on the U. S. A. T. Logan from San Francisco last night are: Lieut. Col. R. L. Ballard, U. S. A.; Mr. and Mrs. C. J. De Roo and family, Dental Surgeon Geo. D. Graham, U. S. A.; Mrs. Graham, J. Kovinan, Major General McCaskey (retired), Mrs. McCaskey, Lieutenant Rodney, Fifth Cavalry; Mrs. Rodney and son, Veterinarian Grover C. Strong, Mr. and Mrs. George Whittemore and family, Captain Winters, Third Cavalry; Mrs. Winters and daughters, Mrs. J. J. Durney, Mrs. Edward Frankenstein, A. P. Frechette, Mrs. Hardy S. Hammond, Thos. Wright, H. S. Hammond, Wm. H. Hole, Frank Henningskens.

## GOODWIN NOMINATED.

HARTFORD, September 14.—Charles Goodwin has been nominated for governor of Connecticut by the Republicans.

## BORN.

ROENDAHN.—At the Kapiolani Maternity Home, in Honolulu, September 14, to the wife of K. Roendahl, of Hana, Maui, a daughter.  
MARKS.—In Honolulu, September 13, to the wife of M. Marks, a daughter.

## STOCK AND BONDS Trent Trust Co., Ltd.

REPRESENTED ON EXCHANGE BY CHAS. G. HEISER, JR.

## Friends at Sea Appreciate a Wireless

On Sunday mornings the office is open from eight to ten.

JOS. S. MARTIN  
Importing Tailor.  
High-class English Woolens.  
Exclusive Styles  
58 Merchant St.

## Classified Advertisements

PINETAR SALES CO.'S office, 855 Kaahumanu (upstairs); tel. 1144. M. E. Covington, sales mgr., 10 to 11 and 3 to 4 daily. 8764

## FOR RENT.

FURNISHED house in private family; pleasant surroundings; close in. Address B. C. D., this office. 8768

BUNGALOW at Kaimuki. Good location. Telephone 1645. 8767

TWO furnished rooms, with or without board; private family; 1923 Kalaheua Ave. 8767

## ROOM AND BOARD.

"THE LELAND," 627 Beretania Ave. Mosquito-proof lanai rooms, with or without board; everything modern; moderate prices; central location. Phone 1308. Mrs. H. Dinklage, prop. 8757

THE HAU TREE—on the beach at Waikiki—first-class apartments and board. 2199 Kalia road, end of Lewers road. 8768

CASSIDY'S COTTAGES, Waikiki Beach; bathing and boating. 8682

SHADY nook; 1049 Beretania; first class; \$35 per month and upward. Tel. 1333. 8728

## FOR RENT, LEASE OR SALE.

SIX-ROOM cottage in Kapalama, about twenty minutes walk from town; mosquito-proof and all modern improvements. Apply 1021 Palama Lane, Phone 2207. 8757

## FURNISHED ROOM.

FOR rent, next to Hau Tree, Waikiki. Apply Curio Den, Fort St. 401

## OFFICES FOR RENT.

ALEXANDER YOUNG BUILDING—Honolulu's only up-to-date fire-proof building; rent includes electric light, hot and cold water, and janitor service. Apply the von Hamm-Young Co., Ltd. 8768

"THE STANGENWALD"—Only fire-proof office building in city. 8768

## FURNISHED HOUSE.

THREE B. R. Cool location. Mrs. Nicholson, Summit Road, Punchbowl Heights. Tel. 1998. 8767

UNION EMPLOYMENT OFFICE. JAPANESE cooks, waiters, yardboys, etc. G. Hiraoka, 208 Beretania, near Emma. Phone 1420. 8684

NEW EMPLOYMENT AGENCY. JAPANESE male and female help; family or store. 900 Alakea, near King. 8765

## HALSTEAD &amp; CO.

## Stock Brokers

921 FORT STREET.

## HONOLULU STOCK EXCHANGE

Honolulu, Wednesday, Sept. 14, 1910.

| NAME OF STOCK                            | Capital     | Par   | Al      | Bto     | Ask    |
|--|-------------|-------|---------|---------|--------|
| Mercantile                               |             |       |         |         |        |
| C. Brewer & Co.                          | \$2,200,000 | \$100 |         |         |        |
| Sugar                                    |             |       |         |         |        |
| Ewa                                      | 5,000,000   | 20    | 38      | 38 1/2  |        |
| Haw. Agricultural                        | 1,200,000   | 100   | 25      | 24      |        |
| Haw. Com. & Sug. Co.                     | 2,812,750   | 25    | 40      | 40 1/2  |        |
| Haw. Sugar Co.                           | 3,000,000   | 20    | 41      | 42 1/2  |        |
| Honolulu                                 | 750,000     | 100   | 10      |         |        |
| Honokaa                                  | 2,000,000   | 20    | 17 1/2  | 18      |        |
| Hoku                                     | 1,500,000   | 100   |         |         |        |
| Hutchinson Sugar                         |             |       |         |         |        |
| Plantation Co.                           | 2,500,000   | 25    | 18 1/2  | 17 1/2  |        |
| Kahuku                                   | 1,500,000   | 100   | 20      | 20 1/2  |        |
| Kelaka Sugar Co.                         | 800,000     | 100   | 20      | 20 1/2  |        |
| Koloa                                    | 500,000     | 100   |         |         |        |
| McBryde Sug. Co. Ltd.                    | 4,500,000   | 20    | 35 1/2  | 37 1/2  |        |
| Oahu Sugar Co. Ltd.                      | 1,000,000   | 20    | 48      |         |        |
| Onomae                                   | 5,000,000   | 20    | 8       | 8 1/2   |        |
| Olaha Sugar Co. Ltd.                     | 5,000,000   | 100   |         |         |        |
| Olowalu                                  | 150,000     | 100   |         |         |        |
| Paahau Sug. Plan. Co.                    | 5,000,000   | 50    | 27      | 27 1/2  |        |
| Pacific                                  | 750,000     | 100   | 128     | 135     |        |
| Pala                                     | 2,500,000   | 100   |         |         |        |
| Pepeskee                                 | 750,000     | 100   | 155     |         |        |
| Pioneer                                  | 2,750,000   | 100   | 220     | 230 1/2 |        |
| Waiulus Agri. Co.                        | 1,500,000   | 100   |         |         |        |
| Waluku                                   | 250,000     | 100   | 220     |         |        |
| Waimanalo                                | 125,000     | 100   | 14 1/2  | 14 3/4  |        |
| Waima Sugar Mill                         |             |       |         |         |        |
| Miscellaneous                            |             |       |         |         |        |
| Inter Island S. N. Co.                   | 2,580,000   | 100   |         | 130     |        |
| Haw. Electric Co.                        | 500,000     | 100   | 170     |         |        |
| H. R. T. & L. Co. Ltd.                   | 1,150,000   | 100   | 107 1/2 |         |        |
| H. R. T. & L. Co. Ltd.                   | 1,150,000   | 100   | 107 1/2 |         |        |
| Mutual Tel. Co.                          | 250,000     | 1     | 14 1/2  | 15      |        |
| O. R. & L. Co.                           | 4,000,000   | 100   |         | 142 1/2 |        |
| Hilo R. R. Co. Ltd.                      | 184,840     | 20    |         |         |        |
| Hilo R. R. Co. Ltd.                      | 2,500,000   | 20    |         |         |        |
| Honolulu Brewing & Malting Co. Ltd.      | 400,000     | 20    |         | 21 1/2  |        |
| Haw. Pineapple Co.                       | 500,000     | 20    |         | 82      |        |
| Taniguchi Olok Rub. Co. (Paid up)        | 141,200     | 20    | 41      |         |        |
| Taniguchi Olok Rub. Co. (Ass. 50 p. Pd.) | 87,210      | 20    | 34      |         |        |
| Pahang Rub. Co. (Paid up)                | 184,820     | 10    | 20      |         |        |
| Pahang Rub. Co. (Ass. 50 p. Pd.)         | 13,138      | 10    |         |         |        |
| Bonds                                    |             |       |         |         |        |
| Haw. Ter. 4 p. c. (Fire Claims)          | 235,000     |       |         |         |        |
| Haw. Ter. 4 p. c. (Refunding 1905)       | 600,000     |       |         |         |        |
| Haw. Ter. 4 1/2 p. c.                    | 1,000,000   |       |         |         |        |
| Haw. Ter. 4 1/2 p. c.                    | 1,000,000   |       |         |         |        |
| Cal. Beet Sug. & Ref. 6 p. c.            | 800,000     |       |         | 98 1/2  |        |
| Hankukia Ditch (upper ditch) 6 p. c.     | 200,000     |       |         |         |        |
| Haw. Irrigation Co. 6 p. c.              | 500,000     |       |         | 108     |        |
| Hilo R. R. 6 p. c. (Issue of 1901)       | 1,000,000   |       |         | 105     |        |
| Hilo R. R. Co. Ref.                      | 800,000     |       |         |         |        |
| Honokaa Sug. Co. 6 p. c.                 | 8,000,000   |       |         | 102 1/2 | 10 3/4 |
| Honokaa Sug. Co. 6 p. c.                 | 8,000,000   |       |         |         |        |
| Kahala Ditch Co. 6 p. c.                 | 500,000     |       |         | 104 1/2 |        |
| McBryde Sug. Co. 6 p. c.                 | 2,300,000   |       |         | 101     |        |
| Mutual Tel. Co. 6 p. c.                  | 250,000     |       |         | 102 1/2 |        |
| O. R. & L. Co. 5 p. c.                   | 2,000,000   |       |         | 104 1/2 |        |
| Oahu Sugar Co. 6 p. c.                   | 400,000     |       |         | 104 1/2 |        |
| Olaha Sug. Co. 6 p. c.                   | 2,500,000   |       |         | 104     |        |
| Pacific Sug. Mill Co. 6 p. c.            | 500,000     |       |         |         |        |
| Pioneer Mill Co. 6 p. c.                 | 1,200,000   |       |         | 10 1/2  |        |
| Waima Sug. Co. 5 p. c.                   | 1,400,000   |       |         | 101     |        |

\*23.125 on \$100 paid. Redeemable at 103 at maturity. \$270 shares treas. stock. \$5000 shares treas. stock.

Session Sales.  
30 Honokaa, 18; 100 Haw. C. & S. Co., 40; 15 Ewa, 33.125; 10 Oahu Sug. Co., 32.50.

## Between Boards.

150 H. C. & S. Co., 40; 15 Paahau, 27; 10 Oahu Sug. Co., 32.50; \$500 1901 Hilo 68, 100.

## Memo.

Oahu Sug. Co. closed yesterday at 31 1/2 bid instead of 31 1/2 as printed.

## Albert F. Afong

832 FORT STREET.

## STOCK AND BOND BROKER

Member Honolulu Stock and Bond Exchange.

## Classified Advertisements

Want Ads., two lines, one time, 10 cents.

## COTTAGES FOR RENT.

COTTAGE at Waikiki beach; good bathing. Apply to Trent Trust Co. 8769

FOUR-ROOM cottage; lanai and bath; Palolo and 8th Ave., Kaimuki. Apply S. H. Webb. 8769

CRESSATTY'S, 2011 Kalia Road, Waikiki beach; elegant; newly furnished or unfurnished; good bathing and boating. 8762

SMALL five-room cottage, \$12.50; bath, gas stove. Inquire Carlo, 1436 Young. 8768

SMALL cottage on beach, furnished; good bathing. Apply Island Curio Store, Elite building, Hotel St. 8768

TWO bedroom cottage, 1126 Beekley St. Inquire next door. 8767

## WANTED.

Address or call 1117 Fort St. 8738

BLACKSMITH on a plantation. Apply F. A. Schaefer &amp; Co. 8767

EXPERT repairs (anything electrical); models developed, storage batteries recharged, magnets and coils repaired. Berger Elec. Works; phone 2134.

EVERYONE to know Nieper's Express telephone number is 1916. 399

EVERYONE to know our new phone number, 1861. Territorial Messenger Service. 8750

## BOYS WANTED.

TO LEARN the jewelry trade. H. Culman, Fort and Hotel. 8763

## SITUATION WANTED.

BY young man with four years' experience as clerk; drygoods and groceries; speaks English, Portuguese, Spanish; no objection to country store. Address X474, this office. 8760

BY young man with experience and recommendations; speaks English and German. B346, this office. 8769

BOOKKEEPER wants position; 20 years' experience on the Islands. S. E. Pierce, this office. 8767

BY engineer; certificated in Germany; stationary or traction. X41, this office. 8767

## William Williamson

## BROKER

## Stocks, Bonds

— AND —

## Real Estate

Member Honolulu Stock and Bond Exchange.  
83 MERCHANT STREET.  
P. O. Box 538. Telephone 1400

## A. J. CAMPBELL

## STOCKS and BONDS

79 MERCHANT ST.

Member Honolulu Stock Exchange.

Represented on the Board by Joseph Andrade.

## The Waterhouse Co.

## Manufacturers' Agents

## Rubber Factors

## COMMISSION AGENTS

JUDD BUILDING.

## PROFESSIONAL CARDS.

## SPECIALISTS.

EYE—EAR—NOSE—THROAT.  
31-32-33-34 Young Bldg.  
DR. NOTTAGE—9 to 11; 1 to 3.  
DR. ROGERS—11 to 1; 3 to 5.  
Sundays—9 to 11.  
Other hours by appointment.

MRS. T. A. ARNOTT (nee Walter)—Specialist, chiropodist and masseur. 1143 Alakea St. Phone 2981.

## VETERINARIANS.

DR. L. E. CASE, office Lewis Station. Phone 2141; residence phone 1112.

## ELOCUTION.

RAY BELL, teacher of elocution, physical and voice culture. Phone 1444; residence, 1259 Lunalilo. 8768

## MUSIC.

SYDNEY F. HOBEN (Koniglicher Conservatorium der Musik, Leipzig). Piano, technique and vortrag; singing and voice production. Metropolitan, Alakea St. 8769

## VOCAL.





ESTABLISHED JULY 2, 1856

HONOLULU, HAWAII TERRITORY, THURSDAY, SEPTEMBER 15, 1910.

# MEXICO CELEBRATES TODAY

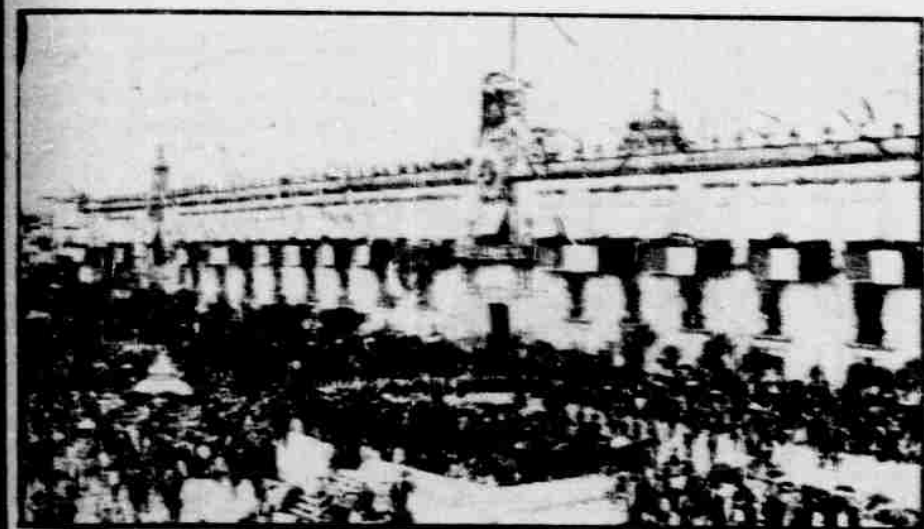
Today is the greatest day that the Republic of Mexico has observed since its conception, being the one hundredth anniversary of its independence. Brilliant festivities, so dear to the heart of the Latin people, mark the day, bringing to a head the ceremonies that have been progressing for several weeks and which continue during the entire month. One function succeeds another with bewildering rapidity, with dedications, balls, concerts, exhibitions and masques.

The celebrations today will be opened by a great historical parade, organized by the national centennial commission, which will form in the Paseo de la Reforma and march through Avenida de la Libertad and San Francisco to the stage in front of the national palace, where various historical scenes will be re-enacted. At four o'clock in the afternoon there will be a celebration and entertainments in various buildings of the Beneficia Publica. The theatrical performances and other spectacles at that hour will be free. At nine o'clock in the evening there will be fireworks on the Zocalo or public square and in other parts of the city and a concert in front of the national palace with singing of the centennial hymn by a chorus of several hundred voices.

Proclamation of Independence. Tomorrow morning, the proclamation of independence will be read, as it was one hundred years ago, and the monument of independence on the Paseo de Reforma will be dedicated by



PRESIDENT DIAZ



DIAZ' CITY PALACE, DURING A RECENT CELEBRATION OF INDEPENDENCE DAY.

President Diaz. An hour later 10,000 flags, the flower of the Mexican army, will be paraded through the streets of the capital to the national palace, there to be reviewed by President Diaz. In the evening there will be free functions in the theaters and concerts in the parks and gardens under the auspices of Governor Landu y Escandon of the federal district.

Dedications and Receptions. Other features have been in progress several weeks and included the dedication of the new seismological station by the minister of fomento and the amphitheater of the national preparatory school by President Diaz and Minister of Education Justo Sierra. September 3; a flag parade by the school children, September 6; the dedication of the two new high schools in the Plaza de Villamil, by the minister of education, September 7; open-



RAMON CORRAL, Vice President of Mexico.

ing of the congress of Americanists by Minister Sierra; the dedication of the new building of the foreign relations department in Avenida Juarez by the minister of foreign relations and reception to the diplomatic corps, September 8; dedication of the new normal school for women and the placing of commemorative tablets in the house formerly occupied by Andres Quintana Roo and the heroine, Leonora Vicario, under the auspices of the governor of the federal district, September 9; excursion of delegates to the congress of Americanists to San Juan Teotihuacan; dedication of the new war department building by Minister Gonzalez Cosio, September 11; dedication of new normal school for

men by President Diaz, and placing of commemorative tablets in Mineria Palace in honor of students who participated in the war for independence by governor of federal district and city council, September 12; inauguration of city water works by Vice-President Corral and the Junta de Provision de Aguas, and inaugural session of pedagogical congress of primary instruction by Minister Sierra, September 13.

The dedication of Balbuena Park and a grand serenade, will take place Saturday; dedication of monument to Benito Juarez on the Alameda by Vice-President Corral, September 18; dedication of the department of weights and measures in the department of fomento, and a grand ball tendered by President Diaz, September 19; velada in the Arben Theater dedicated to the literary and other societies of the republic, under the auspices of the national commission, September 20; the placing of a commemorative tablet at the citadel where the patriot Morelos was confined, and a grand torchlight parade, reviewed by the president and cabinet, September 21; dedication of the National University, with a general scholarly and literary festival, President Diaz and Minister Sierra participating, September 22; laying the cornerstone of the new legislative palace by President Diaz and the minister of public works, invitation balls in various theaters and popular halls in the market buildings under auspices of the commission, September 23; banquet by the minister of foreign affairs to diplomatic corps, September 24; sham battle by the army under the direction of the secretary of war, September 25; dedication of the reconstructed tunnel of Tequiquaque and of new works in connection with the drainage system of the valley of Mexico, under the auspices of the minister of public works, September 26; apotheosis of the chiefs and soldiers of the war of independence, accompanied by a great patriotic festival organized by the commission, September 27; dedication of the new works in Chapultepec Park, concerts, fireworks and illuminations under the auspices of the board of improvements of Chapultepec, September 28; grand velada in the Arben Theater for the distribution of premiums to the winners in the historic, literary and musical contests conducted by the department of public instruction and distribution of prizes to winners in the contests conducted by the national centennial commission, under the auspices of the minister of public instruction, September 29.



GENERAL COSIO, Mexican Secretary of War.

## THE GLIDDEN TROPHY

### CHALMERS-DETROIT WINS OUT

Following is a copy of cablegram received yesterday by the Associated Garage, Ltd., distributors of the famous

### CHALMERS DETROIT CARS

#### CABLEGRAM

Received 2:01 p. m., September 10th, 1910.

S. F. 54 Via San Francisco, Sept. 10, Detroit, Mich. 47

Associated Garage, Limited, Honolulu.

Justice Putnam of New York Supreme Court yesterday sustained decision of American Automobile Association contest board awarding Glidden Trophy to Chalmers Motor Company vacating injunction brought by Premier Company. Chalmers Company immediately gains possession of trophy.

CHALMERS MOTOR CO.

### Associated Garage, Ltd.

Distributors Chalmers Detroit.

## AUSTRALIA

produces butter equal in quality to the mutton shipped from there. We have on hand fresh butter from the Colonies. Very fine flavor in square blocks, 45 Cents a Pound.

### The Metropolitan Market

HEILBRON AND LOUIS, Proprietors.  
Telephone No. 1814

#### When Traveling

#### Travelers' Cheques

Issued by The American Bankers' Association. They are the safest and most convenient way of providing funds for traveling.

Each cheque shows plainly on its face its value in American and foreign money, and hotels, shops, railroad and steamship companies the world over accept them at par.

#### Bank of Hawaii, Ltd.

Capital and Surplus, \$1,000,000.

#### Protection from A Water Shortage

#### REDWOOD ROUND HOOP TANK

Install one at your home and be assured of plenty of clear water the year round.

The cost is not great.

#### Lewers & Cooke, Ltd.

177 So. King St.

## FINE MILLINERY

To Order  
And In Stock

### K. UYEDA

NUUANU STREET.

#### Distilled Water Ice

For Ice, Distilled Water and Cold Storage, consult the

Oahu Ice & Electric Co.  
Box 600. Phone 1128.

#### WHY BE BALD?

When your hair can be saved by a little of

PACHECO'S DANDRUFF KILLER  
A trial will prove its efficacy.  
SOLD BY ALL DRUGGISTS.

#### Galton, Neill & Company, Ltd

ENGINEERS AND MACHINISTS.  
Second and South Sts., Kakaako.  
Boilers retubed with charcoal iron or steel tubes. General ship work.

#### ORIENTAL GEMS

In beautiful Jewelry bits  
**BO WO**

Hotel St. bet. Munnaka and Smith

#### The Star Dyeing and Cleaning Shop

221 Beretania Street, near Alaka.  
Telephone 1182.

MAKAI SIDE OF STREET  
No connection with the place across the street.

READ THE ADVERTISER.  
WORLD'S NEWS DAILY

# SMOKERS

## FITZPATRICK BROS.

SAVE YOUR MONEY WHILE YOU CAN

The Sale of Pipes, Cabinets, Jars, Meer-schaum and Amber Cigar Holders, Cigarette Cases, etc, is Genuine.

Twenty-Five to Fifty Per Cent Off Regular Prices

Hotel and Fort



# MARINE INTELLIGENCE

## PORT OF HONOLULU.

### ARRIVED.

Wednesday, September 14.  
Str. Claudine, from Maui and Hawaii ports, a. m.  
Str. W. G. Hall, from Kauai ports, a. m.  
U. S. A. T. Logan, from San Francisco, 7 p. m.  
Br. S. S. Selsdon, from Newport News, 7:30 a. m.  
Str. Helene, from Hawaii, 8:15 a. m.

### DEPARTED.

M. N. S. S. Wilhelmnia, for San Francisco, 10 a. m.  
C. A. S. S. Marama, for Victoria, at noon.  
Bktn. John C. Meyer, for Sydney, 10 a. m.

### DUE TOMORROW.

C. A. S. S. Zealandia, from Victoria and Vancouver, a. m.  
T. K. K. S. S. Chiyu Maru, from Hongkong.  
O. S. S. Sierra, from San Francisco, a. m.

### SAIL FRIDAY.

U. S. A. T. Logan, for Guam and Manila, a. m.  
Str. Mauna Kea, from Hilo and way ports.

### SAIL SATURDAY.

T. K. K. S. S. Chiyu Maru, for San Francisco.

### DUE SUNDAY.

Str. Kinau, from Kauai ports, a. m.  
Str. Mikahala, from Molokai ports, a. m.

### DUE MONDAY.

P. M. S. S. Siberia, from San Francisco, a. m.

### PASSENGERS.

Arrived.  
Per str. Claudine, from Hilo and Maui ports, September 14—T. K. Beard and wife, Mrs. A. E. Beard, E. V. Rice and wife, J. H. Simpson and wife, J. D. Porter and wife, J. H. Muir and three children, P. S. Brown, J. K. Maa, Capt. L. Self, W. A. Anderson, W. P. Fennell, J. F. Mackenzie, Master J. Chalmers, G. H. Kanoulou and son, B. A. Kemohi, Ethel Pili, L. L. Bradford, J. J. Walsh and wife, T. B. Lyons, Theo. Flor, Miss M. Mingler, Miss Young, Miss M. Taylor, Mrs. Murray, D. L. Meyer, H. W. Pogue, L. Gustafson, Mrs. A. C. Franca, W. F. Knae, M. Makanoi, Mrs. J. S. Taylor and three children, Mrs. F. De Rego, Miss J. De Rego, Miss V. De Rego, A. Gomes and wife, Aug. Gomes, M. Joseph and wife, Aug. Gomes, L. N. B. Keahi, Ke-nolio, Ben-Hekona, Nelson K. Kaloa, Captain Soule, A. G. Martinsen, C. A. Martinsen, Mrs. Kohler and child, Chas. Gay, wife and four children, Miss Gay, Lieutenant Barnard.  
Per str. W. G. Hall, from Kauai, September 14—J. R. Meyers, W. R. Nannu, J. S. Chandler, J. W. Kahaleana, M. A. Mikaele, W. H. Kahiku, W. K. Kanikanehia, Geo. Fountain, David White, W. H. Rice, Chang Tow, W. Matsushita, D. L. Duckworth, Chas. Aki, John R.

Teves, Ant. Rodriguez, Miss Rena Valente, Miss M. S. Valente, Mrs. Chas. Aki and three children.  
Departed.  
Per M. N. S. S. Wilhelmnia, for San Francisco, September 14—F. H. Ackley, Mrs. A. W. Adams, Miss V. Atherton, Mrs. H. F. Atherton, F. F. Baldwin, Mrs. E. F. Baldwin and son, T. K. Beard, Mrs. Chas. Bennett, A. Blon, Mrs. G. F. Boreman and child, E. E. Caldwell, Mrs. E. E. Caldwell and child, Miss E. Canfield, J. L. Clark, S. M. Damon, L. H. Dee, Jos. Delaney, W. E. Dickerson, W. F. Dillingham, Mrs. W. F. Dillingham, L. E. Dreyfus, Mrs. L. E. Dreyfus, W. D. Fennimore, Mrs. W. D. Fennimore, Mrs. M. E. Fox, Mrs. Chas. R. Frazier, H. Galbraith, J. Galbraith, A. N. Hayselden, Mrs. A. N. Hayselden, F. L. Hill, Mrs. F. L. Hill and child, R. Hendry, W. H. Pogue, H. C. Holmes, Mrs. H. C. Holmes, Mrs. M. J. Holmes, C. C. Joy, Jr., W. P. Kelley, S. A. Keystone, H. V. Knight, J. H. Lane, Mrs. E. Lewis, L. V. Lewis, Mrs. E. S. Lapsin, Geo. Lucas, Dr. E. Marshall, F. H. Mason, J. McClellan, T. F. McTigue, Mrs. T. F. McTigue and son, J. C. Orton, Miss Mary Platter, Mrs. J. S. B. Pratt and two children, A. Schneck, L. G. Smith, R. T. Stross, S. K. Sydes, H. Simpson, Roy W. Sanford, H. L. West, Mrs. H. L. West, Miss I. White, T. C. White, H. R. White, Mrs. H. R. White, Miss H. G. White, J. G. Woolley, Mrs. J. G. Woolley, A. Zobel, Mrs. A. Zobel and child.  
Per C. A. S. S. Marama, for Victoria and Vancouver, September 14—G. I. F. Whitney, Mrs. Clara Belton, Mrs. W. H. Soper, Miss M. A. Burbank, Mrs. E. B. Waterhouse, Miss S. E. Pinder, Miss E. Waterhouse, Miss M. Waterhouse, Mrs. A. M. L. Smith, M. Rosenblatt, Adam Lindsay, Master A. L. Lindsay, W. S. May, Mrs. Helen Kalani, W. D. Lowell, Mr. and Mrs. F. A. Alexander, Mr. and Mrs. E. E. Denman, Mr. and Mrs. H. F. Lewis, Master D. Lewis, P. H. Gallarda, C. Meyers, E. W. Evans, F. Martins, J. Martins, F. D. Silva, wife and infant, T. R. Oldham, Mr. and Mrs. Kokomoto and two children, W. E. Gallowsay, Miss J. Belton, Miss P. Nowell, Leong Man Hing, Wong Kyan Lo.

### VESSLS IN PORT.

(Army and Navy.)

Kukui, U. S. L. H. T., Keriger.

Thetis, U. S. R. C., Cochran, from cruise, Sept. 8.

Logan, U. S. A. T., San Francisco, Sept. 14.

(Merchant Vessels.)

Columbian, Am. s.s., Nichols, Tacoma, Sept. 7.

David Evans, Aberdeen, Sept. 3 (Pearl Harbor).

Dumfriesshire, Br. sp., Hamburg, Sept. 13.

Ethel Zane, Am. schr., Caspar, Aug. 25.

Flourance Ward, Am. schr., Midway, Aug. 11.

Greystoke Castle, Br. s.s., Antwerp, Sept. 9.

Robert Lewers, Am. schr., Port Ludlow, Sept. 8.

Romera, Br. s.s., Newport News, Sept. 13.

### TRANSPORT SERVICE.

Dix at Manila.  
Logan, ar. Hon. from S. F., Sept. 14.  
Sherman, ar. Manila, Sept. 4.  
Sherman, at San Francisco.

### MOVEMENTS OF SHIPPING.

A. F. COATES, schr., ar. Port Townsend from Hon., Aug. 6.

ALASKAN, Am. S. S., from Salina Cruz for S. F., Aug. 18.

A. M. BAXTER, Am. schr., ar. Port Townsend from Mahukona, July 8.

ALDEN BESSE, Am. bk., ar. San Diego from Hon., Sept. 1.

ALERT, Am. schr., ar. Grays Harbor from Honolulu, May 31.

ALICE COOKE, Am. schr., ar. Port Ludlow from Hon., Sept. 4.

ALBERT, Am. bk., from Port Gamble for Hilo, Sept. 2.

ALOHA, Am. schr., ar. Redondo from Hon., April 29.

AMARANTH, Am. bktn., ar. Grays Harbor from Honolulu, May 30.

ARIZONAN, Am. S. S., ar. Salina Cruz from Hilo, Aug. 19.

ARAGO, Am. bktn., ar. Gray's Harbor from S. F., April 14.

ARIEL, Am. schr., ar. Port Townsend from Pearl Harbor, April 15.

ASIA, Am. S. S., from Yokohama for Hon., Sept. 14.

ASTRAL, Am. sp., Dunham, from Wilmington for S. F., March 24.

ATLAS, Am. sp., ar. N. Y. from Manila, March 6.

ANNE JOHNSON, Am. bk., ar. S. F. from Hon., May 31.

ANDREW WELCH, Am. bk., from S. F. for Hon., Sept. 2.

BALBOA, Am. schr., ar. Redondo from Hilo, June 3.

BENICIA, Am. bk., ar. Hilo from Aberdeen, Aug. 16.

BOREALIS, Am. schr., ar. Seattle from Hilo, July 2.

BUYO MARU, Jap. S. S., from Hon. for Japan, Sept. 7.

C. S. HOLMES, Am. schr., ar. Redondo from Hilo, Sept. 14.

CAMANO, Am. schr., ar. Hilo from Port Gamble, Aug. 25.

CARRIER DOVE, Am. schr., ar. Grays Harbor from S. F., Feb. 7.

CHILCATTAN, Br. S. S., from Norfolk for Hon., July 21.

CHINA, Am. S. S., ar. S. F. from Hon., Sept. 10.

CHIYO MARU, Jap. S. S., from Yokohama, for Hon., Sept. 8.

COLUMBIAN, Am. S. S., from Seattle for Hon., Sept. 7.

CONCORD, Am. schr., ar. Hon. from Laysan Island, Aug. 6.

CORONADO, Am. bktn., from Hon. for S. F., June 26.

DAVID EVANS, Am. schr., ar. Hon. from Puget Sound, Sept. 3.

DEMARA, S. S., from Hon. for Portland, Sept. 6.

DANMARK, Dan. bk., from Hon. for S. F., Sept. 3.

DAUNTLESS, Am. schr., Jonsien, ar. Port Townsend from Hon., Jan. 9.

DUMFRIESHIRE, Br. sp., ar. Hon. from Leith, Sept. 13.

E. K. WOOD, Am. schr., from Gray's Harbor for Hon., July 20.

EDWARD SEWALL, Am. sp., Quick, from Hilo for Philadelphia, May 29.

ENTERPRISE, Am. S. S., ar. S. F. from Hilo, Sept. 9.

ERSKINE M. PHELPS, Am. sp., from Norfolk for Hon., Aug. 2.

ESPADA, Am. schr., ar. Grays Harbor from Hon., Aug. 9.

ETHEL ZANE, Am. schr., from Hon. for Hilo, Sept. 1.

EVA, Am. schr., ar. S. F. from Mahukona, Jan. 28.

EXPANSION, Am. schr., 2 ar. Redondo from Hilo, Aug. 6.

FALLS OF CLYDE, Am. sp., ar. Hon. from Gaviota, Aug. 21.

FEARLESS, Am. schr., ar. Grays Harbor from Hilo, Aug. 3.

FLAURENCE WARD, Am. schr., ar. Hon. from Midway Island, Aug. 11.

FOOHNG SUEY, Am. bk., ar. Delaware Breakwater from Port Allen, Aug. 29.

FRED J. WOOD, Am. schr., from Hon. for Grays Harbor, Aug. 27.

GAMBLE, Am. schr., ar. Hilo from Port Gamble, Aug. 9.

GOLDEN SHORE, Am. schr., from Hon. for Aberdeen, July 25.

GREYSTOKE CASTLE, Br. S. S., ar. Hon. from Antwerp, Sept. 9.

G. W. WATSON, Am. schr., ar. Grays Harbor from Hilo, July 18.

H. HACKFELD, Gr. sp., ar. Sydney from Hon., March 6.

HAWAII, Am. bktn., ar. S. F. from Mahukona, Aug. 13.

H. B. BENDIXEN, Am. schr., ar. Grays Harbor from Hon., May 13.

H. C. WRIGHT, Am. schr., ar. S. F. from Hana, April 26.

HEATHBENE, Br. S. S., from Hon. for Hilo, Sept. 15.

HELENE, Am. schr., from Hon. for Grays Harbor, Sept. 8.

HEERZOGIN CECILLE, Ger. sp., from Leith for Hon., June 9.

HILONIAN, Am. S. S., from S. F. for Hilo, Sept. 11.

HONGKONG MARU, Jap. S. S., from Hon. for Salina Cruz, July 25.

HONOPIU, Am. schr., ar. Hana from S. F., Aug. 26.

HYADES, Am. S. S., from Hon. for Island ports, Sept. 6.

INCA, Am. schr., ar. Port Townsend, from Hon., July 18.

IRMGARD, Am. bktn., ar. Hilo from Port Ludlow, Aug. 15.

J. L. STANFORD, Am. bktn., ar. Port Townsend from Hon., June 14.

JAMES H. BRUCE, Am. schr., from F. for Hilo, June 12.

J. M. WEATHERWAX, ar. Hilo from Eureka, Aug. 6.

JEAN BAPTISTE, Fr. bk., from Hon. for Sound, 5:15 p. m.

JAMES ROLPH, Am. schr., from S. F. for Hana, Aug. 1. (Wrecked and lost Aug. 3.)

JOHN ENA, Am. sp., ar. Del. Breakwater, July 21.

KAIULANI, Am. bk., Colly, ar. S. F. from Hon., Jan. 18.

KIYO MARU, Jap. S. S., from Hon. for Yokohama, July 10.

KOREA, Am. S. S., ar. Yokohama from Hon., Sept. 10.

KONA, Am. schr., from S. F. for Hon., June 7.

LADY ELIZABETH, Nor. bk., from Bremerhaven for Hon., March 6.

L'AVENIR, Belg. sp., ar. S. F. from Hon., Aug. 12.

LENSING, Am. S. S., ar. Port Harford from Hon., May 23.

LAHAINA, Am. bktn., from Newcastle for Hon., April 5.

LURLINE, Am. S. S., ar. S. F. from Hon., Sept. 14.

M. TURNER, schr., from Hadlock for Pearl Harbor, Aug. 29.

MAKURA, Br. S. S., from Hon. for Sydney, Aug. 19.

MANUKA, Br. S. S., ar. Sydney from Hon., July 12.

MAKAWELL, Am. bktn., U. Neilsen, from Ahukini, for Newcastle, Aug. 27.

MARAMA, Br. S. S., from Hon. for Victoria, Sept. 14.

MANCHURIA, Am. S. S., from Hon. for S. F., Sept. 13.

MANSU MARU, Jap. S. S., ar. Kobe from Hon., May 25.

MARY E. POSTER, Am. schr., ar. Port Townsend from Hon., Aug. 6.

MARION CHILCOTT, Am. sp., from Hon. for Gaviota, Aug. 29.

MARY WINKELMAN, Am. bk., ar. Hon. from Eureka, Aug. 14.

MEXICAN, Am. S. S., from Hilo for Salina Cruz, Aug. 27.

MONGOLIA, Am. S. S., from Hon., for Yokohama, Aug. 18.

MISSOURIAN, Am. S. S., from Mahukona for Salina Cruz, Sept. 9.

MURIEL, Am. schr., from Honoipu for S. F., Aug. 20.

NEVADAN, Am. S. S., from S. F. for Hon., Sept. 12.

NINFA, Ital. sp., ar. Portland from Hon., June 3.

NIPPON MARU, Jap. S. S., from Hon. for Orient, Sept. 13.

NUUANU, Am. bk., Josselyn, from N. Y. for Hon., Aug. 6.

OLYMPIC, Am. bk., ar. S. F. from Kaunapali, April 7.

OMEGA, Am. schr., ar. Coos Bay from Hon., Aug. 14.

O. M. KELLOGG, Am. schr., ar. S. F. from Hana, Aug. 9.

RENEE RICKMERS, Ger. sp., from Hon. for Seattle, July 10.

R. P. RITHEP, Am. bk., Drew, ar. S. F. from Hon., Aug. 26.

ROBERT LEWERS, Am. schr., ar. Hon. from Port Ludlow, Sept. 8.

ROBERT SEARLES, Am. schr., ar. S. F. from Hilo, July 21.

ROBEY, Br. S. S., from Hon. for Okeana Island, June 1.

ROMERA, Br. S. S., ar. Hon. from Newport News, Sept. 13.

ROSECRANS, Am. S. S., from Gaviota for Hon., Sept. 9.

SANTA MARIA, Am. S. S., ar. Port San Luis from Hon., July 12.

SANTA RITA, Am. S. S., from Port San Luis for Hon., Sept. 12.

S. C. ALLEN, Am. bk., from Hon. for Port Bragg, Aug. 6.

SEQUOIA, Am. schr., from Mahukona for Eureka, Sept. 9.

SELSDON, Br. S. S., ar. Hon. from Norfolk, Sept. 14.

S. G. WILDER, Am. bktn. from S. F., for Mahukona, Sept. 9.

S. T. ALEXANDER, Am. schr., ar. Port Townsend from Hilo, June 16.

SIERRA, Am. S. S., from S. F. for Hon., Sept. 10.

STIMSON, Am. schr., ar. Port Townsend from Hon., April 5.

ST. DUNSTAN, Br. S. S., ar. Port Townsend from Hon., June 21.

ST. KATHERINE, Am. bk., S. F. for Hilo, July 4.

TAMON MARU, No. 6, from Hon. for Moji, April 2.

TAURUS, Am. schr., from Port Allen for Sound, April 28.

TENYO MARU, Jap. S. S., ar. Yokohama from Hon., Sept. 2.

TORSDAL, Nor. S. S., from Hon. for Australian ports, July 2.

TRANSIT, Am. schr., ar. Hon. from S. F., August 3.

## OAHU RAILWAY TIME TABLE.

### Outward.

For Wahiawa, Waiailua, Kahuku and Way Stations—7:15 a. m., \*8:20 p. m.  
For Pearl City, Ewa Mill and Way Stations—7:30 a. m., \*9:15 a. m., \*11:30 a. m., \*2:15 p. m., \*3:20 p. m., \*5:15 p. m., \*9:30 p. m., \*11:15 p. m.  
For Wahiawa and Leilehua—\*10:20 a. m., \*5:15 p. m., \*9:30 p. m., \*11:15 p. m.

### Inward.

Arrive Honolulu from Kahuku, Waiailua and Waiailua—\*8:36 a. m., \*5:31 p. m.  
Arrive Honolulu from Ewa Mill and Pearl City—\*7:45 a. m., \*8:36 a. m., \*11:02 a. m., \*1:40 p. m., \*4:26 p. m., \*5:31 p. m., \*7:30 p. m.  
Arrive Honolulu from Wahiawa and Leilehua—\*9:15 a. m., \*1:40 p. m., \*5:31 p. m., \*10:10 p. m.

The Haleiwa Limited, a two-hour train (only first-class tickets honored), leaves Honolulu every Sunday at 8:36 a. m.; returning, arrives in Honolulu at 10:10 p. m. The Limited stops only at Pearl City and Waiailua outward and Waiailua, Waipahu and Pearl City inward.  
\*Daily. †Except Sunday. ‡Sunday Only.  
G. P. DENISON, F. C. SMITH, Superintendent. G. P. A.

## KOOLAU RAILWAY TIME TABLE

### DAILY, EXCEPT SATURDAY, SUNDAY AND HOLIDAYS

Leave Kahana for Punaluu, Haulaia, Laie, Kahuku and Way Stations at.....12:00 M.  
Arrive Kahuku at.....1:00 P.M.  
Returning:  
Leave Kahuku for Laie, Haulaia, Punaluu, Kahana and Way Stations at.....1:45 P.M.  
Arrive Kahana at.....2:45 P.M.

### SATURDAY, SUNDAY AND HOLIDAYS

Arrive Kahuku at.....11:58 A.M.  
Leave Kahana for Punaluu, Haulaia, Laie, Kahuku and Way Stations at.....11:00 A.M.  
1:30 P.M.  
9:15 P.M.  
Leave Kahuku for Laie, Haulaia, Punaluu, Kahana and Way Stations at.....12:35 P.M.  
3:00 P.M.  
Connections are made at Kahuku with the O. R. & L. Co.'s 9:15 a. m. train from Honolulu, and the 8:20 p. m. train, which arrives in the city at 5:30 p. m.

JANUARY, 1, 1909.  
J. J. DOWLING, E. S. POLLISTER, Superintendent. G. P. & F. A.

VIRGINIAN, Am. S. S., ar. Salina Cruz from Hilo, Aug. 30.

WM. OLSEN, Am. schr., ar. Grays Harbor from Hon., March 22.

WILHELMINA, Am. S. S., from Hon. for S. F., Sept. 14.

W. F. BABCOCK, Am. sp., Harris, ar. Sydney from Hon., June 30.

WM. P. FRYE, Am. sp., ar. Delaware Breakwater from Kahului, Aug. 21.

W. H. MARSTON, Am. schr., from S. F. for Hilo, Sept. 11.

WM. T. LEWIS, sp., ar. Kahului from Cardiff, Sept. 6.

ZAMBESI, Br. S. S., from Port Allen for Newcastle, Sept. 3.



## LOTS IN FRUITVALE One Cent Per Square Foot

Or a trifle over for home sites of more than one acre each, adjoining the celebrated Pukele Homesteads in PALOLO VALLEY, ten minutes' walk from the car line.

These lots are adjoining the beautiful homes of Owen Williams, William A. Rideout, Charles J. Schoening, Edward F. Patten, and others.

The rear of these lots extends to the hill slopes, from which grand views are to be had. Correct soil for all kinds of fruit.

Let me show you this property.  
\$500 per acre and up.  
Map in my window.

### Chas. S. Desky

FORT STREET



Next Saturday will be Regatta Day; and a Moonlight Dance at Haleiwa. Friday until Monday rates.

The greatest care is used in selecting the olives for making

## NICELLE OLIVE OIL

Only sound, perfect fruit being used. It is absolutely pure with exquisite flavor.  
Your Grocer Has It

## FAIRMONT HOTEL

The Most Superbly Situated Hotel in the World  
OVERLOOKING THE ENTIRE BAY OF SAN FRANCISCO, THE GOLDEN GATE AND THE REBUILT CITY. CONVENIENT TO SHOPPING, THEATER, BUSINESS AND RAILROAD CENTERS.

THE EPITOME OF HOTEL EXCELLENCE  
Operated on Both American and European Plan.

Containing all the conveniences and luxuries a good hotel should have, with many unique, original and exclusive features. Entirely refurnished and refitted at a cost of over three million dollars. Social center of the city—headquarters of the Army and Navy—scene of most of the social festivities.

ACCOMMODATIONS FOR 1,000 GUESTS.

RATES: American (Table d'Hôte) Plan, one person, per day, \$5.00 and upwards. European (à la Carte) Plan, room and bath, one person, per day, \$2.50 and upwards.

MANAGEMENT PALACE HOTEL COMPANY  
(Also Operating Palace Hotel)

SAN FRANCISCO

## HOTEL MANX

SAN FRANCISCO.

San Francisco's newest hotel containing 300 rooms, each with circulating ice water and each connecting with bath. Half a block from Union Square and convenient to all the principal shops, theaters, railroad ticket offices and points of interest. Meals table d'hôte or à la carte.

Rates: Without bath, \$1.00 per day and up.

With bath: \$2.00 per day and up.

Under the management of GUS C. LARM.

Honolulu Representative: WILLIAM DOUTHITT, Room 308, McCandless Building.

**COAL** Clean and best quality, in ton lots and upwards. For sale cheap by  
**MAGOON BROTHERS**

Room 1, Magoon Bldg.

Cor. Merchant and Alakea Sts.

## WARM ROAST OF TEDDY ANSWERED

Outlook Editor Calls Post Editor  
a Foul Liar and Does It  
"Scientifically."

Those who believe that the Honolulu papers indulge at times in too vigorous language, are invited to read the following, in which the editor of the New York Evening Post and Editor Roosevelt pay their respects to each other. The charge of the Post and Roosevelt's reply are taken from The Outlook, as follows:

"In the New York Evening Post of Friday, August 26, there appeared in an editorial article the following statements:

### The Roast.

"I will make the corporations come to time," shouted Roosevelt to the mob. But did he not really mean that he would make them come down with the cash to elect him, as he did before? For a man with Mr. Roosevelt's proved record it is simply disgusting humbug for him to rant about the corporations upon whose treasurers he fawned when he was President and wanted their money for his campaign. Does he think that nobody has a memory which goes back to the life insurance investigations, and that everybody has forgotten the \$50,000 taken from widows and orphans and added to Theodore Roosevelt's political corruption fund? Did he not take a big check from the Beef Trust, and glad to get it? And now he is going to make the corporations come to time! One can have respect for a sincere radical, for an honest fanatic, for an agitator or leveler who believes that he is doing God's will; but it is hard to be patient with a man who talks big but acts mean, whose eye is always to the main chance politically, and who lets no friendship, no generosity, no principle, no moral scruple stand for a moment between himself and the goal upon which he has set his overmastering ambition.

"This champion of purity, this router for political virtue, is the man who was for years, when in public life, hand in glove with the worst political corruptionists of his day; who toadies to Platt, who praised Quay, who paid court to Hanna; under him as President, Aldrich rose to the height of his power, always on good terms with Roosevelt; it was Roosevelt who, in 1906, wrote an open letter urging the reelection of Speaker Cannon, against whom mutterings had been begun to rise; it was Roosevelt who asked Harriman to come to the White House secretly, who took his money to buy votes in New York, and who afterwards wrote to 'My Dear Sherman'—yes, the same Sherman—reviling the capitalist to whom he had previously written saying: 'You and I are practical men.'"

### The Reply.

"The Evening Post is not in itself sufficiently important to warrant an answer, but as representing a class with whose hostility it is necessary to reckon in any genuine movement for decent government, it is worth while to speak of it. There are plenty of wealthy people in this country, and of intellectual hangers-on of wealthy people, who are delighted to engage in any movement for reform which does not touch the wickedness of certain great corporations and of certain men of great wealth. People of this class will be in favor of any aesthetic movement; they will favor any movement against the small grafting politician, against the grafting labor leader, or any man of that stamp; but they can not be trusted the minute that the reform assumes sufficient dimensions to jeopardize so much of the established order of things as gives an unfair and improper advantage to the great corporation, and to those directly and indirectly responsive to its wishes and dependent upon it. The Evening Post and papers of the same kind, and the people whose views they represent, would favor attacking a gang of small bosses who wish to control the Republican party; but they would, as the Evening Post has shown, far rather see these small bosses win than see a movement triumph which aims not merely at the overthrow of the small political boss, but at depriving the corporation of its improper influence over politics, depriving the man of wealth of any advantage beyond what belongs to him as a simple American citizen. They would be against corporations only after such corporations had been caught in the crudest kind of criminality.

"I have never for one moment counted upon the support of the Evening Post or of those whom it represents in the effort for cleanliness and decency within the Republican party, because the Evening Post would support such a movement only on condition that it was not part of a larger movement for the betterment of social conditions. But this is not all. In the struggle for honest politics there is no more a place for the liar than there is for the thief, and in a movement designed to put an end to the domination of the thief but little good can be derived from the assistance of the liar. Of course objection will be made to my use of this language. My answer is that I am using it merely scientifically and descriptively, and because no other terms express the facts, with the necessary precision. In the article in which the Evening Post comes to the defense of those in present control of the Republican party in New York State, whom it has affected to oppose in the past, the Evening Post, through whatever editor personally wrote the article, practised every known form of mendacity.

"Probably the Evening Post regards the decalogue as outworn; but if it will turn to it and will read the eighth and ninth commandments, it will see that bearing false witness is condemned as

## MOTHERS WHO HAVE DAUGHTERS

Find Help in Lydia E. Pinkham's Vegetable Compound

Winchester, Ind.—"Four doctors told me that they could never make me regular, and that I would eventually have dropsy. I would bloat, and suffer from bearing-down pains, cramps and chills, and I could not sleep nights. My mother wrote to Mrs. Pinkham for advice, and I began to take Lydia E. Pinkham's Vegetable Compound. After taking one and one-half bottles of the Compound, I am all right again, and I recommend it to every suffering woman."—MRS. MAY DEAL, Winchester, Ind.

Hundreds of such letters from girls and mothers expressing their gratitude for what Lydia E. Pinkham's Vegetable Compound has accomplished for them have been received by The Lydia E. Pinkham Medicine Company, Lynn, Mass. Girls who are troubled with painful or irregular periods, headache, backache, dragging-down sensations, fainting spells or indigestion, should take immediate action to ward off the serious consequences and be restored to health by Lydia E. Pinkham's Vegetable Compound. Thousands have been restored to health by its use. If you would like special advice about your case write a confidential letter to Mrs. Pinkham, at Lynn, Mass. Her advice is free, and always helpful.

strongly as theft itself. To take but one instance out of the many in this article; the Evening Post says: 'It was Roosevelt who asked Harriman to come to the White House secretly, who took his money to buy votes in New York, and who afterwards wrote to 'My Dear Sherman'—yes, the same Sherman—reviling the capitalist to whom he had previously written, saying: 'You and I are practical men.' Not only is every important statement in this sentence false, but the writer who wrote it knew it was false. As far as I was concerned, every man visited the White House openly, and Mr. Harriman among the others. I took no money from Mr. Harriman secretly or openly to buy votes or for any other purpose. Whoever wrote the article in the Evening Post in question knew that this was the foulest and basest lie when he wrote the sentence, for he quotes the same letter in which I had written to Mr. Harriman as follows: 'What I have to say to you can be said to you as well after election as before, but I would like to see you some time before I write my message.' I am quoting without the letter before me, but the quotation is substantially, if not verbally, accurate. That statement in this letter to Harriman is of course on its face absolutely incompatible with any thought that I was asking him for campaign funds, for it is of course out of the question that I could tell him equally well what I had to say after election if it referred in any possible way to getting money before election. This is so clear that any pretense of misunderstanding is proof positive of the basest dishonesty in whoever wrote the article in question. As a matter of fact, when Mr. Harriman called it was to complain that the national committee would not turn over for the use of the State campaign in which he was interested funds to run that campaign, and to ask me to tell Cortelyou to give him aid for the State campaign. Mr. Cortelyou is familiar with the facts. In other words, the statement of the Evening Post is not only false and malicious, is not only in direct contradiction of the facts, but is such that it could only have been made by a man who, knowing the facts, deliberately intended to pervert them. Such an act stands on a level of infamy with the worst act ever performed by a corrupt member of a legislature or city official, and stamps the writer with the same moral brand that stamps the bribe-taker.

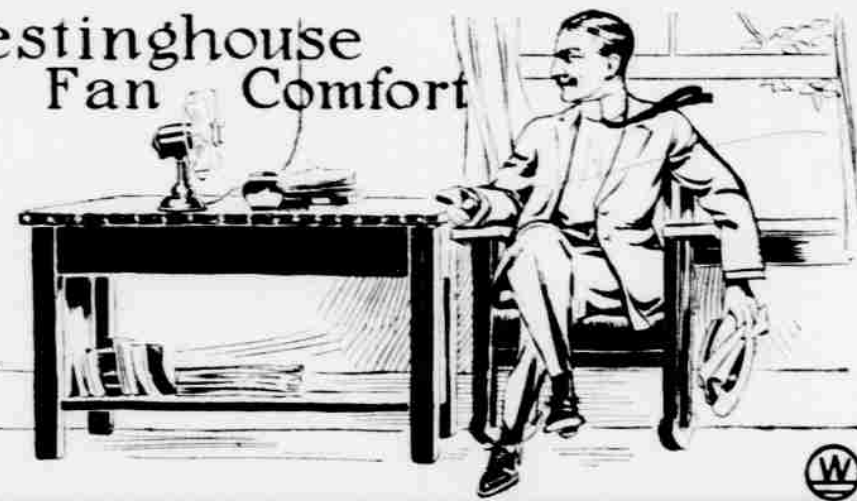
"I have seen only a telegraphic abstract of the article, apparently containing quotations from it. Practically every statement made in these quotations is a falsehood. 'To but one more shall I allude. The article speaks of my having attacked corporations, and referring directly to my Ohio speeches, of my having 'sought to inflame the mob and make mischief.' In those speeches the prime stand I took was against mob violence as shown by the labor people who are engaged in controversy with a corporation. My statement was in effect that the first duty of the State and the first duty of the officials was to put down disorder and to put down mob violence, and that after such action had been taken, then it was the duty of the officials to investigate the corporation, and if it had done wrong to make it pay the penalty of its wrongs and to provide against the wrongdoing in the future. It is but another instance of the peculiar baseness, the peculiar moral obliquity, of the Evening Post that it should pervert the truth in so shameless a fashion."

### PROSPEROUS ESTATE.

Job Batchelor, as master, has submitted his report on the report of the trustees of the Lunalla estate. He finds that the past year was the most prosperous of any since the establishment of the trust.

The report of the trustees shows that expenses were \$2652.50 in excess of the income, which, however, is a better showing than for years past. The trustees charge themselves with \$53,275.03 and ask to be allowed \$52,141.73. The expenses of the estate for the year ran to \$1352.67 and of the home to \$9,875.33.

Westinghouse  
Fan Comfort



Summer is what you make it  
MAKE IT COOL AND COMFORTABLE BY INSTALLING AN  
**ELECTRIC FAN**

The Hawaiian Electric Co., Ltd.

## Diseases of the Stomach

and intestines, constipation, liver troubles, heart disease, weak lungs, blood poverty, rheumatism, sciatica, stiff joints, general debility, diseases of the nervous system, pelvic ailments, kidney disease, catarrh, bronchitis—all these can not long exist when perfect circulation is obtained.

That is the object and certain result of "Nature Cure and Osteopathy."

DR. F. SCHURMANN

OFFICE—167-179 Beretania Ave., corner Union Street, Telephone 1733  
HOURS—8 to 12 A. M. 2 to 6 P. M.

We Sell **WILLCOX & GIBBS**  
AUTOMATIC

## Sewing Machines

On the Installment  
Plan



With Cover, Loose Leaf and Side Drawers, or Drop Case, same as cut, complete with all attachments. The only perfect Automatic Sewing Machine.

DO NOT BUY A CHEAP SEWING MACHINE WHEN YOU CAN GET THE BEST AT A SMALL OUTLAY.

**E. O. Hall & Son, Ltd.**

SOLE AGENTS

## Smoked Bamboo Baskets

Very artistic designs for Hall or Table. Very odd and very new.

PINA SILK, all shades, 45 cents a yard.

PARASOLS, in embroidered silk, linen and pongee, Dragon and floral designs.

## JAPANESE BAZAAR

Fort Street near the Convent

## THOUSANDS

of Bailey's Woven Wire Mattresses have been made, sold and used in Honolulu in the past. We are prepared to make and sell many thousand more rustproof noiseless "DUPLEX" Wire Mattresses in the future.

**Honolulu Wire Bed Co., Ltd.**

Corner King and Alapai Streets

FURNITURE DEALERS.

TELEPHONE 1535

## F. E. DAVIS & CO.

Merchandise Brokers

Nuuanu and Merchant Streets



Add the superior environments of

the Young Cafe to the excellence

of the cuisine and service and

you have the ideal spot for a

luncheon or dinner.

## Honolulu Institute For Physiotherapy

Corner Beretania and Richards Streets.

Open from 8 a. m. to 7 p. m. except Sunday.

All kinds of Electric Light Baths (blue, red, white and violet), Steam Baths, Turkish, Russian, Pine Needle, Nauheim, Carbonic Acid and Oxygen—or Medicated Baths, Massage, X-Rays and High Frequency, etc., etc. Special attendant for ladies.

Read the "Advertiser," World's News Daily



## FOR SALE

Four lots near the center of town at \$275 each. A good chance for a man of small means to get a home.

Beach Lots at Kaalawai, below Diamond Head.

Also

Engine and Boiler, 15 H. P. Good as new.

## MAGOON BROTHERS

Cor. Merchant and Alakea Streets.

## Regal Shoes

ARE BEST

REGAL SHOE STORE  
CORNER KING AND BETHEL

**CLOTHING ON CREDIT**  
**\$1<sup>00</sup> A WEEK**  
NO SECURITY  
F. LEVY OUTFITTING CO.  
SACHS' BLDG. FORT ST.

Absolutely Pure.

## PINECTAR

LEITHEAD & WOODWARD.  
Telephone 1557.

## BREAD

All varieties of Fresh Bread and Plain Crackers manufactured daily at our Bakery, 1134 Nuuanu street.

Patrons and interested parties are cordially invited to call and witness the process of manufacture from the opening of the sacks of flour to the packing of the manufactured product in cases, tins and cartons.

**Love's Bakery**  
1134 Nuuanu Street

SMOKE

## General Arthur

CIGARS.

DRINK

**MAY'S OLD KONA COFFEE**  
BEST IN THE MARKET.

HENRY MAY & CO. Phone 1271.

**WONDERFUL CURIOSITIES**  
AT  
**ANCHOR SALOON**

Standing Room Only  
Admission Free.

**FORCEGROWTH**  
WILL DO IT.

**THE ONWARD**  
SLIDING FURNITURE SHOE



Onward Sliding Furniture Shoe (see picture) to the wheel castor) will not injure floor, carpet, linoleum or rug, nor wrinkle the rug on a polished floor.

TRY IT AND BE CONVINCED.

COYNE FURNITURE CO., LTD.

**Renear Co., Ltd.**  
**ALGAROBIA**  
**BEAN MILLS**

## THE DAY'S DOINGS ON THE STOCK EXCHANGE

With the Republican conventions out of the way, the stock market yesterday showed a little more activity than it has heretofore this week, and if the quotations of stocks can indicate the attitude of their purchasers towards the ticket, then they seem to be generally satisfied with it. The still unsettled state of politics is, however, being felt "on Wall street," and further developments are awaited before the stocks change either for better or worse.

Quotations yesterday did not undergo any change, Hawaiian Commercial proving a favorite on off-board trading at 40 flat. Oahu Sugar remains steady at 32.50. The sales were:

Hawaiian C. & S.—50 @ 40; 20 @ 40; 20 @ 40; 50 @ 40; 100 @ 40.  
Fauhan—15 @ 27.  
Oahu Sugar—10 @ 32.50; 10 @ 32.50.  
Honolulu—25 @ 18; 5 @ 5.  
Ewa—5 @ 33.125; 10 @ 33.125.  
Bonds.  
Hilo 1901 6s—\$500 @ 100.

## REAL ESTATE TRANSACTIONS.

Entered of Record September 14, 1910.  
Yoshiji Harada to T. Morafuji, C.M.  
Ishii Katsunichi to Higa Kame, B.S.  
Angie S. Parke by Atty to Harn  
Fung Co. L  
Hilo Mercantile Co Ltd to J. E.  
Gamalielson, B.S.  
Daisy Amoe and hsb et al to Bishop  
of Zeugma, D  
Kealoha Keawehano et al by Gdn  
to Omori Gissaburo, D  
David Keawehano et al to Omori  
Gissaburo, D  
Emma K. Alapai to William C. Achi  
Jr., D  
Kalahui to Pioneer Mill Co Ltd., L  
Richard H. Trent to Thomas Pedro, Rel

Recorded September 2, 1910.

Koolau Agricul Co Ltd to Lincoln L. McCandless, D; various pes land and int in real, personal and mixed property, Waiahole, etc, Koolanpoko, Oahu; \$10,000. B 340, p 174. Dated August 25, 1910.

James B. Castle and wf to Lincoln L. McCandless, D; various pes land and int in real, personal and mixed property, Waiahole, etc, Koolanpoko, Oahu; \$5150. B 340, p 178. Dated August 25, 1910.

Koolau Railway Co Ltd to Lincoln L. McCandless, D; 1-36 int in gr 464 and int in real, personal and mixed property, Waiahole, etc, Koolanpoko, Oahu; \$850. B 340, p 180. Dated August 25, 1910.

Agnes H. B. Judd by Atty to A. H. Dondero et al, Par Rel; int in lots 8 and 9, "New Judd Tract," Honolulu, Oahu; \$600. B 339, p 245. Dated Sept 2, 1910.

Justina A. Franca to Trent Trust Co Ltd, A. M.; mtg H. Rahim on lot 11 and por lot 10, grs 3616 and 3642, Nuuanu Valley Homesteads, Honolulu, Oahu; \$800. B 339, p 246. Dated August 25, 1910.

Trent Trust Co Ltd to H. Rahim, Par Rel; "Reserve Lot" and lot 5 of subdiv lots 10 and 11, grs 3616 and 3642, Nuuanu Valley Homestead Lots, Honolulu, Oahu; \$500. B 339, p 247. Dated August 25, 1910.

H. Rahim by Atty to W. G. Scott, D; lot 5 of subdiv lots 10 and 11, grs 3616 and 3642, Nuuanu Valley Homestead Lots, Honolulu, Oahu; \$415. B 337, p 218. Dated August 25, 1910.

Cristel Bolte by Regr, Notice of decree of title in Land Reg Court Case No 176, Oahu. B 336, p 243. Dated Sept 2, 1910.

Trent Trust Co Ltd to Mary F. Flood, D; lots 6 and 8, blk 42, Kaimuki Tract, Honolulu, Oahu; \$900. B 340, p 182. Dated Sept 2, 1910.

Bd of Hawn Evangelical Assn to Palama Settlement, D; int in premises, bldgs, etc, Palama, Honolulu, Oahu; \$1. B 340, p 184. Dated Sept 2, 1910.

Joe Keola to Emmaniline H. Liffite, D; int in por gr 822, rents, etc, Nihoa, etc, Kau, Hawaii; \$25. B 340, p 173. Dated August 27, 1910.

Manoel Botelho to Sol Kaluna and wf, Rel; lot 32, gr 4958, Olan, Puna, Hawaii; \$200. B 339, p 243. Dated August 3, 1910.

G. Nishio to Hilo Bldg & Loan Assn Ltd, C. M.; cane crop on 3a land, Olan, Puna, Hawaii; \$415. B 339, p 244. Dated August 25, 1910.

John Nua and wf to Jeanne B. King, D; int in 70-100a land, High St, Waihi, Maui; \$1125. B 332, p 261. Dated August 30, 1910.

Elmira Johnson to Young Men's Svs Socy Ltd, B. S.; int in leasehold, bldgs, etc, Waihi, Maui; \$200. B 336, p 242. Dated August 31, 1910.

Est of Makaikai by Admr to M. Kalama, D; int in R. P. 9117 and shs in hui land, Waihi, Maui, Hawaii; \$463. B 337, p 216. Dated Jan 15, 1896.

William Savidge, Tr, to Mitchell Kalama, Rel; R. Ps 3699, 3667 and 3783, rents, etc, Haiku, Puna, Kauai; 1 share in hui land, rents, etc, Waihi, Maui, Hawaii; \$200. B 339, p 243. Dated August 6, 1910.

M. Kalama to J. Henry Magoon, D; int in R. P. 9117 and in hui land, water rts, etc, Waihi, Maui, Hawaii; \$550. B 337, p 217. Dated August 31, 1910.

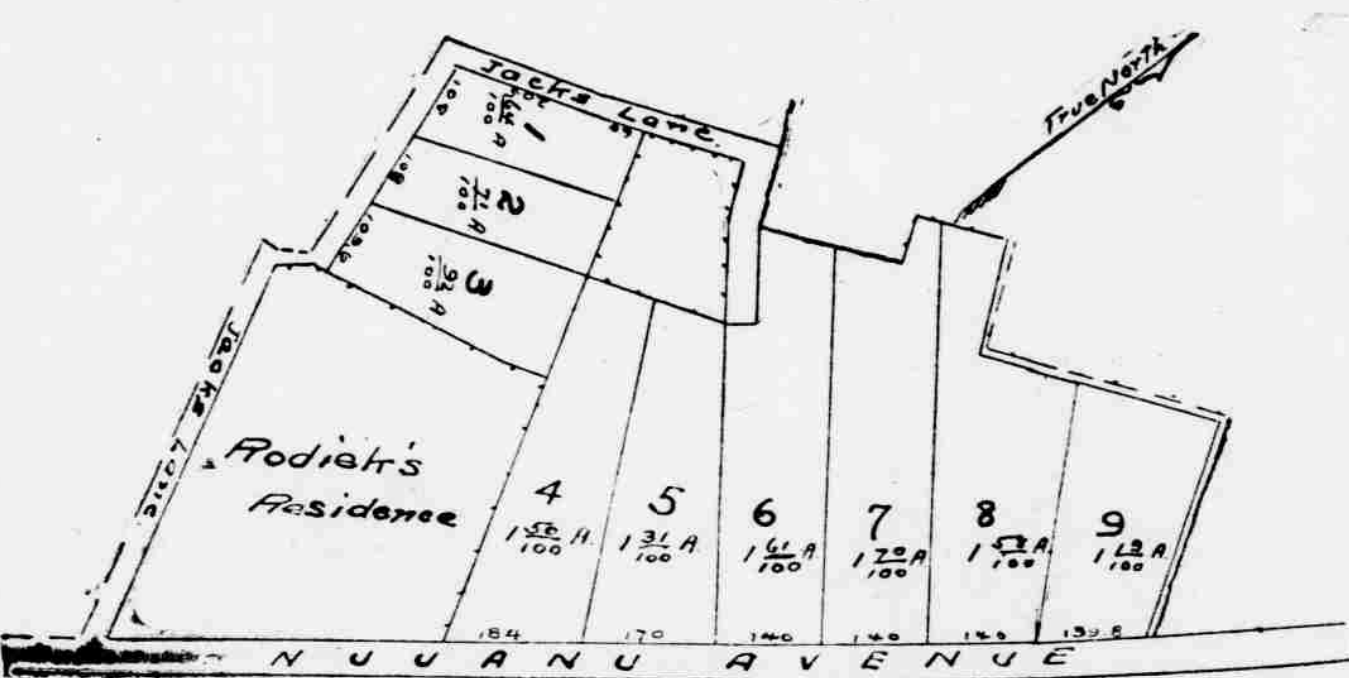
**CHAMBERLAIN'S PAIN BALM A HOUSEHOLD NECESSITY.**

It is in time of sudden mishap or accident that Chamberlain's Pain Balm can be relied upon to take the place of the family doctor, who can not always be found at the moment. Then it is that Chamberlain's Pain Balm is never found wanting. In cases of sprains, cuts, wounds and bruises it takes out the soreness, drives away the pain and heals the injured parts. For sale by all dealers. Benson, Smith & Co. agents for Hawaii.

**PILES CURED IN 6 TO 14 DAYS.**  
PAZO OINTMENT is guaranteed to cure any case of Itching, Blind, Bleeding or Protruding Piles in 6 to 14 days or money refunded.—Made by PARIS MEDICINE CO., Saint Louis, U. S. of A.

AT AUCTION!

## Nuuanu Valley Lots



AT AUCTION!

These lots are situated in the best residence section of Honolulu and are near the residences of Messrs. Rodiek, Cooke, Pfotenhauer, Castle, Sherman and many others.

TO BE SOLD AT PUBLIC AUCTION

**On Saturday, October 8, 1910**

AT 12 O'CLOCK NOON

At the Auction Room of Jas. F. Morgan, 857 Kaahumanu Street.

For further information apply to ESTATE OF B. P. BISHOP or

**JAS. F. MORGAN, Auctioneer**

**TOM SHARP, The Painter**  
Elite Building  
Phone 1697

**SHARP SIGNS**

Signs of all kinds.  
Scenic Work, Decorating,  
Graining, Paper Hanging, Etc.

## By Authority

SEALED TENDERS will be received at the office of the City and County Clerk until Tuesday, September 20, 1910, at 7:30 o'clock p. m., for furnishing the City and County with 8000 lbs. No. 6 Weather Proof Double Braid Copper Wire.  
D. KALAUOKALANI, JR.,  
Clerk, City and County of Honolulu.  
8769—Sept. 15, 16, 19

## ASSIGNEE'S SALE.

I have for sale 5 horses, 2 mules, 2 double drays, sundry drays, wagons and dumpers; sundry sets of harness, plows, harrows, shovels, picks, crowbars, wheelbarrows, and sundry other tools for use in the contracting business.

The above mentioned articles can be seen on the premises near River Street on the mauka side of Vineyard Street.

For further information apply at my office, Room 207, Judd Building.

W. W. CHAMBERLAIN,  
Assignee for Geo. W. McDougall.

8767

## STOCKHOLDERS' MEETING.

A special meeting of the stockholders of Bank of Honolulu, Ltd., will be held at the office of said Bank on Thursday, September 15th, 1910, at 10 o'clock A. M. for the election of Directors to fill temporary vacancies in Board of Directors.  
Honolulu, September 8th, 1910.  
G. C. POTTER,  
Secretary.

U. S. ENGINEER OFFICE, Honolulu, T. H., Sept. 14, 1910.—Sealed proposals for Breakwater Construction at Kahului Harbor, Maui, T. H., will be received here until 11 o'clock a. m. Oct. 14, 1910, and then publicly opened. Information on application.—E. EVELETH WINSLOW, Major, Engrs. 5768—Sept. 14, 15, 16, 17, Oct. 13, 14.

U. S. ENGINEER OFFICE, Honolulu, T. H., Sept. 14, 1910.—Sealed proposals for Breakwater Construction at Kahului Harbor, Maui, T. H., will be received here until 11 o'clock a. m. Oct. 14, 1910, and then publicly opened. Information on application.—E. EVELETH WINSLOW, Major, Engrs. 5768—Sept. 14, 15, 16, 17, Oct. 13, 14.

## NOTICE TO CREDITORS.

Estate of On Fah Chang (w), Deceased.

The undersigned having been duly appointed administrator of the estate of On Fah Chang (w), deceased, notice is hereby given to all creditors of said deceased to present their claims, duly authenticated and with proper vouchers, if any exist, even if the claim is secured by mortgage upon real estate, to him at his residence at Pearl City, in the District of Ewa, Island of Oahu, or to my attorney, Eugene K. Ain, at his office, makai Waikiki corner of King and Bishop streets, upstairs, Honolulu, within six months from the date of the first publication of this notice, said date being September 15, 1910, or within six months from the day they fall due, or the same will be forever barred.  
Honolulu, September 15, 1910.  
CHANG YUN CHAP,  
Administrator of the Estate of On Fah Chang, Deceased.  
5769—Sept. 15, 22, 29, Oct. 6, 13

## NOTICE TO CONTRACTORS.

Bids for the erection of the new Y. M. C. A. building will be received, on conditions to be obtained from the architects, at the office of Ripley & Reynolds, architects, room 401 Boston building, until noon September 30, 1910, and opened immediately thereafter. Plans and specifications and full instructions regarding the conditions under which the bids will be received and contract awarded can be obtained from the architects.

By order of the Building Committee of the Young Men's Christian Association of Honolulu.

**CHAS. BREWER & CO.'S**  
New York Line

The bark FOONG SUEY will sail from New York for this port about October 15, subject to change. Freight taken at lowest rates. For information apply to Chas. Brewer & Co., 27 Kilby street, Boston, or Theo. H. Davies & Co., Ltd., Honolulu.

## For Rent

FOLDING CHAIRS AND TABLES  
**J. HOPP & COMPANY, LTD.**  
**JOHN NEILL**  
ENGINEER.  
135 Merchant Street.  
Machinery Repaired.  
Ship and General Blacksmithing.  
GASOLINE ENGINES.

## LOTS AT KAIMUKI

**Kaimuki Land Co.,**  
Fort and King Sts.

**C. BREWER & CO., LTD.**

Sugar Factors and Commission merchants.

OFFICERS AND DIRECTORS:  
E. F. BISHOP, President  
GEO. F. ROBERTSON, Vice-President and Manager  
W. W. NORTH, Treasurer  
RICHARD IVERS, Secretary  
J. R. GALT, Auditor  
GEO. R. CARTER, Director  
C. H. COOKE, Director  
R. A. COOKE, Director  
A. GARTLEY, Director

**AUTO-LIVERY**  
PHONE 1326

**C. L. HOPKINS**

Systematizer  
Notary Public  
Agent Grant Marriage Licenses  
Hawaiian Interpreter and Translator  
Office: Judiciary Bldg. Hours 9 a. m. to 4 p. m.

**HONOLULU SCRAP IRON CO.**

C. H. BROWN, Manager.  
Halekauwila Street.  
Highest Price Paid for Old Brass, Scrap Iron and all Metals.  
Dealer in Second-hand Machinery.  
Tel. 1642. P. O. Box 547.

**BEST CLEANER AND DYER**  
**U. TOGAWA**  
Fort St. opp. Convent.  
Founder of original Eagle Dyeing and Cleaning Works.

## Fire Insurance

**THE B. F. DILLINGHAM CO., LTD.**

General Agents for Hawaii:  
Atlas Assurance Company of London.  
New York Underwriters' Agency.  
Province Washington Insurance Company.

## Pond Dairy

Is completely equipped for supplying absolutely  
**PURE MILK**  
ALL Cattle Healthy.  
Per Quart. 12 1/2c  
Telephone 2890.

## Select Lumber

DIRECT IMPORTATION  
LOWEST PRICES  
**CITY MILL CO., LTD.**  
Phone 2478.  
KEKAULIKE STREET

## Dondero & Lansing

For Real Estate.  
83 Merchant St.

## Arts and Crafts

**ALEXANDER YOUNG BUILDING**

THIS WEEK.

## Rubber Goods

**GOODYEAR RUBBER CO.**  
R. H. PEASE, President  
573-575-577-579 Market Street,  
San Francisco, Cal., U.S.A.

**READ THE ADVERTISER**  
**WORLD'S NEWS DAILY**