

Commercial



Advertiser.

Established July 2, 1856.

VOL. XXIII., NO. 4210.

HONOLULU, HAWAIIAN ISLANDS, TUESDAY, JANUARY 28, 1896.

PRICE 5 CENTS

M. W. McCHESNEY & SONS

WHOLESALE GROCERS

AND DEALERS IN

Leather and :-
Shoe Findings.

AGENTS

Honolulu Soap Works Company and
Honolulu Tannery.

H. MAY & CO.,

Wholesale and Retail Grocers

98 FORT STREET.

Telephone 22. P. O. Box 470.

S. KIMURA,

WHOLESALE DEALER IN

Japanese Wines, Liquors
AND PROVISIONS.

Saki a specialty.
ALLEY STREET. TELEPHONE 704.

LEWERS & COOKE,

Successors to Lewers & Dickson,
Importers and Dealers in Lumber

And All Kinds of Building Material.
NO. 82 FORT STREET, HONOLULU.

American Livery and Boarding Stables.

Cor. Merchant and Richard sts.

LIVERY AND BOARDING STABLES

Carriages, Surreys and Hacks at all
hours. TELEPHONE 490.

GONSALVES & CO.,

WHOLESALE GROCERS

AND

WINE MERCHANTS,
25 Queen Street, Honolulu, H. I.

ATLAS ASSURANCE COMPANY
OF LONDON.

ASSETS : : : \$10,000,000.

H. W. SCHMIDT & SONS,
Agents for the Hawaiian Islands.

HONOLULU IRON WORKS CO.,

Steam Engines,
Boilers, Sugar Mills, Coolers, Brass and
Lead Castings.

And Machinery of every description made
to order. Particular attention paid to
ships' blacksmithing. Job work executed
on the shortest notice.

LEWIS & CO.,

Wholesale and Retail Grocers

111 FORT STREET.

Telephone 240. P. O. Box 29.

H. JAOUEN,

Practical :- Gunmaker,

Will do any kind of repairing to Firearms,
also Browning and Bluing and Restocking
equal to factory work. Satisfaction guar-
anteed.

Union street, with C. Sterling, Painter.

BEAVER SALOON,

Fort street, opposite Wilder & Co.'s.

H. J. NOLTE, Proprietor.

First-class Lunches Served With Tea

Coffee, Soda Water, Ginger Ale or Milk.
Open from 3 a. m. till 10 p. m.

MERCHANTS' EXCHANGE.

Cor. King and Nuanu streets.

Just Received by THE AUSTRALIA A FRESH
INVOICE OF

Enterprise Beer and Oysters

FOR COCKTAILS :-
Telephone 805.

"HALF AND HALF"

IS A GREAT APPETIZER

Makes the weak stout and purifies the
blood.

Sold at the Empire Saloon.

Two for 25 cents.

N. FERNANDEZ,

Notary Public and Typewriter,

11 KAAHUMANU STREET,

P. O. Box 336. Telephone 24.

TOURISTS' GUIDE
THROUGH
HAWAII

H. M. Whitney, Publisher.

Only Complete Guide Published.

BEAUTIFULLY ILLUSTRATED.
PRICE 75c.

For Sale by Hawaiian News Co.,
Honolulu, Hawaiian Islands.

A. S. HUMPHREYS,

Attorney at Law,

HONOLULU, H. I.

Office: On Kaahumanu street, lately
occupied by Mr. Thurston.

EDMUND P. DOLE,

Attorney at Law

318 FORT STREET.

Telephone 91.

WILLIAM C. PARKE,

Attorney at Law

Agent to Take Acknowledgments

Office at Kaahumanu st., Honolulu H. I.

LYLE A. DICKEY,

Attorney at Law

11 KAAHUMANU STREET.

Telephone 345.

GILBERT F. LITTLE,

Attorney at Law,

HILO, HAWAII.

DR. C. CLIFFORD RYDER,

FORMERLY OF THE—
CALIFORNIA STATE WOMAN'S HOSPITAL

OFFICE:—No. 73 Beretania street,
opposite the Hawaiian Hotel.

TELEPHONE 244.

DR. I. MORI,

Office Fort street near Beretania. Hours
7 to 8:30 a. m. and 4 to 5:30 p. m. Satur-
day and Sunday, 1 to 5 p. m. Telephone
530.

Residence Arlington Hotel.

DR. E. C. SURMANN

Has removed to Garden Lane.

Telephone 181.

DR. TUCKER

Has removed his office to

Corner of Beretania and Fort Streets

Office hours: 9 to 11 a. m., 4 to 5 p. m.
and 7 to 8 p. m. Telephone: Office 923, re-
sidence 427.

DR. C. B. COOPER

Has removed his offices and residence to

Cartwright premises,
Corner of Alakea and Beretania Sts.

Telephone 154. 4186-1m

M. E. GROSSMAN, D.D.S.

DENTIST

98 Hotel Street, Honolulu.

Office Hours: 9 a. m. to 4 p. m.

Miss Elenore Ingersoll

TEACHER OF THE VIOLIN.

Residence with Mrs. E. E. Wall, Bere-
tania and Miller streets. Address, P. O.
Box 403. 4189-1m

H. HACKFELD & CO.,

General Commission Agents,

Corner Fort and Queen sts., Honolulu.

Consolidated Soda Water Works Co.,

LIMITED,

Esplanade, corner Allen and Fort streets.

HOLLISTER & CO., - - Agents.

WILEY'S IMPROVED

Ironing Table

Double Boards, Adjustable for

Pants and Skirts

—FOR SALE BY—

HOPP & CO.,

74 King street,
Or J. W. WILEY, at F. H. Bertlemaann's
shop, opposite New Republic Building.

SPECIAL BUSINESS ITEMS.

Per S. S. Australia, from the

Coast. Honolulu, January 27th.

Camarino's Refrigerator, contain-
ing a full supply of ice house

goods, such as Fresh Frozen Poul-
try, Oysters. Fruits: Grapes of

all kinds, Peaches, Pears, Apples,
Cranberries; Cauliflower, Celery,

Nuts, Dried Figs, etc.

CALIFORNIA FRUIT MARKET.

Telephone 378. 3t

All kinds of SECOND-HAND

FURNITURE sold cheap for cash

at the I X L, corner Nuanu and

King streets.

If you want to sell out your Fur-
niture in its entirety, or for bar-
gains, call at the I. X. L., corner

of Nuanu and King streets.

COOK'S MUSIC SCHOOL, War-
ing building. Piano, Voice and

Harmony. Thirty years' active
experience enables Professor Cook

to economize the time of the pupil.

A. J. Derby, D. D. S. Dental

Rooms 100 Alakea St., between

Beretania and Hotel. Treatment

of dead teeth and roots a specialty.

Office hours, 9 a. m. to 4 p. m.

Tel. 615.

THE SINGER received

54 first awards for sewing ma-
chines and embroidery work at

the World's Fair, Chicago, Ill.,
being the largest number of

awards obtained by any exhibitor

and more than double the num-
ber given to all other sewing ma-

chines. For sale, lease and rent.

Repairing done

B. BERGERSEN, 113 Bethel

City Carriage Company have re-
moved to the corner of Fort and

Merchant streets; Telephone No.

113. First-class carriages at all

hours. JOHN S. ANDRADE.

G. R. Harrison, Practical Piano

and Organ Maker and Tuner, can

furnish best factory references.

Orders left at the Hawaiian News

Co. will receive prompt attention.

All work guaranteed to be the

same as done in factory.

Sans Souci

Seaside Resort.

The pleasantest, quietest, shadiest and

most perfectly appointed seaside resort on

the islands. It is only four miles from the

heart of the city and within easy reach of

the trams, which run every twenty

minutes or oftener. Elegantly furnished

detached cottages or rooms are obtained on

easy terms. The table is superior to that of

any of the city hotels and all the modern

conveniences are provided.

Picnics and bathing parties can obtain

extra accommodations by telephoning in

advance.

The bathing facilities of Sans Souci are

superior to those of any place on the

beach. 4157-1f

EAGLE HOUSE,

Family Hotel,

NUUANU :- AVENUE

Mr. McLEAN, - - Proprietor.

Per day \$1.25; per week \$7.50. Special

monthly rates. Finest location in the city.

BRUCE WARING & CO.

-:- DEALERS IN -:-

Real Estate, Building Lots,

HOUSES AND LOTS

AND

LANDS FOR SALE.

Parties wishing to dispose of their prop-
erties are invited to call on us.

503 FORT STREET NEAR KING STREET

HAWAIIAN HARDWARE CO.,

Hardware, Cutlery and Glassware,

307 Fort Street - - - Honolulu.

KAHULUI HOTEL,

KAHULUI, MAUI.

Sam Sing - - - Proprietor.

Special Attention to the Traveling Public.

MEALS AT ALL HOURS.

A CABLE IS PROBABLE.

Two Bills Before Congressional

Committees.

ANNEXATION IN NEAR FUTURE.

Rushing Work Into Committees—The

Monroe Doctrine—Congress to De-
fine It—Pacific Cable Co. Would

Like to Outdo Col. Spaulding.

WASHINGTON, Jan. 16.—For-
eign questions received considerable

attention during the day. Hale spoke

for an hour in favor of a Pacific cable

connecting the United States and

Hawaii. The Senator expressed the

opinion that the annexation of the

Hawaiian Islands to the United States

was certain to be accomplished at an

early day. The Cuban question was

briefly discussed in connection with

Call's resolution calling on the State

Department for information as to the

status of the uprising. The Monroe

doctrine also received attention in a

resolution by Sewell of New Jersey,

declaring the limitations of the doc-
trine and stating that President

Cleveland's attitude was an extension

of the doctrine beyond its original

scope. A resolution was adopted re-
questing the State Department for

further information on Turkish and

Armenian affairs.

Hale addressed the Senate on his

bill authorizing the Postmaster-Gen-
eral to contract with the Pacific Cable

Company for the transmission of gov-
ernment messages between the United

States and Hawaii. Hale stated that

in round numbers the bill commits

the United States to a subvention of

about \$250,000. It was plain business

enterprise, bringing Hawaii close to

our doors. Other nations had sought

to establish an influence with the Ha-
waiian Government, which, if suc-

cessful, would involve nothing but

detriments to us.

The Senator detailed the efforts of

Great Britain to secure Necker island

as a landing place for a cable, and the

frustration of its efforts by the Ha-
waiian Government, sending a fast

merchant steamer to the island and

raising the Hawaiian flag. As to the

influence of the cable on the question

of annexation, the Senator said he did

not care whether it would or would not

expedite that result. Annexation was

an event sure to come in the near fu-

ture, and he did not want to precipitate

it. Of one thing he felt sure, that with

this cable built all the world would

take notice that the interests of the

two Governments and the two peoples

would become so connected that at-

tempts at interference from outside

would forever cease. If we abandoned

or were lagard in this project our

British rivals would take the ground

that we had left and by hook or by

crook get a resting place on the Ha-

waiian islands for a great military

and commercial British oceanic cable.

Allen (Pop.) of Nebraska favored a

cable to Hawaii, but opposed the

present bill on the ground that he

feared that the arrangement proposed

would lead to disagreeable complica-

tions. He said in reply to a question

from Chandler that he did not think

if the Government owned the lines it

would be wise to lease them. He saw

no reason why the Government

should not control all the telegraph

lines in the country or those extend-

ing from this to other countries. He

said

DANGERS INCREASING.

General Gomez Advancing
Toward Havana.

THE SECOND CUBAN ARMY AT HAND

The Insurgents Firing Property.
Railways Destroyed—Cane Fields
Burned—Expenses Steadily In-
creasing—Great Loss to Business.

NEW YORK, Jan. 20.—The Her-
ald's Havana cable special says: Gen-
eral Campos has gone. General Wey-
ler is coming. Of the man who goes,
history has already written much, and
unless all signs fail will have more to
write ere he has been long in Madrid.
The man who comes Havana knows

left Managua, twelve miles from this
city, fearing that the insurgents may
make another attack upon it, and
large numbers of people continue to
leave other towns around Havana for
this city, apprehending being robbed
by the insurgents. The Spanish auth-
orities at San Francisco de Paula, a
village between this city and Santa
Maria, have detained eight men who
had prepared to join the insurgents.

Throughout the day information
concerning the damage done by the
insurgents in the province of Pinar
del Rio continued to arrive here from
various sources. Between Pueblo,
Neuvo and Ballate, in that province,
all the cane fields have been burned,
and at Paso Real and Los Palacios
the insurgents have not only burned
all the railroad cars but they have
destroyed all the railway material of
every description which they could
lay hands on. In the province of
Matanzas, the insurgents are again
becoming active in anticipation of
the coming of the second Cuban
army of the insurgents, under Gen-
erals Rabi and Maceo. Small bands
are reported to be on the move in the
vicinity of Cana, Bermejo, Roque,
Bolandron and Jovelanos, which is
seriously interfering with the plans of
the Spanish commanders to collect a



GENERAL MAXIME GOMEZ, LEADER OF THE CUBAN ARMY.

chiefly by his record, made seventeen
years ago in Cuba, and since then in
the Philippine Islands. For the future
his promises are fair. Interest in Ha-
vana today is divided between the
cabled program of his policy as out-
lined by General Weyler, the coming
man and the departure of Campos, the
veteran ex-Captain-General, who, this
afternoon, sailed for Coruna, thence to
leave for Madrid.

General Weyler says emphatically
that in his course he will be merciless,
but just. He is of the opinion that two
months ago it would have been easy to
have dealt the rebellion a death blow.
Now he fears it will be more difficult,
owing to the strength the movement
has gained, the losses suffered by the
Spanish army and the near approach
of the rainy season. Despite these
disadvantages he expects results of
considerable importance in a short
time. He says the Liberal party will
support him, and when it goes into
power will grant Cuba certain political
reforms.

MADRID, Jan. 17.—The Cabinet
this evening decided to recall from
Cuba Captain-General Campos and
his brother-in-law, General Arderius,
second in command.

Generals Marin and Pando will be
temporarily substituted in their places.
The supreme command in the island
will be conferred on General Weyler,
who will sail for Cuba forthwith, in
company with General Polavieja.

Before action was taken the leaders
of the Constitutional, Union and Re-
formist parties of Cuba cabled to the
government here demanding the recall
of General Campos.

General Polavieja, the successor of
General Arderius, has started from
Seville for Madrid.

General Weyler will leave Madrid
for Barcelona tomorrow, and will
sail for Cuba on Saturday. He will
be accompanied by Lieutenant Gen-
eral Bargas and the Marquis de Adu-
mada.

To Recognizing Cuba.

NASHVILLE (Tenn.), Jan. 20.—
Congressman McMillan reached the
city to-night from Washington, and
in an interview had with him in con-
nection with Cuban affairs said he
had good grounds for the statement
that President Cleveland in a few days
will send a message to Congress re-
cognizing the Cubans as belligerents.

HAVANA, Jan. 19.—Further news
of the movement of General Gomez
was received this evening from San
Antonio de Los Baños, to the westward
of Salud, where he was repulsed yester-
day, moving apparently towards
La Ceiba. Gomez has burned the
railway station at Seboruca, west of
San Antonio de Los Baños, and when
last heard from was moving so rapidly
that it is not thought likely the
troops under General Linars will be
able to catch him. From the direc-
tion Gomez is taking, he may con-
template an attack on Guanajay
capital of the district of Pinar del
Rio. Many families have already

considerable force of troops in the
district of Colon, with the view of
trying to bring about a pitched battle
with the insurgent forces advancing
through the province of Santa Clara.
At Cuarras, south of Colon, the insur-
gents have burned the plantation of
La Vega and other cane fields, and
they have caused enormous losses by
similar tactics.

While passing through the Matasa-
gua district the insurgents hanged
two plateados, and at Manicaragua,
province of Santa Clara, insurgents
have burned the large store and to-
bacco warehouse, containing 500 bales
of tobacco, belonging to the Tortiz
company. Distress in the province of
Matanzas and other places devastated
by the insurgents is very great and the
local authorities in various districts
have been granted the necessary per-
mission to collect funds by public sub-
scription for the relief of the sufferers.
In addition all the soldiers and all the
employees of the different branches of
the government have agreed to give
one day's pay each month towards
the funds being collected to relieve
the distress referred to.

Later this evening information was
received here to the effect that the in-
surgents have also burned the village
of Rio Blanco, in the province of
Pinar del Rio. The prices of provi-
sions, etc., are rising very rapidly
here and the expense of living is fully
50 per cent. more than it was a month
ago. At the rate things are going
though the Spanish authorities are
still hopeful of driving the insurgents
eastward and westward of Havana,
the city of Havana will be the most
expensive place in the world to live
in. If this is the case with the insur-
gent force now in this vicinity it may
be judged that matters will be con-
siderably worse if the Spanish com-
manders are unable to check the ad-
vance westward of the second Cuban
army. Business is suffering terribly on
all sides.

LOSS OF THE SUGAR CROP.

How Spain's Revenue Has Been De-
creased by the War.

WASHINGTON, D. C., Jan. 17.—
In response to a telegram to Havana,
sent by Senator Dupuy de Lome, the
Spanish Minister, inquiring as to what
effect the destruction of the sugar crop
would have upon the Government
resources, the following dispatch was
received today:

HAVANA, Jan. 17.—Sugar does
not pay direct taxes. Sugar only pays
a port duty or permit to land of 75
cents per ton. If the total sugar crop
were lost, and the average exportation
of 600,000 tons were impossible, the
loss to the treasury would be
\$450,000, less than 1 per cent of the
war expenses. CAENAS.

Senor de Lome, in giving this in-
formation, said that it could be proved
by inquiring of those interested in the
sugar industry in New York, Boston
and Philadelphia, and pointed to the
fact that the rebels, in their efforts to
ruin the island by burning the cane-
fields of Spaniards, Cubans and for-
eigners, have deprived the Spanish
Government of less than half a
million dollars of taxes.

None of the National band boys
returned by the Australia, Wm.
Aylett and Kealakai left by the S.
C. Allen due here January 30.

BY AUTHORITY.

J. H. FISHER, Esq., has this day been
appointed a Notary Public for the First
Judicial Circuit of the Hawaiian Islands.
J. A. KING,
Minister of the Interior.
Interior Office, January 24, 1896.
4208-3t

Sale of Lease of Government Lots on
the Esplanade, Honolulu, Oahu.

On WEDNESDAY, February 26th,
1896, at 12 o'clock noon, at the front
entrance of the Executive Building,
will be sold at public auction the
lease of the following Government
lots, situate on the Esplanade, Hono-
lulu, Oahu:

Lot No. 36; Upset price, \$360.00 per
annum.

Lot No. 37; Upset price, \$360.00 per
annum.

Lot No. 38; Upset price, \$360.00 per
annum.

Lot No. 39; Upset price, \$360.00 per
annum.

Term—Lease for Ten years, rent
payable quarterly in advance.

J. A. KING,
Minister of the Interior.
Interior Office, January 25th, 1896.
4209-3t—1728-3t

Election of Officers

Pearl City Fruit Company, Limited.

AT THE ANNUAL MEETING OF THE
shareholders of the Pearl City Fruit Com-
pany, Limited, held January 25, 1896, the
following were elected to act as officers of
the company for the ensuing year:

W. J. Lowrie..... President
Jas. Lyle..... Vice-President
C. B. Murdoch..... Secretary and Treasurer
F. L. Stoltz..... Auditor
E. Kopke..... Director

C. B. MURDOCK,
4210-3t Secretary, P. O. F. Co., Ltd.

Mutual Telephone Company.

AT THE ANNUAL MEETING OF THE
above Company, held this day the following
officers were duly elected:

W. G. Irwin..... President
Cecil Brown..... Vice-President
Godfrey Brown..... Treasurer
J. F. Brown..... Secretary
J. M. Dowsett..... Auditor

Who also constitute the Board of Di-
rectors:
J. F. BROWN,
Honolulu, January 22, 1896. 4209-1w

ELECTION OF OFFICERS.

HAWAIIAN AGRICULTURAL COMPANY.

NOTICE IS HEREBY GIVEN THAT
at the annual meeting of the Hawaiian
Agricultural Company held this day, the
undermentioned were elected to act as
officers of the company for the ensuing
year, viz:

Chas. M. Cooke..... President
Sam. C. Allen..... Vice-President
George H. Robertson..... Treasurer
T. May..... Auditor
E. F. Bishop..... Secretary
P. C. Jones..... Directors
H. Waterhouse..... Directors
T. May.....

E. F. BISHOP,
Dated Honolulu, Jan. 16, 1896.
4201-1m

MOONLIGHT EXCURSION
AND
GRAND BALL,

AT
Remond Grove,

ON
February 3d, 1896.

Oahu Railway & Land Company's
train leave at 7 p. m. sharp,
returning at midnight.

Single Tickets \$1.50

COMBINATION TICKETS,
LADY AND GENT \$2.00

The above prices include railroad fare,
dancing and refreshments. Tickets to be
had at drug stores and R. R. depot.

J. W. Chapman, the popular carter
will have charge of the lunch room.
4204-2w

NOTICE.

The HAWAIIAN GAZETTE COMPANY re-
quests that all bills up
to the 31st of Decem-
ber, 1895, not already
presented, be present-
ed immediately.

JOHN PHILLIPS,
Plumber.

HOTEL STREET, NEAR FORT.

Telephone. 302.

4208-1f

PACIFIC HARDWARE
COMPANY.

We carry in stock the following
Oils:

Vacuum Oils.

The Vacuum Oil Company was the
first house to manufacture Mineral
Oils of any value for Lubricating pur-
pose. The oil is reduced under com-
plete uniformity of temperature with
out atmospheric pressure and a perfect
inherent hydro-carbon greases of the
oil. This cannot be done by any other
process. It is claimed that these oils
are actually cheaper in use, at the
prices charged than any other oils.
You are sure of getting the same oil
every time you order. You can save
money, as you get better goods at less
price, quality considered.

600 W Cylinder Oil.

This Oil, we claim stands alone. It
is a unique product, with many imi-
tators, but without a rival at any
price.

Our 600 W Cylinder Oil is the out-
growth of over twenty years expe-
rience in the manufacture of oils, and
we guarantee it absolutely in every
particular. We will cheerfully send
you a barrel on approval, not to be re-
turned unless it suits.

Vacuoline Engine Oil.

Many of our patrons have wanted
an oil at moderate price for all uses,
except cylinder lubrication, of heavy
body and great endurance, which
could be depended upon absolutely
anywhere and everywhere. We can-
not speak too highly in its praise. It
is one of the most remarkable oils ever
manufactured. For all places where
an oil must do a great deal of work on
a small quantity, we can guarantee
this oil against any other article. If
you had a hard working machine, or
a bearing that gives you trouble, try
this oil. You cannot find its counter-
part anywhere. It is a rich wine color.
The best substitute for lard oil ever
produced.

Arctic Engine Oil.

This is an Oil for electric light, cen-
trifugal and general high speed work,
adapted for the Edison system, being
used by the Edison Company and re-
commended by them. It is indis-
tinguishable in quality, and can be fil-
tered and used over and over again. It
is a perfect dynamo oil.

Vacuum Marine Engine Oil.

The only oil that meets all the re-
quirements of Marine Engine Lubri-
cation. Better than lard oil and
cheaper.

Heavy Dark Lubricating Oil.

For common shafting, exposed ma-
chinery, car journals, etc. Has no
equal for cart axles.

Landlord's Sale Under Distraint of
Rent.

NOTICE IS HEREBY GIVEN THAT
the undersigned, A. F. Judd, has distrained
and levied upon certain goods and
chatties, the property of J. M. DAVIDSON,
ESQ., for rent due from him to the un-
dersigned for those premises situate in Mer-
chant street near Fort street in Honolulu,
heretofore occupied by said J. M. David-
son, as law offices.

And notice is further given that said
goods and chatties will be sold at Public
Auction at the auction rooms of Jas. F.
Morgan, on Queen street, Honolulu, H. I.,
on Thursday, February 4, 1896, at 12
o'clock noon, to satisfy the rent due and
in arrears as aforesaid on the above de-
scribed premises and costs and expenses.

A. F. JUDD.

By his Attorney
J. ALFRED MAGOON.

Dated Honolulu, Jan. 18, 1896.

The goods and chatties to be sold are as
follows:

9 office chairs, table, office desk, 2 door
mats, revolving book case, 89 law
books as follows:

Benjamin on Sales, Bennett's Notes,
Abbott on Shipping, Story and Perkins'
Notes.

Angell on Laws of Carriers,
2 vols Bishop on Marriage and Divorce,
6th Ed.

Weeks on Mineral Lands,
Kerr on Fraud and Mistake, Am. Notes,
by Bump.

2 vols Willard on Torts,
2 vols Parsons on Contracts.

Wharton, Presidents of Court and Pleas,
Haw. Civil Code, 1858-59,
Haw. Penal Code, 1895,
Cohn, Growth of Law.

Stephens's General Treatises,
Ballantine's Experience of a Barristers'
Life.

2 vols Addison on Contracts, Abbots
54.

3 vols American Decisions, 1760-1837—1837
54.

2 vols Greenleaf on Evidence, 14th Ed. (1st
vol missing).

2 vols Wharton on Evidence, 3d Ed.
Sidgwick's Leading Cases on Measure
of Damages.

2 vols Story's Equity Jurisprudence, 11th
Ed.

Pomeroy, R. remedies and Remedial Rights,
Story's Equity Pleading, Redfield's Ed.

Drake on Attachments, 6th Ed.
3 vols Stephen-Mist of Criminal Law in
England.

2 vols Daniel on Negotiable Instruments,
3d edition.

7 vols Bacon's New Abridgement of the
Law.

Macneil's Treatise on Law of Merchant
Shipping.

Potter's Dwarrior on Statutes and Consti-
tutions.

Curtis, Rights and Duties of Merchant
Seamen.

Wharton's Crim. Pleading and Practice.
2 vols Phillips on Insurance.

Spear on Law of Extradition.
2 vols Thompson on Negligence.

2 vols Smith's Leading Cases, Hare and
Wallace's Notes.

4 vols Deering's Annotated Codes and
Statutes of California.

Freeman on Void Judicial Sales.
10 vols The Law Times Reports, vols 50-59.

2 vols Chitty's Equity Digest,
Chitty on Pleadings, 16 Am. Ed.

4 vols Pariser's Criminal Reports.
Stephen on Pleading, Heard.

Vols II-VI Harg's Reports.
Reports of Sir Henry Vyverton, published
in 1735, A.D. 4202-td

Great
Slaughter

We are cleaning up stock
and will give you some Bar-
gains that Honolulu has never
before had.

NO RESERVES WILL BE
MADE, but our entire stock
will be cleaned up.

Dress Goods

Silks, Wash Goods,

Hosiery,

Ladies' Furnishing Goods,

Gents' Furnishing Goods,

Household Goods,

Etc., Etc., Etc.

J. J. EGAN.

Don't Gamble

Your money by buying clothes
of inexperienced tailors.

We take into consideration
your build as well as style,
best suited for you.

We want your patronage.

MEDEIROS & DECKER,

Hotel Street, Arlington Block.

Selling
At Cost.

To close out the stock—drawn
work, silk spreads, Pajamas,
Curtains, etc., will be sold at
cost or less. Shirt Waists at
50 cents each. Helmets at 25
cents. Special fine line of
matting.

A. F. JUDD.

By his Attorney
J. ALFRED MAGOON.

Dated Honolulu, Jan. 18, 1896.

The goods and chatties to be sold are as
follows:

9 office chairs, table, office desk, 2 door
mats, revolving book case, 89 law
books as follows:

Benjamin on Sales, Bennett's Notes,
Abbott on Shipping, Story and Perkins'
Notes.

Angell on Laws of Carriers,
2 vols Bishop on Marriage and Divorce,
6th Ed.

Weeks on Mineral Lands,
Kerr on Fraud and Mistake, Am. Notes,
by Bump.

2 vols Willard on Torts,
2 vols Parsons on Contracts.

Wharton, Presidents of Court and Pleas,
Haw. Civil Code, 1858-59,
Haw. Penal Code, 1895,
Cohn, Growth of Law.

Stephens's General Treatises,
Ballantine's Experience of a Barristers'
Life.

2 vols Addison on Contracts, Abbots
54.

3 vols American Decisions, 1760-1837—1837
54.

2 vols Greenleaf on Evidence, 14th Ed. (1st
vol missing).

2 vols Wharton on Evidence, 3d Ed.
Sidgwick's Leading Cases on Measure
of Damages.

2 vols Story's Equity Jurisprudence, 11th
Ed.

Pomeroy, R. remedies and Remedial Rights,
Story's Equity Pleading, Redfield's Ed.

Drake on Attachments, 6th Ed.
3 vols Stephen-Mist of Criminal Law in
England.

2 vols Daniel on Negotiable Instruments,
3d edition.

7 vols Bacon's New Abridgement of the
Law.

Macneil's Treatise on Law of Merchant
Shipping.

Potter's Dwarrior on Statutes and Consti-
tutions.

Curtis, Rights and Duties of Merchant
Seamen.

Wharton's Crim. Pleading and Practice.
2 vols Phillips on Insurance.

Spear on Law of Extradition.
2 vols Thompson on Negligence.

2 vols Smith's Leading Cases, Hare and
Wallace's Notes.

4 vols Deering's Annotated Codes and
Statutes of California.

Freeman on Void Judicial Sales.
10 vols The Law Times Reports, vols 50-59.

2 vols Chitty's Equity Digest,
Chitty on Pleadings, 16 Am. Ed.

4 vols Pariser's Criminal Reports.
Stephen on Pleading, Heard.

Vols II-VI Harg's Reports.
Reports of Sir Henry Vyverton, published
in 1735, A.D. 4202-td

E. O. HALL & SON,
LIMITED,

SHIP CHANDLERS

AND

Hardware

Merchants

Receive Merchandise constantly from the
United States and Europe. We
have just received

Horse Shoes, Wheel Barrows

Blacksmiths' Tools,
Waukegan Barbed Wire,
Wire Netting, all kinds;
Plain Galvanized Fence Wire,
Carpenters' Tools of all kinds,

Success Water Filters

THE BEST KIND;
Road Scrapers, Feed Cutters,
Hall's Aluminum Cane Knives,

LAWN MOWERS,

Hoes and Handles,
Picks and Mattocks,

Hall's Plows AND Breakers

These are selling fast and you should
send your orders in soon.

FOLDING CLOTHES

DRYING RACKS,

These Racks fold up like an umbrella.
Every household should have one.

CHARCOAL IRONS,

Ox Yokes and Bows,
Mixed Paints, Turpentine,
Tar, Pitch, Asphaltum,
Plaster of Paris.

ISLANDS OF MARQUESAS

Their History Like a Continuation of Hawaiian Group.

NAMED AFTER PERUVIAN VICEROY

Same Polynesian Race Found in the Pacific—Language Similar to Hawaiian—Can Easily Read Hawaiian Bibles and Other Books—Form, Etc.

The history of the Marquesas Islands is like a continuation of that of the Society and Hawaiian groups; as their first missionaries came from Tahiti and those of subsequent times and of the present time are from Hawaii, and as they will probably pass again under the care of Tahitian missionaries, since France owns these islands, together with Tahiti and the adjacent groups. The Marquesas Islands lie in two parallel groups, thirteen in all, trending from southeast to northwest, between latitudes eight degrees and eleven degrees south, and longitudes, 133 degrees and 150 degrees west. The southern group was discovered July 21, 1595, by Alvaro Mendana de Neyra, as he was voyaging with four ships to colonize the Solomon Islands, and by him named Marquesas de Mendoca, in honor of the viceroy of Peru. The northern group, though near by, was not discovered until nearly two hundred years later, in 1791, when they were seen by Captain Ingraham, of Boston, and named Washington Islands. But the term Marquesas now embraces both groups. It seems to be the rule that the further east one goes, in the Pacific, the more wild, broken, and picturesque are the mountains. The Marquesas are even more remarkable in this respect than the Society Islands, excepting Moorea. The terrific storms of the Western Pacific have not reached this part of the ocean with sufficient violence to cause excessive erosion, nor have frosts here prevailed to disintegrate the beetling cliffs, the sharp ridges and the spiraling crags; but all the mountain forms, even the most frail and reaches a height of 2430 feet above the level of the sea, and the highest 7393. Most of them have fertile valleys half a mile to three miles deep, and from one-tenth of a mile to a mile wide, filled with luxuriant shrubs, vines, and magnificent trees, beneath which rills of pure water, falling from high inland cliffs, ripple along rocky and shaded beds to the ocean." (Coan's Life in Hawaii.)

The largest of these islands is Nukuhiva, named after its discoverer "Marchand." It is seventy miles in circumference, and 7360 feet high at its highest peak. "Almost every pinnacle of this island is carpeted with vines; even on the perpendicular walls of its precipices a tapestry of shrubs and verdure hangs. On the south side is the bay, Taihoa, or Anna Maria, fragile, still seem to stand as when originally upheaved and rent by volcanic forces.

"The coasts of these islands rise from the water like walls. Deep gorges, serrated ridges, lofty promontories, with sea walls plunging thousands of feet into the sea, cone-pointed and truncated; rocky minarets, and confused masses of rocks, scoria, and tufa, testify to a terrific rage of Plutonic agencies in unknown ages past. Many of the ridges are so precipitous and lofty that they cannot be crossed by man; and many of the rocky ribs come down laterally from the lofty spine, or dividing ridge, on an angle of thirty degrees, and form submarine and subaerial buttresses, leaving no passage except by caecae. The lowest of these inhabited islands, which is shaped like a horseshoe and is two miles deep, a mile broad at the center, and half a mile broad at the entrance, where it is flanked by two great headlands over 500 feet high. "Its shore is a beautiful crescent of sand, interrupted here and there with shingle and boulders," says H. Melville (Type). "No description can do justice to the beauty of the scenery of this bay. The mountains shut in a vast amphitheatre of deep gorges, overgrown with vines and gleaming with cascades. I felt regret that a scene so enchanting was hidden from the world in these remote seas." Of a view he obtained from the summit of the mountain he says: "Had a glimpse of the garden of Paradise been given me, I could scarcely have been more ravished with the sight."

About forty miles south of this island is Upou, or Adam Island, on the west side of which is the harbor Hakahou. From this harbor a valley one-fourth of a mile wide extends three miles inland, "crowded with shrubbery, evergreen vines and lofty trees. The mountains, ridges and towering cones of this island are very grand. Within a vast amphitheatre of rugged hills, which send down their spurs to the shore, buttressed by lofty precipices, are eight remarkable columns, 200 to 300 feet high and 50 to 100 feet in diameter, rising in solitary grandeur like a castellated fortress" (Coan). East of this island, about sixty miles distant, is Havaoa, named La Dominica by Mendana, because discovered on the Sabbath day. On the northwest side of this island is the valley Puamau, "one mile in length and one-quarter of a mile wide, a paradise of natural loveliness, a garden of Eden, the music of its rippling stream." On the south side is Atoua, which is said to be the most verdant valley in the Marquesas. Breadfruit, oranges, coconuts, limes and vi-apples grow to be gigantic trees, two feet in diameter and seventy feet high, loaded with fruit. Of this island Geo. Foster (Cook's Voyages) says: "We saw many craggy rocks like spires and several hollow summits piled up in the centre of the island. All the eastern part is a prodigious steep and almost perpendicular wall of a great height which forms a sharp ridge shattered into spires and precipices.

On the north side rises a peak. All the north is a black burnt hill, of which the rock is vaulted along the shore, and the top clad to the summit with casuarinas. Valleys filled with trees lead up to the summit." Of the view from the highest point of this island, Mr. Coan says: "Around us was a vast panorama of cones, ridges, spurs and valleys. Hills heaped on hills and spires bristling among spires, the whole appeared as if a sea of molten rocks, while raging, tossing and spouting in angry billows, had been suddenly solidified by an omnipotent power. It was a mild assemblage of hills and ridges, of gulfs and chasms, of towers and precipices."

A little distance south of Hivaoa is Tabuta, or Christiana, like the rest of the group, "a great heap of scoria, tufa, cinders, and basaltic lavas, bristling with jagged points, traversed with sharp and angular ridges, and rent with deep and wide chasms." The valley Vaitoua at Revolution Bay on the west, one-half mile deep, is shut in by rugged precipices 2000 feet high, and filled with breadfruit, coconuts, vi, orange, guava, and other trees. The southernmost island of this group is Fatuhiva, called also Macdalenia. The chief valley of this island is Onoa, one mile wide and three miles deep, having five lateral branches one-half a mile or more deep, all walled in by towering precipices and filled with magnificent vegetation. The inhabitants of these islands are the same Polynesian race that is found in nearly all the Pacific. So similar is their language to that of Hawaii that they easily read Hawaiian Bibles and other books. They are described as "physically the most perfect of the human species, many of them six feet high, muscular, symmetrical, agile, graceful, and lighter in complexion than Tahitians." The American missionaries remarked that they were more noble in form and stature than the Hawaiians, and the women, vile as they were, more comely, though some of the people are horribly tattooed.—J. M. ALEXANDER, (A Tract Society.)

SUGAR CONSUMPTION FOR 1895

Willett & Gray Give Interesting Figures for Planters.

Willett & Gray's latest statistical circular gives the following information concerning the consumption of sugar that will be read with interest in this country.

"The figures given herewith show the total consumption of sugar in the United States to have been 1,149,744 tons against 2,012,714 tons in 1894, 1,905,862 in 1893 and 1,553,370 tons in 1892. The decrease in 1895 is 62,970 tons, or 5.5 per cent, against the increase in 1894 of 106,842 tons, or 5.08 per cent., and an increase in 1893 of 54,492 tons, or 2.83 per cent. The consumption of 1895 consisted of 324,506 tons of domestic cane sugar, 30,000 tons of domestic beet sugar, 300 tons of sorghum sugar, 7500 tons maple sugar, 15,000 tons of domestic manufactured molasses sugar, a total of 377,306 tons of United States production and 1,460,578 tons of foreign cane and 83,809 tons of foreign beet sugars and 28,063 tons of foreign refined sugars, together 1,572,438 tons of foreign production. The total meltings of our refineries in 1895 were 1,738,744 tons, 28,037 were refined abroad and 182,964 tons were consumed in the raw and plantation condition. Of the 1,738,744 tons melted by refineries, the American Sugar Refining Co. manufactured 1,330,744 tons, or 76.6 per cent, and the independent refiners 708,000 tons, or 23.4 per cent.

"The invisible stock of sugar is now at a minimum, while last year it was 50,000 tons in excess of the preceding year. "If the invisible stocks are properly adjusted the consumption of 1895 would show but about 15,000 tons smaller than 1894, but in the above figures we have taken no account of the invisible stocks. "The American Sugar Refining Co.'s production in 1895 decreased 125,438 tons, and the independent refiners' production decreased 27,306 tons under the business of 1894. The difference between raws and refined in 1895 averaged .858 against 88 cents in 1894.

FRESH COLUMBIA RIVER SALMON.

METROPOLITAN MEAT CO.



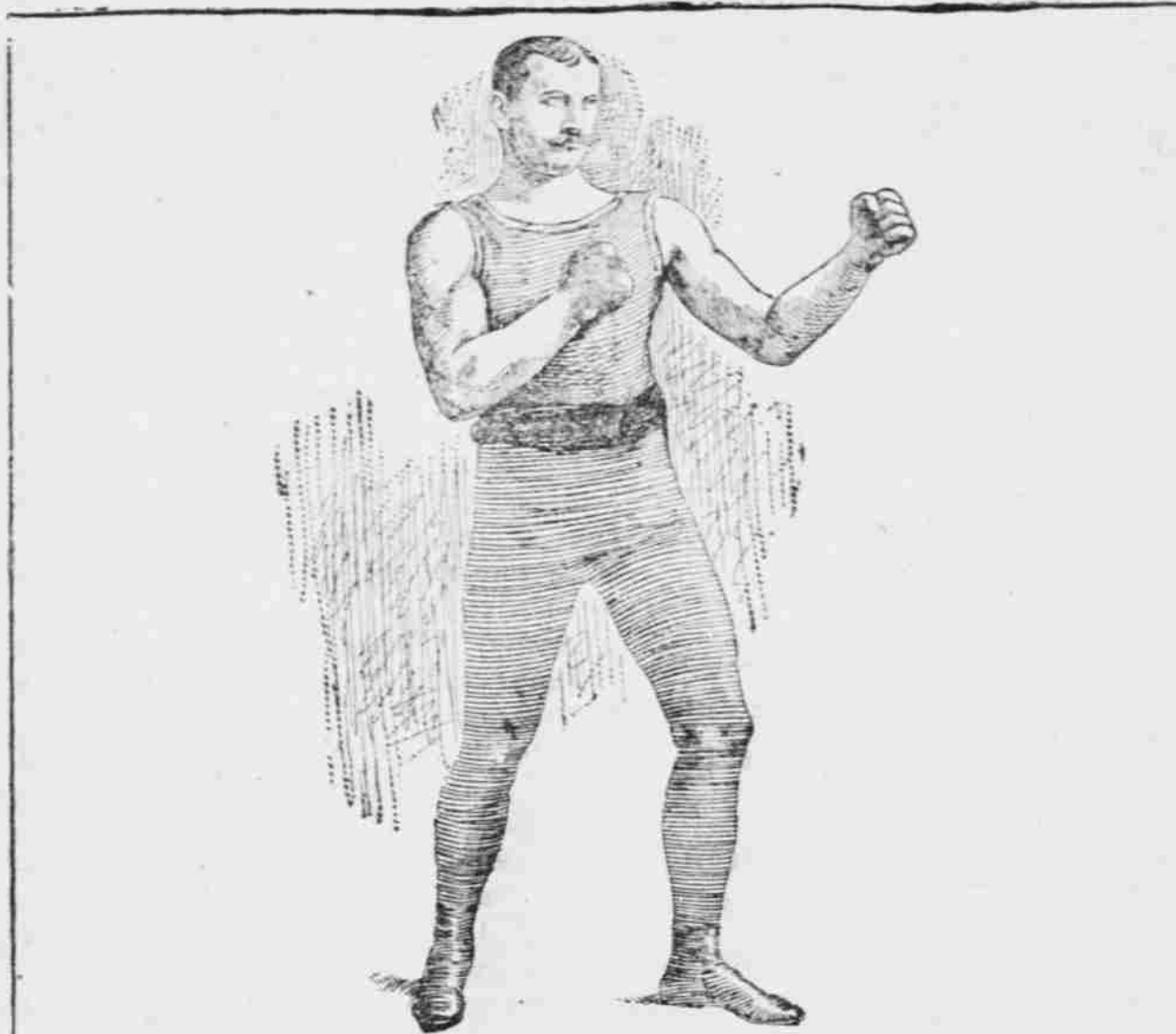
Last Week OF Clearance Sale OF COTTON CREPES

At Reduced Prices.

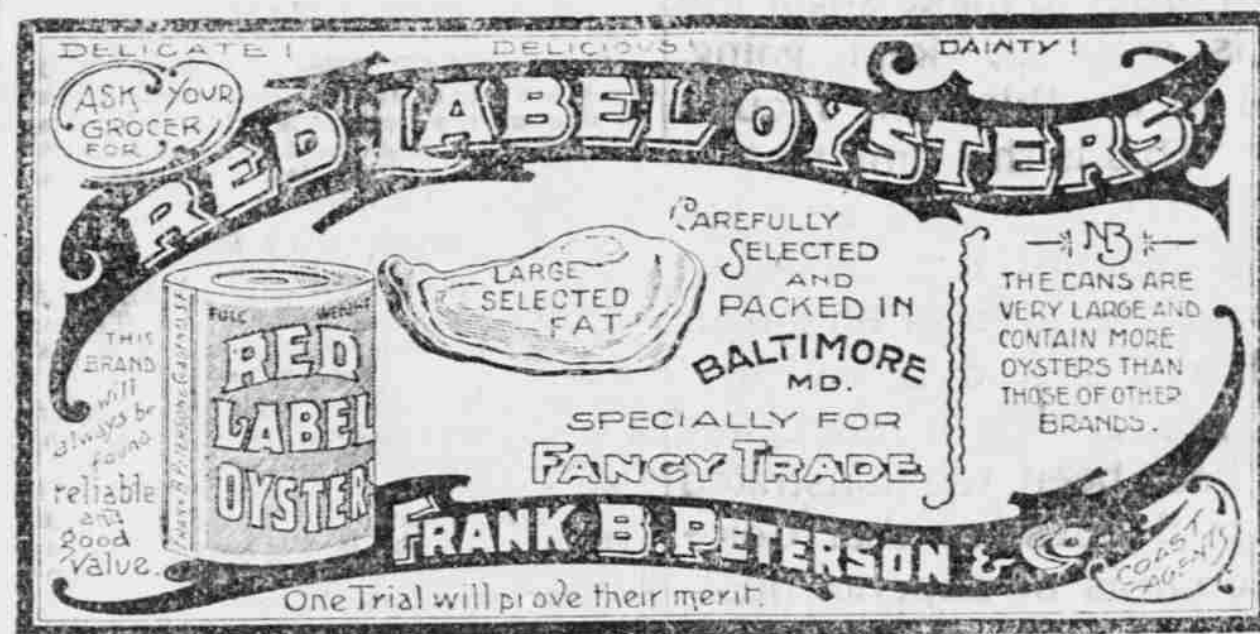
Take advantage of this opportunity and purchase now.

IWAKAMI, HOTEL STREET.

The Daily Advertiser 75 cents a month. Delivered by carrier.



PETER MAHER AND THE WORLD'S CHAMPIONSHIP. When James J. Corbett retired as champion boxer of the world recently he gave his title to Peter Maher, the Irish champion. As Maher has been whipped by Bob Fitzsimmons and Joe Goddard, most sporting men believe he is hardly entitled to claim the championship until he has at least contested for it with Fitzsimmons.



When Ordering Oil, ask your Agents to send you Tropic Cylinder Oil Tropic Engine Oil Tropic Machinery Oil and you will have the BEST Lubricating Oil for Sugar Mdl and your Engines. E. O. HALL & SON, HONOLULU, H. I.

Seasickness

POSITIVELY PREVENTED.

"BRUSH'S REMEDY FOR SEASICKNESS."

(ELIXIR PROPHYLACTIC.)

The Only Known Specific that will Invariably Prevent "Mal de Mer."

GUARANTEED PERFECTLY HARMLESS.

Benson, Smith & Co.,

AGENTS FOR THE HAWAIIAN ISLANDS.

A GREAT SUCCESS

Have You Tried It?

JUST THE THING FOR BREAKFAST!



Aunt Abbey.

DIFFERENT FROM AND BETTER THAN ANY OTHER BRAND.

For sale by all leading Grocers.

FRANK B. PETERSON & CO. S. F. AGENT.

BEST MADE IN THE WORLD.

1845 PRESTON & MERRILL'S FIFTY YEARS 1895 THE STANDARD FOR PURITY FIRST INVENTED BAKING POWDER ALL OTHERS ARE IMITATIONS.



OH!

This is Good

So pleased I can get

GOOD TOBACCO

Hollister & Co.,

CORNER FORT AND MERCHANT STREETS.

SEE THEIR SMOKERS' ARTICLES IN SILVER

Smoking Stands. Cheap.

HAWAIIAN GAZETTE CO.

PUBLISHERS OF THE

'BIG FOUR' OF HAWAII

40TH YEAR OF PUBLICATION The Daily Pacific Commercial Advertiser. THE ONLY Morning Daily Eight Page Well Illustrated DAILY

Gives a complete report of everything of interest—Gets no subsidy—Has no beneficiaries—Has many friends and the largest patronage.

IT HAS LEAD! IT LEADS! IT WILL LEAD!

30TH YEAR OF PUBLICATION The Semi-Weekly Hawaiian Gazette. THE ONLY EIGHT-PAGE ILLUSTRATED Semi-Weekly The Only Standard Publication for legal transactions and notices. Is the best news and advertising medium throughout the Islands.

36TH YEAR OF PUBLICATION The Weekly Kuokoa. THE ONLY Newspaper in the Hawaiian Language for an advertising medium which reaches the intelligent Native population. The Standard publication for court and legal notices in the Hawaiian Language.

14TH YEAR OF PUBLICATION The Planters' Monthly. THE ONLY periodical devoted solely to the interest of agriculture. THE ONLY reliable statistical monthly in the Pacific. Advertisers desiring to reach planters and their interests, the PLANTERS' MONTHLY will prove the most direct medium.

Hawaiian Gazette Company, VON HOLT BLOCK. KING STREET.

Commercial Advertiser.

WALLACE R. FARRINGTON, - - EDITOR.
TUESDAY, JANUARY 28, 1896.

GOVERNOR BRADLEY in his message to the legislature of Kentucky deprecates the increase of lynching and the cigarette habit within his state. This is the first time these sins against humanity have been put in the same class but we must admit that they are in a measure birds of a feather. If Kentucky's new Republican Governor can get his legislature to stamp out these evils his name ought to go down in history as one of the greatest reformers of the age.

THE Associated Press dispatches recently received from the Coast contain a squib to the effect that the people of Hawaii are contemplating secession from the central Government and that Minister Cooper's visit to the island was to investigate the strength of the secession sentiment. The only striking feature about this story is the proof positive that some one connected with the Associated Press was mighty hard up for a story. It reminds us of the riddle to which the answer is: "It's a big lie." If our local correspondents can find nothing more truthful than this to write about we would suggest that they take to sawing wood for a living.

BAD CRIMINAL RECORD.

In the editorial office of the Chicago Tribune is an antediluvian newspaper writer who devotes his entire time during the year to gathering statistics from the newspapers each day of the crimes committed throughout the United States. It is a decided gruesome task and the record he has given to the world for the year 1895 is one that ought to set the people of one of the foremost nations of the world to putting on their thinking caps. After reading the figures which he has set before the public we have no reason to be surprised that many Europeans think of the United States as a country where champagne bottles are uncorked with revolvers and the wild and woolly hero of the dime novel reigns supreme. The United States includes such an immense territory that its residents are not impressed with the appalling increase of crime until brought face to face with the grand total for the year just passed and the comparative tables for the past ten years.

The results as given by the Tribune this year show that the total of murders has swollen from 9800 for 1884 to 10,500 in 1895. The causes of slaughter are given as follows: Quarrels, 4813; unknown, 2466; jealousy, 1136; liquor, 684; by highwaymen, 441; infanticide, 269; resisting arrest, 232; highwaymen killed, 159; insanity, 101; self-defense, 104; strikes, 18; outrages, 49; riots, 28. In looking over the homicidal record for the past ten years we find that the number of murders has increased from 1449 in 1886 to the number previously given, 10,500. During this period the increase has been at the rate of about 1000 each year, with the exception of the year 1888, when there was a falling off of 151 from the record of 1887. Cold, calm figures show us that the knife, bludgeon and pistol have caused a loss of life equal to that of almost any of the great battles of history. It tells us that notwithstanding the world is constantly growing better, there is still much that is lacking in modern civilization.

It is next to impossible to account for this steady advance in every detail. The increase in population and the improved facilities for obtaining the statistics are features that must be taken into account. One interesting and significant feature, however, is the record of

punishment for crime. Over against the 10,500 murders the record gives only 132 legal hangings. Less than two per cent. of the criminals have, so far as the record shows, paid the legal penalty for their dastardly work. Attention is at once directed to the criminal courts. Looking again to the newspapers we find throughout the whole United States a growing tendency on the part of the courts to shield the criminal. The delay in the trials, the reluctance of jurors to find a verdict, appeals from one court to another and a thousand and one items that come in to give the prisoner a new lease of life all have their effect, and may be regarded as one of the leading causes of the unfortunate result. It is a serious matter to take a human life but the courts of to-day seem to have more serious interest in the guilty one. The innocent victim has gone and time does a great deal in calming public opinion. The time is coming when prompt justice will be imperative.

CRANSTOWN and Mueller have found little comfort in their appeal to the Canadian courts for damages on account of their forcible deportation from this country. While the non-suit does not necessarily indicate that the case is finished so far as the steamship company is concerned, it means a long fight for two or three years, should the plaintiffs decide to pay the costs and appeal from the decision of the court at Vancouver. The Hawaiian Government, which is indirectly interested in the outcome, holds by all means the most advantageous position, and as the costs increase it is highly probable that the injured feelings of the exiles will pass into oblivion.

THIS DAY!
AUCTION SALE
—OF—
CarriagesON TUESDAY, JANUARY 28TH
AT 12 O'CLOCK NOON
At my Salesroom, Queen street, I will sell at Public Auction, an invoice ofNew Buggies,
Carts,
and Wagons.JAS. F. MORGAN,
Auctioneer.
4208-3tAUCTION SALE
—OF—
Ship's StoresOn Wednesday, January 29th,
AT 10 O'CLOCK A. M.,
At my Salesroom, Queen street, I will sell at Public Auction, a quantity of stores from the schooner Henrietta, comprisingCanned Goods,
Bacon, Hams,
Sks Flour, ETC., ETC.JAS. F. MORGAN,
Auctioneer.
4210-2tAUCTION SALE
AT PAPAIOU, HILO.FOR ACCOUNT OF THE
Estate of Otsuki & Co.
ON TUESDAY—
—FEBRUARY 4, 1896.

The Store Building, Lease, Store Fixtures, Shelving, Counters, Safe, Showcases, Lamps, Etc.
L Cottage, Storehouse, Stable, Out-houses, Etc.
The Dwelling-house (nearly new) and Lease.
Horses, Mules, Carts.
The Stock of Merchandise, comprising a large assortment of Dry Goods, Groceries, Hardware, etc. Also Book Accounts and other outstanding claims.

All of the above will be offered at Public Auction as above stated at Papaikou, Hilo.
For further particulars apply to F. M. Bindt, on the premises: Or to H. W. SCHMIDT, Assignee of the Estate of Otsuki & Co. 4209 2t—1728 It

STOCK FOR SALE.
HAWAIIAN SUGAR COMPANY
(MAKAWELI.) Apply to
4205-t JAS. F. MORGAN.

Timely Topics

JANUARY 22, 1896.

The steady increase in sugar values has caused plantation owners and everybody interested in the production of that staple commodity much satisfaction. This is as it should be, for without sugar what would become of the country. Of course there are other and varied industries, but none so important and profitable as sugar.

In order to make sugar the mills must be kept going, and to do this will require oil. This is the time that all mills in the islands are running steadily, and it is but proper that the attention of mill men should be called to the best grades of lubricants. It has been demonstrated beyond question that Colorado Oil is of superior quality and best suited to the requirements of plantation machinery of all kinds. No oil introduced here has given such general satisfaction as the Colorado. It is the best quality of lubricant manufactured—for the reasons that it has body and strength, the two great essentials that go toward making an oil that will fulfill all requirements. The Colorado has received the endorsement of numerous engineers on the different plantations of the islands. The best evidence of its popularity and superior quality is the fact that it is used all over the islands, and has given the best of satisfaction in every case. An engineer knows a good thing as well as any one else, and when once Colorado oil is used, none other will be given houserom.

We have another brand of oil—Coronado, which is not so high priced, but is guaranteed a good lubricant for all kinds of machinery. This can be furnished in grades for mill and engine use, and for valve and cylinder, at satisfactory prices.

We can furnish any grade or priced engine oil desired, but advise you to buy only the best quality—for in oil as in other things, it always pays to buy the best.

All oils sold by us are guaranteed and when you buy from our house, you can be assured of getting full value for your money.

THE . . .

Hawaiian Hardware
COMPANY, L'D.,
Opposite Spreckels' Bank,

307 FORT STREET.

BRUCE CARTWRIGHT

REAL ESTATE,
BROKERAGE,
INSURANCE.

Special facilities for handling Estates, Trusts, Guardianships and Private Business. Moneys carefully invested, Loans negotiated, Rents, Dividends and Interests collected. Property sold or leased for a small commission.

General Manager for the Hawaiian Islands for the following insurance companies:
Equitable Life Assurance Society of the United States, assets \$185,044, 210 06.
Commercial Union Assurance Co., Ltd., of London, assets \$16,517,786 00.
Imperial Insurance Company, Limited, of London, assets \$9,362,020 00.
Lion Fire Insurance Company, Limited, of London, assets \$4,125,000 00.
The Board of Underwriters of New York.
The National Board of Marine Underwriters of New York.

FOR LEASE.

NO. 5.—THAT DESIRABLE LOT ON the West side of Judd street, on the Wai-ki side of the residence of C. Boite, Esq. This affords one of the finest building sites in the city. A long lease on moderate terms to a desirable tenant.

FOR SALE.

NO. 2.—FOR SALE OR LEASE VACANT lot on Young street, near Thomas Square. Desirable location near the residence of L. Dee. Price \$2200.

NO. 6.—LAND AT KUMUELI, KAMALO, Molokai. Price \$275. One-half expense of deeds. Price reduced to \$225.

NO. 8.—1 ACRE OF PINE TARA LAND, all in taro, located at Kamakela, water right goes with the land. Last year's taro crop sold for over \$300. Price \$1300. One-half expense of deeds.

NO. 9.—BUILDING LOT AT AALA, Palama. 50x15 feet, on Aala lane. Price \$1400. One-half expense of deeds.

NO. 10.—2 LOTS, EACH WITH TWO-story house, at Aala, Palama. Price together \$1650, or singly \$1000 and \$750. One-half expense of deeds.

NO. 11.—LOT WITH COTTAGES ON Punchbowl street, below Queen street, near water front, will ultimately become fine business property. Price \$3500. One-half expense of deeds.

NO. 13.—328 ACRES GRAZING, COFFEE and feed lands at Honokua, South Kona, Hawaii.

NO. 14.—LAND AT PULWA, NUUANU valley, mauka of "Hanai a Kamalama." Queen Emma's old residence; area 3 7/10 acres. Planted to strawberries and taro. Price \$500.

NO. 16.—HOUSE AND PREMISES ON the west corner of Hotel and Kekaulike streets. Area 1425 square feet. House has recently been repaired and shingled. A rare business opportunity. Deed, stamps and acknowledgments at expense of purchaser. Price \$1200.

NO. 18.—DESIRABLE RESIDENCE with grounds at Kulihi-waena. Houses, stables, outbuildings all complete. Water laid on. Fruit trees in bearing. Climate perfect. Price \$3500.

NO. 19.—THE NEW, ELEGANT AND commodious family residence with spacious grounds, situated opposite the residence of Judge J. A. Magoon, on Keeaumoku street. A chance for a splendid bargain. Possession given on June 30, 1896. For full particulars inquire of the undersigned.

Besides the above I have other desirable property for sale and lease. For information call at the office,
Cartwright Block, Merchant St.

BRUCE CARTWRIGHT

THE HAWAIIAN SAFE DEPOSIT

And Investment Company
STOCKS HAVE BEGUN TO MOVE!
The favorable weather during the past summer gives promise of a large crop for 1896 and with an estimated shortage of the world's production of One Million Tons of Sugar, higher prices are looked for.

Persons alive to the situation are beginning to purchase now. During the present month we have made more sales of First-Class Stocks than for the past twelve months.

We are now buying and selling the following:
Hawaiian Sugar Company Stock,
Ewa Plantation Company Stock,
Hauka Sugar Company Stock,
Honolulu Sugar Company Stock,
Hawaiian Agricultural Company Stock,
Paia Plantation Company Stock,
Makua Telephone Stock,
Hawaiian Electric Company Stock,
Also Hawaiian Government Bonds, and Plantation first Mortgage Bonds.

We have some very secure boxes in the safe deposit vaults to let by the month or by the year at very reasonable rates.

For particulars apply to
THE HAWAIIAN SAFE DEPOSIT

And Investment Company,
408 Fort Street, Honolulu.

New Fire Insurance Agency.

THE UNDERSIGNED HAVING BEEN

appointed agent for the Hawaiian Islands of the well known and reliable

LION

FIRE INSURANCE COMPANY,

Limited,

OF LONDON, ENGLAND,

is now prepared to effect insurance against fire on dwellings, stores, warehouses, merchandise, &c. Patronage solicited.

William R. Castle.

4207-1m

The Daily Advertiser 75 cents a month. Delivered by carrier.

Delivery Wagons

We have built some of the best wagons in the city for grocers, butchers, hardware dealers, etc., and WE CAN BUILD ONE FOR YOU at a moderate price.

We guarantee our work for a year.

Hawaiian Carriage Manufacturing Co.,

NO. 70 QUEEN STREET.

JUST ARRIVED,

An Entirely New

Stock of:

Dry Goods,

COMPRISING

Ribbons, Veilings,
Gloves, Hosiery,
Dress Goods, Flannelettes,
Waterproof Coats, Serges,
Tweeds, Etc., Etc.

BEST QUALITIES AT LOWEST PRICES.

L. B. KERR,

Queen Street.

One of the Advantages

Which the tourist and others who are desirous of taking pictures of the scenery of the Hawaiian Islands have, is the nearness and easy accessibility to the most romantic and picturesque points.

ANOTHER OF THE
ADVANTAGES

Is that we keep constantly on hand a full stock of photographic supplies. For the holidays, we are offering you a camera called the

\$8.00 NO. 2 BULLET \$8.00
(LOADED.)

Measures 4 1/2x4 3/4x5 3/4 inches; makes a picture 3 1/2x3 1/2 inches, and weighs loaded for 12 pictures, only 21 ounces. One button does it. The shutter is simplicity itself. To make a snap shot, slide the button to the left as far as it will go. This sets the shutter. Press the button down. This makes the exposure. There are no plugs or lens caps to lose, no extra levers, no complicated mechanism—one button does it all.

\$5.50 ALSO THE Pocket Kodak \$5.50

Is about as big as a well filled purse and weighs only 5 ounces. Uses roll films 12 or 18 exposures. Both can be loaded at daylight. Perfect in workmanship. Rich and dainty in finish.

HOLLISTER DRUG COMPANY.

AN INDUCEMENT FOR

Out of Door Life

Is a Close, Stuffy Roomed House.

G. W. LINCOLN

Can build you a house that will be as airy and comfortable as all out doors. Consult me before building.

G. W. LINCOLN,

Contractor and Builder of Anything.

MERIT

Is what makes the ready sale of CLOISONE WARE as well as the Lacquer and Bronze Ware. Special invitation is extended to lovers of the beautiful in these goods to inspect my stock. New Goods received ex Rhosina that will command your attention.

K. FURUYA,

Hotel Street,

Next to Ordway & Porter's.

OPIUM EX AUSTRALIA.

"Harness" Containing Sixty-Three Tins Landed by Two Women.

A man named Bonani, supposed to be a Greek, met two female friends on the arrival of the Australia last night and escorted them to his room in Fowler's Yard.

As they passed out the gate of the Oceanic dock Special Cordes noticed the women had anxious but rather pleased expressions of countenances. They interested him and he followed in their wake, imagining at times that he heard a peculiar dull sound coming from somewhere in close proximity to him. The women walked, too, with a sort of impediment which attracted his attention.

He followed them and located them in the room of Bonani. He reported the circumstance to Captain Scott, who immediately secured a search warrant, and Special Cordes made a call on Bonani. He had retired, but was told to sit up while a search was made.

Under the bed the officers found two pairs of drawers, evidently made for women. Each leg was divided up into pockets the width of a tin of dope. Strings were there to tie around the waist, and over the shoulders, very much on the principle of men's suspenders.

The pockets in each pair of these improvised bloomers contained tins of opium. Bonani made the conventional excuses that he knew nothing of the matter. The exact "rake off" in this case was sixty-three tins. The women evidently got out of the way as soon as they discharged their cargoes as they were not in the room when the raid was made. Bonani was taken to the station house and, on searching him, \$55 were found in his pocket.

The supposition is that the women wore the bloomers when they left the steamer, their skirts covering the bundles safely.

The Circus.

A large audience was present at Wirth's circus last night. All the favorites were in the ring and gave excellent entertainment for the spectators. There will be no performance tonight owing to the play, "Meredith's Old Coat" at Independence Park pavilion. Thursday night will possibly be the last appearance of the company as they leave for Japan immediately on their return from Kauai. During the last two performances Lahl Sing has distinguished himself in his jockey act and clearly demonstrated that he may justly claim to be the greatest rider that ever visited the islands.

Vacuum Oils.

Is it not a little surprising that the vacuum oils should be known in Italy, when they are made at so remote a place as Rochester, N. Y. The fact that the chief engineer of the Italian man-of-war Christoforo Colombo knew and selected the vacuum oils for his ship when in this port, is an evidence that good oils speak for themselves the world over.

Word was received by Theo. Hoffmann of the Hawaiian Electric Light Company that his brother, an engineer in an electric light station, at San Jose, Cal., was instantaneously killed by an electric shock.

Weak And Nervous

Describes the condition of thousands of people at this season. They have no appetite, cannot sleep, and complain of the prostrating effect of warmer weather. This condition may be remedied by Hood's Sarsaparilla, which creates an appetite and tones up all the organs. It gives good health by making the blood pure.

Hood's Pills are the best after-dinner pills, assist digestion, cure headache. HOBSON DRUG CO., wholesale agents.

NO CIRCUS TONIGHT!

Owing to the Performance of Meredith's Old Coat For the benefit of a charitable institution, there will be no performance by

Wirth's Pacific Circus

Until TO-MORROW.
THURSDAY NIGHT.
Program for which will be announced later.



Awarded
Highest Honors—World's Fair,
Gold Medal—Midwinter Fair.

PRICE'S CREAM BAKING POWDER

MOST PERFECT MADE.

pure Grape Cream of Tartar Powder. Free from Ammonia, Alum or any other adulterant.

In all the great Hotels, the leading Clubs and the homes, Dr. Price's Cream Baking Powder holds its supremacy

40 Years the Standard.

LEWIS & CO.,
Agents, Honolulu, H. I.

Yesterday's Celebration.

Consul Hackfeld and Hon. Paul Isenburg entertained a large number of officials and merchants at the office of Hackfeld & Co. yesterday from 12 until 2 o'clock. There was a very nice collation, and toasts to the health of the German Emperor were drunk.

Flags were displayed on most of the shipping and on all of the Government buildings and consulates.

It is reported that a bill will be introduced in the next Legislature making it an offense to open butcher shops and markets of any character on Sunday. The white proprietors of the butcher shops are in sympathy with the movement and say they would prefer keeping open until 10 o'clock Saturday night so they could have Sunday for rest.

IN THE BEGINNING

Of the new year, when the winter season of close confinement is only half gone, many find that their health begins to break down, that the least exposure threatens sickness. It is then, as well as at all other times, and with people even in good health, that the following facts should be remembered, namely: That Hood's Sarsaparilla leads everything in the way of medicines; that it accomplishes the greatest cures in the world, and requires the largest building in the world devoted exclusively to the preparation of the proprietary medicine. Does not this conclusively prove, if you are sick, that Hood's Sarsaparilla is the medicine for you to take?

HOBSON DRUG CO., wholesale agents.

Your Stock

Will do better on
FIRST-CLASS FEED.

HAY AND GRAIN

BOUGHT OF US

Is the very best at the
VERY LOWEST PRICES.

CALIFORNIA FEED COMPANY

Nuuanu and Queen Streets.

TELEPHONE 121.

SCOTTISH UNION

— AND —

National Insurance Co.

The undersigned has received the appointment of Agent for the Hawaiian Islands of the above Company, which is one of the strongest financially in the world, and is prepared to take risks at the regular rates.

Capital Assets \$30,000,000.
Total Assets \$41,372,606.

JOHN S. WALKER.

LECTURE

— BY —

Chief Justice Judd,

— ON —

Saturday, February 1

At 7:45 p. m., at

Y. M. C. A. HALL.

SUBJECT: "The Hawaiian Constitution."
Admission 25 cents.
Members of Y. M. C. A. free.
4210-34

Kilohana Art League.

The Kilohana Art League prizes are on show in one of the windows of the Pacific Hardware Company and are made up of the finest work put forth by the club. The various schools of the city are urged to hand in their prize compositions to W. M. Graham before January 30th; also the roll of honor consisting of one member from each one of the classes constituting the respective schools.

There are whispers abroad that the Kilohana Art League will give a mammoth loan exhibition in May, this to be made up of works of art and various things curious and beautiful in the city.

The second anniversary of the league will take place in May.

The Commercial Journal.

The above journal will appear today about noon and will contain a number of articles of special interest to the business community. The paper will be on sale at the principal book stores and at the office of publication.

There will be a special sale of Dr. Jaeger's Sanitary Wool Underwear at Tracey's, to reduce stock. Prices will be \$8 per suit for regular sizes, and \$3.50 per suit for extra large sizes.

Ladies' suits, all sizes, white and natural, at \$3 per suit. Do not let this opportunity pass to get these goods at much less than their value, as the sale will only last till stock is reduced.

CASTLE & COOKE, Ltd.,

Life and Fire
Insurance Ag'ts.

AGENTS FOR

New England Mutual

LIFE INSURANCE COMPANY
Of Boston.

First Fire Insurance Company
Of Hartford.

CASTLE & COOKE LIMITED,

Importers
Hardware

GENERAL MERCHANDISE.

We wish to call your attention to the following goods just received from England:

Sheet Zinc,
Bar Iron,
Anvils,
Fence Wire,
Hydraulic Jacks,
Rain Gauges,
Hubbuck's White Lead,
Hubbuck's White Zinc,
Sauce Pans,
Tea Kettles,
Fish Hooks,
Dog Chains,
Chamois Skins,
Razors, Etc., Etc.

CASTLE & COOKE, Ltd.

IMPORTERS,

Hardware and General Merchandise.

Gasoline \$3.25 per case, delivered.

DEATH TO

High Prices

No more middle-men's profits when you buy of us.

We buy no more goods from wholesalers. Everything comes direct from the factory.

LOOK AT THIS!

Bedroom Sets

— FOR —

\$30.00

CONSISTING OF

7 PIECES, finished as fine as \$50 to \$100 sets. Large Beveled Mirrors; with tables having drawers 18x28 and bottom shelf; draw work has center slide and works perfectly, for \$25 and upwards.

ANOTHER SNAP

— IN —

Bedroom Sets!

We are going to clean out our entire old stock consisting of 7 piece sets. We want room. Goods are coming direct from the factory.

Chiffoniers

\$13.75

Do you want anything better than that?

NO TROUBLE TO SHOW GOODS. We challenge anyone to sell the same goods for the same money. This means money to you.

Call and see for yourself.

HOPP & CO.,

Furniture Dealers,

CORNER KING AND BETHEL STS.

JUST A WORD

DON'T FAIL TO BUY OUR
NO. 1 CLIPPED OATS

Just received ex Milwaukee.

A. L. MORRIS & CO.,

Telephone 422. 51 Fort Street.

T. B. MURRAY,

KING STREET,

Fitted Up With all the Modern Appliances for

MANUFACTURING AND REPAIRING

Vehicles of Every Description

ALL WORK GUARANTEED.

TELEPHONE 572.

Sanders' Express,

TELEPHONE 86.

Pianos and Furniture moved by men of 10 to 15 years' experience. Baggage marked in our care delivered at once. Rubbish carted for 50c. and upward per month by the only private concern in town. Office—No. 87 King street, near Fort.

F. H. FOSTER, Manager

Removal Notice.

Thomas Hollinger

HAS REMOVED HIS

Blacksmith Shop

Into the old "Bulletin" building, Queen street, directly opposite his old stand. 4207-1w

WANTED AT THE LOUVRE SALOON.

51 Nuuanu Street,
5000—men daily to drink the—5000
FAMOUS SEATTLE BEER,
Ice Cold on Draught.

EDWARD & HARRY,
Postoffice Box 475, Honolulu

Indurine

A Cold Water Paint Especially
Designed for Inside Work on
Factories and Public
Buildings.

It is a dry powder which can be prepared for use by simply stirring in COLD WATER, and can be applied by any one and will always produce good work.

It is VERY WHITE, extremely reflective and hardens on a wall like stone and will take any tint.

It will last for years and is unaffected by gases.

One coat covers better than two coats of oil paint or whitewash.

It can be used on any surface and for all classes of work, even for the finest decorating.

Outside Indurine.

This Is for Outside Work.

Such as Fences, Outbuildings and Laborers' Quarters. It is a thick paste to be diluted with cold water; stands rain and exposure, as well as oil paint, and costs but a fraction as much.

COLD WATER KALSOMINE

Adapted for Dwellings, Offices and Public Buildings, or any other place where KALSOMINE is used. It will not rub, discolor or scale off.

LUCOL.

A new Paint Oil. It comes raw and boiled; is superior to linseed, and covers with one-third less lead and pigment to the gallon.

P. and B. Compounds and Papers.

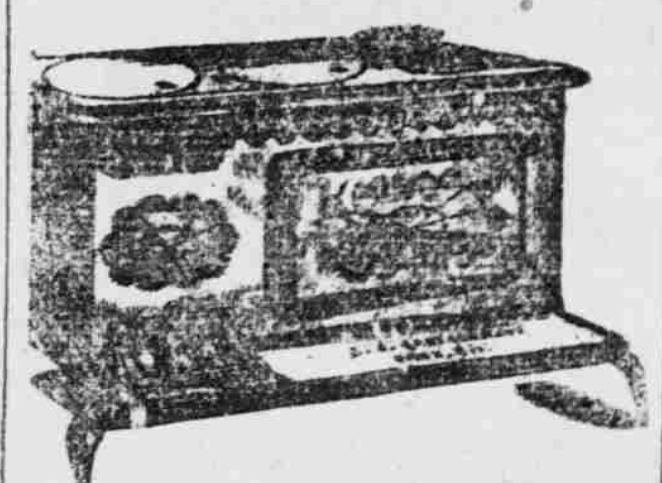
FOR SALE BY

Wm. G. Irwin & Co., Limited,

Agents for the Hawaiian Islands.

JOHN NOTT,

IMPORTER AND DEALER IN



Steel and Iron Ranges,

STOVES AND FIXTURES,

Housekeeping Goods,

AND

KITCHEN UTENSILS,

Agate Ware, Rubber Hose,

PUMPS, ETC.

PLUMBING,

Tin, Copper & Sheet Iron Work.

DIMOND BLOCK

KING STREET.

S. OZAKI,

311 King Street, Corner of Smith Street

EX MOUNT LEBANON

We received a fine consignment of

ART CABINETS,

Porcelain and Lacquer Ware,
Silk Goods in endless variety

— COMPRISING —

Handkerchiefs, Kimonos, Neckties,

Ladies' and Gents' Silk Shirts,
Japanese Toys and Novelties,

Bed Rock Prices!



A Model Plant is not complete without Electric Power, thus dispensing with small engines.

Why not generate your power from one CENTRAL Station? One generator can furnish power to your Pumps, Centrifugals, Elevators, Plows, Railways and Hoists; also furnish light and power for a radius of from 16 to 20 miles.

Electric power being used saves the labor of hauling coal in your field, also water, and does away with high-priced engineers, and only have one engine to look after in your mill.

Where water power is available it costs nothing to generate Electric Power.

THE HAWAIIAN ELECTRIC COMPANY is now ready to furnish Electric Plants and Generators of all descriptions at short notice, and also has on hand a large stock of Wire, Chandeliers and all Electrical Goods.

All orders will be given prompt attention, and estimates furnished for Lighting and Power Plants; also attention is given to House and Marine Wiring.

THEO. HOFFMAN, Manager.

Sugar! Sugar! Sugar!

If Sugar is what you want use

FERTILIZER.

The Hawaiian Fertilizing Company has just received per "Helen Brewer"

50 Tons Soft Phosphate Florida,
150 Tons Double Superphosphate,
300 Tons Natural Plant Food,
25 Tons Common Superphosphate

Also per "Martha Davis" and other vessels,

Nitrate of Soda,
Sulphate of Ammonia,
Sulphate of Potash,
Muriate of Potash & Kainit
High-Grade Manures

To any analysis always on hand or made to order.

A. F. COOKE, Agent.

C. BREWER & CO., LIMITED,
Queen Street, Honolulu, H. I.

AGENTS FOR

Hawaiian Agricultural Company, Onomea Sugar Company, Honouliuli Sugar Company, Wailuku Sugar Company, Waihee Sugar Company, Mahee Sugar Company, Haleakala Ranch Company, Kapapala Ranch, Planters' Line San Francisco Packets, Chas. Brewer & Co.'s Line of Boston Packets.

Agents Boston Board of Underwriters.

Agents Philadelphia Board of Underwriters.

List of Officers:

P. C. Jones, president; Geo. H. Robertson, Manager; E. F. Bishop, Treasurer and Secretary; Col. W. F. Allen, Auditor; C. M. C. Jones, M. Waterhouse, A. W. Carter, directors

HONOLULU

CARRIAGE MANUFACTORY.

W. W. WRIGHT, Proprietor.

CARRIAGE BUILDER

AND REPAIRER.

All orders from the other islands in the Carriage Building, Trimming and Painting Line will meet with prompt attention.

P. O. Box 321.

128 and 130 FORT STREET.

8-40-4

THIS IS THE TELEPHONE NUMBER to ring up if you want any Plumbing or Tin work done promptly and properly. I am prepared to do all kinds of work in my line at the Lowest Possible Rates.

Jobbing a Speciality.

JAS. NOTT, JR.,
Tinsmith and Plumber.

HALEAKALA PARTY.

Maui Social Life Very Active, as Usual.

Paia Wants a Band Concert—Kate Field Expected—Ships Arrive—Heavy Kona Weather.

MAUI, Jan. 25.—On Friday, the 17th, by invitation, Misses Millie Beckwith, Eastman, Aiken, Zeigler, Eva and Nellie Smith, Messrs. David Colville, Rodrigues, Rough, Hay, Aiken, Hardy and Fred Baldwin, took possession of the Olinda House and spent several delightful days there. On Saturday eight of the ladies and gentlemen visited the crater of Haleakala. The party is to be known to fame as the "cyclone party," so named partly because of the wild kona blast which blew during most of their stay, and partly because of the fun and frolic which made the occasion a memorable one. The return to more conventional regions was made on Monday, the 20th.

Wednesday evening, the 22d, at the residence of Mrs. D. C. Lindsay, Paia, a "nut social" was given under the auspices of the Y. P. S. C. E. The program of the occasion was a most unique and interesting one.

"Craigilea," the Haleakala summit house, is in need of repair. Two sheets of corrugated iron have been blown from the roof by the winter winds.

It is possible that Miss Kate Field may visit a Maui cattle ranch on her return from Hawaii.

Dr. P. J. Aiken and family are spending several weeks at Olinda House.

Friday evening, the 31st, the January session of the Makawao Literary Society will take place at the Paia residence of J. W. Colville.

Miss Eastman returns to Honolulu today. She has been the guest of Miss Beckwith of Sunnyside.

It is announced that the Hawaiian Band, on its return from Hilo during the latter part of next week, will give concerts at Wailuku and Kahului. It is suggested as a satisfactory change in the program that the two, or at least one, of the proposed Kahului concerts be given at Paia. The population of Makawao district equals if it does not exceed that of Wailuku district.

During last evening, the 24th, a party of maidens fair and attentive bachelors enjoyed the moonlight and a horseback ride from the Paia church to the residence of G. E. Beckwith, Haiku, via Hamakua and Maliko gulch.

Peach trees are blossoming in upper Makawao.

E. R. Hendry of Honolulu has been at Haleakala ranch during the week.

George Groves desires to have it stated that he did not resign the position of Superintendent of Wailuku roads.

On Sunday, the 19th, the bark Amelia arrived in Hana with lumber for the big flume. She expects to have all her cargo discharged by tonight and to sail loaded with sugar on Feb. 1st.

The schooner J. D. Tallant will not sail from Kahului till some time next week.

Weather—The heaviest kona wind in years blew during the 17th, 18th and 19th. During this week light kona winds with occasional local rains.

The Gleaners' Society.

A meeting of the Missionary Gleaners was held in the parlors of Central Union Church yesterday afternoon, Mrs. Parmelee presiding. Over thirty ladies were present. The afternoon's sewing was done for the benefit of the poor children in Miss Rhoda Green's school.

A donation of \$10.00 was made to the Woman's Exchange, and another of \$25.00 to Mr. Frank Damon's Hotel street mission. The Gleaners will also donate \$10.00 each month for one year to the Kindergarten Association.

It was voted to purchase a sewing machine for the use of the ladies of the Gleaners' society. More and more cases of poverty are carried in to the ladies daily, and the great amount of sewing necessary to supply the demand for clothing, seems to justify the purchase of a machine.

Mrs. O. H. Gulick gave a short and interesting talk on mission work in Japan.

The Police Court.

In the police court yesterday morning, seven cases of drunkenness paid the usual fine.

Olelo plead guilty to the charge of assault and battery on one Ai-

laiki in Honolulu, January 26th, and was fined \$26 and costs.

A. M. Hewitt plead guilty to the charge of hitting a Chinaman in the stomach with a brick bat and was fined \$30 and costs.

The case of Kepano for larceny in the fourth degree was finished yesterday, but was continued until today for argument.

DON'T LIKE HIS RELATIVES.

Emperor William's Dislike for England.

LONDON, Jan. 14.—That these relations are offensive, he uses the imperative in his intercourse with all his relations in England and Germany, and holds himself to be the head of the family next to the Queen. As the son of the British Princess Royal, he always contends he is the heir to the British throne.

In connection with this subject the Frankfort Zeitung renews the story that Emperor William, in the event of the death of the Queen, will claim the throne of the United Kingdom and prepare to enforce his rights by force of arms. As a believer in the divine rights of kings, he would not regard an adverse decision on his claim by Parliament.

The only member of the British royal family who is friendly to Emperor William is the reigning Duke of Saxe-Coburg and Gotha (the Duke of Edinburgh). The Prince of Wales and the Duke of York do not speak to him unless absolutely necessary.

The Duke of Fife, the Marquis of Lorne and Prince Henry of Battenburg, all of whom married members of the royal family and whom the Emperor detests because they had the presumption to do so, return the hatred he feels for them.

The influences operating from the courts of the German States as well as from St. Petersburg are more likely to control the Emperor than English family sentiment.

His Majesty's animosity toward the Duke of Fife, who married the daughter of the Prince of Wales, may have something to do with his rejoicing at the collapse of the British South Africa's forces, as the Duke is connected with that company.

Good Government in Hawaii.

The republic grows in strength, and the people of Hawaii are enjoying a better government than they ever had before. Honesty is no longer a scarce article on the islands, and the reign of the kings and queens of misrule is over for all time.—Baltimore American.

It will be an agreeable surprise to persons subject to attacks of bilious colic to learn that prompt relief may be had by taking Chamberlain's Colic, Cholera and Diarrhoea Remedy. In many instances the attack may be prevented by taking this remedy as soon as the first symptoms of the disease appear. 25 and 50 cent bottles for sale by all druggists and dealers. BENSON, SMITH & Co. agents for H. I.

Second Performance

—OF THE COMEDY—

"Meredith's Old Coat"

—FOR THE—

BENEFIT OF KAWAIAHAO CHURCH

—AT—

Independence Park Pavilion

—ON—

TUESDAY EVENING, JAN. 28

CURTAIN WILL RISE

Promptly at 8 O'clock.

TICKETS ON SALE EXCLUSIVELY AT THE HOBSON DRUG COMPANY.

Box Plan Now OPEN.

Reserved Seats \$1.
General Admission 50c.
4209-2t

The Pasteur Filter

INVENTED BY LATE

PROF. PASTEUR,

Pronounced the best Water Filter in use. For sale and can be seen in operation at

J. A. HOPPER'S.

4208-3w

The Birth Stone for January is the Garnet.

"Who Steals My Purse Steals Trash"

Would never have been uttered by the immortal Bard of Avon, could he have beheld the beautiful gold and silver mounted POCKET BOOKS displayed in our showcases.

BEAUTIFUL?

You wouldn't believe it possible to make things out of leather quite so fine, nor would you imagine the strange kinds of skins used in their manufacture. Take a monkey skin for instance, never saw one? Well it's about as funny a looking thing as you ever looked at. The different kinds of snake and lizard skins, varying from the creamy white to the dark green; colors enough to match almost any costume, they "come to stay and wear forever." Seal, Morocco, Kangaroo, Crocodile and Alligator. A few of the plainer leathers, but all made up in faultless style.

"THERE ARE OTHERS"

But you know the difference.

H. F. WICHMAN

HORSE WANTED.

A GOOD, LARGE, QUIET FAMILY horse wanted, black preferred. Please state color, size and price. Address "G." this office. 4209-3t

FOR SALE.

—A VERY FINE—

Thoroughbred Durham Bull, 5 YEARS OLD.

Inquire at James Carty's Stables. 4208-2t

J. T. LUND,

128 and 130 Fort St., opp. Club Stables.

Practical Gun and Locksmith.

NICKEL PLATING A SPECIALTY.

Bicycles repaired, rented or for sale.

MRS. H. HERBERT

LABOR -: BUREAU

308 Merchant Street.

TELEPHONE 139.

MISS D. LAMB,

Lawyers' Clerk

AND

Notary Public,

Office: With J. A. Magoon.

NOTICE.

CHANG LEONG AND CHANG CHE-ong having sold all interest in their farm in Pauoa to Lau Kim Yung and Wong Kim Chin, notice is hereby given that the latter only are authorized to collect any moneys due to said business, and that they are now responsible for the debts of the concern. Honolulu, January 20, 1896. 4207-1w

DRAFT LOST.

NOTICE IS HEREBY GIVEN THAT draft No. 223, drawn by the Reciprocity Sugar Company, upon C. Brewer & Company, Ltd., on July 5, 1895, in favor of Hookano (w), for the sum of \$20 has been lost. Payment having been stopped, parties are warned against negotiating the same. C. Brewer & Company, Ltd. GEO. H. ROBERTSON, Manager. Honolulu, January 13, 1896. 4198-3m

CHONG KEE RESTAURANT

cor. Merchant and Nuanu sts.

Meals First-Class.

Chicken Served Twice a Week.

Meals 15 cts. down stairs, 25 cts. up stairs. 4189-1m

The Daily Advertiser 75 cents a month. Delivered by carrier.

A NEW LINE OF LADIES' UNDERWEAR

AND LADIES' AND CHILDREN'S

Black Lisle Thread Hose

Men's Black Socks

ARE STILL SELLING AT

\$2.00 per Dozen.

B. F. EHLERS & CO.

For Twenty Years

We have been tailoring at moderate prices.

Twenty years of experience to profit by.

Our KNOWLEDGE of CLOTHES for STYLE, FIT, and WORKMANSHIP, have stood the test as the liberal patronage we have received assures us of that fact.

We have just received our fall stock of woollens, which we are offering at prices that will astonish you.

H. S. TREGLOAN & SON.

ENTERPRISE PLANING MILL,

PETER HIGH & CO., Proprietors
OFFICE AND MILL.

Alakea and Richards Streets, near Queen, Honolulu, H. I.

--: MOULDINGS --:

Doors, Sash, Blinds, Screens, Frames, Etc.
TURNED AND SAWED WORK.

Prompt attention to all orders.

TELEPHONE: 55

WOVEN WIRE MATTRESSES WHICH WILL NOT RUST.

STEEL SPRING WIRE has advanced in price since my importation of five [5] tons per "Martha Bockhahn." Makers of Wire Beds all over the world have advanced prices at least 25 per cent., I HAVE NOT SO FAR. But prices are getting still higher. After January 31st, I shall raise my prices to correspond with the advance.

WOVEN WIRE BAILEY,

Wire Mattress and Iron Bed Maker Queen Street.

H. E. MCINTYRE & BRO.,
EAST CORNER FORT AND KING STREETS
Importers and Dealers in

Groceries, Provisions and Feed.

New and Fresh Goods received by every packet from California, Eastern State and European Markets.
Standard Grades of Canned Vegetables, Fruits and Fish.
Goods delivered to any part of the city. Satisfaction guaranteed.
Island trade solicited.

P. O. BOX 145.

TELEPHONE NO. 92.

JAPANESE BAZAAR,

No. 411 King Street, Next Door to Castle & Cooke's

—IMPORTER AND DEALER IN—

Japanese Dry and Fancy Goods,

Gents' Furnishings, Cotton Shirts, Cotton Crepes, Pajamas. Caps and Straw Hats, 30 cents each, Fancy Articles, etc., Cheap for cash.

K. ISOSHIMA.

P I C T U R E S

Has it occurred to you that a picture is one of the best things to make a Xmas present of?

Everyone enjoys looking at a beautiful thing and what thing of beauty can convey more to the mind than a picture?

Let at least one of your gifts this year be a picture, no matter how little they cost, they will cover more ground than anything else you can buy.

Remember we are selling pictures and frames at San Francisco prices.

You will be astonished at the low prices prevailing at

KING BROS.' ART STORE,

HOTEL STREET.

Save Your Money.

The odd cents is what counts. I can save you from 25 to 35 per cent. on your clothes and guarantee a fit and perfect satisfaction in every respect.

I make friends of my customers, and customers of my friends. Do not be deceived by a grand display. Fine goods well-made is half the battle.

Once tried you will come again. Latest designs constantly received.

I must have room for my new stock. If you are need of clothes, now is your time to see me.

W. W. Ahana,

MERCHANT -: TAILOR,

323 Nuuanu Street.

TO WAIANAE.



SATURDAYS AND SUNDAYS

Trains will leave on Saturdays at 9:15 A. M. and 1:45 P. M., arriving in Honolulu at 3:11 P. M. and 5:26 P. M.
Train will leave on Sundays at 9:15 A. M. arriving in Honolulu at 5:26 P. M.

Round Trip Tickets:

FIRST CLASS : : : \$1.75.
SECOND CLASS : : : \$1.25.

F. C. SMITH,

General Passenger and Ticket Agent.

S. L. B. DE HAWAII.

ALL BILLS AGAINST THE

ABOVE SOCIETY

SHOULD BE PRESENTED AT

ANY TIME TO THE

Board of Directors

THROUGH P. O. BOX 249.

V. O. Teixeira,

SECRETARY.

4201-1m



"STRIKE A LIGHT"

YOU WILL NEVER "MISS FIRE" WITH THE HAWAIIAN BEST SAFETY MATCH. DAMP WEATHER HAS NO EFFECT ON THEM.

It is invariably

100 MATCHES
100 LIGHTS
And no Matches Wasted.

CASTLE & COOKE,
KING STREET.

LOCAL BREVITIES.

No circus tonight.

Sugar firm dull—3½.

A small brown linen bag has been lost.

Beet sugar has advanced in price in Germany.

A. Barnes is looking after the books of J. J. Williams.

W. P. Fennell will return home by the Hall this morning.

H. F. Wichman tells you about beautiful purses this morning.

For fresh Columbia river salmon go to the Metropolitan Meat Co.

The list of officers of the Pearl City Fruit Co., Ltd., is published in this issue.

All claims against Wirth's circus should be presented for payment at once.

Morgan will hold a sale of ship's stores at 10 o'clock January 29th, at his salesrooms.

The annual meeting of the Hawaiian Sugar Company will be held at 9 a. m. January 31.

Fresh frozen fruits and poultry ex S. S. Australia at Camarinos' California Fruit Market.

Morgan will hold a sale of new goggles, carts, wagons, etc., at his salesrooms at noon today.

Chief Justice Judd will lecture on "Hawaiian Constitutions" at Y. M. C. A. Hall February 1.

There was a good turnout of Company H last night and an enthusiastic drill was held.

A nicely furnished room with private family, three minutes' walk from Postoffice, is advertised.

John McLean, proprietor of the Eagle House, entertained members of the Wirth circus at dinner Monday night.

Merediths Old Coat will be on the boards at Independence Pavilion to-night. Secure seats at Hobron Drug Co.

The annual meeting of the stockholders of C. Brewer & Co. will be held at the office of the company February 5th at 10 a. m.

A generous donation of remnants has been received from Mrs. Sachs and Mrs. H. H. Williams by the Kaunakapili Sewing Society.

The H. A. A. C. is more than pleased over the outcome of the field day athletics both financially and from a standpoint of good sports.

The Honolulu Tennis Association has adopted its constitution and has decided to hold the tournament on May 5th, this to be open to all-comers.

Seats for "Meredith's Old Coat" to be presented at Independence Park pavilion for the second time tonight, are selling very rapidly. A few good seats still remain.

Lieutenant Werlich of the navy, late of the Philadelphia, left San Francisco with his wife for Washington, where they will remain for six months he is off duty.

Sasaki was arrested yesterday on complaint of his wife. It seems he has been acting very peculiarly lately, talking to himself and knocking things about the house.

Among the arrivals by the Australia last night were W. G. Irwin, Judge H. A. Widemann, Frank S. Dodge, C. R. McVeigh, Mrs. Dr. Cordelia Green and Miss Alice L. Wall.

The preparations for the grand moonlight excursion to Remond Grove, February 3d, are almost complete. J. W. Chapman, the caterer, will have the matter in charge and it promises to be a good one.

James Lemon of the afternoon watch at the telephone exchange has resigned as operator and has gone down to look after his land in Lala. The boys at the exchange will miss their genial comrade very much.

W. O. Smith will accompany H. J. Rhodes, Superintendent of the Government Nursery, to Molokai this week or next. Mr. Rhodes will remain about a month superintending the construction of sheds and planting seeds at the leper settlement.

Dr. Howard was called to Heeia late yesterday afternoon to attend what are believed to be the fatal injuries of a Japanese laborer, who was unfortunate enough to have his leg broken and get a terrible scalding by the overthrow of a wheelbarrow of hot refuse.

A match race has been arranged between Billy C. and Confederate, to take place at Kapiolani track either Saturday or Monday next. The purse will be \$200 and Halstead's jockey will ride Confederate. Mr. David will take no bets on the race, as he attributes Con-

federate's losing on Saturday to the fact that he had bet \$2 with Jim Quinn on the result.

John S. Walker has been appointed agent for the Scottish Mutual Union and Insurance Co.

Word was received on the Australia by Mr. B. F. Dillingham that his daughter, Mrs. Frear had undergone a successful operation and was doing well.

W. H. Hilliard, the famous American artist, who has resided in Paris for many years, came by the Australia last night to paint a picture of the volcano for Adolph Spreckels.

Miss Blanche Cornwell was riding along King street in a buggy yesterday afternoon when her horse, becoming frightened, ran away. Miss Cornwell held to the reins until the frightened animal was stopped by a mounted patrolman.

Mr. J. C. Scott, manager of the dry goods department of the Hudson's Bay Company's business arrived on the Warrimoo on Saturday and is the guest of Dr. Murray. Mr. Scott may remain in the islands for some time. He is a genial gentleman and considered one of the best singers on the coast.

SACHS' WEATHER BULLETIN.

"What Charlie Says."

DIAMOND HEAD.
JANUARY 26, 1896.

Weather clear; wind light north.

TRIMMED MILLINERY.

In this line we certainly head the list. We carry the Largest Assortment and The Very Latest Style.

Our styles and trimmings are always up-to-date, we never tolerate back numbers.

Leghorn Hats in all grades; also pretty fancy Straws. Children Trimmed Hats, a most complete assortment, with prices way down.

Muslin Hats and Bonnets for children. We have the correct styles. A large assortment to select from and the right prices.

N. S. SACHS,
520 Fort street, Honolulu.

NEW HIGH GRADE
Bicycles for Rent
Terms Reasonable.

HAWAIIAN CYCLE COMPANY
326 Merchant Street.

SPECIAL OFFER TO CLOSE

Choice line of Organdies, \$5 to \$12 complete; choice line of French Organdies, \$12 complete.

We shall continue to offer you your choice of cloth suitings made to order for \$15, \$16 and \$18 complete.

Linen Duck Suits to order \$15.
Linen Duck Skirts to order \$8.
Cotton Duck Skirts to order \$5.
Cotton Duck Suits to order \$10.

If you wish to take advantage of this opportunity to obtain a suit of cloth, organdie or duck cheap, good workmanship, fit and faultless style guaranteed, place your orders early as this offer will positively not be extended beyond the specified time.

B. F. EHLERS & CO.
4186-1m

PAPER PAPER

Roll Wrapping, Flat Wrapping,
Drug Rolls, Straw Rolls,

Roll Paper Cutters

All sizes, no springs to break, last forever.

Toilet Paper, all kinds;
Tissue Rolls, Package Tissue.

Selling this cheap this week. Look at samples and Price Card at front door.

CONTINUATION SALE OF OUR
"SPECIAL BRAND" ENVELOPES.

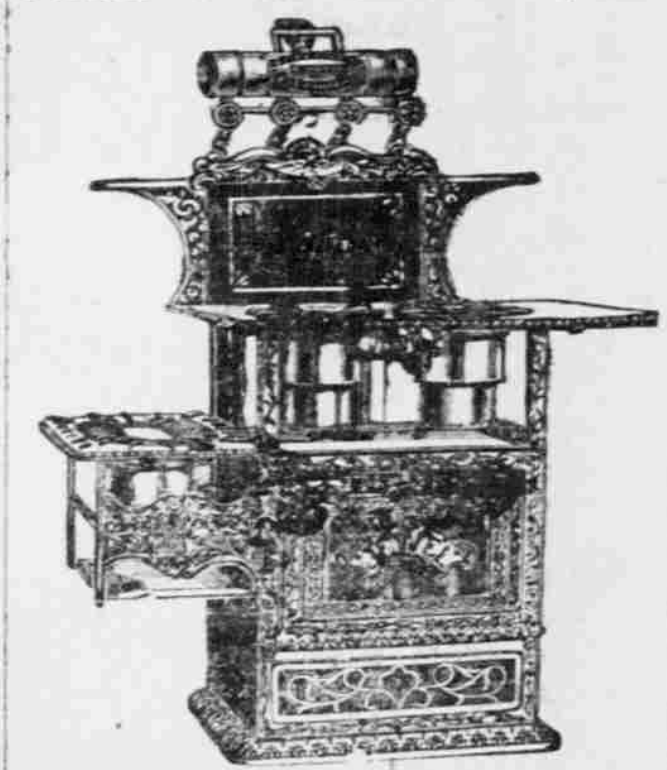
Take advantage of it and save money.

Blank Books.

The largest variety and the lowest prices. Save money! Save money! Save money! We are money savers for you.

WALL, NICHOLS COMPANY,
Republic Building, King Street.

Prices From \$23 to \$35.



New Process Gasoline Stoves.

Gasoline \$3.25 per case delivered.

Castle & Cooke, Ltd.,

Sole Agents, - - Hawaiian Islands

HAZEL BLOOM

The distilled extract of Hamamelis or Witch Hazel has been recognized as a safe and speedy household remedy, both for external and internal application. It has become mostly known under the proprietary titles of "POND'S EXTRACT," "HUMPHREY'S MARVEL OF HEALING," etc. Extensive advertising has rendered this article unnecessarily expensive. We have therefore with a view of saving our patrons this extra charge, succeeded in obtaining a superior WITCH HAZEL EXTRACT, bottled under the trade name of "HAZEL BLOOM."

IT IS THE BEST WE HAVE EVER HAD AND WE CAN RECOMMEND IT.

The cost to you
Is one half . . .

We know the information given above is directly to your interests. We wish you also to know that we try to save you money—and we are doing it every day—by reason of our cut-rate prices.

Hobron Drug Co.

COLLECTION AGENCY.

MESSRS. HUGH P. KING and BISSELL THOMAS beg to inform the public that they have formed a partnership under the name and style of the

HAWAIIAN
Collection Agency

WITH OFFICES AT
No. 326 Merchant Street

(Old Bulletin Office), for the purpose of conducting a

General Collecting Business

It will be their constant endeavor to transact all business entrusted to them with the greatest dispatch and upon the strictest business principles.

Sterling Bicycle

"BUILT LIKE A WATCH"

Absolutely the finest Cycle made. Sold on easy payment system.

Wall, Nichols Company,

Agents for the Hawaiian Islands.

H. H. WILLIAMS

THE PIONEER
Furniture
DEALER,
UNDERTAKER and EMBALMER
Of Honolulu.

MANAGER OF THE

City Furniture Store,
CORNER OF
FORT AND BERETANIA STS.

We keep on hand a large assortment of Goods in our several departments. New Goods every month.

TELEPHONES: Office, 846; Residence and night call, 849.

I. K. L. Corner Is Our Stand.
245 Is Our Telephone.

LARSEN'S EXPRESS Is Our Name.

We move Furniture by the job or \$2 to \$5 by the load, according to quality or distance, and we guarantee all work done by us.

Intending passengers on island or foreign steamers will find us prompt and up to all details in handling, marking and checking baggage.

All work superintended by competent men.

WILLIAM LARSEN,

Proprietor Larsen's Express.

Work Speaks Plainer Than Talk

HONOLULU, H. I., July 20, 1895.

TO WHOM IT MAY CONCERN:

This is to certify that C. Akima has made several suits of clothes for me and the workmanship has been of the best. I take pleasure in recommending him and his work to any and all.

Respectfully Yours,

JAMES B. OBERTEUFER,

Seattle, Wash., U. S. A.

Telephone 662. P. O. Box 496.

C. R. COLLINS.

Manufacturer and Importer of

SADDLERY AND HARNESS,

Both Single and Double.

Has the largest assortment in his line in town and sells them at lowest prices

Everything in the line of Stable Outfitting in stock.

Carriage Tops and Trimmings a Specialty.

Once you call and buy, you will be satisfied.

337 King Street, Near Nuuanu.

GOO KIM,

411 Nuuanu Street, - - - Honolulu.

NEW GOODS! NEW GOODS!

I have just received from America and Europe, a fresh consignment of

Goods Suitable FOR THE Holidays

Choice selection of Christmas Novelties.

Don't fail to examine my stock before buying elsewhere.

STORE TO LET,

King street, near Fort. Apply to

ED. A. WILLIAMS.

FOR SALE.

Fine black horse, perfectly sound. Apply to

ED. A. WILLIAMS.

TO LET.

Fine stable accommodations, one to three stalls. Apply to

ED. A. WILLIAMS.

4141-1f

TANAKA,

JAPANESE BAMBOO STORE,

Alakea street, Masonic Temple.

Manufacturer of

FANCY BAMBOO FURNITURE

Tables, Stands, Hat Racks,

Screens, Flower Stands, Chairs, Sofas,

Book Cases and Bedroom Sets.

ALL STYLES OF FURNITURE

Made to order.

DO YOU KNOW HIM?

A MAN who does not travel, who never rides in a carriage, street car, omnibus or upon a bicycle, who never walks the streets, who cannot slip upon the pavements, who does not go near horses, who can never have sprains, dislocations, broken bones, cuts or bruises, whom fire will not burn, and water will not drown, whom even a dog will not bite, nor lightning strike, who cannot fall from anything?

SUCH A MAN

does not need Accident Insurance.

OTHERS

should apply to

C. D. CHASE General Agent

FOR THE Hawaiian Islands

PREFERRED ACCIDENT INSURANCE COMPANY

OF NEW YORK,

406 Fort Street. Telephone 184.

W. R. RILEY,

SIGN WRITER.

All kinds of signs made on short notice.

Fresco Work.

Bank Lettering.

Office and

Wire Web Signs.

LATEST IMPROVED DESIGNS

EXECUTED.

Office With Sanders' Express

TELEPHONE 86.

4198-1m

VOCAL INSTRUCTION

ANNIS MONTAGUE

(Mrs. Chas. Turner)

Takes pleasure in announcing that she is prepared to receive pupils at her residence.

Correct and Natural Production of the Voice

Based on natural and artistic principles and applying the Italian method to English singing, regulating and developing the voice equally throughout its entire range.

Lessons given by the month, quarterly, or by a series of eight, twelve or twenty-four lessons. Apply personally or by letter

"MIGNON,"

Beretania street, formerly residence of Chas. H. Atherton.

4190-1m

IS

YOUR

SILVERWARE

Sterling Silver or only marked so. Every housewife has heard of the Gorham.

Silversmiths. When they stamp any article sterling silver you can rest assured that it is sterling silver.

We invite the public (tourists especially) to make a thorough examination of our stock and prices in Sterling Silverware,

Souvenir Spoons, Plated Ware, Watches and Diamonds. Native Jewelry manufactured in unique designs and to order.

Jacobson & Pfeiffer,

FORT STREET.

Wenner & Co.'s Old Stand.

H. G. BIART,

Jeweler and Watchmaker,

515 FORT STREET.

HOLIDAY DECLARATION.

Hawaiian and Gold Wire Jewelry to order. Make handsome Presents.

Souvenir Spoons at Very Low Prices.

P. O. Box 355.

FRANK J. KRUGER,

WATCHMAKER.

Watches sold for the very lowest of cash prices or on easy payments.

Watches - - Repaired

ON SHORT NOTICE.

Workmanship guaranteed and prices very reasonable.

Corner Fort and

Merchant Streets.

NOTICE TO THE PUBLIC.

I have bought the sole interest sole

F. E. LYNN AND PATTERSON

In the business known as the

International Iron Works,

LOCATED ON

Queen Street, Honolulu.

All orders for material to be furnished must be signed by me or my attorney-in-fact, Percy Lishman.

All accounts contracted by Lynn and Patterson are assumed by them.

C. R. McVEIGH.

C. & C.

FLOUR

Has gained the confidence of all consumers.

Prices below any other No. 1 Standard

Flour in the market.

WE GUARANTEE

EVERY SACK.

Theo. H. Davies & Co.,

Sole Agents.

WM. G. IRWIN & CO.,

LIMITED.

Wm. G. Irwin... President and Manager

Claus Spreckels... Vice-President

W. M. Giffard... Secretary and Treasurer

Theo. C. Porter... Auditor

SUGAR FACTORS

COMMISSION - - AGENTS.

AGENTS FOR THE

Oceanic Steamship Company

Of San Francisco, Cal.

CENTRAL MARKET,

NUUANU STREET.

First-Class Market in Every Respect.

Besides carrying a full line of meats we make a specialty of

BREAKFAST SAUSAGES,

HEAD CHEESE,

PRESSED CORN BEEF.

Westbrook & Gares,

Proprietors.

New Goods.

A FINE ASSORTMENT.

Tiles for Floors and for Decorating Purposes.

MATTING OF ALL KINDS

MANILA CIGARS

Wing Wo Chan & Co.

210-212 Nuuanu street.

WING WO TAI & CO.

Has Received by the Steamship City of Peking

A Fresh Shipment of

SILVERWARE, IVORYWARE,

GROCKERYWARE, FLOWER POTS,

Vases, Lacquer Ware,

Silk Handkerchiefs and Shawls, Silk Screens,

Fine Mattings and Rattan Chairs,

Manila Cigars and Teas.

FOR LEASE.

A LARGE DWELLING HOUSE IN A charming location, one mile from the postoffice, containing 8 rooms, bath room, etc., partly furnished. Outbuildings consisting of servants' house, stable, carriage house, etc., etc. The grounds comprise 2 large paddocks, and a garden, containing fruit trees and choice plants. Apply to D. LAMB, At office of J. Alfred Magoon, Honolulu.

Pacific Commercial Advertiser

Issued Every Morning, Except Sunday by the
HAWAIIAN GAZETTE COMPANY,
Von Holt Block, King street.

Subscription Rates
The Daily Pacific Commercial Advertiser, Eight Pages.
Per month.....\$ 75
Per 3 months if paid in advance.....2 00
Per year in advance.....8 00
Per year, postpaid to the United States of America, Canada or Mexico.....11 00
Per 1 year, postpaid other foreign 14 00

Hawaiian Gazette, Semi-Weekly, Eight Pages, Tuesdays and Fridays.
Per year, 104 numbers.....\$5 00
Per year, foreign countries.....6 00

PAYABLE IN ADVANCE.
Advertisements unaccompanied by specific instructions inserted till ordered out.

Advertisements discontinued before expiration of specified period will be charged as if continued for a full term.

Liberal allowance on yearly and half yearly contracts.

All persons desiring their advertisements discontinued must send a written order to that effect.

Where cuts are inserted they must be ALL METAL, not mounted on wood, otherwise we assume no risk of their preservation.

C. G. BALLENTYNE,
Business Manager.

THE ADVERTISER CALENDAR.

January, 1896.											
Su.	Mo.	Tu.	We.	Th.	Fr.	Sa.	MOON'S PHASES.				
							Last Qu't Jan 7.				
1	2	3	4	5	6	7	New Moon Jan 14.				
8	9	10	11	12	13	14	First Qu't Jan 21.				
15	16	17	18	19	20	21	Full Moon Jan 28.				
22	23	24	25	26	27	28					
29	30	31									

TIME TABLE

TRAINS											
Leave Honolulu.						Arrive Honolulu.					
Leave Honolulu.	7:40	8:00	8:20	8:40	9:00	Arrive Honolulu.	7:40	8:00	8:20	8:40	9:00
Leave Ewa Mill.	7:50	8:10	8:30	8:50	9:10	Arrive Ewa Mill.	7:50	8:10	8:30	8:50	9:10
Leave Ewa Mill.	8:10	8:30	8:50	9:10	9:30	Arrive Ewa Mill.	8:10	8:30	8:50	9:10	9:30
Leave Honolulu.	8:30	8:50	9:10	9:30	9:50	Arrive Honolulu.	8:30	8:50	9:10	9:30	9:50
Leave Honolulu.	8:50	9:10	9:30	9:50	10:10	Arrive Honolulu.	8:50	9:10	9:30	9:50	10:10
Leave Honolulu.	9:10	9:30	9:50	10:10	10:30	Arrive Honolulu.	9:10	9:30	9:50	10:10	10:30
Leave Honolulu.	9:30	9:50	10:10	10:30	10:50	Arrive Honolulu.	9:30	9:50	10:10	10:30	10:50
Leave Honolulu.	9:50	10:10	10:30	10:50	11:10	Arrive Honolulu.	9:50	10:10	10:30	10:50	11:10
Leave Honolulu.	10:10	10:30	10:50	11:10	11:30	Arrive Honolulu.	10:10	10:30	10:50	11:10	11:30
Leave Honolulu.	10:30	10:50	11:10	11:30	11:50	Arrive Honolulu.	10:30	10:50	11:10	11:30	11:50
Leave Honolulu.	10:50	11:10	11:30	11:50	12:10	Arrive Honolulu.	10:50	11:10	11:30	11:50	12:10
Leave Honolulu.	11:10	11:30	11:50	12:10	12:30	Arrive Honolulu.	11:10	11:30	11:50	12:10	12:30
Leave Honolulu.	11:30	11:50	12:10	12:30	12:50	Arrive Honolulu.	11:30	11:50	12:10	12:30	12:50
Leave Honolulu.	11:50	12:10	12:30	12:50	1:10	Arrive Honolulu.	11:50	12:10	12:30	12:50	1:10
Leave Honolulu.	12:10	12:30	12:50	1:10	1:30	Arrive Honolulu.	12:10	12:30	12:50	1:10	1:30
Leave Honolulu.	12:30	12:50	1:10	1:30	1:50	Arrive Honolulu.	12:30	12:50	1:10	1:30	1:50
Leave Honolulu.	12:50	1:10	1:30	1:50	2:10	Arrive Honolulu.	12:50	1:10	1:30	1:50	2:10
Leave Honolulu.	1:10	1:30	1:50	2:10	2:30	Arrive Honolulu.	1:10	1:30	1:50	2:10	2:30
Leave Honolulu.	1:30	1:50	2:10	2:30	2:50	Arrive Honolulu.	1:30	1:50	2:10	2:30	2:50
Leave Honolulu.	1:50	2:10	2:30	2:50	3:10	Arrive Honolulu.	1:50	2:10	2:30	2:50	3:10
Leave Honolulu.	2:10	2:30	2:50	3:10	3:30	Arrive Honolulu.	2:10	2:30	2:50	3:10	3:30
Leave Honolulu.	2:30	2:50	3:10	3:30	3:50	Arrive Honolulu.	2:30	2:50	3:10	3:30	3:50
Leave Honolulu.	2:50	3:10	3:30	3:50	4:10	Arrive Honolulu.	2:50	3:10	3:30	3:50	4:10
Leave Honolulu.	3:10	3:30	3:50	4:10	4:30	Arrive Honolulu.	3:10	3:30	3:50	4:10	4:30
Leave Honolulu.	3:30	3:50	4:10	4:30	4:50	Arrive Honolulu.	3:30	3:50	4:10	4:30	4:50
Leave Honolulu.	3:50	4:10	4:30	4:50	5:10	Arrive Honolulu.	3:50	4:10	4:30	4:50	5:10
Leave Honolulu.	4:10	4:30	4:50	5:10	5:30	Arrive Honolulu.	4:10	4:30	4:50	5:10	5:30
Leave Honolulu.	4:30	4:50	5:10	5:30	5:50	Arrive Honolulu.	4:30	4:50	5:10	5:30	5:50
Leave Honolulu.	4:50	5:10	5:30	5:50	6:10	Arrive Honolulu.	4:50	5:10	5:30	5:50	6:10
Leave Honolulu.	5:10	5:30	5:50	6:10	6:30	Arrive Honolulu.	5:10	5:30	5:50	6:10	6:30
Leave Honolulu.	5:30	5:50	6:10	6:30	6:50	Arrive Honolulu.	5:30	5:50	6:10	6:30	6:50
Leave Honolulu.	5:50	6:10	6:30	6:50	7:10	Arrive Honolulu.	5:50	6:10	6:30	6:50	7:10
Leave Honolulu.	6:10	6:30	6:50	7:10	7:30	Arrive Honolulu.	6:10	6:30	6:50	7:10	7:30
Leave Honolulu.	6:30	6:50	7:10	7:30	7:50	Arrive Honolulu.	6:30	6:50	7:10	7:30	7:50
Leave Honolulu.	6:50	7:10	7:30	7:50	8:10	Arrive Honolulu.	6:50	7:10	7:30	7:50	8:10
Leave Honolulu.	7:10	7:30	7:50	8:10	8:30	Arrive Honolulu.	7:10	7:30	7:50	8:10	8:30
Leave Honolulu.	7:30	7:50	8:10	8:30	8:50	Arrive Honolulu.	7:30	7:50	8:10	8:30	8:50
Leave Honolulu.	7:50	8:10	8:30	8:50	9:10	Arrive Honolulu.	7:50	8:10	8:30	8:50	9:10
Leave Honolulu.	8:10	8:30	8:50	9:10	9:30	Arrive Honolulu.	8:10	8:30	8:50	9:10	9:30
Leave Honolulu.	8:30	8:50	9:10	9:30	9:50	Arrive Honolulu.	8:30	8:50	9:10	9:30	9:50
Leave Honolulu.	8:50	9:10	9:30	9:50	10:10	Arrive Honolulu.	8:50	9:10	9:30	9:50	10:10
Leave Honolulu.	9:10	9:30	9:50	10:10	10:30	Arrive Honolulu.	9:10	9:30	9:50	10:10	10:30
Leave Honolulu.	9:30	9:50	10:10	10:30	10:50	Arrive Honolulu.	9:30	9:50	10:10	10:30	10:50
Leave Honolulu.	9:50	10:10	10:30	10:50	11:10	Arrive Honolulu.	9:50	10:10	10:30	10:50	11:10
Leave Honolulu.	10:10	10:30	10:50	11:10	11:30	Arrive Honolulu.	10:10	10:30	10:50	11:10	11:30
Leave Honolulu.	10:30	10:50	11:10	11:30	11:50	Arrive Honolulu.	10:30	10:50	11:10	11:30	11:50
Leave Honolulu.	10:50	11:10	11:30	11:50	12:10	Arrive Honolulu.	10:50	11:10	11:30	11:50	12:10
Leave Honolulu.	11:10	11:30	11:50	12:10	12:30	Arrive Honolulu.	11:10	11:30	11:50	12:10	12:30
Leave Honolulu.	11:30	11:50	12:10	12:30	12:50	Arrive Honolulu.	11:30	11:50	12:10	12:30	12:50
Leave Honolulu.	11:50	12:10	12:30	12:50	1:10	Arrive Honolulu.	11:50	12:10	12:30	12:50	1:10
Leave Honolulu.	12:10	12:30	12:50	1:10	1:30	Arrive Honolulu.	12:10	12:30	12:50	1:10	1:30
Leave Honolulu.	12:30	12:50	1:10	1:30	1:50	Arrive Honolulu.	12:30	12:50	1:10	1:30	1:50
Leave Honolulu.	12:50	1:10	1:30	1:50	2:10	Arrive Honolulu.	12:50	1:10	1:30	1:50	2:10
Leave Honolulu.	1:10	1:30	1:50	2:10	2:30	Arrive Honolulu.	1:10	1:30	1:50	2:10	2:30
Leave Honolulu.	1:30	1:50	2:10	2:30	2:50	Arrive Honolulu.	1:30	1:50	2:10	2:30	2:50
Leave Honolulu.	1:50	2:10	2:30	2:50	3:10	Arrive Honolulu.	1:50	2:10	2:30	2:50	3:10