

STEAMER TABLE.	
From San Francisco:	
Coptic	Dec. 3
Sonoma	Dec. 7
For San Francisco:	
Alameda	Nov. 30
Siberia	Nov. 30
Ventura	Dec. 6
From Vancouver:	
Moana	Dec. 17
For Vancouver:	
Aorangi	Dec. 14

HONOLULU

A Bulletin Ad will profitably crowd the

EVENING BULLETIN

3:30 O'CLOCK

Crowd

EDITION

Mary had a little lamb—
You do not look surprised;
Of course you don't for Mary has
been widely advertised.
And something you may learn from
this
If you are not a clam—
You can be just as widely known
as Mary and her lamb.
Let a Bulletin ad. do it.
You'll never rue it.

VOL. XVI. No. 2934 HONOLULU, TERRITORY OF HAWAII, WEDNESDAY, NOVEMBER 30, 1904 PRICE 5 CENTS

Court and Counsel In Parker Case Do Witnesses Favor

By working overtime and for the moment putting aside a criminal case on trial, justice last night and this morning accommodated a couple of travelers anxious to get away in the Siberia at noon today. Samuel Parker and J. T. McCrosson are the travelers accommodated and the case which required the overtime labor on the part of justice is a phase of the famous and much-complicated guardianship matter of Annie T. K. Parker, minor.

Judge Gear sat until almost 11 o'clock last night that certain testimony might be taken prior to the departure of the gentlemen named. At 10:30 o'clock this morning Judge Gear announced jury in the Stephen Mahaulu embezzlement trial being in their seats, that the Mahaulu proceedings would be continued until this afternoon, that the taking of certain testimony in the Parker case might be completed before the departure of the steamer. Counsel for Mahaulu made no objection and jurors were excused until the afternoon, J. T. McCrosson remaining the witness stand in the Parker case. At 11:30 his evidence was in.

During the course of the examination of McCrosson by Attorney W. A. Kinney, representing the guardianship interests, with numerous other learned lawyers, asked the witness whether or not it was at his direction that J. S. Low had instituted proceedings in court for the removal of A. W. Carter as guardian of Annie T. K. Parker. McCrosson emphatically denied that he urged Low to bring the suit.

Kinney's examination was perforce somewhat hurried as he was anxious to crowd everything material within the allotted time.

In the event of the hearing on the motion for the court to pass on the

CORRESPONDENT HAD MUCH TO CONTEND Bass Tells How Japanese Disappointed Men Of Press.

ALTERED CABLES AFTER
APPROVAL OF CENSOR

DISGUSTED WITH CONSTANTLY
BROKEN PROMISES, NEWSPAPER
MEN BROKE ORDERS
AND SAW FIGHT.

John F. Bass, the Chicago News Syndicate correspondent who passed through this city in the Siberia on his way home from the scene of the Russo-Japanese war, speaks in a conservative but deprecating tone of the manner in which the Japanese treated the war correspondents who followed the army in its campaign in Manchuria. Bass was, with a number of other foreign correspondents, attached to Kuroki's army and had a harder time transmitting his news than he had in procuring it.

"The Japanese did not want correspondents; that is very plain. However, if they had told us so we should have had no kick coming and should have saved ourselves much trouble and great expense. But, on the contrary, when we were treated with the greatest superficial courtesy. They were very glad to have us, the representatives of the great and powerful press, etc." When it came to business the contrary treatment was the order of the day. In the beginning they kept promising and procrastinating. They promised to let us go to the fighting line in a few days, time and again, but the promises were never kept. Their actions were in keeping with the usual reputation of Japanese business honor and integrity. They never meant to keep what they promised.

"At last we got tired of the eternal waiting to be allowed to go where we could see anything. I, for my part, decided to break the orders and go where I could see some actual fighting. After that I continually went where I pleased without heeding the orders. In this manner I procured and was able to send to my people the first detailed account of the battle at Liaoyang. I constantly expected to be held up by the military authorities and sent back, the penalty prescribed for correspondents disobeying orders, but no such thing happened and I left the front on my own volition.

"Another thing which was extremely annoying and exasperating to us correspondents was the absolute lack of faith with which the Japanese treated our dispatches. I and other newspapermen have often submitted a message to the official censor and been told by him that it was all right and that it could go. We would then send our message 250 miles overland by courier to the nearest telegraph office and thence to Nagasaki, the base of the cable and through to our papers, only to find that after all the trouble we had taken our precious messages were, even after they had been passed by censor, cut up and altered so as to make them meaningless and incorrect.

"For instance, an English correspondent sent a message concerning Liaoyang home. It contained 158 words and was passed by censor. When the message reached England all it contained was eight words, forming an absolutely meaningless sentence. The rest of the message had been cut out and altered, making the whole thing entirely worthless. On one occasion I sent a message stating that the Japanese Imperial Guards, to which corps I was attached, had lost 1,500 men in a certain engagement. The message was passed by censor but when it reached home it read that 1,500 Russians had been killed in that engagement, making the message worse than worthless."

Want Wireless System For Islands In the Southern Seas

The successful operation of the wireless telegraph system in Hawaii may result in the application of the wireless principle in securing communication between the islands of the South Seas which are operated extensively by the Pacific Islands Phosphate Co.

While that company's steamer Inagua was in this port recently, Mr. Arundel representing the company, made careful inquiry into the working of the Hawaii system and will submit his recommendations to the home office of the company at London and Sydney. Mr. Arundel went out with Manager Cross to Barber's Point and saw how the sending and taking of messages

ASSAULTED CARRIED RETAINED

[Associated Press Special Cable.]
TOKIO, Japan, Nov. 30.—It is reported that the Japanese assaulted, carried, and retained the southeastern portion of 203-metre hill.

Certain of Victory Is Japan's Emperor

[Associated Press Special Cable.]
TOKIO, Japan, Nov. 30.—The Emperor opened the Japanese Diet today. He predicts victory for Japanese arms.

Italy's King Is Preaching Peace

[Associated Press Special Cable.]
ROME, Italy, Nov. 30.—The King has reopened the Italian Parliament. His speech from the throne is liberal in tone. He urges arbitration and avoidance of war.

Rear Admiral Davis For United States

[Associated Press Special Cable.]
WASHINGTON, D. C., Nov. 30.—Rear Admiral Davis has accepted appointment as the American member of the North Sea Commission.

Armies Are Quiet

[Associated Press Special Cable.]
OKU'S HEADQUARTERS, Manchuria, Nov. 30.—The position of the armies here is unchanged.

Can't Agree

[Associated Press Special Cable.]
BERLIN, Germany, Nov. 30.—The negotiations for the commercial treaty between Germany and Austria have been called off.

Money Management

We have just prepared a little booklet entitled "Money Management."

It is free for the asking at our office.



HAWAIIAN TRUST CO.
Limited,
FORT ST.

KAUAI EMBEZZLEMENT

High Sheriff Henry received a wire message this morning from Sheriff Coney of Kauai asking that a Japanese, named Shimizu, who arrived in the steamer Mikahala this morning, be arrested on a charge of embezzlement. The man was located and arrested two hours after the message had been received.

ON ELECTIONS STILL.

Territorial Grand Jury held a session this morning and, among other matters, took further testimony in the matter of complaints alleging fraud at the last election.

POLLS OPEN

In The Bulletin's \$1,000 Prize Contest for the greatest premiums ever offered in Hawaii

TOMORROW.

To secure a delightful termination to your dinner party order one of our Neselrode puddings. Elite Ice Cream Parlors. Telephone Main 182.

Never on time—The cash business.

REFORMS SUGGESTED

HOW TO FILL CHURCHES WITH ENTHUSIASTIC MEMBERS

BOARD OF HEALTH COULD MAKE ITSELF USEFUL ON A WIDER SCALE THAN IT NOW DOES.

A gentleman in Honolulu who gives a great deal of thought to the passing show of everyday life proposed two reforms today in a conversation with a Bulletin representative which should create general interest.

"I have noticed," said he, "much in the papers about Sunday laws, churches, poor church attendance and other problems, and it occurs to me that I have a scheme that will bring men closer to the church and the church closer to the business world with a mutually beneficial result. Let the church offer to its membership the benefits offered by any of the secret orders of good repute. The organization is already there. Cut out all such nonsense as secret and ritualistic lumber but retain all the good things. Give sick benefits. Work out an insurance plan. The dues would not be required to be large and the minister and his assistants could carry out the practical work. This would bring non-Christians to church, and draw the church into business channels.

"It's a good idea.

"I have also been thinking of the glanders and the Board of Health. Glanders is a disease communicable to human beings and is a terrible visitation when it comes upon men. The papers say we shall have an epidemic here. This serious matter is in the hands of the Department of Public Works. It should be controlled by the Board of Health. The community deserves the protection it pays for in supporting the Board of Health.

"Another thing I want the Board of Health to do is to take up the matter of patent medicines. The Board of Health is or should be a protective body. The public should know what patent medicines are detrimental and poisonous and which are harmless. We are entitled to know about these things for our self-protection."

REFORMS SUGGESTED

HOW TO FILL CHURCHES WITH ENTHUSIASTIC MEMBERS

BOARD OF HEALTH COULD MAKE ITSELF USEFUL ON A WIDER SCALE THAN IT NOW DOES.

A gentleman in Honolulu who gives a great deal of thought to the passing show of everyday life proposed two reforms today in a conversation with a Bulletin representative which should create general interest.

"I have noticed," said he, "much in the papers about Sunday laws, churches, poor church attendance and other problems, and it occurs to me that I have a scheme that will bring men closer to the church and the church closer to the business world with a mutually beneficial result. Let the church offer to its membership the benefits offered by any of the secret orders of good repute. The organization is already there. Cut out all such nonsense as secret and ritualistic lumber but retain all the good things. Give sick benefits. Work out an insurance plan. The dues would not be required to be large and the minister and his assistants could carry out the practical work. This would bring non-Christians to church, and draw the church into business channels.

"It's a good idea.

"I have also been thinking of the glanders and the Board of Health. Glanders is a disease communicable to human beings and is a terrible visitation when it comes upon men. The papers say we shall have an epidemic here. This serious matter is in the hands of the Department of Public Works. It should be controlled by the Board of Health. The community deserves the protection it pays for in supporting the Board of Health.

"Another thing I want the Board of Health to do is to take up the matter of patent medicines. The Board of Health is or should be a protective body. The public should know what patent medicines are detrimental and poisonous and which are harmless. We are entitled to know about these things for our self-protection."

THREATEN INSURANCE MEN.

Spokane, Wash., Nov. 14.—Mayor L. W. Boyd has instructed Corporation Counsel Dudley to notify fire insurance officials that the "pink slip" raising rates on city property must be removed at once or the city will immediately prosecute them for entering into a combination to raise rates in violation of law. The "pink slip," raising rates about 20 per cent on a large amount of property, was put in effect several months ago, the plea being that the city has an inadequate water system. This the city is taking steps to remedy. Mayor Boyd estimates that the increase in rates is costing Spokane between \$50,000 and \$80,000 per year.



Alfred Benjamin & Co.
MAKERS * NEW YORK
Correct Clothes for Men

Full Dress Suits And Tuxedos

A better fit, the same fabrics, fine, high class hand tailoring, the absolute correctness, the irreproachable appearance, provided by the best custom tailor at HALF HIS PRICE.

This label guarantees it.

Alfred Benjamin & Co.
MAKERS * NEW YORK

For sale only by

THE KASH CO.,
LIMITED

"For Sale" cards at Bulletin office

**ON MONDAY, NOV. 21st,
Wells, Fargo & Co.**
EXPRESS

Will begin to operate on ALL passenger trains of O. R. & L. Co. Free wagon service in business district, Honolulu.

Phone Main 156
OFFICE—MASONIC TEMPLE.

Convalescing Patient: This bill is very high. Doctor: So was your fever.—The New Yorker.

Burying lots—the undertaker.

FULL DRESS SHIRTS

\$1.50

with and without Cuffs, and anything in MEN'S FURNISHINGS at Selling-Out Prices. Have a look at our

Bath Robes

Levingston, 1075 Bishop, Young Bldg.

STYLISH OXFORDS FOR MEN

A new style in men's Oxfords just here, in tans and Ideal Kid. Tans are exceedingly popular everywhere and shiny leathers favorites always.

The new styles are of the blucher cut and, besides the very best materials obtainable, the greatest skill is used in their construction.

Tans = \$5.50
Ideal Kid = \$6.00

Compare them with \$7 and \$8 shoes and see if you can point out wherein they are inferior.

Manufacturers' Shoe Co., Ltd.
1051 FORT STREET.

MASONIC TEMPLE



WEEKLY CALENDAR.

MONDAY
Le Progress—Election of Officers.

TUESDAY
Honolulu Commandery—Order Temple.

WEDNESDAY
Hawaiian—Second Degree.

THURSDAY
Hawaiian Consistory—Degree Work.

FRIDAY
Aloha Temple—Regular.

All visiting members of the order are cordially invited to attend meetings of local lodges.

HARMONY LODGE, No. 3, I. O. O. F.

Meets every Monday evening at 7:30 in I. O. O. F. Hall, Fort street.
F. M. McGRATH, N. G.
E. R. HENDRY, Secretary.
All visiting brothers very cordially invited.

MYSTIC LODGE, No. 2, K. of P.

Meets every Tuesday evening at 7:30 o'clock in K. of P. Hall, King street. Visiting brothers cordially invited to attend.
JOHN WALKER, C. C.
F. WALDRON, K. R. S.

OAHU LODGE, No. 1, K. of P.

Meets every Friday evening at 7:30 o'clock in K. of P. Hall, King street. Visiting brothers cordially invited to attend.
General Business.
C. M. WHITE, C. C.
E. M. COLEMAN, K. R. S.

HONOLULU LODGE 616, B. P. O. E.

Honolulu Lodge No. 616, B. P. O. E., will meet in their new hall, on Miller and Beretania streets, every Friday evening.

By order of the E. R.
HARRY H. SIMPSON, Secretary.

J. H. FISHER, M. R.

Wm. M. KINLEY LODGE No. 8, K. of P.

Meets every Saturday evening at 7:30 o'clock in K. of P. Hall, King street. Visiting brothers cordially invited to attend.

First Rank.
H. T. MOORE, C. C.
M. M. JOHNSON, K. R. S.

HONOLULU HARBOR, No. 54, A. A. of M. & P.

Meets on first and third Sunday evenings of each month at 7 o'clock at K. of P. Hall. All sojourning brethren are cordially invited to attend.

By order Worthy Captain:
E. H. PARKER.
J. M. RADWAY, C. C.

FIRE INSURANCE

THE

B. F. DILLINGHAM CO.

LIMITED.

General Agent for Hawaii
Atlas Assurance Company of London.
Phoenix Assurance Co. of London.
New York Underwriters' Agency.
Provident Washington Insurance Co.
Phenix Insurance Co. of Brooklyn.

4th floor, Stangenwald Bldg.

LEATHER GOODS, MATCH BOXES, POCKET MIRRORS, THERMOMETERS, CORKSCREWS, RULERS and SCHOOL SUPPLIES; PREMIUMS of every description, at the LOWEST PRICES. Also a fine line of ALUMINUM GOODS. Up-to-date BUSINESS men use our goods to advertise their and please customers. Write us if in need of anything.

THE SAULNIER MFG. CO.
205 MELROSE AVE. NEW YORK, N.Y.

ICE Manufactured from pure distilled water

Delivered to any part of city by courteous drivers.

Oahu Ice and Electric Co., Kewalo. Telephone Blue 3151

COTTON BROS. & CO.

ENGINEERS AND GENERAL CONTRACTORS. Plans and estimates furnished for all classes contracting work.

Room 300, BOSTON BLK., Honolulu.

Weekly Edition of the Bulletin, 05 per year

USE OUR

Mosquito Powder

And be able to read your newspaper in peace.

THE Hollister Drug Co., LIMITED.

1056 Fort Street.

WESTERMAYER

PIANOS

Baby Carriages

Pansy Stoves

"Household"

Sewing

Machines

Hoffschlaeger Co.,

Limited,

25 King Street, near Bethel

Wm. G. Irwin & Co., Ltd.

WM. G. IRWIN...President and Mgr. JNO. J. SPRECKELS...1st Vice Pres. W. M. GIFFARD...2d Vice Pres. H. M. WHITNEY, Jr. Treasurer RICHARD J. IVERS...Secretary A. C. LOVERIN...Auditor

SUGAR FACTORS AND COMMISSION AGENTS

Agents for the SCOTTISH UNION & NATIONAL INSURANCE COMPANY OF EDINBURGH. WILHELM OF MAGDEBURG GENERAL INSURANCE COMPANY. ASSOCIATED INSURANCE COMPANY of Munich and Berlin.

ALLIANCE MARINE & GENERAL ASSURANCE CO. Ltd., of London.

ROYAL INSURANCE COMPANY OF LIVERPOOL. ALLIANCE ASSURANCE CO. of LONDON. ROCHSTER GERMAN INSURANCE COMPANY OF NEW YORK.

AGENTS OF THE Oceanic Steamship Company OF SAN FRANCISCO, CAL.

DAVID DAYTON

167 MERCHANT STREET.

Lots for Sale

in KAPIOLANI PARK ADDITION KALIHI, and other desirable localities.

Also 1 JUMPEAT BUCKBOARD second-hand; good as new.

Horse Shoeing.

W.W. Wright Co.

Limited,

have opened a horse-shoeing department in connection with their carriage shop, etc. Having secured the services of a first-class shoer, they are prepared to do all work entrusted to them in a first-class manner.

BUILDING MATERIALS OF ALL KINDS.

Dealers in Lumber and Coal

ALLEN & ROBINSON, Queen St., Honolulu.

Weekly Edition of the Bulletin, 05 per year

LOCAL AND GENERAL

Read "Wants" on page 6.
The Club Stables have fine pasturage near town.

The rush has commenced at Wall, Nichols for holiday gifts.

Have your old Panama hat made like new. Globe Clothing House.

Trading stamps given away by Whitney & Marsh with each cash purchase.

New patterns in figured lawns at 10c a yard at A. Blom's in Progress block.

The new Royal School building was occupied by teachers and pupils yesterday.

Gertz Bros. will receive per Sonoma fancy Oregon apples and Burbank potatoes.

Col. Macfarlane and Mrs. Macfarlane left in the Siberia today for the Coast.

There will be a meeting of the Board of Agriculture at 4 o'clock this afternoon.

There will be a meeting of the Board of Agriculture this afternoon at 4 o'clock.

The Bar Association meets at 4 o'clock this afternoon at the Judiciary Building.

Genuine Panama hats will be sold by Morgan on Friday, December 2, at his salesroom.

Neatly furnished rooms at the Popular. \$1, \$1.50 and \$2 per week. 1249 Fort Street.

Take thought for the morrow, and lay in a stock of irrigation. Get it at the Pantheon.

Ten fine fat Toulouse geese will be sold by Morgan at his salesroom Friday at 10 o. m.

J. A. C. Davis returned Sunday from a two months' tour of inspection of the schools of Kauai.

Orders taken for fresh violets. Inquire Harold Gear, 1286 Emma St. Telephone, Blue 2371.

Our souvenir spoons can not be surpassed in town. Customers say so. J. A. R. Vieira, Hotel street.

Just arrived ex bark "Olympic," 25 head of fine mules. Enquire Schumacher Carriage Co., Young building.

Telephone to California Feed Co. for "Arabia." It stops leaks in iron roofs, improves appearances, and on sunny days cools fully fifteen degrees.

There will be a sociable in the parlors of Central Union Church on Thursday evening. All are cordially invited.

Do you notice that we cater to all the successful receptions, parties, banquets, etc. Elite Ice Cream Parlors, Telephone 182 Main.

The Hawaiian Historical Society will hold its annual meeting for the election of officers Friday evening at 8 o'clock at the library.

The new style in men's oxforbs has just arrived at Manufacturers' Shoe Co. in tans and ideal kid. Price \$2.50 and \$3 respectively. Real swell.

Theo. H. Davies & Co. are agents for the most perfect razor in the world; it requires no stropping or honing; is always sharp. For further description see their ad in this issue.

POLLS OPEN
In The Bulletin's \$1,000 Prize Contest for the greatest premiums ever offered in Hawaii

TOMORROW.
The regular meeting of the Glenner will be held at the home of Mrs. Judd, 1718 Nuuanu avenue, on Wednesday, November 30, at 3:30 p. m. Miss Agnes Judd will speak of "Personal Experiences in Old Rome and the Catacombs." No member of the society can afford to be absent from this meeting.

J. C. Davis, School Inspector, after seven weeks visiting the schools on Kauai, left for Honolulu on Saturday last says the Garden Island. Mr. Davis has not only put in his time gathering official statistics of schools—their work, attendance and needs—but he has endeavored to make himself useful to teachers and pupils in the way of practical suggestions in school room work and instruction.

Mrs. W. H. Rice was the hostess at a very enjoyable Thanksgiving dinner at Lihue, Kauai. It is one of the customs of the family to have a reunion dinner on Thanksgiving, to which a few friends are sometimes invited. Besides the immediate members of the family, and the married sons and daughters and their families, Mrs. Isenberg, Mrs. Bishop, the Misses Kimford, Hardwick, Jordan, Thier, Messrs. Carter and de Lacey were present.

PASSENGERS BOOKED.
For Maui and Molokai ports, per steam. Kaula, Nov. 30—Geo. P. Thiel, W. B. Maling, R. Muller and wife, C. W. Ashford.

PASSENGERS ARRIVED.
For Maui and Molokai ports, per steam. Kaula, Nov. 30—A. J. Spitzer, Father Sylonus, Thos. Black.

BORN.
SILLIMAN—In this city, November 29, 1904, to the wife of Henry D. Silliman, a son.

Blank books of all sorts, ledgers, etc., manufactured by the Bulletin Publishing Company.

Dr. N. S. Fairweather

MANAGER.

NEW YORK DENTAL PARLORS

1057 FORT STREET.

Everything clean and thoroughly sterilized. Prices the lowest in the city. See my samples at the entrance. NO LADY ASSISTANT.

WORLD NEWS BY CABLE

(Associated Press Cable.)

ATKINSON FEASTED.
New York, Nov. 29.—Secretary A. L. C. Atkinson of Hawaii was banqueted last night at the Lotus Club.

GREEK MASSACRE.
Belgrade, Nov. 29.—Greeks attacked a wedding party near Monastir and thirteen were killed.

MISS LEITER WEDS.
Washington, Nov. 29.—Nancy Leiter, sister of Lady Curzon, has been married to Major Campbell of London.

JAPANESE SATISFIED.
Tokio, Nov. 29.—The operations against Port Arthur are progressing favorably.

RUSSIA AFRAID.
St. Petersburg, Nov. 29.—If the Japanese have captured the 203 metre hill the situation at Port Arthur is critical.

DEWEY DECLINES.
Washington, Nov. 29.—Admiral Dewey is unwilling to serve on the North Sea Commission and a Rear Admiral will be appointed.

ARMIES QUIET.
Tokio, Nov. 29.—The Manchurian situation is unchanged.

JAPANESE AT PORT ARTHUR.
Washington, Nov. 29, 1904. To Japanese Consul, Honolulu.
Port Arthur besieging army reports that on November 29th, against the enemy's line of intrenchments extending from Shungshushan to eastwards, the army firmly occupied the top of the counterescarp and the neighborhood, and is now destroying casemates and caponieres. As against the 203 meters Hill, the army occupied the enemy's trenches near the top after several assaults.

NELSON WHIPS CORBETT.
San Francisco, Nov. 29.—"Battling" Nelson bested "Young" Corbett in a rattling ten-round mill at the Mechanics' Pavilion in a fight under the auspices of the Yosemite Club.

In the first round there was a rapid exchange of blows, with the honors about even.

Second—The fighting was very fast in this round on both sides, but it was Nelson's round by a small margin.

Third—Nelson went down at the opening of the round, but was on his feet again almost instantly, and there was a rapid exchange of blows with the honors easy.

Fourth—Both men were fighting furiously, and Nelson scored a bit groggy at the end of the round.

Fifth—Nelson came up with his left eye closed, but he forced the fighting throughout the round, nevertheless.

Sixth—This was Nelson's round without any question, the round seeing Corbett groggy and all covered with blood.

Seventh—Nelson grew more aggressive in this round, carrying the fight to his opponent, who was very groggy when the bell came, apparently only just in time to save him.

Eighth—Nelson continued to force matters, and Corbett was bleeding from the terrific punishment he had received.

Ninth—Nelson was hammering Corbett all over the ring, the ex-champion being apparently unable to save himself any of the punishment that was being administered to him.

Tenth—Corbett's second threw up the sponge after the round had gone a few seconds, it being plain that the Denver lad was done for.

KAIMUKI TEA GARDEN.

Take your children out to the tea gardens at the terminus of the Kaimuki car line, and let them see the monkey, the rabbits, the guinea pigs, the mongoose, the ring doves, the African and Australian parrots, the Java sparrows, strawberry birds, Japanese larks, quail, Japanese canaries, Galar parrots, red-headed mountain parrots, cockatoos, fantail gold fish, silver fish, ruffe neck pigeons, fantail pigeons, tumbler, pouter, etc., etc.

The Japanese miniature lake and mountain, with its waterfall and rough mountain path to the little house at the summit will also interest them. You will find yourself becoming as interested in the study of nature as your children.

PASSENGERS DEPARTED.

For Maui ports, per steam. Likelike, Nov. 29.—H. G. Danford, H. P. Baldwin, Rev. E. Tokimasa, C. W. Ashford, W. Ayau, Miss Annie K. Mossman, Miss Helen Moa and sister, R. O. Hogg, P. N. Kaholoujuna, H. N. Almy and wife.

For Kauai ports, per steam. W. G. Hall, Nov. 29.—Geo. H. Fairchild, H. Moore, wife and children, G. N. Wilcox, F. J. Cross, J. M. Lydgate, wife, 2 children and nurse.

Blank books of all sorts, ledgers, etc., manufactured by the Bulletin Publishing Company.



A. N. SANFORD,

BOSTON BUILDING, FORT STREET

OVER MAY & CO.

J. HOPP & CO.,

1053-1509 Bishop St., Young Bldg.

Furniture

Rugs

Mattresses

Largest Stock of Furniture in the Islands.

J. HOPP & CO.,

1053-1059 Bishop St., Young Bldg.

Hawaiian Carriage

Manufacturing Co.

427 QUEEN ST. TEL. MAIN 47.

P. O. BOX 193.

Manufacturers of all kinds of Carriages and Vehicles, Wagons, Wagon Materials of all descriptions supplied; Rubber Tires put on at reasonable prices; Repairing, Painting and Trimming; satisfaction guaranteed; estimates given.

C. W. ZEIGLER, Manager.

BATH,

THE

PLUMBER,

165 S. King St.

TEL MAIN 61

EMINENT PHYSICIANS throughout the world recommend

QUINA-LAROCHE

AS A SPECIFIC IN CASES OF ANAEMIA, COLDS, LA GRIPE, SLOW CONVALESCENCE, STOMACH TROUBLES, TYPHOID and MALARIAL FEVERS.

E. Fougere & Co., 30 N. William St., N.Y.

Tel. Main 339. Res. Tel. White 55

Mrs. E. M. Taylor,

FLORIST.

Alexander Young Building. Strawberry and Carnation Plants for sale.

The Lewin-Meyer Co.

Epicurean and Palace Goods

E. J. WALKER,

Wholesale Agent.

H. PURDY,

629 South King Street, Adjoining W. Wright's Carriage Factory.

Carpenter and Builder, Store Fittings and General Jobbing; All Work Guaranteed; Estimates given; orders solicited.

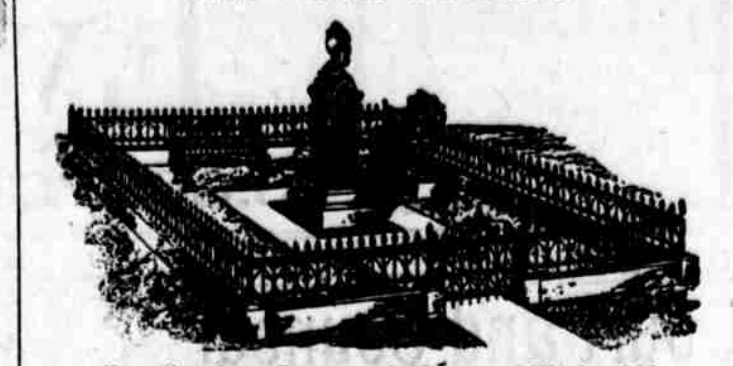
THE MILLER CANDY CO.

has moved its Candy Factory to the old ELITE BUILDING on HOTEL ST. All Candies are made on the premises. Call and try a sample of Hot Candy.

HONOLULU IRON WORKS

Improved and Modern SUGAR MACHINERY of every capacity and description made to order. Better work and RIVETED PIPES for irrigation purposes a specialty. Particular attention paid to JOB WORK, and repairs executed at shortest notice.

Granite and Bronze Monuments At Prices To Suit.



Hawaiian Iron Fence and Monument Works, Ltd

176-180 KING STREET.

NOW WE'RE OFF?

We are prepared to supply the People of Honolulu with Freshest of ISLAND MEATS. Also, Garden Produce of all kinds; Butter, Eggs, Chickens, Turkeys, Sucking Pigs, Bacon, Ham; in fact, everything that a FIRST CLASS MARKET is called upon to furnish.

The ISLAND MEAT CO.,

JAS. E. WESTBROOKE, Manager.

TELEPHONE MAIN 70. FORT ST., OPP. LOVE BLDG.

TELEPHONE 35. BISMARCK STABLE CO., LTD.

WAILUKU, MAUI.

TELEPHONE 226. BISMARCK BRANCH STABLES

LAHAINA, MAUI.

Hacks, Carriages, Buggies and Saddle Horses on short notice.

Carriages meet all steamers. Competent drivers, reasonable rates, new vehicles and live stock.

Y. Wo Sing & Co.

FRUITS AND GROCERIES. Fresh provisions and fruit by every California steamer. Fresh Island butter from Hawaii.

1123 Fort St. and 1196 Nuuanu St. 2875-42

P. O. Box 961. Tel. White 60

SANG CHAN,

MERCHANT TAILOR, HOTEL STREET, HONOLULU.

Suits made to order in the latest styles. Perfect fit guaranteed. Clothing cleaned, dyed and repaired.

Yoshikawa

The Bike Doctor. I have a big stock of wheels. Repairing our specialty. Wheels Remounted. Two Stores: 163 King St., Hotel near River.

SATO,

188 HOTEL STREET near RIVER.

Bicycles and Bicycle Sundries; Repairing a Specialty. Goods not called for in 30 days will be sold.

S. SAIKI,

Dealer in Bamboo Furniture, Picture Frames, Grass Linen, Drawn Linen, Table Cloths, Collars, Neckties, etc.

563 S. BERETANIA ST.

Perfection

Home Bakery

Three Interesting Days of SPECIAL BARGAINS

MONDAY, TUESDAY and
WEDNESDAY

THOSE WHO HAVE ATTENDED OUR SPECIAL MONDAY, TUESDAY AND WEDNESDAY SALES, ALREADY KNOW THE ADVANTAGES OF BEING ON THE LOOKOUT FOR THESE SPECIAL BARGAINS. TO THOSE WHO HAVE NOT YET LEARNED WHAT SURPRISING OPPORTUNITIES WE OFFER, THIS ANNOUNCEMENT IS PARTICULARLY DIRECTED. We want you to realize what it means to save money. NOTE THESE PRICES, THEN COME AND EXAMINE THE GOODS.

TAFETALINE Just right for under-dresses, fancy work SILK etc. All good colors in light blue, Nile green, pink, maize, cerise and black. 35c Our regular 60c quality. ON SALE AT - 35c

HANDSOME MERCERIZED and EMBROIDERED SUITINGS These have every appearance of silk in pretty delicate shades, suitable for evening gowns. Regular price 50c a yard. ON SALE AT - 25c

LADIES' WHITE LAWN Trimmed with SHIRT WAISTS lace, tucked front and back. Regular price \$1.75 ea. On Sale at 95c
LACE CURTAINS Odd pairs, single and sample curtains at just half price. This is a rare chance.

THESE BARGAINS FOR MONDAY, TUESDAY AND WEDNESDAY ONLY.

N. S. Sachs Dry Goods Co. Ltd.
Corner Fort and Beretania

What Others Say --- Drink More.

"The use of carbonated beverages or waters as an addition to wine or alcoholic liquors is highly commendable, as they greatly mitigate, or wholly obviate the retarding influence of such liquors on the digestion of starch."—Dr. I. Burney Yeo, in Popular Science Monthly. Prof. Charles F. Chandler, chemist to the N. Y. Board of Health; Dr. Julius, Professor of Analytical Chemistry in the American Institute, and many others all speak in the highest terms of the beneficial effects of "SODA WATER" upon the system.

Let us supply you with a case of our carbonated beverages.
Consolidated Soda Water Works, Ltd.
TELEPHONE MAIN 71

The "Wellington" No. 2 Typewriter.

VISIBLE WRITING. PERFECTION IN ITS SIMPLICITY
AND MECHANICAL CONSTRUCTION.

The WELLINGTON TYPEWRITER has worked itself into the good graces of typewriters more rapidly than any other machine ever placed on the market. It is constructed at Plattsburg, N. Y., and is fully guaranteed. The Canadian Pacific Railway have now over 500 of these machines in constant use. The British Government since the first of 1903 has bought 545 of these typewriters, and only recently the Minister of Public Works for France has made a three years' exclusive contract for the same machines. The price of these typewriters is \$6000.

THEO. H. DAVIES & Co., Limited,

PACIFIC TRANSFER CO.
WILL CALL FOR YOUR BAGGAGE

We pack, haul and ship your goods and save you money.
Dealers in STOVE WOOD, COAL and KINDLINGS.

Storage in Brick Warehouse, 126 King St. Phone Main 58

The Bulletin, 75cts. per month

Uncle Sam's Boys In Social Gathering

Some half a hundred of Uncle Sam's boys, artillerymen from Camp McKinley, members of the United States Marine Corps, gathered together for a feast that was a feast in more ways than one, at Reist's boat house last evening. First of all there was a feast in the way of all things that go to make up a sumptuous meal; and then there was a feast of singing, for numerous of the boys fairly discovered themselves as masters in the handling of songs of country, home and all the other good things of life.

The occasion was a happy one and in the nature of a social congress of army and navy boys. Henry Grainger of Camp McKinley originated the idea and it was at his invitation that the defenders of the flag ashore and boat met by the water's edge to spend a few merry hours. By way of entertainment, among other pastimes, an impromptu court-martial was held and big Sergeant Jacob Eastman of the 22d Company, Coast Artillery, had to answer to the charge of refusing to sing a song. He was acquitted, however, through the brilliant endeavors of Corporal Cogswell, who proved that the prisoner's modesty had been mistaken for a refusal. Thomas Downey of the Ironclads delighted his audience with numerous vocal renditions, both humorous and pathetic. Sergeant Lawhon of Camp McKinley proved himself an able entertainer. Corporal Schieber's wit was much appreciated. J. A. McNamara exhibited a magnificent voice. "Beauty" Ryan, famous as a player in the Malle-Hima baseball team, rendered several dainty bits of song. "Professor" Deloris, another of the famous Malle-Hima players, was not behind in entertaining. Chief Machinist Pete Ford, better known as "Maskie" of the Ironclads, was a prominent item on the program. "Phony" Sam Davis, the celebrated third-baseman of the Malle aggregation, was delightful in several ways. Pete Schaller was on deck with flying colors in the way of helping things along. G. W. Reese of the Ironclads and B. C. Ripberger of Camp McKinley gave pleasure with their singing. G. H. Grady, of the quartermaster's department, exhibited a good voice to advantage. A delightful evening's entertainment wound up with a speech by Grainger, who, by the way, would make a good Fourth of July orator.

ST. CLEMENTS FAIR

Church fairs are becoming quite the fashion, and St. Clement's fair, which is to take place next Saturday afternoon and evening it is expected will eclipse any yet had. First of all it will be held on the beautiful lawn of Mr. T. May on Kinau street, and a prettier or more appropriate place could not be found in the town. All kinds of things, useful as well as ornamental will be offered for sale. The children's fish pond will be well supplied with pretty things, there will be various side shows which will be amusing and, in fact, it would be hard to say what attractions will not be found there. In the evening there will be dancing on the broad lawn and it is hoped that many will appear in fancy costume, although this is optional.

Mrs. Jarley will exhibit her wax works, which is always lots of fun. One may have his future read at the gypsy camp and the bewitching gypsy maidens themselves are not the least of the attractions. There will be an entrance gate on Kinau street near Ponsacola, and another on Lunaillo street, opposite E. D. Tenny's, into which one may step from the cars. The band will be present as usual, and in fact, nothing will be left undone that would enhance the pleasure of the public.



WHY YOU SHOULD TAKE WINE OF CARDUI

Wine of Cardui is a mild medicine, but a powerful tonic that is unrivaled in its success in the treatment of the diseases peculiar to women. Over 1,500,000 suffering women have been cured of troubles that ordinarily are thought to require the expensive treatment of specialists, simply by taking this great woman's tonic. Wine of Cardui recommends itself to modest women of moderate means, because it can be taken in the privacy of the home without submitting to a humiliating local examination and subsequent dangerous treatment. It is not costly and every sufferer can afford it. If you are a victim of female weakness in any form Wine of Cardui is the medicine that you should take and you cannot afford to lose any time in starting the treatment. Your trouble is ever growing worse—never better. Wine of Cardui never fails to benefit even chronic troubles of the most serious nature, and in nine out of ten cases it brings an absolute cure. 1,500,000 cured women endorse Wine of Cardui.

You should take Wine of Cardui. Ask your druggist for it today.

ALL DRUGGISTS SELL 100 BOTTLES

U. S. Department Of Agriculture

Weather Bureau.
The following data, covering a period of 27 years, have been compiled from the Weather Bureau and McKibbin records at Honolulu, T. H. They are issued to show the conditions that have prevailed, during the month in question, for the above period of years, but must NOT be construed as a forecast of the weather conditions for the coming month.
Month—December, for 27 years.
Temperature, (1890-1903 inclusive)—Mean or normal temperature, 72; the warmest month was that of 1891, with an average of 74; the coldest month was that of 1902, with an average of 71; the highest temperature was 84 on December 2, 1890; the lowest temperature was 55 on December 30, 1900.
Precipitation (rain, 1877-1893, inclusive)—Average for the month, 3.59 inches; average number of days with .01 of an inch or more, 14; the greatest monthly precipitation was 8.86 inches in 1879; the least monthly precipitation was 1.17 inches in 1888; the greatest amount of precipitation recorded in any 24 consecutive hours was 4.20 inches on December 22, 1879.
Clouds and Weather (1885-1903)—Average number of clear days, 12; partly cloudy days, 14; cloudy days, 5.
Wind (1885-1903)—The prevailing winds have been from the northeast. Station: Honolulu, T. H.
Date of issue: November 29, 1904.
ALEX. McC. ASHLEY,
Weather Bureau.
Note.—Only precipitation data taken from McKibbin record.

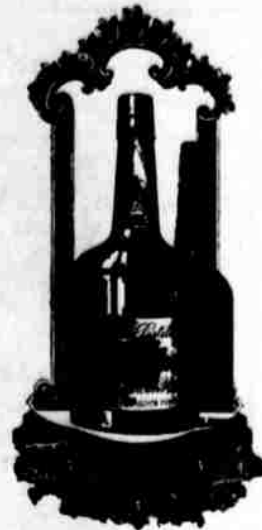
ONE SHARE ONE DOLLAR PER MONTH.

The Thirtieth Series of Stock in the Pioneer Building & Loan Association was issued in October, 1904, and is now open for subscription. The membership fee of fifty cents per share, and the monthly dues are one dollar per month per share. The stock draws much better interest than a savings bank.

Further information can be obtained from A. V. GEAR, Secretary, 122 King St.

POLLS OPEN
In The Bulletin's \$1000 Prize Contest for the greatest premiums ever offered in Hawaii

TOMORROW.
The Government of Paraguay will expend \$125,000 for building a market hall in the city of Asuncion.



EXTRA PONY

BOURBON WHISKEY

Oak Valley Distilling Co.,
COVINGTON, KY.

This Celebrated brand of Whiskey is expressly distilled to suit the Pacific Coast and Hawaiian Island trade. It is made from the very best Grain grown in the most favored region of Kentucky, best adapted for that purpose. All prominent physicians recommend it for medicinal and family use on account of its purity and excellence. SEE THAT YOU ONLY BUY THE GENUINE ARTICLE to be recognized by the Cork and Bottle being branded with our firm name; put up in cases containing 1 doz. quarts.

BRAUNSCHWEIGER & CO., Inc., San Francisco.

H. HACKFELD & CO., LTD
SOLE AGENTS FOR HAWAIIAN ISLANDS



Incandescent Lamps Give Home Comfort.

No trouble with the incandescent lamp. It is a great blessing in the home. Always ready for use and gives a soft, steady and brilliant light. No smoke. No dirt. No refilling. Estimates on wiring your house cheerfully given.

Hawaiian Electric Company, limited.
Office King St., near Alakea. Phone Main 190.

What Is Tipo Chianti?

Tipo Chianti is the wine which helped to make the Italian-Swiss Colony famous for fine table wines throughout the world. It is light, delicate, delicious and an aid to digestion. It is recommended by the most prominent physicians everywhere on account of its purity and fine quality. Connoisseurs pronounce it perfection.

The only red wine served at the banquet tendered to President Roosevelt at the Palace Hotel by the citizens of San Francisco.

Why Don't You Try It?

For Sale by

S. I. Shaw & Co., Goncalves & Co.,
T. F. McTigue & Co. and Carrera & Co.

CEDAR BOX COUCHES.

We are making a special BOX COUCH OF RED CEDAR that we are selling at the same figure as other stores charge for a Spruce Box. We have only lumber for a few boxes so come early and secure a real bargain. Covered in any style.

COYNE FURNITURE CO.,
Limited.

NEW LINE OF

Clothing, Pajamas and Neckwear, Ties,
Etc., at

J. Lando, Hotel St. Store.

\$50.00 for \$1.00

AT THE

Ladysmith Shooting Gallery,

TOP OF PUNCHBOWL.

CASH PRIZE OF \$50

Enos. Bros.,

UNION ST. ABOVE HOTEL.

House and Decorative Painting, Paper Hanging, Kalsomining and Tinting. All orders executed with style and with the best of materials. Estimates given.

BISHOP & CO., BANKERS.

Established in 1888.

BANKING DEPARTMENT.
Transact business in all departments of Banking.
Collections carefully attended to. Exchange bought and sold. Commercial and Travelers' Letters of Credit issued on The Bank of California and N. M. Rothschild & Sons, London.

Correspondents — The Bank of California, Commercial Banking Co. of Sydney, Ltd., London.
Drafts and cable transfers on China and Japan through the Hongkong & Shanghai Banking Corporation and Chartered Bank of India, Australia and China.

Agents for the sale of Travelers' Checks of the American Express Co. Interest allowed on term deposits at the following rates per annum, viz: Seven days' notice, at 2 per cent. Three months, at 3 per cent. Six months, at 3 1/2 per cent. Twelve months, at 4 per cent.

TRUST DEPARTMENT.
Act as Trustees under mortgages. Manage estates (real and personal). Collect rents and dividends. Valuable papers, Wills, Bonds, etc. received for safe-keeping.

ACCOUNTANT DEPARTMENT.
Auditors for Corporations and Private Firms.
Books examined and reported on. Statements of Affairs prepared. Trustees on Bankrupt or Insolvent Estates.

OFFICE, 924 BETHEL ST.
SAVINGS DEPARTMENT.
Deposits received and interest allowed at 4 1/2 per cent. per annum, in accordance with Rules and Regulations, copies of which may be obtained on application.

INSURANCE DEPARTMENT.
Agents for Fire, Marine, Life, Accident and Employers' Liability Insurance Companies.
Insurance Office, 924 Bethel St.

Claus Spreckels. Wm. G. Irwin

Claus Spreckels & Co.

HONOLULU, I. I. T. H.

San Francisco Agents — The Nevada National Bank of San Francisco. Draw Exchange on the Nevada National Bank of San Francisco.
London — The Union of London and Smith's Bank, Ltd.
New York — American Exchange National Bank.
Chicago — Corn Exchange National Bank.

Paris — Credit Lyonnais.
Hongkong and Yokohama — Hongkong Shanghai Banking Corporation.
New Zealand and Australia — Bank of New Zealand and Bank of Australia.
Victoria and Vancouver — Bank of British North America.
Deposits received. Loans made on approved security. Commercial and Travelers' Credits issued. Bills of Exchange bought and sold. Collections Promptly Accounted For.

**The First
AMERICAN SAVINGS
AND TRUST CO.**

OF HAWAII, LTD.

SUBSCRIBED CAPITAL...\$200,000.00
PAID UP CAPITAL...\$100,000.00

President..... Cecil Brown
Vice President..... M. P. Robinson
Cashier..... W. G. Coopers
Office: Corner Fort and King Sts.
SAVINGS DEPOSITS received and interest allowed for yearly deposits at the rate of 4 1/2 per cent. per annum. Rules and regulations furnished upon application.

The Yokohama Specie Bank, Ltd.

ESTABLISHED 1880.
Capital Subscribed.....Yen 24,000,000
Capital Paid Up.....Yen 18,000,000
Reserve Fund.....Yen 9,520,000

HEAD OFFICE, YOKOHAMA.
BRANCHES—Bombay, Hongkong, Honolulu, Kobe, London, Lyons, Nagasaki, Newchwang, New York, Peking, San Francisco, Shanghai, Yokohama, Tokyo.

The bank buys and receives for collection Bills of Exchange, issues Drafts and Letters of Credit and transacts a general banking business.
HONOLULU BRANCH, 67 KING ST.

ENGINEERS

C. H. KLUEGEL,

Member American Society C. E. Consulting and Constructing Engineer. Irrigation Works, Water Power, Railways, Bridges and Land Surveys.
401 Stangenwald building. Address P. O. Box 796.

WAIKIKI INN

A new lot of Bathing Suits; Flash Light for dark nights; Choice Liquors and Beer; Special Lunches and Dinners on Sunday; Rooms to Rent by Day, Week or Month.

THIS PAPER is kept on file at E. Ing Agency, 124 Sansome Street, San Francisco, California, where contracts for advertising can be made for it.

EVENING BULLETIN

Published Every Day Except Sunday,
at 120 King Street, Honolulu,
T. H., by the
BULLETIN PUBLISHING CO., LTD.
WALLACE R. FARRINGTON, Editor

Entered at the Postoffice at Honolulu as second-class matter.

SUBSCRIPTION RATES.
Payable in Advance.
Evening Bulletin.
Per month, anywhere in U. S. \$.75
Per quarter, anywhere in U. S. 2.00
Per year, anywhere in U. S. 8.00
Per year, postpaid, foreign 11.00
Weekly Bulletin.
Six months, anywhere in U. S. \$.50
Per year, anywhere in U. S. 1.00
Per year, postpaid, foreign 1.50

Telephone 256.
Postoffice Box 718

WEDNESDAY, NOV. 30, 1904.

Properly primed by the Lotus Club, Secretary Atkinson ought to be fit for his tour in Wall street.

Admiral Dewey has ever refused additional honors since he thought he might be President and was disappointed.

Bankrupt Coxey will doubtless decide that having had a jolly run for his money, it is about time to promote an other army of tramps.

American lawyer's addition reminds us that lawyers always have a little more testimony to put in after the case is closed and as frequently find details on which to base exceptions.

Japan has made a great success in promoting the enmity of war correspondents of good repute, who scatter throughout the world evidences of the Japanese ability to smile and smile and be a villain still.

Hearst's friends claim he could have polled a larger vote than Parker. If he couldn't then he must be all his enemies said of him. At all events, for him to have secured less can be put down as impossible.

Senator Gandall is urging the citizens of his district to express their desires by petition. He should immediately prepare for the flood. A petition for anything is the easiest thing in the world to fill with names.

A new poison called cyanid of cacodyl has just been discovered, which is said to be many more times deadly than prussic acid, and the chemist protests in its favor that one sniff at the bottle will cure instantly a disconsolate love, or a broken fortune.

There's no doubt that Port Arthur is the center of Japanese hopes and fears just at present. If the veterans in Manchuria are being withdrawn to face certain death about the besieged forts, it is principally fears the Japanese have to consider.

All correspondents are of the opinion that Japan has not yet given a true statement of its losses in the field. The policy of misrepresentation may work all right for a while, but the readiness if not anxiety to bring the fighting to an end tells the story in other words.

Senator Achi's proposal to offer a county bill of his own suggests that the Senator must have been burning midnight oil in the study of municipal problems. At all events it is hoped he has, and is not acting as a catspaw to complicate Republican promises.

From the layman's standpoint the Bulletin would interpret the calling of the Federal Grand Jury as evidence that Judge Dole is inclined to the belief that the Territory needs attention. And judged by his previous experience in attending to the affairs of the Territory, stands a good chance of making a mess of it.

It has been suggested by a wicked freethinker, that Russia's failure to check the Japanese advance might be due to the fact that General Kuropatkin took with him to the front only one icon instead of three. This reminds one of Voltaire's celebrated suggestion about the fossil oysters found in his day on the tops of mountains.

Kauai takes kindly to the soft impeachment that Representative Eric Knudsen is first class Speakership timber. With Ienberg in the field for President of the Senate, there are indications that the Garden Island has withdrawn from its position of being ready with its votes for the other fellow.

The St. Petersburg "Novosti" announces that Count Tolstol recently declared that "song is a trivial and undesirable thing;" and again, that singing "may be compared to wine and tobacco—mere empty pastime, if not worse than that, since it often incites cruel and wicked deeds." A few years ago the Count wrote the reverse of this in a book on "What is Art." Eccentricity has always been a feature of Tolstol's views, yet this is the first time he has been caught, like the politician, conveniently changing his opinions to round out a newspaper interview.

Governor-elect Douglass, the wonderful Democrat of Massachusetts, promises some decidedly socialistic discussions for his State during his term. He says: "I believe in the prin-

ciple of the referendum and it is my purpose if it can be done to have the report of this commission [to investigate industrial needs of the State], which will recommend such action on our part or recommendations to the Congress of the United States as seems wise, to give the referendum vote of the entire State." Only a few years ago Douglass or anyone else would have been howled down as a long-whiskered Populist for suggesting referendum.

NEW PARTY PLANS.

"New party" men and party reorganizers are having their turn at the wheel these days proposing what they will do. They are attracting attention because the people are groping for an effective opening for the spirit of unrest that is very real but has yet to be solidified.

There certainly is bound to be a new party or an old party carrying a definite and aggressive opposition idea in the next few years. The record of the State vote in Massachusetts, Colorado, Minnesota, and Missouri goes to show that the opponents of the present party in power have no little vigor when they have an issue put before them in definite shape so that they can unite. The great fault of the Democratic national campaign was that the party did not in its platform declarations or in the expressions of its candidate offer the people anything different from the party in power beyond a change of faces in the offices. The result was a very good evidence that a party organization cannot "lead" the people when the party organization does not respond to a definite principle.

It cannot be doubted, however, that the great American people are approaching the point where they will demand radical steps to meet the new development of money power and industrial complications that are the direct outgrowth. Roosevelt's popularity with his own party and his success in drawing the radical Democratic votes was due to his cutting away from the conservative methods, refusing to follow the ultra "safe" course, in dealing with the trusts and industrial problems. If the financiers could have beaten Roosevelt they would have done it.

Since Roosevelt has announced that he will not be a candidate for another term, the financiers will devote their energies in the next four years to shaping boons so that a more conservative man than the present incumbent shall secure the nomination. They will also try to do the same thing with the Democratic party. History has shown, however, that there comes a time in our country when the people cut away from the lines laid down for them by the "managers" and run things themselves. That was what happened on the slavery question, and, while there is no danger of an exact repetition of that terrible struggle, there is steadily increasing evidence that citizens will soon combine effectively in a campaign to again carry out the ideal of freedom, liberty and independence for the individual. The Republicans may make a new swath and become the radical-liberal party but it is doubtful. The party has become too much of a haven for Democrats of Hamiltonian ideals, who put money before men. The probabilities are more in the direction of a new party or the expression of the capital-controlling, income-tax, government-ownership idea under the banner of one of the parties now organized. Prosperity can't stop the sentiment that is steadily growing. The ultra radical Socialists cast a larger vote this year than ever before. Hard times can't check it. The spirit of dissatisfaction is abroad and it is expressed as positively in the fight of La Follette in Wisconsin and the campaign of Folk in Missouri as it is in the Debs vote or the popularity of Bryan or the audience that Watson attracts.

AMERICAN LAWYER ADDS

Editor Evening Bulletin:—In addition to what I said in my communication published yesterday, I wish to add a brief reference to the fundamental law in one other particular. My criticism is not addressed to but suggested by the action of Governor Carter, and it bears directly upon the apparent inability to distinguish between the functions of the executive and judicial departments. It is the exclusive duty of the courts and judges to declare the law, and, when an executive officer assumes to determine whether he does or does not know facts pertinent to a case on trial, he adds the judicial power to his own. That authority devolves exclusively on the judges and the courts. When an executive officer is sworn and examined as a witness, if he knows nothing of the case, that fact will speedily appear, the testimony will be ruled out and the witness discharged. But, when, in advance of his appearance as a witness, the executive officer for himself determines that point, he is usurping political authority and illegally blending two separate departments of the government. This proposition ought to be obvious to require argument.

AMERICAN LAWYER,
Honolulu, Nov. 30, '04.

MANCHURIA DEPARTS

The Pacific Mail steamship Siberia sailed for San Francisco this noon. A large number of people were present to see the departing Honolulu people off. The band fairly surpassed itself and leis and flowers were seen in profusion. Among the well-known Honolulu passengers were Col. and Mrs. Sam Parker, Miss Alice Campbell, Miss Ada Rhodes, Col. and Mrs. F. W. Macfarlane, Miss Eileen Macfarlane, J. T. McCrosson and many others.

POLLS OPEN
In The Bulletin's \$1,000 Prize Contest for the greatest premiums ever offered in Hawaii

TOMORROW.

We'll
"Turn Over
A New Leaf."

whenever you are inclined to open an account with us. We want business of the right sort; this does not refer to size—solidity is the point. We aim to treat all patrons alike; their business is fully appreciated and receives careful attention at our hands.

HENRY WATERHOUSE TRUST COMPANY, Ltd.
Cor. Fort and Merchant Sts.
Honolulu, Hawaii.

HAPPY AND HEALTHY.

A Beautiful Canadian Girl Saved From Catarrh of the Lungs by Per-u-na.



MISS FLORENCE KENAH.

Miss Florence E. Kenah, 434 Maria street, Ottawa, Ont., writes:
"A few months ago I caught a severe cold, which settled on my lungs and remained there so persistently that I became alarmed. I took medicine without benefit, until my digestive organs became upset, and my head and back began to ache severely and frequently. I was advised to try Peruna, and although I had little faith I felt so sick that I was ready to try anything. It brought me blessed relief at once, and I felt that I had the right medicine at last. Within three weeks I was completely restored and have enjoyed perfect health since."

F. E. KENAH.

WOMEN should beware of contracting catarrh. The cold wind and rain, and mud of winter are especially conducive to catarrhal derangements. Few women escape.

Upon the first symptoms of catching cold Peruna should be taken. It fortifies the system against colds and catarrh.

The following letter gives one young woman's experience with Peruna:

Miss Rose Gerbing is a popular society woman of Brown Point, Ind., and she writes the following:

"Recently I took a long drive in the country, and being too thinly clad I caught a bad cold which settled on my lungs, and which I could not seem to shake off. I had heard a great deal of Peruna for colds and catarrh and I

For special directions everyone should read "The Ills of Life," a copy of which surrounds each bottle. Peruna is for sale by all chemists and druggists at one dollar per bottle, or six bottles for five dollars.

Those wishing direct correspondence with Dr. Hartman and can wait the necessary delay in receiving a reply should address Dr. S. B. Hartman, Columbus, Ohio, U. S. A.

Benson, Smith & Co. will supply the retail drug trade in Honolulu.

DO WITNESSES FAVOR

(Continued from Page 1.)

not be closed until the evidence of McCrosson and Samuel Parker was in, providing, of course, it was shown that such evidence would be material to the case. The court remarked that the witnesses named would consider themselves as actually subpoenaed in the matter.

But for this the A. W. Carter interests would this morning have served subpoenas on McCrosson and Samuel Parker and their journeyings might have been interrupted with.

"The court recognizes," said Judge Gear, "that counsel and the court are both granting these witnesses a favor in allowing them to go at the present time."

Before leaving the witness stand McCrosson unburdened himself of a number of papers containing material facts in the big suit which involves Kohala ditch interests.

The Parker proceedings are in a queer state. Pending in the Territorial Supreme Court is a decision as to whether or not Judge Gear should be cited to show cause why he should not be adjudged guilty of contempt of that court. Attorney Sidney M. Bailou, one of the attorneys for the A. W. Carter interests, applied to the Supreme Court for an order for Gear to show cause why he should not be found guilty of contempt in that he had proceeded with the Parker case hearings after the local Supreme Court had granted a writ of error to the Supreme Court of the United States from the local high court's decision upholding Gear on the chambers jurisdiction proposition. Bailou contending that appeal to the United States Supreme Court stays proceedings.

According to R. W. Breckons, in argument in the matter before the Supreme Court here, if there is any contempt, it is contempt of the United States Supreme Court for the matter is now out of the hands of the local high court. The whole case is as technical as it is likely to prove long drawn out and complicated.

Haleiwa Limited.

The most attractive day's outing is that afforded by the excursion down the railroad line. The HALEIWA LIMITED, a first-class train, leaves Honolulu every Sunday morning at 8:22 o'clock, making the run in two hours, the rate for round trip being only \$2.00. From 10:22 a. m. until 5:10 p. m. is spent at the beautiful HOTEL HALEIWA, with fresh and hot water bathing, tennis, golf, drives and walks, shooting or fishing, and you are back in town at 10:10 o'clock in the evening.

SUGAR REFINED

IN HAWAII

GOES TO COAST

Messrs. Coster and Buck left in the Siberia for the Coast today, taking with them the first consignment of sugar refined in the Hawaiian Islands. The small shipment was the first to go to the mainland from the new refining plant erected at the Honolulu plantation mill. Mr. Buck and others interested in the Honolulu plantation are greatly pleased with the results of the sugar refinery.

Juror Gives Food

TO

Hungry Porto Ricans

Juror F. J. Dutra of the Stephen Mahulu trial panel discovered a Porto Rican man and woman in a state of starvation on the street this morning. The man carried a few weeks old baby by means of a sling around his neck. Dutra took them to a restaurant and narrowly missed being late in court through the pleasure he derived from watching them eat. They told Dutra that they had come to Hawaii under promises of \$22 per month on a plantation; that they had worked on Oahu for three or four years and that they had been discharged on 7 to find that there seemed to be no way for them to make a living. They had not eaten anything substantial for several days.

MONGOLIA SOON DUE

H. Hackfeld & Co., the agents of the Pacific Mail S. S. Co. this noon received a cablegram from Yokohama stating that the steamship Mongolia left Yokohama today with 1200 tons freight for this port and room for 125 cabin passengers. She is due about December 9.

AHRENS' BIG SEND-OFF.

When Aug. Ahrens left Waipahu plantation as retiring manager, Monday evening, he was given a send-off such as would make the blood jump quicker in the veins of the most stolid. The carriage that took him to the depot was drawn by the white plantation employees. The Japanese to the number of 2,000 marched with torches to the depot and added their banzais to the hearty farewell.

Read "Wants" on page 6.

DO NOT FAIL TO SEE THE

NEW FALL LINE

Art Department of the

Pacific Hardware Company, Ltd.,

Their Pictures and Art Novelties will be the Leaders of the Season. Just the thing for Wedding and Birthday Presents.

PAINT

AND PAINTING

BY

Stanley Stephenson,

THE HONOLULU PAINTERY, PHONE 426. SURE SIGNS—S. S. SIGNS. 137 KING STREET.



Little Bills, Long Bills, Big Bills, Short Bills, Old Bills, Bad Bills and New Bills; all kinds of

Bills Collected

Merchants' Protective Ass'n, Ltd
Scientific Collectors of Bad Debts. Progress Block. Phone Main 197

CONSUMPTION OF SUGAR

UNITED STATES RECORD FOR CURRENT YEAR

HAWAII FURNISHED OVER \$23,000,000 OF \$100,000,000 IMPORTED. USE MORE EACH YEAR.

Washington, Nov. 13.—The sugar consumption of the United States in the current year seems likely to exceed that of any previous year, both in quantity and per capita. The total quantity brought into the United States in the nine months ended with September, 1904, is 4,500,000,000 pounds against 3,750,000,000 pounds in 1903, the high record for the corresponding period. Of this grand total, 687,911,928 pounds were from the Hawaiian Islands, 265,175,443 pounds from Porto Rico, and 24,201,588 pounds from the Philippine Islands. From Cuba the total was 2,527,132,559 pounds, against 1,854,420,177 pounds in the corresponding months of 1903, and 1,538,911,829 pounds in the corresponding months of 1902. From the British West Indies the total was 80,394,246 pounds; from other West Indies and Bermuda, 107,668,642 pounds; from the East Indies other than the Philippine Islands, 259,774,777 pounds, and from South America 62,980,056 pounds.

All of the above is cane sugar. In addition to this there were 235,211,168 pounds of beet sugar, which came chiefly from Germany, and with it a small quantity from Belgium and a still smaller quantity from Austria-Hungary. This total for the nine months—4,266,506,709 pounds—exceeds by more than 600,000,000 pounds the total for the corresponding period of any earlier year.

The value of the sugar brought into the United States in this period is \$101,116,717, of which \$32,223,975 was from the island territories of the United States, \$23,130,212 being from Hawaii, \$9,083,865 from Porto Rico, and \$342,440 from the Philippine Islands. One especially interesting fact shown by a study of the figures—omitting from the consideration the sugar brought from the non-contiguous territories of the United States—was from the East Indies, chiefly Java, the largest being, as already indicated, Cuba. The total imports under the title of "East Indies" during the nine months amounted to 259,774,777 pounds, valued at \$4,319,463, and this is chiefly from Java. The imports from the Dutch East Indies have increased very greatly during recent

year, the total in the fiscal year 1893 being 183,492,432 pounds, and in the fiscal year 1903, 891,758,090 pounds.

The table which follows shows the quantity of sugar imported into the United States during the nine months ended with September, 1904, compared with the corresponding months in each year for 1890 to 1904:

Year—	Pounds.
1890	2,536,357,689
1891	3,124,214,433
1892	2,964,194,253
1893	2,895,527,495
1894	3,625,181,055
1895	2,942,132,566
1896	3,443,065,979
1897	3,552,946,887
1898	2,595,283,590
1899	2,516,288,169
1900	2,877,538,863
1901	3,791,492,579
1902	3,070,577,885
1903	3,764,929,688
1904	4,266,506,939

LARGEST SUGAR DUTY.

San Francisco, Nov. 17.—Cashier Clem Perkins at the Custom House yesterday took in and counted \$192,237.17, which was paid by the Western Sugar Refinery, the duty on a cargo of sugar imported from Java on the German steamer Germanicus. This is the largest single duty paid into the custom house for several years past. The sugar was partly refined and consisted of 18,263 baskets, weighing 5,405,467 kilos. A kilo is equal to two and one-half pounds of our weight, making the cargo a little over 5946 tons. The value of the cargo is \$218,263, a little over the amount of the duty paid. The duty was at the rate of .01615 cents, or a little over 1 1-10th cents per pound. The quality was ascertained by a polaroscopic test, and the rate fixed thereby.

Real Estate Loans

are easily repaid by
MONTHLY INSTALLMENTS.
Just like
RENT
when money is obtained from
PHOENIX SAVINGS, BUILDING AND
LOAN ASSOCIATION.
Judd Building, Honolulu.
Guarantee Capital.....\$ 200,000.00
Paid-in Capital.....\$1,500,000.00
HENRY E. POOCK,
Cashier.

Artistic Signs

And Satisfaction Guaranteed—when made by

JEWETT,
CORNER HOTEL and UNION.

Just Arrived



LARGE
SHIPMENT
NEWEST
STYLES

Showing in the
Celebrated

Walkover

Shoes for Men

\$3.50 and \$4.00

L. B. KERR & COMPANY, limited

ALAKEA STREET,

Satisfaction Always Follows Each Sale

Prices on safes, Monuments and Iron Fences cheerfully given. Call or write

J. C. Astell,
1048-50 Alakea St. Phone 1801 Blue. P. O. Box 642.



Lewers & Cooke, Ltd.,
177 S. KING ST. AGENTS.



**Our \$65
WHITE BRONZE
MONUMENTS**

Are marvels of beauty and durability. They stand a foot 8 inches, the four sides are fitted with removable tablets with raised letters. Endorsed by "The Scientific American" as "most proof and strictly everlasting." Beautiful designs and prices at Pedersen's office, Bethel Street.

H. CANNON,
Sole Agent for Islands Box 1.

Elegant Holiday Furniture

We will soon have ready for inspection the finest assortment ever brought to this city.

Porter Furniture Co.,
Alexander Young Building.

KEEPS PROMISE TO SUBMIT TO ARREST

Onichi, Senior, came into town last evening to be arrested. He is accused of having to do with illicit distilling on the windward side of this island. When U. S. Marshal Hendry was at Hauula for the purpose of rounding up numerous Japanese supposed to be breaking the law in the manner noted, Onichi was so sick that he was unable to travel. He promised, as soon as he was able to move around, to come into Honolulu and be arrested.

True to his promise Onichi appeared and surrendered himself yesterday evening. This afternoon U. S. Commissioner Judd will examine Onichi and several others, preliminary to holding them for the Grand Jury, should his findings warrant such action.



The Sunday Law

AFFECTS NOT HIM WHO
LAYS IN A STOCK AT
HOME OF THE DELIGHTFUL

PRIMO LAGER

IT GIVES A ZEST TO THE
APPETITE AND MAKES
GOOD BLOOD

A STRAIGHT TIP

You must place reliance on your jeweler if you would secure jewelry that is sure to give satisfaction. We'd like you to look over our showing of Rings, Pins, Studs, Brooches, Watches, etc., at any time

M. R. Counter,
1142 Fort Street. Love Building

Cold Storage Delicacies EX ALAMEDA.

Choice assortment of Smelt, Salmon, sole, Shad Oysters, etc. Also

CRYSTAL SPRINGS BUTTER

Metropolitan Meat Company, Limited,

Tel. Main 45.

TAXED CHINESE LAUNDRYMEN

Henry Vierra, clerk to the Assistant Superintendent of Public Works, was this morning discharged from his position and taken before the Attorney General and charged with rather peculiar irregularities in money matters of which he had charge.

Vierra is supposed to have collected a little money on the side in connection with the collection of rents from Chinese tenants of the Government wash houses at Iwilei; it is said that he has been in the habit, for a while, of giving Chinese tenants receipts, say, for \$1500 for rent, when the actual rent was in fact an even \$15, and that the odd fifty cents was not turned in at the Public Works.

"Are these the receipts you gave the Chinese?" was asked of Vierra in the office of the Attorney General this morning.

"I suppose so," was the somewhat indignant reply.

"Is this your handwriting?"

"I suppose so."

The Attorney General could get little or nothing out of Vierra. He did not admit any guilt in the matter, nor did he deny that he had done anything wrong.

Superintendent of Public Work Holmway was seen this forenoon in relation to the matter. In effect he had the following to say:

"Henry Vierra was discharged from his position as clerk in the office of the Assistant Superintendent this morning. He has had charge of the collection of rents from our Chinese tenants

at the Government laundry. Through private information—no, Hatter had nothing to do with this case—we learned that he was collecting more money than he was turning in at the office. An investigation was made and we find that he has been charging the Chinese various little sums over and above what the rents should be.

"For example, he seems to have charged for the privilege of using clothes lines and such things, giving the tenant in each case a receipt in full for the money paid, and turning into the office only what the rent rate called for."

"I cannot say at present just what amount Vierra has in this way collected and failed to turn into the office or to account for, probably not more than two or three hundred dollars."

"The matter will be taken up by the Grand Jury. Vierra was taken before the Attorney General this morning, but he merely answered 'I suppose so,' when the receipts given the Chinese were produced and he was asked if they were the receipts which he had made out. He does not admit that he is guilty of wrong, nor does he deny it."

"I only wish that the matter could be satisfactorily explained for Vierra has been a good clerk."

At 2 o'clock this afternoon the Attorney General called at the police station and swore to a warrant for the arrest of Henry Vierra on a charge of embezzling Government wash house funds.

Judge De Bolt this morning, in the matter of the guardianship of two young Hawaiian girls, Kahoolopio and Mahoe, ordered the former to take up her abode with her father, Kalama, notwithstanding the tears and protests of the girl who has had, through family vicissitudes, but little acquaintance with her paternal parent.

LOCAL AND GENERAL

Read "Wants" on page 6.
Read Whitney & Marsh's ad today on page 8. Something new.

The best cup of Hawaiian coffee in the city. N. England Bakery.

Buy early. Advance sale of new holiday goods now on at Wail, Nichols.

Now is the time. Mail Hawaiian calendars to your friends. Arleigh & Co.

Buy your Sunday morning resurrection at the Pantheon. Blind pigs are "paid."

Glaze fruits, a fresh importation, packed in fancy boxes. Elite Ice Cream Parlors.

A discount of 20 per cent will be given on smoking jackets at J. Land's Hotel street store.

W. H. Cunningham and family left in the Siberia for the Coast today and remain permanently.

Hearing was had in Judge Dole's court this forenoon in the W. M. Cunningham bankruptcy matter.

Lord & Belsor have purchased the rock crusher at Moiliili. It will be set up in their quarry at Makiki.

Judge Robinson's trial jurors are required to present themselves in court at 10 o'clock tomorrow morning.

There is no business of importance to come before the quarterly meeting of the Bar Association this afternoon.

Special blanket and comforter sale, led rock prices. 100 pairs 19-4 white blankets at 75c pair at Pacific Import Co.

Robertson & Wilder, attorneys-at-law, have moved their offices to the fourth floor of the Stangenwald building.

Stop in at L. B. Kerr's, Alakea street, and try a pair of their famous Walkover shoes. You will never buy any other.

A meeting of the Bar Association will be held at 4 o'clock this afternoon in the court room of Judge De Bolt in the Judiciary building.

Chung Him, fined one hundred dollars in the Police Court for selling liquor without a license, appeals his case to the Circuit Court.

W. P. Fennel succeeds Henry Vierra, charged with embezzlement, as clerk in the office of the Assistant Superintendent of Public Works.

Residents about Emma Square state that the weeds are growing prodigiously in the prospective grass plots and bid fair to overwhelm the grass if not cared for.

Saturday evening at 7:30 Morgan will sell the entire stock of watches, clocks and jewelry at the store of M. J. Keille on Hotel street, opposite Miller's restaurant.

POLLS OPEN

In The Bulletin's \$1,000 Prize Contest for the greatest premiums ever offered in Hawaii

TOMORROW.

Get one of the Amateur cut-out outfits at Honolulu Photo-Supply Co. Kodakers who do their own printing will find them very handy for cutting ovals, circles, etc., of different sizes. Price per set, \$1.25.

Mr. Klamp and Mr. Lorenz leave in the Mikahala tomorrow for Kanai on a tour of inspection of the Hackfeld mills. Mr. Lorenz states that the new condensation plant installed by him at Kekaha mill has been in operation three weeks and is working splendidly.

At the "Bushido" lecture this evening in the M. E. parsonage, the "Chao-yan" ceremony will be conducted by Madame Saito, wife of the Japanese Consul General, assisted by Mesdames Kishi, Mori and Ishikawa. Mrs. Soke and Mrs. Yokota will perform on the "Koto" and "Samisen," and Mr. Matsuda on the "Shakuhachi." Tickets for sale at the door. See advertisement.

Hawaiian Sugar Co. A Dividend Payer

The directors of Makaweli Plantation Co. (Hawaiian Sugar Co.) at a meeting Monday decided to pay monthly dividends of one per cent beginning December 15.

The reports from the plantation are so good that the dividend is said to be a conservative one and one that there will be no trouble in continuing indefinitely.

NOVEMBER DIVIDENDS.

	Per cent.
C. Brewer & Co.	2
Ewa Plantation	1 1/2
Waimanalo	1
Hailu	1
Paia	1
Hawn, Electric Co.	1 1/2
Inter-Island S. N. Co.	1
Honolulu	2
Wailuku	1 1/2
Onomea (S. F. Dec. 5)	1
Honolulu	1 1/2
Pioneer	1

LUNCHEON FOR MRS. SCOTT.

Lihue, Kauai, Nov. 28.—Mrs. Ralph Wilcox was the hostess last Tuesday at a delightful luncheon given in honor of her sister, Mrs. W. H. Scott, who is soon to return to her home in San Francisco.

The guests were the sisters and sisters-in-law of the hostess. Mrs. Wilcox's pretty new home is often graced by similar occasions, as nothing gives Mrs. Wilcox such pleasure as to see her friends often and informally.—Garden Island.

"For Rent" cards on sale at Bulletin office.

"BURNT ORANGE" IS THE NEW SHADE OF LADIES' TAN OXFORDS AND WE HAVE THEM.

A Blucher Oxford, with welted sole and Cuban heel, in this new cooling shade is the ladies Oxford for this season.

Strong, Comfortable and a Guaranteed Easy Walker, retailing at \$3.50 and \$4.50—within the reach of all.

McINERNY SHOE STORE,
FORT STREET

Special Opportunity Sale Is Now On.

We have gathered together many plain, pretty materials, both white and colored, and have made price reductions that will ensure their quick sale.

Not only are the prices attractive but the goods themselves are very dainty and fine.

Plain White Batiste, width 28 inches; regular 15c. Reduced to 10c.

Plain White Swisses, 39 inches. Reduced from 15c. to 10c.; 25c. to 6 yards for \$1.00; 35c. to 20c.; 40c. to 25c.

White Dotted Swisses, width 27 inches. Reduced from 25c. to 15c.

Mercerized Chambray, width 27 inches. Reduced from 30c. to 12 1/2c.

Plain French Batiste, width 40 inches, in light blue, pink, red and black. Reduced from 30c. to 20c.

Plain French Organdies, in pink, blue, red and yellow. Reduced from 30c. to 15c.

Dotted Swisses, of Nile green, red, pink and light blue. Reduced from 30c. to 15c.

Plain Batiste, width 40 inches; colors: red, pink, light blue, green. Reduced from 6 yards for \$1.00 to 8 yards for \$1.00.

Ehlers

FORT STREET.

FOOTBALL

**Saturday, Dec. 3.
Punahou vs. H.A.C.**

CHAMPIONSHIP GAME

—AT—
**New Baseball Park
3 p.m.**

Admission 50 cents
Including Reserved Seat.
Under 17 years 25 cents
Seats on Sale at Woods & Sheldon.

Fresh by S. S. Alameda
All kinds of American Biscuit Co's
BISCUITS

**FRESH VEGETABLES
FRUITS AND GROCERIES**

C. Q. Yee Hop & Co.,
Tel. Blue 2511 Beretania and Alakea

MILLINERY.
The latest in Ready-to-Wear and Reception Hats

—AT—
**Miss Power's Millinery Parlors,
Boston Building, Fort St**

TWAS PARKER'S.
Baltimore, Md., Nov. 12.—The official returns of Tuesday's election, made public tonight, show that Parker carried Maryland.

Charles Bonaparte, the Republican, and seven Democrats have been returned electors.

Read "Wants" on page 6.

HONOLULU STOCK EXCHANGE

HONOLULU, Nov. 30, 1904

NAME OF STOCK	Capital Paid Up	5c	10c	15c	20c	25c	30c	35c	40c	45c	50c	55c	60c	65c	70c	75c	80c	85c	90c	95c	100c
MERCANTILE																					
C. Brewer & Co.	1,000,000	100	100	100	100	100	100	100	100	100	100	100	100	100	100	100	100	100	100	100	100
L. B. Kerr & Co. Ltd.	500,000	50	50	50	50	50	50	50	50	50	50	50	50	50	50	50	50	50	50	50	50
SUGAR																					
Ewa Plantation Co.	5,000,000	500	500	500	500	500	500	500	500	500	500	500	500	500	500	500	500	500	500	500	500
Hawaiian Agricultural Co.	1,000,000	100	100	100	100	100	100	100	100	100	100	100	100	100	100	100	100	100	100	100	100
Haw. Com. & Sugar Co.	4,750,000	475	475	475	475	475	475	475	475	475	475	475	475	475	475	475	475	475	475	475	475
Honolulu Sugar Co.	750,000	75	75	75	75	75	75	75	75	75	75	75	75	75	75	75	75	75	75	75	75
Honolulu Sugar Co.	5,000,000	500	500	500	500	500	500	500	500	500	500	500	500	500	500	500	500	500	500	500	500
Kahuku Plantation Co.	500,000	50	50	50	50	50	50	50	50	50	50	50	50	50	50	50	50	50	50	50	50
Kona Plantation Co. Ltd.	500,000	50	50	50	50	50	50	50	50	50	50	50	50	50	50	50	50	50	50	50	50
Kipahulu Sugar Co.	500,000	50	50	50	50	50	50	50	50	50	50	50	50	50	50	50	50	50	50	50	50
Kona Sugar Co.	500,000	50	50	50	50	50	50	50	50	50	50	50	50	50	50	50	50	50	50	50	50
McBryde Sugar Co.	500,000	50	50	50	50	50	50	50	50	50	50	50	50	50	50	50	50	50	50	50	50
Oahu Sugar Co.	500,000	50	50	50	50	50	50	50	50	50	50	50	50	50	50	50	50	50	50	50	50
Onomea Sugar Co.	1,000,000	100	100	100	100	100	100	100	100	100	100	100	100	100	100	100	100	100	100	100	100
Oahu Sugar Plant Co.	500,000	50	50	50	50	50	50	50	50	50	50	50	50	50	50	50	50	50	50	50	50
Oahu Sugar Co. Ltd.	500,000	50	50	50	50	50	50	50	50	50	50	50	50	50	50	50	50	50	50	50	50
Oahu Sugar Co.	500,000	50	50	50	50	50	50	50	50	50	50	50	50	50	50	50	50	50	50	50	50
Oahu Sugar Co.	500,000	50	50	50	50	50	50	50	50	50	50	50	50	50	50	50	50	50	50	50	50
Oahu Sugar Co.	500,000	50	50	50	50	50	50	50	50	50	50	50	50	50	50	50	50	50	50	50	50
Oahu Sugar Co.	500,000	50	50	50	50	50	50	50	50	50	50	50	50	50	50	50	50	50	50	50	50
Oahu Sugar Co.	500,000	50	50	50	50	50	50	50	50	50	50	50	50	50	50	50	50	50	50	50	50
Oahu Sugar Co.	500,000	50	50	50	50	50	50	50	50	50	50	50	50	50	50	50	50	50	50	50	50
Oahu Sugar Co.	500,000	50	50	50	50	50	50	50	50	50	50	50	50	50	50	50	50	50	50	50	50
Oahu Sugar Co.	500,000	50	50	50	50	50	50	50	50	50	50	50	50	50	50	50	50	50	50	50	50
Oahu Sugar Co.	500,000	50	50	50	50	50	50	50	50	50	50	50	50	50	50	50	50	50	50	50	50
Oahu Sugar Co.	500,000	50	50	50	50	50	50	50	50	50	50	50	50	50	50	50	50	50	50	50	50
Oahu Sugar Co.	500,000	50	50	50	50	50	50	50	50	50	50	50	50	50	50	50	50	50	50	50	50
Oahu Sugar Co.	500,000	50	50	50	50	50	50	50	50	50	50	50	50	50	50	50	50	50	50	50	50
Oahu Sugar Co.	500,000	50	50	50	50	50	50	50	50	50	50	50	50	50	50	50	50	50	50	50	50
Oahu Sugar Co.	500,000	50	50	50	50	50	50	50	50	50	50	50	50	50	50	50	50	50	50	50	50
Oahu Sugar Co.	500,000	50	50	50	50	50	50	50	50	50	50	50	50	50	50	50	50	50	50	50	50
Oahu Sugar Co.	500,000	50	50	50	50	50	50	50	50	50	50	50	50	50	50	50	50	50	50	50	50
Oahu Sugar Co.	500,000	50	50	50	50	50	50	50	50	50	50	50	50	50	50	50	50	50	50	50	50
Oahu Sugar Co.	500,000	50	50	50	50	50	50	50	50	50	50	50	50	50	50	50	50	50	50	50	50
Oahu Sugar Co.	500,000	50	50	50	50	50	50	50	50	50	50	50	50	50	50	50	50	50	50	50	50
Oahu Sugar Co.	500,000	50	50	50	50	50	50	50	50	50	50	50	50	50	50	50	50	50	50	50	50
Oahu Sugar Co.	500,000	50	50	50	50	50	50	50	50	50	50	50	50	50	50	50	50	50	50	50	50
Oahu Sugar Co.	500,000	50	50	50	50	50	50	50	50	50	50	50	50	50	50	50	50	50	50	50	50
Oahu Sugar Co.	500,000	50	50	50	50	50	50	50	50	50	50	50	50	50	50	50	50	50	50	50	50
Oahu Sugar Co.	500,000	50	50	50	50	50	50	50	50	50	50	50	50	50	50	50	50	50	50	50	50
Oahu Sugar Co.	500,000	50	50	50	50	50	50	50	50	50	50	50	50	50	50	50	50	50	50	50	50
Oahu Sugar Co.	500,000	50	50	50	50	50	50	50	50	50	50	50	50	50	50	50	50	50	50	50	50
Oahu Sugar Co.	500,000	50	50	50	50	50	50	50	50	50	50	50	50	50	50	50	50	50	50	50	50
Oahu Sugar Co.	500,000	50	50	50	50	50	50	50	50	50	50	50	50	50	50	50	50	50	50	50	50
Oahu Sugar Co.	500,000	50	50	50	50	50	50	50	50	50	50	50	50	50	50	50	50	50	50	50	50
Oahu Sugar Co.	500,000	50	50	50	50	50	50	50	50	50	50	50	50	50	50	50	50	50	50	50	50
Oahu Sugar Co.	500,000	50	50	50	50	50	50	50	50	50	50	50	50	50	50	50	50	50	50	50	50
Oahu Sugar Co.	500,000	50	50	50	50	50	50	50	50	50	50	50	50	50	50	50	50	50	50	50	50
Oahu Sugar Co.	500,000	50	50	50	50	50	50	50	50	50	50	50	50	50	50	50	50	50	50	50	50
Oahu Sugar Co.	500,000	50	50	50	50	50	50	50	50	50	50	50	50	50	50	50	50	50	50	50	50
Oahu Sugar Co.	500,000	50	50	50	50	50	50	50	50	50	50	50	50	50	50	50	50	50	50	50	50
Oahu Sugar Co.	500,000	50	50	50	50	50	50	50	50	50	50	50	50	50	50	50	50	50	50	50	50
Oahu Sugar Co.	500,000	50	50	50	50	50	50	50	50	50	50	50	50	50	50	50	50	50	50	50	50
Oahu Sugar Co.	500,000	50	50	50	50	50	50	50	50	50	50	50	50	50	50	50	50	50	50	50	50
Oahu Sugar Co.	500,000	50	50	50	50	50	50	50	50	50	50	50	50	50	50	50	50	50	50	50	50
Oahu Sugar Co.	500,000	50	50	50	50	50	50	50	50	50	50	50	50	50	50	50	50	50	50	50	50
Oahu Sugar Co.	500,000	50	50	50	50	50	50	50	50	50	50	50	50	50	50	50	50	50	50	50	50
Oahu Sugar Co.	500,000	50	50	50	50	50	50	50	50	50	50	50	50	50	50	50	50	50	50	50	50
Oahu Sugar Co.	500,000	50	50	50	50	50	50	50	50	50	50	50	50	50	50	50	50	50	50	50	50
Oahu Sugar Co.	500,000	50	50	50	50	50	50	50	50	50	50	50	50	50	50	50	50	50	50	50	50
Oahu Sugar Co.	500,000	50	50	50	50	50	50	50	50	50	50	50	50	50	50	50	50	50	50	50	50
Oahu Sugar Co.	500,000	50	50	50	50	50	50	50	50	50	50	50	50	50	50	50	50	50	50	50	50
Oahu Sugar Co.	500,000	50	50	50	50	50	50	50	50	50	50	50	50	50	50	50	50	50	50	50	50
Oahu Sugar Co.	500,000	50	50	50	50	50	50	50	50	50	50	50	50	50	50	50	50	50	50	50	50
Oahu Sugar Co.	500,000	50	50	50	50	50	50	50	50	50	50	50	50	50	50	50	50	50	50	50	50
Oahu Sugar Co.	500,000	50	50	50	50	50	50	50	50	50	50	50	50	50	50	50	50	50	50	50	50
Oahu Sugar Co.	500,000	50	50	50	50	50	50	50	50	50	50	50	50	50	50	50	50	50	50	50	50
Oahu Sugar Co.	500,000	50	50	50	50	50	50	50	50	50	50	50	50	50	50	50	50	50	50	50	50
Oahu Sugar Co.	500,000	50	50	50	50	50	50	50	50	50	50	50	50	50	50	50	50	50	50	50	50
Oahu Sugar Co.	500,000	50	50	50	50	50	50	50	50	50	50	50	50	50	50	50	50	50	50	50	50
Oahu Sugar Co.	500,000	50	50	50	50	50	50	50	50	50	50	50	50	50	50	50	50	50	50	50	50
Oahu Sugar Co.	500,000	50	50	50	50	50	50	50	50	50	50	50	50	50	50	50	50	50	50	50	50
Oahu Sugar Co.	500,000	50	50	50	50	50	50	50	50	50	50	50	50	50	50	50	50	50	50	50	50
Oahu Sugar Co.	500,000	50																			

WANTS

See Page 8, NEW TO-DAY, for New Ads.

SITUATIONS WANTED.

By Japanese to do cooking in private family; can furnish references. Address George, care Bamboo Store, 563 Beretania St. 2929-1w

SPECIAL NOTICES.

FOR SALE.
Have 5 Houses for sale at Palama: \$500 cash; balance WITHOUT INTEREST at \$10.00 per month.

P. E. R. STRAUCH,
No. 74 S. KING ST. TEL. MAIN 386.

WANTED

WANTED TO PURCHASE

(1) A house and lot within five blocks from the business center of Honolulu. Price must not exceed \$1200.00.

(2) A house and lot within a mile from the center of Honolulu; Liliha or Nuuanu St. preferred. Price about \$2400.00.

(3) A tract of 5 or 6 acres suitable for small farming.

A. V. GEAR,
122 King St.

Pupils for shorthand lessons. Address B., this office. 2933-1w

TO LET.

Furnished Rooms.—Housekeeping allowed; cool and mosquito-proof. Alakea House, Alakea St. bet. Hotel and King. 2265-tf

2-room cottage, sanitary plumbing, on River St. Apply J. W. Podmore, King and Bethel. 2792-tf

Newly furnished rooms, all modern conveniences. At No. 84 Vineyard St. 2728-tf

4-room cottage, No. 423 Kuakini St. Apply J. W. Podmore, Bethel St. 2594-tf

Two front mosquito-proof rooms at 777 Kinau St. near Alapai. 2915-1m

Furnished rooms at 1223 Emma Street. Mrs. McConnell. 2563

HELP WANTED.

TO LET.

Well furnished front room \$2; also balcony room \$120, 1281 Fort street. 2932-1m

FOR SALE.

Fine corner lot in Makiki. Curbing, water, fruit and ornamental trees and all improvements. Two minutes' walk from cars and Punahou College. Address R. F., this office. 2516-tf

LOST.

Taken from in front of Bulletin office, between 3 and 4 p. m. Monday, Oct. 31, a cushion frame, chainless Columbia bike, leather bag in front, leathers on handlebar, bell on left side, nickel worn off left side handlebar, rust spot on front axle, and spring holder; rat trap peddles, \$5.00 reward, return Evening Bulletin. W. L. Eaton. 2919-tf

On Fort street, between Sachs' store and King street, lady's gold watch with dragon-head chain and pin set with garnets. Finder leave at Bulletin office. 2931-3t

A bundle containing 2 shirts, on Fort between School and King Sts. Finder please return to this office and receive reward. 2931-tf

FOUND.

Gentleman who exchanged hats at Masonic Temple Friday night can find his hat by applying at this office. 2908-tf

"For Rent" cards on sale at The Bulletin office

GLOSSOP GIVES DETAILS

Of Terrible

SIEGE OF PORT ARTHUR

Reginald Glossop, the British war correspondent who is now on his way home from Port Arthur, yesterday afternoon consented to give some details of the siege on which the eyes of the world is now centered, in addition to the interview published in the Bulletin yesterday.

"So far the Japanese have not captured any permanent forts, although they have occupied several fortified positions. The principal attack on Port Arthur was made on the night of August 23. About 25,000 Japanese took part in this assault. The Japanese advanced under cover of darkness and got as far as the Chinese wall, which runs right between the permanent forts. During all this the Russian guns kept ominously silent. The Japanese had almost reached the fortress when suddenly the darkness was lit up by the glare of numerous powerful Russian searchlights. Overhead flashed big star rockets which intensified the glare. Simultaneously with the light a veritable hail of shot and shell broke loose from the hitherto silent forts. Forty Maxims poured their fire into the files of Japanese which were fully exposed by the light. Heavy shells fell among them, mines were exploded and the withering hail of death fell upon the dense masses of humanity with an effect which no human, however great their bravery, could withstand. The Japanese had to flee and the attack was a failure.

"A little previous to this the Japanese had made an attack on Fort Kuro-patkin. This fort lies in the front and middle of the line of fortresses and divided the Japanese into two divisions. General Nogi centered 2000 men in the attack. The garrison of the fort consisted of 250 Russians.

"The attack was begun by the sending of a small force of men with wire snipers to cut a road through the barbed wire entanglements. The men rushed bravely forward but every one of them fell before the Russian fire before they could use their tools. In spite of this failure the attack went on and the Japanese swarmed up the hill, drove the Russians out at the point of

the bayonet and captured the fort with a 'Banzai!' The Russians made but little resistance and left but few dead.

"Intoxicated by victory the Japanese made themselves comfortable in the captured fort, but they soon received a lesson in strategy from the Russians, who are past masters in the art of holding fortresses, having learned many a trick from Sebastopol and other places. Toward sunrise all the Russian forts suddenly concentrated their fire on Fort Kuropatkin. The shell fire was so heavy that the Japanese, brave soldiers as they are, had to evacuate the fortress immediately.

"A few days later the attack on Fort Kuropatkin was renewed and one morning the Japanese planted their banner on the fortress, having captured it at a loss of about 1000 men. On that same day the Japanese went on to attack Fort Namakagawa. The attack was a perfect hell. The Russians worked two 5-inch guns until the very last moment before they evacuated the fort. The Russians also used hand grenades and dynamite. The Japanese with great bravery swarmed up a steep incline, down which the men above rolled huge boulders, each of which swept tens and scores of men with them. In spite of the terrific shrapnel and rifle fire the Japanese gained an entrance and swept away the garrison at the point of the bayonet.

"A few days later the Japanese made an assault on 203 Meter Hill, a fortress which is separated from Namakagawa by a deep valley. The Japanese swarmed into this valley but were met by a fearful fire from 25 Russian machine guns, which swept the entire glacis of the hill. That day the bravery of these little Spartans filled the correspondent with wonder. But it was all of no avail. The attack was repulsed with but a slight loss to the Russians. That was the last attack from the west side and I think it will be the last one. I have since heard that 203 Meter Hill was captured but I do not believe it.

"Some time previous to this attack the Japanese captured the two forts, Banrusan West and Banrusan East.

The attack was preceded by a terrible bombardment lasting two and a half days. After that the Japanese poured in over the forts and by sheer weight of numbers drove out the Russian garrisons, which had been weakened by the shell fire. There was a terrific carnage, however, the Japanese losing about 3500 men. It is almost impossible to get the exact amount of the Japanese losses as the dead are cremated. The Banrusan forts are in the regular line of forts but do not belong to the permanent category.

"At the capture of Fort Hichimaki the Japanese used their big 28-centimeter guns and 11.2 coast defense howitzers, which their engineers with incredible skill had brought to within shelling distance. After a bombardment lasting for five hours, at which shells costing £100 a piece were fired, the Japanese advanced their infantry, which, after 15 minutes fighting with but small losses, captured the fort, the garrison of which was demoralized by the terrible bombardment.

"When I left the Japanese were paying their principal attention to the forts Nirrusan, Kaikansan and Shogusan, and I think they are still there.

"These forts are protected by an enormous ditch and provided with a great number of machine guns, which will make them difficult to capture. 'From a friend of mine who came out of Port Arthur just before I left, I learned considerable about the conditions prevailing there. I am sure that the Russians will hold out for a long time yet. Some day when the Russians find that they can no longer hold the outer line of forts they will abandon them without fighting and will retreat to the inner line, the real nucleus of Port Arthur, which they will hold to the very last.

"Should the Japanese ever capture Port Arthur their list of casualties will be something tremendous.

"The Japanese attack the fortifications first by a concentration of shell fire, during which they run parallel up to the forts. Then when the word for attack is given the soldiers jump from the trenches and swarm up the hills like ants. It is a slow and take fight on both sides and no quarter is shown. The Russians began the shooting of wounded lying on the hillside and the Japanese replied by taking up the same practice. This, in addition to the enormous losses inflicted by shell fire from modern guns, hand grenades, torpedoes, etc., makes the carnage a terrible one.

"Of the Japanese in front of Port Arthur the Seventh Regiment is considered the bravest, with the First a good second. The Osaka regiment are spoken of with but little respect. It is the only poor regiment there. The Japanese have gained the respect of the Russians, at least as soldiers. However, it is probable that the Japanese reserves which will now be drawn upon, will show themselves far inferior to the men now in the field. The Japanese soldier, as I saw him at Port Arthur, was worth three Russians in a hand-to-hand encounter, to which their great agility adapts them splendidly. The Japanese officers are high spirited and well trained. The bad position of the Russian army, I think, is due more to officialdom than it is to the officers and soldiers, who are beyond criticism.

"The situation, as I see it, now hangs on the Baltic fleet. This fleet counts several very modern battleships and may quite possibly defeat Togo. On board the Baltic fleet are all the officers and crew of the Varig and when it reaches Asiatic waters the Vladivostok squadron will try to transfer to it many men who have already seen fighting. Even if the Baltic fleet should defeat Togo the Japanese in Manchuria will not be in immediate trouble as there is at present provisions enough in Manchuria to feed the army for eight months. Port Arthur will, however, be saved from capture.

"The steamship Alameda made an Irish record when she departed for the Coast this morning, sailing without having a single cabin passenger. The Pacific Mail liner Siberia, which sailed this noon, took the travellers who would otherwise have left in the Oceanic steamer. However, the Alameda made up for what she lacked in the cabin by taking away 140 steerage passengers.

In spite of the lack of passengers a fair-sized crowd gathered on the Oceanic wharf to see the familiar boat off. The band was also present and entertained the scene with the usual steamer program.

NO CABIN PASSENGERS.
The steamship Alameda made an Irish record when she departed for the Coast this morning, sailing without having a single cabin passenger. The Pacific Mail liner Siberia, which sailed this noon, took the travellers who would otherwise have left in the Oceanic steamer. However, the Alameda made up for what she lacked in the cabin by taking away 140 steerage passengers.

In spite of the lack of passengers a fair-sized crowd gathered on the Oceanic wharf to see the familiar boat off. The band was also present and entertained the scene with the usual steamer program.

ACHI'S PROPOSED PLAN FOR DECENTRALIZATION
Senator Achi has prepared seven bills which he will present at the next session of the Legislature and which he believes will give the people a sufficient measure of self government, without the complications and expense of an out and out county system. Mr. Achi's plan contemplates the election of all present officers in their respective districts below the grade of heads of departments. The system would remain as at present in the main except that instead of being appointed by the executive, public servants would be chosen by the people.

SCHEDULE OF VOTE CREDITS
In every copy of the paper there will be printed a coupon which being properly filled out with the name of the party for whom it is desired to vote and deposited with The Evening Bulletin within one week after the day of issue, will be credited as one vote. Additional vote credits will be allowed as follows:

For each NEW subscriber who has not been regularly served with The Evening Bulletin within a period of sixty days prior to the first day of December, if paid cash in advance, double credits will be allowed, as follows:

Daily 1 year \$8.00 2400
Daily 6 months 4.00 1000
Daily 3 months 2.00 400
Daily 1 month75 100
Weekly 1 year 1.00 500
Weekly 6 months50 250
Cash payments on all other subscriptions, either payments in advance or on account of arrears, will receive vote credits when payment is made, but no votes will be credited upon sums less than 75 cents. In other words, votes will be credited for cash payments upon regular subscriptions as follows:

Daily 1 year \$8.00 1200
Daily 6 months 4.00 500
Daily 3 months 2.00 200
Daily 1 month75 50
Weekly 1 year 1.00 350
Weekly 6 months50 150

POLLS OPEN
The Bulletin's \$1,000 Prize Contest for the greatest premiums ever offered in Hawaii

TOMORROW.
The Weekly Edition of the Evening Bulletin gives a complete summary of the news of the day.

BUSINESS DIRECTORY

BALLASTING.

Hawaiian-Japanese Ballasting Co.—Best black sand from \$3 to \$5 a load according to distance hauled. Coral rocks for stable, roads and sidewalks. Third door below King, Maunakea St.; P. O. box 339. Telephone Main 395.

CLEANING AND DYEING.

T. Hayashi—Clothes cleaned, repaired and dyed. 537 Beretania St.

MASSAGE.

S. Ochiai, removed to Beretania St. near Maunakea. 2881

MESSENGERS.

Territorial Messenger Service—Under St. near Hotel; Tel. 261 Main.

MUSIC.

Mr. Jas. Sheridan has opened a repairing shop at 1188 Miller St. cor Beretania. Charges reasonable. A number of second-hand pianos in good condition, cheap. Orders may be left at Haw'n. News Co.

Piano taught in 6 months by experienced teacher; \$3 month (\$8 lessons); special attention to adult beginners. Address "Music," this office. 2933-1w

TOUR OVER MCBRYDE

PRESIDENT ISENBERG TAKES PARTY OVER PLANTATION

GOOD FIELDS OF CANE AND WATER SUPPLY VIEWED BY THE VISITORS — GO OVER THE MILL.

Lihue, Kauai, Nov. 28.—Last Wednesday morning at 10 o'clock a large party of pleasure seekers from Lihue and Koloa gathered at Kukuia, McBryde plantation, at the bidding of Senator Paul Isenberg, president of McBryde Plantation Company, to spend the day in sight seeing on McBryde plantation. Senator Isenberg, Manager Stodart of McBryde's, and Head Luna Weinshelmer of Lualaba, were there to receive the guests and conduct them to the train of cars which had been fitted up specially for the excursion. The train slowly moved from Alopo Gulch toward Koloa up through the Smith estate lands, which were covered with large, heavy, long rattan cane.

The railroad runs here for about a mile through as fine cane as grows on the island entirely unharmed from leaf hopper or borer. This land is old cane land, comprising about 350 acres, but it certainly has lost none of its vigor. After passing over the Smith lands the train returned by the same route to Alopo Gulch and moved westward over the East Lualaba lands for about a mile and from there on to the East Lualaba lands mauka, covering a stretch of a mile and a half, all covered with a fine growth of long rattan, a good deal of which will be taken off for the 1905 crop. This Lualaba land is all new land with a rich, deep soil and grows most excellent cane. Passing over the Lualaba lands on a very high and strongly built bridge, we skirted Lualaba Gulch for a time over a roadbed in many places blasted out of solid lava rock and as we entered upon the West Lualaba lands the train passed through two tunnels cut through the corner of the cliff, one 300 feet long and the other 500 feet long. This railroad from West Lualaba to the Smith lands is the most expensive road on the plantation, the stretch of three miles, including the bridges, costing about \$10,000.

In Lualaba Gulch is situated one of the three large pumping stations of the plantation, the other two being in Hanalei Valley. These pumps supply the plantation with twenty million gallons of water daily, when that amount is required for irrigating purposes. Besides this water, which is used in quantities required, the regular irrigating ditches from the mountains bring eight million gallons of water to the plantation daily, and the plantation gets from the Makaweli plantation through the Hanapepe ditch surplus water from that plantation amounting from three to ten million gallons a day. This water is not especially needed except in the months of June, July, August and September, when all the surplus water Makaweli plantation can spare is used on McBryde.

Besides these sources of water supply, McBryde has a reservoir capacity of eight hundred million gallons which is collected in the rainy season and used in the dry season.

The West Lualaba lands, all new, are about three miles wide, and contain the strip of Government land, about three-quarters of a mile wide, running from the sea to the mountains, called Kalahoe, on which the lease will expire in a couple of years. This Kalahoe land at the present time is covered with a fine growth of cane, plentifully watered, but the land has no water right, and after reversion to the Government, unless water can be secured for it in some way, will become worthless.

Crossing the Kawaihaka Gulch from West Lualaba we passed on to the Waihala lands and took a spin of a mile through fields of heavy long rattan to the new McBryde mill.

This is one of the largest and most finely equipped mills in the Hawaiian Islands. It is a nine-roller Cuban mill and was designed by O. B. Stillman, the famous sugar mill man, and cost erected and complete in every detail \$400,000.

It takes ninety-six men all told, night and day shifts, to operate the mill, and it has a capacity from 100 to 125 tons a day. Manager Stodart piloted the company through the mill explaining the various mechanisms and devices. The machinery is being put in readiness for use, as McBryde will begin grinding on December 5th.

From the mill the expedition proceeded westward over the Waihala Gulch on to the Eleele lands, which extend for a mile and a half down to the Eleele landing. These Eleele lands are old lands and comprise the sugar lands August Dreier formerly cultivated as the old Eleele plantation.

At Eleele landing the excursion came to an end and the entire company was whirled back over the route before traveled to the McBryde Beach House at Lualaba, where Mr. Walter McBryde had prepared a most sumptuous luau for the hungry pleasure party. The excursion party had passed over a stretch of McBryde Plantation lands about twelve miles wide, which is the width of the plantation, while it extends back to an average depth of two miles to the mountains, and contains an aggregate area, including pasture and forest lands, of 12,000 acres, of which 5,077 acres are at present planted to growing cane.

McBryde keeps fourteen hundred men busy. There are fifteen miles of permanent railroad on the plantation and they have nine and a half miles of portable track which they use in cane cutting season. It takes three Baldwin locomotives and 450 cars to do the transportation work on this gigantic estate.

The 1905 crops, which Mr. Stodart will begin taking off within a week or so, comprises 2,500 acres of cane, 800 acres of which is plant, 400 acres is short rattan, and 1,350 acres is long rattan. Mr. Stodart places the 1905 crop at 13,000 tons of sugar, and he believes this is a conservative estimate.

The 1906 crop covers 2,700 acres and comprises 750 acres of plant cane, 1,669 acres of long rattan and 332 acres of short rattan.

The lands of the McBryde plantation are nearly all new lands and therefore rich and strong and much more productive than old lands and cheaper to cultivate because they do not require fertilizer, which is a big item of expense to older plantations.

The old lands on McBryde are the Eleele lands containing about eight hundred acres and the Smith lands containing about three hundred and fifty acres, while the plantation has about one thousand acres of good cane land yet to be cleared for cultivation.

At the McBryde Beach House the company sat down at 2 o'clock on the lawn under the shade of the coconut trees to a delicious luau to which full justice was done by all present.

Those comprising the party were Senator and Mrs. S. W. Wilcox, Mr. and Mrs. Hans Isenberg, Mr. and Mrs. R. W. T. Purvis and Stirling Purvis, Mr. and Mrs. John A. Palmer, Mr. and Mrs. Charles A. Rice, Mr. and Mrs. W. H. Rice Jr., Mr. and Mrs. Sheriff Conner, Mr. and Mrs. R. W. Wilcox, Mrs. C. H. Bishop, Mr. and Mrs. Stodart, Mrs. Christ, Mrs. A. S. Wilcox, the Misses Elele and Mabel Wilcox, Quinn, Rice, and Messrs. W. H. Rice Sr., Dempster, J. C. Davis, W. Fisher, J. K. Farley, Willard, Cropp, Senator Randall, Senator Isenberg, Walter McBryde and Head Luna Weinshelmer.—Garden Islands.

Champion Baseballists Waiting for The Cup

One of the H. A. C. baseball boys said yesterday that he thought it was about time for the Baseball League to turn over the prize of last summer's battle to the winning team. He said: "Our team won the championship, which takes the Rapid Transit Cup. We know we won out but we have had no official notification; we have not had the pleasure of touching with our hands that beautiful cup. It seems to me the League or the trustees should get together and wind up this part of the year's baseball business. That cup should be filled and tested for leaks before the year 1904 passes away."

HANALEI WON.
Lihue, Kauai, Nov. 28.—Thanksgiving day the school boys of Hanalei and Kilauea were pitted against each other in a lively baseball game, at Kilauea. The game was called at 1:30 p. m. with the Hanalei team at the bat. The boys of both teams were evenly matched in size and it soon proved to be a well contested game. Hanalei won by a score of 17 to 13. The players on the teams were as follows: Kilauea—Mahlko, Seraphin, Jachthel, Hide, Joe Pacheco, Antonio Rapozo, Joel Cox, George Akana and Joe Ferriera. Hanalei—S. Papeko, W. Warner, John Uka, Heleohi, Maha, D. Kaili, Kinehi, M. Keohohina and Ah Wah Hen.

The Weekly Edition of the Evening Bulletin gives a complete summary of the news of the day.

A HOLIDAY OPPORTUNITY

A LIFELONG PLEASURE

The Bulletin's Thousand Dollar Prize Contest Begins Thursday, Dec. 1.

Everyone May Vote For Anyone. Open To Everybody In Hawaii.
SIX PRIZES---VALUE \$1000.00

Rules of the Contest

The contest will open Thursday, December 1, and will close at 5 o'clock p. m. March 15.

WHO MAY ENTER

Anyone may enter except persons or anyone in the immediate family of any person in the regular employ of The Bulletin Pub. Co., Ltd.

"NEW SUBSCRIBERS"

By the schedule of vote credits, special inducements are offered for New Subscribers, twice the number of votes being allowed for bona fide new names as for cash payments on account of those now on the subscription books. A New Subscriber, therefore, should be clearly defined. During this contest a new subscriber will be understood to be any person who has not been regularly served with The Daily or Weekly Bulletin within a period of 60 days last preceding the first day of December. Transfers from one member of a household to another will not be allowed, and all names handed in as New must be subject to investigation before votes are allowed.

THE FINAL COUNT

The final count will be made by three judges, selected from among those having no interest in The Bulletin and no active interest in any one of the candidates. The vote will be announced by the judges and the prizes awarded according to their findings, there being no appeal. Subscription accounts and everything pertaining to the contest will be open to their inspection.

NO TRANSFER OF VOTES

Only one name can be written on any ballot, and transfers of votes from one candidate to another will not be allowed.

A Pope-Tribune Automobile An Angelus Piano Player An L. C. Smith Shotgun A Premo Senior Camera A Cabinet Tool Chest A Barrel of Flour

FIRST PRIZE—A Pope-Tribune Automobile. Value, \$600. This machine is Mr. Gus. Schuman's importation and is his choice from among the best autos in the United States. It is made by the celebrated Pope Mfg. Co., of Hartford, Conn., who guarantees it.

SECOND PRIZE—An Angelus, the world-famed piano-player. Value, \$250. The Angelus is the result of an inspiration, and has made it possible for any man or woman who knows nothing about a piano, to play any class of music correctly. The Angelus is a modern miracle in the musical world. The Hawaiian News Co. are the local agents.

THIRD PRIZE—An L. C. Smith, 12-gauge, high-grade Shotgun. Value, \$50. It has automatic ejector, armor steel barrels, English walnut stock, half-pistol grip. This gun is from the sporting-goods house of Woods & Sheldon.

FOURTH PRIZE—A Premo Senior, 5x7 Camera, made by Rochester Optical Co. Value, \$40. This instrument has Bausch & Lomb lens, Victor shutter, vertical and horizontal swinging back, front rising and falling, ratchet and pinion focus. Camera is from the Honolulu Photo Supply Co.

FIFTH PRIZE—A \$20 Tool Cabinet, made by C. E. Jennings & Co., New York. This tool chest is made of chestnut and contains thirty-six useful articles; every tool warranted. The cabinet is from the well-known house of E. O. Hall & Son.

SIXTH PRIZE—One barrel Port Costa flour. Pure as snow and makes best dough.

Schedule of Vote Credits

In every copy of the paper there will be printed a coupon which being properly filled out with the name of the party for whom it is desired to vote and deposited with The Evening Bulletin within one week after the day of issue, will be credited as one vote. Additional vote credits will be allowed as follows:

For each NEW subscriber who has not been regularly served with The Evening Bulletin within a period of sixty days prior to the first day of December, if paid cash in advance, double credits will be allowed, as follows:

Daily 1 year \$8.00 2400
Daily 6 months 4.00 1000
Daily 3 months 2.00 400
Daily 1 month75 100
Weekly 1 year 1.00 500
Weekly 6 months50 250
Cash payments on all other subscriptions, either payments in advance or on account of arrears, will receive vote credits when payment is made, but no votes will be credited upon sums less than 75 cents. In other words, votes will be credited for cash payments upon regular subscriptions as follows:

Daily 1 year \$8.00 1200
Daily 6 months 4.00 500
Daily 3 months 2.00 200
Daily 1 month75 50
Weekly 1 year 1.00 350
Weekly 6 months50 150

POLLS OPEN
The Bulletin's \$1,000 Prize Contest for the greatest premiums ever offered in Hawaii

TOMORROW.
The Weekly Edition of the Evening Bulletin gives a complete summary of the news of the day.

Corporation Notices.

ADVERTISEMENT.

OOKALA SUGAR PLANTATION CO.

Notice is hereby given that at the adjourned Annual Meeting of the OOKALA SUGAR PLANTATION COMPANY, held this day, the following were elected to serve as officers of the corporation for the ensuing year, viz:

Jas. F. Morgan.....President
J. M. Dowsett.....Vice President
Geo. H. Robertson.....Treasurer
E. F. Bishop.....Secretary
T. R. Robinson.....Auditor
Cecil Brown.....Director
Frank Mustace.....Director
H. Armitage.....Director
Honolulu, November 17, 1904.
E. F. BISHOP,
Secretary.

ELECTION OF OFFICERS OF THE WAILUKU SUGAR COMPANY.

Notice is hereby given that at the Annual Meeting of the above Company, held this day, the following persons were elected to serve as officers of the Company for the ensuing year:

M. P. Robinson.....President
W. F. Allen.....Vice President
Geo. H. Robertson.....Treasurer
E. F. Bishop.....Secretary
T. R. Robinson.....Auditor
Chas. M. Cooke.....Director
E. F. BISHOP,
Secretary.

Legal Notices.

IN THE CIRCUIT COURT OF THE First Circuit, Territory of Hawaii. At Chambers: In the Matter of the Estate of Annette Wundenberg. Order for Notice of Hearing. Petition for Probate of Will. A document purporting to be the last will and testament of Annette Wundenberg, deceased, having on the 5th day of November, A. D. 1904, been presented to said probate court, and a petition for the probate thereof, and for the issuance of letters testamentary to Anna Sophia Wright having been filed by Anna Sophia Wright, it is hereby ordered that Monday, the 12th day of December, A. D. 1904, at 10 o'clock a. m., of said day, at the court room of said court, at Honolulu, Oahu, be and the same hereby is appointed the time and place for proving said will and hearing said application. It is further ordered that notice thereof be given, by publication, once a week for four successive weeks, in The Evening Bulletin, a newspaper published in Honolulu, the last publication to be not less than ten days previous to the time therein appointed for hearing.

Dated at Honolulu, November 5th, 1904.
GEORGE D. GEAR,
Second Judge First Circuit Court.
2917—Nov. 9, 16, 23, 30.

Business Notices.

THE HAWAIIAN REALTY AND MATURITY CO., LTD.

Real Estate Mortgage Loans and Investment Securities. Homes Built on the Installment Plan.
Home Office—McIntyre Bldg., Honolulu, T. H.
L. K. KENTWELL, General Manager.

BOWERS' MERCHANT PATROL AND CONFIDENTIAL AGENCY.

Competent watchmen furnished for business houses and residences.
Office, Room 8, Model Block.
P. O. Box 284.

ATTENTION!

HOUSEHOLDERS—Improve your muddy walks and driveways with black sand dressing—always clean. For the next ten days we sell the finest black sand delivered for 75 cents per yr. Cheapest price ever known in town. Telephone your order.

Lord & Belser.

Tel. MAIN 198. P. O. BOX 192.

Special Sale

of SAUCE PANS and PAINTS. Come early and take your choice.

A. FERNANDEZ & SON,

No. 4450 King St., Katze Block, bet. Nuuanu and Smith Sts.; Tel. Main 198.

Christmas

is near at hand. Place your orders now for

Haw'n Jewelry

with THOS. LINDSAY, Love Bldg. Fort St.

P. H. Burnette,

Attorney-at-Law and Notary Public.

Real Estate, Loans, Collections.
Phones: Office, Main 275; Res. Wh. 1341
Office, 79 Merchant Street, Honolulu.

The Weekly Edition of the Evening Bulletin gives a complete summary of the news of the day.

Legal Notices.

Sale Of Sugar Plantation PUNA SUGAR CO., LTD.

IN THE CIRCUIT COURT OF THE FIRST JUDICIAL CIRCUIT, TERRITORY OF HAWAII.

IN EQUITY. AT CHAMBERS.

FIRST NATIONAL BANK OF HAWAII AT HONOLULU, a Corporation; H. HACKFELD & COMPANY, LIMITED, a Corporation; M. P. ROBINSON, H. M. VON HOLT, Trustee for W. S. CHAMBERLAIN; AND A. AHRENS, Plaintiff, vs. PUNA SUGAR COMPANY, LIMITED, a Corporation; S. M. DAMON and S. E. DAMON, Copartners Doing Business Under the Firm Name of BISHOP & COMPANY; OLAA SUGAR COMPANY, LIMITED; AND S. F. DILLINGHAM & COMPANY, LIMITED, Defendants.

NOTICE OF RECEIVER'S SALE.

Notice is hereby given that the undersigned, William Pfotenbauer, Receiver of the Puna Sugar Company, Limited, will under and by virtue of a decree of foreclosure and sale duly made and entered by the Honorable J. T. De Bolt, First Judge of the Circuit Court of the First Judicial Circuit, Territory of Hawaii, at Chambers, on the twenty-second day of October, 1904, in a certain cause in equity, pending in said court, wherein the First National Bank of Hawaii at Honolulu, a corporation; H. Hackfeld & Company, Limited, a corporation; M. P. Robinson, H. M. von Holt, Trustee for W. S. Chamberlain, and A. Ahrens, are plaintiffs, and the Puna Sugar Company, Limited, a corporation; S. M. Damon and S. E. Damon, copartners doing business under the firm name of Bishop & Company; Olaa Sugar Company, Limited, and S. F. Dillingham & Company, Limited, are defendants, sell at public auction, at the front door of the Judiciary Building in Honolulu, Territory of Hawaii, on Saturday, the 24th day of February, 1905, at 12 o'clock noon of said day last mentioned or at the day and hour to which he may adjourn such sale, subject to the confirmation of the above entitled Court, all and singular the property, rights and franchises of the Puna Sugar Company, Limited, described, mentioned or referred to in that certain Deed of Trust, dated July 1st, 1900, executed by the Puna Sugar Company, Limited, to Bishop & Company as Trustees, or in the said Decree of Foreclosure and Sale of October 22nd, 1904, and therein directed to be sold to satisfy the indebtedness incurred by said Receiver as provided by the orders and decree of foreclosure and sale of said court, and also the sum of Five Hundred Thousand Dollars (\$500,000), the same being the principal amount of bonds of said Puna Sugar Company, Limited, issued under said Deed of Trust, together with interest thereon from January 1st, 1904, and also such other sums authorized to be paid by the orders and decree of foreclosure and sale of said court, that is to say:

All the fee simple lands, being approximately 821.88 acres, all the leasehold premises, being approximately 2921.91 acres, all lands leased to various lessees, all of which said land and premises are situated in the District of Puna, Island and Territory of Hawaii, and any and all interest in lands, leases, leasehold interests, tenements, hereditaments, rights-of-way and easements; molasses, sugar, whether in process of manufacture, manufactured or not, 1072.27 acres, a little more or less, of growing cane of the crop of 1905, in good condition; 192.85 acres a little more or less of growing cane of the crop of 1906 in good condition; \$22.84 acres more or less of growing cane, in damaged condition; 9.47 miles of standard gauge railroad 4 feet 8 1/2 inches with 40-pound rails, 2740 feet second-hand tram rails, 129 fish plates, approximately 29 miles of portable track, 16 switches, 4 top switches, 600 iron ties new, 100 extra ties in use, miscellaneous lot of material in blacksmith shop, and car-shop consisting of carriage, plow, and machine bolts, nuts, washers, railroad spikes, coupling pins, hanks, iron, steel, horse and mule shoes, chain, spokes, screws, nails, cane car spars extra, parts and wheels; 200 cane cars of modern type, one 30-ton Porter Locomotive in good condition, 2 donkey engines, 2 coils 2-00 feet 11-16 inch cable, 1 coil 1000 feet of 5-8 inch cable, 1 steam pump and boiler, 2 large plantation maps, 14 small maps and drawings; 131 California mules, 11 horses, 9 donkeys, 30 head of cattle; manager's, overseer's, doctor's, bookkeeper's and surveyor's houses, laborers' quarters and camps, stables and other buildings, sheds, shops, tanks of varying capacity from 2000 to 6000 gallons, 8432 feet of pipe; tools and implements consisting of:

plows, cultivators, shovels, axes, wedges, hammers, cane knives, scapels, sledges, saws, bars, 5 main wagons, 11 dump carts, 2 spring wagons, 1 dray, wheels and parts; firewood, 63 sets chain tug harness, 23 sets double chain tug harness, carriage harness, pack saddles, collars, girths, lines, pads, halters, traces, riding saddles, office furniture, fixtures and safe, and any and all the property used in and about or in connection with the plantation of the Puna Sugar Company, Limited, in the said District of Puna. A more particular description of the said property to be sold is set forth in said decree of foreclosure and sale, dated October 22, 1904, reference to which is hereby made, and the same is made a part hereof.

That said Receiver shall have the right to adjourn said sale or sales from time to time as to him may seem expedient or proper, and if so adjourned, to make the sale without further published notice at the time and place to which the same may be adjourned; that said Receiver may sell said property as a whole or in lots or parcels as he may deem most expedient; that the successful bidder or bidders, as the case may be, shall forthwith deposit at the fall of the hammer at said sale with the Receiver ten per cent. (10%) of the amount of the bid in cash or certified check approved by the Receiver, the balance by approved certified check within ten days after the confirmation of the sale by the court; Upon confirmation of said sale or sales the Receiver shall make, execute and deliver to the purchaser or purchasers of said property a good and sufficient deed or deeds or other instruments of conveyance prepared by the attorney for the Receiver at the expense of the purchaser or purchasers.

In case the purchaser or purchasers shall fail to comply with the terms of the bid or with the orders of the Court relating to the said sale, then the sums or deposits paid or made by the purchaser or purchasers shall be forfeited as a penalty for said non-performance, and if any purchaser or purchasers shall fail to comply with the terms of his or their bid or to complete said purchase, said Receiver may with or without further application to the Court again advertise said property for sale and sell the same on the terms and conditions as are herein stated.

That the said property will be sold freed and discharged from all mortgages, liens, and charges of every kind and description whatsoever, and that the purchasers thereof shall hold and enjoy the same and all the rights, privileges, immunities, and franchises appertaining thereto fully and completely and freed and discharged from all liens, mortgages and charges whatsoever.

For further particulars concerning the whole or any part of said property, reference is hereby made to the report of the said Receiver and said decree of foreclosure on file with the clerk of the above entitled court and all information regarding the same will be readily given by the undersigned upon application at his office with H. Hackfeld & Company, Limited, corner of Queen and Fort streets, Honolulu, Territory of Hawaii, or by Smith & Lewis, Attorneys for said Receiver, Judd Building, said Honolulu.

Dated at Honolulu, T. H., October 25th, 1904.
WILLIAM PFOTENBAUER,
Receiver of the Puna Sugar Company, Limited.
e.o.d. to Feb. 24, '05. Mon. Wed. Fri.

REAL ESTATE TRANSACTIONS

Entered for Record Nov. 28, 1904.
From 10:30 a. m. to 4 p. m.
Harriet K. Kealo and hsb to H. L. Holstein.....D
H. L. Holstein and wf to C. P. Hart.....D
Gear, Lansing & Co by trs to Vitu-rino Ventura.....D
Gear, Lansing & Co by trs to A. M. Pires.....D
Antone M. Caldeira and wf to J. M. Gonsalves et al.....L
Queen's Hospital to James Wright.....L
Naki to Tom Leong et al.....L
Wm. C. Achi and wf to Thomas W. Holstein.....D
Geo. S. Kenway and wf to Francis M. Swanzy.....D
Mary C. Mills to Onomea Sugar Co., L. Yamachi Hotel to Y. Shiosaki.....CM

Entered for Record Nov. 29, 1904.
From 9 a. m. to 10:30 a. m.
Mrs. Kaina to J. W. Halemano.....D

Recorded Nov. 16, 1904.
Peter C. Jones Ltd.; Notice; applica-tion for reg title of por Kul 6450, Ap. 1, Gr. 3393, Kallhi, Honolulu. B 265, p. 284. Dated Nov 15, 1904.

Henry Apa to Melana Momona; D; int in lots 1 and 6, blk 10, Kewalo tract, Honolulu; \$100. B 264, p. 182. Dated Nov 16, 1904.

Henry Apa to Hinamu (w); D; 1-2 int in pc land, Kewalo, Honolulu; \$50. B 264, p. 183. Dated Nov 16, 1904.

Pio Kaawalaui and wf to Mrs. P. Aloha Kalamani; D; 4 acres of Gr. 2577, Hikiapua, Kaupua, Maui; \$10. B 264, p. 184. Dated Oct 24, 1903.

Hon. Gas Co Ltd to Henry Waterhouse Tr Co Ltd tr; Tr Mtg; real property, bldgs, leasehold, gas plant, furniture, etc., Honolulu; bond issue, \$200,000. B 260, p. 230. Dated Nov 15, 1904.

San Francisco Rumors

Of Honolulu Refinery

San Francisco, Nov. 13.—Plans are now being formed for the erection of a large sugar refinery in the Hawaiian Islands, with a view of sending the refined sugar to this country in competition with other refineries that are now sending the product over here. The Honolulu Plantation Company is to be the owner of the new enterprise, and J. A. Buck, the president of the concern, is now in Hawaii looking over the ground. Nothing definite can as yet be learned, and full information on the matter will not be known until Buck's return from the islands.

It has been said that some of the large wholesalers are to be interested in the new refinery, notably Tillman & Bendel of 327 Battery street and M. Ehrman & Co. of 104 Front street. C. H. Schmidt, the vice president of the first named firm, denies that his company has anything to do with the affair. Frederick Tillman, the head of the firm is now at St. Louis and will not return for a month. Mr. Schmidt said yesterday:

"The idea prevails among the wholesalers that the Honolulu Plantation Company is about to erect a large refinery in the islands. I understand that it intends to refine its own sugar and then send over here. The firm of Tillman & Bendel is not interested in the matter. Frederick Tillman, the president, may have private interests in this scheme of which I know nothing. Tillman is now at St. Louis."

At the office of the Plantation Company news was very scarce. Word was given out that the plans have not yet come to a head and nothing was ready for publication.

H. W. Thomas, the secretary of the Honolulu Plantation Company, who has offices at 327 Market street, said:

"I have nothing to give to the papers, because I know but little myself. Buck is now in the islands looking over the ground, and until he returns nothing definite will be known of the affair. The last steamer from Honolulu did not bring any letters from Buck regarding what he had done, and I am somewhat in the dark myself. I can say nothing until we have arrived at some decision about our future movements."

At the office of M. Ehrman & Co. nothing could be learned about the connection that firm has with the new enterprise. Myer Ehrman, the head of the firm, had some time and all questions of the firm's interests were referred to him. A call was made at the home of Mr. Ehrman, at 2618 Jackson street, but he could not be found there. Word was given the reporter that "Mr. Ehrman is not in."

Washington, Nov. 17.—Orders were cabled today to Rear Admiral Terry, in command at Honolulu, to look out for the arrival of Japanese and Russian cruisers. Definite instructions were sent to Terry how to deal with vessels asking for coal or privilege of repairs. The twenty-four hour limit is to be strictly enforced. Similar orders were sent a few days ago to Rear Admiral McCalla at Mare Island.

Tien-Tsin, Nov. 17.—Private advices from Peking contain warnings that the Emperor is increasingly insane, sickly and insignificant. The Dowager thinner and older and lacking in cordiality to foreigners, although perfunctory in matters referring to foreign relations, exhibiting former courtesy, while the most conspicuous "reform" is said to be the new corrupt board of war.

POLLS OPEN
In The Bulletin's \$1,000 Prize Contest for the greatest Premium ever offered in Hawaii

A PRINTING SUGGESTION

The grinding season is over and bookkeepers have time to look over their blank book, ruled and printed forms, stationery and other office supplies before the busy days come again. The Bulletin is equipped to do plantation work of all kinds at right prices. Estimates and proofs furnished for the asking.

"For Rent" cards on sale at Bulletin

WHITE ROCK GINGER ALE

Is carefully prepared in our own laboratory and is bottled by the latest and most scientifically correct mechanical process. It is a perfectly blended combination of the most delicious and wholesome Tropical Fruit Extracts, best Jamaica Ginger Root, Refined Sugar, Purified Carbonic Acid Gas and

WHITE ROCK GINGER ALE

This most popular of American beverages represents in its highest form, the perfection to be obtained by treating the best products kind nature has given to man in the most highly approved method known to science. The result is a pure, wholesome, non-alcoholic drink which perfectly meets all requirements. If you are not already familiar with its unequalled merits, acquaint yourself with the superior excellence of

WHITE ROCK GINGER ALE

WHITE ROCK MINERAL SPRINGS COMPANY
WAUKESHA, WISCONSIN.

If your dealer does not supply it Ring up MAIN 4.

W. C. PEACOCK & CO., Ltd.,

Importing Agents.

BY AUTHORITY

PIPE FOR HILO SEWERS.

NOTICE TO CONTRACTORS.

Sealed proposals will be received at the office of the Superintendent of Public Works until 12 o'clock m., December 19th, 1904, for furnishing 6" sewer pipe, slants and bends for Hilo Sewers, Hilo, Hawaii.

Proposals must be submitted on blank forms, which will be furnished by the Assistant Superintendent of Public Works, Honolulu, and G. H. Gere, Road Engineer, Hilo, Hawaii, and enclosed in a sealed envelope addressed to Hon. C. S. Holloway, Superintendent of Public Works, Honolulu T. H., endorsed "Proposal for Vitrified Sewer Pipe, Slants and Bends for Hilo Sewers, Hilo, Hawaii."

Each proposal must contain the full name of the party or parties making the same and all persons interested therein, and must be accompanied by a certified check, drawn upon a bank or trust company established in Hilo or Honolulu, for \$50.00, payable to Hon. C. S. Holloway, Superintendent of Public Works, in case the proposal is accepted and a contract is not entered into.

The pipe shall be of vitrified salt glazed stone ware of the very best quality, with hub and spigot joints, and of the specified internal diameters, lengths and thickness.

They shall be delivered on the wharf in Hilo in one consignment, and in perfect condition. Circumference of inside of pipe and specials must be a true circle. Straight pipe to be not less than 2 feet in length and standard thickness.

The bidder will state the earliest time in which he will deliver the following pipe on the wharf in Hilo, Hawaii:

1000 lbs. ft." vitrified sewer pipe.
50 " 45" slants.
50 " 6" bends.
50 " 4" bends.
50 " 6" stoppers.

Pipe and specials will be thoroughly and carefully inspected on the wharf, and only perfect pipe, slants and bends will be accepted by the Department of Public Works.

The successful bidder, should a contract be awarded, will be required to furnish a bond of One Hundred and Fifty Dollars (\$150.00) with sureties, subject to the approval of the Superintendent of Public Works. No personal sureties will be accepted. Only Territorial Corporations or Surety Companies are to be submitted as bondsmen.

No proposal will be entertained unless made on blanks furnished by the Assistant Superintendent of Public Works or G. H. Gere, and delivered at the office of the Superintendent of Public Works previous to 12 o'clock m., on the day specified.

The Superintendent reserves the right to reject any or all bids.

C. S. HOLLOWAY,
Superintendent of Public Works,
Honolulu, T. H., Nov. 29th, 1904.
2933-31

NOTICE TO CONTRACTORS.

All material to be used in the Construction of the New Wharf, Kawaiahae Landing, Hawaii, T. H., will be carried by the Wilder's Steamship Company free of all steamer freight charges.

C. S. HOLLOWAY,
Superintendent of Public Works,
Public Works Department, Honolulu, Nov. 29th, 1904. 2933-31

Neopolitan and Tutti Frutti brick ice cream made right, is one of the winners. Elite Ice Cream Parlors.

TOMORROW.

Oceanic Steamship Company

TIME TABLE

The steamers of this line will arrive and leave this port as hereunder:

FROM SAN FRANCISCO:		FOR SAN FRANCISCO:	
SONOMA	DEC. 7	ALAMEDA	NOV. 30
ALAMEDA	DEC. 16	VENTURA	DEC. 6
VENTURA	DEC. 28	ALAMEDA	DEC. 21
	1905	SIERRA	DEC. 27
ALAMEDA	JAN. 6		1905
SIERRA	JAN. 18	ALAMEDA	JAN. 11

In connection with the sailing of the above steamers, the agents are prepared to issue, to intending passengers, coupon through tickets, by any railroad from San Francisco to all points in the United States, and from New York by any steamship line to all European ports.

FOR FURTHER PARTICULARS APPLY TO

Wm. G. Irwin & Co., Ltd.

OCEANIC S. S. CO. GENERAL AGENTS.

Pacific Mail Steamship Co.

Occidental and Oriental Steamship Co. and Toyo Kisen Kaisha

Steamers of the above companies will call at Honolulu and leave this port on or about the dates below mentioned:

FOR JAPAN AND CHINA.	FOR SAN FRANCISCO.
COPTIC.....DEC. 3	GAELIC.....NOV. 28
KOREA.....DEC. 10	SIBERIA.....NOV. 30
GAELIC.....DEC. 20	MONGOLIA.....DEC. 10
SIBERIA.....DEC. 24	CHINA.....DEC. 24
1905	1905
MONGOLIA.....JAN. 4	DORIC.....JAN. 14
CHINA.....JAN. 17	KOREA.....JAN. 27
MANCHURIA.....JAN. 28	

* Call at Manila.

For general information apply to

H. Hackfeld & Co., Ltd., Agents

AMERICAN-HAWAIIAN S. S. CO.

Direct Service between New York and Hawaiian Islands, Via Pacific Coast From New York

S.S. "HAWAIIAN".....to sail about DEC. 3
S.S. "OREGONIAN".....to sail about DEC. 30
Freight received at all times at the Company's Wharf, 41st Street, Brooklyn.

From San Francisco to Honolulu Direct.

S.S. "NEVADAN".....to sail DEC. 14
Freight received at Company's Wharf, Greenwich Street, and each month thereafter.

From Honolulu to San Francisco.

via Puget Sound.

From Seattle and Tacoma

Via San Francisco.

S.S. "NEBRASKAN".....to sail from Seattle DEC. 30
S.S. "NEBRASKAN".....to sail from Tacoma DEC. 31

For further information apply to

G. P. MORSE, H. Hackfeld & Co., Ltd.

General Freight Agent. AGENTS, HONOLULU.

Canadian-Australian Royal Mail

Steamship Company.

Steamers of the above line, running in connection with the CANADIAN PACIFIC RAILWAY CO. between Vancouver, B. C., and Sydney, N. S. W., and calling at Victoria, B. C., Honolulu and Suva, Fiji and Brisbane, AUSTRALIA, DUE AT HONOLULU on or about the dates below stated, viz:

From Vancouver and Victoria, B. C.	From Sydney and Brisbane, AUSTRALIA.
(For Brisbane and Sydney.)	(For Victoria and Vancouver, B. C.)
AORANGI.....JAN. 14	AORANGI.....DEC. 16
MOWERA.....FEB. 11	MOWERA.....JAN. 11
MOANA.....MAR. 11	MOANA.....FEB. 8

Through Tickets issued from Honolulu to Canada, United States and Europe. For Freight and Passage as all general information, apply to

Theo. H. Davies & Co., Ltd. General Agents.

J. F. Morgan, President; C. J. Campbell Vice President; J. L. McKinnon, Secretary; A. F. Clark, Treasurer; N. E. Gedge, Auditor; Frank Mendenhall, Manager.

Hustace-Peck Co., Ltd.

DRAYMEN, 63 QUEEN ST.

DEALERS IN

Firewood, Stove and Steam Coal.

ALSO WHITE AND BLACK SAND. TELEPHONE MAIN 111

Union Express Co., Ltd., 63 Queen Street,

Having baggage contracts with the following Steamship Co.'s Lines:

Oceanic Steamship Co. Pacific Mail Steamship Co.
Occidental & Oriental Steamship Co.
Wilder S. S. Co. Toyo Kisen Kaisha Steamship Co.

We check your outgoing baggage at your homes, saving you the trouble and annoyance of checking on the wharf.

Incoming baggage checked on steamers of above companies and delivered with quickness and dispatch at your homes.

TELEPHONE MAIN 86.

H. J. NOLTE.

O. R. & L. Co.

TIME TABLE

Oct. 6, 1904.

OUTWARD.

Comfort Bringers

THESE

Goodform Closet Sets

will make your clothes closet hold double measure.

Clothing can be kept looking new and neat.

You can see every garment at a glance and remove it with ease.

We sell them in sets and also have the Trowser Hangers and Coat Hangers, which we sell in quantities to suit.

You like to be comfortable—let us fit you out.

E. O. HALL & SON, Ltd.

STOCKYARDS STABLES.



IN ORDER TO KEEP YOURSELF AND FRIENDS OUT OF TROUBLE HIRE THE TALLYHO FOR SUNDAY AND GET OUT OF TOWN.

TELEPHONE BLUE 3143

E. H. LEWIS, Proprietor.

THE SABBATH

May be observed better now than ever before. But all people do not agree on what day the Sabbath should be observed.

There is one matter upon which all classes, kinds and conditions of citizens agree—

The Pacific Mutual Life Policies

Beat The World!

CLINTON J. HUTCHINS
General Agent
920 FORT STREET.

WE ARE AGENTS FOR THE CELEBRATED

Winthrop Medicines

U-Ric-Sol-Vent

Kidney Tea

Blood Purifier

Booklet on the Kidney Free.

Chambers Drug Co., LIMITED.

Cor. King and Fort Sts.

'PHONE MAIN 131.

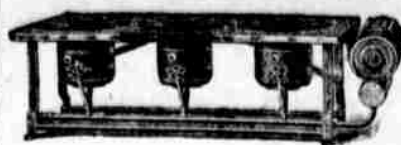
YES!

BUY FROM US—WHY? Because we are the cheapest, call for your orders, allow you 45 days in which to pay your bills, deliver promptly. You make 5% on every dollar you invest. KALIHU STORE, White 3181.



TEETH Without Plates.

Hours, 8 to 5; Sunday, 9 to 12.



Eureka Wickless Blue Flame Cook Stoves.

Why heat up your kitchen by using a coal or wood stove? Oil is the most convenient and cheapest fuel. No kindling; no dirt; no ashes.

HAWAIIAN TRADING CO., Ltd. 1142 Fort St., Love Bldg.

IT'S IN TOWN! SHIPPING INTELLIGENCE

The Celebrated

GORDON DRY GIN

Is here and can be had at all First Class bars and hotels. Try it and be convinced of its merits. We respectfully call your attention to the official analysis on the back of the bottle. This gin is strictly pure and free from fusel oil and we take a pride in presenting it to the public, with the assurance that it will meet with universal favor.

Ask For It Dacine Imitations

Thos. F. McTighe & Co.,

Sole Distributors for Territory of Hawaii.

TEL. MAIN 140 93 & 95 KING ST. P. O. BOX 755

NEW - TO-DAY

SPECIAL NOTICE.

ROBERTSON & WILDER,

Attorneys-at-Law,

have moved their offices to the Fourth Floor of the Stangenwald Building, 2934-35

Annual Fair

OF THE

Women's Guild of St. Clements

Saturday, December 3, 1904

AFTERNOON AND EVENING.

Gates open at 2 p. m. and 7:30 p. m.

On the Lawns of the Residence of T. May, Esq., Kinsau and Pensacola Sts.

BAND IN ATTENDANCE.

Admission 25c. Children, 10c.

LECTURE

BY

Rev. John W. Wadman

"BUSHIDO"

At Parsonage of M. E. Church, Bereania and Miller Sts.

THURSDAY, DECEMBER 1,

7:30 o'clock p. m.

Japanese ladies in costume will serve tea according to "Cha-No-Yu" custom, also give musical performance in the Koto Biwa and Fue.

ADMISSION—50 cts.

Tickets on sale at Trent & Co. and C. J. Day & Co.

A Fine Pasture Near Town.

Horses taken and returned without extra charge.

CLUB STABLES

Fort, above Hotel. 'Phone Main 109

TO ARRIVE DEC. 7th,

Fancy Oregon Apples

Burbank Potatoes

CHEAP!

GERTZ BROS. Tel. Whit 2271

WANTS

For Want Column See Page Six

FOR SALE.

A Bargain if Taken This Week—Good as new, Standard Typewriter. Call at Room 6 Progress Block, 2934-35

The number of timber sleepers on the railways of the world is calculated to be about 1,494,000,000, and their value is estimated at about \$900,000,000. This item makes a serious drain on the timber supplies of the world.

POLLS OPEN
In The Bulletin's \$1,000 Prize Contest for the greatest premiums ever offered in Hawaii

TOMORROW.

TIDES.

NOVEMBER	WEEK 1										WEEK 2										WEEK 3										WEEK 4										WEEK 5										WEEK 6										WEEK 7										WEEK 8										WEEK 9										WEEK 10										WEEK 11										WEEK 12										WEEK 13										WEEK 14										WEEK 15										WEEK 16										WEEK 17										WEEK 18										WEEK 19										WEEK 20										WEEK 21										WEEK 22										WEEK 23										WEEK 24										WEEK 25										WEEK 26										WEEK 27										WEEK 28										WEEK 29										WEEK 30										WEEK 31										WEEK 32										WEEK 33										WEEK 34										WEEK 35										WEEK 36										WEEK 37										WEEK 38										WEEK 39										WEEK 40										WEEK 41										WEEK 42										WEEK 43										WEEK 44										WEEK 45										WEEK 46										WEEK 47										WEEK 48										WEEK 49										WEEK 50										WEEK 51										WEEK 52										WEEK 53										WEEK 54										WEEK 55										WEEK 56										WEEK 57										WEEK 58										WEEK 59										WEEK 60										WEEK 61										WEEK 62										WEEK 63										WEEK 64										WEEK 65										WEEK 66										WEEK 67										WEEK 68										WEEK 69										WEEK 70										WEEK 71										WEEK 72										WEEK 73										WEEK 74										WEEK 75										WEEK 76										WEEK 77										WEEK 78										WEEK 79										WEEK 80										WEEK 81										WEEK 82										WEEK 83										WEEK 84										WEEK 85										WEEK 86										WEEK 87										WEEK 88										WEEK 89										WEEK 90										WEEK 91										WEEK 92										WEEK 93										WEEK 94										WEEK 95										WEEK 96										WEEK 97										WEEK 98										WEEK 99										WEEK 100										WEEK 101										WEEK 102										WEEK 103										WEEK 104										WEEK 105										WEEK 106										WEEK 107										WEEK 108										WEEK 109										WEEK 110										WEEK 111										WEEK 112										WEEK 113										WEEK 114										WEEK 115										WEEK 116										WEEK 117										WEEK 118										WEEK 119										WEEK 120										WEEK 121										WEEK 122										WEEK 123										WEEK 124										WEEK 125										WEEK 126										WEEK 127										WEEK 128										WEEK 129										WEEK 130										WEEK 131										WEEK 132										WEEK 133										WEEK 134										WEEK 135										WEEK 136										WEEK 137										WEEK 138										WEEK 139										WEEK 140										WEEK 141										WEEK 142										WEEK 143										WEEK 144										WEEK 145										WEEK 146										WEEK 147										WEEK 148										WEEK 149										WEEK 150										WEEK 151										WEEK 152										WEEK 153										WEEK 154										WEEK 155										WEEK 156										WEEK 157										WEEK 158										WEEK 159										WEEK 160										WEEK 161										WEEK 162										WEEK 163										WEEK 164										WEEK 165										WEEK 166										WEEK 167										WEEK 168										WEEK 169										WEEK 170										WEEK 171										WEEK 172										WEEK 173										WEEK 174										WEEK 175										WEEK 176										WEEK 177										WEEK 178										WEEK 179										WEEK 180										WEEK 181										WEEK 182										WEEK 183										WEEK 184										WEEK 185										WEEK 186										WEEK 187										WEEK 188										WEEK 189										WEEK 190										WEEK 191										WEEK 192										WEEK 193										WEEK 194										WEEK 195										WEEK 196										WEEK 197										WEEK 198										WEEK 199										WEEK 200										WEEK 201										WEEK 202										WEEK 203										WEEK 204										WEEK 205										WEEK 206										WEEK 207										WEEK 208										WEEK 209										WEEK 210										WEEK 211										WEEK 212										WEEK 213										WEEK 214										WEEK 215										WEEK 216										WEEK 217										WEEK 218										WEEK 219										WEEK 220										WEEK 221										WEEK 222										WEEK 223										WEEK 224										WEEK 225										WEEK 226										WEEK 227										WEEK 228										WEEK 229										WEEK 230										WEEK 231										WEEK 232										WEEK 233										WEEK 234										WEEK 235										WEEK 236										WEEK 237										WEEK 238										WEEK 239										WEEK 240										WEEK 241										WEEK 242										WEEK 243										WEEK 244										WEEK 245										WEEK 246										WEEK 247										WEEK 248										WEEK 249										WEEK 250										WEEK 251										WEEK 252										WEEK 253										WEEK 254										WEEK 255										WEEK 256										WEEK 257										WEEK 258										WEEK 259										WEEK 260										WEEK 261										WEEK 262										WEEK 263										WEEK 264										WEEK 265										WEEK 266										WEEK 267										WEEK 268										WEEK 269										WEEK 270										WEEK 271										WEEK 272										WEEK 273										WEEK 274										WEEK 275										WEEK 276										WEEK 277										WEEK 278										WEEK 279										WEEK 280										WEEK 281										WEEK 282										WEEK 283										WEEK 284										WEEK 285										WEEK 286										WEEK 287										WEEK 288										WEEK 289										WEEK 290										WEEK 291										WEEK 292										WEEK 293										WEEK 294										WEEK 295										WEEK 296										WEEK 297										WEEK 298										WEEK 299										WEEK 300										WEEK 301										WEEK 302										WEEK 303										WEEK 304										WEEK 305										WEEK 306										WEEK 307										WEEK 308										WEEK 309										WEEK 310										WEEK 311										WEEK 312										WEEK 313										WEEK 314										WEEK 315										WEEK 316										WEEK 317										WEEK 318										WEEK 319										WEEK 320										WEEK 321										WEEK 322										WEEK 323										WEEK 324										WEEK 325										WEEK 326										WEEK 327										WEEK 328										WEEK 329										WEEK 330										WEEK 331										WEEK 332										WEEK 333										WEEK 334										WEEK 335										WEEK 336										WEEK 337										WEEK 338										WEEK 339										WEEK 340										WEEK 341										WEEK 342										WEEK 343										WEEK 344										WEEK 345										WEEK 346										WEEK 347										WEEK 348										WEEK 349										WEEK 350										WEEK 351										WEEK 352										WEEK 353										WEEK 354										WEEK 355										WEEK 356										WEEK 357										WEEK 358										WEEK 359										WEEK 360										WEEK 361										WEEK 362										WEEK 363										WEEK 364										WEEK 365										WEEK 366										WEEK 367										WEEK 368										WEEK 369										WEEK 370										WEEK 371										WEEK 372										WEEK 373										WEEK 374										WEEK 375										WEEK 376										WEEK 377										WEEK 378										WEEK 379										WEEK 380										WEEK 381										WEEK 382										WEEK 383										WEEK 384										WEEK 385										WEEK 386										WEEK 387										WEEK 388										WEEK 389										WEEK 390										WEEK 391										WEEK 392										WEEK 393										WEEK 394										WEEK 395										WEEK 396										WEEK 397										WEEK 398										WEEK 399										WEEK 400										WEEK 401										WEEK 402										WEEK 403										WEEK 404										WEEK 405										WEEK 406										WEEK 407										WEEK 408										WEEK 409										WEEK 410										WEEK 411										WEEK 412										WEEK 413										WEEK 414										WEEK 415										WEEK 416										WEEK 417										WEEK 418										WEEK 419										WEEK 420										WEEK 421										WEEK 422										WEEK 423										WEEK 424										WEEK 425										WEEK 426										WEEK 427										WEEK 428										WEEK 429										WEEK 430										WEEK 431										WEEK 432										WEEK 433										WEEK 434										WEEK 435										WEEK 436										WEEK 437										WEEK 438										WEEK 439										WEEK 440										WEEK 441										WEEK 442										WEEK 443										WEEK 444										WEEK 445										WEEK 446										WEEK 447										WEEK 448										WEEK 449										WEEK 450										WEEK 451										WEEK 452										WEEK 453										WEEK 454										WEEK 455										WEEK 456										WEEK 457										WEEK 458										WEEK 459										WEEK 460										WEEK 461										WEEK 462										WEEK 463										WEEK 464										WEEK 465										WEEK 466										WEEK 467										WEEK 468										WEEK 469										WEEK 470										WEEK 471										WEEK 472										WEEK 473										WEEK 474										WEEK 475										WEEK 476										WEEK 477										WEEK 478										WEEK 479										WEEK 480										WEEK 481										WEEK 482										WEEK 483										WEEK 484										WEEK 485										WEEK 486										WEEK 487										WEEK 488										WEEK 489										WEEK 490										WEEK 491										WEEK 492										WEEK 493										WEEK 494										WEEK 495										WEEK 496										WEEK 497										WEEK 498										WEEK 499										WEEK 500										WEEK 501										WEEK 502										WEEK 503										WEEK 504										WEEK 505										WEEK 506										WEEK 507										WEEK 508										WEEK 509										WEEK 510										WEEK 511										WEEK 512										WEEK 513										WEEK 514										WEEK 515										WEEK 516										WEEK 517										WEEK 518										WEEK 519										WEEK 520										WEEK 521										WEEK 522										WEEK 523										WEEK 524										WEEK 525										WEEK 526										WEEK 527										WEEK 528										WEEK 529										WEEK 530										WEEK 531										WEEK 532										WEEK 533										WEEK 534										WEEK 535										WEEK 536										WEEK 537										WEEK 538										WEEK 539										WEEK 540										WEEK 541										WEEK 542										WEEK 543										WEEK 544										WEEK 545										WEEK 546										WEEK 547										WEEK 548										WEEK 549										WEEK 550										WEEK 551										WEEK 552										WEEK 553										WEEK 554										WEEK 555										WEEK 556										WEEK 557										WEEK 558										WEEK 559										WEEK 560										WEEK 561										WEEK 562										WEEK 563										WEEK 564										WEEK 565										WEEK 566										WEEK 567										WEEK 568										WEEK 569										WEEK 570										WEEK 571										WEEK 572										WEEK 573										WEEK 574										WEEK 575										WEEK 576										WEEK 577										WEEK 578										WEEK 579										WEEK 580										WEEK 581										WEEK 582										WEEK 583										WEEK 584										WEEK 585										WEEK 586										WEEK 587										WEEK 588										WEEK 589										WEEK 590										WEEK 591										WEEK 592										WEEK 593										WEEK 594										WEEK 595										WEEK 596										WEEK 597										WEEK 598										WEEK 599										WEEK 600										WEEK 601										WEEK 602										WEEK 603										WEEK 604										WEEK 605										WEEK 606										WEEK 607										WEEK 608										WEEK 609										WEEK 610										WEEK 611										WEEK 612										WEEK 613										WEEK 614										WEEK 615										WEEK 616										WEEK 617										WEEK 618										WEEK 619										WEEK 620										WEEK 621										WEEK 622										WEEK 623										WEEK 624										WEEK 625										WEEK 626										WEEK 627										WEEK 628										WEEK 629										WEEK 630										WEEK 631										WEEK 632										WEEK 633										WEEK 634										WEEK 635										WEEK 636										WEEK 637										WEEK 638										WEEK 639										WEEK 640										WEEK 641										WEEK 642										WEEK 643										WEEK 644										WEEK 645										WEEK 646										WEEK 647										WEEK 648										WEEK 649										WEEK 650										WEEK 651										WEEK 652										WEEK 653										WEEK 654										WEEK 655										WEEK 656										WEEK 657										WEEK 658										WEEK 659										WEEK 660										WEEK 661										WEEK 662										WEEK 663										WEEK 664										WEEK 665										WEEK 666										WEEK 667										WEEK 668										WEEK 669										WEEK 670										WEEK 671										WEEK 672										WEEK 673										WEEK 674										WEEK 675										WEEK 676										WEEK 677										WEEK 678										WEEK 679										WEEK 680										WEEK 681										WEEK 682										WEEK 683										WEEK 684										WEEK 685										WEEK 686										WEEK 687										WEEK 688										WEEK 689										WEEK 690										WEEK 691										WEEK 692										WEEK 693										WEEK 694										WEEK 695										WEEK 696										WEEK 697										WEEK 698										WEEK 699										WEEK 700										WEEK 701										WEEK 702										WEEK 703										WEEK 704										WEEK 705										WEEK 706										WEEK 707										WEEK 708										WEEK 709										WEEK 710										WEEK 711										WEEK 712										WEEK 713										WEEK 714										WEEK 715										WEEK 716										WEEK 717										WEEK 718										WEEK 719										WEEK 720										WEEK 721										WEEK 722										WEEK 723										WEEK 724										WEEK 725										WEEK 726										WEEK 727										WEEK 728										WEEK 729										WEEK 730										WEEK 731										WEEK 732										WEEK 733										WEEK 734										WEEK 735										WEEK 736										WEEK 737										WEEK 738										WEEK 739										WEEK 740										WEEK 741										WEEK 742										WEEK 743										WEEK 744										WEEK 745										WEEK 746										WEEK 747										WEEK 748										WEEK 749										WEEK 750										WEEK 751										WEEK 752										WEEK 753										WEEK 754										WEEK 755										WEEK 756										WEEK 757										WEEK 758										WEEK 759										WEEK 760										WEEK 761										WEEK 762										WEEK 763										WEEK 764										WEEK 765										WEEK 766										WEEK 767										WEEK 768										WEEK 769										WEEK 770										WEEK 771										WEEK 772										WEEK 773										WEEK 774										WEEK 775										WEEK 776										WEEK 777										WEEK 778										WEEK 779										WEEK 780										WEEK 781										WEEK 782										WEEK 783										WEEK 784										WEEK 785										WEEK 786										WEEK 787										WEEK 788										WEEK 789										WEEK 790										WEEK 791										WEEK 792										WEEK 793										WEEK 794										WEEK 795										WEEK 796										WEEK 797										WEEK 798										WEEK 799										WEEK 800										WEEK 801										WEEK 802										WEEK 803										WEEK 804										WEEK 805										WEEK 806										WEEK 807										WEEK 808										WEEK 809										WEEK 810										WEEK 811										WEEK 812										WEEK 813										WEEK 814										WEEK 815										WEEK 816										WEEK 817										WEEK 818										WEEK 819										WEEK 820										WEEK 821										WEEK 822										WEEK 823										WEEK 824										WEEK 825										WEEK 826										WEEK 827										WEEK 828										WEEK 829										WEEK 830										WEEK 831										WEEK 832									
----------	--------	--	--	--	--	--	--	--	--	--	--------	--	--	--	--	--	--	--	--	--	--------	--	--	--	--	--	--	--	--	--	--------	--	--	--	--	--	--	--	--	--	--------	--	--	--	--	--	--	--	--	--	--------	--	--	--	--	--	--	--	--	--	--------	--	--	--	--	--	--	--	--	--	--------	--	--	--	--	--	--	--	--	--	--------	--	--	--	--	--	--	--	--	--	---------	--	--	--	--	--	--	--	--	--	---------	--	--	--	--	--	--	--	--	--	---------	--	--	--	--	--	--	--	--	--	---------	--	--	--	--	--	--	--	--	--	---------	--	--	--	--	--	--	--	--	--	---------	--	--	--	--	--	--	--	--	--	---------	--	--	--	--	--	--	--	--	--	---------	--	--	--	--	--	--	--	--	--	---------	--	--	--	--	--	--	--	--	--	---------	--	--	--	--	--	--	--	--	--	---------	--	--	--	--	--	--	--	--	--	---------	--	--	--	--	--	--	--	--	--	---------	--	--	--	--	--	--	--	--	--	---------	--	--	--	--	--	--	--	--	--	---------	--	--	--	--	--	--	--	--	--	---------	--	--	--	--	--	--	--	--	--	---------	--	--	--	--	--	--	--	--	--	---------	--	--	--	--	--	--	--	--	--	---------	--	--	--	--	--	--	--	--	--	---------	--	--	--	--	--	--	--	--	--	---------	--	--	--	--	--	--	--	--	--	---------	--	--	--	--	--	--	--	--	--	---------	--	--	--	--	--	--	--	--	--	---------	--	--	--	--	--	--	--	--	--	---------	--	--	--	--	--	--	--	--	--	---------	--	--	--	--	--	--	--	--	--	---------	--	--	--	--	--	--	--	--	--	---------	--	--	--	--	--	--	--	--	--	---------	--	--	--	--	--	--	--	--	--	---------	--	--	--	--	--	--	--	--	--	---------	--	--	--	--	--	--	--	--	--	---------	--	--	--	--	--	--	--	--	--	---------	--	--	--	--	--	--	--	--	--	---------	--	--	--	--	--	--	--	--	--	---------	--	--	--	--	--	--	--	--	--	---------	--	--	--	--	--	--	--	--	--	---------	--	--	--	--	--	--	--	--	--	---------	--	--	--	--	--	--	--	--	--	---------	--	--	--	--	--	--	--	--	--	---------	--	--	--	--	--	--	--	--	--	---------	--	--	--	--	--	--	--	--	--	---------	--	--	--	--	--	--	--	--	--	---------	--	--	--	--	--	--	--	--	--	---------	--	--	--	--	--	--	--	--	--	---------	--	--	--	--	--	--	--	--	--	---------	--	--	--	--	--	--	--	--	--	---------	--	--	--	--	--	--	--	--	--	---------	--	--	--	--	--	--	--	--	--	---------	--	--	--	--	--	--	--	--	--	---------	--	--	--	--	--	--	--	--	--	---------	--	--	--	--	--	--	--	--	--	---------	--	--	--	--	--	--	--	--	--	---------	--	--	--	--	--	--	--	--	--	---------	--	--	--	--	--	--	--	--	--	---------	--	--	--	--	--	--	--	--	--	---------	--	--	--	--	--	--	--	--	--	---------	--	--	--	--	--	--	--	--	--	---------	--	--	--	--	--	--	--	--	--	---------	--	--	--	--	--	--	--	--	--	---------	--	--	--	--	--	--	--	--	--	---------	--	--	--	--	--	--	--	--	--	---------	--	--	--	--	--	--	--	--	--	---------	--	--	--	--	--	--	--	--	--	---------	--	--	--	--	--	--	--	--	--	---------	--	--	--	--	--	--	--	--	--	---------	--	--	--	--	--	--	--	--	--	---------	--	--	--	--	--	--	--	--	--	---------	--	--	--	--	--	--	--	--	--	---------	--	--	--	--	--	--	--	--	--	---------	--	--	--	--	--	--	--	--	--	---------	--	--	--	--	--	--	--	--	--	---------	--	--	--	--	--	--	--	--	--	---------	--	--	--	--	--	--	--	--	--	---------	--	--	--	--	--	--	--	--	--	---------	--	--	--	--	--	--	--	--	--	---------	--	--	--	--	--	--	--	--	--	---------	--	--	--	--	--	--	--	--	--	---------	--	--	--	--	--	--	--	--	--	---------	--	--	--	--	--	--	--	--	--	---------	--	--	--	--	--	--	--	--	--	---------	--	--	--	--	--	--	--	--	--	---------	--	--	--	--	--	--	--	--	--	---------	--	--	--	--	--	--	--	--	--	---------	--	--	--	--	--	--	--	--	--	---------	--	--	--	--	--	--	--	--	--	---------	--	--	--	--	--	--	--	--	--	---------	--	--	--	--	--	--	--	--	--	---------	--	--	--	--	--	--	--	--	--	---------	--	--	--	--	--	--	--	--	--	---------	--	--	--	--	--	--	--	--	--	----------	--	--	--	--	--	--	--	--	--	----------	--	--	--	--	--	--	--	--	--	----------	--	--	--	--	--	--	--	--	--	----------	--	--	--	--	--	--	--	--	--	----------	--	--	--	--	--	--	--	--	--	----------	--	--	--	--	--	--	--	--	--	----------	--	--	--	--	--	--	--	--	--	----------	--	--	--	--	--	--	--	--	--	----------	--	--	--	--	--	--	--	--	--	----------	--	--	--	--	--	--	--	--	--	----------	--	--	--	--	--	--	--	--	--	----------	--	--	--	--	--	--	--	--	--	----------	--	--	--	--	--	--	--	--	--	----------	--	--	--	--	--	--	--	--	--	----------	--	--	--	--	--	--	--	--	--	----------	--	--	--	--	--	--	--	--	--	----------	--	--	--	--	--	--	--	--	--	----------	--	--	--	--	--	--	--	--	--	----------	--	--	--	--	--	--	--	--	--	----------	--	--	--	--	--	--	--	--	--	----------	--	--	--	--	--	--	--	--	--	----------	--	--	--	--	--	--	--	--	--	----------	--	--	--	--	--	--	--	--	--	----------	--	--	--	--	--	--	--	--	--	----------	--	--	--	--	--	--	--	--	--	----------	--	--	--	--	--	--	--	--	--	----------	--	--	--	--	--	--	--	--	--	----------	--	--	--	--	--	--	--	--	--	----------	--	--	--	--	--	--	--	--	--	----------	--	--	--	--	--	--	--	--	--	----------	--	--	--	--	--	--	--	--	--	----------	--	--	--	--	--	--	--	--	--	----------	--	--	--	--	--	--	--	--	--	----------	--	--	--	--	--	--	--	--	--	----------	--	--	--	--	--	--	--	--	--	----------	--	--	--	--	--	--	--	--	--	----------	--	--	--	--	--	--	--	--	--	----------	--	--	--	--	--	--	--	--	--	----------	--	--	--	--	--	--	--	--	--	----------	--	--	--	--	--	--	--	--	--	----------	--	--	--	--	--	--	--	--	--	----------	--	--	--	--	--	--	--	--	--	----------	--	--	--	--	--	--	--	--	--	----------	--	--	--	--	--	--	--	--	--	----------	--	--	--	--	--	--	--	--	--	----------	--	--	--	--	--	--	--	--	--	----------	--	--	--	--	--	--	--	--	--	----------	--	--	--	--	--	--	--	--	--	----------	--	--	--	--	--	--	--	--	--	----------	--	--	--	--	--	--	--	--	--	----------	--	--	--	--	--	--	--	--	--	----------	--	--	--	--	--	--	--	--	--	----------	--	--	--	--	--	--	--	--	--	----------	--	--	--	--	--	--	--	--	--	----------	--	--	--	--	--	--	--	--	--	----------	--	--	--	--	--	--	--	--	--	----------	--	--	--	--	--	--	--	--	--	----------	--	--	--	--	--	--	--	--	--	----------	--	--	--	--	--	--	--	--	--	----------	--	--	--	--	--	--	--	--	--	----------	--	--	--	--	--	--	--	--	--	----------	--	--	--	--	--	--	--	--	--	----------	--	--	--	--	--	--	--	--	--	----------	--	--	--	--	--	--	--	--	--	----------	--	--	--	--	--	--	--	--	--	----------	--	--	--	--	--	--	--	--	--	----------	--	--	--	--	--	--	--	--	--	----------	--	--	--	--	--	--	--	--	--	----------	--	--	--	--	--	--	--	--	--	----------	--	--	--	--	--	--	--	--	--	----------	--	--	--	--	--	--	--	--	--	----------	--	--	--	--	--	--	--	--	--	----------	--	--	--	--	--	--	--	--	--	----------	--	--	--	--	--	--	--	--	--	----------	--	--	--	--	--	--	--	--	--	----------	--	--	--	--	--	--	--	--	--	----------	--	--	--	--	--	--	--	--	--	----------	--	--	--	--	--	--	--	--	--	----------	--	--	--	--	--	--	--	--	--	----------	--	--	--	--	--	--	--	--	--	----------	--	--	--	--	--	--	--	--	--	----------	--	--	--	--	--	--	--	--	--	----------	--	--	--	--	--	--	--	--	--	----------	--	--	--	--	--	--	--	--	--	----------	--	--	--	--	--	--	--	--	--	----------	--	--	--	--	--	--	--	--	--	----------	--	--	--	--	--	--	--	--	--	----------	--	--	--	--	--	--	--	--	--	----------	--	--	--	--	--	--	--	--	--	----------	--	--	--	--	--	--	--	--	--	----------	--	--	--	--	--	--	--	--	--	----------	--	--	--	--	--	--	--	--	--	----------	--	--	--	--	--	--	--	--	--	----------	--	--	--	--	--	--	--	--	--	----------	--	--	--	--	--	--	--	--	--	----------	--	--	--	--	--	--	--	--	--	----------	--	--	--	--	--	--	--	--	--	----------	--	--	--	--	--	--	--	--	--	----------	--	--	--	--	--	--	--	--	--	----------	--	--	--	--	--	--	--	--	--	----------	--	--	--	--	--	--	--	--	--	----------	--	--	--	--	--	--	--	--	--	----------	--	--	--	--	--	--	--	--	--	----------	--	--	--	--	--	--	--	--	--	----------	--	--	--	--	--	--	--	--	--	----------	--	--	--	--	--	--	--	--	--	----------	--	--	--	--	--	--	--	--	--	----------	--	--	--	--	--	--	--	--	--	----------	--	--	--	--	--	--	--	--	--	----------	--	--	--	--	--	--	--	--	--	----------	--	--	--	--	--	--	--	--	--	----------	--	--	--	--	--	--	--	--	--	----------	--	--	--	--	--	--	--	--	--	----------	--	--	--	--	--	--	--	--	--	----------	--	--	--	--	--	--	--	--	--	----------	--	--	--	--	--	--	--	--	--	----------	--	--	--	--	--	--	--	--	--	----------	--	--	--	--	--	--	--	--	--	----------	--	--	--	--	--	--	--	--	--	----------	--	--	--	--	--	--	--	--	--	----------	--	--	--	--	--	--	--	--	--	----------	--	--	--	--	--	--	--	--	--	----------	--	--	--	--	--	--	--	--	--	----------	--	--	--	--	--	--	--	--	--	----------	--	--	--	--	--	--	--	--	--	----------	--	--	--	--	--	--	--	--	--	----------	--	--	--	--	--	--	--	--	--	----------	--	--	--	--	--	--	--	--	--	----------	--	--	--	--	--	--	--	--	--	----------	--	--	--	--	--	--	--	--	--	----------	--	--	--	--	--	--	--	--	--	----------	--	--	--	--	--	--	--	--	--	----------	--	--	--	--	--	--	--	--	--	----------	--	--	--	--	--	--	--	--	--	----------	--	--	--	--	--	--	--	--	--	----------	--	--	--	--	--	--	--	--	--	----------	--	--	--	--	--	--	--	--	--	----------	--	--	--	--	--	--	--	--	--	----------	--	--	--	--	--	--	--	--	--	----------	--	--	--	--	--	--	--	--	--	----------	--	--	--	--	--	--	--	--	--	----------	--	--	--	--	--	--	--	--	--	----------	--	--	--	--	--	--	--	--	--	----------	--	--	--	--	--	--	--	--	--	----------	--	--	--	--	--	--	--	--	--	----------	--	--	--	--	--	--	--	--	--	----------	--	--	--	--	--	--	--	--	--	----------	--	--	--	--	--	--	--	--	--	----------	--	--	--	--	--	--	--	--	--	----------	--	--	--	--	--	--	--	--	--	----------	--	--	--	--	--	--	--	--	--	----------	--	--	--	--	--	--	--	--	--	----------	--	--	--	--	--	--	--	--	--	----------	--	--	--	--	--	--	--	--	--	----------	--	--	--	--	--	--	--	--	--	----------	--	--	--	--	--	--	--	--	--	----------	--	--	--	--	--	--	--	--	--	----------	--	--	--	--	--	--	--	--	--	----------	--	--	--	--	--	--	--	--	--	----------	--	--	--	--	--	--	--	--	--	----------	--	--	--	--	--	--	--	--	--	----------	--	--	--	--	--	--	--	--	--	----------	--	--	--	--	--	--	--	--	--	----------	--	--	--	--	--	--	--	--	--	----------	--	--	--	--	--	--	--	--	--	----------	--	--	--	--	--	--	--	--	--	----------	--	--	--	--	--	--	--	--	--	----------	--	--	--	--	--	--	--	--	--	----------	--	--	--	--	--	--	--	--	--	----------	--	--	--	--	--	--	--	--	--	----------	--	--	--	--	--	--	--	--	--	----------	--	--	--	--	--	--	--	--	--	----------	--	--	--	--	--	--	--	--	--	----------	--	--	--	--	--	--	--	--	--	----------	--	--	--	--	--	--	--	--	--	----------	--	--	--	--	--	--	--	--	--	----------	--	--	--	--	--	--	--	--	--	----------	--	--	--	--	--	--	--	--	--	----------	--	--	--	--	--	--	--	--	--	----------	--	--	--	--	--	--	--	--	--	----------	--	--	--	--	--	--	--	--	--	----------	--	--	--	--	--	--	--	--	--	----------	--	--	--	--	--	--	--	--	--	----------	--	--	--	--	--	--	--	--	--	----------	--	--	--	--	--	--	--	--	--	----------	--	--	--	--	--	--	--	--	--	----------	--	--	--	--	--	--	--	--	--	----------	--	--	--	--	--	--	--	--	--	----------	--	--	--	--	--	--	--	--	--	----------	--	--	--	--	--	--	--	--	--	----------	--	--	--	--	--	--	--	--	--	----------	--	--	--	--	--	--	--	--	--	----------	--	--	--	--	--	--	--	--	--	----------	--	--	--	--	--	--	--	--	--	----------	--	--	--	--	--	--	--	--	--	----------	--	--	--	--	--	--	--	--	--	----------	--	--	--	--	--	--	--	--	--	----------	--	--	--	--	--	--	--	--	--	----------	--	--	--	--	--	--	--	--	--	----------	--	--	--	--	--	--	--	--	--	----------	--	--	--	--	--	--	--	--	--	----------	--	--	--	--	--	--	--	--	--	----------	--	--	--	--	--	--	--	--	--	----------	--	--	--	--	--	--	--	--	--	----------	--	--	--	--	--	--	--	--	--	----------	--	--	--	--	--	--	--	--	--	----------	--	--	--	--	--	--	--	--	--	----------	--	--	--	--	--	--	--	--	--	----------	--	--	--	--	--	--	--	--	--	----------	--	--	--	--	--	--	--	--	--	----------	--	--	--	--	--	--	--	--	--	----------	--	--	--	--	--	--	--	--	--	----------	--	--	--	--	--	--	--	--	--	----------	--	--	--	--	--	--	--	--	--	----------	--	--	--	--	--	--	--	--	--	----------	--	--	--	--	--	--	--	--	--	----------	--	--	--	--	--	--	--	--	--	----------	--	--	--	--	--	--	--	--	--	----------	--	--	--	--	--	--	--	--	--	----------	--	--	--	--	--	--	--	--	--	----------	--	--	--	--	--	--	--	--	--	----------	--	--	--	--	--	--	--	--	--	----------	--	--	--	--	--	--	--	--	--	----------	--	--	--	--	--	--	--	--	--	----------	--	--	--	--	--	--	--	--	--	----------	--	--	--	--	--	--	--	--	--	----------	--	--	--	--	--	--	--	--	--	----------	--	--	--	--	--	--	--	--	--	----------	--	--	--	--	--	--	--	--	--	----------	--	--	--	--	--	--	--	--	--	----------	--	--	--	--	--	--	--	--	--	----------	--	--	--	--	--	--	--	--	--	----------	--	--	--	--	--	--	--	--	--	----------	--	--	--	--	--	--	--	--	--	----------	--	--	--	--	--	--	--	--	--	----------	--	--	--	--	--	--	--	--	--	----------	--	--	--	--	--	--	--	--	--	----------	--	--	--	--	--	--	--	--	--	----------	--	--	--	--	--	--	--	--	--	----------	--	--	--	--	--	--	--	--	--	----------	--	--	--	--	--	--	--	--	--	----------	--	--	--	--	--	--	--	--	--	----------	--	--	--	--	--	--	--	--	--	----------	--	--	--	--	--	--	--	--	--	----------	--	--	--	--	--	--	--	--	--	----------	--	--	--	--	--	--	--	--	--	----------	--	--	--	--	--	--	--	--	--	----------	--	--	--	--	--	--	--	--	--	----------	--	--	--	--	--	--	--	--	--	----------	--	--	--	--	--	--	--	--	--	----------	--	--	--	--	--	--	--	--	--	----------	--	--	--	--	--	--	--	--	--	----------	--	--	--	--	--	--	--	--	--	----------	--	--	--	--	--	--	--	--	--	----------	--	--	--	--	--	--	--	--	--	----------	--	--	--	--	--	--	--	--	--	----------	--	--	--	--	--	--	--	--	--	----------	--	--	--	--	--	--	--	--	--	----------	--	--	--	--	--	--	--	--	--	----------	--	--	--	--	--	--	--	--	--	----------	--	--	--	--	--	--	--	--	--	----------	--	--	--	--	--	--	--	--	--	----------	--	--	--	--	--	--	--	--	--	----------	--	--	--	--	--	--	--	--	--	----------	--	--	--	--	--	--	--	--	--	----------	--	--	--	--	--	--	--	--	--	----------	--	--	--	--	--	--	--	--	--	----------	--	--	--	--	--	--	--	--	--	----------	--	--	--	--	--	--	--	--	--	----------	--	--	--	--	--	--	--	--	--	----------	--	--	--	--	--	--	--	--	--	----------	--	--	--	--	--	--	--	--	--	----------	--	--	--	--	--	--	--	--	--	----------	--	--	--	--	--	--	--	--	--	----------	--	--	--	--	--	--	--	--	--	----------	--	--	--	--	--	--	--	--	--	----------	--	--	--	--	--	--	--	--	--	----------	--	--	--	--	--	--	--	--	--	----------	--	--	--	--	--	--	--	--	--	----------	--	--	--	--	--	--	--	--	--	----------	--	--	--	--	--	--	--	--	--	----------	--	--	--	--	--	--	--	--	--	----------	--	--	--	--	--	--	--	--	--	----------	--	--	--	--	--	--	--	--	--	----------	--	--	--	--	--	--	--	--	--	----------	--	--	--	--	--	--	--	--	--	----------	--	--	--	--	--	--	--	--	--	----------	--	--	--	--	--	--	--	--	--	----------	--	--	--	--	--	--	--	--	--	----------	--	--	--	--	--	--	--	--	--	----------	--	--	--	--	--	--	--	--	--	----------	--	--	--	--	--	--	--	--	--	----------	--	--	--	--	--	--	--	--	--	----------	--	--	--	--	--	--	--	--	--	----------	--	--	--	--	--	--	--	--	--	----------	--	--	--	--	--	--	--	--	--	----------	--	--	--	--	--	--	--	--	--	----------	--	--	--	--	--	--	--	--	--	----------	--	--	--	--	--	--	--	--	--	----------	--	--	--	--	--	--	--	--	--	----------	--	--	--	--	--	--	--	--	--	----------	--	--	--	--	--	--	--	--	--	----------	--	--	--	--	--	--	--	--	--	----------	--	--	--	--	--	--	--	--	--	----------	--	--	--	--	--	--	--	--	--	----------	--	--	--	--	--	--	--	--	--	----------	--	--	--	--	--	--	--	--	--	----------	--	--	--	--	--	--	--	--	--	----------	--	--	--	--	--	--	--	--	--	----------	--	--	--	--	--	--	--	--	--	----------	--	--	--	--	--	--	--	--	--	----------	--	--	--	--	--	--	--	--	--	----------	--	--	--	--	--	--	--	--	--	----------	--	--	--	--	--	--	--	--	--	----------	--	--	--	--	--	--	--	--	--	----------	--	--	--	--	--	--	--	--	--	----------	--	--	--	--	--	--	--	--	--	----------	--	--	--	--	--	--	--	--	--	----------	--	--	--	--	--	--	--	--	--	----------	--	--	--	--	--	--	--	--	--	----------	--	--	--	--	--	--	--	--	--	----------	--	--	--	--	--	--	--	--	--	----------	--	--	--	--	--	--	--	--	--	----------	--	--	--	--	--	--	--	--	--	----------	--	--	--	--	--	--	--	--	--	----------	--	--	--	--	--	--	--	--	--	----------	--	--	--	--	--	--	--	--	--	----------	--	--	--	--	--	--	--	--	--	----------	--	--	--	--	--	--	--	--	--	----------	--	--	--	--	--	--	--	--	--	----------	--	--	--	--	--	--	--	--	--	----------	--	--	--	--	--	--	--	--	--	----------	--	--	--	--	--	--	--	--	--	----------	--	--	--	--	--	--	--	--	--	----------	--	--	--	--	--	--	--	--	--	----------	--	--	--	--	--	--	--	--	--	----------	--	--	--	--	--	--	--	--	--	----------	--	--	--	--	--	--	--	--	--	----------	--	--	--	--	--	--	--	--	--	----------	--	--	--	--	--	--	--	--	--	----------	--	--	--	--	--	--	--	--	--	----------	--	--	--	--	--	--	--	--	--	----------	--	--	--	--	--	--	--	--	--	----------	--	--	--	--	--	--	--	--	--	----------	--	--	--	--	--	--	--	--	--	----------	--	--	--	--	--	--	--	--	--	----------	--	--	--	--	--	--	--	--	--	----------	--	--	--	--	--	--	--	--	--	----------	--	--	--	--	--	--	--	--	--	----------	--	--	--	--	--	--	--	--	--	----------	--	--	--	--	--	--	--	--	--	----------	--	--	--	--	--	--	--	--	--	----------	--	--	--	--	--	--	--	--	--	----------	--	--	--	--	--	--	--	--	--	----------	--	--	--	--	--	--	--	--	--	----------	--	--	--	--	--	--	--	--	--	----------	--	--	--	--	--	--	--	--	--	----------	--	--	--	--	--	--	--	--	--	----------	--	--	--	--	--	--	--	--	--	----------	--	--	--	--	--	--	--	--	--	----------	--	--	--	--	--	--	--	--	--	----------	--	--	--	--	--	--	--	--	--	----------	--	--	--	--	--	--	--	--	--	----------	--	--	--	--	--	--	--	--	--	----------	--	--	--	--	--	--	--	--	--	----------	--	--	--	--	--	--	--	--	--	----------	--	--	--	--	--	--	--	--	--	----------	--	--	--	--	--	--	--	--	--	----------	--	--	--	--	--	--	--	--	--	----------	--	--	--	--	--	--	--	--	--	----------	--	--	--	--	--	--	--	--	--	----------	--	--	--	--	--	--	--	--	--	----------	--	--	--	--	--	--	--	--	--	----------	--	--	--	--	--	--	--	--	--	----------	--	--	--	--	--	--	--	--	--	----------	--	--	--	--	--	--	--	--	--	----------	--	--	--	--	--	--	--	--	--	----------	--	--	--	--	--	--	--	--	--	----------	--	--	--	--	--	--	--	--	--	----------	--	--	--	--	--	--	--	--	--	----------	--	--	--	--	--	--	--	--	--	----------	--	--	--	--	--	--	--	--	--	----------	--	--	--	--	--	--	--	--	--	----------	--	--	--	--	--	--	--	--	--	----------	--	--	--	--	--	--	--	--	--	----------	--	--	--	--	--	--	--	--	--	----------	--	--	--	--	--	--	--	--	--	----------	--	--	--	--	--	--	--	--	--	----------	--	--	--	--	--	--	--	--	--	----------	--	--	--	--	--	--	--	--	--	----------	--	--	--	--	--	--	--	--	--	----------	--	--	--	--	--	--	--	--	--	----------	--	--	--	--	--	--	--	--	--	----------	--	--	--	--	--	--	--	--	--	----------	--	--	--	--	--	--	--	--	--	----------	--	--	--	--	--	--	--	--	--	----------	--	--	--	--	--	--	--	--	--	----------	--	--	--	--	--	--	--	--	--	----------	--	--	--	--	--	--	--	--	--	----------	--	--	--	--	--	--	--	--	--	----------	--	--	--	--	--	--	--	--	--	----------	--	--	--	--	--	--	--	--	--	----------	--	--	--	--	--	--	--	--	--	----------	--	--	--	--	--	--	--	--	--	----------	--	--	--	--	--	--	--	--	--	----------	--	--	--	--	--	--	--	--	--	----------	--	--	--	--	--	--	--	--	--	----------	--	--	--	--	--	--	--	--	--	----------	--	--	--	--	--	--	--	--	--	----------	--	--	--	--	--	--	--	--	--	----------	--	--	--	--	--	--	--	--	--	----------	--	--	--	--	--	--	--	--	--	----------	--	--	--	--	--	--	--	--	--	----------	--	--	--	--	--	--	--	--	--	----------	--	--	--	--	--	--	--	--	--	----------	--	--	--	--	--	--	--	--	--	----------	--	--	--	--	--	--	--	--	--	----------	--	--	--	--	--	--	--	--	--	----------	--	--	--	--	--	--	--	--	--	----------	--	--	--	--	--	--	--	--	--	----------	--	--	--	--	--	--	--	--	--	----------	--	--	--	--	--	--	--	--	--	----------	--	--	--	--	--	--	--	--	--	----------	--	--	--	--	--	--	--	--	--	----------	--	--	--	--	--	--	--	--	--	----------	--	--	--	--	--	--	--	--	--	----------	--	--	--	--	--	--	--	--	--	----------	--	--	--	--	--	--	--	--	--	----------	--	--	--	--	--	--	--	--	--	----------	--	--	--	--	--	--	--	--	--	----------	--	--	--	--	--	--	--	--	--	----------	--	--	--	--	--	--	--	--	--	----------	--	--	--	--	--	--	--	--	--	----------	--	--	--	--	--	--	--	--	--	----------	--	--	--	--	--	--	--	--	--	----------	--	--	--	--	--	--	--	--	--	----------	--	--	--	--	--	--	--	--	--	----------	--	--	--	--	--	--	--	--	--	----------	--	--	--	--	--	--	--	--	--	----------	--	--	--	--	--	--	--	--	--	----------	--	--	--	--	--	--	--	--	--	----------	--	--	--	--	--	--	--	--	--	----------	--	--	--	--	--	--	--	--	--	----------	--	--	--	--	--	--	--	--	--	----------	--	--	--	--	--	--	--	--	--	----------	--	--	--	--	--	--	--	--	--	----------	--	--	--	--	--	--	--	--	--	----------	--	--	--	--	--	--	--	--	--	----------	--	--	--	--	--	--	--	--	--	----------	--	--	--	--	--	--	--	--	--	----------	--	--	--	--	--	--	--	--	--	----------	--	--	--	--	--	--	--	--	--	----------	--	--	--	--	--	--	--	--	--	----------	--	--	--	--	--	--	--	--	--	----------	--	--	--	--	--	--	--	--	--	----------	--	--	--	--	--	--	--	--	--	----------	--	--	--	--	--	--	--	--	--	----------	--	--	--	--	--	--	--	--	--	----------	--	--	--	--	--	--	--	--	--	----------	--	--	--	--	--	--	--	--	--	----------	--	--	--	--	--	--	--	--	--	----------	--	--	--	--	--	--	--	--	--	----------	--	--	--	--	--	--	--	--	--	----------	--	--	--	--	--	--	--	--	--	----------	--	--	--	--	--	--	--	--	--	----------	--	--	--	--	--	--	--	--	--	----------	--	--	--	--	--	--	--	--	--	----------	--	--	--	--	--	--	--	--	--	----------	--	--	--	--	--	--	--	--	--	----------	--	--	--	--	--	--	--	--	--	----------	--	--	--	--	--	--	--	--	--	----------	--	--	--	--	--	--	--	--	--	----------	--	--	--	--	--	--	--	--	--	----------	--	--	--	--	--	--	--	--	--	----------	--	--	--	--	--	--	--	--	--	----------	--	--	--	--	--	--	--	--	--	----------	--	--	--	--	--	--	--	--	--	----------	--	--	--	--	--	--	--	--	--	----------	--	--	--	--	--	--	--	--	--	----------	--	--	--	--	--	--	--	--	--	----------	--	--	--	--	--	--	--	--	--	----------	--	--	--	--	--	--	--	--	--	----------	--	--	--	--	--	--	--	--	--	----------	--	--	--	--	--	--	--	--	--	----------	--	--	--	--	--	--	--	--	--	----------	--	--	--	--	--	--	--	--	--	----------	--	--	--	--	--	--	--	--	--	----------	--	--	--	--	--	--	--	--	--	----------	--	--	--	--	--	--	--	--	--	----------	--	--	--	--	--	--	--	--	--	----------	--	--	--	--	--	--	--	--	--	----------	--	--	--	--	--	--	--	--	--	----------	--	--	--	--	--	--	--	--	--	----------	--	--	--	--	--	--	--	--	--	----------	--	--	--	--	--	--	--	--	--	----------	--	--	--	--	--	--	--	--	--	----------	--	--	--	--	--	--	--	--	--	----------	--	--	--	--	--	--	--	--	--	----------	--	--	--	--	--	--	--	--	--	----------	--	--	--	--	--	--	--	--	--	----------	--	--	--	--	--	--	--	--	--	----------	--	--	--	--	--	--	--	--	--	----------	--	--	--	--	--	--	--	--	--	----------	--	--	--	--	--	--	--	--	--	----------	--	--	--	--	--	--	--	--	--	----------	--	--	--	--	--	--	--	--	--	----------	--	--	--	--	--	--	--	--	--	----------	--	--	--	--	--	--	--	--	--	----------	--	--	--	--	--	--	--	--	--	----------	--	--	--	--	--	--	--	--	--	----------	--	--	--	--	--	--	--	--	--	----------	--	--	--	--	--	--	--	--	--	----------	--	--	--	--	--	--	--	--	--	----------	--	--	--	--	--	--	--	--	--	----------	--	--	--	--	--	--	--	--	--	----------	--	--	--	--	--	--	--	--	--	----------	--	--	--	--	--	--	--	--	--	----------	--	--	--	--	--	--	--	--	--	----------	--	--	--	--	--	--	--	--	--	----------	--	--	--	--	--	--	--	--	--	----------	--	--	--	--	--	--	--	--	--	----------	--	--	--	--	--	--	--	--	--	----------	--	--	--	--	--	--	--	--	--	----------	--	--	--	--	--	--	--	--	--	----------	--	--	--	--	--	--	--	--	--	----------	--	--	--	--	--	--	--	--	--	----------	--	--	--	--	--	--	--	--	--	----------	--	--	--	--	--	--	--	--	--	----------	--	--	--	--	--	--	--	--	--	----------	--	--	--	--	--	--	--	--	--	----------	--	--	--	--	--	--	--	--	--	----------	--	--	--	--	--	--	--	--	--	----------	--	--	--	--	--	--	--	--	--	----------	--	--	--	--	--	--	--	--	--	----------	--	--	--	--	--	--	--	--	--	----------	--	--	--	--	--	--	--	--	--	----------	--	--	--	--	--	--	--	--	--	----------	--	--	--	--	--	--	--	--	--	----------	--	--	--	--	--	--	--	--	--	----------	--	--	--	--	--	--	--	--	--	----------	--	--	--	--	--	--	--	--	--	----------	--	--	--	--	--	--	--	--	--	----------	--	--	--	--	--	--	--	--	--	----------	--	--	--	--	--	--	--	--	--	----------	--	--	--	--	--	--	--	--	--	----------	--	--	--	--	--	--	--	--	--	----------	--	--	--	--	--	--	--	--	--	----------	--	--	--	--	--	--	--	--	--	----------	--	--	--	--	--	--	--	--	--	----------	--	--	--	--	--	--	--	--	--	----------	--	--	--	--	--	--	--	--	--	----------	--	--	--	--	--	--	--	--	--	----------	--	--	--	--	--	--	--	--	--	----------	--	--	--	--	--	--	--	--	--	----------	--	--	--	--	--	--	--	--	--	----------	--	--	--	--	--	--	--	--	--	----------	--	--	--	--	--	--	--	--	--	----------	--	--	--	--	--	--	--	--	--	----------	--	--	--	--	--	--	--	--	--	----------	--	--	--	--	--	--	--	--	--	----------	--	--	--	--	--	--	--	--	--	----------	--	--	--	--	--	--	--	--	--	----------	--	--	--	--	--	--	--	--	--	----------	--	--	--	--	--	--	--	--	--	----------	--	--	--	--	--	--	--	--	--	----------	--	--	--	--	--	--	--	--	--	----------	--	--	--	--	--	--	--	--	--	----------	--	--	--	--	--	--	--	--	--	----------	--	--	--	--	--	--	--	--	--	----------	--	--	--	--	--	--	--	--	--	----------	--	--	--	--	--	--	--	--	--	----------	--	--	--	--	--	--	--	--	--	----------	--	--	--	--	--	--	--	--	--	----------	--	--	--	--	--	--	--	--	--	----------	--	--	--	--	--	--	--	--	--	----------	--	--	--	--	--	--	--	--	--	----------	--	--	--	--	--	--	--	--	--	----------	--	--	--	--	--	--	--	--	--	----------	--	--	--	--	--	--	--	--	--	----------	--	--	--	--	--	--	--	--	--	----------	--	--	--	--	--	--	--	--	--	----------	--	--	--	--	--	--	--	--	--	----------	--	--	--	--	--	--	--	--	--	----------	--	--	--	--	--	--	--	--	--	----------	--	--	--	--	--	--	--	--	--	----------	--	--	--	--	--	--	--	--	--	----------	--	--	--	--	--	--	--	--	--	----------	--	--	--	--	--	--	--	--	--	----------	--	--	--	--	--	--	--	--	--	----------	--	--	--	--	--	--	--	--	--	----------	--	--	--	--	--	--	--	--	--	----------	--	--	--	--	--	--	--	--	--	----------	--	--	--	--	--	--	--	--	--	----------	--	--	--	--	--	--	--	--	--	----------	--	--	--	--	--	--	--	--	--	----------	--	--	--	--	--	--	--	--	--	----------	--	--	--	--	--	--	--	--	--	----------	--	--	--	--	--	--	--	--	--	----------	--	--	--	--	--	--	--	--	--	----------	--	--	--	--	--	--	--	--	--	----------	--	--	--	--	--	--	--	--	--	----------	--	--	--	--	--	--	--	--	--	----------	--	--	--	--	--	--	--	--	--	----------	--	--	--	--	--	--	--	--	--	----------	--	--	--	--	--	--	--	--	--	----------	--	--	--	--	--	--	--	--	--	----------	--	--	--	--	--	--	--	--	--	----------	--	--	--	--	--	--	--	--	--	----------	--	--	--	--	--	--	--	--	--	----------	--	--	--	--	--	--	--	--	--	----------	--	--	--	--	--	--	--	--	--	----------	--	--	--	--	--	--	--	--	--	----------	--	--	--	--	--	--	--	--	--	----------	--	--	--	--	--	--	--	--	--	----------	--	--	--	--	--	--	--	--	--	----------	--	--	--	--	--	--	--	--	--	----------	--	--	--	--	--	--	--	--	--	----------	--	--	--	--	--	--	--	--	--	----------	--	--	--	--	--	--	--	--	--	----------	--	--	--	--	--	--	--	--	--	----------	--	--	--	--	--	--	--	--	--	----------	--	--	--	--	--	--	--	--	--	----------	--	--	--	--	--	--	--	--	--	----------	--	--	--	--	--	--	--	--	--	----------	--	--	--	--	--	--	--	--	--	----------	--	--	--	--	--	--	--	--	--	----------	--	--	--	--	--	--	--	--	--	----------	--	--	--	--	--	--	--	--	--	----------	--	--	--	--	--	--	--	--	--	----------	--	--	--	--	--	--	--	--	--	----------	--	--	--	--	--	--	--	--	--	----------	--	--	--	--	--	--	--	--	--	----------	--	--	--	--	--	--	--	--	--	----------	--	--	--	--	--	--	--	--	--	----------	--	--	--	--	--	--	--	--	--	----------	--	--	--	--	--	--	--	--	--	----------	--	--	--	--	--	--	--	--	--	----------	--	--	--	--	--	--	--	--	--	----------	--	--	--	--	--	--	--	--	--	----------	--	--	--	--	--	--	--	--	--	----------	--	--	--	--	--	--	--	--	--	----------	--	--	--	--	--	--	--	--	--	----------	--	--	--	--	--	--	--	--	--	----------	--	--	--	--	--	--	--	--	--	----------	--	--	--	--	--	--	--	--	--	----------	--	--	--	--	--	--	--	--	--	----------	--	--	--	--	--	--	--	--	--	----------	--	--	--	--	--	--	--	--	--	----------	--	--	--	--	--	--	--	--	--	----------	--	--	--	--	--	--	--	--	--	----------	--	--	--	--	--	--	--	--	--	----------	--	--	--	--	--	--	--	--	--	----------	--	--	--	--	--	--	--	--	--	----------	--	--	--	--	--	--	--	--	--	----------	--	--	--	--	--	--	--	--	--	----------	--	--	--	--	--	--	--	--	--	----------	--	--	--	--	--	--	--	--	--	----------	--	--	--	--	--	--	--	--	--	----------	--	--	--	--	--	--	--	--	--	----------	--	--	--	--	--	--	--	--	--	----------	--	--	--	--	--	--	--	--	--	----------	--	--	--	--	--	--	--	--	--	----------	--	--	--	--	--	--	--	--	--	----------	--	--	--	--	--	--	--	--	--	----------	--	--	--	--	--	--	--	--	--	----------	--	--	--	--	--	--	--	--	--	----------	--	--	--	--	--	--	--	--	--	----------	--	--	--	--	--	--	--	--	--	----------	--	--	--	--	--	--	--	--	--	----------	--	--	--	--	--	--	--	--	--	----------	--	--	--	--	--	--	--	--	--	----------	--	--	--	--	--	--	--	--	--	----------	--	--	--	--	--	--	--	--	--	----------	--	--	--	--	--	--	--	--	--	----------	--	--	--	--	--	--	--	--	--	----------	--	--	--	--	--	--	--	--	--	----------	--	--	--	--	--	--	--	--	--	----------	--	--	--	--	--	--	--	--	--	----------	--	--	--	--	--	--	--	--	--	----------	--	--	--	--	--	--	--	--	--	----------	--	--	--	--	--	--	--	--	--	----------	--	--	--	--	--	--	--	--	--	----------	--	--	--	--	--	--	--	--	--	----------	--	--	--	--	--	--	--	--	--	----------	--	--	--	--	--	--	--	--	--	----------	--	--	--	--	--	--	--	--	--	----------	--	--	--	--	--	--	--	--	--	----------	--	--	--	--	--	--	--	--	--	----------	--	--	--	--	--	--	--	--	--	----------	--	--	--	--	--	--	--	--	--	----------	--	--	--	--	--	--	--	--	--	----------	--	--	--	--	--	--	--	--	--	----------	--	--	--	--	--	--	--	--	--	----------	--	--	--	--	--	--	--	--	--	----------	--	--	--	--	--	--	--	--	--	----------	--	--	--	--	--	--	--	--	--	----------	--	--	--	--	--	--	--	--	--	----------	--	--	--	--	--	--	--	--	--	----------	--	--	--	--	--	--	--	--	--	----------	--	--	--	--	--	--	--	--	--	----------	--	--	--	--	--	--	--	--	--	----------	--	--	--	--	--	--	--	--	--	----------	--	--	--	--	--	--	--	--	--	----------	--	--	--	--	--	--	--	--	--	----------	--	--	--	--	--	--	--	--	--	----------	--	--	--	--	--	--	--	--	--	----------	--	--	--	--	--	--	--	--	--	----------	--	--	--	--	--	--	--	--	--	----------	--	--	--	--	--	--	--	--	--	----------	--	--	--	--	--	--	--	--	--	----------	--	--	--	--	--	--	--	--	--	----------	--	--	--	--	--	--	--	--	--	----------	--	--	--	--	--	--	--	--	--	----------	--	--	--	--	--	--	--	--	--	----------	--	--	--	--	--	--	--	--	--	----------	--	--	--	--	--	--	--	--	--	----------	--	--	--	--	--	--	--	--	--	----------	--	--	--	--	--	--	--	--	--	----------	--	--	--	--	--	--	--	--	--	----------	--	--	--	--	--	--	--	--	--	----------	--	--	--	--	--	--	--	--	--	----------	--	--	--	--	--	--	--	--	--	----------	--	--	--	--	--	--	--	--	--	----------	--	--	--	--	--	--	--	--	--	----------	--	--	--	--	--	--	--	--	--	----------	--	--	--	--	--	--	--	--	--	----------	--	--	--	--	--	--	--	--	--	----------	--	--	--	--	--	--	--	--	--	----------	--	--	--	--	--	--	--	--	--	----------	--	--	--	--	--	--	--	--	--	----------	--	--	--	--	--	--	--	--	--	----------	--	--	--	--	--	--	--	--	--	----------	--	--	--	--	--	--	--	--	--