

# The Pacific Commercial Advertiser

U. S. WEATHER BUREAU, February 2.—Last 24 Hours' Rainfall, .00.  
Temperature, Max. 74; Min. 66. Weather, variable.

ESTABLISHED JULY 2, 1856.

VOL. XLIX., NO. 8264.

HONOLULU, HAWAII TERRITORY, WEDNESDAY, FEBRUARY 3, 1909.

PRICE FIVE CENTS.

## STREET CONTROL IS QUESTIONED

Quinn Says That County Owns  
No Property—Belongs to  
Territory.

Wit, sparkling wit, actually came to the surface at the meeting of the Board of Supervisors last evening, but it was quickly submerged in the dense uncertainty of things. It came along toward the end of a rather dreary meeting after Supervisor Quinn had made a statement concerning the need of a boiler for an engine to run a rock crusher for the Wai'alua road which he thought would cost about \$1500. Aylett looked over his spectacles, removed his pipe from his lips and queried:

"Why not leave this matter to the County Engineer?"

"He's only a draughtsman and runs lines for surveying," responded Mr. Quinn. "He doesn't run engines or autos, or things like that. He hasn't anything to do with it."

"I think it ought to be referred to the County Engineer just the same," persisted Aylett.

"I move it be referred to the committee on roads, bridges and parks," said Quinn. It happens that Quinn is a member of that committee.

"Are you an engineer, Mr. Quinn?" inquired Mr. Aylett, slyly, which caused a laugh, and that's where the wit came in.

However, the matter was referred to the committee, Mr. Quinn explaining after the meeting that the County Engineer had already recommended the new boiler.

"One, Two, Three, I Wish —"

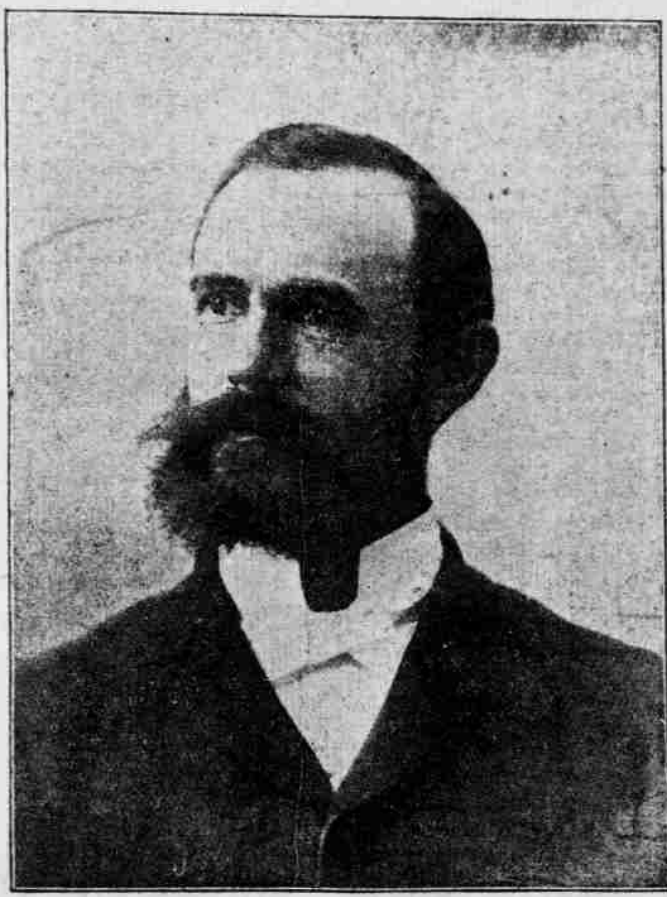
Much of the time of the meeting was taken up with long, filibustering over reports of committees which called for salary and general payroll expenditures. In each case the Mayor passed the buck up to the board and Supervisor Logan repeated his "one, two, three" formula, the only negative vote recorded being that of McClellan, the lone Democrat. A bystander said, sotto-voce, that it reminded him of the famous little Hawaiian melody—"One, two, three, four; sometimes I wish there were more." The first of the "1, 2, 3" bills was passed under a suspension of rules when Mr. Logan asked the Mayor if he had taken any action in regard to clerical hire for the City Clerk's office. His Honor responded affirmatively and added he had appended his signature to the bill. That quashed a special ordinance, and gave the City Clerk an office staff comprising a chief clerk, a clerk, a stenographer and a typewriter. An additional motion provided these four employees with salaries, respectively \$120, \$80, \$100 and \$40, all monthly rates. A third motion called upon the Auditor to issue the warrants. City Clerk Kalauekalani announced that Eugene Buffandau, Antoine Fernandez, Jos. K. Aea Jr., and Francis Evans had been appointed to fill the positions.

No Sand Taken.

A special committee of which Mr. Quinn was chairman, reported that it had investigated the report that Japanese were taking sand away from the roads in Kaimuki and ascertained that the report was incorrect, but that Japanese had been taking away sand from Judge Dole's place at Diamond Head, but that was private property.

(Continued on Page Five.)

HENRY E. COOPER, THE LEADING CANDIDATE  
FOR SECOND FEDERAL JUDGE.



## H. E. COOPER STRONG IN THE RACE FOR SECOND JUDGESHIP

WASHINGTON, D. C., February 2.—The Senate Judiciary Committee has favorably reported the bill for an additional Federal Judge for the district of Hawaii.

The list of those more frequently mentioned for the second Federal judgeship comprises Judge Henry E. Cooper, Mr. Olson, Mr. Robbins Anderson, Mr. Breckons, Judge Robinson, Judge Perry and Judge Hatch.

Judge Cooper, who is in the hands of his friends, has a strong lead. Mr. Olson and Mr. Anderson are also favorites in the Robins' Egg Chamber, the only objection to them coming from those who think that lawyers of judicial experience should be the ones picked from.

Both Judge Robinson and Mr. Breckons are said to be out of the running.

Judge Perry and Judge Hatch are not known to be candidates, nor are several more well-known lawyers whose friends have mentioned them.

Reports from several directions indicate that Judge Cooper, who served on the Circuit bench during the Hawaiian republic and who, at various times, held every position in the cabinet of President Dole, and was at the head of affairs during the President's absence, will get the plum. Judge Cooper, under the Territory, has been Superintendent of Public Works and Secretary of Regents. He is a lawyer of large practice.

ed from. Both Judge Robinson and Mr. Breckons are said to be out of the running.

Judge Perry and Judge Hatch are not known to be candidates, nor are several more well-known lawyers whose friends have mentioned them.

Reports from several directions indicate that Judge Cooper, who served on the Circuit bench during the Hawaiian republic and who, at various times, held every position in the cabinet of President Dole, and was at the head of affairs during the President's absence, will get the plum. Judge Cooper, under the Territory, has been Superintendent of Public Works and Secretary of Regents. He is a lawyer of large practice.

(Continued on Page Five.)

## KAMAIA DIED THIS MORNING

Robert Rycroft Who Came Here  
in 1864 Succumbs to  
Heart Trouble.

Robert Rycroft died at his residence on Wilder avenue early this morning, of heart trouble. He leaves a widow, three sons, Henry, Mark and Walter, and two daughters, Sophia and Gladys.

Mr. Rycroft was a well-known kamaia on the Islands. He was born in Leeds, England, in 1843, and came to the United States when he was sixteen years old, to visit a brother living at Chautauqua. When the Civil War broke out he enlisted in the Sec-

(Continued on Page Five.)

(Continued on Page Five.)

(Continued on Page Five.)

(Continued on Page Five.)

(Continued on Page Five.)

(Continued on Page Five.)

## NEW KING OF HAWAII REIGNS

George I Announces His Elec-  
tion and Looks Around  
for Salary.

King George I has established his kingdom in Hawaii just as clearly as Emperor Norton did in California, and has taken royal apartments at the police station pending the erection of a new palace. The new king, who is otherwise known as George E. Giles, declares he was duly elected as sovereign of the Hawaiian Islands last Saturday. Yesterday he became anxious concerning the government and began a canvass of eligibles to form his cabinet.

The king will probably make his first proclamation this morning before District Magistrate Andrade and will explain the manner of the creation of the new kingdom. At present His Majesty is anxious about the salary and has declared to certain of his subjects whom he has taken into his confidence that he will be satisfied with \$900 a month. In order to prepare the way for the new Minister of Finance to put the treasury in shape, the king affixed his royal signature to a blank power of attorney, the complete signature being "King Giles of Hawaii." At times he refers to himself as King George I and at other times as King Giles.

The new sovereign is a native of the Tonga Islands and a subject of His Majesty George Tubou II, King of Tonga. He is part English and part Tongan, is about twenty-six years of age, good-looking and dresses fairly well. For several weeks he has formed a habit of visiting business houses downtown, among them the Advertiser office, and always has some peculiar comment to make regarding his personal affairs.

At first he spoke of some contract work in Arizona for which he claimed

(Continued on Page Two.)

(Continued on Page Two.)

(Continued on Page Two.)

(Continued on Page Two.)

(Continued on Page Two.)

(Continued on Page Two.)

(Continued on Page Two.)

(Continued on Page Two.)

(Continued on Page Two.)

(Continued on Page Two.)

## GOVERNMENT TO EXCHANGE LANDS

The Territory Hopes to Get  
Kauai Acreage for  
Homesteads.

An exchange of lands that will mean much for the extension of the homestead system on the island of Kauai has been under the consideration of Governor Frear and Land Commissioner Pratt. The Territorial government would like to have about 1730 acres of good pineapple land that is now controlled by the McBryde Sugar Plantation while that corporation is equally desirous of exchanging its holdings for 1337 acres of government land, excellent for the growing of sugar cane. The plantation controls the water rights on both divisions and to make the 1730 acre section desirable for homestead purposes Commissioner Pratt says it will be necessary for the corporation to agree to the delivery of a certain amount of water for household uses after the consummation of the exchange.

Appraisers Appointed.

With the object of ascertaining the exact value of the lands involved three appraisers will leave for Kauai Thursday. George Ewart, W. L. Hopper and W. H. Thomas are the men who have been named to judge the value of the lands for the government and much will depend upon their findings.

The land is desired by the government to extend and enlarge what is known as the Kalahoe Settlement, about nine miles from Lihue, the county seat of Kauai. The acreage controlled by the McBryde Sugar Plantation Company is of the best quality for pineapple raising and general agricultural purposes. Some of the land is now in cane that the government will secure if the exchange is made while its value for pineapple culture has been proven conclusively by a few settlers who planted small fields with the permission of the corporation.

Settlers Contented.

"If this matter is brought to a successful conclusion," said Commissioner Pratt, "some of the best homesteading land in the Territory will be opened for settlement. It is of the very best quality for general agricultural uses and particularly so for pineapples. There are about three hundred people now living contentedly in the section known as the Kalahoe Settlement and the opening of the land that we are trying to secure would undoubtedly increase the general prosperity of the entire region. One of the great advantages so far as pineapple farming is concerned is the proximity of a cannery at Lihue of sufficient size to handle all the pines that can be turned over to it by the independent growers. This, of course, is a highly valuable asset. It is a rolling country, easy to cultivate and is really ideal as far as homesteading is concerned. We are naturally quite anxious to secure the land and as the plantation is equally desirous of obtaining the 1337 acres of government holding there is every hope that matters will be brought to a successful conclusion. The question of water rights is a hard one to arrange and as the plantation controls that part of it absolutely it will naturally have to be taken into consideration in the appraisal of the respective values.

The plantation interests are declared to be desirous of seeing the district settled by a permanent and responsible class of citizen labor for they have found already that the Kalahoe Settlement contributes no small quota to the skilled labor on the plantation.

Experiments that promise to put canned bananas upon the ever-growing list of Hawaiian commercial products have been concluded on Kauai with every indication of success. The pineapple cannery at Lihue has been the scene of the experiments, and as far as a brief attempt in that direction can be accepted as conclusive the banana can be canned as successfully as the pineapple.

Land Commissioner Pratt had the privilege of sampling the canned fruit during his recent visit to Kauai. He tasted a banana of the Chinese variety that had been in the tin for some time, and he declares that it was delicious, retaining the natural flavor and tasting practically the same as the fresh fruit.

"I don't know whether this has ever been tried before," said Commissioner Pratt, in speaking of his discovery, "but it is certainly new as far as I know. The manager at the Lihue cannery is progressive and is constantly experimenting with all varieties of fruit. From what I know of the canned banana it is a success. There certainly should be a profitable field for it commercially."

Experiments that promise to put canned bananas upon the ever-growing list of Hawaiian commercial products have been concluded on Kauai with every indication of success. The pineapple cannery at Lihue has been the scene of the experiments, and as far as a brief attempt in that direction can be accepted as conclusive the banana can be canned as successfully as the pineapple.

Land Commissioner Pratt had the privilege of sampling the canned fruit during his recent visit to Kauai. He tasted a banana of the Chinese variety that had been in the tin for some time, and he declares that it was delicious, retaining the natural flavor and tasting practically the same as the fresh fruit.

"I don't know whether this has ever been tried before," said Commissioner Pratt, in speaking of his discovery, "but it is certainly new as far as I know. The manager at the Lihue cannery is progressive and is constantly experimenting with all varieties of fruit. From what I know of the canned banana it is a success. There certainly should be a profitable field for it commercially."

Experiments that promise to put canned bananas upon the ever-growing list of Hawaiian commercial products have been concluded on Kauai with every indication of success. The pineapple cannery at Lihue has been the scene of the experiments, and as far as a brief attempt in that direction can be accepted as conclusive the banana can be canned as successfully as the pineapple.

Land Commissioner Pratt had the privilege of sampling the canned fruit during his recent visit to Kauai. He tasted a banana of the Chinese variety that had been in the tin for some time, and he declares that it was delicious, retaining the natural flavor and tasting practically the same as the fresh fruit.

"I don't know whether this has ever been tried before," said Commissioner Pratt, in speaking of his discovery, "but it is certainly new as far as I know. The manager at the Lihue cannery is progressive and is constantly experimenting with all varieties of fruit. From what I know of the canned banana it is a success. There certainly should be a profitable field for it commercially."

Experiments that promise to put canned bananas upon the ever-growing list of Hawaiian commercial products have been concluded on Kauai with every indication of success. The pineapple cannery at Lihue has been the scene of the experiments, and as far as a brief attempt in that direction can be accepted as conclusive the banana can be canned as successfully as the pineapple.

Land Commissioner Pratt had the privilege of sampling the canned fruit during his recent visit to Kauai. He tasted a banana of the Chinese variety that had been in the tin for some time, and he declares that it was delicious, retaining the natural flavor and tasting practically the same as the fresh fruit.

"I don't know whether this has ever been tried before," said Commissioner Pratt, in speaking of his discovery, "but it is certainly new as far as I know. The manager at the Lihue cannery is progressive and is constantly experimenting with all varieties of fruit. From what I know of the canned banana it is a success. There certainly should be a profitable field for it commercially."

Experiments that promise to put canned bananas upon the ever-growing list of Hawaiian commercial products have been concluded on Kauai with every indication of success. The pineapple cannery at Lihue has been the scene of the experiments, and as far as a brief attempt in that direction can be accepted as conclusive the banana can be canned as successfully as the pineapple.

Land Commissioner Pratt had the privilege of sampling the canned fruit during his recent visit to Kauai. He tasted a banana of the Chinese variety that had been in the tin for some time, and he declares that it was delicious, retaining the natural flavor and tasting practically the same as the fresh fruit.

"I don't know whether this has ever been tried before," said Commissioner Pratt, in speaking of his discovery, "but it is certainly new as far as I know. The manager at the Lihue cannery is progressive and is constantly experimenting with all varieties of fruit. From what I know of the canned banana it is a success. There certainly should be a profitable field for it commercially."

Experiments that promise to put canned bananas upon the ever-growing list of Hawaiian commercial products have been concluded on Kauai with every indication of success. The pineapple cannery at Lihue has been the scene of the experiments, and as far as a brief attempt in that direction can be accepted as conclusive the banana can be canned as successfully as the pineapple.

Land Commissioner Pratt had the privilege of sampling the canned fruit during his recent visit to Kauai. He tasted a banana of the Chinese variety that had been in the tin for some time, and he declares that it was delicious, retaining the natural flavor and tasting practically the same as the fresh fruit.

"I don't know whether this has ever been tried before," said Commissioner Pratt, in speaking of his discovery, "but it is certainly new as far as I know. The manager at the Lihue cannery is progressive and is constantly experimenting with all varieties of fruit. From what I know of the canned banana it is a success. There certainly should be a profitable field for it commercially."

Experiments that promise to put canned bananas upon the ever-growing list of Hawaiian commercial products have been concluded on Kauai with every indication of success. The pineapple cannery at Lihue has been the scene of the experiments, and as far as a brief attempt in that direction can be accepted as conclusive the banana can be canned as successfully as the pineapple.

Land Commissioner Pratt had the privilege of sampling the canned fruit during his recent visit to Kauai. He tasted a banana of the Chinese variety that had been in the tin for some time, and he declares that it was delicious, retaining the natural flavor and tasting practically the same as the fresh fruit.

## KOREA MUST BE UNDER RULE OF THE JAPANESE

Result of the Imperial Tour of the Hermit  
Kingdom—Taft at Colon—Army  
Appropriation Bill.

(Associated Press Cablegrams.)

SEOUL, February 3.—The Emperor and Prince Ito have returned from their tour of the country. It is announced that the Koreans did not show any pronounced antipathy to the Japanese. Prince Ito made many speeches, declaring that there is no hope of political independence for Korea.

## KOMURA'S PEACE SPEECH PLEASES ADMINISTRATION

WASHINGTON, February 3.—The Administration is pleased with Komura's speech.

TOKIO, February 2.—Baron Komura, Minister of Foreign Affairs, made a statement in the Japanese Diet today bearing on the agitation against the Japanese that is going on in California and Nevada.

Komura declared that the policy of the government is a policy of peace, and that he is confident that the known friendship and the spirit of justice prevailing in America will prevent legislation that may lead to international complications.

Hatori, leader of the Opposition, made a speech in reply. He attacked the passive policy of the government. His utterances were loudly cheered.

## ARMY APPROPRIATION BILL

WASHINGTON, February 3.—The Army Appropriation Bill has passed the House. The amendment calling for an outlay of \$500,000 for experiments with balloons and airships was stricken out.

## ANTI-OPIUM BILL PASSES

WASHINGTON, February 3.—The House bill prohibiting the importation of opium, except for medical purposes, has passed the Senate.

## COLON'S BREAKWATER

COLON, February 3.—President-elect Taft and the engineers accompanying him have inspected the site of the proposed \$10,000,000 breakwater.

## RELIEF FOR CALABRIANS

ROME, February 3.—Ambassador Griscom has sent relief to mountain villages of Calabria whence there are reports of great suffering.

## FRENCH NAVAL PROGRAM

PARIS, February 3.—The Minister of Marine has presented plans to the cabinet for the expenditure of \$45,000,000 on the navy.

## AFTERNOON CABLE REPORT.

SAN FRANCISCO, February 2.—Ten jurors have been secured for the trial of Patrick Calhoun.

ST. PETERSBURG, February 2.—Earthquakes are reported on the island of Saghalien in the North Pacific.

CARSON CITY, Nevada, February 2.—The Nevada Assembly today passed the resolution directed against the Japanese, after eliminating the adverse reference to President Roosevelt.

CITY OF MEXICO, February 2.—English, Japanese and Mexican capital has combined to start a steamship line with ships plying from the Mexican coast to San Francisco and the Orient.

GIBALTAR, February 2.—Admiral Wainwright charges that Captain Quiltrough of the battleship Georgia was intoxicated during a reception held in connection with the festivities of the Atlantic fleet. A court martial has been appointed.

## W. O. SMITH ON THE LOCAL OPTION PLAN

"There are many," said Hon. W. O. Smith yesterday, "who are familiar with the present law regulating the sale of spirituous liquors and its operation who feel that it will be a mistake to give to the voters of each precinct the power to decide by ballot, especially at general elections, whether or not licenses shall be granted in their precinct."

"In the present law," continued Mr. Smith, "there is a provision (section 12) that every applicant for a license shall file with his application an instrument in writing containing an assent of a majority in number of the holders of real estate situated within one thousand feet from the proposed premises, which signatures shall be acknowledged before an acknowledging officer. When the location of the proposed place for selling liquor is within half a mile of any first or second class

postoffice the consent of a majority of the property holders within 250 feet only is required. This provision is intended to apply to populous towns.

"In addition to the foregoing provision the law provides that if a majority of the registered voters of a precinct, in which an application has been made for a license, file a protest against the granting of the license, the application shall be refused.

"These two provisions present very strong local option features. The first compels the applicant to obtain the written consent of property owners, which places a direct and recorded responsibility upon each individual signing; it is a very different matter from the citizen on his own motion personally protesting.

"But if a majority of the voters of a precinct are opposed to the granting of licenses in their precinct, they have the opportunity to protest and prevent any license being granted.

"If the plan is adopted of having the voters at the general elections vote upon the subject of license or no license, it will bring the liquor question most prominently into politics, and will

(Continued on Page Four.)

## MR. PINCHOT'S VIEWS ON FORESTRY IN THESE ISLANDS

On leaving Washington, Mr. A. F. Knudsen received the following letter from Hon. Gifford Pinchot, chairman of the National Conservation Commission and Chief of the Government Forest Service:

United States Department of Agriculture, Forest Service, Washington, New York, December 26, 1908.

My dear Mrs. Knudsen.—You have been kind enough to suggest that I might send through you to the women of the Hawaiian Islands a word about their share in the great movement for forest protection which is now sweeping over the whole country. I do so with the keenest pleasure, because the part of the women in this great movement has everywhere been not only an important one for the present, but the essential part when we come to consider the future. It is just as natural for the women to occupy themselves mainly with the condition of the nation in the future, when the children of today will have taken charge of the national affairs, as it is almost inevitable that the men will give their principal attention to the questions and decisions which we must make now. These questions and decisions concern the future not less than the present, but after all those who control the children control the nation of the future.

It has happened over and over again that the women have taken the leading part in establishing forestry in various parts of the United States. In Penn-

sylvania the whole movement began with the women; in Minnesota they took the laboring oar in establishing the Minnesota national forest. And the growing interest in forest preservation on the part of the Federation of Women's Clubs, the National Mothers' Congress, and other great bodies of women, is one of the most hopeful things for all of us who are interested in securing for the future, so far as we can, some benefits from the forests which we enjoy today.

You in Hawaii have a peculiar interest in this question. Nowhere are forests and water supply more intimately connected than in the Islands, and very few communities have made such progress as yours toward practical forest preservation. There remains, of course, a very large work to be done. You are fortunate in having so good a man as Mr. Hosmer as your forester to assist you in the work. More important still is your interest in public questions, which led you to send your representative, so admirably chosen, to the meeting of the Rivers and Harbors Congress and the Joint Conservation Conference. I welcome the opportunity for cooperation with you for the Forest Service, and I assure you that the Service will always welcome the opportunity to do what it can to help along. One of the things I want most is a chance to visit the Islands.

Very sincerely yours,  
GIFFORD PINCHOT,  
Forester.



# They're

## Ideal for Mid-Summer KEISER TUB CRAVATS

Fabrics Specially Woven

Soft, Lustrous, white Cheviots  
In plain weaves, self figures and stripes

Retain their beautiful lustre  
and softness after laundering

Keiser-Barathea, all-silk,  
in about fifty plain colors

Grand Prize St. Louis World's Fair  
for Quality, Workmanship and Style.



We have the Latest in Weave, Shade and Pattern.

**M. McInerny, Ltd.**

FORT AND MERCHANT

## Golf Links

such as you find at Haleiwa would be considered good anywhere. A game, a dip in the water and a good dinner are among the attractions here.

ST. CLAIR BIDGOOD, Manager.

## HAT NEWS

Isoshima has received a large shipment of millinery goods which are now on display at the King street store.

These goods, comprising Flowers, Ostrich Feathers, Stylish Shapes in Chip and Hair Braids, Wings, Chiffons, Silks, etc. await your inspection. An endless variety of hats for young folks will be shown.

The prices are exceedingly low—unheard of, in fact, and a cordial invitation is extended the ladies to call and examine.

**ISOSHIMA**

King, near Bethel.

## "DUNN HATS"

Have refinement—that "something" which a woman recognizes and appreciates at a glance. The "DUNN HAT" is an achievement which is impossible unless the maker is constantly in touch with the great fashion designers of both America and Europe. Workmanship, style, individuality—the "DUNN HAT" is the combination of them all. It represents perfection in millinery.

**Dunn's Hat Shop**

FORT STREET.

## MANY AUTOS FOR PARADE

Maliinis, as Well as Local  
People, Will Decorate and  
Enter Machines.

The following letter was mailed yesterday afternoon to every owner of an automobile in Honolulu, as ascertained from the records of licenses issued:

"Honolulu, February 2, 1909.  
"Dear Sir,—For the past three years, as you know, Honolulu has celebrated Washington's birthday by a Floral Parade, the principal feature of which has been the decorated automobiles, each succeeding year surpassing previous efforts.

"The date set for the celebration, February 22, is the time of the year when there are more tourists in Honolulu than at any other season, the result being that the event has been widely advertised and has come to be looked upon as an annual Mid-Pacific Festival, an attraction of sufficient importance in itself to well repay a trip across the ocean. For instance, by the Mongolia, due in Honolulu the 22nd of this month, there will be at least two parties, one of twenty-five from Los Angeles, another of fifteen from Chicago, the members of which are coming principally to witness the Floral Parade, of which they have heard so much.

"The event having been so widely heralded and so much being expected of them, the members of the automobile committee are going to need your active assistance as well as the cooperation of every other automobile owner.

"If you have not already decided to participate in the event, please do so. The undersigned would be pleased to see you at your earliest convenience in order to talk over matters.

"Respectfully yours,  
"J. M. DOWSETT,  
"Chairman, Automobile Committee 1909  
"Floral Parade."

Already Senator Dowsett and his committee have seen a large number of auto owners, but as it was found impossible to see personally every one, the above letter was suggested. The committee has assurances of entries to be made by about fifty different persons already, and this alone would insure the success of the parade, but in the light of the extensive advertising which Honolulu's Floral Parade has had all over the mainland, the committee is determined to make the very best showing possible, and is not relaxing its efforts in the slightest.

"Some people are inclined to be a little lazy in regard to decorating and entering a car in the parade," said Chairman Dowsett yesterday afternoon, "and they seem to forget that it is up to every citizen of Honolulu to help boost this thing to the best of his ability. Honolulu has already gained a reputation by reason of this annual floral parade, and we've simply GOT to make good now. A person may say that it won't make much difference whether or not he takes a part in the parade, but every auto, every carriage or bicycle counts, and we can not afford to let any stay out who can possibly see their way clear to help.

"The Floral Parade has come to mean a good deal more than simply a pleasant little local holiday. It is one of Honolulu's assets, and is one of those things which requires some self-sacrifice and personal effort on the part of many. Southern California has made her way to the front through the public spirit of her people, and it is up to Honolulu to do the same. I know a great many of our people have the right kind of spirit, and I want a lot more to show the same."

Maliinis to Enter.

Chairman Dowsett is also addressing personal letters to all the visitors in the Territory who have automobiles with them, inviting them to decorate them and try for a prize. He has already received acceptances from four of these, and there will probably be others. It is understood that there are several machines due to arrive on the Alameda, which will get here Friday, and the Lurline may bring one or two.

Schools to Participate.

Chairman Frank Atherton of the committee on schools stated yesterday that he had made a preliminary canvass of the schools, and that seven or eight had expressed definite intentions of taking part in the parade. Some are not certain whether or not they can do so on account of the expense of decorating cars. This is particularly true of the public schools. Mr. Atherton hopes that this obstacle may be removed in some way, and that a number of others will also see their way clear to take part.

Soldiers Will be There.

It is authoritatively stated that decorated cars or floats are to be entered by the soldiers of Fort Shafter and by the cavalrymen at Leilehua. The Marine Corps took part in the parade last year, but it has not been learned as yet whether they intend to enter this year.

It was learned yesterday that Mrs. Blackwell had been chosen to represent Molokai, among the Island princesses in the parade, and that Francis Gay of Kauai has secured a representative from the Northern Island who will also bring her own horse.

Mardi Gras Proposition.

Although the committee appointed to look into the matter of holding a genuine mardi gras revelry in the evening, on the square formed by King, Bishop, Hotel and Fort streets, report that sentiment among the merchants favors the idea, the general committee, including Director Petrie, is holding back somewhat on the proposition. They fear that if masks are allowed rowdiness will develop which will be hard to control. This, however, has been tried before—on Christmas and New Year's nights—and has been carried off with great success. The matter will be fully decided upon at a general meeting to be held in a day or so.

## NEW KING OF HAWAII REIGNS

(Continued From Page One.)

he had not been paid and ended with passing in a communication on the subject. He said that he was an Englishman and "this Englishman must be paid by Uncle Sam" or there would be trouble. Later, he came to the Advertiser office to complain that an afternoon paper was "after him," and when shown a copy of the paper, he pointed to headlines about Kepoikai, saying that he was Kepoikai and the "persecution" must stop. His next visit was productive of the following communication:

"Tonight I feel more bright than fortnight ago; I feel I will win the battle, for I know that Heaven Father will help me, and will blessed the King & his nation.

"(Signed) GEO. E. GILES.  
The next letter was signed "King Giles" and read as follows:

"I rejoice indeed to hear the good News last night went to get out and see the fun as I heart this morning. I am till weary and blinded on the matter, but in day or two I be able to do business."

Another letter was a sort of biography of King George II of Tonga, but before the writer was half through the communication he had turned to himself, as follows: "The great Traveller in the world will sail away from this port. Some time this week to U. S. America on a business matter, then from there on to London to attending the University. This is his third trip around this world; he will probable Sail back again in 12 month times. I just gone to say that I am very glad to See that some one have Influenced by my suggestion.

"Uncle Sam must gone.

"GEO. E. GILES."  
Yesterday Giles came to the Advertiser office to announce that he had been duly elected king of Hawaii and was willing to hear from people about the formation of his government. He said he had just come from the post-office and was not satisfied with the stamp window and money order department and that things must be changed there immediately. He said that while he was king the rate of postage would have to be changed to the penny postage system for letters, and furthermore that Uncle Sam's head must be removed from the stamps and his own substituted.

Furthermore he wanted the English coinage substituted for Uncle Sam's money and his head should also appear on the coins.

He felt that he must have a palace to cover his royal head and house his ministers of state and that he would have to move toward the selection of a cabinet. As to salary he confessed to was not quite sure about this matter but he suggested \$500 a month as fair, but later on changed to \$900.

When told that there was already a Queen here, he stated that he would make things satisfactory to her, and to Dr. Emerson, later on said he would settle a quarter of a million dollars upon her. In all things he knew the Heavenly Father would guide him. He said he was willing to form a cabinet, and at this juncture Detective Medeiros was introduced to him as a possible Lord Chamberlain. The new king shook hands with the chamberlain in a hearty manner, and agreed to accompany him to one of the public buildings of the kingdom to discuss the government situation. He went to the police station with the detective and was ushered into the presence of Sheriff Jarrett.

The "King" plunged into the story of his election at once, and spoke again of his need of a palace and cabinet ministers to run the government.

"I came from Tonga originally, but arrived in Honolulu five or six months ago," said the "King." "I am a carpenter by trade, but on Saturday last I was duly elected King. You will see it in the newspapers. I don't know just what to do. This is new to me. I feel that I ought to study to fit me for the position of King. I have thought about going away on the S. S. Moana, but I think the government should pay my passage for myself and suite, and pay me a salary while I'm away studying. Yes, I could leave the formation of the government in the hands of my ministers.

"You see, down in Tonga there is an independent government ruled by a king under the protection of Great Britain. It has an independent flag. This country should have its own king and independent flag, and put Uncle Sam out. I will write soon to Lord High Edward of England and tell him about it. That will take time of course, but when I hear from him it will be all right, and we will put Uncle Sam out of Hawaii."

When taken before Chief of Detectives Kalakiele, another long talk about the formation of the government was had, and he thought that the various persons to whom he talked during the course of the afternoon would be good cabinet ministers with Medeiros as Lord Chamberlain, the chief as Minister of Police, Chief Clerk Asch as Minister of Finance, a newspaper reporter as Minister of Foreign Affairs, and Dr. Emerson he regarded as the Royal Household Physician.

On being conducted to the receiving station and shown the telephone and telegraph system the "King" said that he would have to change it all and put in another system. It was decided to put the man in one of the rooms back of the Deputy Sheriff's office. He was shown the armory cell and Giles suggested that one of the vacant cells should also be used for storing rifles—that there were not enough in the building to arm the military. His Majesty, poor devil, made no objection to going into the vacant cell to study the situation and decide on what kind of a palace he wanted to have built.

When Sheriff Jarrett suggested that for the benefit of his health Giles might take a trip to the Coast on the Moana, the man acquiesced at first but on being taken around to the steamship agency he balked and said he was not ready just now.

Giles firmly believes that he is now sovereign of Hawaii but is worried about the financial situation. He suggested that as he was now King the proprietor of the boarding house he has been stopping at should house him for nothing.

## MAMMOTH SALE HOSIERY

All this Week

**BLOM,** Opp. Catholic Church

## Malthoid Roofing Cheapest and Best

MAKES YOUR HOUSE COOL; MAKES YOUR HOUSE SAFE. IT'S FIRE-PROOF, WEATHER-PROOF. TIME-PROOF. IT'S EASIEST TO APPLY; SAVES LABOR CHARGES.

Malthoid Roofing outlasts any other Roofing made today. It saves you worry, trouble, and money. The original cost is 50 per cent less than that of metal.

We take the RISK—We GUARANTEE it ABSOLUTELY.

**P. & B. Paints**

are the best and cheapest protective paints manufactured.

**P. & B. Building Paper**

needs no introduction. All the New Buildings at Fort Shafter are lined with it.

**The von Hamm-Young Co.,  
Limited**

AGENTS. ALEXANDER YOUNG BUILDING.

## FRENCH LAUNDRY

J. ABADIE - - Proprietor.

Ladies' and Gents' Washing Done First-class. Gloves and Ostrich Feathers. Wool and Silk Made Cleaner by a New French Process. Charges reasonable. Give us a trial.

258 BERETANIA STREET : : : : 'PHONE 1492

## SPERRY FLOUR

Makes more bread  
and requires less  
Kneading. . . .

YOUR GROCER HAS IT

Robert Innes Lillie,

Resident Manager.

ROBINSON BUILDING, QUEEN STREET.  
Telephone 564.

APOLLINARIS WATER, HUNGARIAN APENTA APERIENT WATER, JOHANNIS LITHIA WATER.

The woman who values the freshness of her skin, bright eyes, glossy hair and sweet breath, must remember that close rooms, rich diet and late hours are her most powerful enemies, and that a slight aperient, such as a small wine glassful of ONE OF THESE FAMOUS WATERS, taken every morning before breakfast, is one of the greatest aids to health and therefore beauty.

**LEWIS & CO., LTD.**

Sole Agents for the Hawaiian Islands. Telephone 240. 169 King Street.



# SPORTS

## FISHER OFFERS TO LEND BATTERY AND IS TAKEN UP

### Baseball Magnate Makes Courteous Offer That Is Accepted by League--Field Day Next Saturday.

"I have never seen a more heady and quick amateur catcher than this man Soares," said Mique Fisher at the meeting of the league yesterday afternoon. "But there is something that he could not possibly have that our boys have, and that is experience. I think it would be a good idea if you would allow us to lend you either a battery or a catcher for the final games, and I am sure that you will see a difference in the result."

"You may take Bliss and Burns if you wish to, or you may take Bliss alone. You may have Flaherty or Graney pitch for you and let the boys see what they can do against Bill; in fact you may make what use you like of our team. I feel that I am not overstepping the mark in what I propose, because our players are stars from the different mainland professional teams, and your players all work for a living and could not be expected to be as good as men who make a living at the game."

Mique's very sportsmanlike offer was accepted by the league, and the selection was left to Eddie Fernandez, captain of the local team. It is up to him to decide whether the All-Hawaii team borrows a whole battery or only a catcher. It is probable that Dick Reuter and Bliss will be the battery for the locals on Saturday and that Burns and Bliss will be the battery on Sunday.

Strictly Local Team. Today there will be a strictly local team in the field. Castle will pitch, Louie Soares catch, and the field will be the same as Sunday, except that Scottina, the new arrival, will decorate second base. This is a very strong team and the visitors will have to take things seriously. While the team does not size up any stronger on paper, we must remember the added experience and practice they have had with the visitors, and this will surely make a large difference.

There is a distinct possibility of the locals doing something this afternoon. The easy coast of confidence fits the visitors well enough, but Joseph left a few scraps when he fell into the well and the All-Hawaiians have certainly picked them up. They are more determined than ever to buck up and show what they can do, and there will surely be some kind of a showing whoever wins.

**Judge Is No Fan.** Eddie Fernandez, unfortunately, can not play today. He has been serving on a jury in one of the courts and the presiding judge was unkind enough to call the continuation of the case for today. It is a cinch that he is not a fan or he would have put it off until after the All-Stars leave here.

George Burns will take Eddie's place at first, and he may be relied on to play a careful and heady game. With Castle in the box there should be little stealing of second base by the visitors, as the university pitcher has a neat delivery to first base that, while not as deceptive as that of the silent one, is still very quick and able in the setting down of would-be burglars.

**Flaherty to Twirl.** Flaherty will twirl for the visitors this afternoon. He is considered to be the most deceptive of the trinity of plate-passers now with the team, but he has not the speed of the titanic Burns. It may be that the local boys will find him for some long ones, something like the two-bagger that Jack Kia swatted out on Saturday. If they can do this, the rest of the visiting team will have to do some tall fielding, as we take off our hats to no team anywhere for base-running.

Talking about base-running, everybody will have a chance on Saturday. Before the game there will be a short field day. This will start at two o'clock

and will be finished in time for the teams to practise before the game is called.

#### Brick to Run Backwards.

There will be accuracy throwing at a target the size of a catcher's breast-plate, long-distance throwing, base-running and short sprinting. In addition Brick Devereaux and En Sue will run their great vice versa race. Brick will run fifty yards backward and En Sue will sprint a hundred yards forward, and the winner will take possession of a handsome cup that has been put up for the event. For all the other events substantial cash prizes have been offered, and winners may take cups in place of cash if they so wish. All baseball players in the Islands are invited to enter the events without fee of any kind.

#### To Australia Next Year.

Mique stated at the meeting also that he intended to come this way again next year, en route for Australia. He will make a fairly long stay here, and will send a competent man on ahead of him to coach the local team. Mique expects to have as brilliant a success in Australia as he did in Japan, and he may be right. The chain-jinglers are nothing if not sportsmen, and they will doubtless soon take to a snappy game like baseball when they see it properly presented. One thing Mique will have to be careful of, however, and that is to eliminate all signs of ardent coaching or umpire-baiting. The colonials can see nothing but the utmost fair play, and, if they think that a game calls for the taking of unfair opportunities, they will damn it may pronto.

### MIQUE AND THE LAUNDRY BILL

No names can be mentioned in the following story, but it is just as good and you can imagine all you want to. It seems that there is an arrangement between Mique Fisher and his players that the former pays all laundry bills.

A smiling clerk presented the usual bunch of yellow sheets to the impresario, with an addition that was a trifle startling, yesterday morning. Mique went through the items and found one that did not please him, it amounted to \$15.40. "Fifteen dollars for laundry," he roared. "Why, that's fierce, simply impossible."

"What, fifteen bucks for wash?" he cried. "Twice less than that when Uncle died, he did all over the bed beside: I won't pay fifteen dollars."

About that time the particular ball-tosser whose name was appended to the laundry list, hove in sight. Mique hailed him and the guilty party walked up with no signs of guilt on his face.

"What do you mean?" Mique yelled in grief.

"This list is far beyond belief. The laundry man must be a thief. Or else, you dress for dinner."

But the ball player denied the soft impeachment. He said that he had once worn a dinner jacket when he acted as snipe on the stage, before he found that he could play ball, but he knew nothing about any big laundry list. So far as his memory went it amounted to two handkerchiefs, one shirt and a collar.

Then Mique took a look at the laundry list.

His eyes both gave an angry twist;

Baseball today. All-Hawaii vs. All-Stars. Game starts promptly at 3 o'clock. Prices have been reduced to: general admission, 25 cents; grand stand, 50 cents; and reserved seats, \$1. Batteries: Flaherty and Bliss; Castle and Soares.

He shrieked with anger, shook his fist And went through fierce contortions. "What's this?" he yelled. "Two shirtwaists, eh?"

Six pairs of—what, want me to pay For thirteen pairs of hose? Oh, say, You must think I am easy."

Somebody grabbed Mique and the laundry list at the same time. Then there was a loud sound of laughter. That particular ball player had been charged up with as dainty and charmingly private a list of underwear as you could find in a dry goods store advertisement or a Smart Set short story.

After much talk, somebody happened to look at the head of the list and discovered a "Mrs." before the name. There happened to be a lady of the same name staying in the hotel and the clerk had got things mixed. But Mique has not yet recovered and he goes round town muttering "Fifteen bucks for laundry, oh my soul. What it is to manage these baseball players. Fifteen bucks, fifteen golden rollers, fifteen Napoleons, I mean Samoleons, oh ain't it awful?"

### DIAMOND HEAD SMOKER GREAT

If Les. Petrie and Mike Patton and a few others do not wake up with crowns stuck on their heads, they ought to suffer that infliction for the result of their work in getting up the Diamond Head smoker last night, for they surely worked like slaves, acted like princes and were kings of good fellows in running the show.

It was a long program to go through with but every performer was brought on time and each turn was really good. It is hard to pick out a star turn, but Mike Patton with his inimitable polyglot patter the comedy boxing bout must share the honors.

There were quintets, solos, boxing bouts, comic sketches, the human organ and a dozen other stunts. It was one of the best amateur evening's entertainments that could be arranged and the big crowd of spectators appreciated every moment of the fun.

The human organ made a great hit with his imitations of a wind organ playing different airs and he wound up with "Marching Through Georgia," and was loudly applauded. Later he came out and did some clever steps to a rag-time air played on the piano.

Sam Chillingworth was one of the Diamond Head quintet and strummed the guitar very seriously and quite in time. There was some really excellent singing and Billy Kerr handed out some comic songs that made a very proper impression.

The comic boxing was a great stunt. One man was arrayed in a very much padded football outfit and the other was dressed in a suit of Matt. Heffern's pajamas filled in with straw. They were both clever tumblers and the antics they went through brought forth roars of applause.

Mike Patton did his "Going to sleep" recitation and the audience went wild on the final lines when the Irishman throws his hat inside the Golden Gates and Saint Peter tells him to fetch it back. Paddy, of course, runs for his hat and slams the door on the key-keeper. Then he shouts through the keyhole—

"I'll give up heaven, hope and key If you will set Ould Ireland free."

Altogether it was a very clever evening's entertainment and everybody went home with a growing suspicion that the Diamond Head boys are there with the goods every time.

A. K. Viera comes through with a good suggestion. He says: "We want to give the boys a good benefit and see them put a little coin in their jeans. Why not give a great big dance for them at one of the hotels? Any time you think that the Riverside and Aala boys generally won't come through and join the dance, you make an awful mistake." Then he went on with a rhyme something about "Will you, won't you, will you, won't you, will you join the dance?" But that is A. K.'s way and he must not be blamed for it.

## DANE BOXES LIKE COUSIN

### Nelson Boxes With Peterson and Makes a Very Good Showing.

Training for the big event on the sixth started in earnest yesterday. Dick Sullivan went out to Fort Shafter and Peterson did his work at the Orpheum. All the six contestants who will take part are now training in one of the rival camps. At Fort Shafter there is Sullivan, McCullough and Hercules, and at the Orpheum there is Peterson, Nelson and Young Scotty.

That fellow Nelson is good. There is no getting round the fact that he has all the earmarks of being in the great Nelson family, of which the Mayor of Hedgeswich is the present wealthy head. He went three rounds with Peterson yesterday afternoon before a large crowd of fans, and made a hit.

Word went round town in the morning that Nelson was going to try out. The Rialto echoed it, and the window-seats at Fort and Hotel hummed with the news. The consequence was that the sports found they had an important business engagement outside about half-past two and hacked up to the Orpheum en masse.

Peterson came out first and did a shadow-boxing stunt to the destruction of the air and many cigar stamps which, sad relics of Saturday night's excitement, still decorated the stage. Then appeared the big Dane with closely-cropped hair, closely-cropped smile, closely-cropped torso and closely-cropped limbs. In fact, he had the appearance of having been thoroughly well groomed in puris naturalibus or whatever you call it.

#### Nelson Like Nelson.

Somebody called attention to the fact that he looked like his namesake, Bat Nelson, and, indeed, there is a good resemblance, especially about the jaws, nose and smile. All he needs is a cauliflower ear and he will be able to pose for a photograph of the lightweight champion.

Charlie Reilly handled the gong and sent the men to work as soon as they stepped into the ring, which had been left up. The Dane loosened up at once and went after Peterson hotfoot. The latter was too clever for him and avoided his blows, although the marine has a very pretty left jab.

With pillow cushions on their hands, the boys could not hurt each other, even if they tried, and there was a fine exhibition of hard milling for three rounds. It would be an exaggeration to say that Nelson is clever. He is not; he is even awkward. But he has the innate desire to bore in and get at the other fellow, and his moves are not naturally clumsy.

With proper schooling there is no knowing what this husky Dane might do. It is true that Peterson handled him very easily, but there was always that coming back for more that is so typical of the natural boxer. Nelson has large feet that get in his way, but he needs only tuition and practice to find out what to do with these, and he will sure get both in working with Peterson.

#### Peterson Shows Well.

Peterson showed up well in boxing with this big opponent. He has a very easy style and can hit hard enough to satisfy anybody. As to the speed of his left and the force of his right, it was impossible to judge by an exhibition against a novice, but it looks as though both are pretty nearly up to Sullivan class.

After Peterson got through with Nelson, he took on Young Scotty for a couple of rounds, and his speed showed up well. Scotty will, doubtless, learn much from the middleweight and may hand a grand bunch of cleverness to the soldier from Fort Shafter when he meets him next week.

### FOX'S ANNUAL IS OUT AGAIN

Richard K. Fox, whose name is always connected with sport and incidentally with the Police Gazette, has brought out his 1909 Sporting Annual and it must be said that it is better than usual. Sammie Austin, whose big horse shoe tiepin has acted as a headlight on the great White Way for many years, is responsible for the work of getting up records and he has done himself proud in this instance.

There is every kind of a record in the book from walking, and that will interest Honolulu people particularly, to boxing and swimming. The book is complete in every way and, if more people would take the trouble to get one of them, there would be less writing to the sporting editor to decide bets. Doesn't everybody know that when a bet of that kind is decided it is always done from the Fox Manual?

The main feature of the book is the pugilistic records, which are very complete, including many youngsters who are regarded as comers in the Philadelphia no decision belt, but are not heard much of out here. These additions are useful and will supply information when the local fans see any of their names in the record of a recognized champion.

### MON YIN FEELS LITTLE PAIN

Mon Yin is getting along famously. He was removed to his home yesterday morning, and, judging by the beaming smile that decorates the pillow, the

AGENTS FOR  
THE E. P. REED & CO.'S LINE OF  
**LADIES' SHOES**  
AND THE HOME FOR  
LAIRD, SCHOEER & CO.'S HIGH-  
GRADE SHOES

Some natty styles in the new shades of tan have just come in. You will like the looks of them.  
We devote our entire attention to SHOES. Our plan is to buy the best shoes we can and sell them at a FAIR PRICE. Come in and look at these new ones.

**MANUFACTURERS' SHOE COMPANY, LTD.**  
1051 Fort Street. The Place to Buy Shoes. Tel. 282.



## CONSTABULARY BAND OPERA HOUSE

FRIDAY, FEB. 5, AFTERNOON and EVENING.  
Seats at BERGSTROM MUSIC CO. Prices 25c, 50c, 75c and \$1.00.

## Hawaiian Opera House BASEBALL

### ELKS OPERATIC MINSTRELS

(Direction of "Sonny" Cunha)

Thursday and Saturday Evenings  
FEBRUARY 4 AND 6

CHORUS OF 40 STRONG

From the

KAMEHAMEHA GLEE CLUB

NEW SONGS NEW JOKES

NEW LOCAL SCENERY

Box Office opens at the Bergstrom Music Co., Monday, February 1, at 9 a. m.

—VS.—

## BOWLING

HOTEL BATHS

The Yokohama Specie Bank, Limited

ESTABLISHED 1880

Capital (Paid up).....Yen 24,000,000

Reserve Fund.....Yen 15,100,000

HEAD OFFICE, YOKOHAMA.

Branches and Agencies:

Tokio, Kobe, Osaka, Nagasaki, London, Lyons, New York, San Francisco, Bombay, Hongkong, Shanghai, Hankow, Chefoo, Tientsin, Peking, New-chang, Dalny, Port Arthur, Antung-Hsien, Liaoyang, Mukden, Tienling, Changchun.

The bank buys and receives for collection bills of exchange, issues Drafts and Letters of Credit, and transacts a general banking business.

Honolulu Branch, 67 S. King St.

What a Good Wine.

Modern Sculptor (colored film).

Cowboy and the Schoolma'am.

A Lord for a Day.

A Narrow Escape.

The Tale of a Shirt.

Orderly Jameson.

I Have Won a Pig.

SPORT NOTES.

The souvenir program of the All-Stars' visit is out and is a very attractive affair. There are places to keep score in and there are pictures of the local players as well as the visitors, and the whole pamphlet is gotten up in a very neat and attractive way. It is something worth buying and keeping.

A detachment of engineers surveying in the neighborhood of Waimalee played a picked team of laborers on Sunday morning. In the morning they had only time to play five innings, so they went to it in the afternoon. The official scorer got mixed on his errors and could not state whether the winners had forty-three or forty-four. Anyway, the laborers won by 23 to 31. One of the losers emphatically states that it was 533 to 231. But, then, losers always are inclined to be grouchy.

## BASEBALL

### LEAGUE GROUNDS

February - 3, 6 and 7

## All Hawaii

—VS.—

## All Reach

AGGREGATION OF 'ROUND THE WORLD STARS.

Tickets now on sale at Hawaiian News Co., Ltd., Bishop street.

Prices:

General Admission ..... 25c

Grand Stand ..... 50c.

Reserved Seats ..... \$1.00

Auto and Carriage space reserved on application.

## The ART

What a Good Wine.

Modern Sculptor (colored film).

Cowboy and the Schoolma'am.

A Lord for a Day.

A Narrow Escape.

The Tale of a Shirt.

Orderly Jameson.

I Have Won a Pig.

## The GEM THEATRE Motion Pictures

Changes Mondays, Wednesdays and Fridays

ADMISSION.....10c. and 20c. Children 5c.

## EMPIRE THEATRE

HOTEL AND BETHEL STREETS.

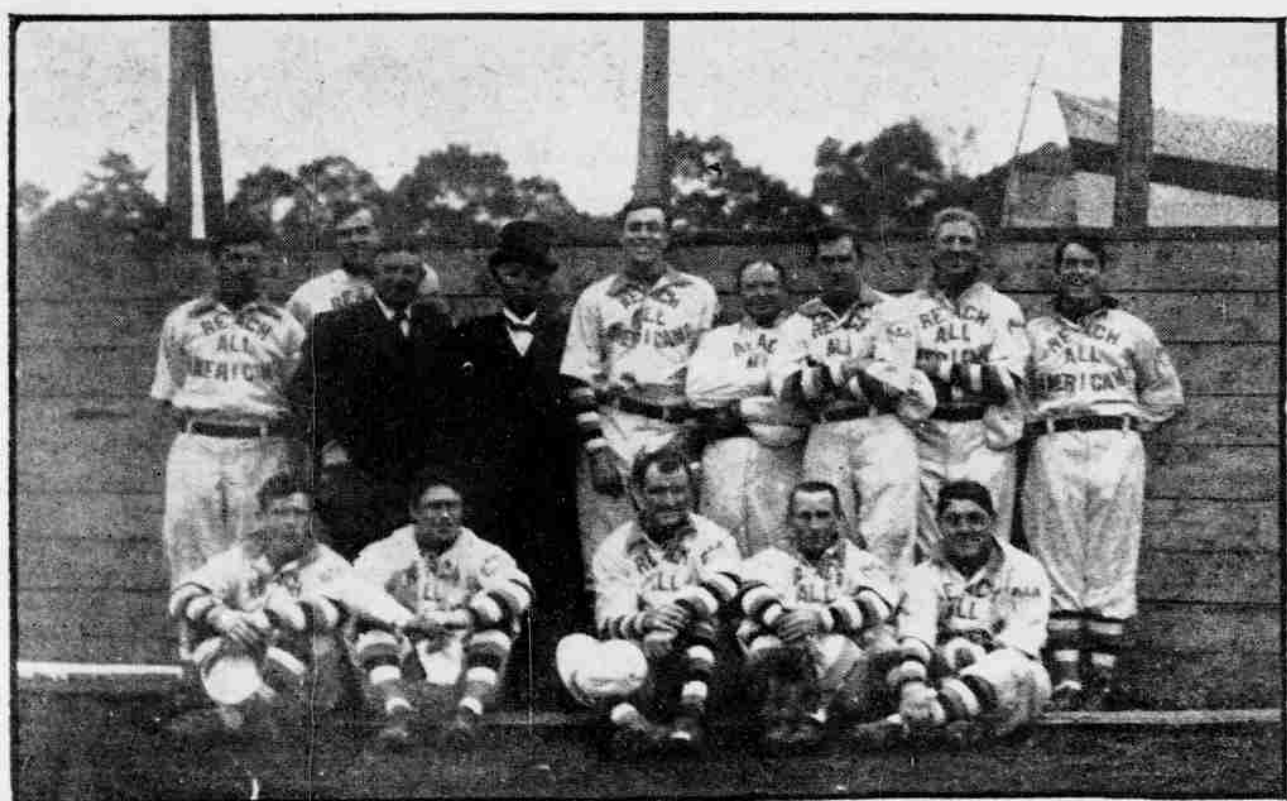
PROGRAM CHANGED

MONDAYS, WEDNESDAYS AND FRIDAYS.

## New Moving Pictures

Admission .....10c

Children ..... 5c



THE ALL-STARS—WHEN SOMEBODY STARTS THEM SMILING.

Left to right—McArdle, Heilmuller, Mique Fisher, Count Okuma, Danzig, Devereaux, Delchanty, Williams, Curtis. Second row—Graney, Bliss, Burns, Flaherty, Hildebrand.



# THE Pacific Commercial Advertiser

A MORNING PAPER.

WALTER G. SMITH EDITOR

WEDNESDAY : : : : : FEBRUARY 3

In California the white people are baiting the Japanese; in Hawaii the Japanese are baiting the white people.

## PLAYING WITH FIRE.

Things are moving along toward strained relations with Japan once more. Nevada has done its worst, and that rotten borough State, with its wide-open legislature, looks much more formidable to Japan than it does to us. In the Japanese Diet the opposition party, which calls for strong measures with America, gets the cheers and the peace-loving premier is put on the defensive. It is all very encouraging to the trouble-makers.

The United States calls itself a nation and in most respects it is; but it will lack an essential element of nationality until it puts into federal control all matters affecting the treaty rights of aliens. It is preposterous to leave such vital matters to be footballed about by Ruef-Schmitz school boards and by gin-soaked and pugilist-ridden legislatures like that of Nevada—legislatures in which, if you did not get your head punched you might get your pocket picked. Every law which has aliens or alien interests as its objective should, by constitutional amendment, be invalid until ratified by Congress; and every offence against the persons or property of aliens committed within the limits of States or Territories should be tried by United States courts. Otherwise the United States might be driven into some calamitous war by the people of some obscure parish in Louisiana or of some slum precinct in San Francisco.

## THE FOREST SERVICE.

According to Gifford Pinchot, forester, the work of the United States Forest Service for the fiscal year 1908 was far-reaching.

For the administration and protection of the 182 national forests in seventeen States and Territories and Alaska, the government spent \$2,526,098.02, or about one and one-half cents an acre. Permanent improvements, including the construction of 3400 miles of trails, 100 miles of wagon roads, 3200 miles of telephone lines, 550 cabins and barns, 600 miles of pasture and drift fences, 250 bridges, and 40 miles of fire lines cost \$592,169.10. Telephone wire to build approximately 400 miles of additional lines was shipped to the forester, but with the funds available before the close of the year the work of construction could not be completed. Some of this work was done on each of the forests in the United States.

Although many needed improvements could not be undertaken, the benefits of what has been accomplished are seen in the more convenient and economical manner in which the forest officers are enabled to carry on their work and in the opening up to forest users of territory hitherto inaccessible. The remaining \$297,840.40 of the total of \$3,416,107.61, disbursed on account of work of the Forest Service, was used in forest investigations costing \$235,855.14, and in diffusion of forest information and federal cooperation.

The Forest Service is one of the branches of the government where everything is not outgo. Last year the receipts from sales of timber, grazing fees, and permits for special uses of forests resources amounted to \$1,842,281.87, an increase of \$271,222.43 over the 1907 figures. The per acre receipts from the national forests were a little more than one cent, less than five mills under the per acre cost of administration and protection of the forests.

The amounts paid the States and Territories, to be expended for roads and public schools from the year's receipts, amounted to \$447,063.79. Chiefly because of increasing the revenue to the States from 10 per cent. in 1907 to 25 per cent. last year, there was a total increase of \$294,031.62 in the amounts payable to the States.

In addition, the national forests yielded heavily to the public in free use. There were 30,714 permits granted for the free use of timber by settlers, schools and churches during the year, against 17,399 in 1907. The number of board feet used in this way by the public amounted to 131,582,000, valued at \$168,720, compared to 63,000,000 feet, valued at \$75,000, in 1907.

The aggregate of free use of the forests for grazing can not be exactly known, since no permit is required to be taken out, and there is therefore no record preserved. It added perhaps 10 per cent. to the amount of stock carried by the forests. Settlers living on or adjacent to the forests, and prospectors, campers and travelers in them are allowed to graze free up to ten head of milch cows, work animals or horses in use, and purchasers of timber and stockmen on the forests are given the same privilege for the horses needed in their work. Arizona and New Mexico milch goats to the number of thirty may be grazed free in place of milch cows.

Of free special-use permits there were issued during the year 1768, as against a total of 1471 previously granted. Of the latter 963 were in force during the year.

The grazing receipts for 1908 were \$962,829, and were paid by the holders of 19,845 permits to graze 1,382,221 cattle, horses and hogs, and of 4282 permits to graze 7,087,111 sheep and goats. Receipts of \$849,027.24 from timber sales were paid by approximately 5189 purchasers, who cut the equivalent of 392,792,000 board feet of timber. The receipts from special uses amounted to \$30,425.23 and were paid by 2065 permittees.

The year's receipts represent profitable use of the forests by some 30,000 individuals or concerns, in addition to more than 30,000 getting free use of timber and other resources. About one-fourth of all the timber cut from the national forests was under free-use permits.

The purpose of this free-use privilege is to make the forests contribute most effectively to the public welfare. The timber given to individuals is given for the development of the country through settlement.

The total receipts from timber sales each year since the national forests have been under the administration of the Forest Service have been as follows: 1905, \$60,136.62; 1906, \$245,913.49; 1907, \$668,813.12; 1908, \$849,027.24.

The average area to each officer theoretically available for patrol duty was 116,665 acres. But more than three-fourths of the time of the forest officers is now required by the fast-growing volume of national forest business, so that in point of fact the force on duty at the close of the year provided about one patrol officer to each 500,000 acres of forest. This is considered inadequate for protection of the forests. Until provision is made for a large increase of force it is necessary either to curtail the business arising from use of the forests or to neglect the proper safeguarding of government property against fire.

About 700,000 trees were planted last year on forests in the States of Nebraska, Kansas, Colorado, New Mexico, Arizona, Utah, Idaho, and California. There are now growing at the planting stations over 2,200,000 trees which will be ready for planting in 1909. Sufficient seed was sown in the spring of 1908 to produce 4,600,000 seedlings.

Besides administering the national forests, the Forest Service renders, on request, expert advice and assistance to other parts of the executive government regarding the practice of forestry. Work of this kind was carried on on several military and Indian reservations in various parts of the country. Cooperative State forest studies were carried on with Kentucky, Mississippi, New Hampshire, and Illinois.

The Forest Service conducts investigations of forest products along the two lines of wood preservation and wood utilization. Some of these investigations aim primarily to promote better use of national forest timbers; others seek results either of general application or contributing to the best use of the forests of some special region.

One of the most amusing of the current inanities is this:

Go ahead with the post-card vote on the coastwise suspension law. make the names public. Then the American Nation will have a permanent record of those supporting the policy of surrender.

Yes, including a "permanent record" of Theodore Roosevelt, the leading Senators and Representatives in Congress, Governor Frear and everybody else who has made a disinterested study of the situation.

The trouble in the Balkans was stopped by bad weather. The people of Serbia, Bosnia and Herzegovina are full of war talk and when spring comes, Austria may have a campaign on her hands. Montenegro may side with her sister states against Francis Joseph's empire.

The plan adopted by the Edgar Allan Poe Centennial Committee for the celebration of the one hundredth anniversary of the poet's birth was suggested

by Charles R. Frazier of this city. The plan consisted of appreciative articles on the life and works of Poe in all the January magazines; in the leading weeklies, in the issue nearest the poet's natal day, and in leading newspapers in their issues of January 19. The plan was carried out on the lines suggested and the publicity thus gained for the much neglected American writer will result in more permanent good than many statues.

Captain Quattrough, who is in trouble in Gibraltar for intoxication, is well known in Honolulu. He came here first as a lieutenant on the old Charleston and again as captain of the battleship Georgia. He is regarded as a fine officer, and his friends will hope that he may clear himself of a charge which, if not excusable in civil life, is least so in a service which requires its officers, for the safety of ships and men, to keep their heads clear and for the prestige of their country to keep their manners clean.

If the Republican leader of the supervisors would stop saying "one, two, three" at every meeting and let some of the other members say "seven come eleven," it would vary the monotony and be of quite as much value to the taxpayers.

## W. O. SMITH ON THE LOCAL OPTION PLAN

(Continued from Page One.)

be a very disturbing element at each election campaign. It has been suggested that the local option law should provide that, notwithstanding its provisions, the present law should remain in force, which implies that, notwithstanding the vote of the majority, the License Commissioners should still exercise their discretion to grant or refuse. If the board grants a license after a majority of the voters of the precinct have voted against licensing, or if they refuse to grant a license after a majority have voted in favor, the result will be so unsatisfactory and so inconsistent with the principles of popular government there will be great danger of the present control being lost.

Dr. McNamara tells of a school teacher who was endeavoring to con-

vey the idea of pity to the members of his class. He illustrated it.

"Now, supposing," he said, "a man working on the river bank suddenly fell in. He could not swim, and would be in danger of drowning. Picture the scene, boys and girls. The man's sudden fall, the cry for help. His wife, knowing his peril and hearing his screams, rushes immediately to the bank. Why does she rush to the bank?"

After a pause a small voice piped forth:

"Please, sir, to draw his insurance money."—Illustrated Bits.



## THE REPAIRING OF Fine Jewelry

Should only be left to competent hands. Our Jewelers are experts. We guarantee every piece of work that leaves our factory.

Bring your repairing to us and know that it will be done properly. Our years of experience is yours at the same price you have to pay for inexperienced services.

H. F. WICHMAN & CO., LTD.  
Leading Jewelers



## Don't be Deceived

In thinking that  
CHEAP GLASSES WILL SERVE  
YOUR EYES JUST AS WELL AS  
GOOD GLASSES.

You have only one pair of eyes. It pays to take the best care of them.

We know the value of an eye. We know how to fit it properly. You're safe with us.

H. F. WICHMAN & CO., LTD.  
OPTICIANS

READ THE ADVERTISER  
WORLD'S NEWS DAILY

## Appetite Health Vigor

If any one of these is failing, you will find an excellent tonic and nutrient in

## MALT NUTRINE

a concentrated extract of malt and hops that is recommended by all the best physicians. Guaranteed absolutely pure.

Hollister Drug Co.,  
Limited

Fort Street, Honolulu



POPULAR  
PRICES

## Our Annual Sale of

# Table Linen

BEGINS

## NOW ON

This event is looked forward to each year by those of our customers who have patronized previous sales, for they know it is the best opportunity of the year to replenish their table linens. A glance at our window display will tell just what the patterns are that are on sale.

Every piece of linen and every napkin offered is guaranteed to be absolutely pure linen, not union linen, as is offered by some manufacturers as the real thing.

	Regular Price.	Sale Price.
70-INCH TABLE LINEN.....	\$ .90 Yd.	\$ .70 Yd.
22-INCH NAPKINS TO MATCH.....	2.50 Doz.	2.00 Doz.
70-INCH TABLE LINEN.....	1.00 Yd.	.75 Yd.
22-INCH NAPKINS TO MATCH.....	3.00 Doz.	2.50 Doz.
70-INCH TABLE LINEN.....	1.25 Yd.	1.00 Yd.
22-INCH NAPKINS TO MATCH.....	3.75 Doz.	3.00 Doz.
70-INCH TABLE LINEN.....	1.10 Yd.	1.10 Yd.
22-INCH NAPKINS TO MATCH.....	3.75 Doz.	3.00 Doz.
70-INCH TABLE LINEN.....	1.75 Yd.	1.40 Yd.
22-INCH NAPKINS TO MATCH.....	4.50 Doz.	3.50 Doz.
26-INCH NAPKINS.....	6.50 Doz.	5.00 Doz.

EHLERS

# 64 Per Cent

The actual saving in current over the ordinary lamp is 64 per cent by the use of the new

## TUNGSTEN LAMPS

Install a Tungsten lamp and begin this saving today.

The Hawaiian Electric Co., Ltd.

KING STREET, NEAR ALAKEA. PHONE 390.

VALENTINES

# VALENTINES

Displayed in corner store window, Fort and Hotel.

H. CULMAN

VALENTINES

COYEE HOP & CO.

SHIPPERS & FAMILY BUTCHERS

TEL 251 N. KING ST.

# FOR AUTOISTS

Convex Glasses For Lamps

We have them in all sizes. They are mathematically correct in every curve, and give a full, clear, steady light.

## OUR AUTO LACQUER

for covering all brass parts is without an equal. It preserves the brass without dulling its polish in the slightest.

LEWERS & COOKE, LTD.

177 S. King Street. Phone 775.

## VIGOROUS OLD AGE

Even ruddy-cheeked youth is not more beautiful than the mature vigor of healthy old age. This, however, is not seen so often as it should be, partly because many persons mistakenly suppose that weakness and ill-health are inseparable from ripe maturity of years.

Yet in the majority of cases enfeebled old persons require nothing but the simple, natural treatment afforded by

## Stearns' Wine of Cod Liver Extract

which acts by increasing the appetite, aiding digestion and putting more iron into the blood. It has neither the taste nor smell of cod liver oil, but is as pleasant to the taste as a superior table wine. It is as valuable to old persons as to young ones and many of its most remarkable effects have been achieved with the aged. Get it at your chemist's and be sure you get STEARNS'—the genuine.

SAN FRANCISCO HOTEL.

# FAIRMONT HOTEL

SAN FRANCISCO

The most superbly situated hotel in the World

OVERLOOKING THE ENTIRE BAY OF SAN FRANCISCO, THE GOLDEN GATE, AND THE RAPIDLY REBUILDING CITY.

CONVENIENT TO SHOPPING, THEATER, BUSINESS, AND RAILROAD CENTERS.

## THE EPITOME OF HOTEL EXCELLENCE

Combining all the conveniences and luxuries a good hotel should have, with many unique, original and exclusive features. Entirely refurnished and refitted at a cost of over three million dollars. Social center of the city—headquarters of the Army and Navy—Scene of most of the social festivities.

ACCOMMODATIONS FOR 1000 GUESTS.

EUROPEAN PLAN.

Single rooms with bath, \$2.50, \$3.50, \$4.00, \$4.50, \$5.00 upwards. Suites, with bath, \$10.00, \$12.50, \$15.00, \$20.00, \$25.00 upwards.

MANAGEMENT

PALACE HOTEL COMPANY



**AFRICA.**

Chamberlain's Cough Remedy has been in South Africa for a number of years, and the fact that it still retains its popularity as a cure of coughs, colds and croup is certain proof that it gives satisfaction. Morum Bros., general merchants at Tarkastad, Cape Colony, make the following statement: "Chamberlain's preparations have a steady demand all the year round and continue to be popular. We always keep a stock of these medicines on hand." For sale at all dealers. Benson, Smith & Co., Ltd., agents for Hawaii.







## Will Buy Home in Honolulu

Someone who is interested in owning a home in Honolulu will be sure to buy a home when they learn of the splendid property which has just been put on the market. The property referred to consists of a well-built Colonial house, with four bedrooms; not yet four years old. Buildings are all well and substantially constructed, with all modern conveniences; the location is the best in the city.

If you are interested in owning a \$12,000 home, you had best call on us.

**TRENT TRUST CO., Ltd.**

## TABLE D' HOTE MEALS

Served in Good Style.

Special Short-Order Lunch. Our new Chef, Mr. F. J. Sullivan, is doing things in style, and serving fine meals.

## PALACE CAFE

Cor. Richards and Merchant Sts.

## BUSINESS LOCALS.

Save money at Kerr's. Mrs. W. H. Heine has a notice in this issue.

Jane Lishman More will decorate china or silk to your order.

Men's natural wool underwear, good quality, 95c., Kerr's sale.

Royal Annex for oysters, crabs, frogs' legs and lobsters. See sign.

Morgan has a house and lot for sale for \$450, netting 17 per cent., for sale today.

The Bishop Trust Co., Ltd., is selling lots in the Puupue tract at low prices.

Sample shirts for boys and men at less than wholesale price, Kerr's sale.

Directoire sashes, gloves and hair ornaments for the ball, correct styles, at Sachs'.

A six-room cottage on Young street is offered for sale cheap. See classified ads.

Dubonnet wine for cocktails and highballs. Wholesale at Thos. McTighe & Co., King and Maunakea.

A dry goods salesman with knowledge of local conditions is wanted by a Coast firm. See classified ads.

Arrow collars, 10c., Kerr's sale.

Why pay 50 cents a hundred for ice when Barnhart will deliver it to you at your house or office for 25 cents?

A second-hand Studebaker phaeton is offered for sale cheap. See classified ads.

Twenty-five-cent socks, six pairs \$1, Kerr's sale.

Wah Ying Chong Co. is selling a fine line of staples at low prices. See the goods on King street, next the fish-market.

No reasonable offer will be refused for a bay mare, buggy and harness advertised for sale in the classified column today.

The newest and most exclusive designs are always to be found in the millinery parlors of Miss Power in the Boston building.

Seriven's drawers, 65c., Kerr's sale.

A young man engaged during the day is willing to accept tradesman's books or similar work during evenings. See classified ads.

When you lunch or take dinner downtown, remember that the Alexander Young Cafe serves the finest meals in Honolulu at popular prices.

The Honolulu Scrap Iron Co. has purchased the junk business of Rosenberg on Queen street. The stock consists of everything from a needle to a printing press.

We guarantee absolutely and unconditionally every statement made in our prospectus. Read it and "fletcherize" on it. Buy "Mayflower" stock. Buy it now!

Wonderful value in clothing for men and boys at Kerr's sale.

Use Malthoid roofing, because it is the cheapest and best. It makes your house cool and safe. It outlasts all others, and is easiest to apply. Sold by von Hamm-Young Co., Ltd.

We want you to come and hear the Victor talking machine, for, if you hear it once, you will want to have it. Let us explain our easy-payment plan. Bergstrom Music Co., Ltd.

The house in which gas is burned costs less to insure than one where it is not. This is an item for consideration by the household. If you have not already done so, have a gas stove installed in your premises.

Shirts, \$1.50 quality, 95c., Kerr's sale.

The City Auction Co. has secured quarters in the Waverley block, on Bethel street, near Hotel, where auction sales will be held during the day and on Saturday nights. In the ad of the new company is the announcement of the intended sale of the Roth stock.

The value of gold never depreciates, and the supply never equals the demand. We're going to help the supply. Buy "Mayflower" stock. Buy it now!

Two-dollar white shirts, slightly soiled, 50c., Kerr's sale.

## LOCAL BREVITIES.

The Canadian-Australia S. S. Moana sails for Vancouver this afternoon at 1:45.

This afternoon the band will play either at the departure of the steamer Moana or at the baseball game.

A gold watch was lost on Saturday. A reward is offered for its return to the Advertiser office. See classified ads.

Theodore Roosevelt Camp No. 1, U. S. W. V., will meet in Waverley Hall this evening for initiation. All members are requested to attend.

Many tourists are expected to arrive here on the Mongolia when she returns, according to advices that have been received at the Promotion Committee.

The Y. M. C. A. advertising exhibition Friday and Saturday will be well worth a visit from business men. It will be full of suggestions for promoting business.

Mrs. Bruce McV. Mackall has been added to the staff of instructors at Oahu College. She will give private lessons in voice, while Miss Rogers will have charge of the chorus and class work.

The Theosophical Society met in the Kapiolani building last evening. Mr. A. F. Knudsen made the address, which was on Personal Magnetism. There was a large attendance. The address was of much interest.

John A. McCandless, in defense of the attack made on Supervisor Quinn, stated yesterday that the chairman of the road committee has had good work done on King street, the roadway being repaired in a common-sense manner.

The Merchants' Association will meet tomorrow afternoon to call for a postcard vote on the proposed suspension of the coastwise shipping laws. President Waldron yesterday sent out a letter to the members, calling the special meeting.

A new right-of-way for the round-the-island road has been secured between Makao and Kahana, and work will be started soon on the construction of the road. When this is completed, one of the worst features of the trip around the island by auto will be eliminated.

Something of a sensation was caused at Hall & Son's yesterday by an attempt on the part of Mrs. Mary Atcherley to buy cartridges for a large military revolver. She was refused the merchandise. It is possible that she got it elsewhere.

## PERSONAL.

W. A. Kinney was booked to leave for Kauai by the Kinau last night.

A. W. Carter and family left for Hawaii on the Mauna Kea yesterday.

Rev. D. Scudder and wife returned on the Mauna Loa yesterday from a trip to Kona.

Ivan Dow, the Mayflower mine agent, departed on the Mauna Kea for Hilo yesterday.

Tom O'Brien returned from his regular Maui trip yesterday. He arrived on the Mauna Loa.

Rev. O. Nawahine was a passenger on the Mauna Loa, which arrived in Honolulu from Maui and Hawaii yesterday.

E. A. Knudsen and wife were returning passengers on the Kinau, which left for Kauai last evening at 5 o'clock.

## PACIFIC CLUB OFFICERS.

Following is the list of officers of the Pacific club, elected at the annual meeting on Monday, to serve during the year:

A. S. Cleghorn, president; F. M. Swanzy, vice president; A. W. T. Bot-tomley, treasurer; G. C. Potter, secretary. Directors: A. A. Wilder, C. S. Holloway, E. L. Spalding, Geo. Rodiek, L. Tenney Peck.

Stockholders in the world's gold mine receive approximately \$500,000, 000 annually. How much of it comes your way? Buy "Mayflower" stock. Buy it now!

## Special Sale

## Dress Goods

ALL-WOOL PLAID  
52 inches wide, \$1.25 quality.....  
.....65c. yard

ALL-WOOL PLAID  
75c. quality.....50c. yard

CREAM TWINE VOILE  
\$1.50 quality.....95c.

NOVELTY SUITING  
\$1.25 quality.....85c.

PLAID SUITING  
\$1.25 quality.....65c. yard

GRAY MIXED COVERT CLOTH  
\$2.50 quality.....\$1.50 yard

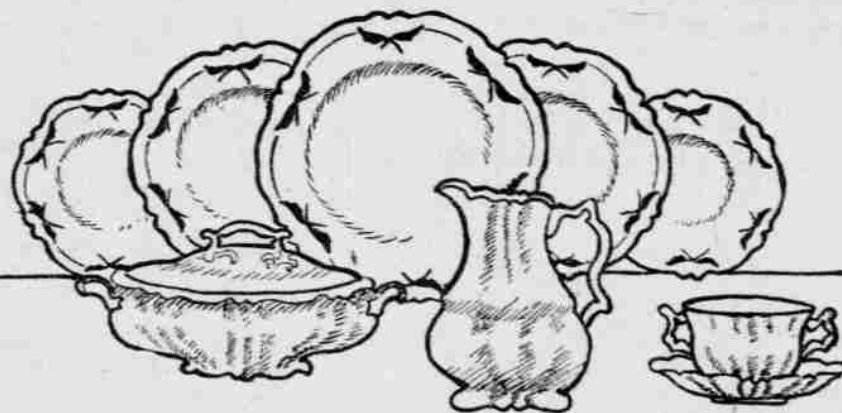
WHITE VOILE  
All wool, \$1.50 quality.....\$1 yard

CREAM HENRIETTA  
75c. quality.....55c. yard

BLACK KNUB VOILE  
\$2.25 quality.....\$1.65 yard

MANY OTHER GOOD VALUES

**SACHS'**  
FORT AND BERETANIA STREETS  
Opposite Fire Station



## THE ELASTIC DECORATED DINNER SERVICE.

No: It is not made of rubber, made of clay. But it admits of extension, and is, therefore, figuratively speaking, elastic.

You can buy a few articles today and add a few more to the collection tomorrow—or a month from now. First thing you know you have a service for a large gathering, same decoration. Is not that elasticity? We control for this vicinity the choicest elastic patterns made.

All prices. Take a look at them.

**W. W. DIMOND & CO., LTD.**

House Furnishing Leaders.

53-57 King St.

AS THE SEASON OF GAYETY APPROACHES

Hart Schaffner and Marx'

**Evening Clothes**  
or a **Tuxedo Suit**

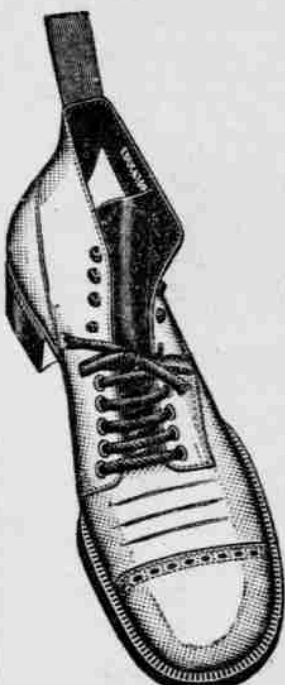
GET CLOSER TO THE FORM OF THE GENTLEMAN OF FASHION.

## SILVA'S TOGGERY

ELKS' BUILDING

KING STREET

PHONE 651.



## Strength

and

## Durability

This is a great shoe for use in Can-neries, etc.

Made of Acid Tanned Leather, it is especially built to stand hard knocks.

Water-proof soles, viscolized uppers.

Try a pair—\$3.50 in Tan and Black.

**McInerney Shoe Store**

## THE CHAPERONES AND THE TAG CANVASSERS

The lists of those who will be chaperones and canvassers on Tag Day is not anywhere near complete yet. This is because there are so many who will act in either or both capacities. However, names will be published in advance. Meanwhile some rivalry of the healthiest nature is being developed in the work, and it is believed that the financial returns will be surprisingly large. Interest in Tag Day itself is becoming deep and general, and more and more is thus becoming known of the purposes to which the money raised on Saturday is to be devoted. Every penny of it will be used for the betterment of the surroundings, food and home treatment generally of the children of the city's tenement districts. Work of stringing the tags will begin tomorrow, and will be all volunteer. There will be thirty thousand of the tickets to be placed on those who wish to give substantial evidence of their interest in the mainspring of the movement.

## JACOBSON-CANARIO.

There was a quiet wedding at the residence of Rev. J. W. Wadman at 11 o'clock yesterday morning, when Miss Marie S. Canario, daughter of Joseph S. Canario and wife of Hilo, was joined in the bonds of matrimony to Samuel P. Jacobson, who for five years past has been with the McInerney shoe store. A cousin of the bride, Miss Pauline Duchalsky, and Asa Jacobson, brother of the groom, officiated as bridesmaid and groom, respectively. Miss Canario is well known to the patrons of Ehlers & Co., where she has been employed for several years. Her father is one of the prominent citizens of Hilo, where he has valuable property interests. The bridal couple left on the Mauna Kea for Hilo, where they will spend their honeymoon.

## THOROUGHLY TESTED.

Chamberlain's Cough Remedy has been examined by eminent analytical chemists who certified that it contained no narcotics. It is not only a safe and harmless medicine, but the best in use for coughs, colds and croup. For sale at all dealers. Benson, Smith & Co., Ltd., agents for Hawaii.



**Veranda Rooms**  
With Every Modern Convenience

**Hawaiian Hotel**  
For MEALS

TRY **ALEXANDER YOUNG HOTEL**  
or CAFE

**William O. Smith**  
Trust Department

ESTATES MANAGED, REVENUES COLLECTED, LOANS AND INVESTMENTS MADE.

## Fire Insurance

AGENT FOR ENGLISH-HAWAIIAN UNDERWRITERS

## Real Estate

FOR RENT

Cottage, Palama, near ear-line....\$15.00

## FOR SALE

Lot with two cottages, corner Miller and Beretania streets. Fine lot in Palolo Tract. House and Lot, Kewalo. Lots in Puunui Tract. Houses and Lots in Palama. Lots in Nuuanu Valley and Kaimuki. House and Lot, King street, near Thomas Square, Bargain.

## \$25 Reward

will be paid by the HAWAIIAN GAZETTE CO., LTD., for the arrest and conviction of any person found stealing copies of the Advertiser from addresses of subscribers. C. S. CRANE, Manager.

## Whitney & Marsh, Ltd.

## Our Semi-Annual Sale

—of—

## Remnants NOW ON

Remnants of all descriptions at bargain prices.

## PICTURE FRAMES

Any picture may be framed artistically in one of our large selected stock of frames.

Frames OVAL, ROUND, and SQUARE, in Walnut, Rosewood, Mahogany, Bird's-eye Maple, Gold and Silver.



## Honolulu Photo Supply Co.

"Everything Photographic."

Fort near Hotel.

## Cotton Crepe Kimonos, \$1.50

MANY BEAUTIFUL PATTERNS.

## CROCKERY

Largest assortment of Japanese decorated China in the City.

## JAPANESE BAZAR

Fort Street, next to the Convent.

## KERR'S BIG SALE

OF

## CLOTHING

AND

## Furnishing Goods

NOW ON

HONOLULU DEPARTMENT STORE.  
ALAKEA STREET.



## Canadian-Australian Royal Mail Line

Steamers running in connection with the Canadian Pacific Railway Co. call at Honolulu on or about the following dates:

FOR FIJI AND AUSTRALIA	FOR VANCOUVER
ORANGI ..... FEBRUARY 6	MOANA ..... FEBRUARY 3
MOANA ..... MARCH 5	MAKURA ..... MARCH 2
MAKURA ..... APRIL 2	ORANGI ..... MARCH 31
ORANGI ..... MAY 1	MAKURA ..... APRIL 27

\*Will call at Fanning Island.

THEO. H. DAVIES & CO., LTD.  
GENERAL AGENTS.

## Oceanic Steamship Co. Time Table

On and after June 24, 1908, the SALOON RATES will be: Single Fare, \$65; Round Trip, \$110. Family rooms extra.

FROM SAN FRANCISCO	FOR SAN FRANCISCO
ALAMEDA ..... FEBRUARY 5	ALAMEDA ..... FEBRUARY 10
ALAMEDA ..... FEBRUARY 13	ALAMEDA ..... MARCH 3
ALAMEDA ..... MARCH 19	ALAMEDA ..... MARCH 24

In connection with the sailings of the above steamers, the agents are prepared to issue, to intending passengers, Coupon Through Tickets by any railroad, from San Francisco to all points in the United States, and from New York by any steamship line to all European ports.

For further particulars apply to

WM. G. IRWIN & CO., LTD.  
AGENTS.

## PACIFIC MAIL S. S. CO., OCCIDENTAL & ORIENTAL S. S. CO. AND TOYO KISEN KAISHA.

Steamers of the above companies will call at Honolulu and leave this port on or about the dates mentioned below:

FOR THE ORIENT	FOR SAN FRANCISCO
CHIYO MARU ..... FEBRUARY 6	TENYO MARU ..... FEBRUARY 9
ASIA ..... FEBRUARY 13	KOREA ..... FEBRUARY 20
MONGOLIA ..... FEBRUARY 22	NIPPON MARU ..... MARCH 2

H. HACKFELD & CO., Agents.

## AMERICAN-HAWAIIAN STEAMSHIP COMPANY.

FROM NEW YORK TO HONOLULU. WEEKLY SAILINGS VIA TEHUANTEPEC

Freight received at all times at the Company's wharf, 41st Street, South Brooklyn.

FROM SAN FRANCISCO TO HONOLULU.	FROM PUGET SOUND TO HONOLULU DIRECT.
PLEIADES to sail ..... FEB. 8	MISSOURIAN to sail ..... FEB. 4

Freight received at Company's wharf, Greenwich Street.

FROM HONOLULU TO SAN FRANCISCO.	General Freight Agent.
PLEIADES to sail ..... FEB. 19	

## MATSON NAVIGATION CO.

Schedule S. S. HILONIAN, in the direct service between San Francisco and Honolulu:

Arrive Honolulu.	Leave Honolulu.
FEBRUARY 17	FEBRUARY 23
MARCH 17	MARCH 23
APRIL 14	APRIL 20
MAY 12	MAY 18
JUNE 9	JUNE 15

S. S. LURLINE, carrying both freight and passengers, leaves San Francisco direct for Honolulu on February 5, 1909.

S. S. HYADES sails from Seattle about January 27 for Honolulu direct, receiving freight for island ports.

Passenger Rates to San Francisco—First Cabin, \$60. Round Trip, First Class, \$110.

CASTLE & COOKE, LTD., Agents.

## Union-Pacific

Transfer Co., Ltd.

126 KING ST.

BAGGAGE, SHIPPING,  
STORAGE, WOOD,  
PACKING, COAL.

Phone  
58

FURNITURE AND PIANO MOVING.

Phone 295.

63 Queen Street.

## HUSTACE-PECK COMPANY, LTD.

General Contractors.

Dealers in Crushed Rock, White and Black Sand, Fire Wood, Stove and Steam Coal, Blacksmith Coal, Hay, Grain, Garden Soil and Manure.

Draying and Heavy Teaming a Specialty.

# LET US KEEP YOU NEXT TO YOUR BAGGAGE

WE ATTEND PERSONALLY TO HAVING YOUR TRUNKS SEALED

HAVING YOU DELAY ON ARRIVAL AT SAN FRANCISCO.  
CABIN BAGGAGE PLACED IN YOUR STATE-ROOM.

## City Transfer Co.

Phone 152  
Jas. H. Love

## Remember This Thing

and always keep it in mind: When you are in need or in trouble about moving ring

GOMES EXPRESS CO. Phone 298.

## Honolulu Construction and Draying Co., Ltd.

GENERAL CONTRACTORS.

Phone Office 381.

P. O. BOX 154.

Fort St., Opp. W. G. Irwin & Co., Ltd.

We do all kinds of Teaming; also deal in Crushed Rock, White and Black Sand, Broken Coral, Garden Soil, Etc.

SAFE MOVING A SPECIALTY

RING UP 316

## NIEPER'S EXPRESS

If you are moving or going away.

## POULTRY

Imported Pure Breeds of various kinds.

## Club Stables

Telephone 199

## Shirts

In All Sizes Made to Order by

## B. YAMATOYA

Panahi Street, off Nuuanu Street.

## MANY TOURISTS ON THE MONGOLIA

H. P. Wood, secretary of the Promotion Committee, has been advised that two tourists parties will arrive in Honolulu on the Mongolia this month, one from Los Angeles and the other from Chicago. Mr. Wood states that both parties are en route to witness the Floral Parade on Washington's birthday. The Los Angeles party was worked up by Mrs. Headlee, the Southern California representative of the local Promotion Committee. There are twenty-five persons in the Los Angeles party and fifteen in the Chicago section. Besides these a large number of others are expected to arrive here for the parade.

The handsome Floral day posters, designed by Viggo Jacobsen, have been displayed all over the mainland and are said to have attracted much attention.

## MARINE REPORT.

(From San Francisco Merchants Exchange.)

Tuesday, February 2, 1909.  
San Francisco—Sailed, Feb. 1, schr. J. H. Bruce, for Mahukona.  
Salina Cruz—Arrived, Jan. 30, S. S. Texan, from Hilo Jan. 17.  
Hilo—Sailed, Jan. 30, S. S. Virginian, for Salina Cruz.

## PORT OF HONOLULU.

### ARRIVED.

Tuesday, February 2.  
Str. Nihaun, Ouess, from Hawaii, 9 a. m.  
Str. Mauna Loa, Simerson, from Kona and Kau ports, a. m.  
C.A. S. S. Moana, from the Colonies, a. m.

### DEPARTED.

Str. Mauna Kea, Freeman, for Hilo and way ports, 12 noon.  
Str. Mikahala, Piltz, for Molokai and Maui ports, 5 p. m.  
Str. Kinai, Gregory, for Kauai ports, 5 p. m.

### SAIL TODAY.

C.A. S. S. Moana, Morrisby, for British Columbia, 1:45 p. m.

### PASSENGERS

#### Arrived.

Per C.A. S. S. Moana, from the Colonies, Feb. 2.—For Honolulu: W. Lee, E. Le Vitus, Mr. Paterson, Miss K. Brook, S. Edwards. Through: L. Maxwell, Mrs. Johns, child and maid; Geo. Young, Mr. McCall, P. Stephen, J. Macleod, Mrs. Morrisby and child, Mr. Lewes, P. Bok, Miss A. Chisholm, H. Hobbs, Mr. and Mrs. Tipton and son, T. Parson, G. Sievwright, Miss M. Weld, Mr. and Mrs. O. Jaeger, C. Whithead, Miss L. Eastman, E. Eastman, Mr. and Mrs. W. Smith, Sam Rowley, J. Stevens, Miss M. Bryant, H. Collie, Miss E. Horwitz, Rev. J. Ware, M. Wood, Mr. and Mrs. J. Conway, G. Schwabe, Miss M. O'Hare, Mrs. J. and Miss M. Shannon, J. Walshe, Mrs. M. Gray and two children, J. Paton.

#### Departed.

Per str. Kinai, for Kauai, February 2.—Mr. Muir, E. A. Knudsen and wife, Miss Whitbeck, Miss Smith, J. W. Wadman, Bishop Smith, R. Ivers, H. St. Goar, A. Haneberg, D. L. Austin, W. A. Kinney.

Per str. Mikahala, for Molokai, February 2.—Mr. Smith, Mrs. Lewis and two children.

Per str. Mauna Kea, for Hilo and way ports, February 2.—I. M. Dow, R. A. Jordan, Mrs. Heen, W. A. Nottley, H. W. M. Mist, Dr. Sexton, Miss Alice Carey, Miss Minnie Gorman, Mrs. A. Mackintosh, Miss G. Mackintosh, J. W. Doyle, R. Johnston, A. W. Carter and family, S. Jacobsen, Miss J. Lennon, Miss Kamohae, Sam V. Kakelako, Hong Chock, Mrs. M. Keau, Dr. Judd, W. C. Moore, J. D. Padakin, Mrs. J. D. Padakin, Mrs. R. Lambert, Mrs. L. Leaf and two children, F. Boyer and wife, H. S. Richard, Misses Rickard (2), H. V. Brown and wife, S. W. Miller, wife and child; W. A. Baldwin, G. D. Dyer, J. S. Porter, E. F. Ball, C. N. Spiers, Samuel Smiley, Rev. C. H. Bloos, S. C. Smith, Mr. Barrett, S. Durler, G. W. Beamer and wife, Miss E. W. Thompson, Miss Jessie Beamer, A. W. Nale and wife, J. A. Bartfield, H. L. Aldridge, J. Brito.

### VESSELS IN PORT.

(Army and Navy.)  
Iroquois, U. S. station tug, Moses. (Merchant Vessels.)  
Flaurence Ward, Am. schr., Piltz, Midway, Jan. 16.  
Irmgard, Am. bktn., Christiansen, San Francisco, Dec. 25.  
Marie Hackfeld/ Ger. bk., Grube, Hamburg, Jan. 21.  
Mexican, Am. s.s., San Francisco, Jan. 30.  
R. P. Ribbet, Am. bk., Drew, San Francisco, Jan. 20.  
Wm. P. Frye, Am. sp., Murphy, San Francisco, Dec. 25.

### THE MAILS.

Mails are due from the following points as follows:  
San Francisco—Per Chiyo Maru, Feb. 5.  
Vancouver—Per Orangi, Feb. 6.  
Orient—Per Tenyo Maru, Feb. 8.  
Mails will depart for the following points as follows:  
San Francisco—Per Tenyo Maru, February 8.  
Vancouver—Per Moana, today.  
Colonies—Per Orangi, Feb. 4.  
Orient—Per Chiyo Maru, Feb. 6.  
TRANSPORT SERVICE.  
Buford, sailed from Manila for Honolulu, S. F., Jan. 15.  
Crook, at San Francisco.  
Dix, at Seattle.  
Sheridan, at San Francisco.  
Sheridan, at San Francisco.  
Thomas, sailed from Honolulu for Manila, Jan. 15.

### DIED.

BEAN—At San Jose, California, suddenly, on February 1, 1909, Hannah E., wife of Joel Bean, in her seventy-ninth year.

The Waialea and the Kalihukas had a rompset on Sunday. The Waialea romped a bit harder than the other team and scored 30 runs to 17. The winners imitated the All-Stars in the third and scored 9. The ground was responsible for the high score, as it was not in good shape, and it was really a hard-fought game.



## For Sale

### COLLEGE HILLS.

A very attractive cottage near the car line, at a bargain for the next ten days.

Building lot, Manoa Road; 36,000 sq. ft., price \$1600.  
Building lot on East Manoa Road, corner side Ave., 17,500 sq. ft., price, \$1000.

### KAIMUKI.

House and lot on Cocoa Avenue; lot, 19,000 sq. ft., corner lot and modern house; price, \$3500.

Eight lots, cleared and fenced, c. r. Eighth and Mauna Loa Avenues, price \$2500.

House and lot, cor. Seventh and Mauna Loa, 60,000 sq. ft., improved, modern cottage, new, price \$3150.

### YOUNG STREET.

Modern cottage, small lot, price \$2100.

### KALILI.

Galick Ave. Modern cottage, lot 100x100. Price \$2100.

## "WATERHOUSE TRUST"

CORNER FORT AND MERCHANT STREETS

# THREE DAYS

from port, a steamer may be

easily communicated with by

## WIRELESS TELEGRAPH



## Classified Advertisements

Cash must accompany the copy. No deviation from this rule.

### WANTED.

YOUNG man engaged during day is open to keep tradesman's books or similar work evenings. "Bookkeeper," care Advertiser office. \$364

SALESMAN with knowledge of local conditions to sell dry goods for Coast firm. Address "A. B. C.," this office. \$264

GENTLEMAN wants furnished room near town in private family. State price. Address "E. M.," Advertiser office. \$263

ONE horse, light wagon and harness. Must be cheap and good. Apply by letter, "C. C.," care Advertiser office. \$261

A YOUNG lady stenographer, competent and experienced, desires position. Address "Stenographer," P. O. Box 208. \$252

### FOR RENT.

EIGHT-ROOM house, interior thoroughly renovated, in open uncultivated field, corner Fort street and Pauoa road; ten minutes' walk. \$264

COTTAGES, with board. Mrs. J. Cassidy, 2005 Kalua road, Waikiki. \$133

A COTTAGE on ear-line at Waikiki, furnished or unfurnished. Electric lights; good bathing. Telephone 274 or 1400. \$255

ALEXANDER YOUNG BUILDING—Honolulu's only up-to-date fire-proof building; rent includes electric light, hot and cold water, and janitor service. Apply the von Hamm-Young Co., Ltd. \$264

EMPLOYMENT AGENCY. MALE and female supplied promptly. Any work; 1128 Union street; phone 579. \$247

### SEWING WANTED.

WILL go out by the day. Mrs. Nellie Taylor, 2566 Lemon road, Waikiki. \$233

### TRAINED NURSE.

PRIVATE home, in confinement, by experienced nurse. Best of care given. Apply 1311 Beretania St. Terms reasonable. \$217

### FURNISHED ROOMS.

COOL and commodious; well furnished; mosquito-proof. Helen's Court. 1124 Adams Lane. \$267

## FOR RENT

The ground floor offices at the corner of King and Bethel streets, occupied by Lyle A. Dickey, Esq., will be for rent, February 1. Apply to \$18 A. S. HUMPHREYS.

## Halstead & Co., Ltd.

STOCK AND BOND

## BROKERS

LOANS NEGOTIATED

Members Honolulu Stock and Bond Exchange

## HONOLULU STOCK EXCHANGE

Honolulu, Tuesday, February 2, 1909.

NAME OF STOCK.	Capital.	Paid Up.	Val.	Bid.	Ask.
MERCANTILE.					
C. Brewer & Co.	\$2,000,000	\$100	255		
SUGAR.					
Ewa	5,000,000	100	27	27 1/4	
Haw. Agriculture	1,300,000	100	18 1/2		
Haw. Com. & Sugar Co.	2,812,735	100	10 3/4	10 1/4	
Haw. Sugar Co.	2,000,000	100	20		
Honolulu S. S. Co.	750,000	100	13 1/2	7 1/2	
Honokaa	2,000,000	100	15 1/2	15 1/4	
Hulu	500,000	100	18		
Hutchinson Sug. Plant Co.	2,000,000	20			
Kahuku	500,000	20		30	
Kekaha Sugar Co.	750,000	100		132 1/2	
Kona	500,000	100			
McBryde Sug. Co. Ltd.	3,500,000	20	3 1/2	3 1/4	
Oahu Sugar Co.	3,400,000	20	29 1/2		
Onomea	1,000,000	20	41	5	
Ookala	500,000	20	13		
Ola Sugar Co. Ltd.	5,000,000	20	4 1/2	5	
Olowalu	150,000	100		21 1/2	
Pasahau Sug. Plant Co.	5,000,000	50			
Pacific	500,000	100			
Pala	750,000	100			
Papeete	750,000	100			
Pioneer	2,750,000	100	144	146	
Waialua Agri. Co.	4,500,000	100	82	82 1/2	
Waialea	1,500,000	100	17 1/2		
Waialea	250,000	100	7 1/2		
Waimea Sugar Mill	125,000	100	50	55	
MISCELLANEOUS.					
Interisland S. S. Co.	1,500,000	100		147 1/2	
Haw. Electric Co.	500,000	100	137 1/2		
H. R. T. & Co. Ltd.	1,150,000	100	101		
H. R. T. & Co. Ltd.	150,000	10	6	9	
Mutual Tel. Co.	60,000	100			
Nahiku Rubber Co.	4,000,000	100	48	48 1/2	
Nahiku Rubber Co.	4,000,000	100	122		
O. R. & L. Co.	1,000,000	20		15	
Hilo R. R. Co.	400,000	20	23 1/2	23 3/4	
Honolulu Brewing & Malting Co. Ltd.	400,000	20	21	22	
Haw. Phosphate Co.	400,000	20			
BONDS.					
Haw. Ter. 4 p.c. (Fire Claims)	\$15,000				
Haw. Ter. 4 p.c. (Re-funding 1905)	600,000				
Haw. Ter. 4 1/2 p.c.	1,000,000				
Haw. Ter. 4 1/2 p.c.	1,000,000				
Cal. Beet Sugar & Ref.	1,000,000				
Co. 6 p.c.	1,000,000				
Hulu 6 p.c.	225,000				
Honolulu Ditch Co.	200,000				
Upper Ditch 6 p.c.	200,000				
Hulu 6 p.c. & Sugar	1,240,000				
Co. 5 p.c.	325,000				
Hulu 6 p.c.	1,000,000				
Honokaa Sug. Co. 6 p.c.	400,000				
Hon. R. T. & L. Co. 6 p.c.	647,000				
Kahuku 6 p.c.	15,000				
McBryde Sug. Co. 6 p.c.	2,000,000				
O. R. & L. Co. 6 p.c.	2,000,000				
Ola Sugar Co. 5 p.c.	900,000				
Pioneer Mill 6 p.c.	1,250,000				
Pacific Sugar Mill	500,000				
Co. 6 p.c.	587,500				
Pala 6 p.c.	1,250,000				
Pioneer Mill 6 p.c.	1,500,000				
Waialea Ag. Co. 5 p.c.	1,500,000				

\*23.125 paid. †39 per cent. paid.

### Session Sales.

150 McBryde, 3.50; 155 Olaa, 5; 5 Honokaa, 15.50; 10 Pioneer, 145; 5 Hon. B. & M., 23.50.

### Between Boards.





ESTABLISHED JULY 2, 1856.

HONOLULU, HAWAII TERRITORY, WEDNESDAY, FEBRUARY 3, 1909.

CALABASHES

Antiques from Queen Emma Collection. Ipukia, Mandarin Coats, Mats, Fans, Baskets, Teacups, Pottery and Brasses. Two hundred subjects in Scenic Postcards. HAWAII & SOUTH SEAS CURIO CO. Alexander Young Bldg. (Under Electric Sign, Hotel Street) Stands at Royal Hawaiian, Young and Moana Hotels.



The Regal The Shoe

THAT PROVES

VALENTINES

Beautiful, Sentimental and Comic.

HAWAIIAN NEWS CO., LTD.

THE BEST

JADE JEWELRY, in latest European styles. Best workmanship at the lowest prices.

BO WO

Hotel Street, between Maunakea and Smith Streets P. O. Box 1007

ASSESSMENT NO. 9.

Has been called in the Harrison Mutual Burial Association, due December 15, 1908; delinquent January 15, 1909. Payable at the office of the Townsland Undertaking Parlor, King and Alakea streets.

GENERAL REPAIRS

— To —

CARRIAGES OR AUTOMOBILES.

W. W. WRIGHT & CO.

KING, NEAR SOUTH STREET

Army and Navy News

Captain J. K. Parsons, 20th Infantry, has been ordered by cablegram to sail by the first available transport. Captain Parsons has been appointed regimental quartermaster and will report to the commanding officer upon his arrival at the Presidio of Monterey, for this duty. He relieves Captain Chapman, 20th Infantry. Captain Parsons will be greatly missed by the men in his present company, as he was a strong advocate of athletic sports of all kinds and has a very promising club.

Cafe Ready in Week.

By the middle of next week the Oahu Service Co., Ltd., will be ready to cater to the officers and enlisted men of the Fifth Cavalry cantonment, the buildings for the cafe, restaurant and kitchen being already under construction. The restaurant will be 20x42 feet, and the officers and civilians' mess hall, 20x20 feet. The kitchen will be a large structure and adjoining it will be another building 20x20 feet covering a large ice box. A cottage for the manager and assistants will also have to be erected. Then the laundry will be erected close by. A deal is being perfected to acquire the machinery of the Wailuku laundry to install at Leilehua.

The Service company will make the officers and civilians' mess hall attractive so that it will become a rendezvous. As a cafe it will be open not only to officers but their families also, and any one from town can be sure of satisfying their wants there. The company also contemplates the operation of a wagonette service between the Wahiawa railroad depot and the cantonment.

Y. M. C. A. and Services.

The Young Men's Christian Association is planning to keep pace with the military and naval development in Oahu and plans to do much work at Leilehua. Secretary Paul Super of the Y. M. C. A., has already written to the headquarters in New York on the advisability of enlarging the scope of the work so as to erect a Y. M. C. A. building at the Fifth Cavalry post. On the strength of the news that the brigade post will be commenced within a short time and that a great army post is to be maintained at Leilehua, the plans for the building have been correspondingly enlarged.

Temporary arrangements for Y. M. C. A. work at Leilehua are being planned by Secretary Super. The Y. M. C. A. work at Fort Shafter is grow-

ing and much interest is taken in all the association work, physical as well as spiritual, by both officers and men. Camp Very is not to be lost sight of nor the Engineer camp at Waikiki. Then Pearl Harbor will add to the work, in time. The scattering of the military camps about the island is puzzling the association to create a system which will cover them all.

When the National Guard of Hawaii goes into camp at Moanalua on the 18th for a week's tour of camp duty, the Y. M. C. A. will follow and erect a tent which will accommodate a large number of men at one time where they may read, write, play games and spend their evenings. Secretary Super plans to install a bowling alley. There will be entertainments of various kinds, including stereopticon views and talks by Ed. Towse and there will be religious exercises.

The First Regiment, National Guard of Hawaii, will spend next Sunday at Kapiolani Park to undergo further instruction in camp duties. Order No. 6, issued yesterday, is as follows:

National Guard of Hawaii Headquarters, First Infantry.

Honolulu, February 2, 1909.

General Order No. 6:

1. Companies and Detachments of the First Infantry, National Guard of Hawaii, stationed at Honolulu, will assemble under arms at the drillshed on Sunday, February 7, 1909, at 7:00 a. m. in heavy marching order.

2. Commanders of Companies and Detachments will caution their men to be on hand promptly, and be in readiness to board the Honolulu Rapid Transit cars at 8:00 a. m. sharp.

3. The Quartermaster's Department will furnish the necessary transportation and subsistence for the First Infantry, en route to Kapiolani Park and return.

4. Uniform: Service. 5. Accouterments: Pack to contain shelter half with poles and pins, blanket, poncho; haversack to contain meat can, knife, fork and spoon; canteen, tin cup to be carried on rear canteen straps. By order of Colonel Ziegler.

THOS. P. CUMMINS,

Capt. & Adj. 1st Inf., N. G. H.

Jap Warships to Hawaii.

SAN DIEGO, California, January 11.

T. Ishida, representative of the Mitsui Company, announced that a Japanese squadron of four warships will visit Southern California ports the latter part of April or early May. Mr. Ishida is here as a representative of the Mikado to arrange for the coaling of the warships when they come to San Diego.

"Two armored cruisers and two training vessels, each of the latter being large protected cruisers, will leave

Japan the first week in March for Honolulu," said Mr. Ishida. "After a short stay there the warships will go to San Francisco. The itinerary after the arrival at San Francisco has not yet been definitely arranged. It is possible that the squadron will go to Tacoma and then return south, but more likely the warships will come south shortly after their arrival in San Francisco. It is planned to have them make a stay of about a week at San Pedro and then they will come to San Diego for two weeks. During the time they are anchored in port here they will take on a supply of coal for the voyage to Panama. The trip to Panama is to be made in order to allow the officers and cadets to become familiar with the work that is being done by the American government in the construction of the canal."

Farragut's Aide Dead.

NEW YORK, January 12.—Commander Jefferson Brown, Engineer Corps, U. S. N., retired, died of pleuropneumonia at his home, No. 1016 Eighty-fourth street, Dyker Heights, Brooklyn, yesterday. He was born in New York City and was sixty-seven years old. Receiving a commission in the United States Navy shortly after the civil war, Mr. Brown served under Admiral Farragut and took part in the battle of Port Hudson, where, after the Mississippi had been captured, he was taken prisoner, together with a captain of marines, a mate and forty men.

After remaining in prison at Jackson, Miss., from January to May, 1863, he was exchanged by the Confederates for an officer of the same name who had been captured on the Atlanta. In 1864 while attached to an ironclad he was in several engagements on the James river. He was ordered to the Wachusett in January, 1865, as an assistant engineer, and made a cruise to China, Japan and the East. He was assigned to the Yantic, and later to the Terror at Havana, and remained aboard this vessel until transferred to the New York navy yard as assistant to Chief Engineers Wood and Henderson.

With the rank of passed assistant engineer, he remained on duty at the New York navy yard until, in 1873, he was ordered to join the Manhattan, an ironclad, at Key West, and during the next five years served on the Dictator, the Catskill, the Mahopac, the Nahant and the Lehigh.

On the Alliance, in 1881, he made an Arctic cruise in search of the Jeannette, reaching North latitude 80 deg. 10 min. north of Spitzbergen, within ninety miles of the highest record by this route and farther north than any American warship at that time. The Alliance advanced to the permanent ice pack, and while in the ice narrowly escaped wreck. The vessel remained until November of the same year, and after his return from the Arctic zone Commander Brown was on special duty

A BROKEN-DOWN SYSTEM.

This is a condition (or disease) to which doctors give many names, but which few of them really understand. It is simply weakness—a break-down, as it were, of the vital forces that sustain the system. No matter what may be its cause (for there are almost numberless), its symptoms are much the same: the more prominent being sleeplessness, sense of prostration or weariness, depression of spirits and want of energy for all the ordinary affairs of life. Now, what alone is absolutely essential in all such cases is increased vitality—vigour—to throw off these morbid feelings, and experience proves that as night succeeds the day this may be more certain secured by a course of

THE NEW FRENCH REMEDY THERAPION No. 3

than by any other known combination. So surely as it is taken in accordance with the printed directions accompanying it, will the shattered health be restored.

THE EXPIRING LAMP OF LIFE LIGHTED UP AFRESH.

and a new existence imparted in place of what has so lately seemed worn-out, "used up," and valueless. This wonderful medicine is purely vegetable and innocuous, is agreeable to the taste, suitable for all constitutions and conditions, in either sex; and it is difficult to imagine a case of disease or derangement, whose main features are those of debility, that will not be speedily and permanently benefited by this never-failing recuperative essence, which is destined to cast into oblivion everything that had preceded it for this wide-spread and numerous class of human ailments.

THERAPION is sold by Chemists throughout the world. Price in England, 2/9 per packet. Purchasers should see that the word "THERAPION" appears on British Government Stamp (in white letters on a red ground), affixed to every package by order of His Majesty's Hon. Commissioners, and without which it is a forgery.

in this city from 1883 to 1886. He was assigned to the Yantic of the North Atlantic station from 1887 to 1890. His last active duty was on the Vermont receiving ship, from which he was detached on August 2, 1892, and retired.

THE HAWAIIAN ANNUAL,

with its fund of information pertaining to these Islands, should be in every office, library and household throughout the Territory for ready reference.

Visitors and others will find this handbook covers their many points of enquiry better than any other half dozen publications, and all persons departing should not forget to be equipped with a copy, not only for their own satisfaction, but for the aid it will afford them to answer the many questions relative to Hawaii that everyone "from Honolulu" meets with in going abroad. And for the varied character of its information it is the best kind of promotion literature to mail abroad. Price, 75 cents per copy, or \$8.00 per dozen. Thos. G. Thrum, publisher.

More mines are opened every year, but there has never been, and never will be, an over-production of the golden goods. Buy "Mayflower" stock. Buy it now!

Court Lunailo No. 6600, A. O. F., will meet in Pythian Hall this evening at 7:30.

If you have a cold as a memento of unsettled weather take a few doses of

Logan's Cough Balsam

Prompt relief in all cases and ultimate cure.

BENSON, SMITH & CO., LTD.  
Hotel and Fort Streets

Ladies

will find our stock of dress shoes compare favorably with any sold in the Honolulu shops and the prices are lower.

L. AYAU SHOE CO.

Nuuanu above Hotel.

MAYFLOWER

IMPORTANT ANNOUNCEMENT

MAYFLOWER

The stock of the Mayflower Quartz and Channel Mining Company will be advanced to 35 cents per share on March first. You can buy at the present price of 25 cents only during the month of February. BUY "MAYFLOWER" STOCK! BUY IT NOW!

M. IVAN DOW,

Fiscal Agent "Mayflower" Mine

GEO. M. SHAW,

Office, Suite 51 & 52 Alexander Young Bldg

Agent

Phone 499

HILO, HAWAII

Call, Write or Phone for a Prospectus

25 CENTS

BUY IT NOW





## HAWAIIAN TRUST CO., LIMITED

### STATEMENT OF RESOURCES AND LIABILITIES, DEC. 31, 1908

Assets.	Liabilities.
Cash:	Capital fully paid up.....\$100,000.00
On hand .....\$ 2,910.85	Trust and agency accounts... 142,921.69
In bank ..... 81,560.74	Undivided profits ..... 62,122.21
Bank trustee & estate account ..... 29,461.29	
In agents' hands ..... 9,939.46	
Stock and other investments ..... 9,500.00	
Loans—demand and time ..... 105,993.00	
Furniture and fixtures, etc. .... 2,257.07	
Accrued interest receivable ..... 3,668.43	
Bonds ..... 3,797.00	
Accounts due us at interest ..... 3,942.50	
General accounts due us ..... 905.31	
Real estate ..... 47,223.83	
Assets other than those specified above ..... 2,884.42	
<b>\$305,043.90</b>	<b>\$305,043.90</b>

Territory of Hawaii, Island of Oahu—ss.

I, John R. Galt, Treasurer of Hawaiian Trust Company, Limited, do solemnly swear that the above statement is true to the best of my knowledge and belief.

JOHN R. GALT.

Subscribed and sworn to before me this 12th day of January, 1909.

[Seal]

H. C. CARTER,

Notary Public, First Judicial Circuit, T. H.

## DRUMMERS' SAMPLES

I am instructed to sell a line of Drummers' Samples of Gentlemen's Furnishing Goods, comprising—

Sweater Jackets and Coats  
Men's Hose, Suspenders  
Belts, Handkerchiefs,  
Barbers' and Bar Coats,  
Denim Overalls, Cotton  
and Khaki Pants. . . .

Great value in every article. Prices are fixed and goods will be sold for CASH ONLY.

**THEO. F. LANSING**

93 and 95 King Street,  
P. O. BOX 351.

Honolulu.

## GURREY'S NEW PICTURES NEW FRAMES

### JUST RECEIVED

An Exclusive and Handsome Stock of Finest

### LADIES' GOODS

#### SILK GLOVES.

16-Button gloves of most superior quality, in Black, White, and Assorted Browns.

Double Finger Tips.

#### KID GLOVES.

16-button length, in Black, White and Assorted Browns.

#### BELTS.

Washable Belts, plain and embroidered, from 30c. up.  
Ladies' Hand Embroidered Belts. Very handsome goods.

#### SQUARE VEILS.

In Chiffon and Net. Black, White, Brown and Blue.

#### FINE RIBBED VESTS.

Of the finest make and material, 20c, 25c, and 3 for \$1.00.

#### LISLE VESTS.

Best quality at 65c and 75c.

#### WAISTS.

A beautiful assortment, embroidered and trimmed with lace. Plain tucked waist of fine India Linon, at \$1.00.

## JORDAN'S

NEW SHIPMENT

## PEEK, FREAN & CO. CELEBRATED LONDON BISCUITS

In Tin Packages.

PLASMON BISCUIT (Sweet and Plain.)  
CRACKLET, RIVOLI, RATAFIA, MILK, OSBORNE,  
ALBERT TORONTO.  
VENICE WAFERS (asst.), DESSERT RUSKS,  
OYSTER, CHOCOLATE, and CHERRY WAFERS.

**Henry May & Co., Ltd.**

Phone 22.

## REV. MR. THWING VISITS CANTON

### Meets Old Friends and Tells About the Ancient Chinese City.

Canton, January 8, 1909.

Editor Advertiser: It is a pleasure to be back in this old city and to meet the friends of former years. Many meetings have been held among the Chinese interested in the anti-opium movement. They all seem very much in earnest in their efforts to get rid of this evil habit. Marked changes appear, since the visit of some four years ago, in this perhaps the largest city in China. It is a place full of activity and business. An interesting description of the city taken from the Daily Telegraph may be of interest to Honolulu readers.

#### Canton City.

"Canton is one of the Chinese towns that to this day shows little trace of foreign influence, and the first realization of the stranger who sails into the harbor, in one of the beautiful river boats, over a deep gray, placid river, past rows of sampans and of glorious brown-sailed junks, is of something absolutely strange, of a life incomprehensible to Western eyes. No temples and pagodas rise to the memory when one recalls Canton, of which the late Dowager Empress of China was a humble native. The daughter of hucksters in Canton would probably be in no way distinguishable from the crowds of women and girls who throng those narrow streets today, as they did centuries ago. So narrow are those streets that, stretching your arms, you can often touch the small, closely-set booths on either side. Everywhere the glow and splendor of color meet your eyes; crimson, yellow, blue, from the looms of the silk-weavers or the embroiderers, the gleam of copper or of gold from the jewelers, iridescent lights from the kingfishers' feathers deftly handled by the enamellers, and the endless play of hues where the fan-makers are using their brushes.

"The daily life of the Cantonese is devoted to toil, and yet they find time for recreation, for the hum of conversation and of laughter fills the street, and the traveler who passes through it in a chair will find himself pressed upon, gazed at, and criticized by a dense mass of people, who touch him, and do not hesitate to ask him questions that are frequently embarrassing. At the upper end of every little room into which you glance there is a large screen, gay with gilt and colors, and on a small table in front flowers are set, flanked, on days of special observance, by a dish of roast pig and a few oranges. There is the joss house, without which no family would regard itself as secure from the wrath of the many gods—such, for example, as one of the 500 enclosed within the great temple. Birds twitter from cages at each open doorway as you pass, and frequently the trill of a bird's note rises louder than all the noise around you. The Chinaman has a peculiar love for birds, and it is rare to see him set out, even on a long journey, without his bird in its gilded cage wrapped in a blue linen cloth.

#### Native Shopping.

"Whatever be the ware sold by the shopkeeper, his store is filled to overflowing, for space is at a premium, and the booths are all tiny. You meet the Cantonese who has been busy over his morning's shopping. He has a bamboo rod over his shoulders, and you notice his neat little scraps of meat or fish, and similar small scraps figure at the doors of the eating-houses, nicely fried and hung on strips of bamboo. The shops of the greengrocers are most attractive, for all vegetables are washed and spread out to the best advantage. Spinach is a favorite, and huge bundles of it, cut with pretty long stems, and perfectly washed, are displayed in every shop. Lettuce, onions, potatoes, vegetable marrows, cucumbers, and gherkins are in general use. The fruit markets are literally crammed with fruit from season to season. Rice forms, perhaps, the most important part of the household supplies, since it is the basis for a number of articles in daily consumption. Round the grocer's shop, for instance, you will note a series of large brown jars, in each of which a long spoon is placed. These contain such appetizing additions to the daily meal of boiled rice as pickled onions, cabbage, beans, anchovies, pounded fish, chilies made into sauce, also tomatoes such as the Italians use, and pickled beans. The grocer sells, too, eggs preserved in coatings of clay, those which he can announce as a hundred years old obtaining the best price. Piles of vermicelli made from rice decorate one of his long tables; bean curd, resembling the curd of cheese, fills a stone receptacle, and he is certain to have the fins of fish and of sharks dried in the sun. His soy is one of his special products, and he will doubtless have some in process of making. Small brown beans parboiled form its basis. They are next rolled in flour and spread on bamboo racks to dry for ten days. From the racks they are placed in stone jars and covered with salt and water, where they lie until the necessary chemical fermentation takes place.

"A Chinese shopkeeper who is well disposed towards his visitor is sure to offer a little white cup of samshu, the national liquor, and he is not difficult to persuade that the process of making it is interesting. In the back regions of his shop stands a huge stone boiler in which the rice for the samshu is first cooked before it is put into a jar where it ferments for a month. It next goes into a metal pot, and is set on a stove inside rings of canvas thickly padded. On the top is another pot of cold water, and, as the spirit is distilled, it runs out. The preparation of malt extract is an immense industry in Canton, and this paste, resembling syrup, fills great vases at every shop door, out of which it is ladled as a sweetmeat for children. It is made in the most primitive way, and, as nothing is wasted in Canton, in one-half of the little wooden shed, where the present writer saw the extract in the making, a couple of pigs were housed. In the other half beyond a low bamboo railing, dishes of rice were set to sprout for the saccharine stage that is known as malt extract. Stoves were fitted on the other side of the room, in which this extract was cooked with paddy, a coarse rice. It was carefully covered with bamboo matting, and allowed to simmer slowly in order to form the sweet paste much appreciated by Chinese children.

#### Night Life in Canton.

"In the evening strings of twinkling lights rise in every direction, and color strikes a stronger note in the street scenes, for the evening hours of leisure induce the richly-dressed portion of the community to parade. The girl of the class whose parents would sell her as a slave frequently sets in the windows of tea-houses or restaurants. There is the tinkling sound of little lanterns glitter and dance in the evening light. The richness of Chinese jewelry is indescribable, and the woman who loves diamonds, but who has not witnessed the display made on the occasion of a wealthy Chinese wedding, has missed a delight."

The foregoing description gives but a few views of Chinese life that may be seen to such good advantage in Canton. One of the most interesting things at present is the new school life.

#### Canton's Schools.

Everywhere for boys and girls are found schools, mission schools and private and public schools. Young China of today is not content with the old-fashioned textbooks of "ye olden time," but new books with bright pictures and up-to-date information are found throughout the schools. Present-day school life is to soon show its influence on the future of China. A number of Chinese from Honolulu were met in Canton, and all are interested to hear of Hawaii or "The Sandalwood Mountain." But more another time.

E. W. THWING.

## ARE NOW READY FOR MANDAMUS ACTION

City Treasurer Trent yesterday refused the demand of Deputy City Attorney Milverton and a couple of road laborers to pay the laborers according to warrants issued by Auditor Bicknell. The laborers are employed under Road Supervisor Cummins. The refusal of the treasurer now brings the matter to a point where mandamus proceedings can be brought into the court. It is said that the city attorney's office is working on the matter which is somewhat involved and will be ready in the near future.

In the meantime the Auditor's office is preparing the warrants for the latter half of January and these will be ready for issuance on Thursday of this week.

## Autos Repaired

Your machine will be ready for you when we say it will be. We don't experiment on autos, we repair them.

**Von Hamm-Young Co., Ltd.**  
Alexander Young Building.

## T. L. P.

MEANS

STANDARD IN PHOTOGRAPHY  
ISLAND VIEWS  
DEVELOPING AND PRINTING  
INTERIORS

### Ernest Moses

PHOTOGRAPHER

BOSTON BLDG. HONOLULU  
Rooms 401-402

#### HEADQUARTERS FOR

**Roses! Roses! Roses!**

MRS. E. M. TAYLOR, Florist.

#### JAPANESE GOODS.

The Best Only.

IWAKAMI,

Hotel and Bethel.

HONOLULU IRON WORKS  
COMPANY.

Machinery, Black Pipe, Galvanized Pipe, Boiler Tubes, Iron and Steel, Engineers' Supplies.

OFFICE—Nuuanu Street.  
WORKS—Kakaako.

### "YAMATOYA," ALL KINDS OF

SHIRTS, PAJAMAS and KIMONOS  
MADE TO ORDER.

1246 Fort St., just above Orpheum.

## Oahu Ice & Electric Co

ICE delivered at any part of the city. Island orders promptly filled.  
Telephone 528. P. O. Box 600. Office, Kewalo.

## JAPANESE CURIOS

SILK GOODS, KIMONOS, CREPE  
RUGS, MATTING, CROCKERY,  
PROVISIONS AND MERCHANDISE.

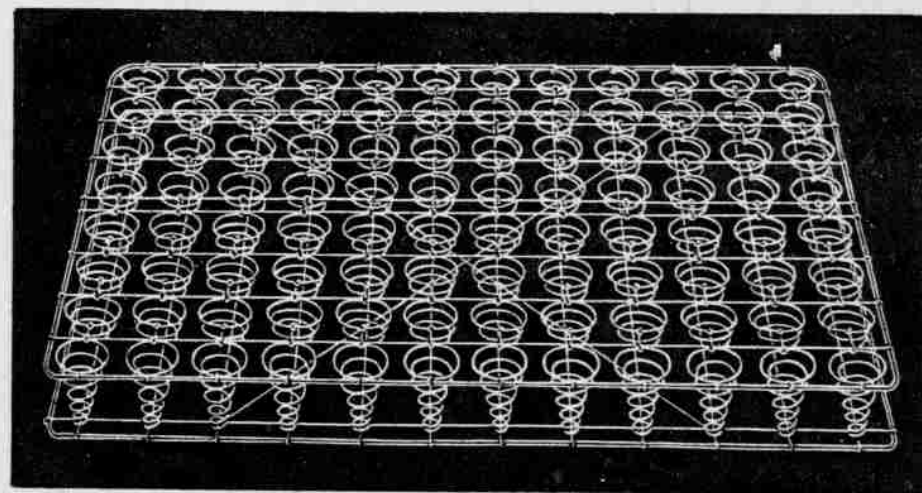
## Sayegusa

Nuuanu, above Hotel.

## The "LEGGETT" Bed Spring

FOR IRON OR WOOD BEDS.

RESTFUL, DURABLE, SANITARY. NOISELESS.



Ten Years' Guarantee given with each Spring. For Sale by  
**Coyne Furniture Co., Ltd.**

## New Shipment of Pajamas

has just arrived from New York. Very attractive designs and made of Flannelette, Gingham and Chambray. Also Plain Gray, Blue, Pink and colors. Romper Suits for boys at 50c a suit.

## YEE CHAN & CO.

Cor. King and Bethel Sts. : Phone 627. : P. O. Box 953.

## J. Hopp & Co.

FURNITURE

185 King Street

## Look At Our Hosiery Show

Examine Quality and Compare Prices.

## L. A HOY

Nuuanu, Below Hotel

## PICNIC HAM

Pickled in San Francisco and smoked in our own establishment. The sweetest morsel at any meal, particularly good with poultry—15 cents a pound

**METROPOLITAN MEAT CO., LTD.**

Telephone 45.



# Save Your Gas Bills

COME IN AND SEE

## The Clover Leaf Cooker . . .

YOU CAN COOK IN FOUR UTENSILS FROM THE GAS USED FROM ONE BURNER.

**E. O. Hall & Son, Ltd.**  
TAKE ELEVATOR. SECOND FLOOR.

## Silverwear

CORRECT IN PATTERN  
AND PRICE  
**A. M. Dietz  
Jewelry Co.**  
121 HOTEL STREET

## LADIES!

The importance of getting food that is known to be absolutely pure cannot be exaggerated. This is especially true in regard to fruits, catsup, etc., which are very often preserved with benzoate of soda and other chemicals.

## Heinz Goods

are absolutely pure; there is nothing artificial about their flavoring, and no coloring or preservative is used. They are just home-made on a large scale, and of uniform quality without the home-made failures.

**Ask for Heinz Goods**

## GO TO LANDO'S STORE

152 HOTEL STREET, OPPOSITE YOUNG HOTEL

FOR YOUR TRUNKS, VALISES AND SUIT CASES

His stock of Shirts, Collars, Cuffs, Ties and Underwear is complete. Also Hats and Caps of a large variety. Panamas and Straw a specialty. Prices are right and no trouble to show goods. Don't forget he has moved from Fort street to the Oregon block, 152 Hotel street, opposite Young Hotel.

## WE SELL WATCHES

Watches that have proven their superior workmanship and have "STOOD THE TEST OF TIME."

REPAIRING IN ALL ITS BRANCHES

**H. CULMAN,** FORT, NEAR HOTEL.

## THE LIVER

HAS a variety of relations to the general processes of our body. The physiological actions of this organ are: (1) It secretes bile; (2) forms glycogen; (3) assists in the formation of urea and allied products; (4) modifies the composition of the blood as it passes through it. When sluggish and enlarged, Osteopathic Treatment will quickly return it to a normal, healthy and active condition.

DR. F. SCHURMANN.

OFFICE—224 Emma square.

HOURS—8 to 9 a. m.  
4 to 6 p. m.

## Relief From Headache Is Yours If You Want It

You have only to get a box of Stearns' Headache Wafers at your chemist's and take one of the little tasteless wafers.

This is the most popular headache cure in the world and has been sold for almost twenty years; the only reason that so many people buy it over and over is that it does what it should—cures headache promptly, safely, pleasantly.

No one needs to suffer from headache when

### Stearns' Headache Wafers

are at hand. It is well to keep a box in the house all the time, for headaches always come without warning. This will drive them away as quickly as they came.

Stearns' Headache Wafers are so much better than others that it will pay to insist on having STEARNS' and no other.

## Around the Police Station

Frank Gran is one of Honolulu's unfortunates who would be better off if there was some place where inebriates could be treated. Frank's greatest enemy is whisky, and although he has made strenuous defensive efforts, he succumbs too often and frequently finds himself in Oahu Prison. He was released lately, and apparently has kept away from drink so far. He was almost moneyless. After viewing moving pictures last evening as one method to keep away from saloons, he decided that he must have some money for his actual needs and stood on a Fort street corner and accosted passersby for coin. One was a detective and twenty minutes after leaving the moving pictures Gran was once more in jail and charged as a vagrant.

### He Struck Mary Ann.

David Leleo is once more in trouble from a too free use of his fists. As usual, David used his fists on a woman, whose name is given on the police register as Mary Ann.

### A Saloon Racket.

For starting a racket in a Japanese saloon opposite the railroad depot Antonio Acosta, a Porto Rican of unsavory record, was yanked up to the police station Monday night and yesterday morning was presented with a fifteen-day sentence on the reef. Judge Andrade warned Acosta that he would not be handled so lightly if he appeared in court again. Acosta is a worthless bank of humanity, who has been a hanger-on at Iwilei for a long time and is not banking for work at any time. The Porto Rican, however, had a method of annexing coin by selling carved kukui nuts for another Porto Rican. All he had to do was hang around saloons and wait for business. He was too insistent in the Jap saloon and the bartender ordered him out. Antonio refused and a scrap followed.

### Japs Forfeited Ball.

Another bath of Japanese arrested for gambling on Monday forfeited ball in police court yesterday. One was a woman. The Japs have been doing a lot of gambling of late, and so have the Chinese, but few of the latter are molested.

### Row in Darktown.

There was a row in darktown on Monday and it all came of two guests of John Nash and wife starting a fight. The host and hostess did not enjoy the fighting and undertook to throw the colored gentlemen into the street. One of the negroes landed on his head and about this time the police showed up. They arrested the Nashes. Mrs. Nash told the court yesterday that the police handled her husband roughly and one had struck him on the head. She confessed, however, that she did not mean to intimate that the blow on John's head had hurt him. The court released Mrs. Nash and fined John \$5 and costs. Nash gets into the police court several times a year generally on account of family troubles. His chief stunt is to beat his wife.

### THE TRUTH ALWAYS.

"When you are in doubt tell the truth." It was an experienced old diplomat who said this to a beginner in the work. It may pass in some things, but not in business. Fraud and deception are often profitable so long as concealed; yet detection is certain sooner or later; then comes the smash-up and the punishment. The best and safest way is to tell the truth all the time. Thus you make friends that stick by you, and a reputation that is always worth twenty shillings to the pound everywhere your goods are offered for sale. We are able modestly to affirm, that it is on this basis that the world-wide popularity of

**WAMPOLE'S PREPARATION** rests. The people have discovered that this medicine is exactly what it is said to be, and that it does what we have always declared it will do. Its nature also has been frankly made known. It is palatable as honey and contains all the curative properties of pure Cod Liver Oil, extracted by us from fresh cod livers, combined with the Compound Syrup of Hypophosphites and the Extracts of Malt and Wild Cherry. A combination of supreme excellence and medicinal merit. Nothing has been so successful in Anemia, Scrofula, Bronchitis, Influenza, Loss of Flesh, Wasting Diseases, and Coughs and Colds. Dr. Austin D. Irvine, of Canada, says: "I have used it in cases where cod liver oil was indicated but could not be taken by the patient, and the results following were very gratifying." It cannot deceive or disappoint you, is effective from the first dose and comes to the rescue of those who have received no benefit from any other treatment. It represents the dawn of progress. Sold by all chemists everywhere.

## Coca Cola

Most Refreshing of Beverages

HAWAIIAN SODA WORKS.

## AMUSEMENTS

The coming glee club concert is receiving much attention at Punahou among the members of the clubs and the students generally. The chief desire is to live up to the reputation made by the choruses at the Christmas concert and to surpass it if possible. As it has been years since glee clubs have been successfully organized among the college students, more than ordinary interest is being taken in this year's concert. It will be held next week, Saturday night, in Chas. R. Bishop hall. Miss Rogers, whose charge of it insures a good performance, is preparing a program that will have many novelties. The proceeds go to pay expenses in the department and to assist in the charitable and philanthropic work of the students. For this reason, as well as musical merit, the concert should be well patronized.

Mrs. Bruce McVean Mackall has been engaged by the trustees of Oahu College to teach voice at the college. Her work will supplement that of Miss Rogers in the choruses, of Miss Clarke, Miss Sheffield and Mrs. Ingalls in instrumental music.

At the Preparatory School Miss Cowan will have a class in gymnastics once a week for each grade above the third. These will be simple drills and setting-up exercises so necessary to insure proper carriage of the body in the growing child.

### Alice in Wonderland.

The greatest interest and enthusiasm are being aroused in those who have heard any of the details of the entertainment to be given at the Opera House on the 18th of February, the proceeds of which will be handed over to the Woman's Guild of St. Andrew's cathedral to pay some incurred debts and for other necessary improvements about the parish. The mere name of "Alice in Wonderland" appeals to old and young alike. While the children are familiar with the story, their parents and friends feel that they need to refresh their memories on some of the episodes which once were so well known to them. The form of the entertainment is a series of tableaux taken from the illustrations of the original edition by John Tenniel. Between the tableaux and illustrative of each one will be given solos, duets and quartets, the music of which has been composed by Liza Lehmann of "Persian Garden" fame, the words being the humorous poems of Lewis Carroll, with which the book abounds. In addition there will be sung some of the songs from Rudyard Kipling's "Just So Stories," composed by Edward German, which are quite in keeping with the style of the songs from "Alice in Wonderland." The musical part of the performance will be given by some of the best available local amateur talent.

The entertainment opens with a quartet taken from the epilogue to "Alice in Wonderland," and introduces the first tableau, "Alice's Dream," in which we see the heroine asleep at her sister's knee, surrounded by the creatures of her fantastic dream. Then follows the sentimental absurdity, "Mock Turtle Soup," a tenor solo, followed by the quartet, "Won't You Walk a Little Faster," said a Whiting to a Snail," the whole leading up to the tableau of "The Walrus and the Carpenter," in which those two worthies appear surrounded by the oysters on whom they subsequently dine.

The next is a quartet, "How Doth the Little Crocodile," and a duet, "You Are Old, Father William." After each of the three verses of this song, the curtain will rise to show, first, Father William, standing on his head; second, his son, dismayed to find the old man has "eaten the goose with the bones and the beak," and, third, Father William balancing an eel on the end of his nose.

After this tableau come three of the Just So songs—"When the Cabin Porchholes Are Dark and Green," "Morrow Down" and "Of All the Tribes of Tegumai"; and finally the contralto solo, "Speak Roughly to the Little Boy," leading up to the tableau, "Pig and Pepper," showing the old duchess and her irascible cook. During the intermission, some of Mrs. Gunn's pupils will dance a ballet, a turn which is sure to be received with pleasure.

The program is then resumed by the bass solo, "Pury Said to a Mouse"; a short contralto recitative, "O 'Tis Love That Makes the World Go Round," and two Just So songs, "The Camel's Hump" and "The Riddle," after which the curtain rises on the scene of the Queen of Hearts ordering the decapitation of three luckless gardeners who have planted a white rose tree where they should have put a red one.

Then come two more Kipling songs, "Keep Six Honest Serving Men" and "The Uninhabited Island," and a quartet, "Twinedum and Tweedledee," introducing the tableau of the two belligerent brothers, who will appear in three different attitudes.

After this come a Kipling song, "Boo," a soprano solo, "The Queen of Hearts," and the quartet, "They Told Me You Had Been to Her," the delightfully inconsequent words of which are taken from the compromising poem found on the Knave of Hearts, on which he was found guilty of having stolen the tarts. At the close of this quartet comes the final and most elaborate tableau of all, depicting the scene in the court at the trial of the offending Knave.

### Band Arrives Tomorrow.

The Philippine Constabulary Band, the famous musical organization directed by Captain Walter H. Loveing, the Afro-American Sousa, will arrive in Honolulu tomorrow with the incoming of the transport Buford. The band is on its way to Washington to play

its founder, William H. Taft, into the presidency of the United States. The main object of this presidential tour of the Philippine Constabulary Band is to correct the wrong impression that is prevalent in the United States as to the character and attainments of the Filipino. The members of the band, eighty-four in number, are all average Filipinos, taken from the Tagalog, Visayan, Ilocano, Bicol and Pampanga people who presented themselves as aspiring musicians when Taft and Loveing organized the band, seven years ago. They were chosen at random, and their success as a corps and individually furnishes a substantial index to the capacity of the entire race typified.

The Manila Times says: "Side-shows in America are exhibiting the 'wild untamed savage' from the badlands of the Philippines, and the gentle Igorrote casts dog for the delectation of the credulous American at ten cents per throw. The folks in the village see the show and wonder how we all manage to keep alive out here."

### Elks, Elks and All Others.

The last call for the Elks' Minstrels. The latest report on the street is that the Elks are very confident that they will have the finest show ever. Hurrah for the Elks; they certainly deserve it. Today the Elks are presenting all of their friends with "the best paper on earth." This is creating a great deal of excitement on the street, and everybody feels sure that any paper with the largest circulation of any paper in the U. S. or Kawaihae will urge many people to the stern thought that they have not purchased their tickets. Be sure to do this before it is too late, for there may not be any desirable seats at the Opera House. So far the seat sale has been very satisfactory, and there are still a number of desirable ones left for the choice of early comers. Come.

"Sonny" Cunha held another rehearsal last night and he says that everything will go off just like clockwork. "Sonny" has had considerable experience along this line, and the whole shows the splendid result accruing from such experience. Come and spend a delightful evening with the Elks.

### The Band Concert.

A public moonlight band concert will be held this evening at 7:30 at Aala Park.

### PART I.

March—On the Beach. . . . . Vokoun  
Overture—Unrest. . . . . Stork  
Intermezzo—Clouds of Roses. . . . . Bergere  
Selection—Il Trovatore. . . . . Verdi

### PART II.

Vocal—Hawaiian Songs. Ar. by Berger  
Selection—Jolly Jingles. . . . . Neat  
Waltz—City Life. . . . . Translatore  
Finale—Mokihana. . . . . Berger  
The Star Spangled Banner.

### The Empire.

Manager Overend of the Empire Theater has something in his mind for the improvement of this place of amusement, but he is not ready to make his plans public. He has made new connections at the Coast for his films, so that the excellent quality will be maintained all the time. There will be an entire change this afternoon, and mothers should take the children, for there will be nothing to offend the fastidious. The admission at the Empire is only ten cents for adults and five cents for children. The show is worth the money.

### The Gem.

There will be something doing at the Gem this week and there should be no one to say he has not seen the pictures. Managed Wieda says the best pictures he has ever thrown on a screen will be included in his program which begins this afternoon. Remember that the Gem is a cool place of amusement and the pictures are all that anyone could wish for. There will be no increase in the price of admission this week, though the attractions will be greater than ever. The music at the Gem is always good.

## Victor

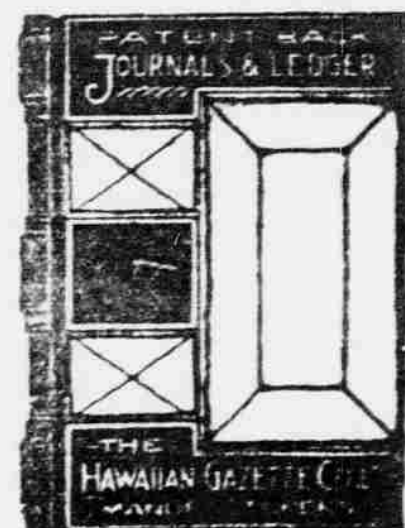
HEAR IT, AND YOU'LL WANT IT  
**Bergstrom Music Co., Ltd.**

**KOA DESKS and  
FOUR POSTERS**

**WING CHONG CO.**  
King and Bethel

**Sun Lee Tai Co.**  
Contractors, Builders, Painters

**KOA FURNITURE TO ORDER.**  
King Street, near Nuuanu.



## HOTEL STEWART

SAN FRANCISCO

GEARY STREET ABOVE UNION SQUARE  
JUST OPPOSITE HOTEL ST. FRANCIS  
EUROPEAN PLAN \$1.50 A DAY UP  
AMERICAN PLAN \$3.00 A DAY UP

A new down town hotel. Steel and brick structure. Furnished at a cost of \$150,000. Every comfort and convenience. On car lines transferring to all parts of city. Omnibus meets all trains and steamers.

## Hotel Stewart

Now recognized as HAWAIIAN ISLAND HEADQUARTERS.  
Cable Address: "STRAWETS"  
A B C Guide

THERE IS NO

## EASIER WAY

TO GET A

## Good Watch

THAN BY BELONGING TO ONE OF OUR

## WATCH CLUBS

EASY PAYMENTS  
A FAIR DEAL

Come and See Us—Costs You Nothing

## J. A. R. Vieira & Co.

113 HOTEL ST. JEWELERS.

## 1909 STYLES

AND

## SPRING PATTERNS

NOW TO BE SEEN AT

**W. W. AHANA CO.,**

FASHIONABLE TAILORS

62 KING STREET. PHONE 521



## Flags Flags

We have them for

The Coming Holidays.

**WALL, NICHOLS CO., LTD.**  
Telephone 16.

## PICTURES

Finest and Most Artistic Portraits and Photographs.

## R. W. Perkins



## Motor Boats

Fitted with 4-Cycle Engines, \$125 Up

## CHARLES D. WALKER'S

Boat and Machine Works,

KING ST., NEAR SOUTH ST.

## Home-Made Bread

Fresh Daily.

Pies, Cakes, Doughnuts,  
Baked Beans Saturday  
PERFECTION HOME BAKERY,  
BERETANIA NEXT TO EMMA.

## PAU KA HANA

For the

TIDY HOUSEKEEPER

ALL GROCERS

## Sam Wo Meat Co.

Superior

BEEF and MUTTON

King Street Fishmarket.

## BOOKS

Brown &amp; Lyon Co.

Merchant and Alakea Streets



## Oahu Railway TIME TABLE

### OUTWARD.

For Waiānae, Waiāluā, Kahuku and Way Stations—9:15 a. m., \*3:20 p. m.  
For Pearl City, Ewa Mill and Way Stations—7:30 a. m., \*9:15 a. m., \*11:15 a. m., \*2:15 p. m., \*3:20 p. m., \*5:15 p. m., \*9:30 p. m., \*11 p. m.  
For Wahiawa—9:15 a. m., and \*5:15 p. m.

### INWARD.

Arrive Honolulu from Kahuku, Waiāluā and Waiānae—8:36 a. m., 5:30 p. m.  
Arrive Honolulu from Ewa Mill and Pearl City—7:46 a. m., \*8:36 a. m., \*10:38 a. m., \*1:40 p. m., \*4:31 p. m., \*5:31 p. m., \*7:30 p. m.  
Arrive Honolulu from Wahiawa—\*2:36 a. m. and \*5:31 p. m.  
The Haleiwa Limited, a two-hour train (only first-class tickets honored), leaves Honolulu every Sunday at 8:22 a. m.; returning, arrives in Honolulu at 10:10 p. m. The Limited stops only at Pearl City and Waiānae.  
\*Daily. †Ex. Sunday. ‡Sunday Only.  
G. P. DENISON, F. C. SMITH,  
Superintendent. G. P. & T. A.

## Koolau Railway TIME SCHEDULE

DAILY, EXCEPT SATURDAY,  
SUNDAY AND HOLIDAYS

Leave Kahana for Punaluu, Hauula, Laie, Kahuku and Way Stations at ..... 12:00 M.  
Arrive Kahuku at ..... 1:00 P.M.  
Returning:  
Leave Kahuku for Laie, Hauula, Punaluu, Kahana and Way Stations at ..... 1:45 P.M.  
Arrive Kahana at ..... 2:45 P.M.

SATURDAY, SUNDAY  
AND HOLIDAYS

Leave Kahana for Punaluu, Hauula, Laie, Kahuku and Way Stations at ..... 11:00 A.M.  
Arrive Kahuku at ..... 11:58 A.M.  
Leave Kahuku for Laie, Hauula, Punaluu, Kahana and Way Stations at ..... 12:35 P.M.  
Connections are made at Kahuku with the O. R. & L. Co.'s 9:15 a. m. train from Honolulu, and the 2:20 p. m. train, which arrives in the city at 5:30 p. m.

JANUARY 1, 1909.

J. J. Dowling,  
Superintendent.  
R. S. Pollister,  
Gen. Passenger & Freight Agt.

WM. G. IRWIN & CO., LTD.  
SUGAR FACTORS AND

### COMMISSION AGENTS

Wm. G. Irwin.....President  
John D. Spreckels.....1st Vice President  
W. M. Giffard.....2nd Vice President  
H. M. Whitney.....Treasurer  
Richard Ivers.....Auditor  
D. G. May.....Auditor

### AGENTS FOR

Oceanic Steamship Company, San Francisco, Cal.  
Baldwin Locomotive Works, Philadelphia, Pa.  
Hakalan Plantation Company.  
Hilo Sugar Company.  
Honolulu Plantation Company.  
Hutchinson Sugar Plantation Company.  
Kilauea Sugar Plantation Company.  
Olowalu Plantation Company.  
Paauhau Plantation Company.  
Waimanalo Sugar Company.

## Wm G. Irwin & Co., Ltd

### AGENTS FOR THE

Royal Insurance Co., of Liverpool, England.  
Scottish Union & National Insurance Co., of Edinburgh, Scotland.  
The Upper Rhine Insurance Co., Ltd.  
Commercial Union Assurance Co., Ltd., of London.

C. BREWER & CO., LTD.

SUGAR FACTORS AND

### COMMISSION MERCHANTS

List of Officers—  
C. M. Cooke, President; George M. Robertson, Manager; E. F. Bishop, Treasurer and Secretary; F. W. Macfarlane, Auditor; P. C. Jones, C. M. Cooke, J. R. Galt, Directors.

## Fire Insurance

THE B. F. DILLINGHAM CO., LTD.

General Agents for Hawaii:  
Atlas Assurance Company of London.  
New York Underwriters' Agency.  
Providence Washington Insurance Company.

## Barnhart

will deliver a superior grade of ICE at

**25c Per Hundred Pounds**

FOR THE BEST QUALITY OF

Typewriting Paper

GO TO THE  
OFFICE SUPPLY CO., LTD.  
931 FORT STREET

**Everything in Paper**

AMERICAN-HAWAIIAN  
PAPER & SUPPLY CO.  
FORT AND QUEEN STREETS

# Women Who Doubt

the ability of Lydia E. Pinkham's Vegetable Compound to cure female ills are requested to write to any or all of the women whose correct names and addresses are given below, and see what they say—you are not obliged to take our word for it—ask the women who know from personal experience that Lydia E. Pinkham's Vegetable Compound can and does cure female diseases.

**Alabama.**  
Goshen—Mrs. W. T. Dalton, Route No. 3.  
**Arkansas.**  
Chester—Mrs. E. H. Wood.  
**Connecticut.**  
Williamstown—Mrs. Etta Donovan, Box 299.  
**Georgia.**  
Ocdilla—Mrs. T. A. Criss.  
Adrian—Lena V. Henry, Route No. 3.  
**Idaho.**  
Woodside—Mrs. Rachel Johnson.  
**Illinois.**  
Moxier—Mrs. Mary Ball.  
Serrino—Mrs. Chas. Folkel.  
Burton View—Mrs. Peter Langenhahn.  
Chicago—Mrs. Alvina Sperling, 11 Langdon St.  
Chicago—Mrs. William Tully, 465 Ogden Ave.  
Chicago—Mrs. Harriet Janetzki, 3033 Lyman St., German.  
**Indiana.**  
South Bend—Mrs. Fred Cetta, 1014 S. Lafayette St.  
Winchester—Mrs. May Deal.  
Indianapolis—Mrs. A. P. Anderson, 1207 E. Pratt St.  
Lindley—Mrs. May Fry.  
Vincennes—Mrs. S. L. E. Jerald, 508 N. 10th St.  
Pendleton—Mrs. May Marshall, R. R. No. 44.  
Dayton—Mrs. E. R. Smith, 431 Elm St.  
Dyer—Mrs. William Oberloh, R. F. D. No. 1.  
Indianapolis—Bessie V. Piper, 29 S. Addison St.  
Ligonier—Mrs. Eliza Wood, R. F. D. No. 4.  
**Iowa.**  
Melbourne—Mrs. Clara Waterman, R. F. D. 1.  
**Kansas.**  
Kinsley—Mrs. Stella Gifford Beaman.  
**Kentucky.**  
Bardonia—Mrs. Joseph Hall.  
Louisville—Mrs. Sam. Lee, 3523 4th St.  
Noah—Mrs. Lizzie Holland.  
**Louisiana.**  
Montegut—Mrs. G. A. Laperouse.  
**Maine.**  
Lewiston—Mrs. Henry Cloutier, 56 Oxford St.  
South West Harbor—Mrs. Lillian Robbins, Mt. Desert Light Station.  
Gardiner—Mrs. S. A. Williams, R. F. D. No. 14.  
Box 39.  
Rockland—Mrs. Will Young, 6 Columbia Ave.  
Sabbatus—Mrs. H. W. Mitchell, Box 3.  
**Maryland.**  
Baltimore—Mrs. W. S. Ford, 1338 Lansdowne St.  
Hampstead—Mrs. Jos. H. Dandy.  
**Massachusetts.**  
Roxbury—Mrs. Francis Merkle, 13 Field St.  
Worcester—Mrs. Desvira Cote, 117 Southgate Street.  
**Michigan.**  
Paw Paw—Emma Draper.  
Detroit—Mrs. Louise Jung, 332 Chestnut St.  
Sedalia—Mrs. J. G. Johnson, R. F. D. No. 3.  
Detroit—Mrs. A. A. Freeman, 28 Cottage Ave.  
Flushing—Mrs. Burt Loyd, R. F. D. No. 3.  
Care of D. A. Sanborn.  
Stoughton—Mrs. Louis Beaudoin.  
Detroit—Mrs. Freda Rosenau, 554 Meldrum Ave., German.  
Minnesota.  
Minneapolis—Mrs. John M. Moldan, 2115 Second St., N.

The above names were selected at random from thousands who have been benefited by Mrs. Pinkham's famous medicine, and no reward whatever is given them for the use of their names. Ask them what they think of Lydia E. Pinkham's Vegetable Compound.

### ELECTION OF OFFICERS.

At the annual meeting of the Pacific Club, held February 1, 1909, the following officers were elected to serve for the ensuing year:  
A. S. Cleghorn.....President  
F. M. Swamy.....Vice President  
A. W. T. Bottomley.....Treasurer  
G. C. Potter.....Secretary  
Directors—A. A. Wilder, C. S. Holloway, E. I. Spaulding, Geo. Rodick, L. Tenney Peck.  
GEO. C. POTTER,  
Secretary.

### NOTICE.

As I have disposed of my interests in the Queen Hotel, I will not be responsible for any debts contracted after January 31, 1909.  
MRS. W. H. HEINE.

### ANNUAL MEETING.

C. Brewer & Company, Limited.  
The annual meeting of the shareholders of the C. Brewer & Company, Limited, will be held at the offices of the corporation in Honolulu on Monday, February 8th, 1909, at 10 o'clock a. m.  
E. F. BISHOP,  
Secretary.  
Dated Honolulu, Jan. 29, 1909. 8260

### DIVIDED NOTICE.

THE GERMAN SAVINGS AND LOAN SOCIETY,  
(Member of Associated Savings Banks of San Francisco)  
526 California St., SAN FRANCISCO.  
Mission Branch, 2572 Mission Street, Near 22nd.  
For the half year ending December 31, 1908, a dividend has been declared at the rate of four (4) per cent. per annum on all deposits, free of taxes, payable on and after Saturday, January 2, 1909. Dividends not called for are added to and bear the same rate of interest as the principal from January 1, 1909.  
GEORGE TOURNAY,  
Secretary.

### REAL ESTATE TRANSACTIONS

Entered of Record February 2, 1909.  
K Kobayashi to Robert Hind..... C M  
Edith M W Blackman and hsb to Frederick C Miller..... D  
Frederick C Miller and wf to West-ern & Hawn Invest Co, Ltd..... M  
Sun Lee Tai Co..... C P D  
Peter C Jones, Ltd, to Morris J Bissell..... D  
Morris J Bissell and wf to Bank of Hawaii, Ltd..... M  
Luika Hawae to Koolau K Maile (w)..... M  
Wahinepio Namokuha (k) et al to Yokoyama (k)..... L  
Gear, Lansing & Co by Trs to Wilson Fengler..... D  
Honoma Sugar Co to Mrs Kahau Lawelawe, Mrs..... Rel  
J Alfred Magoon to Sam Wo Wai Co..... L  
Recorded January 28, 1909.  
Soy Shew et al to Kaneohe Rice Mill Co., Ltd, C M; leaseholds, livestock, tools, rice, crops, etc, Waikiki, Honolulu, Oahu. \$2000 and advs to \$3000. B 307, p 421. Dated January 16, 1909.  
Ethel K Abrams by Regr, Notice of decree of title in Land Reg Court Case

No 153. B 321, p 85. Dated January 26, 1909.

May K Brown et al by Comr to John M Dowsett, Comr Sale; leasehold of por R P 2243, ap 5; pe land, etc, Makaha, Waiānae, Oahu. \$5000. B 321, p 86. Dated January 28, 1909.  
May K Brown and hsb (A M) to William Matson D; int in ap 5, R P 2243, pe land, lease of same and 2 agrmts, Makaha, etc, Waiānae, Oahu. \$1. B 315, p 217. Dated October 10, 1908.  
William Matson and wf to John M Dowsett, D; int in ap 5, R P 2243, pe land, lease of same and 2 agrmts, Makaha, etc, Waiānae, Oahu. \$19,000. B 315, p 219. Dated October 22, 1908.  
See Sung Wai to Wong You, Tr; M; lands, leaseholds, bldgs, tools, livestock, fowls, growing crops, etc, Waipio, etc, Ewa, Oahu. \$2900. B 307, p 424. Dated December 19, 1908.  
Est of Hugh McMillan by Admr to J T Wayson, D; lots 15 and 16, block 10-A, Kapahulu, Honolulu, Oahu. \$150. B 315, p 220. Dated August 31, 1907.  
G Keanahe Pukohola and wf to P C Beamer, M; int in lot 18 of gr 4881, Volcano rd, Puna, Hawaii. \$150. B 307, p 419. Dated January 25, 1909.  
Manuel Burans and wf to Antone R Souza, Jr, D; 8 a in hui land, Ulumalu, Hamakua, Maui. \$100. B 315, p 213. Dated January 4, 1909.  
Jeremiah Walawala and wf to Kaeleku Sugar Co, Ltd, D; 3 a of gr 2930, bldgs, etc, hui land, Kawela, Hana, Maui. \$60. B 315, p 215. Dated January 25, 1908.  
Jeremiah Walawala and wf to Kaeleku Sugar Co, Ltd, D; 3 a of gr 2930, hui land, Kawela, Hana, Maui. \$54. B 315, p 216. Dated January 14, 1909.

### UNCLAIMED LETTER LIST

List of letters remaining unclaimed for in the general delivery for the week ending January 30, 1909:  
Albrecht, John A Maguire, Mrs J  
Arthur, Miss Eda Martin, H L  
Baker, Mrs Annie K Milton, Jack  
Beckley, Mrs G M Moore, Mrs W P L  
Becher, Mrs Olsen, Chas  
Fohanna Davis Parker, Samuel, Sr  
Rissell, Mrs L L Parker, H A  
Blaisdell, Rodrick K Patterson, Mary  
Cain, Jesse M Pearson & Potter  
Cooper, Mrs Frank B Perry, Miss Lucy K  
Conrad, George Perkins, R G  
Conrad, Geo S Pine, George  
Cross, Alexander Randolph, C H  
Cummings, Rev J H Richardson, A  
Davey Photo Co Ross, Miss Frances  
Eaton, Jack (2) Roberts, Mrs L S  
Etz, Mrs Emma Robbins, Geo  
Faine, Miss Mary Scott, G B  
Freimann, Mr Sole, Miss Edith (2)  
and Mrs Spurnbeck, Mrs  
Gibbs, Charles A Tamble, Elwood  
Glass, Harry Thomas, Sen H  
Gran, Frank Tibbitts, Mr and  
Hancock, Dr Mrs R  
and Mrs Tolman, Mrs T S  
Jackson, W Turner, Mrs W A  
Kavser, Mrs K Von Drasevich,  
Koefitz, F A C Pop (2)  
Louis, Mrs Jessie M Watson, Mrs  
McIntosh, Mrs W P Louisiana  
Marshall, Harry Whatkins, John T  
Macfarlane, Mrs Wilson, A W  
Clarence Willy, Mrs Henry  
Packages.  
Adams, Miss Noble, Mrs George  
Cornelia Shollers, Oliver  
Bowen, Mrs A T E (2)  
Bursey, Nurse Smith, Miss  
Cooke, Mrs James Katherine  
Please ask for advertised letters.  
JOSEPH G. PRATT,  
Postmaster.

## NEWELL'S GOOD WORK CONTINUES

Leading Article in An Eastern  
Trade Journal Booms  
Hawaii.

What Director Newell of the Reclamation Service has done in the line of promotion work for Hawaii has been commented on considerably of late by Governor Frear, who with Mr. Newell, issued statements relative to the islands and the opportunities to be found here while he was in Washington, but, from the following clipping from the Baltimore Trade Journal, it would appear that Newell is not by and means letting up in his boosts for Hawaii. The following article, which was edited by Mr. Newell in Washington, appeared in the January number of the Trade Journal:

Frederick H. Newell, Director of the Reclamation Service of the Department of the Interior, who has just returned from an inspection tour of the Hawaiian Islands, is planning extensive government investigations for that distant part of the United States. He was assisted in his investigations by Governor Frear of Hawaii, who accompanied him home, and is working with him in his plans which embrace the reclamation of tracts of government land on the islands for agriculture, a general irrigation system and ultimately the improvement of the waterways and harbor facilities for commercial purposes.

The chief industries of Hawaii are the raising of sugar, the raising and canning of pineapples and the cultivation of rice, bananas and a little coffee. Sugar is raised in the lowlands and pineapples are raised on the higher land where the climate is better and more suitable for the employment of white labor, and it is a part of the plan of the government to foster the employment of white labor wherever possible on the islands. The first work planned is said to be the reclamation of many thousands of acres of the high land of the islands, and this decision was reached after a careful study of the possibilities as disclosed by a recent inspection of the large acreage under pineapple cultivation in the higher sections. It is said not to be the intention to suggest the increase of pineapple cultivation, because that field is already largely covered and filled, but it is believed that the land will admit of the introduction of other agricultural industries which will afford equally good opportunities for the employment of white labor.

The influence of American brains, ingenuity, inventions and practical scientific methods upon the pineapple cultivation and canning industry had a great effect in reaching this decision. Only a few years ago an inferior quality and unimportant quantity of Hawaiian pineapples were merely produced without an established market. There are today thousands of acres under scientific pineapple cultivation, and not only is the quantity produced marvelously increased but the Hawaiian pineapple of today is the best in quality on the American market. It was found that where the pineapples were originally either picked green for shipment to distant points the fruit is today permitted to ripen absolutely on the plant, and is then either sliced, crushed or grated entirely by machinery and packed by machinery under the best sanitary conditions, so that American brains and methods have raised the Hawaiian pineapple from a neglected condition in the fruit markets of the United States to a position at the head of the pineapple product of the world. Mr. Newell believes that if such great strides can be made in Hawaii in one agricultural industry it is possible, with the help of the Federal government, to raise the standard of other Hawaiian products in like manner and so make Hawaii a more important possession of the United States and a greater factor in the commercial markets of the world.

## ANOTHER LYMAN TO ENTER WEST POINT

President Griffiths yesterday received a cablegram from West Point, saying that Charles B. Lyman passed his West Point examinations, and ordering him to report for admission on March 1. The message was at once relayed by wireless to Lyman at Hilo, who will make ready to leave for West Point in obedience to orders.

Lyman received his appointment from Delegate Kuhio last fall. He took the examinations the week of January 12 at Fort Shafter under the supervision of a board of which Major Dunning was chairman.  
Lyman is a son of Rufus A. Lyman of Hilo. He is the third member of the family to receive the appointment and to enter the academy. Clarence is now a lieutenant, stationed in Dakota. Albert is a cadet at the academy, and Charles goes to join his brother. All of the boys are graduates of Oahu College.

Besides being an excellent student, Lyman was a leader in athletics at Punahou. He was a star halfback and captain of last fall's victorious team; he was a sprinter and big point winner on the track team, played soccer, and besides was one of the best baseball catchers in the Islands. He played behind the bat for the P. A. Os.

**BISHOP SMITH ON KAUALI.**  
Bishop C. W. Smith, D. D., accompanied by Rev. John W. Wadman, left for Kauai yesterday at 5 p. m. and will preach in the Korean church at Makaweli on Wednesday evening; at Makaweli on Thursday evening; at Eleele, Friday evening; at Koloa, Saturday; at Lihue, English church, Sunday morning, and in the evening at the Korean church; Monday evening, Kapaa; returning to Honolulu, Wednesday, February 10.

Tribune  
Fountain

## PEN

DURABLE, ACCURATE, EASY  
OF ACTION  
SOMETHING NEW  
SEE OUR LINE OF  
POCKET BOOKS

OAT & MOSSMAN

76 Merchant St., near Postoffice

## DISTILLED WATER

CUTS OUT ALL GERMS

Consolidated Soda Water Works

COMPANY PHONE 71

## Chocolates

THE REAL THING

FRESH EVERY DAY

THE PALM CAFE.

HOTEL, NEAR UNION

## The Boy Will Go Faster

IF HE BELONGS TO OUR STAFF

OF FLEET SPRINTERS

Territorial Messenger Service

Phone 361

## See Our Prints

WAH YING CHONG

NEXT THE FISHMARKET

Andrew Usher's  
Scotch Whiskey

O. V. G. Special  
Reserve

W. O. PEACOCK & CO., LTD.,  
AGENTS.

Drink  
**Rainier**  
Beer  
AND KEEP HEALTHY.

AUTOS and GARRIAGES  
REPAIRED

SCHUMAN CARRIAGE CO., LTD.  
Merchant Street, near Alakea

Valentine Day  
Comes Next

A fine assortment of VALENTINES and TOKENS in Postals, Hearts, Telegrams, Cablegrams, Marconigrams, Telephones, Bill-let-Donx, Cards and Novelties, in dainty, inexpensive lines, at

THRUM'S BOOK STORE  
FORT STREET



TO THE FRONT  
L. G. Smith & Bro.

Visible Typewriter  
G. W. Macfarlane & Co.,  
23 HOTEL ST. WAVERLEY BLK.  
Sole Agents

READ THE ADVERTISER  
WORLD'S NEWS DAILY

PRODUCTS OF

## Love's Bakery

Machine-manufactured Goods; Baked  
Daily

Saloon Pilot

Pilot and

Soda Crackers

are for sale by the following firms:

HENRY MAY & CO.

J. M. LEVY & CO.

T. H. DAVIES & CO.

H. HACKFELD & CO.

C. J. DAY & CO.

GONSALVES & CO.

## "Benjamin" CLOTHES

The Kash Company, Ltd.

AGENTS FOR

Republic

**TIRES**

Stepney

**WHEELS**  
Associated Garage  
LTD.

MERCHANT AND BISHOP STS.

## TO ORDER

AND FIT ASSURED

GENTLEMEN'S CLOTHING

J. E. ROCHA.

HARRISON BLK. FORT ST.

High and Low

ALL JAPANESE

THE HAWAII SHINPO

An authority among Japanese News-  
papers, published in the Territory of  
Hawaii.

The only Illustrated 10-page Japan-  
ese Daily in existence.

12-page Sunday Issue is the Best Ad-  
vertising Medium.

Job Work in Japanese and Chinese a  
specialty.

## BEER

SERVED PROPERLY—A long  
glass and a good one.

Orpheum Saloom

CHAS. LAMBERT, Proprietor

KWONG HING CHONG CO.

CHINESE GRASS LINENS,

LADIES' SHIRTWAISTS, PONGEE,

CHRISTMAS GIFTS.

1024 NUUANU STREET

P. M. POND

General Contractor

PLOWING, GRADING,

HAULING, ROCK, SAND, ETC.

Let Us Submit an Estimate

P. M. POND - Telephone 890

## Real Frames

MADE TO LAST—All Shapes

Pacific Picture Framing Co.

NUUANU, BELOW HOTEL

Y. WO SING & CO.

1186-1188 NUUANU STREET

Fresh

CALIFORNIA FRUITS

P. O. Box 952 Telephone 238

**SHARP SIGNS**

"MAKE GOOD"

**Tom Sharp**

THE SIGN MAN

ELITE BUILDING Phone 397

Send Your Suit

TO THE

EAGLE DYEING AND