

STEAMER TABLE.	
From San Francisco:	
Alameda	Nov. 25
Coptic	Dec. 3
For San Francisco:	
Gaelic	Nov. 28
Alameda	Nov. 30
Siberia	Nov. 30
From Vancouver:	
Moana	Dec. 17
For Vancouver:	
Aorangi	Dec. 14

A Bulletin Ad will profitably crowd the

# EVENING BULLETIN

3:30 O'CLOCK

Crowd

EDITION

VOL. XVI. No. 2930

HONOLULU, TERRITORY OF HAWAII, FRIDAY, NOVEMBER 25, 1904

PRICE 5 CENTS

## EXECUTIVE AND JUDICIARY AUTHORITY CLASH

### Gold Lined Palms

Alleged and Alleged

### Filching Fingers

No more indictments remain on the secret file. The last of the sealed presentments in Judge Gear's court by the Grand Jury Wednesday afternoon was this morning made public. Following are the twenty-one true bills:

Territory vs. Harry C. Mossman, former clerk in the police bureau, five separate indictments, each indictment containing three separate counts, the several presentments alleging the embezzlement of fifteen distinct sums of money, as follows: September 20, 1902, \$14; November 7, 1902, \$9; June 16, 1903, \$9; June 18, 1903, \$9; June 25, 1903, \$9; February 15, 1904, \$10; September 30, 1904, \$4.90; September 30, 1904, \$13.50; August 31, 1904, \$17.45; July 31, 1904, \$15; March 21, 1904, \$15.75; August 31, 1904, \$13.50; August 31, 1904, \$17.25; September 30, 1904, \$11; September 30, 1904, \$9.65.

Territory vs. Ah Tam, Ah Koon, Ah Hee, Ah Young, Ah Cheong, Ah Woy, Ah Wong, Ah Kam, Ah See, Ah Chong, Ah Chin, and Ah Wai, gambling.

Territory vs. A. McDuffie, alleged acceptance of bribes by an executive officer, five indictments; one alleges the acceptance of \$10 from one Lung Wo, who sought protection for his "pat kan" gambling game; the other four bills charge the acceptance, in each case, of \$5 from Ching Mun Gar, who desired protection for his "che fa" gambling game.

Territory vs. Komatsu and Matsui,

nishi, maintaining and conducting a lottery.

Territory vs. M. P. Lagan, formerly ticket seller at the Honolulu depot of the O. R. & L. Co., charged with the embezzlement of \$220.50 of the railway company's money.

Territory vs. Ah On, acceptance of bribes by an executive officer; three separate indictments, each charging the acceptance of \$15 from one Ching Mun Gar, who wanted protection for his "che fa" gambling industry.

Indictments previously reported: Hoopli, "Barefoot Bill", burglary; Josee Reevira, vagrancy; Henry Romero, vagrancy; Otomatsu Kawano, manslaughter, the killing of a fellow Japanese in a quarrel at Waimanalo plantation.

In criminal court this morning, in arraignment proceedings, Attorney George A. Davis appeared for Former Special Police Officer A. McDuffie, whose plea was reserved until Monday; Davis also appeared for Mossman, who pleaded guilty to the charge of embezzlement, and gave notice of a motion for reduction of bail; plea was reserved in this case also. R. W. Breckons was on hand in the interests of the dozen Chinese, whose names all begin with "Ah", charged with gambling; their pleas were reserved for Monday next.

Attorney Frank Thompson appeared for Lagan, the former railway employee.

At noon argument was heard on the motion of Attorney Davis for the reduction of the bail of Mossman. Mossman's bond was originally fixed at \$5,000; his attorney considers this excessive, inasmuch as the defendant is not charged with the embezzlement of public funds; he is alleged to have put to his own use certain moneys by right belonging to newspapers for official advertising, and is therefore accused of embezzling private funds, an offense not so grievous as the misappropriation of funds belonging to the people.

As the trial of the Territory vs. Stephen Mahaulu, embezzlement, was awaiting continuance, most of the arraignments consequent upon the bunch of indictments above noted, were held during the noon hour.

Gan Gin, lottery tickets in possession, represented by Attorney J. W. Cathcart, was arraigned and a police court case which had been appended (same charge) was nolle'd.

When Breckons' dozen alleged gamblers of Oriental extraction were lined up for arraignment one of the members of the Mahaulu jury remarked: "They put me in mind of what the Grand Jurors of the Territory will look like ten or fifteen years from now."

Read "Wants" on page 6.

### ALAMEDA MEETS STORMY WEATHER

Popular Steamer Carries Many Well Known Passengers.

BRINGS FULL FREIGHT AND FULL SIZED MAIL

REV. ALEX. MACKINTOSH AND MANY OTHER PROMINENT PEOPLE RETURN FROM DISTANT PLACES.

The Oceanic steamship Alameda arrived from San Francisco this morning and was docked at the Oceanic wharf at about 9:15 o'clock. The reliable old liner was a couple of hours late, the delay being caused by rough weather and a heavy swell which were encountered throughout the entire voyage. The passage was made in five days nineteen hours and fifty-five minutes. During the voyage the following vessels were sighted:

November 19, 4:40 p. m., Lat. 37.23 N. Long 123.52 N., passed Steamer Artye, bound S. W.; November 19, 9:15, Lat. 36.53 N. Long 125.24 W., met a three-masted schooner bound N. E.; November 20th, 11:05 a. m., Lat. 35.41 N. Long 129.00 W., met Company's steamer Sonoma, bound N. E.; November 22nd, 12:40 p. m., Lat. 30.21 N. Long 132.12 W., met steamer Korea, bound N. E.

The Alameda brought a considerable number of passengers, among them being many well known island people. Alexander Mackintosh, Mrs. von Holt and Miss von Holt return from an extensive trip to Europe. With them is Miss Louise Lefferts, a relative from England. The popular clergyman and his family were greeted by a large number of friends on their arrival.

J. K. Brown, of the Immigration Station and Mrs. Brown return from a visit on the mainland.

H. C. Carter, the son of J. O. Carter, returns from a trip to the Coast.

Mrs. Geo. Chalmers is the wife of Manager Chalmers of the Waimanalo Plantation.

Henry Crawford is a wealthy tourist from Belfast, Ireland, who will take a trip to Hawaii to see the Volcano before he continues on his journey around the world, via Australia.

Mrs. L. Hilmer and Miss Hilmer are the mother and sister of a teacher at the Kamehameha school.

Rev. J. M. Lygate is the pastor of the Foreign Church at Lihue, Kauai.

A. H. Moffitt is the travelling passenger agent of the Southern Pacific railroad.

Geo. Osborne is the manager of the Kukaia Mill Co. in Hamakua, Hawaii. Miss M. Stankard, the stenographer of the Wilder Steamship Co., returns from a short visit to the Coast.

Mrs. J. Usborne is the wife of the pastor of St. Clement's chapel.

Judge Edings, formerly Judge of the Kona Circuit Court, returns after a visit to the mainland.

G. N. Wilcox and G. P. Wilcox are well known Kauai capitalists.

The Alameda left San Francisco at 10 a. m. November 19, seven hours ahead of the Manchuria, and consequently took the lion's share of the mail, 273 bags. She brings a cargo of 1800 tons of general merchandise.

### JAP HANGS HIMSELF

A Japanese who had been ordered deported to Japan, committed suicide by hanging himself at the Immigration Station last Thursday.

Has long toes—The canal mule.

ON MONDAY, NOV. 21st, Wells, Fargo & Co. EXPRESS

Will begin to operate on ALL passenger trains of O. R. & L. Co. Free wagon service in business district, Honolulu.

Phone Main 156 OFFICE—MASONIC TEMPLE.

### GOVERNOR CARTER Is Cited For CONTEMPT OF COURT

Governor George R. Carter is cited by Judge Gear to show cause why he should not be punished for contempt of court, in that the executive has refused to obey a subpoena calling him as a witness in the case of the Territory vs. Stephen Mahaulu, alleged embezzlement of Land Office funds, now on trial.

Early this afternoon Defendant Mahaulu, represented by Attorney Frank Thompson, subpoenaed Governor Carter.

The Governor was wanted to give testimony in regard to whether or not he holds the undated resignation of Territorial Auditor Fisher.

It is contended by the defense that the fact that the undated resignation of the Auditor is held by the Governor, if such is the case, and it is supposed to be the case, places the Auditor in a position that might render his testimony open to criticism as being that of an employee of the Government whose position may be taken away from him at any moment by the will or whim of the executive.

Auditor Fisher is one of the most important witnesses for the prosecution and it seems to be the attitude of the defense that, with his undated resignation hanging over his official head, the Auditor's testimony might be viewed in a light other than would prevail were he not subject to instant dismissal at the hands of the Governor.

When Court opened at 2 o'clock this afternoon, it being expected that the Governor would at that time present himself, Mr. Carter was not on hand. Deputy Attorney General M. P. Prosser, prosecuting Mahaulu, arose to say that the Governor wished to convey his compliments to the Court and to say that he would not present himself.

"Let citation issue," said Judge Gear, "ordering George R. Carter, Governor of the Territory of Hawaii, to appear in this Court on Monday morning next at 10 o'clock, to show cause, if any he may have, why he should not be adjudged guilty of contempt of this Court and punished therefor."

The subpoena served upon the Governor specified that it was required that he take with him into court, if it was in his possession, the undated resignation of Colonel Fisher as Auditor of the Territory.

Immediately upon Judge Gear ordering that the Governor be cited for contempt, United States District Attorney R. W. Breckons approached the bench and held the judge in earnest conversation.

Prior to issuing the order, the Court stated that it was with regret, etc., that the order became necessary, but that he saw no reason why a Federal officer should hold himself above the law; since the Governor refused to obey the subpoena, it became the duty of the Court to proceed in the case of the Governor as it would, as a matter of duty, have to proceed in any other case.

The Mahaulu trial proceeded, with E. S. Boyd on the stand, after the making of the order for citation.

It is contended, in view of the Governor holding the undated resignation of Auditor Fisher, that Fisher is not in reality the Auditor and that therefore his testimony should be stricken from the records of the court.

BLOCKS OF McBRIDE TO LOCAL BUYERS

Two thousand five hundred shares of McBryde were sold on the Stock Exchange today at \$6.

It is stated that the stock sold all belongs to one man and was bought by several local parties in good round blocks. The inquirers for McBryde at \$5 are reported very numerous and it is believed a great deal more could be sold at this figure. McBryde stock is scattered around among a large number of holders who bought it at around par and they are reluctant to part with it at prevailing figures.

The late Sir James Steel, who erected more houses in Edinburgh than any man before him, was the son of a Lanarkshire farmer.

### JAPS CAPTURE OUTER DEFENCES

[Associated Press Special Cable.] TOKIO, Japan, Nov. 25.—The defenses of the Rihling and Sungshu mountains have been captured by the Japanese with the exception of the parapets, which the constant shelling is damaging. The occupation of the forts by the Japanese is expected soon.

ATTACK ORDERED TO CAPTURE FORTS AT ALL HAZARDS. WASHINGTON, D. C., Nov. 25.—It is reliably reported that the Japanese have been ordered to renew the attack on Port Arthur today and take the main defenses at any cost.

ROOSEVELT EN ROUTE. WASHINGTON, D. C., Nov. 25.—President Roosevelt is en route to St. Louis.

GERMANY ACCEPTS. WASHINGTON, D. C., Nov. 25.—Germany has accepted the principle of another Hague conference.

CYCLIST MICHAEL DEAD. NEW YORK, N. Y., Nov. 25.—Jimmy Michael, the noted bicyclist, is dead.

NORTH SEA CONVENTION. ST. PETERSBURG, Russia, Nov. 25.—The North Sea convention has been signed.

SAN FRANCISCO, Cal., Nov. 25.—SUGAR: 88 analysis Beets, 14s 1 1/2d. Previous quotation, 13s 10 1/2d.

### American-Hawaiian Line Will Begin New Important Schedule

H. Hackfeld & Co., the local agents of the American-Hawaiian Steamship Co., have been enabled to announce an important change in that company's plans regarding the local freight traffic which will take place in the near future. The A. H. Co. will in the beginning of the coming year, inaugurate a regular fast freight service between this port, the Sound and San Francisco.

While the A. H. boats have been running before in the service described above the principal change will be in the fact that the steamships will be despatched at regular three-week intervals instead of at irregular intervals. In the form of an interrogation the Court suggested the possibility of the juror's strenuous business occupation superinducing the delusion as to the excusing of the jurors until Monday. Dutra denied the velvety impeachment.

The spirit of Thanksgiving apparently made the kind-hearted Judge still more kind-hearted, for he let the matter pass after holding the delinquent jurymen in awful suspense for a few minutes, talking on the seriousness of keeping eleven men, the Territory and the Court waiting for half an hour.

Dutra took his seat, a relieved man. He evidently expected to be fined ten or twenty dollars.

Promptly at noon the jurors were excused and the case continued until 2 o'clock, way being made for the arraigning of several persons under indictments elsewhere noted. As an example of the strenuous legal battle between the able attorneys (Continued on Page 4.)

### PASSENGERS DEPARTED.

For Maui, Kona and Kau ports, per steamer Mauna Loa, Nov. 25.—W. H. Alby and wife, Miss S. B. Hoar, Mrs. A. F. Linder, Miss Conant, W. W. Bruner, J. Kirkland, Dr. E. Armitage, Mon Yin, Alona, Dr. Deas, Mrs. Deas, Henry Crawford, A. O. Stevens, C. G. Willis, Paul Makaukane, A. Q. Marcellino, Father James, Miss Anna Paris, Miss Flo. Wadman.

The steamer Ke Au Hou arrived from Maui ports this morning. She reports the survey steamer Patterson at Lahaina. The Patterson has been in Kaula battle between the able attorneys

### TAN SHOES ARE RIGHT IN STYLE

Pretty tans in pretty shapes, with tan stockings, are popular favorites everywhere. Our new stock contains just the size and style you want. All for ladies' wear.

Laird & Schober's Light Tan Oxfords .....\$4.00

Laird & Schober's Dark Tan Oxfords .....\$4.50

made with welt sole and military heel.

Chrome Kid Welt Oxfords, Military Heel .....\$3.50

Tan Calf Skin Lace Boot, Military Heel .....\$4.50

Chrome Kid Lace Boot, Welt or Turn Sole .....\$3.50

Manufacturers' Shoe Co., Ltd. 1057 FORT STREET.

### Money Management

We have just prepared a little booklet entitled

"Money Management."

It is free for the asking at our office.

HAWAIIAN TRUST CO. Limited, FORT ST.



Alfred Benjamin & Co. MAKERS \* NEW YORK Correct Clothes for Men

### Full Dress Suits And Tuxedos

A better fit, the same fabrics, fine, high class hand tailoring, the absolute correctness, the irreproachable appearance, provided by the best custom tailor at HALF HIS PRICE.

This label guarantees it.

Alfred Benjamin & Co. MAKERS \* NEW YORK

For sale only by

THE KASH CO., LIMITED



## MASONIC TEMPLE

**PEERLY CALENDAR.**

**MONDAY**  
Eastern Star—Regular.

**TUESDAY**  
Honolulu Commandery—Red Cross.

**WEDNESDAY**  
Pacific—Third Degree.

**THURSDAY**  
Le Progres—Third Degree.

**FRIDAY**  
Eastern Star—Degree Work.

All visiting members of the order are cordially invited to attend meetings of local lodges.

### HARMONY LODGE, No. 3, I. O. O. F.

Meets every Monday evening at 7:30 in I. O. O. F. Hall, Fort street.  
F. M. McCREW, N. G.,  
E. R. HENDRY, Secretary.  
All visiting brothers very cordially invited.

### MYSTIC LODGE, No. 2, K. of P.

Meets every Tuesday evening at 7:30 o'clock in K. of P. Hall, King street. Visiting brothers cordially invited to attend.  
JOHN WALKER, C. C.  
F. WALDRON, K. R. S.

### OAHU LODGE, No. 1, K. of P.

Meets every Friday evening at 7:30 P. M. Hall, King street, at 7:30. Members of Mystic Lodge, No. 2, Wm. McKinley Lodge, No. 3, and visiting brothers cordially invited.  
General Business.  
C. M. WHITE, C. C.  
E. M. COLEMAN, K. R. S.

### HONOLULU LODGE 616, B. P. O. E.

Honolulu Lodge No. 616, B. P. O. E., will meet in their new hall, on Miller and Beretania streets, every Friday evening.  
By order of the E. R.  
HARRY H. SIMPSON, Secretary.  
J. H. FISHER, M. R.

### Wm. M'KINLEY LODGE No. 8, K. of P.

Meets every Saturday evening at 7:30 o'clock in K. of P. Hall, King street. Visiting brothers cordially invited to attend.  
Regular Business.  
H. T. MOORE, C. C.  
M. M. JOHNSON, K. R. S.

### HONOLULU HARBOR, No. 54, A. A. of M. & P.

Meets on first and third Sunday evenings of each month at 7 o'clock at E. of P. Hall. All sojourning brethren are cordially invited to attend.  
By order Worthy Captain:  
E. H. PARKER.  
J. M. RADWAY, C. C.

## FIRE INSURANCE

**THE B. F. DILLINGHAM CO. LIMITED,**  
General Agent for Hawaii  
Atlas Assurance Company of London.  
Phoenix Assurance Co. of London.  
New York Underwriters' Agency.  
Provident Washington Insurance Co.  
Phoenix Insurance Co. of Brooklyn.  
4th floor, Stangenwald Bldg.

**LEATHER GOODS, MATCH BOXES, POCKET MIRRORS, THERMOMETERS, CORKSCREWS, RULERS and SCHOOL SUPPLIES; PREMIUMS of every description, at the LOWEST PRICES. Also a fine line of ALUMINUM GOODS. Up-to-date BUSINESS Men use our goods to advertise their and please customers. Write us if in need of anything.**

**THE SAULNIER MFG. CO.**  
200 MELROSE AVE. NEW YORK, N.Y.  
**ICE** Manufactured from pure distilled water  
Delivered to any part of city by courteous drivers.  
**Oahu Ice and Electric Co.,**  
Kewalo. Telephone Blue 3151

**COTTON BROS. & CO.**  
ENGINEERS AND GENERAL CONTRACTORS.  
Plans and estimates furnished for all classes contracting work.  
Tel. Main 245.  
ROOM 300, BOSTON BLK., Honolulu.

**W. W. Wright Co.**  
Limited,  
have opened a horse-shoeing department in connection with their carriage shop, etc. Having secured the services of a first-class shoeer, they are prepared to do all work entrusted to them in a first-class manner.

**Building Materials**  
OF ALL KINDS.  
Dealers in Lumber and Coal  
**ALLEN & ROBINSON,**  
Queen St., Honolulu.

**Weekly Edition of the Bulletin, 9¢ per year.**

USE OUR

## Mosquito Powder

And be able to read your newspaper in peace.

**THE Hollister Drug Co., LIMITED.**

1056 Fort Street.

## MILLER'S BOCK BEER

THE PUREST THE MILDEST THE HEALTHIEST BREW.

LIQUOR DEPARTMENT.

**Hoffschlaeger Co.,**

Limited,

25 King Street, near Bethel

### Wm. G. Irwin & Co., Ltd.

WM. G. IRWIN, President and Mgr.  
JNO. D. SPRECKELS, 1st Vice Pres.  
W. M. GIFFARD, 2nd Vice Pres.  
H. M. WHITNEY, Jr., Treasurer  
RICHARD IVERS, Secretary  
A. C. LOVEKIN, Auditor

**SUGAR FACTORS AND COMMISSION AGENTS**  
Agents for the  
SCOTTISH UNION & NATIONAL INSURANCE COMPANY OF EDINBURGH  
WILHELMIA OF MAGDEBURG GENERAL INSURANCE COMPANY.  
ASSOCIATED INSURANCE COMPANY of Munich and Berlin.  
ALLIANCE MARINE & GENERAL ASSURANCE CO. Ltd., of London.  
ROYAL INSURANCE COMPANY OF LIVERPOOL  
ALLIANCE ASSURANCE CO. of LONDON.  
ROCHESTER GERMAN INSURANCE COMPANY of NEW YORK.

AGENTS OF THE  
**Oceanic Steamship Company**  
OF SAN FRANCISCO, CAL.

**DAVID DAYTON**

127 MERCHANT STREET.

## Lots for Sale

in KAPIOLANI PARK ADDITION  
KALIHI, and other desirable localities.  
Also 1 JUMPER-BACK BUCKBOARD, second-hand; good as new.

## Horse Shoeing.

**W. W. Wright Co.**

**W. W. Wright Co.**  
Limited,  
have opened a horse-shoeing department in connection with their carriage shop, etc. Having secured the services of a first-class shoeer, they are prepared to do all work entrusted to them in a first-class manner.

**Building Materials**  
OF ALL KINDS.  
Dealers in Lumber and Coal  
**ALLEN & ROBINSON,**  
Queen St., Honolulu.

**Weekly Edition of the Bulletin, 9¢ per year.**

## LOCAL AND GENERAL

Read "Wants" on page 6.

R. W. Shingle is on Maui on business.

The rush has commenced at Wall, Nichols for holiday gifts.

J. K. Kalamianale denies allegations of H. May & Co. suit on bill.

The St. Andrew's Cadets celebrated Thanksgiving at Pearl Harbor.

Have your old Panama hat made like new. Globe Clothing House.

**POPULAR PRICES FOR "THE SPY," OPERA HOUSE SATURDAY NIGHT.**

The Zenda Social Club will give a dance this evening on the Odd Fellows roof garden.

Take thought for the morrow, and lay in a stock of irrigation. Get it at the Pantheon.

Judge de Bolt rules for defendant in the ejectment suit of Blanche Lewis vs. I. K. Kahina.

Orders taken for fresh violets. Inquire Harold Gear, 1286 Emma St. Telephone, Blue 2371.

Jas. F. Morgan will sell wines, liquors, etc., at his saleroom on Tuesday, November 29, 1904.

Oahu Lodge, No. 1, K. of P., will meet tonight at 7:30 o'clock in K. of P. Hall, King street.

Just arrived ex bark "Olympic," 25 head of fine mules. Enquire Schuman Carriage Co., Young building.

The first rehearsal in the Opera House of the "House That Jack Built" will be held tomorrow morning.

Only today and tomorrow for the big bargains in embroideries at Blom's in Progress Block. Don't miss them.

Black attracts heat, white reflects it. "Arable," being white only, reflects; that is one of the reasons that it cools iron roofs 15 degrees.

Extra mince, cranberry, pumpkin and apple pies for Thanksgiving Day, delivered to any part of the city. Hart & Co., Ltd. Telephone Main 182.

Jas. F. Morgan just received from San Francisco a few fire extinguishers, same pattern as is used in the Government buildings. For sale cheap.

**PRICES FOR "THE SPY," SATURDAY NIGHT AT THE OPERA HOUSE** 50c, 75c, and \$1.00.

The Honolulu Symphony Orchestra will meet for rehearsal tonight. A number of the cadets of the German training ship are expected to be present.

Eastman's flash sheets have several distinct advantages over flash powders. They burn more slowly and therefore do not startle the sitter. They give a softer light, therefore the shadows are not so harsh. You can get them at Honolulu Photo-Supply Co.

There were two hundred guests at the Hard Times social and dance given by Excelsior Lodge, I. O. O. F., Wednesday evening. Prizes for winning costumes were awarded as follows: Ladies' first prize, Mrs. Fred Turner; gentlemen's first prize, J. A. McNamara; gentlemen's second prize, F. G. Noyes.

**ART LEAGUE ELECTS OFFICERS.**  
At the business meeting of the Kilauea Art League Wednesday the following officers were elected:

President, Philip H. Dodge; vice-president, A. R. Gurrey Jr.; secretary and treasurer, Mrs. L. Marshall; auditor, Percy Pond; directors, E. A. P. Newcomb and A. F. Judd.

The trustees are F. A. Schaefer, E. A. Mott-Smith, B. F. Dillingham, C. M. Cooke, H. Mackintosh, W. M. Graham. New members admitted are: Mrs. H. Holmes, Miss B. Johnson, Mrs. J. W. Podmore, Mrs. J. P. McCrosson, Miss Alice Spalding, Mrs. C. R. Brunson, Miss McCarthy, Mrs. Wm. Monarrat, Mrs. L. L. McCandless, Wm. H. Pflueger, F. W. Schultz.

**PASSENGERS ARRIVED.**  
From San Francisco, per S. S. Alameda, Nov. 25.—Arthur Briggs, E. N. Brown, J. K. Brown, Mrs. Brown, Mrs. T. S. Campbell, H. C. Carter, Mrs. Geo. Chalmers, G. W. Clyde, Henry Crawford, J. Fawcett, Herman Fiedler, A. H. Hankerson, Mrs. Hankerson, Mrs. L. Hilmer, Miss Hilmer, J. Kirkland, Miss Louise Loefferts, J. M. Lydgate, Master Lydgate, nurse and infant; A. M. Moffitt, Rev. Alex. Mackintosh, Geo. Osborne, Mrs. E. C. Rhodes and child, Mrs. C. Russell, Thos. Saunders, Miss M. Slankard, Mrs. J. Osborne, Mrs. von Holt, Miss M. R. von Holt, W. P. Welfare, Miss Elizabeth White, G. N. Wilcox, G. P. Wilcox, Judge Edings, Mrs. McCarthy.

**PASSENGERS DEPARTED.**  
For Kaula ports, per stmr. Mikahala, Nov. 24.—Francis Gay and wife, A. Haneberg, Chas. Elston, and maid, H. Ramsey, M. A. Rego, J. P. Spalding and family, Miss Lucy and maid, Geo. H. Fairchild, J. H. Arent, Mr. Haernish, F. C. Betters.

Neatly furnished rooms at the Poplar, \$1, \$1.50 and \$2 per week. 1249 Fort Street.

**Dr. N. S. Fairweather**  
MANAGER.

**NEW YORK DENTAL PARLORS**  
107 FORT STREET;  
Everything clean and thoroughly sterilized. Prices the lowest in the city. See my samples at the entrance. NO LADY ASSISTANT.

## WORLD NEWS BY CABLE

Associated Press Cable.

**CUBA MUST CLEAN UP.**

Washington, Nov. 23.—Secretary Hay has notified the Cuban government that it must improve the sanitary conditions at Santiago and elsewhere in the island.

**STEAMERS COLLIDE.**  
New York, Nov. 23.—A float collided yesterday with the German steamer Nord Amerika, tearing a big hole in her hull. The vessel at once returned to her dock. She had 1400 steerage passengers.

**GREAT ATLANTIC STORM.**  
St. John's, N. F., Nov. 23.—A great storm is raging along the coast. The steamer Stord has foundered and her crew of fourteen are lost. The schooner Orpheus is believed to have gone down with a crew of ten.

**STRIKES IN FRANCE.**  
Paris, Nov. 23.—There are serious strikes in the arsenals and powder factories at Brest and Toulon.

**SNOWSTORM IN BRITAIN.**  
London, Nov. 23.—Great Britain is experiencing an unprecedented snowstorm.

**STEAMER DONALD LOST.**  
Sydney, Cape Breton Island, Nov. 23.—The steamer Donald is missing with a crew of fifteen.

**BATTLE IMMINENT.**  
St. Petersburg, Nov. 23.—There are indications of a battle south of Mukden. The rivers are now frozen, permitting military operations on them.

**TURNING RUSSIAN LEFT.**  
Mukden, Nov. 23.—There are signs of a Japanese turning movement on the Russian left. On account of the enemy's fire, rations have been sent to the men in the trenches for the night.

**PORT ARTHUR DEMORALIZED.**  
Tokyo, Nov. 23.—There are increasing reports from Port Arthur. The men coming into the Japanese lines say the garrison is demoralized.

**BALTIC SQUADRON MOVES.**  
Port Said, Nov. 23.—The Russian sea and squadron on its way to the Far East, has been sighted.

**MUKDEN BATTLE BEGUN.**  
Mukden, Nov. 23.—The Japanese attacked Pootung on the 22nd and were repulsed with heavy loss.

The Cosacka routed 1500 bandits under Japanese officers near Kailan and left 200 dead on the field.

**PRINCE FUSHIMI ROBBED.**  
St. Louis, Nov. 23.—Prince Fushimi's apartments were robbed last night of \$5000 worth of jewelry.

**UNPARLIAMENTARY.**  
Vienna, Nov. 23.—The sitting of the Reichsrath has been closed owing to disturbances.

**THANKSGIVING FOOTBALL.**  
Denver, Nov. 23.—Stanford 35, Colorado 0.

Seattle, Nov. 23.—Washington 6, California 6.

Philadelphia, Nov. 23.—Pennsylvania 34, Cornell 9.

**RUSSIAN MEMORIAL.**  
St. Petersburg, Nov. 23.—The Zemtso memorial has been presented to the czar.

**ROOSEVELT TO ST. LOUIS.**  
Washington, Nov. 23.—President Roosevelt has started for St. Louis.

**CAPTURED CONTRABAND.**  
Chefoo, Nov. 23.—The steamer Tungchow has been captured while trying to run the Port Arthur blockade with 39,000 tons of meat.

**A GALLANT DON.**  
Mukden, Nov. 23.—Don Jamie, son of the Carlist pretender, who is serving with the Russians, was decorated for gallantry.

**ONE SHARE ONE DOLLAR PER MONTH.**  
The Thirtieth Series of Stock in the Pioneer Building & Loan Association was issued in October, 1904, and is now open for subscription. The membership fee of fifty cents per share and the monthly dues are one dollar per month per share. The stock draws much better interest than a savings bank.

Further information can be obtained from A. V. GEAR, Secretary, 122 King St.

**MR. DOOLEY**  
and MRS. DOOLEY, of Hawaii, will appear in The Saturday Bulletin. Mr. Dooley will write on the INTELLECTUAL LIFE and MRS. DOOLEY on COUNTY GOVERNMENT. A sixteen-page paper. The biggest and the best. Be sure you get the SATURDAY BULLETIN.



**A. N. SANFORD,**

BOSTON BUILDING, FORT STREET

OVER MAY & CO.

**Handsone Iron Beds**

Elegant new stock arrived in Alameda and now open mass, with enameled with brass trimmings and white enameled plain.

**Porter Furniture Co.,**  
Alexander Young Building.

**BATH,**

THE

**PLUMBER,**

165 S. King St.

TEL MAIN 61

**Our \$65 WHITE BRONZE MONUMENTS**

Are marvels of beauty and durability. They stand 5 feet 8 inches, the four sides are fitted with removable tablets with raised letters. Endorsed by "The Scientific American" as most perfect and strictly everlasting. Beautiful designs and prices at Polmore's office, Bethel Street.

H. CANNON, Sole Agent for Islands Box 1.

Tel. Main 339. Res. Tel. White 53

**Mrs. E. M. Taylor,**

FLORIST.

Alexander Young Building. Strawberry and Carnation Plants for sale.

**The Lewin-Meyer Co.**

Epicurean and Palace Goods

**E. J. WALKER,**

Wholesale Agent.

TO ARRIVE NOV. 25th.

**Burbank Potatoes and Oregon Apples**

CHEAP.

**GERTZ BROS.** Tel. White 3231

**H. PURDY,**

629 South King Street, Adjoining W. Wright's Carriage Factory.

Carpenter and Builder, Store Fitting and General Jobbing; All Work Guaranteed; Estimates given; orders solicited.

**ENGINEERS**

C. H. KLUEGEL,

Member American Society of C. E. Consulting and Constructing Engineer. Irrigation Works, Water Power, Railways, Bridges and Land Surveys.

401 Stangenwald building. Address P. O. Box 796.

**WAIKIKI INN**

A new lot of Bathing Suits; Flash Light for dark nights; Choice Liquors and Beer; Special Lunches and Dinners on Sunday; Rooms to Rent by Day, Week or Month.

**Christmas**

Is near at hand. Place your orders now for

**Haw'n Jewelry**

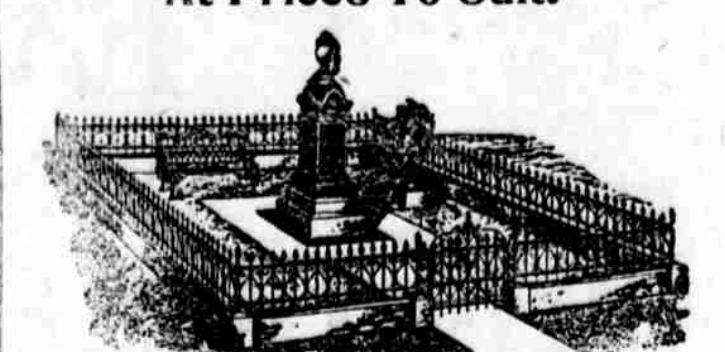
with THOS. LINDSAY, Love B dg. Fort St.

**Perfection**

**Home Bakery**

BRETANIA ST. NEAR EMMA. Home Baking of all kinds fresh every day.

## Granite and Bronze Monuments At Prices To Suit.



**Hawaiian Iron Fence and Monument Works, Ltd**

176-180 KING STREET.

## NOW WE'RE OFF?

We are prepared to supply the People of Honolulu with Freshest of ISLAND MEATS. Also, Garden Produce of all kinds; Butter, Eggs, Chickens, Turkeys, Sucking Pigs, Bacon, Ham; in fact, everything that a FIRST CLASS MARKET is called upon to furnish.

## The ISLAND MEAT CO.,

JAS. E. WESTBROOKE, Manager. TELEPHONE MAIN 76. FORT ST., OPP. LOVE BLDG.

TELEPHONE 38.

**BISMARCK STABLE CO., LTD.**

WAILUKU, MAUI.

TELEPHONE 226.

**BISMARCK BRANCH STABLES**

LAHAINA, MAUI.

Hacks, Carriages, Buggies and Saddle Horses on short notice.

Carriages meet all steamers. Competent drivers, reasonable rates, new vehicles and live stock.

**Alexander & Baldwin**

LIMITED.

OFFICERS.

J. M. Castle.....First Vice President  
W. M. Alexander.....Second Vice Pres.  
J. P. Cooke.....Treasurer  
W. O. Smith.....Secretary  
Geo. R. Carter.....Auditor

**Sugar Factors and**

Commission Agents

AGENTS for Hawaiian Commercial & Sugar Co., Haiku Sugar Co., Pala Plantation Co., Nahu Sugar Co., Kilauea Plantation Co., Hawaiian Sugar Co., Honolulu Railroad Co.

**WM. G. IRWIN & CO., LTD.**

Agents for  
Western Sugar Refining Co., San Francisco, Cal.  
Baldwin Locomotive Works, Philadelphia, Pa.  
Newell Universal Mill Co., Manufacturers of National Cane Shredder, New York, N.Y.  
Paraffin Paint Company, San Francisco, Cal.  
Ohlandt & Co., San Francisco, Cal.  
Pacific Oil Transportation Co., San Francisco, Cal.

**Y. Wo Sing & Co.**

FRUITS AND GROCERIES.

Fresh provisions and fruit by every California steamer. Fresh island butter from Hawaii.

1123 Fort St. and 1188 Nuuanu St. 2875-12

**Gomes Express**

Stand and Office, 716 Fort near Queen St., opposite Packfield building. Draymen, baggage and furniture handled and delivered.

Office Phone Main 298; Residence Phone White 861.

**Yoshikawa**

The Bike Doctor. I have a big stock of wheels. Repairing our specialty. Wheels Retired. Two Stores: 163 King St., Hotel near River.

**SATO,**

188 HOTEL STREET near RIVER.

Bicycles and Bicycle Sundries; Repairing a Specialty. Goods not called for in 30 days will be sold.

**S. SAKI,**

Dealer in Bamboo Furniture, Picture Frames, Grass Linen. Drawn Linen, Table Cloths, Collars, Neckties, etc.

563 S. BRETANIA ST.

**Castle & Cooke, Ltd.**

IMPORTERS

LIFE and FIRE Insurance - Agents

AGENTS FOR—  
NEW ENGLAND MUTUAL LIFE INSURANCE CO. OF BOSTON.  
AETNA FIRE INSURANCE COMPANY OF HARTFORD.

<



## Great Underpriced Sale of Blankets Comforters, Bedspreads, Sheets and Pillow Cases

Now on. For this week only

### Blankets.

White, Tan and Grey, size 10x4  
\$1.15 quality, at

80c pair

White, Tan and Grey, sizes 10x4  
and 11x4, \$1.25 quality. Sale price

95c pair

Extra good value, size 11x4, \$1.75  
quality. Sale price

\$1.45 pair

White, all wool, size 11x4, \$4  
quality. Sale price

\$3.35 pair

Extra quality, white, all wool, size  
11x4, \$4.75 quality. Sale price

\$3.95 pair

All wool, grey or brown, size 10x4,  
\$4 quality. Sale price

\$3.35 pair

All wool, scarlet, extra quality, size  
10x4, \$4.50 quality. Sale price

\$3.60

### Bedspreads

White, full size, 90c quality. Sale  
price

70c

White, full size, \$1 quality. Sale  
price

80c

White P.K., \$1.50 quality. Sale price

\$1.20

White, extra quality, full size, \$2.50  
value. Sale price

\$1.95

### Comforters

Well made, assorted patterns. Sale  
price

\$1.20 each

Well made, full size, \$2.25 quality.  
Sale price

\$1.75 each

Extra fine, full size, very pretty  
patterns, \$3.50 quality. Sale price

\$2.90 each

### Bed Sheets

All hemmed ready for use, size 48x90  
Sale price

50c

All hemmed ready for use 63x90.  
Sale price

55c

All hemmed ready for use, size  
81x90. Sale price

60c

All hemmed ready for use, size  
90x90. Sale price

75c

### Pillow Cases

Hemmed ready for use, 48x36. Sale  
price

12 1-2c

Hemmed, Print of the Loom Cotton,  
size 22x36. Sale price

15c

Hemmed all ready for use, size  
48x36. Sale price

15c

Hemmedstitch, extra good cotton,  
all ready for use, 48x36 and 48x36.  
Sale price

20c

**N. S. Sachs Dry Goods Co. Ltd.**

Corner Fort and Beretania

## Thanksgiving Football Results In A Clean Maile Victory

The Mailes defeated the Punahou yesterday in the first League football game of the season by persistent frontal attack in a score of 11 to 0. The defeated team at all stages of the game fought desperately against superior weight, played by Captain Clark in compact masses. There were times when Punahou's line fought like a fierce undertow dragging a curling comb back to the sea. But more frequently the Maile surf beat down the Punahou line and scooted into the coveted territory with the pig skin, like waters over a dyke.

The Punahou, once, twice and thrice broke through the Maile wall and made long gains, but these were swallowed up by reverses that quickly followed. A dozen times Punahou tried to get around the end but ill-starred luck attended most of these efforts. When the way seemed clearest for the Punahou to make a good end run the man with the ball invariably ran into friend or foe which stopped his career like wire entanglements before a Japanese squad.

There were no fancy or trick plays by either side. It was a dead square pull and the heaviest bunch tipped the beam.

The baseball park never looked fairer than it did yesterday afternoon. The grassy field was divided by two lines of roped posts inside of which was the lined gridiron or checkerboard, with the goal stakes at either end. On the Waikiki side was a large area set apart for automobiles. These, fresh from the floral parade, still adorned with flowers and waving pennants, faced the ropes in a long and beautiful line. Along the ropes were two rows of chairs. Across the gridiron were other rows of chairs and lines of carriages. Above the field the grandstand was full of animated people. Everywhere waved the colors of the opposing teams and the proverbial tin horn raised a raucous chorus that made Berger's band hustle to save its laurels.

The weather was as good as it could be for football in Hawaii. It is rarely cooler than it was yesterday and friendly clouds shut out the sun most of the afternoon.

The game began at 3 o'clock. Freeth kicking off. The ball soon interchanges twice on fumbles. The Mailes force the Punahou to kick. The Punahou get the ball again and kick again, after holding the Mailes for downs. The ball is then taken across Punahou territory by a series of bucking onslaughts which bring out every ounce of resistance in the college boys. Venheizen in a melee at the goal gets the ball over the line. Freeth kicks goal. Score 6 to 0.

Before the expiration of the first half after Freeth's kick-off, the Punahou make a series of breaks through the Maile line on the left. But the whistle blows with the ball on the Punahou 25-yard line.

In the second half, the friends of the Punahou backed up their courage and horns tooted encouragement, but the Mailes were as compact and heavy as before. The kick-off was by Judd and in a brief space the ball was moving back across Punahou territory, the Mailes making a slaughter march of it. There was a spasm at the goal line, Heilbron going over with the ball for the second touchdown. There was a dispute over the goal kick, the referee holding for the Punahou; score 11 to 0.

The remainder of the game was far from the goal posts, the whistle blowing for the end when the ball was in the middle of the field.

The line-up was as follows:

Mailes.	Punahou.
Freeth.....R.—Goal—L.	Robin on
Coulter.....R.—Tackle—L.	Hatch
Ellis.....R.—Guard—L.	L. Judd
Buckle.....L.—Guard—R.	Center
Chilton.....L.—Guard—R.	L. Robinson
Jarrett.....L.—Tackle—R.	A. Judd
Modlin.....L.—End—R.	Damon
Clark (c).....R.—Half—L.	G. Judd
Heilbron.....L.—Half—R.	S. Johnson
Plunkett.....Full	De Hart
Venheizen.....Full	Spivale

### CELEBRATED VICTORY

Lihue, Kauai, Nov. 21.—The Hawaiian of Hanalei valley celebrating the Republican victory by giving a luau on Saturday night November 12th, 1904.

One large pig, sweet potatoes and mullets galore all cooked underground, and pol, opihl, and other delicious things peculiar to a luau were contained in the bill of fare.

There were about eighty souls all told that sat down, and five gallons of tokay stimulated the way for the viands; and yet there were more eatables than mouths to eat.

Dancing of all sorts were indulged in by the more sporty, and speeches echoed from the following named:

Isaac Iona, Edward Gardner, Wm. Kuleleloa, Mrs. Fannie Seta and K. W. Kinney. Mrs. Fannie Seta said that she is overjoyed in knowing that the downfall of Home Ruleism is strong in evidence; and politics on the islands is to be carried on by national party lines. Although she has been stumping for Democracy, still she thought the Republicans put up the best ticket and deserved an overwhelming victory.

Kinney said that the Republicans of Kauai are all the more welded together since the Home Rulers had insulted us by sending men down here to electioneer that had had official and legislative records. They must have thought that we were Democratic pups; Home Ruleism had no business to exist; as long as it does it will always mislead the less intellectual of us Hawaiians, thereby raising prejudiced feeling. Those Hawaiians that worked praise, because of the fatal blow they have given the few greedy and selfish leaders of Home Ruleism. — Garden Island.

### REAL ESTATE TRANSACTIONS.

Entered for Record Nov. 23, 1904.

From 10:30 a. m. to 4 p. m.

Henry van Gieson tr to Lucy Kaman, D

A Wiggins to Hattie Bannister, Rel

A T Bannister and wf to H Water-

house Tr Co Ltd, CM

Healan Yacht & Boat Club to Bank

of Hawaii Ltd, CM

J B Atherton to Wahiawa Water Co

Ltd, L

Hawn Fruit & Pitt Co Ltd to Wa-

hiawa Water Co Ltd, D

Entered for Record Nov. 25, 1904.

From 9 a. m. to 10:30 a. m.

Hopolulu Grocery Co, CoPD

Recorded Nov. 12, 1904.

Queen's Hospital to McCully Land

Co Ltd; Par Rel; lot 6, blk 2, McCul-

ly tract, Honolulu; \$500. B 267, p 10.

Claus Spreckels & Co by atty to Mc-

Cully Land Co Ltd; Par Rel; lot 9,

blk 8, McCully tract, Honolulu; \$1.

B 267, p 11. Dated Oct 24, 1904.

Queen's Hospital to McCully Land

Co Ltd; Par Rel; lot 9, blk 8, McCully

tract, Honolulu; \$1. B 262, p 121.

McCully Land Co Ltd to Sylvia P

Oliveira; D; lot 6, blk 2, McCully tract,

Honolulu; \$1,000. B 264, p 165. Dated

Oct 11, 1904.

Martha N Spencer et al to Pacific

Sugar Mill; L; R P's 5129 and 1000,

Kaunohou, Hamakua, Hawaii; 10

ys at \$60 per ac. B 263, p 134. Dated

Apr 14, 1904.

### KAIMUKI TEA GARDEN.

Take your children out to the tea

gardens at the terminus of the Kaimu-

ki car line, and let them see the mon-

key, the rabbits, the guinea pigs, the

mongoose, the ring doves, the African

and Australian parrots, the Java spar-

rows, strawberry birds, Japanese larks,

quail, Japanese canaries, Galar parrots,

red-headed mountain parrots, cocka-

toos, fantail gold fish, silver fish, ruf-

fe neck pigeons, fantail pigeons, tumb-

blers, powders, etc., etc.

The Japanese miniature lake and

mountain, with its waterfall and rough

mountain path to the little house at

the summit will also interest them.

You will find yourself becoming in-

terested in the study of nature as

your children.

### TAXES REDUCED.

Tax Appeal Court renders three de-

cisions, as follows: In O. R. & L. Co.

and Dowsett Co. vs. Assessor; cattle

in the herd assessed at \$18 per head,

returned at \$15; appellants sustained.

Pacific Guano and Fertilizer Co., in-

come tax: The case involves a \$50,000

loss claimed by the appellant and not

allowed by the Assessor; court decides

that the loss is an actual loss incurred

in trade; deduction therefore allowed.

Wilders Steamship Co., income tax

appeal: Appellants claimed deduction

of \$17,500 on account of the loss of one

of their steamers.

"The court rules that the appellant

is entitled to a deduction of the amount

claimed by the appellant, namely, \$17,

500, less proceeds from sale of the old

vessel, \$516.10—not amount of deduc-

tion, \$16,984.10."

### A POINTER FOR CHRISTMAS PHOTOGRAPHS.

To those desiring photos for Christ-

mas, we would advise an immediate

appointment. Time is getting short

and work is increasing. Also procure

our new 1905 calendar, 50 cents each,

ready for mailing. Rice & Perkins,

Hotel St., Mott-Smith Bldg.

MR. DOOLEY

and MRS. DOOLEY, of Hawaii, will

appear in The Saturday Bulletin. Mr.

Dooley will write on the INTELECT-

UAL LIFE and MRS. DOOLEY on

COUNTY GOVERNMENT. A sixteen-

page paper. The biggest and the best.

Be sure you get the

SATURDAY BULLETIN.

Mrs. Waggle: If you can't sleep

why don't you see the doctor? Wag-

gles: Don't you think I have enough

to worry over without his bill to

think about?—Town Topics.

### Haleakala Ranch Proposes Scheme

Entomologist Alexander Crow pre-

sented a lengthy and interesting re-

port on the work of his department at

the meeting of the Board of Agriculture

and Forestry on Wednesday afternoon.

A card system has been introduced for

keeping records and identifications of

insects. Twenty-one colonies of bene-

ficial insects have been distributed

since the last report. The most care-

ful system is followed in the matter

of protecting the country's plants from

pests.

Considering the Hilo forest reserve

the Board adopted approximately the

1700 foot line as the lower boundary

of the reserve. It was decided to make

no recommendation to the Governor

in the matter until the mauka bound-

ary map is completed.

The Haleakala Ranch Company of

Maui present a forestry and home-

stead proposal for the Board's

consideration.

"The company proposes that after

reserving a portion of Makawao for

forestry purposes, the Government

grant to this company in exchange

the remainder of Ahupuna of Makawao,

containing 2468 acres in exchange

for which this company will undertake

as follows:

1. To grant to the Government in

exchange the forest portion of Kailua-

linui, containing 2752 acres.

And also the land forming the water-

shed into the Keane Valley contain-

ing 2966 acres. The total area so to be

granted to the Government being 5718

acres.

Subject to the exclusive right in this

company to develop water thereon and

take water therefrom, and to cut posts

thereon for local fences.

2. To fence and keep fenced during

the term of the charter of the com-

pany, all portions of this forest reserve

adjoining the Haleakala Ranch lands,

wherever fencing is necessary to keep

stock out of the forest.

3. To withdraw all further request

for Omaopio.

4. The Government to cut Omaopio

up into homesteads, of, say 50 acres

each.

5. The company to pipe water from

its water heads near Pauoaia to

Omaopio, and furnish it to the home-

steads thereon at an agreed rate, say

\$15 per annum, per family, for domes-

tic purposes only.

The company to have first claim,

however, on all water in case of short-

age, for its domestic and drinking



## EVENING BULLETIN

Published Every Day Except Sunday,  
at 120 King Street, Honolulu,  
T. H., by the

BULLETIN PUBLISHING CO., LTD.

WALLACE R. FARRINGTON, Editor

Entered at the Postoffice at Honolulu  
as second-class matter.

SUBSCRIPTION RATES.  
Payable in Advance.

Evening Bulletin.  
For month, anywhere in U. S. . . . \$ .75  
For quarter, anywhere in U. S. . . . 2.00  
For year, anywhere in U. S. . . . 8.00  
For year, postpaid, foreign . . . 11.00

Weekly Bulletin.  
For month, anywhere in U. S. . . . \$ .60  
For year, anywhere in U. S. . . . 1.00  
For year, postpaid, foreign . . . 1.50

Telephone . . . . . 354  
Postoffice Box . . . . . 718

FRIDAY, NOV. 25, 1904.

Now that the spring poet will soon be forth in verbal glory, there is a bit of consolation in remembering that Pity in the first century, registered a kick complaining that almost daily, "some poet or another was trying the patience of Rome with an April poem."

The political barometers went right this year.  
But if there's less of doubtful States, there is more fear;  
For besides that boy of Eopous there are around  
Others who swallowed Parker buttons they had found.

Sunday baseball is, this paper believes, a harmless pastime, but so long as we have a law against it the law should be enforced. Sheriff Coney in this regard also took advance steps over Honolulu, and ordered some time ago, that his deputies see that this law is carried out—Garden Island.  
Presumably Kaula will retreat after learning the High Sheriff's final conclusion.

## RUSSIAN CENSORSHIP.

The British love for Russia is on much the same order as the Irish love for the British. Until Melville E. Stone, of the Associated Press, established direct American news connections in Russia, the most, if not all, the news of Russia read by our people had been properly sifted in London news centers and colored with prejudice accordingly.

The old impressions gained through the indirect but very effective method of British education cannot be wiped out in a twelve month, at the same time Americans are beginning to find out that Russia, though it did not retire from Manchuria when it promised, is not as bad as it is painted, by the unfriendly British writers. Renewed personal interest in Russia gives therefore an especial value to the story Jerome Hart of the Argonaut tells of what he observed during his stay in St. Petersburg and a tourist view of Russia.

Hart was naturally specially observant of the newspaper censorship. He knew there was such a thing because some years ago a subscriber of the Argonaut had returned him a full page of the paper "blacked out" by Russian officials. When he got on the ground, however, Hart found he had to look around to discover the censorship. After recounting what he had been told at home and in London he writes:

"Fancy my amazement, therefore, when, on the first day of our stay in St. Petersburg, during which time I had seen only Russian papers in the reading room of the Europa Hotel, to stumble on another newspaper-rack in a distant corner of the room. I jotted down the names of some of the foreign papers it contained. I was not surprised to see the Paris Figaro and the Paris Gaulois, for they are friendly, nor the Paris (N. Y.) Herald, for it is neutral. But I was surprised to see the London Mail, the London Times, and other hostile English papers! I looked them over carefully. There was nothing 'blacked out'—it looked as if not only the censor had not read them, but that nobody else had read them either. I sat down and perused with a grim smile a long English leader, grudgingly paying to the Czar bitter-sweet compliments on the birth of his son, and then savagely attacking him for trying to 'placate' England by his cordial telegram to King Edward in reply to one from the English monarch. And so it was that I read this article abusing the Czar—not in London, on the banks of the Thames, within sound of Big Ben, but in the Czar's capital, with the bells from the Kazan Cathedral on the Nevsky booming in my ears.

"As if to cap the climax of these curious contradictions, I read an article in the London Daily News, telling how the Russian censors 'blacked out' whole columns in every copy of the London Daily News. Yet this I read in a fair, clean copy of the News—read it in Russia. Could anything be more droll? 'I must not be misunderstood as saying that Russia does not exercise a censorship over books and periodicals. We purchased books in Russia in which many passages were 'blacked out' and whole pages cut out. So I am not maintaining that Russia is liberal in her supervision of her own and other people's letters and papers. She may be more so now than in the past—I don't know. But I do know that all the

newspapers above mentioned were on file in the principal hotel reading-room of St. Petersburg, unmarked and unmutilated."

The fact is also noted that the reports of the reverses of Russian armies in the front were published in detail in the Russian newspapers. From Hart's record of what he saw it is plain that although Russia's faults may be as numerous as the sands of the sea it does not properly take any lessons from Japan on the score of censorship in war times. Russia, the credited censor, has invariably told the whole story of its defeats and losses. Japan never does.

## MANCHURIA STAYS OUTSIDE HARBOR

The Pacific Mail giant liner Manchuria arrived from San Francisco this forenoon. She was anchored off port and will remain there as she is loaded too deep to enter the harbor. The tug Fearless took the Honolulu passengers ashore while launches and row boats attended to the rest of the passengers.

The Manchuria left San Francisco November 19 at 5:30 p. m., being delayed half an hour by mists. As she left only seven and a half hours later than the Alameda she only brought five days of mail.

The giant liner enjoyed a pleasant trip, making the passage in five days and seventeen hours. Thanksgiving was celebrated in great style on board. In the forenoon Rev. Dr. Smith delivered an address. At dinner Consul General E. C. Bellows of Hongkong made a toast in honor of President Roosevelt and all other living heads of nations.

In the evening a concert was given in the saloon at which the following program was rendered:

Song . . . . . By the children  
Miss Green, pianist.  
Selections on Piano . . . . . A. G. Escamilla  
Selections . . . . . Miss Borden  
Song, Selected . . . . . J. Q. Wood  
Mrs. Peck, pianist.  
Song, selected . . . . . James McNaught  
Miss Green, pianist.  
Selections on Piano . . . . . Mrs. Blecken

The steamship brought several well known Honolulu people, among them being B. F. Dillingham, who returns after a prolonged stay on the Coast.

Mr. and Mrs. L. Tenney Peck, J. Q. Wood, H. E. Pickler, Mrs. L. A. Thurston and Dr. I. Mori also returned.

Among the through passengers is Baron Feofee H. de Stampe, a Danish nobleman making a tour around the world. The Stampe family owns an extensive estate on the island of Falster. Baron Stampe's grandfather, Baron Henrik Stampe, is known in Danish history for having procured the emancipation of the Danish peasantry from a yoke similar to the one in Russia.

E. C. Bellows is United States Consul General at Yokohama.

Paymaster Geo. M. Lukesh, U. S. N., returns to Asiatic Station, having been absent on leave. Capt. Chas. Lynch, U. S. A., is on his way to the Philippines.

W. S. Allen is the manager of the Sperry Flour Co.'s branch in Hongkong. He is accompanied by his wife.

T. D. McKay, the veteran passenger agent, returns to the Orient after a trip to St. Louis.

Carl Detzer is a prominent Manila merchant.

Wm. Grebst is a Swedish war correspondent who returns to the seat of war, where he has already been once in the beginning of the campaign.

J. McMullen is a contractor who is on his way to Manila.

Mrs. J. S. van Buren is the wife of the manager of the China Commercial S. S. Co.

The Manchuria has on board 8512 tons cargo for the Orient. It includes 1500 tons of flour, a large amount of feed stuffs for Japan, lead and sheeting for Shanghai and other shipments. She also has on board \$139,000 in treasure for China.

The Manchuria will sail for the Orient tomorrow at noon. Among the passengers who will leave in her is Admiral Terry, who has been in command of the Naval Station for some time. He will return to the mainland via the Orient.

## MAHAULU TRIAL

(Continued from Page 1.)

representing the people and the defendant: Deputy Attorney General M. F. Prosser asked Auditor Fisher: "Do you know whether this money was paid?"

"Yes, it was," replied Fisher, after thought.

Attorney Frank Thompson, for Mahaulu, objected and asked that the words "it was" be stricken from the record, as that portion of the answer was not responsive to the question, but merely voluntary; holding that "yes" or "no" was all that was required in the answer; that witness was asked if he "knew" whether the money was paid, not whether or not the money "had" been paid. The latter part of the reply was ordered stricken and prosecution proceeded to get at the facts in another way. Payment referred to has to do with money paid into the Land Office and unaccounted for.

To secure a delightful termination to your dinner party order one of our Nesle pudding. Elite Ice Cream Parlors. Telephone Main 182.

MR. DOOLEY and MRS. DOOLEY, of Hawaii, will appear in The Saturday Bulletin. Mr. Dooley will write on the INTELECTUAL LIFE and MRS. DOOLEY on COUNTY GOVERNMENT. A sixteen-page paper. The biggest and the best. Be sure you get the SATURDAY BULLETIN.

We'll  
"Turn Over  
A New Leaf."

whenever you are inclined to open an account with us. We want business of the right sort; this does not refer to size—solidity is the point. We aim to treat all patrons alike; their business is fully appreciated and receives careful attention at our hands.

HENRY WATERHOUSE TRUST COMPANY, Ltd.  
Cor. Fort and Merchant Sts.  
Honolulu, Hawaii.

## TWO BIG ATTRACTIONS

At our Store MONDAY NEXT, Nov. 21, 1904.

THE FIRST IS

## Grand Millinery Opening

This department will be opened under the control of Mrs. M. D. SMITH, who arrived from the East by the Sierra with the Latest Creations in Artistic Millinery.

YOUR INSPECTION CORDIALLY INVITED.

THE OTHER ATTRACTION

## A Monster Hosiery Sale

Great purchase of part of Maker's Stock. MEN'S WOMEN'S and CHILDREN'S HOSE

33 1-3 off Regular Prices

Don't miss this opportunity.

L. B. KERR & COMPANY, limited

ALAKEA STREET,

Automobile Fiesta  
For Honors  
A Rivalry Of Beauty

The first Automobile Floral Parade in Honolulu was a credit to the city and was a blooming testimonial to the enterprise, cleverness and taste and spirit of the owners of autos in this city. The floral line along King street and out Waikiki boulevard to Kapiolani Park contained nineteen cars out of the twenty-three or twenty-four owned in Honolulu. The idea of celebrating Thanksgiving in this manner was so recent an inspiration that automobilists had little time to germinate schemes in detail or the planners of the event to go far afield for features of the general parade.

It was carried out with pretty effect and none saw it but formed the wish that a floral festival of this kind might be an annual event or even form a conspicuous feature of the many holiday demonstrations of the year.

The rendezvous at Capitol Square was crowded with people to see the start. Before the hour of 10 o'clock the floral cars came gliding into the scene, gracefully taking their positions on the chalked pavement, ready for the run. Chautauques swung their machines back and forth past each other and through the crowds with skill and precision, with nerves untouched by the concentration of thousands of eyes upon them, or by the profusion of gay-colored flowers and bright, smiling ladies among which they were encoined as in a sequestered bower.

The cars all in line, the judges, Governor Carter, ex-Governor A. S. Clegg and H. D. Couzens, reviewed them before the start.

At the signal of E. M. Boyd, marshal of the parade, the procession moved down King street toward its destination at Kapiolani Park, where judgment was to be rendered. All along the way the residents for blocks on each side came out to the King street curb to watch the horseless cavalcade spin noiselessly past. The applause that greeted the cars and their passengers showed how the populace appreciated the beauty of the apparition-like line and how they entered in the spirit of the contest.

Long before the flower cars started, the cars were crammed with people eager to be in at the finish. Therefore, when the leading car, arrayed in blooming plumes of King Sugar wheel into position under the big banyan tree at Kapiolani Park, an applauding crowd was there to give it greeting. The machines circled into their final places like a gliding line of tropical birds alighting after a morning flight, shaking bright plumage in the sun. It was a splendid semi-circle of beauty that confronted the judges.

It was said on all sides that the most charming feature of the autos was their occupants. The ladies in each car wore costumes harmonizing with the respective schemes of decoration and without them the fairest blossoms of Hawaii would have drooped and yellow.

In a few moments the decision of the judges was handed to Marshal E. M. Boyd. They were:

First prize: Japanese design, Captain Robert Graham.

Second prize: Red and white asters, C. W. C. Deering.

Third prize: Violet, Harry Wilder.

Honorable mention: Sugar cane, Mrs. E. M. Boyd; red roses, A. A. Young.

Captain Graham's prize car was a Japanese design, light bamboo poles sustaining a canopy of green bamboo branches decorated with hanging flowers of wisteria and tiny Japanese lanterns and delicate Japanese hangings. In this car in Japanese costume carrying daintily tinted parasols were Mrs. Graham, Mr. Benson and Miss Giffard. Captain Graham wielded the lever.

The car winning second prize was Mr. C. W. C. Deering's tonneau. A peacock in full plumage was the brilliant outrider for this creation in red and white asters. In the car were Mrs. Deering, Princess Kawananakoa and Miss Cunha.

The third in the judgment of the judges was a harmony violet driven by Harry Wilder. In front were two winged doves restrained in their flight by streamers of violet hue. The ladies as well as the chauffeur wore robes of violet and large hats in the same color. They were Miss Beckley, Mrs. Carefra and Mrs. Dougherty.

A. A. Young's car, which won honorable mention was a beautiful creation of white and yellow chrysanthemums.

## Haleiwa Limited.

The most attractive day's outing is that afforded by the excursion down the railroad line. The HALEIWA LIMITED, a first-class train, leaves Honolulu every Sunday morning at 8:22 o'clock, making the run in two hours, the rate for round trip being only \$2.00. From 10:22 a. m. until 5:10 p. m. is spent at the beautiful HOTEL HALEIWA, with golf and salt water bathing, tennis, fish, drives and walks, shooting or fishing, and you are back in town at 10:10 o'clock in the evening.

Mr. Young, Mrs. Young and Mrs. Hawes were occupants.

The other car receiving honorable mention was driven by Mr. Jargstroff and was entered by Mrs. E. M. Boyd. It was strikingly arrayed with the plumes of blooming sugar cane. Riding in this car with Mr. Jargstroff were Mr. and Mrs. E. M. Boyd, A. S. Clegg and H. D. Couzens.

Red althea blossoms formed the very attractive decorations of the machine ridden in by Dr. Anderson and family. Mrs. Humphris was with them.

Dr. Knudsen drove a car arrayed in palm leaves and ti leaves. He had with him Mrs. Adams and Miss Knudsen.

Pink roses and ferns were the basis of the decorations covering the car driven by Mr. von Hamm. Mrs. von Hamm, Mrs. J. S. Walker and Miss Young were in this car.

The freak car of the procession was that driven by Clarence Macfarlane, with Samuel Parker, Prince David and John McCrosson as passengers. These tourists were attired as Chinese market gardeners and their car was bedecked with garden fruit.

Gus, Schuman's car was a mass of golden leis. The front bore the Hawaiian coat-of-arms made of leis. Streamers of leis were hung about the body of the machine and leis were worn by the occupants, who were Gus, Schuman, Mrs. Schuman and Miss Maggie Lishman.

C. L. Wight, Mrs. Wight and Mrs. Gunn occupied a runabout arrayed in brilliantly colored flowers.

William Barclay's car was attired in sugar cane bloom and lilua leis. Robert Mennagh drove a runabout ornate with hibiscus and strands of bouganvillea.

Mr. and Mrs. J. W. Schoening rode in a runabout decorated with palm fronds and blossoms.

Dr. Waterhouse and child rode in a prettily decorated runabout in which acacia blossoms predominated.

A. E. Frazer's new auto road cart carried himself and G. P. Denison.

One of the most striking cars in the line was that driven by G. W. Rolph. With whom rode Mrs. Rolph, Mrs. C. M. Cooke and Miss Cooke. It was a bower of gold and green made of acacia blossoms and ferns.

The automobile belonging to Mr. Deering, winning second prize, was decorated by F. C. McGuire, the King street florist.

## WILL FACE MURDER CHARGE SECOND TIME

Mana, the Hawaiian who was stabbed by an aged fellow countryman last Saturday, died from his injuries at the Queen's hospital this morning at 3:30 o'clock. His murderer, who has already once served a sentence for a murder committed in the time of Kamehameha the Fifth, is being held by the police. A dying statement has been taken from Mana and the murderer has confessed sufficient to make a charge of murder in the first degree a sure thing. A coroner's jury is now investigating the death of Mana.

## JACKSON'S CHALLENGE

Editor Evening Bulletin:—On Saturday, the 19th inst., one Kid McFadden and Joe Castro fought in this city a fight in which they purported to fight for the featherweight championship of these islands. McFadden fought at 129 and Castro at 130. Now the featherweight weight is 120 and 122 lbs., so it is another impossibility that they could have been contesting for the championship that they purported to have fought for. Now I wish to propose this: If McFadden will come near my weight, 121 or 123 lbs., I will fight him ten or fifteen rounds for the featherweight championship of these islands before any club offering the best inducements, and to show my further good faith, if I whip him, I will fight Castro the next night, if he will fight at 124 or 125 lbs.

If this challenge is accepted either man or his backers can address Bill Hulihui, my manager.

N. JACKSON.

Honolulu, Nov. 25, '04.

## GRINDING THE GOLDEN

Three of Hackfeld's big sugar mills began grinding last Monday. These were the Pioneer Mill and Kipahu, on Maui, and Kekaha, on Kauai.

MR. DOOLEY and MRS. DOOLEY, of Hawaii, will appear in The Saturday Bulletin. Mr. Dooley will write on the INTELECTUAL LIFE and MRS. DOOLEY on COUNTY GOVERNMENT. A sixteen-page paper. The biggest and the best. Be sure you get the SATURDAY BULLETIN.

The Evening Bulletin, 75 cents month.

DO NOT FAIL TO SEE THE

## NEW FALL LINE

Art Department of the

## Pacific Hardware Company, Ltd.,

Their Pictures and Art Novelties will be the Leaders of the Season. Just the thing for Wedding and Birthday Presents.

## CEDAR BOX COUCHES.

We are making a special BOX COUCH of RED CEDAR that we are selling at the same figure as other stores charge for a Spruce Box. We have only lumber for a few boxes so come early and secure a real bargain. Covered in any style.

## COYNE FURNITURE CO., Limited.

## PAINT AND PAINTING

BY

## Stanley Stephenson,

THE HONOLULU PAINTERY, SURE SIGNS—S. S. SIGNS.  
PHONE 426. 137 KING STREET.

## BY AUTHORITY BY AUTHORITY

TWO-ROOM SCHOOL-HOUSE TOGETHER WITH A FOUR-ROOM TEACHER'S COTTAGE AT HULEIA, DISTRICT OF LIHUE, KAUAI, T. H.

School-House together with a Four Room Teacher's Cottage at Huleia, District of Lihue, Kauai, T. H.

Plans and specifications are on file at the office of the Assistant Superintendent of Public Works, and with A. H. Rice, School Agent, Lihue, Kauai, copies of which will be furnished intending bidders on receipt of \$5.00, which sum will be returned to the bidder after he has deposited his bid and returned the plans and specifications.

Scaled proposals will be received at the office of the Superintendent of Public Works, Honolulu, until 12 o'clock m. of December 5, 1904, for furnishing all materials and labor for the construction of a Two-Room School-House together with a Four-Room Teacher's Cottage at Huleia, District of Lihue, Kauai.

Each proposal must contain the full name of the party or parties making the same and must be accompanied by a certified check of 5% of the amount of the proposal payable to C. S. Holloway, Superintendent of Public Works, as surety that if the proposal be accepted a contract will be entered into.

No proposal will be entertained unless made on the blanks furnished by the Assistant Superintendent of Public Works, and delivered at the office of the Superintendent of Public Works previous to 12 o'clock m. on the day specified.

The Superintendent of Public Works reserves the right to reject any or all bids.

C. S. HOLLOWAY,  
Superintendent of Public Works.  
Honolulu, T. H., Nov. 22, 1904.  
2928-31

## Real Estate Loans

are easily repaid by MONTHLY INSTALLMENTS. Just like RENT when money is obtained from PHOENIX SAVINGS, BUILDING AND LOAN ASSOCIATION. Judd Building, Honolulu. Guarantee Capital . . . . . \$ 200,000.00 Paid-in Capital . . . . . \$1,300,000.00 HENRY E. POCOCK, Cashier.

OLAA ONE-ROOM SCHOOL HOUSE WITH TEACHER'S APARTMENTS.

Scaled proposals will be received at the office of the Superintendent of Public Works, Honolulu, T. H., until 12 o'clock m. of December 12, 1904, for furnishing all materials and labor for constructing a One-Room School-House with Teacher's Apartments at Olua, District of Puna, Hawaii.

Plans and specifications are on file at the office of the Assistant Superintendent of Public Works, and with E. E. Richards, Agent Public Works, Hilo, Hawaii, copies of which will be furnished intending bidders on receipt of \$5.00, which sum will be returned to the bidder after he has deposited his bid and returned the plans and specifications.

Proposals must be submitted on blank forms which will be furnished by the Assistant Superintendent of Public Works, and with E. E. Richards, Agent Public Works, Hilo, Hawaii, copies of which will be furnished intending bidders on receipt of \$5.00, which sum will be returned to the bidder after he has deposited his bid and returned the plans and specifications.

Each proposal must contain the full name of the party or parties making the same and must be accompanied by a certified check of 5% of the amount of the proposal payable to C. S. Holloway, Superintendent of Public Works, as surety that if the proposal be accepted a contract will be entered into.

No proposal will be entertained unless made on the blanks furnished by the Assistant Superintendent of Public Works, and delivered at the office of the Superintendent of Public Works previous to 12 o'clock m. on the day specified.

The Superintendent of Public Works reserves the right to reject any or all bids.

C. S. HOLLOWAY,  
Superintendent of Public Works.  
Honolulu, T. H., Nov. 22, 1904.  
2928-31

## GRAND JURY PRESSIES ON

Territorial Grand Jury proceeds to establish a record for itself. Unaffected by the recreation of Thanksgiving day, its seventeen members resumed their labors at 10 o'clock this morning and go on with the work in hand this afternoon. Hatter was in touch with the investigation, as is usual of late, and in addition to cases already reported, his mark will, it is expected, be observed on indictments still to be brought. Deputy Attorney General Emil C. Peters is waiting on the investigators.







# WANTS

See Page 8, NEW TO-DAY, for New Ads.

## SITUATIONS WANTED.

By Japanese to do cooking in private family; can furnish references. Address George, care Bamboo Store, 563 Beretania St. 2923-1w

## SPECIAL NOTICES.

### FOR SALE.

Have 5 Houses for sale at Palama; \$500 cash; balance WITHOUT INTEREST at \$10.00 per month.

P. E. R. STRAUCH,

No. 74 S. KING ST. TEL. MAIN 386.

### WANTED

A-1 statistical clerk for plantation office on Oahu Island; good opening to experienced man. Address R. Bulletin. 2923-1f

### TO LET.

Furnished Rooms—Housekeeping allowed; cool and mosquito proof. Alakea House, Alakea St. bet. Hotel and King. 2925-1f

Orphan cottage, sanitary plumbing, on River St. Apply J. W. Podmore, King and Bethel. 2922-1f

Newly furnished rooms, all modern conveniences. At No. 84 Vineyard St. 2928-1f

4-room cottage, No. 423 Kuakini St. Apply J. W. Podmore, Bethel St. 2894-1f

Two front mosquito-proof rooms at 777 Kinau St. near Alapai. 2915-1m

Furnished rooms at 1223 Emma Street. Mrs. McConnell. 2563

### FOUND.

Gentleman who exchanged hats at Masonic Temple Friday night can find his hat by applying at this office. 2908-1f

## HELP WANTED.

### FOR SALE.

The corner lot in Makiki. Curbing water, fruit and ornamental trees and all improvements. Two minutes' walk from cars and Punahoa College. Address R. F., this office 2516-1f

At a Bargain—One Wheeler & Wilson sewing machine; will be sold at half price; almost new; owner leaving city. Address, W. H. G., Bulletin office. 2923-1f

Cheap—In Manoa Valley, about 15 minutes' walk from car line, an acre of land with house. Apply Enos Bros., Union street. 2924-1f

Cheap—Home near Park, Walkiki. Address R. S. K., Bulletin. 2898-1w

### LOST.

Taken from in front of Bulletin office, between 3 and 4 p. m. Monday, Oct. 31, a cushion frame, chainless Columbia bike, leather bag in front, leathers on handlebar, bell on left side, nickel worn off left side handlebar, rust spot on front axle, and spring holder; rat trap peddles. \$5.00 reward, return Evening Bulletin. W. L. Eaton. 2916-1f

A brown leather purse, near depot, Saturday morning. Reward at this office. 2926-1w

Blank books of all sorts, ledgers, etc., manufactured by the Bulletin Publishing Company.

"For Rent" cards on sale at Bulletin office.

The Weekly Edition of the Evening Bulletin gives a complete summary of the news of the day.

"For Sale" cards at Bulletin office.

## SHORT STORY FOR EVENING HOURS

### THE BLUE GUM MYSTERY

The Blue Gum steamship was on her voyage from Australia to London with 170 passengers and a considerable cargo of mutton and wool. There were two passengers that were the cynosure of the eyes and thoughts of all the rest, and these two were Rev. James Garland and his young wife. It was plain to experienced married people that the couple were quite new to the business of marriage; they were presumably on their honeymoon. The presumption was discovered to be correct by judicious matrons, who made judicious and sympathetic inquiries of the young wife. It is well known that a number of people shut in together for a long voyage must relieve its tedium by incessant gossip about each other. The honeymoon couple were a godsend, and the discussion of them was all the more interesting that the men could not endure the man and the women did not like the woman.

"Men are so mercenary," sighed Miss McWhirter to Mr. Dicks, the second officer.

"More particularly parsons," said Mr. Dicks, softly.

But there was one thing especially which continued to keep the reverend couple a center of interest; it was supposed that Mr. Garland treated his wife no better than he ought.

"Oh, James! Don't! Don't! How cruel you are!"

That was one of the things young Marlow said he had overheard, and, young Marlow ought to know, for he spent much of his time in trying to catch the bride's eye and hold it.

Then came the sensational incident. In the Indian ocean the Blue Gum encountered a storm. The ship was in danger, but the hatches had to be bolted down, and passengers were forbidden to come on deck. The great waves rolled and broke in thunder on the decks and swished in salt cascades over all obstructions, but the steamship rolled and forced through all like a great whale. The bride during the storm kept closely to her cabin, and once the cry came from it pleading into the saloon. "Oh, I can't endure it! I can't! I can't!" A few minutes later Mr. Garland came forth and voluntarily explained.

"She's afraid of the storm," he said, "and it has got on her nerves. I hope it will soon abate. But we are in the hands of God."

"Hypocrite!" murmured young Marlow, and the others looked at each other with lifting eyebrows.

In two or three days the storm zone had been passed, the wind sank, the sea calmed, the sun shone and the passengers came eagerly on deck and stayed there as long as possible. It was a moonlight night. The air was soft and balmy. Miss McWhirter reclined on a deck chair and gazed up into the luminous sky, while Mr. Dicks softly extracted something of a tune from an old flute, when suddenly the company was flustered by Mr. Garland striding in among them and demanding in a husky tone:

"Where is my wife?"

"Have you seen her?" demanded Mr. Dicks, turning upon young Marlow.

"I thought you commonly knew her whereabouts," said Mr. Dicks.

"Has no one seen her?" again cried the husband, casting his eyes around upon the company. "She was in our cabin half an hour ago, and now I can't find her anywhere."

The whole company were on their feet ready with suggestions. Perhaps she had gone to look at the engine; the ladies were fond of gazing at the steel timbers of the ship; perhaps she was hiding "for a lark," like the lady of "The Mistletoe Bough." But behind all suggestions lurked the dark thought that perhaps she had gone overboard. Officers and men searched every conceivable hiding place in the ship.

"My poor wife! My dear wife!" cried the distracted husband. "She has not been herself since the storm began."

"Shame!" muttered young Marlow aside.

"Where can she be gone?" the husband continued. "Do you think she can have gone overboard, captain?"

"That's just what I do think, sir," said the captain, "and there is no use now our putting about for her."

Some time later the captain and others were darkly discussing the matter in the smoking room, with the sojace of a drink or two.

"The question is," murmured the captain, "if he did, why did he? What for?"

"Well," said a bald-headed passenger, who seldom spoke, "if what I've heard be true he had a good reason."

"What have you heard?" asked the captain. "Come!"

"His wife told my wife, in confidence, that before they left Sydney she and her husband had made wills in each other's favor—in case anything should happen on the voyage. Something has happened."

"The confidence trick in married life," exclaimed another passenger. "You often hear of it."

"Do you?" said the captain.

The captain was put out. He did not like the situation, but he did not see how it could be remedied until home was reached. And so day after day passed, and suspicion of Mr. Garland was in full flower. He was avoided and hardly spoken to, and to tell the

**GARLAND STOVES AND RANGES**

The "Garland" is pre-eminent in every point of material, workmanship, strength, beauty, service, convenience, economy of fuel. But one quality, and that the best. Sold by first class dealers everywhere.

The "Garland" Gas Range Has No Equal

Manufactured only by The Michigan Stove Company, Detroit, Chicago

Best seven foot stove for each of beautiful bridge when "Garland" Flaming Circle.

FOR SALE BY THE

**Pacific Hardware Co., Honolulu, H.I.**

truth, he seemed to feel it and to be pained by it, but he said nothing. At length the Blue Gum steamed up the Thames and anchored off Gravesend to wait for the tide. Rev. Mr. Garland made preparations to leave the ship.

"You must excuse me, sir," said the captain, "but I think you do better to go on with us to the dock."

"But my destination, captain," said Mr. Garland, "is a little place in Kent, close by here."

"I think, for your own sake, sir, and for the sake of the ship," insisted the captain, "you must go on with us to the dock."

"I must go on!"

"I think, sir, you must."

"This, I suppose, captain, is in accordance with the suspicion with which I have been persecuted since my poor wife's unfortunate disappearance."

"Not persecuted, sir; not a word has been said," protested the captain.

"No," indignantly cried Mr. Garland, "if my word had been said I might have answered it. I did not expect sympathy, but surely I have a right to be treated as a free man and not as a condemned prisoner. My papers are at your service for any inquiry you may wish to make."

"It is not my business, sir," said the captain, "to make any inquiry; it is the law. All I have to do is to tell what has happened and to say, meaning you, sir, 'Here is the person that knew all about the lady.'"

So Mr. Garland acquiesced in the request—which was almost an order—that he should go on to the dock. And for the issue they were all agog. It had been whispered that the captain had telegraphed from Gravesend to Scotland Yard, and sure enough, as soon as the ship was berthed in the Albert dock a man jumped on board and said: "Tell the captain that Inspector Sharp wishes to see him." Never was a vessel more difficult to clear of its passengers. While the inspector talked on the bridge with the captain Mr. Garland kept himself shut up in his cabin.

At length the captain and the inspector descended to the saloon. The captain knocked at the door of Mr. Garland's cabin. That gentleman evidently apprehended the situation at once.

"I can guess what you are come about," said he.

"All right, sir," said the captain; "this is Inspector Sharp of Scotland Yard."

"I would like a few words in private with you, sir," said the inspector.

"I should prefer what we have to say to be said in public," said Mr. Garland. "I have been under suspicion," he continued with indignation, "and I should like my fellow passengers to hear all that I have to say—as I have often overheard what they have had to say. You are at liberty," he continued, more calmly to the inspector, "to look over all my luggage and papers, but it may facilitate matters if I submit some papers at once."

He returned to his cabin and came out with a bundle of docketed papers in his hand.

"These," said he, beginning to undo the tapes, "will show you that my wife had property in New South Wales worth about £200 per annum. These others"—untying another lot—"will show you that she recently came into property in Kent worth about £1500 per annum. Further—"

But at that point there came an astonishing interruption.

"Captain," cried an excited voice into the saloon, "will you come? The lady has been found."

Then there was a wild scurry forth. The captain followed the messenger, and Mr. Garland followed the captain, while many passengers crowded after on into the now silent engine rooms and still on into a smaller room, where a little engine was noisily at work. By pushing and squeezing a narrow doorway was passed through into a chamber with the temperature of the polar regions. Passing through that chamber an inner door was reached, and the leader unbarred it and held high a lantern. All who could looked on a remarkable scene. White and cold as Greenland was the interior. Timber and walls were loaded with hoar-frost, and all around were full cotton bags frozen stiff.

"Ah, my poor wife!" broke from Mr. Garland, as he staggered into a corner

and knelt by the stiff corpse of a woman, which was hardly distinguishable from the frozen cotton bags. "My own, poor girl! My darling!"

The spectators moved away, silent and humble. Many were the speculations as to how the unfortunate lady had got shut in there, but the only plausible explanation was that in a half-delirious condition she had left her cabin the day after the storm and had wandered into the refrigerating chamber while the men were engaged in resetting the cargo disarranged by the rolling of the vessel.—J. MacLaren Colman in The Tatler.

MR. DOOLEY and MRS. DOOLEY, of Hawaii, will appear in The Saturday Bulletin. Mr. Dooley will write on the INTELLECTUAL LIFE and MRS. DOOLEY on COUNTY GOVERNMENT. A sixteen-page paper. The biggest and the best. Be sure you get the SATURDAY BULLETIN.

### Legal Notices.

IN THE CIRCUIT COURT OF THE First Circuit, Territory of Hawaii. At Chambers; in Probate. In the Matter of the Estate of Elizabeth Barnes Maynard, deceased. Order of Notice of Hearing Petition for Allowance of Final Accounts, Distribution and Discharge. On reading and filing the petition and accounts of George H. Robertson, of Honolulu, Oahu, administrator of the estate of Elizabeth Barnes Maynard, wherein he asks to be allowed \$8,574.00 and charges himself with \$8,612.00, and asks that the same may be examined and approved, and that a final order may be made of distribution of the property remaining in his hands to the persons thereto entitled, and discharging him and his sureties from all further responsibility as such administrator, it is ordered that Monday, the 12th day of December, A. D. 1904, at 10 o'clock a. m., before the judge of said court at the court room of the said court at Honolulu, Island of Oahu, be and the same hereby is appointed as the time and place for hearing said petition and accounts, and that all persons interested may then and there appear and show cause, if any they have, why the same should not be granted, and may present evidence as to who are entitled to the said property. And that notice of this order, in the English language, be published in The Evening Bulletin newspaper, printed and published in Honolulu, once a week, for three successive weeks, the last publication to be not less than two weeks previous to the time therein appointed for said hearing.

Dated at Honolulu, this 4th day of November, 1904.

GEORGE D. GEAR, Second Judge First Circuit Court. 2913—Nov. 4, 11, 18, 25.

IN THE CIRCUIT COURT OF THE First Circuit, Territory of Hawaii. At Chambers; in Probate. In the Matter of the Estate of George Galbraith, deceased. Order for Notice of Hearing Petition for Probate of Will. A document purporting to be the last will and testament of George Galbraith, deceased, having on the 11th day of November, A. D. 1904, been presented to said Probate Court, and a petition for the probate thereof, and for the issuance of letters testamentary to Cecil Brown and W. O. Smith having been filed by Cecil Brown, it is hereby ordered that Monday, the 19th day of December, A. D. 1904, at 10 o'clock a. m., of said day, at the court room of said court at Honolulu, Oahu, be and the same hereby is appointed the time and place for proving said will and hearing said application. It is further ordered, that notice thereof be given, by publication, once a week for three successive weeks, in The Evening Bulletin, a newspaper published in Honolulu, the last publication to be not less than ten days previous to the time therein appointed for hearing.

Dated at Honolulu, November 11th, 1904.

By the Court: W. J. ROBINSON, 3rd Judge 1st Circuit Court. Attest:—J. A. THOMPSON, Clerk. 2919—Nov. 4, 11, 18, 25; Dec. 2.

# BUSINESS DIRECTORY

## BALLASTING.

Hawaiian-Japanese Ballasting Co. — Best black sand from \$2 to \$3 a load according to distance hauled. Coral rocks for stable, roads and sidewalks. Third door below King, Maunakea St.; P. O. box 820. Telephone Main 296.

## CLEANING AND DYEING.

T. Hayashi—Clothes cleaned, repaired and dyed. 537 Beretania St.

## MASSAGE.

S. Ochial, removed to Beretania St. near Maunakea. 2881

## MESSENGERS.

Territorial Messenger Service—Union St. near Hotel; Tel. 361 Main.

## MUSIC.

Mr. Jas. Sheridan has opened a repairing shop at 1105 Miller St. cor Beretania. Charges reasonable. A number of second-hand pianos in good condition, cheap. Orders may be left at Haw'n. News Co.

The Weekly Edition of the Evening Bulletin gives a complete summary of the news of the day.

"For Sale" cards at Bulletin office

## WHITE ROCK GINGER ALE

Is carefully prepared in our own laboratory and is bottled by the latest and most scientifically correct mechanical process. It is a perfectly blended combination of the most delicious and wholesome Tropical Fruit Extracts, best Jamaica Ginger Root, Refined Sugar, Purified Carbonic Acid Gas and

## WHITE ROCK GINGER ALE

This most popular of American beverages represents in its highest form, the perfection to be obtained by treating the best products kind nature has given to man in the most highly approved method known to science. The result is a pure, wholesome, non-alcoholic drink which perfectly meets all requirements. If you are not already familiar with its unequalled merits, acquaint yourself with the superior excellence of

## WHITE ROCK GINGER ALE

WHITE ROCK MINERAL SPRINGS COMPANY

WAUKESHA, WISCONSIN.

If your dealer does not supply it Ring up MAIN 4.

W. C. PEACOCK & CO., Ltd., Importing Agents.

## Hawaiian Carriage Manufacturing Co.

427 QUEEN ST. TEL. MAIN 47. P. O. BOX 193.

Manufacturers of all kinds of Carriages and Vehicles, Wagons, Wagon Materials of all descriptions supplied; Rubber Tires put on at reasonable prices; Repairing, Painting and Trimming; satisfaction guaranteed; estimates given.

C. W. ZEIGLER, Manager.

## Enos Bros.

UNION ST. ABOVE HOTEL.

House and Decorative Painting, Paper Hanging, Kalsomining and Tinting. All orders executed with style and with the best of materials. Estimates given.

\$50.00 for \$1.00 AT THE

Ladysmith Shooting Gallery, TOP OF PUNCHBOWL. CASH PRIZE OF \$50

P. H. Burnette,

Attorney-at-Law and Notary Public. Real Estate, Loans, Collections. Phone: Office, Main 275; Res. Wh. 1341 Office, 79 Merchant Street, Honolulu.

THE MILLER CANDY CO.

Has moved its Candy Factory to the old ELITE BUILDING on HOTEL ST. All Candies are made on the premises. Mail and try a sample of Hot Candy.

## HONOLULU IRON WORKS

Improved and Modern SUGAR MACHINERY of every capacity and description made to order. Better work and RIVETED PIPES for irrigation purposes a specialty. Particular attention paid to JOB WORK, and repairs executed at shortest notice.

The Weekly Edition of the Evening Bulletin gives a complete summary of the news of the day

Blank books of all sorts, ledgers, etc., manufactured by the Bulletin Publishing Company

## BISHOP & CO., BANKERS.

Established in 1858.

BANKING DEPARTMENT. Transact business in all departments of Banking. Collections carefully attended to. Exchange bought and sold. Commercial and Travelers' Letters of Credit issued on The Bank of California and N. M. Rothschild & Sons, London.

Correspondents—The Bank of California, Commercial Banking Co. of Sydney, Ltd., London.

Drafts and cable transfers on China and Japan through the Hongkong & Shanghai Banking Corporation and Chartered Bank of India, Australia and China.

Agents for the sale of Travelers' Checks of the American Express Co. Interest allowed on term deposits at the following rates per annum, viz: Seven days' notice, at 2 per cent. Three months, at 3 per cent. Six months, at 3 1/2 per cent. Twelve months, at 4 per cent.

TRUST DEPARTMENT. Act as Trustees under mortgages. Manage estates (real and personal). Collect rents and dividends. Valuable papers, Wills, Bonds, etc. received for safe-keeping.

ACCOUNTANT DEPARTMENT. Auditors for Corporations and Private Firms. Books examined and reported on. Statements of Affairs prepared. Trustees on Bankrupt or Insolvent Estates.

OFFICE, 924 BETHEL ST. SAVINGS DEPARTMENT. Deposits received and interest allowed at 4 1/2 per cent. per annum, in accordance with Rules and Regulations, copies of which may be obtained on application.

INSURANCE DEPARTMENT. Agents for Fire, Marine, Life, Accident and Employers' Liability Insurance Companies. Insurance Office, 924 Bethel St.

Claus Spreckels. Wm. G. Irwin

Claus Spreckels & Co. BANKERS.

HONOLULU, : : T. H.

San Francisco Agents — The Nevada National Bank of San Francisco. Draw Exchange on the Nevada National Bank of San Francisco. London—The Union of London and Smith's Bank, Ltd.

New York—American Exchange National Bank. Chicago — Corn Exchange National Bank.

Paris—Credit Lyonnais. Hongkong and Yokohama — Hongkong-Shanghai Banking Corporation. New Zealand and Australia — Bank of New Zealand and Bank of Australia.

Victoria and Vancouver — Bank of British North America. Deposits received. Loans made on approved security. Commercial and Travelers' Credits issued. Bills of Exchange bought and sold. Collections Promptly Accounted For.

The First AMERICAN SAVINGS AND TRUST CO.

OF HAWAII, LTD.

SUBSCRIBED CAPITAL...\$200,000.00 PAID UP CAPITAL...\$100,000.00

President..... Cecil Brown Vice President..... M. P. Robinson Cashier..... W. G. Cooper Office: Corner Fort and King Sts.

SAVINGS DEPOSITS received and interest allowed for yearly deposits at the rate of 4 1/2 per cent. per annum. Rules and regulations furnished upon application.

The Yokohama Specie Bank, Ltd.

ESTABLISHED 1880. Capital Subscribed.....Yen 24,000,000 Capital Paid Up.....Yen 18,000,000 Reserved Fund.....Yen 9,520,000

HEAD OFFICE, YOKOHAMA. BRANCHES—Bombay, Hongkong, Honolulu, Kobe, London, Lyons, Nagasaki, Newchwang, New York, Peking, San Francisco, Shanghai, Tientsin, Tokyo.

The bank buys and receives for collection Bills of Exchange, Japanese Drafts and Letters of Credit and transacts a general banking business.

HONOLULU BRANCH, 67 KING ST.

## Cricket Match At Makiki Yesterday

A game of cricket was played at Makiki yesterday between the team which represented the H. C. C. at Maui recently and the rest of the club. The scores were as follows:

HONOLULU REPRESENTATIVE TEAM—FIRST INNINGS.

F. Harrison c and b Layard	13
J. R. M. Maclean, run out	4
S. Beardmore c Cockburn b Layard	12
R. Anderson, not out	11
R. A. Jordan, c Cockburn b Layard	14
W. L. Stanley, b Layard	2
T. Gill c and b Layard	2
A. R. Hatfield b Cockburn	29
C. Jordan b Cockburn	4
J. M. Tucker b Cockburn	5
B. F. Beardmore, l. b. a, Cockburn.	2
Extras	16

Total 195 HONOLULU C. C.—FIRST INNINGS.

G. Tullett c Stanley b Maclean	4
W. Lousher b Maclean	4
D. McIntyre c Anderson, Maclean	5
R. de B. Layard, l. b. w. Hatfield	0
J. L. Cockburn, run out	7
J. C. McGill b Maclean	7
H. L. Herbert b Maclean	5
J. McAuliffe b Hatfield	10
P. Martin b Hatfield	8
E. Martin c Anderson b Maclean	9
A. Jordan, not out	2
D. Center, c Jordan b Hatfield	2
Extras	7

Total 11 wickets 45 HONOLULU REPRESENTATIVE TEAM—SECOND INNINGS.



## Corporation Notices.

## ADVERTISEMENT.

## OOKALA SUGAR PLANTATION CO.

Notice is hereby given that at the adjourned Annual Meeting of the OOKALA SUGAR PLANTATION COMPANY, held this day, the following were elected to serve as officers of the corporation for the ensuing year, viz.:

Jas. F. Morgan.....President  
J. M. Dowsett.....Vice President  
Geo. H. Robertson.....Treasurer  
E. F. Bishop.....Secretary  
T. R. Robinson.....Auditor  
Cecil Brown.....Director  
Frank Mustace.....Director  
H. Armitage.....Director  
Honolulu, November 17, 1904.

E. F. BISHOP,  
Secretary.

## ELECTION OF OFFICERS.

## PEARL CITY FRUIT CO., LTD.

At a meeting of stock holders of the above-named company, held Nov. 14th, 1904, the following were elected to serve as officers for the ensuing six months:

J. R. Galt.....President  
James Lyle.....Vice President  
E. W. Jordan.....Treasurer  
J. Emmeluth.....Secretary  
D. B. Murdoch.....Auditor  
The officers form the Board of Directors.

JOHN EMMELUTH,  
Secretary.

Honolulu, Nov. 23, 1904. 2929-31

## ELECTION OF OFFICERS OF THE WAILUKU SUGAR COMPANY.

Notice is hereby given that at the Annual Meeting of the above Company, held this day, the following persons were elected to serve as officers of the Company for the ensuing year:

M. P. Robinson.....President  
W. F. Allen.....Vice President  
Geo. H. Robertson.....Treasurer  
E. F. Bishop.....Secretary  
T. R. Robinson.....Auditor  
Chas. M. Cooke.....Director  
E. F. BISHOP,  
Secretary.

Honolulu, November 11, 1904.  
2920-1m

## NOTICE.

Young Hong and Ching Chow have this day sold their interest in the firm of Hong Kee & Co., doing a general merchandise business on Ala St., Honolulu, to the undersigned, who assume all debts of said firm.

HERY YICK, CHUN MAN, CHUN PON and YOUNG HANG.  
Nov. 17, 1904. 2928-1w

## Legal Notices.

## GUARDIAN'S SALE OF REAL ESTATE.

Notice is hereby given that pursuant to an order of the Hon. George D. Gear, Second Judge of the Circuit Court of the First Circuit, Territory of Hawaii, made and entered on the 27th day of September, A. D. 1904, in the matter of the Guardianship of John Nanaoa Makaiwa, of Honolulu, Oahu, a minor, in Probate No. 3708, at Chambers, the undersigned Guardian of the person and property of said minor will expose for sale at public auction, the real estate belonging to said minor, hereinafter described, at an upset price of Fifteen Hundred Dollars (\$1500) at the main entrance to the Judiciary Building in said Honolulu, on Saturday, the 29th day of OCTOBER, A. D. 1904, at 12 o'clock noon, of said day.

The property to be sold consists of land situate at Kaakopua, in said Honolulu, and is described as follows:

Commencing at the North corner of this lot at a galvanized pipe; this point is also the North corner of L. C. Award 1592, Apana 1 to Kaho. The above pipe is at the fence and 87.9 feet from the South line of Fort Street and running: 1. S. 36° 40' E. true 29.9 feet along fence along L. C. Award 1669, Apana 1 to Mokulua to angle of fence; 2. S. 61° 50' W. true 70.7 feet along L. C. Award 1599, Apana 1 to Kihelua along fence to junction of fences; 3. N. 29° 10' W. true 98.8 feet along the makai portion of L. C. Award 1592, Apana 1 to Kaho along fence to point 90 feet from Fort Street along mauka side of lane; thence 4. N. 56° 10' E. true 57.7 feet along L. C. Award 1669, Apana 1 to Mokulua to initial point, containing an area of 6140 square feet, being a portion of the land described in Royal Patent No. 142, L. C. Award No. 1592, Apana 1 to Kaho.

Terms—Cash in United States Gold Coin; deeds at the expense of purchaser, and sale subject to confirmation by the Court.

For further particulars apply to Charles F. Peterson, attorney for said guardian, 15 Kaahumanu Street, Honolulu.

JOHN PEKERO MAKIWA,  
Guardian of the Person and Property of John Nanaoa Makaiwa, Minor.  
Dated Honolulu, T. H., September 27, 1904.

The above sale is postponed to Nov. 26, 1904, at the same place and hour.  
JOHN PEKERO MAKIWA,  
Guardian.

2913—Nov. 4, 11, 18, 25.

Do you notice that we cater to all the successful receptions, parties, banquets, etc. Elite Ice Cream Parlors, Telephone 182 Main.

## Legal Notices.

## Sale Of. Sugar Plantation PUNA SUGAR CO., LTD.

IN THE CIRCUIT COURT OF THE  
FIRST JUDICIAL CIRCUIT, TERRITORY OF HAWAII.

IN EQUITY. AT CHAMBERS.

FIRST NATIONAL BANK OF HAWAII AT HONOLULU, a Corporation; H. HACKFELD & COMPANY, LIMITED, a Corporation; M. P. ROBINSON, H. M. VON HOLT, Trustees for W. S. CHAMBER, vs. PUNA SUGAR COMPANY, LIMITED, a Corporation; S. M. DAMON and S. E. DAMON, Copartners Doing Business Under the Firm Name of BISHOP & COMPANY; OLAA SUGAR COMPANY, LIMITED; and B. F. DILLINGHAM & COMPANY, LIMITED, Defendants.

## NOTICE OF RECEIVER'S SALE.

Notice is hereby given that the undersigned, William Protenhauer, Receiver of the Puna Sugar Company, Limited, will under and by virtue of a decree of foreclosure and sale duly made and entered by the Honorable J. T. De Bolt, First Judge of the Circuit Court of the First Judicial Circuit, Territory of Hawaii, at Chambers, on the twenty-second day of October, 1904, in a certain cause in equity pending in said Court, wherein the First National Bank of Hawaii at Honolulu, a corporation; H. Hackfeld & Company, Limited, a corporation; M. P. Robinson, H. M. von Holt, Trustee for W. S. Chamber, and A. Ahrens, are plaintiffs, and the Puna Sugar Company, Limited, a corporation; S. M. Damon and S. E. Damon, copartners doing business under the firm name of Bishop & Company; Olaa Sugar Company, Limited, and B. F. Dillingham & Company, Limited, are defendants, sell at public auction, at the front door of the Judiciary Building in Honolulu, Territory of Hawaii, on Saturday, the 24th day of February, 1905, at 12 o'clock noon of said day last mentioned or at the day and hour to which he may adjourn such sale, subject to the confirmation of the above entitled Court, all and singular the property, rights and franchises of the Puna Sugar Company, Limited, described, mentioned or referred to in that certain Decree of Trust, dated July 1st, 1900, executed by the Puna Sugar Company, Limited, to Bishop & Company as Trustees, or in the said Decree of Foreclosure and Sale of October 22nd, 1904, and therein directed to be sold to satisfy the indebtedness incurred by said Receiver as provided by the order and decree of foreclosure and sale of said Court, and also the sum of Five Hundred Thousand Dollars (\$500,000.), the same being the principal amount of bonds of said Puna Sugar Company, Limited, issued under said Decree of Trust, together with interest thereon from January 1st, 1904, and also such other sums authorized to be paid by the order and decree of foreclosure and sale of said Court, that is to say:

All the fee simple lands, being approximately 8211.88 acres, all the leasehold premises, being approximately 2921.91 acres, all lands leased to various lessees, all of which said land and premises are situate in the District of Puna, Island and Territory of Hawaii, and any and all interest in lands, leases, leasehold interests, tenements, hereditaments, rights-of-way and easements; molasses, sugar, whether in process of manufacture, manufactured or not, 1072.27 acres, a little more or less, of growing cane of the crop of 1905, in good condition; 192.85 acres a little more or less of growing cane of the crop of 1906 in good condition; 822.34 acres more or less of growing cane, in damaged condition; 9.47 miles of standard gauge railroad 4 feet 8 1/2 inches with 40-pound rails, 2740 feet second-hand tram rails, 130 fish plates, approximately 29 miles of portable track, 16 switches, 4 top switches, 600 iron ties new, 100 extra ties in use, miscellaneous lot of material in blacksmith shop, and car-shop consisting of carriage, plow, and machine bolts, nuts, washers, railroad spikes, coupling pins, links, iron, steel, horse and mule shoes, chain, spokes, screws, nails, cane-car spars, extras, parts and wheels; 200 cane cars of modern type, one 30-ton Porter Locomotive in good condition, 2 donkey engines, 2 collis, 2,000 feet 11-16 inch cable, 1 coil 1000 feet of 5-8 inch cable, 1 steam pump and boiler, 2 large plantation maps, 14 small maps and drawings; 131 California mules, 11 horses, 9 donkeys, 30 head of cattle; manager's, overseer's, doctor's, bookkeeper's and surveyor's houses, laborers' quarters and camps, stables and other buildings, sheds, shops, tanks of varying capacity from 2000 to 6000 gallons, 8432 feet of pipe; tools and implements consisting of

plows, cultivators, shovels, axes, wedges, hammers, cane knives, scutes, sledges, saws, bars, 5 Bain wagons, 11 dump carts, 2 spring wagons, 1 dray, wheels and parts; firewood, 63 sets chain tug harness, 23 sets double pack saddles, collars, girths, lines, pads, halters, traces, riding saddles, office furniture, fixtures and safe, and any and all the property used in and about or in connection with the plantation of the Puna Sugar Company, Limited, in the said District of Puna.

A more particular description of the said property to be sold is set forth in said decree of foreclosure and sale, dated October 22, 1904, reference to which is hereby made, and the same is made a part hereof.

That said Receiver shall have the right to adjourn said sale or sales from time to time as to him may seem expedient or proper, and if so adjourned, to make the sale without further published notice at the time and place to which the same may be adjourned; that said Receiver may sell said property as a whole or in lots or parcels as he may deem most expedient; that the successful bidder or bidders, as the case may be, shall forthwith deposit at the fall of the hammer at said sale with the Receiver ten per cent. (10%) of the amount of the bid in cash or certified check approved by the Receiver, the balance by approved certified check within ten days after the confirmation of the sale by the court; Upon confirmation of said sale or sales the Receiver shall make, execute and deliver to the purchaser or purchasers of said property a good and sufficient deed or deeds or other instruments of conveyance prepared by the attorney for the Receiver at the expense of the purchaser or purchasers.

In case the purchaser or purchasers shall fail to comply with the terms of the bid or with the orders of the Court relating to the said sale, then the sums or deposits paid or made by the purchaser or purchasers shall be forfeited as a penalty for said non-performance, and if any purchaser or purchasers shall fail to comply with the terms of his or their bid or to complete said purchase, said Receiver may with or without further application to the Court again advertise said property for sale and sell the same on the terms and conditions as are herein stated.

That the said property will be sold freed and discharged from all mortgages, liens, and charges of every kind and description whatsoever, and that the purchasers thereof shall hold and enjoy the same and all the rights, privileges, immunities, and franchises appertaining thereto fully and completely and freed and discharged from all liens, mortgages and charges whatsoever.

For further particulars concerning the whole or any part of said property, reference is hereby made to the report of the said Receiver and said decree of foreclosure on file with the clerk of the above entitled court and all information regarding the same will be readily given by the undersigned upon application at his office with H. Hackfeld & Company, Limited, corner of Queen and Fort streets, Honolulu, Territory of Hawaii, or by Smith & Lewis, Attorneys for said Receiver, Judd Building, said Honolulu.

Dated at Honolulu, T. H., October 25th, 1904.

WILLIAM PROTEHAUER,  
Receiver of the Puna Sugar Company, Limited,  
c.o.d. to Feb. 24, '05, Mon. Wed. Fri.

## Benefit Concert

## For Kauai's Band

Lihue, Kauai, Nov. 20.—The entertainment given Saturday evening in the Social Hall at Lihue for the benefit of the Kauai band was a great success. The band was stationed under a canopy in the yard and discoursed sweet music until about 8 o'clock, when the program began.

The music was opened by Mr. Paul Isenberg, who sang in a fine, strong voice, the German song "Waldnacht," and responded to an encore with "Forgotten." The audience, which filled the hall to overflowing, showed their appreciation of the splendid voice of the singer by deafening applause.

Mrs. W. H. Rice Jr. delivered the next vocal selection, "Mignon," in a delightful manner, her sweet, clear voice charming the listeners. Mrs. Rice was recalled with great determination by the audience, and as an encore sang "Violets" capriciously. Mr. E. de Lacey played the piano accompaniments. The entertainment proceeded with instrumental music by the band and songs by Mrs. Rice and Mrs. Isenberg alternately, until the final performance, when the band stationed themselves upon the large stage and played "America" in a grand style as to fill everybody's heart with patriotism.

After the musical was over, refreshments were served and dancing closed the evening's pleasure. Comers or chieftains furnishing dance music which can't be surpassed on the islands.

At 12 o'clock the affair closed, the Sheriff remarking jokingly that the Sunday law must be enforced.

Over three hundred people were present to enjoy the "flow of music," and about \$100 was cleared by Father Adelbert for the benefit of the Kauai band, which is one of Lihue's most worthy possessions. During the evening Father Adelbert thanked all who had contributed by their efforts and their patronage to the success of the little venture.

The following is a copy of the program:  
Band—March, "Whirlwind."  
Band—"Under the Double Eagle," (Wagner).  
Band—"From Lihue to Hanalei" (J. Pannas and J. Souza).  
Song—"Waldnacht," Mr. Paul Isenberg.  
Song—"Mignon," Mrs. W. H. Rice Jr.  
Band—"Samsonian Tuba Polka."  
Song—"The Rosary," Mr. Paul Isenberg.  
Band—"Don't Be Cross."  
Song—"A Day Dream," Mrs. W. H. Rice Jr.  
Band—Overture, "Emerald."  
Song—Duet, "Home to Our Mountain."

Union bartenders, waiters, and brewery hands recently went on strike at Eureka, Cal. The public hunger and thirst were only partly assuaged by the employment of Japanese strike breakers.

Mrs. W. H. Rice Jr. and Mr. Paul Isenberg.  
Band—Tuba solo, "Glenora."  
Band—"America."  
Dancing. Coney's Orchestra and Band.  
"The Star-Spangled Banner."  
Good-night!—Garden Island.

MR. DOOLEY  
and MRS. DOOLEY, of Hawaii, will appear in The Saturday Bulletin. Mr. Dooley will write on the INTELLIGENT LIFE and MRS. DOOLEY on COUNTY GOVERNMENT. A sixteen-page paper. The biggest and the best. Be sure you get the SATURDAY BULLETIN.

General Freight Agent.

H. Hackfeld & Co., Ltd.

Agents, Honolulu.

General Freight Agent.

H. Hackfeld & Co., Ltd.

Agents, Honolulu.

General Freight Agent.

H. Hackfeld & Co., Ltd.

Agents, Honolulu.

General Freight Agent.

H. Hackfeld & Co., Ltd.

Agents, Honolulu.

General Freight Agent.

H. Hackfeld & Co., Ltd.

Agents, Honolulu.

General Freight Agent.

H. Hackfeld & Co., Ltd.

Agents, Honolulu.

## Boards Wade Through

## Accumulated Business

A meeting of the Board of Health was held last Wednesday afternoon at which routine business which had accumulated for over a month was disposed of. President Pinkham read his report, which contained a resume of the important business and the Board acted upon its recommendations. Dr. Moore was appointed for two months to take charge of the treatment of trachoma at the dispensary at a salary of \$125 per month.

The issuing of commissions to the High and Deputy Sheriffs as agents of the Board of Health were approved. Dr. J. H. Nichols, of the Massachusetts State Hospital wrote for permission to send two patients to the settlement, offering to pay a proper compensation for their maintenance. The request was denied.

A committee consisting of President Pinkham and Dr. Mays was appointed for the purpose of sending suggestions to Delegate Kuhio.

The request of Deaconess Drant of St. Elizabeth's House, to erect a drinking fountain for man and beast was voted down, it being thought that a fountain of this kind was dangerous from a sanitary standpoint.

Attorney General Andrews reported that the Board had no power to chase away fishermen who fished off the settlement.

The following reports were read: Report of Chief Sanitary Officer for August, September and October; report of Chief Sanitary Officer in re crusade; report of Food Commissioner for August, September and October; report of Plumbing Inspector, September and October; report of Superintendent of Janitor Asylum for last quarter; report of Sanitary Inspector of Hilo for September and October; letters from Dr. L. E. Cofer.

MR. DOOLEY  
and MRS. DOOLEY, of Hawaii, will appear in The Saturday Bulletin. Mr. Dooley will write on the INTELLIGENT LIFE and MRS. DOOLEY on COUNTY GOVERNMENT. A sixteen-page paper. The biggest and the best. Be sure you get the SATURDAY BULLETIN.

General Freight Agent.

H. Hackfeld & Co., Ltd.

Agents, Honolulu.

General Freight Agent.

H. Hackfeld & Co., Ltd.

Agents, Honolulu.

General Freight Agent.

H. Hackfeld & Co., Ltd.

Agents, Honolulu.

General Freight Agent.

H. Hackfeld & Co., Ltd.

Agents, Honolulu.

General Freight Agent.

H. Hackfeld & Co., Ltd.

Agents, Honolulu.

General Freight Agent.

H. Hackfeld & Co., Ltd.

Agents, Honolulu.

General Freight Agent.

H. Hackfeld & Co., Ltd.

Agents, Honolulu.

General Freight Agent.

H. Hackfeld & Co., Ltd.

Agents, Honolulu.

General Freight Agent.

H. Hackfeld & Co., Ltd.

Agents, Honolulu.

General Freight Agent.

H. Hackfeld & Co., Ltd.

## Oceanic Steamship Company

## TIME TABLE

The steamers of this line will arrive and leave this port as hereunder:

FROM SAN FRANCISCO:	FOR SAN FRANCISCO:
ALAMEDA.....NOV. 25	ALAMEDA.....NOV. 30
SONOMA.....DEC. 7	VENTURA.....DEC. 8
ALAMEDA.....DEC. 16	ALAMEDA.....DEC. 21

In connection with the sailing of the above steamers, the agents are prepared to issue, to intending passengers, coupon through tickets, by any railroad from San Francisco to all points in the United States, and from New York by any steamship line to all European ports.

FOR FURTHER PARTICULARS APPLY TO

Wm. G. Irwin & Co., Ltd.

OCEANIC S. S. CO. GENERAL AGENTS.

## Pacific Mail Steamship Co. Occidental and Oriental Steamship Co. and Toyo Kisen Kaisha

Steamers of the above companies will call at Honolulu and leave this port on or about the dates below mentioned:

FOR JAPAN AND CHINA	FOR SAN FRANCISCO
COPTIC.....DEC. 3	KOREA.....NOV. 19
KOREA.....DEC. 10	GAELIC.....NOV. 26
GAELIC.....DEC. 20	SIBERIA.....NOV. 30
SIBERIA.....DEC. 24	MONGOLIA.....DEC. 10
MONGOLIA.....JAN. 4	CHINA.....DEC. 24
CHINA.....JAN. 17	DORIC.....JAN. 14
MANCHURIA.....JAN. 28	KOREA.....JAN. 27

\* Call at Manila.  
For general information apply to

H. Hackfeld & Co., Ltd., Agents

## AMERICAN-HAWAIIAN S. S. CO.

Direct Service between New York and Hawaiian Islands, Via Pacific Coast From New York

S.S. "HAWAIIAN".....to sail about DEC. 3  
S.S. "OREGONIAN".....to sail about DEC. 30  
Freight received at all times at the Company's Wharf, 41st Street, Brooklyn.

From San Francisco to Honolulu Direct.  
S.S. "NEVADAN".....to sail DEC. 14  
Freight received at Company's Wharf, Greenwich Street, and each month thereafter.

From Honolulu to San Francisco, via Puget Sound.

S.S. "NEVADAN".....NOV. 24

From Seattle and Tacoma  
Via San Francisco.

S.S. "NEVADAN".....from Seattle DEC. 7  
S.S. "NEVADAN".....from Tacoma DEC. 8  
For further information apply to

G. P. MORSE, General Freight Agent.

H. Hackfeld & Co., Ltd.

AGENTS, HONOLULU.

## Canadian-Australian Royal Mail Steamship Company.

Steamers of the above line, running in connection with the CANADIAN-PACIFIC RAILWAY CO. between Vancouver, B. C., and Sydney, N. S. W., and calling at Victoria, B. C., Honolulu and Suva, Fiji and Brisbane, are DUE AT HONOLULU on or about the dates below stated, viz:

From Vancouver and Victoria, B. C.	From Sydney and Brisbane.
(For Brisbane and Sydney.)	(For Victoria and Vancouver.)
AORANGI.....JAN. 14	AORANGI.....DEC. 14
MOWERA.....FEB. 11	MOWERA.....JAN. 11
MOANA.....MAY 11	MOANA.....FEB. 8

Through Tickets issued from Honolulu to Canada, United States and Europe. For Freight and Passage and all general information, apply to

Theo. H. Davies & Co., Ltd. General Agents.

J. F. Morgan, President; C. J. Campbell, Vice President; J. L. Nelson, Secretary; A. F. Clark, Treasurer; N. E. Gedge, Auditor; Frank Mustace, Manager.

Hustace-Peck Co., Ltd.

DRAYMEN, 63 QUEEN ST.

DEALERS IN

Firewood, Stove and Steam Coal.

ALSO WHITE AND BLACK SAND. TELEPHONE MAIN 88.

## Union Express Co., Ltd., 63 Queen Street.

Having baggage contracts with the following Steamship Co.'s Lines:  
Oceanic Steamship Co. Pacific Mail Steamship Co.  
Occidental & Oriental Steamship Co.  
Wilder S. S. Co. Toyo Kisen Kaisha Steamship Co.

We check your outgoing baggage at your homes, saving you the trouble and annoyance of checking on the wharf.  
Incoming baggage checked on steamers of above companies and delivered with quickness and dispatch at your homes.

TELEPHONE MAIN 88.

H. J. NOLTE.

O. R. & L. Co.

TIME TABLE

Oct. 6, 1904.

OUTWARD.

For Wailanae, Wailua, Kahuku and Way Stations—9:15 a.m., 9:30 a.m.  
For Pearl City, Ewa Mill and Way Stations—17:30 a.m., 9:15 a.m., 11:05 a.m., 2:15 p.m., 3:30 p.m., 5:15 p.m., 11:15 p.m.

INWARD.

Arrive Honolulu from Kahuku, Wailanae and Wailua—9:30 a.m., 9:00 p.m.  
Arrive Honolulu from Ewa Mill and Pearl City—17:45 a.m., 9:30 a.m., 10:38 a.m., 1:40 p.m., 4:31 p.m., 5:31 p.m., 7:30 p.m.  
Daily.  
Sunday Excepted.  
Sunday Only.  
G. P. DENISON, Supt.  
F. C. SMITH, G. P. & T. A.

## The Weekly Bulletin

Has 680 Subscribers on the Island of Hawaii;  
500 Subscribers on Maui; 400 on Kauai.

OUR MAILING LIST IS OPEN FOR INSPECTION

Every Island has its large family of Bulletin readers.

The merchants of Honolulu can prevent a great deal of money going to the Coast by developing a mail order business of their own by Advertising in

## The Weekly Bulletin

Is kept on file at the C. DAKE'S Advertising Agency, 124 Sans





## Golf Goods

The "ALAMEDA" brought us

16 Drivers, assorted, 6 styles  
14 Brassies, " 6 "  
82 Iron Clubs, " 8 "  
24 Juvenile, " 4 "

Also a good assortment of

Long Tom Tees  
Rubber Neck Tees  
Balls

27 Aluminum clubs, 7 styles  
70 Caddy Bags, assorted, in  
Canvas, Leather, Plaid,  
etc.

We have extra Shafts for all clubs and do repair work to your satisfaction or no pay. If you are interested in anything in the Golf line it will pay you to call on

E. O. HALL & SON, Ltd.

## STOCKYARDS STABLES.



IN ORDER TO KEEP YOURSELF AND FRIENDS OUT OF TROUBLE  
HIRE THE TALLYHO FOR SUNDAY AND GET OUT OF TOWN.

TELEPHONE BLUE 3143

E. H. LEWIS, Proprietor.

## THE SABBATH MOTHER GOOSE OPERETTA

May be observed better now than ever before. But all people do not agree on what day the Sabbath should be observed.

There is one matter upon which all classes, kinds and conditions of citizens agree--

## The Pacific Mutual Life Policies

Beat The World!

CLINTON J. HUTCHINS  
General Agent  
920 FORT STREET.

WE ARE AGENTS FOR THE  
CELEBRATED

Winthrop Medicines

U-Ric-Sol-Vent

Kidney Tea

Blood Purifier

Booklet on the Kidney Free.

Chambers Drug Co.,  
LIMITED.

Cor. King and Fort Sts.

'PHONE MAIN 131.

The London Academy of Music medal for pianoforte playing, counterpoint and harmony has been won by Max Darenki, 8 years old. There were 39 other competitors, the youngest of whom is 25 years old.



Hours, 8 to 5; Sunday, 9 to 12.

200 Children

The House That Jack Built

Given for the Free Kindergarten

Hawaiian Opera House

Saturday and Tuesday Evenings  
December 10 and 13.

Thursday Matinee 3 p.m.

Regular Opera House Prices.  
Tickets on sale at Wall, Nichol.

## WANTS

For Want Column See Page 5

ROOM AND BOARD.

By young lady. Address Y., this office.

MR. DOOLEY and MRS. DOOLEY, of Hawaii, will appear in The Saturday Bulletin. Mr. Dooley will write on the INTELLECTUAL LIFE and MRS. DOOLEY on COUNTY GOVERNMENT. A sixteen-page paper. The biggest and the best. Be sure you get the SATURDAY BULLETIN.

Eminent German professors are becoming proverbial for their longevity. Ewald Hering, of the University of Prague, has just celebrated his 70th birthday.

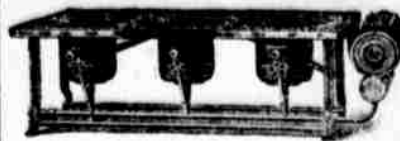
## DENTISTS

THE UP-TO-DATE DENTISTS  
Dentists that will do good work at low prices. Our instruments are thoroughly sterilized after using each time.

LADY ASSISTANT.

THE EXPERT DENTISTS,

215 Hotel Street, opp. Young Hotel.



Eureka Wickless Blue  
Flame Cook Stoves.

Why heat up your kitchen by using a coal or wood stove? Oil is the most convenient and cheapest fuel. No kindling; no dirt; no ashes.

HAWAIIAN TRADING CO., Ltd. 1142 Fort St., Love Bldg.

## IT'S IN TOWN! SHIPPING INTELLIGENCE

The Celebrated

## GORDON DRY GIN

Is here and can be had at all First Class bars and hotels. Try it and be convinced of its merits. We respectfully call your attention to the official analysis on the back of the bottle. This gin is strictly pure and free from fusel oil and we take a pride in presenting it to the public, with the assurance that it will meet with universal favor.

Ask For It Decline Imitations

Thos. F. McTighe & Co.,

Sole Distributors for Territory of Hawaii.

TEL. MAIN 140. 93 & 95 KING ST.  
P. O. BOX 755

## NEW - TO-DAY

## WAS RICH MAN'S SON

SO SAYS PORTO RICAN WHO  
WAS ARRESTED IN NEW YORK

TALE OF WOE REGARDING LIFE  
ON HAWAII SUGAR PLANTATION - ESCAPED FROM  
REFORM SCHOOL.

New York, Nov. 15.—In the line of prisoners passing before Magistrate Whitman today was a young man, whose features and carriage marked him among his fellows in misfortune. His name is Germanio Rodolfo Maltini, and he is a son of a wealthy Porto Rican merchant. He was found on Broadway in a weak and sickly condition by Policeman Platte and arrested on a charge of vagrancy. His clothes, which had been soaked in the water and mud and rained in the dust of many roads, bore testimony to long suffering. He told a remarkable story. "Your Honor," he said, "my troubles began when I got the sugar plantation fever. I hated the thought of hearing it said that my father had made my fortune, and I asked him to send me to Honolulu to learn sugar planting. There were 200 young men like myself on that plantation. We got \$15 a month and board and lodging. I saved money for two years and my apprenticeship was then at an end. I was about to return to Porto Rico, when one night my money was stolen while I slept. I complained to my master. He grinned and told me I was lying. I complained to the police, and they laughed at me. Thinking it part of a plot to keep me there in a sort of slavery, I refused to work until my money was found. "I was suddenly taken before a court by my master and committed to a reform school of Honolulu, where I remained for two years. They took away my own name and gave me an English one, George Brooks. I escaped at last and managed to secure myself on one of the Pacific Mail Steamship Company's boats. They found me and I was put among the firemen and made to work my passage to San Francisco. Finally I got on a freight train bound East. I was caught 100 miles out of San Francisco and put off. Then I jumped until at last I got to New York."

For three days and nights Maltini ramped the streets of this city looking for work. Maltini said he could easily return to his parents, but preferred to first earn money enough to go back looking respectable. The police have secured a position for the young man.

## PETREL'S MOVEMENTS.

San Francisco, Nov. 11.—Instead of proceeding to Honolulu after the completion of her target practice at Magdalena bay, the cruiser Boston will proceed with the New York, the Marblehead and the Bennington on their cruise along the South American coast until the new flagship Chicago is met, when Admiral Goodrich will ship his flag to the latter, send the New York to the Atlantic coast and return with the rest of the Pacific squadron to this port, probably arriving early next year.

The gunboat Petrel, which sailed early this month to Magdalena bay for target practice, will, upon the completion of the practice, return to San Diego and proceed thence to Honolulu, where she will remain indefinitely.

From present indications it is believed that the Pacific squadron will consist for many months of the Chicago, Marblehead, Bennington, Petrel and Wyoming. The Ohio, it is believed, will be sent to the Asiatic station when her six months' probationary period is terminated.

Read "Wants" on page 6.

## TIDES.

Nov.	1	2	3	4	5	6	7	8	9	10	11	12	13	14	15	16	17	18	19	20	21	22	23	24	25	26	27	28	29	30
High	8:00	8:15	8:30	8:45	9:00	9:15	9:30	9:45	10:00	10:15	10:30	10:45	11:00	11:15	11:30	11:45	12:00	12:15	12:30	12:45	1:00	1:15	1:30	1:45	2:00	2:15	2:30	2:45	3:00	3:15
Low	2:00	2:15	2:30	2:45	3:00	3:15	3:30	3:45	4:00	4:15	4:30	4:45	5:00	5:15	5:30	5:45	6:00	6:15	6:30	6:45	7:00	7:15	7:30	7:45	8:00	8:15	8:30	8:45	9:00	9:15

Full moon Nov. 25 at 4:41 p. m.

ARRIVED.

Thursday, Nov. 24.

Stmr. Maui, Bennett, from Hawaii

ports.

Friday, Nov. 25.

O. S. S. Alameda, Howell, from San

Francisco, at 9:15 a. m.

P. M. S. S. Manchuria, Saunders,

from San Francisco, at 10 a. m., oil

port.

DEPARTED.

Thursday, Nov. 24.

Stmr. Mithabala, Gregory, for Kauai

ports.

A. H. S. S. Nevada, Green, for Ka-

hulul.

Friday, Nov. 25.

Stmr. Mauna Loa, Emerson, for

Maui, Kona and Kau ports, at 12:30

p. m.

PASSENGERS ARRIVED.

From San Francisco, per S. S. Manchuria, Nov. 25.—For Honolulu: Mrs. M. E. Alexander, B. F. Dillingham, Mrs. E. Duto, W. Green, Mrs. W. Green, Miss R. Green, Mrs. H. L. Hudson, J. H. Lane, Mrs. J. H. Lane, Mrs. A. N. Locke, Dr. L. Mori, L. Tenney Peck, Mrs. L. Tenney Peck and infant, H. E. Peck, Mrs. L. A. Thurston and two children, J. Q. Wood, Hugo Bremer, For Yokohama: M. Babo, Mrs. H. A. Beeken and three children, M. A. Bassity, E. C. Bellova, Mrs. A. D. Cole, Tadadillo Hibb, Miss E. S. Hartwell, S. Iwamoto, S. Kano, A. Kumamoto, Newton B. Knox, S. Yogi, Paymaster Geo. M. Lakosh, U. S. N.; Capt. Chas. Lynch, U. S. A.; S. Mura, T. D. McKay, Mrs. John McKim, Master Maurice Pollak, Miss Helen Pollak and maid, K. Sugawa, Mrs. K. Sugawa, K. Takata, K. Wada, For Kobe: F. H. Dunn, For Nagasaki: Miss Jennie A. Pieters, For Shanghai: Miss Gladys V. Bell, Mrs. J. H. Brown, Mrs. D. J. Brady, P. de T. Evans, Mrs. P. de T. Evans, P. J. Fitzgerald, Mrs. P. J. Fitzgerald, M. H. Frank, E. Jenner Hogg, Mrs. E. Jenner Hogg, H. Hancock, Miss M. J. Irvine, Rev. R. O. Joffe, N. H. Kennedy, N. McLeod, Mrs. N. McLeod, Miss Annie B. McLeod, Lorenzo Morgan, Mrs. Lorenzo Morgan, Mrs. F. Nasser, R. H. Parker, Mrs. R. H. Parker, J. W. Paxton, Mrs. J. W. Paxton and child, Salvador Perez, Rev. W. S. Smith, Mrs. W. S. Smith, For Hongkong: W. S. Allen, Mrs. W. S. Allen, Chris. J. Bauer, Mrs. Chris. J. Bauer, C. O. Bohanan, Miss Florence Borden, Miss N. J. Borden, K. Branson, Robert Cook, W. J. Crompton, C. F. Davis, Carl Deter, Mrs. Carl Deter and son, A. G. Escanilla, Clifford H. French, Mrs. Clifford H. French, Wm. Grebst, I. R. Hamilton, Mrs. Maximilian Herzog, James Hopper, J. M. Jenks, J. E. Kelley, Geo. L. Klinge, Mrs. A. E. Knight, S. L. Levy, Mrs. S. L. Levy, Mrs. A. M. Lauer, Dr. Alexander Lyall, Mrs. Alexander Lyall, Carl W. Nelson, J. L. Manning, R. E. McGrath, F. E. McHugh, J. Murphy, J. B. Oakley, Mrs. J. B. Oakley, Henry W. Peabody, H. Pollak, Mrs. H. Pollak, Mrs. E. J. Post, A. W. Rettig, Mrs. A. W. Rettig, Jose Vano Reyes, Mrs. Clara Sanders, Geo. S. Shoens, T. C. Smith, Baron Feofee H. de Stampe, Miss E. M. Stevens, Mrs. John Stevenson, C. J. Strome, C. Suedhaus, Mrs. E. Thompson, J. M. Turner, Mrs. J. M. Turner and daughter, Mrs. J. S. Van Buren and maid, A. M. Wiler.

## WEATHER REPORT

U. S. Weather Bureau Office,  
Young Building.

November 25.  
Temperatures—6 a. m., 65; 8 a. m., 69; 10 a. m., 74; noon, 76; morning minimum, 63.

Barometer, 8 a. m., 29.90; absolute humidity, 8 a. m., 5.640 grains per cubic foot; relative humidity, 8 a. m., 75 per cent; dew point, 8 a. m., 59.

Wind—6 a. m., velocity 1, direction N.; 8 a. m., velocity 3, direction N.; 10 a. m., velocity 6, direction N. E.; noon, velocity 5, direction N. E.; rainfall during 24 hours ended 8 a. m., trace.

Total wind movement during 24 hours ended at noon, 146 miles.

## Whitney & Marsh

## Christmas Essentially belongs to the Children

It is the time when they fill our thoughts. We have been thinking of them too,---



PRACTICAL THOUGHTS to make them feel

comfortable and look pretty. We want to convince you that it is cheaper to buy READY-MADE GARMENTS than to do the sewing yourself to say nothing of the time you save.

THESE ARE WHAT WE REFER TO:

## Infants' Long Slips

fine lawn, tucked yoke with insertion. 60c

## Infants' Long Skirts

ranging in price from 60c

Child's White Dresses, sizes 6 months to 6 years, range in price from 60c to the finest of HAND-MADE.

Child's Caps, nice quality fancy lawn, 10c

Of course we have the finer grades as well. Added to the above we have FLANNELETTE GOWNS, SACQUES, BOOTEES, BIBS, CRIB BLANKETS, BED-SPREADS, ETC.



We also carry the celebrated

## STORK GOODS

Stock Pants 50c

Stock Catch-all Bibs 50c

made of a patent washable anti-septic material direct from Storkland

We are showing the children's goods in the mauka window

In the makai window you may see a splendid display of

## LADIES' VESTS

Ranging in price from

10c

INCLUDING THE VEST THAT FILLS THE LONG FELT WANT

The Vest without the Shoulder Straps



## JAS. F. MORGAN

Auctioneer and Broker.

847-857 Kaahumanu Street.

P. O. BOX 594. TELEPHONE 59.

## Auction Sale

SATURDAY, NOV. 26, 1904,  
10 O'CLOCK A. M.

## Horses, Buggies, Harness

I will sell at my saleroom, 847 Kaahumanu street, on above date—  
"OAK GROVE,"  
1 FINE DRIVING MARE and BUGGY.

1 PHAETON, nearly new, rubber tires.  
1 BRAKE, in fine order.  
1 BUGGY.  
1 SET SINGLE HARNESS.  
1 MEXICAN SADDLE.  
1 RIDING BRIDLE.  
1 RACING BIKE.

JAS. F. MORGAN,  
Auctioneer.

## Auction Sale

TUESDAY, 29 NOV., 1904,  
AT 10 O'CLOCK A. M.

## Wines, Liquors, etc.

I am instructed by the Trustee in Bankruptcy of the Estate of W. M. Cunningham, a Bankrupt, to sell at Public Auction at my saleroom, 847 Kaahumanu Street, on above date—  
281½ Bottles, Wines, Liquors, Bitters, Beer, Etc.,  
½ case Empty Pint Flasks,  
½ case Empty ½-Pint Flasks.

JAS. F. MORGAN,  
Auctioneer.

## Fire! Fire!

A LITTLE PRECAUTION

will save much property, perhaps LIFE.

I have just received a few Fire Extinguishers from San Francisco; same pattern as those used in the Government buildings.

Price Reasonable. GET ONE.

JAS. F. MORGAN,  
Auctioneer.

## Across the Continent

on the  
**NEW OVERLAND LIMITED**  
CHICAGO IN

LESS THAN 3 DAYS

NEW YORK

3 DAYS 19 HOURS

LUXURIOUS

EVERY DAY TRAIN

Bath, Barber, Buffet, Library, Electric Reading Lamps in every Booth, Observation Car, Telephone Service.

## SOUTHERN PACIFIC

C. S. FEE,  
Passenger Traffic Manager.  
T. H. GOODMAN,  
General Passenger Agent.  
San Francisco, 1:1 CALIFORNIA.  
6-10-02.



## Three Trains

Daily

VIA  
**UNION PACIFIC**

TO  
Omaha, Kansas City,  
Chicago, St. Louis

And All Principal Eastern Points

No Change { To Denver,  
Kansas City,  
Omaha,  
Chicago.

Be sure your ticket reads via the  
**UNION PACIFIC**

For full information call on  
S. F. BOOTH, G. A.,  
1 Montgomery St., San Francisco, Cal.