

The Pacific Commercial Advertiser

U. S. WEATHER BUREAU, JANUARY 29.—Last 24 hours' rainfall, .00. Temperature, Max. 75; Min. 64. Weather, fair to cloudy.

SUGAR—96 Degree Test Centrifugals, 3.505c; Per Ton, \$70.10. 88 Analysis Beets, 8s 1½d; Per Ton, \$71.80.

ESTABLISHED JULY 2, 1894

VOL. XLIII, NO. 7325.

HONOLULU, HAWAII TERRITORY, TUESDAY, JANUARY 30, 1906.

PRICE FIVE CENTS.

GOVERNOR IS REPORTED BETTER

His Temperature Was Lower Last Night.

Symptoms indicating typhoid persist in the case of Governor Carter, and there are other symptoms complicating the case of a somewhat mysterious nature, nevertheless the Governor had a good day yesterday, and last night his temperature had fallen to 99 4-10 degrees. This abatement of the fever is the most favorable feature that has yet attended the case. The patient rested easily all day Monday and complained of no pain.

"We are still on the watch for typhoid," said Dr. Judd last night. "There have been no stronger indications of that disease. There is, in fact, no change in the symptoms, excepting that the temperature tonight is substantially lower. It has gone down to 99 4-10 degrees."

"We are making the blood tests for typhoid with the Widal reaction. I do not know when these will be concluded. There has been no consultation of physicians over the case, beyond the consultations I have had with my partners. The family has not yet asked for a consultation."

Secretary Atkinson was notified of the state of the Governor's case yesterday afternoon, and sent two cablegrams during the day asking for information. These were sent from Chicago, which city the Secretary could not leave until 8 o'clock last night. In his second cablegram the Secretary told where he could be reached by a dispatch on Wednesday, and asked to be advised on that day. Atkinson will reach San Francisco on Thursday evening, and will be due here on February 9.

There is a precedent, which arose in Governor Dole's time, for the Secretary to take charge of affairs during the Governor's illness. In May, 1901, Governor Dole was very much run down in health and his physician, Dr. Wood, gave him a certificate of inability to perform the duties of his office. Governor Dole at once notified Mr. Cooper, then Secretary, and Cooper took charge of affairs and acted as Governor for several weeks while Governor Dole went to Hawaii to recruit his strength.

The case of Governor Carter differs from this, somewhat, of course, in that the notification of the physician is more than apt to go to Secretary Atkinson in the first place. This is because the Governor attends to no official business whatever, and if there is not rapid improvement in his condition is not likely to be able to attend to any before Secretary Atkinson returns.

PROMOTION OFFICE WAS WATER-SOAKED

The Douglas Block at Los Angeles, occupied by the Southern Pacific Ry., and in which the Hawaii Promotion Committee also has an office directed by Miss Whitlock, was gutted by fire recently, entailing a loss of about \$100,000. Miss Whitlock writes Secretary Wood of the Promotion Committee that although her office was soaked with water, she got in there in time to remove valuable papers and cover all the desks with carpets, and in this way managed to preserve most of her property. None of the Hawaiian pictures were damaged and the stock of literature is intact. The new Hawaiian transparency over her window also escaped injury.

REPEAL AMERICAN REGISTRY LAWS.

WASHINGTON, D. C., Jan. 11.—The repeal of the law which enables wrecked vessels repaired in American yards to obtain American registry was determined upon today by the senate committee on commerce in ordering a favorable report on a bill introduced by Chairman Frye.

IMPROVEMENT CLUBS ALL REPORT

Very Great Enthusiasm at Meeting Last Night.

There was a big crowd of men and women in Y. M. C. A. Hall last night at the joint meeting called by the Pro-



CHARLES MULFORD ROBINSON, THE CITY BEAUTIFIER, WHO IS COMING TO ADVISE WITH HONOLULU ABOUT A PARK SYSTEM.

GRAND JURY OBJECTS TO INTERPRETER CRAWFORD

Judge De Bolt Says He Will Give Them a Man in Whom They Have Complete Confidence.

The Chinese interpreter for the grand jury which is to meet again on Wednesday, will not be Willie Crawford, who is the regular Chinese interpreter for the Circuit Court. This statement is made on the authority of Judge De Bolt.

"Yes," said Judge De Bolt yesterday, "it is a fact that a committee from the grand jury waited on me in my chambers on last Wednesday. Oh, no, they did not come to find any fault with the court."

"What was troubling them? Why, the grand jurors seemed to think that they wanted a new Chinese interpreter. Not that they wanted to have the court change its interpreter. Not at all. But, you see, the conditions in the court and in the grand jury room are a little bit different. When we have Chinese cases on trial in court, there are usually a number of Chinese persons present at the hearing,

and so there are means of telling whether we are getting an exact interpretation of what a witness is saying."

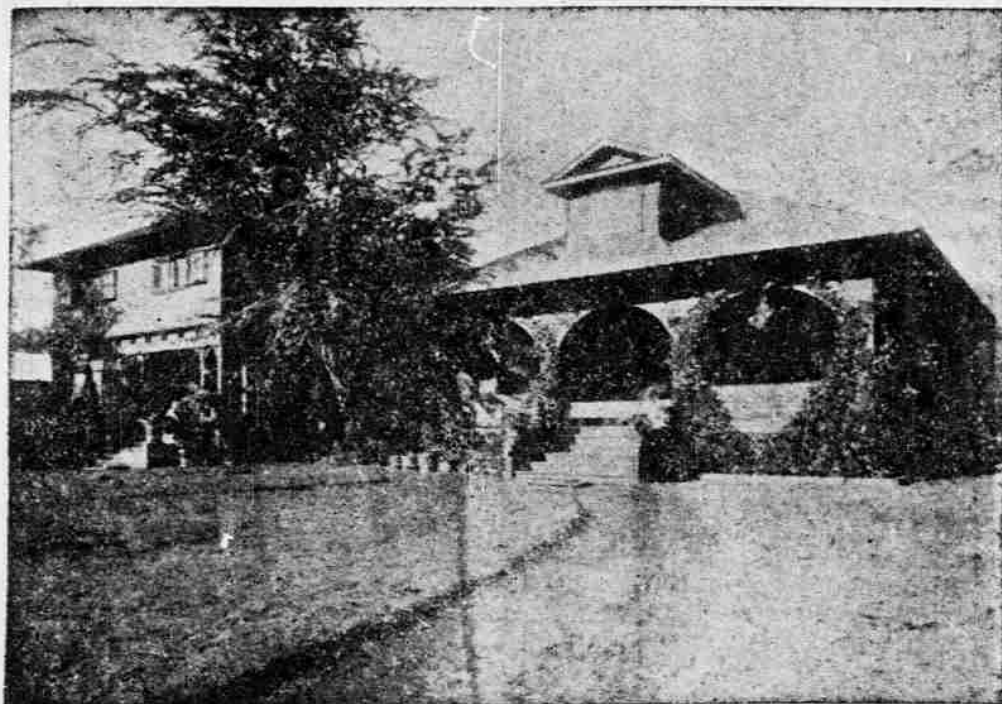
GRAND JURIES DIFFERENT.

"In the grand jury room, on the other hand, there is nobody present, but the interpreter and the witness under examination. And so, as some of the jurymen thought that perhaps they did not have that degree of confidence in the kind of interpretations they would be getting, they concluded to ask permission to make a change. Oh, of course, they will be allowed to have an interpreter instead of Mr. Crawford. In fact, rather than have them not return indictments in cases where they might return them in case they had full faith in their interpreter, I told them to go ahead and do as they liked."

"It is an instance, perhaps, of the

(Continued on Page 8.)

MELROSE HOTEL TO BE SUSANNA WESLEY HOME



FORMER MELROSE HOTEL, NOW THE METHODIST SUSANNA WESLEY HOME.

The Woman's Home Missionary Society of the Methodist church yesterday acquired the property on King street heretofore known as the "Melrose Hotel," which will in future be conducted as the "Susanna Wesley Home."

Largely through the efforts of Bishop

(Continued on Page 4.)

PRINCE FREDERICK THE NEW KING OF DENMARK

Proclaimed in Succession to His Dead Father, Who Was One of the Best Beloved of European Monarchs.

(Associated Press Cablegrams.)

COPENHAGEN, January 30.—The accession of Prince Frederick to the throne of Denmark, under the title of Frederick VIII, has been proclaimed.

This afternoon cables announced the death of the aged King Christian of Denmark, the "father of Kings," and perhaps the best beloved monarch in Europe. Of the Danish royal family, the Searchlight of January 13, said:

Christian IX.—The King of Denmark is the patriarch of European royalty. He is the head of a family of which no less than four members are seated upon thrones of the Old World, while the lines of his relationship extend into most of the more prominent courts.

A forbear of monarchs Christian is not himself the son of a king. In fact, his late wife, as Princess Louise of Hesse-Cassel, stood nearer to the throne than he did when they were married in 1842. He was the fourth son of Duke William of Schleswig-Holstein-Sonderburg-Glücksburg. His wife was a niece of King Christian VIII. When the matter of the Danish succession was under discussion by the Great Powers she renounced her rights in favor of her husband, who was made, by virtue of a treaty concluded in London on May, 1852, the next in line to Frederick VII, who at that time was reigning.

Christian IX. succeeded to the throne on the death of Frederick, November 15, 1863. He found it an uncomfortable seat because of gloomy auspices, and he would have abdicated but for the good cheer and advice of the queen, whose influence saved to Europe one of its most popular and respected monarchs.

Two of Christian's daughters were called to wear imperial crowns. Princess Marie Dagmar became the Empress Maria Feodorovna of Russia. She was widowed before her older sister, Alexandra, married to the Prince of Wales, became England's queen and India's empress.

Christian's first-born son, Prince Frederick, upon whose head the crown will rest when the old king passes away, has been preceded in the ranks of reigning royalties by his younger brother, and also by his own second son. Prince William, the second son of King Christian, was elected King of the Hellenes by the Greek National Assembly on March 31, 1863, and as George I. was the

(Continued on Page 7.)

CHINESE COMMISSIONERS AT WASHINGTON'S TOMB

WASHINGTON, January 30.—The Chinese Commissioners have visited the tomb of Washington.

This is one of the set things for distinguished visitors at the National Capital, but there are perhaps few visits that will have greater significance than this. The Chinese Commissioners are in the United States to learn all that there is to know of modern governmental progress. They have visited the tomb of the man who more than any other made governmental progress possible in America.

GERMAN STEAMER ASHORE.

SEATTLE, January 30.—The German steamer Nariechen, en route to Vladivostok, is ashore in False Bay. The Cargo will be a total loss, but there is a possibility of saving the ship.

HARPER MEMORIAL LIBRARY.

CHICAGO, January 30.—The erection of a million dollar library as a memorial to the late President Harper, of the Chicago University, is assured.

VALENCIA INQUIRY BEGUN.

SEATTLE, January 30.—The inquiry into the wreck of the steamer Valencia has been commenced here.

KILLED BY A BOMB.

TIFLIS, January 30.—General Grinzoff has been assassinated by a bomb.

AFTERNOON REPORT.

TOKIO, January 29.—Kurino has been appointed ambassador to France.

WASHINGTON, D. C., January 29.—General Joe Wheeler was buried in the national cemetery at Arlington today.

VICTORIA, B. C., January 29.—The schooner Ella G., reported to have turned turtle and six to have been drowned, is reported to be safe.

COPENHAGEN, January 29.—King Christian of Denmark died here today. TUKUM, January 29.—Count Frederick Lamsdorff and Baron Roenne prominent land owners of the empire, have been murdered by revolutionists.

SAN FRANCISCO, January 29.—The fog was responsible for several collisions in the bay today. One person was killed and another is dying from the effects of injuries received in a collision between the steamer Peters and the schooner Arrow in another collision. There was no loss of life accompanying this collision.

Scriven's Improved Elastic Seam Drawers



This scientific drawer is worn by over a million careful dressers and it costs no more than ordinary drawer made of good material.

It fits snugly and follows the lines of the hips and legs. Waist sizes from 28 to 50 inches.

None of our patrons are more delighted than men of unusual build. It makes no difference if you are slim, stout, short, tall or of perfect proportions, you can always secure a CORRECT FIT. The SCRIVEN'S DRAWER will yield to any strain or pressure after which it will return to its original shape.

Only the very best material is used and in comfort and durability it KNOWS NO EQUAL.

M. McInerny, Ltd.
MERCHANT AND FORT STREETS.

Make Your "BREAD" Taste Better.

By adding a little good Apple Butter! It makes you forgive indifferent bread, while good bread and good apple butter make an irresistible combination. We do not hesitate to recommend

Heinz Apple Butter

The manufacturers authorize us to refund your money if you do not like it, but no one has ever asked us to make that guaranty good. We sell a great deal of it too.

In some crocks of convenient sizes.

H. Hackfeld & Co., Ltd.
Wholesale Agents.

Gas Range Cooking

For Frying Oysters, Croquettes, Fritters, Doughnuts

and everything else which needs very hot fat, there is no fuel so good as gas. The heat is intense and can be kept at one point indefinitely.

The flame should be kept at full head all the time. It will not do to reduce it, as the fat is constantly being cooled by putting in fresh instalments to be fried.

HONOLULU GAS COMPANY, LIMITED.

PA-U RIDERS LINING UP

A Picturesque Feature for the Floral Parade.

There is every indication that the Pa-u riders' section of the Floral Parade which is to be held on Washington's birthday, will be a feature to appeal not only to the stranger, but to the kamaaina as well.

Frank Andrade, who is in charge of this picturesque section, states that he has heard favorable reports from various localities to the effect that women are preparing to enter the parade wearing the Pa-u riding skirts of the old-time Hawaiians.

Two or three very old women, who in their younger days were famed for their daring riding, and who always wore the Pa-u skirts while on horseback, will be on hand on the day of the parade to assist any of the younger element who may not know all about such skirts, to adjust them and see that the riders go into the parade properly attired.

There has been a little bashfulness on the part of some young women to enter the Pa-u section, but as the day for the parade approaches this diffidence is wearing off, and Mr. Andrade believes that a large number will be on hand.

The reputation of the organizers of the Floral Parade is at stake to provide a picturesque lot of riders. It is hoped that there will be such a turnout as old-timers used to see on Saturday afternoons when the band played at Emma Square. In the old days troops of Pa-u riders used to ride about the enclosure, whose riding qualities were a delight to the eye.

BAND CONCERT WAS HIGHLY ENJOYABLE

One of the largest crowds that has attended a band concert of late was present in Emma Square last evening. It was a perfect evening for music out of doors and Kapellmeister Berger presented a program of more than average excellence.

The Gloria, from Mozart's 12th Mass, was included in the first half of the program and was superbly rendered, the effect of this sonorous production rendered in the scented tropic night being most impressive.

From grave to gay, the musicians cantered through a glad selection from "Prince of Pilsen," and then Madame Nana Alapai, the Hawaiian Nightingale, sang a quartet of American songs, including the ever popular "Norah."

A selection from Monckton's "Messenger Boy" came next and was loudly applauded. This was followed by the haunting strains of Moret's "Poppies," the intermezzo providing most hummable melody.

The last number was the immortal "Blue Danube," played by request. It was an ideal night for the rendition of Strauss' dreamy masterpiece and the selection possessed the advantage that it could be enjoyed to the full without the inconvenient but usually inevitable accompaniment of evening dress.

Tonight's band concert will take place in the roof garden of the Young Hotel. The program, which will commence at 7:30 o'clock, will be as follows:

PART I.

March—"The Diplomat".....Sousa
Overture—"Ten Girls and No Husband".....Suppe
Ballad—"Elua Maka Ulu".....Hermes
"Reminiscences of Verdi".....Godfrey

PART II.

Vocal—Hawaiian Songs, Ar. by Berger
Mrs. N. Alapai.
Selection—"The Musical Star".....O'Hare
Pavane—"The Little Marquise".....Kling
Waltz—"Extra Papers".....Translatour
"The Star Spangled Banner."

TALENTED SINGER CROWDS SALOON

There is aboard the transport Logan, now en route to San Francisco, a baritone singer of remarkable talent.

On Friday night, when the vessel was in port, the vocalist, who is one of the crew of the transport, drifted into a hotel street saloon and commenced to sing a song. It was no new-fangled ragtime that he treated his listeners to, but a song of old Ireland and he rendered it as a song has seldom been sung here before.

There were only half a dozen people in the place when he began to sing but as the rich, full notes rang out, the audience grew until the place was packed. Then the unknown minstrel gave "Kathleen Mavourneen" with rare feeling and concluded with "Killarney."

Such an effect did the songs have on the crowd that men begged him

to sing more and one big son of Erin offered him a dollar to sing another ditty of his far-off, beloved country.

It is said that the singer intends to have his voice developed in San Francisco and that a well known Californian musician has interested himself in the young man and has promised to bring his talent to the notice of the public.

When in Manila, the vocalist sang at an entertainment arranged by the soldiers and sailors of the place and made such a favorable impression on a theatrical manager that he offered him a six months' engagement in the Philippines.

SIAM WANTS SOME PROMOTION BOOKS

Phra (not the Phoenician of storied fame), but Phra Pytate, of the Royal Siamese Navy, has written to the Promotion Committee from Bangkok, asking for literature on Hawaii. The handwriting of the officer indicates that he has been educated in English schools. The letter paper bears the State crest of Siam.

WILL HONOR ST. PATRICK

The Joint Committee from the Ancient Order of Hibernians and the Ladies' Auxiliary will hold a meeting on Wednesday night at Mission Hall to perfect measures for a proper celebration of St. Patrick's day. There will be a literary program, but what other arrangements for the observance of the day will be made have not yet been determined.

LOCAL BREVITIES.

Chester Doyle, of the Attorney General's department, will leave on the Kinau for Hawaii today for a vacation trip of a couple of weeks. He has been suffering a good deal from insomnia lately, and will try to get his system toned up at the Volcano House.

Twenty thousand redwood ties for the Wahiawa branch are being treated chemically at the O. R. & L. Co.'s wharves. Superintendent Denison believes that the treatment will double the life of the ties. Ordinary ties here last four or five years.

Alexander Ihia died on Sunday at the home of his aunt, Grace Kahoali. He was about 30 years old and had been a protege of the late Queen Emma. Funeral services were held at St. Andrew's cathedral at 3 p. m. yesterday and the burial was in Kawaiahaeo churchyard.

Mrs. Lawlor, the widow of a prominent business man of Halifax, N. S., is coming in the Sierra to visit her brother, James Lyle, and family. She is the mother of an Episcopal clergyman and a physician, the latter having been a chum of young Mr. Ewart of Kauai at McGill University several years ago.

A handsome specimen of the North American horned owl was on view in the Fort-street window of the Gunst-Eakin cigar store yesterday. It has been secured by A. V. Gear for the Kaimuki zoological gardens. The beasts and birds at the "Zoo," though collected largely from opposite ends of the earth appear to maintain remarkably good health. Losses by death since the place opened have been very few and the creatures really seem to enjoy their confinement.

Committees were appointed at a preliminary meeting for organization of the Manoa Heights Improvement Club as follows: Organization, etc.—W. B. Maling, Robert Mist, John Effinger. Delegates to Improvement Meeting—Judge Robinson, C. B. Reynolds, Wm. Thompson, Prof. J. E. Higgins. Mr. Maling has the roll of membership at the clerk's office of the Federal court. The club's jurisdiction comprises all of Manoa valley except College Hills and the eastern upper portion.

Thomas C. White, sub-agent of the third land district, lately captured a Chinaman in the act of appropriating firewood in Government land in Kau. The culprit pleaded guilty in court and was fined about \$100 including costs. When caught the Chinaman said he had cut the wood under orders. He has appealed for a reduction of the fine. The land on which he culled the trees was formerly leased to Hutchinson Plantation Co., and since the expiration of the lease has been surveyed for homesteads.

Millama, wife of Makanae, both of whom reside in Kewalo, was kicked out of her house by her spouse on Sunday night. Makanae then went to sleep, with his hands crossed over his neck and face. The wife returned during the night armed with an axe. She brought the weapon down on the form of her husband, in the endeavor to sever his head from his body, so Makanae claims. His wrists being in the way they were cut. The result was: Hospital for Makanae and the station house for Millama.

The settling of Portuguese upon the slopes of Punchbowl was a work started by Judge Perry's late father about twenty-five years ago. It is Government land that was leased to the late Queen Kapiolani, and the lease expires in 1912. Practically an arid desert in the beginning, the thrifty Portuguese have clothed it with gardens and vineyards. It is said that the Kapiolani Estate, Ltd., derives an aggregate of \$40,000 a year in rentals from the Portuguese. Delegate Kuhio has a bill in Congress to facilitate the purchase in fee of their holdings by the tenants.

WHEN YOU HAVE A BAD COLD.

You want a remedy that will give you prompt relief. Get Chamberlain's Cough Remedy. It always cures and cures quickly. For sale by all Dealers and Druggists, Benson, Smith & Co., Ltd., Agents for Hawaii.

Money-Saving Sale of

Muslin Underwear

—AND—

LADIES' SHIRT WAISTS

Commences Wednesday Morning, Jan. 31.

Alert buyers have learned the value of our special sales and a reduction in ladies' muslin underwear means pretty, well-fitting and durable garments at prices less than most stores pay for the goods. The best muslin and nainsook are the materials employed in making these garments and they are handsomely trimmed with embroideries and dainty laces. No skimping in the seams.

Here's an opportunity to make your money go far if you want pretty underwear:

Night Gowns, 50c, 75c, \$1.00, \$1.25, \$1.50, \$2.00 and \$2.50.

Skirts, 75c, \$1.00, \$1.15, \$1.25, \$1.50 and \$2.00.

Drawers, 25c, 35c, 40c, 50c and 75c.

Chemises, 50c, 65c, 75c and \$1.00.

Corset Covers, 25c, 35c, 50c, 65c, 75c and \$1.00.

SHIRT WAIST SPECIAL

Over 300 dainty shirt-waists, in mulls, lawns and madras will be closed out far below cost.

SEE WINDOW DISPLAY.

A. BLOM PROGRESS BLOCK, FORT STREET.

WHILE THEY LAST

Special Sale
Of the Celebrated

LIBBY'S CANNED SOUPS

5 cents a Tin

J. M. LEVY & CO.

Waity Block

Telephone 149

We Would Die For You

By that we mean we would gladly do your cleaning and dyeing if you will give us the chance. We can give you the best possible service and save you money.

Our establishment possesses absolutely up-to-date facilities for cleaning woolen or silk garments for men or women. We dye them in fast colors and press them so that they look as good as new.

Send us your clothes and let us renovate them.

Sanitary Steam Laundry.

Ring up Main 73 and our wagon will call for your work.

QUALITY.

ECONOMY.

SOAP

Honolulu Soap Works Co.

FRED. L. WALDRON,

Spreckels Block.

Sole Agent.

FASHION FAVORS Rainier BEER

RAINIER BOTT'L'G WKS.
Kewalo. Phone White 1331.

For Sale or Lease!

Lots in Gulick Tract, Kalihi,
ON CAR LINE.

\$350.00 and Upward

Easy terms. Particulars of **MRS. S. A. GULICK.**

1020 GULICK AVENUE, KALIHI.

AT AUCTION
BY **WILL E. FISHER**
AUCTIONEER

Telephone Main 424.

Regular Sales Day Wednesday and Saturday

WILL E. FISHER,
AUCTIONEER.

**Tomorrow
WEDNESDAY,**
Jan. 31, 1906,
AT 10 O'CLOCK A. M.,

At my salesroom, corner Fort and
Queen streets, I will sell

HOUSEHOLD FURNITURE

Consisting of Wicker Chairs, Oak Side-
board, Oak Bedsteads, Oak Chiffonier,
Oak Washstands, Tables, Oak Exten-
sion Table, Rockers, Lamps, Mattings,
Window Screens, Ice Cream Freezer,
Carpets, Office Koko Matting, 1 Jewel
Stove and Pipe, 1 Set Home Refer-
ence Library, 1 Set Student's Encyclo-
pedia, fine Engravings and Oil Paint-
ings.

ALSO

1 American Gold Filled Waltham
Watch,
1 Parlor Rifle,
2 Field Glasses, all new;
Etc., Etc.

WILL E. FISHER,
AUCTIONEER.

REAL ESTATE FOR SALE

—o— and —o—

HOUSES TO LET

IN ALL PARTS OF HONOLULU.

WILL E. FISHER,
REAL ESTATE AGENT AND AUCTIONEER.

"H. B." Canned Goods

Full weight 3-lb. Tins
packed in heavy
fruit Syrup.

**PEACHES, PEARS,
APRICOTS, PLUMS,
CHERRIES, ETC.**

Purest and best of Cali-
fornia's choicest
Fruits.

Lewis & Co., Ltd.
GROCERS—SOLE AGENTS
169 King St., Phone 240

F. D. WICKE,

CONTRACTOR AND BUILDER.

Store Fittings a Specialty.

Repairing, Cabinet Work and Polishing.
1082 Alakea St., rear of Y. M. C. A.
Phone M. 447, residence Phone W. 1611.

Ukuleles!

We sell the best Ukuleles at the
lowest prices. Inspect our fine
stock.

HAWAIIAN NEWS CO., LTD.,
Young Building Store.

NOTICE.

ANY WOMAN OR GIRL NEEDING
help or advice, is invited to communi-
cate, either in person or by letter, with
Ensign L. Anderson, matron of the
Salvation Army Woman's Industrial
Home, No. 1680 King street.

Occidental Restaurant & Large Hands

Everything new. First-class cooks;
courteous waiters.
BEST MEAL TO BE HAD IN TOWN.
Open from 5 a. m. to 8 p. m. Private
Dining Room for Ladies.
7329 LEONG HOY, Proprietor.

Panama Hats
\$5.50
GLOBE CLOTHING CO.,
64 Hotel Street.

IMPROVEMENT CLUBS

(Continued from Page 1.)

as to trees and tree-planting, and upon
all general matters in the line of im-
provement. It hoped to serve as a sort
of clearing house for the improvement
movement, and in the interest of unity
to see that a general plan was fol-
lowed that would make of the beauty
of Honolulu a harmonious whole.

President Griffiths closed by offering
the services of his committee to the
local clubs whenever they might be
needed.

JUDGE DOLE.

Judge Dole, the next speaker intro-
duced, said that the Emma street Im-
provement Club, for which he under-
stood he was to speak, had a different
and even perhaps a less difficult work
than some of the other clubs. It was
in an old section of the city, long lived
in, where the trees were old. It might
be that this club would be called upon
to cut down trees instead of planting
them. He had come to this meeting,
indeed, sent by his club, to find out
what to do.

"Take Emma street, for instance,"
said the Judge, turning to Supervisor
Lucas, "and you walk along there and
you will find a fine sidewalk for a lit-
tle distance—and then, all at once, you
will step into the mud. Now, it oc-
curs to me that it would be better to
have it all sidewalk—or all mud."

It is a fine art, this landscape gar-
dening, went on Judge Dole. It is
indeed a liberal education, creating in
the minds of the people a love of the
beautiful, and a civic spirit that will
make us all proud of our city. What
we want to do is to make our im-
mediate surroundings accord with the
beautiful mountains behind us and the
beautiful sea at our feet.

BISHOP LIBERT.

Bishop Libert, being the next speak-
er, said that in order to go about im-
proving the city beautiful the first con-
sideration was to make it comfortable.
Beauty would come in second. Sup-
pose that we had beautiful trees and
beautiful surroundings, and our streets
were mud holes? That would not make
Honolulu a desirable place to live in.
Let each resident attend to making
his own place beautiful, and let us all
unite to see that we have good streets.
It was important to the comfort of all
the people to have good streets, to the
poor people as well as to the rich, and
that improvement should not be con-
fined to any one quarter of the city.
The poor were the best taxpayers, and
street improvement in their sections
would increase property values and so
increase taxes.

But we can not do all this at once,
said the Bishop. It will take time,
and the work must be systematic. We
in Honolulu are not systematic. We
have a way of starting things, and
never finishing them. Let us map out
a good plan of work, and adhere to
that. Then the man buying property
could look at this plan and know what
in the future, would almost certainly
be done for the improvement of his
place.

MR. FARRINGTON.

Mr. W. R. Farrington began his talk
with the story of the man who said
that his mother-in-law was dead, and
that there was no complaint. There
was no complaint, he said, of the im-
provement clubs and the movement for
the improvement of Honolulu. What
was especially needed was organized
work. The members of the im-
provement clubs should get together and
exchange their ideas, crystallize them,
and the newspapers would be glad to
carry these ideas on to the other clubs.
And he gave his endorsement to the
sentiment of Judge Dole that one of
the most important results of this
movement would be the creation of a
proper civic spirit. Let us all pull to-
gether for the good of Honolulu.

MR. RHODES.

"The Improvement Club," said Mr.
Charles Rhodes of Palolo, "has touch-
ed into life and activity the thought
and impulse of co-operation in neigh-
borhood and community. There is no
limit to what may be hoped for if
that thought and impulse can be
developed into habit—if it can be made
permanent.

"How to make it permanent, is, I
believe, the principal theme of this
gathering. Improvement clubs have
been and are being organized in every
part of the city. Each is in the first
flush nascent enthusiasm. How can
that enthusiasm be wrought into con-
tinuing good works?

"The suggestion comes to me that
nothing is as good an augury of per-
manence, as the effort in each neigh-
borhood club to do something itself;
to get its members and its committees
to do something. The habit of work-
ing rather than of resolving and peti-
tioning is the best guarantee of per-
manence."

SUPERVISOR LUCAS.

"It must be amusing to you to think
that I am going to get up here and
make a speech," said Supervisor Jack
Lucas. "But I never did such a thing
in my life. But I can tell you some-

thing about the work of the Super-
visors. In the last six months, we
have spent \$99,000 on the island of
Oahu in road work. We have spent
\$72,000 in Honolulu alone. We have
spent \$12,000 in Ewa, \$6,000 in Wai-
alua, and \$400 in Koolauloa and Koolau-
poko. The natives on the other side of the
island say that they have never had
such a harvest. And, gentlemen, we
have been enabled to do this because
we have not had to run up to the
Legislature for every cent that we
wanted. In the Legislature all the is-
lands had representatives, and the sec-
tion that had the strongest pull got
the money.

"The Advertiser this morning says
that we are building the Kaimuki
road for political purposes. Gentlemen,
if they can find a better set of Super-
visors after we go out, let them do
it. I like criticism, gentlemen, but let
it be truthful. I do not want any un-
derhand business. And I tell you, that
by the time we are out of office we will
have a road upon which you can travel
all around this island in four and one-
half hours."

L. E. PINKHAM.

L. E. Pinkham said that he was suc-
ceeding better with the poorer classes
in getting the streets cleaned than
with the men who owned property
which they used for revenue. He was
having a hard time, because his de-
partment was hampered by lack of
money, but he was doing something
nevertheless. Coming down to the
beauty of Honolulu, he said that one
way to do that was to preserve what
we had. He spoke of the reclamation
of the rice swamps of Waikiki, and
said that while it was possible that the
Board of Health was stretching its
power a bit, under the law, he still
believed that results would be achiev-
ed. And he endorsed what Bishop
Libert had said about the good of
having a system, and working to that.

HO FON.

Mr. Ho Fon expressed his pleasure,
very briefly, at being invited to ad-
dress an improvement meeting, and
said that the Chinese of Honolulu
would be found lined up with the white
men in the interest of public improve-
ment. They would keep their back
yards as clean as their front, and
would be a credit to the city.

DAVID L. AI.

"City Improvement," said David L.
AI, "is the backbone, the life of the
advertising that is being done abroad
by the Promotion Committee. Let us
not deceive the stranger. Let us im-
prove the city that tourists coming
here from abroad will see that the
Promotion Committee had not spread
broad advertising matter that repre-
sents a condition that does not exist.
Let us make good, and to that end
let us increase the beauty of our al-
ready beautiful city. This is the course
I have advocated in the native paper
of which I am the editor, and which I
will always advocate. Improvement is
the life of the work of the Promotion
Committee."

Improvement is necessary on sani-
tary ground, continued Mr. AI. And
it must be improvement in all parts
of the city. Did you ever note the
difference on Fort street below Bere-
tania and above that thoroughfare?
They will tell you that the difference
is because there is property below Bre-
tania that pays more money. But that
is not the proper spirit. We must arouse
interest, and to do that we must see
that all parts are benefited.

M. F. PROSSER.

First Deputy M. F. Prosser, of the
Attorney General's office, said that he
had been called upon most unexpectedly
to speak for the Attorney Gen-
eral, who had a cold. He expressed re-
gret for Mr. Peters, and regret also
that Governor Carter was ill and could
not be present, and that Secretary At-
kinson was absent. Mr. Prosser said
that Mr. Joseph S. Emerson, of the
Prospect Heights Improvement Club,
had prepared a paper that touched the
heart of this subject, which he would
later read, and expressed his hearty
approval and sympathy with the ob-
jects and purposes of the improvement
clubs movement. "Be sure you are
right as to the legal aspect," said Mr.
Prosser, "then go ahead."

DISTRICT CLUBS REPORT.

It being then in order to hear from
the various district club representa-
tives, those present were called upon
to report progress. The first of these
was the Waialae, Kaimuki and Palolo
Improvement Club, the oldest of all,
for which Zeno K. Myers reported.

EMERSON'S PAPER.

The next speaker called upon was
Mr. Emerson of the Prospect Heights
Improvement Club, who read the fol-
lowing paper:

To the Chairman and Representatives
of the Various Improvement Soci-
eties in Honolulu.

Gentlemen: The residents of Hono-
lulu are to be congratulated on the

public spirit shown in the organization
of improvement clubs in its various dis-
tricts, and the prospect of united ef-
forts on their part to build up and
beautify this city for which Nature
has done so much. There are many
ways in which our united action can
be advantageously directed. Let me
indicate but one of them, viz.: the lo-
cation of street lines and of property
boundaries. This lies at the very founda-
tion of all public and private im-
provements. No intelligent person will
build and expend large sums upon a
lot whose title or boundaries are in
doubt. The Court of Land Registration
is affording most valuable assistance in
this direction. Its aid, however, can
only be secured to those who have first
obtained a proper survey of their lots,
such a survey in short as definitely lo-
cates and fixes the boundaries in ques-
tion. The experience of experts who
have devoted themselves to this line of
business in Europe and on the main-
land of our country, as well as in these
fair islands of the sea, all shows the
absolute necessity of establishing,
maintaining and protecting suitable
reference points to which all boundary
points can be readily referred, so that
if lost they can be easily restored, or if
in dispute can be verified.

For this purpose the Hawaiian Gov-
ernment Survey, under the able direc-
tion of its first Surveyor General, Prof.
W. D. Alexander, was started and car-
ried on with a considerable outlay of
money. It brought order out of chaos,
and settled the land system of these
islands on the solid basis of scientific
accuracy. But unfortunately the duty
of looking after and maintaining the
Trig. Stations by permanent marks and
signals on the exact spot originally oc-
cupied has not received sufficient at-
tention. The monuments of many first
class stations have been pulled up and
destroyed by persons to whom the land
on which they stood was sold. Many
wooden posts have rotted away, leav-
ing the station they were to mark un-
certain. Many concrete posts have
been ploughed up to make room for
sugar cane. Some have been washed
away by rain storms or the waves of
the sea. Some have been rendered un-
available for instrumental use by build-
ings or fences. Many have been re-
stored, and in some cases these re-
stored points are proved to be incor-
rect, so that the records of the Govern-
ment Survey do not tally with the facts
on the ground. In some cases where
the old station has been destroyed or
lost, it has been impossible or inexpedi-
ent to replace a new monument on the
old site. In a few such cases a first-
class monument has been set at a suit-
able point in the same vicinity, but as
yet not located with sufficient ac-
curacy. Until they are thus located
they are of little more use to a sur-
veyor than any other unlocated signal
such as a church spire or flag staff.

And just here let me say that by set-
ting a signal or monument I mean the
mechanical work involved in putting
it on the ground in readiness for use,
while by locating it I mean the work
involved in determining its bearings
and distance from the established
points such as Trig. Stations, in a sys-
tem of triangulation, so that it also be-
comes a fixed point of reference on the
earth's surface to which other points
may be referred.

Many of our primary stations are
naturally located on prominent head-
lands commanding an unobstructed
view for miles in many directions.
Some of them would require several
hours and much hard work to flag, and
unless flagged they are absolutely of
no help to the surveyor. Every time
he wants to sight one of these points
he has to re-flag it. A permanent signal,
like those on Diamond Head,
Punchbowl or Tantalus, would obviate
the difficulty and greatly facilitate the
work of locating points from which
they could be sighted.

All this shows that there is much
work demanding the immediate atten-
tion of an expert backed by the Terri-
torial Government. The work of de-
cay and destruction goes steadily on,
so that the longer the work of restora-
tion and protection is delayed the more
costly and difficult it will be.

Again, the city is in great need of
having its street lines definitely estab-
lished by street monuments. The Ter-
ritorial Surveyor has done much valua-
ble work in this line, but the estab-
lishment of County Government has taken
this duty out of his hands and as yet
no one has been designated to assume
such work. To have the main Trig.
Stations located by one Government,
and the street monuments by another,
is an unfortunate complication. They
are essentially parts of one system, and
demand unity of action.

Some 125 of these street monuments
have been set by the present Territorial
Surveyor and his assistants, but from
press of other duties, from lack of
funds and on account of repeated in-
terruptions, few of them have been de-
finitely located. Their bearing and dis-
tance from the Trig. Stations and from
each other has not been measured.
Some of these monuments have been
covered up to a depth of several inches
by the macadam put on the streets
after they were set. One department
of the Government has thus ignored
and interfered with the work of an-
other.

In closing this brief statement of the
present condition of our reference
points, I trust that this intelligent au-
dience will agree with me that the mat-
ter is of vital interest to everyone pre-
sent and demands our united and prompt
effort to save what is left of a fine sys-
tem of Trig. Stations; to restore or re-
place as far as practicable those which
are lost, to set permanent signals
where needed at stations already lo-
cated, to correct the triangulation re-
cords where they are evidently faulty,
and to carry on the work of setting and
locating street monuments so that the
present work of getting a title to a
piece of land in the Court of Land
Registration shall not be so difficult
and expensive as it necessarily is under
present conditions. If I succeed in
arousing your interest in this matter
so as to start a much needed reform, I
will feel that a most important step
has been made towards the improve-
ment of our beloved Honolulu, and the
general landed interests of this entire
country, by a saving of many thousands
of dollars to those employing survey-
ors and a marked improvement in the
work done by them.

Reports were then heard from Bishop
testified for the Emma street club,
said W. N. Macfarlane for the Waikiki
club, Judge Frear for the Pu-
sho Maikai club, John Kikawa for
the Alexander street club, Mr. Boyd for

GREAT CLEARING SALE

—IN—

LACES AND EMBROIDERIES

Thursday, February 1,
One of the greatest Bargain Events
will take place.

We shall offer thousands of yards of Embroideries and
Laces of every description at about half regular prices.

If you want to have first chance to select best patterns
BE EARLY, for many will be attracted by the uncommon
character of the offerings.

PACIFIC IMPORT CO.

FORT STREET.



When the sap is rising in the trees and the
flowers of springtime are bursting into bloom,
the system needs a tonic.

Primo Lager

possesses tonic qualities of a high order while its
merits as a beverage are famous throughout the
territory.

Order a case today and be convinced.

W. M. Campbell

BUILDER AND REAL ESTATE AGENT.

Announces that he is prepared to furnish homes complete, includ-
ing the lot and latest modern improved cottages for \$1000 and up.
Lots for sale at \$350 each on easy terms.
Five-room cottage, good plumbing, for \$700.

PHONE OR ADDRESS WHITE 951.

J. Lando

Our Spring and Summer Stock	Belts Neck- wear Hats	Suspenders Hank's Duck Pants	Trunks and Valises Shirts	Gloves Under- wear, Etc.
---	--------------------------------	---------------------------------------	------------------------------------	-----------------------------------

1054 Fort Street, I. O. O. F. Building and 152 Hotel Street.

meat Market Moving!

We will be moving from our present place of business,
corner Beretania and Alakea Streets, to KING STREET
between Maunakea and Kekaulike Streets, about the first of
February, 1906, retiring from Grocery Business and devot-
ing all of our attention to

The Meat Business

C. Q. YEE HOP & CO.
Wholesale and Retail Butchers.

Ferndale Lithia Water

in bottled at the famous FERNDAL MINERAL
SPRINGS, with its own natural gas.

There isn't a purer or more palatable table water on the
market.

Ferndale Ginger Ale wins golden opinions for itself
wherever tried. Its snap and zest place it far ahead of rival
products. Order a trial lot today.

Pint Bottles.....\$1.35 per dozen

HENRY MAY & Co., Ltd.

PHONES: Retail M - 22
Wholesale M 92



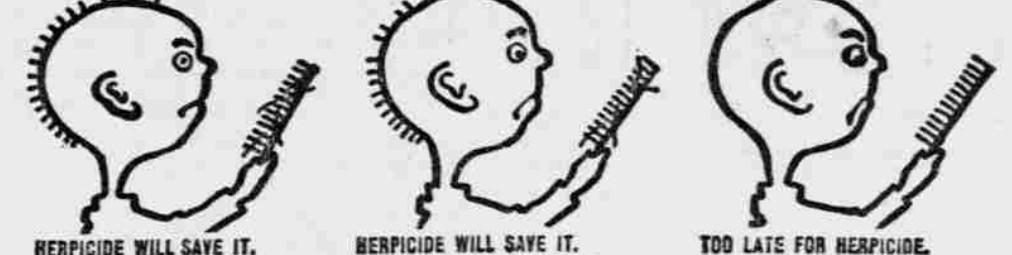
Vapo-Cresolene
ESTABLISHED
1875.

For Whooping Cough, Croup, Coughs,
Bronchitis, Influenza, Catarrh.

It cures because the air rendered strongly antiseptic
is carried over the diseased surfaces of the bronchial
tube with every breath, giving prolonged and constant
treatment. Those of a consumptive tendency, or suffer-
ers from chronic bronchitis, find immediate relief from
coughs or inflamed conditions of the throat.

CRESOLINE is a boon to ARTHMATICS.
ALL DRUGGISTS.
THE VAPO-CRESOLENE CO. 180 Fulton St., New York City.

GOING! GOING!! GONE!!!



NEWBRO'S HERPICIDE

The ORIGINAL remedy that "kills the Dandruff Germ"
DIDN'T KNOW IT WAS LOADED
Most young and middle-aged men never know
that their scalps are loaded with microbic growths
until the hair has "gone off." Nature sends her
warnings of dandruff, itching scalp and falling
hair but the discovery of the dandruff germ is too
Drug Stores, \$1.00. Send 10c. stamps to HERPICIDE CO., Dept. H, Detroit, Mich., for a sample.

HOLLISTER DRUG CO., SPECIAL AGENTS.
Applications at Prominent Barber Shops.

ROADS AND POLITICS.

One of the evils with which all the improvement clubs must contend is political road and street-making and repair. It is a common remark and has been one for years, that under a well-regulated contract system, with no specifications as to "citizen labor"—by which aboriginal Knights of Rest are meant—this city could have better streets for half the money. It fairly confounds a man from the States accustomed to seeing small gangs of Italians excavate like steam shovels and dig ditches at the rate of half a mile a day, to watch the "mahope" methods of our own street constructors. This paper has observed a dozen "citizens" lingering for four weeks over the spreading of gravel over 1000 feet of suburban road and the clearing from the gutters of weeds and lantana. The same number of actual workers could have made a better job of it in a week and at a smaller cost per diem. What our Kaimuki correspondent complained of the other day and what was said about the defects in Waikiki road improvement, are not only true, but the same sort of incompetence can be found all over Oahu wherever roads are being built or repaired. Our political pets, mis-called laborers, simply kill time when nobody is in sight watching them; take long noons asleep under the trees; spend at least a fourth of the remaining time in idle chatter and now and then go through languid motions with a shovel or a pick. They never sweat enough to get the fat off. And to make things worse, the roads they build go to pieces or are badly damaged during the first heavy storm. But the more damages the more jobs and that is all these "citizens" care for. Good roads are a detriment to them so long as they stay good. What "citizen labor" wants are bad roads and a chance to dilly-dally over them at so much per diem—getting pay, in that fashion, for their votes.

Naturally there can be no discipline, no hard driving of these electors. They hold the whip hand. If urged to earn their pay they say they have already earned it at the polls and that the digging and shoveling are extra. If discharged or threatened they let on that they will get even at the next ballot-box. Naturally those in charge of them learn to let things drift and the result is that the tax money and the loan money go dwindling down to nothingness and there seems to be little ahead for the territory and the counties but debt piled on debt, and ourselves as well as posterity to make the borrowings good. The Advertiser knows that with a cold, business-like method of street and road building and repair—an efficient contract system—we should have better streets and roads and more of them and could pay the bills without going beyond our means. We could have more parks, more civic improvements of every kind. We could make Honolulu what it nearly is now—the most cleanly and beautiful city in the world's tropics. That is, we should have all this if the cold, business-like methods could continue, as well as begin. But there's the rub. The fat and sleepy "citizen" of aboriginal strain still has a majority of the votes and if we do not tax ourselves half to death to keep him employed he will elect himself into the offices and tax us more than half to death for the same purpose. Then the industrious people of Hawaii will either have to organize into an "Association for the Support of Native Citizens" and devote their lives to the task or look about for some changes in the basis of citizenship or some marked increase, through immigration, in the number of white voters, as the only means of getting the civic improvements they pay for and saving something to meet the funded debts already incurred.

THE STACKABLE APPOINTMENT.

The Star speaks without knowledge when it says that Gov. Carter was consulted about the appointment of Mr. Stackable, or that the latter got the office with his aid. The Governor was not asked to recommend a name, though, when he went to Washington before Mr. Stackable's term expired, he carried a recommendation for Crabbe which he filed with the Treasury department. There it was turned down and Mr. Stackable, having received previous assurances from Secretary Shaw of his reappointment, got his commission in due form. It is true that, as a general thing, Governor Carter has been the adviser of the President in local Federal appointments but the Stackable case was a marked exception to the rule. Roosevelt was President when Mr. Breckons was nominated for U. S. District Attorney, but apparently no one but the local committees and business men and certain mainland senators had the say about it. A Sunday writer for the Advertiser was in error about Messrs. Breckons and Hendry having been reappointed, their terms not being four year ones; but in the Stackable case he was entirely right. That was a very clear example of the determining influence of a cabinet chief over the choice of men on the payroll of his department. We agree with The Bystander that the reappointment of Judge Robinson is another instance, for Attorney General Moody is known to have been active in the matter.

William Jennings Bryan's letter on Hawaii, which was one of many interesting features of Honolulu's most widely-read journal, the Sunday Advertiser, ought to do the promotion work of this Territory a great deal of good. Mr. Bryan has, literally, millions of readers, and no other man writes for the press today in whom his clientele have more personal confidence. Mr. Bryan's narratives of travel are not brilliant and we gain by that; because people who want to know about a given country are more impressed by a plain, earnest statement of facts and impressions regarding it than they are by the word-pictures which are often painted for the sake of the art and without much basis in reality. It appears from Mr. Bryan's story that he was honestly pleased with Hawaii and that he wants to come again. His concluding words might well be incorporated into our Promotion advertising:

"When we departed from the wharf at nightfall to board the Manchuria we were again laden with flowers, and as we left the island, refreshed by the perfume of flowers and cheered by songs and farewells, we bore away gratefully memories of the day and of the hospitality of the people. Like all who see this Pacific paradise, we resolved to return some time and spend a part of the winter amid its beauties."

The effect of official work and worry upon Governor Carter's health has been such that it is not likely his relatives and friends will acquiesce in any desire he may show to return to his executive duties. At least these are the present signs. Governor Carter has a highly nervous organization which he unstrings by excessive smoking. Small matters trouble him and he takes all things too much to heart. To stand the vexations of the governorship of this turbulent little realm, one needs a temperament of cheerful optimism, nerves that keep their tone under all circumstances and a skin that will shed criticism as a turtle's back sheds birdshot. Governor Carter is not that sort of a man and his nearest friends believe that he owes it to himself and his family to retire from public life and invite the rest and quiet assured him by his ample fortune and so necessary to his future usefulness. It can be his satisfaction that he made a good Governor.

One of the things the Manoa Heights Improvement Association might well take up with others interested is the creation of a park on the vacant College Hills block at the corner of Kamehameha avenue and Manoa road. The land lies somewhat lower than the road and gets enough seepage from near-by hills to keep vegetation green the year around. It is much better adapted for a park than for building lots and could be made into a beautiful embellishment for the main entrance both of the College Hills and Manoa Heights districts. Some of the block has been sold to people who evidently do not intend to build on the lots and the rest is said to be owned by Oahu College. We believe that the block could be easily got for park purposes and that the supervisors would be willing to maintain the property.

If Supervisor Lucas intended to deny last night the statement made in this paper about the work on the Waialae road, it is plain that he knows nothing about it. The Supervisor is strong on denials, but this journal has said nothing about our system of political road-making which is not common knowledge among the people who observe the work done near their homes.

Jack will not be of gubernatorial age until September. During the intervening eight months, if the Governor gets well enough, he may travel abroad. Meanwhile the friends of Judge Cooper, who are by no means unimportant, will get busy. There are signs of stirring politics ahead.

The improvement furor is the healthiest show of public spirit Honolulu has made for years.

The stone wall was there all right but the other man butted it.

REALTY TRANSACTIONS

Entered for Record January 29, 1906.
From 9 a. m. to 4 p. m.

Lizzie K Makuakane and hsb to Hattie N Purdy and hsb to Mrs Waka Okino R
Waka Okino and hsb to Wm Kinney M
Balbina M Jardine to Jose G Serrao BS
J Kauhane to Julius C Bartels D
John Fernandez to Jose M Tavares R
Ben Wilkins to M Horita et al L
Moses Papalakea and wf to Lameka Tam Kee D
W H Beers to Henry Wessel and wf R
Emiline K Wessel et al to Matsuno Motokichi L
Hakalau Plantn Co to W H Shipman L
Manuel M Jardine by atty and wf to Jose G Serrao D
Manuel M Jardine by atty and wf to Wm Fernandez D
Balbina M Jardine and hsb to Jose G Serrao A
Manuel M Jardine adv E N Holmes D
James Prosser by atty to Julia Puhaoa L
Mrs Keahonui Rickard to Sato Fujitani L
Chas H W Hitchcock et al to First Bank of Hilo Ltd D
Chas H W Hitchcock et al to First Bank of Hilo Ltd BS
Hawaii Herald Pub Co Ltd to First Bank of Hilo Ltd CM
S I Shaw and wf to Wm L Peterson D
Wm L Peterson to Bank of Hawaii Ltd M
Jno P Kahahawai to George S Kenway AS
Robert Wallace tr to John A Maguire R
J H Schnack to Albert A D Araujo tr AM
Anna Spalding et al to Lincoln L McCandless D
John A McCandless et al to McCandless Bldg Co Ltd D
Oahu College by trs P
H Waterhouse Tr Co Ltd to Kate Cornwell R
Kate Cornwell to H Waterhouse Tr Co Ltd M
H Waterhouse Tr Co Ltd to Blanche Walker R
Blanche Walker and hsb to H Waterhouse Tr Co Ltd M

Recorded January 19, 1906.

H A Heen to S W Hoopii Kaweloheli, Rel; R P 4311 kul 4942, Waikiki, Honolulu, Oahu. \$150. B 180, p 95. Dated Jan 18, 1906.
W J Wright by High Sheriff to Hoffschlaeger Co Ltd, Sher D: int in app. Opihailiki, S Kona, Hawaii. \$27.50. B 278, p 67. Dated June 8, 1903.
Pioneer Mill Co Ltd to Nellie D Cross, L: pc land and R W Puuoa, Lahaina, Maui. 5 yrs at \$1 per yr. B 273, p 448. Dated Jan 17, 1906.

MELROSE HOTEL

(Continued from Page 1.)

The Susanna Wesley Home has heretofore been conducted in the old Dickey homestead on Nuuanu street. The new location is an excellent one. There are three main buildings, two of which face on King street. These are connected by a spacious lanai. The grounds are greatly improved and there are fifty rooms.

The Home is designed to take care of and protect women and children of the Methodist faith who are not otherwise provided for in the way of homes. The education of children is one of the first features of this excellent institution. The Home will take in Japanese and Korean women as well as those of foreign nationalities.

Miss Jayne, assisted by Miss Morrison, is in charge of the Home. At present there are thirty inmates. The work has been extremely prosperous and gratifying, not only to Rev. John W. Wadman, the energetic pastor of the Methodist mission in Hawaii, but to Bishop Hamilton as well, and the latter has shown his intense interest by securing a permanent home for the institution.

It is planned to have a house-warming and reception at the new home on the evening of February 12, at which will be present Bishop and Mrs. Hamilton. There will be a voluntary offering of the church people on this occasion to make up the \$300 which the church has agreed to be responsible for—its contribution toward the \$5000.

PA-U POSTERS POSTED.

The posters of the Promotion Committee advertising the Floral and Pa-u Parade for February 22 have arrived on the Coast and are being generally posted in conspicuous places. H. K. Gregory, A. G. P. A., of the Southern Pacific Ry., at San Francisco acknowledges receipt of a bunch and states that he has directed them to be put up where they will do the most good. At the Los Angeles Chamber of Commerce exhibit at Shasta Springs the posters are placed where travelers by train can not help seeing them. The St. Francis Hotel has kindly agreed to put up the posters there.

The Oceanic steamer Sonoma is due this morning from the Colonies and to resume her voyage to San Francisco at 3 p. m. The Hawaiian band will be on hand to play the steamer off. The Sierra is due tomorrow morning with a week's later mail, and the Siberia comes in on Friday with two days' mail.

The legal position of Queen Alexandra is very curious. So far as her private business is concerned she is not regarded by the laws and customs of England as a married woman. The idea of the law is that affairs of state consume all the time of the king and therefore no responsibility for the queen's private business rests upon him. If the queen contracted debts in her husband's name he would not be responsible for them, as any other husband would. The king cannot be sued for debt, but the queen can be.

Malt Nutrine

The Ideal Malt Tonic, recommended by Physicians.

Hollister Drug

COMPANY.

It is Cool . . .

THESE DAYS

At HALEIWA
JUST THE PLACE TO
SPEND YOUR VACATION.

THE BEST OF EVERYTHING

All Sorts of Amusement,
All Kinds of Recreation,
All the Comforts of home.

Tickets and information at Oahu Railway station and Trent & Co., or ring up Haleiwa Hotel, King 53. On Sundays the Haleiwa Limited, a two-hour train, leaves at 8:22 a. m.; returning, arrives in Honolulu at 10:10 p. m.

Society Stationery

We make a specialty of Engraving Dies and Embossing Correspondence Paper.

A large and complete stock of only the very finest paper is carried by us at all times.

PROFESSIONAL AND OFFICE LETTER HEADS, in copper plate printing and embossing, a specialty.
All orders for WEDDING and RECEPTION INVITATIONS receive prompt and careful attention.

H. F. Wichman & Co.,

LIMITED.

Fort Street.

GUY OWENS CO. ELECTRICAL ENGINEERS

Phone Main 315, Union Street.

Matting!

We are especially well stocked at present with Japanese and Chinese Matting, also Chinese Matting Rugs, both plain and twisted patterns, and Japanese Cotton Rugs, in pretty blue and white designs. Better get some new matting instead of turning the old. The improvement will be great and the cost won't be much.

Lewers & Cooke, Ltd.

177 SOUTH KING STREET.

EAGLE CLEANING AND DYEING WORKS.

Fort Street, opposite Star Block. LADIES' AND GENTS' CLOTHING CLEANED AT LOWEST PRICES. Phone White 2362.

Catton, Neill & Co., Ltd

ENGINEERS and MACHINISTS
QUEEN AND RICHARDS STREETS

Boilers re-tubed with charcoal-iron steel tubes; general ship work.

The Latest

Morton Electric Razor

So simple that anyone can use it. No stropping necessary, always sharp. Impossible to cut yourself. Consists of a silver triple plated holder and twelve double edged blades packed in a handsome velvet lined case.

Call and examine one.

Pacific Hardware Company, Ltd.
Fort and Merchant Streets.

Electric Sparks!

Sunlight is nature's benevolence. Electric light is man's appreciation of nature.

If you want to keep your friends, keep a light house and a light heart.

Nerves are the enemy of happiness. Electric light the enemy of nerves.

Electric light is the best modern nerve tonic you can prescribe for yourself. You can take it as often as you wish, and give to others without extra charge.

To use electric light just means that you are getting in the habit of being cheerful.

A good light has a moral value. It robs the mind as well as the room of shadows.

Hawaiian Electric Co., Ltd. Office, King St., near Alakea. St. Phone Main 390.

Grand Clearance Sale

Ladies', Misses' and Children's Ready-to-Wear Apparel.

THURSDAY, FEB. 1st, AT 8 O'CLOCK, we will begin a mammoth sale of Ladies', Misses', Children's and Infants' Wearing Apparel at greatly reduced prices.

These goods are first-class in every particular, the same goods that you have been buying every day at regular prices.

SEE OUR WINDOW DISPLAYS.

COATS AND JACKETS.

LADIES' 3-4 COATS:	Usual Price.	Sale Price.
Woolen, assorted colors.	\$ 8.00	\$ 5.50
Cravenette, assorted colors.	12.00	7.00
Pongee Silk	10.00	7.50
Black Taffeta	16.00	10.00
Pongee, Oriental trimming.	20.00	15.00

LADIES' LONG COATS:

Khaki Automobile Coats, with Capes.	\$ 3.50	\$ 1.50
Khaki Automobile Coats, plain.	2.50	1.00
Mohair, Navy and Browns.	10.00	7.00
Waterproof, Brown and Modes.	12.50	9.00
Pongee, Champagne and Navy.	12.00	9.00
Gloria Cloth, Navy and Gray.	14.00	10.00
Cravenette, Mixed Browns.	\$16.00 & 18.00	12.00
Cravenette, Navy	20.00	14.00
Taffeta, Black	16.00	12.00

LADIES' JACKETS:

Assorted Styles	\$ 6.00 to \$12.00	\$ 4.00 to \$ 6.50
Alpaca, Navy	6.00	4.50
Pongee, Navy	8.00	6.00
Black Taffeta	13.00 to 16.00	10.00
Pongee Silk, Oriental	30.00	22.00

MISSSES' AND CHILDREN'S COATS:

Misses' Long Coats, assessor Browns.	\$ 6.50	\$ 5.00
Misses' Long Coats, extra length.	10.00	8.00
Misses' Jackets, Black Taffeta.	5.50	4.50
Children's Jackets, 2 to 10 years, Navy.	2.50	1.50
Children's Jackets, White Pique.	5.50	4.00

SUITS AND SKIRTS.

MISSSES' SKIRTED SKIRTS, assorted.	\$ 3.00	\$ 1.50
------------------------------------	---------	---------

LADIES' WOOLEN:

Walking Skirts, mixed Colors.	\$ 3.50	\$ 2.50
Ladies' Cloth, Black.	13.50	6.00
Voile, Black	9.00	6.00
Taffeta Silk, Brown.	12.00	6.00
Shirred and Pleated, Black and Navy.	10.00	6.00
Voile, Black and Browns.	10.00	6.50
Serge, Navy	10.00	7.00
Cravenette, Oxford	10.00	7.00
Alpaca, Assorted Colors.	10.00	8.00
Voile, Black	12.00	7.50
Cravenette, Oxford and Brown.	15.00	10.00
Voile, Black, with Silk Slip.	25.00	18.00

LADIES' SUITS:

Woolen Shirt Waist Suits, Mixed Colors.	\$15.00	\$ 6.00
Pau de Soie Suit, Black.	20.00	7.00
Tailor-made Suit, Mixed Grays.	12.00	9.00
Tailor-made Suit, Black.	15.00	10.00
Tailor-made Suit, Brown.	14.00	10.00
Tailor-made Suit, Navy.	18.00	12.50
Tailor-made Suits, Assorted Colors.	20.00	15.00

LADIES' SHIRT WAISTS.

White Lawn, Assorted Styles.	\$ 1.25	\$.65 & \$.75
Brown and Gray Chambray.	\$ 1.00 & 1.25	.65
White Lawns, Assorted Styles.	.75 & 1.00	1.00
White Lawn, Black French Knots.	1.50	1.00
White Lawns, Assorted Styles.	2.50 & 2.75	2.00
White Dotted Swiss.	3.50 & 4.50	2.50
White Dotted Swiss.	5.50	3.50 & 4.00
White Lawn	5.00	3.50
White Mull, Hand Embroidered, size 42.	8.00	5.00
White Mull, Hand Embroidered, size 40.	18.00	12.50
White Valenciennes Lace, size 38.	25.00	18.00
Ecu Fancy Lace Waists, sizes 34, 38.	18.00	12.50

CHILDREN'S AND INFANTS' WEAR.

White Muslin Skirts.	\$.75 & \$ 1.00	\$.25
White Muslin Dresses.	.75 & 1.00	.25
White Muslin Dresses.	1.25 & 1.50	.50
Infants' Muslin Slips.	1.25 & 1.50	.50
Infants' Muslin Slips.	3.00	.75
Children's Colored Gingham Dresses.	.50	.35
Children's Colored Gingham Dresses.	.65	.50
Children's Colored Lawn Dresses.	1.50	.50
Children's White Lawn Dresses.	2.50 to 4.50	1.50 to 3.00
Children's Assorted Wash Suits.	1.00 to 5.50	.50 to 3.50
Children's White Pique Suits.	3.00 to 5.00	1.75 to 3.00
Children's White Sun Bonnets.	.50 & .75	.25
Children's White Sun Bonnets.	1.25 & 1.50	.50
Infants' French Bonnets.	.75 to 2.50	.50
Infants' Silk Bonnets.	1.00 to 2.00	.50
Infants' Eiderdown Coats, Assorted Colors.	1.50 to 5.00	1.00 to 3.00

EHLERS

Good Goods

Boxing Carnival

Hawaiian Opera House
SATURDAY NIGHT, FEB. 3.

BILL HUIHUI vs. DICK SULLIVAN
Honolulu. San Francisco.
15 Rounds for Lightweight Championship.

WAHILANI vs. SAILOR MORCH
The Whirlwind. U.S.S. Manning.
10 Rounds, Welterweight Championship.

KAHAULELIO vs. JIM BROWN
The Wild Swan. U.S.S. Iroquois.
6 Rounds for Middleweight Championship.

Tickets for sale at Wall, Nichols Co.,
Thursday, February 1.
Admission 50c., \$1, \$1.50, \$2; Stage
seats, \$2.50.

General Groceries

We received per the S. S. Alaskan
a large shipment of

GENERAL GROCERIES

—ALSO—

ROLLED BARLEY, OATS, BRAN,
WHEAT, MIDDINGS, CORN.

All at Low Prices.

M. W. McCHESNEY
& Sons, Limited.

36 Queen Street, Phone Main 217.

W. W. Ahana & Co.

Limited

Merchant Tailors
Waity Building, King St
Phone Blue 2741

(Opposite Advertiser Office.)

AMERICAN AND FOREIGN
WORSTEADS.

BEGINNING JANUARY 17,
UNDER NEW MANAGEMENT.

Astor House Restaurant

188 KING STREET.

First-class cook in attendance, every-
thing new, neat and clean.
21 meal tickets for \$4.50. Meal 25c.

HONOLULU IRON WORKS
COMPANY.

Machinery, Black Pipe, Galvanized
Pipe, Boiler Tubes, Iron and Steel, En-
gineers' Supplies.
Office—Nuuanu street.
Works—Kakaako.

S. FUJIMURA

MASSAGE

Rheumatism, Bruises, Sprains, Tired
Feeling and other Ailments QUICKLY
RELIEVED.

444 King Street, Palama,
PHONE WHITE 1351.

"Blessed are they that mourn, for they
shall be comforted."

What a great comfort to know that
we have paid respect to the
memory of the loved ones who have
passed away. Do you need a plain
Mortuary Tablet, or a descriptive
Tombstone, or a sculptural Monu-
ment?

View my Designs, learn my Prices,
and be comforted.

A. C. Montgomery,
P. O. Box 152 Warehouse Queen,
rear Judiciary Bldg.
A Postal Brings an Answer.

BIG REDUCTION
IN VICTOR RECORDS

BERGSTROM MUSIC CO., LTD.,
Odd Fellows' Bldg.

BAMBOO Fine White Bamboo for wearing.
Hats, Mats, Fans, Brasses and
Pottery. Parrot Fish.

HAWAII AND SOUTH SEAS
CURIO COMPANY,
Alexander Young Building

FRESH SEEDS ARRIVED BY THE
S. S. NEBRASKAN.

Mrs. E. M. Taylor
YOUNG BUILDING.

JOHN NEILL, Engineer,
Dealer in

NEW AND SECOND-HAND MA-
CHINERY.

Repairing of All Kinds.
GASOLINE ENGINES A SPECIALTY.
135 Merchant Street, Tel. 116.

SPORTS

NIXIE WILL ENTER RACE

Fast Boat to Compete
in Trans-Pacific
Contest.

The yacht Nixie which will be seen
in Honolulu harbor next May, is owned
by Mr. Fulton G. Berry, one of the best
known sportsmen on the Pacific Coast.
He is enthusiastic over the proposed
ocean race to Honolulu and has entered
his yacht for the event.

The Nixie is one of the best boats of
her size on the Coast and was designed
by the late W. G. Hall for Chas. E.
Billings and was sold to Mr. Berry
about three years ago. She is 52 feet
over all, 37 feet 1 w. l., 14 feet beam
and 6 feet draught.

Although at present sloop rigged she
will probably be altered to yawl rig
for the ocean race as the one-masted
vessels are harder to handle in heavy
weather. She is a very fast boat and
is at the top of her class.

While a fast boat she is also an ad-
mirable sea-going craft and has made
several trips down the Coast to Santa
Cruz. With a yawl rig she would prove
a very able ocean-going yacht and any
storms in the Pacific could be ridden
out with ease. With the time allow-
ance she will receive in the race she
will prove a very hard craft to beat.

While T. W. Hobron was at the
Coast this summer, he was on board
during a sail out through the Golden
Gate and in a stiff breeze and heavy
sea she easily ran away from the pilot
boat America in beating through the
Heads. These schooners are very
heavy, able vessels and it takes a fast
sailer to beat them in the average
weather prevailing in the vicinity of
the Golden Gate.

ADAMS' ERRONEOUS GOLF IMPRESSION

"Why don't I play golf?" said Fred
Adams to a friend yesterday, while
performing the interesting evolutions
incident to the mixing of a cocktail.
"Well, if you want to know, the real
reason why I have never taken up
golf seriously is that there isn't
enough action in it for me. I did take
a notion to the game once but a friend
put me off."

"I happened to tell him that I
thought of going in for the great
Scottish game and asked him if he was
wise to the rules."

"Sure," said he. "It's as easy as
kissing your sister. First of all you
make a mole-hill, then you place the
ball on the top of the hill. Next thing
you hit the ball and if you find it the
same day, you win."

"That queered the game with me.
Life's too short for a twelve-hour go-
as-you-please after a lost ball."

Adams was told that there is really
more to the ancient and honorable
game than his first impression led him
to believe and he has promised to re-
consider the matter with fair pros-
pect of becoming a convert.

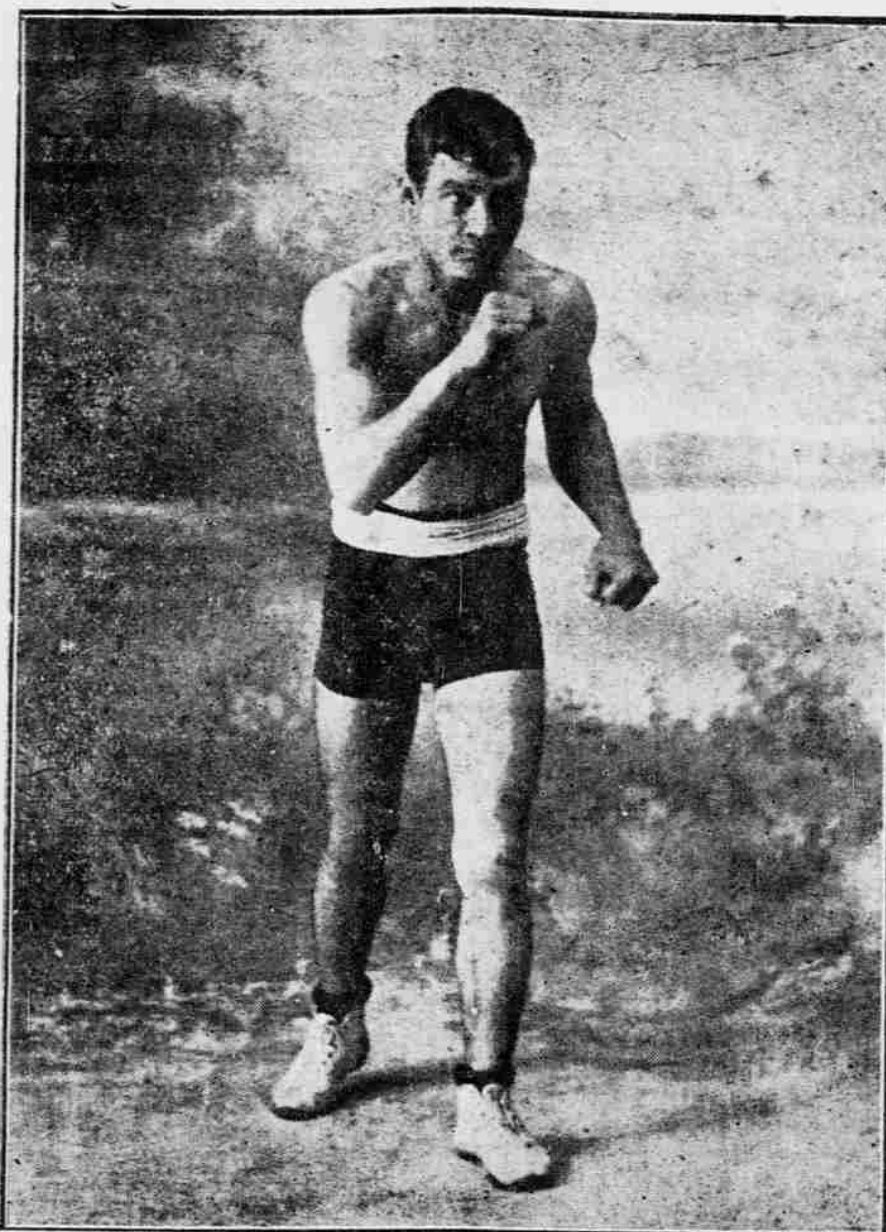
"MAGNIGORIFICENT."

"Magnigoricent" is the new word
coined to express the excellence of the
lunch served at Scott's from 11 to 2
daily. Right opposite the police sta-
tion. You know.

THE SONOMA, JAN. 30TH.

Takes the next shipment of Tropi-
cruit Co.'s pineapples to the Coast.

Address P. O. Box 50, Honolulu, or
leave orders with Wells-Fargo, King
street.



BILL HUIHUI—HE WILL DEFEND THE HONOR OF HAWAII NEI
AGAINST DICK SULLIVAN, NEXT SATURDAY NIGHT.

KENNEL CLUB IS BOOMING

Big Meeting Tonight—
Eighty Charter
Members.

More than ordinary interest is be-
ing displayed in matters pertaining to
the kennel club now.

The new club is being given a great
send-off and many who have signed
the roll of charter members have al-
ready sent to the Coast for valuable
and pure-bred dogs. This, as was the
case in the poultry show, will cause
considerable rivalry, thereby accom-
plishing some of the most important
purposes of the organization, to foster
and encourage the acquisition of pure-
bred dogs, to improve the standard and
to disseminate among members of the
club knowledge of breeding and all
matters pertaining to the welfare of
the dog.

The members of the club will as-
semble this evening in the auction
room of Will E. Fisher, for the pur-
pose of perfecting organization and the
election of permanent officers. The re-
port of the committee on by-laws will
also be received and acted upon.

The charter roll of the Hawaiian
Kennel Club will close this evening,
and parties wishing to sign same may
do so by calling at the office of Will
E. Fisher any time today or this even-
ing.

The membership roll now musters
about eighty and is as follows: Ralph
A. Lyon, Colin Campbell, T. A. Simp-
son, W. R. Lewis, A. R. Rowat, C. E.
Meston, Job Batchelor, Thos. Sharp,
C. Hustace, Jr., C. L. Crabbe, C. Char-
lock, Will E. Fisher, D. J. Styne, C.
L. Sprinks, Wm. Walters, H. M. Whit-
ney, E. W. Campbell, Fred Whitney,
Jess Woods, Geo. L. Bigelow, J. M.
Dowsett, C. T. Littlejohn, J. H. Cat-
ton, John Kelly, A. N. Campbell, H. B.
Gifford, F. B. Damon, G. G. Fuller, D.
Austin, J. E. Fullerton, R. W. Shingle,
Juanita Beckley, C. E. King, L.
Abrams, Albert Waterhouse, Nelson B.
Lansing, E. R. Adams, John Fleming.

Sportlets.

It's like old times, with all the fight
talk in the air.

The White Rock Golf Cup is a cap-
ital advertisement.

The Mables lead the league race by
the length of a street.

Punahou and Honolulu will play
baseball on Washington's birthday.

The Baseball League will need a new
secretary and scorer, as well as an
umpire.

Punahou and Iolani and Diamond
Heads and Y. M. C. A. play "socket"
next week.

Bowers, White, Hampton and Lemon
are said to be after the position of
baseball league umpire.

Ollie Sorenson is slated for the next
vice-commodore of the Hawaii Yacht
Club. George F. Renton may be com-
modore provided he can spare the time
required to attend to the duties of the
office in the coming busy year.

SPEAKS WELL OF CHAMBER- LAIN'S COUGH REMEDY.

Mr. John Main, Manager for P. J.
Petersen & Company, Bloemfontein, So.
Africa, makes the following statement
for the benefit of the public: "Cham-
berlain's Cough Remedy has a big sale
here and as we have been handling it
for several years, we can confidently
say that we sell more of it than we do
of any other preparation of that kind."
This medicine is especially recom-
mended for coughs, colds, croup and whoop-
ing cough and can be given to the little
ones with absolute security. For sale
by all Dealers and Druggists, Benson,
Smith & Co., Ltd., Agents for Hawaii.

BOXERS DO MUCH WORK

Choice Array of Mitt
Pushers at the
Boathouses.

A busy afternoon was spent at both
training quarters yesterday afternoon
and at least two of the sparring bouts
developed into small fights.

At the Healan boat-house the usual
crowd of enthusiasts assembled to
watch Sullivan work out and were
much pleased by the showing he made.
He has not appeared to better ad-
vantage since he commenced to train.

Jim Brown, of the U. S. S. Iroquois,
opened the ball and a couple of lively
rounds ensued.

Then Young Nelson donned the mitts
and went two fast rounds. Although
greatly outweighed and outsized, Nel-
son went to his work with a will and
his cleverness at times puzzled his
lanky opponent. This lad has the mak-
ing of a first-class boxer and would
surprise a whole lot of the boys of his
weight at the Coast. It is safe to say
that he boxes in better form than any-
one in Honolulu today and he has a
right and left double swing that is a
dead ringer for the late lamented
Young Corbett's.

Sailor Morch did the looking-on act
yesterday, but his place was badly taken
by one Abramson, a tar from the U. S.
S. Iroquois. "Abe" is a splendidly
built boy and of ideal proportions for
a fighter. He is fashioned along Jack
Dempsey's lines and wears his weight
where it does the most good. The trouble
with him is that he hasn't yet
learned how to handle himself. He has
a peach of a straight jab with the left
but is too awkward to derive anything
like the benefit from the punch that
he should.

He pitched into Sullivan hammer and
tongs for a couple of rounds and for a
time it looked like a knock-out, one
way or the other. Nothing serious de-
veloped, however, before the end of the
bout was signaled.

Sullivan appeared to be in fine fettle
physically and showed that he possesses
any amount of endurance.

HUIHUI'S WORK-OUT.

When Sullivan had taken off his
gloves the crowd trailed over to the
Myrtle boathouse, where Huihui has
established his training quarters. The
native was a long time showing up and
it transpired that he had been warming
up with a punching bag, before coming
to the boathouse. In this respect he
resembles Jim Jeffries, for the big
boilermaker has no idea of the matter
of time in keeping an appointment and
his weakness in this respect has ever
been a sore point with his trainer, Billy
Delaney.

It was pleasant waiting on the
breeze-swept lanai of the Myrtle boath-
house, however, with its magnificent
view of land and sea and time did not
hang heavily for many a story of sport-
ing interest was told, pending the ar-
rival of the gladiators.

Wahilani and Huihui were the first
to hook up and went three rounds. The
beginning of the bout was of the
friendly tap order but in the third
round the men livened matters up a bit
and some hard knocks were exchanged.
Huihui did not shape as well as usual
and looked a trifle too drawn. He also
acted as if he were tired and has prob-
ably been doing too much work the last
few days and needs a little let up.
Sunday saw him working exceedingly
hard and yesterday he tramped up Tan-
talus. A breathing spell today will do
the native no harm and is almost cer-
tain to benefit him considerably.

After Wahilani had done his stunt,
Kupa, the boy who is scheduled to box
Jack McFadden in Wailuku on Febru-
ary 10, put on the gloves with Huihui
and sparred two warm rounds. Kupa
has a long reach and is very willing.
Every now and again he lets one loose
that is calculated to jar a man of his
size. Perhaps his best blow is a right
hook to the calash. Kupa's wind ap-
peared to be somewhat in need of fix-
ing yesterday.

This concluded the program for Hui-
hui, but before the crowd dispersed the
were treated to a round or so be-
tween Wahilani and Kupa in which the
former more than demonstrated his su-
periority as a boxer.

Sullivan will work at 3 p. m. today
and Huihui an hour later.

THE FAVORITE GROTTTO.

There is no "old bull con"
in our boast that the GROTTTO
sets the best lunch in town.
A glance at the dainty menus
will do more to bring this fact
home than anything we may
say.

Today's lunch and dinner
bill-of-fare:

SOUP—SCOTCH BROTH, BARLEY
STEWED LAMB A LA BOMBAY,
BOILED RICE
BREADED VEAL CUTLETS, TO-
MATO SAUCE
MASHED POTATOES
LIMA BEANS
BEET SALAD

25c

With Wine, Beer, Tea or
Coffee.

FRED KILEY, Prop.,
Cor. Hotel and Bethel Streets.

"A Square Deal For Every Man."

To be independent, with
the right to look every man
in the face, let us invest
your savings for you, se-
curely and profitably as our
experience dictates.

The World Will Give Every
Man a Living,
But the World Doesn't Run
a Delivery Wagon.



WM. G. IRWIN & CO., LTD.

Wm. G. Irwin, President and Manager
John D. Spreckels, First Vice-President
W. M. Giffard, Second Vice-President
H. M. Whitney, Treasurer
Richard Ivers, Secretary
E. I. Spalding, Auditor

SUGAR FACTORS AND

COMMISSION AGENTS.

AGENTS FOR

Oceanic Steamship Co., San Fran-
cisco, Cal.
Western Sugar Refining Co., San
Francisco, Cal.
Baldwin Locomotive Works, Phila-
delphia, Pa.
Newall Universal Mill Co., Manu-
facturers of National Cane Shredder,
New York, N. Y.
Pacific Oil Transportation Co., San
Francisco, Cal.

Fire Insurance.

THE B. F. DILLINGHAM CO.,
LIMITED.

General Agents for Hawaii.

Atlas Assurance Company of London.
Phoenix Assurance Company of Lon-
don.
New York Underwriters' Agency.
Providence Washington Insurance Com-
pany.
Fourth Floor, Stangenwald Building.

HAWAII SHINPO SHA.

THE PIONEER JAPANESE PRINT-
ing office. The publisher of Hawaii
Shinpo, the only daily Japanese paper
published in the Territory of Hawaii.
C. SHIOZAWA, Proprietor.
Editorial and Printing Office—1024
Smith St., above King. Phone Main 46.

WM. G. IRWIN & CO., LTD.

AGENTS FOR THE

Royal Insurance Co., of Liverpool,
England.
Alliance Assurance Co., of London
England.
Scottish Union & National Insurance
Co., of Edinburgh, Scotland.
Fire Association of Philadelphia.
Alliance Insurance Corporation Ltd.
Wilhelma of Magdeburg General In-
surance Co.

C. BREWER & CO., LTD.

Sugar Factors and Commission
Merchants.

LIST OF OFFICERS.

C. M. Cooke, President; George M.
Robertson, Manager; E. F. Bishop
Treasurer and Secretary; F. W. Mac-
farlane, Auditor; P. C. Jones, C. M.
Cooke, J. R. Galt, Directors.

Money to Loan

ON JEWELRY, ETC., ETC., AT

THE J. CARLO PAWNBROKING CO.
CORNER UNION AND HOTEL STS.

FINE RESIDENCE FOR SALE.

Situated on ear line in the most
desirable resident locality of this city.
The improvements consist of a
cottage, containing parlor, recep-
tion hall, drawing room, large din-
ing room, 3 bed chambers, kitchen, pan-
try and all modern improvements.
Large grounds improved with many
valuable and rare fruit trees.
Servants' quarters with stationary
washstands and porcelain bath; large
stable with box stalls.
Size of lot: 20x300 feet.
Price, very reasonable, much below
its actual value.
Terms: Easy.

Further particulars upon application

J. H. FISHER.

KWONG YUEN LING CO.

WHOLESALE LIQUOR AND GRO-
CERY DEALERS.

36-38 North King Street.

COTTON BROS. & CO.

ENGINEERS AND GENERAL CON-
TRACTORS.

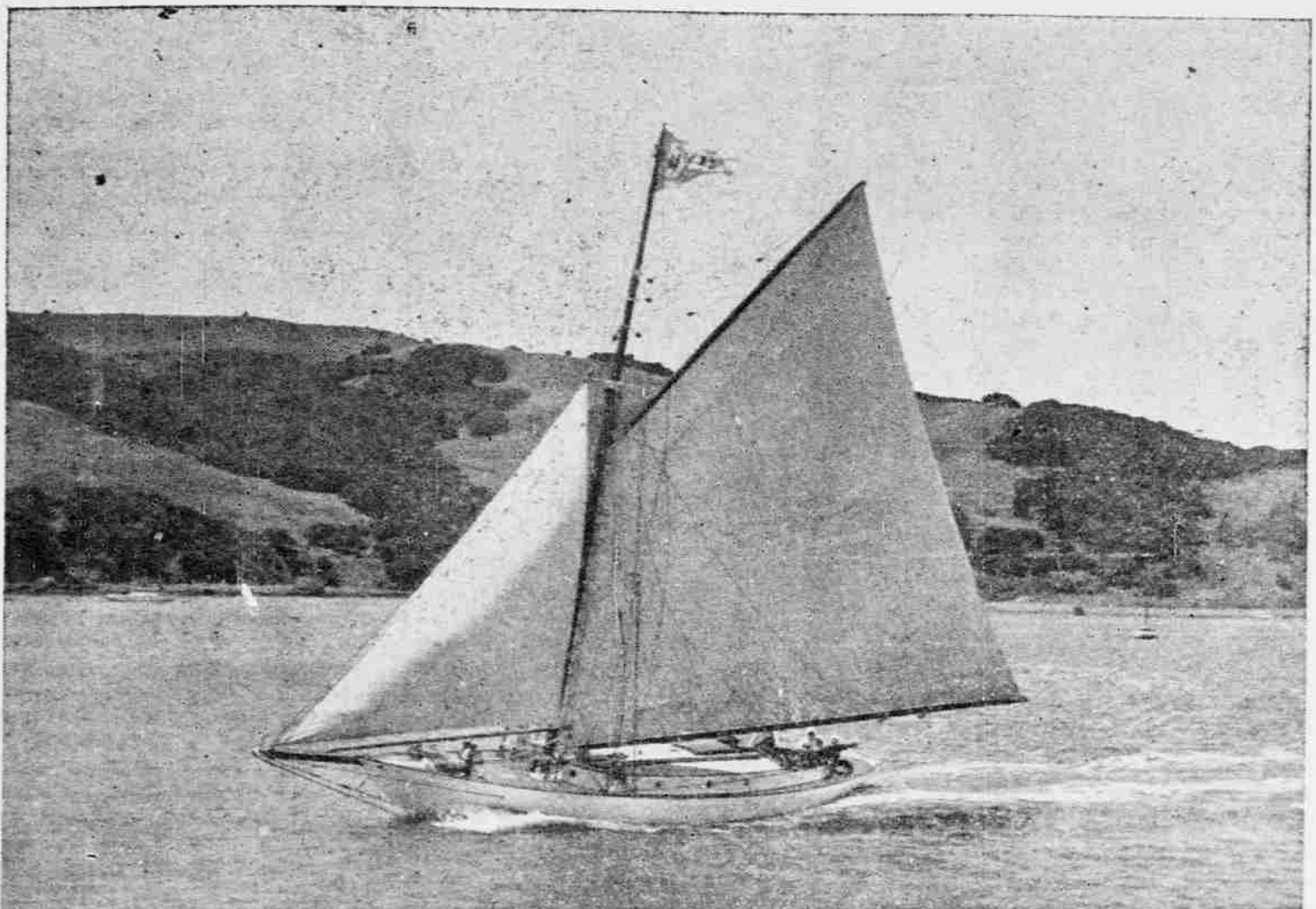
Plans and Estimates furnished for all
classes of Contracting Work.

Boston Block, : : : Honolulu.

TRY OUR

Our Celebrated Bromo Pop, Peach
Sounce, Bishops Tonic, Klondike Flz,
and many others.

ARCTIC SODA WORKS,
17 Miller St., Honolulu, H. T.



THE NIXIE—ONE OF THE STARTERS IN THE TRANSPACIFIC YACHT RACE.

ORPHEUM THEATRE

RICHARD BUHLER

NATIONAL STOCK COMPANY

MONDAY, TUESDAY AND WEDNESDAY.

POPULAR COMEDY OF WESTERN COWBOY AND RANCH LIFE.

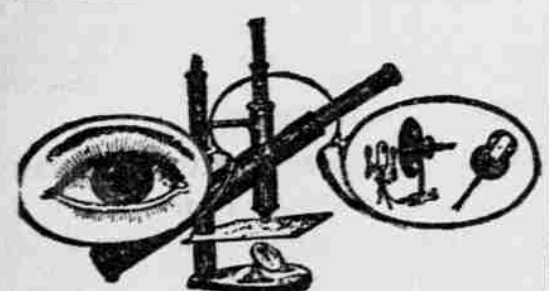
The Cow Boy and the Lady

THURSDAY, FRIDAY, SATURDAY; ALSO SATURDAY MATINEE.

Tracked Around the World

POPULAR PRICES: 25c., 50c., 75c., ORPHEUM TELEPHONE, WHITE 681.

ADMISSION TO MATINEE.....25c.



Thumping the keys of a piano is not music, and putting successively various lenses before the eyes is not an examination, even though certain improvements in vision are obtained.

Anybody can test your eyes—you can do it yourself, but the scientific use of lenses involves something more than experimenting.

Few can examine eyes and do it intelligently and satisfactorily—quite a difference between eye-tests and eye examinations. Did that fact ever occur to you?

A. N. SANFORD

OPTICIAN,

Boston Building, Fort Street, Over May & Co.

Pure Wines and Liquors

Family Trade Solicited.

Lovejoy & Co.

Nuuanu St. : : Phone 308.

Pure Soda Water

You can't get better Soda Water than that bearing the FOUNTAIN brand, for the simple reason that there isn't any better made.

Fontaine Soda Works,
Sheridan Street, near King.
Phone Main 270.

Kimonos, Silks,

ORIENTAL GOODS AT REDUCED PRICE AT

SAYEGUSA,

1120 NUUANU ST., NEAR HOTEL.

QUALITY, STYLE AND FIT

IN OUR

\$25.00 SUITS

George A. Martin

Arlington Block, Hotel Street.
OPEN ON SATURDAYS TILL 9 P. M.

NOW LOCATED IN OFFICES 2 AND 3, McIntyre Building.

J. S. MARTIN

MERCHANT TAILOR.

Fort Street - - - Honolulu, T. H.

RICE & PERKINS,

ARTISTIC PHOTOGRAPHERS.

Studio: Hotel Street, near Fort.

Dry Cleaning

Garments cleaned by this process at

Mrs. A. M. Mellis'

Dressmaking Establishment.

Sachs Block, Honolulu.

SATISFACTION GUARANTEED

SOLD and installed by

BATH the Plumber

Phone M. 61, 165 S. King St.

Can be installed anywhere. All they require is gas and water.

Hot Water in plenty for toilet and bath at a second's notice when you have the Rapid.

Very economical—a bath for one cent—surely that is cheap enough.

SOLD and installed by

BATH the Plumber

Phone M. 61, 165 S. King St.

WEEKLY CROP BULLETIN.

For the Week Ending January 27, 1906.

Local Office, U. S. Weather Bureau,
Honolulu, T. H., January 29, 1906.

GENERAL SUMMARY.

The stormy conditions which reached a climax on the 19th instant have been followed by generally fair weather in all portions of the Group. During the past week, the days have been rather warm and sunny, but very cool nights have continued.

1906 cane has ripened well, conditions have been quite favorable for field operations, and harvesting has proceeded rapidly. Young cane, however, has made very little growth. Winter pineapples have ripened freely, and young plants are generally reported as in good condition. Coffee in the upper levels of windward Hawaii is ripening slowly. The plowing of rice lands continues in all sections. Pastures generally are in good condition, although the cold nights have been bad for grazing stock. During the recent storm, a considerable quantity of snow fell on the summits of Mauna Kea and Mauna Loa in Hawaii, and Haleakala in Maui.

REMARKS BY CORRESPONDENTS.

ISLAND OF HAWAII.

Kaunana—The week has been marked by high winds, sunny days and cool nights. In consequence of which the cane crop of 1906 is ripening well, but 1907 crop cane is making no growth; stripping, fertilizing and hilling up cane; mean temperature, 68 deg.; rainfall, .06 inch.—J. E. Gamaliel-son.

Hilo—Dry weather all week; warm days, with considerable south wind; cold nights; tops of the mountains covered with snow; mean temperature, 71 deg.; rainfall, .05 inch.—L. C. Lyman.

Papaikou—Weather dry and cold; crops doing little in the way of growth; cutting and grinding cane; plowing and clearing land; snow on Mauna Kea and Mauna Loa all of last week; rainfall, .03 inch.—John T. Moir.

Pepeskee—Dry, hard weather, but good for ripening 1906 crop cane; a little too hard for young cane; mean temperature, 72 deg.; rainfall, .01 inch.—James Webster.

Honouliuli—Weather during week has been dry, with bright sunshine during days and cool nights; southerly winds; 1906 crop cane is ripening rapidly; harvesting cane and grinding; no rainfall.

Wm. Pullar.
Hakalau—Very favorable weather for ripening cane; warm, sunny days and dry, blustering winds; stripping, hoeing, fertilizing and cutting cane, and plowing; no rainfall.—J. M. Ross.

Papaaloa—The past week has been very dry and windy, with cool nights, favorable conditions for cultivation, but too cool for young cane; no rainfall.—C. McLennan.

Laupahoehoe—Heavy weather and strong wind from north on 19th; rest of week calm, with cool nights; no rainfall.—E. W. Barnard.

Ookala—Since the 20th, light trade winds have prevailed; weather warm and dry; mean temperature, 69 deg.; no rainfall.—W. G. Walker.

Paauilo—Calm weather; warm days and cold nights; disturbed conditions during the last kona storm not yet become normal; cane and other crops at a standstill; coffee showing new growth of wood, but slow to ripen at high elevations (1700 feet); mean temperature, 66 deg.; rainfall, .12 inch.—C. R. Blacow.

Paaunau—Heavy gale from southwest on evening of 18th and morning of 19th, doing some damage to cane crops; welcome change to warmer weather in latter part of week; rainfall, .20 inch.—H. Glass.

Honokaa—South and southwesterly winds during week, but very little rain; warm days, but cool nights; mean temperature, 69 deg.; rainfall, .46 inch.—C. H. Bragg.

Niuli—Calm weather since the kona storm of 19th and previous night, which did considerable damage to cane, flumes and buildings; commenced grinding crop of 1906 this week; mean temperature, 70 deg.; rainfall, 2.73 inches.—Robt. Hall.

Kohala—High winds and heavy rains at beginning of week, but last three days fine and warm; mean temperature, 70 deg.; rainfall, 2.09 inches.—W. O. Taylor.

Kohala Mission—Clear, quiet weather has characterized the week; heavy dews every night; lightning on 20th; mean temperature, 70 deg.; rainfall, 1.79 inches.—Dr. B. D. Bond.

Puakea Ranch—Continuance of kona storm on 19th, since which time the wind has moderated, and calm, warm weather has prevailed; storm did much

damage to trees, etc., in district; lower pastures improving; rainfall, .92 inch.—A. Mason.

Puuhue—Calm weather since storm of 19th; pasturage good; rainfall, 1.35 inches.—S. P. Woods.

Kamuela—Fine, warm days, and cool nights; quite a cap of snow on both Mauna Kea and Mauna Loa; mean temperature, 63 deg.; rainfall, .30 inch.—Mrs. E. W. Hay.

Puuwaawaa—Only one day with rain this week, one inch falling on the 19th; vegetation very green, but this weather is very cold.—Robt. Hind.

Honokahau—Weather during week dry, with warm days and cold nights; last week's storm did considerable damage in the way of uprooting and breaking down trees, etc.; stock looking fairly well.—F. R. Greenwell.

Kealahou—First part of week cloudy, with 1.40 inches of rain on the 19th; latter portion of week warm, sunny days but nights cool.—Rev. S. H. Davis.

Kealahou—The kona storm on early morning of 19th was not severe here, there being only strong gusts of wind for about six hours, and no damage was done; very heavy seas at Napoos; rainfall, 1.00 inch.—Robert Wallace.

Kau—Northwesterly gale on 19th, doing much damage, uprooting trees and blowing off roofs of houses; has been very cold since, with no rain; mean temperature, 65 deg.; rainfall, 2.09 inches.—F. H. Hayselden.

Naalehu—1.80 inches of rain on 19th, followed by a strong kona gale, causing cane to lodge very badly and breaking down a great deal of same; many large trees were uprooted, thousands of feet of flume thrown down, and roofs blown off of houses all over the district.—G. G. Kinney.

Pahala—Fair weather, but dry; southerly gale early in week brought some rain, which was quickly evaporated by high winds; mean temperature, 64 deg.; rainfall, 1.10 inches.—H. D. Harrison.

Kapoho—Very hard south wind on 19th, followed by light south winds; smooth seas; fishing along Puna coast; mean temperature, 72 deg.; rainfall, .58 inch.—H. J. Lyman.

ISLAND OF MAUI.

Kipahulu—Southerly gale continued during beginning of week, damaging crops considerably; nights cool; calm and warm days at close of week; weeding and fertilizing cane; mean temperature, 69 deg.; rainfall, .79 inch.—H. Neubaur.

Hana—Partly cloudy weather during first part of week, with strong winds which did considerable damage; winds on 18th and 19th were the strongest known here in years; latter part of week, warm, clear days, very cool nights, and northerly winds; no indications of rain.—N. Omsted.

Nahiku—On night of 19th we had a kona storm which blew down a few buildings in different localities; latter portion of week, fine, clear days, but quite cool; rainfall, 1.19 inches.—C. O. Jacobs.

Huelo—On the 19th instant a very strong wind from the southeast; in the Keane Valley this wind was in the nature of a tornado, unroofing houses, etc.; since the 19th weather has been very dry, with light southeasterly winds; mean temperature, 68 deg.; rainfall, 1.51 inches.—W. F. Pogue.

Peahi—Warm weather, with light south wind; cold nights.—Geo. Groves.

Hakua—Since the south gale of the 19th the wind has continued very light

BRO. CARBONNIER

LAID TO REST

The funeral of the late Brother Aquille, who was the oldest lay brother attached to the Catholic Mission in



THE LATE BRO. CARBONNIER AQUILLE.

Hawaii, took place at 4 p. m. yesterday from the Catholic cathedral.

Bishop Libert officiated at the altar, assisted by Father Matthias. The choir was also present, and the casket was borne into and from the cathedral by four lay brothers.

The remains were laid to rest in the Catholic cemetery on King street, Father Matthias officiating at the grave.

The deceased had been in Hawaii for sixty years. He was born in France and to the day of his death he had not learned to speak English to any extent, but he was fluent in the Hawaiian tongue and was regarded at the Mission as something of an authority on island history.

and variable; 1906 fruit is ripening freely, and canning operations are proceeding apace; mean temperature, 69 deg.; rainfall, 2.08 inches.—D. D. Baldwin.

Pala—Very changeable weather, with only .41 inch of rain this week; the Pala mill of the Maui Agricultural Co. commenced grinding 1906 cane on the 22nd instant.—J. J. Jones.

Puunene—Weather changeable, with light showers and a prevailing southerly wind; very cool in mornings; harvesting operations proceeding rapidly; rainfall, .23 inch.—J. N. S. Williams.

Wailuku—Clear and cool weather during the week, with variable winds; plowing rice lands; cane making slow growth; no vegetables in market; green feed plentiful; repairing damage done to flumes, etc., by late kona storm; mean temperature, 65 deg.; rainfall, 1.05 inches.—Bro. Frank.

Kihel—Good rains beginning on 19th, with damaging high south and southwesterly winds prevailing, which carried away a portion of the Kihel wharf; many trees and telephone poles grounded; hilling up ratoons for 1907 crop finished; preparation being made to commence harvesting 1906 cane on the 29th instant; mean temperature, 69 deg.; rainfall, 1.45 inches.—James Scott.

ISLAND OF OAHU.

Ahuimanu—A very quiet week; cold nights; mean temperature, 69 deg.; rainfall, .35 inch.—H. R. Macfarlane.

Maunawili—Weather has been cool and dry; cleaning and cultivating coffee; mean temperature, 70 deg.; rainfall, .36 inch.—John Herd.

Waimanalo—Very stormy on 21st, but calm during remainder of week; rainfall, .52 inch.—A. Irvine.

Ewa—South wind and very sultry weather all week; a good shower on night of 26th and during 27th has been of great benefit to young cane; artificial irrigation suspended; stripping and harvesting cane; mean temperature, 66 deg.; rainfall, 1.12 inches.—W. Lohrengel.

Waikeala—Day temperatures have been higher this week, but early mornings have continued cold; mean temperature, 70 deg.; rainfall, .39 inch.—F. Meyer.

Waikeala—Light showers this week; young pineapple plants in good condition; mean temperature, 68 deg.; rainfall, .31 inch.—W. R. Waters.

Kahuku—Cold nights continue, but days have been warm and sunny; calm during greater part of week; pumps all shut down; harvesting continues rapidly; mean temperature, 70 deg.; rainfall, .11 inch.—R. T. Christophersen.

ISLAND OF KAUAI.

Makaweli—Changeable and unsettled weather; mean temperature, 70 deg.; rainfall, .08 inch.—Hawaiian Sugar Co.

Elele—Warm days, but very cold nights; cane doing well; still grinding.—McBryde Sugar Co.

Koloa—Dry weather continues, with cool nights; harvesting and grinding cane; pastures in good condition; mean temperature, 67 deg.; rainfall, .04 inch.—P. McLane.

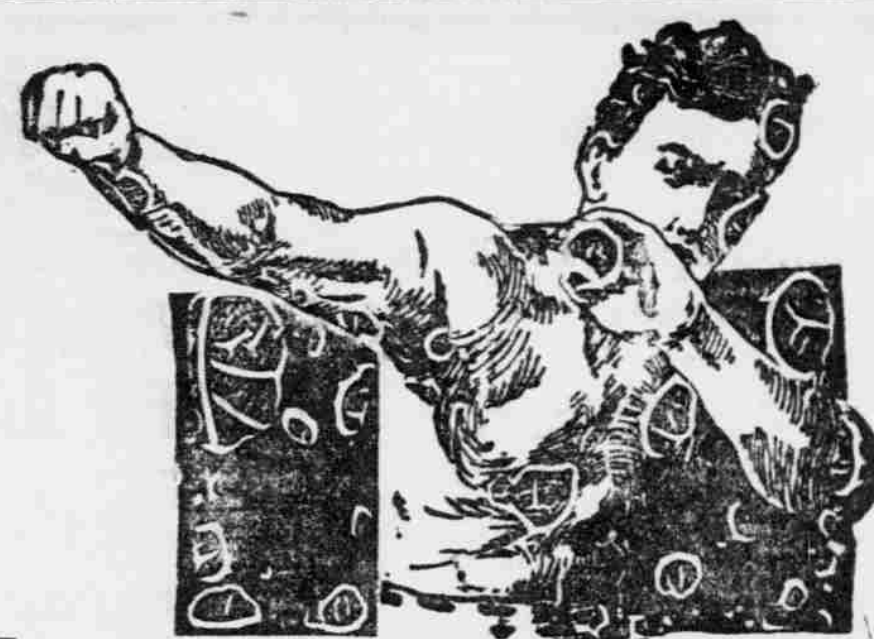
Lihue—Cool nights and warm days, with strong westerly winds; dry weather; mean temperature, 67 deg.; rainfall, .12 inch.—F. Weber.

Keala—Warm days and very cool nights, with southerly to westerly winds; weather good for harvesting, but a little dry for growing cane; mean temperature, 68 deg.; rainfall, .02 inch.—W. Jarvis.

Kilauea—Warm days and cold nights, with westerly winds; mean temperature, 70 deg.; rainfall, .04 inch.—L. B. Boreiko.

A. McC. ASHLEY.

Section Director.



Are You Weak?

Do you want to be strong? Do you want to feel the vim, the snap and fire of vigor? Do you want courage, energy and ambition to support you in your cares and troubles?

I have devoted my life to the development of manly and womanly vigor. I've made a great success. My methods are now being approved by the greatest scientists and doctors and copied.

I've proven that electricity is the basis of all animal life, and that "weak men," dyspeptics, rheumatics, sufferers from lost energy, weak kidneys, pains in the back, head, chest and shoulders, etc., are weak in electricity.

My Electric Belt restores this life in a few weeks and cures every time. MAKES MEN OVER. It beats the world for building up men broken down from dissipation and neglect of the laws of nature. No matter what your trouble is, you can be made better and stronger by using this wonderful Belt. It pours bills and useless suffering. It cures Rheumatism, Back Pains and all organic weakness.

READ MY BOOK. I have a book which every man should read (one for women also). It tells facts that are of interest to every man who wants to remain young in vitality at any age. Send for this book today if you can't call. I mail it, sealed, free. If you call I will give you a free test. Remember, my Belt does not burn, though you feel the current and can regulate it. I warrant it to give a strong current for years, though no man who uses it right needs it over three months. Cut this out and act today.

DR. M. G. McLAUGHLIN,

SAN FRANCISCO, CAL.

906 MARKET ST.

Report of Resources and Liabilities of The Hawaiian Realty and Maturity Company, Limited, At the Close of Business December 30, 1905.

RESOURCES.	LIABILITIES.
Loans on Real Estate.....\$ 4,034.37	Capital paid in.....\$50,000.00
Loans on Securities other than	Undivided profits.....3,362.78
Real Estate.....5,731.24	Investment-Stock Certificates..29,205.35
Treasury Stocks.....19,200.00	
Charter and Franchise.....9,730.00	
Horses and Vehicle.....300.00	
Real Estate.....30,069.00	
Furniture and Fixtures.....667.17	
Due from Agents.....\$560.61	
Due from all other sources.....2,776.63	
Cash on hand.....899.11	
\$82,568.13	\$82,568.13

I, A. H. Kentwell, do solemnly swear that the foregoing Statement is true to the best of my knowledge and belief.

(Signed) THE HAWAIIAN REALTY AND MATURITY CO.

By A. H. KENTWELL,

Act. Manager.

Subscribed and sworn to before me this 24th day of January, 1906.

CHAS. A. MANU,

Notary Public, Judicial Circuit, T. H.

7323

Information Is Always . . .

Wanted

Business Men

Who desire up-to-date Offices that stimulate clerical effort, and make for increased efficiency.

Home Builders

Whose Ideals are not confined to mere theory.

Information Concerning

GLOBE-WERNICKE CABINETS and BOOKCASES

is valuable, but can be obtained at 931 Fort street for the asking.

Hawaiian Office Specialty Company,

931 Fort Street. Phone Main 143.

Globe-Wernicke Agents

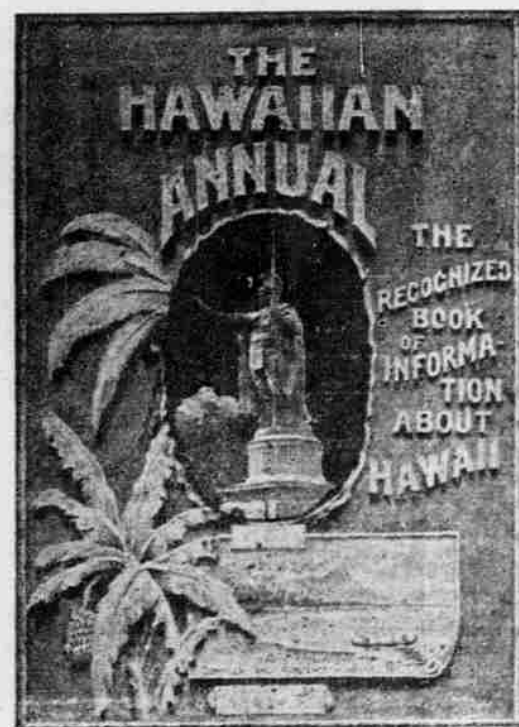
THIS POPULAR HANDBOOK FOR

1906

Is admitted to be the best and most varied number yet issued. Its statistical and reference tables and articles treating with the progress and development of Hawaii, historic and personal reminiscence, descriptive travel, legendary, and other subjects of timely interest, with an exhaustive retrospect for 1905 makes this the best and most reliable handbook of information relating to Hawaii, for local office or home use, or for mailing to friends abroad.

Price, 75c. each, or by mail to any address, 85c. per copy.

THOS. G. THURM

Stationer and Publisher.
1063 Fort Street, Honolulu.

Fever

Honolulu has the improvement fever. Nevertheless, it is a sign of health. Tear down the shacks, lower the fences, but, above all, don't neglect to paint your property. Call on us and talk it over with us. Our color artist will be pleased to show you combinations and quote you prices—prices that won't break you, either.

Stanley Stephenson

THE PAINTER.

Phone 426; 137 King street.

Get that habit—the S. S. Sign habit.

SPECIAL OFFER
Pyrographic Outfit B—\$2.50

For burning on Plaster, Wood, Leather, etc.
Includes one box of Pyrographic Outfit B, one box of Pyrographic Outfit C, one box of Pyrographic Outfit D, one box of Pyrographic Outfit E, one box of Pyrographic Outfit F, one box of Pyrographic Outfit G, one box of Pyrographic Outfit H, one box of Pyrographic Outfit I, one box of Pyrographic Outfit J, one box of Pyrographic Outfit K, one box of Pyrographic Outfit L, one box of Pyrographic Outfit M, one box of Pyrographic Outfit N, one box of Pyrographic Outfit O, one box of Pyrographic Outfit P, one box of Pyrographic Outfit Q, one box of Pyrographic Outfit R, one box of Pyrographic Outfit S, one box of Pyrographic Outfit T, one box of Pyrographic Outfit U, one box of Pyrographic Outfit V, one box of Pyrographic Outfit W, one box of Pyrographic Outfit X, one box of Pyrographic Outfit Y, one box of Pyrographic Outfit Z, one box of Pyrographic Outfit AA, one box of Pyrographic Outfit AB, one box of Pyrographic Outfit AC, one box of Pyrographic Outfit AD, one box of Pyrographic Outfit AE, one box of Pyrographic Outfit AF, one box of Pyrographic Outfit AG, one box of Pyrographic Outfit AH, one box of Pyrographic Outfit AI, one box of Pyrographic Outfit AJ, one box of Pyrographic Outfit AK, one box of Pyrographic Outfit AL, one box of Pyrographic Outfit AM, one box of Pyrographic Outfit AN, one box of Pyrographic Outfit AO, one box of Pyrographic Outfit AP, one box of Pyrographic Outfit AQ, one box of Pyrographic Outfit AR, one box of Pyrographic Outfit AS, one box of Pyrographic Outfit AT, one box of Pyrographic Outfit AU, one box of Pyrographic Outfit AV, one box of Pyrographic Outfit AW, one box of Pyrographic Outfit AX, one box of Pyrographic Outfit AY, one box of Pyrographic Outfit AZ, one box of Pyrographic Outfit BA, one box of Pyrographic Outfit BB, one box of Pyrographic Outfit BC, one box of Pyrographic Outfit BD, one box of Pyrographic Outfit BE, one box of Pyrographic Outfit BF, one box of Pyrographic Outfit BG, one box of Pyrographic Outfit BH, one box of Pyrographic Outfit BI, one box of Pyrographic Outfit BJ, one box of Pyrographic Outfit BK, one box of Pyrographic Outfit BL, one box of Pyrographic Outfit BM, one box of Pyrographic Outfit BN, one box of Pyrographic Outfit BO, one box of Pyrographic Outfit BP, one box of Pyrographic Outfit BQ, one box of Pyrographic Outfit BR, one box of Pyrographic Outfit BS, one box of Pyrographic Outfit BT, one box of Pyrographic Outfit BU, one box of Pyrographic Outfit BV, one box of Pyrographic Outfit BW, one box of Pyrographic Outfit BX, one box of Pyrographic Outfit BY, one box of Pyrographic Outfit BZ, one box of Pyrographic Outfit CA, one box of Pyrographic Outfit CB, one box of Pyrographic Outfit CC, one box of Pyrographic Outfit CD, one box of Pyrographic Outfit CE, one box of Pyrographic Outfit CF, one box of Pyrographic Outfit CG, one box of Pyrographic Outfit CH, one box of Pyrographic Outfit CI, one box of Pyrographic Outfit CJ, one box of Pyrographic Outfit CK, one box of Pyrographic Outfit CL, one box of Pyrographic Outfit CM, one box of Pyrographic Outfit CN, one box of Pyrographic Outfit CO, one box of Pyrographic Outfit CP, one box of Pyrographic Outfit CQ, one box of Pyrographic Outfit CR, one box of Pyrographic Outfit CS, one box of Pyrographic Outfit CT, one box of Pyrographic Outfit CU, one box of Pyrographic Outfit CV, one box of Pyrographic Outfit CW, one box of Pyrographic Outfit CX, one box of Pyrographic Outfit CY, one box of Pyrographic Outfit CZ, one box of Pyrographic Outfit DA, one box of Pyrographic Outfit DB, one box of Pyrographic Outfit DC, one box of Pyrographic Outfit DD, one box of Pyrographic Outfit DE, one box of Pyrographic Outfit DF, one box of Pyrographic Outfit DG, one box of Pyrographic Outfit DH, one box of Pyrographic Outfit DI, one box of Pyrographic Outfit DJ, one box of Pyrographic Outfit DK, one box of Pyrographic Outfit DL, one box of Pyrographic Outfit DM, one box of Pyrographic Outfit DN, one box of Pyrographic Outfit DO, one box of Pyrographic Outfit DP, one box of Pyrographic Outfit DQ, one box of Pyrographic Outfit DR, one box of Pyrographic Outfit DS, one box of Pyrographic Outfit DT, one box of Pyrographic Outfit DU, one box of Pyrographic Outfit DV, one box of Pyrographic Outfit DW, one box of Pyrographic Outfit DX, one box of Pyrographic Outfit DY, one box of Pyrographic Outfit DZ, one box of Pyrographic Outfit EA, one box of Pyrographic Outfit EB, one box of Pyrographic Outfit EC, one box of Pyrographic Outfit ED, one box of Pyrographic Outfit EE, one box of Pyrographic Outfit EF, one box of Pyrographic Outfit EG, one box of Pyrographic Outfit EH, one box of Pyrographic Outfit EI, one box of Pyrographic Outfit EJ, one box of Pyrographic Outfit EK, one box of Pyrographic Outfit EL, one box of Pyrographic Outfit EM, one box of Pyrographic Outfit EN, one box of Pyrographic Outfit EO, one box of Pyrographic Outfit EP, one box of Pyrographic Outfit EQ, one box of Pyrographic Outfit ER, one box of Pyrographic Outfit ES, one box of Pyrographic Outfit ET, one box of Pyrographic Outfit EU, one box of Pyrographic Outfit EV, one box of Pyrographic Outfit EW, one box of Pyrographic Outfit EX, one box of Pyrographic Outfit EY, one box of Pyrographic Outfit EZ, one box of Pyrographic Outfit FA, one box of Pyrographic Outfit FB, one box of Pyrographic Outfit FC, one box of Pyrographic Outfit FD, one box of Pyrographic Outfit FE, one box of Pyrographic Outfit FF, one box of Pyrographic Outfit FG, one box of Pyrographic Outfit FH, one box of Pyrographic Outfit FI, one box of Pyrographic Outfit FJ, one box of Pyrographic Outfit FK, one box of Pyrographic Outfit FL, one box of Pyrographic Outfit FM, one box of Pyrographic Outfit FN, one box of Pyrographic Outfit FO, one box of Pyrographic Outfit FP, one box of Pyrographic Outfit FQ, one box of Pyrographic Outfit FR, one box of Pyrographic Outfit FS, one box of Pyrographic Outfit FT, one box of Pyrographic Outfit FU, one box of Pyrographic Outfit FV, one box of Pyrographic Outfit FW, one box of Pyrographic Outfit FX, one box of Pyrographic Outfit FY, one box of Pyrographic Outfit FZ, one box of Pyrographic Outfit GA, one box of Pyrographic Outfit GB, one box of Pyrographic Outfit GC, one box of Pyrographic Outfit GD, one box of Pyrographic Outfit GE, one box of Pyrographic Outfit GF, one box of Pyrographic Outfit GG, one box of Pyrographic Outfit GH, one box of Pyrographic Outfit GI, one box of Pyrographic Outfit GJ, one box of Pyrographic Outfit GK, one box of Pyrographic Outfit GL, one box of Pyrographic Outfit GM, one box of Pyrographic Outfit GN, one box of Pyrographic Outfit GO, one box of Pyrographic Outfit GP, one box of Pyrographic Outfit GQ, one box of Pyrographic Outfit GR, one box of Pyrographic Outfit GS, one box of Pyrographic Outfit GT, one box of Pyrographic Outfit GU, one box of Pyrographic Outfit GV, one box of Pyrographic Outfit GW, one box of Pyrographic Outfit GX, one box of Pyrographic Outfit GY, one box of Pyrographic Outfit GZ, one box of Pyrographic Outfit HA, one box of Pyrographic Outfit HB, one box of Pyrographic Outfit HC, one box of Pyrographic Outfit HD, one box of Pyrographic Outfit HE, one box of Pyrographic Outfit HF, one box of Pyrographic Outfit HG, one box of Pyrographic Outfit HH, one box of Pyrographic Outfit HI, one box of Pyrographic Outfit HJ, one box of Pyrographic Outfit HK, one box of Pyrographic Outfit HL, one box of Pyrographic Outfit HM, one box of Pyrographic Outfit HN, one box of Pyrographic Outfit HO, one box of Pyrographic Outfit HP, one box of Pyrographic Outfit HQ, one box of Pyrographic Outfit HR, one box of Pyrographic Outfit HS, one box of Pyrographic Outfit HT, one box of Pyrographic Outfit HU, one box of Pyrographic Outfit HV, one box of Pyrographic Outfit HW, one box of Pyrographic Outfit HX, one box of Pyrographic Outfit HY, one box of Pyrographic Outfit HZ, one box of Pyrographic Outfit IA, one box of Pyrographic Outfit IB, one box of Pyrographic Outfit IC, one box of Pyrographic Outfit ID, one box of Pyrographic Outfit IE, one box of Pyrographic Outfit IF, one box of Pyrographic Outfit IG, one box of Pyrographic Outfit IH, one box of Pyrographic Outfit II, one box of Pyrographic Outfit IJ, one box of Pyrographic Outfit IK, one box of Pyrographic Outfit IL, one box of Pyrographic Outfit IM, one box of Pyrographic Outfit IN, one box of Pyrographic Outfit IO, one box of Pyrographic Outfit IP, one box of Pyrographic Outfit IQ, one box of Pyrographic Outfit IR, one box of Pyrographic Outfit IS, one box of Pyrographic Outfit IT, one box of Pyrographic Outfit IU, one box of Pyrographic Outfit IV, one box of Pyrographic Outfit IW, one box of Pyrographic Outfit IX, one box of Pyrographic Outfit IY, one box of Pyrographic Outfit IZ, one box of Pyrographic Outfit JA, one box of Pyrographic Outfit JB, one box of Pyrographic Outfit JC, one box of Pyrographic Outfit JD, one box of Pyrographic Outfit JE, one box of Pyrographic Outfit JF, one box of Pyrographic Outfit JG, one box of Pyrographic Outfit JH, one box of Pyrographic Outfit JI, one box of Pyrographic Outfit JJ, one box of Pyrographic Outfit JK, one box of Pyrographic Outfit JL, one box of Pyrographic Outfit JM, one box of Pyrographic Outfit JN, one box of Pyrographic Outfit JO, one box of Pyrographic Outfit JP, one box of Pyrographic Outfit JQ, one box of Pyrographic Outfit JR, one box of Pyrographic Outfit JS, one box of Pyrographic Outfit JT, one box of Pyrographic Outfit JU, one box of Pyrographic Outfit JV, one box of Pyrographic Outfit JW, one box of Pyrographic Outfit JX, one box of Pyrographic Outfit JY, one box of Pyrographic Outfit JZ, one box of Pyrographic Outfit KA, one box of Pyrographic Outfit KB, one box of Pyrographic Outfit KC, one box of Pyrographic Outfit KD, one box of Pyrographic Outfit KE, one box of Pyrographic Outfit KF, one box of Pyrographic Outfit KG, one box of Pyrographic Outfit KH, one box of Pyrographic Outfit KI, one box of Pyrographic Outfit KJ, one box of Pyrographic Outfit KK, one box of Pyrographic Outfit KL, one box of Pyrographic Outfit KM, one box of Pyrographic Outfit KN, one box of Pyrographic Outfit KO, one box of Pyrographic Outfit KP, one box of Pyrographic Outfit KQ, one box of Pyrographic Outfit KR, one box of Pyrographic Outfit KS, one box of Pyrographic Outfit KT, one box of Pyrographic Outfit KU, one box of Pyrographic Outfit KV, one box of Pyrographic Outfit KW, one box of Pyrographic Outfit KX, one box of Pyrographic Outfit KY, one box of Pyrographic Outfit KZ, one box of Pyrographic Outfit LA, one box of Pyrographic Outfit LB, one box of Pyrographic Outfit LC, one box of Pyrographic Outfit LD, one box of Pyrographic Outfit LE, one box of Pyrographic Outfit LF, one box of Pyrographic Outfit LG, one box of Pyrographic Outfit LH, one box of Pyrographic Outfit LI, one box of Pyrographic Outfit LJ, one box of Pyrographic Outfit LK, one box of Pyrographic Outfit LL, one box of Pyrographic Outfit LM, one box of Pyrographic Outfit LN, one box of Pyrographic Outfit LO, one box of Pyrographic Outfit LP, one box of Pyrographic Outfit LQ, one box of Pyrographic Outfit LR, one box of Pyrographic Outfit LS, one box of Pyrographic Outfit LT, one box of Pyrographic Outfit LU, one box of Pyrographic Outfit LV, one box of Pyrographic Outfit LW, one box of Pyrographic Outfit LX, one box of Pyrographic Outfit LY, one box of Pyrographic Outfit LZ, one box of Pyrographic Outfit MA, one box of Pyrographic Outfit MB, one box of Pyrographic Outfit MC, one box of Pyrographic Outfit MD, one box of Pyrographic Outfit ME, one box of Pyrographic Outfit MF, one box of Pyrographic Outfit MG, one box of Pyrographic Outfit MH, one box of Pyrographic Outfit MI, one box of Pyrographic Outfit MJ, one box of Pyrographic Outfit MK, one box of Pyrographic Outfit ML, one box of Pyrographic Outfit MM, one box of Pyrographic Outfit MN, one box of Pyrographic Outfit MO, one box of Pyrographic Outfit MP, one box of Pyrographic Outfit MQ, one box of Pyrographic Outfit MR, one box of Pyrographic Outfit MS, one box of Pyrographic Outfit MT, one box of Pyrographic Outfit MU, one box of Pyrographic Outfit MV, one box of Pyrographic Outfit MW, one box of Pyrographic Outfit MX, one box of Pyrographic Outfit MY, one box of Pyrographic Outfit MZ, one box of Pyrographic Outfit NA, one box of Pyrographic Outfit NB, one box of Pyrographic Outfit NC, one box of Pyrographic Outfit ND, one box of Pyrographic Outfit NE, one box of Pyrographic Outfit NF, one box of Pyrographic Outfit NG, one box of Pyrographic Outfit NH, one box of Pyrographic Outfit NI, one box of Pyrographic Outfit NJ, one box of Pyrographic Outfit NK, one box of Pyrographic Outfit NL, one box of Pyrographic Outfit NM, one box of Pyrographic Outfit NN, one box of Pyrographic Outfit NO, one box of Pyrographic Outfit NP, one box of Pyrographic Outfit NQ, one box of Pyrographic Outfit NR, one box of Pyrographic Outfit NS, one box of Pyrographic Outfit NT, one box of Pyrographic Outfit NU, one box of Pyrographic Outfit NV, one box of Pyrographic Outfit NW, one box of Pyrographic Outfit NX, one box of Pyrographic Outfit NY, one box of Pyrographic Outfit NZ, one box of Pyrographic Outfit OA, one box of Pyrographic Outfit OB, one box of Pyrographic Outfit OC, one box of Pyrographic Outfit OD, one box of Pyrographic Outfit OE, one box of Pyrographic Outfit OF, one box of Pyrographic Outfit OG, one box of Pyrographic Outfit OH, one box of Pyrographic Outfit OI, one box of Pyrographic Outfit OJ, one box of Pyrographic Outfit OK, one box of Pyrographic Outfit OL, one box of Pyrographic Outfit OM, one box of Pyrographic Outfit ON, one box of Pyrographic Outfit OO, one box of Pyrographic Outfit OP, one box of Pyrographic Outfit OQ, one box of Pyrographic Outfit OR, one box of Pyrographic Outfit OS, one box of Pyrographic Outfit OT, one box of Pyrographic Outfit OU, one box of Pyrographic Outfit OV, one box of Pyrographic Outfit OW, one box of Pyrographic Outfit OX, one box of Pyrographic Outfit OY, one box of Pyrographic Outfit OZ, one box of Pyrographic Outfit PA, one box of Pyrographic Outfit PB, one box of Pyrographic Outfit PC, one box of Pyrographic Outfit PD, one box of Pyrographic Outfit PE, one box of Pyrographic Outfit PF, one box of Pyrographic Outfit PG, one box of Pyrographic Outfit PH, one box of Pyrographic Outfit PI, one box of Pyrographic Outfit PJ, one box of Pyrographic Outfit PK, one box of Pyrographic Outfit PL, one box of Pyrographic Outfit PM, one box of Pyrographic Outfit PN, one box of Pyrographic Outfit PO, one box of Pyrographic Outfit PP, one box of Pyrographic Outfit PQ, one box of Pyrographic Outfit PR, one box of Pyrographic Outfit PS, one box of Pyrographic Outfit PT, one box of Pyrographic Outfit PU, one box of Pyrographic Outfit PV, one box of Pyrographic Outfit PW, one box of Pyrographic Outfit PX, one box of Pyrographic Outfit PY, one box of Pyrographic Outfit PZ, one box of Pyrographic Outfit QA, one box of Pyrographic Outfit QB, one box of Pyrographic Outfit QC, one box of Pyrographic Outfit QD, one box of Pyrographic Outfit QE, one box of Pyrographic Outfit QF, one box of Pyrographic Outfit QG, one box of Pyrographic Outfit QH, one box of Pyrographic Outfit QI, one box of Pyrographic Outfit QJ, one box of Pyrographic Outfit QK, one box of Pyrographic Outfit QL, one box of Pyrographic Outfit QM, one box of Pyrographic Outfit QN, one box of Pyrographic Outfit QO, one box of Pyrographic Outfit QP, one box of Pyrographic Outfit QQ, one box of Pyrographic Outfit QR, one box of Pyrographic Outfit QS, one box of Pyrographic Outfit QT, one box of Pyrographic Outfit QU, one box of Pyrographic Outfit QV, one box of Pyrographic Outfit QW, one box of Pyrographic Outfit QX, one box of Pyrographic Outfit QY, one box of Pyrographic Outfit QZ, one box of Pyrographic Outfit RA, one box of Pyrographic Outfit RB, one box of Pyrographic Outfit RC, one box of Pyrographic Outfit RD, one box of Pyrographic Outfit RE, one box of Pyrographic Outfit RF, one box of Pyrographic Outfit RG, one box of Pyrographic Outfit RH, one box of Pyrographic Outfit RI, one box of Pyrographic Outfit RJ, one box of Pyrographic Outfit RK, one box of Pyrographic Outfit RL, one box of Pyrographic Outfit RM, one box of Pyrographic Outfit RN, one box of Pyrographic Outfit RO, one box of Pyrographic Outfit RP, one box of Pyrographic Outfit RQ, one box of Pyrographic Outfit RR, one box of Pyrographic Outfit RS, one box of Pyrographic Outfit RT, one box of Pyrographic Outfit RU, one box of Pyrographic Outfit RV, one box of Pyrographic Outfit RW, one box of Pyrographic Outfit RX, one box of Pyrographic Outfit RY, one box of Pyrographic Outfit RZ, one box of Pyrographic Outfit SA, one box of Pyrographic Outfit SB, one box of Pyrographic Outfit SC, one box of Pyrographic Outfit SD, one box of Pyrographic Outfit SE, one box of Pyrographic Outfit SF, one box of Pyrographic Outfit SG, one box of Pyrographic Outfit SH, one box of Pyrographic Outfit SI, one box of Pyrographic Outfit SJ, one box of Pyrographic Outfit SK, one box of Pyrographic Outfit SL, one box of Pyrographic Outfit SM, one box of Pyrographic Outfit SN, one box of Pyrographic Outfit SO, one box of Pyrographic Outfit SP, one box of Pyrographic Outfit SQ, one box of Pyrographic Outfit SR, one box of Pyrographic Outfit SS, one box of Pyrographic Outfit ST, one box of Pyrographic Outfit SU, one box of Pyrographic Outfit SV, one box of Pyrographic Outfit SW, one box of Pyrographic Outfit SX, one box of Pyrographic Outfit SY, one box of Pyrographic Outfit SZ, one box of Pyrographic Outfit TA, one box of Pyrographic Outfit TB, one box of Pyrographic Outfit TC, one box of Pyrographic Outfit TD, one box of Pyrographic Outfit TE, one box of Pyrographic Outfit TF, one box of Pyrographic Outfit TG, one box of Pyrographic Outfit TH, one box of Pyrographic Outfit TI, one box of Pyrographic Outfit TJ, one box of Pyrographic Outfit TK, one box of Pyrographic Outfit TL, one box of Pyrographic Outfit TM, one box of Pyrographic Outfit TN, one box of Pyrographic Outfit TO, one box of Pyrographic Outfit TP, one box of Pyrographic Outfit TQ, one box of Pyrographic Outfit TR, one box of Pyrographic Outfit TS, one box of Pyrographic Outfit TT, one box of Pyrographic Outfit TU, one box of Pyrographic Outfit TV, one box of Pyrographic Outfit TW, one box of Pyrographic Outfit TX, one box of Pyrographic Outfit TY, one box of Pyrographic Outfit TZ, one box of Pyrographic Outfit UA, one box of Pyrographic Outfit UB, one box of Pyrographic Outfit UC, one box of Pyrographic Outfit UD, one box of Pyrographic Outfit UE, one box of Pyrographic Outfit UF, one box of Pyrographic Outfit UG, one box of Pyrographic Outfit UH, one box of Pyrographic Outfit UI, one box of Pyrographic Outfit UJ, one box of Pyrographic Outfit UK, one box of Pyrographic Outfit UL, one box of Pyrographic Outfit UM, one box of Pyrographic Outfit UN, one box of Pyrographic Outfit UO, one box of Pyrographic Outfit UP, one box of Pyrographic Outfit UQ, one box of Pyrographic Outfit UR, one box of Pyrographic Outfit US, one box of Pyrographic Outfit UT, one box of Pyrographic Outfit UU, one box of Pyrographic Outfit UV, one box of Pyrographic Outfit UW, one box of Pyrographic Outfit UX, one box of Pyrographic Outfit UY, one box of Pyrographic Outfit UZ, one box of Pyrographic Outfit VA, one box of Pyrographic Outfit VB, one box of Pyrographic Outfit VC, one box of Pyrographic Outfit VD, one box of Pyrographic Outfit VE, one box of Pyrographic Outfit VF, one box of Pyrographic Outfit VG, one box of Pyrographic Outfit VH, one box of Pyrographic Outfit VI, one box of Pyrographic Outfit VJ, one box of Pyrographic Outfit VK, one box of Pyrographic Outfit VL, one box of Pyrographic Outfit VM, one box of Pyrographic Outfit VN, one box of Pyrographic Outfit VO, one box of Pyrographic Outfit VP, one box of Pyrographic Outfit VQ, one box of Pyrographic Outfit VR, one box of Pyrographic Outfit VS, one box of Pyrographic Outfit VT, one box of Pyrographic Outfit VU, one box of Pyrographic Outfit VV, one box of Pyrographic Outfit VW, one box of Pyrographic Outfit VX, one box of Pyrographic Outfit VY, one box of Pyrographic Outfit VZ, one box of Pyrographic Outfit WA, one box of Pyrographic Outfit WB, one box of Pyrographic Outfit WC, one box of Pyrographic Outfit WD, one box of Pyrographic Outfit WE, one box of Pyrographic Outfit WF, one box of Pyrographic Outfit WG, one box of Pyrographic Outfit WH, one box of Pyrographic Outfit WI, one box of Pyrographic Outfit WJ, one box of Pyrographic Outfit WK, one box of Pyrographic Outfit WL, one box of Pyrographic Outfit WM, one box of Pyrographic Outfit WN, one box of Pyrographic Outfit WO, one box of Pyrographic Outfit WP, one box of Pyrographic Outfit WQ, one box of Pyrographic Outfit WR, one box of Pyrographic Outfit WS, one box of Pyrographic Outfit WT, one box of Pyrographic Outfit WU, one box of Pyrographic Outfit WV, one box of Pyrographic Outfit WW, one box of Pyrographic Outfit WX, one box of Pyrographic Outfit WY, one box of Pyrographic Outfit WZ, one box of Pyrographic Outfit XA, one box of Pyrographic Outfit XB, one box of Pyrographic Outfit XC, one box of Pyrographic Outfit XD, one box of Pyrographic Outfit XE, one box of Pyrographic Outfit XF, one box of Pyrographic Outfit XG, one box of Pyrographic Outfit XH, one box of Pyrographic Outfit XI, one box of Pyrographic Outfit XJ, one box of Pyrographic Outfit XK, one box of Pyrographic Outfit XL, one box of Pyrographic Outfit XM, one box of Pyrographic Outfit XN, one box of Pyrographic Outfit XO, one box of Pyrographic Outfit XP, one box of Pyrographic Outfit XQ, one box of Pyrographic Outfit XR, one box of Pyrographic Outfit XS, one box of Pyrographic Outfit XT, one box of Pyrographic Outfit XU, one box of Pyrographic Outfit XV, one box of Pyrographic Outfit XW, one box of Pyrographic Outfit XX, one box of Pyrographic Outfit XY, one box of Pyrographic Outfit XZ, one box of Pyrographic Outfit YA, one box of Pyrographic Outfit YB, one box of Pyrographic Outfit YC, one box of Pyrographic Outfit YD, one box of Pyrographic Outfit YE, one box of Pyrographic Outfit YF, one box of Pyrographic Outfit YG, one box of Pyrographic Outfit YH, one box of Pyrographic Outfit YI, one box of Pyrographic Outfit YJ, one box of Pyrographic Outfit YK, one box of Pyrographic Outfit YL, one box of Pyrographic Outfit YM, one box of Pyrographic Outfit YN, one box of Pyrographic Outfit YO, one box of Pyrographic Outfit YP, one box of Pyrographic Outfit YQ, one box of Pyrographic Outfit YR, one box of Pyrographic Outfit YS, one box of Pyrographic Outfit YT, one box of Pyrographic Outfit YU, one box of Pyrographic Outfit YV, one box of Pyrographic Outfit YW, one box of Pyrographic Outfit YX, one box of Pyrographic Outfit YY, one box of Pyrographic Outfit YZ, one box of Pyrographic Outfit ZA, one box of Pyrographic Outfit ZB, one box of Pyrographic Outfit ZC, one box of Pyrographic Outfit ZD, one box of Pyrographic Outfit ZE, one box of Pyrographic Outfit ZF, one box of Pyrographic Outfit ZG, one box of Pyrographic Outfit ZH, one box of Pyrographic Outfit ZI, one box of Pyrographic Outfit ZJ, one box of Pyrographic Outfit ZK, one box of Pyrographic Outfit ZL, one box of Pyrographic Outfit ZM, one box of Pyrographic Outfit ZN, one box of Pyrographic Outfit ZO, one box of Pyrographic Outfit ZP, one box of Pyrographic Outfit ZQ, one box of Pyrographic Outfit ZR, one box of Pyrographic Outfit ZS, one box of Pyrographic Outfit ZT, one box of Pyrographic Outfit ZU, one box of Pyrographic Outfit ZV, one box of Pyrographic Outfit ZW, one box of Pyrographic Outfit ZX, one box of Pyrographic Outfit ZY, one box of Pyrographic Outfit ZZ.

Use
Novelty Mills
EXCELLENT FLOUR
CALIFORNIA FEED CO., Agents

THE COBWEB CAFE
Queen and Alakea Sts.
**THE FINEST MEALS,
WINES, LIQUORS, ETC.
TO BE HAD IN THE CITY.**

CAMARA & CO. Props

DIARIES
FOR
1906
AT
WALL NICHOLS CO.,
Republie Block.

FOR SALE
3 VERY CHOICE MILCH COWS
from the dairy of Mrs. H. A. Isenberg.
Apply only to
O. A. STEVEN,
c/o Jas. F. Morgan.

**VISIT
THE
ZOO**

A trip to the Zoo, at Kaimuki,
is enjoyable to children and
parents alike.

Besides the wonderful collection
of animals and birds there
are other delights too numerous
to mention.

ADMISSION 10 CENTS.

Sunday
25c
per
month
Advertiser

YAMATOYA
MERCHAND TAILOR AND SHIRT
MAKER.
Nuuanu Street, one door above Pauahi.
P. O. Box 322.
SHIRTS OF ALL KINDS, KIMONOS
AND PAJAMAS MADE TO ORDER
AND ON SALE.

Smoke
GENERAL ARTHUR CIGARS
GUNST-EAKIN CIGAR CO.
Distributor.

STILL A LOT OF
Holiday Goods
LEFT AT
FUKURODA'S.
28-32 HOTEL STREET.



NOTICE TO MARINERS.

Honolulu, T. H., Jan. 29, 1906.

The following affects the List of
Lights, Buoys and Daymarks, Pacific
Coast, 1904:

HAWAII.

Wreck of Bark Martha Davis, Hilo
Bay, page 54, after No. 256 (List of
Lights, Buoys and Daymarks, Twelfth
Lighthouse Subdistrict, 1905, page 9).
The fixed red post-lantern light, es-
tablished to mark the position of this
submerged wreck, was discontinued
January 20, the contractor having
taken charge of the work of removal
on that date.

By order of the Lighthouse Board.
A. P. NIELACK,
Lieut.-Comdr., U. S. N.,
Assistant to the Inspector of the 12th
Lighthouse District.

HELENE BEATS IRMGARD.

The schooner Helene beat the bark-
entine Irmgard from San Francisco to
Honolulu, arriving here yesterday
morning 24 days out. The vessel en-
countered southerly winds and bad
weather and a topsail was lost. Cap-
tain Thompson is now master of the
Helene, Captain Larsen having been
assigned to another one. The schooner
made a good record as she left San
Francisco four hours behind the Irm-
gard. The Irmgard was overtaken and
passed within a few days. For days
the two vessels were in sight of each
until a gale came along and separated
them. The Helene brought a general
cargo and will take a load of sugar,
now piled up in the Oceanic wharf,
to San Francisco.

CARDIFF COAL FOR NAVY.

The French bark Champigny, Cap-
tain Castex, with 3800 tons of the best
Cardiff coal for the Naval Station, was
sighted off Diamond Head yesterday
morning. The tug Fearless went out
as far as the Head to tow the vessel
in, but the French captain would not
agree to the towing price asked and
the tug went back to the harbor. Later
the captain signaled to Diamond Head
Charlie that he would like to have the
tug come back and hitch on, but the
Fearless stayed inside and the bark
failed to reach port last evening. The
Champigny is 140 days out from Car-
diff.

HARLEE AWAITS ORDERS.

First Lieut. Harlee, U. S. M. C.,
attached to the Naval Station, expects
orders on the Sonoma calling him to
Washington to undergo an examina-
tion for promotion to a captaincy.

PHELPS GOES TODAY.

The American ship Erskine M.
Pneips is at anchor in the stream and
has her crew all aboard ready to sail
this morning for Delaware Breakwater.

SHIPPING NOTES.

The bark George Curtis is taking in
a sugar cargo at the Railway wharf.
The S. S. America Maru was due to
leave San Francisco yesterday for Ho-
nolulu and Yokohama.

The schooner Helene brought 1500 tons
of cargo from San Francisco. She has
a load of 500,000 feet of lumber.

The revenue cutter Manning shifted
over to the Channel wharf about noon
yesterday to take some machinery
aboard.

The Nippon Maru arriving Thursday
from the Orient will be dispatched the
same day for San Francisco. This will
take the next mail to the Coast after
the departure of the Sonoma today.

Captain Harris of the schooner Chas.
Levi Woodbury says the Kona storm
in which his vessel was caught was
the worst he ever encountered, not
even barring the Laysan Island storm
in which he and the Woodbury got
lost.

PRINCE FREDERICK.

(Continued from Page 1.)

occupant of a throne several months before his father became the King of Denmark.

Two of Christian's grandsons are reigning monarchs. One of them, Nicholas II., wears the imperial crown of Russia. The other, known as Prince Charles until the voice of a free people called him to rule them, is Haakon VII., King of Norway.

Through his youngest son, Prince Waldemar, King Christian is connected with the House of Orleans which once ruled in France, that prince having married a daughter of the Duke of Chartres. The crown of Bulgaria was offered to Waldemar in 1886, but the prospect did not prove sufficiently attractive to allure him.

Besides being father-in-law to Edward VII. of England, King Christian is allied with the House of Hanover by the marriage of his third daughter, Princess Thyra, to the son of the ex-King of Hanover, who now bears the English title of Duke of Cumberland.

Through the marriage of King George of Greece, whose wife is the Grand Duchess Olga of Russia, the Danish monarch stands in the relationship of father-in-law to a member of the Romanoff family, which house is headed by his grandson, the Czar.

Of his grandchildren not already mentioned Princess Louisa, daughter of Crown Prince Frederick, is the wife of Prince Frederick George of Schaumburg-Lippe, and her sister, Princess Ingeborg, is the wife of Prince Charles, third son of King Oscar II. of Sweden.

The table which follows shows at a glance the various relationships of King Christian, as already described:

Father—Queen Alexandra of England; Dowager Empress of Russia; King George I. of Greece.

Grandfather—Nicholas II., Czar of Russia; Haakon VII., King of Norway; Princess Louisa of Schaumburg-Lippe; Princess Ingeborg of Sweden.

Father-in-law—Edward VII., King of England; Olga, Queen of Greece; Duke of Cumberland, son of the ex-King of Hanover.

SUGAR

Willett & Gray's Circular.

The Week.—Raws: Advanced 125c. 1 per cent, which was taken advantage of generally, but prices are now held firmly at the advance.
Refined: Advanced 10c. Net cash quotations this date are: Molasses, 3.00c.; Muscovado, 2.25c.; Centrifugals, 3.75c.; Granulated, 4.55c. Receipts, 9218 tons. Meltings, 25,000 tons. Total stock in four ports, 164,965 tons, against 180,747 tons last week, and 75,861 tons last year. Beet sugar quotations, f. o. b. Hamburg, 8c. 3d. per cwt. for 88-deg. analysis, without bounty, equal to 3.71c. for 96 test centrifugals at New York. First Marks German granulated f. o. b. Hamburg 10s. 2 1-4d., without bounty, equal to 4.29c. New York, duty paid. Estimated affluents to the United States from Cuba and West Indies, 30,000 tons; Hawaii, 5000 tons; Peru, etc., 10,000 tons. Total, 45,000 tons, against 75,000 tons last year.

Net Cash Prices Refined.—It is generally understood that the lowest price named for refined here is basis of granulated, in barrels and bags, 4.55c. net cash, quoted by American, Howell, Arbuckle and Federal.

Statistics by Special Cables.—Cuba.—The six principal ports: Receipts, 2000 tons; exports, 13,800 tons; stock, 21,000 tons, against 44,202 tons last year; 66 centrals grinding against 151 last year.

Europe.—Stock in Europe, 3,291,000 tons, against 3,640,000 tons last year.

Hamburg reports no shipments of sugar to the United States this week.

Visible Supply.—Total stock of Europe and America, 3,476,955 tons, against 3,700,000 tons last year at the same un-
even dates. The increase of stock is 716,000 tons, against an increase of 581,097 tons last week. Total stocks and affluents together, show a visible supply of 3,531,955 tons, against 2,849,083 tons last year, or an increase of 682,872 tons.

Raws.—The week under review has been still influenced by the unfavorable rainy weather in Cuba, which has curtailed receipts and caused an improvement in prices of 1-8c. per lb. to 3-4c. per lb. for 96-deg. test centrifugals, at which the remaining stock of Javas in store here was sold.

At the close, with better weather reports from the island, a rather easier tone is noted, with large sales at 2 5-16c. c. and f., 96-deg. test for January-February shipment, equal to 3.67c. duty paid.

Purchases during the week were reported locally in Cuba as high as 2.36c. c. and f. for 96-deg. test, such being forced, no doubt

FRAIERNAL MEETINGS

POLYNESIA ENCAMPMENT,
NO. 1, I. O. O. F.

Meets every first and third FRIDAY of the month at 7:30 p. m., in Odd Fellows' Hall, Fort Street.
Visiting brothers cordially invited to attend.

PAUL SMITH, C. P.
L. L. LA PIERRE, Scribe.

EXCELSIOR LODGE NO. 1,
I. O. O. F.

Meets every TUESDAY evening at 7:30, in Odd Fellows' Hall, Fort street.
Visiting brothers cordially invited to attend.

B. F. LEE, N.G.
L. L. LA PIERRE, Secretary.

PACIFIC REBEKAH LODGE,
NO. 1, I. O. O. F.

Meets every second and fourth Thursday at 7:30 p. m., Odd Fellows' Hall, Fort street.
Visiting Rebekahs are cordially invited to attend.

FLORENCE LEE, N.G.,
JENNY JACOBSON, Sec'y.

OLIVE BRANCH REBEKAH
LODGE NO. 2, I. O. O. F.

Meets every first and third Thursday at 7:30 p. m., in Odd Fellows' Hall, Fort Street.
Visiting Rebekahs are cordially invited to attend.

AGNES DUNN, N.G.
THORA OSS, Secretary.

LEAHI CHAPTER NO. 2,
O. E. S.

Meets every third Monday at 7:30 p. m., in the Masonic Temple, corner of Alakea and Hotel streets.
Visiting Sisters and Brethren are cordially invited to attend.

EMMA LONGSTREET RICH CRABBE,
P.W.M., Secretary.

MARY E. BROWN,
Worthy Matron.

LEI ALOHA CHAPTER,
NO. 3, O. E. S.

Meets at the Masonic Temple every second Saturday of each month, at 7:30 o'clock p. m. Visiting sisters and brothers are cordially invited to attend.

MARGARET HOWARD, W.M.,
MARGARET LISHMAN, Sec'y.

LADIES' AUXILIARY,
A. O. H.,
DIVISION NO. 1.

Meets every first and third Tuesday, at 8 p. m., in C. B. U. Hall, Fort street.
Visiting sisters are cordially invited to attend.

M. ALICE DOHERTY, Pres.,
MARGARET K. TIMMONS, Sec'y.

HAWAIIAN TRIBE NO. 1,
I. O. R. M.

Meets every second and fourth FRIDAY of each month, in I. O. O. F. Hall.
Visiting brothers cordially invited to attend.

W. C. MCCOY, Sachem,
A. E. MURPHY, C. of R.

WILLIAM MCKINLEY
LODGE,
NO. 8, K. of P.

Meets every SATURDAY evening at 7:30 o'clock, in Harmony Hall, King Street.
Visiting brothers cordially invited to attend.

MERLE M. JOHNSON, C.C.,
E. A. JACOBSON, K. of R. & S.

HONOLULU LODGE NO. 1,
RATHBONE SISTERS.

Meets every 2nd and 4th Monday, at 8:15 o'clock, in Pythias' Hall, King street.
All visitors cordially invited to attend.

IWALANI K. DAYTON, M.E.C.,
GRACE O'BRIEN, M. of R. & C.

HONOLULU LODGE 616,
B. P. O. E.

Honolulu Lodge No. 616, B. P. O. E., will meet in their hall, on Miller and Beretania streets, every Friday evening.

By order of the E. R.
HARRY H. SIMPSON,
Secretary.

GEO. H. ANGUS, E. R.

COURT CAMOES, NO. 8110,
A. O. F.

Meets every 2nd and 4th Tuesday of each month at 7:30 p. m. in San Antonio Hall, Vineyard street.
Visiting brothers cordially invited to attend.

A. K. VIERRA, C.R.
JOHN P. DIAS, F.S.

HONOLULU AERIE 140,
F. O. E.

Meets on 2nd and 4th WEDNESDAY evenings of each month at 7:30 o'clock in K. of P. Hall, King Street.
Visiting Eagles are invited to attend.

SAM'L McKEAGUE, W.P.
H. T. MOORE, Sec'y.

THEODORE ROOSEVELT,
Camp No. 1, U. S. W. V.

Department Hawaii.
Meets every first and third WEDNESDAY, Suites 15 and 16 Progress Block, Fort and Beretania Streets, at 7:30 p. m.

Visiting comrades cordially invited to attend.

U. T. MOORE, Comdr.
R. H. LONG, Adjutant.

ANOTHER
CONVICTIONJose Montaro Sentenced
for Deadly Weapon
Assault.

Jose Montaro was found guilty before Judge De Bolt of assault with a deadly weapon. An exception was taken but sentence was forthwith pronounced, being imprisonment for six months in Oahu prison and payment of costs. W. S. Fleming, Deputy Attorney General, prosecuted, and A. G. Kaulukou defended. The jury consisted of George J. O'Neil, J. H. McKenzie, George H. Cowan, Charles Butzke, James J. Jaeger, Arthur F. Wall, Fred. Drew, William Buckle, Fred. S. Steere, Frank Darling, George S. Waterhouse and William Barclay.

BUILDING CASE.

Deputy Attorney General Milverton yesterday filed three papers in the Territory's injunction suit against William McCandless and others, to compel the vacating of premises at King and Alakea streets, as follows:

Replication to joint and several answer of William McCandless and Matilda A. McCandless.

Replication to joint and several answer of Charles S. Martin and A. R. Bindt.

Motion to substitute true names of defendants—E. A. Davis for John Doe and Lorenzo Dias for Richard Roe.

Motion that cause be set down for hearing and notice thereof to J. Alfred Magoon and J. Lightfoot, attorneys for defendants.

DAMAGE SUITS.

A. S. Humphreys and Henry Hogan applied yesterday afternoon for reinstatement on the calendar of G. J. McCarty's damage suits respectively against L. M. Whitehouse, on a road-making contract, and Oahu Railway & Land Co., Ltd., for forcible ejection from a passenger train. The applications were granted.

Jose Figaro by his attorneys, Heen & Kaulukou, has filed an amended complaint in his suit for \$5000 damages, on account of physical injuries, against Ewa Plantation Co., Ltd.

DIVORCE CASES.

Judge Lindsay granted a decree of divorce to Irene Ah On against Ah On, the former Chinese policeman. E. A. Douthitt represented libellant, and S. F. Chillingworth libelee. Cruelty and non-support were the grounds.

Alexander K. Lazarus has five days additional to answer his wife's libel for divorce.

COURT NOTES.

Cecil Brown, attorney for A. Kaubi, has filed cross interrogatories to be propounded to five certain residents of the Island of Sao Thiago, Cape Verde Islands, to be attached to the commission to take evidence in the matter of the estate of Frank Antonio, deceased.

Mark P. Robinson et al., trustees under the will of S. C. Allen, by their attorneys, Kinney, McClanahan & Cooper, give notice, in each of two fore-closure suits against Jose G. Henriques, of motion to set the cause for trial.

F. J. Testa has appealed from Judge Lindsay's order denying his motion to reinstate his cause against J. P. Kahahawai et al. on the calendar.

J. J. Byrne has brought suit against E. Devachelle for \$333.36, a balance claimed on account of debt assigned by Theo. H. Davies & Co., Ltd., to the plaintiff.

Liliuokalani by her attorney, A. G. M. Robertson, has discontinued her suit against Inter-Island Telegraph Co., Ltd. It was in the Circuit Court on appeal from judgment for plaintiff for \$292.72 by District Magistrate Whitney.

Cecil Brown, as executor named therein, yesterday filed the will of the late Hannah Wall for probate. The estate is valued at \$12,000. To a friend, Miss Frederika Nott, is left the homestead at Green and Kapiolani streets valued at \$4000. Miss Nott as trustee to look after the Wall burial plot receives \$500, Kawaiahao church \$200 and N. Aimo \$200. All the rest of the estate goes to Robert Walpa Parker, who was named as a foster son of the late Mr. and Mrs. Wall.

ACCOUNTS FILED
OF KAHAI ESTATE

Mary Kahai Puukii, administratrix of the estate of S. K. Kahai, deceased, presents her final account, balancing at \$2751.44, with a petition for its approval and her discharge. By advice of counsel she corrects her original inventory which showed \$861.75 savings bank deposits, \$4122.50 value of real estate and \$4648.95 of personal property, a total of \$9632.20, as the savings belonged to other persons than deceased at his death, and the personal property being sufficient to pay his debts.

PACIFIC LODGE NO. 822,
A. F. & A. M.

THERE WILL BE A SPECIAL Meeting of Pacific Lodge No. 822, A. F. & A. M., at the Masonic Temple, THIS (Tuesday) EVENING, Jan. 30th, 1906, at 7:30 o'clock.

WORK IN THIRD DEGREE. Members of Hawaiian Lodge, Oceanic Lodge, and all sojourning brethren are fraternally invited to attend.

By order of the R. W. M.
E. P. CHAPIN,
Secretary.

debts, the real estate passed to his heirs and not to the administratrix, Mary Kahai Puukii, guardian of Mary Kahai, a minor, in her first annual account charges herself with \$1992.50 and asks to be allowed \$495.45. The balance of \$1497.05 is in savings bank. An inventory attached shows the minor's estate as being worth about \$9300, the taxed values of 1905 being quoted.

A HABIT TO BE ENCOURAGED.

The mother who has acquired the habit of keeping on hand a bottle of Chamberlain's Cough Remedy, saves herself a great amount of uneasiness and anxiety. Coughs, colds and croup, to which children are susceptible are quickly cured by its use. It counteracts any tendency of a cold to result in pneumonia, and when given as soon as the first symptoms of croup appear it will prevent the attack. This remedy contains nothing injurious and mothers give it to little ones with a feeling of perfect security. Sold by all Dealers and Druggists, Benson, Smith & Co., Ltd., Agents for Hawaii.

WILCOXES DISCLAIM
BEING IN BEEF TRUST

Albert S. Wilcox and George N. Wilcox have filed an answer to the complaint of United States against Metropolitan Meat Co. and others, popularly known as the "beef trust case." They say they have not sold beef cattle to consumers, or fresh beef to dealers or consumers. Honolulu has never been a market for their cattle. In the five and six years, respectively, they have been in the cattle-raising business they have found a market for their cattle with Kauai dealers. Although A. S. Wilcox owns 27 shares and G. N. Wilcox 15 shares of the Metropolitan Meat Co., they have never voted such stock for the purpose of controlling the company.

They admit that if all the defendants in the case, who comprise nearly all the wholesale dealers in the Territory, were combined they could control the prices charged for fresh beef raised here, but these defendants say, that they themselves are not in any combination to control prices. With regard to the anti-trust law under which the case is prosecuted, they allege that neither of them has engaged in any combination, trust or conspiracy. Other statements are made to similar effect, all showing that these defendants are not members of any beef trust. In conclusion they say if there is a beef trust they are willing it should be dissolved.

Their attorneys are Smith & Lewis and Olsen.

RUBBER TIRES CASE
TO SUPREME COURT

Hawaiian Carriage Co., Ltd., vs. Schuman Carriage Co., Ltd., bill for accounting, came before Judge De Bolt on amended demurrer. C. F. Clemons appeared for plaintiff, and A. S. Humphreys and S. B. Kingsbury for defendant. The court sustained the demurrer without leave to amend the complaint, and plaintiff will take the case to the Supreme Court.

Plaintiff claimed an accounting of defendant for rubber tires sold, under an agreement that defendant would not independently deal in that article of merchandise for a certain period of years, the agreement stipulating for a division of profits on sales of such tires defendant made. One of the points raised was that the agreement was "in restraint of trade."

ARREST PROFITS
CHE-FA BANK

Under the heading of "Breaks Che-Fa Bank," an afternoon paper printed an article dealing with the arrest of Chun Hoon, a Chinaman, who had in his possession, che-fa tickets representing a cash investment of \$846.20. There were altogether 71 tickets, about one-half of the number issued originally for the drawing.

Chun Hoon is alleged to be an agent of the che-fa banks. It is the custom of agents to go around before the drawing comes off and collect the tickets and the money from the sub-agents.

Far from breaking the bank, as the paper in question suggests, the arrest of Chun Hoon is a direct advantage to the bank. It will, of course, be impossible to identify the purchasers of the tickets now in the possession of the police and the bank accordingly gets the benefit of the doubt to the tune of \$846.20. One individual ticket was for \$43.90.

REBECCA'S AFFAIRS
AGAIN IN COURT

Judge De Bolt rendered the following opinion in the matter of the guardianship of Rebecca Panee Humekau:

"The question submitted is, whether the ward or her former guardian should pay the notary fees, for stamps and for recording instruments transferring the ward's property to her."

"In my opinion the property was acquired by the guardian in excess of his power or legal duty as such, and that therefore it follows necessarily that all expenses incident thereto, such as is involved in the question submitted, should be paid by him. So ordered."

J. A. Magoon is the former guardian, R. H. Trent being the present one.

GRAND JURY
OBJECTS

(Continued from Page 1.)

working of the policy of the Legislature in cutting down expenses without a proper understanding of conditions. As a result of that policy, we can not always get the class of men we would like to have for interpreters, and have to take the kind of cheaper men that we can get. The Chinese and Japanese, under the law, have the same rights as others. Their cases must be tried, and we must have interpreters for the trials. An interpreter should have the qualification of honesty, and he should be competent to interpret. Honesty is desirable, but competence to interpret must exist.

ONLY CHEAP MEN NOW.

"We were compelled, when our expenses were cut down, to let our old interpreter, in whom everybody had confidence, go. He is now at the Chinese Consulate, drawing \$150 per month. I understand. And he is worth that. We have been compelled to do the best that we could, in the meantime. And the same thing, with regard to pay and competency, is true of Japanese interpreters, also. I do not think, indeed, that the Legislature was well advised when that cut was made. I had that in mind when the grand jury's committee waited upon me, although I said nothing of it at the time."

It really begins to look as though the present grand jury meant to do things. It can, without doubt, if it has the mind. In fact, the jolt that it will give Willie Crawford when it informs him, next Wednesday, that it wants a Chinese interpreter in whom it has confidence, and as a result does not want him, will be the beginning of doing things.

SOMETHING DOING.

For there can be no question that the grand jury that does things must do a large part of them in the Chinese quarter. The Chinese are the people who run the che-fa games, and the pake pio banks, and manage all other playful and illegal eccentricities of that kind, and if any white man wants to find out about these matters from a Chinese, he should get his knowledge through a medium that may have nothing to hide on its own account.

Willie Crawford, besides being a cheap man employed because a better and more competent man will not work in court for the pay, as Judge De Bolt says, is also Willie Crawford. Now, everybody in town knows what that means. The new grand jury seem to have had the knowledge borne in upon them to such a marked extent that they refused to stand for Willie.

WILL RUN TO COVER.

The thing will go down the line along Hotel and River streets, of course, now that it is out, but it would have gone down the line anyway, on Wednesday, when Willie got out as well as the knowledge. Of course Willie will only be out as far as the grand jury work is concerned, but that will be quite enough for the boys.

And the grand jury will have no more trouble than they would have had in any event, in case they began stirring things. The general tendency will be to shut up, mouths and pake pio joints, but the statute of limitations has not run—and there are such things as indictments for perjury, if the offense should chance to be committed in the grand jury room.

Altogether, there is a happy prospect for music of divers sorts, and good citizens will rejoice when the band begins to play. The groans of the evil doer always make sweet music in the ears of him who pays his taxes and abides the law.

Rev. William Asher is conducting a series of religious meetings along the Bowery, New York, gathering his hearers in the back rooms of saloons where the proprietors will permit. Sometimes in a dance hall as many as 200 persons of all ages will assemble. Mr. Asher mounts a chair and makes simple appeals for living cleaner lives. His wife, who is his constant companion on such occasions, sings a hymn and generally they manage to bring most of their hearers away with them.

SCOTT'S
EMULSION

Scott's Emulsion is the means of life and of the enjoyment of life of thousands of men, women and children.

To the men Scott's Emulsion gives the flesh and strength so necessary for the cure of consumption and the repairing of body losses from any wasting disease.

For women Scott's Emulsion does this and more. It is a most sustaining food and tonic for the special trials that women have to bear.

To children Scott's Emulsion gives food and strength for growth of flesh and bone and blood. For pale girls, for thin and sickly boys Scott's Emulsion is a great help.

Send for free sample.
SCOTT & BOWNE, Chemists,
409-415 Pearl Street, New York.
50c. and \$1.00; all druggists.

THIS DAY
Auction Sale

Tuesday, Jan. 30, 1906.
10 O'CLOCK A. M.

At my salesroom, 847 Kaahumanu St.

1 Large Diebold Safe

JAS. F. MORGAN,
AUCTIONEER.

THIS DAY
Auction Sale

U. S. ARMY MULES

Tuesday, Jan. 30, '06.

At grounds adjoining Quartermaster's Office, Hotel street, back of Capitol Building.

AT 10 O'CLOCK A. M.,

I am instructed by Capt. C. F. Humphreys, Captain Quartermaster, U. S. A., to sell at Public Auction

ARMY MULES

Further particulars of
JAS. F. MORGAN,
AUCTIONEER.

Auction Sale

Tourists! Collectors!

Thursday, Feb. 1, 1906,

10 O'CLOCK A. M.,

At my salesroom, 847 Kaahumanu Street, I will sell, under instruction from the Administrators of the Estate of

MARY AILAU

the eminent Hawaiian collector, the following ancient and other relics of

Ancient Chiefs

Pig Platters, Calabashes, Cocos (Calabash Nets), Tapas, Stone Adzes, Stone Lamps, Mike Stones, Poi Pounders, 49 Fans, 2 Kaulla Aumakas (War Spears), 2 Hula Drums (Ancient), 1 Idol—Kukaili-iki—One of Kamehameha's War Gods, 1 Ipu Hula (Gourd Drum), 1 Pauhe Calabash, 1 Pauhe Water Bottle, 1 Nawa (War Club), 2 Bamboo Cushions, 1 Hinai Onge, 2 Samoan War Clubs, 1 Koko (Ancient), 1 Black Kapa (Burial), 1 Lauhala Hall Mat, 7 Samoan Coconut Bowls, 1 Lauhala Bag, 1 Case Stuffed Hawaiian Birds, 1 Aumaka, 1 Kaulla Kahili Stick, 1 Kahili Stick (Tortoise) and Ivory (Ancient), 2 Emu Eggs, 1 Carved Coco Bank, 1 Pauhe Show Case, 4 Lei Hulus (Native Birds), 1 Samoan War Club, 1 Moss Album.

JAS. F. MORGAN,
AUCTIONEER.

WAIT FOR THIS GUARDIAN SALE.

55 Acres

CANE LAND, DAIRY OR CHICKEN RANCH.

3½ ACRES FINE LARGO LANDS, ALL ADJOINING.

Controls valuable water near proposed survey of "Waikane" railroad "Waialeale."

Now cheap; in a short while must advance considerably. Why will you pay high prices. Let me locate you.

Title perfect.

JAS. F. MORGAN,
AUCTIONEER.

Castle & Cooke, Ltd.
HONOLULU.COMMISSION MERCHANTS,
SUGAR FACTORS.

—AGENTS FOR—

The Ewa Plantation Co.
The Waiakula Agricultural Co., Ltd.
The Kohala Sugar Co.
The Waimea Sugar Mill Co.
The Fulton Iron Works, St. Louis.
The Standard Oil Co.
The George F. Blake Steam Pump & Weston's Centrifugals.
The New England Mutual Life Insurance Co., of Boston.
The Aetna Insurance Co., of Hartford, Conn.
The Alliance Assurance Co., of London.

"HOW SAVINGS GROW."

Our little booklet with the above title free for the asking.

FIRST AMERICAN SAVING AND
TRUST CO. OF HAWAII, LTD.ALL KINDS OF
RUBBER GOODS

Goodyear Rubber Co.

R. H. PEASE, President,
San Francisco, Cal., U. S. A.

Established 1858.

BISHOP & CO.,
BANKERS.

Cor. Merchant & Kaahumanu Sts.

Smoke—
H. J. N.
PANETELAS
CIGARETS

BEAVER LUNCH ROOMS
H. J. NOLTE.

HORSE SHOEING!

W. W. Wright Co., Ltd.

have opened a horse-shoeing department in connection with their carriage shop, etc. Having secured the services of a first-class shoer, they are prepared to do all work entrusted to them in a first-class manner.

IMPORTED STOCK.

Jan. 26, PER NEBRASKAN

Fine Driving Horses and Fine Bred Milch Cows.

CLUB STABLES.

TELEPHONE MAIN 109.

Choose the Artistic

MANY NEW DESIGNS IN

Monuments

Can be seen at 1048-50 Alakea Street.

J.C. AXTELL & CO.

Phone Blue 1801. P. O. Box 642.

JAPANESE AND AMERICAN
Dry and Fancy Goods

Manufacturers of Straw Mats.

IWAKAMI & CO.

HOTEL STREET.

TRY OUR DELICIOUS

"Peach Mellow" and "Kasport"

AT

CONSOLIDATED SODA WATER WORKS

PHONE MAIN 71.

NOTICE.

At a meeting of the Board of Control of the Harrison Mutual Association held in the Townsend Undertaking Parlors, November 17, 1905, Assessment No. 3 was called, payable December 1 and delinquent December 31, 1905.

J. H. TOWNSEND, Secretary.

JNO. CASSIDY,

Electrical Worker.

159 KING ST. TEL. MAIN 188.

C. B. Reynolds & Co.

THE COWBOY AND THE LADY

"The Cowboy and the Lady" scored heavily at the Orpheum last night before an audience chock full of enthusiasm.

The first act, showing the Ranch at Silverville, Colorado, was a magnificent picture of mountain scenery and a credit to the theater's scenic artist. The entire play was finely staged and everything moved without a hitch.

"The Cowboy and the Lady" gives opportunity for fine acting on the part of the entire cast and all responded with ability.

There are some fine dramatic situations and the story holds the close attention of the audience throughout the play. The strongest part of the piece is its comedy, of which there is a great deal, and at times the house was simply convulsed with laughter and merriment.

Richard Buhler as Teddy North, the hero of the play, had one of his best parts. Ernest Wilkes gave a fine character impersonation of Quickfoot Jim, the half-breed Indian. Tom Lowell, Harry Auerbach and Walter Renfort, as the cowboy friends of Teddy North, were a clever trio and furnished lots of comedy. Chas. Place took a turn at playing the villain and made the character of Weston stand out. Rupert Drum, as Billy Ransom, was also good. Brenda Fowler was magnificent as Mrs. Weston, while Juliette Chandler was sweet and dainty as Midge. Lillian Heyward was fine as Molly Larkins, while Louise Orendorf was a circus as Miss Prissims and furnished no end of comedy.

The play as a whole was a fine production and deserves a successful run.

One of the things that brings a pres'n back to Hawaii, is the excellent lunch served at the CRITERION.

The CRITERION was the pioneer of the 25c lunch with a drink on the side and has more than maintained its lead.

C. J. McCARTHY, Proprietor,
Corner Hotel and Bethel Streets.

BUSINESS LOCALS.

Morgan sells mules today. See ad. Drink Rainier beer and be in the swim.

Kerr's embroideries wonderfully cheap.

Send in your goods for tomorrow's auction.

Bring your jars and get them filled with fresh jam.

Do you want a fine milch cow? See Steven at Morgan's.

Kerr's had a busy day yesterday with the embroidery sale.

Household furniture at auction by Fisher tomorrow at his salesrooms.

Today and tomorrow only for the bargains in embroideries at Kerr's.

Order some of Mrs. Kearns' jams by phone 1411. Only 11c. per pound.

Morgan sells mules today at Armory, back of Capitol building, on Hotel St.

There is nothing better in the islands than the pure jam sold by Mrs. Kearns at 11c. per pound.

The S. S. Sonoma leaves today. Have the Pacific Transfer Co. haul your baggage. Phone Main 58.

Install electric light in your home and get into the habit of being cheerful. Hawaiian Electric Co.

An artist's folding sketching stool has been lost. Reward if finder will return the same to this office.

Scotty's (C. E. Meston) Royal Annex opposite Police Station. Hot lunch served from 11 to 2. It will please you.

Let us invest your savings for you, securely and profitably as our large experience dictates. Hawaiian Trust Co.

Blom's big muslin underwear sale begins tomorrow morning. Big chance to save money and buy pretty garments.

Greater New York Cafe, corner of Liliha and King streets. Open all night. First-class meals and liquors served.

The Union Express Co. check baggage per S. S. Sonoma at your residence or hotel. Phone 86, or at 63 Queen street.

Geo. D. Gear has opened law offices in the rooms formerly occupied by Justice Hatch on Kaahumanu street, telephone Main 214.

First-class tickets to all stations on the Oahu Railroad and Haleiwa coupon tickets are now on sale at the office of Trent & Co., 936 Fort street.

Monuments of all kinds made to order. Quotation given at any time. See A. C. Montgomery, P. O. box 152, or on Queen street, in the rear of the Judiciary building.

A convenient six-room modern house in good location and with stable accommodations is offered for rent on easy terms. Apply for particulars, 1327 Pensacola street.

Whitney & Marsh announce the arrival of their new spring organdies in cotton and silk and also fancy silk mulls. They will be placed on sale on Thursday morning.

Don't turn your old matting. Get new from us. The improvement will be great and the cost surprisingly small. See our assortment of matting and rugs. Lewers & Cooke.

A Chinese hackman lost a horse valued at \$200 by its running away on Liliha street and, after leaving the carriage a wreck on the way, plunging over an embankment. Its neck was broken.

LOCAL BREVITIES.

Tomorrow is last day for filing tax returns.

"The Cowboy and the Lady" tonight at the Orpheum.

The Promotion Committee will meet at 3:30 p. m. today.

Excelsior Lodge meets this evening at 7:30 o'clock in Odd Fellows' hall.

A meeting of the Board of Immigration will be held at 9 a. m. tomorrow.

A rehearsal of the Elks' minstrels will be held at Elks' hall tonight at 7:30 o'clock sharp.

There are now 173 inmates of the insane asylum, of whom 44 are Hawaiians and 24 whites.

Manager Gray of the Young Hotel is expecting a large number of guests to arrive on the Siberia.

Dr. Mori, one of the best-known Japanese physicians here, will return to Japan for a year's stay.

M. Komeya now has charge of the branch postoffice on River street, Fred Makino having resigned.

Gerard Barton has resumed his position as organist and choir master at St. Andrew's cathedral.

Pacific Lodge, F. & A. M., will hold a special meeting this evening with work in the third degree.

Hizashi, a Japanese, was arrested yesterday afternoon by Captain Parker for having che-fa tickets in his possession.

The Yamato Shimbun advises its readers who are insured in American life companies not to let their policies lapse.

Dr. Ross, who arrived in the Alameda last week, leaves today in the Kinai to become physician for the Parker ranch.

W. H. Hoogs was to have left Manila for San Francisco direct the middle of this month and is expected home in March.

At the meeting of the Oahu county supervisors this evening Auditor Bicknell will present a report for the past six months.

Mr. and Mrs. E. A. Frear, late of Mahukona, are the guests of Judge and Mrs. Dole while awaiting their steamer for San Francisco.

T. Komeya succeeds Fred Makino in charge of the River street postoffice station. Makino resigned for want of time to perform the duties.

Delegate Kuhio has a bill in Congress appropriating \$150,000, as the maximum, to purchase a site and erect a Federal building thereon in Hilo.

Augustus St. Gaudens, the great sculptor, brother of Mrs. Oliver Emerson of Honolulu, has been chosen an honorary member of the Royal Academy.

A cablegram from George W. Smith and another from E. A. McInerney intimated that the Washington delegates were to leave San Francisco for the east last night.

Fred. E. Harvey of the Survey Department leaves for Hawaii today to run the lines of the proposed forest reservation in Kona, designed to protect the koa forests of that district.

Bishop Hamilton and Rev. J. W. Wadman leave in the Kinai today for Maui and Hawaii, to visit the Methodist Episcopal missions on those islands. They will return in the Mauna Loa.

Special meeting in the new quarters of Theodore Roosevelt Camp No. 1, U. S. W. V., tomorrow night. Installation of Dept. Commander at 7:30 p. m. Initiation of recruits at 8:15 p. m. to be followed by a social and smoker.

A number of the stowaways were dumped off the transport Logan and left at this port yesterday.

The police have decided that the men must either get to work or leave the country. Owing to the demand for sailors a number of them have already secured jobs and are getting out of the islands.

Polly Kalama, a sister of the late Major Sam. Nowlin, was buried in Kawaiahaeo cemetery on Sunday. She died last Tuesday at the age of 30 years and it was intended to send the body to Kauai for burial, but her brother arrived on Sunday morning and directed that interment should take place here. Mrs. Kalama was born at Hanalei, Kauai. She leaves a husband and three children.



GUARANTEED
Silk Petticoats
They do not split or crack,
Elegant, Modish, Durable.

Heretofore a Taffeta Silk Petticoat has been an expensive luxury, because of almost universal splitting and cracking. But now the Guaranteed Silk Petticoat is within reach of all, because each one bears this positive guarantee:

If through any defect the silk garment should split or crack within three months from date of purchase, we agree to replace it, with a new petticoat.

In black and leading colors at \$6.50, \$8.50 and \$12.00.

N. S. Sachs Dry Goods Co. Ltd.
FORT AND BERTANIA STREETS.

Built like a Watch

The new Vest-pocket Camera. "The Expo." is the camera wonder of the age and the greatest detective of them all. It loads in daylight with film spools for 25 pictures.

The terms "Pocket Camera" and "Detective Camera" have, in the past, been much abused terms, but the Expo Watch Camera is positively guaranteed as a practical Vest-pocket Camera, doing clean-cut work and having nearly all the merits of a much larger and more expensive camera, while easily excelling all other cameras in compactness, number of exposures to a loading, simplicity of manipulation, and cheapness of operation.

PRICE, \$2.50.

See our window display.

HONOLULU PHOTO SUPPLY CO.,
FORT STREET.

Elegant Footwear

THE FINEST STOCK IN THE CITY NOW ON DISPLAY AT
McINERNEY SHOE STORE.

China : Decorators

Will be Interested



In the announcement that we have received and placed on sale a large and very complete line of pure white French and German china for decorating. The assortment comprises the very newest designs. Both useful and ornamental pieces will be found, many of which are designed and made especially for us.

WE SUGGEST EARLY SELECTION.

W. W. DIMOND & Co., Limited,

53-55-57 KING STREET, HONOLULU.
THE LEADERS IN HOUSE FURNISHINGS.

Ladies!

2 Days More Only

Of the Embroidery Sale

Today and Tomorrow!

L. B. Kerr & Co.

LIMITED. ALAKEA STREET.

John Nott The PLUMBER

At 85 King Street.

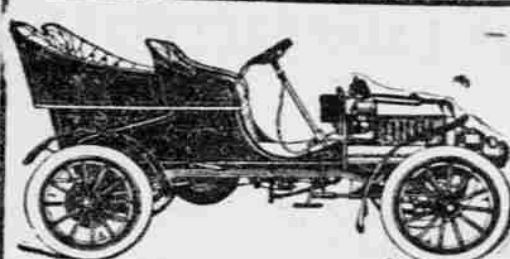
Gas and steam fitters. Estimates in work cheerfully given.

Clean, Sweet . . .

FEATHER PILLOWS

J. Hopp & Co.,

Young Building Furniture Store.
1053-1059 Bishop Street.



Headquarters for Automobiles with a fully equipped fireproof garage.

VON HAM-YOUNG CO.

ALL KINDS OF BUILDING AND REPAIR WORK DONE ON SHORT NOTICE

Wm. T. Patv.

1048 ALAKEA STREET.

AUTOMOBILE PARTS.

We keep everything you may need for your auto, no matter what make of machine it is.

SCHUMAN CARRIAGE CO., LTD
Garage, Merchant St.

Miss Power's

MILLINERY PARLORS, BOSTON BUILDING, FORT STREET.

EXCLUSIVE DESIGNS, REASONABLE PRICES.

WHITNEY & MARSH

Cotton Organdies, 25c
Silk Organdies, - - 35c
Fancy Silk Mulls, - 50c

All new SPRING DESIGNS, now being opened will be placed on sale.

THURSDAY, FEBRUARY 1, '06.

Some of the Reasons Why!

you should always use HOLLY FLOUR, even if you have to pay 10 cents to 15 cents more per sack:

First.—You get 30 more loaves of bread per barrel.

Second.—It meets the bread-maker more than half way; it is easier to make choice bread from HOLLY FLOUR than from any other flour on the market.

Third.—Every sack of HOLLY FLOUR is guaranteed to give perfect satisfaction; money refunded if not as represented.

THEO. H. DAVIS & COMPANY, LIMITED. : Wholesale Agents.
Grocery Department. Phone, Private Exchange 5.

Arrived ex "Dumfriesshire"
Andrew Usher's Special Reserve,
Buchanan's Black and White, "Rhoderick Dhu"

Scotch Whiskies

W. C. PEACOCK & CO., LTD.

SOLE AGENTS.

BETHESDA

"The Water of Quality"
Waukesha's Original Mineral Water
Sparkling _____ Natural _____
Quarts, Pints, Splits Crown Patent Corks
For Sale Everywhere
MACFARLANE & CO., Sole Agents.

Attractive!

White Canvas Blucherettes for \$1.50, \$2.50, \$3.00, \$3.50. Every woman who has studied style for the coming season agrees with us, that white canvas shoes will take first place. Spring and Summer will be whither than ever. Consequently our new consignment of canvas shoes is the largest ever shown in the city. Almost every style a person could desire, for any walk of life. Agreeable prices; stunning appearance; pleasing effects; long wearers; accurate fitting; these are a few of the fine points about our canvas ties that you don't get anywhere else in town. Investigation will prove to your satisfaction that we have the best ever offered.

Manufacturers' Shoe Co., Ltd. 1051 Fort Street
Phone Main 282

The Snow on Maunakea

is no purer than the famous Crystal Springs Butter. We guarantee it absolutely pure and you may order it at all times with absolute confidence that it is as good and sweet as can be. We deliver it frozen hard in neat cardboard cartons.

METROPOLITAN MEAT CO.

Telephone Main 45.

FINE NEW LINE

SHIRTS, FROM 75c AND UP.

NECKWEAR, FROM 15c UP TO \$1.50.

Call and see our stock

K. ISOSHIMA

King near Bethel

