

MAILS.
From San Francisco:
Wilhelmina, Jan. 19.
For San Francisco:
Sierra, Jan. 16.
From Vancouver:
Makura, Jan. 27.
For Vancouver:
Indefinite.

Honolulu Star-Bulletin

2:30
Edition

Evening Bulletin, Est. 1882, No. 6062
Hawaiian Star, Vol. XXII, No. 7102

12 PAGES.—HONOLULU, TERRITORY OF HAWAII, FRIDAY, JANUARY 15, 1915.—12 PAGES.

PRICE FIVE CENTS

ITALY'S DEATH-ROLL GROWS FAST

British Advance West; Germans At Soissons

TEUTONS SAY NORTH BANK OF AISNE CLEARED; CLAIM SIX NEW TOWNS CAPTURED

SIR JOHN FRENCH'S BRITISH SOLDIERS MAKE IMPETUOUS ATTACK AND WIN IMPORTANT GERMAN POSITIONS AT LA BASSEE, ADVANCING A MILE—FRENCH BULLETIN SAYS LITTLE CONCERNING CRITICAL SITUATION AT SOISSONS, BUT BERLIN STATEMENT DECLARES OPPONENTS HAVE LOST HEAVILY

[Associated Press Service by Federal Wireless.]
PARIS, France, Jan. 15.—A Stomer despatch to the Havas News Agency, dated January 10 but just getting through, tells of an important advance made by the British on the left wing of the Allies, toward the west. The despatch says:
"An impetuous British attack after vigorous shelling captured an important, strongly entrenched position held by the Germans near La Bassee. The British advanced a mile."

Berlin Bulletin Declares Teutons Drive Defeated French Steadily Back

BERLIN, Germany, Jan. 15.—The German bulletin today says that the whole northern bank of the river Aisne, northeast of Soissons, has been cleared of the French. The Germans took Cuffries, Crouy, Bucy le Long, Missy, Vauxrot and Valleries. The French suffered severely in retreating under a heavy artillery fire.

The French attacks elsewhere have been repulsed, declares the bulletin. From the Northern Poland are reported quiet. The Russian attacks west of the Vistula have been repulsed with heavy loss, it declares.

The war office believes that the Germans are about to transfer their general offensive to points west and southwest of Warsaw, attempting to clear Northern Hungary and Bukovina of the Czar's forces.

French Bulletin Does Not Admit Losse

PARIS, France, Jan. 15.—The French official bulletin today mentions briefly the situation near Soissons. It says that the Germans took the village of St. Paul near by but that the French charged and promptly recaptured it. Elsewhere, the bulletin says, the situation is the same.

There have been the usual artillery exchanges and one spirited charge near Arras, in which the French Zouaves captured a position leading toward Lille. Comparative inactivity reigned today, asserts the communique.

Russian General Staff Confident

PETROGRAD, Russia, Jan. 15.—The Russian general staff is now confident that the German offensive drive into Poland has exhausted itself. The Russians are gaining along the Vistula river. Gen. von Hindenburg is strongly entrenched there, however, and his German soldiers are hard to dislodge.

Carranza Stopping Exports of Oil From Mexico for British Navy Use

WASHINGTON, D. C., Jan. 15.—The British ambassador has lodged an urgent protest against Gen. Carranza's embargo of oil exports from Tampico. Carranza has ordered the exports stopped on the ground of military necessity. England draws a large part of her navy fuel oil supplies from Mexico through this port.

May Solve "Detained Vessel" Problem

WASHINGTON, D. C., Jan. 15.—Secretary of State Bryan has been notified that Great Britain is willing to release the detained American vessels on bond, provided the judge of the prize court assents.

Turkey Talks of Evacuating Persia

TEHRAN, Persia, Jan. 15.—The Turkish Porte has notified the Shah of Persia that Turkey is willing to evacuate Persia if Russia will do the same.

WOULD SEND JAPAN'S ARMY

[Associated Press by Fed. Wireless.]
TOKIO, Japan, Jan. 15.—Promoters of a so-called army volunteer movement have issued a manifesto announcing their intention of sending an army corps to Europe. They are appealing both to foreigners and to natives for contributions to the fund.

SLAVS READJUST LINES IN PERSIA
PETROGRAD, Russia, Jan. 15.—In Persia the Russians have evacuated the Azerbaidjan district, but not the Petrograd official announcement explains, because of any pressure by the Turks. The plans for the Armenian campaign call for a readjustment of the lines, and the withdrawal from the Northern Persian points is in furtherance of the plans.

VIENNA, Austria, Jan. 15.—The advance of the Russians along the Nida has been repulsed and the offensive campaign has failed, says an official report.

GEN. WISSER IS NOW FORMALLY BRIGADE CHIEF

New Commander of 1st Hawaiian Given Salute of Eleven Guns

OFFICERS OF SCHOFIELD ASSEMBLED, MEET HIM

Important Road to Kole Kole Pass Completed Under Col. Kennon's Administration

[Special Star-Bulletin Correspondence]
SCHOFIELD BARRACKS, Jan. 15.—Brig. Gen. John P. Wisser formally took command of the 1st Hawaiian brigade and of the big army post at Leliha, this morning.

Gen. Wisser, accompanied by his aide, Lieut. Lester D. Baker, infantry, arrived in an automobile at post headquarters at 8:50 a. m., where he was met by Col. L. W. V. Kennon, 25th Infantry, who has been in command of the post since the departure of Gen. Edwards.

Battery B, 1st Field Artillery, was lined up in front of the headquarters building, and as the general stepped from the car rendered a salute of 11 guns.

Lieut. Col. Carl Reichmann, 25th Infantry, will continue as adjutant of the post, with 1st Lieut. James A. Uilo, 1st Infantry, as assistant.

At 10 a. m., all the officers of the post were assembled by regiments at the 25th Infantry Club to meet the new commanding officer.

Gen. and Mrs. Wisser, with one of their two boys, arrived on the transport from Fort Riley, San Francisco, Wednesday morning and are at present guests of Lieut. Col. and Mrs. William W. Foparth, 4th Cavalry.

Tonight at the 25th Infantry hall the officers and ladies of the garrison will give a reception and ball in honor of Gen. and Mrs. Wisser.

Important Road Contemplated.

One of the noteworthy accomplishments of Col. Kennon's administration as post commander was the completion of a road to Kole Kole pass, about two miles west of the post. Aside from its military value this road opens the way to some of the most beautiful scenery on the island. In many ways the view from Kole Kole pass is more impressive than that from the Paik. This road was built by 900 soldiers in nine working days, and required some tremendous cuts and fills, and the construction of a great many culverts. The road was laid out by Col. Kennon himself and the instrumental work performed by 1st Lieut. Charles L. Wyman, 25th Infantry. It required a great many twists and turns to keep the grade below 6 per cent. Several automobiles have made the trip to the top of the pass. It is rather a difficult climb and a hard road upon which to meet another car.

As a result there were at the pier when the vessel docked a large proportion of the leading citizens of Honolulu. There were Governor Pinkham's official representatives to welcome the Siamese royal couple. There were the leading churchmen and educators to greet Dr. Mathews and Dr. Gulick.

There were military men to meet Civil Engineer Charles W. Parks and Assistant Civil Engineer Glenn S. Burrell, U. S. N., who have come to supervise the construction of the drydock at Pearl Harbor. There were business men and lawyers to see C. A. Severance, a Minnesota attorney, who is the partner of Frank B. Kellogg, the "trust buster," who was here last year.

Greeted by Committee.
Dr. Mathews, who is dean of the divinity school of the University of Chicago, and Dr. Gulick, who is well known here as a mission worker, were met at the dock by a large committee and taken on a sightseeing tour. On this committee were Dr. Doremus Souder, F. C. Atherton, Rev. A. A. Ebersole, W. R. Castle, Rev. Frank S.

(Continued on page seven)

TERRITORY AGAIN SHORT OF FUNDS TO PAY TEACHERS

Once more the territory faces a shortage of money in the school fund for the payment of teachers' salaries—an annual occurrence for several years past—and Treasurer McCarthy again is arranging with the banks to cash the warrants issued by the auditor.

Arrangements already have been made with the Honolulu banks to handle these beginning with the end of the present month and continuing until the annual tax-gathering begins pouring into the depleted fund next May, and similar arrangements will be made at once with the banking houses on the other islands. The warrants, after they are issued to the teachers and registered by the treasurer's office, are taken to the banks, who pay their face value to the holders and

CITY ENTERTAINS NOTABLES HERE ON MONGOLIA

Dr. Shailer Mathews and Dr. Sidney Gulick are Guests of Ministers and Educators

PRINCE OF SIAM AND WIFE WELCOMED BY GOVERNOR

Pacific Mail Liner Also Brings C. A. Severance, Prominent Attorney, and Engineers



Dr. Shailer Mathews

Including in its passenger list Dr. Shailer Mathews and Dr. Sidney Gulick, delegates from federated Christian churches of America to carry American good-will to Japan, and Prince and Princess Kampengphet of Siam, the Pacific Mail liner Mongolia brought into port today the most imposing group of notables that has visited Honolulu in months.

As a result there were at the pier when the vessel docked a large proportion of the leading citizens of Honolulu. There were Governor Pinkham's official representatives to welcome the Siamese royal couple. There were the leading churchmen and educators to greet Dr. Mathews and Dr. Gulick.

There were military men to meet Civil Engineer Charles W. Parks and Assistant Civil Engineer Glenn S. Burrell, U. S. N., who have come to supervise the construction of the drydock at Pearl Harbor. There were business men and lawyers to see C. A. Severance, a Minnesota attorney, who is the partner of Frank B. Kellogg, the "trust buster," who was here last year.

Greeted by Committee.
Dr. Mathews, who is dean of the divinity school of the University of Chicago, and Dr. Gulick, who is well known here as a mission worker, were met at the dock by a large committee and taken on a sightseeing tour. On this committee were Dr. Doremus Souder, F. C. Atherton, Rev. A. A. Ebersole, W. R. Castle, Rev. Frank S.

(Continued on page seven)

PEARL HARBOR WORK NEARING ITS COMPLETION

Construction of Shops and Coaling Plant Has Been Going Steadily On

DRYDOCK DISASTER DIDN'T STOP WORK
New Naval Hospital Is a Model Building That is Almost Ready for Occupancy

Some of these days a sea serpent will be discovered in Pearl Harbor, or a shot-up German cruiser will run in for refuge, or there will be some other free show to warrant the running of special trains to Uncle Sam's big Pacific naval base. Then the Honolulu populace will descend en masse on Puuloa, and find out for the first time that a great industrial colony is flourishing unnoticed within 20 minutes' train ride of the city.

REPORTS CONSTANTLY INCREASE MAGNITUDE OF GREAT DISASTER

Many Buried Alive In Ruins of Broken Cities

Towns of Avezzano and Sora Wiped Out--Estimates of Loss of Life Shift Constantly With Late Reports Always Adding to List of Known Dead--King Superintends Rescues--Pope Active in Relief Work.

[Associated Press Service by Federal Wireless.]

ROME, Italy, Jan. 14.—With estimates of the dead and injured in Italy's earthquake constantly shifting, it seems certain now that the total casualties will exceed 100,000. The reports vary very widely. The best available estimate of the dead so far as known makes the number 20,000 and the injured more than 36,000.

Ambassador Page, who has been following closely the reports sent out from the stricken districts, says that these semi-official reports indicate that between 12,000 and 15,000 are dead and twice as many injured.

CASUALTIES REACHING 100,000
The London Chronicle's correspondent estimates the total casualties between 90,000 and 100,000.

The Exchange Telegraph Agency's correspondent says that the latest news is constantly increasing the magnitude of the disaster.

Hundreds and perhaps thousands are still buried alive in the ruins of houses and larger buildings and the tremendous efforts of the rescuers are constantly uncovering victims in time to save them.

KING SUPERINTENDS RESCUES
The king, who left for Avezzano as soon as the extent of the disaster became apparent, is personally superintending the searching parties and his efforts have resulted in effecting several rescues.

The principal loss of life and property occurred in Avezzano and Sora, which are 15 miles apart. Both were destroyed, the population being virtually annihilated.

Pope Benedict has visited the Santa Marta hospital without touching Italian soil. He traversed the Apostolic Palace inside St. Peter's. His predecessor did this also at the time of the Messina earthquake. The pope later offered the mayor of Rome 300 beds in St. Marta's which offer the mayor has accepted.

FIGHT MAY BE MADE AGAINST JOB FOR AYLETT
Some of Supervisors Talk of Reconsidering Action in Approving Appointment

That a movement is under way among the new supervisors to force a reconsideration of the appointment of R. W. Aylett as superintendent of the city and county garbage system with the view of securing another, is the rumor current in city hall circles today.

It is reported that Supervisors Horner, Quinn, Logan and Larsen are planning to bring the matter up before the end of the month. They assign the reasons that Aylett was appointed for political reasons without regard to efficiency, it is stated.

Linked with the same rumor comes the report that Mayor Lane's appointment of L. M. Whitehouse as successor to City Engineer Wall, which was confirmed by the board at a recent meeting, may yet meet with strong opposition. It is stated that the appointment of city engineer may be brought up for reconsideration and that Wall may not be displaced on January 31.

"City Engineer Wall has saved the city thousands of dollars in the few months he has been in office," declared Horner to the Star-Bulletin today, "and he has worked the city and county's mules instead of allowing them to remain idle and grow thin and hiring contractors' animals instead, as was the previous practice. Also he has made the rock quarry pay expenses, instead of allowing the cost

of maintenance to climb so high that it appeared necessary to buy rock from contractors, as also was the previous practice.

"There is no logical reason why Wall should be discharged. He has many things to his credit and the only thing they can possibly throw up against his reputation is that molasses road affair. When the facts are known it will be ascertained that Wall was forced to put on molasses against his better judgment. The only logical excuse for removing Wall is because he happens to vote the Democratic ticket."

"One man who ought to go, however," he continued, "is this man Aylett. He knows nothing about conducting the garbage plants and has no system about him at all. He can pull a few votes, but when we were campaigning we promised the people of Honolulu good government and efficiency. Can Aylett assist in carrying out that promise? Certainly not."

NOTED HYDROGRAPHIC EXPERT WILL COME TO SEE LOCAL CONDITIONS
Hawaii will be visited within a few months by one of the country's noted hydrographic experts. He is N. C. Grover, chief hydraulic engineer of the water resources branch of the U. S. geological survey, with headquarters in Washington, D. C. He will come here in March and will remain several weeks looking over hydrographic conditions and interviewing territorial officials and others to promote future work. The water resources branch of the U. S. G. S. is now maintained jointly by the federal government and the territory.

IRON FENCE

IRON SETTEES, VASES AND RAILINGS.

H. E. HENDRICK, LTD., Merchant and Alaska St.

CARNIVAL HEADS HAVE NEW PLANS FOR DECORATION

Individual Stores and Homes to Be Asked to Work into the General Scheme

A unit system for decorating Honolulu for the Mid-Pacific Carnival now is being considered by a sub-committee of the main organization, headed by F. D. Lowrey. In carrying out this system the merchants and other residents of the city will be asked to "dress up" their store fronts and homes in keeping with a general plan to be outlined by the decorations committee.

"This scheme will mean that those who do but little decorating will not stand out as having done nothing," said Chairman Emil A. Berndt today. According to the present plans of the committee, the general scheme is to line the streets in the business center of Honolulu with trellis work covered with bunting. These arbors will be covered with colored electric lights and hung with Japanese lanterns. At the street intersections bunting will be strung from one building to another, with clusters of colored lights at each corner and in the center. A similar plan is being devised for the streets in the residence section, it being the idea of the decorations committee to secure a beautiful perspective through the aid of bunting, colored lights and Japanese lanterns.

"There is no doubt but that Honolulu will be decorated on a more elaborate scale than ever before for the coming carnival," says Mr. Berndt. "We have been assured of the cooperation of every merchant in the city along this line and we are certain that every resident will do all possible to make the celebration a success from a standpoint of decorations."

Local Japanese businessmen are endeavoring to make lanterns parade as a carnival feature. The plans for the celebration were outlined to them by Director-General James D. Dougherty yesterday. It is expected that the Japanese also will take an active part in the water carnival.

The board of retail trades of the Chamber of Commerce has voted to ask the merchants of Honolulu to advertise the carnival by using carnival letter heads and envelopes in their correspondence to the other islands. The chamber will be asked to pay the expense of printing.

The leaders of the organization which will form the carnival massed band will meet in the Promotion Committee rooms at 10 o'clock tomorrow morning.

\$50,000 BREWERY IN RECEIVERS' HANDS.

COLUMBUS O.—The Foster-Columbus Breweries Company, a \$50,000,000 corporation, went into the hands of a receiver on an order of the Federal District Court. It gave up its reasons for failure "decreased demand for beer, adverse legislation and the voting dry at many states and counties in the past eight years."

Judge Sater appointed C. Christian Horn and Carl J. Hoster, large stockholders, as receivers after it was

PLAN NEW LEAGUE TO CONDUCT FIGHT ON TUBERCULOSIS

Membership in the anti-tuberculosis forces will be opened to every person in the islands, if the plans of the executive committee of the Anti-Tuberculosis League as outlined at a meeting this week are carried through.

This action was taken as a result of the decision reached at the annual meeting of the league last month. The old organization has more or less automatically passed out of existence through the dissolution of some constituent members such as the Merchants' Association and Red Cross Society.

The present plan is to offer two classes of membership, one for adults, costing one dollar a year, and the other for juveniles costing 25 cents. The officers will be elected annually by the entire membership and the executive committee will be appointed by the president.

This is the plan which is at present being considered and probably the one that will be adopted. It has been desired for some time to make the Anti-Tuberculosis League more inclusive than it is at present. The league now is composed of delegates from the board of health, medical society, chamber of commerce, and similar bodies having a civic interest in the tuberculosis work.

The meeting which drew up the plan of reorganization was held at the University Club and attended by Dr. Hobdy, Dr. Wood, Dr. Sinclair and James A. Rath.

SEES BIG ADVANCE IN PUBLIC OPINION.

LOCKPORT, N. Y., Dec. 23.—Ben D. Wright, National Chief Templar of the International Order of Good Templars, made the following comment on the vote on the Hobson amendment: "The fact that it received a majority of eight votes, even though the resolution failed to receive a two-thirds majority, must be regarded by all thinking persons as a great victory for nationwide prohibition, and shows the tremendous advance of public opinion on this subject."

"The victory is all the more significant when it is realized that the resolution was vigorously opposed by both Majority Leader Underwood and Minority Leader Mann. In the language of an editorial in the National Liquor Dealers' Journal of Sept. 1, 1913, this vote is 'the handwriting on the wall' and its interpretation spells doom for the liquor traffic."

shown that the company had defaulted upon a judgment of \$3514 in favor of Samuel S. and Victor Steiner of New York.

The company has outstanding \$4,350,000 stock and \$4,899,000 bonds, largely secured by mortgages on property owned by the company in Ohio, Virginia, West Virginia, Pennsylvania, Indiana and New Jersey. The voting "dry" of West Virginia, the company stated, was the last straw in the legislative acts which reduced the sale of its product.

The company has no liabilities except the Steiner judgment, regular monthly accounts and interest on bonds.

Morning on 'CHANGE'

Stocks maintained their bullish trend today, advances being recorded for Hawaiian Commercial & Sugar, Honolulu Brewing & Malting and Hilo Ex 6 per cent bonds. An active demand for Brewery resulted in four sales totaling 200 shares at 15, a rise of 1. Rumors of an extra dividend, emanating from the call of a directors' meeting, are held accountable for the rise.

Hilo Ex 6s after the rise of 1 yesterday went up another 2 points between boards; 50 H. C. & S. brought 33 1/2, a gain of 1/2. Hawaiian Sugar was unchanged on two sales, as were Pineapple and McBryde; 1000 Olua 6s sold at 80, the mark recently registered.

The half-month period brought declarations of dividends from the following: Hawaiian Sugar, \$20; O. R. & L., \$65; Pepeekeo, \$1; Wailua, \$50; Oahu Sugar, \$10.

NEW YORK "DRYS" ARE FULL OF HOPE

Prohibition leaders in New York, while disappointed at the failure to get the necessary two-thirds vote to pass the Hobson amendment, are highly pleased at the progress made. This sentiment was expressed by William H. Anderson, state superintendent of the Anti-Saloon League.

"The big showing in Congress," said he, "will very greatly help the temperance movement in New York State, for the politicians and the more enlightened liquor men will recognize that they cannot continue to argue against national prohibition on the ground that it is a state question and still refuse to pass state legislation that will permit the people to vote. The proof that national prohibition is a serious issue will strengthen the already bright prospects for some advanced temperance legislation in New York next year."

"The New York Anti-Saloon League's optional local prohibition bill was given a big boost by the vote in Congress."

"The vote would have been larger and probably would have been the necessary two-thirds had it not been for the opposition of President Wilson and Secretary Bryan, both of them high-grade Christian men whose purity of motive will not be questioned. But their opposition on the ground of state rights was even more deadly than if they had been friends of the liquor traffic."

"The fight will go straight on. No question of this sort with a moral element in it is ever eliminated by a defeat. The argument against national action would be much stronger if the liquor traffic had not for many years used national agencies, such as interstate commerce and the mails, to attempt to break down the laws which various states enacted for their own protection. If the liquor interests had been content to confine their activities to the states where they are tolerated by law much of the present agitation for national prohibition would never have started."

The proposed optional local prohibition law for New York is practically the same as the one killed in the legislature by the failure of the committee on excise to report it out. Under a similar law Illinois is largely "dry."

NEW HIGHWAY UP TANTALUS NEARLY READY

Charles R. Forbes, superintendent of public works, expects to have the Makiki Round Top road ready for travel within four months. The completion of this road will open a new highway to Tantalus which, after reaching the top, will circle back and connect with the new roads in the Auwahi district.

The road work is being done entirely by convict labor, there being 40 prisoners now employed. The project was commenced in 1911, but it has been only during the past several months that rapid strides have been made toward its completion. When completed the straight-away sections will be 24 feet wide and the curves 34 feet wide. This will enable automobiles or other conveyances to pass at any point. In the construction a deep enough cut is being made so that 75 per cent of the road will be on a solid cut, while the remaining 25 per cent will be on the fill. The road will not be macadamized as it has a base of black sand which compacts and forms an excellent driveway.

While there may be some delay in further building, as the department intends going back and widening the road in some places, Mr. Forbes hopes to see the project completed in four months.

"It is interesting to note," says Mr. Forbes, "that the majority of the road work has been done with the money coming from payments made by home-stealers who own land in the district through which the road passes. All of the money received in this way has gone toward the building of this road. Up until two months ago there was no money available, but the department was allowed an amount from the governor's contingent fund to continue the work. This will keep the work going until further land payments are made."

The section of land from where the prisoners are now working to the connection with the Tantalus road has never been surveyed. This will require at least a mile of further road construction. As the department now has some funds available the survey to Tantalus will be begun at once. Mr. Forbes says that as far as the completion of the work is concerned the prisoners may very advantageously be employed on the Tantalus road and Makiki Round Top for about one year hence.

The completion of the road will make a complete circle, taking in Makiki, Round Top, Tantalus and the Auwahi district, adding to the scenic beauties to be enjoyed by tourists.

An argument on exceptions to a return in the case of Lee Leong, petitioner for a writ of habeas corpus, and a motion for discharge is being held in the federal court this afternoon. This makes the third habeas corpus proceeding in which Lee Leong has figured in the past year and a half.

Albert Lambert, a local salesman and former commission merchant, filed a petition for adjudication in bankruptcy in the federal court today. A hearing on the petition was to have been held this afternoon. Lambert's liabilities are given as \$3896.03 and his assets to \$653.69.

MAYOR NOW HAS HIS LAUREATE TO SING HIS GLORY

Mr. Botts Appoints Himself Court Poet and Here is His First Madrigal

The weary tasks of the city hall newspaper reporters have been lightened. Until today city employees in the McIntyre building could glance out of an open door almost any time and see a reporter whiz by, from office to office.

Today all was bliss and quiet. The reporters sat in Mayor Lane's reception room smoking cigars. As they blew the smoke wreaths into the atmosphere they drowsily watched E. J. Botts, local newspaperman who yesterday was appointed to the position of purchasing agent, pound on a squeaky typewriter. Botts was "turning out" newspaper "copy." When he concluded he handed his "stories" to the waiting reporters.

"You see," he explained, "I am 'covering' the beat for the newspaper; hereafter, that is, so far as the mayor's office is concerned. Mayor Lane has been bothered so much by reporters since taking office that I have decided to take the matter in my own hands and save the mayor valuable time."

Forthwith he submitted a story which fringed on what is commonly called "press agent copy." Part of it, the post-mortem feature, is the following:

"While budget after budget has been passed by the different boards of supervisors who have had their day in the municipal building, it has remained for Mayor Lane to give the final formal notice to the city fathers that a budget has been duly passed and signed."

"This is but an instance to illustrate the change of affairs since Mayor Lane assumed office. Though the statute would seem to require the chief executive to give written notice to the board on the passage of the budget or semi-annual appropriation bill, the measures have gone through heretofore minus this notice."

"A gasp of surprise has escaped many who have visited the mayor's office in the last few days and seen the transformation which has taken place there recently. The place has been cleaned from floor to ceiling, curtains have been hung and the mayor's office converted into a room into which one may usher a visitor without an apology."

"The formal letter sent by Mayor Lane to the board on the passage of the appropriation bill epitomizes the difference between the former and present chief executive. It may also be taken to indicate the attentiveness of Mayor Lane toward the business of the government. In the olden days on the passage of such a measure, the mayor would lean back, strike a light for a fresh cigar and blink peacefully through the ascending smoke."

"This is a copy of the notice which sets a new appropriation bill in operation."

"It gives me pleasure to inform your honorable body that the mayor has this day signed Resolution No. 3, entitled, 'Resolution making appropriations for the various services and liabilities of the city and county of Honolulu for the period ending June 30, 1915.' Said resolution is herewith returned for the record of the city and county clerk."

ORDERS OF THE HAWAIIAN DEPT.

Jan. 14, 1915.

Special Orders No. 10.
1. In compliance with paragraph 2, Special Orders No. 243, current series, war department, Second Lieut. Lester D. Baker, Infantry, will report in person to Colonel Lyman M. V. Kennon, 25th Infantry, president of the examining board at Schofield Barracks, H. T., appointed in paragraph 4, Special Orders No. 57, as amended by paragraph 1, Special Orders No. 147, current series, these headquarters, at such time as he may be required by the board, for examination, to determine his fitness for promotion.

The examination will be so conducted as not to conflict with the provisions of the acts of Congress of August 24, 1912, and April 27, 1914, with respect to the members of the board and the officer undergoing examination.

2. Private Edward L. Henderson, 159th Company, Coast Artillery Corps, Fort Ruger, H. T., is transferred to the Quartermaster Corps, Coast Defense of Oahu, and will be assigned to station by the Coast Defense commander. (D. Q. M. 4097-419.)

3. Private Allen H. Kimmons, Company F, 25th Infantry, Schofield Barracks, H. T., is transferred to the Quartermaster Corps at that post. (D. Q. M. 4097-420.)

4. Private James A. Roberts, Company D, 25th Infantry, Schofield Barracks, H. T., will be discharged with cut honor from the army by the commanding officer of that post, on account of not being a fit associate for other soldiers. (10270.)

5. Upon recommendation of his troop commander, the unexecuted portion of the sentence to confinement in the case of Private Ray C. Donnelly, Troop C, 4th Cavalry, published in General Court-Martial Orders No. 2660, Hawaiian Department, Nov. 4, 1914, is remitted. (752, J. A. C.)

Tobacco workers in Germany receive \$1.50 a week for unemployment, and 50 cents for the support of families of those drafted for war.

STORAGE
WE STORE EVERYTHING. CITY TRANSFER COMPANY
JAMES H. LOVE Phone 1281

LOVE'S BAKERY
Bread - Cakes - Pies - Crackers

Honolulu Star-Bulletin

In which is combined the HAWAIIAN STAR, established 1893, and the EVENING BULLETIN, established 1882. Issued Daily and Semi-Weekly by

HONOLULU STAR-BULLETIN, LTD.,

Publishers, Commercial Printers, Bookbinders, Photo-Engravers.

WALLACE R. FARRINGTON... General Business Manager

MEMBER ASSOCIATED PRESS.

FLAT RATE, DISPLAY ADVERTISING OVER 2000 INCHES.....

(Preferred Position 30%)..... 25c PER INCH

LEGAL AND TRANSIENT RATE, 1st First Insertion

CLASSIFIED, One Cent per word—30 cents per line per week.

MAIN OFFICES..... 1059 ALAKEA STREET

Telephone—Editorial Rooms 2185; Business Office 2266

BRANCH OFFICE..... MERCHANT STREET

Telephone 2965

SUBSCRIPTION RATES:

DAILY STAR-BULLETIN

Per Month, anywhere in United States..... \$.75

Per Quarter, anywhere in United States..... 2.00

Per Year, anywhere in United States..... 8.00

Per Year, postpaid, foreign..... 12.00

SEMI-WEEKLY STAR-BULLETIN

Per Six Months..... \$ 1.00

Per Year, anywhere in United States..... 2.00

Per Year, anywhere in Canada..... 3.00

Per Year, postpaid, foreign..... 4.00

Address all Communications to Honolulu Star-Bulletin, Ltd., Honolulu, T. H.

SATURDAY NIGHT DANCE AT THE SEASIDE HOTEL

The management of the Seaside Hotel will give the regular dance to-morrow evening. All are invited.—Adv.

Mrs. Hannah Koskoff, believed to be the oldest woman in the United States,

VESSELS TO AND FROM THE ISLANDS

(Special Wireless to Merchants' Exchange.)

VICTORIA—Arrived, Jan. 14, S. S. Glenroy from Honolulu January 5. Aerogram.

S. S. Wilhelmina will arrive from San Francisco Tuesday morning and dock at Pier 15. Has for Honolulu 34 cabin and 12 steerage passengers; 333 bags mail, 50 packages Wells Fargo express matter, 19 automobiles, 2062 tons cargo. For Hilo, two automobiles, 1412 tons cargo.

died in a hospital in New York, aged 117 years.

Oyster Luxuries

By Margaret Matsonauer.

If I had not been successful as a grand opera contralto I know I would have succeeded as a cook. I love to cook as well as to sing, and, while my cooking ambitions are of necessity small, they are always enthusiastic and demand many accolades.

In America the opera season and the oyster season go hand in hand. I don't know how many ways an oyster can be cooked, but during the fall and winter I have oysters three times a day. I am particularly fond of oysters stewed with mushrooms. And this is the way to prepare the dish:

Take an equal quantity of mushrooms (either canned or fresh), tomatoes and oysters. Blanch the oysters in their liquor and season with pepper and salt. Heat the mushrooms in a little gravy; then set the tomatoes in a baking pan, stalk and down. Cut a slice off the top of the tomatoes and scoop out enough to make a cavity big enough to hold an oyster and a mushroom. Brush with melted butter, dust with paprika and then fill the tomato cavity with the oyster and mushroom and place the pan in the oven until the tomatoes are tender. Bake every few minutes with melted butter.

This is one of my regular breakfasts while in New York with the Metropolitan, for I have a housekeeping apartment at the Ansonia. The kitchen is the most important room of my apartment without exception, and in my kitchen I have about everything I have ever heard of in the way of cooking appliances adaptable to a small family. And whether I am singing or my dishes or making favorite viands from old and standard recipes.

My husband is very fond of oysters wrapped in thin strips of bacon and fried. The seasoning I use is paprika, salt and lemon juice. In making creamed oysters I melt a tablespoonful of butter in a saucepan and mix a tablespoonful of flour with it, adding a pinch of nutmeg, and gradually pour in a pint of cream, stirring well in order to prevent burning. When the mixture boils I add a quart of fresh shelled oysters and allow the time to boil till the oyster edges begin to curl; then I season with a dash of salt and a little celery salt and a goodly dash of paprika and serve immediately on square slices of toast or with crackers.

SWEATER AND SACK



THE sweater on the left is a mixture of black and white wool, buttoned up the front with white bone buttons. This sweater is purely for utility and very warm and entirely without fuss and frills of any sort. The garment shown upon the right is both fluffy and frilly, being crocheted of white wool, to be worn on cold mornings at breakfast.

FOR THE EVENING FIRESIDE.

SAVE all your rag of various colors, cut them in strips and sew them together. Some evening when you have nothing else to do go through your rag bag, select rags of different colors and put them in separate bags; then another evening cut these rags in strips, sew them together and wind them in balls; then some afternoon when you are wondering what to do you can begin to make one of the old-fashioned rag rugs in blue or pink, with a border of white or black. Stocking tops make splendid black stripes for the border.

Purchase the largest bone crocheted needle you can find and crochet as you would a round dolly in the usual manner. This will make an attractive rug for the guest room or bedroom.

MAKE FEVER PILLOWS.

TO make a fever pillow take a piece of old linen that has been well washed and make with it a case about twenty-two inches by eighteen inches. Take old newspapers, letters or circulars and tear them into pieces not larger than a ten cent piece, or cut soft paper into strips about half an inch wide and two inches long and cut the strips with an old penknife. Fill the case quite full with the papers and a few shreds of flannel and sew the ends up.

Horsehair cushions of all shapes and sizes are good to rest the back of the neck and the back or to place between the knees or wherever there is a hollow spot. These, as well as paper pillows, will be found a comfort.

HINTS ON HEALTH AND BEAUTY

THE average healthy person has little to fear from drafts, but the aged, enfeebled, infants and persons especially susceptible must be protected from them.

Sleep with the bedroom window wide open. The old superstition that night air is unhealthy even for an invalid is entirely false. On the contrary, night air, especially in large cities, is purer and better than day air because it contains less dust and fewer microbes. To get the best ventilation have the window open at both top and bottom.

It is a mistake to suppose that a healthy complexion needs no care. It needs a good deal of care in order to keep it healthy. A daily facial bath of soap and water is not enough even to keep the skin clean if one lives in a big city where soot and dirt abound, for soap and water do not reach the inner pores, and unless these are treated to a cleansing with cold cream they will become clogged in short order, so the daily bath of cold cream or some other cleansing property is just as necessary to a healthy, clean condition as soap and water.

Here is a homemade remedy which may work a cure if taken at the beginning of an attack of headache. Cut a lemon in half and squeeze its juice into a tumbler. Add a few—very few—grains of sugar and fill up the glass with cold water. Mix it—that is, about three-quarters full. Now stir into this lemon mixture half an teaspoonful of ordinary baking soda. This will fix up, of course, and the draft must be swallowed while it is still effervescent. If one dose fails to arrest the attack repeat it three hours after. This mixture, taken fasting the first thing in the morning, will do much to settle the stomach after a sick headache and will prevent recurrence for some time. This kitchen physic has been found to prevail when phenacetin and all other nerve quieters have signally failed.

VELVET JACKETS SOLD IN SHOPS

THERE are sold some very smart little velvet jackets that reach to the hips. Some of them are laced under the arms and are put on over the head, and some of them are buttoned. They could be made a part of a satin dress and would give, in very good manner, the smart line that prescribes a long, straight skirt. These little jackets are nicely made and cheap—two things in their favor.



Would You Trust A Man

whose surroundings, mode of life, and food and drink, have combined to make him treacherous, indolent and unreliable?

And food and drink are among the chief causes.

Coffee—one of the commonest beverages—contains a drug, caffeine, which affects stomach, liver, heart and other organs.

Some persons are strong enough to stand the attacks of the coffee drug, but to most people it is a poison, and sooner or later is bound to tell.

If you find coffee is hurting you, quit it and try

POSTUM

This healthful food-drink is made of prime wheat and a bit of wholesome molasses, carefully blended and roasted. It contains the food elements of the wheat and molasses and nothing else—nothing injurious or harmful.

Serve Postum piping hot and it is delicious and invigorating.

"There's a Reason" for POSTUM

ALL HONOLULU WILL BE TAKEN BY THE MOVIES

City Crowds Filmed Next Monday to Be Shown at the Exposition

Honolulu is to be "taken for the movies" next Monday. As a piece of promotion work, the plan is endorsed by the Promotion Committee and President Farrington of the Ad Club.

The following notice—and invitation was issued today:

Route. "Commencing at Alakea and Hotel streets the motion picture operator will travel along Hotel street to Fort street. The crowd should bank on the makai side of hotel street, facing Waikiki.

"From Fort and Hotel streets the camera man will travel down Fort to King street, the crowd being on the Ewa side of Fort street, facing mauka.

"From the intersection of Fort and King streets he will travel over King to Bishop street, with the crowd on the makai side of King street, facing Ewa.

"From King and Bishop street the course will be along Bishop to Hotel street; the crowd along the Young hotel building, facing mauka.

"From Hotel and Bishop street the route will lead back to the corner of Hotel and Alakea, along Hotel street, with the crowd this time facing Ewa on the makai side of Hotel street.

"There it is in a nutshell—the line of march for that big motion picture that will be taken next Monday between noon and 1 o'clock for exhibition at the Panama-Pacific exposition and also for distribution around the world through the medium of the Pathe Weekly Letter.

"Albert P. Taylor, acting secretary of the Promotion Committee, and W. R. Farrington, president of the Ad Club, have issued a sweeping invitation—or rather request—that everyone in Honolulu turn out next Monday between the hours of 12 and 1 and become a part of the picture.

"From a publicity standpoint nothing larger has ever been attempted in Hawaii and its results cannot be estimated in dollars and cents. This is a new form of city advertising that has gained great popularity on the mainland where the streets are thickly lined for such a picture.

"It is the desire that a number of automobiles line the course given above—all with tops down—in order that the faces may be shown in the picture. It is also desired that the crowd, as nearly as possible, face in the direction outlined, which also will bring the faces and not the backs into the scene."

STRING LEADERS FIRST, THEN INDEPENDENCE FOR FILIPINOS, SAYS MALONE

"There has been much talk since our campaign in the Philippines about the well-meaning and peaceful intentions of the Filipino leaders who later carried arms against our soldiers. Those of us who have seen the documents which passed between Gen. Otis and the insurgents' leaders know the folly of this talk. Those of us who fought through the campaign there, attempting to fight according to the rules of civilized warfare and being repaid with treachery and bullets in the backs of our men, know that we were justified in the stern measures which were taken to establish law and order in the islands."

So spoke Capt. Malone of the 2nd Infantry in his lecture on "The Philippine Campaign" at the Y. M. C. A. last evening.

Capt. Malone told of his campaign experiences and the character of the people with whom they fought and among whom they worked to establish civil law and order.

"I have great hopes for the future of the Philippines," he said. "Their 15,000,000 of people, who are divided among 50 different nationalities, have much splendid material for building a stable government. They need leadership and direction before this will be accomplished."

WOMEN START CHILD WELFARE ORGANIZATION

First Conference on Subject Is Attended By Large Number Willing to Work

Keen interest in child welfare was shown by the large number of women who attended the conference on the subject yesterday afternoon at the library of Hawaii. The meeting was devoted chiefly to the question of organization.

The first step toward definite organization was taken when Mrs. F. W. Macfarlane was elected permanent chairman of the central committee. Mrs. Arthur G. Smith will continue for the present as temporary secretary.

There were a number of resolutions passed regarding the organization of the child welfare committee and the sub-committees that are to work under the direction of the central committee. The general committee will be composed of representative women from all of the women's organizations in Honolulu.

According to the present plans there will be committees to aid children in all parts of the city. There will be a girls' industrial committee, a boys' industrial committee, a juvenile court committee, a committee to look after the needs of the children in the public schools and a publicity committee.

The majority of the meetings to be held will be open to everyone interested in the movement and not restricted to the members of the organization. It has been found that there is a large field in Honolulu for work along the lines of child welfare as well as an immediate need for somebody to take up the work.

The meeting yesterday adjourned until next Thursday afternoon at the library of Hawaii at 3 o'clock. All women in Honolulu who are interested in the movement are invited.

YOUNG CONCERT TOMORROW NIGHT ON ROOF GARDEN

Prof. Carl Milster's orchestra will give the second of a series of attractive concerts tomorrow evening from 8:30 to 11 o'clock on the roof garden of the Alexander Young hotel. The program is as follows:

March, "Carmen".....G. Biet
Overture, "Fra Diavolo".....Auber
Dark Eyes (a Mexican dance).....N. Moret
Selection, "The Gypsy Baron".....J. Strauss
"Souvenir".....Fr. Drda
Selection, "Rob Roy".....De Koven
Intermission.
Overture, "Die Schone Galathee".....Fr. Suppe
Paraphrase, "Lovely".....Nesvadbo
Selection, "Lohengrin".....R. Wagner
Waltz, "Love Sparks".....A. Holzman
Hungarian Mazurka, "La Trizgane".....L. Ganne
March, "Persian".....J. Strauss

ALL-WIRELESS ROUTE BRINGS GOVERNOR NEWS

Rather unique was the route traveled by the wireless which brought to Governor Pinkham yesterday the news that Secretary Daniels will be the guest of the territory. The message came by government wireless from Arlington station, Washington, to Point Loma, from Point Loma to San Francisco by Federal Wireless, from San Francisco to Honolulu by Federal Wireless.

OLD BACHELOR'S DANCE

Will be given at Phoenix hall Saturday, Jan. 16, 1915. Music by the Royal Hawaiian Glee Club. Dance commences at 7:30 p. m. Admission 50 cents. Ladies with escorts free.—Adv.

Y. W. C. A. DINNER GALA OCCASION FOR HUNDREDS

Merriment Runs High and Business Is Transacted at the 14th Annual Banquet

Several hundreds persons, both kamaaina and malihini, gathered in the parish house of Central Union church last night to attend the States dinner and fourteenth annual meeting of the Y. W. C. A. It was the most successful function ever given by the association.

Bamboo branches, calla lilies, cut flowers and palms beautified the interior of the parish house, while American and Hawaiian flags and the standards of various states and countries added to the color scheme. The dinner guests were seated at tables decorated to represent states, territories and countries.

Hawaiian Table Largest. The Hawaiian table was the largest and ran the full length of the room, the decorations being hibiscus flowers and ferns. The hostess was Mrs. D. Howard Hitchcock. Another prettily decorated table was that at which were seated the representatives of Great Britain, the hostess of which was Mrs. W. W. Taylor. England, Ireland, Scotland and Wales were represented by four lions reposing in a huge basket of roses and British flags.

Each guest was presented with a corsage of violets. Each guest at the California tables was presented with a bunch of grapes. The decorations were formed of baskets of oranges and brown teddy bears, while over the whole flew a pennant bearing the date 1915. Mrs. L. G. Marshall was hostess.

Many other beautifully decorated tables were in evidence, each being typical of some state or country. A snowy birthday cake was placed in front of Mrs. Agnes Judd, who was celebrating her birthday at the New York table. Mrs. L. Tenney Peck was hostess at this table. The New England table was presided over by Mrs. A. F. Jackson and Mrs. Doris E. Paris was in charge of the Michigan table. Guests who gave their native state as Minnesota were welcomed by Mrs. A. E. Arledge. Mrs. W. C. Hobbs was hostess at the Southern table.

Meeting Follows Dinner. During the dinner there were many impromptu talks and much singing and laughter. When the last speech had been made and the last song sung the majority of the dinner guests adjourned to the annual meeting. The program of the meeting was as follows:

Blessing: "Praise God From Whom All Blessings Flow," Rev. A. A. Eberle, leading.
Song: "Honolulu," A. E. Larimer.
Annual Meeting: Mrs. Walter F. Frear, presiding.
Devotional Exercises: Dr. Doremus Scudder.

Minutes of the previous meeting. Reports: Treasurer's and general secretary's.

Report of nominating committee. Amendment of constitution. Vocal Duet: Mrs. E. A. Mott-Smith and Mrs. C. F. Waite.
Address: "The Next Step," Mrs. George Huntington.
Address: "The Greater Y. W. C. A.," Paul Super.
Address: Miss Ida S. Varney.

Secretary Makes Report. In her annual report Miss Carrie Chandler, general secretary of the Y. W. C. A., told of the work which the association accomplished during the past year and also pointed out the present needs of the organization. To this extent she said, in part:

"During the year there have been classes in German, French, Spanish, English, Shakespeare, Salesmanship, Domestic Science, Dressmaking, Millinery, First Aid, Swimming, Tennis, Basketball, Gymnasium and Bible. The classes have met at the Castle Tank, Castle Kindergarten, Kilaheua Building, the Public Library, the Home-stead, the College of Hawaii and four private homes.

"The total number of enrollees in all these classes has been 886. On account of the change in secretaries there was no summer term.

"Of course we want a building and we hope we may have one in the near future. I wish tonight I might have the privilege of escorting you over a building which should have a well equipped lunch room, rest rooms, offices, class room—yes, and a board room—an assembly room, with portable chairs so it could be converted into a play room or game room, a gymnasium suitably equipped for the climate, and a swimming pool open to the use of our members when not needed for class purposes.

"Our rooms are now on the fourth floor of a building where we cannot have elevator service after 5 o'clock, nor on Sundays, and where for good and sufficient reasons we cannot have a sign. Moreover, these rooms, which would otherwise be used for evening classes, are not available for these same reasons. While I cannot escort you over such a building tonight, some day I trust you will give me that privilege."

Mrs. Raymond C. Brown, Mrs. McPherson, Mrs. L. C. Howard and Mrs. R. G. Moore were elected new members of the board of managers.

HOUSE OPENING

The "All Filipino Merchants" will open their store on Saturday, Jan. 16. Friends are invited to visit this store, located at No. 1209 Nuuanu street, Meleio Bodoro and A. G. Letican, managers.—advertisement.

McDUFFIE SAYS ACCUSATION IS GROSSLY FALSE

Captain of Detectives Arthur McDuffie said today that the story published this morning intimating that he had maliciously arrested one Luis Martinez is absolutely false.

"I am virtually accused of arresting Martinez because he is a witness in the federal case against Fred Belmont, one of my squad," said McDuffie. "As a matter of fact, a formal charge was made to the police against Martinez on the basis of which the warrant was made out. He has a bad police record and recently he tried to force a woman to have indecent relations with another man. Complaint was made to me on behalf of the woman and her mother and Martinez was arrested for vagrancy."

"It is absolutely false to say that I arrested Martinez because he is a witness against Belmont. If Belmont is guilty, he should be punished."

"No detective department in the world can run down every burglary or every criminal case. I invite any committee of businessmen to visit my office and see the records of what we are actually doing in running down and convicting criminals. I court an investigation by the grand jury. Recent trials before Judge Ashford, resulting in convictions, show what success we are having. All I ask is justice before the public."

DAILY REMINDERS

Round the Island in auto \$5.00, Lewis Stables. Phone 2141.—Adv.

If you really like good coffee—try "Mayflower" brand, sold by Henry May & Co., Ltd. Phone 1271.

For any tool for any trade or for any purpose—look over the guaranteed lines at Lewers & Cooke, Ltd.

If you want to brace up imbibed the Carnival spirit at Haleiwa. Tickets at Wells Fargo & Co., King street.

Ice when you want it—ice in any quantity you desire. Ice placed where you want it. Oahn Ice Co., phone 1128.

Ladies of taste should inspect the spring showing of panamas and millinery at Milton & Parson's—advertisement.

Galvanizing, sheridizing, coloring, lacquering and plating of every description. Electro Plating Works, 910 Alakea street. Phone 4448.

You can feel sure that no burglar will break into your office or store if you employ the Bowers' Merchant Patrol to watch your place of business.

Resal kidney pills are said to give relief to sufferers from kidney troubles. Sold at the Rexall store, Benson, Smith & Co., Fort and Hotel streets.

Rent a good piano and always have music in your home. The Bergstrom Music Co. has a fine stock of pianos to choose a rent piano from. Arrange today for one.

Special for one week! Folger's high grade teas at 15c the package. (Regular price 25c.) Java, Ceylon, Oolong and English breakfast. Henry May & Co., Ltd. Phone 1271.—Adv.

Take home a beautiful bouquet to her tonight—use you used to do in courting days. Get the bouquet at Mrs. Taylor's Florist Shop, on Hotel street, opposite Young's Cafe.

Tomorrow, Saturday, is "cheese day" at Henry May & Co.'s store. We will cut that 55c-pound-Eldhorn cheese in our window at 18 c. m. Come in and sample it or phone 1271.—Adv.

Better chocolates and other candies are made daily by the Sweet Shop than are imported weekly from the coast. If you like the best and freshest candy—buy at either Sweet Shop.

The New Zealand lamb, butter and snapper, handled locally by C. Q. Yee Hop & Co., is held to be second to none in quality and considering the reasonable prices at which these products are marketed it is no wonder that they have attained the degree of popularity which they have.

The best boarding house or cafe is that one which serves Swift's premium ham or bacon. You will vouch for this if you have been disappointed with other brands. And if you live at home you can be sure of pleasant breakfasts—for your dealer sells Swift's premium products or can get them for you.

The Inter-Island Steam Navigation Co., Ltd., is in receipt of information from Mr. McKay, the Hawaii representative, that the activity of Kilauea is at present very great. Although the lake of fire is about 400 feet below, still it is very large and spectacular. There are also many cones erupting continuously. Hawaii is enjoying perfect weather at present and sojourning visitors and residents of Honolulu who have not visited the volcano should not miss this opportunity.—Adv.

When you read a lot—head begins to throb—eyes pain you as a result—take Shae and read all you like—no headache.—advertisement.

A petition for naturalization as an American citizen has been filed in the federal court by George Godfrey Foden, a native of Canada and a cable operator by trade. The petition will be heard by Judge Sanford B. Dole, April 24.

The funeral services of Samuel Kaluhalawa were held yesterday from the undertaking establishment of H. H. Williams, interment being in the Kaluhalawa cemetery. Kaluhalawa died at the Queen's hospital Wednesday, following an operation for appendicitis. He was 24 years old and a native of the island of Hawaii.

LOCAL AND GENERAL

Elks' Lodge meets this evening.

Oceanic Lodge, No. 371, F. and A. M., special meeting this evening with work in the third degree.

Elizabeth Taucer was granted a divorce today from Charles Taucer on the ground of non-support.

There will be work in page rank at the regular meeting of Mystic Lodge, K. of P., this evening at 7:30 o'clock.

Building Inspector Murakay is preparing plans for a new bungalow to house the boys' workshop at the Royal school.

Judge Ashford today suspended sentence on Basilio Castro, who pleaded guilty of embezzling \$7.50 and a watch from a confiding friend.

School Inspector George S. Raymond will talk on the work of the principal at the annual meeting of Kaula Teachers' Association at Kapaa this evening.

The regular weekly meeting of the Hawaii Promotion Committee will be held in the rooms of the committee, Alexander Young hotel, Bishop street, this afternoon at 3:30 o'clock.

Circuit Judge Whitney today appointed William J. Sheldon administrator of the estate of the late Laurens K. Sheldon, to serve without bond.

The American-Hawaiian steamer Arizona is at Kahuiki today. The vessel will steam for Kananapali and Hilo, leaving the latter port for New York with 11,000 tons of sugar about January 18.

The Mothers' club of Kaimuki will give a dance tomorrow afternoon from 2:30 to 5 o'clock for the school children of Lilihoukani school. Admission 10 cents. Children of other schools are cordially invited.

An extensive program is in preparation for the meeting of the reorganized Territorial Teachers' Association to be held in Honolulu beginning February 12. Miss Iva McDonald is the new president of the organization.

At the suggestion of Director-general Dougherty of the Mid-Pacific Carnival, the board of trade will ask the Chamber of Commerce to arrange to supply local merchants with letter heads advertising the carnival, to be used from now until the end of the carnival.

Kaneshiro Seisu, a Japanese who withdrew his former plea of innocence and this morning confessed guilt to a charge of assault and battery with a weapon, was fined \$50 by Circuit Judge Ashford.

A selection from the opera "Il Pagliaccio," played by Miss Pearl Sutherland, and an explanation of the opera by L. G. French were the features of special chapel exercises at the Punaheou academy Wednesday. These exercises, which recently were introduced, form a new phase of the school work.

Reversing Circuit Judge Ashford's decision awarding a divorce to Manuel Macedo, Jr., the supreme court has remanded the action to the lower court for another hearing. The wife, Christina Macedo, originally sued for a separation, the husband coming in with a cross-petition which was granted by Judge Ashford.

The annual meeting of the associated charities of Hawaii is called for Friday, January 22, at 3:15 p. m., in the rooms of the Chamber of Commerce, third floor Kaula hotel building, to hear the reports of officers and nominating committee, to elect directors and to transact any other business that may arise.

William P. Alexander, son of A. C. Alexander, is author of a play, "Queen Kapiolani," published in a recent issue of the Yale Sheffield monthly. It is a purely Hawaiian drama, based on history, with typical sub-tropical setting and atmosphere. The author's picture appears in the same number as a member of the Senior Council of the university.

The ancient Scott-Philipo suit, which has been dragging through the local circuit courts for 20 years, may be the last Hawaiian civil case reviewed by the United States supreme court if President Wilson signs the bill passed by the senate yesterday. M. F. Scott, on behalf of his wife, Nettie L. Scott, filed an appeal to the U. S. supreme court Tuesday in the old Kona land suit.

K. Solomon, a Hawaiian who stabbed a friend while they were reveling in dago red on New Year's eve, pleaded guilty in Judge Ashford's court today and received a sentence of 18 months' imprisonment. He also received a severe lecture on the danger to himself as well as the entire Hawaiian race of imbibing dago red or its evil boon companion, "square face."

AT THE HOTELS

WAIHAWA HOTEL.

Guests registered at the Waihawa Hotel during the past fortnight: Mrs. J. M. Woodger, Mrs. C. A. Palmer, P. C. Jones and party of twenty-seven; Mrs. Gertrude Worrall, G. F. Jennings, C. E. Lang, A. Faulke, Emily D. Salmon, Laura Hill, Davenport, Iowa; J. A. Horsman, Miss Selma Herman, A. J. Slater, Guy L. Duckworth and family, D. W. Head and wife, L. W. Branch, J. P. Haley, Mr. and Mrs. H. Campbell, W. B. Thomas, T. J. Gibson, K. Marion Jones, R. A. Bolster, Agnes M. McIntyre, V. Kathleen Ward, Mrs. S. A. Gulick, A. E. Lachenby, Mrs. C. Schmidt, Mrs. R. B. Booth, Miss



Watch The Clarion's Windows Saturday

Build A Home

This is a fine way to start the New Year and if you do this you will do well.

But if you want to do better come and see me about the homes I have all ready built. That I can finance for you just the way you want.

L. C. ABLES
83 Merchant St.

P. S.—
If you have any troubles bring them to me.

L. C. A.

COUPON

STAR-BULLETIN WAR MAP OF EUROPE

Send three of these coupons and Fifteen Cents to the Star-Bulletin and receive the new and up-to-date map of Europe.

M. Walker, Miss Lucy Ward, H. F. Port Jervis, N. Y., creating a panic. Nietert, T. E. Morris and George P. Thilen.

Investigators in a Chicago tenement block found eight bathtubs in one block—an average of one tub for every 200 persons.

A large buck walked through the open door of the Westbrook school.



Table Glassware

Is one of the most important items in your table arrangement. Like the "open-stock" dinner pattern idea we have 12 complete lines of glassware from which, with a initial purchase, you can start your set.

W. W. DIMOND & CO., Ltd

The House of Housewares.

53-55 King Street

ROYAL BAKING POWDER

Absolutely Pure
Absolutely has no substitute

Many mixtures are offered as substitutes for Royal. No other baking powder is the same in composition or effectiveness, or so wholesome and economical, nor will make such fine food.

Royal is the only Baking Powder made from Royal Grape Cream of Tartar

Royal Baking Powder Cook Book sent free on request. Address box 552, Honolulu, Hawaii.

Honolulu Star-Bulletin

RILEY H. ALLEN

EDITOR

FRIDAY, JANUARY 15, 1915.

Not endless life but endless love I crave,
The gladness and the calm of holier springs,
The hope that makes man resolute and brave,
The joyful life in the great Life of Things.
W. M. W. Call.

"WORSE THAN MESSINA."

"Worse than Messina."

Thus do early newspaper despatches summarize the tale of Italy's latest earthquake horror.

In loss of life and in extent of country shattered by the terrific throes of seismic travail, the disaster is believed to out-rival terrible Messina—and the earthquake of Messina is the worst of which history holds any record.

Much of the section of Italy now stricken suffered in the Messina temblor. Lipari, Casimiro and other districts suffered almost as did Messina and the island of Sicily.

Graphic descriptions have been secured of the Messina earthquake. A little after 5 in the morning of December 28, 1908, the air was filled with sparks and flashes of flame. Then suddenly the "earth seemed to drop and then came the earthquake, lasting 23 seconds."

Its results were awful beyond description. In Messina men and women were hurled from houses like drops of water from shaken boughs. At Reggio a chasm 80 feet wide opened to unknown depths and from it gushed a flood of boiling water, scalding large numbers of people. To the horror of the quake was soon added a tremendous tidal wave. The sea first seemed to recede from the land and then through the narrow Straits of Messina the wave poured with terrible violence. Estimates have placed its height at 35 feet. The wreck of the entire coast line was the result, whole villages being wiped out. The famous whirlpool of Charybdis, noted in mythology, changed its position. The Lipari islands in the Mediterranean, near Sicily, with a population of 25,000, disappeared, sinking beneath the surface.

Plague and pestilence followed the earthquake and tidal wave.

The loss of life has been placed as high as 200,000, but has been conservatively estimated at 150,000. The population of Messina, Reggio and Palermo were almost entirely destroyed. About 70,000 perished in Messina, 40,000 in Reggio, 10,000 in Palermo and many other towns lost from 100 to 2000.

Among the earthquakes attended with great loss of life, history records the following:

Antioch, 526 A. D., 250,000 killed; Yeddo, 1703, 200,000; Lisbon, 1531, 300,000.

Recent earthquakes of note were those of St. Pierre, Martinique, 1902, 25,000 killed; North India, 1905, 19,000; Kingston, Jamaica, 1907, 1000; San Francisco, 1906, 1000; the shock in Formosa and a destructive temblor in 1909 in Persia.

Italy has been visited many times by severe earthquakes and every section has suffered at some time. The ruins bear eloquent tribute to the irresistible power that rends the earth's crust and makes human strength and man's works puny and impotent.

In very many cases of great public disaster the extent of the loss of life and destruction were underestimated on the first day. Most of the Italian earthquakes have been so underestimated. The Galveston flood and the earthquake and fire in San Francisco furnish two recent examples of great tragedies in the United States of whose extent the first reports gave small indication.

If the earthquake of Avezzano is "worse than Messina," it is terrible indeed. The loss of life will run upwards of 200,000. The property loss is now incalculable. Since a large part of the district worst stricken is agricultural country, there is hope that the destruction of property is less in proportion than the number of deaths ordinarily would indicate. Late reports today also give hope that the loss of life will be much less than in 1908.

IT MIGHT BE RECONSIDERED.

Mayor Lane's appointment of R. W. Aylett as garbage superintendent is one that has disappointed the community. Mr. Aylett has had a rather picturesque and many-sided career as hack-driver, member of the band, member of the territorial legislature, member of the board of supervisors and night watchman at the capitol building, but there is nothing in his varied activities to suggest that he will be a success as superintendent of the garbage department. That department is suffering now from lack of effective attention. To place at it head a man

in whose biography the most memorable incidents are that of being fired because he was caught asleep at his nightwatchman's post, is an act which has already brought much criticism upon the mayor.

To put it plainly, it would be a good thing if the supervisors should reconsider their approval of the mayor's appointee in this case and ask His Honor to put an efficient man on the job.

GOOD FOR THE WOMEN.

Without boasting it may justly be said that in quick sympathy and constructive helpfulness for people in distress, Hawaii leads most American communities. Already the Hawaiian contributions to the Belgian Relief Fund are so large that if New York City gave in proportion to its population, the metropolis would have added more than \$10,000,000 to the fund.

With unusual pleasure the Star-Bulletin publishes this statement of what a group of women in Honolulu are doing toward the relief work. They ask that their names be omitted:

In a recent Saturday Evening Post there is a little editorial on "The Knitting Women" which refers to them rather cruelly as "wanting to do something, and this is the only thing they can think of."

To show that women can think of other ways of helping poor Belgium I ask you to read this: A little group of women in one of Honolulu's residence sections were at a tea-party, and as elsewhere the talk drifted over to "The War" and its inevitable deeper cruelty to women. Statistics were given as to the probable number of women refugees expecting to become mothers and the horrors confronting them. Then and there these mother-hearts worked out a scheme that can be carried out in any section of our generous city.

Each woman agreed to form a group of women who would buy from a wholesale house that gives "cost price" for all Red Cross work, a box of warm material to make baby clothes for these to-be babies. All of them were to use the same pattern, approved by the Maternity Home and the Children's Hospital. At the next meeting the chairman proved that one dress of gray flannel, with tapes to tie and no buttons, would cost 75 cents, the ordinary bolt cutting into thirty-five dresses, and that each dress took a half-hour to make. Orders were sent, \$87 were spent and 856 pairs of booties from the cuttings were made between December 1 and December 31.

Some women gave money, some women gave their time and some hired seamstresses. Each little group headed the problem in its own way.

When the dresses were sent in to the chairman, the express company donated a crate \$3x3x3 feet and delivered it free to the American-Hawaiian steamer, to be sent free of transportation to the Red Cross in New York, by them sent to the neediest station in the war zone.

(Signed) ONE OF THE MOTHERS.

Here is a world-charity beginning in the home. Isn't that splendid and worth while?

JAPAN'S NEW SPHERE OF INFLUENCE

China is feeling more than temporary irritation at the completeness with which Japan is dominating the Shantung Peninsula. That is behind the crisis which yesterday's despatches mention. An instance of the Japanese domination is contained in this telegram from Tsingtau published in a Japanese paper:

"TSINGTAU, Dec. 29.—This city has become completely Japanized as the result of the opening of the city to the public on Monday. Steamer service has already been opened with Moji and Dairen and railway service is being operated into the hinterland. Together with those who came from Taitungching, the number of Japanese newcomers now reaches 1000. The total number of Japanese citizens in the city is 3000 while the Chinese number 10,000.

"Concerning the customs service in Tsingtau, the Japanese minister, Mr. Hieki, sent a note to the Peking government Monday stating that the Japanese government would recognize the right of the Chinese government to appoint the customs officials, provided that 35 Japanese are appointed to the offices."

The Advertiser is on the right track in urging closer cooperation between the city officials and the local engineers. The ranks of the latter are made up of men willing to give much of their valuable private time for the good of the city if their advice is asked. If it isn't asked, they are not likely to offer it, fearing to be considered intrusive.

This early morning custom of slamming Captain McDuffie bears all the indications of a hand-over from the attacks made on him before the civil service commission many month ago—which attacks fell down.

The best thing Cole Blease of South Carolina ever did was to resign.

Tas Assessor Wilder is ready to follow the trail of the army auto even to the cannon's mouth.

Italy's earthquakes will probably take the Latin mind off war for a week or two.

LITTLE INTERVIEWS

—LIEUT. COL CAMPBELL: Being adjutant of a golf team is no joke.

—H. K. LARRISON: It is bitterly cold on the mainland these days. I tell you I was mighty glad to get back to Hawaii's gracious climate.

—DEPUTY SHERIFF ASCH: I am frequently called in to act in the capacity of peacemaker between warring family factions. It's an easier method than through the police court.

J. W. CALDWELL: I am surprised that in all his troubles with these defective water meters Engineer Wall did not try the molasses treatment on 'em. Maybe that would have fixed 'em.

—SIDNEY JORDAN: Fishing for hinales out at Black Point is getting rather out of style with me. I wish there was some place around here where I could go and dig a mess of clams.

—T. R. COPELEY: It is to be regretted that the knockers against Hilo seldom stick to uniform hours. The fall and trip appears to get it in and out of season, even if it is only a few who are doing it.

—WALTER F. DILLINGHAM: It will be slow going on the drydock contract for about a year. It is a big job to get the old concrete out, and it will be necessary to build an extensive floating dock before the new concrete blocks can be laid.

—A. P. TAYLOR: The next time one of our friends leaves for the Coast let's fill a basket with Hawaiian fruit and present it to the traveler. This custom is carried out in San Francisco and the fruit makes an attractive and always appreciated gift.

J. H. CRAIG: There's a lot of money in this town and it ought to be coming out soon. Some of it ought to go for building. There are a lot of people talking of building and I expect a pretty good year—though I don't believe in bluffing yourself just to be a booster.

—COLLECTOR M. A. FRANKLIN: I am beginning to hear much favorable comment from the southern states following the receipt of a quantity of advertising and promotion matter concerning the islands that I forwarded to a host of friends some weeks ago.

—FREDERICK MEYER, manager, Waikeke Company: The roads out my way are in pretty fair shape right now; better than they have been for some time, but you should have seen them a few weeks back. I took a ride in my machine one night and I thought I never would get out. The tires were cut to pieces.

—HALPH A. KEARNS, immigration commissioner: If some of these people who talk about a change of climate and go to the Coast to get it would go to Hawaii they would get all the cold and change of climate they want. I have just got back from there and up the mountains I found the atmosphere invigorating and crisp, better than anything you can get on the Coast. You don't have to leave the islands for any kind of weather you want.

—W. R. FARRINGTON: I stated at the meeting of the Chamber of Commerce that if I were sitting among the directors and in a position to cast a vote, I would certainly vote against the committee report endorsing the Gardner resolution. The reference to the Lodge speech put the whole proposition on a partisan basis which, in my opinion, is a mistake. The only error the Advertiser made in quoting me was to suggest that I was doubtful as to what I would do. I believe in the army and the navy, but I do not believe in the Gardner resolution.

—R. R. REDFORD: The sentiment in favor of the Maunaloa street improvement plan was so strong at the meeting last night that it might be called unanimous, the only objections offered being such as can be overcome, and the project is certain to go through. Incidentally, Maunaloa has a wealth of expert engineers to help with advice on road problems, including H. Stuart Johnson, Marston Campbell, J. W. Caldwell, Prof. J. M. Young, Prof. Arthur R. Keller, A. C. Wheeler and J. L. Young. Now, if Superintendent Forbes will move up, we will have almost a monopoly on the city's engineers.

—ROBERT AHUNA: I wrote in the paper that Supervisor Larson says he found me, foreman of the Kalakaua avenue road gang, sitting down by the roadside reading a newspaper instead of working, when he made an inspection trip recently. I want to explain about this. It was not my fault at all, but the fault of the fore-

Personal Mention

M. A. NICOLL was a passenger from Hawaii in the steamer Mauna Loa this morning.

ALLEN WALL is back from a tour of windward Hawaii. He was a passenger in the steamer Mauna Loa.

O. A. BERNARD was among the passengers returning from the Kona and Kau coast of Hawaii in the steamer Mauna Loa.

MR. AND MRS. CHAPIN A. DAY of Ogden, with their married daughter, Mrs. Bristol, and husband, arrive on the Mongolia.

REV. MR. MONTGOMERY, the pastor of the Congregational church in Red Oak, Iowa, arrives today from the mainland.

HON. G. A. HARTMAN and wife of Portland, Ore., and Mrs. Eppinger are passengers on the Mongolia. They have taken quarters at the Courtyard.

ATTORNEY WILLIAM T. RAWLINS will leave in the steamer Sierra at noon tomorrow for San Francisco. In the Coast city he will attend to legal matters, as well as make arrangements for the appearance of Hawaiian swimmers at the Panama-Pacific Exposition.

PEARL HARBOR WORK NEARING ITS COMPLETION

(Continued from page one)

make it possible to expand this to nearly 300 if the need arose. There are two operating rooms that are the very latest word in surgical completeness, and everything connected with the administration and the running of a big hospital has been provided for. The Spaulding Construction Company of Portland has the hospital contract and will soon turn the completed plant over to the government.

The coal plant is one of the most interesting adjuncts to the yard. It has a normal capacity of 200,000 tons; but this can be increased by almost a half. The coal will be kept submerged and a network of tracks carried on steel trestles supported by concrete piers will carry portable towers and coal cars across and around the pile. These tracks at the same level—50 feet above the water—will be carried over the coaling wharf to handle both incoming and outgoing fuel. The concrete work of the storage basin and pier was done by yard labor, but the contract for erecting the steelwork is held by the Honolulu Planning Mill, the figure being \$53,000.

The fuel storage facilities of the yard include five tanks for fuel oil, each tank having the staggering capacity of 2,000,000 gallons, one tank for gasoline, holding 80,000 gallons and one for the special oil used by the Diesel engines of the submarines, this last container holding 300,000 gallons. The gasoline tank is specially insulated to protect its contents from heat extremes.

While the naval station is an actuality, and while the marine garrison and the officers on duty have been occupying their respective barracks and quarters for many months past, there is still new construction work to be launched. The erection of five shop buildings, contract for which went to the Lord-Young Engineering Company some time ago for \$60,975, is just being started. Structural steel for these buildings arrived in the cooler Hector, which has just recently completed the discharge of its cargo. The five buildings which will soon be part of the yard equipment are the pattern shop, paint shop and rigging loft, boat storehouse, steel storehouse and lumber storehouse.

New Work. A new contract which is soon to be advertised is for the construction of four more sets of quarters for junior officers, the sum available for the four being \$20,000. Plans and specifications are to be given out in the near future. By the Mongolia today two more navy civil engineers are reporting for duty. These are Civil Engineer Charles W. Parks and Assistant Civil Engineer Glenn R. Burrell, both of whom have served

man at Moiliili quarry. He had not sent down the road material for us, so what could we do? I waited for the material and while waiting I read the paper. Any time the foreman sends down material, I and my men will be working.

FOR SALE

In Puunui—House and lot in good location, with all improvements. House just recently erected.

Desirable home on Wilder Ave., in Makiki district, close to Oahu College. May be bought on easy terms.

PRICE \$4250

Call at our office and gain further information.

Stangenwald Building.

Guardian Trust Co., Ltd.

Stangenwald Building, Merchant St.

WICHMAN & CO.

Leading Jewelers.

A Diamond is not only a beautiful possession—but also a wise and safe investment. It is a good time to buy.

A tour here before and are thoroughly familiar with Pearl Harbor plans. Civil Engineer Parks will be the ranking member of the corps and will therefore become public works officer relieving Civil Engineer Samuel Gordon. The latter's tour of duty here is about up and he will probably be transferred to the mainland within the next few months.

The new plans for the construction of the drydock call for the building of

Millions From Current Business

Pacific Gas & Electric Company is the most firmly established business of its class in America. The gross income of the Company amounts to more than a million and a half dollars a month, and its net profits are over \$8,000,000 per annum. There is no risk whatever encountered in investing in its First Preferred Stock. Here is no rainbow chasing; no experiment; no 4000% profit in 1500 years, but a live, prosperous, profitable investment paying, at its present price of \$82.50 per share, 7.27 %, with the added advantage of a quarterly dividend. It may be bought in any amount from one share up from

C. G. BOCKUS

Authorized Agent for Hawaii

P. O. Box 542

503 Stangenwald Bldg.

Phone 2794

FOR SALE \$1200

Five room house, modern improvements, plumbing, gas and electric lights installed

Close to Punahou School

:: lot is 53 x 105 feet ::

Trent Trust Co.

VEIRA JEWELRY CO.

"Waterhouse Trust"

HOUSES FOR RENT

FURNISHED

2336 Oahu Avenue, Manoa 4 bedrooms . . . \$40.00
1252 Kinau St., cor. Armstrong and
Vancouver Aves., Manoa 3 bedrooms . . . 60.00
2568 Hooke St., Puunui 5 bedrooms . . . 75.00
Cottage, Adams Lane 3 bedrooms . . . 50.00

UNFURNISHED

770 Kinau St. 3 bedrooms . . . \$32.50
1239 Wilder Ave. 3 bedrooms . . . 40.00
1231 Matlock Ave. 2 bedrooms . . . 22.50
528 Kinau St. 3 bedrooms . . . 35.00
1817 Kalakaua Ave. 3 bedrooms . . . 30.00
1915 Kalakaua Ave. 2 bedrooms . . . 30.00
1417 Beretania St. 2 bedrooms . . . 30.00
1126 King St. 5 bedrooms . . . 50.00
2534 East Manoa Road,
Manoa Valley 2 bedrooms . . . 44.00
839 Young St. 3 bedrooms . . . 35.00
2 cottages, Adams Lane, City . . . 3 bedrooms . . . 35.00

"Waterhouse Trust"

Cor. Fort and Merchant Sts.

LILIH A ST. TRACT

Situate on the Waikiki side of Liliha Street, about 200 feet mauka of Kuakini Street, comprising

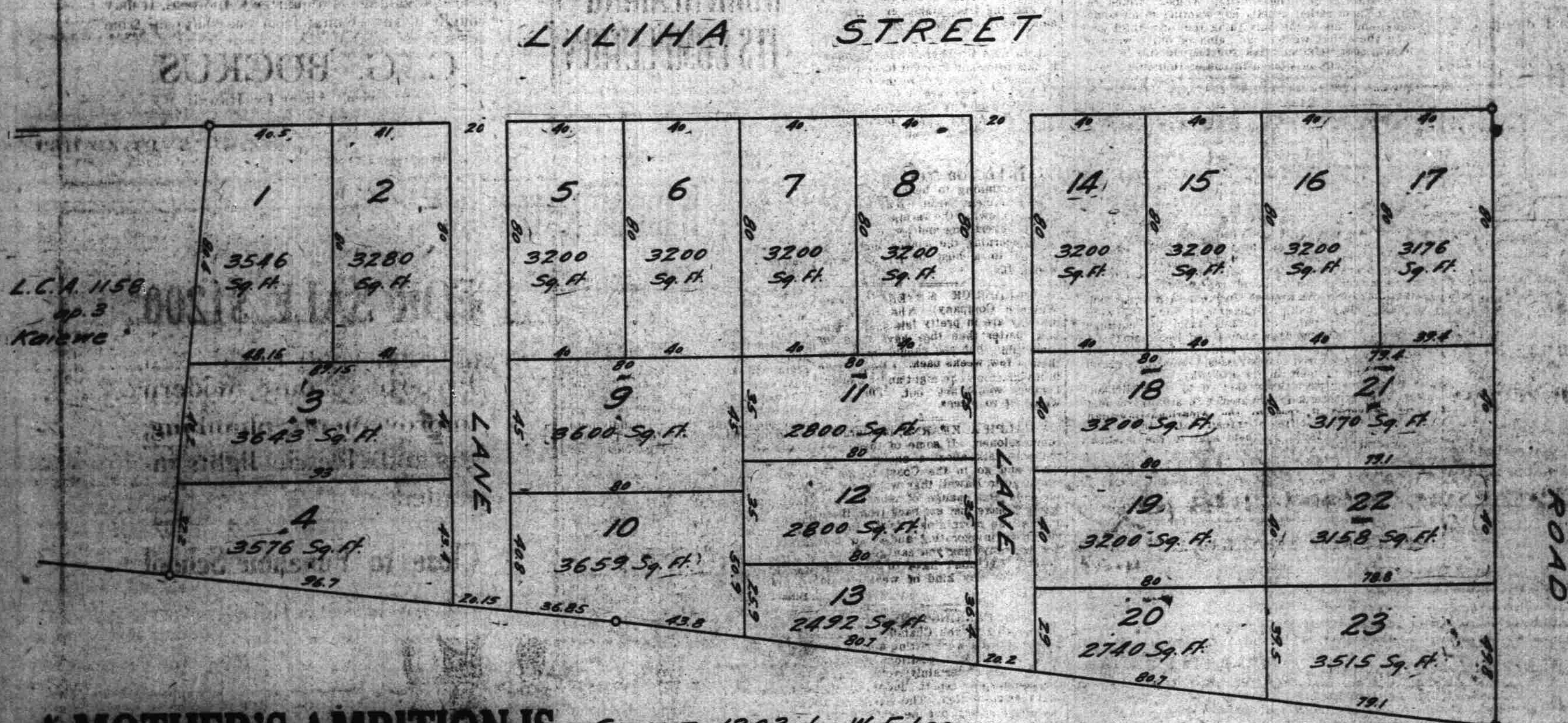
23 LOTS

To be Sold at Auction on the Property

Tomorrow, January 16, 1915, at 3 o'clock in the afternoon

Terms: Quarter cash, balance on time.

O. A. STEVEN, Auctioneer



A MOTHER'S AMBITION IS GRANT 1303 to W. F. Lee

That she and her children and husband shall own the home they live in. She will slave and scrape and save, with that one object in view. ARE YOU MAN ENOUGH TO APPRECIATE IT.

Some of you men who pay rent often wonder, storm and threaten at little expenditures made by your wife which you call extravagances.

Did you ever realize you have never given her an incentive for which to scrape and save.

**Do It Now-Start the home-You do your part-She will do hers
You put her in her own home and she will keep her end up.**

The above property that I am selling tomorrow afternoon, will have as purchasers, a fine class of people. Be a purchaser at the sale I feel certain that you can depend upon this fact---That Your Neighbors Will Be All That You Would Wish

**Don't Forget. The Sale is Saturday, January 16, at 3 o'clock in the
Afternoon, on the Property.**

O. A. STEVEN, Auctioneer

Are You Insured

If Not, See

US

Castle & Cooke, Ltd.

Fire, Life, Marine, Automobile and
Accident Insurance AgentsIf at first
you don't
succeed—
save, save
againBANK OF HAWAII
LTD.

C. Brewer & Co.

(Limited)

SUGAR FACTORS,
COMMISSION MERCHANTS,
SHIPPING AND INSURANCE AGENTS.

PORT ST., HONOLULU, T. H.

List of Officers and Directors:
E. P. HISHOP, President
G. H. ROBERTSON, Vice-President and Manager
R. IVERS, Secretary
E. A. B. BOSS, Treasurer
G. R. CARTER, Director
C. H. COOKE, Director
J. B. GALT, Director
R. A. COOKE, Director
A. GARTLEY, Director
D. G. MAY, Auditor

BANK

OF

HONOLULU

LIMITED

Issues R. N. & R. Letters of
Credit and Travelers' Checks
available throughout the world.Cable Transfers at
Lowest Rates

Fire Insurance

THE
B. F. Dillingham Co.
LIMITEDGeneral Agent for Hawaii:
Atlas Assurance Company of
London, New York. Under-
writers' Agency: Providence
Washington Insurance Co.
4th floor Stangenwald Building

THE YOKOHAMA SPECIE

BANK, LIMITED.
Yen.
Capital subscribed.....\$5,000,000
Capital paid up.....\$3,000,000
Reserve fund.....\$1,350,000
S. AWOKI, Loan Manager

Giffard & Roth

Stangenwald Bldg., 142 Merchant St.
STOCK AND BOND BROKERS
Members Honolulu Stock and Bond
Exchange

Honolulu Stock Exchange

Friday, Jan. 15.

MERCANTILE	Bid.	Asked.
Alexander & Baldwin, Ltd.	200	225
C. Brewer & Co.		
SUGAR.		
Ewa Plan. Co.	21 1/2	22
Hauku Sugar Co.	125	
Haw. Agrl. Co.	150	
Haw. C. & Sug. Co.	33	33 1/2
Haw. Sugar Co.	33 1/2	35
Honokaa Sugar Co.	4	4 1/2
Honolulu Sugar Co.	100	140
Hutchinson S. Plan. Co.	15	
Kahuku Plan. Co.	16	
Kekaha Sugar Co.	120	
Koloa Sugar Co.	130	
McBryde Sugar Co., Ltd.	5 1/2	5 1/2
Oahu Sugar Co.	19 1/2	20
Olaa Sugar Co., Ltd.	5 1/2	5 1/2
Onomea Sugar Co.	29 1/2	30 1/2
Pauhaug S. Plan. Co.	11	
Pacific Sugar Mill		
Pala Plan. Co.		
Peepee Sugar Co.	125	150
Pioneer Mill Co.	23 1/2	24
Waialua Agri. Co.	90	95
Waialua Sugar Co.	125	
Waianae Sugar Co.		
Waimea Sugar Mill Co.		
MISCELLANEOUS.		
Hauku F. & P. Co., Ltd.		
Hauku F. & P. Co., Com.		
Haw. Electric Co.	160	
Haw. Irr. Co., Ltd.		
Haw. Pineapple Co.	35 1/2	
Hilo R. R. Co., Ltd.		
Hilo R.R. Co., Com.		
Hon. B. & M. Co., Ltd.	15	15 1/2
Hon. Gas Co., Ltd.	100	
Hon. Gas Co., Com.	100	
Hon. R. T. & L. Co.		
Inter-Island S. Nav. Co.	140	
Mutual Tel. Co.	18	18 1/2
Oahu Ry. & Land Co.	131 1/2	132 1/2
Pahang Rubber Co.	10	
Tanjong Pagar Rbh. Co.	20	
BONDS.		
Honolulu Ditch Co. 6s.		
Haw. C. & Sug. Co. 5s.		
Haw. Irr. Co. 6s.		
Haw. Ter. 4s. Ref. 1905.		
Haw. Ter. 5s. Pub. Imp.		
Haw. Ter. Pub. Imp. 4s.		
Haw. Ter. 4 1/2s.		
Hilo R.R. Co. 6s. Is. '01.	55	
Hilo R.R. Co. R.&E. Con. 6s.		
Honokaa Sug. Co. 6s.	82 1/2	
Hon. Gas Co., Ltd. 4s.	100	101
Hon. R. T. & L. Co. 6s.	104	
Kauai Ry. Co. 6s.	100	
Kohala Ditch Co. 6s.	90	
McBryde Sugar Co. 5s.	100	
Mutual Tel. 6s.	101	
Oahu Ry. & Land Co. 5s.	103	
Olaa Sugar Co. 6s.	108	
Olaa Sugar Co. 6s.	78	82 1/2
Pacific G. & F. Co. 6s.	102 1/2	
Pacific Sugar Mill Co. 6s.	70	100
Pioneer Mill Co. 6s.	100 1/2	
San Carlos Milling Co. 6s.	100	
Waialua Agri. Co. 5s.	101	

Sales: Between Boards—50 H. C. & S. Co. 33 1/2; 75 H. B. & M. Co. 15; 75-10 Haw. Sug. Co. 34; \$11,000, \$4000 Hilo Ex. 6s 55; \$1000 Olaa 6s 80; 10 Haw. Pineapple Co. 36.
Session Sales—25 McBryde 5 1/2; 60 50, 15 Hon. B. & M. Co. 15.

DIVIDENDS.

Jan. 15.—Haw. Sug. Co. 30; O. R. & L. Co. 55; Peepee 100; Waialua, 50; Oahu Sug. Co., 10.
Latest sugar quotation: 96 deg. test, 4.08 cts.; or \$51.60 per ton.

Sugar 4.08 cts
Beets

Henry Waterhouse Trust Co., Ltd.

Members Honolulu Stock and Bond Exchange.
Fort and Merchant Streets
Telephone 1208

J. F. MORGAN CO., LTD.

STOCK BROKERS
Information Furnished and Loans Made.
Merchant Street—Star Building
Phone 1572From Hawaii to Coast Together.
Two sailing vessels leaving separate ports in the Hawaiian Islands were docked together at Port Townsend, Wash., with the arrival of the barkentine Mary Winkelman from Honolulu and the bark Puako from Mahu.

FOR RENT
Fine 2-bedroom cottage in town; gas; screened; electricity; \$22.
Renovated 5-bedroom house; 30.
FOR SALE—Large house and lot with bearing trees and grapevines; \$3500.
J. H. Schnack,
Real Estate
842 Kaimanani St., Telephone 3633

Alexander & Baldwin
Limited.Sugar Factors
Commission Merchants
and Insurance Agents

Agents for
Hawaiian Commercial & Sugar Co.
Hauku Sugar Company,
Pala Plantation,
Maui Agricultural Company,
Hawaiian Sugar Company,
Kahuku Plantation Company,
McBryde Sugar Co., Ltd.,
Kauai Railroad Company,
Kauai Fruit & Land Co., Ltd.
Honolulu Ranch.

Bishop & Co.

BANKERS
Pay 4% yearly on Savings Deposits, compounded twice annually.

MEAT MARKET & GROCERY

Phone 3451

C. O. VEE HOP & CO.

FOR SALE

\$300—Corner 4th and Palolo ave., 50 x 100.
\$250—Lot 50x100, 4th Ave.
\$375—Lot 50x150, Palolo Ave.
All these lots are only one block from Waialae coastline.
Terms are \$25 down and \$10 per mo. Here is your chance.

P. E. R. STRAUCH

Walter Bids. 74 S. King St.

AGENTS WANTED

HOME INSURANCE CO. OF HAWAII
Ltd., O'Neil Bldg., 96 King St., corner Fort St. Telephone 3529

FOR RENT

Fine 2-bedroom cottage in town; gas; screened; electricity; \$22.
Renovated 5-bedroom house; 30.
FOR SALE—Large house and lot with bearing trees and grapevines; \$3500.

J. H. Schnack,

Real Estate
842 Kaimanani St., Telephone 3633HAWAIIAN TRUST CO., LTD.
HONOLULU, H. T.

HOUSES FOR RENT.

FURNISHED.

Makiki District, 1704 Anapuni St.,
2 bedrooms.....\$ 40.00
College Hills, 2562 Jones St.
4 bedrooms.....60.00
College Hills, 2336 Oahu Ave.
4 bedrooms.....125.00

UNFURNISHED.

1738 Young St. 4 bedrooms.....\$35.00
1263 Miller St. 2 bedrooms.....25.25
School St. 2 bedrooms.....15.00
School St. 2 bedrooms.....13.50
OFFICES FOR RENT—923 Fort St.; 130 S. King St., Kaulaolani building.

CAPITAL (FULLY PAID) \$200,000.00

SHIPPING AND WATERFRONT NEWS

A DIRECT FREIGHT SKIPPER OF IBSEN MAKE PROGRESS
LINE TO MANILA
IS NEW PLAN
IS INVENTOR OF
LIFE-SAVER
IN SALVAGE OF
MALAKKA

A fast freight service between the Philippines, Hawaii and the west coast of the United States, making San Francisco a terminal point, is the plan now completed by Manila and China coast capitalists, who have announced the formation of a company to operate two chartered steamers to carry cargo to San Francisco, returning to the Orient with general cargo.

The vessels are said to be of small tonnage necessitating a call at Honolulu for bunker coal. The vessels now engaged for the new traffic belong to the Straits Settlements Steamship Company, with headquarters at Singapore, China. They belong to a large fleet of vessels well known along the Asiatic coast.

The proposition is understood to have received instant indorsement from Manila exporters.

The information of this latest stroke of enterprise on the part of the Chinese comes from J. F. Boomer, the regular correspondent of the United States bureau of foreign and domestic commerce, stationed at Manila. The Chinese have made the move in order to get a wider outlet for their goods.

At present, copra is one of the four principal products of the Philippines. It is coconut meat, dried, and in the Philippines the latest methods of drying it have been adopted, so that the coconut will not lose its white color. Copra now goes to San Francisco in increasingly large quantities from Tahiti, from the Philippines and to some extent indirectly from the East Indies by way of Australia.

The Philippine producers expect that the United States will be able to absorb the copra that formerly went to Germany, and this steamship line is to be one of the means of developing the American market.

Hawaii Ships Much Coffee.

Coffee made up a large portion of the cargo brought to the leeward district of the island of Hawaii in the steamer Mauna Loa, which arrived this morning with 2540 sacks of the product. Other items on the freight list were 2250 sacks of sugar, two mill rollers, consignments of fruit, eggs, poultry, ducks, vegetables, 29 carcasses of beef, 16 bales of hides, 29 sacks of taro, 105 bunches of bananas, 25 head of steers, 10 calves and 180 packages of sundries. Pursuer Sheldon reported heavy seas and strong gales in steaming along the windward coast of Hawaii. The vessel will leave for Kona and Kau Tuesday afternoon.

Sparks from the Wireless.

The following wireless message has been received by the agents of the S. S. Wilhelmina, bound for Honolulu: For Honolulu—84 cabin passengers, 12 steerage passengers, 323 bags mail, 50 Wells Fargo Express matter, 12 automobiles, 3062 tons cargo; for Hilo—two automobiles, 1412 tons cargo. Ship arrives Tuesday morning and will dock at Pier 15.

STAR-BULLETIN GIVES YOU
TODAY'S NEWS TODAY

WANTED.

Stenographer from the states, of pleasant address, used to meeting the public, as assistant to manager to a Port street business. Telephone 3675.

Feb. 1, young couple wants permanent room and board with refined family in good neighborhood. Address box 133, Star-Bulletin. 6062-6t

FURNISHED COTTAGE.

Furnished cottage and light house-keeping rooms; all conveniences; electric lights; bath, running water; short distance from postoffice. Moderate. Gansel place, Fort and Vineyard. Tel 1541 5964-4t

IN THE CIRCUIT COURT, FIRST
Circuit, Territory of Hawaii. In
Probate—At Chambers.

In the matter of the estate of Lau Yen Sen, deceased.
Order of notice of petition for allowance of accounts, determining trust and distributing the estate.

On reading and filing the petition and accounts of Lau Chong, executor of the estate of Lau Yen Sen, deceased, wherein petitioner asks to be allowed \$480.51 and charged with \$1495.55, and asks that the same be examined and approved, and that a final order be made of distribution of the remaining property to the persons thereto entitled and discharging petitioner and sureties from all further responsibility herein:

It is ordered, that Tuesday, the 23d day of February, A. D. 1915, at 9 o'clock a. m. before the judge presiding at chambers of said court at his courtroom in the Judiciary building, in Honolulu, County of Honolulu, be and the same hereby is appointed the time and place for hearing said petition and accounts, and that all persons interested may then and there appear and show cause, if any they have, why the same should not be granted, and may present evidence as to who are entitled to the said property.

By the Court:
JOHN MARCALLINO,
Clerk Circuit Court.
Dated the 15th day of January, 1915.
6062-Jan. 15, 22, 29, Feb. 5.

Inventor of a life-saving appliance that in maritime circles has already received wide recognition, Captain C. Smith, master of the big Norwegian freighter Henrik Ibsen, is a visitor to Honolulu after an absence of several months.

The freighter with 6000 tons of Australian coal for the inter-island Steam Navigation Company, has been refitted and repaired since his initial visit when partly dismantled and in distress it reached port after a trying experience with a north Pacific hurricane. At Adelaide the vessel was placed in drydock, a new foremast fitted and other damages repaired.

Captain Smith is accompanied by his wife. His command is credited with having the most luxuriously appointed cabins to be found on any freighter making the port of Honolulu. The Henrik Ibsen is practically a new ship and represents a modern type of freight carrier, fitted with the latest appliances for the speedy loading or discharge of cargo.

The captain of the Ibsen has recently been awarded patents in practically all civilized countries on his new life-boat davit, pronounced by maritime men the most satisfactory and reliable equipment yet brought before the attention of shipbuilders. It has been installed on a number of lines operating out of New York and Liverpool.

Captain Smith reported very rough weather in steaming from Newcastle for Honolulu. The vessel completed the trip in 25 days. The Henrik Ibsen will remain outside the harbor awaiting the departure of the British freighter Strathgarry from the inter-island coal bunkers. The vessel will receive fumigation become coming to a berth. It may take 10 days to unload its fuel.

HARBOR NOTES

Taking ballast, the schooner Helene was dispatched for the Sound yesterday afternoon.

The schooner Camano with a cargo of lumber for Hilo is reported to have sailed from Port Ludlow 29 days ago.

Leaving Tacoma the early part of the week the schooner J. H. Bruce has been supplied with lumber for Honolulu.

The American barkentine Georgian, with a shipment of nitrates from the Chilean coast, is due at Honolulu early in February.

The schooner A. B. Johnson is listed to leave Australia with coal for the islands. The date of sailing and destination has not been disclosed.

The schooner Muriel, from San Francisco with general cargo and lumber for Hana, Maui, may reach destination the latter part of February.

With nitrates from Chilean ports, the American schooner James Tuft is out 24 days. The vessel will bring cargo for discharge at Kahului, Maui.

Following a repainting and overhauling on the floating drydock the schooner Repeat sailed for the north Pacific in ballast yesterday afternoon.

Lumber will be discharged from the schooner Oceania Vance upon the arrival of the vessel at Port Allen. The schooner left Port Angeles 24 days ago.

The Oceanic steamer Sierra, sailing at noon tomorrow, will carry the next mail for the coast. A small list of cabin passengers has been booked for San Francisco in the Sierra.

The arrival of the schooner Espada with lumber from Grays Harbor is expected daily at Kahului, Maui. The vessel is scheduled to return to the north Pacific coast in ballast.

The last of 5000 tons of Australian coal has been discharged from the British steamer Strathgarry and the vessel is expected to steam for Puget Sound or Columbia river today.

The schooner Okanagan is lumbered with several windjammers soon to arrive at the port with lumber from Puget Sound. The Okanagan is expected here early in February.

To take a shipment of fuel oil under charter to the Union Oil Company, the steamer Lansing is expected soon to be despatched from the California coast for the Hawaiian Islands.

Perfect weather was the lot of the United States' lighthouse tender Kukui which is reported to have recently arrived at San Francisco preparatory to taking station in Alaskan waters.

The steamer Washington has been chartered to take a shipment of supplies from Seattle for the relief of the Belgians. The vessel was expected to steam for Europe the latter part of January.

Falling to negotiate a passage from Honolulu to the north Pacific coast by the way of the Kaula channel, the schooner Caroline, which left the port Tuesday, passed to the leeward of the island yesterday afternoon, setting a new course in its search of a favorable wind.

The salvage of the Danish motor-ship Malakka, which went ashore on Cedros island, lower California, a few weeks ago, is progressing, according to reports brought to Honolulu by officers in the transport Sherman.

The steam schooner Acme has cleared the wreck and the work of lightering the cargo will soon be under way. The cargo of the East Asiatic ship, consisting of 9,300 tons of Pacific coast and California products, is valued at more than \$500,000. It is believed that all of this will be saved. Captain Pillsbury, representing the underwriters, is at the scene superintending the work of salvage.

The laqua, the wrecking steamer of the Union Iron Works Company of this city, is also on hand and the arrangements are being completed to float the Malakka. This will not be done until the cargo has been removed. The stern of the ship floats in thirty-six feet of water, but the bow is firmly wedged into solid rocks. The specks will have to be blasted away before the vessel can be floated. If vessel and cargo are successfully salvaged it will constitute one of the best pieces of work of this character ever performed on the Pacific coast. There appears to be little danger of the ship being pounded by big seas because of its protected position.

Storm Delays Steamer Waialea.

Seas which are reported to have swept over many of the landings at the more exposed ports along the island and of Hawaii have delayed the arrival of the inter-island steamer Waialea, now predicted to return to Honolulu on Sunday morning. The Waialea has called at a number of ports in Kona and Kau district. The vessel is expected to bring a shipment of cattle, hogs and sugar. Much of the inward cargo will come from the Parker ranch.

Pier Fire Does No Damage.

A fire which originated in a barrel of molten tar called part of the central fire station equipment this morning to Pier 15, where vessels belonging to the Matson Navigation line are moored. A quantity of pitch became ignited and had spread to some rubbish. The blaze was put out through the prompt arrival of a chemical engine. No damage to the wharf or its contents is reported.

Kona Sugar Report.

Sugar awaiting shipment at Kona and Kau ports on windward Hawaii include the following lots according to a report brought by officers in the steamer Mauna Loa today: Punah 3140, Honokaa 2700, Paauhau 2000, Paauhau 886, Kukaia 100 sacks.

Hyades Now Due.

Due from San Francisco and Puget Sound with a large quantity of freight for local importers and the U. S. quartermaster department, the Matson steamer Hyades has been reported by wireless. The vessel is bringing a cargo including 3100 tons for Honolulu, 200 tons for Port Allen, 500 tons for Kahului, 275 tons for Hilo and 75 tons for Kona. The Hyades will take sugar from island ports for coast refineries.

Before the Japanese steamer Seito Maru left Tacoma, Wash., nine huge steel cannon bases were placed on board for the Philippine Islands. The Tacoma Maru, a sister ship, took a like quantity of armament on a previous voyage.

More than 500 tons of eggs shipped from China arrived recently at Seattle in the Japanese steamer Mexico Maru. The eggs were consigned to various importers along the Pacific coast of the United States.

The British steamer Strathgarry has been placed on the berth at New castle, N. S. W., for the Hawaiian Islands in the American barkentine Maikawell. The fuel will probably go to an outside port.

The big Norwegian steamer Henrik Ibsen, with coal for Honolulu, is expected to proceed to the north Pacific coast in ballast, to take up a charter to load a return cargo of lumber for Australia.

PASSENGERS BOOKED

Mauna Kea for Hilo and way ports January 16.—B. K. Baird, Capt. and Mrs. McCuskey, Masters McCuskey (2), Miss E. Schoen, P. Muir, Miss Edith Rose, Mr. and Mrs. J. W. Hove, Mr. and Mrs. A. B. Angus and child, J. N. S. Williams, M. H. Drummond, Geo. Humphreys, Owen Williams, Mr. and Mrs. C. H. Dickey, Mrs. J. B. Cross, Mr. and Mrs. W. G. Vadden.
Per str. Claudine for Maui ports, January 18.—H. Fassoth, John Fassoth, Per str. Kinau for Kauai ports, January 19.—Miss A. Cooke, Mrs. C. M. Cooke, J. K. Farley, Mrs. E. P. Low, Mrs. J. L. Robertson, R. S. Norris.
Per str. Mauna Kea for Punaluu and way ports Jan. 19.—Cecil Brown, Miss I. Dickson, K. G. Carpenter, J. P. Curtis, Mrs. Geo. O. Carpenter.
Per M. N. S. S. Lurline for San Francisco January 19.—Mrs. V. X. De Caro, W. H. Case.

PASSENGERS ARRIVED

Per str. Mauna Kea from Kona and Kau ports.—Miss Matsula K. Takage, O. A. Berndt, J. P. Curtis, F. Ali, E. H. Edwards, Allen Wall, Mrs. Wall, J. G. Lincoln, T. Hayashi, N. Asaki, Rev. T. Okamura, Mrs. R. A. Kane, Miss E. V. Miller, Mrs. A. Boardman, Geo. McCoy, M. A. Nicoll, B. F. Schoen.

Fresh Eggs

Daily

from

Waialae,

Andrade

and

Pond

Ranches

Honolulu Dairymen's
Association
Phone 1542Eyes Examined
Glasses Supplied

Factory on the Premises.

A. N. Sanford
OPTICIANBoston Building Fort Street
Over May & Co.THE van HAMM-YOUNG CO.,
LTD., Honolulu,
Agents

Suggestions and designs for
RESETTING and RE-MODEL-
ING OLD JEWELRY.
Gold and Platinum Settings
WALL & DOUGHERTY



F. M. BURNETTE
Commissioner of Deeds for California
and New York; NOTARY PUBLIC;
Draws, Mortgages, Deeds, Bills of
Sale, Leases, Wills, etc. Attorney for
the District Courts, 79 MERCHANT
STREET, HONOLULU, Phone 1944.

IF YOU WISH TO ADVERTISE IN
NEWSPAPERS
Anywhere, at Any Time, Call on or
Write
E. G. DAKES ADVERTISING
AGENCY
134 Sansome Street San Francisco

HONOLULU DRY GOODS CO.

GRAND TWO WEEKS' SALE NOW
ON

"Blairs" Greater Photo Plays

POPULAR

The Best Shows on Earth!
For the Best People on Earth!
In the Best City on Earth!

MATINEE DAILY AT 2:30 P. M. LAST TIME TONIGHT

MALCOLM WILLIAMS—in THE BRUTE

A famous drama of a strong man's triumph over a woman's pride. One of the latest mainland sensations, dramatized from one of the "Six Best Sellers." Also

"PERILS OF PAULINE"

14th Episode.

Watch the Popular for the BIG CABARET DE LUXE, something out of the ordinary coming soon

For Your Kidneys

The function of the kidneys is to remove waste matter from the system. This waste matter is poisonous and when not promptly and completely expelled from the body clogs the organs and interferes with their work.

REXALL KIDNEY PILLS are a most effective remedy for kidney ailments. PRICE 50 CENTS.

Benson, Smith & Co., Ltd.

The Rexall Store
Fort and Hotel Street Phone 1297
Open Evenings Until 11:15

Expert Furniture Movers

Prices Reasonable

Baggage handled with promptness

Union - Pacific Transfer Co., Ltd.

1125 St. Louis to Young Bldg. 1915-1916-1917



Boosters and Movers

WE MOVE FURNITURE AND BAGGAGE AND BOOST SIDEWALK CONSTRUCTION, BUILDING THEM OR FURNISHING THE BEST MATERIAL FOR THEM.

SERVICE FIRST
Honolulu Construction & Draying Co.
PHONE 4281

PHONE 2295 REACHES Hustace-Peck Co., Ltd.

ALL KINDS OF ROCK AND SAND FOR CONCRETE WORK,
FIREWOOD AND COAL.
14 QUEEN STREET. P. O. BOX 519

Chinese Mutual Investment Co. of Hawaii, Ltd. At the Close of Business December 31, 1914

ASSETS.	LIABILITIES.
Loan and discount—	Capital paid in \$11,350.00
On real estate mortgage..... \$ 2,000.00	Surplus fund 200.00
On time, secured by stock..... 650.00	Undivided 2,532.10
On paper, endorsed 3,225.00	
On real estate 909.00	
Real estate—	
Fixtures and furniture..... 60.00	
Accrued interest 58.55	
Accrued tax, premium 1,906.89	
Dup from agent 56.00	
Cash in bank 1,765.29	
Cash on hand 1,947.96	
\$13,782.10	\$13,782.10

I, C. Q. Yee Hop, treasurer, do solemnly swear that the foregoing statement is true and correct to the best of my knowledge and belief.

C. Q. YEE HOP, Treasurer.

Subscribed and sworn to before me this 14th day of January, 1915.
(Signed) W. TIN YAN,
Notary Public, First Judicial Circuit, Territory of Hawaii.
6061-31

Prince and Princess of Siam Guests of Hawaii on Brief Visit to Honolulu



Prince and Princess Kampengphet of Siam, visiting Honolulu on their globe-girdling tour. They are entertained here at the special request of the state department.

(Continued from page one)

Scudder, Dr. S. D. Barnes, W. A. Bowen and a number of Japanese business men and ministers headed by Rev. Mr. Okamura and Consul-general Hachiro Arita. Dr. Scudder and Mr. Atherton were to take the visitors on a brief sightseeing tour about the city.

At 8 o'clock this evening a reception will be held for them in the University club, to be followed by an informal dinner at 8:30. Arrangements for the dinner are in charge of a committee of the local University of Chicago alumni, headed by Dr. S. D. Barnes. At 8 o'clock a public mass meeting will be held in Central Union church where addresses will be delivered by Dr. Gulick and Dr. Mathews.

The two churchmen have been detailed on their mission by the Federated Council of Churches of Christ in America, of which Dr. Mathews is president. They will visit leading churchmen and statesmen in Japan and tell them of the recent good-will campaign in the United States and assure them of the friendship of Christians in America.

Doughty Greats Prince.
The Siamese royal pair, who are here as the guests of the government, were met by Captain James D. Dougherty, the governor's aide, who went aboard the ship from a launch while it was still off port. On the vessel's arrival at the dock Captain Dougherty escorted the party to an automobile and they were whisked out to the Moana Hotel to a suite especially retained for their use by the government.

Shortly afterward the governor was to pay his official call, and at the conclusion of the greetings the party will again enter waiting motor cars for a sightseeing ride through the city and environs.

The Prince and Princess, and Captain Yoo will be guests of honor at a dinner at the governor's residence this evening. They will be escorted from that entertainment back to the suite at the Moana, spending the night there.

Navy Engineers Arrive.
The Mongolia also brought two officers of the civil engineer corps of the navy, for station at Pearl Harbor. They are Civil Engineer Charles W. Parks and Assistant Civil Engineer Glenn S. Burrell. The former, by virtue of seniority, will be public works officer at the new station, relieving Civil Engineer Samuel Gordon, who will probably be transferred within a few months.

Both the incoming officers have been stationed here before and both are thoroughly familiar with Pearl Harbor and its problems. Civil Engineer Parks came here in 1908, and put in a two-year tour during the formative period, when the mid-Pacific naval base was little more than blue prints and specifications. Assistant Civil Engineer Burrell left Hawaii in 1911. He supervised the channel dredging operations at Pearl Harbor, which were completed shortly after his departure.

Civil Engineer Parks has been stationed at the Philadelphia navy yard as public officer. Assistant Civil Engineer Burrell has been at the Boston navy yard. Both are glad to renew acquaintance with Hawaii.

Through the courtesy of Dr. F. E. Trotter of the United States public health service, the Mongolia was given prompt pratique. Dr. Ranson, a federal quarantine officer, who was a passenger in the ship, yesterday conducted an examination of all passengers, officers and crew. The vessel will leave for Japan and China about 10 o'clock tomorrow morning.

Or a World Tour.
In the party with Prince and Princess is Capt. S. Yoo of the Siamese army. The trio are homeward bound in a globe-circling tour begun more than a year ago and conducted chiefly for educational purposes. From Honolulu

they do not return direct to Siam, however, expecting to spend a short time in Japan and China and arriving home late next month.

In their tour they have pretty well covered the entire civilized world, paying particular attention to Europe, where the major portion of their time was spent. They remained in New York City only a few hours, but in that brief time managed to see much. Coming west they visited Canadian points, saw Yellowstone Park, Niagara Falls, the Yosemite in California, and remained in San Francisco for a time.

The Prince is deeply interested in all the industrial and educational problems of the large outside world and is by no means a stranger to them, being a graduate of Cambridge University and having spent ten years afterward on the continent of Europe. To the Princess, however, the tour has been a revelation, for she never before has been far from Siam.

The Prince is a combination of Oriental and Occidental. In speech and manner he is typically English. Several years' service in the Siamese army has given him a military bearing. He dresses tastefully in quiet English patterns, but adds a quaint touch with his Oriental jewelry, consisting of heavy gold bracelets on each arm, one bearing a watch, and many finger rings.

He is little more than five feet tall, while the Princess is about four feet in height.

ANNOUNCE PROGRAM FOR JAPANESE CONCERT

A concert will be given in the Makiki Japanese church, Kinau and Pensacola streets, at 7:30 o'clock next Thursday evening for the benefit of the Japanese Y. M. C. A. The following program will be presented:

Orchestra—
March—
Y. M. C. A. Orchestra
Glee Club
The Cossack—Parker
Kamehameha Glee Club
Violin Solo
(a) Gypsy Romance—Russian
(b) Pierrot Serenade—Pandigger
(c) Gavotte—Rameau
George Casper

Vocal Solo
"When Chloe Sings a Song"—Stromberg
Philip C. Hall

Piano Solo
Rhapsodie No. 11—Liszt
Miss Pearl Sutherland
"Waltzes from Faust"—Gounod
Y. M. C. A. Orchestra
Koto Solo
Mrs. T. Horl, Mrs. Shibata

Male Quartet
The Four Jolly Sailors
Kamehameha Glee Club

Violin Solo
(a) Minuet—Beethoven
(b) Fantasy (To My Homeland)—Smetana
George Casper

Orchestra—
Selections from "Prince of Tivoli"—Howard
Y. M. C. A. Orchestra

KANSAS CITY, Mo., Dec. 23.—Members of the Prohibition party from Kansas, Iowa and Missouri will meet here on January 3 to launch a new campaign to last 120 days. The plan is to get the names of 5,000,000 voters on petitions for national prohibition before the question again comes up in Congress.

For this campaign the United States has been divided into eleven districts. Kansas City will be headquarters for Missouri, Kansas, Oklahoma, Nebraska and New Mexico. C. G. Hall, national committeeman of the Prohibition party here, said that the signers of the petition will be asked not to support any party in 1916 which does not have national

INDOORS
From 8 to 5
working indoors,
whether in office or
factory or store, often weakens
even a strong constitution as
shown in nervous symptoms,
languor or repeated colds.

SCOTT'S EMULSION is
helping thousands every day:
its rare oil-food en-
riches the blood and
aids the throat and
lungs. It is a strength-
sustaining tonic, free
from alcohol or any
harmful drugs. 14570

Mild, Sweet, Tender

Swift's Premium

EMPIRE THEATRE

Matinee, 1:30 p. m.
Night, 8:45 and 9:45

PROGRAM:
The Wedding of Prudence—two-act
Essanay farce-comedy.
Fanny's Melodrama—Vitagraph com-
edy, featuring Lillian Walker, Wal-
lie Van and James Lackaye.
A Man in the House—Biograph com-
edy.
Hearst-Selig Pictorial News No. 18,
1914.

PARADISE TOURS
HAWAIIAN ISLANDS
AND PACIFIC

We can furnish you with
details and estimates for
any and all excursions.
202 Kaulaolani Bldg.
Phone 5396
Honolulu, T. H.

BLJOU TONIGHT

THEATRE SATURDAY MATINEE
AND NIGHT

George Webb Presents His All-Star Players in

EAST LYNNE

When a babe you heard your father and mother talk
about this great story. Don't fail to see it yourself.

Prices—25c, 50c and 75c. Telephone 3937

Ye Liberty

2 Shows Nightly, 7:15, 8:45
Prices—10c, 20c, 30c, 50c.
TONIGHT

The Great Stroke

Hair-lifting Crook Play in Four Films.

Also

Mary Pickford - Keystone Comedy

Coming Wednesday, Jan. 20.

Annette Kellermann
IN
Neptune's Daughter

Also
The Million Dollar
Mystery

FOR RENT

Three-bedroom furnished house, Kaimuki, rental \$45.00 per month.
Bishop Trust Co., Ltd.

THE RINK, FORT STREET

COME ENJOY YOURSELF

SKATING
Afternoon..... 2 to 5 P. M. Admission 10c
Evening..... 7 to 10 P. M. Skating 25c

French: Laundry's: Branch

Telephone, Branch Office 2919

Main Office 1491

1108 Union Street Near Hotel

"---The most useful piece
of Furniture for your
home"

And now comes the McClernan

Steel Kitchen-Cabinet

to make your housekeeping easier.

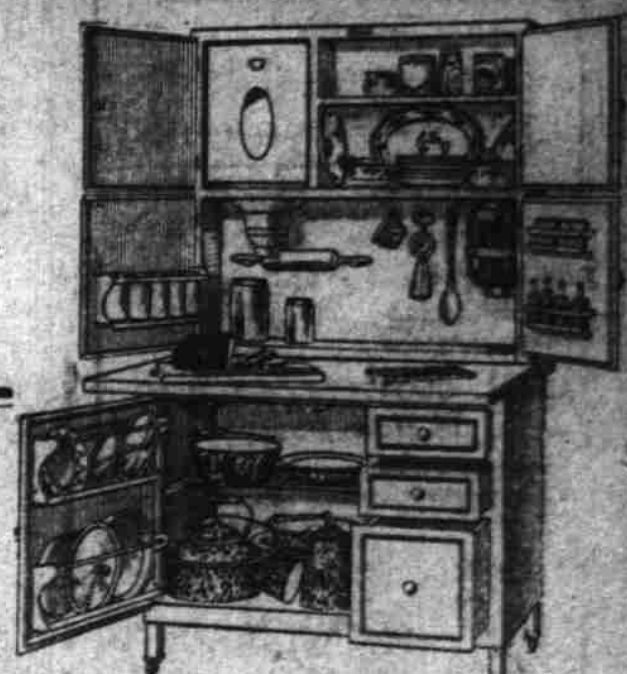
The McClernan Cabinet is made of cold-rolled steel, and there are no screws, rivets or bolts. Joints are seamless. Doors, drawers and slides cannot stick. Cabinet is finished in spotless White Enamel.

To make housekeeping easier—put a McClernan Cabinet in your home.

J. HOPP & CO., LTD.

Home Furnishers for More than 30 Years.

King Street near Alakea.



Equipment:

It is equipped with large tilting and removable after flour bin; large sanitary drawer for bread and cake; swinging glass sugar bin; glass jars for tea, coffee and spices; cutting board for meat and bread; large nickel-plated, extension table-top and ample drawer and shelf space.

Dimensions:

Dimensions: Height, 70 inches. Width, 41 inches. Depth of base, 40x28 inches. Table top extended gives working space of 40x29 inches. Cabinet is as easy to keep clean as a china plate.

Price:

Cash, \$45; on time, \$50-\$110 down and \$10 per month.

WOMAN IN BAD CONDITION

Restored To Health by Lydia
E. Pinkham's Vegeta-
ble Compound.

Montpelier, Vt. — "We have great faith in your remedies. I was very irregular and was tired and sleepy all the time, would have cold chills, and my hands and feet would blot. My stomach bothered me. I had pain in my side and a bad headache most of the time. Lydia E. Pinkham's Vegetable Compound has done me lots of good and I now feel fine. I am regular, my stomach is better and my pains have all left me. You can use my name if you like. I am proud of what your remedies have done for me." — Mrs. MARY GAUTHIER, 21 Ridge St., Montpelier, Vt.

An Honest Dependable Medicine

It must be admitted by every fair-minded, intelligent person, that a medicine could not live and grow in popularity for nearly forty years, and to-day hold a record for thousands upon thousands of actual cures, as has Lydia E. Pinkham's Vegetable Compound, without possessing great virtue and actual worth. Such medicines must be looked upon and termed both standard and dependable by every thinking person.

If you have the slightest doubt that Lydia E. Pinkham's Vegetable Compound will help you, write to Lydia E. Pinkham Medicine Co. (confidential) Lynn, Mass., for advice. Your letter will be opened, read and answered by a woman, and held in strict confidence.

Wholesome, Delicious

Swift's Premium

Chandeliers and Fixtures Installed

ALL WORK ABSOLUTELY
GUARANTEED. ALL MAN-
NER OF ELECTRIC WORK
SATISFACTORILY AND
REASONABLY HANDLED.

Electric Shop

VIENNA BAKERY

1123 Fort St. Phone 2124

EMPORIUM OF ORIENTAL GOODS.

JAPANESE BAZAAR,
Fort St., Opp. Catholic Church.

"Gold Eagle"
English-finish
Blue Serge— \$22.50

IDEAL CLOTHING CO., LTD.
54 Hotel Street

Honolulu Photo-
Supply Co.
KODAK HEADQUARTERS
1059 Fort Street

M'CHESNEY COFFEE CO.
COFFEE ROASTERS
Dealers in Old Kona Coffee
MERCHANT ST., HONOLULU

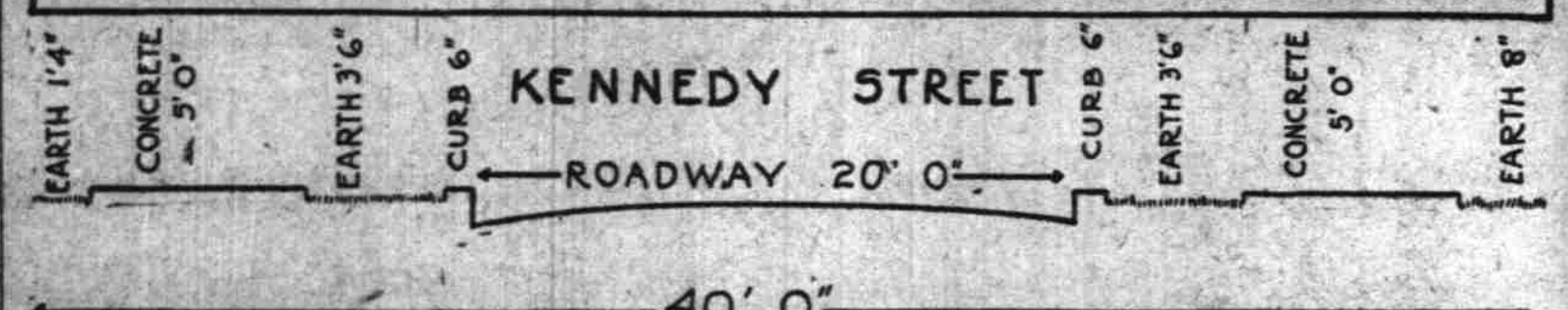
Home-Made Candies
Fresh Daily
Sweet Shop

BIRTHS

GERTZ—At Kaimuki, January 15, 1915,
to Mr. and Mrs. William Gertz, a
son (William, Jr.) Weight, 10 1/2
pounds.

Hilo's Progress in Preserving Streets is Told in Pictures

Governor Pinkham Interested in Installation of Utilities



Pictures and sketch show how "sidewalk area" may be utilized for putting down public pipes and mains without tearing up street, the utilities going down in the earth strip. The lower photograph shows a completed Hilo street.

Hilo's progress in streetwork on plans that do away with the frequent tearing up of paving to install the equipment of public utility corporations, and the interest of Governor Pinkham in developing and fostering such plans, are shown graphically in the accompanying pictures and told in the correspondence published below.

The new Punchbowl streets have carried out the idea of putting down public utilities within the sidewalk area, but it is stated that when gas mains were recently re-installed on Lunalilo street they were re-installed within the street area and that in three places within one block the street was torn up to its full width.

Governor Pinkham is taking a keen interest in advancing the idea that these public utilities, which fall under territorial jurisdiction, should do less tearing up of public streets.

What Hilo is doing is told in the following letter:

"Hilo, T. H., Dec. 24, 1914.

"Honorable L. E. Pinkham,
Governor, Territory of Hawaii, Honolulu, T. H.

"Dear Sir: Following out your ideas expressed when in Hilo regarding the cutting down of the width of streets to curtail the expense of upkeep, would say that a few interested citizens have prevailed upon the supervisors, the result of which is shown in the enclosed photograph.

"The road right-of-way is 40 feet, with 20 feet of macadam from curb to curb, the balance of the width being taken up by sidewalks and grass plots.

"I might add that it is the intention to so narrow all streets in the residential section.

"I am pleased to inform you that several thousand feet of curb and sidewalk have been already laid with prospects for more right along the same lines.

"Yours very truly,
"D. S. BOWMAN."

The photographs and accompanying drawing show how Hilo is solving the problem, the main pipes, etc., being put down in the sidewalk area, this obviating the tearing up of the street paving.

ARMY OFFICERS NAMED TO PLAN SPORT FEATURES

A board of army officers has been named by Gen. Carter to draw up a program of events for the military end of the Mid-Pacific Carnival.

This board, of which Maj. E. V. Smith is president, is to confer with Director-General J. D. Dougherty, as to dates, etc.

Following is the personnel of the board: Maj. E. V. Smith, 2nd Infantry; Maj. E. L. Butts, 25th Infantry; Capt. Norris Stanyon, C. A. C.; Capt. Harry E. Knight, 1st Infantry; Capt. P. D. Glassford, 1st Field Artillery; 1st Lieut. Clarence K. Lyman, 4th Cavalry.

CONCERT
SATURDAY
EVENING
8:30 TO 11 P. M.,
YOUNG HOTEL
ROOF GARDEN
PROF. CARL
MILTNER'S
ORCHESTRA

WEEKLY PRODUCE REPORT

By A. T. LONGLEY, Superintendent in Charge
WEEK ENDING JAN. 14, 1915.

BUTTER.

Small demand for island fancy. Glenwood receipts light. Good demand for tub butter. Receipts light. Fancy island, lb., 50c; island tub, lb., 30c.

EGGS.

Island eggs plentiful, receipts heavy. Price dropping fast. Fresh island, doz., 45c; duck eggs, doz., 30c.

POLTRY.

Demand good for fat chickens. Muscovy and Pekin ducks plentiful. Broilers, fat, 2 to 3 lbs., lb., 35c to 40c; young roosters, lb., 30c to 32½c; hens, good condition, lb., 25c; turkeys, lb. (none in market); ducks, Muscovy, lb., 25c; Pekin, lb., 25c; Hawaiian, doz., \$6.25; geese, lb., 30c.

VEGETABLES AND PRODUCE.

Beans, string, green, lb., 3c; string wax, lb., 3c to 4c; dry, Maui red, per cwt., \$4; calico, per cwt., \$3; small whites, per cwt., \$4; dried peas, per cwt., \$4.50; beets, doz. bunches, 30c; cabbage, lb., 2c to 4c; beans, lima, in pod, 3c to 4c; carrots, doz. bunches, 40c; corn, sweet, per 100 ears, \$2.50; Hawaiian small yellow, ton, \$38.50 to \$39; large yellow, \$37 to \$38.50; cucumbers, doz., 35c to 40c; peanuts, large, lb., 5c; small, lb., 5½c; green peppers, bell, lb., 4c to 6c; chili, lb., 2½c; 4c; potatoes, island Irish, lb., 1½c; egg plant, doz., 35c; pumpkin, lb., 1½c to 1¾c; sweet potatoes, native varieties, per cwt., market over-looked, 85c; taro, wet land variety, cwt., \$1.10; bunch, 15c; tomatos, lb., 3c to 6c; green peas, doz., 10c.

FRUITS.

Alligator pears (none in market); bananas, Chinese, bunch, 35c to 60c; cooking, bunch, 75c to \$1; breadfruit, (none in market); figs, per 100, 80c; grapes, Isabella, lb., 10c; oranges, Hawaiian (none in market); limes, 100 (good in demand), 50c to 85c; pineapples, doz., 40c to 60c; strawberries, (none in market); watermelons (none in market); pohas, lb., plentiful, slow sale, 10c; papayas, lb., 1½c; rouselle, 3c to 4c.

LIVESTOCK.

Beef, cattle and sheep are not bought at live weight. They are taken by the meat companies, dressed and paid for by dressed weight. Hogs, up to 150 lbs., per lb., 11c to 12c; 150 lbs. and over, 10c to 12c.

HIDES—Wet Salted.

Demand good for hides. Steers, No. 1, lb., 14½c; No. 2, lb., 13½c; kips, lb., 14½c; sheep skins, each, 10c to 20c; goat skins, each, white, 10c to 30c.

DRESSED MEATS.

Beef, lb., 11c to 12c; veal, lb., 12c to 13c; mutton, lb., 11c to 12c; pork, lb., 16c to 17½c.

FEED.

The following are quotations on feed f. o. b. Honolulu:
Corn, small yellow, ton, \$43 to \$44; large yellow, ton, \$42 to \$43; cracked ton, \$43 to \$43.50; barley, ton, \$37.50 to \$38; bran, ton, \$36 to \$37; oats, ton, \$43.50 to \$44; wheat, ton, \$56 to \$57; middlings, ton, \$44 to \$44.50; hay, ton, wheat, \$23 to \$28; alfalfa, ton, \$23; alfalfa meal, ton, \$23.

Siberia Leaves Tuesday.

The Pacific Mail liner Siberia will leave for San Francisco between 9 and 10 o'clock next Tuesday morning, according to announcement by H. Hackfeld & Company. The vessel is reported nearing the port from the Orient with 1450 tons of general cargo for Honolulu. About 30 passengers for the coast have been booked in this vessel. The Siberia is believed to bring more than 100 Asiatic steerage passengers from China and Japan for the islands.

Columbia May Arrive Sunday.

The American-Hawaiian freighter Columbia, with New York and Puget Sound cargo including an unusually large shipment of livestock, is due at the port on Sunday morning, according to a late wireless message received by General Freight Agent C. P. Morse. The Columbia also carries 600 head of hogs and 14 head of horses. The vessel will visit island ports to take sugar destined for the east coast.

Let's All Boost for Honolulu!

Ad Club Members and Others Who Are
Interested in the Welfare of this City



NEXT MONDAY, between the hours of NOON and ONE O'CLOCK, a big promotion work will be consummated. A motion-picture of Honolulu will be made for exhibition in San Francisco, during the Exposition and everybody should get in the picture. The picture will also be shown around the world in Pathe Weekly letters and the benefit to Honolulu will be hard to estimate.

As members of the Ad Club and as citizens of Hawaii let's be out in full force.

Watch daily papers for line of march of the camera man and be along the street at the time specified above and here---Monday, January 18th, 12 to 1.

W. R. FARRINGTON,
President Honolulu Ad Club.

Every resident of Honolulu should appear in the photo-play that will advertise and promote this city around the world. To be in the scene is a duty that everyone owes himself and owes his city.

From a promotion-standpoint there is nothing that can excel this kind of publicity. It pays and pays big. Be there next Monday from 12 to 1, on foot and in automobiles—tops down on these—and keep moving. A bigger, more prosperous city will be the result.

ALBERT P. TAYLOR,
Acting Secretary, Hawaii Promotion Committee.

ROUTE.

Commencing at Alakea and Hotel streets the motion picture operator will travel along Hotel street to Fort street. The crowd should bank on the makai side of Hotel street, facing Waikiki. From Fort and Hotel streets the camera man will travel down Fort to King street, the crowd being on the Ewa side of Fort street facing mauka. From the intersection of Fort and King streets he will travel over King to Bishop street with the crowd on the makai side of King street facing Ewa. From King and Bishop street the course will be along Bishop to Hotel street; the crowd along the Young hotel building facing makai. From Hotel and Bishop streets the route will lead back to the corner of Hotel and Alakea along Hotel street with the crowd this time facing Ewa on the makai side of Hotel street.

APPEAL QUESTION TO BE DECIDED AT MEETING MONDAY

President Charles R. Hemenway of the Bar Association of Hawaii is sending notices today to the members of the organization calling a special meeting for next Monday afternoon, to discuss the question submitted to Hawaii yesterday in a cable from Senator Charles A. Culberson, chairman of the senate judiciary committee in Congress.

Senator Culberson's message reads: "Regarded as necessary to cut off appeal to supreme court of the United States. Would it be better for Hawaii to substitute appeal to the circuit court of appeals of the ninth circuit or have decision of your supreme court final?"

This refers to the bill passed by the house December 16 and by the senate yesterday, as stated in the message published yesterday by the Star-Bulletin. If President Wilson signs the measure only cases dealing with federal questions in this district can be carried to the United States supreme court.

Apparently, however, Congress is willing to permit appeals from the local supreme court to the ninth circuit court of appeals at San Francisco, making that the court of final resort, if the bench and bar of the territory so desire. Whether this would be preferable to making the territorial supreme court the last resort is the proposition to be considered by the Bar Association.

"Senator Culberson evidently wants an answer at the earliest possible date," said Hemenway today, "and we shall endeavor to give it to him next Monday evening. Just what action the bar will take cannot be foretold. From present indications there will be differences of opinion and considerable argument before we reach a decision. I can make no closer guess than that as to the outcome of our meeting."

GAS COMPANY HAS INGENIOUS MECHANICAL PUZZLE ON VIEW NOW

For the past few days, scores of people have stood in wonder in front of the Alakea street window of the Honolulu Gas company.

The occasion was a puzzle in the way of a gas water-heater suspended by cords from the ceiling. There is

CHOICEST NEW ZEALAND LAMB BUTTER AND SMOKED SNAPPER

As well as the Best

Products and Groceries

At

Reasonable Prices

Trade With

C. Q. Yee Hop & Co.

PHONE 3451

SOUTH KING STREET



HAWAIIAN TRUST COMPANY, LTD

STATEMENT OF RESOURCES AND LIABILITIES,
DECEMBER 31, 1915.

ASSETS.		LIABILITIES.	
Cash:		Capital stock (fully paid) ..	\$200,000.00
On hand	\$ 1,260.88	Trust and agency accounts ..	168,615.79
In banks	48,201.53	Undivided profits	179,767.60
With agents	\$110,903.09	Employees' pension fund ..	11,212.75
Loans receivable:		All other liabilities	695.23
Loans, demand and time ..	158,756.45		
Bonds	144,516.00		
Stocks in other corpora-			
tions	60,690.00		
Real estate	7,221.50		
Office furniture & fixtures ..	24,408.24		
Accounts due us at interest ..	10,808.64		
General accounts due us ..	30,656.25		
Employees' pension fund in-			
vestment account	11,212.75		
All other assets	1,118.36		
	\$560,291.28		\$560,291.28

Territory of Hawaii, City and County of Honolulu, ss.
I, L. ABRAMS, Secretary of the HAWAIIAN TRUST COMPANY, LIMITED, do solemnly swear that the above statement is true to the best of my knowledge and belief.

Subscribed and sworn to before me this 7th day of January, A. D. 1915.
J. E. O'CONNOR,
Notary Public, First Judicial Circuit, Territory of Hawaii.
6056-Jan. 9, 13, 15, 20, 23.