

From San Francisco: June 21  
For San Francisco: June 25  
From Vancouver: June 23  
For Vancouver: June 23

# EVENING BULLETIN

3:30 EDITION

Try buying Bulletin Advertised Things and note your profits

The Bulletin want ads show, to those who read and answer them, NEW PHASES of life and enterprise, and industry, and business in this city. No one knows the city unless he knows the Bulletin want ads.

VOL. XI. NO. 4242.

10 PAGES.—HONOLULU, TERRITORY OF HAWAII, MONDAY, JUNE 21, 1909.—10 PAGES.

PRICE 5 CENTS.

## TRIAL OF AGITATORS REQUIRES SPECIAL VENIRE CALHOUN MUST AGAIN FACE TRIAL

### STRIKE LEADERS PLACED ON TRIAL

Seven Jurors Are Secured Before Venire Is Exhausted—Lightfoot Gets Setback, and Assault Cases Go To Judge Robinson

Defeated in his melodramatic efforts before Judge De Bolt in the Circuit Court this morning to argue the Court into arranging the trials of his many defendants, so that he could be the kingpin in each and every case, Lightfoot, attorney for the Higher Wage Association, is in a sorry predicament with the fourteen Japanese strikers, indicted on riot charges, and may have to refund the fees paid him by them, on account of the Court's order that the riot cases be referred to Judge Robinson's court.

This, of course, will be the status of the case if, as he says, the strikers have paid him the money. However, there is another interesting light cast on the matter by Deputy Attorney General Kinney, when he said:

"A hundred chances to one these men have not paid Lightfoot a penny, but that he was hired and paid by the Higher Wage Association, who are paying the fees of all martyrs to the cause, who have been arrested and held to trial."

The case of the Territory against Jotario and fourteen others, indicted on charges of riot, was called at 9 o'clock before a crowded courtroom. Attorney Kinney immediately moved that going to the chief time in which to try the cases, the number to be tried, and the impossibility of one court hearing all of the evidence, that the riot cases be transferred to Judge Robinson's court.

Lightfoot protested vigorously on the ground that Jotario and his crowd had paid him the fees, and expected him to represent them. He said he should proceed the privilege of having the cases set so that he would personally represent his clients; that they were entitled to his services.

Mr. Kinney insisted on a prompt trial, in justice to all concerned, and suggested that additional counsel be secured to aid Mr. Lightfoot in handling the cases.

"However painful it may be to the counsel," said Mr. Kinney, "if he cannot represent these defendants at the trial, he should be ready and willing to refund the money paid to him. It has been a custom for some lawyers to come into court, and try to work this game proposition through."

"I have asked the aid of additional counsel in these cases," responded Mr. Lightfoot, "one gentleman said that he

wanted a retainer of \$25,000 to go into them, another asked a cash advance of \$5000 before he would take hold. In fact many of those I have seen objected to going into the cases at all, saying they could not afford to appear in court in the strike cases, on account of their standing and the effect it would have on them. It is next to impossible to get additional counsel."

"I do not believe that any members of the Bar look harshly upon Mr. Lightfoot's taking hold of this case, but it certainly reflects no credit on him or the people he represents to get up before a thousand or fifteen hundred people the way he did, and ridicule the officers who appeared among them with warrants of arrest."

Lightfoot insisted that an attempt was being made by the prosecution to railroad his clients into a trial, and that ample time should be given for the defendants to appear with counsel to represent them.

Judge De Bolt said that the defendants should be fairly and justly dealt with, but he saw no reason for not remanding some of the cases to Judge Robinson's court, and made an order to this effect. Tomorrow morning the fifteen Japanese indicted on charges of riot will be required to appear in Judge Robinson's court, prepared for trial. As to what move Lightfoot will make, is a matter of conjecture, but that additional counsel will be retained is now up to the Higher Wage Association, and their attorney will have to divide the spoils with others who are willing to take hold of the cases.

Soga, Makino, Negoro, Tasaka and Kawamura, charged with and indicted by the Grand Jury for conspiracy, were summoned for trial, and Lightfoot filed a demurrer, which will be argued Saturday morning. Then the work of securing a jury began. After the seventh juror had taken a seat to the jury box in response to his name called by Clerk Batchelor, the next man was absent, and the next one had been summoned on the Federal Grand Jury. It was then apparent that the venire was about exhausted and Judge De Bolt made an order, summoning a new venire. Lightfoot interposed an objection to the order, on the ground that the names of the last two jurors had not been called. The Judge smiled and rescinded the order.

"The learned counsel is very unkind

(Continued on Page 4)

### ORIENTAL SMILES ADORN HANGING

Korean Pays Penalty For Murder At Kona On The Scaffold

TERRITORIAL PRISON IS SCENE OF PUNISHMENT

First Legal Execution in Three Years When Murderer of Yee Gee Pal Drops from Scaffold Platform.

Yee Hal Dam this morning suffered death as the punishment for the murder of Yee Gee Pal at Kona.

The little Korean left his cell in the Territorial Prison quietly, heard the death warrant read in the office of High Sheriff Henry, and in a few minutes following was hanging on the scaffold in expiation of his crime.

During the whole period of his incarceration, his Oriental calm had not suffered the slightest disturbance. The instincts of a hundred generations in the Hermit Country were probably uppermost in his mind, and the inbred, iron-clad customs under which he and his forefathers had lived for centuries were trying to connect with this American way of revenge for an injury against

(Continued on Page 2)

### Accuses Jiji Of Boycott

The startling statement was made by Attorney Kinney this morning in Circuit Court that he could produce an affidavit showing articles published in the Nippon Jiji, the organ of the Higher Wage Association, in which certain men were selected from the plantation and marked for ruin, and that orders had been issued for them to be ostracized. On May 27, he said that paper published an article in which it called attention to the fact that the time had come to act, and proper steps must be taken with the victims selected by the Association, who had defied their orders.

### Ideal Investment

For a few days only, we are offering some investments of the very best type. This will give you an opportunity for perfect security of a few hundreds or several thousands. Immediate acceptance is necessary. Call today.



Hawaiian Trust Company, Ltd.

### Calhoun Must Be Tried Again

SAN FRANCISCO, June 21. — Francis J. Heney, special prosecutor, stated today that Patrick Calhoun, who escaped by a hung jury, will be put on trial again, and as soon as possible.

TWO TURBINE BATTLESHIPS.

WASHINGTON, June 21. — Bids for the construction of two battleships with turbine engines have been ordered by the Navy Department to be opened in August. This indicates that the recent tests of turbine engines as well as the experience of foreign nations has convinced the Navy Department that the turbine is necessary to secure the highest speed for the largest ships of war.

MORE FLYING EXPERIMENTS.

WASHINGTON, June 21. — The Wright brothers are preparing to resume their aeroplane tests.

TWO CHINESE ARRESTED.

NEW YORK, June 21. — Two Chinese have been arrested for complicity in the murder of Elsie Sigel, the slum worker, whose body was found in a trunk on Saturday.

### HALL WILL CASE IN SUPREME COURT

Japanese Review Question of Inheritance Case

The Supreme Court met this morning, and several matters were disposed of during the short session. The Mary Dame Hall will case came before the Court on a question of inheritance tax. The case involves about \$5,600, and is on appeal by the Administrator. It was originally held that the tax could not be collected on about \$200,000 worth of property on account of Mrs. Hall having died abroad. The case of McCandless against W. R. Castle was submitted on brief. An argument was made on appeal from the Circuit Court in the case of the Territory against W. P. Jarrett, Sheriff.

### FREAR COMMUTES DEATH SENTENCE

Governor Frear today commuted the death sentence passed on George Kaleikini, who was convicted and sentenced to be hung for the killing of his wife. The trial took place in February last. The sentence was commuted to life imprisonment.

OUR NEXT FRUIT boat will be the Lurline, about June 30.

Island Fruit Co.,  
72 S. KING. PHONE 15.

### The Boys Run

From the office to the place of call and from there to destination. It's their mission to "scoot."

TERRITORIAL MESSENGER SERVICE.  
Phone 361.

### POST NOTICES OF PAPER BOYCOTT

Barbers and Billiard Men Place Notices In Their Windows

MR. TANAKA OF KAHUKU SAYS BUSINESS IS RUINED

Japanese Would Be Glad to Return to Work—Some of Them Go Into Rice Fields.

The force of the boycott is being brought more vigorously against the Hawaii Shingos that has been the special object of attack on the part of the agitator forces, and especially of the bath house gambling element of the Japanese.

In marked distinction from this course of the Japanese, it has been noted that the Nippon Jiji, the organ of the Agitators, is still carrying the advertisement of goods carried by some of the largest sugar agencies.

Boycott on Shingo. Japanese barber shops, billiard shops and small retail stores along Beretania street had notices posted on their windows this morning stating that they do not care to subscribe for the Hawaii Shingo.

Barbers and store keepers when

(Continued on Page 4)

### Planters Discuss Strike

The directors of the Planters' Association met this morning to discuss the situation. According to Secretary W. O. Smith of the Association, there was simply an informal discussion of strike conditions, but no business was transacted.

### GOVERNOR TO CONFER ON FOURTH PROGRAM

Governor Frear announced today that he will confer with the Sons of the American Revolution for the purpose of arriving at a Fourth of July program that will be generally satisfactory and popular for the people to celebrate on that day. It is understood that quite an elaborate program will be prepared and some special features added this year which will enliven the day and make it one of the most enjoyable in recent years.

### Ice Cream Soda

None better.  
HOLLISTER DRUG CO.  
Established 1879

THE PALM stands for the best only in all things to eat.

Hotel, nr. Union

### THWING'S CHARGES NOT SUSTAINED

Federal Grand Jury Has Reported With 15 Indictments

The Grand Jury this morning made its final report before Federal Judge Sanford B. Dole, and returned fifteen indictments. The report was at once put on the secret file and bench warrants issued for the arrest of those indicted. Their names are being kept very quiet for it feared that they will at once go into close retirement should they know they were wanted on the charges preferred.

All those indicted will be arraigned tomorrow morning at 10 o'clock and will probably plead to the charges against them. The report was read by Foreman Wilder and formally accepted by the Judge, who thanked the jury on behalf of the public and dismissed them.

The feature of the Grand Jury report was the roasting given Rev. Thwing as follows:

"Certain charges preferred to the administration at Washington by the Rev. E. W. Thwing, and embodying alleged violations of Federal statutes within this Territory through either the carelessness or the connivance of certain Federal Territorial officials, have also been under consideration and investigation, and it is the unanimous sense of this Grand Jury that the charges, in so far as they relate to any violation of the Federal laws within the Territory, through the carelessness or incompetence or connivance of any Federal official, are absolutely unwarranted by any direct evidence that the author thereof was able to place before this body, and that in preferring charges of this nature, unsupported by proof, the Rev. Thwing has laid himself open to the most severe censure. This jury deprecates requests for investigation of charges which cannot be reasonably substantiated."

### FILES ANOTHER REPLEVIN SUIT

Attorney Lightfoot will again file in the Circuit Court this afternoon another replavin suit, which has for its purpose the recovery of the documents taken from Makino's safe and the office of the Nippon Jiji. When he mentioned the subject in Court this morning, Attorney Kinney cut him short:

"Oh that won't take up any time. It will be as quickly and as effectually disposed of as the first replavin suit you filed."

"Well, I do not wish the learned counsel to think that we have any hopes of recovering the papers stolen from the defendants," retorted Lightfoot.

Consul General Uyeno has not as yet heard from Admiral Hiei, commanding the training ships Aso and Soga. They are due to arrive on Wednesday.

### APPROPRIATION BILL TONIGHT

County Fathers Have Big Job Facing Them

Tonight will see the Supervisors busy with the appropriation bill. For weeks past the county solons have been making mysterious hydroglyphics on big sheets of foolscap and tonight they will get down to serious business and fight the matter out.

The Supervisors will have no easy job hammering the appropriation bill into shape. Since the last bill was drawn up, the status of the county has undergone a radical change, and there is little in the way of available data to guide the lawmakers in their actions.

As almost every Supervisor has some pet hobby, which requires money, and as the supply of ready cash is more or less limited, there is liable to be considerable wrangling, before the appropriation bill is finally passed.

### INCREASED STOCK FOR HILO R.R. CO.

New Series Of Bonds Is Also To Be Issued

At a special stockholders' meeting of the Hilo Railroad Company, held this afternoon in the offices of the company in the Stangenwald Building, the question of increasing the capital stock of the corporation will be taken up.

The proposed increase is proposed for the purpose of furnishing funds for the construction of the Hamakua extension, and the meeting has been called for the express purpose of arranging for the construction of the extension. Changes in conditions have made it impossible to carry out the plans as originally laid down a year ago.

It is probable that arrangements will be made for the issue of a new series of bonds or the purpose of refunding the present bonded indebtedness of the company, and also to supply the withdrawal to extend the line.

The statement published last week in a Hilo paper, to the effect that the right of way for the first five miles of the Hamakua extension had been secured, is declared to be without foundation by local officials of the company. It is not anticipated that there will be any trouble in securing the right of way, but this has not yet been done.

Today's meeting probably means that construction work will begin very shortly.

185 editorial rooms—256 business offices of the Bulletin office. These are the telephone

### When Hot Weather Comes Along

Your thoughts turn to keeping cool. We have a white Buckskin Oxford that will help you out a great deal. Made on that comfortable, though stylish, "SMILE" last, which has been pronounced correct by fashion leaders. Price \$5.00 and no more. You won't regret getting a pair of these if you ever wear white.



MANUFACTURERS' SHOE CO., LTD.,  
1051 Fort Street.

### Boys' Clothing

Neat and nobby suits in the latest styles and made of handsome materials.

Correct clothes for school closing exercises and at prices that make them especially attractive.



ROYAL BRAND

The Kash Co., Ltd.

Corner Fort and Hotel Sts.



## MASONIC TEMPLE

## WEEKLY CALENDAR

**MONDAY**  
Lodge Meetings—Regular

**TUESDAY**  
Oceanic Lodge No. 1, O. O. F.  
P. M. 8:00. Regular.

**WEDNESDAY**  
Hawaiian Lodge No. 1, I. O. O. F.  
P. M. 8:00. Regular.

## SATURDAY

All visiting members of the  
Order are cordially invited to  
attend the meeting of local lodges.

## HAWAIIAN LODGE No. 1, I. O. O. F.

Meets every Monday evening at  
7:30 in R. of P. Hall, 1000  
P. M. 8:00. Regular.

## OAHU LODGE No. 1, K. of E.

Meets every first and third Fri-  
day evening at 7:30 in R. of P. Hall,  
P. M. 8:00. Regular.

## HONOLULU LODGE No. 1, K. of E.

Meets every first and third Fri-  
day evening at 7:30 in R. of P. Hall,  
P. M. 8:00. Regular.

## Wm. K. KINLEY LODGE No. 8, K. of E.

Meets every 2nd and 4th Saturday  
evening at 7:30 in R. of P. Hall,  
P. M. 8:00. Regular.

## HONOLULU AERIE 140, F. O. E.

Meets on the 2nd and 4th Wed-  
nesday evenings of each month at  
7:30 in R. of P. Hall, corner  
Desha and Fort streets.

## HAWAIIAN TRIBE No. 1, I. O. O. M.

Meets every first and third Thurs-  
day of each month at Knights of  
Pythias Hall, visiting brothers cor-  
dially invited to attend.

## HAWAIIAN TRIBE No. 1, I. O. O. M.

Meets every first and third Thurs-  
day of each month at Knights of  
Pythias Hall, visiting brothers cor-  
dially invited to attend.

## HAWAIIAN TRIBE No. 1, I. O. O. M.

Meets every first and third Thurs-  
day of each month at Knights of  
Pythias Hall, visiting brothers cor-  
dially invited to attend.

## HAWAIIAN TRIBE No. 1, I. O. O. M.

Meets every first and third Thurs-  
day of each month at Knights of  
Pythias Hall, visiting brothers cor-  
dially invited to attend.

## HAWAIIAN TRIBE No. 1, I. O. O. M.

Meets every first and third Thurs-  
day of each month at Knights of  
Pythias Hall, visiting brothers cor-  
dially invited to attend.

## HAWAIIAN TRIBE No. 1, I. O. O. M.

Meets every first and third Thurs-  
day of each month at Knights of  
Pythias Hall, visiting brothers cor-  
dially invited to attend.

## HAWAIIAN TRIBE No. 1, I. O. O. M.

Meets every first and third Thurs-  
day of each month at Knights of  
Pythias Hall, visiting brothers cor-  
dially invited to attend.

## HAWAIIAN TRIBE No. 1, I. O. O. M.

Meets every first and third Thurs-  
day of each month at Knights of  
Pythias Hall, visiting brothers cor-  
dially invited to attend.

## HAWAIIAN TRIBE No. 1, I. O. O. M.

Meets every first and third Thurs-  
day of each month at Knights of  
Pythias Hall, visiting brothers cor-  
dially invited to attend.

## HAWAIIAN TRIBE No. 1, I. O. O. M.

Meets every first and third Thurs-  
day of each month at Knights of  
Pythias Hall, visiting brothers cor-  
dially invited to attend.

## HAWAIIAN TRIBE No. 1, I. O. O. M.

Meets every first and third Thurs-  
day of each month at Knights of  
Pythias Hall, visiting brothers cor-  
dially invited to attend.

We are in line with the  
best assortment of

Talcum  
Powders

In the market. All makes.  
Perfumed and Plain.  
Just ask for the kind you  
want.  
Lehnhardt's Candies always  
fresh at

CHAMBER'S DRUG  
CO., Ltd.

King and Fort Sts.  
Phone 131.

## Dr. F. SCHURMANN

Osteopathic Physician and Oculist.  
222 Emma Square.  
Hours—Consulting, 2-3 p. m.,  
excepting Saturdays, Operating, 8-  
12 a. m., including Saturdays; 3-6  
p. m., excepting Saturdays.

## VACATION BOOKS

See  
BROWN & LYON CO., LTD.  
Alexander Young Bldg.

Conkling  
Fountain Pen

The original and best self-  
filler. Many pen makers have  
tried to imitate the Conkling  
but none have succeeded in  
keeping up to the Conkling  
standard.

New stock just in.

## Oat &amp; Mossman,

76 Merchant St. near P. O.

GOOD SERVICE  
IS A  
BUSINESS ASSETHealth and Economy  
Promote Wealth.

## COOK WITH GAS

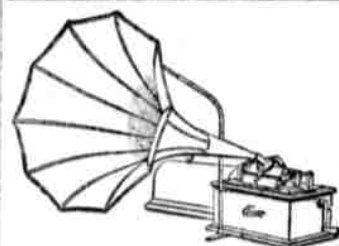
See the

Honolulu Gas  
Co., Ltd.,  
BISHOP STREET.

## RING UP

## Levy's for Groceries

Phone 76.



You haven't heard the best unless  
you've heard the new

Edison  
phonograph

Hawaiian News Co., Ltd.

Alexander Young Bldg.

## LOCAL AND GENERAL

Twelve hundred sheets of good  
paper for twenty-five cents at the  
Bulletin office.

Ten good auto-bucks. Phone 6.  
A bank book has been lost.  
A green Swastika pin has been  
lost.

The Royal Annex is the place to  
get the best meal in town.  
Another landslide is reported to  
have taken place on the Haimakua  
coast.

Attorney Lightfoot was seen on the  
street today, wearing a new suit of  
clothes.

Inter-island and O. R. & L. shipping  
books for sale at the Bulletin  
office, 50 each.

Take your carriage or automobile  
to Hawaiian Carriage Manfg. Co. for  
up-to-date repairs.

It is officially announced that Hono-  
lulu Elks will make no pilgrimage to  
Hilo this coming Fourth of July.

W. G. Walker, manager of Ooakala  
plantation, has been seriously ill, suf-  
fering from pneumonia. He is now  
improving.

The Industrial Edition of the  
Evening Bulletin, wrapped  
ready for mailing, 50 cents at Bul-  
letin office.

Suzuki failed to appear at the Pol-  
ice Court this morning on a charge of  
boozing and consequently had his  
bail forfeited.

John Dett, manager of the Union  
Grill, returned yesterday after a two  
weeks' vacation spent in Hilo and at  
the Volcano House.

Edward Ingham, manager of the  
Parker ranch, is in the city for a for-  
night. He will return early in July to  
Hawaii with his family.

W. McShane, who allowed his horse  
to wander at will instead of hitching  
him up somewhere, was fined \$5 at the  
Police Court this morning.

A private letter received from Hilo  
yesterday contains a denial of the  
story that the pillars of the Hilo High  
School are crumbling away.

J. Johnson, who had a peach of a  
jack on last night, slept in the lockup  
all this morning, when he appeared  
before Judge Long, who soaked him \$7  
for the offense.

Kulekani, Punahou and Malpua,  
three natives who had a scrap on Fort  
street on Saturday night, were be-  
fore Judge Long this morning and  
were each fined \$5.

The Senate Journal has been com-  
pleted and has been sent to the Presi-  
dent, Secretary of the Interior, Presi-  
dent of the Senate, Speaker of the  
House and other officials at Washing-  
ton.

The Ewa "Scratch Team" of base-  
ballers defeated the special police  
team by a score of 17 to 11 yesterday.  
Ellis and Meyers formed the battery  
of the winners and Souza and Heine  
did like duty for the losers.

The dredge Governor will hence-  
forth have A. McDuffie in charge of  
her dipper. McDuffie has been work-  
ing for R. D. Mead of the Planters' Em-  
ployment Bureau in the handling of  
the strike breakers. He handled the  
dipper on the Governor when Alakea  
slip was dredged.

Sung Chong, the Chinaman found  
guilty by a jury in Judge De Bolt's  
court, on a charge of cruelty to an-  
imals, in which the shooting of a neigh-  
bor's dog was the feature, was fined  
\$20 and costs by the Court this morn-  
ing, and remanded to jail pending pay-  
ment of the fine.

Chauffeur Stevens, who got into pil-  
lilla out at Moanalua some time ago,  
nearly caused an accident on Satur-  
day on King street outside the office  
of Wells Fargo Co. The chauffeur ran  
his machine alongside the curb where  
A. M. Brown's buggy was standing.  
The horse took fright and an accident  
was only averted by the prompt action  
of the owner.

Su Shee, alias Su Shi, alias Sun  
Shee, who appealed from an order of  
the U. S. Immigration Commissioner,  
will learn next July 10th whether or  
not she remains here or goes west,  
namely, back to the Celestial Empire,  
where she originally originated. She  
was ordered deported about two weeks  
ago. The case will be heard before  
Judge Dole on the date named.

The important question "Why is  
misa?" will be decided on Tuesday  
when the case of the United States  
against Fujiyama is called. It in-  
volves the classification of that inter-  
esting Japanese article of food, misa,  
and Uncle Sam will doubtless be  
placed at rest regarding its exact na-  
ture after it has been legally investi-  
gated. The case will be tried before  
Judge Dole in the Federal Court.

## SUDDEN DEATH

Kaawapa, a middle-aged Hawai-  
ian expired suddenly at Waialua, Koo-  
laupoko, this morning, according to  
a report which was telephoned to  
Sheriff Jarrett this morning.

From the meager report to hand,  
it appears that the man had been en-  
gaged as a strike breaker at Waia-  
lua, and had walked from that place  
to his home at Waialua on Saturday.  
He had appeared very fatigued on  
his arrival at his home and his death  
must have occurred shortly after-  
ward. The Sheriff is inclined to  
think that it is a case of heart fail-  
ure. Dr. Pratt will go over to Koo-  
laupoko this afternoon sometime  
and make an examination of the  
body.

## STORAGE

THE BEST IN THE CITY. NO DAMPNESS—FIREPROOF—NO BUGS.

## CITY TRANSFER CO.,

JAS. H. LOVE.

82 King St., opp. Union Grill.

Phone 152.

CALHOUN JURY  
FAILED TO AGREE

SAN FRANCISCO, June 20.—The Calhoun jury, after twenty hours' deliberation, has failed to agree, and has been discharged. The poll showed ten for acquittal and two for conviction.

## Takahira Won't Talk

WASHINGTON, June 19.—Ambassador Takahira has returned to Washington from his Western trip. He declines to talk concerning the situation in Hawaii.

## CRUISER SUNK IN MANEUVERS.

LONDON, June 6.—The cruiser Sappho is believed to have been sunk today during the naval maneuvers off Dungeness after a collision. Her crew was saved.

The Sappho is an old vessel, having been built in 1891. She carried 273 men. She is 300 feet long and had a displacement of 3,400 tons. She is one of ten ships of the Apollis class, which are being removed from the effective list.

## EARTHQUAKE IN CANARY ISLANDS.

TENERIFFE, Canary Islands, June 20.—An earthquake occurred here today. The village of Inad felt the shock most severely, several houses being destroyed. No casualties have been reported.

## NEBUKO RELEASED.

MADISON, Wis., June 20.—Nebuko has been released.

The Standard Office Filing Cabinet is the  
GLOBE-WERNICKE

It is used in every office and known to be the BEST.

## OFFICE SUPPLY CO., LTD., Agents

## SHOPPING NEWS

—AND—

## BUSINESS REMINDERS

A gentleman's diamond ring was lost.  
A liberal reward, at 837 Kaahumanu  
street.

A lady's lace handkerchief lost near  
Oahu College; reward if returned  
to this office.

You cannot afford to overlook the  
specials for Monday, Tuesday and Wed-  
nesday at N. S. Sachs Dry Goods Co.

Remember! The Owl cigar is the  
5a cigar with the 10c quality. Sold by  
every dealer because its demand is  
universal.

Subject to immediate acceptance,  
the Hawaiian Trust Company, Ltd., is  
making an exceptional offer for secure  
investment. Investigate it.

The Schuman-Carriage Co. are carry-  
ing a large and well selected stock  
of automobile accessories which will  
interest all owners of machines.

Order your stove coal of the Hono-  
lulu Construction and Draying Co.,  
Ltd., Phone 281, and you will find it  
far cleaner and better burning than  
the usual run of coal.

If you happen to be going away on  
vacation, you may need toilet articles  
to replace those used during the win-  
ter season. See the stock at Benson,  
Smith & Co's, Hotel and Fort streets.

The messenger boys belonging to the  
Territorial Messenger Service are  
trained to "scoot" at the drop of the  
bat. You may always depend upon be-  
ing promptly served when you ring  
telephone 361.

All who are planning for their vaca-  
tion should visit the store of the  
Brown & Lyon Co. in the Young build-  
ing and in the cool "cozy corner" look  
over and select from the large stock  
of classics and fiction their vacation  
reading.

The care devoted to the flavoring of  
the soda water made by the Consolidat-  
ed Soda Water Works Company is not  
excelled by physicians or druggists in  
compounding prescriptions. This ac-  
counts for the evenness of the flavor-  
ing in all of the aerated water put out  
by this company.

THE STEAMER Lurline, Captain  
Weeden, of the Matson line, will arrive  
tomorrow morning from San Francisco.  
She is bringing 285 bags of mail and  
2500 tons of general cargo, including  
lumber. There are twenty-one pas-  
sengers on board her for this port.

THE CANADIAN-AUSTRALIAN line  
or Aorangi is expected to arrive from  
the Colonies next Wednesday. She  
will also carry mail for the United  
States via Canadian ports.

THE AMERICAN-HAWAIIAN Co.'s  
steamer Mexicana is rushing her cargo  
to land at the railroad wharf with the  
W. G. Hall alongside transferring cargo  
to her. She expects to sail next  
Thursday for Kaula and from there to  
Kahului and Hilo. July 2 is the date  
set for her departure from the latter  
port for Salina Cruz, Mexico.

THE AMERICAN-HAWAIIAN com-  
pany's freighter Mexicana, Captain  
Tapley, which arrived last Saturday from  
the States, will probably leave this  
port for Port Allen, on Kaula, next  
Thursday afternoon. She is unloading  
her mainland cargo at the American  
Hawaiian wharf.

THE STEAMER Kaula returned  
from Kaula yesterday with a general  
cargo. Purser Grube reports the fol-  
lowing sugar awaiting shipment on  
Kaula: K. S. M., 7500 bags; W. S. M.,  
5000; M. B., 1500; K. P.,  
16213; L. P., 2341; H. M., 1000; G.  
P., 28,618; M. S. Co., 37,000.

THE STEAMER Kaula returned  
from Kaula yesterday with a general  
cargo. Purser Grube reports the fol-  
lowing sugar awaiting shipment on  
Kaula: K. S. M., 7500 bags; W. S. M.,  
5000; M. B., 1500; K. P.,  
16213; L. P., 2341; H. M., 1000; G.  
P., 28,618; M. S. Co., 37,000.

## Summer Suitings

Attractive  
Patterns

W. W. AHANA CO., TAILORS  
King Street,  
No branches.



## IN FOREIGN PORTS

Monday, June 21.  
SAN FRANCISCO—Arrived June 19:  
U. S. S. St. Louis for Honolulu.  
SAN FRANCISCO—Sailed June 20:  
Schr. W. H. Marston, for Hilo.  
P. M. Ironard, for Honolulu.  
PORT TOWNSEND—Arrived June 20:  
Schr. R. R. Hind, hence June 1.  
SEATTLE—Sailed June 20:  
S. S. Hyades, for Honolulu.

LURLINE ARRIVES  
TOMORROW AT TEN

Wireless telegrams from the Hilo-  
lulu and Lurline have been received  
by Castle & Cooke as follows:  
Sent June 19, at 8 p. m.:  
To Castle & Cooke, Ltd.  
8 p. m., 1,924 miles; weather fine;  
all well.

Sent June 19, at 8 p. m.:  
To Castle & Cooke, Ltd.  
8:30 p. m., 799 miles off; moder-  
ate trade wind; passed Hilo at  
1 p. m.

Sent June 20, at 8 p. m.:  
To Castle & Cooke, Ltd.  
8:30 p. m., 479 miles off; moder-  
ate trade; will arrive Quarantine  
about 10 a. m. Tuesday.

Sent June 20, at 8 p. m.:  
To Castle & Cooke, Ltd.  
8:30 p. m., 479 miles off; moder-  
ate trade; will arrive Quarantine  
about 10 a. m. Tuesday.

Sent June 20, at 8 p. m.:  
To Castle & Cooke, Ltd.  
8:30 p. m., 479 miles off; moder-  
ate trade; will arrive Quarantine  
about 10 a. m. Tuesday.

Sent June 20, at 8 p. m.:  
To Castle & Cooke, Ltd.  
8:30 p. m., 479 miles off; moder-  
ate trade; will arrive Quarantine  
about 10 a. m. Tuesday.

Sent June 20, at 8 p. m.:  
To Castle & Cooke, Ltd.  
8:30 p. m., 479 miles off; moder-  
ate trade; will arrive Quarantine  
about 10 a. m. Tuesday.

Sent June 20, at 8 p. m.:  
To Castle & Cooke, Ltd.  
8:30 p. m., 479 miles off; moder-  
ate trade; will arrive Quarantine  
about 10 a. m. Tuesday.

Sent June 20, at 8 p. m.:  
To Castle & Cooke, Ltd.  
8:30 p. m., 479 miles off; moder-  
ate trade; will arrive Quarantine  
about 10 a. m. Tuesday.

Sent June 20, at 8 p. m.:  
To Castle & Cooke, Ltd.  
8:30 p. m., 479 miles off; moder-  
ate trade; will arrive Quarantine  
about 10 a. m. Tuesday.

Sent June 20, at 8 p. m.:  
To Castle & Cooke, Ltd.  
8:30 p. m., 479 miles off; moder-  
ate trade; will arrive Quarantine  
about 10 a. m. Tuesday.

Sent June 20, at 8 p. m.:  
To Castle & Cooke, Ltd.  
8:30 p. m., 479 miles off; moder-  
ate trade; will arrive Quarantine  
about 10 a. m. Tuesday.

Sent June 20, at 8 p. m.:  
To Castle & Cooke, Ltd.  
8:30 p. m., 479 miles off; moder-  
ate trade; will arrive Quarantine  
about 10 a. m. Tuesday.

Sent June 20, at 8 p. m.:  
To Castle & Cooke, Ltd.  
8:30 p. m., 479 miles off; moder-  
ate trade; will arrive Quarantine  
about 10 a. m. Tuesday.

Sent June 20, at 8 p. m.:  
To Castle & Cooke, Ltd.  
8:30 p. m., 479 miles off; moder-  
ate trade; will arrive Quarantine  
about 10 a. m. Tuesday.

Sent June 20, at 8 p. m.:  
To Castle & Cooke, Ltd.  
8:30 p. m., 479 miles off; moder-  
ate trade; will arrive Quarantine  
about 10 a. m. Tuesday.

Sent June 20, at 8 p. m.:  
To Castle & Cooke, Ltd.  
8:30 p. m., 479 miles off; moder-  
ate trade; will arrive Quarantine  
about 10 a. m. Tuesday.

Sent June 20, at 8 p. m.:  
To Castle & Cooke, Ltd.  
8:30 p. m., 479 miles off; moder-  
ate trade; will arrive Quarantine  
about 10 a. m. Tuesday.

Sent June 20, at 8 p. m.:  
To Castle & Cooke, Ltd.  
8:30 p. m., 479 miles off; moder-  
ate trade; will arrive Quarantine  
about 10 a. m. Tuesday.

Sent June 20, at 8 p. m.:  
To Castle & Cooke, Ltd.  
8:30 p. m., 479 miles off; moder-  
ate trade; will arrive Quarantine  
about 10 a. m. Tuesday.

Sent June 20, at 8 p. m.:  
To Castle & Cooke, Ltd.  
8:30 p. m., 479 miles off; moder-  
ate trade; will arrive Quarantine  
about 10 a. m. Tuesday.

Sent June 20, at 8 p. m.:  
To Castle & Cooke, Ltd.  
8:30 p. m., 479 miles off; moder-  
ate trade; will arrive Quarantine  
about 10 a. m. Tuesday.

Sent June 20, at 8 p. m.:  
To Castle & Cooke, Ltd.  
8:30 p. m., 479 miles off; moder-  
ate trade; will arrive Quarantine  
about 10 a. m. Tuesday.

Sent June 20, at 8 p. m.:  
To Castle & Cooke, Ltd.  
8:30 p. m., 479 miles off; moder-  
ate trade; will arrive Quarantine  
about 10 a. m. Tuesday.

Sent June 20, at 8 p. m.:  
To Castle & Cooke, Ltd.  
8:30 p. m., 479 miles off; moder-  
ate trade; will arrive Quarantine  
about 10 a. m. Tuesday.

Sent June 20, at 8 p. m.:  
To Castle & Cooke, Ltd.  
8:30 p. m., 479 miles off; moder-  
ate trade; will arrive Quarantine  
about 10 a. m. Tuesday.

Sent June 20, at 8 p. m.:  
To Castle & Cooke, Ltd.  
8:30 p. m., 479 miles off; moder-  
ate trade; will arrive Quarantine  
about 10 a. m. Tuesday.

Sent June 20, at 8 p. m.:  
To Castle & Cooke, Ltd.  
8:30 p. m., 479 miles off; moder-  
ate trade; will arrive Quarantine  
about 10 a. m. Tuesday.

Sent June 20, at 8 p. m.:  
To Castle & Cooke, Ltd.  
8:30 p. m., 479 miles off; moder-  
ate trade; will arrive Quarantine  
about 10 a. m. Tuesday.

Sent June 20, at 8 p. m.:  
To Castle & Cooke, Ltd.  
8:30 p. m., 479 miles off; moder-  
ate trade; will arrive Quarantine  
about 10 a. m. Tuesday.

Sent June 20, at 8 p. m.:  
To Castle & Cooke, Ltd.  
8:30 p. m., 479 miles off; moder-  
ate trade; will arrive Quarantine  
about 10 a. m. Tuesday.



# Special Sale

of

## White Wash Goods

For Three Days Only—  
Monday, Tuesday, Wednesday

### Fancy Striped Lawns

Just the thing for Summer Dresses

Regular Price	Special
6 yds for \$1.00	12 1-2c a yd
25c a yd.	20c a yd.
35c a yd.	25c a yd.

### New Arrivals

The rubber-lined Combination Tourist Cases for Sponges, Comb, Brush and Tooth Brushes. A very convenient and almost indispensable article for lady tourists.

### Children's Parasols

We have just received a large assortment of Children's Parasols, and they are little beauties.

From 75c to \$2.00.

## Sachs' Dry Goods Co., Ltd.

Cor. Fort and Beretania Sts.

Opp. Fire Station.

### Level Up Your Lot

Phone 890

Soil, black or Waianae sand, coral or rock furnished to fill up depressions or build up terraces.

P. M. POND

### Autos Repaired

Your machine will be ready for you when we say it will be. We don't experiment on autos; we repair them.

### Von Hamm-Young Co., Ltd.

ALEXANDER YOUNG BUILDING.

#### AUTOMOBILE ACCIDENTS.

After the accident bring the machine to us.

All repairs except the engine.

W. W. WRIGHT & CO.,  
King and South Sts.

### Royal Hawaiian Garage

GEO. S. WELLS, Mgr.  
HOTEL ST. PHONE 191.  
Prices Reasonable.

### Automobile Accessories

Schuman Carriage Co.



BAMBOO RAFFIA  
Fibres for Weaving hats, mats, fans and baskets. HAWAII & SOUTH SEAS CURIO CO., Young Building, (Under the Electric Sign) Bishop St.

Received ex Alameda a New Ship ment of Latest Styles in LADIES' HATS.

K. UYEDA,  
1028 NUUANU ST.

Blank books of all sorts, ledgers, etc., manufactured by the Bulletin Publishing Company.

On Display at our Garage

## Franklin

1909 MODEL "G" RUNABOUT.

FRANKLIN "D" TOURING CAR.

AGENTS FOR THE KISSEL KAR AND CHALMERS-DETROIT.

Repairing by Expert Mechanic.

ASSOCIATED GARAGE, Ltd  
Merchant St.

## C. H. BEHN

Car No. 184 can now be found at

TEL. 199

## Work Horses

Large imported work horses for sale.

CLUB STABLES  
Fort St.

TEL. 109.

"For Rent" cards on sale at the Bulletin office.

## DEVELOPING and PRINTING

## See Gurrey About It

### ST. LOUIS COLLEGE CLOSING WEEK DRAMA

The pupils of St. Louis College gave a very interesting program of drama and music at the college hall on Saturday evening. It was the closing entertainment of the year and as on former occasions the students entered into the work with commendable enthusiasm and performed their parts with a degree of excellence that proved the good training of the teachers.

"The Atonement" was the principal piece about which the exercises of the evening centered. This three-act play depicted an incident of the early history of France and the costuming was elaborate and appropriate. A moral was clearly in evidence throughout this play and also in the lighter piece "The Brownies," that followed.

Between acts there were vocal and instrumental numbers by the smaller boys and good music by the St. Louis College orchestra.

The hall was filled with the relatives of the pupils and friends of the college, and they were all well entertained.

The cast of characters for "The Atonement" follows: King Henry, D. Mossman; Haggonhard, Frederick, Antonia, courtiers, H. Ahong, J. Alona, A. de la Nux; Roland, a nobleman, A. Christian; Lorenzo, son of Roland, G. Sims; Alexis, son of Count Foster, J. O'Dowda; Richard, servant of Roland, A. Thevenin; Tamerlan, a Spanish nobleman, C. Poor; Carlos, Raymond, friends of Lorenzo, C. Costa, A. Wilkinson; Courtiers, E. Helbush, W. Hoopai; Kragge, robber chieftain, P. Halli; robbers, C. Weatherwax, D. Hoapili, L. Fernandez.

"The Brownies"—Cast of characters: Acorn, Peter Ferajet; Broomstraw, Robert Quinn; Buttercup, Louis Chase; Cottontail, Henry Helbush; Cloverleaf, Lawrence Kalepou; Dewdrop, Walter Bryant; Hawthorn, George Frendo; Hazelnut, Henry Evenson; Peppermint, James Wilkin; Rosebud, Joseph McGettigan; Sassafras, Albert Wilkinson; Tadpole, Charles Cost; Mr. Smugg, a miser, John Xavier; Abraham, Smugg's servant, Wm. Hala; Mr. Blast, blacksmith, Louis Leal.

### ST. LOUIS GRADUATION

The graduating exercises at St. Louis College were held this morning. The program is less elaborate this year on account of the attention given the commencement week entertainment.

Diplomas of graduation were presented to Harry Ahong, Charles Weatherwax, Manuel Ferreiro, Joseph Alona and Albert De La Nux.

The gold medal donated by the St. Louis Alumni Association for general proficiency was awarded to Harry Ahong.

The program of the exercises held this morning follows: Overture—Popular Medley... Rathbun Chorus—"We'll Call All Hands".... White Distribution of Premiums. Chorus—"New Hall Columbia".... Chadwick Distribution of Diplomas.

Valedictory.....H. Ahong Address.....Rev. Father Joseph. Finale—El Capitan..... Sousa

The Weekly Edition of the Evening Bulletin gives a complete summary of the news of the day.

### For Rent

\$15—Cottage with two bedrooms at Punui, close Liliha St. car. Electric Light, cool and healthy. Fine view. Large yard.

### P. E. R. Strauch

Real Estate Agent.  
Waity Bldg. 74 S. King St.  
"For Sale" cards at Bulletin.

### YOUNG DEBATORS LOSE TO OLDSTERS

### High School Seniors Are Victors In Lively Contest

The Freshman and Senior debating teams at the High School met Friday in the finals for the Ingalls cup. The infants had defeated the Sophomores and the graduates had taken the Juniors into camp.

The question was "Resolved, That the United States should subsidize her ships." The Freshmen argued on the affirmative, while the Seniors upheld the negative. Kuhns showed up in great shape for the lower classmen, ably assisted by Crockett. They showed the decadence of the American merchant marine, traced it back to its source, and hailed the subsidy as the best means of overcoming the inherent obstacles to American shipbuilding.

Douglas and Tracy, the Senior team, objected to ship subsidy as a special privilege. In a class with rebates and remitted taxes. They showed that Great Britain and Germany, though the two leading maritime powers, granted no subsidy aside from mail contracts and provision for a naval reserve.

The judges decided that, although neither side had much the better of it in argument, the delivery of the Seniors gave them the victory.

An attractive program of literary and musical numbers was provided, through the efforts of Mrs. Crockett and Prof. Polson, the latter having trained the High School orchestra. This was the last meeting of the Debating Society this year, and it ended a remarkably excellent season.

### GRADUATES WEAR THE WHITE LEIS

Yet another college has contributed officially its '09 crop of graduates to the waiting world. The Oahu College, Saturday night, awarded diplomas to twenty-nine of their students at the graduating exercises of the class. Eliza L. Heen acted as Salutatorian and the Commencement part was presented by Edith H. Smith.

Harry Foster Lucas, on behalf of the class, presented the class gift, a Discobolus, to President Griffiths and the graduates, at the foot of the platform, received white leis, which they wore in respect to William L. Webster, a member of the class, who was killed last summer.

Musical was supplied by the Oahu College Glee Club.

### COMMENCEMENT BLACK AND GOLD IS OUT

The commencement number of The Black and Gold, the McKinley High School journal, appeared on Friday. It is a booklet of some fifty pages, with an appropriate athletic cover in colors. The stories are plentiful and well-edited and the departments, especially the "josh" division, are excellent. The edition is especially notable for its art work, among which is a well drawn take-off of one of the faculty.

New Bank Approved.—Washington, June 7.—The comptroller of the currency today approved the application of B. J. Edmonds, cashier of the Peoples' state bank at National City, W. S. Hill, E. M. Fly, B. A. McCune and John L. Schon to organize the Peoples' national bank of National City, with a capital of \$25,000.

### COMMENCEMENT DAY AT NORMAL SCHOOL

The following program has been arranged for the Commencement Day exercises to be held at the Normal School on Thursday:

Teaching—9:30 to 10:30.  
Volcanoes (themselves geography).  
Grade 4. Training teacher, Miss Marie Douglas. Cadets, Rachel Kinkuna, Svbi McNerny.

Trans-continental Railroad Trips (United States). Grade 5. Training teacher, Miss Katherine Stanley. Cadets, Lulu Law, Samuel Toomey.

The Mexican People (North America). Grade 6. Training teacher, Miss Rose Peck. Cadets, Phoebe Hoen, Lila Vogel, William Alona.

The City of Canton (World). Grade 8. Training teacher, Miss Katherine Burnham. Cadets, William Melnick, Florence Crozier.

Hawaiian Industries, as Related to World Industries (World Review). Teacher, Vaughan McCaughey.

Dirt and Dust (Nature Study). Sophomores. Teacher, Miss Louise Gulick.

Folk Tales and Legends. Junior Class. Teacher, Mrs. Marshall.

EXHIBITS.  
Primary Grades, lower hall—Lesson plans, illustrative material, etc.  
Grammar Grades, upper hall—Material used in lessons of the day.

Industrial Work—Good work, cooking, sewing, lace work, printing, Nature study.

#### CONCERT PROGRAM.

- Chorus—  
a. Lift up Your Heads... Gluck  
b. Song of Exaltation, Beethoven
- Remarks—Com. A. F. Judd
- Chorus—Barcarolle
- Song—The Sunflower... Henry Grey
- Address, Hon. F. A. Mott-Smith
- Violin Solo... Paul K. Talbot
- Andante... Mendelssohn
- Presentation of Diplomas... Principal E. Wood
- Chorus—Damasus... Michael Costa

### LURID ATTACK BY JIJI ON BRECKONS

The Nippon Jiji, "The Gentleman of the road," among Japanese dailies, again has blossomed out in flowery language to the effect that the strikers need not hope for justice in the islands from either the Territorial or Federal Government. Mr. Breckons bears the brunt of the attack and is severely scored by the Agitator's organ for bringing a series of criminal charges against Uchiyama, primarily arrested for sending defamatory matter through the mails. The Jiji states that the fact that these charges were brought against him is proof that Mr. Breckons is using his official position to damage the cause of the strikers. Lurid language is used in inviting the Tokio government to come right down and take a hand.

#### THE PARK THEATER.

The great tragedy "Virginia," presented by a superior company of stars, will be given as a motion picture at the Park this evening if the weather permits. All readers of history will remember the thrilling events in this play and will enjoy it. It is an old-time production and one seldom seen in these days of modern drama. Forest, McCullough and others of a couple of generations ago made their reputations with it. Mr. Shaw will sing "The Singer Was Irish," and Mr. Milne will sing illustrated songs. The little girls will be heard in popular songs.

Bulletin Business Office Phone 256.  
Bulletin Editorial Room Phone 185

### WORK BEGUN ON GUN BATTERIES

### Big Motors At Fort Ruger Ready For Test

The driving of the foundation stakes and the work of constructing the big gun batteries at Fort Du Russy, Waikehi, has begun, and all of the concrete machinery used at Fort Ruger has been brought down for this purpose. Details of the Engineer Corps are busy surveying and getting into place the foundations, and material is arriving for the batteries.

The ceremony of testing the big mortar batteries at Fort Ruger immediately upon the arrival of Captain William P. Platt, of the Ordnance Department, is being looked forward to by Major Winslow and the men of the U. S. Engineer Corps with great interest, as the work of installation was difficult and embraced many new schemes of construction. While beyond the experimental stage it is a matter of considerable conjecture as to how the test will result.

Practically all of the machinery, cement-mixing machines, concrete forms and the big roller used in the fortification work, have been transferred to Fort Du Russy, to be used in the big gun foundation work. After the completion of the work at Diamond Head it will be undoubtedly pronounced one of the strongest fortifications in the world of its kind.

Mennonites Arrive.—Bakersfield, June 7.—Under the leadership of Henry J. Martens, representatives of 20 Mennonite families, emigrants from the middle west, arrived here today the first detachment for the new colony near Shafter. Each family will be allotted a quarter section of ground and an artisan well is being put down on each 100 acres.

## Vacation Days

Create a Demand

### For Articles for the Toilet

SPONGES, TALCUM POWDER, TOILET SOAPS (your favorite one), A TOOTH-BRUSH, COME and many other articles which we alone can furnish.

### Benson, Smith & Co., Ltd.

Hotel and Fort Streets.

The latest styles in BARRETTES and COMBS just arrived.

### EMRICH LUX

Fort and Beretania Sts.  
Harrison Block.

### WING CHONG CO

KING ST. NEAR BETHEL  
Dealers in Furniture Mattresses Etc., Etc. All kinds of KOA and Nuuanu and Hotel St. on site of old MISSION FURNITURE Made To Order.

### Woman's Exchange

FOR

TAPAS, BASKETS, MATS.

Hotel near Fort.

LUNCHES and DRINKS  
The most popular place in town.

### The Fashion Saloon

Hotel St. near Fort.  
Jack Scully. Jack Roberts

## BY AUTHORITY

Office of the Board of Health,  
Honolulu, Hawaii, June 19, 1909.

### TENDERS FOR BEEF CATTLE.

Sealed tenders, in duplicate, endorsed "TENDERS FOR BEEF CATTLE," will be received at the office of the Board of Health, until 12 o'clock, noon, Tuesday, June 22d, 1909, for supplying the Leper Settlement, Molokai, with beef cattle for the period of six months from July 1st, 1909, to December 31st, 1909, under the following conditions, namely:

1. The bidder must offer to furnish beef cattle to weigh not less than 350 pounds net when dressed, in lots averaging about 60 head per month, more or less, as may be specified by the Superintendent of the Leper Settlement, and to accept the dressed weights ascertained at the Settlement by said Superintendent.

2. The bidder must specify whether he proposes to deliver the cattle (1) at the Settlement, or (2) to a steamer, or (3) at a landing specified by the bidder. Any bidder may offer delivery in any or all of the foregoing methods.

3. Hides, tallow and offal to be the property of the Board of Health.

4. Each bid must be for the price per pound dressed weight, with an alternative offer of the price per head.

5. The successful bidder must agree that all cattle are offered for delivery subject to the right of the Superintendent of the Leper Settlement to reject any or all unfit for use, in which event other cattle must be forthwith furnished to make up the required number, and those rejected forthwith removed at the expense of the bidder.

All bids must be submitted in accordance with and be subject to the provisions and requirements of Act 62, Session Laws 1909.

For further information apply at the office of the Board of Health.

THE BOARD OF HEALTH.  
E. A. MOTT-SMITH,  
By its President.

Office of the Board of Health,  
Honolulu, Hawaii, June 19, 1909.

### TENDERS FOR SUPPLIES—INSANE ASYLUM.

Sealed tenders, in duplicate, endorsed "TENDERS FOR INSANE ASYLUM," for furnishing the Insane Asylum, Honolulu, City and County of Honolulu, with supplies for the period of six months from July 1, 1909, to December 31, 1909, will be received at the office of the Board of Health until 12 o'clock, noon, Tuesday, June 22d, 1909.

Specifications and a list of the kind of supplies required, and other information, may be had upon application at the office of the Board of Health.

All bids must be made on forms furnished by the Board of Health and must be submitted in accordance with, and be subject to, the provisions and requirements of Act 62, Session Laws 1909.

THE BOARD OF HEALTH.  
E. A. MOTT-SMITH,  
By its President.

4231-101

**WRITE TODAY**  
for a  
**FREE SAMPLE**  
of  
**CONGO ROOFING**

You'll get it promptly and it will settle the roofing problem for you. You never saw that quality before at that price. When your order comes, you will like it still better. The perfect rolls, no flaws or weak spots, with the ends carefully protected, make every inch of the roofing available. No waste trimmings, no broken edges on Congo Roofing. Write for the Sample!

LEWERS & COOKE, LTD.  
177 S. King St.

## How About Your Babies?

Are their tender feet being correctly fitted with shoes? Mrs. A. R. King has revolutionized shoe making for little ones. Her shoes are now being sold by all the leading shoe stores all over the United States to the exclusion of all others.

We are the first to have these shoes, and if you do not want to take chances on having your children grow up with enlarged joints and other foot deformities, come and have them correctly fitted here.

## Regal Shoe Store,

McCandless Bldg.

King and Bethel Sts.



# EVENING BULLETIN

DAILY and WEEKLY Published by BULLETIN PUBLISHING CO., LTD.  
At 120 King Street, Honolulu, Territory of Hawaii.

Daily every day except Sunday. Weekly issued on Tuesday of each week.

MEMBER OF THE ASSOCIATED PRESS.

Wallace R. Farrington, Editor

SUBSCRIPTION RATES PAYABLE IN ADVANCE.

EVENING BULLETIN	WEEKLY BULLETIN
Per Month, anywhere in U.S. .... \$ .75	Per Six Months ..... \$ 4.00
Per Quarter, anywhere in U.S. .... 2.00	Per Year, anywhere in U.S. .... 8.00
Per Year, anywhere in U.S. .... 8.00	Per Year, anywhere in Canada .... 1.00
Per Year, postpaid, foreign .... 12.00	Per Year, postpaid, foreign .... 2.00

CIRCULATION LARGEST OF ANY NEWSPAPER PUBLISHED  
in the Territory of Hawaii.

Tel. Editorial Rooms, - 185  
Business Office, - 256

Entered at the Postoffice at Honolulu  
as second-class matter.

MONDAY JUNE 21, 1909

Let every man remember that to violate the law is to trample on the blood of his own and his children's liberty.—Abraham Lincoln.

Is the reported plot of the Catholic jury correct? Mr. Heney was busy in catching so much as a hung jury.

Is there anything the agitators and their associates have done that could be interpreted as an honest effort to help Hawaii?

Honolulu is growing. The demand for houses to rent is greater than the supply. This means a steady increase of the citizen population.

If a British cruiser has been sunk in the naval maneuvers, it is one of the incidents of the game. This alleged play at war undertaken in the modern navy is no picnic.

Can there be anything but an imaginary difference between the Hawaiian laborers and the Oahu laborers when their demands are identical and the Oahu strike is still in full swing?

"Vejam O Hilo Crocker." This is the Portuguese phrase published by A. Seta for "Watch Hilo Grow," and might well be a permanent substitute, as it rolls well on the tongue and O Hilo is good.

The Bureau of Labor at Washington is able to figure out for 1908, as against 1907, an average decrease of 5.2 per cent in the cost of living. It is unfortunate that the statisticians cannot pay the bills.

Don't lose sight of the main issue. The decision to reach is whether the sugar industry of Hawaii shall be conducted by its present managers or turned over to the dictates of an organization that is not only alien but criminal. Let us have a square deal for our own land.

Speaker Cannon's latest photographs represent him in a flat boat with Philadelphia Jack O'Brien. The Speaker's horse play may be picturesque, but somehow the continuous exhibition of many d—ns on the part of a man holding one of the most exalted and responsible positions in the country becomes rather tiresome.

Now the United States District Attorney is attacked by the persons engaged in the game of holding up Hawaii's chief industry. Is there no limit to the violation of law and common decency that is to be allowed within this Territory under the name of liberty and the privileges of the subject of a friendly nation?

Gauged by the experience of the past six weeks, Honolulu will be a great town when the work at Pearl Harbor employs more than two thousand men at wages better than \$1.50 per day. And with a large per centage of citizen labor on the plantations, is there any city that can offer a brighter prospect for a prosperous future.

It is impossible to deal with the requests of Hawaii Japanese "as if nothing had happened" on the sugar plantations of Oahu. Readjustment of wage conditions should not come until all strikes have been called off. Otherwise the industries of the Territory will be controlled by a succession of strikes manipulated by scheming agitators out for selfish gain.

If, as the Governor intimates, the people would not understand the latest proposition he has made regarding the Kapua lands, it is about time the propositions ceased and the Territorial Fathers gave the people a course in the care of public lands. But the worst of it is the position taken by the Governor is wrong for the chief executive of an American Territory, and he ought to know it.

Professional men in the Japanese colony who have decided to use their influence in bringing the Japanese strike to an end are enlisted

in a good cause. They should start in with vigorous measures to wipe out lawlessness and intimidation. When this is done the majority of their countrymen will go to work, the terrible wage loss will be stopped and it will be possible to discuss a readjustment of the wage system on its merits.

Why should Ambassador Takahira talk of the "situation in Hawaii?" There is no situation in Hawaii that calls for anything but domestic consideration. Hawaii is not being run from Tokyo according to the Washington idea, and it is up to the people of the Territory to handle their own affairs without becoming frightened at bugaboo created to scare them into compromise and neutrality dodges.

Certain Japanese laborers elected to walk out in order to force their employers to accept their demands. All the acts of violence and intimidation have been committed by those for whom a square deal is now requested. These men have not been subjected to coercion or threats. They have been allowed to go, and no barriers have been placed in the way of their return. It seems that the proposal for a square deal coming from the source it does, is extraordinary, to say the least.

## SQUARE DEAL FOR ALL.

"A square deal for the Japanese" is the latest catch phrase that has been sprung on the public.

The Bulletin heartily echoes this phrase when it is used in supporting the cause of Law and Order.

But we don't know why it should be applied especially to the Japanese at this time except that it bears on the attempt to prevent Japanese men and women from continuing their usual vocations on the sugar plantations.

Give every man who would work a square deal.

Let us have a square deal for the hundreds of Japanese now in Honolulu who would today be comfortably housed and earning good wages on plantations if they were not in fear of their lives should they violate the orders of an aggregation of Agitators, Thugs, and Shysters.

A square deal presumes honest leadership, of which the Agitators could never be found guilty.

A square deal must guarantee respect for the law, which the Thugs are banded together to violate.

A square deal presupposes Justice, which the Shysters are employed to defeat.

A square deal for the Japanese requires first that the man who would work shall not be molested.

Give the Japanese an honest square deal, and by way of variety let the citizens of the Territory have a small measure of the same thing.

## THAT KAPAA DEAL.

The latest phase of the Kapaa land deal is very interesting as an exhibit of Territorial methods.

The Governor has written a letter to the Makae Sugar Company that contains a proposition for an exchange of valuable lands belonging to the people.

This letter the Governor has thus far refused to give out. Two requests have been made by the Bulletin.

When this paper first gained information that a new scheme was under consideration, one of the parties interested charged that someone had "leaked." It is admitted, however, that those to whom the proposition was made could not with good grace give the details publicly if the Governor does not approve publicly.

Copies of all the papers in the proposed transaction are in the possession of L. A. Thurston.

The public is refused these papers by Mr. Thurston under his claim as an attorney, and refused by the Governor because he says the document may not be understood.

What is this thing that the Governor is running in the Territorial capitol? A little private ranch?

While such methods characterize

## Home near Oahu College

FOR SALE—This property is near Wilder Ave.; the price is \$3,000; there are 3 bedrooms and modern sanitary conveniences. The place has been recently put in thorough repair. Let us show you; the property will speak for itself either for the purpose of a home or for an investment.

KAIMUKI LOTS FOR SALE.  
At \$225-\$300, \$650, \$750 and \$1,100 per lot.

## Trent Trust Co., Ltd.

the Territorial administration. It will be impossible to get any amendment to our land laws approved by local Legislatures or passed by Congress.

## WAGES AND THE TARIFF.

That the total annual wages affected by the tariff amount to \$2,277,848.537, and that the values of the products involved in the consideration of tariff revision reach the sum of \$13,270,192.988, is the statement made by Senator Money in showing the vast importance of the question now being considered by the Senate.

Senator Money's figures are of value principally as showing the tremendous sums involved. It recalls the report of the late Speaker Reed — "This is a Billion Dollar Country," when the Billion Dollar Congress was being criticized. Senator Money issued his figures to help prove the case of the free trader whose views neither the North nor South accepts when there is an industry to be built up or prosperity to be maintained.

Senator Money has also in this connection prepared a statement showing the cost of indirect taxation to the people of the United States. He states that the cost of granulated sugar in 1906 was 2.05 cents more a pound in New York than in London, and that in 1907 the United States consumed 2,983,979 tons of sugar, against which the duty of \$1.95 a hundred pounds was charged, equaling \$139,777.092, while the duty actually collected amounted to \$69,135.181, making the cost to the people above the revenue col-



## FOR SALE

The Fleker property on East Maunaloa Road.

These premises consist of a lot of 12,500 sq. ft. and bungalow containing living room, dining room, two bedrooms, kitchen, pantry, bath, etc., servants' quarters and out buildings. Two minutes' walk from car line. Price \$4,250.

## FOR RENT

The Allen Herbert premises at Waialea. By the month, week or day. Particulars at our office.

## Waterhouse Trust

Fort and Merchant Streets.

1000

MILES OF SEA BRIDGED BY ONE

Wireless



LEAVE the care of your business with us while traveling this summer.

Thus you will have a vacation without worry.

Bishop Trust Co., Ltd.,  
Bethel Street

lected by the government, \$70,641.821. He, of course, stops there and refuses to recognize the vast sugar industry representing hundreds of millions that is made possible by the tariff.

On pig iron, steel rails, wire nails and steel billets the difference in the foreign prices and those in the United States equals an additional tax of over \$295,000,000, according to Mr. Money's calculations, which he says are based on a sworn statement submitted to the Ways and Means Committee by Judge Gary of the United States Steel Corporation.

## POST NOTICES.

(Continued from Page 1)  
questioned by the Bulletin reporter said they were opposed to the Hawaii Shipho because it stands for and represents the Planters. A number of them, talking in pigeon English, said that they could not afford to pay for a Japanese paper that did not support the contention of the Japanese laborers.

"Me no like Hawaii Shipho, he like kokua sugarmen," declared a barber, who was playing cards with his friends. "Me speak, no more like Hawaii Shipho, but he bring here all time," continued he. "I no like pay money, too much poho."

"Do you like the Nippon Jiji you have there on the table?" asked the reporter.

"Yes," came back the answer. "This paper," pointing at the Nippon Jiji, "too much good," he concluded. The proprietor of a billiard parlor said about the same thing. He said that the times were hard and that he could not afford to subscribe for all the Japanese newspapers. He admitted, however, that he was a subscriber of the Nippon Jiji.

Quiet at Eating Place.  
At the restaurant ground on Aala Lane today things were quiet as usual. The waiters, stewards, the

Your Princess Dress

will fit better if worn over a slip. We have them in white to cost \$3.00, \$4.00, \$5.00, \$6.00.

We also carry combination Corset Covers and Drawers, in all sizes. Cost \$2.25, \$2.50, \$3.00, \$3.50, \$6.50.

Before going away for your holiday provide yourself with suitable fancy work. Art Needlework on exhibition upstairs.

EHLERS

Good Beer is the best temperance drink in the world and the brewer stands for temperance, which means health, character, and physical and mental vigor.

Good, properly made beer contains a very small amount of alcohol and a relatively large amount of nutritive material. People sometimes forget that ginger beer contains more than one per cent. of alcohol and that Primo beer contains less than three per cent. Yet many good temperance people will drink the former and neglect the latter. It is time that the erroneous view that beer is an intoxicant should be exposed and discredited. If you want to keep strong and healthy, drink



## The Alexander Young

## Cafe

when REMODELED will be COOLER and more inviting than ever.

kitchenmen, the porters, the lunas and the officers of the ground were on hand during the heat hour. None of the strikers lacked the attention of these men. The children, who refused to disembark from their mothers' backs, were fed quite comfortably while wrapped in their blankets. The young ones were given milk and rice soup, while the larger ones got their quota of more substantial grub.

Kahuku News.  
T. Tanaka, a storekeeper from Kahuku, stated this morning that the Japanese strikers there were willing to return to work on hour after they were ordered off the estate by Manager Adams.

Mr. Tanaka, who attended the Royal school, and speaks splendid English, said: "I believe that Mr. Adams made a mistake, when he refused to allow the Japanese strikers of Kahuku to return to work, after they were ordered out of the estate. The Japanese strikers then were willing to go back to work even at the former rate of wages they were receiving from the plantation."

"Of course, when Mr. Adams declined to yield to the request of the Japanese, there was nothing more left for them to do but to march on. They are now stopping at Kahana. They can well afford to stay there and live."

"Yes," came back the answer. "This paper," pointing at the Nippon Jiji, "too much good," he concluded. The proprietor of a billiard parlor said about the same thing. He said that the times were hard and that he could not afford to subscribe for all the Japanese newspapers. He admitted, however, that he was a subscriber of the Nippon Jiji.

Quiet at Eating Place.  
At the restaurant ground on Aala Lane today things were quiet as usual. The waiters, stewards, the

Be Correct In Card Etiquette

The price of a copper card plate is very little. After you have one your engraved cards will cost you no more than common printed ones. Ask to see our samples.

H. F. Wickman & Co. LIMITED  
LEADING JEWELERS.

off what they have on hand, for the next month and a half. After that they will have to rely upon the help of outside people."

Joke at Kahana.  
"That was a great joke at Kahana," continued Tanaka. "It was a great joke on the police. Their automobile got stuck in the mud and they had to fight the mud, instead of the Japanese strikers, who were reported to be making trouble there."

Business Dull.  
The absence of the Japanese laborers at Kahuku plantation is ruining the business in the Japanese stores there. Tanaka, who keeps a store there, said this morning that he is selling his goods on a cash basis. He adopted this method since the Japanese strikers left the place. Unless something develops, it is probable that the Japanese stores at Kahuku will be forced to close.

Hilo Agitation.  
A Japanese weekly published in Hilo is very moderate in its English department. The Japanese section, however, is reported by those able to read Japanese as filled with the regulation agitator advice and constant effort to arouse the Japanese workmen against their employers.

Japanese Strikers, Rice Planters.  
The fact that the strikers are tired of loafing in Honolulu is daily evident. Some of them are now employed by the Chinese planters, notably the Palama Rice Mill. About four Japanese were plowing the rice field yesterday at Palama. Strange and unaccustomed to driving the buffaloes, the Japanese strikers busied themselves in steering the animals. One of them said that they are tired of waiting. When asked where he came from, the speaker simply said "Ewa-koehi," which means Ewa district. This expression may include Waiapahu, Aiea, Honolulu and Pearl City.

## STRIKE LEADERS.

(Continued from Page 1)  
to himself as early in the morning," remarked Mr. Kinney.

The two names were then called in proper order, both excused, one because he has to serve on the Federal Grand Jury and the other to attend to pressing business matters. The Judge then made an order to summon a new venire of twenty-six men, which was placed in the hands of Deputy High Sheriff Doyle for service.

Those remaining in the former panel are Thomas McGuire, William K. Isaac, Abraham D. Bolster, James H. Cummins, Sam M. Kanakiau, George H. Greene, H. Robert, Robert M. Walter Starbird, Bernard E. Beardmore and Hiram Kalomauk.

The new venire drawn include J. E. Kahoa, S. K. Hoa, Jr., Sam Pupulu, Henry A. Wise, John G. Clement, Frank A. Bechert, Thomas D. Stroup, George Meyer, John Trask, Charles D. Makani, Henry P. Rosh, Robert Clark, Joseph Moore, John Brown, Alf C. Silva, Sam K. Maaha, Jr., John Parker, William L. West, John H. Travis, John G. Dunster, John Brodie, Charles A. De Laus, Albert Lindoff, James L. Holt, E. S. Barry, and Joseph F. Douglass.

A boozier named Tin, who seems to have made a perfect success of his initial attempt at beer chewing, faced the judge at the Police Court this morning, and was invited to dig up four bucks. Tin dug.

Lawin.  
The cases were continued until to-morrow morning at 10 o'clock.

## POSTMASTER SHORT IN ACCOUNTS

Short in his accounts over \$1,000, a postmaster on Kauai Island will to-morrow face the federal authorities with a warrant for his arrest. His name is withheld pending his being taken into custody. Postoffice Inspector Hare worked up the case. Deputy U. S. Marshal Bruns leaves for Hanalei this evening on the Nueua to serve papers in a case involving an alleged violation of the Edmunds Act. Deputy Irwin will leave on the same boat for Kekaha.

## OLAA BEST SELLER ON 'CHANGE TODAY

Olaa was the only stock showing much activity on the Exchange today. Though the sales of that stock were not large, six parcels changed hands, altogether.

The largest bunch went at 47s, the high-water mark of the morning. There were 100 shares in that parcel. The next sale was at 44s, and that price continued steady. In all 148 shares changed hands, the majority of the deals involving small parcels of from five to eight shares.

Five shares of Inter-Island Steam Navigation Company stock sold at \$155 and ten shares of Waiakoa changed hands at \$91.

The market is now remaining its normal condition, though trading was generally light today. Where prices appeared low, the fall was easily accounted for by the fact that the companies have recently paid substantial dividends.

## TO COLLECT RECORDS OF HAWAII BIRTHS

Lloyd D. Conkling, chief clerk of the Executive Department, leaves on the Mauna Loa tomorrow for Hawaii for the purpose of recording all of the births on the island for the past year. Mr. Conkling has established a complete system of births and is special keeper of the records in this department. It will require most of next week for him to complete this work with the aid of a clerk.

A boozier named Tin, who seems to have made a perfect success of his initial attempt at beer chewing, faced the judge at the Police Court this morning, and was invited to dig up four bucks. Tin dug.

Honolulu Construction & Draying Co., LIMITED  
Phone 251. Fort St. Opposite Irwin & Co.  
Evening Bulletin 75c. Per Month







# Sale of Madeira Embroideries

**A** DARING CUT in prices on the beautiful Embroideries made by the women of Madeira. Ladies who can appreciate the beauty of this work will recognize this unprecedented chance. Think how your friends on the Mainland would rave at such an opportunity. Yet it is yours for a few days.

## Sale Now On

Come early to get a good choice, for these prices will attract crowds of buyers.

### Shirt Waists

\$6.00	Reduced to \$3.50
6.50	Reduced to 4.00
7.00	Reduced to 4.50
8.50, \$9.50	Reduced to \$5.50, \$6.00
\$10.00, \$11.50	Reduced to \$6.50, \$7.50

### Night Gowns

\$6.00, \$8.50	Reduced to \$3.75
7.00, 7.50, \$8.00	Reduced to \$4.00, \$4.25
\$8.50, \$9.00	Reduced to \$4.50, \$5.00
\$10.00, \$12.50	Reduced to \$5.50, \$7.50

### Chemises

\$5.50, \$6.50	Reduced to \$3.50
\$7.00, \$7.50, \$8.50	Reduced to \$4.00, \$4.25
\$8.50, \$9.00, \$9.50	Reduced to \$4.50, \$5.00

### Corset Covers

\$3.25, \$3.50, \$3.75	Reduced to \$1.75
\$4.00, \$4.50, \$4.75	Reduced to \$2.25, \$2.50
\$5.25, \$5.50, \$5.75	Reduced to \$2.75, \$3.00
\$6.00, \$6.50, \$6.75, \$7.50	Reduced to \$4.00, \$4.50

### Doylies

**From 35c up**

### Handkerchiefs

**95c up**

### Jabots

**85c up**

### Belts

**67c up**

### Bows

**35c up**

### Hand Bags

**\$1.10 up**

### Ruffles

**\$1.50 up**

### Tablecloths and Napkins

\$ 75.00	Reduced to \$42.50
\$ 85.00	Reduced to \$45.00
\$100.00	Reduced to \$55.00
\$125.00	Reduced to \$62.50

# MRS. J. ROSENBERG,

Rooms 9 and 10, Second Floor,  
Alexander Young Building

## KEANAE ROAD MAN TO BE INVESTIGATED

Grand Jury At Lahaina  
Has Brief Session  
Of Good Work

## JUDGE KINGSBURY URGES PRACTICAL SELF GOVERNMENT

Maui's County Attorney Is Complimented—Disposition of Criminal Cases.

(Special to the Bulletin.)  
WAILUKU, MAUI, June 18.—Honorable Selden B. Kingsbury, Judge of the Circuit Court, with the Court officers, Attorneys and Grand Jurors went to attend the June 1909 Term of the Second Circuit Court at Lahaina, Wednesday, June 16.

In charging the Grand Jurors, the panel consisting of F. F. Baldwin, H. S. Shoemaker, George Gibb, Wm. Walsh, A. C. Betts, W. A. Engle, Jos. C. Trios, Henry Smith, Alfred Ayers, E. Kruse, H. B. Penhallow, Joe Freitas, Jos. Espindola, Wm. Cockett, C. D. Lukin, H. A. Baldwin, H. W. Rice, H. T. Brookerick and Horace Kekumu, the Judge reminded the grand jurors that they were to exemplify self government and to show the people that the people of this jurisdiction do govern themselves; that they were to enforce the laws and to punish those who break the criminal laws. He also called attention to the fact that under recent enactment of the Legislature the County Attorney becomes ex-officio the prosecuting attorney of the circuit and have charge of all criminal proceedings in this Court. He stated it would be better to get along without an interpreter as far as possible for even "pidgin" English will give a better idea of what is meant than testimony strained through an interpreter. An alleged case of extortion and another matter of so-called graft of persons in official position was referred to for the Grand Jury to examine and determine.

The Court appointed F. F. Baldwin, foreman of the grand jury, and the juryman retired to their room.

**Grand Jury Report.**  
On completion of their labors the day following F. F. Baldwin, foreman,

presented a report with several indictments and the following comment: **Trouble at Keanae.**

Your Grand Jury has had called to its attention by the County Attorney certain apparent irregularity, if not actual criminal acts on the part of one Horace Kekumu and perhaps others, pertaining to the payment of County road laborers at Keanae, this County, for the month of October last. On account of the distance and inaccessibility of the witnesses required in this investigation, it is the opinion of the Grand Jury that the County Attorney should proceed to Keanae and personally investigate this matter in order that the actual facts and truth may be divulged; and that if he in his opinion finds that a prosecution or prosecutions should be started, that he institute the same before the district court.

That your Grand Jury have no matters in the way of special recommendations to make.

The Grand Jury has made note of the valuable and constant assistance and advice of the County Attorney of Maui during its sessions, and hail with entire approbation the new order of things whereby the County Attorney represents the Territory in the prosecutions of all criminal cases arising within this County; feeling as it does, that in the experimental stage of local self government that this County will not be found wanting.

The Grand Jury desires to express its deep appreciation of the courtesies and valuable aid, counsel and assistance received by it from Your Honor, the County Attorney and all other Court Officials in attendance upon this Term of Court.

The following disposition was made of criminal cases:

Territory of Hawaii vs. Harry T. White. Appellant withdrew his appeal and paid the fine imposed by the lower court, \$100.00 and costs, together with costs of Circuit Court.

Territory of Hawaii vs. Chong Sing. Larceny in the second degree. Plea, **Guilty**. Sentenced to six months imprisonment.

Territory of Hawaii vs. Chong Moon Chung. Burglary in the first degree. Plea, **Not guilty**. Trial set for Monday. Defendant had no counsel, and the Court assigned his case to W. F. Crockett, Attorney. Under the new law passed by the Legislature Mr. Crockett will be entitled to a fee not in excess of \$50.00 from the Territorial Treasury.

Territory of Hawaii vs. Frank Ortiz and John Leopoldo. Duelling. Plea, **Not guilty**. Trial set for Monday. Defendant to conduct their own defense.

Territory of Hawaii vs. Ah Liao. Carnally abusing a female under twelve years of age. Plea, **Not guilty**.

Defendant unable to employ counsel. Attorney D. H. Case assigned to defend him, and will be entitled to a fee of \$100.00 from the Territorial Treasury under the Sheldon enactment of the last Legislature.

Daniel Ioane, accused of burglary in the first degree, was discharged, as the Grand Jury found no bill against accused.

Territory of Hawaii vs. Peter Adams. Extortion. Case was passed as defendant was not in Court. Peter Adams was a police officer accused of taking hush money from certain parties, said to be gamblers.

### ART THEATER.

Despite the inclemency of the weather on Saturday night last, so disastrous to the open-air shows, a bumper house is the report from the ever popular Art. The exterior of this theater has undergone a perfect transformation.

For today's performance there is a complete change of program, the feature film being "A Florida Fend," giving a faithful picture of life in that region of romance and entrancing scenery. The show lasts for nearly an hour and a half.

"For Sale" cards at Bulletin.

## TOP MINNOWS EAT MULLET SPAWN

Pest Destroyer Reported  
To Have Found  
New Food

(Special to the Bulletin.)

WAILUKU, MAUI, June 18.—Fishermen claim the minnows imported by the Board of Health at an expense to the Territory of \$1,500, to prey on the larvae of mosquitoes, has acquired a taste for the spawn of the pond mullet and brackish water ponds invaded by minnows no longer produce the delicious mullet or amaama. Owners of fresh or brackish water ponds are threatened with a total loss of the value of their property as the minnows are good for nothing except for bait. The most efficient destroyer of the larvae of mosquitoes known to the writer is the beautiful gold fish, imported in the seventies without cost to the Government. The gold fish is

ornamental and withal does no harm to other fishes big or small. But now we have the costly minnow and very soon the delicious amaama will be a thing of the past.

## HAWAIIAN FALLS IN FAINT AND IS HURT

An aged Hawaiian named Kauin, who was standing in front of the fish market after making a purchase this morning, was observed to suddenly fall to the pavement.

A police officer who happened to be near the spot at once went to the man's assistance and found him to be unconscious and suffering from a bad cut in the back of the head. The injured man was at once picked up and sent in the ambulance to the Queen's Hospital, where he was examined.

By the time the hospital was reached, the patient was conscious, and, after having his head dressed, was allowed to depart for his home. It appears that the man is subject to fainting fits and that he has fallen in the same manner before.

## HOUSE JOURNAL SPLENDID VOLUME

House Proceedings For  
1909 Complete From  
Press of Bulletin

The handsomest Journal ever issued for either the Upper or Lower House of the Legislature of Hawaii, is the House Journal of the session of 1909, ready for delivery on Saturday last, from the press of the Bulletin Publishing Co., Ltd.

For the first time in Hawaii the Journal is bound in buckram, adding greatly to the appearance of the volume and, it is hoped, rendering it impervious to the attacks of silver-fish and other local book destroyers.

The House Journal is also a notable publication in that it contains the most exhaustive and systematic index ever undertaken by any Journal Clerk, and Newnan Fernandez is to be greatly commended for his painstaking work. The work has been turned out well within the contract time, which expires on the 25th inst., and it is a book that reflects credit on both its compilers and publishers.

## ARMY AND NAVY

A recital was given at Schofield Barracks on Saturday evening under the auspices of Lieutenant and Mrs. J. H. Barnard, 5th U. S. Cavalry, at the Officers' Club. The dining room was fitted up with a stage and foot lights and decorated with palms, flags, etc. Every officer at the post was present, including Col. Schuyler and Lieutenant Col. Hunter and Majors Foster and Good.

An excellent buffet lunch was served after the performance and dancing was enjoyed, with the Fifth Cavalry band playing.

The program follows:  
Evelyn Niles Gee, reader; Edwin Stanton Gee, pianist.

1. Monologue—"The Telephone Girl"
2. Original Arrangement of Classics—Chopin's Second Nocturne, Mendelssohn's Spring Song, Kreisler Sonata, Gottschalk's Last Hope.
3. The Banishment of Hagar by Abraham..... Donaldson incidental music by Rubinstein.
4. (a) Scene de Ballet.....Chaminade (b) March, German Triumphant.
5. "A Pair of Lunatics".....Hirsch Intermission, 3 minutes.
- Place—Dr. Adam's Private Sanatorium for the Insane, (A Parlor.)
- Time—Thanksgiving Eve—The annual ball for the patients and their friends is supposed to be in progress.
- Capt. George Fielding, 3rd Cavalry, U. S. A., Mr. Edwin S. Gee, Miss Clara Manners..... Mrs. Evelyn N. Gee

### EMPIRE THEATER.

"The Assassination of the Duke of Guise" is one of the latest sensational story pictures. "His picture will be shown for the first time in Honolulu at the Empire Theatre tonight, tomorrow's matinee and tomorrow evening.

To produce this play Pathe Bros., the greatest film makers in the world, secured the Theatre Francaise in Paris, owned by Sarah Bernhardt, also the most talented theatrical artists, who after weeks of rehearsal, enacted this play for Pathe Bros. at a cost of over \$10,000. To miss seeing this historical picture-story is to miss one of the most dramatic incidents in the history of France.

## SHELDON LAW MAY OUST HAWAIIAN

Honorable Old Man May  
Be Forced Out Of  
Magistracy

(Special to the Bulletin.)

WAILUKU, MAUI, June 18.—Solomon Kahohalahala, the veteran district magistrate of the Island of Lanai, aged over seventy years, and who has held the office continuously since his appointment by Chief Justice Allen, in the year 1872, during the reign of King Kamehameha V, presented himself before Judge Kingsbury at Lahaina this week to take the examination and qualify as a practitioner in district courts in order to continue to hold an office he has held thirty-seven years. The salary of the Lanai district judgeship is a paltry \$20 a month, and the old man's integrity and honesty and fitness to hold it has never been challenged before. But it seems by the terms of the Sheldon bill passed by the last Legislature a lifetime of official integrity is to count for nothing.

When questioned the old man admitted not knowing how to write and read the English language, but claimed he understood a little spoken English. His knowledge of law was also not up to date. In former times when the Hawaiian language was used in Court proceedings S. Kahohalahala had a license to practice law before district courts, a license he allowed to lapse some ten years ago. When first commissioned a district magistrate Chief Justice Hartwell was an Associate Judge of the Supreme Court of the then Kingdom. Judge Kingsbury kindly told the applicant that the matter would be presented to the Chief Justice and he would let him know the result.

**Sunday Rest For Postmen.** New York, June 7.—A movement which aims to secure Sunday as a day of rest for all postmen in the United States was inaugurated today at meetings of New York clergymen of several denominations. Congress will be asked to Act.

**Bulgarians and Turks Fight.**—Berlin, June 7.—A Salonica dispatch to the Frankfort Zeitung says that a fight lasting several hours has occurred on the Rudo-Turkish frontier between Bulgarian and Turkish frontier guards.



## THEY HAVE COME

### ANOTHER SHIPMENT OF

## READING-STANDARD

The motorcycle that is noted for its Simplicity, Durability, Strength, Power and Speed.

The economy of the motor bicycle appeals to all. Its cost of maintenance and operation is so insignificant as to make motorcycling the most economical form of transportation known today. When you stop to consider the vast amount of recreation and pleasure obtained at such low operating cost, it is not surprising that motorcycling is steadily gaining in public favor. And when you bring to these conditions a machine that is perfect in construction, and dependable under the most severe service conditions, there can be little cause for wonder that the "R-S" Motor Bicycle has gained such a strong hold on public favor.

Call and see our new stock or send for a catalogue.

## E. O. HALL & SON, LTD.

## Pottie's

### Urine

### Powders

A Sure and Safe Kidney Regulator.



## Blood Tonic

To Cool and Purify the Blood.

These two Remedies are necessary in a tropical climate. Are given in the feed and water. For Horses that stumble or are lory and out of sorts, you cannot do better than give a course of these Remedies.

H. JOHN POTTIE.

Hotel and Union Sts.

## FOR SALE

## EVERYWHERE



Lovejoy & Co.,  
SOLE AGENTS.

P.O. Box 637 - Tel. 308  
902-904 Nuuanu St., Honolulu

# FILMS

And KODAK supplies of all kinds. We carry a complete line of all sizes. When you want fresh films come to us.

Honolulu Photo Supply Co., Ltd.,  
"Everything Photographic." Fort St., near Hotel.

## NEW SHIPMENT OF

# DESKS

STANDING DESKS FLAT TOP DESKS  
ROLL TOP DESKS SANITARY DESKS

On Sale by

## Coyne Furniture Co., Ltd.

Baseball  
Boxing  
Boating

# SPORTS

Racing  
Bowling  
Rowing

## OPENING OF THE

## RIVER LEAGUE

Tremendous Crowd Attends Aala Park Where Kewalos Defeat Palamas And Fort Shalters Go Down To Alohas--Mayor Pitches First Ball

"Well, they nearly whitewashed us, but not quite," remarked one of the Fort Shalters yesterday. "Yes," chimed in another soldier, "but we are not done by a long way. We will stick to the game till the finish and show them we are not afraid at all."

And that is just the sentiment that all expected to be heard expressed by the Shalters boys. They must not take one defeat too much to heart, and everybody knows that they had an off day yesterday. That sort of thing is liable to happen to any team, and maybe the Alohas will break out in the same way next week.

But all the same the game between the Shalters and Alohas was fierce, and it was only the fact that it looked bad on an opening day to leave the ground before the finish of a game that kept most of the spectators there.

Included in the line-up of the Alohas were some well-known players who used to play with the Marines. Both the half-wet pitchers were on hand, and Gaw and Coll also played with the Alohas. Gibson pitched right through the game, and there was no need to call on Hines, as the Shalters could not get hold of "Gibbs'" curves at all.

Brito caught in good style, and Akana, on first, held the bag down in first-class manner. Gaw played his usual steady game at short, and Coll was satisfactory at third.

For the Shalters, Holoun did well for a couple of innings, and then blew up altogether, and after the Alohas had made no less than ten runs in the fourth Ramsey was put into the box. The new pitcher did much better, and it is a pity that Captain McCall did not make the change earlier in the game. There was no further scoring after Ramsey took the ball, but the lead of the Alohas was too big for the Shalters to overtake.

McCall, always a trier, simply excelled himself yesterday and played a beautiful game. Old "Red," as he is affectionately called by the rest of the bunch, is a first-class man, and it is a treat to watch him play. He never knows when he is beaten, and the way he flies over the ground is wonderful. The Shalters could take a leaf out of "Red's" book with great advantage to the future play of the team as a whole. This McCall would do well amongst some of the "Big" teams in this city, as he plays a heady game, and is a great trier, too.

Bateman, who took the mask after Strouse had made a feeble attempt to hold down the job, had not recovered from his recent illness, and did not play in his usual brilliant style. Still he was a great improvement on Strouse, and, as with the pitcher, the change should have been made sooner.

Congol was reliable and did good work in the left field, but at times the whole bunch would go up in the air, and the Alohas would come in over the plate so often that the spectators would be in doubt as to whether six, eight or ten runs had been scored.

There were a lot of changes made in the Shalters team and it was impossible for the official scorer to make up a proper card. In the fourth, when the Alohas made ten runs, the fans went crazy with excitement, and the row they made must have been heard miles away. Coll was the first man to get home, and he was followed by Hines, Gibson, Harris, Ah Toon, Brito, and Gaw. Then Coll started out again and romped home and the rest of the bunch played follow my leader. Hines and Gibson making one more run each. Oh, it was a lovely circus, and the Shalters did not seem able to stop or throw a ball properly.

The Alohas scored in their very first inning, both Franco and Akana getting home. They made two more in the third through the agency of Akana and Ah Toon, and then, as before.

There were a lot of changes made in the Shalters team and it was impossible for the official scorer to make up a proper card. In the fourth, when the Alohas made ten runs, the fans went crazy with excitement, and the row they made must have been heard miles away. Coll was the first man to get home, and he was followed by Hines, Gibson, Harris, Ah Toon, Brito, and Gaw. Then Coll started out again and romped home and the rest of the bunch played follow my leader. Hines and Gibson making one more run each. Oh, it was a lovely circus, and the Shalters did not seem able to stop or throw a ball properly.

The Alohas scored in their very first inning, both Franco and Akana getting home. They made two more in the third through the agency of Akana and Ah Toon, and then, as before.

STODDARD DAYTON  
7-Seater  
By Hour or Trip.

G. C. Beckley, Jr.  
PHONE 199.



GIBSON, THE MARINE PITCHER, WHO WON YESTERDAY'S GAME.

\*\*\*\*\*  
\*\*\*\*\*

\*\*\*\*\*  
\*\*\*\*\*

\*\*\*\*\*  
\*\*\*\*\*

\*\*\*\*\*  
\*\*\*\*\*

\*\*\*\*\*  
\*\*\*\*\*

\*\*\*\*\*  
\*\*\*\*\*

\*\*\*\*\*  
\*\*\*\*\*

\*\*\*\*\*  
\*\*\*\*\*

\*\*\*\*\*  
\*\*\*\*\*

\*\*\*\*\*  
\*\*\*\*\*

\*\*\*\*\*  
\*\*\*\*\*

\*\*\*\*\*  
\*\*\*\*\*

## PROGRAM

Secretaries or other authorized representatives of clubs are asked to send in a list of events, scheduled by them, that they may be included in the program. Address all communications to the Sporting Editor, Evening Bulletin.

## Base Ball.

June 27: Chinese Alohas vs. Aalas.  
Palamas vs. Fort Shalters.

## Cricket

June 26: Match.

## Polo.

June 26: Moanalua.

## Fistic.

July 3: Sullivan vs. Cordell.  
July 3: Sarconi vs. Terry.

## Golf

July 5: Team.  
(Country Club.)

## PALAMAS.

Runs ..... 1 2 3 4 5 6 7 8 9  
B. H. .... 0 0 0 0 0 2 1 0-3

## KEWALOS.

Runs ..... 1 2 3 4 5 6 7 8 9  
B. H. .... 0 0 2 3 0 0 0 0-5

Two-base hits, Paaluhl, M. Joseph, Ornellas, F. Joseph; three-base hit, F. Joseph; base on balls, o' Paaluhl 3, o' Deponte 3; struck out, by Paaluhl 5, by Deponte 6; hit by pitcher, Kiwa; sacrifice hits, Bolster, Freitas; double play, Aylett to Kaal to Kama. Time of game, 1 hour 36 minutes. Umpire, Williams. Scorer, Tin Chong.

## BOTH ATTELL BROTHERS HAVE NOW BEATEN NEILL.

SAN FRANCISCO, June 19. — Monte Attell defeated Neill tonight in the eighteenth round for the bantamweight championship.

The whole Attell family have now pretty well taken it out of Neill, and he must feel a bit sick when he thinks of the Hebrew bunch. Abe Attell in 1906 passed Neill his little package in the twentieth round, and now Brother Monte puts it over the one-time champion in the eighteenth round.

Neill was one of the best in his time, but appears to have gone back a lot in recent years. It probably is a case of the pitcher going once (or twice) too often to the well. Monte was never in his brother's class as a boxer, and it all goes to show that Neill has seen his best days.

## RELAY RACE IS WON BY HEALANI CLUB.

The Healani Boat Club members pulled off the relay swimming race in great style on Saturday, and defeated the Myrtles by a very narrow margin after a hard tussle.

Oss and Cunha swam in fine form and made very fast time over their section of the course. They were well backed up by the rest of the Healani team, and the combination proved just a trifle too good for the rival club.

There were a number of spectators and the race was much enjoyed by all those present. The members of both teams were in fine condition, and all the men had no trouble in covering the distance in good time. The teams were as follows: Healani—Oss, Cunha, Fuller, Mayne, Kamakau and Bray. Myrtles—Girdler, Center, Bechert, Kerr, Padekin and B. Center.

Dick Sullivan starts work at Fort Shafter this afternoon, and no doubt a big bunch of fans will turn out to watch the champion at his training stunts. Al Hine will look after Sullivan, and as he is an experienced man at the work no doubt the popular middleweight will be well looked after.

There will be an important meeting of the Oahu Baseball League tonight at 7:30 o'clock. The meeting will be held at the Real Estate Exchange, and all members are requested to attend.

Additional Sports on Page 10

## Mr. SWAHN

Formerly cutter for H. P. Roth, is now in charge of L. B. KERR & CO.'S TAILORING DEPARTMENT.

# Hurrah!

4th of July  
and  
Fireworks

Uncle Sam furnishes the 4th and we are ready to furnish the fireworks.

Rockets, Pinwheels, Crackers, Pistols, Flower Pots, Roman Candles, Torpedoes, Canes, Balloons, Flags, Cannons, Red Fire.

Exhibition assortments from \$3.50 to \$20.00. Each one a complete celebration.

Wall, Nichols Co.  
Ltd.

## It Is Flavored Well

There is no hit or miss about the Aerated Water made by us. The flavoring is adjusted to the quantity with the same care physicians bestow in compounding the medicines they prescribe. We will deliver to your house.

Consolidated Soda Water Works Co., Ltd.

JOHN SCHLEIFF, Manager.  
Telephone 71.

## YEE CHAN & CO.,

We have a Large New Shipment of  
**Ladies' Underwear**  
Now on display. Look at our windows.  
Very attractive prices.

## Brass Beds

## \$20 Each

and up

## J. Hopp & Co.

185 King St

Ladies' Undervests. 5c  
Good Quality,  
White Cotton Cloth, 36 in. wide,  
10c a yard

L. Ahoy, Nuuanu, below Hotel



## Monuments

## Safes,

## Iron Fence

Hawaiian Iron Fence and Monument Works

NEXT TO YOUNG BLDG., 176-190 KING STREET PHONE 237.

Weekly Bulletin \$1 Per Year



# Oceanic Steamship Company

## TIME TABLE S.S. ALAMEDA

The steamers of this line will arrive and leave this port as hereunder:

Leave S. F.	Arrive Hon.	Leave Hon.	Arrive S. F.
JUNE 26	JULY 2	JUNE 16	JUNE 22
JULY 17	JULY 23	JULY 7	JULY 13
AUG. 7	AUG. 13	JULY 28	AUG. 3
		AUG. 18	AUG. 24

Rates from Honolulu to San Francisco—First class \$65; Round Trip \$110; Family Rooms extra.

**Wm. G. Irwin & Co., Ltd.**  
OCEANIC S. S. CO. GENERAL AGENTS.

## PACIFIC MAIL STEAMSHIP CO. & TOYO KISEN KAISHA

Steamers of the above companies will at Honolulu and leave this port on or about the dates below mentioned:

FOR JAPAN AND CHINA:

FOR SAN FRANCISCO:

SIBERIA	JUNE 16	MONGOLIA	JULY 6
CHINA	JUNE 24	TENYO MARU	JULY 10
MANCHURIA	JUNE 30	KOREA	JULY 20
CHYO MARU	JULY 6	SIBERIA	AUG. 7
ASIA	JULY 17	CHING	AUG. 17
MONGOLIA	JULY 28	MANCHURIA	AUG. 21

FOR GENERAL INFORMATION APPLY TO

**H. Hackfeld & Co., Ltd., Agents**

AMERICAN-HAWAIIAN STEAMSHIP COMPANY.

Weekly Sailings via Tehantepec,  
FROM NEW YORK TO HONOLULU.

Freight received at all times at the Company's Wharf, 41st Street, South Brooklyn.

FROM SAN FRANCISCO TO HONOLULU.

MISSOURIAN	JUNE 24
S. S. PLATON	JULY 3

Freight received at Company's wharf, Greenwich Street.

FROM HONOLULU TO SAN FRANCISCO.

PLATON, TO SAIL JUNE 18

FROM SEATTLE AND TACOMA TO HONOLULU DIRECT.

COLUMBIAN	to all	JULY 8
S. S. TEXAN		JULY 22

For further information apply to  
**H. HACKFELD & CO., LTD., Agents Honolulu.**  
C. P. MORSE,  
General Freight Agent.

## Canadian-Australian Royal Mail Steamship Company.

Steamers of the above line, running in connection with the CANADIAN PACIFIC RAILWAY CO. between Vancouver, B. C., and Sydney, N. S. W., and calling at Victoria, B. C., Honolulu and Suva, Fiji, and Brisbane, are DUE AT HONOLULU on or about the dates below stated, viz.:

FOR FIJI AND AUSTRALIA:

FOR VANCOUVER:

MAKURA	JUNE 25	AORANGI	JUNE 23
AORANGI	JULY 24	MARAMA	JULY 20
MARAMA	AUG. 20	MAKURA	AUG. 17

\*Will call at Manning Island.

Through Tickets issued from Honolulu to Canada, United States and Europe. For Freight and Passage and all general information, apply to  
**Theo. H. Davies & Co., Ltd. General Agents.**

## Matson Navigation Company

Schedule S. S. HILONIAN, in the direct service between San Francisco and Honolulu:

ARRIVE HONOLULU	LEAVE HONOLULU
JULY 7, 1909	JULY 13, 1909
AUGUST 4, 1909	AUGUST 10, 1909
SEPTEMBER 1, 1909	SEPTEMBER 7, 1909
SEPTEMBER 29, 1909	OCTOBER 5, 1909
OCTOBER 27, 1909	NOVEMBER 2, 1909
NOVEMBER 24, 1909	NOVEMBER 30, 1909
DECEMBER 22, 1909	DECEMBER 28, 1909

Passenger Rates to S. F.: First Cabin, \$60; Round Trip First Class \$110.00

The S. S. LURLINE of this line, carrying both freight and passengers, sails for San Francisco direct, on or about June 30th.

For further particulars apply to  
**CASTLE & COOKE, LTD., Agents.**

**Union-Pacific Transfer Co., Ltd.**  
Furniture and Piano Moving.

Baggage Shipping  
Storage Wood  
Packing Coal

PHONE  
**58**

## Hustace-Peck Co., Ltd.

Phone 295. DRAYMEN 63 Queen Street. P. O. Box 212.  
Estimates Given on all kinds of teaming.

Dealers in

FIREWOOD, STOVE, STEAM AND BLACKSMITH COAL.

CRUSHED ROCK, BLACK AND WHITE SAND, GARDEN SOIL,  
HAY, GRAIN, CEMENT, ETC.

## Joseph A. Gilman,

SHIPPING AND COMMISSION MERCHANT,  
INSURANCE—FIRE AND MARINE.

Agent for ARTHUR SEWELL & CO., Bath, Maine;  
PARROTT & CO., San Francisco.

## FINEST FIT

and cloth of A-1 quality can be purchased from

**SANG CHAN,**

McCANDLESS BLDG.,  
P. O. Box 363, Telephone 931.

## McTighe Favorite

The Best Whiskey on the Market  
**THOS. F. MCTIGHE & CO., AGENTS**

101-105 KING ST.  
PHONE 140. P. O. BOX 755.

ESTABLISHED IN 1858.

## BISHOP & CO.

BANKERS

Commercial and Travelers' Letters of Credit issued on the Bank of California and The London Joint Stock Bank, Ltd., London.

Correspondents for the American Express Company and Thos. Cook & Son.

Interest allowed on term and Savings Bank Deposits.

**Claus Spreckels & Co.**  
BANKERS.

HONOLULU, T. H.

San Francisco Agents—The Nevada National Bank of San Francisco. Draw Exchange on the Nevada National Bank of San Francisco.

London—The Union of London and Smith's Bank, Ltd.

New York—American Exchange National Bank.

Paris—Credit Lyonnais.

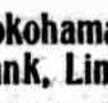
Hongkong and Yokohama—Hongkong Shanghai Banking Corporation.

New Zealand and Australia—Bank of New Zealand and Bank of Australia.

Victoria and Vancouver—Bank of British North America.

Deposits received. Loans made on approved security. Commercial and Travelers' Credits issued. Bills of Exchange bought and sold.

Collections Promptly Accounted For.



## The Yokohama Specie Bank, Limited

Capital, (Paid up) Yen 24,000,000  
Reserve Fund Yen 15,940,000

HEAD OFFICE, YOKOHAMA.

The bank buys and receives for collection bills of exchange, issues Drafts and Letters of Credit, and transacts a general banking business.

The Bank receives Local Deposits and Head Office Deposits for fixed periods.

Local Deposits \$25 and upwards for one year at rate of 4% per annum.

Head Office Deposits, Yen 25 and upwards for one-half year, one year, two years, or three years at rate of 5 1/2% per annum.

Particulars to be obtained on application.

Honolulu Office—67 S. King Street, P. O. Box 168.

M. TOKIEDA, Manager

## The First AMERICAN SAVINGS AND TRUST CO.

OF HAWAII, LTD.

SUBSCRIBED CAPITAL, \$200,000.00  
PAID UP CAPITAL, \$100,000.00

President, Cecil Brown  
Vice President, M. P. Robinson  
Cashier, L. T. Peck

Office: Corner Fort and King Sts.  
SAVINGS DEPOSITS received and interest allowed for yearly deposits at the rate of 4% per cent. per annum.

Rules and regulations furnished upon application.

## FIRE INSURANCE

THE  
**B. F. DILLINGHAM CO**  
LIMITED.

General Agent for Hawaii:  
Atlas Assurance Company of London.  
New York Underwriters Agency.  
Provident Washington Insurance Co.  
4th FLOOR, STANGENWALD BLDG.

## WM. G. IRWIN & CO., LTD.

AGENTS FOR THE  
Royal Insur. Co. of Liverpool, Eng.  
Commercial Union Assurance Co., Ltd., of London, England.  
Scottish Union & National Ins. Co. of Edinburgh, Scotland.

The Upper Rhine Ins. Co., Ltd.

## Alexander & Baldwin LIMITED.

OFFICERS AND DIRECTORS.

H. P. Baldwin, President  
J. B. Castle, Vice President  
W. M. Alexander, Second Vice Pres.  
J. P. Cooke, Third Vice Pres. and Manager  
J. Waterhouse, Treasurer  
E. E. Paxton, Secretary  
W. O. Smith, Director  
J. R. Galt, Director  
W. R. Castle, Director

SUGAR FACTORS,  
COMMISSION MERCHANTS and  
INSURANCE AGENTS

Agents for  
Hawaiian Commercial & Sugar Co.  
Haiku Sugar Company.  
Maui Agricultural Company.  
Kahuku Plantation Company.  
Kahului Railroad Company.  
Haleakala Ranch Company.  
Honolua Ranch.

## Castle & Cooke, Ltd

Honolulu, T. H.

SHIPPING AND COMMISSION MERCHANTS, SUGAR FACTORS

and  
GENERAL INSURANCE AGENTS

representing  
Ewa Plantation Co.  
Waialua Agricultural Co., Ltd.  
Kohala Sugar Co.  
Waimea Sugar Mill Co.  
Apoahua Sugar Co., Ltd.

Fulton Iron Works of St. Louis  
Blake Steam Pumps  
Weston's Centrifugals  
Babcock & Wilcox Boilers  
Green's Fuel Economizers  
Marsh Steam Pumps  
Marion Navigation Co.  
Planters' Line Shipping Co.

## Wm. G. Irwin & Co. LIMITED.

SUGAR FACTORS and  
COMMISSION AGENTS.

Wm. G. IRWIN, President  
JNO. D. SPRECKELS, 1st V. Pres.  
W. M. GIFFARD, 2d V. Pres.  
H. M. WHITNEY, Treasurer  
RICHARD IVERS, Secretary  
D. G. MAY, Auditor

Agents for  
Oceanic Steamship Co., San Francisco, Cal.  
Baldwin Locomotive Works, Philadelphia, Pa.  
Hakalsu Plantation Co., Hilo Sugar Co., Honolulu Plantation Co., Hutchinson Sugar Plantation Co., Kilauea Sugar Plantation Co., Olowalu Company, Paauhau Sugar Plantation Co., Waianalo Sugar Co.

## C. Brewer & Co., Ltd.

QUEEN STREET, HONOLULU, T. H.

AGENTS FOR:

Hawaiian Agricultural Co., Ooka Sugar Plant Co., Onomea Sugar Co., Honoum Sugar Co., Waialuku Sugar Co., Pepee Sugar Co., The Planters Line of San Francisco Packets.

LIST OF OFFICERS:  
C. M. Cooke, President; George Robertson, Vice President and Manager; E. F. Bishop, Treasurer and Secretary; F. W. Macfarlane, Auditor; P. C. Jones, C. M. Cooke and J. R. Galt, Directors.

Life Insurance

Is not a Luxury; It is a Necessity. But you must have the BEST and that is provided by the famous and most equitable Laws of Massachusetts.

New England Mutual Life Insurance Co.,

OF BOSTON, MASSACHUSETTS. If you would be fully informed about these laws, address

**Castle & Cooke,**

GENERAL AGENTS, HONOLULU, T. H.

## DAVID DAYTON

137 MERCHANT STREET.

LOTS FOR SALE

IN KAPIOLANI PARK ADDITION and other desirable localities.

For Sale at a Bargain—Premises at Hauula on the beach, a two-story house and furniture, at a bargain.

**Miss Kate Woodard**

1141 Fort Street.

Stamping, Embroidery and Notions. Shirts, Shirts, Shirts and Underwear. Orders taken for all kinds of fancy work. Telephone 387.

Blank books of all sorts, ledgers, etc., manufactured by the Bulletin Publishing Company.

## Corporation Notices

NOTICE OF CO-PARTNERSHIP.

The undersigned, G. Nakamura, I. Yamamoto, M. Komeya, Y. Ishii, E. Iwasaki, T. Mitamura, and U. Kobayashi, all of the City and County of Honolulu, Territory of Hawaii, and S. Koshima, of Hilo, Hawaii; M. Oyama, of Wailuku, Maui, and S. Kobayashi, of Kahului, Maui, hereby give notice that they have entered into and formed a general partnership; that the names and residences of each of the members of said co-partnership are as aforesaid; that the nature of the business of such co-partnership is to maintain and carry on a banking business in all its branches except as a bank of issue; that the firm name of said co-partnership is—

"THE JAPANESE BANK,"

and that the place of business of said co-partnership is at the market corner of Smith and Hotel streets in the District of Honolulu, Island of Oahu, City and County of Honolulu, Territory of Hawaii.

Dated at Honolulu this 15th day of June, A. D. 1909.

G. NAKAMURA, I. YAMAMOTO, M. KOMIYA, Y. ISHII, E. IWASAKI, T. MITAMURA, U. KOBAYASHI, S. KOSHIMA, M. OYAMA, and S. KOBAYASHI, co-partners doing business under the firm name and style of "THE JAPANESE BANK."

4339-1w

## ELECTION OF OFFICERS.

Hustace-Peck Co., Ltd.

At a meeting of the board of directors of the above-named corporation, held this date, the following officers were elected to serve for the unexpired term:

E. P. Bishop—President, vice Jas. P. Morgan resigned.

Chas. H. Atherton—Vice president, vice C. J. Campbell, resigned.

W. H. SMITH, Secretary Hustace-Peck Co., Ltd. Honolulu, T. H., June 15, 1909. 4338-1w

## NOTICE.

Notice is hereby given that Pete Higgins is no longer in the employ of this company.

PEERLESS PRESERVING PAINT CO., LTD. Office Fort St., opp. Irwin & Co. Telephone 281. 4339-1m

## NOTICE.

Adjourned annual meeting of the Waialua Soda Works, Ltd., will be held at the factory at Waialua Saturday, July 3, 1909, at 7:30 p. m.

H. H. PLEMER, Manager. 4340-31

## BY AUTHORITY

Honolulu, T. H., May 27, 1909.  
RESOLUTION.

AN APPROPRIATION FOR THE PAYMENT OF REPAIRS WAIKANE BRIDGE.

BE IT RESOLVED by the Board of Supervisors of the City and County of Honolulu, Territory of Hawaii, that the sum of EIGHTEEN HUNDRED DOLLARS (\$1,800.00), is hereby appropriated from the General Funds of the City and County of Honolulu, for the payment of an account known as "Repairs, Waikane bridge."

Presented by Supervisor J. C. QUINN.

Approved: June 15th, 1909. JOSEPH J. FERN, Mayor.

4337—June 15, 16, 17, 18, 19, 21, 22, 23, 24, 25.

## SEALED TENDERS.

Sealed Tenders will be received by the Superintendent of Public Works until 12 m. of Saturday, June 26, 1909, for the construction of the Kanohoulu road, Kaneohe, Koolau, Oahu.

Plans, specifications and proposal blanks are on file in the office of the Superintendent of Public Works.

The Superintendent of Public Works reserves the right to reject any or all bids.

C. H. KLUEGEL, Acting Superintendent of Public Works.

Department of Public Works. Honolulu, T. H., June 19, 1909. 4341-31

## Mr and Mrs. Hashimoto, MASSEURS.

Telephone 637.

Rheumatism, Bruises, Tired Feeling, and other Ailments Quickly Relieved.

178 BERETANIA AVE., near EMMA Bath and Electrical Treatment.

## Vienna Bakery

Boston Baked Beans, Boston Brown Bread. Leave orders a day ahead. 28 loaves of bread for \$1.00. 1129 Fort St. Phone 197.

## Legal Notices

No. 160. TERRITORY OF HAWAII. COURT OF LAND REGISTRATION. TERRITORY OF HAWAII TO ESTATE OF BERNICE PAULAH BISHOP, C. MAHOE; THE TERRITORY OF HAWAII, by CHARLES R. HEMENWAY, as Attorney General; CITY AND COUNTY OF HONOLULU, by JOSEPH J. FERN, as Mayor and President of the Board of Supervisors, and to ALL whom it may concern:

Whereas, a petition has been presented to said Court by GEORG FRIEDRICH RODER to register and confirm his title in the following described land:

Lots 6, 7, 8 and 9 of the Coney Estate lots. Title, portion of Apana I, L. C. Award 6225 to M. Kekano-nohi no I. Hialeale, also a lease of Nini I. C. Award 6239 to Kahlomoku at Niolopa, Nuuanu Valley, Honolulu, Kona, Oahu.

Commencing at an iron bolt at the south corner of this property and the north corner of Nuuanu avenue and a road 20 feet wide known as "Jack Lane." From this bolt the true Azimuth and distance to Rosebank Trig. Station is 315° 58' 40" 1143.3 feet and an iron pin at the west corner of Nuuanu avenue and "Jack Lane" is 37° 50' 32.5 feet. This iron pin is at the east corner of Land Court Petition No. 118.

From this iron pin the following Trig. Stations bear Rosebank Trig. Station 214° 23' 144.2 feet, Pauahi Trig. Station 255° 00' 30" and Punchbowl Trig. Station 14° 39' 30".

Running from above iron bolt by true Azimuths as follows:

(1) 217° 56' 442 feet along Nuuanu avenue to junction of stone wall and fence;

(2) 149° 5' 363 feet along Apana 19 of L. C. Award 19612 to A. Paki (Estate of B. P. Bishop), in land along fence to corner of same;

(3) 62° 25' 73.9 feet along same along fence;

(4) 65° 21' 211 feet along same along Kuumana to a gully, iron spike;

(5) 65° 32' 62.8 feet along same to an iron pin;

(6) 61° 2' 46.3 feet along Grant 2433 to Popoki (C. Mahoe) in Palika to 50 foot road;

(7) 231° 00' 559.8 feet along 50 foot road "Jack Lane" to initial point. Area, 4,250 acres.

You are hereby cited to appear at the Court of Land Registration, to be held at the City and County of Honolulu on the 15th day of July, A. D. 1909, at one o'clock and thirty minutes in the afternoon, to show cause, if any you have, why the prayer of said petition should not be granted. And unless you appear at said Court at the time and place aforesaid your default will be taken as confessed and you will be forever barred from contesting said petition or any decree entered thereon.

Witness, the HONORABLE W. J. ROBINSON, Judge of said Court, this 19th day of June, in the year nineteen hundred and nine.

Attest with Seal of said Court, (Seal) M. T. SIMONTON, Registrar.

4341—June 21, 28; July 5, 12.

## Legal Notices.

IN THE DISTRICT COURT OF THE United States, for the Territory of Hawaii.

The United States of America, Plaintiff, vs. Joseph O. Carter, et al. Defendants.



# BUSINESS DIRECTORY

## CONTRACTOR.

Otto Oss, Carpenter, Jobber and Contractor. Phone 1563. 1420 Victoria St. 4221-1m

## PLUMBING.

Yee Sing Kee—Plumber and Tinsmith. Smith St., bet. Hotel and Pauahi.

Bulletin Business Office Phone 256. Bulletin Editorial Room Phone 185.

## EMPLOYMENT AGENCY.

Japanese Employment Association. Nuuanu and Pauahi Sts. Call up phone 697 if you want a cook, good boy or servant.

## REPAIRING.

Woven Wire Mattresses repaired at the Factory Honolulu Wire Bed Co., 1250 Alapai St. Telephone 635. 3945-tf

## Oahu Railway Time Table.

### OUTWARD.

For Waiwae, Waiwae, Kahuku and Way Stations—9:15 a. m., \*3:20 p. m.  
For Pearl City, Ewa Mill and Way Stations—17:30 a. m., \*9:15 a. m., \*11:05 a. m., \*2:15 p. m., \*3:20 p. m., \*5:15 p. m., \*9:30 p. m., \*11:00 p. m.  
For Waiwae—9:15 a. m. and \*5:15 p. m.

### INWARD.

Arrive Honolulu from Kahuku, Waiwae and Waiwae—\*8:36 a. m., \*6:31 p. m.  
Arrive in Honolulu from Ewa Mill and Pearl City—17:46 a. m., \*8:36 a. m., \*10:38 a. m., \*1:40 p. m., \*4:31 p. m., \*5:31 p. m., \*7:30 p. m.  
Arrive Honolulu from Waiwae—\*8:36 a. m. and \*5:31 p. m.

\* Daily.  
† Ex. Sunday.  
‡ Sunday Only.  
The Haleiwa Limited, a two-hour train (only first-class tickets honored), leaves Honolulu every Sunday at 8:22 a. m.; returning, arrives in Honolulu at 10:16 p. m. The Limited stops only at Pearl City and Waiwae. G. P. DENISON. F. C. SMITH.

## Fast Schooner CONCORD

Sailing for KAPUNA, HONOLULU, KAILUA and HOOKENA From Sorenson's Wharf. Apply on Board or to HAWAIIAN BALLASTING CO., Agt. Telephone 393, Maunakea St., below King. P. O. Box 320.

## Wong Wong,

CONTRACTOR and BUILDER. PLUMBING and PAINTING. Office: Honolulu Painting Co., 221 King St. P. O. Box 914.

## The Encore Saloon

Try a drink at the new place and have MIKE PATTON serve you. COR. HOTEL and NUUANU.

## ICE

manufactured from pure distilled water. Delivered to any part of city by courteous drivers.

OAHU ICE AND ELECTRIC CO., Kewalo. Telephone 528.

Delivered to residences and offices at 25c per hundred in 10-lb. lots or more. W. O. BARNHART, 133 Merchant St. Tel. 146.

## BUILDING MATERIAL

OF ALL KINDS. DEALERS IN LUMBER.

ALLEN & ROBINSON, Queen Street :: :: Honolulu.

M. Phillips & Co Wholesale Importers and Jobbers

EUROPEAN AND AMERICAN DRY GOODS. FORT and QUEEN STS.

## S. SAIKI,

Bamboo Furniture Made to Order. Picture Framing a Specialty. 563 S. BERETANIA ST. TELEPHONE 497.

## HONOLULU IRON WORKS

Improved and Modern SUGAR MACHINERY of every capacity and description made to order. Boiler work and RIVETED PIPES for irrigation purposes a specialty. Particular attention paid to JOB WORK, and repairs executed at shortest notice.

## Steinway

AND OTHER PIANOS. THAYER PIANO CO., 166 HOTEL STREET. Phone 118. TUNING GUARANTEED.

## Savings Grow Rapidly

Put a few dollars from your earnings each month into our savings department and you will reap a rich harvest for the Autumn days. We pay 4½ per cent.

## Bank of Hawaii, Ltd.,

Fort and Merchant Sts. Capital and Surplus, \$1,000,000.



Genuine Swedish and Electrical Massage

## K. SASAI,

Fukuokayo Hotel, Liliha Street. Telephone 505.

## THE Chas. R. Frazier Company

FOUR ADVERTISERS Phone 371. 122 King St.

## BENNY & CO., Ltd.,

AGENTS FOR THE

## WHITE Sewing Machine

1266 Fort St. Phone 488.

## WAIKIKI INN

"The Finest Nothing on the Beach." Meals At All Hours.

WINES, LIQUORS, AND CIGARS. W. C. BERGIN, Proprietor.

## The Manhattan Cafe

Meals and Short Orders at All Times of the Day and Night. We Never Sleep. FORT ST. NEAR HOTEL. R. Wm. WARHAM, Prop.

P. H. BURNETTE Com'r. of Deeds for California and New York; NOTARY PUBLIC; Grant Marriage Licenses; Draws Mortgages, Deeds, Bills of Sale, Leases, Wills, Etc. Attorney for the District Courts. 79 MERCHANT ST. HONOLULU; PHONE 310.

We have for sale—Back Set Ranges, size 4 to 9 ft.; Bridge & Bench "Superior Stoves;" Quick Meal and Perfection oil stoves; Farmer's Broilers, Camp and Laundry stoves. Phone 211. EMMELUTH & CO., LTD., 145 King St.

## The J. CARLO LOAN OFFICE

Fort Street near Hotel

"For Rent" cards on sale at the Bulletin office.



Wealth of hair is wealth indeed, especially to a woman. If your hair falls out, is too thin, or is losing its color, use

## Ayer's Hair Vigor

It will remove all dandruff, and will give you thick, long, glossy, and beautiful hair. Accept no substitute. Be sure you get Ayer's Hair Vigor, and preserve the richness and luxuriance of your hair to an advanced period of life.

Prepared by Dr. J. C. Ayer & Co., Lowell, Mass., U.S.A.

## AMUSEMENTS

## Park Theater

Fort Street and Chaplain Lane Open Air Motion Pictures

Entire Change of Program Tonight. "VIRGINIA," A ROMAN TRAGEDY. Shaw will sing "The Singer Was Irish." The little girls, "Poor John." Admission ..... 10 cents Children ..... 5 cents Reserved Seats ..... 15 cents

## ALOHA PARK

OPEN AIR

## Motion Pictures

OPPOSITE THE EMPIRE. Admission ..... 10c Reserved ..... 15c

## ART THEATER

New Feature Film.

## The Octoroon

Change of program three times a week—Monday, Wednesday and Friday.

## THE EMPIRE

## MOTION PICTURES

Thorough ventilation, comfortable chairs. TWO SHOWS DAILY. Admission 10c, 15c, 25c.

## Orpheum Saloon,

and solve the Mosquito Question

## Madeira Embroideries

MRS. ROSENBERG YOUNG HOTEL

## WAH CHONG CO.

DRY GOODS AND TAILORING. Everything absolutely new and fresh from the Coast. WAVERLEY BLK. - HOTEL ST.

## Rainier Beer

FOR SALE AT ALL BARS TELEPHONE 1331

OHIO CLOTHES CLEANING CO.

132 Beretania St. Ladies' and gents' clothes and gloves cleaned. Contracts \$1.50 per month, four suits. Dyeing and dry cleaning. Telephone 496.

BULLETIN ADS PAY

## AMUSEMENTS.

HAWAIIAN OPERA HOUSE. June 22.

## WITHERS,

"THE JOACHIM OF THE CELLO." WITH HIS COMPLETE COMPANY OF EUROPEAN CONCERT CELEBRITIES, INCLUDING Mr. CHARLES BENNETT, the Eminent American Baritone; Mme. MARQUERITE ELZI, F. R. A. M., Solo Pianiste. Seats on sale at Bergstrom Music Co. Prices, \$1.50, \$1.00, 75c, and 50c.

## STRIKE LEADERS PILLAGE SYSTEM

## Japanese Servants Are Forced To Contribute Rice

It has been a subject of curious interest to the public for weeks from just what source the striking Japanese are drawing their rations. It has been the boast of Makino and his associates that there was plenty of money to conduct the strike for an indefinite period. Their counsel, Attorney Lightfoot said as much yesterday in open court, but admitted the funds were getting short for the purpose of furnishing bonds, court fees or bail.

But how about the kau-kau? One has only to watch the organized system of pillage that the leaders in this strike movement have forced upon the poor servant girls in the homes of Honolulu, to ascertain the origin of food supplies that are carried weekly to the Commissary Department of the strike headquarters, and there distributed among the workless Japanese.

Say there are 1,200 Japanese servants employed in the homes of this city. There may be more, but this is a conservative estimate. At least a half dozen well known people have stated lately, and are willing to make affidavits to the effect, that the servant is carrying away from their home a pound or more of rice each week. In some cases where they have been caught at the trick, they have explained by saying it was for a sick mother, brother or sister. Some have lost their positions over the petty larceny.

At this rate, it can easily be figured that over twelve hundred pounds of rice, besides other eatables are trucked away from the homes each week and dumped into the Japanese commissary for strike purposes. How many Japanese will 1,200 pounds of rice sustain per week. Just figure it for yourselves. The average Japanese laborer will consume about a pound per day. These figures are all very conservative, and will admit of expansion.

It is certainly deplorable that the agitators have been able to coerce Japanese servants in the homes to the extent that they have been forced into a nefarious system of petty larceny to satiate the demands of an undesirable class of men who are making the deluded Japanese plantation worker their especial prey. The housewives in the homes of Honolulu and elsewhere should give this matter particular attention, and stop this thieving, for it must be called by an ugly name.

## RECEIVED TABLE

From Hon. Gorham D. Gilman, Secretary Mott-Smith has just received the following letter, referring to the kua table sent him by Honolulu friends:

"Boston, May, 27 1909. Honorable E. A. Mott-Smith. 'My Dear Sir:—I wrote you some weeks ago that after over five months' waiting I had received the kua table sent me by kind friends at Honolulu.

The table was so water-soaked by its being sunk in the salt water of Hell Gate that each part had to be separated from its adjoining part and thoroughly dried, after which each part was restored and the table made as complete as when it left the manufacturer in Hilo.

"The result is a very fine specimen of Hawaii's beautiful wood, and also of a beautiful piece of furniture. It is a source of constant admiration. The accompanying testimonial hangs near by and tells the story of aloha.

"Am I asking too much of you to do the favor to announce through the press that the table has reached its destination, and is most highly prized by the recipient of such a valuable gift."

## TREASURER; MAY BE

"When asked Saturday morning when he would appoint a Territorial Treasurer, Governor Frear said: 'I am in hopes of disposing of this matter very soon. I have a score of names under consideration, and will select a Treasurer in the near future.' As to the operation of the office of public lands, the Governor said that beyond the fact that Marston Campbell would assume charge after July 1 as acting commissioner, there would be no change in the office for the present at least.

# WANTS

ONE CENT A WORD

## WANTED

Wanted to Rent—By naval officer and wife; small well-furnished house in good location. Address N. A., Bulletin office, 4341-1t

Wanted to Rent—Furnished cottage with three bed rooms; responsible party. Address C. G.

Wanted—Girl for housework; small family. 1486 Emma St. 4331-1t

Clean wiping rags at the Bulletin office.

## LOST.

Near Oahu College; a lady's lace handkerchief. Reward when returned to this office. 4342-1t

Gentleman's solitaire diamond ring. Liberal reward at 857 Kaolunani St. 4342-1w

English bulldog; half brindle. Reward if returned to George Beckley, Diamond Head. 4340-1t

Watch fob; elk's tooth, engraved L. H. U. Return to this office and receive reward. 4337-1t

Pink book No. 3957. Return to the First National Bank. 4341-3t

## FOR SALE.

One two-wheel car, iron tire; one trap, four seater; one Studebaker buggy, ball-bearing, with rubber tires. Address A. B. C., this office. 4327-1t

A fine business opportunity for business men. Address H. A., Bulletin office. 4337-3w

185 editorial rooms—256 business office. These are the telephone numbers of the Bulletin office.

## TO LET

K. of P. cottages, 2 story, new, Union street and Garden lane; close to business; no yard to keep up; no car fare. Electric lights and gas. Apply to J. M. McChesney, 16 Merchant street. 4319-1t

At the end of car line on the beach, furnished house; four bed-rooms; electric lights. Address "N," Bulletin office.

Desirable, cool, mosquito-proof rooms. Apply 236 King st., bet. Alakea and Richards sts. 4305-1t

Room and board in private family. Inquire at 732 Kinnu street, near Alapai. Terms reasonable 4340-1m

Two furnished rooms, 1071A Likiep St., near Campbell Lane.

Two furnished rooms. Apply Mrs. D. McConnell, 1223 Emma St.

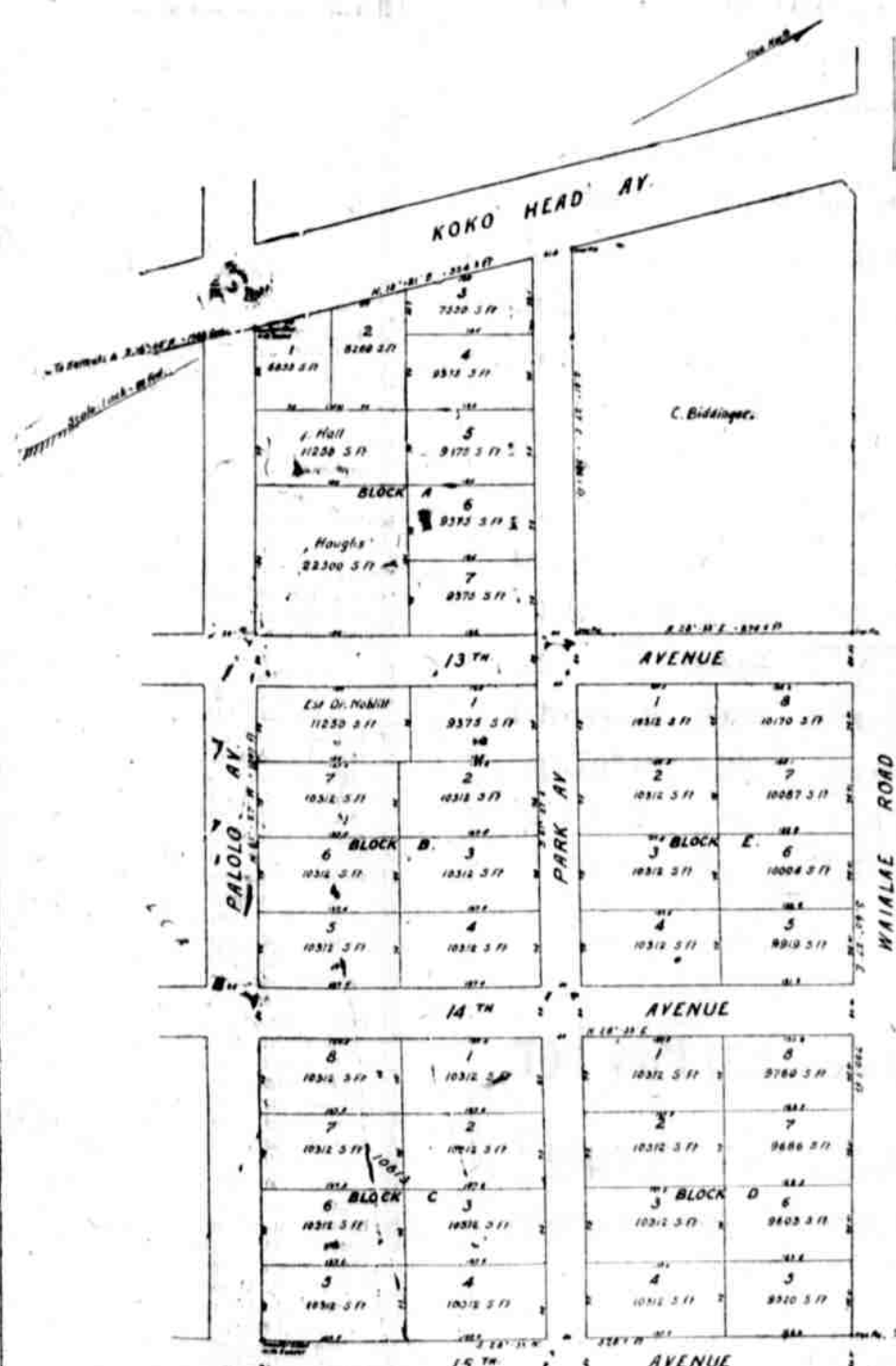
## FOR SALE.

A large property at the entrance to beautiful Pausa Valley, with clear stream of mountain water running through it; one 8-room dwelling; one five-room cottage; electric lights and modern plumbing; both houses thoroughly renovated. Entire property will be sold for less than the cost of the buildings. Address "Home," this office. 4331-1t

20,000 Cocoanuts just arrived on schooner Concord, from Panning Island. Miller Salvage Co. P. O. Box 527. 4285-1t

Choice collection of stamps (about 3,000). Address 1941 Bulletin office. 1t

# Kaimuki Park Tract



SOLD—Block A—Lots 1, 2, 3, 4, 5, 6, 7. Block B—Lots 1, 2, 5, 6, 7. Block C—Lots 5, 6. Block D—Lots 1, 2. Block E—Lots 1, 8.

Lots for Sale. \$400 Each. Easy Terms

Real Estate Exchange, Ltd., 82 South King St.



**You Pay For Your Competitor's Advertising When It Is Better Than Your Own!**

**OF COURSE** the bills are not sent to you -- he pays them. BUT, he pays them out of profits which would have been YOURS if your advertising had been better than his

You will continue to pay the other fellow's advertising bills, and, in the same way, for his automobiles, his new store fixtures, his expansion in every way -- until you decide that you'll stop it, improve and expand your advertising, SET THE PACE YOURSELF, and

**Make Him Pay For Your Advertising!**

**In the Bulletin, of course**



## SPORTS

### King Edward's Derby Win Popular

The following account of the last English Derby, which was won by King Edward's horse, Minoru, will be read with interest by many persons in these islands. The matter is clipped from the Daily Mail:

In many countries I have been present at many exciting scenes, but never, I think, have I witnessed and listened to such an outburst of enthusiasm as that which marked the King's victory yesterday, and which will make the Derby of 1909 forever memorable in the annals of the famous race.

After we had partly recovered I was talking in the paddock with an old nobleman who had seen every Derby since 1881 (as well as a good many before that) and a young girl who had just seen it for the first time. "Ah, my dear," he said kindly, "you're lucky in your first Derby. You'll never see another like it." That was the thought in everybody's mind.

The most astonishing thing about the scene was the suddenness of it. One moment there was silence, tense, dramatic silence, the next moment the air was rent by the shouting of innumerable throats and the course was black with people, every single one of them was waving his hat and jumping up and down, yelling at the top of his voice.

The police were taken completely by surprise. The crowd surged round the unsaddling enclosure rails before any attempt could be made to control them. There was very little roughness and no rowdiness; but a vast concourse of people is always difficult to manage. The police had a hard task set them by the suddenness of the onrush. They did their work fearlessly and well.

The finish was such a near thing that in the grand stand enclosure, where I was at the moment, there was just a flicker of doubt after the horses got past the post as to whether Minoru had kept its lead. Losviers had come along with such a gallant rush as they flashed up the straight that there was very little between them. They were almost neck and neck. Instantly, however, No. 1 was hoisted, and we knew that for the first time in its history a Sovereign of England was the winner of the "classic race."

**Leading in Minoru.** There was an immediate rush to get out. I slipped out among the first and ran along to the unsaddling enclosure. The King was still in his box, bowing, hat in hand. Then he bent towards the Queen, spoke a word to her, turned and went out. The Queen was in ecstasies, receiving congratulations with delight, pointing to the crowd, explaining how cleverly the race had been ridden.

A few moments passed and then the King appeared, smiling and bowing, on the steps leading down from his box to the enclosure. The cheers, which had not for an instant ceased, were now redoubled.

Down among the crowd his Majesty came to lead the winner in. The few policemen at hand began to use vigorous means to keep the throng back. But the King lifted a deprecating hand. "Gently, gently," his gesture seemed to say. "These are all my loyal subjects. They will make way for me to pass."

It was wonderful how they did make way. Those in front constituted themselves the emergency bodyguard. They linked arms and formed a solid block. Through the narrow avenue thus made to the dense mass of cheering humanity the King walked without the least sign of apprehension. Still smiling, still acknowledging salutes, as calm and debonair as if he were walking between lines of soldiers, he made his way to where Lord Marcus Beresford stood holding the winner's head.

The beautiful creature was as calm as its royal owner. Its glossy brown flanks heaved, his aristocratic nostrils dilated. But its eyes had in them only a quiet wonder as Jones, the jockey, smoothed its neck and murmured broken words of affection and praise.

The King took the bridle, and amid still more frantic shouts from every part of the course he led Minoru in. It was a proud moment for Jones, but not the first time he had experienced such a thrill. It was he who rode Diamond Jubilee, with whom the King, then Prince of Wales, won the Derby in 1899. But neither then, nor in the hour of the Prince's triumph with Persimmon in 1896, was there anything like the same excitement as this.

No doubt the hope of seeing the King win attracted a larger crowd than usual, and also the proportion of Americans present was much larger than I have ever noticed

before. They came hoping to see Sir Martin (from the United States) carry off the Blue Ribbon. Unfortunately he had an accident and fell. His jockey was so much hurt that he had to be wheeled up the course in an ambulance.

However, the Americans were as loud as anybody in their delight at the victory of the King. "If any other horse had won," said a well-known New Yorker who came over especially to see the race, "we'd have felt pretty cheap, but to be beaten by King Edward, well, I reckon that's an honor, don't you?"

Their comments on his Majesty's fearless and good-tempered descent among the crowd were also very striking. No other monarch in the world, they said, would mix with his subjects in that dramatic way -- either he would be afraid or, too proud. "Your King," said one of them, "is far nearer to his people than our Presidents are to us. It is a mighty fine thing to have a Sovereign who shares the amusements of his people and trusts them so absolutely. It makes me understand the British nation better than I ever did before."

### SOCCER PRACTICE THIS AFTERNOON AT MAKIKI.

There will be a soccer practice game this afternoon, and all the players are requested to turn out at 5 o'clock and have an exercise. Eddie Fernandez is very anxious to get the best possible team together for the Hilo trip, and as the players of the rainy city are reported to be in fine form it is up to our local men to practice as much as possible.

Play will start as soon after 4:30 as possible, and the following men are expected to take part in the game: E. Fernandez, W. Cralk, N. Greig, H. Chillingworth, R. Chillingworth, A. Norton, Jock Catton, W. Rice, D. Sherwood and J. Dwight.

Any other soccer players who would care for a game are also requested to turn out at the Makiki field this afternoon. They will all be welcome, and the more the merrier.

185 editorial rooms--256 business office. These are the telephone numbers of the Bulletin office.

### Alleged Leper Held At Washington, D. C.; His Wife, Who Aids Fight For Liberty



John R. Early, the North Carolina Salvationist who is being held on a government reservation in Washington as a leper, is making a desperate fight for his liberty, aided by his faithful young wife, Dr. L. Duncan Early, a New York skin specialist, has made a private examination of Early, and this has given rise to a hot controversy among the health experts of the District of Columbia. Health Officer Woodward has written a letter to Dr. Early demanding to know why he made the examination. Early's case has attracted attention all over the United States, and he and the government health authorities are receiving thousands of letters from sympathetic persons. Early quit taking medicine last November and strenuously insists that he has no sign or symptom of the dread disease. He goes about the yard surrounding his quarters and seems in excellent health. Indeed, he is able to work and is so ambitious to do so that he cuts the grass on the reservation. His wife, who had a small child, does the cooking for him. Early's case is likely to find its way into the courts. He hopes to get a verdict from the specialist that will enable him to prove conclusively that he is not afflicted with leprosy.

### BISHOP TEAM DEFEATS SPECIE BANK BOYS.

Bishop & Co.'s baseball team defeated the players from the Specie Bank on Saturday to the tune of 19 to 12. The game was played on Alexander Field and quite a crowd of fans rolled up to see the game.

Bishop's bunch made no less than four runs in the very first inning, and the Yokohama Yeomen came back with three in the third. Then the runs came fast and furious and the scores mounted up in quick order.

The rooting was immense and everybody seemed to enjoy themselves to the utmost. W. Jamieson made his debut as a ball player and made a favorable impression on the rest of the players and fans.

The line-up of the teams was as follows: Bishop & Co.—Enyate, sf; Louis, 1b; Chan Yen, 3b; Gilliland, p; Salto, rf; K. P. Kau, c; Rigo, 2b; Waterhouse, 3b; W. J. Jamieson, ss; Muto, lf. Specie Bank — Tokioka, 1b; Saigo, 3b; Fukano, c; Yoshika, 2b; Masuka, p; Murakami, ss; Hayakawa, 2b; Wada, cf; Otsuka, lf; Tasuda, rf.

### SHORT SPORTS.

McLaren, the well-known professional of the Country Club, has decided to return to the land of the Southern Cross and will go on to the old country by the Aorangi, and thence back to New Zealand.

The genial Mac will be much missed by the members of the Club, and everyone wishes him good luck and bon voyage. The club will make no attempt to fill Mac's place till next summer, as most of the professionals have been engaged, and it would be hard to find a good man for the job.

### BAND CONCERT.

Captain Berger has prepared the following program to be played by the band at Emma Square tonight:

PART I.  
March—The Free Lance. Sousa.  
Overture—The Summer Queen. Bigge.  
Intermezzo—Amina. Link.  
Reminiscences of Bellini. Godfrey.  
PART II.  
Vocal—Hawaiian songs, as by Berger.  
Selection—Musical Review. Riviere.  
Waltz—Carlotta. Millocker.  
Finale—Kismet Patrol. Tobani.  
The Star Spangled Banner.

ADVENTISTS END CONFERENCE—Washington, June 6. — The thirty-seventh quadrennial conference of the Seventh Day Adventists, which has been in session three weeks, adjourned tonight. More than 2,000 persons attended.

### FINANCIER WHO PILOTED SEATTLE FAIR TO SUCCESS



Many governors and other distinguished men will attend the opening of the Alaska-Yukon-Pacific exposition at Seattle on June 1. The machinery will be set in motion by an electric current flashes from the White House by President Taft and accompanied by his greeting. J. E. Chilberg, president of the exposition, to whom great credit is due for the successful completion of the vast undertaking will preside at the opening ceremonies. Mr. Chilberg is a pioneer of Alaska and the head of many large financial institutions.

### SUPREME COURT

The following cases came up before the Supreme Court, Mary H. Atcherley v. W. P. Jarrett, Sheriff City and County of Honolulu and A. N. Campbell and L. L. McCandless v. W. R. Castle Trustee, et al, on a reserved question from the First Circuit Court.

**CASTORIA**  
For Infants and Children.  
The Kind You Have Always Bought  
Bears the Signature of *Dr. J. C. Williams*  
BORN.

LUCAS—In Honolulu, June 19, 1909, to the wife of George W. Lucas, a daughter.

## AFTER DOCTORS FAILED

**Lydia E. Pinkham's Vegetable Compound Cured Her.**

Willimantic, Conn.—"For five years I suffered untold agony from female troubles, causing backache, irregularities, dizziness and nervous prostration. It was impossible for me to walk upstairs without stopping on the way. I tried three different doctors and each told me something different. I received no benefit from any of them, but seemed to suffer more. The last doctor said nothing would restore my health. I began taking Lydia E. Pinkham's Vegetable Compound to see what it would do, and I am restored to my natural health."—Mrs. ERRA DONOVAN, Box 229, Willimantic, Conn.

The success of Lydia E. Pinkham's Vegetable Compound, made from roots and herbs, is unparalleled. It may be used with perfect confidence by women who suffer from displacements, inflammation, ulceration, fibroid tumors, irregularities, periodic pains, backache, bearing-down feeling, flatulency, indigestion, dizziness, or nervous prostration.

For thirty years Lydia E. Pinkham's Vegetable Compound has been the standard remedy for female ills, and suffering women owe it to themselves to at least give this medicine a trial. Proof is abundant that it has cured thousands of others, and why should it not cure you?

### BENNY & CO., LTD.,

DEALERS IN  
Pottles  
And Buyers Of  
Raw Material

415 Queen St Phone 443.

### Forcegrowth Will do it

**Embroidery Sale**  
**BLOM'S**

New SUMMER OUTING HAT at

**MISS POWER'S**

BOSTON BUILDING, FORT STREET.

**Territorial Board of Immigration**

Office 403 Stangewald Bldg. Honolulu.

HO FOR THE

**4th**

FIREWORKS and FLAGS at  
A. B. ARLEIGH & CO., LTD.

**ASAHI BAKERY**

BERETANIA ST., NEAR ALAKEA.

Fine Cakes and Ice Cream.  
Rolls and Buns Fresh every morning.

— BLUDWINE —

the ONLY table drink. Manufactured by the

**Arctic Soda Water Works**  
PHONE 557

**Unique Chinese Goods**

**Wing Wo Tai & Co.**  
941 NUUANU ST

CHOICE CUT FLOWERS,  
Also  
FANCY RIBBONS and BASKETS

**Mrs. E. M. TAYLOR**  
THE FLORIST, HOTEL YOUNG Bld.  
Telephone 339.

**SPECIAL DISPENSATION FOR APRIL.**

This is to your advantage. Look it up. DO IT NOW.  
**HARRISON MUTUAL ASSOCIATION**  
Nos. 69-71 Beretania St.  
Phone 411.