

## The Hilo Tribune.

PUBLISHED EVERY TUESDAY  
OFFICE, KING STREET, - HILO, HAWAII

TRIBUNE BLOCK.

Hilo Tribune Publishing Company, Ltd.  
Publishers and Proprietors.

President.....C. C. KENNEDY  
Vice-President.....E. E. RICHARDS  
Secretary-Treasurer.....J. CASTLE RIDGWAY  
Auditor.....A. H. SUTTON  
Directors.....E. M. THOMPSON, D. W. MARSH

Advertisements accompanied by specific instructions inserted until ordered out.  
Advertisements discontinued before expiration of specified period will be charged as if continued for full term.

### ATTORNEYS-AT-LAW.

Chas. M. LeBlond

ATTORNEY-AT-LAW

Hawaiian, Japanese, and Chinese Interpreters and Notary Public in Office.

Office: SEVENRANCE BUILDING,  
Opposite Court House, HILO, HAWAII

J. CASTLE RIDGWAY THOS. C. RIDGWAY

Ridgway & Ridgway

ATTORNEYS-AT-LAW

Solicitors of Patents, General Law Practice  
HILO, HAWAII.

Notary Public in Office.

OFFICE: Waiuanueue and Bridge Streets

### I. E. RAY

ATTORNEY-AT-LAW  
AND NOTARY PUBLIC

Waiuanueue St. HILO, HAWAII

### REAL ESTATE, ETC.

F. S. LYMAN

AGENT  
FIRE, ACCIDENT AND MARINE  
INSURANCE

Waiuanueue Street, HILO, HAWAII

A S. LeBaron Gurney

AUCTIONEER

COMMISSIONS  
PROMPTLY EXECUTED

FRONT STREET  
OPPOSITE SPRECKELS' BUILDING

Henry Deacon

AGENT FOR

HAWAIIAN FERTILIZER CO.

Limited.

Collector of Rents for Waiakea Mill Co.

General Collecting Solicited  
and Returns Promptly Made.

Office with Theo. H. Davies & Co., Ltd.  
Waiuanueue and Bridge Sts. Hilo,

W. H. BEERS

INTERPRETER AND  
TRANSLATOR  
(English and Hawaiian)

Commission and Business Agent.

Will Act as Administrator, Guardian and  
Executor. Rents and Bills Collected.

Office with I. E. Ray. Telephone 146

ESTABLISHED 1898.

BISHOP & CO.

Bankers.

HONOLULU - OAHU, H. I.

Transact a General Banking and Ex-  
change Business

Commercial and Traveller's Letters of  
Credit issued, available in all the principal  
cities of the world.

Special attention given to the business  
entrusted to us by our friends of the other  
islands, either as Deposits, Collections  
Insurance or requests for Exchange.

## FURNISHED ROOMS

BY DAY, WEEK OR MONTH.  
Neat and newly fitted. Centrally and  
pleasantly located on

PITMAN STREET  
NEAR WAIUANUEUE ST.

Facing on Court House and Hilo Hotel  
Parks. A quiet, pleasant retreat.  
Terms Reasonable.

C. F. BRADSHAW

Proprietor. 43

NOTICE—Neither the Masters nor  
Agent of vessels of the "Matson Line"  
will be responsible for any debts con-  
tracted by the crew. R. F. GUARD,  
Agent.  
Hilo, April 16, 1905.

### LEGAL NOTICES.

In the Circuit Court of the Fourth Circuit,  
Territory of Hawaii.

AT CHAMBERS—IN PROBATE.

In the matter of the Estate of NOMURA  
KANOKICHI, deceased.

PETITION FOR LETTERS OF AD-  
MINISTRATION.

The petition of Ira A. Hutchinson,  
creditor of deceased, having been filed,  
praying for Letters of Administration to  
be issued to him as administrator of said  
estate.

Notice is hereby given that Tuesday,  
the 15th day of July, 1905, at 10 o'clock  
a. m., he and hereby is appointed the  
time for hearing said petition, in the  
Courtroom of the Fourth Circuit Court at  
Hilo, Hawaii, at which time and place  
all persons interested may appear and  
show cause, if any they have, why the  
prayer of said petition should not be  
granted.

Hilo, Hawaii, June 13th, 1905.

By the Court:

A. S. LeBARON GURNEY, Clerk.

By Chas. Hitchcock, Deputy Clerk.

RIDGWAY & RIDGWAY,

Attorneys for Petitioner. 34-3

### BY AUTHORITY.

#### Holiday Notice.

Tuesday, July 4th, being a legal holi-  
day all offices of the Territorial govern-  
ment will be closed on that day.

G. R. CARTER

Governor.

Executive Building, June 16, 1905. 34-2

#### Notice.

All outstanding bills for materials fur-  
nished and services rendered in the  
period commencing July 1, 1904, and  
ending June 30, 1905, must be in my  
office properly certified, if on the Island  
of Oahu by July 10, 1905, if on the other  
Islands by July 15, 1905.

C. M. WHITE,

Chief Clerk.

Department of Public Works,  
Honolulu, T. H., May 31, 1905.

#### Water Notice.

In accordance with Section 1 of Chap-  
ter XXVI of the laws of 1896:

All persons holding water privileges or  
those paying water rates are hereby noti-  
fied that the water rates for the term end-  
ing June 30, 1905, to December 31, 1905,  
will be due and payable at the office of  
the Hilo Water Works on the 1st day of  
July, 1905.

All such rates remaining unpaid for  
fifteen days after they are due will be  
subject to an additional 10 per cent.

All privileges upon which rates remain  
unpaid August 15, 1905 (thirty days after  
becoming delinquent), are liable to sus-  
pension without further notice.

Rates are payable at the office of the  
Water Works.

W. VANNATTA,

Superintendent Hilo Water Works.

Hilo, June 7, 1905. 33-4

#### Public Lands Notice.

Notice is hereby given, that at and  
after 9 o'clock, a. m., on Saturday, July  
29th, 1905, applications will be received  
under the provisions of Part VII (Right  
of Purchase Lease), Land Act of 1895, for  
the following lot of Public Land:

Lot 61, Map 13, Kaiwika, Hilo, Hawaii.  
Area, 25.10 acres; Class, Agricultural.  
Appraised value, \$175.70.

Plans of the lot, and full information  
as to necessary qualifications of appli-  
cants, method of applying, etc., may be  
obtained at the Land Office, Honolulu,  
and at the Sub Agent's Office, Hilo, Ha-  
waii.

JAS. W. PRATT,

Commissioner of Public Lands.

Honolulu, June 24th, 1905.

#### Hoolaha Aina Anupuni.

Ma keia ke haawia aku nei ka hoo-  
laha, ma, a mahope aku o ka hora 9, a.  
m., no ka Poaono, la 29 o July, M. H.  
1905, e waihoia mai no ka palapala noi  
malalo o na mana o ka mahale VII  
(Kuleana Kuai Hoolimalima), Kanawai  
Aina o 1895, no ka apana o ka Aina Anu-  
puni malalo iho nei:

Apana 61, Palapala Aina 13, Kaiwika,  
Hilo, Hawaii.

Ilaina, 25.10 eka; Papa, Aina mahial.

Kumuawai, \$175.70.

O na kii o ka aina a me na kuhikahi

paha e pili ana i na mea e kupono ai ka

mea e noi ana, ke ano o ka noi ana, etc.,

e loa aku no ma ke Keena o na Aina

Anupuni, Honolulu, a me ke Keena Aina

Anupuni ma Hilo, Hawaii.

JAS. W. PRATT,

Komisina o na Aina Anupuni.

Honolulu, June 24, 1905.

June 27, July 4, 11, 18, 25.

## CARTER WITNESSES DEFEAT AND RESIGNS

(By Wireless to THE TRIBUNE.)

Honolulu, June 23.—The returns for Sheriff of Oahu are as follows: Brown, 2458; Poepeo, 1956, and Henry, 860. Governor Carter has resigned.

Honolulu, June 21.—The following county officers for Oahu have been elected: Sheriff, A. M. Brown (R.); County Clerk, D. Kalanokalani, Jr. (R.); County Auditor, James Bicknell (R.); County Attorney, E. A. Douthitt (R.); County Treasurer, Richard H. Trent (Fusion); Supervisors, Edward R. Adams, John Lucas, George W. Smith, H. T. Moore, James K. Paele, Andrew E. Cox, Frank K. Archer. Deputy Sheriffs, J. S. Kalakela, George K. Kekauoha, Frank Pabia, Chris J. Holt, Oscar B. Cox and John Fernandez.

Overconfidence was responsible for the republican defeat in the County of Hawaii. The first returns from East Hawaii showed large republican majorities, but when West Hawaii was heard from, the anticipated victory was turned into defeat. Sam K. Pua, republican candidate for county clerk, was the sole survivor and his election is accounted for by reason of his residence at Kailua, a Home Rule stronghold. There was a deplorable lack of interest in West Hawaii and the Governor's participation in local politics affected the result. The republicans have the majority of supervisors but for deputy sheriffs honors are evenly divided. The candidates elected are marked thus (†) in the annexed table of returns.

Washington, D. C., June 26.—Roosevelt has directed that the fullest courtesies be shown Chinese of the exempt classes entering the United States.

St. Petersburg, Russia, June 26.—General Linevitch has reported the situation in Manchuria unchanged. There has been no action other than minor maneuvering.

Melbourne, Australia, June 26.—The Governor of the Commonwealth has invited Secretary Taft to extend his trip to Australia.

Tokio, Japan, June 26.—Three thousand Russians were defeated on Wednesday by the Japanese, with a loss of two hundred.

Honolulu, June 26.—Lambert was the lowest bidder for the new Hilo Jail, but Whitehouse received the award through changes made after the bids were opened.

### Scandal in Equitable.

New York, June 23.—There is a possibility of criminal proceedings in the matter of the Equitable as a result of the report of Superintendent Hendricks.

## COUNTY ELECTION RETURNS, 1905.

EAST HAWAII												WEST HAWAII											
CANDIDATES.												CANDIDATES.											
	Kalaupapa.....	Ola.....	Waialeale.....	Hilo.....	Papaikou.....	Honoum.....	Lanipahoehoe.....	Kahe.....	Honokaa.....	Kukuihue.....	Kapoho.....	Total.....	Kohala.....	Waimea.....	Kailua.....	Konauewa.....	Hookena.....	Papa.....	Waiohinu.....	Pahala.....	Total.....	Full Vote.....	
COUNTY SHERIFF—																							
†Keolanui, William M.....(H-D.)	54	44	99	100	70	32	17	15	30	80	50	591	172	37	151	141	92	27	88	45	853	1344	
Searle, John Cooper.....(R.)	16	64	87	192	40	56	58	65	26	34	701	70	53	40	83	62	16	71	32	427	1128		
COUNTY CLERK—																							
Edmonds, William E.....(H-D.)	52	36	84	84	63	32	11	17	17	63	44	503	141	8	118	122	85	22	56	47	599	1102	
†Pua, Sam K.....(R.)	17	70	99	196	44	48	59	50	67	41	42	733	91	80	60	100	67	17	51	24	520	1253	
COUNTY AUDITOR—																							
†Maguire, C. K.....(D.)	51	40	77	85	52	29	7	10	24	60	41	476	161	20	165	148	83	24	59	46	706	1182	
Wise, John H.....(R.)	16	64	100	191	48	57	63	60	59	42	41	741	68	67	23	71	70	16	77	23	425	1166	
COUNTY ATTORNEY—																							
†Williams, Charles.....(H-D.)	53	39	77	83	58	30	9	23	43	79	45	539	149	35	141	140	80	24	55	44	667	1206	
Wise, W. S.....(R.)	12	64	95	205	40	54	56	31	48	26	39	690	71	45	35	74	70	17	76	24	414	1102	
COUNTY TREASURER—																							
†Lalakea, T. K.....(H-D.)	53	47	85	99	60	36	11	13	32	80	42	558	166	28	124	133	85	27	63	51	677	1235	
Lyman, Rufus A.....(R.)	16	60	99	189	44	49	58	59	53	24	44	695	67	54	59	83	66	12	75	23	439	1134	

EAST HAWAII												WEST HAWAII											
CANDIDATES.												CANDIDATES.											
	Kalaupapa.....	Ola.....	Waialeale.....	Hilo.....	Papaikou.....	Honoum.....	Lanipahoehoe.....	Kahe.....	Honokaa.....	Kukuihue.....	Kapoho.....	Total.....	Kohala.....	Waimea.....	Kailua.....	Konauewa.....	Hookena.....	Papa.....	Waiohinu.....	Pahala.....	Total.....	Full Vote.....	
SUPERVISORS—																							
Baker, John T.....(D.)	90	99	55	36	12	.....	.....	.....	.....	.....	.....	292	Atcherly, Dr. John.....(L.)	56	21	.....	.....	.....	.....	.....	.....	77	
†Desha, Stephen L.....(R.)	100	152	45	46	46	.....	.....	.....	.....	.....	.....	389	Merseberg, W.....(R.)	0	1	.....	.....	.....	.....	.....	.....	1	
Lyman, Eugene.....(H-D.)	98	115	54	32	12	.....	.....	.....	.....	.....	.....	311	†Woods, James F.....(H-D.)	193	71	.....	.....	.....	.....	.....	.....	264	
†Moir, John T.....(R.)	79	179	53	51	59	.....	.....	.....	.....	.....	.....	421	†Kaliwaa.....(H-D.)	.....	141	124	75	28	.....	.....	.....	368	
†Fernandes, A.....(R.)	.....	.....	.....	.....	.....	80	61	24	.....	.....	.....	165	Kamaooha, George P.....(R.)	.....	49	102	79	16	.....	.....	.....	246	
Makekau, K. H.....(H-R.)	.....	.....	.....	.....	.....	7	27	69	.....	.....	.....	103	Hewitt, George C.....(R.)	.....	.....	.....	.....	.....	64	12	76		
Thomas, E.....(I.)	.....	.....	.....	.....	.....	0	6	16	.....	.....	.....	22	†Shipman, O. T.....(H-D.)	.....	.....	.....	.....	.....	89	63	152		
†Makuakane, D. K.....(R.)	35	82	.....	.....	.....	.....	.....	.....	.....	.....	58	175	.....	.....	.....	.....	.....	.....	.....	.....	.....		
DEPUTY SHERIFF—																							
†Fetter, William A.....(R.)	106	225	49	38	.....	.....	.....	.....	.....	.....	.....	418	†Pulaa, C. H.....(H-D.)	175	.....	.....	.....	.....	.....	.....	.....	175	
Laela, William.....(H-D.)	.....	.....	.....	8	33	.....	.....	.....	.....	.....	.....	41	Stillman, C. K.....(R.)	68	.....	.....	.....	.....	.....	.....	.....	68	
†Mattoon, James.....(H-D.)	.....	.....	.....	.....	.....	.....	.....	.....	.....	.....	.....	51	Kawai, J. W.....(R.)	.....	31	.....	.....	.....	.....	.....	.....	31	
†Kelipuleole, J.....(H-D.)	.....	.....	.....	.....	.....	.....	.....	.....	.....	.....	.....	119	Lindsay, W. M. S.....(R.)	.....	61	135	54	.....	.....	.....	.....	61	
†Rickard, W. J.....(R.)	.....	.....	.....	.....	.....	69	69	26	.....	.....	.....	164	†Kelikoua, J. W.....(H-D.)	.....	.....	.....	.....	.....	.....	.....	.....	159	
†Haaleo, S. H.....(H-D.)	46	47	.....	.....	.....	.....	.....	.....	.....	.....	55	148	Nahale, J. K.....(R.)	.....	67	71	.....	.....	.....	.....	.....	138	
Kaiwi, J. H.....(R.)	24	57	.....	.....	.....	.....	.....	.....	.....	.....	31	112	†Baker, David.....(H-D.)	.....	.....	68	73	21	.....	.....	.....	162	



**The Hilo Tribune.**  
TUESDAY, - JUNE 27, 1905  
Entered at the Postoffice at Hilo, Hawaii, as second-class matter.  
PUBLISHED EVERY TUESDAY.  
J. CASTLE RIDGWAY - Editor  
D. W. MARSH - Business Manager.

**ALL LOST SAVE HONOR.**

"All is lost save honor" apparently was the motive which prompted George R. Carter, when a republican candidate was elected sheriff of Oahu without his approval, to resign his office of Governor.

After making a personal fight out of the election of a county ticket on Oahu upon a self-constructed platform of opposition to the regular republican nominees and a bitter personal campaign resulting in a victory for those whom he so strenuously opposed, there was left only one decent thing for the Governor to do—and that was to resign. By his attitude of antagonism and repeated assertion that every ballot cast for A. M. Brown would be construed as a slap at the administration, the Governor placed himself in the unenviable position of having to withdraw from the gubernatorial office in the case of the success of his opponents.

Either Carter did not place much confidence in party loyalty and party pledges, or else he overestimated his own personal popularity in attempting to throw himself into the breach and block the success of the republican ticket.

No greater mistake could be made by the Governor than to suppose that a Territorial Executive's power and influence are co-extensive with a National administration or that it can seriously be considered as a governing factor in a local county election. It was because of this feeling of resentment that the voters administered so severe a rebuke for the Governor's interference last Tuesday. The same feeling was reflected in the result of the election throughout the County of Hawaii and we saw an otherwise strong republican local ticket go down in defeat largely because of the Governor's attitude in attempting to dominate his party.

It may be that very little can be said against Governor Carter's shrewdness and business ability, but as a diplomat or politician, even his warmest admirers cannot claim for him great distinction. If he is gifted with executive capacity, he lacks the tact and personality to hold his friends together, and that confidence in his subordinates which make willing employees and capable public servants. The theory of undated resignations and that every government employee should bend the knee, is un-American and contrary to the democratic spirit wherever liberty and freedom of speech prevails. He is accepted as eminently respectable and honest in all his actions and to be actuated solely by what he considered was for the best interests of the Territory, but his policies have been arbitrary and domineering, and his desire to rule as a supreme dictator was so strong within him that he has lost more friends than he has made during his brief tenure of office. While a man of strong personality and character, he has signally failed to exhibit an originality or force of character which would place him among the successful leaders of men and affairs. His last fiasco in attempting to individually and personally oppose his own party, and the campaign of abuse and mud-slinging into which he allowed himself to be drawn, left open to him only one course when his efforts proved futile to disrupt the party,—the Governor resigned and he will hereafter flock to himself.

Referring to the action of West Hawaii in downing the Republican ticket, Carl Smith, recalling his championship of the proposition for two counties for Hawaii, can only say: "I told you so."

ESPECIAL attention is called to the accurate table of official returns appearing on the front page of this issue.

**THE ELECTION.**

Of course only regret can be expressed that what appeared to be the strongest ticket in the field should have gone down in defeat at the county election. Two causes may be ascribed for this result. The first was the combination of two parties which agreed upon a fusion ticket selected from two elements of strength which are uncontrollable and governed by an unreasoning prejudice. The second was the spirit of retaliation among a mass of voters for the shortcomings of Governor Carter, for which the Republican party was made to suffer.

These were the unfortunate coincidences which resulted generally in republican defeat in the county of Hawaii, although personal reasons for or against one or more candidates may have materially affected the result in certain localities.

Now that a board of supervisors and a complete set of county officers have been elected for this county, upon whom the duty rests of starting a system of county government, the public should render such moral support and assistance as so important a step demands. The leaders of the party elected to power declare their intention and purpose to put into operation an economical and honest administration of county affairs, having in view the protection of the business interests and the welfare of the community. To the public is left the duty of hampering or assisting them in their first efforts at county government. The present officers are elected for a year and a half and the Republican party can accomplish no good purpose by any attempt to wreck the initial structure of county government under the auspices of its adversary. The purse strings will largely be in the control of a capable and conservative board of supervisors, and the most the Republican party can do is to watch and wait. The records of county officers will speak for themselves and incompetent officials will soon be discovered and relegated to where they belong.

Who is to be the next Governor is now the absorbing question. Had the Governor served out his term, Secretary "Jack" would have been the heir apparent and logical successor. H. P. Baldwin has neither the time nor inclination to seek political office. Judge Kepoikai, a shrewd politician and an Hawaiian scholar, is best suited for the office which he now fills. The appointment of Henry E. Cooper would come nearer to satisfying the majority of the people of this Territory than any name thus far mentioned. He is a man of sterling qualities, of high character, business ability and a polished gentleman—all the requirements to make a successful governor.

H. I. HOLSTEIN, who has posed as the political "boss" of Kohala, appears to have either lost his grip or been pocketed in the other bunch of cattle. We may expect at no distant date to see Holstein a candidate for the Senate bearing a brand other than "republican."

DISAPPOINTMENT over the action of a misguided Supreme Court, who were his personal appointees, in sustaining a "gold brick" county law, may have had much to do in crushing Governor Carter's confidence in the gratitude of his fellow man.

PELEG SMITH, the "Bystander," will now have to revise his eulogy of the most powerful Territorial executive in the United States.

F. BRUGHELLI insists that the resignation of Governor Carter does not liquidate his claim. "The bill is still \$175.00."

If Judge Little were here he might be expected to hiss through his teeth, "Et tu, Brutus!"

**First Foreign Church.**  
Sabbath, July 2, 1905, 11 a. m.—"Christ in you, the hope of glory." Col. 1:27. The sacrament of the Lord's Supper will be administered in connection with this service. 7:30 p. m.—"If the foundations be destroyed, what can the righteous do." Psalm 113. The evening service will be appropriate to the approaching national occasion.

**There May Be Two Sheriffs.**

A question which is puzzling Sheriff-elect William Keolani and other fusionist leaders is whether the enactment of a county law *ipse facto* terminates the terms of office of members of the Sheriff's Department. There is a feeling of unrest in the police force, and it has been rumored that none of the present incumbents will resign. It was reported that Capt. W. A. Fetter who as a republican was elected Deputy Sheriff for the district of South Hilo would refuse to serve under Sheriff Keolani, but Capt. Fetter denies this statement most emphatically. If there is no express provision in the County Act providing for the termination of office of the present officers, the public may see the County of Hawaii presided over by two distinct and separate executive law officers. This would mean that before Sheriff Searle can be displaced by Sheriff-elect Keolani, he must either resign or be removed by the Governor.

When interviewed by a TRIBUNE representative, Sheriff Searle was non-committal on the subject: "I have nothing to say for publication," said Sheriff Searle. "The question has been raised and there appears to be some ground for doubt on the subject. I certainly have no intention of resigning and, of course, if my term of office continues under the Territorial administration, there is no good reason why I should not retain office. This is a matter which I have given little consideration. If my office is vacated by operation of the County law, I am simply in the situation as described by John J. Ingalls of Kansas, when he failed of reelection, 'I am a statesman out of a job.' I have no plans whatever for the future."

It is understood that the matter has been regarded with some serious matter, that Sheriff-elect Keolani has retained C. M. LeBlond, special counsel to protect his interests.

**Elk's Dramatic Club.**

The Elks have assumed charge of the Grand Ball to be given at the Hilo Armory on the night of the Fourth of July, and have in preparation for the same evening a dramatic performance which promises to be one of the best exhibitions given by local talent in Hilo. The comedy entitled "Lend Me Five Shillings," in which Jefferson, Nat Goodwin, Mr. and Mrs. Kendall and other celebrated actors have appeared, will be staged and presented by the Elks under the direction of William Carlton Cook. A stage will be erected in one end of the assembly hall of the Armory, and special scenery and effects will be constructed for the production, which will be given preliminary to the ball. The price of general admission has been fixed at \$1.00, and reserved seats at \$1.50. Tickets will be on sale at the Hilo Drug Store Thursday morning. Already requests have been received by mail and telephone for seats, which will be considered Thursday morning after the advance sale of seats begins.

**Contracted Neuralgia During the War.**

"I had a bad case of neuralgia which I contracted during the war. I tried several kinds of medicine, but they did me no good until a friend of mine recommended Chamberlain's Pain Balm, which gave me immediate relief. I have had no trouble since and must say that I find Chamberlain's Pain Balm a fine liniment. I have since used it for other troubles and always with good results."—J. VIJORN, Jacobsdal, Transvaal. For sale by the Hilo Drug Co.

**ALL KINDS OF RUBBER GOODS**  
GOODYEAR RUBBER CO.  
R. H. PEASE, President.  
SAN FRANCISCO, CAL., U. S. A.

**WM. G. IRWIN & CO., Ltd.**

**Sugar Factors, Commission Agents**

Sole Agents  
National Cane Shredders,  
Baldwin Locomotives,  
Alex. Cross & Sons' Sugar Cane and Coffee Fertilizers

**PLANTERS' LINE**  
—OF—  
**SAILING VESSELS**

Direct Line between SAN FRANCISCO AND HILO.  
Bark St. Catharine, Capt. Saunders  
Bark Amy Turner, Capt. Wariand

**QUICK DISPATCH**  
For freight and passage apply to  
WELCH & CO., Agents, San Francisco  
C. BREWER & CO., Ltd., Agents, Honolulu, or  
**H. Hackfeld & Co., Ltd.**  
AGENTS, HILO.

**For the Skin**

You cannot have a clear and smooth complexion unless the blood is pure. Itches, eruptions, rashes, pimples, all show how impure the blood must be. Get all impurities out of your blood before you are seriously ill.



Miss Dorothy Maher, of Pittsboro, Victoria, sends her photograph and this letter:  
"I had a terrible eruption on my face, which was of a very irritating nature. I tried many blood medicines, but without relief. Friends told me to try Ayer's Sarsaparilla, as it was a most famous blood remedy. I did so, and after taking only two bottles I began to see a great change. By the time the third bottle was used the eruption had entirely disappeared, and without leaving a mark on my face. I am perfectly well now, and I owe it all to this great blood-purifying remedy."

**AYER'S Sarsaparilla**  
There are many imitation Sarsaparillas. Be sure you get "Ayer's."  
Correct any tendency to constipation with Ayer's Pills. They are sugar-coated, easy to take, mild in action. A family laxative.  
Prepared by Dr. J. C. Ayer & Co., Lowell, Mass., U. S. A.  
For Sale by HILO DRUG COMPANY

**Hilo Railroad Co.**

Short Route to Volcano  
**TIME TABLE**  
In effect July 1, 1904.  
Passenger Trains, Except Sunday.

A.M.	P.M.	STATIONS	A.M.	P.M.
7:00	2:30	Hilo	9:35	6:00
7:20	2:50	Olaa Mill	9:50	5:40
7:30	3:10	Keaua	9:55	5:30
7:45	3:25	Ferndale	9:50	5:10
8:00	3:50	Mount. V'war	8:45	4:50
8:15	4:10	Glenwood	8:30	4:30
A.M.	P.M.	SUNDAY	A.M.	P.M.
8:00	3:00	Hilo	10:40	5:40
8:20	3:20	Olaa Mill	10:55	5:25
8:30	3:30	Keaua	10:15	5:15
8:45	3:45	Ferndale	10:00	5:00
9:00	4:00	Mount. V'war	9:45	4:45
9:15	4:15	Glenwood	9:30	4:30

**FOR PUNA:**  
The trains of this Company between Hilo and Puna will be run as follows:  
**WEDNESDAY:**  
Leave Hilo Station, by way of Railroad Wharf, for Olaa and Puna, upon the arrival of the Steamship Kinau, running through to Puna and stopping at Pahoia both going and returning.

A.M.	P.M.	FRIDAY:	A.M.	P.M.
6:00	1:00	Hilo	9:45	4:45
6:20	1:20	ar. R. R. Wharf	9:55	4:35
6:40	1:40	ar. Waialeale	9:25	4:15
6:50	1:50	ar. Olaa Mill	9:10	4:00
7:00	2:00	ar. Pahoia	8:40	3:40
7:10	2:10	ar. Pahoia	8:15	3:15
7:20	2:20	ar. Puna	7:45	3:00
A.M.	P.M.	SUNDAY:	A.M.	P.M.
9:00	1:00	Hilo	4:50	4:50
9:20	1:20	ar. Olaa Mill	4:30	4:30
9:30	1:30	ar. Pahoia	4:00	4:00
9:45	1:45	ar. Pahoia	3:40	3:40
10:05	2:05	ar. Puna	3:20	3:20
11:05	3:05	ar. Puna	3:00	3:00

Excursion tickets between all points are sold on Saturdays and Sundays, good returning, until the following Monday noon.  
Commutation tickets, good for twenty-five rides between any two points, and thousand mile tickets are sold at very low rates.

D. E. METZGER,  
Superintendent.



**Whose eyes need help?**

Yours?  
Vitality important that you heed their warnings, else serious results may ensue. Glasses fitted to all defects of vision by means of our thorough, rigid examinations.  
Our reputation for honesty, fair treatment and right glasses is established. Save suffering, regret and money by consulting us when your eyes call for help.

**A. N. Sanford**  
OPTICIAN  
Boston Building, Honolulu  
PORT STREET  
OVER MAY & CO.

**UNION BARBER SHOP**  
Agents for the

**SANITARY STEAM LAUNDRY**  
HONOLULU  
Leave your packages at the Union Barber Shop.  
Delivered by every Wednesday's Kinau No extra charge. We pay the freight.

**SPRING FEVER Bargain!**

Spring Fever is considered a joke—when someone else has it—but the condition is in reality no joke. Spring Fever is one of the terms applied to that general relaxed condition of the system which is so common at this season. It indicates, as a rule, a loss of vitality and a disordered condition of the blood. An effective remedy should be promptly used, because this condition readily becomes chronic. Our

**Dr. Blake's Sarsaparilla**

Is just the remedy needed. It aids digestion, tones up the nervous system, purifies the blood and increases vitality. We are so sure that it will give satisfaction in all cases that we sell it under a positive guarantee: Your money back if it fails.

**HILO DRUG CO., LIMITED**  
H. L. SHAW, - MANAGER

**SERRAO LIQUOR CO LIMITED**

**WHOLESALE LIQUOR DEALERS**  
Complete Stock of Finest Table Wines, Beers, Whiskies, Gins, Brandy and Liqueurs.  
Sole Agent for  
**PRIMO BEER**  
Wholesale House:  
Serrao Block, Shipman Street  
Telephone No. 7

**THE UNION SALOON**

Always on Hand:  
**BEST BRANDS**  
Of Wines, Liquors, Beers  
Mixed Drinks a Specialty  
Draught and Bottled  
**PRIMO AND SEATTLE BEER**  
10c Per Glass  
Shipman Street  
Telephone No. 7

**J. G. SERRAO, - Manager**

Subscribe for the TRIBUNE. Subscription \$2.50 a year.

**FOR SALE**

Excursion tickets between all points are sold on Saturdays and Sundays, good returning, until the following Monday noon.  
Commutation tickets, good for twenty-five rides between any two points, and thousand mile tickets are sold at very low rates.

D. E. METZGER,  
Superintendent.

**Whose eyes need help?**

Yours?  
Vitality important that you heed their warnings, else serious results may ensue. Glasses fitted to all defects of vision by means of our thorough, rigid examinations.  
Our reputation for honesty, fair treatment and right glasses is established. Save suffering, regret and money by consulting us when your eyes call for help.

**A. N. Sanford**  
OPTICIAN  
Boston Building, Honolulu  
PORT STREET  
OVER MAY & CO.

**UNION BARBER SHOP**  
Agents for the

**SANITARY STEAM LAUNDRY**  
HONOLULU  
Leave your packages at the Union Barber Shop.  
Delivered by every Wednesday's Kinau No extra charge. We pay the freight.

For Sale, One Upright Kroeber Piano in excellent condition.  
Furniture of all descriptions, including one very good Steel Range and Porcelain Bath Tub, Beds, Chairs, Dining-Room Table, Sideboard, Crockery, Glassware, etc.  
One new Singer Sewing Machine. Chickens and one young Jersey Cow.

**ALL VERY CHEAP**  
Call at  
**MRS. F. SOUZA**  
SCHOOL STREET

**Hilo Electric Light Co., Ltd.**

**Houses Wired and Lights Installed**

In accordance with the rules of the National Board of Fire Underwriters.  
A complete stock of  
**ELECTRICAL SUPPLIES**  
Fixtures, Shades, Table, Bed and Desk Lamps, etc., always on hand.

**Fan Motors . . . \$15**  
**Fan Motors, swivel frame 18**  
**Sewing Machine Motor 20**  
Power for operating them \$1 a month  
Installation charged extra.

Estimates furnished on all classes of Electrical Work and Contracts taken to install apparatus complete.

**THE FIRST BANK OF HILO LIMITED.**

Incorporated under the Laws of the Territory of Hawaii.  
CAPITAL, \$200,000.  
**PEACOCK BLOCK, HILO.**

C. FRICK.....President.  
F. S. LYMAN.....Vice-Pres.  
JOHN T. MOIR.....Vice-Pres.  
C. A. STOBIE.....Cashier.  
A. H. JACKSON.....Secretary.

**DIRECTORS:**  
John Watt, John J. Grace,  
F. S. Lyman, H. V. Fettes,  
Wm. Pullar, W. H. Shipman.

**Draw Exchange on**  
in Bank of Hawaii, Ltd., Honolulu  
Wells, Fargo & Co. Bank, San Francisco  
Wells, Fargo & Co. Bank, New York  
The National Bank of the Republic, Chicago  
Glynn, Mills, Currie & Co., London  
Hongkong-Shanghai Bank, Hongkong  
ing Corporation, China.  
Hongkong-Shanghai Bank, Shanghai,  
ing Corporation, China.  
Hongkong-Shanghai Bank, Yokohama  
ing Corporation, and Higo, Japan.

**SAFE DEPOSIT BOXES**  
Rented by the Month or Year. Particulars on Application.

**Olaa Property**

75 Acres, Unimproved; Lot No. 318, near 22-Miles, Volcano Road; Lot No. 101, near Russian Settlement.

**Higgins' Place**

7 Acres, Improved; House, Stables, Office Buildings, etc., Volcano Road.

**FOR PARTICULARS APPLY TO THE HENRY WATERHOUSE TRUST CO. LIMITED. HONOLULU, HAWAII.**

P. O. BOX 346.

**THE HILO TRIBUNE'S MAIL CHART**

**JUNE, 1905.**

MAILS ARRIVE IN HONOLULU AND DEPART AS FOLLOWS:

S.	M.	T.	W.	T.	F.	S.
				1	Alameda 2	Manuka 3
4	5	6x	7	Nevadan 8	9	10
11	12	13	14	15	16	17x
18	19	20	21	22	Alameda 23	China 24
25	26	27x	28	Nebraska 29	30	July 4
			Alameda			Korea

Vessels whose names appear OVER the date ARRIVE from the Coast. Vessels whose names appear BELOW the date DEPART for the Coast. Destination of Vessels: (1) To San Francisco; (2) To Colonies; (3) To Victoria; B. C.; (4) To Yokohama. S. S. Kinau departs from Hilo for Honolulu every Friday at 10:30 a. m. S. S. Mauna Loa's mail closes in Hilo on Saturdays and Tuesdays marked (x) at 2:15 p. m., arriving in Honolulu at daylight three days later.

Subscribe for the Hilo Tribune, \$2.50 Per Year



## Oceanic S.S. Company

### Time Table

The steamers of this line will arrive and leave this port as hereunder:

#### FROM SAN FRANCISCO.

Alameda	June 2
Sonoma	June 14
Alameda	June 23
Ventura	July 5
Alameda	July 14
Sierra	July 26
Alameda	August 4
Sonoma	August 16
Alameda	August 25
Ventura	September 6
Alameda	September 15
Sierra	September 27
Alameda	October 6

#### FOR SAN FRANCISCO.

Alameda	June 7
Ventura	June 13
Alameda	June 28
Sierra	July 4
Alameda	July 19
Sonoma	July 25
Alameda	August 9
Ventura	August 15
Alameda	August 30
Sierra	September 5
Alameda	September 20
Sonoma	September 26
Alameda	October 11

In connection with the sailing of the above steamers the agents are prepared to issue, to intending passengers **Coupon Through Tickets** by any railroad from San Francisco to all points in the United States, and from New York by any steamship line to all European ports. For further particulars apply to

**Wm. G. Irwin & Co.**  
LIMITED  
General Agents Oceanic S.S. Co.

### Koa! Koa!!

Koa Lumber in small and large quantities; well seasoned.

Furniture made to order, any style wanted. Repairs made on any kind of furniture. Prices moderate.

**Serrao Cabinet Shop.**  
Apply to JOSE G. SERRAO.

### To Shippers.

All freight sent to ships by our launches will be charged to shippers unless accompanied by a written order from the captain of vessels.

30tf R. A. LUCAS & CO.

A cough is a danger signal. You should heed its warning promptly. Begin at once, and take regular doses of

## Ayer's Cherry Pectoral



All serious lung troubles begin with a common cold. A cold in the throat easily passes to the bronchial tubes, and you have bronchitis, leading possibly to pneumonia or consumption. Stop your cold before it goes down into the chest. When you bring a bottle of Ayer's Cherry Pectoral into the house you bring with it relief, good cheer, hope, and sunshine. It is a standard and unrivaled remedy for colds and coughs.

There are many substitutes and imitations. Beware of them and of so-called "Genuine Cherry Pectoral." Be sure you get AYER'S Cherry Pectoral.

Put up in large and small bottles.

Prepared by Dr. J. C. Ayer & Co., Lowell, Mass., U. S. A.

For Sale by HILO DRUG COMPANY

## HILO MARKET CO., LIMITED.

Telephone No. 39.

BRIDGE ST. - HILO, H. I.

### Pacific ★ Meat ★ Market

FRONT ST., HILO, H. I.

Choice Cuts of

**Beef, Mutton, Pork, Veal.**

POULTRY of all Kinds

FRESH ISLAND BUTTER

Fine Fat Turkeys.  
Sucking Pigs.

### A POWERFUL RULER.

Governor Carter the most Powerful Territorial Executive.

In a recent issue of the Sunday Advertiser, the Bystander has the following to say about Governor Carter's autocratic power:

George R. Carter is the most powerful civil executive in the United States except the President. The governors of other Territories may sniff at this claim and the State executives dismiss it with a smile, but it can be made clear to the most clouded mind. For example, Governor Carter can, without previous consultation with the President, call out the military and naval forces of the United States to suppress internal disorder. From Maine to California no other Governor can lawfully do that. Governor Carter has the vital power, reposed in no other official in the United States except the President, to suspend the writ of habeas corpus. He is the only Governor who can issue passports for foreign travel. There is no other executive, not even the President, whose control reaches down to policemen, road-laborers and clerks. Civil service laws stand between the department clerk and the President, but they don't stand between the Territorial clerk or day-laborer and the Governor. The latter can remove a policeman or a fireman by a nod. Finally, through the system of undated resignations, he can remove any department chief without the consent of the Senate and control them while they are in power. Pledged to his fortunes in both the Senate and House are the real leaders of his party, most of whom became candidates at his request and were elected by his aid. Even the judiciary owes its personnel to him, for in every case of appointment to the bench, since he became Governor, Carter has been accepted by the President as the one to give the final word. As the Whole Thing the Governor of Hawaii could give odds to some European sovereigns. His use of the veto power, for instance, could not be adopted by King Edward without grating the sensibilities of the Commons. The King now holds that power only in theory and would hesitate to use it; perhaps he would not dare to use it. The President of the Swiss Cantons has no such power as that enjoyed by the Governor of Hawaii, and King Oscar is under more restrictions. As for the rulers of the German kingdoms, many of them would enjoy having a right of way in their home affairs as broad and unimpeded as that of George R. Carter in the affairs of Hawaii.

### Army Losses in Manchuria.

Washington, June 16.—The first approach to an accurate statement of the Russian and Japanese losses in Manchuria is contained in a list of battles and their casualties compiled by General Tasker H. Bliss of the general staff. Some of the information has been gathered by the military information bureau of the War Department. This has been supplemented by data from sources that are not revealed, but which are regarded as authentic.

The number of men engaged and the percentage of losses in each battle is as follows, according to the compilation of General Bliss:

Telissu—Russians, 30,000; losses 16 per cent; Japanese, 45,000; losses 2.58 per cent.

Kablung—Russians, 25,000; losses 8 per cent; Japanese, 50,000; losses 25 per cent.

Fenshuling—Russians, 5,000; losses 4 per cent; Japanese, 18,000; losses 4 per cent.

Motieling—Russians, 15,000; losses 6.6 per cent; Japanese, 20,000; losses 1.4 per cent.

Haiyey—Russians, 8,000; losses 6.2 per cent; Japanese, 18,000; losses 2.9 per cent.

Tatebika—Russians, 40,000; losses 3.4 per cent; Japanese, 60,000; losses 2.8 per cent.

Yashulantz—Russians, 40,000; losses 5 per cent; Japanese, 45,000; losses 2 per cent.

Liaoyang—Russians, 160,000; losses 5.4 per cent; Japanese, 170,000; losses 6.49 per cent.

Sha River—Russians, 180,000; losses 16.25 per cent; Japanese, 175,000; losses 5.8 per cent.

Sandepu—Russians, 65,000; losses 23 per cent; Japanese, 50,000; losses 14 per cent.

Port Arthur—Russians, 45,000; losses 34.33 per cent; Japanese, 106,000; losses 42.6 per cent.

Mukden—Russians, 400,000; losses 25 per cent; Japanese, 500,000; losses 12 per cent.

There are no reliable figures as to deaths from disease in either army, but they are reported to have been very light among the Japanese and heavy among the Russians.

(This would make the Russian losses 170,200 men and the Japanese 100,072 men, or a total of 270,272 men in the Manchuria campaign alone).

### Talk About Mosquitoes!

"The people who complain about the Jersey mosquitoes don't know what mosquitoes are," said a civil engineer the other day. "The Jersey mosquito is a positive joy compared to the blood suckers we have in the northwest. In North Dakota you couldn't possibly sit out in the evening without chain armor or a smudge fire to protect you, and along the line of the Canadian Pacific the workmen wear gloves and veils. When I was out there a year or two ago, looking after the building of a short branch road, we had only one man in the gang who did not mind mosquitoes nor even horse flies. He was a big Swede, with a hide like leather. His impregnability to the assaults of stinging things was the wonder of the camp, and one day he offered to bet my assistant that he could sit for half an hour in a 'slough' and not wince once while the gallinippers drained his life blood. My assistant had a five dollar bill which said the Swede couldn't do it. The Swede stripped to the waist, folded his arms and let the blood-thirsty insects do their utmost. Ten, fifteen minutes passed, and my assistant saw his \$5 leaving him. He took out a sun glass and focussed it on the Swede's back. The big fellow began to squirm. His back was toward us and he could not see what was going on. His back began to smoke. He writhed for nearly three minutes, then he twisted his head over his shoulder and called out:

"'Ae tak of 50 cents if you kill that horse fly.'"—Washington Post.

### Cheer Up.

Bright, cheerful, hopeful thoughts and a strong belief in one's own ability to accomplish the thing undertaken, are friends that will insure success. The ambitious person should learn as early in life as possible to pick out the friends and enemies of success, and in many cases it will be found that the greatest enemies reside within themselves. Morbid thoughts, for example, are infinitely greater hindrances to success than opposition from outside, and no health, no beauty, no harmony, no real success can exist in the atmosphere of abnormal melancholy or morbid ideas. Overcome the enemies to success within yourself and you will have done much toward reaching the goal of your ambition.—Answers.

### Chamberlain's Colic, Cholera and Diarrhoea Remedy.

This remedy is everywhere acknowledged to be the most successful medicine in use for Bowel Complaints. It always cures, and cures quickly. It can be depended upon even in the most severe and dangerous cases. Cures griping, all kinds of diarrhoea, and at the first unusual looseness of the bowels should be taken. Sold by the Hilo Drug Co.

## PAY FOR THE BEST IT'S CHEAPEST

AND THAT'S THE CLASS OF WORK EXECUTED BY

## CAMERON THE PLUMBER

FRONT ST., OP. SPRECKEL'S BLOCK

## FOR TABLE USE

The Leading Brands of

**Rhine Wines**

**Liqueurs and Mineral Waters**

## ARE UNEXCELLED

**Marie Brizard & Rodgers'**

Brandies and Liqueurs

**Usher's Celebrated Scotch Whiskey**

**O. V. C. Special Reserve**

The Most Popular in the Islands

**Kinderlin's Freebooter Gins**

The Finest Put on the Market

**Pabst Beer**

**A. B. C. Beer**

In Quarts and Pints, in Casks and Cases and by the Dozen

Mineral Waters, White Rock and Ginger Ale

**W. C. PEACOCK & CO. Ltd.**

WHOLESALE DEALERS

PEACOCK BLOCK, HILO

## HAWAIIAN FERTILIZER CO., Limited

SAN FRANCISCO OFFICE: 218 CALIFORNIA ST.

Factory: South San Francisco.

## FERTILIZERS

OF ALL KINDS IN ANY QUANTITY

Sulphate of Ammonia

Sulphate of Potash

Manure Salts

Double Superphosphate

Fish Guano

Bone Meal

High-Grade Tankage

We Have Constantly on Hand in Hilo the Standard Brands of



## Fertilizer

AND

High-Grade Fertilizer

At San Francisco Prices Plus the Freight and Charges.

Fertilizers of any required Analysis, with guarantee of same, furnished at short order.

SEND IN YOUR ORDERS

**H. DEACON, Agent**

Telephone 3

WAIANUENUE STREET, HILO

## Canadian-Australian Royal Mail S.S. Co.

Steamers of the above line running in connection with the Canadian Pacific Railway Company, B. C., and Sydney, N. S. W., and calling at Victoria, B. C., Honolulu, Suva and Brisbane, Q.; are due at Honolulu on or about the dates below stated, viz:

From Vancouver and Victoria B.C.	For Victoria and Vancouver, B.C.
For Brisbane, Q., and Sydney:	
MANUKA.....JUNE 3	AORANGI.....MAY 28
AORANGI.....JULY 1	MIOUERA.....JUNE 28
MIOUERA.....JULY 29	MOANA.....JULY 26
MOANA.....AUGUST 26	AORANGI.....AUGUST 23

The magnificent new service, the "Imperial Limited," is now running daily between VANCOUVER and MONTREAL, making the run in 100 hours, without change. The finest railway service in the world.

Through tickets issued from Honolulu to Canada, United States and Europe. For freight and passage, and all general information, apply to

**Theo. H. Davies & Co., Ltd., Gen'l Agts.**

## The Old Buggy...

made new for a few cents and a little labor. With

**THE SHERWIN-WILLIAMS BUGGY PAINT**

you can paint and varnish at the same operation. You will be surprised how easy it is to renew vehicles. Let us show you color cards.



SOLD BY

## HILO MERCANTILE CO. LIMITED.

SOLE AGENTS FOR HAWAII

P. O. Box 94

Telephones 4 A, 4 B

## RING UP 'PHONE 21

FOR PRICES ON ALL KINDS OF PRINTING

LATEST STYLES AND FAIR PRICES

## TWO SPLENDID CLUB OFFERS TO CASH SUBSCRIBERS ONLY

By Special Arrangement with the publishers, the TRIBUNE is able to present to Cash Subscribers the following offers on monthly magazines in combination with the WEEKLY TRIBUNE.

THE TRIBUNE is the brightest, newsiest and most up-to-date weekly newspaper published in Hawaii, having a special wireless news service, thereby giving to TRIBUNE readers, up to the hour of publication on Tuesday morning of each week, the latest foreign and cable news, besides general local news.

The Combination Offers are open to new subscribers or renewals. Magazines may be ordered sent to one or several addresses, but orders under this combination offer must be accompanied by draft or postoffice money order.


**CLUB A**  
Publisher's Price  
\$2.00—Saturday Evening Post,  
1.00—Ladies' Home Journal,  
2.50—Hilo Tribune (Weekly) } **\$4.25**

**CLUB B**  
Publisher's Price  
\$3.00—World's Work,  
1.00—Everybody's Magazine,  
2.50—Hilo Tribune (Weekly) } **\$5.25**

Send in your orders right away.

HILO TRIBUNE PUBLISHING CO., Ltd.





**Absolute Purity**

The brew of quality and absolute purity is

**Primo Lager**

It is an ideal family beverage and sold by all hotels, bars and wholesale dealers.

## DEMOSTHENES' CAFE

Comfortable Rooms ... Hot and Cold Baths ... A Well-Stocked Buffet ... Mixed Drinks and Fine Wines ... A Cold Storage Plant on premises with all the Delicacies of the Season ... Open Till Midnight

**WAIANUENUE STREET, HILO**  
**CUISINE UNEXCELLED FIRST-CLASS SERVICE**



There is a  
Smashup  
Due

In the family where the wife insists on the husband going down town for his

**RAINIER BEER**

It's a family beverage that tastes good and is good for you.

**RAINIER BOTTLING WORKS**  
**AGENTS, HONOLULU**

## OUR BRANDS TOBACCOS ARE:

**"Sealskin" GRANULATED**  
 12-3 Oz. Packages  
 Five packages gratis in each carton.

**"Recruit" GRANULATED**  
 12-3 Oz. Packages  
 Five packages Duke's Mixture gratis in each carton.

**"Kipling" CUT PLUG**  
 12-3 Ounce Tins  
 A high grade for pipe smoking.

**THEO. H. DAVIES & CO. Ltd.**

**SVEA**

**INSURANCE  
COMPANY**

Of Gothenburg, Sweden

Assets (Home Office) \$7,322,063.36  
 Assets in U. S. (for Additional Security of American Policy Holders) 656,678.43

Pacific Coast Department: EDWARD BROWN & SONS, General Agents  
 411-413 California St., San Francisco.

**H. HACKFELD & CO., Ltd., Resident Agents, HILO**

### PAY DAYS FOR ROYALTY.

#### How Sovereigns of Europe Receive Their Allowances.

The manner in which monarchs are paid their salaries varies considerably.

The Emperor of Russia, for instance, is the only European sovereign who is entitled to draw on the revenues of the country over which he rules whenever he pleases and to almost an unlimited extent.

All the vast sums accruing from various forms of taxation in Russia are banked to the credit of two officials named as the imperial treasurers, who discharge all liabilities of the Russian government.

Under the Russian constitution the czar is entitled to receive a seventh share of the revenue of the country, and though he, as a matter of fact, never draws upon the treasury to this extent, the emperor of Russia is yet by far the best paid and wealthiest of European monarchs.

The Emperor of Germany is in receipt of a salary of £100,000 per annum from the state, but his majesty has, of course, many other ways of supplementing this pay.

The salary is paid into the emperor's private banking account twice a year, the check for it being signed by no fewer than seven officials, and is finally indorsed by the kaiser himself.

The emperor also receives a "military and naval" allowance, which amounts to a big sum, and the expense in connection with the maintenance of the royal household at Potsdam are paid quarterly by the state treasury.

King Edward receives a quarterly check from the paymaster general for his salary as a monarch; the check is what is known as a negotiable receipt, and is sent to the keeper of the privy purse, by whom it is signed on behalf of the king, and then lodged to the credit of his majesty's private banking account.

The Emperor of Austria is put to some personal inconvenience before he can obtain his salary.

On the 1st of June and 1st of December the Austrian monarch pays a visit to the office of the state treasury, where he is received by three important officials.

One of these officials then reads out a document to the monarch, reminding him of the many duties he owes to the state, and exhorting him to the faithful performance of the same.

The emperor is then asked if the amount is sufficient, and on his replying to the question in the affirmative, given a receipt to sign for the money, which is, in due course, lodged to the credit of the imperial account.

The King of Portugal's salary is never paid to him direct, but is vested in the care of three officials, upon whom the king can draw whenever he requires money.

Each of these purse keepers, as they are called, receive £500 per annum, which the King of Portugal has to pay out of his own pocket, so that the arrangement costs the king £1,500 a year, which could be very easily saved by the dismissal of such entirely needless officials as the purse keepers.

The Sultan of Turkey has no allowance or salary; he simply informs the Grand Vizier when he wants money, and that official has to see that the amount required is forthcoming promptly, otherwise it is more than likely he might lose his head.—Pearson's Weekly.

#### Lahaina Lights.

The following changes have been made in Hawaiian lights and aids to navigation:

On June 16, 1905, the Lahaina Anchorage Buoy, painted red, was replaced by a black and white perpendicular striped, second-class nun buoy, Territorial type, in 8 1/2 fathoms of water in a position 30 feet N. of the old position. This buoy is on a line of bearing NE. and SW. with the new light and marks the mid-channel entrance to Lahaina Roads where anchorage may be had inside of the buoy within the limits of the white sector of the light is not less than 30 feet

of water within 300 yards of the light.

The new Territorial Government Wharf, white, with red roof has the crown of the roof in the line of bearing NE. and SW. in line between the buoy and the light and correctly marks the middle line of the deepest water of the break in the reef.

Lahaina Light Station, located on the eastward end of Government Wharf, Lahaina Harbor, easterly side of Auau Channel and westerly shore of the northwesterly part of the Island of Maui. On June 20, 1905, this light will be discontinued and on that date a new light will be displayed from a tower 20 feet east of the old location. The new structure is a square, pyramidal, trestle tower with the upper 10 feet walled in to form a room, painted white with lead colored trimmings. The lantern is displayed in the open air on a box-shaped structure with a rail forming a gallery around it. The new light will be 60 feet above high water and 55 feet above base of structure. The light shows through 176° between the bearings S. 48° E. (mag.) and N. 36° W. (mag.). It is a fixed white lens lantern light visible 12 miles, with 2 red sectors visible 7 miles, which red sectors mark the reef line which extends about 300 yards out from the shore line. The white sector marks the anchorage in Lahaina Roads and the break in the reef through which the boats land at the Territorial Government Wharf. Between the bearings S. 48° E. and E. (mag.) the light shows red. Between E. (mag.) and N. 36° W. (mag.) the light shows red.

Anchorage may be had within the white sector in not less than 30 feet of water to within 300 yards of the light.

#### The Way of the World.

It works about like this most of the time—when one man or one line of business is very prosperous some other man or line of business is apt to be catching it. When potatoes are worth \$1.50 a bushel it is a good thing for the man who raises them, but hard on the man who has to buy them. When the salaried man can buy a barrel of good apples for \$1.50 the man with the orchard is dodging the sheriff. The rain which makes one man's pasture green spoils his neighbor's hay, and when wheat men are buying pianos and surreys and starting national banks the day laborer grunts at the price of flour. A period of hard times makes work and prosperity for lawyers, and a set of aching molars a paying job for the dentist; the undertaker thrives during epidemics and fatalities to human life, while sickness and superstition of people make millionaires of the patent medicine men. The intensely cold weather builds up the fortune of the coal man, and when people are dying of sun stroke the iceman is enlarging his bank account, and so it goes, the misfortunes and dire needs of some insuring good times and prosperity for others.

#### Who Loses?

A Bostonian at Cape Breton having run up a bill of 10 cents in a barber shop handed the proprietor a Canadian dollar bill. He got back in change four American "quarters" and a dime. The barber explained that in that part of the world American 25-cent pieces passed for 20 cents. There the story ends. But it is well known that in many sections of this country Canadian coins pass from hand to hand at a similar discount, 20 cents American for 25 cents Canadian. Thus all the conditions are realized for the puzzle so often attacked on the ground that its premises are absurd. The traveler could bring his four quarters back to this country, buy some 5 cent article with each of them, and receive four Canadian quarters in change. If he were regularly traveling back and forth across the border, he could keep up this exchange indefinitely, spending 25 cents in each country without ever reducing his original dollar. The puzzle is, of course, who loses?

Subscribe for the TRIBUNE. Subscription \$2.50 a year.

## SUITABLE FOR EVERY DAY PRESENTS

### FANCY GOODS

We have opened a choice lot, such as:

Bohemian Glassware  
 Carved Swiss Woodwork  
 Italian Statuettes, Busts, Vases, etc.  
 German Music Boxes  
 "Steins"  
 Bronze Goods  
 Japanese Fancy Goods  
 Satsuma Ware, Vases, Cloisonne Ware

### CIGARS

A new shipment of the favorites of Hilo smokers just to hand:

"La Planta"  
 "El Belmont" Needles, Perfectos, etc.  
 "Cremo"

Call on us and inspect them.

**H. Hackfeld & Co.**

LIMITED

Waianuenue Street, Hilo.

## PLANTERS, ATTENTION!

SPECIAL ATTENTION IS CALLED TO THE FACT THAT

THE ONLY  
ORIGINAL AND  
CELEBRATED



FERTILIZER

Is that which has been manufactured for the past fifteen years exclusively by the

**California Fertilizer Works**

SAN FRANCISCO, CAL.

When purchasing be sure that in addition to the brand name of the California Fertilizer Works is on every sack, otherwise you will not be getting the genuine article.

A large stock of our Diamond A and our

**XX HIGH-GRADE FERTILIZER**

Is kept constantly on hand and for sale at San Francisco prices, plus only freight and actual expenses,

By Our Hilo Agents,

**L. TURNER CO.**  
 LIMITED

### Waiakea Boat House

R. A. LUCAS & CO., Prop'rs.  
 WAIAKEA BRIDGE, HILO

HAVE NOW A FLEET OF  
**Gasoline Launches  
 and Small Boats**

FOR PUBLIC HIRE  
 Passengers and baggage taken to and from vessels in the harbor at reasonable rates. Launches and rowboats to hire for private picnics and moonlight rides.  
 RING UP ON TELEPHONE

AGENTS FOR

### Wolverine Gasoline Engine

Self-starter and reversible engine. In practicability it is equal to the steam engine. Sizes from 1 1/2 h. p. upwards. Boats fitted with this engine or frames of any size to order. For particulars apply to R. A. LUCAS, Manager

### CRESCENT CITY BARBER SHOP

CARVALHO BROS.,  
 Proprietors.  
 The Old Reliable Stand is still doing  
**UP-TO-DATE WORK**  
 Razors honed, Scissors and all edged tools perfectly ground.—Satisfaction Guaranteed.  
 WAIANUENUE STREET  
 Second Door Above Demosthenes' Cafe

### WAIAKEA SALOON

Wharf Road, Second Door  
 From the Bridge.

**Fresh Cooling  
Primo**

FINEST BRANDS

**Wines  
Liquors  
Beers**

SCOTCH AND AMERICAN WHISKIES

and

**European Wines**

Draught and Bottled Beer

Subscribe for the TRIBUNE  
 Island subscription \$2.50 a year.



## CONDENSED LOCAL ITEMS

A. C. Bowles of New York is registered at Demosthenes Cafe.

The S. S. Enterprise is expected to arrive on Tuesday, July 4th.

S. H. Webb has for sale a \$100 safe, which he will dispose of at \$40.

J. T. Moir was a departing passenger to Honolulu last Friday on business.

A daughter was born to the wife of C. H. Olney at Reed's Bay yesterday morning.

Miss Daisy Lishman of Honolulu is visiting her sister Mrs. Geo. Ross at Hakalau.

Chairman W. H. Beers has called a meeting of the Republican District Committee this evening.

Why cut your own throat when you can buy a Gillette Safety Razor at Holmes' Store for five dollars.

The clothes hangers sold by Moses & Raymond are the kind that keep your clothes in shape. Try a set.

Miss Emma Lyons of Honolulu is making a vacation visit with her sister, Mrs. A. W. Richardson.

Mrs. E. N. Hitchcock and daughter have been the guests of Mrs. A. G. Curtis at Kurlistown, Olan.

Mr. and Mrs. H. L. Shaw have returned from the Volcano and are now located at their Reed's Bay residence.

Miss Minna Ahrens left on Friday's steamer to join her parents who are now residing at Honolulu.

The clothes hangers sold by Moses & Raymond are the kind that keep your clothes in shape. Try a set.

Miss Franc Potter left on Friday's Kinau for her summer vacation, which she will spend at Lake Tahoe, California.

C. P. Benton, lately of the firm of Benton & Arioli, road contractors, is employed with Theo. H. Davis & Co., Honolulu.

The Catholic Church Fair and Luau will attract a large crowd at the Hilo Armory next Saturday night. Admission is free.

Alvin Keech, the small son of Oke Keech of Honoum, was a returning passenger from Honolulu on the Kinau last Wednesday.

C. O. Smith departed on the Roderick Dhu Sunday morning for his summer vacation, which he will spend on the California Coast.

Moses & Raymond wish to announce that there has been a reduction in prices of Butterick patterns. They always have the latest styles.

Owing to the Fourth of July falling on Tuesday, the Kinau will arrive in Hilo one day late next week departing on Friday at 1 o'clock p. m.

George Richardson who has been making a tour through Europe and who arrived in Honolulu on the China, is expected to return next Wednesday.

If you want to keep in touch with local news happenings while away for the summer, leave your address with the TRIBUNE. No extra charge for mailing.

## A Sign of Prosperity.

The half page advertisement of G. W. Lockington, the furniture dealer, appearing in this issue is no sign of "hard times." When prices are the lowest, then is the time to buy, is the secret of Mr. Lockington's success. Being satisfied with small profits and quick sales, he gives the customer the benefit of San Francisco prices. He carries the largest stock and variety of high class furniture and house furnishings on the Islands. For assortment, style and prices, the Hilo Furniture Store excels. In the undertaking department, which has been enlarged, a large stock of all sizes and kinds of caskets, coffins and undertaker's supplies are kept on hand, and all of the minute details of funerals are carefully looked after. A visit to his establishment will fully repay any one seeking full value received.

## Roderick Dhu Departs.

The bark Roderick Dhu, Engalls master, cleared on Saturday for San Francisco, with five passengers and a cargo of sugar and general merchandise. The sugar shipment consists as follows: Hakalau, 20,000 bags; Hilo Sugar Co., 20,000 bags, and Waiakea Mill, 3,200 bags. The passengers were Judge O. M. Cunningham, of South Bend, Ind.; Dr. B. Van Etten Dolph, New York; F. L. Felter and wife, Los Angeles; and Cyril O. Smith.

## Farewell to F. Sousa.

The banquet on Saturday evening at Demosthenes Cafe in celebration of St. John the Baptist's Day, given by Kilaua Lodge of Masons, was a distinct success. Over sixty covers were laid and toasts were responded to by members of the Order. The banquet was in honor of Past Master F. Sousa, who departs shortly to make his home in Panama.

## No Competition.

The uniform success of Chamberlain's Colic, Cholera and Diarrhoea Remedy in the relief and cure of bowel complaints both in children and adults has brought it into almost universal use, so that it is practically without a rival, and as every one who has used it knows, is without an equal. Sold by the Hilo Drug Co.

J. Meinecke, of Kohala, was a Hilo visitor last week.

E. F. Nichols has returned from a two month's vacation at the coast.

A slight earthquake was experienced on yesterday morning at 7:20 a. m.

The Hilo Cotillion Club give a dance this evening at the Spreckels' Hall.

Miss Nellie McLain, a Honolulu school teacher, is the guest of Mrs. George Lycurgus.

Wm. McKay was called to Honolulu last week on business connected with the Wilder Steamship Co.

The regular monthly meeting of the Hilo Board of Trade meets next Friday night at Fireman's Hall.

Mrs. B. F. Schoen and family returned on Friday morning from a week's outing at Waialeale, Volcano road.

Miss Mabel Taylor, who has been teaching school at Pepeekeo, returned to her home in Honolulu on Friday.

The Volcano House offers a special Fourth of July dinner next Tuesday, and pyrotechnics at night by Madam Pele.

Judge O. M. Cunningham, accompanied by his physician returned to San Francisco on the Roderick Dhu Sunday.

Mr. and Mrs. W. H. Lambert are occupying the cottage in Puno, in which Mr. and Mrs. W. L. McLean formerly resided.

Before leaving on your summer vacation, leave your change of address with the TRIBUNE and the paper will be sent you without extra charge.

The Hilo Candy Co. have removed their quarters from Front street to more spacious quarters on Waianuenue street, opposite the Volcano Stables.

Chas. Sumner, who has lately been employed in the local branch of Theo. H. Davis & Co. Ltd., has left that establishment to return to his home in Boston, Mass.

J. G. Rothwell, manager, W. C. Peacock & Co. Ltd. spent a portion of last week in Hilo on business connected with that firm, returning to Honolulu on Friday morning.

If you wish your coffee to bring the highest market prices let the Hilo Coffee Mill clean, classify and place the same on the market for you. Liberal cash advances made on shipments.

Dr. A. B. Clark, the Honolulu dentist arrived on the last steamer and will remain about ten days in Hilo. He is prepared to give attention to scientific dentistry work while here.

Mr. and Mrs. Wm. Chalmers, James Henderson, and Alex Fraser formed a "gaen hame" party which left Friday for Aberdeen, Scotland. They expect to be gone about four months.

Alvah Scott, who has been attending Cornell, and Irwin Scott, who is preparing for the same college at Lawrenceville, N. J. returned on the Mauna Loa, arriving in Hilo on Saturday night.

Moses & Raymond wish to announce that there has been a reduction in price of Butterick patterns. They always have the latest styles.

James B. Rickard, of Honokaa, now a clerk in the Interior Department at Washington, was among the graduates of Columbian University at the recent commencement, receiving the degree of Bachelor of Laws.

Among the Hilo students, who have been attending various schools in Honolulu, who returned last week are: Miss Katherine Saddler, Emma Akamu, Helen Medcalf, Ednah Akau, Elvira Osorio, and Willie Ah Hip.

Subscribe for the TRIBUNE. Subscription \$2.50 per year.

The tug-of-war on Saturday night at the Hilo Armory resulted in a draw in both contests. The boys from the steamer Kailani pulled against the Waiakea team for forty minutes and the Road Board team waged brawn and muscle against the Company D team, for over an hour without a victory for either side.

The TRIBUNE has been requested to state by Fred C. Conrad, assistant bookkeeper in the office of the Hilo Electric Light Co., Ltd., that Konradt Hayes, who has confessed to the charge of burglary and is now awaiting trial in the Hilo jail, is not related or in any other way connected with him.

Mr. and Mrs. Wm. Chalmers, James Henderson, and Alex Fraser formed a "gaen hame" party which left Friday for Aberdeen, Scotland. They expect to be gone about four months.

Alvah Scott, who has been attending Cornell, and Irwin Scott, who is preparing for the same college at Lawrenceville, N. J. returned on the Mauna Loa, arriving in Hilo on Saturday night.

Moses & Raymond wish to announce that there has been a reduction in price of Butterick patterns. They always have the latest styles.

James B. Rickard, of Honokaa, now a clerk in the Interior Department at Washington, was among the graduates of Columbian University at the recent commencement, receiving the degree of Bachelor of Laws.

Among the Hilo students, who have been attending various schools in Honolulu, who returned last week are: Miss Katherine Saddler, Emma Akamu, Helen Medcalf, Ednah Akau, Elvira Osorio, and Willie Ah Hip.

Subscribe for the TRIBUNE. Subscription \$2.50 per year.

The tug-of-war on Saturday night at the Hilo Armory resulted in a draw in both contests. The boys from the steamer Kailani pulled against the Waiakea team for forty minutes and the Road Board team waged brawn and muscle against the Company D team, for over an hour without a victory for either side.

The TRIBUNE has been requested to state by Fred C. Conrad, assistant bookkeeper in the office of the Hilo Electric Light Co., Ltd., that Konradt Hayes, who has confessed to the charge of burglary and is now awaiting trial in the Hilo jail, is not related or in any other way connected with him.

Mr. and Mrs. Wm. Chalmers, James Henderson, and Alex Fraser formed a "gaen hame" party which left Friday for Aberdeen, Scotland. They expect to be gone about four months.

Alvah Scott, who has been attending Cornell, and Irwin Scott, who is preparing for the same college at Lawrenceville, N. J. returned on the Mauna Loa, arriving in Hilo on Saturday night.

Moses & Raymond wish to announce that there has been a reduction in price of Butterick patterns. They always have the latest styles.

James B. Rickard, of Honokaa, now a clerk in the Interior Department at Washington, was among the graduates of Columbian University at the recent commencement, receiving the degree of Bachelor of Laws.

Among the Hilo students, who have been attending various schools in Honolulu, who returned last week are: Miss Katherine Saddler, Emma Akamu, Helen Medcalf, Ednah Akau, Elvira Osorio, and Willie Ah Hip.

Subscribe for the TRIBUNE. Subscription \$2.50 per year.

The tug-of-war on Saturday night at the Hilo Armory resulted in a draw in both contests. The boys from the steamer Kailani pulled against the Waiakea team for forty minutes and the Road Board team waged brawn and muscle against the Company D team, for over an hour without a victory for either side.

The TRIBUNE has been requested to state by Fred C. Conrad, assistant bookkeeper in the office of the Hilo Electric Light Co., Ltd., that Konradt Hayes, who has confessed to the charge of burglary and is now awaiting trial in the Hilo jail, is not related or in any other way connected with him.

Mr. and Mrs. Wm. Chalmers, James Henderson, and Alex Fraser formed a "gaen hame" party which left Friday for Aberdeen, Scotland. They expect to be gone about four months.

Alvah Scott, who has been attending Cornell, and Irwin Scott, who is preparing for the same college at Lawrenceville, N. J. returned on the Mauna Loa, arriving in Hilo on Saturday night.

Moses & Raymond wish to announce that there has been a reduction in price of Butterick patterns. They always have the latest styles.

James B. Rickard, of Honokaa, now a clerk in the Interior Department at Washington, was among the graduates of Columbian University at the recent commencement, receiving the degree of Bachelor of Laws.

## A Rose German.

The home of Mr. and Mrs. Henry Hayes on Waianuenue street presented an animated scene of color and beauty on last night, when about twenty couples traced the pretty figures of the German, given in honor of Miss Genevieve Venable, a cousin of the hostess. The parlors had been cleared and were tastefully decorated with ferns and evergreens, clusters of fragrant roses being conspicuous in the decorations. Settees and chairs were arranged along the verandas for the dancers, and the figures of the German were led by Miss Venable and Mr. Thos. C. Ridgway, with grace and dexterity. There was a profusion of beautiful and artistic favors of roses, butterflies, buttonholes, bouquets, etc., which lent color and variety to the dance. Mrs. S. C. Ridgway, Mrs. John Holland, Mrs. M. Rice and Mrs. W. T. Balding presided at the favor tables. Cooling refreshments of rose cake and sherbet were served during the evening and the dancing continued until long after the midnight hour. Miss Venable, who has been a teacher in the public schools of the Islands for the past eighteen months, leaves shortly for her home in Virginia. She has been a general favorite in social circles here and her presence will be greatly missed after her departure.

## The High School Site.

Superintendent Davis of the Department of Education appointed Representative Jas. D. Lewis, Normal Inspector C. E. King and School Agent L. Severance as a committee to determine on a site for the new Hilo High School, for which \$3,000 was appropriated at the last legislature. After considering the various sites suggested, the committee practically determined on the lot on which now stands the Riverside School. The present lot is not quite large enough to accommodate both the Riverside and the High Schools, which latter will be a nine-room building, and if a portion of the hospital grounds can be secured, the main portion of the Riverside lot will be used for High School purposes. Overtures have been made by the Masonic Hall Association to exchange their large building lot above the Mason residence for the government property where the Masonic Hall is now located. It is understood, the proximity of the Masonic lot to the Union and Riverside schools, makes it very desirable for school purposes, but no definite decision has been reached on the subject. Normal Inspector King returned to Honolulu Friday and will make a full report to the Department.

## Federal Officials Visit Hilo.

Hon. F. P. Sargent, Commissioner-General of Immigration, J. N. Lott, Solicitor for the Treasury Department, Collector of Customs E. R. Stackable, of Honolulu, Immigrant Inspector F. M. Bechtel and P. A. Donohue, private secretary to Commissioner Sargent, arrived on Wednesday and after visiting points of interest in and about Hilo, spent Thursday at the Volcano House. While in Hilo the party were the guests of J. A. Scott and C. C. Kennedy, the latter accompanying the officials to the Volcano.

The purpose of Commissioner Sargent's visit to Hawaii primarily is to look into the labor situation of the Islands, and if possible to recommend to Congress some solution of the labor problem which confronts the Territory.

The party left here for Maui, where they will be the guests of Hon. H. P. Baldwin.

## An Attractive Store.

The attractive show windows of J. D. Kennedy, the Jeweler, are always an object of attention and admiration by passers-by. Here are displayed only a small portion of the infinite variety of pretty things that can be found in this well ordered and up-to-date jewelry establishment. Jewels, rings, brooches, stick pins, bracelets, watches, chains, fobs, enamel buckles, gold and silver hair ornaments suitable for birthday or holiday gifts, are arrayed in attractive cases. Leather goods, solid silver and plated ware, cut glass, art ware, clocks and vases make desirable wedding presents that are appreciated. In fact it is Mr. Kennedy's aim to keep on hand goods to satisfy the most fastidious tastes. During the first week in July, a new line of goods will be opened up, which will be immediately placed on sale.

## Kinau Departures, June 23.

D. Conway, T. A. Burningham, H. B. Gehr, H. Rohrig, Robt. Kepoo and wife, C. E. King and wife, Miss J. Supe, Miss F. Vingt, Jas. Henderson, Alex Fraser, Mr. and Mrs. Chalmers, T. Kaido, Yee Sheong, J. Abodii, Miss Franc Potter, A. McClelland, A. L. Louison, W. E. Cunningham, Miss Mabel Taylor, J. N. Lott, P. A. Donahue, F. P. Sargent, Miss Minna Ahrens, Irene Ahrens and servant, Miss R. Catton, E. R. Stackable, F. M. Bechtel, J. G. Rothwell, W. R. Coombs, J. T. Moir.

## The Elks Entertain.

Hilo Lodge 759, B. P. O. E. entertained their friends Friday evening at the Elk Club Rooms, when a large gathering of friends and members enjoyed the hospitality of this organization. Dancing was the order of the evening and to the lively strains of a Hawaiian string orchestra, the company danced until a late hour. Punch was served in an adjoining room and cards afforded amusement for those so inclined.

## KINDERGARTEN SUCCESS.

## A Review of Year's Work in the Hilo Institution.

Another successful year of the Hilo Free Kindergarten has just closed with a present enrollment of fifty-seven, and yearly average of fifty. During the year, eighty-six children have been registered. The topics of thought for the children are cleanliness, politeness, and helpfulness.

The number of visitors other than those of the closing exercises was twenty-seven. Special excursions have been made to the coffee mill, park and beach. There have been two "parties" which were greatly enjoyed by the children. Six birthdays have been observed.

There have been three teachers, Miss Sumner, principal, Miss Mealoa Ulii, first assistant, and Miss Ruth Guard, second assistant.

In April, Miss Mealoa Ulii resigned, as she was about to be married, and Miss Florence Scott kindly substituted to the end of the term.

On account of Miss Mealoa Ulii's faithful services to the kindergarten for five years, her resignation was accepted with much regret. It is also with deep regret that we report the resignation of our efficient principal, Miss Sumner, whom duty calls to California. We can not speak too highly of the moral influence of Miss Sumner and of her unselfish devotion to her work.

Notwithstanding the dull times, the public has not failed us, and have succeeded in meeting the obligations of the year, for which the committee feels very grateful, as the outlook at one time was rather discouraging.

Respectfully submitted, FRANCIS M. WETMORE, Sec. of Hilo Free Kindergarten Com.

The members of the Kindergarten Committee for the ensuing year are Mrs. J. A. Scot chairman, Dr. Francis Wetmore, secretary, Mrs. W. S. Terry treasurer, Miss J. Deyo Mrs. Chas. Furneaux.

A splendid opportunity to secure the most popular magazines is open to cash subscribers under the combination club offer of the TRIBUNE.

## Dentistry.

A. B. Clark, D. D. S., from Honolulu, has opened an office in Room 2, Spreckels' Building, over Hilo Drug Store, for ten days. 35-1

## Notice.

The premises occupied by Mr. A. Lindsay on Pleasant street will be for lease or rent on and after July 1st. For particulars inquire of

MRS. M. L. PORTER, Pitman Street. 33-1

## "Monarch Shirts."

Our new line for the spring of 1905 has just come to hand. Decidedly the best assortment and the choicest designs ever offered in Hilo.

L. TURNER CO., LTD.

## Special Notice.

## WILDER'S STEAMSHIP COMPANY.

In order to close up the affairs of Wilder's Steamship Co., all persons having claims against, or owing bills to this corporation, are requested to present their claims and settle their bills without delay, at the office of the company, corner Fort and Queen streets, Honolulu, or at the Company's Office at Hilo.

(Signed) S. B. ROSE, Treasurer. Hilo, June 22, 1905. 35-2

## CATHOLIC LADIES' AID SOCIETY

All are cordially invited to attend a FAIR AND LUAU to be held at the

Hilo Armory, July 1, '05

All donations for the benefit of the Church will be highly appreciated. MRS. W. H. C. CAMPBELL, 261 President.

## Clearance Sale

CHRISTMAS HOLIDAYS may seem a long way off yet, but we are busy preparing for our annual show of Fancy Goods for that occasion.

That we may be able to open up with an entirely fresh stock we have decided to offer what few articles we have on hand at prices hitherto unheard of.

For the convenience of intending purchasers we have arranged the goods into lots, any of which we will send on approval to those so desiring.

LOT ONE—A few Dressing Sackies and Smoking Jackets. Any of these would make a handsome present. Prices from \$3.95. Only half dozen in all.

LOT TWO—Choice assortment of Table Centers in Embroidered and Drawn Work. From \$4.50 upwards.

LOT THREE—A few suits of Silk Pajamas.

Ring Us Up Telephone 96A

Hakalau Store

# 1905

## Ho! for the Races!

UNDER THE AUSPICES OF THE HAWAII JOCKEY CLUB

# JULY 4TH

HOOLULU PARK - HILO - HAWAII  
COMMENCING PROMPTLY AT NINE O'CLOCK A.M.

RACE	PURSE
1. 1/4-Mile, Free for all.....	\$150
2. 1/4-Mile, Hawaiian Bred.....	200
3. 1/4-Mile, Pony Race, 14 hands or under.....	50
4. 1-Mile, to Harness, 2:30 Class, best two in three.....	200
5. 1 1/4-Mile, Free for all.....	400
6. 1/4-Mile, Hawaiian Bred.....	150
7. 1-Mile, Free for all.....	250
8. 1/2-Mile, Japanese Race.....	Sweepstakes
9. 1/4-Mile, Free for all.....	200
10. 1-Mile, Llama's Race, for horses other than racers, to be owned and ridden by Llamas.....	50
11. 1/2-Mile, Donkey Race, riders to change, last to finish wins.....	20
Total.....	\$1670

Three or more to enter, three or more to start.

## TERMS:

ENTRANCE FEE, 10% OF PURSE.  
SECOND HORSE TO SAVE ENTRANCE.  
ENTRIES TO CLOSE ON JUNE 30 AT 6:00 P. M.  
SCRATCHES TO CLOSE ON JULY 1 AT 6:00 P. M.  
NO AUTOS ALLOWED WITHIN THE GROUNDS.

BASEBALL GAME, \$75.00.

J. D. EASTON, Secretary.



## New Neckwear By Enterprise

Narrow Four-in-Hands  
Medium Width Four-in-Hands  
Band Bows  
Shield Bows  
White Bows for Full Dress  
Tecks

All the above in new designs and colorings.

"Monarch Shirts"

SHIRTS THAT FIT

L. TURNER CO. Ltd

## THE HAWAIIAN FERTILIZER CO., Ltd.

### SPECIAL FERTILIZER

For Cane, Vegetable and Banana Fields.

Soil Analysis Made and Fertilizer Furnished Suitable to Soil, Climate and Crop

FOR THE LAND'S SAKE USE OUR FERTILIZERS

Sulphate of Ammonium Nitrate of Soda  
Bone Meal H. C. Phosphates  
Sulphate of Potash Ground Corai

Fertilizers for sale in large or small quantities. Fertilize your lawns with our Special Lawn Fertilizer.

OFFICE: Brewer Block, Queen Street P. O. BOX 767, HONOLULU

FACTORY: At Iwilei Beyond Prison

C. M. COOKE, President.  
B. F. BISHOP, Treasurer.  
G. H. ROBERTSON, Auditor.

R. D. TENNEY, Vice-President.  
J. WATERHOUSE, Secretary.  
W. M. ALEXANDER, C. H. ATHERTON Directors.

**A MATTER OF HEALTH**

**ROYAL BAKING POWDER**  
Absolutely Pure  
HAS NO SUBSTITUTE



THE MOST ELEGANT  
AND VARIED ASSORTMENT  
OF  
**CUT GLASS AND SILVER**  
EVER IMPORTED

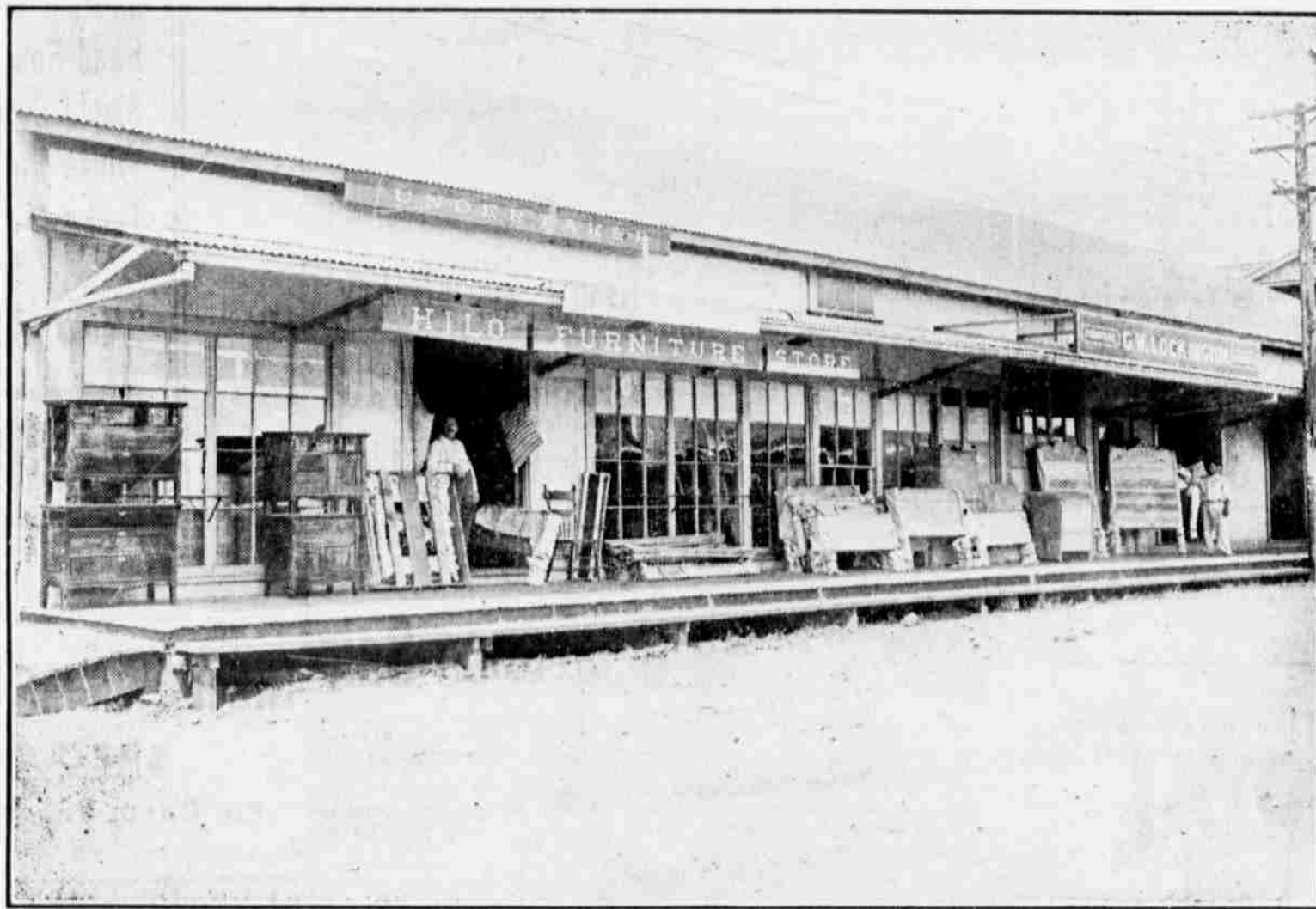
Is To Be Opened Up During  
the First Week of July at

**J. D. KENNEDY'S**

FRONT STREET, HILO

Call and Examine. You Are Sure to See Something You Need

FURNITURE  
UPHOLSTERY \* UNDERTAKING



**G. W. LOCKINGTON**  
FRONT STREET, HILO