

WE'RE ON THE BIG PRESS NOW IN ALAKEA STREET OFFICES

EVENING BULLETIN

3:30 EDITION

Advertising is building on right lines

The value of an advertisement is principally in its TRUTH, while space and attractive display play their part in producing immediate results.

ESTABLISHED 1882. No. 4831.

16 PAGES.—HONOLULU, TERRITORY OF HAWAII, SATURDAY, JANUARY 21, 1911.—16 PAGES.

PRICE 5 CENTS.

PEARY'S CLAIM REJECTED

SANITARY COMMISSION PLAN URGES

Would Protect Health Of Port

Plans For Permanent Commission Laid Before Governor For Action

To protect the port of Honolulu against disease, and particularly to safeguard health conditions here after the opening of the Panama canal, the plan of a permanent sanitary commission has been revived and laid before Governor Frear. Suggested as far back as 1904 by the Chamber of Commerce and by a committee of the chamber laid before former Governor Carter, the plans came to nothing, just why is not clear. They are brought up again in a letter yesterday to Gov. Frear from A. F. Judd, who was one of the attorneys for the chamber when it urged action in 1904.

In this connection it is probable that the name of Dr. L. E. Cofer will be suggested as one of the men on the commission representing the public health and marine hospital service. Since then he has handled a great fight against threatened plague at Seattle, Wash., and after making a brilliant record there is now believed to be in Washington, D. C. With the addition of an army engineer and a local man familiar with conditions, it is believed that such a commission could make a preliminary investigation and estimate what precautions should be taken as well as what a health campaign to protect the port would cost.

It is pointed out that Honolulu will be in grave danger of disease brought from the bot-beds of the canal zone just as soon as vessels and immigrants begin to come from there, and that it is none too soon now to start work.

(Continued on Page 4)

TEMPEST TOSSED STEAMERS DELAYED IN ARRIVAL MAKE PORT IN SAFETY

Escaping with the loss of some of her railing and deck fittings, the Toyo Kisen Kaisha liner Nippon Maru is in port from Hongkong by the way of the Japanese ports after a severe battle with wind and sea. The first day out from Yokohama, Japan proved a strenuous one for the Japanese steamer. The gales that swept that portion of the Pacific better known to navigators as the "Black Hole" arose to the velocity of a hurricane. Angry seas swept the decks of the liner and she received a severe buffeting from waves that appeared mountains high.

During a season of nearly twenty four hours encounter with a combination of elements that tried the very souls of her gallant officers, two Japanese seamen were injured and they were immediately conveyed to the Queen's Hospital upon arrival of the Nippon Maru at Alakea wharf at an early hour this morning.

One man was badly cut about the head while the other sustained a serious fracture of an arm. Captain Harry Smith while inclined to make light of his experiences in the Japan sea expressed much satisfaction at being able to report but limited amount of damage to his staunch ship.

"It was the usual Yokohama weather, only this time it was a little more so," was the smiling reply of the good natured skipper in reply to questions concerning his trip across the Pacific.

FIRE INSURANCE RATE-CUTTING MUST WAIT

Board of Underwriters Defers Action Until After the Legislature.

EXPECT WATER MAINS TO BE RECONSTRUCTED

Bonding Plan to Finance Work Gives Evidence of Going Through at the Next Session.

Pending a reconstruction of the system of water-mains in this city, the Board of Fire Underwriters will decline to lower existing rates on fire hazards. This decision was reached at a meeting of the Board of Fire Underwriters held last Thursday and affects a large number of buildings already up as well as those under construction and which will be finished soon.

The Board has been given to understand that the plans of Marston Campbell, Superintendent of Public Works, calls for the reorganization of the water system and the issuing of a large amount of bonds to finance the work. This plan will be laid before the legislature soon after it opens, and many of the legislators are understood to be in favor of it. With the probability that the legislature will take action, the Board of Underwriters is unwilling to revise rates at the present time.

It is conceded that rates here are high, but the fire risks are declared to be enormous also. With a reorganization of the water system a rebuilding of mains that will stand high pressure fire-fighting facilities will be greatly increased.

Then the underwriters intend to make a thorough revision of rates, which will mean a general lowering on dwelling houses.

FRUIT COMPANY IS CONSIDERING

Hawaii as a field for exploitation is now under official consideration by the United Fruit Company, the biggest concern of its kind on the Atlantic seaboard. C. W. Clark, who was sent here to investigate the islands with a view to contracting for large fruit cargoes for the company, has submitted a vast amount of data to the United people and they are now considering whether to carry on further negotiations, or drop out of the field.

This news has been indirectly received by local men. Mr. Clark makes his headquarters in Los Angeles, where he represents a coast subsidiary company of the United concern. He drafted a complete report on the island banana possibilities, as well as including figures on other fruits and the chances for putting on a line of fast fruit steamers successfully.

Word has been received from Clark that all of his facts and figures are now before the United company, and while he has heard no decision from them, he regards this as a favorable sign, inasmuch as it shows they are considering his figures.

Meanwhile literally hundreds of pineapple growers in the islands are anxious to know whether the United company is coming here or not. Reports from Hilo indicate that many growers will go into planting on a big scale up there if the United company should give adequate steamer service and live up to its announced schedule of prices.

"For Sale" cards at Bulletin.

Frear Not Behind Conkling For Customs Collector Here

Governor Says He Has Refused to Endorse Any Candidate for Job.

Governor Frear stated this morning that he has not endorsed the candidacy of anyone for the office of collector of customs at the port of Honolulu, and that he is not behind D. L. Conkling as successor to Stackable.

"My responsibilities to the President prohibit me endorsing any one candidate for a public office that will not be vacant for a year and a half," stated the Governor. "I may not even be in office at that time. I believe Stackable has made a good officer and I see no reason for a change."

The Governor then delivered himself

of this statement on the question of endorsement for public office, something that should be read with interest by all seeking the chief executive's support.

"Suppose a man comes here—a good man—and I promise him my support. The next day a better man might make the same request, and my responsibilities to the President would dictate that I should support the best man."

It has been stated that D. L. Conkling, the present Territorial treasurer, was the Governor's choice for collector of customs when Stackable's present term expires. Conkling has never made this claim, however, but, on the contrary, has stated that Governor Frear has never made him any promises in the matter.

DECLARE HAWAII ROYAL HAWAIIAN NOW GOING TO HOLSTEIN GIVES DANCE TONIGHT

Report is current among well-posted politicians today that H. L. Holstein, candidate for the speakership of the next House, has succeeded in lining up every member of the Hawaii delegation with the possible exception of one, and that so far from having a majority of his own delegation against him, he may bring it here solid for him. If so, this settles the fight now, and Sam Keliho of Maui has no chance whatever.

Up to today the reports gave Holstein but four sure votes from Hawaii. Holstein's friends have been working hard in his behalf, with apparent success.

M. E. CHURCH TO BE OPENED

Ceremonies of Dedication Will Take Place Tomorrow Morning.

Built with the encouragement not only of Methodism, but of all religious denominations in Honolulu, the new Methodist Episcopal church, at Victoria and Boreana streets, will be dedicated tomorrow morning at a special service participated in by many congregations of this city. One and all will unite in dedicating the imposing structure to the broadest of Christian work.

The ceremonies of dedication will begin at 11 o'clock. Several other churches announce that their own services will be held earlier so that the congregations may all assemble for the special exercises. The Methodist Episcopal Sunday school will be held tomorrow morning at 9:45 in the old church hall, the last service of its years of usefulness.

Bishop to Speak.

Bishop Edwin H. Hughes, who laid the cornerstone of the new church in April of last year, will be the principal speaker at the exercises of dedication. He will be assisted by Rev. R. E. Smith, the new pastor; Dr. John Wadman, superintendent of the mission work; and by Dr. Doremus Scudder and Rev. A. A. Elzevick of Central Union church. A feature will be the participation of the Central Union double mixed quartet, which will render a special musical program.

Every effort will be made to seat comfortably all those who attend, and the church has issued a hearty invitation to everyone.

The completion of this church marks a great step forward in Honolulu Methodism. It is one of the most imposing structures in the Territory, and the architects, Ripley & Reynolds, have been fortunate in their conception and design.

New Church Well Arranged.

The new church has a frontage of 24 feet on Boreana street and 162 feet on Victoria street. The basement is practically taken up by a large social hall 42 feet by 20 feet in size, surrounding it are small ladies' and

There will be a dance at the Royal Hawaiian Hotel tonight, to which guests of other hotels, Army, Navy and townfolk are invited. This will be welcome news to many Honoluluans who in the past have enjoyed dancing on the spacious lawns of this popular hotel, and as the Sierra arrived yesterday with a record passenger list, many will avail themselves of the hotel's hospitality.

TUTTLE NAMES COMMITTEES

A. A. U. Second Meeting Held This Afternoon at Andrews' Office.

The second regular meeting of the board of managers of the local branch of the A. A. U. was held this afternoon at 1 o'clock in the office of Lorin Andrews, and several matters were discussed.

President G. H. Tuttle presented the names of four committees—finance, membership and investigation, records, and legislation—these committees being the permanent ones which are appointed by the president for the whole year.

These appointments were: Finance—John F. Soper, chairman; A. H. Tarleton, F. O. Boyer. Membership and Investigation—A. H. Tarleton, chairman; John F. Soper, L. Andrews. Records—Paul Super, chairman; W. S. Bowen, C. T. Pitts.

Legislation—Lorin Andrews, chairman; C. T. Pitts, F. O. Boyer. The official handicappers and the committee for the registration of athletes are elected by the board of managers, and will serve until the annual meeting in September next.

HAYTI TROOPS ARE READY FOR BATTLE

PORT AU PRINCE, Hayti, Jan. 21.—Troops are mobilizing here for a battle with the Santo Domingo troops over the boundary dispute.

SUGAR

SAN FRANCISCO, Jan. 21.—Beets: 88 analysis, 88 11-14d; parity, 3.87c. Previous quotation, 88 11-14d.

SAN FRANCISCO, Jan. 20.—Sugar: 86 degrees test, 3.48c. Previous quotation, 3.51c. Beets: 88 analysis, 88 11-14d; parity, 3.87c. Previous quotation, 88 11-14d.

The hull of a vessel probably several centuries old has been dug out of the sand at Nombro de Dois, in the Panama Canal Zone. It was under twenty feet of sand and about three hundred feet from the beach. The wood resembled oak and was put together with wooden pins. Many old shugs and bullets, presumably from the ship's magazine, were found.

Say Explorer 1 1/2 Miles Off

House Committee On Naval Affairs Accepts Report Of Experts

(Associated Press Cable.)

WASHINGTON, D. C., Jan. 21.—The House Committee on Naval Affairs today accepted the report of experts who have rejected Captain Peary's claim that he reached the North Pole. The report as adopted declares that Peary came within a mile and six-tenths of the pole on his famous northward dash. The decision will precipitate a fight from Peary's friends for recognition of the explorer as the discoverer of the pole. The naval affairs committee has already reported favorably on the Batsch bill, which provides for the elevation of Captain Peary to the rank of rear-admiral in recognition of his achievements.

The fight against Peary's claim that he reached the pole itself was led in the committee by Congressman Robert Bacon of Arkansas and Congressman Ernest W. Roberts of Massachusetts.

PLAGUE IN PEKIN GROWING WORSE

(Associated Press Cable.)

PEKING, China, Jan. 21.—Deaths from the plague are increasing every day, and the pestilence has become a widespread that danger threatens every part of the city. The United States legation has placed itself under quarantine, and others are following it. The authorities are making every effort to stamp out the disease, but it seems to be making headway.

OLD GUARD WINS IN NEW YORK

(Associated Press Cable.)

NEW YORK, N. Y., Jan. 21.—The insurgent element in the Republican State central committee was given a decisive defeat today in the election of William Barnes Jr. of Albany as chairman of the committee. Barnes has always been identified with the regulars.

STATES WORK FOR 'FRISCO

(Special Bulletin Cable.)

SAN FRANCISCO, Cal., Jan. 21.—San Francisco's prospects for the 1915 fair seem to look brighter today, when news came that the various State Legislatures are considering endorsing local claims for the Panama Canal celebration. The State Senate of Iowa today passed a resolution favoring San Francisco as opposed to New Orleans, and this was followed by news from Helena, Mont., that the Legislature there had appropriated \$200,000 for an exhibition if the fair is held here.

HAWAII SCRAP KEEPS GOING

HAWAII SCRAP.—(Special Bulletin Correspondence.) HILO, Jan. 20.—That all the actions taken by the Republican County Committee since its organization have been illegal, and that the County Committee, as it is at present constituted, has no legal standing, is the contention of several prominent members of that body. They base their claim on a couple of sections of the rules of the Republican party, providing that no man from the windward side of the island, and vice versa, Those who make this claim state definitely that they intend to bring the matter up at the next meeting of the County Committee, and that they will stand out for a re-organization of the committee as far as its membership by holders of proxies is concerned. They may also insist on having the action taken in former meetings, when illegally held proxies were voted, declared void.

The appointment by the Board of Supervisors of John Kealoha as road supervisor for North and South Hilo and of Wm. Vannatta as superintendent of the Hilo Water Works and Sewers, furnishes the best explanation for the fact that the point mentioned above has been brought up. Ever since the appointment was made, there has been considerable criticism of the Republican members of the Board for appointing Vannatta instead of Rose who was endorsed by the County Committee, and for appointing Kealoha, instead of Vierra.

MONTANA DEADLOCK CONTINUES STRONG

(Associated Press Cable.)

HELENA, Mont., Jan. 21.—The deadlock over the United States Senatorship continues, with both sides claiming victory in the next few ballots.

NEW YORK STILL UNABLE TO AGREE

(Associated Press Cable.)

ALBANY, N. Y., Jan. 21.—The deadlock in the Albany Legislature over the election of a United States Senator continues. Depew is stronger than was expected.

BIG NAVAL COLLIER LAUNCHED FOR U. S.

(Associated Press Cable.)

BALTIMORE, Md., Jan. 21.—The naval collier Neptune was successfully launched here today. She is one of the largest colliers afloat.

ASSISTANT SECRETARY FOR NORTON'S PLACE

(Associated Press Cable.)

WASHINGTON, D. C., Jan. 21.—An assistant secretary of the treasury will be offered the position of secretary to President Taft, just vacated by Charles Dyer Norton.

BOTH SIDES FIRM IN IOWA BATTLE

(Associated Press Cable.)

DES MOINES, Ia., Jan. 21.—No settlement of the fight over the United States Senatorship is in sight. Both sides are firm.

Masonic Temple

Weekly Calendar

MONDAY:
Lodge Chapter No. 2—Regular.

TUESDAY:
Oceanic—First Degree.

WEDNESDAY:
Honolulu Commandery—Red Cross.

THURSDAY:
Honolulu Chapter—Installation.

FRIDAY:
Hawaiian—Third Degree.

SATURDAY:

All visiting members of the Order are cordially invited to attend meetings of local lodges.



MARINE ENGINEERS' BENEFICIAL ASSOCIATION

MEETINGS INVITED.

HARMONY LODGE, No. 3, I. O. O. F.

Meets every Monday evening at 7:30 in I. O. O. F. Hall, Fort Street. PAUL SMITH, Secretary. J. G. B. CAMERON, Noble Grand. All visiting brothers very cordially invited.

OAHU LODGE, No. 1, K. of P.

Meets every first and third Friday evening at 7:30 in K. of P. Hall, corner Fort and Beretania. Visiting brothers cordially invited to attend. S. DECKER, C. C. O. F. HEINE, K. R. S.

KAWAIIAN TRIBE, No. 1, I. O. R. M.

Meets every first and third Thursday of each month at Knights of Pythias Hall. Visiting brothers cordially invited to attend. H. FOSTER, Sachem. E. V. TODD, C. of R.

HONOLULU AERIE, 140, F. O. E.

Meets on the 2nd and 4th Wednesday evenings of each month at 7:30 o'clock in K. of P. Hall, corner Beretania and Fort streets. Visiting Eagles are invited to attend. W. R. RILEY, W. P. WM. C. MCCOY, Sec.

HONOLULU LODGE, 616, B. P. O. E.

Honolulu Lodge No. 616, B. P. O. E., meets in their hall, on King Street, near Fort, every Friday evening. Visiting Brothers are cordially invited to attend. JAS. D. DOUGHERTY, E. R. GEO. T. KUEGEL, Sec.

WM. McKINLEY LODGE, NO. 8, K. of P.

Meets every 2nd and 4th Saturday evening at 7:30 o'clock in K. of P. Hall, cor. Fort and Beretania. Visiting brothers cordially invited to attend. F. F. KILBEY, C. C. E. A. JACOBSON, K. R. S.

LOCAL AND GENERAL

Autos, \$4 per hour, Lewis Stables. Dr. Carey, dentist, has resumed practice at 367 Boston building. New sweaters at Whitney & Marsh's.

Dr. A. J. Derby has returned from California. Office phone No. 2237. Hotel Arlington entirely remodeled. Rooms newly furnished. Hot and cold baths.

The Bulletin staff will move to the new Alaska street offices this afternoon and tomorrow. Haas and Sons' candy received by the Sierra. Benson Smith & Co., Ltd., Fort and Hotel streets.

R. W. Shingle was one of the returning passengers by the Mauna Kea today.

Whitney & Marsh will place another lot of the Dupont Silk, on sale at the beginning of the coming week at 25c a yard.

For distilled water, Hire's, Root Beer and all other popular drinks. Ring up Phone 2171. Consolidated Soda Works.

Hot water in all bath rooms at Hotel Majestic. Sachs Block, Fort street. This is the most conveniently located rooming hotel in the city.

Special bargains are in order for Monday at Sachs Dry Goods Co. Come early and have a larger selection to choose from.

A. W. T. Bottomley returned this morning from a trip to Kohala during which he made an extensive tour of the new Kohala ditch.

Costumes for the Floral Parade and Carnival may be ordered through the Hawaiian News Co., Young Bldg. One price for both events. Orders must be in soon.

Tahara, a Japanese, charged with assault and battery was sentenced this morning by Judge Lymer to pay a fine of five dollars and costs of court.

Over one thousand people can be accommodated under the special seating arrangements made for the dedicatory services of the new Methodist church.

Good old St. Valentine is due in Honolulu February 14th. He has never yet failed to appear on time. Valentines in handsome assortment at A. B. Arleigh & Co., Hotel street.

Cheong Lun, a Chinaman, was arrested on charge of larceny. His bail fixed at \$100 by Judge Lymer, which was furnished this morning. His trial will come up next Monday, January 23.

Peter Stanley, whose name appeared on police court docket, had his case of assault and battery postponed until January 24. He is also charged with procuring women for immoral purposes.

M. De Mello of Kona, Hawaii, who has been in town in the interest of the Kona Okolelo Distillery, returned to his home yesterday, on the steamer Mauna Loa. He will soon open the distillery for business.

The morning service at the new Methodist church will be at 11 o'clock instead of 11:30 as first announced. The change is made to the earlier hour on account of other churches having given up their morning services so that their members may attend the dedicatory exercises.

A pleasant wedding took place in Holy Innocent's church, last Saturday afternoon. Miss Emily Cason of Olowalu was united in marriage with Ernest L. Napaepe of Lahaina. Appropriate hymns were sung by the choir girls. After the ceremony a luncheon was served at the Napaepe's residence.—Maui News, Jan. 21.

Editor Y. Segs of the Nippon Jiji returned this morning from Japan to the Nippon Maru.

Express shipment of new military capes on show today at Jordan's.

Bulletin Editorial Room Phone 2185. Bulletin Business Office Phone 2256.

SUGAR GOES INTO THE SEA

A quantity of sugar went into the sea off the coast of Honolulu last evening as a result of the breaking of a wire cable that has been used in the transmission of sugar cargoes from mill to the inter-island steamers.

Sugar intended for the inter-island steamer Maui that arrived here this morning from Hawaii parts was found a very difficult article to handle during the rough weather experienced along the shores of Hawaii.

In attempting to load a consignment from the plantation mill at Honokaa the cable dropped and thirty-seven sacks went into the sea.

Officers returning this morning report much rain having fallen at the Greenwell ranch in Kona.

NEW FACTORY LAW IN JAPAN

Bill Is Drafted to Protect Children and Other Workers in Large Plants.

SEATTLE, Wash., Dec. 20.—Japan is preparing a factory law to be brought before the Diet at the next session. The bill will prohibit the employment of children under 12 years, and those under 14 will not be permitted to work more than 12 hours a day.

For every 10 hours' work an hour's rest must be given, and a half hour every six hours. For those who work at night, four days' holiday each month must be given. This is the fourth bill drafted, the others having been thrown out, and it is intended to apply to all factories employing over ten persons.

The ceremony of the "Red Seal Celebration" took place recently in Tokyo, for the purpose of appeasing the souls of thousands of cows and oxen killed during the recent war to supply the army in Manchuria. It being estimated that 130 per day were killed. A monument was erected "to prevent the souls of these slaughtered animals rising in retribution against the butchers."

WANT A LARGER NAVY

Small Appropriation For Japanese Ships Displeases Authorities.

VICTORIA (B. C.), January 12.—The arrangement for an expenditure of only \$40,000,000 for naval increases in Japan is not satisfying Japanese naval authorities, according to news brought by the steamer Panama Maru today. The "Liberal News" of Tokyo says:

"When the subject was brought before the meeting of cabinet members the naval contingent desired to expand the naval force with armaments amounting to \$25,000,000. Since it became known in naval circles that only \$40,000,000 will be available in the next six years, the opposition against Count Yamamoto has grown to such an extent that unless some change takes place the influence of the Count will quickly be lost."

Editor Y. Segs of the Nippon Jiji returned this morning from Japan to the Nippon Maru.

Express shipment of new military capes on show today at Jordan's.

Bulletin Editorial Room Phone 2185. Bulletin Business Office Phone 2256.

Editor Y. Segs of the Nippon Jiji returned this morning from Japan to the Nippon Maru.

Express shipment of new military capes on show today at Jordan's.

Bulletin Editorial Room Phone 2185. Bulletin Business Office Phone 2256.

Editor Y. Segs of the Nippon Jiji returned this morning from Japan to the Nippon Maru.

Express shipment of new military capes on show today at Jordan's.

Bulletin Editorial Room Phone 2185. Bulletin Business Office Phone 2256.

Editor Y. Segs of the Nippon Jiji returned this morning from Japan to the Nippon Maru.

Express shipment of new military capes on show today at Jordan's.

Bulletin Editorial Room Phone 2185. Bulletin Business Office Phone 2256.

Editor Y. Segs of the Nippon Jiji returned this morning from Japan to the Nippon Maru.

Express shipment of new military capes on show today at Jordan's.

Bulletin Editorial Room Phone 2185. Bulletin Business Office Phone 2256.

Editor Y. Segs of the Nippon Jiji returned this morning from Japan to the Nippon Maru.

Express shipment of new military capes on show today at Jordan's.

Bulletin Editorial Room Phone 2185. Bulletin Business Office Phone 2256.

Editor Y. Segs of the Nippon Jiji returned this morning from Japan to the Nippon Maru.

Express shipment of new military capes on show today at Jordan's.

STORAGE

CITY TRANSFER CO.

JAS. H. LOVE

Shipping

SNOW AND HAIL MADE PROGRESS OF TRANSPORT DIX IMPOSSIBLE

TROOPSHIP BROUGHT FIVE HUNDRED FAGED FOUR-FOOTED PASSENGERS. MAUNA KEA HERE WITH CARGO. NIPPON-MARU TO SAIL FOR COAST AT FOUR. WILL CARRY MAIL.

Five hundred and fifteen frozen four-footed passengers neatly showed their gratification in getting the naval wharf this morning after their thirteen day tempestuous voyage by the United States army transport Dix from Seattle to Honolulu.

Mules and horses were not the only ones to suffer through the fury of the elements. The officers report a very rough and stormy passage.

Some hours after clearing Seattle the Dix met with a blizzard of hail and snow in P's train. The troopship was in the midst of a storm that completely hid the land. For reasons of safety the transport was brought to anchor at Port Angeles, it being found not to be safe to attempt to run the straits of Puget until the weather had sufficiently moderated.

The Dix came in sight of the islands yesterday afternoon and was of the quarantine shortly before seven o'clock but too late to receive pratique by the local authorities.

One first class cabin passenger and seven cabin enlisted men for various branches of service in the Philippines are traveling to Manila by the vessel.

The mules and horses stood the trip fairly well through more than one required the friendly offices of the army veterinarians as they became sick from the rough handling by the towing troopship.

For Honolulu two cavalry horses were left besides one animal of private use.

The animals bound for the Philippines were immediately removed to the United States government corral at Iwilei there to remain for several days. It is possible that the Dix will be dispatched for Manila on or about Wednesday of next week. Some minor emergency repairs must be made to her machinery while here.

The animals include 25 horses riding 175 cavalry and 5 riding mules, 174 draft, 40 pack and 28 for private use.

Three hundred tons coal will be supplied the transport during her stay at the port.

Fourth Officer McKenzie is one of the new faces to be seen on board the vessel.

Quartermaster Clerk Crets is making his first voyage in the Dix. He is an old Philippine hand and has spent several years in Uncle Sam's further possessions.

E. E. Seidfried, a well known Yeoman, who is making his third trip with the troopship, Seidfried takes special pride in displaying the qualifications of a fine target cat, the pet of the ship which has been taught a bunch of tricks sufficient to entitle him to the front bench at a peacock show.

Less than two hundred packages of general supplies and merchandise for the army will be left here. Included in the consignment is an automobile.

The work of transferring the animals from the ship to the corral occupied the greater part of the morning. The horses and mules frisked and romped when they discovered their feet imbedded in the native soil of Hawaii.

Good-Bye to Eddie Roberts.

Eddie Roberts, one of the old familiar figures in trans-Pacific steamship circles as an officer paying his last visit to Honolulu as purser of the Toyo Kisen Kaisha liner Nippon Maru, Roberts has been accorded a serving recognition at the hands of the directors of the Japanese steamship company who have in that he has been selected as general passenger and freight agent for the Toyo Kisen Kaisha and the Western Pacific Railroad Company at pier 34, San Francisco.

Roberts numbers his friends as legion along the shores of the Pacific.

Hilo Shipping.

The Matsun Navigation steamer Enterprise sailed from Hilo for San Francisco on Wednesday evening taking shipmen's of sugar. The bark Albert and schooner A. F. Coates were discharging cargoes at Railway wharf at the time of departure of the Mauna Kea for Honolulu.

Sierra's Cargo for Coast.

When the Oceanic liner Sierra sails for San Francisco on Wednesday morning she will carry a shipment of Hawaiian products amounting to nearly two thousand tons. The freight list will include consignments of sugar, rice, bananas, coffee and sundries. There is a fair looking of passengers at the office of C. Brewer & Co.

Five new steam-whalers for the Canadian North Pacific Whaling Company are now en route to the coast from Norway. Their home port will be at Victoria. The Red, Black and Green left Christchurch early in the month, the White and Yellow

left Seattle on January 11.

Left Seattle on January 11.

Left Seattle on January 11.

Left Seattle on January 11.

ARRIVED	VESSELS TO ARRIVE
Friday, Jan. 20. Seattle—Dix, U. S. A. T. 6:30 p. m. Saturday, Jan. 21. Hilo via way ports—Mauna Kea, stmr., a. m. Hongkong via Japan ports—Nippon Maru, Jap. stmr., 7 a. m.	Sunday, Jan. 22. Maui, Molokai and Lanai ports—Mikahala, stmr. Kauai ports—Kinau, stmr. Monday, Jan. 23. Seattle—Hilolani, M. N. S. S. Kauai ports—Nocau, stmr. Tuesday, Jan. 24. San Francisco—Tenyo Maru, Jap. stmr. San Francisco—Wilhelmina, M. N. S. S.

DEPARTED	VESSELS TO DEPART
Friday, Jan. 20. Hawaii via Maui ports—Claudine, stmr., 5 p. m. Kauai ports—W. G. Hall, stmr., 5 p. m. Kauai ports—Kauai, stmr., 3 p. m.	Wednesday, Jan. 25. Hawaii via Maui ports—Claudine, stmr. Kauai ports—W. G. Hall, stmr. Friday, Jan. 27. Kona and Kau ports—Mauna Loa, stmr. Saturday, Jan. 28. Hilolani via Japan ports—Siberia, P. M. S. S. Hilo via way ports—Mauna Kea, stmr.

PASSENGERS BOOKED	PASSENGERS DEPARTED
Per T. K. K. S. S. Nippon Maru for San Francisco—Mr. Thomas. Per O. S. S. Sierra for San Francisco, Jan. 25.—Mrs. W. A. Bell, Mrs. M. A. Allen, F. D. Lowrey, J. R. Harry, C. Du Roy, J. Warmiser, Mrs. H. P. Earle, F. J. Patterson, G. Prentice, L. C. Solomon, Mr. and Mrs. A. R. Fano and son, Mr. and Mrs. H. J. Biddle Mr. and Mrs. W. B. Miner, J. A. High. Per W. G. Hall, for Kauai ports, Jan. 26.—Rev. E. Pavia, Mrs. Purvis.	Per stmr. W. G. Hall, for Kauai ports, Jan. 29.—J. P. Cooke, H. P. Baldwin.

IN FOREIGN PORTS.	VESSELS TO DEPART
Saturday, Jan. 21. SAN FRANCISCO—Arrived Jan. 21: S. S. Alaskan, from Salina Cruz. SAN FRANCISCO—Sailed Jan. 21: Bk'ne, Imgard, for Mahukona. SAN FRANCISCO—Arrived Jan. 21: S. S. Hyades, from Kahului, Jan. 11. Memo. Nippon Maru, sails for San Francisco today, 4 p. m. Mail closes at 3 p. m.	Saturday, Jan. 21. San Francisco—Nippon Maru, Jap. stmr., 4 p. m. Monday, Jan. 23. Salina Cruz via island ports—Miskourian, A.-H. S. S. Kauai ports—Nocau, stmr. Tuesday, Jan. 24. Hilo via way ports—Mauna Kea, stmr., 10 a. m. Kauai ports—Kinau, stmr., 5 p. m. Maui, Molokai and Lanai ports—Mikahala, stmr., 5 p. m. Kauai ports and Hongkong—Tenyo Maru, Jap. stmr.

WOULD RE LIBERAL WITH FRIAR LANDS	VESSELS TO DEPART
Easy Terms Policy Only One That Could Build Up Business.	Saturday, Jan. 21. San Francisco—Nippon Maru, Jap. stmr., 4 p. m. Monday, Jan. 23. Salina Cruz via island ports—Miskourian, A.-H. S. S. Kauai ports—Nocau, stmr. Tuesday, Jan. 24. Hilo via way ports—Mauna Kea, stmr., 10 a. m. Kauai ports—Kinau, stmr., 5 p. m. Maui, Molokai and Lanai ports—Mikahala, stmr., 5 p. m. Kauai ports and Hongkong—Tenyo Maru, Jap. stmr.

WASHINGTON, D. C., Dec. 15.—	VESSELS TO DEPART
Transactions in friar lands in the Philippines were again under discussion before the House Committee on Insular Affairs today. Captain E. H. Sleeper, director of the lands of the Philippines government, resuming his testimony.	Wednesday, Jan. 25. Manila—Dix, U. S. A. T. San Francisco—Sierra, P. M. S. S. Thursday, Jan. 26. Kauai ports—W. G. Hall, stmr., 5 p. m. Friday, Jan. 27. Hawaii via Maui ports—Claudine, stmr., 5 p. m. Saturday, Jan. 28. San Francisco—Siberia, P. M. S. S. Tuesday, Jan. 31. Victoria and Vancouver—Zealandia, C.-A. S. S.

MAILS.	TRANSPORT SERVICE.
Mails are due from the following points as follows: San Francisco—Per Tenyo Maru, Jan. 24. Yokohama—Siberia, Jan. 27. Colonies—Per Zealandia, Jan. 31. Victoria—Per Makura, Feb. 3. Mails will depart for the following points as follows: San Francisco—Per Nippon Maru, Jan. 21. Yokohama—Per Tenyo Maru Jan. 24. Vancouver—Per Zealandia, Jan. 31. Sydney—Per Makura, Feb. 3.	Dix from Seattle, for Honolulu, Jan. 2. Logan, arrived Manila, Jan. 4. Sheridan, sailed from Honolulu for San Francisco, Jan. 5. Sherman, sailed from Honolulu, for Manila, Jan. 13.

PASSENGERS ARRIVED	TRANSPORT SERVICE.
Per stmr. Mauna Kea from Hilo and way ports Jan. 21.—R. Rorgentrob, E. W. Clarke and wife, E. M. Clarke and wife, R. W. Shinn, Misses Marshall (3), S. A. Winward, wife and son, N. C. Langhaar and wife, R. Scott, wife and daughter, Mrs. M. Christ, O. W. Dunn and wife, Miss Gouldy, Mrs. W. G. Hall, Mrs. L. N. Haas, Dr. Hyde, J. P. Bremer, E. V. Shaylor, wife and daughter, Mrs. J. A. Caldwell, J. H. Roney, wife and 2 children, H. B. Moyer and wife, R. Prittle and wife, Miss Prittle, Mrs. Moyer, M. E. Mulway, F. B. Gowan, F. H. Hendricks, wife and daughter, J. Abadie, Rev. W. D. Westervelt, D. E. Metzger, T. Nidate, K. Yamamura, M. A. Ryeroff, A. T. Fowler, C. M. Walker, P. H. Boggs, K. Maehara, G. W. Ellis, L. F. Turner, Mrs. J. Watt, R. Winhall, W. P. Jarrett, Miss A. Pike, Mrs. Mxfield, G. Bisgard, F. J. Hare, R. W. Shingle, E. H. Wodehouse, A. W. T. Bottomley, Rev. Yakumai, D. C. Lindsay, A. G. White, W. G. Scott, H. Strenbach, C. R. Collins, Y. Sakaba, Y. Bobo, C. D. Lukin, C. B. Fisher, J. T. Higgins, Major William A. Haneberg, C. B. Nape, T. O'Brien.	Dix from Seattle, for Honolulu, Jan. 2. Logan, arrived Manila, Jan. 4. Sheridan, sailed from Honolulu for San Francisco, Jan. 5. Sherman, sailed from Honolulu, for Manila, Jan. 13.

PASSENGERS ARRIVED	TRANSPORT SERVICE.
Per stmr. Mauna Kea from Hilo and way ports Jan. 21.—R. Rorgentrob, E. W. Clarke and wife, E. M. Clarke and wife, R. W. Shinn, Misses Marshall (3), S. A. Winward, wife and son, N. C. Langhaar and wife, R. Scott, wife and daughter, Mrs. M. Christ, O. W. Dunn and wife, Miss Gouldy, Mrs. W. G. Hall, Mrs. L. N. Haas, Dr. Hyde, J. P. Bremer, E. V. Shaylor, wife and daughter, Mrs. J. A. Caldwell, J. H. Roney, wife and 2 children, H. B. Moyer and wife, R. Prittle and wife, Miss Prittle, Mrs. Moyer, M. E. Mulway, F. B. Gowan, F. H. Hendricks, wife and daughter, J. Abadie, Rev. W. D. Westervelt, D. E. Metzger, T. Nidate, K. Yamamura, M. A. Ryeroff, A. T. Fowler, C. M. Walker, P. H. Boggs, K. Maehara, G. W. Ellis, L. F. Turner, Mrs. J. Watt, R. Winhall, W. P. Jarrett, Miss A. Pike, Mrs. Mxfield, G. Bisgard, F. J. Hare, R. W. Shingle, E. H. Wodehouse, A. W. T. Bottomley, Rev. Yakumai, D. C. Lindsay, A. G. White, W. G. Scott, H. Strenbach, C. R. Collins, Y. Sakaba, Y. Bobo, C. D. Lukin, C. B. Fisher, J. T. Higgins, Major William A. Haneberg, C. B. Nape, T. O'Brien.	Dix from Seattle, for Honolulu, Jan. 2. Logan, arrived Manila, Jan. 4. Sheridan, sailed from Honolulu for San Francisco, Jan. 5. Sherman, sailed from Honolulu, for Manila, Jan. 13.

PASSENGERS ARRIVED	TRANSPORT SERVICE.
Per stmr. Mauna Kea from Hilo and way ports Jan. 21.—R. Rorgentrob, E. W. Clarke and wife, E. M. Clarke and wife, R. W. Shinn, Misses Marshall (3), S. A. Winward, wife and son, N. C. Langhaar and wife, R. Scott, wife and daughter, Mrs. M. Christ, O. W. Dunn and wife, Miss Gouldy, Mrs. W. G. Hall, Mrs. L. N. Haas, Dr. Hyde, J. P. Bremer, E. V. Shaylor, wife and daughter, Mrs. J. A. Caldwell, J. H. Roney, wife and 2 children, H. B. Moyer and wife, R. Prittle and wife, Miss Prittle, Mrs. Moyer, M. E. Mulway, F. B. Gowan, F. H. Hendricks, wife and daughter, J. Abadie, Rev. W. D. Westervelt, D. E. Metzger, T. Nidate, K. Yamamura, M. A. Ryeroff, A. T. Fowler, C. M. Walker, P. H. Boggs, K. Maehara, G. W. Ellis, L. F. Turner, Mrs. J. Watt, R. Winhall, W. P. Jarrett, Miss A. Pike, Mrs. Mxfield, G. Bisgard, F. J. Hare, R. W. Shingle, E. H. Wodehouse, A. W. T. Bottomley, Rev. Yakumai, D. C. Lindsay, A. G. White, W. G. Scott, H. Strenbach, C. R. Collins, Y. Sakaba, Y. Bobo, C. D. Lukin, C. B. Fisher, J. T. Higgins, Major William A. Haneberg, C. B. Nape, T. O'Brien.	Dix from Seattle, for Honolulu, Jan. 2. Logan, arrived Manila, Jan. 4. Sheridan, sailed from Honolulu for San Francisco, Jan. 5. Sherman, sailed from Honolulu, for Manila, Jan. 13.

PASSENGERS ARRIVED	TRANSPORT SERVICE.
Per stmr. Mauna Kea from Hilo and way ports Jan. 21.—R. Rorgentrob, E. W. Clarke and wife, E. M. Clarke and wife, R. W. Shinn, Misses Marshall (3), S. A. Winward, wife and son, N. C. Langhaar and wife, R. Scott, wife and daughter, Mrs. M. Christ, O. W. Dunn and wife, Miss Gouldy, Mrs. W. G. Hall, Mrs. L. N. Haas, Dr. Hyde, J. P. Bremer, E. V. Shaylor, wife and daughter, Mrs. J. A. Caldwell, J. H. Roney, wife and 2 children, H. B. Moyer and wife, R. Prittle and wife, Miss Prittle, Mrs. Moyer, M. E. Mulway, F. B. Gowan, F. H. Hendricks, wife and daughter, J. Abadie, Rev. W. D. Westervelt, D. E. Metzger, T. Nidate, K. Yamamura, M. A. Ryeroff, A. T. Fowler, C. M. Walker, P. H. Boggs, K. Maehara, G. W. Ellis, L. F. Turner, Mrs. J. Watt, R. Winhall, W. P. Jarrett, Miss A. Pike, Mrs. Mxfield, G. Bisgard, F. J. Hare, R. W. Shingle, E. H. Wodehouse, A. W. T. Bottomley, Rev. Yakumai, D. C. Lindsay, A. G. White, W. G. Scott, H. Strenbach, C. R. Collins, Y. Sakaba, Y. Bobo, C. D. Lukin, C. B. Fisher, J. T. Higgins, Major William A. Haneberg, C. B. Nape, T. O'Brien.	Dix from Seattle, for Honolulu, Jan. 2. Logan, arrived Manila, Jan. 4. Sheridan, sailed from Honolulu for San Francisco, Jan. 5. Sherman, sailed from Honolulu, for Manila, Jan. 13.

PASSENGERS ARRIVED	TRANSPORT SERVICE.
Per stmr. Mauna Kea from Hilo and way ports Jan. 21.—R. Rorgentrob, E. W. Clarke and wife, E. M. Clarke and wife, R. W. Shinn, Misses Marshall (3), S. A. Winward, wife and son, N. C. Langhaar and wife, R. Scott, wife and daughter, Mrs. M. Christ, O. W. Dunn and wife, Miss Gouldy, Mrs. W. G. Hall, Mrs. L. N. Haas, Dr. Hyde, J. P. Bremer, E. V. Shaylor, wife and daughter, Mrs. J. A. Caldwell, J. H. Roney, wife and 2 children, H. B. Moyer and wife, R. Prittle and wife, Miss Prittle, Mrs. Moyer, M. E. Mulway, F. B. Gowan, F. H. Hendricks, wife and daughter, J. Abadie, Rev. W. D. Westervelt, D. E. Metzger, T. Nidate, K. Yamamura, M. A. Ryeroff, A. T. Fowler, C. M. Walker, P. H. Boggs, K. Maehara, G. W. Ellis, L. F. Turner, Mrs. J. Watt, R. Winhall, W. P. Jarrett, Miss A. Pike, Mrs. Mxfield, G. Bisgard, F. J. Hare, R. W. Shingle, E. H. Wodehouse, A. W. T. Bottomley, Rev. Yakumai, D. C. Lindsay, A. G. White, W. G. Scott, H. Strenbach, C. R. Collins, Y. Sakaba, Y. Bobo, C. D. Lukin, C. B. Fisher, J. T. Higgins, Major William A. Haneberg, C. B. Nape, T. O'Brien.	Dix from Seattle, for Honolulu, Jan. 2. Logan, arrived Manila, Jan. 4. Sheridan, sailed from Honolulu for San Francisco, Jan. 5. Sherman, sailed from Honolulu, for Manila, Jan. 13.

not only exonerated, but were highly commended for their perseverance and skill in stamping out the fire.	Haas, Dr. Hyde, J. P. Bremer, E. V. Shaylor, wife and daughter, Mrs. A. Caldwell, J. R. Hanney, wife and children, H. B. Moyer and wife, I. Prittle and wife, Miss Prittle, Mrs. Moyer, M. E. Mulway, F. B. Gowara, F. H. Hendricks, wife and daughter, I. Abadie, Rev. W. D. Westervelt, L.
As a result of the battering of the sailing vessels during the storms of the North Pacific coast, the underwriters have placed a ban on the oil	

Art Draperies

Cretones, Silhouettes and Repps, in new and beautiful designs. Ex. S. S. Sierra, we received a number of new patterns and colorings in SCRIMS. This popular fabric is being extensively used for window curtains, being both durable and artistic. 25c per yard. Also a complete stock of PLAIN SCRIM, in Arabian, Cream and White.

SHIRTING PERCALES—36 inches wide, at 15c per yard. All city patterns and fast colors.

GINGHAMS—In Stripes, Plaids and Plain Colors; 10c per yard.

ALLOVER LACE NET—Very handsome, latest patterns; in Cream, White and Beige.

SIDE-COMBS, HAIR ORNAMENTS and BARRETTES—A choice selection.

Sachs' Dry Goods Co.,

Corner Fort and Beretania Streets—Opposite Fire Station

High Living

DOES NOT OF NECESSITY MEAN COSTLY LIVING IF THE SUPPLIES ARE PURCHASED FROM US. WE PUT A FAIR PRICE ON SUPERIOR MEATS.

Metropolitan Meat Market

HILBERON & LOUIS, Proprietors TELEPHONE 1814

Oahu Furniture Company

Hand-Made Koa Furniture
To Order and in Stock

EXCLUSIVE DESIGNS BEAUTIFUL FINISH
AND OTHER FURNITURE

King Street, opp. Alex. Young Bldg. P. O. Box 840



Sole Agents

ALEXANDER YOUNG HOTEL LAUNDRY. Our wagons pass your door twice daily.

**Bathing Caps
Water Wings
Bathing Shoes**

Benson, Smith & Co., Ltd.

FORT AND HOTEL STREETS

TUNGSTEN LAMPS

HOUSEHOLDERS AND MERCHANTS WHO ARE INTERESTED IN REDUCING THEIR LIGHT BILLS SHOULD USE THESE LAMPS. THEY GIVE

Twice the Light for the Same Money

A CLEARER, BRIGHTER, WHITER, STEADIER AND BETTER LIGHT IN EVERY WAY THAN THAT OBTAINED WITH THE ORDINARY LAMPS.

The Hawaiian Electric Co., Ltd.

WEEKLY BULLETIN

\$1 a Year

IN BUSINESS CIRCLES

A definite program of home building in connection with the opening up of a new real estate tract is one of the business features of the week.

Bonders & Lausung have started the ball rolling in their new proposition that is opened up in the Makiki district. They propose to sell houses as well as lots, having made arrangements to finance the man who wants to build a home and thus assist in increasing the number of cottages available for the increasing population of the city.

This is a line of development that has always been urged by the Bulletin, and the belief is general that it will prove a success, more than that, indeed, it will literally fill the proverbial long-felt want in city expansion.

Real Estate Leads.

Real estate is attracting more attention than sugar stocks these days and this fact is coming more prominently to the front as the flock of tourists gets thicker. Most everyone from the country west of the Rockies believes in real estate and generally is afraid of stocks. Last winter a good number of visitors bought lots in the Kaimuki section and there will be many buyers in this year's visitation. In addition to Kaimuki, the Kaimuki sales company is offering the Palolo Hill lots that are very attractive to the man who knows and believes in real estate.

Every man who comes here and takes the time to look around appreciates the fact that Honolulu must grow, and its expansion has hardly begun. That means better values for all real estate. And few want stocks when there is land to tie to.

Business to Alakoa Street.

Evidence of the growth and business tendencies of the town are shown in the general drift to Alakoa street, where the Bulletin is soon to be installed in its new offices.

Alakoa has come to the front very prominently in the last year, and the day is not far distant when it will rival Fort street as an active business center. Purchase of the old Y. M. C. A. building by the Elks' club shows that the town has not rid of the idea that everything must be centered about the four corners of two streets. Furthermore, the double-track system of the Rapid Transit is to be extended up Alakoa from King, thus making a direct service between the Punchbowl and Kaimuki street service and the Liliha street line. The Kaimuki street car line has been and is one of the most important of the whole Rapid Transit system and the through service to Palama and up Liliha street will make the junction of Alakoa and Beretania streets the transfer point for all the people from the Punchbowl-Manoa lines going through to Palama and the Punani section of Nuuanu Valley. That, of course, means a steadily increasing traffic on Alakoa street between Beretania and King, with a reasonable probability that in due time the cars of the Punchbowl line will turn down Alakoa to reach King, and leave the Nuuanu cars to take care of the upper Fort street traffic.

Trend of Business.
But let the street cars run as they may, the whole trend of the town's business is toward the Capitol buildings, and a great many new buildings are awaiting a settlement of the Federal building site problem. Immediately there is prospect of the block being raised and the Federal building construction started, just so soon will new buildings go up on the corner purchased by McHenry and the First National Bank, and probably on the corner of Alakoa and King, if that pretty piece of land should not be held for park purposes.

City Business.
New members of the city government have completed the first three weeks of their service with a record for good, snappy business administration that is very gratifying. At times there has been a suggestion of friction with the mayor, but the business of the Board of Supervisors has been moving forward with a celerity that has made some people forget there is a city government because they are not reminded of its existence by lengthy wranglings.

Tight Money.
The week has witnessed a notable tightening up of the money market as regards loans. The Territorial Treasurer has drawn on his balances quite freely to liquidate public accounts at the first of the year, and the sugar plantations have drawn as usual in connection with the grading of the crop. This is always the period of tight money, and it is natural that the financial men should be more conservative this year, as the returns on the crop will not be so large as usual; at least, not during the month of February.

Sugar Crop.
Hawaii's sugar crop is slow in moving to the market. The heavy rains of the first weeks of this month have been unimportant for filling up the water sources and forcing the growing crop at the opportune time, but it has been hard on the harvesting. It is an open question whether this will do any harm in the long run.

Forcing Down Raws.
From present appearances the buyers for the raisers in New York will force down the price to the lowest possible notch in the next few weeks—till the second or third week in January—when the Cuban crop is at its height and the producers of that island will be hustling to realize on their crop to meet financial obligations. That is the period when the

raisers grow fat and the Cuban planters just skinned through with enough to leave him with the hope that he may do better next year.

Indications of this bearing of the market are fast coming to the front. The sugar quotation for Friday was below 5.50, and it will not be surprising if the price is driven as low as 3.25 by the middle of next month. Plans of practically all the sugar concerns are shaped with this possibility in view. The price of beets is now considerably near the cost of production, and Cubans are getting down to the usual "point of resistance."

Merchants and Water.

Members of the Merchants' Association have been notified that the McCrossen bill to obtain control of the Waihiwa water is being vigorously forced upon the attention of Congress, and some action may be taken this week by this business organization. On the other hand, it is stated that a number of the local people who went to Washington will soon be on the way home, only enough remaining to watch against a joker being slipped onto the end of a bill in the closing hours of the Congressional session.

Tourists Coming.

Tourists are coming to town in increasing numbers. The Sierra brought a good number, and every steamer is well booked up in addition to the special excursions from Seattle, Portland and San Francisco. There is no doubt that the town will be well filled in a week or two and by the latter part of February it bids fair to be crowded.

Legislative Prospects.

Business men are interested in the information that the speakership contest is not likely to seriously endanger the peace of the legislative session. Apparently, it will be a friendly contest, with Holstein leading and his opponent satisfied with the vice-speakership.

Coastwise Law.

News from San Francisco is to the effect that the Western Coast people are preparing to make a bitter warfare against the renewed proposal to suspend the coastwise shipping laws in their application to Hawaii. Whether the ship subsidy bill will pass at this session or not, it seems highly probable that the coastwise suspension bill will not get further than its usual pigeonhole.

Rapid Transit.

Announcement has been made by the Honolulu Rapid Transit & Land Co., following a meeting of the board of directors, that 550 shares of treasury common stock will be issued to present holders only, pro rata, at the par value of \$10 a share. This issue is partly to take care of improvement expenses contemplated. The company has also decided to increase its dividends from 1 per cent to 1-1/2 per cent quarterly.

STOCK MARKET IS QUIET BUT FIRM

The stock market furnished few sensations today, no sales being made on the board and only six off the board. Oahu Sugar figured in three of these at 26.26 a share.

Oahu experienced a slight drop, selling at 3.87 1/2. On the other hand, Hawaiian Pineapple continued strong, the only sale made being at 36, the figure reached yesterday. There is slight evidence, however, that this may decline over the week-end.

The Hawaiian Agricultural Company's regular dividend day resulted in the expected announcement of a \$1 dividend.

SMART SET DOINGS

The Liliha Bridge Club met Wednesday with Mrs. Seales wife of Captain Seales of the Fifth Cavalry. Pretty prizes were awarded at the end of the playing. About sixteen women were present and an enjoyable afternoon was spent.

Mr. and Mrs. John Lucas and Mrs. Sarah Lucas have leased Mrs. F. W. Girvin's place, at 1125 Kaimuki street for the winter. Mrs. Helen Girvin is staying with them.

Mr. and Mrs. Trafford Hutson, of Seattle, are sojourning at the Moana Hotel. Mr. and Mrs. Hutson are prominent socially in Seattle, Washington.

Judge and Mrs. Will Whitney will entertain at a dancing party, Monday evening at 8:30. About twenty couples have been invited.

Mr. and Mrs. Westervelt, who returned today on the Mauna Kea, experienced a delightful ten days visit in Hilo, Hawaii.

Lieutenant Scamell is one of the new officers on the Theta, and will be a great acquisition to Honolulu's society.

The Wednesday Bridge Club will meet with Mrs. Parlee at Fort Street next week, at half after two o'clock.

Mr. and Mrs. Harley of Fall River, Mass., are spending their honeymoon at the Moana Hotel.

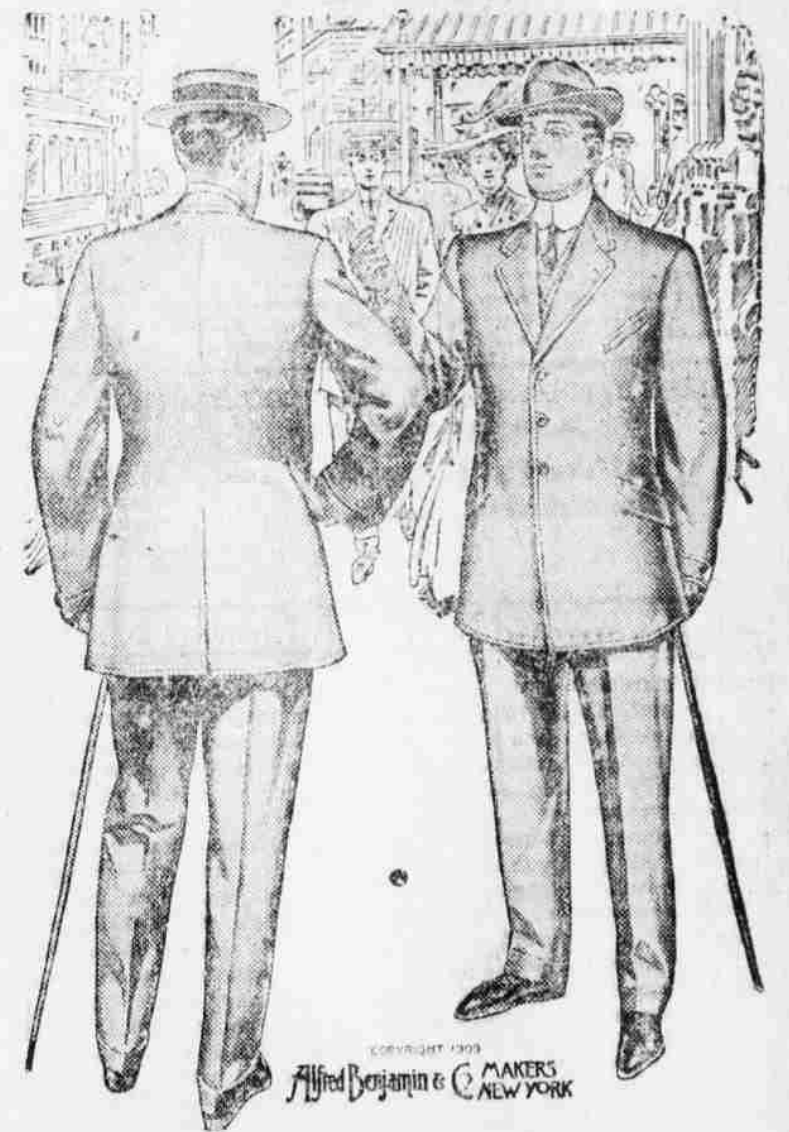
When some people talk we are reminded of a dictionary with the definitions missing.

Correct Clothes For Men

The Newest Model of Spring Clothes has arrived. It is called the

"STANDARD" SACK

Everything about the "Standard" is of such a decisive nature, and it illustrates so nicely what our spring lines are going to be. The "Standard" is a Three-Button Sack, with a good strong shoulder and full lapel.



The **Carion**

Home Beautifying

An expert in the person of Mr. A. M. Morgenthaler is now in this city for a few days and is prepared to give you the last word in fine wall papers and wall hangings.

Mr. Morgenthaler will be pleased to meet those interested in this subject in our store and will make special appointments if desired. There is no charge or other obligation on the part of those coming to hear Mr. Morgenthaler and see his beautiful assortment of fine decorations. Immediate advantage must be taken of this opportunity as Mr. Morgenthaler leaves Honolulu Jan. 28th.

Lewers & Cooke, Ltd.

J. A. GILMAN,
Shipping and Commission

Agent for

Arthur Sewall & Co., Bath, Me.
Parrott & Co., San Francisco
Badger's Fire Extinguisher Co.
General Fire Extinguisher Co.
(GRINNELL AUTOMATIC SPRINKLER)
Neuman Clock Co.
(WATCHMAN'S CLOCK)
Royal Standard Typewriter
Aachen & Munich Fire Ins. Co.

FORT STREET, NEAR MERCHANT

For Iron Beds
go to
Coyne Furniture Co.

Furniture
Rugs & Draperies
J. Hopp & Co., Ltd.

Drink
MAY'S OLD KONA COFFEE
Best in the Market
HENRY MAY & CO.
Phone 1271

EVENING BULLETIN

DAILY and WEEKLY Published by BULLETIN PUBLISHING CO., LTD.
At 120 King Street, Honolulu, Territory of Hawaii.

Daily every day except Sunday. Weekly issued on Tuesday of each week.

MEMBER OF THE ASSOCIATED PRESS.

Wallace R. Farrington, Editor

SUBSCRIPTION RATES PAYABLE IN ADVANCE.

EVENING BULLETIN	WEEKLY BULLETIN
Per Month, anywhere in U.S. \$.75	Per Six Months, anywhere in U.S. \$ 4.00
Per Quarter, anywhere in U.S. 2.00	Per Year, anywhere in U.S. 8.00
Per Year, anywhere in U.S. 8.00	Per Year, anywhere in Canada, 1.50
Per Year, postpaid, foreign, 12.00	Per Year postpaid, foreign, 2.00

CIRCULATION LARGEST OF ANY NEWSPAPER PUBLISHED
in the Territory of Hawaii.

Tel. Editorial Rooms, - 2185
Business Office, - 2256

Entered at the Postoffice at Honolulu
as second-class matter.

SATURDAY JANUARY 21, 1911

Nor deem the irreparable past
As wholly wasted, wholly vain,
If rising on its wreck, at last,
To something nobler we attain.
—Longfellow.

Buyers and builders of homes are
the people who will gain prosperity
from the rapid growth of Honolulu.

What Hilo needs to do in order to
land the Prince Rupert crowd is to
interview the customs house author-
ities and make the way of the vessel
easy.

There are more tourists in Honolu-
lu than ever before. And still they
come, ninety-five per cent. of them
visiting the other islands before re-
turning home.

The man who noted the tombstones
for sale on Alakea street did not have
to be told that these are on sale for
the dead ones of other streets. Ev-
erything on Alakea street is a live
one.

Pink paper has served its purpose
of impressing the public with the fact
that the Bulletin is moving. The
news press is now running in the new
offices, where the Bulletin will be
at home to its patrons on Monday
morning.

The best bathing beaches at Wai-
kiki were once sacrificed to secure
a few kuleanas in Chinatown. This
should be a sufficiently horrible ex-
ample to prevent the slaughter of the
Makiki Valley park to satisfy the
hobby of pompous officials for selling
perpendicular town lots with black
sand for soil.

It appears that Speaker Holstein
is assured the necessary votes to re-
elect him to the Speakership a third
time. This means that the Speaker-
ship fight is presumably eliminated,
and if this proves absolutely true, ev-
eryone is to be congratulated that
the Legislature can proceed imme-
diately to business.

SAN FRANCISCO'S FIGHT FOR THE EXPOSITION.

Honolulu is heart, body and soul
with San Francisco in its fight for
the Panama-Pacific Exposition. Un-
fortunately we have no vote in Con-
gress and can only sit on the side
lines and "root" for the right side—
that's San Francisco's side.

Naturally our people heard with
deep regret the news of New Orleans'
preliminary success. But from the
articles in the San Francisco papers
arriving in the last mail, the result
of the vote of the Arts and Exposi-
tion Committee was expected. The
real fight will come on the floor of
the House.

Mr. Rodenberg, Honolulu's old
friend who gave it the extended Ma-
huka site, is leading the contest for
New Orleans, and it was his commit-
tee that returned on Friday a report
satisfactory to him.

San Francisco's plan is mapped out
in newspapers of the 10th as fol-
lows:

"The resolution from the Foreign

Affairs body is to be pressed to a
conclusion on the floor of Congress,
and New Orleans must join the issue
as she may with the report she de-
pends on getting out of the Arts and
Expositions body.

"Tonight's conference was all im-
portant, but it did not take long to
reach the conclusion. Rodenberg's
activities in behalf of the Southern
city have made it plain, in the opin-
ion of the Californians, that to per-
mit him to have any control of the
situation would be tantamount to
playing into the hands of the enemy.
To have introduced a bill similar in
any degree to that New Orleans has
submitted and to have gone before
Rodenberg's committee on any kind
of an equal footing with the South-
ern city would have been tactically a
blunder and have opened the way for
an effort of the enemy to force delay,
calculated to consume the few weeks
of the Congressional session.

"San Francisco will recognize" the
Committee on Arts and Expositions
so far as to go before it tomorrow
morning, formally to explain that it
has abandoned the old \$5,000,000 ex-
position bill and then to give combat
to New Orleans right there on its
own ground and on its own bill—
that is, if this will be permitted. In
other words, San Francisco continues
to retain an aggressive lead in the
parliamentary situation just as it has
been in the lead from the very be-
ginning of hostilities."

So it appears from this that yes-
terday's vote was merely the signal
that the San Franciscans have just
begun to fight.

And "by the Lord Harry," here's
hoping they win.

HOW CATHOLICS WILL CONTROL.

Elevation of a Roman Catholic to
the exalted position of Chief Justice
of the United States Supreme Court
would have created a tremendous
future twenty-five years ago. It
would have been impossible. Today
the public makes a mental note of the
fact that the Chief Justice is a Roman
Catholic, but the day has passed
when intolerance raises its voice to
declare that a Roman Catholic cannot
be a good, patriotic American.

This may be the reason why no
conspiracy fits were thrown when a
famous English Roman Catholic pre-
late told the Eucharistic Congress
meeting in Montreal that "the Cath-
olics will soon control the United
States through force of numbers."

Father Bernard Vaughan made the
prediction, basing it on the fact that
the "Roman Catholic Church alone en-
forces obedience to the law of God
governing racial suicide."

"Christian fecundity is fighting ster-
ile paganism. The battle for the pos-
session of the world," he continued,
"will soon be narrowed to the Roman
Catholic Church and the destructive
forces of agnosticism. Protestantism
is disappearing. To me nothing can
be more contemptible than those mar-
ried women who shake their little
fists in the face of God, saying: 'We
ignore you and despise your laws.'
The rush for pleasure is leading them
to paganism and the destruction of

College Hills Tract

Lots for Sale

All modern conveniences, such as
electric lights, gas, city water, are in-
stalled on this tract. No pioneering,
no waiting for water, gas, carline or
electric lights before building. The
lots are large, many being nearly one-
half acre in area. The neighborhood is
of the best.

Trent Trust Co., Ltd.

FOR SALE

Three-bedroom house on
King St.; new, with
all modern con-
veniences; lot 100x140.
Price \$4250

Three-bedroom house on
Kalaheima Ave.; hard-
wood floor, beautiful
interior finish. Price 4250

Seven acres with two-
bedroom bungalow, gar-
age, etc., in Maunaloa. A
\$10,000 property for..... 5000

Bishop Trust Co., Ltd.
BETHEL STREET

New Crop! Fresh Pineapples!

Leave your orders for a crate of
SIX CHOICE PINES at 72 King
street.

ISLAND FRUIT CO.,
72 S. King Street
Phone 1515

Carriage, of Phoenicia, of Greece and
Rome.

"Women no longer want the trouble
of rearing children. Children inter-
fere too much with their pleasures
and their figures. The empty cradle
and the empty church are the great
problems of modern life. Racial
suicide and religious suicide act and re-
act upon each other. The Roman
Catholic Church stands alone in its
enforcement of the law of God con-
cerning marriages and the Roman
Catholic Church alone has no com-
plaint to make of empty pews.

"I understand the unmarried wom-
an who feels she does not want to be
left out of public affairs and who
wants her share of the prizes of life
I find no fault with her ambitions,
but I think it is a grand thing to see
The Methodists are deserving liberal



Commercial Photographers

Business and residential work
carefully done.

GURREY'S

Telephone 1574

when you want to send a

Wireless

and a boy will call for the message.

a woman taking in washing. She is
far better than her richer sisters who
spend their time taking in men. I
think it is unfortunate that women
have to work outside the home; but it
seems to be a necessary economic
condition of the day.

"We all aim towards ideals we can
never reach; but neither the nations
nor their peoples are striving toward
a Christian ideal. Our age has no
sense of the proportion, or of the fit-
ness of things, for it has lost sight of
God and his laws."

Members of the Methodist Church
have made a brave struggle to build
a new home that is at once an orna-
ment to the city and a comfortable
rallying place for religious workers.
The Methodists are deserving liberal

support in their effort to satisfy the
ambition to move into the home free
of debt. A short time remains for
the helpers to add their mite to this
cause, but it is never too late to help,
and a resolution to be liberal is just
as helpful late in the day, if it be
timely.

WOULD PROTECT HEALTH OF PORT

(Continued from Page 1)

"With this report made by author-
ity, the necessity of Federal assist-
ance in carrying out its recommenda-
tions may be urged on Congress later
with some hope of success.

"If you can indorse this prayer of
ours in your letter of transmittal, we
ask you to do so.

"Respectfully,
"THE CHAMBER OF COMMERCE
OF HONOLULU,
"By JAMES A. KENNEDY,
"F. J. LOWREY,
"Committee on Legislation and Public
Improvement."

To this was appended a short state-
ment in part as follows:

"It is not too soon to prepare Hon-
olulu for the opening of the Panama
Canal. The tropical diseases rampant
at the isthmus are unknown in Hon-
olulu, and our experience with Oriental
diseases is that they find a ready
culture under our equable climatic
conditions. We believe that extensive
public works may have to be con-
sidered before Honolulu can be con-
sidered disease proof; that to have
Honolulu a clean port receiving the en-
tire commerce of the United States,
and that being a national matter, the
Territory should have assistance by
the Federal Government. In order
that this problem may be approached
satisfactorily we ask you to represent
the situation to the President with
the request that he direct the Sur-
geon-General of the Marine Hospital
Service to detach a surgeon, and the
Secretary of War to direct that an
engineer of the United States Army
be ordered to act with this surgeon,
the two of them to report not only
the necessity for the work, but plans
and specifications for it. We trans-
mit herewith a letter for this pur-
pose."

RUBBER GROWERS TO MEET HERE

"The Hawaiian Rubber Growers' As-
sociation will hold an open session
next Monday morning at the Chamber
of Commerce rooms, and indications
point to the most optimistic of re-
ports on the future of rubber here.
Growers from various plantations have
assembled and will tell of results as
well as discuss methods.

The program includes the following:
"Paper on Pests," C. J. Austin, Na-
hiko Rubber Company.
"Tapping," Mr. Anderson.
"Cultivation and Soil Conditions," L.
Turner, manager Pacific Development
Company.
General discussion.

Dr. Wilcox will also address the
meeting.
The meeting begins at 9:30 o'clock
and the general public is cordially in-
vited to attend.

M. E. CHURCH TO BE OPENED

(Continued from Page 1)
men's retiring rooms, which are com-
fortable and well ventilated. The so-
cial hall is about 12 feet high and can
be opened wide by partitions, which
can be rolled up when occasion de-
mands. The rolling partitions are a
new feature in Honolulu churches.

The auditorium, which is situated at
the rear portion of the church, so that
the noise from the street will not in-
terfere with the services, is well ven-
tilated. The size of the hall is 45 by 26
feet. The rostrum at the corner, di-
rectly opposite the main entrance, and
adjoins the choir, which is on one side
of it, and the organ on the other side.

Peruna Secrets You Should Know



Golden Seal, the root of the above
plant, is a very useful medicine. Many
people gather it in our rich woodlands
during the summer. Few people know
how valuable it is in dyspepsia, catarrh,
and as a general tonic.
Many thousand pounds of this root are
used each year in the famous catarrh
remedy, Peruna. This fact explains why
everybody uses Peruna for catarrh.

Buy Direct and Save Money!

The output of a great factory goes direct to the
users, and you get the advantage of this when you
send your orders to us. We can ship you

DOORS, SASHES & MOULDINGS

In fact, all building materials and save you the mid-
dle man's profit. Reliable merchandise that we pos-
itively guarantee.

SEND FOR ILLUSTRATED CATALOGUE.
PROMPT SHIPMENTS EVERYWHERE.

P. A. ROVIG CO.,

1010 Western Avenue, Seattle, Washington.

Don't be annoyed by the lack of
Hot Water. Install a

RUDD GAS WATER HEATER

and your troubles are over

Guaranteed by the
HONOLULU GAS CO., LTD.

If you want to get a hold
on dirt use

Pau ka Hana

Sold by grocers generally

F. L. WALDRON,
Distributor

SCARES HORSE TO DEATH

PALMER, MASS., Dec. 15.—A
horse owned by W. P. Moore, of
Springfield, driven to town after an
absence of eight years, caught its
first glimpse of an automobile, reared
frantically and fell dead from fright.

Weekly Bulletin \$1 per year.



No home is complete with-
out a CHAFING DISH. Just
the thing to use when chance
callers drop in.

We have a large variety
with both alcohol burners and
electric stoves. Finished in
good style, which makes them
an ornament as well as a use-
ful utensil.

SHERIFF JARRETT RETURNS

Sheriff Jarrett, who went up to Hilo
last Tuesday in the Mauna Kea, re-
turned this morning. He was in his
office looking over the official docu-
ments which had been placed on his
desk for inspection during his absence
from town.
Jarrett stated that Hilo has grown
immensely in size, and that the bud-
ing prospects were bright.

H. F. Wichman
& Co., Ltd.,
Leading Jewelers
FORT STREET

IMMIGRANTS IN DEMAND

Lack of capital and shortage of labor have been, notoriously, the hand-
icaps to growth in South America. Capital has flowed in freely during the last
few years, however, and now the one clamorous cry of our southern neighbors
is for European immigration—more men, not only to meet the moment's need,
but to settle in the country with their families and add to the permanent
labor resources of the community. Since 1880—a period of thirty years—
about 3,500,000 Europeans (Spanish and Italian principally) have crossed to
Argentina; Brazil has received 1,800,000. It is but a beginning. With an
area 200,000 square miles greater than the United States, Brazil has a popu-
lation of only 6.2 to the square mile; in Argentina, half the size of Brazil,
the population density is only 5.4 to the square mile. To compete with Si-
beria, Australia, Canada, South Africa and the United States, the govern-
ments of South America are taking up the immigration problem in a way
that merits the notice of our own labor and citizen hunters. For instance,
practically every State south of us offers to bear the entire cost of the
newcomer's ocean transportation, and it feeds, and, if necessary, clothes him
for five days after he lands. A government labor bureau guarantees him
work and transports him to the locality where he is to live. It feeds and
lodges him for another ten days; it stands between him and the employer
who tries to cheat; and it extends to his family every help it gives him. All
over Europe agents of the South American governments are busily and suc-
cessfully drumming up immigrants. Not just any immigrant, for inspection
regulations are strict and practically uniform with those we enforce.

Waterhouse Trust

Real Estate Department

For Rent

Furnished house of four sleeping
rooms for rent for a period of six
months. Immediate possession. Rental
\$65.

Furnished house on beach at Wai-
kiki for rent for three months from
March 1, 1911.

For Sale

A few of the "Walker Lots" on King
street left at \$1200 and on Young street
at \$900.

A very desirable piece of Kaimuki
property on 12th avenue.

An \$1800 bargain in Makiki district.

Waterhouse Trust

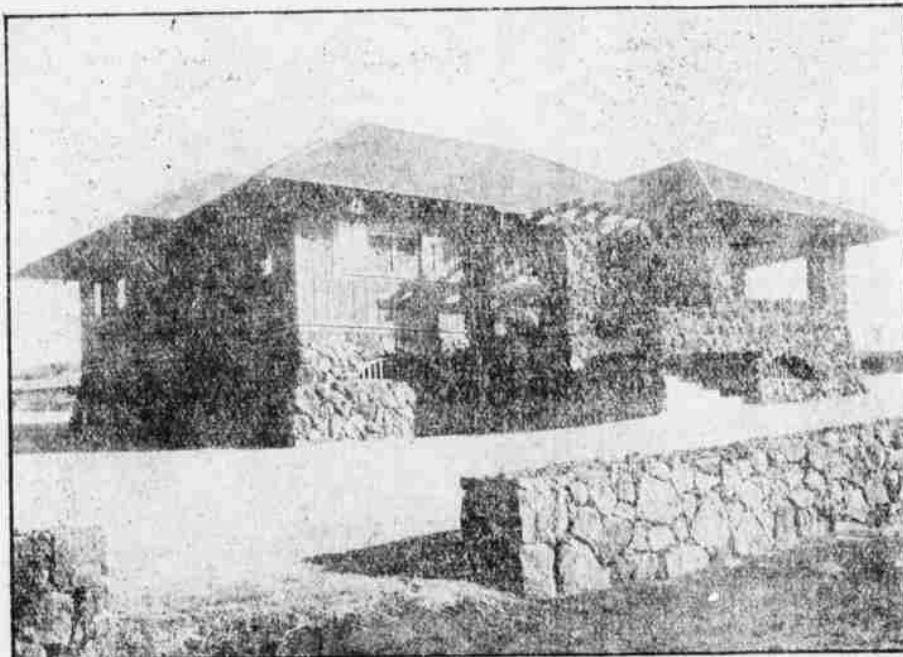
FORT AND MERCHANT STREETS HONOLULU, T. H.

Healthful Kaimuki

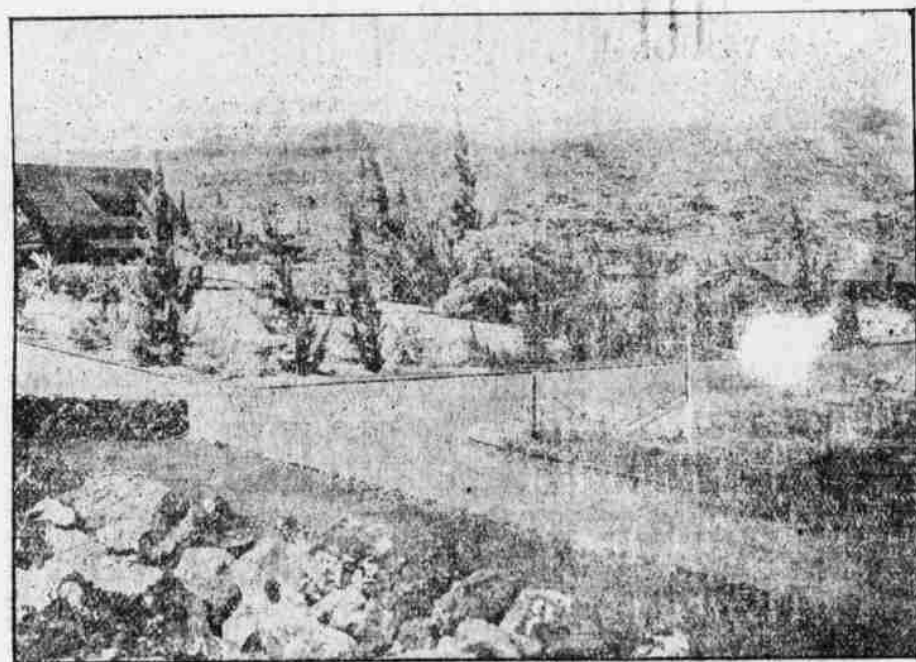
THE PEARL OF HONOLULU SUBURBS

ONE of the most interesting localities in Honolulu is its new residential tracts of Kaimuki, Ocean View and Palolo Hill. During the past year their growth has been remarkable and the popular demand for home-sites is steadily increasing. These charming tracts are contiguous and practically lie in one body, presenting a wide and beautiful diversity of topography and scene. Kaimuki is a magnificent valley located between great Diamond Head and the picturesque Palamou Mountains at an elevation of about two hundred feet above the sea. Ocean View adjoins Kaimuki to the east and inclines gradually to the shore, where a handsome bathing resort can be established. Palolo Hill lies to the north and embraces choice terrace property and a broad and gently sloping tableland at an elevation of seven hundred feet. This overlooks Diamond Head, Koko Head, Waikiki, Honolulu and all surrounding points and gives a marine and landscape view that is grand beyond description. Palolo Hill is the coming "Nali Hill" of Honolulu and is destined to become the summer and winter residence of many of America's wealthiest families. Even now several are arranging to locate their mansion homes where nothing can interfere with the marvelous view and where their green lawns and artistic gardens can be seen by the incoming steamers from all lands. The population of Honolulu is increasing so rapidly that six hundred lots have been sold in Kaimuki during the year, while in the Ocean View tract lots have been secured by intending home-builders, even down near the ocean's edge. Over two hundred beautiful bungalow and villa homes have been erected along the splendidly macadamized avenues and boulevards. These homes are varied in architecture, no two being the same in points of construction and coloring. This variety and individuality makes a landscape that is fascinating to the eye. Many are constructed of natural lava rock, which is not only a great saving in building material but adds much to the beauty and durability of the small, cozy bungalows. The electric light and telephone wires reach to all parts of the property and every house is fully equipped when it is completed. The Palolo Rapid Transit electric car-line extends to Palolo Hill through the entire length of the Kaimuki tract to Ocean View. During the year an effort will be made to have the line continued to Diamond Head, thereby completing a half-mile which will give the most beautiful scenic ride in Honolulu.

Miles of broad and elegantly paved streets have been constructed throughout the Kaimuki and Ocean View tracts. These are splendidly macadamized with the natural lava rock from extensive quarries in the hills and are graded and rolled to the highest perfection. Nothing speaks so well for a residential section as its streets, and in this respect nowhere on the island can be found better and finer drive-ways than extend from the broad Waialae Head through Kaimuki and Ocean View to Diamond Head and Waikiki. They form the exquisite ground framework and finish to the lovely green lawns and flower gardens that surround the pretty homes, enhancing their value many-fold. In the Palolo Hill tract superb streets are being graded, and winding macadamized boulevards are designed to lead along the hillside to the higher elevations. The Whet-



A TYPICAL KAIMUKI BUNGALOW



SCENE IN OCEAN VIEW

mina Rise is a broad boulevard which will extend along the Palolo crest, of the Palolo Hill to its very summit and will afford a most fascinating auto-coasting incline, being absolutely straight from start to finish. The entire section of Kaimuki and Ocean View is piped and supplied with pure artesian water in great abundance. The Territorial Government has constructed a large reservoir at a high elevation which gives a powerful water pressure through all the pipes. It is due to the unlimited supply that every garden has an unstinted quantity of lawns, flower-beds and ornamental trees to beautify the home. One of the most valuable assets of these favored sections is the salubrious climate which renders them ideal places for homes. Now that this is appreciated, Honolulu doctors are, with one accord, recommending their patients to make their homes in any part of this health-giving locality. The climate is surpassingly fine—the temperature being several degrees lower than in the city. Rain seldom falls in Kaimuki and Ocean View, the cloud-forming mists being swept far over the city by the ever-constant Koko Head breeze. The "Koko Head Breeze" as it is called, has become world-famous, as it can never be forgotten by those who have felt its wonderfully invigorating power. It passes between great Diamond Head and Koko Head on its way from Maunaloa Bay, and blows directly westward over this unique locality in a broad belt laden with the ozone and iodine fumes of the sea. Rapid as has been the growth of this grand residential homeland in the past its extension and future development will be still more astonishing. People looking for permanent homesites in this land of ever-changing glories of sunrise and sunset, of moonlight and the marvellous greens of the tropical verdure, want to build at an elevation where no scene is obscured. And it is from Kaimuki, Ocean View and Palolo Hill that the eye can range freely over the most charming vista that any land can give. How much better and brighter life becomes when from the terraces of the home one can look far out at sea and trace the ships in their flight across the ocean or gaze over the broad fertile land to the lofty mountains crested with double rainbows and lost in fleecy, drifting clouds! Living thus far from the maddening crowd, with nature's best gifts of peace, beauty and contentment, life is indeed worth the living.

The Kaimuki and Ocean View tracts were placed on the market about a year ago and their success has been phenomenal. Scores of residents, several of whom are well-known physicians, and many visiting tourists, who decided to remain and make permanent homes rather than return to the rigors of the mainland, have built there. Palolo Hill is now being placed with the same rapidity. This entire section is now the only center of home-building activity in Honolulu. Several residents of the downtown districts have purchased lots and intend to build fine homes where they can get away from the heat and noise of the city. Indeed the entire movement of the incoming population is toward the east—and to the eastward the only property available for the best homesites is that of Kaimuki, Ocean View and Palolo Hill.

PRICES and TERMS

PALOLO HILL TRACT

Section A at	3 1-2 cents	Section C at	-	5 cents
Section B at	-	4 cents	Section D at	-
			5 cents	
Section E at	-	-	5 cents	

Per Square Foot

Size of Lots range from 10,000 square feet up.

TERMS

Twenty per cent down, and balance at the rate of \$10 to \$20, or more, per month. 5 per cent will be deducted on all lots sold for all cash.

Call and secure our Maps!

OCEAN VIEW TRACT

Corner Lots, - \$500 Inside Lots, - \$400

Size of Lots, 75x150 feet, or 11,250 square feet.

TERMS

From \$40 to \$50 cash down and balance at the rate of from \$10 to \$20, or more, per month.

Five per cent discount on all Lots sold for all cash.

We reserve the privilege of increasing our prices or withdrawing any of our Lots from the market.

Kaimuki Land Co., Ltd.,

Main Office: Phone 1659

Branch Office: Phone 3208

WE extend to everyone an invitation to see our property and the extensive improvements we have made and are making for the development of our magnificent building lots. Take the Waialae car, and upon your arrival at our Branch Office at Koko Head Avenue our representatives, who are in charge from 10 a.m. to 5.30 p.m. every day, will show you over our property, and supply you with maps and all the information you require.

NORTH SLATED TO LOSE HEAD

Immigration Commissioner at San Francisco Will Be Displaced.

WASHINGTON, January 2.—President Taft and Secretary of Commerce and Labor Nagel have finally decided that Hart H. North, Immigration Commissioner at San Francisco, must go. North was suspended last May pending the investigation of charges that had been made against him, and his friends have put up a strong but losing fight to secure his reinstatement and vindication.

The reports of the agents sent to San Francisco to investigate North's conduct of the office were all against him, and he has been informed that he must go. Secretary Nagel takes the ground that under the Hart regime the immigration office at San Francisco has been subjected to so much criticism and there has been so much dissatisfaction that the force has become demoralized, and that to retain North in office would be to invite a continuation of the scandalous conditions that have so long existed on the Pacific coast.

President Taft is thoroughly in accord with the decision of the Secretary, and the friends of North realize that they cannot save him. Formal notification of his removal from office will be sent to North at once. His friends have already wired him that he is to be ousted.

It is not likely that North's successor will be named immediately, certainly not until the California Senators have had an opportunity to agree upon a man for the place.

It is stated that North's charges against Dr. Gardiner, interpreter and inspector at San Francisco, failed of substantiation.

The investigation of the San Francisco station will continue under the direction of Acting Commissioner Luther C. Steward, now in charge.

The above report from Washington is commented on by the San Francisco Chronicle in the first day that North was named for the office of Immigration Commissioner in this city he has been in trouble with the local customs officials and with his subordinates in the immigration bureau. He has been continually in hot water with his associates, and his troubles finally culminated in the filing of charges against him last May by Inspector Frank K. Ainsworth. Just what these charges were has never been disclosed, but they included allegations of incompetency and favoring the admission of Hindus.

Hindus Start Trouble.

It was the quarrel over the admission of Hindus that was primarily responsible for the downfall of North. Ainsworth was chairman of a board appointed to pass upon the eligibility of Asiatic immigrants. Last April the board decided that a band of thirty-five Hindus were objectionable under the law, and should be deported. Immediately following this decision North conferred with Inspectors Griffith and Robinson, the other members of the board, and they then reversed their decision. Ainsworth protested, and was promptly removed from the board and assigned to duty at Meigs wharf.

Ainsworth retaliated by filing charges against North with the Secretary of Commerce and Labor. This was in May, and on October 27th North was suspended on the report of Samuel Bond, a confidential agent of the department, who had been sent to San Francisco to make a secret investigation.

Pestered Washington. North had an unfortunate habit of pestering the authorities at Washington with complaints about anybody and everybody who incurred his displeasure. He complained about Collector of Port E. S. Stratton repeatedly and was sharply reprimanded for his trouble.

North could not be located yesterday, but he has repeatedly declared that he would not resign. Consequently it looks as though he would be removed from office.

There will be no dearth of candidates for the position of Immigration Commissioner. The appointment is for four years and pays \$4000 a year. Some of those most prominently mentioned for the place are W. V. Stafford, president of the Harbor Commission; John W. Mott, Arthur MacArthur and John McNab of Mendocino county.

"TOMMY" BREE HAS SANG LAST SONG

"Tommy" Bree, for many years one of the most popular minstrel men in the country, and a favorite of San Francisco, died January 9 in the rebel home at San Francisco. In the early eighties Bree was the stellar attraction in the Standard and Bella Union theaters. He had a pleasing voice, and his singing of "Silver Threads Among the Gold" and "Sleep, Baby, Sleep" delighted thousands. Generous to a fault in the days of his prosperity, he had nothing to carry him through the adversity of old age. Bree was a native of Boston and about 60 years old.

Requiem mass was sung in Sacred Heart church, and the burial took place in Holy Cross cemetery.

SPORTS

Local and National

RELAY RACE AT KAMEHAMEHA

Unknowns Finally Win Race
and Get Pies Offered
as Prizes.

The 600-yard relay race, which was the main event on the school sporting calendar this week, was pulled off on the school grounds yesterday afternoon. The Unknowns took first place and the All-Stars finished second, after a most exciting race.

There was some time wasted at the beginning in getting the teams together, as a few of the runners wanted to step out of the race at the last moment. This did not spoil the event, for there were other good sports on hand to take their places, and the race was ready to be started.

Harold Godfrey, who managed the event, notified all runners before the race that each boy should carry a stick and pass it on to the next man, and all seemed to understand. There were five teams on the line, and Captain Winters started them off. The All-Star team led the first lap, but in the second lap the Leaping Kangaroos led by five yards, and kept the lead till the fifth lap was reached, when the Printers took the lead, but lost to the Leaping Kangaroos on the last lap.

The teams finished in the following order: Leaping Kangaroos, first; Unknowns, second; Printers, third; All-Stars, fourth; Hot Irons, last.

The judges noticed that the last man on the winning team did not have a stick, also the third team, and after the judges had consulted with Godfrey, it was decided to have the race run over.

Unknowns Win.

All the teams were willing to have another try, for they were anxious to win the two pies. Captain Winters started them off again, and it turned out to be a very exciting race. The Leaping Kangaroos led the first lap, with the other four teams bunched together. In the second lap W. Kama and D. Kamehameha ran neck and neck, the latter leading at the end for the Kangaroos. The third and fourth laps were led by the Unknowns by eight yards. It was anybody's race up to this time. In the fifth lap the Unknowns slacked up and the Leaping Kangaroos came to the front, with all the other teams close together. In the sixth and last lap the Unknowns overcame the Kangaroos, who finished second. The All-Stars were third.

During the last lap, H. Spencer, who was running for the All-Stars, was about eight yards behind the second man, and by good grit he beat his man by a foot. Many surprises were sprung in the race. William Kekuewa, W. Kama and J. Panilea, all newcomers, showed up well and won out unexpectedly.

The teams ended in the following order: Unknowns, first; All-Stars, second; Leaping Kangaroos, third; Printers, fourth; Hot Irons, last. Time, 1:10.

The lineup of the winning teams: Unknowns—W. Apan, F. Zablan, W. Kama, S. Ahuna, E. Akiona, C. Miller.

All-Stars—J. Panilea, W. Kekuewa, J. Lamaka, H. Apan, R. Waiata, H. Spencer.

Officials—Captain W. H. Winters, starter; C. E. Livingston, E. G. Bartlett, W. Kamahele and R. Mahika, judges; H. Godfrey, timer.

BENEFIT TONIGHT AT NEW ORPHEUM

Ornellas' Mother Will Receive
Entire Proceeds Taken at
the Show.

Tonight is the night that the big benefit is to be given at the New Orpheum for the mother of Tony Ornellas, who lost his life by drowning last week while leaving the Mary Foster after making a delivery of meat for the Metropolitan Meat Market.

Ornellas was well known in the sporting circles of Honolulu, having been a runner of no mean ability, and as the main support of his mother his untimely death has been a severe blow to her.

Nigel Jackson and Nelson of the Marines have been working hard to make the benefit tonight a success and the vaudeville artists and the boxers are all giving their services to make an evening's entertainment that will long be remembered.

Everyone should help out in this benefit even if it is impossible to attend the benefit personally, and the price of a couple of seats will never be missed by anyone.

The New Orpheum should be filled to overflowing with the bunch of open hearted sports to see the fights and hear the songs, the first by the best boxers in the city and the second by the leading vaudeville artists playing in the local theaters.

The Marine Band will furnish music for the occasion and it is up to the good fellows of Honolulu to make the evening a financial success for a widowed mother.

Come on boys.

Established 1780
Walter Baker
& Co.'s

CHOCOLATES and COCOAS

For eating, drinking and cooking
Pure, Delicious, Nutritious



Registered U. S. Patent Office

Breakfast Cocoa, 1-2 lb. tins

Baker's Chocolate (unsweetened), 1-2 lb. cakes

German's Sweet Chocolate, 1-4 lb. cakes

For Sale by Leading Grocers in Honolulu

Walter Baker & Co. Ltd.

DORCHESTER, MASS., U. S. A.

OUTRIGGER CLUB ELECTS OFFICERS

Reports at Meeting Show
Waikiki Institution Is
Prosperous.

At a meeting of the Outrigger Club being held this afternoon at the Chamber of Commerce rooms, the officers for the year were elected and a long discussion over the question of incorporation and the changing of the by-laws of the club was held.

This is the annual meeting of the club, and the reports made showed a large increase in membership and the whole vital matters of the club in a prosperous condition.

Many improvements have been made during the past year, and the club has held several entertainments and social events which have drawn large numbers of invited guests to the beach and the spacious lands of the grass house in the lagoon.

Much improvement has been made in the sport of surfboard riding, the teaching and perpetuation of which art is one of the prime purposes of the club at Waikiki.

The officers elected at the meeting this afternoon were those who have taken a great interest in the affairs of the club during the past twelve months, the new president being one of the most enthusiastic in taking visitors to the club grounds, showing them around the beach and telling them all about surfing.

The club has done much to promote aquatic sports among its younger members, and Alexander Ford can be seen at the beach every Saturday and Sunday helping the youngsters out in their management of canoes and boards.

The officers elected were: President, Doremus Scudder, vice-president, A. M. Newell, treasurer, Irwin Spalding, secretary, G. H. Tuttle, captain, I. D. Canfield, directors, J. P. Cooke, J. R. Galt, P. L. Weaver, E. M. Ehrhorn, house committee, G. H. Tuttle, A. C. O. Linemann, R. Lyon.

SHOE SALE

A SUCCESS

Interest in the shoe sale at McInerney's was continued throughout this morning, the store being well filled with customers from an early hour. All those in the store this morning were obviously prosperous, but not adverse to securing shoe bargains.

When W. H. McInerney was asked for a statement of his experiences with this sale, especially with regard to how he advertised it and the class of custom attracted, he tersely remarked, "Too busy."

Later he did get an opportunity to say that he had supplied all kinds of people with shoes. "You can see for yourself," he said, and waved his hand toward the crowd of customers in the store, practically all of them English newspaper readers.

Asked as to how he advertised his sale, he said: "I announced the sale in last Saturday's Bulletin and commenced the advertisement in

DO YOU WISH TO BE

A HOME-OWNER IN MAKIKI BEAUTIFUL

THE man or woman of moderate means who wishes to build and own a home in an IDEAL RESIDENTIAL DISTRICT can be gratified.

Monday, January 23rd, 1911

We will start the sale of Lots in our NEW MAKIKI TRACT

This TRACT is located in the exclusive home section bounded by Wilder and Lunalilo Avenues, Piikoi and Kewalo Streets.

Ten Minute Car Service to this property on Punahou Line

Improvements: Paved Streets, Cement Sidewalks, Curbs, Water, Gas and Sewer Mains connected to property line.

Lots 60 x 130 - \$1250---Easy Payments

HOMES WILL BE BUILT

By our Company on the Los Angeles Building Plan, purchaser paying one-fourth down and balance as you do rent. When desired plans for bungalows will be furnished and all details of construction will be taken care of by us.

Just think --with \$750 or \$1000 in hand you can be living in your own home within three months' time. No need to wait until you have between \$3000 to \$4000 to invest in a home.

In the Fine Makiki Residential District



One of the views to be used in "People and Places of Hawaii," the Evening Bulletin's 1911 Special Edition.

BUILDING RESTRICTIONS

No building to be erected on this TRACT that costs less than \$1800.

Every house to be at least 30 feet back from property line, and no fences allowed in front of lots.

Don't put it off a day. Remember we start selling Monday morning, January 23rd.

Come in and see us and let's talk it over.

Dondero & Lansing,

83 Merchant Street

Telephone 2553

You Can Take Any Position With Comfort

If you are wearing "SHIRLEY PRESIDENT" suspenders. No matter what the position is, the sliding cord in the back adjusts itself to meet it.

"SHIRLEY PRESIDENT" SUSPENDERS

are so comfortable that you do not feel them. They do not draw nor pull when body is moved, as is the case with rigid back suspenders.

Ask your dealer for the "Shirley President" Suspenders—the genuine has "Shirley President" on the buckle. Every pair guaranteed. Avoid inferior imitations.

Manufactured by THE C. A. EDGARTON MFG. CO., Shirley, Mass., U. S. A.



BEST INVESTMENT

Extraordinary Clothing Values

We want to impress upon you that every suit you buy in the LEADER will save you from \$4.00 to \$10.00

To get you acquainted with us we want you to see our exceptionally low prices and high grade clothing, then you will admit you have never seen anything to equal them.

They are in two and three-piece suits, WORSTEDS, CHEVIOTS, CASSIMERES, FLANNELS, FRENCH ALPACA, SELF STRIPE and BLUE SERGES. The latest 1911 patterns in stripes and checks.

They are the product of the best makers, the materials are excellent, the tailoring faultless, the styles pleasing to the quiet and to the fashionable dressers.

It is to the interest of every man to participate in this great clothing event. Plain to say, we give good, solid, honest value, and value sticks out all over our clothing.

Prices range from \$6.50 to \$21.50 and worth from 10 to 65 per cent more. Before buying any clothing look at our goods and prices. It will convince you of our great money savers.

OPEN EVENINGS.

The Leader,

Building, opp. Japanese Consulate, Fort Street near Beretania, Harrison

Why Is It?

That RAINIER BEER is just as much in demand at exclusive clubs as at the public bars?

Because its

THE BEER THAT SUITS THE PEOPLE



Pinectar

Made from whole Hawaiian Pineapples and the best refined cane sugar.

At all Soda Fountains and Stores

Arctic Soda Water Works

Honolulu Distributors

Pinectar Syrup for use on hot sales, waffles, etc. A delicious flavoring for punches and ice creams.

AT ALL GROCERS

PINECTAR SALES CO., LTD.

COELHO SPEAKS FOR COLLEGE

Its Success Is the Hope For Future of Hawaii Youth.

Editor Evening Bulletin:—Noticing so much of late in the local papers concerning a general raise or "boost" for the public school system, and not a word about an appropriation for the permanent buildings most urgently needed for the College of Hawaii, I, as one interested in its success, can not help saying something to boost the institution that I know will do the most good to Hawaii.

While it is true, that something should be done towards properly equipping the primary educational system of Hawaii with good teachers, good salaries, good buildings and everything else asked for the convenience of teachers and their charges, the public mind should not be worked up to the point of forgetting that Hawaii's future development will depend very largely upon the work of the College of Hawaii—for there, the preliminaries indicated into the young minds, will receive the final polish of a finished and fully equipped citizen.

The citizens of Hawaii must wake up now and appreciate an institution which will benefit them, as similar institutions have done in the states and territories of our great common country. It was the realization of this result that interested Congress to pass measures appropriating large sums of money for Agricultural Colleges. The work of this was being carried on at private expense.

With the establishment of the College of Hawaii, came the Federal aid which, for the year 1910, amounted to \$100,000. And as I understand it, \$15,000.00 will be received this year, and \$50,000.00 next year and thereafter, or annually until Congress shall otherwise decree.

This aid from the Federal government is restricted however, to certain specified expenditures—equipment and scientific appliances and material supplies required in the instruction of such courses and sciences, including certain instructors' salaries. Nothing for lands and buildings. Land and buildings are to be at the expense of the State or Territory.

The general system and plans of the buildings should not be subjected to public criticism if it means the general public. That should be left entirely to the faculty and the Board of Regents of the College. The gentlemen composing them, are men who have no political axe to grind—no selfish schemes to further—and are honorable men, deeply imbued with the great desire to promote the success of the institution entrusted to their charge. Permitting the plans to public criticism invariably cause varying and contra ideas to interfere with the success of the work outlined. We have an illustration of the result of this meddling right in the heart of this city—the Mahukala and the proposed Federal building "to come" (when the people quit meddling). The very merchants and business men who favored it and who opposed the Mahukala, are now regretting what they did not expect would follow. And if the Honolulu meddlers continue meddling, they will get the Federal building first, then Maui, and then Kauai.

Another and a very strong example in favor of having the plans left alone, is the work of the Trustees of Oahu College, and the Trustees of the Bernice Pauahi Bishop Estate. They plan their general work to be carried out systematically, and in a strictly business manner, their plans are carried out. Before any project is started, estimates are made, and the cash is arranged for. The result—magnificent and fully equipped buildings erected. Kaneohe and Punaluu are the best examples of free land management.

The plans prepared two years ago could be adopted, and the appropriation made available. There should be no halfway measure. Each building, as planned, should be completed in every material detail. Honolulu citizens ought to visit the College in its present quarters to realize the importance of this suggestion. It is too small to house all the equipment needed for any one department of study.

Uncle Sam has funds with which to furnish the institution with appliances and machinery needed in the courses now taken up by the students. To purchase them at this time would mean, that they be left exposed in the open or under some "coco" palm and be subject to the action of the elements.

Various plans have been suggested heretofore as to how to secure the needed funds for the college buildings, but they seem not to find favor with those clothed with the power of disbursing public funds.

Timely suggestions at the proper time would usually accomplish good results. It is to be hoped, that persons who have not yet decided, that this will be true in this instance.

There are three ways of getting this money. If the administration would be favorable, and they are:

1. A special appropriation out of

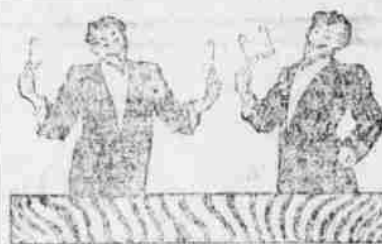
Whooping Cough

CROUP ASTHMA CATARRH COUGHS COLDS BRONCHITIS

Vapo-Cresolene

A simple, safe and effective treatment for bronchial troubles, croup, whooping cough, asthma, catarrh of the throat and lungs, colds, etc. It is a boon to sufferers from Asthma. The air is rendered slightly moist and the throat is cooled and soothed. It is especially valuable to mothers with young children.

Send postal for descriptive booklet. All DRUGGISTS and Grocers sell Vapo-Cresolene. Try it. It is a simple, effective and safe remedy. Of course, it is not a cure for all cases of whooping cough, but it is a most valuable aid in the treatment of the disease. Vapo-Cresolene Co., 62 Grand St., N. Y.



QUICK GLASS REPAIRS

All kinds of everlast and spectacle repairing done as it may be.

Special lenses ground to order—prompt and accurate work.

Broken frames repaired.

A. N. Sanford, Optician

BOSTON BUILDING, FORT STREET Over May & Co.

ROSA & CO.

Okolehao Beers, Wines and Liquors

FAMILY TRADE GIVEN SPECIAL ATTENTION DELIVERIES TO ALL PARTS OF THE CITY Phone 3181

ROSA & CO.,

Alakea and Queen Streets

WHEN YOU DRINK

you want to drink the best, such as CRESTA DIANCA and INGLENOCK WINES, KING WILLIAM SCOTCH WHISKY, MUMFORD'S CHAMPAGNE, which we carry.

We also carry a full line of other Wines and Liquors, and deliver to any part of the city.

MAGFARLANE & CO.,

Limited

Phone 2026 - Queen Street

Order Cream Pure Rye Sold by LOVEJOY AND CO.

PRIMO BEER

Pacific Saloon

KING AND NUUANU STREETS

You'll find they're all good fellows here.

"It's the Fashion"

Hotel Mr. Fort D. H. Davies, Prop.

Rainier Beer

FOR SALE AT ALL BARS Telephone 2131

Silva's Toggery

The Store for Good Clothes

STYLISH FOOTWEAR

MANUFACTURERS' SHOE CO., LTD. 1051 Fort St.

QUARTER SIZES

at

Regal Shoe Store,

Evening Bulletin 75c. Per Month

Not Exactly a Clean Shave

"Why is your grandpa's face so wrinkled?" asks the lady next door. "He was shaving in his life chair," explains the little girl, "and while he was shaving, the VACUUM CLEANER cleaned his whiskers."

This reminds us that we have just received another shipment of these wonderful

Magic Electric Vacuum Cleaners

The simplest, lightest, most effective, inexpensive, noiseless and durable suction cleaner made.

It will clean carpets, rugs, polished floors, walls, ceilings, furniture of any sort, bedding, curtains, clothing, pictures—in fact, everything in the house. It is furnished with special nozzles for the different work it has to do. It has a wide nozzle and will pick up large scraps of paper, cloth cuttings, thread, lint, matches, toothpicks and all such articles that get on every floor.

Connect the electric cord with the nearest lamp socket, turn on the current and the machine will do the rest, requiring so little effort that a child can easily run it.

Come in and see a MAGIC CLEANER and let us show you a lot more good points about it.

E. O. Hall & Son, Ltd.

Our Specialties

LOS ANGELES BOHEMIAN BEER. BROWN LABEL BIEDERER CHAMPAGNE. WATSON KENTUCKY WHISKIES (2 to 6 years old). MUNRO'S HOUSE OF LORDS SCOTCH WHISKY. GOLD LION COCKTAILS. CALIFORNIA WINES of the Italian-Swiss Colony of California.

GONSALVES & CO., Ltd.,

74 QUEEN STREET

Try the famous

"New Orleans Fizz"

Only at

The Criterion Saloon

For a Good Meal, quickly prepared and well served, go to the

Palm Cafe,

PHONE 2011

HOTEL STREET

Remember! the Palm Test Is "The Best"

If It's Paint

AND YOU WANT A GOOD JOB, SEE ME—TOM SHARP

SHARP SIGNS

PHONE 1637

ARE SEEN EVERYWHERE

ELITE BUILDING

PURE, RICH MILK

People who buy milk from us have the comfortable, satisfying knowledge that, besides its richness, it is pure, clean and sanitary.

The Pond Dairy

CULTURED PEOPLE

ARE PARTICULAR ABOUT THEIR LINEN. YOU CAN'T EXPECT TO HAVE SNOW WHITE LINEN UNLESS IT IS PROPERLY LAUNDERED. SEND TO

FRENCH LAUNDRY, 777 KING STREET

I. ABADIE, Proprietor NO BRANCHES.

Weekly Bulletin 81 Per Year

Weekly Bulletin 81 per year.

AMUSEMENTS.

The Bijou

(Management of Sam Kube)

VAUDEVILLE'S HOME

PROGRAM FOR TONIGHT:
AMATEURS' NIGHT
Plenty of Talent

JONES and GREINER

Comical Comedians
DIAZ & FISHER

Horizontal Bar Performers

THE WELDON FAMILY

Wonderful Acrobats

VALLE TRIO

Singers, Musicians and Dancers

BEN BENO

Equilibrist

TOTE & TATE

Punchy Clowns

MADAME CHARINI

Trapeze Wonder

New Pictures - Hughes' Orchestra

A FIFTY-CENT SHOW FOR 10c.

15c and 25c

MATINEE, SATURDAY

EMPIRE THEATRE

Hotel St., opp. Savoy

(Management of J. T. Scully)
Highest Salaried Show in the City

NEW TONIGHT

GERTRUDE EULALIE and FOUR

PRETTY SOUBRETTES

In novel Dancing, Singing and Acrobatic Act—All Pretty

AMATEURS TONIGHT

Funniest Aggregation of Local

Amateurs Ever Brought To-

gether Under One Roof

MUSICAL BENTLEYS

Featuring the wonderful Marhaba

Xylophone, largest of its kind in the

world. Program: "Manzanillo," Mexi-

can Serenade, Bohyn; "Diskland,"

March, Lampe; Medley of Popular

Songs—"Sugar Moon," "Meet Me To-

night in Dreamland," "Any Little Girl

That's a Nice Little Girl," "My Hapa-

Haele Hula Girl."

CRAWFORD & MEKKER

Just Nonsense Comedians—Lively

Songs and Dances

POPULAR PRICES.....10c, 15c, 25c

The Savoy

Hotel, Opposite Bethel

(Management of E. J. Love)

Largest Motion Picture

Theater in City

ARRAY OF NEW ARTISTS

TONIGHT

SEE THEM! HEAR THEM!

DOLLIVER & ROGERS

Dainty Duo

Dancers, Singers, Acrobats

DORIC TRIO

Singers, whose Mexican, Cowboy,

Yachting and other acts are high

class

GREATEST ACTS FROM THE

COAST

LOREDO

Marvelous Contortionists, in Original

Act

Just In on Sierra:

NEW FILMS - - - NEW MUSIC

Popular Prices - - - Never Changed

Park Theater

OPEN AIR AND CLEAN

Tremendous Success of

BARNES & WEST

Fashion Plates of Vaudeville

"THE VILLAGE CUT-UP"

New Songs—New Jokes—New Dances

MISS WEST

In elaborate costume, will dance

BUCK AND WING

Travellers in which Geo. E. West

will describe the travels of the team

around the world. Original lantern

slides used.

NOVELTY THEATRE

Corner Nuuanu and Pauahi Streets

COMMENCING MONDAY MATINEE

NEW ARTISTS

The Moorish Iron-Jawed King

K. HASSON BEN ABDIC AND WIFE

A Son of the Arabian Desert

In a Galaxy of Hair-Raising Feats

Carrying Special Scenery

SENORITA COUCHITA CARRANZA

Spanish Sourette and Dancer

A Spanish Dancer Who Was Born in

Spain

MISS MARGARET LOWELL

In New Songs

The Best MOTION PICTURES in the

World

IT ALL HAPPENS FOR THE AND 15c

PIERRE BARRON

ALOHA BATH HOUSE.

School of Physical Culture.

Ladies' Men's and Children's

classes. Hours: a. m. to 10 p. m.

and Private Instruction.

2185 editorial rooms - 2256

business office. These are the tele-

phone numbers of the Bulletin.

DOINGS OF THE WEEK AT THE
VON HAMM-YOUNG CO. SALESROOMSSEVERAL CARS SOLD AND OTHER CONSIGNMENTS ON
THE WAY FROM MAINLAND—OVERLAND MACHINES
STILL PROVING POPULAR.

The Sierra brought again for The von Hamm-Young Company a bunch of the finest cars made on the mainland. Among same are three beautiful Packard cars;

One, a seven-passenger, palace touring car with the popular four-door body, furnished with electric lights and the latest automobile appliances. This beautiful car is awaiting the arrival of A. J. Campbell, who has been detained fully two months longer in Europe than he anticipated.

The other Packard, a beautiful five-passenger car of the phaeton type, was ordered by Mr. F. M. Swazy, who is still on his trip around the world.

The third, a dashing model 18 run about of the latest type and equipped with all the latest data, is for Mrs. Geo. R. Carter.

Cadillacs Come.

Another carload which came in on the Sierra for the von Hamm-Young Company is a carload of Cadillac automobiles which have proven to be the most popular cars, not only in Honolulu, but all over the United States, in its class of \$2000.00 and less.

One of these beautiful cars, a fine roomy five-passenger car, was specially ordered for Mr. A. W. Eames of Wahiawa. The car arrived here just in time, as Mr. Eames returned from the mainland on the Sierra after a two months' trip.

Another fine Cadillac car, of the five-passenger model, the first car arriving in Honolulu with the four-door body, was ordered specially by the Volcano Stables & Transportation Company and will be shipped by the first steamer to Hilo.

The third Cadillac has virtually been spoken for, this leaving unsold out of the carload only one.

Buick for Knudsen.

Another car arriving for The von Hamm-Young Company this week was a splendid five-passenger Buick touring car, famous for its wonderful climbing capacity and powerful motor. This car was ordered by E. A. Knudsen of Kaula and will be turned over to him the first week in February when Mr. Knudsen comes to Honolulu to attend to his legislative duties.

Wright Bought Car.

During the week Wright, manager of the Volcano Stables & Transportation Company, of Hilo, Hawaii, was in town making his headquarters at The von Hamm-Young Company, whom he represents on Hawaii. Mr. Wright closed his 1911 contract with the firm and as a starter purchased this week a fine five-passenger White gasoline car, which was shipped last Tuesday to Hilo. He also ordered another five-passenger car, aside from the White above mentioned, which will be shipped this week.

Hupmobile Popular.

A great deal of interest has been centered on the pretty little Hupmobile runabout which is shown in The von Hamm-Young Company's salesrooms. This little car is probably one of the most reliable and economical cars to handle, and one of the first automobiles costing less than \$1000.00, which has made a tremendous hit all over the United States.

In the East nearly every Packard, Peerless, and Pierce Arrow owner possesses a little Hupmobile on the side for his own immediate use, while his family have the use of the big touring car.

Overlands Sold.

The Overland is as popular in Honolulu as ever. To the already many sales made by The von Hamm-Young Company was added the sale of the fine five-passenger, semi-tonneau Overland to R. E. Hughes of Eumene, Maui. This car was shipped on the Claudine on Friday.

This disposal of the carload of Overlands which came in last week, other sales being looked for another carload which is due to arrive here on the Wilhelmina on January 24th.

Dr. McDonald, one of the latest enthusiastic purchasers of the Overland admitted that he feels now that he really owns an automobile, even though he has been the possessor of several cars in the past. He says the Overland is it.

First Pope-Hartford.

The von Hamm-Young Company expects their first carload of 1911 Pope-Hartford to leave the factory this week. The Pope Manufacturing Company are unusually late in getting out their 1911 product. The demand, however, in the East has been

so large for these fine cars that the West, and especially Honolulu, had to wait.

The Pope-Hartford is a car worth waiting for though as it is virtually indestructible and one of the finest cars built, Pops brought down here years ago are still running on the streets and in fine shape. Cars four or five years old have been converted into trucks and bakery wagons doing first-class work today.

Grabowsky Performance.

The following is an authentic report regarding the Grabowsky in the New York American contest which took place October 23 and 24:

"Our one-ton car which finished tri-umphant the overland run—Detroit to New York—has the distinction of holding the world's record for the best long-distance haul ever made."

"The same car was photographed and featured more in the New York American contest than any other car."

"1st day—Official route was 45 miles (that we missed the road and went 53.9-10 miles), made 100 stops and finished ahead of schedule."

"2nd day—Covered 45 miles, made 100 stops and finished 28 minutes ahead of my class."

"Total gas used, 9 gallons; total oil used, 3 1-2 pints; load carried, 2000 pounds."

"One-half capacity allowed for 100 stops. Finished both days' run with a perfect score. The contest was held through heavy traffic."

The Grabowsky Power Wagon Company has received the following words of its victory in the Chicago-Milwaukee reliability run:

"Grabowsky two-ton truck officially declared winner in its class by judges. The only two-ton finish with perfect score. All working parts of the car were under seal and that not one seal was broken that where every other car had their water seal broken, ours went through with the same water taken on in Chicago—a wonderful recommendation for the Grabowsky radiator system. The car carried a full two-ton load and was admired by everybody for its excellent lines and the fine work done."

Millions of dollars more will be invested in automobiles during 1911 than was invested during 1910, but the total number of cars sold will not be increased.

The whole tendency of automobile sales for the coming year will be away from cars of low value and low price, and toward cars of high value and better than average price.

This statement, made today by Charles T. Jeffery, president of the Thomas B. Jeffery Company, is based upon accurate information gathered from hundreds of dealers in every nook and corner of the country and from thousands of owners and prospective buyers.

The head of the Rambler Company has just concluded a conference with fifty representatives of the Rambler metropolitan distributing and service centers. From each of these was required a careful report of sales conditions in his territory. These men represent nearly every State in the Union, from Maine to California. To the information they offered has been added that gathered from a thousand sources, with the result that the following statement has been made by Mr. Jeffery:

"The volume of sales of cars above medium price will be larger than ever before, but the total number of cars sold will not be greater. Those who have previously purchased low-priced cars have been educated up to those of better quality."

"Taking the different sections of the country in the order of their importance, conditions are as follows:

"The Middle West will take a larger volume of the output during 1911 than ever before, but while the sales of cheaper cars will be more numerous, by far the greater volume of sales will be made of those averaging above \$2000 in price. This because the farmer will be the biggest buyer, and he wants weight, capacity and power."

"New England and the South, hitherto considered behind other sections of the country in automobile buying, will almost equal the Middle West this year."

"San Francisco and the Pacific Coast, where the better class of cars have always sold easily, will buy more than ever before, as present indications are that deliveries can not be made fast enough."

"Chicago will be the market for the Middle West. The largest increase there will be in closed cars. Chicago has hitherto been somewhat behind New York in that respect."

"The Northwest, where the largest sales of medium-priced cars have been made this year, will take about the same number as last year. There will show a small increase from present indications, while in the Central States, the bulk of the sales will be those of the better than medium cars, and to replace those of lower price."

"Our sales for the past year have increased 40 per cent. The largest increase has been shown by New England and the South."

If You Are Sickly

Just let Hostetter's Stomach Bitters build up and renew the entire system, make the stomach strong and healthy and keep the bowels free from constipation. It has done so in hundreds of cases in the past 57 years and most certainly will not fail you. Try it to-day for Indigestion, Dyspepsia, Costiveness, Biliousness, Headache and Malaria, Fever and Ague. Ask for



For sale by Benson, Smith & Co., Ltd.; Hollister Drug Co., Ltd.; Chambers Drug Co., Ltd.; Hilo Drug Co.; and at all Wholesale Liquor Dealers.

JUE YUEN MOW
IN HOT WATERChinaman Cause of Impending
Tong War Now in San
Francisco.

Jue Yuen Mow, the Chinaman who fled to Honolulu with Young Cheong and who has been taken back to San Francisco, is still in hot water. A long war is imminent, according to the following account from a San Francisco paper:

Chinatown has what looks like another tong war on its hands.

The war is between the Bing Kong tong, which has sounded the call to arms for its hatchet men and gun fighters throughout the bay region, and the members of the Jew family. Recently the wife of one of the members of the Bing Kong tong fled to Honolulu, and members of the Jew family were charged with assisting her in her flight.

Bitter controversy ensued, and the Bing Kongs issued a mandate that they would declare a tong war on the Jew family unless an indemnity of \$8000 was paid them.

The members of the Jew family decided in council that they would pay no more than \$3500 to indemnify the Bing Kongs.

"Then it will be war," was the answer sent to them by the Bing Kongs, and Chinatown became tremulous with tension over the impending affray.

Hearing about the declaration of war, the Six Companies got together and tried to patch up a truce. The Bing Kongs refused to be placated, however, and trouble is expected in Chinatown soon unless a compromise is effected.

BREAKWATER PLANT
GOES TO KAHULUI

(Special Bulletin Correspondence.)
WAILUKU, Jan. 20. — The Inter-island steamer Wailale arrived from Hilo at Kahului last Sunday morning with about 172 tons of breakwater machinery from Hilo, including large cranes to be used on the work on the Kahului breakwater by Contractor Metzger. After unloading her cargo the Wailale left on Monday for Honolulu.

CHRISTIAN CHURCH.

Alaska and King streets. Sunday, January 22, 1911.

9:45 a. m.—Bible school; William G. Hall, superintendent. Lesson: "Oni and Abah Lead Israel Into Greater Sin"; 1 Kings 16:15-23.

10:40 a. m.—Morning services. Preaching omitted; communion service only. Dismissing for union service, at 11 a. m. Methodist Episcopal church, dedicatory service, to which the entire congregation is invited.

3 p. m.—Steen Chapel mission Bible school; superintendent, Ed Snyder. Lesson, 1 Kings 16:15-23. International.

6:30 p. m.—Young People's Society, Christian Endeavor, Topic, "Prevailing Prayer." Scripture, Mark 11:20-25. Leader, N. E. Davis.

7:30 p. m.—Evening service. Preaching by Dr. S. L. Livingston; subject, "Who the Sabbath?"

Tuesday evening—Bible students' class; Ed Snyder, leader. This class meets in the church study room. All young men invited.

Strangers and visitors always welcome to our meetings.

Delicious chocolates from Haas and Sons' arrived by the Sierra. Benson, Smith & Co., Ltd. Fort and Hotel streets.

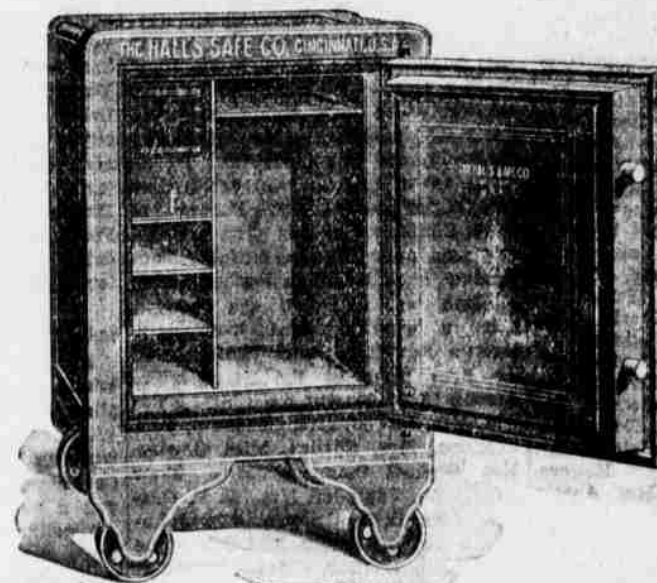
TO CURE A COLD IN ONE DAY
Take Laxative Bromo Quinine Tablets. All druggists refund the money if it fails to cure. E. W. Grove's signature is on each box.
PARIS MEDICINE CO., ST. LOUIS, U. S. A.



Built by the Locomobile Co. of America, Bridgeport, Conn. The "30" Locomobile: Bosh high tension Ignition, jump spark. New Fore-door model. 38 h. p. motor. Four speeds and reverse; 120-inch wheel base. Straight line shaft drive. Quiet, Efficient, Absolutely reliable. Torsion rod; two universal joints. Alloy steel rear axle—no brazing. 5-Passenger Body; 4-Passenger Baby Tonneau; 3 or 4 Passenger Roadster.

The Locomobile is the best built car in America. This is no idle claim, but founded on fact. The Locomobile meets the requirements of island motorists better than any other car. Built for touring.

Sold by
Schuman Carriage Co.,
Merchant Street



Hall's Safes

are good safes

Full assortment of sizes and most up-to-date models at

H. HACKFELD & CO., Ltd.,
Hardware Dept. Hackfeld Bldg

Society

HOME AFFAIRS A FEATURE OF WEEK

LUNCHEONS, TEAS, DINNERS AND BRIDGES SERVE TO EMPHASIZE SOCIAL SIDE OF LIFE.

MISS JESSIE KENNEDY was hostess at the most elaborate dinner of the week. Covers were arranged for twenty-four. The long table was arranged to represent an aviation meet. In the center of this field was placed a pole wrapped in pink and lavender. A large hoop wrapped with these colors surmounted the pole. Double ribbons, pink for the girls and lavender for the men, were fastened to the hoop. On these ribbons were attached miniature aeroplanes. The body of the machine was fashioned out of wicker and was filled with violets. The canopy was made of lavender and pink satin. The lavender machines were for the men folk and the dainty pink ones for the fair sex. During the dinner the young people could pull the ribbons, and the aeroplanes were arranged so they would float through the air. The miniature field where the "meet" was supposed to be held was carpeted with lavender violets, sprigs of maiden hair and pale pink carnations, thus producing a stunning effect. Mr. Sherwood Lowrey and Miss Ida Koepke, whose engagement was announced before Christmas, were the



MRS. WALTER F. DILLINGHAM

idea, for it includes all the women that belong to the Army, Navy, U. S. Marine Corps and Revenue Cutter service. The club comprises about thirty-six members. At Monday's entertainment many beautiful frocks were worn, and an enjoyable time was experienced. Mrs. Pardee of Fort Shafter won the first Bridge, and was awarded a beautiful memorandum book bound in leather. Mrs. Macomb was awarded the second prize, a beautiful card tray. Mrs. George Bowen of Fort Shafter won the first prize at the Heart table. Among those present were Mrs. Baldwin, Mrs. Bowen, Mrs. Chapman, Mrs. Cochran, Mrs. Cowles, Miss Cowles, Mrs. Samuel Dunning, Mrs. Moore Falls, Mrs. Faulkner, Mrs. W. B. Graham, Mrs. G. B. Graham, Mrs. Johnston from Fort Rucker, Mrs. Johnstone from Fort Shafter, Mrs. Kennedy, Mrs. Ross Kingsbury, Mrs. Koester, Mrs. Marx, Mrs. Macomb, Mrs. Ne-

Admiral and Mrs. Cowles' Dinner.
Admiral and Mrs. Cowles were host and hostess at a beautiful din-

ville. Mrs. Pardee, Mrs. Payson, Mrs. Katherine Stephens, Mrs. Putnam, Mrs. Ramsey, Mrs. Roy Smith, Mrs. Timberlake, Mrs. Wallace, Mrs. Walcutt, Mrs. Ward, Mrs. Wilbur, Mrs. Williams, Mrs. Willis, Mrs. Wilson, and Mrs. Widdfield.

Major and Mrs. Kennedy's Dinner.

Wednesday evening the beautiful home of Major and Mrs. Kennedy at Fort Shafter was the setting for an exquisitely appointed dinner. At this function were Major and Mrs. Timor of Fort Rucker, and Captain and Mrs. Arthur Marx of the U. S. Marine Corps. The decorative scheme for this affair was both unique and

der. A large reed basket, filled with delicately tinted asters, in this color, was placed in the center of the table. On either side of the large basket were placed smaller reed baskets filled with violets and maidenhair fern. Broad lavender satin ribbon was arranged in the center piece, the trailing ends were gracefully attached to the other baskets, and streamers being long enough to knot the ends in butterfly bows on the handles of the smaller basket. Overhead from the electric chandeliers was suspended a mammoth basket filled with maidenhair, and lavender asters. From this basket lavender tulle was festooned, and veiled the central de-



MRS. EDWARD TIMBERLAKE

beautiful. A mammoth yellow satin bow, formed of broad satin ribbon was placed in the center of the table. Sprigs of maidenhair were effectively placed midst the loops of the ribbon, and drooped in a graceful fashion, contributing to the color scheme of yellow and green. Watercolor scenes served as place cards. After dinner the host, hostess and guests adjourned to the drawing room where cards were enjoyed. Bridge was not the form of entertainment chosen, but the game of "Scot" was substituted, and made a pleasant diversion. This is an old game that has recently been revived in New York, and is fast taking the place of Bridge with the smart set of that city. Among the guests at Wednesday evening's entertainment were Major and Mrs. Timberlake, Captain and Mrs. Arthur Marx, Mrs. Baldwin of Fort Shafter, Miss Katherine Stephens, Lieutenant McClellan and Lieutenant Chilton.

Mrs. Marx's Luncheon.

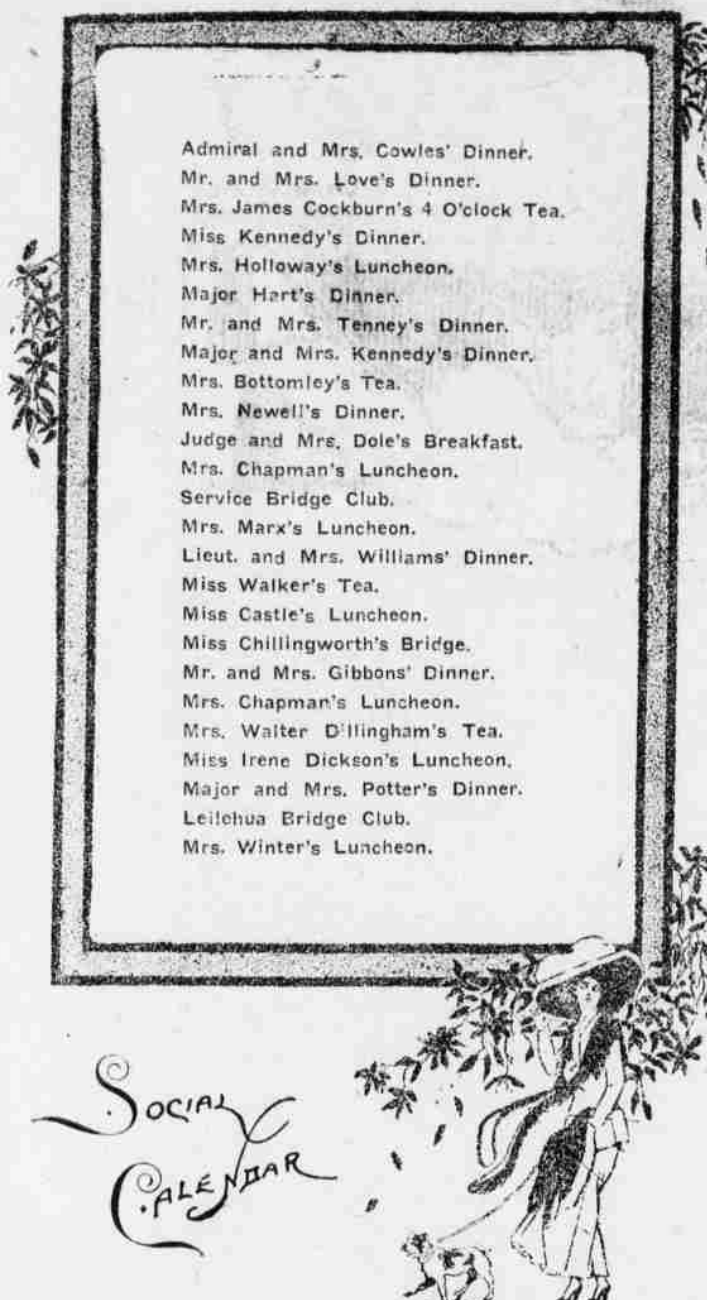
Mrs. Benjamin Lodge Marx entertained at luncheon Wednesday complimentary to her mother, Mrs. Claire Williams, who has recently returned from a three years European trip. Covers were laid for ten. The table was a mass of variegated roses and Australian maidenhair. The place cards were exquisite bits of Italian art. Among those who enjoyed the hostess's hospitality were Mrs. Claire Williams, Madam Lowrey, Mrs. Newton Locke, Madam Benjamin Dillingham, Madam Tenney, Mrs. Sanford Ballard Dole, Mrs. William Bowen, Madam Weaver, and Mrs. Needham.

Miss Castle's Luncheon.

Poinsettias ornamented the beautiful luncheon table when Miss Ethelwyn Castle entertained at luncheon Wednesday at her Waikiki home. This affair was given in honor of her house guest, Mrs. Short. A dozen covers were arranged around the artistic table, each place being marked by scenes in Holland. Among those present were Miss Castle, Mrs. Short, Mrs. William Richard Castle, Mrs. Moore Mrs. Philip Weaver, Mrs. Percy Pond, Miss Claire Williams, Miss Sara Lucas, Miss Ames Buchanan, Miss Edith Williams, and others.

Mrs. Chapman's Luncheon.

One of the most beautiful luncheons of the week was given by Mrs. Chapman of Fort Shafter. This entertainment was in compliment to Mrs. Henry Bond Restarick and her house guest, Mrs. Earle, of San Diego. Tiffin was served from a beautifully decorated service in lavender.



Admiral and Mrs. Cowles' Dinner.
Mr. and Mrs. Love's Dinner.
Mrs. James Cockburn's 4 O'clock Tea.
Miss Kennedy's Dinner.
Mrs. Holloway's Luncheon.
Major Hart's Dinner.
Mr. and Mrs. Tenney's Dinner.
Major and Mrs. Kennedy's Dinner.
Mrs. Bottomley's Tea.
Mrs. Newell's Dinner.
Judge and Mrs. Dole's Breakfast.
Mrs. Chapman's Luncheon.
Service Bridge Club.
Mrs. Marx's Luncheon.
Lieut. and Mrs. Williams' Dinner.
Miss Walker's Tea.
Miss Castle's Luncheon.
Miss Chillingworth's Bridge.
Mr. and Mrs. Gibbons' Dinner.
Mrs. Chapman's Luncheon.
Mrs. Walter Dillingham's Tea.
Miss Irene Dickson's Luncheon.
Major and Mrs. Potter's Dinner.
Leilehua Bridge Club.
Mrs. Winter's Luncheon.

musical program was given. The guests listening to a number of very fine vocal and instrumental pieces, that were rendered by some of the talented guests. Among those invited were Lady Heron, Mrs. Stanley, Mrs. Lange, Mrs. John Strayer McGrew, Mrs. Arthur Marx, Mrs. L. Tenney Peck, Mrs. Alfred Lowrey, Castle, Mrs. Blackman, Miss Beatrice Holsworth, Mrs. Clinton Ballentyne, Mrs. Ernest Waterhouse, Mrs. Robins Anderson, Miss Irma Ballentyne, Mrs. Arthur Smith, Mrs. Alan Bottomley, Mrs. Jamieson, Mrs. Wilfred Greenwell, and others.

Mrs. Chillingworth's Bridge Party.

Mrs. Charles Chillingworth gave a delightful Bridge party Thursday afternoon. This function was given in honor of the Princess Kawannakoa and Mrs. Kate Voorhies Henry of San Francisco. The pretty home of the Chillingworths was beautifully decorated with red carnations, mums and potted plants. Brass shades were awarded at each table, and were won by the Princess Kawannakoa, Mrs. George Herbert, and Mrs. Kate Voorhies Henry. During the interesting games a delicious punch was served. Later in the afternoon dainty viands consisting of salad, loaf, cake and coffee were served. Among those present were Mrs. Charles Chillingworth, Princess Kawannakoa, Mrs. Kate Voorhies Henry, Mrs. Carl Wideman, Mrs. Edward Tenney, Mrs. Arthur Marx, Mrs. J. Morton Riggs, Mrs. Helen Noonan, Mrs. James D. Dougherty, Mrs. George Herbert, Mrs. L. M. Whitehouse, Mrs. Gussie Shmidt, Mrs. George Smithies, Mrs. Harry Murray, Mrs. Johnstone, Miss Marcavite McIntyre and Mrs. Walter Macfarlane.

Mr. and Mrs. Love's Dinner.

Mr. and Mrs. William Love were host and hostess at an enjoyable dinner party Wednesday evening, which was given in honor of Mr. and Mrs. Patterson of Portland, Oregon, and Mr. and Mrs. Madison, who are also from Oregon. The large table was fragrant with mammoth eucalyptus. The numerous candle sticks containing candles shaded with rose pink shades lent added beauty to the table. The place cards were hand-painted with clusters of bamboo, painted in each corner. The names of each guest was lettered in gold. Among Mr. and Mrs. Love's guests were Mr. and Mrs. Madison, Mr. and Mrs. Patterson, Mr. and Mrs. Benjamin Lodge Marx, Miss Moore, Miss Clarissa Bredfeldt, and others.

Elks' Carnival.

It will interest the many who are looking forward to participation in the grand mask ball at the Elks' big carnival in the galleries of the Alakea street wharf, on the evenings of February 21 and 22, to know that the committee in charge of the ball has arranged to provide an additional dancing space in the big ballroom of the Elks' club which shelters the Alakea wharf. At the market, or seaward end, the floor space of the balcony or gallery will be extended for a space of twenty feet or more over the present well or open space, so that there will be afforded sufficient room for the full manifestation of the grace of terpsichorean maneuvers.

The best of music will be supplied and the long elevated avenues on either side of the large shed will prove to be excellent promenade grounds, over the rails of which the

orated in scarlet poinsettias. Handsome silver candelsticks, shaded with red shades, fashioned to represent poinsettias, shed a becoming glow over the assembled guests. The place cards were hand-painted and were tied with satin ribbon to match the floral decoration. Among those present were Major Hart, Brigadier-General and Mrs. Macomb, Mrs. Katherine M. Yates of Chicago, and Lieutenant Andrews, of the U. S. Army.

Floral Parade Plans.

It is doubtful if Honolulu really means what the Floral Parade means this year. For six or seven years Honolulu has been holding a parade that has been interesting a portion of our citizens and an increasing number of visitors each year.

But this year there is more interest and more tourists by several times than ever before. Our people are now taking a really serious interest in this festival, and its success for all time is assured.

Here is the outlook for this year's event:

First: The parade, several times larger and better than ever before.

Second: The carnival at night under the auspices of the Elks, of brilliancy and magnitude such as has never before been held in Honolulu.

Third: Several thousand visitors from the mainland, including two large excursion steamers; one bringing one hundred and fifty or more Shriners from San Francisco, the other bringing upwards of two hundred and fifty from Puget Sound. This besides an unusually large number of strangers by the regular liners.

Fourth: Publicity throughout the world on a scale which has never before been possible. This will be due to the inauguration of the Pan-Pacific Travel Congress, which will hold its first session here under the auspices of the Hawaii Promotion Committee.

Mrs. Newell's Dinner.

Mrs. Newell of Minneapolis, who is spending the winter in Honolulu, was the hostess at a delightful dinner on Friday evening. This pleasant affair was given in honor of Mr. and Mrs. Douglas Mackay and Mr. and Mrs. W. D. Mackay of Seattle. The attractive dinner table was fragrant with cut flowers and maidenhair fern. At the termination of the dinner the hostess and her guests played several rubbers of Bridge.

Mr. and Mrs. Gibbons' Dinner.

Mr. and Mrs. Charles Gibbons, who have been staying at the Moana Hotel for the past four months, gave a delightful dinner Thursday at the Moana in honor of their daughter and son-in-law, Mr. and Mrs. Gustav Schaefer. This was in celebration of Mr. Schaefer's birthday anniversary. The table was beautifully decorated for the occasion and a delicious repast was served. Later the host and hostess adjourned to the lanai to listen to the Hawaiian band concert.

Mr. and Mrs. Tenney's Dinner.

Mr. and Mrs. Edward Tenney entertained at dinner Wednesday evening in honor of Mr. and Mrs. Harry Macfarlane. The table was exquisitely decorated with hothouse flowers and maidenhair fern. The corners of this attractive table were decorated with silver candelabra with handsome silk shades. At the conclusion of the dinner, the party motored to the Bijou Theatre, where they enjoyed a good vaudeville performance.

Mrs. Holloway's Luncheon.

Mrs. Carl Holloway entertained a dozen friends at luncheon Wednesday afternoon. Scarlet was the color scheme used on this occasion. Miss Helen Wilder and Miss Copeland were the incentive for this affair. Among Mrs. Holloway's guests were Mrs. Frederick Klebahn, Mrs. Edward Tenney, Mrs. Andrew Fuller, Mrs. Helen Noonan, Mrs. E. Jones, Miss Helen Wilder, Miss Copeland, Mrs. George Herbert, Miss Maggie McIntyre, and Miss Ames Walker.

Mid-Pacific

Kirmess

OLD
FISH MARKET

Saturday,
Feb. 18

Dear to the Hearts of the Women.

DR. T. FELIX GOURAUD'S

Oriental Cream

OR MAGICAL BEAUTIFIER
An Indispensable and Necessary
Article for Particular Women
who Desire to Retain a
Youthful Appearance.

Every woman owes it to herself and loved ones to retain the charm of youth nature has bestowed upon her. For over half a century this article has been used by actresses, singers and women of fashion. It renders the skin like the softness of velvet leaving it clear and pearly white and is highly desirable when preparing for daily or evening attire. As it is a liquid and non-greasy preparation, it remains unnoticed. When attending dances, balls or other entertainments, it prevents a greasy appearance of the complexion caused by the skin becoming heated.

Gouraud's Oriental Cream cures skin diseases and relieves sunburn. Removes Tan, Pimples, Blackheads, Moth Patches, Rash, Freckles and Vulgar Redness.



Yellow and Muddy skin, giving a delicately clear and refined complexion which every woman desires.
Ferd. T. Hopkins, Prop., 37 Great Jones Street, New York.



New Manoa Home.

Mr. Spencer Bowen is building a beautiful home in Manoa Valley for his bride-to-be. The land on which this attractive house will stand, formerly belonged to Mr. W. R. Castle, who bought a large section with the intention of building for his oldest son, Mr. W. R. Castle, Jr. On the latter's decision to accept a professorship at Harvard College, thus taking up a permanent residence in the east, Mr. Castle Sr. disposed of this property. Judge Lindsay bought one lot and will build shortly. Mr. Bowen is erecting his attractive home and Mr. E. W. Sutton bought the third strip of land. Eventually this will be one of the most attractive blocks in the Manoa suburbs.

Battersby-French.

Miss Ethel French and Mr. William Battersby were quietly married in the Central Union parsonage parlors by the Reverend Eberhart. The ceremony was performed at half after eight on Saturday evening, January the fourteenth. The father, bride, maid and best man were the only ones who witnessed the ceremony. Mr. J. Grievess attended the groom and Miss Emma French, a sister of the bride, acted as bridesmaid. At the conclusion of the ceremony, a bridal supper was tendered the happy young couple by a coterie of friends. Covers were arranged for twenty-four. The table was exquisitely decorated in white and green.

Mrs. Walter Dillingham's Tea.

Mrs. Walter Dillingham entertained a tea Monday afternoon, from 4:30 to 6. The guests included were the women and young maids that will participate in the Mid-Pacific Kirmess. Mrs. Dillingham received in the drawing room; Mrs. Robert Atkinson and Mrs. Samuel Dunning poured tea and coffee in the dining room; Mrs. George Potter served punch. About two hundred guests were present.

Dance at Hawaiian Hotel.

The beautiful and tropical Royal Hawaiian Hotel will be the setting for a beautiful dance that will take place this evening at 9 o'clock. Society folk will be well represented and an enjoyable time is being anticipated. Formal invitations have not been issued; army, navy and town folk are invited. Kaul's Quintet Club will play.

Major and Mrs. Potter's Dinner.

Major and Mrs. George Potter entertained at dinner in honor of Mr. and Mrs. Harry Macfarlane. This affair was given in honor of the latter's birthday. Among those present were: Major and Mrs. Potter, Mr. and Mrs. Harry Macfarlane, Mr. and Mrs. Edward Tenney, Mrs. Noonan, Mrs. Henry Macfarlane, Mrs. Fred Macfarlane and Miss Alice Macfarlane.

Mrs. Winter's Luncheon.

Mrs. Winter, wife of Captain Winter, entertained a few friends informally at luncheon Wednesday. All of the guests were enthusiastic Bridgists. This schooling game was participated in during the afternoon. Among those present were Mrs. Winter, Mrs. Arthur Marx, Mrs. Frederick Ramsey and Mrs. Pardee of Fort Shafter.

Engagement.

Mr. Reginald Fursey is pleased to announce the engagement of his sister, Violet, to Mr. J. W. Donald of Honolulu, Hawaii.

The many friends of Mrs. Wesley K. Hamilton will be delighted to learn that she is enjoying the best of health, and is now the same splendid athlete that she was prior to her illness which she experienced in Honolulu some years ago. This young matron is enjoying her usual popularity at Fort Pickens, Florida, where Captain Hamilton is stationed. As a girl she was considered one of the most popular members of smart-set, and has legions of friends in Honolulu.

Mr. C. B. Wells arrived on the Mongolia and is sojourning at the Moana Hotel until the twenty-fifth of this month. The society people of Honolulu were disappointed that Mrs. Wells did not accompany her husband, but owing to this being a business trip and of such short duration, this charming matron decided to remain at home. Mr. Wells has been greeted and entertained by hosts of friends. He was a kamatua in these islands, having been manager of the

Walluku sugar plantation for fifteen years. It was through his good judgment and management that this plantation reached its efficiency. It is to be regretted that Mr. and Mrs. Wells have chosen California for their future home. At present they reside on Nob Hill in San Francisco, but they will occupy a palatial mansion that is being built for them in Claremont, Cal., which will be finished about the first of June. Mr. Wells is an enthusiastic motorist, having purchased a 1911 Pope-Hartford seven-seated touring car. The roads are so excellent in and around Honolulu that Mr. and Mrs. Wells may bring down their automobile and spend the winter of 1912 at the Moana Hotel.

The San Francisco News Letter of January 7 has the following, which is of interest locally:

Miss Enid Grogg was a great disappointment to Honolulu society. Sheathe your sabers, knights of the fair Enid, and let the tale proceed. It seems incomprehensible that the effervescent Enid could disappoint the islanders who are looking for champagne personalities as their own cause to sparkle in that climate. But I have it on the written word of a trustworthy source that Enid did not come up to expectations.

What did they want, those effete islanders? Surely the dashing Enid has chic and talent enough to animate a troop of bored audiences. She did please, but—catch her of the secret with both hands—she did not shock! Yes, the Honolulu esquires wanted more than a thrill; they wanted to be shocked and our Enid did not even furnish a little tremor. They had been prepared for a dashing edition of Alice Roosevelt Longworth and Alice, as we all know, made them sit up and take notice to the extent that you can still get a flicker of conversation out of them on the subject of how many cigarettes she smoked at a certain reception, and what she wore or didn't wear bathing at Waikiki, and what—but we won't go into that.

Enid Grogg danced and sang and played the piano for them, and talked in almost any language her partner preferred, but still Honolulu society sat around expectant for the shock. The Korean sailed away with the stimulating Enid draped in tils, but some of the sighs from the shore were sighs of disappointment. The much-heralded girl did not break a single convention—she did not even bend one.

However, there is another San Franciscan, a fair grass widow, who is stirring things up a bit in the islands. She went down as the guest of a wealthy member of the royal family, and is being lavishly entertained. Her army connections are important, and the brass button set is alert for her pleasure. The lady has an impulsive way of giving tongue to thoughts that were never intended for utterance, and therefore she has been christened the Yellow Peril—a tribute to her blonde beauty and a rebuke to her conversational ability. Only one fact has been recorded from the islands. She told at a dinner party that she had been unjustly accused of saying that her small son showed no special talent, so he would probably have to go into the army or the navy. The dinner was largely military, and the resurrection of the canon was not inspired. "The idea of my saying such a thing," exclaimed the lady in conclusion. "Why, the child is still too young to hold such a thought over him!"

A picture appears on this society page of Mrs. Timberlake, wife of Major Timberlake, commandant at Fort Ruger. Mrs. Timberlake is a tall, graceful blonde, with quantities of fair hair and has blue eyes. Major Timberlake came to these islands in March, but his wife did not come to Honolulu until July. In the six months that this charming woman has resided in Honolulu she has made a wide circle of friends and is deservedly popular.

On account of Mr. George Cooke being a representative of the legislature, Mr. and Mrs. Cooke will not return to their home in Kauai until April. This young couple have been occupying the Clarence Cooke's home on Keamoku street, but will visit with Mrs. Cooke's mother, at the Judd homestead after today.

Mr. and Mrs. E. E. Paxton, after a delightful four months trip through the east, returned on the Mongolia Sunday. Mr. and Mrs. Paxton spent the holiday season in Chicago, and

experienced a snowy Christmas, which proved a novelty. While in New York this young couple met quite a number of Honolulu people.

Mrs. Claire Williams' Tea.

The following invitation has been received by the smart set of Honolulu: "To meet Mrs. Frances M. Needham and Mrs. Clarence Short; Mrs. Claire Elsie Williams at home Wednesday, January, the twenty-fifth, from four until six o'clock. Kailano, Waikiki."

Mr. and Mrs. Jos. Schwartz entertained at their pretty bungalow on Monday evening in honor of the Shepards of Chicago. About twenty guests were present. Bridge was indulged in while Kaul's Quintet Club made the evening a merry one with their Hawaiian songs.

Mr. H. P. Wood, of the Promotion Committee, has purchased a Challenger-Detroit touring car. In good weather, Mr. and Mrs. Wood can be seen on Kalaheka avenue enjoying their new machine. Mrs. Wood is learning to run the new automobile.

Mr. and Mrs. D. G. Peck, the former a retired banker of Los Angeles, have taken apartments for the winter at the Alexander Young Hotel. Mr. and Mrs. Peck are relatives of L. Tenney Peck of this city.

Mr. Thomas, a retired capitalist of New York, is staying at the Moana Hotel. Mr. Thomas is completing a trip around the world, and will leave for the mainland on the Nippon Maru.

Mrs. Sarah M. Newcomb's picture appears in this society page. Mrs. Newcomb is very prominent socially in Honolulu and is one of the numerous society women actively interested in the Mid-Pacific Kirmess.

Mr. Roscoe Perkins is convalescing after an operation for appendicitis. Mr. Perkins left the hospital



MRS. E. A. P. NEWCOMB.

Thursday and is recuperating at his apartments at the Wahine Kapu Club.

Miss Dickson's Luncheon.

Miss Irene Dickson entertained at a bridge luncheon, Friday, in honor of the Princess Kawananakoa and Mrs. Voorhes Henry. The luncheon tables were lavishly decorated with scarlet carnations and maiden hair ferns. Japanese place cards designated the places of each guest.

After tilia, bridge was played, prizes were awarded at each table and were won by Princess Kawananakoa, Mrs. James Dougherty and Miss Julie McStocker. Those prizes were cut glass bon-bon dishes. Among Miss Dickson's guests were the Princess Kawananakoa, Mrs. Voorhes Henry, Princess Kawananakoa, Mrs. Hagens, Mrs. J. Morton Riggs, Mrs. Murray, Miss Margaret McIntyre, Mrs. Frederick Dymally, Mrs. Williamson, Miss Chapman, the Misses McStocker (2) and Mrs. Dougherty.

Miss Agnes Walker's Bridge.

Mrs. Holloway, Mrs. Herman Fackel, Mrs. Edward Tenney, Mrs. Helen Noonan, Mrs. Arthur Brown, Mrs. Frank Richardson, Mrs. C. White, Mrs. E. Faxon Bishop, Mrs. Geo. Herbert, Mrs. George Potter, Mrs. Frederick Macfarlane, Miss Alice Macfarlane, Mrs. C. B. Cooper, Mrs. Newby, Mrs. Maxwell, Mrs. Becker, Mrs. Babblitt, Mrs. Waterman, Mrs. Harry and Mrs. Charles Wilder were the bridge guests of Miss Agnes Walker Friday afternoon. Prizes were awarded at each table and at the end of the afternoon delicious refreshments

were served. The prizes were large boxes of American beauty roses. The following young matrons were awarded the prizes: Menides Herman Fackel, Helen Noonan, George Herbert and George Potter.

Mr. Thomas' Dinner.

Mr. and Mrs. R. D. Mead were the complimented guests at dinner Thursday evening when Mr. Thomas of New York entertained at the Moana Hotel in their honor. The table decorations were in marquerites. After dinner the host and his guests adjourned to the veranda to listen to the band concert.

Mid-Pacific Kirmess.

Society is on the go, we have over the Mid-Pacific Kirmess that will begin in Honolulu on February 18. Mrs. Walter Francis Dillingham is chairman of this large entertainment, and by her great executive ability is going to make it one of the greatest and most interesting entertainments ever given in these islands. This means work, but it is in such a good cause that Mrs. Dillingham has not experienced any trouble in getting an able corps of society women and debutantes to assist her. One of the most elaborate booths is the Anglo-Indian booth, with Mrs. Sara L. Newcomb chairman, assisted by the following committee: Mrs. Walter F. Peck, Mrs. Edward Julius Timberlake, Mrs. John Osborne, Mrs. Theodore Richards, Mrs. Gordon Osborne, designer of the booth and costumes; Mr. E. A. P. Newcomb, conductor of the music.

The booth will occupy the monkey enclosure end of the fishmarket and will comprise an elaborate arch in the center, surmounted by a pagoda in the Indian style of architecture. The English and Indian booth will extend on

FAMOUS Tabard Inn Library and Book Lovers' Library

Now established at second floor of HOTEL MAJESTIC, cor. Beretania and Fort S's.

Call and see the fine assortment of books and learn how you can use these attractive libraries

the right and left sides of the arch, the spaces being defined by a series of columns. This entire composition will form the most imposing structure in the Kermess. The archway entrance and colonnades will be modeled by Mr. Osborne and cast in stucco. The architectural effect will be enhanced by brilliant colors and gilding after the Eastern manner. The interior of the Indian booth will be hung with curtains and embroideries, brought from India by Mrs. Walter Dillingham and Mrs. John Osborne, and Bokara and brasses and preloved hangings from Mr. Newcomb's collection. In niches and from the ceiling will be suspended Eastern lamps of bronze and brass, while from the glowing coals of a brazier will arise clouds of perfumed incense. The floor and counters will be covered with Eastern rugs. Divans will be built and finished cushions and curtains draped to complete a sumptuous and oriental effect. The ladies who serve at this booth will be dressed in Indian costumes, and with their smiling eyes and jewelry will add the touch which will completely picture as dazzling as any to be seen on the metropolitan stage.

The English booth will be a strong contrast to the Indian, with its floor strewn with rushes, a broad double fireplace and roof decorated with embroidered shields and armor. Benches and carved chairs will form the furniture. The walls will be arranged to have the effect of high paneling with narrow windows and shields of color. On the walls will hang a tapestry designed by Rubens, which was hung on the streets of Antwerp

when Marie de Medicis visited Charles V. in that city. Other effects will be devised to give this booth the appearance of a baronial interior. This room will be enhanced by the Canterbury Pilgrims and a concourse of people in fourteenth-century costumes, after the march of the pilgrims to the great stage where performances are to be given. With the cooperation of Mr. Osborne, the artist, and Mr. Newcomb, the architect, we can rest assured that the Anglo-Indian booths will be worth the while of a long journey to see. The feature of the English booth will be the march of the Canterbury Pilgrims, from the ground at the mauka end, through the market to the great stage. In this procession will be seen the knight and his squire, the princess and her maid, the Friar with his "knives and penes" for fair women, the cook and shipman, the Doctor of "Phisick," who will have a bill for every ill; the gay "wyffe" of Bath, flitting with the poet or some other young fellow. The miller will be there with his bagpipes; the parson with indulgences to sell to those who need them for vain merit, extravagance, gluttony, and—on, and all the rest of the merry throng, followed by a crowd of townsfolk in the picturesque costumes of the period.

During the march the pilgrims will sing the following verse arranged from Chaucer's poem:

"What that Aprille with his showre sweete
The drouth of Marche hath pierced to the roots,
Than longer folk to gon on pilgrimages
To Canterbury town they wende,
The holy blisful martir for to seke
That hem hath holpen when that they were neede."

The music will be one of the Gregorian chants. This will be repeated in unison until the whole company is grouped as a tableau on the stage, and will produce a solemn and interesting effect.

The costumes used by Mrs. Newcomb and Mr. Newcomb were worn by them in the Canterbury Pilgrims procession, which formed one of the features of the great pageant given in the palatial residence of Mrs. Porter Norton in Buffalo, N. Y., five years ago.

Those who will take part in the procession are the following: Mesdames Timberlake, Peck, Richards, Southgate, Williams, Wall, Newcomb, White, von Holt, Thompson, Duff, Crockett, Winkley and Adams; Misses Crockett, Ward (2), Bidsworth, Reynolds, Pierce, Dyke, Hoppin and Lyon; Messrs. Hoemer, von Holt, Carter, Sinclair, Wall, Captain Johnson, Lieuts. Vaughn and Price, Messrs. Osborne, Thompson, Richards, Blackman (2), Newcomb, Vaughn, Thompson, Blackstone, Bzard, Irwin and Carmichael. The cast of characters will be announced later.

Mrs. Bottomley's Tea.

Mrs. Allan Bottomley entertained at tea at 4 o'clock Friday afternoon. Mrs. Bottomley and Mrs. Southgate received in the drawing room of this attractive home. The house was fragrant with cut flowers and beautifully ornamented with potted palms. Mrs. R. A. Jordan, the mother of the hostess poured tea; Mrs. E. W. Jordan served the coffee. A levy of pretty young society girls and matrons assisted in passing the refreshments.

Among the guests were Mesdames T. King, Kimball, Ernesta Waterhouse, L. Tenney Peck, Locke, Lees, Prosser, von Holt, Lawrence Judd, M. Cooke, Hobday, Shopberg, Kopke, Rallentyne, Ebbins, Anderson, Arthur Smith, Robert Bond, Geo. Bowen, C. Davies, James Cockburn, the Messrs. Jordan, Koepke and others.

Mr. Frederick Lowrey, Jr., will be a departing passenger on the steamer Sierra. Mr. Lowrey will wed a beautiful California girl some time in February, although the day has not been set. The bride-elect is Miss Lella son of Santa Rosa, who came to the islands last year to attend the Panama-Pacific wedding and met her fate in Honolulu. Both these young people are popular socially and will be given a royal wedding on their return from their honeymoon.

The Cadillac owner sees nothing in any other car which he envies

More impressive than anything we might say about the car, is the complete contentment of the Cadillac owner.

If he felt that another car possessed some qualifications which his Cadillac lacked, it would be only human nature for him to experience a little twinge of envy; even if the other car cost twice as much money.

But you may experiment with the first Cadillac owner whom you encounter; and you will find that he is not conscious of the slightest deprivation.

He is more apt, on the contrary, to ask you to point out, how it would profit him to own a costlier car. And, if you follow him in the analysis of internal as well as external construction, you will be puzzled for an answer.

He will begin by pointing out to you that the service which a car renders, and the comfort which its owner enjoys, is entirely dependent upon the integrity of its mechanical construction.

And he will gently remind you, in that connection, that Cadillac practice is held in world-wide esteem by engineering experts—that the Cadillac "shop" is admired as a model—in men, machinery, methods and management.

Pleasant evidence of the extent to which the Cadillac reputation has traveled was given in England recently during the visit of the American Society of Mechanical Engineers to Great Britain.

The wonderful standardization test, in which three Cadillacs were torn

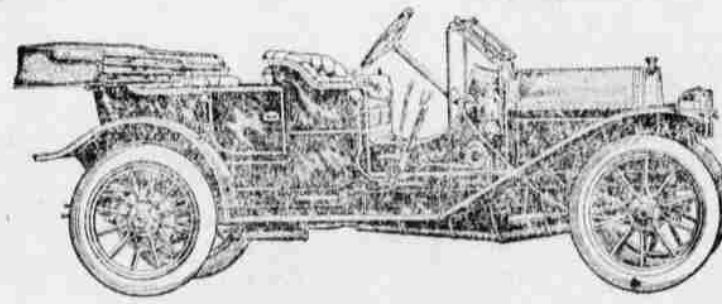
down and reconstructed from a haphazard pile of parts, and for which the Dewar Trophy was awarded, was evidently fresh in the minds of British engineers and journalists.

are both of interest to Cadillac owners, present and prospective. Quite frankly it was asked, how the Cadillac Company could build a car which won the world's trophy for

Cadillac "Thirty"

The tribute that was paid by London journalists to the Cadillac standard elicited an inquiry and an answer which were illuminating; and which

standardization, and profitably manufacture it to sell at so low a price. The gist of the explanation given can be gathered from a single statement



DEMI-TONNEAU, \$1700.

Prices include the following equipment: Bosch magneto and Delco ignition systems. One pair gas lamps and generator. One pair side oil lamps and tail lamp. One horn and set of tools. Pump and repair kit for tires. 60-mile season and trip Standard speedometer, robe rail, full foot rail in tonneau and half foot rail in front. Tire holders.

Cadillac Motor Car Company, Detroit, Michigan

(Licensed under Seiden Patent)

Von Hamm-Young Co., Ltd.,

Agents

Oceanic Steamship Company

Leave S. F. Arrive Hon. Leave Hon. Arrive S. F.
January 14 January 20 January 25 January 31
February 4 February 10 February 15 February 21

\$85 first class, single, S. F.; \$110 first class, round trip, San Francisco.
C. BREWER & CO., LTD., General Agents.

Pacific Mail Steamship Co., and Toyo Kisen Kaisha

Steamers of the above Companies will call at HONOLULU and leave this Port on or about the Dates mentioned below:

Leave Honolulu For Orient. Leave Honolulu For S. F.
America Maru January 18 Korea January 7
Tenyo Maru January 24
Korea February 3

For further information apply to

H. Hackfeld & Co., Ltd., agents

Matson Navigation Company

BETWEEN SAN FRANCISCO AND HONOLULU

From San Francisco For San Francisco
S. S. Lurline January 11 S. S. Lurline January 20
S. S. Wilhelmina January 24 S. S. Wilhelmina February 1
S. S. Honolulu January 27 S. S. Honolulu February 4
S. S. Lurline February 11 S. S. Lurline February 21

S. S. HYADES of this line sails from Seattle for Honolulu direct on or about FEBRUARY 4, 1911.

For further particulars, apply to
CASTLE & COOKE, LTD., General Agents, Honolulu

Canadian-Australian Royal Mail

STEAMSHIP COMPANY

FOR SAN FRANCISCO AND AUSTRALIA: FOR VANCOUVER:
ZEALANDIA MARCH 5 ZEALANDIA JANUARY 31
MAKURA FEBRUARY 3 ZEALANDIA JANUARY 31

THEO H. DAVIES & CO., LTD., GENERAL AGENTS.

AMERICAN HAWAIIAN STEAMSHIP COMPANY.

From New York to Honolulu, via Tehuantepec, every sixth day.
Freight received at all times at the Company's wharf, 41st Street,
South Brooklyn.
FROM SEATTLE OR TACOMA TO HONOLULU DIRECT:

S. S. COLUMBIAN, to sail..... JANUARY 21
S. S. ALASKAN, to sail..... FEBRUARY 2
For further information apply to H. HACKFELD & CO., LTD.
agents, Honolulu
C. P. MORSE, General Freight Agent.

Union-Pacific Transfer Co.,

Baggage Shipping Storage

King St. Opp. Lewers & Cooke. Phone 1875.

HUSTACE - PECK CO., LTD

42 QUEEN STREET PHONE 2295
Estimates given on all kinds of Drying, Teaming, Road Building,
Excavating, Filling.
FIREWOOD AND COAL, WAIAE SAND FOR SALE

FIRE INSURANCE

The B. F. Dillingham Co. LIMITED

General Agent for Hawaii:

Atlas Assurance Company of London.
New York Underwriters' Agency.
Provident Washington Insurance Co.
11th FLOOR, STANGENWALD BLDG.

LIFE INSURANCE

Is not a Luxury. It is a Necessity.
But you must have the BEST
and that is provided by the famous
and most equitable Laws of Massa-
chusetts, in the

New England Mutual Life Insurance Co.

OF BOSTON, MASSACHUSETTS.

If you would be fully informed about
these laws, address

CASTLE & COOKE,

GENERAL AGENTS,
HONOLULU, T. H.

Bishop & Co.

Established in 1858

BANKERS

Commercial and Travelers'
Letters of Credit issued on
the Bank of California and
The London Joint Stock Bank
Ltd., London.

Correspondents for the
American Express Company
and Thos. Cook & Son.

Interest allowed on Term
and Savings Bank Deposits.

BANK OF HONOLULU LIMITED

PAID CAPITAL, \$600,000

Successors to
CLATS SPRECKELS & CO.

Invites your Account and
offers satisfactory service.

Loans at market rates.

Exchange and Cable trans-
fers.

Travelers' Credits and
Checks available everywhere.

The Yokohama Specie Bank, Limited

HEAD OFFICE, YOKOHAMA

Capital (Paid Up) Yen 24,000,000
Reserve Fund Yen 18,000,000

General banking business
transacted. Savings accounts for
\$1 and upwards.
Fire and burglar-proof vaults,
with Safe Deposit Boxes for rent
at \$2 per year and upwards.
Trunks and cases to be kept on
custody at moderate rates.
Particulars to be applied for.

YU ANAI, Manager.

Honolulu Office, Bethel and Mor-
chants Streets. Telephone 2121
and 1594. P. O. Box 168.

Oahu Machine Shop

Manager - H. L. ROSS
301 QUEEN AND RICHARDS STS.
Telephone 514

ENGINEERS AND GENERAL
MACHINE REPAIRS

Automobiles, Motor Cycles, Gas Sta-
tionary and Marine Engines, Rice
Mill Machinery, Etc.

Honolulu Electric Co.

Engineering and Contracting
House-Wiring Repairing Supplies
1187 AIAKEA ST. Near Beretania

—PLANNED STEEL—
A full assortment, sizes 24"x96"
to 48"x120", and gauges No. 16 to
No. 26 just to hand.

We do sheet metal work of all
kinds, and guarantee satisfaction.
Your patronage is solicited.
PROMPT ATTENTION TO JOBBING
EMMELUTH & CO., LTD.
Phone 1511 145 King Street

BUILDING MATERIAL

OF ALL KINDS.
DEALERS IN LUMBER.

ALLEN & ROBINSON
Broom Street Honolulu

DRAYING

Carrying freight to and from the wharves is done cheaper
and better by us because we have large facilities and are doing
this work constantly for the bulk of the merchants in town. We
do not charge you at special trip rates.

Honolulu Construction & Draying Co., Ltd.,

QUEEN STREET

PHONE 2281

Alexander & Baldwin, LIMITED.

OFFICERS AND DIRECTORS.
H. P. Baldwin, President
W. O. Smith, First Vice-President
W. M. Alexander, Second Vice-President
J. P. Cooke, Treasurer
Third Vice-President and Manager
J. Waterhouse, Secretary
M. E. Paxton, Director
J. R. Castle, Director
J. R. Galt, Director
W. R. Castle, Director

Sugar Factors, Commission Merchants, and Insurance Agents

Agents for
Hawaiian Commercial & Sugar Co.
Hauka Sugar Company.
Pala Plantation.
Maui Agricultural Company.
Kahuku Plantation Company.
Kahala Railroad Company.
Haleakala Ranch Company.
Honolulu Ranch.
McBride Sugar Co.
Kaula Railway Co.

Castle & Cooke, Ltd

Honolulu, T. H.

SHIPPING AND COMMISSION MERCHANTS, SUGAR FACTORS
and
GENERAL INSURANCE AGENTS
Representing
Ewa Plantation Co.
Wailua Agricultural Co., Ltd.
Kohala Sugar Co.
Waimea Sugar Mill Co.
Apokaa Sugar Co., Ltd.

Fulton Iron Works of St. Louis
Babcock & Wilson Pumps
Green's Fuel Economizers
Matson Navigation Co.

C. Brewer & Co., Ltd.

SUGAR FACTORS AND COM-
MISSION MERCHANTS

Officers and Directors:

H. P. Bishop, President
Geo. H. Robertson, Vice-President and Manager
W. W. North, Treasurer
Richard Ivers, Secretary
J. R. Galt, Auditor
Geo. R. Carter, Director
C. H. Cooke, Director
C. A. Cooke, Director
A. Galt, Director

C. Brewer & Co., Ltd.

FIRE AND MARINE

INSURANCE AGENCIES

Royal Insurance Co. of Liverpool.
London Assurance Corporation.
Commercial Union Assurance Co.
of London.
Scottish Union & National Ins.
Co. of Edinburgh.
Caledonian Assurance Co. of
Edinburgh.
American & Foreign Marine Ins.
Co.

Territorial Board of Immigration

Office 403 Stangenwald Bldg.
Honolulu.

SCANDINAVIA BELTING

HONOLULU IRON WORKS

Agents.

Chemical Engines and Watchman's Clocks

For Sale by
J. A. GILMAN
Fort Street

PACIFIC ENGINEERING COMPANY, LTD.

Consulting, Designing and Con-
structing Engineers.

Bridges, Buildings, Concrete Struc-
tures, Steel Structures, Sanitary Sys-
tems, Reports and Estimates on Pro-
jects. Phone 1045.

Inter-island and O. R. & L. Shipping
books for sale at the Bulletin
office, 50c each.

LEGAL NOTICES.

IN THE DISTRICT COURT OF THE
UNITED STATES, FOR THE
TERRITORY OF HAWAII.

THE UNITED STATES OF AMER-
ICA, Plaintiff, vs. LORRIN A.
THURSTON, et al., Defendants.
—Action brought in said Dis-
trict Court, and the Petition
filed in the office of the Clerk
of said District Court, in Hono-
lulu.

THE PRESIDENT OF THE UNITED
STATES OF AMERICA, GREET-
ING:

LORRIN A. THURSTON, ARTHUR
P. PETERSON, G. BOLTE and
GODFREY BROWN, Trustees;
JOHN A. CUMMINS, KAPEKA
M. CUMMINS, wife of JOHN A.
CUMMINS; THOMAS A. CUM-
MINS, MARY C. KIBLING, oth-
erwise called MARY I. CREIGH-
TON, otherwise called MAY A.
CREIGHTON, otherwise called
MAY A. KIBLING, MATILDA
K. WALKER, otherwise called
KAUMAKAKAME WALKER,
JANE P. MERSEBERG, and
FLORA CROWELL, otherwise
called FLORA HIRAM, children
of the said JOHN A. CUMMINS;
LYDIA A. CUMMINS, wife of
the said THOMAS B. CUM-
MINS; JOHN CUMMINS, THOMAS
CUMMINS, RABLER CUM-
MINS, MOSLEY CUMMINS,
and BRICK WOOD CUM-
MINS, children of the said
THOMAS B. CUMMINS and
LYDIA A. CUMMINS;
THOMAS B. WALKER, hus-
band of the said MATILDA K.
WALKER; JOHN P. WALKER,
THOMAS B. WALKER, Jr., and
MATILDA WALKER CONSTA-
BEL, children of the said MA-
TILDA K. WALKER and
THOMAS B. WALKER;
ADOLPH CONSTABEL, husband
of the said MATILDA WALKER
CONSTABEL; JAMES K.
MERSEBERG, husband of the
said JANE P. MERSEBERG;
JANE P. CUMMINS MERSE-
BERG, KING THOMAS, oth-
erwise called KING THOMAS
MERSEBERG, JAMES MERSE-
BERG, MALLIE MERSEBERG,
BLAISDELL, THURILLA MERSE-
BERG JOY, JANE MERSE-
BERG, MATILDA MERSE-
BERG, ROBINSON CHARLES
MERSEBERG, ABIGAIL MERSE-
BERG, IDA MERSEBERG, WIL-
LIAM MERSEBERG, HELEN
MERSEBERG and MADELINE
MERSEBERG, children of the
said JANE P. MERSEBERG and
JAMES K. MERSEBERG; JOHN
D. BLAISDELL, husband of the
said MALLIE MERSEBERG
BLAISDELL; BARNEY JOY,
husband of the said THURILLA
MERSEBERG JOY; HENRY P.
ROBINSON, Jr., husband of the
said MATILDA MERSEBERG
ROBINSON; CHARLES A. KIB-
LING, husband of the said
MARY C. KIBLING; EDITH
KIBLING and MAY KIBLING,
children of the said CHARLES
A. KIBLING; CHARLES MA-
HOE; HATTIE MAHOE, wife of
the said CHARLES MAHOE;
ABRAHAM FERNANDEZ;
CUSHMAN CARTER, Trustee;
ARIANA AUSTIN, HERBERT
AUSTIN, WALKER AUSTIN and
EDITH AUSTIN, heirs at law
of JAMES W. AUSTIN, de-
ceased; HERBERT AUSTIN and
WALKER AUSTIN, as Execu-
tors and Testamentary Trustees
under the Will of JAMES W.
AUSTIN, deceased; SAMUEL M.
DAMON, Trustee; E. O. HALL
& SON, LTD., an Hawaiian cor-
poration; HAWAIIAN TRUST
COMPANY, LIMITED, an Hawa-
liian corporation; OFFICE SUPPLY
CO., LTD., an Hawaiian corpo-
ration; HALSTED & CO., LTD.,
an Hawaiian corporation; THE
BANK OF HAWAII, LTD., an
Hawaiian corporation; CHARLES
M. COOKE, LIMITED, an Hawa-
liian corporation; ANNA C.
COOKE, C. MONTAGUE COOKE,
Jr., CLARENCE H. COOKE,
GEORGE P. COOKE, RICHARD
A. COOKE, ALICE T. COOKE
and THEODORE A. COOKE,
beneficiaries under the last Will
and Testament of CHARLES M.
COOKE, deceased; and JOHN
SMITH, WILLIAM THOMPSON,
ROBERT JONES, SAMUEL ROH-
ERTSON, JULIUS BROWN,
SARAH STILES, MARY STONE,
JANE WILLIAMS and ANNA
FORSYTH, unknown owners and
claimants;

You are hereby directed to appear,
and answer the Petition in an action
entitled as above, brought against
you in the District Court of the United
States, in and for the Territory
of Hawaii, within twenty days from
and after service upon you of a cer-
tified copy of Plaintiff's Petition
herein, together with a certified copy
of this Summons.

And you are hereby notified that
unless you appear and answer as
above required, the said Plaintiff
will take judgment of condemnation
of the lands described in the Petition
herein and for any other relief de-
manded in the Petition.

WITNESS THE HONORABLE
SANFORD B. DOLE, and the HON-
ORABLE A. G. M. ROBERTSON,
Judges of said District Court, this
22nd day of November, in the year
of our Lord one thousand nine hun-
dred and ten and of the Independ-
ence of the United States one hun-
dred and thirty-fifth.

LEGAL NOTICES.

IN THE DISTRICT COURT OF THE
UNITED STATES, FOR THE
TERRITORY OF HAWAII.

THE UNITED STATES OF AMER-
ICA, Plaintiff, vs. THE TERRI-
TORY OF HAWAII, et al., Defend-
ants.

THE PRESIDENT OF THE
UNITED STATES, GREETING:

THE TERRITORY OF HAWAII,
AMERICAN SUGAR COMPANY,
LIMITED, a Corporation organized
and existing under and by virtue of
the laws of the Territory of Hawaii;
CHARLES R. BISHOP; WILLIAM
O. SMITH, SAMUEL M. DAMON, E.
FAXON BISHOP, ALBERT F. JUDD,
and ALFRED W. CARTER, Trustees
under the Will and of the Estate of
BERNICE P. BISHOP, deceased;
ELIZABETH LILUE, LUCILE NIU-
MALU, ESTHER KALIHU, CARO-
LINE PUKOO, ANNIE KAPAPALA,
CLARA KILAUUA, ELISA HILO,
MARION MAKENA, DAVID PUU-
LOA, ALBERT PUNAHOU, ROBERT
WAHAWA, ALEXANDER LANAI,
GEORGE KEWALO, HENRY KA-
MALO, WALTER HAWEA, and
PHILIP LAHAINA, unknown owners
and claimants.

You are hereby directed to appear,
and answer the Petition in an action
entitled as above, brought against
you in the District Court of the United
States, in and for the Territory
of Hawaii, within twenty days from
and after service upon you of a cer-
tified copy of Plaintiff's Petition
herein, together with a certified copy
of this Summons.

And you are hereby notified that
unless you appear and answer as
above required, the said Plaintiff
will take judgment of condemnation
of the lands described in the Petition
herein and for any other relief de-
manded in the Petition.

WITNESS THE HONORABLE
SANFORD B. DOLE, and the HON-
ORABLE A. G. M. ROBERTSON,
Judges of said District Court, this
22nd day of November, in the year
of our Lord one thousand nine hun-
dred and ten and of the Independ-
ence of the United States one hun-
dred and thirty-fifth.

(Sgd.) A. E. MURPHY.

(Seal) Clerk.

(Endorsed)
No. 66. DISTRICT COURT OF
THE U. S. for the Territory of Ha-
waii. THE UNITED STATES OF
AMERICA vs. THE TERRITORY OF
HAWAII, et al. SUMMONS. ROBERT
W. BRECKONS and WILLIAM
T. RAWLINS, Plaintiffs Attorneys.
Territory of Hawaii, City of Hono-
lulu—ss.

I, A. E. MURPHY, Clerk of the
District Court of the United States
of America, in and for the Territory
and District of Hawaii, do hereby
certify the foregoing to be a full, true
and correct copy of the original Pe-
tition and Summons in the case of
THE UNITED STATES OF AMER-
ICA vs. THE TERRITORY OF HA-
WAI, et al., as the same remains of
record and on file in the office of the
Clerk of said Court.

IN WITNESS WHEREOF, I have
hereunto set my hand and affixed the
seal of said District Court this 1st
day of December, A. D. 1910.
(Seal) A. E. MURPHY,
Clerk of the United States District
Court, Territory of Hawaii
4790-3m

A. G. M. ROBERTSON, Judge of
said District Court, this 23rd day
of December, in the year of our Lord
one thousand nine hundred and ten
and of the Independence of the United
States the one hundred and
thirty-fifth.
(Seal)

(Signed) A. E. MURPHY,
Clerk.

(Endorsed)
No. 69. DISTRICT COURT OF THE
U. S. for the Territory of Ha-
waii. THE UNITED STATES OF
AMERICA vs. LORRIN A.
THURSTON, et al. SUMMONS.
ROBT. W. BRECKONS, Attorney
for Plaintiff.
Territory of Hawaii,
City of Honolulu, ss.

I, A. E. MURPHY, Clerk of the
District Court of the United States
of America, in and for the Territory
and District of Hawaii, do hereby
certify the foregoing to be a full,
true and correct copy of the origi-
nal Summons in the case of THE
UNITED STATES OF AMERICA vs.
LORRIN A. THURSTON et al., as the
same remains of record and on file
in the office of the Clerk of said
Court.

IN WITNESS WHEREOF, I have
hereunto set my hand and affixed
the seal of said District Court this
20th day of December, A. D. 1910.
A. E. MURPHY,
Clerk of United States District Court,
Territory of Hawaii.
By F. L. DAVIS,
Deputy Clerk.
4812-3m

And you are hereby notified that
unless you appear and answer as
above required, the said Plaintiff
will take judgment of condemnation
of the lands described in the Peti-
tion herein and for any other relief
demanded in the Petition.

WITNESS The Honorable SAN-
FORD B. DOLE and The Honorable

LEGAL NOTICES.

IN THE CIRCUIT COURT OF THE
FIRST CIRCUIT, TERRITORY
OF HAWAII, HOLDING TERMS
IN THE CITY AND COUNTY
OF HONOLULU.

MARSTON CAMPBELL, Superin-
tendent of Public Works of the
Territory of Hawaii, Plaintiff
and Petitioner, vs. ISABELLA
H. WOODS et al., Defendants
and Respondents.

TERM SUMMONS.
THE TERRITORY OF HAWAII to
THE HIGH SHERIFF of the
Territory of Hawaii, or his
Deputy:

YOU ARE COMMANDED to sum-
mon ISABELLA H. WOODS; PAL-
MER PARKER WOODS and MOL-
LIE WOODS, his wife; MARY
ALICE BLUETT and P. W. P.
BLUETT, her husband; JAMES
FRANK WOODS and EVA WOODS,
his wife; SAMUEL PARKER WOODS
and ROSE WOODS, his wife; MA-
BEL ROBERTSON BECKLEY and
HENRY BECKLEY, her husband;
MAUD WOODS; LUCY WOODS; R.
W. SHINGLE, ERNEST WODE-
HOUSE and ALLAN W. T. BOT-
TONLEY, Trustees under the Will
of James Wright, deceased; KOHALA
RANCH COMPANY, LIMITED, an
Hawaiian Corporation having its
principal office at Puuhoe, District
of Kohala, Island and Territory of Ha-
waii; JOHN DOE, MARY DOE, and
RICHARD DOE, unknown owners
and claimants, defendants, in case
they shall file written answer with-
in twenty days after service hereof
to be and appear before the said
Circuit Court at the term thereof
pending immediately after the ex-
piration of twenty days after service
hereof; provided, however, if no
term be pending at such time, then
to be and appear before the said
Circuit Court at the next succeed-
ing term thereof, to wit, the Janu-
ary 1911 Term thereof, to be hold-
en at the City and County of Ho-
nolulu, on Monday, the ninth day
of January next, at 10 o'clock a.
m., to show cause why judgment
of condemnation of the lands de-
scribed in the Petition herein and
for any other relief demanded in
the petition should not be awarded
to Marston Campbell, Superintend-
ent of Public Works, pursuant to the
tenor of his annexed Petition.

And have you then there this
Writ with full return of your pro-
ceedings thereon.

WITNESS The Honorable Presid-
ing Judge of the Circuit Court of
the First Circuit, at Honolulu afore-
said, this 1st day of September,
1910.

(Seal)

(Sgd.) HENRY SMITH,
Clerk.

(Endorsed) L. No. 7202, Reg. 3,
PK. 165, Circuit Court, First Cir-
cuit, Territory of Hawaii. Marston
Campbell, Superintendent of Public
Works of the Territory of Hawaii,
Plf. and Petitioner, vs. Isabella H.
Woods et als., Defts. and Respond-
ents. Original summons filed and
issued September 1, 1910, at 2:25
o'clock p. m. A. K. Aona, Asst.
Clerk. Returned October 4, 1910,
at 1:05 p. m. A. K. Aona, Asst. Re-
issued for further service this 4th
day of October, 1910, at 1:55 o'clock
p. m. A. K. Aona, Asst. Clerk.
Territory of Hawaii,
City and County of Honolulu, ss.

I, Henry Smith, Clerk of the Cir-
cuit Court of the First Judicial Cir-
cuit, Territory of Hawaii, do here-
by certify the foregoing to be a full,
true and correct copy of the origi-
nal summons in the case of Mar-
ston Campbell, Superintendent of Public
Works of the Territory of Hawaii,
vs. Isabella H. Woods et
als., as the same remains of record
and on file in the office of the Clerk
of said Court.

IN WITNESS WHEREOF, I have
hereunto set my hand and affixed
the Seal of said Circuit Court this
17th day of November, 1910.

HENRY SMITH,
Clerk of the Circuit Court of the
First Circuit, Territory of Ha-
waii.

Alexander Lindsay Jr., Attorney-
General, and Arthur G. Smith, De-
puty Attorney-General, for the peti-
tioner. 4779-3m

CORPORATION NOTICES.

NOTICE.

At the annual meeting held Janu-
ary 2, 1911, at its hall on King
street, the following named gen-
tlemen were elected to serve as officers
of the United Chinese Society for the
ensuing year:

President.....Mr. Chu Gem
Vice-President.....Mr. G. Kim Fook
English Secretary.....
.....Mr. Wm. Yap Kwai Fong
(re-elected)

.....Mr. Kan Kan Sun (re-elected)
Treasurer.....Mr. Ho Fon (re-elected)
Assistant Treasurer.....
.....Mr. Yong Kwong Tat
WM. YAP KWAI FONG,
4818-2wks Secretary.

THE Chas. R. Frazier Company

YOUR ADVERTISERS
Phone 1371 122 King St.

UNION BARBER SHOP

M. VIERRA, Prop.

Your Watch

will not keep time and give you the satisfaction it ought, if it is not attended to properly.

Have it overhauled and oiled for another year's work. It brought to us it will be in the hands of EXPERT WATCHMAKERS.

J. A. R. VIEIRA & CO.,
JEWELERS

Phone 2231. 113 Hotel St.

S. E. Lucas
OPTICIAN

Masonic Building, corner Hotel and Alakea
The best Lenses in town to fit every eye.

DR. SCHURMANN
Osteopath
175 BERETANIA STREET
Phone 1733

Automobile
Supplies & Repairing
Associated Garage,
Limited

Von Hamm-Young
Co., Ltd.

Pioneers and Leaders in
the Automobile Business

Agents for such well-known cars as Packard, Pope-Hartford, Stevens-Duryen, Cadillac, Thomas Flyer, Buick, Overland, Baker Electric, and others.

A Happy New Year

Gay and Miller

Announce the opening of the
OAHU AUTOMOBILE STAND
Corner of King and Bishop Streets

Phone 3448

LOCOMOBILE

"The Best-Built Car in America"
SCHUMAN CARRIAGE CO., LTD.
Agents

J. W. KERSHNER

Auto Tire Repairing

1177 Alakea St. Phone 2434

46-HORSES-46

FROM THE NORTHWEST, FOR
WORK OF ALL KINDS
Now at Quarantine Station

Telephone 1109

CLUB STABLES

Y. Yoshikawa, Pau Ka Hana

The BICYCLE DEALER and REPAIRER, has moved to

130 KING STREET

New location—Red front, near
Young Building. Telephone 2518

H. YOSHINAGA

Young Street, above Beretania
BICYCLES arrived for racing
and general use. Prices, \$25 up to
\$45, without brakes. Repairing and
tuning done neatly.

San Francisco Hotels

HOTEL STEWART

SAN FRANCISCO
Geary Street, above Union Square
Just opposite Hotel St. Francis

European Plan \$1.50 a day up
American Plan \$3.00 a day up

Steel and brick structure, furnishings cost \$200,000. High class hotel at moderate rates. Omnibus meets all trains and steamers. Hotel Stewart now recognized as Hawaiian Island headquarters. Cable address, "Trawets" A. B. C. Code. Reservations made through Trent Trust Co., Port Street, Honolulu.

Hotel St. Francis

Union Square, San Francisco
Under the Management of
James Woods.

FACING the beautiful park in the heart of the city, which is the theatre of the principal events of the famous festivals of San Francisco, this hotel, in environment and atmosphere, expresses most pleasantly the comfortable spirit of old California.

The royalty and nobility of the Old World and the Far East and the men of high achievement in America who assemble here contribute to the cosmopolitan atmosphere of an institution which represents the hospitality and individuality of San Francisco to the traveler.

The building, which marks the farthest advance of science in service, has now the largest capacity of any hotel structure in the West, and upon completion of the Post street annex will be the largest caravansary in the world.

WHILE THE SERVICE IS UNUSUAL, THE PRICES ARE NOT.

European Plan from \$2.00 Up

Haleiwa

The place for comfort and good living at moderate cost. Only two hours from Honolulu by train. Good roads for those who wish to motor down.

WAIKIKI INN

First-Class Family Hotel
Best Bathing on the Beach
W. C. BERGIN, Prop.

Hotel Majestic

Sachs Block, Fort and Beretania Sts.
Fine furnished rooms, \$1 per day
\$10 and upwards per month. Splendid accommodations.
MRS. C. A. BLAISDELL, Prop.

Vienna Bakery

has the best HOME-MADE BREAD,
GERMAN PRETZELS and COFFEE
CAKE. Be sure and ring up 2121.

1129 FORT STREET

SUMMER DAYS AND

F. E. DAVIS & CO.,

GOOD THINGS
MERCHANDISE BROKERS
Merchant and Nuuanu Streets

FOR YOUR GROCERIES, SEE
AMERICAN BROKERAGE CO.

93-95 King Street, near Maunakea
Phone 2291 Daily Delivery

BULLETIN ADS PAY

Stearns' Electric Rat and Roach Paste

rides the house of all vermin in a night. Drives rats and mice out of the house to die.

See box Dec. 10-12, box \$1.00. Sold by druggists or sent express prepaid on receipt of price.

STEARNS' ELECTRIC PASTE CO., Chicago, Ill.

A. BLOM

IMPORTER FORT STREET

Trimmed Hats

MISS POWER
Boston Building - Fort Street

SPECIAL HOLIDAY PRICES

Dunn's Hat Shop

The very latest RAINCOATS and RAINY-DAY SKIRTS in all styles and all sizes.

Mrs. F. S. Zeave,

Rooms 47-48 - Young Building

ASSORTED FELLOW TOPS FOR THE HOLIDAYS

FANCY ARTICLES OF ALL KINDS
Call at
MISS WOODARD'S
1141 Fort Street

LEADING HAT CLEANERS.

All kinds of Hats Cleaned and Blocked.
So Acids Used. Work Guaranteed.
FELIX TURRO, Specialist,
1154 Fort Street. Opp. Convant.
Honolulu, T. H.

Dress Goods

MEN'S FURNISHINGS
YAT HING
YEE CHAN & CO.,
DRY GOODS

KING AND BETHEL STREETS

KAM CHONG CO.,

GENTS' FURNISHINGS
Fort and Beretania Streets
Harrison Block

FINE LINE OF DRY GOODS

WAH YING CHONG CO.,

King St., Near Bethel
Dealers in Furniture, Mattresses, etc., etc. All kinds of KOA and MASON FURNITURE made to order.

IMPORTERS OF ORIENTAL GOODS

WING WO TAI & CO.

941 Nuuanu, near King Street
PHONE 1920

FINEST FIT

And Cloth of All Quality Can be Purchased from
SANG CHAN,
MO CANDLES BLDG.
P. O. Box 991 Telephone 1731

West Market and Importers

C. Q. Yee Hop & Co.

Fine Line of
Carpenter Tools
At the New Hardware Store
CITY HARDWARE CO.
King and Nuuanu Streets

BULLETIN ADS PAY

Cable News

KATSURA OPENS JAPANESE DIET

(Associated Press Cable.)
TOKYO, Jan. 20.—Premier Katsura today opened the Imperial Diet and in the first session of 1911, which is to take up some of the most important matters that have been before the empire for some time.

Among these is the new tariff, which is considered the most important subject before the Diet at present, particularly in its English relations. The government has been severely criticized in some quarters over its conference with Great Britain on this subject and it is expected that the Diet's action will put the stamp of its disapproval on the negotiations.

The naval expansion program, which also receives a great deal of attention, other important matters coming up are the new factory law, the new railroad policy, establishing the broad gauge standard on the government line, and similar bills.

COMMANDER SIMS' PUBLIC REPRIMAND

WASHINGTON, D. C., Jan. 20.—Secretary of the Navy Meyer has issued a general order, publicly reprimanding Commander William S. Sims, U. S. N., because of his childish speech in London, which caused much comment at the time of the Atlantic fleet's visit to England.

At a banquet in the Goldball, before a distinguished company, at which Ambassador Whitlaw Reid and the officers of the fleet were guests, Commander Sims, praising his remarks as personal, stated that in case of trouble with any other nation, England in her right would find the United States with her to the last drop of blood.

This expression caused much feeling in Germany, especially, and the matter was brought to the attention of the State Department at Washington and then taken up by the Navy Department, with the result that the commander is publicly reprimanded. His defense was that he carefully stated before making his speech that it was his personal opinion that he was presenting.

TAFT'S SECRETARY WILL RESIGN
WASHINGTON, D. C., Jan. 20.—Charles Dyer Norton, private secretary to President Taft and former assistant secretary of the treasury, has announced his resignation and his return to Chicago to take up the work of his insurance agency, in the near future.

Mr. Norton, who is only thirty years of age, has made a record for himself, both in business and in Washington. When induced by Secretary MacVane to become assistant secretary of the treasury, he was forced to give up his Chicago business of 125,000 a year and returned in June of 1909.

When President Taft promoted his former secretary to a consular position and was looking around for a successor, Norton was the man who filled the bill, and he was transferred to the White House. And now, after nearly two years of official life, Mr. Norton states he will return to his private business. His successor has not been decided upon.

GOVERNOR JOHNSON AGAINST S. P. CO.
SACRAMENTO, Jan. 20.—The administration measures advocated by Governor Johnson and provided for the public commission, initiative, referendum and recall in the State government, were introduced in the Assembly today.

The Governor's fight upon the Southern Pacific also keeps up, and the bill for the physical valuation of all railroad property in the State as a basis for rate making is being pushed.

FOR NAVY AEROPLANES.
WASHINGTON, D. C., Jan. 20.—Among the items in the naval appropriation bill, which comes before Congress next week, will be one of \$25,000 for experiments in aviation. This item was inserted following the recent aviation meets at Los Angeles and San Francisco, where was shown the practicability of aeroplanes to fly to and from a warship, and drop supplies from great heights.

TAMMANY MAKING HEAVY FIGHT
ALBANY, Jan. 20.—The decision in the Legislature over the election of a United States Senator to succeed Chauncey M. Depew continues in spite of the efforts put forth by Tammany to elect William F. Shepley. Depew seems to be gaining in strength.

MORE IMPROVEMENTS AT PARK THEATER

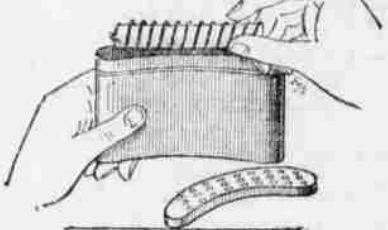
Several important changes in the stage and roof of the Park Theater are being made. The stage changes will be sufficient to make possible the staging of any act that could be produced at any of the other theaters, and the roof is to be made to cover all the seats without in any way reducing the comfort of an otherwise open-air theater.

Preferred creditors are those who never trouble us.

SEARN WATCH
Watches, Clocks, Jewelry
100-102 King Street
Phone 1731

SIMPLY LIGHT AND INSERT TUBE

Warmer does the rest



The Welkom Warmer

Size 3 1/2 x 5 1/2 inches, weight 4 1/2 ounces.
The only modern, safe, effective and sensible substitute for the antiquated Hot Water Bag.
No water to heat—no rubber to rot. Will last for years.
The Warmer is made of metal heated within one minute by the lighting and insertion of a paper tube containing a blazeeless, smokeless and odorless fuel generating a uniform heat which lasts over two hours at a cost of less than one cent. It is carried to fit any portion of the body and held in place by means of a bag and belt allowing the wearer to move about at will.

AS A PAIN KILLER

The Welkom Warmer has no equal. It can be put into constant action and is indispensable in cases of rheumatism, lumbago, neuralgia, sciatica, cramps, etc.

By placing the Warmer on the affected part the heat being dry, not moist, takes out the cold. Physicians say that the moist heat of the hot water bag will not cure but aggravate the ailments above mentioned.

Many have been sold—not a single complaint.

Complete outfit including Warmer, bag, belt, coil and 10 tubes of fuel sent prepaid to any part of the U. S. upon receipt of \$1.00.

If you wish to know more about this wonderful device write today for free descriptive booklet.

WELKOM WARMER MFG. CO.

108 Fulton St., New York.

Calendar Pads and Excelior Diaries for 1911

Also a complete line of OFFICE STATIONERY and BLANK BOOKS.

Office Supply Co., Ltd.,

931 FORT STREET

WALL, NICHOLS CO., Ltd.

69-71 KING STREET

TRY AN Onoto FOUNTAIN PEN

A. B. ARLEIGH & CO., LTD.
Hotel Street

Six Days Only SALE OF BOOKS

Thursday, December 29, to
Wednesday, January 4

BROWN & LYON CO. Limited

ICE

Manufactured from pure distilled water. Delivered to any part of city by courteous drivers.

Oahu Ice & Electric Co., Kewalo

Telephone 1128

PROMOTION COMES TO R. N. CORBALTY

WAIKUKU, Jan. 20.—R. N. Corbalty, who for several years past has been the efficient cashier of the Kaimuki Railroad Company, will leave with his family next week to reside permanently hereafter in Honolulu. Mr. Corbalty having been promoted to a position in the Honolulu office of Alexander & Baldwin. Mr. Corbalty was for many years cashier of the Hamao Plantation near Hana on this island, and moved to Kaimuki when that corporation ceased to exist. Mr. Rattray, who has been in the Kaimuki office for some time, will succeed Mr. Corbalty, and the outgoing cashier thanks in very high terms of his associates.

2185 editorial rooms—2256 business office. These are the telephone numbers of the Bulletin.

WANTS ONE CENT A WORD

WANTED

Young man or woman with knowledge of stenography and typewriting for office work and bookkeeping. Address "G. K. C." 4817

Have your hat cleaned by the Expert Hat Cleaners, 1123 Fort St., opp. Club Stables. Best workmanship, no acids used. 4669-11

Amateurs for Bijou Theater. Apply between 12 and 1 daily. 4807-11

Party with \$200 to invest in good paying proposition. Address "W. 475" this office. 4829-11

500 bicycle tires to vulcanize. J. W. Kershner, 1177 Alakea street.

Anything of value bought for cash. Carlo, 1417 Fort St. 4753-11

Intelligent young dog is wanted. "A. A." Bulletin. 4823-11

Clean wiping rags at the Bulletin office.

HELP WANTED.

For to help in printing office. Must be honest. Apply Bulletin office. Alakea St. 4820-11

SITUATION WANTED.

Japanese Cooking School. Families or hotels supplied with cooks. G. M. Matzie, 1457 Auld Lane. Tel. 1564

LOST.

Passbook No. 8672 on Bishop & Co's savings bank, lost. Finder please return to bank. 4829-11

CLOTHES CLEANING

Clothes cleaned, dyed and pressed on short notice. Called for and delivered. Phone 3029. S. Harada, 1159 Fort street. 4760-11

DANCING SCHOOL.

Miss Gibson's Academy of Dancing. Model Hall. Adult classes in waltz, two-step and three-step. Juvenile classes in health culture, dancing and ballroom etiquette. Apply at 1129 9th Ave., Kaimuki; Tel. 3051.

SODA WORKS.

Phone 3022 for the best soda water made in Honolulu. Honolulu Soda Water Co., Matsumoto lane, near corner of Beretania and Nuuanu. 4751-11

AUTOMOBILE

For hire, seven-seated Packard. Phone 2511. Young Hotel Stand. Chas. Reynolds. 4549-11

LIVERY STABLE.

First-class livery turnout at reasonable rates. Territory Livery Stable, 348 King; phone 2535.

CONTRACTORS.

George Yamada, general contractor. Estimates furnished. 210 McCandless building. Phone 1115.

WELDING.

Any kind of metal welded. Bring your broken parts to 207 Queen near Alakea.

PLUMBING.

Yee Sing Kee—Plumber and tinsmith. Smith St., bet. Hotel and Pauahi.

AGENCY.

The Vogel Co. has opened offices at 1114 Alakea St. Office hours, 9 a. m. to 5 p. m. H. C. McMillan, Res. 245 Post Ave. 4827-Jan. 17, 19, 21, 23, 25, 27.

CLOTHING ON CREDIT \$1 A WEEK

NO SECURITY
NO DOWN PAY

HAWAIIAN HATS
Latest shapes.
Fine weaves.
HAWAII & SOUTH SEAS CURIO CO.
World's Largest Dealers in Pacific Island Souvenirs.

"For Rent" cards on sale at the Bulletin office.

TO LET

Five cottages on Kanehameha IV. road and Markham lane. All lately repaired and painted. Water laid on from government main. Rent reasonable. Apply to Jos. P. Mendonca, 840 Kaahumanu St. 4812-11

Hotel Delmonico; under new management. Rooms by the day, week or month. 159 Beretania street. Reasonable rates.

Furnished housekeeping rooms, 2520 Kaimukua Ave. Good sea bathing. 4823-11

Two furnished rooms. Apply Mrs. D. McConnell, 1223 Emma St.

ROOMS AND BOARD.

"THE ISLAND," 627 Beretania avenue. Mosquito-proof jalous rooms, with or without board. Everything modern; moderate prices. Central location. Phone 1398. Mrs. H. Diaklage, prop. 4793-11

Cool furnished rooms and cottages, with board. 1634 Nuuanu Ave., near School St. Prices moderate.

FOR SALE.

The Transo envelope—a time-saving invention. No addressing necessary in sending out bills or receipts. Bulletin Publishing Co., sole agents for nationwide. 11

Men's clothing on credit, \$1 per week; suit given at once. F. Levy Outfitting Co., Sachs building, Fort street. 4742-11

A snap—Rooming house; centrally located; long lease. Must be sold. Address "J. R.," this office. 4831-11

Remington No. 10 visible typewriter; 470; latest model. Address "Type-writer," this office. 4829-11

Selected Caravanica wool cotton seed. A. V. Gear, 1214 Fort St. P. O. Box 494. 4693-11

Inter-island and Oahu Railroad shipping books at Bulletin office. 11

Sewing machine (White) for sale. Tregloan Place No. 9.

Choice cut flowers. Phone 3029.

FOR SALE OR RENT.

Home in Oahu, Hawaii, containing between 7 and 8 acres, on the Volcano road, three-quarters of a mile from Mountain View. House, barn, cottage and servants' quarters, price, \$2500. Also five shares of Whitney & Marsh stock (dry goods company); par value, \$100. Make me an offer on this. Address, Retta G. Higgins, Paige P. O., Caroline County, Virginia. 4804-11

BEAUTY CULTURE.

Marinella system—Minnie Rhoads, 1149 Alakea street. Scalp and facial massage; shampooing and manicuring; salt glows. Phone 3083. 4756-11

Mrs. Drinkwater—Massage, Special Face Treatment, Chiropody, etc. 169 Beretania, cor. Union. Telephone 3276. 4800-11

CHIROPODY.

Dr. Birch, Chiropodist, 64 Alexander Young Bldg. Hours, 10 a. m. to 4 p. m.; evenings 7 to 8. Sundays 8 a. m. to 12. Treatment at residence by appointment. Phone 3019.

AGENTS.

C. Henry Hustace, selling agent Palmer-Singer cars. Horses' movement patches; special attention given to repairing automobiles and motorcycles. South near King. Phone 2174.

The Most Delicious Ginger Ale—CASCADE

RYCROFT'S FOUNTAIN SODA WORKS
Telephone 2270

VICTOR RECORDS FOR NOVEMBER

BERGSTROM MUSIC CO., LTD.

Thayer Piano Co. Steinway AND OTHER PIANOS

150 Hotel St. Phone 2313
TUNING GUARANTEED

LEGAL NOTICES.

IN THE DISTRICT COURT OF THE UNITED STATES IN AND FOR THE TERRITORY OF HAWAII.

UNITED STATES OF AMERICA, Plaintiff and Petitioner, vs. AUGUSTUS F. KNUDSEN, ERIC A. KNUDSEN, ANNIE S. KNUDSEN, Guardian of ARTHUR S. KNUDSEN; ARTHUR S. KNUDSEN; IDA E. VON HOLT; HENRY M. VON HOLT; MAUD K. GARSTIN; KEKAHA SUGAR COMPANY, a corporation organized and existing under and by virtue of the laws of the Territory of Hawaii; THE TERRITORY OF HAWAII; BISHOP TRUST COMPANY, a corporation organized and existing under and by virtue of the laws of the Territory of Hawaii; and SAMUEL ALGARROBA, JANE GUAVA, MARY MANGO and JOHN BANYAN, unknown owners and claimants, Defendants and Respondents.

You are hereby directed to appear, and answer the Petition in an action entitled as above, brought against you in the District Court of the United States, in and for the Territory of Hawaii, within twenty days from and after service upon you of a certified copy of Plaintiff's Petition herein, together with a certified copy of this summons.

And you are hereby notified that unless you appear and answer as above required, the said Plaintiff will take judgment of condemnation of the lands described in the Petition herein and for any other relief demanded in the Petition.

WITNESS THE HONORABLE SANFORD B. DOLE and THE HONORABLE A. G. M. ROBERTSON, Judges of said District Court, this 5th day of January, in the year of our Lord one thousand nine hundred and eleven and of the Independence of the United States the one hundred and thirty-fifth.

(Sgd.) A. E. MURPHY, Clerk.

No. 72. DISTRICT COURT OF THE U. S. for the Territory of Hawaii. THE UNITED STATES OF AMERICA vs. AUGUSTUS F. KNUDSEN, et al. SUMMONS. ROBERT W. BRECKENRIDGE and WILLIAM T. RAWLINS, Attorneys for Plaintiff.

UNITED STATES OF AMERICA, District of Hawaii—ss. I, A. E. MURPHY, Clerk of the District Court of the United States of America, in and for the Territory of Hawaii, do hereby certify the foregoing to be a full, true and correct copy of the original summons in the case of THE UNITED STATES OF AMERICA vs. AUGUSTUS F. KNUDSEN, et al., as the same remains of record and on file in the office of the Clerk of said Court.

IN WITNESS WHEREOF, I have hereunto set my hand and affixed the seal of said District Court this 17th day of January, A. D. 1911. (Sgd.) A. E. MURPHY, Clerk of the United States District Court, Territory of Hawaii. By F. L. DAVIS, Deputy Clerk. 4825-2m

CORPORATION NOTICES.

NOTICE OF ELECTION OF OFFICERS.

At the annual meeting of the Sociedade Portuguesa de St. Antonio, Beneficente de Hawaii, held in Honolulu on the 4th day of December, 1910, the following officers were elected to serve during 1911:

Manuel C. Pacheco, President; Joseph V. Fernandez, Vice-President; John S. Ramos, Secretary; Manuel R. Bicho, Treasurer; Members: Supreme Board—Augustin C. Grillo, Joseph R. Bicho and August F. C. Correa.

Board of Directors—Manuel R. Pereira, John S. Ramos Jr., Joseph P. Dias, Manuel J. Pereira, John R. Bicho Jr.

Auditors—Joseph Castano, Rogers J. Forges, Crino Almeida.

At the meeting of the Directors held January 18, 1911, the following officers were elected:

Manuel R. Pereira, Chairman; John S. Ramos Jr., Secretary. All of the above officers assumed the responsibility of office on the 18th of January, 1911.

JOHN S. RAMOS, Secretary.

Honolulu, January 19, 1911.

4829-21

DIVIDEND NOTICE.

Hawaiian Pineapple Co., Ltd.

The directors have declared a monthly dividend of 25c per share upon the capital stock of the company, commencing with dividend No. 29, due and payable January 31, 1911.

Stock books will be closed to transfers from the 25th to the end of each month.

A. W. ADAMS, Treasurer.

Dated January 18, 1911. 4829-Jan. 19, 20, 21.

NOTICE.

To Whom It May Concern: We beg to state that Mr. H. B. Odell has severed his connection with us.

ASSOCIATED GARAGE, LTD. 4829-21

THE RENEAR CO.

Limited

ALGARROBA BEAN MILLS.

LEGAL NOTICES.

NOTICE TO CREDITORS.

Estate of William Brede.

Letters Testamentary on the estate of William Brede having been issued to the undersigned, by W. J. Robinson, Third Judge of the Circuit Court of the First Judicial Circuit, Territory of Hawaii, on the 15th day of December, 1910:

Notice is hereby given to all creditors of the said William Brede, deceased, to present their claims duly authenticated, and with proper vouchers, if any exist, even if the claim be secured by mortgage on real estate, to the undersigned at his place of business, at the corner of Fort and Merchant streets, Honolulu, within six (6) months from the first publication of this notice, or they will be forever barred.

All persons indebted to said William Brede are requested to make immediate payments to the undersigned at his place of business as aforesaid.

Dated, Honolulu, Oahu, December 30, 1910.

HENRY WATERHOUSE TRUST COMPANY, LTD., Administrator of the Estate of William Brede.

4813-Dec. 31; Jan. 7, 14, 21, 28, 1911.

IN THE CIRCUIT COURT OF THE FIRST JUDICIAL CIRCUIT, Territory of Hawaii—At Chambers, In Probate. In the matter of the Estate of Anna H. Bailey, Deceased. On reading and filing the petition of William O. Smith of Honolulu, Territory of Hawaii, alleging that Anna H. Bailey, a resident of the City of Oakland, County of Alameda, State of California, died testate at Los Angeles, State of California, on or about January 24, 1910, leaving in the Territory of Hawaii property necessary to be administered upon, and praying that letters of ancillary administration with the will annexed be issued to said petitioner, William O. Smith; It is Ordered that Thursday, the 2nd day of February, A. D. 1911, at 9 o'clock a. m., be and it is hereby appointed for hearing said petition in the courtroom of this Court, at Honolulu aforesaid, at which time and place all persons concerned may appear and show cause, if any they have, why said petition should not be granted. Dated at Honolulu, this 20th day of December, 1910. By the Court: M. T. SIMONTON, Clerk, Circuit Court, First Circuit. (Sgd.) Smith, Warren & Hemenway, attorneys for petitioner.

4813-Dec. 31; Jan. 7, 14, 21, 28, 1911.

BY AUTHORITY.

SEALED TENDERS.

Sealed tenders will be received at the office of the Superintendent of Public Works, Honolulu, T. H., until 12 m. of Wednesday, January 25, 1911, for furnishing the Honolulu Water Works with approximately 600 feet of 6-inch galvanized water pipe of standard dimensions, delivered at Kalihi-uku.

The Superintendent reserves the right to reject any or all bids. MARSTON CAMPBELL, Superintendent of Public Works. 4825-10t

BUSINESS NOTICES.

LEAHI HOME.

The annual meeting of the members of the Leahi Home will be held at the offices of Messrs. Theo. H. Davies & Co., Ltd., Honolulu, on Thursday, January 26, 1911, at 5 o'clock p. m.

T. CLIVE DAVIES, Secretary.

4829-21

AUDIT COMPANY OF HAWAII

924 BETHEL STREET

P. O. Box 645 - Telephone 2035

Conducts all classes of Audits and Investigations, and furnishes Reports on all kinds of financial work

Suggestions given for simplifying or systematizing office work. All business confidential.

TIN AND IRON GUTTERS

JOHN NOTT

The Pioneer Plumber 183 MERCHANT STREET

Forcegrowth

Will do it

Inter-Island and O. R. & L. shipping books for sale at the Bulletin office, 50c each.

BY AUTHORITY

RESOLUTION, No. 429.

RESOLUTION MAKING APPROPRIATIONS FOR THE VARIOUS SERVICES OF THE CITY AND COUNTY OF HONOLULU.

BE IT RESOLVED by the Board of Supervisors of the City and County of Honolulu, Territory of Hawaii, that the following sums, amounting to ONE HUNDRED THIRTY-SIX THOUSAND, NINE HUNDRED EIGHTY-SIX AND 50/100 DOLLARS (\$136,986.50), are hereby appropriated to be paid out of all moneys in the General Fund of the Treasury of the City and County of Honolulu for salaries fixed by law and other salaries, wages of labor, donations, maintenance of jails, schools, and general expenses of the said City and County for the period beginning with the first day of January, A. D. 1911, and ending with the thirty-first day of March, A. D. 1911, said payment to be made pro rata monthly subdivisions of said amount as stated in the schedule thereof herein contained:

	Per month.	Three months.
Salaries fixed by law.....	\$3,005.00	\$ 9,015.00
Advertising, not pro rated.....	500.00	1,500.00
Associated charities.....	100.00	300.00
Attorney, deputies and office employees.....	650.00	1,950.00
Attorney, expenses, civil and criminal cases, not pro rated.....	100.00	300.00
Attorney, material and supplies.....	375.00	1,125.00
Auditor, office employees.....	100.00	300.00
Auditor, material and supplies.....	1,662.50	4,987.50
Bonds, not pro rated.....	255.00	765.00
Building and plumbing inspector, payroll.....	150.00	450.00
Building and plumbing inspector, material and supplies.....	50.00	150.00
Burial of indigent dead, not pro rated.....	900.00	2,700.00
City and county physician, payroll.....	100.00	300.00
City and county physician, material and supplies.....	25.00	75.00
City and county physician, medicine.....	450.00	1,350.00
Clerk, office employees.....	100.00	300.00
Clerk, material and supplies.....	1,400.00	4,200.00
Collection and disposition of garbage.....	150.00	450.00
Commission, collecting road tax, not pro rated.....	60.00	180.00
Committee's clerk, payroll.....	225.00	675.00
Coroner's inquest, not pro rated.....	150.00	450.00
District courts, employees.....	420.00	1,260.00
District courts, material and supplies.....	50.00	150.00
District magistrate, second, not pro rated.....	75.00	225.00
Donation, Hawaii Promotion Committee.....	250.00	750.00
Donation, Kapiolani Park (to be expended under the direction of the Board of Supervisors).....	700.00	2,100.00
Donation, Leahi Home.....	125.00	375.00
Engineering and surveying work, payroll.....	1,500.00	4,500.00
Engineering and surveying work, material and supplies.....	100.00	300.00
Fire inspectors, payroll.....	510.00	1,530.00
Hospital expenses, not pro rated.....	3,450.00	10,350.00
Janitors, payroll.....	1,200.00	3,600.00
Maintenance of fire stations and fire apparatus, payroll.....	5,995.00	17,985.00
Maintenance of fire stations and fire apparatus, material and supplies.....	700.00	2,100.00
Maintenance of Hawaiian band, payroll.....	5,175.00	15,525.00
Maintenance of Hawaiian band, material and supplies.....	75.00	225.00
Maintenance of jails, payroll.....	1,945.00	5,835.00
Maintenance of parks, payroll.....	470.00	1,410.00
Maintenance of parks, material and supplies, not pro rated.....	250.00	750.00
Maintenance of police and fire alarm system, payroll.....	200.00	600.00
Maintenance of police and fire alarm system, material and supplies.....	125.00	375.00
Maintenance of police force, payroll.....	2,235.00	6,705.00
Maintenance of police force, material and supplies.....	1,100.00	3,300.00
Maintenance of pounds, payroll.....	50.00	150.00
Maintenance of prisoners.....	685.00	2,055.00
Maintenance of roads, Honolulu district.....	6,800.00	20,400.00
Maintenance of roads, Honolulu district, not pro rated to be expended in the following manner:		
Nuuanu avenue.....	\$1,500.00	
Pacific Heights road.....	500.00	
Kalahelekani lane.....	500.00	
Maintenance of Ewa road district.....	1,000.00	3,000.00
Maintenance of Waianae road district.....	100.00	300.00
Maintenance of Waikeolu road district.....	1,200.00	3,600.00
Maintenance of Koolaula road district.....	1,000.00	3,000.00
Maintenance of Koolau road district.....	1,150.00	3,450.00
Maintenance of Waimanalo road district.....	100.00	300.00
Maintenance of schools.....	500.00	1,500.00
Maintenance and construction of electric light system, payroll.....	790.00	2,370.00
Maintenance and construction of electric light system, materials and supplies.....	1,018.00	3,054.00
Mayor, incidentals.....	150.00	450.00
Mayor, entertainment fund, not pro rated.....	250.00	750.00
Mayor, food inspector, payroll.....	420.00	1,260.00
Meat and food inspector, payroll.....	100.00	300.00
Milk inspector, payroll and transportation.....	85.00	255.00
Morgan attendant, payroll.....	325.00	975.00
Municipal office rents.....	30.00	90.00
Premium on insurance, not pro rated.....	170.00	510.00
Sanitary inspectors, payroll.....	170.00	510.00
Supervisors, material and supplies, not pro rated.....	400.00	1,200.00
Treasurer, office employees.....	50.00	150.00
Treasurer, material and supplies.....	50.00	150.00
Witness fees, not pro rated.....	450.00	1,350.00

BE IT FURTHER RESOLVED, that the following sums amounting to TEN THOUSAND, SIX HUNDRED AND FIFTY DOLLARS (\$10,650.00), are hereby appropriated to be paid out of all moneys in the Road Tax Special Fund of the City and County of Honolulu for the building and maintenance of roads and bridges in the respective districts named herein, said payment to be made pro rata monthly subdivisions of said amount as stated in the schedule thereof contained herein:

	Per month.	Three months.
District of Honolulu.....	\$2,000.00	\$ 6,000.00
District of Ewa.....	1,250.00	3,750.00
District of Waialua.....	250.00	750.00
District of Koolau.....	50.00	150.00

AND BE IT FURTHER RESOLVED, that the Auditor of the City and County of Honolulu is hereby authorized and directed to draw warrants on the City and County Treasurer for any of the sums named herein, or parts thereof, upon having filed with him sub-vouchers of salaries fixed by law, and other salaries, of donations named herein, of payrolls and of accounts for materials and supplies, accompanied by original vouchers and certified by the clerk as having been duly passed and allowed by the Board of Supervisors at any regular meeting, or any special meeting called for the purpose of considering expenditures;

AND BE IT FURTHER RESOLVED, that to make expenditures under this Resolution, it shall be necessary that all salary lists, items of donations, payrolls, items of material and supplies and accounts of general expenses shall, before being presented to the Board of Supervisors, be passed upon by a committee or committees, and by such be reported to the Board of Supervisors, with the recommendation of such committee or committees, and sums found to be lawfully due and payable may then be voted upon singly or collectively as convenient on a call of the yeas and nays. In the event of any such committee failing or neglecting to so pass upon any such matters, or to make any recommendations in regard thereto, the Board may thereupon act.

AND BE IT FURTHER RESOLVED, that no payments under this Resolution be incurred in any month in excess of the monthly pro rata sums herein authorized.

Introduced by Supervisor H. E. Murray. Honolulu, T. H., January 6, 1911.

Approved this 19th day of January, A. D. 1911.

JOSEPH J. FERN, Mayor.

10t-Jan. 19, 20, 21, 22, 24, 25, 26, 27, 28, 30.

Cash Prize

We will give a Cash Prize of TEN DOLLARS to the person sending us the best original article on the subject of

Kaimuki's Residential Value

The article must explain why KAIMUKI is the best place to build a home in. This is all there is to it. If you know anything at all about beautiful KAIMUKI you can certainly write a splendid little composition about it and win the TEN DOLLARS. Try it!

Your article must contain not less than 200 words nor more than 500. Send your name and address plainly written on your manuscript. It is not necessary for you to have it typewritten—just your own handwriting will do.

Sunday, or any day, you can take a car ride to KAIMUKI. Get off at our Branch Office at the end of the Waialae line. Take a ramble around. Look at the mountains, the land and the sea. Notice the magnificent lay of the ground, the delightful slopes of the Palolo Hills, the pretty homes, the fine road and street improvements and the feeling of comfort and happiness everywhere. Don't forget old Diamond Head, Koko Head and the rainbows. Then it will not take you long to tell the world something about

Kaimuki's Residential Value

Send us your composition on or before January 31, 1911. We will award the prize money on February 5, 1911.

Address:

Kaimuki Land Company, Ltd., Honolulu, T. H.

OWL

CIGAR—NOW 5c

M. A. GUNST & CO. Agents

HAWAIIAN FISHERY, LTD.

King Street Fish Market

Telephone 2565

URINARY DISCHARGES RELIEVED IN 24 HOURS

SANTAL MIDY

SHAW & SEVILLE

NEW MONUMENT WORKS

King Street, Near Alakea

Phone 3085 P. O. Box 491

Assessment No. 13

HARRISON MUTUAL ASSOCIATION

Honolulu Branch

is due on November 15, 1910, and becomes delinquent December 15, 1910.

REAL ESTATE TRANSACTIONS

Entered for Record January 19, 1911.

From 10:30 a. m. to 4 p. m.

Jose de Aveiro and wife et al. to

Sao Martino Bent Soey of H. M

Territory of Hawaii to Mary E

Foster.....Each D

L. L. McConduff and wife to Lizzie

M. Whiting et al.....M

Walter Hunt to P. E. R. Strauch.....M

Ho Yee to Ho Leong, D.....M

Ho Yee to Ho Leong, D.....M

Ho Yee to Ho Leong, D.....M

Ho Yee to Ho Leong, D.....M

Ho Yee to Ho Leong, D.....M

Ho Yee to Ho Leong, D.....M

Ho Yee to Ho Leong, D.....M

Ho Yee to Ho Leong, D.....M

Ho Yee to Ho Leong, D.....M

Ho Yee to Ho Leong, D.....M

Ho Yee to Ho Leong, D.....M

Ho Yee to Ho Leong, D.....M

Ho Yee to Ho Leong, D.....M

Ho Yee to Ho Leong, D.....M

Ho Yee to Ho Leong, D.....M

Ho Yee to Ho Leong, D.....M

Ho Yee to Ho Leong, D.....M

Ho Yee to Ho Leong, D.....M

Ho Yee to Ho Leong, D.....M

Ho Yee to Ho Leong, D.....M

Ho Yee to Ho Leong, D.....M

Ho Yee to Ho Leong, D.....M

Ho Yee to Ho Leong, D.....M

Ho Yee to Ho Leong, D.....M

Ho Yee to Ho Leong, D.....M

Ho Yee to Ho Leong, D.....M

Ho Yee to Ho Leong, D.....M

Ho Yee to Ho Leong, D.....M

Ho Yee to Ho Leong, D.....M

Ho Yee to Ho Leong, D.....M

Ho Yee to Ho Leong, D.....M

Ho Yee to Ho Leong, D.....M

Ho Yee to Ho Leong, D.....M

Ho Yee to Ho Leong, D.....M

Ho Yee to Ho Leong, D.....M

Ho Yee to Ho Leong, D.....M

Ho Yee to Ho Leong, D