

If you want to-day's News, to-day you can find it in THE STAR

THE HAWAIIAN STAR.

The Hawaiian Star is the paper that goes into the best homes of Honolulu

CLASSIFIED ADS, THREE LINES, THREE TIMES TWENTY-FIVE CENTS. QUICK RESULTS

Vol. X.

HONOLULU, H. T., TUESDAY, MARCH 10, 1903.

No. 3423.

MIDWAY TO THE FRONT

OFFICIALS OF THE JAPANESE LINE OF MAIL STEAMERS PLAN TO REPORT VESSELS BOTH EASTWARD AND WESTWARD BOUND FROM THAT SPOT AS SOON AS CABLE GETS THERE.

It is not unlikely that all of the Oriental liners will be reported on every outward and homeward trip by cable from Midway Island. In fact the officials of the Toyo Kisen Kaisha have under consideration the advisability of establishing a signal station on that island as soon as the cable shall be in working order from Midway to Honolulu.

Captain Greene of the Nippon Maru and Captain Going of the America Maru of the Japanese line wrote to the officials of their company as soon as it was known that the cable company would have a station on Midway Island, and suggested to the steamship people the advisability of establishing some sort of signal station on Midway. The advantage of doing this would be that the vessels of the company could be signalled on all of their trips. It would not be necessary for the vessels to stop at Midway except on rare occasions.

Midway is practically within the track of the steamships for they pass now within fifty miles of the place. When the cable is operating they can easily run down to a short distance off the island and there signal ashore any news or important information that may be desired to be conveyed without delay, to their head officials. Such an arrangement would enable the officials at San Francisco, Honolulu and Yokohama to learn whether the vessels were on time, if they had encountered rough weather, when they would be apt to reach the various ports. The idea seems an excellent one. Midway is about a third of the way from Yokohama to this port. By having the vessel reported from that place there would be reduced the uncertainty regarding them while they were making the trips between Japan and the Hawaiian Islands.

The Toyo Kisen Kaisha's fleet will probably not be the only vessels to be reported if the plan suggested by Captains Greene and Going are approved. The Pacific Mail and Occidental and Oriental companies will no doubt make arrangements to share the expense of maintaining the service from Midway. The result will be that all Oriental vessels will be reported.

There is some danger however in running too close to the islands out in that section of the Pacific. Comparatively little is known of the Pacific about Midway Island and a mistake in the course might put a vessel on some uncharted reef. When in the China Captain Seabury used to hug these islands pretty close however and the danger could no doubt be reduced to a minimum by deciding upon some regular course. The steamships would have to lie some distance off Midway however and signal ashore and some times send a boat there if anything important were to be reported.

It is not improbable that the cable officials will try to make some arrangements with the steamship people to have some liner call at intervals at Midway in order to take mail and supplies to the poor lonely operators who will be in charge of the station in that remote portion of the globe.

WANTS LEPERS TO HAVE TELEPHONES

SENATOR KALAUOKALANI INTRODUCED BILL IN SENATE TO GIVE LEPER SETTLEMENT TELEPHONE SYSTEM—BRITISH POLITICAL CLAIMS MORE THAN FIRST REPORTED.

Senator Kalauokalani wants the lepers to have a telephone. In fact in an indirect way he introduced a measure looking to public ownership of this public utility. He moved today that an item of \$15,000 to provide a telephone service from the leper settlement to the rest of the island of Molokai be inserted in the appropriation bill. The Senator considered this quite an important measure. It would enable the lepers to ascertain whenever the paiai supply was short. There was not much debate on the proposition and it was referred to the committee on Public Lands.

(Continued on page five).

A LUCKY HAWAIIAN

W. K. MACOMBER IS LEFT \$500,000 BY THE DEATH OF AN AUNT IN WORCESTER, MASS.—THE ELDER MACOMBER CAME TO THE ISLANDS HALF A CENTURY OR MORE AGO.

Associated Press Cable to the Star.

SAN FRANCISCO, March 10.—W. K. Macomber, an Hawaiian half-white, has been left \$500,000 by the death of an aunt in Worcester, Mass. Macomber came to the Mainland from Hawaii with the company of Hawaiian singers that went to the Buffalo Exposition over a year ago.

Macomber is well known in Honolulu and Kau. He is about 26 years of age and is a native of Kau. His home is at Waiohinu, Hawaii. He attended Kamehameha School until he joined the Hawaiian singers to go to the Buffalo Exposition. He has been living in San Francisco for some months past.

The elder Macomber came to these islands many years ago. Macomber married a native and had a number of children among them being the young man who has fallen heir to the fortune. From what can be learned of the young man this was the first visit he had paid to the mainland. Evidently he gained the good graces of his aunt during his recent visit to the eastern states.

MORGAN'S REASONS.

Associated Press Cable to the Star.

WASHINGTON, D. C., March 10.—Senator Morgan announces that he is opposing the Panama Canal treaty because it does not embody either the law or the spirit of the Spooner law. Both sides agree that there shall be an early vote and it is believed that this will be brought about within a week.

CLEVELAND OUT OF POLITICS.

Associated Press Cable to the Star.

NEW YORK, March 10.—In an authorized interview published today, ex-President Cleveland says that he is out of active politics.

IN A NEW JURISDICTION.

Associated Press Cable to the Star.

WASHINGTON, D. C., March 10.—The jurisdiction of the department of immigration has been extended to include Hawaii, and the other Pacific possessions of the United States.

CHOLERA IN NEW YORK.

Associated Press Cable to the Star.

NEW YORK, March 10.—The steamship Karamania, which arrived from Marseilles, France, today, reports six deaths as having occurred among her passengers during the voyage. These deaths are supposed to be due to cholera.

The vessel has been placed in Quarantine with all of her 733 passengers.

ONCE MINISTER TO VENEZUELA.

BELLEVILLE, Ill., March 1.—Jehu Baker, former United States Minister to Venezuela and for one term Representative from the Twenty-first Congressional district of Illinois, died here today, aged 81 years.

WIRELESS TELEGRAPH IN MEXICO.

CITY OF MEXICO, March 1.—Reports from Guaymas show that the wireless telegraphy experiments across the Gulf of California have been successful.

GREAT SUFFERING ALONG MISSISSIPPI.

Associated Press Cable to the Star.

ST. LOUIS, March 10.—Additional reports from the Mississippi valley indicate that the floods in that section are the worst in recent years. All of the rivers along the valley are overflowing their banks, and flooding the surrounding country for miles. In some sections the low land is completely inundated for a distance of five miles. Thousands of refugees are seeking safety. The situation is very desperate. Relief parties are being sent out. It is expected that many lives have been lost but no reports of any great fatalities in this respect have been received.

DESERT CHURCH OF ROME.

Associated Press Cable to the Star.

ROME, March 10.—Fourteen Catholic priests have joined the independent Catholic church. The schism is daily growing in strength and members.

WOULD PAY SUBSIDIES.

Representative Kaniho this morning introduced a resolution to pay subsidies to the various islands steamers, with a view to inducing the steamship companies to reduce rates on deck passengers. He proposes to pay \$4,000 biennially for the Kinau, \$5,000 for the Mauna Loa, \$3,000 for the Claudine and \$2,500 each for the W. G. Hall and Mikahala.

TO BUILD HILO ROAD.

A conference is in progress this afternoon between representatives of the Hilo-Kohala railroad and the contracting firm of Wilson Lyons & Company of San Francisco. The latter have made an offer to finance and build the road. The representatives of the railroad company are considering the matter and discussing the proposition with the contractor's representatives.

DELAY COSTLY TO HAWAII

THE PEARL HARBOR NAVAL IMPROVEMENTS WILL BE DELAYED AT LEAST A YEAR BY THE FAILURE OF THE CIRCUIT COURT OF APPEALS TO DECIDE THE PENDING CASE.

The delay of the Ninth Circuit Court of Appeals in deciding the case of the United States against the Honolulu Plantation Company will cost Hawaii and the country a long delay in starting work on the Pearl Harbor naval station. It was expected that the appeal, which was argued and submitted long ago, would be settled soon enough to allow an appropriation by the last Congress. As it is the matter necessarily goes over to the next session, beginning in December and it will probably be a year or more before the money is appropriated.

According to the plans of those in charge Congress would have been asked for \$5,000,000 as a preliminary appropriation, but it was not thought that there was any chance of getting the appropriation through before the United States had secured title to the land. Had the case been settled promptly actual work on the improvements at Pearl Harbor would probably have begun in a month or two.

The case will now be decided, it is expected, on May 5, when the court's next term opens, and all will be ready for the next Congress. The appeal was taken by the government from a verdict for \$102,000 for the plantation company's lands. Judge Estee set aside one verdict of almost the same amount, on the ground that it was excessive, but when a second jury made practically the same assessment the judge refused to interfere again, even though he regarded the award as too large. It is said that subsequently the government refused to compromise at \$90,000. The Court of Appeals has power to fix the amount and will probably render a decision settling the matter definitely. Judge Estee's first decision setting aside the verdict of the jury named \$75,000 as a proper sum.

In the Primo beer case the appeal is made useless by the delay. The law appealed on is now being repealed by the Hawaiian legislature and a new law is being enacted in its place. The appeal was from a decision by Judge Estee declaring the Primo licenses invalid, in that they provided for the sale of only Honolulu-made beer and were a discrimination against mainland products.

CAPTAIN GREENE AND HIS WATCH

IT WAS STOLEN FROM HIS ROOM IN THE CALIFORNIA HOTEL—BUT WAS RECOVERED BY THE POLICE—WAS PRESENTED TO HIM BY THE OWNERS OF THE NIPPON MARU.

Captain W. W. Greene of the steamship Nippon Maru which arrived yesterday from San Francisco and sailed at noon today for the Orient, recovered the handsome watch of which he was robbed in the California Hotel February 26, under such sensational circumstances.

The watch was especially valued by Captain Greene. It was presented to him by the owners of the vessel in appreciation of the excellent service he performed during the teamsters strike in San Francisco last summer. The vessels of the Japanese line were the only boats running into San Francisco that were able to discharge, load and sail according to schedule. The masters of those vessels were able to accomplish this apparently impossible task by having the members of their crew perform stevedoring work. Every man aboard the vessels turned to after reaching port and worked overtime in an endeavor to aid his employers in the time of necessity.

The efforts of officers and men were not allowed to go unrewarded by the Japanese company. The captains were presented with a gold watch and chain each, the chief engineers and first officers received watches and the rest of the crew were given a

(Continued on page five.)

NEW SPECIALS.

Madapolam, 35 inch wide, soft finish, 10 cts. yard; Pillow casing, Pequot brand, 12½ cts. yard; fine white Cambric, 10 cts. yard, today at Sachs' Dry Goods Co.

SAVING MONEY.

The plan of the Pioneer Building and Loan Association encourages its members to make monthly savings of stated amounts—\$1.00 or any multiple of \$1.00. The odd dollars of one's income are thus put to substantial use as each dollar paid in immediately begins to earn interest. Loans made to its shareholders are paid back in monthly installments. The interest earned for 1902 was 11½ per cent. Pioneer Building & Loan Association, Judd Building, Merchant street. J. L. McLean, president; A. V. Gear, secretary.

Want ads in Star cost but 25 cents.

ROYAL
Baking Powder

Makes the bread more healthful.

Safeguards the food against alum.

Alum baking powders are the greatest menaces to health of the present day.

Shout

when you have a good thing. Don't be timid about it, but speak

Out

and let the people know how good the thing is. When you speak the truth talk

Loud

enough for the whole community to hear.

We've got something good in our Heywood Shoes for men and we want you to know about it. Come and see the goods.

MANUFACTURERS' SHOE COMPANY, LIMITED

SPECIAL ATTENTION TO OTHER ISLAND MAIL ORDERS.



In placing your affairs in the hands of a Trust Company, you have a right to expect that your interests will be carefully looked after. The Hawaiian Trust Company will never disappoint you.

The Trust Company lives long, stays at home, keeps well, therefore is best fitted to administer a trust.

HAWAIIAN TRUST CO., LTD.

923 FORT STREET.
TELEPHONE MAIN 184.

Influenza is always more or less prevalent at this season of the year. This disease is very similar to a severe cold and if allowed to take its course is liable to cause serious results. The best treatment for influenza is to avoid exposure and take Chamberlain's Cough Remedy. This medicine gives immediate relief and if used as directed, will ward off all dangerous consequences. It leaves the system in a natural and healthy condition. It always cures and cures quickly. All Dealers sell it. Benson, Smith & Co., general agents.



SPRATT'S

Dog Biscuit and Puppy Cakes, also medicines and soaps and general kennel supplies.

Pearson & Potter Co., Ltd.
HOTEL AND UNION STREETS.
Phone Main 317.

Canadian-Australian Royal Mail STEAMSHIP COMPANY

Steamer of the above line, running in connection with the CANADIAN PACIFIC RAILWAY COMPANY between Vancouver, B. C. and Sydney, N. S. W., and calling at Victoria, B. C., Honolulu and Brisbane, Q.

Due at Honolulu on or about the dates below stated, viz:

FOR AUSTRALIA.	FOR VANCOUVER.
MIOWERA FEB. 14	AORANGI FEB. 11
AORANGI MARCH 14	MOANA MARCH 10
MOANA APRIL 11	MIOWERA APRIL 8
	AORANGI MAY 6

Calling at Suva, Fiji, on Both
Up and Down Voyages

THEO. H. DAVIES & CO., Ltd., Gen'l Agts.

Pacific Mail Steamship Co. Occidental & Oriental S. S. Co. and Toyo Kisen Kaisha.

Steamers of the above Companies will call at Honolulu and leave this port on or about the dates below mentioned:

FOR CHINA AND JAPAN.	FOR SAN FRANCISCO.
CHINA FEB. 20	SIBERIA FEB. 24
DORIC FEB. 28	COPTIC MARCH 3
NIPPON MARU MARCH 10	AMERICA MARU MARCH 10
SIBERIA MARCH 18	KOREA MARCH 20
COPTIC MARCH 27	GAELEIC MARCH 28
AMERICA MARU APRIL 3	HONGKONG MARU APRIL 7
KOREA APRIL 11	CHINA APRIL 14
GAELEIC APRIL 21	DORIC APRIL 21
HONGKONG MARU APRIL 29	NIPPON MARU MAY 1
CHINA MAY 7	SIBERIA MAY 9
DORIC MAY 16	COPTIC MAY 16
NIPPON MARU MAY 23	AMERICA MARU MAY 25
SIBERIA JUNE 2	KOREA JUNE 2
COPTIC JUNE 10	GAELEIC JUNE 12

For general information apply to

H. Hackfeld & Co.

Oceanic Steamship Company.

TIME TABLE

The fine Passenger Steamers of this line will arrive at and leave this port as hereunder:

FROM SAN FRANCISCO.	FOR SAN FRANCISCO.
SIERRA FEB. 25	SONOMA FEB. 24
ALAMEDA MARCH 6	ALAMEDA MARCH 11
SONOMA MARCH 15	VENTURA MARCH 11
ALAMEDA MARCH 27	ALAMEDA APRIL 1
VENTURA APRIL 8	SIERRA APRIL 7
ALAMEDA APRIL 17	ALAMEDA APRIL 22
SIERRA APRIL 29	SONOMA APRIL 28
ALAMEDA MAY 8	

*Local Boat.

In connection with the sailing of the above steamers, the Agents are prepared to issue to intending passengers coupon through tickets by any railroad from San Francisco to all points in the United States, and from New York by steamship line to all European Ports.

For further particulars apply to

W. G. Irwin & Co.

(LIMITED)
General Agents Oceanic S. S. Company.

AMERICAN HAWAIIAN STEAMSHIP COMPANY.

DIRECT MONTHLY SERVICE BETWEEN NEW YORK AND HONOLULU, VIA PACIFIC COAST.

FROM NEW YORK.
S. S. OREGONIAN, to sail about February 25.
S. S. MINNETONKA, to sail about March 20.
Freight received at Company's wharf 43d Street, South Brooklyn, at all times.
FROM SAN FRANCISCO:
S. S. NEBRASKAN, to sail February 24.
S. S. ALASKAN, to sail April 25.
S. S. NEVADAN, to sail March 13.
and every sixteen days thereafter.
Freight received at Company's wharf, Stewart Street, Pier No. 20.
FROM HONOLULU TO SAN FRANCISCO:
S. S. NEBRASKAN, to sail March 14.
S. S. NEVADAN, to sail February 24.
FROM SEATTLE AND TACOMA:
S. S. ARIZONA, to sail March 1.

H. Hackfeld & Co.,

C. P. MORSE, General Freight Agent.

AGENTS.

Addicks Bides His Time

THE MAN WHO "HELD UP THE STATE OF DELAWARE" SAYS HE WILL WORK FOR A LEGISLATURE THAT WILL ELECT HIM TO THE UNITED STATES SENATE NEXT YEAR.

DOVER, (Del.), March 2.—The compromise between the Republicans and Union Republicans resulting in the election of State Senator J. Frank Allee (Union Republican) to the Senate which expires in 1907, and Congressman L. H. Ball (Republican) to the term expiring in 1905 was undoubtedly due to pressure from Washington brought to bear upon the Republicans in the Legislature, who have all along been opposed to the election of J. Edward Addicks or any of his adherents to the United States Senate. Congressman Dick of Ohio came to Dover today in the interest of Republican harmony. He established headquarters at the Hotel Richardson, where, prior to the joint session of the Legislature, he received a delegation from each Republican faction. He advised the acceptance by the regular Republicans of the Union Republicans' proposition agreed upon Saturday that a Union Republican be elected to the long-term Senatorship and a regular Republican for the short term. Addicks himself to be eliminated. Dick stated that the Republican National Committee desired this action. The two Senators were elected on the second ballot. The election is regarded as an Addicks victory.

"I am very happy," said Addicks, after the result was announced. "It gratifies me to make one of my best friends, J. Frank Allee, United States Senator. He deserves the place, from party point of view, and greatly strengthens the Union Republicans and myself in making the fight to carry the State in 1904 for the President. I propose to help elect a majority of the Legislature of 1904 favorable to my candidacy for the United States Senate."

James Frank Allee was born in Dover forty-six years ago. He succeeded his father as a watchmaker and jeweler, which business he carries on in Dover. After the appearance of J. Edward Addicks in Delaware politics in 1880, Mr. Allee became actively interested in political matters and closely associated with the Addicks wing of the Republican party. He was elected to the State Senate on the Union Republican ticket in 1898 and in 1902, each time overcoming the opposition of Democratic and regular Republican candidates. Allee is also associated in business with Mr. Addicks and is president of the Bay State Gas Company of Delaware and the Staten Island Brick Company.

Will Take Her Sister's Place

NEW YORK, March 1.—A cable to the Sun from London says: The Paris correspondent of the Daily News reports that Princess Margaret Maria, sister of the ex-Crown Princess of Saxony, is willing to succeed her as the wife of the Crown Prince. Marriage with a divorced wife's sister is not illegal, and Princess Louise would prefer to see Princess Margaret the stepmother of her children than a stranger. She also believes that some of her own popularity among the Saxon people will descend to her sister.

Princess Margaret is Catholic, but if she resembles her sister, she would as soon be anything else. The Crown Prince would please the Saxons by marrying according to Lutheran rites, without trying to obtain the authority of the Vatican for his remarriage. It is added that the Grand Duke of Tuscany, the father of the Princess, is willing, if the interest on Louise's dowry is secured to her for life, to give Margaret a dowry equal to that of Louise. The correspondent does not mention the Crown Prince's inclinations, which, so far as can be judged from the story, have not been consulted.

HORRIBLE OIL EXPLOSION.

Associated Press Cable, Morning Service.

ORLEAN, N. Y., March 9.—In an accident to an oil train here, the oil tanks ignited. A crowd had gathered when an explosion occurred and a large number of people were killed and injured. So far twenty-two bodies have been recovered.

SHIPPING INTELLIGENCE

(For additional and later shipping see pages 4, 5, or 8.)

ARRIVING.
Monday, March 9.
S. S. Nippon Maru, Greene, from San Francisco at 3 p. m.

DEPARTING.
Monday, March 9.
S. S. America Maru, Going, for San Francisco at 9:30 p. m.

Tuesday, March 10.
S. S. Nippon Maru, Greene, for the Orient and Manila at noon.
Stmr. Kinan, Freeman, for Hilo and way ports at noon.
Stmr. Claudine, Parker, for Maui at 5 p. m.
Stmr. W. G. Hall, S. Thompson, for Kauai ports at 5 p. m.
Stmr. Concord, Mana, for Eleele, about 5 p. m.
Stmr. Nocu, Pederson, for Lahaina, Kaniapail, Honokaa and Kukuhihale at 5 p. m.
Stmr. Iwalani, Piltz, for Koloa at 5 p. m.
Stmr. Kauai, Bruhn, for Punaluu and Honouliuli at 5 p. m.
Stmr. Ke Au Hou, Tullett, for Anahua, Kapaa, Kilauea, Hanalei and Kailiwal at 5 p. m.
Wednesday, March 11.
S. S. Alameda, Dowdell, for San Francisco at 11 a. m.

PASSENGERS.
Per S. S. Nippon Maru, March 9, from San Francisco to stop over at Honolulu—Col. and Mrs. E. F. Holmes, F. B. Cleland, Miss E. Winklerfeld, Mr. and Mrs. S. B. Jenks.
Through—For Yokohama: T. Baba, Rev. W. H. Gmelinski, T. Kano, Miss L. Lamb, Mrs. J. T. Murray, Miss E. W. Peters, Mrs. H. Ross, D. L. Smith, Mrs. D. L. Smith, F. Thomas, Mrs. F. Thomas, J. Torrice.
For Nagasaki: T. A. P. May, Mrs. B. Thomas.
For Shanghai: J. P. McCoy, Hugo Suter.
For Manila: W. C. Baker, P. S. Black, F. S. Chapman, Mrs. K. M. Cooney, Mrs. E. E. Elser, Miss Edith Elser, D. Folkmar, S. J. Fountain, Mrs. L. S. Hewitt, Frank Hill, H. A. Macdonald, L. F. Patstone, Mrs. J. R. Ryan and son, Aaron Schwartz, C. H. Smith, Charles Squire, G. B. Travis, H. C. White.

For Hong Kong: Miss M. A. Brewer, S. W. Burdick, Mrs. S. W. Burdick, Dr. W. H. Clunes, S. D. Eldredge, E. M. Fowler, Miss K. Fowler, Miss M. Grouty, Mrs. B. Hanchett, Hon. Arthur Hill, Mrs. Arthur Hill, H. J. Latt, Mrs. H. Musgrave.

BASKET BALL GAME.
A game of basket ball will be played

Important Reasons

Why Herring-Hall-Marvin
Safe Co.'s Safes and
Locks are the Best?

The concrete filling makes these safes absolutely Fire-Proof and positively Damp-Proof. The solid angle corners add greatly to their security in time of fire, and form the only solid corners made. The patent Bolt Work is superior to any in use and does not require the constant oiling, cleaning, and repairs that is acknowledged in other makes of safes. That although 600,000 of these safes are now in use, and many thousands have been tested by some of the most disastrous conflagrations in the United States, THERE IS NOT A SINGLE INSTANCE ON RECORD WHEREIN ONE OF THEM EVER FAILED TO PRESERVE ITS CONTENTS PERFECTLY. They make safes for county treasurers, county recorders, county clerks, jewelers, Hotels, residences, churches and corporations. We have a large assortment of safes on hand and will be pleased to show same.

Theo. H. Davies & Co., LIMITED

Hardware Department

LENT

If you observe the Lenten season strictly you will be interested in the following kinds of fish now in stock:
Codfish, Fiman Haddies Mackerel, Holland Herring, Smoked Halibut, Bloaters, Smoked Salmon, Salted Salmon, Salmon Bellies, Fresh Halibut and Fresh Salmon.
Visit our delicacy counter for good things to eat.

Metropolitan Meat Co., Ltd

Telephone Main 45

BEAVER LUNCH ROOM,
Fort Street. Opposite Wilder & Co.
H. J. NOLTE, Prop'r.

First-Class Lunches served with tea, coffee, soda water, ginger ale or milk.
Smokers Requisites a Specialty.

OHTA,

Contractor and Builder,
.....House Painter

1010, Sheridan Street, near Kin-
Honolulu, H. I.

S. Kojima.

IMPORTER AND
DEALER IN

LIQUORS,

Japanese Provisions.

General Merchandise.

AND PLANTATION SUPPLIES.

1010, HOTEL STREET, HONOLULU

Telephone White 2411.

P. O. Box 906.

Furniture

Our stock of furniture and upholstery goods, was never more complete than at present. Besides furniture, we have a full assortment of RUGS, SHADES, LINOLEUM, MIRRORS, MATTING and PORCH SCREENS. We have well equipped UPHOLSTERY, REPAIRING and POLISHING departments.

THE LEADERS.

Hopp & Co.,

King and Bethel Streets.

Phone Main 111.

Twenty-five cents pays for a Want ad in the Star. A bargain.

We BEGIN where
OTHERS leave off
IF OTHER PAINTS DO NOT STOP THE LEAK
OURS WILL

The Peerless Preserving Paint

IS GUARANTEED TO DO THE
WORK AND TO GIVE
ABSOLUTE SATISFACTION.

WE HANDLE FELT, PITCH AND GRAVEL ROOFS.

Proofs of which are found at the following Buildings:

Alexander Young Building,
Colusa Building,
Honolulu Brewery Building,
C. Brewer & Co.'s Building,
Stangenwald Building,
Stables Building,
New Morgue Building,
And Many Others.

For Further
Particulars
Apply to

Peerless Preserving Paint Co.

No. 30
Queen
Street

GOLDEN RULE BAZAAR

156 HOTEL STREET

Books, Stationery

AND

School Supplies

Blank Books all Sizes,
Letter Copying Books and
Letter Presses,
Office Supplies, Etc., Etc.

Dairies for 1903

J. M. WEBB,
PROPRIETOR.

Honolulu Iron Works.

STEAM ENGINES, SUGAR MILLS
BOILERS, COOLERS, IRON, BRASS
AND LEAD CASTINGS.

Machinery of Every Description Made
to order. Particular attention paid to
Ship's Blacksmithing. Job Work Executed
on Short Notice.

W. G. IRWIN & CO.

AGENTS FOR

Western Sugar Refining Co., San Francisco, Cal.
Baldwin Locomotive Works, Philadelphia, Pa.
Newell Universal Mill Co. Manufacturers of National Cane Shredder, New York, N. Y.
Paraffine Paint Company San Francisco Cal.
Ohlandt & Co., San Francisco, Cal.
Pacific Oil Transportation Co., San Francisco, Cal.

25c. Pays for a Want
Ad in The Star A BARGAIN

St. Louis
A.B.C.
BEERS
The Highest Priced but
the Best Quality.
SOLD EVERYWHERE.

No "Breakbone"

IN

Pawaa

But pure air, pure water and vigorous health. These desirable qualifications have made this locality so popular that 6 more lots have been secured, in order to supply the demand for homes.

Call and see

W. M. Campbell

at his office, 1634 Young street. Phone White 2111, or special agent

W. M. Minton,

JUDD BUILDING.

Twenty-five cents pays for a Want ad in the Star. A bargain.

HENRY E. HIGHTON,

ATTORNEY-AT-LAW.

Southwest Corner Fort and King Sts.
Honolulu, H. T.**DR. K. HAIDA,**Office and Residence Beretania street
near Emma. Office hours: 9 a. m. to 12
m., 6 p. m. to 8 p. m.**General Employment Office.**

M. SHIROKANE.

Japanese and Chinese laborers, etc.,
supplied at short notice. Contract
work of every kind undertaken.
Corner Emma and Beretania streets.**Jno. W. Cathcart,**

LAW OFFICES.

511 AND 515 STANGENWALD BLDG.

Moana HotelWaikiki
BeachRapid Transit Electric Cars arrive
at, and depart from, the main entrance
of the Moana Hotel every ten minutes.

MOANA HOTEL CO., LTD.

T. K. JAMES,
Manager.**The Clifton,**

T. K. JAMES, Proprietor.

Private Apartments en suite and single.
Finest appointed and furnished
house in Hawaii. Mosquito proof
throughout.

HOTEL STREET, NEAR ALAKEA.

PIANO AND ORGAN TUNERHenry C. Davies. Address, P. O. Box
230, Honolulu, Oahu.**DR. J. M. WHITNEY,**

DENTIST

Boston Building, Fort Street Over H.
May & Co.

Hours: 9-5 Tel. Main 277.

CLUB STABLES HACK STAND

Telephones,

MAIN 32 AND 319

HACKS Nos. 3, 7, 24, 53, 236, 59, 51,
186.**HART & CO., LTD**THE ELITE ICE
CREAM PARLORSChocolates and Confections
Ice Cream and Water Ices
Bakery Lunch.**THE FINEST RESORT IN THE CITY****Higaki & Nagami**

Art Photographers

Kodak Developing and Printing.

A life size photograph, size 8x10
given free with every order of one
dozen cabinet pictures.CORNER NUUANU AND
BERETANIA STREETS.
P. O. BOX 879**Hirose Shoten,**Removed to corner of Nuuanu and
Beretania streets.In addition to JAPANESE PROVI-
SIONS and DR YGOODS a wholesale
LIQUOR department has been opened.

Tel. White 1721 P. O. Box 885.

CREPE SHIRTSA large shipment of fine
crepe shirts suitable for the
cold weather have just been
received and are on display
in our window.

PRICES REASONABLE.

RICHEST STOCK OF JAPANESE GOODSIn the city, China, Cloi-
sonne and Satsuma Wares.
Japanese Silks and Curios.**S. OZAKI.**HOTEL STREET STORE.
178 HOTEL STREET.
PHONE MAIN 197.Twenty-five cents pays for a Want
ad in the Star. A bargain.**CORPORATION NOTICES.****Notice of Lost Certificate.**Notice is hereby given that Certificate
No. 944 for Ten Shares of the Oo-
kala Sugar Plantation Co. standing on
the books of said company in the name
of W. S. Edings has been lost, and
transfer of the same on the books of
said company has been stopped.All persons are warned against nego-
tiating, purchasing or dealing with
said certificate. Said shares are trans-
ferable only by endorsement on said
certificate and by surrender of the same
and the issue of a new certifi-
cate. No title will pass to the finder
of said certificate. Said certificate, if
found, should be delivered to the un-
dersigned.GEO. H. ROBERTSON,
Treasurer Oo-kala Sugar Plantation Co.**Election of Officers.**

APOKAA SUGAR COMPANY, LTD.

Notice is hereby given that at the ad-
joined annual meeting of the share-
holders of the Apokaa Sugar Co., Ltd.,
held in Honolulu, on Monday, March
2nd, 1932, the following officers were
elected to serve for the ensuing year:E. D. Tenney.....President.
C. M. Cooke.....Vice-President.
C. H. Atherton.....Secretary.
W. A. Bowen.....Treasurer.
J. H. Castle.....Auditor.The above named officers also con-
stitute the Board of Directors.C. H. ATHERTON,
Secretary, Apokaa Sugar Co., Ltd.**ELECTION OF OFFICERS.**Notice is hereby given that at the an-
nual meeting of the C. Brewer & Com-
pany, Limited, held this day, the fol-
lowing were elected to serve as officers
of the Corporation for the ensuing
year:Chas. M. Cooke.....President.
Geo. H. Robertson.....Vice President & Manager.
.....Vice President & Treasurer.
E. F. Bishop.....Auditor.
W. F. Allen.....Director.
P. C. Jones.....Director.
H. Waterhouse.....Director.
Geo. R. Carter.....Director.E. F. BISHOP,
Secretary.

Dated Honolulu, February 11th, 1932.

Notice of Lost Certificate.Notice is hereby given that Certifi-
cate No. 2134 for 200 shares of the cap-
ital stock of the Kihel Plantation Co.,
Ltd., standing on the books of said
Company in the name of Mamie L.
Burke has been lost, and transfer of
the same on the books of said Company
has been stopped.All persons are warned against nego-
tiating, purchasing or dealing with
said certificate. Said shares are trans-
ferable only by endorsement on said
certificate and by surrender of the same
and the issue of a new certificate. No
title will pass to the finder of said
certificate. Said certificate, if found,
should be delivered to the undersigned.J. P. COOKE,
Treasurer Kihel Plantation Co.
February 25, 1932.**Notice of Lost Certificate.**Notice is hereby given that Certifi-
cate No. 2871 for 500 shares of the cap-
ital stock of the Ewa Plantation Co.,
Ltd., standing on the books of said
Company in the name of Mamie L.
Burke has been lost, and transfer of
the same on the books of said Company
has been stopped.All persons are warned against nego-
tiating, purchasing or dealing with
said certificate. Said shares are trans-
ferable only by endorsement on said
certificate and by surrender of the same
and the issue of a new certificate. No
title will pass to the finder of said
certificate. Said certificate, if found,
should be delivered to the undersigned.W. A. BOWEN,
Treasurer Ewa Plantation Co., Ltd.
February 25, 1932.**Olaa Sugar Co., Ltd.****ASSESSMENTS.**The twenty-third assessment of 10%
or two dollars (\$2.00) per share has
been called to be due and payable Oc-
tober 21, 1932.The twenty-fourth and final assess-
ment of 10% or two dollars (\$2.00) per
share has been called to be due and
payable December 20, 1932.Interest will be charged on assess-
ments unpaid ten days after the same
are due at the rate of one per cent
(1%) per month from the date upon
which such assessments are due.The above assessments will be pay-
able at the office of The B. F. Dilling-
ham Co., Ltd., Stangenwald building.
(Signed) ELMER E. PAXTON,
Treasurer Olaa Sugar Co.
May 12, 1932.**SENATOR BURTON
AN EASY MARK**DEPOSITED TWO THOUSAND DOL-
LARS WITH A ST. LOUIS GET-
RICH-QUICK CONCERN.ST. LOUIS (Mo.), March 2.—Copies
of two letters bearing the signature of
J. H. Burton, United States Senator
from Kansas, showing his connection
with the now defunct National Security
Company may be used in the
trial of Charles H. Brooks and Percy
D. Smith, officers of that get-rich-quick
concern. One of Burton's letters fol-
lows:"UNITED STATES SENATE, Janu-
ary 10, 1932.—The National Security
Company, St. Louis, Mo.—Dear Sirs:
After arriving in Washington and giv-
ing your proposition some thought I
decided to deposit \$2000 with you under
the 6 per cent per month plan, and so
advised Mr. — to make the deposit for
me. I have this day received two cer-
tificates from your company of \$1000
each, sent to me through Mr. —. From
investigation that I have made I feel
that my money deposited with your
company will be safe, and I know it
will be quite impossible for me to find
a more profitable investment. Faith-
fully yours,
"J. H. BURTON."**DIED.**POND—At Brooklyn, Conn. February
11, 1932, Mrs. Sarah A. Pond, mother
of Lieut. Commander Charles F.
Pond, U. S. N., formerly in Honolulu
in command of the U. S. S. Iroquois.**HAKUOLE SILENT.**So far we have been favored with no
response from Mr. James H. Hakuole
regarding the challenge issued by Mr.
C. A. Doyle, and the chance of adding
\$200 U. S. gold into the coffer of the
Japanese Exotic Association, seems
exceedingly remote. Mr. C. Shiozawa
of this paper still holds a certificate of
deposit for \$200 in Bishop & Co., in his
private safe, which was handed to him
by Mr. Doyle on the other day.—Haw-
aii Shippo.**A RICH WOMAN ARRIVES.**Among the passengers on the Nippon
Maru to stop at this port were Mr. and
Mrs. Holmes. Mrs. Holmes is reputed to be one
of the richest women in the world. She
enjoys a monthly income of from \$30,-
000 to \$50,000 a month from the famous
Silver King mine of Park City, Utah.
They will remain here until the Sibe-
ria and then continue to the Orient.**INTERPRETER BUSH RESIGNS.**
Interpreter John E. Bush has re-
signed his position as interpreter of the
Sovereigns. Bill J. Crawford filled the
position yesterday.**WALDORF DRAMATIC SEASON.**The season of the Waldorf Company
commences tonight at the Opera House
and everything is in readiness for the
opening production "Sweet Nell of Old
Drury." Seats have been selling briskly
for this show and a big house is now
certain. The story of Nell Gwynne and
the "Merry Monarch" will give
Miss Waldorf an opportunity to renew
her acquaintance with audiences here
on the best of terms. Naval Mc-
Gregor should also be cordially wel-
comed and although the rest of the
company are strangers they will doubt-
less be well received.Ten portrait statues of heroic size
will adorn the colonnade of the indus-
trial building at the St. Louis ex-
position, and will represent the following
great inventors: Howe, Fulton, Bes-
semer, Chickering, Clark, Ericsson,
Watts, Colt, Hoe and Goodyear.Chamberlain's Cough Remedy is in-
dicated especially for coughs, colds,
whooping cough and influenza. It has
become famous for its cures of these dis-
eases over a large part of the civilized
world. The most flattering testimonials
have been received giving accounts of
its good works; of the aggravating and
persistent coughs it has cured; of se-
vere colds that have yielded promptly
to its soothing effects, and of the dan-
gerous attacks of croup it has cured,
often saving the life of the child. The
extensive use of it for whooping cough
has shown that it robs that disease of
all dangerous results. It is especially
prized by mothers because it contains
nothing injurious; and there is not the
least danger in giving it, even to bab-
ies. It always cures and cures quick-
ly. All Dealers sell it. Benson, Smith
& Co., general agents.

Want ads in Star cost but 25 cents.

**Jesse Moore
A. A. Whiskey
BEST ON EARTH****LOVEJOY & CO.**
HONOLULU H. T.
DISTRIBUTORS FOR
JESSE MOORE-HUNT CO
San Francisco Cal., and Louis-
ville Ky.

Star Want ads pay at once.

**BANK OF HAWAII
LIMITED.**Incorporated Under the Laws of the
Territory of Hawaii.PAID-UP CAPITAL - \$600,000.00
SURPLUS - 200,000.00
UNDIVIDED PROFITS - 48,000.00**OFFICERS AND DIRECTORS.**Charles M. Cooke.....President
P. C. Jones.....Vice-President
F. W. Macfarlane.....2nd Vice-President
C. H. Cooke.....Cashier
F. C. Atherton.....Assistant CashierH. Waterhouse, E. F. Bishop, E. D.
Tenney, J. A. McCandless and C. H.
Atherton.**COMMERCIAL AND SAVINGS DE-
PARTMENTS**Strict attention given to all branches
of Banking.

JUDD BUILDING. FORT STREET

CLAUS SPRECKELS, WM. G. IRWIN.

Claus Spreckels & Co.**BANKERS.**

HONOLULU, H. I.

San Francisco Agents—The Nevada
National Bank of San Francisco.**DRAW EXCHANGE ON**SAN FRANCISCO—The Nevada Na-
tional Bank of San Francisco.
LONDON—The Union Bank of London,
Ltd.NEW YORK—American Exchange Na-
tional Bank.
CHICAGO—Merchants' National Bank.
PARIS—Credit Lyonnais.BERLIN—Dresdner Bank.
HONGKONG AND YOKOHAMA—The
Hongkong and Shanghai Banking
Corporation.NEW ZEALAND AND AUSTRALIA—
Bank of New Zealand.
VICTORIA AND VANCOUVER—Bank
of British North America.**TRANSACT A GENERAL BANKING
AND EXCHANGE BUSINESS.**Deposits Received. Loans Made on
Approved Security. Commercial and
Travelers' Credits Issued. Bills of Ex-
change Bought and Sold.**COLLECTIONS PROMPTLY AC-
COUNTED FOR.**

ESTABLISHED IN 1858.

**BISHOP & CO.
BANKERS****BANKING DEPARTMENT.**Transact business in all departments
of Banking.
Collections carefully attended to.
Exchange bought and sold.Commercial and Travelers' Letters
of Credit issued on the Bank of Cali-
fornia and N. M. Rothschild & Sons,
London.Correspondents: The Bank of Cali-
fornia, Commercial Banking Co. of
Sydney, Ltd., London.Drafts and cable transfers on China
and Japan through the Hongkong &
Shanghai Banking Corporation and
Chartered Bank of India, Australia
and China.Interest allowed on term deposits at
the following rates per annum, vis—
Seven days' notice, at 2 per cent.
Three months, at 3 per cent.
Six months, at 3 1/2 per cent.
Twelve months, at 4 per cent.**TRUST DEPARTMENT.**Act as Trustees under mortgages.
Manage estates (real and personal).
Collect rents and dividends.
Valuable Papers, Wills, Bonds, Etc.,
received for safe-keeping.**ACCOUNTANT DEPARTMENT.**Auditors for Corporations and Pri-
vate Firms.
Books examined and reported on.
Statements of Affairs prepared.
Trustees on Bankrupt or Insolvent
Estates.

Office, 924 Bethel Street.

SAVINGS DEPARTMENT.Deposits received and interest allowed
at 4 1/2 per cent per annum, in accord-
ance with Rules and Regulations,
copies of which may be obtained on
application.**INSURANCE DEPARTMENT.**Agents for FIRE, MARINE, LIFE,
ACCIDENT AND EMPLOYERS' LIAB-
ILITY INSURANCE COMPANIES.
Insurance Office, 924 Bethel Street.**THE FIRST****AMERICAN SAVINGS & TRUST
CO. OF HAWAII, LTD.**

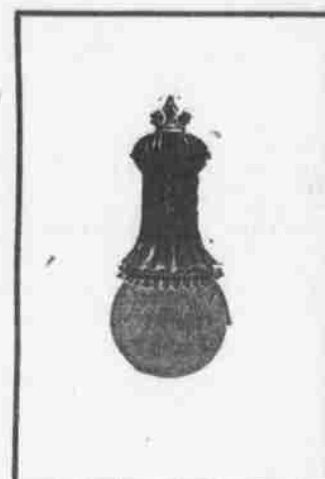
Capital, \$250,000.00.

President..... Cecil Brown
Vice-President..... M. P. Robinson
Cashier..... W. G. CooperPrincipal Office: Corner Fort and
King streets.SAVINGS DEPOSITS received and
interest allowed for yearly deposits at
the rate of 4 1/2 per cent per annum.
Rules and regulations furnished up-
on application.**NOTICE.**DR. F. L. MINER.
Office and Residence, 169 S. Beretania
Street.
Hours: 10-12, 1-3, 7-8.
Telephone Main 480.**Hats Hats Hats
(STRAW) (FELT) (PANAMA)**Our Hat Factory is the largest and
most complete in the city, and we are
always turning out the latest patterns
in Straw Hats.We make Native Hats to order at
prices from \$1.00 up.

Hats cleaned and repaired.

PANAMAS A SPECIALTY**Iwakami & Co.,**

36 and 42 Hotel Street

**The Adams-
Bagnall
Arc Lamp**Direct Current
FOR
Plantation UseIt is the best illuminator. The case
is made of hard rolled sheet copper,
stamped in shape for greatest strength
and durability. It is not affected by
sugar fumes or weather. Send for
booklet giving full description.**Haw'n Electric Co.,
LIMITED.**

TELEPHONE MAIN 390.

The Favorite Champagne**Moet & Chandon**

WHITE SEAL

Dry, Delicate, Delicious

Used by the President of the United States at the banquet to H. R.
H. Prince Henry of Prussia.Used by His Majesty King Edward VII of England at the coronation
banquet.Used by His Majesty the Emperor of Germany on his yacht, the
"Hohenzollern," at the banquet given to the President of the United
States.Used by the President of France at the dinner given in honor of the
unveiling of the Rochambeau Statue.Used also at all the principal banquets and dinners by the leading
Hotels in the Hawaiian Islands.**H. Hackfeld & Co., Ltd.**

Sole Agents for the Hawaiian Territory

DO IT NOW....**Insert Your****Want Adv't****In the STAR**Note Heads, Bill Heads, Statements Want ads in the Star bring quick re-
and Fine Commercial Printing at the sults. Three lines three times for 25
Star Office. cents.

The Hawaiian Star,

DAILY AND SEMI-WEEKLY.

Published every afternoon (except Sunday) by the Hawaiian Star Newspaper Association, Limited.

Frank L. Hoogs,

Editor

TUESDAY, MARCH 10, 1903.

"THE WHEELS GO ROUND."

The County Bill now looks as if solid work were going to be done upon it. The shape in which it will be when it emerges from the House and Senate is now problematical. If it goes through as at present framed, we know what kind of a bill it is, and we can form a fair idea of how it is going to affect us, though, of course, this is entirely experimental, results may arise which we at present do not foresee. Radical changes usually develop the unexpected, and this we may be prepared for in the event of the bill passing in somewhat of its present shape.

If however, the present bill is cut and slashed and has laid upon its back a burden of amendments and additions confusion will be worse confounded, and the result will be well nigh hopeless. Wisdom would counsel that the county bill should pass without amendment, and give two years in which to allow the Territory to adjust itself to the new conditions and the new methods. The conservative members of the House and the majority of the Senate think this way. But will they be able to hold the radical and the erratic?

As the bill stands now, it is an excellent piece of mechanism which has been most carefully constructed by a skilled hand. If some one sets to work to improve this mechanism with a meat axe, the result will not be far to seek. The machinery will be all thrown out of gear, parts of it will not work at all while other parts will not work the way that its framers intended, and there will be a confusion the like of which we have not yet experienced though we have experienced something in this way.

To many of the people in this country, the county system of government, is an utterly untried field and they know nothing of its responsibilities, its advantages or its disadvantages. They are like the young bears, they have all their troubles before them. It is this very lack of the realization of responsibility in this direction which should make the legislature very careful as to what it does in this direction. No one denies, no one can deny that county government is not a healthy form of government, in that it forces each individual to take an active part in the management of local affairs. But the responsibility should be realized, and so thoroughly realized that it cannot and will not be shirked.

The county bill as prepared by the committee gives ample opportunity for exercising this responsibility and two years hence, if it seems advisable, that responsibility might be still further increased, but every consideration of common sense would urge careful thinking members to accept the present bill in its present condition now, and give it an opportunity to show how it does work. There are certain Legislators who like Budge in Helen's Babies, are willing to destroy a watch because they "want to see the wheels go round." There will be plenty of wheels to watch, and plenty of mechanism to learn about during the forthcoming two years, without destroying the county bill or over burdening it with amendments.

Senator Burton seems to have been dead easy upon a land scheme even to the extent of writing eulogistic letters.

We are beginning to learn something about the law's delays. The appeal cases which have gone to San Francisco will go over to another term. We used to kick at our own courts, but we are beginning to learn what other courts are like.

The sugar crop of the Province of Santa Clara in Cuba is a very large one. Last year it turned out 279,659 tons. This year the crop will be 35,629 tons in excess of last year. A great deal of this sugar is being held back at Cienfuegos in order to take advantage of the treaty should it pass.

Today is the fortieth wedding anniversary of King Edward VII. Queen Alexandra has retained her beauty wonderfully and at the end of forty years is still a handsome woman. When she entered London she was unquestionably the most beautiful woman in the British dominions.

The fabled Orient is not a treasure house for the theatrical profession. It never has been. In days of old British India used to be the rock upon which company after company used to split. The small Caucasian communities of China and Japan never could support more than a single night's entertainment, and that of a very primitive kind. Since the occupation of the Philippines, Manila has loomed up as a possible show town, but a vaudeville entertainment is about what it requires. Honolulu is about the farthest western outpost for the theatrical profession, and even this is not always a safe proposition, though money has been made here.

The Balkan question will come well to the fore during the present month and the next two. Though it is still bitterly cold in the upper valleys, the snows are beginning to melt and military operations on an extended scale can be undertaken. The actual fighting, however, is a small part of the game. It is the various diplomatic moves and intrigues which interest the looker on. Though the so-called Macedonian patriots are the people whose welfare is ostensibly being looked after, they are only a stalking horse. Every one knows they are a set of thieves and cut throats, who would willingly rob and murder people of any nationality or religion, a Turk or a wealthy German, American or Englishman, a Mahomedan or a Christian, all would be the same if they fall into Macedonian hands, propitiously. But what Russia and Austria may hope to get out of a turn up is the important subject to consider, and what Germany or England will do in case those two countries gather in too many Macedonian chestnuts.



Bracers

FOR
ROUND SHOULDERSLadies,
Gentlemen, and
Children

Best Grade

AND ALL CHEST
MEASURES.

HOLLISTER DRUG CO.

FORT STREET

TOUCHING VARIOUS TOPICS.

Mr. Baer's speeches appear to much greater advantage than one of the letters he has written.—Baltimore Herald.

An Illinois man used ten pounds of dynamite and the coroner's verdict was "not found."—Cincinnati Commercial Tribune.

The Sultan is going to have an exhibit at St. Louis. It is not known whether it will wear a mother-hubard or a kimono.—Birmingham News.

It may be set down as certain that Mr. Bryan's emblem for 1904 will not be an olive branch for gold bugs with a ballot attached.—St. Louis Globe-Democrat.

If every American consul in South America is drunk by midnight it is perhaps because South American gin mills are not open after 1 o'clock.—St. Louis Post Dispatch.

There may be some excellent reasons for restoring the Democratic party to power, but Mr. Carmack's speeches are not calculated to make the country see them.—Washington Post.

J. Pierpont Morgan insists that he is paying more than his share of taxes. That's all right. Other people insist that he has more than his share of a good many other things.—Lewiston (Me.) Journal.

The latest claim of Chicago is that it is the steam center of the world. There is no manifest reason why the claim should not be allowed. Chicago takes pride in a great many things that no other town wants.—Cincinnati Enquirer.

Civilization seems to be getting both feet firmly planted in Jayhawkerdom. The Kansas Legislature has passed a bill prohibiting "snake-eating." It is now up to Missouri to legally make snake-eating odious.—Atlanta Constitution.

"DIVINE-RIGHT" BAER.

Mr. Baer's tongue has the sweep of a whale's externity.—Buffalo Evening News.

Mr. Baer's efforts to discredit human nature would inevitably be successful if he were a fair sample.—Detroit News.

President Baer evidently has no very high opinion of President Mitchell. It is safe to assume, however, that President Mitchell reciprocates the compliment.—Omaha Bee.

In his speech before the anthracite commission, President Baer evidently forgot to urge his "divine-right" theory as an argument in favor of the operators.—Syracuse (N. Y.) Evening Herald.

President Baer, in his arraignment of the Civic Federation, said the members did nothing during the conference but keep silence and puff cigars. Smoke up, old man! you're mad.—Cincinnati Commercial Tribune.

Mr. Baer of the Reading Coal Company and railroad, who poses as a viceroy of the Almighty in running the anthracite business, appears to have been disciplined by his superior authority. It seems that his starvation wages were not approved up above.—Pittsburg Post.

Mr. Baer evidently doesn't think much of the National Civic Federation, of which Senator Hanna is the leading spirit. Perhaps some responsible club would be willing to offer a prize to have the two gentlemen discuss the organization in a sixteen-foot ring.—Indianapolis News.

Conciliation plan of George F. Baer is to have the miners' wage scale slide with the price of coal. Of course there will be no sliding in the size of the

OUR CORNER
WINDOW CONTAINS

Fluting Machines,
Cane Knives,
Meat Saws,
Carpet Sweepers,
Rat Traps,
Garden Trowels,
Saw Irons,
Hedge Shears,
Monkey Wrenches,
Hammers,
Chisels,
Cleavers,
French Knives,
Steels,
Stank Pounders,
Meat Choppers,
Match Boxes,
Fish Hooks,
Fish Line,
Ice Picks,
Table Bells,
Files,
Wool Cards,
Braces and Bits,
Tobacco Cutters,
Scales,
Spatulas,
Fish Sealers,
Wick Trimmers,
Bird Cages,
Twine Holders,
Hatchets,
Coffee Mills.

This will give you only a small idea of the assortment that we carry in our hardware and house furnishing department on our second floor, which can be reached by our safety elevator.

W. W. DIMOND & CO.,
LIMITEDDealers in
Household
Necessities

Nos. 53, 55 and 57, King Street

HONOLULU.

Classified Ads in Star.

A Three-Line Advertisement (15 words) will be inserted in the STAR'S Classified Columns for 25 cents. Each additional line at the rate of 10 cents extra.

Ads under "Situations Wanted," inserted free until further notice.

For Sale

A magnificent building site on the Punchbowl slope near Thurston avenue. Particulars at Star office.

Building lot corner King and Kamehameha road. Palama terminus of Rapid Transit road. Apply at Star office.

Furnished Rooms To Let

A nicely furnished front room. Mosquito proof and electric light. 494 Beretania near Punchbowl.

Two furnished rooms. Cheap. No. 9 Garden Lane.

Room and Board

Nicely furnished room with board in private family. Apply 494 Beretania street.

Lost

A gold ring set with garnet stone on Beretania street between Punchbowl and Alapai streets. Finder will please return same to this office and receive reward.

A gold stick pin, the shape of a spider was lost on walk from Walkiki band stand to the Annex, or from there on car to Punchbowl street. Return to this office and receive reward.

The Pacific Hotel,

112 Union St., opposite Pacific Club.

Newly Furnished Rooms

The Best Restaurant in the City.
MRS. HANA, Proprietor.

dividends. Trouble is Mr. Baer's partner, by a series of miracles, might keep the price of coal down.—New York Evening Telegram.

A COMPOSER DEAD.

The name of Robert Planquette, who died lately in Paris, is less familiar than the titles of his operas, which have been enormously popular in this country and in England, as well as in France, though their popularity has not been of the kind that excites interest in the composer. Very likely not one in 10 of those who hear "The Chimes of Normandy" know or care that it is Planquette's "Les Cloches de Corneville." This is by far the most popular of his operas, but he also wrote "Rip van Winkle" (1882), "The Old Guard" (1887) and "Paul Jones" (1889), showing a predilection for American themes unusual in a Frenchman, though America has continued to prefer "The Chimes of Normandy." Planquette was born in Paris and educated in the conservatory there.

Good Form
Closet Sets

JUST RECEIVED FROM THE FACTORY

SAMPLES IN WINDOW

Gentlemen's Sets

6 COAT HANGERS..... }
6 TROUSERS HANGERS..... } PRICE \$2.00
1 BAR AND LOOP..... }

Separate Articles

COAT HANGERS, EACH..... 10 CENTS.
TROUSERS HANGERS, EACH..... 25 CENTS.
BARS, EACH..... 25 CENTS.
LOOPS, EACH..... 25 CENTS.
SKIRT HANGERS (AS IS) EACH..... 15 CENTS.

Pacific Hardware Co., Ltd

FORT AND MERCANT STREETS

M. S. GRINBAUM & CO., LTD.,
LIMITED.Importers and
Commission
Merchants

SOLE AGENTS FOR

Little Jack

Smoking Tobacco

5c. and 10c. packages.

Agents for

BRITISH AMERICAN ASSURANCE
COMPANY, of Toronto, Ontario.DELAWARE INSURANCE CO. of
Philadelphia.

Chicago

In Less Than

3 Days

From San Francisco at 10 a. m.

CHICAGO, UNION PACIFIC
& NORTHWESTERN LINE

Pullman fourteen-section Drawing-Room and Private Compartment Observation Sleeping Cars with Telephone, Electric-reading Lamps in every Berth Compartment and Drawing-Room. Buffet Smoking and Library Cars with Barber and Bath. Dining Car—meals a la carte. Electric-lighted throughout.

Daily Tourist Car Service at 6 p. m. and Personally Conducted Excursions every Wednesday and Friday at 8 a. m. from San Francisco. The best of everything.

R. R. Ritchie,
Gen. Agent Pacific Coast,
San Francisco.

617 Market Street.
Palace Hotel.
or S. P. Company's Agent.

Tired Nurses Say
Our Rubber
Tired Baby
Carriages Are
Very Restful

The Von Hamm-Young Co., Ltd.
NEW YOUNG BUILDING,
KING STREET.

A NEW SHORTHAND CHARACTER.

The invention of the method of writing by signs, called shorthand, has served the grand and useful purpose for which it was intended. The stampede made by business men to crowd the greatest amount of work into the smallest space of time, thereby realizing greater attainments, has given birth to time-saving devices of many kinds, but not the least of these is the shorthand alphabet. There are many different systems but even those which were supposed to have been perfect a few years ago are being improved and characters are changed to include more in their meaning. The letter D has been adopted recently by many stenographers to signify anything perfect. It has been found that the letter D stands for Douglas—the inventor of the Douglas Patent Closet, guaranteed against leakage and the annoyance of running water. Bath, the plumber, installs the Douglas.

GROTE & CRAMER,
MERCHANT TAILOR.

Suits Made To Order, Cleaned and Repaired.
Ladies' Skirts Dyed and Cleaned.
Union Street, Honolulu, T. H.

CASTLE & COOKE, LTD.,

Commission Merchants,
Sugar Factors....

AGENTS FOR

The Ewa Plantation Company,
The Waiakua Agricultural Co., Ltd.
The Kohala Sugar Company,
The Waimea Sugar Mill Company,
The Fulton Iron Works, St. Louis, Mo.
The Standard Oil Company,
The George P. Blake Steam Pumps,
Weston's Centrifugals,
The New England Mutual Life Insurance Company of Boston,
The Aetna Fire Insurance Company of Hartford, Conn.
The Alliance Assurance Company of London.

Castle & Cooke, Ltd

Life and
Fire

Insurance Agents

AGENTS FOR

New England
Mutual Life
Insurance Co
OF BOSTON.

Aetna Fire
Insurance Co.,
OF HARTFORD, CONN.

THE

New Overland

LIMITED

SAN FRANCISCO TO
CHICAGO IN

Less Than 3 Days

AND NEW YORK

3 Days 19 Hours

AN

EVERY DAY TRAIN

Bath, Barber, Buffet, Library,
Electric Lights, Reading Lamps,
in Every Berth, Observation Car
Telephone Service.

Southern Pacific

E. O. McCORMICK
Passenger Traffic ManagerT. H. GOODMAN,
General Passenger Agent.

SAN FRANCISCO, CALIFORNIA.

Note Heads, Bill Heads, Letter Heads
and all kinds of Job and Commercial
Printing neatly and promptly executed
at the Star Office.

FIRST SPRING SHOWING

White Dress Goods and Embroideries—The Very Latest Creations—An Immense Assortment.

We'd like to have you see these handsome materials. You'll want new summer garments now and of course an Easter gown. Goods are very swell and prices way down to the bottom notch.

Mercerized White Goods

In stripes, polka dots and fancy. The very latest for shirts, waists and skirts.

New Madras and Piques

These are crisp and new and will make up prettily.

Embroideries

The most elaborate assortment ever displayed in Honolulu. Patterns are entirely new.

Embroidery Sets

A good display of beautiful designs.

Fine Neat Embroideries

Of these we have a special assortment for infants wear.

Fancy Colored Embroideries

These are something new. Material to match.

Medallion Embroideries

Very new and effective for dress trimmings.

ALL-OVER EMBROIDERIES.

All new and in handsome patterns. New embroidery beadings.

COME EARLY.

THREE SPECIALS THIS WEEK

Madapolam

soft finish, 36 in. wide, just the thing for underwear, 10 cts. yard.

Fine White Cambric

Yard wide, soft finish, good quality, 10 cts. yard.

Pillow Case

Pequot brand, size 5-4, best cotton, 12½ cts. yard.

N. S. Sachs Dry Goods Co., Ltd

Mohamet and the Mountain

HAVE ILLUSTRATED MANY A POINT AND WILL CONTINUE TO DO SO FOR CENTURIES TO COME. AS WE CANNOT VERY WELL BRING A STEIN BLOCK SUIT TO EVERY MAN IN THIS TOWN FOR HIS INSPECTION, WE MUST TRY TO BRING THE MEN TO OUR STORE TO SEE THE MOST FASHIONABLE AND PERFECTLY TAILORED CLOTHES THAT IS POSSIBLE FOR THE SKILL AND SCIENCE OF THE 19TH CENTURY TO PRODUCE. THIS LABEL IN THE COAT HAS BEEN THE HONORABLE "CLOTHES-MARK" OF THE MAKERS FOR NEARLY A HALF CENTURY.



M. McINERNY, LTD.,

HONOLULU, T. H.

CAPTAIN GREENE AND HIS WATCH

(Continued from page one.)

month's extra pay in addition to the extra allowance for the extra work. It was on only his last visit to Japan that Captain Greene had received from the president of the company the inscription which was to be placed in the watch which is an elegant gold one.

Captain Greene was feeling ill on February 26 so did not go out to have the inscription placed in the watch. That night his room on the eighth floor of the California Hotel was entered and he was robbed. The burglar evidently entered through the fire escape. He must have drugged Captain Greene for the strains of some narcotic were discovered on the couch. The gold watch and chain and \$35 in cash was taken. Captain Greene's coat containing his purse with over \$500 in cash as well as some valuable papers had been left hanging in a closet and was left untouched by the robber. The vest was discovered outside on the fire escape the next morning.

Captain Greene reported the occurrence to the police. He did not remember the number of the watch and the only mark he was able to furnish the officers was a particular stamp inside the case that the manufacturers had placed there. By Saturday night the watch and chain had both been recovered. No trace of the robber was found. The police are inclined to the belief that the thief is the same man who has been operating at the Palace Hotel.

ELEPHANT LARGER THAN JUMBO
NEW YORK, March 2.—A cable to the Sun from London says: The elephant Jingo, which has been bought by Bostock from the London Zoo, will sail for the United States on the steamer Georgia on March 6th. Bostock says that he would not now accept \$20,000 for the elephant, which is larger than Jumbo was, and is still growing.

NEW PRESIDENT IN SALVADOR.
PANAMA, March 2.—A dispatch from Salvador received here today says General Regalado yesterday handed over the Presidency to General Pedro Jose Escalon, who was declared elected February 19th. This was the first peaceful transfer of the Presidency in fifty years and has caused great rejoicing throughout Salvador.

Illustrations for
Newspapers, Maps,
Catalogue Cuts.
HARRY ROBERTS
P.O. BOX 86. PALAMA.

Henry Waterhouse Trust Co., Ltd.

Monarch Shirts \$1

They are the real thing. The latest styles and designs.

ARROW BRAND COLLARS 2 FOR 25C.
ELASTIC SEAM DRAWERS 50C.

If you know about prices and quality you'll be around early.

1071 BISHOP ST.
Alex. Young Bldg.

LEIVINGSTON'S

LEPERS AND TELEPHONES

(Continued from page one.)

Senator Dickey moved that an item for \$200 be inserted in the same bill to defray the yearly salary for the school agent on the Island of Maui.

Quite an unexpected communication was received from Secretary Hawes, conveying the information that the amount of the claims that the British subjects have against the Territory as the result of political imprisonment during the 1895 trouble was considerably larger than had been originally reported to the Senate. In the previous message giving the amount of these claims, the enumeration of the claims of the British people had been in "dollars" when it should have been in "pounds sterling." This little error will make an increase of nearly five times the amount given in the original figures. The message today was referred to the Judiciary Committee.

Senator Dickey introduced the various bills drawn by Chief Justice Frear which are to revise the statutes of the Territory.

Senator Achi introduced his bill granting the Kona-Kau Railroad ten years release from the payment of taxes.

The Public Lands Committee recommended in favor of the present insane asylum being continued and that branches be established on the other islands.

The malt liquor license measure was reported favorably with the amendment that the alcoholic strength be reduced from 10 to 5 per cent. The railroad and local option bills were not reported.

The Governor's message regarding appropriation for unpaid bills was referred to the Committee on Public Expenditures.

The bill to appoint a commission of three members to compile the statutes was passed. The members are to receive \$1500 each.

Some discussion regarding the bill to charge dressmaking establishments a fee of \$20 occurred. This measure was referred to the county committee. Senator Crabbe asked if the bill required very poor woman sewing to take out this license. Senator Brown said that it probably would have such an effect unless the term "establishment" were not clearly defined.

Senator Kalaokalani, the father of the bill, said that he had been around the islands a good deal and that the dressmaking was all in the hands of Japanese. Senator Kaohi said that according to this reasoning they might as well charge poi makers a license too as the poi makers were principally Chinese.

The bill regulating the notice of summons was passed as was the bill repealing the law regarding the importation of opium.

The Senate adjourned until tomorrow at 10 a. m. There will be various committee meetings this afternoon.

TRIAL OF JACKSON

The defense in the case of Nigel E. G. Jackson, charged with arson in the first degree, will be an alibi. A jury was secured soon after court met this morning and opening statements were made by both sides. A. L. C. Atkinson for the defense said that Jackson's whereabouts and doing up to the time of the fire would be shown.

After the first satisfactory twelve jurors had been secured George A. Davis asked the men in the box if any of them had conscientious scruples against the death penalty, reading the statutes which provides death or life imprisonment for arson in the first degree, in the discretion of the judge. Juror Prescott stated that he had objections to the death penalty which would probably deter him from bringing in a verdict of guilty and he was excused.

In his opening statement Davis said that the case would be a lengthy one and the evidence circumstantial. "The crime of arson is usually committed in darkness and secrecy," he said, "and we shall not be able to show you the actual lighting of the match by the perpetrator of this dastardly deed. But we shall show that the defendant was on the premises at a late hour without the invitation or consent of the occupants. We shall prove that he had made frequent threats against some of the occupants of the dwelling and that on the morning of the fire, when he returned to his room Jackson remained up for some time, moving about the place, and that when the fire began he told others that it was the Friel place. We shall also show that before the coroner's jury the defendant told conflicting stories about this statement."

Atkinson stated that the defense admitted the destruction of the building and the burning to death of three occupants, but would prove that Jackson had left the Friel home long before the fire and would account for every moment of his time until he went to sleep and was awakened by the fire. "We shall also show that Jackson was a frequent visitor at the Friel home," he said, "and that even though there were divorce proceedings pending he was on intimate terms with his wife."

J. B. Watson, one of the occupants of the Friel home, was the first witness. He testified to seeing the defendant at the Friel place early on the evening of October 29. Watson retired between half past ten and eleven p. m. and was awakened at about 2 a. m. on October 30 by the fire. When he first saw it it was on the kitchen wall, near the window. Watson said that before retiring he had looked in the stove and that there was no fire in it.

According to Mrs. Watson the fire started on the outside of the kitchen wall and was preceded by another effort to burn the dwelling. She testified to having found a burnt towel in a compartment inside the house.

Mrs. Watson testified to hearing Jackson call his wife out to the front porch a month or so before the fatal fire. Jackson asked for a glass of water and Mrs. Jackson took one to him. "I heard Mrs. Jackson say, 'you shall not do that on my father's porch,'" said the witness, "and the glass was dashed down and broken."

Judge De Bolt intimated an important ruling regarding testimony as to threats alleged to have been made by the defendant. The court stated that the only threats that could be placed before the jury were threats of arson and this ruling will shut out much evidence which the prosecution wants to try to produce. Mrs. Watson was not allowed to tell of a quarrel between Jackson and wife two years before the fire, the court ruling that it was too distant.

A. P. Taylor was the last witness called this morning, and legal objections occupied some of the time he was on the stand. Judge De Bolt ordered the jurors kept together as in a murder case, and they were taken to the Grill for luncheon. The jurors are: Herman Meek, A. E. Lloyd, James Steiner, E. A. Ross, N. Peterson, J. McKeague, D. M. Ross, E. R. Adams, Vincent Fernandez, M. W. Parkhurst, D. L. Austin, E. O. White.

STUART ROBSON ILL.

NEW YORK, March 2.—Stuart Robson, the comedian, is ill at his home here and his tour for the next two weeks has been canceled by his manager upon the advice of the physicians attending Mr. Robson.



The Expert Dentists for Honest Work at Low Prices. The largest and most complete offices in the city. TRY THEM.
215 Hotel Street off Union, in front of Young Building.

SHIPPING INTELLIGENCE

ARRIVING.

Monday, March 9.
Stmr. Maui, F. Bennett, from Papeete at 2:30 p. m. with 10,757 bags sugar.

DEPARTING.

Tuesday, March 10.
Stmr. Ke Au Hon, Tulett, for Adahola, Kapaa, Kilauea, Hanalei and Kailiwhai at 5 p. m.
Stmr. Iwaland, Plitt, Waimea and Kekaha at 5 p. m.
Stmr. Noeau, Pederson, for Lahaina, Knapahai, Honokaa and Kukuhihale at 5 p. m.
Sloop Kaulani, for Pearl Harbor at 10 a. m.
Stmr. Maui, F. Bennett, for Papeete and Kukaia at 2 p. m.
Stmr. Lady, for Koolau at 11 a. m.
Am. bktn. W. H. Dimond, Hansen, for San Francisco at 10 a. m.
Stmr. Kaula, Bruhn, for Punaluu at 5 p. m.

PASSENGERS.

Per stmr. Kinau, March 10, for the Volcano—Mrs. E. L. Rockhill, Miss Dick, P. B. Yates and wife, B. Clifton Henry Dick, Col. S. B. Dick, J. M. Siedenback, A. E. Houghton and wife for Hilo: Mrs. Rolling, E. P. Mabie, J. P. Sisson, Mrs. H. Deacon and son, A. Humbert, A. V. Peters, Mrs. W. P. Thrum, 2 children and nurse; for Mahukona, C. Kaiser, Mrs. J. R. Maclean; for Kawaihae, A. C. Aubrey; for Maunaloa, C. H. Dickey.

Per stmr. Claudine, March 10, for Kailiwhai—John J. Walsh, Mrs. John Grubbs, Theodore Reberg, C. D. Lufkin, J. P. Cooke, J. G. Smith, wife and child, Alfred Cooper, H. E. Cooper; for Hana: Emily Kalama; for Lahaina, C. Streikewald.

Per S. S. Nippon Maru, March 10, for the Orient—Mrs. A. J. Coffee and child, Jules R. Wall, E. Ginsbourne, C. H. Smith and wife, Mrs. Ho See, C. F. Scott, George Lynch and wife, Charles E. Benjamin, Dr. G. A. Moore and wife, Mrs. S. Patton, Mrs. M. Marsh, B. Pochhammer, H. J. Gallagher.

CHARIOT IN A TOMB.

NEW YORK, March 2.—A cable to the Sun from London says: Advice from Cairo dated February 24th say that Mr. Davis an American who has expended considerable sums in exploration work near Thebes, has found a splendid chariot in the tomb of King Thothmes. The fittings of the chariot are of bronze and the remainder is of gilded wood. The chariot is valued at \$5000.

NEW ADVERTISEMENTS

CHAMBER OF COMMERCE.

The regular monthly meeting of the Honolulu Chamber of Commerce, will be held at its room in the Hackfeld Building on Wednesday, March 11, at 2 p. m.

IMPORTANT BUSINESS.

A full attendance is requested.
JAS. GORDON SPENCER,
Secretary.
Honolulu, March 10, 1903.

MEETING NOTICE.

McBRYDE SUGAR CO., LTD.

The regular annual meeting of the stockholders of this company will be held in the Assembly Hall, over the offices of Messrs. Castle & Cooke Ltd., in Honolulu, on Thursday, 26th March, 1903, at 10 o'clock a. m.

The stock transfer books will be closed between the 12th and 24th March.
F. M. SWANZY,
Treasurer, McBryde Sugar Co., Ltd.
Honolulu, March 10, 1903.

BY AUTHORITY

PUBLIC LANDS NOTICE.

Applications have been made to this Commission for Settlement Associations on Government Lands at the 27½-Mile Tract in Oloa, Puna, Hawaii, known as the Otto Rose and Baker Settlement Associations, averaging in area of 200 acres a lot. Maps &c. are now open for inspection in the Office of Mr. E. D. Baldwin, Sub-Agent First Land District, Hilo, Hawaii.

The public is invited to make such suggestions as to its dispositions.

EDWARD S. BOYD,
Commissioner of Public Lands.
Public Lands Office, Honolulu, March 6th, 1903.

HAWAIIAN OPERA HOUSE.

Lessee and Manager, Mr. W. Regie
Representative, Mr. Arthur Seymour

Janet Waldorf Co.

Tuesday, Mar. 10

The Romantic and Amusing Comedy

"Sweet Nell of Old Drury"

Which aroused Audiences to a Pitch of Enthusiasm throughout England, America, Australia and the Orient.

ONE NIGHT ONLY

THURSDAY 12th MARCH

"The Lady of Ostend"

Which Creates a hurricane of laughter.

SATURDAY, 14th MARCH

The Famous Napoleonic Drama

"A ROYAL DIVORCE"

Further announcement to follow.
Seats on sale at Wall, Nichols & Co. Tariff as usual.
Doors open at 7:30. Performance punctually at 8:15.

A FOOLISH OLD IDEA.

It was once thought that a medicine was all the more beneficial for having a nasty taste and smell. We now know that such an idea is perfect nonsense. There is no more reason why medicine should offend the senses than why food should do so. Therefore, one of the greatest chemical victories, of the past few years is what we may call the redemption of cod liver oil. Everybody knows what a vile taste and smell this drug has in its natural state. No wonder most people declare they would rather suffer from disease than take cod liver oil, and the emulsions are quite as foul and abominable as the plain oil, so matter what may be alleged to the contrary. Now it is one of nature's laws that a medicine which diagnoses the nose and the palate, and also sickens the stomach, can have no good effect as a medicine, because the system cries out to be delivered from it. In

WAMPOLE'S PREPARATION the desired miracle is wrought, and we have the valuable part of the oil, without the other. This effective modern remedy is palatable as honey and contains the nutritive and curative properties of Pure Cod Liver Oil, extracted by us from fresh cod livers, combined with the Compound Syrup of Hypophosphites and the Extracts of Malt and Wild Cherry. The palate accepts it as it does sugar, confectionery or cream. Taken before meals it goes to the very secret stronghold of digestive disorders: prevents and cures Nervous Dyspepsia, Scrofula, Throat and Lung Troubles and all diseases due to impurity of the blood. Dr. G. C. Shannon, of Canada, says: "I shall continue its use with, I am sure, great advantage to my patients and satisfaction to myself." Has all the virtues of cod liver oil; none of its faults. Effective from the first dose. Sold by all chemists.

SPECIAL STOCKHOLDERS' MEETING

A special meeting of the stockholders of the Maui Sugar Co., Ltd., will be held on Saturday March 14, 1903 at 6:30 p. m. at the office of the Oahu Lumber & Building Co., Ltd., 223 King street, for the election of 2 members to the Board of Directors, and other important business as may be placed before the meeting.

MAUI SUGAR CO., LTD.
By its President, Lee Chu.
Honolulu, March 7, 1903.

The New Era Hotel.

Port Street.

Between Vineyard and School.

WITH OR WITHOUT MEALS

Reasonable Terms.

Hawaiian Soap Everybody

The HONOLULU SOAP WORKS are now putting up their BEST Number 1 SOAP in 50 pound Cases—family size—at \$2.25 per box, delivered free to every part of the city. Full cases—100 pounds—will be delivered at \$4.25.

For all empty boxes returned in good, clean condition, 10 and 20 cents will be paid.

Every Family in the Islands should have a case of Soap at this price. The best Soap made for the Kitchen and Laundry. Try a case. It is cheaper than buying by the bar.

Order from the Agents,
M. W. McCHESNEY & SONS
Queen Street.

A WORLD'S WONDER

Hawaii's Live Volcano

All About a
Trip From

RICHARD H. TRENT, Gen. Agent

Corner Fort and Merchant streets.

Want ads in Star cost but 25 cents.

Want ads in the Star bring quick results. Three lines three times for 25 cents.

A Summer Proposition.

Well, now, there's the
ICE QUESTION!

You know you'll need ice; you know
it's a necessity in hot weather. We
know you are anxious to get that ice
which will give you satisfaction, and
we're like to supply you. Order from

OAHU ICE & ELECTRIC CO.,

HOFFMAN AND MARKHAM.

Telephone 151 Blue, Postoffice Box 695.

W. G. IRWIN & CO., LTD.

Wm. G. Irwin, President and Manager
Class Spreckels... First Vice-President
W. M. Giffard... Second Vice-President
H. M. Whitney, Jr. Sec'y and Treasurer
Geo. J. Ross... Auditor

SUGAR FACTORS, COMMISSION AGENTS

AGENTS OF THE

Domestic Steamship Company of San
Francisco, Cal.

AGENTS FOR THE

Scottish Union National Insuranc
Company of Edinburgh.

Windsor & Magdeburg General Insur
ance Company.

Associated Assurance Co., Ltd., of
Munich and Berlin.

Alliance Marine and General Assur
ance Co., Ltd., of London.

Royal Insurance Company of Liver
pool.

Alliance Assurance Company of Lon
don.

Hochster German Insurance Company.

SAVE MONEY!

By using our Pure

Ready Mixed Paint

Choose your color and do the
work YOURSELF.

One gallon covers 600 square
feet.

Wilder & Co.

Limited

"I Roughed It"

Many of us have to work hard all day
long. We cannot care for ourselves as
we would. No wonder our blood gets
out of order, becomes thin and impure.
This produces boils, eruptions, nervous
ness, indigestion, and great weakness.



We have this photograph and letter from
Mr. John H. H. of Wagon Wagon, New
South Wales. Read carefully what he says:
"I have roughed it a great deal, mining,
working in mines, exposed to the heat, and
have often had poor food. My blood fre
quently became impure and I have eruptions,
boils, and become generally run down. But
Ayer's Sarsaparilla takes hold of me every
time, makes my blood pure and builds me
right up."

AYER'S Sarsaparilla

There are many imitation "Sarsaparillas."
Be sure you get Ayer's.

Take Ayer's Pills with the Sarsaparilla.
They aid in purifying the blood; and they
cure constipation and biliousness.

Prepared by Dr. J. C. Ayer & Co., Lowell, Mass., U.S.A.

Silent Barber Shop

Hotel Street.

HOT AND COLD BATHS.
BEST BARBER SHOP
IN HONOLULU.

Oahu Tailoring Company.

MERCHANT TAILORS.

Suits Made To Order.
Cleaning, Repairing and
Pressing a Specialty.

Corner Beretania and Emma Streets.

NOTICE.

Persons needing, or knowing of those
who do need protection from physical
or moral injury, which they are not
able to obtain for themselves, may con
sult the Legal Protection Committee of
the Anti-Saloon League, 9 McIntyre
Building.

W. H. RICE, Supt.

CARRIE NATION IN 'FRISCO

THE KANSAS HATCHET WIELDER IS ARRESTERED
BEFORE SHE HAS BEEN IN THE GOLDEN GATE
CITY TWENTY-FOUR HOURS—IS PROMPTLY
BAILED OUT BY HER MANAGER.

SAN FRANCISCO, March 2.—Carrie Nation was arrested
last night after a vigorous evening spent in a number of down
town saloons, but was speedily released on bail furnished by her
manager, G. R. Ray. Her arrest was the result of her having
smashed a bottle of whisky over the counter of a Montgomery
street saloon. It broke a lot of glassware and the glass doors of
a bottle case, and the damage is estimated at over \$100 by the
proprietor of the place.

Her manager, G. R. Ray, disappeared after the event. About
12 o'clock Special Officer Rochette went to the hotel, arrested
Carrie and she went to the City Prison with him, after asking that
she might be given time to procure her nightgown. The evening
ended ingloriously for Carrie and it would seem that it was all
because her natural genius for advertising was aided and abetted
too much by those about her.

She began the evening at a saloon on Market street and the
crowd was with her from the start. She told the proprietor he
was manufacturing drunkards all the time and then moved on.
The next stop was at a saloon at the junction of Geary and Mar
ket streets, where the crowd poured through the two doors as
through a sieve. She asked the bartender if he liked his business,
and he said he did "because he made his living at it."

As she came out a man took off his hat and cried, "God bless
Carrie Nation," and Mrs. Nation clasped the Bible that she car
ried tightly, bowed her head and said, "May that prayer be an
swered." By the time a newly fitted up saloon on Montgomery
street was reached the crowd was a small army. It poured in, for
it had been whispered that damage was likely to be done here.
Everybody in the place, proprietor and help alike, seemed only
too pleased to see Carrie. She took off her hat and mounted a
big leather chair for a speech. She got little attention, but calls
and hoots, though good natured, greeted her.

One man called, "Where's your hatchet?" She held up her
Bible.

"She's out for notoriety!" came another voice.

"That man don't know a motive higher than a dollar!" Mrs.
Nation cried.

"Why don't you smash something, Carrie?" yelled a tall man.
Mrs. Nation turned, and she had an unsurprised look upon her
face.

"I believe they just want me to smash something to advertise
this man's business," she said. "But I won't do it that way. It's
too much like hypocrisy. But just give me a bottle of whisky and
I'll show you what I'll do with it. No, that won't do," as an em
pty bottle was offered. A full bottle of thin-looking whisky was
handed her and she threw it over the counter, smashing it into
bits, striking among other glass in its fall. Every one took this
very calmly; so the crowd moved on.

The crowd was so big that she had to take a Geary-street car
and go out several blocks to avoid it. She came back down Mar
ket street, visited another saloon, where she told the proprietor
pleasantly that she "saw everywhere she looked the corpses that
his business had made." Then she took another car nearly down
to the ferry, followed by a yelling mob, and got back to her hotel,
to change it for the prison a half-hour later.

Mrs. Nation says she has taken a vow of poverty, and the
money that she makes is going into a home for drunkards' wives
to be built in Kansas City. She had quite a number of callers
yesterday, among them James L. Himrod, president of the State
central prohibition committee. Mrs. Nation will visit the Univer
sity at Berkeley on Friday. She lectures tonight at the Alhambra.

AMES CLAIMS INNOCENCE.

HANCOCK, N. H., March 3.—Former Mayor Albert A.
Ames, of Minneapolis, who is here awaiting the result of extradi
tion proceedings, said in the course of an interview, today:

"I am perfectly willing to go back and face the charge, but I
really do not feel able. I know that I am not strong enough to
stand the journey and the physicians advise against it. I am per
fectly innocent. I know they cannot prove any of these charges,
which are due to politics, and you know what that means."

"It is persecution," interrupted Mrs. Ames, indignantly. "They
simply want to injure the doctor. They want to get him out of the
way."

Dr. Ames, according to his wife's statement, to which he nod
ded approval, has been ill since November 20, 1901. The date is
significant, from the fact that the charge of accepting a bribe on
which the papers for his requisition have been granted is based on
an incident said to have taken place on November 15, 1901, or
five days previous to his first illness.

"I want to say just here," said Mrs. Ames, in a most positive
manner, "that Dr. Ames is not and never has been a fugitive from
justice. There has never been a time except when we were travel
ing that those interested in Minneapolis did not know where he
was."

"They have had him arrested on a new indictment found Feb
ruary 4 and what have they got to back it up? Nothing but the
evidence of a woman who says she paid him \$25 through Mr.
Brown, the Mayor's private secretary."

ANOTHER SMALL FARM SCHEME.

H. W. S. Edmunds, who lately arrived from the Orient says
that negotiations are under way between himself and the owners
of the Kamalo Sugar Company property by which the 11,000
acres of that estate are to become the property of a corporation
which will divide it up into suitable sized small farms and induce
American farmers to come and settle on it. The corporation will
carry those who have not capital enough to carry themselves over
the preliminary period of planting. The security to the company
for the advances made, will be labor to be performed by the colo
nists for the corporation on lands it will plant. Another feature
of the plans proposed is that the corporation will sell small farms
on the instalment plan, planting and cultivating them for the
purchasers, under the latter's direction.

NEGRO BURGLAR GANG.

The negro burglar gang were in Judge De Bolt's court again
yesterday morning, when Attorney General Andrews entered a
nolle prosequi in each case where the defendant is already serving
a term. Grant Snow, Snow Taylor, Taylor Snow alias Tom Tay
lor, John Brown and Roger James each had the benefit of a
nolle prosequi, as to the charges against them additional to those
for which they are already doing time.

COUNTY BILL NOT READY.

The House yesterday afternoon did not carry out its resolution
to make the county bill the order of the day, for the bill was not
ready to be reported by the printing committee, when the mem
bers came together after the noon recess. The afternoon session
was therefore devoted to advancing a number of Senate and
House bills on first and second reading. Wright offered a reso
lution to appropriate \$5,000 for the expenses of A. L. Louison
at Washington, on condition that Louison stay there four
months and work for a bounty on coffee.



"Can't Afford to Paint."

The man who says that, forgets that painting prop
erly done is economy, and the fact is he can't afford
NOT to paint.
How often you require to paint is largely depend
ent upon the paint you use.

THE SHERWIN-WILLIAMS PAINTS

out last others. They are the most economical paints you can use, because
they cover most and wear longest. Add to this their good appearance, and
you have perfect paints—The Sherwin-Williams Paints.

They are made for many different kinds of painting. Whatever it is
you want to paint—a house, or anything in or out of the house—we make
the right paint for that particular purpose—not one slap-dash mixture for
all.

SOLD BY

E. O. HALL & SON, LTD

DO YOU WATCH GOOD THINGS TO EAT?

Then Watch Us

Every steamer with a cold storage plant brings us the
World's choicest foods and if you are anything of an
Epicurean you will be glad to know what we receive.

THIS WEEK THE "NEBRASKAN."

brings fresh fruits, vegetables, delicacies etc., also Rose
Creamery Butter.

Watch for Her Arrival and Our Advertisement.

H. MAY & COMPANY, LIMITED.

22 — Telephones — 92

Straw Hat and Shirt Factory

SHIRTS, HATS AND PAJAMAS MADE TO ORDER
AT VERY LOW PRICES.

YAMATOYA,

(FORMERLY MURATA'S STORE.)

NUUANU STREET.....NEAR HOTEL

JAPANESE Kimono and Fancy Goods

American Gents' Furnishing Goods

K. FUKURODA,

ROBINSON BLOCK,
PHONE WHITE 3421,
14 HOTEL STREET.

Intensely Interesting Books

The most popular book in the country at the present time is
"The Pit," by Frank Norris, author of the "Octopus." Its sale is
phenomenal—the greatest of any book published in years. Below
is a list of a few new books in our stock:

"The Pit".....Frank Norris.....\$1.50
"The Blue Flower".....Henry Van Dyke.....1.50
"Letters from a Self-Made Merchant to His Son".....Lorimer.....1.50
"An Old Sweetheart of Mine".....Illustrated by Christy.....2.00
"Wanted, A Chaperon".....Paul Leister Ford.....2.00
"Captain Mackin".....Richard Harding Davis.....1.50
"The Fortune of Oliver Horn".....F. Hopkinson Smith.....1.50
"The Two Venrevels".....Booth Tarkington.....1.50
"Confessions of a Wife".....Mary Adams.....1.50

Hawaiian News Co., Limited

MERCHANT STREET,.....HONOLULU, T. H.

Rich Embroideries

AT

Oriental Bazaar.

IN

SILK AND LINEN GOODS

SUCH AS DOILIES, TABLE CLOTHS, BED SPREADS, CUSHIONS,
SHAWLS, SCREENS, HANDKERCHIEFS, ETC. THIS IS THE RICHEST
LINE OF EMBROIDERIES EVER SHOWN IN HONOLULU.

WAITY BUILDING, KING STREET OPPOSITE ADVERTISER OFFICE.

Want ads in the Star bring quick re
sults. Three lines three times for 25
cents.

Want ads in the Star bring quick re
sults. Three lines three times for 25
cents.

Now Does? THE PHOENIX MAKES SUCH LARGE PROFITS WITH SAFETY?

THIS QUESTION WAS ANSWERED FULLY IN
FINANCIAL ARTICLES 5 AND 6 SOMETIME SINCE.
IT WILL BE ANSWERED AGAIN ON MARCH 10th
WATCH FOR IT.

20,000 SHARES OF THE 25,000 INTENDED TO BE
PLACED IN HAWAIIAN TERRITORY HAVE BEEN
SOLD. DON'T DELAY!

OFFICERS & DIRECTORS:

A. A. WATKINS,

Pres.

Wm. Pres. W. W. Montague & Co.

CHAS. R. BISHOP,

Late of Honolulu

Vice Pres.

CHAS. E. LADD,

Ladd & Titton, Bankers, Portland, Ore.

CLARENCE GRANGE,

Man. Director

Phoenix and Equitable Savings, Portland

GEO. C. BOARDMAN,

Dir. S. F. Savings Union.

S. PRENTISS SMITH,

(Formerly Bank of California)

Dir. D. O. Mills Bank.

GAVIN McNAB,

Attorney.

MERCANTILE TRUST CO.

Trustee.

Phoenix Savings B. & L. Assn OF CALIFORNIA

Hawaiian Department—JUDD BUILDING, Ground Floor,
Fort Street Entrance.

ROBERT SLAUGHTER, General Agent.

INTEREST ON TERM ACCOUNTS \$100 LOTS 6%

Easy Money for Small Boys

The small boys can make plenty of spending money this week by asking their neighbors for the quart beer bottles they don't want.

Bring Bottles To the Brewery

We will pay two cents for every clean quart beer bottle. They must be free from oil.

Honolulu Brewery - Queen Street
TELEPHONE MAIN 341

Great Reduction Sale! OF Hats and Caps

K. ISOSHIMA,
NO. 30 KING ST. NEAR BLTHBL.

The New Store.

PERFUMERY AND TOILET
ARTICLES DEPARTMENT:
Now open for inspection.
HOUSE FURNISHING GOODS
DEPARTMENT:
Goods now being placed.
TINWARE, BASKETWARE
AND AGATEWARE DE-
PARTMENT:
Goods now being placed.

Don't buy without seeing our
goods and prices.

LEWIS & CO., LTD.

The Lewers & Cooke Building.
169 KING STREET.
240-2 Telephones-240.

M. PHILLIPS & CO.,

Wholesale Importers
And Jobbers of
AMERICAN AND EUROPEAN DRY GOODS
Corner of Fort and Queen Sts.

C. BREWER & CO., LIMITED

QUEEN STREET,
HONOLULU H. T.

...AGENTS FOR...

Hawaiian Agricultural Company, Ono-
mea Sugar Company, Honoumua Sugar
Co. pany, Wailuku Sugar Company,
Waihee Sugar Company, Mahee Sugar
Company, Haleakala Ranch Company,
Kapaeha Ranch.
Planters' Line and Shipping Co.
Charles Brewer & Co.'s Line of Bos-
ton Packets.
Agents Boston Board of Underwrit-
ers.
Agents Philadelphia Board of Under-
writers.

LIST OF OFFICERS.

Charles M. Cooke.....President.
Geo. H. Robertson...V-Pres. & Mgr.
E. Faxon Bishop.....Treas. & Sec'y.
W. F. Allen.....Auditor.
P. C. Jones.....Director.
H. Waterhouse.....Director.
G. R. Carter.....Director.

All of the above named constituting
the Board of Directors.

OAHU RAILWAY AND LAND CO'S



TIME TABLE

FROM AND AFTER JANUARY 1, 1931

STATIONS.	Daily		Daily		Daily	
	ex. Sun.	D'y	ex. Sun.	D'y	ex. Sun.	D'y
(Outward)	A.M.	P.M.	A.M.	P.M.	A.M.	P.M.
Honolulu	7:10	9:15	11:55	3:15	8:10	
Pearl City	8:35	9:45	11:40	3:47	8:55	
Ewa Mill	8:35	10:05	12:00	4:05	9:10	
Wahiawa		10:50		4:45		
Wahiawa		11:55		5:40		
Kahuku		12:35		6:15		
STATIONS.	Daily		Daily		Daily	
	ex. Sun.	D'y	ex. Sun.	D'y	ex. Sun.	D'y
(Inward)	A.M.	P.M.	A.M.	P.M.	A.M.	P.M.
Kahuku		5:35		2:05		
Wahiawa		6:10		2:50		
Wahiawa		7:10		3:55		
Ewa Mill	5:50	7:45	1:05	4:05		
Pearl City	6:15	8:05	1:30	4:35		
Honolulu	6:10	8:35	2:05	5:05		

G. P. DENISON, Superintendent.
F. C. SMITH, Gen. Pass. & Tkt. Agt.

Modern Conveniences

Have you
Visited
Our New Store?

Does it mean anything to you
to have samples and goods dis-
played in an attractive manner
and to buy from a modern
equipped store? Visit our new
quarters and see what we mean.
Excellent display of

BUILDING MATERIALS,
BUILDER'S HARDWARE,
WALL PAPERS, ETC.

LEWERS & COOKE,
LIMITED
77 South King St.

THE YOKOHAMA SPECIE BANK LIMITED.

Subscribed Capital.....Yen 24,000,000
Paid Up Capital.....Yen 18,000,000
Reserved Fund.....Yen 8,910,000

HEAD OFFICE, YOKOHAMA.

The Bank buys and receives for col-
lection Bills of Exchange, issues drafts
and Letters of Credit, and transacts a
general banking business.

INTEREST ALLOWED:

On fixed deposits for 12 months, 4 per
cent per annum.
On fixed deposits for 6 months, 3 1/2 per
cent per annum.
On fixed deposits for 3 months, 3 per
cent per annum.
Branch of the Yokohama Specie Bank.

New Republic Building, Honolulu H. T.

のビールは神を静め消化を助くるの大効あり故に強壯劑として良
の處方にレニニアを用ひざるは稀なり殊に
は酔正にしに醸造最も佳良あるを以て良の常に勤むる所の者あり
クオリツ瓶二打八三弗七拾五仙にて市内何處にても配達す若し空
瓶を戻されば壹打に對し二十五仙を値引するにより正味三弗二十
五仙なり
レニニア、ボットリング、ウェア、スブ代理店
(郵便局五七一七 電話番號一三三三)

Twenty-five cents pays for a Want
ad in the Star. A bargain.

THE CENTER OF THE UNIVERSE

AN ENGLISH ASTRONOMER WRITES AN ARTICLE
TO PROVE THAT MAN IS THE PURPOSE AND
APOTHEOSIS OF THE UNIVERSE—REMARK-
ABLE MARSHALLING OF ASTRONOMIC FACTS.

NEW YORK, Feb. 28.—A cable to the Sun from London says:
The attention of the thinking world will be attracted by a re-
markable article in the Fortnightly Review for March by Dr.
Alfred Russell Wallace, entitled "Man's Place in the Universe."
This eminent writer has assembled all the latest astronomical and
other scientific discoveries and knowledge bearing upon the sub-
ject. He deduces therefrom this theory: First, that the earth,
or solar system, is the physical center of the stellar universe; sec-
ond, the supreme end and purpose of this vast universe was the
production and development of the living soul in the perishable
body of man. Dr. Wallace maintains that the stars are not in-
finite in numbers, but that the stellar universe is limited. He says
that, as telescopes reach farther and farther into space, they find
continuous decrease in the number of stars, thus indicating the
end of stellar universe.

Furthermore, Dr. Wallace holds that the sun occupies a posi-
tion very near, if not actually at, the center of the whole universe,
and therefore in all probability is the center of the whole material
universe.

Speaking of organic life, Wallace says: "I am not aware that
the whole facts have been sufficiently considered; yet there are
facts that indicate our position in this respect to be as central and
unique as that of the sun in the stellar universe."

Writers on this subject, Wallace says, have usually been con-
tent to show that certain planets may possibly be now in a con-
dition to support life, not dissimilar to that upon the earth, but
they never have considered the question could such life have origi-
nated and been developed upon these planets. This is the real
crux of the problem and Dr. Wallace believes that the full consid-
eration of the required conditions will show that no other planet
can fulfill them. Dr. Wallace observes that materialists will ob-
ject that the want of all proportion between the means and end
condemns the theory that the universe was created for the pro-
duction and development of man, but he asks if there is any such
want of proportion. If the end to be reached were a great and
worthy one, and if the particular mode of attaining that end were
the best, or perhaps, even the only possible one, it may fairly be
presumed that it was so by the fact that it has been used and has
succeeded.

PASSED NUMEROUS BILLS.

Senate Transacted Considerable Business Yesterday at the After-
noon Session.

A number of measures passed third reading in the Senate yes-
terday afternoon. Among the bills passed were a bill to repeal
the law relating to desertion by married persons; bill reducing
punishment for embezzlement; bill amending law relating to mali-
cious injury; bill reducing penalty for burglary; bill relating to
reformatory and industrial schools; bill to prohibit felonious
branding of cattle and other stock; bill to permit corporations to
hold stock in other concerns, and bill for emergency appropria-
tions. An item appropriating \$7,000 for repairs on Lusitana
street from Lunalilo street to Pauoa road was inserted in the ap-
propriation bill, as was another amendment for \$992.00 for ex-
penses of circuit court at Lihue, Kauai. The bill relating to guar-
dians and minors and wards also passed. Other bills were refer-
red to various committees.

Senator Dickey gave notice of acts amending the law and
repealing certain laws, as follows: For the protection of birds;
an act relating to fisheries; an act relating to negotiable instru-
ments; an act relating to mongoose; relating to the census; re-
lating to marriage contracts; amending an act preventing the
bringing of actions against government officers engaged in sup-
pressing rebellion; an act relating to escheat of lands; relating to
wills; relating to married women; repealing "an act to regulate
names."

TRIAL TRIP SUCCESSFUL.

Associated Press Cable, Morning Service.

SAN FRANCISCO, March 9.—The trial trip of the submarine
torpedo boat Grampus was successfully made today.

STRIKE GROWING WORSE.

Associated Press Cable, Morning Service.

VANCOUVER, March 9.—The strike negotiations have been
broken off and a bitter fight has ensued.

WINS ON A FOUL.

Associated Press Cable, Morning Service.

PORTLAND, Ore., March 9.—O'Keefe was given the deci-
sion on a foul in the sixth round.

SOVEREIGNS TO VISIT.

Associated Press Cable, Morning Service.

ROME, March 9.—The Kaiser will visit the King of Italy in
May and the Czar in November.

VESUVIUS IN ACTION.

Associated Press Cable, Morning Service.

NAPLES, March 9.—Vesuvius is again active and is throwing
up ashes and explosive globes. Tourists are flocking to this city
and three American warships have arrived.

IMPORTANT TO SUGAR MEN.

Associated Press Cable, Morning Service.

SAN FRANCISCO, March 9.—The Inter-State Commerce
attorneys have arrived to attend the trial of the Justin case en-
forcing lower sugar rates, Nebraska coast transfers and reduc-
tions.

MRS. RICHTER'S APPEAL.

WASHINGTON, Feb. 28.—Mrs. Ellen T. Richter of Syracuse,
N. Y., mother of Edward C. Richter, who is alleged to have been
tortured to death in the Philippine islands by Lieutenant William
S. Sinclair, and whose case has been recently discussed in the
Senate, was given an audience by the President today. She was
accompanied by Ellwood Bergery of Philadelphia. The President
manifested a disposition to summon to this country all the wit-
nesses to the death of Richter, and to have their testimony heard
before a civil tribunal, although he made no direct promise.

KUBELIK TO WED A COUNTESS.

VIENNA, Feb. 28.—The engagement is announced of Jan
Kubelik, the violinist, and Countess Marianne Czaky (nee Von
Szell) a relative of Coleman Szell, the Hungarian Prime Min-
ister. Her marriage to Count Czaky will be nullified by the Pope.

Sterling The Painter

HAS ADDED TO HIS
PAINT SHOP A
LARGE STOCK OF

Wall Paper

Also an experienced Paper Hanger
as salesman who will be pleased to
give information about paper hanging
and decorating. Competent Paper
Hangers employed and always on hand.

REASONABLE PRICES.

Same Old Stand Union Street

NIPPON MARU ARRIVED.
The Nippon Maru arrived yesterday
afternoon from San Francisco with
three days later mail and news files.
She experienced good weather during
the trip. The vessel is full with freight
for Oriental ports. She is going to
Manila this trip.
Among her through passengers is Dr.
Cluness of California. He is going
to Hong Kong.
J. P. McCoy of the Oriental Life In-
surance company is bound for Shang-
hai.
Hugo Suter is bound for Shanghai
to take charge of the Deutsch-Asiatic
bank.
A number of passengers stopped over
at this port. The Nippon Maru sailed
at noon today for the Orient. The
band played her away.

COURT NOTES.

The damage suit of G. W. Hayselden
vs. the Hawaiian Tramways company
came to an end yesterday afternoon.
Judge Robinson granting the plaintiff's
motion for a voluntary non-suit.

Judge Robinson granted the motion
to set aside the order dismissing the
case of Good Hope Building Associa-
tion vs. F. J. Amweg et al., and the
cause is restored to the calendar.

The petition to have a guardian ap-
pointed for Lahapa Halsey, an insane
person was dismissed upon petitioner's
motion by Judge Gear.

E. H. Wright has been granted thirty
days to file a bill of exceptions.
Judge Gear denied the motion of
Sarah Swinton for leave to intervene
in the case of Aldrich vs. Hassinger,
holding that she has shown no interest
in the property in dispute.

A demurrer has been filed in the case
of C. A. Long vs. E. C. Macfarlane et
al.

Twenty-five cents pays for a Want
ad in the Star. A bargain.

S. SAIKI, Bamboo Furniture

AND PICTURE FRAMES

Neat and Handsome
Designs made to order.
463, Beretania Street, near Punchbowl.
Advertise your wants in the Star.

A Good Doctor

ALMOST ALWAYS PRESCRIBES
Beer for a Tonic

It quiets the nerves and aids digestion.

HE RECOMMENDS.

Rainier BEER

Because it is the

Purest and Best
Beer Made

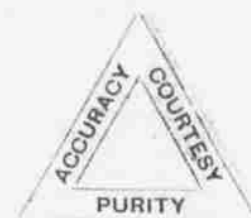
2 Dozen quart bottles delivered to
any part of the city \$3.75. We allow
for the return of quart bottles, 25 cents
per dozen, making the net price \$3.25.

Rainier Bottling Works

Agents for Hawaii

PHONE WHITE 1331.
P. O. Box 517.

Starlevant Drug Co.,



160 Hotel Street - Oregon Block
TELEPHONE MAIN 151.

Embroideries.

This sale of EMBROIDERY will give you a chance to secure
a stock of EMBROIDERIES at prices that are really money
savers. The bargains include Hamburg and Swiss EMBROID-
ERED Edgings and Insertions.

These goods are EMBROIDERED on good, strong cloth.
Nothing to equal the prices has been offered during the past year.

E. W. JORDAN & CO., LTD.,
FORT STREET

25c

DOES THE BUSINESS

A Three-Line Advertisement
(18 words) will be inserted in
the STAR'S classified columns
for 25 cents. Each additional
line at the rate of 10c. extra.

ADVERTISEMENTS IN THE
CLASSIFIED COLUMNS OF THE

STAR

BRING QUICK AND SURE RESULTS.

If it is help wanted, or house
for rent, or boarding, 25 cents
covers the investment.

Woman's Exchange

Has a new lot of JAVA MATS, SAKAGAN, KAPAS, FANS, AND BASKETS and the best assortment of FARMERIAN SHELLS in Town.

PRICES RIGHT.

Wine Worth Drinking

FROM US YOU CAN GET THE KIND OF WINE THAT WILL GIVE YOU HEALTH AND MAKE YOU FEEL THAT THE PURCHASE WAS WORTH YOUR WHILE.

1 Gallon of this Pure Wine Will Only Cost You

75 cts

Liquor Department

HOFFSCHLAGER & CO., LIMITED

Cable Address "ARMITAGE."

Harry Armitage, STOCK AND BOND BROKER

Member Honolulu Stock and Bond Exchange

Office, Campbell Block, Merchant Street, Honolulu, T. H. Telephone Main, 101 P. O. Box 683.

Correspondents San Francisco, Chicago and New York Stock and Bond Exchanges. Daily San Francisco quotations received.

TO MAKE ROOM FOR OTHER GOODS WE ARE, FOR A SHORT TIME CLEANING OUT OUR STOCK OF BICYCLES AT A BIG CUT IN PRICES.

\$75

CHAINLESS BICYCLES AT

\$45

\$50

CHAIN WHEELS AT

\$30

TOE CLIPS

Leather 75c per set cut to 50c.

Regular Style

Cut to 25 cents.

REPAIR KITS

25 cents cut to 15 cents

GLASS LAMPS

\$5 cut to \$2

\$1.50 Cut to 85 cents

Other goods at similar prices. See our Union street window display of bargains.

PEARSON & POTTER CO., LIMITED

UNION AND HOTEL STS. Phone Main 317

OUR INDUSTRIOUS CHINESE PEOPLE

LIST OF THE OCCUPATIONS IN WHICH ALL OVER EIGHT YEARS ARE EMPLOYED.

Collector of Internal Revenue Roy H. Chamberlain, with the permission of the Commissioner of Internal Revenue has furnished the committee representing the Builders' and Traders' Exchange, the Merchants' Association, and the Honolulu Trades and Labor Council with a list of the number of Chinese in various trades and occupations in Honolulu. In his letter of transmittal to the committee the collector says:

"I have the honor, therefore, to enclose herewith a complete list giving the figures desired, which has been compiled in this office, and is believed to be absolutely correct. The list includes only those who actually resided in the limits of Honolulu during the period of registration but it is possible that some of these came from outlying districts, or the other islands for the purpose of registering. These would include planters of various kinds but few, if any, tradesmen.

"This office will, in future, be glad to furnish any information possible to the bodies which you represent."

The list is as follows:

Skilled Labor.....	1,786
Unskilled Labor.....	1,278
Professions.....	115
Agriculture.....	2,230
Commercial.....	1,442
Servants.....	1,253
Students.....	394
Capitalists.....	8
Total males over ten years of age.....	8,498
Balance, women & children.....	5,077
Total population.....	13,575

STOCK PRICES

By cable to the Stock Exchange. SAN FRANCISCO, March 10.—The following are the "bid" quotations for Hawaiian stocks at the 10:30 session of the San Francisco Stock and Bond Exchange this morning.

Hawaiian Commercial.....	\$48.25
Honolulu.....	15.00
Makaweli.....	27.50
Panohau.....	19.00
Onomea.....	22.00

QUOTATIONS DISCONTINUED. The Honolulu Stock and Bond Exchange will discontinue receiving the San Francisco Stock Exchange quotations by cable after tomorrow. This decision was arrived at, at a meeting held this morning. It is felt that the expense is greater than the benefits warrant.

BAND CONCERT. The Territorial band under Captain Berger's direction will play at Esplanade this afternoon, at the direction of Governor Dole, in compliment to Mrs. H. A. P. Carter, "Mother" Parker, and Mrs. E. K. Wilder.

DESKY FORECLOSURE. Judge Gear this morning rendered a decision overruling the plea in abatement in the case of the German Savings and Loan Society against C. S. Desky and wife, and giving the defendants five days in which to answer.

HOME RULE BILL

The House this morning took the Home Rule county bill from the table and passed it on first reading. It is said that the bill may receive preferential consideration over the Republican bill in the House. With the ten Home Rule bills there were nineteen votes this morning in favor of taking the bill up again.

NORWAY AND SWEDEN AGREE. Associated Press Cable to the Star.

WASHINGTON, D. C., March 10.—Advice from Stockholm state that Norway and Sweden have signed a protocol of mutual agreement.

KATHRYN RIDDER SICK. AUSTIN (Tex.) March 2.—Miss Kathryn Ridder, the actress, is confined to her room in a hotel at San Antonio, suffering from pneumonia.

INVESTIGATE RAPID TRANSIT. The House this morning passed a resolution introduced by S. Kellinot, for a committee to investigate the Rapid Transit's increase of stock and its payment of profits to the government. Kellinot, Jaeger and Purdy were named.

NO DELEGATE FOR ALASKA. WASHINGTON, March 2.—Friends of the Alaskan delegate bill gave up hope today when the Senate Democrats began their filibuster. They cannot see how the differences between the two houses can be settled before adjournment. Representative Cushman, who has devoted his entire time during the session in the furtherance of the bill, admits its defeat. The conference report on the Alaska homestead bill was agreed to by both houses today and the bill was sent to the President.

HAWAIIAN DITCH BILL. WASHINGTON, March 2.—Senator Foraker made an effort to pass the Hawaiian Ditch Company bill in the Senate today, but failed. There is strong opposition to this bill. Foraker proposed a substitute extending to Hawaii the American irrigation laws so far as they are applicable, including a provision granting rights of way to any construction company over the public domain under proper conditions. But even this was opposed by Senator Teller and others, and it is probable the bill will be lost in the shuffle.

CROWN PRINCESS AT LINDAU. VIENNA, March 1.—The former Crown Princess of Saxony has arrived at Lindau where she met her mother. She will stay at her mother's chateau at Lindau for the birth of her child.

Twenty-five cents pays for a Want ad in the Star. A bargain.

NEW ADVERTISEMENTS

McBryde Meeting.....Page 5
Hawaiian Electric Co.....Page 3
E. R. Bath.....Page 4
Chamber of Commerce.....Page 5
Person & Potter Co.....Page 8
Lewis & Co.....Page 7

NEWS IN A NUTSHELL

Paragraphs That Give Condensed News of the Day.

McBryde's annual meeting will be held March 26.

The Alameda sails for the coast at 11 o'clock tomorrow forenoon.

The Pacific Hotel on Union street has the best restaurant in the city.

Chamber of Commerce will meet at 2 p. m. tomorrow. Important business.

The Adams-Bagnall enclosed direct current are lamps are the best for Electric Co.

Courteous attention is always shown patrons of the Pantheon-Waverley shaving parlors.

L. W. Haworth, editor of the Hilo Tribune, arrived in town by the Kinau and returns today.

Lewis & Co. have added new departments to their store in the Lewers & Cooke building.

The Nippon Maru arrived yesterday with three days later mail and news files from San Francisco.

The Territorial Band will play at the residence of Mrs. Wilder, Nuuanu valley, this afternoon at 4 o'clock.

Judge Wilcox was back in the police court yesterday morning conducting court after an illness of several days.

Pearson & Potter are closing out their stock of bicycles at a big cut in price for a short time only to make room for other goods.

Primo and Pacific beers are sold for \$2 a dozen quarts by Camara & Co. plantation use. Send to Hawaiian Electric Co. for booklet giving full description.

Fred Stream was committed to the Circuit court yesterday morning by Judge Wilcox to answer to a charge of larceny in the second degree. The defendant was charged with taking a watch.

Primo and Pacific beers are sold for \$2 a dozen quarts by Camara & Co. plantation use. Send to Hawaiian Electric Co. for booklet giving full description.

Fred Stream was committed to the Circuit court yesterday morning by Judge Wilcox to answer to a charge of larceny in the second degree. The defendant was charged with taking a watch.

Primo and Pacific beers are sold for \$2 a dozen quarts by Camara & Co. plantation use. Send to Hawaiian Electric Co. for booklet giving full description.

Fred Stream was committed to the Circuit court yesterday morning by Judge Wilcox to answer to a charge of larceny in the second degree. The defendant was charged with taking a watch.

Primo and Pacific beers are sold for \$2 a dozen quarts by Camara & Co. plantation use. Send to Hawaiian Electric Co. for booklet giving full description.

Fred Stream was committed to the Circuit court yesterday morning by Judge Wilcox to answer to a charge of larceny in the second degree. The defendant was charged with taking a watch.

Primo and Pacific beers are sold for \$2 a dozen quarts by Camara & Co. plantation use. Send to Hawaiian Electric Co. for booklet giving full description.

Fred Stream was committed to the Circuit court yesterday morning by Judge Wilcox to answer to a charge of larceny in the second degree. The defendant was charged with taking a watch.

Primo and Pacific beers are sold for \$2 a dozen quarts by Camara & Co. plantation use. Send to Hawaiian Electric Co. for booklet giving full description.

Fred Stream was committed to the Circuit court yesterday morning by Judge Wilcox to answer to a charge of larceny in the second degree. The defendant was charged with taking a watch.

Primo and Pacific beers are sold for \$2 a dozen quarts by Camara & Co. plantation use. Send to Hawaiian Electric Co. for booklet giving full description.

Fred Stream was committed to the Circuit court yesterday morning by Judge Wilcox to answer to a charge of larceny in the second degree. The defendant was charged with taking a watch.

Primo and Pacific beers are sold for \$2 a dozen quarts by Camara & Co. plantation use. Send to Hawaiian Electric Co. for booklet giving full description.

Fred Stream was committed to the Circuit court yesterday morning by Judge Wilcox to answer to a charge of larceny in the second degree. The defendant was charged with taking a watch.

Primo and Pacific beers are sold for \$2 a dozen quarts by Camara & Co. plantation use. Send to Hawaiian Electric Co. for booklet giving full description.

Fred Stream was committed to the Circuit court yesterday morning by Judge Wilcox to answer to a charge of larceny in the second degree. The defendant was charged with taking a watch.

Primo and Pacific beers are sold for \$2 a dozen quarts by Camara & Co. plantation use. Send to Hawaiian Electric Co. for booklet giving full description.

Fred Stream was committed to the Circuit court yesterday morning by Judge Wilcox to answer to a charge of larceny in the second degree. The defendant was charged with taking a watch.

Primo and Pacific beers are sold for \$2 a dozen quarts by Camara & Co. plantation use. Send to Hawaiian Electric Co. for booklet giving full description.

Fred Stream was committed to the Circuit court yesterday morning by Judge Wilcox to answer to a charge of larceny in the second degree. The defendant was charged with taking a watch.

Primo and Pacific beers are sold for \$2 a dozen quarts by Camara & Co. plantation use. Send to Hawaiian Electric Co. for booklet giving full description.

Fred Stream was committed to the Circuit court yesterday morning by Judge Wilcox to answer to a charge of larceny in the second degree. The defendant was charged with taking a watch.

Primo and Pacific beers are sold for \$2 a dozen quarts by Camara & Co. plantation use. Send to Hawaiian Electric Co. for booklet giving full description.

Fred Stream was committed to the Circuit court yesterday morning by Judge Wilcox to answer to a charge of larceny in the second degree. The defendant was charged with taking a watch.

Primo and Pacific beers are sold for \$2 a dozen quarts by Camara & Co. plantation use. Send to Hawaiian Electric Co. for booklet giving full description.

Fred Stream was committed to the Circuit court yesterday morning by Judge Wilcox to answer to a charge of larceny in the second degree. The defendant was charged with taking a watch.

Primo and Pacific beers are sold for \$2 a dozen quarts by Camara & Co. plantation use. Send to Hawaiian Electric Co. for booklet giving full description.

Fred Stream was committed to the Circuit court yesterday morning by Judge Wilcox to answer to a charge of larceny in the second degree. The defendant was charged with taking a watch.

Primo and Pacific beers are sold for \$2 a dozen quarts by Camara & Co. plantation use. Send to Hawaiian Electric Co. for booklet giving full description.

Fred Stream was committed to the Circuit court yesterday morning by Judge Wilcox to answer to a charge of larceny in the second degree. The defendant was charged with taking a watch.

Primo and Pacific beers are sold for \$2 a dozen quarts by Camara & Co. plantation use. Send to Hawaiian Electric Co. for booklet giving full description.

Fred Stream was committed to the Circuit court yesterday morning by Judge Wilcox to answer to a charge of larceny in the second degree. The defendant was charged with taking a watch.

Primo and Pacific beers are sold for \$2 a dozen quarts by Camara & Co. plantation use. Send to Hawaiian Electric Co. for booklet giving full description.

Fred Stream was committed to the Circuit court yesterday morning by Judge Wilcox to answer to a charge of larceny in the second degree. The defendant was charged with taking a watch.

Primo and Pacific beers are sold for \$2 a dozen quarts by Camara & Co. plantation use. Send to Hawaiian Electric Co. for booklet giving full description.

Fred Stream was committed to the Circuit court yesterday morning by Judge Wilcox to answer to a charge of larceny in the second degree. The defendant was charged with taking a watch.

Primo and Pacific beers are sold for \$2 a dozen quarts by Camara & Co. plantation use. Send to Hawaiian Electric Co. for booklet giving full description.

Fred Stream was committed to the Circuit court yesterday morning by Judge Wilcox to answer to a charge of larceny in the second degree. The defendant was charged with taking a watch.

Primo and Pacific beers are sold for \$2 a dozen quarts by Camara & Co. plantation use. Send to Hawaiian Electric Co. for booklet giving full description.

Fred Stream was committed to the Circuit court yesterday morning by Judge Wilcox to answer to a charge of larceny in the second degree. The defendant was charged with taking a watch.

Primo and Pacific beers are sold for \$2 a dozen quarts by Camara & Co. plantation use. Send to Hawaiian Electric Co. for booklet giving full description.

Fred Stream was committed to the Circuit court yesterday morning by Judge Wilcox to answer to a charge of larceny in the second degree. The defendant was charged with taking a watch.

Primo and Pacific beers are sold for \$2 a dozen quarts by Camara & Co. plantation use. Send to Hawaiian Electric Co. for booklet giving full description.

Fred Stream was committed to the Circuit court yesterday morning by Judge Wilcox to answer to a charge of larceny in the second degree. The defendant was charged with taking a watch.

Primo and Pacific beers are sold for \$2 a dozen quarts by Camara & Co. plantation use. Send to Hawaiian Electric Co. for booklet giving full description.

Fred Stream was committed to the Circuit court yesterday morning by Judge Wilcox to answer to a charge of larceny in the second degree. The defendant was charged with taking a watch.

Primo and Pacific beers are sold for \$2 a dozen quarts by Camara & Co. plantation use. Send to Hawaiian Electric Co. for booklet giving full description.

Fred Stream was committed to the Circuit court yesterday morning by Judge Wilcox to answer to a charge of larceny in the second degree. The defendant was charged with taking a watch.

Primo and Pacific beers are sold for \$2 a dozen quarts by Camara & Co. plantation use. Send to Hawaiian Electric Co. for booklet giving full description.

Fred Stream was committed to the Circuit court yesterday morning by Judge Wilcox to answer to a charge of larceny in the second degree. The defendant was charged with taking a watch.

Primo and Pacific beers are sold for \$2 a dozen quarts by Camara & Co. plantation use. Send to Hawaiian Electric Co. for booklet giving full description.

Fred Stream was committed to the Circuit court yesterday morning by Judge Wilcox to answer to a charge of larceny in the second degree. The defendant was charged with taking a watch.

Primo and Pacific beers are sold for \$2 a dozen quarts by Camara & Co. plantation use. Send to Hawaiian Electric Co. for booklet giving full description.

Fred Stream was committed to the Circuit court yesterday morning by Judge Wilcox to answer to a charge of larceny in the second degree. The defendant was charged with taking a watch.

Primo and Pacific beers are sold for \$2 a dozen quarts by Camara & Co. plantation use. Send to Hawaiian Electric Co. for booklet giving full description.

Fred Stream was committed to the Circuit court yesterday morning by Judge Wilcox to answer to a charge of larceny in the second degree. The defendant was charged with taking a watch.

Primo and Pacific beers are sold for \$2 a dozen quarts by Camara & Co. plantation use. Send to Hawaiian Electric Co. for booklet giving full description.

Fred Stream was committed to the Circuit court yesterday morning by Judge Wilcox to answer to a charge of larceny in the second degree. The defendant was charged with taking a watch.

Primo and Pacific beers are sold for \$2 a dozen quarts by Camara & Co. plantation use. Send to Hawaiian Electric Co. for booklet giving full description.

Fred Stream was committed to the Circuit court yesterday morning by Judge Wilcox to answer to a charge of larceny in the second degree. The defendant was charged with taking a watch.

Primo and Pacific beers are sold for \$2 a dozen quarts by Camara & Co. plantation use. Send to Hawaiian Electric Co. for booklet giving full description.

Fred Stream was committed to the Circuit court yesterday morning by Judge Wilcox to answer to a charge of larceny in the second degree. The defendant was charged with taking a watch.

Primo and Pacific beers are sold for \$2 a dozen quarts by Camara & Co. plantation use. Send to Hawaiian Electric Co. for booklet giving full description.

Fred Stream was committed to the Circuit court yesterday morning by Judge Wilcox to answer to a charge of larceny in the second degree. The defendant was charged with taking a watch.

JAS. F. MORGAN

Auctioneer and Broker,

42 Queen Street,

P. O. Box 594 Telephone 72

AT AUCTION.

Land at Kewalo.

ON SATURDAY, MARCH 14, AT 12 O'CLOCK NOON.

At my salesroom, 42 Queen street, I will sell at Public Auction, a valuable lot at Kewalo, being Lot 3 in Block 16, containing an area of 5000 sq. ft. Size, 50-100.

Terms Cash. Deeds at purchaser's expense.

JAS. F. MORGAN, AUCTIONEER.

Algaroba Fire Wood

Delivered Full Measure

Leave orders with

W. W. DIMOND & CO., Ltd.

SUGAR

By Cable to the Planters' Association. From Williams, Dimond & Co. SAN FRANCISCO, March 9.—The New York price of 96 test centrifugals this day is 3.76 cents per pound. The last previous quotation was March 5, 3.79.

ARE HANDLING MUCH SUGAR

Probably one of, if not the heaviest movements of sugar about these islands occurred during the first eight days of the present month. To two causes is due this activity one has been the good weather and the other the ability of the various factors to receive the sugar promptly from the island boats.

Most of the sugar brought into Honolulu has been from Kauai plantations. From March 1 to March 8 the Inter-Island Company landed 100,364 bags of sugar from Kauai, Hamakua and other Hawaii plantations. During the same period the Wilder Company landed 55,446 bags at Honolulu and about 40,000 bags at Hilo. All of the sugar carried by the Wilder vessels has been from Maui and Hawaii plantations.

The captains and members of the crew of the vessels deserve great credit for the part they had in performing this work. They have worked overtime and have enabled their employers to take advantage of the good weather that has prevailed. It is well that they have done so for a strong north wind sprang up last night and has prevailed today. It is not improbable that some of the steamers will be unable to load sugar today at windward Kauai ports by reason of the rough weather.

The S. S. Alameda is at the Railway wharf receiving 16,000 bags of sugar. She will haul over to the Oceanic wharf this evening or tomorrow morning and take on additional freight. She will carry about 1500 tons of sugar for San Francisco when she departs tomorrow.

The schooner Aurora has been chartered by Irwin & Company to load sugar for San Francisco.

The schooner Mahukona arrived this morning from San Francisco. She will load sugar from McBryde Plantation for San Francisco.

The S. S. Arizona is coming from the Sound to take from 7,000 to 8,000 tons of sugar from various Hawaiian ports for Delaware Breakwater.

NANCE O'NEIL TO INVADE BROADWAY

NEW YORK, March 2.—The Sun says: Charles Frohman has announced that Nance O'Neil, instead of Miss Margaret Anglin, will be Lady Macbeth when he opens his next season at the Herald-square with an elaborate revival of Shakespeare's "Macbeth." Whether Miss O'Neil is to leave her old manager, McKee Rankin, and star exclusively under Frohman's direction is not announced, but it seems probable that both Miss O'Neil and Rankin have been engaged by Frohman, as in addition to his skill as a stage manager, Rankin gives a good performance of Macbeth.

This engagement will really be Miss O'Neil's first serious attempt to capture Broadway, and singularly enough she comes here last, after appearing in nearly every other English-speaking capital in the world. She has acted in New York before, but never under

Economy in Every Item

Read the List

Hoodier Letter Files.....	10
Dozen Scratch Tablets.....	45
Dozen Lead Pencils.....	20
Cloth Bound Books.....	15
500 Business Envelopes.....	15
Book Keeping Blank Books.....	85
Dozen packages Toilet Paper.....	25
Stenographers' Note Book.....	60
Gilt Edge playing Cards.....	10
One Line Rubber Stamps.....	25
100 Isiting Cards printed.....	85

TRY SHOPPING BY MAIL. ORDERS FILLED SAME DAY AS RECEIVED.

WALL, NICHOLS CO., LTD. YOUR MONEY SAVERS.

Nip the Cough

The first time you feel a tickling in your throat, take

Putnam's Cherry Cough Comfort

and stop it. Consumption and serious throat and lung diseases start this way. But this well known cough remedy will stop it quicker than any other known remedy. Pleasant to take. Children take it readily. Two sizes 25 and 50 cents. Sold at both our drug stores.

HOBSON DRUG CO.,

Ehlers' Block, Fort Street,

Sachs' Block, Beretania and Fort

Telephone 492
Blue
— FOR —

Pacific Beer

\$2 per Doz. Qts.

CAMARA & CO.,

S. E. Corner Queen and