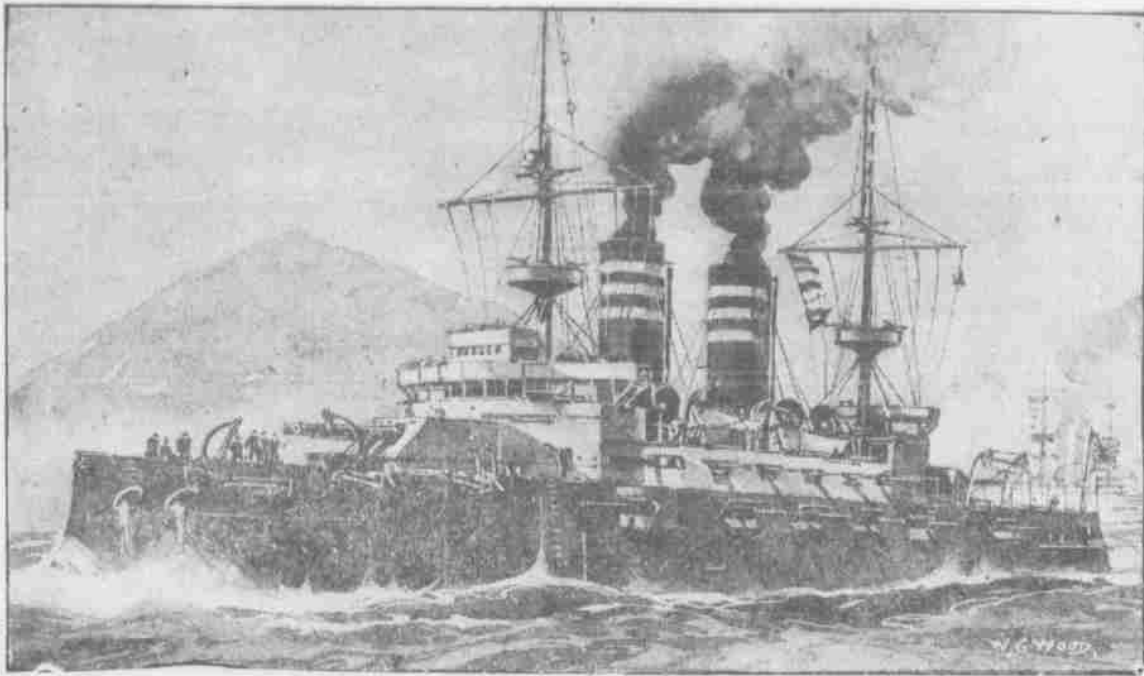
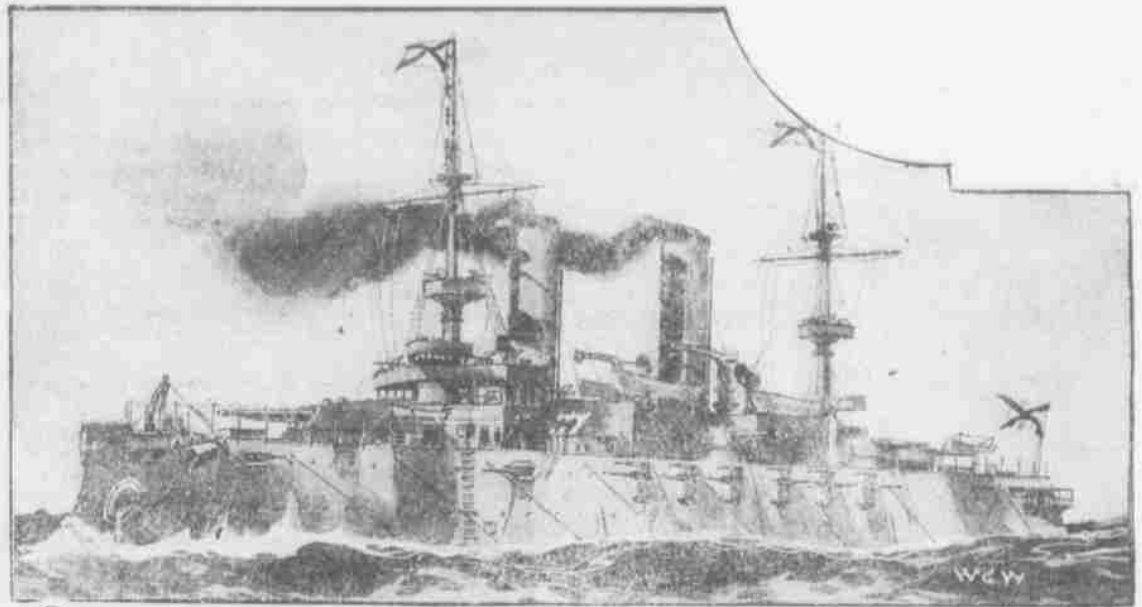


## ONE OF WORLD'S GREAT BATTLES



Japanese Flagship Mikasa



Russian Flagship Kniaz Suvaroff



TOGO.



ROJESTVENSKY.

### Togo's Victory Ranks With Dewey's

(Associated Press Cable to The Star.)

TOKIO, May 28.—The Japanese fleet is undamaged. The following Russian ships have been sunk: Borodino, battleship. Emperor Alexander III, battleship. Admiral Oushakoff, coast defence battleship. Admiral Nakhimoff, armored cruiser. Dimitri Donskoi, armored cruiser. Vladimir Monomachi, armored cruiser. Svetlana, protected cruiser. Jemchug, protected cruiser. Irtutsh (?) Probably the Ismailud, protected cruiser. Kamtschatka, repair ship. The following have been captured by the Japanese: Orel, battleship. Nikolai I, battleship. Sissol Veliky, battleship. Admiral Serlavin, coast defence battleship. General Admiral Apraxine, coast defence battleship. The Russian Flagship was seriously damaged. Rojestvensky apparently escaped.

Automobiles can be hired day or night at Club Stables, Fort Street.

Fine Job Printing Star Office.

### We Give Sound Advice

on matters pertaining to the settlement of your estate. For instance: You may want to know what it will cost and what form and routine must be adhered to. This information we are pleased to supply on application; also to advise you relative to the formalities of will-making.



HAWAIIAN TRUST CO., LTD.  
Fort Street, Honolulu

### HUNTER'S SUPPLIES

SHOTGUNS, RIFLES, REVOLVERS

### Ammunitions

A FULL LINE AT

PEARSON & POTTER CO. Limited

451 FORT STREET

The pursuit by the Japanese is continuing. ST. PETERSBURG, May 28.—Nothing official has been received here. ST. PETERSBURG, May 29.—The deepest gloom prevails. It is believed that Rojestvensky sent a portion of his fleet to the other side of Japan en route to Vladivostok, reserving his effective ships for the battle.

### Russia Must Put Forth Peace Proposals

LONDON, May 28.—Baron Hayashi, Japanese Ambassador, declares that Russia must propose peace to Japan. The continuance of the war means, he says, that Vladivostok will become the second Port Arthur as the Japanese forces will at once begin to attack that fortress.

(Additional Cable on Page Five.)

### GETTING READY TO GO HOME

THE HOUSE IN WHAT IS BELIEVED ITS LAST DAY OF THE EXTRA SESSION.

The House of Representatives met at 2 o'clock this afternoon presumably for the last time this session, and listened to the reading of the Governor's message notifying it of his having signed Senate bill No. 5, the Loan Bill.

The second message from the Governor dealing with the salaries bill and vetoing certain items was also read. Coelho moved deferring consideration until the action of the Senate was learned. The motion carried.

Waterhouse introduced a resolution to the effect that the clerk and stenographer should be allowed 30 days under pay for preparing the journal of the House for the printers. The resolution passed.

A communication from citizens of Lahaina, calling on the House to appropriate a sufficient sum for the support of the school.

(Continued on page eight)

### The Russian Losses

The Russian losses so far as reported are:

Sunk: 10.  
Battleships ..... 3  
Armored cruisers ..... 3  
Protected cruisers ..... 3  
Repair ship ..... 1  
Captured 5, all battleships.  
Total losses 15.

### ON THE EVE OF ADJOURNMENT

GOVERNOR SIGNS THE LOAN BILL TO ENABLE THE LEGISLATURE TO ADJOURN SPEEDILY.

There were but seven Senators present when the roll was called to order this afternoon for what promised to be the last meeting of the extra session, and so, after the call to order there was a short recess to wait for a quorum, and within a few moments the absentees came in. The President rapped for order again, and announced a message from the governor.

(Continued on page 5.)

NEW GROCERY OPENS THURSDAY J. M. Levy & Co. open an up-to-date and thoroughly stocked grocery in the Wally Building, two doors from the Metropolitan Meat Co., Thursday morning. Everything new and high grade.

CHAMBERLAIN'S COUGH REMEDY GIVES SATISFACTION EVERYWHERE.

"I have been selling Chamberlain's Cough Remedy in my retail shop of this place for six years," says Adolph Abrahamson of Durbanville, Cape Colony. "I find it to give satisfaction with the people who use it and it is the best seller of any cough remedy I handle." For sale by all dealers, Benson, Smith & Co., agents for Hawaii.

### Classified Advertising

#### Wanted

Young man to learn the barber trade. Inquire corner Richard and Queen.

A bright young man as solicitor. Give references. Address P. O. Box 486, Honolulu.

### Wilder Company To Go Out Of Existence

STOCKHOLDERS RATIFY ACTION OF DIRECTORS AND DECIDE TO-DAY THAT THE OLD COMPANY WILL GO OUT OF EXISTENCE—TRANSFER OF PROPERTY AND GOOD WILL WILL BE EFFECTED BY JULY 1—TERRITORIAL TREASURER'S CONSENT NECESSARY.

The consolidation of the Wilder S. S. Company and Inter-Island Steam Navigation Company was finally effected this morning at a special meeting of the stockholders of the former concern.

The action of the stockholders was unanimous there being 4,650 shares out of the total of 5,000, present and voting in favor of the measure.

According to the terms of the resolution which was passed, the Wilder Company decided to sell its property, good will and every thing to the Inter-Island Steam Navigation for \$750,000 in stock of the Inter-Island Company. The action of the stockholders was in reality a ratification of the action of the directors of the company in entering into the agreement to sell to the other company, the action being approved by the decision today.

There were present W. O. Smith who was in the chair, secretary S. B. Rose, Senator J. M. Dowsett, August Dreier, C. M. Cooke, L. A. Thurston, W. P. Pfothner, George C. Beckley, W. G. Irwin, J. B. Galt, A. J. Wilson, A. F. Judd, W. C. Parke, A. Lewis, Jr., C. L. Wright, E. B. McClanahan and Messrs. McKinnon, Clapp and McLain. The following directors of the Wilder Company were appointed trustees to look after the adjustment of the transfer and sale of the property W. O. Smith, W. Pfothner, G. C. Beckley, C. M. Cooke, S. B. Rose and J. M. Dowsett.

(Continued on page five)

IN THE SWIM. Bathing suits are the feature at Sachs this week, and men, women and children will be catered for. If you would learn how to swim Sachs' water wings will teach you quickly.

BUY A NEW HEAD. This is impossible, but if you have one that aches it is possible to cure it with Head-Ease powders. They are safe, pleasant, effective. At Hobron's.

Lutted's Hawaiian Pot in Pound Cans for sale by all druggists and grocers.

FOR SALE. Roman candles, rockets, all styles fireworks. New England Bakery.

ATTENTION, GOOD HOUSEWIVES. At last we have received the much-talked-of Asbestos table cloth for your dining table. Arleigh & Co.

TIME TO PAINT. Your house needs painting. Get estimates from Enos Bros., Union street.

### A MATTER OF HEALTH

**ROYAL BAKING POWDER**  
Absolutely Pure  
HAS NO SUBSTITUTE

NEW ANIMALS. The Kaimuki Zoo has imported new animals per the S. S. Sonoma. Among them are a cage of Squirrels, a pair of Mexican Doves, a pair of Australian Wallabies, and a fine pair of Emu. This hot weather is just the time to take a trip to the Zoo and cool off.

ODDS AND ENDS. Good Typewriter Paper at less than cost. Regular 15¢ and 1.25 values going at 9¢ box. Call early before its all sold. Wall, Nichols Co.

### Here's the Very Latest IN Dainty Footwear

Ladies' Kid Blucherette, Large Eyelets, Silk Laces, Flexible turn Sole, 1 1/4 inch Cuban Heel, Patent Tip. Newest toe.

Price, \$3.50

We offer in this shoe more value than we have ever been able to offer at the price. It is the very latest in style, will give comfortable and serviceable wear and conforms to the natural lines of the foot. Every size and width in stock.

MANUFACTURERS' SHOE CO., LIMITED.

1051 FORT STREET



# Oceanic Steamship Company.

## TIME TABLE

The first Passenger Steamer of this line will arrive at and leave this port as hereunder:

FROM SAN FRANCISCO.	FOR SAN FRANCISCO.
*ALAMEDA.....MAY 12	*ALAMEDA.....MAY 17
*SIERRA.....MAY 24	*SONOMA.....MAY 25
*ALAMEDA.....JUNE 1	*ALAMEDA.....JUNE 7
*SONOMA.....JUNE 14	*VENTURA.....JUNE 15
*ALAMEDA.....JUNE 21	*ALAMEDA.....JUNE 28
*VENTURA.....JULY 5	*SIERRA.....JULY 4
*ALAMEDA.....JULY 12	*ALAMEDA.....JULY 19
*SIERRA.....JULY 26	*SONOMA.....JULY 25
*ALAMEDA.....AUGUST 2	*ALAMEDA.....AUGUST 9
*SONOMA.....AUGUST 16	*VENTURA.....AUGUST 15
*ALAMEDA.....AUGUST 23	*ALAMEDA.....AUGUST 30
*VENTURA.....SEPTEMBER 6	*SIERRA.....SEPTEMBER 5
*ALAMEDA.....SEPTEMBER 13	*ALAMEDA.....SEPTEMBER 20
*SIERRA.....SEPTEMBER 27	

\* Local Boat.  
In connection with the sailing of the above steamers, the Agents are prepared to issue to intending passengers convenient through tickets by any railroad from San Francisco to all points in the United States, and from New York by steamship line to all European Ports.  
For further particulars apply.

**W. G. Irwin & Co.**  
(LIMITED)  
General Agents Oceanic S. S. Company.

# Canadian-Australian Royal Mail STEAMSHIP COMPANY

Steamers of the above line, running in connection with the CANADIAN-PACIFIC RAILWAY COMPANY between Vancouver, B. C., and Sydney, N. S. W., and calling at Victoria, B. C., Honolulu and Brisbane, Q.

Due at Honolulu on or about the dates below stated, viz:

FOR AUSTRALIA.	FOR VANCOUVER.
MANUKA.....JUNE 3	AORANGI.....MAY 31
AORANGI.....JULY 1	MIOWERA.....JUNE 28
MIOWERA.....JULY 29	MOANA.....JULY 26
MOANA.....AUG. 26	AORANGI.....AUG. 23
AORANGI.....SEPT. 23	MIOWERA.....SEPT. 20
MIOWERA.....OCT. 21	MOANA.....OCT. 18
MOANA.....NOV. 18	MIOWERA.....DEC. 13

CALLING AT SUVA, FIJI, ON BOTH UP AND DOWN VOYAGES.  
**THEO. H. DAVIES & CO., Ltd., Gen'l Agts.**

## AMERICAN HAWAIIAN STEAMSHIP COMPANY.

DIRECT MONTHLY SERVICE BETWEEN NEW YORK AND HONOLULU, VIA PACIFIC COAST.

FROM NEW YORK TO HONOLULU.	
S. S. "ARIZONAN".....MAY 20th	
S. S. "HAWAIIAN".....JUNE 5th	
FROM SAN FRANCISCO TO HONOLULU.	
S. S. "NEVADAN".....JUNE 1st	
S. S. "NEBRASKAN".....JUNE 22nd	
FROM HONOLULU TO SAN FRANCISCO.	
S. S. "NEBRASKAN".....MAY 21st	
S. S. "NEVADAN".....JUNE 11th	
FROM SEATTLE AND TACOMA TO HONOLULU.	
S. S. "NEBRASKAN".....JUNE 16th	
S. S. "NEVADAN".....JULY 7th	

**H. Hackfeld & Co.**  
C. P. MORSE, General Freight Agent. Agents.

# Pacific Mail Steamship Co. Occidental & Oriental S. S. Co.

Steamers of the above Companies will call at Honolulu and leave this port on or about the dates below mentioned:

FOR CHINA AND JAPAN.	FOR SAN FRANCISCO.
COPTIC.....MAY 19	MONGOLIA.....MAY 19
SIBERIA.....JUNE 3	CHINA.....MAY 20
MONGOLIA.....JUNE 14	DORIC.....JUNE 13
CHINA.....JUNE 24	MANCHURIA.....JUNE 19
DORIC.....JULY 8	COPTIC.....JULY 4
MANCHURIA.....JULY 15	SIBERIA.....JULY 11
KOREA.....JULY 29	MONGOLIA.....JULY 28
COPTIC.....AUG. 5	CHINA.....AUG. 18
SIBERIA.....AUG. 23	DORIC.....AUG. 18
MONGOLIA.....SEPT. 2	MANCHURIA.....SEPT. 1
CHINA.....SEPT. 13	KOREA.....SEPT. 22
DORIC.....OCT. 4	COPTIC.....OCT. 3
KOREA.....OCT. 17	SIBERIA.....OCT. 17
COPTIC.....OCT. 28	
SIBERIA.....NOV. 11	

For general information apply to

**H. Hackfeld & Co.**

# The Balm of Good Coffee

is granted to the users of our OLD KONA COFFEE. It stimulates flagging energy and soothes worried nerves as nothing else can. And then there is the exquisite pleasure to be derived from a cup of rich, clear, delicately flavored coffee.

The uniform excellence of our coffee is due to the fact that it is the best grown, absolutely pure, very old, and we roast and grind our coffee every day. Try it and you will always use it. You cannot get better coffee.

Price 25 cents per Pound

**Henry May & Co., Ltd.,**  
Retail Main 22—TELEPHONES—Wholesale Main 92.

# SHIPPING INTELLIGENCE

(For additional and later shipping see pages 4, 5 or 6.)

TIDE, SUN AND MOON.  
Sun Moon June 2, at 11:11 p. m.

Date	High Tide	Low Tide	High Tide	Low Tide	High Tide	Low Tide
June 1	1:25 P. M.	9:09 P. M.	4:19 P. M.	5:13 P. M.	4:37 P. M.	5:59 P. M.
2	1:57 P. M.	8:50 P. M.	4:31 P. M.	5:17 P. M.	4:58 P. M.	6:28 P. M.
3	2:26 P. M.	8:30 P. M.	4:43 P. M.	5:21 P. M.	5:19 P. M.	6:58 P. M.
4	2:52 P. M.	8:10 P. M.	4:55 P. M.	5:25 P. M.	5:40 P. M.	7:28 P. M.
5	3:16 P. M.	7:50 P. M.	5:07 P. M.	5:29 P. M.	6:01 P. M.	7:58 P. M.
6	3:38 P. M.	7:30 P. M.	5:19 P. M.	5:33 P. M.	6:22 P. M.	8:28 P. M.
7	3:58 P. M.	7:10 P. M.	5:31 P. M.	5:37 P. M.	6:43 P. M.	8:58 P. M.
8	4:16 P. M.	6:50 P. M.	5:43 P. M.	5:41 P. M.	7:04 P. M.	9:28 P. M.
9	4:32 P. M.	6:30 P. M.	5:55 P. M.	5:45 P. M.	7:25 P. M.	9:58 P. M.
10	4:46 P. M.	6:10 P. M.	6:07 P. M.	5:49 P. M.	7:46 P. M.	10:28 P. M.
11	4:58 P. M.	5:50 P. M.	6:19 P. M.	5:53 P. M.	8:07 P. M.	10:58 P. M.
12	5:08 P. M.	5:30 P. M.	6:31 P. M.	5:57 P. M.	8:28 P. M.	11:28 P. M.
13	5:16 P. M.	5:10 P. M.	6:43 P. M.	6:01 P. M.	8:49 P. M.	11:58 P. M.
14	5:22 P. M.	4:50 P. M.	6:55 P. M.	6:05 P. M.	9:10 P. M.	12:28 P. M.
15	5:26 P. M.	4:30 P. M.	7:07 P. M.	6:09 P. M.	9:31 P. M.	12:58 P. M.
16	5:28 P. M.	4:10 P. M.	7:19 P. M.	6:13 P. M.	9:52 P. M.	1:28 P. M.
17	5:28 P. M.	3:50 P. M.	7:31 P. M.	6:17 P. M.	10:13 P. M.	1:58 P. M.
18	5:26 P. M.	3:30 P. M.	7:43 P. M.	6:21 P. M.	10:34 P. M.	2:28 P. M.
19	5:22 P. M.	3:10 P. M.	7:55 P. M.	6:25 P. M.	10:55 P. M.	2:58 P. M.
20	5:16 P. M.	2:50 P. M.	8:07 P. M.	6:29 P. M.	11:16 P. M.	3:28 P. M.
21	5:08 P. M.	2:30 P. M.	8:19 P. M.	6:33 P. M.	11:37 P. M.	3:58 P. M.
22	5:00 P. M.	2:10 P. M.	8:31 P. M.	6:37 P. M.	11:58 P. M.	4:28 P. M.
23	4:50 P. M.	1:50 P. M.	8:43 P. M.	6:41 P. M.	12:19 P. M.	4:58 P. M.
24	4:38 P. M.	1:30 P. M.	8:55 P. M.	6:45 P. M.	12:40 P. M.	5:28 P. M.
25	4:26 P. M.	1:10 P. M.	9:07 P. M.	6:49 P. M.	1:01 P. M.	5:58 P. M.
26	4:12 P. M.	0:50 P. M.	9:19 P. M.	6:53 P. M.	1:22 P. M.	6:28 P. M.
27	4:00 P. M.	0:30 P. M.	9:31 P. M.	6:57 P. M.	1:43 P. M.	6:58 P. M.
28	3:50 P. M.	0:10 P. M.	9:43 P. M.	7:01 P. M.	2:04 P. M.	7:28 P. M.
29	3:40 P. M.	0:00 P. M.	9:55 P. M.	7:05 P. M.	2:25 P. M.	7:58 P. M.
30	3:30 P. M.	0:00 P. M.	10:07 P. M.	7:09 P. M.	2:46 P. M.	8:28 P. M.
31	3:20 P. M.	0:00 P. M.	10:19 P. M.	7:13 P. M.	3:07 P. M.	8:58 P. M.

Times of the tide are taken from the U. S. Coast and Geodetic Survey tables. The tides at Kahului and Hilo occur about one hour earlier than at Honolulu, Hawaiian standard time is 10 hours 30 minutes slower than Greenwich time, being that of the meridian of 157 degrees 30 minutes. The time whistle blows at 1:30 p. m., which is the same as Greenwich, 0 hours, 0 minutes. The Sun and Moon are for local time for the whole group.

U. S. Department of Agriculture, Weather Bureau.

The following data, covering a period of 30 years have been compiled from the Weather Bureau and McMillan records at Honolulu, T. H. They are issued to show the conditions that have prevailed during the month in question, for the above period of years, but must not be construed as a forecast of the weather conditions for the coming month.

Month, May, for 30 years.  
Temperature, (1876-1904, incl.)  
Mean or normal temperature, 75 deg.  
The warmest month was that of 1895, with an average of 76 deg.  
The coldest month was that of 1902, with an average of 74 deg.  
The highest temperature was 87 deg. on May 28, 1897.  
The lowest temperature was 60 deg. on May 5 and 6, 1902.  
Precipitation (rain 1877-1894, incl.)  
Average for month, 2.33 inches.  
Average number of days with .01 of an inch or more, 12.  
The greatest monthly precipitation was 11.25 inches in 1885.  
The least monthly precipitation was 0.23 inches in 1878.  
The greatest amount of precipitation recorded in any 24 consecutive hours was 9.63 inches on May 10, 1885.  
Clouds and Weather (1884-1904, incl.)  
The prevailing winds have been from the northeast.  
Station: Honolulu, T. H.  
Date of issue: April 28, 1905.  
ALEX. McC. ASHLEY,  
Section Director, Weather Bureau.

HAWAII REPUBLICANS.  
HILO, May 22.—Immediately following the adjournment of the Republican county convention Thursday night, the members of the County Committee were called together by R. A. Lyman, Jr., when an executive committee was selected, as follows:  
R. A. Lyman, Jr., chairman; J. McGilroy, vice-chairman; Charles Akau, secretary; John T. Mohr, treasurer; and the following committeemen—Puna, G. D. Super; North and South Hilo, E. K. Simmons; Hamakua, N. T. Purdard; North and South Kohala, W. H. Renton; North Kona, R. Wassman; South Kona, W. J. Wright; Kau, Dr. W. A. Schwabbe.

ARRIVING.  
Sunday, May 28.  
Am. Soler, Aloha, Dabell, 16 days from San Francisco at 5 a. m.  
Star, W. G. Hall S. Thompson, from Kauai ports at 4:20 a. m.  
Star, Claudine, Parker, from Maui ports at 5:20 a. m.  
Tug Fearless, Olsen, from Pearl Harbor at 4:30 p. m.  
Monday, May 29.  
S. S. China, Mrie, from the Orient, due.

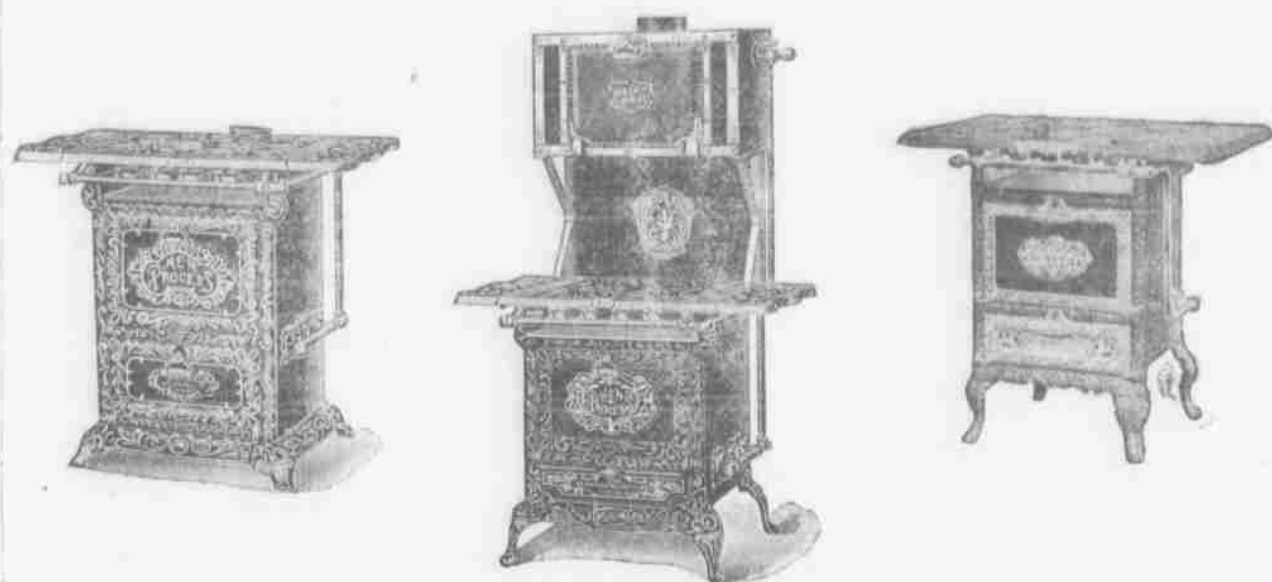
DEPARTING.  
Sunday, May 28.  
Am. Ship J. B. Thomas, Halderow, for Port Townsend at 9 a. m.  
S. S. California, Dow, for Kahului at 6 p. m.  
Monday, May 29.  
S. S. China, Friele, for San Francisco, probably sail in afternoon.  
Star, Likelike, Napala, for Molokai, Maui and Lanai ports at 5 p. m.  
Tuesday, May 30.  
Star, Kinau, Freeman, for Hilo and way ports at noon.  
Star, Claudine, Parker, for Maui ports at 5 p. m.  
Star, W. G. Hall, S. Thompson, for Kauai ports at 5 p. m.

PASSENGERS.  
Arriving.  
Per star, W. G. Hall, May 28, from Kauai ports—E. Kopke, C. W. Spitz, A. N. Peters, D. L. Austin, Lo Joo, Tong Yau Kee, George R. Cullen and wife, Mrs. H. K. Kahale, Miss N. Spencer, Mrs. D. W. Poor, J. M. Chase, D. B. Macdonald, R. Wagner, Miss L. Hal, Miss L. Ranken, C. W. Smith, Mrs. H. Kellner, Mrs. E. M. Toms, F. Toms, E. Langer and 24 deck.  
Per star, Claudine, May 28, from Maui ports—H. Benton, Mrs. English Mrs. Kaikala, Miss W. Fernandez, J. C. Plenco, wife and 2 children; Ed. K. Vuvaushelle, E. L. Hadden, A. J. Taite, J. Duggan, Mrs. Chung Che and 2 children, Yee Sheons, Rev. W. Marshall and wife, Y. Kawasaki, W. J. Marshall, P. N. Kahokuolona and wife, Captain Townsend, F. S. Dunn, F. Klamp, Mrs. C. H. Atherton, Mrs. Hugo and child, A. C. Dowsett, J. H. Porteous, S. B. Fujiyama.

MAKAWALI.  
Arriving, May 25.—Am. bark Edward May, Hansen, 11 days from San Francisco.  
Departing May 27.—Am. bark Emily P. Whitney, Goodman, for San Francisco.  
KAHULULU.  
Departing, May 28.—S. S. Nebraskan, Weedon, for San Francisco.

# NEW PROCESS GAS RANGES

are the Gas Ranges that we carry in stock for the Honolulu public or our many customers.  
The entire line is on display and we extend to all a cordial invitation to come and have explained the advantages and superiority of these pre-eminent ranges.



With a view of offering you the best Gas Range made, months time has been devoted in having impartial, exhaustive experiments of the supposed best ranges to determine which was really best. The New Process proved to be the most up-to-date range made and greatest gas saver.  
The facts convinced us and this is why we carry New Process Gas Range and are its sole agents in the Territory of Hawaii.

# W. W. DIMOND & CO.,

53, 55, 57 King Street, Honolulu, Hawaii

WEISBARTH HAS HARD LUCK.  
Captain WeisbARTH and the schooner Lavinia arrived last night from Puna-lu with no cargo but plenty of hard luck stories. The Japanese who were to have sent a load of fire wood to Honolulu by the schooner Lavinia, failed to produce the stuff. WeisbARTH said that it seemed to be raining heavily on the Kau and Kona coasts Saturday.

AT THE ORPHEUM  
Tonight will see the celebrated piece "Tribby" which will be given by the full strength of the Elfelders. Tribby is without a doubt one of the most interesting pieces now on the stage dealing as it does with the mysterious, with strong climates and plenty of comedy. There will be the dance in the studio by the art students in the Latin quarter, Paris, also the death of Svengali. Miss Selwyn will give one of her child specialties.  
Wednesday the romantic comedy drama, "The Lion's Heart," and at the matinee Saturday "Jack and the Beanstalk" with Happy Hooligan and the Katzenjammer family.

CAN CALL OUT TROOPS.  
Discussion of the National Guard appropriation has led to discovery of the fact that the Governor of Hawaii has special power to call upon the naval and military forces of the United States, in case of riot or insurrection. The Army and Navy Regulations contain the following on the subject:  
"Excepting that in Hawaii, the Governor may call upon the commander of the military and naval forces of the United States in the Territory of Hawaii, or summon the posse comitatus, or call out the militia of the Territory to prevent or suppress lawlessness, violence, invasion, insurrection, or rebellion, in said Territory, and he may, in case of rebellion or invasion, or imminent danger thereof, when the public safety requires it, suspend the privilege of the writ of habeas corpus, or place the Territory, or any part thereof, under martial law until communication can be had with the President or his decision thereon be made known."

AT LAHAINALUNA.  
Invitations have been issued to the dedication of the new buildings at Lahainaluna (Atkinson Hall, Hitchcock Hall and David Mole Hall), to take place together with the graduation exercises on June 7. School Inspector H. W. Wells will be present and distribute the diplomas to graduates.

The value of a trace mark can be readily seen when one has an article of merit. The word "Rainier" is a guarantee of excellence when applied to the products of the Seattle Brewing & Malting Co. Rainier Beer is unsurpassed.  
Drink Purity! Drink Health!  
Fine Job Printing Star Office.

# OPENING LAND IN HAMAKUA

RIGHT OF PURCHASE LEASES ISSUED FOR A NUMBER OF HOMESTEADS ON HAWAII.

HILO, May 22.—Sub-Land Agent G. H. Williams went to Honokaa last Saturday to receive applications for several small homestead lots in the Hamakua district. All of the land is agricultural land, partly cleared, and was opened for settlement under the right of purchase lease system. Lot 7, Ahualoa homesteads, containing an area of 65.70 acres, was given to Joe de Colte at an appraised value of \$657. Lot 19a, Ahualoa, having an area of 22.70 acres, went to M. A. Diaz at an appraised valuation of \$227. Lot 3, at Niuepa, containing 16.84 acres, was disposed of to Mrs. Kaona at an appraised value of \$202. Lot 19, in the same locality, containing 40 acres, went to Willie Iokila at \$405, while N. P. Soares secured three small lots, Nos. 41, 72 and 73, aggregating 27 acres at an appraised value of \$158. The appraised valuation was placed on each of these homesteads at \$10 an acre, and there were a number of applicants for each parcel disposed of under the right of purchase lease plan.

BORN.  
CARNegie.—At Walluku, Maui, on Thursday, May 25, 1905, to the wife of Leslie Carnegie, an son.

LAWTON MAY SAIL ON THURSDAY  
The Naval transport Lawton will probably sail on Thursday for Guam and Manila. The vessel is undergoing some repairs. The men are to be given shore leave during the remainder of the stay of the vessel in part, as they were deprived of liberty for several days owing to the discovery of a case of scarlet fever in the crew.

UP HALEAKALA.  
Engineer Hugh Howell and an assistant started in to survey the Haleakala summit road last Monday. Contracts will be made to construct it, so the \$5,000 appropriation under the Loan Bill will not lapse. Mr. Howell will complete the survey in about 10 days.

CHINA DUE TODAY.  
The S. S. China is due today from the Orient, en route to San Francisco.

GIVE CHAMBERLAIN'S PAIN BALM A TRIAL.  
No other liniment affords such prompt relief from rheumatic pains. No other is so valuable for deep seated pains like lame back and pains in the chest. Give this liniment a trial and become acquainted with its remarkable qualities and you will never wish to be without it. For sale by all dealers, Benson, Smith & Co., agents for Hawaii.

A JUNE WEDDING.  
Miss Alice Campbell and Walter Macfarlane are to be married on June 21 at the Roman Catholic church, Rev. Father Ulrich officiating. Afterwards a reception will be held at the Parker residence on Emma street. Muriel Campbell will be the maid-of-honor and the bridesmaids, the Misses Alice Macfarlane, Irene Dickson, Ada Rhodes and Clara Cummings.

MAKES STRONG HEARTS.  
Thousands of weak hearts have been made strong and healthy by the use of Dr. Miles' New Heart Cure. It acts directly upon the heart muscles and nerves, quieting the excited condition, nourishing and building up their wasted energies. It regulates the circulation, stimulates the appetite and tones up the stomach. If first bottle fails to benefit, money back.

Nature gave an ideal environment to the home of Rainier Beer, fields of waving grain, vineyards of perfect hops, streams of pure water and last but not least a knowledge of how to make better beer. The best beer from the best place.

# NOTICE.

## NOTICE TO BONDHOLDERS EWA PLANTATION COMPANY.

In accordance with the terms under which its bonds were issued, the Ewa Plantation Co. will pay, with accrued interest, on July 1st, 1905, One Hundred Thousand Dollars (\$100,000.00) of its bonds, this completing the redemption of the entire issue of \$500,000 issued under date of January 1st, 1900. The numbers of the bonds to be paid are as follows:

7	114	187	274	461
9	120	188	275	463
15	123	193	280	464
22	124	194	291	410
24	132	199	292	413
29	137	204	295	421
32	148	212	304	424
38	148	213	307	426
45	149	219	309	432
46	151	222	340	441
47	152	240	344	445
59	157	242	353	451
74	168	254	354	454
82	169	257	355	455
93	174	258	359	463
96	176	259	360	469
97	179	264	361	478
100	183	266	363	479
110	184	270	373	493
113	185	271	383	494

Notice is hereby given to the holders of these bonds to present the same for payment at the office of the Treasurer of the Ewa Plantation Company in Honolulu on July 1st, 1905, and that interest on same will cease on and after that date.

W. A. BOWEN,  
Treasurer Ewa Plantation Company,  
Honolulu, Hawaii, May 20th, 1905.



## BANK OF HAWAII

LIMITED.

Incorporated under the Laws of the Territory of Hawaii.

PAID-UP CAPITAL.....\$600,000.00  
SURPLUS.....200,000.00  
UNDIVIDED PROFITS.....102,617.80

## OFFICERS.

Charles M. Cooke.....President  
P. C. Jones.....Vice-President  
F. W. Macfarlane.....2nd Vice-President  
C. H. Cooke.....Cashier  
C. H. Cooke.....Assistant Cashier  
F. B. Damon.....Assistant Cashier  
F. B. Damon.....Secretary  
DIRECTORS: Chas. M. Cooke, P. C. Jones, F. W. Macfarlane, E. F. Bishop, E. D. Tenney, J. A. McCandless, C. H. Atherton, C. H. Cooke.

## COMMERCIAL AND SAVINGS DEPARTMENTS.

Strict attention given to all branches of Banking

JUDD BUILDING. FORT STREET.

Claus Spreckels, Wm. G. Irwin.

## Claus Spreckels & Co.

BANKERS

HONOLULU, - - - - - H. I.

San Francisco Agents—The Nevada

National Bank of San Francisco.

DRAW EXCHANGE ON

SAN FRANCISCO—The Nevada National

Bank of San Francisco.

LONDON—Union of London &amp; Smith's

Bank, Ltd.

NEW YORK—American Exchange National

Bank.

CHICAGO—Corn Exchange National

Bank.

PARIS—Credit Lyonnais.

BERLIN—Dresdner Bank.

HONGKONG AND YOKOHAMA—The

Hongkong and Shanghai Banking

Corporation.

NEW ZEALAND AND AUSTRALIA—

Bank of New Zealand, and Bank of

Australia.

VICTORIA AND VANCOUVER—Bank

of British North America.

TRANSACT A GENERAL BANKING

AND EXCHANGE BUSINESS.

Deposits Received. Loans made on

Approved Security. Commercial and

Travelers' Credits Issued. Bills of

Exchange Bought and Sold.

COLLECTION PROMPTLY AC-

COUNTED FOR.

ESTABLISHED IN 1858.

## BISHOP & CO.

BANKERS

BANKING DEPARTMENT.

Transact business in all departments

of banking.

Collections car fully attended to.

Exchange bought and sold.

Commercial and Travelers' Letters

of Credit issued on the Bank of

California and N. M. Rothschilds &amp;

Sons, London.

Correspondents for the American

Express Company, and Thos. Cook

&amp; Son.

Interest allowed on term and Savings

Bank Deposits.

TRUST DEPARTMENT.

Act as Trustees, collect Rents and

Dividends.

Safety Deposit suit.

ACCOUNTANT DEPARTMENT, 928

Bethel street.

Auditors and Trustees in Bankruptcy

Books examined and reported on.

INSURANCE DEPARTMENT, 924

the Street.

Agents for Fire, Marine, Life, Accident

and Employers Liability Insurance

Companies.

## THE YOKOHAMA SPECIE BANK

Limited.

ESTABLISHED 1850.

Capital Subscribed.....Yen 24,000,000

Capital Paid Up.....18,000,000

Reserve Fund.....9,720,000

HEAD OFFICE, YOKOHAMA.

Branches:

Honolulu, New York, San Francisco,

London, Lyons, Bombay, Hongkong,

Newchwang, Peking, Shanghai, Tientsin,

Kobe, Nagasaki, Tokio.

The Bank buys and receives for collection

Bills of Exchange, issue Drafts

and Letters of Credit, and transacts a

general banking business.

Honolulu Branch 67 King Street

T. HAYASHI,

TAILOR.

Clothes Cleaned, Dyed and Repaired.

537 Beretania Street.

Opposite Queen's Hospital.

## CHEE HOON KEE,

Hotel Street near Maunaloa.

Plumber

LOUI CHEE, MANAGER.

Want ads in the Star bring quick returns. Three lines three times for 25 cents.

## DEMOCRATS EFFECT HOME RULE FUSION

JOINT TICKET NOMINATED SATURDAY NIGHT—POEPOE CHOSEN AS CANDIDATE FOR SHERIFF.

The Democratic and Home Rule Parties agreed Saturday night upon fusion and a joint ticket was placed in nomination by the two conventions. The Democratic meeting was by far, the more exciting and at times the debate was vigorous.

Fred Turrell presided. The fusion conference committee presented its report but upon motion of T. T. Moore one of the members, the report was tabled until after word on the subject had been received from the Home Rule convention. A second report was then introduced as follows:

"The Democratic Party of the county of Oahu in convention assembled adopts the following as its declaration of principles:

"We pledge our faith in the principles of Democracy as enunciated in the national and territorial platform of our party.

"We affirm that the declarations in platform and campaign speeches of the Territorial Democracy relative to the insincerity of the local Republican Party in its platform utterances on vital issues, have been fully justified by the course of events since the last general election, and we declare that as a party the Republicans of this county and territory are becoming subservient to as corrupt machine politics as exist anywhere in the Union.

"We declare the restoration of the Konoiki rights in the bay and sea fisheries to those claiming them prior to the application of the Organic Act, is a piece of class legislation, pure and simple, contravening the intent of the Organic Act and again placing the many under tribute to the few.

"We welcome whatever measure of self-government is contained in the County Act, demand for it a fair trial and a square deal and pledge our candidates if elected thereunder to give its provisions broad and just interpretation.

"Believing in the maxim 'In union there is strength' we welcome the fusion of Democrats and Home Rulers in bringing forward a joint county ticket to which we pledge ourselves individually and collectively.

Respectfully submitted,

E. B. McCLANAHAN,

B. N. KAHALEPUNA,

F. J. TESTA,

JOHN EMMELUTH,

JOHN EFFINGER.

The report was adopted with the exception of that portion referring to fusion but subsequently when the fusion was accomplished the section was endorsed. There was a brief wait for word from the Home Rule Convention and finally Col. Lauka moved that an emissary be sent to the Home Rulers to ascertain whether anything was doing. Just as the messenger was about to depart a messenger from the Home Rulers arrived with a communication from D. M. Kupihea secretary of the Home Rule county convention announcing that the fusion report had been adopted unanimously. There was a shout and then the report of the Democratic committee was taken up for consideration.

H. T. Moore made a verbal report relative to the negotiations between the two committees and then the following allotment of nominees was read:

Koolauloa and Koolapoko—Super-

visor—J. K. Paele (H. R.)

Koolauloa—Deputy Sheriff—U. Jones

(Dem.)

Koolauloa—Deputy Sheriff—Willie

Lane (H. R.)

Wailua and Wailanae—Supervisor—

S. K. Mahoe (H. R.)

Wailua—Deputy Sheriff—B. Nauka-

na (Dem.)

Wailua—Deputy Sheriff—Dick Gill-

iano (Dem.)

Ewa—Deputy Sheriff—S. Kapu (H. R.)

Supervisor at Large—A. Fernandez

(Dem.)

Supervisors for Honolulu—H. T. Moore

(Dem.), J. A. Akina (H. R.), D. M. Kupihea (H. R.)

Sheriff—J. M. Poepe (H. R.)

Honolulu Deputy Sheriff—D. Kahale-

leahu (Dem.)

County Clerk—B. N. Kahalepuna

(Dem.)

County Attorney—E. M. Watson

(Dem.)

Treasurer—R. H. Teant (Dem.)

Auditor—J. P. Makaihi (H. R.)

John Emmeluth who had been on the

committee made a minority report in

which he stated that he did not consider

that the Fourth District had been

given a fair showing.

L. D. Timmons moved to indefinitely

postpone action on the report. There

was an animated discussion of this

motion and finally it was voted down

and the report passed amid enthusiasm.

WELL KNOWN MAN LEAVING.

W. Berlowitz, who has lived nineteen

years in these islands, and been a commercial

traveler for a number of the

leading firms, will leave by the S. S.

Aorangi Wednesday for Vancouver.

He is going to New York to live.

BAND AT NAVAL WHARF.

The band gave a concert this morning

at Naval wharf No. 2 to the cruiser

Boston and the Naval ship Lawton.

Want ads in the Star bring quick returns. Three lines three times for 25 cents.

Do not accept the "just as good" label upon trying Rainier Beer. You will always order it—it never changes.

Star Want Ads pay 25 cents.

## THE MAILES WERE SHUT OUT

PUNAHOU WINE FROM THE HONOLULU AND THE ELKS DRUB THE MAILES, SATURDAY.

Two exciting games of baseball were played at the baseball grounds on Saturday. In the first game the P. A. C's beat the H. A. C's with the score of 4 to 3, while the Elks shut out the Mailes with the score of 6 to 0.

In the first inning the H. A. C's pushed a man as far as second but failed to score, while Stiles slugged out a home run and Ahrens hit out for a two-bagger, but failed to reach home. The H. A. C's failed to reach first in the second inning and the P. A. C's could not bring up the score. In the third Fernandez made first and stole second but the three following men went out, and he failed to score. The Punahous also went out without getting a point. The H. A. C's came up to the bat in the fourth inning determined to do or die, and Williams, Gleason, and De Fries came home before they were shut off. The Punahous failed to score. In the fifth the position was reversed and the Puns got three runs, while the H. A. C's failed to reach first. In the sixth G. Desha made a swell overhand catch in left field and prevented the H. A. C's from getting in a run. The Punahous met with the same fate. In the seventh the H. A. C's did some poor playing and both sides retired without scoring. The remaining innings passed without changing the score. Desha struck out four men, and De Fries three.

The second game started out with Moore's striking out, and neither side could make anything in the first inning. There was exceedingly good playing displayed in the next two innings and no runs were made in them. In the fourth Moore got his base on balls and Evers and Hampton both scored a three bagger. Three runs were scored and again the Mailes got a goose-egg. The score did not change during the fifth, and the sixth followed suit. Honan, of the Mailes made a fine catch in this inning. Neither side scored in the seventh but in the eighth Hampton, Evers and Cogswell came home for the Elks, while the Mailes could not make anything. The ninth inning did not change the score and the game ended with the score of 6-0. Freitas struck out five men, and Hampton seven.

The scores by innings is as follows:

1 2 3 4 5 6 7 8 9

H. A. C.....0 0 2 0 0 0 0 0 3

P. A. C.....1 0 0 3 0 0 0 0 4

1 2 3 4 5 6 7 8 9

Elks.....0 0 0 3 0 0 0 0 6

Mailes.....0 0 0 0 0 0 0 0 0

IN RE REVIVAL.

EDITOR STAFF: Kindly allow me space in which to answer certain statements made by "Catholics" in Saturday morning's Advertiser (May 27) regarding Catholics and Revivalists; "before the revivalists have received their wages and left the country."

First: The Central Union Revival meetings are open to all and no one is required to come or stay away. If some come and feel that they are being coaxed away from their own church the best plan might be for those not to attend them at all.

Second: The facts regarding the Henry Nappel imprisonment case are very easy to get, since both Mr. Nappel and his son are at the present time in this city. The writer has seen both and the facts are as follows:

The Island of Ponape, Micronesia, one of the Caroline Islands, was up to the time of the close of the Spanish-American war in the hands of the Spanish, and after it was sold by them to the Germans. Mr. Nappel was imprisoned for ten months during this war by the Spaniards, and as to whether or not the Spaniards were Catholics we will leave that for "Catholics" to say.

Third: The history of the first arrival of the Catholics on these islands is as follows: About the year 1849 two French Jesuits arrived here on a sailing vessel and were not allowed to land by order of the king, a perfectly lawful thing for the government to do. These two Jesuits went back to California and returned to the islands later, although the prohibition of their living in these islands had not been removed. They were again ordered away by the government and it was only at the intercession of the Protestant American Missionaries that they were allowed to remain.

It might have been well if "Catholics" had made himself acquainted with the facts of which he wrote and had he done this he would not have had to use as anonymous names.

W. L. CASTLE.

AMY TURNER HAD LEAK.

A leak was discovered in the bark Amy Turner on Wednesday of last week, the vessel making water at the rate of two feet of water an hour according to a Hilo paper. The leak was found to be through a hole an inch and a half in diameter in the lower end of the sleeve of the water closet pipe. Repairs were made and the leak stopped. No damage was done the sugar and the vessel proceeded to sea on May 29. A survey was held.

NEURALGIA.

Is an affliction of the nerves, and therefore yields readily to the soothing influence of Dr. Miles' Anti-Pain Pills. They are absolutely harmless, and drive out the pain by relieving the irritated condition of the nerves. Guaranteed to benefit, or money refunded, 25 doses, 25 cents. Never a day in bulk.

Want ads in the Star bring quick returns. Three lines three times for 25 cents.

Do not accept the "just as good" label upon trying Rainier Beer. You will always order it—it never changes.

Star Want Ads pay 25 cents.

## Dr. Deimel Underwear

Dr. Deimel's is a perfect sanitary underwear possessing remarkable wearing qualities and being finished in the best and most up-to-date style.

Ordinary linen makes a clean underwear but it is cold and clammy and much sickness is caused by colds contracted while using it.

Dr. Deimel's Underwear is simply linen with the cold taken out by a special process which transforms the objectionable material into a soft, warm, porous, fabric known as Linen-Mesh.

This underwear is especially suited for the summer season when one perspires with but little provocation.

We keep a large enough variety of sizes to fit everybody.

M. MCINERNEY, LTD.

MERCHANT AND FORT STS.

## FOREIGN STEAMER TIMETABLE

STEAMERS TO ARRIVE.

Date. Name. From.

May 2—Sierra.....Colonies

3—Manuka.....Colonies

3—Ventura.....San Francisco

6—Miwera.....Victoria, B. C.

9—Siberia.....Yokohama

10—Korea.....San Francisco

12—Alameda.....San Francisco

13—Nebraskan.....San Francisco

13—Mongolia.....Yokohama

13—Coptic.....San Francisco

23—Sonoma.....Colonies

24—Sierra.....San Francisco

24—China.....Yokohama

31—Aorangi.....Colonies

June 2—Alameda.....San Francisco

3—Siberia.....San Francisco

3—Manuka.....Victoria, B. C.

9—Nevadan.....San Francisco

13—Ventura.....Colonies

13—Manchuria.....Yokohama

14—Mongolia.....San Francisco

14—Sonoma.....San Francisco

20—Doric.....Yokohama

23—Alameda.....San Francisco

24—China.....San Francisco

28—Miwera.....Colonies

28—Nebraskan.....San Francisco

STEAMERS TO DEPART.

Date. Name. For.

May 2—Sierra.....San Francisco

3—Manuka.....Victoria, B. C.

3—Ventura.....Colonies

6—Nevadan.....San Francisco

6—Miwera.....Colonies

9—Siberia.....San Francisco

10—Korea.....Yokohama

12—Alameda.....San Francisco

13—Mongolia.....Yokohama

13—Coptic.....Yokohama

23—Sonoma.....San Francisco

24—Sierra.....Colonies

27—Nebraska.....San Francisco

30—China.....San Francisco

31—Aorangi.....Victoria, B. C.

June 3—Siberia.....Yokohama

3—Manuka.....Colonies

7—Alameda.....San Francisco

13—Ventura.....San Francisco

13—Manchuria.....San Francisco

14—Mongolia.....Yokohama

14—Sonoma.....Colonies

17—Nevadan.....San Francisco

20—Doric.....San Francisco

24—China.....Yokohama

28—Alameda.....San Francisco

28—Miwera.....Victoria, B. C.

\* Calling at Manila.

† Date of Departure from Kahului.

U. S. A. Transports will leave for San

Francisco and Manila, and will arrive

from same ports at irregular intervals.

Purity and Wholesomeness are the

first requirements of a beverage. The

United States Government reports as-

sure both of these to Rainier Beer.

Armaur once boasted that he used

every part of the pig but the squeal.

It would seem that his pupils have

found means to preserve even that

jeeding from the squealing that came

from the Beef Trust managers when

confronted with the bribery indict-

ments.—Hinghamton Press.

Star Want Ads pay 25 cents.



# The Hawaiian Star, DAILY AND SEMI-WEEKLY.

Published every afternoon (except Sunday) by the Hawaiian Star Newspaper Association, Limited.

## SUBSCRIPTION RATES.

Local, per annum.....\$ 8.00  
Foreign, ".....12.00  
Payable in advance.

FRANK L. HOOGE.....MANAGER  
MONDAY.....MAY 29, 1905.

### Expensive Naval Enterprise

In sending Rojestvensky to the Far East, Russia successfully carried out the greatest and most expensive naval enterprise of the kind ever attempted. The first report of his defeat comes just as the world was beginning to give Russia credit for a notable achievement in naval history. Americans, who boasted not a little at the successful journeying of a squadron in company, making good time and meeting no mishap, from Asiatic waters to Honolulu and back, certainly owe praise to the Russians, who sent a fleet of forty or more vessels half around the world in time of war, overcoming the tremendous difficulties of coaling and supplies in the face of an active enemy and arriving if not in first-class fighting condition, at least in apparently as good a state of preparedness for battle as was possible to be in without drydocking. Whether defeated now or not, Rojestvensky has done that which for a time at least, stilled the world's chorus of criticism of his country and brought him praise even from London. In commenting upon the change in tone of some leading London and New York papers, the San Francisco Argonaut says: "Praise from the enemy is praise indeed, but it appears to be well deserved. Rojestvensky has won what is indeed a wonderful diplomatic and strategic triumph in getting his fleet to the China Sea, in making junction with Nebogoroff's squadron without the loss of a single vessel in completely re-provisioning and re-coaling his ships, and in resting his men."

It was not reasonable to suppose that the Japanese would allow Rojestvensky to reach Vladivostok and put his fleet in first-class fighting shape by the cleaning and overhauling they could have been given there. Togo undoubtedly had the Russians at a serious disadvantage in the matter of speed and was able to choose his fighting distance and control the course of the battle, as he and Kamimura have done in the other naval fights of the war. The blow, if Rojestvensky is "annihilated" as the first official Japanese report has it, is as bad as any Russia has received in the war, and perhaps more decisive than any. Financially, the cost of Rojestvensky's enterprise must have been appalling. To maintain forty or fifty war vessels and pay for the vast fleets of colliers and supply vessels which have met them at various points must have been one of the costliest ventures of the entire war. If the fleet is defeated and rendered harmless it is a half-billion dollar blow at Russia, and it leaves her with little chance of interrupting Japan's course in Manchuria.

### World-Wide Phenomena

"The World-Wide Spiritual Awakening," is the title of an article in the current number of the Century Magazine by Henry R. Elliot. In a very terse way it tells of how widely diffused the phenomena of revivals are at the present time. He touches on the Welsh revival, and the work in Great Britain of Torrey and Alexander, and that of Rev. Dr. J. Wilbur Chapman in Denver and Los Angeles, and of Rev. W. J. Dawson in New England. His conclusions from the whole matter are that the phenomena observable are a reaction from materialism. He says:

Many additional details could be given to illustrate the general interest, but the above may suffice. It would be quite inadequate, however, to base the claim of a wide-spread spiritual awakening on revival phenomena and statistics. Underneath such symptoms is a profound sensitiveness to religious truth. The distribution and study of the Bible are greater than ever before; the roster of home and foreign missionaries is larger, and is supplemented by workers in social settlements, brotherhoods, deaconesses, Y. M. C. A. workers, and patrons of every variety of public and private charities, to an extent never before dreamed of in human history. The standard of public and of business morality is set at a high level, as witness the sharp and aggressive criticism of "graft," "trusts," "bossism," etc. The zeal for purity and righteousness is wider than sect or zone. It stirs America in one way and Russia in another. It affects the Christian after one fashion and the Hebrew or the Shinto after another. But everywhere the President's motto of "a square deal" is on the people's lips and hearts. May it not be that after a veritable orgy of materialism the world is awakening to realize that character is better than billions, and service than selfishness.

### Australian Sugar Crops

The Australian crop of sugar for the year just ended, statistics of which are just now being made up, exceeded the estimates considerably. Queensland is by far the principal Australian sugar producer, though New South Wales has quite an interest in it. The estimates for the crop of 1905 are considerably above the crop of last year, and it is said that if the estimates are realized the amount of available Australian grown sugar will just about equal the estimated consumption. The estimated crop for 1905 for the whole of Australia is somewhat under 200,000 tons, or less than half the expected crop of Hawaii.

The total figures for New South Wales are 1526 growers—1304 white, and 222 black—cultivating 21,042 acres, made up of 18,631 acres by white labor, and 2411 by black. The cane yields were 180,971 tons white, and 18,669 black, or a total of 199,640 tons; while the sugar saved was 10,202 tons, of which 17,488 were produced by white, and 1714 by black labor. Black labor, he it understood, means Polynesian labor, and the distinction between white and black labor is made because, in pursuance of her policy of a "white Australia," the Commonwealth pays a bounty for sugar produced wholly by white labor.

In Queensland the number of cane producers has increased from 2997 in 1903, to 3422 in 1904. The producers registered for bounty on white-grown cane in 1904 numbered 2429, as against 2048 in 1903—an increase of 381.

The area under white-grown cane was 45,424 acres, and under black labor 74,375 acres, or a total of 119,799. The area in the previous year was 103,804 acres, showing that the industry is extending rapidly. The quantity of white-grown cane in 1904 was 379,884 tons, as against 222,537 tons in 1903. Bounty amounting to £85,211 was paid to growers up to April 15, as against £50,652 paid in the previous year.

Owing to the favorable season of 1904, the estimate of 129,000 tons was largely exceeded, the actual production up to December 31 being 145,020 tons. Of this quantity 39,404 tons was white, and 105,616 tons black, grown.

In 1904 there were 55 sugar factories licensed, and the total amount received for license fees was £1397; while a further sum of £400 was received for refineries.

Grinding for the crop of 1905 will begin about June 1, and most of the mills will be in operation by July 1. Reports from the sugar dis-

## NOW

IS THE TIME  
TO DO YOUR

## Planting



FRESH  
Flower and  
Vegetable  
Seeds in 5c.  
Packages ...  
Just Re-  
ceived ex.  
"Sierra."

HOLLISTER DRUG CO.  
Fort Street

tracts indicate that, due to the genial weather, the sugar cane has made rapid growth, and the factories will have trouble to cope with the large quantity of cane produced. It is early at present to make a reliable estimate of the sugar production for 1905. The season is, however, expected to prove a record one. If early frosts are not experienced, the estimated production of sugar may be put down at 160,000 tons, of which quantity 55,000 tons will be white-grown.

The total stock of sugar in the factories and refineries in Queensland on January 1 last was 27,092 tons. This, added to the expected Queensland production of 160,000 tons, and, say, 20,000 tons produced in New South Wales, equals 207,000 tons of Commonwealth sugar, available for consumption. On the basis of these figures, the Commonwealth will not require to import foreign sugar.

The amount of bounty paid in New South Wales for white-grown sugar up to February 25 last was £36,966 5s 2d, but claims had been received when the return was compiled which, it was estimated, would bring the total up to £63,150.

There will be rejoicings in Hull over the defeat of Rojestvensky. In order to forestall any possibility of a typographical error, it may be explained that Hull, England, is referred to. That was the home port of the destroyed North Sea trawlers.

It will be a grand sight to see that most recent Democrat George Davis march proudly to the polls and vote the straight Democratic ticket at the coming election.

When the Polish Socialists issued a proclamation urging the destruction of all who were not socialists, "the troops, fired on the Jews." That seems to be way of settling any little political dispute in Poland.

The making of a correction of error by a newspaper is not always accomplished without difficulty, as is shown by the following efforts of the Advertiser to set John Cassidy right in the estimation of his fellow citizens:

It was not John Cassidy but John Castro whom Governor Carter mentioned a few days ago as having an unpaid bill among the proposed appropriations. The disciple of Testa says he only wishes he had a good-sized claim on the treasury.—Advertiser, May 29.

Besides having no "unpaid bill" against the Government, John Cassidy has no use for a political tutor. Mr. Cassidy is one of the oldest electri-

## Classified Ads in Star.

### Employment Office

Cumura 508 King street near Punchbowl. Bicycles repaired, clothes cleaned and dyed also employment office.

### For Sale

Building lot corner King and Kamehameha road. Palama terminus of Rapid Transit road. Apply at Star office.

### Undertaking

Oahu Undertaking Co., 1175 Alakea near Beretania street. Attend all calls day or night. Telephone Main 328.

### Wanted

Boy to carry papers. Must have a bicycle. Apply at Star office.

Four gentlemen to room on car line Nuuuau Avenue. Board optional, swimming tank on premises. Address P. O. Box 545.

Set of books to keep or other clerical work to do in spare time. Also typewriting. Apply A. P. O. Box 567.

### Situation Wanted

Any clerical position, including Typewriting and Bookkeeping by Mrs. Marion Luning. P. O. Box 545.

Experienced Canvasers can secure profitable employment by addressing "Opportunity," Box 395, City.

### For Rent

A furnished house, 7 rooms, bath, servants' quarters. Star Office.

House Kinau street near Alapai. Apply P. B. Damon, Judd building.

### "Procrastination is the Thief of Time"

DON'T put off starting that savings account. We pay 4 1/2 per cent per annum and your money is withdrawable on demand. \$1.00 to \$5,000.00 on one account. Further particulars, apply PHENIX SAVINGS, BUILDINGS AND LOAN ASSOCIATION

Judd Building, Honolulu.

Guarantee Capital.....\$2,000,000  
Paid in Capital.....1,500,000  
HENRY E. POCKOCK.....Cashier.

## W. G. Irwin & Co.

### AGENTS FOR THE

Royal Insurance Co., of Liverpool, Eng.  
Alliance Assurance Co., of London, Eng.  
Scottish Union & National Ins. Co., of Edinburgh, Scotland.

Fire Association of Philadelphia.

Alliance Insurance Corporation Ltd.  
Wilhelms of Magdeburg General Ins. Company.

THOSE TIRED EYES

THEY ARE SURELY CAUSED BY YOUR NEGLIGENCE. WHY RUIN YOUR EYES BY LACK OF CARE AND ATTENTION. CONSULT US; WE GUARANTEE INSTANT RELIEF. NO CHARGE FOR EXAMINATION. DR. JOHN GODDARD.

With H. F. Wichman & Co., Ltd

clans of Honolulu and therefore a "disciple of Testa"—was written about him for yesterday's issue, but unfortunately not so printed.—Advertiser May 30.

On the principle that laughter is good for the digestion local physicians should have copies of the fusion ticket printed for distribution among their dyspeptic patients. Let the patients spend a few moments in contemplation of the ticket after each meal.

Campaign cry for the Democrats: "What's the matter with poi-poi?"

What with Sweden and Norway quarreling, Austria and Hungary on the verge of war and the Democrats of Oahu saying they have been jobbed by the Home Rulers, the outlook for universal peace is indeed dark.

There need be no further discussion over the proper pronunciation of Rojestvensky's name, it is just plain "Dinnis."

It was hardly fair to take advantage of Attorney E. M. Watson by putting him on that ticket when he was away. The nomination of Poepea for sheriff was naturally followed by an earthquake.

Want ads in the Star bring quick results. Three lines three times for 25 cents.

# ..UTILIZE..

The Present  
ample water  
supply...

BY BUYING A SUPPLY OF

Garden Hose,  
Etc., Etc.

(The shortage having been neutralized, now is the time to utilize.)

Pacific Hardware Company, Ltd  
FORT AND MERCHANT STREETS.

Honolulu Iron Works. CASTLE & COOKE, LTD.

STEAM ENGINES, SUGAR MILLS,  
BOILERS, COOLERS, IRON, BRASS  
AND LEAD CASTINGS.

Machinery of Every Description Made  
to order. Particular attention paid to  
Ship's Jacking, Job Work Exe-  
cuted on Short Notice.

HUSTAGE PECK CO., LTD  
QUEEN STREET  
DEALERS IN

Firewood, Stove,  
Steam and Blacksmith  
Coal

WHO WE LEA RETAIL.

Special Attention Given to  
DRAYING

ALSO, WHITE AND LOCK SAND.

LORD & BELSER.

General Contractors and Teaming.  
Bridges, Steel and Concrete, and Sewer  
Work. Guarantee first-class work at  
low prices.

Also Curbing, Crushed Rock, Black  
and White Sand, Soil or Filling Material  
at lowest rates.

Office and yards, South and Kawaia-  
hao Street, Telephone Main 128.

THE HAWAIIAN REALTY  
AND MATURITY CO. Ltd.

Real Estate, Mortgages, Loans and  
Investment Securities. Homes built on  
the installment plan.  
Home Office: McIntyre Building, T. H.  
L. K. KENTWELL, General Manager.

The Pacific Hotel,  
1182 Union Street.

Rooms, first-class, Meals 25c.,  
or Board \$4.00 per Week and  
Meal Tickets \$4.50.

Best Meal In Town

COME AND TRY IT.

Want ads in the Star bring quick re-  
sults. Three lines three times for 25  
cents.

Commission Merchants,  
Sugar Factors.

### GENTS FOR

The Ewa Plantation Company,  
The Waialua Agricultural Co., Ltd.  
The Kala Sugar Company.  
The Waimea Sugar Mill Company.  
The Fulton Iron Works, St. Louis, Mo.  
The Standard Oil Company.  
The George F. Blake Steam Pumps.  
Weston's Centrifugals  
The New England Mutual Life Insur-  
ance Company of Boston.  
The Aetna Fire Insurance Company of  
Hartford, Conn.  
The Alliance Assurance Company of  
London.

EUROPEAN BARBER SHOP  
928 Fort, between King and Merchant.

FIRST CLASS SHOP  
WITH THREE BARBERS  
Open Sundays

Denman  
Butter

TWO POUNDS 65c.

TRY SOME OTHER THEN TRY THIS

We have the sole agency and have  
had it for years.

### WHY?

Because we have found it the best!  
Denman has the finest Creamery in  
California.

LEWIS & CO., LTD.

169 KING STREET.

240—3—TELEPHONES—3—240

M. PHILLIPS & CO.,  
Wholesale Importers  
And Jobbers of

AMERICAN AND EUROPEAN DRY GOODS

Corner of Fort and Queen Sts.

Shipping  
Receipt  
Books

SOLD AT

STAR OFFICE

OAHU RAILWAY & LAND CO.  
WILDER'S S. S. COMPANY  
INTER-ISLAND S. N. COMPANY



Highton occupied all this morning with his argument of the various propositions contained in the agreed submission.

---

E. J. Benjamin, vice-president of M. S. Granbaum & Co., is expected by the Siberia.



# A Summer Proposition.

## ICE QUESTION!

You know you'll need ice, you know it is a necessity in hot weather. We believe you are anxious to get that ice which will give you satisfaction, and we'd like to supply you. Order from

**THE OAHU ICE & ELECTRIC CO.,**

Telephone, 434 Blue, Postoffice Box 506.

**W. G. IRWIN & CO., LTD.,**

Wm. G. Irwin, President and Manager  
John D. Spreckels, First Vice-President  
W. M. Gifford, Second Vice-President  
H. M. Whitney, Treasurer  
Richard Iversen, Secretary  
A. C. Lusk, Auditor

**SUGAR FACTORS, COMMISSION AGENTS**

AGENTS FOR

Oceanic Steamship Co., San Francisco, Cal.  
Western Sugar Refining Co., San Francisco, Cal.  
Baldwin Locomotive Works, Philadelphia, Pa.  
Newall Universal Mill Co., Manufacturers of National Cane Shredder, New York, N. Y.  
Pacific Oil Transportation Co., San Francisco, Cal.

**HART & CO., LTD**

The elite Ice Cream Parlors.  
Chocolates and Confections  
Ice Cream and Water Ices  
Bakery Lunch.

**THE FINEST RESORT IN THE CITY**

**Union Pacific**

Railroad

SUGGESTS

**Speed and Comfort**

Three trains daily through cars, first and second class to all points. Reduced rates take effect soon. Write early.

**S. F. Booth,**  
General Agent.

No. 1 Montgomery Street,  
San Francisco.

**Travellers Agree**

THAT

**The Overland,**  
Limited

IS

**Quickest, Finest, Best**

**A Train that Supplies All Demands**

To St. Louis or Chicago

**IN 3 DAYS**

from San Francisco.

**ELECTRIC LIGHTS**

**READING LAMPS,**

**CLUB CARS—**

**ALL GOOD 'FRINGS**

**Southern Pacific**

Information Bureau  
613 Market Street,  
San Francisco.

**OAHU RAILWAY AND LAND CO'S**  
**TIME TABLE**

**OCTOBER 6, 1904.**

**OUTWARD.**

For Waianae, 'Aiea, Kahuku and  
Way Stations—9:15 a. m., 3:30 p. m.  
For Pearl City, Ewa Mill and Way  
Stations—9:30 a. m., 3:45 p. m.  
9:45 a. m., 4:00 p. m., 4:15 p. m.  
9:30 p. m., 10:00 p. m., 11:15 p. m.

**INWARD.**

Arrive Honolulu from Kahuku, Wai-  
anae and 'Aiea—8:30 a. m., 5:31  
p. m.  
Arrive Honolulu from Ewa Mill and  
Pearl City—7:55 a. m., 8:35 a. m.,  
10:25 a. m., 1:40 p. m., 4:31 p. m.,  
5:31 p. m., 1:30 p. m.  
Daily.  
Sunday Excepted.  
Sunday only.

The Haleiwa Limited, a two hour  
train, leaves Honolulu very Sunday at  
8:22 a. m. returning arrives in Hono-  
lulu at 10:10 p. m. The Limited stops  
only at Pearl City and Waianae.

M. P. DENNISON, Supt.  
F. C. SMITH, G. P. & T. A.

Do not envy the beautiful hair of others, but possess it yourself. Women are born with beautiful hair, others acquire it, but none have it thrust upon them. Those who acquire it do so, for the most part, by the discovery that there is a remedy for locks thinned by disease, or which may have become prematurely gray, and that remedy is

**Ayer's Hair Vigor**

Have you lost your hair? It will restore it. Has your hair faded or turned gray? It will bring back the color and gloss of youth. In brief, there is no condition, short of absolute destruction of the roots, in which Ayer's Hair Vigor will not produce luxuriant hair. Do not be deceived by cheap imitations which will only disappoint you. Make sure you get AYER'S Hair Vigor.

Prepared by Dr. J. C. Ayer & Co., Lowell, Mass., U.S.A.

**Castle & Cooke, Ltd**

**Life and Fire**

**Insurance Agents**

AGENTS FOR  
**New England Mutual Life Insurance Co OF BOSTON.**

**Aetna Fire Insurance Co., OF HARTFORD, CONN.**

**S. SAIKI, Bamboo Furniture AND PICTURE FRAMES.**  
Neat and Handsome Designs made to order.  
553 Beretania Street, near Punchbowl.  
TELEPHONE BLUE 881.

**C. BREWER & CO., LIMITED**

**QUEEN STREET, HONOLULU, H. T**

AGENTS FOR

Hawaiian Agricultural Company, Ono-  
ma Sugar Company, Honoma Sugar  
Company, Oahu Sugar Company,  
Ookala Sugar Plantation Company,  
Haleakala Ranch Company, Kapaeha  
Ranch.

Planters' Line Shipping Company.

Charles Brewer & Co's Line of Boston  
Packets.

**LIST OF OFFICERS.**

Charles M. Cooke, President  
Geo. H. Robertson, V-Pres. & Mgr.  
E. Faxon Bishop, Treas. & Secy.  
F. W. Macfarlane, Auditor  
P. C. Jones, Director  
C. H. Cooke, Director  
J. R. Galt, Director  
All of the above named constitute  
the Board of Directors.

**BAND CONCERT**

The band will give a public concert  
at Emma square, at 7:30 this evening  
the following program to be played:

**PART I.**

March—"Bonaventura" (new)....Losey  
Overture—"Light Cavalry".....Suppe  
Ballad—"Alice Where Art Thou".....Asher  
Grand Selection—"Tosca".....Puccini

**PART II.**

Vocal—Hawaiian Songs, as by Berger  
Intermezzo—"Moonlight".....Moret  
Selection—"American Airs".....Contorno  
March—"El Capitan".....Souza  
"Star Spangled Banner."

**TIRED BRAIN.**

Means that you are losing control of  
your will power; if it is difficult to con-  
centrate your thoughts; you are forget-  
ful, languid, nervous, irritable. Refresh  
your tired brain with Dr. Miller's Ner-  
vine which will soothe, feed and  
strengthen the exhausted nerves, and  
renew your brain power. The first bot-  
tle will not fail to help you; if so, your  
druggist will return your money.

Want ads in the Star bring quick re-  
sults. Three lines three times for 25  
cents.

There are no "blues" in Rainier Beer,  
it is all golden brown, the golden brown  
of the ripened grain.

Fine Job Printing, Star Office.

**ROYAL FARMERS**



THE QUEEN OF ITALY.  
(Associated Press Cable)

ROME, May 20.—The king and queen have inaugurated the inter-  
national conference on agriculture.

**REPUBLICANS ENDORSE CARTER**

STRONG RESOLUTION ADOPTED  
BY THE COUNTY COMMITTEE ON  
SATURDAY NIGHT.

The Republican county committee met on Saturday evening and passed a strong resolution endorsing Governor Carter's administration. Organization was affected by the election of Lorrin Andrews chairman, Judge Hoekano vice chairman, Z. Lyon secretary and John Waterhouse treasurer, and it was decided to select an executive committee to hold nightly meetings during the campaign. The resolution adopted was presented by E. R. Adams and is as follows:

"Be it resolved by the Republican county committee of the county of Oahu in meeting assembled, that representing the Republican party of the county of Oahu, we deplore the fact that the Republican County Convention of the Islands of Oahu failed to endorse the energetic and wise policy of President Roosevelt, the recognized head of the National Republican party and of our Republican Governor, George R. Carter, (the President's representative in Hawaii), who has assisted in every way possible to give this Territory an honest, economical and efficient administration, reflecting credit on the Republican party.

"And as the duly elected representatives of the Republican party of the County of Oahu, we hereby, on behalf of the party, endorse not only the administration of President Roosevelt but the administration of Governor George R. Carter, and heartily pledge our support to that administration, recognizing George R. Carter to be the head of the Republican party of the Territory of Hawaii."

**START KAUAI YACHT CRUISE**

HAWAII AND LA PALOMA LEAVE  
SATURDAY AFTERNOON FOR HA-  
NALEI—TO RETURN TOMORROW.

Another yacht cruise to Kauai was started Saturday afternoon when the Hawaii left Honolulu about 2 o'clock, and about 4 o'clock the yacht La Paloma left Pearl Harbor to join the Hawaii, and the pair to proceed to Hana-  
lele.

On the Paloma were Clarence Macfarlane, T. W. Hobron, L. Petrie and two native sailors, and on the other yachts reached Hanaelele Saturday and George Crozier. It is expected that the yachts reached Hanaelele yesterday and remain there on Sunday and part of Monday. They will return to Honolulu about Tuesday night.

The weather is not propitious for yachting now, but the two vessels will take chances. Inter-island cruising is likely to be very popular this summer.

**IMPORTANT TO MARINERS.**

The following notice has been issued by Captain Niblack the lighthouse in-  
spector for these islands.

The following affects the list of lights and fog signals, Pacific coasts, 1904:  
Laupahoehoe Point Light-House, page 54, No. 254, located about 20 miles northerly of Hilo Bay, on the north-  
easterly shore of the Island of Hawaii, On May 17 the fixed red lens lantern light at this station, heretofore shown from a white trestle 32 feet high, was moved approximately 18 feet south from its former position and is now shown from a white mast at the base of which is a service room painted white, roof and trimmings red. The light is now 34 feet above base of struc-  
ture and 48 feet above mean high water.

**GRAND REDUCTION SALE!**

**FOR THREE WEEKS ONLY  
FROM SATURDAY MAY, 27**

HATS, TIES, SHIRTS, SOX, AND  
OUR ENTIRE STOCK WILL BE  
SOLD AT THE LOWEST  
POSSIBLE PRICES.

**K. ISOSHIMA**

**OUR OWN LINE**

**San Francisco to Chicago**

(WITHOUT CHANGE).

**STANDARD AND TOURIST SLEEPERS DAILY**



Trade

Mark

Stopping en route at Los Angeles, also "THE PETRIFIED FORESTS" and the "GRAND CANYON OF ARIZONA."

HONOLULU PEOPLE TAKE THE SANTA FE ROUTE DURING THE  
COLD WINTER MONTHS. AN IDEAL TRIP ALONG THE OILED ROAD-  
BEDS ON THE CALIFORNIA LIMITED. TWO TRAINS DAILY.

**Passenger Agent, W. G. Irwin & Co., Office**

**REALTY TRANSFERS**

Entered for Record May 27, 1905.  
Helen E Carpenter by atty to Admr.  
of Est of William Kamana.....Rel  
Margaret A Lidgate by Tr to Ann  
Lidgate.....A M  
Sajuro Fugita to Sekimatsu Mori., BS  
Oahu College by Trs to W. Mat-  
lock Campbell.....D  
W Matlock Campbell to Trs of Oahu  
College.....M  
Oahu College by Trs to W M Camp-  
bell.....D  
W Matlock Campbell to Trs of Oahu  
College.....M  
D E Wilson and wf to Frank G da  
Rosa.....D  
Emma P Kinney to Emma P Wise  
.....Re  
I Fujiyama to Wing Man Cheng.....C M  
Manoel Pavao Sr and wf to Jose  
Farias.....D  
Francisco da Camara et al to Maria  
L da Camara.....D  
Hon Kee & Co.....Co. P D

**TUGS OF WAR.**

In the tug-of-war contest Saturday  
night the 15th District won from the  
Lumber Yards in 1 hour, 35 minutes,  
15 seconds. The Chinese pulled the

Japanese in 10 minutes. The Roads and  
Bridges won from the Kandicans in 10  
minutes.

**THE TENNIS GAMES.**

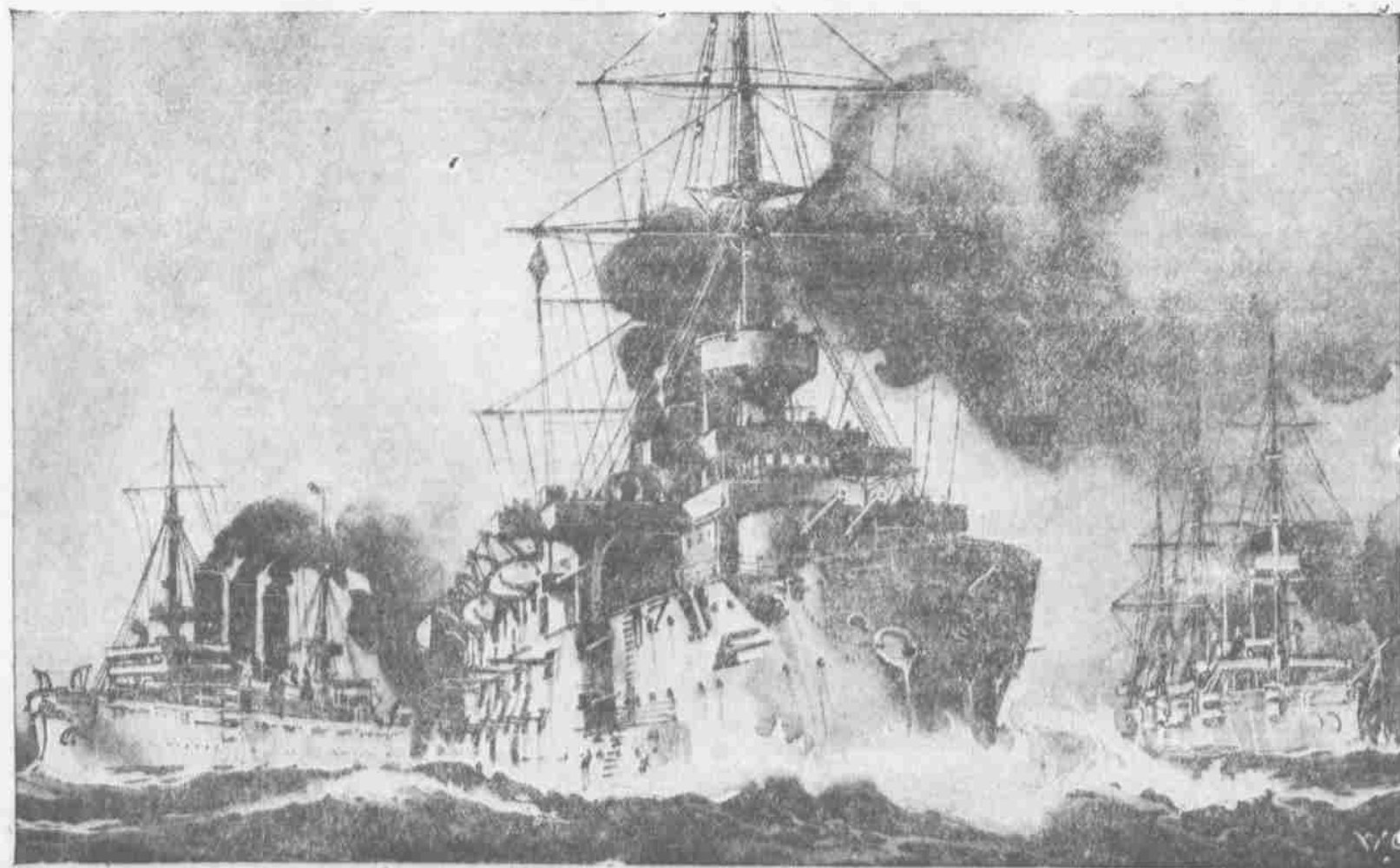
In the tennis tournament Saturday S.  
H. Derby and George Fuller won from  
A. P. Griffiths and S. P. French, 9-7, 5-7  
6-0, 6-4.  
The championship match will be  
played this Monday afternoon on Paci-  
fic Tennis Club courts by W. P. Roth  
and C. H. Cooke against Derby and  
Fuller.  
Entries in the mixed doubles will  
close at 5 p. m. today.

**CHILDREN WHEN TEETHING.**

This is the most dangerous age in the  
life of a child. At this time they have  
more or less diarrhoea, which weakens  
the system and renders the child more  
susceptible to disease. Any unusual  
looseness of the bowels should be  
promptly controlled, which can be done  
by giving Chamberlain's Colic, Cholera  
and Diarrhoea Remedy, with an occa-  
sional dose of castor oil to cleanse the  
system. For sale by all dealers, Ben-  
son, Smith & Co., agents for Hawaii.

Persons of discrimination are always  
on the alert for quality—Rainier Beer  
was awarded gold medal at the Paris  
Exposition for purity, quality and ex-  
cellence of flavor.

**Some Of The Russian Ships**





## ORPHEUM THEATRE

241 KULUWA, HAWAII

"Friendship of the Pacific"

## THE ELLEFORD CO.

PRESENTING AN ENTIRELY NEW  
REPERTOIRE OF HIGH-CLASS  
PRODUCTIONS.The strongest company ever brought  
to Honolulu by this popular manager.MONDAY AND TUESDAY, MAY  
29TH AND 30TH.

"Trilby"

WEDNESDAY AND THURSDAY  
MAY 31ST AND JUNE 1ST.

"THE LION'S HEART"

FRIDAY AND SATURDAY,  
JUNE 2ND AND 3RD.

"STREET OF NEW YORK"

SATURDAY MATINEE,  
"JACK AND THE BEAN STALK,"  
INCLUDING HAPPY BOOGLIAN."

Matrons, etc., for reserved seats.

GO TO THE  
**PANTHEON.**  
FOR YOUR  
BOTTLED GOODS.Straight Knit of Bedrock Place,  
Pineapple, etc., etc., etc.**M. OHTA,**  
Contractor and Builder  
House PainterKewalo, Sheridan Street, near Kila  
Honolulu, H. I.  
Telephone White 691.**ALEXANDER & BALDWIN LTD.**

## OFFICERS:

H. P. Baldwin.....President  
J. P. Cooke.....First Vice-President  
W. M. Alexander.....Second Vice-President  
L. T. Peck.....Third Vice-President  
J. Waterhouse.....Treasurer  
G. M. Rolph.....Secretary  
W. O. Smith.....Auditor**Sugar Factors and  
Commission  
Merchants**

## AGENTS FOR

Hawaiian Commercial & Sugar  
Company,  
Maiku Sugar Company,  
Paia Plantation,  
Maui Agricultural Company,  
Kihikihi Plantation Company,  
Hawaiian Sugar Company,  
Kahuku Plantation Company,  
Kahului Railroad Company,  
Haleakala Ranch Company.**THE BLOOM AND  
BLOSSOM**of a house is its yearly coat of  
paint. There is the same satis-  
faction to be found in a freshly  
painted house as there is in a  
beautiful flower. We will help  
you paint your house by sup-  
plying you with the wherewithal  
to go to work. If you prefer  
to mix your own paint we have  
on hand the finest stock of lead,  
zinc, oil, turpentine, colors, var-  
nish, brushes of any house in  
town. Should you however wish  
to use ready-made paints, you  
cannot do better than to place  
an order with us for WHITTIER  
FULLER & CO'S PURE PRE-  
PARED PAINTS than which it  
is impossible to find better.**LEWERS & COOKE, LTD.,**  
177 S. KING STREET**BEAVER LUNCH ROOM,**  
Fort Street, Opposite Wilder & Co  
H. J. NOLTE, PROP.First-Class Lunches served with tea,  
coffee, soda water, ginger ale or milk.

Smokers Requisites a Specialty.

**BATH  
THE  
Plumber**175 S. King Street  
Telephone Main 61**K. UYEDA**  
1025 Nuuanu Street, Honolulu, T. H.  
Between King and Hotel Street.  
Straw Hat Manufactory. Any Style  
of Straw Hat made to order. Panama  
and Felt Hat Cleaned.**FOREIGN NEWS BY CABLE**

## THE RUSSIAN SQUADRON IS ANNIHILATED.

TOKIO, May 29.—(Official). Rojestvensky practically annihilated.  
Twelve ships sunk or captured. Two transports and two destroyers  
sunk.

## REPORTS OF GREAT FIGHT.

TSINGTAU, May 29.—A running naval engagement has taken place  
in the Koryu Straits. It is reported that the Japanese losses are one  
cruiser and ten torpedo boats, and the Russian losses two battleships,  
two cruisers and a repair ship.

## TWO OF RUSSIA'S LOST SHIPS.

WASHINGTON, May 29.—It is believed here that the Russian bat-  
tleships Orel and Borodino have been sunk. Japanese Minister Taka-  
hira is advised that the naval battle so far has been favorable to the  
Japanese.The Orel and Borodino were sister ships, being of the group of five bat-  
tleships known as the Borodino class. Three of the ships, the Borodino, Orel  
and Imperator Alexander III, were completed in 1904, while two others, the  
Seydlitz and the Kruzenshtern, Rojestvensky's flagship, were completed in  
1905. Six others are now under construction. The vessels are of 12,500 tons  
displacement and carry four 12-inch, twelve 6-inch, twenty 3-inch rifles,  
twenty 2-pounder and eight 1-pound rapid fire. The ships have many tor-  
pedo tubes, two submerged broadside, one above water at bow and one at  
stern, and two above water broadside.The ships are heavily armored, having 8-inch belt, 11-inch turret and 4-  
inch deck armor on the sides. The engines of this class are 3-cylinder triple-  
expansion driving screws. The designed indicated horsepower is 18,200 and  
the speed 18 knots. The ships are equipped with 20 Heligoland boilers with  
economizers. The coal supply is 1250 tons. These ships were especially built  
to withstand torpedo attack, having 4-inch nickel steel hulls below the belt.  
Two vertical bulkheads of the same material run the whole length of each  
side. Coal is packed between the armor deck and a second armored deck.  
Altogether, this class represented Russia's most powerful ships.

## RUSSIAN FLEET SCATTERED.

LONDON, May 29.—It is reported here that the Russian fleet has  
been dispersed and that the Japanese are pursuing.

## JAPAN SHUTS OFF NEWS.

TOKIO, May 29.—The censorship of news here is complete.

## AMERICAN STEAMER SUNK.

TOKIO, May 28.—Rojestvensky sunk an unknown American steam-  
er off Formosa on the 21st. The crew were saved.

## CRISIS IN NORWAY.

CHRISTIANA, May 29.—King Oscar's veto of the consular law  
has caused a sensation. It possibly involves a dissolution of the union  
between Norway and Sweden.

## TROUBLE FOR FRANCIS JOSEPH.

VIENNA, May 29.—The situation in Hungary is acute.

## POLISH SOCIALISTS WANT BLOOD.

WARSAW, May 29.—The Polish Socialists have issued a proclama-  
tion urging the destruction of everybody not belonging to the Socia-  
lists. Troops have fired upon the Jews, wounding forty.

## TROOPS KILL JEWS.

LODZ, May 29.—The troops have fired into a crowd and killed two  
Jews.

## ARMENIANS IN DIRE TROUBLE.

ST. PETERSBURG, May 29.—Twenty-two Armenians and two  
Muslims have been killed in a conflict at Nakhichevan. Many Ar-  
menians have been killed at Jabri. The distress of the Armenians is  
increased by a plague of locusts.

## RIO GRANDE OVERFLOWS.

EL PASO, Texas, May 29.—By an overflow of the Rio Grande dam-  
ages of half a million dollars have been caused.

## VESUVIUS IN ERUPTION.

NAPLES, May 29.—Vesuvius is in a state of eruption.

## RUSSIAN SQUADRON SIGHTED.

TOKIO, May 28.—Four Russian warships passed through the Ku-  
rile Straits on the 25th going westward.**ALFONSO AT LARGE**

(Associated Press Cable)

MADRID, May 29.—King Alfonso has started on his foreign tour.  
PARIS, May 29.—King Alfonso of Spain will arrive here on Tuesday  
and elaborate preparations are being made for his reception. Secretary  
Hay has arrived.

## ST. PETERSBURG ENTHUSIASTIC.

ST. PETERSBURG, May 28.—The news of Rojestvensky's pro-  
gress has aroused enthusiasm. A report that he had defeated Togo  
was accepted by many as true.

## CORNELL DEFEATS HARVARD.

BOSTON, May 28.—Cornell defeated Harvard in the eight-oared  
race.

## COSSACKS AND JEWS COLLIDE.

LODZ, Russia, May 28.—The Cossacks and Jews collided here.  
Three were killed and many wounded.

## CORRUPTION GETS A BLOW.

PHILADELPHIA, May 28.—Public sentiment has forced the Re-  
publican organization to abandon the gas lease.

## DEFEATS NORWEGIAN HOPES.

CHRISTIANA, May 28.—King Oscar has declined to sign the bill  
giving separate consuls to Norway. The cabinet has resigned.

## GERMAN YACHT AHEAD.

NEW YORK, May 28.—The German yacht Hamburg was leading  
the ocean race when the St. Paul sighted the fleet on the 24th.

## HELD UP A TRAIN.

MISSOULA, Mont., May 28.—Bandits held up a train near here  
and looted a safe.**JOYS OF MATERNITY**

## A WOMAN'S BEST HOPES REALIZED

Mrs. Anna Poils Tells How Women Should  
Prepare for MotherhoodThe darkest days of husband and  
wife are when they come to look for-  
ward to childhood and lonely old age.  
Many a wife has found herself inas-  
suable of motherhood owing to a dis-  
placement of the womb or lack of  
strength in the generative organs.Frequent backache and distressing  
pains, accompanied by offensive dis-  
charges and generally by irregular  
and scanty menstruation indicate a dis-  
placement or nerve degeneration of  
the womb and surrounding organs.The question that troubles women  
is how can a woman who has some fe-  
male trouble bear healthy children?Mrs. Anna Poils, of 110 Park Avenue,  
Hot Springs, Ark., writes:My Dear Mrs. Pinkham—  
During the early part of my married life I  
was delicate in health, had a nervous husband and  
I was very anxious for a child to bless our  
home, but I had two miscarriages, and could  
not carry a child to maturity. A neighbor  
who had been cured by Lydia E. Pinkham's  
Vegetable Compound advised me to try it. I  
did so and soon felt that I was growing  
stronger, my backache and backaches left  
me, I had no more bearing-down pains, and  
felt like a new woman. Within a year I  
became the mother of a strong, healthy  
child, the joy of our home. Lydia E. Pink-  
ham's Vegetable Compound is certainly a  
splendid remedy, and I wish every woman  
who wants to become a mother would try it.Actual sterility in woman is very  
rare. If any woman thinks she is ster-  
ile, let her try Lydia E. Pinkham's  
Vegetable Compound and write to Mrs.  
Pinkham, Lynn, Mass. Her advice is  
free to expectant or would-be mothers.

## WAIMANALO SUGAR CO.

The stock ledger of the Waimanalo  
Sugar Company will be closed to trans-  
fers from May 27th to May 31st.W. L. HOPPER,  
Secretary Waimanalo Sugar Co.

## OLOWALU SUGAR CO.

The stock ledger of the Olowalu  
Sugar Co. will be closed to transfers  
from May 27th to May 31st, both dates  
inclusive.RICHARD IVERS,  
Secretary Olowalu Sugar Co.

A. C. Davis. Harry Rivers.

**Horseshoe Saloon**

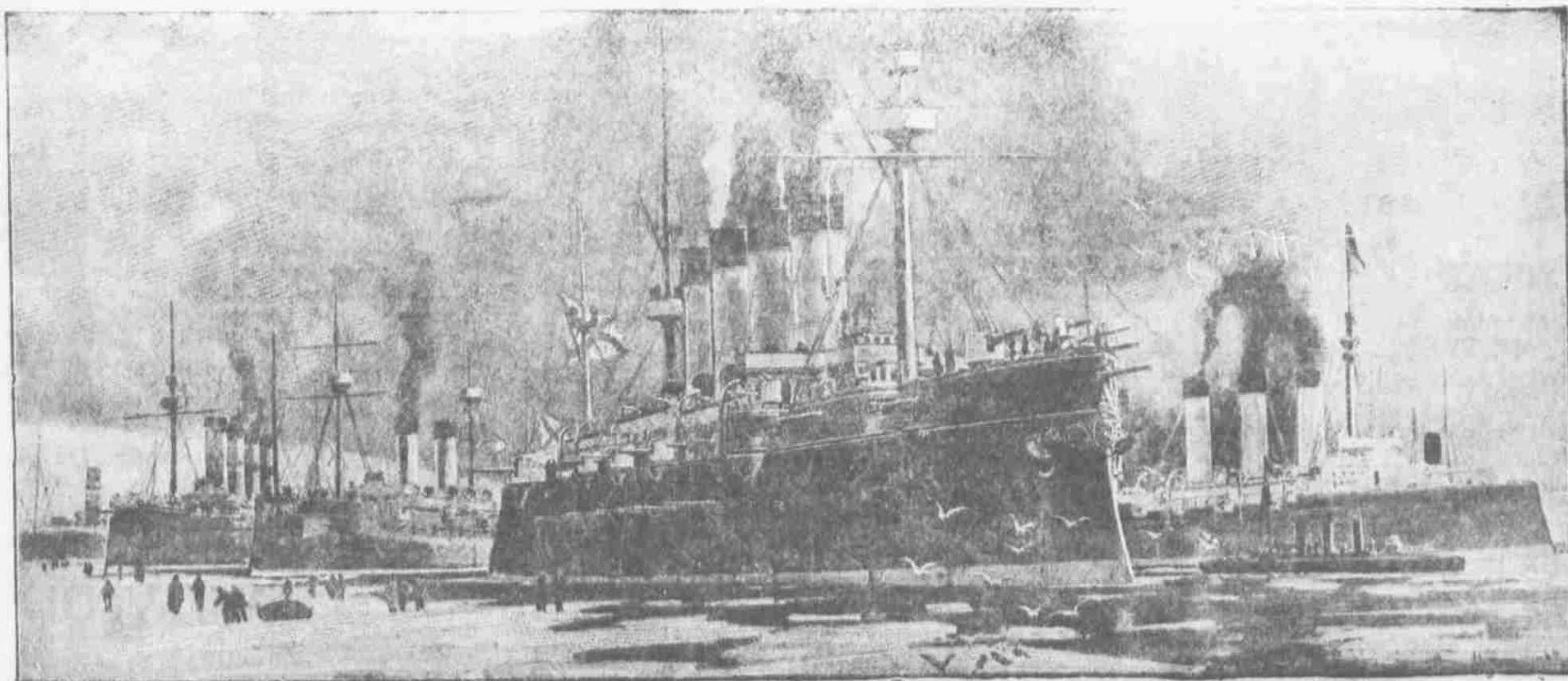
William Patterson, Manager.

DOWLING ALLEY  
NOW OPEN.

Hotel Street. Honolulu, Hawaii.

HOT CLAM JUICE and BEEF TEA,  
also OYSTER COCKTAILS always on  
hand at 7

## FAVORITE SALOON

Rainier Beer.  
Purity is unquestionable.  
Wholesomeness is remarkable.  
ITS—  
Flavor is delightful.  
Strength is invigorating.**More Of The Russians**



## SOUVENIR LEATHER POSTAL

Enamelled Hawaiian Jewelry.  
Cat Nails Lids.  
Home made Mahalo Chalice.

## WOMAN'S EXCHANGE



HOT WEATHER with all its attending discomforts is once more holding the center of the stage.

Pacheco's Dandruff Killer will keep your head cool, free from dandruff and stop that awful itching.

Sold by all Druggists and at the Union Barber Shop, Telephone Main 322.

## Crystal Springs Butter . . .

has become the most popular butter in Honolulu and deservedly so for there isn't a finer or better flavored butter in the market. The cows that assist in its manufacture are blue ribbon stock, grazing in the richest pastures of the world. We pack this butter in neat cardboard cartons which keep it from softening and at the same time preserve its exquisite flavor from that of other articles in the refrigerator. The price is TWO POUNDS FOR 66 CENTS.

**METROPOLITAN MEAT CO.**  
Limited

Telephone Main 45

## NEW Tennis Goods

FOR THE Coming Season

JUST RECEIVED INCLUDING

**WRIGHT & DITSON**

**1905 Balls and Rackets**

We are also prepared to furnish New Awnings and Verandah Curtains, or Recover Your Old Awning Frames.

## New Underwood

AND MANY MAKES OF SECOND-HAND

## Typewriters

AND ALL VARIETIES OF

T W Papers and Supplies

**Pearson & Potter Co., Ltd. 931 Fort Street.**

## NEW ADVERTISEMENTS.

M. McIntyre, 1111 Kalia Road, Phone 1111.  
Joe P. Morgan, 1111 Kalia Road, Phone 1111.

## NEWS IN A NUTSHELL

Paragraphs That Give Condensed News of the Day.

## WEATHER REPORT.

U. S. Weather Bureau Office, Young Building.

Temperature, 84, 85, 73; 8 a. m. 78; 10 a. m. 77; noon 78; morning minimum 70.

Barometer, 8 a. m. 30.01; absolute humidity 8 a. m. 8.75; grains per cubic foot relative humidity 8 a. m. 65; per cent dew point 8 a. m. 64.

Wind velocity, 6 a. m. 6; east, 8 a. m. 11; northeast, 10 a. m. 12; northeast; noon 12; northeast.

Total rainfall during 24 hours ended 8 a. m. .06 inches.

Total wind movement during 24 hours ended at noon 234 miles.

## ALEX. McC. ASHLEY,

Section Director, U. S. Weather Bureau

A canvasser is wanted. See Classified ads.

A young man is wanted to learn the barber's trade.

The S. S. China was sighted 20 miles west at 12:35 o'clock.

The most popular place in town is the Horseshoe Saloon bowling alley.

William White will run on the Home rule ticket for deputy sheriff of Lualaba.

The House of Representatives meets this afternoon at 2 o'clock and the Senate at 3.

Judge Weaver has gone to Koolala to remain a few days. He will return on Wednesday.

The Metropolitan Meat Company will close their shops at 10 a. m. tomorrow. Send orders early.

Furniture, crockery and dry goods will be sold at auction on Wednesday by Jas. F. Morgan.

J. N. S. Williams, chief engineer of Punahoa mill, is reported as recovered from severe illness.

George Groves of Peahi will run as an independent candidate for supervisor of Makaiwa district.

Mrs. C. H. Atherton returned yesterday from a visit to her sister, Mrs. D. H. Case, at Wailuku.

Sugar, May 27, 4.375 cents a pound, or \$57.50 a ton; last previous quotation 4.365 cents a pound.

The Home Rulers of Hana have endorsed E. Wittrock, the Republican nominee for deputy sheriff.

A reception and hop are to be given aboard the cable steamer Restorer the latter part of the week.

Clement Crowell has accepted the fusion nomination for treasurer of Maui vice Pala Naki, resigned.

A civil service examination will be held in Honolulu June 21 for positions in the Bureau of Printing, Philippine service.

Hawaii's Young People for June contains a picture of Atkinson Hall one of the new buildings of Lahainaluna Seminary.

A mannerchor was organized at the Symphony Society's clubrooms on Friday evening with ten members to begin with.

Mrs. C. A. Brown will not leave in the China as reported, but in the Alameda on June 7 and go direct to Lowell, Mass.

Dr. Deimel's underwear is a perfect sanitary underwear and is endorsed by the medical profession both at home and abroad. M. McIntyre.

The Library will close for the circulation of books on Memorial Day May 29. The reading room will open as usual from 9 a. m. to 9:30 p. m.

Tomorrow is Memorial Day. The services will be under the auspices of the G. A. R. The Spanish War Veterans will take part in the services.

Governor Carter's nomination of L. A. Andrews to be a member of the South Hilo road board was a surprise. He will succeed Mr. Wright-Hawaii Herald.

The members' "first view" of the spring exhibit of the Kilauea Art League will be given tonight at the rooms of the League, Alexander Young Building.

The catalogue of Oahu College for the sixty fourth year of the institution has just been issued. It contains much interesting information regarding the institution.

Sugar on Kaula is as follows: K. M., 2,500; V. K., 700; Diamond W., 1,200; M. A. K., 24,200; G. R., 592; M. R., 25,166; K. P., 11,288; G. P., 4,675; H. M., 23,249; M. S. Co., 1,369.

Mr. Hadley of Oahu College has been the guest of Dr. G. S. Allen of Kalahehi during the week. Mr. Hadley came to Maui to visit his brother Ernest, who is sick with fever at Pala Hospital.

W. E. K. Makihi, who attended the Maui County Republican convention as a delegate, immediately afterwards announced himself as an independent candidate for deputy sheriff of Makawao.

The Mothers and Teachers' Club earnestly request all persons interested in the social purity problem to be present at their meeting in the Y. M. C. A. hall, Borton block today at 2 p. m.

The Woman's Guild of St. Clement's church will not meet tomorrow, the regular day for meeting as it is Memorial Day. Instead, the meeting will be a week from tomorrow afternoon, June 6.

## CHOICE ALGAROB

**FIRE WOOD**

SAWED AND SPLIT OR IN 4 FEET LENGTHS

DELIVERED TO ANY PART OF THE CITY. LEAVE ORDERS WITH

**W. W. DIMOND & CO.**

Agents for East Niu Ranch.

The final meeting of the series of social services, was held last evening at Central Union Church. There was a very large attendance, members of the Grand Army of the Republic and veterans of the Spanish War attended in a body.

Mr. and Mrs. Henry M. Alexander are visiting Mr. and Mrs. H. P. Baldwin of Punahoa. They will continue their wedding tour to Hawaii next week. Mr. Alexander is a brother of Mrs. Baldwin and was formerly well-known on Maui.

The Woman's Auxiliary and Guild of St. Andrew's Cathedral will meet today at 2:30 p. m. with Mrs. E. D. Tenney. Those who have not already handed in their letters offering for mission to the Auxiliary are requested to do so at this meeting.

The Kilauea Art League will hold a meeting at the residence of H. P. Dilligham, Horetania and Panahou, streets on Friday afternoon June 7, at four thirty o'clock. August F. Knudsen will speak by request on The Idealism of the Vedas.

An account of the ceremonies in connection with the unveiling of the memorial tablet to the first Hiram Bingham at Oahu College last month has just been published in pamphlet form. It contains portraits of the first and second Hiram Bingham.

Owing to ill health, J. F. Clay has resigned his position as bookkeeper of the Oahu Sugar Co. Mr. Clay will sever his connection with the plantation about August 1st and go to San Francisco for medical treatment. His successor will probably be Charles Weatherbee of Puna.

## GETTING READY TO GO

(Continued from page one)

port of the National Guard was read and filed.

"Too late! Too late!" sighed Harris.

The Governor's third message dealt with House Bill No. 4, respecting Departmental expenses. It was of course identical with that presented in the Senate, vetoing certain items.

The consideration of the veto of items Salaries bill was taken up seriatim.

## THE LAST WORK OF THE SENATE

THE UPPER HOUSE DID NOT SPEND ALL THE MONEY IT APPROPRIATED FOR ITSELF.

The Governor's message vetoing House bill No. 4 making appropriations for the departmental use of the Territory was received this afternoon and the following items being vetoed: stamped envelopes, letter paper and postage stamps for free use of lepers and suspects \$1,500; entertainments at leper settlement \$800; expenses of defending of act 20 Session Laws, on appeal to Supreme Court of the United States \$3,000; support of Kona Orphanage \$3,000; Malulu Hospital, Maui, \$6,000; Elele Hospital, Kaula \$1,000; Lihue Hospital, Kaula \$5,000.

On this message, likewise, the items were taken up and voted upon separately. The veto of the item of \$1000 to furnish stamps and stamped envelopes to lepers and leper suspects was sustained, 8 to 6.

The veto of the item of \$800 for entertainments at the Settlement on Molokai was sustained, 8 to 6.

The veto of the item of \$3000 to defray the expense of lawyers to defend the validity of the County Act was sustained, 8 to 6.

The veto of \$3000 for the support of the Kona Orphanage was overridden, 11 to 3.

The veto of the item of the hospital at Hilo was overridden, 12 to 2.

The veto of the item of \$1000 for Elele Hospital was overridden, 12 to 2.

The item of \$3000 for the hospital at Lihue, Kaula, was overridden, 12 to 2. McCandless introduced a resolution authorizing the President of the Senate to approve the bill of the clerk for printing the journal of the extra session at the same rate as was paid for the printing of the journal of the regular session.

The nomination of Dental Examiners were then confirmed.

A second message from the governor vetoed certain items in the salaries bill as follows:

DEPARTMENT OF JUSTICE.  
Second Clerk.  
Salary of Assistant Clerk and Bailiff of circuit court and clerk and interpreter District Court, (50.00) \$1,200.

DEPARTMENT OF INTERNAL IMPROVEMENTS.  
Public Grounds.  
Salary of Keeper of Makiki Cemetery (\$50.00) \$1,200.

DEPARTMENT OF PUBLIC HEALTH Sanitation.  
Salary of Sanitary Inspector and Inspector of Building, Plumbing and House Sewers and Inspector of Dairies and Milk, Fish and Food, Wailuku and Kahului (\$75.00) \$1,800.00.

Government Physicians.  
Pay of Government physicians as per monthly schedule; for physicians resident in Districts named, who shall act as agents of the Board of Health in their several districts, examine the Public schools and pupils, attend the indigent sick free of charge, perform the duties of Registrar of births, deaths and marriages, and to make autopsies for coroner's inquests, free of charge, \$26,100.00.

All of the vetoes were sustained except the item of pay for government physicians which was overridden.

House Bill 7, amending the Loan Bill passed at the 1933 session, was tabled on second reading.

Achl returned House Bill No. 6, and Senate Bill 9, making appropriations to pay the expenses incurred at the last session, the Judiciary Committee being unable to agree upon a report upon them.

## ON WEDNESDAY, MAY 31,

AT 10 O'CLOCK A. M.

At my saleroom.

## FURNITURE, Etc

Crockery.  
Chocolate sets, pretty patterns;  
Dinner Sets,  
Dry Goods, Etc,  
A further Nice Oil Paintings,  
Etc., Etc.

JAMES F. MORGAN, AUCTIONEER.

## AUCTION SALE

ON THURSDAY, JUNE 1,

12 o'clock noon, at my saleroom, 357 Kalamannu street, Honolulu.

## Lease of

## Bishop Estate Lands

situate North Kona, Hawaii, and being as follows:

The makai portions of the lands of Kahaluu, Keauhou 1, and Keauhou 2, North Kona, Hawaii, lying below the Mauka Government Road, containing an area of 2900 acres, more or less, of coffee, fruit and grazing land. Also the Fishing Rights, appurtenant to the said lands, until such time as the same may be condemned or acquired by the government. Proposes lease excepts and reserves all kuleanas not owned by the Lessors, also reserving such rights of way that may be necessary from the mauka Government road to the sea. It includes an area of about 80 acres of fine land formerly leased to the Hawaii Tea & Coffee Co., Ltd.

Term of Lease, 21 years from 1st day of July, 1935.

Upset price for the annual rental, \$500.00 net above Taxes and a sum equal to one-half years' rental to be deposited upon the day of sale.

Conditions as usual in Bishop Estate leases, and to include a covenant on the part of the Lessee, to continue as sub-tenants on the said lands, should they so desire, all bonafide residents now holding, occupying or cultivating lots. The Lessee shall have the right to limit the size of such sub-leases to a maximum area of two (2) acres, and shall not charge a rate in excess of \$5.00 per annum per acre.

For further particulars apply to the Superintendent of the Bishop Estate, Frank S. Dodge, No. 77 Merchant street, Honolulu; Thos. C. White, Local Agent of the Estate, Kalahehi, Kona, Hawaii, or

JAMES F. MORGAN, AUCTIONEER.

On motion of Hayselden, House Bill No. 6 was indefinitely postponed. The same Senator made a like motion with reference to Sena e Bill 9.

Achl moved that the communication from the House with reference to the bill be laid on the table, as the proper course. Hayselden then withdrew his motion, and the motion of Achl carried.

Paris asked a suspension of the rules to make a speech congratulating the Senators upon the harmony that had marked the proceedings of the session. He then presented to President Isenberg a beautifully chased silver salver, with the best wishes of the Senate.

President Isenberg was greatly moved. "I have tried, Senators," he said, "to preside fairly. If at any time I have seemed to deal by any of you unjustly, it has been my state of health that was at fault, and not my heart."

The Senate committee on Accounts submitted a report showing that the expenses of the session had been \$1,307.65. This leaves \$1,692.35 of the appropriation of \$3,000 unspent.

## OVER SEVENTY WITNESSES

TESTIMONY IN REBUTTAL IN THE NAONE MURDER TRIAL STILL CONTINUES.

The seventieth witness was called this afternoon in the Naone murder trial. Half a dozen others were called in quick succession, there being no cross-examination, and a large crowd more are waiting outside Judge De Bolt's court room to be called in turn. They are witnesses for the prosecution in rebuttal of the defense's insanity testimony.

The Rev. Alexander Mackintosh was the first witness called this afternoon. He testified that he was an Episcopal clergyman and principal of the Royal School, were Naone had attended. His idea of Naone was that he was a "bright intelligent fellow," and he stated that on seeing him after school days he had not observed any change in his condition, mental or otherwise.

The testimony of Oahu prison guards as to Naone's condition and health in jail, was continued.

## STOCKS THIS AFTERNOON.

The following transactions in stocks were reported at the afternoon session of the exchange today. Between cards 5 Rapid Transit pfd at \$100. On Board 20 Ewa at \$27, 20 Pioneer at \$150.

The S. S. Alameda and S. S. Siberia will arrive here Friday morning from San Francisco with mail.

## DELICIOUS WHITE GRAPE JUICE.

Grape-Catel is a most delicious white grape juice which is being served at the Hobron Drug Co's soda fountain. It is very wholesome and possesses the rich grape flavor.

# Rubber Tires

Have you about used up that old set of tires on your carriage? Are you not running on the channels and spoiling them? If so won't it pay you to see us about putting on a new set?

We will send to your house for the wheels and return them in a short time with the new tires nicely put on. It will not cost you a great deal and we guarantee the rubber and the work we do.

## E. O. HALL & SON, LTD



## CONSOLATION

See the maidens in the sea—  
Just as happy as can be;  
In a little while, ah me,  
Frightened damocles we'll see,  
Who will scream most frightful,  
For to toes so pink and wee,  
Cruel crabs attached will be—  
Here endeth the maiden's glee.

Singing sea I may not hear,  
Though I wish that I were there;  
I must duty's burden bear  
In the city grim and drear;  
One thing only brings me cheer,  
When my thoughts to seaside veer,  
But the same is very dear:  
There're no crabs in PRIMO BEER.

## PRIMO LAGER

Invigorates the tired system like a dip in the briny.

### IT DOESN'T WARP.

Old Sol won't warp the paint we put on your house — it's the best paint made, it stands up against all difficulties. Talk to us about painting your property.

**Stanley Stephenson**  
Painter and Decorator  
PHONE 426 137 KING STREET  
SIGNS OF SUCCESS—S. S. SIGNS

# Fresh Bottled Bock Beer

\$2.00 PER DOZEN QUARTS.

## CAMARA & CO.,

LIQUOR DEALERS.

MERCHANT AND ALAKEA STREETS. TEL. MAIN 492.

# New Process GAS... RANGES



THE RANGE OF UNIVERSAL FAVOR.

Most economical in use of gas. Satisfaction guaranteed.

SOLD ON EASY TERMS.

## W. W. DIMOND & CO., LTD.

DISTRIBUTORS FOR HAWAII  
53-55-57 KING STREET.