

THE RAINFALL OF THE HAWAIIAN ISLANDS

-----  
HAWAII (TER.) WEATHER BUREAU

Hawn.  
QC925 .8  
AH3  
1902  
cop. 2

# THE RAINFALL

HAWAIIAN COLLECTION  
GREGG M. SINCLAIR LIBRARY  
UNIVERSITY OF HAWAII

OF THE

HAWAIIAN ISLANDS.

---

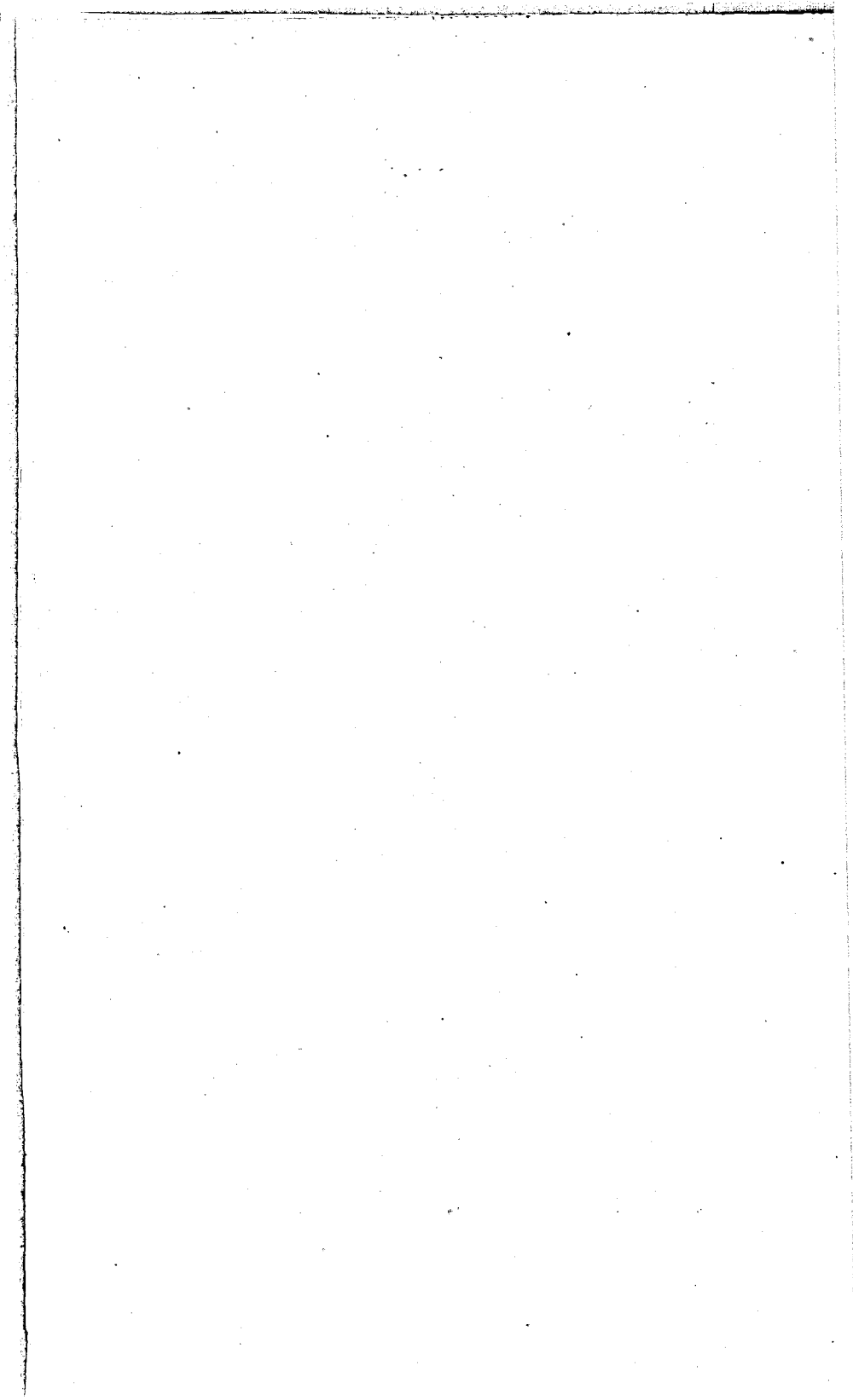
CURTIS J. LYONS,

DIRECTOR OF WEATHER BUREAU.

---

HAWAIIAN WEATHER BUREAU,

1902.



# INDEX,

---

Station.	Map.	Page.
Ahuimanu . . . . .	Oahu . . . . .	53
Beretania Street . . . . .	Honolulu . . . . .	37
Electric Light Station . . . . .	Honolulu . . . . .	45
Erehwon (Kula) . . . . .	Maui . . . . .	30
Ewa Plantation . . . . .	Oahu . . . . .	55
Hakalau . . . . .	Hawaii . . . . .	6
Haleakala Ranch . . . . .	Maui . . . . .	29
Halfway House . . . . .	Honolulu. . . . .	46
Hamakuapoko . . . . .	Maui . . . . .	31
Hana . . . . .	Maui . . . . .	28
Hana Plantation . . . . .	Maui . . . . .	27
Hanalei . . . . .	Kauai . . . . .	60
Hanamaulu . . . . .	Kauai . . . . .	58
Hilea . . . . .	Hawaii . . . . .	22
Hilo District . . . . .	Hawaii . . . . .	9
Hilo Town . . . . .	Hawaii . . . . .	1
Honohina . . . . .	Hawaii . . . . .	6
Honokaa . . . . .	Hawaii . . . . .	13
Honomu . . . . .	Hawaii . . . . .	5
Honuapo . . . . .	Hawaii . . . . .	20
Insane Asylum . . . . .	Honolulu . . . . .	49
Kaanapali . . . . .	Maui . . . . .	26
Kahuku . . . . .	Oahu . . . . .	23
Kahului . . . . .	Maui . . . . .	33
Kailua . . . . .	Hawaii . . . . .	19
Kapiolani Park . . . . .	Honolulu . . . . .	41
Kapoho . . . . .	Hawaii . . . . .	24
Kaumana . . . . .	Hawaii . . . . .	2
Kealakekua . . . . .	Hawaii . . . . .	20
Kewalo (King St.) . . . . .	Honolulu . . . . .	40
Kidwell . . . . .	Honolulu . . . . .	51
Kilauea . . . . .	Kauai . . . . .	59

Station.	Map.	Page.
Koele . . . . .	Lanai . . . . .	34
Kohala Mission . . . . .	Hawaii . . . . .	16
Kohala Parsonage . . . . .	Hawaii . . . . .	17
Koloa . . . . .	Kauai . . . . .	56
Kukaiiau . . . . .	Hawaii . . . . .	9
Kukuihaele . . . . .	Hawaii . . . . .	14
Kula (Erehwon) . . . . .	Maui . . . . .	30
Kulaokahua (Kinau St.) . . . . .	Honolulu . . . . .	38
Laupahoehoe . . . . .	Hawaii . . . . .	7
Lihue Grove Farm . . . . .	Kauai . . . . .	57
Lihue . . . . .	Kauai . . . . .	58
Luakaha . . . . .	Honolulu . . . . .	47
Makaweli . . . . .	Kauai . . . . .	61
Mapulehu . . . . .	Molokai . . . . .	35
Naalehu . . . . .	Hawaii . . . . .	21
Nuuanu (Wilder's) . . . . .	Honolulu . . . . .	44
Nuuanu Ave. (W. W. Hall) . . . . .	Honolulu . . . . .	42 and 43
Niulii . . . . .	Hawaii . . . . .	15
Oahu College . . . . .	Honolulu . . . . .	39
Olaa . . . . .	Hawaii . . . . .	25
Olowalu . . . . .	Maui . . . . .	26
Ookala . . . . .	Hawaii . . . . .	8
Paauhau . . . . .	Hawaii . . . . .	11 and 12
Paauilo . . . . .	Hawaii . . . . .	10
Pahala . . . . .	Hawaii . . . . .	23
Paia . . . . .	Maui . . . . .	31
Papaikou . . . . .	Hawaii . . . . .	3
Pauoa (P. Opfergelt) . . . . .	Honolulu . . . . .	48
Pauoa (S. E. Bishop) . . . . .	Honolulu . . . . .	50
Pepeekeo . . . . .	Hawaii . . . . .	4
Pohoiki . . . . .	Hawaii . . . . .	25
Punahou (Weather Bureau) . . . . .	Honolulu . . . . .	36
Puunomalei . . . . .	Maui . . . . .	28
Reciprocity Mill . . . . .	Maui . . . . .	27
Reform School . . . . .	Honolulu . . . . .	48
Spreckelsville . . . . .	Maui . . . . .	33

Station.	Map.	Page.
Volcano House .....	Hawaii .....	23
Volcano Road .....	Hawaii .....	24
Waiakea .....	Hawaii .....	2
Waianae .....	Oahu .....	54
Waiawa .....	Kauai .....	60
Wailuku .....	Maui .....	32
Wailuku Plantation .....	Maui .....	34
Waimanalo .....	Oahu .....	52
Waimea .....	Hawaii .....	18
Waikapu .....	Maui .....	32
Woodlawn Dairy .....	Honolulu .....	51
Wyllie .....	Honolulu .....	44

## PRELIMINARY STATEMENT.

---

The collection of rainfall statistics on the part of the government began in 1890. A number of private individuals, however, had prior to that period established rain-gauges of their own, and several series of records of more or less continuity were available. These were collected and tabulated by months and years in the first pamphlet issued by this office as a Report to the Surveyor-General and through him to the Minister of the Interior and Legislature of that same year.

The allotment of rain-gauges to persons willing to make returns began at that time, and has been kept up ever since. Many of the sugar plantations, however, have provided their own. At first cheap three-inch gauges were used but were soon generally replaced by eight-inch gauges, lately of copper with glass measuring tubes, which are in some respects preferable to rods. A large proportion of the reports come directly from plantation managers.

The monthly publication of rainfall began in the Honolulu papers in 1892 and has been kept up ever since. The annual reports, beginning with 1892, have also contained the monthly rainfall.

This is the first series of tables arranged by stations that has been issued. Nearly all the stations established prior to 1897 are included. As the names of the observers are published in the Annual Reports, and are subject to frequent changes, they are not given in this pamphlet, excepting a few that serve to identify the station. The thanks of the office and of the public, and of scientific men abroad, are hereby sincerely given to those who by voluntary effort have made these statistics possible.

The monthly reports are made in detail, i. e., for each day of the month, and of course are kept on file for any future students, or future publication. Where the monthly amounts in this publication are enclosed in brackets it is indicated that

figures are interpolated by estimation from the nearer stations, for the purpose of securing totals and averages. For the reason that half years are used for monthly averages, but not for annual totals, the rule has been to use the latter only for annual average or "normals."

It has been the rule of the Bureau from the first to make the daily measurement in the morning as early as convenient, presumably, as most observers are early risers, at six o'clock, and to enter as on the date of observation, and not for the day before. The subject was well considered, and decided thus, partly because on account of the fact that a large proportion of the lighter rains fall at night, country observers naturally repair to the rain-gauge in the morning; and also that where other observations are made it is best to put everything down when observed. The essential thing for purposes of comparison is uniformity, even at the expense of offending the prejudices of some, while added to this should be a clear understanding of just what period is covered.

Rain-gauges should be directly on the ground, but this has not been insisted upon. There has not been an inspection of gauges, as there always should be, owing to the fact that the meteorological office has been merely a subdivision of the Government Survey. A circular was issued at the early part of the enterprise relating to proper exposure, etc.

As exposure to prevailing winds, and elevation above sea-level are the two determining factors regulating the relative amount of rainfall at different stations, the approximate elevations are given. These in most cases are only approximate, but are abundantly accurate enough for the purpose required. The exposure to winds can easily be obtained from the accompanying maps. It must be remembered that the trade winds which blow on an average 260 days in the year, are from the direction of about N. 52° E. true, but are locally deflected by the trend of the coasts and slopes of the mountains. As is well known the heaviest rains are where the winds blow from the sea up the face of the mountain.

The southwesterly winds are most prevalent in the winter



season. Where both winds are felt the heaviest rains occur in February and November. Where the S.W. wind has less effect March and November have the heaviest rainfall. The trade wind varies in direction in some seasons, so when N.N.E. winds prevail Hamakua, i. e., Honokaa, &c., has the heavier rains, and when E.N.E. winds are frequent Hilo and Puna, i. e., Kapoho, &c., exceed the usual amount.

The Kona or west district of the island of Hawaii is exceptional, being in the lee and depending on the sea-breeze for rain effect. As this is strongest in summer the heavier rains are in July and August.

The consecutive arrangement of the tables is topical, i. e., with the stations following in order around each island counter-clock-wise, being thus convenient for comparison, and a natural method for those familiar with the country. Some stations have been introduced on the maps which have only lately been occupied. The tables are confined, as was said above, to those stations reported earlier than 1897.

Through the courtesy of the United States Weather Bureau the monthly rainfall of Hawaii, which is now a Territory of the United States, is published regularly in the Monthly Weather Review.

It is hoped that this pamphlet will be of use to the agricultural and commercial interests of the Territory as well as to those of scientific research everywhere.

CURTIS J. LYONS,  
Territorial Meteorologist.

## RAINFALL AT HILO, HAWAII, (TOWN.)

Elevation, 100 feet. Exposure, East.

MONTHS.	1880	1881	1882	1883	1884	1885	1886		
January.....	13.97	5.80	34.00	3.89	9.64	.....	0.53	.....	.....
February.....	32.52	32.12	22.52	19.99	1.87	.....	6.99	.....	.....
March.....	13.98	6.04	15.54	2.93	10.96	.....	20.93	.....	.....
April.....	13.98	5.16	5.72	11.91	25.12	.....	17.10	.....	.....
May.....	7.76	3.58	6.60	9.09	17.76	.....	16.32	.....	.....
June.....	8.39	9.17	6.22	5.68	7.80	.....	9.67	.....	.....
July.....	18.21	9.25	7.27	8.58	14.55	.....	10.10	.....	.....
August.....	8.91	7.87	8.06	17.28	16.73	.....	8.51	.....	.....
September.....	14.43	8.48	8.53	5.30	10.93	15.21	.....	.....	.....
October.....	14.56	4.49	7.23	26.84	12.16	18.29	.....	.....	.....
November.....	3.70	24.34	16.87	8.43	5.83	15.08	.....	.....	.....
December.....	1.73	27.84	17.13	16.11	15.50	13.70	.....	.....	.....
Annual.....	152.14	144.14	155.51	136.04	146.85	.....	.....	.....	.....

Annual Average is made up from Annual Total.

## RAINFALL AT HILO, HAWAII.—(CONTINUED.)

Elevation, 100 feet.

Exposure East.

MONTHS.	1893	1894	1895	1896	1897	1898	1899	1900	AVERAGE
January.....	2.00	20.03	2.50	3.54	3.28	38.64	(4.54)	3.13	9.69
February.....	8.74	24.38	3.21	9.87	11.55	3.95	8.81	5.79	12.81
March.....	15.98	21.01	7.91	14.89	13.47	45.41	22.44	5.16	14.44
April.....	19.81	18.22	25.00	20.95	3.66	7.12	16.52	5.67	12.92
May.....	10.67	2.65	9.00	14.11	4.97	8.19	18.93	12.60	10.13
June.....	9.74	6.17	6.00	8.97	3.19	4.23	(7.70)	4.02	6.46
July.....	8.34	10.78	7.40	7.58	8.03	10.20	.....	8.31	8.57
August.....	5.74	3.60	13.98	13.65	10.22	6.88	.....	14.46	9.72
September.....	5.66	5.50	17.65	11.21	5.73	8.31	.....	5.69	9.42
October.....	10.00	7.81	8.55	6.59	8.28	(6.84)	27.00	18.04	12.62
November.....	15.20	14.95	12.64	3.12	12.75	9.80	3.67	19.50	11.85
December.....	6.90	17.50	10.21	5.30	8.84	(3.49)	.....	5.06	11.48
Annual.....	118.78	152.60	124.05	119.78	93.97	153.06	.....	117.43	135.85

Annual Average is made up from Annual Total.

## RAINFALL AT WAIAKEA, HILO, HAWAII.

Elevation, 50 feet. Exposure, East.

Months.	1891	1892	1893	1894	1895	1896	1897	1898	1899	1900	Normal.
Jan ...	19.00	12.48	1.71	16.81	3.22	3.02	3.59	41.51	4.78	2.72	10.88
Feb ...	6.00	11.29	9.33	25.71	2.10	12.00	11.20	6.94	8.80	6.14	9.95
Mar ...	10.10	10.89	15.05	17.11	5.23	13.42	12.69	49.75	22.80	5.58	16.26
April ..	10.68	2.64	20.74	17.25	28.42	18.05	3.11	6.95	16.51	5.47	12.98
May ...	5.07	3.21	10.73	1.87	8.63	13.85	6.43	7.25	19.61	16.41	9.30
June ...	5.71	8.24	8.00	4.58	6.08	7.57	3.46	4.30	7.70	3.78	5.94
July ...	9.75	0.48	7.17	9.37	7.38	5.84	6.42	10.32	5.42	8.73	8.09
Aug ...	12.34	10.73	6.03	3.64	14.71	19.63	9.42	6.83	15.31	14.87	11.30
Sept ...	14.92	9.35	5.20	5.66	19.57	10.83	5.38	8.31	6.38	6.92	9.25
Oct ...	25.27	10.97	8.53	7.50	9.38	7.05	9.20	9.41	22.04	19.37	12.83
Nov ...	10.46	6.98	14.37	13.26	12.70	2.68	16.59	8.25	4.58	15.44	10.53
Dec ...	25.42	11.83	6.73	17.18	12.51	5.34	9.76	2.04	0.83	5.65	9.73
Annual	154.72	109.09	113.59	139.94	129.93	119.28	97.25	161.86	134.76	111.08	127.04

Annual average is made up from annual total.

## RAINFALL AT KAUMANA, HILO.

Elevation, 1250 feet. Exposure, East.

Months.	1896	1897	1898	1899	1900						Normal.
Jan ...	(6.00)	4.47	49.61	6.37	.....	.....	.....	.....	.....	.....	16.60
Feb ...	(20.00)	17.56	7.76	8.74	.....	.....	.....	.....	.....	.....	13.50
Mar ...	23.14	19.55	55.58	24.90	.....	.....	.....	.....	.....	.....	30.79
April ..	31.78	7.22	12.70	19.49	5.42	.....	.....	.....	.....	.....	15.32
May ...	18.07	8.39	15.53	18.58	19.35	.....	.....	.....	.....	.....	15.99
June ..	15.94	5.26	6.54	12.44	7.06	.....	.....	.....	.....	.....	9.45
July ...	11.94	13.85	22.53	14.39	8.76	.....	.....	.....	.....	.....	14.29
Aug ...	26.22	23.76	11.10	20.40	23.22	.....	.....	.....	.....	.....	20.94
Sept ...	17.46	7.71	12.21	.....	8.61	.....	.....	.....	.....	.....	11.50
Oct ...	9.40	10.73	18.90	.....	24.00	.....	.....	.....	.....	.....	15.76
Nov ...	3.29	18.30	12.94	.....	15.80	.....	.....	.....	.....	.....	12.58
Dec ...	7.84	8.87	6.39	.....	3.79	.....	.....	.....	.....	.....	6.72
Annual	191.08	145.68	231.84	.....	.....	.....	.....	.....	.....	.....	189.53

Annual average is made up from annual total.

## RAINFALL AT PAPAIKOU, HILO.

Elevation, 400 feet.

Exposure, East.

Months.	1886	1887	1888	1889							Normal.
Jan ...	0.74	20.61	4.90	5.46							7.93
Feb ...	6.39	12.00	10.86	0.76							7.50
Mar ...	16.70	14.25	7.31	5.17							10.86
April..	9.30	3.55	16.40	3.44							8.17
May ..	11.62	8.03	5.78	6.50							7.98
June ...	8.23	5.90	6.42	10.42							7.74
July...	10.10	8.02	15.54	10.22							10.97
Aug...	8.51	12.71	15.84	10.44							11.88
Sept...	17.02	8.24	5.84	10.50							10.40
Oct....	16.16	10.20	12.58	9.32							12.06
Nov ...	33.42	11.68	20.49	(9.55)							18.79
Dec....	7.42	39.42	4.50	16.52							16.96
Annual	145.61	154.61	126.46	98.30							131.24

Annual average is made up from annual total.

## RAINFALL AT PEPEEKEO, HILO DISTRICT.

Elevation, 100 feet. Exposure, East.

Months.	1890	1891	1892	1893	1894	1895	1896	1897	1898	1899	
Jan....	22.59	18.18	14.53	5.16	20.58	4.56	4.06	4.62	33.14	3.27	.....
Feb....	13.35	6.35	8.50	6.04	25.02	3.94	15.58	9.28	8.66	7.46	.....
Mar....	22.07	7.56	10.95	13.60	18.04	8.81	12.34	10.29	42.37	23.87	.....
April..	10.09	8.20	1.99	14.30	15.22	19.55	15.05	3.02	5.94	9.31	.....
May..	13.47	5.96	2.02	7.33	3.18	8.18	12.05	4.92	8.87	18.82	.....
June..	14.63	5.92	8.48	5.97	4.32	6.36	5.34	2.36	4.17	6.83	.....
July...	30.80	10.61	11.21	7.25	8.40	9.34	7.50	5.15	9.73	2.11	.....
Aug....	21.67	9.26	9.78	5.50	3.29	14.08	17.51	9.72	7.07	15.14	.....
Sept...	10.76	17.60	13.48	7.20	4.39	19.77	10.03	6.08	7.62	6.53	.....
Oct....	11.16	20.15	9.45	8.57	6.44	6.97	7.31	10.20	11.77	21.82	.....
Nov....	12.13	7.74	6.02	13.89	12.59	12.90	3.06	12.07	10.78	2.56	.....
Dec....	22.14	20.85	16.32	9.26	19.76	12.17	6.09	8.25	3.68	1.14	.....
Annual	204.86	138.38	112.73	104.07	141.23	126.63	115.92	88.35	153.80	118.86	.....

Annual average is made up from annual total.

## RAINFALL AT PEPEEKEO, HILO DISTRICT—(CONTINUED.)

Elevation, 100 feet Exposure, East.

Months.	1900										Normal.
Jan....	3.56	.....	.....	.....	.....	.....	.....	.....	.....	.....	12.20
Feb....	5.96	.....	.....	.....	.....	.....	.....	.....	.....	.....	10.01
Mar....	4.56	.....	.....	.....	.....	.....	.....	.....	.....	.....	15.86
April..	6.02	.....	.....	.....	.....	.....	.....	.....	.....	.....	9.88
May..	1.48	.....	.....	.....	.....	.....	.....	.....	.....	.....	7.82
June..	2.50	.....	.....	.....	.....	.....	.....	.....	.....	.....	6.08
July...	7.82	.....	.....	.....	.....	.....	.....	.....	.....	.....	7.26
Aug....	12.02	.....	.....	.....	.....	.....	.....	.....	.....	.....	11.36
Sept...	7.76	.....	.....	.....	.....	.....	.....	.....	.....	.....	10.11
Oct....	17.54	.....	.....	.....	.....	.....	.....	.....	.....	.....	11.94
Nov....	14.04	.....	.....	.....	.....	.....	.....	.....	.....	.....	9.79
Dec....	2.89	.....	.....	.....	.....	.....	.....	.....	.....	.....	11.14
Annual	87.15	.....	.....	.....	.....	.....	.....	.....	.....	.....	126.53

NOTE—The final average is derived from the annual totals and not from the monthly averages.

## RAINFALL AT HONOMU, HILO, HAWAII, (300 feet.)

Elevation, 300 feet. Exposure, Northeast.

Months.	1892	1893	1894	1895	1896	1897	1898	1900			Normal.
Jan ...	18.74	6.80	21.22	3.92	8.36	3.01	35.44	.....	.....	.....	12.51
Feb ...	11.96	7.95	20.34	4.14	15.16	10.16	7.28	.....	.....	.....	10.67
Mar ...	12.53	15.64	16.55	6.95	11.68	9.73	49.99	.....	.....	.....	18.52
April..	1.42	16.94	16.16	21.51	15.91	3.37	5.84	.....	.....	.....	11.60
May ..	1.74	6.42	3.87	8.28	(13.00)	3.83	7.27	.....	.....	.....	8.04
June..	10.18	8.71	4.64	6.02	6.99	2.42	4.31	.....	.....	.....	6.37
July...	8.32	6.25	7.70	8.19	8.65	4.35	11.38	3.25	.....	.....	7.62
Aug...	12.09	5.15	3.30	13.97	17.53	11.63	7.62	.....	.....	.....	10.18
Sept...	12.94	6.74	4.41	20.27	10.81	6.16	8.68	.....	.....	.....	10.28
Oct ...	10.94	8.85	7.00	7.09	8.75	10.24	11.36	.....	.....	.....	9.17
Nov....	10.37	13.54	22.02	12.71	2.54	13.01	10.96	.....	.....	.....	12.16
Dec ...	9.94	8.62	14.59	10.50	(6.00)	7.45	7.96	.....	.....	.....	9.29
Annual	121.17	111.62	141.80	123.55	125.38	85.36	168.09	.....	.....	.....	126.71

Annual average is made up from annual total.

## RAINFALL AT HONOMU, HILO, HAWAII, (950 feet.)

Elevation, 950 feet. Exposure, Northeast.

Months.	1892	1893	1894	1895	1896	1897	1898				Normal.
Jan ...	23.51	8.19	20.60	6.32	5.27	5.30	41.78	.....	.....	.....	11.53
Feb ...	18.81	5.88	25.62	5.18	15.28	16.17	9.15	.....	.....	.....	14.49
Mar ...	29.51	19.72	28.50	14.74	(13.00)	15.93	50.82	.....	.....	.....	20.23
April..	3.62	18.09	19.92	32.04	28.83	6.61	.....	.....	.....	.....	18.18
May ..	3.60	8.38	5.81	10.26	(15.00)	5.87	.....	.....	.....	.....	8.15
June..	13.35	11.00	9.40	9.43	12.74	3.35	.....	.....	.....	.....	9.88
July...	12.40	10.74	15.17	12.43	10.34	8.77	18.40	.....	.....	.....	11.64
Aug...	14.70	6.80	8.60	16.12	21.42	13.04	.....	.....	.....	.....	13.44
Sept...	16.11	8.06	7.34	23.66	13.59	7.07	.....	.....	.....	.....	12.64
Oct ...	12.81	12.18	11.72	9.80	10.22	8.55	.....	.....	.....	.....	10.88
Nov ...	14.35	13.75	28.63	19.23	2.46	19.99	.....	.....	.....	.....	16.40
Dec....	14.15	13.36	24.58	15.34	8.00	8.46	.....	.....	.....	.....	13.98
Annual	176.92	136.15	205.89	174.55	156.15	119.11	.....	.....	.....	.....	144.79

Annual average is made up from annual total.

## RAINFALL AT HAKALAU, HILO, HAWAII.

Elevation, 200 feet. Exposure, Northeast.

Months.	1892	1893	1894	1895	1896	1897	1898	1899	1900		Normal.
Jan ...	12.55	4.18	15.63	3.71	7.59	4.03	31.90	2.66	3.82	.....	9.56
Feb ...	6.53	6.01	16.20	6.39	14.11	8.11	6.53	7.58	6.77	.....	8.69
Mar ...	9.56	12.46	17.49	9.05	9.81	9.04	38.72	20.12	4.70	.....	14.59
April..	2.22	17.99	11.67	16.93	15.17	3.06	6.32	9.61	5.44	.....	9.82
May ..	1.93	7.52	3.61	6.80	13.50	4.56	8.48	17.92	13.03	.....	8.59
June ..	8.04	6.53	3.34	4.49	5.38	2.13	3.85	6.82	1.93	.....	4.72
July ...	7.56	6.90	7.27	7.96	6.70	4.60	8.75	2.75	8.88	.....	6.82
Aug ...	10.63	5.04	2.90	12.94	14.79	11.28	6.00	15.83	13.55	.....	10.34
Sept...	11.67	5.88	4.76	17.82	11.71	4.44	7.72	5.16	6.40	.....	8.39
Oct ...	8.07	8.06	5.78	5.32	7.88	9.57	9.03	23.18	19.76	.....	9.73
Nov ...	5.25	10.51	23.29	12.17	1.98	14.01	9.14	3.10	15.47	.....	10.54
Dec ...	12.44	7.49	13.68	8.28	6.63	7.22	6.98	0.95	2.30	.....	7.39
Annual	96.45	78.57	125.62	111.86	115.45	82.05	143.42	115.68	102.05	.....	110.12

Annual average is made up from annual total.

## RAINFALL AT HONOHINA, HILO, HAWAII.

Elevation, 300 feet. Exposure, Northeast.

Months,	1894	1895	1896	1897	1898	1899	1900				Normal.
Jan.....	17.64	5.58	7.07	(4.25)	40.93	3.12	3.47	.....	.....	.....	11.70
Feb ...	13.79	4.27	17.17	8.35	6.20	7.08	8.80	.....	.....	.....	9.38
Mar ...	23.00	6.89	11.11	12.38	36.60	26.10	5.64	.....	.....	.....	17.39
April...	14.70	21.50	12.39	4.17	7.05	11.89	5.74	.....	.....	.....	11.06
May ..	3.32	8.70	17.20	4.74	13.38	15.83	17.32	.....	.....	.....	11.64
June ..	4.18	5.48	(6.00)	2.18	4.63	8.89	2.47	.....	.....	.....	4.83
July ...	8.60	9.77	7.19	5.26	9.33	4.42	6.03	.....	.....	.....	7.21
Aug ...	3.64	12.72	18.63	12.24	6.63	13.62	13.14	.....	.....	.....	11.51
Sept...	4.96	16.77	11.62	5.76	10.60	5.87	7.06	.....	.....	.....	8.95
Oct ....	7.46	3.60	8.87	8.60	13.12	22.76	21.95	.....	.....	.....	12.30
Nov ...	25.80	14.34	3.04	13.87	13.85	3.55	18.63	.....	.....	.....	13.29
Dec ...	13.76	8.10	9.66	8.76	8.04	0.95	3.08	.....	.....	.....	8.48
Annual	140.85	117.72	(129.95)	92.85	170.41	123.98	113.13	.....	.....	.....	126.98

Annual average is made up from annual total.

## RAINFALL AT LAUPAHOEHOE (10 feet) HILO, HAWAII.

Elevation, 10 feet. Exposure, Northeast.

Months.	1892	1893	1894	1895	1896	1897					Normal.
Jan ...	12.00	7.31	5.42	4.65	11.08	5.68	.....	.....	.....	.....	8.09
Feb ...	7.38	7.38	13.08	5.17	16.20	6.68	.....	.....	.....	.....	9.64
Mar ...	10.68	15.00	22.10	11.40	12.00	8.26	.....	.....	.....	.....	14.23
April ..	0.82	16.33	9.39	29.97	14.47	.....	.....	.....	.....	.....	13.19
May ...	4.56	8.65	2.86	6.87	9.38	.....	.....	.....	.....	.....	6.46
June ...	3.31	4.87	3.86	4.17	8.34	.....	.....	.....	.....	.....	4.91
July ...	4.74	6.31	8.92	8.83	6.83	.....	.....	.....	.....	.....	7.12
Aug ...	7.87	3.85	4.95	12.26	13.20	.....	.....	.....	.....	.....	8.42
Sept ...	6.83	3.57	1.50	10.98	6.16	.....	.....	.....	.....	.....	5.80
Oct ...	7.81	6.83	5.37	4.57	6.23	.....	.....	.....	.....	.....	6.16
Nov ...	3.29	4.96	17.38	9.66	2.08	.....	.....	.....	.....	.....	7.47
Dec ...	13.65	5.11	24.63	4.26	5.80	.....	.....	.....	.....	.....	10.69
Annual	82.93	90.17	119.46	107.79	111.77	.....	.....	.....	.....	.....	102.40

Annual average is made up from annual total.

## RAINFALL AT LAUPAHOEHOE (900 feet) HILO, HAWAII.

Elevation, 900 feet. Exposure, Northeast.

Months	1892	1893	1894	1895	1896	1897	1898	1899	1900		Normal.
Jan ...	15.95	8.80	5.73	6.32	13.58	7.91	41.60	1.04	5.69	.....	11.94
Feb ...	9.65	6.49	14.53	9.67	17.14	11.34	8.28	5.58	(9.00)	.....	10.18
Mar ...	17.18	21.73	23.65	21.26	21.00	8.11	31.70	33.54	(6.00)	.....	19.79
April ..	2.00	19.32	11.24	54.23	19.48	3.99	7.50	9.74	4.57	.....	14.67
May ...	5.49	8.90	3.91	8.67	11.75	4.85	11.56	12.00	16.66	.....	9.31
June ...	5.79	7.40	5.28	6.67	13.83	1.34	4.80	10.15	3.88	.....	6.51
July ...	7.44	7.66	8.85	10.55	7.93	14.72	16.79	11.98	4.94	.....	10.09
Aug ...	9.47	4.00	7.26	15.85	15.03	17.89	7.99	16.21	11.22	.....	11.66
Sept ...	8.71	3.83	1.50	13.23	7.49	3.90	5.76	7.01	5.62	.....	6.34
Oct ...	8.41	8.14	7.76	5.70	8.71	3.77	8.32	29.82	15.98	.....	10.73
Nov ...	4.83	4.36	14.70	8.87	1.75	13.94	8.04	10.43	21.99	.....	9.87
Dec ...	16.10	5.36	30.49	4.00	14.52	10.20	8.73	0.80	5.55	.....	10.61
Annual	111.02	105.99	134.90	165.02	152.21	101.96	161.07	148.00	110.60	.....	132.19

Annual average is made up from annual total.



## RAINFALL AT OOKALA, HILO, HAWAII.

Elevation, 400 feet. Exposure, Northeast.

Months	1890	1891	1892	1893	1894	1895	1896	1897	1898	1899	
Jan ...		25.87	18.01	8.13	3.56	5.76	7.91	4.29	32.85	0.49	.....
Feb ...		3.73	(8.00)	6.25	11.73	12.92	7.78	8.61	6.52	3.61	.....
Mar ...		13.71	(12.00)	13.74	12.76	12.85	(15.00)	5.90	28.43	22.87	.....
April ...		10.93	(1.00)	14.96	6.93	24.93	11.02	5.48	6.33	8.26	.....
May ...		4.16	1.12	5.07	1.31	4.46	7.23	2.03	(9.00)	8.54	.....
June ...		3.06	2.43	4.42	2.91	4.14	(8.00)	(1.00)	4.00	5.44	.....
July ...	30.78	9.99	4.22	5.62	4.51	5.78	5.32	4.33	11.71	10.31	.....
Aug ...	35.38	9.03	6.59	2.50	4.64	9.72	6.14	9.42	5.27	11.47	.....
Sept ...	21.66	8.07	5.20	3.09	0.60	9.58	4.81	2.55	3.99	4.32	.....
Oct ...	47.08	26.78	5.70	3.39	4.58	5.86	6.07	2.04	5.63	20.22	.....
Nov ...	36.99	14.36	9.16	1.93	19.18	11.44	1.79	9.39	7.32	8.87	.....
Dec ...	26.06	34.73	5.58	2.60	24.71	2.14	7.28	6.72	4.39	0.60	.....
Annual	.....	164.42	79.01	71.70	97.42	109.58	88.35	60.76	123.24	105.00	.....

Annual average is made up from annual total.

## RAINFALL AT OOKALA, HILO—CONTINUED.

Elevation, 400 feet. Exposure, Northeast.

Months	1900										Normal
Jan ...	4.97	.....	.....	.....	.....	.....	.....	.....	.....	.....	10.97
Feb ...	9.17	.....	.....	.....	.....	.....	.....	.....	.....	.....	7.83
Mar ...	5.48	.....	.....	.....	.....	.....	.....	.....	.....	.....	14.27
April ...	7.92	.....	.....	.....	.....	.....	.....	.....	.....	.....	9.78
May ...	12.99	.....	.....	.....	.....	.....	.....	.....	.....	.....	5.59
June ...	3.46	.....	.....	.....	.....	.....	.....	.....	.....	.....	3.88
July ...	3.62	.....	.....	.....	.....	.....	.....	.....	.....	.....	6.82
Aug ...	7.46	.....	.....	.....	.....	.....	.....	.....	.....	.....	7.22
Sept ...	2.13	.....	.....	.....	.....	.....	.....	.....	.....	.....	4.43
Oct ...	9.62	.....	.....	.....	.....	.....	.....	.....	.....	.....	8.99
Nov ...	14.87	.....	.....	.....	.....	.....	.....	.....	.....	.....	9.83
Dec ...	2.93	.....	.....	.....	.....	.....	.....	.....	.....	.....	9.13
Annual	84.42	.....	.....	.....	.....	.....	.....	.....	.....	.....	98.40

Annual average is made up from annual total.

## GENERAL RAINFALL FOR HILO DISTRICT.

Elevation, 200 feet, estimated average. Exposure, East.

Months	1891	1892	1893	1894	1895	1896	1897				Normal*
Jan ...	18.59	15.68	5.52	15.96	4.78	6.41	4.78	.....	.....	.....	10.40
Feb ...	6.17	10.59	7.23	19.85	5.11	14.86	11.54	.....	.....	.....	13.11
Mar ...	8.83	14.47	16.15	20.83	10.54	15.05	12.52	.....	.....	.....	12.48
April..	9.44	2.10	17.94	15.04	27.39	20.35	4.52	.....	.....	.....	12.62
May ..	5.52	3.22	8.57	3.45	8.80	14.18	5.91	.....	.....	.....	8.52
June ..	5.81	8.20	7.78	5.08	6.09	8.82	3.04	.....	.....	.....	7.48
July ..	10.18	8.88	7.58	7.94	8.68	8.33	9.33	.....	.....	.....	10.22
Aug ...	10.80	10.76	5.26	4.63	14.08	18.58	13.05	.....	.....	.....	11.19
Sept ...	16.26	11.30	5.77	4.53	17.76	11.73	6.04	.....	.....	.....	10.73
Oct ...	22.71	9.78	8.89	7.43	6.55	8.27	8.88	.....	.....	.....	12.21
Nov ...	9.10	7.45	11.32	19.18	12.82	2.71	14.95	.....	.....	.....	13.25
Dec ...	23.14	13.32	7.85	19.63	9.80	7.46	8.65	.....	.....	.....	15.06
Annual	146.55	115.75	109.86	143.55	131.90	136.75	103.21	.....	.....	.....	137.27

Annual average is made up from annual total.

\* For 16 years ending 1896.

## RAINFALL AT KUKAIAU, HAMAKUA, HAWAII.

Elevation, 250 feet. Exposure, Northeast.

Months	1892	1893	1894	1895	1896	1897	1898	1899	1900		Normal
Jan ...	.....	6.38	1.62	5.73	10.42	2.68	28.20	0.27	4.62	.....	6.24
Feb ...	.....	5.12	12.56	5.91	16.25	6.02	4.72	1.23	10.31	.....	7.89
Mar ...	.....	9.33	16.52	10.28	12.15	3.25	20.59	18.46	4.87	.....	11.93
April..	.....	10.87	4.41	20.01	12.36	3.71	4.96	6.88	7.53	.....	8.84
May ..	.....	3.32	0.89	2.72	6.87	2.24	3.96	3.98	9.55	.....	4.19
June ..	.....	2.08	2.24	1.81	7.17	0.78	3.88	2.35	2.08	.....	2.79
July ..	.....	2.85	4.57	4.75	4.33	3.16	6.44	4.28	2.01	.....	4.04
Aug ...	.....	1.57	4.37	7.13	7.11	7.19	2.99	6.59	4.29	.....	5.03
Sept ...	.....	1.36	0.66	6.52	1.91	0.65	2.03	1.99	1.21	.....	2.04
Oct ...	.....	1.69	3.41	4.99	4.91	1.87	4.98	14.25	8.05	.....	5.52
Nov ...	5.24	2.21	17.73	10.70	1.02	6.65	3.99	5.32	13.75	.....	7.67
Dec ...	.....	2.64	16.17	1.26	5.32	5.28	4.42	0.40	3.97	.....	4.93
Annual	.....	49.44	85.15	81.81	89.83	43.38	91.16	66.00	72.24	.....	72.38

Annual average is made from annual total.

## RAINFALL AT PAAUILO, HAMAKUA, HAWAII.

Elevation, 750 feet. Exposure, Northeast.

MONTHS	1892	1893	1894	1895	1896	1897	1898	1899	1900		Normal
Jan..	11.59	7.53	2.49	6.15	10.88	5.18	22.00	0.32	6.30	....	8.05
Feb..	1.94	5.88	9.03	7.88	16.33	5.27	4.00	0.96	11.37	....	7.07
Mar..	14.75	5.53	17.08	16.00	14.98	3.42	18.28	20.16	5.55	....	12.86
April.	0.80	8.24	4.22	29.42	12.00	3.50	6.37	7.50	7.86	....	8.88
May..	3.00	3.78	0.64	3.48	7.66	2.25	3.76	3.38	15.21	....	4.79
June..	1.49	2.23	2.15	1.63	5.53	0.87	3.87	2.41	2.80	....	2.55
July..	3.12	2.73	3.38	3.50	4.01	3.61	5.92	5.35	2.70	....	3.81
Aug..	4.88	1.06	4.23	5.75	6.49	6.92	3.78	6.35	4.41	....	4.87
Sept.	3.03	0.60	1.02	6.70	1.28	1.10	1.49	3.46	1.06	....	2.09
Oct..	4.71	1.73	3.67	4.20	5.94	1.43	3.52	17.60	9.73	....	5.83
Nov..	4.05	1.08	18.03	10.20	1.96	6.20	4.04	6.81	18.87	....	7.21
Dec..	5.36	2.95	15.80	1.02	8.84	4.37	8.86	0.09	4.93	....	4.47
Total.	58.72	43.34	81.74	95.93	95.90	44.12	82.53	74.39	90.79	....	74.16

Annual average is made up from annual total.

RAINFALL AT PAAUHAU, (300 ft.) HAMAKUA, HAWAII.

Elevation, 300 feet. Exposure, Northeast.

MONTHS	1890	1891	1892	1893	1894	1895	1896	1897	1898	1899
Jan...	10.13	14.46	9.32	6.85	0.81	3.06	8.17	2.58	18.31	0.49
Feb...	11.73	5.38	1.35	6.23	8.67	8.31	10.57	4.38	2.90	0.90
Mar...	12.25	9.59	6.74	6.99	10.96	8.28	8.82	1.12	12.23	14.38
Apr...	4.63	7.28	0.10	5.31	2.05	14.88	3.44	2.58	4.46	3.82
May...	5.20	2.41	2.21	2.13	0.25	1.85	7.97	1.44	3.52	2.17
June...	11.75	0.70	0.53	1.67	0.33	1.20	4.44	0.32	2.73	2.48
July...	20.60	3.82	1.65	2.35	3.14	2.65	4.68	1.68	3.93	3.55
Aug...	13.32	11.14	3.00	0.71	2.96	5.55	5.08	5.27	1.77	3.38
Sept...	2.31	4.36	1.63	0.32	0.26	3.85	0.87	0.76	1.43	0.72
Oct....	9.27	6.72	2.23	1.02	1.63	3.67	3.20	0.72	2.56	11.45
Nov...	12.29	2.02	1.01	0.84	8.29	9.04	1.68	6.02	3.08	3.36
Dec...	14.06	5.96	6.32	2.59	15.12	0.30	5.95	3.81	4.01	0.06
Annual	127.54	73.84	36.09	37.01	54.47	62.64	64.87	30.68	60.88	46.76

Annual average is made up from annual total.

RAINFALL AT PAAUHAU, (300 ft.), CONTINUED.

Elevation, 300 feet. Exposure, Northeast.

MONTHS	1900									Normal
Jan...	3.14	.....	.....	.....	.....	.....	.....	.....	.....	7.03
Feb....	9.29	.....	.....	.....	.....	.....	.....	.....	.....	6.34
Mar...	2.02	.....	.....	.....	.....	.....	.....	.....	.....	8.49
Apr....	6.01	.....	.....	.....	.....	.....	.....	.....	.....	4.96
May...	6.72	.....	.....	.....	.....	.....	.....	.....	.....	3.26
June..	1.86	.....	.....	.....	.....	.....	.....	.....	.....	2.54
July...	1.32	.....	.....	.....	.....	.....	.....	.....	.....	5.39
Aug....	2.64	.....	.....	.....	.....	.....	.....	.....	.....	4.89
Sept...	0.70	.....	.....	.....	.....	.....	.....	.....	.....	1.56
Oct....	5.01	.....	.....	.....	.....	.....	.....	.....	.....	4.31
Nov....	7.38	.....	.....	.....	.....	.....	.....	.....	.....	4.99
Dec....	3.71	.....	.....	.....	.....	.....	.....	.....	.....	5.63
Annual	49.80	.....	.....	.....	.....	.....	.....	.....	.....	58.59

Annual average is made up from annual total.

### RAINFALL AT PAAUHAU (1200 ft).

Elevation, 1200 feet. Exposure, Northeast.

MONTHS.	1890	1891	1892	1893	1894	1895	1896	1897	1898	1899
Jan....	16.15	21.40	.....	10.39	0.89	6.18	10.00	4.85	17.33	0.37
Feb....	13.71	9.03	.....	6.83	7.63	5.20	14.40	3.41	4.62	0.53
Mar....	16.52	10.66	.....	7.82	12.04	15.07	13.67	2.43	15.54	19.69
April..	5.49	10.85	.....	5.19	2.75	24.35	3.66	2.52	5.39	6.91
May....	6.75	5.50	.....	1.77	0.28	3.30	9.90	1.86	3.58	2.14
June...	12.64	1.42	.....	1.34	0.85	1.25	3.90	0.61	3.98	2.56
July...	21.99	.....	.....	2.00	3.08	3.39	3.62	1.84	4.24	6.25
Aug....	13.96	.....	.....	0.90	3.97	6.56	7.05	5.75	4.22	4.39
Sept...	3.93	.....	.....	0.26	0.34	3.67	0.76	2.40	1.61	2.14
Oct....	9.15	.....	.....	0.97	2.19	4.25	4.17	1.32	1.83	15.05
Nov....	14.39	.....	.....	0.57	10.72	8.20	2.09	6.72	2.75	6.36
Dec....	18.17	.....	.....	2.45	17.41	0.76	6.50	6.38	7.77	0.17
Annual	152.85	.....	.....	40.49	62.13	82.18	79.72	40.09	72.84	66.56

Annual average is made up from annual total.

### RAINFALL AT PAAUHAU (1200 ft).—CONTINUED.

Elevation, 1200 feet. Exposure, Northeast.

MONTHS.	1900									Normal
Jan ...	5.03	.....	.....	.....	.....	.....	.....	.....	.....	9.26
Feb....	9.49	.....	.....	.....	.....	.....	.....	.....	.....	7.48
Mar....	3.99	.....	.....	.....	.....	.....	.....	.....	.....	11.74
April..	7.88	.....	.....	.....	.....	.....	.....	.....	.....	7.50
May....	9.72	.....	.....	.....	.....	.....	.....	.....	.....	4.48
June...	2.88	.....	.....	.....	.....	.....	.....	.....	.....	3.14
July...	2.02	.....	.....	.....	.....	.....	.....	.....	.....	5.16
Aug....	2.68	.....	.....	.....	.....	.....	.....	.....	.....	5.27
Sept...	0.75	.....	.....	.....	.....	.....	.....	.....	.....	1.77
Oct....	6.06	.....	.....	.....	.....	.....	.....	.....	.....	4.99
Nov....	10.60	.....	.....	.....	.....	.....	.....	.....	.....	6.93
Dec....	6.70	.....	.....	.....	.....	.....	.....	.....	.....	7.37
Annual	67.80	.....	.....	.....	.....	.....	.....	.....	.....	74.96

Annual average is made up from annual total.

## RAINFALL AT HONOKAA, HAMAKUA, HAWAII,

Elevation, 425 feet. Exposure, Northeast.

MONTHS.	1885	1886		1890	1891	1892	1893	1894	1895	1896	
Jan ....	16.00	2.73	....	10.66	16.89	8.41	8.16	1.57	2.76	9.58	....
Feb ...	9.40	5.23	....	10.69	4.56	1.01	6.26	8.04	10.50	14.27	....
Mar ...	7.03	9.80	....	11.43	8.63	7.54	7.88	11.32	8.38	8.87	....
April..	16.60	10.59	....	3.19	(9.00)	0.15	4.93	2.58	16.53	2.61	....
May ...	23.80	14.01	....	2.80	1.91	2.76	2.02	0.40	2.36	8.11	....
June ..	5.42	6.60	....	10.65	0.35	0.48	1.79	0.47	1.09	5.03	....
July ...	12.41	3.75	....	16.40	2.76	2.20	2.84	3.53	3.38	5.40	....
Aug...	6.46	3.69	....	11.24	8.87	4.32	0.80	4.15	6.37	5.65	....
Sept...	9.16	7.03	....	1.99	3.13	2.00	0.38	0.36	4.02	1.02	....
Oct....	8.85	1.69	....	6.06	6.15	1.92	1.09	2.49	4.45	3.69	....
Nov ...	13.38	(6.00)	....	12.92	1.63	1.92	0.68	10.78	9.29	1.60	....
Dec ...	20.96	(6.00)	....	10.15	5.44	7.12	3.25	17.24	0.59	5.53	....
Annual	149.47	77.12	....	108.18	(69.32)	39.83	40.08	62.93	69.92	71.36	....

Annual average is made up from annual total.

## RAINFALL AT HONOKAA, HAMAKUA—CONTINUED.

Elevation, 425 feet. Exposure, Northeast.

MONTHS.	1897	1898	1899	1900							Normal
Jan ...	2.38	16.24	0.43	3.73	....	....	....	....	....	....	7.94
Feb....	4.36	3.56	0.65	9.00	....	....	....	....	....	....	6.99
Mar ...	1.53	12.79	12.40	2.99	....	....	....	....	....	....	9.46
April..	3.16	5.39	4.30	5.84	....	....	....	....	....	....	6.54
May ...	1.50	2.92	2.00	7.79	....	....	....	....	....	....	5.49
June ..	0.61	3.29	2.96	2.43	....	....	....	....	....	....	3.99
July ...	1.84	3.91	4.08	1.80	....	....	....	....	....	....	4.94
Aug...	5.90	2.26	3.33	3.74	....	....	....	....	....	....	5.13
Sept...	1.53	1.85	1.32	0.77	....	....	....	....	....	....	2.66
Oct....	0.92	2.35	9.50	5.17	....	....	....	....	....	....	4.18
Nov....	6.51	2.96	4.19	7.13	....	....	....	....	....	....	6.02
Dec. ...	4.60	6.42	0.30	7.61	....	....	....	....	....	....	6.86
Annual	36.22	63.94	45.46	58.00	....	....	....	....	....	....	68.60

Annual average is made up from annual total.

## RAINFALL AT KUKUIHAELE, HAMAKUA, HAWAII.

Elevation, 700 feet. Exposure, Northeast.

Months	1891	1892	1893	1894	1895	1896	1897	1898	1899	1900	Normal
Jan ...	14.51	10.09	7.60	1.09	2.07	10.35	1.93	12.40	1.16	3.53	6.46
Feb ...	7.93	0.83	7.27	7.30	6.04	9.15	2.59	3.87	0.50	7.23	5.27
Mar....	9.41	9.06	7.35	9.07	8.74	9.64	1.74	12.56	12.46	3.82	8.38
April ..	8.78	0.26	4.19	3.66	19.09	5.86	3.21	6.69	4.74	10.02	6.65
May ..	(2.75)	2.77	3.88	1.26	3.33	1.90	1.78	4.93	1.95	8.00	3.25
June ..	0.96	0.82	2.36	1.65	3.36	7.34	0.71	3.54	3.20	2.90	2.68
July ..	(4.00)	2.49	4.01	4.17	3.82	7.97	2.51	5.07	6.39	2.75	4.32
Aug... (11.00)	4.70	1.00	6.78	8.68	4.22	7.15	2.36	4.54	3.40	5.37	
Sept ..	5.60	2.17	0.58	1.14	4.81	1.44	1.69	2.49	2.07	0.55	2.25
Oct ...	7.27	2.82	1.02	2.92	4.54	5.51	1.05	2.79	10.29	6.13	4.43
Nov ...	1.97	1.47	1.10	15.53	8.70	1.97	7.99	3.08	5.25	6.10	5.32
Dec ...	5.66	7.82	3.52	14.38	0.32	7.14	3.24	7.76	0.35	8.52	5.93
Annual	79.84	45.30	43.88	68.95	73.50	72.49	34.59	67.54	52.90	62.95	61.19

Annual average is made up from annual total.

## RAINFALL AT NIULII, KOHALA, HAWAII.

Elevation, 200 feet. Exposure, North.

Months	1885	1886	1887	1888	1889	1890	1891	1892	1893	1894	
Jan....	6.86	3.63	7.46	2.01	2.74	....	11.44	7.89	4.99	1.50	....
Feb....	5.84	2.22	4.96	2.64	2.00	....	5.81	0.91	3.34	7.24	....
Mar....	4.75	1.96	7.16	4.06	3.06	....	4.42	3.78	5.12	5.68	....
April...	9.35	4.80	1.63	4.77	2.00	....	6.30	0.58	4.64	3.43	....
May...	11.61	7.71	4.44	6.06	2.42	....	1.84	3.91	3.71	2.37	....
June...	5.63	6.06	1.34	4.24	3.08	....	1.08	2.04	3.46	2.28	....
July...	8.67	4.17	6.00	5.16	3.98	....	(4.00)	1.70	4.17	3.74	....
Aug....	3.30	3.74	5.42	4.93	5.45	....	9.41	4.33	1.41	3.07	....
Sept....	8.71	7.22	2.52	3.10	3.90	....	3.90	3.32	0.62	0.82	....
Oct....	3.56	1.28	2.53	1.75	6.56	....	7.38	2.18	1.21	2.62	....
Nov...	7.83	2.43	2.91	4.79	8.23	....	1.12	1.94	1.47	8.20	....
Dec...	9.95	4.70	2.55	2.81	7.40	....	3.27	(5.50)	1.05	10.25	....
Annual	86.06	49.92	48.92	46.32	50.82	97.60	59.97	38.08	35.19	51.19	....

Annual average is made up from annual total.

## RAINFALL AT NIULII, KOHALA, HAWAII—CONTINUED.

Elevation, 200 feet. Exposure, North.

Months	1895	1896	1897	1898	1899	1900					Normal
Jan....	2.14	2.79	2.86	6.19	0.93	2.28	....	....	....	....	4.24
Feb....	6.45	5.46	2.51	2.82	1.85	3.82	....	....	....	....	3.86
Mar....	2.85	6.52	1.35	13.34	7.07	2.70	....	....	....	....	4.97
April...	11.96	4.07	1.42	2.34	2.94	4.90	....	....	....	....	4.34
May...	3.41	2.49	1.17	3.91	2.38	9.39	....	....	....	....	4.45
June...	3.20	4.19	0.85	2.80	2.43	2.07	....	....	....	....	2.98
July...	3.46	4.43	1.48	3.26	5.88	3.31	....	....	....	....	4.23
Aug....	5.07	3.11	4.80	3.17	4.21	4.05	....	....	....	....	4.36
Sept....	3.67	1.65	1.52	2.38	3.90	1.76	....	....	....	....	3.27
Oct....	2.49	3.96	1.90	2.94	7.31	6.48	....	....	....	....	3.61
Nov....	10.60	0.53	3.48	5.27	3.11	4.15	....	....	....	....	4.40
Dec...	1.31	4.30	2.93	3.33	0.66	1.45	....	....	....	....	4.09
Annual	56.61	43.50	26.27	51.75	42.67	46.36	....	....	....	....	48.84

Annual average is made up from annual total.



## RAINFALL AT KOHALA MISSION, KOHALA, HAWAII.

Elevation, 521 feet. Exposure, North.

Months	1890	1891	1892	1893	1894	1895	1896	1897	1898	1899
Jan ...	13.75	11.87	9.94	5.29	2.22	2.79	5.18	4.20	5.83	1.16
Feb....	5.98	8.85	1.96	4.53	7.91	3.87	5.70	3.16	2.10	2.56
Mar...	17.56	5.94	3.70	5.72	5.87	3.31	5.32	1.56	15.98	6.86
April..	7.48	7.55	1.14	6.43	3.46	11.84	3.46	1.60	2.43	2.66
May ..	6.95	2.56	4.61	4.06	2.20	3.06	2.22	1.18	3.98	2.24
June...	9.16	2.01	2.50	4.09	2.35	2.96	4.05	0.91	2.76	1.84
July...	10.05	4.19	2.14	4.30	3.69	3.55	5.25	1.60	3.55	5.01
Aug...	9.88	9.79	4.07	2.16	3.79	5.53	3.18	5.35	3.65	3.59
Sept...	3.18	6.25	3.31	1.03	1.09	3.70	1.78	1.64	2.55	4.13
Oct....	4.61	9.14	2.24	1.50	2.73	3.44	8.27	2.01	2.54	5.36
Nov...	4.93	1.79	1.80	1.84	10.72	10.04	0.67	3.85	4.12	3.77
Dec...	6.63	4.46	5.19	2.34	10.98	2.06	3.77	2.30	4.45	0.82
Annual	100.16	74.40	42.60	43.29	57.01	56.15	43.80	29.36	53.94	40.00

Total average is made up from annual total.

## RAINFALL AT KOHALA MISSION—CONTINUED.

Elevation, 521 feet. Exposure, North.

Months	1900										Normal
Jan....	2.17	....	....	....	....	....	....	....	....	....	5.85
Feb....	4.83	....	....	....	....	....	....	....	....	....	4.68
Mar...	2.11	....	....	....	....	....	....	....	....	....	6.72
April..	5.71	....	....	....	....	....	....	....	....	....	4.89
May ..	8.37	....	....	....	....	....	....	....	....	....	3.76
June...	2.51	....	....	....	....	....	....	....	....	....	3.09
July...	3.11	....	....	....	....	....	....	....	....	....	3.31
Aug...	3.26	....	....	....	....	....	....	....	....	....	4.93
Sept...	1.07	....	....	....	....	....	....	....	....	....	2.70
Oct ..	6.33	....	....	....	....	....	....	....	....	....	3.92
Nov...	5.00	....	....	....	....	....	....	....	....	....	4.41
Dec...	0.81	....	....	....	....	....	....	....	....	....	3.98
Annual	45.28	....	....	....	....	....	....	....	....	....	53.27

Total average is made up from annual total.

## RAINFALL AT KOHALA PARSONAGE, KOHALA, HAWAII.

Elevation, 350 feet. Exposure, North.

Months	1890	1891	1892	1893	1894	1895	1896	1897	1898	1899	
Jan....	11.97	11.81	8.88	5.21	2.43	2.90	4.66	3.86	6.61	1.26	.....
Feb...	6.82	7.22	1.79	4.58	9.00	2.53	6.47	3.68	(2.10)	2.02	.....
Mar...	15.46	6.05	3.95	5.93	6.53	3.84	6.43	1.63	16.54	7.71	.....
April..	6.10	7.56	0.55	6.89	4.35	14.76	3.63	1.40	3.15	2.87	.....
May...	9.89	1.93	4.15	4.83	2.90	3.71	2.76	1.11	4.84	2.86	.....
June..	6.82	2.23	2.89	4.68	3.25	3.50	4.49	0.78	(2.70)	2.38	.....
July...	10.60	4.37	2.26	5.23	4.59	3.81	5.98	1.58	4.52	6.03	.....
Aug...	9.92	7.53	4.71	1.97	4.11	6.54	3.80	5.50	4.06	4.05	.....
Sept...	2.99	6.43	3.88	1.62	1.33	4.10	1.82	1.58	3.47	4.44	.....
Oct...	4.99	9.08	2.77	1.71	2.94	3.76	4.02	2.25	3.03	5.90	.....
Nov...	4.81	1.30	1.88	2.05	10.31	12.70	0.64	3.49	4.70	4.00	.....
Dec...	6.47	4.83	4.89	2.39	12.56	2.25	4.38	2.07	10.35	0.97	.....
Annual	96.84	70.34	42.60	47.09	64.30	64.40	49.08	29.93	61.27	44.49	.....

Total average is made up from annual total.

## RAINFALL AT KOHALA PARSONAGE—CONTINUED.

Elevation, 350 feet. Exposure, North.

Months	1900										Normal
Jan...	2.43	.....	.....	.....	.....	.....	.....	.....	.....	.....	5.64
Feb...	4.84	.....	.....	.....	.....	.....	.....	.....	.....	.....	4.62
Mar...	3.02	.....	.....	.....	.....	.....	.....	.....	.....	.....	7.01
April..	5.97	.....	.....	.....	.....	.....	.....	.....	.....	.....	5.20
May...	9.55	.....	.....	.....	.....	.....	.....	.....	.....	.....	4.41
June...	2.90	.....	.....	.....	.....	.....	.....	.....	.....	.....	3.33
July...	3.30	.....	.....	.....	.....	.....	.....	.....	.....	.....	4.75
Aug...	1.46	.....	.....	.....	.....	.....	.....	.....	.....	.....	4.89
Sept...	1.46	.....	.....	.....	.....	.....	.....	.....	.....	.....	3.01
Oct...	6.70	.....	.....	.....	.....	.....	.....	.....	.....	.....	4.29
Nov...	4.38	.....	.....	.....	.....	.....	.....	.....	.....	.....	4.57
Dec...	(0.80)	.....	.....	.....	.....	.....	.....	.....	.....	.....	4.72
Annual	45.81	.....	.....	.....	.....	.....	.....	.....	.....	.....	55.92

Annual average is made up from annual total.

## RAINFALL AT WAIMEA, HAWAII.

Elevation, 2720 feet. Exposure, Central.

Months.	1891	1892	1893	1894	1895	1896	1897	1898	1899	1900	Normal
January ...	8.17	8.43	1.48	1.41	1.84	4.04	5.91	3.62	1.41	3.12	3.87
February ..	10.10	3.18	3.96	5.52	4.08	4.02	0.75	2.62	3.72	3.29	4.56
March .....	5.41	2.82	5.81	2.46	10.06	5.73	1.43	5.39	4.73	1.45	5.15
April .....	3.40	1.77	1.84	2.46	6.18	1.12	1.93	2.60	5.13	3.79	3.11
May .....	1.31	3.42	2.46	1.59	2.09	2.11	0.76	2.54	4.28	4.95	2.69
June .....	1.82	1.01	2.48	1.84	1.62	2.49	1.37	4.66	2.62	1.96	2.26
July .....	3.03	1.70	3.35	2.06	2.01	2.96	1.77	3.24	2.57	1.98	2.50
August .....	2.37	3.17	1.15	2.43	7.96	3.60	3.05	2.88	1.78	1.81	3.06
September ..	1.21	1.74	0.54	0.82	2.27	1.01	0.79	1.49	2.46	0.87	1.37
October ...	7.96	2.41	1.07	1.36	1.16	1.76	1.54	3.47	5.77	4.23	3.18
November ..	0.41	0.19	1.42	5.10	4.34	0.70	1.82	1.78	5.15	7.72	3.07
December..	2.44	9.10	1.95	11.64	1.09	3.61	3.24	4.02	0.30	4.57	4.37
Annual ..	47.63	38.94	27.51	38.69	44.70	33.15	24.36	39.31	39.92	39.74	40.50

Annual average is made up from annual total.

## RAINFALL AT KAILUA, HAWAII.

Elevation, 950 feet. Exposure, West.

Months.	1881	1882	1883	1884	1885	1886	1887	1888	1889	1890	1891
January ...	13.49	3.75	3.89	0.36	0.63	0.37	6.37	1.63	0.00	5.25	0.69
February ...	2.74	1.37	4.61	1.37	1.87	0.13	2.64	6.37	0.87	3.61	1.45
March .....	0.50	5.33	0.62	1.87	6.37	2.62	1.50	1.12	0.50	5.74	3.47
April .....	0.50	0.87	2.32	8.50	10.13	5.67	3.00	6.88	2.87	7.18	2.41
May .....	7.91	5.49	3.92	2.87	5.20	2.63	3.63	11.37	6.25	6.33	2.28
June .....	3.97	4.74	4.72	3.99	6.25	5.70	7.50	3.75	3.62	6.50	7.66
July .....	3.24	1.37	2.45	6.27	11.12	2.05	4.37	1.37	7.75	3.06	5.06
August ....	3.10	11.76	5.34	7.28	5.75	4.00	3.88	3.12	9.00	8.29	....
September ..	1.49	6.65	4.57	2.37	6.37	9.75	3.87	8.62	6.88	4.54	....
October ...	3.18	2.62	2.70	5.53	4.12	4.30	7.25	3.63	1.25	2.41	....
November ..	9.61	6.12	2.49	0.80	0.58	4.62	4.25	3.00	1.37	2.37	....
December ..	0.50	2.87	11.63	7.53	3.75	3.62	6.25	1.63	2.62	0.58	....
Annual ..	50.23	52.94	49.32	48.74	62.14	45.46	54.51	52.49	42.98	55.86	.....

Annual average is made up from annual total.

## RAINFALL AT KAILUA—CONTINUED.

Elevation, 950 feet. Exposure, West.

Months.	1893	1894	1895	1896	1897	1898	1899	1900			Normal
January ...	2.12	3.89	3.83	1.22	3.34	1.33	1.79	0.55	....	....	2.85
February ...	6.16	7.94	6.63	2.96	3.52	4.19	5.12	1.38	....	....	3.42
March ....	2.71	8.24	1.22	4.08	3.03	8.67	5.83	2.06	....	....	3.39
April .....	1.45	4.73	6.94	5.86	4.80	2.48	0.97	1.60	....	....	4.32
May .....	8.39	3.55	4.24	8.49	5.73	7.28	13.81	2.91	....	....	5.91
June .....	3.66	4.04	5.53	5.17	4.94	7.26	3.38	6.99	....	....	5.23
July .....	11.39	4.24	6.89	3.14	4.91	8.88	4.59	13.73	....	....	5.57
August ....	5.41	5.27	5.77	5.52	5.96	4.98	9.15	3.88	....	....	5.97
September ..	6.39	6.02	5.42	5.94	5.63	6.35	5.19	8.60	....	....	5.83
October ....	9.55	2.05	4.84	3.46	4.06	4.91	4.70	8.06	....	....	4.36
November ..	6.71	4.64	6.18	0.55	3.81	3.45	0.52	5.15	....	....	3.68
December ..	2.58	0.38	4.35	3.79	3.72	1.97	1.60	1.32	....	....	3.47
Annual ..	66.52	55.09	61.84	50.18	53.45	61.75	56.65	56.23	....	....	54.24

Annual average is made up from annual total.

## RAINFALL AT KEALAKEKUA, HAWAII.

Elevation, 1584 feet. Exposure, West.

Months.	1891	1892	1893	1894	1895	1896	1897	1898	1899	1900	Normal
January ...	[1.00]	8.58	3.14	5.77	4.32	5.01	5.05	1.61	1.36	0.98	3.68
February...	[1.50]	2.72	2.37	6.39	5.02	3.25	2.07	4.53	2.38	1.57	3.18
March .....	2.03	3.85	2.14	3.88	1.54	3.05	3.30	6.99	3.13	2.10	3.28
April .....	1.98	7.56	4.93	2.63	6.78	3.39	4.08	2.03	2.39	3.83	3.96
May .....	3.47	5.40	9.47	3.62	5.38	8.30	5.85	7.81	9.09	1.89	6.02
June .....	6.93	11.34	4.99	3.45	5.95	3.54	6.09	7.36	4.37	5.56	5.96
July .....	3.89	6.69	12.80	4.83	6.22	5.10	9.80	12.16	6.75	11.28	7.75
August ...	4.94	6.16	6.86	5.07	9.97	4.00	10.36	10.04	10.81	9.49	7.72
September..	3.77	6.96	7.62	8.42	8.28	6.85	6.74	5.67	7.67	11.17	7.31
October ....	10.49	7.06	5.96	3.41	7.16	4.34	6.18	6.90	4.64	10.23	6.64
November ..	2.26	6.63	7.12	2.96	13.59	1.15	4.46	2.35	1.70	5.71	4.79
December...	0.49	2.22	1.67	1.77	1.71	1.97	2.03	2.25	1.80	0.84	1.67
Annual ..	43.55	75.17	69.07	52.20	75.92	49.95	66.01	69.70	56.09	64.65	62.23

Annual average is made up from annual total.

## RAINFALL AT HONUAPO, KAU, HAWAII.

Elevation, 15 feet. Exposure, South.

Months.					1895	1896	1897	1898	1899	1900	Normal
January ....	.....	.....	.....	.....	1.95	0.46	0.94	4.26	2.10	0.22	1.65
February ..	.....	.....	.....	.....	4.30	0.31	0.23	2.29	1.68	1.19	1.66
March .....	.....	.....	.....	.....	0.00	6.49	1.09	15.45	4.38	0.55	4.66
April .....	.....	.....	.....	.....	0.86	1.20	0.00	0.00	13.14	1.28	2.75
May .....	.....	.....	.....	.....	2.19	0.65	0.00	0.00	2.41	0.74	0.99
June .....	.....	.....	.....	.....	0.63	0.00	0.34	0.00	0.30	0.22	0.25
July .....	.....	.....	.....	.....	1.02	0.20	0.00	0.84	1.26	1.89	0.87
August .....	.....	.....	.....	.....	5.04	10.04	0.73	0.48	0.05	5.28	3.60
September..	.....	.....	.....	.....	2.18	2.75	0.44	1.85	0.28	0.00	1.25
October ....	.....	.....	.....	.....	[2.26]	0.17	1.25	0.10	0.45	5.32	1.59
November ..	.....	.....	.....	.....	3.28	4.48	7.12	1.94	0.13	7.49	4.07
December...	.....	.....	.....	.....	7.79	2.87	1.16	5.96	0.28	0.69	3.12
Annual ..	.....	.....	.....	.....	31.50	29.62	13.30	33.17	26.46	25.32	26.59

Annual average is made up from annual total

## RAINFALL AT NAALEHU, KAU, HAWAII.

Elevation, 650 feet. Exposure, Southeast.

Months.	1890	1892	1893	1894	1895	1896	1897	1898	1899	1900	Normal
January ...	26.49	[10.00]	2.49	13.43	3.12	2.48	1.75	4.34	4.57	0.17	6.88
February ..	8.65	6.84	8.40	14.40	4.79	1.87	1.06	3.77	2.26	3.03	5.51
March... ..	12.84	2.27	11.82	3.84	0.49	5.72	2.42	20.02	6.11	1.69	6.22
April .....	8.25	3.29	1.98	1.83	2.12	3.14	0.81	0.71	11.74	3.04	3.69
May.....	2.66	1.65	1.42	0.26	2.04	1.07	1.12	0.74	4.76	1.93	1.76
June. ....	1.73	0.40	0.15	1.03	1.94	0.08	1.24	0.62	1.39	1.80	1.04
July .....	3.15	1.17	2.71	1.60	1.89	0.86	0.56	1.61	2.68	.....	1.80
August .....	2.93	1.07	1.13	2.21	10.87	12.50	2.15	1.37	1.16	.....	5.04
September.	2.55	0.63	1.12	1.22	4.43	3.14	1.54	3.48	0.84	...	2.10
October ...	13.62	2.81	0.65	2.09	2.39	0.75	3.90	0.18	1.19	.....	3.06
November..	0.46	3.80	14.16	11.68	4.37	6.26	10.00	3.02	0.20	.....	5.99
December .	2.50	5.57	4.44	1.23	8.23	2.61	3.20	5.77	2.16	.....	3.96
Annual ..	87.83	39.50	50.47	54.82	46.68	40.48	29.95	45.63	39.06	.....	47.05

Annual average is made up from annual total.

## RAINFALL AT HILEA, KAU, HAWAII.

Elevation, 310 feet.

Exposure, Southeast.

Months.	1885	1886	1887	1888	1889	1890		1895	1896	1897	
January	0.00	1.70	.....	1.90	0.80	10.60	.....	2.20	0.80	2.30	.....
February	2.60	4.60	.....	11.10	1.90	6.00	.....	3.50	0.80	0.20	.....
March	2.20	1.80	.....	4.40	0.80	10.90	.....	0.40	6.90	1.30	.....
April	11.30	0.00	.....	2.60	1.30	7.20	.....	0.80	1.30	0.20	.....
May	6.60	0.00	.....	2.40	0.10	.....	.....	2.50	0.60	0.80	.....
June	1.00	0.00	.....	1.60	1.80	.....	.....	0.50	0.00	0.50	.....
July	8.20	0.40	.....	0.40	3.00	.....	.....	1.10	0.60	0.10	.....
August	0.30	0.00	.....	2.60	0.20	.....	.....	8.70	11.90	0.90	.....
September	2.30	5.60	.....	2.50	2.60	.....	.....	3.40	2.00	0.50	.....
October	0.00	1.90	10.10	5.80	0.80	.....	.....	3.00	0.40	2.20	.....
November	3.00	25.90	6.90	3.40	0.40	.....	.....	3.60	4.10	6.60	.....
December	1.10	2.60	17.40	0.90	0.20	.....	.....	5.30	2.20	1.70	.....
Annual	38.60	44.50	.....	39.60	13.90	.....	.....	35.00	31.60	17.30	.....

Annual average is made up from annual total.

## RAINFALL AT HILEA—CONTINUED.

Elevation, 310 feet.

Exposure, Southeast.

Months.	1898	1899	1900								Normal
January	3.60	2.10	2.30	.....	.....	.....	.....	.....	.....	.....	2.57
February	3.00	0.30	2.30	.....	.....	.....	.....	.....	.....	.....	3.30
March	20.60	5.02	0.30	.....	.....	.....	.....	.....	.....	.....	5.24
April	0.10	12.00	2.10	.....	.....	.....	.....	.....	.....	.....	3.54
May	0.50	2.30	0.80	.....	.....	.....	.....	.....	.....	.....	1.66
June	0.50	0.00	0.50	.....	.....	.....	.....	.....	.....	.....	0.64
July	1.10	0.06	2.30	.....	.....	.....	.....	.....	.....	.....	1.73
August	0.07	0.51	3.70	.....	.....	.....	.....	.....	.....	.....	2.89
September	1.60	0.00	0.10	.....	.....	.....	.....	.....	.....	.....	2.06
October	0.20	0.60	5.10	.....	.....	.....	.....	.....	.....	.....	2.74
November	2.00	0.00	8.40	.....	.....	.....	.....	.....	.....	.....	5.84
December	3.40	1.00	1.10	.....	.....	.....	.....	.....	.....	.....	2.44
Annual	36.67	23.89	29.00	.....	.....	.....	.....	.....	.....	.....	34.65

Annual average is made up from annual total.

## RAINFALL AT PAHALA, KAU, HAWAII.

Elevation, 850 feet. Exposure, Southeast.

Months.	1892	1893	1894	1895	1896	1897	1898	1899	1900		Norma
January ...	10.20	3.89	13.26	3.56	1.27	2.90	5.82	2.76	0.42	....	4.89
February ...	3.21	14.71	15.20	2.94	0.63	0.40	5.31	1.35	1.60	....	5.04
March.....	0.73	7.61	2.60	0.79	6.59	1.05	20.91	7.56	1.90	....	5.52
April.....	2.18	1.84	1.20	1.22	0.88	0.58	0.54	10.49	0.71	....	2.18
May.....	2.54	1.28	0.38	2.85	0.70	0.68	1.21	2.26	0.60	....	1.40
June.....	0.41	0.65	0.68	0.87	0.00	0.41	0.34	0.00	1.27	....	0.51
July.....	0.08	0.46	0.79	0.68	0.74	0.06	1.03	1.31	2.31	....	0.83
August.....	1.57	1.60	1.06	8.78	10.91	1.81	1.96	0.31	3.53	....	3.50
September..	0.04	2.81	1.21	4.10	(2.00)	1.10	2.78	0.25	0.66	....	1.66
October.....	3.58	0.62	1.12	2.68	1.45	2.15	2.23	0.91	5.02	....	2.19
November..	4.32	13.19	15.85	5.97	4.46	6.87	3.30	0.40	9.15	....	7.05
December..	2.74	3.61	0.62	8.99	2.64	1.92	3.94	0.55	7.59	....	3.62
Annual..	31.60	52.27	53.97	43.43	32.27	19.93	49.37	28.15	34.76	....	38.39

Annual average is made up from annual total.

## RAINFALL AT VOLCANO HOUSE.

Elevation, 4000 feet. Exposure, Southeast.

MONTHS.	1888	1889	1890	1891	1892	1893	1894		1899	1900	Normal
January ...	15.95	9.65	33.80	14.25	15.15	5.70	25.75	.....	2.57	0.85	.....
February ...	11.90	5.40	26.20	13.15	13.20	15.30	19.00	.....	3.32	1.90	.....
March.....	11.20	2.90	49.25	12.02	10.45	14.30	12.10	.....	13.73	2.47	.....
April.....	10.10	3.10	15.55	.....	0.60	10.60	6.10	.....	6.57	3.92	.....
May.....	4.90	9.00	12.35	.....	2.00	5.60	.....	.....	10.69	8.05	.....
June.....	2.95	9.50	4.25	.....	5.60	4.30	.....	.....	1.97	2.02	.....
July.....	12.10	1.25	38.05	.....	4.50	9.20	.....	.....	1.96	3.63	.....
August.....	10.05	2.45	14.20	.....	4.45	3.30	.....	.....	3.81	10.10	.....
September..	7.60	6.70	5.92	.....	3.10	4.50	.....	.....	2.37	2.85	.....
October.....	7.40	7.15	29.70	.....	3.90	3.70	.....	.....	7.07	12.07	.....
November..	6.53	16.40	17.90	.....	4.70	4.80	.....	.....	3.34	13.77	.....
December ..	6.65	59.20	27.50	.....	5.20	5.30	.....	.....	1.04	1.75	.....
Annual..	.....	.....	.....	.....	72.85	86.60	.....	.....	58.44	63.38	.....

These figures are given just as sent in. Some doubt has been cast over the 1889-90 record. Probably 75 inches is a fair annual normal.



### RAINFALL AT VOLCANO ROAD, PUNA, HAWAII.

Elevation, 265 and 2400 feet. Exposure, East.

Months	*1891	1892		1893	1894	1895	1896	1897			Normal
January	(10.00)	14.33	.....	4.51	21.96	6.46	[4.00]	6.57	.....	.....	.....
February	6.22	11.20	.....	13.75	32.20	3.97	[15.00]	16.27	.....	.....	.....
March	10.81	11.79	.....	24.90	27.64	16.55	[14.27]	17.18	.....	.....	.....
April	12.61	3.59	.....	19.83	24.49	42.05	20.72	8.01	.....	.....	.....
May	6.28	2.85	.....	9.89	5.46	12.79	16.67	9.14	.....	.....	.....
June	5.11	8.85	.....	9.27	8.41	11.45	11.63	5.58	.....	.....	.....
July	9.35	9.14	.....	13.52	14.56	16.05	10.73	12.44	.....	.....	.....
August	13.40	10.63	.....	9.82	7.52	18.48	20.13	16.27	.....	.....	.....
September	14.42	9.54	.....	6.98	7.90	22.95	11.27	7.35	.....	.....	.....
October	23.87	12.58	.....	11.60	8.86	9.76	8.55	9.76	.....	.....	.....
November	12.02	12.51	.....	15.97	13.13	15.27	4.37	18.36	.....	.....	.....
December	25.09	10.00	.....	10.18	24.06	13.05	8.66	14.57	.....	.....	.....
Annual	.....	.....	.....	.....	.....	.....	.....	.....	.....	.....	.....

For 1891 and 1892, 265 feet; 1893, etc., 2400.

### RAINFALL AT KAPOHO, PUNA, HAWAII.

Elevation, 110 feet. Exposure, East.

Months.	1891	1892	1893	1894	1895	1896	1897	1898	1899	1900	Normal
January	.....	13.45	2.55	22.35	4.13	5.43	5.41	15.64	2.83	2.76	8.28
February	.....	3.95	10.05	24.79	6.45	6.80	3.36	11.41	7.29	7.55	10.20
March	.....	5.69	9.53	9.60	3.24	10.29	6.18	24.86	8.77	3.14	9.03
April	.....	2.52	11.88	4.30	7.21	6.89	3.25	3.26	9.40	3.53	5.80
May	.....	2.33	7.62	1.11	5.58	5.58	2.76	4.17	8.37	8.59	5.12
June	.....	5.92	4.04	2.75	4.83	2.57	2.59	4.19	6.45	6.13	4.38
July	.....	6.10	3.54	3.82	6.11	3.02	4.77	4.99	1.65	5.96	4.44
August	6.71	6.15	2.12	2.45	5.94	5.13	5.29	4.12	5.60	10.64	5.26
September	9.15	5.18	3.09	5.09	9.46	4.58	5.99	6.55	2.90	6.98	5.53
October	15.03	9.50	5.44	6.80	9.62	4.38	7.13	6.11	15.48	15.38	8.87
November	3.28	5.20	18.42	7.28	8.64	4.24	12.41	7.22	2.46	7.45	8.15
December	8.88	5.50	5.64	8.48	12.20	4.01	9.74	4.05	3.19	2.13	6.15
Annual	.....	71.49	83.92	98.82	83.41	62.92	63.88	96.57	74.39	80.44	81.21

Annual average is made up from annual total.

## RAINFALL AT POHOIKI, PUNA, HAWAII.

Elevation, 10 feet. Exposure, East.

Months.	1891	1892	1893	1894	1895	1896	1897	1898	1899	1900	Normal
Jan. ....	1.56	13.75	1.25	25.19	.....	3.25	4.47	18.04	3.83	2.81	8.24
Feb. ....	8.66	5.14	10.48	25.54	.....	10.55	2.53	15.26	7.31	4.56	10.00
March...	4.98	6.00	9.78	11.30	.....	8.68	6.47	19.87	7.83	2.96	8.65
April...	3.28	2.48	9.69	4.48	.....	10.26	3.19	3.05	13.76	2.87	5.89
May....	2.75	2.04	7.54	1.49	.....	3.51	2.90	3.48	10.54	7.36	4.62
June....	7.13	4.53	4.27	2.66	.....	2.81	2.43	4.00	7.00	4.70	4.39
July..	6.80	5.16	5.69	5.61	.....	2.84	4.68	4.77	1.95	8.27	5.08
Aug....	7.59	7.32	4.25	[2.50]	.....	6.17	3.98	5.06	2.44	9.48	5.42
Sept...	6.66	5.73	3.93	[5.50]	10.21	3.61	3.32	5.73	3.33	6.27	4.89
Oct....	16.21	7.46	3.98	8.55	6.09	5.13	8.04	7.50	25.66	14.63	10.79
Nov....	3.19	5.09	19.37	[7.50]	9.61	3.34	9.71	5.33	2.54	8.33	7.15
Dec....	10.59	[5.00]	5.62	[8.50]	10.54	4.54	8.63	6.70	3.44	2.86	6.21
Annual.	79.40	69.70	85.85	[111.00]	....	64.69	60.40	98.79	89.68	75.10	82.49

Annual average is made up from annual total.

## RAINFALL AT OLAA, PUNA, HAWAII.

Elevation, 1650 feet. Exposure, East.

Months	1893	1894	1895	1896	1897	1898	1899	1900	Normal	
Jan ..	4.51	22.99	5.70	3.95	5.63	51.46	.....	4.65	.....	13.75
Feb ..	12.26	32.98	4.16	14.41	16.41	10.16	.....	1.95	.....	13.19
Mar ..	31.27	27.45	16.36	19.01	25.58	52.44	.....	0.86	.....	21.71
April.	24.34	25.90	39.62	23.34	6.21	13.86	.....	7.41	.....	20.09
May..	16.89	5.19	14.06	21.35	9.74	13.66	.....	18.14	.....	14.15
June.	11.01	9.76	12.23	17.35	5.53	8.18	.....	4.99	.....	9.86
July..	14.64	16.06	14.76	10.13	11.35	18.03	.....	12.57	.....	13.93
Aug..	10.39	8.07	18.12	22.77	14.85	10.93	.....	22.00	.....	15.30
Sept..	7.48	8.45	23.69	18.67	8.23	12.76	.....	7.96	8.06	12.48
Oct...	15.10	11.10	11.01	10.04	9.41	16.82	.....	25.19	21.75	13.60
Nov..	17.97	15.27	15.89	5.68	19.92	10.08	.....	8.64	16.87	14.52
Dec..	11.56	25.72	13.96	9.28	13.48	8.04	.....	2.57	4.59	12.37
Annual.	177.42	208.94	189.56	175.98	146.34	226.42	.....	121.19	.....	177.98

Annual average is made up from annual total.

## RAINFALL AT KAAPALI, WEST MAUI.

Elevation, 15 feet. Exposure, Northwest.

Months	1892	1893	1894	1895	1896	1897	1898				
Jan....	9.07	1.43	1.63	5.19	5.99	1.14	3.61	.....	.....	.....	.....
Feb....	2.41	9.15	5.75	3.20	1.85	0.81	8.71	.....	.....	.....	.....
Mar...	1.15	1.17	1.46	2.00	2.39	0.75	4.80	.....	.....	.....	.....
April..	0.70	2.02	1.03	1.58	0.98	0.45	.....	.....	.....	.....	.....
May...	0.99	1.33	0.20	0.46	0.14	1.19	.....	.....	.....	.....	.....
June..	0.88	0.38	0.20	1.44	0.42	0.20	.....	.....	.....	.....	.....
July...	1.12	1.01	1.89	0.57	1.41	0.60	.....	.....	.....	.....	.....
Aug...	1.48	0.98	0.30	5.70	3.17	1.37	.....	.....	.....	.....	.....
Sept...	0.26	1.71	0.35	2.09	0.00	0.61	.....	.....	.....	.....	.....
Oct....	1.93	0.22	1.24	0.50	1.69	1.62	.....	.....	.....	.....	.....
Nov...	0.88	2.45	6.13	1.72	0.56	5.11	.....	.....	.....	.....	.....
Dec...	1.84	3.00	5.78	4.09	5.99	3.91	.....	.....	.....	.....	.....
Annual	22.71	24.85	25.96	28.54	24.59	17.76	.....	.....	.....	.....	.....

Annual average is made up from annual total.

## RAINFALL AT OLOWALU, WEST MAUI.

Elevation, 15 feet. Exposure, Southwest.

Months	1891	1892	1893	1894	1895	1896	1897	1898	1899	1900	Normal
Jan....	.....	4.57	0.76	1.18	2.87	4.77	0.00	0.00	0.29	1.50	1.80
Feb....	.....	1.78	3.02	3.31	3.05	0.00	0.00	4.15	1.48	.....	2.10
Mar....	.....	0.00	0.49	0.00	1.00	2.05	0.00	0.70	1.01	.....	0.53
April..	0.00	1.37	0.00	0.00	0.16	0.00	0.00	0.00	0.00	.....	0.17
May...	0.02	1.93	0.00	0.00	0.00	0.00	0.00	0.00	0.00	.....	0.21
June..	0.01	0.31	0.00	0.00	0.00	0.00	0.40	0.00	0.00	.....	0.08
July...	0.00	0.00	0.00	0.00	0.19	0.00	0.02	0.00	0.00	0.14	0.02
Aug....	.....	0.52	0.00	0.06	1.47	0.64	0.00	0.00	0.00	.....	0.29
Sept...	0.09	0.00	0.00	0.00	0.00	0.00	0.00	0.00	0.00	0.00	0.01
Oct....	0.24	3.72	0.00	0.19	0.00	0.07	0.73	0.00	0.00	.....	0.55
Nov...	0.11	0.13	1.54	3.24	1.10	0.80	0.92	0.00	0.00	11.15	0.87
Dec...	0.00	1.27	1.45	2.13	0.80	2.37	1.74	0.92	0.75	.....	1.27
Annual	.....	15.60	7.26	10.11	10.64	10.70	3.81	5.77	3.53	.....	8.45

Annual average is made up from annual total.

## RAINFALL AT RECIPROCITY MILL, EAST MAUI.

Elevation, 60 feet. Exposure, East.

MONTHS.	1895	1896	1897	1898	1899	1900					Normal.
Jan....		3.77	3.05	6.85	2.35	0.97					3.39
Feb....		3.58	1.47	8.74	4.79	5.98					4.91
Mar....		3.80	2.72	12.05	8.85	0.75					5.63
April..		4.57	1.58	1.65	6.59	0.75					4.53
May....		4.35	3.02	3.41	7.61	4.04					4.49
June...	2.95	2.19	2.71	3.20	2.83	2.61					2.71
July....	3.34	2.57	4.43	4.08	(3.00)	7.19					4.25
Aug....	5.98	1.91	4.04	2.72	3.81	4.60					3.42
Sept...	3.58	1.83	3.80	4.35	1.15	3.02					2.83
Oct....	2.57	3.47	3.17	5.78	16.26	8.01					7.34
Nov....	5.23	7.42	8.07	4.26	2.78	11.07					4.72
Dec....	3.73	7.70	4.12	5.84	(2.00)	2.24					4.38
Annual.....		47.16	42.18	62.93	62.02	51.23					53.10

Annual average is made up from annual total.

## RAINFALL AT HANA PLANTATION, EAST MAUI.

Elevation, 200 feet. Exposure, East.

MONTHS.	1894	1895	1896	1897							Normal
Jan....	3.49	2.66	7.13	2.01	....	....	....	....	....	....	4.43
Feb....	12.20	4.57	1.87	1.81	....	....	....	....	....	....	6.21
Mar....	7.03	2.45	4.66	2.35	....	....	....	....	....	....	4.71
April..	2.28	23.54	5.91	1.69	....	....	....	....	....	....	10.58
May....	0.79	2.18	3.27	2.05	....	....	....	....	....	....	2.08
June...	2.83	4.42	1.80	1.61	....	....	....	....	....	....	3.02
July....	3.57	4.22	2.68	4.42	....	....	....	....	....	....	3.49
Aug....	1.33	5.21	2.06	3.99	....	....	....	....	....	....	2.87
Sept...	2.12	3.91	2.84	4.40	....	....	....	....	....	....	2.96
Oct....	3.39	4.14	3.88	3.61	....	....	....	....	....	....	3.77
Nov....	15.18	7.17	3.17	9.71	....	....	....	....	....	....	8.51
Dec....	7.72	3.32	8.35	4.55	....	....	....	....	....	....	6.48
Annual	61.95	67.79	47.62	42.20	....	....	....	....	....	....	59.11

Annual average is made up from annual total.

### RAINFALL AT HANA (1800 ft.)

Elevation, 1800 feet. Exposure, East.

Months	1894	1895	1896	1897							Normal
Jan ...	6.55	2.60	6.57	5.48	....	....	....	....	....	....	4.88
Feb....	18.28	3.84	2.96	3.65	....	....	....	....	....	....	3.48
Mar ...	15.15	6.59	8.12	6.69	....	....	....	....	....	....	7.13
April..	7.97	13.48	10.34	4.47	....	....	....	....	....	....	9.43
May ..	2.57	6.65	6.35	3.26	....	....	....	....	....	....	5.42
June ..	7.24	10.04	6.04	4.93	....	....	....	....	....	....	7.00
July...	.....	7.93	7.22	7.95	....	....	....	....	....	....	7.70
Aug.....	.....	15.47	5.03	6.77	....	....	....	....	....	....	9.09
Sept...	.....	10.32	3.43	6.07	....	....	....	....	....	....	6.60
Oct.....	.....	8.59	5.12	7.19	....	....	....	....	....	....	6.96
Nov... ..	.....	11.65	3.87	11.98	....	....	....	....	....	....	9.16
Dec... ..	.....	7.04	13.89	7.47	....	....	....	....	....	....	9.46
Annual	....	104.20	78.94	75.91	....	....	....	....	....	....	86.01

Annual average is made up from annual total.

### RAINFALL AT PUUOMALEI, EAST MAUI \*

Elevation, 1400 feet. Exposure, North.

Months	1895	1896	1897	1898	1899	1900					Normal
Jan....	4.71	6.50	3.10	9.93	0.49	3.44	....	....	....	....	4.69
Feb ...	6.22	7.14	3.26	5.94	1.21	4.14	....	....	....	....	4.65
Mar ...	11.64	9.61	1.49	13.38	12.17	4.14	....	....	....	....	8.74
April..	9.68	3.21	2.46	3.21	2.63	8.20	....	....	....	....	4.90
May ..	3.42	3.81	1.61	5.32	2.52	10.32	....	....	....	....	4.50
June ..	2.87	0.69	0.61	2.78	2.82	3.41	....	....	....	....	2.19
July...	2.67	2.83	3.33	2.54	1.25	4.82	....	....	....	....	2.91
Aug...	7.78	3.60	5.66	2.74	1.66	2.05	....	....	....	....	3.91
Sept...	7.80	0.63	1.68	4.07	0.62	1.64	....	....	....	....	2.74
Oct ...	1.59	3.90	5.41	2.20	9.38	10.55	....	....	....	....	5.50
Nov ...	7.72	1.31	6.28	2.72	7.76	14.06	....	....	....	....	6.64
Dec... ..	2.62	15.06	4.61	9.64	[11.00]	5.22	....	....	....	....	8.02
Annual	68.72	58.29	39.50	64.47	43.51	71.99	....	....	....	....	59.29

Annual average is made up from annual total.

\*In Makawao District.

## RAINFALL AT HALEAKALA RANCH, EAST MAUI. \*

Elevation, 2100 feet. Exposure, North.

MONTHS	1892	1893	1894	1895	1896	1897	1898	1899	1900		Normal
Jan ..	17.59	[2.00]	0.82	4.00	5.51	2.66	3.97	0.55	3.22	.....	4.48
Feb ..	2.40	7.27	14.74	4.47	3.60	0.74	3.83	1.10	8.08	.....	5.14
Mar ..	1.77	4.23	6.63	9.70	5.11	1.15	9.46	7.13	4.37	.....	5.51
April.	1.58	1.57	0.99	3.07	0.99	0.98	1.17	6.64	7.04	.....	2.67
May .	3.19	0.55	0.37	0.31	1.82	1.39	1.55	1.45	2.57	.....	1.46
June..	[1.00]	0.55	0.15	0.26	0.12	0.51	1.18	0.94	1.33	.....	0.67
July .	0.68	0.60	0.17	1.02	0.25	0.44	0.52	1.04	3.64	.....	0.93
Aug..	[3.50]	0.48	1.34	7.24	1.00	4.33	1.11	0.71	3.76	.....	2.60
Sept .	0.20	0.27	0.25	1.38	1.25	0.28	1.62	0.22	1.53	.....	0.78
Oct ..	2.09	0.52	0.63	0.08	0.80	2.55	0.65	8.67	1.59	.....	1.95
Nov..	3.59	1.22	9.23	3.73	1.86	6.27	1.15	4.80	13.40	.....	5.03
Dec..	6.72	2.24	7.43	1.26	6.39	3.41	5.24	0.15	4.04	.....	4.10
Total.	44.81	21.50	42.95	36.52	28.70	24.71	31.45	33.40	54.57	.....	35.40

Annual average is made up from annual total.

\*In Makawao.

## RAINFALL AT EREHWON, KULA, EAST MAUI.

Elevation, 4000 feet. Exposure, North.

MONTHS	1890	1891	1892	1893	1894	1895	1896	1897		
Jan....	6.71	3.80	14.05	2.00	[1.00]	3.83	6.06	6.73	.....	.....
Feb...	4.64	4.11	2.53	7.48	7.01	5.87	0.26	0.00	.....	.....
Mar....	14.25	2.85	3.35	1.47	3.07	0.48	1.49	0.28	.....	.....
Apr...	6.15	0.54	2.86	2.84	1.51	2.54	1.59	0.25	.....	.....
May...	3.89	1.60	4.90	3.44	0.00	1.29	3.65	1.44	.....	.....
June..	4.21	3.57	1.14	1.58	0.27	3.38	0.42	0.87	.....	.....
July...	2.18	0.75	0.32	1.84	[0.50]	2.39	1.30	0.16	.....	.....
Aug...	5.85	0.54	3.52	2.44	1.46	9.67	2.62	5.29	.....	.....
Sept...	2.77	5.20	2.87	0.17	1.70	2.26	0.82	3.47	.....	.....
Oct....	1.03	2.88	3.71	1.65	0.96	1.51	0.74	2.92	.....	.....
Nov...	0.73	1.09	0.88	4.64	5.10	3.67	2.47	2.73	.....	.....
Dec...	4.05	2.08	4.40	2.64	7.28	1.46	1.76	2.60	.....	.....
Annual	56.46	29.01	44.53	32.19	[29.86]	38.35	23.18	26.74	.....	.....

Annual average is made up from annual total.

## RAINFALL AT KULA, CONTINUED.

Elevation, 4000 feet. Exposure, North.

MONTHS	1898	1899	1900								Normal
Jan....	0.96	0.75	.....	.....	.....	.....	.....	.....	.....	.....	3.59
Feb....	6.28	2.17	.....	.....	.....	.....	.....	.....	.....	.....	4.03
Mar....	7.78	[1.20]	.....	.....	.....	.....	.....	.....	.....	.....	3.62
Apr....	0.10	2.32	1.51	.....	.....	.....	.....	.....	.....	.....	2.02
May...	1.34	4.03	3.63	.....	.....	.....	.....	.....	.....	.....	2.66
June..	2.90	0.07	0.32	.....	.....	.....	.....	.....	.....	.....	1.70
July...	2.18	3.16	2.25	.....	.....	.....	.....	.....	.....	.....	1.55
Aug...	4.94	1.15	4.91	.....	.....	.....	.....	.....	.....	.....	3.87
Sept...	1.44	1.17	1.34	.....	.....	.....	.....	.....	.....	.....	2.11
Oct....	1.44	1.22	2.52	.....	.....	.....	.....	.....	.....	.....	1.87
Nov...	0.60	0.68	15.11	.....	.....	.....	.....	.....	.....	.....	3.43
Dec....	4.87	[1.00]	0.00	.....	.....	.....	.....	.....	.....	.....	2.92
Annual	34.83	18.92	.....	.....	.....	.....	.....	.....	.....	.....	33.41

Annual average is made up from annual total.

## RAINFALL AT PAIA\*, EAST MAUI.

Elevation, 180 feet. Exposure, North.

Months	1895	1896	1897	1898	1899	1900					Normal
Jan ...	4.58	4.30	0.91	3.08	0.34	2.21	....	....	....	....	2.57
Feb ...	2.89	2.73	1.14	4.35	1.00	2.43	....	....	....	....	2.42
Mar ...	2.73	3.52	0.54	5.03	9.55	2.10	....	....	....	....	3.94
April ..	2.51	1.00	1.24	1.80	1.44	4.01	....	....	....	....	2.00
May ..	3.84	1.12	0.64	1.20	0.31	2.64	....	....	....	....	1.62
June ..	0.96	1.62	0.55	1.20	1.60	1.16	....	....	....	....	1.18
July ..	1.11	1.70	1.20	0.63	0.35	2.80	....	....	....	....	1.13
Aug ...	3.88	0.90	3.00	1.47	0.60	1.01	....	....	....	....	1.81
Sept ..	3.21	0.14	0.38	1.14	0.14	0.76	....	....	....	....	0.96
Oct ...	1.05	2.23	1.68	1.01	3.32	4.31	....	....	....	....	2.27
Nov ...	5.01	1.61	4.18	1.96	2.34	18.71	....	....	....	....	5.63
Dec ...	1.51	6.94	2.06	2.63	0.60	1.83	....	....	....	....	2.59
Annual	33.48	27.81	17.52	25.50	21.59	43.97	....	....	....	....	28.31

Annual average is made up from annual total.

\*Makawao District.

## RAINFALL AT HAMAKUAPOKO\*, EAST MAUI.

Elevation, 800feet. ? Exposure, North.

Months.	1885	1886	1887	1888	1889	1890					Normal
Jan ...	4.30	0.80	8.50	0.94	1.85	6.30	....	....	....	....	3.78
Feb ...	2.20	3.50	3.30	3.55	2.50	6.50	....	....	....	....	3.59
Mar ...	1.30	1.65	4.65	2.10	0.75	10.65	....	....	....	....	3.52
April ..	9.80	2.95	1.25	1.95	2.90	4.15	....	....	....	....	3.83
May ..	5.75	3.85	2.05	2.53	1.55	1.50	....	....	....	....	2.87
June ..	1.65	3.00	1.60	1.60	0.50	4.35	....	....	....	....	2.12
July ..	7.45	2.14	2.70	2.60	1.90	5.35	....	....	....	....	3.69
Aug ...	2.40	1.25	1.15	2.65	1.20	3.60	....	....	....	....	2.04
Sept ...	3.15	1.20	1.10	1.10	0.70	3.15	....	....	....	....	1.73
Oct ...	1.10	0.91	1.35	2.50	0.82	3.20	....	....	....	....	1.65
Nov ...	5.05	2.40	3.45	4.70	1.50	1.90	....	....	....	....	3.17
Dec ..	7.95	1.05	4.35	3.25	5.70	6.65	....	....	....	....	4.82
Annual	52.10	24.69	35.45	29.47	21.87	57.30	....	....	....	....	36.81

Annual average is made up from annual total.

\*In Makawao District.



### RAINFALL AT WAILUKU, MAUI.

Elevation, 250 feet.      Exposure, Northeast.

Months.	1880	1881	1882	1883						
Jan ...	2.05	12.33	1.84	3.76	.....	.....	.....	.....	.....	.....
Feb ...	4.34	6.38	3.82	3.11	.....	.....	.....	.....	.....	.....
Mar ...	1.01	5.18	8.87	2.39	.....	.....	.....	.....	.....	.....
April ...	1.05	1.10	0.91	0.43	.....	.....	.....	.....	.....	.....
May ...	0.00	0.19	2.41	0.00	.....	.....	.....	.....	.....	.....
June ...	0.46	0.37	0.10	0.34	.....	.....	.....	.....	.....	.....
July ...	2.13	0.21	1.12	0.49	.....	.....	.....	.....	.....	.....
Aug ...	0.65	0.96	1.68	1.87	.....	.....	.....	.....	.....	.....
Sept ...	0.37	0.47	0.17	0.09	.....	.....	.....	.....	.....	.....
Oct ...	0.22	0.09	1.26	1.25	.....	.....	.....	.....	.....	.....
Nov ...	4.00	5.41	3.33	1.38	.....	.....	.....	.....	.....	.....
Dec ...	2.54	5.56	2.56	12.73	.....	.....	.....	.....	.....	.....
Annual	18.82	38.25	28.07	27.84	.....	.....	.....	.....	.....	.....

### RAINFALL AT WAIKAPU.

Elevation, 250 feet.      Exposure, East.

Months.	1887	1888	1889	1890	1891	1892	1893	1894			Normal.
Jan ...	.....	1.71	2.98	6.65	4.46	11.08	2.31	1.15	.....	.....	4.33
Feb ...	.....	8.13	3.57	6.55	2.45	3.64	10.01	4.62	.....	.....	5.57
Mar ...	.....	3.93	0.96	14.30	1.69	0.97	2.22	3.13	.....	.....	3.89
April ...	.....	0.48	3.69	8.99	1.58	0.40	4.67	0.24	.....	.....	2.86
May ...	.....	3.47	0.75	2.90	0.72	2.92	0.28	0.04	.....	.....	1.58
June ...	.....	0.76	0.49	2.05	0.00	0.12	0.12	0.20	.....	.....	0.53
July ...	1.59	1.02	0.46	1.81	0.27	0.27	0.60	0.51	.....	.....	0.82
Aug ...	1.26	2.62	0.50	3.96	0.76	0.99	0.24	0.44	.....	.....	1.35
Sept ...	0.60	1.82	0.32	1.69	0.17	0.13	0.14	0.07	.....	.....	0.62
Oct ...	2.87	3.90	0.75	2.03	1.42	4.72	0.92	1.10	.....	.....	2.21
Nov ...	5.10	2.53	2.31	3.00	1.14	1.27	3.44	5.00	.....	.....	2.97
Dec ...	2.19	4.16	3.67	10.73	0.59	6.68	1.97	[4.50]	.....	.....	4.31
Annual		34.53	20.45	64.66	15.25	33.19	26.92	21.00	.....	.....	31.04

Annual average is made up from annual total.

## RAINFALL AT KAHULUI.

Elevation, 10 feet. Exposure, North.

Months,	1892	1893	1894	1895	1896	1897	1898				Average Annual
Jan. ....	5.84	1.42	0.97	0.43	3.76	1.09	0.88	.....	.....	.....	.....
Feb. ....	(1.85)	7.45	2.48	.....	0.66	0.06	5.16	.....	.....	.....	.....
Mar. ....	0.54	0.00	0.72	.....	1.81	0.14	1.74	.....	.....	.....	.....
April....	0.29	0.00	0.00	.....	0.56	0.44	0.75	.....	.....	.....	.....
May ..	3.23	0.00	0.00	.....	0.14	0.29	.....	.....	.....	.....	.....
June ..	0.05	0.00	0.00	.....	0.21	0.00	.....	.....	.....	.....	.....
July ...	0.14	0.33	0.00	0.30	0.58	0.00	.....	.....	.....	.....	.....
Aug. ...	0.53	0.00	0.05	.....	0.24	0.85	.....	.....	.....	.....	.....
Sept....	0.00	0.20	0.00	.....	0.12	0.12	.....	.....	.....	.....	.....
Oct ....	4.63	0.00	0.12	.....	1.58	0.12	.....	.....	.....	.....	.....
Nov ....	1.03	0.67	5.47	.....	1.46	4.33	.....	.....	.....	.....	.....
Dec ...	3.50	1.20	(5.19)	.....	4.38	2.33	.....	.....	.....	.....	.....
Annual	21.63	11.27	(15.00)	.....	15.50	9.77	.....	.....	.....	.....	14.63

Annual average is made up from annual total.

## RAINFALL AT SPRECKLESVILLE.

Elevation, 50 feet. Exposure, North.

Months.	1883	1884	1885	1886		1888	1889	1890	1891		Average Annual
Jan ...	3.68	4.93	1.71	0.74	.....	1.14	1.24	4.21	2.27	.....	.....
Feb ...	7.17	2.94	1.52	1.39	.....	4.19	2.33	4.42	2.36	.....	.....
Mar ...	1.47	1.94	2.29	1.40	.....	1.37	0.73	9.34	1.54	.....	.....
April..	0.62	6.43	7.43	0.67	.....	0.31	2.09	3.78	1.96	.....	.....
May ..	0.59	1.34	2.61	1.82	.....	1.43	0.28	0.74	0.32	.....	.....
June ..	0.15	0.30	0.12	1.53	.....	0.70	0.36	1.11	0.10	.....	.....
July ..	0.49	0.88	4.31	0.68	.....	0.85	0.42	1.58	0.47	.....	.....
Aug. ...	0.81	0.23	0.71	0.18	.....	1.52	0.29	1.75	1.03	.....	.....
Sept...	0.02	0.46	1.27	1.05	.....	0.96	0.27	0.86	0.98	.....	.....
Oct ...	0.40	2.80	0.92	0.60	.....	1.10	0.44	0.96	1.41	.....	.....
Nov ...	0.22	0.88	3.73	(2.00)	.....	2.86	1.40	1.41	0.83	.....	.....
Dec ..	8.65	4.16	3.91	(1.00)	.....	2.37	3.13	6.24	1.60	.....	.....
Annual	24.25	27.31	30.53	(13.06)	.....	18.80	12.98	36.36	14.87	.....	22.52

Annual average is made up from annual total.

## RAINFALL AT WAILUKU PLANTATION.

Elevation, 200 feet. Exposure, Northeast.

MONTHS	1887	1888								
Jan		0.83								
Feb		7.07								
Mar		2.98								
April		0.23								
May		1.67								
June	0.19	0.48								
July	1.66	0.88								
Aug	0.33	2.08								
Sept	0.44	1.64								
Oct	3.17	1.74								
Nov	4.39	3.22								
Dec	2.00	2.81								
Annual		25.61								

Annual average is made up from annual total.

## RAINFALL AT KOELE, LANAI.

Elevation, 1600 feet. Exposure, Central.

Months	1892	1893	1894	1895	1896	1897	1898				Normal.
Jan	6.60	1.35	2.21	6.86	3.53	1.89	0.23				3.74
Feb	2.30	12.81	6.88	2.56	2.43	0.83	7.92				4.62
Mar	1.50	1.79	1.09	1.41	4.73	1.75	9.22				2.04
April	4.62	1.57	3.07	0.56	0.76	0.93	0.39				1.92
May	6.72	0.86	0.81	1.59	0.00	3.01	0.32				2.16
June	2.76	1.46	1.34	0.65	[0.00]	2.56	5.02				1.46
July	0.12	0.45	1.17	2.79	3.07	0.71					1.38
Aug	1.02	3.22	2.25	6.10	3.45	1.49					2.92
Sept	[1.25]	0.18	1.89	3.39	1.63	5.87					2.37
Oct	3.79	2.09	1.28	1.88	0.61	4.96					2.43
Nov	2.41	6.85	3.58	1.93	3.14	2.81					3.45
Dec	3.51	2.58	3.57	5.85	6.85	3.65					4.34
Annual	[36.60]	35.21	29.14	35.57	30.11	30.46					32.85

Annual average is made up from annual total.

## RAINFALL AT MAPULEHU, MOLOKAI.

Elevation, 70 feet. Exposure, East.

Months.	1892	1893	1894	1895	1896	1897	1898	1899			Normal.
Jan ...	12.92	4.35	3.38	5.67	4.14	4.82	3.68	1.84	..	.....	5.28
Feb ...	5.82	11.05	5.11	3.00	2.42	1.69	8.66	2.26	..	.....	5.39
Mar ...	2.53	4.71	2.18	1.99	3.29	1.67	8.69	2.21	..	.....	3.58
April ..	1.26	2.55	1.44	1.75	1.95	1.63	1.02	1.07	..	.....	1.66
May ..	1.74	2.26	0.50	2.81	1.21	2.48	2.23	5.20	..	.....	1.89
June ..	3.25	1.41	0.85	2.70	1.43	1.85	1.43	2.24	..	.....	1.85
July ..	1.40	1.80	2.61	2.61	3.33	3.17	3.73	1.91	..	.....	2.66
Aug ...	2.79	2.55	0.73	4.36	4.18	2.07	2.44	1.19	..	.....	2.73
Sept ..	1.40	2.87	1.29	4.18	0.98	2.17	3.28	.....	..	.....	2.31
Oct ...	3.58	1.40	2.62	1.73	3.26	3.25	2.95	.....	..	.....	2.68
Nov ...	1.97	5.93	6.00	1.64	1.14	4.81	3.57	.....	..	.....	3.58
Dec ..	5.61	3.00	5.57	5.48	6.13	4.31	4.55	.....	..	.....	4.95
Annual	44.27	43.88	32.28	37.92	33.46	33.92	46.21	.....	..	.....	38.85

Annual average is made up from annual total.

RAINFALL AT PUNAHOU (WEATHER BUREAU)  
HONOLULU.

Elevation, 50 feet. Exposure, Southwest.

Months.	1884	1885	1886	1887	1888	1889	1890	1891	1892	1893	
Jan ...	1.45	0.42	0.99	7.18	2.41	2.20	3.67	2.12	8.85	2.88	...
Feb ...	1.16	1.98	1.32	6.02	13.28	0.75	10.71	5.15	4.41	14.91	....
Mar ...	5.81	3.16	1.97	2.66	2.45	0.60	10.59	1.33	1.07	1.31	....
April ...	3.76	6.00	1.47	3.75	[2.80]	1.65	5.25	1.59	2.40	2.32	....
May ...	0.87	11.50	2.51	5.80	[1.70]	1.32	2.25	0.68	5.80	2.22	....
June ...	2.19	1.75	1.44	1.64	[1.30]	1.90	1.88	0.91	1.88	0.64	....
July ...	2.98	5.05	1.04	1.31	(1.80)	1.43	2.77	1.44	1.62	0.73	....
Aug ...	1.57	2.94	1.95	1.74	(3.70)	1.34	2.20	1.38	2.22	1.60	....
Sept ...	0.97	2.25	6.09	1.42	1.71	2.19	1.20	1.25	1.31	1.73	....
Oct ...	5.05	0.72	2.40	2.62	1.59	1.55	2.16	4.64	2.55	1.18	....
Nov ...	1.00	4.00	10.48	17.01	4.01	2.54	2.77	0.80	1.05	9.93	....
Dec ...	3.50	4.35	4.95	7.33	1.16	6.75	2.31	1.95	3.36	1.95	....
Annual	30.31	44.12	36.61	58.48	37.91	24.22	47.76	23.29	36.52	41.40	....

Annual average is made up from annual total.

RAINFALL AT PUNAHOU (WEATHER BUREAU)

--CONTINUED.

Elevation, 50 feet. Exposure, Southwest.

Months.	1894	1895	1896	1897	1898	1899	1900				Normal.
Jan ...	4.21	2.79	2.38	(3.00)	6.26	1.22	0.74	.....	.....	.....	3.10
Feb ...	11.91	2.63	3.09	(2.25)	8.49	4.01	1.14	.....	.....	.....	5.48
Mar ...	2.91	2.05	6.50	(2.20)	12.70	4.94	1.67	.....	.....	.....	3.76
April ...	2.53	1.77	3.84	1.46	2.42	1.07	5.23	.....	.....	.....	2.90
May ...	0.40	1.35	1.31	1.55	1.35	2.44	1.60	.....	.....	.....	2.68
June ...	0.98	1.52	1.59	1.44	2.90	1.14	0.88	.....	.....	.....	1.52
July ...	1.14	1.55	0.56	1.31	1.63	0.42	2.59	.....	.....	.....	1.72
Aug ...	0.32	2.97	3.68	1.23	2.08	1.53	2.00	.....	.....	.....	1.97
Sept ...	1.47	4.34	0.64	3.41	1.28	0.80	1.55	.....	.....	.....	1.98
Oct ...	2.62	1.36	3.57	1.81	2.16	4.02	6.88	.....	.....	.....	2.76
Nov ...	10.35	4.36	(3.50)	2.07	1.64	0.67	11.30	.....	.....	.....	5.15
Dec ...	3.50	12.43	(6.75)	0.84	2.03	1.75	1.67	.....	.....	.....	3.92
Annual	42.34	39.12	37.41	22.57	44.94	24.01	37.25	.....	.....	.....	36.95

Annual average is made up from annual total.

## RAINFALL AT BERETANIA ST., HONOLULU.

Elevation, 20 feet. Exposure, Southwest.

Months.	1877	1878	1879	1880	1881	1882	1883	1884	1885	1886	
Jan ...	.....	0.77	9.95	2.90	2.39	4.66	3.65	1.08	0.38	0.93	.....
Feb ...	2.01	0.32	2.00	4.93	3.60	1.88	6.14	1.14	1.00	1.18	.....
Mar ...	0.67	0.13	0.42	2.88	4.07	7.45	1.21	4.65	2.79	1.94	.....
April ..	1.92	1.44	2.50	1.59	2.73	1.52	0.75	2.38	5.71	0.94	.....
May ...	5.20	0.23	2.17	1.18	1.93	1.26	0.64	0.35	11.29	1.54	.....
June ...	0.24	2.06	0.66	0.99	1.75	0.54	0.77	0.80	2.40	0.66	.....
July ...	0.65	0.63	1.72	6.03	1.62	0.34	1.14	1.38	5.20	1.19	.....
Aug ...	0.53	1.32	1.78	0.84	2.17	1.72	2.12	1.09	2.01	1.71	.....
Sept ...	1.12	0.72	0.65	1.02	1.56	1.04	0.26	0.54	2.11	2.91	.....
Oct ...	0.76	1.88	0.93	1.63	0.72	3.55	1.91	4.32	0.41	1.36	.....
Nov ...	1.73	1.07	3.52	3.23	8.91	2.89	3.01	0.59	3.50	8.70	.....
Dec ...	2.34	1.79	9.86	1.46	6.12	2.14	4.36	3.90	2.53	4.52	.....
Annual	17.17	11.76	36.16	33.68	37.57	28.99	25.96	22.22	39.93	27.58	.....

Annual average is made up from annual total.

\*Corner of Miller.

## RAINFALL AT BERETANIA ST., HONOLULU.--(CONTINUED.)

Elevation, 20 feet. Exposure, Southwest.

Months	1887	1888	1889	1890	1891	1892	1893	1894			Normal.
Jan ...	7.61	2.99	0.86	2.87	1.75	8.07	2.68	3.77	.....	.....	3.32
Feb ...	5.38	13.74	0.84	10.70	3.73	3.18	14.00	12.12	.....	.....	4.77
Mar ...	2.42	1.58	0.84	13.29	0.56	0.97	0.76	2.16	.....	.....	2.69
April ..	3.06	3.13	2.28	7.95	1.13	1.73	2.23	2.92	.....	.....	2.55
May ...	5.49	1.45	1.27	2.03	0.36	4.89	1.42	0.27	.....	.....	2.38
June ...	1.45	0.68	0.91	0.56	0.57	1.12	0.44	1.03	.....	.....	0.92
July ...	1.05	0.61	0.59	1.22	0.68	0.97	0.41	0.75	.....	.....	1.46
Aug ...	1.32	4.47	1.20	1.12	0.93	1.64	1.10	0.16	.....	.....	1.54
Sept ...	0.72	2.95	1.52	0.69	1.06	0.85	1.27	0.77	.....	.....	1.15
Oct ...	1.61	1.66	0.77	1.68	3.18	2.38	1.22	1.53	.....	.....	1.69
Nov ...	13.40	3.84	1.96	1.71	0.54	0.71	10.70	8.58	.....	.....	4.53
Dec ...	7.31	1.17	5.54	1.30	2.31	4.26	1.58	[2.45]	.....	.....	3.60
Annual	51.82	38.27	18.58	45.12	16.80	30.77	37.81	36.51	.....	.....	30.91

Annual average is made from annual total.

## RAINFALL AT KULAOKAHUA (KINAU ST., HONOLULU.)

Elevation, 50 feet. Exposure, Southwest.

Months.	1884	1885	1886	1887	1888	1889	1890	1891	1892	1893	
Jan ...	1.07	0.06	0.38	5.85	0.78	0.87	2.00	1.19	6.50	2.57	.....
Feb ...	1.68	0.67	0.94	13.04	1.98	0.77	9.85	4.84	3.18	13.45	.....
Mar ...	4.06	2.96	1.63	2.24	2.25	0.38	7.83	0.69	0.29	0.75	.....
April ..	3.52	5.11	1.19	2.35	2.36	0.94	4.84	0.88	1.60	2.22	.....
May ..	0.44	11.56	1.61	4.10	1.97	0.81	1.20	0.23	5.10	1.50	.....
June ...	0.48	2.51	0.63	0.95	0.47	0.97	0.86	0.43	0.67	0.29	.....
July ...	1.40	4.27	0.56	0.67	0.15	0.48	1.30	0.58	0.53	0.28	.....
Aug....	0.83	2.85	0.43	1.02	4.22	1.16	1.00	0.58	1.14	1.04	.....
Sept ...	0.32	1.17	2.26	0.95	2.80	1.81	0.60	0.47	0.42	0.91	.....
Oct ...	4.66	0.03	1.84	0.44	1.31	0.95	1.36	3.62	3.01	0.64	.....
Nov ..	0.54	1.40	8.74	11.84	3.39	1.50	1.80	0.39	0.35	8.33	.....
Dec ..	3.76	3.14	3.47	6.37	18.08	2.82	1.64	1.50	3.97	1.30	.....
Annual	22.76	35.73	23.68	49.82	39.76	13.46	34.28	15.40	26.67	33.28	.....

## RAINFALL AT KULAOKAHUA, (KINAU ST., HONOLULU.)

—(CONTINUED.)

Elevation, 50 feet. Exposure, Southwest.

Months.	1894	1895	1896	1897	1898	1899	1900				Normal
Jan ...	3.08	2.38	2.20	0.94	3.97	0.87	0.41	.....	.....	.....	2.06
Feb ...	12.42	1.81	1.30	0.79	7.60	3.55	0.93	.....	.....	.....	4.64
Mar ...	1.51	1.46	3.11	1.20	9.66	3.73	1.30	.....	.....	.....	2.65
April ...	2.25	1.01	2.40	0.93	1.26	0.81	4.08	.....	.....	.....	2.22
May ..	0.10	0.93	1.51	0.96	0.68	1.44	1.06	.....	.....	.....	2.07
June ..	0.59	0.90	0.78	0.99	2.07	0.68	0.39	.....	.....	.....	0.86
July ...	0.45	0.45	0.00	0.81	0.63	0.11	1.65	.....	.....	.....	0.84
Aug....	0.08	1.41	1.33	0.39	0.58	1.04	1.40	.....	.....	.....	1.20
Sept ...	0.56	2.15	0.39	2.66	0.15	0.35	1.17	.....	.....	.....	1.18
Oct ...	1.76	0.41	2.04	1.61	0.52	3.70	7.07	.....	.....	.....	2.06
Nov ...	8.33	4.27	2.31	1.88	0.50	0.17	12.69	.....	.....	.....	3.96
Dec ...	2.41	12.02	5.54	0.51	0.77	1.95	1.06	.....	.....	.....	4.13
Annual	33.54	29.20	22.91	13.67	28.39	18.42	33.21	.....	.....	.....	27.89

## RAINFALL AT OAHU COLLEGE.

Elevation, 80 feet. Exposure, Southwest

MONTHS	1889	1890	1891	1892	1893	1894	1895				Normal.
Jan....	2.88	4.16	2.05	8.81	3.14	3.35	2.63	.....	.....	.....	3.86
Feb...	1.00	10.65	6.24	4.59	14.53	11.60	2.56	.....	.....	.....	7.17
Mar...	0.85	10.89	1.53	1.09	1.08	2.47	2.15	.....	.....	.....	2.87
April..	2.04	5.21	1.60	2.64	2.25	2.51	2.10	.....	.....	.....	2.62
May..	2.48	2.24	0.66	5.82	2.30	0.33	1.58	.....	.....	.....	2.20
June..	2.05	(1.90)	0.77	1.90	0.64	0.77	1.67	.....	.....	.....	1.39
July...	1.41	(2.80)	1.31	1.70	0.73	1.09	.....	.....	.....	.....	1.52
Aug...	1.35	(2.20)	1.35	2.32	1.60	0.26	.....	.....	.....	.....	1.51
Sept...	2.50	1.38	1.34	0.98	1.54	1.63	.....	.....	.....	.....	1.56
Oct....	1.98	2.65	5.15	2.40	1.24	2.41	.....	.....	.....	.....	2.26
Nov....	2.33	2.80	0.88	0.89	9.90	10.57	.....	.....	.....	.....	4.56
Dec....	5.40	2.48	2.44	3.90	1.79	3.72	.....	.....	.....	.....	3.29
Annual	26.27	49.36	25.23	35.87	40.76	40.71	.....	.....	.....	.....	36.36

Annual average is made up from annual total.



## RAINFALL AT KEWALO, KING ST., HONOLULU.

Elevation, 15 feet. Exposure, Southwest.

Months.	1890	1891	1892	1893	1894	1895	1896	1897	1898	1899	
Jan ....	2.74	1.35	8.73	2.91	3.61	2.97	2.74	2.52	3.65	0.60	.....
Feb ..	9.98	5.32	2.97	14.21	11.63	2.50	2.06	0.93	8.14	3.63	.....
Mar ...	10.25	0.90	0.48	1.08	1.88	1.52	4.45	1.33	10.70	4.75	.....
April.	4.78	1.07	1.98	1.76	1.43	1.18	2.78	1.02	1.37	0.76	.....
May ...	1.31	0.40	5.39	1.32	0.19	1.20	0.80	1.28	0.43	0.53	.....
June ..	0.84	0.46	2.57	0.21	0.57	0.82	1.07	1.21	1.78	0.68	.....
July .	1.49	0.62	1.13	0.30	0.57	1.05	0.30	0.78	0.80	0.13	.....
Aug ...	1.04	0.76	1.33	0.84	0.13	1.84	3.74	0.60	1.34	1.15	.....
Sept...	0.82	0.62	0.68	1.05	0.87	2.81	0.58	2.67	0.51	0.37	.....
Oct ...	1.19	3.85	2.17	0.79	1.95	0.41	2.72	1.42	1.69	2.90	.....
Nov ...	1.94	(0.50)	0.50	8.18	8.35	3.55	3.82	1.60	1.21	0.46	.....
Dec ...	2.13	(2.00)	3.20	1.67	2.57	11.74	7.24	0.53	1.79	1.80	.....
Annual	38.51	17.85	31.13	34.32	33.74	31.59	32.30	15.89	33.41	17.76	.....

Annual average is made up from annual total.

## RAINFALL AT KEWALO, KING ST.—CONTINUED.

Elevation, 15 feet. Exposure Southwest.

Months.	1900									Normal.
Jan .....	0.67	.....	.....	.....	.....	.....	.....	.....	.....	2.95
Feb .....	0.97	.....	.....	.....	.....	.....	.....	.....	.....	5.66
March....	1.37	.....	.....	.....	.....	.....	.....	.....	.....	3.52
April....	3.51	.....	.....	.....	.....	.....	.....	.....	.....	1.97
May .....	0.92	.....	.....	.....	.....	.....	.....	.....	.....	1.25
June....	0.36	.....	.....	.....	.....	.....	.....	.....	.....	0.96
July....	1.82	.....	.....	.....	.....	.....	.....	.....	.....	0.82
Aug .....	1.17	.....	.....	.....	.....	.....	.....	.....	.....	1.26
Sept....	0.60	.....	.....	.....	.....	.....	.....	.....	.....	1.05
Oct.....	5.48	.....	.....	.....	.....	.....	.....	.....	.....	2.42
Nov.....	11.79	.....	.....	.....	.....	.....	.....	.....	.....	3.81
Dec.....	1.19	.....	.....	.....	.....	.....	.....	.....	.....	3.26
Annual.	29.85	.....	.....	.....	.....	.....	.....	.....	.....	28.79

Annual Average is made up from Annual Total.

## RAINFALL AT KAPIOLANI PARK, HONOLULU.

Elevation, 10 feet Exposure, Southwest.

Months.	1890	1891	1892	1893	1894	1895	1896	1897	1898	1899	
Jan ...	1.62	1.32	6.04	1.68	4.07	2.28	1.48	1.02	1.39	0.31	.....
Feb ...	8.64	2.67	2.18	15.00	8.15	1.62	1.47	0.17	6.63	4.35	.....
Mar ...	11.00	.....	0.21	1.26	1.57	0.76	3.88	0.32	7.95	4.34	.....
April ...	3.39	.....	1.94	1.76	0.24	0.21	1.29	0.06	0.23	1.55	.....
May ...	1.36	.....	7.67	0.14	0.03	0.42	0.39	0.54	0.22	0.91	.....
June ...	0.79	.....	0.89	0.02	0.04	0.17	0.10	1.11	0.37	0.00	.....
July ...	0.49	.....	0.13	0.04	0.11	0.15	0.04	0.10	0.13	0.00	.....
Aug ...	0.40	.....	0.41	0.40	0.31	1.23	3.52	0.26	0.16	0.18	.....
Sept ...	0.60	0.20	0.21	0.52	0.46	1.60	0.00	0.19	0.10	0.00	.....
Oct ...	1.38	1.76	1.13	0.50	1.88	1.05	0.84	0.44	0.41	1.46	.....
Nov ...	1.83	0.42	0.49	11.19	8.31	2.41	3.24	1.48	0.18	0.00	.....
Dec ...	0.85	0.42	2.98	1.44	1.66	11.31	5.58	0.68	2.16	1.77	.....
Annual	32.35	.....	24.28	33.95	26.83	23.21	21.83	6.37	19.93	14.87	.....

Annual Average is made up from Annual Total.

## RAINFALL AT KAPIOLANI PARK—CONTINUED.

Elevation, 10 feet. Exposure, Southwest.

Months	1900										Normal
Jan ...	0.26	.....	.....	.....	.....	.....	.....	.....	.....	.....	2.01
Feb ...	0.68	.....	.....	.....	.....	.....	.....	.....	.....	.....	4.89
Mar ...	0.61	.....	.....	.....	.....	.....	.....	.....	.....	.....	3.19
April ...	1.34	.....	.....	.....	.....	.....	.....	.....	.....	.....	1.19
May ...	0.00	.....	.....	.....	.....	.....	.....	.....	.....	.....	1.17
June ...	0.05	.....	.....	.....	.....	.....	.....	.....	.....	.....	0.36
July ...	0.56	.....	.....	.....	.....	.....	.....	.....	.....	.....	0.17
Aug ...	0.25	.....	.....	.....	.....	.....	.....	.....	.....	.....	0.71
Sept ...	0.06	.....	.....	.....	.....	.....	.....	.....	.....	.....	0.38
Oct ...	2.12	.....	.....	.....	.....	.....	.....	.....	.....	.....	1.12
Nov ...	11.37	.....	.....	.....	.....	.....	.....	.....	.....	.....	4.05
Dec ...	8.05	.....	.....	.....	.....	.....	.....	.....	.....	.....	3.55
Annual	17.85	.....	.....	.....	.....	.....	.....	.....	.....	.....	22.94

Annual average is made up from annual total.

RAINFALL AT NUUANU AVENUE, HONOLULU,  
(W. W. Hall, Residence.)

Elevation, 50 feet. Exposure, Southwest.

Months	1874	1875	1876	1877	1878	1879	1880	1881	1882	1883	
Jan....	10 00	4.55	3.73	3.24	0.26	13.09	4.01	2.19	6.02	4.23	.....
Feb...	3.41	2.92	4.73	2.90	1.01	3.15	7.05	4.68	3.11	6.20	.....
Mar...	4.16	3.86	6.43	0.94	0.29	0.49	4.72	6.58	8.52	1.45	.....
April..	1.28	4.22	3.58	3.41	3.08	4.13	3.82	3.86	2.80	1.23	.....
May...	1.14	4.16	5.87	7.27	0.96	3.59	0.75	3.04	1.84	0.68	.....
June..	2.51	2.44	1.07	1.14	3.00	1.80	2.03	2.94	1.10	0.37	.....
July...	2.40	0.95	1.42	2.27	2.13	2.89	7.59	3.48	0.73	1.70	.....
Aug...	1.00	1.09	2.58	1.19	4.76	3.17	1.97	5.58	1.95	1.74	.....
Sept...	2.58	3.11	0.51	2.64	1.71	1.46	2.55	2.68	2.51	0.67	.....
Oct...	5.50	1.50	0.37	1.63	2.62	2.46	1.98	1.40	3.74	2.03	.....
Nov...	15.67	5.78	3.35	2.24	1.80	4.98	8.62	5.69	3.93	2.80	.....
Dec...	3.30	4.46	2.92	3.43	2.35	10.71	2.27	9.14	2.46	6.87	.....
Annual	52.95	39.04	36.56	32.30	23.97	51.92	47.36	50.26	38.71	29.97	.....

RAINFALL AT NUUANU AVENUE, HONOLULU,  
(W. W. Hall, Residence)—CONTINUED.

Elevation, 50 feet. Exposure, Southwest.

Months.	1884	1885	1886	1887	1888	1889	1890	1891	1892	1893	
Jan .....	1.40	0.60	0.47	8.15	1.46	1.40	2.85	1.81	8.50	2.80	....
Feb .....	1.24	2.00	1.99	6.21	11.36	0.54	11.77	6.93	4.19	14.72	....
March .....	3.03	3.00	2.02	3.47	2.45	0.60	11.45	0.97	2.36	1.11	....
April .....	1.90	6.00	2.50	3.18	2.85	2.62	6.73	2.31	1.67	3.00	....
May .....	1.70	11.00	2.27	7.51	1.69	1.89	2.61	0.76	4.18	2.50	....
June .....	1.40	2.84	1.78	2.28	1.24	1.71	1.79	1.52	2.13	[1.36]	....
July .....	4.24	5.85	2.31	2.02	1.72	1.72	2.20	1.79	2.03	0.96	....
Aug .....	1.86	2.49	2.21	2.05	3.71	1.81	2.94	1.85	2.75	1.75	....
Sept .....	1.24	2.82	3.31	0.85	2.24	1.91	1.38	[1.75]	1.00	2.38	....
Oct .....	5.20	0.58	2.78	3.85	2.51	1.32	3.02	4.19	2.90	1.58	....
Nov .....	0.76	3.69	9.73	13.34	4.03	1.73	2.48	1.17	1.14	10.35	....
Dec.....	2.53	3.90	4.32	6.96	1.74	7.58	1.81	3.63	5.19	1.62	....
Annual ..	27.50	44.77	35.69	59.87	37.00	24.83	51.03	28.68	33.04	44.13	....

Annual average is made up from annual total.

RAINFALL AT NUUANU AVENUE, HONOLULU,  
(W. W. Hall Residence)—CONTINUED.

Elevation, 50 feet. Exposure, Southwest.

Months.	1894	1895	1896	1897	1898	1899	1900				Normal
Jan .....	4.11	3.37	2.64	1.41	5.95	1.07	0.69	.....	.....	.....	3.36
Feb. ....	13.00	2.80	2.67	2.84	9.04	4.40	1.29	.....	.....	.....	5.07
March.....	3.10	1.79	4.08	2.31	11.79	5.16	2.01	.....	.....	.....	3.63
April .....	4.28	1.48	4.85	1.76	1.67	1.26	4.78	.....	.....	.....	3.12
May.....	1.24	1.31	2.42	1.87	1.47	2.42	1.71	.....	.....	.....	2.89
June.....	1.57	1.60	2.31	2.62	2.63	6.13	1.02	.....	.....	.....	2.01
July.....	1.31	1.95	0.94	2.56	2.06	0.31	3.00	.....	.....	.....	2.32
Aug .....	0.20	2.74	4.90	1.48	2.17	1.63	2.77	.....	.....	.....	2.34
Sept.....	1.30	5.77	1.25	2.96	1.78	0.81	2.92	.....	.....	.....	2.08
Oct.....	1.42	1.52	3.30	3.45	3.01	5.31	9.00	.....	.....	.....	2.73
Nov.....	7.92	4.50	3.75	2.23	1.94	0.49	13.45	.....	.....	.....	5.29
Dec.....	3.51	12.20	8.10	1.04	1.76	2.90	1.31	.....	.....	.....	4.37
Annual ..	42.96	41.03	41.21	26.53	45.27	31.89	43.95	.....	.....	.....	39.53

Annual average is made up from annual total

## RAINFALL AT NUUANU, WILDER'S.

Elevation, 500 feet. Exposure, Southwest.

Months.	1879	1880	1881	1882	1883	1884	1885	1886	1887	1888	Normal
Jan..	18.79	6.59	3.96	9.85	6.04	3.07	0.61	0.92	13.21	2.13	6.52
Feb..	4.32	10.84	4.29	6.10	7.36	3.94	1.64	4.28	10.28	10.53	6.36
Mar..	1.28	8.15	10.84	7.34	1.76	14.68	5.01	3.69	3.44	5.75	6.19
April.	5.55	12.84	4.38	3.78	3.73	5.35	5.28	8.60	6.89	5.21	6.16
May..	6.70	3.12	1.82	3.41	3.46	[3.00]	11.99	7.42	11.56	2.81	5.53
June..	8.16	4.85	8.22	3.60	1.59	2.86	6.77	4.49	3.51	3.67	4.77
July..	6.29	10.80	7.27	1.55	5.11	5.21	11.92	4.50	7.04	5.32	6.50
Aug..	6.80	3.04	8.81	4.36	3.46	5.64	5.28	5.01	6.21	6.67	5.53
Sept..	3.88	5.53	5.71	3.90	2.23	5.90	6.26	8.18	2.36	4.90	4.88
Oct..	5.82	4.22	3.37	4.63	5.51	8.40	1.99	7.39	6.37	5.57	5.33
Nov..	9.08	9.38	6.68	7.08	4.48	1.10	5.49	11.29	12.47	7.69	7.47
Dec..	12.13	1.61	9.55	2.53	5.40	5.04	7.24	6.00	9.10	3.69	6.23
Total.	88.80	80.97	74.90	58.13	50.13	64.19	69.48	71.77	92.44	63.94	71.70

Annual average is made up from annual total.

## RAINFALL AT NUUANU, WYLLIE ST.

Elevation, 250 feet. Exposure, Southwest.

Months	1891	1892	1893	1894	1895	1896	1897	1898	1899	1900	Normal.
Jan...	.....	10.02	4.64	4.21	2.65	2.78	2.68	11.87	[1.40]	1.05	4.59
Feb...	.....	6.82	15.08	17.70	3.61	3.97	6.49	9.97	[9.50]	1.51	8.32
Mar...	.....	5.73	4.28	9.54	2.36	4.31	4.55	20.89	8.29	2.94	6.98
April..	.....	2.45	4.32	7.20	3.55	9.85	2.68	3.30	2.35	9.55	5.12
May..	.....	4.96	5.92	0.67	3.14	4.47	2.71	3.90	6.13	4.47	4.04
June..	2.72	6.08	2.65	2.60	3.67	3.60	4.88	5.66	2.95	1.86	3.77
July...	4.00	5.39	2.24	3.69	4.06	1.43	6.89	6.55	0.73	6.95	4.21
Aug...	2.97	4.90	3.28	1.20	8.34	4.83	3.19	3.92	4.28	5.29	4.36
Sept...	2.63	2.63	4.72	3.52	9.27	1.44	5.81	3.43	1.76	4.74	4.15
Oct...	6.48	6.04	3.65	3.04	3.58	4.25	4.83	5.82	8.72	12.94	5.87
Nov...	3.06	2.62	13.24	11.09	6.44	3.47	4.11	4.19	0.76	15.77	6.85
Dec...	6.39	5.34	3.11	5.84	13.79	7.59	1.48	3.74	2.94	2.42	5.13
Annual	.....	62.98	67.13	70.30	64.46	51.99	50.30	83.24	49.81	69.49	63.29

Annual average is made up from annual total.

## RAINFALL AT ELECTRIC LIGHT STATION.

Elevation, 405 feet. Exposure, Southwest.

Months	1890	1891	1892	1893	1894	1895	1896	1897	1898		
Jan....	7.44	6.27	10.83	6.11	6.78	3.94	3.81	4.21	18.89	.....	.....
Feb....	22.56	8.02	8.90	12.26	16.55	4.24	4.72	6.32	10.82	.....	.....
Mar....	(22.56)	3.66	7.16	9.49	9.19	2.48	6.95	7.21	26.17	.....	.....
April..	9.79	4.98	3.39	6.73	8.97	7.00	8.25	2.78	4.30	.....	.....
May...	8.87	3.10	4.54	6.88	1.03	4.14	6.99	2.95	4.31	.....	.....
June...	8.46	4.12	10.47	4.09	3.40	5.50	5.26	6.71	7.20	.....	.....
July...	7.33	4.81	6.05	3.22	3.72	4.77	2.87	9.00	(7.70)	.....	.....
Aug....	8.79	3.74	7.51	5.24	1.77	8.48	6.13	4.10	5.57	.....	.....
Sept...	7.44	6.11	4.31	6.97	3.88	11.96	1.43	9.08	4.05	.....	.....
Oct....	9.68	7.74	8.93	5.84	3.76	5.88	6.14	7.17	6.11	.....	.....
Nov....	5.85	3.39	3.84	13.59	12.39	7.65	4.77	4.98	7.99	.....	.....
Dec....	6.18	7.62	6.61	4.45	4.65	11.01	6.52	2.66	6.41	.....	.....
Annual	124.95	63.56	82.54	84.87	76.09	77.05	63.84	67.17	109.52	.....	.....

Annual average is made up from annual total.

## RAINFALL AT ELECTRIC LIGHT STATION—CONTINUED.

Elevation, 405 feet. Exposure, Southwest.

Months.	1899	1900								Normal
Jan....	1.58	1.36	.....	.....	.....	.....	.....	.....	.....	6.38
Feb....	13.30	2.91	.....	.....	.....	.....	.....	.....	.....	10.06
Mar....	12.50	2.49	.....	.....	.....	.....	.....	.....	.....	9.89
April..	3.84	13.22	.....	.....	.....	.....	.....	.....	.....	6.66
May...	9.47	(6.00)	.....	.....	.....	.....	.....	.....	.....	5.29
June...	4.05	2.86	.....	.....	.....	.....	.....	.....	.....	5.65
July...	1.03	8.10	.....	.....	.....	.....	.....	.....	.....	5.32
Aug....	6.14	5.92	.....	.....	.....	.....	.....	.....	.....	5.76
Sept...	2.22	4.49	.....	.....	.....	.....	.....	.....	.....	5.63
Oct....	9.23	13.91	.....	.....	.....	.....	.....	.....	.....	7.67
Nov....	1.17	14.36	.....	.....	.....	.....	.....	.....	.....	7.26
Dec....	3.20	2.94	.....	.....	.....	.....	.....	.....	.....	5.66
Annual	67.73	78.56	.....	.....	.....	.....	.....	.....	.....	81.44

Annual average is made up from annual total.

## RAINFALL AT HALFWAY HOUSE, NUUANU.

Elevation, 735 feet. Exposure, Central.

Months.	1890	1891	1892	1893	1894	1895	1896	1897			
Jan .....	8.10	10.99	11.03	8.25	7.32	3.53	3.20	3.00	.....	.....	7.49
Feb .....	24.81	9.62	10.89	18.56	(20.00)	3.88	5.52	2.67	.....	.....	13.32
March .....	20.21	4.95	91.91	(10.50)	9.98	2.43	4.54	5.20	.....	.....	8.93
April .....	13.06	7.79	6.60	9.00	6.72	9.29	7.65	1.63	.....	.....	8.59
May .....	15.96	4.59	8.60	7.92	1.28	6.57	5.47	0.82	.....	.....	7.20
June .....	14.06	6.16	4.70	(5.50)	3.47	5.66	4.05	5.04	.....	.....	6.23
July .....	11.69	6.52	5.80	(6.50)	4.02	6.08	2.46	8.62	.....	.....	6.15
Aug .....	15.61	5.33	8.95	5.18	1.81	12.50	7.24	.....	.....	.....	8.09
Sept.....	9.49	11.62	5.50	5.14	4.45	15.25	1.34	.....	.....	.....	7.54
Oct.....	10.87	12.71	10.09	(6.00)	4.70	9.46	5.34	.....	.....	.....	8.45
Nov.....	6.64	3.03	4.98	15.25	18.30	7.86	7.00	.....	.....	.....	9.01
Dec.....	15.79	7.01	7.57	3.83	4.82	9.94	10.83	.....	.....	.....	8.54
Annual ..	166.29	90.32	94.62	101.63	86.87	92.45	64.64	.....	.....	.....	99.54

Annual average is made up from annual total.

## RAINFALL AT LUAKAHA, NUUANU.

Elevation, 850 feet.

Exposure, Central.

Months.	1890	1891	1892	1893	1894	1895	1896	1897	1898	1899
Jan .....	11.23	12.18	15.00	8.42	12.45	4.81	2.97	4.74	22.00	4.41
Feb. ....	23.16	9.93	14.46	20.99	26.61	4.76	7.63	4.84	20.44	15.90
March ..	21.47	5.43	10.70	(12.00)	17.81	4.41	6.76	7.33	40.13	26.59
April....	11.60	10.31	9.34	12.57	9.87	18.71	13.26	2.95	7.45	6.44
May....	16.87	5.64	11.92	12.53	2.46	9.57	7.46	1.78	9.80	12.53
June....	10.23	7.65	15.72	(8.00)	6.79	9.37	5.89	6.89	10.25	7.23
July....	14.88	8.34	8.40	(7.00)	7.05	8.96	4.35	12.62	10.84	5.63
Aug....	19.74	7.58	10.69	8.28	7.18	19.46	11.29	7.96	8.71	8.91
Sept....	16.55	14.62	6.06	8.13	6.10	23.59	2.24	15.27	6.88	4.62
Oct.,....	13.08	19.11	8.98	(7.00)	8.52	12.00	7.02	10.62	8.00	13.08
Nov....	7.62	5.99	6.50	15.85	21.04	12.93	7.52	5.94	9.12	3.26
Dec.,....	18.53	12.54	9.25	7.23	7.35	16.83	13.03	4.18	9.65	4.87
Annual	184.98	119.32	127.02	128.00	133.25	145.40	89.42	85.12	162.77	113.47

Annual average is made up from annual total.

## RAINFALL AT LUAKAHA, NUUANU—CONTINUED.

Elevation, 850 feet. Exposure, Central.

MONTHS.	1900									Normal.
Jan....	2.45	.....	.....	.....	.....	.....	.....	.....	.....	9.15
Feb....	6.04	.....	.....	.....	.....	.....	.....	.....	.....	14.07
Mar....	4.22	.....	.....	.....	.....	.....	.....	.....	.....	14.26
April..	19.19	.....	.....	.....	.....	.....	.....	.....	.....	11.06
May....	11.65	.....	.....	.....	.....	.....	.....	.....	.....	9.25
June..	6.98	.....	.....	.....	.....	.....	.....	.....	.....	8.63
July....	12.60	.....	.....	.....	.....	.....	.....	.....	.....	9.15
Aug....	11.40	.....	.....	.....	.....	.....	.....	.....	.....	11.02
Sept....	8.25	.....	.....	.....	.....	.....	.....	.....	.....	10.21
Oct....	21.21	.....	.....	.....	.....	.....	.....	.....	.....	11.69
Nov....	16.03	.....	.....	.....	.....	.....	.....	.....	.....	10.16
Dec....	9.19	.....	.....	.....	.....	.....	.....	.....	.....	10.24
Annual	129.21	.....	.....	.....	.....	.....	.....	.....	.....	128.90

Annual average is made up from annual total.



RAINFALL AT PAUOA, P. OPFERGELT,  
Elevation, 100 feet. Exposure, Southwest.

MONTHS.	1889	1890	1891								Normal
Jan .....	[1.50]	2.37	2.10	.....	.....	.....	.....	.....	.....	.....	.....
Feb....	0.75	11.58	6.52	.....	.....	.....	.....	.....	.....	.....	.....
Mar....	0.69	10.68	.....	.....	.....	.....	.....	.....	.....	.....	.....
April..	2.85	6.94	.....	.....	.....	.....	.....	.....	.....	.....	.....
May....	3.41	2.46	.....	.....	.....	.....	.....	.....	.....	.....	.....
June...	1.51	2.58	.....	.....	.....	.....	.....	.....	.....	.....	.....
July...	2.27	2.97	.....	.....	.....	.....	.....	.....	.....	.....	.....
Aug....	1.73	2.93	.....	.....	.....	.....	.....	.....	.....	.....	.....
Sept...	2.46	1.82	.....	.....	.....	.....	.....	.....	.....	.....	.....
Oct....	1.97	3.61	.....	.....	.....	.....	.....	.....	.....	.....	.....
Nov....	1.90	3.15	.....	.....	.....	.....	.....	.....	.....	.....	.....
Dec....	7.95	2.21	.....	.....	.....	.....	.....	.....	.....	.....	.....
Annual	28.99	53.30	.....	.....	.....	.....	.....	.....	.....	.....	.....

Annual average is made up from annual total.

RAINFALL AT REFORM SCHOOL.  
Elevation, 30 feet. Exposure, Southwest.

Months.	1888	1889									Normal
Jan .....	[3.50]	1.21	.....	.....	.....	.....	.....	.....	.....	.....	.....
Feb .....	11.35	0.62	.....	.....	.....	.....	.....	.....	.....	.....	.....
March.....	2.93	0.72	.....	.....	.....	.....	.....	.....	.....	.....	.....
April.....	1.87	2.27	.....	.....	.....	.....	.....	.....	.....	.....	.....
May.....	1.53	1.73	.....	.....	.....	.....	.....	.....	.....	.....	.....
June.....	0.96	1.26	.....	.....	.....	.....	.....	.....	.....	.....	.....
July.....	1.93	1.28	.....	.....	.....	.....	.....	.....	.....	.....	.....
Aug.....	(5.00)	1.16	.....	.....	.....	.....	.....	.....	.....	.....	.....
Sept.....	3.73	1.70	.....	.....	.....	.....	.....	.....	.....	.....	.....
Oct.....	2.88	1.06	.....	.....	.....	.....	.....	.....	.....	.....	.....
Nov.....	4.31	1.49	.....	.....	.....	.....	.....	.....	.....	.....	.....
Dec.....	1.14	4.91	.....	.....	.....	.....	.....	.....	.....	.....	.....
Annual..	40.13	19.47	.....	.....	.....	.....	.....	.....	.....	.....	.....

Annual average is made up from annual total.

## RAINFALL AT INSANE ASYLUM.

Elevation, 30 feet. Exposure, Southwest.

Months	1893	1894	1895	1896	1897	1898	1899	1900			Normal
Jan....	3.65	3.32	3.07	2.13	1.82	7.65	0.47	0.62	.....	.....	2.83
Feb....	14.14	12.58	3.09	3.04	1.24	7.84	4.81	1.02	.....	.....	5.96
Mar....	2.42	6.71	1.93	3.69	0.61	14.13	4.86	1.85	.....	.....	4.53
April...	2.71	4.56	1.80	5.99	1.66	1.38	(0.72)	3.99	.....	.....	2.65
May ..	2.90	0.54	1.44	2.90	1.29	1.24	2.82	1.72	.....	.....	1.86
June ..	0.89	1.12	1.65	0.93	2.62	3.48	1.81	0.59	.....	.....	1.63
July...	1.11	1.83	1.96	0.42	3.10	3.33	0.16	2.19	.....	.....	1.76
Aug...	1.34	0.35	3.37	3.52	1.25	1.19	2.06	2.05	.....	.....	2.14
Sept...	2.69	(1.25)	5.19	0.28	2.05	1.90	0.73	1.56	.....	.....	1.95
Oct....	1.98	1.65	1.65	1.94	3.22	3.86	5.65	7.63	.....	.....	3.57
Nov ...	11.56	6.90	5.20	2.88	2.60	2.19	0.05	9.30	.....	.....	5.09
Dec ...	1.56	3.63	11.83	3.48	1.07	2.17	2.47	1.03	.....	.....	3.44
Annual	46.95	44.44	42.18	31.20	22.53	50.36	26.61	33.55	.....	.....	37.23

Annual average is made up from annual total.

## RAINFALL AT PAUOA, SCHOOL ST., S. E. BISHOP'S.

Elevation, 50 feet. Exposure, Southwest.

Months	1890	1891	1892	1893	1894	1895	1896	1897	1898	1899
Jan....	2.35	2.00	8.35	3.28	3.78	3.77	2.98	1.79	6.56	1.33
Feb....	11.73	6.60	4.32	14.20	11.56	2.86	2.87	3.10	9.15	4.72
Mar....	9.47	1.04	2.29	1.90	3.69	2.21	4.38	2.86	12.03	4.57
Apr....	6.74	2.29	1.77	2.43	4.13	1.44	4.49	2.14	2.22	1.49
May....	2.34	0.84	4.57	2.77	0.43	1.06	2.48	2.10	1.84	2.50
June...	2.10	0.91	2.04	1.36	1.60	2.01	2.10	2.92	3.03	2.01
July...	2.30	1.93	2.48	0.81	1.63	2.51	0.95	2.42	2.09	0.51
Aug....	2.28	2.00	2.62	1.59	0.53	3.29	3.57	1.93	2.43	1.45
Sept...	1.42	1.75	1.04	2.21	1.67	5.63	1.20	3.23	1.71	1.10
Oct....	2.84	4.27	2.65	1.74	1.99	1.45	3.71	3.33	3.28	5.84
Nov....	2.36	1.15	1.15	9.66	8.53	4.67	4.42	2.58	2.36	0.76
Dec....	1.92	3.43	4.65	1.75	3.98	11.72	7.47	1.25	1.95	2.71
Annual	47.85	28.21	37.96	43.70	43.52	42.62	40.62	29.65	48.65	28.49

Annual average is made up from annual total.

## RAINFALL AT PAUOA, SCHOOL ST., S. E. BISHOP'S

—CONTINUED.

Elevation, 50 feet. Exposure, Southwest.

MONTHS	1900									Normal
Jan....	1.05	.....	.....	.....	.....	.....	.....	.....	.....	3.39
Feb....	1.24	.....	.....	.....	.....	.....	.....	.....	.....	6.67
Mar....	2.43	.....	.....	.....	.....	.....	.....	.....	.....	4.26
Apr....	4.93	.....	.....	.....	.....	.....	.....	.....	.....	3.10
May....	2.17	.....	.....	.....	.....	.....	.....	.....	.....	2.10
June...	1.46	.....	.....	.....	.....	.....	.....	.....	.....	1.96
July...	3.27	.....	.....	.....	.....	.....	.....	.....	.....	1.89
Aug....	3.02	.....	.....	.....	.....	.....	.....	.....	.....	2.25
Sept...	2.74	.....	.....	.....	.....	.....	.....	.....	.....	2.14
Oct....	9.02	.....	.....	.....	.....	.....	.....	.....	.....	3.59
Nov....	13.36	.....	.....	.....	.....	.....	.....	.....	.....	4.63
Dec....	1.46	.....	.....	.....	.....	.....	.....	.....	.....	3.84
Annual	46.15	.....	.....	.....	.....	.....	.....	.....	.....	39.76

Annual average is made up from annual total.

**RAINFALL AT MANOA, KIDWELL'S.**  
Elevation, 100 feet. Exposure, Southwest.

Months	1891	1892	1893	1894	1895	1896					Normal
Jan...	4.88	9.48	3.76	3.32	2.52	2.46	.....	.....	.....	.....	4.40
Feb...	5.94	4.76	15.78	13.62	2.78	4.30	.....	.....	.....	.....	7.86
Mar...	2.21	1.89	2.45	4.65	2.63	8.18	.....	.....	.....	.....	3.67
April..	3.53	3.49	3.00	3.62	3.55	5.85	.....	.....	.....	.....	3.84
May ..	1.26	5.31	3.14	0.40	1.39	2.33	.....	.....	.....	.....	2.30
June..	1.35	2.75	0.90	1.14	2.52	2.49	.....	.....	.....	.....	1.86
July ..	2.26	1.35	1.09	1.56	2.78	1.22	.....	.....	.....	.....	1.71
Aug...	2.14	3.33	2.22	0.41	4.67	4.25	.....	.....	.....	.....	2.84
Sept..	2.16	1.46	2.57	1.50	6.94	1.38	.....	.....	.....	.....	2.67
Oct ..	5.93	3.53	1.86	3.07	2.77	4.88	.....	.....	.....	.....	3.68
Nov ...	1.59	1.94	11.46	10.22	4.88	(5.00)	.....	.....	.....	.....	5.85
Dec ...	3.43	4.59	1.75	4.48	12.68	(7.00)	.....	.....	.....	.....	5.65
Annual	36.68	43.88	49.98	47.99	50.11	(49.34)	.....	.....	.....	.....	46.33

Annual average is made up from annual total.

**RAINFALL AT MANOA, WOODLAWN DAIRY.**

Elevation, 285 feet. Exposure, Central.

Months	1898	1899	1900								Normal
Jan ...	.....	2.02	1.55	.....	.....	.....	.....	.....	.....	.....	.....
Feb...	.....	8.85	2.63	.....	.....	.....	.....	.....	.....	.....	.....
Mar...	.....	19.21	5.58	.....	.....	.....	.....	.....	.....	.....	.....
April..	.....	7.27	18.77	.....	.....	.....	.....	.....	.....	.....	.....
May ..	.....	6.55	8.43	.....	.....	.....	.....	.....	.....	.....	.....
June..	.....	4.75	5.26	.....	.....	.....	.....	.....	.....	.....	.....
July...	.....	2.02	12.61	.....	.....	.....	.....	.....	.....	.....	.....
Aug...	.....	6.53	6.84	.....	.....	.....	.....	.....	.....	.....	.....
Sept...	.....	4.66	5.07	.....	.....	.....	.....	.....	.....	.....	.....
Oct....	.....	10.08	15.74	.....	.....	.....	.....	.....	.....	.....	.....
Nov...	.....	2.50	14.48	.....	.....	.....	.....	.....	.....	.....	.....
Dec ...	2.45	2.30	5.57	.....	.....	.....	.....	.....	.....	.....	.....
Annual	.....	76.74	102.53	.....	.....	.....	.....	.....	.....	.....	.....

Annual average is made up from annual total.

## RAINFALL AT WAIMANALO, 100 FT. [Averaged with 25 ft.]

Elevation, 100 &amp; 25 feet. Exposure, Northeast.

Months.	1880	1881	1882				1894	1895	1896		Normal
Jan .....	3.05	7.31	6.75	.....	.....	.....	.....	3.36	5.33	.....	.....
Feb .....	3.30	5.74	2.11	.....	.....	.....	.....	2.58	1.76	.....	.....
March .....	2.68	5.94	11.22	.....	.....	.....	.....	0.93	2.65	.....	.....
April .....	0.59	1.37	1.18	.....	.....	.....	1.10	0.90	2.70	.....	.....
May .....	0.19	2.89	6.07	.....	.....	.....	0.11	4.27	0.92	.....	.....
June .....	2.14	1.42	0.85	.....	.....	.....	1.12	0.88	1.15	.....	.....
July .....	4.07	1.01	1.45	.....	.....	.....	0.78	1.15	0.94	.....	.....
Aug .....	1.32	5.73	2.14	.....	.....	.....	0.81	2.07	2.08	.....	.....
Sept .....	1.78	0.90	0.45	.....	.....	.....	1.01	4.28	0.33	.....	.....
Oct .....	1.70	0.29	2.77	.....	.....	.....	1.73	5.69	3.41	.....	.....
Nov .....	6.80	5.79	4.86	.....	.....	.....	9.88	6.61	11.12	.....	.....
Dec .....	2.69	9.21	2.78	.....	.....	.....	2.12	16.33	9.13	.....	.....
Annual .....	30.31	47.60	42.83	.....	.....	.....	.....	49.05	41.52	.....	.....

Annual average is made up from annual total.

## RAINFALL AT WAIMANALO—CONTINUED.

Elevation, 25 feet. Exposure, Northeast.

Months.	1897	1898	1899	1900							Normal
Jan .....	2.48	1.87	1.18	2.20	.....	.....	.....	.....	.....	.....	3.60
Feb .....	0.61	11.20	7.17	2.38	.....	.....	.....	.....	.....	.....	3.65
March .....	1.44	12.35	8.45	2.54	.....	.....	.....	.....	.....	.....	4.98
April .....	0.31	1.68	1.91	3.68	.....	.....	.....	.....	.....	.....	1.54
May .....	1.67	1.26	10.09	1.48	.....	.....	.....	.....	.....	.....	2.90
June .....	0.73	2.74	0.39	0.79	.....	.....	.....	.....	.....	.....	1.22
July .....	1.12	1.19	0.75	2.35	.....	.....	.....	.....	.....	.....	1.48
Aug .....	1.07	0.63	0.87	1.33	.....	.....	.....	.....	.....	.....	1.99
Sept .....	2.96	0.37	0.68	0.68	.....	.....	.....	.....	.....	.....	1.34
Oct .....	3.15	1.83	2.55	5.27	.....	.....	.....	.....	.....	.....	2.84
Nov .....	3.69	0.45	0.48	19.56	.....	.....	.....	.....	.....	.....	6.92
Dec .....	3.13	5.67	4.00	2.42	.....	.....	.....	.....	.....	.....	5.87
Annual .....	22.36	41.24	38.52	44.68	.....	.....	.....	.....	.....	.....	38.04

Annual average is made up from annual total.

RAINFALL AT AHUIMANU, KOOLAU.  
Elevation, 350 feet. Exposure, Northeast.

Months.	1891	1892	1893	1894	1895	1896	1897	1898	1899	1900	Normal
Jan.....	7.50	12.42	7.35	4.98	3.22	3.99	4.95	4.54	2.93	0.70	5.26
Feb.....	7.01	7.13	19.49	18.17	4.31	5.29	2.95	12.75	10.81	2.69	9.06
March....	1.76	3.55	6.82	5.62	1.82	5.82	3.99	28.87	18.37	1.05	7.77
April.....	3.50	8.83	11.36	4.07	4.06	8.08	1.63	4.05	5.79	11.08	6.25
May.....	1.97	16.33	3.16	0.48	8.23	8.05	4.12	3.51	8.22	4.78	6.07
June....	1.99	6.78	2.41	2.52	3.58	3.30	3.74	6.95	0.73	6.05	3.80
July.....	2.94	3.05	2.73	2.63	4.14	3.08	1.13	4.70	4.24	7.97	3.66
Aug.....	1.37	4.19	3.40	3.44	8.85	7.83	9.57	4.22	4.44	6.42	5.38
Sept.....	9.24	2.16	4.67	5.20	14.86	2.12	12.67	2.89	3.00	6.62	6.35
Oct.....	10.57	5.03	2.87	3.17	8.08	5.80	7.88	3.01	5.83	17.12	6.94
Nov.....	7.87	6.84	14.27	13.68	7.61	9.92	7.04	3.25	1.81	27.55	9.98
Dec.....	6.63	7.72	3.88	4.24	12.62	9.69	4.26	9.06	4.55	5.36	6.80
Annual..	62.35	84.03	82.41	68.20	81.38	72.97	63.93	87.81	70.72	97.41	77.12

Annual average is made up from annual total.

RAINFALL AT KAHUKU, North Point of Island.

Elevation, 25 feet. Exposure, North.

Months	1891	1892	1893	1894	1895	1896	1897	1898	1899	1900	Normal
Jan ...	(1.50)	7.72	4.75	3.03	1.88	2.07	1.60	2.57	2.00	1.16	2.82
Feb ...	2.35	2.42	12.68	15.57	2.14	2.02	1.30	6.58	2.03	1.84	4.90
Mar....	1.05	0.92	2.14	1.56	0.59	2.52	1.24	16.15	6.14	1.62	3.39
April -	0.83	2.63	3.39	1.33	0.65	3.17	0.85	1.72	2.90	4.01	2.15
May ..	1.21	8.53	1.34	0.38	1.05	2.78	1.67	1.24	3.51	1.20	2.29
June ..	0.40	2.78	0.59	0.83	0.63	1.59	2.11	1.91	0.64	1.01	1.24
July ..	1.33	1.16	1.07	0.96	1.50	0.88	1.10	2.05	2.06	1.97	1.41
Aug...	0.49	1.39	1.27	1.05	2.66	3.27	1.59	1.37	1.25	4.23	1.86
Sept ..	2.42	0.98	1.65	1.26	4.87	0.85	4.50	1.29	1.61	1.22	2.07
Oct ...	0.90	2.39	1.62	1.45	11.11	1.51	3.11	1.08	2.69	4.45	3.03
Nov ...	1.14	1.57	5.04	14.15	2.35	3.20	3.42	0.97	0.54	13.66	4.60
Dec ...	2.74	3.99	1.52	1.38	6.32	3.60	1.60	1.05	1.96	1.86	2.60
Annual	16.36	36.48	37.06	42.95	35.75	27.46	24.09	37.98	27.33	38.23	32.36

Annual average is made up from annual total.

## RAINFALL AT WAIANAE, 15 FT.

Elevation, 15 feet.

Exposure, West.

MONTHS.	1881	1892	1893	1894	1895	1896					Normal
Jan .....	(1.00)	7.07	4.63	2.36	2.42	2.20	.....	.....	.....	.....	3.28
Feb .....	(3.00)	4.31	15.10	12.48	1.26	1.10	.....	.....	.....	.....	6.21
March.....	0.00	0.00	0.00	0.90	0.32	1.69	.....	.....	.....	.....	0.48
April .....	0.02	1.65	3.01	0.00	0.89	1.30	.....	.....	.....	.....	1.15
May.....	1.10	1.17	0.00	0.70	0.50	2.00	.....	.....	.....	.....	0.91
June.....	0.00	0.00	0.00	0.00	0.10	0.00	.....	.....	.....	.....	0.02
July.....	0.00	0.00	0.00	0.00	0.52	0.00	.....	.....	.....	.....	0.09
Aug.....	0.00	0.65	0.03	0.00	1.56	5.15	.....	.....	.....	.....	1.23
Sept. . . .	1.14	1.00	0.00	0.60	1.18	0.00	.....	.....	.....	.....	0.65
Oct.....	0.14	1.60	0.61	0.50	1.18	0.00	.....	.....	.....	.....	0.67
Nov.....	0.00	0.90	5.09	3.69	3.25	3.33	.....	.....	.....	.....	2.71
Dec.....	1.09	(4.50)	0.98	0.36	7.30	4.80	.....	.....	.....	.....	3.17
Annual ..	7.49	(22.85)	29.45	21.59	20.48	21.57	.....	.....	.....	.....	20.57

Annual average is made up from annual total.

## RAINFALL AT WAIANAE, 1700 FT.

Elevation, 1700 feet.

Exposure, West.

Months	1897	1898	1899								Normal
Jan ...	4.28	2.99	1.75	.....	.....	.....	.....	.....	.....	.....	.....
Feb... ..	2.28	13.93	2.25	.....	.....	.....	.....	.....	.....	.....	.....
Mar... ..	2.09	11.20	7.78	.....	.....	.....	.....	.....	.....	.....	.....
April.. ..	1.79	4.40	4.51	.....	.....	.....	.....	.....	.....	.....	.....
May... ..	2.64	2.45	4.43	.....	.....	.....	.....	.....	.....	.....	.....
June... ..	8.23	3.01	1.34	.....	.....	.....	.....	.....	.....	.....	.....
July... ..	4.60	4.33	.....	.....	.....	.....	.....	.....	.....	.....	.....
Aug... ..	10.12	2.29	.....	.....	.....	.....	.....	.....	.....	.....	.....
Sept... ..	1.54	2.85	.....	.....	.....	.....	.....	.....	.....	.....	.....
Oct... ..	2.59	1.02	.....	.....	.....	.....	.....	.....	.....	.....	.....
Nov... ..	3.71	0.65	.....	.....	.....	.....	.....	.....	.....	.....	.....
Dec... ..	4.19	7.43	.....	.....	.....	.....	.....	.....	.....	.....	.....
Annual	48.06	56.55	.....	.....	.....	.....	.....	.....	.....	.....	.....

Annual average is made up from annual total.

### RAINFALL AT EWA PLANTATION.

Elevation, 50 feet.

Exposure, South.

Months.	1891	1892	1893	1894	1895	1896	1897	1898	1899	1900	Normal
Jan.....	(1.00)	5.85	1.91	2.58	2.51	1.37	0.59	0.42	0.00	0.14	1.63
Feb.....	2.99	3.90	11.04	10.02	2.00	0.74	0.15	11.01	3.96	0.65	3.44
March....	0.41	1.00	2.91	2.18	0.89	2.94	0.44	7.02	1.72	0.68	1.91
April.....	0.00	1.50	2.47	0.76	0.24	1.71	0.10	0.38	0.06	0.78	0.80
May.....	0.11	3.64	0.00	0.00	1.66	1.45	0.45	0.22	2.20	0.00	0.95
June.....	0.13	2.02	0.00	(0.00)	0.40	0.06	1.84	1.53	0.65	0.06	0.69
July.....	0.01	0.00	0.00	0.00	1.92	0.12	0.26	0.17	0.31	1.29	0.41
Aug.....	0.28	0.98	0.00	0.00	0.02	3.74	0.22	0.24	0.00	0.25	0.57
Sept.....	0.04	0.13	0.03	0.29	5.30	0.37	2.89	0.07	0.07	0.00	0.92
Oct.....	0.91	0.82	0.00	0.53	0.71	0.95	3.39	0.41	3.30	1.20	1.22
Nov.....	1.18	0.00	8.15	6.39	4.69	3.99	2.99	(0.00)	0.00	9.26	4.87
Dec.....	0.69	4.49	1.34	0.91	10.50	5.26	0.72	1.39	1.50	1.08	2.79
Annual..	(7.75)	23.33	27.99	23.66	30.84	22.70	14.02	21.47	13.77	15.39	20.09

Annual average is made up from annual total.

### RAINFALL AT KOLOA, KAUAI.

Elevation, 200 feet.

Exposure, South.

Months.	1882	1883	1884	1885	1886	1887	1888	1889	1890	1891	Normal
Jan..	5.64	2.21	2.97	0.54	1.75	13.15	5.28	0.77	15.98	.....	5.36
Feb..	4.44	5.37	2.00	0.80	2.93	6.92	10.50	0.56	3.88	4.97	4.24
Mar..	5.65	2.61	2.10	2.28	3.45	3.60	1.17	1.53	18.60	3.01	4.40
April..	2.26	1.46	1.63	3.18	2.57	3.75	3.20	3.16	6.86	6.03	3.41
May..	4.55	1.83	1.78	3.43	4.33	8.10	2.21	7.40	7.44	1.60	4.27
June..	2.30	3.10	1.92	4.66	1.80	1.81	4.47	4.30	5.35	3.14	3.28
July..	1.31	4.64	5.60	7.48	3.17	4.52	3.39	7.72	2.95	4.40	4.52
Aug..	3.53	2.74	3.23	7.44	3.55	6.05	2.21	3.86	5.00	3.33	4.09
Sept..	2.82	2.07	2.24	3.16	5.59	2.65	6.29	7.12	3.79	....	3.97
Oct..	2.65	2.16	2.42	4.06	.....	5.10	7.80	6.03	2.04	..	4.03
Nov..	10.01	9.21	1.48	3.68	.....	10.66	5.76	4.49	10.69	..	6.99
Dec..	5.26	3.54	3.24	3.78	.....	12.04	2.00	5.18	5.55	....	5.07
Annual..	50.42	40.94	30.61	44.49	.....	78.35	54.34	52.12	88.13	..	53.63

Annual average is made up from annual total.



## RAINFALL AT LIHUE, GROVE FARM.

Elevation, 200 feet. Exposure, East.

MONTHS.	1885	1886	1887	1888	1889	1890	1891	1892	1893	1894	
Jan.....	0.50	1.50	7.50	4.21	0.80	18.33	1.22	7.51	5.50	3.51	.....
Feb.....	2.66	1.50	7.52	9.63	0.97	4.50	1.30	6.28	14.84	7.74	.....
March....	2.20	12.70	4.30	1.25	0.66	14.69	0.85	1.16	4.61	2.50	.....
April....	4.06	1.60	3.35	2.19	2.89	6.37	1.11	6.07	1.81	1.73	.....
May.....	5.10	3.00	5.55	3.42	2.80	7.14	0.51	1.67	1.25	0.71	.....
June....	5.00	1.00	0.50	1.70	1.67	1.64	0.85	1.25	0.60	0.51	.....
July....	7.00	1.30	1.15	1.00	3.54	1.21	1.29	1.31	0.41	1.33	.....
Aug.....	5.00	0.80	1.51	1.73	1.50	1.94	0.61	0.52	0.94	0.47	.....
Sept....	4.20	6.45	0.85	3.73	5.52	2.00	1.83	0.91	1.48	1.23	.....
Oct.....	4.40	2.30	3.00	5.80	1.32	1.50	2.99	6.03	2.78	0.68	.....
Nov.....	3.60	10.00	13.39	4.90	3.00	6.45	2.20	4.60	4.96	15.32	.....
Dec.....	4.00	3.15	16.63	1.90	1.50	2.54	1.62	4.73	5.35	2.82	.....
Annual..	47.72	45.30	65.25	41.48	26.17	68.31	16.38	42.05	44.53	38.55	.....

Annual average is made up from annual total.

## RAINFALL AT LIHUE GROVE FARM—CONTINUED.

Elevation, 200 feet. Exposure, East.

Months.	1895	1896	1897	1898	1899	1900					Normal
Jan.....	5.68	0.97	0.62	4.03	0.95	0.36	.....	.....	.....	.....	3.95
Feb.....	0.79	2.26	3.95	6.65	2.12	2.94	.....	.....	.....	.....	4.73
March....	0.34	1.63	9.52	11.60	2.91	0.48	.....	.....	.....	.....	4.40
April....	0.74	3.33	1.16	2.10	5.80	2.99	.....	.....	.....	.....	2.96
May.....	2.36	2.00	3.34	1.89	7.20	1.46	.....	.....	.....	.....	3.08
June....	1.32	2.37	1.95	2.51	1.36	0.74	.....	.....	.....	.....	1.56
July....	1.42	1.14	1.31	2.96	1.39	2.58	.....	.....	.....	.....	1.89
Aug.....	9.72	1.26	1.30	1.12	1.51	2.17	.....	.....	.....	.....	2.01
Sept....	2.38	0.83	2.33	1.22	0.75	2.19	.....	.....	.....	.....	2.37
Oct.....	2.77	2.39	3.05	1.23	6.16	4.51	.....	.....	.....	.....	3.18
Nov.....	2.72	13.31	3.31	1.22	0.37	8.47	.....	.....	.....	.....	6.11
Dec.....	3.95	5.59	0.48	2.42	4.70	1.99	.....	.....	.....	.....	3.96
Annual..	34.19	37.08	32.32	38.95	35.22	30.86	.....	.....	.....	.....	40.28

Annual average is made up from annual total.

## RAINFALL AT LIHUE, MOLOKOA.

Elevation, 300 feet. Exposure, East.

Months.	1893	1894	1895	1896	1897	1898	1899	1900			Normal
Jan .....	.....	5.90	7.13	1.86	1.04	5.34	1.29	1.09	.....	.....	3.39
Feb .....	.....	9.53	1.70	3.46	5.81	8.81	2.45	3.13	.....	.....	4.98
March .....	.....	3.64	0.80	2.93	6.84	14.34	3.25	0.99	.....	.....	4.69
April .....	.....	4.73	1.29	3.72	1.29	2.00	5.61	2.73	.....	.....	3.05
May .....	1.70	0.91	3.26	3.37	5.53	2.79	5.17	1.71	.....	.....	3.05
June .....	1.41	1.90	2.75	4.45	2.72	3.62	1.39	1.57	.....	.....	2.43
July .....	1.40	2.36	2.23	2.40	1.57	3.82	1.34	3.01	.....	.....	2.27
Aug .....	1.56	1.17	12.30	3.55	1.97	2.35	2.01	2.42	.....	.....	3.41
Sept .....	2.14	2.39	4.29	1.70	3.41	1.67	0.98	2.24	.....	.....	2.35
Oct .....	4.42	1.33	3.75	3.90	5.63	3.07	6.98	6.93	.....	.....	4.50
Nov .....	5.49	18.10	4.74	12.43	4.42	1.55	0.53	9.05	.....	.....	7.04
Dec .....	6.10	4.21	6.24	5.34	1.01	3.01	4.38	2.33	.....	.....	4.09
Annual ..	89.20	56.17	50.50	49.11	41.24	52.37	35.38	37.20	.....	.....	45.03

Annual average is made up from annual total.

## RAINFALL AT HANAMAULU.

Elevation, 200 feet. Exposure, East.

Months	1893	1894	1895	1896	1897	1898					Normal.
Jan .....	.....	4.50	6.41	2.09	0.58	2.68	.....	.....	.....	.....	3.26
Feb .....	.....	8.06	1.70	2.54	3.89	5.06	.....	.....	.....	.....	4.25
Mar .....	.....	1.94	0.42	1.89	6.45	10.39	.....	.....	.....	.....	4.21
April .....	2.84	3.51	0.91	2.59	[0.70]	1.54	.....	.....	.....	.....	2.01
May .....	1.36	0.49	2.62	2.54	3.80	1.73	.....	.....	.....	.....	2.09
June .....	0.98	1.36	1.61	2.39	1.59	2.83	.....	.....	.....	.....	1.79
July .....	0.80	1.96	1.71	1.88	0.70	[2.76]	.....	.....	.....	.....	1.64
Aug .....	1.20	0.92	9.90	2.44	1.05	1.76	.....	.....	.....	.....	2.88
Sept .....	1.45	2.15	2.88	2.02	2.31	1.21	.....	.....	.....	.....	2.00
Oct .....	3.18	1.01	4.55	2.33	3.32	2.69	.....	.....	.....	.....	2.85
Nov .....	3.91	15.22	3.33	13.86	3.26	1.02	.....	.....	.....	.....	6.77
Dec .....	4.92	3.46	5.30	4.14	0.59	2.50	.....	.....	.....	.....	3.49
Annual	31.56	44.58	41.34	40.71	28.24	36.17	.....	.....	.....	.....	37.10

Annual average is made up from annual total.

## RAINFALL AT KILAUEA.

Elevation, 325 feet. Exposure, Northeast.

Months	1890	1891	1892	1893	1894	1895	1896	1897	1898	1899	
Jan....	11.44	3.16	14.62	8.93	5.62	7.33	1.61	2.78	8.79	0.24	.....
Feb...	12.58	5.71	7.34	18.81	13.86	1.62	5.24	9.42	7.44	3.34	.....
Mar....	23.96	3.59	6.40	15.41	6.47	1.43	3.35	8.83	18.01	10.77	.....
April..	7.31	4.34	8.02	5.94	4.59	3.44	6.62	1.43	5.27	5.04	.....
May...	9.57	3.91	9.79	4.41	1.23	3.17	8.51	4.56	4.46	10.25	.....
June..	4.75	4.90	7.84	3.90	2.29	4.20	5.14	3.03	4.09	2.90	.....
July...	3.35	5.89	6.15	2.69	3.37	3.84	2.22	3.46	5.71	2.65	.....
Aug...	5.50	3.75	5.40	3.08	2.12	11.07	3.76	4.01	2.49	3.37	.....
Sept...	4.21	7.45	3.87	3.87	3.63	6.31	3.16	4.22	2.45	2.50	.....
Oct....	4.85	5.34	5.92	7.08	3.48	6.94	5.16	3.81	2.41	5.17	.....
Nov...	5.22	8.13	6.39	5.96	23.62	6.22	7.27	6.92	2.91	0.89	.....
Dec...	9.00	8.39	5.44	4.64	5.71	10.31	4.24	2.91	4.05	4.96	.....
Annual	101.74	64.56	87.18	84.72	76.14	65.88	56.28	55.38	68.08	52.08	.....

NOTE. The observations of a number of stations, having an average elevation of 325 feet were combined in this table.

## RAINFALL AT KILAUEA—CONTINUED.

Elevation 325 feet.

Exposure, Northeast.

MONTHS.	1900										Normal.
Jan....	2.05	.....	.....	.....	.....	.....	.....	.....	.....	.....	5.96
Feb....	4.08	.....	.....	.....	.....	.....	.....	.....	.....	.....	8.13
Mar....	0.87	.....	.....	.....	.....	.....	.....	.....	.....	.....	9.01
April..	4.87	.....	.....	.....	.....	.....	.....	.....	.....	.....	5.17
May...	2.91	.....	.....	.....	.....	.....	.....	.....	.....	.....	5.71
June...	2.22	.....	.....	.....	.....	.....	.....	.....	.....	.....	4.12
July...	3.97	.....	.....	.....	.....	.....	.....	.....	.....	.....	3.94
Aug...	5.35	.....	.....	.....	.....	.....	.....	.....	.....	.....	4.54
Sept...	4.70	.....	.....	.....	.....	.....	.....	.....	.....	.....	4.21
Oct....	9.74	.....	.....	.....	.....	.....	.....	.....	.....	.....	5.45
Nov...	12.12	.....	.....	.....	.....	.....	.....	.....	.....	.....	7.79
Dec...	0.04	.....	.....	.....	.....	.....	.....	.....	.....	.....	5.43
Annual	56.88	.....	.....	.....	.....	.....	.....	.....	.....	.....	69.90

Annual average is made up from annual total.

## RAINFALL AT HANAIEI.

Elevation, 10 feet.

Exposure, North.

Months.	1892	1893	1894	1895	1896	1897	1898	1899	1900	Normal.
Jan .....	[18.00]	9.12	6.83	8.88	2.00	2.09	12.20	0.24	3.06	6.94
Feb. ....	[9.00]	17.70	23.07	1.99	6.58	15.02	4.71	4.08	6.11	9.81
March ..	12.23	15.66	8.71	2.42	7.40	19.45	27.67	21.3 <sup>4</sup>	1.63	12.94
April ....	5.80	12.12	5.66	7.25	7.58	2.17	7.03	4.21	8.10	6.66
May ....	10.18	7.05	1.22	8.71	4.91	3.88	6.10	7.80	5.82	6.18
June ....	7.48	6.07	4.04	3.90	8.38	2.52	3.49	3.93	2.49	4.70
July ....	8.27	2.34	4.36	4.48	2.81	5.31	6.49	4.39	8.26	5.19
Aug. ....	7.89	4.54	2.31	17.16	3.92	5.25	4.39	5.29	8.74	6.61
Sept. ....	14.04	4.66	5.73	12.50	4.66	6.58	3.49	3.67	5.03	6.82
Oct. ....	5.52	12.21	1.57	7.76	7.05	6.78	3.61	7.03	14.51	7.22
Nov. ....	3.92	5.47	20.50	7.13	8.34	10.82	4.23	1.61	15.12	7.10
Dec. ....	5.85	8.97	7.10	9.77	5.02	2.78	4.05	7.27	5.06	6.21
Annual	[107.18]	105.91	91.10	91.95	68.65	82.65	87.46	70.86	83.93	87.74

Annual average is made up from annual total.

## RAINFALL AT WAIAWA.

Elevation, 32 feet.

Exposure, Southwest.

Months.	1894	1895	1896	1897	1898						Normal
Jan ...	3.44	5.96	3.39	0.81	.....	.....	.....	.....	.....	.....	2.90
Feb ...	8.17	1.78	1.07	0.97	.....	.....	.....	.....	.....	.....	2.99
Mar ...	1.10	0.39	0.51	3.26	.....	.....	.....	.....	.....	.....	1.39
April ..	1.93	0.95	0.44	0.24	.....	.....	.....	.....	.....	.....	0.89
May ...	0.26	0.40	0.15	0.89	.....	.....	.....	.....	.....	.....	0.42
June ...	0.16	3.90	0.11	0.91	.....	.....	.....	.....	.....	.....	1.27
July ...	0.02	1.11	0.00	0.21	.....	.....	.....	.....	.....	.....	0.33
Aug ...	0.20	[4.50]	1.06	0.65	.....	.....	.....	.....	.....	.....	1.80
Sept ...	0.32	[4.00]	0.39	1.00	.....	.....	.....	.....	.....	.....	1.43
Oct ...	[0.04]	[0.50]	0.16	1.67	0.00	.....	.....	.....	.....	.....	0.59
Nov ...	10.49	[1.75]	14.37	0.95	.....	.....	.....	.....	.....	.....	6.89
Dec ...	2.29	7.43	1.93	.....	1.02	.....	.....	.....	.....	.....	2.91
Annual	28.42	[32.67]	23.58	[12.06]	.....	.....	.....	.....	.....	.....	24.18

Annual average is made up from annual total.

## RAINFALL AT MAKAWELI.

Elevation, 50 feet. Exposure, South.

Months.	1892	1893	1894	1895	1896						Normal
Jan .....	5.60	3.89	3.69	5.81	2.99	.....	.....	.....	.....	.....	4.40
Feb .....	4.55	9.55	8.57	1.31	0.71	.....	.....	.....	.....	.....	4.94
March .....	2.08	3.13	0.37	0.00	0.46	.....	.....	.....	.....	.....	1.21
April .....	2.99	1.98	1.67	0.00	0.05	.....	.....	.....	.....	.....	1.34
May .....	1.87	0.02	0.40	0.00	0.53	.....	.....	.....	.....	.....	0.56
June .....	0.97	1.15	0.40	0.58	0.47	.....	.....	.....	.....	.....	0.71
July .....	0.24	0.54	0.00	0.76	1.76	.....	.....	.....	.....	.....	0.66
Aug .....	1.31	0.60	0.27	4.50	0.81	.....	.....	.....	.....	.....	1.50
Sept .....	0.49	1.53	0.67	4.21	1.07	.....	.....	.....	.....	.....	1.57
Oct .....	2.15	3.13	0.04	0.79	0.08	.....	.....	.....	.....	.....	1.24
Nov .....	1.22	2.40	9.04	1.93	11.90	.....	.....	.....	.....	.....	5.30
Dec .....	3.81	3.35	2.24	5.47	2.10	.....	.....	.....	.....	.....	3.39
Annual ..	27.27	31.27	27.36	25.36	22.93	.....	.....	.....	.....	.....	26.84

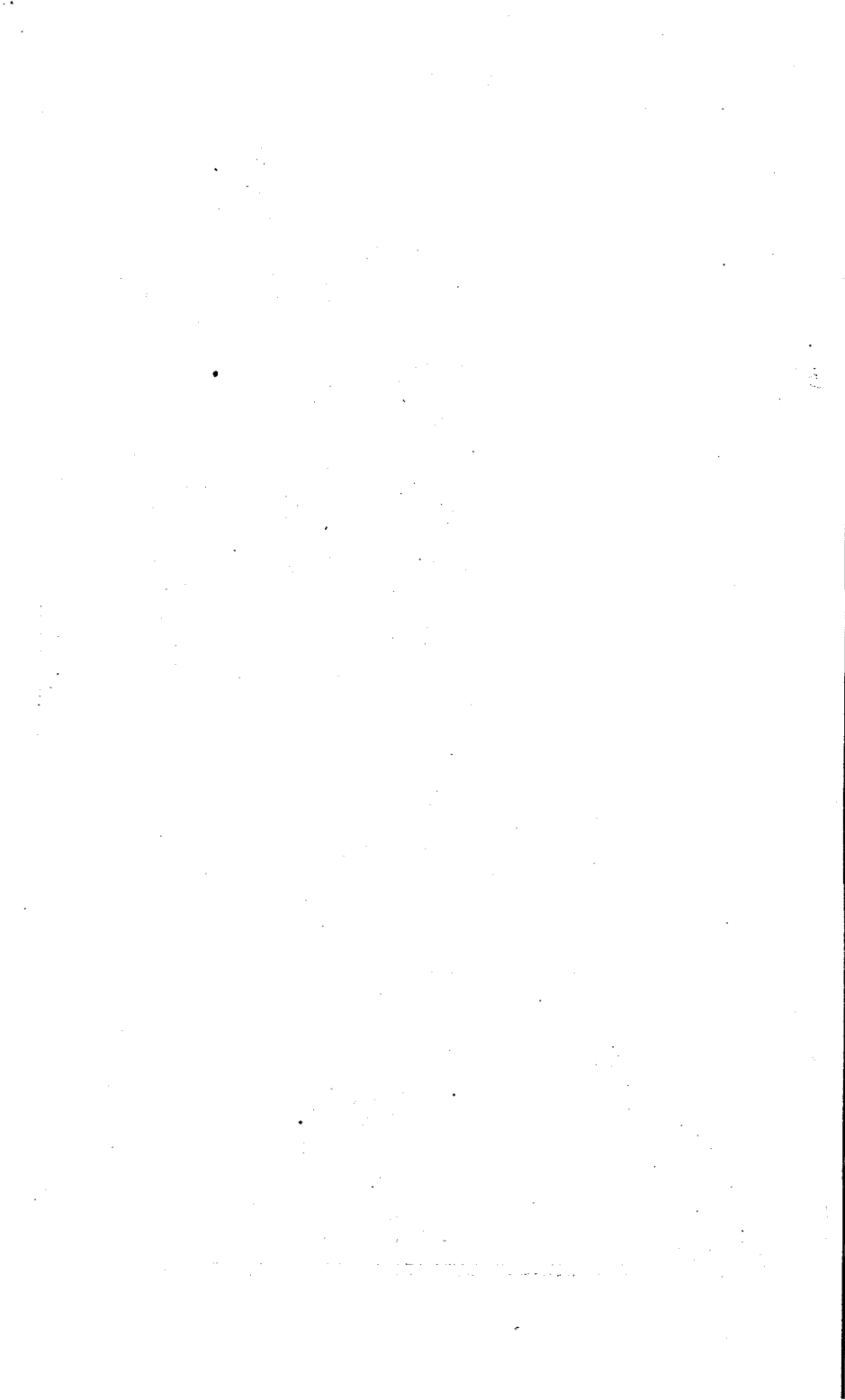
Annual average is made up from annual total.

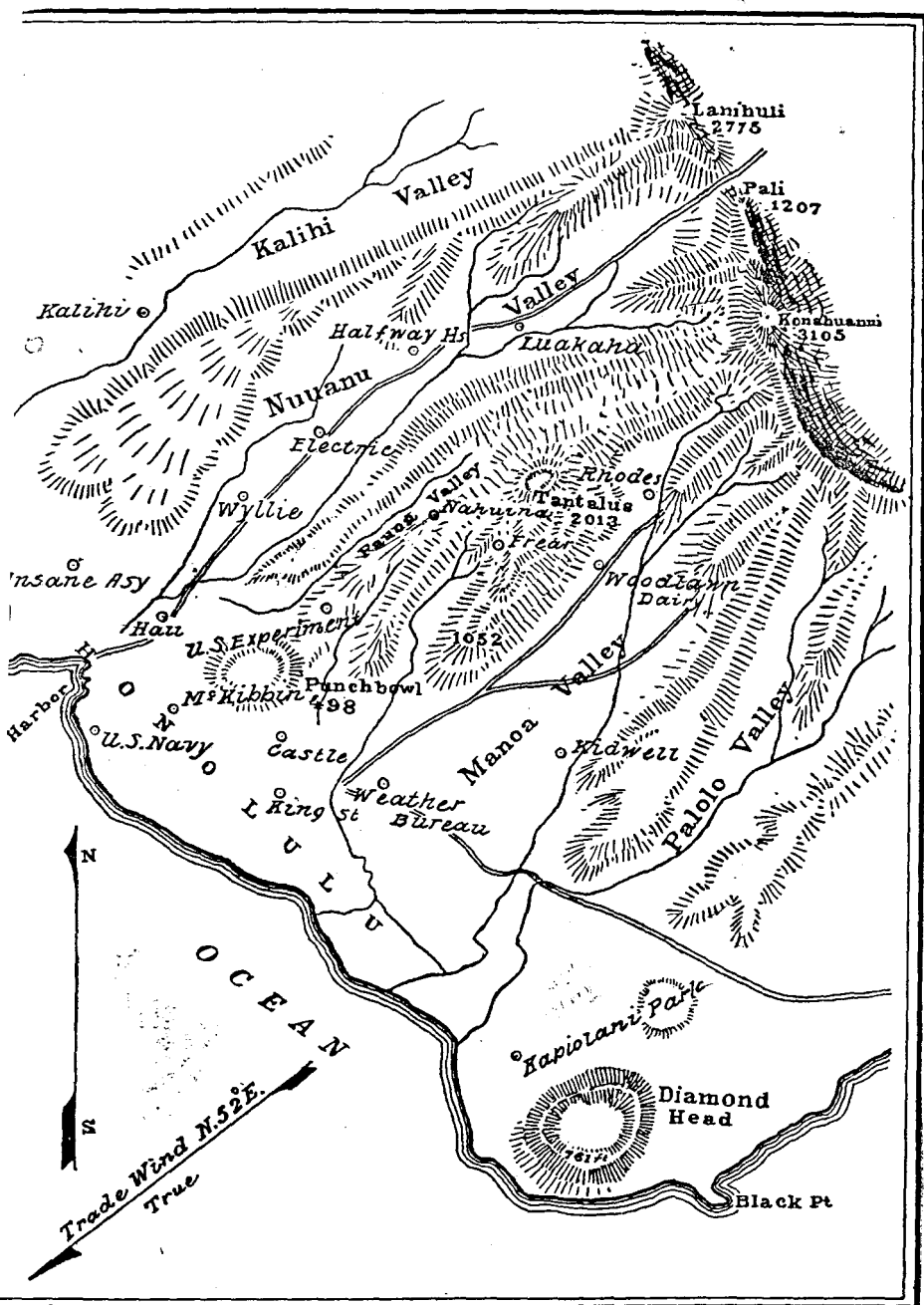




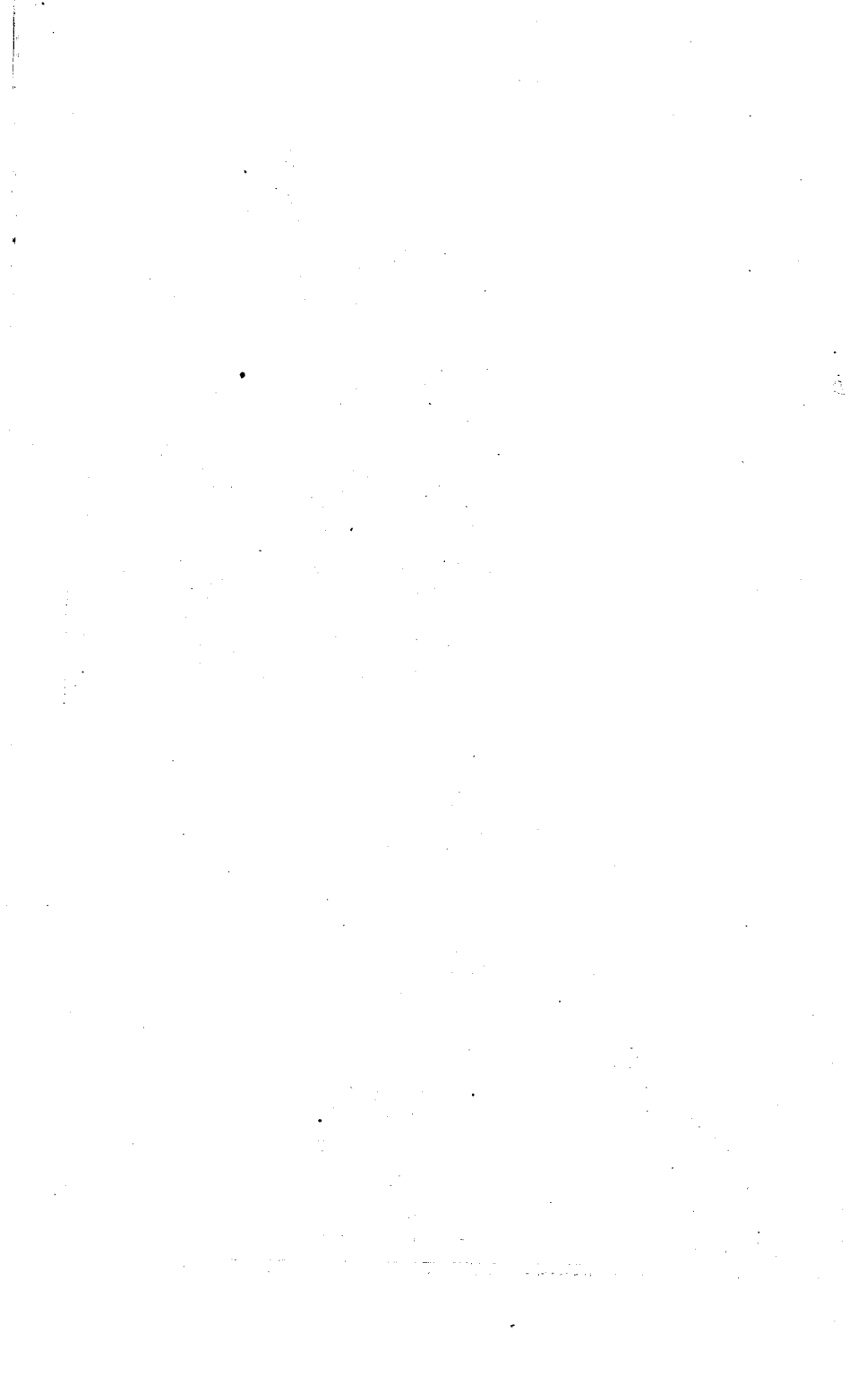


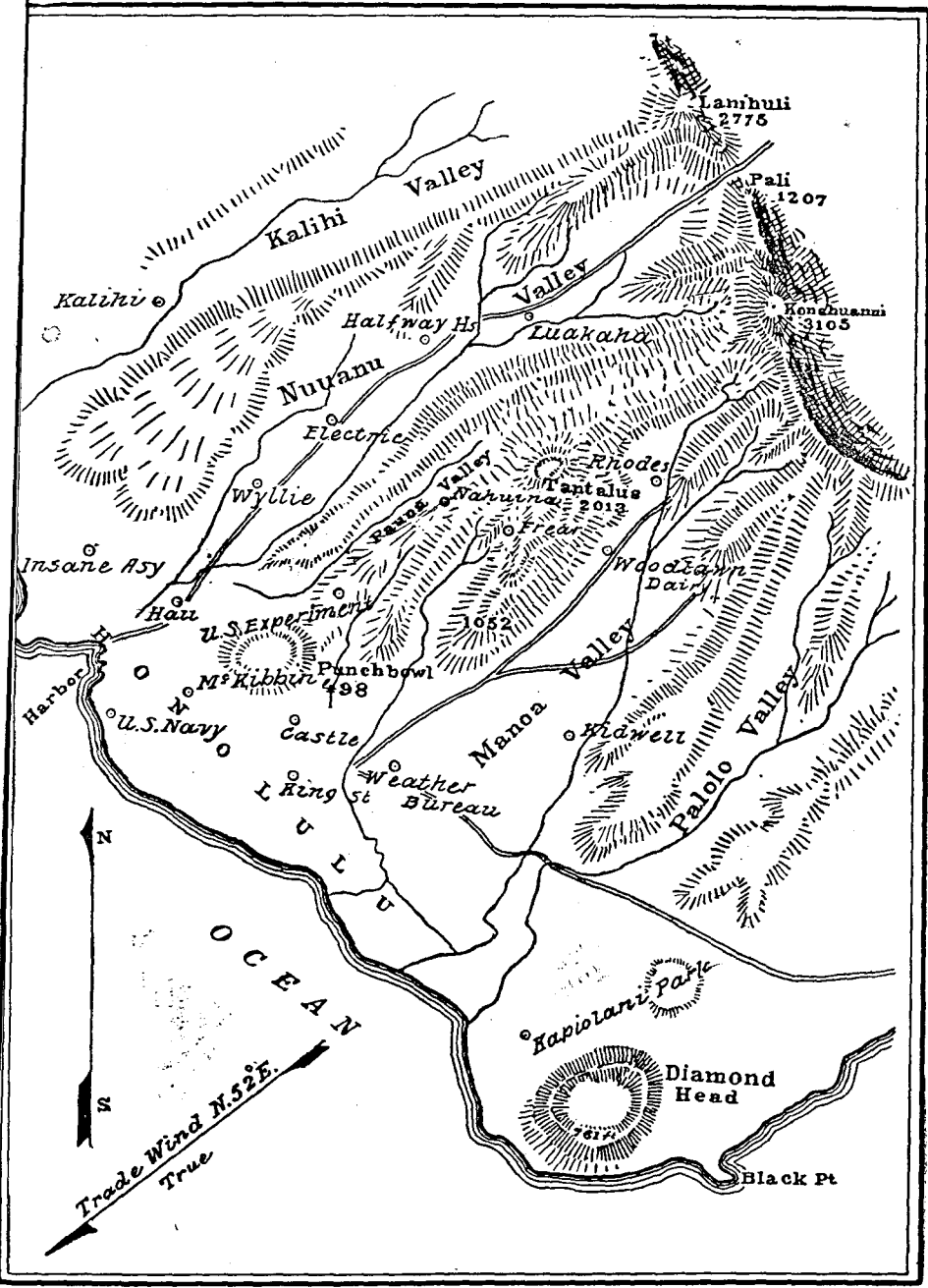






HONOLULU AND VICINITY.—Scale 1:90000.





HONOLULU AND VICINITY.—Scale 1:90000.



