

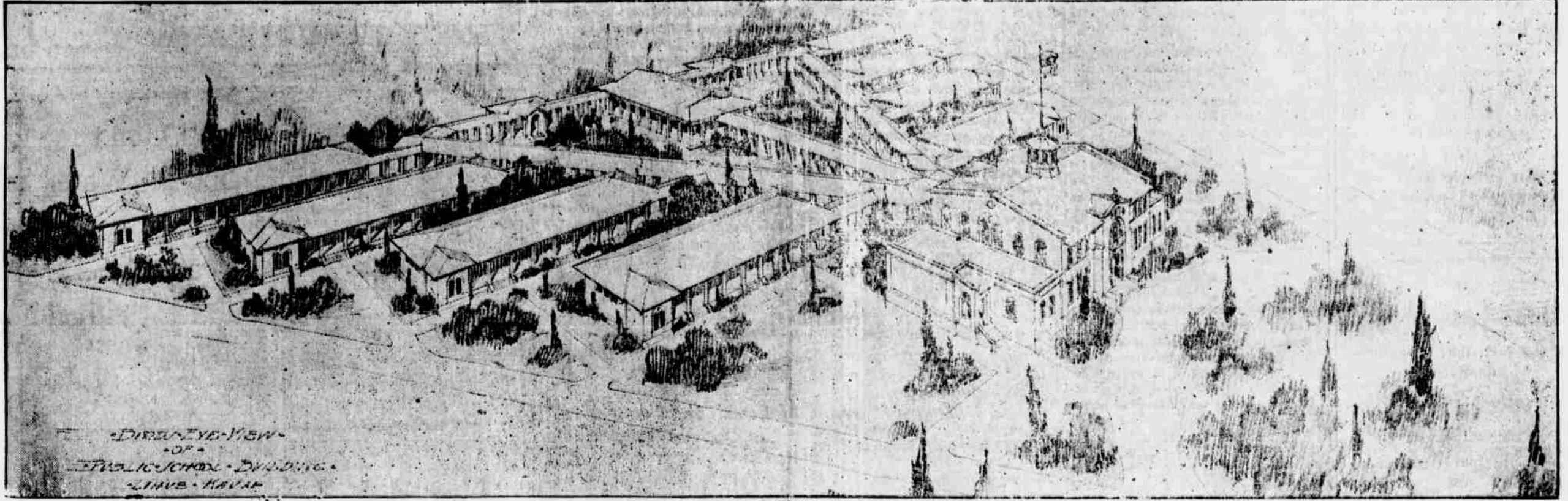
The Garden Island.

ESTABLISHED 1904. VOL. 15. NO. 50.

LIHUE, KAUAL, TERRITORY OF HAWAII, TUESDAY, DECEMBER 16, 1919

SUBSCRIPTION RATES, \$2.50 PER YEAR 5 CENTS PER COPY

UP-TO-DATE NEW SCHOOL BUILDING FOR LIHUE



The Planters and Social Welfare

The interest and attention which the planters gave to problems and plans of social welfare at the recent Planters meeting is a very significant new departure in the history of the sugar business if these Islands.

An efficient committee was appointed a year ago to deal with this subject and they have given the matter much intelligent attention, have secured the services of a specialist from the Mainland to make a careful study of conditions and needs, and have brought in a report which gives promise of large constructive possibilities.

They face the issues squarely, admitting that things are not right, and that, in the interest of business success as well as philanthropy and humanity, they must be bettered, and they go on to suggest various lines in which the betterment may be made.

Each individual plantation is urged to do its utmost in every way toward the betterment of present conditions, especially along the lines of housing, sanitation, and the proper care of children. In addition to this they recommend the organization of an industrial service bureau which shall act as a general clearing house of information, suggestion and inspiration along these lines. This bureau will be prepared to assist the individual plantations in dealing with their local problems, with advice, plans, information, etc.

The main lines along which effort will be made, for a start anyway, are as follows:

Housing: This will come first in importance and should receive immediate attention. Plans and specifications will be furnished, not only of the individual buildings themselves, but of camps or villages as a whole, with a view to comfort, convenience, artistic appearance and the development of community life.

Health and Sanitation: Attention should be given to the problems of food supply and food preparation, to the end that all the people on the place may be properly nourished. Nurseries and dairies should be encouraged.

Recreation: Amusement halls should be furnished on every plantation, and amusements of various kinds should be provided, and carefully supervised. And every effort should be made to interest the local communities to do things for themselves along these lines.

Education: Thorough cooperation with the department of education is recommended and probably the establishment and conduct of night schools and other educational activities.

Industrial Relations: A careful study should be made of living requirements and hours of work with a view to securing the best results both in the satisfaction and well-being of the laborer and the interest and efficiency of the plantation. Shorter hours may prove to be good business.

It is recommended that welfare work be conducted entirely separate and apart from any religious organization in order to escape the suspicion and resentment of opposing religious elements.

New Departure in School Construction

Defects of the Traditional Building

The plans for the new Lihue school, very carefully worked out by Ripley & Davis, with rare intelligence and a broad vision of the needs of such an institution, mark a new departure in school construction. Heretofore all such construction has been along the stereotyped plan of a drygoods box, variously modified and combined, but inherently vicious in principle, especially for this climate, in that only one side of the box could possibly get the right kind of lighting and ventilation, and the other sides were woefully deficient in these respects.

To put two or three of these boxes on top of one-another, or arrange them in courts or squares aggravated the evils.

New Ideals Well Worked Out

A glance at the plan shown herewith will show how simply and effectively these evils have been avoided, and how ideal the arrangement will be for a country school such as ours. Counting on the Trades as the prevailing wind, and the forenoon sun as the prevailing light, every room will get perfect ventilation and perfect lighting. With an open lanai corridor to temper the glare and the heat of summer.

The requirements of the administration building will be somewhat different and the old-time plan will be retained for the sake of economy of space and central location.

An Attractive Novelty

A novel feature of great attractiveness is the open court, the pillared corridors and the open pavilion. This will furnish most desirable open air gathering places for the school as a whole, or in sections, for general exercises, supervised games, athletics, etc.

Will Cost \$250,000

Adequate provision will be made throughout for toilets, lavatories, cloak rooms, rest rooms for the teachers, etc.

The construction is to be of concrete, permanent, durable, and first-class in every respect. It will cost in the neighborhood of \$250,000, which is three times the money at present available for the structure, so that the work will have to proceed, if at all, in sections, with waits between for further appropriations.

Where to Begin

It is a question where to begin, and what section to build first. Some think that the administration building as a unit complete by itself should be put in first, leaving the actual teaching departments to occupy the present quarters until later. Others feel that the first and most absolute need is suitable school room facilities, and that therefore the wings should be built immediately with as little delay as possible, leaving the secondary needs of the administrative departments until later.

The Bonus Rate of Wages

Returning delegates from the Planters' convention report a very live discussion over the plantation wage scale for the coming year, which ran over the greater part of two days, but which finally circled back to the point from which it started, the tabulated scale of wages prepared by the committee on labor in conjunction with the trustees of the organization.

This final decision continues the bonus program and the scale of wages now in force, but with the material change that the actual rate shall be adjusted every month, according to the varying price of sugar. This will involve a good deal of work, and a constant shifting of base, which many think will not be as satisfactory as the old way.

Another change to be made is in the manner of payment of the bonus. Heretofore 50 per cent of the same has been paid from month to month; this will now be changed to 75 per cent. A strong effort was made, especially by the Kauai and Maui delegations, to have the whole bonus paid immediately as earned, month by month. This, they argued, would go very far to reassure labor, and prevent dissatisfaction; they would know right along what they were getting; this would come nearer to the demand made by the labor interests, and would obviate the very large payment at the end, which went to the head of the laboring man and kind of intoxicated him with too much money, and threw him off his balance in extravagance.

The solid Scotch vote of the Hilo-Hamakua Coast, canny and retentive of the dollar to the uttermost, was too strong to be overcome, so there will be a lump sum balance to be paid at the end as heretofore.

An elaborate sliding scale table has been drawn up showing the varying bonus percentages according to the price of sugar. With sugar at 7 1/2 cents the bonus will be 100 per cent of the regular wages; at 8 cents, 114 per cent; at 9 cents, 144 per cent; at 10 cents, 174 per cent; at 11 cents, 204 per cent; and at 12 cents, 234 per cent. And there are some people who think that we will see 12 cent sugar, and accordingly a 234 per cent bonus, making a total labor compensation three and a third times the regular wage.

A Joyful Time Coming

A plentiful supply of confetti, streamers, horns and other noise implements have been ordered for the New Years Eve dance at Lihue Armory. It is planned to give these out shortly before the Old Year passes on so that his going can be properly speeded, and the New Year welcomed in. All signs point to a record attendance.

Owing to the press of accumulated business of importance consequent on his absence on Hawaii, Bishop Restarick found it impossible to come to Kauai last week as he had expected. Rev. L. Kroll of St. Andrews church came in his stead and conducted services in the Lihue Union church at Lihue, and also at Waimea.

Waimea Y Concert

The Y. M. C. A. club of Waimea put on an entertainment in their social hall last Saturday night that was both a credit to the boys and satisfactory to the audience. Some remarkable music talent was revealed in orchestral renderings and in a variety of solos, duets and quartettes instrumental and vocal. A violin solo by Ceraldo was a very pleasing surprise. Interspersed between the musical numbers was an exciting wrestling match and three round boxing bout fast enough for anybody. No decision was given however. The program ended with a pretty musical farce depicting the capture of a shy and lovely maiden by a wandering cowboy with his lariat. It was a case of being mutually "lass'd."

Following the musical program Mr. Walworth exhibited a series of moving pictures after which a large portion of the audience remained to enjoy an informal dance. The club realized about \$100, which will be expended for athletic supplies and other club property.

Personals

Mr. and Mrs. C. A. Rice are back from Town this morning.

Mrs. G. F. Rankin, of Makaweli, returned from a visit to Honolulu this week.

Mr. J. O. Warner will occupy the pulpit at the Lihue Union church next Sunday.

Stanley Taylor, manager of the Honolulu Paper Co., is on the Island in the interest of his firm.

C. H. Wilcox came home this morning with the news that they have another little daughter in the family.

C. M. Kephart of the Pond Automobile Co. is back on the Island again doing good business for his firm.

A. E. Hale, salesman for the von Hamm-Young Co. is on the Island again looking after the interests of his firm.

Mrs. Cheatham and Miss Sadie Cheatham, mother and sister of Mr. E. A. Cheatham, arrived on Kauai last Friday for an indefinite visit.

E. W. Broadbent, hold-over delegate from the Planters' meeting returned this morning accompanied by his wife and daughter.

J. P. Lynch, manager of the Lynch Co., machinery and engineering supplies, is on the Island looking up business for his company.

Mr. W. F. Jennings, of the Lihue Store, went to Town on Saturday and returned this morning bringing Mrs. Jennings. She will be cordially welcomed as an important addition to the Lihue community.

The senior children of the Lihue Sunday School spent a delightful evening last Friday with Mr. and Mrs. J. M. Lydgate. Various new games, some very clever charades, which the children presented very graphically, and simple refreshments filled up a very congenial and happy evening.

Community Christmas Celebration

In addition to the trees and Santa Claus and treats that will be given to the children of the various schools Lihue is to have a regular community Christmas celebration on Christmas eve. If the weather permits the celebration will take place on the ball park, otherwise it will be held in the armory. The exercises will begin early enough to allow those to attend who have other engagements the same evening. Everybody in Lihue and vicinity is invited. Hooray for Santa Clause!

Sales Exhibition Pictures

There was an exhibition of paintings by Baiho Iwai at Eleele Hall, Dec. 13-14, which has called forth considerable interest, and a good many people have availed themselves of the opportunity to attend. All told there were somewhat over one hundred pictures shown, mostly island views, but with a sprinkling of interesting Japanese studies. Every section of Kauai was represented, from the Waihiu landing to Mana beach. Many of the canvasses were small studies, inexpensive and likely to find ready sale for even humble homes. Some of them, no doubt, may be very acceptable for Christmas needs.

RETURN OF OLD FAMILY

Mr. and Mrs. Wm. Hyde Rice returned from Honolulu this morning. It will be remembered that Mr. Rice went to town some months ago in a precarious condition of health. We are glad to know that he returns in the full vigor of hale and hearty old age, with a smile and a cheery greeting for everyone, and with a hearty sympathy for every normal interest of life.

J. I. SILVA RETURNS

J. I. Silva, of the Eleele Store, is back this morning from his trip to the Coast, whither he went for the benefit of his health some two months ago. He is a new man, compared with what he was, quite himself again, with plenty of energy and initiative; he will make business hum on that side of the Island.

ENTERTAINMENT AT HANAIEI

There was a very successful concert and dance at Hanalei last Saturday evening for the benefit of the Centennial Convention in Honolulu next Summer, commemorating the arrival of the missionaries. The entertainment was in the old church and over \$350 was realized.

Makaweli to Have Big Christmas Tree

Several Makaweli Plantation Santa Clauses will make their bow to the employees of the plantation on Christmas Eve. A large decorated and lighted Christmas tree will occupy the center of the ball park and around it will be gathered the Makaweli people to enjoy the program.

The program will consist of songs, motion pictures and presenting of presents. The plantation Santa Clauses will have a present for each child and candy for all.

The school children under the direction of Miss Thompson is practicing Christmas songs for the occasion. The plantation motion picture machine will be set out of doors and beside a program of motion pictures, the "Life of Christ" will be given by stereopticon slides. The program will be under the direction of Mr. Damkroger.

Chamber of Commerce Meeting

The regular December meeting of the Chamber of Commerce will take Thursday afternoon 3 p. m. at the County Building, Lihue. Several matters of public importance will come up for attention and a large representation is requested.

THE E. A. KNUDSENS RETURN

Mr. and Mrs. Eric Knudsen were returning passengers from the Coast on the Schem last week. Mr. Knudsen states that California is full of tourists; in fact it is almost impossible to get hotel accommodations in San Francisco, Los Angeles, or the popular watering places. He says everybody seems to have plenty of money, and are spending it—especially the farmers.

The Schem was so crowded this trip down that meals had to be served in three relays.

NEW WIRELESS MAN

The new wireless man, G. L. Evans, comes originally from Maine, and recently from Kawaihae, and he finds Lihue a delightful improvement on the latter, anyway. He has been in the navy for the last three years.

McALPINE PAYS US A VISIT

Jas. K. McAlpine, general manager of the Pond Automobile Co., and one of the most prominent automobile men in the Territory, arrived by the Kinua Friday morning. He is looking over the ground here with a view of establishing a branch of that live concern here.

Mr. E. Livesey of the wireless has resigned his position and will devote himself to the sugar business and contracting and cultivation with the same, residing on his homestead.

We make RUBBER STAMPS.
Send us your order.



The One Store in Honolulu
That Sells Dependable Shoes

"REGALS"

Our mail order department
is always at your service

Our shoe repair department
is the best in the city

It pays to have your old
shoes repaired

"IN THE REGAL WAY"

1/2 soles and heels sewed...\$2.25
Whole soles and heels sewed 3.25

—All Work Guaranteed—

Don't Lose Sight!

of the fact that I have a
qualified

Eyesight Specialist

at your service

My personal guarantee
goes with all the work
done, backed up by a rep-
utation, gained during 25
years on the islands, for A
FAIR AND SQUARE
DEAL.

If your eyes trouble you,
or you need to change your
glasses, come and consult me.

For appointments, write

S. E. LUCAS

OPTICIAN

Kapaa, Kauai

SPORTS

BASEBALL AT KAPAA

The usual doubleheader of the Ka-
waihau Athletic Association was staged
here on Sunday. In the first game,
the Stars defeated the Farmers 4-1 in
a rather uninteresting game, that is,
from the spectators point of view.
There were no spectacular stunts to
cause excitement and the result could
have been foreseen soon after the game
started.

In the second game, the Asahis ap-
plied a coat of whitewash to the Ha-
wails, the final score being 7-0. The
Hawails managed to get runners on
third and second three times and once
filled the bases with only one down,
but the necessary hit could not be de-
livered. The pitcher of the Asahis
was in rare form, as the Hawaii's hit-
ters, who had pounded out thirteen
runs against their opponents the Sun-
day previous, were unable to connect
safely when a hit was needed.

One redeeming feature of the games
was the umpiring which seemed to be
satisfactory to all concerned. There
were no disputes and the two games
were pulled off in record time.

Every team in the league has now
been whitewashed at least once; the
Hawails being the last to suffer a de-
feat via the shut-out route. The stand-
ing of the teams for the second series
is now as follows:

	W	L	Pc.
Asahis	4	0	1,000
Stars	2	2	.500
Hawails	1	3	.250
Farmers	1	3	.250

In Bun Hee, star shortstop of the
Makee baseball team of the Kauai
Senior League, arrived from Honolulu
last Friday to spend the Christmas
vacation at his Kapaa home. He ex-
pects to participate in the coming
games between the Asahi baseball
team of Honolulu and the local picked
teams.

KOLOA DEVELOPING FAST TEAM

Koloa is rapidly developing a basket-
ball team in the new social hall, and
will soon be ready for match games
with all comers.

THE ASAHIS ARE COMING

John Fernandes, the promoter of
sports on Kauai, has made arrange-
ments to have the Asahi ball team, of
Honolulu, visit Kauai New Year's week
for a series of games.

The Asahi's first appearance will be
at Waipouli race track on New Year's
day, where they will meet the All
Kauai's. The game will start at 2
o'clock sharp.

Besides the baseball game, there will
be the usual New Year's races, that
are held over year by the Spaldings.

The Asahi is the champion Japanese
team, having cleaned up all comers
on Oahu, Maui and Hawaii, but it re-
mains to be seen if they can turn the
trick on Kauai.

The Asahis intend to visit Japan
next year and are watching the work
of the different Japanese players on
their tours, with a view of signing on
the most promising material.

The lineup for the New Year's game
will be as follows:

All-Kauai's
Nobuchi, c; Mitsu, p; Antone Per-
reira, 1st; John Spalding, 2nd; U. Bun
Hee, ss; Hopli, 3rd; King, rf; M. Per-
reira, cf; F. Fernandez, lf; Akita,
Morita and Bob Okuda, subs.

Asahis
Kurasaki, Yamaguchi, Murokami,
Komenaka, Okino, Misheda, Iwata,
Tokuda, Nakamura, Yoshikawa, Mori-
yama and Zenimura.

On Saturday, January 3rd, at 2 o'-
clock at Lihue Park the Asahis will
meet a team composed of Kauai's best
Japanese players. This should be a
good game, and may give some of the
local boys a chance to prove them-
selves good enough to sign on for the
trip to Japan. The local lineup will
be as follows:

All-Kauai Japanese
Nobuchi, c; Mitsu, p; Okuda, 1st;
Akita, 2nd; Tsunehiro, ss; Watase,
3rd; Watase, cf; Morita, rf; Kinj, lf;
Doi, Tai, Shirai, subs.

A Double Header

On Sunday, January 4th, there will
be two games at Waipouli race track.

The first game will start at 10 o'clock
in the morning when the Asahis will
meet the P. A. C.

At 2 o'clock the Lihue's, holders of
the 1919 Island championship, will
cross bats with the visitors. This will
be the big game of the series, and
should draw a record attendance.

A general admission of 25 cents, and
50 cents for automobiles will be charg-
ed to defray expenses.

The local lineups for the games will
be:

Portuguese Athletic Club

John Gabriel, c; John Robbello, p;
Manuel Andrade, p; Antone Perreira,
1st; John Perreira, 2nd; August Silva,
3rd; Manuel Medeiros, ss; Joe Medei-
ros, rf; Jardon Medeiros, cf; Manuel
Brun, lf; Gabriel Medeiros, sub.

Lihue

Hirata and Ellis, c; M. Perreira, p;
Okuda, 1st; E. Lovell, 2nd; In Bun
Hee, ss; Akita, 3rd; Mitsu, cf; Doi,
rf; F. eFrnandez, lf; Joe Teixeira, rf;
Tai, Fred eFrnandez, subs.

BASEBALL ON CHRISTMAS DAY

There will be an exhibition game of
baseball at 2 o'clock on Christmas day
at Lihue Park between the Lihue first
team, champions of Kauai, and the
P. A. Cs, a team composed of the best
Portuguese players on the island.

The Portuguese boys have a hunch
they can humble the champs, but Capt.
John Fernandes, of the Lihues, just
smiles and says, "Wait and see."

**Makaweli and Camp 4
to Decide Championship**

Makaweli and Camp 4, of Makaweli
Plantation will cross bats for the first
clash in the plantation championship
series this Sunday. Makaweli came
through the season in her league with
a clear record, winning every game,
while Camp 4 lost but one game.

Sunday's game will be played on the
Camp 4 diamond, which recently was
put into perfect shape, and the follow-
ing game on Makaweli diamond. There
will undoubtedly be a large crowd to
witness the "fray" as it has been look-
ed forward to with a great deal of
interest on the plantation.

New Camp took the lead in the
(Continued on page 7)

**When in Honolulu
stop at
The Blaisdell**
EUROPEAN PLAN

Running water in every room; rooms
singly or with baths; comfortable beds;
close to best restaurants and all car-
lines. Highest class service.
Centrally located in the theatre and shopping centers.

J. F. CHILD, Proprietor

**You Can't
Splash Water
Behind a
Pembroke
or under it either!**

And the rim is wide enough for a comfortable set!
The edge is nearer the floor so the kiddies can climb in and out
of it easily without danger of falling.
It's built into the floor and walls. No dirt or moisture can get
behind or underneath it.

Honolulu Iron Works Co.
Wholesale Distributors

Waimea Stables, Ltd.

The most famous Garage on Kauai. The near-
est place to get transportation to

The Barking Sands, Olokele Canyon,
Waimea Canyon, Kokee Camps,
Kukuilono Park, etc.

—and—
Do Business all over the Island of Kauai

Our Autos are comfortable, our Drivers are
Reliable and have been with us for years, and
know every inch of the country.

We Rent Ford Cars Without Drivers.

We have good Riding Horses, accustomed to the
work. We do Draying and Hauling by Trucks
all over the Island. We run the Stage Line
between Lihue and Kekaha three round trips
per week.

ALFRED GOMEZ, Manager.
Telephone 43 WAIMEA P. O. Box 71

Princess
de luxe Electric
IRONS

Specially priced during the Holidays at

\$5

Nickel-plated; guaranteed for 10 years. A handsome,
practical iron that any woman is proud to have and
use. A beautiful Christmas gift.

Lewers & Cooke, Ltd.
169-177 So. King Street HONOLULU

CALIFORNIA FEED CO
LIMITED.
Dealers in
HAY, GRAIN AND CHICKEN
SUPPLIES.
Sole Agents for
International Stock, Poultry Food
and other specialties. Arabic for
cooling Iron Roofs, Petaluma In-
cubators and Brooders.
KING'S SPECIAL CHICK FOOD
P. O. Box 452, Honolulu

HOTEL LIHUE
(The Fairview)
Twenty-two elegant rooms
In Main Building
Three Airy Cottages
Cuisine unexcelled in country
districts
W. H. Rice, Jr.,
Proprietor

"We have not studied
cost nor economy as
we should, either as
organizers of indus-
try, statesmen, or as
individuals."
—President Wilson.

But there is yet time
to start to save—and
that time is NOW.

Bishop & Company
Savings Department
WAIMEA BRANCH
KAUAI

Bargain Sale on Auto Tires.

Clean them away to make room for new
Shipment.
A saving from 15 per cent to 30 per cent for
two Weeks only.
Beginning Thursday the 4th. Take your choice
of any Tires in this Store during the week of
Dec. the 4th to 18th.

For Cash Only. No Reservations. No Tires can be Returned or Ex-
changed.

33x4 SS Kantslip Tread, Kelly Springfield, sell at net	\$35.85
32x4 SS U. S. Royal Cords, list \$52.10, sell at net	44.50
33x4 SS U. S. Royal Cords, list, 53.45, sell at net	45.70
34x4 SS U. S. Royal Cords, list 54.95, sell at net	46.70
35x4 1/2 SS U. S. Royal Cords, list 63.40, sell at net	54.20
35x5 SS U. S. Royal Cords, list 76.85, sell at net	65.70
37x5 SS U. S. Royal Cords, list 80.45, sell at net	68.80
32x3 1/2 SS U. S. Royal Cords, list 41.00, sell at net	43.60
30x3 Cl U. S. Chain Tread, list 17.05, sell at net	14.60
30x3 1/2 Cl U. S. Chain Tread, list 22.20, sell at net	19.00
30x3 Cl Batavia, list 17.07, sell at net	11.95
30x3 1/2 Cl Batavia, list 21.78, sell at net	15.25
31x4 SS Batavia, list 33.88, sell at net	23.70
32x3 1/2 SS Batavia, list 25.34, sell at net	17.75
32x4 SS Batavia, list 34.58, sell at net	24.20
30x3 Cl Keystone, list 17.68, sell at net	12.58
30x3 1/2 Cl Keystone, list 22.79, sell at net	15.95
33x4 SS Keystone, list 37.49, sell at net	36.35
30x3 Cl Mohawk Non-Skid, list 22.00, sell at net	19.80
30x3 1/2 Cl Mohawk Non-Skid, list 26.85, sell at net	24.15

Come early or Phone to 104 W
AKO STORE
Waimea

Practical Wisdom

Dr. W. W. Baldwin, of Maui, has recently published a little pamphlet on Tuberculosis which should be widely circulated and read all over the Islands. It would be especially helpful for use in the schools, and every child of intelligence should read it and assimilate the information contained therein.

More Common Than we Suppose
It seems that the disease is very much more common even than most people suppose. "We all, except the few who live in isolated regions, become infected with the disease during childhood, and this primary infection acts as a sort of vaccination and we are rendered practically immune against further outside infection." Thereafter the danger of infection comes mainly from the germs we already have within us, that we pick up in childhood, and that have been lying dormant in our systems for many years.

A very important fact in this connection is that an infection in babyhood does not act as a vaccination, but the disease passes immediately to the acute stage and results fatally. Between the ages of two and fourteen the disease generally takes a mild form, but after that period, say from 15 to 40, the disease is very virulent, and it is during this period that the dread disease does its most fatal work, and gathers in a harvest that aggregates one-third of all the deaths in the country from all causes.

Practical Lessons
In view of these facts there are two or three practical lessons that we may draw and emphasize most sharply.

Carefully Guard Infants
First, infants under two years must be most carefully guarded against infection, since if they are exposed they become infected very easily and are unable to throw off the disease. If any one in the house has tuberculosis, such infants are subjected to the gravest peril. Infants should not be taken to the movies, or to church, or any other public gathering. A dirty

home is always dangerous at any period of childhood, for the germs may lurk in the dust of a house in great numbers, and the child is always crawling about the floor.

After this early stage, the danger from infection in this way is not so great; and indeed it is actually desirable that a mild form of infection should be contracted, which will act as a sort of vaccination to immunize the patient.

Build up the Constitution
Second, for the prevention of the disease. In general, build up the constitution, make the body strong and healthy, and it will defend itself from the inroads of the disease. Exercise and fresh air are important means to this end. Proper housing conditions, with clean, not overcrowded houses, are vital. The removal of diseased tonsils and adenoids; the proper care of the teeth; these are important factors of the defense.

Proper food and Diet
But most important of all is proper food and diet, a community that has proper food and plenty of it, and properly cooked, has a low percentage of tuberculosis patients.

Now what is proper food, or a proper diet?

Two Very Vital Elements
A great deal of public attention has been called to this subject during the war and we have a much more intelligent understanding of it in consequence, but there are one or two aspects of the matter that have not been popularly grasped. There are certain factors which are vital to a proper diet, and these are essential. That everyone knows. And they must be taken in proper proportions. A "balanced ration" is very important. The Orientals live too much on rice; the Portuguese too much on flour; the Hawaiians too much on poi and sweet-potato. "But in recent years it has been discovered that there is something besides a balancing of the food that must be considered; there are two other food elements, whose chemical composition has not been determined yet, which are absolutely necessary to maintain life. These elements have received the strange names "water-soluble-B" and fat-soluble-A." The former is abundant in most foods, though it is badly lacking in some, for instance rice, hence the development of beri-beri in exclusive rice

enters. "Fat-soluble-A" on the contrary is comparatively rare in nature, and the scarcity of it does great harm.

Three Essential Elements
It is abundant, so far as we know, in only three kinds of food, namely in milk—and its products, butter, cheese, etc.—in eggs, and in greens—spinach, lettuce, etc.—and the most of this trio is milk!

Importance of Milk
The moral is that we must have milk, no matter what it costs. The dairyman must be encouraged to the end that every community may have an abundant supply of good milk. And they are an absolute necessity, very large factor of our living—larger than it has been heretofore with most people.

Use More Greens
In addition to milk we should use more greens than we do. Many people have had the idea that greens, salads etc. were a fad—were padding or fancy frills, whereas we know that they are an absolutely necessity. They are not only palatable and wholesome, they are vital and we can't afford to pass them by slightly. And we are particularly favored in these Islands in that they are always easily available and always in season. They should never be wanting on our tables.

Dinnerware From Open Stock

You can buy one piece of dinnerware at the same price it would cost in a 100 piece set. Thus with open stock dinnerware the problem of replacement is solved.

You can start set with a few pieces and then add to them from time to time as your needs remand or your purse permits.

Sample plates for selection sent at your expense

Fifty patterns to choose from at

W. W. Dimond & Co., Ltd
"The House of Housewares"
53-55 King Street Honolulu

Coming-- Wednesday Dec. 24th at the Tip Top
SPECIAL ATTRACTION
The Greatest Comedy Success of the Season "THE BETTER 'OLE"

TONIGHT
TIP TOP THEATRE

ROBERT WARWICK
Supported by Theodore Roberts and Wanda Hawley
in "Secret Service"

No dramatic play, written, spoken or screened has ever approached the romantic interest of "Secret Service" In it are love, suspense, action and surprise.

11th Chapter of PEARL WHITE
Weekly News---Up to Date

THURSDAY, DECEMBER 18

WILLIAM FOX PRESENTS

VIRGINIA PEARSON
—IN—
"THE LOVE AUCTION"

A Sensational Drama of Metropolitan High Life. A Picture That is Sure to please all.

10th Episode of "THE HAND OF VENGEANCE"
Weekly News---Up to Date

FRIDAY, DECEMBER 19

ELSIE FERGUSON
—IN—
"The Avalanche"

"If she could only win, she could replace the money and he would never know. Frantically she plays and—" In THE AVALANCHE there's a gripping story filled with drama. All the regal splendor of Elsie Ferguson's charm will be found in this tale of the lure of gambling which almost conquered a woman's soul.

Third Chapter of "THE TIGER'S TRAIL" with Ruth Roland
Pathe Weekly - Up-to-date

SATURDAY, DECEMBER 20

Dorothy Gish in 'Nugget Nell'

A burlesque travesty on the Wild and Movie West. ...when Nell wanted "glad rags" she went right out and took 'em with the persuasion of a threatening muzzler. And yet when she was all dolled up "the city chap remained unimpressed." But Nell battles on. When all the perils are overcome—well its one real fine picture and to tell you about it would spoil it. See it!

15th Chapter The of "The Brass Bullet"
Weekly News Up-To-Date

SUNDAY, DECEMBER 21

EDDIE POLO in
"The Lure of the Circus"

THE GREATEST SERIAL FILM EVER SHOWN
In 18 thrilling Weekly Episodes

Daring, Dashing, Fearless Eddie Polo—the Premier Thrill Maker of the Universe—has surpassed his own amazing record as a chance-taker in this supreme Serial Production. Never in the history of the people's entertainment have so many hairbreadth and death-defying "stunts" been assembled in a single picture. See the fascinating drama of love and life, staged under the flaming banners of the spreading Big Tops.

ALSO

A Selected Feature Picture
Weekly News Up To Date

MAXWELL

5 Passenger Touring Car
3 Passenger Roadster

Have Arrived at Lihue, Kauai
for immediate delivery

--- PRICES ---

Touring - \$1275
Roadster - 1275
1 to 1 1/2 ton Truck Chassis \$1625 at
Honolulu

Demonstration by appointment
See Mr. Kephart at Lihue Hotel

The Pond Company Ltd.

Automobile Products
Honolulu, T. H.

The Wailua Homesteaders

The lucky ones in the recent Wailua homestead drawing are out daily looking over the land, and making their tentative selections; and in their minds have chosen the best lots perhaps many times over. The privilege of taking two of these lots at once of course cuts the number of these lucky

ones down by half, so that there are not going to be more than eight or ten of them at best.

The competitive selection is to be made on the 23rd of December, after which they will have 90 days to get onto the land for residence and begin actual cultivation.

This will take some "hustling" and will mean that there will be a great scramble to get building material,

fencing material, and other equipment, onto the ground and into place. Later there will be another great scramble to get the clearing, etc., done in time to get the crop in before too late.

All this is going to take a good deal of enterprise, energy and executive; and also a good deal of capital; homesteading isn't going to be all sunshine and roses by any means. But there will be generous returns for the man who sees it through successfully.

THE GARDEN ISLAND

Issued Every Tuesday

KENNETH C. HOPPER - Managing Editor
TUESDAY - DEC. 16

DON'T FORGET KAUAI

We learn from the Honolulu papers that a big advertising campaign is being launched on the Mainland with a view to interesting the traveling public in these Islands. To this end ads will be carried in 619 of the daily papers and in 24 leading magazines of America. The estimated cost of the campaign is about \$260,000.

We trust that Kauai will not be forgotten on this program.

We have no living volcano; we have no amazing Haleakala; we have no "On the Beach at Waikiki;" but we have the Garden Island, the daintiest, prettiest, most compact, most varied and most fertile Island of the group.

We have more scenery to the square inch, and better roads to see it by, than any of our neighbors—and the interim spaces between sights are shorter and less monotonous.

The beauties of Kauai can be seen as in a single reel, in a day—a continuous vision of delight—or weeks may be devoted to them with ever increasing pleasure and satisfaction. People have come for a few days of fleeting visit and have stayed for years.

It is not for nothing that we have won and held the title, "The Garden Island;" and it has not been the advertising afterthought of some wide-awake promotion committee to beguile people into coming here; it has been our conceded right for half a century or more; and never so richly deserved as now.

Our places of interest, natural and artificial, are both more notable and more accessible than ever before. Kauai was the pearl of the Pacific when Cook saw it first, nearly 150 years ago—it is much more the pearl of the Pacific as the tourist sees it today.

We cast no stones at Honolulu or Hilo; we don't berate the Beach at Waikiki or the Coral Gardens at Kaneohe; we don't decry Haleakala or Iao Valley or the Ditch Trail—they are all right; but any tourist who goes home to any other place on earth without seeing Kauai, the Garden Island, has missed the cream of his opportunities and made a serious mistake that he should not fail to remedy the very next season.

Meanwhile we are waiting for him with everything in order and at its best.

WHERE WE WILL FALL DOWN

No considerable share of any possible benefit from the campaign of advertising the Islands abroad is ever likely to accrue to Kauai until we have better steamer service. The tourists may flock to Honolulu in ever increasing numbers and find their way to Hawaii and Maui, but they will turn a deaf and declining ear to the attractions and inducements of Kauai. "No thank you! I have heard about that terrible sea trip in a dinky little steamer; none of that for me!" And only occasionally one of the very hardy variety will make the trip.

We do not wish to make any invidious criticism of the Inter-Island as to its equipment, and passenger service; it is a strictly business enterprise with no philanthropic weakness that we have been able to discover; it will reply that there is no present justification for a better service, and no money in it. And that being the case we know what we will have to expect. So long as the Inter-Island is run along these canny, conservative, old foggy lines, we will lose the tourist, and they will lose the trade. We can advertise until the heavens fall, and we will get no return therefrom. The tourist will go to Hilo and Maui and forget that there is any such place as the Garden Island.

If we are to get any adequate share of that wealthy tourist travel, we must have a very much better steamer service.

CHILDREN SUFFER FROM SHORTAGE OF WATER

The public school at Honokaa is in a very unsanitary condition, according to the report of Chief-Sanitary Inspector Clifford Charlock. Many of the children are suffering from sores caused by dirt, and the shortage of water has prevented some of them from bathing for several weeks. The health officials are endeavoring to exterminate all of the many dogs of the district although it is stated that the shortage of water is the real cause of the outbreak of sores.—Star-Bulletin.

The Kuna Planters, Ewart, Baldwin, Alexander, Cropp, Moler, Wolters and Larsen returned from the Planter's meeting by the Mikahala arriving Saturday morning.

There was a big round of hypothetical gambles in the district court yesterday morning, but the judge found that there was insufficient evidence to make a case and dismissed the crowd.

Christmas Gifts
FROM
Wall & Dougherty Ltd.

Jewelers and Silversmiths
HONOLULU

Diamonds' Jewelry, Watches
Stationery, Silverware

Mail orders given prompt attention

Goods sent on memorandum to reliable parties

Let us reconstruct and repair your jewelry

Order It By Mail!

Our MAIL ORDER DEPARTMENT is exceptionally well equipped to handle all your Drug and Toilet wants thoroughly and at once.

We will pay postage on all orders of 50¢ and over, except the following:

Mineral Waters, Baby Foods, Glassware and articles of unusual weight and small value.

Non-Mailable: Alcohol, Strychnine, Rat poisons, Iodine, Ant poison, Mercury Antiseptic Tablets, Lysol, Carbolic Acid, Gasoline, Turpentine, Benzine and all other poisonous or inflammable articles.

If your order is very heavy or contains much liquid, we suggest that you have it sent by freight.

Benson, Smith & Co., Ltd.
"Service Every Second"

The Rexal Store Box 426 Honolulu

TERRITORIAL MESSENGER SERVICE

TAKES ORDERS FOR ALL KINDS OF

Dry Cleaning and Laundry Work

SEND BY PARCEL POST TO

1112 UNION ST. HONOLULU

Send your Gowns to the Best Cleansers in the Islands

Expert operators --- Prompt Service

FRENCH LAUNDRY

J. ABADIE, Prop. Honolulu.

ELEELE STORE

J. I. SILVA, Prop.

ALWAYS LEADS IN LOWEST PRICES ON

Dry Goods, Boots and Shoes,
Mens Furnishings, Cigars and
Tobacco, Notions of all kinds.

MAIN STORE, ELEELE, PHONE 72 W. BRANCH, STORE KALAHEO HOMESTEAD

Read the Garden Island

Write us for
1920 Catalogue of

Kodaks
Brownies
Premos
and Supplies

Honolulu Photo Supply Co.

Everything Photographic
KODAKS - FILMS - FINISHING - FRAMING
1059 Fort St. Honolulu

We Always Recommend

FEDERAL

Double-Cable-Base

TIRES

A complete stock of Rugged and Plain
Treads in all styles and sizes always on hand

McBRYDE STORE

AGENTS FOR KAUAI

Theo. H. Davies & Co., Ltd.
HONOLULU and HILO

Sugar Factors and Commission Merchants

IMPORTERS OF GENERAL MERCHANDISE

GENERAL HARDWARE

Builders' Hardware	Crockery	Glassware	Silverware
Sporting Goods	Fishing Tackle	Firearms	Ammunition
Safes	Refrigerators	Spark Plugs	Flashlights
Paints	Varnishes	Brushes	Oils
Harness	Saddlery	Roofing	Trunks
	etc.		Suit Cases

GROCERIES

Fancy and Staple Lines, Feed, etc.

DRY GOODS

Shoes Toilet Supplies Stationery etc. etc.

INSURANCE AGENTS

Writers of Fire, Marine, Compensation, Automobile and Miscellaneous Insurance Policies.

AGENTS FOR

Canadian-Australian Royal Mail Steamship Line

Upon application information will be cheerfully furnished in regard to any of our lines in which you may be interested.

Dealers in General Merchandise

American Factors Paints
AmFac Red Label Coffee
Yale Locks & Hardware



Our aim is to serve you efficiently in financial matters of every description.

We have well equipped departments at your service for correspondence or consultation.

OUR COMPLETE TRUST SERVICE is at your service

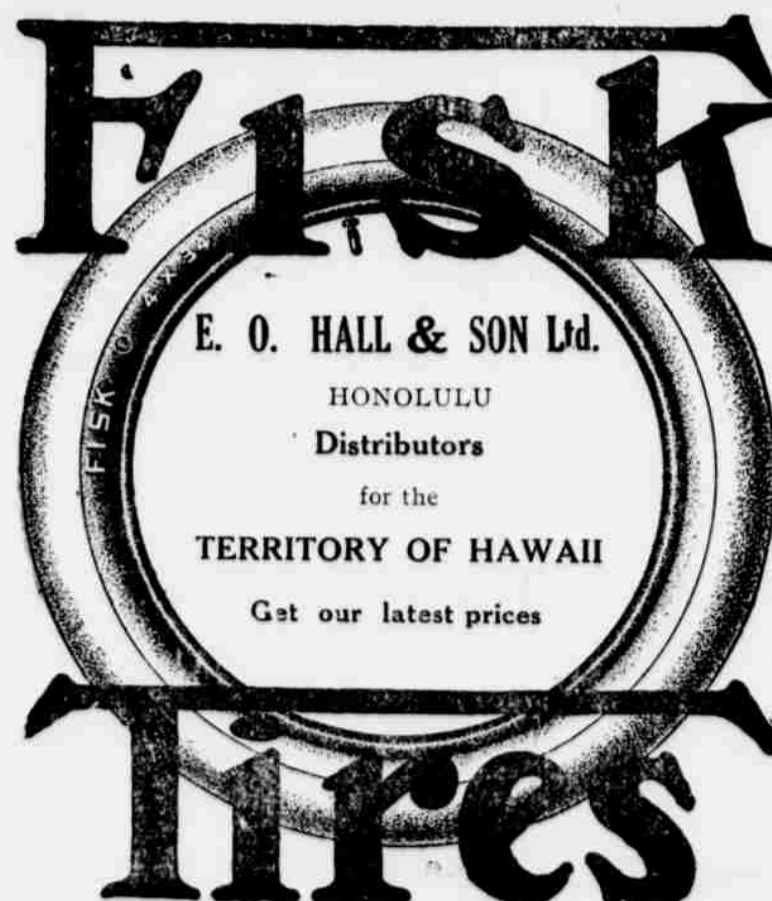
Henry Waterhouse Trust Co., Ltd.
Honolulu

KAPAIA GARAGE

Automobile Repairing and Machine Work

STORAGE BATTERIES REPAIRED AND RECHARGED
VULCANIZING

Telephone 258 L P. O. Box 236



IN THE CIRCUIT COURT OF THE FIFTH JUDICIAL CIRCUIT, TERRITORY OF HAWAII
JANUARY TERM, 1919.

THE TERRITORY OF HAWAII BY LYMAN H. BIGELOW, SUPERINTENDENT OF PUBLIC WORKS, Plaintiff & Petitioner

v.
HENRY WATERHOUSE TRUST COMPANY, LIMITED, TRUSTEES UNDER THE WILL AND OF THE ESTATE OF KALEIPUA KANOA, LIHUE PLANTATION CO., LTD., G. N. WILCOX, MRS. ELIZA HOLT, S. K. KAE0, JOHN DOE, MARY DOE, AND RICHARD ROE, UNKNOWN OWNERS AND CLAIMANTS.

Defendants & Respondents.
TERM SUMMONS

THE TERRITORY OF HAWAII TO THE HIGH SHERIFF OF THE TERRITORY OF HAWAII, OR HIS DEPUTY, THE SHERIFF OF THE COUNTY OF KAUI, OR HIS DEPUTY.

You are commanded to summon Henry Waterhouse Trust Company, Limited, Trustees under the Will and of the Estate of Kaleipua Kanoa, Lihue Plantation Co., Ltd., G. N. Wilcox, Mrs. Eliza Holt, S. K. Kaeo, John Doe, Mary Doe, and Richard Roe, unknown owners and claimants, defendants and respondents, in case they shall file a written answer within twenty days after service hereof, to be and appear before the said Circuit Court at the term thereof pending, immediately after the expiration of twenty (20) days after service hereof. PROVIDED, HOWEVER, if no term be pending at such time, then to be and appear before the said Circuit Court at the next succeeding term thereof, to wit, the January 1920 term to be holden at Lihue, County of Kauai in the second Wednesday of January next at ten o'clock A. M., to show cause why the claim of the Territory of Hawaii, by Lyman H. Bigelow, Superintendent of Public Works, Plaintiff and Petitioner, should not be awarded to it pursuant to the tenor of this annexed complaint, and have you then and there this writ with a full return of your proceedings thereon.

WITNESS, the Honorable Presiding Judge of the Circuit Court of the Fifth Judicial Circuit, at Lihue aforesaid, this 8th day of September, A. D. 1919.

(Sgd.) J. A. THOMPSON,
Clerk Supreme Court Territory of Hawaii, and Ex Officio Clerk Circuit Court 5th Circuit.
COUNTY OF KAUI,

ss.
TERRITORY OF HAWAII }
I, JOSEPH ANDRE SOUSA, Clerk of the Circuit Court of the Fifth Judicial Circuit, Territory of Hawaii, do hereby certify that the foregoing is a full, true, and correct copy of the original summons in the case of the TERRITORY OF HAWAII v. HENRY WATERHOUSE TRUST COMPANY, LTD., et al, as the same appears of record and on file in the office of the clerk of said Court.

I further certify that the petition herein prays the condemnation for use for public rights-of-way and warehouse sites for the Nawiliwili Harbor projects, of the following described lands and its appurtenances situate at Nawiliwili, Island and County of Kauai, Territory of Hawaii, to wit:

"Beginning at a + cut in a large boulder at Low Water mark, near "Carter's Point", the coordinates of said point of beginning referred to the Government Triangulation Station "Nawiliwili" being 4197.3 feet South and 2105.6 feet East, and running thence by true azimuths:

1. 81° 27' 4147.0 feet to a rock marked by a + and pile of stones. (From this point the triangulation Station "Nawiliwili" bears N. 22° 29' 30" E)
2. 156° 50' 2031.0 feet, crossing the Huleia river to a concrete post marking the Southeast corner of the Kanihewa Reservation.
3. 238° 31' 145.8 feet to a peg on the Northwest side of main road.
4. 205° 29' 503.0 feet along the West side of road to bend in fence at gateway to Kaiwi's.
5. 253° 18' 985.9 feet.
6. 214° 15' 201.6 feet along the upper edge of pali
7. 243° 40' 30" 299.7 feet along the upper edge of pali
8. 236° 13' 412.6 feet along the upper edge of pali
9. 226° 29' 30" 206.8 feet along the upper edge of pali
10. 208° 13' 391.3 feet to bend in

11. 219° 47' 918.4 feet to South corner of Kaeo's kuleana (L.C.A. 5415:3)
12. 231° 18' 30" 217.8 feet along Kaeo's seawall.
13. 199° 32' 257.5 feet to an iron bolt marking the Southwest corner of the Lihue Plantation's wharf lot.
14. 217° 17' 30" 110.0 feet.
15. 313° 17' 30" 21.3 feet along remainder of said lot.
16. 10° 20' 121.0 feet along remainder of said lot.
17. 307° 17' 30" 94.0 feet along remainder of said lot to low water mark
18. 50° 04' 260.2 feet along low water mark.
19. 51° 18' 30" 217.8 feet along low water mark.
20. 30° 47' 87.7 feet along low water mark.
21. 31° 06' 284.8 feet along low water mark.
22. 40° 45' 50.0 feet along edge of coral ledge at low water mark. (At 184 feet this line crosses over a concrete pier.)
23. 34° 12' 30" 125.4 feet along edge of coral ledge at low water mark.
24. 25° 22' 144.5 feet along edge of coral ledge at low water mark.
25. 4° 49' 104.8 feet along the shore line at low water mark.
26. 45° 02' 140.4 feet along the shore line at low water mark.
27. 65° 45' 140.7 feet along the shore line at low water mark.
28. 60° 21' 691.0 feet along the shore line at low water mark.
29. 38° 53' 30" 159.4 feet along the shore line at low water mark.
30. 29° 00' 234.9 feet along the shore line at low water mark.
31. 97° 21' 227.0 feet along the shore line at low water mark.
32. 65° 17' 117.6 feet along the shore line at low water mark.
33. 69° 10' 30" 547.2 feet along the shore line at low water mark.
34. 26° 45' 121.7 feet along the shore line at low water mark.
35. 355° 23' 291.8 feet along the shore line at low water mark.
36. 333° 42' 1125.5 feet along the shore line at low water mark.
37. 327° 17' 331.0 feet along the shore line at low water mark.
38. 298° 04' 30" 324.0 feet along the shore line at low water mark.
39. 275° 50' 462.4 feet along the shore line at low water mark.
40. 267° 40' 30" 606.2 feet along the shore line at low water mark.
41. 260° 52' 809.5 feet along the shore line at low water mark.
42. 250° 53' 30" 223.0 feet along the shore line at low water mark.
43. 267° 43' 30" 480.8 feet along the shore line at low water mark.
44. 239° 28' 146.9 feet along the shore line at low water mark.
45. 267° 31' 516.4 feet along the shore line at low water mark.
46. 276° 30' 172.2 feet along the shore line at low water mark.
47. 291° 03' 230.8 feet along the shore line at low water mark

All persons having any interest in or claim to the land and its appurtenances sought to be condemned, are hereby warned that unless they appear at the said Circuit Court at Lihue, Island and County of Kauai, Territory of Hawaii, on or before the 16th day of January, A. D. 1920, they will be forever barred from contesting said petition or any judgment thereon.
IN WITNESS WHEREOF, I have hereunto set my hand and affixed the seal of said Circuit Court this 13th day of September, A. D. 1919.
SEAL
(Sgd.) JOSEPH ANDRE SOUSA, Clerk.

NOTICE OF SALE OF GOVERNMENT LEASES

At 10 o'clock, A.M., Friday, January 9th, 1920, at the front door of the Court House, Lihue, Kauai, there will be sold at public auction under Section 380 of the Revised Laws of 1915, general leases to the following described Government Lands:

WAIMEA VALLEY LOTS:

Lot No.	Area	Upset Rental Per Annum
14	5.14 Acres	\$103.00
33	36260 Square Feet	17.00
25	12870 "	6.00
28	24430 "	11.00
56	15.6 Acres	312.00
59	4.2 "	84.00
62	3.7 "	74.00
60	7.6 "	114.00
77	2.9 "	30.00
61	7.5 "	113.00
63	17.1 "	257.00
71	5.9 "	89.00
64	9.5 "	143.00
65	31.0 "	465.00
67	19.1 "	287.00
68	11.2 "	168.00
69	7.9 "	119.00
70	4.6 "	69.00

Term of leases, 10 years from January 10th, 1920.

Rentals payable semi-annually in advance.

The purchasers shall pay the costs of advertising and other charges in connection with the preparation of the leases.

For maps and further information, apply at the office of the sub agent, Mr. G. W. Sahr, Lihue, Kauai, or at the office of the Commissioner of Public Lands, Capitol Building, Honolulu, T. H.

C. T. BAILEY,
Commissioner of Public Lands.

Dated at Honolulu, December 3rd, 1919.
Dec. 9, 16, 23, 30, Jan. 5.

NOTICE OF SALE OF GOVERNMENT LEASES

At 10 o'clock, A.M., Friday, January 9th, 1920, at the front door of the Court House, Lihue, Kauai, there will be sold at public auction under Section 380 of the Revised Laws of 1915, general leases to the following described Government Lands:

HANAPEPE VALLEY LOTS:

Lot No.	Area (Acres)	Upset Rental Per Annum
1	22.1	\$442.00
2	10.7	214.00
3	6.7	134.00
4	1.1	22.00
5	3.0	60.00
6	1.1	22.00
7	4.1	82.00
8	2.5	50.00
9	7.8	156.00
10	13.1	262.00
11	2.0	40.00
12	6.6	132.00
13	6.0	120.00
14	1.0	20.00
15	0.7	14.00
16	0.4	8.00
17	1.0	20.00
18	1.0	20.00
19	1.7	34.00
20	3.9	78.00
21	4.5	90.00
22	5.9	118.00
23	2.6	52.00
24	6.5	130.00
25	4.3	86.00
26	8.1	162.00
27	9.3	186.00
28	1.7	34.00
29	1.6	32.00
30	2.2	44.00
31	2.0	40.00
32	3.9	78.00
33	3.4	68.00
34	3.1	62.00
35	1.2	24.00
36	2.6	52.00
37	8.7	174.00
38	3.5	70.00
39	4.0	80.00
40	1.6	32.00
41	1.7	34.00
42	4.7	94.00
43	2.7	54.00
44	1.1	22.00
45	3.7	74.00
46	13.8	276.00
47	2.1	42.00
48	0.5	10.00
49	6.6	132.00
50	4.2	84.00
51	2.0	40.00
52	0.2	5.00

Term of leases, 10 years from January 10th, 1920.

Rentals payable semi-annually in advance.

The purchasers shall pay the costs of advertising and other charges in connection with the preparation of the leases.

For maps and further information, apply at the office of the sub agent, Mr. G. W. Sahr, Lihue, Kauai, or at the office of the Commissioner of Public Lands, Capitol Building, Honolulu, T. H.

C. T. BAILEY,
Commissioner of Public Lands.

Dated at Honolulu, December 3rd, 1919.
Dec. 9, 16, 23, 30, Jan. 5.

Done In School Shops

Mr. E. Allen Creevey, Industrial Supervisor, states that the Kauai school shops are planning to take up mechanical drawing with their manual work. This will be a most popular and profitable subject with their boys; it is an almost indispensable accomplishment in many occupations.

Mechanical drawing is founded upon the science of geometry which as applied to drawing becomes a delightful and interesting, not the difficult subject the beginner fears. For instance, a homesteader wishes to know how many gallons of water will fill a tank of known diameter and height, or how much material will be needed to make a food safe to fit a certain space in the kitchen. The examples illustrate the practical application of geometry, a subject no less important to the mechanic than the farmer, but a thousand times more interesting than the usual text book.

The plan is to work the subject into the shopwork gradually, so that eventually the boys will complete drawings of their projects before the actual work begins.

This will enable the boys after leaving school to make some of their own furniture from plans and sketches given in magazines, and without an instructor to guide them from start to finish.

"Our school shops are doing a greater work than the average layman knows about," says Mr. Creevey. "An example of it has been given in the exhibit of Lihue school shop at the Lihue Store. The boys have taken old, unsightly furniture, and after removing the dirt, cracked and discolored finish, have refinished the articles in a very creditable fashion."

"Besides making a great variety of pieces of furniture, the shop boys have been taking care of a great many of the repairs needed around the school buildings. This is not only a saving for the County, but is valuable training for the boys, enabling them to handle most of the ordinary repairs around the home."

"If you want some furniture made see the principal or vocational instructor of your nearest school. If they have more work than they can handle, communicate with Mr. Creevey at Elelee, and he will be glad to assist you."

"FRENCH'S"

"Poultry Mustard"
is a great

HEALTH AND EGG PRODUCER. IT WILL ALSO GREATLY INCREASE THE FERTILITY OF YOUR HATCHING EGGS AND PRODUCE YOU STRONG-ER AND BETTER CHICKS.

IN 5 LB AND 10 LB BOXES, ALSO 25 LB PAILS.

UNION FEED CO., LTD.

HONOLULU, T. H.

Good oil is cheaper than parts

"A quart of oil"—any oil—is better than no lubrication.

But why not ask for Zerolene and know that you are getting Correct Lubrication?

Zerolene is correctly refined from selected California crude oil. It keeps its lubricating body at cylinder heat, holds compression, gives perfect protection to the moving parts and deposits least carbon. It is the product of the combined resources, experience and equipment of the Standard Oil Company.

Get a Correct Lubrication Chart for your car. At your dealer's or our nearest station.

STANDARD OIL COMPANY
(California)

A grade for each type of engine



USE ROYAL CORD TIRES For SERVICE



The Von Hamm-Young Co.

Honolulu :: Hilo :: Wailuku

FINEST RENT CARS ON KAUAI

Big, New and Comfortable

Our Cole Eights make regular trips up Waimea Canyon. Let us take you up.

We make a specialty of the
EXPRESS BUSINESS

Light and Heavy Hauling

Give us your Baggage Checks and Bills of Lading and we will do the rest

Ford Cars Without Drivers Rented by the Day.

We are at Your Service Day or Night

GOMEZ GARAGE

Nawiliwili 492 L - PHONES - Hanapepe 237W



Copyright Hart Schaffner & Marx

Silva's Toggery, Honolulu.

For high-speed, heavy duty machines you will find

MAGNOLIA METAL

Standard Babbitt of the World

will show lowest co-efficient of friction and longest wearing qualities under heavy pressure.

Used in thousands of plants where speeds are high and duty severe, running as high as 5000 r. p. m. It is not uncommon for a Magnolia-lined bearing to run 20 years and longer.

WRITE US FOR FULL PARTICULARS.

Catton, Neill & Co., Ltd.

Queen and Alakea Sts.

Honolulu

The last word in

Novelty Low Shoes

They are just received from the factory and are the prettiest shoes that we have seen for a long time. Made with turn soles, long narrow toes and slender French heels.

Buckles of different designs to suit the individual taste.

Black Satin.....	\$8.50 to \$12.50
White Satin.....	10.00
Silver Cloth.....	12.50
White Kid.....	12.50 to 15.00
Black Suede.....	15.00

Manufacturers' Shoe Store

1051 Fort Street,

Honolulu, T. H.

Meeting of the Supervisors

The Board of Supervisors of the County of Kauai held its regular business meeting for the purpose of preparing a budget or estimate of expenditures for salaries and pay rolls and for public improvements for the next ensuing fiscal period or the year 1920, also for the transaction of other business that came before it on Monday, December 15, 1919, at 9:30 o'clock a.m. Present were H. D. Wishard, chairman; T. Brandt, W. D. McBryde and J. F. Bettencourt Jr. Mr. Menefoglio did not attend the meeting on account of illness.

A request (P1753) from J. M. Lydgate, secretary of the Board of Child Welfare for the County of Kauai, for an appropriation of Eight Hundred Dollars (\$800.00) to be spent by said Board in assisting indigent families under Act 129, Session Laws of 1919, was received and placed on file.

The Board after having carefully considered the matter, upon the motion of Mr. Brandt, seconded by Mr. McBryde, approved the following estimate of expenditures for the year 1920, viz:

Salary Co. Rd. Supervisor	\$ 3,600.00
Pay of Police:	
Specials	3,960.00
Waimea	4,620.00
Koloa	2,820.00
Lihue	3,720.00
Kawaihau	3,720.00
Hanalei	2,820.00
Coroner's Inquest	1,500.00
County Jail	11,000.00
County Bldg., Janitor Service	400.00
County Lot & Bldg	1,500.00
Discount & Interest	750.00
District Courts & Jails:	
Waimea	500.00
Koloa	100.00
Lihue	10.00
Kawaihau	200.00
Hanalei	100.00
Expenses, Auditing Co. Books	200.00
Expenses of Election	1,000.00
Expenses of Witnesses	1,000.00
Furniture & Office Supplies	150.00
Six Hospitals	12,000.00
Incidentals:	
Attorney	100.00
Auditor	1,200.00
Clerk	1,200.00
Sheriff	2,400.00
Supervisors	100.00
Treasurer	700.00
Co. Road Supervisor	2,660.00
License Collections	400.00
Lighting Pub. Grds. & Pks.	50.00
Mileage, Supervisors	600.00
Official Bond Premiums	100.00
Registration of Autos	1,080.00
Stationery	200.00
Support of Prisoners	3,500.00
Water Works:	
Kekaha	300.00
Waimea	1,000.00
Kalaheo	1,000.00
Lawai	300.00
Omao	200.00
Koloa	1,000.00
Kapaa	1,000.00
Anahola	200.00
Weights & Measures	100.00
County Rd. Machinery	5,000.00
Roads & Bridges	100,500.00
Board of Child Welfare, Kauai	
County	1,600.00
Salaries	33,240.00
Expenses 5th Circuit Court	5,000.00
Law Books, 5th Circuit Court	500.00
Support Juvenile Court Dependents	100.00
Permanent Improvement Fund:	
Koloa: Resurf. Macad. Rds.	15,000.00
Port Allen Landing Rd.	4,000.00
Lihue: Resurf. Macad. Rds.	10,000.00
Nawiliwili Bridge	10,000.00
Kawaihau: Anahola Bdge.	15,000.00
Hanalei: New Bdges.	14,000.00
Koloa Water Wks.	5,000.00
Total	\$294,000.00

The following demands which were presented to the Board were ordered paid against the following appropriations by a unanimous vote, viz:

Niihau: Rds. & Bdges.	\$ 399.90
Rd. Tax Spec. Dep.	90.00
Lihue: Wailua Homesteads' Roads	187.20

Total 677.10
At 11:30 o'clock a.m. the meeting adjourned.

Rainfall for the Week

Week ending Sunday evening Dec. 14.	
Wainiha Intake	1.00
Power House	0.40
Hanalei	1.06
Kilauea	0.73
Kealia	1.25
Lihue	2.91
Koloa	5.10
McBryde	5.87
Makaweli	3.55
Kekaha	1.87

Miss Marie Payne has left with the Garden Island a number of excellent books to be sold at ridiculously low prices, among which is a set of Teachers' Cyclopaedia, in 8 volumes, and works of fiction by prominent authors. The books may be seen at this office.

Hawaiian Polished Woods

Worked into many useful novelties, on hand. A big assortment from which to select.

Kimonos

In various colors and designs.

Fancy Stationery and Books

TOYS

Shop Early

C. B. HOFGAARD & CO., LTD.

STA-STUK

Sticks and Stays Stuck

SELF-VULCANIZING

NO HEAT

NO CREEP

\$1.50

NO LEAK

Made in U. S. A.

For Auto and Motorcycle
Inner Tube and Casing Repairs

The Simplest and Most Efficient Puncture
Repair Kit on the Market

Kauai Trading Co.

KOLOA

Kauai Agents

Young People's Convention

Committee representing the churches, Y.M.C.A., Y.W.C.A. and young people's societies has been organized for the promotion of a big gathering on Saturday and Sunday, January 10 and 11 to be known as Kauai County Young People's Christian Convention. The theme of the convention will be the Christian Life and Service. A number of Honolulu's best leaders and speakers will be present. The program will include group meetings for the Boy Scouts, Girls' Reserve, older boys and young women; there will be one solid afternoon on Saturday devoted to athletic sports for all the delegates. Saturday night a banquet will be held in the armory and Sunday will be filled with devotional and inspirational meetings, closing with a mass meeting in the Tip Top theater. It is earnestly recommended that the good people of Kauai will take note of the date of this event and will be careful not to plan anything that will conflict but rather to give every possible assistance to insure its success.

The following are officers and chairmen of the general committee which is further subdivided into special committees on arrangements: County chairman, J. O. Warner; secretary and treasurer, Mabel Wilcox; vice-chairmen: Hanalei, Katherine Cook, Kilauea, D. W. Richardson, Hanamaulu, Louise Haslop, Lihue, Elsie Wilcox, Koloa, S. N. Ahn, Lawai, W. Kaulili, Anahola, Carrie Pauole, Kapaa, H. C. Barclay, Eleele, L. A. Walworth, Makaweli, E. L. Damkroger, Waimea, W. Wright, Kekaha, F. D. Hamada.

RUBBER STAMPS made at this office on Wednesdays and Saturdays.

JAS. F. MORGAN

Co. Ltd.

Stocks, Bonds,
Real Estate and Insurance

NO. 125-131 MERCHANT ST.
P. O. Box No 594 Honolulu

KAWAJHAU NOTES

Sunday movies seem to be a decided success here since the supervisors lifted the ban on Sunday pictures. The pictures shown on the Sabbath have been of the best variety and as a result, standing space at the local theatre is always at a premium on Sunday evenings.

News comes from the Kapaa school that the Misses Webb, Gagliardo, Scaten and Baldwin, new teachers from the Mainland, are planning to journey to Hilo and the Volcano during the Christmas vacation which starts on Saturday next. Other teachers whose homes are in Honolulu will content themselves with spending the holidays in town.

With the prospect of a bank being opened, and a large store erected by the American Factors, Ltd., in Kapaa very bright, this village promises to be one of the most important places on this island. However, we still lack one of the most necessary of modern conveniences—an electric light system. The last legislature granted a franchise to a local company which has since retired from business, the prospects of Kapaa residents getting an electric light system in the near future seems very remote.

Mr. T. B. Bush, Territorial surveyor, came from Honolulu last week to make a survey of the proposed right of way through the Kapaa homestead lands for the extension of the permanent lines of the Makee Sugar Company. This new line, when completed, will enable those homesteaders who have to pay for the cost of laying portable tracks needed in harvesting, according to the new contract recently drawn up, to cut this cost down to the minimum, as the new line will reach many places hitherto without permanent railroad connection.

W. S. Haxton, representing the Honolulu Star-Bulletin, is on Kauai in the interests of his paper. He spent two days here and business seemed to be good.

If you have anything to sell, or there is something you want, put a little notice in the Garden Island, and you will get results. It does not cost much.

SPORTS

(Continued from page 2)

Plantation League last Sunday by defeating Camp 4 by a score of 11 to 7. Standing of the Plantation League:

New Camp	5	4	1	800
Camp 4	6	4	2	666
Camp 2	5	3	1	600

This league is composed of second teams and not entered in the plantation championship series.

A FOOTBALL CHALLENGE

It has been understood by some of the football "has-beens" and a few "would-like-to-be" players on Makaweli plantation that Lihue Hi is boasting of having two teams in this great sport. Whether this is true or not, Makaweli would like to meet Lihue Hi in a little competition of this nature. True, no one has equipment for a real football battle, but some old clothes, mother's pillows for padding, and a little grit, and we can give Kauai Hi the time of her life.

How about it?

KAUAI HIGH ACCEPTS BASKET BALL CHALLENGE

Kauai High School has received a challenge to a basket ball game from Makaweli to be played at Makaweli on New Year's day. The challenge has been accepted and war is hereby declared. The time of the game will be 2:30 p.m.

JEWELERS

EVERYTHING IN THE SILVER AND GOLD LINE, RICH CUT GLASS AND ART GOODS

MERCHANDISE OF THE BEST QUALITY ONLY.

H.F. WICHMAN & CO., LD.

LEADING JEWELERS.

P. O. Box 342 Honolulu



KAUAI'S EMPORIUM

Christmas Suggestions

IN OUR

Hardware Department

Thermos and Vacuum Bottles and Fillers

In Nickel, Plain and Corrugated Pints and Quarts.

Electric Ware

COFFEE PERCOLATORS, CHAFING DISHES, GRILLS, HOT PLATES, WATER HEATERS, TOASTERS

DESK and TABLE LAMPS, FLASHLIGHTS

ALUMINUM and "PYREX" COMMODITIES and UTENSILS

Watches

ELGIN, CROWN, STANDARD and PERFECTION Gold, Gold Filled, Silver, Silveroid and Nickel WRIST WATCHES, COAT CHAINS, VEST CHAINS, FOBBS

"VICTOR" PHONOGRAPHS PHONOGRAPH RECORDS

MANICURE SETS SCISSOR SETS POCKET KNIVES "BOY SCOUT" POCKET KITS

Table Ware Knives

KNIVES, FORKS, SPOONS, (in sets and separate) "ROGERS" SETS WITH CHESTS CARVING SETS CARVING SHEARS BUTTER KNIVES FRUIT KNIVES SALAD FORKS BERRY SPOONS SUGAR TONGS

Safety Razors

"EVER-READY" "GILLETTE" "DURHAM DUPLEX" "Gillette" and "Ever-Ready" TRAVELING CASES HONES STROPS SHARPENERS EBONY and IVORY-HANDLED RAZORS SHAVING BRUSHES

Automobile

REPAIR KITS WRENCH SETS "KLAXON" HORNS WIND SHIELD MIRRORS SOCKET WRENCH SETS

Crockery

GLASSWARE LEMONADE and WATER SETS TUMBLERS

Trunks and Suit Cases

Furniture

CHAIRS HIGH CHAIRS ROCKING CHAIRS STEAMER CHAIRS DRESSERS CHIFFONIERS TABLES STANDS STOOLS —AND—

Wheel Toys

AUTOMOBILES CARTS "CHOO-CHOO" CARS "SAMMIES" CARS VELOCIPEDES WAGONS TRUCKS TRAILERS

Suggestions in our

Japanese Department

Kimonos

Crepe and Silk for Women and Children KIMONO PATTERNS in Silk and Cotton SILK BABY JACKETS SILK PETTICOATS SILK SASH SILK OBIS

PLACE CARDS PIN CUSHIONS CARD CASES HAND BAGS TABLE, PIANO and STAND COVERS SLIPPERS SCARFS

BASKETS MIRRORS LAMP SHADES TEA SETS GRASS RUGS CARVED TABLES JARDENIERES CUPS and SAUCERS FLOWER POTS

Lacquered

Glove and Handkerchief Boxes, Jewel Cases and Trays

TOYS

IN PROFUSION IMPORTED FROM JAPAN

LIHUE STORE

J. I. SILVA'S

ELEELE STORE

will be open every evening until 9 o'clock for your accommodation from Nov. 22 to Jan. 3rd.

We predict a rush during the **Holiday Season** and if you would avoid same we would advise you to shop early.

A complete line of goods is on display from which you can fill all your wants. A good stock of shoes for ladies, gents and children. Hats, Caps and Dress Goods to suit all tastes.

Hand Embroidered Centerpieces Worked in Colors

and other attractions too numerous to mention.

Come in and see, even if you do not buy.

We Want Your Business

Reliable mechanical attention to your car means more service from your car and less cost in its operation. Let us take care of your car. We have competent mechanics who know how and use only the best of materials.

We have the best equipped shop and largest stock of parts and accessories on the island. We want your business and we realize that satisfactory work and fair treatment are the best means of securing it and holding it.

Authorized Ford Dealers

"Maximum Service at Minimum Cost"

NAWILIWILI GARAGE, LTD.

Beautiful Things for Christmas

---now on display. Something suitable for every member of the family.

Come in and See

Makaweli Store

"TIDES OF FATE" AT MAKAWELI WAREHOUSE THEATRE

At the Makaweli "Warehouse" theatre next week will be seen "Tides of Fate," the latest World Picture. Miss Alexandra Carlisle, the famous stage beauty, is the star of this production and she is seen in the role of Fanny Lawson, a young girl who suffered much through being greatly sinned against. The role calls for great dramatic resourcefulness. Miss Carlisle plays the role in a truly memorable manner. Assisting her is a notable company of film favorites.

In addition to the feature there will be a comedy and weekly. These shows are given on Saturday and Wednesday nights free to the employees of Makaweli.

THE IMPERIAL ORCHESTRA

of seven musicians will accept engagements for dances and parties. Real music by real musicians. Rates reasonable. Address Box 104, Lihue. 4t

LOST

A Panama Hat at the Port Allen warehouse on the evening of the dance to the Brookdale Cadets. Finder please communicate with J. R. Oxberry, c/o C. B. Hofgaard & Co., Waimea.

FOR SALE

3 Singer Sewing Motors, each\$12.00
1 Pennsylvania 12 in. Lawn Mower 6.00
See H. T. BARCLAY, Kealia.

NOTICE

My wife, Ah Foon, having left my bed and board, I will not be responsible for any debts contracted by her in my name.

AH CHIN,
Eleele, Kauai

IN THE CIRCUIT COURT OF THE FIFTH CIRCUIT, TERRITORY OF HAWAII — AT CHAMBERS — IN PROBATE.

Probate No. 737

In the Matter of the Estate of Liang Yin Fook, otherwise known as David Nium Fook Leong, Deceased.

NOTICE TO CREDITORS

Notice is hereby given that Letters of Administration have been issued to BISHOP TRUST COMPANY, LIMITED, as Administrator of the Estate of LIANG YIN FOOK, otherwise known as DAVID NIUM FOOK LEONG, late of Waimea, County of Kauai, Territory of Hawaii, Deceased.

All creditors of the deceased, or of his estate, are hereby notified to present their claims, with proper vouchers, or duly authenticated copies thereof, even if the claim is secured by mortgage upon real estate, to the said BISHOP TRUST COMPANY, LIMITED, at its place of business, No. 924 Bethel Street, Honolulu, City and County of Honolulu, Territory of Hawaii, within six (6) months from the date of this notice, which is the date of the first publication hereof; otherwise such claims, if any, shall be forever barred.

And all persons indebted to the said estate are hereby notified to make payment to the said BISHOP TRUST COMPANY, LIMITED, at the above address.

Dated, Lihue, T. H., December 9th, A.D. 1919.

BISHOP TRUST COMPANY, LIMITED,

Administrator of the Estate of Liang Yin Fook, otherwise known as David Nium Fook Leong, Deceased.

Philip L. Rice,

Attorney for Administrator.

Dec. 9, 16, 23, 30, 1919; Jan. 6, 1920.

NOTICE

During the Month of December The Bank of Hawaii, Ltd. will be open on Monday and Friday evenings from 6 to 8.—Adv't.

Classified Advertisements

WANTED

Anyone having beef cattle, hogs, sheep, poultry, etc., for sale can dispose of same to the Kapaa Meat Market. Phone 525. 2-28.

Officer's Kit bag. Just the thing for camping out. Can be seen at this office. 1t.

FOUND

Sum of money. Owner can have same by calling at this office, proving ownership and paying for this advertisement.

IN THE CIRCUIT COURT OF THE FIFTH JUDICIAL CIRCUIT, TERRITORY OF HAWAII AT CHAMBERS—IN PROBATE

In the Matter of the Estate of Ramon Feleciano, Deceased.

Order of Notice of Hearing Petition for Administration

ON READING and Filing the Petition of Micaela C. Feleciano, of Kalaheo, Kauai, mother of said deceased, alleging that said Ramon Feleciano of said County of Kauai, died intestate at Honolulu, Oahu, on the 16th day of April, A. D. 1918, leaving property in the Hawaiian Islands necessary to be administered upon, and praying that Letters of Administration issue to a suitable person.

IT IS ORDERED that Friday, the 23rd day of January, A. D. 1920, at 9 o'clock A.M., be and hereby is appointed the time for hearing said Petition in the Court Room of this Court at Lihue, County of Kauai, at which time and place all persons concerned may appear and show cause, if any they have, why said Petition should not be granted.

Dated at Lihue, County of Kauai, T. H., November 19th, 1919. (SEAL) (Sgd.) LYLE A. DICKEY, Judge of the Circuit Court of the Fifth Circuit.

Attest:
(Sgd.) JOS. ANDRE SOUSA, Clerk of the Circuit Court of the Fifth Circuit.

E. K. AIU, Attorney for Petitioner. Nov. 25; Dec. 2, 9, 15.

NOTICE

Any one found shooting on any Grove Farm Plantation lands will be prosecuted to the full extent of the law. 1t.

G. N. WILCOX, Prop.

SWEATERS

Ready Made Clothing, Christmas Gifts, etc.

H. ICHINOSE

Koloa, Kauai :: :: Phone 271

CHANG HING KEE

Proprietor

LIHUE HARNESS SHOP

Back of Garden Island Office

Harness and Saddle Maker, Automobile Tops and General Repair Work.

Diamonds, Watches, Jewelry, Silverware, Stationery

DETOR & ELIE

Manufacturing Jewelers and Watchmakers

Platinum and Diamond Pieces Made to Order

Designs Furnished

Call for Memorandum Goods

HOTEL AND FORT STREETS
HONOLULU, T. H.

Koloa Plantation Store

Wholesale and Retail Groceries
Dry Goods of all Descriptions.
General Plantation Supplies.

Complete New Stock of Excelsior Diaries

for 1920

In all sizes, for office, shop and pocket use; cloth and morocco binding. Place your order early as they sell fast.

Hawaiian News Co., Ltd.
Bishop Street Honolulu

War Savings Stamps

Lihue Branch

Bank of Hawaii, Ltd.

Thrift Stamps