

With Maui's Girl Scouts

Kula
Rain and bad roads kept the Girl Scout director and the "eggbeater" from their regular visit to the Calla Lily troop on Wednesday. The following letter from one of these busy and helpful little scouts very creditably reports its own efforts and expresses its interest in the rest of us:

Waiakoa, P. O., Nov. 28, 1921
Dear Miss Seibert:
I am always glad when it comes to my turn to write. It always makes me feel bad when I don't see anything about our troop in the paper so I'm sending this to you. Our meeting was as usual. The patrols assembled very well and after a short drill, we held a short business meeting. During that time we practised on the Christmas carols while the principal accompanied us on the guitar.
When the meeting was over we played Virginia Reel. That was such fun. There was only time for a few other games as our captain had to go at four o'clock.
Come and see us when you can and bring news of the other troops.
Your little Scout,
LYDIA KAMAKAU.

Puukoli
A letter from Captain Shaw states that six girls have passed their tenderfoot tests and are anxiously awaiting the presentation of their pins. Good for you, girls! You are regular scouts now.

Haiku
The regular meeting of the Daisy troop met Monday afternoon with Capt. Parker, Lieut. Johnston and Miss Seibert. Much interest was shown in the exhibit board with the various scout insignia and badges. Next week will appear an account of the hike taken by nineteen of the scouts.

Paia
A joint meeting of Capt. Rosecran's troop was held at the school house Tuesday at 3 o'clock. Twelve of these scouts are to give the signalling and drilling demonstration next Monday at the Woman's Club, so much of the time was spent practising these activities.

Many of the Bougainvillea troop have started working for the Health badge. That is a wonderful badge to earn and is within reach of you all. Miss Seibert hopes many of the registered scouts will work for this badge right along with the second class tests.

Kahului
Miss DeKay, captain of the Rose-lani troop, met with seven scouts Tuesday at the Community Hall. Two new members are to be enrolled next week, so perhaps this troop may remain intact for awhile longer.
Signalling and drilling were practised and a short business meeting held.

Narcissus Troop Kahului
Only nine small girls compose this troop but they are such good little workers that they have asked them to give two demonstrations Monday at the Territorial Club. Gardner announces that she will have one or two of her girls ready for "attendances" next week.

Spreckelsville
The Carnation troop is always in full force. Many have already passed their test for signalling and are working on First Aid lessons under Lieut. Stuewe.
They are going to give a Christmas dance on the school program.
Captain Johnston has helped the scouts make their own signal flags but is in need of some 42-inch sticks on which to attach them. The manual training boys helped the Paia girls out.

Captains, attention! Please send in your "Personal Record" blanks. We want to check up by January 1st.

How many troops subscribe for the Girl Scout Magazine? The "American Girl" will give you news of girl scouts

BANK OF MAUI
Has my Savings Account



WHO HAS YOURS?

Theaters

"The Whistle"

Appearing in an entirely new type of starring vehicle, William S. Hart in "The Whistle" is the feature attraction at the theaters next week. Where most of his previous pictures have been western in character, this new film is based upon factory life in a New England community. "Bill" Hart plays the part of a mill foreman in a town which is dominated by the head of its one big factory. The human appeal and drama of the story serve to put it over with unmistakable emphasis. A tragedy enters the life of the foreman and changes the current of his existence. Hart engages in one of the most intense fist encounters of his career. There is no love story other than the love of a mother for her child, but this rather adds than detracts from the popular interest of the theme. In offering this feature to you we feel apart from the popularity of the star, it will receive a great reception and meet with your most enthusiastic praise.

"The Feud"

He's here again. Who? Why Tom Mix the boy that puts the act in action and believe me he is sure there in "The Feud" a picture so full of action with just enough sentiment in it to make it a little different from the usual run of Mix's pictures, but you can rest assured that you will get your share of thrills, so don't miss it.

"The Sporting Duchess"

Once each year sportsmen from all over the world gather at Epsom in Surrey, England, generally on the Wednesday before Whitsuntide, to attend the Derby races. Many plays have been written around these races the most famous of which is "The Sporting Duchess" the film version is taken from the mammoth spectacular production which had the greatest run at Drury Lane theater, London of any play of its kind. Alice Joyce plays the roll of the sporting Duchess, who stakes everything on the outcome of the race, her characterization is considered the best work of her career. Most of the race scenes were taken at New Orleans, and Derby Day is shown complete in every detail, the big race being complete from start to finish.

"The Lost Romance"

William de Mille's production "The Lost Romance" is a most pleasing picture, from the famous novel by Edward Knoblock. The honors are well divided in a splendid cast of whom Lois Wilson, Jack Holt and Conrad Nagel are well supported. It is a story of a husband and wife who were so busy making a home that they forgot to make love. Till the woman came to believe that life would be happier with the lover she once rejected. Come and see how the three of them face earth's greatest problem, and find the Lost Romance.

"Drifters"

The rest of the weeks program will be J. Warren Kerrigan in "Drifters" and Mary Miles Winter in "All Souls

Science Will Rival Aurora in the North

American explorers are fast introducing electric lights in the Arctic Regions and one would not be surprised to hear shortly of the Esquimaux enjoying this modern luxury in their huts, according to the prediction made by Mr. Ralph Wilson, manager of the local Exide Service Station.

"A few weeks ago," said Mr. Wilson, "I read of the natives in some isolated section of Alaska, Cedak Island, I believe, being introduced to electric lights and the event was commented on as a step toward progress. Then the other day I received word that MacMillan, the explorer, had taken a complete lighting system with him on his latest trip to the Polar Regions. He has also equipped his expedition with a wireless set and will send back radio reports as he makes his way North. Current for both is furnished by Exide batteries."

"Mr. MacMillan, who sailed from Boston, was leader of the famous Crocker Land Expedition seven years ago. It was really on this occasion that electric lights also furnished by Exides were introduced in the Arctic Regions, probably, for the first time in history.

"This was made possible principally through the development of the storage battery. Such a voyage necessarily is rough and full of hardships and the equipment must be strong enough to withstand a lot of rough handling.

"After 4000 miles of traveling during which the party was shipwrecked and almost perished in blizzards, they were still able to give the Esquimaux the surprise of their lives—electric lights."

Eye two very interesting stories in which these two favorite stars do some very clever acting, this with the usual News Weekly's will make a week's program at the local theaters that is hard to beat.

Those that saw Buster Keaton in "Hard Luck" last week enjoyed it so much, that we have booked this great comedian in his latest scream "The High Sign" which will be shown in the near future.

IN MAUI'S THEATRES



WAILUKU HIP

Saturday, December 3rd.
WM. DE MILLE'S PRODUCTION
"THE LAST ROMANCE"

—also—
"THE MOON RIDERS"
And a Good Comedy

Sunday, December 4th.
J. WARREN KERRIGAN

—in—
"DRIFTERS"
—and—
JOE RYAN

The First Episode of
"THE PURPLE RIDERS"

Monday, December 5th.
TOM MIX

—in—
"THE FEUD"

—and—
"THE DRAGON'S NET"

—and—
MUTT and JEFF

Tuesday, December 6th.
JAPANESE PICTURES

Wednesday, December 7th.
WM. S. HART

—in—
"THE WHISTLE"

—also—
PATHE NEWS
And a Good Comedy

Thursday, December 8th.
MARY MILES MINTER

—in—
"ALL SOULS EVE"

—and—
PATHE NEWS
And a Good Comedy

Friday, December 9th.
ALICE JOYCE

—in—
"THE SPORTING DUTCHESS"

—and—
BURTON HOLMES

KAHULUI THEATER

Saturday, December 3rd.
Maurice Tourneur Production
ALL STAR CAST
"THE COUNTY FAIR"

—also—
"THE MOON RIDERS"
—and—
A Good Comedy

Monday, December 5th.
J. WARREN KERRIGAN

—in—
"DRIFTERS"
—also—
The Final Episode of
"THE VANISHING DAGGER"

and—
BURTON HOLMES

Tuesday, December 6th.
TOM MIX

—in—
"THE FEUD"

—and—
"THE DRAGON'S NET"

—and—
MUTT and JEFF

Wednesday, December 7th.
JAPANESE PICTURES

Thursday, December 8th.
WM. DE MILLE'S PRODUCTION
"THE LAST ROMANCE"

—also—
JOE RYAN

—in—
The First Episode of
"THE PURPLE RIDERS"

—and—
PATHE NEWS

Friday, December 9th.
MARY MILES MINTER

—in—
"ALL SOULS EVE"

—and—
PATHE NEWS

Twice as rich as ordinary milk for Frozen Puddings

Recipe
Two large cans Carnation Milk, 2 cups water, 4 eggs, 2 cups sugar, 2 teaspoonfuls vanilla, 1/4 teaspoonful salt. Heat one can of Carnation Milk and the water in a double boiler. Beat eggs and sugar, and pour into heated milk; mix well, and cook in double boiler, stirring constantly, until the mixture thickens on a spoon like cream. Remove from fire, cool add vanilla, and another can of Carnation Milk. Put in freezer and freeze. This will make about two quarts.

Send for free Carnation Cook Book of Tested Recipes, Henry May & Co., Ltd., White Distributors for Hawaii, Honolulu.



Order From Your Grocer

good meals in Honolulu

AWAIT YOU AT CHILD'S

New, modern, high class restaurant, centrally located. Good and comfortable. Intelligent, courteous service. European plan. Operated in connection with the

Blaisdell Hotel

J. F. CHILD, Proprietor

YOU'RE INVITED

The next time you are in Honolulu, come into our office and introduce yourself. We like to know our friends by sight as well as by name. We are always glad to pay us a visit anyway.

You are invited to avail yourself of our equipment. If our service is a bit vague to you, don't know exactly what a Trust company does, and how, ask us to tell you. We will be glad to consult with you even though you may not have at present any business to place with us.

TRENT TRUST CO. LTD.
HONOLULU

So To Serve That We May Continue to Serve

WE ARE PLEASED TO ANNOUNCE THAT
The Wailuku Hardware & Grocery Co., Ltd.
WAILUKU, MAUI
HAVE BEEN APPOINTED AGENTS FOR
EAST MAUI, FOR

A. G. Spalding & Bros.

FAMOUS
TENNIS, BASEBALL AND ATHLETIC GOODS

E. O. Hall & Son, Ltd.

Distributors for the Territory.

KAHULUI RAILROAD COMPANY'S MERCHANDISE DEPARTMENT

ROUND CAST IRON

Sash Weights

Sizes—4, 5, 5 1-2, 6, 6 1-2, 7, 7 1-2, 8, 8 1-2, 9, 10, 12, 14, 15, 16, 18, 20, 21, 22, 24 lbs.

Prices Cheerfully Furnished

Tel. Nos. 201 - 202 and 203
Private Exchange
Connecting All Departments

WAREHOUSES,
KAHULUI, MAUI.

SEMI-WEEKLY MAUI NEWS

"FOR THE VALLEY ISLE FIRST"

A Republican Paper Published in the Interests of the People
Issued Every Tuesday and Friday

MAUI PUBLISHING COMPANY, LIMITED
Proprietors and Publishers.

M. R. PEREIRA, Manager

SUBSCRIPTION RATES: \$4.00 PER YEAR IN ADVANCE

Entered at the Post Office at Wailuku, Maui, Hawaii, as second-class matter.

MEMBER OF THE ASSOCIATED PRESS—The Associated Press is exclusively entitled to the use for republication of all news dispatches credited to it or not otherwise credited in this paper and also the local news published herein.

JOSEPH H. GRAY, : : : : EDITOR

FRIDAY : : : : DECEMBER 2, 1921.

JAPANESE LABOR

It is something of a coincidence that the action taken by the Japanese laborers at Puunene and the pertinent advice given by Consul General Yada of Japan to Japanese laborers in conference in Honolulu should have appeared in the same issue of this paper. Both were highly important items of news and had it not been that the Puunene mass meeting was held two days prior to Consul Yada's speech it would have appeared that the Maui laborers were acting upon his advice. Perhaps they were moved by some of the things he has said previously to his Honolulu speech for he has spoken to the point in many places and at many times in the past.

No matter what was the moving influence that caused Puunene laborers to cut away from labor organizations, the action is one which will tend to produce a better feeling towards Japanese labor. If other plantation laborers shall follow the same course, the harmonizing effect will be heightened and greatly emphasized. But will they do so?

Last week's meeting is not the first time that laborers of Puunene have expressed the most kindly sentiment towards the management of the Hawaiian Commercial & Sugar Company and relations between employers and employed there have been particularly satisfactory and gratifying. Other plantations have been trying consistently and earnestly for better housing, living and working conditions on Maui. They may not have achieved so much but they have perhaps not been in so favorable a position. Still the housing conditions on nearly all of the Maui plantations are immeasurably better than they were five years ago.

It may be that the action of the Puunene laborers will not be followed by the laborers of the other plantations. It may be that it was occasioned by the particularly cordial entente there established but the action will still have its effect.

Consul General Yada, spoke right to the point in Honolulu, Monday when he blamed the strike on Oahu of last year as a disturber of the harmony that had previously existed in the Islands. In part he was right in saying that the strike precipitated the demand for Chinese labor. To an extent it did but the withdrawal from the Islands of so many Japanese and Filipinos on the savings from high wages and large bonuses was an important operating cause also. And the consul was surely right when he said that the fomenting of industrial strife would weaken the position of the Japanese in Hawaii and on the mainland as well.

Mr. Yada came to the Islands at a time when the situation for the Islands here was decidedly critical. He has consistently worked to better relations, to bring about a cordial understanding and his services have been important to his countrymen and to citizens of the Territory. His services will be missed when he leaves the Islands to become the representative of his country elsewhere.

INTENSIVE PRODUCTION

There was much meat in the report of H. P. Agee of the planters' experiment station. He said that if the planters can increase their yield per acre in cane or sucrose content or both so as to secure an important increase per acre in extraction at a sacrifice to the acreage planted and cultivated, it would be found much more profitable. That is what every well managed plantation in the Islands has been seeking to do and why the most improved sugar making machinery is being installed in the mills after each grinding season.

Every one will admit the force of Mr. Agee's arguments, but how to achieve the result is the question that bothers. One important point he brought out in his report is that Hawaii suffers at this time from deficiency in quality as well as in quantity of labor. It has lost not merely workers but efficiency of workers.

The experiments in super-intensive cultivation of which he told were enlightening and surely the time will come when such methods quite generally employed in all parts of Hawaii. But they are experimenting and practical application is what is necessary to increase production by 25 percent while reducing the area cultivated an equal amount.

COMMUNITY CHRISTMAS TREES

Nowhere, in no way, is the spirit of Christmas better exemplified than here on Maui in the Community Christmas tree celebrations. All races, all creeds, all ages of childhood come together and there is no discrimination shown in what they receive, in what is done for them. Class enters into it not at all. There is a little gift for each and the program is for the enjoyment of them one and all equally.

It may seem that little is done for the children for the gifts are not expensive and the costs to the community are small but the little folk are none the less happy. It is the idea that they are remembered, that they are cared for, given something, that really appeals. It is the Christmas spirit that is evidenced and radiates and descends upon the great and the small alike. The community and every member of it is better for such an observance of the day of the birth of the Christ.

In the home the tree has its charm and beauty; in the Sunday school it answers its particular purpose but no where does it mean quite so much, so fully harmonize with the spirit of the season as when it is made a truly community affair.

It is strange that public speakers should display such intense ignorance as they often do. In Honolulu a visiting speaker advised the removal of the mayor because he saw drunken men on the street. Had he investigated the powers and duties of the mayor he would not have placed himself in the position of appearing foolish himself or else of conceiving his hearers to be little better than fools. Such a faux pas cannot but weaken the cause the speaker espouses.

Some business men appear horror stricken that wharfage tolls should go into the general territorial funds. The maintenance and the interest costs have had to come from the territory so it really

THE OPTIMISTIC PESSIMIST

If one looks for the best in others one is apt to receive the best that they have for it is natural for a person to try to live up to that which is expected of him.

Fear is the most common and least warranted quality in man. Almost yes practically every one fears something, and yet man was made to control all things in the world through his will. Fear paralyzes the will and makes man a slave instead of a monarch.

It is the mental attitude that makes life what it is to each man or woman. Who lives in self and for self, suffers in self and for self, but the person who gets out of self and into the heart of humanity is the one who gains bodily health and the other joys of life.

Distrust is a second cousin to wretchedness if harbored habitually.

Nothing is more easily soiled than a reputation and much hard rubbing is required to remove stains. Some soil their own reputations and others seek to soil that of their neighbor.

It is easy to become so skeptic as to disbelieve before the evidence in the case is offered. It takes experience and restraint to remain unbiased.

The general idea of reform is to make the other fellow conform to one's own ideas.

One who ignores a slur or an affront hurts the giver more than him self for he deprives the offender of the satisfaction of knowing that he has hurt.

Next to his pocket book his self esteem is the most vulnerable spot in the average man.

Some of those who purchase on credit and do not pay their bills are the most persistent hagglers over prices. Perhaps they do not want to increase the burden of the debts they plan to carry more than can be avoided.

It is better to walk around the imperfections of one's neighbor than to stumble over them.

Those who are going out after business report this season promises to be better than the normal, though not so active as last year. It is those who are sitting back, Micawber like, who are complaining that business is poor. A little advertising tonic is what they need to put pep in the business system.

One good thing about those who procrastinate in their Christmas shopping is that they wait until it is too late to send off to some mail order house on the mainland and have to encourage home industry.

should cause no alarm. It makes the users of the wharves pay for the use to the taxpaying public through the territorial treasury, that is all.

FORESIGHT

If your father had bought 8 per cent bonds in 1873 he would have profited tremendously by the subsequent increase in security values.

This year you have practically the same opportunity—an opportunity which comes once in a lifetime and does not stay very long. That the time is rapidly passing is shown by the steady rise in bond prices in the last few months.

We are listing numerous attractive investments in bonds of companies whose long record and sure standing in the financial fabric of America assure the owner of their bonds, of safety and security.

WATERHOUSE TRUST CO., LTD.

HONOLULU.

SAY IT ELECTRICALLY

Select your Christmas Gift from this list of electrical equipment and be sure to please on Christmas Day and many days to come.

- | | |
|----------------------|-------------------|
| Boudoir Sets | Coffee Percolater |
| Curling Irons | Percolater Sets |
| Hair Driers | Tea Pots |
| Boudoir Lamps | Waffle Irons |
| Radiant Socket Ovens | Toasters |
| Sewing Machines | Grills |
| Vacuum Cleaners | Washing Machines |

All at Mainland Prices, Saving Cost of Freight or Expressage.

MAUI ELECTRIC CO., LTD.

Main Street, Wailuku Phone Wailuku 121

STOP! LOOK! READ!

IF YOU ARE GOING TO MEET THE STEAMER AT LAHAINA CALL UP

KAHULUI AUTO STAND
PHONE 191-A

JOHNNIE J. KOHAMA—For comfortable, easy-riding cars. Regular trips on Mondays, Wednesdays, Fridays and Saturdays.

K. Machida Drug Store

ICE CREAM
The Best in Town
And a Up-To-Date Soda Fountain
Give Us a Trial
KAHULUI WAILUKU

HOUSE PAINTING

Paper Hanging and Interior Decorating

Estimates Furnished on Application

H. YAMAGUCHI
Contractor and Painter

Near Chinese Church.
Vineyard Street. Phone 247-A
Wailuku

Gasoline, Automobile Parts and Automobile Painting

Christmas Joy

There is something in the words that always suggests chiming bells, sweet voices singing carols, harmony, melody, MUSIC.

So it comes that there is no more acceptable and appropriate gift in the Christmas season than to bring music into the home.

BRUNSWICK PHONOGRAPHS PIANOS
Records Sheet Music

PLAYER PIANOS

Rolls

Musical Instruments of all sorts for Christmas Gifts.

HONOLULU MUSIC CO., LTD.

JACK BERGSTROM, REPRESENTATIVE.

Maui Musical Headquarters

MAIN AND HIGH STREETS, WAILUKU.

If you are not now receiving the REXALL MONTHLY MAGAZINE please send your name for mailing list. The Magazine has recently been enlarged, and improved by the addition of stories by prominent writers and pictures of current events.

THIS SERVICE IS ABSOLUTELY FREE.

Benson, Smith & Co., Ltd.

SERVICE EVERY SECOND

The Rexall Store Box 426 Honolulu, T. H.

Chinese Reed Furniture
Chinese Silk
General Merchandise
Furniture
Coffins
Chinese Goods
TAM CHONG
LOWER PAIA

TINN CHONG STORE

Dry Goods, Groceries and General Merchandise
Bakery & Restaurant
Cigars, Tobaccos, Fruits, etc.
Main Street, Kahului, Maui.

JOHNS-MANVILLE PACKINGS

are as familiar to you mill men as pots and pans are to the housewife.

This advertisement is not to point out the merits of this brand of packing, but simply to remind you that for the fall repairs in the mills Johns-Manville products are at hand.

The Honolulu Iron Works, Ltd.

Sole Agents in Hawaii for Johns-Manville Power Specialties

Dealers In General Merchandise

American Factors Paints
AmFac Red Label Coffee
Yale Locks and Hardware

AMERICAN FACTORS LTD.
WHOLESALE DISTRIBUTORS

IT'S A PLEASURE TO SHOP

In the handsomest store on Maui, where one finds a complete stock of Dry Goods, Furnishings, Notions, Groceries and general merchandise, where service and attention are the best

THE LAHAINA STORE

Phone 27-B, Lahaina. Branch at Puukolii.

On the Other Islands

For Wharf Tolls—Kauai Chamber of Commerce recently went on record as favoring the proposed wharf tolls prepared by the Harbor Board but the Garden Island says the action may be changed since it is learned that proceeds would go into the general treasury instead of a special fund for maintenance.

Job For Smiddy—Walter H. Brouley is out as superintendent of pumps for the Honolulu water department and former U. S. Marshal Jerome J. Smiddy is to be named in his place.

Andrade For Judge—Attorney Frank Andrade, former member of the legislature, is mentioned to succeed Judge Cornell S. Franklin on the bench of Honolulu. Confirmation of the report of the resignation of Judge Franklin has been given. He will sail for Shanghai on December 11.

Honolulu Oil Dividend—Honolulu Oil Company has declared a dividend of 10 cents a share payable December 15, from the earnings of its patented lines. The dividend is in no wise connected with the moneys that have been held in escrow and were recently released.

Ten Finish Grind—Ten of the 11 American Factors plantations have finished their grind of the 1921 crop. Oahu Sugar Company is still grinding.

Typhoid at Laie—Dr. F. E. Trotter of the health board finds that there is typhoid fever at Laie but that the water is not responsible, analysis showing freedom of the supply from typhoid germs.

American Factors Bonds—Three quarters of the \$4,000,000 bond issue of American Factors are to be offered at once. Of the \$3,000,000 there will be half a million offered to Islands investors and \$2,500,000 from the mainland thus bringing that amount of "outside money" into the territory.

Road Badly Damaged—Extensive injuries to the new Kalopa Home-stead road in course of construction on the Big Island is reported to have resulted from recent heavy rains. Water swept along the road bed and materials were washed away.

Will Recover Taxes—Col. Howard Hathaway is quoted as saying that revenue collections for the Territory for the fiscal year 1922 will be approximately \$15,000,000 and that plans are underway to recover \$1,000,000 in taxes due from citizens of Hawaii who are resident in the Philippines and China but whose income is drawn from Hawaii.

Koreans Scalded—Five Koreans working in a boiler room on the S. S. Maui when she was last in Hilo Harbor were badly scalded about the faces and arms by escaping steam and were taken to the Hilo Hospital.

NOTICE OF HEARING

Notice is hereby given that the proposed Traffic Ordinance and the proposed Ordinance Regulating the Use of public Highways by Pedestrians will be taken up by the Board of Supervisors for final consideration on Thursday, December 8, at 10 a. m. The public is invited to attend.

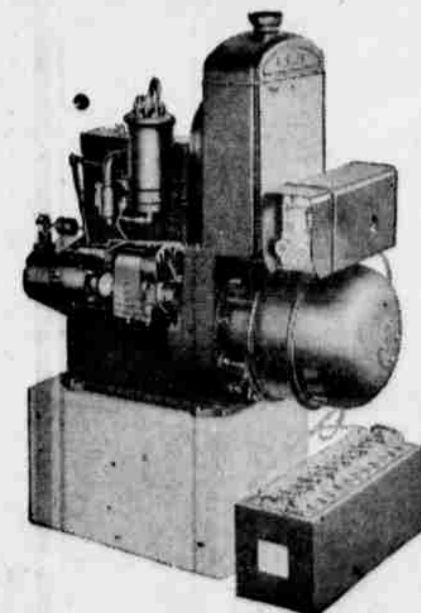
By Order of the Board of Supervisors for and within the County of Maui, T. H.

WM. FRED KAAE,
County Clerk and Clerk of the Board of Supervisors, County of Maui, Territory of Hawaii.
(Nov. 18, 25, Dec. 2.)

DR. CAROLYN DRYER
OSTEOPATHIC AND
TROPIC OIL TREATMENTS
Residence E. E. Pleasant, Wailuku
Phone 95

M. TANIOKA
Photographer
Day and Night Service
Tel. 133-A Main Street, Wailuku

DO YOU KNOW
What This Means?



Hurd, Pohlman & Co.
will tell you in their Tuesday's advertisement

MORTGAGEE'S NOTICE OF INTENTION TO FORECLOSE AND OF SALE.

Notice is hereby given that, under the power of sale, contained in that certain indenture of Mortgage of date June 28th, 1919, made, executed and delivered by T. Sakamoto, (Shika Sakamoto, his wife, releasing dower) as mortgagor, to the Bank of Maui, Limited, a domestic banking corporation, as mortgagee and of record in liber 522, on pages 201 and 204, said Bank of Maui, Limited, as the owner and holder thereof, intends to foreclose said mortgage, and sell the mortgaged properties therein named, because of the non-payment of the principal and interest due on the promissory note secured thereby.

The above mentioned mortgage was given to secure the payment of a promissory note of Five Hundred Dollars, of date June 28th, 1919, payable one day after date, and drawing interest at the rate of eight percent per annum; said note being signed by said T. Sakamoto.

Notice is likewise given that, after the expiration of three weeks from the date of first publication of this notice, to-wit, on Saturday, the 7th day of January, 1922, at twelve o'clock noon of said day, said mortgaged properties, for the reasons above stated, will be sold at public auction, at the front entrance to the Court House, in the Town of Wailuku, County of Maui, Territory of Hawaii. Said mortgaged properties will be sold in the order hereinbelow described; and, as soon as a sum is obtained from sales sufficient to meet all indebtedness and expenses, sales will discontinue.

Terms of sale—Cash.
Deeds at expense of purchaser.
For further particulars apply to the Bank of Maui, Limited, at Wailuku, Maui, or D. H. Case, its Attorney, of said Wailuku.
Dated at Wailuku, Maui, this 25th day of November, 1921.

BANK OF MAUI, LIMITED
By C. D. LUFKIN,
Its Vice-President and Manager

Description of Properties to be Sold:

- (1) That certain piece, parcel or lot of land lying mauka of the Government road between the Waikapu stream and Kaina Sylva premises, containing an area of Two and one-half acres, more or less, and being part of the property described in and known as Grant 282 to James Louzada.
- (2) That certain piece, parcel or lot of land lying immediately makai of the Government road, and opposite portion (1) above mentioned, containing an area of three-quarters of an acre, more or less, and being a part of the premises described in and known as Grant 2747 to Eugene Bal.
- (3) That certain piece, parcel or lot of land lying on the mauka side of the Government road, at the extreme south end of the premises heretofore belonging to Antone Sylva, deceased, at Waikapu, within the present fence; having a frontage of about 176 feet, and containing an area of three-quarters of an acre more or less.
- (4) That certain piece, parcel or lot of land comprising 12 adjoining taro patches, situate at Kaopala, in the said District of Waikapu, and known as and described in Royal Patent 6699.
(Dec. 2, 9, 16, 23.)

Clothes left with us for more than three months and not called for will be burned or otherwise destroyed.
Customers who change their address will please let us know.
KATO CLOTHES CLEANING SHOP
Wailuku, Maui.

Harada Auto Stand
Prompt auto service on call day or night
Meet every steamer
Kahului, Maui. Phone 217-E.

SEALED TENDERS

Sealed tenders for the construction of 1 Room School Building and 1 Teachers Cottage, at the Kamehameha III School, Lahaina, Maui, T. H., will be received by the Board of Supervisors of the County of Maui, at the County Clerk's Office, Wailuku, Territory of Hawaii until 2:00 P. M., Friday, December 9th, 1921, at which place and hour they will be publicly opened and read.

Copies of proposal blanks, plans and specifications can be obtained at the office of the County Engineer, Wailuku, Maui, T. H. A deposit of \$5.00 will be required for each set of plans and specifications.

Tenders must be made out on the blank forms supplied by the County Engineer and enclosed in an envelope furnished, sealed, and sent to the County Clerk so as to reach his office not later than 2:00 P. M., Friday, December 9th, 1921. Any and all bids not in accordance with this section will be at once rejected.

The right is reserved to reject any and all bids.

By order of the Board of Supervisors for and within the County of Maui.

By WM. FRED KAAE,
County Clerk, County of Maui.
(Nov. 25, Dec. 2, 6.)

SEALED TENDERS

Sealed tenders for the transporting of materials for the construction of the Kula Pipe Line Extension to the Waiohuli-Keeke Beach Lots, will be received by the Board of Supervisors of the County of Maui, at the County Clerk's office, Wailuku, Territory of Hawaii, until 2:00 P. M., Friday, December 9th, 1921, at which place and hour they will be publicly opened and read.

Copies of proposal blanks, can be obtained at the office of the County Engineer, Wailuku, Maui, T. H., upon application.

Tenders must be made out on the blank forms supplied by the County Engineer and enclosed in an envelope furnished, sealed, and sent to the County Clerk so as to reach his office not later than 2:00 P. M., Friday, December 9th, 1921. Any and all bids not in accordance with this section will be at once rejected.

The right is reserved to reject any and all bids.

By order of the Board of Supervisors for and within the County of Maui,

By A. BORBA, JR.,
Acting Deputy County Clerk,
County of Maui.
Nov. 29, Dec. 2, 6.

LATEST JAZZ MUSIC

Furnished by
Professor John. C. Almeida
BLIND MUSICIAN
For Appointments Call 91-A Paia

T. OKUMURA
PHOTO STUDIO
Kodak Developing and Printing
ENLARGING
Island Views and Post Cards
Market Street Wailuku, Maui



QUALITY DOMINATES

Quality is the genius of production; and the dominant characteristic of Red Crown Gasoline is quality.

One cannot experience the results of quality unless quality is in the product.

"Red Crown" is an all-refinery gasoline; a product of quality. It has a full and continuous chain of boiling points,—a perfect chain of power,—that makes it possible for you to enjoy the maximum power and the maximum speed your engine was designed to develop.

Look for the Red Crown sign on garages and service stations.

STANDARD OIL COMPANY
(California)

HOW ABOUT THE JAPANESE?

Are you getting all the business from them you want? If not, you can reach them in only one sure way, in their own language. Tell them what you have that they want in advertisements and in hand-bills.

Issued Semi-Weekly **MAUI RECORD** N. K. Otsuka, Prop.
JOB PRINTING
Translations from English to Japanese and Japanese to English

RESTAURANT

Food to tempt the appetite of the most fastidious and delicious enough to set before a king.

T. AH FOOK ———— **Kahului**

SHOP EARLY



FOR THE CHILDREN:
Toys of all kinds from a Whistle to a Go-Cart. Dolls, Aluminum Cooking and Tea Sets, Mechanical Toys, Bats, Balls, etc.

FOR THE LADIES:
Toilet Accessories, Perfumes, Hair Brushes, Mirrors Toilet Sets, Stationery, Shirt Waists, Handkerchiefs, Laces Candies.

FOR THE MEN:
Tennis Rackets and Balls, Rifles, Shot Guns, Sporting Goods, Neckties, Shirts, Pajamas, Shaving Sets, Razors and Safety Razors.
And Scores of Other Suitable Gifts for Boys and Girls, Men and Women.

Wailuku Hardware & Grocery Co., Ltd.
Main and Market Streets, Wailuku. Phone 214

MAUI SODA & ICE WORKS, LTD.

"We Serve Your Needs"

ICE, PURE SODA WATERS, DISTILLED WATER, COLD STORAGE

The Oldest Establishment of Its Kind on Maui.
Phone, 128 Wailuku.

Cleaning and Dyeing---

should be trusted only to experts. The same is true of fine garments to be washed. Otherwise such injury to the fabric may result as to cause serious loss. You can depend absolutely on the Method Exquisite of

THE FRENCH LAUNDRY
J. Abadie, Proprietor, Honolulu.
MAUI AGENCIES:
M. UYENO KAHULUI
JOHN D. SOUZA PAIA

JUST CALL FOR NICK

and get where you want to be when you want.


1920 PAIGE, 1919 CADILLAC, 1919 NASH AND FIVE-SEATERS ALSO

NED NICHOLAS
Meets All Steamers. Sightseeing Trips. Reliable Chauffeurs.
Wailuku, Maui. Phone 17.

Theo. H. Davies & Co.

Limited

SOLE DISTRIBUTORS
HAWAIIAN ISLANDS



Sixty years of experience with preparation of food products are represented in the distinctive goodness of Del Monte Brand Canned Fruits and Vegetables.

Demand the Del Monte Brand From Your Grocer.

Former Emperor and Empress of Austria Live in Garden Spot

Arrival of former Emperor Charles and the former Empress Zita of Austria in Madeira has brought comparisons of their fates with other former monarchs who became trouble makers and whom the other nations proceeded to put in places where their trouble making could achieve little.

Banishment of trouble-making former monarchs to islands of the sea far from their one-time dominions is an uncommon procedure but precedent for the plight of former Emperor Charles of Austria-Hungary who has been exiled to Madeira, is found in the historic case of Napoleon I, who passed six years on St. Helena in the south Atlantic, 700 miles from the nearest land, a prisoner more than a century ago.

St. Helena is not only much smaller than Madeira but, compared to the latter, is as "a devil's island" to paradise. Five-sixths of its area is devoid of vegetation and, aside from an army garrison, there are no big towns or other evidences of life.

Island Garden Spot

Madeira, five times the size of St. Helena, is an ocean garden spot. Funchal, its chiefly city, has a population of more than 20,000 and the island, one of a group of four owned by Portugal, produces some of the most famous wine and laces in the world as well as an abundance of fruits, grains and sugar. Oxen are mainly used for agriculture, instead of draft horses and other farming methods are primitive. Less than two percent of the people can read and write.

The Portuguese military garrison is very small and Charles, Zita and their six small children, if the Allied powers permit, may have every freedom except an unchaperoned ocean voyage. Napoleon was guarded day and night by soldiers.

Madeira, the Portuguese word for "forest," is directly in the Atlantic ocean trade routes. St. Helena, a British naval coaling station, often doesn't see a ship for days. Madeira is a port of call and thus is kept in daily touch with the outside world. The island, 400 miles west of Morocco, has a temperate climate. It is 12 miles wide and 35 miles long and elliptical in shape. Three other islands nearby complete the Madeira group. They are Porto Santos which, with Madeira, have a population of 17,000 and the Desertas and Selvagens, two smaller islands of volcanic origin. The latter are uninhabited, rocky formations jutting out of the sea.

File to Switzerland

After the collapse of the Central Powers in 1918, Charles and Zita sought refuge in Switzerland where, for three years, they lived with their children. Last March the former Emperor attempted a coup d'etat by crossing the Swiss border and reaching the town of Steinamanger, Hun-

Matrimonial System Of Japan is Changing

(ASSOCIATED PRESS)

TOKYO, Nov. 30—A series of articles on love and marriage is appearing in Japanese newspapers and magazines as a sign of the modern tendencies New Japanese mentality. Professors of note in psychology, school teachers and writers are prominent in the discussion of reforming the old matrimonial system, all advocating more freedom for personal choice.

According to the old customs, the parents chose bride and bridegroom and the marriage was performed with out previous knowledge of each other by the interested parties. Marriage was considered a duty toward country and family, the religion of ancestor worship being its principle. The young couple lived with the parents and the bride owed complete obedience to her mother-in-law.

The custom now is for the young people to meet long before marriage, so that they may know each other. To live apart from the family is no longer considered undutiful. The tendency also appeared to marry for love's sake and because of personal choice. This new and romantic ideal is so strong that all means are tried to obtain it, entailing elopements, suicides, notorious family dissensions. Hence, the discussion for greater liberty and more social life which are quite opposed to the old social system of Confucius, that men and women should keep apart and marry for duty's sake and not for love.

gary, where with prominent monarchists he planned to enter Budapest. The plot failed and Charles returned to Switzerland. Again, on October 22 last, despite his "word of honor" given to the Swiss authorities that he would attempt no further escapes, the former monarch and his wife, during the dispute over Burgenland, flew in an airplane from Lucerne to Oedenburg and ultimately reached Rabb, Hungary, where Charles was received by an armed party of royalists. In a sanguinary effort to enter Budapest, the Carlists were defeated. The former emperor and empress were captured and, finally, at the behest of the Little Entente, placed aboard a British monitor in the Danube. On November 3, the ex-royal pair sailed for their future home in the mid-Atlantic. On November 4 the former emperor, who had persistently refused to renounce his hereditary "rights" was dethroned and the Hapsburg dynasty was ousted from Hungary by a law passed by the Hungarian National Assembly.

Fate Like Napoleon's

Napoleon's banishment in 1814 was no less bitter. The former Empress Josephine had died and his living consort, Marie Louise, with her son, the little Prince of Rome, had gone from Fontainebleau to Vienna following the Emperor's abdication. Meanwhile the Allied powers had ceded to Napoleon the island of Elba in the Mediterranean and there as a "sovere-

Woman In Peril at Black Fellows Hands

(Associated Press Mail)

SYDNEY, New South Wales, Nov. 29—(Associated Press Mail)—The perils of pioneering in the extreme north of Australia around the Gulf of Carpentaria, a region still peopled with wild black tribes, were related here by Mr. and Mrs. J. T. Beckett, who have just arrived from Vanderlin Island, off the coast.

The natives from the mainland frequently raided the island, knowing that the police can not hear of the occurrences for some time and have difficulty then in tracing them, Beckett said. When Mrs. Beckett was alone on the island the natives plotted to kill her and her son, when he returned from another island, and then rob their store. The conspiracy was frustrated by a faithful native servant who was murdered brutally for exposing the plot, Beckett said.

Mrs. Beckett saved her own life by hiding off the murderer with a pistol, and he escaped to the mainland. Encouraged apparently by this, another native beheaded a native woman within a short distance of the police station at Borroloola. He was captured and with other law-breaking natives, including the celebrated "murdering Tomnoy" who has escaped from jail several times, was brought to Darwin in the same boat on which the Becketts traveled.

The possibilities of obtaining oil in the region are good, Beckett said, as oil-bearing shale is found and the natives have reported seepage of oil in several localities.

ign" he might have passed the rest of his life in peace and tranquility. Eleven months of retirement, however, sufficed to spur him to escape and new adventures.

He had been brought to Elba aboard the British warship "Dauntless" on April 20, with royal dignity and consideration. On the night of February 26, 1815, with 1,000 followers he slipped out of Porto Ferrajo and then began the famous "One Hundred Days" in which he sought to regain the throne of France. He gathered strength in men and guns as he crossed the Alps and marched on Paris but his reign as a "constitutional monarch" was of short duration. Great Britain, Russia, Austria and Prussia declared him an outlaw and raised 150,000 troops to crush him. The lost battle of Waterloo the following June saw the end of his power.

The former emperor threw himself upon the mercy of the British, falling in an effort to flee to the United States. He made overtures to Captain Maitland of the warship "Bellerophon" who took him to Plymouth, Eng., pending disposition of his case by the Allied powers. It was finally decided to send him to St. Helena and there, guarded by a strong British force, he landed on October 17, 1815. For six years he lived in practical solitude, writing his memoirs and monographs on military cam-

HOBOS ARE KILLED
(ASSOCIATED PRESS)
CASPER, Wyoming, Dec. 1—Four are known dead and fifteen injured as the result of a Burlington line freight train piling up forty miles west of here last night. A search is being conducted for other victims who may be lying wounded or dead in the debris. There were known to have been between twenty and thirty hoboes riding the train at the time of the wreck.

TREATY UNRATIFIED
(ASSOCIATED PRESS)
WASHINGTON, Dec. 1—The Department of State has received a dispatch from Bogota saying that the Colombian Congress has adjourned without ratifying the United States-Colombian treaty.

paigns and political affairs, dying on May 5, 1821, of a cancer which had been aggravated by deep periods of hatred and depression. General Wilkes, the first governor of St. Helena, proved too lenient with Napoleon and "too amenable to his influence," and, as a result was displaced some years before the Corsican's death, by Sir Hudson Lowe.

Dear Santa Claus

We are writing you this early because we want all the children and their fathers and mothers to know that our stock of personally selected Christmas Cards is the most beautiful and varied that we have ever had.

We have an exceptionally fine lot of Books too, which would make fine Christmas presents. It may lighten your burdens somewhat for them to have this information.

Yours for a Merry Christmas.

The Hawaiian News & Thrum's, Ltd.

Young Hotel Building
Honolulu.



KEEN KUTTER
Cane and Corn Knives

You can cut down the heaviest stand of cane or corn with an easy slash of a Keen Kutter Cane and Corn Knife. The cut of these knives is powerful, clean and sure.

have heavy, razor-edged steel blades. Handles are strong, hold the blades with a vise-like firmness and are shaped to ensure a good grip. Every one is guaranteed. It must be absolutely satisfactory or your dealer will cheerfully refund your money or give you a new tool.

"The Recollection of QUALITY Remains Long After the PRICE is Forgotten."
Trade Mark Reg. in U. S. Pat. Off. E. C. SIMMONS

SIMMONS HARDWARE COMPANY

CHRISTMAS SUGGESTIONS

Perfumes	\$1.00 to \$20.00	Rouge and Powder Metal Vanity Cases75c to \$1.50
Powder	80c to \$3.75	Spanish Combs	\$1.75 to \$20.00
Hair Nets	\$1.00 per dozen		


MARINELLO SHOP
H. C. La Moe, Prop. 1110 Fort Street. Phone 2091

JAPANESE GOODS A SPECIALTY
J. ONISHI
GENERAL MERCHANDISE
KAHULUI.

Telephone 96-A P. O. Box 141
GEORGE SOON
Up-to-date
Gents' Furnishings
Foresters' Bldg. KAHULUI

T. HOSHI
CLOTHES CLEANED AND PRESSED
HATS CLEANED
KALUA AVENUE WAILUKU

WHEN YOU WANT HAULING, CARTING TRUCKING
and want prompt service call
W. B. SNIFFEN
P. O. Box 144 Phone 183-A
WAILUKU



THE UNIVERSAL CAR

TO THE MAUI PUBLIC:

The undersigned have been appointed and now are the duly authorized FORD AGENTS on and for the Island of Maui.

Our first shipment of 20 cars arrived by the Wilhelmina this morning and we are advised that other consignments have left the factory for us.

We shall conduct the business of the FORD AGENCY at our present location until further notice.

HOLT & LOCEY

Foresters' Building, Kahului Telephone 53-H.

Change In Taxation System Is Forecast By New Treasurer

(ASSOCIATED PRESS)
HONOLULU, Dec. 1.—Hawaii may soon have a new system of assessing and collecting its territorial taxes said A. Lewis Jr., this morning on taking over the treasurership from Delbert E. Metzger. The new treasurer discussed taxes and taxation at length declaring the subject a problem that requires the most careful consideration.

"Hawaii is passing through one of those cycles which, in the composite, make for the law of averages," said Lewis and continued: "The dropping line started here a little earlier than it did on the mainland. As almost all of the larger concerns here did not over-extend their business, we should recover here more quickly than they will on the mainland. Sign posts indicate the way to turn and the road may not be very long and arduous."

"While world conditions are being adjusted to produce a more stabilized market, commercial concerns of Hawaii are taking up a notch or two in their belts, are calling on their reserves prudently and are retrenching all along the line. The government expenditures will burden business as lightly as may be possible. To establish what is desired in the present financial crisis spells work."

"If the treasury department is to function properly there should be frequent and continued conferences to bring all points to the surface. Stability is the goal. It will be my earnest endeavor as treasurer to keep in close contact with the business interests of the territory, including the interests of every taxpayer. Taxes are a large item in every individual's business and in every home."

"When a change is to be made due notice should be given so that the effect may be analyzed and understood. Consequently, unless there is absolutely no other way out, tax law changes at hastily convened extra sessions of the legislature should be avoided. From time to time the treasury department will invite discussion of some of its problems."

Relatives of Father James Here on Visit

John Beys and daughter, Miss Dina Beys, father and sister of Rev. Father James, pastor of the Catholic church at Makawao, were among the arrivals by the *Wilhelmina* from San Francisco, coming from their home in Holland to visit their son and brother. The visitors will remain some time with Father James. So far as the records of the mission in Honolulu go, reports the Advertiser, this is the first time in the history of the Catholic Mission in Hawaii when relatives of a local priest have come here on a visit. Mr. Beys and Miss Beys were met at the pier by Father Charles M. Windels and Father Alphonse of the local mission.

SPAIN TO BUILD SHIPS
(ASSOCIATED PRESS)
MADRID, Nov. 30.—The Chamber of Deputies passed a bill appropriating 13,000,000 pesetas for naval construction and providing for an increase in the Spanish navy.

Society

TENDERED SURPRISE

Mrs. D. P. Penhallow was the recipient of a surprise by a number of her friends on Monday evening, the occasion being her seventieth birthday anniversary. The uninvited guests had told the servants to leave lights in the back of the house on and were stealing in through the kitchen when Mrs. Penhallow, thinking lights had been left on unintentionally went to investigate. She opened the door just as the visitors entered and her surprise was complete. They brought a large birthday cake with 70 candles among the good things and remembrances they carried.

Among those who planned the surprise and offered their congratulations were Mr. and Mrs. Bert Gibb, Mr. and Mrs. Caleb Burns and the parents of Mr. Burns, Mr. and Mrs. D. H. Case, Mr. and Mrs. Ben Williams, Mr. and Mrs. Frank Hoogs, Mr. and Mrs. Moir, Rev. and Mrs. Villiers, Mrs. Pleasant and Miss Armin von Tempky.

NEW ARRIVAL HONORED

An informal bridge party in honor of Miss Lacey, recently arrived from Honolulu to join the nurses staff of

the Pioneer Hospital, was given by Miss Thelma Hayselden at the nurses cottage of the hospital in Lahaina on Wednesday evening. Among those present were Dr. and Mrs. Webb, Mr. and Mrs. Herbie Walker, Mr. and Mrs. Gerald Phelps, Arthur Gordon, Arthur Banham, Miss Lacey the guest of honor and a few others. Mr. Walker won the prize for holding the highest score, after which refreshments were served bringing to an end a most delightful evening.

FOR OPEN SHOP
(ASSOCIATED PRESS)
CHICAGO, Dec. 1.—The Railroad Labor Board has reached a unanimous decision by which the "open shop" principle will be used in all railroad shop crafts. The board has further agreed upon 148 new working rules for the car workers which it is expected will be issued late today.

Attorney Eugene Murphy has been on Kauai this week.

SENTIMENT AND SENSE

There is much sentiment, beautiful sentiment it is true, that attaches to CHRISTMAS GIVING but there is no reason why a gift should not carry with it something more than a fleeting pleasure, why sense and sentiment should not go hand in hand. There is no better gift than one that carries with it security and safety and protection.

You can do nothing better for your wife and family at this season than to provide against their suffering want or privation in your absence, if it should so happen, through a policy on your life, if you have none, or added insurance, if you already carry some protection for them.

THE BALDWIN BANK, LTD.

KAHULUI Insurance Department WAILUKU

BEST IN THE LONG RUN BEST IN ANY RUN GOODRICH TIRES

Full Line of Tires and Full Line of Tubes
Solid Tires Pressed On

DAN T. CAREY

Main Street. Wailuku.

LAHAINA ICE CO., LTD.

Manufacturers of Ice and Pure, Delicious Soda and Mineral Waters

Distributors of Electric Power and Light

WILLIAM SMITH, Manager
Phone Lahaina, 50-A.

The Ability To Pay---

depends upon the Companies whose financial and moral standing guarantees the reliability of their insurance contracts, both under ordinary conditions and in settling claims which have arisen in conflagrations.

Why Stand In Jeopardy?

We represent leading companies of the world.

C. Brewer & Company (Limited)

(Insurance Department)
P. O. Box 347 : : Honolulu, T. H.

PLANTATION MARKET

Lahaina.
Choicest Cuts of the Choicest Home-Raised Meats on Maui
A Trial Is Worth Your While
ANTONE FURTADO, Proprietor.

MATSON NAVIGATION COMPANY

DIRECT SERVICE BETWEEN HONOLULU, HILO AND SAN FRANCISCO

For San Francisco:

WILHELMINA.....Dec. 7, 4 p. m., Pier 15
MATSONIA.....Dec. 14, 10 a. m., Pier 15
MANOA.....Dec. 21, 10 a. m., Pier 15

Also operating a line of steamers between San Francisco, Tacoma, Seattle and the Hawaiian Islands.

For particulars apply to—
CASTLE & COOKE, LTD.
AGENTS, HONOLULU
FORT AND MERCHANT STS.

TIME TABLE—KAHULUI RAILROAD CO.

Daily Passenger Train Schedule (Except Sunday)
The following schedule went into effect November 18, 1918.

TOWARDS WAILUKU					TOWARDS HAIKU							
9	7	5	3	1	Distance Miles	STATIONS	Distance Miles	2	4	6	8	10
8:33	3:30	1:25	8:35	6:35	15.3	A. Wailuku..L	0	6:40	8:40	1:30	3:35	5:35
5:23	3:20	1:15	8:23	6:25	12.0	L. Kahului..A	3.3	6:52	8:52	1:42	3:47	5:47
5:20	3:17	1:12	8:20	6:22	8.4	L. Spreck..A	6.9	7:02	9:02	1:52	3:57	5:57
5:09	3:05	1:08	8:08	6:10	5.5	L. Spreck..L	9.8	7:03	9:03	1:53	3:58	5:58
5:00	2:55	1:00	8:00	6:02	3.4	L. Paia..A	7.15	7:12	9:12	2:04	4:10	6:10
4:52	2:53	1:07	7:57	6:04	3.4	L. Hama..A	7:20	9:20	2:14	4:19	6:19	8:19
4:51	2:46	1:00	7:50	6:07	1.4	A. Kuapoko..L	11.9	7:22	9:22	2:15	4:20	6:20
4:45	2:49	1:03	7:45	6:12	0	L. Pauwela..A	13.9	7:30	9:30	2:23	4:28	6:28
4:44	2:39	1:06	7:44	6:15	0	L. Haiku..L	15.3	7:32	9:32	2:25	4:30	6:30
4:40	2:35	1:10	7:40	6:18	0	L. Haiku..A	15.3	7:36	9:36	2:30	4:35	6:35

PUUNENE DIVISION

TOWARDS PUUNENE			TOWARDS KAHULUI			
3	1	Distance Miles	STATIONS	Distance Miles	Passenger	Passenger
2:50	6:00	0	L. Kahului..A	2.5	6:22	8:15
3:00	6:10	2.5	A. Puunene..L	0	6:12	8:05

- All trains daily except Sundays.
 - A Special Train (Labor Train) will leave Wailuku daily, except Sundays, at 5:30 a. m., arriving at Kahului at 6:50 a. m., and connecting with the 6:00 a. m. train for Puunene.
 - BAGGAGE RATES: 150 pounds of personal baggage will be carried free of charge on each whole ticket, and 75 pounds on each half ticket, when baggage is in charge of and on the same train as the holder of the ticket. For excess baggage 25 cents per 100 pounds or part thereof will be charged.
- For Ticket Fares and other information see Local Passenger Tariff I. C. C. No. 3 or inquire at any of the Depots.

Special Bargain Sale

LADIES', MISSES' AND GIRLS' READY-TO-WEAR GARMENTS

Tailored Dresses in winter weight goods suitable for street wear on all occasions.

Afternoon and Evening Gowns in voiles, organdies and silk pongees.

Ladies' Coats in full and three-quarter lengths, suitable for winter wear on Maui. Also a beautiful line of Sport Coats.

Sport Skirts in woolen plaids, pleated, and a charming line of Sport Skirts in silks, satins and tricolettes.

Shirt Waists and Smocks of georgette crepe, crepe de chine and tri colette.

Ladies' Gabardine Overskirts.

Ladies' Under Skirts.

Beautiful line of Lingerie and Underwear, which includes nightgowns trimmed with Filipino hand embroidery and hand work, chemises, corset covers and brasieres.

HOSE—Silk, mercerized and cotton.

FOR MEN—Flannel Pajamas, Shirts, Undershirts and Underwear.

CHICAGO BAZAAR

MARKET STREET NEAR VINEYARD, OPPOSITE THE HIPPODROME
BIG BARGAIN SALE WILL OPEN SATURDAY

Best Paint Covers This Far

Cheap Paint Goes This Far

Same Size Can

Which Paint---Costs Less?

Note how the best paint spreads easier and covers more square yards than cheap paint does.

Figure in the extra gallons of cheap paint that you must buy and the extra cost of application.

It means that cheap paint costs just as much as good paint on the house.

The best paint then gives five or more years' protection to your property investment. Cheap paint, on the average, starts cracking in twelve months. Which paint costs less?

The best material—PIONEER WHITE LEAD,

LEWERS & COOKE, LTD.

Paint Department

LUMBER AND BUILDING MATERIALS

169-177 SOUTH KING ST.

Personal Mention

F. G. Mahary has returned from Honolulu where he was initiated into the shrine.
 W. H. "Pop" Hutton, scout commissioner, returned from the Hana district, Wednesday.
 Sheriff Clem Crowell expects to make a trip to Honolulu on business the first of the week.
 Mrs. David Wadsworth will make a trip to Honolulu the first of the week.
 F. A. Hawkins, representative of the Standard Oil Co., on Maui, returned Wednesday evening from a trip to Honolulu.
 Rev. W. A. Tate of Lahaina, who recently underwent an operation at Pioneer Hospital, is reported as making a rapid recovery.
 J. J. Walsh, manager of Kahului Store, was a returning passenger from Honolulu Wednesday afternoon.
 F. P. Rosecrans, manager of Paia Store, was a returning passenger on the Mauna Kea Wednesday.
 A. B. Brown of Paia was one of the Maulites who traded the hot sands at the Shrine initiation in Honolulu last Saturday. He returned home the first of the week more or less intact.
 G. A. McDermott, representing D. C. Heger, of San Francisco, is calling upon customers with an attractive line of shirts, pajamas and neckties. He is at the Grand Hotel for a few days longer.
 Mr. D. Q. Travis and his niece Miss Guess of Los Angeles are house guests of Mr. and Mrs. T. A. Brown of Wailuku. The visitors will leave next week for Hilo and the Volcano and a tour around the Big Island before returning to the coast.

CARD OF THANKS

The widow and family of the late Antone M. Feiteira express their sincere thanks for the floral tributes sent to his funeral and for the many sympathetic and kind expressions and acts bestowed upon them by his and their friends in their bereavement through his death.—Adv.

Coming Events

SATURDAY, DECEMBER 3
 Dramatic Recital under auspices of educational department of Maui Women's Club, Territorial Building, 8:15 p. m.
MONDAY, DECEMBER 5
 Meeting of Maui Women's Club, Territorial Building.
 Meeting of Athletic Committee at 7:30.
TUESDAY, DECEMBER 6
 Kahului Ladies Aid meets at the Kahului Community House at 3 o'clock.
 Annual meeting of the Woman's Guild of the Church of the Good Shepherd at the rectory.
WEDNESDAY, DECEMBER 7
 Board of Supervisors meets.
THURSDAY, DECEMBER 8
 Formal opening of new high school building.
 Chamber of Commerce meets 3:30.
 Hearing on Traffic and Pedestrian ordinances before board of supervisors 10 a. m.
FRIDAY, DECEMBER 9
 Annual meeting of Maui Teachers' Association.
SATURDAY, DECEMBER 10
 Supper of Ladies Aid of Wailuku Union Church at Maui Hotel, 6:30.
 Concert and dance under auspices Ladies Aid of Paia Protestant Church at Paia Orpheum, 7:30.

Pertinent Paragraphs

Wilhelmina In—The Matson liner Wilhelmina came into Kahului harbor this morning and will return to Honolulu tonight.
Circle's Birthday—Valley Isle Circle of the Companions of the Forest will celebrate its second anniversary tomorrow evening with a dance at Foresters' Hall, Kahului.
Kahului Ladies Aid—Members of the Kahului Ladies Aid Society are asked to meet at the Kahului Community House next Tuesday afternoon at 3 o'clock.
Concert and Dance—The Ladies Aid of the Paia Protestant Church announce a concert and dance to be held at the Paia Orpheum on Saturday evening, December 17.
Cabinets Installed—At the sheriff's office there have been received the art metal filing cabinets which will be used in connection with the Bertillon identification system that will be operated here.
Athletic Committee Meeting—A called meeting of the Athletic Committee of the Fair and Racing Association will be held next Monday evening for the discussion of general business.
Woman's Guild—The annual meeting of the Woman's Guild of the Church of the Good Shepherd will hold its annual meeting at the church rectory next Tuesday afternoon. The meeting is important and all members are requested to attend.
Awarded Jail Sentence—Ah Chong, alias Leong Chong, taken to Honolulu by Marshal Cox on charges of violating the prohibition act pleaded guilty before Judge Vaughan and was sentenced to serve three months in jail.
Christmas Carols Singing—All who are interested in the singing of carols in the streets on Christmas Eve are invited to attend a meeting for the arranging of such singing at the residence of Mrs. E. E. Parsons on Iao Valley Road.
Final Hearings—Hearings of the proposed traffic ordinance and the proposed pedestrian ordinance will be held by the board of supervisors on Thursday morning, December 8. It is expected some suggestions will be made by the Chamber of Commerce Committee.
Yellow Jacket Coming—This morning's mail brought word that the Honolulu Chinese student players will come to Maui during the holidays and present their play, "The Yellow Jacket" that has been produced to crowded houses in the capital city nearly a dozen times.
Postal Thief Sentenced—Willie Yockeman, alias Willie Ah Sing, who was taken to Honolulu by Marshal Cox last Saturday night pleaded guilty to violation of postal laws in tampering with mail at Kahului Post Office some months ago and was sentenced by Judge Vaughan to three months imprisonment.
Boy Forges Checks—Deputy Sheriff Levi Joseph brought a youthful prisoner over from Molokai Wednesday. The boy admits the forgery of several checks. Another prisoner brought over proved to be a case of mistaken identity the boy complained of really being an older brother of the prisoner.
Maui Mail Lost—Sixty-three letters from Honolulu to points on Maui were lost Saturday night, November 19, when the bag containing the Kilauea's ship-side mail for Maui fell into the ocean at the Lahaina wharf. It dropped into the water and was carried out to sea. A stevedore attempted to throw it from the skiff to the wharf. It is to be understood that all were letters mailed at the dock, says Postmaster D. H. MacAdam. Names of senders or addresses are not known.

In the Churches

Church of the Good Shepherd
 Sunday, December 4th.
 Sunday school at 10 a. m.
 Morning worship and sermon at 11. A cordial invitation to all.
 J. Charles Villiers, rector.
Makawao Union Church
 Rev. Augustine Jones, Minister.
 Morning Worship, 11 a. m.
Wailuku Union Church.
 Rev. Augustine Jones, pastor.
 Evening Worship, 7 p. m.
 There is a widespread feeling that a holy life is not a useful life—that graces of character are not always practical. This and many other phases of the spiritual life will be treated in a sermon that Mr. Jones is preparing on "The Beauty of Holiness."
Kahului Union Church
 Sunday, December 4, 1921.
 Rev. George H. DeKay will preach on "Dripping Away From God."
The Community Church, Lahaina
 W. A. Tate, Minister and Director of Americanization for West Maui.
 Services held the first and third Sunday evenings in the month at 7:30 p. m. in Baldwin Kindergarten. Bible School every Sunday at 10 a. m. All are cordially welcomed to these services.
SERVICES IN THE CATHOLIC CHURCHES
St. Anthony's Church
 Rev. Father Justin, Pastor.
 Masses at 8 and 10:00 a. m.
Our Lady of Victory Church
 Rev. Father Bruno.
 Masses 8 and 10 a. m.

Court Valley Island Elects New Officers

Court Valley Island No. 9239, A. O. F., held its summoned meeting last night at Foresters' Hall, Kahului and elected the following officers, who will be installed at the first meeting in January:
 W. F. Crockett, Jr., Chief Ranger.
 Jno. Martins, Sub-Chief Ranger.
 A. C. Franco, Treasurer.
 Jno. E. Garcia, Financial Secretary.
 Joe Xavier, Recording Secretary.
 E. J. Freitas, Senior Woodward.
 Sam Aho, Junior Woodward.
 J. J. Mahoney, Senior Beadle.
 Ed. Aho, Junior Beadle.
 W. F. Crockett, Sr., W. I. Maples, J. M. Medeiros, Trustees.
 J. Garcia, C. F. N. Rose, Jno. Duarte, Auditors.
Supervisors to Meet—The board of supervisors will open its December meeting next Wednesday.

WANT ADS

LOST—Bewteen Edwards' Garage and Wailuku Mill, Forester's emblem watch fob on black ribbon, bearing initials "F. R. C." Finder return to Wailuku Sugar Co.'s office and receive reward. tf.
FOR SALE—House and lot on Iao Valley Road above Maui Hotel, price \$2600. Inquire of John Martins, Spreckelsville, Phone 78-E.—tf
FOR SALE—Chickens and ducks. Also three well bred horses. Inquire, P. W. Eichinger, Waihee, Maui, Phone 138C.

Maui Women's Club

The regular monthly meeting on Monday, December 5th, promises to be a most interesting one. Hostesses for the occasion are: Mrs. T. B. Linton, Mrs. Enos Vincent and Mrs. Augustine Jones. There will be a talk by Miss Maude May Babcock, and the regular program presided over by Miss Frances Seibert. It is the Girl Scout program, and undoubtedly will be a very entertaining one.
 When the program is concluded refreshments will be served, so that all members may linger a few moments and meet Miss Babcock, as well as greet their fellow clubwomen.
 The business meeting will commence at 2:30 p. m. and be concluded in time for the program to start promptly at 3 o'clock.

Paradise of Pacific Excels Past Effort

Paradise of the Pacific's Holiday number is off the press and makes one of the most attractive gifts one can send to friends on the mainland for Christmas. It is profusely illustrated with color reproductions of paintings of various islands scenes from the brush of Howard Hitchcock, H. T. Franga, Ethel Gripper and others.

CHILDREN'S SEWING

Layette and Fancy Work
 PHONE 138-K WAIHEE, MAUI

HEMSTITCHING AND PICOTING

HEMSTITCHING, PICOTING, 12½ Cents a Yard
 SCOLLOPS, POINTS, 17½ Cents a Yard
MRS. ALICE PHELPS
 LAHAINA, MAUI
 PHONE 66

Obituary

ANTONE M. FEITEIRA, SR.
 Death came suddenly to claim Antone M. Feiteira, Sr., for more than two score years a resident of Maui, last Sunday morning.
 Mr. Feiteira had been apparently in his usual good health previous to Sunday and on Sunday morning. He left his home and proceeded to the Kuau Church, had entered the church yard and was talking to friends before entering the building when he was suddenly stricken. He was picked up and cared for but died in a few minutes.
 Forty-one years ago Mr. Feiteira came from the Azores to Hawaii and at the time of his death he was 64 years of age. For 22 years of his residence here he was employed in the Hamakupu store and for 11 years at Paia store. Besides the widow he is survived by nine children, Manuel, Antone, John, Frank, Raphael, Alfred, Mary, Marian and Virginia and by 12 grand children.
 During his long life on Maui he made a large circle of friends who mourn his sudden demise.

er artists well known to Hawaii nei besides many half tone photo-engravings which illustrate the 160 pages it contains. The cover design is a beautiful reproduction in color of a bunch of Hawaii's typical blossoms, the hibiscus. There are 24 full page color illustrations and seven full page half tones besides scores of smaller cuts.
 Paradise of Pacific's holiday number has become an annual institution in the islands, is looked forward to with pleasurable anticipation and never disappoints. It has lived ahead of its reputation this year.

The Stock Market

Ewa	20 1/4
H. C. & S. Co.	32
McBryde	6 1/2
Oahu	21
Pioneer	5 1/4
Waialua	17 1/4
Engles	16 1/2
Wailuku	97
Haku Fruit	20 1/4
Sugar	Unquoted
Honolulu Oil	3.87
	7%

Today's Quotation on RAW SUGAR:

4.11

CENTS PER POUND
 Copper 137 1/2 c. lb.
 Rubber, N. Y. 18c lb.
 Rubber, Singapore 17c lb.
 For further information regarding local and foreign securities see—

WATERHOUSE TRUST CO., LTD.
 PHONE 5701

JEWELRY

Watch Making and Repairs
 Make your selection of Holiday Gifts early.
 Make a Deposit and We'll Put them Aside For You.
U. OGAWA
 Market St. Wailuku

For Your Selection

 Now Selection Gift Shop

Now is the time to begin Christmas shopping for those who enjoy putting individuality and discrimination into their choice of GIFTS. The little additional time increases the delights both of giving and receiving.

Look over our list of suitable Gifts and Order Now.

- | | | |
|----------------------------|-------------------|------------------------|
| Ladies' and Misses' | Children's | Men's and Boys' |
| Dresses, | Celluloid Toys, | Socks, |
| Suits, | Sweaters, | Ties, |
| Waists, | Dresses, | Handkerchiefs, |
| Skirts, | Bonnets, | Garters, |
| Petticoats, | Handkerchiefs, | Arm Bands, |
| Scarfs, | Dolls, | Shirtings, |
| Sweaters, | Ribbons, | Leather Novelties, |
| Underwear, | Hosiery, etc. | Etc., Etc. |
| Corsets, | | |
| Neckwear, | | |
| Handkerchiefs, | | |
| Gloves, | | |
| Purses, | | |
| Bags, etc. | | |

And many other useful Gifts not mentioned.

HOME OF LINENS

HONOLULU

Professor Maud May Babcock



DRAMATIC RECITAL

"Abraham Lincoln"

Special Engagement under the Auspices of the MAUI WOMAN'S CLUB

Saturday Evening, Dec. 3, 1921

8:15 o'clock

TERRITORIAL BUILDING, KAHULUI

Prices, 75 Cts. and \$1.00. Children 50 Cts.

"Maud May Babcock inspired the immense audience with her readings. All numbers on the program were of the highest order and the audience showed its appreciation of the splendid entertainment."
 San Francisco Chronicle.

Do Your Christmas Shopping Early Failure to Do So Means Disappointment to Others

A SMALL PORTION OF OUR GIFT LIST

Hawaiian Coat-of-Arms XMAS GREETING CARDS—very neatly engraved with Hawaii's emblem.
 We are exclusive dealers in this article and have a complete assortment—come in and select yours early.
STATIONERY makes a very acceptable gift.
STATIONERY in the pretty Xmas boxes which we are now showing makes the most desirable and appreciated gift.
 Good enough to want yourself, therefore they must be good enough to give to others.
KOA and JEWELRY NOVELTIES.
 Our Jewelry Department is very complete in every respect—many things of interest will be found and something to suit every taste.
 A complete assortment of Hawaiian made Koa articles—just the thing to send to the folks at home.

JOHNSTON'S CHOCOLATES.
HOEFFLER'S CHOCOLATES.
GOLDEN PHEASANT CHOCOLATES.
CANDY: The gift that never goes wrong—the gift that makes Christmas complete for everybody. Put up in attractive Christmas boxes in all sizes, shapes and styles.

WHITE IVORY GIFTS—A beautiful, durable material exhibited in ideas of a hundred different kinds. Novelty pieces, lyric-a-brac, Boudoir and Toilet articles, high quality with a rich lustre of Old Ivory—single pieces or complete sets.

KODAKS
 The way to a Merry Christmas. There is a KODAK for every age, there is the Vest Pocket and the big KODAK for the professional.
 There is the small for the Children which they can operate with ease.
 We are the exclusive Eastman Agents for this Island.

THE MAUI DRUG COMPANY, LTD.

WAILUKU TELEPHONE 232 MARKET ST.
 "THE HOUSE OF SERVICE"