

# 22nd Annual Merrie Monarch Festival



1985

## Hilo, Hawaii

## CO-SPONSORS

County of Hawaii  
Hawaiian Airlines

## COMMITTEES

<i>Chairwoman</i>	DOTTIE THOMPSON
<i>Royal Court</i>	GEORGE NAOPE
<i>Royal Parade</i>	GEORGE deMELLO
<i>Exhibits/Demonstrations</i>	DORIS NOSAKA
<i>Hawaiian Arts &amp; Crafts</i> (Mooheau Park)	"ZIG" ZANE
(Butler Building)	GEORGE NAOPE
(Kilohana Room)	
<i>Seating &amp; Decorations</i>	ALFRED SIMEONA GEORGE deMELLO
<i>Stage</i>	DENNY & JACKIE HOLT
<i>Sound</i>	GLENN YAFUSO
<i>Facilities</i>	LUANA KAWELU
<i>Contest Chants</i>	EDITH McKINZIE KALANI MEINECKE
<i>Timers-Scorers-Ushers</i>	LILY PA BIG ISLAND CHAPTER PSI
<i>Souvenir Programs/T-Shirts</i>	THOMAS SPENCER, JR.
<i>Ticket Collectors</i>	EAST HAWAII KIWANIS
<i>Commentator</i>	KIMO KAHOANO

## HULA JUDGES

KAUI ZUTTERMEISTER	ADELINE LEE
EDITH McKINZIE	JOHN KAIMIKAUA
NALANI KANAKAOLE	KIMO ALAMA
JOHNNY LUM HO	



*RULERS of the MERRIE MONARCH FESTIVAL*

*Mo'i Kane - FRITZ KUA III*

*Mo'i Wahine - PAULA ANN IOPA REZENTES*

# HAWAI'I'S LEGACY: Aloha Kupuna

*The Ali'i all left behind them perpetual monuments to the love they bore their people.*

*Princess Pauahi's interest was in Hawai'i's young people. To that end, she made them her heirs through the Kamehameha Schools for Boys and Girls.*

*King Kamehameha IV and Queen Dowager Emma always held uppermost in their minds, the welfare of their people. Their crowning achievement was the Queen's Hospital.*

*King Lunalilo left his large landed estate to the "poor, destitute and infirm people of Hawaiian blood" — Lunalilo Home.*

*King David Kalakaua catalyzed the Hawaiian cultural renaissance of the last quarter of the 19th century. His impact is still felt today, for the inspiration for Hawai'i's present-day cultural resurgence can be traced to his reign. His active pursuit of the ancient chants was perhaps the most important factor in the revival and perpetuation of the oli and the hula.*

*Hawaiian music was the chief beneficiary of this dynamic cultural life, for it encouraged aspiring singers and composers, instrumentalists and dancers, chanters and poets.*

*While he urged the preservation of Hawaiian traditions, he also encouraged the adaptation of new art forms introduced from the West. The best examples are: the "ukulele he promoted as a Hawaiian instrument and the hula ku'i."*

*Equally interested in the welfare of the people, Queen Consort Kapiolani later willed her fortune to found and maintain a maternity home, namely Kapiolani Children's Hospital.*

*Leleiohoku and Princess Likelike, brother and sister of King Kalakaua, were accomplished musicians and composers. Their compositions still live on.*

*Queen Lili'uokalani was the most accomplished musician and composer of all her family. Two beautiful songs which live today in world affection: "Aloha Oe" and "The Queen's Prayer."*

*She spent her later years working for the welfare of her people. Her large estate was left for the care and protection of Hawaiian orphans: Queen Lili'uokalani Children's Center-Lili'uokalani Trust.*

*Prince Kuhio Kalaniana'ole Piikoi, better known as Prince Cupid, was elected delegate to Congress. He won the hearts of his Congressmen, and in 1920, the Hawaiian Rehabilitation Bill, known as "The Hawaiian Homes Commission Act", was passed. He also organized the Hawaiian Civic Club.*

## Schedule of Events

### SUNDAY, APRIL 7 — MOKUOLA "COCONUT ISLAND"

- 11:00 a.m. The Paradise Band
- 12:00 noon Lynn Flores Trio
- 1:00 p.m. King Street Band
- 2:00 p.m. The Lim Family
- 3:00 p.m. The Freitas Brothers
- 4:00 p.m. Kaipo Lilikoi Harris

### MONDAY, APRIL 8 - SATURDAY, APRIL 13 EXHIBITS/DEMONSTRATIONS "HAWAIIAN ARTS AND CRAFTS"

*Wailoa Center* 8:00 a.m. - 4:30 p.m.

Display: Hawaiian Quilts, Hawaiian Photography  
Demonstrations: Hawaiian Crafts

*Kilohana Room, Nanihoa Surf Hotel* 9:00 a.m. - 5:00 p.m.

Feather Leis, Hawaiian Jewelry, Hawaiian Quilts, Lauhala Hats

*BUTLER BUILDING, Hooihulu Complex* Wednesday, April 10 - Saturday, April 13

9:00 a.m. - 5:00 p.m. Haku Leis, Coconut Crafts, Lauhala Hats & Crafts, etc.

*MOOHEAU PARK* — Saturday, April 13 - 8:00 a.m.

Hawaiian Craft Fair

### NOONDAY SHOWS AT NANIHOA SURF HOTEL

#### WEDNESDAY, APRIL 10 (Doors open at 5:30 p.m.)

- 6:30 p.m. Hawaii County Band
- 7:00 p.m. Enter Royal Court
- 7:15 p.m. Charles K.L. Davis (singing anthems)
- 7:30 p.m. JOHNNY LUM HO & HIS POLYNESIAN REVUE

#### THURSDAY, APRIL 11 (Doors open at 5:30 p.m.)

- 6:00 p.m. Enter Royal Court
- 6:15 p.m. National anthems
- 6:30 p.m. Introduction of Kumu Hula/Judges/Dignitaries
- 7:00 p.m. MISS ALOHA HULA

#### FRIDAY, APRIL 12 (Doors open at 4:30 p.m.)

- 5:45 p.m. Enter Royal Court
- 5:55 p.m. National anthems
- 6:00 p.m. Kane & Wahine Hula Kāhiko

#### SATURDAY, APRIL 13 (Doors open at 4:30 p.m.)

- 10:30 a.m. Royal Parade
- 5:30 p.m. Royal Court enters
- 5:45 p.m. National anthems
- 6:00 p.m. Kane & Wahine Hula Auwana

## Grogge Shoppe

HO'OPI'I BROTHERS — KEKUA FERNANDES —

SEVEN SEAS LUAU HOUSE

Wednesday, April 10 - Saturday, April 13 · 4:00 p.m. - midnight

Sunday, April 14 12:00 noon - 6:00 p.m.

CROWN ROOM - NANIHOA SURF HOTEL

12:00 midnight - 3:00 a.m.



NĀ WAI EHĀ 'O PUNA / *Kumu Hula*: Thaddius Wilson, Aiea, Oahu

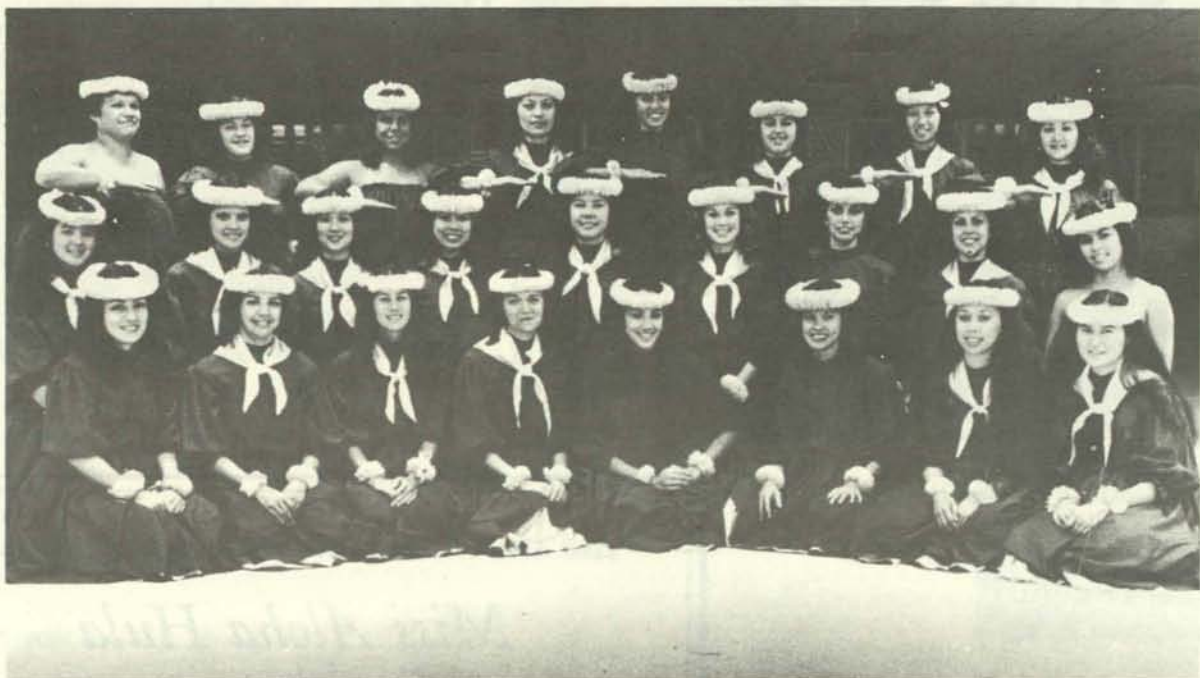
HUI 'O KAMALEI / *Kumu Hula*: Kamalei Sataraka, Honolulu, Oahu





KAULANA NĀ PUA 'O HAWAII / *Kumu Hula*: Ehulani Lum, Hayward, California

HĀLAU MŌHALA 'ILIMA / *Kumu Hula*: Māpuana de Silva, Kailua, Oahu





*Keolamai 'okalani Tanouye*  
MISS HULA-MAUI

*Kalola T.*  
HUI 'O KAMALEI



*Iwalani Viveiros*  
PUKALANI HULA HALE

*Kailinoe 'okalani Kawamoto*  
KEOLALAUANI HĀLAU OLAPA  
'O LAKA



*Karwahine Cabanilla*  
THE LADIES OF KAHANĀKEALOHA

*Healani Youn*  
THE LADIES OF KE'ALA 'O KĀ LAUWA'E

22nd ANNUAL MERRIE MONARCH FESTIVAL

*Miss Aloha Hula*  
*Contestants*





*Pualilia Mauricio*  
HĀLAU 'O WAIMEA

*Kauilani Keahi*  
HULA HĀLAU 'O KAWAIL'ULĀ

Not pictured:

*Ehulani II Po'omaikai Lum*  
KAULANA NA PUA 'O HAWAII

*Joann Karwai*  
PUA ALI'I 'ILIMA

*Kathy Leilani Cook*  
KU'UIPO OHANAS 'O KALEPONI

*Ka'wehilani Palapala*  
KĀ UA KILIHUNE

*Kaili Trask*  
PUKAIKAPUA'OKALANI

*Mahumalu Dunlap*  
HULA HĀLAU 'O KAMUELA

## Past Contest Winners

1971

*1st Solo — Miss Aloha Hula*  
Aloha Wong (Keolaulani Hula Studio, Kaneohe, Oahu)  
*Group Hula (1st)* Pauline Kekahuna & Her Hauoli Group

1972

*Ancient Group*  
Johnny Lum Ho Hula Studio (E Luna E Ka Hale Kai)  
*Modern Group* Johnny Lum Ho Hula Studio (Kawika)  
*Implements Group* Puamana Hula Studio (Heeia)

1973

*Hula Kāhiko / Hula Auwana / Implements / Overall Winner*  
Pauline Kekahuna & Her Hauoli Group  
*Miss Aloha Hula*  
Miss Kalani Kalawa (Louise Kaleiki Hula Studio)

1974

*Hula Kāhiko* Louise Kaleiki Hula Studio  
*Hula Auwana* Louise Kaleiki Hula Studio  
*Hula Implements* Louise Kaleiki Hula Studio  
*Miss Aloha Hula* Dee Dee Aipolani

1975

*Hula Kāhiko (tied 1st place)*  
'Ilima Hula Studio  
Pauline Kekahuna & Her Hauoli Group  
*Hula Auwana* 'Ilima Hula Studio  
*Implements* Keolaulani Hula Studio  
*Miss Aloha Hula* Leimomi Maria

1976

*Hula Kāhiko* 'Ilima Hula Studio  
*Hula Auwana* Alicia K. Smith  
*Male Category* Na Kamalei o' Lililehua  
*Overall Group* 'Ilima Hula Studio

1977

*Hula Kāhiko / Overall (Kane Division)* Hālau o' Kekuhi  
*Hula Auwana (Kane Division)* Na Kamalei  
*Hula Kāhiko (Wahine Division)* Na Pualei O' Ka Likolehua  
*Hula Auwana (Wahine Division)*  
Johnny Lum Ho Hula Studio  
*Overall* Na Pualei O' Ka Likolehua  
*Miss Aloha Hula*  
Pualani Chang (Pukaikapuauokalani Studio)

1978

*Hula Kāhiko / Hula Auwana / Overall (Kane Division)*  
Waimapuna  
*Hula Kāhiko* Johnny Lum Ho Hula Studio  
*Hula Auwana* Na Pua Lei O' Likolehua  
*Overall* Na Pua Lei O' Likolehua  
*Miss Aloha Hula* Regina Makaikai Igarashi

1979

*Hula Kāhiko (Kane Division)* Nā Wai Ehā 'O Puna  
*Hula Auwana / Overall (Kane Division)* Waimapuna  
*Hula Kāhiko (Wahine Division)* Hauoli Hula Studio  
*Overall (Wahine Division)* Hauoli Hula Studio  
*Hula Auwana (Wahine Division) (tied 1st place)*  
Na Pualei 'O Likolehua, Hauoli Hula Studio  
*Miss Aloha Hula* Jody Imehana Mitchell (Maui)

1980

*Hula Kāhiko (Kane Division)* Waimapuna  
*Hula Auwana (Kane Division)* Nā Wai Ehā 'O Puna  
*Overall (Kane Division) (tied 1st place)*  
Waimapuna, Nā Wai Ehā 'O Puna  
*Hula Kāhiko (Wahine Division) (tied 1st place)*  
Hauoli Hula Studio, Johnny Lum Ho Hula Studio  
*Hula Auwana* Johnny Lum Ho Hula Studio  
*Overall* Johnny Lum Ho Hula Studio  
*Miss Aloha Hula*  
Kaula Kamahale (Johnny Lum Ho Hula Studio)

1981

*Hula Kāhiko / Hula Auwana / Overall (Kane Division)*  
Nā Wai Ehā 'O Puna  
*Hula Auwana (Wahine Division) (tied 1st place)*  
Johnny Lum Ho Hula Studio, Hālau 'O Nā Maoli Pua  
*Hula Kāhiko / Overall (Wahine Division)*  
Hālau 'O Nā Maoli Pua  
*Miss Aloha Hula*  
Brenda Alidon (Johnny Lum Ho Hula Studio)

1982

*Hula Kāhiko / Hula Auwana / Overall (Kane Division)*  
Hula Hālau O Ka Ua Kani Lehua  
(Johnny Lum Ho Hula Studio)  
*Hula Kāhiko (Wahine Division)* Hālau Mohala Ilima  
*Hula Auwana* Hālau 'O Kahanuola  
*Overall* Hula Hālau O Ka Ua Kani Lehua  
*Miss Aloha Hula*  
Dayna Kanani Oda (Hula Hālau O Ka Ua Kani Lehua)

1983

*Hula Kāhiko / Hula Auwana / Overall (Kane Division)*  
Hula Hālau O Ka Ua Kani Lehua  
*Hula Kāhiko / Hula Auwana / Overall (Wahine Division)*  
Hula Hālau O Ka Ua Kani Lehua  
*Miss Aloha Hula*  
Geola Pua (Hula Hālau O Ka Ua Kani Lehua)

1984

*Hula Kāhiko / Hula Auwana / Overall (Kane Division)*  
Nā Wai Ehā 'O Puna  
*Hula Kāhiko / Hula Auwana / Overall (Wahine Division)*  
Hālau Mohala 'Ilima  
*Miss Aloha Hula*  
Twyla Ululani Mendez (Hauoli Hula Hālau)

# Hula Contest Songs

(KANE DIVISION)

## NĀ NALU Ō HAWAI'I

### *The Waves of Hawai'i*

*Eia mai ka nalu mai Hawai'i Kuauli mai.*

*Haki nu'anu'a ka nalu i Maui Ihilaumāewa.  
Popo'i ka nalu i O'ahu-Nui-ā-La'ila'i.  
Warōā ka nalu i Kaua'i o Olo-i-mehani.  
'A'ohē ilaila kō nalu e Kekalukaluōkewā.  
Kū mai, kū mai ka nalu.  
Popo'i kai uli, kai ko'ō.  
Aia ka nalu o kōua i Kahiki-mai-'eka.  
Nō kōua ka nalu o Hawai'i-Nui-Kuauli,*

*E haki kuapā ana i Huia i Pi'ihonua.  
Ili kō nalu i Kanuōkamanu o Waiākea ia.  
Kai 'owē'owē ka nalu o Punahoā.  
A lele ka nalu o Puala i Pu'ueo.  
Kau aku kō papa i ka nalu o Kapō'ai,  
E he'e ana mai ka wai aku o Honoli'i.  
Eia kō nalu he'e pu'ewai la i Pāpa'ikou.*

*Lau ka nalu o 'ua kānaka i Pāhoehoe,  
Heihei pū nō me kā Pai'ea.  
E hāpapa ana i ka nalu he'e pu'ewai o Waipi'o.  
Hiki 'ōpuni ka nalu o Māliu i Halelua.  
Ki'eki'e iluna ka nalu o Kūmoho Nā'ōhaku.  
He pana nalu kō Puakea, aia nō i kaheka.  
He'e mai ka nalu o Huihā, kā'alo i Ki'ikau.  
Hu'e ka nu'a o ka nalu i Nā'ōhulelua.  
Haki pā lala o Kamakai'a a ma 'Auhaukea'ē.  
Lele ka nalu i Kamoā, kau iluna o Pu'u.*

Here comes the surf from Hawai'i of the verdant countryside.

The surf masses and breaks at Maui Ihilaumāewa.  
The surf breaks at O'ahu-Nui-ā-La'ila'i.  
The surf roars at Kaua'i of Olo-i-mehani.  
Your surf is not there, Kekalukaluōkewā.  
The surf looms forth, looms forth.  
The dark surf, the rough surf breaks.  
There our surf is at Kahiki-mai-'eka.  
For the two of us the surf of Mighty Hawai'i of the verdant countryside,

Breaking and dashing at Huia in Pi'ihonua.  
Your wave comes aground at Kanuōkamanu of Waiākea.  
A rustling surf is the wave of Punahoā.  
And the surf of Puala leaps at Pu'ueo.  
Your board mounts the surf of Kapō'ai,  
Surfing from the waters of Honoli'i.  
Here is your wave for surfing toward the mouth of the stream at Pāpa'ikou.

Numerous are the waves of the surfers at Laupāhoehoe,  
Racing together with Pai'ea's (waves).  
Striving for the wave to take you to the sands of Waipi'o.  
The surf of Māliu surrounds at Halelua.  
The surf of Kūmoho Nā'ōhaku rises high.  
A celebrated surfing spot is Puakea, there by the tidepools.  
The surf of Huihā runs past Ki'ikau.  
The buildup of waves washes out upon Nā'ōhulelua.  
The surf of Kamakai'a strikes obliquely at 'Auhaukea'ē.  
The surf leaps at Kamoā, come ashore at Pu'u.

(WAHINE DIVISION)

## HE INOA LEI NŌ KA MŌ'IWAHINE KAPI'OLANI

### *A Name Chant Honoring the Queen Kapi'olani*

*Aia i ka 'ōpua kō lei nani.  
'O ke ānuenuē pipi'o iluna  
Ha'āheo i ka mea ua li'ili'i.  
Arwearwe 'ula i ka maka o ke ao,  
A he like ā like me ka 'ōnohi,  
Me ka pūnohu 'ula i ka mālie,  
Ke hāli'a mai la e ka noe anu,  
Me ke ala ko'i'ula ko'iarwearwe,  
Ulu māhiehie i ka ua noe,  
I ka 'Ehukai o Kūlanihāko'i.  
A he kāhiko ia nō ia nei,  
Nō ka pua kapu i ka 'iu o Lono,  
I kukupu a pua ma ka Hikina,  
I uwē i Hawai'i moku o Keawe,  
'Ua kau a'e la i Makanoni,  
I kāhi ā ka lā i puka mai ai.  
Kaena ka hana ā Hanakaulua  
I ka 'ōliko pua i ka mālie.  
Ha'ina ke Li'i nona ka lei,  
'O Kapi'olani i ka 'iu o ka moku.*

There high upon the horizon clouds is your lei of adornment.  
The rainbow arches above  
Vaunting the gentle mist.  
Red beams at the first dawn,  
Like the eye of the sun,  
Like the red rising mist in the calm,  
The cold mist and the rainbow-hued rain,  
The column of light rain are all pathways of remembrance,  
Attractively arrayed in the misty rain,  
In the sea spray of Kūlanihāko'i.  
It is a splendor befitting this one,  
The sacred offspring of the highest heavens of Lono,  
Budding and flowering in the East,  
Diffusing over Hawai'i, island of Keawe,  
Placed high above Makanoni,  
At the place where the sun emerges.  
Proud is Hanakaulua  
At the serene budding.  
Sing the praises for the Chiefess whom this honors,  
Kapi'olani of the highest realm of the island.

# Miss Aloha Hula

Thursday, April 11, 1985

## KĀHIKO (Ancient Dances)

1. Kealohamai'okalani Tanouye — Miss Maui Hula  
*Ke Ha'ala Puna*
2. Ehulani II Po'omaikai Lum — Kaulana Nā Pua 'O Hawaii, Hayward, California  
*A Ko'olau Au*
3. Kaili Trask — Pukaikapua'okalani, Kailua, Oahu  
*Kalalau*
4. Pualilia Mauricio — Hālau 'O Waimea, Waimea, Oahu  
*Ka'ao No Ka Mo'o Kane 'O Waimea*
5. Joann Kawai — Pua Ali'i 'Ilima, Aiea, Oahu  
*He Kai Ehu Ko Kohala Loa*
6. Kawehilani Palapala — Kā Ua Kilihune, Honolulu, Oahu  
*Pa Ka Makani*
7. Healani Youn — The Ladies of Ke'ala 'O Kā Lauwa'e, Aiea, Oahu  
*He Wahi Laha'ole 'O Kalihi Wai E*
8. Kalola T. — Hui 'O Kamalei, Honolulu, Oahu  
*Kakai Kahi Ka Manu O'o*
9. Kathleen Leilani Cook — Kuuipo Ohanas 'O Kaleponi, Hercules, California  
*Kaulana 'O Kohala*
10. Kauilani Keahi — Hula Hālau 'O Kawaili'ulā, Kailua, Oahu  
*Na Makana Aloha No Na Po'e*
11. Kalilinoe'okalani Kawamoto — Keolalaulani Hālau Olapa 'O Laka, Kaneohe, Oahu  
*Lei Kauai Malie I Kanani*
12. Malumalu Dunlap — Hula Hālau 'O Kamuela, Waimanalo, Oahu  
*He Mele Hulu No Kapiolani I Waimanalo*
13. Iwalani Viveiros — Pukalani Hula Hale, Pukalani, Maui  
*Ka Manu 'O Kaula I Ka Makani*
14. Kawahine'okekai Cabanilla — Ladies of Kahanākealoha, Honolulu, Oahu  
*Wahine Mu'umu'u*

INTERMISSION

# Miss Aloha Hula

Thursday, April 11, 1985

## AUWANA (Modern Dances)

1. Kealohamai'okalani Tanouye — Miss Maui Hula  
*Ka Ena*
2. Ehulani II Po'omaikai Lum — Kaulana Nā Pua 'O Hawaii, Hayward, California  
*Medley of Hilo Songs*
3. Kaili Trask — Pukaikapua'okalani, Kailua, Oahu  
*Ka Kahanu Pua Mokihana*
4. Pualilia Mauricio — Hālau 'O Waimea, Waimea, Oahu  
*'O Kalena Kai*
5. Joann Kawai — Pua Ali'i 'Ilima, Aiea, Oahu  
*Ke Aloha*
6. Kawehilani Palapala — Kā Ua Kilihune, Honolulu, Oahu  
*Ke'aukaha*
7. Healani Youn — The Ladies of Ke'ala 'O Kā Lauwa'e, Aiea, Oahu  
*Kamano Kalanipo*
8. Kalola T. — Hui 'O Kamalei, Honolulu, Oahu  
*E Nihi Ka Hele*
9. Kathleen Leilani Cook — Ku'uipo Ohanas 'O Kaleponi, Hercules, California  
*He'inoa Aumakua*
10. Kauilani Keahi — Hula Hālau 'O Kawaili'ulā, Kailua, Oahu  
*Kinu'ē*
11. Kalilinoe'okalani Kawamoto — Keolalaulani Hālau Olapa 'O Laka, Kaneohe, Oahu  
*Aloha Kauai*
12. Malumalu Dunlap — Hula Hālau 'O Kamuela — Waimanalo, Oahu  
*U'ilani*
13. Iwalani Viveiros — Pukalani Hula Hale, Pukalani, Maui  
*Wahine Ilikea*
14. Kawahine'okekai Cabanilla — Ladies of Kahanākealoha, Honolulu, Oahu  
*Na Wahine U'i*

# *Kane & Wahine Hula*

*Friday, April 12, 1985*

## HULA KĀHIKO

1. AIA I KAMAILE KOU LEI AHI  
Kaulana Nā Pua 'O Hawaii / *Kumu Hula*: Ehulani Lum, Hayward, California
2. MAIKA'I KE ANU 'O WAIMEA  
Kā Ua Kilihune / *Kumu Hula*: Al Barcarse, Honolulu, Oahu (kane)
3. KUALOLOA KEA'AU I KANAHELEHELE  
Na Hālau 'O Ke Anuenue / *Kumu Hula*: Kelena Vasconcellos, Hilo, Hawaii
4. HE MELE HE INOA NO KE ONAONA  
Pua Ali'i 'Ilima / *Kumu Hula*: Vicky Holt Takamine, Aiea, Oahu
5. UA OI AKU KO KAKOU PONO ME KA HAKU IESU  
Hui 'O Kamalei / *Kumu Hula*: Kamalei Sataraka, Honolulu, Oahu
6. AIA I HONUAKAHA KU'U LANI  
Hui Ho'oulu Aloha / *Kumu Hula*: Cy Bridges, Laie, Oahu (kane)
7. HANO HANO KAUAI  
Hula Hālau 'O Kahikilaulani / *Kumu Hula*: Ray Fonseca, Hilo, Hawaii
8. KAU ILUNA 'O MOKULEIA  
Pukaikapua'okalani / *Kumu Hula*: Ellen Castillo, Kailua, Oahu
9. ALOHA NU'UANU I KE KAPA A KA NOE  
Keolalaulani Hālau Olapa 'O Laka / *Kumu Hula*: Aloha Dalire, Kaneohe, Oahu
10. KA PO'E LAWAI'A  
Gentlemen of Maluikeao / *Kumu Hula*: Frank Palani Kahala, Honolulu, Oahu (kane)
11. NI'IHAU  
Ku'uipo Ohanas 'O Kaleponi / *Kumu Hula*: Sybil Pruett, Hercules, California
12. KAULILUA I KE ANU WAI'ALE'ALE  
Lehua Dance Co. / *Kumu Hula*: Kaulana Kasparovitch, Honolulu, Oahu
13. KĀHIKO 'O KE AKUA  
Hālau 'O Waimea / *Kumu Hula*: Piilani Lua, Hauula, Oahu
14. KA UHI KE IMAKA 'O KA LANI  
Hula Hālau 'O Kawaili'ulā / *Kumu Hula*: Chinky Mahoe, Kailua, Oahu (kane)

INTERMISSION

# *Kane & Wahine Hula*

*Friday, April 12, 1985*

## HULA KĀHIKO

15. KA MAKANI 'O NU'UANU  
Hālau 'O Nā Maoli Pua / *Kumu Hula*: Mae Loebenstein/Alicia Smith, Honolulu, Oahu
16. HALE HALE KEALOHA I HAIKŪ  
Hula Hālau 'O Kahikilaulani / *Kumu Hula*: Ray Fonseca, Hilo, Hawaii (kane)
17. NO LUNA I KĀ HALEKAI  
Pukalani Hula Hale / *Kumu Hula*: Nina Maxwell, Pukalani, Maui
18. KA'IULANI  
Hālau Mōhala 'Ilima / *Kumu Hula*: Māpuana de Silva, Kailua, Oahu
19. HE'EIA  
Kaulana Nā Pua 'O Hawaii / *Kumu Hula*: Ehulani Lum, Hayward, California (kane)
20. HANA NO'EAU NĀ WAHINE KAPA  
Ladies of Kahanākealoha / *Kumu Hula*: Frank Palani Kahala, Honolulu, Oahu
21. KAUA I KĀ NANI A'O HILO  
Noelani Hula Hālau / *Kumu Hula*: Noelani Canon, Honolulu, Oahu
22. KA UWE 'O NĀ MANU  
The Ladies of Ke'ala 'O Kā Lauwa'e / *Kumu Hula*: Darrell Lupenui, Aiea, Oahu
23. AI-HEA 'O KALANI  
Lamalani Hula Academy / *Kumu Hula*: Lahela Kaaihue, Honolulu, Oahu (kane)
24. HE MELE HULU NO KAPI'OLANI I WAIMANALO  
Hula Hālau 'O Kawaili'ulā / *Kumu Hula*: Chinky Mahoe, Kailua, Oahu
25. A NANA'I KAULUHEA  
Nā Hula 'O La'i Kealoha / *Kumu Hula*: Elaine Kaopuiki, Lanai City, Lanai
26. E HO'I KEALOHA  
Hula Hālau 'O Kamuela / *Kumu Hula*: Paleka Leina'ala Mattos, Waimanalo, Oahu
27. KAHALEOHU'OKALANI  
Hui Ho'oulu Aloha / *Kumu Hula*: Cy Bridges, Laie, Oahu
28. KE UWALO MAI NEI 'O UKA  
Nā Wai Ehā 'O Puna / *Kumu Hula*: Thaddius Wilson, Aiea, Oahu (kane)

# *Kane & Wahine Hula*

*Saturday, April 13, 1985*

## HULA AUWANA

### 1. KA ULUWEHI 'O KE KAI

Kaulana Nā Pua 'O Hawaii / *Kumu Hula*: Ehulani Lum, Hayward, California

### 2. PAPA SIA

Kā Ua Kilihune / *Kumu Hula*: Al Barcarse, Honolulu, Oahu (kane)

### 3. NANI KA'ALA

Nā Hālau 'O Ke Anuenue / *Kumu Hula*: Kelena Vasconcellos, Hilo, Hawaii

### 4. KU'U HO'A

Pua Ali'i 'Ilima / *Kumu Hula*: Vicky Holt Takamine, Aiea, Oahu

### 5. KAPILIMEHANA

Hui 'O Kamalei / *Kumu Hula*: Kamalei Sataraka, Honolulu, Oahu

### 6. A KONA HEMA

Hui Ho'oulu Aloha / *Kumu Hula*: Cy Bridges, Laie, Oahu (kane)

### 7. E ONO HONO

Hula Hālau 'O Kahikilaulani / *Kumu Hula*: Ray Fonseca, Hilo, Hawaii

### 8. KĀ IPO LEI MANU

Pukaikapua'okalani / *Kumu Hula*: Ellen Castillo, Kailua, Oahu

### 9. PAUOA LIKO KA LEHUA

Keolalaulani Hālau Olapa 'O Laka / *Kumu Hula*: Aloha Dalire, Kaneohe, Oahu

### 10. NĀ SELAMOKU

Gentlemen of Maluikeao / *Kumu Hula*: Frank Palani Kahala, Honolulu, Oahu (kane)

### 11. E KU'U SWEET LEI POINA OLE

Ku'uipo Ohanas 'O Kaleponi / *Kumu Hula*: Sybil Pruett, Hercules, California

### 12. ALOHA KAUAI

Lehua Dance Co. / *Kumu Hula*: Kaulana Kasparovitch, Honolulu, Oahu

### 13. KA PANIOLO NUI 'O MOLOKA'I

Hālau 'O Waimea / *Kumu Hula*: Piilani Lua, Hauula, Oahu

### 14. HO'OIPO HULA

Hula Hālau 'O Kawaili'ulā / *Kumu Hula*: Chinky Mahoe, Kailua, Oahu (kane)

INTERMISSION



# *Kane & Wahine Hula*

*Saturday, April 13, 1985*

## HULA AUWANA

### 15. LILI'U E

Hālau 'O Nā Maoli Pua / *Kumu Hula*: Mae Loebenstein/Alicia Smith, Honolulu, Oahu

### 16. PUA BE STILL

Hula Hālau 'O Kahikilaulani / *Kumu Hula*: Ray Fonseca, Hilo, Hawaii (kane)

### 17. KU'ULEI LEHUA

Pukalani Hula Hale / *Kumu Hula*: Nina Maxwell, Pukalani, Maui

### 18. KE KIHEI 'O MAPU

Hālau Mōhala 'Ilima / *Kumu Hula*: Māpuana de Silva, Kailua, Oahu

### 19. HUALALAI

Kaulana Nā Pua 'O Hawaii / *Kumu Hula*: Ehulani Lum, Hayward, California (kane)

### 20. HOLOLIO ANA NĀ PĀ'Ū RIDER

Ladies of Kahanākealoha / *Kumu Hula*: Frank Palani Kahala, Honolulu, Oahu

### 21. HANO HANO NO 'O HAWAI'I

Noelani Hula Hālau / *Kumu Hula*: Noelani Canon, Honolulu, Oahu

### 22. 'O KALENA KAI

The Ladies of Ke'ala 'O Kā Lauwa'e / *Kumu Hula*: Darrell Lupenui, Aiea, Oahu

### 23. A'OIA

Lamalani Hula Academy / *Kumu Hula*: Lahela Kaaihue, Honolulu, Oahu (kane)

### 24. PĀNĪ'AU

Hula Hālau 'O Kawaili'ulā / *Kumu Hula*: Chinky Mahoe, Kailua, Oahu

### 25. HE PUA WEHIWA/HA'AHEO

Nā Hula 'O La'i Kealoha / *Kumu Hula*: Elaine Kaopuiki, Lanai City, Lanai

### 26. ALOHA PUA MELIA

Hula Hālau 'O Kamuela / *Kumu Hula*: Paleka Leina'ala Mattos, Waimanalo, Oahu

### 27. KA PUA U'I

Hui Ho'oulu Aloha / *Kumu Hula*: Cy Bridges, Laie, Oahu

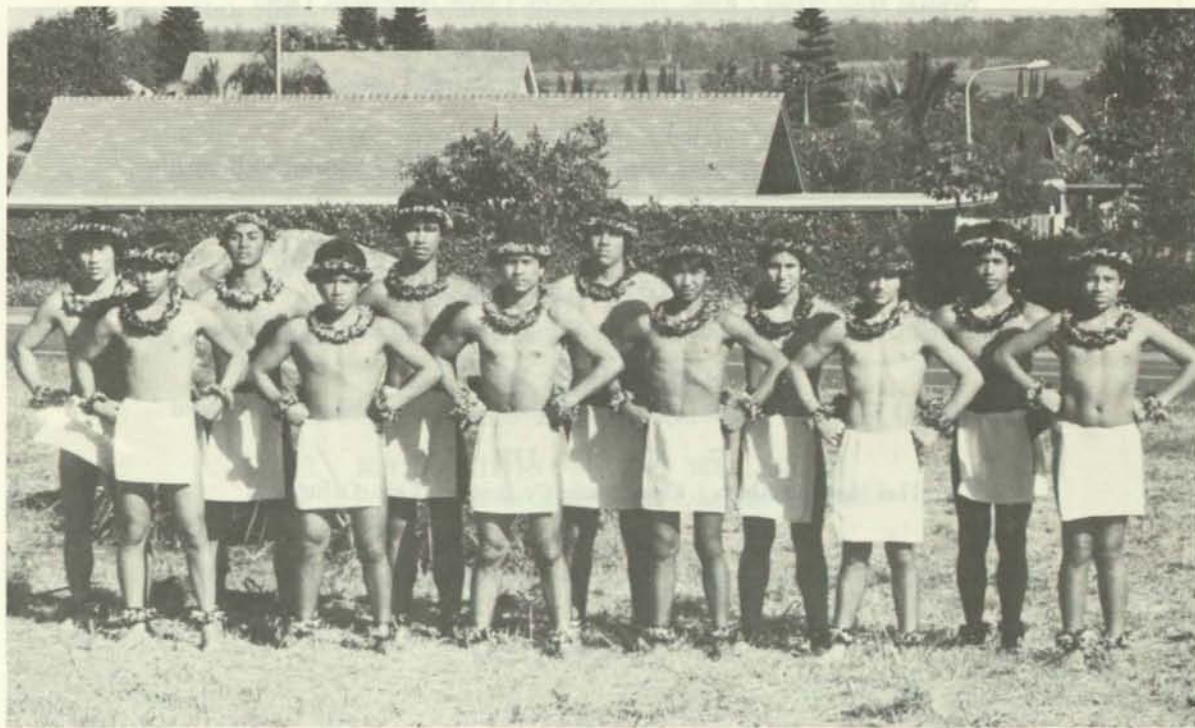
### 28. Medley of Maui Songs

Nā Wai Ehā 'O Puna / *Kumu Hula*: Thaddius Wilson, Aiea, Oahu (kane)



PUKAIKAPUA'OKALANI / *Kumu Hula*: Ellen Castillo, Kailua, Oahu

KA UA KILIHUNE / *Kumu Hula*: Al Barcarse, Honolulu, Oahu





KAULANA NĀ PUA  
'O HAWAII

*Kumu Hula:* Ehulani Lum,  
Hayward, California

NOELANI HULA HĀLAU

*Kumu Hula:* Noelani Canon,  
Honolulu, Oahu





NĀ HULA 'O LA'I KEALOHA / *Kumu Hula*: Elaine Kaopuiki, Lanai City, Lanai

KU'UIPO OHANAS 'O KALEPONI / *Kumu Hula*: Sybil Pruett, Hercules, California





HULA HĀLAU 'O KAWAILI'ULĀ / *Kumu Hula*: Chinky Mahoe, Kailua, Oahu

LEHUA DANCE CO. / *Kumu Hula*: Kaulana Kasparovitch, Honolulu, Oahu





HĀLAU 'O NĀ MAOLĪ PUA / *Kumu Hula*: Mae Loebenstein/Alicia Smith, Honolulu, Oahu



THE LADIES OF KE'ALA 'O KĀ LAUWA'E / *Kumu Hula*: Darrell Lupenui, Aiea, Oahu

PUA ALI'I 'ILIMA / *Kumu Hula*: Vicky Holt Takamine, Aiea, Oahu





PUKALANI HULA HALE / *Kumu Hula*: Nina Maxwell, Pukalani, Maui

THE GENTLEMEN OF MALUIKEAO / *Kumu Hula*: Frank Palani Kahala, Honolulu, Oahu







HĀLAU 'O WAIMEA / *Kumu Hula*: Piilani Lua, Hauula, Oahu

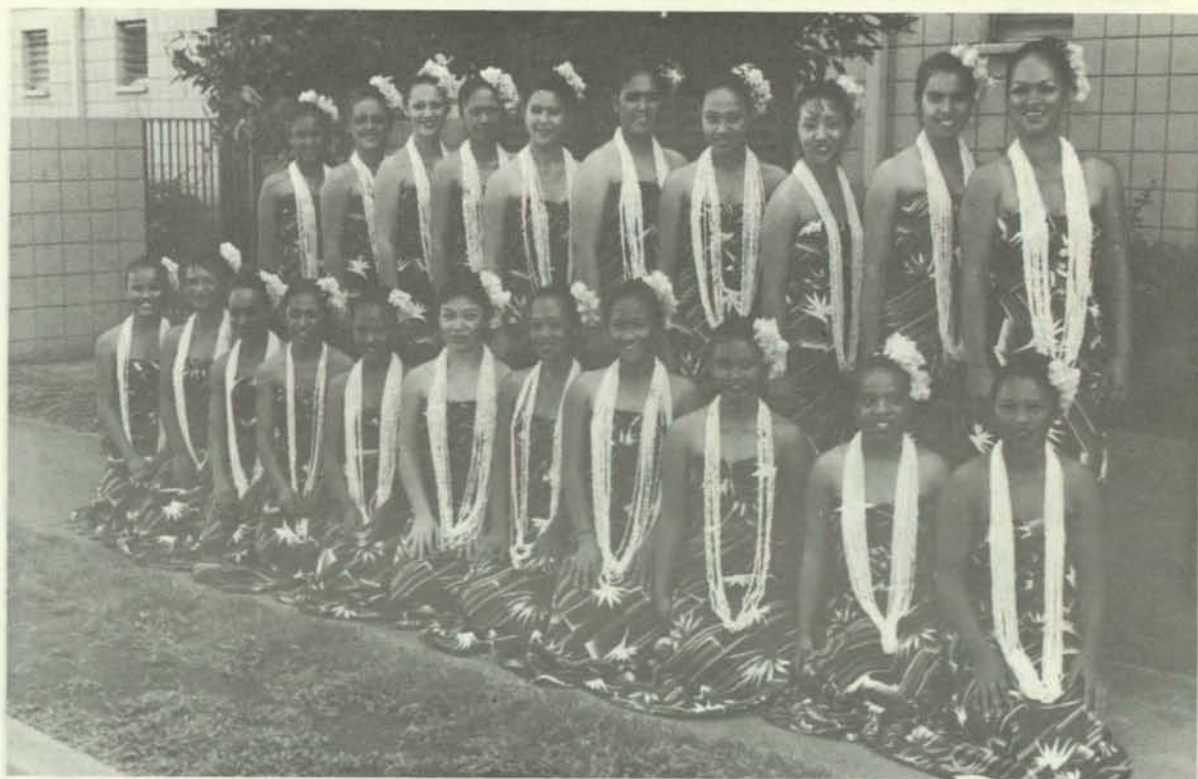
HULA HĀLAU 'O KAHIKILAULANI / *Kumu Hula*: Ray Fonseca, Hilo, Hawaii





KEOLALAUANI HĀLAU OLAPA 'O LAKA / *Kumu Hula*: Aloha Dalire, Kaneohe, Oahu

HULA HĀLAU 'O KAMUELA / *Kumu Hula*: Paleka Leina'ala Mattos, Honolulu, Oahu





THE LADIES OF KAHANĀKEALOHA / *Kumu Hula*: Frank Palani Kahala, Honolulu, Oahu

HUI HO'OU LU ALOHA / *Kumu Hula*: Cy Bridges, Laie, Oahu





JOHNNY  
LUM HO'S

*Polynesian  
Revue*



WEDNESDAY,  
APRIL 10

Edith Kanaka'ole  
Multi-Purpose Center

(FREE)



# Royal Parade

SATURDAY, APRIL 13, 1985

1. Police Escort
2. HNG - Colors
3. Mayor Dante Carpenter
4. Hawaii County Band
5. Grand Marshall - Lei Collins
6. Royal Court Float
7. Miss Aloha Hula 1985
8. Hawaii Island Shriners
9. Abigail Kekaulike Kawananakoa
10. Waiakea Ukulele Band
11. HNG Drill Team
12. Hilo Gymnasts
13. Mt. View Brownies
14. Pa'u Queen and Marshall
15. Float - JCPenney's
16. 111th Army Band
17. Pa'u - Hawaii Unit
18. Navy
19. Miss Aloha Hawaii
20. Papaikou Brownies
21. Kalaniana'ole Intermediate School Band Pom Poms
22. Kalaniana'ole Intermediate School Band Flag Unit
23. Kalaniana'ole Intermediate School Band
24. Miss Latina
25. Pa'u - Maui Unit
26. Pumekahi Ohana
27. Jr. Miss Sampaguia
28. Laupahoehoe High School Band Flags
29. Laupahoehoe High School Band
30. Pa'u - Oahu Unit
31. Hawaiian Boys Club Float (Waikiki)
32. Miss Hawaii Filipina
33. Hawaii Tribune Herald Float
34. Pa'u - Kauai Unit
35. Konawaena High School Baton Twirlers
36. Konawaena High School Band Flags
37. Konawaena High School Band
38. Sonja Float
39. Pa'u - Molokai
40. Hamakua County Band
41. Corvette Auto Club
42. Pa'u - Lanai Unit
43. Kahee Float
44. Waiakea High School Band Flags
45. Waiakea High School Band Rifles
46. Waiakea High School Band
47. Float - Lionel Silva
48. Pa'u - Niihau Unit
49. Henry Opukahaia School Float
50. Hilo High School Rifles
51. Hilo High School Flags
52. Hilo High School Band
53. Pa'u - Kahoolawe Unit
54. St. Joseph Elementary Float
55. Hui Lio
56. Scherzade 4-H
57. Parker Ranch Cowboys
58. Ikaika Club
59. Fire Truck



## Grand Marshall

LEI COLLINS

Curator of the Hulihee Palace

- 1937 Music field: Bina Mossman and Charles King.  
1941-1946 City and County of Oahu: Supervisor of Music-Recreational Dept. Radio Commentator: K.G.U. Play ground quarter hour (Saturdays).  
1946 Ambassador: Aloha Week.  
1946-1970 Halekulani Hotel: Entertainment Director.  
1955 Aloha Airlines: Sales and Promotions.  
1962 State Dept. of Transportation: Visitors Information. Director of Personnel and Training (statewide).  
1970-1977 Hilton Hawaiian Village: Social Director and Acting Asst. Mgr.  
1979-present Hulihee Palace: Curator

Children: John (Connie) Collins, Winona (Junius) Wong, Fanny (Sam) Auhoy, Georgianna (Norman) Clark, Erneste (Frank) Masagatani. Hanai sons: Louis Collins, Toshio Mukai.

A few of her many proteges have been: Danny Kaleikini, Arthur Lyman, Nalani Olds, The Halekulani Girls.



## Pa'u Queen

GAYLE

Kauioikalaniamekou'alo-  
hamauloao'iaokouinipuawai  
FERGERSTROM

*Visiting Ship*  
**USS BADGER**



*Commanding Officer*  
**Capt. John Malcolm Schantz, USN**

Captain Schantz was born in Long Beach, California, the son of RADM Curtiss W. Schantz (DC) USN, and Catherine McLellan Schantz. After graduation from Valley Forge Military Academy, he accepted a Presidential appointment to the United States Naval Academy, and was commissioned with the class of 1963. He reported immediately to sea, serving in USS Conway (DD-507) until detached to attend the Naval Destroyer School. Following Destroyer School, he reported to USS Harold J. Ellison (DD-864) as Engineer Officer. In April 1967, after warfare training at Naval Amphibious Base, Coronado, he relieved as Officer in Charge of YRBM-18, a mobile support base for river patrol in this capacity, which included action during the 1968 Tet Offensive, he was decorated with the Legion of Merit and Combat "V".

Following service in Southeast Asia, he reported to Headquarters, Commander in Chief, Allied Forces Southern Europe in Naples, Italy, for duty on his staff. He returned to sea as Operations Officer in USS Plymouth Rock (LSD-29) until August 1974, when he was appointed to Flag Secretary and Aide to Commander, Naval Forces Caribbean. He then served as Executive Officer of USS Truett (FF-1095) while that ship deployed as a unit of NATO'S Standing Naval Force, Atlantic. Duty as a student at the Armed Forces Staff College was then followed by assignment as head of the Politico-Military Policy Section on the staff of Commander in Chief, U.S. Naval Forces Europe, in London, England. In February 1981, Captain Schantz assumed command of USS Rathburne (FF-1057) in Pearl Harbor, Hawaii. He relinquished command two months later when hospitalized for surgery. Prior to reporting to Badger, he served as Surface Anti-submarine Warfare Officer on the staff of Commander in Chief United States Pacific Fleet.

In addition to the Legion of Merit, Captain Schantz's decorations include the Meritorious Service Medal, the Navy Commendation Medal with Gold Star, the Combat Action Ribbon, and the Navy Unit Commendation. He is a proven specialist in Politico-Military Affairs (Europe), and holds a Master's Degree from Boston University.

In 1963, Captain Schantz married Sarah Gates of Howell, Michigan. Their son, John M. Jr., was born in 1970.



## *Acknowledgements*

County of Hawaii (Co-Sponsor)	Kaiko'o Mall Association
Hawaiian Airlines (Co-Sponsor)	HPM Building Supply
Abigail Kekaulike Kawananaoia	Orchid Isle Motors
Charles K. Robinson Foundation	Doreen McDiarmid
Ebesu's	KBIG
Naniloa Surf Hotel	KHLO
Hawaii Printing Corporation	KIPA
Kurohara's	KPUA
Travelodge	Hawaii Tribune Herald
Hukilau Hotels	Honolulu Advertiser
HT&T	Yamada Transfer
International Travel	Ipo's by Keala
JCPenney's	Hale Lua Hawaii
HELCO	

## *Festival on Video!*

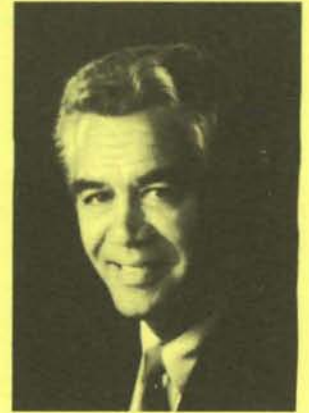
Official Video Cassettes of the 1985 Merrie Monarch Festival, produced by KITV, are available through Media Resources International. Write for FREE details to:

Media Resources Int'l.  
 P.O. Box 2816  
 Honolulu, HI 96803



*Office of the  
Mayor*

DANTE K. CARPENTER  
MAYOR



MAYOR'S MESSAGE  
22ND ANNUAL MERRIE MONARCH FESTIVAL  
APRIL 7 - 13, 1985


On behalf of the people of the County of Hawaii, it gives me pleasure to welcome everyone with a very warm aloha to the 22nd Annual Merrie Monarch Festival. Special greetings are extended to those of you who have traveled from other islands and the mainland to join us in this annual celebration.

We are honored that Hilo has become the home of this magnificent display of Hawaiian dance and music. Through the years we have seen this merry and festive event grow to be the main Hawaiian cultural program statewide. The authors of this Festival are to be commended and congratulated for their extraordinary efforts which have made this spectacular pageant possible.

For the next few days we will be able to see and enjoy the Miss Hula, Auwana and Kahiko competitions. We will be treated to the sounds of old Hawaiian chants, the beat of the pahu, melodic Hawaiian voices, and the strum of guitars by the participants in these contests. The superior abilities and accomplishments of all the halaus will be demonstrated as they take part in this cultural performance.

We wish the best of luck to everyone who is participating in this year's festivities. May this Merrie Monarch Festival prove to be the most successful and memorable of all.

Me Ke Aloha Pumehana,

  
DANTE K. CARPENTER  
MAYOR, COUNTY OF HAWAII

**YOU  
ARE  
*Beautiful*  
TOO**

Best wishes for every success  
here on the most beautiful  
island on earth.



**HAWAIIAN AIR**