

Established July 2, 1856.

VOL. XXX., NO. 5298

HONOLULU, HAWAIIAN ISLANDS, MONDAY, JULY 31, 1899.—TWELVE PAGES.

PRICE FIVE CENTS.

### PROFESSIONAL CARDS.

#### J. Q. WOOD.

ATTORNEY AT LAW. HONOLULU  
Address: Care of F. D. Greeny.  
Boston address: Rooms 68 and 69  
Smith building, No. 15 Court  
Square.

#### A. L. C. ATKINSON.

ATTORNEY-AT-LAW. OFFICE: CORNER  
King and Bethel Streets, (up-  
stairs).

#### DR. C. B. HIGH.

DENTIST. PHILADELPHIA DENT-  
al College 1892. Masonic Temple.  
Telephone 318.

#### DR. A. GORDON HODGINS.

OFFICE AND RESIDENCE 548 FORT  
Street. Office Hours: 9 to 11; 2  
to 4, 7 to 8. Telephone 953.

#### DR. A. C. WALL. DR. O. E. WALL.

DENTIST—OFFICE HOURS: 8 A. M.  
to 4 p. m. Love Building, Fort  
Street.

#### M. E. GROSSMAN, D.D.S.

DENTIST—98 HOTEL STREET, HONO-  
lulu. Office Hours: 9 a. m. to  
4 p. m.

#### GEO. H. HUDDY, D.D.S.

DENTIST—FORT STREET, OPPO-  
site Catholic Mission. Hours:  
From 9 a. m. to 4 p. m.

#### DR. WALTER HOFFMANN.

BERETANIA STREET, OPPOSITE  
Hawaiian Hotel. Office Hours: 8  
to 10 a. m.; 1 to 3 p. m.; 7 to 8 p. m.  
Sundays: 8 to 10 a. m. Tele-  
phone 510. P. O. Box 501.

#### DR. I. MORI.

236 BERETANIA ST., BETWEEN  
Emma and Fort. Telephone 277;  
P. O. Box 843. Office hours: 9 to  
12 a. m. and 7 to 8 p. m.; Sundays,  
8 to 12 a. m.

#### DR. A. N. SINCLAIR.

413 KING ST., NEXT TO THE OPERA  
House. Office hours: 9 to 10 a. m.;  
1 to 3 p. m.; 7 to 8 p. m.; Sundays:  
12 m. to 2 p. m. Telephone 741.

#### C. L. GARVIN, M. D.

OFFICE—No. 537 KING STREET,  
near Punchbowl. Hours: 9:00 to  
12:00 a. m., 7:00 to 8:00 p. m.  
Telephone No. 443.

#### T. B. CLAPHAM.

VETERINARY SURGEON AND DEN-  
tist. Office: Hotel Stables. Calls,  
day or night, promptly answered.  
Specialties: Obstetrics and Lam-  
eness.

#### CATHCART & PARKE.

ATTORNEYS AT LAW. HAVE  
moved their law offices to the Judd  
Block. Rooms 308-309.

#### F. M. BROOKS.

ATTORNEY AT LAW. (FORT AND  
Hotel Streets). Over Fairchild's  
Shoe Store, Honolulu, H. I.

#### LORRIN ANDREWS.

ATTORNEY AT LAW. OFFICE  
with Thurston & Carter, Merchant  
street, next to postoffice.

#### FRANCIS J. BERRY.

ATTORNEY AND COUNSELLOR AT  
Law. Will practice in the U. S.  
Federal and State Courts. Pro-  
gress Block, corner Beretania and  
Fort Streets, rooms 5 and 6.

W. C. Achi. Enoch Johnson.

#### ACHI & JOHNSON.

ATTORNEYS AND COUNSELLORS  
at Law. Office No. 10 West King  
Street. Telephone 884.

#### CHAS. F. PETERSON.

ATTORNEY AT LAW AND NOTARY  
Public. 15 Kaahumanu Street.

#### LYLE A. DICKEY.

ATTORNEY AT LAW AND NOTARY  
Public. King and Bethel Streets.  
Telephone 806. P. O. Box 786.

#### J. M. KANEAKUA.

ATTORNEY AND COUNSELLOR AT  
Law. Office: In the Occidental  
Hotel, corner of King and A'aleka  
Streets, Honolulu.

#### P. SILVA.

AGENT TO TAKE ACKNOWLEDG-  
ments to Instruments. District of  
Kona, Oahu. At W. C. Achi's of-  
fice. King Street, near Nuuanu.

#### T. McCANTS STEWART.

ATTORNEY AND COUNSELLOR AT  
Law. Progress Block, opposite  
Catholic Church, Fort street, Hono-  
lulu, H. I. Telephone 1122.

#### T. D. BEASLEY.

DRAUGHTSMAN. PLANTATION  
and Topographical Maps a Special-  
ty. Room 306, Judd Building, Tel-  
ephone 633.

#### DR. TOMIZO KATSUNUMA.

VETERINARY SURGEON. SKIN  
Disease of all kinds a specialty.  
Office: Room 11, Spreckels Build-  
ing. Hours: 9 to 12 a. m. and 4 to  
7 p. m. Residence Telephone 1093.

#### DR. A. C. POSEY.

SPECIALIST FOR EYE, EAR,  
THROAT AND NOSE DISEASES  
AND CATARRH. Masonic Temple.  
Hours: 8 to 12 a. m.; 1 to 4 and 7  
to 8 p. m.

#### DR. T. MITAMURA.

CONSULTING ROOMS. 427 NUUANU  
Street; P. O. Box 842; telephone  
132; residence, 524 Nuuanu street,  
Cottage Hospital, 530 Nuuanu  
street. Hours: 9 to 12 a. m. and 7  
to 9 p. m.; Sundays, 2 to 6 p. m.

#### MISS F. WASHBURN.

PUBLIC STENOGRAPHER AND  
Typewriter. Office: Room 202, Judd  
Building. Telephone 1086.

#### WILLIAM SAVIDGE.

STOCK AND BOND BROKER.  
McInery Block, Fort Street.

#### C. J. FALK.

STOCK AND BOND BROKER. MEM-  
ber Honolulu Stock Exchange.  
Room 301 Judd Building.

#### A. J. CAMPBELL.

STOCK AND BOND BROKER. OF-  
fice Queen street, opposite Union  
Feed Co.

#### WM. T. PATY.

CONTRACTOR AND BUILDER. GOOD  
work. Reasonable Prices. Resi-  
dence 720 Fort Street.

#### O. G. TRAPHAGEN.

ARCHITECT—223 MERCHANT ST.,  
Between Fort and Alakea. Tele-  
phone 734. Honolulu, H.

#### JAMES T. TAYLOR, M. Am. Soc. C. E.

CONSULTING HYDRAULIC ENGI-  
neer. 306 Judd Block, Honolulu,  
H. I.

#### BURNETTE & CO.

STOCK AND CUSTOM HOUSE BROK-  
ers. Real Estate and General  
Agents. Office 639 King street,  
near Alakea. P. O. Box 262. Tele-  
phone 641.

#### ANNIS MONTAGUE TURNER.

Remaining in Honolulu for a few  
months will take a limited number of  
pupils for

#### VOCAL INSTRUCTION.

Terms by the lesson or month. Com-  
mencing on and after the 16th of July.  
"MIGNON."

#### 729 Beretania Street, Honolulu.

#### COOK'S MUSIC SCHOOL.

Love's Building; Fort St.

#### PIANO, ORGAN, VOICE PRODU- TION, Singing and Harmony.

Special attention paid to musical  
control, touch and musical analysis.

#### WOMAN'S EXCHANGE.

215 Merchant St.

PER "MORNING STAR," FROM  
Micronesia, Hibiscus and Banana At-  
ticks, belts, spears, war clubs, shells,  
ivory nuts, and tortoise shells, as well  
as the best assortment of Hawaiian  
curios in town. Tel. 659

#### HONOLULU SANITARIUM.

1082 KING STREET.  
Telephone 639.  
Dr. Luella S. Cleveland, medical super-  
intendent. Hours: 9 a. m. to 5 p. m.  
Methods of Battle Creek, Michigan.  
Sanitarium. Baths of every descrip-  
tion. Trained nurses in bath rooms as  
well as in sick room. Massage and  
manual movements. Electricity in  
every form. Classified dietary, etc.  
Ample facilities for thorough examina-  
tion. Dr. C. L. Garvin, consulting  
physician and surgeon.

#### S. E. LUCAS, Parisian Optician.

LOVE BUILDING, FORT STREET.  
Upstairs; P. O. Box 351. I carry  
a full line of ALL KINDS OF  
GLASSES from the CHEAPEST  
to the BEST. Free Examination  
of the Eyes.

## THE SETTLEMENT

Scenes at the Annual Visit of  
the Board of Health.

### MOLOKAI LEPEBS WELL TREATED

Baldwin and Bishop Homes Visited—Brother  
Dutton's Noble Work—Prizes for  
Tree Planting.

At an early hour Saturday morning  
the steamer W. G. Hall cast anchor on  
the Molokai coast and a number of her  
passengers looked for the first time  
upon Kalaupapa, one of the villages of  
the far-famed leper settlement. The  
vessel brought, besides members of the  
Board of Health and their guests,  
about a hundred who had received per-  
mits to visit afflicted relatives in the  
colony. Their coming was expected.  
A large company had assembled to  
welcome them. The steamer's boats  
were soon lowered, and to the music  
of the Kalaupapa brass band the  
strong-armed rowers pulled for the  
rocky shore. The landing was made  
without difficulty. The permits, with-  
out which no one is permitted to visit  
the Settlement, were received by the  
proper officer, and soon those who had  
come to see relatives were reunited  
with them—for a day.

The village, with its white cottages,  
looked clean and bright in the morn-  
ing sunshine, and the inhabitants not  
at all like a company of invalids.  
There were many who showed no out-  
ward trace of disease.

It was a pleasure to note how much  
is being done by self-sacrificing people,  
as well as by the Government, through  
the Board of Health, for these afflicted  
people. The Bishop Home for Girls,  
under the charge of Mother Marianne  
and assistants of the Franciscan Sis-  
terhood, now has one hundred and  
twenty-four inmates, seventy-four girls  
and fifty women, some of whom have  
been inmates since their girlhood. It  
consists of numerous cottages in well-  
kept grounds, and here the visitors  
were entertained by music, a number  
of selections being played on the piano  
by one of the girls.

After a luncheon at the Board of  
Health cottage the party took horses  
and went over to Kalaupapa, on the  
other side of the peninsula, where is  
located the Baldwin Home for Boys,  
under charge of Brother Dutton, known  
to almost everyone on the islands as  
a noble Christian man who, thirteen  
years ago, went there to devote his life  
to the welfare of the unfortunate lepers.  
The Home consists of cottages  
built facing a square in a sheltered  
spot. The ground, originally covered  
with stones, has been cleared up and  
planted with grass, shrubs and flow-  
ers, and is now a very attractive place.

The Home at present shelters one  
hundred and twenty-five men and boys.  
Brother Dutton is a believer in use-  
ful occupation for the body and mind.  
Under his direction and by his ex-  
ample those who are able work in  
beautifying and cultivating the  
grounds. The garden is a model one,  
and its produce adds much to the com-  
fort of those in the Home. Instruction  
is given from time to time in the  
school. Brother Dutton tries to have  
every member of his affiliated family  
able to read and write, but at the same  
time not to weary them by too much  
instruction.

An organized band in uniform is  
a feature of the Home, and played for  
some time for the visitors, and it was  
evident that they enjoyed the perfor-  
mance, while giving pleasure to their  
guests.

The saddest event of the day was  
witnessing the parting between the  
afflicted and their friends. Many were  
the sad farewells at the landing. The  
warmth of human affection overcame  
the fear of disease in that hour when  
they were to part, perhaps never to  
meet again on earth, and there were  
tender kisses and embraces for those  
so soon to be left behind, while the  
unutterably pathetic sound of the part-  
ing cries filled the air. Still, it must  
have been consoling to friends to know  
that the wants of their dear ones  
were and would continue to be so well  
provided for, and that although science  
has as yet discovered no cure for the  
malady, much can be, and is being  
done, to alleviate the affliction.

Just before leaving, Mr. W. O. Smith  
announced that the newspapers of Ho-  
nolulu would give five prizes for suc-  
cess in tree-culture. The first prize is  
to be \$50, the second \$40, the third \$30,  
the fourth \$20, and the fifth \$10. These  
prizes are to be awarded October 1,  
1900, and competition is open to all  
the inhabitants of the Settlement. Mr.  
Smith also offered five prizes for the  
best-kept grounds, to be awarded  
April 1, 1900. For the best-kept and  
neatest grounds the first prize is to be

\$25, the second \$20, the third \$15, the  
fourth \$10, and the fifth \$5. Like the  
prizes for success in tree-culture, these  
are open to all the inhabitants of the  
colony. The committee to award the  
prizes consists of W. O. Smith and  
Charles H. Reynolds of Honolulu and  
William Noley of Kalaupapa.

During the past year the water sup-  
ply for the Settlement has been so  
much increased by laying of larger  
main that it is now sufficient for irri-  
gation, and there are well-founded  
hopes that great success may now be  
reached in the growing of trees, which  
has hitherto been difficult on account  
of the lack of water.

### FROM THE CRATER

Lava Flow Has Stopped  
for the Present.

### Surveyor Baldwin Reports That the Erup- tion Has Ceased—McCandless Party Found No Lava.

Reports by the Kinau yesterday con-  
firm those received early last week to  
the effect that the recent eruption on  
the slopes of Mokuaweoweo had ceased.  
Surveyor E. D. Baldwin and his  
brother C. W. Baldwin were about the  
latest to return to Hilo from the scene  
of the recent outbreak. They went up  
the trail back of Hilo which goes  
through the woods and onto the flow  
of 1852. From Humuhua sheep station  
they had a view of the whole line of  
flow and its outbreak at the crater.  
The survey observations were made  
from that point. This route, however,  
is so rough and difficult that it is not  
to be recommended for general use.  
It is mostly over broken pahohoe.  
Mr. Baldwin reports the eruption as  
having ceased. No advance was made  
at the end of the flow during the day  
and two nights which they spent there,  
and nothing but a little smoke appear-  
ed in the crater. It appears to have  
subsided about the time that the earth-  
quake shock of the early part of the  
week occurred. According to Mr. Bal-  
dwin the flow had not turned toward  
Hilo, nor is there any evidence that it  
would have taken this direction had it  
continued.

The McCandless party returned on  
the Kinau. They visited the crater by  
way of Kawahae. At the time of their  
arrival the lava was still hot but the  
flow had entirely ceased. It was re-  
marked by this party that vegetation  
within ten feet of the lava hardly yet  
cooled was as green as if no boiling  
lava had menaced it, showing that the  
lava must have pretty well cooled off  
before it finally stopped.

### FRESH OUTBREAK REPORTED.

A letter received from Oloa by a gen-  
tleman in this city, contains a hurriedly  
written postscript to the effect that  
news had just reached him that the  
eruption had broken out again with  
renewed vigor, but the gentleman who  
received the letter could not be found  
last night.

### Company F Wins.

The return shoot between a team  
from Company F and one from the po-  
lice force was held last Saturday. It  
resulted in favor of the military by a  
score of 416 to 361. The highest score  
of the police was 49, made by Wills.  
Two of F's team made 45 and all but  
two did 40 or better. The individual  
record was as follows:

Company F—Peterson 35, Drake 39,  
Ferreira 43, Storey 49, Drummond 41,  
Bordfeld 43, Ludwig 42, Burnett 45,  
Johnson 45, Gouvea 42. Total 416.

Police—Captain Kanse 38, Captain  
Kihal 39, Komas 39, Atwell 31, Kala-  
kahi 38, Wills 40, Lambert 38, Nalpo 25,  
Hubbell 27, Lieutenant Gardner 25,  
Total 361.

### GOING AWAY.

L. B. Kerr, the Queen-street mar-  
chant, will go away on August 18th  
and from now until that date an-  
nounces a departure sale at his big dry  
goods store, at prices that will make  
competition impossible.

## PROF. HITCHCOCK

Dartmouth College Scientist Talks  
on Ash Formations.

### MAUNA LOA'S NEW GROWTH

Views on the Relation of Earth-  
quakes With Lava Flows—Soil  
Investigations.

Professor C. H. Hitchcock, the geol-  
ogist of Dartmouth College, who has  
been on Hawaii for the past two  
months, returned on the Kinau. His  
visit to the islands at this time was  
mainly to investigate the ash forma-  
tions on Hawaii, but he was fortunate  
in being able to include the recent  
eruption of Mokuaweoweo in his trip.  
He found in all parts of the island  
evidence that prior to this century  
there had been explosive eruptions by  
which great volumes of volcanic ash  
have been blown out and distributed  
generally over the island.

"On the other side of Hawaii," he  
told the Hawaii Herald, "it is quite  
apparent in the soil, though it is of a  
lighter color than on this side owing to  
the lack of rain. On the Oloa road it is  
in plain view in many of the cuts and  
my investigations showed that funda-  
mental base of the island formation is  
an. In subsequent years there was an  
explosive eruption which sent out  
ashes in the form of smoke, so fine was  
it in texture. This settled over the  
island and years afterward these ashes  
became soil and seeds carried by the  
wind or by birds were dropped on it  
and took root. Then came another  
ash-flow and that is what appears on  
the surface. It was many years ago,  
evidently, when this took place, as the  
vegetable growth on this side of the  
island bears witness. This combination  
is what makes the soil of Oloa so  
wonderfully rich and the fact that it  
has not packed enables people to run  
steeds into the ground a number of  
feet without an effort. I would say that  
the large quantity of smoke noticeable  
over these islands and far out at sea  
contained a percentage of this same  
ash, though I do not know positively  
that such is the case. As to the date  
of the last flow of this character, it  
would be hard to determine. I am not  
familiar with the history of the islands  
as to the reign of kings, but we know  
that what is known as the Uni road,  
which was built under the direction  
of that sovereign, is on top of the most  
recent ash-flow."

"It is possible that damage has been  
done by them to the extent of covering  
up buildings, primitive ones, of course,  
though it probably was not accompa-  
nyed by loss of life. Unlike the flow  
at Pompeii, which was of gravel, and  
came suddenly, this came gradual, and  
persons had time to get out of the  
way. It is easy to imagine the de-  
struction of the native houses of that  
time because they were frail compared  
with those of today. It is barely pos-  
sible that these explosive eruptions  
from Mauna Loa have ceased, and that  
there will be but one kind, such as  
the recent one, in the future."

Questioned regarding the relation of  
the earthquake of Monday with the  
subsiding of the lava flow, Professor  
Hitchcock said:

"It is difficult to fix the connection;  
it may be that the explosion of the gas,  
which caused the shock, opened up  
heretofore closed channels under the  
surface of the mountain side, and that  
the lava is escaping somewhere. On  
the other hand, it may mean that there  
is a flow going in another direction,  
possibly into the sea by distinctively  
underground channels. Kilauea we  
know is active during long or short  
periods and then surface activity  
ceases. The fire and lava disappear  
somewhere, but scientists have not yet  
discovered the direction. Eruptions  
may continue from time to time on  
this island for many years to come,  
but I look for them to be principally on  
Mauna Loa because that is the youngest  
mountain. Geologists have a rule for  
determining the relative difference  
in the age of islands, and following  
this rule we find that the end of Haw-  
aii around Kohala was made first;  
then came Mauna Kea, and finally

Mauna Loa. The process of formation  
has continued through thousands of  
years. We obtain our results by meas-  
urement of the ravines and calculating  
the time necessary for the water to cut  
through the walls, you have no ravines  
in this part of the island. Mauna Loa  
has no water courses, consequently  
there are no ravines. As conditions  
change these may, in a sense, develop.  
We studied the building of Mauna Loa  
and find that it is by layers of lava  
which have come in close proximity as  
the lava flows. You will listen to the  
accounts given by persons who have  
watched the growth of the new cone  
from almost nothing to its present di-  
mensions, you will hear the duplicate,  
almost, of the story of the building of  
Mauna Loa, as scientists have proved  
by their investigations. Should these  
lava flows continue the shape of the  
mountain must surely change."

### Will Not Open.

Major Curtis Iauka telephoned to  
the Advertiser yesterday saying that  
the Wailana Hotel will not open to-  
day, as stated in an afternoon paper  
on Saturday. Due and correct notice  
of the time of opening of the hotel will  
be given by this paper.

### A BOY AND A GUN.

The Gun Goes Off and the Boy  
Gets Hurt.

A boy and a loaded revolver combin-  
ed to cause an accident that nearly  
cost a lad's life. Three native boys,  
Jim Koloa, his brother Alapai and  
Jack Naive started out for a bicycle  
ride to Diamond Head yesterday after-  
noon. Naive carried a loaded, .22  
calibre revolver. When out near the  
Tramway's stables they wanted to fire  
off the pistol. A cartridge jammed  
and all the boys tried to fix it. There  
was a sudden report and young J. Ko-  
loa fell over with a bullet just above  
his heart. A little lower and the re-  
sult would have been fatal. The  
wounded boy was taken to the Queen's  
Hospital by Deputy Marshal Chilling-  
worth. The bullet was extracted and  
the lad is doing nicely.

### POLICE RAIDS.

A Kakanako House and Beach Res-  
ort Raided.

Saturday night the police, under the  
leadership of David Kaapa, raided one  
of the notorious Kakanako joints. A  
number of well-known young men were  
there at the time, but made themselves  
scarce as soon as the cry of "Police!"  
was raised. The case against the pro-  
prietors will come up before Judge  
Wilcox this morning. The charge is  
selling liquor without a license.  
Yesterday afternoon Deputy Marshal  
Chillingworth accompanied by officers,  
paid an official visit to a well-known  
beach resort. A quantity of incriminat-  
ing evidence was secured and will be  
used against the proprietor when the  
case comes up this morning.

### Emma Square Concert.

The following selections will be  
played at Emma Square this evening  
by the Government band:

#### PART I.

Overture—"Light Cavalry" .... Suppe  
Finale—"Bellario" ..... Donizetti  
Grand Selection—"Marta" .... Flotow  
Song—

#### PART II.

Coro, Solo—"Sama Sona Polka"  
..... Clappe  
Mr. Charles Kreuter.  
Trombone—"Cavalier's Introduction"  
Musical Review—Hiviere  
March—"Hands Across the Sea"  
..... Sousa  
"The Star-Spangled Banner."

### Hoodlums Arrested.

A crowd of about forty noisy boys  
and young men were arrested in Pau-  
aul yesterday afternoon. Some were  
playing baseball, others were "shoot-  
ing craps," and all combined to create  
a disturbance. They were charged  
with breaking the Sunday laws.

Only the highest grade of RED RUB-  
BER is used in the Stamps made by  
THE HAWAIIAN GAZETTE CO.

## ROYAL BAKING POWDER

ABSOLUTELY PURE

Makes the food more delicious and wholesome



# TANKS!

This is the season of the year when TANKS interest those who like to be sure of water for the garden, house or stock. If you are provided with one of our

## Pat. Non-Shrinking Redwood Tanks

there will be none of this 6 to 8 a. m. and 4 to 6 p. m. business. You will be able to use water all day if you wish.

## The Pat. Non-Shrinking Tank

has no equal. Many try to imitate it, but you want the genuine.

**Sold by**  
**E. O. HALL & SON,**  
LIMITED.

## Ready - Rock Asphalt ROOFING.

It is a NON-CONDUCTOR OF HEAT, which, together with the fact that it is practically indestructible, particularly recommends it for this climate.

Call and see it on roof at office.

## Asphaltum Piping

FOR WATER MAINS, SEWERS AND ELECTRIC CONDUCTORS.

AGENTS FOR

CALIFORNIA CANNERIES CO., LTD. FRUITS AND JELLIES.  
VITAX DRY BATTERIES. Best in the market.  
STANDARD BISCUIT COMPANY.  
HIGHLAND AND PET CREAMS.  
C. F. MACKENZIE & CO. BROOMS, ETC. ETC. ETC.

Hawaiian Trading Co., Ltd.  
Office: No. 6 Love Building, Fort St.

### ATTENTION TO PLANTATION MANAGERS.

CALIFORNIA HARNESS SHOP is now prepared to furnish at short notice all Plantation Supplies. A full line of goods in our line at Rock Bottom Prices.

We use the Extra Heavy Hames and Best English Chains, Stock and work throughout No. 1.

SAMPLE : ORDER : IS : RESPECTFULLY : SOLICITED.

### California Harness Shop

NO. 639 KING STREET, LINCOLN BLOCK.  
Telephone 641. Just Below The Arlington Hotel.  
D. O. & M. S. HAMMAN.

## Honolulu Tobacco Co., Ltd.

IMPORTERS OF

HAVANA AND MANILA CIGARS

SMOKERS' ARTICLES.

## Fine Grades of Smoking Tobacco.

Corner Fort and Merchant Sts., Honolulu.



## K. Isoshima,

HAT MANUFACTURER,  
GENTS' FURNISHINGS.

KING ST., Next to Castle & Cooke.

EX CARMATHENSHIRE.

Large shipment of the latest styles in

## STRAW HATS.

New Style Shirts, Neckwear,  
Gents' Furnishings, Etc., at the lowest reasonable prices.

## BISHOP ESTATE

Full Text of the Annual Report of the Trustees.

### IMPROVEMENTS AT THE SCHOOLS

Inventory of the Property on Hand—Lands Acquired and Lands Sold in the Year.

One of the clauses in the will of the late Bernice Pauahi Bishop directs that the greatest publicity compatible with the welfare of the estate shall be given to all matters connected with her estate, and in addition to filing the accounts of receipts and expenditures of the estate annually the Trustees are further required to file with the Circuit Court a report of its condition and affairs from year to year. Below will be found the report just filed for the past year:

The Trustees under the will of the late Mrs. B. P. Bishop beg to submit their report for the year ending June 30th, 1899.

The usual accounts are herewith presented:

The total receipts from all sources during the year, including cash on hand on the 1st day of July, 1898, amounted to \$345,800 59. And the total amount of expenditure on every account was 341,295 95.

Leaving a balance on hand of \$ 4,654 85

In re the bill of relief applied for from the Court in connection with a construction of the will of the late Mrs. B. P. Bishop and the various trust deeds under which the Trustees hold property, referred to as having been carried to the Supreme Court for jurisdiction in the last Annual Report, decision was handed down by that body on October 11th, 1898, to this effect: Held, The Trustees, in the exercise of a sound discretion as to the best interest of the estate, may sell lands without application to a Court of Equity for permission so to do.

By the death of Aueha (w), on May 16th, 1899, and the death of Princess Kaiulani, on March 6th, 1899, devisees under the will of Bernice P. Bishop, the lands devised to them for a life estate, viz.: lot on Punchbowl street, Honolulu, to Aueha (w), and land and spring known as Kaniwai, Waikiki-uka, Oahu, to Princess Kaiulani, have reverted to the control of the Trustees.

The Trustees have during the past year commenced the filling in and improving of the large tract of land known as Kakaako, situate on the southeast side of the city, this property having come into demand as sites for iron works, warehouses, etc.

The constantly increasing interests of the estate in connection with the lands controlled has necessitated the employing of a competent person to take charge of the land department, and the services of Mr. F. S. Dodge, a gentleman for many years prominent in the Government survey department employ, have been secured.

The Trustees, in granting long-term leases of agricultural lands during the past year, have adopted a rental system based upon a percentage of gross products derived from the lands devised when such gross products shall exceed a fixed minimum valuation. This system is deemed best under long-term leases.

A comparison of former accounts with the one submitted will show a substantial increase of revenue returns over all returns of other years since the estate came under the control of the Trustees.

### KAMEHAMEHA SCHOOLS.

During the year the work in the agricultural department of the Boys' School, under Professor T. S. Sedgwick, has been thoroughly inaugurated. The students taking this course of instruction are enthusiastic, and the Trustees believe that knowledge imparted in this department will be of the greatest benefit.

Believing that a practical knowledge of nursing and care of the sick would be of benefit to the students of the Girls' School, the Trustees, upon the beginning of the next term, will add to the staff of teachers in that institution a trained nurse to give instruction along such lines in connection with other duties.

An addition is being made to the main building of the Girls' School to give increased bathing and dormitory facilities.

Extensive improvements have been carried on during the year upon the grounds surrounding the several schools, at a considerable expense. Plans looking towards the putting in of a complete new water system for the various uses of the schools and grounds connected therewith are being perfected.

In the matter of attendance the several schools are filled to their utmost capacity.

### INVENTORY OF PROPERTY BELONGING TO THE ESTATE ON THE 30th OF JUNE, 1899.

The Trustees return as in their hands the whole of the property included in the inventory filed with former accounts, except as follows:

#### PROPERTY ACQUIRED.

The Trustees of the Queen Emma Estate and Queen's Hospital having shown their claim to an interest in Royal Patent 3458, land of Halakaa, Lahaina, Maui, a quit-claim deed of such interest was procured from them for the sum of two hundred and fifty dollars.

#### PROPERTY SOLD.

A right-of-way for road was sold the

Hawaiian Government, being an area of 61,565 square feet, at Kapakahi, Ewa, Oahu, and being a portion of M. A. 39 to Kaulokamoa. Selling price, \$200.

A portion of Royal Patent 4475, Land Commission Award 7113, Apana 29, 111 of Kapaekapa, Waikiki-uka, 4,611 square feet, was sold to James Osborne, for \$250.

A portion of Royal Patent 299, Land Commission Award 113 to Pahi, Halealala premises, King and Fort streets, Honolulu, being 193 square feet in rear, was sold to Miss Agnes M. McIntyre, for \$600.

The remainder of Royal Patent (grant) 1855 to J. Pihol, corner Queen and Maunakea streets, Honolulu, was sold to Virginia L. McLeod, for \$2,000.

A portion of Royal Patent 4475, Land Commission Award 7113, Apana 29, Kawailoa, Waiialua, Oahu, 7,250 square feet, was sold to Jesse Amann, for \$50.

Personal property belonging to the estate on the 30th day of June, 1899, was as follows:

Cash on hand \$ 4,654 85

Bills receivable 199,648 20

Bills receivable secured as follows:

B. F. and E. L. Dillingham, notes for \$100,000; collateral, 100, \$1,000 each, Oahu Railway & Land Co. 6 per cent bonds \$100,000 00

Real estate securities 99,648 20

Total \$199,648 20

**Calumet** STRICTLY HIGH GRADE  
**Baking**  
**Powder** NONE SO GOOD

## Your Note Our List of POPULAR AND NEW BOOKS

And we will note the ones that you buy!!!

- THE CRUISE OF THE CACHALOT, by F. T. Bullen.
- DAVID HARUM, by Wescott.
- WITH KITCHENER TO KHARTOUM, by Stevens.
- ADVENTURES OF CAPT. KETTLE, by C. Hyde.
- THE RIVER SYNDICATE, by C. E. Carryl.
- THE ASSOCIATE HERMITS, by F. Stockton.
- BARRACK-ROOM BALLADS, by Kipling.
- THE AMATEUR CRACKSMAN, by Hornum.
- ON THE EDGE OF THE EMPIRE, by E. Jepson.
- ANGLO-SAXON SUPERIORITY, by E. Demolins.

HAWAIIAN NEWS CO., LIMITED.  
MERCHANT STREET.

## MORE NEW BOOKS!

At Publisher's Prices.

- THE SWALLOW.
- GADFLY.
- GARDEN OF SWORDS.
- REAL HAWAII.
- DROSS.
- CAPT. COURAGEOUS.
- DAY'S WORK.
- LADY URSULA.
- PRINCESS OF HOPE.
- DREYFUS CASE.
- ENCHANTED STONE.
- ISLAND EMPIRE.
- TRELAWNY OF WELLS.
- OUTSIDERS.
- And a large number of others.

LEAVE YOUR ORDERS FOR PROFESSOR BLACKMAN'S MAKING OF HAWAII. A few copies just received, more on the way.

## Thos. G. Thrum.

AT THE GAZETTE OFFICE.

## THE ORPHEUM FAMILY THEATRE.

TONIGHT! TONIGHT!  
CURTAIN RAISER—Laughable Farce Comedy Entitled  
**Senator McFee.**

First appearance of the Charming Contralto Vocalist  
**Ethel Dixon.**  
Post and Marion in  
**The Rival Lovers.**

Boggs and Heward in the Dramatic Sketch  
**Drifted Apart.**  
(by request.)

TROIBERT IN  
**New Mysteries.**  
—THE—  
**4-Salvinis-4**  
In the Comedy Aerobatic Act  
**Fun in a Chinese Wash House**  
**May Ashley.**  
**The Hartwell Sisters.**

General Admission, 25c and 50c. Last six rows for Children under 12 years, 10c. Reserved Chairs, 50c. Seats can be booked by ringing up telephone 540.

T. G. BALLENTYNE. H. P. EAKIN.

## Ballentyne & Eakin, Real Estate and Stock Brokers.

If you want to buy or sell either Real Estate or Sugar Stocks call and see us.  
Careful attention given to every commission.  
McINERNEY BLOCK, FORT STREET, HONOLULU.

## H. Hackfeld & Co., Ltd.

Beg to announce the arrival of  
**Iron Ship "KILMORY"** From London.  
**Iron Ship "WEGA"** From London.  
**Iron Bark "H. HACKFELD"** From Liverpool.

With a large assortment of  
**EUROPEAN GROCERIES,**  
**OILS AND PAINTS,**  
**CEMENT, FIREBRICKS,**  
**CORR. and PLAIN IRON.**  
**FENCE-WIRE.**  
**BUCKETS and TUBS,**  
**SAUCEPANS, TEAKETTLES,**  
**FILTERS, CROCKERY,**  
**DEMIJOHNS, ETC., ETC.**

For Sale at Lowest Prices.  
**H. Hackfeld & Co., Ltd.**

## There Are Plumbers and Plumbers.

OUR SPECIALTY IS  
**Sanitary Plumbing.**

There's as much difference between plumbing and SANITARY PLUMBING as there is between daylight and darkness. Anyone can put a lot of pipes together and run them off anywhere, but with Honolulu's surface sewerage the essential point is to have the plumbing done in a way that makes the Sanitary conditions perfect.

**JOHN NOTT.**  
75-79 KING ST. TEL: NO. 31

## ALL NEW GOODS! AT GOO KIM'S.

210 Nuuanu Street, Above Hotel.  
The clearance sale is over and the new stock opened up. Here are some of the latest:  
Chinese Grass Cloth in White, Brown and Light Blue.  
Embroidered Silk Handkerchiefs.  
Fancy Carved and Scented Wood Boxes.  
Farwell Cotton, 26-in. wide, 16 yds. \$1.00.  
Ginghams, 29 yds. \$1.00.  
Fast Color Calicoes, 29 yds. \$1.00.  
New Tailoring Goods.  
Silk Crepe Shawls. (Black, White and Colored.)  
Colored Lawns, 20 yds. \$1.00.  
Victoria Lawns, 75c the piece of 18 yds.  
Laces. (Black, White and Cream.)  
Hats, Caps, etc.

## THOSE Baby Carriages

HAVE ARRIVED AT THE  
**City Furniture Store,**  
**H. H. WILLIAMS, Manager.**  
Love Building, 534-536 Fort St.  
TELEPHONE 846: RESIDENCE, 849.



**We have the  
BULGE on  
Bulging Shirt Bosoms**

Does your Shirt Bosom bother you?

**Of course it does!  
Of course it will!**

Unless your Full Dress Shirts are equipped with

**THE  
MacHurdle Dress Bosom Retainer**

which absolutely prevents the Bosom from BULGING and presenting an unsightly appearance.

**For sale by  
M. McINERNY,  
Haberdasher.  
Merchant and Fort Streets, Honolulu.**

**NEWS FROM MAUI**

**Deputy Sheriff Scott Goes to Oiaa.**

Cane Planting on Nahiku Plantation—Proposed Sugar Plantation on Ulupalalua Ranch.

MAUI, July 29.—Quite a number of people have visited Haleakala during the week and several of them report that during the hours of darkness little could be seen of Mauna Loa's fire on account of banks of heavy clouds which however generally cleared away at the approach of dawn revealing columns of smoke but no glare of volcanic light. A large party of young men from Spreckelsville and Hamakuaopoko state that the reflection from Mokuaweoweo was not very brilliant during the night of the 22nd. A New York party composed of Prof. A. C. Bickmore, H. L. Morehouse, field secretary of the American Baptist Home Missionary Society, C. C. Lanell and guides spent Tuesday night, the 25th, at Craigielea and though they could see no reflection of Mauna Loa on account of fog, witnessed a most gorgeous sunrise from the summit of Haleakala. News came per steamer Mauna Loa, on the 28th, that the lava flow on Hawaii had stopped.

W. G. Scott recently deputy sheriff of Walluku departs for Hawaii August 1st, to become luna on Oiaa plantation. Mr. Scott has the good wishes of many Maui friends for success in his new venture. Alfred Hayselden of Lahaina assumes Mr. Scott's former position and Robert Lindsay of Hana will go to Lahaina. Captain of Police H. Z. Kaipo will be promoted to the position of deputy sheriff of Hana.

Nahiku plantation is busy planting thirty-five acres of seed cane, the larger part of which arrived by the Claudine of the 26th, from Olowalu. The plantation had three acres of seed cane. Two large cottages have been recently completed, one of which will be occupied by the manager and bookkeeper and the other by the head luna. The plantation will build a new landing midway between the old one and the one recently completed by the government. The latter was unsatisfactory because there was space for only one railroad track leading to it, and it would be too expensive to widen the roadway owing to the great height and steepness of the adjoining cliff.

Mr. and Mrs. Frank L. Hoogs of Honolulu are at Kawapae Resort, Makawao.

Dr. R. I. Moore, the dentist, has been several weeks in Hana. He will soon visit Paia.

During the 25th, congratulations were due Dr. and Mrs. McConkey of Paia on the birth of a baby girl.

Arthur Baldwin of the Harvard Law School returned to Hana on the 26th.

It is reported that an agent representing Honolulu capitalists visited Ulupalalua Ranch during the week with a view of purchasing the property. It is stated that a large acreage of this estate is available for the production of sugar.

Weather: Generally warm and dry.

**SCANDALOUS MUTILATION.**

The following are a few extracts from a poem butchered by a nearsighted compositor:

Manuscript—"Surcease of sorrows."  
In Print—"Smearcase tomorrow."  
Manuscript—Lying by a weeping willow, underneath a gentle slope.  
In Print—Lying to a weeping widow to induce her to elope.

The P. C. & M. Co., on Fort street, have just received a large shipment of Crescent bicycles. They will be sold considerably cheaper than the Sterling.

Manuscript—Cast thy pearls before the swine, and lose them in the dirt.  
In Print—Cart they pills before the sunrise, an love them if they hurt.

The P. C. & M. Co. will sell you a high-grade Sterling bicycle for \$60.00 on small weekly or monthly installments.

Manuscript—Take away the jingling money; it is only glittering dross.  
In Print—Take away the tingling honey; put some flies in for the boss.

The P. C. & M. Co. have just received a select variety of Winchester rifles and a fresh stock of ammunition.

Manuscript—I am weary of the tossing of the ocean as it heaves.  
In Print—I am wearing out my trousers till they're open at the knees.

The P. C. & M. Co. have a new lot of bicycles to rent by the day, week or month at very reasonable rates.

**HOARE VS. ALLEN.**

Plaintiff Excepts to Judge Stanley's Recent Decision.

In the ejectment case of James Hoare vs. S. C. Allen, plaintiff has filed exceptions to the rulings in the recent decision of Judge Stanley, which have been allowed. Plaintiff excepts to the ruling that the order of Justice McCully authorizing a mortgage, authorized the guardian to include the lot in controversy; to the ruling that either the Hon. Justice McCully or the Court had jurisdiction to authorize a guardian to mortgage the real estate of his ward, and to the further ruling that the order of Justice McCully authorized the insertion of a power of sale in the mortgage made by the guardian. A still further exception to the decision is that it is contrary to the law and the evidence and the weight of evidence.

**THE VON HAMM-YOUNG**

COMPANY, LIMITED.

**Importers and Commission Merchants**

Respectfully announce herewith the  
OPENING of their New Store

**On Queen Street,  
Between Nuuanu and Kaahumanu Streets**

**On or About August 1st, 1899.**

A full line of

**DRY GOODS,**

OF AMERICAN AND EUROPEAN MANUFACTURE,

In the latest and newest designs will always be on hand,

ALSO,

**TWEEDS, SUITINGS, COATINGS, TROUSERINGS,**

In new modern styles only to suit everybody.

**TAILORING GOODS AND TRIMMINGS** of all descriptions.

SOLE AGENTS FOR THE

CELEBRATED

**DOMESTIC  
Sewing  
Machines.**



With the latest and best improvements.

Also, for the light-running, well known Hand Sewing Machine

**"NEW PACIFIC,"**

The Delight of Tailors and House-keepers.

OUR NOTION DEPARTMENT

Will be a specialty in its kind.

A large variety of the best made Saddles, Belts, Umbrellas, Hats, Shoes, Parasols, Clocks, etc., etc., Baby Carriages, Chairs, Glassware, Straw Hats, Fur Hats and Crash Hats a specialty.

Sole Agents for the Unsurpassed

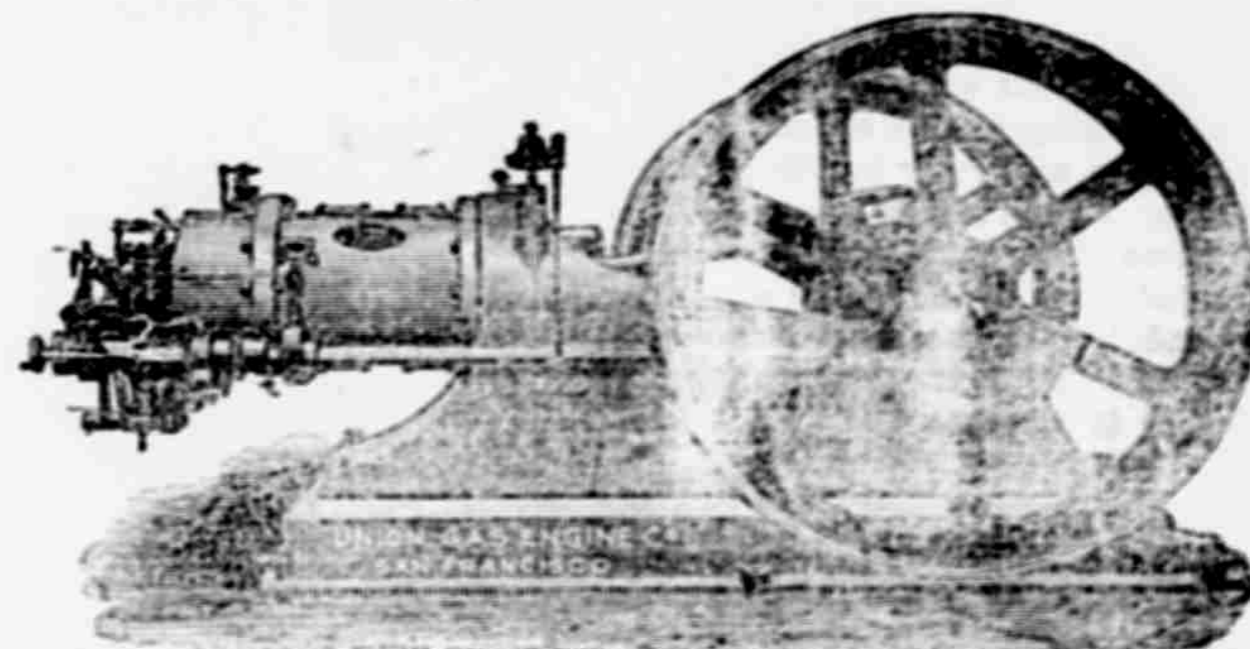
**SPELTERINE,**

the only and sure remedy to preserve and strengthen Horses' Hoofs in this climate. Try it and be convinced.

SOLE AGENTS FOR THE **Union Gas Engine Co.** OF..... SAN FRANCISCO.

These Engines being the most economical of this kind and well adapted to all kinds of work

**Land and Marine.**



AGENTS FOR THE **Lancashire Insurance Co.**

CAPITAL, £3,000,000.

Paid Up Capital and Funds, £1,687,162.

Insurances effected against loss or damage by Fire on Buildings and Contents of Warehouses, Office and Store Premises and Private Dwellings at moderate rates.

Prompt and equitable settlement of losses. Life business also transacted on favorable terms.

**WHY!**

**GREEN RIVER**

IS THE WHISKY WITHOUT A HEADACHE.

WE HAVE BEEN AUTHORIZED TO SELL

**HARZER SAUERBRUNNEN**

At \$5.00 per case of 50 bottles.

Owing to Spurious Imitations having been brought to this market, the public is hereby notified that the only

**"GENUINE SAUERBRUNNEN"**

IS BOTTLED BY THE

**Harzer Koenigsbrunnen-Quelle,**  
and every bottle bears their trademark and stamp.

**H. Hackfeld & Co. Ltd.**

SOLE AGENTS, HAWAIIAN ISLANDS.

**CATTON, NEILL & CO.**  
FOUNDERS AND MACHINISTS.

213 Queen St., bet. Alakea and Richards Sts., Honolulu.

Invite Enquiries for General Ironwork; Iron and Brass Castings, Steam Boilers, Water Pipe and All Kinds of Sheet Iron Work Made and Repaired Machine and Ships' Blacksmithing.

REPAIRS PROMPTLY ATTENDED TO.

TEL 410

**Read the Advertiser.**



THE PACIFIC  
Commercial Advertiser.  
W. N. ARMSTRONG - EDITOR.  
MONDAY : : : : JULY 31  
THE ERUPTIONS STOP.

When the Advertiser described the volcanic eruptions on Hawaii, as evidences of a "decaying industry," it was justified in making the statement because the frequency and force of the eruptions are gradually decreasing, and the whole system seemed to be subject to the "dry rot" which is fatal to volcanic prosperity as well as to commercial prosperity.

It now appears, however, that the sudden ending of all volcanic action on the 23rd instant, is due to the unfortunate dispute between Mr. E. C. Macfarlane and the trustees of the Bishop Estate. The public is aware of the nature of this painful controversy; the application of Mr. Macfarlane to the trustees, for an extension of the lease of the volcano house premises at a lesser rental, on the ground that for many years to come there would be no eruptions and the trade of the hotel would be insignificant; that the trustees believing and relying on these representations, reduced the rent and extended the lease; that within a few days after signature of the lease, the magnificent outbreak of volcanic fire occurred on Mauna Loa, and the hotel business became vastly prosperous. The trustees justly feeling that they had been "done up" by Mr. Macfarlane, took prompt measures "to protect themselves" against this fraud, and promptly sent up sagacious emissaries to obtain facts which would justify a court in breaking the lease, besides holding up this member of the Macfarlane family to the eternal scorn of mankind (and womankind). This move on the part of the trustees was countered by a similar move by "the party of the second part," Mr. M. The educated geologists have now given up the flummery business of attributing volcanic action to natural causes, and wisely accept the theory of the old theologians, that volcanic action is the personally conducted work of Satan. In the case of Hawaii, however, according to the authentic native traditions, S—— (we do not desire to spread his name on the record) leased the premises to Pele in past ages, and she has operated this volcanic ranch ever since.

Both the trustees and Macfarlane have since the outbreak of molten lava, beseeched her to take sides in the matter. The trustees have put before her the Macfarlane perjury, and asked her to pull out the fires, while the wily "party of the second part," on the other hand, has ignored argument, made love to her, called "Pele's hair" the most beautiful in the world, and taken her to ride in his buggy, and nearly won over this charming, venerable and fire eating creature. But, unfortunately for him, the Bishop estate owns the land upon which the outbreaks occur, and every atom of lava that destroys grasses and trees is a trespass and violation of the Hawaiian law, the Federal law, and the Federal Constitution if it covers these islands. The trustees having threatened her with ejection, and the loss of her home, if she received any more of the Macfarlane caresses, and kept up the eruptions and flows, for the personal profit of the hotel company, she has given way under this violent pressure, has returned the Macfarlane pretty presents, cancelled engagement for buggy rides, and pulled out the fires.

The public, as usual in such cases, is the sufferer. This magnificent display of the terrible forces of nature is suddenly withdrawn owing to a dispute between the trustees of the Bishop estate and the astute agent of the Volcano House Company. It should have been left to an arbitrator to adjust the differences. As the matter now stands the Supreme Court must pass upon it, and the judgment of the public should be suspended until the court has decided it. Practically, the trustees have the best of it at present.

MAKING PUBLIC POLICY.

In a free country the censorship of news may retard, but cannot suppress the diffusion of knowledge. During the Civil war, it was often attempted by Secretary Stanton but failed. The soldier has the right to use the post office, and he will write plainly to his friends.

The truth about the campaign in Luzon has not been told in the newspaper despatches because they are subject to control, or their correspondents are, but gradually the people are getting accurate information from the soldiers themselves about the conduct of the war. The effect of this information in shaping public policy will be seen in the coming session of Congress. On the whole, the volunteers are rather disgusted with the war business. They are willing enough to fight

for their country, if it is necessary, but men who are enduring severe hardships must feel that the endurance is a patriotic duty. The obligation of the United States to preserve the Philippines from anarchy is high and solemn, but it is a moral rather than a patriotic obligation. As an Idaho soldier said he would "rather fight to maintain order and decency in his own State which seemed to be in the hands of a mob, than fight for the preservation of order among the Filipinos." Besides, when the volunteer gets no sleep, has sore feet, is weakened with fever, and stands up to his waist in water, and dodges Filipino shots, he is in no pleasant mood to read in one of the home Expansion journals an editorial written by an editor, who sits in a comfortable chair telling him that he is gloriously following the Star of Empire. He believes that the editor ought to take his turn at it, and try the fever and sore feet and swamps and bullets.

The Bangor (Maine) Commercial publishes a letter from Capt. Hersey of the 12th U. S. Regulars now in Luzon. Capt. Hersey is a man of reputation in Maine. The letter is addressed to the captain's father. This is an extract: "The volunteers have done splendid fighting, there is no doubt about that. The great criticism to be made on them is their utter disregard of the laws of civilized warfare. I heard a man of the Montana Regiment state that, when he had a new revolver issued to him he tried it on an inoffensive native, who was paddling a boat out in the stream. The revolver proved to be a good one, for the native fell over dead into the water. He thought it was a good joke. He also told of one of his comrades, who, when a native (wounded), asked him for water, kicked him in the head until he died. Filipinos claim that their women are ravished, and I guess with a good deal of truth. So far I have heard of no such disgraceful acts being done by any of the regulars. In my opinion, the hatred created by these acts of wanton cruelty will make anything like a cordial feeling between the insurgents and Americans, for a good many years to come, impossible, even if we succeeded in conquering them by force of arms."

No one, for a moment, believes that the body of volunteers would tolerate such conduct. But we have had here, in the case of a Regiment of volunteers an unfortunate reputation given by lawless and cruel men to a body of really patriotic soldiers. The war fever is over. The war editors are off on their summer vacations. The offers of enlistment as common soldiers at \$15 per month are moderate, although a multitude of men are eager to serve as officers. The garish lights are turned off. Through the medium of thousands of letters written by intelligent men, who carry rifles, the "hell" of war is taken home to the people, and the political leaders who naturally follow the popular will, will not hesitate to declare what that will is during the coming session of Congress. This is the people's war, not the President's. Let us now see how the people will manage it. We have faith that they will finish what they have undertaken. The war of

1812 was a war brought about by one of the political parties. The Mexican war was made by the slave power. The Civil war was a war for union, and against general disruption. The war now existing, has become at last an effort to preserve order, and prevent anarchy in a foreign land. It is a new departure. It will not be abandoned.

TEXAS' OLD NAME.  
(Indianapolis Journal.)

Probably the fact is not generally known that Texas was at one time and for many years called the "New Philippines." The first settlement in what is now Texas was made by French emigrants in 1685. During the next twenty-five years there was an intermittent struggle between the French and Spanish for supremacy, resulting in favor of the latter, and in 1814 the name of the New Philippines was given to the country. This was its official name in Spanish records for many years, and until the name of Texas, from a tribe of Indians, gradually came in vogue.

New bill at the Orpheum tonight.

Nothing  
So Bracing  
—AS—  
PURE AIR

Everyone enjoys it; your health depends upon it. You can just as well have it as your prudent neighbor. Old and young alike endorse it.

DISINFECTINE

With the heat of summer comes the foul and disease producing air from the cesspool, vault and cellar. You must be on your guard against the accumulation of trash, garbage, etc.; it is dangerous to have around.

INSURES

No skill is required to have the air about your home pure. The cost is trifling and effect is wonderful. Disinfectine as prepared by us will serve the purpose.

PURE

We have it prepared in quantities to supply any or all demands. We will deliver to your home, if within the city limits, a trial bottle at 25 cents. Don't neglect to order a bottle at once.

AIR.

Those who are familiar with the article order it by the gallon, which proves beyond all doubt that it is the proper thing.

Manufactured only by

HOLLISTER DRUG CO.  
SOLE AGENTS.

SEATTLE BEER

—AT THE—

CRITERION SALOON.

The Only High Grade Baking Powder Offered at a Moderate Price.

CALUMET Baking Powder

NONE SO GOOD.

Hood's Sarsaparilla Cures

Permanently Cures Scrofula, which is one of the worst afflictions of the human race, and comes from impure blood.

Salt Rheum, a torment to the flesh, a disfigurement to the body, and a drain on the system, also due to vitiated blood.

Pimples, which so disfigure the skin, and make the human face divine anything but a thing of beauty, but which are Nature's advertisement of foul blood.

Hood's Sarsaparilla is the best—in fact the One True Blood Purifier. Sold by all druggists. \$1; six for \$5.

Hood's Pills act harmoniously with Hood's Sarsaparilla.

TIMELY TOPICS

June 1st, 1899

Now that spring time is here, have you given a thought about renovating your home. The sticky, wet weather we have had for the past month has delayed the usual spring work, but better late than never. We kindly ask you to read this list and then call into our store and get the prices. We have just received a large shipment of the following:

WHITE LEAD in Oil.  
PAINT OIL.  
MIXED PAINT, assorted colors.

COAL TAR, in barrels.  
CAR BOX OIL, in barrels.  
CARBOLINEUM, in barrels.  
STOCKHOLM TAR, in 10 gallons and barrels.

METALLIC PAINT, ground in oil.  
MIXED COLORS, in 1 lb. tins (Masury's or Fuller's)

VARNISH of various kinds for carriage and house building purposes.

FLAT PAINT BRUSHES, Adams.

VARNISH : BRUSHES, Adams.

WHITE WASH BRUSHES, cheapest and best.

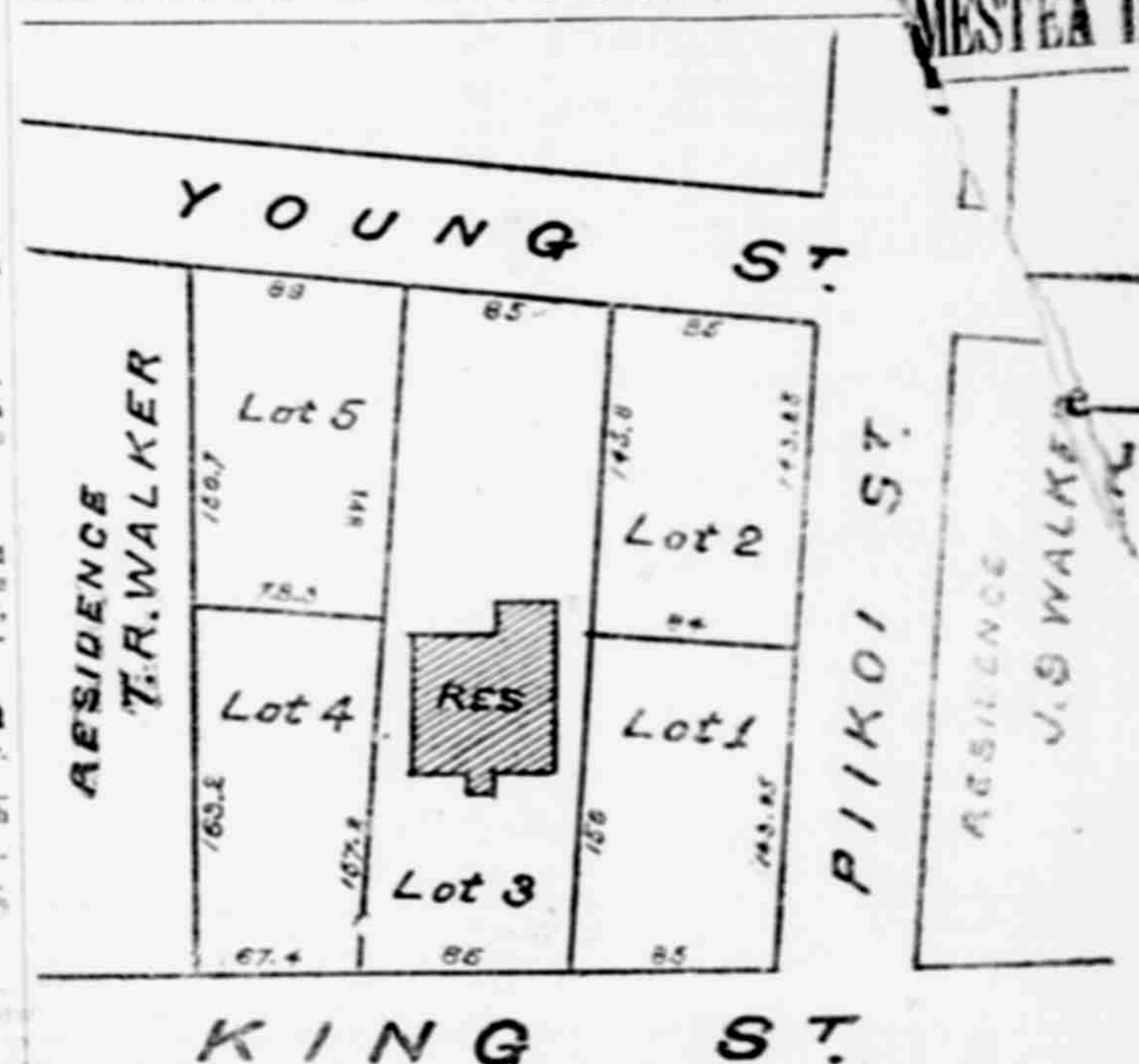
These goods have just arrived from the East and

Perfectly Fresh.

The Hawaiian Hardware Co. Limited.  
307 FORT ST.

IF YOU LOVE your wife take her to the ORPHEUM tonight.

SUB-DIVISION OF THE BICKERTON HO



These finely improved Lots for sale. Location excellent. Lots planted with choice trees and shrubbery. Prices reasonable. Lots 1, 2, 4 and 5 are sold. Lot 3—A Beautiful Lot. Best bargain in town. Easy terms to purchase.

Inquire of  
**Bruce Waring & Co.** PROGRESS BLOCK, HONOLULU.

E. JOHNSON, President. DR. W. S. NOBLITT, General Manager and Medical Director. LEO SCHELLBERG, Assistant Mgr.  
**Hawaiian Medicine Co**  
LINCOLN BLOCK (upstairs), KING ST., HONOLULU.

We Manufacture a Line of  
**Pure Family Medicines.**

One is the PAUEHA COLIC MEDICINE. It is the best medicine in the world for colic in infants, children or adults. RELIEVES as though by MAGIC all abdominal and stomach pains. It contains no morphine, laudanum or other preparations of opium, and can be given with safety to the youngest infant.

FREE CONSULTATION to purchasers from 11 a. m. to 12 m. Salesroom open from 9 a. m. to 6 p. m.

**Mosquitoline**

Will Drive Mosquitoes Away.

Cures the Bites!  
Brings Comfort!

—ONLY AT—  
**BENSON, SMITH & Co**

—LIMITED—  
Fort and Hotel Streets.

DEPARTURE SALE  
AT L. B. KERR'S, QUEEN STREET.

On August 18th I am going away and the

WHOLE STOCK IS TO BE SOLD

At prices that will make competition impossible. It now comprise

a large and complete line of the

NEWEST SHADES

BEST QUALITIES

Of imported Dry Goods, purchased from the Eastern Factories. Now is your time to buy at the right price. Everything must go.

QUEEN STREET, **L. B. KERR,** IMPORTER.



### "A Place For Everything"

is even more essential in the office than at home. Business men occasionally suffer heavy pecuniary losses because of an important paper mislaid. This can be guarded against by providing yourself with one of our new roller-top desks, with the latest, up-to-date time-saving devices and conveniences. A large assortment of flat-top, roll-top and standing desks, book-cases, press stands, letter files, document files, chairs, stools, etc., has just been received ex "Mohican." All styles and prices.

**HENRY WATERHOUSE & CO.**  
OFFICE, QUEEN STREET.  
Telephone 313.

**Castle & Cooke, LIMITED.**

**LIFE AND FIRE INSURANCE AGENTS**

AGENTS FOR  
New England Mutual Life Insurance Co. OF BOSTON.

Elma Fire Insurance Company OF HARTFORD.

**CASTLE & COOKE, Ltd**  
HONOLULU.  
**COMMISSION MERCHANTS.**

**SUGAR FACTORS**

—AGENTS FOR—

The Ewa Plantation Co.  
The Waialua Agricultural Co., Ltd.  
The Kohala Sugar Co.  
The Waimea Sugar Mill Co.  
The Koloa Agricultural Co.  
The Fulton Iron Works, St. Louis, Mo.  
The Standard Oil Co.  
The George F. Blake Steam Pumps.  
Weston's Centrifugals.  
The New England Mutual Life Insurance Co., of Boston.  
The Aetna Fire Insurance Co., of Hartford, Conn.  
The Alliance Assurance Co., of Boston.

### FOR SALE.

THE COMFORTABLE TWO STORY COTTAGE off Beretania St., between Miller and Punchbowl Street, and now occupied by James Nott, Jr., partly mosquito proof. A bargain for the right party.

Apply at  
**P. E. R. STRAUCH.**  
Real Estate Broker

LINCOLN BLOCK,  
639 King Street. Telephone 641.

### Boxing Taught

—BY—  
**MARTIN DENNY**  
Champion light weight of Australia, at Long Branch, Waikiki.  
Terms reasonable. Given on application.  
PRIVATE LESSONS GIVEN.

### PROCESSION VIEWS!

MANY CHOICE VIEWS OF THE funeral procession of the Queen Dowager. Single pictures or complete sets cheap. A few Kauliani and Kapiolani buttons still in stock.

LICHTIG, Fotografer,  
606 Fort Street.  
Above Dewey Restaurant.

WE have the most complete line of **CLEVELANDS** ever shown here. \$40 to \$85.  
The \$40 kind is the equal of any other make at ANY PRICE.  
INSTALLMENTS \$10 PER MONTH.



**Honolulu Bike Co.**  
209 Hotel Street.  
Only the highest grade of RED RUBBER is used in the Stamps made by the HAWAIIAN GAZETTE CO.

### In Solid Mahogany

We have just opened up the most elegant line of Parlor Furniture seen here. Everything in Solid Mahogany.

**Cabinets AND Whatnots.**

That are just the articles you have waited so long for to complete the artistic effect of your parlors.

**Chairs AND Tables.**

Dainty and elegant, yet withal, strong and serviceable. . . . . This is no everyday selection and we anticipate a speedy clearance.

A few nice **CHILD'S SWINGS.**

**J. HOPP & CO.**

Leading Furniture Dealers  
KING & BETHEL STS.

### THE NEW ENGLAND BAKERY AND CANDY CO.

Manufacture a full line of Bread, American and German. Schwartzbrod mit kumel, milk brod and twist with mohnsamen, French Splits, Whole Wheat, Graham, Hot Buns, Snails, Jenny Linds.  
Also the most complete and extensive line of CAKE in the city.

Jelly Rolls, Angel Food, Wine, Citron, Walnut, Sponge and Marble Cake, Lady Fingers, Cup Cakes, Almond, Macaroons; all kinds of cookies, fresh every day.

WEDDING CAKES from \$5 upwards.  
Delicious highly frozen Ice Cream and Sherbets, any flavor.

French Cream Bonbons and Chocolate Cream Drops—our own make—packed in elegant boxes from \$1.00 upwards.

**J. OSWALD LUTTED,**  
Manager.

### TO OUR FRIENDS AND PATRONS.

—Have you tried any of those CHOCOLATE or COCOANUT (fresh) cakes from the German Bakery? They are only 25 and 50c each and pronounced delicious by those who have tried them. Order one for your Sunday dinner. We also have a sponge cake which we sell for the moderate sum of five cents each.

—THE GERMAN BAKERY,  
833 Fort Street,  
—Headquarters for genuine ginger snaps, sugar cookies, etc.  
—Telephone 677.

EAT . . . . .  
**Pettijohn's Breakfast Gem.**  
ASK YOUR GROCER FOR IT

**The Silent Barber Shop**  
Ladies' Boot-Black Stand  
In rear of shop.  
**JOSEPH FERNANDEZ, Prop'r**  
Arlington Hotel, Hotel Street.

### WON IN THE TENTH

Stars Win First Game of New Series

An Imported Umpire Fails to Give Satisfaction—The Score Was 6 to 5 at the End.

The baseball game on Saturday was won by the Stars after a desperate and exciting struggle. Ten innings were played before the game was decided. The score of 6 to 5 speaks for itself. Though defeated, the sympathy and admiration of the largest crowd of the season went to the Stars, for the general impression was that they got decidedly the worst of the umpire's decisions. It will probably teach them a lesson, however, not to accept the services of strangers in the future.

The game, barring the umpiring, was a fast one. Both teams were on their toes. At the end of the fifth inning the score was four all. In the sixth the Stars goose-egged, while the Kams pulled one out of the fire. Zero to cipher to hold the tale of the seventh. In the eighth the Stars evened things up by getting a man across the plate. The Kams came to the bat in the ninth with the score five to five. In this crucial inning both teams ciphered. The Kams tried hard to land a run in the tenth, but failed. By a magnificent steal Moore came in when two of the Stars were out, winning the game.

The crowd was large and enthusiastic. The band added greatly to the liveliness of the occasion.

Following is the detailed score:

Stars	ABRIBSBPOAE	Kams	ABRIBSBPOAE
Moore, 2b	5 3 1 3 3 3 1	Makanaal, 1b	5 0 1 0 0 0 0
Kiley, rf	5 1 0 1 1 0 0	Crowell, rf	5 1 0 0 1 0 0
Gorman, c	5 1 0 0 1 1 1	Kuana, cf	5 0 1 0 1 0 0
Lishman, ss	5 0 2 1 1 0 0	Wise, 3b	5 0 1 0 1 0 0
Wills, 1b	4 0 1 0 1 0 0	Reuter, p	5 1 0 0 1 0 0
Davis, p	4 0 0 0 4 2 2	Leble, 1b	6 2 0 10 0 1
Pryce, 2b	4 0 0 0 0 0 0	Kelsova, c	6 2 1 0 4 5 1
Bower, cf	4 0 0 0 0 0 0	Hurbottle, ss	6 0 1 0 0 2 1
T. Jackson, p	4 1 1 0 1 10 1		

SCORE BY INNINGS.

Inning	Stars	Kams
1	0	0
2	0	0
3	0	0
4	0	0
5	0	0
6	0	0
7	0	0
8	0	0
9	0	0
10	6	5

Runs Earned—Stars, 2; Kams, 1.  
Base on Balls—Stars, 4; Kams, 7.  
Struck Out by Jackson, 6; by Reuter, 4.  
Two-base Hit—Jackson. Sacrifice Hits—Stars, 2. Double Play—Mabuka. Flies Caught—Kams, 7; Stars, 7. Fouls Caught—Kams, 1; Stars, 4. Hit by Pitched Ball—Pryce (2). Wild Throws—Jackson, Gorman. Time of Game—Two hours. Umpires—D. Dayton and Leon Cohen. Scorer—Clement.

STANDING OF TEAMS.

Team	Games Played	Won	Lost	Percentage
Stars	7	5	2	.714
Kams	7	4	3	.571
Artillery	4	0	4	.000

IS IT RIGHT  
For An Editor to Recommend Patent Medicines?  
From Sylvan Valley News, Brevard, N. C.

It may be a question whether the editor of a newspaper has the right to publicly recommend any of the various proprietary medicines which flood the market, yet as a preventive of suffering we feel it a duty to say a good word for Chamberlain's Colic, Cholera and Diarrhoea Remedy. We have known and used this medicine in our family for twenty years and have always found it reliable. In many cases a dose of this remedy would save hours of suffering while a physician is awaited. We do not believe in depending implicitly on any medicine for a cure, but we do believe that if a bottle of Chamberlain's Diarrhoea Remedy were kept on hand and administered at the inception of an attack much suffering might be avoided and in very many cases the presence of a physician would not be required. At least this has been our experience during the past twenty years. For sale by all dealers. Benson, Smith & Co., Ltd., agents for H. I.

Food Prepared With "Calumet" is Free from Rochelle Salts, Alum, Lime and Ammonia. "Calumet" is the Housewife's Friend.

**CALUMET Baking Powder**  
NONE SO GOOD.

**Rosenberg & Rosenberg.**

Pay the highest prices for  
OLD COPPER, BRASS, LEAD, ZINC, IRON and all kinds of bottles. OLD PLANTATION MILLS a specialty.  
P. O. Box 40. 207 QUEEN ST. Honolulu, H. I.  
Prompt attention to all Island trade.  
6264

try some

with soda in a tall glass

Crown Distilleries Co. San Francisco

ALL KINDS OF  
Apples, Cherries, Plums, Peaches, Muscat Grapes  
Oranges, Limes and Lemons, Eastern Oysters, Etc., Etc., Etc.

**E. HENRIQUES,**  
MASONIC TEMPLE.  
Telephone 444.

**TO ARRIVE:**  
Ex. America Maru.

HANDSOME SILK BID-SPREADS, TABLE COVERS, GRASS, CLOTH CENTRE PIECES. These are of very dainty patterns.

Also, a new line of Pajamas, Neckties, Suspenders, Handkerchiefs.

Some New Goods to arrive soon!

**Murata & Co.**  
HOTEL ST., COR. NUUANU.

Branch Hat Store, Nuuanu St

**FOR SALE.**

Two Lots at Kalihi, on main road, 60x102 each. A bargain.  
Two Lots at Kalihi, 75x150 each. A bargain. Easy terms.  
Lot on Young street, this side of Thomas Square, 52x155. Fine location to build.  
Residence at Waikiki on the beach. Good location and bathing.

**TO LET.**

Unfurnished cottage on Liliha street. Unfurnished house of four bed rooms on beach at Waikiki.  
Unfurnished cottage at Pawaa, King street. Apply to

**WILLIAM SAVIDGE,**  
310 Fort Street

**HONOLULU IRON WORKS CO.**  
Steam Engines, BOILERS, SUGAR MILLS, COOLERS, BRASS AND LEAD CASTINGS. And machinery of every description made to order. Particular attention paid to ship's blacksmithing. Job work executed on the shortest notice

**NOVELTIES**  
for dinner giving and for luncheons and for entertaining may be had here constantly.

**LEWIS & CO. Grocers**  
111 FORT STREET.  
Telephone 240. P. O. Box 207.

**J. MORGAN,**  
OPAL MERCHANT  
**JEWELER**  
AND LAPIDARY  
OPAL CUTTING A SPECIALTY.  
No. 2 School St., Near Smith's Bridge.

**THE DOCTORS**  
—SAY THAT—  
**Malaria AND Microbes**

Have small chances when PURE WATER is provided

\*\*\*\*\*  
**THIS IS THE SEASON**  
When drinking water needs to be purified.  
You can get the most perfect

**Water Filters AND Coolers**  
From  
**THE PACIFIC HARDWARE CO.**  
At their  
Fort Street Store  
And at their  
Household Supply Department  
On Bethel Street.

**New Shipment OF SILK GOODS.**

—ALSO—  
FRASS: CLOTH; HANDEKERCHIEFS, DOYLIES; TABLE: COVERS.

**SILK SHIRTS, SILK PAJAMAS, ETC**

Handsome Carpets for Halls and stairs.

**JAPANESE RUGS, VERY PRETTY PATTERNS.**  
A large stock on hand to select from, at prices that will surprise you.

**S. OZAKI,**  
WAVERLEY BLOCK - - HOTEL STREET

**IT IS CHEAPER**  
to pay a fair price to have your watch repaired by . . . . .  
**AN EXPERT WATCHMAKER**  
than to risk having it ruined in order to save a few cents.

**M. R. COUNTER,**  
Practical Watchmaker  
507 Fort St.  
Gives personal attention to repairing fine and complicated watches.

**LOWEST PRICES CONSISTENT WITH GOOD WORKMANSHIP.**  
**CITY MILL CO., LTD.**

**Builders and Contractors.**  
QUEEN & KEKAULIKE STREETS. (Ewa Side of Old Fish Market.)

Beg to announce that they are now prepared to undertake all branches of the above business.  
Work undertaken by the day or by contract; estimates furnished.

**Have You Seen**  
The Rotary Motion and Ball Bearing  
**Wheeler**  
—AND—  
**Wilson**  
**Sewing Machines?**

If not it will serve your interests to call and see them on display at  
**F. L. Prescott's**  
FORT STREET.  
A look will convince you that they are the simplest machine made and three times the value of any other.

**ARE YOU LOOKING FOR**  
Stocks or Bonds, Investments or Loans, Offices or Fire Insurance, Safe Deposit Boxes or,  
A COMPANY—Responsible, Reliable and Accessible, to act as TRUSTEE, EXECUTOR, ADMINISTRATOR or GUARDIAN?  
If so, call on  
**The Howoition Trust & Investment Co.**  
GEO. R. CARTER, Treasurer,  
407 Fort Street, Honolulu.

**Uncle Sam's Cafe.** 512 Fort Street.

Open from 5 a. m. to 12 p. m.  
Excellent menu at all meals.  
First-class French chef employed.  
All the delicacies of the season.  
Ham or Egg Sandwiches with Coffee, Tea or Milk, 15 cents.

**Look Wo Sing Co.**  
A LARGE ASSORTMENT OF LINK CUFF BUTTONS.  
In Numerous Designs.  
Also a handsome display of LADIES' AND GENTS' RINGE. JEWELRY  
Of all kinds made to order.

**BIART** 404 1/2 FORT ST JEWELER.

**ALEXANDER & BALDWIN**  
SUGAR FACTORS  
—AND—  
Commission Merchants  
JUDD BUILDING.

**HAWAIIAN CARRIAGE MFG. CO., Ltd**  
121 Queen Street.  
CARRIAGE AND WAGON BUILDERS  
LUBBER TIRES AND ROLLER BEARING AXLES.  
**HAWAII SHINPO SHA**  
THE PIONEER JAPANESE PRINTING OFFICE.  
The publishers of "Hawaii Shingo." The only daily Japanese paper published in the Islands.  
EDITOR . . . . . M. TAKAHASHI  
PROPRIETOR . . . . . C. SHIOZAWA.  
Office: Nuuanu avenue, above Derr-tania. 5212



**FLOOR LINOLEUMS**  
AND OILOLOTH.  
**HALL LINOLEUM CARPET**  
AND FIBRE MATTING.

**Rugs,**  
CENTER, SOFA AND STAND  
Heavy Stock and Great Choice.

Portieres, Curtains,  
Table Covers, Etc.  
Of Best Value Ever Imported

**E. W. JORDAN**  
No. 10 STREET

L. KONG FEE.  
MERCHANT TAILOR  
623 1/2 Fort St., Opp. Club Stables.

FINE SUITS TO ORDER AT REASONABLE RATES  
Suits cleaned and repaired. Satisfaction guaranteed.

Only the highest grade of RED RUBBER is used in the Stamps made by the HAWAIIAN GAZETTE CO.

**HENRY R. WORTHINGTON, (INC.)**  
**Engineers and Builders**  
Of High Duty Pumping Engines for Water Works and Irrigation

THE SPECIAL ATTENTION OF PLANTATION MANAGERS AND AGENTS is called to the fact that we carry in stock at our Queen Street warehouse a large assortment of pumps for all kinds of sugar house service, including vacuum pumps, air pumps, condensers, feed pumps, juice pumps, molasses pumps, etc., together with a complete stock of spare parts and valves for all sizes. Careful attention given all orders and prompt shipment guaranteed.  
ESTIMATES FURNISHED FOR COMPLETE IRRIGATION PUMPING PLANTS OF ANY CAPACITY OR POWER.

Honolulu, H. I. CORNER FORT AND QUEEN STREETS. Telephone 596.

**35 Different Styles!**  
**Gold Oak Bedroom Sets,**

Cheval and Duchesse  
IN ELEGANT AND VARIOUS DESIGNS.....

Extension Dining Tables,  
Parlor and Dining Chairs  
Just to hand Per "S. C. Allen."

**COYNE-MEHRTEN FURNITURE COMPANY.**  
J. A. MEHRTEN, MANAGER  
Progress Block.

**COURT CALENDAR**

For the Coming August Circuit Term.

Judge Stanley Will Preside Over  
What Bids Fair to be Very Long Session

Below will be found a list of the cases to be tried at the coming August term of the First Circuit Court. Judge Stanley will preside, and the government will be represented by both Attorney-General H. E. Cooper and Deputy Attorney-General E. P. Dole. From the length of the calendar it is pretty certain that the term will be a long one:

**HAWAIIAN JURY—CRIMINAL.**  
Republic of Hawaii vs. Antonio Marshall; distilling liquor. Appeal from District Court of Honolulu. Kaulakou for defendant.  
Republic of Hawaii vs. Ah Fong alias Tom Keong; heedless driving. Appeal from District Court of Honolulu. De Bolt for defendant.  
Republic of Hawaii vs. Annie Kino; forgery (for sentence). Achi-Johnson for defendant.  
Republic of Hawaii vs. S. Kanaana; cruelty to animal. Appeal from District Court of Honolulu. Kaulakou for defendant.  
Republic of Hawaii vs. Lillioa (w); practicing medicine without license. Appeal from District Court of Honolulu. De Bolt for defendant.  
Republic of Hawaii vs. Kahue, and three others; assault and battery. Appeal from District Court of Honolulu. De Bolt for defendant.  
Republic of Hawaii vs. Kaloehohi; gambling. Appeal from District Court of Honolulu. Kaula for defendant.

**FOREIGN JURY—CRIMINAL.**  
Republic of Hawaii vs. Muramoto alias Maida; rape. De Bolt for defendant.  
Republic of Hawaii vs. Leong Tai; unlawful possession of opium. Appeal from District Court of Honolulu. Robertson-Wilder for defendant.  
Republic of Hawaii vs. Tong Fai; assault and battery. Appeal from District Court of Waianae. Poepe for defendant.  
Republic of Hawaii vs. C. O. Flynn; malicious injury. Appeal from District Court of Ewa.  
Republic of Hawaii vs. J. R. Higby; assault and battery (change of venue from Second Circuit Court). Hona-Coke-Creighton for defendant.

Republic of Hawaii vs. Camachero alias J. Goveia; practicing medicine without license (for sentence). Wood for defendant.  
Republic of Hawaii vs. Joe Fraga; assault with dangerous weapon (for sentence). Davidson for defendant.  
Republic of Hawaii vs. Tasaka (Jap.); soliciting (for sentence). Creighton for defendant.  
Republic of Hawaii vs. Charles Clark; conspiracy 3rd degree. Appeal from District Court of Honolulu.  
Republic of Hawaii vs. Ah Moon; maintaining lottery scheme. Appeal from District Court of Honolulu.  
Republic of Hawaii vs. M. J. Borges; selling spirituous liquor without license. Appeal from District Court of Honolulu.

Republic of Hawaii vs. John H. West; malicious injury. Appeal from District Court of Honolulu.  
Republic of Hawaii vs. Ho Yuen; malicious injury. Appeal from District Court of Ewa. Kahookano for defendant.  
Republic of Hawaii vs. T. J. Fitzpatrick; sexual intercourse with female under fourteen years. Appeal from District Court of Honolulu. Humphreys-Hankey for defendant.  
Republic of Hawaii vs. Chun Chee (w); unlawful possession of opium. Appeal from District Court of Honolulu. Chillingworth for defendant.  
Republic of Hawaii vs. Manuel Andrade; heedless driving. Appeal from District Court of Honolulu. Neumann for defendant.

Republic of Hawaii vs. Ah Hong; maintaining lottery scheme. Appeal from District Court of Honolulu. Neumann for defendant.  
Republic of Hawaii vs. Ah Mai; maintaining lottery scheme. Appeal from District Court of Honolulu. Neumann for defendant.  
Republic of Hawaii vs. Pung Fai; assault and battery. Appeal from District Court of Honolulu. Kane for defendant.  
Republic of Hawaii vs. Ah Ping and three others; assault and battery. Appeal from District Court of Honolulu. De Bolt for defendant.  
Republic of Hawaii vs. Yee Yop; violating immigration laws. Appeal from District Court of Honolulu. C. Clark for defendant.

**HAWAIIAN JURY—CIVIL.**  
J. D. Holt, Jr. vs. A. Kaula; ejectment. Kinney-Ballou-McClanahan for plaintiff; C. Brown for defendant.  
N. K. Eldredge vs. S. Parker; action on contract. Magoon-Silliman for plaintiff; Neumann for defendant.  
In re Estate of Nalimu Nolei. Appeal from Probate Judge, First Circuit. Magoon-Silliman for petitioner-appellant; Kinney-Ballou-McClanahan for contestants.  
Kaupena Kaimama vs. J. H. Kanaana; malicious prosecution. Creighton for plaintiff; Dole-Kinney-Ballou-McClanahan for defendant.  
W. P. Hopu et al vs. Kanaana (k); quieting title. Poepe for plaintiffs; C. Brown for defendant.  
Mary K. Tibbets vs. S. Pall; Guardian's ejectment. Magoon-Silliman for plaintiff.  
A. S. Mahaulu vs. Kahalemoku et al; ejectment. Thurston-Carter-Andrews for plaintiff; De Bolt for defendants.

(Continued on Page 7.)

**Houses for Rent**

Properties for Sale.

Stocks and Bonds.

Loans Negotiated.

R. C. A. PETERSON.

Broker, Real Estate and

Financial Agent.

HONOLULU : : : : : H. I.

Office: 15 Kaahumanu St.

P. O. Box 565.

**Hoffman Saloon**

**BAVARIAN ALE**  
—And—  
**OLYMPIA BEER**  
ON DRAFT.

**L. H. DEE**  
—PROPRIETOR—

Cor. Hotel and Nuuanu Sts.

**E. E. HITCH**

Market Warehouse Building, Queen Street.

**Practical Sail Maker**

Estimates Given for all Kinds of AWNINGS, TENTS, TRUNK COVERS, TARPULINS, WAGON COVERS, FIELD COVERS, ETC.

Stock Furnished at Fair Prices. All Work Done Satisfactorily.

**CHOICE VEAL, MUTTON**  
—AND—  
**BEEF, PORK**  
Always On Hand.

Sausages, Liver, Head Cheese and Breakfast Bolognae at the  
**CENTRAL MEAT MARKET.**  
214 Nuuanu St. Tel. 104.

**FIRST CLASS Bicycle Repairing**

Done at Very Reasonable Figures.

GIVE US A TRIAL

**CLEVELAND BICYCLES FOR RENT.**

We have a few second hand wheels which we are selling at cut rate prices.

**CITY REPAIR SHOP**

E. Jones. R. Clark

115 Bethel Street

Opposite Waterhouse Grocery Co.

**Consolidated Soda Water Works Co.**

—LIMITED—

Esplanade, Cor. Allen and Fort Sts.

HOLLISTER & CO. - AGENTS

**WM. G. IRWIN & CO.**  
—LIMITED—

Offer for Sale:

REFINED SUGARS.

Cube and Granulated.

PARAFFINE PAINT CO.'S

Paints, Compounds and Building Papers.

PAINT OILS,

Lincol-Raw and Boiled.

Linseed-Raw and Boiled.

INDURINE,

Water-proof cold-water Paint, inside and outside; in white and colors.

FERTILIZERS,

Alex. Cross & Sons' high-grade Scotch fertilizers, adapted for sugar cane and coffee.

N. Ohlandt & Co's chemical fertilizers and finely ground Bone Meal.

STEAM PIPE COVERING,

Reed's patent elastic sectional pipe covering.

FILTER PRESS CLOTHS,

Linen and Jute.

CEMENT, LIME & BRICKS.

AGENTS FOR

WESTERN SUGAR REFINING CO., San Francisco, Cal.

BALDWIN LOCOMOTIVE WORKS, Philadelphia, Penn., U. S. A.

NEWELL UNIVERSAL MILL CO., (Manf. "National Cane Shredder"), New York, U. S. A.

OHLANDT & CO., San Francisco, Cal.

RISDON HEON AND LOCOMOTIVE WORKS, San Francisco, Cal.



A Model Plant is not complete without Electric Power, thus dispensing with small engines.

Why not generate your power from one CENTRAL Station? One generator can furnish power to your Pump, Centrifugals, Elevators, Pumps, Railways and Hoists; also, furnish light and power for a radius of from 15 to 30 miles.

Electric Power being used, saves the labor of hauling coal in your field, also water, and does away with high-priced engines, and only have one engine to look after in your mill.

Where water power is available it costs nothing to generate Electric Power.

THE HAWAIIAN ELECTRIC COMPANY is now ready to furnish Electric Plants and Generators of all descriptions at short notice, and also has on hand a large stock of Wire, Chandlers and Electrical Goods.

All orders will be given prompt attention, and estimates furnished for Lighting and Power Plants; also, attention is given to House and Marine Wiring

THEO. HOFFMAN, Manager.

**WM. G. IRWIN & CO.**  
LIMITED.

Wm. G. Irwin, President and Manager  
Clas Spreckels, Vice President  
W. M. Giffard, Secretary and Treasurer  
H. M. Whitney, Jr., Auditor

SUGAR FACTORS

—AND—

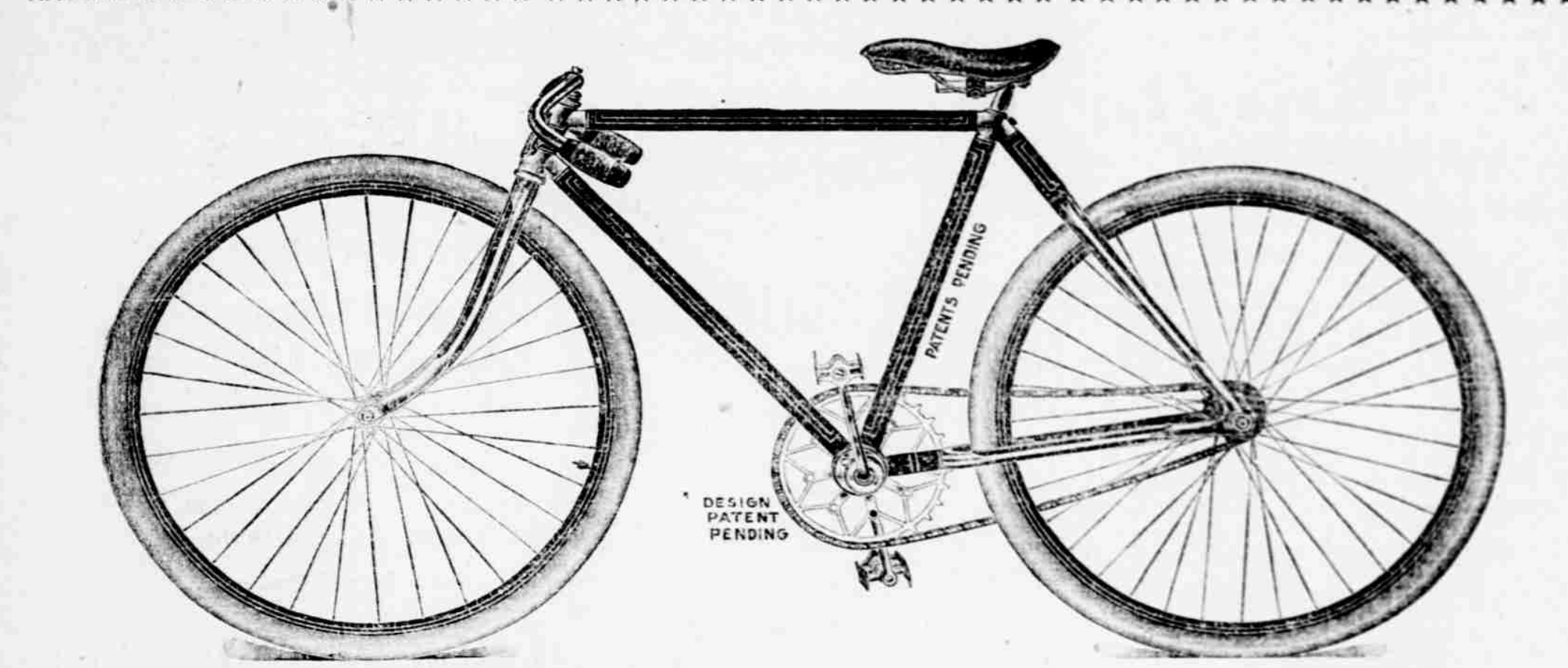
COMMISSION AGENTS

AGENTS FOR THE

Oceanic Steamship Company

Of San Francisco, Cal.

**BAILEY'S BIKE BITS.** Telephone 398.  
P. O. Box 441.



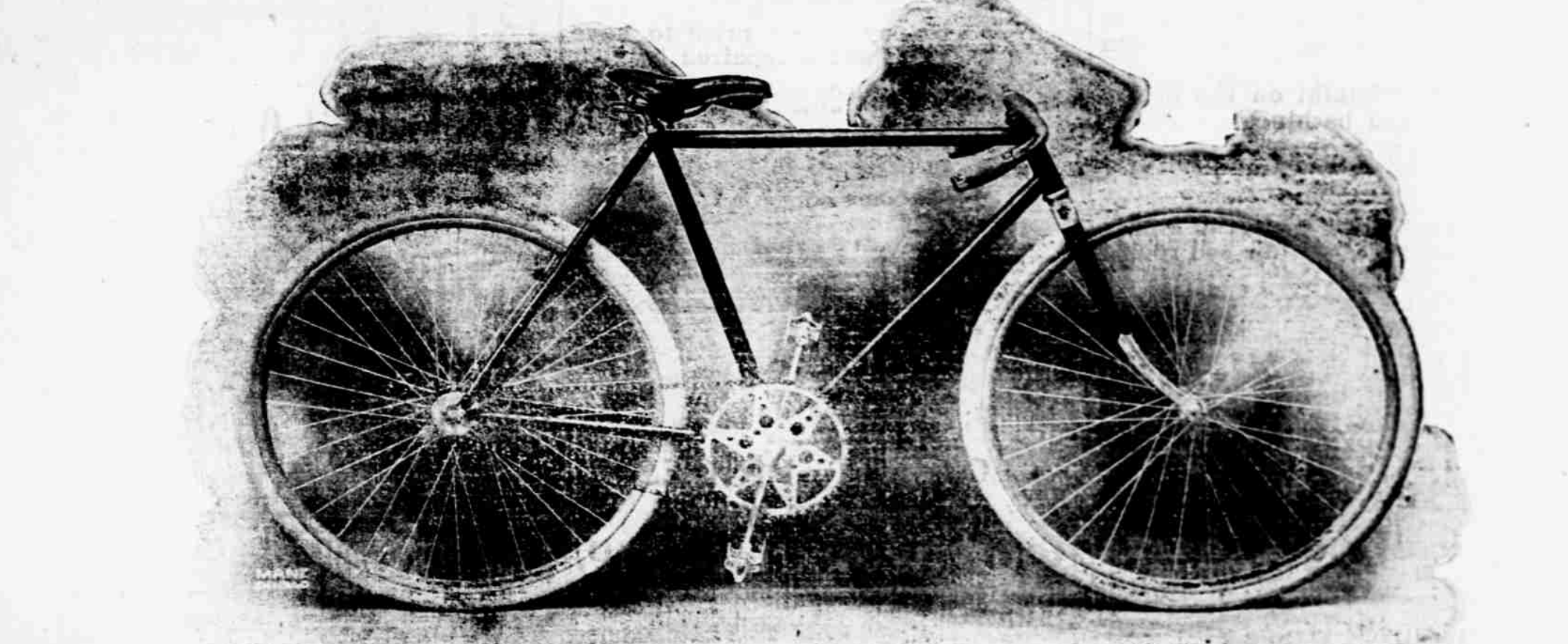
**The Manson Three Crown Bicycle.**

The handsomest Wheel made. If you put its exquisite appearance, the excellency of its workmanship, and its light running qualities, alongside the ordinary wheel sold in Honolulu, no one of our nicely discriminating Honolulu people will for a moment hesitate which wheel to purchase. The Manson Three Crown Bicycle is the "Edition de Luxe" of the bicycle world.

BAILEY'S HONOLULU CYCLERY, Sole Agents for Hawaiian Islands.

OPTIONS:— Any Saddle, Tire or Chain. - - - PRICE, \$60.

SOLE AGENT FOR THE MILWAUKEE PUNCTURE-PROOF TIRE—THE BEST.



**THE BEEBE BICYCLE**

A fine wheel at a very low price. A hundred of them in use in Honolulu and no kick coming. Cones and Cups equal to the best [Always Excepting Manson].

Price Single Tube Tires \$30 00 35 00  
Price Double Tube Tires 35 00 40 00  
Price Milwaukee Puncture Proof Tire 40 00 45 00.

AT **Bailey's Honolulu Cyclery** 231 KING ST.  
The Pioneer Repair Shop.



# W.C. Achi Mauna Loa & CO.

## Stock Brokers

10 West King Street.

## FOR SALE

Honolulu Brewing & Malting Co.

Oahu,

Kihei,

Ookala,

Nahiku,

Waimea,

Waimanalo,

Etc., Etc., Etc.

## J LANDO, OUTFITTER AND FURNISHER

Has on hand a new line of

## Shirts in Golf, Stanley, Neglige.

WOOL AND COTTON UNDERWEAR, HOSE, in Fancy Lyle and Cotton. HATS AND CAPS in endless varieties. MEN'S AND BOYS' CLOTHING. STAR and MOTHER'S FRIEND SHIRT WAISTS.

Successor to L. E. TRACY, Fort Street near King.

## Children's Photos

Are the hardest of all to make well until you become accustomed to the task. Mothers tell us we are at our best when making photos of the little ones. Our quaint, unique poses—faithful likenesses—and dainty style of finishing photos find favor in every mother's eyes.

J. J. WILLIAMS, WILLIAMS' ART STUDIO, Fort Street.

Jas. H. Love, Stock Broker

FORT ST., Next Blatt's Jewelry Store.

## For Sale:

KIHEI, MCBRYDE SUGAR CO. NAHIKU, OOKALA, KAHUKU.

## BREAKS OUT AGAIN INTO VIOLENT ERUPTION.

By Walking a Few Blocks you can see it.

LE MUNYON is back from a three weeks' trip to the source of the FIERY FOUNTAINS

With all kinds of beautiful Photographs - AND - Colored Sketches

## ONLY VIEWS of the Eruption!

TAKEN BY ANYONE. WE HAD NO SHOES LEFT.

## THE Le Munyon

PHOTO SUPPLY CO. 426 Fort Street

## FOR SALE.



A LOT OF FINE, WELL BRED Milch Cows, Heifers, Horses, tame and gentle; a child can handle them. Will be sold single or by lots. A large number of well made milking cans will be sold in lots of one or a dozen.

## FOR SALE.

16 1-3S ACRES COFFEE LAND AT HONOKAA. 8 acres in full bearing, 5 acres planted with trees from 1 to 2 years old. Over 200 Alligator Pear trees, with other fruits, oranges and peaches, and about 500 Banana trees.

This land is all fenced and there is also a 20x20 building, containing a coffee pulping machine, etc., on property. A bargain.

## Beach Lots AT KULIOUOU

THE UNDERSIGNED OFFERS ON long leases at reasonable rentals four very desirable beach lots at Kulioouou of two acres each, with water laid on. For plans of lots and further particulars apply to

J. M. MONSARRAT, Cartwright Block, Merchant St. 5250

## WEAK MEN

And women—those lacking in energy and vigor, will find Electricity, as applied by the great American invention, "Dr. Pierce's Electric Belt," a most useful restorative.

Pierce Electric Co. 620 Market St. San Francisco.

TOURISTS' GUIDE THROUGH HAWAII. PRICE, 60c. BEAUTIFULLY ILLUSTRATED. FOR SALE BY ALL NEWSDEALERS.

## COURT CALENDAR

(Continued from Page 6.)

### MIXED JURY.

Mary Lopez et al vs. Anna dos A. Perry et al; quieting title. Kinney-Ballou-McClanahan for plaintiffs; Robertson-Wilder for defendants.

T. R. Mossman vs. C. Monting; assumption. Castle-Weaver for plaintiff; Humphreys-Gear for defendant.

Hanakaui Holt vs. Hamakua Mill Co.; ejectment. Dickey for plaintiff; C. Brown for defendant.

C. K. Iaukea vs. B. Cartwright et al; quieting title. Dickey for plaintiff; Kinney-Ballou-McClanahan for defendants.

Kalau vs. Ewa Plantation Co. et al; trespass. Kinney-Ballou-McClanahan for plaintiff; C. Brown for defendant.

S. Ahmi vs. Annie Waller et al; quieting title. Kanekua-Achi-Johnson-Kaulukou for plaintiff; Kinney-Ballou-McClanahan - Robertson - Wilder-Magoon-Silliman-C. Brown for defendants.

K. Lazarus vs. J. O. Carter; replevin. Appeal from District Court of Honolulu. Davis for plaintiff; Kinney-Ballou-McClanahan for defendant-appellant.

Priscilla E. Hassinger et al vs. Helen B. King et al; ejectment. Robertson-Wilder-Thurston-Carter for plaintiffs; Kinney-Ballou-McClanahan for defendants.

A. N. A. Olds vs. J. A. Magoon; trespass. Humphreys-Hankey-Gear-Honshill for plaintiff; Magoon-Silliman for defendant.

Soloman Kauai vs. J. K. Sumner et al; malicious prosecution. Magoon-Silliman for plaintiff; Thurston-Carter-Andrews-Humphreys - Hankey - Gear - Stewart for defendants.

Luika Kilinahe vs. H. R. Macfarlane et al; executor's ejectment. Dickey for plaintiff; Kinney-Ballou-McClanahan for defendants.

Mary K. Tibbetts vs. S. M. Damon et al; trustees' ejectment. Magoon-Silliman for plaintiff; Kinney-Ballou-McClanahan for defendants.

Mele Uli et al vs. Haw. Com. & S. Co.; ejectment. Correa for plaintiffs; Hartwell-Castle-Weaver for defendant.

Benito Guerrero vs. Anna dos A. Perry; ejectment. Kinney-Ballou-McClanahan for plaintiff; Robertson-Wilder for defendant.

Kan Wing Chew vs. A. M. Brown and C. F. Chillingworth; trespass. Clark-Kanekua for plaintiff; Dole for defendants.

Gulistan F. Roper, trustee, vs. Solomon Kauai et al; ejectment. McCants Stewart for plaintiff; Magoon-Silliman for defendants.

Junius Kanae vs. O. R. & L. Co.; replevin. Humphreys-Hankey for plaintiff; Hatch for defendant.

Jessie Kanae vs. O. R. & L. Co.; replevin. Humphreys-Hankey for plaintiff; Hatch for defendant.

Kahal (w) et al vs. L. Ahlo et al; quieting title. Poepeo for plaintiffs; C. Brown for defendants.

T. R. Mossman vs. S. M. Damon et al; trustees' quieting title. Castle-Weaver-Achi-Johnson for plaintiff.

Eleanor K. Prendergast vs. Peter Martin; ejectment. Magoon-Silliman for plaintiff; Kinney-Ballou-McClanahan for defendant.

### FOREIGN JURY—CIVIL.

Tuck Chew vs. Makee Sugar Co.; assumption. Robertson-Wilder-Neumann for plaintiff; Kinney-Ballou-McClanahan for defendant.

J. O. Carter vs. Samuel Norris; assumption. Kinney-Ballou-McClanahan for plaintiff; Hatch for defendant.

C. Batchelor vs. C. B. Wilson, marshal; trespass. Creighton for plaintiff; Humphreys-Gear for defendant.

M. G. Silva vs. C. S. Desky; damages. Creighton for plaintiff; Kinney-Ballou-McClanahan for defendant.

J. A. Magoon vs. L. Marks; assumption. Appeal from District Court of Honolulu. Magoon-Silliman for plaintiff; Davis for defendant-appellant.

A. M. Brown vs. Chung C. H. Chong; covenant. Davis for plaintiff.

T. W. Hobson vs. Charles I. Helm; assumption. Robertson-Wilder for plaintiff; Neumann-Davis for defendant.

Charles I. Helm vs. F. P. McStocker et al; trespass. Neumann-Davis for plaintiff; Dole-Robertson-Wilder for defendants.

J. J. Byrne vs. P. J. Voeller; assumption. Kinney-Ballou-McClanahan for plaintiff; Magoon-Silliman for defendant.

Lum Sung et al vs. Marion M. Luning; action on contract. Magoon-Silliman for plaintiffs; Humphreys-Hankey for defendant.

Kahului R. R. Co. vs. Haw. Com. & S. Co.; trespass. Kinney-Ballou-McClanahan for plaintiff; Hartwell-Castle-Weaver for defendant.

A. R. Titlow vs. Albert Whyte et al; assumption. Cartwright-Parkes for plaintiff; Hankey for defendant.

Eva Power vs. W. H. Bradley et al; assumption. Dickey for plaintiff; Humphreys-Hankey for defendants.

Lee Kyau (w) vs. Lo Kul (k); slander. McCants Stewart for plaintiff; Davidson for defendant.

H. R. Hitchcock vs. The Haw. Tramways Co., Ltd.; damages. Davis for plaintiff; Neumann-De Bolt for defendant.

Schweitzer & Co. vs. Charles J. Fishel; assumption. Humphreys-Hankey for plaintiff; Magoon-Silliman for defendant.

Charles E. Bartlett vs. Haw. Car. Mfg. Co. Smith for plaintiff; Kinney-Ballou-McClanahan for defendant.

Court of Honolulu. Davidson for plaintiff-appellant; Robertson-Wilder-Gear for defendants.

M. M. Kohn vs. L. H. Dee; assumption. Appeal from District Court of Honolulu. Henshall-Carhart-Parkes for plaintiff-appellant; Magoon-Silliman for defendant.

H. R. Hitchcock vs. Manuel Andrade; damages. Appeal from District Court of Honolulu. Davis for plaintiff; Neumann for defendant-appellant.

### JURY WAIVED.

Ng Chung Tug vs. Jick Kee; assumption. Appeal from District Court of Honolulu. Neumann for plaintiff; Robertson-Wilder for defendant-appellant.

J. M. McChesney vs. A. J. Brown; marshal; replevin. Appeal from District Court of Honolulu. Magoon-Silliman for plaintiff; Humphreys-Gear for defendant-appellant.

J. M. McChesney vs. A. M. Brown, marshal; replevin. Appeal from District Court of Honolulu. Magoon-Silliman for plaintiff; Humphreys-Gear for defendant-appellant.

Gehring & Butzko vs. W. S. Edings; assumption. Appeal from District Court of Honolulu. Henshall for plaintiff-appellant; Humphreys-Gear for defendant.

M. W. McChesney & Sons vs. L. Andrade; assumption. Appeal from District Court of Honolulu. Humphreys-Gear for plaintiffs.

Joseph Tinker vs. Junius Kanae; assumption. Appeal from District Court of Honolulu. Edings for plaintiff-appellant; Humphreys-Gear for defendant.

Kam Fung vs. Kam Hoy; assumption. Appeal from District Court of Honolulu. Creighton for plaintiff; Castle-Weaver for defendant-appellant.

George C. Beckley vs. Ah In; assumption. Appeal from District Court of Honolulu. Monsarrat-Weber for plaintiff; Castle-Weaver for defendant-appellant.

Gehring & Butzko vs. J. Cook et al; assumption. Appeal from District Court of Honolulu. Magoon-Silliman for plaintiff; Robertson-Wilder for defendants-appellant.

E. J. Crawford vs. H. Bissen et al; quieting title. Humphreys-Gear for plaintiff; Robertson-Wilder for defendants.

J. A. Magoon vs. J. S. Walker; assumption. Appeal from District Court of Honolulu. Magoon-Silliman for plaintiff; Neumann for defendant-appellant.

C. J. Fishel vs. B. H. Kahananui et al; assumption. Neumann for plaintiff; Kinney-Ballou-McClanahan for defendants.

Young Chung vs. Joe Davis; damages. Appeal from District Court of Ewa. Peterson for plaintiff; Kane for defendant-appellant.

C. S. Desky vs. Mrs. Thomas Lack; damages. Appeal from District Court of Honolulu. Magoon-Silliman for plaintiff-appellant; Davis for defendant.

M. Souza vs. M. G. Simoes; assumption. Appeal from District Court of Honolulu. Creighton for plaintiff; Correa for defendant-appellant.

Allen & Robinson vs. Boo Ying Lung; assumption. Appeal from District Court of Honolulu. Humphreys-Gear for plaintiff; Edings for defendant-appellant.

Tong On vs. P. Mahaulu, administrator; assumption. Edings for plaintiff; Magoon-Silliman for defendant.

Yamaoka vs. F. M. Whitehouse et al; assumption. Edings for plaintiff; Creighton for defendants.

John H. Estate vs. A. E. Judd; ejectment. Kinney-Ballou-McClanahan-Magoon-Silliman for plaintiff; Hartwell for defendant.

C. Lai Young vs. J. H. Barenaba; debt. Appeal from District Court of Honolulu. Dickey for plaintiff; De Bolt for defendant-appellant.

Charles Kamman vs. Mary Stevens; covenant. Davis-Dickey for plaintiff. J. A. Magoon vs. Yee King Tong; ejectment. Stewart for plaintiff; Davidson for defendant.

A. R. Rowat vs. N. Braham; assumption. Appeal from District Court of Honolulu. Peterson for plaintiff-appellant; De Bolt for defendant.

E. L. Gilliland vs. Wallace Poe; trespass. Appeal from District Court of Waianae. Robertson-Wilder for plaintiff-appellant; Poepeo for defendant.

H. H. Parker vs. Palea (k); trespass. Appeal from District Court of Koolau-poko.

M. Akawa vs. J. K. Palea; damages. Appeal from District Court of Koolau-poko.

H. H. Parker et al vs. E. K. Bull; trespass. Appeal from District Court of Koolau-poko.

F. Pahia vs. Palea (k); trespass. Appeal from District Court of Koolau-poko.

John Bell vs. Palea (k); trespass. Appeal from District Court of Koolau-poko.

William Henry vs. Palea (k); trespass. Appeal from District Court of Koolau-poko.

### DIVORCE AND SEPARATION.

Maria G. Leivinho vs. J. M. Leivinho. Magoon-Silliman for plaintiff.

Alia Pilipo (w) vs. K. L. Pilipo. Kane for plaintiff; Thurston-Carter-Andrews for defendant.

Lily Akona vs. Dr. Chong, alias Jeong Foo Yen. Kaulukou for plaintiff.

Martha Dunleavy vs. Frank J. Dunleavy. Edings for plaintiff.

Maria G. Borba vs. Manuel J. Borba. Peterson for plaintiff; Gear for defendant.

Amakehan (k) vs. Kawai (w). Kaula for plaintiff.

William Ringer vs. Sarah Traak Ringer. Kahookano for plaintiff.

Emma Dudoit vs. Charles Dudoit. Correa for plaintiff; Kahookano for defendant.

Sabina K. Hutchinson vs. William K. Hutchinson. Peterson for plaintiff; Robertson-Wilder for defendant.

## W. J. GUNN, Real Estate Agent.

410 Montgomery St. San Francisco, California

The attention of those having capital to invest is called to the fact, that no city in the United States or probably no city in the world offers better opportunities to make profitable or fortunate investments in Real Estate than does the city of San Francisco at the present time.

A great many reasons can be given why San Francisco really will advance in value from now on.

I offer my experience and knowledge of values to intending buyers of business properties or residence sites. I can submit some very desirable purchases of Real Estate that will yield a fine income and steadily advance in value.

Information cheerfully given. Parties coming from the Islands who desire to invest are requested to call. I will be happy to correspond with any who may wish to obtain information in regard to San Francisco Real Estate.

Full charge taken of property and taxes paid for absent owner.

W. J. GUNN, 410 Montgomery St., San Francisco, California.

## THE CLUB STABLES (Limited)

C. BELLINA, Manager. Fort St., near Hotel. Telephone 477.

Livery, Boarding and Sales Stables. PROMPT SERVICE, STYLISH TURN-OUTS, SAFE DRIVERS.

We are especially equipped to cater to your trade. Fair dealing and good service is what we depend on to get it. Dr. Rowat is always in attendance at the Stables.

## Club Stables Hack Stand

Corner Union and Hotel Streets. (Old Bell Tower.)

## CLUB STABLES HACK STAND ANNEX

TELEPHONE 777. (Corner Union and Bethel Streets.)

CAREFUL AND WELL INFORMED DRIVERS. FIRST CLASS CARRIAGES. HACKS AT ALL HOURS.

Orders for Surreys, Wagonettes, Single or Double Teams at a moment's notice. HACKS Nos.—45, 65, 70, 77, 97, 125 and 180.

C. BELLINA, Mgr. Stables Tel. 477. Tel. 319.

## METROPOLITAN MEAT CO

108 KING STREET. G. J. WALLER : : MANAGER.

Wholesale and Retail BUTCHERS -AND- NAVY CONTRACTORS

## Orpheum Cafe

ABOVE ORPHEUM THEATRE, FORT ST. OPEN DAY AND NIGHT Meals Served at All Hours.

25c REGULAR DINNER 25c From 12 Till 2 o'clock. FAMILY DINING ROOM IN CONNECTION. TABLES RESERVED FOR LADIES. WHITE LABOR EXCLUSIVELY.

C. T. GOW, Manager. JUST ARRIVED

New Importation of SILK GOODS, in the piece, SILK HANDKERCHIEFS, SILK SHAWLS, DECORATED FLOWER POTS, NEW PORCELAIN CUPS AND SAUCERS, TEA AND DINNER SETS, CARVED IVORY, RATTAN CHAIRS, CARVED SANDALWOOD BOXES.

## CLAUS SPRECKELS, WM. G. IRWIN, CLAUS SPRECKELS & CO., Bankers,

HONOLULU - - - H. I. SAN FRANCISCO AGENTS—THE NEVADA NATIONAL BANK OF SAN FRANCISCO.

—DRAW EXCHANGE ON— SAN FRANCISCO—The Nevada National Bank of San Francisco. LONDON—The Union Bank of London, (Ld.) NEW YORK—American Exchange National Bank. CHICAGO—Merchants' National Bank. PARIS—Credit Lyonnais. BERLIN—Dresdner Bank. HONGKONG AND YOKOHAMA—Hongkong and Shanghai Banking Corporation. NEW ZEALAND AND AUSTRALIA—Bank of New Zealand. VICTORIA AND VANCOUVER—Bank of British North America.

## BISHOP & CO. SAVINGS BANK

On October 1st, 1898, and continuing until further notice, Savings Deposits will be received and interest allowed by this Bank at four and one-half per cent per annum. The terms, rules and regulations of the Hawaiian Postal Savings Bank will be adopted as far as it is practicable to apply them, and the Cash Reserve of \$50,000 as required under the Postal Act will be maintained.

Printed copies of the Rules and Regulations may be obtained on application.

## BISHOP & CO. ESTABLISHED IN 1853. BISHOP & CO. -Bankers-

TRANSACT A GENERAL BANKING AND EXCHANGE BUSINESS. Commercial and Travelers' Letters of Credit issued, available in all the Principal Cities of the World.

INTEREST allowed after July 1st, 1898, on fixed deposits: 3 months 3 per cent; 6 months 3 1/2 per cent; 12 months 4 per cent.

## THE YOKOHAMA SPECIE BANK LIMITED.

Paid Up Capital ..... Yen 12,000,000 Reserve Fund ..... Yen 7,300,000

HEAD OFFICE: YOKOHAMA. BRANCHES AND AGENCIES: Kobe, London, Lyons, New York, San Francisco, Shanghai, Bombay, Hong Kong, Tokyo.

INTEREST ALLOWED: On Fixed Deposit for 12 months 4 p. c. p. a. On Fixed Deposit for 6 months 3 1/2 p. c. p. a. On Fixed Deposit for 3 months 3 p. c. p. a.

INTEREST ALLOWED BY THE HEAD OFFICE AT YOKOHAMA. On Current Deposit 1 2-10 per day. On Fixed Deposit for 12 months, 5 1/2 per cent p. a.

The Bank buys and receives for collection Bills of Exchange, Issues Drafts and Letters of Credit on the above Branches and Agencies and transacts a general banking business.

Agency Yokohama Specie Bank: New Republic Bldg., Honolulu, H. I.

## JUHEI ISHIZUKA AGENCY OF KEI HIN BANK, LTD. Vineyard Street.

Transact General Banking and Exchange Business. 4540 OFFICE - - - TOKYO, JAPAN. Draw exchange on FIRST NATIONAL BANK, YOKOHAMA.

## C. BREWER & CO. D. AGENTS FOR

Hawaiian Agricultural Company, Onoia Sugar Company, Honoma Sugar Company, Waiuku Sugar Company, American Sugar Co., Makee Sugar Company, Gokala Sugar Plantation Company, Haleakala Ranch Company, Kapapala Ranch, Molokai Ranch.

Planters' Line, San Francisco Packets, Charles Brewer & Co.'s Line of Boston Packets. Agents Boston Board of Underwriters. Agents for Philadelphia Board of Underwriters.

Standard Oil Co. LIST OF OFFICERS. C. M. Cooke, President; George H. Robertson, Manager; E. F. Bishop, Treasurer and Secretary; Col. W. F. Allen, Auditor; P. C. Jones, H. Waterhouse, G. R. Carter, Directors.

## M. W. MCCHESNEY & SONS. Wholesale Grocers and Dealers in Leather and Shoe Findings.

Agents Honolulu Soap Works Company, Honolulu, and Tannery.







# A Good Thing

To know about your food is its purity. No one can afford to overlook this important thing in beverage. People who know, say that women and children can use—and be sure of its absolutely purity—mild and delicious

## RAINIER BEER

It's ideal for home use—a trial convinces.

### NOTICE.

A RECEPTION WILL BE HELD AT THE Chinese Consulate, Victoria street, on Wednesday next, August 2d, between the hours of 11 a. m. and 1 p. m., in honor of the birthday anniversary of His Imperial Majesty, Kwang Hsi, Emperor of China, to which all friends are cordially invited.

YANG WEI PIN,  
H. I. Chinese M.'s Consul,  
Honolulu, July 29, 1899. 5298

### KAHUKU P ANIATI N.

A DIVIDEND WILL BE DUE AND payable to the shareholders of the Kahuku Plantation Co. on Monday, the 31st inst. The stock books of the company will be closed to transfers on the 29th and 31st insts. C. BOLTE,  
Treasurer Kahuku Plant. Co.  
Honolulu, July 26, 1899. 5296

### MEETING NOTICE.

THE ANNUAL MEETING OF THE stockholders of the Waimea Sugar Mill Co. will be held at the office of Castle & Cooke, Ltd., on Monday July 31st, at 2:30 p. m. E. D. TENNEY,  
Sec'y. Waimea Sugar Mill Co.  
5295

### DIVIDEND NOTICE.

A DIVIDEND IS DUE AND WILL be payable to the shareholders of the Kipahulu Sugar Co. on August 2d. The stock books of the company will be closed to transfers on July 31st and August 1st. E. SUHR,  
Sec. Kip. Sugar Co.  
Honolulu, July 30th, 1899. 5297

### ASSESSMENT NOTICE.

NOTICE IS HEREBY GIVEN THAT at a meeting of the directors of the HONOLULU RAPID TRANSIT & LAND CO., held at the company's office on the 1st instant, an assessment of ten (10) per cent was levied on the Capital Stock of the Company, due and payable at the Company's office, No. 411 Fort street, Honolulu, from and after this date.

The shares upon which any assessment may remain unpaid after thirty (30) days from this date will be declared delinquent.  
Honolulu, H. I., 5th July, 1899.  
J. A. GILMAN,  
Secretary H. R. T. & L. Co.  
5277

### NOTICE.

NOTICE IS HEREBY GIVEN THAT the partnership heretofore existing between A. W. Keech and T. McLean, stevedores, has been dissolved, said business now being incorporated with the Merchants' Stevedore Co., Ltd., with A. W. Keech as treasurer and T. McLean manager.  
Honolulu, July 28, 1899. 5297

### NOTICE.

ALL PERSONS WHO ARE TENANTS of what has been known as the Kapiolani estate are hereby requested to make prompt payment of the amounts due by them to the undersigned at their office on Kachumunu street.  
D. KAWANANAKOA,  
J. KALANIANA'OLE.  
5283

### NOTICE

NEITHER THE CAPTAIN NOR the owners of the British ship Amphitrite will be responsible for any debts contracted by the crew of said vessel.  
C. A. ANDERSON,  
Master.  
Honolulu, H. I., July 15, 1899. 5289

### NOTICE

THE STOCK BOOKS OF THE Hawaiian Sugar Co. will be closed to transfers from the 27th inst. to the 31st inst., both inclusive.  
W. L. HOPPER,  
Secretary Hawaiian Sugar Co.  
5294

### NOTICE.

AT A MEETING OF THE Merchants' Stevedore Co., Ltd., held today, the following officers were elected: J. H. Fisher, President; W. Wolters, Vice President; W. Lishman, Secretary; A. W. Keech, Treasurer; C. H. Atherton, Auditor. Who also constitute the Board of Directors.  
W. LISHTMAN,  
Secretary.  
Honolulu, July 25, 1899. 5294

### NOTICE.

DR. H. V. MURRAY WILL OPEN his office on the Porter premises, Alakea street, near the Pacific Club, on Monday, July 31st. 5295

## OLAA MILL SITE

To Be Eight and a Half Miles From Hilo.

Chief Engineer Kluegel Denies Rumors That the Hilo Railway Project Has Been Abandoned.

Discussing the work being done on the Hilo Railway and the location of the Olaa mill site, Chief Engineer C. H. Kluegel says in the last number of the Hawaii Herald:

"The preliminary lines of the Hilo Railway have been surveyed, but the exact location of the mill site must be settled before work can be pushed much further. I feel safe in saying that the locality will be about eight and one-half miles from Hilo and about three-quarters of a mile back from and on the left-hand side of the Volcano road. When this is finally settled upon work will be commenced on the permanent locations. I have greater faith in the future of the Olaa Sugar Co. than I ever had before, a faith which I backed up with the purchase of 500 additional shares of stock just before I left Honolulu. The work of clearing the lower lands is progressing favorably, and in many places the lands are as clear as meadows. The work is being rapidly and well done, and it appears to me that it cannot be more than a few weeks before at least a hundred plows will be going over the land. The company is fortunate in many ways. There will be no necessity for pumping-plants, which in themselves constitute a good dividend, and the conditions are such that the labor question will be less annoying than on plantations where irrigation is necessary."

### HAS NOT RESIGNED.

Captain Campbell Denies False Report in Circulation

Captain Campbell of the Inter-Island Steamship Company denies the reports circulated by irresponsible parties to the effect that he is about to sever his connection with the Inter-Island Company. He said on Saturday that he was at a loss to think whence these reports should have emanated. Both the officials of the company and himself were much annoyed about them.

"The facts are just these," said the captain, "my health has not been good for some months and the company has been kind enough to insist on my taking a vacation. I am to have sixty days, or even three or four months if I wish it, my orders being not to come back till I get ready. Capt. Haglund will assume my duties during my absence. There is absolutely no truth in the report that I am to sever my connection with the company."

### VESSELS IN PORT.

ARMY AND NAVY.  
U. S. S. Froquois, Pond, Hilo, March 19.  
U. S. S. Badger, Miller, Aia, July 28.

MERCHANTMEN.  
(This list does not include coasters.)  
Am. sch. George Curtis, Sproule, New York, May 31.  
Ger. bk. H. Hackfeld, Barber, Liverpool, June 2.  
Br. bk. Antiope, Murray, Iquique, July 3.

Br. ship Amphitrite, Anderson, London, July 4.  
Haw. ship Euterpe, Saxe, Newcastle, July 15.  
Am. sch. bkt. Morning Star, Garland, South Seas, July 15.  
Ger. bk. J. C. Glade, Stege, London, July 16.  
Haw. stmr. City of Columbia, Walker, Nihau, July 17.  
Am. bk. C. D. Bryant, Colly, San Francisco, July 20.  
Am. sch. F. S. Redfield, Birkholm, Tacoma, July 23.  
Haw. sch. Star of Italy, Westor, Newcastle, July 23.  
Am. sch. Honolulu, Olsen, Sitka, July 25.  
Am. sch. Okanogan, Rensch, Pt. Townsend, July 25.  
Am. sch. Mary E. Foeter, Thompson, San Francisco, July 27.  
Am. sch. Ottilie Fjord, Segelhorst, Eureka, July 20.

### MESSENGER SERVICE.

Honolulu Messenger Service delivers messages and packages. Tel. 378.

## New Upright PIANOS

—FOR—  
**\$250.00**  
ON INSTALLMENTS OF  
**\$10 PER MONTH**

—THE—  
Bergstrom Music Co.,  
Progress Block.

## Guardian's Sale of Real Estate

Notice is hereby given that pursuant to an order of the Hon. W. L. Stanley, Second Judge of the Circuit Court of the First Judicial Circuit, Hawaiian Islands, made and entered on the 27th day of July, A. D. 1899, in the matter of the Estate of August Podelyn, Frederick Podelyn and Waldemar Podelyn, minors, in Probate, at chambers, the undersigned guardian of the estate of said minors, will expose for sale at public auction the real estate belonging to said minors, hereinafter described, at an upset price of forty-five hundred dollars (\$45,000) at the auction rooms of J. F. Morgan, on Queen street, in Honolulu, on SATURDAY, THE 25th DAY OF AUGUST, A. D. 1899, at 12 o'clock, noon, of said day.

The property to be sold consists of a part of lot No. 362 on Piikoi street, in Honolulu, Island of Oahu, Hawaiian Islands, and commencing on Piikoi street on the makai corner of Lishman's of and running 100 feet; thence at right angles in a southerly direction 100 feet; thence at right angles in a northeasterly direction 100 feet, and thence 100 feet to the point of beginning, being the same premises conveyed to C. F. Wolfe by Royal Patent No. 3269 from the Hawaiian Government, and by the said C. F. Wolfe conveyed to Ida Podelyn on the 2d day of April, A. D. 1886, all as will more fully appear by reference to the deed of C. F. Wolfe recorded in the Register office in said Oahu, in liber 99, page 191, together with the dwelling-house and other buildings and erections standing thereon.

Terms, cash in United States gold coin; deeds at expense of purchaser, and sale subject to confirmation by the Court.

For further particulars apply to WILLIAM A. HENSHALL, attorney for said guardian, or to JAMES F. MORGAN, auctioneer.

J. F. HUMBURG,  
Guardian of the Estate of August Podelyn, Frederick Podelyn, and Waldemar Podelyn, minors.  
Dated, Honolulu, H. I., July 28th, A. D. 1899. 5298

### NOTICE.

NOTICE IS HEREBY GIVEN TO all persons indebted to us whose accounts date prior to June 1st, 1899, that unless settlements are made by the first day of August, next, the accounts will be placed in the hands of our attorney for collection.  
J. T. WATERHOUSE,  
Honolulu, July 21, 1899. 5291

## HAWAIIAN Dry Goods Association

TEMPLE OF FASHION.  
**SPECIAL SALE**  
FOR THIS WEEK ONLY!

Fine Figured Organdies at 20 yards for \$1.00.  
Farwell Cotton at 20 yards for \$1.00.  
Fine Gingham at 15 yards for \$1.00.  
Fine Gingham at 35 yards for \$1.00.  
Ladies' Shirt Waists at 25 cents each.  
Ladies', Men's and Children's Shoes at 25% below cost.

**M. PALAU, Manager.**

A. V. GEAR ..... PRESIDENT.  
DR. HUDDY ..... VICE PRESIDENT.  
EDWARD HANAPI ..... SECRETARY.  
N. FERNANDEZ ..... TREASURER.  
CHAS. WILCOX ..... AUDITOR.

## TRAVEL EXCITEMENT.

IRREGULAR MEALS  
TEND TO PRODUCE CONSTIPATION. DR. McCARD'S IMPROVED Vegetable Anti-Bilious Pills should be in your grip whether you leave town for three days or as many months. No need to give you a score of medical terms to explain their action. They bring relief from constipation and constipation is responsible for lots of mean little complaints you know. Easily taken—prompt in effect.

**Honolulu Drug Co.**

TELEPHONE NO. 364. P. O. BOX NO. 679

## ARTESIAN WELLS!

L. E. PINKHAM, CONTRACTOR.  
Office With the Pacific Hardware Co., Honolulu H. I.

Estimates given and contracts made for wells on any of the Islands.

**SIX NEW PLANTS** For heavy work operated by the most skillful highest class drillers.

ROYAL TASTE HAMS  
High Grade & Up-to-Date.  
COAST AGENTS FRANK B. PETERSON & CO. SAN FRANCISCO.

## BY AUTHORITY.

IRRIGATION NOTICE.  
Holders of water privileges, or those paying water rates, are hereby notified that the hours for irrigation purposes are from 6 to 8 o'clock a. m. and from 4 to 6 o'clock p. m.  
ANDREW BROWN,  
Supt. Honolulu Water Works.  
Approvev by:  
J. A. KING,  
Minister of Interior.  
Honolulu, June 14, 1899. 5255

## A SNAP! \$1,000 CASH Balance in 1 and 2 Years.

EITHER OF THOSE TWO ELEGANT COTTAGES on Waikiki Road, for sale, containing five and six rooms respectively, in first class condition. Keys at office. See them immediately.

WILL E. FISHER,  
Real Estate Agent, Fort and Merchant Streets. 5270

## 28-LOTS-28 At Kapalama For Sale.

SITUATED ON MAUKA SIDE OF King street, near the Hawaiian Tramway Co.'s depot; the location is one of the best, if not the best, in the city of Honolulu.

Terms are very reasonable.  
For further particulars apply to  
W. C. ACHI & CO.  
July 20, 1899. 5290

## CONEY : ESTATE LANDS.

A FEW VERY DESIRABLE BUILDING LOTS on Nuuanu avenue, at Niopoa, Nuuanu valley for sale. Apply to  
J. M. MONSARRAT,  
Cartwright Block, Merchant St. 5267

## REAL ESTATE FOR SALE.

1--A few elegant lots at Manoa on the road, with unsurpassed view and climate. On line proposed Rapid Transit. Easy terms.

2--Several town lots on Beretania Street, Ewa side of Geo. Ross.

3--One house and lot on Beretania Street.

4--Lots in different parts of Kewalo Tract.

5--Kapiolani Park Addition Lots, on installments.

8--One homes. New houses and high grounds at Kewalo, \$1100 each. Cheap.

10--Lands in Nuuanu valley

11--Long leasehold at Kakaako with good returns

13--Only 6 more lots of all sizes in different parts of the most desirable locations of Kalihi, with fine views, macadamized streets, and water supply from city. These lots we sell at lowest figures in monthly installments without interest so as to put them within reach of anybody who wants a home.

17--House and lot, well improved, on wide, macadamized street in Kalihi, just past Kamehameha Schools. Price \$2,250.

21--FOR SALE--A house lot 100x200 in block 17 on Lehua Avenue, Pearl City.

22--A few of the very choicest lots, of various sizes, in all Kalihi, Ewa side of H. C. Myers, Esq., commanding an unsurpassed view, on fine street with water from city. A visit to the grounds will convince. Terms to suit yourself.

## STOCKS AND BONDS For Sale!

Buy and sell outright City and Suburban Real Estate.

Apply to  
**J. H. Schnack**

DEALER IN  
Real Estate and  
Stock Broker.  
223 Merchant St.  
P. O. Box No. 104.

## MAUNA KEA VIEW HOTEL.

IS NOW OPEN TO THE PUBLIC.

Carriages and saddlehorses will meet the arrival and departure of every Kinau at Kawahae; also for any other point.

SHERIFF ANDREWS OF HAWAII says: "The only way of reaching the present lava flow by wagon road is via Waimea carriages; can go within two miles of the flow.

For particulars apply to  
H. AKONA,  
Proprietor,  
Waimea, Hawaii.  
5287

## Wailuku Hotel

### REMOVAL NOTICE.

THE UNDERSIGNED BEGS TO NOTIFY his patrons and the traveling public of the removal of SHROEDER'S WAILUKU HOTEL.

To the building next to Hoffman & Vettlesen's store, and a few doors away from the old location.  
GEO. B. SHROEDER,  
Wailuku, Maui.  
5297

## KINDERGARTEN AND PRIMARY.

MISS MARTHA HITCHCOCK AND Miss Ada R. Whitney will open a private school in the Child-Garden, corner of Alapai and Beretania streets. Miss Hitchcock will conduct the Kindergarten department. Miss Whitney, who has taught the past year with Mrs. P. H. Dodge, will conduct the two grades above the Kindergarten. The school will open with the public schools.

### NOTICE.

AT A MEETING OF THE Merchants' Stevedore Co., Ltd., held today, the following officers were elected: J. H. Fisher, President; W. Wolters, Vice President; W. Lishman, Secretary; A. W. Keech, Treasurer; C. H. Atherton, Auditor. Who also constitute the Board of Directors.  
W. LISHTMAN,  
Secretary.  
Honolulu, July 25, 1899. 5294

### NOTICE.

DR. H. V. MURRAY WILL OPEN his office on the Porter premises, Alakea street, near the Pacific Club, on Monday, July 31st. 5295



**OUR FACILITIES FOR PLACING**  
**MARBLE AND GRANITE**  
**Monuments**  
 At reasonable prices, are unexcelled.  
 Drop us a card and our representative will call on you.  
**THE HAWAIIAN IRON FENCE AND MONUMENTAL CO.**  
 P. O. Box 627. 641 King Street. Telephone 502.

**Minerva Mirillo.**  
 The new effervescent aperient for the Liver, Blood and Stomach.  
 Invaluable for persons of sedentary habits  
 SOLD EVERYWHERE.

**Minerva Mirillo**  
 Is a mild and pleasant, but exceedingly effective aperient, keeping the blood pure, regulating the liver, clearing the complexion, removing gouty matter from the system, and generally warding off disease. Made from, and containing all the valuable properties of, ripe fruit. Prized by travelers, seafaring men, and residents in hot climates. A sure preventive of diarrhoea, and a delightful invigorator of the constitution. When used simply as an effervescent beverage, it has most salutary results. Valuable for all persons of sedentary habits, removing depression and head affections, and generally bracing up the nervous system.

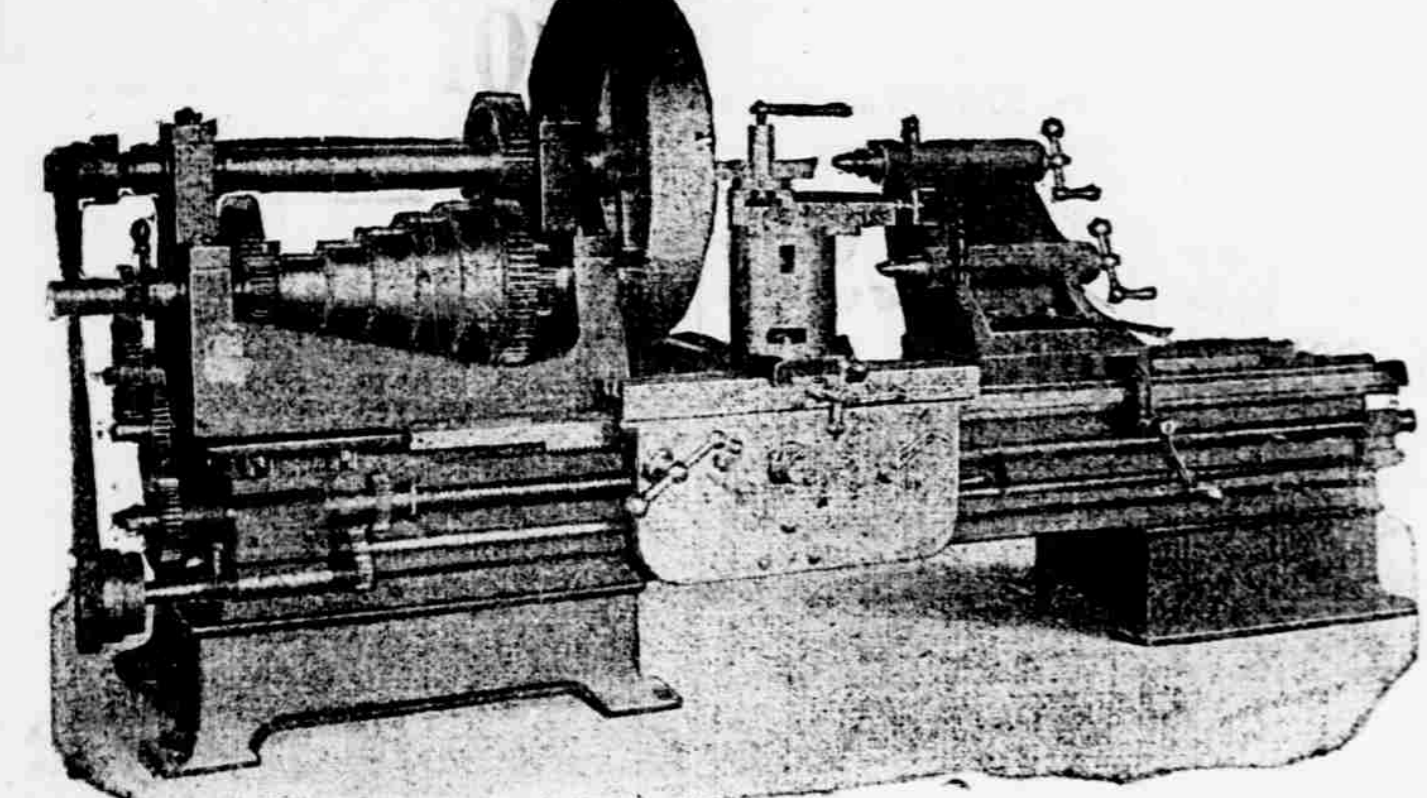
**Gonsalves & Co.**  
 Sole Agents for Hawaiian Islands for the Minerva Preparations.  
**BEAVER LUNCH ROOMS.**  
 Fort Street, Opp. Wilder & Co. H. J. NOLTE, Prop.  
 First-Class Lunches Served With Tea, Coffee, Soda Water, Ginger Ale or Milk. Open from 3 a. m. to 10 p. m.  
 Smokers' Requisites a Specialty.

**SORGHUM and ALFALFA SEED**

Just received at  
**Salter's Grocery**  
 ORPHEUM BLOCK. FORT ST.

**Read the Hawaiian Gazette**

**Special Machinery.**  
**J. J. McCabe Double Spindle Lathe**  
 Heaviest Lathe Work. Two Lathes in One. Direct Acting Electric Motor When Desired.



IN USE BY—O. R. & L. CO.  
 ORDERED BY—OAHU SUGAR CO., WAIALUA AGRICULTURAL SUGAR CO., HONOLULU SUGAR CO., KIHAI SUGAR CO.  
 OTHER SPECIALTIES:—Gray Planers, Barnes & McCabe Drill Presses, Combined Upright and Radial Drills, Shapers, Universal Milling Machines, Combined Bolt and Pipe Cutters.  
**Henry D. Roberts, Agent,**  
 Pacific Hardware Co. Ltd. Machinery Department.

**2-Two Leaders-2**

One for the table, the other for the yard—both for you.  
 Fine quality of BLOWN TUMBLERS, engraved in 3 designs.  
 Your choice at 75 cents per dozen. You know the regular price.  
 \*\*\*\*\*  
**\$75.00.**  
 Complete outfits in Crockery, Glass, Cutlery, Plated Ware and Kitchen Utensils, including Stove and Refrigerator for  
**\$75.00.**  
 Estimates and lists given on application.  
 When you are in our store always inspect the Bargain Tables on the second floor (take elevator).  
 You are sure to see something you want and the price will not stop you.

**W. W. DIMOND & CO. LIMITED.**  
 SOLE AGENTS  
 "JEWEL" STOVES for coal or wood.  
 "GURNEY" CLEANABLE REFRIGERATORS.  
 NEW WICKLESS BLUE FLAME OIL STOVES.  
 GERM PROOF FILTERS.  
 "PRIMUS" OIL STOVES.

**FOOTBALL SEASON**  
 Assured From the Meeting on Saturday.

Charles Crane Elected Manager for This Year—J. Q. Wood's Report and Assistance  
 A number of the town football players met last Saturday afternoon in the rear offices of the Safe Deposit Co. The report of J. Q. Wood, manager of last year's team, was read. It showed that expenditures had been considerably in excess of the receipts. This difference Mr. Wood had paid out of his own pocket. This is only one of many similar acts of Mr. Wood arising from great interest in the game and his desire to see it flourish in Honolulu. A vote of thanks was tendered the "daddy" of local football, who resigned his position as manager on account of his proposed Eastern trip. C. S. Crane was then nominated for the position and elected unanimously. In regard to selecting a captain it was decided that the best policy would be to wait until the players came to the front in order that the best choice might be made.

**Accounts Approved.**  
 Judge Perry has approved the accounts of Godfrey Brown, John Maguire and T. R. Walker, trustees of the estate of James Woods, who charged themselves with receipts aggregating \$11,892.66 and asked to be allowed the sum of \$12,954.68, showing a balance due them of \$1,064.02. The accounts show that the estate owed the trustees the sum of \$18,015.00 on December 31, 1897, and \$19,979.02 on December 31, 1898.

**Missionary Work.**  
 Theodore Richards, who resigned from the principalship of the Kamehameha schools to take up missionary work, is touring Hawaii, holding meetings and giving concerts for the benefit of various churches.

**AN EPIDEMIC OF DIARRHOEA.**  
 Mr. A. Sanders, writing from Coconut Grove, Fla., says there has been quite an epidemic of diarrhoea there. He had a severe attack and was cured by four doses of Chamberlain's Colic, Cholera and Diarrhoea Remedy. He says he also recommended it to others and they say it is the best medicine they ever used. For sale by all dealers. Benson, Smith & Co., Ltd., agents for H. I.

**"The Mills Will Never Weave Again at Prices of the Past."**  
 \*\*\*\*\*

All grades of wovens and worsted fabrics have been advanced five to fifteen per cent.  
 But our prices will remain unchanged. We are offering a better and larger line of clothing this season than ever before at prices that can't help but meet with your approval. All you will have to do is to come and tell us your wants—we will do the rest.  
 We are now ready to show you a fine line of KNOX HATS in Mackinaw and Milan straws. These goods are unsurpassed in style and finish.  
 Have a try at our Deimel linen-mesh underwear.

**THE KASH**  
 9 Hotel Street : : Waverley Block.  
 WE MAKE SHIRTS TO ORDER.  
 Telephone No. 676. No. 9-11, Hotel St.

**Palama Lots....**  
 Next to Insane Asylum Pasture.  
**22 Fine Desirable House Lots For Sale.**

Those desiring further information regarding these desirable lots inquire of J. F. MORGAN, Queen street, or MRS. THERESA WILCOX, Bethel street, opposite Bishop Savings Bank.

**10 Houses and Lots For Sale.**  
 On Lanawai and Cooke streets Terms reasonable.  
 MRS. THERESA WILCOX, Bethel Street.  
 Sole Agents: F. J. Lowrey, C. M. Good  
**LEWERS & COOKE.**  
 Importers and Dealers in Lumber and Building Materials. Office, 414 Fort St.

**JAS. F. MORGAN**  
 Auctioneer and Broker,  
 33 Queen Street,  
 P. O. Box 594. Telephone 72.

**Residence Sites AT MANOA FOR SALE.**  
 HAVING PURCHASED A TRACT of the finest land in Manoa for residence sites, I will now receive applications from parties desiring to purchase.  
 These lots are immediately in front of the residence of H. E. Cooper, Esq., and command a grand view of Manoa Valley and the picturesque country to Diamond Head.  
 There are 10 lots in 2 series, 5 fronting on the west, or main, Manoa road, and 5 facing on Liholiho street.  
 The lots are each 100 feet wide and from 106 to 286 feet deep. Government water main laid past the lots on West Manoa road.  
 Early applications necessary. Map of the property and all information in regard to terms of purchase, etc., at my office.

**JAS. F. MORGAN,**  
 33 Queen street.  
**Auction Sale OF BOATHOUSE AND BOATS**

**ON TUESDAY, AUG. 1, 1899,**  
 AT 12 O'CLOCK NOON.  
 At the boat house, foot of Punchbowl street, known as the King's boat house, I will sell at Public Auction:  
 THE LARGE BOAT HOUSE,  
 Having a Corrugated Iron Roof.  
 About 600 feet of Water Pipe.  
 ONE BOAT WITH 8 OARS.  
 ONE WHALE BOAT AND 6 OARS.  
 ONE MAST, TWO FLAG POLES.  
 Building to be removed within 15 days from day of sale.

**JAS. F. MORGAN, Auctioneer.**  
**Auction Sale OF HOUSEHOLD FURNITURE**

**On Wednesday, August 2, '99**  
 AT 10 O'CLOCK A. M.  
 At the residence of Mr. J. W. Postmore, Emma street (above the residence of President S. B. Dole), I will sell at Public Auction:  
 The entire household furniture, comprising, in part,  
 Handsome Ferns and Palms  
 One Gage Stock & Co. Piano (a fine instrument)  
 Parlor Divans and Chairs  
 Center and Sofa Rugs  
 Oak Bookcase, Curtains and poles  
 One Oak Dining Set (table, sideboard and chairs)  
 Crockery and Glassware  
 Two Royal Hawaiian Decanters  
 Oak Bedroom Set, Iron Bedsteads  
 Toilet Sets, Large Kitchen Stove and Utensils, White Leghorn and other Fowls, etc., etc.

**JAS. F. MORGAN, Auctr.**  
**Auction Sale OF FINE RESIDENCE SITE!**

**On Saturday, August 5, '99**  
 AT 12 O'CLOCK NOON.  
 At my salesroom, 33 Queen street, I will sell at Public Auction.  
 A FINE RESIDENCE LOT ON THE CORNER OF WILDER AVENUE AND KEEAUMOKU STREET.  
 Size of lot:  
 154.8 on Wilder avenue.  
 147.75 on Keeaumoku street,  
 150 along J. F. Humburg lot.  
 109.8 along adjoining lot.  
 Contains 19,288 square feet.

This is an elegant building site, and is adjacent to the properties of J. L. McLean, C. M. Cooke, E. W. Peterson, and J. F. Humburg.  
 For further particulars apply to  
**Jas. F. Morgan,**  
 Auctioneer.

**Residence Property AT AUCTION.**  
**On Saturday, August 5, '99,**  
 AT 12 O'CLOCK NOON.

At my salesroom, 33 Queen street, I will sell at PUBLIC AUCTION  
 3 FINE RESIDENCE SITES ON KEWALO STREET, NEAR LUNALILO STREET.  
 Each lot has a frontage of 100 feet on Kewalo street and a depth of 270 feet.  
 These are all fine, level lots, containing 27,000 square feet each.  
 Maps and further particulars at my office.  
**JAS. F. MORGAN, Auctioneer.**

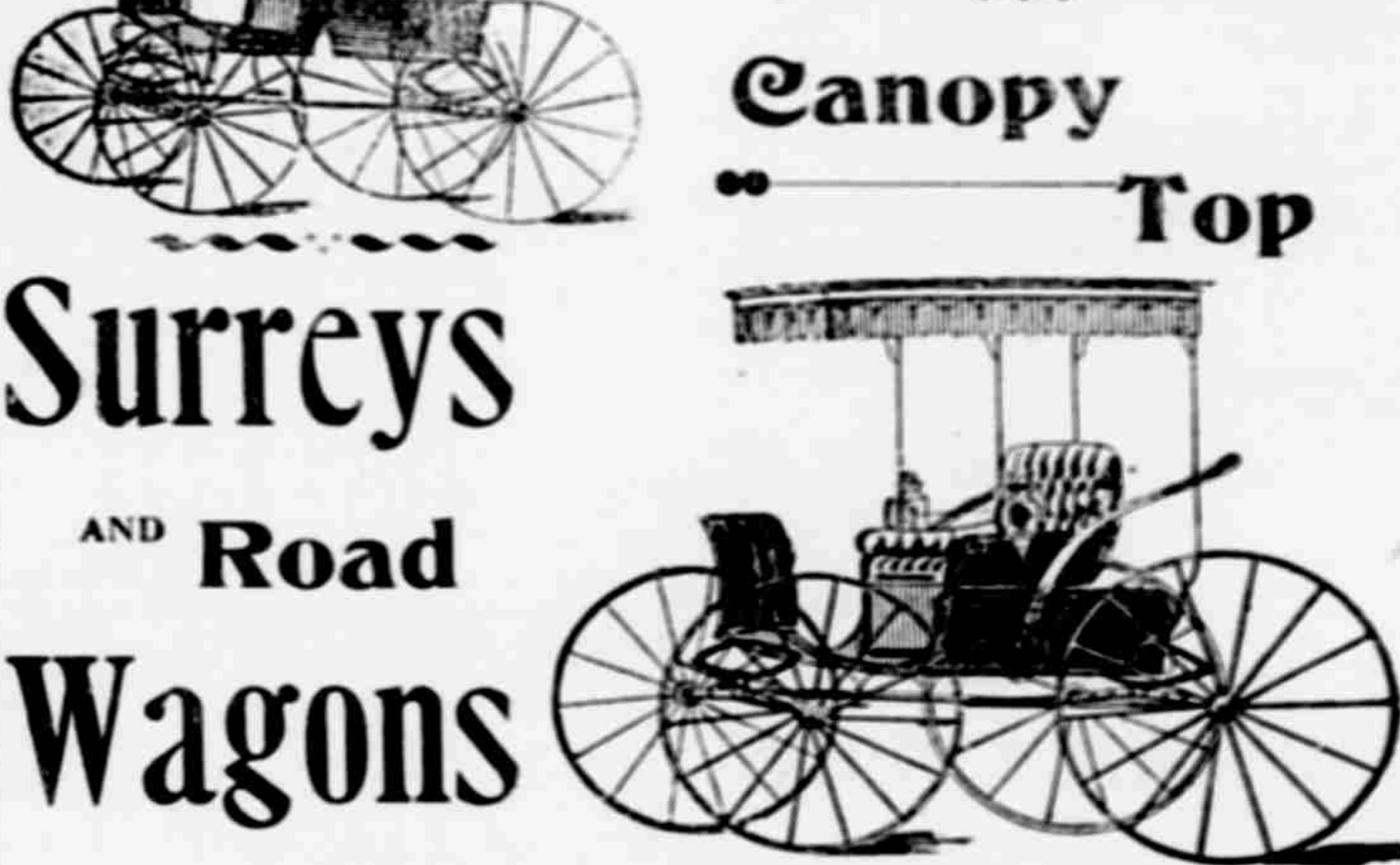
**RETIRING FROM BUSINESS SALE**

TO THE PUBLIC:  
 The firm of A. E. Murphy & Co. will retire from the shoe business, commencing July 24th, 1899. We intend to close out within two months' time, and to do so will reduce the price of our stocks of shoes BELOW COST.  
 This is a bona fide sale; no catch trap; no buncombe about it—a genuine retiring sale.  
 Now is the time to get shoes, and our shoes are all new and the correct shapes.  
 The sale will be for cash only.

**A. E. MURPHY & CO.**  
 205 Hotel St. Arlington Block.

**Just Received**  
**18 HEAD YOUNG MULES**  
 Large and Sound.  
**HONOLULU STOCK YARDS CO.**  
 W. S. WITHERS, Manager.  
 COR. QUEEN AND ALAKEA STREETS.

**Nice Roomy PHAETONS**



**Surreys AND Road Wagons**  
 A Particularly attractive line arrived by the S. S. "Australia" and by the bark "W. H. Dimond."  
**CALL AND INSPECT.**  
**G. SCHUMAN, FORT ST.**

**THE Finest, Largest, Up-To-Date STOCK OF Harness, Saddlery and Carriage Goods, IN THE ISLANDS.**

When you can't find what you want elsewhere call here, and get it. F. PHILP is in charge of MANUFACTURING DEPARTMENT. ISLAND ORDERS promptly and satisfactorily filled.  
**C. R. COLLINS.**  
 ESTABLISHED 1891.  
 TELEPHONE 562. P. O. BOX 507. KING ST., near NUUANU ST.



**LOCAL BREVITIES.**

Orpheum tonight.  
 Imported hats and Mrs. Hanna's.  
 The delayed America Maru should be along today.  
 The band will play at Emma square this evening.  
 The way to beat the repair shop—ride a Cleveland.  
 Miss A. A. Allen, stenographer, has a card in this issue.  
 Mrs. Joseph Sisson died in Hilo a week ago last Saturday.  
 M. M. Johnson has succeeded F. B. Angus as sergeant of Co. B.  
 Mrs. John Lucas, who is on Hawaii, is recovering from a sprained ankle.  
 Captain William Matson is to build a large warehouse at Waialua, Hilo.  
 The ice cream soda at Hollister Drug Co. attracts large crowds these days.  
 The Orpheum presented a good program to a large house Saturday evening.  
 A first-class blacksmith is wanted. See R. A. Wadsworth advertisement in this issue.  
 This Kinau brought the heaviest passenger list from Hilo in her history this last trip.  
 The Knights of Pythias will occupy the third story of the new Baldwin block in Hilo.  
 Mrs. J. T. Stacker and children have gone to the Mainland for a three months' visit.  
 The Badger sailed for San Francisco at 10 o'clock Saturday morning. She did not carry mail.  
 It has been decided to procure funds and go ahead with building a Chinese mission church at Hilo.  
 The judgment and bill of costs in the ejectment suit of James Hoare vs. Samuel C. Allen has been filed.  
 Annual meeting of Waimea Sugar Mill Co. today at 2:30 p. m. at the office of Castle & Cooke, Ltd.  
 Two bright boys are wanted at the News Agency O. R. & L. Co. Inquire of A. M. Mellis at the depot.  
 Only the highest grade of RED RUBBER is used in the Stamps made by the HAWAIIAN GAZETTE CO.  
 For that tired feeling, brace up on Jesse Moore "AA" Whiskey; it is the perfection of Kentucky distilling.  
 A statement of the condition of the Bank of Hawaii, Ltd., up to the present month, is published in this issue.  
 Mrs. Annis Montague Turner sang a solo in her usual excellent manner at Central Union church yesterday morning.  
 The Egan Dry Goods Co. is offering great bargains in table linen, toweling and towels. See their advertisement for prices.  
 The band will play at Emma square yesterday afternoon was greatly enjoyed by one of the largest audiences of the season.  
 Agent of Public Lands J. F. Brown will sell at auction a five-acre lot of land situated in Honokawai, Maui, this afternoon.  
 Bids for the construction of the new Spreckels block at Hilo have been asked for. It will be 150 by 75 feet and two stories high.  
 There was an interesting meeting at the Y. M. C. A. yesterday afternoon. Geo. B. McClellan spoke on "Two Kinds of Failure."  
 A guardian's sale of real estate in the matter of the estate of Podyen (minors) is advertised for 26th prox. at noon by J. F. Morgan.  
 The band proved an entertaining feature at Saturday's baseball game. D. K. Naone acted as leader in the absence of Capt. Berger.  
 With yesterday's service in St. Andrew's Cathedral Wray Taylor concluded the nineteenth year as director of the music for that church.  
 By making an early start the football players hope to get enough practice to be able to make a good showing when the season is in full swing.  
 Deputy Marshal Chillingworth has made return of service of summons in the case of Cecil Brown against J. P. Mendonca, petition for writ of error and assignment of errors.  
 The reception of the Chinese Consul in honor of the Emperor's birthday will take place at the consulate Wednesday, between 11 and 1 o'clock. The government band will be in attendance.  
 Not for a long time has there been a stronger program heard in Honolulu than the one that will be given at Progress Hall tomorrow night in the grand benefit concert for the Amateur Orchestra.  
 The Camera Club of the Y. M. C. A. held an interesting meeting Saturday evening. The dark room was investigated and pronounced first class. There will be another meeting in the near future.  
 A reception will be held at the Chinese Consulate on Wednesday next between the hours of 11 a. m. and 1 p. m. in honor of the birthday anniversary of his Imperial Majesty, Kwang Hsi, Emperor of China.  
 The list for season tickets for the Tivoli opera season is still open at Bergstrom's music store. No money is asked at the present time. The opening of the list is in order to determine how much encouragement will be received.  
 Le Munyon returned Sunday morning after a three weeks' trip to the burning craters on Mauna Loa, bringing with him a beautiful collection of photographs, with some superb sketches. See what he has to say about it and about his shoes in the advertisement of The Le Munyon Photo-Supply Co. on page 7.  
 Hawaii Plantations.  
 Pepeekeo plantation finished grinding on Tuesday last with an output of 7,500 tons of sugar. Hakalau closed down on Monday last with a total of 9,000 tons. Onomea expects to finish in about a week's time.—Hilo Tribune.

**N. S. Sachs**  
**DRY GOODS CO. LTD.**  
**THE PROGRESSIVE STORE**

We have bought at a large discount the entire stock of

**TRIMMED AND UNTRIMMED**  
**Millinery,**  
**FLOWERS and FEATHERS**

Recently imported by Miss Pauline Dinan, of San Francisco, and shall offer same on

**Wednesday**  
**And Following Days**  
 AT ABOUT  
**50c ON THE DOLLAR.**

**N. S. Sachs Dry Goods Co.**  
**LIMITED.**  
 THE PEOPLE'S PROVIDERS.

**VOLCANOES**  
**Vomiting Stones**  
 —UPON—  
**MAUNA LOA**

**THE ONLY**  
**Photographs**  
 MADE.

**Daven**  
**PHOTOGRAPHIC CO.**  
**LIMITED.**  
 MOTT-SMITH BLOCK.  
 Corner Fort and Hotel Streets.

**GOLDEN RULE BAZAAR'S**  
**New Book Bulletin!**  
**BOOKS : AND : STATIONARY.**  
 316 FORT STREET.

"The Development of English Thought," by Simon N. Patten, Ph.D.  
 "Swallow," by H. Rider Haggard.  
 "The Wizard," by H. Rider Haggard.  
 "The Fowler," by Beatrice Harraden.  
 "The Rough Riders," by Theodore Roosevelt.  
 "The Trail of the Gold Seekers," by Hamlin Garland.  
 "The Downfall of the Dervishes," by E. N. Bennett.  
 "Valdrait," by M. Radiger; translated by C. LeDuc, Crook, Ph.D.  
 "The Minor Tactics of Chess," by P. K. Young and E. C. Howell.  
 "The Major Tactics of Chess," by P. K. Young.  
 "Outsiders," by Robert W. Chambers.  
 "Dross," by Henry Seton Merriman.  
 "With Kitchener to Khartoum," by G. W. Stevens.  
 "Prisoners of Hope," by Mary Johnston.  
 "The Open Question," by Elizabeth Robins.

**The Best Meal Cafe.**  
**HOME BAKERY AND CAFE.**  
**OPEN AT ALL HOURS.**

It is folly to suffer from that horrible plague of the night, itching piles. Deane's Ointment cures quickly and permanently. At any chemist's.

**HEYWOOD**  
**TRADE MARK**  
**SHOE**  
 1864

MADE IN WARDENVILLE MASS.

**OUR PATROL SHOE**  
 Extra Quality, Calf Vamp, D. Leather Lined Rubber Heel.

Positively  
**Waterproof**  
 Sole.

**Manufacturers' Shoe Store**  
 SOLE AGENTS.

**PHOTOGRAPHY.**  
 Everybody is interested in  
**PHOTOGRAPHY.**

**Kodaks.**  
 All kinds, prices and sizes. We sell them and teach you how to use them.

**Films.**  
 Fresh supply always on hand.

**Papers.**  
 A large assortment in stock.

**SOLIO,**  
**ARISTO PLATINO,**  
**BROMIDE,**  
**VELOX.**

**VELOX**  
 We have in six kinds. Suitable for all kinds of negatives.

We instruct you to use all the above, **FOR THE ASKING.**

**Hobron Drug Company**  
 COR. KING & FORT STS.

**EGAN**  
**Dry Goods Co**  
**Fort Street.**

**BARGAINS IN**  
**Table Linen, Towels**  
**and Toweling**

65c Bleached Damask 45 Cts. a Yard.  
 \$1.50 Bleached Damask \$1.00 a Yard.  
 12 1-2c Turkish Towels 3 for 25 Cts  
 20c Turkish Towels 2 for 25 Cts  
 25c Huck Towels 3 for 50 Cts.  
 75c Damask Towels 50 Cts. Each  
 12 1-2c Flaxine Toweling 3 Yards for 25 Cts  
 15c Flaxine Toweling 10 Cts a Yard.

**Egan Dry Goods**  
**COMPANY.**  
**Fort Street.**

**STOP!!!**  
 and see what you need before starting for the Crater.

**YOU WILL WANT A**  
**SWEATER**  
**AND LEGGINS.....**

We keep the Most Complete and Best Assorted Line in the city.

The hotels are crowded beyond their limits. Get a tent and be independent of them, and make the trip to the outbreak in comfort, and at the same time have a genuine outing.  
**A FEW MORE LEFT.**

Be in comfort on board the steamers and buy  
**A Reclining Steamer Chair.**

**Fire Arms and Ammunition.**

**Pearson & Potter Co., Ltd.**  
 312 FORT STREET. TEL. 565.

**JUST ARRIVED**  
 A new line of **JEWELRY** consisting of Watches, Chain Bracelets, Pins, Buttons, etc. Also very handsome **EMBROIDERY** Cushion Covers, **DAINTY CENTER PIECES, DOYLIES,** and many other **SILK GOODS** at reasonable Prices.

**ASADA & CO.**  
**Japanese Importers and Dealers.**  
 Hotel Street - Robinson Block.

**THEO. H. DAVIES & Co**  
 LIMITED  
 Merchants and Commission Agents,  
 Beg to call the attention of the trade to their complete line of—

**Hardware : Crockery : Saddlery : Etc.**  
**PAINTS AND OILS.**  
**GENERAL PLANTATION SUPPLIES.**  
 A fine assortment of Kitchen Furnishings.  
**GRAY AGATE WARE** a Specialty  
**Kaahumanu Street.**

**For 1 Week Only!**  
**Remnant Sale.**

Our Low Prices in  
**Towels, Victoria Lawns and**  
**Ladies' Lisle Thread Vests**  
 still continue.

**B. F. Ehlers & Co**  
**FORT ST.**

**EX AUSTRALIA:**  
 A Large Invoice of  
**NEW AND ELEGANT**  
**GOODS!**

COMPRISING:—  
**Elegant Imported Millinery**  
**Dress Findings, Ribbons, Etc., at**  
**MISS KILLEAN'S**  
**ARLINGTON BLOCK. HOTEL STREET.**

The hairdressing and manicuring department is now under the supervision of Miss De Lartigue, first class artiste just from the coast.

**OUR CLOTHING**  
**Is Up to the Top Notch.**

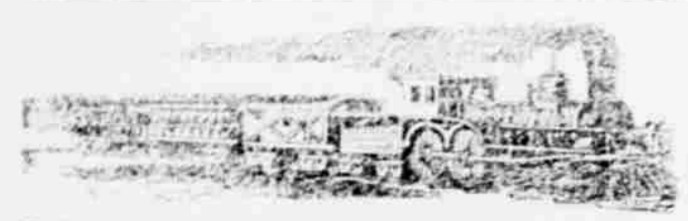
**Men's Strictly All Wool Suits,**  
 made of Cheviot and Fancy Cassimers, lined with good Italian cloth. A suit that is in every way desirable for business, a suit that will fit you well. This suit would be considered an excellent value at the regular retail price of \$12.50.  
**THE HUB price is..... \$ 6.50.**

**Men's Serge Suits,**  
 made from Pure Worsted, cut in the very latest styles. Made with piped French facing. Is lined throughout with the best Farmer's Satin and Serge Linings. A tailor would charge you at least \$28.00 to make it.  
**THE HUB price is .... \$12.50 to \$14.50.**

**J. S. SPITZER.**  
 HOTEL STREET NEAR FORT.



The Pacific Commercial Advertiser Issued Every Morning, Except Sunday, by the HAWAIIAN GAZETTE COMPANY, Von Holt Block, King Street.



OAHU RAILWAY & LAND CO.'S TIME TABLE From and After Jan. 1, 1899.

Table with columns for Stations, Daily, and Daily. Lists routes between Honolulu, Ewa Mill, and Kahuku.

METEOROLOGICAL RECORD. By the Government Survey, Published Every Monday.

Table with columns for Day, Barom, Therm, Wind, and Rain. Shows weather data for the week of July 24-30.

Barometer corrected to 32 F. and sea level, and after the 1st of February for standard gravity of Lat. 45. This correction is -0.6 for Honolulu.

TIDES, SUN AND MOON.

Table with columns for Day, High Tide, Low Tide, Sun, and Moon. Shows tide and celestial data for the week.

New moon on the 6th at 1:18 a. m. The tides and moon phases are given in Standard time. The time of sun and moon rising and setting being given for all ports in the group are in Local time, to which the respective corrections to standard time applicable to each different port should be made.

SHIPPING INTELLIGENCE.

ARRIVED AT HONOLULU.

Stmr. Kinau, Freeman, 26 hrs. from Hilo: 662 sacks, spuds, 23 sacks coffee, 14 sacks corn, 69 bds. hides, 57 hogs, 25 cattle, 1 horse, 220 pigs, sundries. Stmr. Kawailani, Moser, from Koolau. Stmr. Ke Au Hou, Mosher, from Koolau: 4,110 bags sugar, H. Hackfeld & Co. Stmr. Noeau, Pedersen, from Lahaina and Kaanapali: 410 bags sugar to H. Hackfeld & Co. Stmr. Kaula, Bruhn, from Makaweli: 14 sundries. Stmr. J. A. Cummins, Searle, 6 hrs. from Waimanalo. Stmr. W. G. Hall, Tullett, 4 1/2 hours from Kalaupapa. Stmr. Waialeale, Greene, 16 hours from Waimea: 1,450 bags sugar to Alexander & Baldwin.

SAILED FROM HONOLULU.

Am. sch. Jessie Minor, Whitney, San Francisco in ballast. Am. bk. McNear, Pedersen, Laysan Island, in ballast. U. S. S. Badger, Miller, San Francisco. Stmr. Maui, Macdonald, Paauhau. Am. sch. Transit, J. Petersen, San Francisco. Jap. stmr. Hongkong Maru, Filmer, San Francisco. Stmr. Iwalani, Gregory, Honokaa. Am. bkt. Kikikat, Cutler, Pt. Townsend in ballast.

ISLAND PORTS.

HILO—Arrived, July 24, bk. Roderick Dhu, from San Francisco. Sailed, July 26, bk. Amy Turner, for San Francisco, taking a cargo of sugar valued at \$118,543.68. Onomua Sugar Co. shipped 17,828 bags and Honomu Sugar Co., 6,672 bags.

MOVEMENT OF STEAMERS.

Steamers due and to sail today and for the next six days are as follows: ARRIVE From America Maru—San Francisco Aug. 1. From Maui—Kohala Aug. 1.

Miowera—Sydney Aug. 3. Aorangi—Victoria Aug. 4. Mokoli—Molokai Aug. 5. Lehua—Molokai Aug. 5. Kinau—Hilo Aug. 5. W. G. Hall—Kauai Aug. 6. Claudine—Maui Aug. 6. Manna Loa—Kona Aug. 8. Belgian King—Yokohama Aug. 11.

DEPART. Steamers for Sails America Maru—Yokohama Aug. 1. Lehua—Hilo July 31. Mokoli—Kauai Aug. 1. Kinau—Hilo Aug. 1. Claudine—Maui Aug. 1. Manna Loa—Kona Aug. 1. Miowera—Victoria Aug. 3. Aorangi—Sydney Aug. 4. W. G. Hall—Kauai Aug. 4. Upehi—Kohala Aug. 4. Australia—San Francisco Aug. 8. Belgian King—S. F. Aug. 11.

DIED AT SEA. Kameo, one of the crew of the steamer Mikahala, died of heart disease while on board that steamer off Waimea, Kauai, at 9:10 p. m. July 27, 1899.

PASSENGERS. Arrived. From Hawaii and Maui, per stmr. Kinau, July 29.—Volcano—Senator A. P. Jones, George F. Jones, Miss Jones, Miss Martin, Thomas Rickard and wife, Miss A. Hartnagle, Miss N. H. Grisvoldh, W. Del Mar, Miss O. Paleki, Miss May Laughlin, J. S. Edwards, Miss E. P. Chamberlain, Mrs. Willing, Miss Thatcher, Mrs. F. Kruger, three children and maid, Edgar Wood and wife, A. H. Brown, S. Kueby, Howard Hitchcock, J. S. McCandless, Miss E. G. Cartwright, Miss A. Hartnagle, Miss C. D. Castle, H. E. Rolfe and wife, A. L. Rolfe, S. N. Castle, Hon. W. Hayward, L. L. McCandless, J. S. Martin, C. Weatherwax, C. Banco, Miss Leslie Wright, W. McCluskey, C. W. Booth, George Waipa, J. W. Mason, G. F. Alfonso, wife and child, Miss A. Shaw, L. Hookano, W. Hookano, Miss H. Hookano, K. Lani, K. Hahane, K. Puenueh, Ah Sing, D. Konaalele, Miss May Kameakala, K. Ione, Pali Kikoa, C. E. King, Miss Ella Wright, W. H. Stone, J. A. McCandless, P. McLane, J. H. Schulters, Wm. Anderson, J. Wright, C. E. Eagan, Prof. C. H. Hitchcock and wife, Miss M. Hitchcock, G. Schuman, F. S. Dodge, E. Page, C. M. Curtis, E. Buffington, Miss H. Edwards, Miss E. G. Munson, Mrs. M. Brazil, J. M. Riggs, Miss G. Whiteman, Henry Vierra, Mrs. C. Hoffman, Miss F. Kelsey, F. Lowrey, F. Jacobs, wife and child, H. Dillingham, E. O. Hall, C. F. Alexander, R. B. Mullen, Le Munyon, P. Deek, T. T. Phillips, Mrs. S. K. Pua and child, Miss M. Campbell, Henry Vida, W. H. Naano, F. C. Schenkein, A. D. McBryde and bride, Mrs. C. K. Stillman, Miss C. Wood, E. D. Tenney, C. M. Cooke, T. H. Macdonald, J. K. Hookano, Miss Kuhlmann, Mrs. G. Hons, W. F. C. Hasson, M. W. Bergan, Dr. T. E. Wetzel, L. Kupau, I. Tahee, Mrs. Kanuha, Geo. Wright, C. H. Everett, Miss Grisi, and 91 deck.

From Makaweli, per stmr. Kaula, July 29.—Mrs. Mary Ailau, Mrs. Mary Kamekono, Mrs. Paki Kapahu and 6 deck. From Nawiliwili, per stmr. Mikahala, July 30.—D. A. Ray, C. M. Cooke, Jr., C. D. Lufkin, S. H. Comstock, H. Rice, P. Higgins, W. B. Weigel, Mrs. Merrivether, W. Belfield, J. H. Fields, George Allen and wife, Mrs. H. Harbart, Mrs. R. Waialeale, J. Levenson, A. K. Kwal, Mrs. W. H. Rice, Mrs. C. Christian and child, Mrs. J. Sherman, Mrs. L. Vanway, Sister Albertina, Miss N. B. Forsyth, Miss E. Batchelor, Miss E. Christian, Miss Rice, Miss P. Malina, Miss L. Kopa, Mrs. Kean, Mrs. Chapin and children, H. Kapu, and 42 deck.

From Waimea, per stmr. Waialeale, July 30.—H. P. Faye and 2 deck. From Maui ports, per stmr. Claudine, July 30.—J. N. S. Williams, H. P. Baldwin, R. T. Wilbur and wife, Mrs. H. J. Austin, Miss Ward, K. S. Gjerdrum, Dr. R. I. Moore, Mrs. A. K. Field, Mrs. J. Shaw and three children, R. R. Berg, L. Joseph, Mrs. Makalua, Miss Previer, Miss A. Ahlo, Mrs. A. H. A. N. Keipoikai, F. S. Dunn, W. H. Cornwell, W. E. T. Neumann, L. M. Vetlesen, A. Kanahilili, G. B. Curtis, I. M. Geist, H. H. Jaeger, C. Jensen, Bishop of Panapolis, Mrs. Scrimger, Tang Sung, Wong See, Chung See, Rev. Akazawa, Rev. T. Gomi, H. Reuter, L. Kabuamale, Chung Ming, Isaac Harbottle, and 40 deck.

Departed. For San Francisco, per Jap. stmr. Hongkong Maru, July 29.—H. L. Morehouse, Miss E. A. Preston, Rev. Kincaid, E. R. Gray, Mrs. E. Y. G. Bryant, Miss Stainson, P. Schneider, Mrs. Hawley, Dr. H. Hillard, S. G. Ruddell, Dr. David W. Rellison.

NEW BILL at ORPHEUM THEATER tonight.

WANTED.

TWO BRIGHT BOYS AT THE O. R. & L. Co. News Agency. Inquire at the depot of A. M. Mellis. 5298

WANTED.

A FIRST-CLASS BLACKSMITH; must be able to do all kinds of repair work. Apply at once to R. A. Wardsworth, Kahulu. 5298

WANTED.

ROLL-TOP DESK, MEDIUM SIZE. Address P. O. box 139. 5297

WANTED.

TO RENT OR LEASE A HOUSE OF six or seven rooms, near town, by a permanent tenant. Address A. B. this office. 5296

WANTED.

A PHYSICIAN TO FILL POSITION on a plantation in one of the best agricultural locations in the country. Apply immediately to C. BREWER & CO.

THE BANK OF HAWAII.

Section 14 of the Banking Laws of 1884 require that on the last Monday in January and July of every year banks must make a statement of their affairs as of the 1st day of January or July.

The following is the statement of the condition of The Bank of Hawaii, Ltd., on the 1st day of July, 1899:

Table with columns for Assets and Liabilities. Assets include Loans and discounts, Loans on call and overdrafts, Due from banks, Exchange on hand, Hawaiian Gov't bonds, O. R. & L. Co. bonds, Lease safe-deposit building and office furniture, Cash on hand. Liabilities include Capital, 4,000 shares, Undivided profits, Deposits, Certified and cashier's checks, Due to other banks, Dividends unclaimed.

I, C. H. COOKE, Cashier of the above-named bank, do solemnly swear that the above statement is true to the best of my knowledge and belief.

C. H. COOKE, Cashier.

E. D. TENNEY, HENRY WATERHOUSE, F. B. OAT, Auditors, Directors.

Subscribed and sworn to before me this 5th day of July, A. D. 1899.

HARRIET E. WILDER, Notary Public.

STENOGRAPHER.

MISS A. A. ALLEN, EXPERT STENOGRAPHER and Typist, will be pleased to receive orders. Office cor. King and Bethel sts. (upstairs); telephone 751. 5298

F. D. GREANY, A.B. [HON.]

TUTOR—WILL TAKE A FEW PUPILS for private instruction. Office cor. King and Bethel Sts. Tel. 62 and 806; P. O. Box 759.

KIHEI NOTICE.

THE THIRD ASSESSMENT, 10 per cent, or \$5.00 per share, on the assessable stock of Kihei Plantation Co. will be due and payable August 1st 1899, by order of the Directors. J. P. COOKE, Treasurer. 5274

NOTICE TO WAIALUA STOCK-HOLDERS.

NOTICE IS HEREBY GIVEN THAT in accordance with the by-laws of the Waialua Agricultural Co., Ltd., interest will be charged on all assessments remaining unpaid from and after July 31st, 1899. W. A. BOWEN, Treasurer Waialua Agricultural Co., Limited. 5294

TO LET.

A LARGE, AIRY FURNISHED room on Young street, town side of Thomas Square; rent reasonable. For further information apply to H. C. Ovenden, at Tax office, Judiciary building. 5297

FOR RENT.

AFTER JUNE 30th, THE PREMISES corner Hotel and Richards streets, known as the "Gedge Cottage," at present occupied by U. S. Com. Dept. Particulars of N. E. GEDGE, Inter Island Office. 5251

HOUSEKEEPING ROOMS TO LET.

FURNISHED OR UNFURNISHED; also furnished rooms with or without board. Apply at Temperance Hotel, Nuuanu, near Vineyard. 5291

FOR SALE.

BEACH LOT AT PENINSULA. For particulars apply to C. J. FALK, Room 301 Judd Building. 5278

FOR SALE.

THE STEAMER "KAENA," IN perfect condition, with chains, anchors, etc., complete; carrying capacity about forty tons. For further particulars inquire at office of Inter-Island Steam Navigation Co., Queen Street. 5250

For Sale

A NEW PHAETON WITH RUBBER tires; can be seen at residence of G. P. Castle, corner Kinau and Kapiolani street. For terms apply to G. T. Klougal, at Pacific Hardware Co. 5294

SITUATION WANTED.

BY BOOKKEEPER, HIGHLY EDUCATED; long experience; desires permanent employment; good references. Ad-



A Superb Train

Every Day in the Year VIA THE UNION PACIFIC.

SAN FRANCISCO TO CHICAGO WITHOUT CHANGE.

BUFFET SMOKING AND LIBRARY CARS WITH BARBER SHOP. DOUBLE DRAWING ROOM SLEEPERS. FREE RECLINING CHAIR CARS. PULLMAN TOURIST SLEEPERS. DINING CARS (A LA CARTE). ONLY 3 1/2 DAYS TO CHICAGO. Leaves San Francisco daily at 6 p. m.

D. W. HITCHCOCK, General Agent, No. 1 Montgomery St., San Francisco.

Steamer Upolu

Will leave Honolulu at 10 o'clock a. m., touching at Honolulu, Mahukona, Kawaihae and Kona ports, as follows: LEAVE HONOLULU.

Table with columns for Date and Arrive Honolulu. Shows departure dates for August.

For freight and passage apply to THEO. H. DAVIES & CO., LTD. AGENTS.

CHAS. BREWER & CO.'S New York Line.

The bark "Nuuanu" will leave New York on or about July 15th, 1899, for Honolulu. Advances made on shipments on liberal terms. For further particulars, address Messrs. CHAS. BREWER & CO., 27 Kilby street, Boston, or C. BREWER & CO., LTD., Honolulu Agents.

FOR GUAM DIRECT.

A GOOD STAUNCH SCHOONER will meet with quick dispatch for above port. For passage and other information apply to J. R. MILLS & CO., New Market Grocery, Merchant street, near Central Telephone Office. 5294

NOTICE TO PASSENGERS.

NOTICE IS HEREBY GIVEN TO passengers booking by any of the Lines of Steamers represented by the undersigned agents that on and after August 1st, 1899, a booking fee of ten dollars will be required from each passenger at the time of registration of name. This fee will be refunded in case of inability to provide accommodation on arrival of steamer. (Signed) WM. G. IRWIN & COMPANY, Ltd., By its President, W. G. Irwin. (Signed) THEO. H. DAVIES & CO., Ltd. By Thomas Rain Walker, Director, Agents of Canadian-Australian Steamship Co. (Signed) H. HACKFELD & CO., Ltd., E. Suhr, Director. 5280

TO LEASE, OR FOR SALE.

NEW HOUSE OF SIX LARGE rooms, with bath and patent W. C. servants' rooms, carriage house, etc. Also in rear of the above one cottage of three rooms, with bath and patent W. C. Situated on Young street on the town side of Thomas Square. For particulars address H. Gorman, P. O. box 226. 5288

FOR SALE—A BARGAIN.

FAMILY CARRIAGE HORSE "Prince Henry," a good roadster, fast but gentle; suitable for a lady to drive. Two-seated Surrey, Single Harness, Lap Robes, everything complete. A bargain to the right party. Elegant upright grand "FISHER" PIANO, good as new, at half price. Apply to FRANK E. NICHOLS, office of Wall, Nichols Co., Ltd. 5278

CHICKENS FOR SALE.

JUST ARRIVED EX. COPTIC—Fine lot young, pure-bred Leaborn chickens—will be sold in lots to suit purchasers. Samples can be seen at store. J. R. MILLS.

Oceanic Steamship Company.

TIME TABLE:

The Fine Passenger Steamers of This Line Will Arrive at and Leave This Port as Hereunder:

Table with columns for FROM SAN FRANCISCO and FOR SAN FRANCISCO. Lists routes to Australia, Moana, Alameda, and MARIPOSA.

In connection with the sailing of the above steamers, the Agents are prepared to issue, to intending passengers, coupon through tickets by any railroad from San Francisco, to all points in the United States, and from New York by any steamship line to all European Ports.

For further particulars apply to

Wm. G. IRWIN & Co. General Agents Oceanic S. S. Co.

Pacific Mail Steamship Co. Occidental & Oriental Steamship Co. AND Toyo Kisen Kaisha.

Steamers of the above companies will call at Honolulu and leave this port on or about the dates below mentioned:

FOR JAPAN AND CHINA: FOR SAN FRANCISCO:

Table with columns for Date and Ship Name. Shows departure dates for America Maru, City of Peking, Gaelic, Hongkong Maru, China, Doric, Nippon Maru, Rio de Janeiro, Coptic, America Maru, City of Peking, Gaelic, and Hongkong Maru.

For general information apply to

H. HACKFELD & Co., Ltd. Agents

CANADIAN-AUSTRALIAN ROYAL MAIL STEAMSHIP CO.

Steamers of the above line, running in connection with the CANADIAN PACIFIC RAILWAY COMPANY between Vancouver, B. C. and Sydney, N. S. W., and calling at Victoria, B. C., Honolulu, Suva (Fiji), and Brisbane, (Q.), are

DUE AT HONOLULU

On or about the dates below stated, viz:

Table with columns for FROM VANCOUVER AND VICTORIA, B.C. and FROM SYDNEY, BRISBANE (Q.) AND SUVA. Lists arrival dates for Aorangi, Miowera, Warrimoo, and Aorangi.

The magnificent new service the "Imperial Limited" is now running daily.

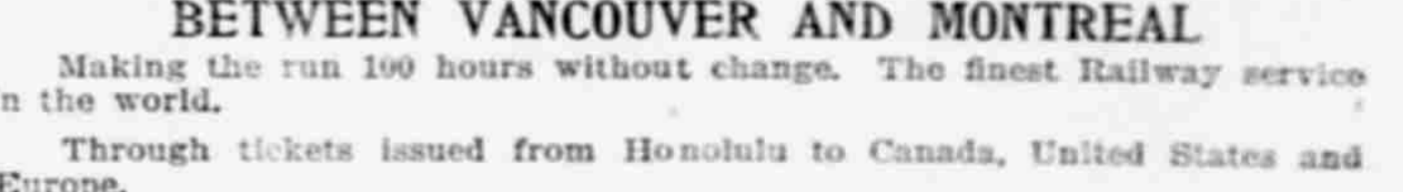
BETWEEN VANCOUVER AND MONTREAL

Making the run 190 hours without change. The finest Railway service in the world.

Through tickets issued from Honolulu to Canada, United States and Europe.

For Freight and Passage and all general information, apply to

Theo. H. Davies & Co., Ltd., Gen'l Agts.



Ex S. C. Allen A LARGE SHIPMENT HANDSOME PHAETONS

Surreys, Road Carts, Etc.

Also, a new line of Harness, Laprobes, Sheep Skin Buggy Mats, Whips, Lanterns.

And other carriage supplies. ALL STYLISH AND UP-TO-DATE.

HONOLULU CARRIAGE MANUFACTORY,

WRIGHT, Prop.