



U. S. WEATHER BUREAU, DECEMBER 18—  
Last 24 hours' rainfall, .01; Temperature, max. 74,  
min. 67; Weather, cloudy and moist.

Established July 2, 1856.

SUGAR—96° Test Centrifugals, 4.65; Per Ton,  
\$93. 88 Analysis Beets, 13s 9d, Per Ton \$99.80.

VOL. XXXIX., NO. 6978.

HONOLULU, HAWAII TERRITORY, MONDAY, DECEMBER 19, 1904.

PRICE FIVE CENTS.

## DAHU PRISON MODERNIZED

The New Building  
Is Now Ready  
For Use.

Architecturally Modest  
It Is Internally Up-  
to-Date.

All the Appointments Are Well  
Pleasing to High Sheriff  
Henry.

At a cost of \$16,865, the contract price for the building alone, the addition to Oahu Prison has been completed. One ward of the jail, in fact, is now occupied by women prisoners, and the balance of the building is ready for occupancy.

"It is a fine building for the purpose," said High Sheriff Henry, going over the place yesterday, "modern and up-to-date in every particular."

And, in fact, it is a fine building for the purpose for which it was designed. There can be not the least question about that. The new building, a three-story structure, stands in a yard by itself on the Ewa side of the main jail building. It is surrounded by a concrete wall, twenty feet in height, built by the labor of prisoners in the jail, and enclosing a tract of perhaps two acres in extent. This new jail yard is reached by a massive gateway leading from the yard of the old jail, and in the middle of the new yard Gerit Wilder has planted a kamani tree that the new yard may be shaded, in the time to come, as the old yard is now. That tree in the old yard, is perhaps the greatest solace that prisoners in the jail have. The new tree, it is hoped, will prove as great a blessing to the unfortunate in the future.

Passing out of the old jail yard through the new gate, the new jail building stands up clean and white across the whole length of the enclosure. It is of brick, covered with concrete, and is most massively built. An iron door leads into the lower corridor, and here just opposite the door is a large closet room in which are the electric light switches for the entire building, and various other conveniences for the use of the guards.

Opening right and left from the entry, are two long wards or corridors, each cut off from the entry by a grated door. The corridor or ward on what is known as the mauka side is the smaller of the two, containing ten cells, each seven feet, and each capable of holding two, or at a pinch, three prisoners, with comfort. The cells are fitted with hammocks in lieu of cots, a reform in the interest of health and cleanliness both physical and moral, and the cells are so arranged that from the door of one it is impossible to look into the cell directly across the hall.

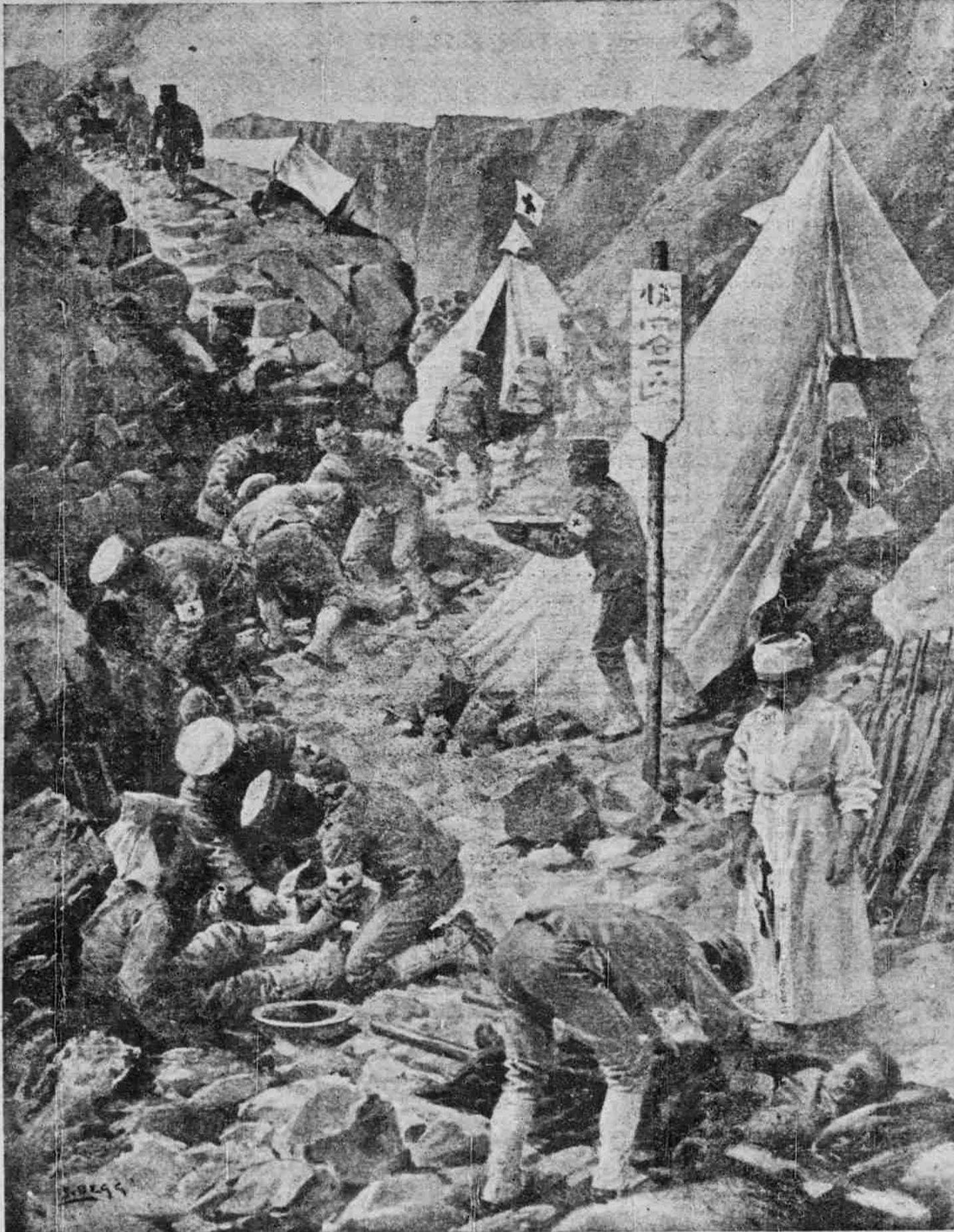
At the end of the ward farthest from the main door, and this is true of the all the wards, is a clean, white closet with open plumbing, and a sink equally clean and white for the emptying of slops. These things are arranged with perfect drainage, and according to the best sanitary rules, the apparatus being of the kind in use in the best modern jails.

Opposite the entry, on the makai side of the prison, is a larger ward or corridor, containing twenty-two cells, and in this larger ward the arrangements are in all respects similar to those in the smaller one. From the entry, also, a broad stairway, well-lighted and with broad landings, leads up to the second floor, where the wards and cells are exactly as on the floor below, with the difference that in the space occupied by the entry below there has been placed on this floor a room for guards.

The third floor is arranged precisely as the second with the exception that there are concrete partitions in the hallway so that the two wards are more private than on the floor below. The small ward on the second floor, it should be noted in passing, is the one now in use for women prisoners in the jail. It is the intention, of course, to keep the women apart from the men, letting them out to their bath in the new prison yard after the men have gone to their work on the streets and parks.

The bath, by the way, is one of the best features of the new prison. The

## STOESSEL CAN HOLD OUT LONG TIME



THE JAPANESE SURGEON AT WORK IN A RAVINE.

bath house is cement floored and with a cement wall rising up high enough to hide the body of the bather, at which point lattice work commences. The bath house contains six showers and a number of hydrants. The floor slopes down to a grating in the center which carries off the flow of water, and the drainage scheme here, also, is perfect.

The new prison building contains, all told, ninety-six cells and accommodations for twice as many prisoners as that—or, on a pinch, for three times as many. The building is 12x32 feet over all. It stands on the Ewa side of the main prison, as has been said, and is a plain structure but not the less impressive in its effect for that. It is roofed with gravel, with large ventilators on the roof, and is well lighted. There is a window in every cell so that the prisoners are not cut off altogether from the sunlight of out of

(Continued on page 10.)

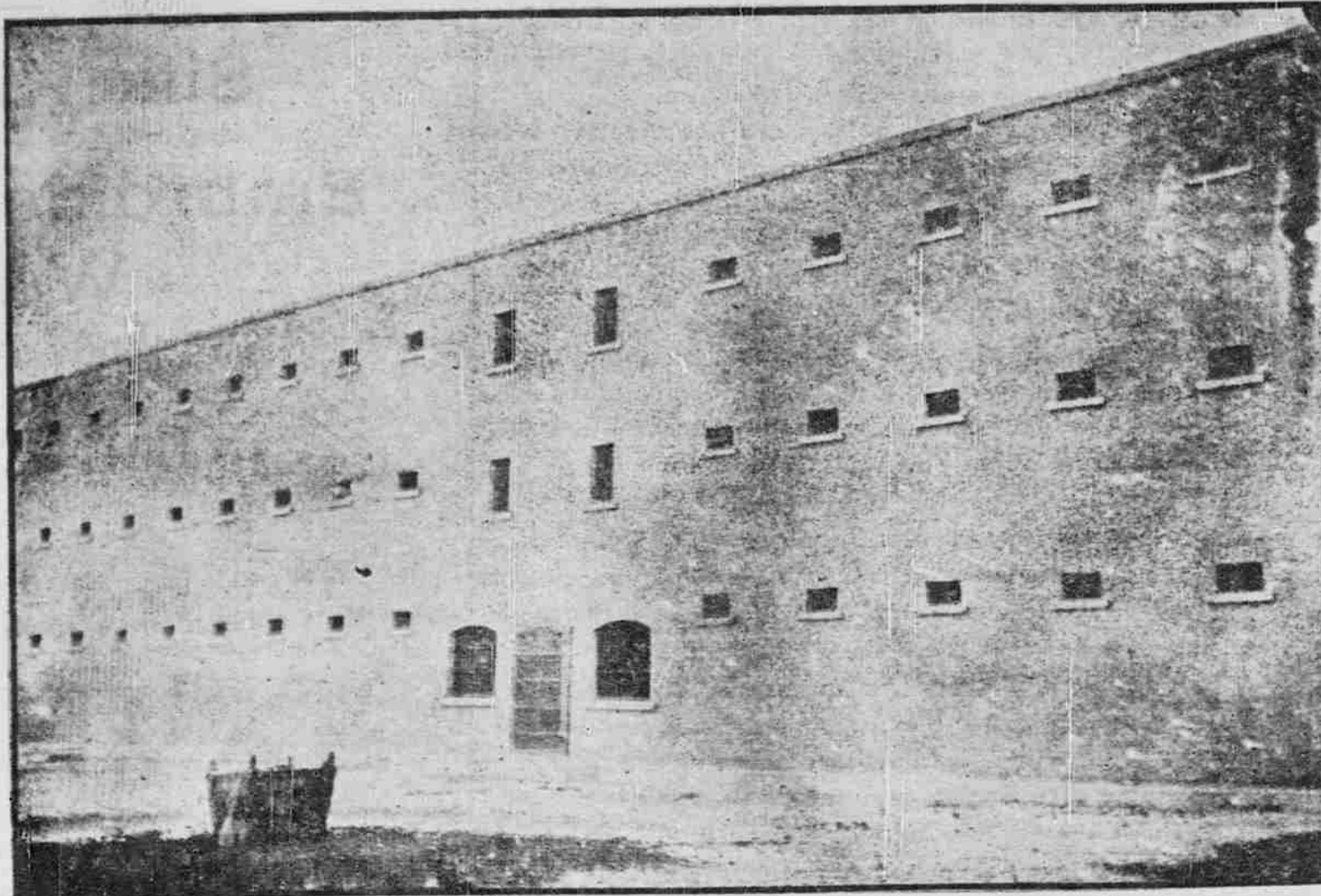
### ATLANTIC COAST STORM.

(ASSOCIATED PRESS CABLEGRAMS.)

NEW YORK, Dec. 19.—A violent storm has occurred from New Jersey to and along the New England coast. Many disasters to small craft are reported. Eight inches of snow fell in this city.

### STUDENTS ARE SUPPRESSED.

ST. PETERSBURG, Dec. 19.—The police and Cossacks dispersed a demonstration of 3000 students. Sixty were injured and 300 arrested.



THE NEW ADDITION TO OAHU PRISON.

—Advertiser Photo.

Russians at Mukden Are Comfortably  
Ensconced With Satisfactory  
Transport Service.

Attack on Sevastopol Cost Japan Two Torpedo  
Boats—Six Russian Warships Abandoned.  
Macedonia Troubling the Powers.

(ASSOCIATED PRESS CABLEGRAMS.)

ST. PETERSBURG, Dec. 19.—Dispatches from General Stoessel of December 10 declare his ability to hold Port Arthur for a long time.

SIX WARSHIPS ABANDONED.

TOKIO, Dec. 19.—The Japanese have lost two torpedo boats altogether in the operations against the battleship Sevastopol at Port Arthur. The Russians have abandoned the Peresviet, Poltava, Pobieda, Pallada, Bayan and Retvizan.

THIRD PACIFIC SQUADRON.

LIBAU, Dec. 19.—Work is being hurried on the third Pacific squadron.

RUSSIANS WELL FIXED.

MUKDEN, Dec. 19.—Artillery fighting continues. The transport service is working well. The soldiers are comfortably housed. Prices are high. Twenty-eight thousand Chinese refugees are being supported.

IMPORTANT PRISONER ESCAPES.

SHANGHAI, Dec. 19.—The commander of the Rastoropyn has escaped to Vladivostok in the steamer Vigretia.

The Russian torpedo boat destroyer Rastoropyn with dispatches succeeded in escaping from Port Arthur and arrived at Chefoo, China, November 16. On the delivery of her dispatches she was immediately blown up by her crew to prevent her being captured.

CHINESE ARE DISTRESSED.

OKU'S HEADQUARTERS, Dec. 19.—There is a serious shortage of food and fuel among the Chinese here. Firewood is \$40 a ton. The military situation is unchanged.

### EXILE WELCOMED HOME.

PARIS, Dec. 19.—Habert, who was banished five years, has returned and been welcomed by thousands of the populace.

### BAD MACEDONIAN SITUATION.

LONDON, Dec. 19.—An aggravation of the Macedonian situation is occupying the attention of the Powers.

## WANT TO ADD MORE SHIPS TO ROJESTVENSKY'S SQUADRON

ST. PETERSBURG, Dec. 10.—The arrest of Captain Clado yesterday evening by the order of the Grand Duke Alexis, the High Admiral, for criticising the Grand Duke and the Admiralty, is treated very quietly in the morning papers, which merely print the official text of the order. The Novoe Vremya, which has been printing Clado's articles which led to the Government's action, makes no comment on the arrest, but presses the question of opening the Dardanelles, the closing of which is considered as "an unnatural arrangement and piece of antiquated diplomacy" and renews Clado's own arguments that the convention closing the Straits should be modified. Other papers, while silent on the question of the Black Sea fleet, urge the strengthening of Admiral Rojestvensky's squadron. The Russ, in a long article, declares that the formation of a third squadron would occupy months, but says that at least the battleship Seniavin and the cruiser Otchakoff could be dispatched in time to catch up with Rojestvensky somewhere in the Indian Ocean, and urges that their preparation and that of other vessels of the Baltic fleet should be rushed without a moment's delay.



SANTA CLAUS COMES  
DOWN THE CHIMNEY  
EVERY EVENING AT 7.30.

# THE LAST WEEK OF OUR ANNUAL CHRISTMAS FAIR

CANDY FOR THE CHILDREN.  
MUSIC EVERY EVENING  
7 30 to 8.30 BY FIRST CLASS  
QUINTETTE CLUB.

The retail trade look upon this as the most important week of the year. Everybody, rich and poor alike let loose the purse strings at Christmas time. Happy is the merchant whose business has been sufficiently encouraging to lay in a good stock for December trade. We have been more than satisfied with our success on Alakea street. We anticipated big results this month. So far we are away ahead, and if the elements are kind for six days more we will nearly double any previous figures. Who says it is hard times? Nonsense! You got to keep pace, that's all. The general public are always the best judges. Our stock is just what is required and our prices are well known to be the LOWEST IN HONOLULU.

FOR THIS WEEK WE ARE FULLY PREPARED AND RESPECTFULLY SOLICIT YOUR KIND INSPECTION.

## Novelties for Ladies' Wear

AT 25c, 35c, and 50c.

LADIES' WHITE TURNOVER COLLARS, embroidered in the following colors: Self, red, blue, green, navy, burnt orange.  
AT 25c, 30c, 40c, and 50c—Cream and white lace stocks.  
AT 50c. Ex-Alameda.  
Fancy Cheffion Collars in white pea, blue and black.  
AT 75c, \$2.00, \$2.50, \$3.00, \$4.00, \$5.00.  
Ladies, Oriental Lace Collars,  
AT \$3.00, \$4.00, \$4.50 and \$5.00.  
Hawaiian Coat of Arms Hat pins..... 25c, 40c

## Cheap Jewelry for Xmas

Hawaiian Coat of Arms Shield Brooches..... 50c, 75c, \$1.00  
Scarf Pins ..... 35c, 50c, 75c  
Diamond Head Bar Pins ..... 50c  
Aloha Bar Pins ..... 50c  
Sterling Silver Bracelets ..... \$1.25, \$1.50, \$2.50, \$3.00  
Gold Filled Bangles ..... \$2.00, \$3.00, \$4.00  
Double Chain Necklaces ..... \$2.00, \$2.50, \$4.00  
Gild Filled Watch Chains ..... \$1.75, \$2.00, \$3.00  
Childrens' Bracelets and Bangles..... 50c, \$1.00, \$2.00, \$3.50

## Handkerchiefs

FOR LADIES.

Plain White Hemstitched AT 50c, 65c, 85c, \$1.00, \$1.25, \$2.75, \$4.00 per dozen.  
Embroidered Handkerchiefs—85c, \$1.25, \$1.75, \$2.50, \$3.50, \$4.00 to \$10.00 dozen.

## For Gentlemen

Hemstitched Handkerchiefs — AT \$1.00, \$1.35, \$1.65, \$1.75, \$2.00 dozen.  
Pure Linen—\$2.75, \$3.00, \$4.00, \$5.50 dozen.  
Silk Handkerchiefs—50c, 75c, \$1.00.

## Furnishing Goods

MEN'S NECKWEAR—A full line of newest shapes at 25c, 35c, 50c, 75c, \$1.00.  
THE NEWEST IN BELTS AT 50c, 75c, \$1.00, \$1.25.

HOSIERY.

Black Cotton Sox..... 12 1-2c, 15c, 25c, 35c, 50c  
Lisle Thread Sox..... 25c, 35c, 50c, 75c  
Nobby Fancy Sox ..... 25c, 35c, 50c, 75c  
Black Casmere Sox ..... 50c, 75c  
Natural Wool Sox ..... 50c

SUSPENDERS.

AT 20c, 25c, 30c, 35c, 50c, 60c, 75c.

## Men's Shirts

A complete line of Men's Shirts; all styles; AT 50c, 65c, 75c, \$1.00, \$1.25, \$1.50, \$1.75, \$2.00.  
BOYS' SHIRT WAISTS—"The Mother's Friend" Brand—65c, 90c.

## Boys' and Men's Clothing

Our Clothing is just what the people are asking for.  
STYLISH. DURABLE. ECONOMICAL.

## SHOE DEPARTMENT

CHRISTMAS SUGGESTIONS.

Men's Vici Kid Slippers..... \$1.50, \$1.75, \$2.25, \$2.50  
Men's Worsted Slippers; any color..... \$1.25  
Men's Carpet Slippers..... 35c, 50c, 60c  
Men's Nullifiers ..... \$2.00, \$3.00, \$3.50  
Ladies' Patent Kid 3-Strap Sandals..... \$3.50  
Ladies' Black Beaded Sandals ..... \$3.50  
Ladies' Patent Kid Sandal, tongue and bow..... \$3.50  
Ladies' Worsed Slippers; all colors..... \$1.00  
Ladies' Carpet Slippers ..... 35c, 50c  
Infants' Shoes, soft sole, lace and button..... 40c, 50c, 60c  
Infants' Shoes, Clara Tie; all colors..... 75c  
Infants' Bootettes; all colors..... \$1.25

# TOYS

TOYS FOR BABIES  
TOYS FOR GIRLS  
TOYS FOR BOYS

# TOYS

YOU CAN GET ALMOST ANY  
KIND OF TOY YOU WANT  
HERE.

# L. B. KERR & COMPANY, LTD., Alakea Street

## WALTHAM WATCHES

12,000,000



WALTHAM WATCHES ARE NOW IN USE. ALL ARE GUARANTEED BY AMERICAN WALTHAM WATCH COMPANY, WALTHAM, MASS., U. S. A. THIS COMPANY IS THE LARGEST WATCH MANUFACTURING CONCERN IN THE WORLD.

## Historical Honolulu

OR A CENTURY OF HAWAIIAN EVOLUTION.

This valuable record of the most important events in the History of Honolulu for the past hundred years was compiled and published at great expense in 1899.

Its historical and descriptive articles are by the very best recognized authorities on Island matters and are handed from absolutely impartial standpoints.

It is finely illustrated and contains portraits and biographical sketches of the principal business and professional men of the Islands.

This is a publication that no student of Hawaiian History can afford to be without. A limited number of copies still for sale by The Hawaiian Gazette Co., Ltd.

## Substantial Cloth Binding

50c per Copy

POSTAGE 30 CENTS EXTRA.

## SEEKERS FOR PLEASURE IN THE RAIN AND SUN

It Was Just a Typical Blue Law Sunday and There Was the Usual Crowd at Kapiolani Park.

From Kalihi to the Capitol grounds there were little spits of rain yesterday. The kind of rain that dries as it falls upon white duck clothes. The kind, you know, that you can step from under going across the street to get out of a shower. And the sun shone all day at Waikiki.

Consequently, the Sunday crowd went to Waikiki. The band played under the trees, and the aquarium was open and had many visitors. Among others, a lot of sailors went into the place and seemed to establish a friendly understanding with the fishes at once.

There seems to be a lot of affinity between sailors and fishes, the world over. Sailors are always drawn to fish markets by an irresistible attraction, and sailors at sea will put up all kinds of schemes to catch fish. Sailors, in ships lying at anchor in tropical ports, will fish all day to catch a shark, and call it fun.

And yet, though they catch fish, sailors are not greatly given to the eating of them. May be it savors too much of cannibalism. Fish eat sailors. Possibly, also, fish are fond of looking at sailors. Sharks have been known to follow vessels at sea for days and days—and sperm whales likewise will sometimes swim along very close to sailing ships. And dolphin are well known to play about the bows even of the most noisy and fussy steamers.

The sailors watched the fishes at the aquarium, apparently with interest more keen than that displayed by shore-going folks yesterday. There were more autos out Waikiki way than usual, and the road around Diamond Head was highly popular. The air from the sea was cool, and the sun sparkled upon the water, and there was even more than the usual exhilaration in the swift motion of the machines. The rushing wind had a quality that was like wine.

In town, and especially in the Asiatic quarter, the crowds on the streets gave them something of the appearance of the days before High Sheriff Henry began the enforcement of the Sunday law. And yet every place of business in the quarter was closed as tightly as on the first Sunday after it was announced that the law would be enforced. Perhaps the Chinese and Japs have found out at last that they can go in and out of their houses without danger of arrest. So long as they do not attempt to do business they will not be molested.

## When You Don't Know What Else to Give, Give Handkerchiefs

Nobody can ever have too many—for handkerchiefs are always wearing out or losing themselves. There isn't a better gift.

Children's handkerchiefs in boxes, 20 cts. a box.

Ladies' cambric and linen handkerchiefs at reduced prices.

Men's cambric and linen handkerchiefs from 60 cts. per doz. upward.

A fine line of gentlemen's silk handkerchiefs, suitable for Christmas from 25 cts. upward.

**A. BLOM,** PROGRESS BLOCK FORT STREET.

OPEN EVERY EVENING UNTIL 8:30.  
SATURDAYS UNTIL 10 P. M.

## Silk Kimonos

## Embroidered Shirt Waists

New Patterns

## China Ware

All new goods, and prices right. Call and select your presents now. No trouble to show goods.

**SAYEGUSA**

1120 Nuuanu street, just mauka of Hotel street.

Read the Advertiser.



### A Multitude of Sensible Gifts

Nothing is better appreciated as a holiday gift than some article of furniture for the house. It is always in use and always a remembrance of the donor's thoughtfulness.

A visit to the Coyne Furniture Store will show a multitude of different articles that are at once appropriate, beautiful, durable and reasonably priced. The expense can be limited to any amount desired from one dollar upward. You will find little difficulty in selecting handsome and appropriate gifts for everybody, from baby to grandsire. Here are a few of the articles we have:

- |                 |            |                |
|-----------------|------------|----------------|
| Rocking Chairs, | Desks,     | Parlor Tables, |
| Chairs,         | Bookcases, | Dining Tables, |
| High Chairs,    | Go Carts,  | Sideboards,    |
| Misses' Chairs, | Couches,   | Lounges,       |
| Morris Chairs,  | Rugs,      | Dressers,      |
| Music Cabinets, | Portiers,  | Chiffoniers.   |

Come and test our claim. Goods delivered promptly as promised.

COYNE FURNITURE COMPANY, LTD.  
148 HOTEL STREET. 1113 UNION STREET.



### For Sale at a Sacrifice A JOHN G ILS Kitchen Range

10 feet long; contains 3 ovens, water boiler, necessary pipe and brick. Well suited for a hotel, restaurant or plantation. Can be seen at my salesroom, 180 Merchant street.

WILL E. FISHER,  
AUCTIONEER.

### \$3.00 PER SACK RICE

A No. 1.  
250 SACKS in lots to suit.

WILL E. FISHER,  
AUCTIONEER.

### TO LET.

ELEGANT CORNER TWO-STORY DWELLING, corner Pihlani and King streets, of 7 Bedrooms, Reception Room, Parlor, Dining-room and Kitchen. Large attic; good dry cellar; servants' quarters, etc. Nice large yard. Rent reasonable.

Further particulars of  
WILL E. FISHER,  
Agent, 180 Merchant street.

### PANAMA HATS \$10

USUAL PRICE \$15.00. ANY SHAPE DESIRED.

ASCOTT, 4 IN HANDS, BAT, CLUB, AND WINDSOR TIES.

### BATH ROBES

NEGLIGEE SHIRTS, STRAW AND FELT HATS FOR MEN AND BOYS.

Linen Handkerchiefs in all grades; all fine Christmas gifts at

I. Levingston,  
1075 Bishop St.  
Young Building.

### POTATOES \$1.10 per Sack to \$1.60 per Sack APPLES ONIONS

AT THE  
Potato Warehouse.  
SMITH ST. NEAR KING.

### UP-TO-DATE MILLINERY

AT  
Miss Power's Millinery Parlors  
Boston Building, Fort Street.

### FOR SALE

GERMAN UPRIGHT PIANO in good order; a bargain, \$75; easy payments. Inquire HONOLULU HOTEL.

## A REGULAR SEA DOG

### The True Tale of Jack of the Kinau Wharf.

He is just a plain dog, Jack of the Kinau wharf, a black dog, somewhat ragged looking as to coat and with a swing that is most humanly seaman-like in his walk. But he has a brown, honest eye and a tail that holds in its waving all that has ever been expressed of the virtue of friendship.

Jack of the Kinau wharf, in fact, is a dog who has long passed the puppy stage and has reached that age where dogs know all, and more than all that is written of man's frailty, and overlook it out of their great love. For Jack of the Kinau wharf has lived among all manner of men—and has himself passed through salad days of youth and folly, as men do.

Jack of the Kinau wharf was a gay dog, in those days, without the roll in his gait and with the love for salt water in his blood that is the mark of many a gay dog. It was in those days that he took up his residence on the wharf, making occasional trips to the other islands in the Wilder steamers.

The wharf, however, was his favorite stamping ground and, large or small, he held the wharf for years against all canine comers. He welcomed the steamers when they came and speeded them when they sailed, and he was the sworn friend of every man in the company—with a vagabond preference for the deckhands and roustabouts who shot craps under the sheds on rainy Sundays. Of course Jack of the Kinau wharf had his friends ashore. Every Jack has. But the dog knew these for fair weather, payday friends and was faithful for many a year to his own kind.

But time flies with all, and Jack of the Kinau wharf grew old—and poltite. It often happens that way. Your gay dog ever looks out for a sunny corner to lie in as old age creeps upon him.

Jack of the Kinau wharf had put out many a wag of his tail to bear interest in kindness in the vagabond, sea dog days, and as he felt the coming of age he permitted one of his shore friends to adopt him.

And so he left the sea, and lives up town, now, and wears a license tag as every dog should who would not have the fear of the pound man to depress his tail. But Jack still loves the sea and the Kinau wharf. Every steamer day he is there, renewing old friendships with steamboat men and making new ones. Also, every time he visits the wharf he is accompanied by a strange dog that he seems to be showing the place to—probably recounting, as he trots about among the bales and boxes, tales of the days when he was a sad young sea dog himself, living a life of wild adventure from steamer day to steamer day.

## SECRETARY WILSON ON HAWAIIAN AFFAIRS

Secretary Wilson of the United States Department of Agriculture, in his eighth annual report, has the following to say with reference to Hawaii:

### HAWAII EXPERIMENT STATION.

A chemist and horticulturist have been added to the staff of the Hawaii station, and in this way the field of operations has been considerably widened. Soil investigations have been undertaken by the chemist, which are of general importance to the agriculture of the islands. The horticulturist has prepared a bulletin on bananas, which not only treats of the cultivation and marketing of this fruit, but also brings together descriptions of a large number of Hawaiian varieties, making possible a systematic study of this important food plant. Experiments are being continued on the cultivation and fertilization of bananas, and a large collection of varieties is being brought together on the station grounds. Experiments in the propagation of mangoes and alligator pears have begun.

The entomologist has prepared a bulletin on the leaf hopper of sugar cane, which was investigated at the solicitation of many of the planters of the islands. This insect made its appearance quite recently and has proved in certain districts to be a very serious enemy to cane cultivation. The bulletin treats of the life history of the pest, describes the injury produced, and offers suggestions for its control.

Under the immediate direction of the special agent in charge, investigations have been made of some of the fungous diseases of coffee, sugar cane, and other economic plants, and a comparative test of grasses and forage plants has been begun in connection with the Hawaii Live Stock Breeder's Association. Cooperative experiments with tobacco have been conducted on the island of Hawaii with the object of producing a type of tobacco that is especially adapted to Hawaiian conditions. Cooperative experiments on cacao and banana cultivation are also being carried on in connection with the insular board of agriculture and the Hilo boarding school.

Forest studies in cooperation with State or Territorial governments were carried on during the year in New Hampshire, Maryland, Wisconsin, California, and Hawaii.

The study in Hawaii resulted in the publication of a bulletin on "The Forests of the Hawaiian Islands," in the adoption by the Territorial government of its recommendations, and the appointment of a member of the Bureau of Forestry as superintendent of forestry in the islands.

## AN EXCEPTIONAL SALE OF HOLIDAY HANDKERCHIEFS

Not too early to buy gifts, and it is not difficult to make selections now, for assortments are not broken. Ladies' initial pure linen handkerchiefs, Special \$1.00 a dozen.

### SPECIAL.

Ladies' pure linen hemstitched handkerchiefs. 8 1-3c., 12 1-2c., 15c., 20c., and 25c. Ladies' hemstitched and embroidered handkerchiefs. Large variety of patterns to select from. Great value 15 cts.

### SPECIAL AT 15 CTS.

Men's pure Irish linen handkerchiefs, hemstitched and embroidered initials 15 cts. Ladies' pure linen hemstitched and embroidered handkerchiefs. Box of six, \$1.50. Great value.

### GREAT VALUES.

We have just opened a large stock of boys' clothing. Knee pants suits in sizes 3 to 15 years, dark and medium dark effects, tweeds, worsted, serges. We guarantee every suit as represented. Learn our prices before you make your purchases. All our boys' clothing is made by reliable manufacturers. No trouble about fitting. A RECORD BREAKER, our \$3.00 boy's suit.

### LADIES' EIDERDOWN SACQUES.

An elegant new line in all sizes. Pink, light blue and red. Special values at \$1.00, \$1.25, \$1.50.

### A SALE OF LADIES' BLACK SATEENE PETTICOATS.

Ladies' black sateene petticoats, good quality, with ruffles, worth \$1.50. Special at \$1.00.

A handsome line of the latest sateene petticoats will be on special sale this week at reduced prices. Come early; such goods at such prices in rainy weather sell quick.

### GREAT CUT IN PRICES.

Great bargains in our Dry Goods Department. Many lines on sale for less than actual cost. Call and see our prices.

### GRAND DISPLAY OF HOLIDAY NOVELTIES

For Ladies, Men and Children.

We quote a few suggestions and their prices: Dainty cups and saucers, hand painted, from 25 cts. to 50 cts. Latest designs. Smokers' sets, 25c., 50c., 75c., and \$1.00. Ash trays, new designs, 25 cts. Match holders from 5 cts. up. Ink wells in latest designs, 50 cts. Handkerchief and glove cases, set 50 cts. Elegant large line of collar and cuff boxes from 50 cts. up. Sewing boxes, entirely new ideas, in 25 styles from 35 cts. up. Hundreds of other useful and ornamental articles suitable for Xmas gifts.

### EXTRA SPECIAL

ALL OUR TOYS WILL BE CLOSED OUT. 50 PER CENT OFF THE REGULAR PRICE. EVERY ARTICLE IS MARKED IN PLAIN FIGURES.

## PACIFIC IMPORT COMPANY, LIMITED

Progress Block, Fort Street.



DELIVERED AT YOUR DOOR

### Small Farmers

can be successfully raised to be large farmers by regular use of

## Primo Lager

It is strengthening, invigorating and absolutely pure.

## Mission Furniture for Long Service

An elegant new stock just received consisting of Mission styles in weathered oak and beautifully carved pieces, that will make appropriate and sensible Christmas gifts.

We cordially invite you to see these goods.

- |        |           |
|--------|-----------|
| TABLES | DESKS     |
| CHAIRS | CABINETS  |
|        | BOOKCASES |

## H. Hackfeld & Co., Ltd.

HACKFELD BUILDING.



### Vapo-Cresolene

For Whooping Cough, Croup, Coughs, Bronchitis, Influenza, Catarrh.

It cures because the air rendered strongly antiseptic is carried over the diseased surfaces of the bronchial tubes with every breath, giving prolonged and constant treatment. Those of a consumptive tendency, or sufferers from chronic bronchitis, find immediate relief from coughs or inflamed conditions of the throat.

CRESOLENE is a boon to ASTHMATICS. ALL DRUGGISTS. THE VAPOR-CRESOLENE CO., 180 Fulton St., New York City.

### STRENUOUS SUNDAY FOR POLICE FORCE

Early yesterday morning sixteen persons, consisting of Japanese, Hawaiians and three men from the Alameda, were arrested in a bunch on the charge of disturbing the quiet of the night. Three late drunks were hauled in also about that time, and about half an hour afterward a Pake and a haole were locked up on the popular charge of disturbing the quiet of the night.

Two Hawaiians were also arrested about 2 a. m. on the charge of vagrancy. During the day two Chinese, one a hack driver, were held for investigation. About four in the afternoon ten little boys from Punchbowl way were brought down and given a good scare by being locked up for a couple of hours. They persisted in playing ball in the street and creating a disturbance. When warned by a patrolman they were saucy and so were given a lesson. The youngsters nearly cried for joy when allowed to go.

About nine last evening a gang of Chinese gamblers were caught out at Waikiki near John Ena's place. Several of them were recognized as old offenders who used to hang out at the other side of town. Their number may have had something to do with their being caught, as thirteen were present.

### Our Crow for 1905

A boy once wrote: "I luv a rooster fer few things—one iz the krow that iz in him, and the other is the spurs that air on him to bak up his krow with."

We admit having crowed often and loud, but we have the "spurs to bak up the krow."

OUR

### PALACE CANNED GOODS

are the best fruits and vegetables put up. Every can we sell bears our money back guarantee.

Sold by

C. Q. Yee Hopp & Co.

THE LEWIN-MEYER COMPANY,  
Packers, San Francisco.

### BATH



THE

### Plumber

165 S. King Street.  
Tel. Main 61.

**TURPIN**

AN ARROW COLLAR  
BEST MADE  
Cluett, Peabody & Co.  
Makers of Monarch Shirts



**THE PACIFIC Commercial Advertiser**

WALTER G. SMITH, EDITOR.

MONDAY : : : DECEMBER 19

**NATIONAL FARM WEALTH.**

Commenting on the estimate that the value of the products of the farm during 1904, excluding the value of crops fed to live stock to avoid duplication, was \$4,900,000,000 the Secretary of Agriculture, in his annual report, says:

"An occupation that has produced such an unthinkable value as one aggregation nearly \$5,000,000,000 within a year may be better measured by some comparisons. All of the gold mines of the entire world have not produced since Columbus discovered America a greater value of gold than the farmers of this country have produced in wealth in two years; this year's product is over six times the amount of the capital stock of all national banks; it comes within three-fourths of a billion dollars of equaling the value of the manufactures of 1900 less the cost of materials used; it is twice the sum of our exports and imports for a year; it is three times the gross earnings from the operations of the railroads; it is four times the value of all minerals produced in this country."

The Secretary has something of great interest to Hawaii in the following observation:

"We buy over \$200,000,000 worth of tropical countries that can not be grown in continental United States. Through scientists sent from the United States to the several island groups the Department is instructing the people of our island possessions to grow these things, such as coffee, rubber, fibers, drug plants, nuts, fruits, spices and the like."

Yet there are people in Hawaii who say that we can never make anything out of supplying the continental folks with such diversified products, or any staple but sugar, because of inadequate transportation facilities, bugs, flies, worms and what not. And, as to the Federal helping hand itself, Hawaii is compelled to appeal to the Washington authorities for obtaining fair play for its coffee in the army and navy commissariats. Besides what the Department of Agriculture is doing as stated by Secretary Wilson, for which we are truly thankful, the co-ordination of the Treasury Department is needed for promoting such tariff revision as will encourage the production of tropical staples under the American flag, which can be done not only without unduly taxing the consumers but rather benefiting their pockets through assurance of best value for their money. Speaking of coffee, there is no doubt that a large proportion of what our continental fellow-citizens imbibe would be regarded by them, after they had tried the Hawaiian article, as quite intolerable.

The Maul delegation to the Legislature is reported as being in favor of putting through the business of the session within the sixty days prescribed by the Organic Act, thus avoiding the necessity of the thirty days' extension the Governor in his discretion is empowered by the same authority to grant. Long hours, short speeches and honest application to business are the ingredients chiefly required for the prescription to that end, a consummation that all the people must devoutly wish. The reduction of interpreting to the lowest possible minimum would be a great time-saver. An interpreter too fond of hearing his own voice and who has not the faculty of condensing ideas from verbiage, when it contains any ideas, should not be employed.

If the Federal authorities have a man and money available to come here and investigate the existence of glanders, it does not appear wise to hold them at arm's length. Sporadic and rare as cases of the equine distemper may be, it is from such faint origin that epidemics of diseases sometimes leap forth with little warning. Glanders is something to be stamped out and if it cannot be completely done by the local veterinary talent, by all means let the Territory accept the Federal assistance offered. That is what the money and the man are for.

Mexico is not a paradise for the workingman who has experienced anything like American labor conditions. P. Maurice McMahon makes clear in his breezy letter from that country in this issue. Even Japanese direct from their own over-crowded islands found a very little of Mexico all they wanted of it, and if any Portuguese had been lured from Hawaii, with promise of comfortable settlement there, pity the heads on which their curses would fall for the sending of them thither.

If Queen Liliuokalani had as many relatives as mainland newspapers record, not all the crown lands indemnity she asks from Congress would go far in supporting them—that is to say if they all assumed royal titles and lived up to them, like the esthetic dame of Punch with her antique teapot.

**THE FORESTRY PROBLEM.**

Any persons whose minds are hazy as to the utility of systematic forestry in this Territory ought to read the various reports of Forester Hosmer as they appear. One upon the proposed forest reservation on the island of Maui will be found in this issue. Mr. Hosmer there, as in his previous reports of forestry matters elsewhere in the group, makes it clear that forests are intimately connected with the benefit of agricultural enterprise in the Territory. As in other parts of the Union and foreign countries, the aim of intelligent forestry here is to strike the proper balance between the maintenance of forests and the utilization of land for development. It would not do to give too much land up to the dominion of the wild woods and it would be equally a mistake to prevent matured timber from being culled and put to commercial use. To preserve and propagate forests where they will advantage climatic and agricultural conditions, while at the same time avoiding measures that would unnecessarily tie up land areas or block legitimate enterprise, is the problem of modern governmental forestry. It is for the best solution of this problem that men are being professionally trained and great congresses of forestry specialists convoked.

**A CITIZEN'S STORY**

Told by a Honolulu Citizen for the Benefit of Honolulu People.

The greatest importance attached to the following is that it concerns a Honolulu citizen. It would lose three-quarters of its interest if it involved some resident of Kalamazoo, Mich., or Woonsocket, R. I. Like all the testimony which has appeared here, and like all which will follow about the Old Quaker remedy, Doan's Backache Kidney Pills, it comes from residents, fellow citizens and neighbors. No other remedy can show such a record of home cures. Read this case:

Mrs. Emma Vieira, of King street, this city, says: "For three or four years I had the misfortune to be afflicted with an aching back. The pain and discomfort this entailed on me can be better imagined than described. I have two children, and it was of course difficult for me to attend to them while oppressed with suffering. The way in which I found relief eventually was by using Doan's Backache Kidney Pills, procured at the Hollister Drug Co.'s store. They did me a large amount of good, as I now testify. I should certainly recommend those who have backache or any other form of kidney trouble to try Doan's Backache Kidney Pills."

Doan's Backache Kidney Pills are for sale by all dealers. Price 50 cents per box (six boxes \$2.50). Mailed on receipt of price by the Hollister Drug Co., Ltd., Honolulu, wholesale agents for the Hawaiian Islands. Remember the name Doan's, and take no other.

**LETTER LIST.**

List of letters remaining unclaimed in the Honolulu Postoffice for the week ending December 18, 1904:

- |                      |                     |
|----------------------|---------------------|
| Allen, Miss M        | Lillington, Miss S  |
| Auble, Miss M        | McGuire, Mrs Jack   |
| Anderson, Cap H A    | Merrithew, W O      |
| Andrews, Miss Julia  | Moses, Sam          |
| Bird, Mrs J S        | Mossman, Mrs W F    |
| Blaisdell, Edward    | Murphy, Mrs Brid-   |
| Boswell, Miss Eva    | get.                |
| Brunett, Mrs W H     | Munro, Henry        |
| Beveridge, Mrs H D   | Nowlein, Samuel     |
| Cavenagh, T J        | O'Sullivan, W H (2) |
| Cowan, Bert          | Porter, Mrs G       |
| Coe, Miss M E (2)    | Potter, Dr Philip S |
| Crozier, W H         | Richards, Frank     |
| Dole, Benjamin       | Roys, Mabel M       |
| Davis, E A           | Rose, M             |
| Dalton, William      | Roeh, Werner        |
| Davis, Jonah H       | Rugg, R M           |
| Dotta, Evaristo      | Salter, P Edison    |
| Debuille, Jeanne     | Schneider, Mrs N    |
| Duval, Leon          | Schaffer, J A       |
| Dumuid, Paul         | Schaffer, Albert    |
| Edwards, John        | Smith, David        |
| Gourley, Sam         | Spencer, Cap & Mrs  |
| Graves, R H          | Stecker, Ernest     |
| Green, Max           | Teller, A           |
| Gregory, Mrs C D     | Thornton, W (2)     |
| Harper, Mrs Mary J   | Veenman, Ferdi-     |
| Howard, Mrs M        | nand.               |
| Howard, H A          | Waltenspiel, Albert |
| Hughes, V            | Watt, Mrs M         |
| Jaouen, Hippolyt (2) | Weiss, Mrs Flor-    |
| Johny, Mrs Hattie    | ence.               |
| Jordan, Lewis        | Weir, Mrs W J       |
| Lloyd, Miss Lucy     | Wilcox, G P         |
| McHilbus, Miss H     | Wingo, Dr J C       |
| Hempel, Heinrich     | Wilks, W R          |
| Kirk, Mrs G          | Zoffman, Miss A M   |

JOS. M. OAT, Postmaster.

**The Safest State.**

In looking up data for a reply to an inquiry from Judge Thomas, of Montgomery, Ala., relative to the homicidal death rate in Maine, the officials of the Statehouse in Augusta have found that Judge Thomas's surmise that homicides in Maine are fewer than in any other state is probably correct.

The record of homicides for the 10 years ended with 1901 is as follows: In 1892, three, including one infanticide; 1893, one; 1894, six; 1895, six; 1896, eight, including two non-residents killed on the high seas; 1897, four; 1898, six; 1899, nine; 1900, ten; 1901, nine, including one infanticide.

This is considered to be a remarkably good showing for a state of 700,000 population. The rate is much smaller than in former times.

In 1870 there were 11 homicides; in 1871, 17; 1872, 10; 1873, 10; 1874, 19; 1875, 11.

During the Civil War the rate was much greater than in either of the periods mentioned, there having been 14 cases in 1861, 18 in 1862, 24 in 1863 and 22 in 1864.

During these earlier periods capital

punishment was in force in Maine. In 1876 the death penalty was abolished, to be reenacted in 1883 and again abolished in 1887. For a state where the quality of liquor sold is so vile Maine has very few crimes of violence.

**EIGHTH PRECINCT CLUB RESOLUTIONS**

The resolutions adopted at the meeting of the Eighth Precinct Republican Club on Saturday night were as follows:

Resolved, That it is the sense of the Eighth Precinct Fourth District Republican Club that the Rules and Regulations of the Republican Party of the Territory of Hawaii should be so amended and revised as to cover the following provisions.

First—That every applicant for membership in the Precinct Clubs shall be required to answer in the affirmative the following questions to wit: Are you a Republican? Will you support the principles of the Republican Party and abide by its Rules?

Second—That the time and place of holding the Territorial Convention shall be decided by the Territorial Central Committee before the holding of the primaries for the nomination of Delegates to said Convention.

Third—That whenever a delegate shall from any cause whatsoever be unable to attend the Convention he shall place his proxy at the disposal of the Executive Committee of his Precinct Club and the said Committee shall elect some member of the said club to hold said proxy.

Fourth—That no member of any nominating convention shall hold more than two proxies.

Fifth—That no person who holds an appointive position under the Territorial Government or shall hold an elective office under County or Municipal Government shall be eligible to election as delegate to any nominating convention or as member of the Territorial Central Committee, the County Committee or the District Committee or the Executive Committees thereof.

Sixth—That Article 6 Section 1 be revised to provide that no person shall be eligible to serve on more than one of the following committees: the Territorial Central Committee, the County Committee or the District Committee.

Seventh—That no person shall be eligible to election or to hold proxy as delegate to more than one nominating convention in any one election campaign.

Eighth—Resolved, that it is the sense of the club that the rules of the Republican Party should be amended to provide that all ex-chairmen of the Territorial Central Committee should be made honorary members of the Central Committee and its executive committee with the right to participate in all meetings except that they shall not have the right to vote.

Ninth—That a section be added to provide that the Central Committee shall have one-half of their members hold over in the same manner as the Senate of the Territory, making the term of each member four years.

And be it further, Resolved, That these Resolutions be spread upon the minutes of the club and that the Secretary be instructed to have a copy thereof delivered to the Sub-Committee on Amendment of Rules of the Territorial Central Committee before Monday evening December 19th, 1904.

The suggestion was also made and favored that the Territorial Central Committee favor the passage of a primary election law.

**SCOTT'S EMULSION**

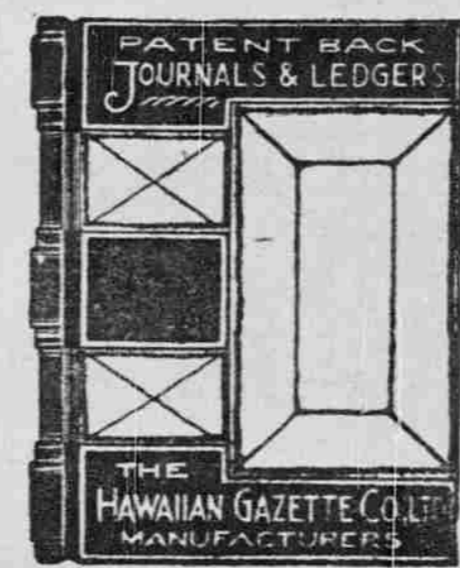
is for babies and children who are thin and pale when they ought to be fat and ruddy; for men and women who are weak and delicate when they ought to be strong and hearty—for all who are not getting proper nourishment from their food.

Poor blood, thin body, open the door for disease. Scott's Emulsion bars the way. Makes the blood richer, produces healthy flesh and above all provides nourishment.

Avoid these so-called wines, cordials and extracts of cod liver oil that are prepared for the taste only, contain none of the value of cod liver oil and which contain a large percentage of alcohol.

Scott's Emulsion has been the reliable cod liver oil preparation for over a quarter of a century.

We'll send you a sample free upon request. SCOTT & BOWNE, 409 Pearl Street, New York.



**Peculiar To Itself**

In what it is and what it does—containing the best blood-purifying, alterative and tonic substances and effecting the most radical and permanent cures of all humors and all eruptions, relieving weak, tired, languid feelings, and building up the whole system—is true only of

**Hood's Sarsaparilla**

No other medicine acts like it: no other medicine has done so much real, substantial good, no other medicine has restored health and strength at so little cost.

"I was troubled with scrofula and came near losing my eyesight. For four months I could not see to do anything. After taking two bottles of Hood's Sarsaparilla I could see to walk, and when I had taken eight bottles I could see as well as ever." Scize A. HARRIS, Withers, N. C.

Hood's Sarsaparilla promises to cure and keeps the promise.

**ATTENTION!**

- Chic
- Chinese Incense
- Eutaska
- Panama Violet
- Panama Rose
- Ben Hur
- Japan Rose
- Rose of Killarney
- Crushed Roses
- Crushed Carnation
- Violette de Lorme
- Jasmin de Siam
- Ambre
- Vere Novo
- Verveine
- Nile Carnation

These are a few of the latest in the Perfumery line; in the nearest of packages.

We claim these goods the most exquisite ever shown in this city. A most appropriate holiday gift.

Ask to be shown these and convince yourself.

**Hollister Drug Co**  
FORT STREET.

**DIE STAMPING and EMBOSING.**

**COPPER PLATE ENGRAVING and PRINTING.**

We are now prepared with as fine a plant as can be found anywhere, to execute all orders for

- Wedding Invitations and Announcements;
  - Reception and Ball Invitations;
  - At Home Cards;
  - Visiting Cards, etc., etc.
- A fine line of

**SWELL CORRESPONDENCE PAPER**

has just been added to this department which consists of the very latest styles in paper and envelopes.

In all work in this department we use only the finest stock that can be procured.

Call and ask to see samples of our work.

Estimates furnished upon request.

**H. F. WICHMAN & CO., LTD.**  
Fort Street.

**The Wise Man**

saves up for the rainy day.

**Be Prudent**

Open an account with us and hard times will not hurt you.

**See...**

for particulars

**Phoenix Savings, Building and Loan Association.**

Judd Building, Honolulu

Guarantee Capital, \$200,000.00.

Paid in Capital, \$1,300,000.00.

HENRY E. POCOCK,

Cashier.

**HORSE SHOEING!**

**W. W. Wright Co., Ltd.**

have opened a horse-shoeing department in connection with their carriage shop, etc. Having secured the services of a first-class shoer, they are prepared to do all work intrusted to them in a first-class manner.

**The Pacific Hardware Co., Ltd.**

Our Glassware Department has been transferred to our

**First Floor**

Step inside and see our beautiful display of

**Rich Cut Glass**

made by The Pairpoint Corporation—the largest manufacturers in the States.

Our assortment is complete and consists of . . . . .

**NAPPIES, BOWLS, VASES, DECANTERS, ROSE BOWLS, JUGS, ETC.**

Everything marked in plain figures.

The Cleanliness and Convenience

of

**ELECTRIC LIGHTS**

are an all year 'round appeal to the home lover.

If you call, or send word to our office we will explain the advantages in full.

**Hawaiian Electric Co., Ltd.**

Office King St., nr. Alakea.

Phone Main 390.

**"THE MOST PERFECT RAZOR IN THE WORLD."**

No Stropping or Honing. Always Sharp. A Safe Safety, Impossible to Cut Yourself.

Shaving elevated to the place of a delightful toilet function. The secret is in the wafer blades, 7-1000 of an inch thick: these are as thin as paper, double edged, and tempered so hard they must be ground with diamond dust. Each edge of every blade will give at least ten velvet shaves which makes 20 shaves to the blade. 20 double blades go with each set so that you are assured of 400 perfect shaves without a trace of bother about stropping or honing and without the expense of the extra stropping devices used with other safety razors.

Total Expense 1-8 cent per shave.

**THEO. H. DAVIES & CO., LTD.**

Hardware Department.

**Locations for Homes**

Anywhere and everywhere in Honolulu with SEA VIEW : : : MOUNTAIN VIEW.

Will build you an artistic home thoroughly tropical in any part of the city that you may select. We are our own architects, contractors and builders. ADDRESS

**W. MATLOCK CAMPBELL,**  
1634 Young Street.

**Holiday Goods Below Cost**

SALE NOW ON.

Everything at your own price. Gent's Furnishing Goods, Dry Goods, Silks and Oriental Goods.

**S. OZAKI, DRY GOODS DEPARTMENT.**

Nuuanu street, between King and Hotel, Ewa side.



In the files' opinion a bald man has a good head for business.

PACHECO'S DANDRUFF KILLER will discourage flies from doing business on your head. Try it.

Sold by all druggists and at the Union Barber Shop. Tel. Main 232.

**CITY MESSENGER SERVICE.**

Should you want a messenger in a hurry, ring up the City Messenger Service, Tel. Main 78. Office, Fort street near Hotel. All orders promptly attended to by good, reliable messengers M. J. SANTOS, Manager.

**TERRITORY STABLES**

FINE TEAMS AND CARRIAGES for hire at all hours.

GIVE US A TRIAL.

No. 548 S. King St. Phone Main 35



**The Expert Dentist**

For Honest Work at Low Prices. F. L. FERGUSON, D. D. S., Manager.

No. 215 Hotel street, in front of Young Building.

**APPLES FOR CHRISTMAS**

GERTZ BROS. Phone White 2271.

**Just Received**

PANTS! PANTS! PANTS! at popular prices.

**GLOBE CLOTHING COMPANY**  
Hotel St., near Bethel.

**PACIFIC HOTEL.**

112 Union Street. BOARD AND ROOMS. First class board. Meals 25c.; \$4.00 per week. Meal tickets \$4.50. Best meal in the city for the money.



CARTS.

DOLLS.

TOYS.

VELOCIPEDES.

GAMES.

PUZZLES.

# SANTA CLAUS

# EMPORIUM

ORIGINALITY FINDS EXPRESSION IN THE CONCEPTION OF AN IDEA. OUR COLLECTION OF EXCLUSIVE NOVELTIES DEMONSTRATES THIS FACT.

WE ARE IN A POSITION TO SATISFY EVERY DEMAND FOR THE STAPLE FANCY AND EXCLUSIVE HOLIDAY NOVELTIES.

**ARE YOU LOOKING** for a nice little **WAGON OR CART** for your Boy or Girl? We have the largest assortment ever shown in Honolulu and best of all, **THE PRICES ARE RIGHT.**

**W. N. Co. Are Always Hammering Down High Prices . .**



**At Wall, Nichols. Familiarity Breeds Economy.**

If You Are Looking . . . for a nice **DOLL CAB**



**THE TOLEDO TANDEM**  
Has Trycle movement. A new and useful Child's vehicle. Upholstered seats. Can be drawn by handle, or propelled like a Tricycle. Body 33 in. long.

**TOYS**  
The assortment is so large, it is impossible for us to enumerate all.

**Wall, Nichols Co., Ltd.**

**THE SAME OLD TOY.**  
**ONLY A LITTLE BETTER.**  
The Climbing Monkey never gets tired.  
Price . . . . .35c

for your little Girl we have them in no less than **Twenty Distinct Styles** Some of which are real **BEAUTIES.** Prices range from 50c to \$10.00.

**IRON AND WOOD CARTS.**  
A strong, well made and nicely decorated article—come in several sizes. **PRICES 25c, 45c, 85c.**

**STEEL YACHTS.**  
"Columbia" model, made all steel. Well rigged with sails. Has metal rudder. Comes in four sizes—10 in. to 20 in. long.  
Prices from 50c. up.

**SEE OUR DOLL FAIR**  
WE HAVE DOLLIES BY THE THOUSAND TO SUIT ALL PURSES AND TASTES. . . .

**AUTOMATIC LOCOMOTIVE.**  
A Unique Toy. Runs forward or backwards with one winding. A good strong article. Price only 40c.

**TETER-TOTER.**  
A novel and practical entertainer for children, built strong, painted red, striped, decorated and varnished. Four children can teter at a time; ages 4 to 14 years.

**HOOK AND LADDER.**  
The Boys' delight. Large size and very strong. \$5.50 up.

**IRON STOVES and RANGES.**  
A real Stove for the little Girl. One that will safely burn wood or coal. Comes in four sizes—75c to \$5.00.

**50c. and 75c. Line.**  
Handsome satin suit. Box plaited waist, large lace reverses, silk, ribbon girde with buckle, satin faced hat, lace trimmed; come in assortment of six styles.

**KID BODY DOLLS.**  
Have Bisque heads, flowing hair, good boides, shoes and stockings; size 10 inches to 20 inches. Prices according to sizes:  
35c, 50c, 75c, \$1.00, \$1.40, \$1.90, \$2.50.  
With Moving Eyes  
Small . . . . . \$ .50  
Medium . . . . . 1.00  
Large. \$1.50 to \$5.00

**MECHANICAL MOUSE.**  
The kind that runs. It's a regular Cat teaser.

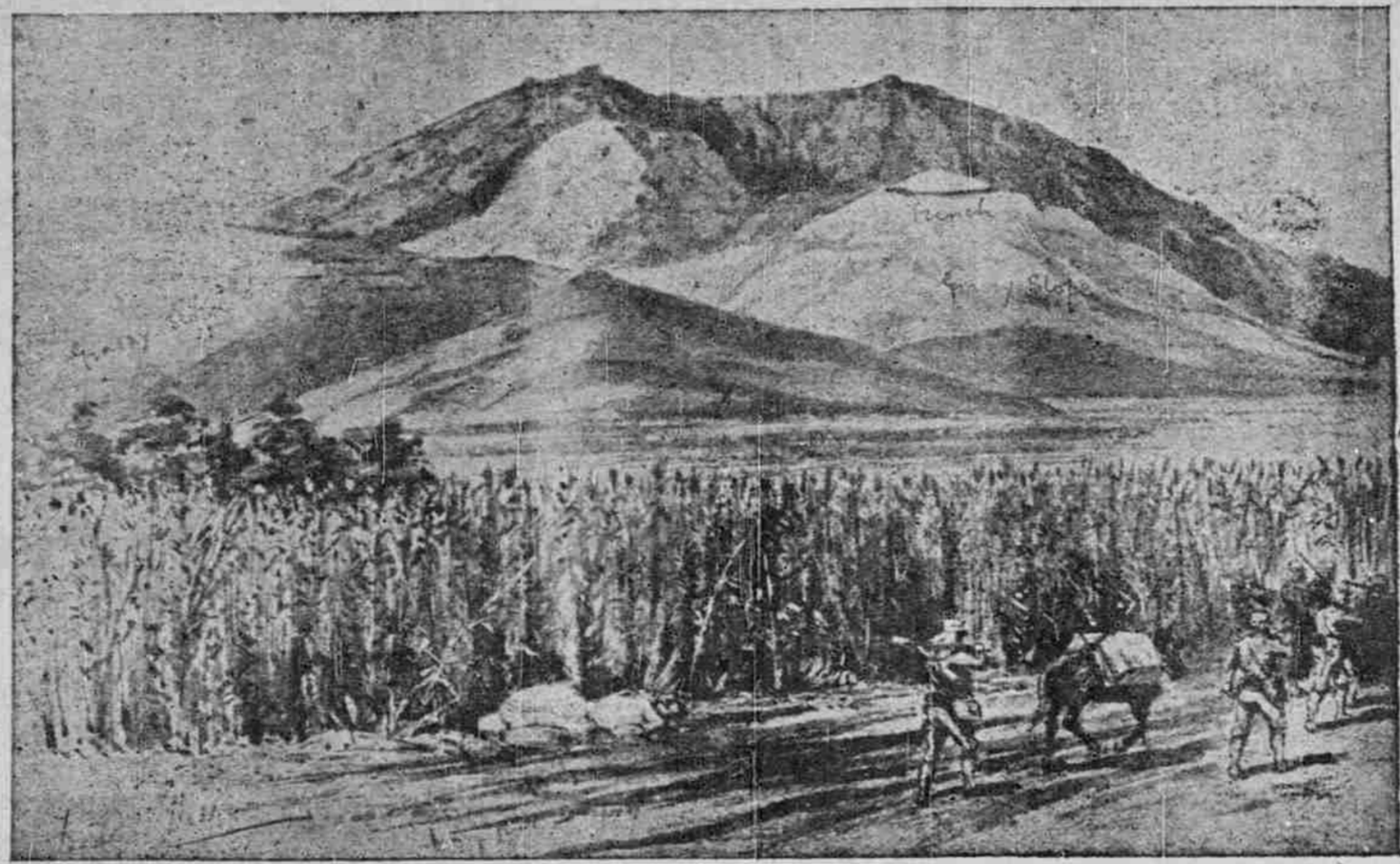
**VELOCIPEDE WAGON.**  
Something New and Novel. This wagon is equipped with an extension seat. We have two sizes. Suitable for Boy or Girl.

**IRON-TOYS.**  
Iron Trains, Iron Hose Reels, Fire Engines, Hook and Ladders, and many other styles make a good toy as they are not easily broken. From 25c. to \$7.50.

## TO INVITE THE PUBLIC

### Admiral Beckley Wants All to Enjoy His Park Dedication.

HILO, Dec. 13.—The Hilo Park Commission, consisting of Chairman E. E. Richards, L. Turner, Dr. J. Holland and Admiral Beckley, met Thursday evening and have outlined a program for the dedicatory exercises of Mooheau Pavilion on Monday, January 24. Admiral Beckley will be the principal speaker of the day and Miss Juanita Beckley will christen the edifice with a bottle of champagne. Two mammoth flags will be raised while the band plays "Hail to the Chief." "Mooheau" Beckley will take an important part in the ceremony of flag-raising. No one will be permitted to enter the structure until after the breaking of the bottle, when the Admiral and party and committee on arrangements will ascend the stairs, and Rev. S. L. Desha will deliver a prayer. Rev. C. E. Shields will probably respond to the Admiral's dedicatory speech. The Hilo band will render several selections, one of which will be "Mooheau March" composed by Professor Carvalho especially for the occasion. The morning exercises will begin at 10 o'clock, and as the races are scheduled at Mooheau Park for the afternoon, the final celebration will be in the form of a grand ball within the pavilion, beginning at 7:30 o'clock in the evening. The Admiral has decided that it shall not be a card affair, but a ball to which the public are invited. During the day, at an hour not yet set, there will be an auto parade under the supervision of Admiral Beckley, and prizes will be given to the best decorated vehicle. In the cavalcade will be pa-u ladies, riding astride and in the flowing garb of former Hawaiian days. No expense will be spared to make the day an occasion to be remembered.



TAKUSHAN—ONE OF THE FORTIFIED RUSSIAN POSITIONS AT PORT ARTHUR CAPTURED BY JAPANESE. —Illustrated London News.

Mr. Villiers writes: "This position was the first that it was absolutely necessary to capture for the proper investment of Port Arthur. From the heights the Russians could see the Japanese advance for miles, so on August 9 the Eleventh and Ninth Japanese Divisions gallantly carried it in face of the combined fire from all the forts and such Russian warships as remained. The weather was stormy and wet, but the Japanese infantry climbed up the slippery sides of the mountain like cats, and in a very few minutes ascended an elevation of nine hundred feet. This sketch well illustrates the difficult contour of the country. The position closely resembles Nanshan and other positions victoriously carried by the Japanese."

bananas is to distill them into banana brandy. The produce of banana distillation gives very pure brandy, remarkably free from fusel oil and other undesirable and hurtful ingredients. It possesses a peculiar, agreeable banana flavor and ought to be very acceptable on the liquor market, not less than dry grape brandy or ordinary cognac. Not long ago, as published in the "Tropenpflanzer," the German magazine of tropical agriculture, experiments in fruit distillation have been made with the assistance of the government in Victoria, Cameroon, German West African possessions. The results of these experiments are as follows: One hundred quarts of ripe banana mush produces 12 quarts of pure, absolute (100 degrees) alcohol, or 24 quarts of 50 degrees strong brandy, viz, about 24 per cent of the volume of peeled and pounded bananas. Pineapples give 12 per cent of pineapple brandy of 50 degrees strength

when treated in the same way. This brandy possesses still higher specific pineapple flavor and also comes out very pure. Papayas distilled without the seed give 5 per cent of pure (100 degrees) alcohol equal to 10 per cent of 50 degrees brandy. The presence of seed gives papaya brandy too spicy a taste. Thus an average bunch of 40 pounds weight of bananas ought to produce 10 quarts or 2 1-2 gallons of strong 50 degrees brandy. Allowing the cost of bananas to be one cent a pound, the value of material per gallon of brandy will be only 16 cents or 4 cents per quart of brandy. NOTES FROM HILO PAPERS. The four-masted schooner F. M. Slade, of San Francisco, P. Larsen, master, makes her first visit to Hilo, with a cargo of 1160 tons of coal from Newcastle, N. S. W., consigned to the Hilo Railroad. She made the voyage in 57 days, arriving Saturday noon at Hilo. Mrs. Sam Peck returned to Honolulu last Friday. J. U. Smith was a returning Kinau passenger from Honolulu.

The Tennis Club will hold a tournament on Monday, January 2nd. Paul Jarrett was a Hilo visitor last week, returning to Honolulu on Friday. Mrs. E. J. Weight left Friday to visit friends and relatives in Honolulu and Kauai. Owing to the transfer of the Misses Hill the Kaluiki school is without a school teacher. The bark St. Katherine, Saunders, master, cleared yesterday with light cargo for San Francisco. Wm. M. McQuaid and wife, who have been guests of the Maddens at Kukaiau, went to Honolulu last week. A TIMELY SUGGESTION.—This is the season of the year when the prudent and careful housewife replenishes her supply of Chamberlain's Cough Remedy. It is certain to be needed before the winter is over, and results are much more prompt and satisfactory when it is kept at hand and given as soon as the cold is contracted and before it has become settled in the system. In almost every instance a severe cold may be warded off by taking this remedy freely as soon as the first indi-

## What Shall I Give?

Our store is ready with thousands and thousands of answers; and all set before you so attractively as to make choosing the easiest thing in the world. Come, visit our Christmas display. It is a great show for old and young.

**Gift Gloves for Christmas**

**Glove Order**

This Order entitles bearer to . . . . . Pairs  
of . . . . . GLOVES.

**B. F. EHLERS & CO.**  
Fort Street.

To send a gift of a pair of gloves, all you need to do is to buy a Glove Order at this store and the recipient can call and choose the color and size that suits.

**REAL OSTRICH BOAS.**  
White, \$15, \$20, \$25.  
Black, \$16, \$13.50, \$18, \$17, \$25.  
Black and white, mixed, \$25 each.  
Grey, \$20 each.

**FRENCH FEATHER BOAS.**  
White, new effects, very stylish; \$6, \$7, \$8.  
White, 15 feet long, \$15.

Linen table sets, napkins, damask towels, hemstitched and embroidered bed sets.  
Teneriffe lace squares, scarfs and doilies.  
Real lace tea cloths and center pieces.  
Hemstitched and embroidered doilies, scarfs and squares.  
Ice wool fascinators, \$1.25.  
Ice wool shawls, \$1.50, \$1.75.  
Shetland floss shawls and squares, \$1.25 to \$3.50.  
White and colored Madras waistings, 25 cts. to \$1.00.  
Hand embroidered tea cloths and doilies.  
Tambour tea cloths and scarfs.  
Bulgarian embroidered table covers.  
French flannel waists \$5, in red, navy blue, etc.

## B. F. Ehlers & Co.

FORT STREET.

cation of the cold appears. There is children like it. Buy it and you will no danger in giving it to children forget the best. It always cures. Sold by it contains no harmful substance. It all Dealers. Benson, Smith & Co., Ltd., is pleasant to take—both adults and Agents for Hawaii.





is compounded with the greatest of care and contains nothing injurious. It is a safe and reliable remedy for stomach complaints and has a record of fifty years of cure to its credit. Many prominent physicians prescribe and recommend it as a cure for dyspepsia, indigestion, flatulency, belching, nervousness and insomnia. Try it. The genuine must have our Private Die Stamp over the neck of the bottle.

**HOSTETTER'S  
STOMACH - BITTERS**

**At 10 A. M. Daily**  
the finest train going east

**Overland  
Limited**

leaves San Francisco  
**Chicago in 3 Days**

Send for time-tables and other matter giving full information regarding all Transcontinental Flyers of the Southern Pacific. The best in luxury-giving and speed-making trains. Send now and you will receive the information by return steamer.

**INFORMATION BUREAU**  
613 Market St., San Francisco.

**Southern Pacific**

**JOHN NEILL**  
135 Merchant Street.  
MACHINERY REPAIRED.

Ship and General Blacksmithing.  
Brass Goods, Pipe and Fittings, Burrows' Wire Screens.

**Have You Tried  
the PALACE  
Goods?**

Delicious fruits and vegetables of the very finest quality. They come to the table any time in the year as delicious as when just picked.

Every variety is the choicest that grows.

Every can sold with our money-back guarantee.

Packed by Lewin-Meyer Co.,  
San Francisco.

Sold by

**C. J. Day & Co.**  
FORT STREET.

**An Old Hat**

cannot be improved much by paint, but an old faded house, or a dingy looking piece of furniture can be made to look as good as new. For good, honest Painting at reasonable prices see us.

**Stanley Stephenson,**  
Painter and Paper Hanger.  
Phone 426. 137 King Street.

For Xmas Sign—get an S. S. Sign.

## PORTUGUESE ADVISED TO KEEP AWAY FROM MEXICO

P. Maurice MacMahon, the poet who formerly made Honolulu his home, writes interestingly of his adventures in the land of the Montezumas, as follows:

CITY OF MEXICO, Calle del Eliso No. 61, Dec. 2.—Many people asked me in Honolulu in regard to employment of different kinds here. Really, unless a person has a good knowledge of Spanish, or has some position to come to—as I—there is no use coming here. Spanish is spoken everywhere.

I am glad to see the Advertiser is endeavoring to induce the Portuguese who are thinking of coming to Mexico to make their fortunes, to stay in Honolulu. What I saw stated in the paper in this particular is true in the main. From what information I have been able to obtain, Mexico is not a desirable place at present for people who have big appetites and families, and like the variety of food the Portuguese do—and who must of necessity receive sufficient "dinero" to provide these foods. They could not possibly compete with the cargadores and other classes of peon labor, for all these poor "diablos" receive is about 40 or 50 cents a day, out of which they live on tortillas and frijoles and stale vegetables and fruits, with a pint or two of their favorite pulque at two-centavos a pint, on which they now and again get a maudlin jag and stagger around like a marionette in a Punch and Judy show, till some considerate gendarme takes them in charge for the carcel. The Portuguese could not well live on the diet, to which these people are accustomed as the Hawaiian is to his poi and raw fish. And even if they received double the pay of the trotting cargadore how in el nombre of his majesty el Diablo could they get enough to eat with butter from 85 cents to \$1 a pound, and meat about 25 cents a pound (Mex. it is true, but their dollar would be Mex. also).

Of course, if they had special concession from the Government in regard to taking up lands, and were given enough wages to live upon, they, being a very industrious people, would be sure to prosper; and the climate is all right for them, as they are a hardy people. At this elevation it is a little too cold for people who have not sufficient to eat or enough to wear—in the winter, I mean—though on the whole I believe the climate is very agreeable and healthy.

When I first came here the elevation and the cold air acted upon me peculiarly—tired all at once, shortness of wind, a little dizzy, perhaps, even though a short time before I may have been feeling first-rate. But all that is gone, and now I enjoy long walks without exhaustion after them, and all the time have a good appetite.

I do not know how low the thermometer goes, as I cannot read the thermometers they have here, so strangely are they graded—those I've seen—but I saw one in a store the other afternoon, when the weather was just pleasantly agreeable, and it registered 54 degrees (and now it is often below 50 degrees). That would seem almost freezing in the day time in Honolulu. In fact, the climate to me is just what I have often experienced at the Volcano House when Dan Porter and the Judge and I used to take our quarterly jaunts to court—excursions which will have a rosy halo of romance encircling them as long as life and memory is mine. What is life to us anyway, if romance is lacking—a dull routine composed of eating and sleeping.

P. MAURICE McMAHON.

## NIXON IS TO BUILD A NAVY FOR CZAR

WASHINGTON, D. C., Nov. 26.—Lewis Nixon, of New York, will leave for Sevastopol about February 1 to undertake the gigantic task of creating for Russia a navy so powerful that when it takes the seas there no doubt will be felt at St. Petersburg as to its ability to wrest the power of the sea away from the Japanese and eventually crush the Mikado. Nixon has already filled a contract to supply ninety torpedo-boat destroyers for Russia. The boats are all either on their way or have been delivered at various Russian ports.

But Russia was not willing to stop there or rely entirely on the Baltic fleet which she is now sending in two squadrons to become a new Pacific squadron. She realizes that the Japanese are splendid fighters on sea as well as on land and has decided to have other squadrons further north en route in case these should fail. To meet this emergency it is decided to build on the Black sea a fleet which should be able to cope with any force the Japanese could muster. Accordingly arrangements have been made for the construction under the personal supervision of Nixon in Russian waters of 100 fighting ships ranging from torpedo boats, destroyers and cruisers of all classes to heavily armored battleships.

This work must be done within two years and it is to be assumed Russia does not expect to see the war end until after the lapse of that time. To accomplish this in a given time the great shipbuilding plant of Russia at Sevastopol has been greatly augmented and improved. It is now considered the third largest shipyard in the world. Much in the way of making ready has already been done. The enormous plant on the Black sea will be under charge of Nixon and he will take with him to fill the great order several thousand skilled American artisans. These workmen will be transported half way around the world to fill the largest order for warships ever given.

### CARD OF THANKS.

Mrs. Walter Hoffmann, as chairman on general arrangements for the children's operetta just over, wishes to thank everybody who in any way contributed to its success. To Miss Martin for drilling the children and conducting the performances to a successful close, to the chaperons for invaluable assistance, to the parents who kindly consented to allow their children to take part in the production, and with patience and work saw it through, to the orchestra who played so well and saved the kindergarten a great deal of money by consenting to help, to the young ladies who ushered and to their chairman, to Mrs. Andrew Fuller and her staff of helpers who sold tickets,

to Mrs. Holloway and Mrs. J. M. Dowsett for soliciting advertisements for the programme, to the ladies who sold them, to Mr. Gurrey who designed the cover, to Mrs. Gunn for great assistance with other school teachers in selecting clever children and her moon dance, to Miss de la Tigre for making up the children, to the gentlemen who kindly helped the ladies take tickets at the door, to Miss Hopper whose work was as constant as Miss Martin's, to the "grown ups" in the cast (Mrs. Cooper, Mrs. Fred Waterhouse and M. Wiedemann) for loyalty and hard work through it all, to Mr. Cunha who kindly stepped in at a time of great need and helped out wonderfully, to the "King's guards" for faithful work, to the "maids of honor" for interest shown from first to last, to the public who attended so generously and to the press, who were always pleased to do and say kind

# Lewis & Co., Ltd.

GROCERS

"I asked a maid if she would wed.  
And in my home her brightness shined;  
She faintly smiled and murmured low:  
"If I can trade with Lewis & Co.'"

**Don't Wait.  
The Rush  
Grows Daily**

CIGARS, Fine Havanas, 25, 50 or 100 to the box. LOWNEY'S FAMOUS CHOCOLATES, in dainty packages; Chafing Dishes; Wine Coolers; Bon Bons; Glace Fruit; Delicious Cresca Figs in baskets; Smyrna Figs, the new crop; Fresh Chestnuts; Lady Apples for Christmas.

Artificial and Green Xmas Trees.

Spanish Raisins and all those little delicacies for the Christmas Dinner.

## LEWIS & COMPANY, Ltd.

GROCERS

169 KING STREET.

240-3 TELEPHONES—240.

## J. HOPP & CO.

Furniture Dealers and Upholsterers

**Our  
Christmas  
Furniture**

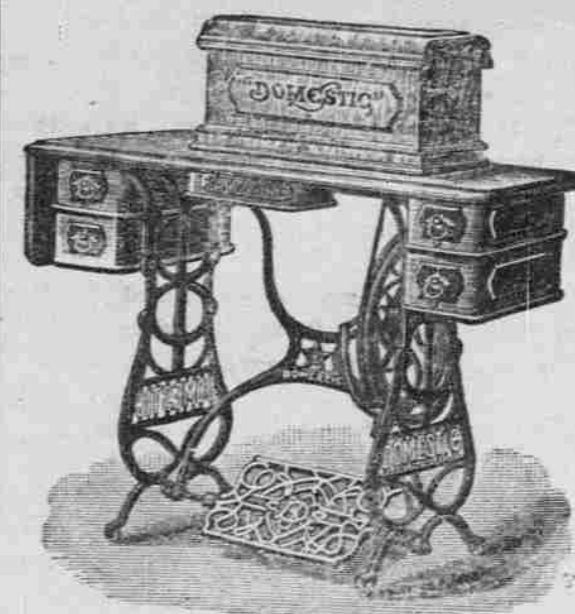
ALL HERE AND NOW ON DISPLAY.

**J. HOPP & CO.**

NEW YOUNG BUILDING STORES,  
1053-1059 BISHOP ST.

"A stitch in time saves nine."

**Our Special Holiday Offer**



Here's a splendid chance to procure the very best sewing machine in the market at a great saving during the holiday season.

DOMESTIC, with top.  
Reduced from \$35 to \$25.  
DOMESTIC, drophead.  
Reduced from \$65 to \$45.

**VON HAMM-YOUNG CO., LTD.**

ALEXANDER YOUNG BUILDING.

things, to Mr. Giffard and Mr. Hoogs for courtesies at the Opera House and to Mr. Wall for his patience at the box office. But the chairman feels, with all due thanks to the list just mentioned, that most of all should the children know how grateful she is to them individually for their hard and incessant work. Early and late were they at their post, always willing and happy to do their best, attentive and alert at all the rehearsals (many and often as they were), and altogether marvelous at the several performances. The gross receipts taken in at the box office were \$2335, half of which goes to Miss Martin and half to the Free Kindergarten.

### FOUNDED IN HONOUR.

No doubt you have seen in the papers such announcements as this concerning some medicine or other: "If, on trial, you write that this medicine has done you no good we will refund your money."—Now, we have never had reason to speak in that way concerning the remedy named in this article. In a trade extending throughout the world, nobody has ever complained that our medicine has failed, or asked for the return of his money. The public never grumbles at honestly and skillfully made bread, or at a medicine which really and actually does what it was made to do. The foundations of WAMPOLE'S PREPARATION are laid in sincerity and honour, the knowledge of which on the part of the people explains its popularity and success. There is nothing to disguise or conceal. It was not dreamed out, or discovered by accident; it was studied out, on the solid principles of applied medical science. It is palatable as honey and contains all the nutritive and curative properties of Pure Cod Liver Oil, extracted by us from fresh cod livers, combined with the Compound Syrup of Hypophosphites and the Extracts of Malt and Wild Cherry. This remedy is praised by all who have employed it in any of the diseases it is recommended to relieve and cure, and is effective from the first dose. In Anemia, Scrofula, Nervous and General Debility, Influenza, La Grippe, and Throat and Lung Troubles, it is a specific. Dr. Thos. Hunt Stucky says: "The continued use of it in my practice, convinces me that it is the most palatable, least nauseating, and best preparation now on the market." You can take it with the assurance of getting well. One bottle proves its intrinsic value. "You cannot be disappointed in it." Sold by all chemists everywhere.



**MEN, I'LL CURE YOU**



Let any man who is weak, broken down, old and decrepit in physical weakness, full of pains and aches, gloomy, despondent and cheerless—any man who wants to be stronger and younger than he feels—let him come and tell me how he feels, and if I say that I can cure him I will forfeit \$1,000 if I fail. I don't want money that I don't earn. I don't need it, and am not after it. But I am after the dollars that are now going wrong in the quest of health. Look at all these poor wrecks of humanity that are spending all they earn on drugs—dope that is paralyzing their vital organs—that have spent all they have earned for years without gaining a pound of strength for the hundreds of dollars wasted.

That is the money that I am after, because for every dollar I take I can give a thousand per cent interest. I have cured so many cases right here that I can prove my claims to you, but if that proof is not enough I'll give you the names of men right near you—where you are. Is that fair?

Most of the belts that I am selling now are to men who have been sent here by their friends whom I have cured. I think that is the best evidence that my business is a success from the standpoint of cures, as well as on the dollar side.

Just lately I have received letters of praise from these men: James P. Daniels, 709 Divisadero street, San Francisco. He was cured of a back trouble of 12 years' standing. J. M. Gaskill, 220 Chestnut Ave., Santa Cruz, Cal., who says I cured him of indigestion, Constipation, Nervousness and Lumbago from which he had suffered 15 years.

Wherever you are, I think I can give you the name of a man in your town that I have cured. Just send me your address and let me try. This is my twenty-fourth year in the business of pumping new vim into worn-out humanity and I've got cures in nearly every town on the map.

Write to me. I've got a nice book on men that I'll send sealed free, if you inclose this ad.

DR. M. G. McLAUGHLIN, 906 Market St., San Francisco.

**FORESTRY ON MAUI**

**Campaign Against Insect Pests—Official Reports.**

Following are portions of the valuable reports made at Wednesday's meeting of the Board of Agriculture and Forestry, one by Forester Hosmer on Maui forest reserves and another by Entomologist Crow on insect pests:

In accordance with your request, I submit herewith a report upon the forest questions contained in the proposition of the Haleakala Ranch Company, of Maui, made jointly to the Board and the Commissioner of Public Lands, under the date of November 2, 1904.

It is suggested by the Ranch Company that the forest of the government land known as the Ahupuaa of Makawao, otherwise and locally, as the Board of Education Land, containing 2021 acres, more or less, be set apart as a forest reserve. To this area they propose shall be added the forested portion of the Ahupuaa of Kallialui, containing 2752 acres, more or less, and also that part of the same land lying in the watershed of Haleakala, in the watershed of the Keanae valley, 2966 acres more or less, this provided that the proposed exchange shall be consummated. Makawao is in the district of Hamakua, Kallialui in Kula, both on the island of Maui. Their relation to each other and to other adjacent lands is shown on the large scale map, submitted with the Ranch Company's report and now on file in this office.

The forest portion of Makawao was fenced by the Ranch Company about eight years ago and stock has, since then, been kept out of the forest.

The forested section of Kallialui has only recently been set apart, but a fence now extends along its western edge from the lower reserve to the steep pali above the Koolau Gap and the cattle have been got out of the woods. There is said to be a band of wild cattle in the main forest, some distance makai of this fence. No estimate can be given of its size.

Having personally visited the lands in question and gone over the ground in some detail, I am reasonably familiar with the conditions thereon. My personal knowledge of the district has been supplemented by conversations and conferences about the lands with the gentlemen most familiar with them, held during Governor Carter's recent visit to Maui, and at other times.

The area which it is proposed be set apart and added to, consists of a belt of forest, composed mainly of Ohia and Koa trees, which stretches up the northeastern slope of Haleakala, from an elevation of about 2500 feet, near Piholo Hill to between 6000 and 7000 feet, near the Koolau Gap—the great break in the crater wall of Haleakala, at the head of Keanae valley. This area is some twelve miles long by about one and one-half miles wide.

The forest on this belt is the western edge of the great Koolau forest, which covers, in an unbroken stretch, all the eastern side of Haleakala.

As the principal value of a considerable portion of the Koolau District is on account of the water that can be developed therein for the irrigation of the great Waialuku Plain it may be well in passing to consider the source of this water.

The Koolau District can probably boast as heavy precipitation as any area in the Territory.

The highest records are from the Keanae section, where, at Nahiku, 400 inches in a year have been recorded. On either side of this section the rainfall diminished, but more gradually to the North than to the South. In general the conditions governing precipitation must be similar to those obtaining in the Hilo District of Hawaii, as both sections are situated on the eastern side of high mountains, subject to trade winds. As yet not very much is definitely known as to the exact way in which rainfall is distributed over eastern slope of Haleakala.

For some reason the upper limit of the heavy precipitation seems to be higher on Haleakala than on Mauna Kea, a fact that makes it desirable that the forest be kept intact up to a higher elevation than in Hilo.

The present edge of the Koolau forest is not alone the arbitrary line where the trees now stop and the grazing land begins. It is, as well, almost identical with the place where the area of heavy precipitation finally fades away into the drier climatic conditions of the Kula district. This transition is a fairly sharp one, for the region just beyond Olanda, which is only a little way out-side of the forest, is as dry as part of Kula; a condition probably due to the influence of the mountain upon the wind currents, for the winds from either direction die out on reaching this locality.

Its present edge may therefore be considered as the natural boundary of the Koolau forest, as well as the limit of rainfall that can be depended upon.

But this is not the only reason why the present forest should be maintained. The nature and configuration of the country is such that in the strip of forest under question, head all the important streams from the Hailko gulch to the Keanae valley; all the streams in fact that drain the heart of the Koolau district.

Nowhere in the Territory has there been such systematic development of the water as in this district. And with the completion of the new ditches large additional areas, now of only comparatively small value, will be made highly productive, with a consequent gain of just as much in the general prosperity of the Territory. The statement has recently been made that for every million gallons per day of water developed, one hundred additional acres of cane can be planted. As the government shares in this ex-

**El Principe de Gales Havana Cigars**

For sixty years they have stood first among clear Havana cigars of high character—long enough surely to leave nothing unsaid in their favor.

Monthly shipments direct from TAMPA to our store, bring to fastidious smokers the famous EL PRINCIPE de GALES—in the very pink of condition.

Seven of the best sizes of this popular brand have been especially selected for the holiday season. Besides being manufactured of the most carefully selected leaf, they represent the highest type of Cuban workmanship:

Make your choice from the following:

BISMARCS . . . . .	12 in a box	\$1.50
HIGH LIFE . . . . .	25 in a box	2.50
ASTORS . . . . .	25 in a box	3.75
CAMELIAS . . . . .	50 in a box	3.50
RIVERSIDE . . . . .	50 in a box	4.00
INVINCIBLE CHICO . . . . .	50 in a box	5.00
CREME DE LA CREME . . . . .	50 in a box	5.00

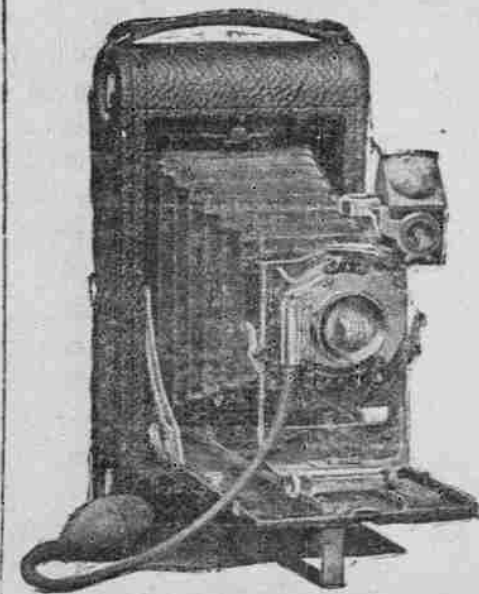
These prices hold good anywhere on the Islands. Mention shade of cigar preferred.

**Gunst-Eakin Cigar Co.**

Corner Fort and King Streets

**Fill the Stocking With a KODAK**

A Kodak as a gift will be appreciated by old and young alike. It begins an enjoyment on Christmas morning that increases from day to day and from year to year.



**KODAKS**

\$5 to \$35.

**PREMO CAMERAS**

\$5 Upward.

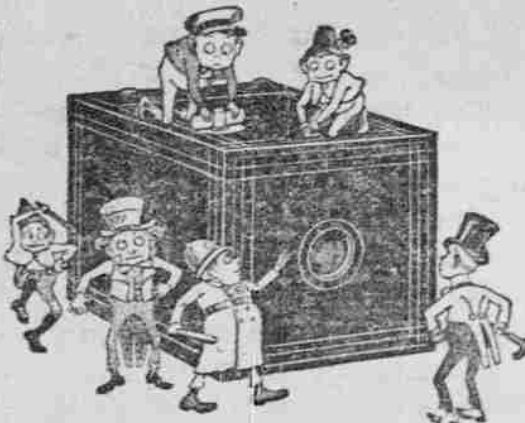
**OTHER CAMERAS**

\$3 Upward.

- KODAK DEVELOPING MACHINE, STYLE A.....\$ 6.00
- KODAK DEVELOPING MACHINE, STYLE E..... 7.50
- KODAK DEVELOPING MACHINE, STYLE H..... 10.00
- "BROWNIE" DEVELOPING MACHINE.....\$ 2.00

**The Brownie Camera**

For Boys and Girls . . .



Every boy and girl ought to have one for Christmas. Older folks enjoy them too. They take excellent pictures.

- "Brownie," No. 1, costs only.....\$1.00
- "Brownie," No. 2, costs only..... 2.00
- Folding "Brownie," No. 2, costs only..... 5.00

**PICTURE FRAMING**

1905 SOUVENIR CALENDARS

**Honolulu Photo-Supply Co.**

FORT STREET.

(Continued on Page 8.)



No finer summer discovery can be made than an ice-bound bottle of sparkling

**White Rock**

A water that is without a peer as a hot weather refreshment at once pure, delicious and healthful.

W. G. PEACOCK & Co. Ltd. Agents.

**Christmas Goods**

- LADIES' SILK KIMONO from \$6.50 and up.
- LADIES' SILK SHORT KIMONO from \$3.25 and up.
- CHILDREN'S SILK KIMONO at all prices.
- LADIES' COTTON KIMONO at all prices.
- JAPANESE SILK per yard, 40 cents.
- NEW JAPANESE PURSES for ladies, special price.

Must be seen to be appreciated.

JAPANESE

**Crockery and Embroidered Screens**

At very low prices.

**K. FUKURODA,**

28-32 HOTEL STREET.

**IN FOREIGN LANDS**

or in your native land when you are away from home, the SEMI-WEEKLY GAZETTE will be found a most welcome visitor; giving as it does a condensed summary of all the local news of the Islands and Honolulu.

Subscribe before you start on your travels and you won't need to "wonder what is happening at home" while you are away.

Price 50 cents per month or \$5.00 per year postpaid to any part of the United States. Foreign postage extra.

HAWAIIAN GAZETTE CO., LTD. PUBLISHERS.

65 South King St.

Phone 88.

Honolulu, Hawaii.



**Bishop & Co., Bankers**

ESTABLISHED IN 1850

**BANKING DEPARTMENT**

Transact business in all departments of banking. Collections carefully attended to. Exchange bought and sold.

Commercial and Travelers Letters of Credit issued on the Bank of California and N. M. Rothschild & Sons London.

Correspondents: The Bank of California, Commercial Banking Co., Sydney, Ltd., London.

Drafts and cable transfers on China and Japan through the Hongkong and Shanghai Banking Corporation and Chartered Bank of India, Australia and China.

Agents for the sale of Travelers Checks of the American Express Company.

Interest allowed on term deposits at the following rates per annum, viz: Seven days' notice, at 2 per cent. Three months, at 3 per cent. Six months, at 3 1/2 per cent. Twelve months, at 4 per cent.

**TRUST DEPARTMENT.**

Act as Trustees under mortgages. Manage estates, real and personal. Collect rents and dividends. Valuable papers, wills, bonds, etc. received for safe keeping.

**ACCOUNTANT DEPT.**

Auditors for corporations and private firms. Books examined and reported on. Statements of affairs prepared. Trustees on bankrupt or involved estates.

Office, 924 Bethel street.

**SAVINGS DEPARTMENT.**

Deposits received and interest allowed at 4 1/2 per cent per annum, in accordance with rules and regulations copies of which may be obtained on application.

**INSURANCE DEPARTMENT**

Agents for FIRE, MARINE, LIFE ACCIDENT and EMPLOYERS' LIABILITY INSURANCE COMPANIES Insurance Office, 924 Bethel Street.

**WM. G. IRWIN & CO., LTD**

**AGENTS FOR**

- Western Sugar Refining Co., San Francisco, Cal.
- Baldwin Locomotive Works, Philadelphia, Pa.
- Newall Universal Mill Co., Manufacturers of National Cane Shredder New York, N. Y.
- Paraffine Paint Company, San Francisco, Cal.
- Ohlandt & Co., San Francisco, Cal.
- Pacific Oil Transportation Co., San Francisco, Cal.

**MR. TOWNE IS A LOVER OF THE HAWAIIAN ISLANDS**

**Lately Visiting Tourist Goes Back to the Mainland and Does Promotion Work East.**

No more enthusiastic lecture upon Hawaii has been heard from that given by Mr. Linwood O. Towne, of Haverhill, Mass., who was here during last summer with the scientific party under escort of Prof. Barton of Boston. In a letter received by Mr. Richard H. Trent under date November 27, Mr. Towne writes:

"Yours November 15th at hand acknowledging paper sent. I too have to acknowledge courtesy of copy with account in Advertiser. I trust that Honolulu people may have a little appreciation of how much my visit there meant to me personally. I am almost afraid I am making myself a bore talking about it to friends, but they seem interested.

"After that first talk, I was at once asked to repeat it at one of our largest churches, the Universalist. I enclose clipping. The part omitted was better than part told of, i. e., singing of a quartet of young men that I had drilled in Hawaiian songs. They gave Hawaii Pono, Maui, Ua Like No a Like, Sweet Lei-Lehua and Aloha Oe. Great applause and much talk afterwards about it.

"I found myself speaking the following week again on same sweet tale in private parlors, for father of our, and your, 'Billy Adams' and invited friends. Mr. Adams had heard me before and this time had some ladies in. Seem likely to repeat same again next week at another church here, a large Congregational one, where the Rev. Mr. Hyde was before going to Honolulu.

"One of our wealthiest citizens was at my Universalist talk and said he wished I'd take his son (in college now) on my next trip. I told Worth Aiken that that would, I hope, be in five years. It may have to come sooner, if people want to go with me to help push or lead. Am dimly disappointed in having lost thirty-six of my films. These represent thirty-six views taken in and about Honolulu and I wanted them for lantern slides the worst way, for future lectures. I think possibly I can have the films duplicated and mailed to me so I can use them. I am already engaged to give stereopticon talk on Hawaii in our great City Hall as soon as I can get ready for it.

"Incidentally I gaze at the temperature and sigh. We have flying snow here today though none of any account has fallen yet. I would give one good plunk for a papaia this minute. I fear you don't know your blessings. I simply cannot describe that so that any one here can understand what it is. With warm appreciation,

"Very cordially,

"L. O. TOWNE.

The clipping enclosed in the letter was from the Haverhill Evening Gazette of Saturday, November 12, and is as follows:

The lecture on "Hawaii" before the Men's club of the First Universalist church last evening by Linwood O. Towne was an interesting and instructive event and was largely attended. Some time since Mr. Towne lectured on his topic and his story was so enthusiastically received that the club decided to have him appear at their meeting last evening.

Mr. Towne is too well-known as a lecturer to need description and his work in this line has been one of the most attractive, entertaining and instructive courses of the local high school. He is well versed in the story of the country of Hawaii and from a personal tour of that interesting country he is thoroughly familiar with his topic and with a personal talent of description his work is much more interesting and acceptable.

Mr. Towne spent sufficient time in the far western islands to become acquainted with the country and its customs and his portrayal of real life and real things, is one of the best stories ever written. To illustrate his lecture he has a fine group of pictures, each of them expressing the interesting matter he talks of and in this way he makes a lecture, really a story-telling affair with fine views to illustrate and beyond interest, attraction, instruction and learning, there is nothing, but these features make his lectures of the best variety and much sought.

Mr. Towne's effort was received with enthusiasm and surprise for it was believed that the island of Hawaii had lost its interest to local people, but to hear it described as the lecturer can describe it, and to see such souvenirs and pictures as he has, is but to remind one of what there really is in existence beyond the Paradise.

**THE FUNDAMENTAL LAW OF HAWAII: A NEW LAW BOOK**

The Hawaiian Gazette Company, Ltd., announce the publication of a book, edited and indexed by Lorrin A. Thurston, containing the several constitutions and other fundamental laws of earlier days, the annexation treaty, resolutions and procedure and the Organic Act.

The book contains 298 pages of text and 138 pages of index. It is printed in regulation law book type and style and is substantially bound in calf skin.

The price is \$5. The scope and character of the book and the reasons for its publication are given in the preface, which is as follows:

**PREFACE TO THE FUNDAMENTAL LAW OF HAWAII.**

Congress has expressly enacted a law organizing Hawaii into a Territory, and extended the provisions of the United States Constitution to the Territory.

In a restricted sense, therefore, the United States Constitution and the Organic Act constitute Hawaii's fundamental law; but the Organic Act specifically re-enacts the great body of pre-existing Hawaiian statute law, which was based upon the several Hawaiian Constitutions and organic laws.

A large proportion of the law governing real estate, property and personal rights in Hawaii being based upon these early constitutions and laws; and precedents, decisions and court practice having grown out of them, it is necessary to consult them in order to have a comprehensive understanding of existing Hawaiian law. They are nearly all published, however, in books now out of print, and in scattered volumes, inaccessible to many, and inconveniently located for all. In fact, not even practicing lawyers in Hawaii

can, except at considerable loss of time, place their hands on the laws and constitutions necessary for the study and decision of practical questions continually being presented to them.

Under these circumstances it is believed that the public interest requires the re-publication in convenient reference form of what may be called "the fundamental law of Hawaii." To meet this requirement the following constitutions, laws and documents have been compiled under the common title of "The Fundamental Law of Hawaii," viz.:

1. The first Constitution of Kamehameha III, 1840, including the preliminary issued Bill of Rights.
2. The first laws of Hawaii, enacted under Kamehameha III, (1833-1842), published together in 1842.
3. The law creating and principles guiding the Land Commission.
4. The second Constitution of Kamehameha III, 1852.
5. The Constitution of Kamehameha V, 1864.
6. The Constitution of Kalakaua, 1887.

**FORESTRY ON MAUI.**

(Continued from page 7.)

feel satisfied that the temperature was too high causing the insects to remain active and thereby die for want of food, instead of hibernating during the voyage. I called Mr. Giffard's attention to this and he ordered a cabinet gram sent to Mr. Perkins suggesting placing them in a cooler chamber. Insects will survive a very low temperature without injury.

Fruit arriving infested with scale has been fumigated with hydrocyanic gas. On the third instant a package of eight small Ixoras came by mail from Philadelphia, Penn., and found them infested with the long narrow armored scale. After fumigation with hydrocyanic acid gas, the leaves were removed and destroyed. This scale has unfortunately obtained a foothold on this island. It is a palm scale but also attacks "Screw-pines," magnolias and coffee trees.

Copies now on sale at all book stores of the Hawaiian Forester and Agriculturist, a monthly magazine of forestry, entomology and agriculture, issued under the direction of the Board of Commissioners of Agriculture and Forestry. Price 10 cents a copy, \$1.00 per year by mail to any address. Subscriptions received at the Gazette office.

7. The Proclamation and orders incident to the establishment of the Provisional Government, 1893.
  8. The Constitution of the Republic of Hawaii, 1894.
  9. The treaty annexing Hawaii to the United States, 1897.
  10. The Resolution of the Hawaiian Senate ratifying the annexation treaty, 1897.
  11. The Joint Resolution of Congress annexing Hawaii, 1898.
  12. The documents and procedure incident to the transfer of the sovereignty and possession of Hawaii to the United States, 1898; and the executive orders of President McKinley, relating to the government of Hawaii, issued during the transition period between the date of annexation and the passage of the Organic Act, 1898-1900.
  13. The Act of Congress organizing Hawaii into a Territory, 1900.
- The laws of 1842 are not "fundamental" in the sense that the constitutions

and other laws and documents are; but they have been included herein for the reason that they were not only the first written laws of Hawaii, but embodied many of the pre-existing laws and customs of the country and therefore throw a strong light upon the origin and development of much of the present law.

Only a few of the laws, constitutions and documents re-published, have ever been indexed. A full index of all of them is included herein. Instead of one general index, each is indexed separately. The reason for such treatment is that reference will usually be desired to a given subject in some one law or constitution. The subject sought will be much easier found in the short index of the particular law, than it would have been in a necessarily long index of the whole.

The table of contents gives the page of each constitution and law and of its index.

**Merchant and Fort Streets.**

**The Pacific Hardware Comp'y, Ltd.**

**THIRD AND LAST WEEK**

OF OUR

**CHRISTMAS SALE**

Our Glassware Department has been transferred to the

**FIRST FLOOR**

To make shopping easy. We carry a complete assortment of "Pairpoint"

**Rich Cut Glass**

SUCH AS

**Nappies, Bowls, Vases, Decanters, Rose Bowls, Jugs, Etc.**

DON'T MISS OUR

**BARGAIN COUNTERS**

On second floor. Everything reduced to close out our entire stock of Holiday Goods before Christmas.



**A. N. Sanford,**

OPTICIAN,

Boston Building, Fort Street. Open May & Co.

Tel. Main 353. Residence Tel. White 52.

**Mrs. E. M. Taylor**

**FLORIST.**

Alexander Young Building. Fancy carnation and strawberry plants for sale.

**MANILA CIGARS IN TEA.**

Or without. Just the thing for a Christmas present. Call at the HAWAIIAN TOBACCO CO. corner King and Bethel streets, and place your order for a box. Only a few left. New stocks of smokers' requisites just arrived.

**Y. MAN SING**

117 NUUANU STREET.

**WARRIORABLE DRESS-MAKER**

**LADIES' UNDERWEAR.**

Dresses made to order. Sewing guaranteed. If the stitches break I will repair without extra charge.

**CHICHESTER'S ENGLISH PENNYROYAL PILLS**

Original and Only Genuine. SAFE. They relieve Ladies and Druggists of CHICHESTER'S ENGLISH in RED and Gold metallic boxes, sealed with wax ribbon. Take no other. Beware of Dangerous Substitutions and Imitations. Buy of your Druggist, or send 4c. in stamps for Particulars, Testimonials and "Health for Ladies," to letter by return mail. 16,000 Testimonials. Sold by all Druggists. Chichester Chemical Co. Made in England. PHILA. PA.

**CALABASHES**

A fine display of Food Bowls for polishing. Wili-wilis dried.

**FOOD BOWLS**

Hawaii & South Seas Curio Co.

**WILI-WILIS**

Alex. Young Bldg.

The greater the experience of persons possessing property or money the more they realize the wisdom of engaging the trust company as executor, trustee, attorney or agent. The greater the inexperience of such persons, the more the trust company's services are needed. No charge for consultation. Our booklet "Money Management" free at our office or by mail.

**Hawaiian Trust Co., Ltd.**

Fort Street

**WM. G. IRWIN & CO., LTD**

Wm. G. Irwin, President and Manager John D. Spreckels, First Vice-President W. M. Giffard, Second Vice-President H. M. Whitney, Jr., Treasurer Richard Ivers, Secretary A. C. Lovekin, Auditor.

Sugar Factors and Commission Agents

**AGENTS FOR THE**

**Oceanic Steamship Company** Of San Francisco, Cal.

**AGENTS FOR THE**

Scottish Union & National Insurance Company of Edinburgh.

Wilhelms of Magdeburg General Insurance Company.

Associated Assurance Company of Munich & Berlin.

Alliance Marine & General Assurance Co., Ltd., of London.

Royal Insurance Company of Liverpool, Alliance Assurance Company of London.

Rochester German Insurance Company of N. Y.

**Fire Insurance,**

**THE B. F. DILLINGHAM CO., LIMITED.**

General Agents for Hawaii.

Atlas Assurance Company of London.

Phoenix Assurance Company of London.

New York Underwriters' Agency.

Providence Washington Insurance Company.

Phoenix Insurance Company of Brooklyn.

Fourth Floor, Stangenwald Building.

**The Famous A.B.C. Beers** are guaranteed absolutely pure.



# What to Give Men For Christmas

We cordially invite the ladies especially to visit this store during the few remaining days 'till Christmas. Unless you have seen our Christmas display you have missed the richest and finest show in town.

Perhaps we can help you solve some of the Christmas gift perplexities. There isn't much outside the useful to give a man—because only the useful appeals to him. At least come here, then think it over. We have thousands of useful things.

UMBRELLAS, SUIT CASES, BATH ROBES, DRESSING GOWNS, STEAMER RUGS, SILK SUSPENDERS, NECKWEAR AND MUFFLERS, BELTS, PANAMA HATS, FANCY HOSE, SILK BANDANAS.

**M. McInerney, Ltd.**  
CORNER MERCHANT AND FORT STREETS.

# METEOROLOGICAL SUMMARY FOR MONTH OF NOVEMBER

METEOROLOGICAL RECORD FOR THE MONTH OF NOVEMBER, 1904. (In Hawaiian Islands), UNITED STATES DEPARTMENT OF AGRICULTURE, WEATHER BUREAU.

Approximate percentages of district rainfall as compared with normals: Hawaii—Hilo, 70 per cent; Hamakua, 142 per cent; Kohala 140 per cent; Kona, 28 per cent; Kau, 11 per cent. Maui (East) 130 per cent. Oahu—Honolulu, 103 per cent; Nuuanu, 87 per cent; Koolau, 104 per cent; Ewa, 63 per cent. Kauai—Lihue, 43 per cent; Hanalei, 34 per cent; Waimea, 28 per cent. The greatest monthly rainfall was 18.01 inches at Puuohua, Hawaii. The greatest twenty-four hour rainfall was 3.72 inches on the 27th, at the United States Magnetic Station, Oahu.

### TEMPERATURE TABLE.

Station—	Elev. ft.	Mn. Mn. Mn.				Dew Rel. Pt. hy.
		ft.	mx.	mo.	H. L.	
Hawaii—						
Pepeekeo	100	78	68	73	82	65
Hakalau	200	77	66	72	81	62
Ookala	400	78	66	72	83	61
Kohala Mission	551	77	66	72	82	62
Niuli	200	78	69	73	82	64
Volcano House	4000	70	51	60	75	47
Kauai—						
Lihue	1850	78	58	68	83	52
Pahala	850	82	64	73	88	61
Olaa Mill	210	81	59	70	83	54
Mau—						
Kaanapali	12	82	66	74	87	61
Wailuku	250	81	66	74	85	55
Kihel	(?)	82	67	74	89	61
Oahu—						
United States Weather Bureau	121	78	68	73	82	61
United States Magnetic Station	45	82	66	74	86	54
United States Experimental Station	350	80	68	74	84	60
Punahou	47	79	68	73	81	57
Ahuimanu	350	80	66	73	84	60
Waiaua	(?)	79	64	72	83	57
Ewa Mill	60	78	64	71	82	54
Kahuku	25	80	71	75	84	62
Kauai—						
Lihue	200	81	65	73	85	50
Kilauea	342	78	65	72	82	56
Kealia	15	79	67	73	83	58
Koloa	241	80	67	74	84	54
Makaweli	(?)	84	67	75	88	57
Kahoolawe—						
Kaahoolawe	1420	88	71	79	102	64

Hawaii—Pepeekeo reports solar halos on the 2d and 29th; light earthquake shock at 8 p. m. of the 13th; heavy fall of snow and hills covered on the 28th; snow disappeared by the 30th. Niuli reports thunder on the 28th to northward of station. Oahu—United States Weather Bureau reports solar rainbows on various dates.

### RAINFALL FOR NOVEMBER, 1904.

Stations—	Elev. Ft.	Inches Rain
HAWAII.		
Hilo.		
Papaikou	8.91	
Waialea	5.19	
Hilo (town)	10.0	
Kaunama	10.50	
Pepeekeo	10.0	
Hakalau	2.0	
Puuohua	10.50	
Laupahoehoe	5.00	
Ookala	4.00	
Puueo	8.5	
HAMAKUA.		
Faaulo	3.00	
Kukiaia	2.50	
Honokaa (Meincke)	11.00	
Kukuiahae	7.00	
Kohala.		
Niuli	2.00	
Kohala (Mission)	5.21	
Kohala (Sugar Co.)	2.70	
Hawi Mill	6.00	
Puakea Ranch	6.00	
Puuhue Ranch	1.847	
Waimea	3.720	
Awini Ranch	11.100	
KONA.		
Huehue	2.000	
Holuoloa	1.350	
Kealahou	1.530	
Kealahou (Wallace)	1.27	
Napoopoo	2.5	
Puuwaawaa Ranch	2.736	
Kau.		
Kau	1.850	
Honuaou	2.5	
Naaiehu	6.50	
Hilea	3.10	
Pahala	0.50	
Volcano House	4.000	
Kea Homesteads	2.000	
Puna.	1.98	
Olaa Mill	2.10	
MAUI.		
Kaanapali	12	
Kaupo (Mokulau)	285	
Kipahulu	308	
Kihel	1.80	
Nahiku	850	
Haiku	700	
Kula (Erehwon)	4.000	
Puomalei	1.400	
Pala	1.80	
Haleakala Ranch	2.000	
Wailuku	250	
Kahului	3.09	
Makawao	1.700	
Puunene	73	

Stations—	Elev. Ft.	Inches Rain
Oiokele Valley	1310	4.12
Halaala	250	2.05
Kapahi	300	3.30

### DELAYED REPORTS FOR OCTOBER.

Ewa Plantation, Oahu	50	1.97
Haleakala Ranch, Maui	2000	1.87
Hawi Mill, Hawaii	600	1.79

ALEX. McC. ASHLEY, Section Director.

COLDS are quickly cured by Chamberlain's Cough Remedy. It acts on nature's plan, loosens the cough, relieves the lungs and opens the secretions, effecting a permanent cure. It counteracts any tendency of a cold to result in pneumonia. For sale by all dealers. Benson, Smith & Co., Ltd., agents for Hawaii.

The Alameda leaves for the coast Wednesday morning at 9 o'clock.

# OLD PLANTERS

THE HAWAIIAN GAZETTE CO. HAS, AT CONSIDERABLE EXPENSE, SUCCEEDED IN COMPLETING A LIMITED NUMBER OF SETS OF PLANTERS' MONTHLIES FROM VOL. I OF 1882 UP TO THE FIRST OF THE PRESENT YEAR.

OF THE EARLIER NUMBERS, LONG SINCE OUT OF PRINT, MANY ISSUES WERE ENTIRELY EXHAUSTED, MAKING IT NECESSARY TO RESET AND REPRINT ALL SUCH NUMBERS, THUS ADDING MATERIALLY TO THE COST. THIS EXTRA EXPENSE WAS MORE THAN JUSTIFIED, HOWEVER, BY THE VALUABLE NATURE OF MUCH OF THE MATTER CONTAINED IN THESE OLD NUMBERS, MATTER THAT CANNOT BE FOUND ELSEWHERE THAN IN THESE BOOKS AND THAT IS VALUABLE REALLY BEYOND PRICE TO THE PLANTATION INTERESTS. THESE PLANTERS ARE UNIFORMLY BOUND IN FULL LAW SHEEP, GIVING THEM AN ATTRACTIVE APPEARANCE IN ADDITION TO THEIR DURABILITY.

ANYONE DESIRING A COMPLETE SET, OR ANY PART OF A SET, WOULD DO WELL TO COMMUNICATE WITH THE GAZETTE CO. AT AN EARLY DATE, AS THERE ARE BUT VERY FEW SETS AVAILABLE AT THE PRESENT TIME, AND IN ORDER TO COMPLETE MORE SETS IT WILL BE NECESSARY TO RESET AND PRINT MORE BACK NUMBERS, THUS INCREASING THE COST STILL MORE.

# KOREA DAMAGED MARINE RAILWAY

When the P. M. S. S. Korea was being worked into a berth at the naval docks last week, she ran foul of the marine railway tracks and badly damaged them. The iron shoeing was ripped off and in places cut through. Heads came off seven-eighth inch bolts, and when the heads held, the bolts were pulled out of the solid timber sills. Boulders were rolled over the track and added to a scene of wreckage that came to the view of the marine railway diver when he made an examination. It is only recently that the tracks



# BY AUTHORITY

## PAYMENT OF WATER RATES.

As provided for in Section I, Chapter XXVI of the session laws of 1896:

All persons holding water privileges or those paying water rates are hereby notified that the water rates for the six (6) months ending June 30, 1905, will be due and payable at the office of the Honolulu Water Works on the first day of January, 1905.

On all such rates remaining unpaid on January 15, 1905, an additional charge of 10 per cent will be made.

All privileges upon which rates remain unpaid to February 15, 1905 (30 days after becoming delinquent), are subject to immediate shut off, without further notice.

The outside men have been instructed to shut off all delinquent privileges as fast as possible after February 15, 1905.

Rates are payable at the office of the Honolulu Water Works to the Chief Clerk of the Department of Public Works.

J. H. HOWLAND, Supt. of Honolulu Water Works. Honolulu, T. H., Dec. 15, 1904. 6977.

## PUBLIC LANDS NOTICE.

Notice is hereby given that at and after 9 o'clock a. m. Monday, January 9th, 1905, applications will be received under the provisions of Part VII. (Right of Purchase Leases), Land Act 1895, at the Land Department, Judiciary Building, Honolulu, for the following lots of Public Land:

20 lots of Pastoral Agricultural Land at Pupukea and Paumalu, Koolauloa, Oahu, of from 85 acres to 182 acres area each.

These lots are about 5 miles north of Waialea, immediately adjacent to the line of the Oahu Railway.

The Government reserves the right to a 50-foot strip across lots 1, 2, 3, 4, 12, 13, 14, and the right to a 20-foot strip across lots 2, 3, 5, 6, 6A and 13. If the same is required for the purpose of a public road, such strips to be located at the option of the Government official charged with the location or construction of Government roads in this district, and to be taken without compensation for unimproved value of land.

Appraised value of above lots is \$12.50 per acre. Plans of the lots and full particulars as to necessary qualifications of applicants, method of applying, etc., may be obtained at the Land Department, Judiciary Building, Honolulu. (S.) JAS. W. PRATT, Commissioner of Public Lands. Honolulu, T. H., Dec. 5th, 1904. 6968—Dec. 6, 10, 19, 24, 31, Jan. 7.

## SOMETHING NEW IN LIFE INSURANCE.

Take out an insurance policy with the Relief and Burial Association, for \$4.50 and have your family protected. Your family shall receive from the date of your policy and up to the date of your death, \$10 to every 100 members and \$100 to every 1000 members. Relief and Burial Association, Office No. 69, Beretania street, between Fort and Nuuanu streets.

## NOTICE.

HORSESHOE SALOON. From and after this day all my business ceases with the Horseshoe saloon. EDW. H. WOLTER. Honolulu, Dec. 16. 6977.

## NOTICE.

ANY WOMAN OR GIRL NEEDING help or advice, is invited to communicate, either in person or by letter, with Ensign L. Anderson, matron of the Salvation Army Women's Industrial Home, No. 1630 King street.

# BRITT-NELSON FIGHT AT THE COLUMBIA

The Columbia Saloon will receive the returns on Tuesday night of the Britt-Nelson fight which is to take place in San Francisco. The Columbia has always furnished fist news on all big occasions and its cable service on this occasion will be the best. The first round will probably be received shortly after 7 o'clock.

## IN THE CIRCUIT COURT OF THE THIRD CIRCUIT, TERRITORY OF HAWAII—AT CHAMBERS—IN PROBATE.

In the Matter of the Estate of Morris L. Gordon, Late of Kona, Hawaii—Order for Notice of Hearing Petition for Probate of Will.

A Document purporting to be the last Will and Testament of Morris L. Gordon, deceased, having on the 2d day of December, A. D. 1904, been presented to said Probate Court and a Petition for the Probate thereof, and for the Issuance of Letters Testamentary to L. N. Aungst, George W. McDougall and John Greig having been filed by John Greig,

It is hereby ordered, That Saturday, the 14th day of January, A. D. 1905, at 10 o'clock a. m. of said day, at the Court Room of said Court at Kailua, Hawaii, be and the same hereby is appointed the time and place for proving said Will and hearing said application.

It is further ordered, That notice thereof be given, by publication, once a week for three successive weeks in the Pacific Commercial Advertiser, a newspaper published in Honolulu, the last publication to be not less than ten days previous to the time therein appointed for hearing.

Dated at Kailua, N. Kona, Hawaii, Dec. 9th, 1904. By the Court.

JOHN P. CURTIS, 6973—Dec. 12, 19, 26, Jan. 2. Clerk.

## ELECTION OF OFFICERS.

### HONOMU SUGAR CO.

Notice is hereby given that at the annual meeting of the Honomu Sugar Company held this day, the following named persons were elected as officers and directors of the above company for the ensuing year:

J. C. Jones ..... President  
J. A. Kennedy ..... Vice-President  
Geo. H. Robertson ..... Treasurer  
E. F. Bishop ..... Secretary  
T. R. Robinson ..... Auditor

Board of Directors—J. C. Jones, J. A. Kennedy, Geo. H. Robertson, E. F. Bishop, T. R. Robinson, W. G. Brash, C. M. Cooke.

E. F. BISHOP, Secretary.  
Honolulu, H. T., October 31, 1904.

## NOTICE

At the general meeting of the Japanese Benevolent Society held on December 13, 1904, the following officers were elected to serve during the ensuing year:

Dr. Iga Mori ..... President  
Mr. S. Yamanaka ..... Vice President  
Mr. Y. Soga ..... Secretary  
Mr. T. Uyeno ..... Treasurer  
Mr. M. Kishi ..... Auditor  
Y. SOGA, Secretary.  
6975.

## NOTICE

Is hereby given that while Chock Tong Esq. is absent from the Territory of Hawaii our Mr. Wong Chee will sign and act for our firm.

WING WO TAI & CO.  
Dated: Honolulu, Dec. 16, 1904. 6977.

## NOTICE

Is hereby given that I appoint Messrs. C. K. Chow and Wong Chee to act for me under full power of attorney during my absence from the Territory of Hawaii.

CHOCK TONG.  
Dated: Honolulu, Dec. 16, 1904. 6977.

Kukuihale	7.00	8.99
Niuli	2.00	6.32
Kohala (Mission)	5.21	6.47
Kohala (Sugar Co.)	2.70	6.49
Hawi Mill	6.00	6.13
Puakea Ranch	6.00	4.71
Puuhue Ranch	1.847	5.87
Waimea	3.720	3.89
Awini Ranch	11.100	13.12
KONA.		
Huehue	2.000	0.15
Holuoloa	1.350	1.08
Kealahou	1.530	1.34
Kealahou (Wallace)	1.27	1.27
Napoopoo	2.5	0.65
Puuwaawaa Ranch	2.736	0.33
Kau.		
Kau	1.850	1.97
Honuaou	2.5	0.55
Naaiehu	6.50	0.70
Hilea	3.10	0.50
Pahala	0.50	0.12
Volcano House	4.000	2.21
Kea Homesteads	2.000	1.98
Puna.		
Olaa Mill	2.10	6.38
MAUI.		
Kaanapali	12	2.83
Kaupo (Mokulau)	285	3.62
Kipahulu	308	3.73
Kihel	1.80	1.80
Nahiku	850	11.25
Haiku	700	6.43
Kula (Erehwon)	4.000	2.65
Puomalei	1.400	9.50
Pala	1.80	5.10
Haleakala Ranch	2.000	7.59
Wailuku	250	6.07
Kahului	3.09	3.09
Makawao	1.700	10.79
Puunene	73	5.32
OAHU.		
U. S. Weather Bureau	108	4.11
Punahou	47	6.36
Kulaokahua (Castle)	50	4.94
U. S. Naval Station	6	4.25
College Hills	175	7.01
Manoa (Woodlawn Dairy)	285	9.21
Manoa (Rhodes Gardens)	300	14.74
Insane Asylum	30	4.10
Kailihi-uka	485	8.54
Nuuanu (Hall)	50	4.38
Nuuanu (Wyjille St.)	250	5.32
Nuuanu (Elec. Station)	405	5.30
Nuuanu (Luakaha)	850	11.60
U. S. Experiment Station	350	5.45
Tantalus Heights (Frear)	1360	10.19
Waimanalo	25	6.37
Maunawili	250	8.17
Kaneohe	100	4.88
Ahuimanu	350	7.08
Kahuku	25	6.13
Ewa Plantation	60	3.05
U. S. Magnetic Station	45	4.94
Moanalua	15	3.76
Waiaua	60	6.77
KAUAI.		
Wilcox Ditch	725	3.50
Mahaulepu	90	3.87
Koloa (Kukuluia)	100	2.68
Makaweli	7.22	7.22
Lihue (Weber)	200	2.88
Lihue (Grove Farm)	200	2.74
Lihue (Molokoa)	250	2.90
Lihue (Kukaua)	1000	4.51
Kealia	15	1.87
Kilauea Plantation	342	2.62
Waiaua	30	1.10
Eleele	150	1.30
Wahiawa	150	1.77
McBryde	900	2.99</



## Don't Wait

If you are going to have any of the following good things for the Christmas dinner order them now and you'll not take any chance of being disappointed:

- Lady Apples (for Xmas trees), Apples, Oranges, Celery, Cauliflower, Turnips, Parsnips, Hubbard Squash, Horse Radish.

### HENRY MAY & CO., LTD.

Retail 22—Telephones—Wholesale 92

### EARLE CLEANING AND DYEING WORKS

Fort Street, opposite Star Block. LADIES' AND GENTS' CLOTHING CLEANED AT LOWEST PRICES. Phone White 2362.

### CHRISTMAS PIANOS

Time to think about making a choice. We will reserve any instrument you may select and deliver it at Christmas time. Sold on easy payments.

Bergstrom Music Co., Ltd.

### Frogs For Sale

ALIVE OR DRESSED. Apply, George Landon, Corner of Queen and Coral streets, opposite Magoon block.

### Santa Claus' Headquarters

THOS. G. THURM'S STORE, 1063 Fort Street.

Is replete with its usual supply and variety of HOLIDAY SEASON GOODS for which it has long been noted, with an unusual selection of New Books by popular writers, to all of which, early attention is invited for choice of articles and avoidance of usual rush towards Xmas.

Good goods at right prices in all cases. Store open evenings up to Xmas eve.

Look out for the coming HAWAIIAN ANNUAL, its 31st issue; an especially strong historic and reminiscent number. Will be ready about December 20th.

## Builders

Should not fall to get our bid for the lumber, builders' hardware, etc., when giving estimates for building. They'll find our prices to be lower than those quoted elsewhere—due to our large buying and selling facilities. Largest and most varied stock of building materials suitable for the construction of any size dwelling.

No trouble to give you an estimate.

### Lewers & Cooke, Ltd

177 S. KING STREET.

### ELEGANT HOLIDAY Furniture

Come and see the rich display.

### Porter Furniture Co.

YOUNG BUILDING.

### Lovejoy & Co.

Liquor Dealers.

Nuuanu and Merchant Sts. Phone Main 308.

### The Miller Candy Co.

Will open today with a full line of Fresh Home Made Candies across the street from the restaurant, Hotel Street.

Come and see the Candy Made.

# MAUI LEGISLATORS WANT A SIXTY-DAY SESSION

## The Whole Raft Going to Molokai to Celebrate the Republican Victory—Schools Have Christmas Trees.

MAUI, Dec. 17.—All the Maui legislators—Senators Kalama and Hayselden, Representatives Copp, Haia, Kalino, Pali and Coelho—will sail for Molokai by the steamer Likelike on the 23rd, intending to spend Christmas there. They will make a week's visit assisting Molokai residents in celebrating the recent Republican victory.

The regular annual meeting of the stockholders of the First National Bank of Wailuku will be held at the banking house in Wailuku, at 2 o'clock p. m., on Jan. 10, 1905, for the purpose of electing a Board of Directors for the ensuing year.

The Keanae orange crop is ripening. Another place in Hana district where oranges are raised is at Kaupo. Wailuku raises a few oranges but the best climate on Maui for the production of the golden fruit is at Lahaina and Lahainaluna.

The postponed convention of Maui teachers will take place in the new Wailuku school building on Friday, Jan. 6, 1905, beginning at 10 o'clock a. m.

### CHRISTMAS TREES.

There were a number of Christmas tree celebrations at various Maui schools yesterday. Last evening quite a gathering of people assembled at Alexander House, Wailuku, to witness Christmas tree exercises by the kindergartners and their pupils.

In the morning a number of Hamakuapoko residents attended the tree exercises at the Hamakuapoko kindergarten in charge of Miss Steele. The little children gave presents to each other and enjoyed the refreshments.

At the Paia kindergarten, Miss Mosser and her assistants also made the day delightful for their tiny pupils.

At the Kaupakalua government school there was a fine Christmas tree and an entertainment consisting of appropriate songs and recitations, with candy, oranges, pop corn, etc., for the children.

At the Makawao school there was a tree with refreshments and a program ending with a Christmas play entitled, "Santa's Lost Sack."

### NOTES.

Sub-Land Agent W. O. Aiken returned from Kauai on Wednesday, having successfully disposed of the ten lots of Government land at Hanalei.

Dr. W. G. Rogers, the Honolulu oculist, has seen a large number of patients at Paia plantation hospital during the week since Wednesday. He will be there for several days longer.

Tax Assessor W. T. Robinson, of Wailuku, returned from Honolulu on Wednesday's Claudine.

Miss Hart of Punahou is visiting Mrs. W. O. Aiken at Puuomalei, Makawao.

Mrs. H. A. Baldwin, of Hamakuapoko, departs for Honolulu today for a brief visit.

Kula citizens will hold a meeting this afternoon at Pulahu to decide upon recommendations to be made to the Maui legislators.

By the way, it is stated that the Maui law-makers are in favor of a 60-day session for the legislature of 1905.

On Wednesday congratulations were offered Mr. and Mrs. T. M. Church of Paia upon the advent of a baby boy.

Miss McGowan of Kula departs for Honolulu today for the holidays.

Miss R. E. Crook, of Makawao, went to Hawaii by the steamer Mauna Loa of the 16th. Mr. W. C. Crook and Miss Irene Crook will depart for Honolulu today.

Weather: A heavy rain on Thursday—1.85 to 2 inches.

## IS THE LAST SURVIVOR OF THE CUSTER MASSACRE

NEW YORK, Dec. 10.—William McGee, who claims to be the sole white survivor of Custer's command in the famous battle of Little Big Horn, is under arrest here charged with homicide.

Late Thursday night he got into an argument with Frank Mitchell, a salesman, over the proper method for cooking a kidney stew. A quarrel followed and the men attacked each other with kitchen knives, the fracas having occurred in Mitchell's flat.

McGee, who lived on the Western frontier forty years, declares Mitchell attacked him and by practicing an old trick he felled his opponent, not, however, until he received a severe scalp wound.

Mitchell did not appear badly off at the time, but he died 24 hours later. McGee was arrested meantime in a newspaper office where he had gone to set the editor right regarding the story of the fight.

In telling of his service in the army, McGee declared he was detached by Custer, just before the massacre, to carry a message to Major Reno, who was to have made a joint attack with Custer's troops on the Indians.

McGee bears the scars of many wounds which he claims to have received before he reached Reno's forces. Recently he came here from Texas and has been canvassing for a magazine.

## OAHU PRISON MODERNIZED

(Continued from page 1.)

doors, and the prison is cool in the hottest days.

It should meet the needs of the Territory, in the way of a central prison, for a number of years to come. The old prison has accommodations for 360 prisoners, and with the roomy new building, with its clean and airy cells, there should be no trouble in providing place for all the unfortunates who may come into collision with the police department through their inability to observe the laws.

High Sheriff Henry is proud of his new prison, and justly. He is even prouder of the cleanliness and order that pervade the whole prison estab-

lishment, and also justly. The High Sheriff was himself keeper of Oahu Prison for many years, and knows how a prison should be conducted. In Warden Kamana and Deputy Warden Bourke, moreover, he has two assistants who bring to their work an intelligent understanding of the problem before them, and a keen sense of the responsibility that is upon them to enforce the law—to punish while at the same time inflicting no more hardship than the law prescribes for the men under their charge.

Prisoners get justice in Oahu Prison if they also get what is coming to them. The management, in fact, is perhaps the best that it has ever been in the history of the Territory. High Sheriff Henry, besides his knowledge of what should be done, has the power now to carry out his ideas. And he has assistants who will give him intelligent help.

## REALTY TRANSACTIONS.

Entered for Record Dec 17, 1904.

Yee Wo to Chee Yet..... L  
J W Kalo to Samuel Andrews..... Rpt  
Andrew Cox to Yau Lee Yuen..... L  
Manuel da S Orta to Joseph Quel-  
ho ..... Rel  
John Kahuli et al to E Faxson-  
Bishop, Tr ..... M  
David Kaapa to Trs of Est of B P  
Bishop ..... S L  
Wong Tong to Siu Ten Yee..... B S  
Siu Ten Yee to Pang Jing..... B S  
John Martins to Maria de J Mar-  
tins ..... D  
Jose M Macarao and wf John C Pin-  
ho ..... D  
Paahao and wf to Jose M Ferreira ..... D  
Jose M Ferreira to A B Lindsay.... M  
J Kahapula and wf to Manoel J  
Medelroe ..... D  
Antonio R Lucas and wf to Peter  
Silva ..... D

Recorded Dec 10, 1904.

James A Hepper Co Ltd to H A Heen,  
Rel: 4 leaseholds, mill, bldgs, crops of  
paddy, livestock, furniture, tools, fix-  
tures, etc. Kamohihihi, Honolulu, Oahu.  
\$3000. B 215, p 221. Dated Aug 11,  
1904.

Wong Leong to Min Yee, L; 3 pes  
land, Kailua, Koolau, Oahu. 15  
yrs at \$225 per annum. B 263, p 180.  
Dated Oct 1, 1904.

Oahu Railway & Land Co to Emma  
L Dillingham, D; lots 6 and 7, blk 25  
and lots 4, 5, 16 and 17, blk 26, Pearl  
City, Ewa, Oahu. \$1000. B 264, p 252.  
Dated May 18, 1904.

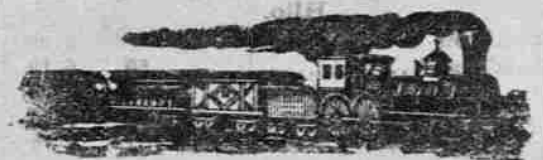
S C Allen Est of by Trs to Oahu  
Railway & Land Co. A M; mtg F J  
Cross et al on 3 leaseholds, bldgs, etc,  
King street, Honolulu, Oahu. \$1. B  
260, p 333. Dated Nov 25, 1904.

Mary L Porter (widow) to Daniel  
Porter, D; 18-100 acr land, Church St,  
Hilo, Hawaii. \$1210. B 269, p 1. Dated  
Oct 10, 1904.

Chas Moore and wf to Court of Ma-  
una Kea No 8854, Ancient Order of Ho-  
resters by Trs, M; pc land, Puueo, Hilo,  
Hawaii. \$350. B 268, p 1. Dated Nov  
18, 1904.

Zelubabera Kakina and wf by aft of  
mtgce to Albert S Wilcox, Fore Aft.  
1 acr land, Oloheua, Kauai, int in hui  
land, Wainiha, Hanalei, Kauai. B 260,  
p 334. Dated Dec 10, 1904.

## ANOTHER



## Monuments and Iron Fences Just Received

Many neat up-to-date designs shown. We study to please. Your wish faithfully carried out. Satisfaction guaranteed.

## J. C. Axtell,

1048-50 Alakea Street. P. O. Box 642. Phone Blue 1801

## THE Aquarium NOW OPEN!

## AT Kapiolani Park

THE AQUARIUM WILL BE OPEN on Week days from 10 o'clock a. m. to 9 p. m. and from 7 to 9:30 o'clock p. m. On Sundays it will open at 1 p. m. ADMISSION will be FREE on Thursdays. On other days a charge will be made of 10 cents to adults and 5 cents to children under fourteen years of age.



THE TYPEWRITER which does the most work and the best work in the shortest time for the longest time is the

## Remington

J. H. HARRISON, Agent. Hotel Street.

## OAHU ICE & ELECTRIC Co

Ice delivered to any part of the city. Island orders promptly filled. Tel. Blue 2751. P. O. Box 600. Office: Kewalo.



Announcement of Auctions

## FOR LEASE.

I have for lease one of the finest and most complete properties in the city for the purpose of a private hotel.

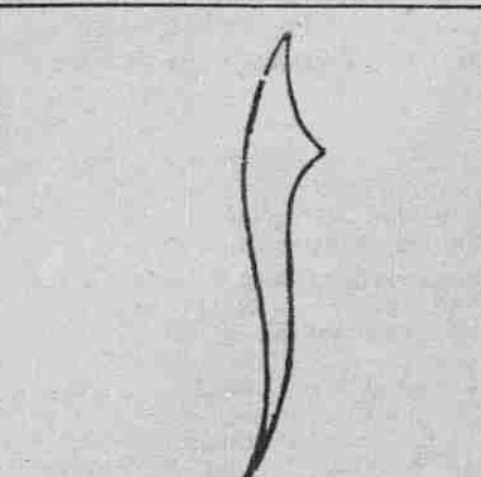
The property is in the heart of the city, within a few minutes' walk of the Postoffice and business district, is well kept and buildings are new and in good repair. There is a large main building with four roomy bedrooms, large dining room, wide halls, and verandas.

Two cottages containing 9 bedrooms, sitting rooms, etc. All rooms are connected with baths fitted with the latest sanitary improvements.

Bona fide applicants can view the property by obtaining an order at my office.

Tenant must be a responsible party who will take good care of the place. Apply to

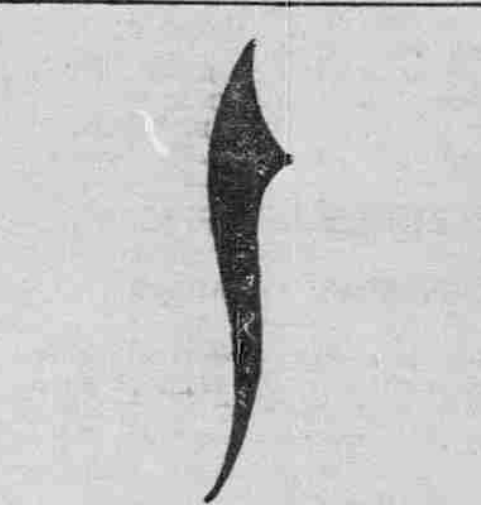
JAMES F. MORGAN, 857 Kaahumanu Street.



## FOR RENT.

Anapuni Street—Unfurnished.....\$25.00  
Beretania Street—Furnished..... 50.00  
Beretania Street—Unfurnished..... 22.00  
Aloha Lane—Unfurnished..... 18.00  
Lunalilo Street—Unfurnished..... 30.00  
Waikiki Road—Unfurnished..... 18.00  
Off Waikiki Road—Unfurnished... 10.00

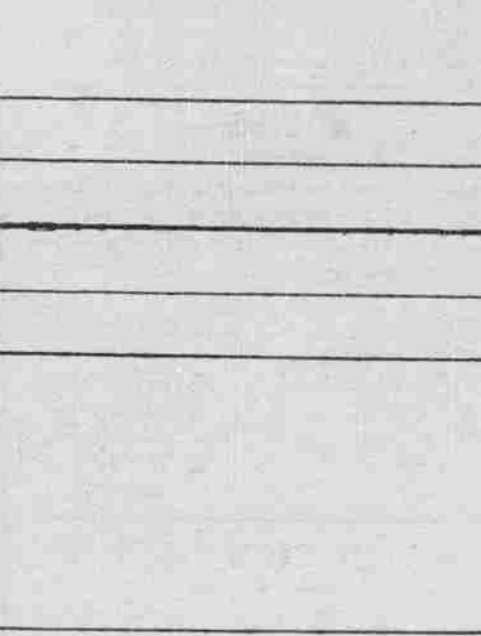
JAS. F. MORGAN, 857 Kaahumanu street.



## FOR RENT.

One of the best business corners in Honolulu. A money-making first-class rooming house.

JAS. F. MORGAN, AUCTIONEER.



AT AUCTION

## Castle & Cooke, Ltd

HONOLULU. Commission Merchants. SUGAR FACTORS. —AGENTS FOR— The Ewa Plantation Co. The Wailua Agricultural Co., Ltd. The Kohala Sugar Co. The Waima Sugar Mill Co. The Fulton Iron Works, St. Louis. The Standard Oil Co. The George F. Blake Steam Pump. Weston's Centrifugals. The New England Mutual Life Insurance Co., of Boston. The Aetna Insurance Co., of Hartford, Conn. The Alliance Assurance Co., of London.

## Gillman House Boquet Cigars BEAVER LUNCH ROOMS

Harrison Mutual Burial Association of Honolulu. Has over 2,800 members. Has buried 102 members during the two years since its organization. \$4.50 entitles you a certificate in Class A, entitling you to all its benefits. J. H. TOWNSEND, Secretary.

## W. W. AHANA & CO.

Limited Merchant Tailors. Waity Building, King St. Phone Blue 2741. Opposite Advertiser Office. American and Foreign Worsteads.

## CHOICE STOCK

Five fine bred milch cows to arrive December 21 per S. S. Nevada.

## CLUB STABLES,

Fort, above Hotel street; telephone Main 109.

## JAPANESE Groceries and Provisions

Manufacturers of Straw Hats.

## IWAKAMI & CO

HOTEL STREET.

## HONOLULU IRON WORKS COMPANY.

Machinery, Black Pipe, Galvanized Pipe, Boiler Tubes, Iron and Steel, Engineers' Supplies. Office—Nuuanu street. Works—Kakaako.

## Honolulu Candy Co.

New England Bakery. J. OSWALD LUTTED, Manager.

## Roofs Repaired

BY WM. T. PATY.

Carpentry of all kinds attended to. Give us a call.

## Holiday Stationery

Special holiday packages of high grade stationery suitable for Christmas gifts, at

Hawaiian News Company, Alexander Young Building.

## AH PAT & CO.

103 South King, near Alakea. MERCHANT TAILORS. Expert cutter, formerly with J. D. Tregloan. Cleaning and repairing a specialty.

## G. W. LINCOLN

Contractor and Builder No. 916 ALAKEA STREET.

## A FINE NEW ASSORTMENT

Direct from China. GRASS LINEN in all colors also embroidered pieces for Shirts, etc.

## Kwong Yuen Hing Co.

36 and 38 N. King Street.

## COURTEOUS TREATMENT. PROMPT ATTENTION. BEST QUALITY AND LOTS MORE AT

## CONSOLIDATED SODA WATER WORKS

PHONE MAIN 71.

## COTTON BROS. & CO.

ENGINEERS AND GENERAL CONTRACTORS. Plans and Estimates furnished for all classes of Contracting Work. Boston Block, : : : Honolulu.

## ALL KINDS OF Rubber Goods

Goodyear Rubber Co. R. H. PEASE, President, San Francisco, Cal., U. S. A.



## WILLIAM BLAISDELL BURIED YESTERDAY

The funeral of William Blaisdell took place yesterday afternoon from his late residence on Young street, near Pihiki, the interment being in Nuuanu cemetery. The services were attended by a large number of friends and relatives, and the floral tributes were quite numerous.

Rev. W. M. Kincaid of Central Union Church officiated both at the residence and at the grave. A choir composed of Mrs. Cornelia Damon, Miss Damon, Miss Yarrow, Rev. Mr. Logan and Mr. Hutchins sang effectively "Nearer, My God, to Thee," and "Rock of Ages."

The pall bearers were Messrs. C. W. Ashford, Carlo Long, Colonel C. J. McCarthy, Charles Weight, Charles Falk, Frank Kruger.

Mr. Blaisdell was seemingly in the best of health all day Saturday. He attended the football game in the afternoon, where, it is said, he may have overtaxed himself, for he was one of the most enthusiastic of spectators. After the game he went almost directly to the home of John Colburn, where he expected to dine. He sat down on a sofa and presently was stricken with paralysis. Dr. Wood was called and after some time the patient seemed better and he was sent to his home. He chatted with his family and some friends for a while, but finally fell asleep and never awoke.

## HOODLUMS ON CARS ARE OBJECTIONABLE

Some examples of hoodlumism have been reported recently as having taken place on the Rapid Transit cars. One was of a couple of soldiers who sat near the front of a Walkiki-bound car which was largely patronized by ladies. The soldiers were somewhat intoxicated and insisted on showing their contempt of propriety by drinking from a big, black bottle, containing whiskey.

Another instance is reported by a lady who rode in from Waiatale the other day when two Portuguese youths made themselves objectionable by their conduct toward a couple of young girls, until the girls were compelled to leave the car.

### BUSINESS LOCALS.

Big gift day today at Sachs. See Jordan's advertisement on this page.

Souvenir with children's hats at Sachs.

Whitney & Marsh will remain open every evening until Xmas.

Handsome painted plaques free today with dollar purchase at Sachs.

Christmas red berries, red lilies and assorted cut flowers at Mrs. Taylor's.

First shipment of spring goods, figured organdies, gauzes, etc., at B. F. Ehlers & Co.'s.

B. F. Ehlers & Co. will keep open, Thursday, Friday and Saturday evenings, Dec. 22, 23, 24.

There isn't a better gift for Christmas than handkerchiefs. Special prices prevail at Blom's this week.

The famous Palace canned goods are sold by C. J. Day & Co. in Honolulu, and by all other reliable grocers.

Best handkerchief bargains at Sachs. Pacific Import Co. carry one of the best assorted stocks of Christmas novelties suitable for ladies, men and children.

Ship your Christmas packages to Hilo and along the Oahu Railroad by Wells-Fargo express. Office Masonic Temple.

The Imperial Barber shop on King street is a popular place for children. Mothers bring or send your boy there to have his hair cut.

Just the thing for Christmas presents. Nice editions of all standard authors. Also standard dictionary, encyclopaedias, scientific and historical works. Wm. C. Lyon Co., Ltd., Hotel and Fort streets, upstairs.

New ready-to-wear apparel at Sachs.

**RELIEF AFTER SIX YEARS.**—Mrs. M. A. Clark, of Timberrange, N. S. W., Australia, writes: "I wish to inform you of the wonderful benefit I have received from your valuable medicines. I suffered from a severe cough for six years and obtained no relief until I took Chamberlain's Cough Remedy. One bottle cured me and I am thankful to say that I have never had the cough since. Make any use of this letter that you like for the good of any other poor sufferers." For sale by all Dealers. Benson, Smith & Co., Ltd., Agents for Hawaii.

### Public Moonlight Concert.

The Government band will play this evening at Thomas Square at 7:30. The program is as follows:

**PART I.**  
Overture—"Fra Diavolo" .....Auber  
Romance—"In the Valley" .....Losey  
Grand Selection—"Parisina" .....Donizetti  
Vocal—Hawaiian Songs, arr. by Berger  
Mrs. N. Alapai.

**PART II.**  
Medley—"Musical Review" .....Riviere  
Ballad—"Star of Bethlehem" .....Adams  
Waltz—"Reverie" (new) .....Waldteufel  
March—"Uncle Sammy" .....Holzman  
"The Star Spangled Banner."

### Returns of the Fight.

Cable bulletins of the Britt-Nelson fight will be received at the Columbia Saloon on Hotel street on Tuesday evening next, December 20th.

Special arrangements have been made to receive the fight by rounds from the ringside. The first bulletin should arrive at 7 o'clock.

### LOCAL BREVITIES.

Water rate day is coming near. J. W. Springston, contractor, arrived from Maui in the Claudine.

Mrs. E. Faxon Bishop is expected to arrive on the Siberia Friday.

J. R. Bergstrom returned on the Hall from a business trip to Kauai.

Miss A. Danford arrived yesterday on the W. G. Hall from Kauai.

W. C. Crook and Mrs. Irene Crook came over from Maui in the Claudine.

The honey raising enterprise lately started near Kihel, Maui, is doing well.

H. A. Isenberg and W. Pfotenhauer returned from Maui yesterday in the Claudine.

Mrs. J. Lucas and Mrs. W. A. Hardy were passengers arriving in the Claudine yesterday.

The Walluku high school will be opened on Friday, January 6, with appropriate exercises.

G. N. Wilcox, the well known Kauai capitalist, arrived yesterday on the W. G. Hall from Kauai.

Colin Campbell, not Mr. Kellett, is captain of the Iolani team in the Association Football League.

Father Wendelin of Lahaina and Father Oliver of Hilo have exchanged places in the Catholic mission field.

H. J. Shoemaker has arrived on Maui from San Francisco to take the position of night chemist in Puunene mill.

Robert Anderson, an expert in rubber cultivation, is investigating the suitability of lands on Maui for the industry.

Wm. Williamson of the Von Hamm-Young Company arrived on the Hall yesterday morning. He has been making a short business trip to the Garden Island.

The Christmas tree celebration of the Palama chapel will take place on Wednesday evening at 7:30 at the chapel, King and Liliha streets.

Mrs. Taylor has received by the Alameda, Christmas red berries and green wreaths, which she is selling along with red lilies and assorted cut flowers.

A farewell concert to the steamer Gaelic on the occasion of her last visit to this port before withdrawal from the Oriental route will be given by the band tomorrow.

The Central Union Church will hold its Christmas tree next Thursday evening. All ladies who are to furnish cakes are requested to bring them to the church Thursday morning.

Commander Reginald F. Nicholson, commanding the cruiser Tacoma, which recently arrived at New York from a cruise from San Francisco, is visiting his father, Commodore Nicholson, at 2019 Nineteenth street, for a few days.—Washington Star.

Complaint is made by Harry Roberts and some other residents in Houghtalling road that the man who is doing the blasting for the approaches to a new bridge in Kailhi is so careless with his work that large stones fall in showers in dangerous proximity to houses in the neighborhood.

Rear Admiral S. W. Terry, formerly in command of the Washington navy yard and more recently in command of the naval station at Honolulu, Hawaii, will retire for age December 28 next, and the vacancy thus created will be filled by the promotion of Captain Joseph E. Craig, captain of the navy yard, Norfolk, Va., to the grade of rear admiral. Captain Craig is now in this city undergoing examination.—Washington Star.

### An Enjoyable Outing.

The most attractive day's outing is that afforded by the excursion down the railroad line. The HALEIWA LIMITED, a first-class train, leaves Honolulu every Sunday morning at 8:22 o'clock making the run in two hours, the rate for round trip being only \$2.00. From 10:22 a. m. until 8:10 p. m. is spent at the beautiful HOTEL HALEIWA, with fresh and salt water bathing, tennis, golf drives and walks, shooting or fishing and you are back in town at 10:10 o'clock in the evening.

THE FUNDAMENTAL LAW OF HAWAII. Bound in law calf, sent postage prepaid, to any address in the United States for \$5 a copy.

## BUY YOUR HOLIDAY GOODS

AT  
**SACHS'**  
GIFT DAY  
TODAY

**HANDSOME  
PAINTED PLAQUES  
GIVEN AWAY**

With One Dollar Purchases. See our announcement on page 9.

**N. S. SACHS DRY GOODS CO., LIMITED.**  
Corner Fort and Beretania Streets.

## Drug Store Christmas Goods

You will always find appropriate gifts in our store. We have a swell line of perfumes. Here's a partial list of holiday goods:

**BRUSHES AND COMBS,  
TOILET CASES,  
HAND MIRRORS,  
TOILET WATERS,  
KODAKS,  
CHOICE PERFUMES,  
FANCY SOAPS,  
COLORED CALENDARS.**

Our Hawaiian colored calendars at the popular price of 50 cents make a splendid gift. Former price \$1. Come and see us.

## Hobron Drug Co.

**Wallace Jackson**  
General Baggage Express  
and Dray Business.

Will make special rates for hauling by the ton. Also have fire wood for sale. Orders received by Phone 343 promptly attended to.

**Santa Claus Emporium.**  
Wall, Nichols Co.  
**Open Evenings**  
EVERYBODY WELCOME.

## Remembrances

Six days left of  
**THE GREAT GIFT SEASON.**  
Starting tomorrow morning a steady rush during the last days before Christmas, will be on. The Alameda brought many new ideas in our line, same will be on display Monday morning. Come early.

**CHILDREN'S DINNER AND TEA SETS.**  
Fine German china. Decorated and plain, white and gold, \$2.50 to \$5.00. Nineteen different patterns.

**W. W. Dimond Co., Ltd.**  
53, 55, 57 King Street

### SOMETHING NEW FOR OFFICES.

Card Index and Numerical Filing System.  
Edison's Oscillating Mimeographs.  
Burroughs' Adding Machines; a great labor saver.  
Globe-Wernicke Combination Writing Desk and Book Cases.  
Three styles of UNDERWOOD TYPEWRITER MACHINES which were awarded the GRAND PRIZE and GOLD MEDAL at the St. Louis Exposition, over all competitors.  
We have also a full line of Office and Typewriter supplies and repair all makes of machines. All work guaranteed.

**PEARSON & POTTER CO., LTD.**  
931 Fort Street.

## TIME TO ORDER YOUR CHRISTMAS TURKEY

Many good things will be on hand for the Merry Christmas dinner.

Geese, Corn Fed Turkeys, Chickens, Wild Ducks, Rabbits, Sucking Pigs, etc.

ORDER BY TELEPHONE IF YOU CHOOSE.

**Metropolitan Meat Co., Ltd.**  
Telephone Main 45.

**QUALITY. ECONOMY.**  
**SOAP**  
**Honolulu Soap Works Co.**  
FRED. L. WALDRON,  
Spreckels Block. Sales Agent.

Only Experienced Help employed at the

**Hawaiian Carriage Mfg. Co., Ltd.**  
Z. W. ZIEGLER, MANAGER.

425 Queen street, rear of Judiciary Bldg.  
Phone Main 47.

## Repairing a Specialty

**GIVE US A TRIAL.**  
**HAWAII SHINPO SHA.**

THE PIONEER JAPANESE PRINTING office. The publisher of Hawaii Shinpo, the only daily Japanese paper published in the Territory of Hawaii.  
C. SHIOZAWA, Proprietor.  
Y. SOGA, Editor.  
Editorial and Printing Office—101 Smith St., above King. Phone Main 44

**C. BREWER & CO., LTD.**  
Sugar Factors and Commission Merchants.

LIST OF OFFICERS.  
C. M. Cooke, President; George Robertson, Manager; E. F. Bishop Treasurer and Secretary; Col. W. F. Allen, Auditor; P. C. Jones, C. M. Cooke, G. R. Carter, Directors.

**DRINK**  
**White Rock**  
MINERAL WATER

W. C. PEACOCK & CO., Ltd. Agts.

## Ladies' Special Neck-wear and Real Lace Handkerchiefs

NEW YORK'S LATEST STYLES.

**Ladies' Bags**  
WORTH \$3.00 AND \$2.00 FOR  
**\$1.00**

**Pillows Pillows Pillows**  
GOOD, MEDIUM AND CHEAP.

**TOYS**  
ALL MARKED TO CLEAR AT

## E. W. JORDAN & Co., LTD.

**SMOKING AND HOUSE JACKETS**  
For the Holidays.

New line of swell TIES, SHIRTS, Etc.

—AT—  
**J. Lando . . .**  
1056 Hotel Street.

## Holiday Assortment of FINE WINES and LIQUORS

A gift that will be appreciated in almost every household is a box of favorite wines and liquors. Select from the following list any combination you wish:

WINES	WHISKIES
Moet & Chandon, (White Seal.)	Paul Jones,
Ciaret, Port, Sherry, Burgundy, Hock, Sauterne, Zinfandel, Risling.	Old Jas. E. Pepper, Jesse Moore, Cream Pure Rye, Old Jasper, 8 and 10 year old Kentucky whiskies by the gallon.

Full assortment of fine Holland Gins.  
Fine French Cognac and Liqueurs.  
Bartlett Water. Wunder, Primo and Rainier Beer.

**Lovejoy & Co.,**  
902 NUUANU STREET, : : : PHONE MAIN 208.

## SHIPPING RECEIPT BOOKS

FOR  
**Wilder Steamship Co.**  
**Inter-Island Steamship Co.**  
**Oahu Railway & Land Co.**

For Sale at  
**Hawaiian Gazette Co.**  
Von-Holt Block, King Street.

## A PAIR OF SLIPPERS ON CHRISTMAS MORNING

Think of the enjoyment in store for the man or woman who receives a pair of comfortable slippers on Christmas morning.

Men's Slippers in kid, calf, lizard and monkey skin.  
Ladies' house slippers and felt slippers for cold nights and mornings.

**Manufacturers' Shoe Co., Ltd.**  
1051 Fort Street.



Canadian-Australian Royal Mail Line

Steamers running in connection with the Canadian-Pacific Railway Co. at Honolulu on or about the following dates:

Table with columns for destination (FIJI AND AUSTRALIA, VANCOUVER), ship names (MOANA, MORANGI, MOWERA), and dates.

Through tickets issued to all points in Canada, United States and Europe. THEO. H. DAVIES & CO., LTD. GENERAL AGENTS.

Pacific Mail S. S. Co., Occidental & Oriental S. S. Co.

Steamers of the above companies will call at Honolulu and leave this port on or about the dates below mentioned:

Table with columns for destination (SAN FRANCISCO, CHINA, KOREA, etc.), ship names (GAELIC, SIBERIA, MONGOLIA, etc.), and dates.

Oceanic Steamship Co. TIME TABLE

The fine passenger steamers of this line will arrive and leave this port as hereunder:

Table with columns for destination (SAN FRANCISCO, CHINA, etc.), ship names (ALAMEDA, SIERRA, etc.), and dates.

American-Hawaiian Steamship Company

Direct Monthly Service Between New York and Honolulu via Pacific Coast. THE SPLENDID NEW STEEL STEAMERS—

Table with columns for destination (NEW YORK, etc.), ship names (S. S. Oregonian, etc.), and dates.

Pacific Transfer Co.

WILL CALL FOR YOUR BAGGAGE. We pack, haul and ship your goods and save you money.

Union Express Co.

Branch of Hustace, Peck Co., Ltd. 63 Queen Street. Having baggage contracts with the following steamship lines:



EDWARD MAY IS COMING WITH COAL

TACOMA, Dec. 7.—To load a cargo of Roslyn coal for the Hawaiian Islands, the American bark Edward May, Captain L. C. Hansen, arrived in the harbor...

The Mails.

Mails are due from the following points as follows: San Francisco—Per Gaelic, Dec. 20.

Shipping Notes.

The Gaelic arrives tomorrow from the coast with several days' later mail. The Claudine brought the following cargo:

ARRIVED.

Sunday, Dec. 18. Stmr. Claudine, Parker, from Maui ports. Stmr. W. G. Hall, Thompson, from Kauai ports.

DEPART TODAY.

Stmr. Noeau, Tullett, for Kauai ports, 5 p. m. Stmr. Likeli, Naopala, for Maui and Molokai ports, 5 p. m.

ARRIVE TOMORROW.

O. & O. S. S. Gaelic, Finch, from San Francisco, a. m. Stmr. Likeli, Naopala, from Molokai ports, p. m.

from Kauai ports—G. N. Wilcox, J. R. Bergstrom, W. F. Reynolds, Miss M. Christian, Miss K. Christian, Mrs. M. Mendola, John Mendola, J. Nevins, William Williamson, E. H. Kuhlmann, Miss A. Danford, Miss M. Traak, E. Pohai, Tock Yuen, J. Kanishige and 55 deck.

DEPARTED.

Stmr. Kaulani, Bennett, for Hilo, 9:30 a. m. U. S. S. Iroquois, Niblack, Station vessel.

VESSELS IN PORT.

ARMY AND NAVY. U. S. S. Iroquois, Niblack, Station vessel. U. S. S. Petrel, Sherman, Station vessel, San Diego, Dec. 8.

MERCHANT VESSELS.

Alameda, s.s., Dowdell, San Francisco, Dec. 16. Archer, Am. bkt., Lancaster, San Francisco, Dec. 17.

U. S. WEATHER BUREAU.

Alexander Young Building, Honolulu, T. H. December 18, 8 p. m. Mean temperature—70.

Classified Advertisements.

WANTED.

A FLAG pole; price must be reasonable. Address X, this office. 6978.

FURNISHED ROOM.

COOL mosquito-proof rooms, electric lights, telephone, all modern conveniences, lowest rates and most central location in city at Helen's Court, rear of Hart's Ice Cream Parlors. 6953

FOR RENT.

AT Waikiki beach, a six-room mosquito-proof cottage, partly furnished; also stables and servants' quarters; possession given Jan. 15th, 1905. Apply at 2011 Kalia road. 6976.

FURNISHED rooms at the Methodist parsonage, Beretania and Miller streets. 6974.

FURNISHED rooms, corner Hotel street and Adams lane. Apply premises. 6938

COTTAGES; Christley lane, off Fort St. Rent reasonable. Apply Wong Kwai.

FOR SALE.

COMPLETE set bound volumes Planters' Monthly. 22 vols., 1882 to 1904. Uniform binding; full sheep. Price \$175.00. Address P. M., care Gazette 6908

OFFICES FOR RENT.

"THE STANGENWALD," only fire-proof office building in city.

FOUND.

A DIAMOND ring. Owner can have by calling at his office, proving property and paying all expenses. 6975.

LOST.

THE following warrant has been lost through the mail and payment has been stopped: Warrant No. 10,063, for \$42.50, in favor of Akuni Ahau; finder will please return to HENRY COBB ADAMS, Heela, Koolau-poko, Oahu. 6978.

FOR SALE.

A half acre of ground with fine residence, stable, carriage shed and servants' quarters. Magnificent view overlooking entire city. Buildings almost new. Purchaser can have immediate possession. Apply. BISHOP & CO., Bankers.

FOR RENT.

STORES AND OFFICES—Waity Building, King Street. STORE—Fort street, makai Island Meat Co. store. STORE—Fort Street, opposite Catholic Church. STORE—Beretania and Fort Streets. WAREHOUSE. HOUSE—Pacific Heights. HOUSE—Kaimuki. BISHOP & CO., Bankers.

HONOLULU STOCK EXCHANGE.

Honolulu, Dec. 17, 1904.

Table listing various stocks and bonds with columns for Name of Stock, Capital, Val., Bid, Ask.

SALES BETWEEN BOARDS.

Twenty-five Kihel, \$12; 100 Kihel, \$12-50; 7 Pioneer, \$127.50; 25 Kahuku, \$25; \$1000 Kahuku 6 per cent bonds, \$100; \$1000 Ewa 6 per cent bonds, \$100; 340 McBryde, \$72.50.

TIDES, SUN AND MOON.

Table with columns for Days, Dec., High Tide, Low Tide, etc.

METEOROLOGICAL RECORD.

Table with columns for Date, Barom., Therm., etc.

1846 Fifty eight Years of Success 1904 AMERICAN INSURANCE CO.

OF NEWARK, N. J. Losses Paid, \$5,515,677.54

The Waterhouse Co.

932 FORT STREET. Resident Agent, Honolulu, T. H.

TRENT & CO.

COLLECTORS OF INCOME, RENTS AND DIVIDENDS, ACCOUNTANTS AND AUDITORS.

Going East?

IF SO, WHY NOT USE THE ONLY DOUBLE TRACK RAILWAY between the Missouri River and Chicago. THREE TRAINS DAILY VIA THE SOUTHERN PACIFIC UNION PACIFIC AND CHICAGO & NORTHWESTERN RYS.

FOR RENT.

HOUSE AT PALAMA, back of Kamehameha School—\$13.75. COTTAGE ON QUARRY STREET—\$12.50 per month.

FOR RENT.

HOUSE AT PALAMA, back of Kamehameha School—\$13.75. COTTAGE ON QUARRY STREET—\$12.50 per month.

FOR RENT.

HOUSE AT PALAMA, back of Kamehameha School—\$13.75. COTTAGE ON QUARRY STREET—\$12.50 per month.

FOR RENT.

HOUSE AT PALAMA, back of Kamehameha School—\$13.75. COTTAGE ON QUARRY STREET—\$12.50 per month.

Halstead & Co., Ltd.

STOCK AND BOND BROKERS. LOANS NEGOTIATED. Members Honolulu Stock and Bond Exchange.

For Rent

Christley Lane .....\$15.00. Kinau St. .... 40.00. Kinau St. .... 35.00. Liliha St. .... 15.00. Kalihi, . . . . . 12.00. South St. .... 15.00.

FOR SALE

Residence property—magnificent view—delightful climate. Large House, Stables, etc. Lot 115x200, 1546 Thurston Ave. HENRY WATERHOUSE TRUST CO. LIMITED. Cor. Fort and Merchant Streets. Honolulu, T. H.

7-McINTYRE BUILDING-7

FOR RENT: 2-story house at 1920 Young St.; 22 acres farming land, Waialua, on 10 years' lease. FOR SALE: House and lot on Young street, a bargain. WANTED: Lot on upper Liliha St. W. L. HOWARD.

CHAS. BREWER & CO.'S NEW YORK LINE

Bark Nuuanu sailing from New York to Honolulu on or about March 1, 1905. FREIGHT TAKEN AT LOWEST RATES. For freight rates apply to CHAS. BREWER & CO., 27 Kilby St., Boston, or C. BREWER & CO., LTD., Honolulu.

THE WATERHOUSE CO.

932 FORT STREET. Resident Agent, Honolulu, T. H.

TRENT & CO.

COLLECTORS OF INCOME, RENTS AND DIVIDENDS, ACCOUNTANTS AND AUDITORS.

Going East?

IF SO, WHY NOT USE THE ONLY DOUBLE TRACK RAILWAY between the Missouri River and Chicago. THREE TRAINS DAILY VIA THE SOUTHERN PACIFIC UNION PACIFIC AND CHICAGO & NORTHWESTERN RYS.

FOR RENT.

HOUSE AT PALAMA, back of Kamehameha School—\$13.75. COTTAGE ON QUARRY STREET—\$12.50 per month.

FOR RENT.

HOUSE AT PALAMA, back of Kamehameha School—\$13.75. COTTAGE ON QUARRY STREET—\$12.50 per month.

FOR RENT.

HOUSE AT PALAMA, back of Kamehameha School—\$13.75. COTTAGE ON QUARRY STREET—\$12.50 per month.

FOR RENT.

HOUSE AT PALAMA, back of Kamehameha School—\$13.75. COTTAGE ON QUARRY STREET—\$12.50 per month.

FOR RENT.

HOUSE AT PALAMA, back of Kamehameha School—\$13.75. COTTAGE ON QUARRY STREET—\$12.50 per month.

Dr. Hicks Fleshglow

Gives the face the natural pink glow of health. With a magnifying glass it cannot be detected. Call for a FREE TRIAL as a sample at Miss Wynn's Hair Dressing Parlors, Richards street.