

The Pacific Commercial Advertiser

U. S. WEATHER BUREAU, OCTOBER 10.—Last 24 hours' rainfall, .14.
Temperature, Max. 81; Min. 71. Weather, rainy.

SUGAR—96 Degree Test Centrifugals, 3.625c; Per Ton, \$72.50.
88 Analysis Beets 8s 10½d; Per Ton, \$78.20.

ESTABLISHED JULY 2 1856

VOL. XLII., NO. 7231.

HONOLULU, HAWAII TERRITORY, WEDNESDAY, OCTOBER 11, 1905.

PRICE FIVE CENTS.

BOURKE COCKRAN A GUEST AT THE MOANA HOTEL

**Famous New Yorker a Through Passenger on
the America Maru—Thinks Hawaii Makes
the United States Assailable.**

Hon. Bourke Cockran, leading orator of Tammany Hall, member of the lower house of Congress from New York, and one of the foremost Democrats in the United States, is passing through Honolulu as a passenger on the Japanese liner America Maru. He is making his first visit here and last night took apartments at the Moana Hotel.

Mr. Cockran was met aboard the America Maru as the vessel entered the harbor. He chatted with the Advertiser man for some time, speaking of the Philippines and Hawaii.

When told of the nomination of William R. Hearst for mayor of New York, Mr. Cockran remarked: "That must have been done by bolting Democrats."

He was intensely interested in the news of the investigation of the life insurance companies in New York, and was surprised to hear that Hughes had been nominated for mayor by the Republicans.

"What was the purpose of your world-tour and especially your visit to the Philippines?" was asked of Mr. Cockran.

"To learn," was his reply. "My visit to the Philippines was to ascertain personally the situation there."

"Have you changed your views with regard to the Philippines?"

"No, indeed. I have always been opposed to the acquisition and retention of the Philippines. My visit there did not alter my views."

"However, as long as President Roosevelt and Mr. Taft have evidently determined upon a policy looking to their retention, and that policy will undoubtedly prevail, I will do what I can to benefit the islands."

"But it is my opinion that the plunderers will come out on top, despite the best intentions of the President and Mr. Taft. They will do everything possible for the benefit of the islanders, but the plunderers will get the best of it."

"What ideas have you had concerning the Hawaiian Islands?" was next asked.

"The same as I had with regard to the Philippines," answered Mr. Cockran.

"I opposed the annexation of the Hawaiian Islands, for the reason that I believed them entirely unnecessary to the nation."

"Before the United States acquired the Hawaiian Islands the nation was unassailable. Now I believe to the contrary."

"However, as the Hawaiian Islands are now a part of the American Union, I believe it my duty to look out for their welfare as for that of any other part of the Union."

NO SUBMARINES USED BY THE JAPANESE

"Japan used no submarines in the war with Russia."

This is the unqualified statement of Mr. C. D. Miner, Superintendent of Construction of the Holland Submarine Company, who is a passenger on the Japanese liner America Maru.

Mr. Miner, accompanied by Mrs. Miner and three electricians and machinists, is returning from the Japanese navy yard at Yokosuka, where he put together six Holland submarine boats, finishing them just before the peace treaty was signed.

Mr. Miner says that all the parts of the submarines were shipped to Japan piecemeal. It was his duty to assemble them and produce fighting machines. He and his men worked hard with the boats and put together the first submarine craft ever constructed in the Far East.

The construction of the Holland boats at Yokosuka probably gave rise to the rumor that Japan herself was engaged in building submarines of a type planned by Japanese naval constructors.

Mr. Miner states that none of the submarines were ready for use during any of the engagements of the war, and that no submarines were used on either side in the great battle of Japan Sea.

On leaving Yokosuka Mr. Miner and associates were given an ovation by Japanese naval officers, and at Yokohama they were similarly honored.

The statement of the Superintendent of the Holland Submarine Company that no submarines were completed for Japan in time to take part in the war is of special interest in view of the famous "North Sea incident," when the Russian fleet fired on and sank English trawlers, afterwards claiming privilege on the ground that Japanese submarines had been sighted.

Reference being made to President

Roosevelt's trip below water in the submarine Plunger, Mr. Miner said the receipt of the news in Japan caused great interest.

FALSE ALARM.

The second false alarm within a week was turned in at midnight from box 35 at Alakea and Halekauwila sts. This is the second false alarm from this box within three months. Acting Chief Engineer Deering stated that he would conduct an investigation to see who is giving the government unnecessary expense.

THE AMERICA MARU HERE

**The Fighting Passenger
Boat Given an
Ovation.**

The steamship America Maru is again in port, after achieving fame in the Japan-Russian war. The popular liner of the Toyo Kisen Kaisha Company arrived yesterday afternoon.

The decks of the America Maru no longer bristle with guns. The latter have been removed and traces of the gun platforms have been obliterated as far as possible. In fact, the America Maru looks almost as trim as she did before she became an auxiliary cruiser in the Japanese navy.

The vessel was sighted about 4 o'clock and at 5 o'clock was at anchor in the roadstead waiting for the pilot, customs and immigration officials. The customs launch went out about 5 o'clock and the officials boarded the vessel.

The crew, all in white uniforms, were drawn up on the main deck, the Japanese immigrants in double lines, nearby. With the Japanese flag flying at the sternmast, and the crews in line, it looked almost as if the America Maru were still an auxiliary cruiser, except that no cannon were visible.

On the Waterwitch was a committee of Japanese wearing rosettes, and comprising Rev. Mr. Motokawa, U. Kobayashi, M. Komoe, M. Yamashiro, T. Hiramoto, K. Kawasaki, S. Hirano. They were allowed to board the vessel as soon as pratique was granted. They were greeted with enthusiasm by the Japanese officers, and shortly tables were spread on the upper deck, where refreshments, principally liquid, were served.

As the steamer Mikahala passed the America Maru, en route to Kauai, the Japanese passengers aboard gave three rousing banzais, which were returned by those on the liner.

Then the liner started up the channel.

(Continued on Page 2.)

SAY MAKE BAD MONEY

**Soldiers Charged With
Counterfeiting Taken
From Transport.**

Six men were taken from the transport Sherman yesterday afternoon, by United States Marshal Hendry and U. S. District Attorney Breckons, charged with passing counterfeit paper money. Three men were also removed and are held as witnesses. The six prisoners are held at the jail until their cases come up before Commissioner Maling.

The arrests caused something of a commotion aboard the transport. The first man taken off was Charles H. Murphy of the Marine Corps. Murphy was taken ashore and to the office of District Attorney where he was interrogated, with the result that summonses were issued immediately for the arrest of Thos. L. Carter, a civil employee; C. P. Brown and John Doe Wood, former bluejackets; William Moore and John Brady. Orders were also issued to hold as witnesses James Murray, Mr. Sheehan and John McCabe.

Murphy was arrested early in the afternoon. Although the vessel was scheduled to leave at three, it was held at the instance of the District Attorney, and did not sail until five, by which time all the men wanted were ashore and in the patrol wagon.

It is claimed that Murphy not only flooded Nagasaki and the transport with bogus paper money, but that he attempted to pass it in Honolulu. Cablegraphic instructions came from Chief Wilkie of the Secret Service to be on the lookout for these "passers of the queer."

It is said that Murphy had quantities of the bogus money, which is raw in execution. He is also alleged to have offered \$10 greenbacks to shipmates for \$2.75 and \$3 each. A man, in the presence of a Customs Inspector,

(Continued on Page 3.)

FOR CHARITY, NOT BUSINESS

**Life Insurance Company Is Run to
Satisfy Demands of
Philanthropy.**

(Associated Press Cablegrams.)

NEW YORK, October 11.—During the progress of the insurance investigation President McCurdy testified that his company was a philanthropic enterprise and not founded to make money for the policy holders.

STRIKE SPREADS.

MOSCOW, October 11.—A majority of the factories have joined the striking printers and bakers. There have been several clashes with the police.

SCANDINAVIA SERENE.

CHRISTIANIA, October 11.—The treaty has been ratified.

STOCKHOLM, October 11.—The treaty will be ratified on Friday.

PEACE NOT NEAR.

BUDAPEST, October 11.—The Diet has been prorogued until December. The chances are slim that peace will crown the proposed coalition.

SABIN IS DEAD.

SAN FRANCISCO, October 11.—John I. Sabin, president of the Pacific States Telephone & Telegraph Company, is dead.

HEARST ACCEPTS NOMINATION.

NEW YORK, October 11.—William E. Hearst has accepted the nomination of the Municipal League for mayor.

STEAMER SAVED.

EUREKA, California, October 11.—The Steamer Argo, which went ashore here four days ago, has been floated.

MAKES BIG HAUL.

PITTSBURG, October 11.—The Adams Express Company has been robbed of \$100,000 by an employee.

AFTERNOON REPORT.

TOKIO, October 10.—The visiting British fleet left Kobe today for Yokohama.

TOKIO, October 10.—Miss Alice Roosevelt and party will sail from Yokohama on October 13 for the United States.

EUREKA, October 10.—Efforts to float the wrecked steamer Argo have failed. Attempts to float her will be resumed.

NEW YORK, October 10.—Vice President Gillette of the Mutual Life Insurance Company testified today that his company gave the Republican national committee \$40,000 in 1905, \$35,000 in 1906 and \$1,500 in 1896.

CRABBE FOR SECRETARY.

Ex-Senator and President of the Senate Charles L. Crabbe has been appointed Secretary of the Immigration Commission. He took charge yesterday and will look after all statistics, accounts and records. Secretary Atkinson's private office has been turned over to Mr. Crabbe, temporarily, until other quarters can be arranged for. Secretary Crabbe was formerly chairman of the Republican Central Committee.

VIOLATED ORDINANCE.

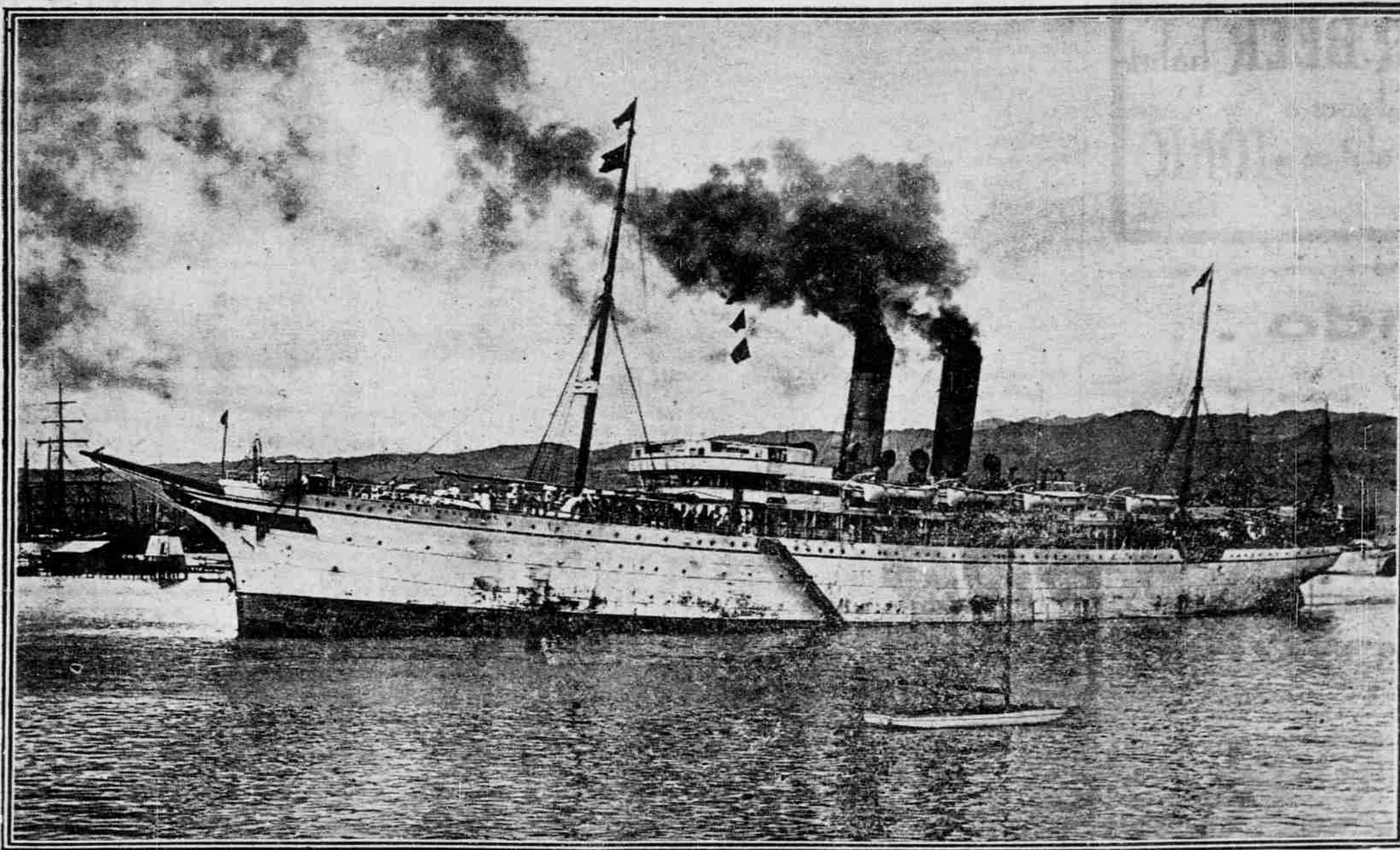
A number of Chinese laundrymen were arrested last night for violating the newly passed ordinance prohibiting spraying clothes by spitting.

NO VESSEL TO TAKE THE ALAMEDA'S PLACE

In reply to a cable by W. G. Irwin & Co., as to what vessel would replace the Alameda the following reply was received:

"Can not get a suitable vessel. The Alameda will be ready for sea in about five weeks."

W. G. Irwin & Co. presume from the foregoing that it is the intention of the Oceanic Steamship Company to put the vessel on the run again.



T. K. K. AMERICA MARU, WHICH ARRIVED YESTERDAY FROM YOKOHAMA ON HER FIRST RUN SINCE THE END OF THE JAP-RUSSO WAR.



THE Leonard Cleanable Refrigerator

There is none other as good

CLEAN
DURABLE
ECONOMICAL

In three styles: Zinc Lined, Porcelain Lined, Porcelain Lined and Covered.

ALL PARTS EASILY REMOVED.

H. HACKFELD & CO., LTD.,

Hardware Department.

COOLER
WEATHER
IF
YOU
WANT
IT.

A gas range kitchen is cooler
than "all out doors."

Don't miss Miss Tracy's cook-
ing demonstrations.

Honolulu Gas
Co., Ltd.

Man-A-Cea

The Wonderful MAN-GA-NESE WATER.

STOPS

that Distress after Eating or Drinking.
Cures where all else fails

CATARRH of the STOMACH

Indigestion, Excess of Mucus, Fermentation, Acidity, Gases,
Distention, That Lump, Distress, Nausea, Anaemia.

For sale by your druggist or by

W. C. PEACOCK & CO., LTD.
SOLE AGENTS.

Beneficial to Young and Old



"GESUNDHEIT, GRANDPA!"
Cultivate the **RAINIER BEER** habit.
It brings the glow of health and gives a new lease
on life. No medicine can equal it as a **TONIC**

RAINIER BOTTLING WORKS, Phone W. 1331, Honolulu.

J. Lando

Our Spring and Summer Stock	Belts Neck- wear Hats	Suspenders Hank's Duck Pants	Trunks and Valises Shirts	Gloves Under- wear, Etc.
---	--------------------------------	---------------------------------------	------------------------------------	-----------------------------------

1054 Fort Street, I. O. O. F. Building and 152 Hotel Street.

A. N. Sanford, Optician

BOSTON BUILDING, FORT ST., OVER MAY & CO.



IF YOU ARE
LOOKING
FOR THE BEST

DEATH OF MRS. REBECCA JOHNSON

JOHNSON—Mrs. Rebecca Johnson, at the home of her daughter and son-in-law, Mr. and Mrs. Chas. A. Bon, Young street, Pawaa, Honolulu, Oct. 10, 1905. Deceased was 74 years of age, a native of Cadiz, Ohio.

Mrs. Johnson arrived here from Denver with her husband, Ashbury F. Johnson, on the 3rd inst. Accompanying the aged couple from San Francisco were Mrs. E. Kimble and Miss Kimble, sister and niece of Mrs. Johnson.

Mr. and Mrs. Johnson had come to the islands to spend the winter. On Saturday last Mrs. Johnson, while at the Moana hotel, was stricken with paralysis and was unable to rally. Death came painlessly. Besides Mrs. Chas. A. Bon of this city there are three other daughters and three sons surviving Mrs. Johnson. Two of the daughters, Mrs. E. T. Duffey and Miss Nellie and one son, Henry, have visited Honolulu. The other daughter is Miss Annie and the other sons are Charles and Ashbury. Mr. Charles Johnson will arrive by the Korea, having been summoned by cable on Saturday. Mr. and Mrs. Johnson are well known at Denver and at Laramie, Wyo. Mrs. Johnson was a cultivated, lovable woman of beautiful christian character.

POULTRY SHOW PROSPECTS BOOM

The regular monthly meeting of the Hawaiian Poultry Association was held last night in the office of the Fisher, Ables Co., P. L. Weaver presiding.

It was announced that G. P. Wilder, J. H. Craig and C. R. Frazier had been appointed an exhibition committee, at a director's meeting, recently held, with full power to arrange all details pertaining to the coming show. The entire management of the affair will be left in the hands of these gentlemen.

Prospects for the show are exceedingly bright, fifty entries already being guaranteed while at least this number more is in sight. There will be over three hundred birds on exhibition.

A fine premium list has been promised, the local merchants having come forward very handsomely in this respect.

Two new members were elected at last night's meeting and the names of five more were suggested.

A special meeting of the association will be held on the 24th inst. at 7:30 p. m. for the purpose of making an appropriation with which to defray the expenses of the exhibition.

It is anticipated that between two and three thousand people will pass the turnstiles on the show days.

AN EVENING IN JAPAN.

The Young People's Legion of the local corps of the Salvation Army announce an interesting meeting to take place in the Army Hall, corner of Nuuanu and King streets, on Thursday evening, October 12, at 8 p. m. Rev. Mr. Wadman, who has seen a number of years' service in Japan as a missionary, will give an address, subject "An Evening in Japan." After the address a musical program will be rendered and refreshments will be served. All are invited to attend. Admission free. Refreshments 10 cents.

ANHEUSER - BUSCH'S MANAGER CURED OF A HEAVY COLD.

Mr. Albert E. Stasney, manager Anheuser - Busch Brewing Association, Cape Town, Africa says: "During my trip in the Transvaal I contracted a severe cold, and am pleased to state that in Chamberlain's Cough Remedy I found prompt relief and after continuing it for a few days was entirely rid of the distressing indisposition." For sale by Benson, Smith & Co., Ltd., Agents for Hawaii.

READ THE ADVERTISER
WORLD'S NEWS DAILY.

THE AMERICA MARU HERE

(Continued from Page 1.)

nel. Half way in the vessel was met by the steam barge Pioneer, decorated with Japanese flags. Daylight fireworks were discharged from the deck of the steamer, and the air was full of flying elephants, birds, balloons, Japanese flags, etc. Then as darkness came on, Japanese lanterns were lighted on the Pioneer. It was a pretty scene as viewed from the decks of the America Maru as she swung about in the harbor to go stern foremost into the Hackfeld slip.

Then, as the vessel went into the slip, the dock became a mass of Japanese lanterns, in the hands of the children of various Japanese schools. The children broke into song and continued their musical ovation to the triumphant liner, until all the lines were secured. The Japanese national anthem and many other songs were sung lustily and enthusiastically, and at the conclusion of each, the crew and passengers broke out into "Banzai!" The dock was crowded with Japanese and every evidence of the patriotic feeling of the subjects of the Emperor was shown.

Captain Goin, commander of the America Maru, and formerly of the Nippon Maru, came into port wearing a broad smile. It is a long time since he was here last. He has had a strenuous career since the war began, being one of the Japanese transport captains. He had command of the steamer Rosilla Maru, a hospital boat used to convey the wounded from Dalny to Japan. Afterwards he was in command of the Manchuria Maru, which conveyed new troops from Japan to Manchuria, landing them at Dalny. He landed, in all, about 8000 troops. At the beginning of the war his transport, with others, was always conveyed by Jap warships, but latterly the transports took their chances. Captain Goin prizes a picture, which occupies a prominent place in his cabin, in which all the transport captains are shown, himself included. Then another picture shows 337 persons, including the captains, chief officers, engineers and pursers of the transports.

On the wall of his cabin, Captain Goin also points with pride to a Japanese manuscript, showing that he, Goin, has been honored with the ribbon of the Sixth Order of the Sacred Treasure by the Emperor of Japan, for services in the Japan-China war. It is expected that for his service in the Japan-Russia war some other acknowledgment of services will be granted by the Emperor.

C. Lacy Goodrich, than whom no other pursuer is more popular on the Pacific Ocean, is the "Guardian of the Keys" aboard the America Maru. Mr. Goodrich was sent from San Francisco to Yokohama to take charge of the clerical end of the Maru, and his advent both in Yokohama and Honolulu was hailed with joy. Lacy is one of the officers who makes friends not only for himself, but the company.

H. B. Thomas is in charge of the steward's department, and from expressions made by several of the passengers, he is on the highway to fame, as he has the art of satisfying the inner man down to a fine point. Mr. Thomas has recently had an interesting experience. He was steward aboard the American steamer Montana, which was captured by the Japanese at Petropaulovsk. The Montana had a cargo for the Russian government, and anchored at Petropaulovsk, near the Spreckels' liner Australia. One day two Japanese warships poked their noses into the harbor, and as a preliminary discharged half a dozen guns, happily with blank cartridges. The Montana did the only thing that was sensible under the circumstances. She surrendered, and the crew were taken prisoners and sent to Yokosuka, Japan. The Australia, says Mr. Thomas, did not yield so easily, and a shot was sent across her bows. She yielded quickly then. She had to, for she had several tons of dynamite in her hold. Mr. Thomas says that Petropaulovsk was in a ruined state when the Japanese finished bombarding it.

Mr. Thomas had to completely outfit the America Maru anew for the trip, and it was a hard job. Yet he has so thoroughly fitted out every department, that the passengers found nothing to complain of.

"The table service is the finest I have ever known at sea," said Mrs. Miner, wife of Superintendent Miner of the Holland Submarine Co., and this sentiment was expressed by Bourke Cockran and many others. In fact some wanted to remain aboard for dinner last night, saying that they were sure it would be better than what they would get ashore.

Hayashi, the second steward, has been with the company for about ten years, and formerly traveled in the steamers to London.

Tachibana, the keeper of the buffet, is the only man aboard who served all through the war. He is full of incidents of the experiences of the America Maru. He presented to Dr. Katsunuma, formerly a veterinarian in the Japanese army, a tattered and dirty flag which was used at various times aboard the America Maru, while she was attached to Togo's fleet. The flag will form the center of attraction at a dinner to be given in the near future. The American Maru has been an auxiliary cruiser since the beginning of the

REAL BARGAINS IN PRETTY LACES

The following standard lines will be sold at greatly reduced prices for one week only, commencing Monday, October 9th. The goods are all new.

VALENCIENNES, TORCHONS,

Fancy Cotton, Orientals, Clunie, All-overs, Fooking, etc.
Ladies' Super Lisle Gloves, all colors, reduced from 50c. to 35c. a pair.

Ladies' Ribbed Vests, regular 15c., this week 10c.

A. BLOM

PROGRESS BLOCK,
FORT STREET.

Grand Rug Sale

Commencing

Thursday Morning, Oct. 12,
At 8 O'Clock.

All our beautiful blue and white Japanese Cotton Rugs will be sold out at tremendous reductions and this will be your last chance to get them in this city.

Perhaps no other rug has proven so popular among Honolulu housewives as these beautiful blue and white Japanese Cotton Rugs and many hundreds are doing fine service today in prettily-furnished homes.

They are not only beautiful, but possess excellent wearing qualities and are suitable for parlor, dining-room or bedrooms.

Don't miss this chance to buy them at great bargains.

NOTE THESE REDUCTIONS:

Sizes.	Regular Prices.	Sale Prices.
2x 4 feet, Blue and White.....	\$ 2.00	\$ 1.50
Blue Center.....	2.40	1.80
3x 4 feet, Blue and White.....	3.00	2.25
Blue Center.....	3.60	2.70
3x 6 feet, Blue and White.....	4.50	3.40
Blue Center.....	5.40	4.05
4x 6 feet, Blue and White.....	6.00	4.50
Blue Center.....	7.20	5.40
4x 8 feet, Blue and White.....	8.00	6.00
Blue Center.....	9.60	7.20
6x 6 feet, Blue and White.....	9.00	6.75
Blue Center.....	10.80	8.10
6x 8 feet, Blue and White.....	12.00	9.00
Blue Center.....	14.40	10.80
8x 8 feet, Blue and White.....	16.00	12.00
Blue Center.....	19.20	14.40
8x10 feet, Blue and White.....	20.00	15.00
Blue Center.....	24.00	18.00
8x12 feet, Blue and White.....	24.00	18.00
Blue Center.....	28.80	21.60
9x12 feet, Blue and White.....	27.00	20.25
Blue Center.....	32.40	24.30
10x10 feet, Blue and White.....	25.00	18.75
Blue Center.....	30.00	22.50
10x12 feet, Blue and White.....	30.00	22.50
Blue Center.....	36.00	27.00
10x14 feet, Blue and White.....	35.00	26.25
Blue Center.....	43.00	32.25
12x12 feet, Blue and White.....	36.00	27.00
Blue Center.....	43.20	32.40

Lewers & Cooke, Ltd.,

177 S. KING STREET.

war, with the exception of a single trip made by the liner to San Francisco and return.

She was mounted with a battery of two 15-centimeter guns, fore and aft; four one-pounder guns and two 47-millimeter guns.

On the foremast is a lookout station, considerably above the crew's nest. This came in handy after the battle of the Japan Sea when the America Maru was despatched in pursuit of the three Russian warships which left Rojstvensky's fleet and fled to Manila. The America Maru on that occasion, being one of the swiftest of the auxiliaries, sped through the fogs and mist, but failed to sight the war vessels. She visited several desolate islands in the hope of discovering the quarry, and went almost as far as Manila Bay, before discovering that they had gone safely inside.

The America Maru was the first vessel to signal the approach of the Russian fleet as it neared Singapore. She had been dispatched through the Malacca straits to locate the enemy. She did so and returned to get in touch with the main fleet.

The America Maru has 1000 tons of freight for Honolulu. She will be despatched for San Francisco at noon today, and will undoubtedly beat the transport Sherman into port. That being the case, the bulk of the mail, which was forwarded on the transport, will arrive some time later than that despatched by the America Maru.

Among the passengers for Honolulu, four in number, three were Japanese. The other is Mr. P. Retallian, who will stop over here until the next steamer. Of the through passengers there are

Lieut. Brewster and Lieut. Egan of the Marine Corps, U. S. A.; Captain James, was master of the steamer Poonahona, which was recently sold in Japan; R. McQueen, was the engineer on the steamer; Captain Cartwright was captain of the British steamship Pawnee; Mr. J. E. Matthews, is connected with a big steel concern at Bethlehem, Pa.; and is accompanied by Mrs. Matthews; Harry Williams, Jr., is connected with the big tea exporting company of Siegfried at Kobe; C. B. Miner is superintendent of the Holland Submarine Co., and H. L. Burke, F. S. Roney and R. P. Metz were his assistants in assembling Holland submarines at Yokosuka, Japan; Mrs. Miner accompanies her husband. Among the important personages is Bourke Cockran, the famous Tammany orator of New York city, and member of the lower house of Congress, who is a through passenger, completing a tour of the world. The America Maru left Yokohama October 1, and is now making her 29th voyage. Her officers are as follows: Philip Goin, Commander; Ernest Bent, Chief Officer; G. Ishii, Chief Engineer; C. Lacy Goodrich, Purser; M. Kanai, Surgeon.

25c
per
copy
Sunday
Advertiser

AT AUCTION
By **WILL E. FISHER**
AUCTIONEER
Telephone Main 424.

THIS DAY!
Wednesday
October 11, 1905.
10 O'CLOCK A. M.

At my salesrooms, corner Fort and Queen streets, I will sell

HOUSEHOLD FURNITURE
CURIOS, TRUNKS

Beer Mugs, all sizes;
Many Coffee Pots,
Many Flour Sieves,
Ladies' Secretary,
Domestic Sewing Machines, (new);
Elegant Hawaiian Quilts,
Large Glass Doors,
10 Sheets Corrugated Iron (new) 9 feet long,
Brown Wrapping Paper, Etc., Etc.
Bureau, Bedsteads,
Screens, Door Blinds,
Rockers, Glassware, Chinaware,
Tables, Firewood, Axes, Hatchets,
Ice Boxes, Refrigerator, Corrugated Iron,
Couch, Bedding, Books,
ETC., ETC., ETC.

WILL E. FISHER,
AUCTIONEER.

At Auction

SATURDAY, OCT. 7, 1905
AT 12 O'CLOCK NOON.

At the mauka or front entrance of the JUDICIARY BUILDING, we will sell by order of F. WUNDENBERG, Esq., assignee for the creditors of the WAIKIKI SEASIDE HOTEL LTD., the entire

Household Furniture
Fittings, Surf Boats,
Plants, Etc, Etc

belonging to the Seaside Hotel Ltd., and situated in the premises known as the HAWAIIAN HOTEL ANNEX at Waikiki, being the contents of all the buildings (excepting the mauka Waikiki corner building) upon the premises, consisting of

Plants,
Parlor Furniture,
Bedroom Furniture of Iron, Brass, Oak and Mahogany,
Bedsteads, Dressers, Bureaus, Cheffoniers, Rockers, Tables, Bedding, Towels, Bathing Suits, Diningroom Furniture, Tables, Linen, Chinaware, Crockery, Cooking Utensils,
Oil Paintings, Rugs, Safe, Folding Desk, Ornaments, Linoleum, Llanai Chairs, Lawn Iron Chairs, Benches,
Surf Boats, Plants, Etc., Etc.
The Furniture, etc., will be offered as a whole.

Further particulars of
F. WUNDENBERG, ESQ.,
Assignee for Creditors of Waikiki Seaside Hotel Ltd., or

FISHER, ABLES CO., LTD.,
AUCTIONEERS.

The above advertised sale is postponed to Saturday, the 21st day of October, 1905, at the same hour and place.

FISHER, ABLES CO., LTD.,
AUCTIONEERS.

THE TENTH ANNUAL
ST. CLEMENTS

Church
Fair

Will Be Held
FRIDAY AND SATURDAY,
OCTOBER 13TH AND 14TH.

Admission, 25 cents.
Children, 10 cents.

Pure Wines
and Liquors

Family Trade Solicited.
Lovejoy & Co.
Nuuanu St. Phone 308.

"HOW SAVINGS GROW."

Our little booklet with the above title free for the asking.

FIRST AMERICAN SAVING AND TRUST CO. OF HAWAII, LTD.

SPORTS

TOURNEY ENTRIES

Twenty-Six Names Are
Down for Men's
Singles.

The entries for the gentlemen's and ladies' singles in the fall tennis tourney, to be played under the auspices of the Hawaii Tennis Association, closed yesterday afternoon at Woods & Sheldon's.

The competition in the men's division promises to be unusually keen, no less than 26 entries having been received.

The entries, which include a number of new names, are as follows:

C. G. Bockers, H. G. Gray, Major R. C. Van Vliet, E. R. Adams, W. P. Roth, A. T. Brock, C. F. Eckhart, L. Lewton Brain, J. P. Cooke, S. G. Wilder, D. Howard Hitchcock, Prof. French, H. G. Dillingham, S. G. Fuller, C. H. Cooke, A. L. C. Atkinson, A. F. Judd, M. F. Prosser, F. Alexander, W. H. Babbitt, A. F. Griffiths, W. S. Warren, T. R. Fulmore, R. D. Mead, E. Steere.

In the ladies' singles only two names were received, those of Miss Lorita Van Vliet and Mrs. F. C. Field.

The draw took place yesterday afternoon and the first matches are scheduled to come off this afternoon.

The winner of the men's singles will receive the handsome J. A. M. Johnson cup, and a second prize, consisting of a leather racket case, has been presented by Woods & Sheldon.

The trophy for the ladies' singles is a beautiful cup, offered by E. O. Hall and Co.

The following games will be played this afternoon:

Beretania courts at 4 o'clock—
W. Warren vs. L. Lewton Brain.
C. G. Bockers vs. G. G. Fuller.
R. C. Van Vliet vs. Fred Alexander.
At 5 p. m.—
J. R. Fulmore vs. A. F. Griffiths.
W. H. Babbitt vs. H. S. Gray.
Prof. French vs. H. C. Carter.
Pacific Courts at 4 o'clock—
C. H. Cooke vs. E. R. Adams.
At 4:30 p. m.—
E. Steere vs. H. G. Dillingham.
At 5 p. m.—
M. F. Prosser vs. A. F. Judd.
W. P. Roth vs. J. P. Cooke.

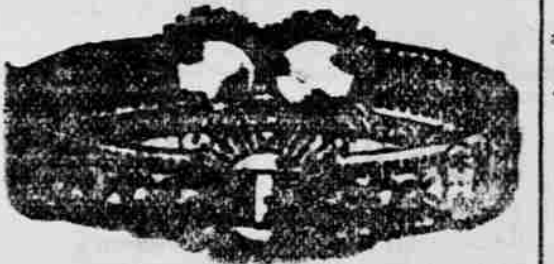
MAUI MAY PLAY BALL

J. C. Davidson of Lahaina is in Honolulu, conferring with various local baseball magnates with a view to arranging a series of games with an All-Maui team, to be played here.

The Maui representative wants to play the H. A. C's, the league winners, a series of three games, the pitching to be done by someone other than Barney Joy.

The Maui team is willing to come on a percentage basis.

FOR WEAK MEN



WITH FREE SUSPENSORY.
If your manly strength has been wasted by the dissipation of youth or of maturity, overwork, worry or sickness, I can promise if you will wear my belt that you will regain the vigor and pleasure of perfect strength.

DR. McLAUGHLIN'S ELECTRIC BELT
Cures weakness in Men and Women. Weak Backs, Rheumatism, Stomach, Kidney and Liver Troubles, Constipation and all Nervous Diseases.
FREE BOOK—If you can't call, inclose this ad and I will mail, sealed and free, my beautiful illustrated 80-page book, which tells all. Address
DR. M. G. McLAUGHLIN,
205 MARKET ST., ABOVE ELLIS,
SAN FRANCISCO, CAL.

WE DYE
TO
LIVE

Send us your most dainty and delicate fabrics if you wish them dyed or dry-cleaned. Also feather boars, ostrich plumes or anything that you really care for and we will make them as good as new.

We have just installed up-to-date machinery for this purpose and guarantee our work. You will be surprised how successfully we can handle gloves, ribbons, girdles, neckties, etc. Our wagons will call and deliver them.

Sanitary Steam Laundry.
Telephone Main 73.

HUNTING THE SNIPE

Fair Nimrod's Have Bad
Time in Palolo
Valley.

There were some tall stunts doing in the snipe catching line at the mauka end of Palolo Valley on Monday evening.

A local lady of alleged royal descent and several of her friends, male and female, were invited by a certain young man about town to participate in a snipe-catching party to be held at the time and place mentioned.

The fair all and the others swallowed the bait, hook, sinker and all, and about 8 p. m. a dozen or more snipe catchers left the Club Stables bound for Palolo.

Arrived at the hunting ground each lady and gentleman hunter was given a bag, stationed several hundred yards apart, and told to hold it open so that the snipe might fly in when driven toward the hunters by the rest of the party, who left their companions presumably to proceed to beat the surrounding country for the birds.

In reality they rendezvoused at a given point and were soon driving merrily home, leaving the snipe hunters awaiting their prey in Palolo's ghostly solitudes.

At 2 a. m. yesterday one bedraggled sportsman made town and a little later two of the fair sportswomen drove in on a milk wagon.

Just how the rest fared is not known, but at least a couple of the deluded Nimrods shared the hospitality of a Kaimuki resident who was awakened by agonized shrieks long after midnight.

The distinguished all, who lives in the region round about Palolo, reached home a sadder but wiser woman.

Whisper the word "snipe" to her and she'll scratch you!

PUNAHOU TO GATHER

Association Footballers
Will Organize
Today.

Association football matters are rapidly shaping themselves and it won't be long before all the league teams are organized.

The Punahou Association will meet this afternoon at 5 o'clock at the Thistle Club, Oregon Block, at the corner of Union and Hotel streets, for the purpose of electing officers, including a captain, manager and secretary.

A large attendance is earnestly requested.

The Malles have already organized and the Iolani will do so in the near future. There will likely be two or three more teams in the league.

Practice will commence at Makiki in about ten days' time.

THE JUNIOR FOOTBALLERS

Football opens on the 28th inst., when Oahu and St. Louis colleges oppose each other.

All four teams entered in the league have deposited \$50 as a guarantee that they will maintain a team until the season is over.

The Oahuans are doing exceedingly well, what the team lacks in weight being more than made up for in speed. The season has been arranged in two series and the winner of each will play off for the championship. The first series will be played as follows:

Oct. 28—Punahou vs. St. Louis.

Oct. 30—Kame vs. High School.

Nov. 4—Punahou vs. High School.

Nov. 6—Kame vs. St. Louis.

Nov. 11—St. Louis vs. High School.

Nov. 13—Punahou vs. Kame.

QUITE A HERCULES

Strong Man Staar Is
Looking for a
Match.

Oscar Staar, the strong man, is back in town from a trip to Laysan Island, and is now on the trail of the local alleged strong men.

He particularly wants to try conclusions with Honolulu's champion Japanese wrestler who, while Staar was away, boasted that he could defeat him at weight-lifting.

Staar's standing challenge is that he will lift more with one arm than any other man can lift with two.

Staar is 25 years of age and his measurements are phenomenal, as the following figures will show:

Forearm, 13 1-2 inches; bicep, 16 1-2 inches; chest, 44 inches; expanded, 63 inches.

Staar is a natural Hercules whose strength came with his birth.

He has used no developing apparatus and has done no systematic weight-lifting, other than that connected with his avocation as stevedore.

He drinks beer and smokes in moderation, but has a hankering for raw mince meat, of which he often partakes of a pound at a time. He is also very fond of brown bread.

Staar's physical development is marvelous and he is as hard as a rock.

TOOK SWEETHEART TO A PRISON CELL

PARKERSBURG, W. Va., September 18.—The trying ordeal of taking to prison his former sweetheart has fallen to the lot of Guard H. F. Williams, of the Moundsville Penitentiary. This evening at Grantsville he will remove from the Calhoun County Jail Mrs. Gene Blackshire, convicted of complicity in the murder of her husband, Henry Blackshire, six months ago. She will be brought to this city by Williams and placed in the Wood County Jail before being taken to the penitentiary, where she is sentenced to serve three years.

When Williams entered the jail at Brantsville and saw the woman the first time since she refused him her hand in marriage and told him that she loved "Henry better and will marry him," she fell back in her chair, and said:

"My God, it is you who are sent to see me in disgrace. Why could they not have sent some one else?"

Mrs. Blackshire is on the verge of physical collapse, and at frequent intervals prays that she may be saved from serving the term in the penitentiary, saying that she is innocent and a just God would not permit the innocent to suffer.

Mrs. Blackshire employed two men—Rub McCroskey and Louis Hendricks—to kill her husband, and evidence was shown at the trial that she assisted in the murder. Her illicit relations with Hendricks and other men, as well as her desire to get her husband's life insurance—\$1,000—led to the crime. Blackshire was first poisoned, presumably by his wife, and later shot to death by the hired assassins, who are now serving life sentences for the crime.

The woman's sentence is generally recognized as light, in view of the crime.

SAY MAKE BAD MONEY

(Continued from Page 1.)
picked up a bogus \$10 greenback yesterday near the entrance to the naval dock. It was rolled up into a wad. Just how it came there is a mystery.

The bogus money was issued against the National Bank of Washington and the Western National Bank of San Francisco. The local banks had been on the watch for the presentation of the stuff.

"When the Sherman reaches San Francisco the secret service people will go through it like a cyclone," remarked District Attorney Breckons.

Murphy has a bad record in the navy. He is known as a "Bread and Water" man, on account of his numerous confinements in the brig. His chief offenses in his two years of enlistment have been repeated absences from duty without leave, insolence to his superior officers, breaking parole and liberty. He had been confined in double irons frequently and on occasions has had the bread and water diet for twenty days at a time, with a regular meal every three days.

MISTAKEN DIAGNOSIS.

There are many people who have pains in the back and imagine that their kidneys are affected, while their only trouble is rheumatism of the muscles, which can be cured by a few applications of Chamberlain's Pain Balm, or by dampening a piece of flannel with the Pain Balm and binding it over the affected parts. A pain in the side or chest should be treated in the same manner and prompt relief is sure to follow. For sale by Benson, Smith & Co., Ltd., Agents for Hawaii.

Lace Curtain Sale

Great reduction in prices in our LACE CURTAIN Department. Many lines will be closed out

At 20 Per Cent. Off the Regular Price

These lots consist of

Irish Point Lace Curtains
and
Net Curtains

SPECIAL VALUES

In NOTTINGHAM LACE CURTAINS, each pair reduced so as to close out all broken lines.

36-inch Dotted Curtain Swisses.....12 1/2c yd.
Silkolines, Newest Patterns.....7 yds. for \$1.00

PACIFIC IMPORT CO.

There is nothing that tones up the run-down system like a glass of good beer.

PRIMO LARGER
— and —
WURZBURGER BEER

possess unequaled medicinal properties and are absolutely pure. Invalids partaking of them quickly show their beneficent effects.

CHAUFFEUR TOLD TO KEEP CHANGE

A well-known local chauffeur struck a windfall yesterday and in consequence is today the possessor of much good red gold.

The young fellow had been chauffeuring an individual from the transport Sherman for the best part of the day and as sailing time drew near he was told to go aboard the vessel and get his money.

To his great surprise when he presented a bill for \$18, his fare handed him three twenty-dollar gold pieces from a big bag of gold and told him to keep the change.

The man of liberal parts is named Sutcliffe and he is said to be employed in the Quartermaster's Department in the Philippines.

The chauffeur is today making a noise like ready money.

UNION GAS ENGINES

The UNION GAS ENGINE runs on Gasoline, Distillate, Naphtha, Benzine and Kerosene; but better than all is FUEL GAS.

Safe, clean, reliable and elements of danger eliminated. No storage of explosives required. Engines of all powers in stock from 1 horse-power to 150 horse-power.

Those desiring small power for lighting, pumping water or driving machinery of any description should investigate the Union Engines.

We equip oil or gasoline with necessary apparatus to operate with fuel gas.

FOR SALE

We have, for sale, a fine 1-2 cabin gasoline launch, 30 feet 6 inches in length, 6 feet 6 inches beam, a draught of 32 inches and an 8 h. p. engine.

CALL AT
Von Hamm-Young Co., Ltd.
AGENTS, HONOLULU.

We Have For Sale

IN LARGE OR SMALL LOTS
Merchantable Nor-west Lumber, including a small lot of 6x10 8oft. lengths.

—Also—

18 oz. Munze Metal Sheathing.
1 1-4 inch Munze Metal Nails.
No. 24 Gauge Corrugated Iron Ship's Felt.

Very low prices quoted on application.

AMERICAN-HAWAIIAN ENGINEERING & CONSTRUCTION CO., Ltd.

508 Stangenwald Building.

THE BERNICE PAUHAH BISHOP MUSEUM, KAHULU, OAHU.

Residents of Hawaii Territory and strangers visiting Honolulu are hereby notified that the above named Museum will be open to inspection on FRIDAYS and SATURDAYS of each and every week of the year, and also upon ALL PUBLIC HOLIDAYS (Thanksgiving and Christmas excepted), between the hours of 10 o'clock a. m. and 5 o'clock p. m., from the 31st day of March to the 31st day of October, and from 10 o'clock a. m. to 4:30 o'clock p. m. from the 1st day of November to the 31st day of March of each year until further notice.

Tourists arriving in Honolulu by regular steamers on other than the regular visitor's days hereinbefore designated (Sundays and Thanksgiving excepted) and leaving and Christmas excepted, may be admitted to the Museum on SPECIAL PERMITS, issued during office hours from the general office of the trustees, No. 77 Merchant street, next door to the banking house of Bishop & Co.

ADMISSION TO MUSEUM FREE.
Electric cars bound west on King street pass the Museum every ten minutes during the day.
Honolulu, T. H., June 12th, 1905.
PER ORDER.

RAPID BATH HEATERS

Can be installed anywhere. All they require is gas and water.

Hot Water in plenty for toilet and bath at a second's notice when you have the Rapid.

Very economical—a bath for one cent—surely that is cheap enough.

Sold and installed by
BATH THE PLUMBER
Phone M. 61, 165 S. King St.

THE PACIFIC

COMMERCIAL ADVERTISER

WALTER G. SMITH : : : : : EDITOR.

WEDNESDAY - - - - - OCTOBER 11.

THE CASE PRESENTED.

Unless new evidence appears which is important enough to be examined and reported the case against the police and gamblers may be regarded as made up.

The Advertiser has demonstrated that widespread gambling in this city was practically without police interference up to the time when the exposure of the same was made in these columns. This paper has given names, dates, locations and photographs.

The evidence produced was strong enough to lead the supervisors to pass an anti-barricade ordinance and to send the county sheriff a letter to this effect:

Honolulu, September 27, 1905.

A. M. Brown, Esq., Sheriff County of Oahu, Honolulu.

Dear Sir: We are reliably informed that gambling is being carried on in Honolulu, both by Chinese and by white men. The publicity with which gambling places are being conducted is such as to indicate either protection, indifference or incompetency on the part of the police. At best the money being spent upon the police, especially the detective force, is not securing results which we are entitled to expect.

The Advertiser has demonstrated in the cases of Townsend and Daveuchelle that the police have made it their business to bulldoze and maltreat men whom they believe had given evidence against them.

Since the exposures began, the police have made many arrests of minor gamblers and one arrest of a major gambler; but in all cases brought to trial the evidence they produced was not sufficient to warrant more than a nominal fine nor did it deter the arrested men from returning to their unlawful trade.

Such a state of affairs in any other city would be regarded by the people of Honolulu as meaning but one thing. Is there any fair reason why a different interpretation should be put upon it here?

LIFE INSURANCE PROSPECTS.

There seems to be but one way out for the life insurance companies and that is to get under Federal control and subject themselves to such regular examinations and to such full publicity as attend the operations of national banks.

Senator Dryden, president of the Prudential, proposes this. We have not always been inclined to credit him with sincerity in the matter, but there are at least two good reasons why a resort to Federal oversight would be desirable from the companies' point of view. Now the life insurance people have to deal with forty-nine state and territorial commissioners, some of whom are arbitrary, some stupid and some corrupt. They also come up against legislatures. There is endless confusion and trouble which would all be avoided by going under Federal law.

The other reason is that the companies would have a better standing abroad. American state chartered life insurance companies have long been objects of suspicion in Europe, while in Germany they have often found themselves in trouble with the authorities. While these things do not keep the insurance people from doing a trans-Atlantic business, they have retarded progress. As corporations supervised by the United States the companies would have fewer foreign as well as local obstacles to meet.

Of course the great grafters would not like to lose their present chance, but it is either that or submission to drastic state regulations, with further loss of business.

STRATEGIC HAWAII.

We can not be expected to agree with Hon. Bourke Cockran that the possession of Hawaii has made the United States assailable. Naval and military men have contended for nearly fifty years that the maritime power which held these islands could prey at leisure upon the commerce and attack the vulnerable points of the Pacific Coast. No hostile ships of war except British ones operating from Esquimaux could attack the California, Oregon and Washington shore cities without having Hawaii for a base. That proposition stands unchallenged among war-makers.

A fortified Hawaii, far from making the United States assailable, would eliminate the western coast of the United States from the calculations of an enemy. This assumes, of course, that this place would be adequately defended and provisioned.

The two evening papers rendered the same cablegram yesterday into the following contradictory statements:

This from the Bulletin:

New York, N. Y., Oct. 10.—In the course of the insurance investigation today Vice-President Gillette testified that the Mutual Life Insurance Company contributed \$400,000 to the Republican campaign fund in 1904, \$350,000 in 1900, and \$1,500 in 1896.

This from the Star:

New York, October 10.—Vice-President Gillette of the Mutual Life Insurance Company testified today that his company gave the Republican national committee \$40,000 in 1905, \$35,000 in 1900 and \$1500 in 1896.

For a bad mix-up of an important piece of news this takes the leading place among cable cryptograms.

The personality of a ship is as individual as that of a man. The Alameda is to the citizen of Honolulu as personal as a friend. The America Maru, returned to the trans-Pacific run after a hard-fought war, is like the coming back of an old chum. Every ship of their class is fondly remembered or bitterly hated by many people. To islanders particularly, such regular callers are deeply interesting. They carry the mail, convey the newly wedded on their honeymoons, bring the mourners back to their dead. In a way they cease to be shipyard products and partake of our daily life.

The Hawaiian band might find it profitable to tour the United States every year under competent business management. Patrick Sarsfield Gilmore's famous band did so annually for many seasons and Sousa's band still finds plenty of employment, playing in summer at the Eastern watering places and in winter at theaters and public halls. Honolulu would not want its musicians to be away winters, but it would not object to exchanging the pleasure of hearing them summers for the advertising of which their presence at Newport, Brighton Beach and Atlantic City would be the means.

If Miss Roosevelt comes this way from Yokohama, society ought to hire the opera house, floor it over for dancing and give the President's daughter a function that would remind her of a gala evening at the White House. It is a long time since Honolulu society has exerted itself in a large way, and the coming of the American princess would give it a fortunate chance.

Hawaii doesn't exactly want a dry winter, but it could enjoy one with considerably less rain in it than the summer and fall have supplied.

Does anybody suppose that Moore will go to jail or lose a day's profits on the complaint of a dummy prosecutor?

No political party can get its chances insured for another big campaign subscription from McCall.

The Chinese spitters should employ Attorney Chillingworth.

And now Manila is sending us tainted money.

DON'T LIKE THE PHILIPPINES

"The visit of the Taft party to the Philippines has proven a colossal failure, looking at it from the political standpoint," said an army officer on the transport Sherman yesterday.

"It was a political failure. It was the biggest mistake ever made. There is no doubt but that Taft, being looked upon as a possible nominee for the presidency in 1908, was sent out on a grand tour, with congressmen in his train to see what had been effected under his administration in the Philippines.

"But on arrival there the bubble burst and the congressmen saw the Philippines as they really were.

"From what I gathered from some of the congressmen, Senator Dubois included, for he remained in Manila when the party went to the southern islands, the party learned that the prosperity of the Philippines was fictitious. Their apparent prosperity was due to the millions of dollars which the United States government poured annually into the archipelago. With much of this withheld, the Philippines would be but a shadow of their alleged commercial greatness, and that is where Taft's presidential bubble burst.

"The congressmen supposed, from what they had been told, that the Philippines were creating things in the archipelago, but investigation showed that this theory was wrong.

"Look at the gigantic failures of business houses in the Philippines. Smith, Bell & Co., failed for millions after being carried for a year by the banks. The North American Trading Company failed. Barry Baldwin and Wolf are the Americans who are the mainstay of commercial prosperity in the islands, and I can't say that Baldwin is over-anxious to remain there much longer.

"The foreign element look to the development of the railroads all over the islands, by the plentiful use of federal government money, to rehabilitate the commercial business.

"The Philippines want free trade. That is their cry. They also want Chinese labor for their plantations. They don't raise much of a cry about the latter, but that is one of their most pressing needs.

"The Philippines can never amount to anything if they don't get Chinese labor to develop the sugar industry. Without Chinese labor other countries do not need to worry about competition in sugar development."

Next Monday

October 16,

we will place on display a handsome new line of

Christmas Novelties

B.F. EHLERS & CO.

GOOD GOODS.

THE FUNDAMENTAL LAW OF HAWAII CONTAINS:

1. The first Constitution of Kamehameha III, 1840, including the previously issued Bill of Rights.
2. The first laws of Hawaii, enacted under Kamehameha III, (1833-1842), published together in 1842.
3. The law creating and principles guiding the Land Commission.
4. The second Constitution of Kamehameha III, 1852.
5. The Constitution of Kamehameha V, 1864.
6. The Constitution of Kalakaua, 1887.
7. The Proclamation and orders incident to the establishment of the Provisional Government, 1893.
8. The Constitution of the Republic of Hawaii, 1894.
9. The treaty annexing Hawaii to the United States, 1897.
10. The Resolution of the Hawaiian Senate ratifying the annexation treaty, 1897.
11. The Joint Resolution of Congress annexing Hawaii, 1898.
12. The documents and procedure incident to the transfer of the sovereignty and possession of Hawaii to the United States, 1898; and the executive orders of President McKinley, relating to the government of Hawaii, issued during the transition period between the date of annexation and the passage of the Organic Act, 1898-1900.
13. The Act of Congress organizing Hawaii into a Territory, 1900.

For sale by

THE HAWAIIAN GAZETTE CO., Ltd.,

Price \$5.00, postage prepaid. Honolulu, T. H.

It Is Cool

THESE DAYS

At HALEIWA

JUST THE PLACE TO SPEND YOUR VACATION.

THE BEST OF EVERYTHING

All Sorts of Amusement,
All Kinds of Recreation,
All the Comforts of Home.

Tickets and information at Oahu Railway station and Trent & Co., or ring up Haleiwa Hotel, King 53. On Sundays the Haleiwa Limited, a two-hour train, leaves at 8:22 a. m.; returning, arrives in Honolulu at 10:10 p. m.

Notice

To our Customers and Friends:

We believe that we have the reputation of handing to our Patrons one of the nicest Calendars distributed yearly in this city.

For 1906 we will have something very fine and odd, a calendar we know which will be kept for years.

But they are expensive, and to prevent indiscriminate distribution, and to make sure that our friends will get one we ask you to call and register your name in our store.

They will be in envelopes, with the names on, ready for distribution the last week of December.

Hollister Drug COMPANY.

Only the Other Day

THE LONG-LOOKED-FOR STOCK OF

Electric Lamps

IN ALL SHADES OF BRONZE, ARRIVED, AND WE HAVE NOW READY FOR YOUR INSPECTION AN EXCELLENT ASSORTMENT IN ALL THE NEWEST SHAPES.

We believe

YOU WILL FIND SOMETHING TO YOUR LIKING, AND THE WAY THEY ARE GOING WOULD MAKE AN EARLY SELECTION NECESSARY.

PRICES RANGE FROM

\$12 to \$50

H. F. WICHMAN & CO., LIMITED.

JEWELERS, FORT STREET.

THE EXPO WATCH CAMERA

is built like a watch and is a practical vest-pocket CAMERA, doing clean-cut work and having nearly all the merits of a much larger and more expensive camera. It easily excels all other cameras in compactness, number of exposures to a loading, simplicity of manipulation and cheapness of operation.

PRICE, \$2.50;

25 FILMS FOR 25c.

Honolulu Photo Supply Co.

Fort Street Near Hotel.

BUY A VICTOR

It is surprising how much genuine amusement can be obtained from a VICTOR TALKING MACHINE. Buy one and find out for yourself. Cash or installments.

BERGSTROM MUSIC CO. LD.

Odd Fellows' Bldg.

READ THE ADVERTISER WORLD'S NEWS DAILY.

Semi-Porcelain Dinner Sets

DECORATED IN DIFFERENT COLORS JUST ARRIVED . . .

We are offering special inducements on these goods and you will be surprised at the very reasonable prices.

A large invoice of Steel Enamelled Ware in both White and Grey has just been opened.

Pacific Hardware Co., Ltd.

Fort and Merchant Streets.

Remington Standard Typewriter

Eight models ranging in price from

\$97.50 TO \$150.00.

Sold on Easy Terms.

— ALSO —

A new line of

VICTOR SAFES

From \$36.00 up—on easy terms. Supplies for all office automatic machinery. Repairing a specialty.

Hawaiian Office Specialty Co.

Tel. Main 15. 72 King street.

Electricity's Many Uses!

Electricity may be used in a multitude of ways apart from its regular lighting application.

The many ways in which the Electric Light can be used to advantage may be explained in a personal interview with a representative of this company. If word is sent to our office an agent will call on you, or the asked-for information be otherwise given.

HAWAIIAN ELECTRIC CO.

Limited.

Office, King and Alakea Sts.

'Phone, Main 390.

QUALITY.

ECONOMY.

SOAP

Honolulu Soap Works Co.

FRED. L. WALDRON,

Spreckels Block.

Sole Agent.

Sustaining Their Popularity

Our 40% gain in trade since we introduced these famous women's SHOES is a marked demonstration of how the women of Honolulu appreciate high grade footwear at popular prices. Not only are OUR SHOES the swiftest in point of fashion, but they are the greatest wearers and the greatest fitters made.

Every day new customers are introducing themselves to us. Are you with us in this matter? Remember that there are 22 different styles to select from, in all kinds of leathers—Vici Kid, Patent Colt, Velour, Calf, etc. These SHOES are made with GOODYEAR WELTS and HAND-TURNED SOLES.

Island orders given prompt attention. MANUFACTURERS' SHOE CO., LTD.,



E. P. REID'S Famous
\$3.50—
SHOES for Women

Phone Main 282.
1051 Fort St.

FINE JAPANESE GOODS

Of All Kinds, Lowest Prices

AT

SAYEGUSA'S Nuuanu Street, Just Mauka of Hotel

T. Cahalan

Formerly with E. R. Bath, has taken charge of the PLUMBING DEPARTMENT

— of —

JOHN NOTT,

At 85 King Street.

Pure blood makes the skin clear, smooth, healthy. Impure blood blotches the skin with pimples, sores, boils, eczema, eruptions. Mr. G. W. Burtner, Keenelown, Va., tells of the bad condition he was in, and how he was cured by

Ayer's Sarsaparilla

"Shortly after leaving college, I was troubled with a skin disease which showed itself first at the ankles. Physicians pronounced it eczema, and treated me for that



complaint. The eruption crept slowly up my limbs, and on the body, until it enveloped the whole frame. It gave me infinite trouble, with constant itching, casting off of dry scales, and a watery liquid which would exude from under the scales. I treated it for over three years unsuccessfully, and was unable to check it until I began using Ayer's Sarsaparilla. I used three bottles of this medicine, and was completely cured—my skin becoming as smooth and clear as before."

There are many imitation Sarsaparillas. Be sure you get "AYER'S."

Prepared by Dr. J. C. Ayer & Co., Lowell, Mass., U. S. A.

HOLLISTER DRUG CO., AGENTS

When You Go To the States,

whether your destination be

Denver, Kansas City, St. Louis, Chicago,

or another eastern city, by all means travel on the

Denver and Rio Grande, RR

and view the most beautiful scenery in America by daylight.

THROUGH SLEEPING AND DINING CARS TO ALL POINTS.

Handsomely illustrated books of travel mailed free; write to

W. J. SHOTWELL, General Agent, 625 Market St., San Francisco, Cal.

NOTICE.

ANY WOMAN OR GIRL NEEDING help or advice, is invited to communicate, either in person or by letter, with Ensign L. Anderson, matron of the Salvation Army Woman's Industrial Home, No. 1680 King street.

VISIT THE

ZOO

A trip to the Zoo, at Kaimuki, is enjoyable to children and parents alike.

Besides the wonderful collection of animals and birds there are other delights too numerous to mention.

ADMISSION 10 CENTS.

Come and shake hands with the Orang Outang.

Catton, Noill & Co., Ltd

ENGINEERS AND MACHINISTS QUEEN AND RICHARDS STREETS.

Boilers re-tubed with charcoal-iron steel tubes; general ship work.

The QUEEN

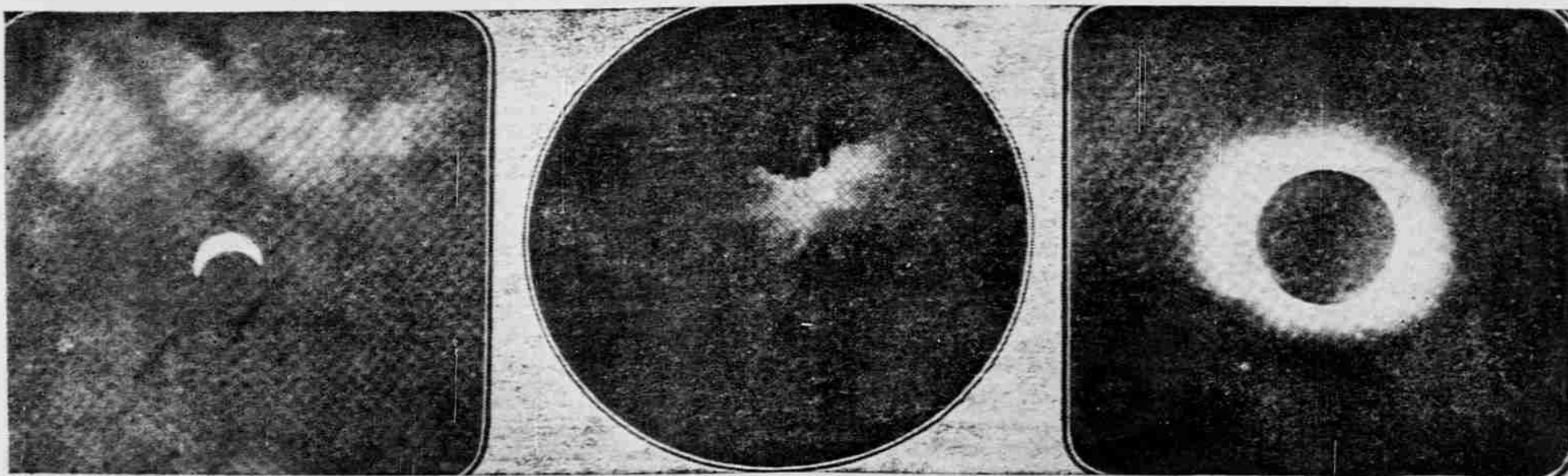
Automobile has reached a stage of perfection attempted but never accomplished by others, the result of years of careful experimenting. It is equipped with greater cylinder capacity than any car in its class and excels in Price, Power and Perfection.

SCUDMAN CARRIAGE COMPANY, LIMITED, Automobile Warehouse on Merchant St., between Fort and Alakea Sts.

HARRISON MUTUAL ASSOCIATION

Has now 3,200, has buried 137 of its members during the two and one-half years since its organization. The membership fee will be raised to \$5.00 on May 1, 1905. J. H. TOWNSEND, Secretary.

THE RECENT SOLAR ECLIPSE.



BATH, 1 O'CLOCK.

BRISTOL.

PARIS.



WHITBY.

WHITBY.

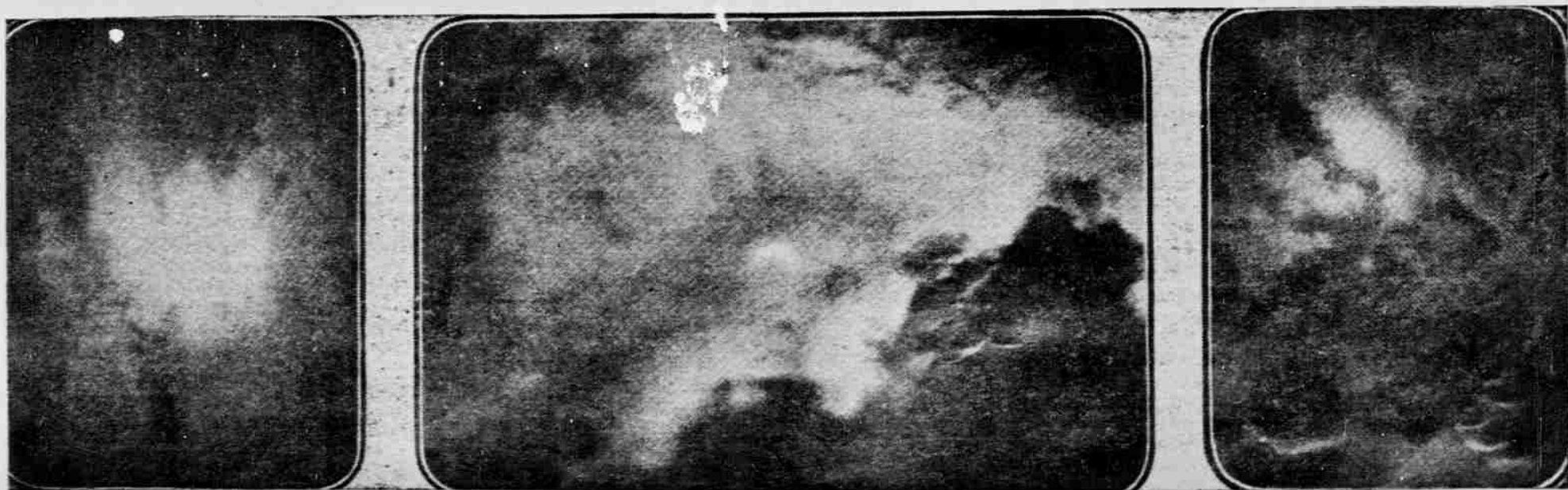
WORTHING, 1:57 P. M.



LIVERPOOL, 12:40 P. M.

LIVERPOOL, 12:45 P. M.

FALMOUTH, 1 O'CLOCK.



BANDON, CO. CORK, 12:29 P. M.

RHYLL, 12:50 P. M.

SKIBBEREEN, 12:30 P. M.

(Photo by Lewis Dance, Watson, Prouce, T. W. Jones, Cleaver, Stephens, &c.)

NEW YORK LIFE'S MONEY AND J. P. MORGAN'S SCHEMES

NEW YORK, September 21.—Like a lightning flash from a clear sky came the sensational development today of the \$132,000,000 mystery in connection of J. Pierpont Morgan with the New York Life Insurance Company, during the session of the Legislative Investigating Committee.

It dwarfed all other talk of millions involved in "joint account" syndicates and turned the thoughts of the Investigating Committee toward the fact that had been gradually developing all day—that J. P. Morgan is the great dominating figure in the New York Life Company, and holds it in thrall through the control of its investments by George W. Perkins, his partner, and the vice-president of the insurance company.

"Is it true that \$132,000,000 of the investments of the New York Life Insurance Company are flotations of the J. P. Morgan firm?" was the question asked by Inquisitor Charles E. Hughes, and which was not satisfactorily answered by Mr. Perkins, then on the stand.

This sensation developed in the murky and dreary muddle of a long and tiresome session devoted to delving into the tangled and complicated "joint account" transactions. It came when the members of the committee were almost ready to fall asleep in their chairs as they listened yawningly to the dreary recitation of long lines of figures and statements of investments made and profits shared with outside financiers.

Mr. Perkins had no answer ready and was given time to check off the long list of investments handed him by Mr. Hughes, all of which are said to be in possession of the New York Life and floated at some time by the Morgan firm. According to the last report of the New York Life Company its investments in bonds reached the total of \$294,309,762.

WILL BE THOROUGHLY PROBED.

This matter is to be gone into thoroughly before the investigation closes, for it will be shown ultimately that the New York Life Company is as completely in the control of J. P. Morgan as though he owned it. The connecting link has always been George W. Perkins, and before his testimony is concluded much will be developed to show the manner in which he has made the insurance company contributory to the great wealth of Mr. Morgan.

During the investigation today purchases of bonds from the Morgan firm to the value of nearly \$30,000,000 were developed by the testimony of Mr. Perkins. The mysterious connection of the Morgan firm and the Life Insurance Company has only been touched upon as yet, however, and by the time the investigation is ended transactions of this sort will be shown to be trivial compared to the real bulk of business that flows from the insurance company's massive building on Broadway to the squat, ancient home of the Morgan forces in Wall street.

There were other revelations equally astounding in today's session of the Legislative Investigating Committee.

Before the investigation began Mr. Hughes made a statement which indicates that the work of probing the insurance companies has hardly begun.

"We have not yet reached the meat of this inquiry," said Mr. Hughes. "In reality, we have only just started. Facts of greater importance to the policy holders than those which have been brought out will come to light before long. I have every reason for saying this."

Back of this statement is believed to be Mr. Hughes' intention to show that at least \$1,000,000 was contributed to the Republican campaign last year by life insurance companies in this country. These companies include the New York Life, Equitable, Mutual, Northwestern of Minnesota, Connecticut Mutual and others of the larger corporations.

REALTY TRANSACTIONS.

Entered for Record October 10, 1905.

From 9 a. m. to 4 p. m.

M Kahaleonohi Brash to W D

Speckmann

Hie Bipi and hsb to F A Schaefer

Poluea Kalaokalani and hsb to

Kohala Land Co Ltd.

John D Holt and wf by Aff of

Mtgee to Irene I Holloway Tr.

John D Holt and wf by Mtgee to

Alfred W Carter Tr.

Sophie K Walker by Regr.

Sophie K Walker by Regr.

Sophie K Walker by Regr.

German Savs & Loan Socy by Atty

to John F Colburn et al.

J Alfred Magoon and wf to Akeau

Ahchong

Ralph E Turner to Emma S Nor-

ton

J Garcia Tr to Mrs K Kihelani.

J H Harrison by atty to William

C Achi Jr.

Kalmi and hsb to Hoopli Wire.

Manuel J Carlos and wf to Bank

of Hawaii Ltd.

Maria D Carlos and hsb to Hawn

Land & Imprmt Co Ltd.

Recorded October 2, 1905.

J Kekahuna to T Awana. L: 20 acr

land, Makawao, Maui. 10 yrs at \$20

per yr. B 273, p 287. Dated Sept 20,

1905.

Gear, Lansing & Co by Trs to Manoel

M Soares. D: lot 21, Kaonoulu lots, Ku-

la, Maui. \$510. B 270, p 428. Dated

Aug 25, 1905.

Florence da C Jardin and hsb (A C)

to Maria S Gonsalves. D: int in 92.70

acr land, Makawao, Maui. int in 2

shares hui land, Peahi, Hamakualoa,

maka (w) et al. D: 1-9 int in R P 3712

kul 5455, Moouuku, Honouaia, Maui;

1-9 int in R P 5453 kul 5428, Kaohae,

Honouaia, Maui. \$1. B 270, p 421.

Dated Sept 6, 1905.

Luce Kawalepolepo by gdn to Kono,

L: por R P 3771 kul 8381, Hauko, Ha-

makua, Hawaii. 10 yrs at \$30 per yr.

B 273, p 289. Dated Sept 2, 1905.

D Hoopli H Wire and hsb (M) et al to

Eliza Johnson, M: 16 8-10 acr of R P

1123, Mokuleia, Waialua, Oahu. \$300.

B 276, p 122. Dated Sept 30, 1905.

E L Kaula to Charles Gay, D: por

R P 4475 kul 7713 ap 42, Kikilaia, Waie-

mea, Kauai. \$150. B 270, p 432. Dated

Dec 22, 1903.

Alice M McChesney to John Walker,

Assmt Rent: rents, etc, on lot D, Wal-

kiki Rd, Honolulu, Oahu. \$1. B 274,

p 289. Dated Sept 20, 1905.

Poipe (widow) et al to J K Maawe,

D: 1-2 int in gr 3029, Kalulu, Lanai.

\$2.50. B 270, p 433. Dated June 10,

1905.

G Shimoda to S Sajima, P A: general

powers. B 274, p 290. Dated Oct

2, 1905.

Est of S C Allen to Mele K Notley,

A M: mtg D F Notley and wf on lots

1, 2, 3, 4 and parts 5 and 6 blk 25 Ka-

lulani tract, Honolulu, Oahu; lots 3 and

4 of pors R P 2078 kul 553, Kapalama

tract, Honolulu, Oahu; int in est of

Charles Notley. \$1628.80. B 276, p 124.

Dated Sept 15, 1905.

Bishop & Co to Linda C Bergstrom,

Rel: por gr 3773, bldgs, etc, Thurston

and Spencer Aves. Honolulu, Oahu.

\$3000. B 220, p 312. Dated Oct 2, 1905.

Joao Gomes and wf to Hawn Land

& Imprmt Co Ltd. D: lots 5 and 6 blk

Don't Delay

but secure a box in our safe-deposit vaults today. The rent is only \$5 per year and up, and it may be the means of saving you irreparable loss from fire or burglars.



HAWAIIAN TRUST CO., LIMITED.
Fort Street, Honolulu.

WM. G. IRWIN & CO., LTD.

Wm. G. Irwin, President and Manager
John D. Spreckels, First Vice-President
W. M. Giffard, Second Vice-President
H. M. Whitney, Treasurer
Richard Ivers, Secretary
E. I. Spaulding, Auditor

SUGAR FACTORS AND COMMISSION AGENTS.

AGENTS FOR
Oceanic Steamship Co., San Francisco, Cal.
Western Sugar Refining Co., San Francisco, Cal.
Baldwin Locomotive Works, Philadelphia, Pa.
Newall Universal Mill Co., Manufacturers of National Cane Shredder, New York, N. Y.
Pacific Oil Transportation Co., San Francisco, Cal.

WM. G. IRWIN & CO., LTD.

AGENTS FOR THE
Royal Insurance Co., of Liverpool, England.
Alliance Assurance Co., of London, England.
Scottish Union & National Insurance Co., of Edinburgh, Scotland.
Fire Association of Philadelphia.
Alliance Insurance Corporation Ltd.
Wilhelma of Magdeburg General Insurance Co.

Fire Insurance

THE B. F. DILLINGHAM CO., LIMITED.

General Agents for Hawaii
Atlas Assurance Company of London.
Phoenix Assurance Company of London.
New York Underwriters' Agency.
Providence Washington Insurance Company.
Fourth Floor, Stangenwald Building.

HAWAII SHINPO SHA.

THE PIONEER JAPANESE PRINTING office. The publisher of Hawaii Shinpo, the only daily Japanese paper published in the Territory of Hawaii.
C. SHIOZAWA, Proprietor.
Editorial and Printing Office—1020 Smith St., above King. Phone Main 45.

C. BREWER & CO., LTD.

Sugar Factors and Commission Merchants.

LIST OF OFFICERS.

C. M. Cooke, President; George M. Robertson, Manager; E. F. Bishop, Treasurer and Secretary; F. W. Macfarlane, Auditor; P. C. Jones, C. M. Cooke, J. R. Galt, Directors.

Money to Loan

ON JEWELRY, ETC., ETC., AT

THE J. CARLO PAWNBROKING CO.
CORNER UNION AND HOTEL STS.

By Cable

For Clothing and Gents' Goods, go to the RED FRONT, corner Queen and Nuuanu.

THE HAWAIIAN REALTY AND MATURITY CO.

Limited.
REAL ESTATE, MORTGAGE, LOANS AND INVESTMENT SECURITIES.
Office: McIntyre Bldg., Honolulu, T. H. P. O. Box 265. Phone Main 141.

FOR

Nickel Plating

CALL ON

GUY OWENS

1120 Union St., Tel. Main 215.

TO ARRIVE PER S. S. MANCHURIA.

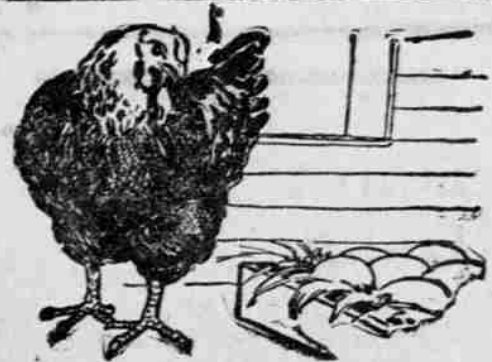
NEW ROSE BUSHES, AT

Mrs E. M. Taylor

Alexander Young Building.

EAGLE CLEANING AND DYEING WORKS.

Fort Street, opposite Star Block.
LADIES' AND GENTS' CLOTHING CLEANED AT LOWEST PRICES.
Phone White 2362.



LAID TO ORDER

There are eggs.
Fresh eggs.
Strictly fresh eggs.
And guaranteed strictly fresh eggs.

It's the guaranteed strictly fresh eggs that concern us—and you as well as us.

For we give our iron-clad warranty that the eggs we sell are the "guaranteed strictly fresh" kind.

We keep Biddy busy—yes, several hundred Biddies—supplying our demands.

In fact winter and summer, the hennery has a standing order for all the guaranteed strictly fresh eggs it can produce.

J. M. LEVY & CO.
Phone Main 149.

K. FUKURODA

Dealer in
JAPANESE AND AMERICAN
Dry and Fancy Goods,
Straw Hat Manufacturer.
Robinson Block, Nos. 28-32 Hotel St.

New Swell

FALL SUITS FOR GENTS NOW
DISPLAYED AT
GLOBE CLOTHING CO.
Hotel Street.



Your Attention

FOR ONE MOMENT.
Yes; we do big work but we are just as anxious for the little jobs.
We paint floors,
Grain your front door.
Put in a light of glass.
Hang a room of paper.
Paint a sign.
Whitewash a barn.
Renovate your furniture or anything in fact done with paint.

Stanley Stephenson,

GENERAL PAINTER.
Phone 426—137 King Street.
Our signographer prescribes S.S. Signs to improve trade health.

SCHOOL SUPPLIES

AT THURM'S
GOOD GOODS AT BOTTOM PRICES.
Call and be convinced.

ALL KINDS OF BUILDING AND
REPAIR WORK DONE ON
SHORT NOTICE
by

Wm. T. Paty.
1048 ALAKEA STREET.

Pure Soda Water

You can't get better Soda Water than that bearing the FOUNTAIN brand, for the simple reason that there isn't any better made.

Fountain Soda Works,
Sheridan Street, near King.
Phone Main 270.

PLAYING CARDS.

▲▲▲
We have a full stock of playing cards of the most popular makes, bridge counters, etc.
▲▲▲

HAWAIIAN NEWS CO., LTD.,
Young Building, Store.

YAMATOYA

MERCHANT TAILOR AND SHIRT MAKER.
Nuuanu Street, one door above Pauahi.
P. O. Box 822.
SHIRTS OF ALL KINDS, KIMONOS AND PAJAMAS MADE TO ORDER AND ON SALE.

AS OTHERS
SEE HAWAIIMany Interesting Notes
of Territorial
Travel.

Haleiwa, Oahu, T. H.,
August 17, 1905.

Editor Press: At your request I shall endeavor to write a letter for your paper and hope that it will be of some interest.

Our party left San Francisco for the islands July 8, on the steamer Manchuria, this being the same steamer on which were Secretary Taft and party. We were six days on the Pacific, and we enjoyed every minute. We had no rough weather until the last two days, when the breakers rolled quite high, but we only enjoyed this the more, having by this time gained our "sea-legs." In fact, our party succeeded in keeping their "sea-legs" from the very start.

The Manchuria and her sister ship, the Mongolia, are the largest steamers that leave the San Francisco harbor. They are equipped with all the comforts of home and one wants for nothing. The service over the entire ship is Chinese. The waiters formed quite a striking picture in the dining room as we came down to our meals. For breakfast and lunch they dressed in long blue robes, and for dinner they were all in white. What stolid faces they did have, expressions never changing, no matter what the circumstance.

We arrived in the Honolulu port about 5 o'clock in the morning on July 14, and docked about 7, although we were not allowed to land until nearly 8. A party of native musicians came out to the steamer and met us and played their sweet native songs for us until we reached the wharf. A number of Honolulu's prominent citizens came aboard also, bringing with them great armfuls of leis; these are long strings of flowers, and they are the natives' welcome to the visitors on the islands. We came into port amid great demonstrations in honor of the Secretary of War, Miss Roosevelt and others of the Taft party. In the confusion of sound you could distinguish the boom of the cannons, the whistles and bells on the different ships in the harbor, and several bands, playing the Hawaiian national hymn and "America." The city and harbor were gay in the flying of flags of all descriptions, but the one that looked the most like home was "Old Glory."

The wharf was guarded by the native police, and a company of the United States regulars, under whose protection we passed to the farther dock, where we were met by our friends. Here I left our party and in company with my sister and her husband, Mr. and Mrs. Bidgood, came out to the Haleiwa hotel on the Oahu railroad, one of the two that they have on the islands.

The trip on the Oahu railway is one of rare beauty and attractiveness to a visitor on the islands. Leaving Honolulu the route lies west to Moanalua and through the cane fields of Honolulu plantations. For more than half of the circumference of Pearl Harbor the line is on the shores of the lochs. Fertile fields border the rails and the scenery of the western coast is impressive. Mountains, broken by deep valleys come down to the sea in almost continuous cliffs, against which beat long surf lines. After leaving Kaena Point, the northwestern end of Oahu, one looks out upon a fertile plain, three miles wide and twenty long, on which are cattle ranges and fields of rice and sugar cane.

About midway of this coast is the bay of Waialua and the Haleiwa hotel. And it is here that I have taken up my abode for the summer months. A beautiful spot, a perfect Garden of Eden placed as it is, picturesquely upon the shores of a quiet bay, and about which rise great mountains, at the foot of which stretch vast valleys of the cane and rice fields.

The variety of amusement here would satisfy almost any heart, there being excellent golf links bordering on the sea; tennis courts; bathing in ocean or fresh water pool; driving, fishing, hunting and boating. Surely one would not lack for entertainment.

The Haleiwa hotel is located about the center of the great plantation of Waialua, a mile away is the modern mill. The sugar crop of the Territory of Hawaii for the year 1904 was 763,491,992 pounds, of a total value of \$24,359,385; 102,019 tons of this output was produced on the island of Oahu, and 97 per cent of this amount was raised along the line of the Oahu railway, which runs from Honolulu to Kahuku, about 16 miles beyond the Haleiwa hotel. Along this line is the most productive sugar estate in the world—Ewa—which last year produced 31,696 tons. At Ewa sugar culture has become a science; some of the fields have produced 15 tons to the acre. The plantation is artificially irrigated, as in fact are all of those along this road. On it are seven pumping stations, which have a capacity of 60,750,000 gallons of water daily.

Two hundred feet is the highest level irrigated, but on the Waialua plantation there is being constructed a great reservoir up in the mountains, and it is the plan of the company constructing it to store up all the water possible during the rainy season. When full the water will back up the gorge eight miles. The capacity of this reservoir will be such that enough water can be stored there for a year's irrigation. This will do away with the pumping plants, reducing the expense greatly. And again, where now they can only grow the sugar cane to a height of 200 feet, thus enable them to raise it to 700 feet, thus bringing into cultivation a great many

Danderine
GREW THIS HAIR
AND WE CAN
PROVE IT.
Results from its use are QUICK and PERMANENT.

MISS DOROTHY CLARK,
2130 Grenshaw St.,
CHICAGO.

FRANCES MARIE KNOWLTON,
980 Garfield Boulevard, Chicago, Ill.,
Age 4 Years.

MISS LUCY MAY,
5036 Forestville Ave.,
CHICAGO.

LITTLE FRANCES MARIE KNOWLTON

whose photograph appears herewith has a most beautiful head of golden hair, thicker than the crown of glory of most mature women. Frances is only four years old, and her hair hangs within 12 inches of the floor. The extraordinary hair strengthening qualities of Danderine has grown for this little girl the most admirable head of hair ever possessed by a child of her age in the world. The other two ladies whose photographs are shown here are certainly delighted with the results they are getting. Neither of them having hair that would reach to their waists before beginning the use of Danderine.

IT IS POSITIVE AND PERMANENT IN ITS RESULTS.
When applied to the scalp on either old or young, it makes the hair sprout and grow thick, long and beautiful, and there is no waiting around for weeks and months to see results, either. Any druggist will refund the price if it does not accomplish every result we claim. NOW at all druggists in three sizes, 25 cents, 50 cents and \$1.00 per bottle.

FREE To show how quickly Danderine acts we will send a large sample free by return mail to any one who sends this advertisement to the Knowlton Danderine Co., Chicago, with their name and address and 10 cents in silver or stamps to pay postage.

FOR SALE AND GUARANTEED BY HOLLISTER DRUG CO.

acres of land that are now lying idle. The Ewa sugar mill is one of the most perfect, the machinery is thoroughly modern and embraces every effect known for the extraction of the saccharine matter from cane. So perfect are the appliances that the extraction at this mill now reaches 96 per cent of the sugar analytically determined. The mill is so arranged that inspection of the various processes is easily made, the sugar may be followed through every process, from the cane as it is brought in from the field on small cars, to the sugar as it is sacked and loaded onto the cars, to be shipped to New York to be refined.

An interesting drive from the hotel is through the cane fields to the south up to the Waialua plains. The road winds along the ridges and through gulches past the great reservoir before mentioned in the Kankonahua gulch to the settlement of Waialua. There is located the largest pineapple canery in the Territory. Over 300 acres of growing fruit lie before the eye, a sight purely tropical and very interesting.

SEEING WONDERLAND.

Leaving this island, I will take you on a trip to Wonderland. My sister, Mrs. Bidgood, and myself embarked on the little island steamer Kinai for the island of Hawaii to visit the volcano of Kilauea and the Puna district. The trip over on the Kinai was one long to be remembered. We struck a gale or, in other words, the gale struck us, and the little boat did almost everything but turn somersaults, and at times we even thought she would do that. But finally we reached our destination, a number of hours late, but well pleased to again set foot on solid ground.

We stayed in Hilo over night, taking the early morning train for Glenwood, from which place we staged it to the Volcano house, reaching there a little before lunch time. As our time was short, we began explorations at once, first visiting the Sulphur banks, where we gathered a few sulphur crystals. All around us were great cracks from which issued columns of sulphur fumes and the rocks upon which we were standing were quite warm, some of them too much so for comfort. Some of this steam they pipe to the hotel for hot sulphur steam baths.

After lunch, dressed in suitable garb for the occasion, we set off for the Fern forest, even though it was pouring rain. However, if one should wait for clear weather in this country he would be liable to be disappointed, as it rains at the most unexpected moment.

The Fern forest is certainly a thing of rare beauty, covering hundreds of acres and a perfect jungle of ferns, all kinds and sizes, from very small plants to great trees standing 30 to 40 feet in height. It is a quiet spot, the silence broken only by the sighing of the trees, or the singing of the many little birds, which make their home here. One can wander at will through this forest without any

fear of poisonous reptiles, there being none on these islands. Another pleasing feature of this forest and a very tempting one to me was the fruit to be found there. On every hand were those delicious red berries, very much like thimble-berries. Then there is another, the "Ohelo," or sacred berry. They are thus named, as no native would go down to the crater of Kilauea without taking with him a handful of these berries and throwing them into the pit as an offering to Madam Pele, the goddess of fire.

The following morning we wandered over to the Koa forest, Tree Moulds and the extinct crater of Kilauea Iki. It is from the Koa trees that a great many of the curios are made, and also a great deal of furniture. It has a very pretty grain, and takes a beautiful polish.

The tree moulds are very interesting. In some prehistoric time, during one of the eruptions from Mauna Loa, the lava flowed down over this forest. As it came to the trees it flowed right up them, covering them almost entirely. Later there came a mud flow, burying the forest, and now there is nothing left but these great trees, cemented as it were, with lava. The tree itself has rotted long ago and but the impression is left of the bark on the lava.

The extinct crater of Kilauea Iki is another of the wonderful sights to be seen on this island. We stood on the rim and looked down 900 feet to the floor of this crater and could imagine in a very weak way of its one time activity. The walls of this crater are now covered with a thick undergrowth. About 2:30 in the afternoon a party of us young people, mounted on horses, left the Volcano house and began to descend the steep, well-worn trail that leads onto the brittle lava floor of Kilauea.

Impressed with the awful grandeur of our surroundings, silence was more eloquent than words. We went in Indian file, the path being too narrow to allow more than one. We made our way slowly over this lava bed for a distance of two and one-half miles, where we left our horses, and in a rock corral and we proceeded to the deeper mysteries, where horses "fear to tread."

We first wandered over to the "Little Beggar," which at one time was a spouting cone, then over to Madam Pele's kitchen, from which issued clouds of sulphur fumes, then stopped at the hot cracks, over which we scorched some postal cards as souvenirs. The heat coming from these cracks is very intense and many times we were forced back and had to put our cards on long sticks. We looked down into some of the caves, but did not venture down into them for various reasons. Of course, we would not say we were afraid, but we thought above ground was safe enough for us.

After being "photographed" on the top of the big blow-holes, we stepped towards the crater and with a suddenness that fairly deprived us of our breath, we found ourselves over the great illuminated pit, 600 feet below us, part of which boiled and surged, a

great red mass of molten rock. The sight for the next three hours and a half, as we hung over the edge, large-eyed, awed, and almost terrified, was one the like of which I never expect to see again.

Standing on the rim of this seething cauldron, witnessing its upheavals, its breathings, its cool madness, its sudden flows, we realized more than ever, how great are God's works, how ignorant man is. Surely "the heavens declare the glory of God and the firmament sheweth His handiwork."

Now and then, at the beckon of Madam Pele down below, portions of the side walls would go rumbling down with a roar that sent the cold chills down one's spine, but which nevertheless was fascinating. The floor of the crater was ablaze with fire all the time, and the cone with a great glare of light, shot a stream of liquid rock high into the air, fully 100 feet. A great fire fountain, as it were, weird and wonderful in the extreme. We were favored with this display twice during the evening. There was one flow, the most beautiful of them all, being the largest, when one whole end of the floor opened up and that molten lava seethed and boiled in its angry way. Viewing such a sight, we became unconscious of the time, or the sharp rocks that were almost piercing the flesh until the guide reminded us that it was 9 o'clock and about time to make the return trip.

With the scene fresh in our minds the return ride was even more impressive than the first. There was no sound, save the crushing of the lava under the horses' feet, or an occasional word spoken to them. They needed no guiding and the riders were left to their own reflections. It was a tired and solemn looking crowd that at last reached the Volcano house at a late hour.

IN PUNA DISTRICT.

We left the Volcano house the following afternoon and went down into the Puna district. This part of the island is extremely interesting, being the heart of the extinct craters, nearly all of which are the cone craters. It is over this district that the flow from Mauna Loa in 1840, took its course, and as far as the eye can see loom up these great black cinder rocks, piled up in great confusion, just as they cooled in their mad rush to the sea many years ago. From Mauna Loa to the sea, a distance of about 18 miles, there extends one long line of extinct craters, varying in size. One peculiarity of these craters in this district is they are composed of cinders, the belief being that at the time of their activity the heat was so great that they burned themselves out, leaving nothing but the cinders. This the natives use for their roads, much as we do the fine sand.

Close to the home where we visited are three large extinct craters. In the pit of the first one is quite a good-sized lake, known as Green lake, which is bottomless, as far as is known no one having been able to sound bottom. In the pit of the second one is just a small frog pond. But the third one, just a short distance above the second, shows great activity at present, and it erupts at the proper seasons in the form of delicious bananas, vegetables of all kinds and fruits being watched and tended by a Japanese gardener. These three craters go down to a depth of about 300 feet.

Taking the island as a whole one would travel far before finding another such beautiful and interesting country. At times one would almost imagine he were in China or Japan, there is so much of Oriental life to be seen on all sides.

The foliage of the trees is one of the most beautiful sights to be seen. Every tree, with very few exceptions, blooms, some in the most exquisite colors. Especially beautiful is the poinciana regia, which is just one solid mass of flaming red.

Many more interesting places are yet to be visited, but they are as yet in the future, so "thus endeth the reading of the first lesson." Ethel L. Post, in Riverside (Cal.) Press.

SWEETS TO THE SWEET
AND
SWEETEST OF ALL
IS

Mackintosh's
Old
English
TOFFEE

ONLY
10 Cents Per Package.

TRY IT!
YOU'LL LIKE IT.
White Rock Water and
Ginger Ale, \$1.50 per dozen.

Henry May & Co., Ltd.

TELEPHONES:
Retail, Main 22; Wholesale, Main 92.

Speaking of Old Kona Coffee!
How would a cup of Coffee made from 8-year-old Kona go? We have a few bags of this excellent Coffee (probably the only lot in the city) which we will offer (while it lasts) at \$1.75 per 6-pound tins, freshly roasted and ground while you wait. Try a tin.

M. W. McChesney & Sons, Ltd.,
Coffee Roasters, Queen Street.

J. Hopp & Co.

FINE FURNITURE
1053-1059 YOUNG BUILDING,
Bishop Street.

COTTON BROS. & CO.

ENGINEERS AND GENERAL CON-
TRACTORS.
Plans and Estimates furnished for all
classes of Contracting Work.
Boston Block, : : : Honolulu.

Dry Cleaning

Garments cleaned by this process at
Mrs. A. M. Mellis'
Dressmaking Establishment.
Sachs Block, Honolulu.
SATISFACTION GUARANTEED.

W. HIRAI

BUILDER AND CONTRACTOR
AND EMPLOYMENT OFFICE.
PHONE MAIN 161.
Beretania street, between Smith and
Maunakea Street.

To Order Suits for Young Men a
Specialty.

EVERY SUIT INDIVIDUAL—NO
TWO ALIKE.

George A. Martin

Merchant Tailor.
Merchant St., Next Postoffice.

TRY OUR DELICIOUS

"Peach Mellow" and "Raspout"
AT

CONSOLIDATED SODA WATER WORKS
PHONE MAIN 71

ALL KINDS OF

RUBBER GOODS

Goodyear Rubber Co.
R. H. PEASE, President.
San Francisco, Cal., U. S. A.

TRY OUR

Our Celebrated Bromo Pop, Peach
Bounce, Bishops Tonic, Klondike Fizz,
and many others.

ARCTIC SODA WORKS,
127 Miller St., Honolulu, H. T.

OAHU ICE &
ELECTRIC CO

Ice delivered to any part of the city.
Island orders promptly filled. Tel. Blue
1111. P. O. Box 600. Office: Kewalo.

WALTHAM WATCHES

STEM WINDING, LEVER.

WALTHAM WATCHES EXPRESS

THE HIGHEST STAGE OF

THE WATCHMAKER'S ART.

TWELVE MILLION WALTHAM

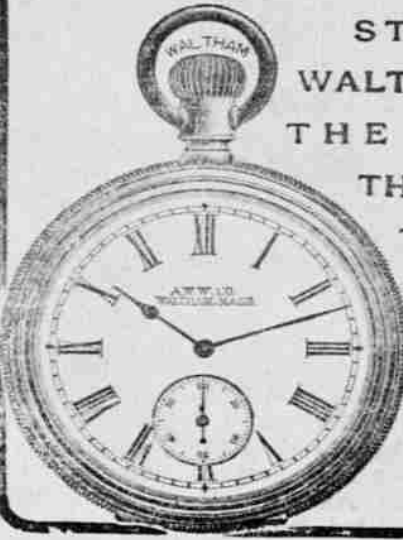
WATCHES NOW IN USE.

ALL GUARANTEED BY

AMERICAN WALTHAM

WATCH COMPANY,

WALTHAM, MASS., U. S. A.



"Bucks"Pneumatic
Air Cell**RUBBER STAMP
MOUNTS**

are handled exclusively by

WALL, NICHOLS CO.,THIS STAMP
WILL PRINTover any rough surface, giving a
Clear and Perfect Impression.
This is the only**Rubber Stamp**made that will give perfect sat-
isfaction at all times.
OUR STAMPS have a Deep
Cut die which assures Perfect
Results.We have recently added to our
shop equipment a new improved**Steam Vulcanizer**operated by city gas. We find it
a great improvement over old
methods which are still in use by
other manufacturers. Compare
our**Deep Cut Dies**

to any other make, you will find

"Ours the Best"TRY US AND YOU WILL BE
CONVINCED.**Wall, Nichols Co., Ltd.****THE QUEEN'S HOSPITAL
Pay Patient Department**

**THE QUEEN'S HOSPITAL, PAY
PATIENT DEPARTMENT,** offers su-
perior accommodations and attendance
for pay patients, both in ward and
private rooms. The recent "Pauahi
Annex" addition to the Hospital, with
its modernly equipped Operating Room,
Sterilizing, Anesthetic and Bath Rooms,
also Portable Baths, afford an up-to-
date service in every respect, with
Resident Physician, staff of Trained
Nurses, etc., also an Elevator Service.
The following are the rates, which in-
clude all charges for ordinary medical
cases if in charge of the regular Hos-
pital Physicians and Surgeons:

Private rooms... \$2.50 to \$3.50 per diem.
Ward patients... \$1.50 per diem.

Practicing Physicians are invited to
place patients in the Hospital, either
in ward or private rooms, such patients
to remain under the care of their own
physician, subject to the rules of the
Hospital; such patients will, however,
have to pay their own doctor.

Applicants for admission to the Hos-
pital must furnish the Superintendent
a surety for Hospital charges, or else
pay two weeks in advance, which must
be renewed every week thereafter. In
Surgical cases a charge of from \$5 to
\$15 is made for use of Operating
Room and materials. Surgeons are in-
vited to use the Operating Room of the
Hospital under the above specified
rates, and arrangements for hours can
be made with the Superintendent.

Persons desiring admission to the
Hospital should apply to the Superin-
tendent, on the premises, Punchbowl
and Miller streets.

For further information or refer-
ence, apply to the Superintendent or
Resident Physician at the Hospital,
GEO. W. SMITH, Esq., Secretary
(Benson, Smith & Co.), or E. F.
BISHOP, Treasurer (C. Brewer & Co.).
7209

**Choose the Artistic**

MANY NEW DESIGNS IN

Monuments

Can be seen at 1048-50 Alakea Street.

J. C. AXTELL & CO.

Phone Blue 1801. P. O. Box 642.



The transport Sherman sailed yester-
day afternoon at five o'clock for San
Francisco, instead of at three as
scheduled. The delay was caused by
the United States Marshal and District
Attorney taking off alleged counter-
feits. Six men were arrested as be-
ing members of the ring, and three
witnesses were also held. The vessel
was ready to go at three. The postal
authorities decided to send the mail
to the Coast on the Sherman, and 87
bags were sent on the vessel. As the
America Maru came in while the Sher-
man was leaving, and will sail at noon
today, the Sherman will undoubtedly
deliver the mail at least a day later
than the America Maru would.

Several local people departed on the
Sherman. Among them were Mrs.
Behr, wife of Lieut. Behr, Artillery
Corps, U. S. A., who was formerly at
Camp McKinley. Mrs. Behr goes to
Fortress Monroe to join her husband.
She has been visiting for two months
with Mr. and Mrs. J. L. Downing, the
former being her brother. J. Hastings
Howland, Assistant Superintendent of
Public Works, left for the Coast on a
vacation. An assemblage of friends on
the dock aided Mr. Howland in sing-
ing several selections from "The Sere-
nade" while the vessel was waiting for
the Marshal Hendry to get through with
his work on the ship.

Inspectors Wilson and Sheehan of the
Customs Department departed for the
Coast on vacation absence.

MORRISON PROMOTED.

Captain Morrison, U. S. A., a through
passenger on the Sherman, had an
honor conferred upon him yesterday.
He had just returned from Manchuria,
where he has been attached to the
Japanese armies, and received notification
that he had been promoted to
major. There was something of a
ceremony on the Sherman's decks, al-
though unofficial, when Capt. Morrison
went up in rank. Captain Walter K.
Wright, U. S. A., removed the two
bars from each of Mr. Morrison's
shoulder-straps. Two gold leaf
emblems were then brought from the
quartermaster's office, and were pinned
to Major Morrison's shoulder-straps by
Mrs. Baldwin, widow of Lieut.-Colonel
Baldwin. The insignia on his should-
ers, Major Morrison received the con-
gratulations of his brother officers.

THOMPSON HELD IRMGARD.

The barkentine Irmgard was delayed
in her sailing yesterday until after
2 o'clock owing to legal proceedings
brought against A. D. Thompson, one
of her passengers. Thompson and his
family had already boarded the Irm-
gard, when a summons was served on
him, charging him with the embezzle-
ment of 25 shares of Oohala. N. G.
Peterson was the complainant and R.
C. A. Peterson appeared as his attor-
ney. It appears that the shares had
been hypothecated to Bishop & Co.'s
bank. Mr. Peterson claimed he had no
right to do so. On payment of \$75 the
matter was settled and Mr. Thompson
was allowed to start on his voyage.
The Irmgard had but little cargo, only
enough being taken in for ballast.

FOUND SOME DESERTERS.

Deputy United States Marshal Win-
ter, while searching yesterday for de-
serters from the Brenda, found three
deserters from the Sotola-James Dis-
ney, Thomas Bjorseth and John Lewis
Chilso Birley, the last an apprentice.
He also arrested Karl Franson, a de-
serter from the Brenda. All are held
to await the demand of the British
Consul.

SHIPPING NOTES.

Dr. Crook, assigned to the America
Maru, joined the vessel here.

The tug Fearless will be ready to go
into commission today. The tug Chas.
Counselman will return to Hilo.

Of the five stayaways taken from the
barkentine Irmgard yesterday by Deputy
Marshal Winter, two were from the
British ship Brenda, two from the So-
tola and one from the Criffel, which
has already put to sea.

The Hawaiian Government band gave
a complimentary concert aboard the
transport Sherman from 2 to 3 p. m.
yesterday, which was greatly enjoyed
by those aboard. When Dixie was
played the crowd went wild with en-
thusiasm.

The cruiser Calabria is scheduled to
depart for Suva this morning at 10
o'clock. Last evening a complimentary
dinner was tendered Prince Ferdinando
of Savoy, Captain Morlando and of-
ficers of the Calabria by Acting Consul
Lanz and Mrs. Lanz at their Punahou
residence.

E. H. Cocke, formerly with the
Army Quartermaster's Department of
Honolulu, who went to Manila in Feb-
ruary, is a passenger on the Sherman
en route to the army military hospital
at the Presidio for treatment. Mrs.
Cocke, formerly one of the Osborne
girls of Honolulu, and her infant, ac-
company him.

ANNUAL MEETING.

**THE HONOLULU LIBRARY AND
READING ROOM ASSOCIATION.**

The annual meeting of the members
of the Honolulu Library and Reading
Room Association will be held at the
Library Building on Friday evening,
October 13, 1905, at 8 p. m., for the
purpose of receiving reports, electing
Trustees, and the transaction of any
other business which may properly
come before said meeting.

EDWARD W. CAMPBELL,
Secretary, The Honolulu Library and
Reading Room Association,
Honolulu, Hawaii, October 10, 1905.
7231-Oct. 11, 12.

BY AUTHORITY.

Notice is hereby given that the fol-
lowing Registered Treasury warrants
will be paid at the Treasury upon
presentation:
Registered Numbers 10801 to 11750,
inclusive.

A. J. CAMPBELL,
Treasurer, Territory of Hawaii.
Treasurer's Office, Honolulu, October
10, 1905.
7231-Oct. 11, 12.

At the meeting of the Board of Su-
pervisors of the County of Oahu, Ter-
ritory of Hawaii, held on the 9th day
of October, A. D. 1905, in their office,
McIntyre Building, the following
ORDINANCE was duly passed by the
said Board.

ORDER NO. 4.

**PROHIBITING THE EXPOSURE OF
GAMBLING TABLES OR IMPLE-
MENTS IN A ROOM BARRED OR
BARRICADED OR PROTECTED
IN ANY MANNER TO MAKE IT
DIFFICULT OF ACCESS OR IN-
GRESS TO POLICE OFFICERS,
WHEN THREE OR MORE PER-
SONS ARE PRESENT; OR THE
VISITING OF A ROOM BARRED
AND BARRICADED OR PRO-
TECTED IN ANY MANNER TO
MAKE IT DIFFICULT OF AC-
CESS, OR INGRESS TO POLICE
OFFICERS, IN WHICH GAM-
BLING TABLES OR IMPLE-
MENTS ARE EXHIBITED OR
EXPOSED, WHEN THREE OR
MORE PERSONS ARE PRESENT.**

**THE PEOPLE OF THE COUNTY OF
OAHU DO ORDAIN AS
FOLLOWS:**

Section 1. It shall be unlawful for
any person within the limits of the
County of Oahu to exhibit or expose to
view in any room or house or place
barred or barricaded or otherwise built
or protected in a manner to make it
difficult of access or ingress to police
officers, when three or more persons
are present, and cards, dice, dominoes,
or any gambling table layout, or any
part of such layout, or any other gam-
bling implements whatsoever used in
any game of faro, monte, roulette, fan
tan, or any banking or percentage
game played with cards, dice, dominoes,
or any device for money, checks, credit
or any representative of value or any
other game in which money or any-
thing of value is lost or won.

Section 2. It shall be unlawful for
any person within the limits of the
County of Oahu to visit or resort to
any such room or house or place
barred or barricaded or otherwise built
or protected in a manner to make it
difficult of access or ingress, to police
officers, when three or more persons
are present, where are exhibited or ex-
posed to view any cards, dice, domi-
noes, or any gambling table layout,
or any part of such layout, or any
other gambling implements whatso-
ever, used in any game of faro, monte,
roulette, fan tan, or any banking or
percentage game, played with cards,
dice, dominoes, or any device for
money, checks, credit or any repre-
sentative of value, or any other game
in which money or anything of value
is lost or won.

Section 3. Every person who shall
violate any provision of this ordinance
shall be deemed guilty of a misde-
meanor, and upon conviction thereof
shall be punished by a fine not to ex-
ceed five hundred (\$500.00) dollars or
imprisonment for not more than six
(6) months, or by both such fine and
imprisonment.

Section 4. Jurisdiction is hereby con-
ferred upon all District Magistrates
within the County of Oahu, to try and
determine all offenses arising under the
provisions of this ordinance.

Section 5. This ordinance shall take
effect and be in force from and after
its passage.

Approved:
GEORGE W. SMITH,
Chairman, Board of Supervisors.
Attest:
D. KALAUOKALANI, JR.,
Clerk, County of Oahu.
7231

At the meeting of the Board of Su-
pervisors of the County of Oahu, Ter-
ritory of Hawaii, held on the 3rd day
of October, A. D. 1905, in their office,
McIntyre Building, the following
ORDINANCE was duly passed by the
said Board:

ORDER NO. 2.

**REGULATING THE SPRINKLING
OF CLOTHES.**

**THE PEOPLE OF THE COUNTY OF
OAHU DO ORDAIN AS FOL-
LOWS:**

Section 1. It shall be unlawful for
any person or persons, loading or per-
forming any act in the laundrying of
clothing of another, or in the laundry-
ing of clothing for hire, within the
County of Oahu, to spray any article
so laundered with liquid sprayed or
projected from the mouth of said per-
son or persons, or to direct or permit
any person in his employ to so spray
such article so laundered.

Section 2. Any person violating any
of the provisions of this ordinance
shall be guilty of a misdemeanor, and
upon conviction shall be fined not less
than Five Dollars, nor more than
Twenty-five Dollars and in case such
fine is not satisfied by immediate pay-
ment thereof the person so fined shall
be committed to prison for the non-
payment of the same and the time of
such imprisonment shall be deemed to
discharge the same at the rate of One
Dollar per day.

Section 3. This Ordinance shall take
effect from and after its passage and
publication.

Approved:
(Sgd.) GEO. W. SMITH,
Chairman, Board of Supervisors.
Attest:
(Sgd.) D. KALAUOKALANI, JR.,
Clerk, County of Oahu.
7228

No. 57.
TERRITORY OF HAWAII.

COURT OF LAND REGISTRATION.

**TERRITORY OF HAWAII TO
CHARLES M. MULITNER, ROBERT**

**PARKER, JR., JOHN J. REGAN,
NIM SHEE, KONG SHUN FET** alias
ED KONG, WONG LEONG DOO SO-
CIETY BY WONG HOW; heirs of NG
FAWN as follows: WONG SHEE
(widow), NG CHING CHEE (w), NG
KAM (w), NG FOO (w), and NG KAM
(k); THE TERRITORY OF HAWAII
by LORRIN ANDREWS as Attorney
General, and to all whom it may con-
cern:

Whereas, a petition has been pre-
sented to said Court by the Estate of
S. G. Wilder, Limited, to register and
confirm its title in the following de-
scribed land:

Commencing at a point on the pre-
sent northwest side of Liliha street
bearing by true azimuth 54° 37' 30" and
distant 601 75-100 feet from a monument
in Liliha street on a 17 feet offset to
the new southeast side of Liliha street
and on a 13 2-10 feet offset to the new
northeast side of School street from
which monument Mokuaea Trig. Station
bears 146° 55' 30" and a similar monu-
ment on a 15 feet offset to the new
southeast side of Liliha street and on a
10 feet offset to the new southwest
side of School street, bears 46° 10' and
is distant 26 9-10 feet, and running
thence by true azimuths:

(1) 144° 58', 83 6-10 feet along L. C. A.
1172, Ap. 3, to Palapaa;

(2) 227° 37', 27 1-10 feet along same;

(3) 140° 40', 12 5-10 feet to point on
northwest side of auaui;

(4) 47° 45', 60 1-10 feet along L. C. A.
981 to Helelua;

(5) 67° 30', 48 1-10 feet along same;

(6) 326° 17', 108 8-10 feet along re-
mainder of L. C. A. 9009, to Liliha
street;

(7) 230° 33', 83 4-10 feet along present
northwest side of Liliha street to
the point of commencement;

Area 555 square feet or 0 1365-10000
of an acre, being house lots on Liliha
street, Honolulu, in III of Koahu, be-
ing a portion of R. P. No. 5554, L. C.
A. 9009 to Kapelelele.

You are hereby cited to appear at
the Court of Land Registration, to be
held at Honolulu, Island of Oahu, on
the 24th day of November, A. D. 1905,
at one o'clock and thirty minutes in
the afternoon, to show cause, if any
you have, why the prayer of said peti-
tion should not be granted. And unless
you appear at said Court at the time
and place of hearing, said petition will
be taken as confessed, and you will be
forever barred from contesting said
petition or any decree entered thereon.

Witness, PHILIP L. WEAVER, Esq.,
Judge of said Court, this 25th day of
September, in the year nineteen hun-
dred and five.

Attest with Seal of said Court.

(Seal) **W. L. HOWARD,**
Registrar.
7219-Sept. 27, Oct. 4, 11, 18.

**IN THE CIRCUIT COURT OF THE
FIRST CIRCUIT, TERRITORY OF
HAWAII, AT CHAMBERS-IN
PROBATE.**

In the Matter of the Estate of Arthur
W. Pearson, Deceased. Order for
Notice of Hearing Petition for
Probate of Will.

A document purporting to be the Last
Will and Testament of Arthur W.
Pearson, deceased, having on the 3rd
day of October, A. D. 1905, been pre-
sented to said Probate Court, and a
Petition for the Probate thereof, and
for the Issuance of Letters Testam-
entary to Stella G. Pearson, widow
of said deceased, having been filed by
said Stella G. Pearson;

It is hereby ordered, That Tuesday,
the 14th day of November, A. D. 1905,
at 10 o'clock a. m., of said day, at the
Court Room of said Court, at Honolu-
lu, be and the same hereby is ap-
pointed the time and place for proving
said Will and hearing said applica-
tion;

It is further ordered, That notice
thereof be given, by publication, once
a week for three successive weeks, in
the Pacific Commercial Advertiser, a
newspaper published in Honolulu, the
last publication to be not less than ten
days previous to the time therein ap-
pointed for hearing.

Dated at Honolulu, October 3, 1905.
J. T. DE BOLT,
First Judge Circuit Court First Circuit.
7225-Oct. 4, 11, 18, 25.

**IN THE DISTRICT COURT OF THE
UNITED STATES FOR THE TER-
RITORY OF HAWAII.**

In the Matter of Andres A. Montano,
a Bankrupt. In Bankruptcy.

To the creditors of Andres A. Montano
of Honolulu, Island of Oahu, Territory
of Hawaii.

Notice is hereby given that on the
9th day of October, A. D. 1905, the said
Andres A. Montano was duly adjudi-
cated bankrupt, and that the first
meeting of creditors will be held at
my office, 502 Stangenwald building,
in Honolulu, on the 24th day of Octo-
ber, A. D. 1905, at 4 o'clock in the
afternoon at which time the said credi-
tors may attend, prove their claims,
appoint a trustee, examine the bank-
rupt, and transact such other business
as may properly come before said
meeting.

WILLIAM T. RAWLINS,
Referee in Bankruptcy.
Honolulu, October 10, 1905. 7231

**IN THE DISTRICT COURT OF THE
UNITED STATES FOR THE TER-
RITORY OF HAWAII.**

In the Matter of Mary J. Montano, a
Bankrupt. In Bankruptcy.

To the creditors of Mary J. Montano
of Honolulu, Island of Oahu, Territory
of Hawaii.

Notice is hereby given that on the
9th day of October, A. D. 1905, the said
Mary J. Montano was duly adjudi-
cated bankrupt and that the first meet-
ing of her creditors will be held at my
office, 502 Stangenwald building, in
Honolulu, on the 24th day of October,
A. D. 1905, at 4:30 o'clock in the after-
noon at which time said creditors may
attend, prove their claims, appoint a
trustee, examine the bankrupt, and
transact such other business, as may
properly come before said meeting.

WILLIAM T. RAWLINS,
Referee in Bankruptcy.
Honolulu, October 10, 1905. 7231

NOTICE.

EMMELUTH & CO., LTD.

All persons owing the undersigned
are hereby notified to make immediate
settlement of their accounts, other-
wise the same will be placed in the
hands of our attorneys for collection.
7227 **EMMELUTH & CO., LTD.**

**IN THE DISTRICT COURT OF THE
UNITED STATES FOR THE TER-
RITORY OF HAWAII.**

The United States of America, Plain-
tiff and Petitioner, vs. Chun Afong,
Julia H. Afong, et als, Defendants
and Respondents. Action brought
in said District Court and the Peti-
tion filed in the office of the
Clerk of said District Court in
Honolulu.

The President of the United States
of America, Greeting:

To **CHUN AFONG; JULIA H.
AFONG; EMMELINE M. MAGOON;
JOHN A. MAGOON, husband of said
EMMELINE M. MAGOON; CHUN T.
AFONG; NANCY McSTOCKER;
FRANK B. McSTOCKER, hus-
band of said NANCY McSTOCKER;
JULIA JOHNSTONE; ARTHUR H.
JOHNSTONE, husband of said JULIA
JOHNSTONE; HENRIETTA WHIT-
ING; WILLIAM H. WHITING, hus-
band of said HENRIETTA WHIT-
ING; MARIE K. HUMPHREYS;
ABRAM S. HUMPHREYS, husband of
said MARIE K. HUMPHREYS;
ELIZABETH BURNS; I. R. BURNS,
husband of said ELIZABETH BURNS;
HELEN G. HENSHALL; CAROLINE
B. RIGGS; J. M. RIGGS, husband of
said CAROLINE B. RIGGS; MARTHA
M. DOUGHERTY; ANDREW J.
DOUGHERTY, husband of said MAR-
THA M. DOUGHERTY; ALICE HUT-
CHINSON; MARY C. AFONG;
ALBERT F. AFONG; ABRAHAM H.
AFONG; MELAINE B. BREW-
STER; JAMES W. W. BREW-
STER, husband of said MELAINE B.
BREWSTER; HENRY AFONG; LEE
HONG; CHUN LUN; CHUN SIN; S.
M. DAMON, Trustee; W. F. ALLEN,
Trustee; KIMO PII (sometimes called
JAMES PII); KAMALIE, wife of said
KIMO PII; M. ECKARGT, M. KEKU-
ANAO, HACKFELD & COMPANY,
LIMITED, a Hawaiian Corporation;
MIRIAM PURPLE, HENRY RED,
JANE GREEN, HORACE BLACK and
GEORGE WHITE, unknown heirs
aw of KAHIKALE, Deceased; PE-
TER BLUR, CATHERINE YELLOW,
HENRY BROWN, LYDIA SCARLET
and JOHN VIOLET, unknown heirs
at law of KAMALIE, Deceased, De-
endants and Respondents.**

You are hereby directed to appear,
and answer the Petition in an action
entitled as above, brought against
you in the District Court of the United
States, in and for the Territory of Ha-
waii, within twenty days from and af-
ter service upon you of a certified copy
of the Plaintiff's Petition herein, to-
gether with a certified copy of this
summons.

And you are hereby notified that un-
less you appear and answer as above
required, the said Plaintiff will apply
to the Court for the relief demand-
ed in the Petition herein.

**WITNESS, THE HONORABLE
SANFORD B. DOLE, Judge of
said District Court, this 1st
day of July in the year of our
Lord one thousand nine hun-
dred and five and of the in-
dependence of the United
States the one hundred
and twenty-ninth.**

W. B. MALING,
Clerk.

A true copy of Summons.
Attest:-**W. B. MALING, Clerk.**
By **F. L. HATCH, Deputy Clerk.**
7168

**Waikiki Seaside Hotel
Limited.**

Notice is hereby given that at a
meeting of the stockholders of the
Waikiki Seaside Hotel, Limited, held
this day, an assignment of all the com-
pany's property was made to the un-
dersigned for the benefit of the credi-
tors of the company. All persons in-
debted to said company are requested
to make prompt settlement of such in-
debtedness with the undersigned; and
all creditors of the company are re-
quested to present their claims to the
undersigned, within thirty days from
the date hereof.

Notice is hereby further given, that
the undersigned will not be responsi-
ble for any debts hereafter incurred
on behalf of the company without his
written consent.

Honolulu, September 15, 1905.
F. WUNDENBERG,
Assignee.

STOCKHOLDERS' MEETING.

**WAIALUA AGRICULTURAL COM-
PANY, LIMITED.**

A special meeting of the stockholders
of the Waialua Agricultural Co., Ltd.,
will be held at the office of Castle &
Cooke, Ltd., on the first floor of the
Stangenwald Building, Merchant street,
in the city of Honolulu, H. T., on
Thursday, October 19, 1905, at
10 o'clock a. m., to consider and
act upon the authorization of an
issue of bonds in the sum of One
Million Five Hundred Thousand Dol-
lars (\$1,500,000.00), to refund the exist-
ing bonded indebtedness of the com-
pany and for other purposes, and the
execution of a trust deed or mortgages
to secure the same, and the transac-
tion of such other business as may
properly be brought before said meet-
ing.

CHAS. H. ATHERTON,
Secretary, Waialua Agricultural Com-
pany, Limited.
Honolulu, H. T., September 29, 1905.
7220

**HONOLULU BREWING & MALTING
CO., LTD.**

The annual meeting of the stock-
holders of the Honolulu Brewing &
Malting Co., Ltd., will be held at the
office of the company, No. 535 Queen
street, in the city of Honolulu, T. H.,
on Saturday, October 21, 1905, at 10
o'clock a. m. Stock books will be
closed for transfer from October 12,
1905, to October 21, 1905, both dates
inclusive.

(Signed) **FRANK HALSTEAD,**
Acting Secretary, Honolulu Brewing &
Malting Co., Ltd. 7231

MEETING NOTICE.

FRATERNAL MEETINGS.

POLYNESIAN ENCAMPMENT

NO. 1, I. O. O. F.

Meets every first and third FRIDAY of the month at 7:30 p. m., in Odd Fellows' Hall, Fort Street.

Visiting brothers cordially invited to attend.

F. M. McGREW, C. P.
L. L. LA PIERRE, Scribe.

EXCELSIOR LODGE NO. 1, I. O. O. F.

Meets every TUESDAY evening at 7:30, in Odd Fellows' Hall, Fort Street.

Visiting brothers cordially invited to attend.

F. G. NOYES, N. G.
L. L. LA PIERRE, Secretary.

PACIFIC REBEKAH LODGE, NO. 1, I. O. O. F.

Meets every second and fourth Thursday, at 7:30 p. m., Odd Fellows' Hall, Fort Street.

Visiting Rebekahs are cordially invited to attend.

LILLIE DUNN, N. G.
JENNY JACOBSON, Sec'y.

OLIVE BRANCH REBEKAH LODGE NO. 2, I. O. O. F.

Meets every first and third Thursday at 7:30 p. m., in Odd Fellows' Hall, Fort Street.

Visiting Rebekahs are cordially invited to attend.

MARGARET SIMONTON, N. G.
THORA OSS, Secretary.

LEAHI CHAPTER NO. 2, O. E. S.

Meets every third Monday at 7:30 p. m., in the Masonic Temple, corner of Alakea and Hotel streets.

Visiting Sisters and Brethren are cordially invited to attend.

EMMALONGSTREET RICH CRABBE, P. V. M., Secretary.

ADELAIDE M. WEBSTER, Worthy Matron.

HAWAIIAN TRIBE NO. 1, I. O. R. M.

Meets every second and fourth THURSDAY of each month, in I. O. O. F. Hall.

Visiting brothers cordially invited to attend.

T. F. McTIGHE, Sachem,
E. V. TODD, C. R.

WILLIAM M'KINLEY LODGE, NO. 8, K. of P.

Meets every SATURDAY evening at 7:30 o'clock, in Harmony Hall, King Street.

Visiting brothers cordially invited to attend.

EDWIN FARMER, C. C.
E. A. JACOBSON, K. of R. & S.

HONOLULU TEMPLE NO. 1, RATHBONE SISTERS.

Meets every 2nd and 4th Monday, at Knights of Pythias' Hall, King street.

All visitors cordially invited to attend.

SALLIE L. WILLIAMS, M. E. C.
GRACE O'BRIEN, M. of R. & C.

LODGE LE PROGRES DE L'OCEANIE.

Meets the last Monday in each month, at 7:30 o'clock in Masonic Temple, corner Alakea and Hotel streets.

Visiting Masons cordially invited to attend.

C. J. DE ROO, Secretary.

W. R. FARRINGTON, W. M.

HONOLULU LODGE 616, B. P. O. E.

Honolulu Lodge No. 616, B. P. O. E., will meet in their hall, on Miller and Beretania streets, every Friday evening.

By order of the E. R.

HARRY H. SIMPSON, Secretary.

GEO. H. ANGUS, E. R.

COURT CAMOES, NO. 8110, A. O. F.

Meets every 2nd and 4th Tuesday of each month at 7:30 p. m. in San Antonio Hall, Vineyard street.

Visiting brothers cordially invited to attend.

A. O. ROSA, C. R.

M. C. PACHECO, F. C.

HONOLULU AERIE 140, F. O. E.

Meets on 2nd and 4th WEDNESDAY evenings of each month at 7:30 o'clock in K. of P. Hall, King Street.

Visiting Eagles are invited to attend.

M. ROSENBERG, W. P.

H. T. MOORE, W. Secty.

THEODORE ROOSEVELT, Camp No. 1, U. S. W. V.

Meets every first and third WEDNESDAY at Waverley Hall, at 7:30 p. m.

Visiting comrades cordially invited to attend.

PAUL SMITH, Condr.

R. H. LONG, Adjutant.

F. D. WICKE,

CONTRACTOR AND BUILDER. Store Fittings a Specialty.

Repairing Cabinet Work and Polishing. 1082 Alakea St., rear of Y. M. C. A. Phone M. 447, residence Phone W. 1611.

HORSE CLIPPING.

Experienced man. Electric machine. Horses called for and returned.

CLUB STABLES, Fort above Hotel Street.

TELEPHONE MAIN 109.

STORY OF A RANCH

Ikua Purdy on Stand in the Parker Case.

If Ikua Purdy knows any good of the ranch where he was born and brought up he has not come to it in his evidence. His direct testimony occupied all of yesterday, and was one long recital of mismanagement and improper methods, following the bill of particulars. There were no tilts between counsel to enliven the proceedings, the story flowing on with scarcely a ripple of objection.

Ikua agreed with Eben Low and young Parker that a fence should be constructed to prevent cattle from going over to Humuula and Horner's. Cattle had frequently been detained in pens without food or water. Inbreeding should have been prevented by cutting the ranch up in paddocks and separating families. Other methods of stopping poor cattle from breeding had been improperly prosecuted under Carter's administration.

The witness complained that branding at the Kulihaie pen was made a sport. It was Waimea's birthday. The best horses were saved for that occasion, and visitors were allowed to participate in the run. The dairy at Mana was not properly kept. The butter house was dirty and dogs drank the milk. The cows were milked in the open, and when it rained weak calves got stuck in the mud. Ivy had doubled in Carter's time and other noxious plants had spread.

One item of interest was the recital of a horse trade between the witness and Fred Carter, which read like a chapter from "David Harum." The facts were complicated, but at the close of the deal the witness had the horse and Carter had \$45. But the end was not yet, for the witness was surprised to receive a letter from Carter, demanding \$55 more on the ground that the animal was worth \$100 and that Carter had sold him in ignorance of the fact that he was a race horse.

The witness took exceptions to other horse deals of Carter's. John Chesbro had bought a horse for \$40, which, in the opinion of the witness, was worth \$100. Akina had secured an animal for \$30 which should have brought \$60 or \$70. These two were the only ones that had struck the ranch on its bargain day, though the witness had heard something about a sale in which John Lindsay figured.

The recital of mismanagement went on. The horses were broken in a way that caused injuries and death. The cattle were not properly tamed at all. The drives were so loosely conducted that branded animals were counted two or three times over. Needed im-

THE BRIGHT SIDE of life. It is a feeling common to the majority of us that we do not get quite the amount of happiness we are entitled to. Among the countless things which tend to make us more or less miserable ill health takes first place. Hannah More said that sin was generally to be attributed to biliousness. No doubt a crippled liver with the resulting impure blood, is the cause of more mental gloom than any other single thing. And who can reckon up the fearful aggregate of pain, loss and fear arising from the many diseases which are familiar to mankind; like a vast cloud it hangs over a multitude no one can number. You can see these people everywhere. For them life can scarcely be said to have any "bright side" at all. Hence the eagerness with which they search for relief and cure. Remedies like **WAMPOLE'S PREPARATION** have not attained their high position in the confidence of the people by bald assertions and boasting advertisements. They are obliged to win it by doing actually what is claimed for them. That this remedy deserves its reputation is conceded. It is palatable as honey and contains the nutritive and curative properties of Pure Cod Liver Oil, combined with the Compound Syrup of Hypophosphites, Extracts of Malt and Wild Cherry. Nothing has such a record of success in Scrofula, Influenza, Throat and Lung Troubles, and emaciating complaints and disorders that tend to undermine the foundations of strength and vigor. Its use helps to show life's brighter side. Professor Reddy, of Canada, says: "I have much pleasure in stating that I have used it in cases of debility and found it to be a very valuable remedy as well as pleasing to take." You cannot be disappointed in it. Sold by chemists.

provements were not made, while the Waimea stables, which were built, were unnecessary as the old ones could have been repaired. Wild dogs had increased, for John Lindsay had declared that ill luck followed those that killed them, particularly a tendency to fall off horses.

The witness complained that the sleeping accommodations on the drives were insufficient, so that the men had to sleep with their feet in the middle. Moreover, the cooking pot was too small to cook enough to go around. Wild cattle were caught on the mountain and tied to trees two or three days before being taken down. On one occasion the cattle had to be released before they were branded, on account of the excessive rains.

Magoon next asked about the occasion when Fred Carter had been absent from the branding pen at Waimea for over an hour. According to the witness, all work had immediately stopped and Ikua himself had gone after Carter. Fence posts by the ten thousand had been cut and hauled and then left to rot.

The direct examination was still unfinished when the court adjourned for the day.

LOCAL TROUBLES OF NEW YORK LIFE

Cashier F. A. Wickett, of the New York Life Insurance Company, was seen yesterday by an Advertiser reporter in regard to the charges filed with the Insurance Commissioner by the Hawaiian Trust Co., agents for the Prudential Life Insurance Co., of Newark, N. J.

Mr. Wickett said, "I have not very much to say, for there is not much to talk about. I am at a loss to understand what the real trouble is about unless it is jealousy, which unfortunately exists between certain agents of life insurance companies, especially upon the part of the fellow who is getting a little short on his business."

"I understood that this matter had been settled to the satisfaction of all parties concerned and did not know that there was any kick coming until I read of the charges in this morning's Advertiser. These charges are an attempt to discredit the New York Life."

"As far as any investigation is concerned the New York Life courts the most searching examination in all its affairs. The company has done its business in a straightforward manner and has written an unusually large amount of business, having at the present time over \$4,000,000 in force throughout these islands, and our policies are held by the most substantial and representative people in the Territory."

"It is not our policy to throw mud at our competitors; we have gotten the bulk of the business without doing so, as can easily be ascertained by reference to the reports filed by all life insurance companies doing business in Hawaii with Treasurer and Insurance Commissioner Campbell."

"Our motto is, 'Stick to business and keep a yellin', let the other fellow kick.'"

BUYS LAND TO RAISE SISAL OR

Christian Conradt has purchased the Mouritz lands at Pukoo, Molokai, and will shortly begin planting sisal on an extensive scale. He will also continue to raise cattle on the lands, using the upper mountain ridges for this purpose, where the pasture is luxuriant.

The Mouritz place runs from the top of the mountains to the sea, with the exception of that section purchased by Postmaster Bannister sometime ago. The Bannister land is on the makai side of the government road. Dr. Mouritz had his residence on the Bannister property, but afterwards built a commodious home beneath a grove of trees on the upper lands, close to the mouth of a valley. The Conradts will take up their residence at Pukoo. The lands are well adapted to the growing of sisal and Mr. Conradt expects to develop sisal into an industry which will be entered into by others.

He believes that in time it might pay to have a sisal mill on Molokai.

WOULD IMPROVE KALIHI SECTION

The "Kalihi Club," as the voters who live out that way call themselves, have resolved the outfit into an improvement club, in line with others of like nature which have now found the necessity of being organized to advance the interests of their section.

A meeting was held last evening at Senor Borges' store, which resulted in the election of P. F. Ryan as president and M. F. Peters (the well-known messenger service man) as secretary; and they, the improvement club, further resolved that the expenditure of the appropriations already made for roads and water should be asked for.

Saleswomen's Peril

GRAVE DISEASES, DUE TO STANDING

Facts About Miss Merkle's Dangerous Illness and Complete Cure

Have you ever thought why so many women or girls rather walk an hour than stand still for ten minutes?



It is because most women suffer from some derangement of their delicate organism, the discomfort of which is less trying when they are in motion than when standing.

In some states laws compel employers to provide resting places for their female employees.

But no amount of law can regulate the hard tasks of these women. They must get the strength which this work demands or run the risk of serious diseases and the surgeon's knife.

Read about the experience of Miss Margaret Merkle, 275 3d Street, Milwaukee, Wis.:

Dear Mrs. Pinkham:— "Gradual loss of strength, nervousness, bearing-down pains and extreme irritation compelled me to seek medical advice. The doctor said I had ovarian trouble and ulceration of the womb, and advised an operation if I wanted to get well. I objected to this and decided to give Lydia E. Pinkham's Vegetable Compound a trial. I soon found that all the good things said about this great medicine were true. The ulceration soon healed, backache, headache and nervousness disappeared, and in a short time I was strong, vigorous and perfectly well. I wish every working girl who suffers would try Lydia E. Pinkham's Vegetable Compound."

Lydia E. Pinkham's Vegetable Compound is a vegetable tonic which invigorates and strengthens the entire female organism, and will produce the same beneficial results in the case of any sick woman as with Miss Merkle.

JUST SOME QUERIES.

Editor Advertiser: What have Lord & Belser got to do with the police that labor patronage should be in the hands of the latter?

Why should Isaac Cockett and Alex. Nicholls complain to Sheriff Brown that some one had given away the secret compact to start a gambling house in Kalihi? Brown, as preserver of the peace, should be the last man they should go to. REMUS.

FEEL SICK?

Then you are the very person we want to interest in the merits of Hostetter's Stomach Bitters, and to urge a fair trial for your health's sake. This medicine has restored more sickly people to robust health than any other. Get a bottle of



today and take a dose before meals and at bedtime. It will soon make you strong and robust, by strengthening the entire system and thus curing

Poor Appetite, Indigestion, Sick Headache, Constipation, Torpid Liver, Insomnia, or Malaria, Fever and Ague.

Try a bottle at once.

ODD FELLOWS HALL

Tuesday Night, October 17

Dr. Frederic Bell

AMERICA'S SONG LECTURER,

Will Deliver His Last Lecture, Entitled

"A Merry Heart Doeth Good Like a Medicine"

OR

"Fun Better than Physic."

General admission to all parts of the House, 25 cents.

Tickets for sale at Wall, Nichols Co. Lecture commences at 8 o'clock.



AUCTION SALE

Friday, October 13, 1905, AT 10 O'CLOCK A. M.

At my salesroom, 847 Kaahumanu street,

MEN'S and BOYS' CLOTHING

ALSO

Regular Friday Sale

ASSORTMENT OF

Furniture, Etc

JAS. F. MORGAN, AUCTIONEER.

AUCTION!

I would draw your attention to a

Guardian's Sale Property

situated on MAUNAKEA STREET, NEAR QUEEN.

14 1-2 ACRES, PAUOA VALLEY.

Saturday, October 14,

AT 12 O'CLOCK NOON.

At my salesroom, 857 Kaahumanu street.

JAS. F. MORGAN, AUCTIONEER.

FOR SALE At Auction

Shortly at my salesroom, 857 Kaahumanu street, Honolulu.

LAND OF KAPONO.

LOCATION—The land of Kaponu is situated at Punaluu, Koolauloa, Oahu, between the lands of Puhe-miki and Haleaha.

PATENT AND AREA—Royal Patent (Grant) 879 to L. S. Ua, and contains 39 Acres, 3 Rods, 9 Ro. Excepting Kulean.

LEASE—Twenty acres, rice land, now under lease for 13 years from 1897, at \$300 per annum and taxes \$24, total \$324.

BUILDING—It has a large building and outhouses—sleeping quarters and storehouse for paddy. Cement threshing floor.

WATER RIGHT—It has a water right from the Waiono stream through aual, for irrigation.

SPRING—It has a water spring of its own in center of land now unused but could be piped to house lot for domestic use.

HOUSE LOT—There is a house lot of nearly three acres in area and fronts on the belt road of this island.

BELT ROAD—The belt road cuts thro' the makai end of this land.

SEA BATHING—Facilities for sea bathing is excellent, being only a few feet from the makai end of land, and has a sandy bottom.

FISHERY—Fishery is free being Government land.

STEAMER SERVICE—Steamer John A. Cummins calls at Punaluu.

JAS. F. MORGAN, AUCTIONEER.

RICH RED SOIL

Plenty of Water

The new contracts are now ready for the Kapolani Addition Lots at Kalihi.

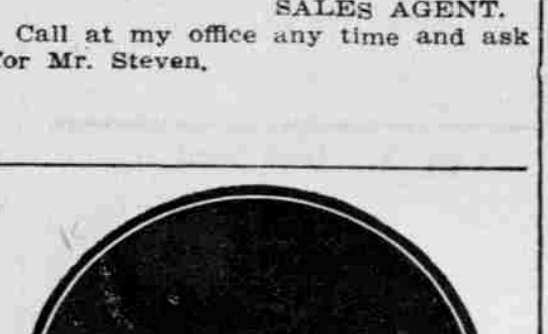
THE NEW PRICES ARE FIXED—CUT THROUGHOUT.

Now is the time to buy.

Preference given to those already owning lots—but first come first choice.

JAS. F. MORGAN, SALES AGENT.

Call at my office any time and ask for Mr. Steven.



MORGAN

General admission to all parts of the House, 25 cents.

Tickets for sale at Wall, Nichols Co. Lecture commences at 8 o'clock.

Castle & Cooke, Ltd.

HONOLULU.

COMMISSION MERCHANTS,

SUGAR FACTORS.

—AGENTS FOR—

The Ewa Plantation Co.
The Wailua Agricultural Co., Ltd.
The Kohala Sugar Co.
The Waimea Sugar Mill Co.
The Fulton Iron Works, St. Louis.
The Standard Oil Co.
The George F. Blake Steam Pump.
Weston's Centrifugals.
The New England Mutual Life Insurance Co., of Boston.
The Aetna Insurance Co., of Hartford, Conn.
The Alliance Assurance Co., of London.

Have You a Tooth

that can not be saved? Do not let it remain in your mouth to taint the breath and impart decay to the other teeth. Have it removed at once and replaced with our Bridge Work. If you don't know the exact condition of your teeth, we will examine them FREE.

F. L. Ferguson, D.D.S.

215 Hotel St.

The Expert Dentists.

Cigars at Cost

Must have room for new stock. BEST BRANDS, \$3.50 to \$6.00 PER 100. Order Now.

Myrtle Cigar Store,

T. J. FITZPATRICK, Proprietor.

FORT STREET.

HONOLULU IRON WORKS COMPANY.

Machinery, Black Pipe, Galvanized Pipe, Boiler Tubes, Iron and Steel, Engineers' Supplies.

Office—Nuuanu street.

Works—Kakaako.

W. W. AHANA & Co.

Limited

Merchant Tailors

Waity Building, Fort Street.

Phone Blue 2741

(Opposite Advertiser Office)

American and Foreign

Worsteads

JAPANESE AND AMERICAN

Dry and Fancy Goods

Manufacturers of Straw Hats.

IWAKAMI & Co.

HOTEL STREET.

Smoke

Gillman House

Boquet Cigars

BEAVER LUNCH ROOMS

H. J. NOLTE.

KWONG YUEN HING CO.

WHOLESALE AND RETAIL LIQUOR

DEALERS.

36-38 North King St.

Use

Novety Mills

EXCELLENT FLOUR

CALIFORNIA FEED CO., Agents

HORSE SHOEING!

W. W. Wright Co., Ltd.

have opened a horse-shoeing department in connection with their carriage shop, etc. Having secured the services of a first-class shoer, they are prepared to do all work entrusted to them in a first-class manner.

Smoke

GENERAL ARTHUR CIGARS

GUNST-EAKIN CIGAR CO.

Distributor.

JNO. CASSIDY,

Electrical

Worker

BELL'S MATING BEE DECLARED OFF

Dr. Frederic Bell delivered his second lecture before a Honolulu audience in Odd Fellows' hall last night, the subject being "Love, Courtship, Marriage and Divorce."

A good house listened to the lecture. Dr. Bell opened proceedings by singing a baritone solo, "Strangers Still," which was received with applause.

The lecture was instructive and amusing and was listened to with pleasure by those present.

Dr. Bell threw much valuable light on marital problems and their solution, showing a thorough grasp of his subject.

At the conclusion of the lecture, Dr. Bell called for volunteers whom, he declared, he would make harmoniously on phenological principles.

Six young ladies rushed blushing to the front in almost less time than it takes to tell it.

With the men it was different, however. All the cajoling, entreating and bantering on the part of the doctor failed to induce more than one pale youth to join his eager sisters.

Of course the mating bee had to be declared off, Dr. Bell stating that as a rule it was the ladies that were difficult to get to go to the front, not the sterner sex.

BAND TONIGHT AT PALAMA STATION

The Hawaiian Government band will give a concert this evening at the Palama R. R. Station, at 7:30. The program is as follows:

PART I.
March—"Old Comrades".....Telke
Overture—"Autumn Queen".....Bigge
Intermezzo—"Karama".....McKinley
Selection—"Musical Review".....Riviere

PART II.
Vocal—Hawaiian Songs, arr. by Berger
Mrs. N. Alapai.
Intermezzo—"A sprig O'Shillelah"
(new).....Helf
a. "Good-Bye Eyes of Blue" (new).
b. "He's My Pal" (new).....Edwards
March—"Mama's Boy" (new).....Helf
"The Star Spangled Banner."

Sugar cured ham with champagne sauce at the CATERION at noon today.

The kind that melts in your mouth.

Plenty cold meat if you're good and hungry.

Tie a knot in your handkerchief so you won't forget it.

C. J. MCCARTHY, Proprietor,
Corner Hotel and Bethel Streets.

BUSINESS LOCALS.

A first-class mechanic desires a situation on a plantation. See our Wanted ads for particulars.

There is nothing that tones up the run-down system like a glass of Primo Lager or Wurzbacher beer.

Don't delay but secure a box in our safe deposit vaults today. The rent is only \$5 per year and up. Hawaiian Trust Co.

Go to Miss Power for stylish millinery, exclusive designs and reasonable prices. Millinery parlors, Boston building, Fort street.

Lewers & Cooke begin tomorrow morning a grand sale of Japanese blue and white cotton rugs. Tremendous reduction will prevail.

John Neil, at 133 Merchant street, has a lot of good machinery for sale at very low prices. See advertisement elsewhere, giving a list.

L. de L. Ward, accountant and auditor, has opened up an office in the McIntyre building where he will be pleased to meet his friends.

Sachs' big make-room sale of handkerchiefs and leather goods commences tomorrow morning. Tonight will see the last of the art-goods sale.

First class tickets to all stations on the Oahu Railroad and Haleiwa coupon tickets are now on sale at the office of Trent & Co., 936 Fort street.

Anything and everything will be sold today at Will E. Fisher's auction rooms at 10 o'clock. A partial list of articles is published in his advertisement elsewhere.

The annual meeting of the stockholders of the Honolulu Brewing & Malting Co., Ltd., will be held at the office of the company on Saturday, October 21st inst., at 10 o'clock a. m.

HAWAII PROMOTION WORK.

The Hawaii Promotion Committee held a short meeting yesterday afternoon and authorized the printing of 100,000 copies of a folder, the work to be done by the Hawaiian Gazette Company. The committee also ordered 3000 folders, the size of the ordinary business envelope, on the subject "Why One Should Visit Hawaii." These are intended to be enclosed with merchants' correspondence.

The report of the secretary and treasurer was approved for submission to the Chamber of Commerce and the Merchants' Association today.

LOCAL BREVITIES.

M. G. Silva is being sued by his wife for two years' unpaid alimony in Judge Robinson's court.

Registered treasury warrants Nos. 10801 to 11750 will be paid upon presentation at the office of the Treasurer.

Count A. de S. Canavarro, Consul-General for Portugal, left yesterday by the Kinai for Maui on a tour of inspection.

The annual meeting of the Honolulu Library and Reading Room Association will be held at 8 o'clock Friday evening.

A new chapel is being built by Dr. A. S. Baker at Houlualoa, Hawaii. Dr. Baker is now in Honolulu getting the material.

Captain J. F. Morrison, U. S. A., who was attached to the Japanese army headquarters, went through on the Sherman.

M. A. Greenwell, Wm. J. Sheldon and Abram Kaulukou passed the examinations for admission to the Supreme Court.

Captain George Grau, U. S. A., formerly of H. Hackfeld & Co., was in town yesterday during the stay of the transport Sherman.

A telegram yesterday announced that Fred Baldwin, who was operated on in New York for appendicitis, was slightly improved.

Six recruits will be made into Eagles tonight at Honolulu Aerie 140, K. of P. hall on King street. Visiting Eagles are invited to attend.

The effects of the lately bankrupt Chinese theatrical company were sold yesterday at auction by J. F. Morgan and brought fair prices.

Three cane-loaders for the Hawaiian Commercial & Sugar Company are being constructed by Wilson & Webster after the invention of F. L. Webster.

Don't miss the O. E. S. dance on Saturday evening, October 14, at the Healan boat house. Tickets fifty cents to be bought from the members or Hobron Drug Co., or Benson, Smith & Co.

E. G. Carrera, who is an employee of the Department of Commerce and Labor, departed yesterday on the transport Sherman for Washington, D. C., where he will be assigned to duty.

Judge Robinson yesterday overruled all the objections in the Takada murder case and when the defendant refused to plead ordered a plea of not guilty entered. The trial is set for next month.

Frank Fisher was found guilty yesterday morning of conducting a disorderly house. Judge Robinson sentenced Fisher to ten days' hard labor and to pay costs. Fisher has already been 10 months in prison.

Sabura Adachi was released from Oahu prison yesterday after serving a year's sentence for perjury in the notorious Ten-Dollar Club matter. Adachi escaped after testifying before the grand jury and was extradited from Japan.

Judge De Bolt yesterday gave a decree in favor of Harold Jeffs for the recovery of \$100 and costs from the Rapid Transit Company for damages. Jeffs offered a transfer that was rejected and he was put off the car on Beretania street.

The annual meeting of the Honolulu Library and Reading Room Association will be held on Friday, October 3, at 8 o'clock p. m., in the reading room. Trustees are to be elected, reports read and such business transacted as may come up before the meeting.

Two cases of Kona coffee, the gift of Hackfeld & Co., were forwarded on the Sherman yesterday, one directed to General Hall, who was in charge of the Seagirt competition, and one to Col. Bird Spencer of Passaic, N. J. The immediate donors of the coffee were the Hawaii National Guard Seagirt rifle team.

United States District Attorney R. W. Breckons, after making some arrests of alleged counterfeiters on the Sherman, walked ashore yesterday evening with a big bundle under his arm. The customs inspector took occasion to inspect this and found three boxes of cigars. District Attorney Breckons grinned when he was informed he must pay duty and confessed to the justice of the inspector's seizure.

Electric light is good for the soul-sight as well as the eye-sight. It helps people to see their duty as well as more mundane things. Hawaiian Electric Co.

Make-Room Sale!

Handkerchiefs and Leather Goods

Beginning Thursday, Oct. 12,
FOR THREE DAYS ONLY

Nothing will be spared in our handkerchief and leather goods departments. Everything must be sold to make room for our holiday stock.

HANDKERCHIEFS

Plain, fancy border and embroidered goods for men, women and children will be sold at extraordinary reductions.

LEATHER GOODS

Ladies' hand-bags, satchels and purses of every description will be sold at nearly HALF PRICES. This is an unprecedented opportunity to purchase at marvelously low prices. DON'T MISS IT!

H. S. SACHS DRY GOODS CO. LIMITED

COR. FORT AND BERETANIA STS.

Headache

It will relieve the most severe headache, check a threatened pain or neuralgia symptom, yet it will not disturb the stomach, nor leave any bad effects. Do not be afraid to try them, they contain no morphine, opium or any other ingredient that is injurious to take.

The relief is instantaneous, and sure help for chronic headaches, sick headaches or neuralgia.

25 CENTS A BOX.

Hobron Drug Co.

Our Tan Blucher

is the greatest value in an up-to-date SHOE ever offered. Price \$4.00.

McINERNY SHOE STORE.

From the Kaiser's Country

Wooden Ware

A recent invoice of Germany's finest wooden ware has arrived. The lot contains potato mashers, rolling pins, basting and skimming spoons, butter spades, knife boxes and hand-carved breadboards.

WHAT DO WE CLAIM FOR THIS SUPERB LINE?

Simply that they are made with the greatest care by highly skilled men, using selected material only, and that by virtue of these features both the dealer and user will be gratified.

W. W. DIMOND & CO., LTD.

PILOT OF THE HOUSEHOLD,
53, 55, 57 King Street.

THAT "SUNRISE" IS A BRAND

Sunrise is a brand of the best "Creamery Butter," which we receive from California by every steamer.

How we keep our butter fresh: We always get enough butter to supply our customers until the next steamer arrives. We are never over stocked. This butter is the best, as we guarantee every pound we sell. Never fails to give satisfaction. We deliver every pound in a cardboard box.

C. Q. YEE HOP & CO.

Tel. Main 251. Corner Beretania and Alakea Streets.

Correct Clothes

—FOR—

GENTLEMEN

The Suits we are turning
out are Models of Perfection

Cut Artistically by an Expert

who knows how to instruct his help to carry out the wishes of the customer
Made on the premises by

SKILLED WHITE LABOR

HIGH CLASS TAILORS.

L. B. KERR & Company, Ltd.

Alakea Street.

W. Matlock Campbell

Has returned and is ready for business. Ring up 'Phone White 591, or address General Delivery, until further notice.

UTILIZE, TO MAKE USE OF

This is what I should do with that wall space that I have. How well it would look to have it filled in with a nice set of Globe-Wernicke bookcases; and it would certainly keep my books in better shape. I think I will take ten minutes and go and see them at

J. A. M. Johnson Co., Ltd.

931 Fort Street.

'Phone Main 143 P. O. Box 514
Specializers in Modern Office and Store
Methods.

Beautiful Chairs

We have received an especially fine shipment of chairs of all sorts and those needing chairs will do well to inspect our new stock. There are chairs for every purpose and at all prices and all are well made and of beautiful design.

Porter Furniture Co
LIMITED, Young Building,
Cor. Hotel & Bishop Streets.

Idols

Some old Buddhist Images, very rare. Fijian Tapa. Old Hawaiian Tapa Quilt. HAWAII & SOUTH SEAS CURIO CO.

Young Building and Royal Hawaiian Hotel.

GO TO—

Miss Power's

—FOR STYLISH MILLINERY.
Millinery Parlors, Boston Building,
Fort Street.

PACIFIC HOTEL.

1182 Union Street.
First-class rooms and board; American cooking. Rates: Single meals, 25c; per week, \$4.00.
Get the best there is for your money.

WHITNEY & MARSH, LTD

Special Offering of

EMBROIDERIES

EDGINGS, INSERTIONS AND CORSET COVERS.

On MONDAY MORNING!

Bargain prices to close out some odds and ends.

Moopole (RED TOP) Extra Dry

PINTS and QUARTS.

From a Honolulu Hotel Manager:

"We have tried other Champagnes and since placing your Dry Monopole before our guests, they will use none other."

—ALSO—

MONOPOLE BRUT

(CLUB DRY)

The perfection of a Champagne that you don't feel next morning.

LEWIS & Company, Limited.

GROCERS & WINE MERCHANTS.

169 King street. Telephone 240.

CHICAGO

IN LESS
THAN

3 DAYS

and over THE ONLY DOUBLE-TRACK RAILWAY between the Missouri River and Chicago.

THREE FAST TRAINS DAILY.

VIA

SOUTHERN PACIFIC, UNION PACIFIC AND
CHICAGO & NORTHWESTERN RAILWAYS

Overland Limited. Vestibuled. Leaves San Francisco at 11 a. m. daily. The most Luxurious Train in the World. New Pullman Drawing-room and State-room cars built expressly for this famous train. Gentlemen's Buffet and Lady's Parlor Observation Car. Book Lovers Library. Dining Car. Meals a la Carte. Electric Lighted throughout.
Eastern Express. Vestibuled. Leaves San Francisco at 8 p. m. daily. Through Pullman Palace and Sleeping Cars to Chicago. Dining Cars. Free Reclining Chair Cars.
Atlantic Express. Vestibuled. Leaves San Francisco at 9 a. m. daily. Standard and Tourist Sleepers.

PERSONALLY CONDUCTED EXCURSIONS

Wednesdays, Thursdays and Fridays. The best of everything.
R. R. RITCHIE, G.A.P.C. CHICAGO & NORTHWESTERN RY.
617 Market Street, (Palace Hotel) San Francisco,
or U. P. Company's Agent.

Swift's Premium Hams

Every ham or piece of bacon branded "Swift's Premium" or "Swift's Winchester" is your guarantee for flavor, quality and value. No other hams or bacon are so good, sweet and tender. Give an order to your dealer today.

Every One U. S. Inspected SWIFT & COMPANY, U.S.A.

THEO. H. DAVIES & CO., LTD.,
AGENTS.

DELICATESSEN

When in doubt as to what to eat, visit our Delicatessen Counter and there you will find temptingly arrayed a host of appetizing dainties which will bring that jaded appetite back to its former vigor and hugely please the most fastidious or jaded palates.

Metropolitan Meat Co., Ltd.

Telephone Main 45.

Felt Hats

AT LESS THAN
COST PRICES.
CALL AND BE
CONVINCED.

K. ISOSHIMA.

No. 30.
King street.

