

# The Pacific Commercial Advertiser

U. S. WEATHER BUREAU, November 18.—Last 24 hours' rainfall, trace. Temperature, Max. 79; Min. 71. Weather, fair.

SUGAR.—96 Degree Test Centrifugals, 3.80c.; Per Ton, \$76.00. 88 Analysis Beets, 9s. 4½d.; Per Ton, \$79.20.

ESTABLISHED JULY 4, 1850

VOL. XLVI, NO. 7888.

HONOLULU, HAWAII TERRITORY, TUESDAY, NOVEMBER 19, 1907.

PRICE FIVE CENTS.

## READY TO ISSUE CLEARING-HOUSE CERTIFICATES

### Honolulu Banks Will Issue Them if Necessary, but It Is Not Believed Necessity Will Arise.

"While the financial crisis has passed in New York, where it originated," said E. I. Spalding, of Claus Spreckels & Co., yesterday, "on the Coast the scarcity of currency and the impossibility of getting shipments of gold from the East will probably continue for two or three weeks. The bankers of Honolulu are in close touch with San Francisco, and have had frequent consultations together; and while it is not expected it will be necessary, all arrangements have been made for a clearing-house and for the issuance of clearing-house certificates, should they be necessary. There seems no likelihood that they will be. There seems sufficient coin in the Territory for business needs, the fear in the past being that the collection of taxes would withdraw so large a portion of the coin from circulation as to create a shortage.

"The situation on the Coast was due not alone to the lack of currency, but to the lack of currency of small denominations. This is shown by the fact that clearing-house certificates were issued in such small denominations as one dollar.

"These clearing-house certificates are issued to the banks by the clearing-house, on the transfer by the banks to the clearing-house of such gilt-edged securities as the committee of the clearing-house approve, and then only to seventy-five per cent. of the market value of the stock. The clearing-house charges the banks a high rate of interest, in order to compel the redemption of the certificates as soon as the emergency for which they were issued has passed away. This rate of interest varies in different cities, each clearing-house fixing its own rate of interest.

"In California, also, the banks have had the assistance, in meeting the situation, of the cooperation of the Governor of the State, who has declared a series of holidays, during which it

was optional with the banks whether they did business or not. Thus depositors demanding their money could be refused until the holiday was over, though the banks sought in every way to protect and help business. In most cases these clearing-house certificates would answer every purpose, and the results seem entirely satisfactory.

"The fact that the crops of the country are unusually good is a feature in the present situation. There were in the elevators at Buffalo alone, only a few days ago, 3,000,000 bushels of grain sold for export, for the moving of which the railroads could not furnish the cars. The same conditions exist all over the country. The railroads are not able to supply cars enough to move the crops.

"There is nothing whatever in the local situation to cause uneasiness. The banks are in touch with the Coast and in touch with each other. As soon as the Coast banks can begin to get shipments of gold from the East, their situation will clear, just as the situation in New York has cleared as gold has been received from Europe.

Some interesting facts concerning clearing-house certificates are given in a recent issue of the Wall Street Journal. They were first issued by the New York Clearing-house in 1860 to meet the emergency created by the prospect of the Civil War. They have been issued nine times since then, including the present, by the New York banks. Chicago has never issued clearing-house certificates until the present crisis. In issuing them now it issues none of a lower denomination than \$5000. In 1893 the maximum issue of these certificates by nine cities amounted to over \$65,000,000, of which New York issued over \$38,000,000. The prevailing rate of interest upon these certificates has been six per cent., although on two occasions seven per cent. has been charged. In Boston, however, the rate has always been 7.3 per cent. In some cities the rate has been as high as 9 per cent. It is eight per cent. in San Francisco now.

One of the striking things about these issues, which the records of them show, is how quickly they have performed their work and passed out of existence.

check everywhere. In addition it has assisted in the payment of a salary to Dr. Norgaard. In fact it was on the guarantee of the association that he came down here. The association has done much to introduce valuable range grasses into the Islands. A part of the time it has paid the salary of an inspector at the slaughter houses; and lately it has done much in behalf of the search of a remedy for the horn fly pest.

The morning session of the association was largely occupied with a discussion of the very existence of the association. There was no one who urged the dissolution of the organization. There was a very general feeling that the association had done enough to fully justify its creation and existence, and that there was still a field for its energy and efforts. These ideas were presented during a discussion of a motion by L. von Tempisky that the association do not disband. Among those who spoke on this subject were H. M. von Holt, R. W. Shingle, E. P. Low and L. von Tempisky. Finally von Tempisky withdrew his motion and submitted one providing for changes in the by-laws designed to meet changed conditions. These changes in the by-laws provide a reduction of the annual dues of members from \$25 a year to \$5 a year, and abolish the "cattle and sheep" tax, which was the principal source of the association's revenue, being ten cents for each head of cattle, and two and a half cents for each sheep and calf sent to the Honolulu market. This tax was an entirely voluntary contribution by the ranchers and ran as high one month as \$144.95, but latterly, because of individual objection to paying it, had dropped last month to \$42.62.

**CATTLE STEALING.**  
With these changes it was decided to maintain the organization, if being believed that there was a legitimate field for its endeavors, and that in any event it would be wise to keep the organization intact to meet any emergency that might arise. A suggestion of opportunity for such an organization was made in the matter of legislation. It was stated that the effect of the legislation of the last legislature in reducing the penalty for cattle stealing from two years' imprisonment to one, had been that cattle stealing had greatly increased, and it might be that the ranchers would have to ask the legislature for protection. In which case there the work could best be done through such an organization as this.

(Continued on Page Two.)

## POLITICIANS ARRANGEMENT ARE SAWING WOOD ALL BUT MADE

### Many Have Something "Unauthorized" Trip of Kuhio Produced Johnson's Work. Results.

"The present garbage department of the county, considering the small appropriation it has to work with, is doing remarkably well, and could not keep the city better served."

Such is the opinion of J. H. Boyd, who recently made an examination of the condition of the department, examining the appropriation account and going through the payrolls, and whose name has been prominently mentioned in connection with the department as the head of it, to succeed Road Supervisor Sam Johnson when he is discharged.

Mr. Boyd does not relish the way his name has been used of late, either in connection with the position which it is said will be created or in connection with the various political slates which are being tentatively drawn up and issued as feelers.

"I have never been after Sam Johnson's job, now or at any other time," he said yesterday, "neither have I had anything to do with the resolution which has been drawn up by Charley Achi to have him ousted as head of the garbage department. Only, if the vacancy had been made, I was and am ready to make an application for it, the same as any other citizen has a right to do. I heard about the resolution the day preceding the last meeting of the Supervisors and expected that it would have been presented. I do not know why it did not come up.

"The reason my name has been mentioned so prominently in connection with this matter, probably, because I made an examination into the workings of the garbage department with a view to applying for a franchise to take over the work and that of the street sweeping, with a possible fertilizer works to be established. I had two friends ready to back me if it could be shown that there was any money in it. But I had to tell my friends that with the appropriation that the department had to work on there was no margin of profit."

"Then you consider that the present" (Continued on Page Seven.)

"Without authority," it is officially stated, Prince Cupid went to Kalaupapa. But he took with him, nevertheless, articles of agreement, prepared in Honolulu according to the wishes of the Board of Health President, whereby Wallach is to be allowed to conduct his experiments upon a number of lepers at the Kalihii station. He took with him, also, a carefully prepared petition to the Board of Health, all ready to receive the signatures of the Board or the Committee of Seven at the Settlement. When he returned to Honolulu he brought the articles of agreement and the petition, signed as was necessary by the committee. It was to get these signatures and to prepare the way for the come-down of the Board of Health that Kuhio went to Molokai and the results of the trip will be put in evidence at the meeting of the Board of Health tomorrow.

The petition from the Committee of Seven, who were authorized to sign it at a mass meeting held during Kuhio's stay in the Settlement, is in a different tone to the last communication from there to the President of the Board, when Pinkham was bluntly informed that the people of the Settlement were too disgusted with him to have any further dealings regarding Wallach. The petition which will be presented tomorrow addresses the Board in all humility, stating that the lepers realize that from the standpoint of argument and reason they have nothing to bring forward in support of their desire to have Wallach come to them, that they had not been able nor had their friends been willing to produce anything in the nature of proof that Wallach could effect a cure of anything, but throwing themselves on the compassion of the members of the Board, they wished, in spite of everything conceded, to have Wallach treat them. They call upon the Board to remember the poor lepers and act against their better judgment if necessary.

The articles of agreement contain seventeen clauses. These outline the plan upon which Wallach is to use his dope, the safeguards to be thrown (Continued on Page Four.)

## ROOSEVELT IS PRAISED FOR RESCUE POLICY

(Associated Press Cablegrams.)

WASHINGTON, November 19.—President Roosevelt is being commended in financial circles for the wisdom he has shown in handling the financial situation and congratulated on the success which is following the measures introduced by him to relieve the crisis through the issuing of Panama Canal bonds.

These bonds are already prepared for issuing and applications, accompanied by the canal certificates, have reached the treasury from thirty financial institutions.

**FOREIGN BOURSES CONFIDENT.**

WASHINGTON, (D. C.), November 18.—The prompt action of the Government in aiding the banking business in the recent crisis and the importation of millions in gold have relieved the financial situation throughout the country and there is nothing further to fear. All foreign bourses show marked improvement and confidence.

**CRISIS AT AN END.**

NEW YORK, November 18.—The action of the U. S. Treasury in promising to issue \$50,000,000 in Panama canal bonds is approved here and it is believed that the financial crisis is at an end.

The issuance of \$50,000,000 in Panama bonds will relieve the money market in this way: At the present time, certificates are issued for work performed on the big ditch; these certificates will be recalled and bonds issued therefor. The Treasury will not accept the certificates as security for Federal funds; the bonds will be accepted. So at an early day, banks will be able to handle \$50,000,000 of the government's money, in addition to the amounts advanced by Secretary Cortelyou.

## LABOR FEDERATION WANTS ABSOLUTE EXCLUSION

NORFOLK, Virginia, November 19.—The delegates to the convention of the American Federation of Labor, in session here, have passed a resolution in favor of the absolute exclusion of Asiatics from the United States.

## ANARCHISTS KILLED BY OWN BOMBS.

LISBON, November 19.—Bombs, which were in the possession of three anarchists, exploded yesterday, killing two of the conspirators. The third one was captured by the police.

## EUROPEAN SUGAR MEN IN ANNUAL CONCLAVE

BRUSSELS, November 19.—The International Sugar Convention convened here yesterday. The question of admitting Russia into the Brussels Convention will be settled today.

## MANY RUSSIAN MUTINEERS SENTENCED TO DEATH

VLADIVOSTOK, November 19.—Two hundred of the mutineers, captured after the battle of the destroyer Skori with the other destroyers in the Vladivostok harbor and the land batteries in October, have been sentenced to execution. It is predicted that an attempt to carry out the wholesale execution will bring about another outbreak among the sailors.

## TAFT DINES WITH PFLUG.

VLADIVOSTOK, November 19.—Secretary Taft dined yesterday as the guest of General Pflug, commander of the force stationed here.

**HOME FOR CHRISTMAS.**

HAMBURG, Germany, November 19.—Secretary Taft will sail for New York from this port, arrangements having been made to allow him to embark on December 7.

## MEXICAN CONSPIRATORS ARRESTED.

GUAYAQUIL, Mexico, November 19.—A number known to have been in conspiracy against the government were arrested yesterday.

## SOUTHERN ITALY SUFFERS AGAIN.

CALABRIA, Italy, November 19.—This district was visited by another severe earthquake yesterday. A number of houses were shattered and other damage done.

**SOME WERE CAUGHT.**

BELLINGHAM, November 18.—Three hundred Japanese trying to cross the Canadian border and enter this state have been turned back within the past six months.

**MAURETANIA ALSO FAST.**

QUEENSTOWN, November 18.—The new steamship Mauretania on her run from London to New York, is averaging twenty-two and five-eighths knots. She carries \$12,500,000 in gold for American banks.

**ORCHARD WILL REPEAT STORY.**

BOISE CITY, Idaho, November 18.—The trial of Pettibone for complicity in the murder of ex-Governor Steunenberg, of Idaho, has been set for November 25.

## CATTLE BREEDERS TAKE UP COURAGE

### Continue Their Organization and Will Fight the Horn Fly.

The Hawaiian Live Stock Breeders' Association held its annual meeting yesterday, changed somewhat the form of its organization, and decided to continue as an association, instead of disbanding, as was tentatively proposed, and as was by some fully expected would be done.

The reasons why there has been thought of a disbandment of the organization, are three. In the first place the Board of Agriculture and Forestry, created since the organization of the Breeders' Association, through its committee on animal husbandry with the assistance of Dr. Norgaard and Entomologist Van Dine, now does some of the work which the association has done and is doing. Second, a number of the members of the association who have been made defendants in the Beef Trust case have feared that their attendance at the meetings of the association or any remarks they might make at it, would be misconstrued to their disadvantage by the federal authorities prosecuting the Beef Trust case. And third, practically growing out of the other two, there has been such a lack of interest in the association that the collection of dues and of the so-called "cattle and sheep tax" has been much interfered with, practically prevented.

The association has to its credit since its organization in 1902 as things accomplished, the practical eradication of the lantern pest, as the government was about to withdraw Prof. Koebel from Mexico, when the association came to the aid of the investigation and secured Koebel's retention on this work, resulting in his finding in Mexico the natural enemies of lantern which, introduced here, have swept it away from large portions of the Islands, and promise to hold it in



## CATTLE BREEDERS TAKE UP COURAGE

(Continued from Page One.)  
 With the determination to continue the association, there seemed to come considerable enthusiasm, and the remainder of the proceedings were carried on with much spirit.  
 The receipts since the last annual meeting two years ago have been \$2642.23. There is in the treasury now \$440.29. The expenses aside from \$75 a month paid Dr. Norgaard have been the salary of an inspector at the slaughter house, and the usual expenditures for printing, stationery, and postage, of such organizations.

### LIVE STOCK PESTS.

At the afternoon session, D. L. Van Dine read a preliminary report on the insects affecting the live stock industry of Hawaii. The report is based on the work and investigations of Mr. Van Dine and of Dr. Norgaard. Specimens of all these insects, mounted and in a case were shown. They include two species of blow fly lately discovered, and in all twelve species of true flies. The horn fly leads in importance. It was introduced into the Islands in 1897, and has been bred uninterruptedly here ever since. It was introduced into the United States in 1885 or perhaps as late as the spring of 1886. Two lines of control work have been studied. One is by the introduction of its natural enemies, which is still in the experimental stage. But while this is the ideal way the rancher cannot neglect other direct measures of control, said Mr. Van Dine. In Texas where the subject has been studied under the direction of Dr. Howard, chief of the Bureau of Entomology of the Department of Agriculture, it has been found that it is directly affected by temperature and moisture. During the long, dry summer it is reduced ninety-five per cent because conditions of breeding are not so good. The introduction of insectivorous birds had been considered. The introduction of the turkey buzzard was being considered to eat the bodies of all dead cattle to prevent the breeding of blow flies in them. But of true insectivorous birds there were suitable species in California which would be brought down as soon as a method of feeding them en route could be devised. These would do a great deal toward reducing the flies by the numbers they would devour.

### EXPERIENCE ON MOLOKAI.

The experience on Molokai, Mr. Van Dine said, had shown that fifty or sixty per cent of the dung, which was the material in which the fly bred, was found around watering troughs and in shady places, so that any treatment of this material to prevent the breeding of the fly would be much cheaper from this fact than if it were scattered all over the feeding grounds. It was also a fact that cattle feeding in the groves were comparatively free from the horn fly because the pigs in rooting about for the sigaroba bean so spread out the dung that it dried before the pupae of the fly could develop. Francis Gay had also experimented with a fly trap with some success.

The hot fly which while found here had not as yet developed into destructive pest was so elsewhere, the statistics of the Union Stock-Yards, Chicago showing a loss of \$3,337,000 in one year from this source.

### LOSS OF SHEEP.

Of the pests of sheep the blow fly easily came first. It was found on Molokai, Hawaii, and Oahu, and was so destructive that in one year it had caused the death of 5000 out of 18,000 sheep. It was supposed formerly to infest only dead tissue and was never known before to be an animal pest. Its destructiveness, however, was due to its complication with sheep scab irritated by horn-fly.

Other species of sheep pests are two, species of blue bottle fly, the sheep bot fly, and the screw worm.

The insect pests of horses include the stable fly, the horse bot fly, and mosquitoes. Of mosquitoes, Mr. Van Dine said that they do more injury than people are aware of, in the worry they inflict on horses, and it was now pretty certain that there was a connection between mosquitoes and pappu. In dogs it is now pretty certain that mosquitoes are instrumental in some degree in the spread of the heart worm.

### FRANCIS GAY'S FLY TRAP.

A. F. Judd described the fly trap used by Francis Gay, spoken of by Mr. Van Dine. It consisted of a chute through which the cattle were driven. The chute was lined with bamboo boughs to brush the flies off the cattle. The chutes were covered with tar paper except in the middle where there was a box open below and covered with glass. When the flies were brushed off the cattle they rose and flew into the box attracted there by the light. When they attempted to get out they were caught by wire netting properly arranged. The effect of this trap was to catch millions of flies, greatly to the relief of the cattle, and apparently they recognized its benefits for after being driven through the chute a few times they sought it themselves.

### GOVERNOR CARTER SPEAKS.

Former Governor George R. Carter was present representing the Board of Agriculture and Forestry. He said that Hawaii stood high in the estimation of men of affairs abroad, because of its reputation for organized industry. Prof. Hilgard had spoken of this to him as had others. He expressed his gratification that the association had decided to continue.

A. F. Judd spoke of two of the imported grasses, Rhodes' grass and Paspalum dilatatum, which had done excellently on Molokai at all altitudes above 200 feet. Experiments there had shown that sowing the seed broadcast was as effective a way of starting it as any. L. von Tempisky spoke of how well these grasses had proved themselves on Maui.

There was a discussion of new and noxious weeds that had shown themselves lately at different places in the islands.

The morning session was presided over by President A. F. Judd. Those present in person were Mr. Judd, A. M. Brown, secretary; R. W. Shingle, treas-

urer; Albert Horner, A. Mason, H. M. von Holt, Frank Woods, E. P. Low, Z. K. Myers, W. A. Greenwell, L. von Tempisky, E. H. Wodehouse, A. L. C. Atkinson, D. L. Van Dine and Dr. Victor Norgaard. Those represented by proxy were Aubrey Robinson, H. P. Baldwin, A. W. Carter, W. T. Robinson, W. H. Rice, E. E. Conant, A. F. Wilcox, G. J. Waller, G. N. Wilcox.  
 The following officers for the ensuing year were elected: President, H. M. von Holt; vice president, Albert Horner; treasurer, J. O. Young; secretary, Z. K. Myers; directors, Francis Gay, for Kauai; L. A. Thurston, for Oahu; J. H. Mackenzie, for Maui; J. Frank Woods, for Hawaii, and Charles A. Hartwell, for Molokai.  
 The meeting then adjourned.

## Our Meats

are not so high in price as they are good in quality. We deliver anywhere in the city without extra charge.

C. Q. Yee Hop & Co.

Telephone 251

## MISSION FURNITURE

CONTRACTORS, BUILDERS AND PAINTERS

Sun Lee Tai Co.

26 KING ST., NEAR NUUANU.



### Leather Postals

The Stork is coming—many varieties. Mexican Drawn Work.

Brasses, Pottery, Fans, Mats, Tapes.

HAWAII & SOUTH SEAS CURIO CO.

Alexander Young Building



NOW ON DISPLAY

Our

FINE LINE OF

## PICTURES

For the Holidays

Which Have Just Arrived

Make your selection early, for in most cases we have only one of a subject.

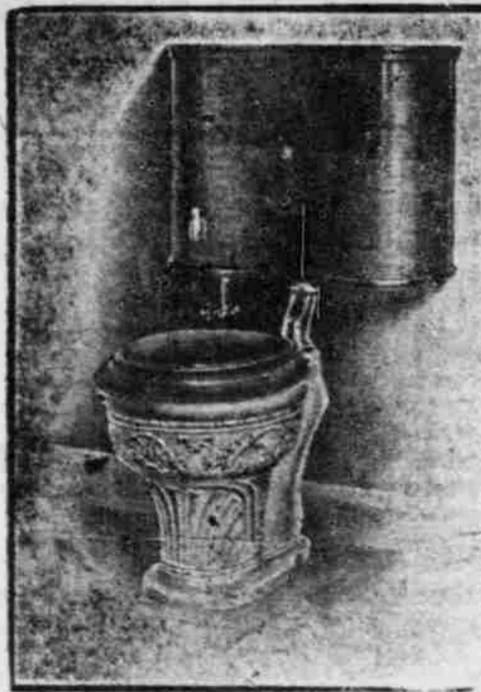
Remember the place, where they keep almost everything—

WALL, NICHOLS CO.,

LIMITED

YOUR MONEY SAVERS

## New Dome



JOHN NOTT.

## FALL HATS

New Line Just Received FOR LADIES AND GENTLEMEN.

UYEDA

1028 Nuuanu Avenue.

## Fine Millinery

All Descriptions at

Madame Josephine's

MILLINERY PARLORS

162 HOTEL STREET, Opposite Young

Hotel

READ THE ADVERTISER

WORLD'S NEWS DAILY

# Extraordinary Sale of New Dress Goods, All-Over Laces and Embroideries For This Week Only

To make more room for Christmas novelties we will take the quickest way possible—that is, reduce prices on the following goods so that they will go instantly.

### FANCY FIGURED SILK MULLS

Regular 50c values, this week.....40c  
 Regular 35c values, this week.....25c

### PLAIN SILK MULLS

Regular 35c values, this week.....25c

### PLAIN SILK MULLS DOTTED.

Regular 35c values.....25c

### FANCY DOTTED SWISSES

Regular 25c values, this week.....20c  
 Regular 20c values, this week.....17½c

Special values in white goods, such as Lawns, India Linons; Persian Lawns, Organdies, etc.  
 These goods are reduced from 20 to 25 per cent.

Handsome new leather bags and purses. Leather bags in the latest styles and shades at.....\$1.25 upward

### ---All-Over---

## Laces and Embroideries

25 per cent discount on these goods for this week. Our all-over laces range from 25c to \$4.00 per yard. All-over embroideries from 50c to \$3.50 a yard.

## Ribbons

The latest novelties in plaid, stripes and fancy figures.

	Regular.	Special.
3 to 3½ inch.....	35c	this week 25c
4 inch.....	40c	this week 35c
4½ inch.....	50c	this week 40c
5 to 6 inch.....	75c	this week 60c

Christmas Holly Ribbons in all sizes

# A. BLOM, MODEL BLOCK FORT STREET

Get Your Clothing

## WASHED and IRONED

AT OUR PLACE WHERE ALL OF THE ARRANGEMENTS ARE SANITARY. NO ILL-SMELLING CLOTHES FROM US : : : : :

## Sanitary Steam Laundry

Telephone 73.

Branch Office, TERRITORIAL MESSENGER SERVICE Telephone 361.

## BEAUTY HATS

are to be seen only at

MRS. DUNN'S

Fort St., below Beretania; next to the church.



The spirit of New England is as strongly manifest in these fair Islands of the Pacific on Thanksgiving Day as in the land of the early Pilgrim Fathers. The past year has been productive of a goodly share of blessings, so let us eat, drink and be merry. For the Thanksgiving Dinner we have provided the following good things:

- Mince-meat, Plum Pudding, Fruit Cakes, Brandied Fruits, Sweet-pickled Fruits, Fancy Preserves and Jellies, Maraschino Cherries, Marrons in Brandy and Syrup, Sweet Cider, Boiled Cider, Cranberry Sauce, Fancy Table Rasins, Citron, Lemon and Orange Peel, Olives (All Varieties, Stuffed and Plain), Pickles, Assorted Nuts, Lehnhardt's Candies, Frozen Eastern and Cocktail Oysters, Cheese (All Varieties), Bon Bon Crackers (For Table Decoration), Fresh Fruits and Vegetables in Season.

## HENRY MAY & CO., LTD.

Phone 22. LEADING GROCERS Phone 92



HOTEL JEFFERSON  
 TURK AND GOUGH STREETS  
 SAN FRANCISCO  
 SPECIAL RATES  
 New hotel, faces Jefferson Square. Two blocks from Van Ness Ave., the present shopping district. Car lines transferring all over city, pass door. Every modern convenience. 200 rooms single or en suite, 150 private baths. American and European plans. Prices moderate. Omnibus meets all trains.  
 STEWART-BARKER CO.

## Golf is Ahead . . .



McLaren is showing the Missourians "HOW". Can you find any more delightful place to practice than Haleiwa?

ST. CLAIR BIDGOOD, Manager.

**Special Christmas Ship**

Matson Navigation Company

**The S. S. ENTERPRISE**

of this line, carrying passengers and freight, will sail from San Francisco for

**HONOLULU DIRECT DEC. 10th.**

Place your Christmas orders for this vessel.

The above-mentioned ship will sail promptly as advertised.

Passenger rates from San Francisco:

First Cabin ..... \$ 60.00  
Round-trip, first-class .... \$110.00

For further particulars, apply to

**Castle & Cooke, Ltd.**  
AGENTS

**New JEWELRY JUST IN**  
**J. A. R. Vieira & Co.**  
Manufacturing Jewelers  
113 Hotel Street

**The Hoffman**

Corner Nuuanu and Hotel

**Billy Howell**

Only the BEST of LIQUORS—  
There's None Too Good for Us

**Free Lunch**  
**FORD RUNABOUTS**

One need only look about him to see that the Ford Runabout is the most popular machine in Honolulu.

Sold by  
**Schuman Carriage Co., Ltd.**

**Harrison Mutual**  
**Burial Association**

**J. H. TOWNSEND** Secretary  
Phone 411 Kapiolani Building

**For Fashionable Millinery**

Go to  
**MISS POWER'S**  
MILLINERY PARLORS  
Boston Building, Fort Street

**Why Delay?**

You can begin collecting your Christmas books now by the easy payment plan.

**William C. Lyon Co., Ltd.**  
King, near Fort

**BUY NOW!**

Gems, Gold and Silver Jewelry.  
Up-to-date Styles.  
Ready-made or by special order  
Prices reasonable. Call on us.

**SUN WO**  
No. 1808 Maunakea St. P. O. Box 948

**WE WILL**

**Paint**

your Auto or Carriage promptly and at a reasonable price.

**W. W. WRIGHT CO.**  
KING STREET, NEAR SOUTH

**W. R. PATTERSON**

has changed his office from 1168 Union street to  
HALE ALOHA, VINEYARD ST.

**The Lawrence Barrett**  
is the aristocrat of 19c. Cigars.  
**Theo. H. Davies & Co., Ltd.**  
Distributors

**THE HONOLULU DRUG COMPANY**

Reedy and Finley Sell to an Incorporation and Take Some Stock.

"Honolulu Drug Company, Limited," has filed its articles of association in the office of the Treasurer of Hawaii, J. F. Childs, F. M. McCallum, C. H. Rauon, Henry Bicknell and F. O. Boyer, all of Honolulu, are the incorporators.

The company purchases from R. B. Reedy and N. C. Finley the stock in trade, fixtures, furniture and good will of the business heretofore carried on by them in Honolulu under the name of the Honolulu Drug Co. at a valuation of ten thousand dollars to be paid in 250 shares, paid up, of the capital stock of the company and the sum of \$5000 in cash.

The amount of the capital stock shall be \$15,000, divided into 750 shares of the par value of \$20 each, with the privilege of subsequently extending the said capital stock to \$50,000.

Ten per cent of the capital stock is paid in, the following being the list of shareholders with number of shares held by each:

N. C. Finley, 125; R. B. Reedy, 125; C. H. Rauon, 30; Henry Bicknell, Mrs. A. M. Hurt and Ben E. Lee, 25 each; E. Colt Hobron, 20; E. A. Jacobson, F. O. Boyer, J. B. Purdy, R. J. Taylor, M. W. Tschudi, Chas. L. Bosson, J. H. Ketcheson and John K. Clark, 10 each; J. Alfred Magoon and W. T. Monsarrat, 8 each; F. M. McCallum, Eva N. Gay, J. F. Childs, W. C. Bailey, H. H. Williams, Hawaiian Soda Works, Jas. Bicknell, L. Petrie, P. M. Natual, M. H. Drummond, L. R. Medeiros, E. S. McGrew, Raymond C. Brown, Charles Freeman, Geo. W. Knight, C. J. Cooper, Leong Yee, Ludwigson & Junglaus, 5 each; K. Yasamori, 3; M. R. Monsarrat, J. Lightfoot and George Campton, 2 each. Total, 575 shares, of \$11,500 par value.

For the first period the board of directors consists of J. F. Childs, president; F. M. McCallum, vice president; C. H. Rauon, secretary; Henry Bicknell, treasurer; F. O. Boyer, auditor; R. B. Reedy, manager.

Early next year the Honolulu Drug Co., Ltd., will occupy the store in the Odd Fellows building now occupied by Mr. Lando.

**THE ASSOCIATED CHARITIES SHOWING**

The monthly meeting of the Associated Charities occurred yesterday at 4 p. m.

The manager reported thirteen new applications during the month, and thirty recurrent cases, thirty-eight received relief at the office.

Funds disbursed by the manager are as follows:  
Strangers' Friend Society ..... \$ 24.50  
Catholic Ladies' Aid Society ..... 32.90  
Am. Rel. .... 39.25  
Associated Charities ..... 19.55  
Total ..... \$106.30

A. C. JORDAN, REPORT OF TREASURER.

Honolulu, T. H., Nov. 18, 1907.  
Report of the treasurer of the Associated Charities for two months beginning September 16, 1907, and ending November 18, 1907:

**CREDITS.**

Sept. 16 Balance as of this date.....\$235.50  
Sept. 25 Govt. donation ..... 100.00  
Sept. 25 By cash ..... 10.00  
Sept. 28 By cash ..... 25.00  
Oct. 26 By cash ..... 10.00  
Oct. 29 Govt. donation ..... 100.00  
Oct. 29 By cash ..... 25.00  
Nov. 8 By cash ..... 55.00  
Nov. 18 By cash ..... 115.00  
Total ..... \$675.50

**DEBITS.**

Sept. 9 Telephone, Aug. & Sept. \$ 5.00  
Sept. 20 Allen & Robinson, Sept. rent ..... 25.00  
Sept. 20 Mrs. E. W. Jordan, salary for Sept. .... 100.00  
Oct. 1 Mrs. M. Anderson, janitor services, Sept. .... 7.50  
Oct. 26 Allen & Robinson, rent for October ..... 25.00  
Oct. 31 Mrs. M. Anderson, janitor services for October. .... 7.50  
Nov. 1 Mrs. E. W. Jordan, salary for October ..... 100.00  
Nov. 2 Mrs. E. W. Jordan, sundry expenses ..... 20.00  
Nov. 13 Telephone, 2 months. .... 5.00  
Total ..... \$295.00

Balance as of Nov. 18, 1907.....\$380.50  
E. & O. E. GEO. P. COOKE, Treasurer.

**FINISH OF NOTABLE LIQUOR LAW CASE**

The mandamus suit of Jacintho Miguel vs. C. G. Ballentyne et al. to compel defendants as License Commissioners to issue a saloon license to plaintiff, was discontinued yesterday. Miguel had withdrawn his appeal in the Supreme Court.

Miguel struck right at the heart of the 1907 liquor law by raising the point that it was unconstitutional to refuse him a renewal of his license without compensation for the stock of liquor he had on hand from his license under the old law.

**PINEAPPLE LAND TAX DECISION**

The Supreme Court Holds That Lessor's Interest is Not Exempt.

By the following decision the Supreme Court settles an important question as to the scope of the law exempting pineapple land from taxation. It shows the distinction that exists between the respective interests of the lessor and the lessee of such land. In this case the lessor, who resisted taxation, had not shown that his interest was actually in use for the production of pineapples. Therefore it was taxable. This is the decision:

In the Supreme Court of the Territory of Hawaii, October term, 1907. James L. Holt, Assessor and Collector of Taxes, first division, vs. Edgar Wood. Reserved Question from First Circuit Court. Argued October 11, 1907. Decided November 16, 1907. Hartwell, C. J., Wilder and Ballou, J. J.

Taxation—exemption.—A lessor's interest in land in actual use by the lessee for the production of pineapples is not exempt from taxation under R. L., Sec. 1223.

**OPINION OF THE COURT BY WILDER, J.**

This is a reserved question from the First Circuit Court to determine whether under Sec. 1223 of the Revised Laws defendant's interest as lessor in a piece of land is exempt from taxation when the land is in actual use by the lessee for the production of pineapples.

This section as originally passed was Act 35 of the Session Laws of 1903, being entitled "An Act to encourage diversified industries," and reading as follows:

"For the next five years all property, real and personal, actually in use for the production of pineapples shall be exempt from taxation of any kind."

The proposition that exemptions from taxation are strictly construed, in other words, that taxation is the rule and exemption the exception, is well settled. Bishop vs. Gulick, 7 Haw. 627, 630; O. R. & L. Co. vs. Shaw, 12 Haw. 76. As the United States Supreme Court puts it: "A doubt is fatal to the claim" of exemption. Theological Seminary vs. Illinois, 188 U. S. 662, 672. The question here is not what the Legislature could do but what it did do—that is, it is a question of construction.

This statute should be construed in connection with the system of tax laws in existence at the time of its passage. In Halstead vs. Pratt, 14 Haw. 38, 39, it is said that "The general rule is that a statute should be construed with reference to the system of laws of which it is a part unless a contrary intention clearly appears. If this were not so, statutes would often have to be given absurd constructions, for they often do not contain express provisions as to the extent of their operation in this respect."

The general system of taxation then in existence is set out in Chapter 98 of the Revised Laws. A specific amount is payable by certain male inhabitants known as poll, school and road taxes. Carriages, bicycles and dogs are taxed a certain amount which is payable by the owners thereof. Sec. 1212 R. L. reads that "Except as otherwise provided all real property and all personal property within the Territory shall be subject to an annual tax of one per cent upon the full cash value of the same." The meanings of real property and of personal property for purposes of taxation are set out. Under Sec. 1216 R. L. it is provided that "All real and personal property and the interest of any person in any real or personal property shall be assessed separately as to each item thereof for its full cash value," and in Sec. 1217 R. L. that "The interest of every person in any property shall be separately assessed and every person shall be liable to taxation in respect of the full value of his interest in such property." Certain exemptions as to property and persons are allowed. Individuals, corporations and companies are required to make returns of property owned by them or in their possession and assessments are made to or against them for their interests in property, and in the case of persons unknown or non-resident they are assessed as such. There are provisions for appeals from assessments and for the collection of taxes. The system as a whole in theory and in practice, so far as real property is concerned, is to tax persons for their interests in such property. It is very common to speak of assessing and taxing property, but under our system such an expression is not exact. For instance, in Holt vs. Savidge, 17 Haw. 84, and in Long vs. Holt, 17 Haw. 198, this court held that the assessment should be made to some one "whose duty it was to pay the taxes."

To hold that this 1903 statute exempted a lessor from taxation on his interest in land used by the lessee for the production of pineapples would be an implied repeal of the then existing laws as to assessing and taxing the separate interests of persons in such property, which under Sec. 21 R. L. only follows "when the new law contains provisions contrary to, or irreconcilable with, those of the former law."

There is no doubt but that one of the purposes of the exemption was to stimulate, encourage and promote the production of pineapples. The actual user of property for that purpose is directly benefited by having no taxes to pay on his interest therein. That the production of pineapples is not directly encouraged by exempting a lessor from paying taxes on his interest in land so used, who, from all that appears, gets as much rent as if the property was used for some other purpose, is substantially the line of reasoning in State vs. Magurn, 187 Mo. 239, holding that a lessor's interest in land leased to the public for school purposes is not exempt although the constitution exempted lots used exclusively for schools. See also County of Hennepin vs. Bell, 43 Minn. 344, and

**Panama Hats for Christmas**  
**Swellest Shapes for Ladies and Gentlemen**

We imported this elegant line especially for the holidays and it is now unpacked ready for inspection. A swell Panama is something everyone wants and they're sure to make very popular gifts.

Better come in now and lay one aside for Christmas. We'll block it any shape to suit.

This is the finest line of Panamas we have ever carried.

**M. McINERNEY, LTD.** HABERDASHER AND CLOTHIER,  
Cor. Merchant and Fort Streets.

**CHRISTMAS GOODS**

LARGEST LINES  
LOWEST PRICES

**JAPANESE GOODS**

**SAYEGUSA**

Nuuanu Street, above Hotel Street.

Traveler's Insurance Co. vs. Kent, 50 N. E. (Ind.) 562, to the same effect. But it is suggested that the production of pineapples would be encouraged indirectly by exempting the lessor of land used for that purpose because the lessee in any event either by a covenant in the lease or by having to pay a higher rental would have to pay the taxes assessed to the lessor, and probably that is so, although it does not so appear in this case.

But, after all, the question is whether this defendant has brought himself within the terms of the exemption claimed, that is, whether his interest is "actually in use" for the production of pineapples. That the defendant as lessor has an interest in the land which is distinct from the interest of the lessee is unquestioned. Is there any interest in the land except the lessee's which is actually used for the production of pineapples? The lessor is not concerned in the use of the land or in the production of pineapples, and it is immaterial to him what use is made of the land. The use of the land by the lessee for certain purposes does not make the lessor's interest used for the same purposes. We think that the lessor's interest is not exempted by the statute. In State vs. Board of Assessors, 46 La. An. 859, 51 So. 384, it was held that the lessor's interest in property which was leased and used by the lessee for manufacturing purposes was not exempt under the constitutional provision of Louisiana that "The capital, machinery and other property employed in the manufacture of machinery shall be exempt from taxation."

The answer to the reserved question is that the defendant is liable for taxes on his interest in the land.

C. B. Hemenway, Attorney General, for plaintiff.  
L. J. Warren, (Smith & Lewis on the brief with him), for defendant.

**REALTY TRANSACTIONS.**

Entered of Record Nov. 18, 1907.  
Keohi (w) to D Nuuhina et al. .... D  
S W Wilcox to W R Castle, Tr. .... A M  
Annie Kaea and hsb to Manuel K Cook, Tr. .... M  
W C Markham to Mahoe Kaulukou D  
Charles W Gray by atty to James D Young ..... D  
John D Moore to Charles A Nelson P A  
John D Moore by atty to Charles J McCarthy ..... B S  
S Kaimanopoe et al to See Hop Co. L  
Mahoe Kaulukou and hsb to Cooperative Home Pur Soc of Hon. M  
J A Kahiona and wf to Joseph Kekuku et al ..... D  
H Van Gleason and wf to Carl Ontal et al ..... Agrmt

Recorded Nov. 13, 1907.  
H P Kaanaana (k) to N Oshita, L; Ta of R P (gr) 737, Pahoa, N Kohala, Hawaii; 19 yrs at \$55 per yr. B 293, p 212. Dated Oct 1, 1907.

**CHINESE ...**

**Embroidered Goods**

Beautiful SILK and GRASS LINEN GOODS direct from China and personally selected by our buyer there. These goods we are enabled to offer at

VERY ATTRACTIVE PRICES.

The line includes Shawls, Handkerchiefs, Tablecovers, Doylies, Centerpieces, Pillow Covers, Bureau Scarfs, etc., and an elegant line of Embroidered Silk and Grass Linen Shirtwaist Patterns. All new designs.

**JUST THE THING FOR CHRISTMAS GIFTS**

**Yee Chan & Co.**  
Corner Bethel and King Streets.

**WICKLESS BLUE FLAME Oil Stoves**

We have just opened a large shipment of Wickless Blue Flame Oil Stoves. Have handsome Black Japanned Cabinet, highly ornamented. The Oil feeds automatically from the Safety Removable Tank. Brass Subtank and Brass Burners.

Nothing to get out of order and easily kept clean.

1 Burner.	2 Burners	3 Burners.
\$5.50	\$8.50	\$12.00

**E. O. Hall & Son, Ltd.**  
Household Dept. Second Floor

THE Pacific Commercial Advertiser A MORNING PAPER.

WALTER G. SMITH EDITOR

TUESDAY NOVEMBER 19

GOOD GOVERNMENT FOR CITIES.

Mr. Kent, in his address on the reform of great cities, shows that civic regeneration is always possible if honest men take the matter into their own hands...

Even Tweed could not hold his intrenchments in New York nor the Quay ring in Philadelphia. Cincinnati easily expelled its public thieves, as did St. Louis in the halcyon days of spoil.

To attack Schmitz and Ruef after their three indorsements at the polls; to find juries to convict them of high crimes; to break down their iron-bound organization and turn arrogant supervisors into eager purveyors of States' evidence was a task as successful as it was enormous.

Honolulu, in a small way, has shown its own capacities for civic reform. Here honest men control politics whenever they choose to do so and in the encouragement they are getting through the triumphs of civic virtue on the mainland, and in the renewed threat of the spoilsmen here, it is not likely that they will let their energies subside.

THE DOLLAR ALMIGHTY.

A local correspondent, writing of pressing questions of the day, protests against a statement in the Sunday Advertiser that "the prosperity of 80,000,000 of Americans are in the hands of the men who can concentrate the most money."

Yet the assertion was not made at random. The Rockefellers and Morgans, and the rest of their powerful tribe, are today holding up the market and keeping the greater part of it from collapse.

On the other hand these same financiers who are now piling their gold up under the market, and trying to save it, could, during any period of prosperity, so manipulate their vast possessions as to ruin banks and start a panic like that of 1857.

In brief the people who control the circulating medium of the country are to its life what the heart is to the individual in its influence upon the circulation of the blood.

Auwe Achi It seems To me That when You write A letter You prove Without A single Doubt You really Hadn't Better.

The Livestock Breeders' Association is considering the advisability of bringing in the turkey buzzard to feed on the bodies of dead cattle in which the horn-fly is bred.

The growth of the pineapple industry here is an example of how small farming makes good when it gets a fair chance. Rubber and tobacco development is sure to follow.

Those turkey buzzards may come in handy for the politicians. As part of the garbage department they would at least need a deputy inspector at \$6 a day.

Think of a hundred billion dollar country rising in fervid joy to welcome a British steamer bringing relief to the extent of twelve and a half millions.

It was said of the earlier Achi that he could quote Scripture to his purpose.

Two financial squalls have been raised. The other is Lawson's.

Correspondence

SIGNS OF THE TIMES.

Honolulu, Nov. 17, 1907.

Editor Advertiser: When our organisms are out of order we make the utmost efforts to restore them to normal conditions. Recently we lost from our midst a most estimable young fellow citizen. The attending physician made the fatal mistake of looking for the disturbance in the region of the stomach when in fact it was located in the head.

Tremendous efforts are being made to avert disaster that will bring ruin, misery and crime in its wake. In the morning paper prominent space is given to crimes committed by several of our foremost citizens. Poor victims of a fearful system! Crimes that cannot but fill each reader with horror.

each fifteen or twenty years. Is there no escape? The same article holds President Roosevelt responsible in large part. A social condition confronts us: the responsibility is a social responsibility and the remedy will have to be a social remedy.

Personally, I deny that the fate of our nation is in the hands of a few persons. If it were we could remove those few persons and those that might succeed them and all would be well.

misfortunes we suffer and some one in our midst will rise up and slay the miscreants. Remove the few that have the power over the nation's welfare in their hands and leave the causes that produced those men unchanged and call those causes permanent, as we do, and other men will take their places.

And again I ask is there no escape? And I answer, No! Not as long as the system of profit is in operation. As long as it is profitable to adulterate milk, sugar and flour, to feed embalmed beef to the nation's soldiers; to grind little children and helpless women into dollars and cents, there is no escape!

H. CULMAN.

DAILY GRIST OF THE POLICE COURT

Dora Lancaster was the one flower among the garden full of the weeds of humanity that faced Judge Andrade in the police court yesterday. That is, Dora was the solitary female in the dock, being present to account for the fact that she toiled not nor spun but always had money.

Six Chinese poker players, caught in their regular Sunday game, were on the calendar. Two of them jumped bail and the rest were fined, the total, including the bail antes, amounting to \$49.

Four boys, ranging in age from fifteen to seventeen years, who had stoned a Chinaman on the Beach road on Friday, were found guilty of assault and will be sentenced this morning. Each told a different tale of the affair, which led Judge Andrade into stating that he thought each of them lied and did it very stupidly.

H. Edmunds and Haya, who had fought each other for a place at the Aala ball game on Sunday, were discharged.

ARRANGEMENT ALL BUT MADE

(Continued From Page One.) around him and the safeguards to be maintained by the Board of Health. The plan is that first proposed by Pinkham, immediately after the resolution in favor of Wallach by the Legislature, and which has since been urged.

WIRELESS FROM THE HEALER. In view of the fact that it is considered certain that the Board of Health will this time listen favorably to the request of the Committee of Seven, wireless messages have been exchanged between Charley Notley and Wallach. One received from Wallach yesterday instructed the Home Ruier not to make any terms with the Board of Health until Wallach himself was back in town.

Whether the Healer is going to spring some new condition and again block things remains to be seen, but it is not improbable.

STUTTERING SAMMY.

"S-s-s-s-s-s" was the noise Samuel Pinao, in charge of the big steam roller at work on upper Nuuanu avenue, made yesterday afternoon in the direction of the engineer at the wheel. "What's the matter?" yelled back the engineer, gazing open-mouthed at the faces Pinao was making, his attention being so attracted that he failed to see that his big machine was creeping along to the edge of a deep ditch.

"S-s-s-s-s-s-stop her," at last Pinao got out, but it was too late. Over the roller went, sliding gracefully on her beam's end and sticking there. Samuel Pinao is a first-class man in the road department, but stutters. If he had been able to handle his sibilants as accurately and promptly as he handles his machinery all would have been well and the roller would not now be under obligations to jack screws to get back again on the road.

THE COUNCIL OF INSTALLATION.

The council which has been convened for the installation of Dr. Doremus Scudder, as pastor of the Central Union church, will meet Wednesday afternoon for the examination of the records of the church in calling Dr. Scudder and of his acceptance. In the evening at 7:30, special services will be held for which the program will be varied and interesting.

TO BRING MANY CATTLE.

The Hilonian, on her next trip from San Francisco, will arrive on Thanksgiving Day, much to the disconcertment of those local people who will be forced to give up their holiday on this account. She will bring down a very large shipment of livestock for the Parker Ranch, shipped by A. W. Carter. These will include many head of blooded bulls and a number of fine brood mares. There will be about sixty animals in all.

Make your wants known, there's no one else to do it and you will get the greatest publicity through the classified ads. in the 'Tiser.

Steel Manicure Scissors and Files . . .

and manicure goods of every description.

NIPPERS, CLIPPERS, SCRAPERS, POLISHERS, Etc.

The very latest in this line direct from the New York factory. All at right prices. Come and see the display.

HOLLISTER DRUG CO. ESTABLISHED 1879.



The variety of design of our

Jade Jewelry

is constantly increasing. Each week finds something new in this stylish line on exhibition. Our creations in Lavalliers, Pendants, Rings, Combs, Etc., are unequalled in appearance and quality.

Your inspection is invited.

H. F. Wichman & Co. LIMITED Leading Jewelers

FRENCH PASTRIES

We are making something especially dainty in the line of Cream-Rolls, Cream Puffs, Banana Shortcake, etc., that are just the thing for a light lunch or afternoon or evening refreshments.

Alexander Young Cafe ALEXANDER YOUNG BLDG.

Y. WO SING & CO. Groceries and Fruits

1186-1188 Nuuanu St. Phone Main 238 P. O. Box 963

ASK TO SEE OUR NEW

SWISS EMBROIDERED PATTERNS

For

Corset Covers

Just the right amount of material, handsomely embroidered, and ready to be made into any size corset cover, with a minimum amount of labor.

\$2 to \$3.50 Each

EHLERS

No Heat No Danger No Odor No Dirt

Incandescent Electric Light

By conveniently placed switches you may light any room before entering.

Hawaiian Electric Company, Ltd.

Phone 390 Office King near Alakea.

Keep Strong

The tonic properties of hops and the food value of malt are at their best in.....

PRIMO BEER

It will keep you healthy and strong if you drink it regularly.

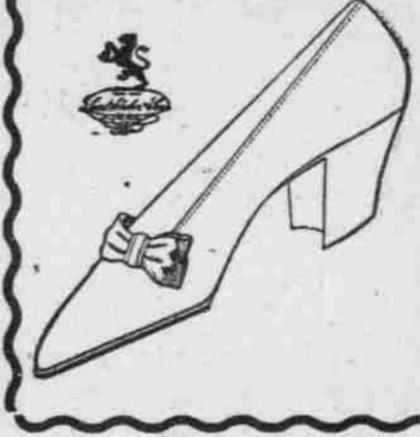
Thanksgiving Is Coming

You had better prepare your menu for the day. If you are in need of poultry, we can serve you as well as with meats. And of the best quality.

The Metropolitan Meat Co., Ltd.

Telephone 45.

Speaking About "Soul" ---Affinity---



These beautiful pumps are the swellest in town. And they fit properly. We just received four large lines. Patent Leather, Gun Metal, Tan Russia, and Canvas, all with leather bows. Women who appreciate style and comfort should come and get a pair.

MANUFACTURERS' SHOE CO., Ltd.

1051 FORT STREET PHONE 232

J. LANDO

Depot For BOSS OF THE ROAD OVERALLS PORUSKINT UNDERSHIRTS DRESS SUIT CASES NEW LINE OF SHIRTS, TIES, HATS AND CAPS. SEE DISPLAY IN OUR WINDOW.

PLANT PINEAPPLES!

You can make \$250 per acre from one season's crop!

BELLAIR

in Kalihi Valley is an ideal place for the growing of Pineapples. The right soil, the right climate. Pineapples grow there now. Let me take you out to show them to you. Three miles from the business center of Honolulu, 1 1/2 miles from the Pineapple Cannery. Will sell the land at from

\$250 to \$400 Per Acre

ON EASY TERMS.

Chas. S. Desky

CAMPBELL BLOCK, FORT STREET.

Oahu Railway TIME TABLE.

OUTWARD. For Waianae, Waialua, Kahuku and Way Stations—9:15 a. m., \*2:20 p. m. For Pearl City, Ewa Mill and Way Stations—17:30 a. m., \*9:15 a. m., \*11:05 a. m., \*2:15 p. m., \*3:20 p. m., \*5:15 p. m., \*9:30 p. m., \*11 p. m. For Wahiawa—9:15 a. m. and \*5:15 p. m. INWARD. Arrive Honolulu from Kahuku, Waialua and Waianae—8:36 a. m., 5:31 p. m. Arrive Honolulu from Ewa Mill and Pearl City—17:46 a. m., \*8:36 a. m., \*10:38 a. m., \*1:40 p. m., \*4:31 p. m., \*5:31 p. m., \*7:30 p. m. Arrive Honolulu from Wahiawa—8:36 a. m. and \*5:31 p. m. \*Daily. †Ex. Sunday. ‡Sunday Only. The Haleiwa Limited, a two-hour train (only first-class tickets honored), leaves Honolulu every Sunday at 8:22 a. m.; returning, arrives in Honolulu at 10:10 p. m. The Limited stops only at Pearl City and Waianae. G. P. DENISON, Superintendent. F. C. SMITH, G. P. & T. A.

Fire Insurance.

THE B. F. DILLINGHAM CO. LTD. General Agents for Hawaii. Atlas Assurance Company of London. New York Underwriters Agency. Providence Washington Insurance Company.

C. BREWER & CO., LTD. Sugar Factors and Commission Merchants.

LIST OF OFFICERS. C. M. Cooke, President; George M. Robertson, Manager; E. F. Bishop, Treasurer and Secretary; F. W. Macfarlane, Auditor; P. C. Jones, C. M. Cooke, J. R. Galt, Directors.

WM. G. IRWIN & CO., LTD. SUGAR FACTORS AND COMMISSION AGENTS

Wm. G. Irwin—President and Manager John D. Spreckels—First Vice-President W. M. Giffard—Second Vice-President H. M. Whitney—Treasurer Richard Ivers—Secretary W. F. Wilson—Auditor AGENTS FOR Oceanic Steamship Co., San Francisco, Cal. Western Sugar Refining Co., San Francisco, Cal. Baldwin Locomotive Works, Philadelphia, Pa. Newell Universal Mill Co., Manufacturers of National Cane Shredder New York, N. Y. Pacific Oil Transportation Co., San Francisco, Cal.

Wm. G. Irwin & Co., Ltd.

AGENTS FOR THE Royal Insurance Co., of Liverpool, England. Scottish Union & National Insurance Co., of Edinburgh, Scotland. Wilhelms of Magdeburg General Insurance Co. Commercial Assurance Co., Ltd., of London.

ALL KINDS OF Rubber Goods GOODYEAR RUBBER CO. R. H. PEASE, President. 573-575-577-579 Market Street, San Francisco, Cal., U. S. A.

Yoshikawa King Street WILL BUY OLD CLOTHES and BICYCLES

Shirts In All Sizes Made to Order by B. YAMATOYA Paauhii Street, off Nuuanu Street.

Mr. and Mrs. Hashimoto MASSEURS

RHEUMATISM, BRUISES, SPRAINS, TIRED FEELING, and other ailments QUICKLY RELIEVED. 444 KING STREET Telephone 565

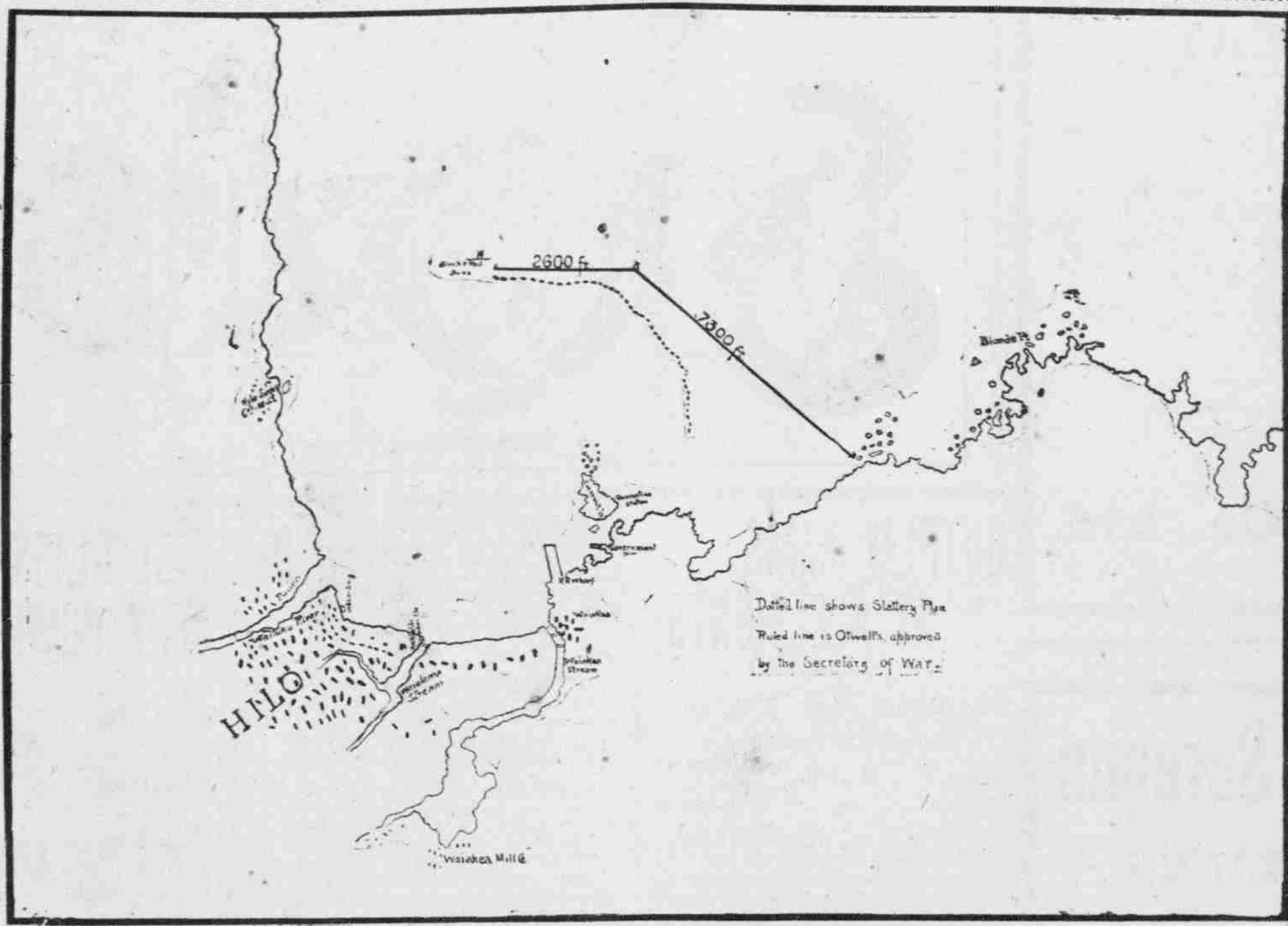
Pictures For Christmas We are already busily engaged in Christmas work. Come early. R. W. PERKINS, Phone 77

Second-Hand Pianolas We have several good bargains this week.

BERGSTROM MUSIC CO., LTD. Odd Fellows' Building

Oahu Ice & Electric COMPANY.

Ice delivered at any part of the city. Island orders promptly filled. Tel. Main 523. P. O. Box 600. Office, Kewalo.



MAP OF HILO HARBOR, SHOWING LOCATION OF BREAKWATER.

The above map shows the lines of the Hilo breakwater, as submitted to Washington and approved by the Secretary of War. The new breakwater, shown by the black line on the map, will take in Reed's Bay, and, what is still more important, a large pocket of deep water, which lies between that body of water and the structure. This

gives Hilo a harbor which will be many times the size of the Honolulu harbor and as well protected. In the plans which were submitted to Washington by Captain Otwell, he recommended that the first section of the breakwater, after leaving the shore be constructed with a lighter cross-section than that further out. The engineer officer made this recommend-

ation, believing that the lighter structure would be amply strong for its purpose and would allow the money appropriated for the work to go further. The Washington authorities did not agree with this scheme, preferring to follow the same plans which have been used in the Delaware and San Pedro breakwaters, the most important work of the kind that have ever

been constructed by the government. The specifications for the work, as well as the change in the plans which has been made necessary, will be forwarded to Washington on the next steamer carrying mail to the Coast, and, if rapid action is taken, the actual work which will give Hilo a protected harbor will commence during the latter part of February.

THE INAUGURATION OF FIFTEENTH NATIONAL IRRIGATION CONGRESS

(Conclusion) "I feel a good deal more at home in my grounds than I do in addressing an audience. In my work I have something over 5000 species of plants in training for improvement, but I can only speak of one of them now. I will take the cactus. You probably know that one-third of the land surface of this whole earth is practically desert. Nearly the whole of Australia except a narrow rim around the coast has been found to be almost useless for any purpose except sheep raising, and even that is not profitable because there is once in a while a year when one-half of the sheep die, and it is something the same wherever stock has been grown in semi-arid districts. The cactus, which was introduced into Australia and South Africa, was the worst thing that could have been done. It was introduced probably for ornament on account of the thorns. It has taken possession of Australia and South Africa. It is very destructive to the sheep districts. Very often the thorns get into the eyes of the animals and destroy their sight. Fifteen years ago I was examining and studying foliage plants for dry regions, to see what improvement could be made upon them, and it struck me that the

cactus, if the thorns can be taken off, would be one of the, if not the best, of all plants for desert culture. I gathered all the cactus of all kinds, those which would even grow in Alaska, because I wanted some of the hardy blood. I gathered them from the best that I could find from my collectors in South Africa and Mexico and I gathered them from North Africa, where the cactus has been somewhat cultivated for the use of camels. This is a particularly thornless variety. There are two or three others. I found that by raising them by seed that ninety-nine out of a thousand would be thorny. A few were partially thorny. They had not yet acquired the habit of leaving off the thorns, but once in a while one would be found among thousands that would have less thorns than even the parent. Taking that one and raising thousands and thousands of seedlings produced one that was entirely thornless. The cactus is just a little harder than the blue gum. Some cactus will grow in Labrador. One species grows in North Dakota and Idaho and is able to stand the climate of Alaska. Now, as I wished to get a cactus that would produce a great amount of nourishment, of course my first object was to

get it thornless. Then next was to get one which would produce a great weight of forage to the acre. That has been very well accomplished. I have a cactus set out three feet apart one way by six the other, that will produce 200 tons of food per acre. Twenty tons per acre is a good crop for beets, carrots, turnips, cabbage and almost anything cultivated in the soil. Some of the older cactus will produce about 100 tons. Cactus is not as nutritious as beets, but there is more water in it. By analysis some cactus produce 3.5 per cent. starch, while others produce 5-10 of one per cent., so you can see there is a great individuality in the nutritious quality of cactus as well as productiveness. Now my object is to combine this great productiveness with great nutrition, and then my opinion is that the cactus will be the most important plant that there is today for arid regions. I have taken the wild Colorado cactus, planted them in a small bed and given them no water, planted four or five of my improved cactus in the same bed, and the improved cactus stayed them almost to death. In the same treatment they will grow three or four feet in height and be in perfect vigor and often weigh two to seven pounds each, while the wild Colorado cactus, which you would think was as hardy as anything possible, would be drying up for the want of moisture. That can be seen on my place today. The ability of the improved cactus to root deeper, from their greater individual growth, gives them the opportunity to strike deeper and take the moisture up, while the common wild cactus cannot reach it, so it starves to death. Now, every animal that eats vegetation of any kind is very fond of cactus and for that reason it has thorns, otherwise it would be out of existence, or it would have taken some other means to protect itself. All the cactus, as far as I know, which do not already have thorns, have a very bitter juice and it is not suitable for food for any animal. Those which have the worst thorns are the most nutritious and the most useful. The cactus produces very good beef and very good milk and is used in the Hawaiian Islands and North Africa for that purpose extensively. A delegate asked Burbank if he had a secret of developing plant life and if the secret would die with him. Burbank replied that he has no secret and that he is always ready to assist others.

THURSDAY, SEPTEMBER THE 5TH. FORESTRY, AGRICULTURE AND IRRIGATION DAY. The official program was carried out, the entire session being devoted to the able and interesting addresses as follows: Forestry and Railroads. The Relation of Range Products to the Water Supply. Leasing of the Public Grazing Lands, State Forestry and Forestry Administration. Relation of Forestry and Irrigation, The Bureau of Plant Industry. Federal Aid and Control of Irrigation and Drainage. Irrigation and Sugar Beet Culture. The evening session was a very interesting lecture on California and its resources, illustrated by splendid stereopticon views of California scenes and attractions by the California Promotion Committee.

On Friday, September the 6th, Land and Irrigation laws held sway. The addresses continued full of interest and were as follows: "The Public Land Laws," by J. M. Carey of Wyoming, author of the Carey Act. J. M. Carey was the president of the Fifth and Sixth National Irrigation Congress, held in Lincoln, Nebraska, in July, 1897, and in Cheyenne in Sept., 1898, and has accomplished much for the cause of irrigation in the arid West. "California Irrigation Laws," by Frank H. Short of California, one of the ablest attorneys on the subject of water and water rights. Dr. Elwood Mead read a report of

the Committee on Inter-State Water Rights. Some friendly discussion followed the last two addresses.

The afternoon and evening sessions were given over to other attractions and many took advantage to attend the State and Irrigation Fairs.

Saturday, the closing day of the congress, was full of interest and the reports of the various committees were received and adopted. A spirited debate on the Resolution Committee's report on the subject of "Free Sugar and Lumber from Foreign Countries," lasted for some time. Finally the two resolutions relating to these subjects were withdrawn and the report of the Resolution Committee adopted unanimously, with the thanks of the congress for their good work.

The delegates of the National Irrigation Congress are to be congratulated on their selection of both president and secretary. Judge Gouly, the newly-elected president, whose home is in Denver, and who is one of the best known men in the State and has large irrigation interests. Judge Gouly personally is a delightful man to meet and his work prior to and during the congress will result in great good to the West generally.

Mr. B. A. Fowler, who was elected secretary, is a man of fine attainments and a good executor, who also has had large experience in irrigation lines, having filled the position of president of the leading water users association in the Salt River Valley in Arizona.

Perhaps two of the most interesting features of the congress, without any attempt to criticize the quality of the many splendid papers delivered there, were the visit of Mr. E. H. Harriman and his talk to the congress and the visit also of "The Wizard of California," Mr. Burbank.

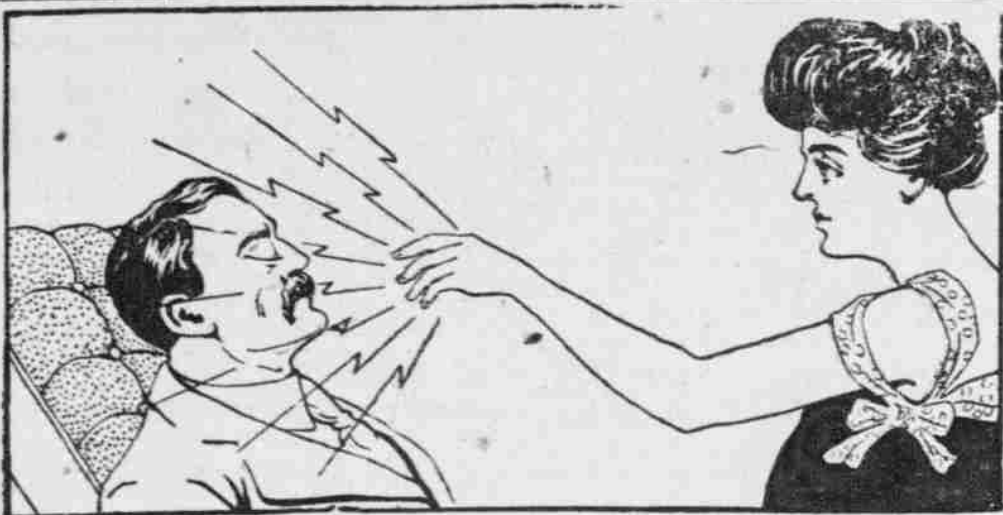
Governor Chamberlin of Oregon, who acted as president of the Fifteenth National Irrigation Congress, filled the position very creditably indeed; in fact, many expressed the opinion that he was the best presiding officer that the Irrigation Congress has ever had. Article VI of the Constitution of the National Irrigation Congress is as follows:

The membership of the congress may be as follows: Fifteen delegates from each State and Territory, to be appointed by their respective governors; five delegates from each town and city of the United States having a population less than 25,000, to be appointed by its Mayor or chief executive; ten delegates from each city having a population of over 25,000, to be appointed by the Mayor; five delegates for each county, to be appointed by the chairman of the governing board; two delegates each from regularly organized immigration, agricultural and horticultural societies, societies of engineers, agricultural colleges and commercial bodies; each member of any State or Territorial Irrigation Commission; also the State Commissioners of Agriculture or Horticulture; the chairman of each section and a permanent officer of the congress; also the Governor of each State and Territory and all members of the United States Senate and House of Representatives.

Each member shall be entitled to one vote; provided, no State shall have more than twenty votes and provided, when a State is represented by less than ten delegates, said delegates, if all present, may cast ten votes for said State.

It is clear from the above that the Territory of Hawaii is entitled to a large delegation and it is to be hoped that at the future annual meetings, Hawaii will be ably represented, and the needs of the Territory clearly stated so that the citizens of this Territory may reap some of the benefits to be derived from the Reclamation Act and the preservation and conservation of the natural resources of these islands, by placing the same under National supervision and control.

GARFIELD'S MEAL. After days and days of swift travel and swift eating Secretary Garfield's



Cures Like Nature

Drugless Treatment Restores Health While You Sleep

Here's a remedy that cures while you sleep. No poisonous drugs to swallow. No weak stomach or digestive troubles due to drugging. This remedy is Nature's medicine—electricity. The only way to cure anything is to help Nature. Nature will cure when she has the power. That power is electricity. Feed it to your nerves and they will absorb and carry it to every organ and tissue of the body, where it gives health and vim to every ailing part. The reason drugs don't cure is because they do not assist Nature. Nature needs nourishment, strength, something that builds up. Drugs contain no nourishment, no electricity, not one thing that builds vitality—just poison which tears down.

Electro-Vigor is not an electric belt. It never needs charging, for it makes its own power continuously. My digestion has greatly improved under the use of Electro-Vigor and I can eat almost anything without distress. My circulation has improved and I am sure my strength is greater. REV. JOHN T. GULICK, Honolulu, T. H.

THIS IS FREE

Cut out this coupon and mail it to me. I'll give you a beautiful 100-page book, which tells all about my treatment. This book is illustrated with pictures of fully developed men and women, showing how Electro-Vigor is applied, and explains many things you want to know. I'll send the book, closely sealed and prepaid, free; if you will mail me this coupon.

S. G. HALL, M. D. 1439 Fillmore Street, SAN FRANCISCO.

Please send me, prepaid, your free 100-page illustrated book. Name Address

Vapo-Resolene

An Inhalation for Whooping-Cough, Croup, Bronchitis, Coughs, Diphtheria, Catarrh. Creosone is a Boon to Asthmatics. Does it not seem more effective to breathe in a remedy for diseases of the breathing organs than to take the remedy into the stomach? Creosone cures because the air, rendered strongly antiseptic, is carried over the diseased surface with every breath, giving prolonged and constant treatment. It is invaluable to mothers with small children. Those of a Consumptive Tendency will find immediate relief from Coughs or Inflamed Condition of the Throat. ALL DRUGGISTS. Send postal for descriptive booklet. Vapo-Resolene Co. 150 Fulton Street, New York.

For Kimonos SEE K. Fukuroda ALL COLORS AND PRICES

A. N. Sanford GRADUATE OPTICIAN Boston Building, Fort Street Over May & Co.

WE SELL Love's Bakery Soda Crackers Something new. Try them.

J. M. LEVY & CO. Phone 76.

GANDIES GIMBAL'S, of Frisco POWELL'S, of New York Fresh by Every Steamer Pawaa Junction Store

THE GRANE-SPENGER CO., LTD. Dealers in SEWING MACHINES of all kinds. Also Hawaiian Souvenirs, Hats and Orrios. 108 N. King St., near Maunakea. Phone Main 494 - - - P. O. Box 541

Catton, Neill & Company, Ltd. ENGINEERS AND MACHINISTS. QUEEN AND RICHARDS STREETS. Boilers re-tubed with charcoal-iron or steel tubes. General ship work.

1907 STYLES AND PATTERNS NOW TO BE SEEN AT

W. W. AHANA & CO., LTD FASHIONABLE TAILORS, 62 King Street.

Union Electric Co. 69-71 BERETANIA STREET Telephone Main 316. House Wiring, Bells, Dry Cells. Special attention to installing private telephones and general repair work

party was gathered about a simple table in an Arizona town. "Newell," said the secretary to the director of the Reclamation Service, "now that no prominent citizens are present, may I have what I wish to eat?" "Certainly." "Bring me a small piece of dry toast and a cup of hot water."

THE NEWELL COCKTAIL. F. H. Newell does not drink. He associates, however, with men who do imbibe. The other evening the director dined with Dr. J. W. McGee, O. H. Miller and a newspaperman. "Gentlemen," suggested Dr. McGee, "suppose we start this meal with a cocktail?" All acquiesced. "The waitress came for the order and when it was Newell's turn, he said: "I'll have an oyster cocktail." Subsequently he was informed that there were no suitable oysters obtainable. He ordered soup. "THAT PRESIDENT."

Gifford Pinchot employs a colored servant at his home. One day Pinchot had been out with his constant companion, President Roosevelt. The way led back of the White House over a long flat stretch of mead through the center of which oozed a lazy ditch. This had to be crossed so the President jumped in and Pinchot followed. When he returned home wet through he was met at the door by his servant, who felt of his coat and said: "You 'all done been out wit' dat President ag'n?"

## MINCE MEAT TIME

is a happy time for those who have nothing to do with it but to eat the pies. Not so pleasant for the housewife if she has to prepare the filling.

In suggesting prepared Mince Meat we recommend

### HEINZ

because every one knows Heinz Mince Meat is cleanly and it is good. Only the best ingredients go into it. Your Grocer has it.

**H. Hackfeld & Co., Ltd.**

Wholesale Agents.

## Embroidered Screens IN CARVED FRAMES

Something for the well arranged parlor where other furniture is in keeping with the elegance shown here. Nothing better has ever been shown in Honolulu.

## SATSUMA VASES and TEA SETS

Rare goods, these, and something for the art collector or the lady who entertains.

## Brass Goods, Vases, Jardinieres, Lanterns and Trays.

Splendid value and suitable for the holiday trade.

### CARVED TABLES

## Japanese Bazaar

Fort Street below the Convent.

## Try Our Hats

Straw, Lauhala, Formosa,  
and All Kinds of Hats

**IWAKAMI**

IT'S.....

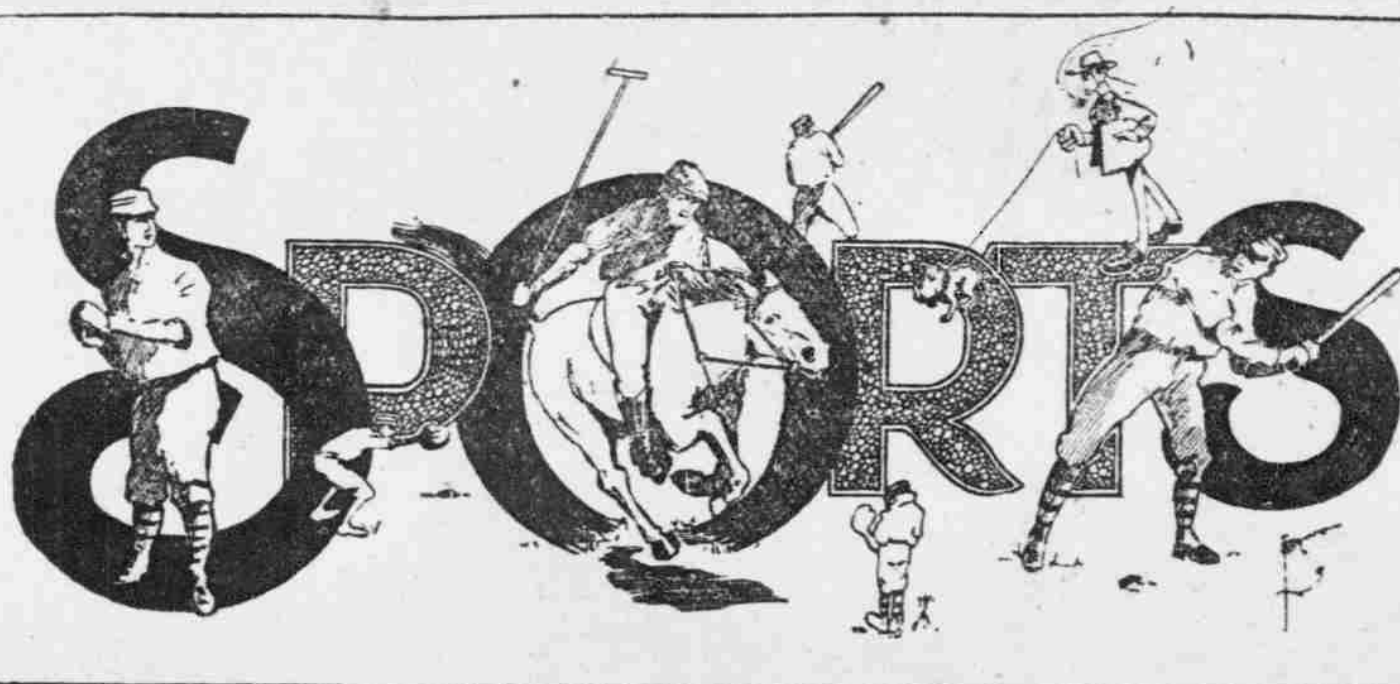
# RAINIER

NO WONDER THE OTHERS ARE JEALOUS.

AT ALL BARS AND WHOLESALE AT.....

## RAINIER BOTTLING WORKS

Telephone 1331.



## OUTPLAY KAMS AT ALL POINTS

**Puns Defeat Their Opponents  
in Football by Score  
of 11-0.**

Punahou College defeated the Kamehameha Schools at football on the college grounds yesterday afternoon by a score of 11-0, in a much better game than was seen ten days ago. The Kams were outplayed at almost every point but would have made a much better showing had they been able to hold the kicks of their opponents. On only one or two instances, and these in the second half, did the Kams have the ball in their enemy's territory, and then they lost it through fumbles and were once more driven back to defensive work.

The game was more satisfactory in regard to officials than the previous one, though there was still room for improvement. The Kam supporters claimed they got the worst of the decisions, but in any event they stood no chance of winning the game and from the standpoint of an outsider the decisions were, in the main, fair. The ruling off of Naukana, by Umpire Babbitt, was certainly justified. Pa, the captain of the Puns, had been tackled and thrown when the Kams right guard rushed up and threw himself on Pa, driving both fists in the former's face. It was a palpable foul, and ruling out of the game was certainly deserved.

The sensation of the game came at the end. Lyman kicked just before the whistle blew and McKenzie, who had been playing the star game for the Kams, fumbled, allowing Townsend to carry the ball over for a touchdown. The Kams protested, as they said the whistle had blown before the touchdown had been made. It had, indeed, but long after the play had been started, and anyone at all familiar with the rules of football would know that a play once started can be completed.

Lyman was the star for the Puns, while McKenzie took the honors for the Kams. Captain Oliver was very much off color, fumbling kick after kick and allowing the Puns to gain large amounts of ground in this way. Townsend put up a fine game, as did Jack Desha, the former showing up well in the forward pass, which was worked to great advantage several times.

The Puns hammered at a hole between left guard and tackle and made most of their gains through these positions when playing straight, hard football. The Kams seemed to have the stronger line, but when it came to offensive work poor judgment was shown. They tried end plays continually, where their advantage of weight counted for little and several times were thrown back for severe losses. At times they seemed to be doing well, but would then lose the ball on a fumble.

Lyman kicked off for the Puns, against the wind and the Kams carried the ball outside at the 22 yard line. They lost twenty yards on a bad attempt at a forward pass and were forced back to their 12 yard line. The Kams then got the ball again on a delayed forward pass, which did not connect, and kicked to Jack Desha at the center of the field.

Townsend gained fifteen yards on a forward pass and Lyman followed with a substantial gain on the same kind of a play, but lost the ball on a fumble a few moments later. The Puns were doing all the work and kept the ball out of their territory, even when Oliver kicked, all through the first half, though unable to score.

The second half was played harder by both sides. Though the Puns scored twice, the Kams took a big brace and had they not fumbled kicks, might have held the score down. Oliver kicked off and on the first play the Puns lost fifteen yards for passing the ball too straight ahead on a forward pass. A fumble soon gave the ball to the Puns and they started down the field. Through left guard and tackle they went, making good gains at each attempt, and opening up holes that were beauties. First it was Lyman, then Desha, and finally the honor of carrying the ball across the line fell to Captain Joe Pa. Lyman kicked an easy goal.

The Kams made a brace after the kickoff, and with a series of plays around the end and between end and tackle, carried the ball down the field as if certain that they could score. All went well till they fumbled when at about the 30 yard line. Shortly after this Naukana was sent off the field by Umpire Babbitt, as he had simply followed the strictest rule of football. It might be remarked here that the Kam adherents on the side lines used language neither fit for the football field nor anywhere else, to the officials several times during the game,

which should have been stopped, even had it been necessary to make arrests. The scholars themselves were not the offenders, but they should be able to hold their supporters in better check. Lidgate was hurt slightly and Ashford took his place. The ball changed hands continually, both sides fumbling, and kicking often, as the men were tired out. The Kams never got within close touch of the Pun goal nor were the Puns able to force their opponents very far. The last score, from which a goal was kicked, was made as stated above.

The lineups were:  
Punahou—D. Townsend, left end; C. Akina, left tackle; R. Hitchcock, left guard; H. Hind, center; W. Lidgate and Ashford, right guard; F. Stack, right tackle; Chi Bui, left end; Joe Pa (captain), C. Lyman, half backs; Jack Desha, full back.  
Kamehameha—Bartels, left end; Kallihwai, left tackle; Kaapana, left guard; Komomua, center; Naukana and Kealoha, right guard; Kauli, right tackle; Mackenzie, left end; Naeole, Lota, half backs; Oliver, full back.  
Umpire, W. H. Babbitt; referee, Col. Johnson.

## APPLYING FOR GOLF LESSONS

From the way in which the local golfers are rushing to make applications for lessons in the Scotch game at the hands of Alexander McLaren, the expert from Australia who is now here, he will have his hands full for the next three months and maybe longer. The list was opened at E. O. Hall & Son's yesterday morning and already nearly forty of the local players have put down their names for lessons.

The manner in which the lessons are arranged for is very simple, and it is not necessary to see Mr. McLaren personally at all. A diary is used and the page for each date marked off into hours. If you wish to take a lesson at 10 o'clock Monday morning, you simply fill in your name against that date and time. The matter is then already arranged and there is no fear of a conflict with some other anxious seeker for wisdom of the links and club.

McLaren is greatly taken with the city, though he thinks that the local golf links are too easy and would be greatly improved with the introduction of new hazards and bunkers, that would bring out more skilful play. In this opinion there are but few of the local players who will agree with him, as they have all the trouble necessary, to ensure plenty of exercise, in getting around the course as it is at present.

## NO MORE \$5 FOR HOME RUNS

There certainly are mighty batsmen coming on the Alameda with Mique Fisher's Coast League delegation, and awe has already been inspired by the announcements of the feats which they have performed. The mighty Truck Eagan, who, while not the strongest batter in the Pacific Coast League, is noted for the distance which the balls he hits travel, is among those to arrive on Friday. Joe Nealon, of the National League, also has the same propensity for long drives.

In view of this fact, a local firm has taken precautions that there shall not be any further stringency in the local money market caused by the Coast men carrying away all the currency of the city. For a long time there has been a sign at the local ball grounds announcing that this firm would give a \$5 prize to anyone who hit the ball over the fence, but if you visit the local diamond you will no longer find this announcement. Instead there is a large blank space where the announcement was, which was caused by a liberal coating of paint administered last Saturday. The prospect of paying out \$25 or \$30 after each game was a little too much for the firm and they decided to take no risk of a misunderstanding.

## BARNEY CABLES HE'LL BE THERE

Barney Joy cabled to St. Louis College Alumni Association that he would be "there with the boys." "There" means at the dance arranged for by the association, at the Alexander Young Hotel on Friday evening, when the guests of honor will be the big Hawaiian pitcher and the Coast ball team.

"It was expected," a member of the Alumni said yesterday, "that the victorious St. Louis baseball team would return from Japan on that day, but Barney is deserving of as glorious a welcome and reception as the members of the team had they returned. So the Young roof garden will be the scene of joy and merriment on Friday evening."

"Music for the evening will be furnished by the Kaa Glee Club and this ensures one and all a good time."

## DEFIANCE CLASS VERY POPULAR

**Three Local Men Talking of  
Building Yacht Like  
Schaefer's.**

As the result partly of the winning of the Cooper Cup race Sunday by the Defiance and the fine showing that she made in her recent trials, it seems likely that Walker, the local builder, will be given orders for at least three more craft of her size and style. The manner in which she sailed away from the other second-class yachts on Sunday was a surprise, even to those who believed that she would win. She was handled by Gus Schaefer, her owner, assisted by Frank Bechert of the Myrtle Boat Club, who is one of the cleverest of the local men in the handling of yachts.

Bechert is very much taken with the way the Defiance handles herself and in all probability will order a vessel of her type in the near future. As Walker is practically the originator of the type, it is likely that he will build the boat, unless Bechert, who is rather good at things of this kind, decides to take a hand in the work himself.

Kenneth Brown, the owner of the little sidewalk craft, the Chip, that made such a sensation by winning the Macfarlane Cup from the other second-class yachts, is also looking earnestly at the Defiance and lying awakes nights thinking of plans and materials. His own boat, while she has made a unique record for herself, is not just what Brown wants, and a boat on the plans of the Defiance is likely to find him at the wheel in the next yachting season.

Another yachtsman, named Hughes, is also watching his chance to build out the same lines and would make a most welcome addition to this class. This would mean that there would be four boats, all of the same size, twenty-six feet, and of the same construction, which could all sail from scratch. The races would be very close and exciting. The Maggie is also the same size, and the result of the races would be of great interest, as the manner in which the boats were handled, would decide the winner.

## WOMEN'S WOES

**HONOLULU WOMEN ARE FINDING  
RELIEF AT LAST.**

It does seem that women have more than a fair share of the aches and pains that afflict humanity; they must "keep up," must attend to duties in spite of constantly aching backs, or headaches, dizzy spells, bearing-down pains; they must stoop over, when to stoop means torture. They must walk and bend and work with racking pains and many aches from kidney ills. Kidneys cause more suffering than any other organ of the body. Keep the kidneys well and health is easily maintained. Read of a remedy for kidneys only that helps and cures the kidneys and is endorsed by people you know.

Mrs. Emma Vieira, of King street, Honolulu, says: "For three or four years I had the misfortune to be afflicted with an aching back. The pain and discomfort this entailed on me can be better imagined than described. I have two children, and it was of course difficult for me to attend to them while oppressed with suffering. The way in which I found relief eventually was by using Doan's Backache Kidney Pills, procured at the Hollister Drug Co.'s Store. They did me a large amount of good, as I now testify. I should certainly recommend those who have backache or any other form of kidney trouble to try Doan's Backache Kidney Pills."

Doan's Backache Kidney Pills are for sale by all dealers. Price 50 cents per box (six boxes \$2.50). Mailed on receipt of price by the Hollister Drug Co., Ltd., Honolulu, wholesale agents for the Hawaiian Islands.

### AN INQUIRY ANSWERED.

A gentleman at Bembesi, Rhodesia, writes to inquire where Chamberlain's Cough Remedy can be procured. He says he has learned of the good effects resulting from its use, and as children in that locality are often subject to coughs, he desired to give it a trial. This remedy may be procured from any store or chemist. For coughs, colds and croup there is nothing better, and as it contains no injurious substance it can be given to the smallest child with perfect security. For sale by all dealers. Benson, Smith & Co., agents for Hawaii.

The business men's gymnasium class will meet Thursday afternoon at 5 o'clock in the Y. M. C. A. gymnasium.



\$12.00  
SOLID OAK MIRROR OR  
PLAIN.



\$1.00 Each.  
SOLID OAK, CANE SEAT.

The lowest prices, the largest stock to pick from. THE BIG FURNITURE STORE, in the Young Building.

COYNE FURNITURE CO., LTD.

### Home Industry

# SOAP

Honolulu Soap Works

FRED L. WALDRON,  
Agent.

## IF YOU LIKE TOAST

make it on a

## GAS STOVE TOASTER

There is no other  
toast that is half  
so good.

HONOLULU GAS CO., Ltd.

BISHOP STREET

## SUPPLIES

OFFICE SPECIALTIES

CASH REGISTER,  
TYPEWRITER,  
ADDING MACHINE,  
MIMEOGRAPH and  
GLOBE-WERNICKE

SUPPLIES  
CARD SYSTEMS

Hawaiian Office Specialty  
Company, Ltd.  
921 Fort Street

## LET US GET IN TOUCH

with your soles. We can save them better, quicker, cheaper than anyone else in town. Bring your work direct to our shop.

Men's soles and heels.....\$1.25  
Women's soles and heels....\$1.00

## VICKERS SHOE REPAIR SHOP

1119 UNION ST. P. O. Box 567.

## BETTER THAN WATER

There is danger in drinking ordinary water. Try our Sodas made from Distilled Water.

Fountain Soda Works

Phone 270 R. RYCROFT

READ THE ADVERTISER  
WORLD'S NEWS DAILY

### Have You Made Your Will?

People with considerable money never neglect this important duty. It's the man with a very small estate that usually thinks it too little to bother with. Then, when he dies, his small estate is made very small indeed with court charges.



**Hawaiian Trust Company, Ltd.**  
Fort Street

### William O. Smith

#### Trust Department

Estates Managed, Revenues Collected, Loans and Investments Made.

#### Insurance

AGENT FOR ENGLISH-AMERICAN UNDERWRITERS.

#### Real Estate FOR RENT.

Large HOUSE, Beretania street, next to Queen's Hospital.

#### FOR SALE.

Lot With 2 Cottages—Corner Miller and Beretania streets—CHEAP.

Lot in Palolo tract—Area, 18,000 square feet.

House and Lot—Kewalo. Lots in Punuuhi Tract. Houses and Lots in Palama. Lots in Nuuanu Valley and Kaimuki.

### Bishop Trust Co., Ltd.

### Financial Agents

INVESTMENTS MADE IN

Stocks, Bonds, or Real Estate

Rents, interest and dividends collected. Taxes and Insurance attended to and remittance made monthly or quarterly as desired.

Safe Deposit Boxes for rent.

### BISHOP TRUST CO., Ltd.

924 BETHEL STREET

### HONOLULU PAINTING CO.

W. B. KAM, Mgr.

PAINTING AND PAPERHANGING AND TINTING.

Dealers in Wallpaper, Paints, etc. Corner Beretania and Emma. P. O. Box 914.

MAKE A CASE OF

### Aerated Waters

ONE OF YOUR WEEKLY PURCHASES

### Consolidated Soda Works Co.

Telephone 71

### New Pictures

BEAUTIFUL SUBJECTS NEW PROCESS

### Pacific Picture Framing Co.

Nuuanu, below Hotel Street

### HAWAII SHINPO SHA.

THE PIONEER JAPANESE PRINTING OFFICE.

The publisher of Hawaii Shinpo, the only daily Japanese paper published in the Territory of Hawaii. C. SHIOZAWA, Proprietor. Editorial and Printing Office—1034 Smith St., above King. Phone Main 40.

### S. & W. CANNED FRUITS

We have now a COMPLETE ASSORTMENT

### HENRY MAY & CO., LTD.

Phone 22

### Second-Hand Machinery

STEAM AND GASOLINE ENGINES.

### Walker's Boat Works

King Street, near Alapai 7828

## MARINE

The German ship Marie Hackfeld arrived yesterday morning from Hamburg, bringing 2830 tons of general cargo from that port for H. Hackfeld & Company. Captain Grube reports sighting a ship answering the general description of the Arthur Sewall, which is believed to be lost, in tow of a man-of-war. This was on September 20, but it is doubtful if the ship was the same, as there has been no report made of her arrival anywhere.

This is the fourth time that the Marie Hackfeld has visited this port under the command of her present captain and he has many friends here to welcome his return. She will discharge here, then leaving for Portland, Oregon. She came in with the Hawaiian flag flying, and though asked to take it down by the customs officials, and follow the usual courtesy of flying the American flag when entering a port of the United States, Captain Grube refused.

The Marie Hackfeld has on board a crew composed of young men who seem to enjoy sea life and have formed a band with which they serenade the commander at frequent intervals. They appear to have a very jolly time on board their ship.

#### HOCHE SOON DUE.

The French ship Hoche, Captain Le Maitre, which left Hamburg shortly after the Marie Hackfeld, stopping at Leith and Brest on her way to Hawaii, may be expected soon. She is said to be a very fast sailor and, as she left Brest on August 20, should put in an appearance at a near date.

#### MEXICAN DUE SATURDAY.

The merchants of the city who have freight coming down from Seattle and Tacoma, will be glad to hear that the American-Hawaiian steamer Mexican will be in port on Saturday. She will go to Kahului first, and will discharge her Maui freight before coming to this city. She will then come here to take away sugar. She brings no freight from San Francisco with the exception of 2000 barrels of oil for local consumption. The Mexican will take the last of the sugar crop from here and Hilo, part of that from this port being Kaula sugar, which will be transferred from the Nevada, which is now at Makawell landing.

#### WILL GREET ALAMEDA.

The arrival of the Oceanic steamer Alameda will mean business for the launches of the waterfront. With the coming of the baseball team and of the Ellersford Company from the Coast, as well as many other passengers, a large number of people desire to go outside the harbor and meet the vessel. Of course, they will not be allowed to go on board till the ship has been inspected by the United States Marine Hospital doctors, but with the Alameda that does not take long, and several private launch parties have been arranged for.

#### LOCAL OFFICE OF THE UNITED STATES WEATHER BUREAU.

Honolulu, Monday, November 18, 1907.

YEAR	MONTH	THERMO.				WIND	WIND	WIND	WIND
		Max.	Min.	Mean	Dir.				
1900	29	64	51	75	78	.62	88	8	SE
1901	30	65	52	76	79	.68	79	4	SE
1902	29	64	52	76	79	.68	79	4	SE
1903	29	64	52	76	79	.68	79	4	SE
1904	30	65	52	76	79	.68	79	4	SE
1905	30	65	52	76	79	.68	79	4	SE
1906	29	64	52	76	79	.68	79	4	SE
1907	30	65	52	76	79	.68	79	4	SE
Ave	30	65	52	76	79	.68	79	4	SE

WM. B. STOCKMAN, Section Director.

#### TIDES, SUN AND MOON.

DAY	NOV	High Tide		Low Tide		Sun		Moon	
		Time	Height	Time	Height	Set	Rise	Set	Rise
M	18	2:51	1.7	2:32	8.2	9:27	8:14	5:18	5:04
T	19	3:29	1.8	3:04	8.5	10:15	8:14	5:17	5:58
W	20	4:07	1.9	3:36	9.22	11:07	8:15	5:17	6:50
T	21	4:42	1.9	4:08	9.47	11:56	8:15	5:17	7:39
F	22	5:18	1.9	4:35	10.11	12:48	8:15	5:17	8:25
S	23	5:52	1.9	5:18	10.35	1:38	8:15	5:17	9:04
S	24	6:26	1.8	6:29	11.08	2:22	8:15	5:17	9:24

Full moon Nov. 19 at 1:33 p. m.

The tides at Kahului and Hilo occur about one hour earlier than at Honolulu.

Hawaiian standard time is 10 hours 30 minutes slower than Greenwich time, being that of the meridian of 157 degrees thirty minutes. The time while the blows at 1:30 p. m., which is the same as Greenwich 9 hours 0 minutes. Sun and moon are for local time for the whole group.

#### METEOROLOGICAL RECORD.

Issued Every Sunday Morning by the Local Office, U. S. Weather Bureau.

DAY	NOV	WIND		TEMP.		HUMIDITY		CLOUDS		WIND	
		Dir.	Sp. Vel.	Max.	Min.	Rel.	Avg.	Dir.	Vel.	Dir.	Vel.
19	30	02	79	69	41	88	10	8	SE	4	
20	30	04	83	72	10	71	10	7	SE	4	
21	30	04	82	70	10	72	10	7	SE	4	
22	30	04	82	70	10	72	10	7	SE	4	
23	30	04	82	70	10	72	10	7	SE	4	
24	30	04	82	70	10	72	10	7	SE	4	

\* S. and SE.

Note.—Barometer readings are corrected for temperature, instrumental errors, and local gravity, and reduced to sea level. Average cloudiness stated in scale from 0 to 10. Direction of wind is prevailing direction during 24 hours ending at 8 p. m. Velocity of wind is average velocity in miles per hour. T indicates trace of rain.

WM. B. STOCKMAN, Section Director.

## POLITICIANS SAWING WOOD

(Continued from Page One.)

ent department is working economically?" he was asked. "I do," said Boyd. "I consider that it is doing remarkably well."

#### POLITICS FORCED ON HIM.

It was in connection with the fact that his name has been appearing in one connection or another with all the states that have been published that Boyd had the most to say. "I want to state that all this is being forced upon me. I have not been doing politics and am not in politics, except that I use whatever influence I have to prevent and keep down the race feeling that seems to be cropping up. I have always worked along the lines of fairness between the two races here, insisting in whatever I advocated that both the white voters and the Hawaiian voters should be treated equally and fairly. I have had no sympathy with any such cry as 'Hawaii for the Hawaiians,' and I have always spoken against its application in politics and in the preparation of our Republican tickets. My idea has always been, and I have always thought, that the Hawaiians, with their preponderance of voting strength, and the whites, with their preponderance of wealth, should come together and select the best men, giving equal representation to each side.

"But I have kept out of active politics. In the Wallace matter I kept still, and in view of this I think that the references made to me in the different newspapers have been unfair. I think that the references of The By-stander have been both unjust and uncalled for, and I consider that the fact that I was acquitted of the charges brought against me seven years ago ought to prevent the constant dragging up of that matter against me every time my name is mentioned. I have been in business since that time, and thousands of dollars have passed through my hands, and not one person can accuse me of anything dishonorable. I think that that ought to have some weight with the people. I can not fight the newspapers, especially when I do not know who writes the different articles."

#### FIGHT WILL BE TONIGHT.

In spite of the declaration of Mr. Boyd that the garbage department now is being run remarkably well and economically, it is practically a certainty that the resolution drawn up by Charley Achi to change it will be introduced into the business of the Supervisors tonight. It will probably be introduced by Harvey, although Harvey stated yesterday that he had had only one conversation with Achi during the past two months and was in no wise politically allied with him. "I know that if we separate the road and garbage departments it will cost the county a few more dollars to run it, but what can we do?" he asked. "The law says that no one man can be at the head of two departments drawing a salary from each. We didn't make the laws, our only duty being to carry them out. I don't know anything about this scheme to discharge Johnson. I know that I voted against him before, the same as I voted against Hustace. If the Republicans want to turn those two men down they can. They have the votes to do it. What have I got to do with the Republican party scraps?"

"I was opposed to Hustace on the start. I supported Archer for the chairmanship, at his own request. I moved that he be elected, also at his own request, and then he turned around and voted against my motion. Now they have Hustace, the man they wanted. Let them keep him or vote him out—I have done my duty and it is up to them."

"Will you vote to pay Brown his back pay?" Harvey was asked. "That is another thing that is against the law. I will not vote for it."

#### ACHI DENIES HIS THREATS.

During the one conversation which Harvey says he has had with Achi, the Laborite denied positively that he had ever threatened Hustace with political oblivion or stated that he had the Supervisors on his string to vote as he wished. According to Harvey, Achi stated that all he did to Hustace was to ask him why he had not put certain men to work. Instancing Boyd, Clark, Isaac and the others.

"Why did you go to him for that?" asked Harvey. "Why did you not go to the road board or, better still, to Johnson? Johnson is the man who puts men to work. That is his business and does not belong to Hustace or anyone else."

What Achi said to this was not stated.

#### ACHI, READY LETTER WRITER.

Achi issued another of his letters yesterday, Chief Taylor being the one addressed. The letter asked a great many questions, but explained none of the several things of which the public would like to know. The letter was: My Dear Chief Detective Taylor. Sir: In the Sunday Advertiser of yesterday, I saw that you stated the following paragraph: "While making myself plain on the subject, I wish to state also that as far as Achi is concerned I know something of the caliber of men he tried to foist into this department as soon as Colonel Laukea assumed the office. One of the men presented was, to use Achi's own expression, a gambler, but he thought if I took him in hand and trained him in the detective department, that he would quit gambling, reform, and be O. K. I declined to accept of Mr. Achi's protegee."

Am I in your way to become Sheriff of the County of Oahu? If Achi is to be condemned by Detective Taylor for his recommending a gambler for a position in the police department, why not C. D. Taylor condemn Mr. Taylor for having committed the same wrongdoing? Do you forget that Mr. Taylor and Achi had signed and endorsed the application of a known gambler to Mr. Taylor for a position on the police

force, before Mr. Taylor became C. D. Taylor?

Do you not know that right now under your own department that you are employing and paying the County money to a convicted gambler?

If Achi is to be ridiculed for recommending a gambler, why Chief Detective Taylor should not be ridiculed for actually employing a convicted gambler under his department?

Did you not know that a gambler fed you to the first step to the high position which you now hold?

Did you not know that a gambler had given you most, if not all, information which you had about gambling during the late administration of the Police department?

Did you not make your informer believe at the time that if you were going into heaven, he would be with you in that kingdom?

If Achi believed at the time he recommended the alleged gambler for a position in the Police force, that the gambler would reform, was it wrong?

Was not Saint Paul a wrong-deer before the Lord had chosen him as One of His Apostles?

Is it not true that you and Laukea are downing Achi in order that the meaning of Laukea's small talk might be carried out?

Can you tell us when and where the following small talk of Laukea was written or printed?

"SHERIFF LAUKEA—No mistake could be made in the election of Mr. Taylor, the present Chief of the Detective Bureau, to the office of Sheriff, and of course, with myself as Mayor of Honolulu, I believe it would insure good government to the public."

Very respectfully yours, W. C. ACHI.

Honolulu, Nov. 18, 1907.

#### TAYLOR REFUSES TO RISE.

"I have nothing to add to what I have already said," was what Taylor remarked when he had read the above. "There is nothing whatever for me to say."

During the perusal of the letter Colonel Knox burst into the office of Sheriff Laukea and offered him his assistance in fighting any and all persons who showed themselves to be in opposition to the police. "I represent the Fighting Seventh, sah," he said, drawing himself up. "An' I am wit you, Mistah Sheriff, an' an' me men."

#### APOLOGIZED TO HUSTACE.

In addition to penning his letter to Taylor, the Laborite called on Hustace and, it is said, ate humble pie, explaining that he had said many things in the heat of the moment for which he was sorry and which he desired to retract.

The fact that the members of the Board of Supervisors, whom Achi claimed to have under his thumb, have been squirming given to Hustace and have been calling upon him to save their faces may have something to do with the retraction. Being in leading strings and having everybody know it are quite different things and it was up to Achi to retract or have a rebellion on his hands.

#### HUSTACE WILL STAY.

As a result of the publicity given to their plans, it is improbable if the resolution to oust Hustace will appear tonight, while if it does it is stated that Cox, Dwight and Kealoha will vote against it, leaving Hustace to cast the deciding vote for himself.

But it is unlikely that he will have to. Ever since the publication of the resolution, drafted and ready, voting the Chairman out, the various Supervisors have been loudly insisting that "there's nothing in it," that the whole story is only newspaper talk or the result of a plot hatched by no one less than Nagaran Fernandez. In fact Fernandez is getting a great deal of undeserved credit for spilling things and letting whole herds of cats out of all sorts of bags.

It is decidedly funny, in fact, to note the cautious manner in which each politician approach and talk to each other these days, since the Advertiser has been publishing the inside doings of their little back-room conferences. "Someone is snaking in the grass," is the way Achi puts it.

#### A GOOD HOUSEHOLD LINIMENT.

When a bottle of Chamberlain's Pain Balm is kept in the house, the pains of burns and scalds may be promptly relieved, cuts and bruises quickly healed, swellings promptly reduced and rheumatism and neuralgia robbed of their terrors. In fact, for the household filth, it is just such a liniment as every family should be provided with. For sale by all dealers, Benson, Smith & Co., agents for Hawaii.

#### UNITED STATES OF AMERICA. IN THE DISTRICT COURT OF THE TERRITORY OF HAWAII.

Whereas, A libel was filed in the District Court of the United States for the Territory of Hawaii on the 18th day of November, A. D. 1907, by A. M. Brown, versus the American schooner Luka, her tackle, apparel, boats, furniture and appurtenances, and against all other persons intervening for their interests therein, respondents, in a cause of libel in personam, civil and maritime, to recover the sum of \$1592.51, interest, costs and expenses, as by said libel, reference being hereby made thereto, will more fully and at large appear.

Now, therefore, in pursuance of the monition, and under the seal of the court to me directed and delivered, I do hereby give public notice to the American schooner Luka and all other persons claiming the said American schooner Luka, her tackle, apparel, boats, furniture and appurtenances, or in any manner interested therein, that they be and appear before the said District Court, to be held in the city of Honolulu, on Friday, the 29th day of November, A. D. 1907, at ten o'clock in the forenoon of that day, provided the same shall be a day of jurisdiction; otherwise on the next day of jurisdiction thereafter, there and then to interpose their claims and make their allegations in that behalf, otherwise default and condemnation will be ordered.

Dated the 18th day of November, A. D. 1907.

E. R. HENDRY, U. S. Marshal; J. J. Dunne, proctor for libellant.

E. R. HENDRY, U. S. Marshal; Geo. A. Davis, proctor for libellant.

E. R. HENDRY, U. S. Marshal; Geo. A. Davis, proctor for libellant.

E. R. HENDRY, U. S. Marshal; Geo. A. Davis, proctor for libellant.

E. R. HENDRY, U. S. Marshal; Geo. A. Davis, proctor for libellant.

E. R. HENDRY, U. S. Marshal; Geo. A. Davis, proctor for libellant.

## By Authority.

#### PUBLIC AUCTION.

On Wednesday, November 20th, at 12 o'clock noon, on the premises at Iwilei, will be sold to the highest bidder the buildings, boiler and piping of what is known as the Iwilei Laundries. Possession will be given purchaser on Saturday, November 30th, at 12 o'clock midnight.

The buildings to be removed and premises cleared before December 30th, 1907.

Ten per cent of the purchase price to be paid on the fall of the hammer and the balance on confirmation of the sale by the Superintendent of Public Works.

Purchasers will not have the right to rent any of the rooms during the time the buildings may be in his or their possession.

MARSTON CAMPBELL, Superintendent of Public Works.

Jas. F. Morgan, Auctioneer.

7886

#### ADVERTISEMENT.

Proposals will be received at the office of the Superintendent of Public Works, Honolulu, T. H., until 12 o'clock, Monday, November 25th, 1907, for the constructing of Sanitary Sewers along:

Nuuanu Ave., from Kuakini St. to Bates St.

Bates St., from Nuuanu Ave. to East side of Punuuhi Stream.

Private way from Bates St. to Judd St.

Panua Road from Nuuanu Ave. to Booth Road.

Fort Street from Kuakini St. to Panua Road.

Panua Road, from Fort St., to flush tank in Punchbowl St.

Plans, specifications and blank form of Proposal may be obtained at the office of the Superintendent of Public Works for which a deposit of \$5.00 is required which sum will be refunded intending bidders after they have returned the plans and specifications.

Proposals will not be accepted unless submitted on the blank form furnished, enclosed and sealed with a certified check for One Thousand (\$1,000.00) Dollars, endorsed "Proposal for Honolulu Sewer Extension," and delivered previous to 12 o'clock of the day specified at the office of the Superintendent of Public Works, who reserves the right to reject any or all bids.

MARSTON CAMPBELL, Superintendent of Public Works.

Honolulu, T. H., Nov. 15th, 1907.

255

#### NOTICE.

The annual meeting of the Healanu Yacht and Boat Club, Limited, will be held on Wednesday, November 20, 1907, at 7:30 p. m., at the Republican Headquarters, on Merchant street.

H. P. O'SULLIVAN, Secretary.

255

#### UNITED STATES OF AMERICA. IN THE DISTRICT COURT OF THE TERRITORY OF HAWAII.

Whereas, A libel was filed in the District Court of the United States for the Territory of Hawaii on the 13th day of November, A. D. 1907, by Y. Kanja, M. Takashita, T. Marutani, H. Iwasaki and G. Ujlya, versus the American schooner Luka, her tackle, apparel, boats, furniture and appurtenances, and against all other persons intervening for their interests therein, respondents, in a cause of libel in rem, civil and maritime, to recover the sum of \$339.57, interest, costs and expenses, as by said libel, reference being hereby made thereto, will more fully and at large appear.

Now, therefore, in pursuance of the monition and under the seal of the court to me directed and delivered, I do hereby give public notice to the American schooner Luka and all other persons claiming the said American schooner Luka, her tackle, apparel, boats, furniture and appurtenances, or in any manner interested therein, that they be and appear before the said District Court, to be held in the city of Honolulu, on Friday, the 22nd day of November, A. D. 1907, at ten o'clock in the forenoon of that day, provided the same shall be a day of jurisdiction; otherwise on the next day of jurisdiction thereafter, there and then to interpose their claims and make their allegations in that behalf, otherwise default and condemnation will be ordered.

Dated the 13th day of November, A. D. 1907.

E. R. HENDRY, U. S. Marshal; J. J. Dunne, proctor for libellant.

Fraternal Meetings

Pacific Lodge No. 822, A. F. & A. M. THERE WILL BE A SPECIAL meeting of Pacific Lodge No. 822, A. F. & A. M., at its hall, Masonic Temple, corner of Hotel and Alakea streets. THIS (Tuesday) EVENING, NOV. 19, 1907, at 7:30 o'clock.

J. A. GILMAN

Room 400 Judd Building

Shipping and Commission Merchant

INSURANCE

FIRE AND MARINE Agent For Arthur Sewall & Co., Bat'l, Maine. Parrott & Co., San Francisco. Aaschen and Munich Fire Insurance. Manheim Insurance Co.

Economy in Soap

Johnson & Johnson's liquid soap holder is made for the purpose. HOLDS LIQUID SOAP. Turn on the tap and the soap is there to use without waste. No dust or dirt and no clogged drain pipes. Come Take a Look In! PRICE \$1.75 Benson, Smith & Co., Limited. FORT AND HOTEL.

AMERICANS!

THE HAWAII JIYU SHINBUN Asks your assistance in furthering friendship between Japan and America; send it \$5.00 and it will come to your Japanese servant, teaching him moderation and right-thinking. Address, S. SHEBA, Mgr., Cor. Beretania and Maunakea Streets. The best Japanese newspaper in Honolulu. Translations made from English to Japanese, and vice versa. Moderate charges. Commercial Work Solicited.



HONEST PAINT

Made of pure materials. Mixed with skill; governed by experience; applied by competent mechanics. OUR PAINT STAYS PAINTED Phone 426

Stanley Stephenson, THE PAINTER

Buy Your JEWELRY HOLIDAY PRESENTS From

J. Carlo Pawn Co.

CHEAPER THAN EVER 3018 NUUANU ST. - Near King.

Fraternal Meetings

CANTON OAHU NO. 1, P. M. I. O. F. Meets every second Friday of the month, at 7:30 p. m., in Odd Fellows' Hall, Fort Street. Visiting brothers cordially invited to attend. H. T. MOORE, Commandant. PAUL SMITH, Clerk.

POLYNESIA ENCAMPMENT NO. 1, I. O. O. F. Meets every first and third Friday of the month, at 7:30 p. m., in Odd Fellows' Hall, Fort Street. Visiting brothers cordially invited to attend. C. O. HOTTELL, C. P. L. L. LA PIERRE, Scribe.

EXCELSIOR LODGE NO. 1, I. O. O. F. Meets every Tuesday evening, at 7:30, in Odd Fellows' Hall, Fort Street. Visiting brothers cordially invited to attend. A. F. CLARK, N. G. L. L. LA PIERRE, Sec.

HARMONY LODGE NO. 3, I. O. O. F. Meets every Monday evening, at 7:30, in Odd Fellows' Hall, Fort Street. Visiting brothers cordially invited to attend. W. F. GEHRING, N. G. E. R. HENDRY, Sec.

PACIFIC REBEKAH LODGE NO. 1, I. O. O. F. Meets every second and fourth Thursday, at 7:30 p. m., Odd Fellows' Hall, Fort Street. Visiting Rebekahs are cordially invited to attend. ANNIE BIDDLE, N. G. JENNY JACOBSON, Secy.

OLIVE BRANCH REBEKAH LODGE NO. 2, I. O. O. F. Meets every first and third Thursday, at 7:30 p. m., in Odd Fellows' Hall, Fort Street. Visiting Rebekahs are cordially invited to attend. MAE CANTIN, N. G. HAZEL CRANE, Secy.

OCEANIC LODGE NO. 371, F. & A. M. Meets on the last Monday of each month, at Masonic Temple, at 7:30 p. m. Visiting brethren and members of Hawaiian and Pacific are cordially invited to attend. CHAS. A. BON, W. M. F. WALDRON, Sec.

LEAHI CHAPTER NO. 2, O. E. S. Meets every third Monday of each month, at 7:30 p. m., in the Masonic Temple. Visiting sisters and brothers and members of Lei Aloha Chapter No. 3, are cordially invited to attend. ALICE G. HERRICK, W. M. ADELAIDE M. WEBSTER, Sec.

LEI ALOHA CHAPTER NO. 3, O. E. S. Meets at the Masonic Temple every second Saturday of each month, at 7:30 p. m. Visiting sisters and brothers are cordially invited to attend. MARGARET HOWARD, W. M. LOUISE A. TRUE, Secy.

LADIES' AUXILIARY, A. O. H., DIVISION NO. 1. Meets every first and third Tuesday, at 8 p. m., in C. E. U. Hall, Fort Street. Visiting sisters are cordially invited to attend. MRS. M. COWES, Pres. MAUD O'SULLIVAN, Secy.

ANCIENT ORDER HIBERNIANS, DIVISION NO. 1. Meets every first and third Wednesday, at 8 p. m., in C. E. U. Hall, Fort Street. Visiting brothers cordially invited to attend. F. O. GREY, Pres. J. T. CARREY, Secy.

MYSTIC LODGE NO. 2, K. of P. Meets every Tuesday evening at 7:30 o'clock in K. of P. Hall, corner Fort and Beretania. Visiting brothers cordially invited to attend. A. S. WEBBER, C. C. F. WALDRON, K. R. S.

WILLIAM MCKINLEY LODGE NO. 8, K. of P. Meets every Saturday evening at 7:30 o'clock, in Pythian Hall, corner Beretania and Fort streets. Visiting brothers cordially invited to attend. L. H. WOLFE, C. C. E. A. JACOBSON, K. R. S.

HONOLULU TEMPLE NO. 1, PYTHIAN SISTERS. Meets every first and third Monday, at 7:30 p. m., at Knights of Pythias Hall, Fort and Beretania streets. All visitors cordially invited to attend. ROSE ERICKSON, M. E. C. GRACE O'BRIEN, M. of R. & S.

COURT CAMOES NO. 8110, A. O. F. Meets every second and fourth Tuesday of each month, at 7:30 p. m., in San Antonio Hall, Vineyard street. Visiting brothers cordially invited to attend. J. P. REGO, C. R. M. C. PACHECO, F. S.

CAMOES CIRCLE NO. 240, C. O. F. Meets every second and fourth Thursday of each month, at 7:30 p. m., in San Antonio Hall, Vineyard street. Visiting companions are cordially invited to attend. M. C. PACHECO, C. C. R. J. BORGES, F. S.

COURT LUNALILLO NO. 6600, A. O. F. Meets every first and third Wednesday evenings of each month, at 7:30 p. m., in Pythian Hall, corner Fort and Beretania streets. Visiting brothers cordially invited to attend. WILLIAM AHA, C. R. JAS. K. KAULIA, P. O. F. S.

HONOLULU AERIE 140, F. O. E. Meets on second and fourth Wednesday evenings of each month, at 7:30 o'clock, in Pythian Hall, corner Beretania and Fort streets. Visiting Eagles are invited to attend. L. E. TWOMEY, W. P. H. T. MOORE, Secy.

HONOLULU HARBOR NO. 54, A. A. of M. & P. Meets on first and third Sunday evenings of each month, at 7 o'clock, at Odd Fellows' Hall. All sojourning brethren are cordially invited to attend. By order of the President. A. L. LANE FRANK C. POOR, Secy.

THEODORE ROOSEVELT CAMP NO. 1, U. S. W. V. Department Hawaii. Meets every second and fourth Saturday, Waverley Block, corner Bethel and Hotel, at 7:30 p. m. Visiting comrades cordially invited to attend. O. SCHWEDTFEGER, Commander.

MARINE ENGINEERS BENEFICIAL ASSOCIATION. Meets second and fourth Mondays of each month at the new K. of P. Hall, corner Fort and Beretania streets. E. HUGHES, Pres. H. G. WOOTTEN, Secy.

CHUNG WAH LODGE NO. 4, K. of P. Meets every second and last Tuesday at its hall, Vineyard street, at 7:30 p. m. Visiting brothers are cordially invited to attend. E. S. KONG, C. C. SAMUEL L. WONG, K. of R. & S.

HAWAIIAN TRIBE NO. 1, I. O. R. M. Meets every first and third Thursday of each month, in K. of P. Hall, corner Fort and Beretania streets. Visiting brothers cordially invited to attend. A. D. CASTRO, Sachem. A. E. MURPHY, C. of R.

HONOLULU LODGE 616, B. P. O. E. Honolulu Lodge No. 616, B. P. O. E. will meet in their hall, King street, near Fort, every Friday evening. By order of the E. R. FRANK E. RICHARDSON, E. R. HARRY A. WILDER, Secy.

HONOLULU SCOTTISH THISTLE CLUB. Meets on the first and third Friday, at 7:30 o'clock p. m., in rooms in Oregon Block, entrance on Union street. JAMES C. MCGILL, Chief. JOHN MACAULEY, Secy.

THAYER TO ASK FOR RECEIVER

Hawaiian Realty and Maturity, Co. Found in Rotten Condition.

Wade Warren Thayer, the special attorney to whom the Attorney General referred the badly muddled affairs of the Hawaiian Realty and Maturity Co., will today bring a bill in equity in the Circuit Court for the appointment of a receiver for the concern. Registrar Henry Hapai has reported on his examination of the books of the Hawaiian Realty and Maturity Co., Ltd., to Attorney General C. R. Hemenway. He says his examination was a personal one. The cash book prior to July 1, 1905, and the journal were missing. It was therefore impossible for him to check the original ledger. That book appeared to have been unintelligibly kept and Mr. Hapai was of the opinion "that certain entries were improperly made and cash receipts unaccounted for." To arrive at the status of the company as of a certain day, he used the membership ledger to ascertain the total deposits and withdrawals. He selected October 31, 1907, and found the following: Cash balance in First National Bank, \$151.67. Mortgages outstanding, \$1861.37. Real estate as per conveyances by Annie Holt Kentwell and husband to the corporation, \$36,940; less sale of Makaha interest in said conveyance, \$1500, and Waialua interest, \$6000; leaving \$29,440 as value of real estate. But the examiner found an item of \$7750 to the credit of real estate account, but finding no evidence of such a transaction he treats it as an entry improperly made and reduces the total assets accordingly to \$23,703. Both the Waialua item of \$6000 and the \$7750 item are unsatisfactory, but Mr. Hapai says he has no alternative but to leave the entries as made. What became of the cash he leaves an open question. To arrive at the liabilities the stock account in the ledger was worthless and the examiner had to rely on the stock certificate book. From stub memoranda he found that the stocks outstanding and unpaid amounted to \$17,560. Then he tackled the question of what was due to members on deposit account. "Although juggling of accounts appears on the membership ledger," Mr. Hapai says, "it was the only evidence available from which to make this report." He arrived at the following data: Total amount paid in full as required by stock certificates, \$17,250; less loans on stock, \$1553.50; balance, \$15,696.50. Total paid by members who failed to pay up in full as required by certificate, \$56,057; loans, deducted, \$9000.30; balance, \$47,056.70. Total liability, \$80,313.20, being \$56,610.16 in excess of assets. This is not counting furniture and fixtures valued by the company at \$646.22 nor \$3118.39 in unsecured notes and I. O. U.s, which Mr. Hapai regards as worthless. With these included the company's deficit, on the face of the books such as they are, would be reduced to \$52,845.55. The Registrar took no notice of the expense or any other account bearing on the affairs of the company for the reason that the entries were improperly made. However, the profit and loss account showed a debit balance of \$966.06 on June 30, 1906, but how the entries were made Mr. Hapai was unable to report, the journal having disappeared.

ALLEGED THUGS ARE ON TRIAL

Three Japanese Men Fight Jail Sentences for Assault on a Woman. Yano, Yoshioka and Kakutani were brought to trial before Judge Lindsay yesterday afternoon, on the charge of assault and battery on a Japanese woman named Asa Yano on July 8 last. County Attorney J. W. Cathcart appears for the prosecution and W. T. Rawlins for defendants. District Magistrate Whitney on July 11 found the defendants guilty and sentenced Yoshioka and Kakutani to imprisonment for six months each and Yano for three months, with costs of \$2.50 each. They appealed to the Circuit Court. After one challenge by defendants the following jurors were accepted. C. E. Frasher, A. L. Perry, F. H. McGuire, J. P. Robinson, K. R. G. Wallace, U. F. Merrifield, H. L. Herbert, H. A. Asch, G. W. Macey, Albert Ludloff, Chas. Phillips and W. G. Walker. General particulars of the charge were these: Defendants called the complaining witness out of the house she occupied at "the new camp," Honolulu, on pretense of talking to her, and asked her to go away with them. On her refusal they maltreated her—kicking and slapping her and tearing her clothes—and terrorized her by threats of cutting her to pieces with a knife. The trial is still on. APPEAL DROPPED. Ah Hong withdrew his appeal, in Judge Lindsay's court, from a fine of \$30 and costs, in Honolulu District Court, for assault and battery.

WEEDON'S TWO DAMAGE SUITS

Asks for \$4750 Each From Mrs. and Mr. Chapin-- Cases Consolidated.

Walter C. Weedon's two damage suits against Mrs. C. W. Chapin and C. W. Chapin, respectively, were ordered by Judge De Bolt some time ago to be consolidated. They came on for trial before Judge Robinson yesterday. The jury panel became exhausted in the morning and a special venire of twenty-five jurors was ordered, returnable at 3 p. m. Plaintiff claims \$4750 from each defendant. His cause of action alleged is personal injury from being thrown off his horse at Kapiolani Park, the animal having been frightened by the automobile of defendants, at the time being driven by Mrs. Chapin. This was on Sunday, January 7, 1906, Mr. Weedon riding out to Diamond Head to take an observation of a sailing vessel in which his wife was returning from San Francisco. Defendants belong to New York City. A. Perry appeared for plaintiff and E. M. Watson for defendant. When the extra jurors came in, and after plaintiff had challenged three and defendants six of the panel, the following jury was found satisfactory and sworn: Edward B. Friel, Otto Schilling, Benjamin H. Clarke, Edward E. Robbins, William C. King, Robert K. Pahau, Frederick Goudie, James H. Cummings, Eugene K. Allen, Frank E. King, Irving J. Hurd, H. E. A. Ruething. It is expected the trial will occupy the rest of this week or longer. NEW TAX QUESTION. An appeal from Honolulu District Court in the case of Jas. L. Holt, assessor, vs. E. J. Monsarrat, on a lane point, was tried by Judge De Bolt yesterday. Deputy Attorney General Whitney appeared for the assessor and A. G. M. Robertson for the taxpayer. The court took the matter under advisement, plaintiff to file brief by November 29, defendant to have until December 2 to reply. The point arises over the fact that defendant has only a life interest in the estate on which taxes are claimed of her. With costs and penalties accrued the assessor's claim is \$1992.37. FOR CATTLE SOLD. J. H. Raymond has brought suit against Ah Ping for \$563.37, for cattle delivered at Lahaina. Ah You and Lahaina National Bank are summoned as garnishees. A. G. M. Robertson is attorney for plaintiff. EXCEPTIONS ALLOWED. Judge Lindsay allowed plaintiff's bill of exceptions in the suit of Hark Hak Sae vs. Pak Lung Kwon et al. Davis and Magoon were the respective counsel.

FAILED TO PUT AWAY HIS SECOND HELPMET

Tam Pong's trial for violation of the Edmunds Act by keeping two wives was started before U. S. Judge Dole yesterday morning and at 2 p. m. was continued until this morning. Assistant District Attorney J. J. Dunne appears for the prosecution, and C. Creighton for the defendant. The jury consists of George Chalmers, J. Horace Myatt, Wm. Lishman, J. N. Wood, Wm. Pullar, S. A. Walker, Samuel Parker, E. J. McNery, John T. Moir, John Eflinger, John Cassidy and F. H. Kilbey. Defendant in 1905 was convicted for the same offense on his plea of guilty, and promised to send the superstitious wife home to China. His failure to do so has brought him the present trouble. All other matters were continued until 9:30 this morning. The Federal grand jury was in session in the United States courtroom yesterday afternoon. It was mostly natives, a majority of them women, who occupied the benches for witnesses in the corridor. Frank A. Mayfield and U. McCoy were excused as trial jurors for the term by Judge Dole.

LAND TITLE APPEAL CASE IS SUBMITTED

After hearing the two cases mentioned below, the Supreme Court yesterday adjourned till tomorrow morning at 10 o'clock. Plaintiff's writ of error to the Maui Circuit Court, in the case of Lahaina Agricultural Co. vs. A. Poaha et al., was submitted on briefs in the Supreme Court. Kinney & Marx for plaintiff; Ashford, Vivas and Coke for defendants. An appeal of certain respondents from the Court of Land Registration in regard to the application of Lewers & Cooke, Ltd., for a registered title was called in the Supreme Court yesterday afternoon. Castle & Whittington for petitioner; Attorney General Hemenway, L. A. Dickey, C. F. Peterson and Thompson & Clemons for certain respondents, appellees, and Holmes & Stanley and C. H. Olson for the Kapiolani Home, one of the respondents, appellants. The case was argued and submitted. Elsie Dwight Cummings has brought a divorce suit against William C. Cummings for non-support and cruelty.



THIS DAY At Auction

TUESDAY, NOV. 19, 1907, AT 10 A. M.

At my Salesroom, 847 Kaahumanu St. Bureaus, Washstands, Wheeler & Wilson Sewing Machine, Oak Bed, Springs, Mattresses, Rockers, Dining Chairs, Box Couch, Chickering Piano, Extension Dining Table, Kitchen Table, Curtain Poles, Window Shades, Road Skates, Books, Tapes, Cedar Chest, Book Shelf, Toilet Sets, Crockery, Pictures, Phaejon, Carriage Pole, Ferns, Palms.

JAS. F. MORGAN, AUCTIONEER.

Auction Sales My Leader This Week

SATURDAY, NOV. 23, 1907, 12 O'CLOCK NOON.

At my Salesroom, 847 Kaahumanu St. I am instructed by Mr. Riedel to sell his

Cottage on Gulick Avenue

containing six rooms, with veranda two sides of the house, at an upset price of only \$1000. Lot 50x100. House new. Terms: Cash.

JAS. F. MORGAN, AUCTIONEER.

Auction Sale

SATURDAY, NOV. 23, 1907, 12 O'CLOCK NOON.

At my Salesroom, 847 Kaahumanu St. 5913 SQUARE FEET ON LILIIHA STREET close to King street, with a

JAS. F. MORGAN, AUCTIONEER.

FOR SALE

Two of Honolulu's Choicest

Adjoins the properties of P. C. Jones, A. Lewis and A. Gartley. Fronts on two roads.

NUUANU VALLEY CHEAP FOR CASH. JAS. F. MORGAN, AUCTIONEER.

A SNAP

Three Lots

KEAUMOKU STREET NEAR WILDER AVENUE. Come quick. Three days, for \$600.

JAS. F. MORGAN, AUCTIONEER.



Castle & Cooke, Ltd. SHIPPING AND COMMISSION MERCHANTS. Sugar Factors and General Insurance Agents. REPRESENTING New England Mutual Life Insurance Company of Boston. Aetna Fire Insurance Co. National Fire Insurance Co. Citizen's Insurance Co. (Hartford Fire Insurance Co.) Protector Underwriters of the Phoenix of Hartford.

Beautiful Insertions

We are just in receipt of a fine assortment of very beautiful insertions, which we offer at prices ranging from 5c to 40c a yard.

Yokings

GREAT VALUES ASSORTED PATTERNS From 40c to 50c.

L. AHOY

Nuuanu Street, below Hotel Street Christmas Books We have a Splendid Assortment for this Christmas. Come and see them.

Hawaiian News Co., Ltd.

Alexander Young Bldg. PUPILS WANTED A COMPETENT lady teacher recently from the Coast would like private pupils. Is proficient in music, drawing, etc. Backward pupils brought up in work; bright pupils advanced. Address "R.", 20 Hawaiian Hotel, or telephone. 770

JOHN NEILL, Engineer

Dealer in NEW AND SECOND-HAND MACHINERY. Repairing of All Kinds. GASOLINE ENGINES A SPECIALTY 135 Merchant Street. Tel. 116.

O. OKAZAKI

NEW GOODS IN Worsteds and Shirtings Suits and Shirts to Order Hotel Street, near River Street.

CLOTHES

WITH STYLE TO THEM MATERIAL THAT WEARS George A. Martin, Arlington Block Hotel Street

"YAMATOYA,"

ALL KINDS OF SHIRTS, PAJAMAS and KIMONOS MADE TO ORDER. 1246 Fort St., just above Orpheum.

Safes Opened

Typewriters, Sewing Machines and CASH REGISTERS Cleaned, Repaired and Adjusted S. H. WEBB, UNION STREET

Elegant Tea

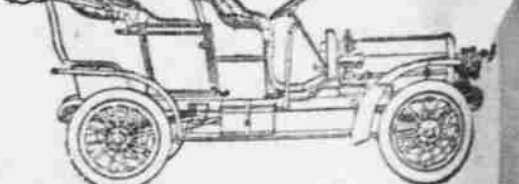
A few cases left of that CHOICE CEYLON TEA. ORANGE PEKOE. In 5 lb. packages, \$1.50.

McChesney Coffee Co.

16 MERCHANT STREET. NOTICE ANY WOMAN OR GIRL NEEDING help or advice, is invited to communicate, either in person or by letter, with Ensign L. Anderson, matron of the Salvation Army Women's Industrial Home, No. 1680 King street.

575 EAGLE DYEING AND CLEANING WORKS

Fort Street.



Automobile Repairing

We have the best equipped repair shop for autos in the Territory. von HAMM-YOUNG CO., LTD. Garage on Alakea Street



## Own a Home

### Decide To-Day

Make your decision as the result of your best judgment, but be prompt. The natural impulse of some will be to wait. Caution to a degree is commendable, but has killed many a man's big opportunity. It will kill yours if you wait now.

**INSURANCE**  
**TRENT TRUST CO., Ltd.**  
916 Fort St. Honolulu.  
**REAL ESTATE**

## Lunch at the Criterion

EVERY NOON AND  
AFTER 4 P. M.  
The Lunch is Gratis

**C. J. McCARTHY, Prop.**  
Corner Hotel and Bethel Streets

## Do You Know?

that you can visit one of the World's Wonders for

**\$42.50**

It takes only four days to make the Round Trip to

### Kilauea

THE WORLD'S GREATEST LIVING VOLCANO

For tickets and information regarding the trip, apply to

**The Henry Waterhouse Trust Co., Limited**  
Corner Fort and Merchant Streets  
HONOLULU

### BUSINESS LOCALS.

See Sachs' holiday goods. Go to E. O. Hall & Son's for a superior blue flame oil stove.

All desiring home-made mince meat send orders early to Mrs. Kearns.

A dividend warrant for fifty dollars has been lost. See Classified ads.

A gentleman wants room and board on Punchbowl slope. See Classified ads.

Rooms and housekeeping rooms for rent in "Fern Place." See Classified ads.

Sun Lee Tai Co., contractors, builders and painters, also make mission furniture.

Thrum calls attention in an advertisement today, to a fine line of Christmas goods.

The Bickerton premises, Kalia road, Waikiki, are offered for rent. See Classified ads.

Ehlers are showing some handsome embroidered Swiss patterns for corset covers—\$2 to \$3.50 each.

A draft drawn on Davies & Co., Ltd., in favor of Yokohama Specie Bank has been lost. See Classified ads.

Island curios are very suitable for Christmas gifts. We are ready for your call. Best selection at the big curio store—Steiner's—Elite building, Hotel street.

The stock in leather postals, fans, baskets, mats, tapas, fans for souvenirs, Hawaii & South Seas Curio Co., Alexander Young building. Exquisite designs in Mexican drawn work, dollies, scarfs, teneriffe and squares.

A superior table wine is the Napa and Sonoma Wine Company's. It took first prize at both St. Louis and the Lewis and Clark exhibitions. In quarts and pints. Lewis & Co., Ltd., sole agents for Hawaii, 169 King street, Phone 240.

Low prices prevail at Sachs'.

### CLOUD WIPED OUT.

A cloud on the title of 234 acres of land at Waialae-iki was forever wiped out yesterday, when Acting Governor Mott-Smith signed a land patent for the tract to A. Paki. The cloud arose from a notation on a former conveyance, designating a certain portion of the land as claimed by Princess Victoria Kamehameha. This chiefess was a grandchild of Kamehameha I. Although the patent was signed only yesterday, the question of granting it was settled a good while before.

The arrangements for the plant and flower tea of St. Clement's church, which will take place at the home of General Davis, on Hastings street, Thursday afternoon at 3 o'clock, are progressing rapidly and those who go should have a most enjoyable time.

Cream puffs, cream rolls, banana short cake and other French pastries at their best at Alexander Young Cafe.

### LOCAL BREVITIES.

D. P. R. Isenberg will be here on the Mongolia on the 22nd inst.

Work in Page rank this evening. Mystic Lodge No. 2, K. of P.

Fred. L. Waldron will leave for the Coast by the Korea on Friday.

Excelsior Lodge No. 1, I. O. O. F., will meet this evening at 7:30 in Odd Fellows hall.

Ladies' Auxillary, A. O. H., Division No. 1, will meet in C. E. U. hall at 8 o'clock this evening.

Kaplanani Maternity Home trustees meet at 10 this morning and all members of the board are requested to attend.

The Rapid Transit employees' swimming pool and bowling alley will be opened with an invitational reception this evening.

Friends of Mrs. F. F. Fyler will be pleased to learn that she has passed successfully through an operation at the Queen's hospital.

Three new trustees will be elected by the Chamber of Commerce tomorrow, to bring the number up to fifteen according to a recent vote.

The Board of Trustees of the Kaplanani Maternity Home will meet this morning at 10 a. m. All members of the Board of Trustees are requested to attend.

Acting Governor Mott-Smith had a long conference yesterday with parties in interest in the condemnation proceedings of the United States for the Federal building site.

A grand concert will be given on Friday, November 29, at the Kawaiahao basement, for the benefit of the Kawaiahao church. The program will be published next week.

The regular monthly meeting of the W. C. T. U., will be held in the church parlor of Central Union church this afternoon at 2:30. A large attendance is requested. Plan to be present.

Miss Kate Kelley leaves for Kauai today to give evidence, from knowledge gained as stenographer of the Supreme Court, in Territory vs. Pak Yen before the Fifth Circuit Court.

H. Theodore Barclay has resigned as first assistant bookkeeper for McBryde Sugar Co. at Elele to become bookkeeper at the Waialua store. He came over from Kauai on Sunday morning.

Col. McCarthy paid J. D. Moore \$1000 for the Palace saloon, the transfer being recorded yesterday. He had paid Ching Bros. \$550 for the Palace cafe, so that the combined business has cost him \$1550.

Information has been received by the police that Man Chong, who escaped from Oahu prison where he was serving a life sentence for the murder of Policeman Mahelona, is enjoying life and liberty in China.

Mr. William Kent will speak informally to the class in city government today at the Normal school at 3:30. The usual invitation is extended to any women interested. The subject of the day is "Direct Legislation."

Charles D. Willard of Los Angeles will address the Chamber of Commerce at its regular meeting tomorrow afternoon, on the projected new harbor for that city and the relation it will have to the commerce of Hawaii.

As a matter of fact, the naval wireless station communicated with the transport Thomas about 300 miles out of Honolulu, when the transport said she had nothing to communicate and stopped replying to the Honolulu station.

Though acquitted of manslaughter, with which he was charged on account of the death of a Japanese prisoner whom he had kicked in the stomach, Enoka Lovell will not be restored to his office of jailor at Lihue by High Sheriff Henry.

Deputy Attorney General Whitney, on his professional visit to Kauai last week, found a keen interest prevailing in homestead matters. The experiment of settling Portuguese and Spanish laborers upon homes of their own on McBryde plantation is working out satisfactorily. There are about 1000 persons thus settled.

Eldred H. Davis, clerk to Admiral Very, died of typhoid-pneumonia at the Queen's hospital on Saturday and was buried in Nuuanu cemetery on Sunday. Rev. David W. Crane conducted the services. Davis was born in Maryland and his mother lives in Baltimore. He was thirty-two years and six months old, and joined the naval station here in August, 1905.

## First Showing of Holiday Novelties

Now Ready and We Invite You All to Come.

Beautiful and interesting articles of all kinds, suitable for Christmas presents, now on display and new attractions being added daily.

Our stock this year is far ahead of anything we have ever carried.

**N.S. Sachs Dry Goods Co., Ltd.**  
Corner Fort and Beretania Streets

## Willow Hampers and Baskets

The largest and most complete assortment in the city on display now in our large window.

There are: Hampers and Clothe Baskets, Office, Wastepaper, Baby, Linen Work, Flower, Fruit, Satchel, Telescope, Dress Suit, Butcher Knife and Lunch Baskets in various styles and sizes.

All useful and durable and at the right price.

### W. W. DIMOND & CO., LTD.

Dealers in Household Goods. 53-55-57 King St.

## YOUR CHRISTMAS

Treat yourself or have someone treat you or you treat someone else to one of our handsome Bathrobes or an outfit of Pajamas. There is nothing better suited to the needs of a gentleman and our stock is as complete as any in the stores of the New York haberdasher. Useful Christmas gifts are always appreciated. Ours are the best.

### SILVA'S TOGGERY

Elk's Building, King Street.

### NAPA AND SONOMA WINE COMPANY'S

## CELEBRATED TABLE WINES

You can get wines higher in price, but quality and price considered, it will be hard to surpass this brand of table wines that have taken the FIRST PRIZES at both the ST. LOUIS and LEWIS and CLARKE EXPOSITIONS.

### RED WINES

ZINFANDEL (light pleasant wine).  
CABERNET (old and mellow) St. Julian type.  
BURGUNDY (full-bodied bouquet).  
EL MOLINO (Bordeaux character).  
MEDOC (elegant, rich).

### WHITE WINES

GUTEDEL (fruity dry wine).  
JOHANNISBERG REISLING (Rhine wine character).  
VINE CLIFF (Mosselle type).  
SAUTERNES (very mellow, palatable).  
HAUT SAUTERNES (medium sweet, delicate).  
CHATEAU YQUEM (very rich type).

### SPARKLING WINES

SPARKLING MOSELLE.  
SPARKLING SAUTERNE.  
SPARKLING BURGUNDY.

### LEWIS & CO., LTD.

SOLE AGENTS  
169 KING STREET. PHONE 240.

## MOONLIGHT CONCERT AT THOMAS SQUARE

There will be a public moonlight band concert this evening, at 7:30, at Thomas Square.

### PART I.

March—"H. M. the King".....Rosey  
Overture—"Comedy".....Beia  
Fantasia—"The Lanternfeast" (new).....Glover  
Selection—"The Siege of Rochelle".....Baife

### PART II.

Vocal—Hawaiian Songs..Ar. by Berger  
Selection—"Sweet Old Melodies" (by request).....Dalbey  
Spanish Dance—"Gracioso" (new).....Nehi  
Polka—"Dance Parole" (new).....Fetras  
"Star Spangled Banner."

### EWA'S FINE PROSPECT.

Ewa Plantation Co., will begin grinding about the middle of December. It is said that the cane on the plantation never looked so well before at this time of the year. The crop of the year 1908 will be a splendid one, according to anticipations.

From now on the evenings will be delightfully cool, and the evening of the 27th, when the Rebeleahs give their dance, is sure to be an ideal one. The dance is to be given at the Young hotel and any one attending is promised a good time. The Young floor is the best, the music will be good and refreshments will be served. Tickets, admitting gentleman and lady, are \$1.

### DIAMOND HEAD FORT.

The Hustace-Peck Co., Ltd., having made a bid to furnish rock and sand for the Diamond Head fortifications, there is a prospect now that the work may not be delayed as was feared when the call for bids had met with no response on the date set. If the bid is approved at Washington the contracting company will furnish the material from Fred. Harrison's quarry at Kaimuki. The bid is for 7000 tons of rock at \$1.95, and 3000 tons of rock sand at \$2 a ton.

### 1908 VIEW CALENDARS.

R. W. Perkin's beautiful Hawaiian souvenir calendars for 1908 are now ready. They're the prettiest yet.

J. A. Gilman will leave for the Coast on the Korea on Friday.

The Kilohana Art League will hold their First View reception on Tuesday, November 26, at 8 p. m.

### CHILDREN IN THE HOME.

Small children are always a source of anxiety to parents. Coughs, colds, croup and whooping cough attack the little ones and serious illness results almost before they are aware of it. One trial of Chamberlain's Cough Remedy for these troubles will prove its efficiency and give it a place in the home ever after. For sale by all dealers. Benson, Smith & Co., agents for Hawaii.

There is no occasion for delay, put the want advertisement in today. The Advertiser carries the bulk of want advertising.

## Whitney & Marsh

### DIRECT FROM PARIS

The Trimmings which were recently purchased in Paris have just arrived—some are on display in our window. They surpass anything in this line ever brought to Honolulu.

ALSO

## SPANGLED ROBES

in an array of colorings, including.....

BLACK, SILVED, GOLD, NILE, HELIO, PINK AND PEARL.

Following our regular custom we have ony imported

### ONE OF EACH

## HAWAIIAN ART CALENDARS

We are headquarters for all the Hawaiian Calendars issued this year. We make no calendar ourselves, but handle the best that other people make. You have the advantage here of seeing all the different kinds together and being able to choose what you like best.

Ours are the very lowest prices.

### HONOLULU PHOTO-SUPPLY CO.

Fort Street, near Hotel.

## --PAINT--

like many other things that we use, is often sadly and badly adulterated. The adulterated kind fades, peels, rots. It may be cheap at the start, but it's dear at the finish—and its "finish" comes quickly.

There is one paint we know is pure. That is W. P. Fuller & Co.'s

### PURE PREPARED PAINT

We guarantee its quality and durability.

## Lewers & Cooke, Ltd.

177 S. King St.

## FRENCH LAUNDRY

J. ABADIE, Proprietor.

Ladies' and Gents' Washing Done First-class. Gloves and Ostrich Feathers. Wool and Silk Made Cleaner by a New French Process. Charges Reasonable. Give Us a Trial.

258 BERETANIA ST. : : : PHONE 1491



## THE IDEAL CHRISTMAS GIFT

Give your boy or girl a Kodak for Christmas. It will be the means of enjoyment for the whole family.

We have the newest Kodaks, Brownie Cameras, Pre-moettes, and Cameras, as well as Kodak Albums, Developing Tanks, and hundreds of other things for Holiday presents.

Come and see our stock.

### Hawaii Photo & Art Co.

L. R. Crook, Prop. Fort Street, below King.

### Canadian-Australian Royal Mail Line

Steamers running in connection with the Canadian Pacific Railway Co. call at Honolulu on or about the following dates:

FOR FIJI AND AUSTRALIA.		FOR VANCOUVER.	
MOWERA	NOV. 16	AORANGI	NOV. 13
AORANGI	DEC. 14	MOANA	DEC. 11
MOANA	JAN. 11	MOWERA	JAN. 8

Through tickets issued to all points in Canada, United States and Europe.

**THEO. H. DAVIES & CO., LTD.,**  
GENERAL AGENTS.

### Pacific Mail S. S. Co., Occidental & Oriental S. S. Co., and Toyo Kisen Kaisha

Steamers of the above companies will call at Honolulu and leave this port on or about the dates mentioned below:

FOR THE ORIENT.		FOR SAN FRANCISCO.	
MONGOLIA	NOV. 22	KOREA	NOV. 22
HONGKONG MARU	DEC. 3	AMERICA MARU	NOV. 30
KOREA	DEC. 16	SIBERIA	DEC. 7
AMERICA MARU	DEC. 24	CHINA	DEC. 14
SIBERIA	DEC. 30	MANCHURIA	DEC. 21
		NIPPON MARU	DEC. 28

For further information apply to  
**H. HACKFELD & CO., LTD., Agents.**

### Oceanic Steamship Co. Time Table

The fine passenger steamers of this line will arrive and leave this port as hereunder:

FROM SAN FRANCISCO.		FOR SAN FRANCISCO.	
ALAMEDA	NOV. 22	ALAMEDA	NOV. 27
ALAMEDA	DEC. 13	ALAMEDA	DEC. 18
ALAMEDA	JAN. 3	ALAMEDA	JAN. 8

In connection with the sailing of the above steamers, the agents are prepared to issue, to intending passengers, Coupon Through Tickets by any railroad, from San Francisco to all points in the United States, and from New York by any steamship line to all European ports.

For further particulars apply to  
**WM. G. IRWIN & CO., LTD., AGENTS.**

### Matson Navigation Co.

The S. S. HILONIAN of this line, carrying passengers and freight, will run in a direct service between this port and San Francisco, sailing and arriving on or about the following dates:

Leave San Francisco.	Arrive Honolulu.	Leave Honolulu.
NOV. 11	NOV. 28	DEC. 3
DEC. 19	DEC. 26	DEC. 31

PASSENGER RATES TO SAN FRANCISCO: First Cabin, \$60. Round Trip, First Class, \$110.

For further particulars apply to  
**CASTLE & COOKE, LTD., AGENTS.**

### AMERICAN-HAWAIIAN STEAMSHIP COMPANY.

**FROM NEW YORK TO HONOLULU.**  
Weekly Sailings via Tehuantepec.  
Freight received at all times at the Company's Wharf, 41st Street, South Brooklyn.

**FROM HONOLULU TO SAN FRANCISCO VIA KAHULUI.**  
S. S. NEVADAN...TO SAIL NOV. 24

**FROM SAN FRANCISCO TO HONOLULU DIRECT.**  
S. S. NEVADAN...TO SAIL DEC. 13

For further information apply to  
**H. HACKFELD & CO., LTD., Agents, Honolulu.**  
C. P. MORSE, General Freight Agent.

**Union-Pacific Transfer Co., Ltd.**

BAGGAGE SHIPPING  
STORAGE WOOD  
PACKING COAL

Phone 58

FURNITURE AND PIANO MOVING.

**HUSTACE-PECK COMPANY, LTD.**  
DRAYMEN

Phone 295 - 63 QUEEN STREET - P. O. Box 212

ESTIMATES GIVEN ON ALL KINDS OF TEAMING

Dealers in  
FIREWOOD, STOVE, STEAM AND BLACKSMITH COAL.  
CRUSHED ROCK, BLACK AND WHITE SAND, GARDEN SOIL,  
HAY, GRAIN, CEMENT, ETC.

**Thanksgiving Pies**

Mince, Squash, Pumpkin and Custard Pies; Plum Pudding, Cakes, etc., at their very best here.

We will roast turkeys, pigs, etc., for those who don't care to do it at home.

Try our Home-made Mince-meat and Cranberry Sauce.

**The Palm Cafe Phone 311**

**THE PACIFIC Commercial Advertiser**

Entered at the Postoffice at Honolulu, T. H., as second-class matter.

SUBSCRIPTION RATES:  
One Year .....\$12.00

Advertising Rates on Application. Published every morning except Sunday by the

**HAWAIIAN GAZETTE CO., LTD.**  
Von Holt Block, No. 45 South King St.  
C. S. CRANE : Manager.

**ROYAL HOUSE**  
Fourth and Howard Sts.  
SAN FRANCISCO, CAL.

F. L. TURPIN, Prop.

EUROPEAN PLAN. 200-room reinforced concrete building, containing all modern conveniences. Reading Room, Ladies' Parlor, etc. Rates same as before the fire—\$06, 75c, \$1.00 and \$1.50 per day. Special weekly rates. Two blocks from Fourth and Market. From dock, take street car and transfer to Fourth street.

CAFE IN CONNECTION.

**Bulls for Sale**  
Fine bred shorthorns.  
**Club Stables**  
Tel. 109

## THE TERRITORY WILL BE SHORT

Current and Loan Funds Lack \$166,000 of Meeting All Appropriations.

Acting Governor Mott-Smith is working on a problem something like adding four and four and making nine or eleven as the sum. It is a task that will last after Governor Frear returns from Washington—in fact, until June 30, 1909, unless the Legislature of that summer cuts the Gordian knot a little sooner.

Appropriations are in excess of available funds under both the old loan account and the current revenues. The deficiency in the matter of unexpended loan balances from the 1905 period is \$16,194, and probable current revenue will likely fall \$150,000 short of meeting the appropriations against that source.

Therefore it comes about that the executive has to do some figuring. A little will have to be taken out of the collar, a strip off the tail, a snip from the pocket flaps, of the coat to make it somewhat of a presentable garment, the web of cloth being so limited in length and width.

Act 94 of 1907 provides \$25,000 for the College of Agriculture and Mechanic Arts, now happily in course of being established. This money was appropriated out of any unexpended balance of the loan fund of 1905.

Act 135 of 1907 appropriates items as follows, from the fund just mentioned, for the purposes stated:

Kalaupapa and Kalaupapa water works, \$12,000.  
Pali road, Kalaupapa, \$1000.  
Home for non-leprosy male children of leprosy parents, \$15,000.  
Educational buildings, Oahu, \$56,177.95.  
Completion of Kalihi-waena school, Oahu, \$3500.  
Courthouse, Kailua, Hawaii, \$10,000.  
Courthouse, Wailuku, Maui, \$25,000.  
Waimea water works, \$1500.

All of which makes a total of \$124,177.95, being an excess over the amount available of sixteen thousand and odd dollars, as already stated.

"With regard to the amount of appropriations under the new loan bill, we have the money for that," Mr. Mott-Smith said yesterday. "It is \$287,000.

"Current account expenditures are entirely estimated," the Acting Governor went on to say.

"Quite a hole was made in anticipated current revenue by the transfer of half the license fees to the counties. It makes a difference of over \$200,000 to the Territory.

"The probable deficiency from appropriations, up to June 30, 1909, will be about \$150,000. This is including the snug cash balance carried over from last period. If we depended solely on the revenue of the current period we would be quite largely in a hole.

"What we are endeavoring to do is so to arrange expenditures that we shall not in any one month go behind."

**MARINE REPORT.**

(From San Francisco Merchants Exchange.)

Monday, November 18.

Port Gamble, November 17, arrived, sch. Robert Lewers, hence Oct. 24.

**PORT OF HONOLULU.**

**ARRIVED.**  
Monday, November 18.  
Marle Hackfeld, Grube, Hamburg, November 18.

**DEPARTED.**  
Str. Maui, Bruhn, for Hawaii ports, 5:15 p. m.  
Str. Ke Au Hou, Tallett, for Kauai ports, 5:10 p. m.

**DUE TODAY.**  
Str. Mauna Loa, Simerson, from Hawaii and Maui ports, a. m.

**SAIL TODAY.**  
Str. Kinahu, Freeman, for Hilo and Hawaii ports, 12 m.  
Str. W. G. Hall, Thompson, for Kauai ports, 5 p. m.  
Str. Iwalani, Self, for Maui and Molokai ports, 5 p. m.

**PASSENGERS.**  
Booked to Depart.  
Per str. Kinahu, Freeman, for Maui and Hawaii ports, 12 noon.—S. M. Kanakani, M. A. Mayfield, Wm. Pullar and wife, R. A. Lyman, Frank Lyman, Misses Hopkins, W. G. Ogg, L. von Tempky, H. Holmes, P. V. Knudsen, J. Paoo, M. Parmenter, D. B. Murdoch, wife and 2 children, Master Murdoch, O. Sorensen, A. Mason, A. B. Lindsay, Jno. Ross and wife, Mrs. Ellis Baker, C. Waldyer, D. H. Case, J. Glenn, W. T. Robinson, Rev. E. W. Thwing, Mrs. Joe Kumewa, G. R. Lindsay and wife, Jas. Laird, Mr. and Mrs. A. Horner, W. G. Walker and wife, Jno. A. Scott, D. Forbes, George Munden, Miss M. Renton, Miss E. Renton, H. H. Renton and wife, Jno. Watt and wife, J. O. Young and family.  
Per str. W. G. Hall, Thompson, for Kauai, 5 p. m.—A. H. Waterhouse, F. Schmidt, Mrs. Choy Chin and infant, E. H. W. Broadbent, wife and child.  
Per str. Iwalani, for Molokai ports, 5 p. m.—G. F. Wright, B. Lightfoot, C. Conradt, E. Brune.

**BOEN.**  
ROSA—In this city, November 17, 1907, to the wife of Alfred O. Rosa, a daughter.

**QUININE THAT DOES NOT AFFECT THE HEAD**  
LAXATIVE BROMO Quinine Tablets for Colds, Grip, Influenza or any Catarrhal disorders, Headache and Feverish or Malarious conditions. E. W. Grove's signature on every box. Made by PARIS MEDICINE CO., Saint Louis, U. S. of A.



## FOR SALE

We have for sale a limited number of

## SMALL LOTS

At Wahiawa

These lots are

## 50 x 150

situated near the Railroad Depot and especially suitable for summer homes. While they last we will sell them for

## \$200 per Lot

**Henry Waterhouse Trust Co., LIMITED.**  
Fort and Merchant Streets,  
HONOLULU.

## TRENT TRUST CO., Ltd.

TO LET.

- Punchbowl, 2 bedrooms.....\$ 8.00
  - Molihill, 2 bedrooms..... 25.00
  - Liliha Street, 3 bedrooms..... 15.00
  - Kahuku, 2 bedrooms..... 15.00
  - Emma Lane, 2 bedrooms..... 15.00
  - Union Street, 3 bedrooms..... 15.00
  - Wilder Avenue, 4 bedrooms..... 18.00
  - Punchbowl Street, 2 bedrooms..... 18.00
  - Gandall Lane, 3 bedrooms..... 22.00
  - Nuanu Valley, 4 bedrooms..... 25.00
  - Peck Avenue, 3 bedrooms..... 25.00
  - Young Street, 5 bedrooms..... 25.00
  - King Street, 2 bedrooms..... 25.00
  - Wilder Avenue, 7 bedrooms..... 30.00
  - Lunalilo Street, 3 bedrooms..... 40.00
- FURNISHED.**
- Kaimuki, 1 bedroom..... 10.00
  - Kaimuki, 2 bedrooms..... 45.00
  - Hackfeld St., 2 bedrooms..... 35.00
  - College Hills, 3 bedrooms..... 45.00
  - Alexander Street, 3 bedrooms..... 60.00
  - Liliha St., 2 bedrooms..... 70.00

## TRENT TRUST CO., Ltd.

**HONOLULU IRON WORKS COMPANY.**

Machinery, Black Pipe, Galvanized Pipe, Boiler Tubes, Iron and Steel, Engineers' Supplies.  
OFFICE—Nuanu Street.  
WORKS—Kakaako.

## THRUM'S BOOK STORE

IS IN FULL SUPPLY OF GOOD THINGS FOR THE SEASON.

for which it is noted, comprising Dressed and Undressed Dolls of various kinds and sizes; Dolls Sundries in variety; Teddy Bears and other animals; Games and Toys; Shoo Fly Rockers; Irish Mails and other vehicles.

## RUMPP'S FINEST LEATHER GOODS

in large variety—few of a kind.

**A FINE COLLECTION OF BOOKS**  
by popular writers, with others still to come; as also an Invoice of Fine Stationery and Tissue Papers.

## Hardy Flowering Bulbs

IN VARIETY

**Mrs. Ethel M. Taylor**  
Young Hotel Bldg. Tel. 339.

## Classified Advertisements

- ROOM AND BOARD.**  
GENTLEMAN desires "a home" with family in Punchbowl Slope. Plenty foliage and ocean view. "W.", this office. 7888
- ROOMS TO RENT.**  
ROOMS and housekeeping rooms to let, Fern Place, 1516 Emma street. Call before 2 p. m. 7888
- From the present outlook the public will have another chance to see the Palamas and Chinese Athletic Club teams cross bats. Jess Woods has offered the two teams a handsome silver cup for a game to be played as a preliminary to one of the games of Fisher's Stars vs. All-Hawaiians.

## HONOLULU STOCK EXCHANGE

Honolulu, Monday, November 18, 1907.

NAME OF STOCK.	Capital.	Bid	Ask
MERCANTILE.			
U. Brewer & Co.	\$1,000,000	\$100	---
SUGAR.			
Ewa	5,000,000	24	24
Haw Agricultural	1,000,000	140	175
Haw Com. & Sugar Co.	2,312,750	10	10
Haw Sugar Co.	2,500,000	2	32 1/2
Honoumou	750,000	150	---
Honolulu	2,000,000	25	---
Hoku	500,000	130	140
Kahuku	500,000	25	24
Kihohi Plan Co Ltd.	2,300,000	50	---
Kipahulu	180,000	100	---
Koloa	500,000	100	100
McBryde Sug Co Ltd	2,300,000	20	24
Oahu Sugar Co.	1,000,000	20	24
Onomea	1,000,000	20	24
Ookala	500,000	20	24
Oahu Sugar Co Ltd.	5,000,000	30	34
Ohia	150,000	100	---
Pasabau Sug Plan Co	5,000,000	50	145
Pacific	500,000	100	---
Pala	750,000	100	150
Pepeekeo	750,000	100	140
Pioneer	2,750,000	100	120
Waialua Agr Co.	1,500,000	100	60
Waikuku	1,500,000	100	---
Waipahu	250,000	100	170
Waimea Sugar Mill	125,000	100	---
MISCELLANEOUS.			
Inter-Island S. S. Co.	1,500,000	100	120
Haw Electric Co.	500,000	100	---
H. R. T. & Co. Pfd.	1,150,000	100	48
H. R. T. & Co. Com.	1,150,000	100	50
Mutual Tel Co.	150,000	10	8
Nahiku Rubber Co.	50,000	100	---
Nahiku Rubber Co. Assess.	100	---	---
O. R. & L. Co.	4,000,000	100	66
Hilo R. R. Co.	1,000,000	20	---
Honolulu Brewing & Malting Co Ltd.	400,000	20	24
BONDS.			
Haw Ter 4 p c (Fire Claims)	815,000	---	---
Haw Ter 4 p c (Re-funding 1905)	600,000	---	---
Haw Ter 4 1/2 p c	1,000,000	---	---
Haw Ter 5 p c	750,000	---	---
Haw Gov't 5 p c	195,000	---	---
Cal Beet Sug & Ref Co 6 p c	1,000,000	97 1/2	100
Hoku 6 p c	800,000	---	---
Hamakua 1 1/2 c	200,000	---	---
Upper Ditch 6 p c	200,000	---	---
Haw Com & Sugar Co 5 p c	1,877,000	---	---
Hilo R & L Co 6 p c	500,000	---	---
Hon R T & L Co 6 p c	1,000,000	---	---
Hon R T & L Co 5 p c	708,000	---	---
Kahuku 6 p c	200,000	---	---
O R & L Co 6 p c	2,000,000	---	---
Oahu Sugar Co 6 p c	800,000	---	---
Oahu Sugar Co 5 p c	1,250,000	---	---
Pala 6 p c	450,000	---	---
Pioneer Mill Co 6 p c	1,250,000	---	---
Waialua Ag Co 5 p c	1,500,000	---	---
McBryde Sug Co 6 p c	2,000,000	---	---

\*23.1275 paid, 118 per cent. paid.

**SESSION SALES.**  
(Morning Session.)

None.

**BETWEEN BOARDS.**  
10 Ewa, 24.

## Professional Cards

**PIANO TUNING.**  
GEORGE LENORD - Expert piano tuner. Office, Wall, Nichols Co., Ltd. 246

JAS. SHERIDAN - Practical piano maker and organ builder. Expert tuning and repairing a specialty. Corner Alakea and Hotel streets.

**MUSIC.**  
MRS. HODGSON - Teacher of piano and singing. Rapid progress, with thorough training. Studio, 276 Beretania St., near Alakea St. See sign.

## Classified Advertisements

**WANTED.**  
BY young married white man, position in office or outside. Capable salesman; competent bookkeeper. "Competent," this office. 255

ASSISTANT bookkeeper for plantation on Kauai. Single man wanted. Apply in own handwriting, stating age, experience, etc., to P. O. Box 188. 7878

**SITUATIONS WANTED.**  
RING up phone 1203 between 10 a. m. and noon for students willing to work certain hours each day and Saturdays as yard boys, etc. 7886

**FOR RENT.**  
THE premises of Mrs. F. T. Bickerton at 2017 Kalia road, Waikiki. Apply on premises, or telephone 869. 7888

**COTTAGE, No. 646 King, opposite South street. Inquire of H. W. Green, No. 123 Merchant street.**

**NICELY-FURNISHED rooms; cool, pleasant. The Elite, Hotel street, opposite Young Hotel.** 255

**NICELY furnished room, entrance from veranda, electric lights, use of bath. Dwelling three minutes' walk from cars, and commanding fine marine view. Address DeLancy, this office.** 7873

**FOR SALE.**  
HORSE, buggy and harness in A1 condition. Address "Gem," this office. 7886

**CHOICE of two Jersey milk cows now giving milk. Apply A. W. Eames, Wahiawa.** 7877

**OFFICES FOR RENT.**  
"THE STANGENWALD"—Only fire-proof office building in city.

**ALEXANDER YOUNG BUILDING—**Honolulu's only up-to-date fire-proof building; rent includes electric light, hot and cold water and janitor service. Apply the Von Hamm-Young Co., Ltd.

**LOST.**  
DIVIDEND warrant No. 2354, dated August 31, 1907, drawn by the Hawaiian Fertilizer Co., Ltd., on Bank of Hawaii, Ltd., for \$50, in favor of H. F. Wichman. Payment has been stopped on same, and finder will please notify Hawaiian Fertilizer Co., Ltd., Brewer building. 7888

**DRAFT No. 280, drawn by the Union Mill Co., Kohala, 11th October, on Theo. H. Davies & Co., Ltd., Honolulu, in favor of the Yokohama Specie Bank, Ltd. All persons are warned against negotiating same.** 7888

**GREAT Dane dog; tiger color. Reward if returned to this office.** 7882

## Halstead & Co., Ltd. STOCK AND BOND BROKERS

LOANS NEGOTIATED.  
Members Honolulu Stock and Bond Exchange.

Telephone Main 101 - P. O. Box 600.

## Harry Armitage Stock and Bond Broker

Member of Honolulu Stock and Bond Exchange.

Office, Campbell Block, Merchant Street, Honolulu, T. H.

## BARGAINS IN REAL ESTATE!

\$325-\$50 down and \$10 per month, without interest—will buy a fine lot on Kalihi road, near King street car line. Former price, \$550.

Lots (area almost 1-2 acre), unequalled in soil and view, on Manoa Heights. Two small homes in Nuuanu Valley. One small, neat home at Palama, within walking distance of town.

And other bargains!  
For Rent: A 6-room, newly painted cottage with gas stove, electric light on veranda and care of yard; close to center of town. Rental, \$16 per month.

J. H. SCHNACK, 137 Merchant St.

## FOR RENT

For 4 or 6 months. Furnished house near car line. Good location. Eleven rooms. Bath rooms both upstairs and downstairs.

## THE WATERHOUSE CO.

Judd Building.  
**Albert F. Afong**  
822 Fort Street.

## STOCK AND BOND BROKER

MEMBER HONOLULU STOCK AND BOND EXCHANGE.

## Real Estate

**HAWAIIAN DEVELOPMENT CO. LIMITED.**  
F. B. McSTOCKER : Manager  
STANGENWALD BUILDING.  
Cable Address: Develop.  
P. O. Box - - - - - 500

**FOR RENT.**

1. Residence T. F. Sedgwick, Palolo Heights;
2. Settler's shack and 2 acres truck land, Palolo, for \$10.00 per month.

FOR SALE.—Wahiawa pineapple land and home; Driving horse, 1071 Beretania street.  
W. L. HOWARD.

## The Owl Cigar

IS STILL THE BEST 5c. CIGAR IN THE MARKET

**M. A. Gunst & Co.**  
Distributors

## Advertising

**HAWAII PUBLICITY CO.**  
Phone 173

## R. G. A. PETERSON,

General Commission Broker

REAL ESTATE, STOCKS & BONDS

FIRE & LIFE INSURANCE

MORTGAGE LOANS & TITLES APPRAISEMENTS