

# The Pacific Commercial Advertiser

U. S. WEATHER BUREAU, June 25.—Last 24 Hours' Rainfall, .02.  
Temperature, Max. 80; Min. 72. Weather, fair.

SUGAR.—96 Degree Test Centrifugals, 4.25c. Per Ton, \$85.00.  
88 Analysis Beets, 10s. 11 1/4d. Per Ton, \$86.20.

ESTABLISHED JULY 2, 1856.

VOL. XLVII., NO. 8075.

HONOLULU, HAWAII TERRITORY, FRIDAY, JUNE 26, 1908.

PRICE FIVE CENTS.

## THE ITINERARY OF THE BIG FLEET

### Latest Orders Posted at the Naval Station.

Three weeks from today the harbor will be crowded to its utmost capacity with the warships of the Atlantic fleet, and the whole interest of the townfolk will be in the waterfront. As yet there has not been given out any definite arrangements for the berthing of the vessels, but as many will be taken to dock as can possibly be accommodated. The matter of coaling so many vessels in a week is causing a great deal of anxiety and the probability that they will all not be able to coal from the wharves is becoming apparent.

The date for the arrival of the fleet is set in a new itinerary which arrived at the Naval Station yesterday for the 16th, and the sailing day is set for the 23rd of July. This will give a week in port. The vessels of the fleet and their commanders are as follows: First Division (Rear Admiral C. S. Sperry, commanding-in-chief, commanding)—Connecticut, flagship, Captain H. Osterhaus; Kansas, Captain C. E. Vreeland; Vermont, Captain W. P. Potter; Minnesota, Captain J. Hubbard.

Second Division (Rear Admiral R. Wainwright, commanding)—Georgia, flagship, Captain E. F. Quaitrough; Nebraska, Captain R. F. Nicholson; New Jersey, Captain W. H. H. Southard; Rhode Island, Captain J. B. Murdock.

Third Division (Rear Admiral W. H. Emory, commanding)—Louisiana, flagship, Captain K. Niles; Virginia, Captain A. Sharp; Ohio, Captain C. W. Bartlett; Missouri, Captain G. A. Merrin.

Fourth Division (Rear Admiral S. Schroeder, commanding)—Wisconsin, flagship, Captain H. Morrell; Illinois, Captain J. M. Bowyer; Kearsarge, Captain H. Hutchins; Kentucky, Captain W. C. Cowles.

Auxiliaries—Culgoa, Lieutenant Commander J. B. Patton; Panther, Commander V. S. Nelson; Glacier, Commander W. S. Hogg; Yankton, Lieutenant Commander C. B. McVay; Relief (hospital ship), Surgeon C. F. Stokes.

The Panther will call at Tutuila, Samoa, en route from Honolulu to Auckland. The official mail address of the Atlantic fleet will be care Postmaster, San Francisco, Cal., to October 15, 1908, after which it will be care Postmaster, New York, N. Y. Mail must bear the name of the ship for which it is intended.

## WORKING ON ANNUAL AND OTHER REPORTS

The Governor's and Secretary's offices are squaring themselves around for some hard work for the end of the month, the annual report of the Governor to the Secretary of the Interior and the semiannual report of the Secretary to the President being due for forwarding to Washington on June 30. The latter report is now in course of preparation, and the Governor will plunge into the preparation of his just as soon as he waves a farewell to Secretary Garfield.

The other departments have been preparing their reports to the Governor or for incorporation in his report, while in addition they have been preparing reports and synopses for the use of the Secretary of the Interior while here. Yesterday the Attorney General was busy in preparing a synopsis of some of the Territorial laws, particularly those dealing with land, while the Commissioner of Public Lands was walking about the Executive building with his breast-pockets bulging with reports. These were presented to the Secretary of the Interior during the afternoon.

Mr. Garfield visited most of the heads of departments yesterday after his return with the Governor from Fort Shafter, spending some time with the Treasurer and the Land Commissioner.

## COMMERCIAL'S BOOSTER DINNER

### Ninety Were Present and Some Interesting Speeches Were Delivered.

The Commercial Club gave a "booster" dinner last evening. It was served at 7 o'clock and about ninety sat down to it. The menu was an excellent one—a good incentive to the frame of mind which makes boosting easy and natural.

President George W. Smith presided. He told briefly what the "booster" dinner was. It was an occasion for members to recall the things that were going well and making Hawaii and Honolulu better places to live in.

President Smith introduced as the first "booster," Captain Parks, the engineer of the Navy Department who is doing things to Pearl Harbor. Captain Parks declined to tell what he was doing but said he hoped everybody in Honolulu would come out and see for themselves. He told what Pearl Harbor was capable of in the matter of providing accommodations for fleets, and all it needed was a straightening out of the channel which could be done and would be done.

Judge Lindsay was the first assistant booster and made a pleasant speech. Fred W. Macfarlane was asked to tell something about the finances of the club, but he didn't, though he told other things equally interesting.

Former Governor George R. Carter made a very interesting speech about Pearl Harbor and the tenacity with which its possibilities had been studied and urged.

Superintendent of Public Works Marston Campbell supplied some most interesting and effective boosting material in a rapid account of the public improvements that had been carried on and completed in the past eight years. He told of macadamized roads, new wharves, the Nuuanu reservoir, and public buildings in various parts of the Territory.

The speechmaking of the evening was concluded by Ed. Towse who was called on to tell whether Taft or Bryan would carry Wyoming. He told:

After dinner there was an adjournment to the reading room.

## PREPARING FOR THE ELECTIONS

### Secretary's Office Busy—Some Changes in the Precinct Boundaries.

Politics and election affairs are apparently in a slump on the street, but the business of preparing for the voting this fall is going steadily ahead in the office of the Territorial Secretary. The election proclamation will not be made until towards the end of September, but there is an immense amount of work to be done between now and then.

In the first place a number of requests have been received for changes in the location of the voting places, requests for the establishment of new polling places and requests for the shifting of the precinct lines, and all these have to be carefully considered. The most radical change asked is the re-dividing of the first and second precinct of the fourth. The line now runs along Waialae road, Beretania avenue and King street, cutting the districts parallel with the sea; the request is that the line be swung at right angles so as to run from sea to mountain. This will make a huge district out of the first and a smaller one out of the second to maintain a voting average and will throw the headquarters of both precincts as they stand into the second precinct.

In the second of the fifth a number of voters want a new polling place declared at the Waialae Industrial School. This precinct is about thirty miles long and the Waialae end have now to go eighteen miles to vote at Hanalei. About thirty voters are interested.

There has been a change decided upon in the form of the statement to be made under oath by applicants for registration before the Board of Registration. In former registrations there has been brought up the question of the registration of those who have been convicted of criminal offenses. This year there will be no question. The form of declaration contains a clause to be sworn to stating that the one to be registered has not forfeited his citizen's rights.

There are some vacancies to be filled on the Board of Registration and the various parties have been asked to nominate candidates for these vacancies. The parties have also been asked to name candidates for appointment as inspectors of election, but so far the only response to the invitations to send in names have come from the Home Rulers.

## INSPECTION OF PEARL HARBOR

### Secretary Garfield and Party Will See Lochs and Visit Sisal Plant.

This morning at nine o'clock the Secretary of the Interior, accompanied by a number of prominent citizens, will board the U. S. S. Iroquois for a tour of inspection of Pearl Harbor. The party will sail about the harbor during the forenoon, land at noon for lunch at the Peninsula residence of F. W. Macfarlane, then take a special train for Sisal, where the working of the sisal into a commercial product will be watched. The party will return by train, expecting to arrive in Honolulu shortly after three o'clock.

The party is in charge of Justice Ballou, among those invited to accompany the Secretary of the Interior and the Governor being Captain Rees, Captain Carter, Naval Engineer Parks, Captain Leaves, of the cruiser S. S. Louis; Lieutenant Langhorn, his chief of staff; Dr. Cofer, George Robertson, F. Klamp, W. M. Giffard, W. F. Dillingham, E. D. Tenney, L. Tenney Peck, C. H. Cooke, S. M. Damon, A. L. C. Atkinson, George R. Carter, H. E. Cooper, Captain Ottwell, J. F. Morgan, George W. Smith, F. W. Macfarlane, Secretary Mott-Smith, J. P. Cooke, S. B. Dole, Prince Kuhio, Col. Sam Parker, J. B. Castle, Albert Judd, J. A. Kennedy, Major Dunning and F. M. Swanzey.

### BUSY DAY YESTERDAY.

Secretary Garfield had a busy day yesterday, in spite of the fact that he was just back from a hard trip. In the forenoon he received a number of delegations at the Governor's office, including a delegation from the Punchbowl Portuguese, who asked him to arrange for the Portuguese there to be able to purchase their homes at the expiration of the Kapiolani lease. In this delegation were A. D. Castro, A. H. R. Vierra and J. M. Marques. The members of the Board of Agriculture and Forestry called and presented information of the department.

The Secretary had lunch at the Pacific Club with the heads of the various Federal departments, at which a number of speeches were made, after which the Secretary called at the rooms of the Hawaii Promotion Committee for a presentation. This was a beautifully engraved koa plaque and an enlargement of a Hawaiian photograph.

The party then went out to Fort Shafter, the Secretary, the Governor and Adjutant General Jones watching a parade of the troops there.

On his return the Secretary held consultations with the heads of the Territorial departments, being the guest of the University Club last night at dinner and during the evening.

### MET PLANTERS' ASSOCIATION.

One important meeting yesterday was the meeting of the Secretary with the officers of the Planters' Association, that occupying over two hours. After the Secretary had been presented to the members by S. M. Damon, the conference was an informal one, the questions of land and labor being discussed.

## HAWAIIAN SCENE IN LONDON'S GREAT SHOW

The following extract is from an article in the London Times dealing with the exhibition of Oriental and African scenes now being held in the Agricultural Hall:

"The scene changes to India; the scene-painters, by the way, have produced a great crescent-shaped panoramic background, which rolls and unrolls from one end to the other, so that the scene-shifting is reduced to its simplest form. An Indian child-wife takes refuge with a missionary's wife from the hated husband who claims her. The appeal is useless, and she is carried off weeping. Years pass, and the same wife, now a widow, is led to the funeral pyre, to be burnt alive with her dead husband. This, it should be explained, is supposed to be about 80 years ago. As the torches are about to be applied a British official marches in with a guard of Sepoys and forbids the sacrifice. Again the scene changes to Hawaii, where the priest of Pele breaks in on a wedding group with his demand for the bridegroom to be sacrificed to the volcano goddess and avert her impending wrath. It is the chiefestness Kapiolani who now advances, defies the priest, and taunts his goddess as Elijah taunted Baal, leads the way up the mountain side, crosses the forbidden tabu line, and hurls the priestly staff into the flaming crater, while the people raise a song of deliverance from immemorial tyranny. At the close of this episode the choir, Orientally but simply robed and with palms in their hands, ascend in procession and range themselves in a great semicircle on the stage. The four contingents who have enacted the various scenes now enter to a quick-marching song, "We come from the gloom of the shadowy trail," to form a human star, and the pageant closes with a triumphal Christian hymn.

## THE ITINERARY FOR KAUAI TOUR

### Secretary Garfield to Spend Saturday Among the Barons.

A. Gartley went to Kauai last evening to make the final arrangements for Secretary Garfield's tour of the Garden Island.

The itinerary as arranged by Mr. Gartley, George H. Fairchild, and W. A. Kinney is as follows:

The party will leave here on the steamer W. G. Hall as soon after 9 o'clock tonight as possible and will arrive at Ahukini at 6 o'clock Saturday morning. They will be met by automobiles there and taken to the residence of Manager Weber of Lihue Plantation where breakfast will be served. Governor Frear and Secretary Garfield will then go to Kapaa and Kealia and look over the Kapaa lands, returning to Lihue at 10, when there will be a public reception. Following this the party will go to Koloa where the train on the McBryde plantation road will be in waiting to take the party to the McBryde residence at Lualaba where there will be a luncheon.

From Lualaba the party will visit the Kalaheo homesteads where there are about ninety families residing.

From Kalaheo by autos the party will go to Eleele to see the breakwater, and thence to Makaweli and Waimea. There they will embark on the Kinai at about 3:30 or 4 o'clock and coast the Napali section of the island, viewing the magnificent scenery there, and arriving at Honolulu at 6 o'clock Sunday morning.

Those in the party leaving here will be Secretary Garfield, Governor Frear, W. A. Kinney, D. P. R. Isenberg, Augustus Knudsen, Francis Gay, Geo. H. Fairchild, and possibly Kuhio. Paul Isenberg will take his runabout with him. The autos expected to be used in making the journey on Kauai are those of Francis Gay, John H. Coney, George H. Fairchild, and George H. Wilcox.

## JORDAN GETS WILDER'S JOB

### Supervisors Through Chauffeur Examiner Hope to Stop Speed Abuse.

The resignation of Harry Wilder as county examiner of chauffeurs was accepted at the meeting of the Supervisors last night and S. R. Jordan named to fill the vacancy.

Other applicants were E. A. de Lovelace and C. J. Schoening.

Chairman Husted wanted to see a perfectly independent man appointed to fill the position and not a man connected with a garage, as was the case with two of the applicants.

"Something has got to be done with regard to the autos," remarked Husted, "or we shall have more of the trouble that we're having right along. The board must do all they can to remedy the abuse of speed."

It was decided to ask Sheriff Hauka to commission Jordan as a special officer without pay in order to be better able to enforce the automobile ordinance.

### ANNOUNCEMENTS OF INCREASED DIVIDENDS

A number of very satisfactory announcements were made yesterday morning on the Stock Exchange. The Onomea dividends were increased from one and one-half per cent. to two per cent.; the Honouliuli plantation from one and a half to the same rate and Pepeekeo one per cent. At the same time it is rumored that the Pioneer, Haiku and Paia are in line for increased dividends. A question of increased dividends by the Oahu plantation was discussed at a directors' meeting yesterday and deferred.

### CONSUL'S DOG IMPOUNDED.

The pointer owned by British Consul Forster has twice been taken up by the dog-catcher, though it carries a 1908 tag. The first time Mr. Forster rescued the dog on the spot, but the next time the animal was taken to the police station, where, luckily, it was recognized by the Sheriff and released. The tag, apparently, had been no protection. It is a common opinion, due to several cases like that of the British Consul's dog, that the official catcatcher is more anxious to impound a good dog, the owners of which will redeem him for cash, than a mangy cur of no cash value, which it is the main object of the law to destroy.

## HARVARD WINS THE VARSITY AND FRESHMAN RACES

### Rebels Capture a Town in Mexico—Funeral of Cleveland to Be Very Simple—There Will Be No Military Escort.

(Associated Press Cablegrams.)

NEW LONDON, Connecticut, June 26.—In the Yale-Harvard races here yesterday, Harvard won the Varsity and the Freshman eight-oared race and Yale the four-oared race.

This is the forty-second of these Yale-Harvard Varsity races that has been rowed, and the nineteenth that Harvard has won.

## CLEVELAND'S FUNERAL TO BE A VERY SIMPLE ONE

PRINCETON, New Jersey, June 26.—The funeral of the late Grover Cleveland today will be very simple. There is great mourning in Brazil for the eminent dead.

The members of both the Roosevelt and the Cleveland cabinets will attend the funeral.

There will be no military escort.

### A DEATH MASK TAKEN.

PRINCETON, New Jersey, June 25.—The body of ex-President Grover Cleveland was embalmed today. A death mask was also taken.

### GUNS FOR CLEVELAND.

Half-hourly guns will be fired at the Honolulu Naval Station today from sunrise to sunset in honor of the late ex-President Cleveland.

## ENGLAND AND RUSSIA WARN SHAH OF PERSIA

TEHERAN, Persia, June 26.—Quiet has been restored. Russia and England have warned the Shah to uphold the constitution.

Three hundred have been killed in the fighting that has taken place. TEHERAN, Persia, June 25.—Looting and disorder still continue here, the many refugees being cared for in the different legations.

In Tabriz, as a result of fighting between the Reactionaries and Revolutionists, the number of dead and wounded number one hundred.

## THIRTY-EIGHT DROWNED.

CORUNA, Spain, June 26.—It is now known that there were thirty-eight drowned in the wreck of the steamer La Roche off this coast June 24.

## LAREDO VIESCA, MEXICO CAPTURED BY REBELS

LAREDO VIESCA, Mexico, June 26.—This place has been captured by rebels. There have been many casualties in the struggle.

Troops have been rushed to the scene. It is denied that the trouble has any political significance.

## NO TROUBLE WITH VENEZUELA.

WASHINGTON, June 26.—No trouble is expected growing out of the Venezuela situation.

### PROHIBITION IN LOUISIANA.

BATON ROUGE, June 25.—The prohibition bill was defeated in the Senate here today. The anti-racing bill was signed today by the Governor.

### BANK CLERK AN EMBEZZLER.

PITTSBURG, June 25.—H. W. Tiers, a clerk in the First National Bank, was arrested today for the alleged embezzlement of \$50,000.

### FIVE KILLED IN A FIRE.

CHICAGO, June 25.—In a fire which took place here today five persons were killed.

### DIPHTHERIA AT AN ASYLUM.

REDLANDS, California, June 25.—Thirty-one cases of diphtheria have developed in the insane asylum here.

## THE PACIFIC CLUB ENTERTAINS GARFIELD

A luncheon was given at the Pacific Club yesterday in honor of Secretary Garfield.

About thirty members were present at the function which was of a most enjoyable nature.

Secretary Garfield made a telling speech in which good humor abounded, and which sparkled with witty allusions to topics of local interest.

There were several other speakers chief among whom was Judge Dole.

Another fire has broken out in the coal at the Naval Station and was burning all day yesterday.

## BIG CROWD LOOKED FOR AT AALA PARK

It is expected that there will be a record crowd at the meeting tonight at Aala Park, at which Secretary Garfield, Governor Frear and Delegate Kalaniana'ole will speak. All the speakers will deal with the broad issues of national politics and it is not expected that local issues will be touched upon at all, except very incidentally. It is possible, however, that the attitude of Washington towards Hawaii will be dealt with by the Secretary.

John Wise will be the interpreter for the speakers and the county band will play.

# Cluett TOWN AND COUNTRY SHIRTS

**T**HE label on a Cluett shirt stands for the best materials, the most careful workmanship, the most accurate patterns, color-fast fabrics and that exclusive control of the patterns which means so much to the man who strives to escape the ordinary in his attire.

\$1.50 and more.  
CLUETT, PEABODY & COMPANY, Troy, N. Y.  
Makers of Arrow Collars

## Economy—and Improvement in Looks

Something perhaps, Sir, you did not think of—yet here's a big modern fact:



You can get here from us, clothes for Spring and Summer that will fit you and wear you better, and with finer style than you can get from any tailor or clothier in this town or neighborhood.

These clothes are Stein-Bloch tailored. Do you read the "Saturday Evening Post" or "Collier's"? They tell about these clothes each week.

## M. McINERNEY

FORT AND MERCHANT STREETS

### Embroidered Silk and Silk Crepe Waist Patterns and Hand Bags.

Silk Crepe Scarfs, Cotton Crepes of all Shades

## SAYEGUSA

## SPERRY FLOUR CO.

Offer to the Trade Their Mill Products, including the following Celebrated Brands:

"GOLDEN GATE," "SPERRY," "DRIFTED SNOW," "MAPLE LEAF," "SOUND RING," "RED SHIELD,"

and other Family and Baker Flour. Also BRAN, SHORTS, MIDDINGS, ROLLED BARLEY, and the famous CAPITOL MILLS CEREALS.

The Sperry Products have been for over fifty years the standard of quality for the Pacific Coast.

Ask your Grocer for them.

Robert Innes Lillie,  
RESIDENT MANAGER.

Honolulu Office: Robinson Bldg., Queen St. Hilo Office: Spreckels Bldg., King St.

**Gautinaud's Cognac**  
A Medicinal Brandy.  
**Blackberry Brandy**  
Always useful in the Tropics.  
**Gibson's Rye Whiskey**  
Straight from the Distillery.

These are absolutely essential to every family.

**LEWIS & COMPANY, LTD.**  
Family Wines and Liquors. Telephone 240

## CITY FATHERS DO BUSINESS

Road Matters Occupy Greater Part of Regular Weekly Session.

The Oahu Board of Supervisors held a meeting last night.

Present were Chairman Hustace, Supervisors Dwight, Fern, Archer, Kealoha; Clerks Kalaoukani, Aea, Buffandeau; Road Supervisor Cummings, Fire Chief Thurston, County Engineer Gere, John Holt, Deputy County Attorney Milverton, Clem Quinn.

### BILLS.

The following bills were passed:

|                                |           |
|--------------------------------|-----------|
| County Clerk                   | \$ 170 00 |
| County Engineer                | 212 50    |
| Fixed salaries                 | 1676 00   |
| Keepers of parks               | 109 00    |
| County Auditor                 | 125 00    |
| County Attorney                | 30 00     |
| County department              | 410 00    |
| Com. col. road tax (Koolauloa) | 3242 35   |
| Com. col. road tax (Koolau)    | 2 70      |
| Com. col. road tax (Koolau)    | 4 80      |
| Coroner's fees                 | 12 00     |
| Koolau road district (Kailua)  | 70 05     |
| County Treasurer               | 125 00    |
| Kapiolani Park                 | 148 75    |
| Fire department                | 1832 50   |
| Road department                | 697 50    |
| Garbage department             | 105 00    |
| Elect. light dept.             | 360 75    |
| Police and fire alarm system   | 95 00     |
| Hawaiian band                  | 645 00    |
| County Attorney                | 30 00     |
| Fire department (horses)       | 800 00    |

A request by the Republican Central Committee for the use of Aala park and its benches for tonight's meeting, which will be addressed by Secretary Garfield, was granted.

### THE KAILUA ROAD.

A communication from the Hawaiian Copra Co. re the proposed road at Kailua, was read and filed. The company agree with the assistance of others, to make the fill at the ricefield and to construct the bridge over the aupal, provided the county will construct the road as far as the ricefield, the county to furnish the material for the bridge and to loan the tools and implements needed to make the fill.

### ROAD MATTERS.

G. Chalmers wrote that the road from Waimanalo to the Pali has been in bad shape ever since the winter rains. He asked that \$100 be expended at each end of the road this month, not to do a first-class job but to help matters some. Referred to road committee.

It was moved and carried that \$750 be appropriated for the month of July to build the Kailua road from the bridge to the beach. This amount will be hereafter included in the regular estimates until the road is completed.

### NOTHING DOING HERE.

County Engineer Gere asked that \$750 a month be set aside for the construction of a coral road from Kahuku to Waialeale. This is the worst piece of road of the belt road and during the wet months is practically impassable.

Gere also recommended an appropriation of \$150 with which to repair the Waimanalo pali road.

Nothing will be done till next month when the matter will be again considered. The board thought that the county had all the road work in the outside districts on its hands at present that it could attend to.

### DISCLAIMED RESPONSIBILITY.

County Attorney Cathcart recommended that the county had no legal liability in the matter of payment of the doctor's fee for attending the Japanese who was shot and killed on March 19 while breaking into the store of the Wahiawa Consolidated Pineapple Co.

### JUDD STREET EXTENSION.

Superintendent of Public Works Campbell wrote that C. W. Booth was willing to deed to the Territory a strip of land forty feet in width through his property, for the extension of Judd street on a straight line to Auwalolima bridge, provided the street is accepted, curbed, graded and macadamized within a reasonable length of time. Referred to the road committee.

### THE INEVITABLE BREEZE.

The only breeze throughout the entire meeting was when the chair ordered Acting Sergeant-at-arms Buffandeau to quell sounds of argument in the adjoining office of Charlie Achi, which were interfering with the business of the board.

At 8:23 p. m. the board adjourned till July 1 at 7:30 p. m.

## GARFIELD PRESENTED WITH CARVED PANEL

After the luncheon at the Pacific Club yesterday afternoon, Secretary Garfield visited the rooms of the Promotion Committee and was there presented with a beautifully carved panel in light and dark koa, representing a bunch of mangoes.

The carving was donated to the Promotion Committee by F. N. Otremba with the understanding that it be presented to Secretary Garfield.

Otremba, who is a remarkably skilled wood-carver, is at present engaged on the mantelpiece to be presented to Mark Twain by the Promotion Committee.

Secretary Garfield accepted the gift with a few brief but sincere words of thanks. He shook hands with Otremba and complimented him highly on his work.

The committee also offered Secretary Garfield a duplicate of any one of the enlarged photographs of local scenes on the walls of the committee's rooms. Mr. Garfield accepted this offer as well and the picture chosen will be hung on the walls of his room in the Interior Department in Washington.

## PUNAHOU PREPS ARE GRADUATED

Splendid Class Exercises Were Held Yesterday Morning.

Chas. R. Bishop Hall, Punahou, was crowded, and the crowd filled the halls and adjoining classrooms, at the closing exercises of the Preparatory school yesterday morning. This was Principal Pitts' first graduating class and the class itself and the program were a great credit to him. The hall was beautifully decorated with flags and flowers. Green and white, the colors of the class, predominated.

Eight members of the class spoke for the class on the program while others had musical numbers. It is impossible to make selections from the program for all did well. The speaking was distinctly audible in all parts of the big hall.

The singing under the direction of Mr. Bode was most pleasing. The duet by Julia Lee, a Chinese girl, and Caroline Ripley, a girl of Tahitian parentage, was especially applauded.

The Selection "An Operatic Tea," by the Third Grade, had a truly Lilliputian effect. The little people drank, and clinked their cups and sang the catchy words in real operatic fashion. Kinau and James Wilder in a French song, and Margery Wakefield and Ezra Crane in an American song that savored of "The Irish, too, and Irish stew," called forth vigorous applause. The girls from the upper grades in their white dresses and blue ribbons and sashes not only made a pretty tableau but also sang pleasingly.

Of all the numbers on the program probably the speech on Wireless Telegraphy by Alexander Anderson, was the most original. He gave a lucid explanation of the theory of the sending of wireless messages and then proceeded to demonstrate how they were sent. In this he was assisted by Archie Sinclair. Messages were sent back and forth across the stage by the two boys much to the interest of the audience. These boys have practically mastered this intricate subject by themselves. Except for the more delicate parts of the instruments they built the parts themselves, and put them together. They have become expert in sending and receiving messages.

The drill of the King's Guard was executed with military precision. The wheeling, and turning, and counter marching showed much drill.

The graduating class marched upon the stage, and here Randolph Hitchcock, for the class, presented a beautiful koa table and two koa chairs to the school.

Principal Pitts then delivered the diplomas in a brief speech, replete with sound advice, to the following students.

As each came forward to receive his diploma there was a round of applause. William Patterson Alexander, Robert Alexander Anderson, Norman Jaldemar Andresen, Robert Edward Askew, Edith Lois Baldwin, Wray Lawrence Bergstrom, Harry Francis Bertelmann, Marion Elizabeth Brown, Marion Maude Chapin, Theodore Atherton Cooke, Lucy Miriam Dimond, William Clason Emory, Margaret Stewart Forrest, Hazel Gear, Edwin Hutecheon, Gibb, Ralph Bicknell Harrub, George Arthur Heen, Randolph Howard Hitchcock, Hermann Valdemar von Holt, Mary Elizabeth von Holt, Charles Henry Hustace, Lorna Hooleia Jarrett, Harold Livingston Kerr, Mary Gertrude Knight, Julia Yin Lan Lee, Ruth Dorothea Lindley, Albert Kalamiumoku Lucas, Raymond Philip Lucas, Alfred Magoon, Harry Eaton Magoon, Mary Catherine Magoon, Martha Louise McChesney, Ruth Florence McChesney, Jack Troup Moir, Katherine Mary Puaola Radway, Caroline Helen Ripley, Herbert Cornelius Shipman, Archibald Missah Sinclair, Alan Ambros Webster, Tang Leong Wong.

### THE FOLLOWING IS THE PROGRAM IN FULL:

**PROGRAM.**  
Invocation... Bishop H. B. Restarick  
Greeting Song... C. E. Whiting  
Chorus—Upper Grades.  
Senator Robert M. La Follette... Hermann von Holt.  
Duet—"Beautiful Moonlight"... Glover Julia Lee and Caroline Ripley.  
The Haena Caves... Katherine Radway.  
An Operatic Tea... C. H. McCurrie  
The Pineapple Industry in Hawaii... Harold Kerr.  
Spring Song... Fourth Grade.  
Miss Edith's Modest Request, Bret Harte  
Hazel Gear.  
Songs Our Grandmas Sung... French—Kinau and James Wilder.  
American—Margery Wakefield and Ezra Crane.  
English—First Grade.  
Luther Burbank... Edwin Gibb.  
A Boy's Mother, James Whitecomb Riley  
Second Grade.  
Summer Now Hath Come Among Us... Pinsuti  
Chorus—Upper Grades.  
The City of Refuge... Lorna Jarrett.  
Nursery Rhymes... Bennett  
Girls from Upper Grades.  
How He Saved St. Michael's, Stansbury  
Mary von Holt.  
Wireless Telegraphy... Alexander Anderson.  
Violin solo—"Blumenlied," Henri Ernst  
Eaton Magoon  
Martha McChesney, Accompanist.  
King's Guard Drill—Boys from Sixth and Seventh Grades.  
Presentation of Diplomas.

### THE CALIFORNIA.

The California Theater, starts today with an entire change of moving pictures and illustrated songs. The management has been successful in securing a number of pictures that have not been shown to a Honolulu audience, and he presents these this afternoon for the first time. Electric fans keep the temperature down in the California, and there is absolutely no discomfort. The admission will continue at 10 cents for adults and 5 cents for children.

**Specials for this Week**

Do you need a Dainty Dressing Sacque or two? If so, we want you to see our Window Display of Dressing Sacques at one-fourth to one-half off the original prices.

40c Sacques, this week.....25c     \$1.40 Sacques, this week.....90c  
75c Sacques, this week.....45c     \$1.50 Sacques, this week.....90c

**SILK AND LISLE GLOVES.**

Every woman needs Gloves—so here's your opportunity. Don't let it slip by, this time, for the number of pairs we can sell at this price is limited.

**ELBOW LENGTH SILK GLOVES**  
(in White or Black)

\$2.00 Quality.....\$1.60 a pair     \$1.75 Quality.....\$1.35 a pair  
\$1.50 Quality.....\$1.15 a pair

**ELBOW LENGTH LISLE GLOVES**  
(in White or Black)

\$1.25 Quality.....\$1.00 a pair     \$1.00 Quality.....75c a pair

Fort Street, opp. Catholic Church

After thoroughly canvassing the merits of all Cold Water Calcimines, irrespective of the amount of advertising, we have found that

## Dekorato

is superior to any other; that is our reason for keeping it in preference to others.

### LEWERS & COOKE, LTD.

177 South King Street. Phone 775.

### GO TO LANDO'S STORE

152 HOTEL STREET, OPPOSITE YOUNG HOTEL

FOR YOUR TRUNKS, VALISES AND SUIT CASES

His stock of Shirts, Collars, Cuffs, Ties and Underwear is complete. Also Hats and Caps of a large variety. Panamas and Straw a specialty. Prices are right and no trouble to show goods. Don't forget he has moved from Fort street to the Oregon block, 152 Hotel street, opposite Young Hotel.

### Winsome Styles In Footwear

FOR LADIES.

As near to the ideal as footwear can be made.

If you are going to wear a Pongee Suit or Skirt, we have just the shoe to match it in our Champagne Colonial No. 476, at

## \$4.50

Manufacturers' Shoe Co., Ltd.

"The Reliable House."

1051 Fort St. Tel. 282.

## Gunther's Candies

"NONE SO GOOD."

There's a fresh assortment of them—all kinds, all delicious, at

### PALM CAFE.

Hotel, Street, near Fort.

### Whose Eyes Need Help?

We help ailing eyes; we fit glasses for all defects of vision, and our rigid, systematic examination insures accuracy.

## A. N. Sanford

OPTICIAN Boston Bldg.

THE CHAS. D. WALKER BOAT AND MACHINE WORKS KING STREET

### Portraits

HAVE YOURS TAKEN BY

## R. W. Perkins

Studio on Hotel Street, near Fort

### HONOLULU IRON WORKS COMPANY.

Machinery, Black Pipe, Galvanized Pipe, Boiler Tubes, Iron and Steel, Engineers' Supplies.  
OFFICE—Nuuanu Street.  
WORKS—Kakaako.

### Join Today

During the Special Dispensation.

HARRISON MUTUAL ASSOCIATION  
KAPIOLANI BUILDING

READ THE ADVERTISER  
WORLD'S NEWS DAILY

### A. M. DIETZ JEWELRY CO.

Successors to G. DIETZ, JEWELER and WATCHMAKER. 1066 Fort Street. New and attractive goods arriving by every steamer. Largest Stock of Hawaiian Souvenir Jewelry in Honolulu.

### MACHINERY FOR SALE

One double cylinder steam hoisting engine with friction drum, gipsy head, and brake, 25 H. P. One upright steam boiler and engine complete, 10 to 15 H. P., in first-class condition, at a bargain. One 2 H. P. Fairbanks-Morse gasoline engine. One air compressor, 6-inch steam cylinder, 7-inch air cylinder, 7-inch stroke, by Blake Mfg. Co. One Mircea and Watson crab winch. One large platform scale, capacity 1500 lbs. One 6-inch centrifugal (Krogh) pump. An assortment of Steel and Iron Pulleys. A lot of Railroad Spikes. Tools and Implements. One piece 8-inch double leather belting, 41 feet; one piece 10-inch double leather belting, 46 feet; one piece 12-inch double leather belting, 48 feet. In first-class condition, at a bargain. JUST RECEIVED BY STEAMSHIP COLUMBIAN. A consignment of the celebrated FOOS GASOLINE ENGINES, 2, 4, 6 and 9 H. P. Any size or style up to 90 H. P. The best gasoline engine that has ever been imported into this Territory. Call and look them over at Neill's Workshop 135 Merchant Street.

### Burroughs' Adding Machines

The Waterhouse Co. Judd Building.

### Telephone 71

YOUR SODA WATER ORDER Consolidated Soda Works Co. G. S. LEITHEAD, Manager

### REMOVAL NOTICE.

The New Oahu Carriage Manufacturing Co. has removed to Queen street, at the easterly side of Nuanuan stream. 8034

### Andrew Usher's Scotch Whiskey O. V. G. Special Reserve

W. C. PEACOCK & CO., LTD., AGENTS.

### LAWRENCE BARRETT

10c. HAVANA CIGAR

### BO WO

Hotel Near Smith Street. MANUFACTURER OF Jade Jewelry FORT, BELOW KING

### O. OKAZAKI

NEW GOODS IN Worsteds and Shirtings

Suits and Shirts to order. Hotel Street, near River Street.

### Y. WO SING & CO.

Groceries and Fruits 1150-1152 N. W. Ave.

## DWIGHT GETS REAL "RILED"

### He Shows His Teeth When Road Estimate Is Slashed a Thousand.

Supervisor Sam Dwight got real pettish at the meeting of the Board of Supervisors last night and threatened to resign as chairman of the roads, bridges and parks committee if he didn't get the appropriation he asked for, and more complaints of neglected road work came in. The estimates for July were being considered and Dwight was given \$14,000, \$11,000 of which came out of the general fund and the remaining \$3000 out of the road tax. Dwight kicked for an extra \$1000 and said that \$800 out of the estimate would have to be disbursed for repairs to the steam rollers, whereas he wanted the whole \$14,000 for road work. He wanted the extra "thou" to make good the steam-roller item.

"We can't possibly do it," said the chair, "we're sailing close enough to the wind as it is. Hoomanawanui, however, and you'll get all you want." "I've hoomanawanui long enough," replied Dwight, testily, "and I want an extra thousand dollars right now." "You can't have it," replied Hustace, "and that's all about it." "Very well," growled Dwight, "if any more complaints come in I'm out of it." "Why, what do you mean, Mr. Dwight?" gasped Hustace. "I've asked for more money and I can't get it," exclaimed Dwight in the tone of one who clinches an argument. "Your motion is in order, Mr. Archer," said the chair. "Archer moved that the estimates for July be put in at \$42,985, and the motion carried. "Have you any reports to make on deferred matters?" asked Hustace of Dwight. "No," growled Dwight. "I'm sorry you feel that way about it," said Hustace.

## DEATH OF MRS. MARGUERITE CLARK

The Castillon, published at Castile, New York, publishes the following concerning a former resident of Honolulu, a teacher who is remembered by many here:

On the morning of Wednesday, June 3, 1908, Mrs. Marguerite Greene Clark of 44 Wilcox street, Toronto, passed to her heavenly home, leaving a little daughter only twelve days old. In combating pleuro pneumonia complications all that the most skillful physicians and trained nurses could do proved unavailing.

Of the little group of children forming Dr. C. A. Greene's family she was the third and her early years were spent in this village in the Sanitarium home. In Northampton, Mass., she took the preparatory work and entered Smith College, but by reason of temporarily ill health was not able to finish the course and later studied music in Oberlin College. She spent two very successful years as a teacher in Honolulu and soon after her return married Dr. Harold Clark.

Since her marriage, which has been an ideally happy one, Toronto has been her home.

Mrs. Clark was a woman of strong and beautiful character and rare attainments, and whether in the home of her childhood or in the wider circles of her later life, she drew around her many friends who loved and honored her.

Of Dr. Greene's family circle which for so many years formed a part of our village life only two now remain, Mrs. Mary Greene Phillips of Rochester and Dr. J. Edward Greene of Pasadena, Cal.

To the devoted husband upon whom this crushing blow has fallen, to the two little boys and infant daughter and to the other friends who mourn her loss all hearts go out in the sincerest sympathy. "What I do thou knowest not now, but thou shalt understand hereafter."

The most complete and attractive curio is

### STEINER'S Island Curio Store

Elite Building, Hotel street. Visitors always welcome.

### Vickers' Repair Shop

NOW AT REGAL SHOE STORE

Choice

### Kaneohe Beef

Always on Hand YOUNG PIGS POULTRY EGGS FRESH BUTTER AND CHEESE

### SAM WO MEAT CO.

King Street Market, next C. Q. Yee Hop & Co. Tel. 258 YOUNG TIM, Manager.

## NEW PASTOR OF JAPANESE CHURCH

### Rev. C. Nakamura Arrived by the S. S. Tenyo Maru.

Rev. C. Nakamura, of the Methodist Mission in Japan, arrived in this city by the S. S. Tenyo Maru, in order to become the pastor of River street Japanese church. Mr. Nakamura is well qualified for splendid service as a Christian worker among his own people of Honolulu. Educated in one of the theological schools of Tokio, he afterward spent five years in the United States, where, after completing a special course in study, he became pastor of a large church at Sacramento, and later served the Methodist Japanese congregation of Oakland, California. Friends predict for Mr. Nakamura great success in this his new and interesting field of labor. A public reception will be tendered the new pastor next Wednesday evening at 8 p. m. in the River street church, to which all friends interested are hereby cordially invited.

## PROMOTION WORK GOES ON APACE

Honolulu, June 25, 1908. Chairman and Members of the Hawaii Promotion Committee:

Gentlemen.—By the last mail an additional batch of letters was received from different libraries on the mainland acknowledging copies of our pamphlet, "Agriculture in Hawaii." A number of requests for our news service also came to hand.

By the Marama several inquiries from probable visitors were received from different points in New Zealand and Australia; also from Colombo, Ceylon. The Galle Face and Oriental hotels in Colombo continue to give our folders a prominent place in the advertising matter they distribute among their guests.

By the last steamer for the north a full line of folders was sent to Mr. E. J. Coyle, assistant general passenger agent of the Canadian Pacific Railway, for distribution throughout the Northwest.

Upon the arrival of the new Japanese steamer Tenyo Maru we presented the purser with a framed copy of our map, "The Crossroads of the Pacific," which has been given the place of honor in his office.

The new edition (third) of "The Crossroads of the Pacific" map should soon be to hand. We have numerous applications for additional copies, and will be able to thoroughly cover China, Japan, the Straits Settlements, as well as Australia and New Zealand, with this effective advertisement.

I am pleased to report that Mr. G. P. Wilder has promised to look into the matter of a special fruit display in our rooms during fleet week. We also expect to have a good exhibit of sisal and growing pineapples in tubs.

Through the courtesy of Mr. W. H. Rice we will be able to show at least two more of Otto Wix's paintings of Kauai scenery, Hoary Head Mountain near Lihue, with the Hulua stream in the foreground, the other being a sketch of Wainiuhou waterfall.

Mr. Howard Hitecheek has also promised to favor us with several of his latest paintings of Island scenery, which, we feel assured, will be greatly appreciated by the numerous visitors constantly thronging our rooms.

A letter from the editor of the National Geographic Magazine states that they will publish in their July or August number an interesting article by Mr. W. A. Bryan on the "Pacific Scientific Institute," which will be well illustrated.

Respectfully submitted, H. P. WOOD, Secretary.

## HILO SEES SOME VERY FAST BALL

The following good game of baseball was played in Hilo last Sunday:

Mooheaus 1 2 3 4 5 6 7 8 9  
Hiloites 0 0 0 0 0 1 0 0 1

Mooheaus—Jno. Freitas, c; Antonio Oliviera, p; Geo. Todd, 1b; Charles Green, 2b; Joe Tavis, 3b; Sheldon, ss; Geo. Desha, lf; H. Morehead, cf; Butler, rf.

Hiloites—Jno. Kealoha (Barefoot Bill), c; Jack Williams, p; Sol Anakole, 1b; J. Easton, 2b; Kaipou, 3b; P. Lyman, ss; Geo. Hapai, lf; M. Ahfal, cf; Ben Spaulding, rf.

In the first game the H. A. C. defeated the Naniwas by the score of 3 to 2.

## RACE MARES HAVE REACHED HILO

The race mares Veronica and Frolie arrived in Hilo safely and will make the local owners sit up, as either of them can negotiate a mile in 1:40.

It looks as if Louis Warren would have done better to have shipped Bruner and Indigo to Maui instead of Hilo.

The reason he shipped to Hilo was that the purses looked too small for him to race on the Valley Isle.

He'll probably come back to Honolulu with the firm conviction that a small purse is better than no purse at all.

## THE ART THEATER.

There will be something new in the attractions at the Art Theater tonight, and the audience will be given its fill of pictures that are as nearly lifelike as science can make them. The Art is a comfortable amusement hall, planned after those which have proven so successful and pleasing to the Los Angeles people. The admission to the Art is from five cents, for children, to twenty-five for adults, according to location.

# SPORTS

## KALANIANOLE LEAGUE ELECTS

The meeting of the Kalaniana'ole Baseball League held at the residence of President A. K. Vierra last night was well attended, the following being present: C. Bui Farm, E. S. Kong, M. T. Marshall, Jr., Ben C. Oliveira, Augustine Guerrero, Robert Ako, Cornelius Aiu, M. Gomes, Sam Hop, J. O. Vierra, Ho Tong, Enos Vincent, C. S. Wakita and A. K. Vierra. The business of the evening was the election of officers, revising of the constitution and bylaws and transfer of the Kamanuawai interest to the Honolulu White Sox.

The following officers were elected for the ensuing term: President, Enos Vincent; vice president, E. S. Kong; secretary, A. K. Vierra; assistant secretary, Augustine Guerrero. They were all unanimously elected. The election of treasurer, umpire, manager and scorer was postponed until the next regular meeting.

The league teams this season will be composed in part of two Winter League players and three Riversiders, and with the contingent of ball-tossers now in view the games will be of greater interest than in the past.

The rules were so amended by the committee appointed for that purpose that Spalding's Guide of 1908 will be lived up to in all of its requirements, and baseball will be played in its noble and truest sense.

Resolutions of sympathy were extended to the Hon. Jonah K. Kalaniana'ole, after whom the league was named, on account of the death of his brother, Prince David Kawanakoa. The Hon. Chas. F. Chillingworth and John Wise were appointed by the chair to act as arbitrators.

## DING-DINGS DOWN MARINES

The Rapid Transits met and defeated a nine composed of marines from the cruiser St. Louis yesterday afternoon, by the score of 14 to 8.

The Marines led up to the eighth inning when the Ding-Dings started in to make a slugging match of it and piled up ten runs.

Score by innings:

Rapid Transits... 1 2 3 4 5 6 7 8 9  
Marines... 0 0 0 0 0 1 0 0 8

The lineup follows: Rapid Transits—May, c; Hoopii, p; Pimental, 1b; St. John, 2b; Canario, 3b; Hamauku, ss; Pascoe, rf; Asch, cf; Boyer, lf.

Marines—Anderson, c; Davis, p; Winters, 1b; Masack, 2b; Mlsner, 3b; Swedeman, ss; Trowbridge, rf; Mike, cf; Faith, lf.

## OAHU PLAYERS PRACTISE POLO

The Oahu polo team were out for practise on Wednesday at the new ground and did some lively work.

Those who rode were W. Dillingham, R. W. Shingle, E. H. Lewis, G. Angus, Clarence Cooke and a couple of others.

The Oahu players will practise steadily from now on.

The Kauai players are in full practise and are said to be doing splendidly. Their horses will arrive a week before the date of the tournament which takes place next month.

A feature of the advertising of the Wild West show will be the riding about town of a tame bull from the back of which an announcer will give the particulars of the different events to be held at Kapiolani Park during fleet week.

The general program of the Wild West show and polo tournament will be ready for distribution in a day or so.

## AORANGI HAD GOOD BOUTS

Quite a novel entertainment was given the passengers of the Aorangi just before her arrival here. A miniature ring was pitched on the aft hatch, and a boxing contest held—ten preliminaries and three star bouts was the program. It was a great success. Among the principal contestants was the old-time Joe Reynolds, ex-champion of the British Navy, with Sam Sharp, Bill Squires' sparring partner. Mr. Sharp was sadly out-pointed, out-generalized and worsted at every stage of the game. The decision favoring Reynolds was met with great approval. The referee for the occasion was Argyle Campbell, better known as Billy Campbell. Mr. Campbell had the handling of the bouts, and gave the passengers of the Aorangi an entertainment of a kind never before seen on ship-board. Ladies were present, all the gentlemen in evening dress, and they voted the affair just too lovely for anything. Campbell is the protégé of the old-timer Australian, Steve O'Donnell, and has been matched to meet Reynolds on the Aorangi for 2000l., there being a number of sporting men on board. Reynolds is the heavier by ten pounds, but a lively go is expected as Campbell has beaten some good boys in the States at 130 pounds. The boys will box ten rounds.—Western Pacific Herald, Suva, Fiji, June 9.

## BARNEY JOY IS BEST STICKER

The battery averages of the big league players to date has been compiled.

Men playing in seven or more games and averaging .250 or over are:

Games. Pct.  
Joy, Saints..... 7 .440  
Fernandez, E. D. H..... 8 .413  
Louis, D. H..... 8 .357  
Lemon, Kams..... 8 .290  
Oimos, D. H..... 8 .285  
Evers, D. H..... 8 .276  
Hamauku, Kams..... 7 .272  
Hampton, Puns..... 7 .250

A number of men who have played in a fewer number of games have high averages.

## ROOSEVELT SHIFTS CLASS

How times change! And in their changing, how men change with them!

The Cosmopolitan Magazine in a recent issue, produced the facsimile of a letter written by Theodore Roosevelt when he was a member of the New York Legislature.

In the letter, President Roosevelt stated that, when at college, he was the lightweight champion.

What class is Roosevelt in today? He is the heavyweight champion of the world. King Edward has said it!

## AEA WON A MOTORCYCLE

Sergeant John Aea of the local police force won a Torpedo motor cycle in the recent prize contest of the San Francisco Examiner.

The machine, which is a beauty, arrived by the S. S. Mexican, and Aea is taking lessons in riding it.

## LEAHI GIRL BESTS MAKAAALA

The match race at Kapiolani Park yesterday afternoon between Makaala and Leahi Girl, at a quarter of a mile, resulted in a win for the mare by two lengths, in the fast time of 0:25 1-2. Holt rode Makaala and Hollinger was up on the winner.

The victory of the mare was a great surprise, as the black horse had won his last two races at the same distance with her. The rest has probably done Leahi Girl a lot of good.

Welakabao, the Waipahu horse, which was to have raced with Makaala yesterday, hurt himself while working out and was withdrawn. Leahi Girl taking his place.

Makaala will be shipped to Maui today. Sure Shot was sent to Maui a week ago. He was purchased by Manuel A. Enos for \$300.

Traveler, also known as Bazaar II, will go to Maui today and will be entered in the Hawaiian-bred race to be run at Spreckels Park on July 4. M. J. Rodrigues will train Traveler for his engagement and goes up with the horse.

## AALAS TO VISIT KAUAI

By the steamer Kinau on July 2, the Aala baseball team, the champions of the Riverside Junior League, will sail for Waimea, Kauai.

The Aalas are to play one or two games at Waimea with the Waimea team.

Manager Sam Hop is confident that his bunch of players, composed of the following, will come out victorious: M. Correa (captain), Alex. Asam, Joe Clement, C. Y. Marks, Apui, Peter Hall, Jas. Ho Yup, Geo. Holt, Wm. Hoopii, Sam Hop.

## Short and Sweet

The big league games tomorrow will be Kams vs. Saints and Punahou vs. Diamond Heads.

The Newspaper Baseball League will complete its season on July 5. On Sunday morning next the Advertisers and Bulletins will meet at 10 o'clock at Kapiolani Park, and in the afternoon the Mercantiles and Paradise will meet at the big league grounds.

Kamehameha is a warm favorite for the Beckley cup race which takes place on Sunday.

The weekly shoot of the Hawaiian Gun Club held on Wednesday resulted in Harry Whitney winning with a score of 9 out of 10. Irwin Spalding tied with Whitney but the latter won the shoot-off, making 9 out of 12. J. W. Harvey got 7 out of 10 and J. Vincent 5 out of 10.

The Oahu College nine and the alumni nine play a game on the Punahou campus tomorrow afternoon. The game will start at 3 o'clock.

The Santa Clara baseball nine are expected to arrive by the next Hiloian from the Coast.

The Tansan cup for local golf competition arrived by the S. S. Tenyo Maru. It will be placed on exhibition in a few days. It will probably be played for under the same rules which governed the White Rock contest.

St. Louis Alumni defeated the Kamehameha Alumni at Pedro on Wednesday night by 158 points. Each team has now won one event and the decider will be played in a couple of weeks.

Jess Woods leaves San Francisco on his Oriental baseball trip by the S. S. Mongolia on June 30.

The battery averages of the big league players to date has been compiled. Men playing in seven or more games and averaging .250 or over are:

Games. Pct.  
Joy, Saints..... 7 .440  
Fernandez, E. D. H..... 8 .413  
Louis, D. H..... 8 .357  
Lemon, Kams..... 8 .290  
Oimos, D. H..... 8 .285  
Evers, D. H..... 8 .276  
Hamauku, Kams..... 7 .272  
Hampton, Puns..... 7 .250

A number of men who have played in a fewer number of games have high averages.

## COMING EVENTS

June 26—Baseball, Oahu College vs. Alumni.

June 27—Baseball, Kams v. St. Louis; Diamond Head v. Punahou.

June 28—Yachting, Beckley Cup race.

July 3—Chinese Aloha's dance, K. of P. Hall.

July 3-4—Hilo races.

July 4—Chinese Aloha's dance, K. of P. Hall.

July 4—Transpacific yacht race starts.

July 4—Maui races.

July 17-18—Wild West show.

July 19—Fleet baseball.

July 19—Golf, McInerney Cup play.

July 20, 21, 22, 23—Kennel Club show.

July 22-23—Polo tournament.

Aug. 17—Puunene tennis cup play.

## AMUSEMENTS.

### HAWAIIAN

## Opera House

June 30, 1908

W. D. Adams presents, under the direction of Harold Basset,

## BLANCHE ARRAL

THE World Famous Artiste

In gems from

## GRAND OPERAS

in costume

Seats on sale at WALL NICHOLS CO., LTD. 75c, \$1.00, \$1.50.

## ORPHEUM THEATRE

Now Playing

J. C. Cohen and Gerald R. Lumley Present the Favorite Artist

## MR. RICHARD BUHLER

and the Incomparable Lumley Company

including FRANK E. MONTGOMERY, MISS MAE KEANE and VIRGINIA THORNTON.

Tonight the Romantic Drama

## Soldiers of Fortune

Change of play, Monday and Thursday.

MONDAY, JUNE 29

## Brown's In Town

MATINEE WEDNESDAY AND SATURDAY

POPULAR ORPHEUM PRICES

Seats now on sale at Orpheum Box Office.

## CALIFORNIA THEATRE

HOTEL and Union

## MOVING PICTURES

Entire Change of Views

Admission.....Ten Cents

Children.....Five Cents

## ART THEATRE

Hotel Street

BETWEEN BETHEL AND FORT

Extraordinary attractions. Sonny Cunha at the piano. Mrs. King, premier vocalist, will sing illustrated songs.

## MOVING PICTURES

## EMPIRE THEATRE

HOTEL AND BETHEL STREETS.

## New Moving Pictures

TONIGHT! TONIGHT!

NEW FILMS

FRANK VIERRA, Pianist.

Admission..... 10 cents

Children..... 5 cents

## BASE BALL

League Grounds

SATURDAY, JUNE 27

1:30 P. M.

Kams. vs. St. Louis

Diamond Heads vs. Punahou

ADMISSION 25c.

Reserved Seats, Grandstand, 25c. Extra

## Coming Events

June 26—Baseball, Oahu College vs. Alumni.

THE Pacific Commercial Advertiser A MORNING PAPER.

WALTER G. SMITH EDITOR FRIDAY : : : : : JUNE 26

THE SECRETARY'S TOURS.

Secretary Garfield's tours of these Islands deserve all the descriptive adjectives of "strenuous," "whirlwind," and "rushing" that have been applied to them.

Mr. Garfield in these tours has made some endurance tests that not everyone would care to attempt. He and Governor Frear, by all accounts, have stood the tests better than anyone else.

If it were merely a hurried dash, simply a mad rush, perhaps there would be little of value. But to a man of trained powers of observation the dash and the rush are merely incidental.

It might be said in the same way: What can a man learn of a country by spending two weeks in it? In ultimate thoroughness, a lifetime is not too long to learn all that is to be learned.

Mr. Garfield may get during his visit here somewhat fragmentary information regarding the Islands. He has not time to see all, or to hear all that might be profitably seen or heard.

With this, hereafter, everything he hears or reads regarding Hawaii means more than it ever could before. If what he reads or hears is free from error, he has a place for it in his recollections and knowledge, and it fits into its place.

All this is true of any intelligent traveler. It is true in higher degree of a trained observer like the Secretary, of a man accustomed to sift, and compare, and judge, with rapidity and precision.

THE RED CROSS SOCIETY.

There is nothing in the statistics of the Red Cross Society to flatter the pride or self-esteem of Americans. We have been accustomed to think of ourselves as the foremost people in the world in organizations of a humanitarian or altruistic character.

In 1905 Congress incorporated the American National Red Cross, part of the greatest humanitarian organization in the world. The Secretary of War is its president, its offices are in the War Department, its aims make a universal appeal.

THE SOCIALIST PLATFORM.

The Socialist party in 1904 polled 402,283 votes, or barely 3 per cent. of the total. In American politics the vote of minor parties has not as a rule been a stable quantity, hence what the socialist vote this year may be is entirely problematical.

The direct primary seems likely to cut short the senatorial careers of a good many who have shown much facility in handling legislatures.

Louisiana may not be ready for prohibition, but she is ready to stop race-track gambling. This is pretty good progress for a State that only a few years ago was the home of the Louisiana lottery.

The spectacle of Russia warning the Shah of Persia to uphold the constitution, is one for the gods. The Shah might retort with something about Finland and the treatment of the Duma.

Consul-General Saito will be missed in Honolulu. He has been here ever since annexation, and has always created a favorable impression, and has been well liked.

Addressing an audience through an interpreter may be a new experience to Secretary Garfield, but he seems to take to it very kindly.

Everywhere Secretary Garfield goes he meets the land question.

STRONG PLAY IS DAVIS' SOLDIERS OF FORTUNE

Richard Buhler and the Lumley Company presented the second of the excellent plays of their repertoire last night at the Orpheum in Richard Harding Davis's play "Soldiers of Fortune."

The public's approval has been well earned, for it was from every viewpoint, an excellent presentation. The standard originally set by the company was equalled throughout in some respects even exceeded.

Quite striking too is Hope Mosler's portrayal of Alice. By the use of her art and through the force of her charming personality and beauty, Miss Mosler rises to a high degree of excellence.

All the other parts were capably handled. The specialty by Miss Brundage was well executed. Same bill tonight.

WONDERFUL SCENES AT THE CRATER OF KILAUEA

Editor Advertiser: The active lake of fire, in Kilauea crater is at present much larger and more in constant activity than for years past, and its wonderful beyond description.

Some are so fascinated that they remain at the crater's edge all through the night, viewing this most spectacular display of nature's mighty forces.

Rivers of fire keep flowing from the active springs to the outer portions of the lake. Occasionally the hardened crust will obstruct the flow which quickly rising soon overtops the barrier and dashes down in a glorious fall of liquid fire.

The scene changes every hour and presents a sight that no one who can go and see it should miss. I have watched the rolling torrent from Mauna Loa's heights move toward the sea, and several times have seen the rising lake in Kilauea's pit, but Halemau-mau's present lake of fire gives a grander and more wonderful spectacle than any seen before.

EDWARD W. THWING.

THE HAWAIIAN POOR.

Editor Advertiser: We have been thinking if it would be, could be, (might be) practicable, to give, say, to five of the native policemen, five dollars extra a month, in some way, if they would watch out for any distress cases of their individual districts and report them, that succor might be given.

Sometimes, one is so very destitute, he or she has no courage, and no way of presenting the case at the office, of the Asso. Charities. We are sure, you can comprehend how easily, such a state as that might come about.

EDITOR TIMES.

June 26, 1908.

High and Low

ALL JAPANESE READ

THE HAWAII SHINPO

An authority among Japanese Newspapers, published in the Territory of Hawaii.

The only Illustrated 16-page Japanese Daily in Existence.

12-page Sunday Issue is the Best advertising Medium.

Job Work in Japanese and Chinese a specialty.



What Does She Care

that the mercury is sizzling, and everybody else is hot and tired and mad? SHE'S all right—she's at our SODA FOUNTAIN.

HOLLISTER DRUG CO. LTD. FORT STREET



When a Watch Does Not Keep Time

It is in the need of the services of an Experienced Watchmaker. When your watch fails you, bring it to us. We will give you an honest report on its condition.

H. F. WICHMAN & CO. LIMITED Leading Jewelers

ANY WOMAN OR GIRL NEEDING help or advice, is invited to communicate, either in person or by letter, with Ensign L. Anderson, matron of the Salvation Army Woman's Industrial Home, No. 1630 King street.

SOMETHING NEW

There's always something new and Tasty in the Pastry line at the

A. Y. CAFE

Hawaiian Souvenir Purses

50 cents

We have just received the first shipment of what we think will be the best 50c. seller of all the many moderate-priced Hawaiian Souvenirs.

B. F. EHLERS & CO.

SELLING ELECTRICITY FOR LIGHT AND POWER IS OUR BUSINESS The Hawaiian Electric Co., Ltd.

MADE IN H. C. HONOLULU Hawaiian Souvenirs and Jewelry H. GULMAN 1064 FORT ST.

JUST RECEIVED A new shipment of Fancy Writing Paper, Place Cards, Silk and Leather Shopping Bags and Satchels, Embroidered Belts with and without buckles. Japanese Bazar Fort Street, near the Convent.

WRAPPING PAPER, PAPER BAGS, TWINES American-Hawaiian Paper & Supply Co., Ltd. CORNER FORT AND QUEEN STS. Telephone 416.

Best Butter We have just received from the dairies a large invoice of the best butter we have had in many months and we are offering it as follows: CRYSTAL SPRINGS 35 Cents WHITE CLOVER 30 Cents PARKER RANCH, 2lbs. 70 Cents Metropolitan Meat Company, Ltd. Telephone 45.

Office Desks If you need a DESK of any kind for your OFFICE or STUDY, you should see our fine stock. Plain, Flat and Roller-Top Desks. Largest assortment in the Territory. H. HACKFELD & CO., LTD. FURNITURE DEPARTMENT.

**THE TIMELY USE OF THE BITTERS**

will save you much suffering and probably a long sick spell. Therefore keep a bottle handy and take a few doses at the first symptoms of any Stomach, Liver, Kidney or Bowel disorder.



**Hostetter's Stomach Bitters**

during its 54 years' experience has established such a record of cures that it is now the recognized leader among Stomach remedies. It always cures

Sick Headache, Poor Appetite, Heartburn, Indigestion, Costiveness, Female Ills or Malaria, Fever and Ague.

We guarantee it absolutely pure.



**A Window Full of Useful Articles at**

**20%**

Discount for Cash only. Such as Purses, Card Cases, Toilet Sets, Cigarette Cases, etc.

**For 10 Days Only**

**J. A. R. Vieira & Co.**  
113 Hotel Street.

**AUTOS REPAIRED**

by men who are experts in their line. No experiment work done here by amateurs. Careful attention given every machine.

**von Hamm-Young Co., LIMITED**

**BIG STOCK ENAMELED**

**IRON BEDSTEADS**

All Sizes

**Coyne Furniture Co., Ltd.**  
YOUNG BUILDING

**Shirts**

In All Sizes Made to Order by **B. YAMATOYA**  
Pauahi Street, off Nuuanu Street.

**GENERAL REPAIRS**

—To—  
**CARRIAGES OR AUTOMOBILES.**

**W. W. WRIGHT & CO.**  
KING, NEAR SOUTH STREET

**1908 STYLES**

—And—

**SPRING PATTERNS**

NOW TO BE SEEN AT  
**W. W. AHANA & CO., LTD.**  
FASHIONABLE TAILORS  
62 KING ST. Phone 525

**WE PAINT**

AUTOS AND CARRIAGES.  
**Schuman Carriage Co., Ltd.**

American & European Plan

**HOTEL**

A "HOME" HOTEL FOR PERMANENT AND TRANSIENT GUESTS. IN THE HEART OF THE CITY. WITH BAY SUNNY SUITES AND SINGLE ROOMS ALL CONNECTED WITH BATHS. SPECIAL SUMMER RATES. CUISINE UNRIVALLED.

**NORMANDIE**

CORNER BUTTER AND GOUGH STREETS  
**SAN FRANCISCO**

**GARFIELD ON HAWAII AND MAUI**

**The Marvelous Journey of the Secretary of the Interior.**

The trip of the Garfield party from the Volcano House to Napoosoo bay, via Kohala and Waimea, was strenuous enough to have suited the President himself. Going to the Volcano by car and automobiles was easier—all the more so because of the fine send-off given the party at Hilo; but to make a hundred miles the next day from Pele's fireside to Honokaa, with all those gulches to negotiate, was no joke. There were two automobiles for the eight passengers and the two chauffeurs who took the trip—the powerful car of James B. Castle and the red touring machine of Governor Carter. The latter, unfortunately, was not in condition, and went out of business long before the journey had ended.

Jack Atkinson was grand dragoon of the expedition and he managed things well. Everybody knew him along the way and called him by his first name; and whatever the party required from cigars to gasoline, he was able to get.

The run from the Volcano House back to Hilo was made in good time by the Castle car, but the Carter machine made long stops, twice to repair a dislocated shaft and once or twice to tighten the brakes. The Castle machine was far ahead but as one of its tires blew up and caused much delay, the whole party was able to leave Hilo together, the objective being Honokaa, at 2 o'clock. It was nearly dark, however, before the autos reached that destination and the passengers got to work on the luau that had waited so long for its guests.

It was fair going along the coast, though to get around the deeply indented gulches used up time and steam. There were occasional breakdowns, also a pleasant interlude at one of the plantation houses where Manager McClellan and his hospitable wife provided light and sparkling refreshments. All the way the air was fine, the canefields thrifty and the glimpses of the sea enchanting. Such things were needed to make the hundred mile rush endurable.

**THE HONOKAA LUAU.**

At Honokaa, the assembly hall, with its flag flying, its luau under way, and the resident population all out, was a welcome sight to the tired travelers. There was a handy place to wash and seats at the table were waiting. The speechmaking had already begun, but Secretary Garfield and his escort were given all the time they needed to satisfy a sharpened appetite before they were called to their feet. As usual the Secretary made a strong impression by his rapid, clear, incisive talk. He was before an audience that was interested in the land question more than in any other and he touched on the need of local initiative in building up the country in a way that drew prolonged applause. Governor Frear followed, pointing out that Americanism did not mean the exact transplanting of this or that custom or institution from Maine or Georgia but the adaptation of the means of success or happiness to the peculiar needs of the locality. He awoke much enthusiasm by his promise to do all he could for a Kohala railroad. Other speeches were made by A. L. C. Atkinson, Judge Ballou, F. B. McStocker, W. O. Smith and W. G. Smith. It was noticeable that every favorable reference to the small farm idea caused enthusiasm. Several Hawaiians spoke, Mr. Lindsay, whose knowledge of Hawaiian, Portuguese, Chinese and Japanese, makes him the master of the linguistic situation at Honokaa, interpreting for some of them.

**LOST IN THE RAIN.**

The weather did not promise well that night at Kohala but, notwithstanding, the Secretary, Gov. Frear and Judge Ballou pushed forward to Alfred Carter's ranchhouse in cloud-land at Waimea, which they thought they could make in about three hours. They left at half-past eight behind horses, but were on the road until 2 a. m. The mountain highways were bad in that district, it was raining and the driver lost his way. The horses were finally given their head and they easily, if slowly, followed the trail home.

The other party consisting of F. B. McStocker, W. O. Smith, Land Commissioner Pratt, Jack Atkinson and W. G. Smith stayed at the Honokaa hotel and went out with the Castle and Carter machines and a surrey after breakfast. Mr. Atkinson had telephoned ahead and some cowboys were sent out from Waimea to meet and guide the travelers. It had been raining during the night and the roads which, for the first two miles, were in bad shape, as well as very steep, soon proved too much for the Carter car. There were frequent stops for repairs and in the worst places the passengers walked. Finally the cowboys came and, hitching their lariats to the machine, and getting the aid of its steam power, the empty car was forced along. But about nine miles from Hilo that could be done was to telephone to Honokaa to send horses to tow the machine back. The stranded travelers found refuge in the other car and in a surrey which had been sent down.

**FROM WAIMEA TO KONA.**

Alfred Carter's ranchhouse was made towards the middle of the forenoon—a spacious mountain home where breakfast and a hearty welcome was waiting. A buggy and surrey were put at the disposal of the party and these,

with the Castle machine, took the travelers, with the Secretary and Alfred Carter in the lead, across the semi-arid and dusty Waimea plains to a point about twenty miles away where other vehicles took the carriage loads. There was a distance of forty miles yet to cover. Later three locomobiles arrived, Bruner's, Hind's and Conant's, and at a pace of eighteen miles an hour the party started for Napoosoo. It was a long way, but the roads were fine, the air zesty and the rain, for most of the time, held off. At Judge Matthewman's handsome home a stop was made and luncheon eaten and from there the way was short and sweet to John Maguire's, where another feast, topped off with ripe peaches, had been spread.

**THE HOME OF THE FARMER.**

Along this route—the home of the farmer—Secretary Garfield was keenly alive to all the signs of progress and, with F. B. McStocker and W. O. Smith to explain things to him, did not miss much worth the knowing. Just at dusk the Castle automobile rolled down to the wharf at Napoosoo where, apparently, the whole population was waiting. A band was there, which opened up with the Star Spangled Banner, a line of Khaki-clad policemen saluted, there was a chorus of alohas, a rush of women with leis and an impromptu reception by the Secretary and the Governor. It took three-quarters of an hour for all the handshaking to expend itself and then the venerable Hawaiian who went around the world with King Kalakaua, led the way, the orchestra and guests following, to the lantern-hung covered wharf where a luau was spread.

Kona did its best with that feast and that means much when it is considered how varied is the agriculture of its rich and benevolent soil. Every known Hawaiian dish that a foreign palate can appreciate had been provided, together with many haole delicacies. The poi was pink, the roast pork, the fish in ti leaves, the stewed chicken, the sweet potatoes, the aromatic boiled squid, the kukui nut delicacies, the green corn cooked in island fashion, the made dishes, the turkey and watermelon and fizzing soda drinks—here was a feast which made everybody wish the Secretary of the Interior could make interiors larger. As usual, after a time there were speeches. Judge Matthewman presided and the Secretary made the first address. His was a plea for individualism; then a strong hint that the Home Rule party was a bit out of tune with things American; a recurrence to his thought, expressed in former speeches, that self-help is the first title to government aid; a concluding tribute to the beauty of the islands and their right to expect the same consideration as other territories of the Union; a friendly greeting in Hawaiian to conclude with. Then came Governor Frear with a speech full of sound economic advice and a promise to come soon again on a visit of his own. Walter G. Smith followed with some remarks about small farming and W. O. Smith spoke both in Hawaiian and English. Just before the party left to take boats for the steamer, the native singers led in the singing of Aloha Oe.

**CAPTAIN COOK MONUMENT.**

Secretary Garfield, who had spoken at the Volcano House of his desire to make a "monument" reservation of the public land about the Volcano—something he is empowered to do without act of Congress—said that he intended to do the same thing at Napoosoo with the forty-square feet which includes the Captain Cook cenotaph. This will relieve the navy of the duty of looking after the historic spot. The caretaker under the new arrangement will be the keeper of the lighthouse.

The next night—Monday—was spent on the Claudine, the party getting off at Hana, Maui, for the Maui trip. Policemen who guard eighty miles of territory were there to do the honors. All but two of the Garfield party—the two Smiths—made the arduous trip to the summit; though W. O. Smith made a long horseback journey through the rain to visit his grandchildren.

It required a lot of patience and grit to reach the peak of Haleakala. Mile upon mile, hour after hour, were spent in the saddle in drenching rain, along giddy trails among the clouds. Horses were finally exchanged for carriages and carriages for saddle horses again and finally Idlewild was reached where the party feasted and slept, getting up not long after midnight to ride to the summit. Up there the sky was clear and the air frosty. The travelers, who included Secretary Garfield, Gov. Frear, Justice Ballou, Land Commissioner Pratt and Generalissimo Atkinson, saw all that nature shows at that altitude—the vast stretches of sea, the near-by islands, the twin peaks on Hawaii, the crater and its cloud-invasion of the pit. Coffee was cooked there and at an early hour the descent began, all hands reaching Spreckelsville in good season for Mr. and Mrs. H. P. Baldwin's noontide hospitality.

**AT WAILUKU.**

The next item on the itinerary was a visit to Puunene mill, thence by autos to Kahului and Wailuku. By this time W. O. Smith and W. G. Smith had rejoined the party. At Wailuku the courthouse was filled with people waiting to hear a word from the Secretary. Judge Kepoikai, Sena-Coeelho and other leading Hawaiians had the arrangements in hand. At this meeting the Secretary talked in his best vein, instilling a sound national spirit, urging the people to do what they could for themselves before asking aid of the Federal power, speaking of his deep interest in the land question, dwelling on the pleasant incidents of his trip and upon his desire for the fullest information about the islands from all sides. At the conclusion of his speech, Sena-Coeelho made a good talk about the needs of Maui, urging the refund of customs duties so that all the islands could have more schoolhouses and Federal buildings, asking that terms of the Federal Court be held in Maui and that a United States Marshal be located there—the job going to a Hawaiian. Senator Coelho also wanted the Japanese fishermen kept beyond the three-mile limit so that their advantage in the matter of boats would not count for so much.

After the speaking the Garfield party was covered with rose leis and, thus morally attired, it hurried by auto cars to Lahaina, twenty-two miles away. In that historic capital the travelers

**REGALS**

**For Men**

Wearing any shoes but Regals, when the Regal store is so handy to you, is like running ten miles when an automobile is at your disposal.



You are so certain to find just the sort of shoe you like in the 14 early Summer Regal models, and you are so sure to find thorough comfort through the perfect fit afforded by Regal quarter-sizes, that you are really doing your feet an injustice if you don't come in and get a pair of Regal Oxfords.

**\$3.50**

and

**\$4.00**

One of 214 correct new Regal styles for this season made in all leathers.

Quarter-Sizes. Mail Orders Promptly Filled.

**REGAL SHOE STORE**

McCandless Bldg., King and Bethel Streets.

**Glogau Alcohol Stove**



burns denatured alcohol. 1 burner same as cut

**\$4.50**

Efficient, economical and clean. Quickly started, easily regulated, leaves no odor. Cuts down labor and fuel bills.

Denatured Alcohol, 1 quart bottle, 40c or 1 gallon with container, \$1.25.

**E. O. Hall & Son, Ltd.**

Household Dept.

Take Elevator.

**USE**



THAT IS THE BUTTER FOR YOUR TABLE.

MAY WE SUPPLY YOU WITH IT?

SOLD AND GUARANTEED BY

**C. Q. Yee Hop & Co.**

TELEPHONE 251.

**These Grand Nights**

Haleiwa presents great attractions to the man with an auto. The road down is good, and as good coming back. The meals are excellent and the service the best possible.

ST. CLAIR BIDGOOD, Manager.

**J. A. GILMAN**

SHIPPING AND COMMISSION MERCHANT

INSURANCE FIRE and MARINE

Agent For—

ARTHUR SEWALL & CO.

Bath, Me.

PARROTT & CO.

San Francisco.

**NEW STEAMER TIME-TABLE.**

The new steamer Time-table Post Cards are out today. On sale at all post card dealers.

THERE IS A BENEFICIAL EFFECT FOLLOWING THE USE OF

**Rainier Beer**

TRY IT

AT A SALOON OR AT HOME

**Rainier Bottling Works**  
Phone 1331

WE WILL FILL YOUR ORDERS FOR

**THEATRE TICKETS**  
OPERA HOUSE OR ORPHEUM  
**Territorial Messenger Service**  
Phone 361

**Sing Chan Co.**

King Street opp. Aala Park

**PLUMBERS**

PRODUCTS OF

**Love's Bakery**

Machine-manufactured Goods; Baked Daily

**Saloon Pilot**

**Pilot and**

**Soda Crackers**

are for sale by the following firms:

**HENRY MAY & CO.,**  
**J. M. LEVY & CO.,**  
**T. H. DAVIES & CO.,**  
**H. HACKFELD & CO.,**  
**C. J. DAY & CO.,**  
**GONSALVES & CO.**

**Manuel Reis**

THE LATEST MODEL POPE-HARTFORD, 1908.

The best automobile in the city, to carry four passengers, can be had at any hour, day or night, by calling up Manuel Reis, telephone 290; von Hamm-Young garage, telephone 200, or my residence, telephone 1097.

**Aloha Shop**

Telephone 302  
Next to Orpheum. Cleaning and Dyeing Clothing.  
Also Tailoring. Prompt Service. Low Prices.  
Goods Called for and Delivered.

TWO IMPORTED

**Thoroughbred Jersey**

BULLS AT SERVICE AT

**THE POND DAIRY**

Telephone 890

**Pictures for School**

OR HOME DECORATION

**Pacific Picture Framing Co.**  
Nuuanu, below Hotel

**Yee Chan Co.**

**Dry Goods and Shoes**

King and Bethel Streets.

**Stunning New Hats**

At Miss Power's

MILINERY PARLORS;  
Boston Bldg. - Fort Street.

**PRECIOUS STONES**

set in rings and brooches. Gold and silver jewelry made to order at reasonable prices. Your trade solicited.

**SUN WO**

CHAN CHEW, Manager  
1208 Maunakea St. P. O. Box 943

**Wah Ying Chong Co.**

King Street, Ewa of Fishmarket  
**DRY GOODS and FURNISHING GOODS OF EVERY DESCRIPTION**

# Sour Stomach

Belching of gas, sour risings in the throat, pain after eating, a general feeling of heaviness, irritability, these are conditions which Dr. Williams' Pink Pills correct.

"I had a distressed feeling after eating, often followed by terrible vomiting spells," says Mrs. William Duely, of 43 Lucas avenue, Kingston, N. Y., "and became subject to deathly sick headaches. I was constantly belching gas in my efforts to relieve my stomach. I was in this condition for nearly three and a half years, although I tried a number of doctors. I was discouraged with them all, when I read about Dr. Williams' Pink Pills. A few boxes helped me wonderfully. I continued their use until cured and have had no signs of stomach trouble since."

## Dr. Williams' PINK PILLS

At all druggists or direct from Dr. Williams Medicine Co., Schenectady, N.Y. 50 cents per box; six boxes, \$2.50.

# GOVERNMENT AND POLITICS IN 2000

## Haskin Forecasts Some of the Tendencies and Changes.

(Advertiser Correspondence, Copyright by Frederic J. Haskin.)

As a factor in world politics, the United States is ten years old this summer. Not until after the Spanish-American War did Europe look upon the American nation as fully entitled to a seat at the council table of the powers. Until that time the Americans themselves had been proud of their Western isolation, and contented themselves with casting a protecting wing over the other American republics. In those ten years the United States has been prominent in world diplomacy. It has participated in international confabs where many Americans thought it had no business. It has prevented the partition of China by the Europeans and the Japanese. It ended the war between Russia and Japan. It cut a Gordian knot of Latin-American politics to facilitate cutting a ditch across the canal. It is now making a naval demonstration in force so that its international political views will receive the respectful attention usually accorded to him who speaks softly and carries a big stick.

Whether it was "manifest destiny" or a deliberate breaking away from the advice of Washington and the other immortals, is now only an academic controversy. The fact is, the United States is in world politics, is in to stay in, and is rapidly gaining a predominant position. So much for ten years. Another ninety, and the American people will have been in world politics for a century. Long before that time the United States will have become the supreme power in the world because of its great wealth, its great population and its great resources. It will maintain that position by virtue of its captaincy of the Pan-American Union—the confederation of republics which is already wielding an enormous influence and which must grow in strength and power with the development of the great Latin countries to the South.

Political union of the Americas is improbable on account of the bar of diverse tongues. Political and commercial cooperation is already promised. Railroads direct from Argentina and Chile to New York and Puget Sound, a merchant marine and the Panama Canal will cement the nations of the Western world into one potential whole. The palace being built in Washington for the Pan-American Bureau may have more of the promise of American glory in its future than Andrew Carnegie, who gave most of the million to build it, and John Barrett, who is bossing the job, have dreamed of.

In the Pacific Ocean the United States will hold Hawaii, its detached islands and the Philippines. It will have the major portion of the enormous Chinese and Siberian trade. It will be in that day that England so long has been, and Columbia will rule the waves—vice Britannia, resigned. What the future will bring forth in domestic party politics no man may dare predict. But the certain influences of growth and development will materially affect the present political and governmental organizations. The forty-six stars on the flag will have been multiplied by the addition of new States and the division of old ones. Arizona, New Mexico, Southern Alaska and Hawaii will have gained statehood long before the year 2000. Porto Rico, perhaps in union with other West Indian islands, may also add a star to the constellation of the flag.

Texas is entitled, by the terms of the Act of Admission, to divide its great empire into five sovereign States. The rapid growth of the Lone Star State will make its local administration more and more difficult as the years go by, and it will split up. The Texan patriotism will keep alive the old memories of the Lone Star, and the States of Texas, Houston, Austin, Crockett and Alamo will form a great group as compact in spirit as that of New England, formed by the six States of Maine, New Hampshire, Vermont, Massachusetts, Rhode Island and Connecticut.

New York City will have grown enormously and will have become the greatest city on earth. The lack of sympathy between the city and "up-state" will so increase that a separation will be deemed necessary, and the new state of Manhattan will include the great urban population of the southern end of New York state, Long Island and the northern part of New Jersey. Already the people of the Inland Empire in the northwest are clamoring for a division of territory by three states which will enable them to add to the roster of the states the name of Lincoln.

It is an idea which will grow and which eventually may be acted upon. Chicago and Philadelphia may also succeed in divorcing themselves from their rural fellow-citizens of Illinois and Pennsylvania. Kansas City, a metropolis in two states, may be the center of a new state carved from Missouri and Kansas territory. These changes, or others of a similar nature, are almost sure to follow the doubling of the present population and the increased inconvenience of local administration in states of the present boundaries. Even now New York state makes separate laws and organizes separate administrative bodies for Manhattan and "up-state."

Long before the end of the century many of the details of federal legislation now in the hands of Congress will be delegated to commissions. The work of Congress is now so great that it overwhelms that body and makes true deliberation impossible. The actual power of legislation will always rest with Congress as long as the Republic endures, but there will be much of the detail work that will be delegated to other bodies. Tendencies in this direction are already being "viewed with alarm," but the movement will not cease because of the fears of the conservatives.

The reserved powers of the states, such as are left, will be guarded with as great jealousy and with more intelligence than they are now. The annual meeting of the House of Governors, in some city other than Washington, will facilitate uniform legislation by the states upon important matters of general interest, and this will have the effect of stopping a general outcry for increased federal powers. The recent meeting of the governors at the White House was the first step in this direction—it is easy and natural for the movement there begun to assume the predicted importance.

The municipal government problem will be solved and the ruin of boss rule avoided by the general adoption of the commission system. It is entirely possible that the idea of cooperation may be so extended that the commissioners who administer local municipal affairs may be united in an organization which will provide a system of checks and balances which will guarantee honest government. The commissioners of New York, for instance, will fall from five other cities. One commissioner is removed to some other city each year, and inspecting supervisors from other cities may come in at any moment. This would be a combination and adaptation of the German municipal system and the old-fashioned Methodist itinerant.

Absolute and complete publicity of campaign contributions and expenditures is sure to come within the next decade or two. The federal government and all the states will recognize the fundamental importance of party government, so that all primaries and conventions will be held under the laws of the land. The Congress will unseat a man whose nomination was obtained by fraud as quickly as if he were elected by fraud. The corrupt practices of present-day elections will disappear. This is as certain as the life of the nation, for if corruption is not stopped it will increase, if it increases the nation cannot hope to live.

What was looked upon fifty years ago as "smart politics" and was admitted, twenty years ago became "sharp practice" and was frowned at. The same thing today is "corruption" and is roundly denounced. Not long hence it will be "crime" and will be punished with severity. A more acutely sensitive civic conscience is making the old-fashioned methods of politics decidedly unpopular.

The political machine boss will be a thing of the past. There will be great political leaders, and sharp division of opinion. But these leaders will attract their following because of their espousal and advocacy of some principle—not because of their power to dispense pie or shake the plum tree. Education of the masses is already breaking the power of the boss. A new boss who comes up nowadays must come as a wolf in sheep's clothing. He must denounce his trade to obtain a foothold to practise it. Such hypocrites will fall, and the American of the future will read the tales of the boss-ridden cities and States of today with the same curious sensations of experience now in reading of Salem witchcraft.

The surest sign that true reform will come in the future is that it is already coming. Twenty years ago men were prominent in public life who openly did things that would absolutely damn a public man of today. There is no doubt that there are honored public men today who resort to political subterfuges that their successors of twenty years hence will not dare to consider. The world grows and it gets better every day. The "good old days" were generally bad. When the United States comes to its full estate, when there are 335,000,000 Americans in the year 2000, it will be the greatest nation under the sun. But more than great in wealth and power—it will be great in the honesty of its government and the purity of its people.

**LOUIS EPPINGER DIES IN JAPAN**  
SAN FRANCISCO, June 17.—Announcement of the death of Louis Eppinger at Yokohama was received by his family in this city yesterday. He was a brother of Herman and Jacob Eppinger, and for many years conducted a merchants' cafe on Halleck street. For the last eighteen years he had been in Japan, and as the manager of the Grand Hotel at Yokohama had become one of the most successful hotel men in the Orient. Nearly all American travelers in Yokohama stayed at his hotel.

# REALTY TRANSACTIONS

Entered of Record June 25, 1908.  
Grace D Merrill by atty to David T Fleming.....A M  
John V Fernandez and wf et al to John J Abreu.....D  
Kamaka (w) et al to Antonio de Souza.....D  
Malle Sylva by Tr to T M Sylva...L  
Lee Poy to Lee Yuen Hong...Rev P A Kwong Lun Tai & Co to Lee Poy.....Ren' C P A  
Victoria Ward by atty to Gilbert Waller.....Rel  
Kina Ah Chan (w) by atty to Pien-nerr Mill Co Ltd.....L  
Kaillikole (k) to Sam Kanui.....D  
Mutl Bldg & Loan Soc of Haw Ltd to Elmer M Cheatham.....Rel  
Mutl Bldg & Loan Soc of Haw Ltd to Elmer M Cheatham.....Rel

Recorded June 16, 1908.  
Yee Yick Wui by tr to S Kodama, L; lands and premises, No 148 Hotel St, Honolulu, Oahu. 5 yrs at \$45 per mo. B 298, p 286. Dated Apr 19, 1905.  
Gear, Lansing & Co by trs to Mrs Keola Aylett, D; lots 5, 7 and 9, blk 30, Kaimuki Tract, Honolulu, Oahu. \$2160. B 299, p 454. Dated Dec 15, 1904.  
Tr of Theodore F Lansing, by reg, Notice of decree of title in land reg. court case No. 69 (Koolauapo, Oahu). B 304, p 245. Dated June 15, 1908.  
Keone Kaiaua (w) to David Kaalekahi et al, D; int in por R P (gr) 1189, Kalama 5, S Kona, Hawaii. \$10. B 299, p 451. Dated Jan 19, 1903.  
Pipine Kanakanui and wf to Henry Martinson, D; R P 3635, 3 pcs land, bldgs, livestock, etc., Waiomao, etc, Kau, Hawaii. \$150. B 299, p 452. Dated June 13, 1908.  
Henry Martinson to Pilmoku Kanakanui (w), D; R P 3635, 3 pcs land, bldgs, livestock, etc, Waiomao, etc, Kau, Hawaii. \$190. B 299, p 453. Dated June 13, 1908.

Recorded June 17, 1908.  
Wm Mahuka and wf to Henry Waterhouse Tr Co Ltd, D; R P 38, blk 721 and por R P 5630, blk 191, ap 4, King and Merchant sts, Honolulu, Oahu. \$25,100. B 299, p 458. Dated Aug 6, 1907.  
Maria G Sabola and hsb to Jose Eduard, D; por R P 4966, blk 8138, Holoaloa, Kona, Hawaii. \$150. B 299, p 457. Dated Apr 22, 1908.  
S B Kaleo Haina and wf to Hamakua Mill Co, L; int in gr 2450, Kaula, Hamakua, Hawaii. 10 yrs at \$138 per y. B 298, p 288. Dated June 4, 1908.  
Leong Young to Emilie Hundley, D; int in R P 6921, blk 4987, Anahola, Koolau, Kauai. \$65. B 299, p 456. Dated June 10, 1908.

## BALL TICKETS.

Tickets for the Atlantic fleet ball can be procured at the following places:  
W. W. Dimond Co., Ltd.  
Chambers Drug Co., Ltd.  
Bergstrom Music Co., Ltd.  
Hollister Drug Co., Ltd.  
Benson, Smith & Co., Ltd.  
M. McInerney, Ltd.  
M. A. Gunst & Co., Ltd.  
Wall, Nichols Co., Ltd.  
Hawaiian News Co., Ltd.

## By Authority

### NOTICE.

**PAYMENT OF WATER RATES.**  
As provided for in Chapter 45 of the Revised Laws of Hawaii, 1905, all persons holding water privileges or those paying water rates are hereby notified that the water rates for the six (6) months ending December 31, 1908, will be due and payable on the first day of July, 1908.

On all such rates remaining unpaid on July 15, 1908, an additional charge of 10 per cent. will be made. All privileges upon which rates remain unpaid on August 15, 1908, are subject to immediate shut-off without further notice.

Rates are payable at the office of the Honolulu Water Works, Capitol Building. J. M. LITTLE, Superintendent of the Honolulu Water Works.  
June 19, 1908.  
8070—June 19, 20, 21, 22, 23, 24, 25, 26, 27, 28, 29, 30.

### TERRITORY OF HAWAII.

Treasurer's Office, Honolulu, Oahu. In Re Dissolution of the Rice Growers and Factors' Company, Limited. Whereas, The Rice Growers and Factors' Company, Limited, a corporation established and existing under and by virtue of the laws of the Territory of Hawaii, has, pursuant to law in such cases made and provided, duly filed in this office a petition for the dissolution of the said corporation, together with a certificate thereto annexed as required by law:

Now, therefore, Notice is hereby given to any and all persons that have been or are now interested in any manner whatsoever in the said corporation, that objections to the granting of the said petition must be filed in this office on or before 12 o'clock noon of June 29, 1908, and that any person or persons desiring to be heard thereon must be in attendance at the office of the undersigned, in the Capitol Building, Honolulu, at 12 o'clock of said day, to show cause, if any, why said petition should not be granted.

A. J. CAMPBELL, Treasurer, Territory of Hawaii. Honolulu, April 16, 1908.  
8018—Apr. 21, 28; May 5, 12, 19, 26; June 2, 9, 16, 23, 26.

**SHERIFF'S SALE NOTICE.**  
Under and by virtue of a Writ of Execution issued out of the Circuit

Court of the First Judicial Circuit, Territory of Hawaii, on the 20th day of May, A. D. 1908, in the matter of Robert W. Shingle, plaintiff, against The Hotel Baths, Limited, defendant, I did at Honolulu, Island and County of Oahu, Territory of Hawaii, on the 8th day of June, A. D. 1908, levy upon and shall offer for sale and sell at public auction to the highest bidder at the Police Station, Kalakaua Hale, in said Honolulu, at 12 o'clock noon of Monday, the 13th day of July, A. D. 1908, all the right, title and interest of the said The Hotel Baths, Limited, defendant aforesaid, in and to all the following described property unless the sum of Eight Thousand Six Hundred and Forty-Three and 95-100 (\$8643.95) Dollars, that being the amount for which said Execution was issued, together with interest, costs, my fees and expenses are previously paid.

## PROPERTY TO BE SOLD.

First: That certain sub-lease from W. A. Kinney to the said The Hotel Baths, Limited, defendant aforesaid, dated May 1, 1906, recorded in the office of the Registrar of Conveyances in said Honolulu, in book 288, pages 146-150 for the term commencing with May 1, 1906, and ending with November 30, 1930, covering property which in said sub-lease is described as follows: "All that piece or parcel of land situate on the makai side of Hotel street between Alakea street and Bishop street, in Honolulu aforesaid, demised to the lessor by Margaret Cowes by lease dated the 28th day of October, 1905, and recorded in the Registry of Deeds, in said Honolulu, in book 283 on pages 277 and following;" and the property by said sub-lease demised.

Second: That certain lease from von Hamm-Young Co., Ltd., a corporation, to the said The Hotel Baths, Limited, defendant aforesaid, dated September 1, 1906, recorded in the office of said Registrar in book 288, pages 174 to 179, for the term of twenty-five (25) years and five (5) months commencing from September 1, 1906, covering property which in said last mentioned lease is described as follows: "All that certain piece or parcel of land (part of the land described in R. P. 54, L. C. A. 644, to William Smith Dany) situate near the west corner of Hotel and Alakea streets," in said Honolulu, containing an area of Nine Hundred and Forty-Three (943) square feet more or less and in said lease more particularly described; and the property by said lease from said von Hamm-Young Co., Ltd., demised.

Third: The improvements on the said premises consisting of one frame and galvanized iron building enclosing and including a concrete swimming tank of about 75 feet by about 45 feet and two (2) bowling alleys.

Fourth: 45 pair ladies' bath suits, 6 dozen towels, 2 cash registers, 49 chairs, 10 bowling balls (small), 14 bowling balls (large), 2 sets ten pins (old), 1 set ten pins (new), 1 set duck pins (old), 2 sets duck pins (new), 3 score boards, 1 shuffle board, 2 glass show cases, 1 dozen spittoons, 1 counter, 1 clothes wash tub, 1 wash board, 1 clothes wringer, 66 stools, 4 small mirrors, 1 8-day clock, 1 set traveling rings, 1 trapeze bar, 1 slide, 1 springing board, 2 step platforms, 8 benches, 1 bamboo screen, 4 bedsteads, 3 mosquito nets, 11 pillows and slips, 24 sheets, 4 counterpanes, 3 small grass rugs, 5 burlap curtains, 1 pair Howe scales, 6 steamer chairs, 2 large grass rugs, 1 center table, 3 blankets, 2 bath robes, 21 runners, 1 water cooler, 150 feet 1-inch hose, 3 door mats, 2 waste paper baskets and 1 large straw basket.

Terms Cash. Transfer papers at expense of purchaser.

C. P. LAUKEA, County Sheriff. Dated Honolulu June 10, 1908. 8062—June 11-26, July 11

## MEETING NOTICE.

HAWAIIAN MAHOGANY LUMBER CO., LTD.  
A special meeting of the stockholders of the Hawaiian Mahogany Lumber Company, Limited, will be held at the office of the Hawaiian Development Company, Limited, on Monday, June 29, 1908, at 9 o'clock a. m. By order of the Board of Directors. A. N. CAMPBELL, Secretary.

## SUMMER READING

Choice Books; Low Prices.  
E. HERRICK BROWN & CO. 907-909 Alakea Street.

## PURE-BRED POULTRY FOR SALE.

EGGS from choice stock in season. Address: W. C. WOODEN, Box 658, Honolulu

## ISLAND HORSES FOR SALE CHEAP

Club Stables Telephone 109

# Oahu Railway TIME TABLE

## OUTWARD.

For Waianae, Waiialua, Kahuku and Way Stations—9:15 a. m., \*8:20 p. m. For Pearl City, Ewa Mill and Way Stations—7:30 a. m., \*9:15 a. m., \*11:05 a. m., \*2:15 p. m., \*3:20 p. m., \*5:15 p. m., \*9:30 p. m., \*11 p. m. For Wahiawa—9:15 a. m. and \*9:15 p. m.

## INWARD.

Arrive Honolulu from Kahuku, Waiialua and Waianae—\*8:36 a. m., 8:51 p. m. Arrive Honolulu from Ewa Mill and Pearl City—\*7:45 a. m., \*8:36 a. m., \*10:38 a. m., \*1:40 p. m., \*4:31 p. m., \*7:31 p. m., \*9:30 p. m. Arrive Honolulu from Wahiawa—\*8:36 a. m. and \*8:31 p. m.

\*Daily. \*Ex. Sunday. \*Sunday Only. The Haleiwa Limited, a two-hour train (only first-class tickets honored), leaves Honolulu every Sunday at 8:22 a. m.; returning, arrives in Honolulu at 10:10 p. m. The Limited stops only at Pearl City and Waianae. P. DENISON, F. C. SMITH, Superintendent. G. P. & T. A.

# KOOLAU RAILWAY

## TOWARD KAHUKU.

| Station  | Distance | Daily | Daily | Ex. Sunday | Rate Sat. Sun. and Holidays | Kahuku | Kahuku |
|----------|----------|-------|-------|------------|-----------------------------|--------|--------|
| Cahana   | 6.00     | 11.00 | 1.32  |            |                             | to     | to     |
| Punaluu  | 2.17     | 11.11 | 1.42  |            |                             | \$ .10 | \$ .06 |
| Haleaha  | 8.00     | 11.17 | 1.46  |            |                             | .15    | .10    |
| Kalaupuu | 4.12     | 11.23 | 1.50  |            |                             | .20    | .15    |
| Haulaia  | 4.89     | 11.30 | 1.53  |            |                             | .25    | .20    |
| Kalapaun | 6.27     | 11.36 | 1.58  |            |                             | .30    | .25    |
| Kala     | 8.45     | 11.42 | 2.04  |            |                             | .40    | .30    |
| Arrive   |          |       |       |            |                             |        |        |
| Kahuku   | 11.00    | 11.53 | 2.15  | .55        | .40                         |        |        |

## TOWARD KAHANA.

| Station   | Distance | Daily | Daily | Ex. Sunday | Rate Sat. Sun. and Holidays | Kahana | Kahana |
|---|----------|-------|-------|------------|-----------------------------|--------|--------|
| Kahuku  | 6.00     | 12.40 | 3.00  |            |                             | to     | to     |
| Lale  | 2.55     | 12.49 | 3.12  |            |                             | \$ .15 | \$ .10 |
| Kalapaun  | 4.73     | 12.57 | 3.22  |            |                             | .25    | .18    |
| Haulaia   | 6.11     | 1.02  | 3.28  |            |                             | .30    | .20    |
| Kalaupuu  | 6.87     | 1.05  | 3.35  |            |                             | .35    | .25    |
| Haleaha   | 8.00     | 1.09  | 3.41  |            |                             | .40    | .30    |
| Punaluu   | 8.83     | 1.13  | 3.47  |            |                             | .45    | .35    |
| Kahana  | 11.00    | 1.23  | 3.58  | .55        | .40                         |        |        |
| Connecting at Kahuku with the O. R. & L. Co.'s 9:15 a. m. train from Honolulu.  |          |       |       |            |                             |        |        |
| Returning, leaves Kahana at 1:32 p. m., connecting with the afternoon train for the city which leaves Kahuku at 2:20. |          |       |       |            |                             |        |        |

JAMES J. DOWLING, Supt. R. S. POLLISTER, G. P. & T. Agt.

# Fire Insurance

## THE B. F. DILLINGHAM CO., LTD.

General Agents for Hawaii  
Atlas Assurance Company of London. New York Underwriters' Agency. Providence Washington Insurance Company.

## WM. G. IRWIN & CO., LTD.

SUGAR FACTORS AND COMMISSION AGENTS  
Wm. G. Irwin, President and Manager John D. Spreckels, First Vice-President W. M. Giffard, Second Vice-President H. M. Whitney, Treasurer Richard Ivers, Secretary W. F. Wilson, Auditor  
Oceanic Steamship Co., San Francisco, Cal. Western Sugar Refining Co., San Francisco, Cal. Baldwin Locomotive Works, Philadelphia, Pa. Newall Universal Mill Co., Manufacturers of National Cane Shredder, New York, N. Y. Pacific Oil Transportation Co., San Francisco, Cal.

## Wm. G. Irwin & Co., Ltd.

AGENTS FOR THE  
Royal Insurance Co., of Liverpool, England. Scottish Union & National Insurance Co., of Edinburgh, Scotland. Wilhelms of Magdeburg General Insurance Co. Commercial Assurance Co., Ltd., of London.

## C. BREWER & CO., LTD.

SUGAR FACTORS AND COMMISSION MERCHANTS.  
LIST OF OFFICERS:  
C. M. Cooke, President; George M. Robertson, Manager; E. F. Bishop, Treasurer and Secretary; F. W. Macfarlane, Auditor; P. C. Jones, C. M. Cooke, J. R. Galt, Directors.

## At Thrum's Book Store

Commercial, Official and Society Stationery, Best Typewriter Papers, Many Books by Good Writers.  
HAWAIIAN FOLK TALES—the only collection of local legends, finely illustrated, price \$1.75.  
HAWAIIAN ANNUAL—the recognized reference book of island information, price 75 cents.

WORLD'S NEWS DAILY

# SPECIAL SALE

## Flag, Pole and Halyard, Flag 5x8

PRICE - - - \$3.85  
Warranted Fast Colors Also flags of other sizes

## Capital Decorating Co.

920 FORT STREET.

## Best Cigars

## Best Tobacco

## Best Store

## MYRTLE CIGAR STORE

## Naniwa & Co.

CONTRACTORS AND BUILDERS  
MASONS, CARPENTERS, DRAYMEN  
Room 180 - - Magoon Bldg.

## BANZAI!

We have the best Japanese importations in SILKS and CREPES, NOVELTIES, etc. AMERICAN and PANAMA HATS—For Ladies and Gentlemen

## IWAKAMI, Hotel Street

## Send Your Suit

To the EAGLE DYING AND CLEANING WORKS  
Telephone 575. FORT STREET.

## Union Electric Co.

69 BERETANIA STREET Telephone 315  
House Wiring - Bells - Dry Cells  
Special attention to installing private telephones and general repair work.  
Dated Honolulu, February 12, 1908.

## Am I in It?

Well, I guess I am when it comes to doing the RIGHT KIND of painting or artistic paperhanging. I can show you the latest ideas in house decoration and execute them at a reasonable cost.

## STANLEY STEPHENSON

137 King. Phone 428.  
ALWAYS RIGHT - S. S. SIGNS.

## ALL KINDS OF Rubber Goods

GOODYEAR RUBBER CO.  
R. H. PEASE - - - President  
573-575-577-579 Market Street, San Francisco, Cal., U. S. A.



**FINE OFFICES FOR RENT**  
IN THE  
**Judd Building**  
with Electric Lights, Janitor and Elevator Service.  
Enquire  
**Hawaiian Trust Company, Ltd.**  
923 FORT STREET

**Bishop Trust Co., Ltd.**  
buys and sells Hawaiian Stocks and Bonds. Makes Loans on approved security.  
Invites correspondence in reference to investments in the Islands, or the condition of any Hawaiian Plantation.  
Acts as Trustee, Executor, or Guardian.  
Collects interest and dividends and manages estates generally.  
Fire Insurance.  
Safe Deposit Boxes.

**Bishop Trust Co. Building**  
824 Bethel Street,  
HONOLULU.

**William O. Smith Trust Department**  
Estates Managed, Revenues Collected, Loans and Investments Made.  
**Insurance**  
AGENT FOR ENGLISH-AMERICAN UNDERWRITERS  
**Real Estate**

**FOR RENT.**  
T. W. Hobron premises on Nuuanu Avenue, now occupied by Mr. Richard M. Isenberg. Partially furnished. Beautiful grounds; large, spacious house.  
**FOR RENT.** Large house, Beretania street, next to Queen's Hospital.  
**FOR SALE.** Lot with two cottages, corner Miller and Beretania streets.  
**FOR SALE.** Large house, Beretania street, next to Queen's Hospital.  
**FOR SALE.** Lot in Palolo tract.  
**FOR SALE.** House and Lot, Kewalo.  
**FOR SALE.** Lots in Puunui tract.  
**FOR SALE.** Houses and Lots in Palama.  
**FOR SALE.** Lots in Nuuanu Valley and Kaimuki.  
**FOR SALE.** House and Lot, King street, near Thomas Square.

HAVE YOU TRIED  
**ISLETON BUTTER?**  
**J. M. LEVY & CO.**  
Phone 76

**LOCAL OFFICE OF THE UNITED STATES WEATHER BUREAU.**  
Honolulu, Thursday, June 25, 1908.

| Year    | THERMO |     | WIND |     | Direction | Average Velocity |
|---------|--------|-----|------|-----|-----------|------------------|
|         | Max    | Min | Max  | Min |           |                  |
| 1900    | 80.04  | 65  | 78   | 78  | 04        | 77               |
| 1901    | 80.00  | 65  | 72   | 78  | 08        | 68               |
| 1902    | 80.02  | 65  | 78   | 79  | 3         | 71               |
| 1903    | 80.01  | 64  | 71   | 78  | 02        | 66               |
| 1904    | 80.06  | 62  | 74   | 78  | 00        | 64               |
| 1905    | 80.02  | 63  | 70   | 70  | 7         | 75               |
| 1906    | 80.10  | 61  | 71   | 78  | 14        | 72               |
| 1907    | 80.06  | 64  | 73   | 78  | 00        | 72               |
| 1908    | 80.06  | 62  | 72   | 78  | 02        | 8                |
| Average | 80.03  | 63  | 72   | 78  | 04        | 70               |

**TIDES, SUN AND MOON.**  
Days June  
High Tide  
Low Tide  
Sun Rise  
Sun Set  
Moon Rise  
Moon Set

**METEOROLOGICAL RECORD.**  
Issued Every Sunday Morning by the Local Office, U. S. Weather Bureau.

| Date    | THERMO |       | WIND |     | Direction | Average Velocity |
|---------|--------|-------|------|-----|-----------|------------------|
|         | Max    | Min   | Max  | Min |           |                  |
| June 22 | 80.00  | 61.10 | 4    | 32  | 6         | 19.6             |
| 23      | 82.50  | 61.5  | 5    | 32  | 7         | 30.6             |
| 24      | 83.30  | 61.8  | 8    | 10  | 8         | 35.3             |
| 25      | 82.70  | 60.6  | 4    | 10  | 8         | 35.3             |
| 26      | 82.70  | 60.6  | 4    | 10  | 8         | 35.3             |
| 27      | 83.30  | 61.2  | 8    | 10  | 8         | 35.3             |
| 28      | 84.08  | 61.3  | 8    | 10  | 8         | 35.3             |

**MARINE**  
**SPECIAL STEAMERS.**  
The steamer Hall, which will arrive on a special trip today with sugar, will sail this evening for Waimea, taking Secretary Garfield and party to the Garden Isle. The steamer Kinanu will also make a special trip to Honolulu, leaving Kaula on Saturday afternoon with the party, so that they will arrive back again Sunday morning.

**CLEANING BOILERS.**  
A report has been circulated that the boilers of the cruiser St. Louis have been clogged by the use of salt water on the run to this port. It has been said that on this account she will not be ready to use on the Kaula trip by Secretary Garfield. The story has been denied by the officers, who say she is ready to go at a moment's notice and that only the regular cleaning that is necessary after a vessel which has been virtually out of commission is rushed into use again, is being done.

There certainly is a great difference in the appearance of the ship now and when she arrived here. Commander Gleaves, who is one of the most competent commanders in the Navy, and for a long time was in command of the President's yacht, at the Wayflower, has had his men hard at work since the coating operations were finished, with the paint brushes and holy stones, until now the big boat is like a new pin. She will leave here for California Sunday afternoon, so as to land the Secretary of the Interior in San Francisco on the morning of July 5.

**NEW MOKOLII.**  
A new freight and passenger boat is soon to be placed in commission in the island waters by Captain Miller. She will have gasoline for motive power and will divide the trade of the outside ports of Oahu with the Cummins. There will not be a great deal of competition, however, as the Cummins has about all she can do at most times of the year handling Irwin & Co. sugar and freight to the windward. The new boat will be the old Mokoli, which has been granted a new lease of life, and will have a one-hundred horsepower Standard gas engine installed as soon as it arrives here. The engine has been ordered and it will be on the ground in about three months. Work of erecting a shelter deck on the Mokoli began yesterday and she will be quite a trim little boat when finished. It is thought that she will be able to handle about one hundred and fifty tons of freight at a time and on account of her shallow draught will be handy in Kaneohe bay or at Pearl Harbor. She will be fitted up for towing also, and with passenger accommodations, so that she may be used comfortably for a trip to Pearl Harbor and back. Captain Miller has not yet made up his mind what he will call the new boat.

**PROSPECTING TOUR.**  
The James Makee will sail for Mokolai and Maui on a prospecting tour this afternoon or tomorrow. For Mokolai she will take several mules and wagons for use in the work of erecting the Kalaupapa light. After finishing her work at the Settlement she will go to Kahului, where her work will be to establish the new harbor lines there. This accomplished, she will go on the prospecting tour looking for sand banks, so that they may be exploited with a view to getting sand for use in the fortifications. She will be gone several days.

**BEHIND TIME.**  
About eighty miles from port, four hours and a half after leaving, the Tenyo Maru wireless that she was in latitude N. 21 degrees 51 minutes and longitude W. 156 degrees 49 minutes. Her speed would have been about sixteen knots. This will have to be greatly improved to have her make the time she expected to make to San Francisco in four days and eight hours. To do this she would have to maintain an average speed of a little over eighteen knots.

**SHIPPING NOTES.**  
The Claudine and Helene put their sugar into the Mexican yesterday. The schooner Borealis is loading sugar at Mahukona. She will get a full load. The steamer Maui is expected to arrive here tomorrow from Hawaii with sugar.  
The Kinanu, with her usual large passenger list and heavy freight, sailed on time for Kaula last evening.  
The steamers Mauna Loa, from Hawaii and Maui ports, and the Hall, Ke Au Hou and Nihau, from Kaula, will all be in this morning with sugar.  
The schooner Honolulu, which was towed out of Hana, Maui, on Saturday last, went to Honolulu and finished loading sugar and sailed from there yesterday for San Francisco.  
The steamer Helene, from Hamakua and Kawaihae, brought several passengers yesterday. Among them was Ernst Giesecke, whose wife was knocked down and seriously injured by an automobile Monday afternoon.

**MOVEMENTS OF SHIPPING.**  
ALABAMA, U. S. S., Veeder, from Hon. for Guam, June 22.  
ALAMEDA, O. S. S., Dowdell, from Hon. for S. F., June 24.  
ALASKAN, A-H. S. S., Nichols, from Seattle, ar. Hon., June 22.  
ALEXANDER ISENBURG, Ger. sp., from Bremen for Hon., Mar. 27.  
ALICE COOKE, Am. schr., ar. Hon. from Port Ludlow, June 4.  
AMY TURNER, Am. bk., Warland, from Hon. for S. F., June 11.  
AORANGI, Br. S. S., Phillips, ar. Sydney from Hon., June 19.  
ASTRAL, Am. sp., Dunham, from Hilo for Delaware Breakwater, April 6.  
ATLAS, Am. sp., from Kahului for Delaware Breakwater, Apr. 9.  
ALBERT, Am. bk., from Port Townsend for Hon., June 15.  
ASIA, P. M. S. S., from S. F. for Hon., June 23.  
AMERICA MARU, T. K. K. S. S., Filmer, ar. Yokohama June 5, hence, May 25.  
ANNIE E. SMALE, Am. schr., from Newcastle for Hon., Apr. 23.  
ANNIE JOHNSON, Am. bk., ar. S. F. from Hilo, June 19.  
ANDREW WELCH, Am. bk., from Hon. for S. F., June 25.  
AURORA, Am. bkt., Samuelson, ar. S. F. from Hilo, June 20.  
ALICE McDONALD, Am. schr., from Hon. for Port Townsend, June 14.  
ARIZONAN, from S. F. ar. Seattle, June 21.  
BOREALIS, Am. schr., ar. Mahukona from S. F., June 14.  
BUFOED, U. S. A. T., ar. Hon. from S. F., June 14.  
BUCRANIA, Br. S. S., from Newport News, ar. Hon., June 19.  
CRESCENT, Am. schr., from Newcastle, for Hon., May 25.  
CARADALE, Br. sp., from Newcastle for Hon., June 4.  
CHINA, P. M. S. S., from Hon. for Yokohama, June 8.  
CORONADO, Am. bkt., Potter, ar. Hon. from S. F., June 3.  
COLUMBIAN, A-H. S. S., Colcord, from Hilo for Salina Cruz, June 20.  
CELTIC MONARCH, Br. sp., Llewellyn, from Hon. for San Francisco, May 15.  
CARAVELLAS, Fr. S. S., ar. S. F. from Hon., June 25.  
DEFENDER, Am. schr., from Hon. for Honolulu, June 22.  
DIX, U. S. A. T., Ankers, from Hon. for Manila, June 3.  
E. F. WHITNEY, Am. bk., ar. S. F. from Kahului, June 19.  
ENTERPRISE, M. Nav. Co.'s S. S., from S. F. for Hilo, June 15.  
EDWARD SEWALL, Am. sp., Quick, from Hon. for Delaware Breakwater, April 6.  
FOOHNG SUEY, Am. bk., Banfield, from Elelee for Delaware Breakwater, May 22.  
FLAURENCE WARD, Am. schr. aux., Piltz, ar. Hon. from Midway, May 26.  
GEO. E. BILLINGS, Am. schr., Birkholm, ar. off port June 3 from Newcastle, sailed same Elelee ar. June 13.  
GERARD C. TOBEY, Am. bk., ar. S. F. from Hilo, June 9.  
GEORGE CURTIS, Am. bk., Herbert, from Hon. for S. F., June 1.  
H. C. WRIGHT, Am. schr., from Mahukona for S. F., June 10.  
HILONIAN, M. N. Co. S. S., Johnson, ar. S. F. from Hon., June 24.  
HONOIPI, Am. schr., from Honolulu for S. F., June 25.  
HELENE, Am. schr., Thompson, ar. S. F. from Hon., June 10.  
HOLYWOOD, Br. bk., ar. Hon. from Junn, May 7.  
IRMGARD, Am. bkt., from Hon. for S. F., June 14.  
IROQUOIS, U. S. S., Carter, ar. Hon.

**Registered Numbers of Automobiles**  
There have been a number of requests for the numbers which are required by law to be placed on the rear of automobiles operated in this county, and the following list gives the information desired up to date, according to the records of Clerk Chas. H. Rose of the Police Department:

| No. | Name                    | No. | Name                     |
|-----|-------------------------|-----|--------------------------|
| 1   | G P Wilder              | 119 | S G Wilder               |
| 2   | S M Ballou              | 120 | Dr C B Wood              |
| 3   | D P R Isenberg          | 121 | C J Carter               |
| 4   | J A McCandless          | 122 | R W Anderson             |
| 5   | E Henriques             | 123 | E H Wodehouse            |
| 6   | C M Cooke               | 124 | Francis Gay              |
| 7   | C H Cheal               | 125 | A J Lowrey               |
| 8   | W H Baird               | 126 | Haw. Fer. Co.            |
| 9   | G Schuman               | 127 | R D Mead                 |
| 10  | F E Richardson          | 128 | R W Perkins              |
| 11  | E F Bishop              | 129 | F C Atherton             |
| 12  | R C Ingram              | 130 | F T Williams             |
| 13  | Von Hamm                | 131 | A F Afong                |
| 14  | L M Whitehouse          | 132 | C H Cooke                |
| 15  | S G Wilder              | 133 | Mrs W B Brinckerhoff     |
| 16  | J R Galt                | 134 | R W Shingle              |
| 17  | E J Lord                | 135 | L-L S. N. Co.            |
| 18  | Mutual Tel Co           | 136 | J L Renton               |
| 19  | Hackfeld & Co           | 137 | George Davies            |
| 20  | J P Cooke               | 138 | C B Cooper               |
| 21  | Guy Owens               | 139 | R B Catton               |
| 22  | .....                   | 140 | W F Dillingham           |
| 23  | .....                   | 141 | Lewis Abrams             |
| 24  | Von Hamm                | 142 | J C Quinn                |
| 25  | Von Hamm                | 143 | W T Monsarrat            |
| 26  | J Lightfoot             | 144 | W J Dyer                 |
| 27  | Fred Harrison           | 145 | W D Baldwin              |
| 28  | A Waterhouse            | 146 | A N Sinclair             |
| 29  | O R Williams            | 147 | G E Schaefer             |
| 30  | G Herbert               | 148 | E F Bishop               |
| 31  | R W Anderson            | 149 | Chas Bartlett            |
| 32  | H H Williams            | 150 | J B Castle               |
| 33  | Jas Dole                | 151 | G P Denison              |
| 34  | J H Hertsche            | 152 | A W Seabury              |
| 35  | Dr W L Moore            | 153 | Young Bros               |
| 36  | G P Denison             | 154 | W T Lucas                |
| 37  | J E Young               | 155 | P C Jones                |
| 38  | Dr O E Wall             | 156 | O A Hartwell             |
| 39  | E H Paris               | 157 | T H Petrie               |
| 40  | H Fujiwara              | 158 | George Ross              |
| 41  | W Vredenberg            | 159 | E D Tenney               |
| 42  | C B Cooper              | 160 | Hustace-Peak Co          |
| 43  | W W Goodale             | 161 | A G Hodgins              |
| 44  | E J Young               | 162 | R M Isenberg             |
| 45  | E E Thompson            | 163 | Dr R J McGittigan        |
| 46  | E H Lewis               | 164 | J H Hertsche             |
| 47  | E H Lewis               | 165 | Theo McLeod              |
| 48  | E H Lewis               | 166 | Mrs Alexander            |
| 49  | E H Lewis               | 167 | J Fleming                |
| 50  | G R Carter              | 168 | Henry Froelich           |
| 51  | O McDougall             | 169 | F W Macfarlane, Jr       |
| 52  | O E McCarthy            | 170 | Mrs George R Carter      |
| 53  | A Irvine                | 171 | J W Donald               |
| 54  | Alex Young              | 172 | E M Magoon               |
| 55  | Sam Wight               | 173 | John Little              |
| 56  | Dr F E Clark            | 174 | B C Kennedy              |
| 57  | .....                   | 175 | W L Whitney              |
| 58  | Alfred Cooper           | 176 | C W Otwell               |
| 59  | E C Waterhouse          | 177 | W M Giffard              |
| 60  | C J Hutchins            | 178 | Mrs B M Allen            |
| 61  | S Bickerton             | 179 | Hon. Brew. & Malt Co.    |
| 62  | T C Davies              | 180 | Schuman Carriage Co      |
| 63  | H G Wootton             | 181 | D P R Isenberg           |
| 64  | J T Wayson              | 182 | Schuman Carriage Co      |
| 65  | S M Ballou              | 183 | George II Brown          |
| 66  | R W Sweet               | 184 | Assoc. Garage            |
| 67  | C Hedemann              | 185 | J E Daggitt              |
| 68  | W M Campbell            | 186 | S B Kingsbury            |
| 69  | G C Beckley, Jr         | 187 | C M Cooke                |
| 70  | W Weinrich, Jr          | 188 | W F Brooke               |
| 71  | J A McCandless          | 189 | Nakamura                 |
| 72  | L G Kellogg             | 190 | Kurisasi                 |
| 73  | L G Kellogg             | 191 | F W McFarlane, Jr        |
| 74  | L G Kellogg             | 192 | Carl Hedemann            |
| 75  | .....                   | 193 | E J Lord                 |
| 76  | R C Stackable           | 194 | Thos A White             |
| 77  | Trent Trust Co          | 195 | F E Thompson             |
| 78  | J A Gilman              | 196 | George Ross              |
| 79  | Victor Hurd             | 197 | L F Alvarez              |
| 80  | Von Hamm                | 198 | E K Fairchild            |
| 81  | Andrew Adams            | 199 | F W Macfarlane           |
| 82  | H Waterhouse            | 200 | Geo Herbert              |
| 83  | Henry N Almy            | 201 | S Bickerton              |
| 84  | Judge Hartwell          | 202 | A Lewis, Jr              |
| 85  | Von Hamm                | 203 | E A Davis                |
| 86  | E O White               | 204 | F A Eames                |
| 87  | Von Hamm                | 205 | J F Morgan               |
| 88  | G R Carter              | 206 | Singer Sewing Machine Co |
| 89  | J S B Pratt             | 207 | R W Shingle              |
| 90  | E H Lewis               | 208 | S H Wadhams              |
| 91  | J T Warren              | 209 | J C Quinn                |
| 92  | Dr M Oyama              | 210 | W W Goodale              |
| 93  | Captain E H Humphrey    | 211 | J Waterhouse             |
| 94  | W W Goodale             | 212 | J H Magoon               |
| 95  | Burrell Construction Co | 213 | A H Afong                |
| 96  | J B Castle              | 214 | T L Peak                 |
| 97  | H F Wichman             | 215 | Manned Reis              |
| 98  | H L Kerr                | 216 | Dr M Bornham             |
| 99  | Dr Hoffmann             | 217 | C P L Ladin              |
| 100 | Conrad C von            | 218 | H Castle Coleman         |
| 101 | J J Belser              | 219 | E C Waterhouse Laundry   |
| 102 | G P Cooke               | 220 | J R Judd                 |
| 103 | A G Hodgins             | 221 | E Jaeger                 |
| 104 | H H Lillis              | 222 | E M Seville              |
| 105 | Sanitary Steam          | 223 | T J Quinn                |
| 106 | Samuel Parker           | 224 | Miss A Macfarlane        |
| 107 | Haw. Elec. Co.          | 225 | E C Cofor                |
| 108 | H G Dillingham          | 226 | G S Wells                |
| 109 | J D Kennedy             | 227 | A J Gonsalves            |
| 110 | H V Murray              | 228 | J Waller                 |
| 111 | Dr W G Rogers           | 229 | C H Bellina              |
| 112 | C L Wright              | 230 | Francis Gay              |
| 113 | Hon. Gas Co.            | 231 | Mrs B von Hamm           |
| 114 | C H Cooke               | 232 | .....                    |
| 115 | F B Damon               | 233 | .....                    |
| 116 | Von Hamm                | 234 | .....                    |
| 117 | E A Knudsen             | 235 | .....                    |
| 118 | S R Jordan              | 236 | .....                    |
| 119 | E M Magoon              | 237 | .....                    |

**FAIRMONT HOTEL**  
SAN FRANCISCO  
The most superbly situated hotel in the World  
overlooking the entire Bay of San Francisco, the Golden Gate, and the rapidly rebuilding city  
Convenient to shopping, theatre, business and railroad centers.  
**THE EPITOME OF HOTEL EXCELLENCE.**  
combining all the conveniences and luxuries a good hotel should have, with many unique, original and exclusive features.  
Entirely re-furnished and refitted at a cost of over three million dollars.  
Social center of the city—headquarters of the Army and Navy—Scene of most of the social festivities.  
**ACCOMMODATIONS FOR 1,000 GUESTS**  
European Plan. Single rooms with bath, \$2.50 upwards. Suites, with bath, \$10.00 upwards.

**MANAGEMENT PALACE HOTEL COMPANY**  
**JOHN G. WOOLLEY Good Brushes**  
AT SARATOGA, N. Y.  
In Attendance at the Centennial Jubilee Held There.

**The Victor**  
THE HOME ENTERTAINER  
Bergstrom Music Co., Ltd.  
**Furniture**  
"PAY-A-LITTLE-AT-A-TIME."  
**J. Hopp & Co.**  
185 KING STREET.

**Wahiawa Strawberries**  
FRESH EVERY MORNING AT  
**MAY'S**  
Phone 22  
**Asters**  
ALL SHADER  
**Len Choy**  
Beretania and Smith Streets

**Mr. and Mrs. Hashimoto MASSEURS**  
RHEUMATISM, BRUISES, SPRAINS, TIKED, FEELING, and other ailments QUICKLY RELIEVED.  
444 KING STREET. Telephone 637

**LINDER DISCOURSES ON SUGAR FERTILIZATION**  
A. F. Linder, superintendent of the Mexican National Sugar Refining Company at El Potrero, one of the best sugar experts in the country, and for twenty-eight years engaged in sugar making in Hawaii, is among the visitors in the city and is stopping at the Hotel Porter.  
Discussing the sugar output and the methods of cultivation practised in Mexico as compared with the Hawaiian Islands Mr. Linder stated that while the class of sugar produced is very similar, the method of cultivation differs very much and that Mexico can with profit adopt some of the methods now in use in the islands. Irrigation and the use of fertilizers are practised in Hawaii very extensively, but one does not find any fertilizers used in Mexico, or at least only to a very limited extent. On the low lands, of course, the use of fertilizers is not necessary, but it should be used in the higher elevations with much freedom and such use would result, as it has in Hawaii, in largely increased production to the acre of cane.  
"The acreage output is being increased in Hawaii every year by this method," said Mr. Linder, "and that of Mexico should do the same."  
"The indications are most promising for a splendid crop both as regards quality and quantity for the coming year. We had good rains during what is commonly known as the dry season and everything is in the best possible shape."  
Mr. Linder states that the cultivation of sugar cane and the refining of sugar in Mexico possesses advantages over other sections. Labor is cheap and as good as in other countries and is plentiful. He expressed the opinion that Mexico, from a sugar producing standpoint, has a very wide field and with the introduction and practise of modern methods of cultivation, has a most promising future.—Modern Mexico.

### Fraternal Meetings

**SONS OF ST. GEORGE, LODGE NO. 358.**  
Meets every second and fourth Thursday at K. of P. Hall. Visiting brothers cordially invited to attend.  
J. R. COLLINS, W. P. A. G. S. KENWAY, Secy.

**SHUNG WAH LODGE NO. 4, K. of P.**  
Meets every second and fourth Tuesday at its hall, Vineyard street, at 7:30 p. m. Visiting brothers are cordially invited to attend.  
SAMUEL L. WONG, O. C. WONG KIM CHONG, K. of P. & S. R.

### Fraternal Meetings

**POLYNESIA ENCAMPMENT NO. 1, I. O. O. F.**  
Meets every first and third Friday of the month at 7:30 p. m., in Odd Fellows' Hall, Fort Street. Visiting brothers cordially invited to attend.  
O. A. SIMPSON, O. P. L. L. LA PIERRE, Secy.

**EXCELSIOR LODGE NO. 1, I. O. O. F.**  
Meets every Tuesday evening, at 7:30, in Odd Fellows' Hall, Fort Street. Visiting brothers cordially invited to attend.  
J. DUTOT, N. G. L. L. LA PIERRE, Secy.

# Get Your Gas Stove Installed

and you will know what the word enjoyment signifies.

Honolulu Gas Co., Ltd. Bishop Street

Your Grocer will sell you:-

PAU KA HANA SOAP

DRINK COCA COLA

Reduction Sale CONTINUING UNTIL JUNE 30.

LADIES' AND GENTLEMEN'S HATS K. UYEDA 1028 NUUANU AVENUE

SUPPLIES OFFICE SPECIALTIES CASH REGISTER, TYPEWRITER, ADDING MACHINE, MIMEOGRAPH and GLOBE-WERNICKE SUPPLIES CARD SYSTEMS Hawaiian Office Specialty Company, Ltd. 931 Fort Street

DENNISON'S Paper Napkins and Doylies Hawaiian News Co., Ltd.

The Owl POPULAR 5 CENT CIGAR.

M. A. Gunst & Co. Alfalfa and Sorghum Seed

Mrs. Ethel M. Taylor Telephone 339, Young Building.

Fleet Souvenirs Pictures, Folders, Badges, Canos, Booklets. In lots to the trade. HAWAII & SOUTH SEAS CURIO CO. Alex. Young Bldg.

## TERRITORY HAS NO JURISDICTION

### Demurrer Test Case Against Social Evil Denies Power of Local Courts.

A demurrer has been filed by A. S. Humphrey and J. Lightfoot in the case of the Territory versus Blanche Martin which, if sustained, may prove the stone wall against which the moral wave may beat in vain. The case is a test one to determine the power of the police to suppress the social evil, the defendant having been caught flagrante delicto and her companion having pleaded guilty in the District Court and having been fined.

An indictment was returned by the grand jury against Blanche Martin, who was arraigned under the indictment before Judge Robinson yesterday morning. The following is the demurrer filed: "The defendant demurs to the indictment against her in this case because under section 711 of the Revised Statutes of the United States the jurisdiction of the United States District Court for Hawaii of the offense charged against her in said indictment is exclusive, and

"Because section 3151, under which said indictment was found, is inconsistent with the Constitution and laws of the United States and was not continued in force by section 6 of the Organic Act of Hawaii (31 Stats. U. S. 141, C. 333, 2 Supp. R. S. 1141), and "Because there is no law of the Territory of Hawaii which constitutes the facts stated in said indictment a criminal offense."

**OTHER ARRAIGNMENTS.**  
Inagi, indicted for selling intoxicating liquors without a license, pleaded not guilty. Defendant in person. Maximiana Brillante, assault with a deadly weapon, the shooting of Ben Guerro, on June 10, reserved his plea until this morning at 9 o'clock. J. Lightfoot for defendant.

Manuel Cruz, carnally abusing a female child under the age of ten years, will plead this morning and his case may go to trial without jury. The County Attorney's department will prosecute and J. A. Magoon appear for the defense. The alleged offense took place in Honolulu on November 15, last year. Fugita, indicted for maiming, will be arraigned this morning for plea. In the indictment he is charged with having bitten off Henry Leslie's ear in a fight on June 3, S. F. Chillingworth is defending.

**CASES MAY GO OVER.**  
It is probable that these cases may all go over until the fall term, the life of the present term so far as jury trials are concerned ending on Tuesday next. The case of the Territory versus John Marks, larceny in the first degree, is set for trial on Monday, and is expected to be hard fought, following to last for some weeks, while following it is set another case against Marks, that of perjury.

**TERRITORY VS. MAGO.**  
The case of the Territory versus Mago, rape, which is the third case on the calendar for the present term and which has been going over from the day it was set down for trial, January 29, is supposed to come up today.

### WHAT IT WILL DO.

A woman buys a sewing machine or what it will do; not as an article of furniture. A man carries a watch to tell him the time; not as an investment of surplus capital. The same principle when one is ill. We want the medicine or the treatment which will relieve and cure. The friend in need must be a friend indeed, something, or somebody, with a reputation. There should be no guesswork in treating disease. People have the right to know what a medicine is, and what it will do, before they take it. It must have behind it an open record of benefit to others for the same diseases, a series of cures that proves its merit and inspires confidence. It is because it has such a record that **WAMPOLE'S PREPARATION** is bought and used without hesitation or doubt. Its Good Name is the solid basis for the faith the people have in it; and a good name has to be earned by good deeds. It does what you have a right to expect it to do. It is palatable as honey and contains all the nutritive and curative properties of Pura Cod Liver Oil, combined with the Compound Syrup of Hypophosphites and the Extracts of Malt and Wild Cherry. In Scrofula, Anemia, Nervous and General Debility, Influenza and Wasting Complaints, it is to be thoroughly relied upon. Doctor J. L. Carrick says: "I have had remarkable success with it in the treatment of Consumption, Chronic Bronchitis, Catarrh and Scrofulous Affections. It is of special value in nervous prostration and depraved nutrition; it stimulates the appetite and the digestion, promotes assimilation, and enters directly into the circulation with the food. I consider it a marvelous success in medicine." Every dose effective. "You cannot be disappointed in it." Sold by druggists throughout the world.

before Judge Robinson. The illness of County Attorney Cathcart, however, may result in a further postponement. L. M. Straus is named as counsel for the defense.

**HAUGHTON VERSUS HAUGHTON.**  
A suit for absolute divorce has been brought by Annie L. Haughton of Honolulu against James P. Haughton on the grounds of failure to provide. The marriage took place before the Rev. Alexander Mackintosh in September, 1905. There are no children.

**PAUL LEMKE ESTATE.**  
An inventory of the estate of the late Paul Lemke was filed yesterday by John MacCallino, J. H. Schnack and W. L. Howard, the appraisers. The value of the estate is placed at \$5,678.02, consisting of the most part of two promissory notes secured by real estate in Honolulu and Soidin, Germany, and of twenty-five shares of Ewa and five of Waialua.

**PLANTATION GETS VERDICT.**  
Judgment against the plaintiff was found yesterday in Judge De Bolt's court in the suit brought by Nellie N. Hao against the Hutchinson Plantation Company. The action was to collect \$375 alleged to be due as rental on a piece of land at Naalehu, Kau, Hawaii, used by the plantation since 1900.

W. C. Achi appeared for the plaintiff and H. E. Cooper for defendant.

**COURT NOTES.**  
United States Commissioner Hatch held a hearing yesterday in an Edmunds Act case, in which one of the witnesses was Isoy, the Japanese reported to be at the head of the movement to reopen the tenderloin. Mrs. Hutchinson, Mrs. Albert Afong and Mrs. Whiting, the latter the mother-in-law of Albert Afong, were on the witness stand yesterday in the Riggs versus Afong argument. The witnesses were called upon to relate the substance of the various conversations between the members of the Afong family in connection with the compromise and the events leading up to and following it.

A release of all claims of any kind on the lands of Kuloa, Hanapepe, Kaula, in favor of the Kauai Railway Company from W. A. Kinney, was placed on file with the Registrar of Conveyances yesterday.

A writ calling upon W. C. Achi to show cause why an execution should not be issued in connection with the judgment obtained against him as W. C. Achi & Co., for \$697.55, has been issued. This case is one of long standing, the judgment being an old one.

A jury in Judge De Bolt's court has been summoned for 10 o'clock this morning. It was Mrs. M. G. Coito, not Mrs. M. G. Simoes, who was released on suspended sentence after pleading guilty before Judge Robinson on Wednesday of running a blind pig. The case of Mrs. Simoes has only just been appealed from the District Court, where she was fined \$150 for a like offense. There is already one suspended sentence out against the sale of liquor illicitly in Simoes' store on Punchbowl, the one caught that time being a father-in-law. This time it is the wife. At the time of the arrest of Mrs. Simoes there was almost a riot and the police were afraid for the time that they would have to resort to force to defend themselves.

### STATEMENT OF OAHU COUNTY'S CASH FUND

The following statement of cash on hand in the treasury of the County of Oahu was presented at the meeting of the Board of Supervisors last night:

|   |             |
|---|-------------|
| GENERAL FUND.                                       |             |
| To balance on hand June 25, 1908                    | \$29,602.18 |
| To warrant for June from Territory                  | 32,000.00   |
|   | \$61,602.18 |
| OUTSTANDING.  |             |
| June estimates                                      | \$38,255.00 |
| Water-wheel and labor for electric light department | 4,900.00    |
| Block pavement, Queen street                        | 11,683.89   |
| Mixer for Queen street                              | 500.00      |
| New fire boxes                                      | 1,500.00    |
| Fire department, engine repairs                     | 100.00      |
| Fire department, Palama, repairs roof               | 50.00       |
| Painter and repairing Thomas Square bandstand       | 225.00      |
|   | \$56,293.89 |
| Balance   | \$ 5,308.29 |
| To warrant for July from Territory                  | 32,000.00   |
| Total general funds                                 | \$37,308.29 |
| ROAD TAX FUND ON HAND JUNE 25, 1908.                |             |
| Honolulu  | \$ 9,662.51 |
| Ewa and Waialua                                     | 6,948.11    |
| Waialua   | 3,666.18    |
| Koolauloa   | 1,404.32    |
| Koolau-poko   | 394.08      |
|   | \$20,075.20 |
| Grand total   | \$59,383.49 |

### DESPATCH ENGINEER STABS HIS CAPTAIN

Chief Engineer Daly, of the S. S. Despatch, is under arrest by the United States District Attorney's department for an assault with a knife on his chief, Captain Kokeritz, the affair having taken place, as alleged, on board the Despatch at an early hour yesterday morning. The action of the Federal authorities is in line with the claim that what happens in Honolulu harbor happens on an arm of the sea and within Federal jurisdiction. Just what occurred and why is not clear. It has been learned that the captain and the engineer had quarreled and that the latter had received the worst of the fist encounter. It was also learned that the engineer had had trouble ashore in a saloon before going to the ship. The wound inflicted is not a serious one.

J. A. McLeod, with five-seated Buick auto. Tel. 1111 or 191. First class trade solicited.



### THIS DAY Auction Sale

Friday, June 26, 1908, 10 O'CLOCK A. M., at my Salesroom, 854 Kaahumanu St. I will sell on account of whom it may concern:-  
3 Cases (59 pair) Ladies' Shoes, 40 White Shirts, 399 White Collars, 125 Pair Cuffs, 12 Neckties.

### Various Items of Furniture, Etc.

Lot Plants, Ferns, etc., Roll-top Desk, Various Office Partitions, glass sides, 1 Fine Showcase, Large Mirror.

JAS. F. MORGAN, AUCTIONEER.

### Auction Sale

House and Land on Queen St., NEAR SOUTH STREET, Saturday, June 27, 1908, 12 O'CLOCK NOON.

at my land salesroom, 855 Kaahumanu street, I will sell at public auction, by order of C. H. Dickey, Esq., administrator (with the will annexed) of the estate of W. F. Williams, deceased, the following valuable property, situate Queen street, Honolulu, near the corner of South street:  
LOT NO. 1—Street number, 573. Area of lot, 1890 square feet; frontage on Queen street, 28.5 feet. House contains four rooms; kitchen and bathroom on back veranda. Rents for \$10 a month. In good repair. Terms: Cash, U. S. gold coin. Deeds at expense of purchaser.

JAS. F. MORGAN, AUCTIONEER.

### Auction Sale

Liquors, Wines, Beers, Liqueurs AT HAWAIIAN HOTEL Monday, June 29, 1908 10 O'CLOCK A. M.

at back entrance Hawaiian Hotel, I am instructed to sell the whole of the varied CHOICE WINES, LIQUORS, ETC., contained in storeroom at Hawaiian Hotel. In lots as invoiced. Invoice can be seen at my office.

JAS. F. MORGAN, AUCTIONEER.

### Auction Sale

Kawaiahao Seminary Buildings King Street WEDNESDAY, JULY 1, 1908, 12 O'CLOCK NOON.

I have received instructions to sell on the grounds as above—THE LARGE BUILDINGS VARIOUS COTTAGES BATH AND WASH-HOUSES PLUMBING, ETC. Will take intending bidders morning between 9 and 11, afternoon between 2 and 5, to view. The large amount of lumber and plumbing in these buildings should draw attention of Plantation Managers, Contractors, U. S. Government Officials on Pearl Harbor work, for laborers' quarters, buildings, etc.

JAS. F. MORGAN, AUCTIONEER.



Castle & Cooke, Ltd. SHIPPING AND COMMISSION MERCHANTS. Sugar Factors and General Insurance Agents. REPRESENTING New England Mutual Life Insurance Company of Boston. Aetna Fire Insurance Co. National Fire Insurance Co. Citizens' Insurance Co. (Hartford Fire Insurance Co.) Protector Underwriters of the Phoenix of Hartford.

### Old Kona Coffee

WANTED—1 BAG OR 100 BAGS State Quality and Price to

McChesney Coffee Co. 16 MERCHANT STREET, HONOLULU

Coffee Roasters to the Trade

KWONG HING CHONG CO. 1024 Nuuanu Avenue

GRASS CLOTH GRASS LINEN TABLE COVERS DOYLIES Oahu Ice & Electric Co. ICE delivered at any part of the city. Island orders promptly filled. Tel. 528; P. O. Box 600. Office, Kewalo.

KOA DESKS and FOUR POSTERS WING CHONG CO. King and Bethel

Sun Lee Tai Co. Contractors, Builders, Painters KOA FURNITURE TO ORDER. King Street, near Nuuanu

NEW Franklin Autos SILENT CAMERON. No Noise on any Speed. Come and See It.

Associated Garage H. F. MURRAY, Manager.

DISTILLED WATER PURE SODA WATER Fountain Soda Works

T. KUNIKIYO FLORIST Fort Street, next Kash Store. Fresh flowers daily. Violets, Carnations, Asters, Roses and an assortment of decorative plants. Orders for table flowers promptly filled. Telephone 688

NEW SHIPMENT. Famous "B" Brand For Kimonos SEE K. Fukuroda ALL COLORS AND PRICES

Bikes Painted TO LOOK EQUAL TO NEW Y. YOSHIKAWA 163 KING STREET

A. A. WILSON. General Contractor Office, 58 Young Bldg. Tel. 158.

Gatton, Neill & Company, Ltd. Engineers and Machinists QUEEN AND RICHARDS STREETS. Boilers re-tubed with charcoal-iron or steel tubes. General ship work.

"YAMATOYA," ALL KINDS OF SHIRTS, PAJAMAS and KIMONOS MADE TO ORDER. 1244 Fort St., just above Orphanum.

Money We buy your Diamonds, Watches, and old Jewelry for Spot Cash. J. Carlo 1018 Nuuanu Ave., and Fort Street near Hotel



# COLLEGE HILLS

Lots are now being sold in Honolulu's choicest suburb at low prices and on easy terms. Try to break the rent habit and get a home before prices are higher.

**TRENT TRUST COMPANY**  
LIMITED

## \$25 Reward

Will be paid by the HAWAIIAN GARMENT CO., LTD., for the arrest and conviction of any person found stealing copies of the Advertiser from addresses of subscribers.

C. S. CRANE, Manager.

IT'S ALL IN

### KNOWING HOW

and being willing to take the trouble. But it makes our

### DRAUGHT BEER

different from all the rest.

### CRITERION AND PALACE BARS.

C. J. McCarthy - Prop.

### BUSINESS LOCALS.

A well-furnished house is wanted for a year by a family without children. See classified ads.

A young man capable to do the work may secure a position as bill clerk and assistant bookkeeper.

John Neill carries a full line of engines and is prepared to do all kinds of repair work on machinery.

Wall, Nichols Co., Ltd., have a complete line of fireworks for the Fourth of July. Make your selections now.

Sun Wo, manufacturer of Chinese jewelry of the premier class, on Maunakea street, near Beretania avenue.

Sun Lee Tai Co., King street, near Nuuanu avenue, can please you with their stock of elegant koa furniture.

The Club Stables has the right sort of horses for ladies and gentlemen. They may be secured there at low rates.

The Sam Wo meat market, next to C. Q. Yee Hop, at the fishmarket, carries a supply of the best Kaneohe meats.

A reward of twenty dollars will be paid for the return to this office of a gold watch lost Saturday, June 20. See classified ads.

Shop early tomorrow at Sachs'. The store will close at one o'clock, but till then there will be reductions of from 1-4 to 1-2 on many specials.

A young Scotchman speaking Hindi and with plantation experience advertises for a situation on plantation. Will be at liberty after July 1.

There's no experiment work by amateurs done on the machines at the von Hamn-Young Garage. Highest class of repair work, done by experts.

There's no confection that is quite so good as Gunther's candies. We have a fresh shipment of them just in. All kinds; all delicious. Palm Cafe.

All furniture and piano-moving by the Union-Pacific Transfer Co. is done by careful men who know their business. All work is absolutely guaranteed and carried out without delay. Phone 58.

Isleton butter is sealed in a carton in the creamery. When you have tried it, you will see the difference it makes. J. M. Levy & Co., family grocers. Phone 76.

Don't select your desk from a small assortment of unpromising specimens. H. Hackfeld & Co. have the largest and best stock of office desks in the Territory. Inquire furniture department.

The American-Hawaiian Paper & Export Co. carries supplies for stationers—pencils, erasers, penholders and tablets. Dealers can be supplied at the corner of Queen and Fort streets at very satisfactory prices.

Photographers will find the "Photographic Instruction Text," by Geo. H. Partridge, Instructor in Photography, Lewis Institute, a complete guide to successful photography. \$1, at Honolulu Photo-Supply Co., Ltd.

### PUNAHOU REUNION.

Today (Friday) is the day when the Punahou Alumni Association will hold its annual festival and reunion on the college grounds at Punahou. In addition to the literary program, already published in these columns, the Hawaiian band will be in attendance, and the usual display of fruit will be had. The management desires it to be understood that all those interested in Punahou, as well as members of the association, are cordially invited to attend.

The meeting will be opened at 3 o'clock.

### LOCAL BREVITIES

The Honolulu Times will be ready early Saturday morning.

Honolulu Lodge 616, B. P. O. E., will meet in Elks' Hall this evening at 7:30.

The closing exercises of Aliiolani College will be held today from 10 a. m. to 12 m. at Palolo.

It is stated that Senichi Uyeno will be sent here as the successor of Consul General Saito, who has asked for his recall.

A meeting of those interested in the reorganization of Company C. N. G. H., will be held in the Bungalow at seven o'clock this evening.

The closing exercises of the Valley School will be held this morning at half-past nine. All friends of the school are cordially invited.

The flag on the Judiciary building and the Executive building floated at half-mast yesterday in honor of the memory of ex-President Cleveland.

George C. Ross and family take this means of thanking all kind friends for flowers sent and sympathy expressed during their late sad bereavement.

Tickets for the Russell meetings are being distributed today, and can be obtained at the Y. M. C. A. Though the admission is free, it is strictly by ticket.

The muumuu sale and pot lunch on Saturday next at Haalelea Lawn are under the auspices of the Iolani Guild of Hawaiian Ladies, assisted by their friends.

Miss Needham takes this means of thanking her pupils of Central Grammar and Kaakopua Primary schools for their lovely floral offerings on the occasion of her father's funeral.

Class-day exercises of the senior class at Punahou will be held this evening at half-past seven o'clock on the lawn in front of the Science Hall. All friends of the class are cordially invited to be present.

The closing exercises at the Aliiolani College will take place this morning between ten o'clock and noon, to which all friends of the college are invited. In addition to the closing exercises there will be sports among the pupils.

It is expected that Naval Engineer Parks will soon be in a position to go ahead with the extension of the seawall on the Waikiki side of the harbor entrance, the idea being to extend the Waikiki spit some distance further out to present the washing in of sand into the channel entrance.

### SONS OF ST. GEORGE ELECT NEW OFFICERS

The annual election of officers of Captain Cook Lodge No. 353 of the Order Sons of St. George was held last night and resulted as follows:

Past president, J. R. Collins; worthy president, Isaac Cockett; worthy vice president, Alec Dowsett; worthy secretary, John Richardson; worthy treasurer, James L. Holt; chaplain, W. C. Roe; worthy messenger, J. Padaken; inside sentinel, O. J. Shaw; outside sentinel, Robert French; trustees, Isaac Cockett, R. A. Jordan, Geo. Barker; physicians, Dr. G. Herbert, Dr. F. H. Humphris.

### ORCHESTRA REHEARSALS POSTPONED.

At a meeting of the board of directors of the Honolulu Symphony Society on Tuesday, it was unanimously decided to discontinue the orchestra rehearsals until October 2. Owing to numerous other attractions and the coming of the fleet next month and some of the orchestra members being out of town, the directors are taking this step. It would not be worth while having rehearsals unless the majority of the members could be present.

### EMPIRE THEATER.

There is nothing lacking in the collection of pictures shown at the Empire Theater, and the music and singing enhances the value of the presentation. The management of this little place of amusement caters to the public taste and gives satisfaction as a result. The films are as new as can be bought, for the representative of the Empire is on the ground picking the winners at the Coast shows. Admission five and ten cents.

**We Close at 1 p. m. Tomorrow Shop Early**

### SPECIAL INDUCEMENTS FOR EARLY SHOPPERS TOMORROW.

**WOOD DARNERS**  
10c quality; till 1 p. m., 5c.

**HANDKERCHIEFS**  
Ladies' embroidered linen handkerchiefs; 35c quality; till 1 p. m., 20c.

**DOTTED DRESS SWISS**  
White, with black embroidered pin dots; 50c quality; till 1 p. m., 35c a yard.

**LINEN FINISH SHEETS.**  
Double-bed size; \$1.00 quality; till 1 p. m., 80c each.

**MEDALION APPLIQUE EMBROIDERY**—30c quality; till 1 p. m., 20c a yard.

**SILK STRIPED CHALLIES**  
Neat designs; 60c quality; till 1 p. m., 45c a yard.

**LADIES' WHITE RIBBED VESTS**  
Low neck; no sleeves; 15c quality; till 1 p. m., 10c.

**N. S. Sachs Dry Goods Co., Ltd.**  
Corner Beretania and Fort Streets.



## JUNE--THE MONTH OF BRIDES AND ROSES

No doubt among the prospective brides of merry June are some of your young friends.

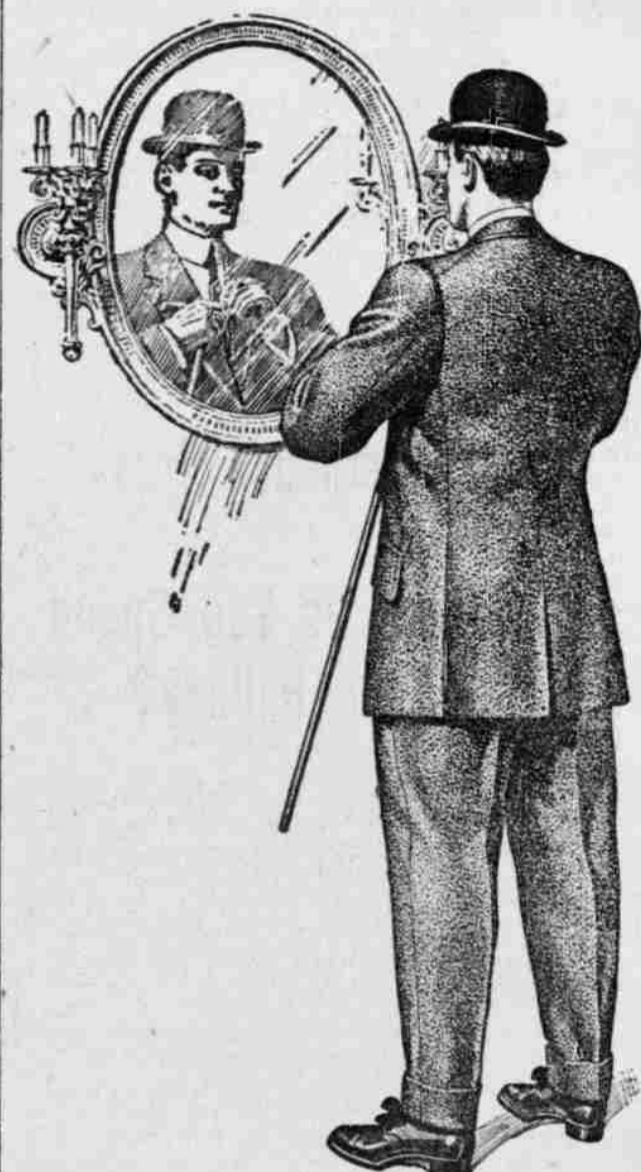
Perhaps you already have the invitations to the wedding. Perhaps the question of suitable gifts is giving you occasional serious moments.

Why not settle it at once? We can help you over the difficulty with suggestions by the score—we're primed for such contingencies.

No finer display of **CUT GLASS**—rich, deep cuttings—was ever shown here, and the other departments are likewise teeming with gift suggestions.

**DON'T WORRY—COME IN TODAY.**

**W. W. DIMOND & COMPANY, LTD.**



You'll find that we've got the clothes you want for summer wear; dark coats to wear with light trousers; smart, catchy stuff, made for us and for you by Hart Schaffner & Marx, the best clothes makers.

This store is the home of Hart Schaffner & Marx clothes.

**Silva's Toggery**

Elks' Building

King and Fort

Telephone 651

Copyright 1908 by Hart Schaffner & Marx

## Potay Blucher --Bal--

Price \$3.50

Here's all you could desire of comfort and sterling worth in a \$3.50 shoe. We guarantee it.



**McINERNEY SHOE STORE**

## HAWAIIAN NIGHT AT THE UNIVERSITY CLUB

A Hawaiian Night was given at the University Club last night, in honor of Secretary Garfield and fun reigned supreme till after midnight.

The company was small but select and the stunts put on for the entertainment of the visitor were as unique as they were enjoyable.

Not the least interesting item on the program was a spirited four-round bout with the gloves between Wahilani and Kupa, a couple of 140-pound native boxers, who went about their business with a will, greatly to the delight of the distinguished visitor and the entire company.

A number of old Hawaiian customs were successfully introduced and a bag-pipe stunt by Piper Grace.

### INTERESTED IN HAWAII.

The following letter from Ohio is of interest:

Chagrin Falls, Ohio,

June 10, 1908.

Mrs. Mattie Bright Sackwitz, Honolulu, Hawaii.

Dear Mrs. Sackwitz: The Bay View Club of Chagrin Falls has asked me, as corresponding secretary, to acknowledge the receipt of your very interesting letter to us, through Mrs. Brewster. It was read at one of the club meetings and thoroughly enjoyed, and we all appreciate the kind effort you have made to bring Honolulu a little nearer and more real. Naturally, we, as Americans, are interested in our new possessions, but our studies in the Bay View Club during the past year have wonderfully increased our interest—and now your letter, written by one well known to many of the members, has verified all that we have read concerning your beautiful islands. They seem to us, so far away, as enchanted. Let us hope some of us may some time in the future have the pleasure of visiting the Hawaiian Islands and seeing for ourselves their beauties.

Thanking you for your kindness, I am, very sincerely,

SUE DEAN HUBBELL.

### TWO CONCERTS TODAY.

The hand will play this afternoon at Punahou, and in the evening at Ala Park.

## The Muumuu Sale and Poi Lunch

AT HAALELEA LAWN,

On Saturday, June 27, 1908

BEGINS AT 12 O'CLOCK NOON.

Muumuus of all colors, ancient and modern styles, are the coming substitute for kimonos.

Admission 25c. Lunch 50c. Tickets at the gate. 8073



**Hawaiian Hotel For MEALS**

TRY **ALEXANDER YOUNG HOTEL OF CAFE**

**MADAME ARRAL HAS GREAT VOICE**

There is a demand among the people to see and hear Madame Arral, the famous French singer, who appears at the Opera House next Tuesday night. They want to hear her because she comes with a great reputation, which she fully lives up to; to see her because of her wonderfully romantic career. Wherever she goes she creates a furor. She is admired by the theater-going people for her excellent acting and beautiful voice. Her appearance here next Tuesday will impress the Honolulu people with the fact that they have missed hearing one of the best of the great operatic singers through the failure of Madame Arral to visit here before. The program will include some of the best pieces in her repertoire, selections that will please.

## A NEW LINE

OF

## Popular Priced Skirts

in

Silk, Voile, Panama, Alpaca and Fancy Weaves

## WHITNEY & MARSH

## FRENCH LAUNDRY

J. ABADIE - Proprietor

Ladies' and Gents' Washing Done First-class. Gloves and Ostrich Feathers.

Wool and Silk Made Cleaner by a New French Process. Charges reasonable. Give us a trial.

258 BERETANIA STREET : : : : : 'PHONE 1495

## Photographic Instruction Text

BY GEO. H. PARTRIDGE, INSTRUCTOR IN PHOTOGRAPHY, LEWIS INSTITUTE.

There's not a question or situation that can confront the Photographer that is not fully treated in this little book.

Formulas, rules, and methods comprehensively dealt with in small space and in clear, concise language.

Illustrated with designs, figures, and drawings.

Price \$1.00 at the

**HONOLULU PHOTO-SUPPLY COMPANY**

"Everything Photographic." Fort Street.

## Benson's Dyspepsia Tablets

Give relief to those who suffer the effects of failure to properly masticate food. These tablets digest the food, increase the appetite and prevent food fermentation in the stomach.

TWENTY-FIVE CENTS A BOX.

**Benson, Smith & Company, Ltd.**

Hotel and Fort Street.

## GREAT CLOTHING SALE

Rosenberg Stock. Men's Clothing, Men's Woolen Pants, Boy's Suits, Men's Negligee Shirts and Straw and Felt Hats . . . .

**AT HALF PRICE**

**L. B. KERR & CO., LTD.**

Alaeka Street

### Canadian-Australian Royal Mail Line

Steamers running in connection with the Canadian Pacific Railway Co. call at Honolulu on or about the following dates:

| FOR FIJI AND AUSTRALIA. | FOR VANCOUVER.           |
|-------------------------|--------------------------|
| MANUKA..... JUNE 26     | AORANGI..... JULY 22     |
| MARAMA..... JULY 21     | MOANA..... AUGUST 19     |
| AORANGI..... AUGUST 24  | MANUKA..... SEPTEMBER 15 |
| MOANA..... SEPT. 19     | AORANGI..... OCTOBER 14  |

\*Will call at Fanning Island.

THEO. H. DAVIES & CO., LTD.  
GENERAL AGENTS.

### Oceanic Steamship Co. Time Table

On and after June 24, 1908, the SALOON RATES will be: Single Fare, \$85; Round Trip, \$114. Family rooms extra.

| FROM SAN FRANCISCO.    | FOR SAN FRANCISCO.     |
|------------------------|------------------------|
| ALAMEDA..... JULY 10   | ALAMEDA..... JULY 15   |
| ALAMEDA..... JULY 31   | ALAMEDA..... AUGUST 5  |
| ALAMEDA..... AUGUST 21 | ALAMEDA..... AUGUST 26 |
| ALAMEDA..... SEPT. 11  |                        |

In connection with the sailing of the above steamers, the agents are prepared to issue, to intending passengers, Coupon Through Tickets by any points in the United States, and from New York by any steamship line to For further particulars apply to

WM. G. IRWIN & CO., LTD.,  
AGENTS.

### PACIFIC MAIL S. S. CO., OCCIDENTAL & ORIENTAL S. S. CO., AND TOYO KISEN KAISHA.

Steamers of the above companies will call at Honolulu and leave this port on or about the dates mentioned below:

| FOR THE ORIENT.            | FOR SAN FRANCISCO.        |
|----------------------------|---------------------------|
| ASIA..... JUNE 30          | KOREA..... JULY 9         |
| MONGOLIA..... JULY 31      | AMERICA MARU..... JULY 17 |
| HONGKONG MARU..... JULY 18 | SIBERIA..... JULY 27      |
| KOREA..... JUNE 29         | CHINA..... AUG. 1         |

H. HACKFELD & CO., LTD., Agents.

### MATSON NAVIGATION CO.

Vessels in the above company will ply between Honolulu and San Francisco as under:

| Ship     | Leave Honolulu | Arrive Honolulu | Leave Honolulu |
|----------|----------------|-----------------|----------------|
| HILONIAN | July 1         | July 8          | July 14        |
| LURLINE  | July 8         | July 15         | July 28        |
| HILONIAN | July 29        | Aug. 5          | Aug. 11        |
| LURLINE  | Aug. 11        | Aug. 19         | Sept. 26       |
| HILONIAN | Aug. 26        | Sept. 2         | Sept. 8        |
| LURLINE  | Sept. 14       | Sept. 22        | Oct. 3         |
| HILONIAN | Sept. 23       | Sept. 30        | Oct. 6         |

Passenger Rates to San Francisco—First Cabin, \$60. Round Trip, First Class, \$110.

### AMERICAN-HAWAIIAN STEAMSHIP COMPANY.

FROM NEW YORK TO HONOLULU.  
Weekly Sailings via Tehuantepec.

Freight received at all times at the Company's Wharf, 41st Street, South Brooklyn.

| FROM HONOLULU TO SAN FRANCISCO. | FROM SEATTLE AND TACOMA TO HONOLULU. |
|---------------------------------|--------------------------------------|
| ALASKAN..... JUNE 27            | ARIZONAN..... JUNE 28                |
| ARIZONAN..... JULY 15           | ALASKAN..... JULY 19                 |

For further information apply to H. HACKFELD & CO., LTD., Agents, Honolulu. C. P. MORSE, General Freight Agent.

Phone 295. 63 Queen Street.  
**HUSTACE-PECK COMPANY, LTD.,**  
GENERAL CONTRACTORS.  
Dealers in  
Crushed Rock, White and Black Sand, Fire Wood, Stove and Steam Coal, Blacksmith Coal, Hay, Grain, Garden Soil and Manure.  
Draying and Heavy Teaming a Specialty.

**Union-Pacific Transfer Co., Ltd.**  
BAGGAGE SHIPPING  
STORAGE WOOD  
PACKING COAL  
Phone 58  
226 KING ST. FURNITURE AND PIANO MOVING.

**City Transfer Co.**  
Jas. H. Love.  
BAGGAGE AND FURNITURE MOVING.  
Office Opposite Union Grill. Phone 152.

**GOMES' EXPRESS CO.**  
Fort Street, opposite Hackfeld & Co.  
BAGGAGE CHECKED  
Office Phone - 298  
FREIGHT HANDLED, FURNITURE AND PIANO MOVING, STORAGE, PACKING, SHIPPING.

**Honolulu Construction and Draying Co., Ltd.**  
GENERAL CONTRACTORS.  
Phone Office 281. P. O. Box 154.  
Fort St., Opp. W. G. Irwin & Co., Ltd.  
We do all kinds of Teaming; also deal in Crushed Rock, White and Black Sand, Broken Coral, Garden Soil, Etc.  
SAFE MOVING A SPECIALTY.

**THE PACIFIC Commercial Advertiser**  
Entered at the Postoffice at Honolulu, T. H., as second-class matter.  
SUBSCRIPTION RATES:  
One Year.....\$12.00  
Advertising Rates on Application.  
Published every morning except Sunday by the  
**HAWAIIAN GAZETTE CO., LTD.**  
New Holt Block, No. 44 South King St.  
C. S. CRANE, Manager.

**TOM SHARP**  
is now connected with the Capital Decorating Co.  
Call on him, or phone 428.  
**137 KING STREET**

**Professional Cards**  
Cash must accompany the copy. No deviation from this rule.  
JAMES T. TAYLOR, M. Am. Soc. C. E. Consulting Hydraulic Engineer. Residence telephone No. 1603. P. O. Box 799, Honolulu. 8070

**CHINA PAINTING.**  
MRS. J. LISHMAN MORE—Classes in china painting. Orders solicited. Studio, 1445 Keaumoku street. Telephone 1346.

**4th July**  
FIREWORKS! FIREWORKS!  
and  
FLAGS, ALL SIZES.  
Send in your orders early. Wall, Nichols Co., Ltd.  
READ THE ADVERTISER  
WORLD'S NEWS DAILY

## RESCUED FROM WAKE ISLAND

Survivors of the Toyoshima Found by the Benjamin Constant.

YOKOHAMA, June 4.—The Brazilian cruiser Benjamin Constant (2707 tons, a training ship), arrived in Yokohama on the afternoon of the 3rd under command of Captain F. Gomes Pereira. She has a crew of 350, including 32 officers, and will stay here about one week, after which the vessel will visit various Japan ports. During her trip from Honolulu, which she left on May 9th, the cruiser sighted Wake Island, a desert isle lying a long distance from the customary tracks of vessels. A nearer approach showed a tattered red flag flying and as this was naturally taken as a distress signal the ship went closer in and saw a party of Japanese making signals. The dangerous nature of the coast prevented the Japanese being taken off by boat but a rope was finally passed ashore and a cable way fitted up. The work of rescue began immediately but it was three days before all the men were got aboard. They numbered twenty and were the survivors of the wreck of the sailing vessel Toyoshima-maru which left Tateyama, Boshu, about the middle of January last for trading in the southern waters and was reported missing. It appears she encountered a heavy storm which rendered her helpless and carried away the captain and five of the crew. The ship's full complement was forty-two and of these the remaining thirty-six managed to effect a landing on Wake Island. Very little food was obtainable and the men suffered great hardships, disease and starvation reducing their number by sixteen. Of the twenty rescued men two are dangerously ill.

### MARINE REPORT.

(From San Francisco Merchants Exchange.)  
Thursday, June 25, Fr.  
San Francisco—Arrived, June 25, Fr. S. S. Caravellas, hence June 15.  
San Francisco—Sailed, June 25, bkt. S. G. Wilder, for Honolulu.  
Honolulu—Sailed, June 25, schr. Honoupu, for San Francisco.

### PORT OF HONOLULU.

**ARRIVED.**  
Thursday, June 25.  
Str. Claudine, Bennett, from Hawaii and Maui ports.  
Str. Helene, Nelson, from Hawaii.  
Tug Kaena, Jorgensen, from Pearl Harbor.  
**DEPARTED.**  
Am. bk. Andrew Welch, Kelly, for San Francisco.  
Str. Kinau, Gregory, for Kauai ports.  
Tug Kaena, Jorgensen, for Pearl Harbor.  
**SAIL TODAY.**  
Str. W. G. Hall, Thompson, for Kauai ports, p. m.  
**PASSENGERS**  
Arrived.  
Per str. Claudine, June 25, from Hawaii and Maui ports.—W. W. Thayer, B. H. Kelekolio, J. R. Garfield, J. V. Pratt, S. M. Ballou, Governor W. F. Frear, A. L. C. Atkinson, W. O. Smith, W. G. Smith, A. C. Gibb, W. A. Yeats, Q. Q. Bradford, R. L. Ogilvie, Rose Puhiale, C. Reinecke, Miss On Tai, E. H. Rodgers, F. Crockett, Mrs. Reedy, Miss Foltz, Mrs. Both, Kim Sick, Mrs. Hammett, Chang Ling and wife, Mrs. M. Gregulho, Kim Pi Hon, Kim Jaz Gu, C. A. Vickery and wife, Leong You, R. Low, Miss Kaukau, Miss Van Deerlin, Ah Sing, S. B. Fujiyama, I. Fugimoto, Charles Gay and wife, A. S. Hartwell, 54 deck.  
Per str. Helene, June 25, from Hawaii.—Manuel De Rego, Jo De Rego, A. W. Carter, J. O. Young, E. Giessecke.  
Departed.  
Per str. Kinau, June 25, for Kauai.—Annie Pereira, Helen Schumalfeyne, Leslie Wishard, Douglas Baldwin, E. Langer, Miss M. B. Waterhouse, Miss E. Waterhouse, Master Mesick, A. Gartley, Mrs. Choy Chin and baby, Miss Anna Harrison, S. K. Oncha, Miss R. Obed, Miss M. Obed, T. Kimishima, R. Kimishima, K. Kimishima, J. L. Hjorth, Mrs. W. L. West, Miss W. Metzger, Miss M. Mengler, Mrs. W. Napalieu, Mrs. J. Noble, A. K. Knudsen, Francis Gay, Miss Lulu Weber, Mrs. F. Weber, H. C. Colburn and wife, Mrs. J. Gribbia, Miss Conrade, Aarman, Andersen, Edwin Akina, Miss H. Yamashiro, Miss Annie M. Pereira, Mrs. Fred Johnson, Mrs. Kaloeka Hall, Mrs. Ahukini Kukea, Thos. Onokea, Hee Fat.

### VESSLS OF PORT.

(Army and Navy).  
U. S. S. St. Louis, Gleaves, Bremerton, June 19.  
Iroquois, U. S. S., Carter, Mookal, May 1 (Merchant Vessels).  
Holywood, Br. bk., Smith, Junin, May 7.  
Flaurence Ward, Am. schr., Piltz, Midway, May 26.  
Coronado, Am. bkt., Potter, San Francisco, June 3.  
Alice Cooke, Am. schr., Penhallow, Port Ludlow, June 4.  
Olympic, Am. bkt., Evans, S. F. via Hilo, June 12.  
Bucrania, Br. s., Tilsley, Newport News, June 19.  
Alaskan, Am. s.s., Nichols, Seattle, June 22.  
Mexican, Am. s.s., Nichols, S. F., June 24.

### TRANSPORT SERVICE.

Warren, in Philippines.  
Thomas, at S. F.  
Brook, at S. F.  
Logan, at San Francisco, repairing.  
Sheridan, left Manila for Honolulu, June 15.



## FOR SALE

Building lot on Pacific Heights.  
One-half acre. Extensive view of city and harbor.....\$ 750  
Building lot in Manoa Valley.  
One of the most desirable lots left on the upper levels. Area of about an acre..... 1,600  
House and lot on Prospect street.  
Modern house, and lot 75x125.  
Planted with choice fruits and palms..... 4,000

### "Waterhouse Trust"

Corner Fort and Merchant Streets  
Where Do You Spend Your Holiday?

REDUCED RATES FOR THE SUMMER AT THE VOLCANO HOUSE.  
For three months, beginning June 30th, a special ticket will be issued covering a stay of nine days at the Volcano House, and transportation to and from that resort, per S. S. MAUNA KEA. PRICE \$50.00.  
To the business man or woman, looking for rest and recreation, the Volcano in its present intense activity, the many points of interest in its neighborhood, and the cool invigorating atmosphere of the mountain at that altitude (4200 feet), together with the comforts of a first class hostelry, such as the Volcano House, offer unusual attractions as a place to spend the summer vacation.  
For information regarding the trip apply to  
HENRY WATERHOUSE TRUST COMPANY, LTD.

Get the habit.  
Talk to your island friends by wireless.  
Rates are low.

### TRENT TRUST CO., Ltd.

**TO LET**  
\$40.00 and Over.  
\$75.00.....Waikiki; 4 B. R.....Furnished  
60.00.....Waikiki Beach.....2 B. R.  
50.00.....College Hills; 4 B. R.....Furnished  
50.00.....Pacific Hts.; 4 B. R.....Furnished  
48.00.....Anapuni St.....2 B. R.  
\$25.00 to \$35.00.  
\$25.00.....Bates St.....1 B. R.  
\$35.00.....Pacific Hts.; 2 B. R.....Furnished  
\$10.00 to \$35.00.  
\$10.00.....Morris Lane.....2 B. R.  
10.00.....Kaimuki.....2 B. R.  
13.00.....Fort St.....2 B. R.  
13.00.....School St.....2 B. R.  
15.00.....Gandall Lane.....2 B. R.  
17.00.....Alder St.....2 B. R.  
18.00.....Pensacola St.....3 B. R.  
18.00.....Gandall Lane.....3 B. R.  
22.50.....Young St.....3 B. R.  
25.00.....Matlock Ave.....2 B. R.  
30.00.....Alexander St.....3 B. R.  
30.00.....Alakea St.....2 B. R.  
30.00.....Alexander St.....3 B. R.  
32.00.....Wilder Ave.....3 B. R.  
35.00.....Thurston Ave.....5 B. R.  
SOME OTHERS NOT ADVERTISED

### TRENT TRUST CO., Ltd.

**THE MAILS.**  
Mails are due from the following points as follows:  
Vancouver—Per Manuka, June 27.  
San Francisco—Per Asia, June 30.  
San Francisco—Per Mongolia, July 6.  
Yokohama—Per Korea, July 7.  
Mails will depart for the following points as follows:  
Colonies—Per Manuka, June 27.  
Yokohama—Per Asia, June 30.  
Yokohama—Per Mongolia, July 6.  
San Francisco—Per Korea, July 7.  
The barkentine Coronado has shifted to the Mauna Loa wharf and will be moved over today to take the Kona liner's Honolulu sugar.

### HONOLULU STOCK EXCHANGE

Honolulu, Thursday, June 25, 1908.

| NAME OF STOCK.                     | Quota.     | Val.  | Big.   | Low.    |
|------------------------------------|------------|-------|--------|---------|
| <b>MERCANTILE.</b>                 |            |       |        |         |
| O. Brewer & Co.                    | \$2,000.00 | \$100 |        |         |
| <b>SEAS.</b>                       |            |       |        |         |
| Sea                                | 5,000.00   | 20    | 27 1/2 | 28      |
| Sea Agricul.                       | 1,200.00   | 100   |        |         |
| Sea Com & Sugar Co.                | 2,512.75   | 100   | 14     | 25 1/2  |
| Sea Sugar Co.                      | 2,000.00   | 2     |        |         |
| Honoumu                            | 750.00     | 100   |        |         |
| Honokaa                            | 2,000.00   | 25    | 9 1/2  | 10 1/4  |
| Haiku                              | 50.00      | 100   |        |         |
| Kahuku                             | 500.00     | 100   |        |         |
| Kihohi Plan Co Ltd.                | 2,500.00   | 50    |        | 30      |
| Koloa                              | 500.00     | 100   |        |         |
| McBryde Sug. Co Ltd.               | 5,000.00   | 20    | 28     | 28 1/2  |
| Oahu Sugar Co.                     | 3,000.00   | 20    |        |         |
| Oonaha                             | 1,000.00   | 20    |        |         |
| Ookala                             | 500.00     | 20    | 7 1/2  | 7 3/4   |
| Oloa Sugar Co Ltd.                 | 3,000.00   | 20    |        |         |
| Olowalu                            | 150.00     | 100   | 100    | 9 1/2   |
| Papeete                            | 500.00     | 100   |        |         |
| Pioneer                            | 2,750.00   | 100   | 130    | 40      |
| Pala                               | 750.00     | 100   |        |         |
| Waialua Agri Co.                   | 4,500.00   | 100   | 10     | 8 1/2   |
| Waialua                            | 1,500.00   | 100   | 145    |         |
| Waimea Sugar Mill                  | 125.00     | 100   | 5      | 60      |
| <b>MISCELLANEOUS.</b>              |            |       |        |         |
| Inter Island S. S. Co.             | 1,500.00   | 100   |        | 118 1/2 |
| Haw Electric Co.                   | 500.00     | 100   |        |         |
| H. R. T. & L. Co. Ltd.             | 1,150.00   | 100   | 100    |         |
| H. R. T. & L. Co. Ltd.             | 1,150.00   | 100   | 50 1/2 | 65      |
| Mutual Tel Co.                     | 150.00     | 10    |        |         |
| Nahiku Rubber Co.                  | 60.00      | 100   |        |         |
| Nahiku Rubber Co.                  | 4,000.00   | 100   |        | 32      |
| O. R. & L. Co. Ltd.                | 1,000.00   | 100   | 100    | 1 1/2   |
| Hilo B. R. Co.                     | 1,000.00   | 20    |        |         |
| Honolulu Brewing & Malting Co Ltd. | 400.00     | 20    | 24     | 21      |
| Haw Pineapple Co.                  | 40.00      | 20    | 24 1/2 |         |
| <b>BONDS.</b>                      |            |       |        |         |
| Haw Ter 4 p c (Fire Claims)        | 815.00     |       |        |         |
| Haw Ter 4 p c (Re-funding 1905)    | 600.00     |       |        |         |
| Haw Ter 4 p c                      | 1,000.00   |       |        |         |
| Haw Ter 4 p c                      | 1,000.00   |       |        |         |
| Haw Ter 4 p c                      | 1,000.00   |       |        |         |
| Haw Gov 5 p c                      | 31.00      |       |        |         |
| Cal. Beech & Ref Co 6 p c          | 1,000.00   | 100   |        |         |
| Haiku 6 p c                        | 800.00     | 100   |        |         |
| Honolulu 1000 Co                   | 200.00     |       |        | 98 1/2  |
| Haw Com & Sugar                    | 1,871.00   |       |        |         |
| Inter Island S. S. Co              | 475.00     |       |        |         |
| H. R. T. & L. Co. Ltd              | 1,030.00   |       |        |         |
| Hilo B. R. Co 6 p c                | 647.00     |       |        |         |
| Kahuku 6 p c                       | 200.00     |       |        |         |
| McBryde Sug Co 6 p c               | 3,000.00   |       |        | 86      |
| O. R. & L. Co 6 p c                | 2,000.00   |       |        | 101 1/2 |
| Oahu Sugar Co 6 p c                | 900.00     |       |        | 100     |
| Sea Sugar Co 6 p c                 | 1,250.00   |       |        | 100     |
| Pac Ho Sugar Mill Co 8 p c         | 350.00     |       |        | 100     |
| Pala 6 p c                         | 450.00     |       |        | 100     |
| Pioneer Mill Co 6 p c              | 1,250.00   |       |        | 100     |
| Waialua Ag Co 5 p c                | 1,500.00   |       |        | 100     |

\*23.125 paid. 728 per cent paid.  
**SESSION SALES.**  
None.  
**BETWEEN BOARDS.**  
60 Pioneer, 140; 190 Oahu Sug. Co., 25.25; \$2000 McBryde 6s, 95; \$2000 Haiku 6s, 100.25.  
**NOTICE.**  
At directors' meetings, held June 24, 1908,  
Onomea Sugar Company increased dividend from one and one-half per cent. per month to two per cent. per month, commencing July 5, and continuing until further notice;  
Honoumu Sugar Company's dividend was increased from one and one-half per cent. per month to two per cent. per month, commencing July 5, and to be continued for the balance of the year;  
Pepeekeo Sugar Company's dividend was increased from one per cent. per month to two per cent. per month, commencing July 15, and to be continued for the balance of the year.

### Classified Advertisements

Cash must accompany the copy. No deviation from this rule.  
**WANTED.**  
FOR a term of one year or eighteen months, a well-furnished home in good neighborhood; four bedrooms. Stable and small grounds. Small family; no children. P. O. Box 733. 8075  
**BILL CLERK** and assistant book-keeper. Address, in own handwriting, P. O. Box 426, Honolulu. 8075  
TO buy second-hand films and slides. Address P. O. Box 191. 8074  
GOOD German, Scandinavian or Chinese cook, \$30 per month; laundry included, \$40 per month. Joseph Hay, Hauula, Koolauloa. 8072

### SITUATION WANTED.

BY young Scotchman on plantation. Had experience on tea estates. Speaks Hindi. Address, after July 1, "D. S. R.", this office. 8075  
BY stenographer (American); best of references. Address "S. M. S.", this office. 8073  
**\$20. REWARD.**  
FOR return of lady's gold watch lost June 20. This office. 8075

### FOR RENT.

THREE furnished cottages at the beach, suitable for rooming house. Electric lights, good bathing. Apply by telephone 1400 or 274. 8070  
ONE-HALF of a cottage, furnished or unfurnished. Inquire of Mrs. Machado, 930 Kalia road. 8054  
SIX-ROOM modern house. Electric lights; gas, mosquito-proof. Inquire at 1237 Pensacola street. 8045  
THE Popular apartments are the best located, neatest and cheapest rooms. 1249 Fort. 8029

### TO RENT.

FURNISHED.  
HOUSE on Nuuanu street, near School; possession September 1. For particulars apply to Cecil Brown, 97 Merchant street. 8069  
**ROOM AND BOARD.**  
GENTLEMAN keeping house alone desires gentleman to live with him. "961" this office. 8074  
VILLA VILLA, King street. Room and board; also table board. 8045  
**OFFICES FOR RENT.**  
"THE STANGENWALD" Only fire-proof office building in city.  
ALEXANDER YOUNG BUILDING—Honolulu's only up-to-date fire-proof building; rent includes electric light, hot and cold water and janitor service. Apply the Von Hamm-Young Co., Ltd.  
**DIED.**  
NAWAHINE—At Kahana, Koolauloa, June 23, 1908, Mrs. Hoopli Harisson Nawahine, aged 54.

## Halstead & Co., Ltd.

STOCK AND BOND BROKERS  
LOANS NEGOTIATED  
Members Honolulu Stock and Bond Exchange  
**FOR SALE.**  
Lots at Kalia, close to car-line, at half price. Terms: \$50 down, and \$10 per month, without interest. Lots (about one-half acre) on Manoa Heights, unequalled in view and soil. Lots at from \$250 and up in Nuuanu Valley, on your own terms.  
Lots at Kapaehulu at \$100 each, on time payments without interest.  
Lots at Palama, within walking distance from town. Easy terms.  
**FOR RENT—**An eight-roomed furnished house, with stable, etc., on Kalia road, one block from car line; large grounds with bearing fruit trees. Rental \$30 per month.  
J. H. SCHNACK, 137 Merchant Street

**FOR SALE.**  
Galvanized sheet steel tanks, skylights, gutter, ridging, leader and air pipe. Any shape, any size, any weight. In stock or to order. Ribbed or fire-proof wire skylight glass. Estimates on anything in our line.  
Job work in sheet metals solicited.  
EMMELUTH & CO., LTD.,  
Phone 211. 145 King St.

**FOR RENT.**  
Fine residence, Wahiawa; pineapple land at Palolo.  
**FOR SALE.**  
Pineapple land at Wahiawa and Palolo.  
W. L. HOWARD  
Room 3, McIntyre Building  
Tel. 181

## Albert F. Afong

832 FORT STREET  
STOCK AND BOND BROKER  
MEMBER HONOLULU STOCK AND BOND EXCHANGE

## Real Estate

**HAWAIIAN DEVELOPMENT CO. LIMITED.**  
F. B. MCSTOCKER - - - Manager  
STANGENWALD BUILDING  
Cable Address: Develop  
P. O. Box 263

**CHAS. BREWER & CO'S NEW YORK LINE**  
Regular line of vessels plying between New York and Honolulu. BARK NUUANU will sail from New York on or about July 26, 1908. Subject to change without notice.  
FREIGHT TAKEN AT LOWEST RATES  
For freight rates apply to  
CHAS. BREWER & CO.,  
27 Kilby St., Boston, or  
THEO. H. DAVIES & CO.,  
Honolulu.

**ICE CREAM AND CAKES**  
Served Daily  
EXCEPTIONAL QUALITY  
MANY FLAVORS  
**Perfection Home Bakery**  
Beretania and Emma Streets

**Classified Advertisements**  
Cash must accompany the copy. No deviation from this rule.  
**FOR SALE.**  
SHIPPING receipt books, railway and steamer, 50 cents, at the business office of the Advertiser. 8073  
GENUINE and fine oil. May be seen at Hawaiian Trust Co., Ltd., Fort, below King street. 8069  
ONE pair pure-bred White Holland Turkeys, price \$13. Address P. O. Box 294, Honolulu. 286  
ONE gas engine, 15 h. p.; Union. One gas hoisting engine, 12 h. p.; Fairbanks, Morse. One No. 3 Austin stone-crusher, complete. Address "E. V." this office. 8066

**PICTURESQUE HONOLULU**, a book of eighty pages of matter illustrating Honolulu, for fifteen cents. This is one of the most complete books of the kind ever issued here, containing articles of interest to people who have been here or who you would like to have visit the islands. For sale at this office, ready for mailing. 8044  
**TYPEWRITER FOR SALE.**  
A REMINGTON in good condition. Will sell for \$30. Can be seen at this office. 8072

**ROOMS TO RENT.**  
COOL and commodious; well furnished; mosquito-proof. Helen's Court, 1124 Adams Lane. 8057  
**LOST.**  
SILVER medal, engraved "Excellence Sacred Heart School" and owner's name. Reward at this office. 8074  
ON Nuuanu avenue, a lady's ulster. Leave at this office and receive reward. 8074  
**FOUND.**  
SMALL skiff. Owner may find same by calling at this office. 8072

**STEINWAY & SONS**  
AND OTHER PIANOS.  
THAYER PIANO CO.  
156 HOTEL STREET  
Phone 218  
TUNING GUARANTEED