

The Pacific Commercial Advertiser

U. S. WEATHER BUREAU, September 5.—Last 24 Hours' Rainfall, .05. Temperature, Max. 83; Min. 68. Weather, showery.

ESTABLISHED JULY 2, 1856.

SUGAR.—96 Degree Test Centrifugals, 4.11c. Per Ton, \$82.20.
38 Analysis Beets, 11s. 9d. Per Ton, \$89.80.

VOL. L., NO. 8448.

HONOLULU, HAWAII TERRITORY, MONDAY, SEPTEMBER 6, 1909.

PRICE FIVE CENTS.

VISITORS SAIL FOR GARDEN ISLE

Congressional Party on First Interisland Trip.

Shortly after 10 o'clock last night the Congressional party departed for Kauai on the Mauna Kea.

Owing to the short time the Congressmen are to spend in the Islands, the Kauai trip has necessarily to be a quick one. The party will be back in Honolulu again tomorrow morning. However, much of the island can be seen from the steamer's decks, and a good idea gained of its beauty. Also there will be auto trips across the island and into some of the prettiest sections, and the wealth of the sugar crops, the results of irrigation development, the electric pumping plants, and the splendid hospitality of Kauai, will be observed in the space of a day.

The steamer will arrive at Nawiliwili this morning at daybreak, and the Kauai reception committee will meet and escort those by auto who desire to see the windward side of the island to Hanalei, where the steamer will be met. At Hanalei the party will breakfast aboard the steamer, proceeding on board to Waimea. The party will land and lunch at Gay's. From Waimea to Lihue the party will go by autos and have supper at the town and afterward attend a reception there. The party will sail for Honolulu tonight, arriving here tomorrow morning.

The Kauai committee to greet the Congressmen comprises the following list of Kauaians: H. D. Wishard, chairman; Hon. Chas. A. Rice, W. H. Rice Jr., W. D. McBryde, Francis Gay, J. Opio and C. K. Kahee.

Trip to Hawaii.

At 12 o'clock noon tomorrow, the party will depart for Hawaii on the Mauna Kea. The Hawaiian band will be on hand to give a musical send-off. The committees on Hawaii are as follows:

Kohala—Mr. John Hind, chairman; Mr. R. R. Elgin, Mr. H. H. Renton, Mr. G. C. Watt, Mr. J. Atkins Wright, Mr. C. K. Kunaue, Mr. Ernest Kanehau, Mr. Ernest A. Akina, Mr. D. Lono Kanihaha, Mr. H. P. Beckley, Mrs. J. P. Woods, Mrs. H. L. Holstein, Mrs. P. P. Woods, Mrs. W. P. McDougal.

THE OPENING OF OAHU COLLEGE NEXT TUESDAY

Oahu College will open its sixty-ninth year Tuesday morning, September 7, the chapel services at both the College and Preparatory School beginning at 9 o'clock.

But few changes have been made in the corps of instructors and efficient teachers of wide experience have been secured for the new positions.

The trustees have been particularly fortunate in securing the services of Mr. John S. Reed, a former instructor of mathematics and athletic coach of the College, to take charge of the College department during the leave of absence of President Griffiths in the East. Mr. Reed has had experience in teaching in the East and in the West as well as in Honolulu.

The college's department of music that has been so rapidly developed the last few years by such instructors as Mrs. Bruce McV. Mackall, in voice culture, Miss Margaret E. Clarke, piano and organ, Miss Carolyn L. Sheffield and Miss Gertrude K. Brown, who returns this year after a year's leave of absence, piano; Mrs. E. A. Ross, violin, will be strengthened by the addition of the new instructor of choruses and class singing, Miss Ruth L. Smith. Miss Smith has had experience as a music supervisor in Long Beach, California. She is a graduate of the University of California, and has studied music at the University and at Columbia University. She will supervise the singing in the College and Preparatory School. Every effort has been made to make this department an exceptionally strong one.

The English department has added to its instructors, Mr. Harold S. Clark, a graduate of Dartmouth College. Mr. Clark is the son of the world-known founder of the Christian Endeavor Society, Francis E. Clark. In college he also was prominent in track athletics and baseball at the college. Another member of this department will be

RACERS FACE TO FACE WITH DEATH

Five Mile Motorcycle Contest All but Ends in Tragedy.

Whizzing round the five-lap-to-the-mile flat track at a tremendous speed, Will Eldid and Bill Chilton, on high-powered motorcycles, raced one of the most spectacular and dangerous races ever seen here, at the Athletic Park last night.

On the last lap of the sixteenth mile, Chilton's spark gave out. His machine immediately slowed, and Eldid, who was overtaking him, crashed into the machine in front so that only a miracle saved both men from being killed.

This happened over by the third base turn. Immediately the resounding toot of the explosions of the four cylinders stopped, the huge crowd present surged over from the grandstand and bleachers and surrounded the two machines. The police soon bore the crowd back and then it was found that Chilton was sitting calmly in his saddle, one foot on the ground to hold his machine up, while the rear wheel was bent almost double and the steering bars were turned at right angles to their proper position.

The race itself was spectacular in the extreme. Although the argument which started the race only came up on Saturday afternoon and there was only a small notice in the morning paper about the race, the Athletic Park was crowded to the limit.

In the stanchion sockets that mark the track, torches had been set up to mark the limits of the circuit and the moving picture machine was turned on like a searchlight, sending a broad beam of bright light across the diamond, while the rest of the track was in darkness, save for the glowworm twinkling of the torches round the track.

A Tremendous Speed.

The race was supposed to be over a distance of five miles. The two contestants started at opposite side of the track and it was agreed that, if neither racer caught up on the other before the five miles was completed, it was to be called a draw.

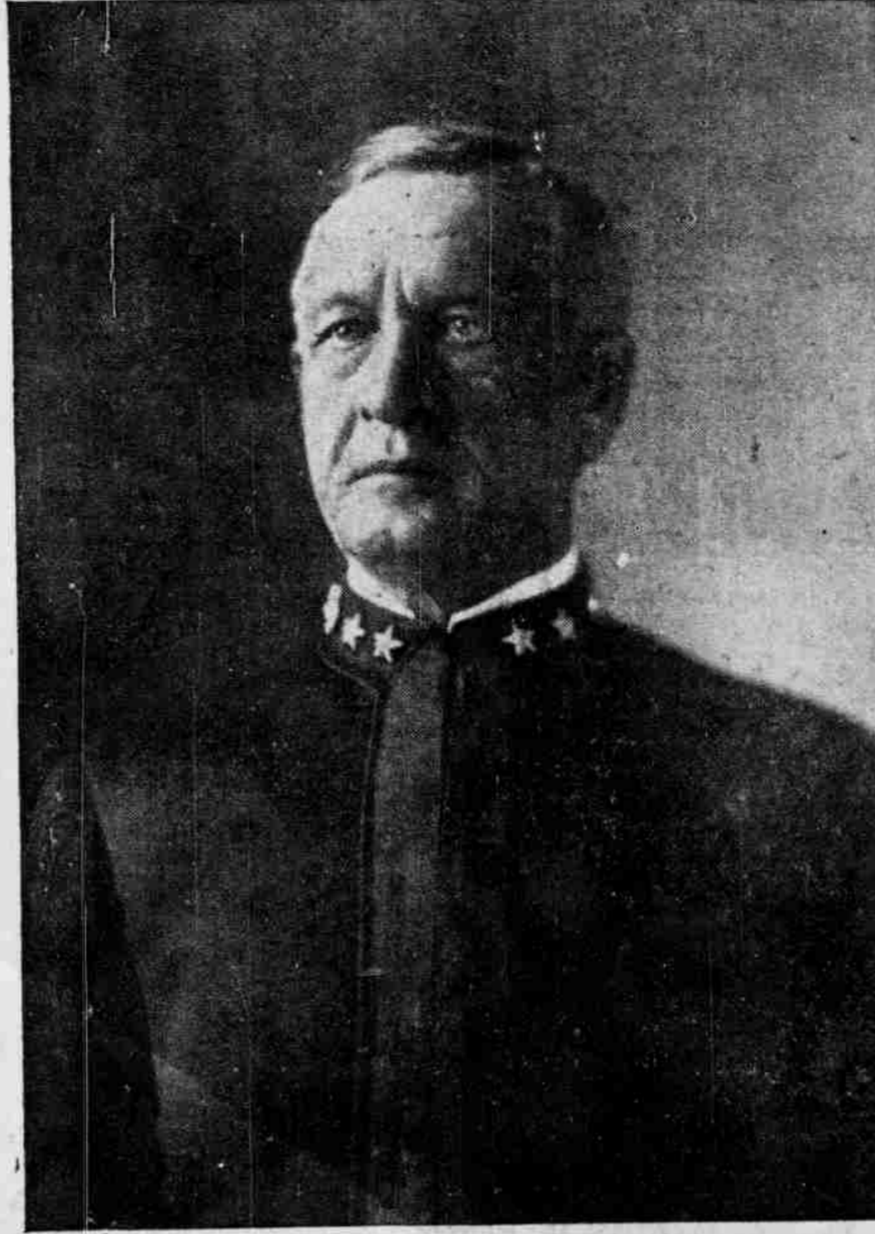
The gun fired and they started off at a speed that seemed simply incredible, considering the narrowness of the turns and the unbanked condition of the track. Mile after mile was reeled off in 1:10 and 1:12, but neither rider seemed able to make any advance on the other.

When the last lap of the fifth mile was completed, Eldid had gained a few yards on Chilton but was still far from catching him. The bell was rung continuously to notify them that the race was over, but there was no such word as "Stop" in their lexicons. They kept on going and it seemed as though they would go on for ever.

Eldid began to gain noticeably about the ninth mile and the crowd yelled itself hoarse when, at the home plate turn, Eldid was within ten feet of his opponent. But Chilton merely gave his

(Continued on Page Five.)

THE COMMANDER-IN-CHIEF IN THE PACIFIC.



REAR-ADMIRAL URIEL SEBREE, U. S. N. Who succeeded Rear-Admiral Swinburne as ranking officer of the Pacific fleet, and is in command of the magnificent squadron of warships now racing toward Honolulu.

CONGRESSMEN SAW FLIGHT OF THE WRIGHT AEROPLANE

Representative Thomas Declares That After Witnessing Air Voyage He Felt Like Taking Passage.

When Orville and Wilbur Wright flew their aeroplane at the official test held at Fort Myer, Va., a few weeks ago and won the government's prize, many of the visiting Congressmen were present. Representative Aubrey Thomas of Ohio, of the naval affairs committee, was one of those who watched with breathless interest the wonderful bird-like movements of the air clipper. Mr. Thomas says that the flight was made from the parade ground, which was kept clear of course. The parade is not larger than that at Schofield Barracks, and the aeroplane is not as long as the Commercial Club dining hall.

After the engines had been looked over, the aeroplanist and his military passenger seated themselves in the machine and, when the order was given to start, the machine slid down the skids and immediately began rising, skimming the parade but gradually going upward. The flight was easy and as graceful as that of a bird on

the wing. Twice around the parade the aeroplane circled and then flew off toward Alexandria. The machine suddenly dipped just over a hill and then there was an anxious suspense, for the spectators did not know whether or not the machine had met with an accident, but later on the machine was seen soaring in the distance. On the return the same dip was made. The spectators afterward learned that the aeroplanist had decided to maintain a uniform distance above ground, and when the topographical depression was reached the planes were depressed.

When the machine returned to the parade, the audience was thoroughly aroused and became wildly enthusiastic. The machine came down as lightly as a feather and alighted on the spot from which it first arose.

"When one witnesses such a flight and sees how thoroughly the machine is under the control of the aeroplanist," said Mr. Thomas, "one really wishes to take a trip through the air. I believe I should if I had the opportunity."

LOUISIANA MAN IS ENTHUSIASTIC

Representative Watkins Says Cane Car Shifter Is New to Him.

"We haven't anything like that cane unloader in Louisiana, and I am going to see that it is introduced as one of the best labor saving devices I have seen in a sugar mill."

Representative Watkins, of Louisiana, was enthusiastic over the patent automatic cane-unloading device in use at Waipahu sugar mill when he and the Congressional party visited the estate late Friday afternoon on the return trip from Haleiwa. The device in question is one familiar to people here, and now considered an ordinary machine. The cane is brought to the endless belt which carries it up into the rollers. Hooks operated on a long swing arm pull the cane off the car, which is tilted to allow an easy fall into the belt. The car is then pushed ahead to a platform detached from the main car rails. This detached platform then rises with the car until the two short rails on which the car rests roll over to a parallel track, whence the car is shunted down the line and out of the way.

This method of removing unloaded cars appealed to Mr. Watkins as one which ought to be introduced into every sugar mill in the South.

SACRED HEARTS CONVENT BLESSED

New Kaimuki Building Is Formally Opened to the Public.

With the impressive ceremonial presided in the ritual of the Roman Catholic church, the Right Reverend Bishop of Honolulu yesterday afternoon blessed the new convent of the Sacred Hearts in Kaimuki. The formal opening of the new building also took place at the same time.

The occasion was a happy one for the Sisters of the Sacred Hearts, for it marked the realization of the most ambitious project which they have undertaken since they arrived in Hawaii, more than half a century ago. Though the convent school has grown, from a small beginning, to an educational institution of vast importance, this is the first time that the school has been moved from the site where the Sisters first took up their teaching work when they landed in the Islands. The convent represents an outlay of more than \$50,000. Of this money, \$10,000 was donated by the late August Dreier. It was this donation which enabled the Sisters to realize their ambition and erect a building suitable to house the fine school which they have built up.

Only the boarding department of the convent school will be located in the Kaimuki building. The day school will be maintained in the old convent building on Port street, where it has been housed for so many years.

LINK'S VOTERS MEET BIG ONES

Representative Taylor Gives Hawaiian Salute to County Scarecrow.

That a good Democrat cannot be held down was clearly demonstrated on the Congressional auto trip around the island on Saturday when the machine carrying Representatives Houston and Candler and E. M. Watson, of this city, met a number of Hawaiians down in Waikane. The machine was stopped and Senator McCandless, of Honolulu, introduced the Congressmen to the windward Oahu voters.

The visiting Congressmen were astonished to learn that every voter in Waikane section is a Democrat and they insisted on being photographed with the Hawaiians so that the picture could be shown down in Mississippi, and they will tell their constituents that they found one place away down in the middle of the Pacific Ocean where not a Republican could be located.

Representative Taylor not only had a good time on the trip, but he furnished considerable amusement to those traveling with him. The representative, as all the Congressional party knows, is a good talker, a jolly good fellow, brimming with true Southern chivalry. The Alabama representative has picked up a few Hawaiian words and among them is aloha. On the auto trip he shouted aloha to residents along the route, and whenever a woman returned the salutation or bowed her aloha, the representative beamed and remarked how cordial the people were. At one place a young lady gave him a very comprehensive response as the auto sped by, and it is said she accompanied her aloha with a kiss blown from her finger tips. The Alabama Congressman was clearly enthusiastic and when a very human-looking scarecrow in a rice field was sighted the representative, who is a little near-sighted, waved his hand and shouted aloha, and insisted afterwards that the lady bowed almost as well as the young lady who blew him the kiss.

At the Ala Park meeting, the representatives had their first experience with interpreters. They started off in their speeches and taking the bit in their mouths continued talking, oblivious to the presence of the interpreters, who were vainly trying to memorize all that was being said, particularly arrays of statistics, figures and dates. Rev. Stephen Desha interpreted for Representative Houston, and when the latter said something nice about the roads over which he had traveled, the interpreter elaborated, much to the amusement of the Hawaiians on the platform, for he added: "But wait until he gets over to Hilo and tries to travel on our roads."

The interpreters could not withstand the temptation to put in a few words of their own here and there, and oftentimes the Congressman would gaze in almost open-mouthed admiration of an interpreter who talked several minutes more than the lawmaker whose speech he was interpreting. Finally the Congressmen got on to this new wrinkle and concluded it was a pretty good sort of way to do politics. Congressman Taylor, after watching Mr. Keaweahu, his interpreter, finally complimented the Hawaiian, by saying: "Go on, you're saying what I said much better than I could express it."

CHAS. LEWERS BROUGHT ICE AROUND HORN

The death of Mrs. Mary Lewers at Kansas City recently, recalls the business enterprises of her husband, Charles H. Lewers, one of the founders of Lewers & Cooke. He was one of the enterprising ones who imported ice from New York, having it shipped to Honolulu in sailing vessels, around Cape Horn. The ice was sold here at a good rate, but it cost the importer ten cents per pound laid down here as there was a good deal of waste.

MAN WHO FOUND CUSTER'S BODY IS NOW IN HONOLULU

"When the body of General Custer was found lying on the battleground of the Little Big Horn, stripped of all but the underclothing, but with his long yellow hair still unshorn, one of the first men to gaze upon the dead cavalry leader was White Calfee of Terry's column, the day following the massacre. Mr. Calfee, now a ranchman of Bozeman, Montana, has been visiting in Honolulu for several weeks with his old friend Kit Etherington of Salsville, Montana. They leave again for the mainland on the Manukoa after a delightful visit here. Mr. Calfee, at the time of the Custer

WARSHIPS SAIL FROM BAY CITY

Dr. Cook Is Entertained by Denmark's King and Queen.

(Associated Press Cablegrams.)
SAN FRANCISCO, September 6.—The Pacific fleet, under command of Rear-Admiral Uriel Sebree, sailed from here yesterday afternoon, bound for Honolulu.

Should Admiral Sebree carry out his original intention of making the run under forced draught, the ships will probably arrive some time Thursday. It is believed that the record of the St. Louis may be smashed and a new mark set for the San Francisco-to-Honolulu journey.

KING AND QUEEN QUESTION COOK

COPENHAGEN, September 6.—Dr. Cook, as the guest of the King and Queen of Denmark, yesterday related the story of his adventures in his search for the North Pole. He was closely questioned by their Majesties.

The King has given instructions that the closest investigations shall be made of the observations which Cook made on his trip, with the view to establishing the truth of the daring explorer's claims.

Dr. Cook has decided to visit Brussels. He will then go to Paris, where he will deliver a lecture, after which he will return to Copenhagen, whence he will sail for New York.

EXPLORERS CONCEDE COOK'S DISCOVERY

LONDON, September 6.—Most Arctic explorers and scientists of the world now concede Cook's discovery of the North Pole.

SLIGHT EARTHQUAKE IN MEXICO CITY

CITY OF MEXICO, September 6.—A slight earthquake shock was felt here yesterday. No damage is reported.

THIRTY THOUSAND ARE IDLE IN PITTSBURG

PITTSBURG, September 6.—The dawn of Labor Day here saw 30,000 idle workmen as the result of strikes and lockouts.

massacre, was a wagon contractor and supplied wagons and other means of transportation which followed Terry's command. When news reached the detachment of the massacre on the Little Big Horn the men pushed on to the scene. Not a living soul was on that field, only the stark, already decomposing bodies of Custer and his men. The uniforms had been stripped from the dead leaving only an undershirt and drawers on each one. Sabers, carbines, hats, boots and all the equipment of the cavalrymen had been carried away by the savages. Every man but Custer was a terrible sight. The bodies were buried on the spot, as there was no means of carrying them to any post.

UNPRECEDENTED SUCCESS OF THIS SALE

Not exactly that, but the greatest success we have had in a clearance sale for four years. And that is going some, considering our record in this respect.

WE WILL CONTINUE THE BARGAINS THIS WEEK AS LONG AS THE GOODS LAST. BUT THEY MAY NOT BE HERE UNTIL SATURDAY, FOR THE DEMAND IS GREAT. THE BUYING PUBLIC FLOCKS TO OUR STORE BECAUSE THEY KNOW WHAT

A BLOM BARGAIN MEANS:

WE ARE CALLING YOUR ATTENTION PARTICULARLY TO AN ENTIRELY NEW IMPORTATION OF EMBROIDERIES JUST FROM THE CUSTOM HOUSE. THEY WILL BE PUT INTO THE SALE TUESDAY. WE HAVE PLEASURE IN OFFERING A LOT OF LINEN TORCHON LACE, REGULAR AT \$1.00 TO \$1.75, WHICH WE WILL SELL AT SIXTY CENTS A DOZEN.

THE EMBROIDERIES ARE NOT OUT OF THE CUSTOM HOUSE AS THIS ANNOUNCEMENT IS BEING WRITTEN, BUT WE WILL HAVE THEM FOR YOU TUESDAY MORNING, SURE.

Everything in this sale is to be sold at genuine bargain prices. Nothing will be left over, and if your purchases are delayed you will miss some of the best things you ever saw.

BLOM, The Bargain Maker, Fort Street, Opp. Catholic Church

SPORTS

KING OF SPAIN SPILLS THE WHITWASH TUB ON BOERS

Magnificent Exhibition of Pitching by Royalty Delights a Huge Crowd at the Athletic Park.

ATHLETIC PARK RESULTS.

Morning.			
P. A. C. 4.	C. A. C. Jrs. 2.		
C. A. C. 5.	Marines 4.		
J. A. C. 5.	Kalihi 0.		
Oahu League Standing.			
	P. W.	P. W.	P. W.
Kalihi	7	5	.714
J. A. C.	8	5	.625
C. A. C.	8	4	.500
Marines	7	1	.143

The surprise of the season was sprung at the Athletic Park yesterday afternoon when the Japs whitewashed the Boers and the King of Spain kept the boss sluggers of the league down without a single little mealy scratch hit.

This changes the aspect of things altogether. It looks very much as though the Japs had a good chance to cop off the championship of the first series, after all. Here is how things stand. If the Japs win the last game of the series next Sunday and the Boers lose either of the two games they have yet to play, then the Japs and Boers will be tied for first place.

Next Sunday the Japs play the Half-wets. They should be able, judging by the dope, to win all right. The Boers are up against the Dragonlets. The result of that game is very much on the knees of the gods. But, if the C. A. C. should win, then nothing can keep the Japs from tying with the Boers. Finally there is that nineteenth-inning game tie between the Marines and Boers to play off. Should the Marines win this game, it will be all off with the Kalihi and the Japs will lead in the standing.

There is another very interesting possibility to the situation. If the Boers lose their next two matches and the Japs are defeated by the Marines, then the Dragonlets, Japs and Boers will all be tied for first place. Which ever way you look at it, it is the keener and most exciting finish to a first series that has ever happened in this town.

The grandstand was honored by the presence of a large number of Congressional visitors and their families and friends. They seemed to enjoy watching the crowd as much as they did the ball games and they expressed themselves as delighted with the experience. It was a great surprise to them to see the class of ball that our polyglot kids put up and some of them became greatly enthused over the closeness of the plays and the clever fielding that was done.

The afternoon was so crowded with interesting features that it is hard to pick out the best of them. But it must be said that the wonderful feat performed by the King of Spain is not only something very wonderful but a great Island record. Just imagine it—NOT A HIT, NOT AN ERROR, ONLY ONE MAN ON SECOND BASE AND NOT A STOLEN BASE ON EITHER SIDE.

The William Espinda-Solomon Hoopi combination is the finest that has ever been seen at the park. Solomon is the old standby of the Palamas and he was in excellent form. When he went out to take the mask and mitt he was greeted with round after round of applause and Solomon carried his honors very gracefully. He smiled that long, broad smile of his and immediately began to work wonders.

The first time? Why our genial friend Webster Junior. This was his reappearance at the park and he played a magnificent game at left field, he caught all the long flies and there was not a single fumble or approach to one to mar a great game. Webster has profited by his short rustication and everybody hopes that he will stay by it and put out the same line of dope.

The Marine defeat was a sad tragedy for the good Half-wets and all the more so that it was due principally to the switching round of the team. Lieutenant Kilgore played first base for the first time at the park and changed his men from their accustomed positions. Slorp and Gaw were changed over. Gaw is used to playing shortstop and Slorp to third base. The swap made it bad for them.

It looked, to a man up a telegraph pole who did not have the price of admission, very much as though the Lieutenant made two bad mistakes. First, in changing Gaw and Slorp over, and secondly, in leaving Knight on the bench. Judging by precedent Knight would never have made that overthrow in the eighth inning and let the winning run in.

Hang Chack Has Kahuna. Hang Chack was back from Hawaii and made his appearance for the Dragonlets. He surely brought a rabbit's foot and a bunch of kahuna back with him for he scored the first two runs and came in with a bingle just at the right time to help score another one.

Gibson pitched a splendid game and Williams caught well for him. It was a great pity that the support was not better, although with the changes that were made, one can hardly blame the infielders.

Teukamoto Smiles. Teukamoto, the Jap runner from Hilo who has come to compete in the tennis race next Saturday, was at the grounds with three medals on his breast and a regular corps of trainers and managers. He was greeted with enthusiasm when he was recognized and smiled very becomingly, making a nice bow and looking as though he were quite ready to make a little speech.

Hays Under the Weather. Coll took Hays' place in the third inning. Hays was not feeling well, suffering from one of those very prevalent feverish colds. Peyton went to right field and Coll to second base. The latter did some remarkable fielding. Apau sent a hot liner to right field which should have been good for a bingle. But Coll was there with a shovel and returned to first with such lightning speed that Apau could not beat it and was sent to the bench.

In spite of the change in their positions, both Slorp and Gaw played their usual errorless games. Slorp, by the way has not made an error this season and it looks very much as though he would keep it up for the balance of the series.

A Record Attendance. The attendance was another record. The fans were jammed against the fence nearly all round the field, and there was not a seat to be had for love or money. Berger's band was there with its usual loud delivery. Captain Berger would have won the game only he had somebody playing the French horn who insisted on making errors.

Then he had a cornet player who would go to sleep at first base and was put out three times for this offense. Captain Berger himself pitched a mighty fine game, but his delivery was too strenuous and the big drum player could not hold him. The final score was six-eight time.

Umpiring Was Good. McHenry umpired a great game as

usual. The league has not yet waked to the fact that this energetic and accurate man needs another umpire to help him. McHenry has not eyes in the back of his head, although he works the two he has in front of his mush very much overtime.

The Dragonlets went in first and scored in the first inning. Hank Chack bingled and stole one while Sing Chong scored in the first inning. Hang Chack went to third on a passed ball. Sing Chong bargled. John Lo skied to first. Cheeby sacrificed Hang Chack home, short to first. Akina died. One run.

Hang Chack repeated the dose in the third. He was safe on second-base-man's error and stole second. Sing Chong sacrificed him to third, and John Lo again sacrificed him home. Cheeby was safe on another error by Hays and stole second. Akina fanned. One run; 2 to 0, Dragonlets.

Again in the fourth the Dragonlets scored. Ah Toon fanned, but Akana walked and stole twice. Asam fanned, but Apau was safe on catcher missing third strike, and Akana scored. Hang Chack grounded to first. One run; 3 to 0, Dragonlets.

But the excitement of the game came in the fourth, when the Half-wets tied the score. Gaw bingled to right-field fence. Davis sacrificed him to second, and then did Gibson hand out one wonderful drive to center-field fence. It was good for a double, and Gaw romped. Then Coll made a great bingle and Gibson went home. Two runs and only one down. Kilgore fanned, but Coll scored on a bad throw, first to third. Thompson fanned. Three runs. Score 3 to 3.

The Marines took the lead in the seventh. Kilgore skied to right field. Thompson was safe on shortstop's error. Williams bingled and Thompson went to third. Slorp was safe on first's error. Peyton fanned, but the catcher missed the third strike and Thompson scored. Gaw skied. One run; 4 to 3, Marines.

The Dragonlets won the game in the eighth. John Lo was safe on Kilgore's error. Cheeby bingled and sent Lo to second, but Lo was out trying to make third. Akina bunted and the catcher threw wild to first, hitting Akina. Gilgore threw in a hurry to third to get Cheeby. He threw high and Cheeby romped while Akina went to second on the play. Ah Toon fanned, but Akana bingled and Akina scored. Akana was out trying to steal second. Two runs and the game. The official score was as follows:

C. A. C.—	ABR	BH	SB	P	O	A	E
Hang Chack, lf.	5	2	1	2	0	0	0
Sing Chong, ss.	3	0	0	1	1	1	0
J. Lo, rf.	3	0	0	1	1	0	0
Che Bui, c.	3	1	2	5	0	0	0
Akina, lb.	4	1	0	0	15	0	0
Ah Toon, 3b.	4	0	0	1	2	0	0
Akana, cf.	3	1	2	2	0	0	0
Asam, 2b.	4	0	0	0	2	1	0
Apau, p.	4	0	0	0	0	4	0
Totals	33	5	4	8	27	10	4

MARINES—	ABR	BH	SB	P	O	A	E
Slorp, ss.	3	0	0	0	0	4	0
Hays, 2b.	1	0	0	0	0	0	3
Peyton, rf.	3	0	0	0	0	1	0
Gaw, 3b.	3	1	0	1	1	0	0
Davis, cf.	3	0	0	1	0	0	0
Coll, rf-2b.	4	1	1	0	4	3	0
Lt. Kilgore, lb.	4	0	0	12	0	3	0
Thompson, if.	4	1	0	0	1	0	0
Williams, c.	4	0	2	0	8	2	0
Totals	33	4	5	0	26	12	8

*Apau out, third strike.
C. A. C.: Runs. 1 0 1 1 0 0 0 0—5
B. H. 1 0 0 0 1 0 0 2—4
Marines: Runs. 0 0 3 0 0 1 0 0—4
B. H. 0 0 0 3 1 0 1 0—5
Two-base hit, Gibson; sacrifice hits, Sing Chong, J. Lo, Che Bui, Davis; left on bases, C. A. C. 5, Marines 5; bases on balls, off Apau 2, Gibson 1; struck out, by Apau 4, Gibson 9; wild pitch, Apau; first base on errors, C. A. C. 8, Marines 1; passed balls, Che Bui 2, Williams 2. Time of game, 1 hour 55 minutes. Umpire, McHenry. Scorer, N. Jackson.

The Japs whitewashed the Boers. They made their first run in the fourth. Franco walked, Akana hit to pitcher, but the latter fumbled and both men were safe. Walker fanned, but Ross

What the Boys Want for School

We beg leave to call attention to our unexcelled stock of clothing suitable for boys' wear. We recommend our stock as being superior in quality and style. It is all that the fondest mother could wish for:

Khaki knee pants, brown linen knee pants, white duck knee pants, blue serge and tweeds, shirtwaists, blouses and negligee shirts, straw and felt hats, caps that will appeal to the boy, entirely new stock of boys hose; extra quality.

College boys' suits in the very latest patterns of material and most fashionable cut. These are in tweeds, plain and fancy. All good wearing and the right thing for growing boys.

We have never shown a better assortment of clothing and boys fixings. Your boy will want something for the opening on Tuesday.

M. McINERNY, Ltd.

FORT AND MERCHANT STREETS

was safe on first's error and Franco scored. Ross was out trying to steal, and Akana was also caught asleep. One run.

Two more in the sixth. Espinda safe, third's error. Hoopi sacrificed him to second. Franco drove a terrific three-bagger between left and center and Espinda scored. Akana sacrificed Franco home. Walker skied. Two runs.

Two more in the seventh. Ross safe on short's error, Webster, Jr., bingled, man on first and second. Augie Dreier hit to pitcher and Ross was out at third. Kaipo doubled beautifully to right field and Augie and Webster, Jr., romped. But Kaipo was out trying to steal home. Espinda fanned. The official score was:

J. A. C.—	ABR	BH	SB	P	O	A	E
A. Franco, ss.	2	1	0	2	0	0	0
A. Akana, 2b.	2	0	0	0	2	3	0
Walker, cf.	4	0	0	1	0	0	0
Long, 2b.	2	0	0	1	1	1	1
Brannon, cf.	2	0	0	0	0	0	0
Young, lf.	3	0	0	0	0	0	0
H. Kaipo, 3b.	4	0	0	2	0	1	0
Norton, c.	2	0	0	0	0	1	0
Clark, p.	3	0	0	0	0	5	0
Wood, lb.	3	0	0	13	0	1	0
Totals	27	0	0	0	27	10	4

J. A. C.: Runs.	0 0 1 0 2 2 0 0—5
B. H.	0 0 0 0 0 1 2 0—4
Kalihi: Runs.	0 0 0 0 0 0 0 0—0
B. H.	0 0 0 0 0 0 0 0—0

Three-base hit, A. Franco; two-base hit, D. Kaipo; sacrifice hits, A. Akana, 2, Hoopi; left on bases, J. A. C. 1, Kalihi 2; double play, Long to Wood; bases on balls, by Espinda 3, Clark 2;

struck out, by Espinda 11, by Clark 8; wild pitch, Espinda; balk, Clark. Time of game, 1 hour 13 minutes. Umpire, McHenry. Scorer, N. Jackson.

Attendance, 3500.

Notes of the Game

Prince Cupid was there as cicerone to the Congressional visitors. He seemed to enjoy the games as much as anybody.

Marshal Hendry was there as usual in the grandstand and applauded vigorously.

Bill Espinda has come into his own. He will run George Clark close for the place as the star twirler of the league.

George Clark is overworked. The Boers are making a huge mistake in putting him in every week. He is a crackerjack and it would be a shame if his enthusiasm is allowed to work him out. Oom Paul, please take notice.

There was a hot foul tip in the first game. The ball went straight for a Chinese fan. He ducked his nut and the ball hit that pate and bounced back to the field. Oy Yoi.

One of the Congressional party also took a soak on the headpiece from a ball that managed to twist round inside back of the wire.

A record crowd and a record game. Not a single, little, tiny hint of a bingle for the Boers. What, ho!

Captain Baker was there with his smile as usual. He seemed to enjoy the games more than ever. (Additional Sports on Page Three.)

ORPHEUM THEATER

The Home of Vaudeville

Joel C. Cohee Proprietor

Notes of the Game

Engagement of the world-famous creators of humorous situations.

WISE AND MILTON

and a company of nine Song and Dance and Musical artists who will make their initial bow to Honolulu this

MONDAY EVENING, SEPT. 6

Usual prices of admission.

BASEBALL

Honolulu Baseball League

SATURDAY, SEPTEMBER 11, 1909,

3:30 P. M., ST. LOUIS VS. PUNAHOU Tickets on sale at M. A. Gunst & Co.

INTERNATIONAL STEAM PUMP CO.

---: MANUFACTURERS OF THE FAMOUS :---

Worthington, Deane, Knowles,
and Laidlaw-Dunn-Gordon

PUMPS

FULL LINES BOTH STEAM AND POWER PUMPS
CARRIED IN STOCK FOR IMMEDIATE DELIVERY

QUOTATIONS CHEERFULLY GIVEN

The von Hamm-Young Co.,

LIMITED

SOLE AGENTS

Alexander Young Bldg.

SPORTS

FOR BLOOD AT ATHLETIC PARK

Dragonlets and Japs to Appear
in Fiercest Scrap Yet
This Afternoon.

Athletic Park Events Today.

Asahis vs. C. A. C. Jrs., 1:30.
C. A. C. vs. J. A. C., 3:30.
Chilton vs. Eldid, motorcycle race
for 15 miles, 8 p. m.

Two of the greatest games for blood
ever played here will be seen at the
Athletic Park this afternoon. The
Asahi, and all-Japanese team, will try
conclusions with the C. A. C. Juniors,
an all-Chinese team, and those two old
enemies, the Dragonlets and Japs, will
scrap it out.

The Japs have been playing mag-
nificent ball and have opened up a big
lead on the C. A. C. The latter team
does not like this. It is very much
peevish about it and makes no bones
about saying so. The Dragonlets have
wanted to get a good chance at the
Japs out of the regular schedule and
they have that opportunity today.

This game is not in any regular
schedule but it is very much for blood.
The team that wins this game will gain
more satisfaction by it than if they
took the entire championship of the
Oahu league. Also they will doubtless
pocket a neat little sum for a big pot
has been made by each team and its
friends and the entire amount wagered
on the result of the game.

Batteries Unnamed.

Neither side has given out its bat-
teries. But it is expected that Apan
will not fill the box for the first few
innings. He had a hard day yesterday
handing it to the Marines and it will
not be a surprise if some other pitcher
is given a tryout for at any rate the
earlier innings. Cheebly, of course, will
catch. He is playing a mighty heady
game these days and can keep most
any kind of a twirler doing his best.

The Japs are well fixed for pitchers.
They have two of the headiest in the
league. The King of Spain and Don
Juan di Flores are both good ones.
Even should Royalty find itself a trifle
stiff today from its hard exertions in
making Island records yesterday, the
agile Don will be there to kokua and
can step into the box at any time.

An Exciting Event.

The evening event, if it is only half
as exciting as that of last night, will

certainly be something that nobody
should miss. There is something ex-
traordinarily tense and gripping in the
sight of those two shrieking machines
scouting round the short track at such
a breakneck speed.

After the excitement of last night,
Chillie's friends rallied round him and
said very clearly that they believed
that he could win tonight. There
were others who thought differently and
the registration of wagers went on
quickly and confidently.

No large amounts, of course, were
placed on the event but there was
enough to make it very interesting
and there will be some sensation to it
when those daredevils start round the
track again tonight at 8 o'clock.



Johnny Williams, Who Will Pitch for
the Saints Today. He Twirled a
Winner for the Amateurs Last Satur-
day.

NO RIVERSIDE GAMES.

The Fort Shafter team was
the only one to turn up in full
force at Aala Park yesterday
afternoon. Neither the C. A.
As, nor the Aalas showed any
signs of playing. Six of the
Palama team showed on the
field. Lieutenant Bowen held
his men there till well after 3:30
and then left. So there were
no games at Aala Park yester-
day afternoon.

COX HAS SECOND LEG ON THE CUP

Oscar Cox put his second leg on the
Haleiwa cup yesterday afternoon by
defeating all comers in the tournament
and making a close race with A. Mc-
Kinnon.

The exact score is not known as the
part of the Island was hardly noticed.
The links at Haleiwa are in excellent
condition and the special late train
enables golfers to get back to Hono-
lulu shortly after 10 o'clock. Also
Cliff is figuring on something large in
the golfing line very soon.

The weather was delightfully clear
and the sultriness that obsessed this
part of the Island was hardly noticed.
The links at Haleiwa are in excellent
condition and the special late train
enables golfers to get back to Hono-
lulu shortly after 10 o'clock. Also
Cliff is figuring on something large in
the golfing line very soon.

Senator Dolliver told this story to
illustrate Aldrich methods with the
tariff, but it may be applied to other
criticisms of peculiar political plays:
It seems that in a "quiet little game" in
Reno an unsophisticated stranger saw
the dealer deal himself four aces. He
sidled over to the player opposite the
dealer and whispered to him that the
dealer had four aces. "Well, what's
that to you?" demanded the player.
"I am trying to tell you because I
thought you ought to know," answered
the rubber-neck. "I saw him deal
himself four aces." "Say, mister,
you had better get out of here," an-
swered the player. "You don't un-
derstand this game. What if he did
deal himself four aces? Aint it his
deal?"

Judge—Do you mean to tell me that
you stood by, and let your mother-in-
law be beaten to death by the prisoner
without doing anything? Witness—
Well, I didn't think he needed any
help.—The Bohemian.

"Does your wife cry when she gets
angry?" "Yes," answered Mr. Meek-
ton. "Is isn't the heat of her temper
that distresses me so much as the
humidity."—Washington Star.

JEWELS TO SCRAP WITH SAINTS

Great Excitement Over Second
Game at the Big League
Grounds Today.

Big League Games Today.

Kams vs. Puns, 1:30.
Saints vs. Jewels, 3:30.

It is seldom that there has been so
much preliminary talk about a mere
baseball game as there has been lately
about the meeting of the Diamond
Head and St. Louis teams at the big
league grounds this afternoon.

Each team has it in for the other one
and has it in very badly. The Saints
are in a constant state of peev every
time anybody so much as mentions the
Sparklers and, if any of the Jewels
hear the word Saint, they go up in
the air and begin to talk about what
they are going to do to the Alumni.
It will be, without doubt, the most



Bob Leslie, the Man Who Swatted Two
Homers Last Saturday. He Will
Pitch for the Jewels Today.

Fetching New Designs

FOR EVENING WEAR

From Rochester, New York and Philadelphia, have just been
received.

The new DRESDEN TIES in Black Suede, Bronze Kid,
White Suede and Patent Leather are new this season from the
factory of Laird, Schober & Co. of Philadelphia.

You are thereby assured of comfort, correct style and de-
tail. Why pay a little less and take chances in getting some-
thing which is not correct. You can't make a mistake in
these.

OPEN SATURDAY EVENINGS.

Manufacturers' Shoe Co., Ltd.

1051 FORT STREET.

PHONE 282.

fiercely contested event ever seen out
on those grounds. Both sides are work-
ing up to a tremendous pitch of enthu-
siasm and this is helped greatly by the
general sense of dissatisfaction engendered
by the failure of the public to
support the league.

If you want to see a game for that
red stuff that shows itself when some-
body hits you on the snoot, climb out
to the league grounds and be prepared to
root. There will be something doing
of no mean order.

Johnny Williams is going to twirl
for the Saints, Louie Soares, the "Tiser
Kiddo, will catch for him and here is
a battery that is almighty hard to beat.
Johnny is in excellent form these days.
Never before did he get them over the
plate with such tremendous speed as
last Saturday when he was slipping it
to the Fenians for the Amateurs. That
long arm of his ties itself in sixteen
knots when he is winding and, when he
lets go, the mortars at Fort Ruger look
like toy pistols alongside of it.

Bob Leslie to Pitch.

Bob Leslie will twirl for the Jewels.
Everybody knows what a terrific deliv-
ery Bob has when he is right and, that
he is right, was shown last Saturday
when he slogged two homers over the
fence. Jim Winne will be there to
mitt for Bob and here is one catcher
who is improving all the time and mak-
ing better and better every time he
comes out.

It is hard to pick out any particular
weak place in either team, although both
sides have been busily engaged in find-
ing for some weeks past. The
Sparklers seem to have a bit of a hole
round third base and the Saints will
certainly look out for that opening.
Then Bob is always liable to get mixed
if he does not get off with the right
foot.

In spite of the fact that the writer
will probably be cremated for daring
of them.

Honolulu Athletic Park BASEBALL Sunday, September 12

K. A. C. VS. C. A. C.

J. A. C. VS. U. S. M. C.

Seats on sale at Wall, Nichols Co.,
Ltd., King street.

such a suggestion, it seems that, if the
Saints would allow Bob to work hard
for a few innings without trying to hit
him, they would be very likely to find
occasional places where they can put
in some bingles.

A Pitcher's Battle.

The Saints are firm in the outfield
and there seem to be few holes in their
stockings. Johnny has a terrific deliv-
ery but if a bat ever connects with
one of his straight ones, it generally
rambles some.

As a matter of fact both teams have
been practising so hard and faithfully
that it will certainly be a battle of
pitchers and the team that finds the
weak place in the other's twirling first
will have a tremendous advantage. One
thing is certain, there will be no avia-
tion at the league grounds this after-
noon. Whoever team wins will do so
by a very slight margin.

The first game does not lack interest
by any means. The Kams and Puns
are well matched and the former have
been improving so much that the
youngsters may surprise everybody this
afternoon by slipping something over.
They are two good games on paper and
will certainly prove so in the playing
of them.

THE Pacific Commercial Advertiser A MORNING PAPER. WALTER G. SMITH EDITOR. MONDAY SEPTEMBER 6

A YEAR OF ACHIEVEMENTS.

The year 1909 has seen the realization of two of the most ambitious dreams of mankind; the problem of flying with machines heavier than air has been solved, and the North Pole has been discovered. Countless lives have been sacrificed, and millions of money have been spent, in trying to locate the northern extremity of the earth's axis. Men have bravely faced unknown death time and again in the hope of reaching the goal; but jealous nature, with her barriers of ice and snow, has hitherto been able to thwart the bravest of explorers and, until Dr. Cook made his last dash, every trial ended in failure. Peary tried time and again to reach the longed-for goal. Undaunted by failure, he kept hammering at the task which he had laid out for himself, each time coming a little nearer his objective. But always there was something which put a stop to the advance, just when success seemed certain. Bitter disappointment was the reward of each heart-rending endeavor. Lieutenant Greely, with a handful of volunteers, years ago, tried to reach the North Pole. He failed, and his experiences on the trip were such that he never cared to make the trial again. Theory after theory has been advanced. One scientist preached the doctrine of an open polar sea, another compiled tons of data to show that the North Pole would be found to be warm, not frigid. Andree made a dash for the Pole in a balloon, firm in his belief that air currents travel in circles about the end of the earth. Andree has never been heard from since he started from Dane's Island in 1897. He and his balloon found a grave in the frozen North. But though Peary failed in each of his efforts to reach the Pole, his work was not in vain. Time and again he added to the scientific lore of the world, and last, but far from least, he interested Dr. Cook in the work. Dr. Cook was surgeon of the first expedition, and who shall say but that his determination to achieve victory over ice and snow was the direct result of the enthusiasm instilled by his brave commander. In each failure Cook saw a lesson, and, when he started out for himself, he eschewed that which the failure of the others told him to avoid. He took no large party of white men to consume his provisions and delay progress. He studied the lives of the Eskimos; he lived as did the Eskimos; he husbanded his strength and he won—Victory. Cook's feat must have gone down in history as the greatest of the decade but for one thing: the discovery of the secret of propelling through the air, for a long-continued time, a machine, heavier than air, and capable of carrying passengers. It was not many years ago that the would-be flying machine inventor was looked upon in the same light as the perpetual-motion crank—a freak, more or less harmless according to the intensity of his interest in the problem he was trying to solve. Now the time has arrived when people are actually placing orders for aeroplanes, not for scientific study, but for sport. Concerning the future utility of the aeroplane, there is some doubt; concerning the feasibility of navigating the air by means of such a contrivance, there can now be none. The Commissioners of the District of Columbia suspended the speed laws of the district as far as President Taft is concerned. Thus the President may oash through the streets of Washington at sixty miles an hour, providing his motor car can make that speed. But President Taft reciprocated the courtesy by instructing his chauffeurs to keep well within the speed limits laid down for ordinary folk. Now, in order to avoid embarrassing the authorities of Beverly, he has announced twenty miles an hour as the limit of speed which his machines shall be allowed to obtain.

Tis pretty tough on Peary to have his doctor step in and steal away the laurels which he has spent so many years trying to obtain. Dr. Cook must be built of the same stuff as that other doctor who plucked a pair of golden stars for his shoulder straps when he grew tired of maltese crosses on the fatigue blouse collar. The Pacific fleet will soon be anchored in Hawaiian waters again, and Honolulu's citizens will again be showing that they have a warm spot in their hearts for the lads who wear the dark blue shirts and man Uncle Sam's floating forts. Unless Senator Dillingham has already booked his return passage, he may receive enlightenment in the working of the coastwise shipping law, which will drive the lesson straight home. When Dr. Cook gets through proving that he reached the North Pole, he will be proof against any cross-examination that lawyers may put him through in time to come. With 30,000 men idle, the outlook for a happy Labor Day celebration in Pittsburg seems mighty unpromising.

NO SCORCHING FOR MR. TAFT President Orders His Chauffeur to Keep Within Speed Limit.

By Ernest G. Walker. (Mail Special to the Advertiser.) BEVERLY, Mass., Aug. 20.—The summer capital of the United States is only two weeks old. Everybody in the vicinity has become thoroughly used to it during that brief passage of time. The natives, so-called out of no derisive intention, but in distinction from the wealthy residents in the palatial cottages which extend along the North Shore for forty or fifty miles, are now taking the change as a matter of course. Cabinet officers come and go, without stirring the city of Beverly half as much as would an invention in shoe machinery. Even the President's automobile goes whizzing through the streets of an afternoon without making any more of an impression than it would in Washington. A third of the President's vacation is gone. He is really having the time of his life. He enjoys the Stetson cottage down upon Burgess Point, which is fifteen minutes' walk away from the heart of Beverly and from the executive offices where Secretary F. W. Carpenter presides. He enjoys the golf over at the Myopia links and at the Essex County Club links, only he is not going to the Essex links just now because a tourney is on and the President does not like the publicity. He cordially detests being on exhibition. He protested against it while he was in the 1908 campaign. Now, that he is President and able to do some things as he wishes, he insists upon taking his vacation without being on exhibition. Then the President enjoys immensely the automobile rides in the late afternoon.

m. when the most delightful period of the day is beginning. Mrs. Taft accompanies him. Capt. Archibald W. Butt, his aide and playfellow, sits on the front seat beside the chauffeur and away they go for forty or fifty miles. The President has ridden over every beautiful road within a long radius of Beverly and Capt. Butt is constantly trying to find some new and pleasant route. Now, the President has begun to ride over the same roads a second time. Probably there is no more beautiful country of such magnitude for automobile driving on this continent, perhaps in the world, and the President is appreciating it fully. Nowhere else does one see more automobiles. They come down the roads in droves. The speed mania is prevalent and the natives have been protesting. They have to wage continual war against the juggernaut cars that shoot through their streets. It occurred to the President ought to set a wholesome example for their benefit. Stories have been current that his big car, followed by a smaller car carrying two Secret Service men, generally made rapid progress. The hard headed and practical Yankee up this way may love the glamor of official position but they do not hesitate to speak out their minds when they have a grievance. So letters began pouring in upon the President, protesting against the example he was setting for the rich summer visitors who come down to the North Shore on pleasure bent. The President was annoyed, because he claimed that his automobile had not been driven in excess of the legalized speed of twenty miles an hour and that, in fact, he had been driving so slowly he had to take the dust of many machines which passed him on the road. His chauffeur now has specific orders not to drive faster than from fifteen to twenty miles an hour and the North Shore natives are a little better satisfied. This has not restricted the speed of the great current of automobiles which surge through the streets of Beverly and other North Shore towns and cities but it looks better to the people who make their homes here for twelve months of the year. The pressure upon the President to participate in local functions during his vacation has been very great but he has steadfastly refused. For some days there was a stream of visitors to the White House offices appealing to Mr. Carpenter for a chance to see the President and invite him to be their guest. The functions varied greatly in character and if the President had yielded he would have been attending by this time all the big affairs from Martha's Vineyard to Portland, Maine. A Republican County Club of New Hampshire sent a distinguished man here, endorsed by Senator Gallinger, to invite the President to come with them on their annual outing. The G. A. R. of the Granite state have an important annual reunion at the Weirs. The President did not like to decline their invitation but he also knew what was in store for him if he made an exception. These invitations kept coming in all along the line. One was from the Public Improvement Association of Boston, a great organization working for the betterment of the city on the broadest possible lines. The committee to extend that invitation did not even see the President. Their request was carried to him by Mr. Carpenter that very afternoon and that very afternoon declined. One invitation he has accepted, however, and that an invitation of the Boston Chamber of Commerce to a banquet in his honor on the evening of September 14, which is the evening before he starts on his long transcontinental trip. The committee of prominent Boston business men, who came to extend or rather to renew that invitation, had no difficulty reaching the President and their invitation was promptly accepted. But it was given out as a renewal of an invitation extended to him at Hot Springs, Va., last winter while he was President-elect. The banquet promises to be a great affair, where 2000 people will be present in Mechanics' Hall. Elaborate preparations are being made and the Boston business men hope to make it the star occasion of the entire autumn tour. They may succeed, for the President seems to be entering into the spirit of the affair. His speech will probably be an important one, forecasting in some particulars the tenor of his speeches through the West. The President puts considerable work upon his cabinet officers. That gives him more time to attend to the matters which must have his personal attention and also gives him more time for his own vacation. The cabinet officers, in this easy-going summer time, in turn pass some of the work—as much as they can—on to their subordinates, to the assistant secretaries and the chiefs of bureaus, but the work gets done, and there is no little summer activity in consequence. Secretary MacVeagh, who is spending the last half of August at his summer home in Dublin, N. H.; is looking for some capable tariff experts. The President, instead of having many wearisome sessions himself, asked Secretary MacVeagh to find the men for him. The other day Secretary MacVeagh wrote down to the President that he was finding the job full of difficulties and asking that he be given plenty of time. Postmaster-General Hitchcock and Secretary of Commerce and Labor Nagel have been toiling with the selection of census supervisors. They named about 200 and came on to Beverly to recommend the appointment of those 200. The President signed the commissions. They also placed before him about 100 more cases and asked him to decide. He did decide a few, but the most of the cases, including the supervisor for Hawaii, were turned back to them with the injunction to work out who would be the most capable men and at the same time be pleasing to the President's best political friends in the various States. Many of the names have not yet been determined. The politicians are not taking a tremendous interest in the work because the President has warned them in a public letter that if a census supervisor or a census enumerator is caught being politically active he will be dismissed forthwith. In like way other cabinet officers have been given their summer tasks by the President, which is keeping the departmental wheels rotating. Attorney-General Wickesham has just left Beverly after an important talk, which the President said was not only about pardon cases, but about the legislation that the President contemplates asking of Congress this winter. Considerable of the investigation work is on subjects the President intends putting into his annual message. He will not write it till he returns to Washington in early November. By that time his cabinet officers will have completed inquiries into certain matters, the results will be laid before him, the President can pass judgment upon the facts as presented and incorporate into his message what suits him. It probably will not be a long document. The President is averse to such outputs, preferring to sum up concisely what he wants.

be their guest. The functions varied greatly in character and if the President had yielded he would have been attending by this time all the big affairs from Martha's Vineyard to Portland, Maine. A Republican County Club of New Hampshire sent a distinguished man here, endorsed by Senator Gallinger, to invite the President to come with them on their annual outing. The G. A. R. of the Granite state have an important annual reunion at the Weirs. The President did not like to decline their invitation but he also knew what was in store for him if he made an exception. These invitations kept coming in all along the line. One was from the Public Improvement Association of Boston, a great organization working for the betterment of the city on the broadest possible lines. The committee to extend that invitation did not even see the President. Their request was carried to him by Mr. Carpenter that very afternoon and that very afternoon declined. One invitation he has accepted, however, and that an invitation of the Boston Chamber of Commerce to a banquet in his honor on the evening of September 14, which is the evening before he starts on his long transcontinental trip. The committee of prominent Boston business men, who came to extend or rather to renew that invitation, had no difficulty reaching the President and their invitation was promptly accepted. But it was given out as a renewal of an invitation extended to him at Hot Springs, Va., last winter while he was President-elect. The banquet promises to be a great affair, where 2000 people will be present in Mechanics' Hall. Elaborate preparations are being made and the Boston business men hope to make it the star occasion of the entire autumn tour. They may succeed, for the President seems to be entering into the spirit of the affair. His speech will probably be an important one, forecasting in some particulars the tenor of his speeches through the West.

The President puts considerable work upon his cabinet officers. That gives him more time to attend to the matters which must have his personal attention and also gives him more time for his own vacation. The cabinet officers, in this easy-going summer time, in turn pass some of the work—as much as they can—on to their subordinates, to the assistant secretaries and the chiefs of bureaus, but the work gets done, and there is no little summer activity in consequence. Secretary MacVeagh, who is spending the last half of August at his summer home in Dublin, N. H.; is looking for some capable tariff experts. The President, instead of having many wearisome sessions himself, asked Secretary MacVeagh to find the men for him. The other day Secretary MacVeagh wrote down to the President that he was finding the job full of difficulties and asking that he be given plenty of time. Postmaster-General Hitchcock and Secretary of Commerce and Labor Nagel have been toiling with the selection of census supervisors. They named about 200 and came on to Beverly to recommend the appointment of those 200. The President signed the commissions. They also placed before him about 100 more cases and asked him to decide. He did decide a few, but the most of the cases, including the supervisor for Hawaii, were turned back to them with the injunction to work out who would be the most capable men and at the same time be pleasing to the President's best political friends in the various States. Many of the names have not yet been determined. The politicians are not taking a tremendous interest in the work because the President has warned them in a public letter that if a census supervisor or a census enumerator is caught being politically active he will be dismissed forthwith. In like way other cabinet officers have been given their summer tasks by the President, which is keeping the departmental wheels rotating. Attorney-General Wickesham has just left Beverly after an important talk, which the President said was not only about pardon cases, but about the legislation that the President contemplates asking of Congress this winter. Considerable of the investigation work is on subjects the President intends putting into his annual message. He will not write it till he returns to Washington in early November. By that time his cabinet officers will have completed inquiries into certain matters, the results will be laid before him, the President can pass judgment upon the facts as presented and incorporate into his message what suits him. It probably will not be a long document. The President is averse to such outputs, preferring to sum up concisely what he wants.

B. F. Ehlers & Co. WILL BE OPEN Saturday Afternoon UNTIL 5 O'clock B. E. EHLERS & CO.

Visiting Congressmen Will find a Modern Up-to-Date Pharmacy fully equipped to meet all demands, at 1056 Fort St. Hollister Drug Company.

Are you enjoying the privilege of a good watch? For many years we have closely followed the course of watch manufacture; carefully noting and taking advantage of all good qualities, as well as detecting and avoiding all bad ones. Our present stock is the result of twenty years of close study of the manufacture of time pieces and with this experience we are able to offer you at a moderate price a good watch, which will last a lifetime. We carry Howard's, Waltham's and Swiss Watches in large variety of cases. H. F. Wichman & Co. LIMITED. LEADING JEWELERS.

The Best Cakes, the best of everything come from the Alexander Young CAFE Because they have the best facilities—always open to public inspection.

BOYS' School Clothes The Kash Co., Ltd. WING ON CHONG Furniture and Frames MADE TO ORDER KOA FURNITURE IN STOCK BETHEL OPP. THE EMPIRE THE CURIO SALOON IS THE Orpheum Saloon FORT STREET

COMFORT MEANS ECONOMY A WESTINGHOUSE ELECTRIC FAN in your office means comfort, and comfort means economy. An office force works better and gives better returns on a cool day. WESTINGHOUSE FANS make all days "cool" days. A 390 telephone call insures the prompt attention of our solicitor, Curtis P. Iaukea. THE HAWAIIAN ELECTRIC CO., LTD.

School Toilets Supplies which the children will find necessary for the toilet are to be had of us. TOOTH POWDER, TOOTH BRUSHES, SOAPS and many other needed articles. Benson, Smith & Co., Ltd. FORT AND HOTEL STREETS.

Island Views CONGRESSMEN AND OTHER VISITORS who wish scenic, genre and portraits of Island subjects are respectfully invited to see our big assortment. We act as a clearing house for all the views taken in the Islands and our assortment is the largest. Honolulu Photo-Supply Co. "Everything Photographic." Fort Street, Near Hotel.

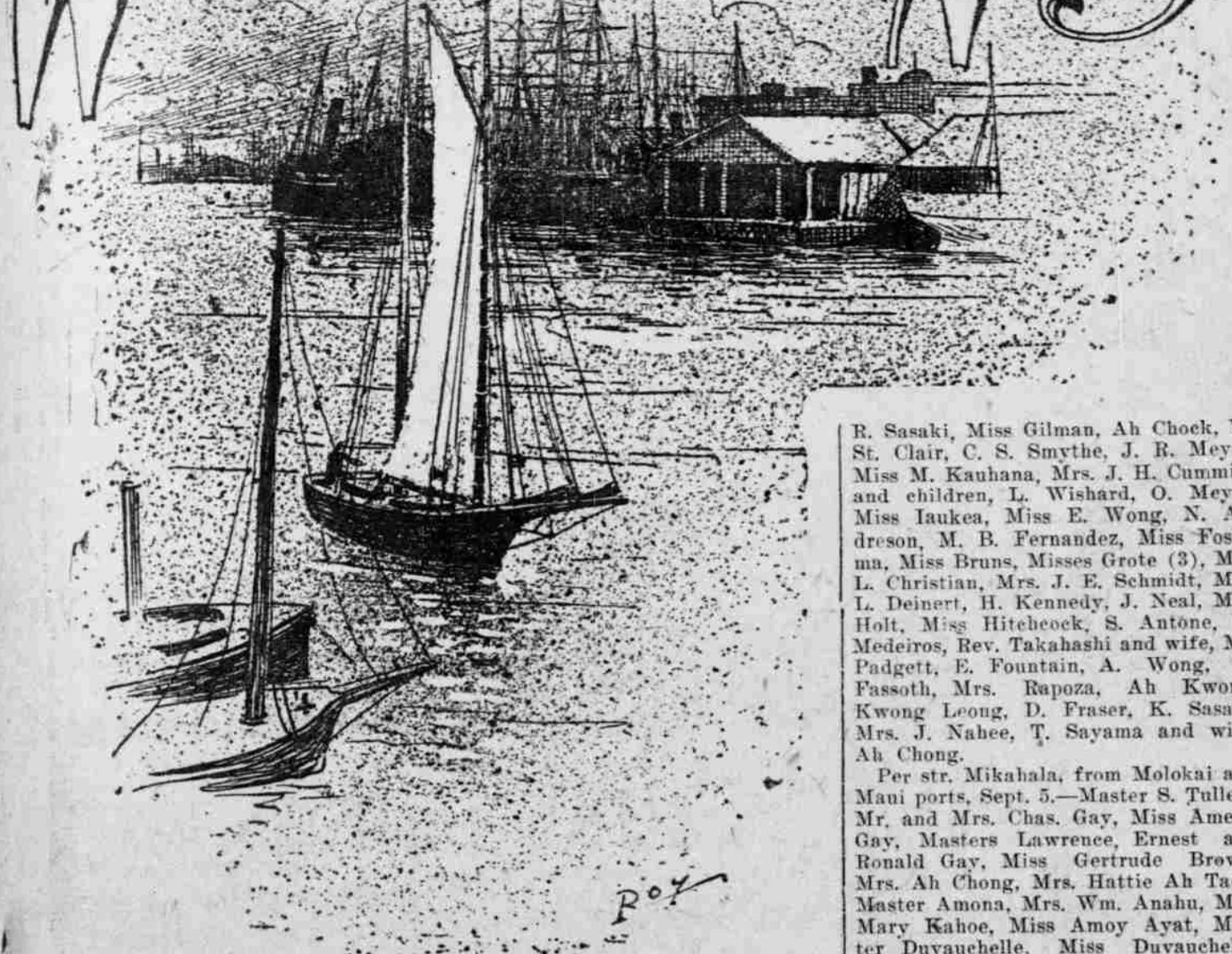
ON KING STREET We have a very desirable tract of 56 acres for lease as a garden and rice plantation. You can easily grow all kinds of vegetables and the finest of rice with the abundance of artesian water, the excellent soil and the perfect drainage. Real Estate Department Hawaiian Trust Co., Ltd.

The Yokohama Specie Bank, Ltd. Capital (Paid up).....Yen 24,000,000 Reserve Fund.....Yen 15,940,000 HEAD OFFICE, YOKOHAMA. The bank buys and receives for collection bills of exchange, issues Drafts and Letters of Credit, and transacts a general banking business. The Bank receives Local Deposits and Head Office Deposits for fixed periods. Local Deposits \$25 and upwards for one year at rate of 4% per annum. Head Office Deposits Yen 25 and upwards for one-half year, one year, two years or three years at rate of 5 1/2% per annum. Particulars to be obtained on application. Honolulu Office—67 S. King Street. P. O. Box 168. M. TOKIEDA, Manager.

For Sale IMPROVED RESIDENCE PROPERTY Pensacola Street\$3500 College Hills\$5700 Pacific Heights\$6000 Artesian Street\$1250 Kinau Street\$4250 College Hills\$3000 For Rent Six-bedroom house on Pacific Heights. Modern and in good condition. Only \$30 per month. BISHOP TRUST CO., Ltd. 924 BETHEL STREET THIS PAPER is kept on file at THE DAKE ADVERTISING AGENCY, INC, 427 South Main St., Los Angeles, and 12 Geary St., San Francisco, where contracts for advertising can be made for it.

HOT WEATHER does not effect interest. It works just as hard for you at 98° as at 75°. Set interest to work by opening a savings account with this bank, 4 1-2 per cent. compounded twice annually. The Bank of Hawaii, Ltd. Capital and Surplus, \$1,000,000.

WATER FRONT NEWS



Toward the end of the present month the American-Hawaiian Steamship Company will have cleaned up all the sugar for which it contracted this season. Since January 2, a big steamer of that line, carrying 12,000 tons of sugar, has left Hilo every fourteen days, and there have been intermediate boats going to San Francisco.

First Steamer Across Atlantic.

It was under the American flag that the first steamship crossed the Atlantic ocean. The Savannah, built at New York, was a vessel of 300 tons burden and was sold while still on the stocks to William Scarborough, a wealthy merchant of Savannah, Ga., who had conceived a fancy for trying the effect of steam navigation on the high seas. She had a fuel capacity of 75 tons of coal and 25 cords of wood and her wheels were so constructed that they could be removed in rough weather. She was launched August 23, 1818, and began her first voyage to Savannah on Sunday, March 8, 1819, reaching there April 6. Stephen Vail of Morristown, N. J., furnished her engines. The vessel was scheduled to start on her trip across the Atlantic May 20. Scarborough advertised extensively for freight

and passengers, but there were no responses. The people everywhere were interested but no one cared to risk such a perilous undertaking. She started on May 20 on advertised time, but did not venture on the high seas until five days later. The voyage was uneventful until June 16, when the Irish coast was sighted. On the 17th, Lieutenant Bowin, of the King's cutter Kite, boarded the Savannah under the impression that the ship was on fire. The smoke coming from her direction was unusual and had excited his anxiety. The wheels were shipped on the 20th, the sails set and she ran into the Mersey and soon anchored at Liverpool. The actual voyage consumed 22 days, of which 14 were under steam. Ninety years has developed the modern ocean liner and has cut the time to less than four days.—Dry Goods.

Shipping Notes.

The Kinau brought in 25 head of cattle from Kauai yesterday morning. The Mikahala's cargo included 40 sheep from Molokai Ranch, 130 cases honey, 3 horses, 1 goat, 65 pigs, 67 bales hides, 12 crates chickens. The Kinau's purser reports the following sugar on Kauai awaiting shipment: K. S. M., 8260 bags; L. P., 780; M. S. Co., 12,000; K. S. Co., 1600; Y. K., 500.

The American-Hawaiian freighter Mexican left for Kaaunapali Saturday night to load sugar there, and will sail for Salina Cruz, via Hilo this week, carrying 12,000 tons. The Missouriian is due here next Saturday from Tacoma and Seattle.

The following sugar awaits shipment on Hawaii: Olaa, 8821 bags; Waikaeo, 19,000; Wainaku, 22,500; Onomea, 20,100; Laupahoehoe, 12,500; Ooakaa, 3000; Kukaiaia D. 2391, H. 433; Hamakua, 10,000; Paauhau, 17,000; Honokaa, 15,000; Kukuhihale, 1970; Punaluu, 3883; Hoonuapoo, 3047.

PORT OF HONOLULU.

ARRIVED.
Sunday, September 5.
Str. Kinau, Gregory, from Kauai ports, a. m.
Str. Mikahala, Tullett, from Molokai and Maui ports, a. m.

DEPARTED.
Saturday, September 4.
A. H. S. S. Mexican, for Kaaunapali, 9 a. m.
Sunday, September 5.
Str. Mauna Kea, Freeman, for Kauai, 10 p. m. (Special Congressional party excursion.)

DUE TOMORROW.
P. M. S. S. Asia, Gaukruger, from Yokohama, a. m.
Str. Mauna Kea, from Kauai, (with Congressional party), a. m.

SAIL TOMORROW.
Str. Mauna Kea, Freeman, for Hilo and way ports, 12 noon.
Str. Kinau, Gregory, for Kauai ports, 5 p. m.
Str. Mikahala, Tullett, for Molokai and Maui ports, 5 p. m.
Str. Noean, Sachs, for Kauai ports, 5 p. m.
P. M. S. S. Asia, Gaukruger, for San Francisco, probably 5 p. m.

DUE WEDNESDAY.
Str. W. G. Hall, from Makaweli, a. m.

SAIL WEDNESDAY.
O. S. S. Alameda, Dowdell, for San Francisco, 10 a. m.

DUE THURSDAY.
Str. Claudine, from Maui ports, a. m.

DUE FRIDAY.
P. M. S. S. China, Friele, from San Francisco, a. m.
Str. Mauna Loa, from Kona and Kau ports, a. m.

DUE SATURDAY.
U. S. Pacific fleet, from San Francisco (eight cruisers).
A. H. S. S. Missouriian, from Seattle and Tacoma, a. m.

PASSENGERS Arrived.
Per str. Kinau, from Kauai ports, Sept. 5.—Mrs. J. Smythe, R. Smythe, C. A. Rice, Misses Bryant (2), Miss V. Reis, D. E. Baldwin, Miss Ulanahale, F. Thevevin, Ed Wong, J. Fernandez, Miss Watase, Miss Yamaga, Mrs. J. Grube, Mrs. Zoller, Miss Spencer, Mrs. M. Schmidt, Mr. and Mrs. Baron, Dr. F. L. Putnam, Mr. and Mrs. Cushingam, J. Keam, Miss Hitchcock, Mr. Schiefer, T. Onoka, C. H. Bailey, Mr. and Mrs. Lindt, Ed Fountain, Jno. Fassoth, Joe Fassoth, Mrs. Almeida, Ah Nin, H. Wedemeyer, W. A. Coney,

R. Sasaki, Miss Gilman, Ah Chock, W. St. Clair, C. S. Smythe, J. R. Meyer, Miss M. Kauhana, Mrs. J. H. Cummins and children, L. Wishard, O. Meyer, Miss Iaukea, Miss E. Wong, N. Anderson, M. B. Fernandez, Miss Foshima, Miss Bruns, Misses Grate (3), Mrs. L. Christian, Mrs. J. E. Schmidt, Miss L. Deinert, H. Kennedy, J. Neal, Miss Holt, Miss Hitchcock, S. Antone, M. Medeiros, Rev. Takahashi and wife, Mr. Padgett, E. Fountain, A. Wong, H. Fassoth, Mrs. Rapozo, Ah Kwong, Kwong Loong, D. Fraser, K. Sasaki, Mrs. J. Nahee, T. Sayama and wife, Ah Chong.

Per str. Mikahala, from Molokai and Maui ports, Sept. 5.—Master S. Tullett, Mr. and Mrs. Chas. Gay, Miss Amelia Gay, Masters Lawrence, Ernest and Ronald Gay, Miss Gertrude Brown, Mrs. Ah Chong, Mrs. Hattie Ah Tack, Master Amona, Mrs. Wm. Anahu, Miss Mary Kahoe, Miss Amoy Ayat, Master Duvauchelle, Miss Duvauchelle, Miss E. Luthera, Rev. F. Iaca, Masters Rex Randolph and William Hitchcock, C. N. Marquez, G. Ahoy, H. C. Waldron, Misses Margaret, Alberta, Kalama, Mabel, Lizzie Meyer, Otto and Ernest Meyer.

VESSELS IN PORT.

(Army and Navy.)
Iroquois, U. S. station tug, Moses, Kukul, U. S. L. T.

(Merchant Vessels.)
Dauntless, Am. schr., Johnson, Grays Harbor, Aug. 17.
Flaurence Ward, Am. schr., Piltz, Midway, Aug. 11.
Mary Winkelman, Am. bkt., Eureka, Sept. 1.
Nordsee, Ger. sp., Peitsmeir, Leith, July 29 (in port again Aug. 27, from drift at sea).
Olympic, Am. bk., Evans, Calito Buena, August 22.
Scottish Monarch, Br. s.s., from Newcastle, Sept. 2.
S. G. Wilder, Am. bktne., Jackson, San Francisco, August 23.
Vennacher, Br. s.s., Newcastle, Aug. 26.

TRANSPORT SERVICE.
Buford, at Manila.
Dix, from Seattle for Hon., Aug. 27.
Logan, arrived San Francisco from Honolulu, August 10.
Thomas, from Honolulu for San Francisco, Sept. 2.
Sheridan, ar. Manila from Hon., September 3.

THE MAILS.
Mails are due from the following points as follows:
San Francisco—Per China, Sept. 10.
Yokohama—Per Asia, Sept. 7.
Vancouver—Per Makura, Sept. 17.
Colonies—Per Aorangi, Sept. 15.

Mails will depart for the following points as follows:
San Francisco—Per Asia, Sept. 7.
San Francisco—Per Alameda, Sept. 8.
Yokohama—Per China, Sept. 10.
Vancouver—Aorangi, Sept. 15.
Colonies—Makura, Sept. 17.

RACERS FACE TO FACE WITH DEATH

(Continued from Page One.)
throttle a twist and began to open up the space again.

A Terrible Skid
In the tenth mile, Eldid did an awful skid at the home run. He clipped one of the torches and then slid across the track till it seemed that he must surely knock a hole in the grandstand. But he kept on going as though all the devils from Hades were after him. In the sixteenth mile, Chilton's spark fell to miss, and just before the final lap of that mile was completed, his engine ceased to explode, his machine slowed down rapidly. Before Eldid could eram on the brake he had crashed into the machine of his galant opponent.

A Plucky Exhibition.
What most appealed to a spectators was the innate pluck and daredevilry of the thing. Both men were taking enormous chances, but they stayed by it and, if gasoline and spark had held out, they would have been racing yet.

Eldid is a professional motorcycle and trick-bicycle rider. But Chilton is not by any means the kind of man who would impress one as being capable of such daring. He is a barber and is more than a trifle corpulent.

Not satisfied with risking their lives one time, these two riders have determined to ride the race over again tonight. They will go fifteen miles and the rider who has a clear lead over the other at the end of that distance will be declared the winner. Judges will be selected this morning and announcement of the selections made at the baseball games at the Athletic Park this afternoon.

The Union Bible Class will meet tomorrow evening at the Methodist church at 7:30 o'clock.

A Japanese riding a bicycle ran into a Japanese child at Nuanu and Beretania yesterday afternoon. The child, about two years old, was thrown against the curb and was badly cut.

James E. Jaeger, vice commodore of the Hawaii Yacht Club, will leave for the Coast soon to bring back his speed cruiser which is being built in San Francisco by Swanson.

Miss L. B. Miller, of San Diego, California, has arrived in Hilo, where she has gone to teach school.

Trent Trust Co., Ltd.

Houses To Let

- | | | |
|---------------------------|------|---------|
| Kaimuki | 1 BR | \$12.00 |
| Union and Garden Lane | 3 | 18.00 |
| Waikiki (Camp McKinley) | 4 | 25.00 |
| Pawaa and Young Sts. | 4 | 25.00 |
| Elm and Birch Sts. | 3 | 25.00 |
| Kinau and Alapai Sts. | 2 | 26.25 |
| Magazine and Spencer Sts. | 2 | 27.50 |
| Waialae Road | 2 | 30.00 |
| 1111 Kinau St. | 3 | 32.50 |
| 1245 Lunaliilo St. | 3 | 32.50 |
| 725 Kinau St. | 3 | 32.50 |
| Manoa Valley | 3 | 35.00 |
| Bates St. | 2 | 35.00 |
| Elsie Ave. and Young St. | 4 | 40.00 |
| 1286 Beretania St. | 5 | 40.00 |
| Richards St. nr. Hotel | 2 | 40.00 |
- Furnished**
- | | | |
|---------------------------|---|-------|
| Waikiki (on Beach) | 2 | 30.00 |
| Magazine and Spencer Sts. | 2 | 35.00 |
| Makiki St. | 3 | 50.00 |
| 1475 Thurston Ave. | 4 | 60.00 |

HOME NEAR

FT. SHAFTER FOR SALE

Price \$1100.
Terms easy.
A well-built modern home with modern plumbing and large lot. 75x150. A little ready cash and monthly installment will buy it.

A KINAU STREET HOME FOR SALE

One and a half story house, 3-bed-room house, large parlor and dining-room, front and back lanais, barn, servants' quarters. Modern improvements. Price \$3200.

Trent Trust Co., Ltd.

VISITORS SAIL FOR GARDEN ISLE

(Continued From Page One.)
gall, Mrs. Jno. Hind, Mrs. J. W. Gunn and Mrs. B. D. Bond.
South, Kohala—Mr. A. W. Carter, chairman; Mr. S. Mahuka Spencer, Mr. C. A. Widemann, Mr. T. S. K. Nakanehina, Mr. J. Jorgenson, Mr. W. M. S. Lindsay, Mr. Thomas Kanaana, Mr. Archie Kanaa.
Hamakua—Hon. R. H. Makekua, chairman; Hon. J. W. Moananui, Hon. M. T. Furtado, Mr. J. T. Crosson, Mr. Henry Hall, Mr. A. Ahrens, Mr. K. S. Gjerdrum, Mr. James Gibb, Mr. A. Lidgate, Mr. A. Horner, Mr. John K. Kealoha, Mr. Samuel Kaekaeuiwi, Mr. Thomas N. Nale'ehua, Mr. William N. Purdy, Hon. Chas. K. Notley, Mr. A. Fernandez, Mr. Sam Haina.
Hilo—C. R. Buckland, chairman; J. T. Mair, A. Lindsay, Hon. G. P. Alfonso, J. K. Kai, C. E. Wright, R. W. Elliot, Wm. McKay, Mr. and Mrs. E. N. Holmes, Mr. and Mrs. J. A. Scott, Mr. and Mrs. W. M. Keolani, Mr. and Mrs. C. K. Maguire, Mr. and Mrs. J. T. Mair, Mr. and Mrs. N. C. Willford, Mr. and Mrs. Samuel K. Pua, Mr. and Mrs. J. T. Brown, Mr. and Mrs. W. H. Shipman, Mr. and Mrs. C. E. King, Mr. and Mrs. C. C. Kennedy, Mr. and Mrs. James D. Lewis, Mr. and Mrs. Norman K. Lyman, Rev. S. L. Desha, Mr. and Mrs. Castendyck, Mr. and Mrs. A. Lindsay, Mr. and Mrs. W. H. C. Campbell, Mr. and Mrs. H. V. Paten, Dr. Hayes, H. Vears, Byron K. Baird, E. E. Richards, Carl S. Smith and E. N. Holmes.
Kona—Hon. Henry L. Kawewehl, chairman.

Will Visit Big Ditches.
The party arrives at Mahukona shortly after midnight tomorrow morning, and at this landing those who have expressed a desire to leave the steamer and take the side trip through Kohala to Waimea may do so. This party will visit the Kohala ditch which will be of interest to the members of the irrigation committee. They will lunch at the Kohala club and attend a noonday reception. At Kukuhihale the party will be entertained by the Hamakua ditch management, and will leave for Hilo Thursday morning.

Those who do not take this trip will stay on the steamer, which will skirt the Kona coast and arrive at Napoopolu at 6 a. m. Wednesday. This will give an opportunity to see the beautiful and historic bay of Kealakekua, where Captain Cook was killed. The look monument stands upon the shore under the Kealakekua cliffs. The party will be driven through the beautiful Kona district in carriages and have breakfast at Kona. The ride through Kona is one of the most attractive in the islands, the travelers passing through orange groves, coffee plantations, etc. The steamer will arrive at Hilo late in the afternoon and the visitors will be taken by special train to Glenwood, whence they will go by stage to the Volcano House.

Volcano-Cooked Coffee.
The visit to the crater of Kilauea will be made on Thursday, and it is likely that the party will have coffee and eggs cooked over red hot cracks near the pit of Halemaunau.

On Friday, the party returns to Hilo, where a reception will be held that evening. The next morning the Congressmen will be given an opportunity to inspect the brekwater.

Off For Maui.
At 11 p. m. Saturday the party will sail for Maui. It is planned that when the steamer arrives at Hana, those who desire to take a horseback ride along the Koolau ditch to Makawao, will be accommodated, and the others

TONIGHT OPERA HOUSE TONIGHT TONIGHT
MR. W. D. ADAMS PRESENTS
WITHERS COMPANY
POPULAR PROGRAM
The audience will be asked to select numbers for the
FAREWELL ON WEDNESDAY

DR. FREDERIC BELL, PH. D.
Is Without a Peer As a Phrenologist and Physiognomist
The Doctor will tell you why one person is a failure, while another succeeds. He will also point out whether you are best adapted for lawyer, doctor, preacher, teacher, actor, nurse, musician, commere, the army, navy, etc. He will also tell you the studies which will most enhance your boys' and girls' success in the truest and best sense, without the possibility of a mistake through the exact science of Phrenology and Physiognomy.

Complete Chart—Terms Moderate.
FREE LECTURE: Sunday afternoon, at 3 o'clock, Hawaiian Hotel lanai. Subject: "Dreams, Visions, Prophecies and Revelations Explained."
Classes now forming in the evening and new thought. For full particulars call on Dr. and Mrs. Bell at the Royal Hawaiian Hotel, Suite 40, 42 and 44. Hours 10 to 5 and 7 to 9. Sundays only by appointment; also by phone 715 any day.

CLOTHES SATISFACTION
Made to your measure, with goods and fittings to suit the climate. Not ready-made. : : : : :
W. W. AHANA & CO. 162 King Street. Phone 521.

CANDY
The kind that leaves only pleasant memories because made of pure goods only. Ours are fresh every day : : : : :

The Palm Cafe, Hotel and Union

Handwritten Signature
Rubber Stamps
HAWAIIAN GAZETTE CO., LTD.
Phone 88.

LOCAL OFFICE OF THE UNITED STATES WEATHER BUREAU.

Honolulu, Sunday, Sept. 5, 1909.

TIME	THERMO.		94 Hour Baromet.	WIND	WIND VELOCITY	WIND DIRECTION	WIND VELOCITY
	Max.	Min.					
1900	29.96	75	30.02	6	NE	1	NE
1901	30.04	76	30.00	4	NE	1	NE
1902	29.97	74	29.81	8	NE	1	NE
1903	30.06	81	29.78	32	NE	2	NE
1904	29.98	81	29.74	44	NE	6	NE
1905	30.03	83	29.78	39	NE	1	NE
1906	29.99	85	29.73	39	NE	4	NE
1907	29.96	82	29.74	51	NE	8	NE
1908	30.04	81	29.72	58	NE	7	NE
1909	30.03	83	29.76	65	NE	4	NE
Ave	30.00	83	29.75	40	NE	4	NE

*NE and E (NE and SW).
WM. B. STOCKMAN,
Section Director.

TIDES, SUN AND MOON.

Days	September		High Tide	Low Tide	Sun Sets	Moon Sets
	High Tide	Low Tide				
Sept. 6	9:29	1:59	6:00	5:45	6:09	11:42
7	7:10	4:47	2:38	6:48	5:46	6:08
8	5:11	3:52	1:52	7:45	5:06	6:07
9	3:12	3:05	1:22	8:22	4:10	6:06
10	1:34	2:19	1:31	8:50	3:08	6:05
11	1:24	1:58	2:11	9:18	2:19	6:04
12	2:48	1:58	2:46	9:34	1:08	6:03

Last quarter of the moon, Sept. 6.
The tides at Kahului and Hilo occur about one hour earlier than at Honolulu.
Hawaiian standard time is 10 hours 50 minutes slower than Greenwich time, being that of the meridian of 157 degrees thirty minutes. The time whistle blows at 1:30 p. m., which is the same as Greenwich 0 hours 0 minutes. Sun and moon are for local time for the whole group.

METEOROLOGICAL RECORD.

Issued Every Sunday Morning by the Local Office, U. S. Weather Bureau.

DAY	THERM.		WIND	WIND VELOCITY
	Maximum	Minimum		
Aug. 30	80	72	SE	8
31	82	74	SE	10
Sept. 1	83	75	SE	12
2	84	76	SE	14
3	85	77	SE	16
4	86	78	SE	18
5	87	79	SE	20
6	88	80	SE	22
7	89	81	SE	24
8	90	82	SE	26
9	91	83	SE	28
10	92	84	SE	30
11	93	85	SE	32
12	94	86	SE	34
13	95	87	SE	36
14	96	88	SE	38
15	97	89	SE	40
16	98	90	SE	42
17	99	91	SE	44
18	100	92	SE	46
19	101	93	SE	48
20	102	94	SE	50
21	103	95	SE	52
22	104	96	SE	54
23	105	97	SE	56
24	106	98	SE	58
25	107	99	SE	60
26	108	100	SE	62
27	109	101	SE	64
28	110	102	SE	66
29	111	103	SE	68
30	112	104	SE	70

Note.—Barometer readings are corrected for temperature, instrumental errors, and local gravity, and reduced to sea level. Average cloudiness stated in scale from 0 to 10. Direction of wind is prevailing direction during 24 hours ending at 8 p. m. Velocity of wind is average velocity in miles per hour.

WM. B. STOCKMAN,
Section Director.

Fraternal Meetings

HAWAIIAN LODGE NO. 21, F. & A. M.
THERE WILL BE A STATED meeting of Hawaiian Lodge No. 21, F. & A. M., at its hall, Masonic Temple, corner of Hotel and Alakea streets, THIS (Monday) EVENING, Sept. 6, 1909, at 7:30 o'clock.
TRANSACTION OF BUSINESS.
Members of Pacific Lodge, Oceanic Lodge, and all visiting brethren, are fraternally invited to attend.
By order of the W. M.,
K. R. G. WALLACE, Secretary.

Fraternal Meetings

POLYNESIA ENCAMPMENT NO. 1, I. O. O. F.
Meets every first and third Friday of the month, at 7:30 p. m., in Odd Fellows' Hall, Fort Street. Visiting brothers cordially invited to attend.
W. ELLERBROCK, C. P.
L. L. LA PIERRE, Scribe.

AMUSEMENTS

The Concert Tonight.

The concert tonight promises to be something unusually good with the added inducement offered by the management to allow the public to suggest what shall be included in the program for the farewell concert on Wednesday night. The program offered for tonight, and which is printed below, will tempt many who might not have concluded to go before reading it. The numbers are pretty well divided between the splendid artists in the company and the enjoyment of the audience should be supreme in consequence. Those who have not already reserved their seats must wait until the theater box office opens tonight in order to book. Wednesday night will be a positive farewell for this company of remarkable musicians and the audience should be large in consequence. The program for tonight is given herewith:

- Sonata in F Maj. (first movement) for pianoforte and violoncello. . . . Richard Strauss
Miss Marguerite Elzy and Mr. Herbert Withers.
Songs—Mag Schom die Blume, Die Blauen Rathsel, Liebessehnen. . . . Josef Sucher
Mr. Charles Bennett.
Pianoforte Solos—Valse Oubliee, Liszt Humoresque. . . . Tchaikowsky
Mme. Marguerite Elzy.
Violoncello Solos—Cansanetta. . . . Herbert Victor
Scherzo. . . . Van Goens
Mr. Herbert Withers.
Interruption.
Songs—I Attempt from Love's Sick-ness (16th Century). . . . Purcell
At Twilight. . . . Nevin
Time Was I Roved the Mountains. . . . Lohr
Mr. Charles Bennett.
Pianoforte Solos—Hungarian Rhapsodie (No. 13). . . . Liszt
Mme. Marguerite Elzy.
Songs—The Blue Hills of Antrim. . . . Hamilton Hartly
Who is Sylvia? . . . Shubert
The Lark Now Leaves. . . . Horatio Parker
Mr. Charles Bennett.
Violoncello Solo—Czardas (Hungarian Dance). . . . A. Fischer
Mr. Herbert Withers.
Art Theater.
Today being Labor Day, a program of especial excellence has been arranged for patrons of the Art Theater. The feature film will be "A Daughter of Erin," a stirring drama of old Ireland. The plot, which is an absorbing one, is woven around the love of an aristocratic landlord for his tenant's beautiful daughter. The story is one of real interest, and the attention of the spectators is held until the curtain falls on the closing incidents of this drama of love, hatred and passion. The pictures show some of the scenery for which Ireland is so justly famed, and will recall fond recollections in the minds of all who have visited that country. The remainder of the program is just as good as the feature film; indeed, every film may justly be said to be a feature film today. The Lessos have returned and will present entirely new feats—something better than they have attempted in Honolulu, good as that has been. Mrs. Lesso, who earned a reputation as being one of the best shots with a small caliber rifle in Australia, will give an exhibition at both performances today. A target has been erected on the stage, and those who visit the Art Theater today will be rewarded by seeing some marksmanship which they will not very easily forget.

Army and Navy News

Military Plans for Hawaii.

In acting on the recommendations of the bureau chiefs of the War Department in the form of estimates on which will be based the appropriations for the maintenance of the military establishment special consideration has been given by Secretary Dickinson to the projects of coast defense on which work has been begun in the Hawaiian Islands and the Philippines, says the N. Y. Tribune's Washington correspondent. Beyond this the army estimates include no new construction, and for the most part provide no means of continuing many important works in the way of buildings at army posts. The military authorities entertain the hope that Congress will find it possible to insert some provision in the army appropriation bill so that the means of doing work on military projects will not be entirely lacking for the next fiscal year.
Army officers say that the decision of Secretary Dickinson limiting the work on the coast defenses, with special favor in behalf of the fortifications in Hawaii and Manila Bay, will serve to postpone in a serious degree the completion of numerous plans for harbor defense.

No Conversation by Wireless.

Rear Admiral Schroeder has issued an order to his fleet captains that a sharp surveillance of wireless operators must be observed, and that every word sent or received must be kept account of, and all unconventional talk with other operators must be stopped. Wireless is not to be used between ships that are in signaling distance of each other, but if the commander-in-chief calls by wireless for reports or for information such reports will be made by individual ships, ordinarily by signal. When any ship is within reach of shore wireless stations the apparatus on board ship will not be used except in urgent cases and for a period of five minutes before noon each day, when the wireless noon signal from the naval observatory at Washington is expected to be received. In using the wireless Admiral Schroeder urged that conciseness in framing messages be studied, and adds that "the air is getting too busy to admit of messages being expressed in a conversational way."

A Japanese laborer, Shinosuke Fukuda, was buried alive by a landslide at Papeete, Hawaii, last Tuesday. He was working on the foundation for the new mill there, and was caught in a fall of the side of the ditch which is being used to carry away the earth sluiced out of the foundations.

One of the features of the luncheon for the Congressional party at the Haleiwa Hotel on Saturday was the Hawaiian quartet, whose oldtime songs and good playing won the hearts of the visitors. The country quartet clubs still cling to the good old Hawaiian songs and have little to do with the popular air craze of the day.



CITY AUCTION CO
J. W. SMITHIES, Manager.
AT THE BUILDING ADJOINING THE STANGENWALD BUILDING, MERCHANT STREET.

AT AUCTION
AT OUR SALESROOM, MERCHANT STREET, ADJOINING THE STANGENWALD BUILDING. FRIDAY, SEPTEMBER 10, 1909. AT 10 O'CLOCK A. M.
Some exceptionally fine

KOHA FURNITURE
of original design.
ALSO
AT 12 O'CLOCK NOON,
One "Buick Touring Car,"
One "White Touring Car,"
One "Oldsmobile Runabout."
All in running order.
JAS. W. PRATT, Auctioneer.

A BARGAIN
ONE 40-H.P. WINTON FIVE-SEATER.
J. W. PRATT, Auctioneer.

Jas. F. Morgan

STOCKS, BONDS
AND REAL ESTATE

No. 857 Kaahumanu St.

Pineapples

We are offering for a short time a 91-acre pineapple plantation for sale at a bargain.
Call and see
JAS. F. MORGAN.

A Good Investment

5 large cottages in good condition, 26,000 sq. ft. of ground, located in the best residence section of Honolulu; this is better than stocks or bonds. It will pay you to investigate this, if you want to invest your money in good real estate.
Full particulars at the office of
JAS. F. MORGAN.

FOR RENT

Three-bedroom cottage; good location; near car. \$30.

FOR SALE

Houses and lots in Punahou, Manoa, Puunui, Kalihi, Kaimuki, Prospect St. and many more desirable bargains.
JAS. F. MORGAN.

Manoa

Upper Manoa road—a crown lot—100x200. This is a bargain.
JAS. F. MORGAN.

KALIHI

A new house and 4 lots, containing 20,000 sq. ft. Owner has left town will sell this at a bargain. If you want a place to raise chickens, fruits, vegetables, or flowers, buy this.
JAS. F. MORGAN.

Makiki

146 feet frontage, contains 20,742 sq. feet.
Large house, 3 bedrooms, study, dining room, kitchen, parlor, bath and lanai; grounds covered with shade and fruit trees. Owner is having the house overhauled. This is a good place in a good location.
For further information, see
JAS. F. MORGAN.
Three lots on Wilder avenue, also property in Punahou and Manoa Valley. A snap—over 2 acres in Manoa for \$1500.
JAS. F. MORGAN.

Puunui

This fine residence section is advancing rapidly.
The people who live there say it is the best spot in Honolulu. We still have four lots left of the large tract we subdivided. They are situated on Wylie and Liliha streets, just where the car stops. High elevation, good air, mountain and marine view, close to car and town; good streets, good soil and a good place to build a home. Take Liliha street car and ride to the end and you will see our sign; or call at our office and we will show you the map and give you further information.
JAS. F. MORGAN.

Do you want view? We have a 4-bedroom house on Prospect street, large grounds well improved with fruit trees, at a bargain. Will take half cash and half on time. The price is right and so is the location if you want elevation and view within walking distance from town.
JAS. F. MORGAN.

A large lot on Prospect street which gives you an excellent view of city and harbor. Beretania street, 3-bedroom house.
Palama, small house and lot. Smith street, a lot. Kukui street, a lot. Kukui Lane, house and lot. Kinau street, 2 houses and a few more.
JAS. F. MORGAN.

POLO

Interisland Tournament

Saturday, Sept. 11, at LEILEHUA
Wednesday, Sept. 15, at MOANALUA
Tickets \$1.00; to be had at Fitzpatrick Bros., M. A. Gunst Co., E. O. Hall & Son, Ltd., Wall, Nichols Co., Ltd.

ART THEATER

A DAUGHTER OF ERIN

A Stirring Drama of the Emerald Isle
RETURN OF THE LESSOS
With Entire Change of Juggling Arts
CHANGE OF PROGRAM
3 TIMES A WEEK
MONDAY, WEDNESDAY, FRIDAY.

Princess Rink

Open Every Afternoon and Evening
AFTERNOON SESSION, 3 TO 5
EVENING SESSION, 7:30 TO 10:30
EXHIBITION OF
Fancy Skating
BY
Miss Emma Wiener
Champion Lady Skater of the World
ADMISSION: 15c.; Skates, 15c.

Park Theater

Fort Street Below Beretania
MOVING PICTURES
AND
VAUDEVILLE
— Changes —
MONDAY, WEDNESDAY AND FRIDAY
Empire Theater
TONIGHT
MOTION PICTURES
SPECIAL ENGAGEMENT
HENRY CLARKE
Hawaiian Tenor

Honolulu Athletic Park

Moving Picture Vaudeville

EXCELSIOR LODGE NO. 1, I. O. O. F.

Meets every Tuesday evening, at 7:30, in Odd Fellows' Hall, Fort Street. Visiting brothers cordially invited to attend.
B. W. TSCHUDI, W. G. L. L. LA PIERRE, Sec'y.

HARMONY LODGE NO. 3, I. O. O. F.

Meets every Monday evening, at 7:30, in Odd Fellows' Hall, Fort Street. Visiting brothers cordially invited to attend.
E. W. FOSTER, W. G. E. R. HENDRY, Sec'y.

PACIFIC REBEKAH LODGE NO. 1, I. O. O. F.

Meets every second and fourth Thursday, at 7:30 p. m., in Odd Fellows' Hall. Visiting Rebekahs are cordially invited to attend.
FREIDA VON BERG, N. G. ALICE NICHOLSON, Sec'y.

OLIVE BRANCH REBEKAH LODGE NO. 2, I. O. O. F.

Meets every first and third Thursday, at 7:30 p. m., in Odd Fellows' Hall. Visiting Rebekahs are cordially invited to attend.
SALLIE L. WILLIAMS, N. G. ALEXANDRA BATH, Sec'y.

OCEANIC LODGE NO. 371, F. & A. M.

Meets every second and fourth Tuesday of each month, at Masonic Temple, at 7:30 p. m. Visiting brethren are cordially invited to attend.
R. H. BEMROSE, W. M. W. H. GOETZ, Sec'y.

LEAHI CHAPTER NO. 2, O. E. S.

Meets every third Monday of each month, at 7:30 p. m., in the Masonic Temple. Visiting sisters and brothers are cordially invited to attend.
ANNA S. WRIGHT, W. M. ADELAIDE M. WEBSTER, Secretary.

LEI ALOHA CHAPTER NO. 3, O. E. S.

Meets at the Masonic Temple every second Saturday of each month, at 7:30 p. m. Visiting sisters and brothers are cordially invited to attend.
MINNIE RHODS, W. M. MARGARET LISHMAN, Sec'y.

HONOLULU TEMPLE NO. 1, PYTHIAN SISTERS

Meets every first and third Tuesday of each month, at 7:30 p. m., at Knights of Pythias Hall, Fort and Beretania streets. All visitors cordially invited to attend.
AIMEE BICKNELL, M. E. C. SALLIE L. WILLIAMS, K. R. S.

OAHU LODGE NO. 1, K. of P.

Meets every first and third Friday at 7:30 o'clock, Pythian Hall, corner Beretania and Fort streets. Visiting brothers cordially invited to attend.
F. R. NUGENT, C. C. E. M. McCREY, C. C. E. A. JACOBSON, K. R. S.

WILLIAM MCKINLEY LODGE NO. 8, K. of P.

Meets every second and fourth Saturday evening, at 7:30 o'clock, in Pythian Hall, corner Beretania and Fort streets. Visiting brothers cordially invited to attend.
F. M. McCREY, C. C. E. A. JACOBSON, K. R. S.

COURT CAMOES NO. 8110, A. O. F.

Meets every second and fourth Tuesday of each month, at 7:30 p. m., in San Antonio Hall, Vineyard street. Visiting brothers cordially invited to attend.
CAESAR MEDEIROS, C. R. H. PEREIRA, F. S.

CAMOES CIRCLE NO. 240, C. O. F.

Meets every second and fourth Thursday of each month, at 7:30 p. m., in San Antonio Hall, Vineyard street. Visiting companions are cordially invited to attend.
MRS. M. R. MEDEIROS, C. C. M. R. L. A. PERRY, F. S.

COURT LUNALILLO NO. 6600, A. O. F.

Meets every first and third Wednesday evening of each month, at 7:30 p. m., in Pythian Hall, corner Fort and Beretania streets. Visiting brothers cordially invited to attend.
W. KELLE, C. R. JAS. K. KAULIA, P. C. F. S.

HONOLULU ABBEY 140, F. O. E.

Meets on second and fourth Wednesday evening of each month, at 7:30 o'clock, in Pythian Hall, corner Beretania and Fort streets. Visiting Eagles are invited to attend.
WM. C. McCOY, W. P. H. T. MOORE, Sec'y.

HONOLULU HARBOR NO. 54, A. A. of M. M. & P.

Meets on the first Sunday evening of each month, at 7 o'clock, at Odd Fellows' Hall. All sojourning brethren are cordially invited to attend.
By order of the Camp President, J. B. SEARLE, FRANK C. POOR, Sec'y.

THEODORE ROOSEVELT CAMP NO. 1, U. S. W. V.

Meets every first and third Saturday of each month, in K. of P. Hall, corner Fort and Hotel streets, at 7:30 p. m. By order of the Camp Commander, J. K. BROWN, Adjutant.

MARINE ENGINEERS BENEFICIAL ASSOCIATION

Meets second and fourth Mondays of each month at the new K. of P. Hall, corner Fort and Beretania streets.
GEORGE E. WARD, President. H. G. WOOTTEN, Secretary.

HAWAIIAN TRIBE NO. 1, O. H. R. M.

Meets every first and third Thursday of each month, in K. of P. Hall, corner Fort and Beretania streets. Visiting brothers cordially invited to attend.
E. V. TODD, C. of R. L. A. PERRY, Sachem.

HONOLULU LODGE 616, B. P. O. E.

will meet in their hall, King street, near Fort, every Friday evening. Visiting brothers are cordially invited to attend.
E. A. DOUTHITT, E. R. H. C. EASTON, Sec'y.

HONOLULU SCOTTISH THISTLE CLUB

Meets on 2nd and 4th Fridays in the month at 8 o'clock, in Rooms 11 and 12, Alexander Young Building.
J. R. M. MACLEAN, Chief. JAMES H. FIDDES, Sec'y.

HAWAII CHAPTER NO. 1, ORDER OF KAMBAMBA

Meets every first and third Thursday evening of each month at 7:30 o'clock in Fraternity Hall, Odd Fellows' building, on Fort street.
N. FERNANDEZ, Kaushau.

DAMIEN COUNCIL, NO. 683, Y. M. I.

meets every second and fourth Wednesday at 7:30 o'clock, in St. George's Alumni Hall (Dreier Hall), Union street. Visiting members are always welcome.
W. J. GALLAGHER, President. H. P. O'SULLIVAN, Secretary.

PAU KA HANA

If your grocer can't supply you, notify
FRED. L. WALDRON - PHONE 19
Coca Cola Refreshes
BOTTLED BY
HAWAIIAN SODA WORKS
PHONE 516.

Castle & Cooke, Ltd.

SHIPPING AND COMMISSION MERCHANTS.
SUGAR FACTORS AND GENERAL INSURANCE AGENTS.

REPRESENTING
New England Mutual Life Insurance Company of Boston.
Aetna Fire Insurance Company.
National Fire Insurance Company.
Citizens' Insurance Company (Harford Fire Insurance Company).
London Assurance Corporation.

WE DELIVER FULL-WEIGHT ICE TO YOUR DOOR FOR TWENTY-FIVE CENTS PER HUNDRED. BARNHART, TELEPHONE 146, MERCHANT STREET.

FORCEGROWTH

WILL DO IT.

"YAMATOYA," ALL KINDS OF SHIRTS, PAJAMAS AND KIMONOS MADE TO ORDER.
1246 Fort St., just above Orpheum.

Rubber Goods

GOODYEAR RUBBER CO.
R. H. PEASE - President
573-575-577-579 Market Street, San Francisco, Cal., U.S.A.

Sun Lee Tai Co.

Contractors, Builders, Painters
KOA FURNITURE TO ORDER.
King Street, Near Nuuanu.
TELEPHONE 683.

Catton, Neill & Company, Ltd.

ENGINEERS AND MACHINISTS,
Queen and Richards Streets.
Boilers re-tubed with charcoal-iron or steel tubes. General ship work.

PREFERRED BY ALL
Keystone-Elgin AND
Ingersoll Watches
JOS. SCHWARTZ, AGENT

Honolulu Scrap Iron Co.

C. H. BROWN - MANAGER
HALEKAUWILA STREET
Highest price paid for Old Brass, Scrap Iron and all metals.
Dealer in Second-hand Machinery.
Tel. 642. P. O. Box 547.

KWONG HING CHONG CO.

CHINESE GRASS LINENS, LADIES' SHIRTWAISTS, PONGEE,
1024 NUUANU STREET

PRECIOUS STONES

set in rings and brooches. Gold and silver jewelry made to order at reasonable prices. Your trade solicited.
SUN WO
CHAN CHEW - MANAGER
1808 Maunakea St., P. O. Box 948

TOWNSEND UNDERTAKING CO.

LIMITED.
MUTUAL BURIAL ASSOCIATION.
CITY MAUSOLEUM.

Private Telephones

WE INSTALL PRIVATE LINES
UNION ELECTRIC CO.

YOU HAVE
SANITARY PLUMBING, ELECTRIC LIGHTS, ELEVATORS AND AUTOMOBILES.
WHY NOT VACUUM CLEANING?
WILSON FEAGLER
P. O. BOX 101

The J. CARLO LOAN OFFICE

Fort Street near Hotel

THE CRITERION

is a gentlemen's resort. The fittings and service are entirely too fine to suit any other than gentlemen of good taste : : : : :

Corner Hotel and Bethel
G. J. McARTHUR, Prop.

DELMONICO HOTEL

130 Beretania Street, adjoining Central Fire Station.
Furnished rooms, mosquito proof.
First class accommodation, en suite or single, for men only.
Terms reasonable.

Hotel Victoria

AMERICAN AND EUROPEAN
Corner Bush and Stockton streets, San Francisco. Tel. Douglas 280.
MRS. W. F. MORRIS,
Formerly of Hotel Cecil.

Apartments, Cuisine and Service
Highest Standard

The PLEASANTON

Wilber Ave. and Punahou

HOTEL MAJESTIC

Sachs Block, Fort and Beretania Sts.
Fine furnished rooms, \$1 per day or \$10 per month and up. Splendid accommodations.
MRS. C. A. BLAISDELL, Prop.

THE QUEEN

Nuuanu Street, Near Vineyard.
FURNISHED APARTMENTS—
FROM \$2.50 UPWARD.
Mrs. A. McDowall - Proprietress

BEGINNING

TUESDAY, SEPT. 7,

We will sell our entire stock of Sterling and Plated Flat Ware at a

20 PER CENT

DISCOUNT FOR CASH ONLY

This offer comprises some of the most substantial and attractive designs on the market. This special offer will last ten days only.

J. A. R. Vieira & Co.

Jewelers and Watchmakers,
Hotel Street.

BUSINESS LOCALS.

New embroideries at Blom's. Blom's store will be a lively place on Tuesday.

Whitney & Marsh will remain open till noon today.

Manufacturers' Shoe Co. will remain open today until 12 noon.

The sale at Blom's is the most successful he has had in four years.

Every value doubled and prices lowered at Blom's during this big sale.

A small house near Fort Shafter is being offered for sale by Treat Trust Co., Ltd.

A White sewing machine in good condition is for sale at \$25. Inquire at this office.

Whitney & Marsh carry a complete line of boys' and girls' dresses, suits, etc., requisite for school days.

See about your school supplies of stationery at American-Hawaiian Paper and Supply Co., Ltd., Fort and Queen streets.

Wireless telegraph office open for business Sunday mornings hereafter from 8 to 10. Corner Fort and Merchant streets.

Bo Wo, Hotel street, between Maunakea and Smith, has fine jade jewelry in stock or will make from special designs on short notice.

The Territorial Messenger Service guarantees promptness and reliability. Our parcel delivery reaches all parts of the city. Phone 361.

There is no better candy in the city than that sold by the Palm, on Hotel street near Union. It is made from pure materials and is always fresh.

If your auto is out of whack or needs painting, send it to the Royal Hawaiian Garage, opposite the Hawaiian Hotel, where it will be attended to promptly and returned to you as good as new.

Call at N. S. Sachs Dry Goods Co. this morning and see the display of new goods just opened. These goods were personally selected by Mr. Sachs in the East, and are well worth your inspection.

Haleiwa is the most delightful place on this island that is easy of access by train or other conveyance. The meals and service at this famous hotel compare favorably with the best at the seaside resorts on the mainland.

There is nothing better than fine-grained beef with a trace of fat mingling with the rich red texture. This quality, sold chilled, not frozen, is to be had from the Metropolitan Market, King street, telephone 43.

LOCAL BREVITIES.

Harmony Lodge, No. 3, I. O. O. F., will meet in Odd Fellows' hall at 7:30 this evening.

Hawaiian Lodge, No. 21, F. and A. M., will meet in Masonic Temple at 7:30 this evening.

Chief Leal bagged ten Chinese gamblers yesterday morning, and officer Apana landed fourteen on Saturday night.

The yachts Kamehameha, Gladys and Charlotte C. have gone on a cruise to Lanai. They are expected back by sundown this evening.

There will be special through cars on the King street line for the baseball games at the big league park this afternoon. The first game is called for 1:30.

Many local business men are spending short vacations on Tantalus. Reports state that the air is delightfully cool up there and that the recent sultriness has not been noticed at all.

The challenger who recently sent in a request to hear from somebody who could play checkers can be accommodated by applying at the police station, where there are some six champions at the game.

Kelapa and Sam David, who were arrested a couple of days ago and held for investigation, were yesterday charged by Chief Leal with having stolen a double-breasted coat valued at \$12 from one Mitsuhi.

There will be an important meeting of the Riverside League tomorrow at noon in the office of A. L. C. Atkinson. All members should make a point of turning up and doing something to prevent the league from going make.

The rules for the ten-mile race to be run at the Athletic Park will be the same as those which governed the Marathon race at the big league grounds last April. These will be published in the Advertiser during the week.

On Wednesday evening, at Lahaina, a public meeting was held over which Manager Weinzeimer presided while Senator Hayselden acted as secretary. The object of the meeting was to arrange for the entertainment of the Congressional party.

The big surf off Waikiki was crowded with canoes yesterday afternoon. There being no off-shore wind and the waves being high, the sport enjoyed was excellent. There were many malihinis in the canoes, and they were all greatly enthused over the experience.

Hack Inspector Scully reported at the police station yesterday that an auto collided with a bike rider at the corner of Maunakea and King streets yesterday forenoon, and that the auto went on without any effort being made to ascertain whether any one was injured.

BAD EXAMPLE SET BY MRS. LONGWORTH

YOSEMITE, Cal., Aug. 24.—The alleged propensity of Mrs. Alice Roosevelt Longworth for cigarette smoking came in for caustic criticism today by Mark Keppel, superintendent of schools at Los Angeles, in an address to the convention of state and county school superintendents.

The speaker declared that Mrs. Longworth's example had done more than any other thing to cause the spread of the cigarette habit in this country, and he said that her example had had "a demoralizing effect upon the women of the country."

Mr. Keppel's remarks were made during a heated debate aroused by a resolution presented by Superintendent James D. Graham of Long Beach, which called upon the legislature to pass a law making it a misdemeanor for pupils in educational institutions supported by the state to use tobacco or any other narcotic.

Have your rolling done by the new combination steam roller and traction engine brought here by Honolulu Construction & Draying Co. It is greatly in demand. Office Fort street opposite W. G. Irwin & Co. Phone 281.

James N. Mackin, representing the Diston Saw Company, is on Hawaii looking up the business interests of his firm in connection with the sawmills.

New : Goods IN ALL DEPARTMENTS

LADIES' CREAM SERGE SUITS
with blue and green stripes, three-fourths length coat and ornamented with large buttons. These are the very swellest advanced styles.

NEW PRINCESS SLIPS
in white lawn, very prettily trimmed in lace and embroidery.

CHILDREN'S COATS AND JACKETS
in checks, stripes and novelty goods. Very nobby.

LADIES' RIDING SKIRTS
in khaki and covert cloth.

TURKEY RED TABLE DAMASK
new patterns and fine quality
60c per yard

LADIES' NECKWEAR
comprising: Dutch collars in lace and embroidered, embroidered mull bows, hand-embroidered bows, lace and mull jabots, lace chemisettes and the latest is the daintily embroidered mull ties—white with white embroidery and white with colored embroidery.

DRAPERY DEPARTMENT
We have lots of pretty new things in our Drapery Department. Take a look at our Fort Street Show Window for pointers in this line.

NEW BED SPREADS
new designs and superior quality.

LACE CURTAINS
A very large assortment of lace curtains in all prices.

N. S. Sachs Dry Goods Co. LIMITED

CORNER FORT AND BERETANIA

"SUCCESS" GARDEN HOSE

It certainly is a "SUCCESS"—Just what its name implies. For a long time we have experimented in hose—to produce just what will last longest under the peculiar conditions found here. The results of our investigations are highly satisfactory. In the "SUCCESS" hose we combine all the good points and eliminate all the weak ones.

IT IS RED; IN 5-PLY AND WEARS LIKE IRON

If you doubt, look about you—in seven out of ten yards you find the Red "SUCCESS" hose used, not because it's red, but because it wears—THE BEST BY TEST.

¾ IN. 50 FEET, \$8.50; ¾ IN. 25 FEET, \$4.50

W. W. DIMOND & CO., LTD.

53-55-57 KING STREET, HONOLULU.

White Serge Clothing

We have suits in White Serge, single or double-breasted, cut in the latest style and made in the finest manner from patterns cut from perfect models in the service of

Hart, Schaffner & Marx

These suits were received on Tuesday and are positively new. The material is superior and is the same as that used by the custom tailors on the mainland.

ALL SIZES!

SILVA'S TOGGERY

Elks' Building : : King Street
PHONE 651



Copyright 1909 by Hart Schaffner & Marx

Gold Bronze

Plain Sailor Shoe

with a Bronze Velvet Bow with a Single Rhinestone Set, Wood Cuban Heel, Turn Sole, Feather Edge, Velvet Finish. The finest and most beautiful dress shoes made.

We invite your inspection.

\$7.50

M. McInerney Shoe Store

PERSONALS.

Mrs. W. H. C. Campbell and her daughter have returned to Hawaii.

J. B. Castle and C. Bolte are on Hawaii looking after their ohia interests.

Prince Cupid was an interested spectator at the baseball games yesterday.

Mrs. E. Loebeinstein is visiting her daughter, Mrs. Harry Morehead, in Hilo.

Mr. and Mrs. Luther Severance have returned to Hilo after an absence of two months.

Mr. and Mrs. Charles Rein and Miss Lora Rein of Minnesota are guests of Mr. and Mrs. Ludloff in Hilo.

Joe Santiago, section luna at Honolulu for more than twenty years, died last Friday. He leaves a wife and two children.

National Committeeman A. G. M. Robertson entertained several of the Congressmen yesterday, Prince Kuhio being in the party.

Harry Murray, of the Associated Garage, made a trip round the island yesterday in a Chalmers-Detroit car with a party of friends.

Mr. and Mrs. Hannigan and Mrs. Lyons, who came with Miss Renton from the Coast, are spending a few weeks here.—Kohala Midget.

Governor Frear and Prince Kuhio accompanied the Congressional party on the Kauai trip last evening. F. E. Thompson, chairman of the entertainment committee, was unable to make the trip, being on the other side of the island. He will make the Hawaii and Maui trips.

WASHINGTON'S CHIEF LIKES OUR PINES

Seattle P.L.—Adorned with the yellow lei, and with a Hawaiian orchestra playing and singing the music of the islands, Gov. M. E. Hay was the guest of honor at a pineapple luncheon given by the Hawaiian commission yesterday.

"Hereafter, when I look for something good on a bill of fare, I shall read down until I come to Hawaiian pineapple, and stop there," said the governor. "It seems that I have never tasted real pineapple until today."

Special tables had been prepared in the Hawaiian building for the governor and his party. The Hawaiian girls, wearing leis, or yellow garlands, decorated him similarly for the occasion. Miss Keala Kaal, the sweet-voiced soloist with the Hawaiian orchestra, sang several songs in the tongue of the islanders. When the luncheon was over the party posed for their pictures.

Veranda Rooms

With Every Modern Convenience

HAWAIIAN HOTEL

For MEALS Go To

ALEXANDER YOUNG HOTEL

or CAFE

Promptness and Reliability

Territorial Messenger Service

TELEPHONE 361

HONOLULU DANCING ACADEMY

Meets Monday and Friday nights at 8:30 o'clock, Kiloana Art League, under the direction of

OTTO BURMESTER.

Information furnished by Otto Burmester at WALL, NICHOLS CO., King St. Telephone—Store 261. Res. 1178.

School Books and Supplies

A. B. Arleigh & Co., Ltd

HOTEL ST. OPPOSITE UNION.

Earlier in the day the governor and party were at a luncheon served by the Olympia domestic science class in the Educational building. The Olympia high school girls cooked and served the meal. Those at the luncheon were Gov. and Mrs. M. E. Hay, Seabury Merritt, of Spokane; W. H. Babbit, of the Hawaiian commission; Miss Irene Boyd and Miss Pauline Evans, of Honolulu; W. M. Geddes, secretary of the government board of managers; State Senator B. M. Wilcox, of the New York commission; W. W. Ludlow, chief clerk of the United States treasury department, and L. P. Hornberger, secretary of the Washington commission to the A.-Y.-P. exposition.

You can obtain complete outfits for School for your

Girls and Boys

AT

WHITNEY & MARSH'S

AS THE DEVIL SHUNS HOLY WATER

so the Osteopath shuns "drugs and surgery." Osteopathy is a system of healing, which treats the human body by manual therapeutic and naturopathic methods. Its unparalleled success speaks for itself.

Dr. F. Schurmann, Osteopath

Specialty—Treatment of the eyes osteopathically and fitting of glasses.

HOUS—Consulting, 2-3 p. m., Saturdays excepted.
Operating, 8-12 a. m. Telephone 33.
3-6 p. m. Office 222 Emma Square.

Fitz-You E-Z School Girl Shoe

A proper shoe for girls. Good sensible broad toes and low heels. Made of highest price dark tan russet and black kid and smooth soft calf and Russia calf. Double sole lace boots and oxfords.

Every mother should see these before buying. They are big value. New stock to choose from and every pair guaranteed to wear, wear, wear.

Regal Shoe Store

McCandless Building Corner King and Bethel.

Beef that has Flavor

We are making a specialty of Island beef from the best ranches, and we are pleased to offer our customers a grade that is of fine grain, liberally supplied with fat, and chilled so that it is tender.

OUR MEATS ARE NOT FROZEN.

Metropolitan Market

W. F. HEILBRON, PROP. TELEPHONE 45.

New Goods Ex Alameda At Jordan's

Exquisite Creations in Lingerie

at 8.50, 12.50, 16.50, 18.50, 25.00 to 35.00.

Nobby Styles in Linen Suits, 15.00, 17.50 to 20 to 25.00.

Elegant Line of New Waists, 5.00 to 25.00.

New Tailored Dutch Neck Waists, 1.00, 1.25, 1.50, 2.00, 2.50, 3.00.

All better Styles come one of a kind only. No charge for alterations.

Oceanic Steamship Co. Time Table

Table with columns for destination (San Francisco, Puget Sound, etc.), ship names (Alameda, etc.), and departure dates. Includes sub-section for 'Rates from Honolulu to San Francisco'.

WM. G. IRWIN & CO., Agents.

AMERICAN-HAWAIIAN STEAMSHIP COMPANY.

Table listing ship names (Pleiades, etc.), routes (San Francisco, Puget Sound), and departure dates. Includes contact information for C. P. Morse.

Canadian-Australian Royal Mail Line

Steamers running in connection with the Canadian Pacific Railway Co. call at Honolulu on or about the following dates:

Table listing ship names (Makura, Aorangi, etc.), destinations (Japan, Australia, etc.), and departure dates. Includes agent information for Theo. H. Davies & Co., Ltd.

THEO. H. DAVIES & CO., LTD., GENERAL AGENTS.

PACIFIC MAIL S. S. CO., AND TOYO KISEN KAISHA.

Steamers of the above companies will call at Honolulu and leave this port on or about the dates mentioned below:

Table listing destinations (China, Asia, etc.), ship names, and departure dates. Includes agent information for H. Hackfeld & Co., Ltd.

MATSON NAVIGATION COMPANY.

Schedule S. S. HILONIAN, in the direct service between San Francisco and Honolulu:

Table showing arrival and departure dates for the Hilonian line. Includes agent information for Castle & Cooke, Ltd.

Crushed Rock and Rock Sand

HUSTACE-PECK COMPANY, LTD. 63 QUEEN STREET. PHONE 295. We crush our own rock and deliver to all parts of the City.

Union-Pacific Transfer Co., Ltd.

BAGGAGE, SHIPPING, STORAGE, WOOD, PACKING, COAL. FURNITURE AND PIANO MOVING. 426 KING ST. Phone 58.

PHONE 152

FOR GOOD SERVICE AND PERSONAL ATTENTION BY THE

CITY TRANSFER COMPANY

Jas. H. Love.

LET US HANDLE YOUR Baggage and Furniture

GOMES' EXPRESS

PHONE 298.

NIEPER'S EXPRESS

PHONE 316. BAGGAGE AND FURNITURE. FORT, BELOW HACKFELD'S. SIGN OF THE RED AWNING.

CARL N. NIEPER, Proprietor.

WOOD AND COAL

GIVE US A TRIAL, AND NOTE QUANTITY AND QUALITY. ISLAND TRANSFER

G. W. McDOUGALL, Prop.

"Waterhouse Trust" REAL ESTATE

For Sale in College Hills

A very desirable home, located near the car line, on high ground, commanding a splendid view of Manoa Valley. Size of lot 100x150. House consists of living room, diningroom, breakfast room, two bedrooms, kitchen, bath, servants' quarters, etc.

FOR RENT

Furnished Cottages at Punahou, Beretania avenue, and Waikiki Beach. Unfurnished houses in all sections of the city.

"Waterhouse Trust"

Fort and Merchant Streets.

MAUI NOTES.

Mauaolu Seminary will open Monday, September 6. Attorney General Hemenway has taken action for damages against the Waialua Sugar Company for alleged encroachment on the public highway between Waialua and Waikapu.

Last Tuesday evening Mr. and Mrs. Karl Roendahl entertained, at their home at Hana, Misses Dorothy Ellerbroek and Pearl Littlejohn of Honolulu, in whose honor a dance was given.

W. G. Scott and wife are again at home in Paia after a most pleasant visit to the Seattle Exposition. Mr. Scott reports that James Kirkland sends his aloha to all of his old Maui friends.

Captain Carl Richard has been appointed master of the tug Leslie Baldwin of the Kahului Railroad Co. to succeed Captain Randall. The new captain was for a long time first officer on the steamer Claudine.

Canon Ault and family have returned from spending a very pleasant vacation in Lahaina.

Mrs. J. J. Carey returned home on the last trip of the Lurline. She had been to her old home in Chicago. Judge C. C. Conrad of Pukou, Molokai, was in town for a few days this week. He returned home on the Claudine.

Captain Quinn of the Corps of U. S. Engineers went to Hilo this week to get a launch for service in making the proper surveys of the Kahului harbor.

A Richey of the lighthouse service returned to Honolulu Wednesday. He has done much toward improving the lighthouses on this island and on Hawaii.

Dr. J. J. Carey and Hugh M. Coke spent last week in Honolulu where they went to meet relatives on the Lurline. They returned home by the Claudine Saturday.

Mrs. H. M. Coke and four children arrived on the Lurline from San Francisco last week. They had been on a visit to relatives on the Coast since last December.

Dr. Wm. Osmer has bought the practise of Dr. Dinegar and has begun the practise of medicine in Waialua.

Cane contracts for the cultivation of areas at Olaa by Spaniards were filed with the Registrar this week and served as a reminder that the Spaniards brought here by the Board of Immigration are very desirable people.—Maui News.

Robertson who was formerly the manager of the Hygeia Soda and Ice Works left on the Claudine for Honolulu where he expects to take a week's vacation and will then go to Wainaku, Hawaii.

Carelessness and neglect are the chief causes of blood poisoning. A cut or bruise, however slight, should have immediate attention. A good liniment and one that not only gives prompt relief from pain, but being antiseptic, heals the wound without maturation, is Chamberlain's Pain Balm.

"That man made an immense fortune out of a simple little invention." "Indeed! What did he invent?" "Invent? Nothing, you dub! He was the promoter!"—Cleveland Leader.

THE PACIFIC Commercial Advertiser Entered at the Postoffice at Honolulu, T. H., as second-class matter. SUBSCRIPTION RATES: One year, \$12.00. Advertising Rates on Application.

HAWAIIAN GAZETTE CO., LTD. Von Holt Block, No. 65 South King St. C. S. CRANE, Manager

Halstead & Co., Ltd. William Williamson STOCK AND BOND BROKERS

Members Honolulu Stock and Bond Exchange. HONOLULU STOCK EXCHANGE Honolulu, Saturday, September 4, 1909.

Table listing stock and bond transactions with columns for Name of Stock, Price, and Volume. Includes a section for Real Estate.

ALFRED D. COOPER Cable and Wireless Address ALDYKES, HONOLULU

Western Union and Lieber's Codes. HAWAIIAN STOCKS AND BONDS BOUGHT AND SOLD

ALBERT F. AFONG STOCK AND BOND BROKER

Member Honolulu Stock and Bond Exchange. Classified Advertisements FOR RENT.

Classified Advertisements

UNFURNISHED—The C. W. Dickey cottage on Bates street; \$35.00. FURNISHED—Residence, 1586 Nuuanu, \$50.00.

SEVEN-ROOM COTTAGE, Pawa Junction, \$20; five-room cottage, Young street, near Aalapai, \$15.

COTTAGES; with board. Mrs. J. Cassidy, 2005 Kalua road, Waikiki.

TO A SATISFACTORY TENANT.—One-half of the store occupied by the Hawaiian Gazette Company, Limited, on King street; has modern front window, large enough for displaying any line of goods, machinery excepted; building is in the center of the retail district, constructed of stone and modern in every respect.

THE NEW ERA HOTEL, No. 1450 Fort St., furnished rooms by the day, week or month. Tropicaly situated. Terms reasonable. A vacant cottage in the rear. Inquire on the premises. MRS. HENRY SMITH. 8440

FURNISHED ROOMS. NICELY furnished rooms, 1124 Adams Lane. Cool and pleasant. 8377

THE KNUTSFORD, corner Beretania and Union Sts., Honolulu. Superior apartments, single or en suite; newly furnished throughout. Centrally located; one block from Young Hotel. 8445

IN private family. Inquire 732 Kinau street, near Alapai; terms reasonable. 8439

STAMPING. STAMPING, stenciling, Japanese designs; water-color work and lessons. 1825 College St. 8427

DENTIST. DR. A. B. CLARKE, dentist. Office, 303 Boston building. 846

Real Estate

Member Honolulu Stock and Bond Exchange. 83 MERCHANT STREET. P. O. Box 538. Tel. 618. FOR SALE. House and Lot, Nuuanu. \$2000

Real Estate

FOR RENT—5-acre banana plantation with shack; also other land, Palolo foothills. FOR SALE—25 acres suburban property. A tree cotton investment on hand. W. L. HOWARD, 202 McCandless Building.

A. J. CAMPBELL STOCKS AND BONDS

79 MERCHANT ST. Member Honolulu Stock Exchange. During my absence from the Territory Joe Andrade will represent me on the Honolulu Stock Exchange and in all matters pertaining to the sale of stocks and bonds. A. J. CAMPBELL.

Furnished House TO RENT

For six months, two-story house on Wyllie street, Nuuanu valley, four bedrooms and two bath rooms, large barn and tennis court.

The Waterhouse Co.

Judd Building. Classified Advertisements FRESH poi berries at Mrs. Kearns' every Saturday. Order early. 8422

ROOMS AND BOARD. SPLENDID airy rooms and cottages, with or without board; 1634 Nuuanu avenue, near School. 8447

OFFICES FOR RENT. ALEXANDER YOUNG BUILDING—Honolulu's only up-to-date fire-proof building; rent includes electric light, hot and cold water, and janitor service. Apply the von Hamm-Young Co., Ltd.

"THE STANGENWALD"—Only fire-proof office building in city. MUSIC. AGNES WICKSTRUM, B. M., teacher of piano. Those interested call up 1776. 8446

VOCAL. HUGO HERZER, Teacher of Singing. Season 1909-10 from Sept. to June, inclusive. Studio, 20-22 Kapiolani Building. Residence telephone 1301. 8444

BICYCLE STOLEN. THE BOY who took away a bike from the Gazette delivery door early Wednesday morning will serve his interests by returning it to this office. 8439

A GOOD second-hand motorcycle, 6 h. p. twin cyl. R. Standard. Y. Yoshikawa, 163 King, opp. Young Hotel. 8437

AND for cribs, baby carriages, or go-carts, see J. Hopp & Co. They have many styles of go-carts and carriages, one go-cart is only \$2.75.

LOST. BETWEEN the Hawaiian Hotel and Methodist Church, a gold, pansy design pin, with a diamond setting. Finder please return to Mrs. Thomas, at Hawaiian Hotel, and receive reward. 8448

ONE pointer dog. Return to O. E. Wall, Hassinger street and receive reward. 8439

CERTIFICATES Hawaiian Pineapple Stock Numbers 356, ten shares, and 358, fifteen shares. Finder please return to C. H. Dickey. 8439

BUNCH OF KEYS. Finder notify this office. 8447

BICYCLE ROADSTER, No. 3082. Reward at this office. 8447

AT LEILEHUA, a brindle bulldog; collar marked Sheridan; answers to name of Shindy. Ample reward; no questions asked. C. S. Hoyt. 8440

STEINWAY & SONS AND OTHER PIANOS. THAYER PIANO CO. 156 Hotel Street, Phone 218. TUNING GUARANTEED.



HONOLULU, HAWAII TERRITORY, MONDAY, SEPTEMBER 6, 1909.

NEW LINE
OF
Wicker
Veranda
Furniture

J. HOPP & CO.
Largest Furniture Store in the
Island
King Street Near Alakea
Your Credit Is Good

F. L. La Moreaux
Piano and Pipe Organ Tuning and
Repairing.
BERGSTROM MUSIC COMPANY, LTD
Tel. 321

Iron Beds
Mattresses
Furniture
Coyne Furniture Co., Ltd.

K. L. WONG
IMPORTER AND DEALER IN
LATEST STYLE OF LADIES' AND
GENT'S
FURNISHING GOODS
ROBINSON BLOCK, 32 HOTEL ST.

New Combs
WITH THE LATEST IN BARRETTES
AND HAIR GOODS AT
MRS. DORIS E. PARIS.
1150 Fort Street.

JUST RECEIVED A FINE LINE OF
Men's Sweater Coats
ready for winter weather
FROM \$2.00 TO \$4.00
OVER 200 KINDS OF MEN'S SOCKS
10c TO 50c A PAIR

Wah Ying Chong Co.
CHAN KEE
Great Reduction Sales
NOW ON

Send Your Suit
TO THE
EAGLE DYEING AND
CLEANING WORKS
TEL. 505, FORT STREET.

Just in Ex Lurline
BERKSHIRE PIGS, TURKEYS AND
CHICKENS
CLUB STABLES
TELEPHONE 109

RAMBLER and REGAL
AUTOMOBILES
H. A. WILDER : : : Agent

The Best Only.
IWAKAMI,
JAPANESE GOODS.
Hotel and Bethel.

VERSES
OF
HAWAII
BY P. MAURICE M'MAHON.

A Charming contribution to
the literature of the Islands by
a worthy poet.
Bound in tapa or cloth, \$1.

OAT & MOSSMAN
MERCHANT STREET.

RING UP
Levy's
For Groceries Phone 76



CONGRESSMAN WILLIAM E. REEDER, OF KANSAS, IN CONVERSATION WITH THREE HAWAIIAN CHIEFESSES.



MOANALUA PRESENTING GOVERNOR FREEAR WITH A BOUQUET OF CARNATIONS.

BETHLEHEM STAR PLANET VENUS

Scientific Society Brands Many
Popular Notions "Pure
Idiocy."

LAKE GENEVA, Wis., Aug. 20.—
After the opening yesterday of the
tenth annual meeting of the Astro-
nomical and Astrophysical Society of
America at Yerkes observatory, Prof.
Pickering and Prof. E. B. Frost, who
has charge of the Yerkes observatory,
drew up a list of the "problems" which
they say a genuine scientist will never
bother about. Here is the list:
Going up in a balloon with telescopes
in order to make observations. This the
true astronomer declares ridiculous.
Question of the inhabitability of the
planets. This is described as purely a
biological problem. The true astronomer
concerns himself merely with matters
of mass, length and time.
Probability of the destruction of the
earth by comets. This is characterized
as "pure idiocy."
Talk of comets plunging into the sun
and thus generating a heat sufficient to
burn up the earth. More "idiocy."
Talk of satellites of the moon. Ludicrous.
Rumors of the reappearance of the
Biblical star of Bethlehem. This star,
which is reported frequently from some
part of the country, according to Prof.
Frost, is the planet Venus.

SAMUEL E. KAUIE DIES AT WAILUKU

Maui News.—Hon. Samuel Ephraim
Kauiie of Wailuku died at his home
Wednesday, September 1, after a pro-
longed illness extending over a period
of twenty months.
He was buried in the Wailuku ceme-
tery the following afternoon after reli-
gious services had been rendered at his
home and at the Kaahumanu church.
The funeral services were conducted by
Rev. Kaumeheua, Rev. Dodge and
Rev. J. Nua. Hon. J. W. Kalua spoke
feelingly of the life and character of
the deceased.

MRS. KELIINOI IS CALLED BY DEATH

Maui News.—By wireless word was
received Tuesday of the death of Mrs.
Emma Keliinoi, wife of S. Keliinoi of
Wailuku.
Mrs. Keliinoi has been on a visit to
her parents in Kona, Hawaii, and was
stricken down with typhoid fever in the
early part of July. Mr. Keliinoi was
at once sent for and remained with
her during her illness. Some weeks ago
her condition was thought to be better
and the children were sent home. She
is reported to have suffered a relapse

and died Monday and was buried in
Kona near her former home.
Mrs. Keliinoi was a daughter of
Judge Yeats of Hawaii and has lived
for some twelve or fifteen years on this
island.

LAW DISCOURAGES INCORPORATIONS

Incorporation papers are going to be
at a discount before long, if the prog-
nostications of those who have been
studying up the income tax law are
correct. Many new business concerns
to be formed in the future will be con-
tent to be simply partnerships instead
of incorporated companies, and the
close corporations which are so com-
mon in Hawaii today will in all prob-
ability decrease in numbers.
For, according to the income tax
provision of the new tariff law, all
corporations whose net income exceeds
\$5000 a year must pay income tax of
one per cent. on their earnings. Non-
incorporated companies, partnerships,
and such like concerns escape this
burden.
It has been noticed by malhinis fre-
quently that in Honolulu almost every
business of any kind is incorporated
and limited. This is by no means the
case in most other American communi-
ties, but it seems to be the fashion
down here. The new income tax law is
liable to discourage this habit.
The work of collecting the income
tax is going to devolve upon the Inter-
nal Revenue Department. Collector
Drake yesterday received instructions
from Washington to prepare a list of
all the corporations of Hawaii, to be
segregated into five classes, financial
and commercial, public service, indus-
trial and manufacturing, mercantile,
and miscellaneous.

NEW AUTO STAND.

The Honolulu automobile stand, un-
der the management of Messrs. Geo. C.
Beckley, Jr., and C. H. Behn, is now
open for business. Their new garage,
only just completed, at the corner of
Alakea and Hotel streets, is one of the
best in the city, and in addition to
their already fine lot of cars, among
them a Packard Landulet, they have
ordered a number of the latest 1910
model, seven-seated Stoddard-Daytons
and Packards, these last-named cars
being now of the way. Both Mr. Beck-
ley and Mr. Behn are old hands at the
business, and the public is fortunate in
having placed at its disposal an auto-
mobile service equal to any on the
mainland.

ALCOHOL IS A PRESERVATIVE.

Alcohol is recognized the world over
as the proper, most efficient and whole-
some preserver of medicinal compounds,
and while some journalists try to alarm
the world by the cry that patent
"medicines contain more alcohol than
beer," they neglect to state that prop-
rietary medicines are taken in doses
from a teaspoonful to a tablespoonful,
while beer is a beverage that is con-
sumed in quantities from a glass to sev-
eral quarts a day.
Lydia E. Pinkham's Vegetable Com-
pound contains only 18% alcohol, sim-
ply enough to preserve the roots and
herbs from which it is made, and may
be relied upon by every woman in the
land as a reliable, honest and sure
remedy for the ills peculiar to her sex.

"If you'd assume a more genial
manner, you'd get along better in busi-
ness." "Rot! I tried it once, and
everybody I met wanted to borrow
money."—Cleveland Leader.

HERE'S EVERYTHING FOR THE BOYS

Vacation usually takes the shape out of the Boys' Clothing and now is the time to restock. We believe our Suits and Toggery for Boys compare with what is found in the largest shops on the Coast.

WE INVITE YOUR ATTENTION TO

Suits for Young Men and Boys. Shirts for Young Men. Trousers or College Boys and Knickers for the young generation. Collars and Cuffs. Neckwear in All Shapes and Many Patterns of Materials. Khaki Suits and Khaki Trousers, long and short, for School Boys, who wear 'em to save their good clothes. Suspenders, Pajamas, Nightgowns for Boys. Felt and Straw Hats, Caps, Traveling Bags, Suit Cases, Handkerchiefs, Hosiery, Umbrellas, etc.

There is an individuality about our clothing that is not found in "tailor made" for which you are asked to pay more than we charge for better goods.

SILVA'S TOGGERY,

Elks' Building Phone 651 King Street



The popular table butter.
Fresh shipment by Ala-
meda.

Henry May & Co., Ltd.

Leading Grocers - - - Phone 22

THERE IS ONLY ONE Peerless Preserving Paint

Office Fort St. opp. W. G. Irwin & Co.
TEL. 281 : : : : P. O. Box 757

LEROY HENRY MASSEUR

FIFTEEN YEARS EXPERIENCE.
PHONE 411.

HONOLULU IRON WORKS COMPANY.

Machinery, Black Pipe, Galvanized
Pipe, Boiler Tubes, Iron and Steel, En-
gineers' Supplies.
OFFICE—Nuuanu Street.
WORKS—Kakaako.

OUR MEATS

ARE ALL RIGHT.
Prompt delivery every day.
C. Q. YEE HOP & CO.
NEXT THE FISHMARKET.

Rhine's Candies Fresh

JUST RECEIVED BY ALAMEDA.
Pawaa Junction Store
HENRY ASCH, PROPRIETOR.

Health for the Children

Every parent notes with anxious eye the first symptoms of the children's failing health: the pale cheek, listless manner and capricious appetite speak more plainly than any words, for the well child is a veritable storage battery of animal spirits.

Stearns' Wine of Cod Liver Extract

Every parent notes with anxious eye the first symptoms of the children's failing health: the pale cheek, listless manner and capricious appetite speak more plainly than any words, for the well child is a veritable storage battery of animal spirits. Renewing the appetite is the first step back to health and

given faithfully for a short time will do it. The children need not even know it is a medicine for the taste is very pleasant and does not suggest cod liver oil in the least. But the effect is certain.

For persons of every age Stearns' Wine of Cod Liver Extract is an unfailing tonic, appetizer and strength renewer. Get it at your chemist's, and be sure you get STEARNS'—the genuine.



THERE WAS NOTHING UNUSUAL IN THE LUNCHEON SERVED TO THE CONGRESSMEN ON SATURDAY; ANY OF THE GUESTS GET AS GOOD AT ANY TIME. WE WILL BE PLEASED TO HAVE YOU SPE ND A FEW DAYS AT THIS DELIGHTFUL PLACE.

Painted Autos

We have all the facilities, and the experienced men, to paint your automobile so it will look as good as when you first drove it. A dingy-looking machine does not reflect credit on the owner or driver. Our prices are not high for the most satisfactory service.

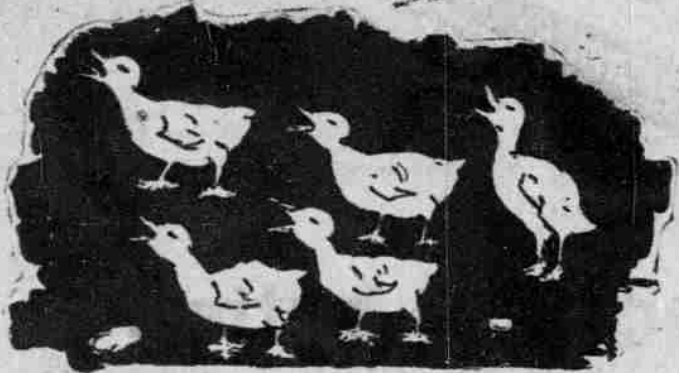
Royal Hawaiian Garage, Ltd.

Geo. S. Wells, Mgr.

Hotel St, opp. Hawaiian Hotel. Phone 191.

First Exhibit FALL MILLINERY

DUNN'S HAT SHOP
Corner Fort and Beretania Sts.



White Duck Suits

MADE ESPECIALLY FOR US IN FASHIONABLE SHAPES FROM SUPERIOR MATERIAL. THESE SUITS ARE WORN ON ALL OCCASIONS AND TAKE THE PLACE OF EVENING CLOTHES.

M. McInerney, Ltd.

FORT AND MERCHANT STREETS.

LADIES' AND GENTLEMEN'S

Panama Hats

COME AND SEE THEM.

K. UYEDA

NUUANU BETWEEN KING AND HOTEL.

THE LARGEST SHIPMENT OF

MILLINERY

WE HAVE EVER RECEIVED IS NOW IN OUR STORE

K. ISOSHIMA, King St., near Bethel.

STEAM ROLLER AND TRACTION ENGINE

With our new combination engine we are prepared to undertake rolling, plowing and heavy hauling. See us for rates.

HONOLULU CONSTRUCTION AND DRAY

Office, Fort St. opposite W. G. Irwin & Co. Phone 281

IMPORTANT TO TRAVELERS ENTERING THE UNITED STATES

Treasury Department, office of the Secretary, Washington, August 13, 1909.—The customs laws and regulations require an examination of all the baggage and effects of passengers arriving in the United States from foreign countries. Before such examination can take place passengers are required by law to state what articles they are bringing with them that were obtained abroad. This information must be given upon forms provided for that purpose, which are entitled "Baggage Declaration and Entry."

Passengers should observe that there are two forms of declaration, one for residents and the other for nonresidents. These forms will be distributed to passengers during the early part of the voyage by an officer of the ship. When a passenger has prepared and signed the declaration, the coupon at the bottom of the form should be detached and the form should be given to the officer of the ship designated to receive the same. Declarations spoiled in the preparation should not be destroyed, but should be turned over to the purser, who will furnish a new blank to the passenger.

After all the baggage and effects of the passenger are landed upon the pier, the coupon which has been retained by the passenger should be presented at the inspector's desk, whereupon an inspector will be detailed to examine the baggage. Passengers must acknowledge in person, on the pier, their signatures to their declarations.

For the purposes of administration, passengers are divided into two classes, viz:

1. Nonresidents of the United States.
2. Residents of the United States.

The division of passengers into nonresidents and residents in nowise affects citizenship.

Nonresidents are (a) actual residents of other countries; (b) persons who have been abroad continuously for two years or more who elect to declare as nonresidents. Residents are all persons who have been residents of the United States and who have been abroad less than two years.

Residents of the United States must declare all wearing apparel, jewelry, and other articles, whether used or unused, on their persons, or in their baggage, which have been obtained abroad by purchase or otherwise, with the foreign cost or value of same. They shall state, as well as all wearing apparel, jewelry, or other articles taken out of the United States, which have been remodeled or improved while abroad so as to increase their value, the said statement to include the cost of such improvement. If the articles so declared are for others, or to be used in business or for sale, these facts should be stated in the declaration.

Residents of the United States are allowed one hundred dollars' worth of articles at their present foreign value, free of duty, provided they are not for sale or to be used in business, and are properly declared. In the case of minors, the exemption of one hundred dollars' worth of articles obtained abroad is restricted to such articles as are for the bona fide use of such minor.

Use does not exempt from duty wearing apparel or other articles obtained abroad, but due allowance will be made by appraising officers for wear or depreciation.

Whenever practicable, passengers should present the original receipted bills for all foreign purchases.

Residents of the United States may bring with them, free of duty, all wearing apparel and other personal effects taken by them out of the United States which have not been remodeled or improved abroad so as to increase their value.

Residents of the United States must not deduct the one hundred dollars exemption from the value of their

wearing apparel or other articles obtained abroad by purchase or otherwise. Such deduction will be made by customs officers on the pier.

Nonresidents of the United States are entitled to bring in free of duty only such articles as are in the nature of wearing apparel, articles of personal adornment, toilet articles, and similar personal effects actually accompanying the passenger and necessary and appropriate for his or her wear and use for the purposes of the journey and present comfort and convenience, and are not intended for other persons nor for sale. Household effects of persons or families from foreign countries will be admitted free of duty if actually used abroad by them not less than one year, and not intended for any other person nor for sale.

Articles intended for other persons, for use in business, and household effects, must be so declared.

All cigars and cigarettes must be declared, and are not to be included within the one hundred dollars exemption. Each passenger is entitled to bring in, free of duty and internal-revenue tax, either 50 cigars or 300 cigarettes.

The senior member of a family, if a passenger, may make declaration for the entire family.

Ladies traveling alone should state the fact in the declarations and entries in order that an expeditious examination of their baggage may be made.

The exact number of pieces of baggage, including all trunks, valises, boxes, packages, and handbags of all description accompanying the passenger, must be stated in the declaration.

Whenever practicable, passengers should present the original receipted bills of foreign purchases.

Passengers dissatisfied with values placed upon dutiable articles by the customs officers on the piers may demand a reexamination, but application therefor should be immediately made to the officers there in charge. If for any reason this course is impracticable, the packages containing the articles should be left in customs custody and application for reappraisal made to the collector of customs, in writing, within two days after the original appraisal. No request for reappraisal can be entertained after the articles have been removed from customs custody.

Upon application to the customs officer in charge on the pier, baggage intended for delivery at ports in the United States other than the port of arrival, or in transit through the United States to a foreign country, may be forwarded thereto without the assessment of duty at the port of arrival, by the various railroads and express companies, whose representatives will be found on the pier. Passengers desiring to have their baggage forwarded in bond should indicate such intention and state the value thereof in their declarations, before any examination of the baggage has been made.

Government officers are forbidden by law to accept anything but currency in payment of duties, but, if requested, will retain baggage on the piers for twenty-four hours to enable the owner to secure the currency.

Passengers are advised that to offer or give gratuities or bribes to customs officers is a violation of law, and customs officers who accept gratuities or bribes will be dismissed from the service.

Any discourtesy or incivility on the part of customs officers should be reported to the collector at the custom house, the deputy collector or the deputy surveyor at the pier, or to the Secretary of the Treasury.

An act of Congress of 1897 expressly forbids the importation into the United States of garments made in whole or in part of the skins of seals taken in the waters of the North Pacific Ocean, and unless the owner is able to establish by competent evidence and to the satisfaction of the collector that the garments are not prohibited they can not be entered.

In order to secure prompt identification and thereby facilitate the passage through the customs upon return of valuable personal and household effects, taken abroad by persons leaving the United States, the articles may be registered with the collector at the port of departure or the port at which the journey commences.

JAMES B. REYNOLDS,
Assistant Secretary.

UNCLAIMED LETTER LIST

List of letters remaining unclaimed for in the general delivery for the week ending September 4, 1909.

- | | |
|------------------------------------|---------------------|
| Albert, J J | Knell, H A |
| Allen, Miss Helen | Kot, Frank |
| Maui | Lures, Mrs Barreis |
| Anderson, A | Moore, Miss Eva |
| Anderson, David L | Munroe, Miss Lena |
| Banister, Miss | Murray, Geo C |
| Carrie | Nielson, Ole |
| Berggren, F H | Peter, Eddie G N |
| Buys, A Billa | Pooler, Miss |
| Burford, E B | Catherine |
| Byers, Chas W | Post, Mrs Grace |
| Chester, Mrs | Robert, Mrs W R |
| Chester, Mrs N | Rose, Mrs Elizabeth |
| Clark, Joseph K | Roy, Mrs F |
| Clark, Albert C | Serant, Mrs L N |
| Crooth, Miss | Scott, Mrs A M |
| Isabella | Shaffer, Joseph |
| Dannas, Master P | Stuart, Mrs McG |
| Doyle, Emeline | Stant, Mrs L N |
| Ecklund, Walter | Trask, Miss |
| Freeman, Pvt Lewis | Jennie (2) |
| Goulding, A | Travis, John |
| Hawaiian, The | Victor, Miss Maria |
| Trayways Co, Ltd | Victor, Mrs Eliz- |
| Henderson, J | abeth K (2) |
| Halek, Mrs Hannah | Wagner, J B |
| Irwin, A (3) | Wallace, Mrs M |
| Johnny, Miss Alice | Kamabalehua R |
| Jones, Thomas | Whaley, Joseph |
| Keithley, G L (2) | Whitlock, Miss A |
| Kern, Geo A | Williams, Frank |
| Kleishmann, Franz | Wilder, Mrs Marian |
| Please ask for advertised letters. | |
| JOSEPH G. PRATT, | |
| Postmaster. | |

Cured by Lydia E. Pinkham's Vegetable Compound

Paw Paw, Mich.—"I suffered terribly from female ills, including inflammation and congestion, for several years. My doctor said there was no hope for me but an operation. I began taking Lydia E. Pinkham's Vegetable Compound, and I can now say I am a well woman."

EMMA DRAPER.
Another Operation Avoided.
Chicago, Ill.—"I want women to know what that wonderful medicine, Lydia E. Pinkham's Vegetable Compound, has done for me. Two of the best doctors in Chicago said I would die if I did not have an operation, and I never thought of seeing a well day again. I had a small tumor and female troubles so that I suffered day and night. A friend recommended Lydia E. Pinkham's Vegetable Compound, and it made me a well woman."—Mrs. ALVENA SPERLING, 11 Langdon St., Chicago, Ill.

Lydia E. Pinkham's Vegetable Compound, made from roots and herbs, has proved to be the most successful remedy for curing the worst forms of female ills, including displacements, inflammation, fibroid tumors, irregularities, periodic pains, backache, bearing-down feeling, flatulency, indigestion, and nervous prostration. It costs but a trifle to try it, and the result has been worth millions to many suffering women.

BEFORE THE Fleet Comes to Honolulu

MAKE YOUR VERANDAS LOOK NICE
BY HANGING UP A FEW

GALVANIZED WIRE HANGING BASKETS

We have them in three sizes.

8-INCH	10-INCH	12-INCH
40c.	50c.	60c.

MOSS FOR LINING THE BASKETS 15c POUND
FORCEGROWTH, 10 lb. bags 60c

E. O. Hall & Son, Ltd.,

HOUSEHOLD DEPARTMENT

EMBROIDERED
PONGEE SILK COATS.

MANDARINS

Silk Crepe Scarfs, all shades. Ladies' Silk Stockings, Crepe Picture Frames and Paintings.

Sayegusa

NUUANU, ABOVE HOTEL.

New Arrivals, Ex Lurline

PRICES LOWEST IN THE CITY.

Dining chairs in sets, parlor rockers, rope portieres, lace curtains, bureaus, dining tables, sideboards, etc.

Honolulu Wire Bed Co.

Showroom, Corner King and Alakea.

Hawaiian Ballasting Company

BUILDING CONTRACTORS

858 MAUNAKEA STREET, NEAR KING. P. O. Box 820; Tel. 396.
K. Matsumoto, Manager

Black Sand, Coral, Garden Soil, delivered anywhere in Honolulu, from corner Hotel and Fort streets, at LOWEST PRICES.

JAPANESE CURIOS

and articles of vertu. Direct importations. Antique Armor 16th Century and small bits.

THE JAPANESE BAZAAR

Fort St., near the Convent.

COMPLETE NEW STOCK OF

Single and Double Bedspreads

COTTON AND WOOLEN BLANKETS,
SHEETS AND PILLOW CASES, COMFORTERS AND PILLOWS.

ALL KINDS OF BOYS' SCHOOL SUITS FROM \$1.25 PER SUIT UP.

BOYS' KNEE PANTS FROM 25c PER PAIR UP.

NEW PATTERNS OF FLANNELETTES

SUITABLE FOR KIMONOS OR WRAPPERS.

YEE CHAN & CO.

CORNER KING AND BETHEL STREETS.

J. LANDO Has New Lines of Summer

Underwear, B. V D. Athletic
Poris Net and Lace Weave

YOUR SIZE

152 Hotel Street, Opposite Young Hotel.

Read the "Advertiser," World's News Daily

Packard
1910 CARS.

Only a few cars still available. Place your order at once.

THE VON HAMM-YOUNG CO., LTD.
Agents.

David A. Dowsett
INSURANCE, REAL ESTATE, LOANS
203 Judd Building. Phone 655.

BASKETRY
Exquisite Baskets from Orient and South Seas; Fans, Postcards
HAWAII & SOUTH SEAS CURIO CO.
Young Building.
(Under Electric Sign - Bishop St.)

Go to the...
UNION BARBER SHOP
—The Very Best Entrances from Merchant and King

MANILA CIGARS
NOW FIVE CENTS
Fitzpatrick Bros.
TWO STORES

The Badger
FIRE EXTINGUISHERS
J. A. Gilman
Room 50 Judd Bldg.

ROSES
—AT—
MRS. E. M. TAYLOR'S
Tel. 239.
Alexander Young Building.

Mr. and Mrs. Hashimoto
MASSEURS
Telephone 637
Rheumatism, Bruises, Sprains, Tired Feeling and other Ailments Quickly Relieved.
VIBRATORY MASSAGE.
178 BERETANIA AVE., NEAR EMMA
BATH AND MANICURE.

Everything in Paper
AMERICAN-HAWAIIAN PAPER & SUPPLY CO
FORT AND QUEEN STREETS
CALL, CHRONICLE, or EXAMINER.
Subscribe for one of these dailies and get the news of the world. Only \$1.00 per month.
WALL, NICHOLS CO., LTD.

Ohio Clothes Cleaning Co.
Gentlemen's Suits cleaned and pressed, four times per month or \$1.50. Work guaranteed.
HARRISON BUILDING, Beretania Ave.

YOUNG LADIES
wanted to learn the hairdressing trade.
EMRICH LUX
Fort and Beretania Streets.
Harrison Block.

LEWIS & CO.
LEADING GROCERS.
KING STREET
TELEPHONE 240

Congressmen!!
Can get Canes, Calabashes, Tapas, Seed and Shell Lids and all Hawaiian Curios at reasonable prices at

VALTOLDI'S
Floral and Curio Depot,
1113 Alakea Street,
Masonic Temple.

Porcelain Panels
FOR ARTISTS AND AMATEURS
Jane Lishman More
HARRISON BUILDING.

SOCIETY

Fred C. Smith, the general passenger agent of the O. R. & L. Co., departed on the Lurline for the Coast for a rest and in hopes of benefiting his health.

Mrs. Politte Elyins, wife of Congressman Elvins of Missouri, is a pretty and popular member of the Congressional party and has made a score of friends on the Island.

Mrs. Frazee, Past Worthy Matron of Lei Aloha Chapter, Order of Eastern Star, entertained at her Nuuanu avenue residence Friday evening in honor of Robert Morris, the founder of the O. E. A. A. Pratt spoke on the life of Robert Morris and a musical program was rendered by Mrs. Felker, Mrs. Weil, Miss Klein, Miss Pratt and Walter Klein.

Dr. Carl Ramus is the guest of Bishop and Mrs. Restarick.

Mrs. George Davies gave a motor party to Haleiwa for dinner Thursday evening in honor of Mrs. and Miss Birney. Sixteen guests enjoyed the ride down and back by moonlight.

Mrs. H. L. Parmelee of New Haven, Conn., who has been the guest of her daughter, Mrs. William W. Low, for some time past, is booked to leave on the Mongolia.

Miss Agnes Wickstrum, sister of Mrs. C. H. Olson, of College Hills, returned on the Kinan from a visit of several weeks at Lihue.

Miss Cordelia Gilman gave a surfing party Thursday afternoon at her home at Waikiki to a jolly party of friends.

Ex-Governor and Mrs. Carter gave a dance at the Country Club Friday evening in honor of Francis Brown.

Civil Engineer and Mrs. Parks gave an informal little dinner Wednesday evening at the Young in honor of Admiral and Mrs. Hollyday. Covers were laid for Major and Mrs. Ray, Captain and Mrs. Falls, Miss Frear, Lieutenant Burrell and the guests of honor.

Invitations are out for the reception to the officers of the fleet to be given by Captain and Mrs. Rees at the Pleasonton from four until six o'clock on the fifteenth of September.

Major and Mrs. Beecher B. Ray gave an elaborately appointed little dinner party at the Young Thursday evening. The table was decorated with a large bowl of American Beauties and covers were laid for Governor and Mrs. Frear, Congressman and Mrs. Miller, Congressman and Mrs. Scott, Congressman Candler and Mrs. H. O. Leighton. The party after dinner attended the ball on the roof garden.

Mrs. H. O. Leighton, who has been the house guest of Governor and Mrs. Walter Frear for several days, left for Hilo on the Magma Loa.

Mrs. Castner, wife of Captain Castner, was a departing passenger on the transport Thomas. She will stop over in San Francisco for ten days and then make a two months' tour of the East and will probably sail later for a tour throughout Europe with her aunt, Mrs. Bliss of San Francisco.

Mrs. Falls, wife of Captain Falls, left for the Coast on the Lurline for a visit with her parents at Sacramento. Mrs. Falls expects to return on the December transport.

Miss Juliette May Fraser returned on the Alameda after an absence of four years. Miss Fraser graduated in June from Wellesley College.

Miss Eva Stevens was a returning passenger on the Alameda from a trip to Chicago and Yellowstone Park.

The Week End.—Mr. Augustus F. Knudsen, chairman of the Hawaii Commission, and Mrs. Knudsen have issued handsome cards of invitation bearing the following inscription: "The Hawaii Commission of the Department of the Interior to the Alaska-Yukon-Pacific Exposition requests the pleasure of your presence at the Washington State Building on Thursday evening August the twenty-sixth, nineteen hundred and nine. Dancing at half after eight o'clock."

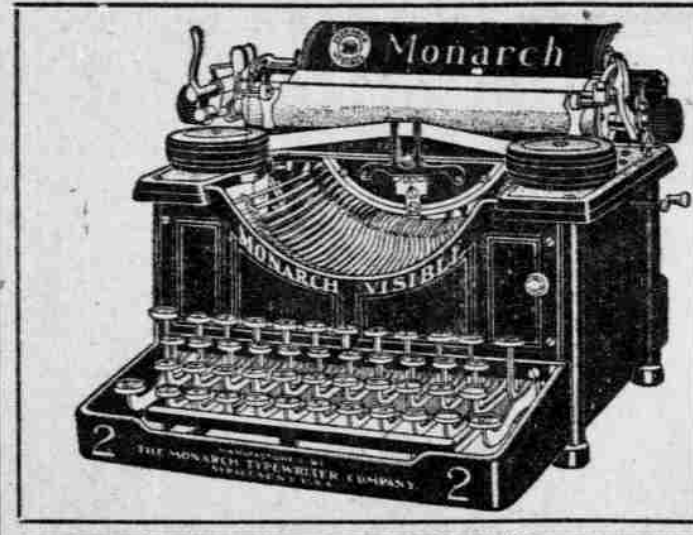
This reception will be a notable and interesting event combining, as it will many Hawaiian features with a conventional evening reception. The beautiful Washington State Building will be decorated with palms, flowers and the entwined colors of Hawaii and

If you would like to be strong and robust there's only one thing to do—make the stomach strong and digestion perfect. For this work you will find there is nothing equal to

HOSTETTER'S
CELEBRATED
STOMACH BITTERS

Its merit has been clearly proven during the past 56 years and is no longer an experiment. Try it for Dyspepsia, Indigestion, Costiveness, Malaria, Fever and Ague.

FOR SALE BY
Benson, Smith & Co., Ltd.
Hollister Drug Co., Ltd.
Chambers Drug Co., Ltd.
Hilo Drug Co.,
and at all Wholesale Liquor Dealers.



ANY OLD TYPEWRITER MADE NEW
WE HAVE ADDED to our staff of employes a man of long experience in repairing writing machines. His knowledge of the complicated mechanism of this character is genuine and not confined to any one make or model. We solicit your orders for repairs, which we are quite willing to guarantee will be made to your satisfaction, at about half the price you have been accustomed to paying. If the machine is not returned to you practically as good as new, it will be up to us to make good.

Wall, Nichols Company, Ltd.
FORT AND MERCHANT STREETS.

"SOROSIS SHOES"
DISTINCTIVE FOOTWEAR
In all leather at \$4

Sorosis models embrace every essential of shoe satisfaction—softness and pliability in leathers, comfort in fit and graceful in form. The season's new models await you.

L. B. Kerr & Co., Ltd.
ALAKEA STREET.

NEW MOULDINGS AND PICTURES
Just Received per "Alameda" at
Gurrey's

the United States. Dancing will continue throughout the evening to the alternating music of the Hawaiian and Wagner bands. The receiving line will be composed of Mr. and Mrs. Augustus F. Knudsen and other members of the Hawaiian Commission and the following distinguished guests: Secretary of the Interior Richard A. Ballinger and Mrs. Ballinger, Rear Admiral Sebree, Commander-in-Chief of the Pacific fleet, and Mrs. Sebree; Rear Admiral and Mrs. Rodgers, Hon. Gifford Pinchot, Chief Forester of the U. S.; Hon. F. H. Newell, Chief of the Reclamation Service; President and Mrs. J. E. Chibberg, Mr. and Mrs. I. A. Nadeau, Mr. and Mrs. Josiah Collins, Mr. Ralph Hosmer, Federal Forester of Hawaii.

COMMERCIAL EXPERTS OF JAPAN ARE COMING

Advices received recently by the board of commerce announce that the fifteen honorary commercial commissioners from Japan, who are to make a tour of the United States this fall, will be in Detroit about October 1. These commissioners will be headed by Baron Shibusawa, who visited the United States a number of years ago to make a study of commercial organizations. Largely through his influence, chambers of commerce along the lines of those in this country were started in the principal cities of Japan. In Japan, however, they are closely allied with the government and exert a great deal of influence in formulating legislation. Frank G. Ryan, president of Parke, Davis & Co., became well acquainted with Baron Shibusawa during a visit to Japan and says he holds the highest rank in the commercial life of the empire.

The Japanese commissioners will be accompanied by fifteen trade experts and when they start their tour from the Pacific coast they will be joined by fifteen American trade experts. Five of the latter are to be appointed by President Taft, from government departments, the other ten will be selected by various commercial organizations of the United States, working in groups. For instance, Detroit, Grand Rapids, South Bend and Indianapolis are associated and will have the selection of one expert.

The Japanese are coming to this country strictly on business and it is not proposed to have their time taken up by promoters and theorists during their visits to manufacturing plants; nor will they waste time studying an industry in Detroit if they have studied a similar one in some other city. According to a letter received by Secretary C. B. Sawyer of the board of commerce, from the Seattle chamber of commerce, entertainment is not even desired. So banqueting, sightseeing and other amenities will be cut out. Some of the Japanese will be accompanied by their wives and the board of commerce will see that they are entertained while the commissioners and experts are at work.

After the tour of the United States is finished, the American experts will go to Japan to gain information of the things which Japan has for export which can be disposed of in this country. The exchange of visits by the experts is full of significance as affecting the future trade and friendly relations between the United States and Japan, and in addition it is believed that it will result in more extensive use of American-made machinery in Japan, and that eventually this trade is likely to be extended into China.—Detroit Free Press.

"When you do tell a lie," remarked Hamlet Fatt, "tell an elaborate lie." "I don't know about that," said Yorrick Hamm. "Following that policy would have lost me the job I just got." "How so?" "A manager wanted to know if I had ever played Richelieu. I never have, but I said yes. I was about to say that I originated the part."—Louisville Courier-Journal.

"She says she'd rather waltz than eat." "Well, she'll find plenty of men who would rather sign a dance program than a dinner check."—Louisville Courier-Journal.

CONGO ROOFING
The Roofing That Lasts.
Fire and Weather Resisting.

Sold by
LEWERS & COOKE, LTD
177 S. King Street

Truth and Quality

appeal to the Well-Informed in every walk of life and are essential to permanent success and creditable standing. Accordingly, it is not claimed that Syrup of Figs and Elixir of Senna is the only remedy of known value, but one of many reasons why it is the best of personal and family laxatives is the fact that it cleanses, sweetens and relieves the internal organs on which it acts without any debilitating after effects and without having to increase the quantity from time to time.

It acts pleasantly and naturally and truly as a laxative, and its component parts are known to and approved by physicians, as it is free from all objectionable substances. To get its beneficial effects always purchase the genuine—manufactured by the California Fig Syrup Co., only, and for sale by all leading druggists.

Just received from the East
HIGH-GRADE
TAFFETA AND SATIN
RIBBONS
RUCHINGS in all colors.
FANCY NECKWEAR in latest patterns.
K. L. WONG
32 HOTEL ST. OPP. BETHEL

Consult Us for Advertising Ideas
THE CHAS. R. FRAZIER CO.
122 KING ST. Phone 371

SWIFT SILENT SKILFUL SANITARY
Silent Barber Shop
HOTEL OPP. UNION
EXPERIENCE IS THE TEACHER
WE MAKE
FRAMES
Pacific Picture Framing Co.
NUUANU BELOW HOTEL

CRYSTAL WHITE SODA
IS THE BEST FOR THE HOME LAUNDRY.
ASK YOUR GROCER FOR IT.

EVERY STEAMER
takes goods from us to the F. Thomas Parisian Dyeing Works which come back by return steamer. Have you anything to be cleaned or dyed?
THE FRENCH LAUNDRY, J. Abadie, Prop. Phone 1491

AUTOMOBILE TOPS
We make and furnish new tops, or repair old ones.
W. W. WRIGHT CO., LTD. King near South.

Aching Heads Are Bad for Business
No one can transact business properly when his head is fairly splitting with pain.
No saleswoman or salesman can give satisfactory attention to customers when suffering from this torture.
Business of every kind today demands clear-headed consideration—freedom from disturbance as far as possible—and the aching head is a hindrance.
You can assure yourself certain relief from headaches by taking
Stearns' Headache Wafers
One dose cures and you do not want it again until another headache comes; then you take it because you know what it will do for you. It is free from habit-forming drugs.
Justice to yourself demands that you get STEARNS'—the genuine.

Wah Chong & Co. WAVERLEY BLOCK DRY GOODS

Alfalfa Hay

HAWAIIAN GROWN All hay, no stones or rubbish. In 100-lb. bales not compressed. Price... \$25 a ton CALL ON YOUR DEALER OR

The Pond Dairy

TEL. 890

Men's Fine Shirts

PRICES FROM 20c TO \$3.50

G. K. Chow & Co.

KING AND RIVER STREETS

Yawman & Erbe

SECTIONAL FILING CABINETS

HAWAIIAN NEWS CO., LTD.

ALEXANDER YOUNG BLDG.

William O. Smith

Trust Department

ESTATES MANAGED, REVENUES COLLECTED, LOANS AND INVESTMENTS MADE.

Fire Insurance

AGENT FOR ENGLISH-HAWAIIAN UNDERWRITERS.

Real Estate

IN ALL PARTS OF THE CITY.

PARAGON MARKET

ALAKEA-UNION-BERETANIA, Under Management

FRED'K W. KLEIN

and catering particularly to the meal needs of families.

Superior Quality

Excellent Service

EDWARD EVERETT HALE

COMPLETE WORKS.

Brown & Lyon Co.

YOUNG BUILDING.

WE HAVE BEEN SELLING BRIDGE & BEACH MFG. CO.

STOVES AND RANGES

for the last thirty years in Hawaii.

Emmeluth & Co., Ltd

145 KING STREET.

THE CUSHMAN MARINE MOTOR.

4-horsepower, weighs 145 lbs. A little wonder. Can be seen at Neill's workshop, 125 Merchant street.

IMPORTED Seeds

RUBBER

GRASSES AND FORAGE PLANTS

VEGETABLE SEEDS

Orders taken for imported seeds.

Jared G. Smith

Kealakekua, Hawaii, T.H.

Jade Jewelry

In Special Original Chinese Designs. Attractive—Elegant—Low Priced.

BO WO

Hotel Street bet. Maunakea and Smith

Regal Shoes

ARE THE SHOES THAT PROVE.

Regal Shoe Store

CORNER KING AND BETHEL.

Shirts

In All Sizes Made to Order by

B. YAMATOYA

St. Mauka of Pauali.

Love's Bakery

Machine-manufactured Goods; Baked Daily

Saloon Pilot Pilot and Soda Crackers

are for sale by the following firms:

- HENRY MAY & CO. J. M. LEVY & CO. T. H. DAVIES & CO. H. HACKFELD & CO. C. J. DAY & CO. GONSALVES & CO.

NEW FALL MILLINERY

—AT—

MISS POWER'S

Millinery Parlor, Boston Building Fort St.

THE STAR Merchant Tailor

Dyeing, Cleaning and Repairing all kinds of Clothes. Skillful workmen. Best in Town. All work Guaranteed. Telephone 182. Give us a Call. No. 208 Beretania St., near Emma St.

ISLAND VIEWS

BEST COLLECTION IN THE CITY.

R. W. Perkins

HOTEL STREET, NEAR POST.

AUTOS

INDEPENDENT AUTO STAND, King and Bishop Streets. Phone 609.

PARAGON PAINT & ROOFING CO.

PETER HIGGINS, Manager.

ESTIMATES FURNISHED. WORK GUARANTEED.

Office 1039 Bethel, Near Hotel St.

ALL THE FITTINGS FOR

Automobiles

SCHUMAN CARRIAGE CO., LTD.

Drink Rainier Beer

AND KEEP HEALTHY.

Exactly Right

CONSOLIDATED SODA WATER WORKS CO., LTD.

TELEPHONE 71.

SHARP SIGNS

"MAKE GOOD"

Tom Sharp

THE SIGN MAN

ELITE BUILDING Phone 897

Republic TIRES

Stepney

WHEELS

Associated Garage

17B. MERCHANT AND BISHOP STS.

TOM KEENE

Best 5c Cigar

MORE LUMBER

A cargo of lumber from Washington mills has just been received by us. We can fill your order for any quantity.

City Mill Co., Ltd

KEKAULIKE STREET

REAL ESTATE TRANSACTIONS

Entered of Record Sept. 3, 1909.

Bina C Harvey and hsb to Trent Trust Co Ltd... Territory of Hawaii to Samuel M Damon... Henry Waterhouse Tr Co Ltd tr Priscilla S Clarke... Priscilla S Clarke and hsb to First Am Sav & Tr Co of Haw Ltd... M B da Silveira and wf to L L McCandless et al... J E Kekipi and wf to C H Dickey... Samuel Kuby and wf by atty to Arthur Berg... W K Kahakua to Henry P Baldwin... Ellen A Polyblank to Elizabeth K Booth... Oahu Railway & Land Co to W F Frear et al trs... Elizabeth K Booth and hsb to Haw Trust Co Ltd... Irwin H Beadle tr to Trent Trust Co Ltd... Bina Larsen and hsb to Muri Bldg & Loan Soc of H Ltd... Muri Bldg & Loan Soc of Haw Ltd to Joseph A McKay... John J Combs to Haw Trust Co Ltd...

Entered of Record Sept. 4, 1909.

L L McCandless and wf to John Kamaka et al... Ana Ikaia and hsb to Mrs Hattie K Hapai... First Bank of Hilo Ltd to Masayo Arakawa... I E Ray by mtgee to L Ahip... I E Ray by mtgee to Masayo Arakawa... L Ahip et al to First Bank of Hilo Ltd... Moses K Kipi to Elizabeth K Victor... Olaa Sugar Co Ltd to Manuel de Coito Sr... Olaa Sugar Co Ltd to Antonio de Fontes... Olaa Sugar Co Ltd to Frank Muireira... Olaa Sugar Co Ltd to Joe C Medeiros... Olaa Sugar Co Ltd to Manuel Enos... Olaa Sugar Co Ltd to Manuel Rapoza... James Kanaholo and wf to Onomea Sugar Co... Paul Muhlendorf by attys to Notice... Paul Muhlendorf by attys to Notice...

Recorded Aug. 18, 1909.

Agnes Kapoli to Henry Kaunai, P A; general powers, B 321, p 452. Dated May 27, 1909. David Kalani to Honomu Sugar Co, Grant; perpetual R W across R P 899, B 315, p 483. Dated April 22, 1909. Bishop Trust Co Ltd tr to Lo Gin, Mei; lot 22, blk 4, 5000 sq ft land, Kapahulu, Honolulu, Oahu. \$150. B 324, p 20. Dated Aug 17, 1909. Samuel Parker to Helen M Widemann, B S; 57400 shrs Parker Consolidated Irrigation Co Ltd. \$1, etc. B 321, p 453. Dated Aug 17, 1909. J T McCrossin to Samuel Parker, Consent; to conveyance of 57400 shrs Parker Consolidated Irrigation Co Ltd. \$1. B 321, p 453. Dated Aug 17, 1909.

John C Brown to Henry Kamana, Rel; lots 4 and 5, blk 10, Kewalo lots, Honolulu, Oahu. \$250. B 324, p 31. Dated Aug 16, 1909.

Kohala Ranch Co Ltd to Union Mill Co, L; por gr 1956, Kohala, Hawaii. 5 yrs at \$60 per yr. B 323, p 21. Dated July 16, 1909.

Tono Lusing to Kow Chin Char, D; R P 4271, blk 1814, Halakua, Kohala, Hawaii. \$270. B 315, p 486. Dated Aug 18, 1909.

Peter Punihelo to Pioneer Mill Co Ltd, L; ap 1 and 2, R P 1700, kul 6799, Kawaala, Lahaina, Maui. 10 yrs at \$10 per yr. B 323, p 18. Dated Aug 17, 1909.

P Kalua Kanawaliwai to Pioneer Mill Co Ltd, L; ap 1, R P 1733, kul 6857, Pohaiki, Waianae, Lahaina, Maui. 8 yrs pd \$25. B 323, p 20. Dated Aug 14, 1909.

W D Mahelona (k) to Agnes Kapoli, D; int in R P 4999, kul 4665, Haou, etc, Hana, Maui. \$5. B 315, p 485. Dated July 24, 1909.

Recorded August 19, 1909.

Miller Salvage Co Ltd to von Hamm-Young Co Ltd, C M; 1 gasoline tug boat and 100-hp 4-cylinder Union Gasoline Engine No 5598, etc, Territory of Hawaii. \$1970. B 324, p 32. Dated Aug 16, 1909.

Geo Lyeurgus and wf to Robert W Shingle, D; 81-100th land, Makiki st, Honolulu, Oahu. \$6750. B 317, p 272. Dated Aug 7, 1909.

Geo Lyeurgus and wf to Robert W Shingle, B S; personal property in buildings and premises, Makiki st, Honolulu, Oahu. \$750. B 321, p 457. Dated Aug 7, 1909.

J H Schnack and wf to Manoel G St Anna, D; lots 12 and 13 of R P 3652, Kalihi, Honolulu, Oahu. \$200. B 317, p 274. Dated Aug 6, 1909.

Mary A Waterbury (widow) to C Q Yee Hop, Tr, D; por R P 56, kul 219, Maunakea st, Honolulu, Oahu. \$1000. B 317, p 275. Dated Aug 2, 1909.

First Bank of Hilo Ltd to Hawaii Herald Publishing Co Ltd, Rel; presses, types, furniture, fixtures, etc, in bldg, Church st, Hilo, Hawaii. \$1900. B 314, p 489. Dated July 7, 1909.

Libert H Boeynaems to Francis Council No 573 Y M I, L; por kul 571, King st, Hilo, Hawaii. 20 yrs; 10 yrs at \$5 per mo, 10 yrs at \$10 per mo. B 323, p 24. Dated June 10, 1909.

Hilo Sugar Co to County of Hawaii, D; por gr 485, Kaiwika, S Hilo, Hawaii. \$1. B 317, p 277. Dated July 8, 1909.

Antonio F Martins and wf to Honomu Sugar Co, M; Land Patent (gr) 5127, Honomu, S Hilo, Hawaii. \$600. B 324, p 35. Dated Aug 14, 1909.

Kamehameha Hulihana and hsb (Hulihana) to Sam K Kolia, D; 1-3 int in R P 7097, kul 819, Olowalu, Maui. \$8. B 319, p 180. Dated Aug 16, 1909.

Sam K Kolia to Hulihana, D; 2-3 int in R P 7097, kul 819, Olowalu, Maui. \$16. B 319, p 181. Dated Aug 16, 1909.

William Henning and wf to Lahaina Agrest Co Ltd, D; 25911 sq ft land, Lahaina, Maui. \$2500. B 317, p 271. Dated Aug 19, 1909.

D Nagata and wf to D C Lindsay, Tr, M; 15-20-100a land, Pulehuiki, Kula, Maui. \$700. B 324, p 34. Dated July 27, 1909.

Recorded August 20, 1909.

Bathsheba M Allen (widow) to James E Jaeger, D; por gr 2788, ap 1 and 4990 and 15 ft perpetual r w, Makiki, Honolulu, Oahu. \$1, etc. B 316, p 422. Dated Aug 14, 1909.

Est of James Robinson by Tr to Empire Bldg Co Ltd, L; por kul 787, cor Bethel and Hotel sts, Honolulu, Oahu. 15 yrs at \$2000 pr yr. B 323, p 26. Dated May 15, 1909.

Carl Isenberg by atty to Hans Isenberg, A M; mig E W Jordan and wf on por gr 106 and por kul 661, ap 2, Wylie st, Honolulu, Oahu. \$4500. B 324, p 37. Dated Aug 18, 1909.

Koleka Kalehuna (widow) to A St C Pianaia, D; pe land, Kapalama-kai, Honolulu, Oahu. \$1, etc. B 316, p 423. Dated Mar 18, 1904.

Elizabeth McCandless to A G M Robertson, P A; general powers, B 321, p 458. Dated Aug 20, 1909.

H W Schmidt to W T Schmidt, M; 1-7 int in R P (gr) 3535, Honolulu, Oahu. \$1000. B 324, p 39. Dated Aug 16, 1909.

Elizabeth Richardson and hsb (E V) to George H Holt, D; 1-9 int in R P 1730, kul 729 and rents, etc, on same, Queen st, Honolulu, Oahu. \$650. B 316, p 429. Dated Aug 14, 1909.

John R Smith and wf to George W Smith, P D; lands, Keopuka, S Kona, Hawaii. B 316, p 418. Dated June 1, 1909.

George W Smith and wf to John R Smith, P D; lands, Keopuka, S Kona, Hawaii. B 316, p 418. Dated June 1, 1909.

First Bank of Hilo Ltd to Daniel Kaibenui, Rel; pes land, Waianaka, S Hilo, Hawaii. \$160. B 324, p 37. Dated Aug 4, 1909.

Luhukau (widow) to Hilo Railroad Co, D; int in R P 4656, kul 5021, Puaeo, Hilo, Hawaii. \$137.50. B 316, p 420. Dated Aug 19, 1909.

Abbie K Welch and hsb (J F) to Rachel W Papanilima, D; 1-2 int in ap 2, R P 5174, kul 4249, Honokowai, Kaaanapali, Maui. \$50. B 319, p 182. Dated Aug 18, 1909.

Rachel W Papanilima and hsb (C M) to Abbie K Welch, D; 1-2 int in ap 1, 3 and 4, R P 5174 and ap 1, R P 5037, Honokowai, etc, Kaaanapali, Maui. \$50. B 319, p 182. Dated Aug 18, 1909.

Keoona Aki et al to Charles Wilcox, D; por R P 2160, kul 3477, rents, etc, Ahupua, Waialuku, Maui. \$800. B 319, p 184. Dated Aug 18, 1909.

J Alfred Magoon and wf to Gertrude A McCorry et al, D; int in R Ps 6025, 693 and 1716, Kaamola, etc, Molokai. \$125. B 316, p 425. Dated June 9, 1909.

Kaluna (widow) to Hugh McCorry et al, D; 1-2 int in grs 693 and 1716, Keonekuno, Molokai. \$50. B 316, p 426. Dated June 28, 1909.

D Kolia (k) et al to Hugh McCorry et al, D; int in grs 693 and 1716, Keonekuno, Molokai. \$50. B 316, p 427. Dated June 28, 1909.

Samuela W Spencer to Hugh McCorry et al, D; int in grs 693 and 1716, Keonekuno, Molokai. \$200. B 316, p 428. Dated Aug 14, 1909.

"Ma, what are the folks in our church gettin' up a subscription fer?" "To send our minister on a vacation to Europe this summer." "Won't there be no church services while he's gone?" "No, dear." "Ma, I got \$123 in my bank—can I give that?" —Cleveland Leader.

By Authority

SALE OF GOVERNMENT LOTS, MAKIKI, HONOLULU, OAHU, T. H.

On Monday, September 13th, 1909, at 12 o'clock noon at the front entrance of the Court House (Judiciary Building) will be sold at Public Auction the Lots in Government Subdivision on the slope of Makiki Valley.

Maps with full information as to areas and upset prices are on file in the Office of the Commission of Public Lands, Capitol Building, Honolulu.

Terms: Purchasers to have the following options:

1st. Total purchase price at date of sale;

2nd. 25% or 50% of purchase price at date of sale and balance in two years at 6% per annum, by equal installments in one and two years. The purchaser may make full payment at any time within the two years. All payments to be in U. S. Gold Coin.

Expense of Patent Grant and Stamp to be paid by the purchaser.

MARSTON CAMPBELL, Commissioner of Public Lands.

Honolulu, August 9, 1909.

8425—Aug. 10, 17, 24, Sept. 6, 13.

NOTICE TO SUBSCRIBERS.

Notice is hereby given that a new Directory of Subscribers of the Mutual Telephone Co., Ltd., will shortly be published.

All subscribers desiring any change of name or address are earnestly requested to leave instructions, in writing, at the office of the Company, corner of Alakea and Merchant Streets, on or before Wednesday, Sept. 15, 1909, after which date no changes will be made for the new Directory.

MUTUAL TELEPHONE CO., LTD. Honolulu, Sept. 1, 1909. 8445

CHOICE SEED COFFEE

We still have a few pounds left of that Choice Java Seed Coffee, lately imported. Coffee growers desiring to improve their coffees, and thus secure higher prices, will do well to plant this seed.

Price \$1.25 per pound postpaid (about 1200 seeds).

M'CHESNEY COFFEE CO., 16 Merchant street, Honolulu. 8442

NOTICE

Anyone having unpaid bills against the Board of Commissioners for Hawaii of the Alaska-Yukon-Pacific Exposition, incurred by their order, will please present the same to the Secretary, Mr. H. P. Wood, at the rooms of the Hawaii Promotion Committee on or before September 10, 1909.

349—Sept. 5, 6, 7, 8, 9.

IN THE DISTRICT COURT OF THE UNITED STATES FOR THE TERRITORY OF HAWAII.

THE UNITED STATES OF AMERICA, Plaintiff, vs. JOSEPH WHITMARSH; HANNAH J. WHITMARSH, wife of JOSEPH WHITMARSH; KAMAHA WHITMARSH; ANNA WHITMARSH and SAMUEL WHITMARSH, unknown heirs at law of PETER WHITMARSH, deceased; WILLIAM KEKA; S. AOKI; MARIE M. PAA; KALAMA KEKA; JAMES AKO, attorney in fact for JOSEPH WHITMARSH; THE TERRITORY OF HAWAII; JOHN BROWN, JAMES BLACK, MARY BLUE and JANE PURPLE, unknown owners and claimants; JOHN D. PARIS; MARY C. PARIS; J. D. PARIS, JUNIOR, and HANNAH PARIS, Defendants.

THE PRESIDENT OF THE UNITED STATES OF AMERICA, GREETING:

To JOSEPH WHITMARSH; HANNAH J. WHITMARSH, wife of JOSEPH WHITMARSH; KAMAHA WHITMARSH; ANNA WHITMARSH and SAMUEL WHITMARSH, unknown heirs at law of PETER WHITMARSH, deceased; WILLIAM KEKA; S. AOKI; MARIE M. PAA; KALAMA KEKA; JAMES AKO, attorney in fact for JOSEPH WHITMARSH; THE TERRITORY OF HAWAII; JOHN BROWN, JAMES BLACK, MARY BLUE and JANE PURPLE, unknown owners and claimants; JOHN D. PARIS; MARY C. PARIS; J. D. PARIS, JUNIOR, and HANNAH PARIS, Defendants.

You are hereby directed to appear, and answer the Petition in an action entitled as above, brought against you in the District Court of the United States in and for the Territory of Hawaii, within twenty days from and after service upon you of a certified copy of Plaintiff's Petition herein, together with a certified copy of this Summons.

And you are hereby notified that unless you appear and answer as above required, the said Plaintiff will take judgment of condemnation of the lands described in the Petition herein and for any other relief demanded in the Petition.

WITNESS the Honorable SANFORD B. DOLE, Judge of said District Court, this 26th day of June in the year of our Lord one thousand nine hundred and nine and of the independence of the United States the one hundred and thirty-third. (Signed) A. E. MURPHY, Clerk.

(Endorsed) "No. 60 District Court of the United States for the Territory of Hawaii. The United States of America vs. Joseph Whitmarsh, et al. Summons. Robert W. Breckons, Plaintiff's Attorney. Filed July 2, 1909. A. E. MURPHY, Clerk.

By (Signed) A. A. DEAS, Deputy Clerk."

Territory of Hawaii, City of Ho-

nolulu.

UNITED STATES OF AMERICA, I, A. E. MURPHY, Clerk of the District Court of the United States of America, in and for the Territory and District of Hawaii, do hereby certify the foregoing to be a full, true and correct copy of the original Summons in case of The United States of America vs. Joseph Whitmarsh, et al., as the same remains of record and on file in the office of the Clerk of said Court.

IN WITNESS WHEREOF, I have hereunto set my hand and affixed the seal of said District Court this 12th day of July, A. D. 1909.

(Signed) A. E. MURPHY, Clerk of United States District Court, Territory of Hawaii.

ELECTION OF OFFICERS.

Kona Tobacco Co. Ltd. At an adjourned annual meeting of the Kona Tobacco Co., Ltd., held this day, the following directors and officers were elected to serve for the ensuing year:

Directors—Jared G. Smith, H. P. Wood, L. L. McCandless, H. G. Middle-

ditch, and W. R. Castle. Officers—President, J. G. Smith; vice president, H. P. Wood; secretary, H. G. Middle-

ditch; treasurer, W. R. Castle. (Sgd.) H. G. MIDDLEDITCH, Secretary. Honolulu, September 2, 1909. 8447

Fire Insurance

THE B. F. DILLINGHAM CO., LTD. General Agents for Hawaii: Atlas Assurance Company of London New York Underwriters' Agency. Providence Washington Insurance Company.

WM. G. IRWIN & CO., LTD.

SUGAR FACTORS AND COMMISSION AGENTS

Wm.