



*Fifty First Annual*  
**Merrie Monarch Festival**

April 20-26, 2014

*"Hula is the Language of the Hearts  
Therefore the Heartbeat of the  
Hawaiian People."*

*Kalakaua Rex*

CANDIES  
**BIG ISLAND**<sup>®</sup>

The Big Island: home of the best hula competition, the world's most active volcano and the only place where our entire line of treats are available.

Hilo Factory & Retail Gift Shop: 585 Hinano Street Hilo, Hawaii  
OPEN 365 DAYS A YEAR - 8:30 am - 5:00 pm  
Factory viewing hours - Monday - Friday 8:30 am - 3:45 pm  
Ala Moana Center - Street Level, Near Centerstage - Honolulu, Hawaii - Oahu  
808.935.8890 • US Toll Free 800.935.5510 • bigislandcandies.com

## 2014 **Merrie Monarch** FESTIVAL

Aloha mai kākou,

Every year starting on Easter Sunday, the Merrie Monarch Festival honors King David Kalākaua. Kalākaua came to the Hawaiian Kingdom throne in 1874 and reigned until his death in 1891. The revival and respect for traditional Hawaiian culture reached its height during Kalākaua's reign.

Although hula is the focus of the Merrie Monarch Festival, the week is filled with other displays of Hawaiian cultural practices. Our Merrie Monarch Invitational Hawaiian Arts Fair, held at the Civic Auditorium, features the talents of artists who demonstrate the highest quality and authenticity of traditional Hawaiian culture. The Festival week also includes appearances by the Royal Court in all its pageantry, a parade with pā'ū riding units, a Ho'olaule'a of music and dance, and noon-day hula shows. All of these activities serve to perpetuate Hawaiian cultural practices, and ensure that these unique aspects of our culture are handed down to future generations.

I would like to thank the kumu, the haumāna, and the countless people who volunteer and have supported the Merrie Monarch Festival throughout the years. To all of you, I humbly say mahalo a nui loa.

*Luana* nō me ka ha'aha'a,  
*Luana*  
Luana Kawelu  
President



## 2014 ROYAL COURT



### MŌ'Ī KĀNE – Malani Alameda

Malani is the son of Tina Marie Alameda and Puku'i Kaleiwahea and the husband of Kayle Kehau Akiona. Together they are the parents of Kepo'inalu Darcy Akiona Alameda (9), Puku'i Leigh Marie Akiona Alameda (5), and Tainui Kawaikapu Akiona Alameda (2). In 2007, he began working at Ka 'Umeke Kā'eo Hawaiian Immersion Public Charter School, and three years ago he became a kumu in the māla there. In the māla, garden, he teaches students to care for the land and grow food using techniques of our kūpuna. Being a kumu and teaching the keiki of Hawai'i is a very important part of his life. Not only does he teach in a school setting, but also on the ocean in a wa'a.

### MŌ'Ī WAHINE – Kaheaokalani Mary

#### Ellen Kinimaka Stocksdale

Kaheaokalani is the daughter of Leon and Kaniu Stocksdale, the sister of Kaniu J. and Kamanawa, and the proud aunty of Kamakoa. She was born and raised on Hawai'i island. In 2002, Kaheaokalani earned a Master of Arts degree from the University of Hawai'i at Mānoa School of Social Work. Currently she is employed as a social worker with the Queen Lili'uokalani Children's Center. She enjoys spending time with friends, family and her dog, as well as volunteering at activities that promote community involvement, particularly those events that put a smile on the faces of keiki.

*Kākā'ōlelo*

**Keith Kawika Lewis**

*Kahu*

**Aulani C. Wersing**

*Nā Mea Oli*

**Kekoa Harman** (Wednesday)

**Kamuela Chun** (Thursday)

**Brad Kekoa Billena** (Friday)

**Emery Li'ili'iokalani Aceret** (Saturday)

*Ali'i Ukali*

**Leeann Kainoa Akana-Baltero**

**Arianne Kalehiwahiwaokalani Lindsey Kaapuni**

*Pa'a Pūlo'ulo'u*

**Ty Keoho'okalani Silva** (Wednesday & Friday)

**Isaac James Makanui Knell** (Thursday & Saturday)

*Nā Kānaka Ho'okani Pū*

**Austin Akahiakea Kale**

**Jorden Ka'anohiokalā Kealoha-Yamanaka**

**Zachary Ka'imina'auao Kerr**

**Keawe Kihe**

**Kennady Kamalei Kuikahi-Batalona**

**Kamaha'o Labra**

**Ezekiel Lonomakaihe Peralto**

**'Aiponokamoku Valente**

*Nā Pa'a Kāhili*

**Kamakaokalani Lewis**

**Kekuamakani Lewis**

**Kekaniokekai Shaw-De Mello**

**Makoa Victor**

## Schedule of Events

### SUNDAY, APRIL 20, 2014

#### *Ho'olaule'a – Afook-Chinen Civic Auditorium*

9:00 a.m.	Ha'akumalae Protocols Program, Hawai'i Community College and Hawai'i Island Public Charter Schools, Kekuhi Keali'ikanaka'oleohaililani, Dr. Taupouri Tangaro & Manaiakalani Kalua welcome Te Waka Huia, Tāpeta & Annette Wehi
10:30 a.m.	Hula Hālau Ke 'Olu Makani O Mauna Loa, Meleana Manuel
11:30 a.m.	Hālau O Ka Ua Kani Lehua, Johnny Lum Ho
12:30 p.m.	Nā Lei Liko O Ola'a, Kimo Kekua
1:00 p.m.	Hālau O Kekuhi, Kekuhi Keali'ikanaka'oleohaililani
2:00 p.m.	Hālau Nā Pua O Uluhaimalama, Emery Aceret
3:00 p.m.	Toa Here, Romi Salvador

### MONDAY, APRIL 21, 2014

12:00 noon	Ben Kaili and Band – Hilo Naniloa Hotel
1:00 p.m.	Hālau Hula O Hilo Hanakahi, Pua Crumb – Hilo Hawaiian Hotel

### TUESDAY, APRIL 22, 2014

12:00 noon	Unukupukupu, Dr. Taupouri Tangaro, Manaiakalani Kalua & Pele Kaio – Hilo Naniloa Hotel
1:00 p.m.	Hula Hālau O Kawānanakoa, Alberta Nicolas – Hilo Hawaiian Hotel

### WEDNESDAY, APRIL 23, 2014

9:00 a.m. – 5:00 p.m.	Merrie Monarch Hawaiian Arts and Crafts Fair – Afook-Chinen Civic Auditorium
10:00 a.m. – 2:30 p.m.	Hawaiian Lecture (morning) & Performance (afternoon) – 'Imiloa Astronomy Center
11:00 a.m.	Hula Hālau Ke 'Olu Makani O Mauna Loa, Meleana Manuel – Afook-Chinen Civic Auditorium
12:00 noon	Ke Ola O Nā Kūpuna, Haunani Medeiros – Hilo Naniloa Hotel
1:00 p.m.	Ben Kaili and Band – Hilo Hawaiian Hotel

#### *Hō'ike – Edith Kanaka'ole Tennis Stadium*

5:45 p.m.	Entrance of Royal Court
6:00 p.m.	National Anthem / Hawai'i Pono'ī – Kamehameha Schools Hawai'i Campus Concert Glee Club
6:10 p.m.	Pule – Kahu Wendell Davis
6:15 p.m.	Hālau O Kekuhi, Nālani Kanaka'ole
6:35 p.m.	Hālau Nā Mamo O Kaleinani, Seiko Kaleinanikauikawekiu Okamoto
7:25 p.m.	Te Waka Huia, Tāpeta & Annette Wehi
8:15 p.m.	Hālau Hula O Mehanaokalā, Ku'uleinani Hashimoto
9:05 p.m.	'Ilima Hula Studio & Family, Lani-Girl Kaleiki-AhLo

## Schedule of Events

### THURSDAY, APRIL 24, 2014

- 9:00 a.m. – 5:00 p.m. Merrie Monarch Hawaiian Arts and Crafts Fair – Afook-Chinen Civic Auditorium  
 10:00 a.m. – 2:30 p.m. Hawaiian Lecture (morning) & Performance (afternoon) – ‘Imiloa Astronomy Center  
 11:00 a.m. Ke Ola O Nā Kūpuna, Haunani Medeiros – Afook-Chinen Civic Auditorium  
 12:00 noon Hālau Nā Mamo O Kaleinani, Seiko Kaleinanikauikawekiu Okamoto – Hilo Naniloa Hotel  
 1:00 p.m. Hālau Hula O Kou Lima Nani Ē, Iwalani Kalima – Hilo Hawaiian Hotel

### Miss Aloha Hula Competition – Edith Kanaka‘ole Tennis Stadium

- 5:45 p.m. Entrance of Royal Court  
 6:00 p.m. National Anthem / Hawai‘i Pono‘ī – Kamehameha Schools Hawai‘i Campus Concert Glee Club  
 6:10 p.m. Pule – Kahu Wendell Davis  
 6:15 p.m. Introduction of Judges  
 6:20 p.m. Miss Aloha Hula Competition  
 Presentation of Awards

### FRIDAY, APRIL 25, 2014

- 9:00 a.m. – 5:00 p.m. Merrie Monarch Hawaiian Arts and Crafts Fair – Afook-Chinen Civic Auditorium  
 10:00 a.m. – 2:30 p.m. Hawaiian Lecture (morning) & Performance (afternoon) – ‘Imiloa Astronomy Center  
 11:00 a.m. Hālau Hula O Kou Lima Nani Ē, Iwalani Kalima – Afook-Chinen Civic Auditorium  
 12:00 noon Te Waka Huia, Tāpetā & Annette Wehi – Hilo Naniloa Hotel  
 1:00 p.m. Hālau Ha‘a Kea ‘O Akalā, Paul Neves – Hilo Hawaiian Hotel

### Group Hula Kahiko Competition – Edith Kanaka‘ole Tennis Stadium

- 5:45 p.m. Entrance of Royal Court  
 6:00 p.m. National Anthem / Hawai‘i Pono‘ī – Kamehameha Schools Hawai‘i Campus Concert Glee Club  
 6:10 p.m. Pule – Kahu Wendell Davis  
 6:15 p.m. Introduction of Judges  
 6:20 p.m. Hula Kahiko Competition

### SATURDAY, APRIL 26, 2014

- 9:00 a.m. – 4:00 p.m. Merrie Monarch Hawaiian Arts and Crafts Fair – Afook-Chinen Civic Auditorium  
 10:30 a.m. Royal Parade – Downtown Hilo (Begin at Pauahi St. – Kīlauea Ave. – Keawe St. – Waiānuenuē Ave. – Kamehameha Ave. – end at Pauahi St.)  
 12:00 noon Hālau O Mailelalani, Maile Canario – Afook-Chinen Civic Auditorium

### Group Hula ‘Auana Competition – Edith Kanaka‘ole Tennis Stadium

- 5:45 p.m. Entrance of Royal Court  
 6:00 p.m. National Anthem / Hawai‘i Pono‘ī – Kamehameha Schools Hawai‘i Campus Concert Glee Club  
 6:10 p.m. Pule – Kahu Wendell Davis  
 6:15 p.m. Introduction of Judges  
 6:20 p.m. Hula ‘Auana Competition  
 Introduction of Kumu Hula  
 Presentation of Awards

## PAST WINNERS

### 1971

Implements Div. / Modern Div. / Overall Winners  
 Pauline Kekahuna - Hau‘oli Hula Studio  
 Miss Aloha Hula - Aloha Wong (Keolalaulani Hula Studio)

### 1972

Ancient Division / Modern Division Johnny Lum Ho Hula Studio  
 Implements Division - Puamana Hula Studio  
 Miss Aloha Hula Aulani Newalu (Hālau ‘O Kahealani)

### 1973

Hula Kahiko / Hula ‘Auana / Implements /  
 Overall Winner Pauline Kekahuna - Hau‘oli Hula Studio  
 Miss Aloha Hula - Kalani Kalawa (Louise Kaleiki Hula Studio)

### 1974

Hula Kahiko / Hula ‘Auana / Implements /  
 Overall Winner - Louise Kaleiki Hula Studio  
 Miss Aloha Hula Dee Dee Aipolani (Piilani Watkins Hula Studio)

### 1975

Hula Kahiko (tie)  
 ‘Ilima Hula Studio & Pauline Kekahuna - Hau‘oli Hula Studio  
 Hula ‘Auana - ‘Ilima Hula Studio  
 Implements - Keolalaulani Hula Studio  
 Miss Aloha Hula - Leimomi Maria (‘Ilima Hula Studio)

### 1976

Hula Kahiko - ‘Ilima Hula Studio  
 Hula ‘Auana - Alicia K. Smith Hula Studio  
 Kāne Division - Nā Kamalei O Lililehua  
 Overall - ‘Ilima Hula Studio  
 Miss Aloha Hula (tie) Ululani Duenas (‘Ilima Hula Studio)  
 Cheryl Nalani Guernesy (Kaleo ‘O Nani Loa Studio)

### 1977

(Kāne) Hula Kahiko / Overall - Hālau O Kekuhi  
 Hula ‘Auana Nā Kamalei  
 (Wahine) Hula Kahiko / Overall - Nā Pualei O Likolehua  
 Hula ‘Auana Johnny Lum Ho Hula Studio  
 Miss Aloha Hula Pualani Chang (Pukaikapua‘okalani Studio)

### 1978

(Kāne) Hula Kahiko / Hula ‘Auana / Overall - Waimapuna  
 (Wahine) Hula Kahiko - Johnny Lum Ho Hula Studio  
 (Wahine) Hula ‘Auana / Overall - Nā Pualei O Likolehua  
 Miss Aloha Hula - Regina Makaikai Igarashi  
 (Keolalaulani Hula Studio)

### 1979

(Kāne) Hula Kahiko - Nā Wai Ehā O Puna  
 Hula ‘Auana / Overall - Waimapuna  
 (Wahine) Hula Kahiko / Overall - Hau‘oli Hula Studio  
 Hula ‘Auana (tie) Hau‘oli Hula Studio & Nā Pualei O Likolehua  
 Miss Aloha Hula - Jody Imehana Mitchell (Pā‘ū O Hi‘iaka)

### 1980

(Kāne) Hula Kahiko - Waimapuna  
 Hula ‘Auana - Nā Wai Ehā O Puna  
 Overall (tie) - Waimapuna & Nā Wai Ehā O Puna  
 (Wahine) Hula Kahiko (tie)  
 Hau‘oli Hula Studio & Johnny Lum Ho Hula Studio  
 Hula ‘Auana / Overall - Johnny Lum Ho Hula Studio  
 Miss Aloha Hula - Kaula Kamahēle (Johnny Lum Ho Hula Studio)

### 1981

(Kāne) Hula Kahiko / Hula ‘Auana / Overall  
 Nā Wai Ehā O Puna  
 (Wahine) Hula Kahiko / Overall - Hālau O Nā Maoli Pua  
 Hula ‘Auana (tie) - Johnny Lum Ho Hula Studio &  
 Hālau O Nā Maoli Pua  
 Miss Aloha Hula - Brenda Alidon (Johnny Lum Ho Hula Studio)

### 1982

(Kāne) Hula Kahiko / Hula ‘Auana / Overall  
 Hālau O Ka Ua Kani Lehua  
 (Wahine) Hula Kahiko - Hālau Mōhala ‘Ilima  
 Hula ‘Auana - Hālau ‘O Kahanuola  
 Overall - Hālau O Ka Ua Kani Lehua  
 Miss Aloha Hula - Dayna Kanani Oda  
 (Hālau O Ka Ua Kani Lehua)

### 1983

(Kāne) Hula Kahiko / Hula ‘Auana / Overall  
 Hālau O Ka Ua Kani Lehua  
 (Wahine) Hula Kahiko - Hālau Mōhala ‘Ilima  
 Hula ‘Auana / Overall - Hālau O Ka Ua Kani Lehua  
 Miss Aloha Hula - Geola Pua (Hālau O Ka Ua Kani Lehua)

### 1984

(Kāne) Hula Kahiko / Hula ‘Auana / Overall  
 Nā Wai Ehā O Puna  
 (Wahine) Hula Kahiko / Hula ‘Auana / Overall  
 Hālau Mōhala ‘Ilima  
 Miss Aloha Hula - Twyla Ululani Mendez (Hau‘oli Hula Hālau)

### 1985

(Kāne) Hula Kahiko / Hula ‘Auana / Overall  
 Nā Wai Ehā O Puna  
 (Wahine) Hula Kahiko / Hula ‘Auana / Overall  
 The Ladies of Ke‘ala O Ka Lauwa‘e  
 Miss Aloha Hula Healani Youn  
 (The Ladies of Ke‘ala O Ka Lauwa‘e)

### 1986

(Kāne) Hula Kahiko / Hula ‘Auana / Overall - Waimapuna  
 (Wahine) Hula Kahiko / Overall - Keolalaulani ‘Ōlapa O Laka  
 Hula ‘Auana - Hula Hālau ‘O Kamuela  
 Miss Aloha Hula - Leimomi Nuuhiwa  
 (The Ladies of Ke‘ala O Ka Lauwa‘e)

### 1987

(Kāne) Hula Kahiko / Hula ‘Auana / Overall  
 Hālau O Ka Ua Kani Lehua  
 (Wahine) Hula Kahiko - Nā Wai Ehā O Puna  
 Hula ‘Auana (tie) - Hālau Mōhala ‘Ilima & Kawaili‘ulā  
 Overall - Keolalaulani ‘Ōlapa O Laka  
 Miss Aloha Hula - Lisa Kuuipo Doi  
 (Hālau O Ka Ua Kani Lehua)

### 1988

(Kāne) Hula Kahiko / Hula ‘Auana / Overall  
 Hālau O Ka Ua Kani Lehua  
 (Wahine) Hula Kahiko / Overall  
 Hālau O Ka Ua Kani Lehua  
 Hula ‘Auana - Hula Hālau ‘O Kamuela  
 Miss Aloha Hula  
 Sheldeen Kaleimomi Kaleohano (Hula Hālau ‘O Kahikilaulani)

### 1989

(Kāne) Hula Kahiko - Hālau Hula ‘O Kahikilaulani  
 Hula ‘Auana - Men of Nā Kamalei  
 Overall - Kawaili‘ulā  
 (Wahine) Hula Kahiko / Overall - Hula Hālau O Nā Maoli Pua  
 Hula ‘Auana - Keali‘ikaapunihonua Ke‘ena A‘O Hula  
 Miss Aloha Hula - Pi‘ilani Smith (Hula Hālau O Nā Maoli Pua)

### 1990

(Kane) Hula Kahiko / Hula ‘Auana / Overall  
 Kawaili‘ulā  
 (Wahine) Hula Kahiko / Overall - Hālau O Nā Maoli Pua  
 Hula ‘Auana - Hālau Hula ‘O Kahikilaulani  
 Miss Aloha Hula - Natalie Noelani Ai (Hālau Hula Olana)

## PAST WINNERS

### 1991

(Kane) Hula Kahiko - Hälau Hula 'O Kahikilaulani  
Hula 'Auana / Overall - Hälau O Ka Ua Kani Lehua  
(Wahine) Hula Kahiko / Overall - Hula Hälau 'O Kamuela  
Hula 'Auana Hälau Nā Lei O Kaholokū  
Miss Aloha Hula  
Kapualokeokalaniākea Dalire  
(Keolalaulani Hälau 'Olapa O Laka)

### 1992

(Kāne) Hula Kahiko / Hula 'Auana / Overall  
Nā Wai Ehā O Puna  
(Wahine) Hula Kahiko / Overall - Hula Hälau Nā Lei O Kaholokū  
Hula 'Auana - Hula Hälau 'O Kamuela  
Miss Aloha Hula Kauimaiokalaniākea Dalire  
(Keolalaulani Hälau 'Olapa O Laka)

### 1993

(Kāne) Hula Kahiko / Hula 'Auana / Overall  
Kawaili'ulā  
Hula 'Auana - Hälau Hula 'O Kahikilaulani  
(Wahine) Hula Kahiko / Overall  
Hälau O Ka Ua Kani Lehua  
Hula 'Auana - Hula Hälau Nā Lei O Kaholokū  
Miss Aloha Hula Maelia Lani Kahanuola Loebenstein  
(Ka Pā Hula O Kauanoë O Wa'ahila)

### 1994

(Kāne) Hula Kahiko - Nā Wai Ehā O Puna  
Hula 'Auana / Overall - Kawaili'ulā  
(Wahine) Hula Kahiko - Kawaili'ulā  
Hula 'Auana / Overall - Hälau Nā Mamo O Pu'uanahulu  
Miss Aloha Hula Tracie Ka'onohilani Farias  
(Nā Wai Ehā O Puna)

### 1995

(Kāne) Hula Kahiko - Hälau Nā Mamo O Pu'uanahulu  
Hula 'Auana - Kawaili'ulā  
Overall - Kawaili'ulā  
(Wahine) Hula Kahiko / Hula 'Auana / Overall  
Hula Hälau Nā Lei O Kaholokū  
Miss Aloha Hula Allison Kailihiwa Kaha'ipilani Vaughan  
(Ka Pā Hula O Kauanoë O Wa'ahila)

### 1996

(Kāne) Hula Kahiko / Hula 'Auana / Overall  
Kawaili'ulā  
(Wahine) Hula Kahiko - Hälau Nā Mamo O Pu'uanahulu  
Hula 'Auana / Overall - Hula Hälau 'O Kamuela  
Miss Aloha Hula - Ku'ukamalani Ho  
(Keali'ikaapunihonua Ke'ena A' O Hula)

### 1997

(Kāne) Hula Kahiko - Nā Wai Ehā O Puna  
Hula 'Auana / Overall - Kawaili'ulā  
(Wahine) Hula Kahiko - Ka Pā Hula O Kauanoë O Wa'ahila  
Hula 'Auana - Keolalaulani Hälau 'Olapa O Laka  
Overall - Ka Pā Hula O Kauanoë O Wa'ahila  
Miss Aloha Hula - Kehaulani Enos (Hälau Mōhala 'Ilima)

### 1998

(Kāne) Hula Kahiko / Overall - Hälau Nā Mamo O Pu'uanahulu  
Hula 'Auana - Nā Wai Ehā O Puna  
(Wahine) Hula Kahiko / Hula 'Auana / Overall  
Hälau Nā Mamo O Pu'uanahulu  
Miss Aloha Hula - Lokalia Kahele (Nā Wai Ehā O Puna)

### 1999

(Kāne) Hula Kahiko / Hula 'Auana  
Hälau Nā Mamo O Pu'uanahulu  
Overall - Hälau Nā Mamo O Pu'uanahulu  
(Wahine) Hula Kahiko / Hula 'Auana / Overall  
Hula Hälau 'O Kamuela  
Miss Aloha Hula - Keolalaulani Dalire  
(Keolalaulani Hälau 'Olapa O Laka)

### 2000

(Kāne) Hula Kahiko - Ke Kai O Kahiki  
Hula 'Auana - Hälau Nā Mamo O Pu'uanahulu  
Overall - Hälau Nā Mamo O Pu'uanahulu  
(Wahine) Hula Kahiko - Hälau Nā Mamo O Pu'uanahulu  
Hula 'Auana / Overall - Hula Hälau 'O Kamuela  
Miss Aloha Hula  
Tehani Kealamailani Gonzado (Hula Hälau 'O Kamuela)

### 2001

(Kāne) Hula Kahiko - Kawaili'ulā  
Hula 'Auana - Hälau O Ka Ua Kani Lehua  
Overall - Kawaili'ulā  
(Wahine) Hula Kahiko - Hula Hälau 'O Kamuela  
Hula 'Auana - Hula Hälau 'O Kamuela  
Overall - Hula Hälau 'O Kamuela  
Miss Aloha Hula  
Natasha Kamalamalamaokalailokokapu'uwaimehanaokekeikipunahele  
Oda  
(Hälau O Ka Ua Kani Lehua)

### 2002

(Kāne) Hula Kahiko - Hälau O Ka Ua Kani Lehua  
Hula 'Auana - Ka Pā Hula Kamehameha  
Overall - Hälau O Ka Ua Kani Lehua  
(Wahine) Hula Kahiko - Hula Hälau 'O Kamuela  
Hula 'Auana - Hula Hälau 'O Kamuela  
(Wahine) Overall - Hula Hälau 'O Kamuela  
Miss Aloha Hula

Malia Ann Kawailanomalie Petersen (Hula Hälau 'O Kamuela)

### 2003

(Kāne) (Tie) Hula Kahiko - Hälau Nā Mamo O Pu'uanahulu &  
Ka Pā Hula O Kamehameha  
Hula 'Auana - Hälau O Ka Ua Kani Lehua  
Overall - Hälau O Ka Ua Kani Lehua  
(Wahine) Hula Kahiko - Hula Hälau 'O Kamuela  
Hula 'Auana - Hula Hälau 'O Kamuela  
Overall - Hula Hälau 'O Kamuela  
Miss Aloha Hula - Jennifer Kehaulani Oyama  
(Hälau Nā Mamo O Pu'uanahulu)

### 2004

(Kāne) Hula Kahiko - Ke Kai O Kahiki  
Hula 'Auana - Hälau I Ka Wēkiu  
Overall - Hälau Nā Mamo O Pu'uanahulu  
(Wahine) Hula Kahiko - Nā Lei O Kaholokū  
Hula 'Auana - Hula Hälau 'O Kamuela  
Overall - Nā Lei O Kaholokū  
Miss Aloha Hula - Natasha Mahealani Akau  
(Hälau Nā Mamo O Pu'uanahulu)

### 2005

(Wahine) Hula Kahiko - Nā Lei O Kaholokū  
Hula 'Auana - Hula Hälau 'O Kamuela  
Overall - Nā Lei O Kaholokū  
(Kāne) Hula Kahiko - Hälau Nā Kamalei  
Hula 'Auana - Hälau Nā Kamalei  
(Overall) - Hälau Nā Kamalei  
Miss Aloha Hula - Maile Emily  
Kau'ilanionāpuachi'ipioikeānuenuokeola Francisco  
(Hälau Nā Mamo O Pu'uanahulu)

## PAST WINNERS

### 2006

(Wahine) Hula Kahiko - Nā Pualei O Likolehua  
Hula 'Auana - Ka Leo O Laka I Ka Hikina O Ka Lā  
Overall - Nā Lei O Kaholokū  
(Kāne) Hula Kahiko - Kawaili'ulā  
Hula 'Auana - Ka Leo O Laka I Ka Hikina O Ka Lā  
Overall - Kawaili'ulā  
Miss Aloha Hula - Bernice Alohanamakanamaikalanimai Davis-Lim  
(Nā Lei O Kaholokū)

### 2007

(Wahine) Hula Kahiko - Hula Hälau 'O Kamuela  
Hula 'Auana - Hula Hälau 'O Kamuela  
Overall - Hula Hälau 'O Kamuela  
(Kāne) Hula Kahiko - Hälau I Ka Wēkiu  
Hula 'Auana - Hälau I Ka Wēkiu  
Overall - Hälau I Ka Wēkiu  
Miss Aloha Hula - Keonilei Ku'uwehiokālā Kaniaupio Fairbanks  
(Ka Pā Hula O Kauanoë O Wa'ahila)

### 2008

(Wahine) Hula Kahiko - Hula Hälau 'O Kamuela  
Hula 'Auana - Hula Hälau 'O Kamuela  
(Overall) Hula Hälau 'O Kamuela  
(Kāne) Hula Kahiko - Hälau Nā Mamo O Pu'uanahulu  
Hula 'Auana - Hälau Nā Mamo O Pu'uanahulu  
(Overall) Hälau Nā Mamo O Pu'uanahulu  
Miss Aloha Hula - Kalimakuhilani Akemi Kalāmanamana Suganuma  
(Keolalaulani Hälau 'Olapa O Laka)

### 2009

(Wahine) Hula Kahiko - Hälau Nā Mamo O Pu'uanahulu  
Hula 'Auana - Hula Hälau 'O Kamuela  
Overall - Hälau Nā Mamo O Pu'uanahulu  
(Kāne) Hula Kahiko - Ke Kai O Kahiki  
Hula 'Auana - Hälau Nā Mamo O Pu'uanahulu  
Overall - Ke Kai O Kahiki  
Miss Aloha Hula - Cherissa Henoheanāpuaikawaokele Kāne  
(Hälau Ke'alaokamaile)

### 2010

(Wahine) Hula Kahiko - Hälau Ke'alaokamaile  
Hula 'Auana - Hälau Ke'alaokamaile  
Overall - Hälau Ke'alaokamaile  
(Kāne) Hula Kahiko - Ke Kai O Kahiki  
Hula 'Auana - Ke Kai O Kahiki  
Overall - Ke Kai O Kahiki  
Miss Aloha Hula - Māhealani Mika Hirao-Solem  
(Hula Hälau 'O Kamuela)

### 2011

(Wahine) Hula Kahiko - Hälau Ke'alaokamaile  
Hula 'Auana - Hula Hälau 'O Kamuela  
Overall - Hälau Ke'alaokamaile  
(Kāne) Hula Kahiko - Ke Kai O Kahiki  
Hula 'Auana - Ka Leo O Laka I Ka Hikina O Ka Lā  
Overall - Ke Kai O Kahiki  
Miss Aloha Hula - Tori Hulali Canha  
(Hälau Ke'alaokamaile)

### 2012

(Wahine) Hula Kahiko - Hälau o ke 'A'ali'i Kū Makani  
Hula 'Auana - Hälau Mōhala 'Ilima  
Overall - Hälau o ke 'A'ali'i Kū Makani  
(Kāne) Hula Kahiko - Hälau I Ka Wēkiu  
Hula 'Auana - Hälau I Ka Wēkiu  
Overall - Hälau I Ka Wēkiu  
Miss Aloha Hula - Rebecca Lilinoekekapaouomaunakea Sterling  
(Hälau Mōhala 'Ilima)

### 2013

(Wahine) Hula Kahiko - Hälau Mōhala 'Ilima  
Hula 'Auana - Keolalaulani Hälau 'Olapa O Laka  
Overall - Hälau Mōhala 'Ilima  
(Kāne) Hula Kahiko - Kawaili'ulā  
Hula 'Auana - Kawaili'ulā  
Overall - Kawaili'ulā  
Miss Aloha Hula - Manalani Mili Hokoana English  
(Hälau Nā Lei Kaumaka O Uka)



**MERRIE MONARCH**  
INVITATIONAL HAWAIIAN ARTS FAIR



Wed, Thurs, Fri & Sat • April 23-26, 2014  
Wed - Fri 9 am - 5 pm • Sat 9 am - 4 pm  
Afook-Chinen Civic Auditorium & Butler Building

**HANDMADE HAWAIIAN ARTS, CRAFTS AND CULTURAL DEMONSTRATIONS**  
**'ONO FOOD • NATIVE HAWAIIAN PLANTS**  
**'Ohe Kāpala and Ni'ihau Shell Workshops**  
**FREE ENTERTAINMENT DAILY AT 11:00 AM**  
Weldon Kekauoha • Kuana Torres-Kahele • Nā Palapalai  
Kainani Kahaunaele & Lei 'Ula • Cyril Pahinui • Komakakino  
Kawiki Alfiche with Halau o Keiki'ali'i of San Francisco,  
Pauhiokalani and 'Ohu'ohukea'auikalikolehua - Pi'ilani Ka'awalo  
Halau I Ka Leo Ola o Na Mamo - Pele & Kekoa Harman  
Ke Ana La'ahana - Mapuana Waipa • Ben Kaili Band with Hula Halau  
Hula Hälau Ke 'Olu Makani O Mauna Loa - Meleana Manuel  
Hälau Hula O Kou Lima Nani E - Iwalani Kalima  
Ke Ola O Nā Kūpuna - Haunani Medeiros

**MANUHI • FREE**  
Merrie Monarch Tees, Posters & Programs available here

## WEDNESDAY NIGHT HŌ'IKE

April 23, 2014

- 5:45 p.m. Entrance of Royal Court  
6:00 p.m. National Anthem / Hawai'i Pono'i –  
Kamehameha Schools Hawai'i Campus Concert Glee Club  
6:10 p.m. Pule – Kahu Wendell Davis  
6:15 p.m. Hālau O Kekuhi – Nālani Kanaka'ole  
6:35 p.m. Hālau Nā Mamo O Kaleinani – Seiko Kaleinanikauikawekiu Okamoto  
7:25 p.m. Te Waka Huia – Tāpeta & Annette Wehi  
8:15 p.m. Hālau Hula O Mehanaokalā – Ku'uleinani Hashimoto  
9:05 p.m. 'Ilima Hula Studio & Family – Lani-Girl Kaleiki-AhLo



*Hālau O Kekuhi*



*Hālau Nā Mamo O Kaleinani*



*'Ilima Hula Studio & Family*



*Te Waka Huia – Tāpeta & Annette Wehi*



*Hālau Hula O Mehanaokalā*

## 51st ANNUAL MERRIE MONARCH FESTIVAL

### *Judges*



**Cy M. Bridges**



**Nālani Kanaka'ole**



**Noenolani Zuttermeister Lewis**



**Keali'i Reichel**



**Kalena Silva**



**Alicia Smith**



**Vicky Holt Takamine**

**Miss Aloha Hula**  
**Thursday, April 24, 2014**



**1. Kilioulaniuamamaoho'opi'iwahinekapualokeokalaniakea Lai**  
*Kumu Aloha Dalire*  
*Keolaulani Hālau 'Ōlapa O Laka*  
*He'eia, Kāne'ohe, O'ahu*



**2. Melia Kau'ikeonalani Carmen Taganas**  
*Kumu Sammie Ku'ualoha Young*  
*Hālau Nā Lei Hiwahiwa O Ku'ualoha*  
*Hilo, Hawai'i*



**3. Nicole Nalani Ishibashi**  
*Kumu Leinā'ala Pavao Jardim*  
*Hālau Ka Lei Mokihana o Leinā'ala*  
*Kalāheo, Kaua'i*



**5. Leiomālama Tamasese Solomon**  
*Kumu Hulali Solomon Covington*  
*Beamer-Solomon Hālau O Po'ohala*  
*Waimea, Hawai'i*



**4. Sarah Kapuahelani Sterling**  
*Kumu Māpuana de Silva*  
*Hālau Mōhala 'Ilima*  
*Ka'ōhao, O'ahu*



**6. Ke'alohilani Tara Eliga Serrao**  
*Kumu Tracie & Keawe Lopes*  
*Ka Lā 'Ōnohi Mai O Ha'eha'e*  
*Pū'ahu'ula, Ko'olalupoko, O'ahu*



**7. Tiana Makanaokeali'imakamae Kuni**  
*Kumu Robert Ke'ano Ka'upu IV & Lono Padilla*  
*Hālau Hi'iakaināmakalehua*  
*Kalihi Kai, O'ahu*



**9. Jessica Hi'iakaikalikooke'a'ali'i Osorio**  
*Kumu Sissy Kaio & Lilinoe McCormack*  
*Hālau O Lilinoe*  
*Carson, California*



**12. Kamalani Kaleimomi Kahalepoli Kawa'a**  
*Kumu 'Iliahi & Haunani Paredes*  
*Hālau Kekuaokalā'au'ala'iliahi*  
*Wailuku, Maui*

**Miss Aloha Hula**  
**Thursday, April 24, 2014**



**8. Amber Kanoelani Rosenberg**  
*Kumu William Kahakuleilehua Haunu'u*  
*"Sonny" Ching*  
*& Lōpaka Igarta-De Vera*  
*Hālau Nā Mamo O Pu'uanahulu*  
*Honolulu, O'ahu*



**10. Alyssa Marie Ku'ulaniopu'u Mitsuko Akiyama**  
*Kumu Olana & Howard Ai*  
*Hālau Hula Olana*  
*Pu'uloa, O'ahu*



**11. Asia Leolani Ha'aheo'oluaipo Maka'awa'awa**  
*Kumu Kau'ionālani Kamana'o*  
*& Kunewa Mook*  
*Hula Hālau 'O Kamuela*  
*Kalihi & Waimānalo, O'ahu*



**13. Hulali Ka'imi'aina Ciera De Lima**  
*Kumu Nāpua Greig*  
*Hālau Nā Lei Kaumaka O Uka*  
*Kula, Maui*

# MISS ALOHA HULA

## Hula Kahiko

THURSDAY, APRIL 24, 2014

### 1. Kilioulaninuiamamaoho'opi'iwahinekapualokeokalaniakea Lai – Keolalaulani Hālau 'Ōlapa O Laka – Kumu Aloha Dalire

*“Lele Ana 'O Ka'ena”*

Hi'iaikaipoliopole, favorite younger sister of Pele, recounts the great flood of Kahulumanu. In a part of the chant she warns, “A cloud-pall shadows the ocean, a sure sign of a turbulent sea: Of a tide that will deluge the land.”

Then, as the hot scorching sun beats down on the land, “It comes with the breath of the wind!

And what is my gift in return? To my shame, it's only my voice.”

### 2. Melia Kau'ikeonalani Carmen Taganas – Hālau Nā Lei Hiwahiwa O Ku'ualoha – Kumu Sammye Ku'ualoha Young

*“Ka Ho'opālua 'Ia O Kūkahau'ula Me Poli'ahu”*

The pairing of Kūkahau'ula and the snow goddess Poli'ahu high atop Mauna Kea is memorialized in this mele composed by Wai'au. The red-hued clouds of sunrise and sunset which embrace Mauna Kea attest to the love shared by the divine couple. Kumu Hula Micah Kamohoali'i taught this mele to Kumu Young.

It comes from his family collection and has been perpetuated for generations.

### 3. Nicole Nalani Ishibashi – Hālau Ka Lei Mokihana o Leinā'ala – Kumu Leinā'ala Pavao Jardin

*“Aia I Mānā Kō Lei Nani”*

This mele is one of several mele ho'oheno, songs of adoration, for Queen Kapi'olani. She was a gracious and kind-hearted Ali'i Wahine who travelled throughout her kingdom with a mission to improve the health and wellness of her people. Various features of Kaua'i's natural beauty are mentioned in the mele as a tribute to the Queen.

### 4. Sarah Kapuahelani Sterling – Hālau Mōhala 'Ilima – Kumu Māpuana de Silva

*“Auhea Wale 'Oe e Kahalakea”*

Kahalakea is the less-remembered of the two mo'o guardians of Kawainui Pond in Kailua, O'ahu. She lived on the fringe of what is now known as Hāmākua Stream in a hala grove adjacent to the storied land of Wai'auia.

She is called on to assist in the reclamation of this sacred place “i kulelewi 'ole ai ka nohona,”

so that life will not be one of bones scattered in the wind.

### 5. Leiomālama Tamasese Solomon – Beamer-Solomon Hālau O Po'ohala – Kumu Hulali Solomon Covington

*“He Wahine Kapu 'O Pele”*

Pele is at Kīlauea and as the sun rises the beauty she helped create is revealed. She is adorned in the vapors of Kīlauea. “Pele, a sacred woman of the fire. Sacred fire and famous of Kīlauea.”

This refrain is repeated between every verse.

### 6. Ke'alohilani Tara Eliga Serrao – Ka Lā 'Ōnohi Mai O Ha'eha'e – Kumu Tracie & Keawe Lopes

*“A Ka La'i Au I Mauiola”*

Referred to as “Keanolani,” this mele inoa, name chant, is in honor of Princess Ruth Ke'elikōlani (1826-1883).

It comes from a set of nine mele, very much reminiscent of those composed for the ali'i by a select group of composers, in which all share similar opening and closing lines. This mele takes us to Puna, Hawai'i, making references to those pana 'āina, noted places, associated with the eastern point—Ha'eha'e, Hanaka'ulua, Kumukahi, Makanoni, Ko'oko'olau, Waiaka'ea and Kawaiko'olihilihi. The mele states, “I abide in the midst of the tranquility of Mauiola, where the sun rises at Ha'eha'e.”

# MISS ALOHA HULA - Hula Kahiko

### 7. Tiana Makanaokeali'imakamae Kuni – Hālau Hi'iakaināmakalehua – Kumu Robert Ke'ano Ka'upu IV & Lono Padilla

*“He Mele 'Au'au No Kahailihauwelo”*

The god Kāne brought forth 'Īao's clear, chilly waters which continue to flow and give life to Maui's people. The Kāne family practices a bathing tradition in which the children receive their first cleansing, molding and shaping of their bodies in the waters of 'Īao. This mele 'au'au is an account of this family custom, lovingly perpetuated.

### 8. Amber Kanoelani Rosenberg – Hālau Nā Mamo O Pu'uanahulu – Kumu William Kahakuleihua Haunu'u “Sonny” Ching & Lōpaka Igarta-De Vera

*“Pehu Kaha Ka Limu O Hanalei”*

Kawelo and Kauaoha were companions as children and both grew to be great warriors of Chief 'Aikanaka. Though Kawelo bested Kauaoha in his youth, Kauaoha has become a feared adversary whom Kawelo must face after killing the warrior Kahakaloa. Kawelo chants this mele to honor his opponent and to offer to settle differences as friends. Despite Kawelo's efforts, they fight and Kauaoha loses his life.

### 9. Jessica Hi'iaikaikalikooke'a'ali'i Osorio – Hālau O Lilinoe – Kumu Sissy Kaio & Lilinoe McCormack

*“E Ho'i Ka Nani I Mānā”*

From Mānā, Queen Emma travels upland to the lofty heights of Lake Wai'au at the summit of Mauna Kea in the early 1880s. At Lake Wai'au, she enjoys the water of this special place along with the song of the palila birds and the calm of the māmane trees. Each feature of wonder and beauty is captured in this name chant for Emma.

### 10. Alyssa Marie Ku'ulaniopu'u Mitsuko Akiyama – Hālau Hula Olana – Kumu Olana & Howard Ai

*“Eō Ka'ahupahau”*

The shark goddess Ka'ahupahau is the guardian of the waters of Pu'uloa. Together with her brother Kahi'uka, she carefully watches the harbor entrance, preventing man-eating sharks from threatening humans.

Kumu Hula Noelani Ka'āina wrote this chant to memorialize and honor Ka'ahupahau.

### 11. Asia Leolani Ha'aeo'oluaipo Maka'awa'awa – Hula Hālau 'O Kamuela – Kumu Kau'ionālani Kamana'o & Kunewa Mook

*“E Pua Ana Ka Makani”*

Queen Ka'ahumanu's trip to Kaua'i and her thought to visit Halali'i on Ni'ihau are commemorated in this mele inoa, name song. Mentioned in turn are a pandanus grove, the stringing of lei hala, and the hīnano blossoms found on Kaua'i. “To me, love is like royalty, a lei to adorn my chiefess.”

### 12. Kamalani Kaleimomi Kahalepoli Kawa'a – Hālau Kekuaokalā'au'ala'iliahi – Kumu 'Iliahi & Haunani Paredes

*“Aia I Waiehu Pua Lokelani”*

This beautiful love song was composed by J. P. Hale when he was on Maui in 1884. The mele artfully begins with the comparison of a sweetheart to the delicate lokelani, a heavenly rose. As the story unfolds, the composer reveals that there indeed is no other lover by his side for “You are the best of all I know.”

### 13. Hulali Ka'imi'āina Ciera De Lima – Hālau Nā Lei Kaumaka O Uka – Kumu Nāpua Greig

*“He Inoa No Kawailaha'ole”*

The heights of Mauna Kea are praised in this mele published in the Hawaiian language newspaper *Hoku o ka Pakipika*. The composer simply identifies herself as Mrs. Nawelu and she chooses to highlight Mauna Kea's numbing cold, its isolation and its fragrant uplands. She also alludes to a love interest in the forest of Pā'ie'ie.

INTERMISSION



## HULA KAHIKO

FRIDAY, APRIL 25, 2014

### 1. Nā Pua Me Kealoha – Kumu Sissy Kaio & Lilinoe McCormack; Carson, California (Kāne) “Pā Au I Ka Ihe A Kāne”

This traditional chant was believed to be performed solely by men. Agricultural expertise and the skillful use of the ‘ō‘ō, digging stick, are demonstrated in their dance movements. Thus are we reminded of the farmers’ skill not only in cultivation but on the battlefield as well, when they are armed with spears.

### 2. Hālau Nā Lei Hiwahiwa O Ku‘ualoha – Kumu Sammye Ku‘ualoha Young; Hilo, Hawai‘i “Aia Lā ‘O Pele Ka Wahine ‘Ai Honua”

Pele’s fiery temper causes her to devour the land, flashing brightly in the uplands and darkening the Puna district with volcanic ash. She consumes the forests after filling the craters, and she sends forth tremors and spews sulphur as she pleases. Pele’s temperamental nature is revealed in this mele composed in 2004 by Kumu Hana Pau; it was a gift to Kumu Sammye Ku‘ualoha Young.

### 3. Keolalaulani Hālau ‘Ōlapa O Laka – Kumu Aloha Dalire; He‘eia, Kāne‘ohe, O‘ahu (Kāne) “Mai Puna Au Ē”

This tribute to the volcano goddess Pele establishes her roots in the Puna district on the island of Hawai‘i. Pele descends from the uplands of Wahinekapu and her smoky volcanic ash smites the buds of the lehua blossoms. The lava masses of Maukele shift and turn—all acknowledge her fearful and devastating power and show her the respect due to a deity.

### 4. Hālau Hula ‘O Hōkūlani – Kumu Hōkūlani & Larry De Rego; Waipahu, O‘ahu “Lā‘au O Ka Wā Kahiko”

In days of old and even today many people use nature’s plants and resources to cure the sick. This mele recalls their preparation and application. With faith and prayer, the power of healing takes place. Today many of our people continue to teach and learn about lā‘au lapa‘au, the art and cultural practice of restoring health.

### 5. Academy of Hawaiian Arts – Kumu Mark Keali‘i Ho‘omalū; Oakland, California “He Mele No Kamohoali‘i, Kamanōhelekū”

Kumu Mark Keali‘i Ho‘omalū composed this chant for Pele’s older and favorite brother Kamohoali‘i, the shark god. Kamohoali‘i traveled with Pele from Kahiki to Hawai‘i. He was able to take the form of a human and was known as the shark that walks upright. The dancers’ entrance uses a marching style called mele ka‘i paikau, and they will also use paddles to represent the navigational skills of Kamohoali‘i.

### 6. Hālau Ke Kia‘i A O Hula – Kumu Kapi‘olani Ha‘o, Kawika Mersberg & Wailani Ha‘o-Avilla; Makiki & Kapolei, O‘ahu (Kāne) “Ua ‘Ona ‘O Kāne I Ka ‘Awa”

In the time of Liloa, above the heights of Waipi‘o Valley, the god Kāne and his retinue of immortals gathered in revelry to drink ‘awa, a narcotic drink, used in rituals and for relaxation. However, after every ‘apu, coconut shell cup, of ‘awa, the famous conch shell named Kīhapū sounded. The sound filled the valley for many sleepless nights. This revelry ended when Puapualenalea, a kupua, demigod, retrieved Kīhapū and peace was restored.

### 7. Hālau Hi‘iakaināmākalehua – Kumu Robert Ke‘ano Ka‘upu IV & Lono Padilla; Kalihi Kai, O‘ahu “Kumupa‘a Ka Wewehi O Hi‘iaka”

The leaf and flower buds, the branches and the full lehua blossoms of the ‘ōhi‘a are metaphors for the physical, emotional and spiritual growth shared by dancers and kumu hula during their hula journey. Kumu Ke‘ano Ka‘upu IV composed this mele to honor these experiences and the Hālau’s lineage. “I ulu no ka lālā i ke kumu – The branches grow because of the source.”

## HULA KAHIKO

### 8. Hālau Hula Lani Ola – Kumu Puanani Jung; Laguna Hills, California “He Inoa Kēia Nou E Lili‘u”

Lili‘uokalani’s royal lineage is acknowledged by powerful elements in nature such as lightning in the heavens and the protective presence of the moon. The chiefess is a sacred descendant of the Keawe bloodline from the island of Hawai‘i and her reputation as a ruler is known world-wide. She bears privileges of her rank and nobility abroad and is much loved by her people at home.

### 9. Hālau Nā Mamo O Pu‘uanahulu – Kumu William Kahakulelehua Haunu‘u “Sonny” Ching & Lōpaka Igarta-De Vera; Honolulu, O‘ahu (Kāne) “He Mele Ma‘i No Kekaleka”

Namakahelu, the great hula master and chanter of Moanalua, gifted this mele ma‘i, procreation chant, to Douglas Damon, the youngest son of Samuel Mills Damon. Such procreation chants encouraged the perpetuation of bloodlines. This mele ma‘i was composed shortly after Douglas’ birth in 1890, to honor him and his family. In the chant he is referred to both as Kekaleka (Douglas) and “Huki ka ulua” (pull in the ulua fish).

### 10. Beamer-Solomon Hālau O Po‘ohala – Kumu Hulali Solomon Covington; Waimea, Hawai‘i “Ike I Ke One A‘O Nohili”

Nohili is also called Barking Sands Beach; the sounding sands of the beach are widely known. Mentioned in the first verse is the lei pahapaha, a type of lei composed of sea lettuce seaweed unique to Kaua‘i. Many famed places and the elements of nature that are associated with these places are remembered.  
“Ike I Ke Kani A‘O Nohili—Known is the sounding sand Nohili.”

### 11. Hālau Hula Ka Lehua Tuahine – Kumu Ka‘ilihiwa Vaughan-Darval; Mānoa, O‘ahu “Hā‘upu”

This mele māka‘ika‘i celebrates Queen Emma’s many huaka‘i, travels, to the island of Kaua‘i. The poetry praises the beauty and grandeur of this island’s wahi pana, well-known and storied places, visited by our beloved Queen. From the splendor of Mt. Hā‘upu to the water mirages of Polihale, she continues her travel to legendary Kemamo.

### 12. Academy of Hawaiian Arts – Kumu Mark Keali‘i Ho‘omalū; Oakland, California (Kāne) “Hole Waimea”

Mary Kawena Puku‘i identifies the famed Kīpu‘upu‘u warriors as the composers of “Hole Waimea.” It honored their Ali‘i Kamehameha I and described their spear-making activities in the forest of Mahiki. These warriors were trained runners and excellent spear fighters. As the dancers enter they will be using the ihe laumeki, a kind of barbed spear.

### 13. Hālau Nā Mamo O Pu‘uanahulu – Kumu William Kahakulelehua Haunu‘u “Sonny” Ching & Lōpaka Igarta-De Vera; Honolulu, O‘ahu “Ali‘iolani”

This mele was written by Chief Mataio Kekūānā‘a for his son Alexander Liholiho and it was later modified for Alexander’s older brother Lot. These sons ruled as Kamehameha IV and Kamehameha V from the mid-1850s to the early 1870s. Notable winds and rains of various places are recalled as metaphors of love, and the entire chant is offered in praise of the royal one as a mele inoa, name chant.

### 14. Ka Leo O Laka I Ka Hikina O Ka Lā – Kumu Kaleo Trinidad; Honolulu, O‘ahu (Kāne) “Aia I Ni‘ihau Ku‘u Pāwehe”

Master chanter and Kumu Hula Kamuela Akoni Mika is said to have composed this mele and choreographed its dance movements. He chose to use kā lā‘au, pairs of dance sticks, to relate details of the fine, soft pāwehe mat for which Ni‘ihau is known. In describing Ni‘ihau, many of the island’s special features are given—the sugar cane of Halālā‘i, Ka‘ula Island surrounded by birds, the gusty Mikioi wind, sea spray and pouring rain.

## INTERMISSION

### 15. Hālau Hula Olana – Kumu Olana & Howard Ai; Pu‘uloa, O‘ahu

*“Aia I Haili Kō Lei Nani”*

Princess Virginia Kapo‘oloku Po‘omaikelani wrote this mele for her sister Queen Kapi‘olani. It is the first of seven lei chants honoring the Queen, which were presented to her at the King’s Coronation in 1883. The words and imagery of the mele extol the island of Hawai‘i and the lehua blossoms of Mokaulele.

### 16. Ke Kai O Kahiki – Kumu La‘akea Perry; Wai‘anae, O‘ahu (Kāne)

*“Kūnihi Ka‘ena”*

Hi‘iaka’s journey through the very rough ‘Ie‘iewaena Channel is recounted in this mele. She arrived on the sands of Mokulēia and made her way to pay her respects to her ancestral divinity Ka‘ena. Ka‘ena was a family member of Pele and is also the western most point of O‘ahu. Pele made her way to the slope of the Wai‘anae mountains and as she looked back she recited her experience in mele, “Kūnihi Ka‘ena, holo i ka mālie.”

### 17. Hālau I Ka Wēkiu – Kumu Karl Veto Baker & Michael Lanakila Casupang; Pauoa, O‘ahu

*“Kāua I Ka Huaka‘i”*

The mele was composed in the 1860s by Prince William Pitt Leleiōhoku. This mele ho‘oipoipo describes a love affair and weaves together imagery of the passion and deep desire of two companions. More commonly known today as the Hawaiian War Chant, it has gone through a transformation far from its original poetic intent and in this presentation the Hālau hopes to hold steadfast to the past for its proper continuance into the future.

### 18. Hālau Hula ‘O Kahikilaulani – Kumu Nāhōkūokalani Gaspang; Hilo, Hawai‘i

*“Ka ‘Oī O Nā Pua”*

Queen Lili‘uokalani, Hawai‘i’s last monarch to rule, is remembered for her gentle character and demeanor in this beautiful mele. She is likened to the māmane blossom in the uplands, the lililehua flower which attracts the birds, the sweetly-singing ‘i‘iwi polena bird among the ‘a‘ali‘i foliage—metaphors which reveal her gentleness, strength in adversity and compassion. This mele has been extracted from an original composition found in the Mary Kawena Puku‘i Collection which was shared by Aunty Pat Namaka Bacon.

### 19. Hālau Kekuaokalā‘au‘ala‘iliahi – Kumu ‘Iliahi & Haunani Paredes; Wailuku, Maui (Kāne)

*“E Ho‘i Ka Nani I Moku‘ula”*

This chant was published in *Ka Nūpepa Kū‘oko‘a* in 1862. It recalled the many sacred places in Lua‘ehu at Lāhainā, Maui. Moku‘ula was home to the sacred chiefs of the Pi‘ilani and Kamehameha lines. This once glorious place succumbed to foreign invasion, and the people continue to lament, “Let the beauty return to Moku‘ula.”

### 20. Hālau Nā Lei Kaumaka O Uka – Kumu Nāpua Greig; Kula, Maui

*“E Ho‘i Ka Nani I Mānā”*

William Seymour Lindsey, great grandfather of Kumu Hula Nāpua Greig, was an escort who accompanied Queen Emma to Lake Wai‘au. “Yes, Queen Emma went into the pūnāwai o Wai‘au (spring of Wai‘au), she went upon the back of Wai‘au Lima. He was a man of Kawaihae...She went upon his back, Wai‘au’s back, and he swam across this spring, Wai‘au. He carried Queen Emma and set her upon a stone on the other side. The people were startled by this, to see them swimming there.”—Kalani Ka‘apuni-Phillips, interview with Larry Kimura, 1-30-1967.

### 21. Keolalaulani Hālau ‘Ōlapa O Laka – Kumu Aloha Dalire; He‘eia, Kāne‘ohe, O‘ahu

*“Ka‘ililauokekoa”*

This mele captures the story of the attractive Ka‘ililauokekoa and her fascination with the haunting bamboo flute which draws her into the upland forests. There in the heights of Pihanakalani, she meets with her handsome lover. “Perhaps you are sleeping, my sweetheart...follow, move closer to me.”

### 22. Hālau Hula ‘O Kahikilaulani – Kumu Nāhōkūokalani Gaspang; Hilo, Hawai‘i (Kāne)

*“Hanohano Waimea I Ka Wai Kea”*

Queen Kapi‘olani, wife and consort of King David Kalākaua, visited the west side of the island of Kaua‘i, and her journey was commemorated in this mele. She encounters the Waimea River flowing red from storm run-off and the expertly-made Menehune Ditch, in addition to many wahi pana, cultural and historical sites. The cold misty heights of Alaka‘i complete the journey.

### 23. Hālau Ka Lei Mokihana o Leinā‘ala – Kumu Leinā‘ala Pavao Jardin; Kalāheo, Kaua‘i

*“Aloha Ka Luna O Keōlewa”*

Kānei‘olouma, a heiau in Po‘ipū, Kaua‘i, was abandoned in the early 1800s after the ‘ai kapu, restricted eating and religion, was abolished. The heiau became overgrown with vegetation, and this mele honors our ancestors and kānaka kūpa‘a, the staunch people of the land, for their recent restoration work to this sacred area. The peak Keōlewa on Mt. Hā‘upu is the “surveyor of the sacred sites of the waters of Kemamo.” The navigational peaks of Hōkūnui and Hōkūlei are adorned in the mist.

### 24. Ka Lā ‘Ōnohi Mai O Ha‘eha‘e – Kumu Tracie & Keawe Lopes; Pū‘ahu‘ula, Ko‘olaupoko, O‘ahu

*“He Aloha Nō Nā Pua”*

*“He Aloha Nō Nā Pua”* is a mele hula ‘ōlapa that honors King David Kalākaua (1836-1891). In the mele the rosy cheeks of young women are referred to as “Nā pua ‘ōhelohelo.” In Hilo “Love is truly bountiful,” just like the bubbling springs created by the heavy rains there. The puana, summary refrain, declares “...at the heights of Poulua, there are two things admired...the suppleness of your body and the sparkle in your eyes.”

### 25. Hālau I Ka Wēkiu – Kumu Karl Veto Baker & Michael Lanakila Casupang; Pauoa, O‘ahu (Kāne)

*“E Ka Liko Hou O Uka”*

This name chant written for Miriam Kapili Likelike Kekāluohi includes countless moments of love and affection. She is also referred to in this mele by the name Kaliko, the newly formed leaf buds of the ‘ōhi‘a lehua. This mele is imbued with kaona, hidden meaning, by the composer, and Princess Likelike is compared to the beautiful natural elements on the island of Hawai‘i.

### 26. Hula Hālau ‘O Kamuela – Kumu Kau‘ionālani Kamana‘o & Kunewa Mook; Kalihi & Waimānalo, O‘ahu

*“Nani Hanohano Ke Kuahiwī O Ka‘uiki”*

Hāna’s beauty is defined by those places and special features for which this remote Maui area is well-known and remembered. The mele was said to be composed for Kamu‘ohounani, a kama‘āina of Hāna with intimate knowledge of land names, shorelines, upland pools, and winds carrying fragrances of maile, hīnano, palai fern and ‘awapuhi blossoms. Coupled with each feature mentioned is a deep love and attachment, aloha ‘āina, for Hāna, carried in the hearts of her people.

### 27. Hālau Mōhala ‘Ilima – Kumu Māpuana de Silva; Ka‘ōhao, Oahu

*“Kākuhihewa (Aia i Honolulu Ku‘u Pōhaku)”*

This place- and generation-leaping, 19th century composition comes to us from Uncle Henry Moikeha Pa by way of Robert Cazimero. It celebrates the 16th century chief Kākuhihewa and his line of Kūkaniloko-born ali‘i that originates with Kapawa in perhaps the 12th century. It suggests, somewhat cryptically, that the anchor-stone of O‘ahu’s loyalty to chief and land might now be found in Honolulu in the petals of the pua komela.

### 28. Kawaili‘ulā – Kumu Chinky Māhoe; Kailua, O‘ahu (Kāne)

*“Kalaunui‘ōhua”*

Kalaunui‘ōhua was a chief of Hawai‘i who possessed a strong warrior spirit. He wished to conquer and unite the islands of Hawai‘i. As he crossed over the Alenuihāhā, Pailolo, Kaiwi and Ka‘ie‘ie Waho channels, he faced different challenges, for the currents and wave patterns made sailing difficult.

## HULA 'AUANA

SATURDAY, APRIL 26, 2014

### 1. Nā Pua Me Ke Aloha – Kumu Sissy Kaio & Lilinoe McCormack; Carson, California (Kāne) “Ku‘u Hoa”

In 1937, Francis Keali‘inohopono Beamer wrote this mele for his wife Louise Leiomalama Walker Beamer. He captured his affection for her in song, and this beautiful mele was born. “Let us return, we two.

My desire for you is always in my heart.”

### 2. Hālau Nā Lei Hiwahiwa O Ku‘ualoha – Kumu Sammie Ku‘ualoha Young; Hilo, Hawai‘i “Nā Mauna Ho‘oheno”

This composition by Kumu Hula Kawika Alfiche of Hālau Keikiali‘i of San Francisco honors the majestic and awe-inspiring mountains of Hawai‘i Island. Each is lovingly described—Mauna Kea, home of Poli‘ahu, the snow goddess; Kīlauea, the sacred fire of Pele; Mauna Loa in the calm; Hualālai standing lofty; and the Kohala Mountains sheltering the birthplace of Pai‘ea Kamehameha. “Cherished are the mountains in the land of Keawe.”

### 3. Keolalaulani Hālau ‘Ōlapa O Laka – Kumu Aloha Dalire; He‘eia, Kāne‘ohe, O‘ahu (Kāne) “Pili Kāpekepeke”

This mele warns us of the flirtations of love lest we give our hearts away without first considering that we may be embarking on a very fickle journey. The mele uses the imagery of the ‘i‘iwi bird fluttering from flower to flower and the fisherman who misses an excellent catch as metaphors. We must be mindful of someone with an ever-changing heart and emotions. “The ‘i‘iwi is a most sweet-eyed beauty,” but “love can be such a fickle thing at times.”

### 4. Hālau Hula ‘O Hōkūlani – Kumu Hōkūlani & Larry De Rego; Waipahu, O‘ahu “Lilialanaikawaiola”

“Lilialanaikawaiola” was composed for and is dedicated to Joyce Lilialanaikawaiola O’Brien, a kind-hearted person who is always willing to help others. Her “strength and dignity are her blessings.”

A mele inoa composed by Kamaki Kanahale and put to music by Sean Na‘auao.

### 5. Academy of Hawaiian Arts – Kumu Mark Keali‘i Ho‘omalulu; Oakland, California “Hilo Hula”

The Hālau acknowledges that Hilo is indeed famous in the Kanilehua rain. Celebrated Mokuola is an island resting in Hilo Bay; it is wearing a beautiful lei of lehua blossoms. Behold the beauty of Waiākea and the waters of Waiolama which make Hilo so beloved.

### 6. Hālau Ke Kia‘i A O Hula – Kumu Kapi‘olani Ha‘o, Kawika Mersberg & Wailani Ha‘o-Avilla; Makiki & Kapolei, O‘ahu (Kāne) “Medley: Hula / Ke Ao Nani”

“Hula” teaches us how much fun learning hula can be and “Ke Ao Nani” simply uses nature to teach us different directions in Hawaiian. Above, birds in the sky; below, flowers on the earth; in the uplands, groves of trees; in the sea, fishes in the ocean—all remind us to be grateful for the beauty that embraces us.

### 7. Hālau Hi‘iakaināmakalehua – Kumu Robert Ke‘ano Ka‘upu IV & Lono Padilla; Kalihi Kai, O‘ahu “Ku‘u Ipo O Ke Aumoe”

A cherished sweetheart is compared to a precious lei liko. Its fragrance is carried by the gentle caressing breeze blowing in the midnight hours, causing the composer, Charles Warrington Jr., to long for the return of his beloved. This beautiful mele aloha expresses his deep sentiments of love.

## HULA 'AUANA

### 8. Hālau Hula Lani Ola – Kumu Puanani Jung; Laguna Hills, California “Kona Kai ‘Ōpua”

In his composition, “Kona Kai ‘Ōpua,” Henry Waiiau describes the unique features of the Kona district of Hawai‘i Island. “The cloud banks over Kona’s peaceful sea.” This mele is always sung at Kumu Puanani’s family gatherings with pride and aloha, and is a tribute to her hula lineage and the Wright and Akona families that hail from Kona.

### 9. Hālau Nā Mamo O Pu‘uanahulu – Kumu William Kahakuleihua Haunu‘u “Sonny” Ching & Lōpaka Igarita-De Vera; Honolulu, O‘ahu (Kāne) “O‘ahu Homestead Medley”

Prince Jonah Kūhiō championed a homesteading program for Hawaiians on the floor of the U.S. Congress. The Hawaiian Homes Commission Act was passed in 1920 to provide a means for Hawaiians to be placed upon the land through leases for residential, farming and ranching purposes. This medley pays tribute to the first four homesteads on O‘ahu—Nānākuli, Waimānalo, Papakōlea and Wai‘anae.

### 10. Beamer-Solomon Hālau O Po‘ohala – Kumu Hulali Solomon Covington; Waimea, Hawai‘i “Ku‘u Hoaloha”

“Ku‘u Hoaloha” is a favorite song of the Beamer ‘ohana and was penned by Victor Kala for the home of Mrs. Helen Tam located on St. Louis Heights. The home was a gathering place for many entertainers and friends sharing their hula and music. “Friends and strangers come visiting, introducing themselves with aloha,” for “Your aloha is the main thing.”

### 11. Hālau Hula Ka Lehua Tuahine – Kumu Ka‘ilihiwa Vaughan-Darval; Mānoa, O‘ahu “Ho‘onanea”

Hawai‘i’s Songbird, Auntie Lena Machado, composed this time-honored mele to describe intense emotions and feelings between lovers. In “Ho‘onanea” she expresses romance and passion in simple terms.

“Lose yourself here in my arms. I long to drink deeply of love.”

### 12. Academy of Hawaiian Arts – Kumu Mark Keali‘i Ho‘omalulu; Oakland, California (Kāne) “Aia I Moloka‘i Ku‘u ‘Iwa / E Ho‘okau‘ahe‘ahe”

Moloka‘i was once famed for its vigor in sports and the Hawaiian martial art of lua. Originally a chant, “Aia I Moloka‘i Ku‘u ‘Iwa” will debut tonight as a hula ‘auana. “E Ho‘okau‘ahe‘ahe” was composed by John Kaimikaua and brings forth historical and legendary places on Moloka‘i island. Celebrated is Lanikāula, a powerful and famous seer of his time. It is said that upon his death his body and spirit went into a grove of kukui trees. The grove is called Kalanikāula and is also known as Ulu Kukui O Lanikāula—The kukui grove of Lanikāula.

### 13. Hālau Nā Mamo O Pu‘uanahulu – Kumu William Kahakuleihua Haunu‘u “Sonny” Ching & Lōpaka Igarita-De Vera; Honolulu, O‘ahu “Lei Puakenikeni”

John Kameaaloha Almeida composed this song comparing a loved one to the sweet fragrance of the lei pua kenikeni. His expertly-chosen words of love are woven together with a haunting melody to express the similarity between the heady fragrance of the pua kenikeni and passionate emotions of aloha. “Fragrant, beautiful and excellent is the lei, appealing and most entrancing.”

### 14. Ka Leo O Laka I Ka Hikina O Ka Lā – Kumu Kaleo Trinidad; Honolulu, O‘ahu (Kāne) “Ho‘i Ke Aloha I Ra‘iātea”

This mele hula commemorates the 1992 voyage of the double-hulled canoe Hōkūle‘a from Hawai‘i to Ra‘iātea and Rarotonga. The voyage was designed to train a new generation in skills of seafaring as well as to celebrate the revival of canoe building and the tradition of Pacific navigation. Nu‘ulani Atkins and Randie Kamuela Fong are co-composers of this mele.

INTERMISSION

15. Hālau Hula Olana – Kumu Olana & Howard Ai; Pu'uloa, O'ahu  
*"Uhiwai"*

Composer and musician Nathan Aweau wrote this touching song to celebrate his parents' 50<sup>th</sup> wedding anniversary. *"Uhiwai"* is a metaphor which likens a heavy mist to their affection for one another. "Where are you, mist of love? Love is calling. You are truly a gift, so beautiful indeed."

16. Ke Kai O Kahiki – Kumu La'akea Perry; Wai'anae, O'ahu (Kāne)  
*"Kalalea Medley"*

Two Kaua'i songs are intertwined. *"Anahola"* describes majestic Kalalea as it rises above the cliff of Anahola. Some kama'āina say that the district of Anahola was once called Kalalea. The second song, *"Kalalea"* is of a prominent hill overlooking Anahola. In legend, Kaua'i hero Kawelo thrust his spear into the hill, forming a hole called "Aolani," heavenly cloud, because it enables one a glimpse into the daylight of heaven.

17. Hālau I Ka Wēkiu – Kumu Karl Veto Baker & Michael Lanakila Casupang; Pauoa, O'ahu  
*"Mōhala Pono Ē"*

This mele was written for Kana'iolowalu, the Native Hawaiian Roll Commission, as a call to action, emphasizing the necessity for unity amongst nā kānaka maoli, native people. This composition proclaims a powerful message, inspiring the heart of the people and honoring the voices of past and present generations. As the journey continues forward to the future, reunification must be upheld, for a nation still exists.

18. Hālau Hula 'O Kahikilaulani – Kumu Nāhōkūokalani Gaspang; Hilo, Hawai'i  
*"Hilo Ē"*

Hilo is well-known for the abundant lehua blooms found in the Pana'ewa Forest and at Waiākea. When fashioned into lei, they are exceedingly beautiful and cherished as special tokens of affection, particularly among those from Hilo. The mele was written in the 1920s by Mary Heanu to pay tribute to Hilo and to encourage visitors to come and stay for awhile.

19. Hālau Kekuaokalā'au'ala'iliahi – Kumu 'Iliahi & Haunani Paredes; Wailuku, Maui (Kāne)  
*"Kuahiwi Nani / Haleakalā Hula Medley"*

Composer Alice Ku'uleialohapo'ina'ole Namakelua wrote *"Kuahiwi Nani"* for the Maui float in the 1941 Kamehameha Day Parade. The mele praises Maui's beautiful mountain Haleakalā that towers majestically above all, and in the second verse it refers to Makawao and the customary gathering of edible tree fungus called "pepeiao akua." *"Haleakalā Hula"* is often credited to composer Amy Kalima in the 1920s. "You are a beautiful mountain... well known throughout the world." The expansive views one can witness from atop Mt. Haleakalā are overwhelming.

20. Hālau Nā Lei Kaumaka O Uka – Kumu Nāpua Greig; Kula, Maui  
*"I Waikapū Ke Aloha"*

Kamakoa Lindsey-Asing set to music this traditional chant commemorating the four waters of Maui, Nā Wai 'Ehā. The words also exalt the famous winds of these Maui districts and include allusions of affection. "You were in Lahaina / With the Kua'ula wind / Amid the shelter of the breadfruit trees of Lele / Gently pinching."

21. Keolalaulani Hālau 'Ōlapa O Laka – Kumu Aloha Dalire; He'eia, Kāne'ohe, O'ahu  
*"E Ku'u Lei Pua Kenikeni"*

The love of a parent for a child is symbolized in a lei of pua kenikeni blossoms. Kumu Hula Kawaikapuokalani Hewett wrote this mele to express his never-ending affection for his late son Kuakapuokalani and the memories held deep within. "My lei of pua kenikeni, the one I desire constantly, never forgotten in my recollections."

22. Hālau Hula 'O Kahikilaulani – Kumu Nāhōkūokalani Gaspang; Hilo, Hawai'i (Kāne)  
*"Ku'uipo Onaona"*

Over her lifetime, Maddy K. Lam established herself as a talented composer and lyricist, a pianist, singer and producer. Of her many popular and much loved compositions, *"Ku'uipo Onaona"* is among her best. Her words beckon a reluctant lover to step forward. "Don't be slow...do hurry to me."

23. Hālau Ka Lei Mokihana o Leinā'ala – Kumu Leinā'ala Pavao Jardin; Kalāheo, Kaua'i  
*"Kauai Medley: Hanohano Hanalei / Nā Hala O Naue / Nani Wai'ale'ale"*

The district of Hanalei is the common theme woven into these Kaua'i songs. Recalled is Mt. Nāmoloakama standing majestically, the famous heavy rains of Hanalei and the waters of Mt. Wai'ale'ale that nourish many areas of Kaua'i. This Hālau lovingly honors the late Kumu Hula Ku'ulei Punua of Kaua'i. These songs were the highlight of her hula show for more than 50 years. Aunty Ku'ulei's legacy lives on through her many students.

24. Ka Lā 'Ōnohi Mai O Ha'eha'e – Kumu Tracie & Keawe Lopes; Pū'ahu'ula, Ko'olaupoko, O'ahu  
*"Ku'u Home Aloha"*

This mele ho'oheno is the composition of noted composer Bina Mossman (1893-1990). She composed this mele for her beloved home of the Ko'olau mountain area. Her home was located on Kāne'ohe Bay Drive, Pū'ahu'ula, Ko'olaupoko, O'ahu. Mossman shares that her home is situated "...in the comfort of the Ko'olau." The picturesque scenery she portrays is that her home is gloriously verdant and ever-present is the arching rainbow as a gentle breeze blows.

25. Hālau I Ka Wēkiu – Kumu Karl Veto Baker & Michael Lanakila Casupang; Pauoa, O'ahu (Kāne)  
*"Kono Wau Iā 'Oe"*

This newly composed mele is an invitation in our busy lives to take time for a leisurely walk with a loved one. It is important for us to embrace opportunities to enjoy a companion while picking flowers and making lei together. These special moments are intimately shared together in nature, from the lush verdant mountains to the cool refreshing sea of our island paradise.

26. Hula Hālau 'O Kamuela – Kumu Kau'ionālani Kamana'o & Kunewa Mook; Kalihi & Waimānalo, O'ahu  
*"Koali"*

Located in Hāna, Koali is cherished for its breaking surf and its shoreline heady with the fragrance of līpoa seaweed. The moon rises and reveals the hazy splendor of cliffs as the scent of līpoa continues to fill the air. Amidst all of this beauty, there also are references to a house with a rose garden, lovely maidenhair fern, and the proud streaming of a Hawaiian flag—such a lovely setting "...regal in the calm."

27. Hālau Mōhala 'Ilima – Kumu Māpuana de Silva; Ka'ōhao, O'ahu  
*"Kuilima Hula"*

"My maiden name was Kainanui, and my father was a former chief...The only good swimming area at Kahuku was Kalokoiki, the cove next to the hotel. All of the old-timers went there. The point the hotel is on is called Kuilima Point now, but Kuilima is an inland name... The correct name of the point is Kalaeokaunu. I composed a song entitled 'Kuilima' that mentions some of the special places in Kahuku... Kuilima means 'to walk hand-in-hand.'" -- Emily Blanchard, 2-9-1973.

28. Kawaili'ulā – Kumu Chinky Māhoe; Kailua, O'ahu (Kāne)  
*"Pānini Pua Kea"*

Prolific composer John Kameaaloha Almeida composed many songs about beautiful flowers which represented the many lovely women he knew. *"Pānini Pua Kea"* is a white flowered cactus; this flower represented a fair sweetheart amid all the beautiful flowers. "Well known is my heart's turmoil as love stirs ceaselessly in my heart."

**51st ANNUAL MERRIE MONARCH FESTIVAL**



**Kumu**  
Sissy Kaio & Lilinoe McCormack  
*Carson, California*



**1. Nā Pua Me Kealoha**



**2. Hālau Nā Lei Hiwahiwa O Ku'ualoha**



**Kumu Sammye Ku'ualoha Young**  
*Hilo, Hawai'i*



**Kumu Aloha Dalire**  
*He'eia, Kāne'ohe, O'ahu*



**3. Keolalaulani Hālau 'Ōlapa O Laka**

**51st ANNUAL MERRIE MONARCH FESTIVAL**



**Kumu Larry & Hōkūlani De Rego**  
*Waipahu, O'ahu*



**4. Hālau Hula 'O Hōkūlani**



**Kumu Mark Keali'i Ho'omalu**  
*Oakland, California*



**5. Academy of Hawaiian Arts**



**6. Hālau Ke Kia'i A O Hula**



**Kumu Kawika Mersberg,**  
**Kapi'olani Ha'o,**  
**& Wailani Ha'o-Avilla**  
*Makiki & Kapolei, O'ahu*

**51st ANNUAL MERRIE MONARCH FESTIVAL**



**Kumu Lono Padilla  
& Robert Ke'ano Ka'upu IV**  
*Kalihi Kai, O'ahu*



**7. Hālau Hi'iakaināmakalehua**



**8. Hālau Hula Lani Ola**



**Kumu Puanani Jung**  
*Laguna Hills, California*



**Kumu Lōpaka Igarta-De Vera  
& William Kahakuleihua Haunu'u**  
*"Sonny" Ching  
Honolulu, O'ahu*



**9. Hālau Nā Mamo O Pu'uanahulu**

**51st ANNUAL MERRIE MONARCH FESTIVAL**



**10. Beamer-Solomon Hālau O Po'ohala**



**Kumu Hulali Solomon Covington**  
*Waimea, Hawai'i*



**Kumu Ka'ilihiwa Vaughan-Darval**  
*Mānoa, O'ahu*



**11. Hālau Hula Ka Lehua Tuahine**



**12. Academy of Hawaiian Arts**



**Kumu Mark Keali'i Ho'omalulu**  
*Oakland, California*

**51st ANNUAL MERRIE MONARCH FESTIVAL**



**13. Hālau Nā Mamo O Pu‘uanahulu**



**Kumu Lōpaka Igarita-De Vera  
& William Kahakuleihua Haunu‘u**  
“Sonny” Ching  
*Honolulu, O‘ahu*



**14. Ka Leo O Laka I Ka Hikina O Ka Lā**



**Kumu Kaleo Trinidad**  
*Honolulu, O‘ahu*



**Kumu Olana & Howard Ai**  
*Pu‘uloa, O‘ahu*

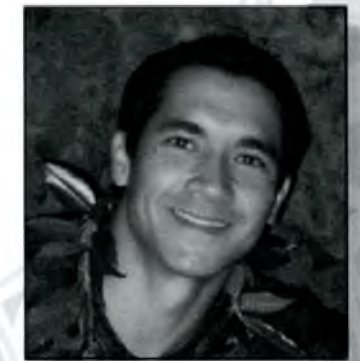


**15. Hālau Hula Olana**

**51st ANNUAL MERRIE MONARCH FESTIVAL**



**16. Ke Kai O Kahiki**



**Kumu La‘akea Perry**  
*Wai‘anae, O‘ahu*



**Kumu**  
**Michael Lanakila Casupang**  
& **Karl Veto Baker**  
*Pauoa, O‘ahu*



**17. Hālau I Ka Wēkiu**



**18. Hālau Hula ‘O Kahikilaulani**



**Kumu Nāhōkūokalani Gaspang**  
*Hilo, Hawai‘i*

**51st ANNUAL MERRIE MONARCH FESTIVAL**



**19. Hālau Kekuaokalā'au'ala'iliahi**



**Kumu 'Iliahi & Haunani Paredes**  
*Wailuku, Maui*



**Kumu Nāpua Greig**  
*Kula, Maui*



**20. Hālau Nā Lei Kaumaka O Uka**



**Kumu Aloha Dalire**  
*He'eia, Kāne'ohē, O'ahu*



**21. Keolalaulani Hālau 'Ōlapa O Laka**

**51st ANNUAL MERRIE MONARCH FESTIVAL**



**22. Hālau Hula 'O Kahikilaulani**



**Kumu Nāhōkūokalani Gaspang**  
*Hilo, Hawai'i*



**Kumu Leinā'ala Pavao Jardin**  
*Kalāheo, Kaua'i*



**23. Hālau Ka Lei Mokihana o Leinā'ala**



**24. Ka Lā 'Ōnohi Mai O Ha'eha'e**



**Kumu Tracie & Keawe Lopes**  
*Pū'ahu'ula, Ko'olaupoko, O'ahu*



**51st ANNUAL MERRIE MONARCH FESTIVAL**



**Kumu**  
**Michael Lanakila Casupang**  
**& Karl Veto Baker**  
*Pauoa, O'ahu*



**25. Hālau I Ka Wēkiu**



**26. Hula Hālau 'O Kamuela**



**Kumu**  
**Kunewa Mook &**  
**Kau'ionālani Kamana'o**  
*Kalihi & Waimānalo, O'ahu*



**Kumu Māpuana de Silva**  
*Ka'ōhao, O'ahu*



**27. Hālau Mōhala 'Ilima**

**51st ANNUAL MERRIE MONARCH FESTIVAL**



**28. Kawaili'ulā**



**Kumu Chinky Māhoe**  
*Kailua, O'ahu*

**2013 WINNERS**

*Kāne Overall Winner - Kawaili'ulā*  
*Wahine Overall Winner - Hālau Mōhala 'Ilima*



*Kawaili'ulā*  
*Hula 'Auana winner*



*Keolaulani Hālau 'Ōlapa O Laka*  
*Hula 'Auana winner*



*Hālau Mōhala 'Ilima*  
*Hula Kahiko winner*



*Miss Aloha Hula*  
*Manalani Mili Hokoana English*  
*(Hālau Nā Lei Kaumaka O Uka)*



*Kawaili'ulā*  
*Hula Kahiko winner*

## Committees

President .....	Luana Kawelu
Vice-President .....	Kathy Kawelu
Office .....	Lei Andrade
T-Shirt Sales .....	Bo Saiki, Daisy Kamohai
Ticket Sales .....	Luana Kawelu, Evelyn Chong
Royal Court .....	U'ilani Peralto, George De Mello, Carol Kekauoha, Kimo Kekua
Arts & Crafts Fair .....	Nelson Makua, Paula De Morales
Noon Day Shows .....	George De Mello, Jo Loa
Hō'ike Emcee .....	Kaea Alapai
Ho'olaule'a Emcee .....	Darde Gamayo
Noon-day Show Emcee .....	Alaka'i Paleka
Backstage .....	Polly Grace, Nettie Tiffany, Gene Madriaga, Māpuana Waipa, William Ma'e-Huihui, Pohai Kelson, Deresa Kekauwela
Back Gate .....	Buzzy Histo, Lehua Veincent, Colleen Kawelu, Stacy Rosehill-Baker, Kelly Swartman-Hogan
Facility Coordinator .....	Paul Moffett
Accountants .....	Pam Lancaster, Nani Lancaster, Joan Nakano
Timers .....	IAAP Retirees - Lilly Pa, Gwen Nicolas, Irma Sumera, Shirley Naho'oikaika
Ticket Collectors .....	East Hawai'i Kiwanis
Stadium Kōkua .....	José Augustine, Irene Lopez
VIP Usher .....	Roxcie Waltjen
Stadium Ushers .....	Gail Makuakāne-Lundin, Martha McNicoll
Scrip Sales .....	Keaukaha Big League Baseball
T-Shirt Concession .....	Friends of Cougars Baseball
House Band .....	"Ke Kuini" - Aunty Gobbles, Ho'o Apo, Kehau Tamure, Ainsley Halemanu
Parade .....	Missy Kaleohano, Annette Leung
Float Judges .....	Kaipo AhChong, Kainoa Daines, Patricia Dunn, Lance Duyao, Lorna Kahauolopua
Pā'ū Units .....	Kawai Dudoit
Pā'ū Judges .....	Ha'ana Haili, Lori Higa, Buzzy Histo, Doogin Mahuna, Lolena Nicholas
On-Site Parade Line-Up .....	Lehua Jaycees
County Facilities .....	County of Hawai'i P & R
Food Concessions .....	Kuali'i 'Ohana, Hale O Nā Ali'i, Big Island Women in Travel, Hui Maka'i M/C
Decorations .....	Hālau Hula 'O Kahikilaulani, Kumu Hula Nāhōkūokalani Gaspang
Sound .....	Glenn Yafuso, Piggy Kaleohano
Stage .....	Denny Holt
Parking .....	Roland Pacheco, Uwao Chartrand, Albert Kawelu, Cal Crum Sr., Sam Kaeo
Facility Regulation .....	Koa Puna

## Acknowledgements

County of Hawai'i (Co-Sponsor)  
Hawaiian Airlines (Co-Sponsor)  
Mauna Loa Macadamia Nut Corporation - a subsidiary of the  
Hershey Company  
Big Island Candies - Allan Ikawa  
Big Island Visitors Bureau - Ross Birch  
Hawai'i Visitors and Convention Bureau  
Office of Hawaiian Affairs (OHA)  
Matson Navigation - CEO Matthew J. Cox & Russell Chin  
Charles A. Robinson  
Pekelo & Aileen Day  
Sig Zane Designs  
Lehua Jewelers - Sharon Gilbert  
Glenn V. at Shearz  
Hawai'i John's  
Green Point Nursery  
Hawaii Tropical Flower Council  
Hawaii Floriculture & Nursery Association  
Hawai'i Printing Corporation - Ed Hara  
Action Photos of Hawai'i-Hilo - Kai Suzuki  
Big Isle Moving - Will Trotter  
Kona Transportation  
Hilo Fish Company Inc. - Charles Umamoto  
Sol & Bobbi Kaholoa'a  
KFVE Hawai'i News Now  
The Kukui Media Group - Broadcast Producers  
Robert Godbey, Esq.  
Tom Kualii, Bruce Omori & Ken Sklute - Still  
Photographers  
Kenji Kuroshima  
Hawai'i Tribune-Herald  
Honolulu Star-Advertiser  
The Molokai Dispatch for Kumu Moana Dudoit photo  
William G. Meyer III, Esq.  
Richard Schaller & Roland Yamamoto  
Pat Couvillon, Joan Hori, Carol Silva, & Noenoelani  
Zuttermeister Lewis  
Hālau O Kawānanakoa  
Ted H.S. Hong, Esq. - Legal Services

**NOTICE TO ALL PHOTOGRAPHERS:** The Merrie Monarch Festival warns photographers to obtain the proper professional releases before using images of any and all performers, dancers, judges, and participants in the Merrie Monarch Festival. The Merrie Monarch Festival disclaims any and all liability arising from the unauthorized use of any person's image. Please note that no commercial photographers will be allowed to take pictures during the Festival without the permission of the Merrie Monarch Festival.



*A cultural tradition.*



Mauna Loa® applauds the world's best hula dancers at this year's Merrie Monarch Festival. We are honored to celebrate over 50 years of perpetuating the dance and heritage of Hawaii.

Tour the Mauna Loa® Visitor Center located in Hilo 808.966.8618

[www.maunaloa.com](http://www.maunaloa.com)

SEE, *feel* AND HEAR  
THE HEART OF HAWAI'I.

We're proud to support  
the Merrie Monarch Festival  
and the tradition of hula,  
which gracefully passes down  
Hawaiian history from  
generation to generation.



**HAWAIIAN**  
— AIRLINES —

HAWAI'I *flies* WITH US