

Free Tickets-
Innocents
Abroad
See page 12

Honolulu Diary— Page 3

Haunani Apoliona— Page 7

Life in Hell— Page 8



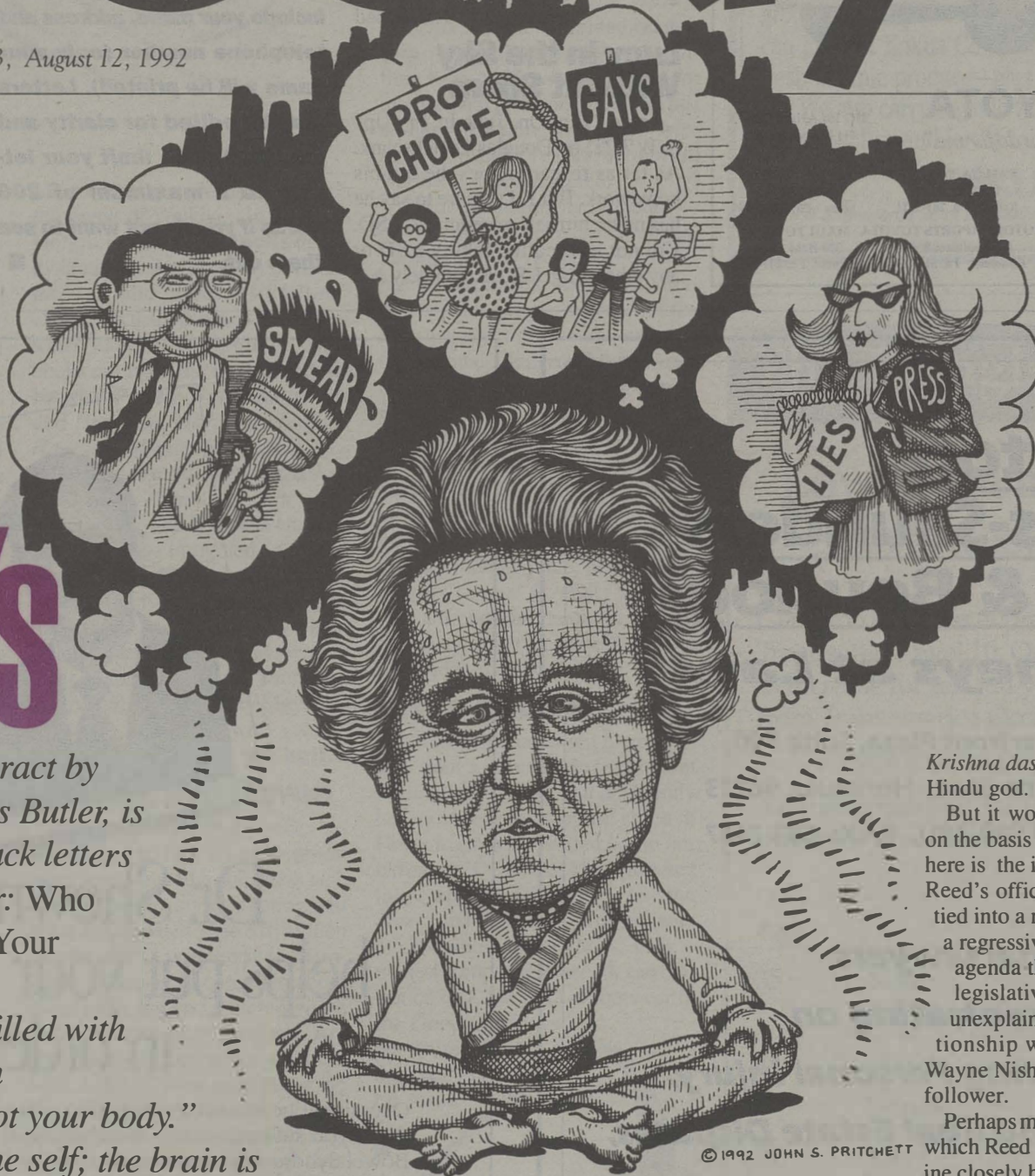
H O N O L U L U

Weekly

Floating
Points
of Light—
Page 11

Volume 2, Number 33, August 12, 1992

Rick Reed's



Story by
Derek Ferrar

Inner Self

The title of the book, a tract by Hawaii-born guru Chris Butler, is emblazoned in bold, black letters on the plain white cover: Who Are You? Discovering Your Real Identity.

Inside, the pages are filled with Butler's brand of Indian philosophy: "You are not your body."

"The brain is used by the self; the brain is not the self." "The aim of the followers of the Bhagavad-gita... is to become liberated from the subtle material body."

Between the words, there are pictures — photographs of Butler preaching to a group of followers. And there on page 31, seated among the faithful, an eager smile playing on his face, is Rick Reed, Republican state senator from Maui, candidate for U.S. Senate.

Krishna das, "servant of Krishna" — the ancient Hindu god.

But it would be bigotry to judge Reed solely on the basis of his religious beliefs. The real issue here is the interaction between those beliefs and Reed's official actions. Through Butler, Reed is tied into a network of people who seem to share a regressive social agenda as well as a god, an agenda that can be found reflected in Reed's legislative positions. Of concern, too, is the unexplained nature of Republican Reed's relationship with fellow U.S. Senate candidate Wayne Nishiki, a Democrat who is also a Butler follower.

Perhaps most striking of all is the virulence with which Reed has attacked those who seek to examine closely his ties to Butler and his group.

This spring, when Reed found out that *Honolulu Magazine* was planning a profile of him, he initiated an aggressive campaign against the magazine and the writer of the article, *Honolulu* executive editor John Heckathorn. Reed claimed that the article was the product of a "smear" effort against him by Sen. Dan Inouye and gay "radicals."

"Homosexual activists are determined to sabotage my candidacy," he said.

When the *Honolulu* article hit the streets, Reed began telling the media to expect a "smear" campaign against him by Inouye. And when he found out that *Honolulu Weekly* was planning a related article, he sent *Weekly* publisher Laurie Carlson

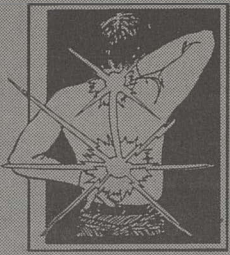
Maybe Reed should listen a little closer to Butler's teachings on discovering one's real identity. Although Reed's political soul has transmigrated through incarnation after incarnation — Rick Reed the crusading newspaperman, Rick Reed the tough Honolulu prosecutor's aide, Rick Reed the friend of business, the environmentalist, the Hawaiian activist, the David to Larry Meheu's Goliath — his essence has, for the most part, remained undefined.

His pugnacious protests notwithstanding, there is evidence to support the idea that Reed's inner self answers to Butler's command and to the name

Continued on Page 4

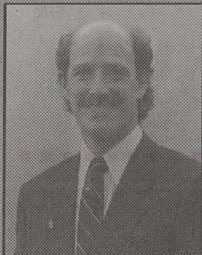
AUTO ACCIDENT & INDUSTRIAL INJURY CLINIC

DOWNTOWN - BISHOP AT BERETANIA



"Back injuries are a Pain in the Neck!"
W. CARL GALLAGHER, M.D., D.C.
Doctor of Chiropractic

**PAINLESS RELIEF
OF NECK AND
BACK PAIN.
LET US BEND OVER
BACKWARDS FOR YOU!**



DR. DAVID L. FERGUSON, D.S., M.T., D.C., F.I.C.C.
Board Eligible Chiropractic Orthopedist

NO-FAULT & WORKERS' COMP PAYS ALL MEDICAL EXPENSES

DON'T SUFFER-CALL NOW! CENTURY SQUARE SUITE 1008 1188 BISHOP STREET **523-0030**

TERCEL

STRIKING GOOD LOOKS

AT A PRICE THAT CAN'T MISS! **\$7198***

STARTING FROM ONLY

Heather Hays, Miss Hawaii USA 1992

*MSRP
2 Dr. Standard
Does not include destination charge, tax and license fees.

TOYOTA
"I love what you do for me."

SERVICE MOTOR CO. 105 S. Kam Hwy. Wahiawa Ph. 622-4195	TOYOTA CITY 2850 A Pukoloa St. Mapunapuna Ph. 834-1402	KAILUA TOYOTA 105 Oneawa St. Kailua Ph. 261-3321	BIG ISLAND TOYOTA 811 Kanoelehua Ave. Hilo Ph. 935-2920
WAIPAHU TOYOTA 94-757 Farrington Hwy. Waipahu Ph. 677-3161	WINDWARD TOYOTA 45-655 Kam Hwy. Kaneohe Ph. 233-2600	MOTOR IMPORTS TOYOTA 650 Kapiolani Blvd. Honolulu Ph. 526-2688	KAUAI TOYOTA 4337 Rice St. Lihue Ph. 245-6978
KAIMUKI TOYOTA 3282 Waiialae Ave. Kaimuki Ph. 735-1737	MAUI TOYOTA 320 Hana Hwy. Kahului Ph. 877-2781		

Letters

Smear Fear

(Ed. note: Sen. Rick Reed sent this letter to Honolulu Weekly publisher Laurie Carlson in response to requests for an interview in connection with the article on him appearing in this issue.)

After reading *Honolulu Magazine's* article about my personal life — and repeatedly hearing that *Honolulu Weekly* intends to write something even more outrageous — I don't want to lend credibility to your "article" by participating. So go ahead and do what you're going to do without me.

I've read *Honolulu Weekly* and feel we share perspectives on many things, including the need to encourage more open, responsive government, a better business climate and an independent, objective media. So I'm disappointed that *Honolulu Weekly* has apparently decided I'm someone to oppose even though I've never even met you or anyone on your staff.

I hope the misperception and bias disappear as you have a chance to monitor my public service over the coming years. If so, I'd be happy to do an interview at that time.

Rick Reed

Lucy in the Sky Without Spam

I read "Turn On, Tune In, Fry Up" (HW 7/22) by Douglas Cruickshank. As far as research goes, he did his homework. But I'd venture to say he has never himself experienced LSD. I'm not advocating taking LSD or any other drug. LSD is definitely not,

as Cruickshank called it, a "super-silly pill," nor will it send you to any "cuckoo land" (although it can really make you laugh). It is, as he says, "powerful." Its main reason for arriving in the world at the time that it did was the world's obsession with materialism. "Acid," when used properly, gave many people a chance to see the spiritual side of life and gave many a profound spiritual experience. Many people became enlightened during this time and, even though they no longer take LSD, they continue to pass on the spiritual values they learned while using it.

Gary Fanelli

P.S. I don't eat Spam anymore as I became a vegetarian during those days of LSD, Jimi Hendrix, love, peace and tuning in, turning on and dropping out.

The Honolulu Weekly welcomes your letters. Write to: Editor, Honolulu Weekly, 1200 College Walk, Suite 212, Honolulu, HI 96817. You must include your name, address and telephone number (only your name will be printed). Letters may be edited for clarity and length. Please limit your letters to a maximum of 200 words if you do not want to see them cut.

HONOLULU Weekly

Vol. 2, No. 33
August 12, 1992

Publisher and Managing Editor Laurie V. Carlson
Senior Editor Julia Steele
Arts & Calendar Editor Derek Ferrar

Calendar:

Associate Editor Matt Ujagalelei

Contributing Editor John W. White

Film Critic Bob Green

Theater Critic Karyn Koeur

Contributing Writers

Cecil Adams, Jay Junker, T.M. Lafferty, Nikki Ty-Tomkins

Copy Editor Kathy Luter Reimers

Art Director Bud Linschoten

Production Manager Matthew J. Ghali

Production Assistant Isabella Forster

Cartoonists Matt Groening, Slug Signorino

Illustrators

Linda Fong, John Pritchett

Administrative Support Catharine Gregory

Advertising

Leo Geensen, Donovan Slack

Honolulu Weekly

ISSN #1057-414X

Entire contents © 1992 by Honolulu Weekly, Inc.

All rights reserved.

Manuscripts should be accompanied by a self-addressed stamped envelope. Honolulu Weekly assumes no responsibility for unsolicited material.

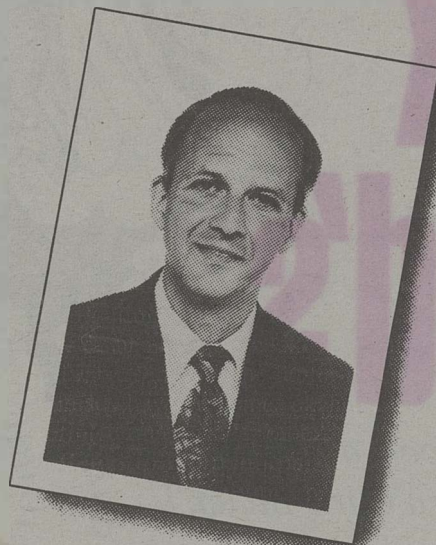
1200 College Walk, Suite 212
Honolulu, Hawaii 96817
Telephone: 808 528-1475

Bickerton Ramos-Saunders Dang & Bouslog Attorneys at Law

Three Waterfront Plaza, Suite 500
500 Ala Moana Blvd., Honolulu, 96813
Phone: (808) 599-3811, FAX: 533-2467

**Trial lawyers
concentrating on
cases involving Personal Injury,
Commercial and Real Estate Disputes,
First Amendment Issues and
Environmental Law.**

Free case evaluation and flexible fee arrangements tailored to your case.



Dr. Shewmake helps put your disorders in order.

Occasional heartburn, constipation and indigestion affect most of us. But if you suffer from chronic abdominal pain, ulcers or Irritable Bowel Syndrome, we invite you to visit Dr. Floyd Shewmake, our new gastroenterologist at The Honolulu Medical Group.

Professional Activities: Dr. Shewmake has extensive experience in the treatment of disorders of the stomach, intestines, gallbladder and liver.

AT A FREE PUBLIC LECTURE, Dr. Shewmake will present "A Discussion of Digestive Disorders" on Saturday, August 15, 11 a.m. at The Honolulu Medical Group.

Parking is free. For lecture reservations or to schedule an appointment with Dr. Shewmake, call 537-2211.

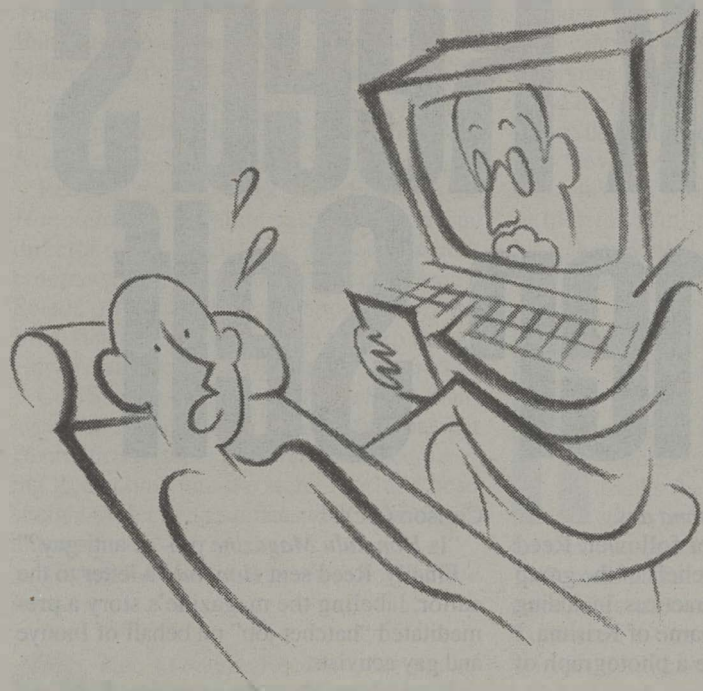
550 South Beretania Street, Honolulu
AAAHC Accredited since 1981

THE
HONOLULU
MEDICAL
GROUP



The Best of Health

Honolulu Diary



Shop talk

Last week representatives from some of the country's best alternative media gathered in Seattle for the 15th annual convention of the Association of Alternative Newsweeklies. Reflecting the rapid growth of the field, the conference was the largest to date: AAN currently has a membership of 80 papers in North America, including the *LA Weekly*, the *San Francisco Bay Guardian*, the *Chicago Reader*, the *Seattle Weekly* and the *Boston Phoenix*, with a combined readership of 12 million. This year, an all-time high of 23 papers applied for membership in the organization; just seven — including the *Village Voice* and, yes, dear reader, *Honolulu Weekly* — were accepted.

While the mainstream media — employing the only philosophical paradigm they recognize, left vs. right — define the American alternative press simply in terms of the left (usually, the far left), convention members suggested that a more insightful distinction might be progressive vs. reactionary. In a panel on what the alternative moniker really stands for, editors proposed that the mandate of the country's alternative press is to empower readers, provide intelligent reporting that has integrity and an edge, promote the country's racial diversity and provide a thoughtful media in opposition to a media that exists merely to respond to events.

She's got sole

Imelda Marcos might have been less than a shoo-in during recent Philippine elections, but apparently her most recent shopping spree in Hong Kong has restored her to her old habits. The former Philippine first lady spent, according to the Associated Press, \$5,806 on six pairs of crocodile leather shoes. This is modest compared to her alleged collection of 1,200 pairs of footwear in the *Good Old Days*, but we're all cutting back a little these days.



I.D.s with bogus names and ages on the streets of Waikiki... In person in Honolulu, **Jesse Jackson**, a dynamic speaker as always, was far more candid about his "fellow" Democrats than he was at the orchestrated national convention... New books out from the **University of Hawaii Press**: *Hawaiian Insects and Their Kin*, *Marine Atlas of the Hawaiian Islands* and *From Marcos to Aquino: Local Perspectives on Political Transition in the Philippines*... The Hawaiian Humane Society has launched a "**pet bereavement support group**," held on the first Thursday of each month in the Humane Society's education center... Seen around town: T-shirts bearing the legend "I survived a personal attack by The Mayor of Honolulu," complete with a rendition of **Hizzoner as pit bull**...

Ranting and Raven

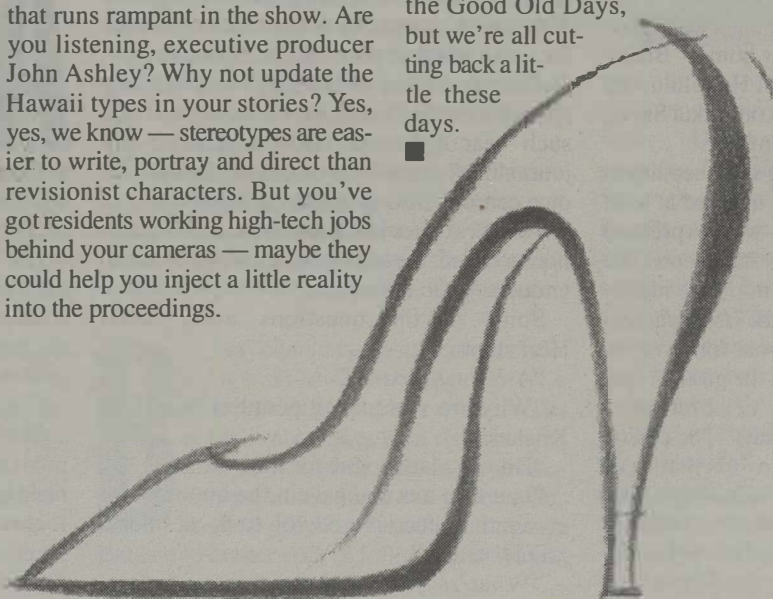
Now that the *Raven* TV series has been picked up by CBS, government types have heaved a collective sigh of relief (on-location shooting will bring an estimated \$6 to \$10 million into the state). Local residents, meanwhile, continue to complain about the sexism and racial stereotyping that runs rampant in the show. Are you listening, executive producer John Ashley? Why not update the Hawaii types in your stories? Yes, yes, we know — stereotypes are easier to write, portray and direct than revisionist characters. But you've got residents working high-tech jobs behind your cameras — maybe they could help you inject a little reality into the proceedings.

And it doesn't doze off while you're weeping

New computer games are coming out of the empire in record numbers, none more successfully than *INSIGHT*, a therapy and psychoanalysis "game" that allows you to be your own therapist right on the comfort of your own couch (IBM and compatibles, \$59.95). It works like this: Insinuate the disc into your PC, answer the questionnaire on the screen and, based on your wildly revealing answers, Dr. Computer will epiphanize your personality profile and chart up a course of action to capitalize on your strengths and subvert your neuroses. The system, we are told, is based on a similar one employed by NASA (though that's another story... and probably a juicy one). Computer experts say this program actually works, is beneficial and doesn't go waterskiing in France during your personal molting season — It's There For You Always. Attach a virtual reality module to that, and maybe you won't even need a traditional personal life.

Signs of the times

On Aug. 20, Olelo: The Corporation for Public Broadcasting will launch **The Educational Channel**, "a new channel dedicated to educational programming, including credit and non-credit coursework, lifelong learning and personal development opportunities, and work-force training."... The **CostCo** wholesaler grossed \$200 million in Hawaii last year, placing it 31st in the state's top businesses... Where are they now? **Marilyn Bomhorst**, who some people still think would make a terrific Honolulu mayor, is now selling mid-scale real estate very successfully. Ace business analyst-reporter **Bruce Voss** has quit his magazine column and returned to school... Sidewalk entrepreneurs are openly selling **fake**



Who Shops at Kokua Co-op?



We do!

Kokua Co-op is a member-owned natural foods and grocery store open to the public. Anyone can shop and anyone can join. At Kokua Co-op we have Hawaii's best selection of fresh organic produce—plus a complete line of natural foods. We also carry organic wine, organic bulk coffees, naturally raised poultry and fertile free-range eggs.

KOKUA CO-OP

2357 S. Beretania St. at Isenberg / Phone: 941-1922 / Open 7 days a week

The Takagis to serve you!

Low, level insurance rates guaranteed for 10 years

Get affordable, level premium life insurance with Trendsetter Level 10. One low rate guaranteed not to increase for ten full years. Quality protection from Transamerica Occidental Life.

TRENDSETTER® LEVEL 10 POLICY

Annual premiums for the first ten years for a preferred nonsmoker.

Age		Annual Premium	
		\$250,000	\$1,000,000
35	Male	\$ 283	\$ 900
	Female	258	810
45	Male	548	1,930
	Female	448	1,540
55	Male	1,140	4,320
	Female	880	3,290

Premiums shown reflect a 10% reduction in first year base premium rate when paid annually.

Call David or Verne Takagi
Transamerica Life Companies
Phone 523-6840

Continued from Page 1

a letter accusing the *Weekly* of "misperception and bias" and refusing to grant an interview (see "Letters" on Page 2).

In the course of Reed's public career, he has been remarkably fortunate in avoiding scrutiny of his ties to Butler. Many writers have treated the issue with kid gloves, as did *The Honolulu Advertiser's* Vicki Viotti, who, in an uncritical piece on Reed that appeared right around the time the *Honolulu* article was being released, let the senator off with a simple, "he spikes persistent rumors that he is a Krishna himself."

According to a recent poll by *The Advertiser* and *Channel 2 News*, Reed is trailing Inouye by 23 percent, with 22 percent of the vote undecided. But it is clear that Reed is giving the veteran incumbent the toughest challenge he's seen in a long time. So, with the election three months away, it's time for the \$64,000 question: Just how much influence does this guru hold over Reed?

In 1977, Reed arrived on Maui from his native Washington State with a backpack and \$1,000. His second marriage was on the rocks, he had abandoned a promising P.R. career and was experimenting with Buddhist meditation. (Reed had originally planned his trip to Maui around a meditation conference. The conference was canceled, but he came anyway.) Before long, Reed hooked up with followers of Butler, a renegade Krishna guru who is a Kalani graduate and the son of a prominent Oahu doctor and antiwar activist Willis Butler.

In 1968, Butler (who has been known by a variety of other names, including Sai Young, Siddhaswarupananda and Jagad Guru, or "world teacher") dropped out of college and began teaching yoga philosophy on Maui. In 1969, he became a disciple of the late International Society for Krishna Consciousness founder A.C. Bhaktivedanta Swami Prabhupad, though he retained his own followers. In 1970, when Prabhupad announced that Butler was not a bona fide spiritual master, Butler submitted to Prabhupad's will, entered the Krishna fold and sent a number of his followers into ISKCON temples around the country.

But in 1973, Butler left the fold. He later said that ISKCON was an organization "not based on love but based on slavery," whose leaders "want everyone to live in the temple, in a welfare state where they centralize food and sleeping and have control over them." He returned to Hawaii, gathered back some of his followers and formed a more decentralized Krishna community. While he continued to call Prabhupad his master and to teach a faith based on chanting of the "Hare Krishna" mantra, he and his followers eschewed the familiar in-your-face ISKCON solicitation style. Instead, a core of his followers banded together to form a business network centered around the Down to Earth health food chain.

Butler's philosophy is, in essence, identical to that of Prabhupad: Human beings are "sparks" of God, whose sole purpose is to please the Lord. The desire-bound soul is born again and again in the cycle of karma until it achieves liberation through chanting the holy name of Krishna.

Butler's dogma extends to social issues as well. He condemns the pleasure-driven activities of the "hedonist," such as abortion ("a great sin and a great wrong"), homosexuality ("perverted," "against the laws of nature and God" and caused by "activities in a past life") and sex other than for the sole purpose of procreation within marriage ("illicit"). He has published several booklets on these topics, most notably a 1982 pamphlet titled *Abortion*, the cover of which features a photo of dead fetuses.

Perhaps most relevant to Reed's candidacy, Butler also teaches that "it is the responsibility of the individual politicians to develop godly qualities" and that "the inept politicians should be removed from their seats and replaced with self-satisfied leaders... Sometimes... saintly persons will take it upon themselves to accept such political posts."

In 1976, Butler followers led a slate of 14 candidates running for a variety of offices under a mysterious new party called Independents 4 ■ August 12, 1992 ■ *Honolulu Weekly*

for Godly Government, whose candidates preached a brand of social reform that appeared to mimic Butler's beliefs. One candidate, Kathy Hoshijo, an initiate known to the group as *Katyayanidevidasi* and a longtime Butler devotee who had followed him into ISKCON and out again, took 17 percent of the vote for U.S. Congress, while another, a grocer and former Waikiki beachboy named Wayne Nishiki, won 20 percent of the vote in a three-way race for Maui mayor.

The IGG's connections to Butler remained a virtual secret until the summer after the elections, however, when *The Advertiser's* Walter Wright published a riveting three-part expose of the Butler group's activities. At the time, Hoshijo accused the paper of "an obvious smear attempt," which she said the paper had undertaken because of her opposition to legal abortion, the Equal Rights Amendment and the Hawaii Newspaper Preservation Act (the law that allowed *The Advertiser* and the *Honolulu Star-Bulletin* to enter into a joint operating agreement).

One of the Butler associates Reed met during his early days on Maui was Mike Durkan, a former IGG candidate, who wanted to start a newspaper (as fellow IGG slater Bill Penarozza, a Butler initiate, had done on Kauai). With Durkan and another IGG supporter, Geoff Silva, Reed sunk the last of his money into starting the *Valley Isle*, the free newspaper which is now best remembered as the vehicle for Reed's allegations, in June 1977, that former Honolulu policeman and state Land Board member Larry Mehau was the "godfather" of organized crime in Hawaii.

But, as Heckathorn's *Honolulu* article points out, the paper also "actively promoted the politics, religious thought and businesses associated with Chris Butler's splinter Krishna sect." Seven of the nine people whose names were on the *Valley Isle's* masthead when the Mehau issue was published had numerous links to the IGG, and the paper often ran articles by or about IGG candidates as well as spiritual-advice articles by Butler. The paper gained as much as 25 percent of its advertising from businesses linked to the IGG and its supporters.

By 1978, *Valley Isle* editor Reed was himself writing articles in which he referred to Butler as "my spiritual teacher, His Divine Grace Siddha Swarup Ananda Goswami." Elsewhere, over the years, Reed has often referred to Butler simply as a wise advisor, while hedging on details of the extent of their relationship. In response to questioning by Heckathorn, Reed said, "I will always respect Chris Butler, and I hope he'll always be willing to give me spiritual advice if I seek it." But Reed has adamantly (and specifically) maintained that he has never been a member of a Butler organization.

"(The *Honolulu* article) acknowledges there is no evidence I have ever been a member of a Hare Krishna organization, or of Independents for Godly Government," Reed told *Advertiser* reporter Thomas Kaser late last month, "yet it pursues a guilt-by-association tack because I knew some of its members."

While it's true there's no evidence of Reed joining a Butler organization, it's also true that there seems to be no membership organization to join. Butler himself has proclaimed, "I am a symbol of decentralization in that I teach people to take Krishna into their home." Butler does have a worship center in Honolulu, the Science of Identity Foundation on Kukui Street, but it has no public list of members.

Reed's statements denying membership in any Butler organization have angered at least one former Butler follower, who expressed "outrage" after reading Reed's statements. The former follower, who asked not to be identified, came forth after reading the *Honolulu* article to say that Reed is a "devout follower" of Butler's faith and a regular at the group's special functions, such as the celebration of Krishna's and Butler's birthdays. The person was told by other Butler followers that Reed was an "initiated disciple" of Butler. Upon such initiates — people who, the former follower said, had "submitted to Butler's commands" — Butler bestowed spiritual names: Reed's,

Story by
Derek Ferrar

Rick Reed's Inner Self

the ex-follower said, is *Krishna das*.

According to the former follower, Reed "appeared to share all the beliefs of the group and participated in all the practices, including bowing and chanting the name of Krishna. I have seen him bow before a photograph of Chris Butler."

Naturally, we would've liked to have gotten Reed's comments on the former follower's report, but, as you already know, he won't talk to us.

Heckathorn knew little of this when he embarked on his profile of Reed. "We started out to do a positive interview," says Heckathorn, noting that the magazine is "not exactly a hotbed of Inouye supporters" (in 1991, a *Honolulu* reader's poll rated Inouye the state's "worst politician"). "We set out to prove that Hawaii really had a choice in the Senate race."

But Heckathorn and *Honolulu* publisher/editor Ed. Cassidy were given pause by Reed's hostile reaction to requests for an interview, as well as a vicious campaign of anonymous letters and phone calls threatening that Cassidy's career would be destroyed if the Reed story went ahead.

After dodging Heckathorn's interview requests for several weeks, Reed finally said he was sick, even producing a doctor's note, and would only respond to questions in writing.

A series of hostile faxes from Reed began to arrive in *Honolulu's* offices. Reed charged that, in trying to "falsely align" him with an "unpopular religious organization," Heckathorn was attempting to "give credibility to malicious, libelous rumors started by the likes of... Larry Mehau."

Strong words for a man who had built so much political capital by playing the underdog in successfully defending himself against defamation charges by Mehau. Strong words for a man who had once told the *Honolulu Star-Bulletin* that "fear of lawsuits" was keeping Hawaii's media "timid and cautious" and that such "fear of the repercussions of adversary journalism" caused the media to "become its own censor." Strong words for anybody.

Two days after Heckathorn faxed his questions to Reed, the senator sent a series of counterquestions to the writer.

Some of the questions Reed faxed Heckathorn:

"Are you bisexual?"

"Why are you telling people I'm a Hare Krishna?"

"Do you plan to vote for Inouye?"

"Is it true that radicals in the homosexual community encouraged you to do a 'smear' article on me?"

"What is your relationship with Lori

Carlson (sic)?"

"Is *Honolulu Magazine* pro- or anti-gay?"

Finally, Reed sent *Honolulu* a letter to the editor, labeling the magazine's story a premeditated "hatchet job" on behalf of Inouye and gay activists.

In mid-June, about the same time Reed was faxing his counterquestions to Heckathorn, Cassidy returned home one day to find a typed, unsigned letter nailed to his door. The writer threatened, Cassidy says, "to make accusations about my personal life that would cost me my job and my public standing if I proceeded with the piece on Reed." Similar threats were subsequently made in phone calls to the *Honolulu* office and to Cassidy's home.

In late June, when it was clear *Honolulu* was going ahead with the story — around the same time Reed sent *Honolulu* his letter to the editor — a number of people in the media received an anonymous letter claiming that Cassidy "is working to destroy and smear Rick Reed with false statements and lies because he is frightened of what Senator Reed knows about him." The letter accused Cassidy of accepting money from Inouye and homosexuals to smear Reed, being a bisexual, fathering a secret child with the daughter of a Democratic politician, having sex with *Weekly* publisher Carlson and stealing money from charities.

Soon after the letter appeared, Reed called Heckathorn to deny he had anything to do with it, warning that *Honolulu* better not say he had.

To be sure, there is no evidence to suggest that Reed was in any way responsible for the letter, but whoever wrote it certainly seems to think like Reed.

After the *Honolulu* article appeared, Reed told *The Advertiser* it was "a calculated attempt to focus public attention on aspects of my personal and religious lives that have nothing to do with my candidacy," claiming his counterquestions were "response in kind to the outrageous questions the magazine has sent me about my personal life and alleged connection with the Hare Krishnas."

But in the April 1 newspaper insert Reed used to kick off his run for the U.S. Senate, he announced: "The motivating force in my life, my purpose in life, is to be pleasing to God," with whom, he said, he has a relationship of a "personal nature."

The electorate deserves to know about the motivating factors in any candidate's decision-making process, especially one who is so explicit about his spiritual influences. Is it really unreasonable to inquire just who, to Rick Reed, God is? Reed, who is always quick to point to

the campaign money Inouye receives from political action committees, obviously realizes that it's in the public's interest to know who a candidate answers to (Reed himself refuses PAC money).

At the very least, it seems clear that the senator, his assertions of nonmembership notwithstanding, has long-term and continued associations with Butler and his followers. One of these connections, examined in the *Honolulu* article, is with Mike and Carol Gabbard, who run the Science of Identity Foundation (Butler himself now apparently resides in California). The Gabbards have both worked as staffers in Reed's Senate office, and they donated \$3,800 to Reed's Keep Hawaii Hawaii series of television commercials on social and environmental topics. Until last February, the Gabbards ran The Natural Deli, a restaurant in the Down to Earth store on King Street. They closed the business after it was picketed for several weeks by gay-rights activists angered by remarks Mike Gabbard made on his radio show, *Let's Talk Straight, Hawaii*.

Reed has ties, too, to Down to Earth. As the *Honolulu* article points out, the wife of one director of the health-food grocery's parent company, Healthy's Inc., worked in Reed's Senate office in 1989, and another director, Mike Henrietta, has contributed to Keep Hawaii Hawaii and the Reed for Senate Committee.

Carl Sanche, a former Down to Earth manager who says it was no secret at the store that Henrietta is a Butler follower, remembers seeing Reed come into the store often and head straight to Henrietta's office, without talking to anyone first.

"(Reed) was not a stranger in there," Sanche says.

Okay, so maybe Reed is a devotee of Butler's. Maybe he does chant Hare Krishna and associate with the Gabbards and others of similar faith. So what? All of these associations could conceivably have nothing to do with Reed's Senate candidacy — if it weren't for the extremely conservative social agenda pushed by Butler and his people, an agenda that is reflected in Reed's politics.

Butler preaches that abortion is an "offense against God," and that, while legislation is not the only answer, "the business of the leaders must be to protect the innocent."

As a state senator, Reed has several times introduced bills (none of which passed) that would have forbidden the appropriation of state money to clinics that perform — or even counsel patients on — abortion, as well as bills that would have imposed abortion restrictions, such as a mandatory waiting period. During Reed's 1990 campaign for re-election to his Senate seat, he received an endorsement from the Hawaii Right to Life Political Action Committee, which distributed a flier with a graphic photo of a first-trimester fetus over the claim, "This baby needs you to vote for Rick Reed." In a recent *Advertiser* article, Reed proclaimed, "I am solidly pro-life."

Butler preaches that "society itself is making it so that more and more people are becoming homosexuals. The media is especially guilty of encouraging people who were not homosexuals before to become homosexuals by propagating the idea that it is a normal and acceptable occurrence."

This winter, Reed proposed legislation that would have denied state funds to any organization or activity that would "tend to promote or glorify homosexuality." He has several times proposed laws requiring mandatory AIDS testing for prisoners, hospital admittees, prostitution arrestees and as a condition for granting a marriage license.

Butler preaches that the root cause of crime is "materialism;" that, in the case of crime, "the need for external control exists when there is no internal control;" and that in today's America, influenced by "materialist" economic forces controlling the schools and media, "the cry for more law and order is getting louder and louder."

Reed has proposed legislation imposing stiffened punishment for crime, including a reinstatement here of the death penalty.

Butler preaches that "even sex in marriage

is considered illicit if it is engaged in simply for sense gratification and not procreation. It may not be as sinful as engaging in homosexual activities, but it is still displeasing to God."

Reed is a big opponent of explicit sex education. This year, he sponsored an (unsuccessful) bill prohibiting "teaching... so-called alternative sexual lifestyles in any school by teachers, administrators, or any outside group." Several years ago, Reed wrote a three-page outline suggesting changes to AIDS curriculum in Hawaii's public schools. The outline, titled "How to Re-Direct Your Sexual Energy," recommended focusing instead on physical activities such as sports and "yoga," as well as spiritual pursuits like prayer and "meditation."

Reed's right-wing leanings extend to other areas as well. He is a hawk, who once told a reporter of swapping his .38-caliber pistol for a .45-caliber because the .38 didn't have enough "stopping power." In the late '80s, he advocated the creation of an American strike force that could kill Libyan leader Moammar Khadafy and "anyone else who is waging war against the American people." During the Gulf War, he took out a full-page newspaper ad berating his fellow Hawaii legislators for being soft on the conflict.

Reed's puritanical stances seem to have won him an alliance with the Christian right. According to information obtained by the Sacramento, Calif., watchdog group Project Tocsin, which tracks the political activities of religious groups (Tocsin is an old word for a warning signal), Reed attended a November 1991 national leadership meeting of evangelist and former presidential candidate Pat Robertson's Christian Coalition.

Investigative reporter Frederick Clarkson, who — undercover — attended the "Road to Victory" Conference and Strategy Briefing at Robertson's Virginia Beach, Va., headquarters, wrote in the January 1992 issue of the journal *Church and State* that the conference was "devoted to... the mechanics of taking over the Republican Party."

Present at the conference as either speakers or attendees were such conservative superstars as Vice President Dan Quayle, North Carolina Sen. Jesse Helms, California Rep. William Dannemeyer, Christian right leader Phyllis Schlafly... and Reed.

"Christian Coalition activists are working to take over the Republican Party from the grassroots up," Clarkson wrote, "while electing right-to-life conservative Christian Republicans to public office at all levels. They view George Bush and 'establishment' Republicans as their principal opponents and believe themselves divinely appointed to take power and rule in the United States."

"We are not just coming up against human beings to beat them in elections," Robertson told the conference in his closing address. "We're going to be coming up against spiritual warfare."

Clarkson says Coalition executive director Ralph Reed (presumably no relation to Rick) told one reporter, "I want to be invisible. I do guerrilla warfare. I paint my face and travel at night. You don't know it's over until you're in a body bag. You don't know until election night."

One has to ask just what Reed, who claims membership in no religious organization, was doing at the conference — and, further, how his rabid Christian friends would feel about his long-term involvement with a Krishna sect.

But, hey, candidates with a covert religious right-wing social agenda are a dime a dozen these days, even if most of them are doing it in the name of Christ, not Krishna. One really unusual twist on the Reed story, however, involves Reed's connection, through Butler and his network of followers, to Wayne

Nishiki, the Maui councilman who is running against Inouye in the Democratic primary. Earlier this summer, Nishiki was nearly expelled from the Democratic Party for allowing his picture and a statement of support to appear in Republican Reed's newspaper insert. Nishiki labeled the expulsion proceedings a plot by "Emperor" Inouye.

After Nishiki's failed IGG candidacy for Maui mayor, he became a reporter for the *Valley Isle*. In his 1977 expose, *The Advertiser's* Wright identified Nishiki as a "noninitiate (of Butler's) but (a) fellow chanter," who had been involved in the financial dealings that led to the creation of the Down to Earth family of businesses and whose mother-in-law owned a "Krishna farm" on Maui, "where the Krishna devotees... put on vegetarian feasts and chanting every Sunday afternoon."

Since then, Nishiki seems to have stuck with Butler's group. The same former follower who said that Reed is a devout Butler follower also said they saw Nishiki at Science of Identity Foundation programs on several occasions and had been told that he, too, is now an initiated disciple.

In 1978, after the *Valley Isle* collapsed under the weight of libel suits by Mehau and others and the IGG had become defunct, Reed ran Nishiki's dramatic, narrowly unsuccessful Democratic campaign for lieutenant governor.

The possibility that Nishiki and Reed, with their shared Butler connections, could be engaged in a coordinated campaign against Inouye deserves a close look, according to Bart Dame, a member of the Central Committee of the state Democratic Party. Dame, who helped head off the move to expel Nishiki, has been researching connections

Inouye. *Honolulu Weekly* phone calls to Nishiki were unreturned.

Aware that both Nishiki and Reed would likely brand his research part of a smear by Inouye, Dame says, "In fact, I approached the Inouye campaign with some of my findings, and they were actually a lot less receptive than I expected them to be — they never got back to me."

So if Reed is as clearly tied into Butler as it appears, why does the champion of "clean" government come out swinging every time somebody mentions it? One answer might be found in remarks made by political commentator Dan Boylan in Heckathorn's *Honolulu* article. Reed, Boylan said, "appeals to the disaffected on both ends of the political spectrum" at a time when anti-incumbent sentiment is running high all over.

An analysis of Reed's campaign strategy and legislative history clearly shows that he endeavors to appeal to a number of target groups, some of whom have conflicting interests. It may be that Reed would rather his right hand not know what his left is doing, and vice versa.

At the conservative end of Reed's spectrum of support are some members of the Christian right, who back his regressive social agenda. More towards the center of Reed's support spectrum are small business leaders like Sam Slom, Cliff Slater and Lex Brodie, who back Reed's efforts to reform workman's compensation rules and to provide a better tax climate for such businesses. It may be that Reed is eager to keep the details of his unorthodox religious affiliations from both these groups.

The same may be true of the predominantly Catholic Filipino community, which Reed has been courting heavily. (Reed's fifth wife, Jennifer Villagonza Reed, is Filipina.)

On the left end of Reed's support spectrum are environmentalists and Hawaiian activists, who have latched onto Reed's anti-development stance, his TV ad promoting the cause of the Save Mount Olomana Association, the potent underdog image he acquired during the Mehau trial and his friendships with such Hawaiian elders as Uncle Harry Mitchell, father of Kimo Mitchell, who along with fellow activist George Helm, disappeared from Kahoolawe in 1977. (Part of Reed's *Valley Isle* article calling Mehau Hawaii's crime godfather also alleged Mehau was responsible for Mitchell's and Helm's deaths.)

But members of these activist groups — particularly the environmentalists — also have a history of supporting civil-liberties causes such as gay and abortion rights. Reed clearly does not share these views — a fact he might prefer the activists didn't know.

Reed seems to be, by nature, a fighter — and he has promoted himself as such. The list of fights he's picked with the media and with fellow legislators (not to mention Larry Mehau) is long. "Rick is all man," Reed's ex-boss, former Honolulu Prosecutor Charles Marsland, gushed to *Honolulu's* Heckathorn. "He's not going to back off, not going to take any guff from anyone."

At the very least, Reed has been skirting the truth when he disclaims any membership in a Butler "organization." His ties to Butler are long and ongoing, and his devotion to his guru, apparently runs deep. The dominating nature of Butler's role in his sect and the extraordinarily hostile reaction Reed has toward anyone who calls him on his faith, suggest there is at least a possibility that a vote for Reed is in great part a vote for Jagad Guru Siddhaswarupananda. Reed may be "all man," but whose man is he?

Perhaps only Krishna knows for sure.

Derek Ferrar, the *Weekly's* Arts and Calendar editor, spent 10 years as a disciple of an Indian guru. His monastic name was Swami Turiyananda Paramahansa.

I am a symbol of decentralization in that I teach people to take Krishna into their home.
— Chris Butler, a.k.a. Jagad Guru Siddhaswarupananda.

I don't identify myself with any particular faith or church. I'm not a member of any organization.
— Kathy Hoshijo, a.k.a. Katyayani devi dasi, 1976 Independents for Godly Government candidate for U.S. Congress, who is revered by Butler followers as a "pure devotee" of Krishna.

I really couldn't say I belong to any particular church or organization.
— Sen. Rick Reed.

between the two.

"After studying Federal Election Commission filings," Dame says, "I'd say that at least 80 percent of Nishiki's funds come from Butler followers, a number of whom have donated to Reed's campaign as well. They share donors, they share volunteers — and the common thread seems to be Chris Butler. Basically, you have this renegade Hare Krishna cult that is running two of its members for U.S. Senate; one is a Republican and one is a Democrat."

Dame says the Democrats "would have been justified in expelling Wayne," but he and others successfully advocated censure instead, since expulsion "would have been perceived as a heavy-handed attempt to squash a rebel."

In a November article in the *Star-Bulletin*, Reed and Nishiki denied teaming up to unseat

CALENDAR

August 12 - August 18

Film

Criticism by Bob Green unless otherwise noted.
☺, the Weekly's dingbat of approval, indicates
films of more than average interest.

First Run

Brief reviews of selected first-run films in town.
Confirm theaters, dates and times.

☺ **Batman Returns** A fairy tale for the age of alienation, *Batman Returns* is a beautifully realized, visually stunning take on the further adventures of Gotham City's most eccentric good guy. With Michael Keaton, Michelle Pfeiffer and Danny DeVito. The best comic-strip film ever made.

Bebe's Kids An animated musical comedy with an all-black cast of characters, most of whom are based on the comedy monologues of the late comic Robin Harris. In this Afrocentric piece, done in Harlem Renaissance and Kenyan colors and set to music by Motown vet John Barnes, the Harris-like main character takes some neglected kids for an outing in an amusement park — with nightmarish results. Screenplay by Reginald Hudlin (*Houseparty*), direction by former Disney animationist Bruce Smith.

☺ **Behold Hawaii** After more than a decade's delay, this IMAX confection about Hawaii has made it to our shores and, despite the fact that it is a hokey melodrama (dream-sequence during a dubious thunderstorm, etc.), this damned thing — about a young Hawaiian rediscovering his roots — is drop-dead gorgeous and ethnographically compelling. Certainly, it is not a film to be dismissed in a moment of severe sophistication; it is a clear reminder of why we should honor and respect Hawaiian culture, and, for all of its faults, the IMAX imagery reinforces the notion of the sacred *aina*. Highly recommended. (Waikiki IMAX)

Boomerang A new Eddie Murphy comedy, in which Murphy tries out a new persona — theoretically, a kinder, gentler kinda guy. In reality, it's the same old sexist nonsense, replete with stunning, scantily-clad women and painful jokes. With Halle Berry and Robin Givens.

Buffy the Vampire Slayer Luke Perry stars (with Donald Sutherland) in this hormone-

rush comedy about a comely young lass who is assigned the task of doing-in a clutch of vampires who've been hanging around school and just, well... bringing everyone down. It's in the *Wayne's World* and *Encino, Man* mode — big and dumb, with plenty of pubescent flesh on view. (Better hang up your garlic now; this is the first of eight vampire movies to be released within the next three months.)

Death Becomes Her We are promised "scathing satire" in this macabre fantasy-comedy from the hands of director Robert Zemeckis (*Who Framed Roger Rabbit, Back to the Future(s)*). It's got a "dream" cast: Meryl Streep as a tacky cabaret chanteuse, Goldie Hawn as a jealous aging broad and Bruce Willis as a plastic surgeon. The story is about middle-agers trying to turn back the hands of time with natural and unnatural forces. It's one of those big \$40 million jobs — so look for watered-down satire, lots of product placement and a script cobbled to fit the whims of all that competing star power. Isabella Rossellini co-stars.

The Dream is Alive A 40-minute NASA propaganda film, narrated by Walter Cronkite (who surely must have winced at the clichéd voice-overs he had to enunciate). It shows the wonders of America's space program, and it's a crowd pleaser: The shuttle's in space and all's right with the world, it seems to say. A few of the shots are eerily beautiful, and one or two are spectacular. All in all, however, it's strictly for the rubes — bread and circuses while Rome burns far below. (Waikiki IMAX)

Hawaii — Born in Paradise An IMAX tourist-oriented tour of our state, featuring a Big Island volcano, a rain forest, Haleakala and the birth pangs of Loihi. Lucky for us, it has an environmental theme and it does an okay job — as far as it goes. Music by Oscar-nominated Mark Isham (*Never Cry Wolf*). (Waikiki IMAX)

Honey, I Blew Up the Kid A Disney special-effects comedy starring Rick Moranis. It's about a Giant Child (the result of one of his father's loony experiments), who does cute and very big shtick. This is the ultimate summer movie, and it's a sequel to boot (to *Honey, I Shrank the Kids*). Mark my words, it will make a zillion dollars.

Housesitter A pale imitation of the American screwball comedies of the 1930s, in which eccentrics played out rites of passage using bent logic. In this '90s incarnation, Goldie Hawn and Steve Martin are pressed into service when Hawn moves (uninvited) into Martin's house — and life — and gradually takes over. Screenwriter Mark Stein certainly knows his '30s comedies — he's stolen from virtually every one to create this confection.

A League of Their Own The writing team of Lowell Ganz and Babaloo Mandel (*City Slickers, Parenthood*) put together this uneven confection based on the true story of the 1943 all-American girls baseball organization. It's a patchwork affair with an inescapable story directed by Penny Marshall (*Big, Awakenings*) who displays her sitcom roots here (everything is played broadly, and some female stereotypes are used rather insensitively). The cast includes Tom Hanks, Madonna, Rosie O'Donnell, Jon Lovitz and, best of all, Geena Davis in the lead, whose performance is so measured and moving that she seems to be in another film altogether.

Lethal Weapon 3 Deja view, with Mel Gibson and Danny Glover re-bonding as a pair of Frick and Frack cops trying to locate a cache of evidence that has disappeared from the precinct itself. Plenty of chases, explosions, violence and martial arts (provided by Rene Russo). It is said that returnee Joe Pesci, peroxidized and perky, practically walks away with the movie. Directed, as were the first two, by Maui's Richard Donner.

Mo' Money Damon Wayans (*In Living Color, The Last Boy Scout*) wrote and stars (with sibling Marlin) in this comedy about a hustler making his way in Metropolis. Wayans does his most polished TV bits (a double-entendre gay, a stud-master, a nail) in this allegedly autobiographical movie about making your way in the world when you're not the right color, don't speak the King's English and don't know which fork or spoon to use. Wayans may or may not be the next Eddie Murphy — but he's hungry enough not to forget to be belly-laugh funny.

Out for Justice Out to lunch.

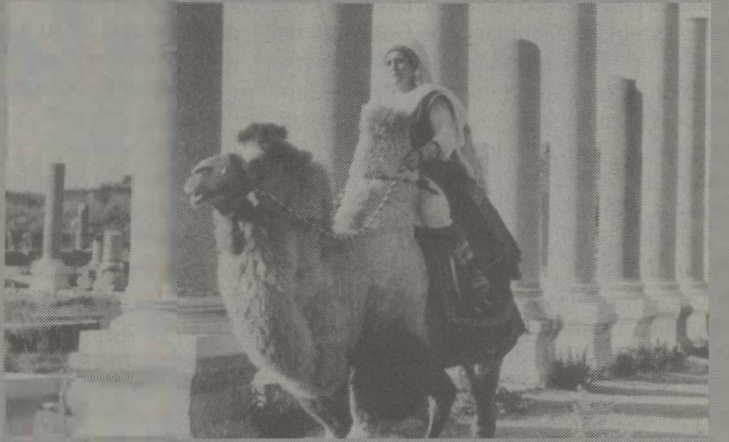
Patriot Games Harrison Ford lends his stolid integrity to this summer blockbuster adapted from Tom Clancy's big paranoid bestseller about Irish terrorists seeking revenge on an ex-CIA agent, who has inadvertently foiled their plans to off members of the British Royals. Australian director Phillip Noyce (*Dead Calm*) knows how to stage action sequences, and some of the mind-boggling CIA spy- and kill-apparatus is on view in this "family values"-oriented outing. In fact, a bit of this \$42 million movie was actually shot at CIA headquarters and received full cooperation from that agency — a movieland first.

☺ **Pinocchio** Walt Disney's second-ever feature-length cartoon, now refurbished with enhanced color and cropping and blow ups for the wide screen, is an odd, schizoid movie — a Victorian morality tale tricked out with song and dance. Occasionally, the animation is strikingly effective. Does the film veer into vicious sentimentality and cutesy poo? Yep. Just for the record, that's Cliff "Ukulele Ike" Edwards warbling *When You Wish upon a Star*.

☺ **Prelude to a Kiss** One of the most intelligent films out of Hollywood in many a moon, this is a revisionist romantic comedy that has to do with the little surprises that greet us once *The Honeymoon Is Over*. The play from which it was adapted had elements of brilliance; the movie, suffering from censorship (a crucial kiss is cut away so as not to "offend" the audience), lacks them... but is nonetheless well worth seeing. With Alec Baldwin as the groom and Meg Ryan as the bride, into whose body the soul of an old man is transferred at a wedding party.

☺ **Raise the Red Lantern** Another stunningly beautiful Chinese film by director Zhang Yimou, of which *Los Angeles Times* reviewer Kevin Thomas wrote, "The visual and dramatic become one to a greater, richer

Film Pick



"Do you 'ave a license for that camel?" A scene from *Mankurts*.

Cinema Masterworks of Turkmenistan (1963-1990)

Film curator Forrest Ciesol will introduce these five films, rarely seen in the United States, that hail from the Central Asian republic of Turkmenistan (formerly part of the Soviet Union). The five range from the 1963 classic *The Contest* to 1990's *Mankurts*, a stinging indictment of totalitarianism, and for those who have a merely stereotypical awareness of Central Asia, they should prove a revelation. From the strong folk music traditions to the incursions of television to the rites of passage for the young, these stories reinforce our common humanity while giving insight into the traditions and folkways of a unique culture, one that is both rural and urban. *To Bring Up a Man* (1982) is the tale of a young city boy brought to his grandfather's sheep ranch in an effort to help him get in touch with nature. *The Son* (1963) is a father-and-son story in which a young man serves the memory of his father by emulating the elder's skill as a musician in the aftermath of World War Two. *The Contest* (1963), described as "a profound... condemnation of mankind's unbroken history of violence," tells the story of one man's obsession with saving his abducted brother. *Daughter-in-Law* (1971), the most celebrated of all Turkmeni films, contrasts the rigid conventions binding females with the rich inner lives of women who will not be psychologically subdued. Finally, *Mankurts* (1990) is the allegorical tale of a man who loses all memory of himself and his traditions after being brutally tortured. Of this last film, director/cinematographer Hodzhakuli Narliev says: "This parable is modern. Mankind deprived of its historic memory about the past is a world without a future. It is the sleep of reason producing monsters." — Bob Green

8/12: *The Son*; 8/13: *To Bring Up a Man*; 8/14: *The Contest*; 8/15: *Daughter-in-Law*; 8/16: *Mankurts*; Art Auditorium, UH Manoa; 7:30 p.m. all nights. \$4. 956-7221.

extent than ever before in Zhang's work."

Raising Cain Horrormeister Brian DePalma wrote and directed this thriller about murder, schizophrenia and working wonders on a low budget. John Lithgow here essays two roles — evil twin division — in DePalma's attempt to resurrect his reputation and bankability. If this thing is half as horrifying as DePalma's *Bonfire of the Vanities*, it'll scare the zoris off you. (Warning: DP also wrote this shockfest, and, as a writer, he tends to steal plot points from everyone in sight.)

Sister Act Written for Bette Midler (who turned it down), this comedy about a gangster's moll and singer in a '60s femme trio wound up starring Whoopi Goldberg. After witnessing a murder, the Whoopster winds up in a witness protection program... and then a nunnery. The one-liners abound, though luckily they're delivered by such veterans as Maggie Smith and the wondrous Mary Wickes.

A Stranger Among Us Melanie Griffith is a NYPD detective who goes undercover in a self-contained Hassidic Jewish community to investigate a missing-persons case that turns into a politically connected murder. This synthesis of *Witness* and *Shining Through* was directed by Sidney Lumet, the most prolific "A" director in the history of Hollywood.

Three Ninjas Disney crap about three pubescent American kids who Right All Wrongs using martial-arts derring-do.

☺ **Unforgiven** In this well-cast, resonant Western, Clint Eastwood orchestrates a comeback that trades on his earlier screen image as a mysterious retributionist (see *Outlaw Josey Wales*). Gene Hackman, Morgan Freeman and Richard Harris co-star. The best news here is that Eastwood directs — and he's a much better director (*Bird, White Hunter, Black Heart*) than actor. Some preview critics have called it

an "instant classic." Regardless, it certainly reveals the tragedy of short-cut Western morality plays. Highly recommended.

Universal Soldier Jean-Claude Van Damme and Dolph Lundgren star as the "ultimate fighting machines of the future" (and you thought it was going to be the Patriot missile system). GI Joe meets the \$6-million-man in this brain-dead fantasy about two soldiers who are brought back from the dead, with a little genetic enhancement courtesy of Uncle Sam (does Medicare cover that?).

Unlawful Entry Suspenser about a sociopathic cop (Ray Liotta — who else?) helping out, and then invading the lives of, a young couple.

Whispers in the Dark A suspenser, by director Christopher Crowe, starring, among others, Alan Alda and Jamey Sheridan. This troubled production originally received an NC-17 rating because of its "erotic content," was re-edited and wound up with an R rating, thus protecting the film studio's \$30 million investment. With Annabella Sciorra.

Short Run and Revival

☺ **Diamond Jim** (1935) An above-average screen bio of James Brady, well-known *bon vivant* and millionaire sportsman in the American 1890s. The film would be negligible except for the star power of Jean Arthur, one of America's best comedienne. Arthur could play the romantic lead and still get big laughs — see *Diamond Jim* for proof positive. *Moviedrome Museum*, 3566 Harding Ave.; Thur. 8/13 & Sat. 8/15, 8 p.m., matinees 8/15, 3 & 5:30 p.m. \$5. 735-8771

☺ **Easy Living** (1937) Preston Sturges wrote this screwball comedy that has something to do with Jean Arthur (in what is, arguably, her best

Word Pick



Serbian-born writer
Victoria Djuric Emery

Rethinking the Yugoslavian war

Much has been made in the American media of the civil war in Yugoslavia, and at least one Hawaii resident is concerned that the American public is getting a skewed view of the situation and that American troops will soon become involved in the war. Serbian-born writer

Victoria Djuric Emery, a University of Hawaii faculty member who will read from her work this Friday, says she fears shelling by the Americans of the area could escalate the violence. She points out that the current situation is the result of unresolved political and ethnic conflicts from previous times, as well as rivalry over trade and industry, and she observes: "Croatia is more industrialized and Serbia is more agricultural. The problem is whether they are going to be hostile to each other. Then you will have a situation where Croatia will have allies like Germany, and they may acquire a lot of power, and if they want to be hostile to Serbia and overpower them, that's going to be a problem. A lot depends on whether everybody would be satisfied with the boundaries at this time, in a way that they were not satisfied in the past."

Emery's short stories and poetry have appeared in literary magazines in Hawaii, on the continental United States and in her native Yugoslavia. She will read at the University of Hawaii's Women's Center, along with writers Lyn Walters Buckley and Diane Kahanu. The readings will be followed by an informal discussion of the events in Eastern Europe — including the Serbian peace movement — and audience members are invited to participate. — T.M. La Ferté

An evening of poetry and fiction by women writers Lyn Walters Buckley, Victoria Djuric Emery and Diane Kahanu: *Women's Center, 1820 University Ave.*: Fri. 8/14, 7:30 p.m. Free. 942-7762

Haunani Apoliona

The Hardest Working Woman in Slack Key

The standard myth of the musician, expressed however ironically by Dire Strait's 1985 pop hit *Money for Nothing*, posits a life of unearned luxury. Even though they expend incredible amounts of physical and mental energy going about their business, musicians are described as "players." The majority of them must take second jobs and then somehow find the time to fit their art into what others can call leisure. In short, most musicians work very hard indeed. And among the hardest-working musicians in Hawaii today is singer, composer and *ki ho'alu* (slack key) guitarist Haunani Apoliona, who will perform this Sunday at the Gabby Pahinui/Atta Issacs Slack Key Festival.

The winner of a 1992 Distinguished Alumni Award of the University of Hawaii, Apoliona somehow manages to balance a busy schedule of performing with a remarkable commitment to community action and a full-time executive position as president/corporate executive officer of ALU LIKE Inc., the 16-year-old highly respected statewide multiservice agency for Hawaiians. That she stays so busy is story enough. That she does her work so well, in the spirit of sincerity, humility and mutual respect, makes for an even more important message and model.

Long a mainstay on the Hawaiian music scene, Apoliona is perhaps best known for her work with the popular group Olomana, which she joined in May of 1982. She has also performed with the great Oahu quartets Kaimana and Puamana, with North Kohala singer/storyteller Clyde "Kindy" Sproat and with an ad hoc Hawaiian supergroup affectionately known as Da Bunch (which also features The Ho'opi'i Brothers, Violet Liliko'i, Barney Isaacs and Led Kaapana). Her first professional music partners, in the '60s, were David and Daniel Choy from Palolo Valley, and she has played with Haunani Bernardino, Eldon Akamine and Aaron Mahi for the last three decades. In the hula world, she has worked as music director of Frank Kawai Hewett's Kuhai Halau o Kawaikapuokalani Pa 'Olapa Kahiko and performed with many other halau.

Her 1986 solo album, *Na Lei Hulu Makua, Na Wahine Hawaii'i*, earned six Na Hoku Hanohano awards and continues to circulate widely among lovers of Hawaiian music. She is also a three-time recipient



of the Haku Mele Award for Hawaiian composition, for *ALU LIKE* (1985), *Kukui'ohiwai* (1988) and *E Mau Ana ka Ha'aheo* (1991). Away from home, she has represented Hawaii at numerous festivals, including the Smithsonian Festival of American Folk Life in Washington, D.C. in 1989 and the Festival of Pacific Arts in Tahiti in 1985.

Jay Junker

Apoliona says her music helps her immeasurably in her work. "The music," she says, "rejuvenates the spirit and also provides an opportunity to link with people in all segments of the community. Many times the music is the entree to other points of commonality. For example, Olomana, with Jerry (Santos) and Robert (Beaumont), created its own musical identity and then linked itself to issues of land and other *na mea Hawaii* (Hawaiian issues). Music is very non-threatening; you don't have to do battle with points of view. It's very uplifting and because of it, people are more ready to listen to whatever is attached to your philosophy."

In addition to her efforts on the bandstand, Apoliona has worked extensively and effectively in the media — she did a Hawaiian affairs radio series on KHVH, hosted *The ALU LIKE Connection* on Oceanic Cablevision and appeared in *Hawaiian Rainbow* (still the most widely-distributed film on Hawaiian music). In 1990, she provided guidance, narration and the opening song for the television special *Ku'u Home: Hawaiian Songs of Home*.

Apoliona currently serves on a wide array of boards, such as Olelo, the Corporation for Community Television and the state of Hawaii Board of Health.

For most, this would be a busy enough schedule. Amazingly, Apoliona fits all

of these activities around her administrative and planning work with ALU LIKE. Both federally and locally funded, ALU LIKE provides a wealth of services for Hawaiians on all of the islands, including business development services, job and educational training, computer training, services to Native Hawaiian elders and substance abuse prevention services. The organization currently employs a full-time staff of roughly 160 individuals. Apoliona, who earned a master's degree in social work from UH Manoa, has been with the organization since 1978. She began as an employment and training counselor, worked her way up and became president/CEO in 1991.

Apoliona says the central philosophy she aims to communicate is that people can do anything when they set their minds to it. "And," she adds, "we can do it together. If we focus on the higher plane of things we all have something to contribute, we all have strengths. I guess the effort is to continue to focus on the common areas and get over those rough spots where there might be differences. It's an inch-by-inch process, sometimes a struggle, but there are some basic things — like mutual respect — that are important."

Haunani's first composition, *ALU LIKE*, winner of the Na Hoku Hanohano Award for song of the year in 1985, expresses this idea well. She wrote it in 1979, after being asked to deliver a talk at a statewide conference of ALU LIKE, which at the time consisted of about 80 people.

"I was asked," she says, "to lead a workshop on Hawaiian concepts and values, which we were taught included the importance of working with sincerity and humility as well as the need to listen and observe and not be so moved to talk all the time; to concentrate instead on the completion of tasks. Before the workshop, Guard Kealoha and I were talking, and he said wouldn't it be great for ALU LIKE to have a song. I guess the work and the belief in ALU LIKE's mission helped to uncork some of the spirit and inspiration. I had never written a song, but within half an hour the lyric and melody came through. We woke people up at midnight and said 'Hey, we got this song!' The next morning we performed it with all the ALU LIKE staff at the Makaha Inn, where the conference was being held — and what got to me was the way the music brought us so together. Every time we sing it, it helps to get us back on track. It pulls us back and reminds us of our responsibilities as skillful people, working hands, with appreciation of the flowers of many kinds."

"Since then, I guess all other songs that I have composed have tried to speak of the high importance of work, the quality of work and the process by which we move with one thought, caring for one another and looking to the source of our strength and focusing our energy on the task at hand."

For some artists, these words would go only as far as the lips. No matter how beautifully expressed, they would reside merely in the realm of ideas, not in the day-to-day world, where the real person meets the persona. Apoliona, working with her hands as well as her spirit and *na'au* (soul), embodies the ideals of which she sings. Perhaps this is why her songs ring so true. Flowers that will never fade, *na pua mae'ole*, they inspire us to action even as they entertain. ■

role) as a penniless gal meeting up with Wall Street wealth. This is a (theoretically therapeutic) post-Depression dream-world fantasy — it never once touches reality as we know it. But it does create a world that is funny, indeed. Recommended. *Movie Museum*, 3566 Harding Ave.: Fri. 8/14 & Sun. 8/16, 8 p.m.; matinees 8/16, 3 & 5:30 p.m. \$5. 735-8771

☞ **Puamana** (1991) This 37-minute movie focuses on the life and lifework of Auntie Irmgard Aluli and the musical Farden family. Aluli was made for Les Blank's loose-limbed, meandering "reality" films — she lights up the screen, even when she is puttering around in her backyard. When the family gathers, little telling glimpses — the words of Dr. Noa Emmet Aluli from Molokai, for example — show how strength of character can be forged by love of land and music. Also on the same bill — Blank's *Gap-Toothed Women* and *Marc and Ann*. *Academy Theatre*, 900 S. Beretania St.: Wed. 8/12, 7:30 p.m.; Thur. 8/13, 1 p.m. \$4. 532-8701

☞ **Rocco and his Brothers** (1960) Luchino Visconti's long, elaborate neo-realistic look at the fortunes and misfortunes encountered by a family of peasant Italians when they move to Metropolis. Rocco is portrayed (by a cast-against-type Alain Delon) as a saint. His elder brother (Renato Salvatori) is a rough-and-tumble boxer in league with a gay boxing promoter. *Rocco* is long; it's melodramatic, it's operatic — and it's good. Highly recommended. *Academy Theatre*, 900 S. Beretania St.: 8/13 - 8/15 & 8/17, 7:30 p.m.; 8/16, 4 p.m. \$4. 532-8701

La Terra Trema (1948) This is an early Visconti film, shot on location using "real" people — merchants, clerks, fisherman — as actors, in a portrayal of village life. The film — set in the village of Acì Trezza, Sicily — was allegedly shot without a script, and the reminiscences of the villagers determined the flow of events. It's a companion piece of sorts to *Rocco and his Brothers*. *Academy Theatre*, 900 S. Beretania St.: Tue. 8/18 & Wed. 8/19, 7:30 p.m. \$4. 532-8701

Music

Concerts

Alpha Blondy Blondy, who hails from Africa's Ivory Coast, is one of the most original and authentic acts in reggae today. *Aloha Tower*: Fri. 8/14, 7 p.m. \$17.50 advance, \$20 at the door. 536-2728

David Choy Quartet Joining saxophonist Choy in this Jazz Comes to Chinatown show will be bassist Bruce Hamada, pianist Jim Howard and drummer Noel Okimoto. *Magnets on the Park*, 1121 Nuuanu St.: Sun. 8/16, 3 p.m. \$8. 677-1930

The Dela Cruz Brothers Falsettomeisters Michael and James Dela Cruz hit the high notes in this installment of Sea Life Park's special Year of the Family "Kama'aina Friday Night" series featuring musical groups whose members come from the same 'ohana. Performing with the brothers will be their hula halau, Na Opio o Koolau, featuring three generations of dancers ranging in age from 3 to 76. *Sea Life Park*, Makapuu Point: Fri. 8/14, 8:30 p.m. \$5.25 (without park admission, free with admission). 259-7933

Kaneohe BayFest Those few, proud folks with all the camouflage and guns put on a happy face for once in this three-day family jamboree sponsored by the Kaneohe Marines. On the musical bill: *Fri.*: Molly Hatcher; *Sat.*: Willie K.; *Sun.*: Kapena. Also featured: sports, rides, games, food, fashion show and BEER. So come on out, as the *Morale, Welfare and Recreation* press release says, and "enjoy the beautiful base." *Kaneohe MCAs*: Fri. 8/14 - Sun. 8/16, all day, \$2. 296-9696

Audy Kimura Kimura, a top local contemporary composer, pulls out the Island favorites to soothe the savage beast in this "Wildest Show in Town" concert at the zoo. Opening for Audy will be the Kapalakiko Hawaiian Band from San Francisco. And if the free music doesn't do it for ya, then catch this: The good folks at AT&T, the series' sponsor, will be offering free three-minute international calls before the show. *Tanzania, anyone?* *Honolulu Zoo*, Kapiolani Park: Wed. 8/12, 5 p.m. Free. 531-0101

Jay Larin Remember *The Koolaus are Sleeping?* Just checking. *Captain's Room*, Hawaii Prince Hotel, 100 Holomoana St.: Fri. 7/14, 8:30 p.m. \$6 advance, \$8 at the door. Two-drink minimum. 947-5829

Jeff Linsky Linsky, a largely self-taught guitarist with a unique flair for improvising with jazz, classical and Latin influences, has garnered transcontinental raves at guitar festivals. Fans include Earl Klugh ("He has it all") and Carlos Barbosa-Lima ("flawless, remarkable technique"). *Atbernton Performing Arts Studio*, Hawaii Public Radio, 738 Kaheka St.: Sat. 8/15, 8 p.m. \$15. 955-8821. Linsky will also perform at *Orvis Auditorium*, UH Manoa campus: Mon. 8/17, 8 p.m. \$8. 956-8742

Molly Hatcher Back from the land of Whatever Happened To..., this vintage Southern rock outfit steps into town to shake your world, baby. The Hatcher will also be performing at the Kaneohe BayFest (see separate entry). *Gussie L'Amour's*, 3251 Nimitz Hwy.: Sun. 8/16 - Tue. 8/18, 8:30 & 10:30 p.m. \$8 advance, \$10 at the door (advance ticket gets you in for all three days). 836-9180

Slack Key Festival See article on this page. **Sounds of Aloha Chorus** Barbershop harmony makes your day in this installment of Bishop Museum's free MusicFest! series. *Bishop Museum*, 1525 Bernice St.: Fri. 8/14, 6 p.m. Free. 847-3511

Universal Expo Preview Check out this show by Hawaii acts who have been accepted to perform at the Universal Exposition in Seville, Spain — and help finance their trip there. On the bill: slack-key wizards Ozzie Kotani and Peter Medeiros; jazzmen Francesco Crosara and Eric Kurtz; electronic composer Robert Æolus Myers; Kalaupapa storyteller Makia Malo, performing with actors Chris Schoemaker and Jeff Gere in a large bamboo "environmental sound sculpture" built by musician Steve Rosenthal; Nani Lim Yap and Leialoha Lim Amina's Na Lei 'O Kaholoku hula halau; the Three Cornered World dance troupe, featuring Karen Miyake, Eva Lee, Ben Moffat and Yukie Shiroma; dancer Valerie Bergman; and mime Julie McBane. *Andrews Amphitheatre*, UH Manoa campus: Sat. 8/15, noon - 6 p.m. \$10 donation. 395-5915

Club Acts

Band schedules are subject to change. Please call venues for latest information. Consult the Live Music Venues list for locations and phone numbers.

12/Wednesday

- Almost Famous Variety**; *Coconut Willie's*: 4 p.m. - 1:30 a.m.
- Augie Rey & City Lights** Dance; *Nicholas Nickolas*.
- Bernadette and the New Sensations** Top 40; *Rumours*.
- Blue Kangaroo** Country, Folk; *Jolly Roger Waikiki*.
- Bobby Dunne Band** Pop, Rock; *Irish Rose Saloon*.
- Brother Noland** Contemporary Hawaiian; *Malia's Cantina*.
- Carol Atkinson** Jazz; *Cupid's Lounge*.
- Christopher Carillo** Variety; *Monterey Bay Cannery Outrigger*.

Gabby Pahinui / Atta Issacs Slack Key Festival

Waimanalo Beach Park, Sun. 8/16, noon to 6 p.m.

Next To Nothing

Lingerie & Active Wear

20% OFF w/Coupon
• Variety of thong underwear
• Men's silk boxer shorts
• Short set P.J.s, chemise, camisole, wedding gifts, bustiers & more!

FREE Cotton short set with \$25 purchase - Good while supply lasts.
(Offer not good w/ other specials)



1026 Kapahulu Ave., Honolulu HI 96816 Tel: 735-6398

CALENDAR

LIFE IN HELL

©1992
BY MATT
GROENING

BINKY'S GUIDE TO LOVE
OR "ANGUISH AH-OY!"

CHAPTER XXV: FIRST-DATE CONVERSATIONAL NO-NOS

LOVE SECRET # 28: RELIEVE YOUR ANXIETY DURING MOMENTS OF STRESSFUL INTIMACY WITH GENTLE MOCKERY OF YOUR PARTNER.

I'VE NEVER HAD THE COURAGE TILL NOW TO TELL YOU THE DEPTH OF MY LOVE FOR YOU.
SAY IT, DON'T SPRAY IT.

ANALYZING YOUR DATE
YOU'VE GOT NO ONE TO BLAME BUT YOURSELF.

ODD DREAMS
SO I'M LYING THERE HEADLESS AND THE EXECUTIONER TAKES OFF HIS HOOD AND IT'S MY DEAR SWEET MAMA. PRETTY WACKY, HUH?

YOUR DIET
ALL I'VE EATEN THIS WEEK ARE THREE RICE CAKES.

YOUR CAT'S DIET
BUNKLEY WILL NOT-- I REPEAT, WILL NOT-- EAT DRY CAT FOOD.

PAST LIVES
I USED TO BE SHAKESPEARE'S MISTRESS, WHICH EXPLAINS WHY I AM ATTRACTED TO BALDING GUYS WHO PLAY THE LUTE.

PROBLEMS WITH MOM
I TOLD HER I WAS ON A DIET BUT MOTHER INSISTED WE STOP BY FOR SOME BUTTERWORTH PUDDING.

YOUR THERAPY
MY THERAPIST-- OR MR. BIG MOUTH, AS I CALL HIM-- SAYS I HAVE A LOT OF REPRESSED HOSTILITY.

CONSPIRACY THEORIES
SEWERS ACCIDENTALLY BACKED UP INTO MY HOUSE?? I THINK NOT.

FANATICAL RELIGIOUS BELIEFS
I HOPE YOU'LL LET ME SAVE YOUR SOUL FROM THE PIT OF ETERNAL TORMENT.

CURRENT RELATIONSHIPS
SURE, I LIVE WITH TRIXIE, BUT WE DON'T REALLY DO MUCH TOGETHER.

SECRET TATTOOS
YEAH, I'VE GOT A SORT OF VISUAL PUN TATTOOED JUST BELOW MY NAVEL. I THOUGHT IT WAS PRETTY CLEVER THE FIRST SEVEN YEARS.

UNUSUAL HOBBIES
WOULD YOU CARE TO SEE MY COLLECTION OF OVER 3,000 SNOW GLOBES?

FINANCIAL DIFFICULTIES
I KNOW THIS MAY SOUND A BIT PREMATURE BUT IF YOU COULD FIND IT IN YOUR HEART TO LEND ME 200 BUCKS I'D BE FOREVER INDEBTED TO YOU.

ANNOYING HABITS
I'VE BEEN USING CHEWING TOBACCO LONG BEFORE IT GOT TRENDY.

BRUTAL HONESTY
FROM YOUR COMPLEXION I'D SAY YOU HAVE A LOT OF STRESS IN YOUR LIFE RIGHT NOW.

THE MEANING OF LIFE
I THINK WE ALL BASICALLY LIVE AND DIE ALONE IN AN UTTERLY INDIFFERENT UNIVERSE. YOU IN THE MOOD FOR GUACAMOLE?

TIDES - August 12 to August 18



David Finrock Variety; Spindrift Kabala.
Eddie Chung Guitar; Jolly Roger East.
Edge Top 40; Oasis.
Ernie Shea Jazz; Mabina Lounge.
Garret Okubo Contemporary; Chuck's Mililani.
J.P. Smoketrain Rock; No Name Bar.
Jeff Burton & The Corvettes '50s & '60s Rock; Kento's.
Joel Kurasaki Jazz; Orson's.
Jon Basebase Contemporary; Horatio's.
Kevin Mau Variety; Coconut Willie's. 12:30-3:30 p.m.
Kit Samson & the Sound Advice Contemporary; Kabala Hilton.
Leroy Kahaku Contemporary; Black Orchid. 6-9 p.m.
Loretta Ables Trio Jazz; Lewers Lounge.
Natural Transition Jazz; Paradise Lounge.
New Horizon Reggae; Anna Bannanas.
Nohelani Cypriano Contemporary; Sberaton Waikiki.
Nueva Vida's Big Thing R&B; Black Orchid.
Ohana Two Hawaiian; Bay View Lounge.
Pandanus Club Hawaiian; Nick's Fishmarket.
Raga & Star Williams Jazz; New Orleans Bistro.
Richard Perrin Contemporary Hawaiian; Chart House. 5-8 p.m.
Ricky West Band Rock; Gussie L'amour's.
Rudy Molina Guitar; Yacht Club Restaurant.
Russel & Friend Mellow Contemporary; Bandito's.
7th Avenue Contemporary Hawaiian; Monterey Bay Cannery Pearlridge.
Steep Cliff Rock; Jazz Cellar.
Steven Charles Band Contemporary Jazz; The Row.
The Angry Inch Dance Rock; Wave Waikiki.
The Krush Contemporary Hawaiian; Outrigger Reef Towers.
Tito Berinobis Contemporary Hawaiian;

Chart House. 8:30 p.m. - 12:30 a.m.
13/Thursday
Almost Famous Variety; Coconut Willie's. 4 p.m. - 1:30 a.m.
Augie Rey & City Lights Dance; Nicholas Nickolas.
Azure McCall & Co. Jazz; Nick's Fishmarket.
Bernadette and the New Sensations Jazz; Black Orchid. 9:30 p.m. - 1:30 a.m.
Betty Loo Taylor & Rachel Gonzalez Jazz; New Orleans Bistro.
Blue Kangaroo Country, Folk; Jolly Roger Waikiki.
Bobby Dunne Band Pop, Rock; Irish Rose Saloon.
Bryan Huddy Mellow Contemporary; Bandito's.
Carol Atkinson Jazz; Cupid's Lounge.
Christopher Carillo Variety; Monterey Bay Cannery Outrigger.
Crossover Contemporary Hawaiian; Malia's Cantina.
Dean & Dean Contemporary Hawaiian; Chart House. 8 p.m. - 12:30 a.m.
Eddie Chung Guitar; Jolly Roger East.
Edge Top 40; Oasis.
Ho'aloa Contemporary Hawaiian; Waikiki Beachcomber.
Island Blend Hawaiian; Surfboard Lounge. 11:30 a.m. - 2 p.m.
J.P. Smoketrain Rock; No Name Bar.
Jay Marion Guitar; Ramsay Galleries & Cafe. 4-6 p.m.
Jeff Apaka & Duo Jazz; Mabina Lounge.
Jeff Burton & The Corvettes '50s & '60s Rock; Kento's.
Joe Bourque Fiddler; Oinks Barbeque.
Joel Kurasaki Jazz; Orson's.
Jon Basebase Contemporary; Horatio's.
Jonny & The Dreamers Contemporary

Hawaiian; Spindrift Kabala.
Ka'au Crater Boys Hawaiian; Compadres.
Kevin Mau Variety; Coconut Willie's. 12:30-3:30 p.m.
Kit Samson & the Sound Advice Contemporary; Kabala Hilton.
Lance Ori Contemporary Hawaiian; Chart House. 5-8 p.m.
Lawai'a Contemporary Hawaiian; Top of the I.
Leahi Contemporary Hawaiian; Chuck's Mililani.
Leroy Kahaku Contemporary; Black Orchid. 6-9 p.m.
Loretta Ables Trio Jazz; Lewers Lounge.
Mahi Beamer Contemporary Hawaiian; Andrew's.
Mojo Hand Blues; Jaron's Kailua.
Natural Transition Jazz; Paradise Lounge.
Nohelani Cypriano Contemporary; Sberaton Waikiki.
North American Bush Band Rock; Anna Bannanas.
Ohana Two Hawaiian; Bay View Lounge.
Open Fire Rock; Jazz Cellar.
Ricky West Band Rock; Gussie L'amour's.
Rudy Molina Guitar; Yacht Club Restaurant.
7th Avenue Contemporary Hawaiian; Monterey Bay Cannery Pearlridge.
The Angry Inch Dance Rock; Wave Waikiki.
The Krush Contemporary Hawaiian; Outrigger Reef Towers.
Tito & Lorry Contemporary Hawaiian; Monterey Bay Cannery Ward.
Tommy D & the D Band Rock; Mai Tai Lounge.
True Blues Blues; The Row.
Widow Maker Rock; Jazz Cellar.
14/Friday
Alisa Randolph & Musica É Jazz; Cafe Sistina.
All Natural Blend '50s & '60s Variety;

LIVE MUSIC VENUES

Anna Bannanas, 2440 S. Beretania St. 946-5190
Andrew's, Ward Centre, 1200 Ala Moana Blvd. 523-8677
Bandits, 98-151 Pali Momi St. 488-8888
Banyan Veranda, Sheraton Moana Surfside, 2353 Kalakaua Ave. 922-3111
Bayview Lounge, Turtle Bay Hilton, 57-091 Kam Hwy. 293-8811
Black Orchid, Restaurant Row, 500 Ala Moana Blvd. 521-3111
C-5, 205-C Sand Island Access Rd. 848-0990
Cafe Sistina, 1314 S. King St. 526-0071
Cappuccinos, 320 Lewers St. 924-1530
Chart House, 1765 Ala Moana Blvd. 944-6669
Chinatown Gateway Park, Bethel & Hotel St. Chuck's Mililani, 95-221 Kipa Pa Dr. 623-6300
Coconut Willie's, International Marketplace 2230 Kalakaua Ave. 924-9454
Coffee Manoa, 2851 E. Manoa Rd. 988-5113
Coffeeine, 1820 University Ave. 947-1615
Compadres, 1200 Ala Moana Blvd. 523-1307
Cupid's Lounge, Outrigger Prince Kuhio, 2500 Kuhio Ave. 922-0811
The Factory, 1065 Kapiolani Blvd. 545-0872
Fast Eddie's, 52 Oneawa St. Kailua. 261-8561
Gussie L'amour's, 3251 N. Nimitz Hwy., 836-7883
Horatio's, Ward Warehouse, 1050 Ala Moana Blvd. 521-5002
Iolani Palace, King and Richard, 523-6747
Irish Rose Saloon, Outrigger Reef Towers, 227 Lewers St. 924-7711
Jaron's Kailua, 201A Hamakua Dr., Kailua. 262-6768
Java Java Cafe, 760 Kapaehulu St. 732-2670
Jazz Cellar, 205 Lewers St. 923-9952
Jolly Roger Waikiki, 2244 Kalakaua Ave. 923-1885
Jolly Roger East, 150 Kaulani Ave. 923-2172
Kabala Hilton Hotel, 5000 Kalakaua Ave. 734-2211
Kapiolani Park Bandstand, 2805 Monserrat Ave. 523-4674
Kento's, Hyatt Regency Hotel, 2424 Kalakaua Ave., 922-6440
Kuhio Saloon, 2200 Kuhio Ave., 926-2054
Lewers Lounge, Halekulanani, 2199 Kalia Rd. 923-2311
Mabina Lounge, Ala Moana Hotel, 410 Atkinson Dr. 955-4811
Mai Tai Lounge, Outrigger Malia, 2211 Kuhio Ave. 923-7621
Malia's Cantina, 311 Lewers St. 922-7808
Monterey Bay Cannery Pearlridge, 98-1005 Moanalua Rd. 487-0408
Monterey Bay Cannery Ward, 1200 Ala Moana Blvd. 536-6197
Moose McGillycuddy's, 310 Lewers St. 923-0751
New Orleans Bistro, 239 Kuhio Ave. 926-1444
Nicholas Nickolas, Ala Moana Hotel, 410 Atkinson Dr. 955-4466
Nick's Fishmarket, Waikiki Gateway Hotel, 2070 Kalakaua Ave. 955-6333
No Name Bar, 131 Hekili St., Kailua. 261-8725
Oasis Nightclub, 2888 Wai'alea Ave. 734-3772
Oinks Barbeque & Rib Joint, Ward Centre 526-4133
Orson's, 5 Hoolali St., Kailua. 262-2306
Outrigger Reef Towers, 227 Lewers St. 924-8844
Paradise Lounge, Hilton Hawaiian Village, 2005 Kalia Rd. 949-4321
Pecos River Cafe, 99-016 Kamehameha Hwy., Aiea. 487-7980
Pink's Garage, 955 Waimanu St. 537-1555
Proud Peacock, Wailea Falls Park. 638-8531
Ramsay Galleries & Cafe, 1128 Smith St. 537-ARTS
Reni's, 98-713 Kuahao Pl., Pearl City. 487-3625
Rose City Diner, Restaurant Row, 500 Ala Moana Blvd. 524-7673
The Row, Restaurant Row, 500 Ala Moana Blvd. 528-2345
Rumours Nightclub, Ala Moana Hotel, 410 Atkinson Dr. 955-4811
Scuttlebutt's, 120 Hekili St., Kailua, 262-1818
Sea Life Park, Makapuu Point. 923-1531
Shore Bird 2169 Kalia Rd. 922-6906
Sheraton Waikiki Hotel, 2255 Kalakaua Ave. 922-4422
Silver Fox Lounge, 49 N. Hotel St. 536-9215
Snapper's, Discovery Bay, 1778 Ala Moana Blvd., 941-2577
Spindrift Kabala, 4169 Wai'alea Ave. 737-7944
Steamer's, 66-1445 Kamehameha Hwy., Haleiwa. 637-5085
Sugar Bar, 67-069 Kealahou St., Waikaha 637-6889
Surfboard Lounge, Waikiki Beachcomber Hotel, 2300 Kalakaua Ave. 922-1646
Tamarind Park, King and Bishop 523-4674
Top of the I, Ilikai Hotel, 1777 Ala Moana Blvd. 949-3811
Waikiki Broiler, 200 Lewers St. 923-8836
Ward Centre, 1200 Ala Moana Blvd. 531-6111
Wave Waikiki, 1877 Kalakaua Ave. 941-0421
Wilcox Park, Fort Street Mall and King. 523-4674
Yacht Club Restaurant, Ilikai Hotel, 1777 Ala Moana Blvd. 949-3811

Tamarind Park. Noon - 1 p.m.
Almost Famous Variety; Coconut Willie's. 4 p.m. - 1:30 a.m.
Augie Rey & City Lights Dance; Nicholas Nickolas.
Azure McCall & Co. Jazz; Nick's Fishmarket.
Bernadette and the New Sensations Jazz; Black Orchid. 10 p.m. - 3:30 a.m.
Blue Kangaroo Country, Folk; Jolly Roger Waikiki.
BMW Blues; Scuttlebutt's.
Bobby Dunne Band Pop, Rock; Irish Rose Saloon.
Bruddah Waitah & Island Afternoon Contemporary Hawaiian; Chuck's Mililani.
Carol Atkinson Jazz; Orson's.
Christopher Carillo Variety; Monterey Bay Cannery Outrigger.
Crossover Pop, Funk, Blues; Jaron's Kailua.
Dean & Dean Contemporary Hawaiian; Chart House. 8:30 p.m. - 1 a.m.
Eddie Chung Guitar; Jolly Roger East.
Edge Top 40; Oasis.
Exit 8 Contemporary Hawaiian; Monterey Bay Cannery Pearlridge.
Ho'aikane Contemporary Hawaiian; Steamer's.
Honolulu Jazz Duo Jazz; Cappuccinos.
Island Heart Hawaiian; Surfboard Lounge. 11:30 a.m. - 2 p.m.
J.P. Smoketrain Rock; No Name Bar. 5-7 p.m.
Jeff Apaka & Duo Jazz; Mabina Lounge.
Jeff Burton & The Corvettes '50s & '60s Rock; Kento's.
Jesse Vance Boden Guitar, Flute; Proud Peacock. 4-9 p.m.
Jimmy Borges Jazz; Paradise Lounge.
Joanie Komatsu Contemporary Island; Waikiki Beachcomber. 5:45 - 7:45 p.m.
Joe Bourque Fiddler; Oinks Barbeque.
Jon Basebase & Vince Andrada Contemporary; Horatio's.
Jonny & The Dreamers Contemporary Hawaiian; Spindrift Kabala.
Joy Woode & Betty Loo Taylor Jazz; New Orleans Bistro.
Kahala Surf Serenaders Contemporary; Kabala Hilton.
Kevin Mau Variety; Coconut Willie's. 12:30-3:30 p.m.
Kit Samson & the Sound Advice Contemporary; Kabala Hilton.
Lawai'a Contemporary Hawaiian; Malia's Cantina.
Leroy Kahaku Contemporary; Black Orchid. 6-9:30 p.m.
Loretta Ables Trio Jazz; Lewers Lounge.
Lynn with Sunset Variety; Ward Centre. Noon - 1 p.m.
Mahi Beamer Contemporary Hawaiian; Andrew's.
Melodious Thunk Folk, Blues; Kuhio Saloon.
Mojo Hand Blues; Silver Fox Lounge.
Nohelani Cypriano Contemporary; Sberaton Waikiki.
Nueva Vida Jazz; Reni's.
Ohana Two Hawaiian; Bay View Lounge.
One People Mellow Contemporary; Bandito's.
Pagan Babies World Dance; Anna Bannanas.
Patrick Dickson Hawaiian; Cupid's Lounge. 5:30 - 7:30 p.m.
Percolators Improv; Java Java Cafe.

Remi & Friends Variety; Waikiki Broiler.
Ricky West Band Rock; Gussie L'amour's.
Rudy Molina Guitar; Yacht Club Restaurant.
Steep Cliff Rock; Jazz Cellar.
Steve Frias Keyboard; Ramsay Galleries & Cafe. 6-9 p.m.
Steven Charles Band Contemporary Jazz; The Row.
The Angry Inch Dance Rock; Wave Waikiki.
The Krush Contemporary Hawaiian; Outrigger Reef Towers.
Tito & Lorry Contemporary Hawaiian; Monterey Bay Cannery Ward.
Tito Berinobis Contemporary Hawaiian; Chart House. 5-8 p.m.
Tommy D & the D Band Rock; Mai Tai Lounge.
Tropical Knights Contemporary Hawaiian; Top of the I.
Widow Maker Rock; Jazz Cellar.

15/Saturday

Alisa Randolph & Musica É Jazz; Cafe Sistina.
Almost Famous Variety; Coconut Willie's. 4-8 p.m.
Augie Rey & City Lights Dance; Nicholas Nickolas.
Azure McCall & Co. Jazz; Nick's Fishmarket.
Bac N Thyme Jazz, R&B; Cupid's Lounge.
Bernadette and the New Sensations Jazz; Black Orchid. 10 p.m. - 3:30 a.m.
Betty Loo Taylor & Derryl McKay Jazz; New Orleans Bistro.
Blue Kangaroo Country, Folk; Jolly Roger Waikiki.
Blues Bandits Blues; Reni's.
BMW Blues; Scuttlebutt's.
Bobby Dunne Band Pop, Rock; Irish Rose Saloon.
Bruddah Waitah & Island Afternoon Contemporary Hawaiian; Chuck's Mililani.
Bryan Huddy Variety; Coconut Willie's. 12:30-3:30 p.m.
Carol Atkinson Jazz; Orson's.
Christopher Carillo Variety; Monterey Bay Cannery Outrigger.
Crash Party Top 40; Gussie L'amour's.
Crossover Pop, Funk, Blues; Jaron's Kailua.
Dean & Dean Contemporary Hawaiian; Chart House. 8 p.m. - 1 a.m.
Eddie Chung Guitar; Jolly Roger East.
Edge Top 40; Oasis.
Exit 8 Contemporary Hawaiian; Monterey Bay Cannery Pearlridge.
Ho'aloa Contemporary Hawaiian; Waikiki Beachcomber.
Honolulu Jazz Duo Contemporary Jazz; Cappuccinos.
Island Blend Hawaiian; Surfboard Lounge. 11:30 a.m. - 2 p.m.
Java Java Jam Various; Java Java Cafe.
Jazz Quartet Jazz; Ramsay Galleries & Cafe. 2:30 - 5:30 p.m.
Jeff Apaka & Duo Jazz; Mabina Lounge.
Jeff Burton & The Corvettes '50s & '60s Rock; Kento's.
Jesse Vance Boden Guitar, Flute; Proud Peacock. 4-9 p.m.
Jimmy Borges Jazz; Paradise Lounge.
Joe Bourque Fiddler; Oinks Barbeque.
Jon Basebase & Vince Andrada Contemporary; Horatio's.
Jonny & The Dreamers Contemporary Hawaiian; Spindrift Kabala.
Kahala Surf Serenaders Contemporary; Percolators Improv; Java Java Cafe.

Adrift Upon a Glimmering Sea



Lanterns with a mission.

The Toro Nagashi Ceremony guides the dead home

In the gardens surrounding the Tendai Mission in Nuuanu, preparations for the annual *Toro Nagashi* ("floating lantern") ceremony are in full swing. Under a protective portico, the wooden framework of an enormous lantern soars to a height of well over 10 feet. Several smaller lanterns are lined up nearby, awaiting final paper covering and ornamentation.

Jean Yuhara, a tiny, vivacious woman who readily admits to being the "girl Friday" of this Buddhist sect, leads the way past the lanterns into the beautiful mansion, which was once the home of the late Alfred Castle but now houses the Tendai Mission. Before settling down to a discussion of the upcoming festival, she permits a small visit to the temple ("or church — nowadays, it doesn't matter what you call it," she says with a smile). The sacred area occupies a large room that once contained the late Mrs. Castle's library, and the original dark wooden panelling sets off a magnificent display of gilded statues of Jizo, a Buddha sent to guard children and farmers; Kwannon, the goddess of mercy; and the "fire" Buddha. A rare and extensive collection of *daruma* — small good luck dolls whose blank faces are painted by their owners to mark each occasion of good luck — lines an entire wall.

In this magnificent room, you are immediately aware of the importance of ritual... and one of those rituals will this week provide Honolulu with a lovely religious ceremony, the Toro Nagashi at the Ala Wai Canal, in which over 2,000 illuminated lanterns will drift slowly down the darkened canal, guiding the spirits of the dead.

Traditionally, Toro Nagashi is the last event in the Bon Festival (a series of colorful folk dances and related

Nikki Ty-Tomkins

religious ceremonies held to honor the dead during the months of July and August). As it's celebrated in Hawaii, Toro Nagashi is the result of the convergence of two influences — the summer Dragon Boat Festival, which was held to honor the suicide of a frustrated poet in the third century B.C., and the Buddhist celebration of the visit of the souls of the dead to the land of the living.

According to convention, the core of the Bon Festival was celebrated over three days. On the first day, the living paid homage to the dead by visiting their graves and inviting souls back to their earthly homes. On the second day, an offering was made at the family shrine while a priest chanted sutras for the deceased. On the final day, the spirits of the dead were guided back to their world by hundreds of paper lanterns set adrift on a nearby body of water.

Today the rituals have become somewhat truncated — modern ecological concerns have forced some changes. Even though they are made of biodegradable waxed paper, the lanterns aren't permitted to float freely into the ocean. Complaints about lanterns that washed up on the beach after the Jodo Mission's original Toro Nagashi ceremony at Haleiwa encouraged the Tendai group to

offer an alternative; currently, lanterns are firmly affixed to wooden rafts, which are drawn by an outrigger canoe bearing the largest lantern — the "Great Toro." The parade of lanterns drifts as far as the McCully bridge; the lanterns are then gathered up and returned to the mission. After a few days, when they have dried out, they are burned... with the appropriate prayers said.

This year's Toro Nagashi is scheduled for this Saturday. On that day, over 2,000 paper lanterns and dozens of floating rafts will be brought to the canal, near the Waikiki-Kapahulu library. Many of the lanterns will already have the names of ancestors printed on one side; others will be offered to the public at the site.

Before the festivities begin at 6 p.m. there will be a large Mando Parade, which will include all the various Buddhist sects as well as many churches and temples. Yuhara stresses that everyone is welcome to join in, particularly since the date of this year's ceremony — Aug. 15 — coincides with the end of World War II, and this year's Great Toro is dedicated to the 100th Infantry Battalion.

A program of music, chanting and prayer will follow, which this year is planned to include a whimsical concession to modernity — a karaoke group. At 7:30, the Obon ceremony, which includes prayers for the souls of the honored dead as well as for those lost at sea, in war or tidal waves, will begin. Then the rafts, with their series of flickering lanterns, will be gently lowered into the canal to the accompaniment of classical music provided by a group of Gagaku musicians. As the strands of lanterns slowly float down the canal, several thousand people on shore will send them safely on their way, with prayers for the souls of loved ones. ■

Toro Nagashi Ceremony
Ala Wai Canal
Sat., Aug. 15, 6 p.m.

SABRE RATTLING

The favored sport of our nation's leaders

Does it solve the tragedies of:
U.S. CHILDREN STARVING,
DECAYING CITIES,
PEOPLE SLEEPING IN THE STREETS,
OVERFLOWING JAILS?

Box 91019, Hon, HI 96835 • 924-1674

Rainbow Peace Fund

Fresh Pasta

Angel hair pasta with smoked chicken
in a mustard herb butter sauce.



477 Kapahulu Avenue

732-5525

Make Friends With Those Who Dance

BIG CITY PRODUCTIONS
FALL SESSION 1992
August 23 - October 17



Registration Deadline
for FULL SESSION classes
at Central YMCA is Aug. 22
Information: 735-3724

GIVE YOUR EYES A SECOND LOOK.

WITH DURASOFT®
COLORS CONTACT
LENSES...
IN 18 SHADES!

SPECIAL!
\$99/Pair

DURASOFT colors:
HAZEL, EMERALD GREEN,
MISTY GREY, BABY BLUE

K. PAUL CHIN, O.D.
OPTOMETRIST - 521-9151

STREET LEVEL, BISHOP SQUARE,
1066 ALAKEA ST., SUITE A
VALIDATED PARKING AVAILABLE

EYE EXAM OR CURRENT PRESCRIPTION
NECESSARY. LIMITED TIME OFFER



AFRICAN
ARTS
&
ARTIFACTS

550 N. NIMITZ HWY
SUITE B

526-0662

HANDCARVED
SOAPSTONE

KENYAN
JEWELRY

DRUMS, MASKS
& SPEARS

EBONY
FIGURES

CERAMIC
BUSTS

LARGE
AFRICAN POTS

KIONDO BAGS

SAFARI
ANIMALS

AND MANY OTHER
ONE-OF-A-KIND
HAND CRAFTED
ITEMS

CALENDAR

colorful fabric collages. Through 9/6. *Queen Emma Gallery*, 1301 Punchbowl St. 547-4397

Innerscapes Acrylic and mixed-media canvases by Lola Stone. Through 8/15. *Alfred's at Century Center*, 1750 Kalakaua Ave. 955-5353

Jason Photographs by Jason Nakano; paintings and drawings by Jason Teraoka. Through 8/16. *Acme Artwerks*, 1065 Kapiolani Blvd. 545-0827

Julie Kerns Schaper Recent watercolors. Through 8/29. *Cafe Che Pasta*, 1001 Bishop St. 524-0004

Kayumanggi Presence II This exhibit showcases works by Hawaii artists of Filipino ancestry. Kayumanggi means "brown skin" in the Filipino language and comes from the title of a painting by Hawaii artist Romolo Valencia. Originally the brainchild of Mandell Andres, this second annual exhibit includes works by guest artists Jose Blanco from the Philippines and Manuel Ocampo from Los Angeles. Through 8/20. *Honolulu Hale*. 523-4674.

Kilauea: A Butterfly's View and Metamorphosis Paintings by Phan Nguyen Barker. Through 8/30. *Contemporary Cafe*, 2411 Makiki Hts. Dr. 526-1322

Ruth Glenn Little Watercolors. Through 8/31. *Michaels Fine Jewelry*, Pearlridge Center. 487-1111

Dianne Lynn Acrylics and watercolors. Through 8/31. *Verbano Italian Restaurant*, 3571 Waialae Ave. 735-1777.

Marquesas Islands Photo Exhibit Color prints of the world's remotest archipelago, the Marquesas Islands, by Ed Rampell, with accompanying text about the life and literature of Herman Melville, who lived in the Marquesas exactly 150 years ago. Ongoing. *Marquesan Village*, Polynesian Cultural Center. 293-3333

Miss Michael McKenna Colorist works on the island environment. Through 8/31. *The Kailua Coffee Co.*, 108 Hekili St., Suite 3. 261-4291

Noa Noa A woodcut series by Paul Gauguin originally intended to accompany an autobiographical account of his life in the South Pacific. Impressions of these woodcuts printed by Gauguin's son were never published during the French artist's life. Through 9/20. *Honolulu Academy of Arts*, 900 S. Beretania St. 532-8700

Past/Forward Hawaii Craftsmen's 1992 statewide annual juried exhibition. Through 8/30. *Honolulu Academy of Arts*, 900 S. Beretania St. 532-8700

A Rainbow of Color Works in clay by Sandy Martin. Through 8/31. *Arts of Paradise*, International Marketplace. 924-2787

The Struggle for Hawaii's People, Land & Sea A photo documentary by Ed Greevy covering 25 years of protest over the oppression of Hawaiian culture and lifestyle. Through the summer. *Fanatik Gallery*, 1820 University Ave. 947-1615

Taitoru Ga Na, Sensa Titolo, Sans Titro, Sin Titolo, Untitled Paintings by Garren Fagaragan. Through 8/31. *Roy's Park Bistro*, 1956 Ala Moana Blvd. 944-4624

A Tribute to the Hawaiian Banyan Tree Acrylic with pen-and-ink paintings by Glenn Steinberg. Through 8/31. *Art Cove*, Ward Warehouse. 239-9914

Élan Vital Paintings by the Maui artist. Through 9/30. *Paul Brown Gallery*, 1347 Kapiolani Blvd. 947-3971

Watermelons Acrylic paintings by Ingrid Manzone. Through 8/16. *Ko'olau Gallery*, Windward Mall. 247-0709

Ena Woo Mixed-media paintings and wearable art jewelry by the Big Island artist. Through 8/31. *Bakkaus Gallery*, 928 Nuuanu Ave. 582-4677

Learning

Jewish Communities in China Who knew? Get the lowdown at this bi-cultural presentation with guests from the People's Republic of China and UH professor Lenn Goodman whose lecture "Establishing a Historical Foundation" will provide a basis for the evening's discussion. Hold the char siu, please. *Kuykendall Auditorium*, UH Manoa campus. Thur. 8/13, 7 p.m. Free. 735-8558

Education Lecture Dr. James A. Crupi, president and founder of Strategic Leadership Solutions will lecture on the "Future of Education

and the Global Economy." *Princess Ruth Ke'ehikolani Auditorium*, Kamehameha Schools campus. Thur. 8/13, 8 a.m. Free. 842-8231

Pacific Island Taro Festival A public forum will be held at this agrarian gathering (see *Whatevahs listing*) to discuss Windward Oahu's future ecological needs. Facilitator Tom DiGrazia will mediate a friendly dialogue among environmentalists, legislators, Native Hawaiians and others who are interested. *Windward Community College*, 45-720 Kealahala Rd.: Sat. 8/15, 1:30 - 3:30 p.m. Free. 235-7433

Sacred Places II This full-day workshop on preserving and maintaining religious buildings and the treasures they house will be hosted by Bernard Gruenke, who has worked on several Hawaii church restorations. A free organ concert at the Cathedral of Our Lady of Peace will follow the workshop. *Call Historic Hawaii Foundation for reservations and info.* Fri. 8/14, 9 a.m. - 4 p.m. (Free concert 4 - 6:30 p.m.) \$25. 537-9564

Digestive Disorders GI man Floyd Shewmake, M.D. will discuss treatment of and relief from general gastrointestinal problems such as heartburn, ulcers, chronic abdominal pain and indigestion. *Third Floor*, Honolulu Medical Group, 550 S. Beretania St. Sat. 8/15, 11 a.m. - noon. Free. 537-2211 ext. 721

Kids

Ancient Hawaiian Ways Kids accompanied by a parent can discover how the ancient Hawaiians lived in nature by making Hawaiian fashions, playing games, and working in a taro lo'i. Reservations required. *Hawaii Nature Center*, 2131 Makiki Hts. Dr.: Sun. 8/16, Session I (6 - 10 years old) 10 a.m. - noon; Session II (preschoolers) 1:30 - 3:30 p.m. \$3. 955-0100

Be Your Best Fashion Show Be the Christy Turlington of the fourth grade with new duds from this fashion show for keikis. *Children's Dept.*, Liberty House Ala Moana: Sat. 8/15, noon. Free. 941-2345

Ronald McDonald Story Hour If the kids

cried their eyes out when they had to sit on Santa's lap, this less threatening childhood idol may prove an easier avuncular encounter for your children. The ubiquitous Ronald will host story-hour this week. *Waialua Public Library*, 67-068 Keaiohanui: Sat. 8/15, 10:45 a.m. Free. 637-4876

Symphonic Sleep-over Musical games and demonstrations from the exhibit *What Makes Music?* are part of this overnight workshop for 6-to 10-year-olds. *Bishop Museum Castle Building*, 1525 Bernice St.: Sat. 8/15, 7 p.m. - Sun. 8/16, 8 a.m. \$53 for adult and child pair, \$27 for each additional family member. 848-4149

Whatevahs

American Recorder Society Bring your own recorder and jam, so to speak, with a roomful of people wielding small woodwind instruments. *Linekona Building*, 1111 Victoria St.: Tue. 8/18, 7:15 - 9:30 p.m. Free. 988-4534

Bon Dances Every summer, tradition-minded Japanese celebrate their departed ancestors during the sacred *O'Bon* season. This week's bon dances will be at *Soto Mission of Hawaii*. 1708 Nuuanu Ave.: Fri. 8/14, 7:30 p.m. service, 537-9409.

Day of Caring This one-day celebration of volunteerism kicks off with a breakfast at the East-West Center, featuring guests Harry (the little guy) & Myra (you're getting too big for your bank) of TV fame, and moves to a project of your choice where your kokua is needed. *Garden Level Dining Room*, East-West Center: Sat. 8/15, 8:30 a.m. - 2:30 p.m. Free. 543-2235

End of Summer Dance Parents Without Partners sponsors this bash with door prizes, free pupus, a no-host bar and music. *NCO Club*, Fort Shafter: Sat. 8/15, 8 p.m. - 1 a.m. \$10. 262-6442

Ethnobotany of the Early Hawaiians Naturalist Hiko'ula Hanapi guides this two-part, Bishop Museum-sponsored hike through Ho'omaluhia Botanical Gardens and tells how the early Hawaiians used a variety of plants

to meet daily needs for food, clothing and medicine. *Visitor Center at Ho'omaluhia Botanical Garden*, 45-680 Luluku Rd.: Sat. 8/15 & Sun. 8/16, 9 a.m. - noon. \$12. 848-4149

Kaalawai Shoreline Hike This 2-mile, novice hike follows the shoreline at Black Point, the beach that has kept Doris Duke forever young. *Iolani Palace*, Mauka side: Sat. 8/15, 9 a.m. \$1. 836-4940

Kathleen King Style Show Judging from the dadaist, cut-and-paste announcement for local designer Kathleen King's "fashion-type event," her choice of venue for showing the new collection seems appropriate (with a spin of the globe, close your eyes and point.) But, Kathleen says the North Shore adds a touch of country to her funky apparel. *Pat's At Punaluu*, 53-567 Kamehameha Hwy.: Sat. 8/15, 1 p.m. Free. 293-8502

Laie Hike For the advanced booney-stomper, this 10-mile hike in Laie affords a look down to the North Shore coastline and a sweeping view of the Waiahua plains and the Waianae range. *Iolani Palace*, Mauka side: Sun. 8/16, 8 a.m. \$1. 373-1525

Maunawili Slide Hike Bring your swimwear for this 5-mile hike that leads to a waterfall, swimming hole and rock slide in lush Maunawili Valley. Reservations required. *Call Hawaii Nature Center for time and meeting place.* Sat. 8/15. \$3. 955-0100

Na KerekaholoMua The FrontRunners (yes, that's one word) is a club for gay men, lesbians and anyone who enjoys running and walking in a friendly, supportive and non-competitive atmosphere. *Bandstand snack bar*, Kapiolani Park: Thursdays, 5:30 p.m. Free. 946-4244

Pacific Island Taro Festival The taro ohana in Hawaii will present a day-long festival with a cornucopia of games, demonstrations, crafts, exhibits and even a poi-eating contest to celebrate the root. Good fun for all — and good excuse fo' eat plenty. *Windward Community College*, 45-720 Kealahala Rd.: Sat. 8/15, 10 a.m. - 4 p.m. Free. 235-7433

Women's Night Literary Reading See *Word Pick* on Page 6.

innocents

"...A totally engaging hour"

-Chicago Tribune

"...As a viewer, at least half the time you don't know where you are, and you have the sense some of those on the bus don't either. But they are having the time of their lives... and the camera is there to record their joy..."

-Mike Shoup, Travel Editor

200 FREE TICKETS

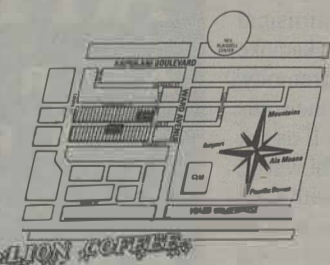
FOR SNEAK PREVIEW - 2 TICKETS PER PERSON, SUPPLIES LIMITED.

SNEAK PREVIEW AUG. 22, 1:00PM

REGULAR DATES

ADMISSION \$4 GENERAL, \$3 MEMBERS
 AUG. 27, 1 AND 7:30PM
 AUG. 28, 29, 31, 7:30 PM
 AUG. 30, 4:00PM

FREE TICKETS ONLY AVAILABLE AT LION COFFEE, 831 QUEEN STREET



Presented by **LION Coffee** and **Weekly**

THE HONOLULU ACADEMY OF ARTS THEATRE 900 S. BERETANIA ST