

CLUB

SCENE

• PAGE 11 •

UNSUNG



ZEROES

• PAGE 15 •



DEM BONES

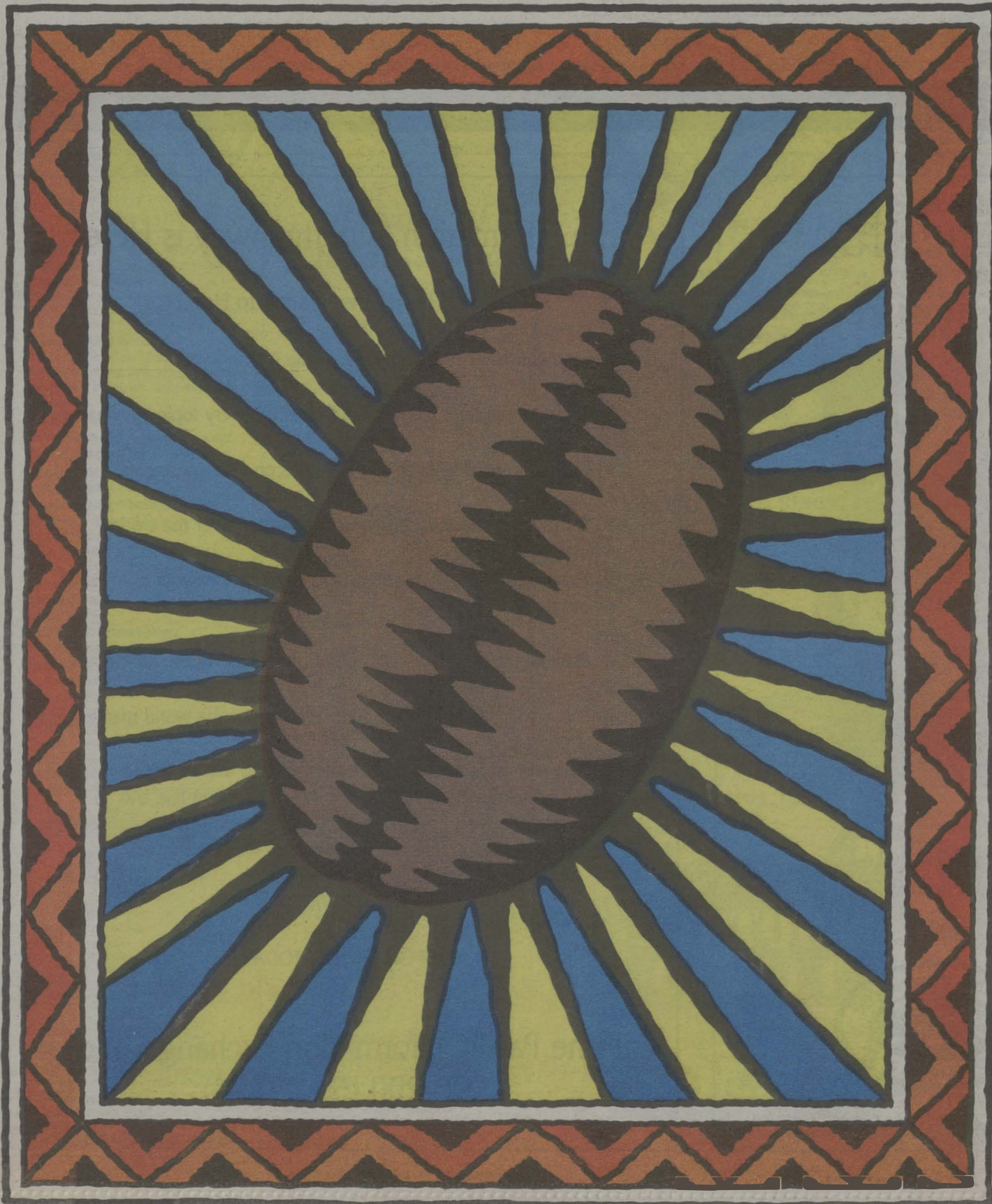
• PAGE 17 •

H O N O L U L U

Weekly

FREE

Volume 4, Number 47, November 23, 1994



THE BEAN SCENE

WE CRAVE IT, WE DRINK IT, BUT DO WE REALLY KNOW OUR COFFEE?

BY LINDA GRZYWACZ

• PAGE 6 •

94 PATRIC HETT

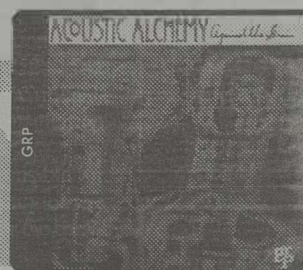
WIN CONCERT TIX! DAVID SANBORN & ACOUSTIC ALCHEMY



DAVID SANBORN "THE BEST OF DAVID SANBORN"

13.99 CD
8.99 CASS.

It's the concert event of the season, and Stars Music, Movies and More located inside Sears wants to take you there! Register in any participating Stars store by November 23, and you may be the lucky winner of a pair of tickets to see jazz great David Sanborn & Acoustic Alchemy at the Waikiki Shell, Friday, November 25, at 7pm. And, while you're registering for great concert tickets, be sure to pick up these great hits:



ACOUSTIC ALCHEMY "AGAINST THE GRAIN"

13.99 CD
8.99 CASS.



SALE!

**Ala Moana
Mall,
947-0304**

**Pearlridge
Mall,
487-4430**

**Windward
Mall,
247-8379**

BICKERTON ■ SAUNDERS ■ DANG ■ BOUSLOG

Attorneys at Law

Trial lawyers concentrating on cases involving

- Personal Injury and Wrongful Death,
- Commercial and Real Estate Disputes,
- Civil Rights,
- First Amendment Issues,
- and Environmental Law.

Free case evaluation and flexible fee arrangements tailored to your case.

Three Waterfront Plaza ■ 500 Ala Moana Boulevard ■ Suite 500 ■ Honolulu Hawaii 96813 ■ Tel: (808) 599-3811 ■ Fax: 533-2467

Now 'Tis Easier To Give & To Receive.



Hawaiian Breakfast Basket - \$34.50, in stores & catalog.

With one call or visit, you can give the taste of Christmas past with every Christmas present. Hawaiian gourmet delicacies uniquely wrapped in lauhala baskets almost too beautiful to open. Baskets for every budget. Each reflecting your superb taste. Mainland or Local phone orders efficiently handled. Free delivery for qualifying corporate orders.

Free Catalog. 531-5592



DOWNTOWN 900 MAUNAKEA & KAHALA MALL

The Information Superhighway is Here

PIXINET™ brings the Internet to Hawaii

- Send electronic mail anywhere in the world
- Participate in over 5,000 newsgroups on every topic imaginable
- Chat with users in over 100 countries on all 7 continents
- Shop via your home computer in stores all over the world
- Browse the world's museums and exhibits from your home or business
- Play interactive games with other players anywhere on the Net
- Make your businesses products available to the world marketplace

All this and more awaits you on the Internet, the world's largest and fastest growing network. With 20 million users on-line and an estimated 2 million new users per month, the Internet has something for everyone and promises to connect the world together.

DONT WAIT

GET ON THE NET TODAY

Call the Pacific Information Exchange, Inc. at
596-PIXI (596-7494)

Letters

Water woes

Only in Hawaii can we ask our citizens to conserve water and get immediate cooperation. Even our keiki are careful. Our restaurants serve the liquid gold only on request. However, the agency that has the power to protect this public resource, the state Commission on Water Resource Management, refused to order the immediate stoppage of the dumping of 8 million gallons a day by the Waiahole Irrigation Co. ("Liquid Assets," *HW*, 11/9). Why this unconscionable waste?

The water should be returned to the Windward side so that our streams can live again with *opae* and *oopu*; so that our taro farmers can increase their crops; so that aquatic industry can grow; so that the legacy we leave to our keiki is one of lush green and not barren waste.

Even the argument of University of Hawaii's Prof. Jon Van Dyke that there is no legal beneficial public good in such wanton waste was ignored.

Why did the Commission listen to the spurious arguments of the attorney general instead? Is there a hidden agenda detrimental to the public? Shouldn't we ask for the immediate resignation of this ineffective group? Or should we simply thumb our noses at any conservation efforts in the future?

Only in Hawaii can such inane decisions occur.

Lela M. Hubbard

Money matters

Thanks for the thoughtful article about Hawaii's First Congressional District election ("Culture Clash," *HW*, 10/19). I found the biographical insights instructive and the generational play on words entertaining.

The article's argument — that money controls the election process — was clear. But to make his point the author painted the incumbent in caricature, and the result was not only biased but unfair.

To say that Swindle didn't "have a prayer" and "the reason is money" described a political reality but entirely missed the political truth.

Anyone who has followed the progress of Neil Abercrombie knows that his motivations are not financial and his success is not built on personal gain. A more thoughtful analysis would have explored the underlying truth: that the perverse economic reality of media elections hurt Rep. Abercrombie more than it hindered Mr. Swindle.

The reason that Abercrombie has "impossibly high name recognition" is not because he has bought and paid for it. Strangely enough, he's earned it! He has a long history of fighting for special causes, not for special interests. Thorough, thoughtful and independent consideration are his trademarks.

While Mr. Swindle may have similar integrity, it has not been grown and tested here. Neil Abercrombie's reputation has been built from the community up. It is not possible to create an equal reputation from the media down, no matter how much money is spent.

R. Sean McLaughlin

Toxic waste

Dioxin, one of the most toxic substances known to humans, has been linked to cancer, birth defects and learning disabilities. Its major sources include incineration and the use of chlorine in paper and plastics.

The city of Honolulu's decision to close the Waipahu Incinerator should be applauded, but more must be done. The EPA should require publicly accessible reporting on dioxin, phase out the use of dioxin-producing chlorine in the manufacture of paper and plastics and ban the start-up of any new incinerators or expansion of existing ones. The EPA is accepting public comment on dioxins until Jan. 13. The health and welfare of future generations is at stake.

Mary E. Desmond
Campaign Director
U.S. Public Interest Research
Group in Hawaii

Honolulu Weekly welcomes your letters. Write to: Editor, Honolulu Weekly, 1200 College Walk, Suite 214, Honolulu, HI 96817 or FAX to 528-3144. You must include your name, address and telephone number (only your name will be printed). Letters may be edited for length or clarity.

WOMEN CARING FOR WOMEN

Modern care from the doctors who understand your concerns.

Susan Chapman, MD, FACOG Iona Higgins, MD, FACOG

Anne Hart, RNC, MS, NP

Advanced Help & Treatments for: Natural Childbirth • Family Planning • Infertility • Menopause • Pap Smears • Hysterectomy • Abnormal Pregnancies • Vaginal & Urinary Infections • Most insurance accepted • New patients welcome.

Pali Women's Health Center
970 N. Kalaheo Ave. Ste. A-305, Kailua • Tel: 254-1588
(Convenient Windward location in the Pali Palms Plaza.)



Children's Bicycle Sale

November 25, 26 & 27th

Save 20%

on Tricycles and
Children's Bicycles!!!
10% off Adult Bikes &
Camping Equipment



- * All bikes are fully assembled
- * Layaway for Christmas now
- * Quantities are limited



HONOLULU	AIEA	HAWAII KAI	KANEOHE
1149 S. King St. (near Piikoi) 596-0588	98-019 Kam Hwy (by Cutter Ford) 487-3615	Shopping Center (near Longs) 396-6342	Windward City Shopping Center 235-8722

HONOLULU Weekly

Vol. 4, No. 47
November 23, 1994

Publisher Laurie V. Carlson
Managing Editor Christine Whalen
Arts & Calendar:
Editor: David K. Choo
Film Critic: Bob Green
Theater Critic: Leroy Thomson
Contributing Writers
Paula Durbin, Dale Moana Gilmartin,
Linda Grzywacz, Seth Markow, Matt
Uiagalelei, Frederick Woodruff, Alan
Young
Copy Editor Seth Markow
Art Direction Ito Design Associates
Cover Illustration John Pritchett
Production Manager Saxon Moen
Assistant Lowell Gillia
Contributing Photographers
Christine Flanagan, Dale
MacDiarmid
Cartoonists
Lynda Barry, Matt Groening,
John Pritchett, Slug Signorino
Administrative Support
Malie Young
Classified Advertising
Zoe A. Shinno
Advertising
Senior Account Executive:
Leo J. Geensen
Account Executives: Carmen
Gonzalez, Jill C. Pascual,
Dennis Torres
Editorial Interns
Christine Flanagan, Dale
MacDiarmid, Maile Shimabukuro

A.A.N. A Member of the
Association of
Alternative
Newsweeklies

VERIFIED
AUDIT CIRCULATION
AUDIT PENDING

ISSN #1057-414X
Entire contents © 1994 by
Honolulu Weekly, Inc.
All rights reserved.

Manuscripts should be accompanied
by a self-addressed stamped envelope:
Honolulu Weekly assumes no responsibility
for unsolicited material. Subscription rates:
six months, \$35; one year, \$50.

Honolulu Weekly is available free of
charge, limited to one copy per reader.
Additional copies may be purchased at our
office. No person may, without permission
of Honolulu Weekly, take more than one
copy of each Honolulu Weekly issue.

1200 College Walk, Suite 214
Honolulu, Hawaii 96817
Tel: 808 528-1475 FAX: 808 528-3144
INDEPENDENT, LOCALLY OWNED

Beware of Deadly X-mas Trees!!!

Dried out X-mas trees
can be Deadly X-mas trees!!!

Did you know...

By Christmas Day, your Christmas
Tree may be two months old and
already drying out.

Placing a X-mas tree in a bowl of
water will NOT MAKE IT
FIRE PROOF.

Dried out X-mas trees can go up in
flames in a matter of seconds.

Tree Seal™ can
make your
X-mas Tree
virtually
fire proof.



Tree Seal™ is a "hassle free" fire
retardant specifically designed for
Christmas trees. Besides making your
Christmas tree fire retardant, Tree
Seal™ has many other advantages:

- It is easy to apply (spray it on-like
Windex or 409)
- It's odorless and colorless (will
NOT affect scent of tree)
- It locks in moisture to keep needles
green
- And best of all, Tree Seal™ is
Non-Toxic which makes it safe
around children.

Tree Seal is available at
participating Safeway stores,
Star Markets, independent
X-mas tree vendors, or by calling
538-6236

OPEN SUNDAYS

GRAND OPENING

JEWELRY FACTORY OUTLET

Specializing In
HAWAIIAN HEIRLOOM AND ESTATE JEWELRY
Importers Of Fine Diamonds

HAWAII'S ONLY FACTORY OUTLET FOR FINE JEWELRY!

<p>DIAMOND HEART PENDANT</p> <p>1/2 CTW </p> <p>\$199</p>	<p>DIAMOND STUD EARRINGS</p> <table style="width: 100%;"> <tr><td>.04 C.T.W.</td><td>\$49.00</td></tr> <tr><td>.08 C.T.W.</td><td>\$79.00</td></tr> <tr><td>.10 C.T.W.</td><td>\$89.00</td></tr> <tr><td>.15 C.T.W.</td><td>\$129.00</td></tr> <tr><td>.20 C.T.W.</td><td>\$179.00</td></tr> </table>	.04 C.T.W.	\$49.00	.08 C.T.W.	\$79.00	.10 C.T.W.	\$89.00	.15 C.T.W.	\$129.00	.20 C.T.W.	\$179.00	<p>HAWAIIAN "FRENCH MOUNT" W/ DIAMOND</p> <p>1/4 CT \$299</p>		
.04 C.T.W.	\$49.00													
.08 C.T.W.	\$79.00													
.10 C.T.W.	\$89.00													
.15 C.T.W.	\$129.00													
.20 C.T.W.	\$179.00													
<p>HAWAIIAN HEIRLOOM BRACELET, RING & PENDANT SET 8MM</p> <p>FOR ONLY \$499</p>	<p>\$309 HAWAIIAN HEIRLOOM</p> <p>GOLD LINK BRACELET</p>	<p>DIAMOND ANNIVERSARY BANDS</p> <p>1/4 CTW \$249 1/2 CTW \$399</p>												
<p>DIAMOND TENNIS BRACELET</p> <p>1 CTW \$279 2 CTW \$799 3 CTW \$1,199</p>	<p>LOOSE DIAMONDS</p> <table style="width: 100%;"> <tr><td>.46 CT MG F COLOR</td><td>\$799</td></tr> <tr><td>1.01 CT PRINCESS CUT</td><td>\$2,500</td></tr> <tr><td>1.00 CT ROUND VS1 F</td><td>\$4,800</td></tr> <tr><td>1.00 CT ROUND VS1 E</td><td>\$5,500</td></tr> <tr><td>1.40 CT ROUND VS2 G</td><td>\$7,800</td></tr> <tr><td>5.00 CT ROUND F COLOR</td><td>\$10,000</td></tr> </table>	.46 CT MG F COLOR	\$799	1.01 CT PRINCESS CUT	\$2,500	1.00 CT ROUND VS1 F	\$4,800	1.00 CT ROUND VS1 E	\$5,500	1.40 CT ROUND VS2 G	\$7,800	5.00 CT ROUND F COLOR	\$10,000	<p>HAWAIIAN HEIRLOOM GOLD RING</p> <p>\$74.99</p>
.46 CT MG F COLOR	\$799													
1.01 CT PRINCESS CUT	\$2,500													
1.00 CT ROUND VS1 F	\$4,800													
1.00 CT ROUND VS1 E	\$5,500													
1.40 CT ROUND VS2 G	\$7,800													
5.00 CT ROUND F COLOR	\$10,000													

**Jewelry
FACTORY
OUTLET**

1750 KALAKAUA AVE., SUITE 106
TEL: 951-5577
OPEN DAILY 9 TO 9
SUNDAY 12 TO 6

PEARL STRANDS 50% OFF

WINNERS NAMES WILL BE POSTED AT THE JEWELRY FACTORY OUTLET

ENTER TODAY TO WIN OVER \$8,000 IN PRIZES

150 LUCKY WINNERS

GOLD CHAINS 70% OFF

**CLIP AND TAKE TO
JEWELRY FACTORY OUTLET
ENTER TO WIN TODAY**

**DAILY DRAWINGS
THRU NOVEMBER**

NAME _____
STREET/APT _____
CITY / ZIP _____
PHONE _____

Entrants must be 18 years or older and must claim prize within two weeks from date of drawing. Winners names will be posted in store. Jewelry Factory Outlet employees and persons associated with their agents not eligible. Entry blanks may not be duplicated.

OFFER ENDS 11/30/94

SUPERB SONY STUFF SALE!!!
SELECTED SONY TITLES
CDs - \$11.99 ea.
Cassettes - \$7.99 ea

Prices Good Through December 1, 1994



Also Bab's newest live release!! ("Her voice.....like butter")
THE CONCERT 2-CD set
Cassette
\$20.99
\$17.99

KAILUA
 418 Kuulei Rd.
 ph: 262-2175

HONOLULU
 1618 Makaloa
 ph: 944-5044

WAHIAWA
 82 S. Kam Hwy.
 ph: 621-0001

WIN

An outer island holiday get-a-way
 and custom color calenders!

Just listen to Sam Kapu, every morning on
 The KINE 105FM and have your new
 Talking Phonebook right at your side.
 Be the right caller with the right answer
 and *you win!*

Hawaiian KINE 105FM, Pleasant Island Holidays,
 The Color Source, and the Talking Phonebook are
 teaming up to give away great holiday gifts.



Environment

The destruction of coral reefs comes under scrutiny at a recent Hawaii conference.

In the Shallows

DALE MOANA GILMARTIN

Hawaii's reefs are in peril. From suffocating algae blooms on Maui to Hanauma Bay's trampled dead coral, these living treasures are disappearing. The problem is not unique to Hawaii — U.S. government officials estimate that 10 percent of the world's coral reef ecosystems already have been destroyed, and 20 to 30 percent are predicted to collapse in the next 20 to 30 years.

The plight of these endangered ecosystems was the focus of a conference this month at Tokai University's Honolulu campus. The Sierra Club Legal Defense Fund, Life of the Land and Greenpeace Pacific Campaign sponsored the first of what is expected to be an annual conference titled Community Involvement in the Management and Protection of Coral Reef Ecosystems in Hawaii.

The list of attendants reads like a local *Who's Who* of marine-conscious individuals and includes longtime environmental war horses like Ira Rohter of Hawaii's Green Party and John Kelly of Save Our Surf, world-class scientific researchers, undergraduate students from the University of Hawaii's Marine Option Program, subsistence fishers from Molokai and federal, state and county government agents.

Pacific Islanders, by virtue of their historical methods of conservation, should play a vital role in the coral reef conservation movement, said keynote speaker Robert Johannes, a University of Tasmania fisheries biologist and former UH researcher.

"Pacific Islanders, [because] they relied on a narrow band [of water] surrounding their islands, invented many conservation practices, like fishing gear restrictions, closed seasons related to spawning and catch size limits long before continental peoples," he said.

Many Hawaii residents know that pristine underwater habitats are an important part of our quality of life and a major visitor attraction, but their importance goes beyond aesthetics. Reefs play a vital role in both global ecology and economics. They are among the most diverse and productive ecosystems on the planet, rivaling even tropical rain forests in the rich variety of their inhabitants; coral reef ecosystems are vital habitat and spawning grounds for marine organisms, serve as natural barriers against coastal erosion, cultural resources and as sinkholes for greenhouse gases.

They are being destroyed by a variety of factors, including chemical, nutrient and soil runoff from agriculture and construction; overfish-

ing; coral collection; anchor damage; sewage and stormwater pollution; and offshore oil operations.

In order to halt the decimation of the reefs these activities are causing, people can't rely solely on government, Johannes said, but instead must work within their own communities.

A prime example of community-based management is Hui Malama O Mo'omomi, a group of Hawaiian homesteaders and fishing folk, which recently designated a subsistence fishing area on Molokai.

"Moomomi homestead has been there for four generations," said Wayne Lee, a member of the hui who spoke at the conference. "We don't need scientific people to tell us the fish are running out; we look with our eyes and see: no more fish."

The decline of nearshore marine resources off Moomomi resulted in local residents banding together to take action.

"The law allows you to designate the nearshore waters of your *ahupuaa* [traditional Hawaiian land use division] a subsistence fishery area," Lee said. His group, assisted by Walter Ritte of the Hawaii State Department of Business, Economic Development & Tourism, wrote and submitted Act 271, which passed this year, to the state Legislature. It gives the hui the opportunity to formulate a management plan for nearshore fisheries off Moomomi.

"Our goals are to be able to depend on our natural resources," Ritte, a longtime Molokai resident, said. "It keeps the family unit together. 'Aina' doesn't just mean the soil, it includes the reef."

As communities work from the grass-roots level, some advances also are being made at the other end of the spectrum, the national level. Several versions of a federal Coral Reef Protection Act have been drafted (but were never submitted to Congress) in recent years, but there is no current U.S. national legislation protecting coral reefs.

A federally appointed working group of agency heads is address-

ing the coral reef issue through the Coral Reef Initiative, which will form an international coalition to seek solutions.

The United States, Jamaica, Australia and Japan plan to host an international meeting on coral reef ecosystems in early 1995.

The Western Pacific Fisheries Management Council, which regulates fishing in the U.S. waters of the Western Pacific, may acknowledge the unique nature of coral reef ecosystems by proposing a management plan specifically tailored to them. While not many reefs fall under WPFMC jurisdiction, this measure would reflect heightened federal awareness of the need to control activities on reefs.

The Hawaii state Legislature this year passed a resolution, "Recognizing the Importance of Protecting the Coral Reef Ecosystem." Given that the resolution was sponsored by Mazie Hirono, our lieutenant governor-elect, there is some hope that it won't end up being simply more government greenwashing.

Conference participants agreed that the meeting provided unparalleled networking opportunities but that they were only a first step.

Some participants agreed to form a working group that would meet regularly to follow through on the momentum of the conference.

"Our hope is that this isn't just another conference," said conference co-coordinator Denise Antolini. "Today is about making a difference."

Most everyone at the conference agreed with Ritte, who concluded, "We've got to go back to the old laws, supplemented by new laws. It ain't working now; we've got to fix it. Our very survival depends on it." ■

Those interested in ongoing activities to protect coral reefs should contact Mark Smaalders at the Sierra Club Legal Defense Fund, 599-2436.

Government officials estimate that 10 percent of the world's coral reef ecosystems already have been destroyed, and 20 to 30 percent are predicted to collapse in the next 20 to 30 years.

OFFSTAGE ACTORS GROUP PRESENTS... bodies, rest, & motion a play by roger hedden

With: Bridget Ann Kelly, Guy DeConte, Mark Dias, Kristine Altwies



"You'll definitely want to get in on the ground floor & support Offstage Actors Group. They are the best of all that is Hawaii." L. Thomson, Honolulu Weekly.

Dole Cannery Pineapple Playhouse
Fri. & Sat. Nov. 18 - Dec. 10 & Sun. Nov. 27
All shows at 8 PM - Call 734-0207 for info

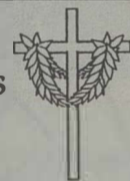
Find A Valuable Treasure
Hidden In Paradise!



For Clues
Order 'Keys to the Treasure' by
de Rey

This small limited edition collection of six fine art photo-poems signed by the poet de Rey contains clues to locate this treasure.
To order or for information
Call 526 - 8158

PLEASE JOIN WITH US



IN GIVING THANKS

Thanksgiving Week Services

Thanksgiving Day	10:00 AM
Advent Sunday, November 27th	
Family Service	8:00 AM
Learning Ministry	9:15 AM
Choral Eucharist	10:30 AM
Advent Carol Service	8:00 PM

From the Congregational family at
THE LUTHERAN CHURCH OF HONOLULU

Grounded in tradition...not bound by it.

1730 Punahou Street at Dominis
941-2566

"BEST NEW RESTAURANT" — Travel & Holiday

KAHALA MOON
CAFE



An Affordably Exquisite

THANKSGIVING DAY SUPPER

1-7 PM / Holiday Parties / Sunday Brunch / Call Now 732-7777

"CULINARY TOUR-DE-FORCE" — Nadine Kam, Honolulu Star Bulletin

" ★ ★ ★ ★ " — Honolulu Magazine

Coffee should be black as hell, strong as death and sweet as love. —old Turkish proverb

Coffee should be black as hell, strong as death

From its very beginning as a brewed beverage, coffee has aroused passions and stirred controversy. Sipped by Yemenese dervishes in between whirls; both denounced and accepted at different times by Moslems and Christians; hoarded and banned by royalty; boiled, sweetened and *au lait*ed in coffee houses; and traded on an international scale, coffee is at once an art, a science, a business and a commodity.

Of course, to most it is coffee's unmistakable, slightly addictive flavor and aroma that keeps cups full. Chemistry-wise consumers could cite aldehydes, ketones, esters and, in particular, acetaldehyde as partly responsible for coffee's rich-roasted, nose-pleasing smell and taste. The romantics among us may prefer to think of it as a mixture of culture and caffeine in a cup.

We are talking about a relationship here, between coffee and its consumers. People — somewhere in the world — have been drinking coffee as we know it today or a version of coffee (earliest brews in Arabia included boiling the leaves as well as the berries of the coffee plant) for about 1,450 years. Ugandans and Abyssinians — true caffeine lovers that they apparently were — chewed dried coffee berries before that. And we have our share of java junkies today: Americans consumed 26.8 gallons of coffee per person last year, according to the U.S. Department of Agriculture.

For a nation of avid coffee drinkers, we're surprisingly uninformed about our drink of choice. We consume it regularly, taking it for granted, enjoying it but really not knowing it. A little knowledge may well



(Left) Coffee beans drying in the *hoshidana*. Japanese for "rolling roof," the original *hoshidan*s were on wheels and only a few feet high. The beans dried during the sunny mornings, and the *hoshidan*s were rolled over them to protect the coffee beans from afternoon and evening showers. Modern *hoshidan*s (pictured) are stationary fiberglass structures that allow the sunlight through during mornings.

are the beans — if you want great cups of coffee — that you should get to know.

"Coffee is as complex as wine," says Sandy Cirie, coffee broker and roaster, owner of Red Ram Roasters in Kailua. "There are more than 100 steps required from picking the cherries to the coffee in your cup."

Like wine? And what's this about "cherries"? We are talking about coffee here. One hundred steps ... it sounds so complicated. Well, it is. There's the growing of trees and the harvesting. (There are about seven picks during a three-month coffee season — even cherries growing on the same tree ripen at different times — and coffee brokers will choose according to the pick. Cirie likes the third or fourth pick for most coffees.) Then there's the processing ("wet" or "dry" — wet processing is usually considered to be superior), the shipping, the roasting, the grinding, the brewing and finally the pouring.

However, if you are like most people, you are probably less concerned with the process than the ultimate taste and/or caffeine content. Switch to gourmet *arabica* beans and you can cut your caffeine intake in half. *Coffea arabica* contains about 1 percent caffeine, while 2 percent caffeine is found in *robusta* beans. Unless, of course, you end up drinking twice as much because it tastes so much better. (It will.)

A quick coffee primer

Coffee beans are actually seeds. Coffee trees (sometimes pruned to bush height), after blooming in a burst of white flowers scented like jasmine, produce red "cherries." A little over 6.5 pounds of cherries must be picked for each pound of roasted whole beans created, and a single cherry usually contains twin seeds. (The Ugandans, one of the first people to cultivate coffee, considered the seeds "brothers" and used them in a traditional "blood brother ceremony.")

In about 5 percent of all harvested coffee cherries, one seed is produced instead of two. This only child is called a peaberry. Some consider peaberry beans to be superior. Kona Kai Farms, for example, sells its Peaberry Kona/Dark Roast Coffee for \$18.50 per pound, \$2 more per pound than its regular Dark Roast 100 percent Kona.

The best coffees are always hand harvested. The bright-red cherries are picked, the rest left to ripen. Cheaper grades are machine harvested. "Cheaper coffees, those that end up in blends like Folger's or Yuban, are left to grow and ferment on the tree until the cherry is black like a raisin. Then everything is stripped off the branches: green cherries, red ripe cherries and the fermented black cherries." Even twigs and leaves can make it to the roaster and grinder in cheap coffees. (If they made it that far, then they will make it into your cup, too.)

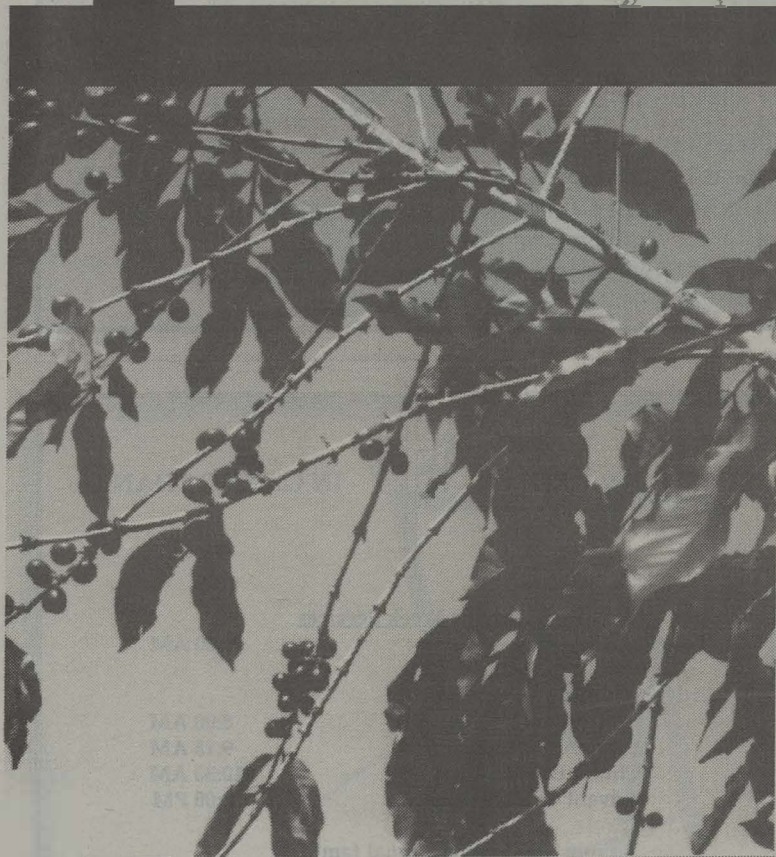
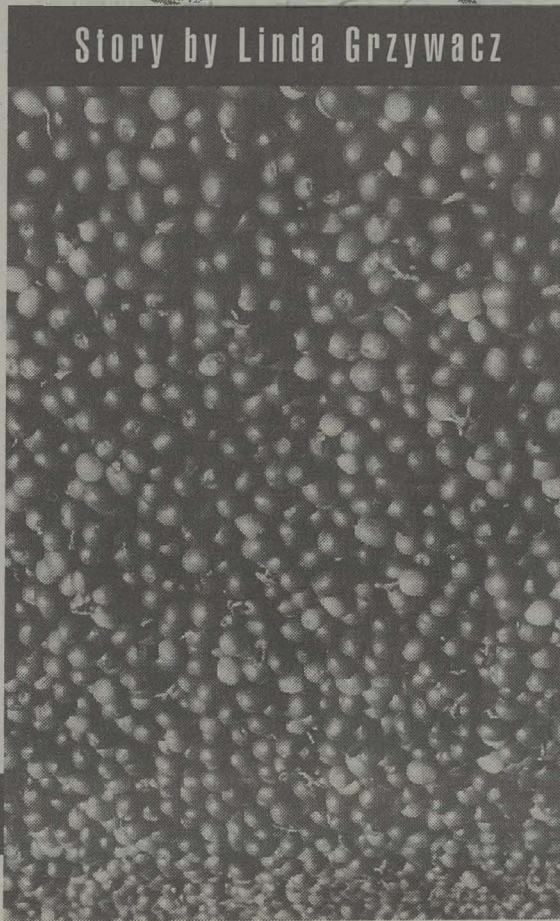
But, according to Cirie, "A bad roaster can even kill an excellent bean. Some beans, like Konas, don't have the body to sustain a heavy roast." In general, lighter roasts will be more acidic; darker roasts will have almost burned tones and a bittersweet tang. Certain beans taste best at certain roasts.

Coffea arabica grown in Jamaica does not taste the same as *Coffea arabica* grown in Sumatra, which does not taste the same as that grown in Kona, and to paraphrase Yul Brynner as the king of Siam in *The King and I*, "et cetera, et cetera, et cetera." Coffees are often blended to balance out acids, aromas and body. Before purchasing beans, ask your roaster/retailer for advice on flavors and blending. If yours can't help you, find one who can.

It's simple, really. Avoid roasted sticks by purchasing whole-bean *arabicas* that are fresh-roasted by a great roaster. For the freshest cup possible, buy a week's worth of coffee beans at a time and grind only as much as is needed right before brewing. This guarantees that all those wonderful things that give coffee its great

THE BEAN SCENE

Story by Linda Grzywacz



(Above) *Coffea arabica*: Coffee "trees" are actually large shrubs — members of the same family as the gardenia.

(Right) *Coffea arabica*: Coffee "cherries" before pulping (the pulping process separates the beans from the rest of the cherries).

be a dangerous thing in this case, as better coffee is usually more expensive coffee. But you might find knowing more leads to a bit more appreciation for that liquid you sip, slurp or gulp down to start the day.

There are many wild species of coffee, according to the Specialty Coffee Association of America, but only two are traded commercially: *Coffea arabica* and *Coffea canephora* or *robusta*. *Arabicas* make up about 75 percent of the world's coffee production, and unless you contain yourself to instants or commercial blends (which are most often made of *robusta* beans), it is probably ground *arabica* beans that make it into your cup.

All *arabica* beans, however, are not created equal. Only about 10 percent of the world's crop qualifies as the specialty coffees sold by gourmet shops. These are the beans that potentially make the best coffee, so these

flavor — aldehydes and dimethyl sulfides, to name two — will not oxidize and go stale. (According to one food textbook, many people have become so accustomed to drinking the beverage made from stale coffee that they have developed a taste for it.)

OK. The beans are roasted and ground and coffee brewed. Since the acid in the coffee (and even tea, especially if it's served with lemon) dissolves some of the polystyrene in Styrofoam, you may want to pass on that Styrofoam cup and serve it in a pre-warmed ceramic mug. Wrap your hands around it, warm them up, sip and enjoy. ■

BASIC STEPS

- 1) Pick cherries (by hand) from trees.
- 2) Pulp cherries to separate bean.
- 3) Beans dried for about four to five days in hoshidanas.
- 4) Beans processed to remove two layers (silver skin and parchment) from green bean.
- 5) Green beans sorted according to size and quality of bean.
- 6) Beans roasted, ground, brewed.
- 7) Drink coffee.

often has been blended with other coffees lacking those characteristics.

Unfortunately, some Kona blend drinkers may be losing out as the coffee processors cash in on the Kona name. The Mainland doesn't regulate the name "Kona coffee"; theoretically, a processor could put as little as one Kona bean in each pound and call it "Kona blend." And while here in Hawaii state law requires that a minimum of 10 percent Kona coffee be contained in Kona coffee blends, no one seems to be enforcing the regulation. And the law doesn't guarantee much as far as quality is concerned because

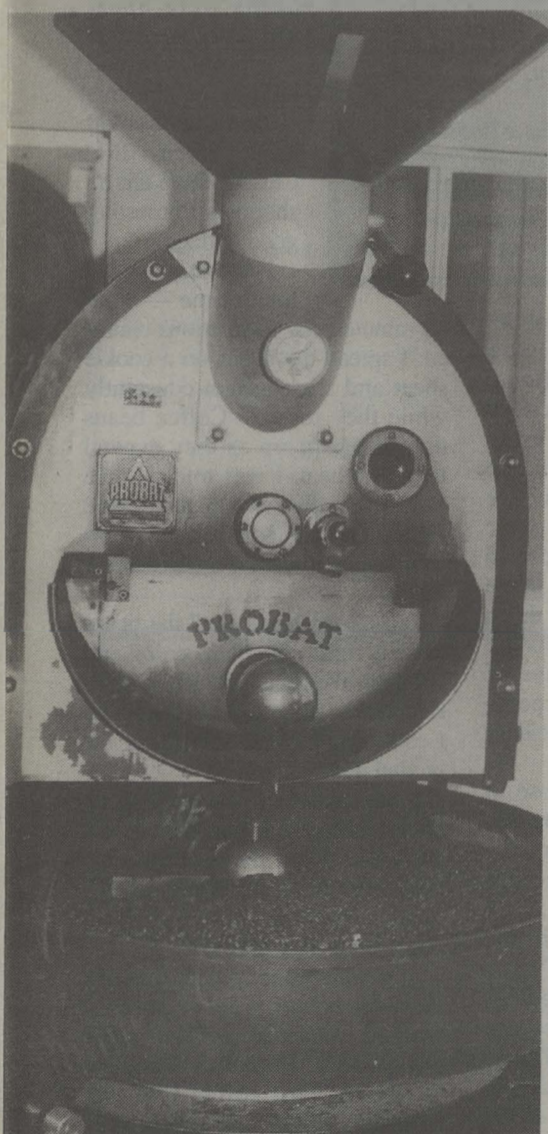
many blends probably use inferior Kona beans. The law doesn't require that the best Kona coffee be used — and it probably isn't; according to Cirie, the best Kona trade at up to \$8 per pound green (unroasted). So chances are — in order to keep prices down — lower-grade Kona are used in Kona blends. (Currently, there is no law requiring manufacturers to disclose what other kind of coffee is in that blended bag. ...)

A faction of Kona coffee growers isn't happy with the current labeling of Kona coffee, a situation they maintain sacrifices

Kona coffee wars

Kona coffee's history is long and its reputation excellent. The Rev. Samuel Ruggles planted coffee in Kona about 165 years ago. Today 2,000 acres of Kona coffee are being cultivated by about 600 growers, down from the approximately 6,000 acres farmed in 1959. Twenty-thousand bags (a little over 100 pounds each) of green coffee are produced there annually.

Bob Regli, owner of Kona Kai Farms, describes great Kona "as one of the finest coffees in the world: medium bodied, fairly acidic, with some subtle winy tones, very richly flavored and, when fresh, overwhelmingly aromatic." Kona coffee is known worldwide as being smooth and rich and



(Above) Coffee shrubs in the nursery, before planting.

(Left) Final stage: Roasting the beans. This is a 10-kilo roaster.

the integrity of its unique flavor for economic gain. In early 1993 this group — members of the Kona Coffee Council (KCC) — applied to the U.S. Patent and Trade Office for certification of the name "Kona coffee"; they're hoping to patent "Kona coffee" definitions (100 percent Kona and Kona blend). The KCC represents less than a third of the coffee industry in Kona.

Photos by Christine Flanagan

RISE ABOVE IT ALL!!
NEVER BEFORE AVAILABLE IN HAWAII!!

UNIQUE GIFT of FLIGHT

The ORIGINAL **GLIDER RIDES**®
A Service of HONOLULU SOARING CLUB, INC.

OPEN COCKPIT **N2S** BI-PLANE FLIGHTS

- 2-passenger ride with live-VIDEO (VHS)
- 25 minute flight

• 1941 - VINTAGE (fully restored)

- 1 passenger
- 20 minute flight
- Leather helmet and goggles provided

SERENE

CHOICE TOTAL \$125*
(* plus tax)

AEROBATIC SPORT BI-PLANE

(CLOSED BUBBLE CANOPY)

- ACRO-maneuvers tailored to your desire
- 1 passenger with live-VIDEO
- 10-minute flight

ADRENALIN +

YOU GIVE THE CERTIFICATE AND LET *THEM* CHOOSE ONE

Certificate is Valid thru 12/95

- EXTENDED OPTIONS AVAILABLE
- Flight operations: Dillingham Airfield North Shore Oahu
- 10:30 - 5:30 every day
- RESERVATIONS REQUIRED
- [Some restrictions apply]

677-3404

Ask for "Mr. Bill"

Offer expires 1-31-95

AXIOM PRESENTS

IN ASSOCIATION WITH
Unity Church of Hawaii

MATTHEW FOX

EVENING LECTURE & ONE-DAY SEMINAR
Nov. 18-19

MATTHEW FOX RESCHEDULED FOR FEB. 17, 18 1995

Creating... the tradition

Experiencing
THE CELESTINE PROPHECY
with Author James Redfield & Salle Merrill-Redfield

Evening Lecture - Jan. 12, 1995
at the Hawaii Prince Hotel, Waikiki

One-Day Workshop - Jan. 14, 1995
at The Ritz Carlton Maui

FOR INFO & REGISTRATION CALL: 1-800-76-AXIOM

Pritchett



©1994 JOHN S. PRITCHETT

Confessions of a Home Roaster

Let's get one thing straight: I'm no chef. I don't own a cookbook, a wok, a vegetable steamer, a cake pan or a spatula. My latest kitchen acquisition is a red, white and blue "Duke Bainum, M.D. for City Council" potholder I recently found in my mailbox. So believe me when I say that anyone can roast beans. All you need is an oven, a container to hold the beans and something to stir them with.

ROASTING GUIDE

An experienced roaster roasts by sound — roasting coffee crackles and pops — as well as color of bean.

Light Roast: Light-brown beans; dry surface. Coffee from this roast will taste like grain or bread.

Medium or American Roast: Medium-brown beans; dry surface. Coffee made from this roast has a definite acid snap.

Light French or City Roast: Beans are a bit darker than American Roast; oil begins to appear on their surface. A less acidic brew.

French Roast: Dark-brown and shiny beans; a bittersweet cup. This is the point, chemistry majors, where amines and ammonia are formed, adding to a dark roast's distinctive odor.

Italian Roast: Almost black, shiny beans. Adios, acid. There will be charcoal tones in your cup.

John Lagenstein, vice president of the KCC and chairman of the certification committee, says, "We are not anti-blend. We just want the ability to identify our product [Kona coffee]."

Les Drent, publisher of Coffee Times magazine and pro-certification, echoes Lagenstein. "As complex as the issue is ... it comes down to truth in labeling, putting in the package what it says on the package."

Five corporations have filed lawsuits in opposition to the name "Kona" being federally certified by the Kona Coffee Council: C. Brewer dba Royal Kona Coffee Co., Captain Cook Coffee Co., Kona Kai Farms, Hawaiian Isles Kona Coffee Co. and Woolson Tea & Spice dba Lion Coffee Co.

Regli says he filed his lawsuit because he believes that the group who filed for the certification mark "does not represent the industry [in Kona]."

"I think it would be great if all coffees — not just Kona — were labeled and designated by geography."

Even he admits, however, that "Kona blends are done by accountants, not by coffee roasters. There is a big incentive to use as little Kona as possible in a blend to get the pizzazz of the name 'Kona.'"

Both Regli and Lagenstein voiced their frustrations on the divisive nature of the certification issue. Lagenstein is abandoning his fight for the certification mark and giving up his seat on the Kona Coffee Council next year, after what he feels was "a slap in the face" by those members of the Kona coffee community who didn't support him and his efforts.

And Regli sees the certification fight as drawing attention away from the issues that people can agree on. "Instead," he says, "we have the Kona coffee wars."

The dispute may move toward taking depositions, or — more likely — it will die a quiet death if the KCC decides to drop the trademarking issue because of financial considerations, according to Lloyd Lamouria, president of Kona Kai Cafés.

The infighting among those in the Kona coffee business may be contributing to Hawaii's relatively low profile in the U.S. coffee world.

"We are the only state in the union that grows coffee," says Cirie, "and it is not just any coffee. Its special characteristics are dependent on the eco-conditions here — volcanic soil and cloud, shade, sun variations — that produce excellent coffee."

"We grow coffee and we have the experts," she says. "Why is Seattle the coffee capital of the U.S.?" —Linda Grzywacz

The challenge of entering my dark, unfamiliar kitchen was daunting, but in I went, carrying a Ziplock bag full of green (unroasted) Kona coffee beans. "Preheat the oven to 450 degrees," my instructions said. As I was waiting for the oven to heat, I remembered something my mother told me. "Anything that can be done in the oven can be done in the microwave," she'd always said. Wouldn't you believe a woman who owns a red apron with white letters saying "Got More Time For Misbehaving Since I Started Microwaving"?

I dumped some green beans into a glass dish and gave it a try. Four minutes later I popped open the microwave door. Smoke flooded the room. The beans were black and unrecognizable. The problem could have been the microwave or it could have been me. Clearly, there are no shortcuts to roasting good coffee.

Not that you need much time — only 20 minutes, my instructions claimed. I spread the beans on a cookie sheet and stirred them constantly while they roasted. Coffee beans pop like popcorn as they expand from the heat, I was told. Unlike popcorn, they have a second expansion pop and when the beans start to pop a second time, they are ready.

During the first "pop" the beans were a light chocolate color and popping like Rice Krispies in milk. Eventually, the beans got quiet and I continued to stir, waiting for the second pop.

I was sweating like mad in my hot kitchen. The beans were a dark chocolate color, the oil beginning to emerge from the beans, when I finally heard the second series of pops. Were they finished?

Once the beans cooled, I ground them and brewed a pot of coffee. It smelled wonderful, as Kona coffee always does. I tasted it. Delicious — no, the best coffee I've ever had. Success! I gulped down the entire pot. Then, shaking from excitement (or caffeine overdose), I poured another bagful of beans onto the cookie sheet and started again. —Christine Flanagan

INDIGO

EURASIAN CUISINE

Now Open
for Breakfast

7:00 - 10:00 am

Morning Tea

Lunch

11:00 - 2:00 pm

Afternoon Tea

Dinner

5:00 - 9:30 pm

- Bar Open All Day •
- Patio Dining •
- Valet Parking (Dinner) •

1121 NUUANU AVE.
HONOLULU, HI 96817
521-2900

• KIONDO BAGS • BATIKS • TRIBAL ARTIFACTS • KISII SOAPSTONE • MUSIC • SHONA SCULPTURE

EST. 1987

OUT OF AFRICA

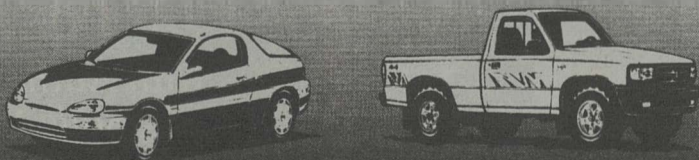
New Christmas Location
Windward Mall & Ward Warehouse

• SPEARS • SHIELDS • GOURDS • DRUMS • JEWELRY • FABRIC • POTTERY • BASKETS

Automotive Experts

Non-Profit Consumer Information Service

Recommended by Motor Trend Magazine.

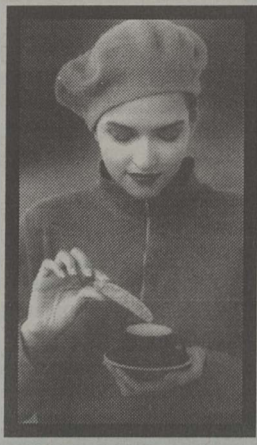


24-hour touch tone hot-line provides dealer invoice cost (what the dealer really paid for the car), secret rebate information and negotiation strategies.

Dial 1-900-772-3477

First minute free. \$1.95 ea. add. min. Average call 5 minutes.

COFFEE • ART • FASHION



THE POSSIBILITIES ARE
ENDLESS AT

CAFFÈ
ACZIONE
THE COFFEE HOUSE

★★★★ FOOD
★★★★ SERVICE
★★★★ ATMOSPHERE
★★★★ VALUE

'Wins Consumers with Style'
-Nadine Kam, Star-Bulletin

Espresso Bar • Art Gallery
Euro/Hawaii Bistro

Mon. - Thurs. 9am - Midnight
Fri. - Sat. 9am - 2am
Sun. 9am - 10pm

PHONE: 941-9552
1684 HALAHAUA AVE.



Give the Gift of
Massage

This Christmas you can give a
gift that is Rewarding, Relaxing
and totally Enjoyable!!

Friends and family alike will
enjoy receiving a 1 hour massage.

To purchase gift certificates or to
schedule appointments call

Century Square Massage Clinic

538 7790

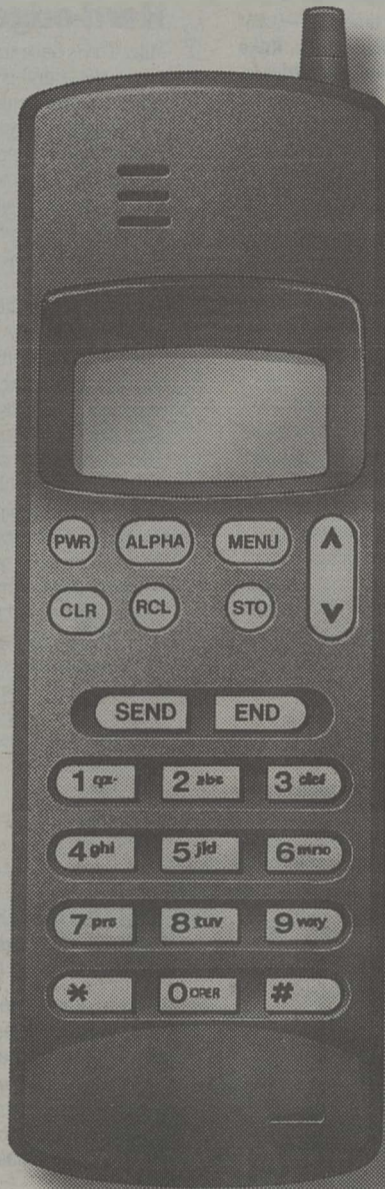
Bridget Ross RN, LMT
Mat#3620

Economics 101.

Regular.....\$269

Save.....\$120

Sale.....\$149



Nokia 101

Subject includes:

- Extended nickel cadmium battery
- Rapid charging cigarette lighter adapter
- Leather case
- A/C charger
- Signal and battery strength indicator
- 50 alphanumeric memory locations
- 95 minutes of talktime (with extended battery)
- 1 yr. warranty

Honolulu Cellular
Hawaii's Cellular Leader

ARC activation required, some restrictions apply. Hurry, this offer is good for a limited time, and only while supplies last.

For Free consultation at your home or office call 627-8500.



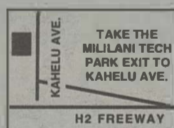
1161 Kapiolani Blvd.
593-2755



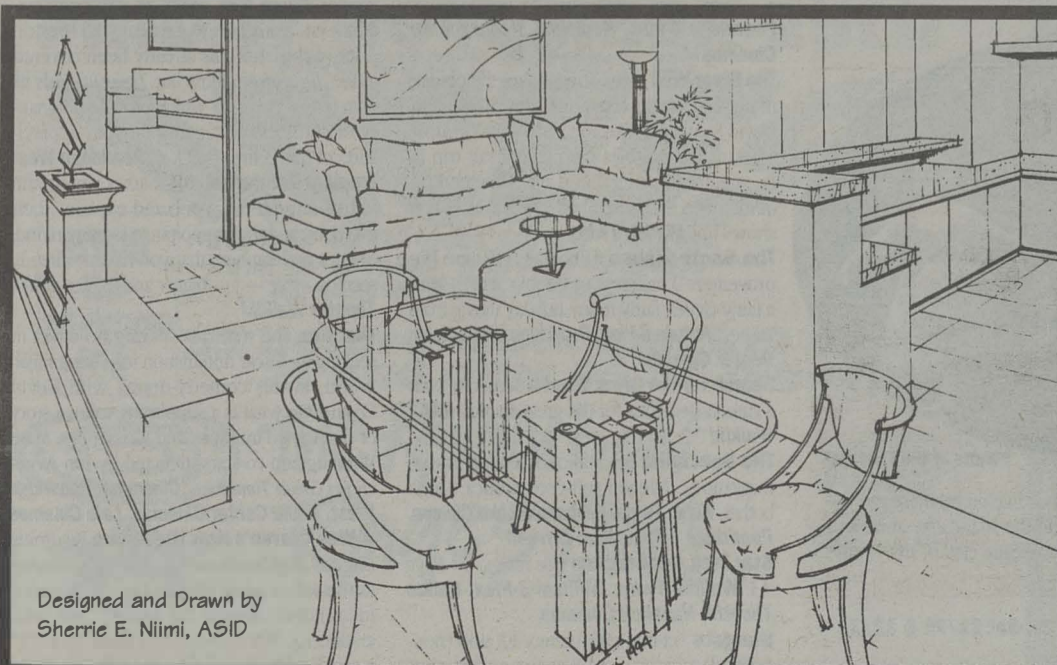
Grosvenor Center
737 Bishop St. 537-2021



98-1238 Kaahumanu St.
Pearl City 487-CELL



500 Kahaolu Ave.
Mililani 627-8899



Designed and Drawn by
Sherrie E. Niimi, ASID

Draw attention to yourself.

Everybody in Honolulu with a taste for contemporary furniture has already heard of PILO. But, what most people don't know is - PILO also offers design assistance. Better still, our design services are directly deductible from the cost of any furniture you buy at PILO, even our sale items. This means that if you plan to do some refurbishing, you very well might be able to get professional interior design plans too, at no additional cost! For more information call 524-5515.

PILO
Fine European Furniture

560 N. Nimitz Hwy, Suite 118 • Honolulu, Hawaii 96817 • 524-5515 • Open daily 10:00 am to 6:00 p.m.

CALENDAR

Nov. 23 - 29

"Calendar" is a selective listing of arts, entertainment and other activities in the Honolulu area. Due to the capricious nature of life in the entertainment world, dates, times and locations are often subject to change without warning; movies are prone to switching theaters just days after Honolulu Weekly comes out. Avoid disappointment: Call ahead.

Film

Criticism by Bob Green unless otherwise noted. ☺, the Weekly's dingbat of approval, indicates films of more-than-average interest.

☺ **Bullets Over Broadway.** In this, one of his three best films, Woody Allen has managed to return to broad farce (with more skill and laughs than ever, but now character-driven comedy, fewer mere jokes) and, in the last third of this masterpiece of its kind, to merge low comedy and high purpose to get one of the biggest laughs (of many) when, here, the "two" Woodys — the farceur performer and the high-minded screenwriter — merge.

Varsity Twins

Double Dragon A video game makes it to the third dimension (or what passes for it in Hollywood). It's the one about two bros seeking a magical medallion ... and so forth.

Enchanted Lake Cinema, Pearlridge West

☺ **Forrest Gump** The film deals with the life and times (mostly flashback) of Gump, whose experiences take him from small-town Alabama to college football glory to Vietnam (and the turbulent '60s) to Washington, D.C. (and propitious meetings with three presidents), to wealth ... and a return to the family home back in 'Bama. As long as the movie is Gump's Kilroyesque story, things go beautifully — funny and touching. When the movie tries to be a commentary on the great social tides of American history during these eras, it's more simplistic than Gump himself. **Pearlridge West, Marina Twins**

Hidden Hawaii An IMAX tourist-oriented tour of our state, featuring a Big Island volcano, a rain forest, Haleakala and the birth pangs of Loihi. Luckily for us, it has an environmental theme and does an OK job — as far as it goes. Music by Oscar-nominated Mark Isham (*Never Cry Wolf*). **IMAX Waikiki**

Interview with the Vampire Although it's a feast for the ears and eyes, the aptly named *Interview with the Vampire* is tragically low on the life's blood of any watchable film, a

plot. It has a beginning (the start of the interview); it has an ending, sort of (the end of the interview); but the story, the interview, can best be described as simply a middle. No conflict, no movement, no real climax, this middle unfolds as a strict chronology with all the tension of an unedited diary entry and all the drama of a history book timeline. —David K. Choo **Waikiki No. 3, Alkahi Twins, Koko Marina Twins, Mililani 3-Plex, Kam Drive-In, Nanakuli Cinemas**

☺ **The Lion King** Disney's newest animated feature, a little darker than most. Music by Tim Rice and Elton John. Voices by a host of celebrities, including Jeremy Irons. **Kahala 8-Plex, Pearlridge 4-Plex**

Little Giants Two brothers coach opposing peewee football squads. Rick Moranis and Ed O'Neill co-star. Directed by former David Lynch cohort Duwayne Dunham. Would I lie to you about a thing like that? **Kahala 8-Plex, Pearlridge West**

Love Affair The film starts with the same sense of whimsy as its 1957 predecessor starring Cary Grant and Deborah Kerr, but this love affair gets a lot more serious a lot quicker. The sadness and emptiness that was alluded to by Grant and Kerr pours out like so many tears with the Beattys. In an effort to lighten things up a bit, Garry Shandling is cast as an ever-scheming business agent, but aside from a few chuckles, it doesn't work. This film's single-minded purpose is to get to Midtown Manhattan and its big, plot-twisting misunderstanding. At the end of this sobbing juggernaut, both lovers are still adrift, carried off by the currents of coincidence and happenstance. They bump along unaware until the earthquake-at-the-Hoover-Dam finale. —D.K.C. **Kahala 8-Plex**

Mary Shelley's Frankenstein With a buffed Kenneth Branagh (the film's director as well as star), beautiful Helen Bonham Carter (as Branagh's adopted sister and then fiancée), puppy-faced Tom Hulce as a loyal medical school friend, an almost unrecognizable John Cleese as an outlaw teacher and Robert DeNiro as the monster. Unfortunately, DeNiro's monster, who can think and speak with a forced eloquence, does not embody the mythology of weird science's achievement; he's reduced to the stature of a homely homeless man suffering from separation anxiety. Branagh's pre-occupation, the relationship between creator and creation, seems to blind him oddly. But perhaps now, after the fact, Branagh can truly understand Victor Frankenstein's epiphany: When ego is allowed to play God, it plays God with everyone — including talented

Music Pick

Hard-edged romantic

Miles Davis once named him as the most innovative, influential saxophonist of recent times. His sound is unmistakable: piercing yet rich, forceful yet romantic. Alto saxophonist **David Sanborn** returns to the Waikiki Shell this Friday in what promises to be a thoroughly enjoyable evening of jazz-funk.

First here as an opening act in the early '80s, Sanborn, who has played the Shell as a headliner before and encountered the difficulties that came with the notorious decibel cap, is excited about returning: "I love it. I'm glad. I hear that you've raised the dB limit out there. It'll make it a little bit easier. It's not that we necessarily want to peel paint, but you need to play at a certain level to make the music sound good if you're playing for a large audience."

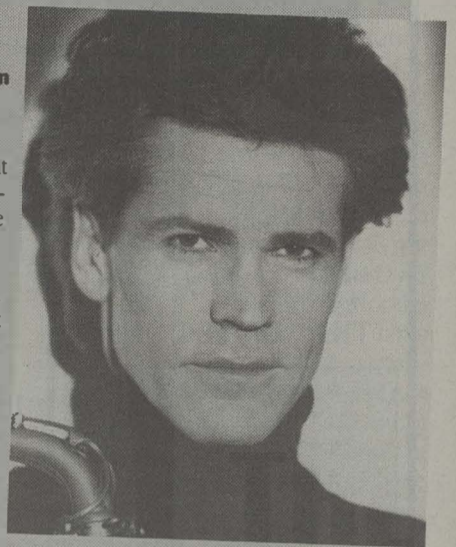
About his tone, which has been emulated by countless well- and unknown saxophonists, Sanborn says: "I think it's a combination of my physiology, the way I stand, the way I hold the horn and also the kind of sound that I hear in my head. I always tried to sound like Hank Crawford when I started playing; he was my first big influence. I was really into players that had a certain kind of alto sound: Hank Crawford, David Newman, Phil Woods, Jackie McLean, Cannonball Adderley. They had a more aggressive sound; they had a lot of timbre in their sound, a lot of overtones. I think I gravitated more toward the harder-edged sound, because the kind of music I grew up with was kind of R&B and blues based."

After apprenticeships with legendary bluesman Little Milton in his native St. Louis and with the Butterfield Blues Band (with whom he played Woodstock, right before Jimi Hendrix), David Sanborn's career has been marked by 14 albums as a leader (most of which have gone gold or platinum), five Grammys and many spectacular appearances and recordings as a sideman for such stars as Stevie Wonder, David Bowie, Bruce Springsteen and the Rolling Stones. He also hosted the fondly remembered "Night Music," one of television's great music programs, on which he not only put together such unlikely but successful combinations as Sonny Rollins with Leonard Cohen but also was able to showcase some of his aforementioned musical models.

Never content to coast on his success, Sanborn has admirably been known to step out of the commercial bag, to challenge himself. What does he do to keep improving his playing? "Practice. I play music that is difficult for me to play: Woody Shaw tunes, Wayne [Shorter] tunes, Joe Henderson tunes — tunes that allow me to learn something that I don't know about playing [chord] changes — and play with people who know about that kind of stuff. I became a musician because I love music, and although I love bebop and straight-ahead music, I don't consider myself to be very adept with that vocabulary. I work at it, because why practice things that you already know? Why not practice the things that you don't know, that are hard for you?"

Opening the concert will be **Acoustic Alchemy**, featuring Englishmen Greg Carmichael, who plays a nylon-string guitar, and Nick Webb, who plays a steel-string guitar, accompanied by bass and drums. The group has been successful specializing in the modern easy-listening style known as "new adult contemporary." —Seth Markov

David Sanborn and Acoustic Alchemy: Waikiki Shell, Kapiolani Park: Fri 11/25, 7 p.m. Reserved seating, \$25; grass seating, \$16 advance, \$18 at door. 591-2211



David Sanborn

PHOTO: LINDA GOLDSMITH

moviemakers. **Kam Drive-In, Enchanted Lake Cinema, Varsity Twins, Pearlridge West**

Miracle on 34th Street This remake of the '40s Xmas classic ain't up to snuff. It's one of those John Hughes jobs — thin, funnyish, Hollywood's notion of a belief system. Pirandello it's not. **Kahala 8-Plex, Pearlridge 4-Plex**

☺ **Only You** Marisa Tomei and Robert Downey Jr. do a "romantic comedy" as in days of yore, à la Cary Grant. If you're still capable of blush-and-swoon, you might like it. Hard-boiled real-

ists should stay away. **Kahala 8-Plex, Pearlridge West**

The Professional A very, very French film — financed by the United States — about a hit man's relationship (parental, sort of) with a 12-year-old girl. Ka-boom, ka-blat, ka-blooye. Nonstop action with a plot so unbelievable it could only be French. It's in English, however. **Kuhio Twins, Pearlridge West, Kam Drive-In, Keolu Center Cinemas**

☺ **Pulp Fiction** This film is a kind of "celebration" (albeit ironic) of criminal life. It's beautifully done — and seems to convince audiences that they're hip. This is post-modernist filmmaking that makes a virtue out of self-consciousness and the audience's knowledge of genre movies. It's better than *Natural Born Killers* because the language (especially Jackson's monologue) is often funny and terrifically well acted. No question about it: Tarantino has really "done it" here. **Pulp Fiction** is a good, good movie, but it's quite brutal. **Pearlridge 4-Plex, Kapiolani, Keolu Center Cinemas**

The River Wild Meryl Streep takes the plunge in her first action-adventure film. Streep and David Strathairn (*Passion Fish*) play a couple with marital troubles who take a raft trip in an attempt to patch things up. They end up in the deep end when bad boy Kevin Bacon shows up. **Marina Twins**

The Santa Clause Tim Allen ("Home Improvement") makes it to the big screen with a fairly clever, fairly funny holiday movie from Disney. **Kahala 8-Plex, Pearlridge West, Keolu Center Cinemas**

Search for the Great Sharks Someone with a camera searches for the great sharks. **IMAX Waikiki**

The Specialist Sly Stallone. Sharon Stone. Explosions. Alleged soft-core erotica. Don't bother. **Kuhio Twins, Enchanted Lake Cinema, Pearlridge 4-Plex, Kam Drive-In**

Star Trek Generations See review on Page 13. **Waikiki Twins, Mililani 3-Plex, Kallua Theatre, Nanakuli Cinemas**

Stargate Sci-fier with plenny FX and (non-political) morphing. An Egyptian artifact spurs

a top-secret investigation. Kurt Russell muscles around, James Spader is a Nilotic scientist, and Jaye Davidson (*The Crying Game*) plays a queenly ruler. **Waikiki Twins, Alkahi Twins, Koko Marina Twins, Laie Cinemas**

The Swan Princess Animation, celebrity voices, run-of-the-mill cell animation with some computer enhancements. For children, ostensibly. **Kahala 8-Plex, Pearlridge West, Enchanted Lake Cinema**

Timecop Jean-Claude Van Damme plays Max Walker, a member of the Time Enforcement Commission, a supersecret agency that polices the time-travel superhighway. The year is 2004, and while on a mission to corral a dishonest partner, Walker, who lost his wife and eight-bedroom house in a fire 10 years before, uncovers a U.S. senator's dastardly and cumbersome plan to steal money from the past to fund his presidential campaign. What follows is a race against time, so to speak, as Walker dashes back and forth collecting evidence and witnesses to implicate the senator. A lot of this stuff has already been covered in the *Terminator* films but *Timecop* adds its own twists and turns which provide poignancy or cominess depending on your appreciation of this genre. —D.K.C. **Pearlridge West**

Tropical Rainforest IMAX takes you to rain forests around the globe and explains their evolution and their importance to humankind. There's nothing here that you haven't already seen on cable — just bigger and louder. **IMAX Theatre Waikiki**

The War The studio is sparing no effort in seeking an Oscar nomination for young Elijah Wood, in this comedy-drama with Kevin Costner (in what is a supporting role), a story of small-town triumphs and vicissitudes. Mare Winningham co-stars; directed by Jon Avnet (*Fried Green Tomatoes*). **Cinerama, Pearlridge West, Keolu Center Cinemas, Laie Cinemas**

☺ **Wes Craven's New Nightmare** Returning original *Nightmare* star Heather Langenkamp (as herself) is asked by New Line Studios president Robert Shayne (as himself) and writer/director Wes Craven (as himself) to star in a new Freddy (Robert Englund, who also plays

Dance Pick

A bit of Bolshoi

The Christmas season gets a jump start the day after this Thanksgiving with the premiere of Ballet Hawaii's *Nutcracker*. In a town this small, no one cares to risk comparisons, but this spectacle truly promises to be unlike any of the other adaptations of the holiday classic that have proliferated in Honolulu since at least 1980. In the first place, the Bolshoi Ballet's Shamil Yagudin has brought to Manoa many idiosyncrasies from his alma mater's own production. So the little girl who receives the gift of the nutcracker at the Christmas party is not named Clara but Marie, as in the Russian rendition of the story by Alexandre Dumas. And unlike little Clara, who watches bedazzled as the pageant unfolds in her honor, Marie grows up by the middle of Act I and dances with the Prince right through the splendor of the snow scene to the "Grand Pas de Deux" and final "Waltz of the Flowers" — à la Gelsey Kirkland and Mikhail Baryshnikov in the New York City Ballet's television special. Bolshoi veterans Alla Khaniashvili and Vitaly Artushikin, recently here with Ballet Stars of Moscow, return to Hawaii in these leading roles, elevating the technical level of a cast that includes Jacquelyn Hays once again as the Sugar Plum Fairy and five brand-new Ballet Hawaii principals in the various *divertissements*.

Of course, familiar faces will abound in the corps de ballet as well as among the bonbons, soldiers and baby mice, and look for guest artist Marie Takazawa in "Chinese Tea" with a surprise partner. Best of all, for the first time in 10 years, the Tchaikovsky score will be played by a live orchestra of more than 30 musicians with the San Francisco Ballet's Denis De Couteau conducting. (De Couteau will remain in the Islands for another seasonal favorite, Handel's *Messiah*.) Ballet Hawaii is playing for high stakes, and their special touches don't come cheap. But from all indications, the company is on a roll. —Paula Durbin



"Waltz of the Flowers"

Ballet Hawaii's Nutcracker: LCC Theater, Leeward Community College, 96-045 Ala Ika: Fri 11/25, Sat 11/26 & 12/3, 2 & 8 p.m. \$22 • 28. 949-7578

Club Scene

Into the night

Sometimes it seems the sole meaning of life in Honolulu, the overriding purpose that pulls us inexorably toward our own destiny, is to find parking. Never mind what happens when you get out of the car; the real victory is to get a space and spend as little time and money as possible in the process. Which is why it was miraculous that I found street parking for *Phantom of the Opera*. Because I was so lucky, I shall magnanimously divulge the HIC, I mean, NBC parking secret. You have to walk two blocks, but there is a certain lot that is always empty at night. It belongs to a clinic in the area and all I'm saying is that it's not Straub's. You're probably not supposed to park there, but I've never had any problems. It comes in quite handy when you have to go to graduation.

Phantom seemed a very nice show — fun to get dressed up and all, and great sets, but really, Andrew Lloyd Webber is no Puccini. That goth-disco number when the Phantom leads Christine down into his lair was unreal. It reminded me of the Alan Parsons Project score to the movie *Ladyhawke*. And how do I always manage to get seated in front of the same people who sit in back of me at the movies and provide a running commentary with the likes of "Ho, das baaaad" and "Hah, hah, good for him"?

Last month at the *Hat Makes the Man* reunion and benefit concert for the family of Greg Mundy, I ran into my friend Lisa's mother. She is probably Frank Orral's biggest groupie, since he and her kids grew up together on the same street. (Sorry, Mrs. R, for that quip about it being past your bedtime.) The show was rockin'. Marty's dress kept popping buttons as the evening wore on. Peter's usual Irish-setter mane was crew-cut. And when Frank sang that "Everybody's Trying to Figure It Out" song, whoever was running the video decided it would be cute to show the segment of *Poi Dog Pondering* performing the same song on David Letterman from a few years ago. It was quite frightening and unnecessarily post-modern

to watch the video projectionist try to sync up the Letterman video with the live feed. But great to see all those same old faces together again — the band and the audience. Everyone is aging so well. I asked around a few weeks later to see if perhaps the band would be playing more gigs. The answer was no. All I have to say is that if the Go-Go's can manage to be on their second reunion tour, then you guys can deal.

San Francisco's *Midnight Voices* has released a new album called *Late Nite at the Upper Room*. Fans of the third installment of MTV's "The Real World" will know that *Midnight Voices* is the band that Mohammed is in. He's the one with the dreadlocks. They are rather phenomenal in concert — a mix of African dance, rap, hip-hop, old school ... I'm so bad at categorizing music. Hey, can we please get them to come here? Somebody? Anybody?

On a recent sortie into Waikiki with two friends who work at *Compadres*, we ran into a friend of theirs who is a waiter at a Waikiki seafood restaurant. He remarked, "I've just come from work and smell like fish." The girls, who had just come from work also, retorted, "Well, we smell like chips." Trying to keep with the theme, I offered that earlier that day I, too, had come from work and smelled like newspaper. Unfortunately, we were at a loss to think of a job that could make you smell like malt vinegar. We ended up at *Hula's*. It was a Wednesday night, the make-a-date night. A live version of the personal ads was being played out. From what I gather, you post an ad on the bulletin board and are given a number. When you receive a response to your ad, your number is broadcast on the video screen and the rest is left up to nature, or is it nurture? Ad No. 116 had a follow-up ad written by "number 116's mother," who assured all prospective hopefuls that 116 was indeed a good boy and was marriage material. Somehow I was unable to find a number for the mother who sounded so nice.

—Matt Uiagalelei

MOVIEHOUSES

Film locations and times are subject to change. Please call venues for latest information.

Town

Cinerama

1550 S. King St. 973-6333

The War

Kapiolani

1646 Kapiolani Blvd. 973-5633

Pulp Fiction

Varsity Twins

1106 University Ave. 973-5833

Bullets Over Broadway, Mary Shelley's Frankenstein

Waikiki

IMAX Theatre Waikiki

325 Seaside Ave. \$7.50. 923-4629

Hidden Hawaii, 11 a.m., 1:10, 3,

5, 7 & 9 p.m. *Search for the Great*

Sarks, 2, 4 & 8 p.m. *Tropical*

Rainforest, 2, 4 & 8 p.m.

Kuhio Twins

2095 Kuhio Ave. 973-5433

The Specialist, The Professional

Marina Twins

1765 Ala Moana Blvd. 973-5733

Forrest Gump, The River Wild

Waikiki No. 3

Kalakaua at Seaside Ave. 971-5133

Interview with the Vampire

Waikiki Twins

Seaside at Kalakaua Ave. 971-5033

Stargate, Star Trek Generations

Windward

Aikahi Twins

Aikahi Park Center, 25 Kaneohe

Bay Dr. 254-1330

Stargate, Interview with the

Vampire

Enchanted Lake Cinema

1060 Keolu Dr. 263-4171

Mary Shelley's Frankenstein, The

Specialist, Double Dragon, The

Swan Princess

Kailua Theatre

345 Hahani St. 261-9103

Star Trek Generations

Keolu Center Cinemas

1090 Keolu Dr. 263-5657

Pulp Fiction, The War, The Santa

Clause, The Professional

East

Kahala 8-Plex

Kahala Mall, 4211 Waiialae Ave.

733-6233

Only You, Little Giants, Love

Affair, The Santa Clause, Miracle

on 34th Street, The Lion King, The

Swan Princess

Koko Marina Twins

Koko Marina Shopping Center,

7192 Kalaniana'ole Hwy. 397-6133

Stargate, Interview with the

Vampire

Central

Kam Drive-In

98-850 Moanalua Rd. 483-5533

Mary Shelley's Frankenstein, The

Professional, Interview with the

Vampire, The Specialist

Mililani 3-Plex

Mililani Town Center, 95-1249

Meheula Pkwy. 625-3886

Star Trek Generations, Interview

with the Vampire

Pearlridge 4-Plex

Pearlridge Center, 98-1005

Moanalua Rd. 483-5233

The Specialist, Miracle on 34th

Street, Pulp Fiction, The Lion King

Pearlridge West

Pearlridge Center, 98-1005

Moanalua Rd. 483-5333

Only You, The Santa Clause, The

War, The Puppet Masters, Timecop,

Wes Craven's New Nightmare,

Forrest Gump, The Swan Princess, The Professional, Double Dragon, Mary Shelley's Frankenstein, Little Giants

North Shore

Laie Cinemas

55-510 Kamehameha Hwy.

293-7516

The War, Stargate

Leeward

Nanakuli Cinemas

87-2070 Farrington Hwy. 668-

8775

Interview with the Vampire, Star

Trek Generations

Art & Revival Houses

Academy Theatre

Honolulu Academy of Arts, 900 S.

Beretania St. \$4. 532-8768

Jamon Jamon (1992) Wed 11/23,

Fri 11/25, Sat 11/26 & Mon 11/28,

7:30 p.m.; matinee Sun 11/27, 4

p.m.

Austrian Avant-Garde Cinema:

Culture and Its Discontents Tue

11/29, 7:30 p.m.

Movie Museum

3566 Harding Ave. \$5. 735-8771

Plan 9 from Outer Space (1956)

Thur 11/24 & Fri 11/25, 8 & 10

p.m.; Sun 11/27, 3, 5:30 & 8 p.m.

Glen or Glenda (1953) plus *Bride*

of the Monster (1955) Sat 11/26,

4, 7 & 10 p.m.

The Marvelous Visit (1974) Mon

11/28, 5:30 & 8 p.m.

UH Art Auditorium

UH Manoa Campus. \$5.

Spanking the Monkey (1994) Mon

11/28 & Tues 11/29, 7 & 9 p.m.

A TRIBUTE TO

Radio Free 102.7 FM HAWAII Revolution

DANCE FLOOR DEMOCRACY
 with Dave'O Day, Daniel J., Kai, Kathy with a K, and Deputy Dan
FRIDAY NOVEMBER 25th
 and every Friday at

ACCESS
 1009 University Ave.
 Info line: #944-4949
 E-line 591-3623

BYOB
 no
 corkage
 fee

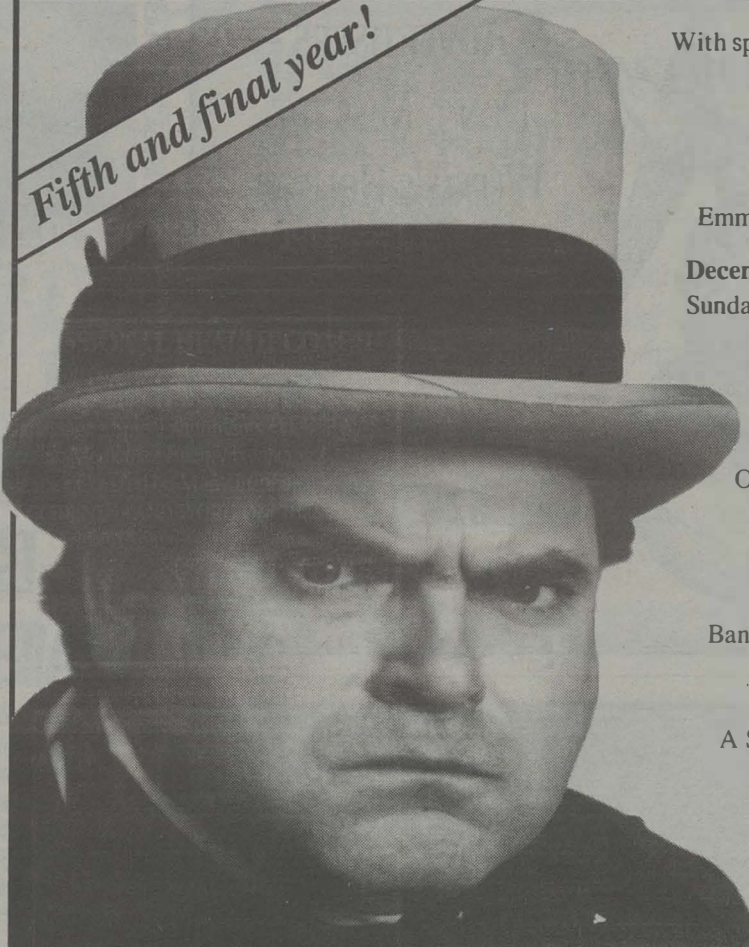
\$5 before 10pm and \$10 after
 21 and over \$5 all night



The Revolution RAGES ON!




Fifth and final year!



With special Guest Star
 James K. Seibel
 Written by
 Jim Hutchison
 Composed by
 Emmett G. Yoshioka

December 4-18, 1994
 Sunday thru Thursday
 Order tickets
 by phone at
 734-0274,
 Box Office
 Opens Tomorrow

Sponsored by
 Alexander and
 Baldwin, Inc.
 Bank of Hawaii and
 Long Distance
 Hawaii/USA,
 A Sprint Company


 Diamond
 Head
 Theatre

Frank DeLima as
SCROOGE

Sound enhancement system available at all performances for the hard of hearing. The December 11, 3 pm performance will be audio descriptive for the visually impaired.

LIFE IN HELL

©1994
By MATT
GROENING

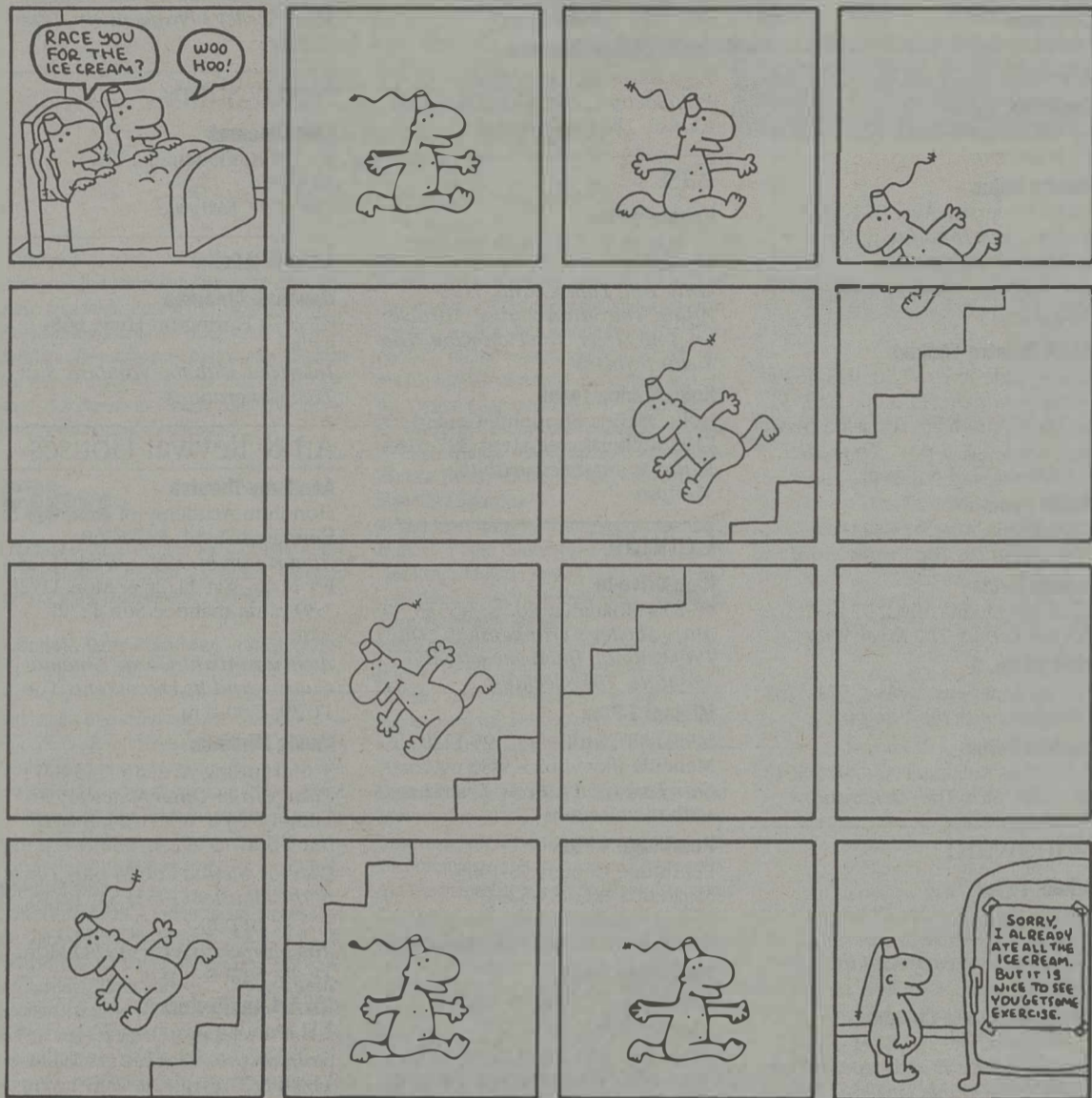


ILLUSTRATION: ADRIAN PEARLIDGE. STORYLINE: ©1994 BY MATT GROENING

himself) film. She accepts when her son's (Miko Hughes) nightmares intensify, a stalker whose telephone voice sounds like that of Freddy grows bolder and her husband is mysteriously killed. This thing — quite gory, you understand — is by far the best of the series and, perhaps, one of the best in a very long time. **Pearlridge West**

Short Runs & Revivals

Austrian Avant-Garde Cinema: Culture and Its Discontents Five new films figure in the Art Academy's new entry in this ambitious program. Somewhat Eurocentric (shall we say), the films center around domestic life in Vienna. Cutting-edge technique, plenny satire, great images. Only hard-core buffs need apply.

Academy Theatre

• **Bride of the Monster** (1955) Ed Wood's awful film, a close second to *Plan 9 from Outer Space*. Highly recommended. **Movie Museum**
• **Glen or Glenda** (1953) Ed Wood directs (and "stars") in this wonderfully horrible story about a man with two wardrobes, both awful. Angora anguish has never been this funny before or since. Truly, truly terrible. Highly recommended. **Movie Museum**

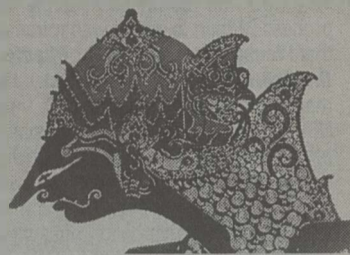
• **Jamon, Jamon** (1992) Run — do not walk — to director Bigas Luna's new, genuinely outrageous comedy (sexy, high energy, melodramatic). Winner of the Silver Lion at 1992's Venice Film Fest, this story (not to be divulged beforehand) is the kind of thing Almodóvar tries to pull off. This, Honoluluites, is da real ting. Go, already. Highly recommended. **Academy Theatre**

• **The Marvelous Visit** (1974) What is there to say? It's a Marcel Carne film and it plays only one night. Stay away if you don't know Carne's work already; the place will be packed. **Movie Museum**

• **Plan 9 from Outer Space** (1956) Ed Wood's genuinely awful (offa?) sci-fi flick. If you don't laugh, you'll cry. Highly recommended. **Movie Museum**

• **Spanking the Monkey** (1994) Terrific (and highly controversial) independent (U.S.) film about — well, the unorthodox relationship that develops between recuperating mother and horny son. It's a case, here, of adding incest to injury. Highly recommended. **UH Art Auditorium**

as well as the storytelling. Bring a cushion and an umbrella. **Music Department Courtyard Amphitheater**, UH Manoa campus. Fri 11/25 & Sat 11/26, 8 p.m. \$10 general; \$6 students, seniors. 95-MUSIC



Wayang Kulit: Shadow Puppets of Java

The Scene

23/Wednesday

Blues

Blues Jam/Open Mike, Sand Island R&B 847-5001

Melodious Thunk, Anna Barmanas 946-5190

Classical

Pumehana Davis, Banyan Court 922-3111
Grant Mack, Hanatei Bistro 396-0777

Comedy

Frank DeLima, Polynesian Palace 923-SHOW

Contemporary

Mahi Beamer, Andrew's Restaurant 523-8677
New Height, Nicholas Nikolas 955-4466
Kit Samson's Sound Advice w/ Rolando Sanchez, Maile Lounge 734-2211

Tito & David, Banyan Court, Sheraton Moana Surfider 922-3111

Country/Folk

Black Gold, Pecos River Cafe 487-7980
Bobby Dunne Band, Irish Rose Saloon 924-7711

Guitar

Richard Natto, Marina Front Lounge 956-1111
Winston Tan, Ships Tavern Restaurant 942-5516

Hawaiian

Jonah Curwings, Duke's Canoe Club 923-0711
Keoki Johnson, Sand Bar, Sheraton Waikiki 922-4422

Willie K, Ocean Terrace, Hawaiian Regent Hotel 922-6611

Ka'au Crater Boys, Moose McGillycuddy's 944-5525

Kahali'a w/ Karla & Halau Na, Poolside, Sheraton Waikiki 922-4422

Jon Osorio & Steve Brown, Shark's Cafe 947-4275

Butch O'Sullivan, Lobby Bar, Sheraton Waikiki 922-4422

Elaine Spencer Trio, Banyan Court, Sheraton Moana Surfider 922-3111

Jazz

Loretta Ables w/ Jim Howard & Bruce Namada, Lewers Lounge, Halekulani 923-2311

Azuro McCall w/ Tennyson Stephens & David Choy, Duc's Bistro 531-6325

Ed Moody, Lewers Street Fish Co. Restaurant 971-1000

Joy Woode w/ Betty Loo Taylor, Cupid's Lounge, Outrigger Prince Kubio 922-0811

Piano

Carol Atkinson, Mabina Lounge 955-4811

Max, Pieces of Eight 923-6646

Los Peetz, Michel's 923-6552

Pat Siiva, Sunset Lanai Lounge 923-1555

Ginny Tiu, Banyan Court, Sheraton Moana Surfider 922-3111

Johnny Todd, Mabina Lounge 955-4811

Ruben Yap, Mabina Lounge 955-4811

Rock

Bobby Dunne Band, Irish Rose Saloon 924-7711

Legends in Concert, Legends Showroom, Royal Hawaiian Shopping Ctr. 971-1400

The Love Notes Show, featuring Bruno, Kento's 923-7400

The Twisters, Kento's 923-7400

24/Thursday

Comedy

Comedy Night, Captain's Table Lounge 922-2511

Don Conover, Rose & Crown Pub 923-5833
Frank DeLima, Polynesian Palace 923-SHOW

Continued on Page 14

ADVERTISERS - DON'T MISS THE WEEKLY'S HOLIDAY GIFT GUIDES. NOVEMBER 30TH & DECEMBER 7TH CALL 528-1475 NOW (EXT 12, 13, 14 OR 15)

Handpainted Clothing
Extraordinary Gifts
Ala Moana Center
Center Court Street Level
947-4451

KMS. KMS. KMS. KMS. KMS. KMS. KMS



BAD HAR DAY?

Buy your professional hair care products at 25% below retail

- Free professional consultations available
- All products 100% money-back guaranteed

THE SALON STORE

1030 Kapahulu

A RETAIL DIVISION OF
Jimmy's
AT KILOHANA SQUARE

735-9723

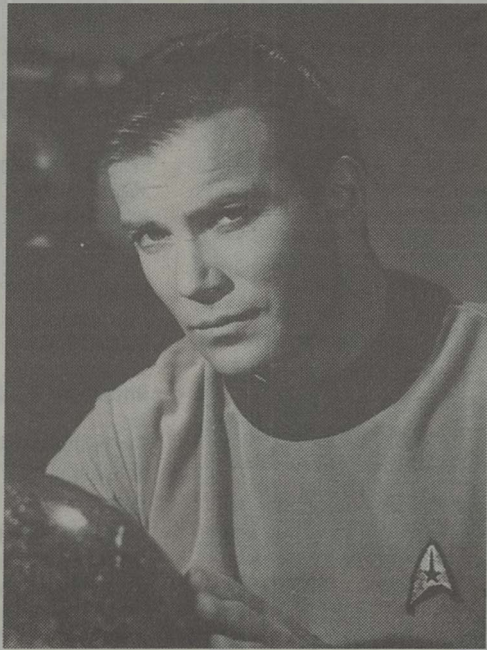
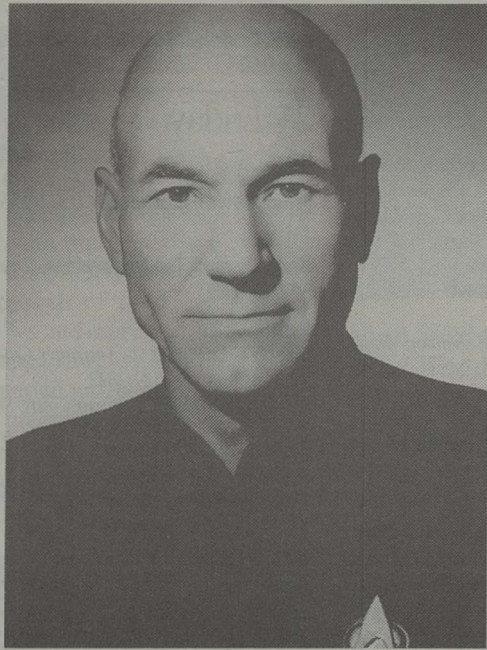
Now Open!

KMS. KMS. KMS. KMS. KMS. KMS. KMS

Film

Star Trek Generations, the seventh film in the schizophrenic epic, epitomizes all that is good and bad about the television and film franchise.

CAPTAINS COURAGEOUS



There's not room enough in the galaxy for both of them: Picard and Kirk

DAVID K. CHOO

It was a dramatic high point for "Star Trek" and a great moment in television history: In the episode from the original series "City on the Edge of Forever," Joan Collins is run over by a bus.

In the episode a time-traveling Captain Kirk is faced with yet another galaxy-size moral dilemma: In order to save the world, he must stand by and let a historic babe meet an untimely death. You see, earlier Dr. McCoy, high on painkillers, had slipped back in history and accidentally caused a few ripples in the time pool. To restore their reality Captain Kirk and Mr. Spock go back to Depression-era Earth and learn that the good doctor had saved the life of a social worker — who Kirk is dating — and who was supposed to die in a traffic accident. (A ripple can become a wave, we are told.) But Kirk, being the hero that he is, suppresses his sex drive long enough to do the right thing. On that street corner, when he restrains Dr. McCoy and Collins is made road kill, "Star Trek" ventured where few television shows had gone before.

The sci-fi superfranchise that is "Star Trek" has always been the finest venue for the big moral dilemma (BMD). Hundreds of millions of lives regularly hang in the balance as the hero chooses duty over hedonism, then takes a cold shower. However, what goes hand in hand with the BMD has also been the franchise's worst enemy: the supernova McGuffin, the plot device that eats up all the scenery and elbows out the human story. Time travel gizmos, doomsday machines and omnipotent alien entities that would even get Job pissed off are favorites. When these machinations are held in check long enough, stories like "City ..." flow with Steinbeckian simplicity and

"Star Trek" soars. When the show's writers, consulting their technical manuals, try to build a Tolkienesque universe, the show falls apart amid a low drone of technobabble.

Star Trek Generations, the seventh film in the schizophrenic epic, epitomizes all that is good and bad about the television and film franchise. It's got the BMD, this one about mortality, but it also has the out-of-hand McGuffin (Hitchcock's term for a plot device) — two of them in fact, a doomsday machine and a time travel gizmo. In this film getting to that big moment on the street corner takes almost 80 years, but the wait is worth it, and like everything else in the "Star Trek" universe, the good eventually overcomes the bad.

According to *Generations* gallivanting around the universe has a price: Saving the galaxy from destruction is a pursuit that one essentially undertakes alone. For both James T. Kirk and Jean-Luc Picard, their stellar careers have denied them the chance to settle down on that nice little ranch house on Venus with that perky science officer. In pursuit of fame and glory, the captains have denied themselves the opportunity to hear the pitter-patter of little space cadet feet.

The film opens as a newly retired Kirk, supervising a shakedown cruise of the newest starship Enterprise, is asked in an emergency to take the helm once again. Ill equipped and short staffed, the ship answers a distress call from two transports caught in a roving energy ribbon. The Enterprise gets there in time but can only save a handful of the passengers, and in the process Kirk is zapped by the power surge as it cuts through the ship's hull.

Fast-forward 78 years into the future when the Enterprise, captained by Jean-Luc Picard, answers another distress call. This one is from a space laboratory that has come under Romulan attack. One of the few sur-

vivors is a mad scientist named Soran (Malcolm McDowell) who is on the brink of completing ground-breaking research. As the crew sorts through the debris, Soran escapes, fires a probe into a neighboring star and kills it. Has he developed yet another ultimate weapon? Yes and no. Soran, like Kirk, was sucked up into the ribbon (basically a traveling orgasm where all your dreams come true) but was later sucked back out. He desperately wants to get back, and, using his star killer, he plans on carrying out a complex plan to realign the planets, reacquainting himself with the ribbon and bliss. He succeeds, taking Picard with him and killing 230 million people in the process.

So floating around in timelessness, Picard and Kirk finally have the opportunity to really retire, turn the biological clock back or forward as they desire and have it all.

But the creative impulse in *Generations* seems to end with the McGuffins as the screenplay, which could push the envelope of character development, instead warps into the pedestrian. Bliss for the two captains involves being dropped into another television series. For Picard happiness is having a big family on "Masterpiece Theatre;" for Kirk it's living on the set of "Bonanza." When both characters come to realize that they must give it all up, travel back in time and save the galaxy once more, it doesn't seem much of a choice. After all, if they stay in the ribbon much longer, their lives will likely become reruns.

They do come back, and nothing from that point on really holds up to close scrutiny. So what's new? There's a fist fight on a deserted planet; ships crash; people die; hundreds of millions are saved. It all sounds pretty silly and it is. But when the two captains, facing their BMDs on their street corners, do what captains gotta do, you just have to smile. ■

The Hawaii School of Oriental Medicine

Applications are now being accepted for Spring Semester Classes in Oriental Medicine toward a Master's degree in Acupuncture:

**Acupuncture
Herbology
Clinical Internship**

The finest instruction in Hawaii.

Call for more information
533-6333



MONTSUKI

SINCE 1979



exquisite gifts & holiday apparel designed from vintage silk kimonos, obis



& other unique fabrics...

quality workmanship with distinctive flair.



11-8 Koko Head Avenue • 734-3457

We're just what the doctor ordered!

Rx _____ Patient's Name _____ Date _____

Join Weight Watchers Now!

\$22 Registration Fee

Pay only \$11 for weekly meetings thereafter

(Prices going up in January)

For information about the Weight Watchers meeting nearest you, call:

487-3399

Signature: *Daniel J. Hartley*

Address: Newtown Square

City: Aiea State: HI Zip: 96701

"If you're lonesome, that's your business. Not ours." —Shalaine, Matchmaker



If you're exasperated with the "accepted" ways of meeting that right person, try our more businesslike approach.

Call Shalaine for a friendly, discreet, always confidential meeting at no charge.

We know many quality people who, like you, would like to meet sensibly. We've made it our business.

Shalaine International, Inc. ☎ 941-5799

Happy Holidays from

BAIK Designs



Just in time for Christmas - Our new shipment is here

- 560 N. Nimitz Hwy. ▪
- Gentry Pacific Design Center ▪
- 524-2290 ▪

Lynda Barry

ERNIE POOK'S COMEEK

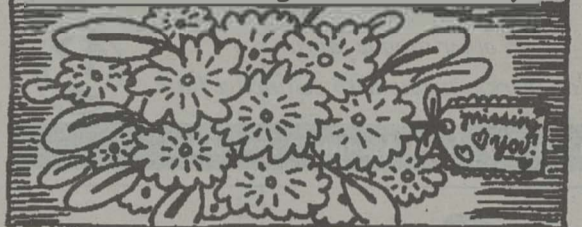
CALENDAR

From Page 12

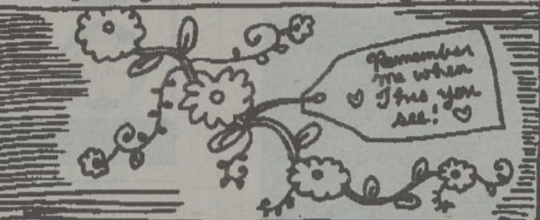
FLOWER POWER

By LYNDA BARRY • I can't get it unless it's real 'n' new

The lying monster. Oh the lying monster. Yes. He blooms inside your head after you catch him and even after you quit him. he blooms and blooms and blooms. He is a florist that sells crazy-blossoms. He is a great arranger of crazy-blossoms. I myself have many of his violent bouquets.



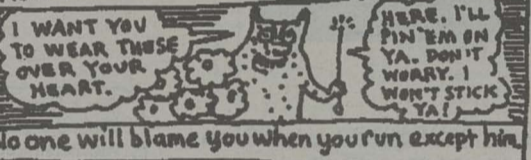
And the vines! The vines that crawl and creep into our stomach and make us feel sick from having believed. We are choked with vines that make us feel stupid and vines that curl our hands into strangling things and we want to kill our trusting and we want to kill the lying monster who has put his misery inside us. Oh he is inside us making us go over and over everything to find the strangling root.



We seek the day the hour the minute the word that first penetrated and took hold, thinking "if I can just know this." And we seek the why! And at first we go to the monster himself! As if our miserable transformation has also transformed him! Yes! And he may tell you that it has! He is, after all, a lying monster! He may tell you he is sorry and bring you more flowers! How strange that these blossoms bring relief.



How strange is the feeling of hope that seems to come from these blooms. And how grateful you both feel at this moment. The lying monster sincerely thanks you for rescue! And about this one thing he is not lying: He cannot live without you. Oh beloved host! He ate a hole inside of you and you felt The Terror of The nothing. He offers to fill the hole by climbing back inside you. How comforting is the perfect fit. And until he begins to eat again, how beautiful are his flowers.



No one will blame you when you run except him.

Contemporary
Mahi Beamer, Andrew's Restaurant 523-8677
Cecilio, Kincaid's 591-2005
The Edge, Waikiki Broiler 923-8836
Roslyn Freitas, Hanatei Bistro 396-0777
Jon and Max, Old Company 923-3373
New Height, Nicholas Nikolas 955-4466
Kit Samson's Sound Advice, Maile Lounge, Kabala Hilton, 5000 Kabala Av. 734-2211
Kelly Villaverde, Banyan Court, Sheraton Moana Surfider 922-3111

Country/Folk
Black Gold, Pecos River Cafe 487-7980
Bobby Dunne Band, Irish Rose Saloon 924-7711

Guitar
Richard Natto, Marina Front Lounge 956-1111
Winston Tan, Ships Tavern Restaurant 942-5516

Hawaiian
Banyan Serenaders, Banyan Court, Sheraton Moana Surfider 922-3111
Jonah Cummings, Duke's Canoe Club 923-0711
Kooki Johnson, Sand Bar, Sheraton Waikiki 922-4422
Lihau, Banyan Court, Sheraton Moana Surfider 922-3111
Butch O'Sullivan, Lobby Bar, Sheraton Waikiki 922-4422
Rittenband & Gustafsson, Jolly Roger East 923-2172
The Twilites w/ Aloha & Halau Na, Poolside, Sheraton Waikiki 922-4422

Jazz
Loretta Ables w/ Jim Howard & Bruce Hamada, Lewers Lounge, Halekulani 923-2311
Azure McCall w/ Tennyson Stephens & David Choy, Royal Garden Hotel 943-0202
Sunny Silva w/ Paul Madison, Royal Garden Hotel 943-0202

Piano
Bobby Gonsalves & David Nico, Mabina Lounge 955-4811
Max, Pieces of Eight 923-6646

Bob Nelson, W.C. Peacock Restaurant Lounge 922-3111
Les Peetz, Michel's 923-6552
Pat Silva, Sunset Lanai Lounge 923-1555
Johnny Todd, Mabina Lounge 955-4811
Oliver Wendell, Banyan Court, Sheraton Moana Surfider 922-3111

Rock
Bobby Dunne Band, Irish Rose Saloon 924-7711
Legends in Concert, Legends Showroom, Royal Hawaiian Shopping Ctr. 971-1400
The Love Notes Show, featuring Bruno, Kento's 923-7400
The Twisters, Kento's 923-7400

World
North American Bush Band, Anna Bannanas 946-5190

25/Friday

Alternative
Moonflower Monster, CD Cafe 537-1921

Blues
Keith Olson & The Renovators, Sand Island R&B 847-5001

Classical
"Bach's Lunch", St. Andrew's Cathedral, Queen Emma Sq. 524-2822
Pumehana Davis, Banyan Court, Sheraton Moana Surfider 922-3111

Comedy
Frank DeLima, Polynesian Palace 923-SHOW

Contemporary
Mahi Beamer, Andrew's Restaurant 523-8677
Kimo Bicoy, Mezzanine Restaurant 955-6000
Cecilio, Kincaid's 591-2005
The Edge, Waikiki Broiler 923-8836
Jon and Max, Old Company 923-3373
New Height, Nicholas Nikolas 955-4466
Nightwing, John Dominis 523-0955
Kit Samson's Sound Advice, Maile Lounge, Kabala Hilton 734-2211

Continued on Page 16

TIDES - November 23 to November 29



Moon Phases: LAST QUARTER - Nov 25 NEW MOON - Nov 29 FIRST QUARTER - Nov 9 FULL MOON - Nov 17
 Tide times and heights are for Honolulu Harbor. Tide and moon information supplied by Doug Behrens Design.

MOKES ON SPOKES

Don't Let the Name Scare You

We're professional, service-oriented and not as frightening as you might think.

523-5166 Mokes on Spokes, No joke.

Deanna Mei Ho
 Custom Clothier • Alterations
 Sewing to fit you
 574-0168



"YOUR PROFESSIONAL HEALTH COACH"

- Detoxification programs • Cleansing diets • Nutritional Counseling • Immune System Strengthening • Therapeutic massage • Spinal alignments • Herbal & Homeopathic Medicine • Energy balancing • Chinese medicine • Covered by Many Insurance Plans

AUTO ACCIDENTS - AND WORK INJURIES
 MAJOR CREDIT CARDS ACCEPTED

Dr. Diana Joy Ostroff
 "For The Treatment of You, Not Just Your Symptoms"
 1750 Kalakaua Avenue, Century Center, Suite 2107
 947-1315

THE HONEST TRUTH

This ad is a terrible way to display our product because...

- ...you can't see the vibrant color.
- ...you can't feel the handcrafted texture.
- ...you can't marvel at the intricacy of the weave.

Before you decide on any oriental carpet, you have to see it, touch it, experience it for yourself. The Indich Collection has Hawaii's largest inventory of fine Persian, Kilim, Chinese and Tibetan rugs in classical or breathtaking Island Style designs. With our unbeatable prices and our complete 100% guarantee, you'll see what an outstanding value quality can be.

INDICH COLLECTION

Where Hawaii Shops for Fine Oriental Rugs

560 North Nimitz Highway ♦ Gentry Pacific Design Center (Between K-Mart & City Mill) ♦ Monday - Saturday 9:30 to 5:30 Sunday 10:00 to 4:00

524-7769

Colorprints, Inc.

The Leading edge in Custom Photo Lab Services

1051 Waimanu St.
 Honolulu, HI 96814
 Tel 591-2836, Fax 591-2849

Music

You needed a diligent ear to catch some of '94's finer musical moments, many of which fell through the cracks and into the void.

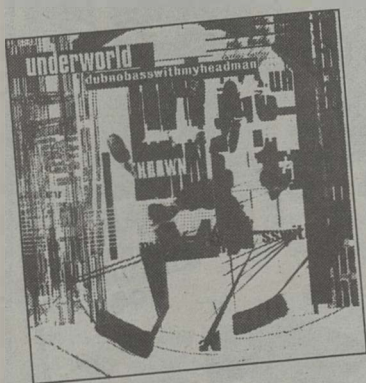
Unsung Zeroes

FREDERICK WOODRUFF

Actually, the title of this column is a little overstated. Some of the CDs featured in this retrospective fared well on the music charts but most likely didn't find a place in your music collection. And that's a shame because amidst the flurry of tribute albums, the rebirth of punk, Woodstock rehashes and moribund supergroups reuniting to meet mortgage payments, a disparate gathering of artists was busy creating some of pop's finest moments. I've perused the quickly fading year and gathered together eight for your consideration.

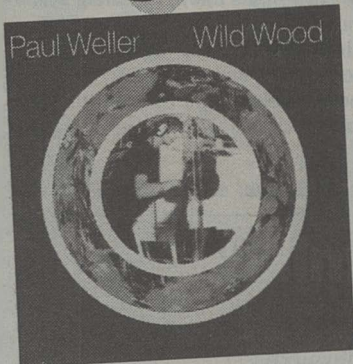
Sam Phillips *Martinis and Bikinis* (Virgin)

Remember sensitive female singer-songwriters you cared about before they became caricatures of themselves or had Nelson Riddle removed from his oxygen tent to toy with their take on old '40s and '50s standards? Well, Sam Phillips doesn't. From the opening harpsichord-laced dirge that declares, "History is written to say it wasn't our fault," Phillips gender-bends into an existential, John Lennonesque mindset, ripping through cogent examinations of faith, loss, greed, God and the murky war between the sexes. Producer and husband T-Bone Burnett helps define the edgy, acoustic environment with bare-bones sonics that resemble mid-to-late-term Beatles, all enhanced by Phillips' ragged vocals and intrepid spirit.



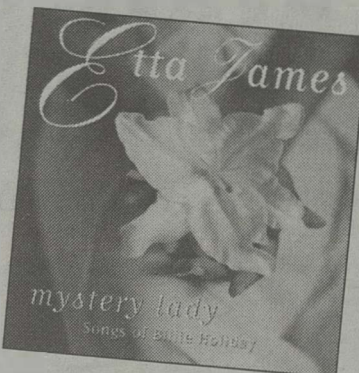
Underworld *dubnobasswithmyheadman* (TVT Records)

From the ashes of techno and rave came a revived sensibility, from MIDI musicians, to actually write songs and deliver them with a live, propelled fortitude. Late-'80s electro-meisters Underworld re-emerged this year to channel that sensibility. *dubnobass* is a hypnotic, sometimes nasty gathering of elegant guitar work, surrealistic computer wizardry and Freudian lyrical high jinks. The songs are the equivalent of orchestrated music for the '90s. Slithering and bumping around your brain like a snake in a kitchen drawer, you can't escape the allure of lead singer Karl Hyde's sinister baritone throughout these multihued, helical synthscapes.



Paul Weller *Wild Wood* (London)

Wild Wood is the equivalent of a sketchbook, filled with mysterious markings and scribbles that expose the core of an artist's intention. Weller, ringleader of the late Style Council and the even later Jam, resurfaced in '94 scarred and battered from his cumbersome late-'80s cocktail-lounge eclecticism. With Sade doing a much better job, listeners just weren't interested. Streamlined and ragged in spots, the musical setting of *Wild Wood* is spontaneous, contemplative and rich with melodic reward. Weller's rough-hewn vocals crack and break through a compact gathering of poetic ballads, instrumentals and brisk guitar-driven rock. This is a welcome comeback from an underappreciated pop master.



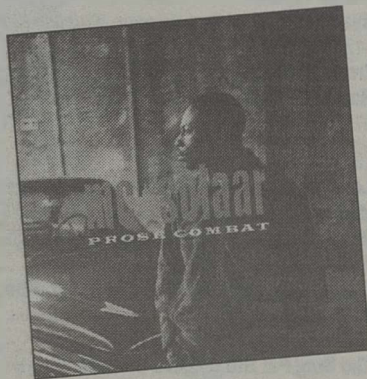
Etta James *Mystery Lady — Songs of Billie Holiday* (Private Music)

Who else but a soul survivor like blues singer Etta James could realistically tackle a juggernaut like this collection from the Billie Holiday songbook? Many have tried but few have embodied the material with such gritty appropriateness. James buries herself in these songs, claims the nuances from a part of her being that says, "Been there, done that." Everything here is reborn in an epiphany that conveys exuberance and spirit rather than the dull thud of a retread tribute.

Crowded House *Together Alone* (Capitol)

With beguiling craftsmanship, songwriter Neil Finn and his fellow Australian mates spin together melody, stream-of-consciousness poetry and lilting musicianship to reshape the parameters of art rock. Techno maven and producer Youth

helped shift the band's sound into an eerie, edgy field of churning world-beat percussion and ambient guitar soundscapes. Finn has a solid gift for writing melancholic hooks that pull the listener deep into the rich layers of imagery of each song. To date, the band's finest effort.



MC Solaar *Prose Combat* (Cohiba)

Despite all of the cross-pollination that has taken place between gangster rap, hip hop, house and dance pop, Paris-based MC Solaar never abandoned rap as a purely musical idiom. Maybe this has to do with the whole French thing, the worship and preservation of a language: the spoken word as an art form. Here, embellished appropriately enough with the right musical atmosphere, syntax enters an otherworldly level of mood, dark and spiritual, sometimes cinematic. I have no idea what Solaar is actually saying, but who cares? You're lost in the mellifluousness of his prose from the moment those first few scratches break the surface and pull you under.

Shara Nelson *What Silence Knows* (Chrysalis)

Crystal Waters *Storyteller* (Mercury)

Two completely different takes on black women preserving dominion over pop-dance expertise and regenerating it in the process. Nelson, formerly of the British band Massive Attack, runs her rich alto through an impressive gauntlet. Restrained, rueful in places, she deconstructs the normally vapid musical field that most female pop singers maneuver through. *What Silence Knows* offers new skews on traditional modes of old-style rhythm and blues, contemplative ballads and swaggering dance tracks. Waters, as *Storyteller* demonstrates, is the future sound of dance-based rap 'n' croon and deserves the platform Janet Jackson has been hogging with her baroque prattle. Waters' production is piquant and clipped, with whirring synthesizers, savvy sampling (imagine Laura Nyro's "Stoned Soul Picnic" reconfigured into a hip-hop ghetto milieu) and choppy rhythm guitars, with the subtle balance that Waters maintains between belting, rapping and singing. ■

ON THE BIG ISLAND...
Chalet Kilauea
The Inn at Volcano

- Candlelit Gourmet Breakfast
- Treehouse & Lace Suites
- Afternoon Tea & Pastry
- Book, Music & Video Library
- Outdoor Jacuzzi for Stargazing
- Five Elegant Vacation Homes

"Undoubtedly, the nicest Inn in all of Hawaii!"
-Missy McPherson, San Francisco

1-800-937-7786
\$75. to \$225. for two
Call Now For Reservations

EarthWare
Products to protect our planet

Super Stocking Stuffers:
Puzzles, massagers, soaps, teas, honey straws and more -- for everyone on your list!

KILOHANA SQUARE: 1016 Kapahulu Ave. (near Freeway)
Plenty of Parking 735-6825

DIRECT FROM LAS VEGAS!
THE ALL NEW

Dauer Entertainment Group Inc.
Presents *Kenny Kerr's*

Boyz n the Ring

Starring *Jahna Steele*
Produced by *John David Coleates*

Hawaii's only female impersonator show.

You've Gotta See It To Believe It!

One show nightly,
Tuesday thru Sunday, 8:30 p.m.

CALL 922-2276 FOR RESERVATIONS

Hula Hut
286 Beach Walk

Special Kamaaina Rates just \$15
(includes one drink, proof of Hawaii residency required.)
Some restrictions apply. Free parking.

November 23, 1994 ■ Honolulu Weekly ■ 15

Theater

PHOTO: JOHN H.Y. WAT

Walking the thin line between art and disaster, Kumu Kahua's newest play takes you on an acrobatic adventure step by exciting step.

Soul on a High Wire



Bones of contention: Local investigators Fatu (Ron Encarnacion) and Mina (Karen Kaulana) are hot on the trail of stolen artifacts.

LEROY THOMSON

There's a special electric thrill to the premiere of a new play, a feeling like stepping across a tightrope. You find your expectations at a great height, walking gingerly along the line of action; you pray the tension can keep you aloft, interested, involved step by step; but you can't help but fear the next step will fail and you'll fall into an abyss of disbelief or, worse, boredom. *Ola Na Iwi (The Bones Live)* by Victoria Nalani Kneubuhl carried me along that acrobatic adventure step by exciting step.

Consider the fact this play is commissioned by the theater company and the high wire feels even higher. Sometimes a guaranteed paycheck is a fine motivation, but art is as often stymied by such inducements as it is inspired by them. Few great plays were made to order. On the other hand, Kumu Kahua has enjoyed a long and successful relationship with Kneubuhl. Perhaps you have heard of her other successes: *The Conversion of Ka'ahumanu*, *Ka'iulani* and *Tofa Samoa*.

Consider the actors and the wire shakes a bit. You hate to knock anyone who volunteers their time and work to a new show, but let's be frank: Good, experienced actors work every bit as hard as weak, naive actors, but bad actors seem to make you work harder than anyone. Bad performance exhausts you. You know Kumu Kahua encourages new talent, so you know some of the roles are going to be a bit rough. On the other hand, director John Wat has proven quite capable of orchestrating a variety of talent into a good show. He could do it again.

Consider the plot and you may feel like you're falling. Kawehi (Lyla Bonnie Berg) has left Berlin with a museum artifact in her suitcase, the bones of a Hawaiian woman. She has hidden them under her bed, told only her best friend and neighbor, Erik (Jack Boyle), but really has no clear

idea what she has done, why she has done it or what she should do now.

While she tries to sort out her mess, the museum sends Gustav, a jolly and rather uncomplicated agent, overseas to bring back the bones to their rightful owners, the museum. Gustav is helped by local investigators Mina (Karen Kaulana) and Fatu (Ron Encarnacion). Pua, a grand poohbahette of the Hawaiian Museum (played by Venus Kapuaala), also hears about the missing bones and tries to claim them to advance her museum and her career.

While Kawehi steers these snoops away from the bones, she finds yet another stranger in her life: a homeless Hawaiian woman, Nanea (Kehaunani M. Hunt). Kawehi takes Nanea into her home and into her confidence even though she doesn't know where the woman came from, how she came to speak German so well or even why she seems to know history so intimately.

You might feel a little uneasy at Kneubuhl's dependence on cinematic techniques. The play's scenes are brief and switch between continents and centuries with camera speed. But there is no camera, and we wait in the dark for one continent to scurry out along the glow tape as a different century stumbles in to take its place. The 19th-century characters who appear at odd times help educate us about historical justifications for grave robbing, but really this would be better executed on video or film. On the other hand, Kneubuhl improves when she invites some mysterious clowns to a costume party, where these characters can act like a chorus or even a narrator, poetically pointing and prodding the "real" characters in the play. Here the element is pure theater: Success doesn't rely on clever lights but the beauty of her lines.

Kneubuhl's particular genius is her poetry. Once in a while a character soars into a monologue that surprisingly lifts you off the tightrope and floats you into bright and easy clouds of sound and sense. Her words can

break through the theater walls and open up a universe of the mind. Yes, she is a great writer.

In the end I enjoyed the thrill of the tightrope, where my hopes balanced me above my fears, as the play coaxed the progress of my feet. And I'm exhilarated the play works. When it comes down to it, new or old, you want the play to entertain. This does. On one level it's a suspense-filled mystery, on another a cultural drama, on yet another a spiritual hymn. You find yourself guessing the plot, learning a culture and peering into the vast unknown of death and spirit.

Yes, not all the actors are refined artists, but the director has done a great job in balancing out the show's cast. Yes, Kneubuhl's humor is weak and often forces a film vision onto the stage, but just as often she proves a sensitivity to character (that can be quite funny at times) and delivers a sound, a hypnotic music to her lines — which is pure theater.

After it's all over and I'm sitting in my car letting the lines run through my mind, I realize Kumu did it to me again. In the labor of art — the writing, the acting, the producing — the spirit of the labor is exposed. That spirit teaches you more than any "message" plugged by any play. Each play I see at Kumu Kahua contributes to a cumulative sense that I am hearing the voice of Hawaii's soul, her spirit. How do you thank someone for that? Once again I have seen something at Kumu I could never witness anywhere else because it is local drama done locally. I left, once again, feeling I had touched Hawaii. ■

Ola Na Iwi (The Bones Live)

Kumu Kahua Theatre
Merchant and Bethel
Fri & Sat 11/25 & 26,
12/2 & 3, 8 p.m.; Sun
11/27 & 12/4, 2 p.m.
\$9
536-4441

BUSINESS OUT OF BALANCE?

We can help.

**COUNT
ON IT.**

COMPREHENSIVE*

591-1677

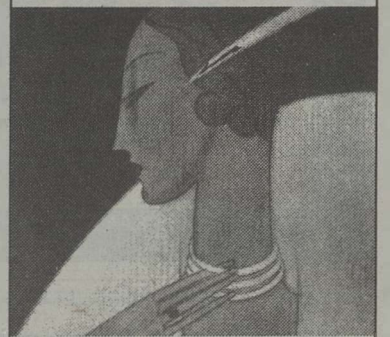
John Miller, CPA

Accounting • Bookkeeping

Tax Services • Consultation

1210 Auahi St. Suite #232

GLITTER & ROMANCE AT A PLACE IN TIME



Add sparkle & elegance to your holiday dressing with our unique vintage and reproduction jewelry and accessories.

212 Merchant St. (at Alakea)
M-F 9-5 Sat 10-2

BEAD IT! GIFT CERTIFICATES AND JEWELRY KITS AVAILABLE



COME SEE US AT THE

KA LEO PRODUCT SHOW!

UH CAMPUS CENTER, NOVEMBER 29 & 30

1154 KOKOHEAD AVENUE, HONOLULU, HI 734-1182 CATALOG 737-0499
BEADS BOOKS TOOLS FINDINGS CLASSES



WE OFFER YOU A BEAUTIFUL SMILE ...

Whatever your dental needs, you'll be happy you visited us. We offer **Cosmetic, Preventive, & Comprehensive** Quality Dental Care.

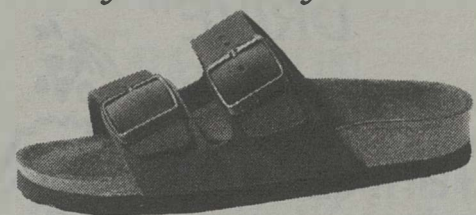
John M. Jones, DDS
Cecil Riter DDS

Emergencies, new patients and most insurance welcome
1441 Kapiolani Blvd. suite 907 phone: 955-0058



BIRKENSTOCK.

What you've always wanted.



Arizona

This holiday season, stop in and discover just how comfortable Birkenstocks really are. There's a good chance you'll want a pair for everyone on your list!

Gift 
Certificates
available

©1994. Birkenstock is a registered trademark.

Food

PHOTO: DALE MACDIARMID

At Maunakea Market Place you eat wholesale.



World-Food Cornucopia

It's a trip: Maunakea Market Place

ALAN YOUNG

Maunakea Market Place is a wonderland of assorted stuffs: T-shirts, shoes and food — primarily Asian food: fresh and live fish, produce, imported groceries and prepared-food stalls. The Market Place sprawls over a good portion of the block bounded by Hotel, River, Pauahi and Maunakea streets.

Being, as usual, hungry, your ingestion investigator gravitated toward the prepared-food stalls and **Paradise Plate**, a provider of Korean provenance. From the array of the ready-to-eat items, I ordered up a \$5 plateful: a goodly amount of plain hot rice; a chilled seaweed condiment of intensely salty and tangy shreds of olive-drab *kombu*, which demanded large mouthfuls of rice as complement (a cold beer would have also sufficed); a cold preparation of squid pieces mixed with slivers of fresh green Korean hot chilies, green onion, salt and sesame oil — piquant, chewy, delectable (another rice-and-beer food); balls of fish paste in a light *kochoojang* (Korean spiced miso) sauce with sliced round onion — tame next to the squid but very pleasant; a long halved Anaheim-type green chili stuffed with a sesame, green onion and ground beef filling; *kong namul* (soybean sprouts tailed, blanched and seasoned), Paradise Plate's version being a little different from most other Korean eateries in having a light-orange cast to it given, I suspect, by the addition of a little mild chili powder; and won bok kim chée — nice and spicy. Yes, Virginia, the whole shebang, enchilada, horse and buggy — a whole tasty, interesting plate had for a mere fiver. The other stuffs available include a cucumber and a daikon kim chee, the ubiquitous mac salad, fried chicken pieces, long beans stir-fried with Spam, beef broccoli, chicken yakitori, mung bean sprout *namul*, *taegu* (sweet, seasoned, shredded dried codfish), dried radish strips in chili paste, pickled daikon, fried rice, two kinds of long-rice-preparation Hawaiian-style beef stew and three kinds of fried fish. Plenty of pickings and a tray of Spam musubi by the cash register.

If you have a little time to wait, the folks at Paradise Plate will prepare Miso Soup (two kinds), Rice Cake Soup, Cold Noodle, a Barbecued Kal Bi plate — all these \$4.99; Sai-myon (we suspect *myon* to be Korean for

the familiar-to-local-idiom min or mein, noodle), \$3.99; Duk Rae Myon (a Seoul blues picker?), \$3.75; or Ray-myon (rahmen, I think), \$2.75. You can have it to go or to consume on site at the square, barely-big-enough-for-two ornamental-tile-inlaid tables running the length of the hall and, for sitting, square, clunky black stools. An exercise in good quick eating and hard seating.

Also at the makai end of the hall and across the way from Paradise Plate are two adjoining stalls, both with their backs to the fish, grocery and vegetable stalls a few steps below. I've eaten at both and they afford quite good value, i.e., cheap, nutritious and tasty.

On your left is **Triple One** (one could be given to multiple speculation as to what's in a name) — Chinese, Singaporean and Malaysian food. Their standard stick-the-letters-to-it sign announces Laksa (a seafood noodle in coconut milk soup, and Triple One's is a goodly bowlful at \$4.95) rice noodle with coconut rice with fish. They also have the standard small steam table with ready-to-eat items displayed for takeout and/or the immediate grind. This selection has a nice straight Chinese look about it: turmeric and coconut milk, fish chunks and chicken legs, eggplant and noodles. A bowl of hot chili sauce is available for palate warming. Visit with some hearty eater friends so you can share a bunch of different dishes.

Next to Triple One is **369 Hong Kong Cuisine**, a duo of esoterica in names, I dare say. For \$2.75 you can get a bowl of Roast Duck Noodle that is probably one of the cheapest available in our fair town. For the same price they serve a Fish Cake Noodle, White Chicken Noodle, Char Siu Noodle, etc. Also available is *jook*, the Cantonese rice gruel, a long-time comfort food and folk cure for hangovers. For a quick and easy-on-the-pocketbook little meal or large snack, 369 Hong Kong will do the job right.

On another visit we found ourselves at **Malee Thai/Vietnamese Cuisine** intent on scarfing up Pad Pet, seafood, beef or chicken (\$5) — fried-curry base with basil, long bean, young bamboo and eggplant on rice. It arrives with the aforementioned veggies and seafood — a few very flavorful small whole shrimp, some sweetish slivers of crab surrogate, curled tiles of squid and small round fish-paste dumplings (these most likely the quite acceptable frozen, packaged kind from

Singapore or Malaysia, Hong Kong or Bangkok). Moderately spicy as ordered, curry spiked, it was spooned over steaming-hot jasmine rice and accompanied by small yellow inner leaves of romaine lettuce and Japanese cucumber slices, all moistened with a light sweet dressing. Nice. We eat. We like.

The next preparation to appear on the counter was **Spicy Soup** (*tom yum*) (\$5, with rice \$6) — fresh lemon grass with mushroom, fresh chili pepper, lemon, shrimp, "caramarian" (I hope they meant calamari), fish ball and crab (surrogate). A big bowl of soup — I'd guess a quart or more of broth in this seafood-stocked pond. Spicy as advertised and tangy, good balance of lemon grass and lemon juice.

Third and last is **Larb**, beef, chicken or pork (\$5) — "ground beef or chicken mixed with herbs and served with fresh cabbage." Scoop up some of the cooked mince onto your piece of cabbage leaf, add a long bean or two, eat. Yum. It's crunchy with parched rice grains, fragrant with whole mint leaves and tangy with chilies, lime juice and fish sauce.

Yes, there's more to investigate: **Neam** (\$5) — "fried spicy rice ball, mixed with minced raw pork and served with fresh lettuce, mint leaves and fried chili pepper." I don't think we're in Kansas anymore, Toto. They also seem to have a thing for pork blood. It's featured in four of their noodle soups, including their chicken noodle soup. Pretty exotic for Campbell's kids. But there's more sedate fare: Thai fried rice and noodles; Vietnamese salads of papaya, beef, chicken or cold noodles; curries and stews; stir-fry dishes; spring and summer rolls; soups with beef or seafood. All are prepared to order with generous and tasty portions. Like Douglas MacArthur, I shall return. There are all those semiprepared bowls of food behind the counter sneeze guard to investigate. I've got my eye on those *somen* noodles flanked by a small bowl of intensely orangey liquid. I wonder ...

Maunakea Market Place
1120 Maunakea St.
Mondays - Saturdays,
7 a.m. - 5:30 p.m.
Sundays, 7 a.m. - 3 p.m.

CLIP THIS COUPON AND RECEIVE FIRST WELL DRINK FOR \$1



946-4442
444 Hobron Lane (Eaton Sq.)

DA KINE KAFÉ & KATERING KO.
DAILY LUNCHES 11AM-3PM
SUNDAY BRUNCH 11:30AM-2PM
TUESDAY DINNERS \$6 AT 6:30PM
PUPUS TILL 1AM
DON CONOVER AT THE PIANO
FRIDAY & SUNDAY EVENINGS

CAPPUCCINO • SHAKES • HERBAL TEAS • SANDWICHES • LATTE • ICE CREAM • SOUP

THE VILLAGE Espresso

Mention this ad for **FREE 2 oz. Coffee Samplers** of assorted flavors with purchase of 8 oz. Coffee Beans

Hours: Mon-Thurs 7 am - 10:30 pm
Fri-Sat 7 am - 12:00 pm
Sun 7 am - 9 pm

1249 Wilder Avenue
(808) 523-BEAN

CHEESECAKE • PASTRIES • ICED TEA • LEMONADE

MAHALO TO ALL OUR PATRONS!
COME SEE US AGAIN!

ESPRESSO
GRANITAS
LIGHT EATERY

NOW SERVING!
SOUPS
SALADS
SANDWICHES

TRI ESPRESSO CAFÉ
HAWAIIAN LIFE BUILDING
1311 KAPIOLANI SUITE 102
MON-THURS: 7AM - 9PM
FRI: 7AM-11PM SAT: 8:30AM-11PM

593-1664

PARTY!!!
at
SHARKS CAFE HONOLULU

Live Music
Satellite Live Sports
Pupus till 1:30 am

Take a BITE out of the HOLIDAY SEASON!

Special Holiday dinner & lunch packages available
2535 coyne street (next to varsity theater) • call 94-SHARK for more info

BREAK WITH TRADITION
HAVE YOUR HOLIDAY PARTY
AT
Hanamizuki
Yakinique Restaurant

RESERVATIONS 947-2900
1969 S. KING ST., CORNER OF McCULLY & KING

YULE SAVE AT TOWER



10.99 CD 7.99 CS



11.99 CD 7.99 CS



11.99 CD 7.99 CS



11.99 CD 7.99 CS



10.99 CD 7.99 CS



11.99 CD 7.99 CS



10.99 CD 7.99 CS



10.99 CD 7.99 CS



19.99 2CD 11.99 2CS



11.99 CD 7.99 CS



10.99 CD 7.99 CS



11.99 CD 7.99 CS

OPEN 9AM TO MIDNIGHT EVERYDAY! SALE ENDS 12/7/94

TOWER
RECORDS • VIDEO • BOOKS

**HONOLULU
KAHALA • AIEA
WAIKIKI**
1 • 800 • ASK • TOWER
SHOP BY PHONE OR FOR STORE LOCATIONS

From Page 18

Split-second: 50 Recent works by Ira Ono. Through 1/1/95.

Janica Yoder Color is the expressive vehicle for the Milwaukee artist's sensibility. Her lush photographic works are about the delectation of beauty. Through 1/15/95.

The Contemporary Museum at the Alana Waikiki 1956 Ala Moana Blvd. Open daily. Free. 526-1322

Land Space Recent paintings by Hiroki Morinoue. Through 1/25/95.

The Contemporary Museum Honolulu Advertiser Gallery 605 Kapiolani Blvd. Open daily. Free. 526-1322

Pacific Rim Sculpture Conference Exhibition An invitational sculpture exhibit featuring work by Pacific Rim artists. Through 11/30.

The Hawaii Maritime Center Pier 7. Open daily, 9 a.m. - 5 p.m. \$7 adults, \$4 kids. 536-6373

The history of Hawaii is the history of its relationship with the ocean. Honolulu's waterfront museum offers an excellent view of that history through exhibits that explore the ancient Hawaiian voyages, Captain Cook, the whaling industry, memories of the Lurline and Matson shipping lines and the most recent maritime hallmark, the Hokule'a voyages. The center is home to the Falls of Clyde — the only fully rigged four-masted ship left in existence — a humpback whale skeleton and other marine displays ranging from sharks to yacht racing. Ongoing.

Honolulu Academy of Arts 900 S. Beretania St. Open Tue - Sat, 10 a.m. - 4:30 p.m.; Sun, 1 - 5 p.m. Suggested donation: \$4 adults; \$2 students, seniors. 532-8700

Concepts 4 An exhibit of contemporary Hawaii artists in a variety of media. At the Academy Art Center at Linekona. Opens Fri 11/25, runs through 12/11.

Carmen Lomas Garza: Day of the Dead Celebration A site-specific installation called *Dia de los Muertos*, or "Day of the Dead," by Chicana artist Garza. The exhibit is based on Mexican and Mexican-American traditions associated with the Day of the Dead celebration, when home shrines or altars are constructed as memorials to deceased ancestors. Through 12/11.

Nativity Theme in Art For Christmas, an exhibit of nativity scenes in art. Through 12/16.

The World in a Bottle Chinese inside-painted snuff bottles from the collections of Joseph Baruch Silver and traditional Chinese paintings. Through 12/4.

Mission Houses Museum 553 S. King St. Open Tue - Sat, 9 a.m. - 4 p.m.; Sun, noon - 4 p.m. \$5 adults, \$1 kids. 531-0481

The three historic mission houses, built between 1821 and 1841, are located downtown, within walking distance of other photographic landmarks. Explore the daily life and work of the American missionaries on the grounds of the museum and discover the role the brethren and sistren played in 19th-century Hawaii. Ongoing.

Pacific Aerospace Museum Honolulu International Airport, central waiting lobby. Open Sun, 10:30 a.m. - 6 p.m.; Mon & Tue, 9 a.m. - 6 p.m.; Wed - Sat, 9 a.m. - 9 p.m. Dedicated to commemorating aerospace achievements of the Pacific. Ongoing.

Wildlife Museum 1190 Dillingham Blvd. Open daily, 8:30 a.m. - 4:30 p.m. \$6.95. 848-0660

On display are more than 360 specimens of wild animals from 42 countries on six continents. Ongoing.

Walt Disney World Through 1/1/95. \$150. 988-7378

Compost Workshop Recycle your clippings and turn greens to compost. A short video will be shown before the hands-on demonstration of composting. Reservations required. *Ho'omaluhia Botanical Garden*, 45-680 Luluku Rd.: Sat 11/26, 2 - 4 p.m. Free. 233-7323

Manoa: The Valley of Rainbows A deeply historic area, Manoa Valley abounds with legends, myths and sites that reveal the story of Honolulu's ancient and modern people. Glen Grant leads this excursion by trolley. With a stop for lunch at Waioli Tea Room. Reservations required. *Honolulu TimeWalks Office*, 2634 S. King St.: Sat 11/26, 9 a.m. - 1:30 p.m. \$50. 943-0371

(number) and get transported back to the days when sugar ruled. You'll visit the plantation community where Shige Yoshitake (the luna) with Glen Grant will acquaint you with the life and labor of the immigrant workers who toiled the land. *Call for information:* Sun 11/27, 9 a.m. - 3 p.m. \$35; \$25 kids. 943-0371

Residential Landscape Designing In this workshop, there will be a heavy emphasis on the use of plants, especially trees and shrubs for landscaping the home garden. Bring your layout ideas and a list of plants to this class. Reservations required. *Lyon Arboretum*, 3860 Manoa Rd.: Sat 11/26, 9:30 - 11:45 a.m. \$13.50. 988-7378

Kids

Holiday Zoo Explorers The Honolulu Zoo offers keiki a once-a-week afternoon program to talk to the animals and their keepers while learning about wildlife conservation. *Call for information:* 8 - 10 years: Mondays, 11/28 - 12/19 or Thursdays, 12/1 - 12/22; 11 - 13 years: Tuesdays, 11/29 - 12/20; 5 - 7 years: Wednesdays, 11/30 - 12/21 or Fridays, 12/2 - 12/23. \$90. 971-7195

Marvelous Mammals Your keiki, 3 - 5 years old, can learn what a mongoose, a wild pig and a human have in common at this mammal discovery day. Reservations required. *Hawaii Nature Center*, 2131 Makiki Hts. Dr.: Sun 11/27, 9:30 - 11 a.m. \$5. 955-0100

Santa Claus The jolly good man himself will make an appearance at Pearlridge Center to open Santa's Magical Toyland. Bring your cameras or have your picture taken with Santa for a nominal fee. *Phase I, Pearlridge Center:* Fri 11/25, 9:30 a.m. Free. 488-0981

Hikes and Walks

Aiea Ridge Hike The Sierra Club holds different hikes each weekend and other weekly activities. This week's hike is a strenuous ridge hike to the Koolau summit with views of Windward Oahu. *Call for a recorded listing of hike information:* Sun 11/27. \$3. 538-6616

Chinatown Walking Tours The Chinatown Historical Society offers two different walking tours. The morning tour covers the heart of Chinatown and its arcades, herbal shops and historical buildings. The afternoon tour visits several Chinese and Japanese temples and the lush sanctuary Foster Gardens. *Meet inside Asia Mall*, 1250 Maunakea St.: weekdays, 10 p.m.; Sat 10 a.m., 1 p.m. \$5. 521-3045

Chinese Folklore of Old Honolulu Storyteller Barbara Wong brings to life the magic and mystery of Chinese folklore as you tour through Chinatown. Reservations required. *Call for meeting place:* Wed 11/30, 9 - 11 a.m. \$5. 734-9245

Diamond Head Hike More of a vertical walk (replete with handrails and paved stairs) than a hike, this excursion up Hawaii's famous landmark includes a look at its historical background. Bring a flashlight for the dark passages at the top. *Meet at entrance to Honolulu Zoo*, 151 Kapahulu Ave.: Sat, 9 a.m. Free. 948-3299

Ghosts of Old Honolulu: A Supernatural Tour Glen Grant will present this nighttime tour of the Honolulu's haunted buildings, lonely graveyards and eerie supernatural occurrences. The ghosts of Hawaii are a blend of Polynesia, Asia and the West. Reservations required. *Meet at the steps of the Hawaii State Library:* Wed 11/23, 6 - 9:30 p.m. \$7. 943-0371

Hawaii at War Relive the days when Hawaii was at war. The sights, sounds and tales of the '40s are presented by historical role players as you stroll through the streets of wartime Honolulu. Reservations required. *Irwin Park (near Aloba Tower):* Tue 11/29, 6 - 9 p.m. \$7 adults, \$5 kids. 943-0371

Hawailoa Ridge Hike A 5-mile intermediate ridge hike between Aina Haina and Niu past the zillion-dollar homes. The first half of the hike is a pleasant ridge walk, while the last half is a steep climb to the Koolau summit. *Meet at Iolani Place grounds*, mauka side: Sat 11/26, 9 a.m. \$1. 262-5506

Historic Honolulu Walking Tour Step back in time (but be careful crossing the street) on this historical tour of downtown, which includes the Mission Houses, Kawaiahao Church, King Lunalilo's tomb, the Kamehameha statue, the Iolani Palace grounds and St. Andrew's Cathedral. Reservations

required. *Call for meeting place:* Wed, 9:30 a.m. - noon. \$7 adults, \$2 kids. 531-0481

Lillha Reminisce about Honolulu of old as you tour from the quiet springs of Kunawai to the "main street" of Liliha, learning the folklore of the area and the neighborhood history of Liliha Street. Reservations required. *Call for meeting place:* Sat 11/26, 9 - 11 a.m. \$5. 734-9245.

Manoa Falls to Pauoa Flats After reaching the falls, you will ascend Aihuilama trail to Pauoa and the Tantalus trail system on this moderate 6-mile, six-hour hike. Reservations required. *Hawaii Nature Center*, 2131 Makiki Heights Dr.: Sat 11/26. \$5. 955-0100

Scandalous Days in Old Honolulu: A TimeWalk to the Era of Saloons and Sinners Be a part of Honolulu's checkered past and join in the "morals wars" of last century, when drunken sailors encountered teetotaling temperance leaders. Reservations required. *O'Toole's Pub*, 902 Nuuanu Ave.: Fri 11/25, 6 - 9 p.m. \$10. 943-0371

The Magic of Waikiki From bathing places of the alii to the luxurious homes of the kamaaina haole, Waikiki, the world-famous beach community, opens up to you on this walking tour lead by Anne Peterson. Reservations required. *Call for meeting place:* Tue 11/29, 6 - 8 p.m. \$5. 734-9245

Whatevahs

Christmas Crafts Fair Christmas specialties, lauhala work, leis, wreaths, handmade toys, ceramics, jewelry, one-of-a-kind clothing and fine woodwork will be on sale at this fair. Entertainment and edibles, too. *Mission Houses Museum*, 553 S. King St.: Sat & Sun 11/26 & 27, 9 a.m. - 4 p.m. Free. 531-0481

Chronic Fatigue Syndrome Support Group Get the latest information available about and group support for this debilitating disease. The topic of this month's discussion will be "A Naturopath's Approach to CFIDS." *Kaiser Medical Center*, King & Pensacola: Wed 11/23, 6:30 p.m. Free. 637-6083

Garden Tour Explore spices and tropical plants on this garden tour. Walking shoes and reservations required. *Ho'omaluhia Botanical Garden*, 45-680 Luluku Rd.: Thur 11/24, 10 a.m. Free. 233-7323

Hanukkah Party An evening of Israeli folk dancing and a potluck supper. *Ala Wai Golf Course Ballroom:* Sun 11/27, 6:30 - 9:30 p.m. \$2. 373-2561

Hawaii Parkinson Syndrome Organization Patients, caregivers and friends are invited to this organization's monthly meeting. *Epiphany Episcopal Church*, 1041 10th Ave.: Sat 11/26, 1:30 p.m. Free. 955-6106

Japanese Festival As part of the nine-day grand-opening festivities at Aloba Tower, a traditional *mikosbi* parade and Japanese festival will take place. *Aloba Tower Market-place:* Fri 11/25, 11:30 a.m. - 7:30 p.m. Free. 528-5700

Ro*Mind*Me A multimedia performance by Mark Kadota that explores mind chatter and how the senses influence various realities. *The Contemporary Museum*, 2411 Makiki Hts. Dr.: Sun 11/27, 3 p.m. Free. 526-1322

Thanksgiving Festival The Magoon Estate and the "Old Waikiki" merchants are celebrating the holiday season with this festival, an old-fashioned community celebration in the Kuhio district. The festival will include clowns, live bands, fashion shows, arts and crafts, a celebrity cookout, food, games, hula shows, magicians, jugglers and a bikini contest. *Waikiki Gallery*, 2145 Kuhio Ave.: Fri 11/25, 5 - 10 p.m. & Sat 11/26, 4 - 10 p.m. Free. 922-8388

Thanksgiving Service and Dinner The Lutheran Church of Honolulu will have Thanksgiving service in the morning and a turkey dinner with all the trimmings in the afternoon. Call to make a reservation. *Lutheran Church of Honolulu*, 1730 Punahou St.: Thur 11/24, 10:30 a.m. (service), 3 p.m. (dinner). Free. 941-2566

Vegetarian Society Thanksgiving Dinner The society hosts a pure vegetarian (vegan) dinner for members and nonmembers. Tickets must be purchased in advance. *Waioli Tea Room*, 2950 Manoa Rd.: Wed 11/23, 6 p.m. \$21; \$10 kids 4 - 11 years. 395-1499

The World of Jim Henson A tribute to the man who could make magic with some felt and thread. Colleagues and Muppets gather to pay homage. *KHET*, Channel 11: Wed 11/23, 8 p.m.

The Straight Dope



ILLUSTRATION: ELIUS SICHIRINO

Whenever I take an airplane trip and check my bags, they hand me this little ticket, and on the back it says, "This is not the baggage check described in the Warsaw Convention." Funny, it sure looks to me like a baggage check. If it's not a baggage check, what is it? And what do you have to do to get a real baggage check? —Bill Kinnersley

You've already got one. Look on the back of your airline ticket. It says, "PASSENGER TICKET AND BAGGAGE CHECK." I know, doesn't look like a baggage check, doesn't act like a baggage check. Tough. In modern commerce lawyers rule. According to the Warsaw Convention (see below), possession of the baggage check/ticket legally entitles you to possession of whatever belongings you handed over temporarily (you hope) to the airline pursuant thereto. As a practical matter, you also need the little cardboard stubs with the numbers on them (the ones that claim they're not baggage checks, appearances to the contrary) to satisfy the guard at the exit from the baggage claim area. But the stubs are merely an administrative convenience. When the airline loses that duffel bag you packed the gold bars in; and you make a claim: and they deny it, citing the limitation-of-liability rules that aren't stated (clearly, anyway) on the back of the ticket but that you have to mail in to get; and you're outraged and take the case to the Supreme Court — and whether you win or not, the lawyers wind up with 99 44/100 of the proceeds — you want the check for the 15 cents left over to be sent to you, the one who bought the ticket, not the yope who picked up the cardboard stub you threw on the floor in disgust when they lost your bag in the first place, right? Right. So don't let a little incongruous terminology upset you.

While waiting for a delayed flight, I amused myself reading the fine print on the back of my airline ticket. There I saw a bunch of rules set by the Warsaw Convention. Didn't that go away with the fall of the Soviet Union? Why did we let the commies make rules for air travel? —Mark Twishika, Dallas

You goof, you're thinking of the Warsaw Pact, the former Eastern-bloc military alliance. Or maybe Warsaw, Ind. Whatever, the Warsaw

Convention of 1929, formally known as the Convention for the Unification of Certain Rules Relating to International Carriage by Air, wasn't an attempt by the Comintern to impose its will on the rest of the world. Rather, it was the nascent air-transport industry and its government allies imposing their will on you, Joe and Joan Consumer. The Warsaw Convention limits airline liability for international flights, the argument having been that huge settlements resulting from a few ill-timed accidents would have strangled the then-infant industry in its cradle. (In fairness, the convention also guaranteed you'd get at least something if you crashed in a flaky jurisdiction.) The complaint over the years has been that the limitation is pathetically low, currently \$10,000 or \$20,000 per person depending on circumstances. Efforts to negotiate a higher rate have foundered on disagreement on just how high to make it. Intercarrier agreements have raised the limits in many cases — for example, to \$75,000 per person for flights having a stop in the United States, still none too generous. Note that this applies only to international flights. For domestic flights the sky, so to speak, is the limit.

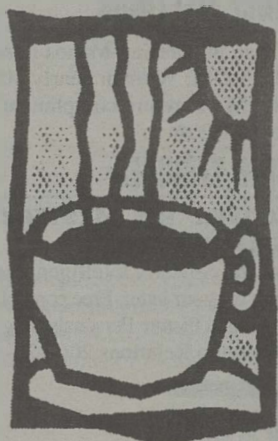
Is it not possible for automobile manufacturers to design and install a passenger's-side rear-view mirror in which objects are not closer than they appear? This all but useless fun-house feature of modern automobile design seems simple to correct. (Hint: Substitute the driver's-side mirror for the passenger's-side mirror ... voila!) —Timothy Hurley, Hampstead, Md.

Now, now. The fun-house mirror is supposed to be a safety feature. The mirror's convex surface gives you a wider angle of view to help overcome the notorious right-side blind spot. Inevitably, the wider the view, the smaller the objects in it, giving the false impression that said objects are more distant than they are. That's a danger, but with practice you can compensate for it. There's no compensating for objects you can't see at all, the fatal flaw, maybe literally, with using a flat mirror as you suggest.

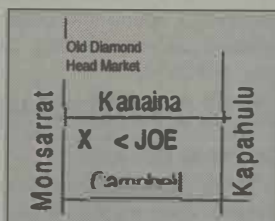
Cecil Adams

Is there something you need to get straight? Cecil Adams can deliver "The Straight Dope" on any subject. Write Cecil Adams, Chicago Reader, 11 E. Illinois, Chicago, IL 60611. ■

A CUP



OF JOE



**ESPRESSO BAR
LIGHT EATERY
JUICES-DESSERTS**

737-7445

3116 Monsarrat Ave.

ANGELICA'S

*Do dinner
where
you do
business*



*Now serving
dinner
6 nights a week*

*Join us
Monday - Saturday*

*The Gentry Pacific
Design Center,
560 N. Nimitz Hwy, Ste. 102
Phone: 537-6619*

TOWER RECORDS • VIDEO • BOOKS

Creative Music Productions



11.99 CD

**MICHAEL SHRIEVE - FASCINATION
CMP 67:**

Shrieve's solo debut, a trio date featuring Bill Frisell and Wayne Horvitz. "Some drummers only have chops, but Michael Shrieve has vision" - Carlos Santana

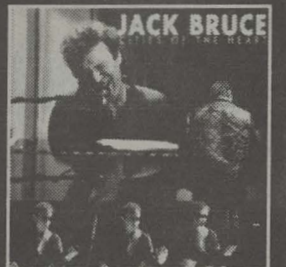
16.99 2CD

**JACK BRUCE - CITIES OF THE HEART.
CMP 1005:**

Jack Bruce celebrates his birthday in Cologne with a host of friends, including Ginger Baker, Gary Moore and Bernie Worrell. Reissued with a low price tag, featuring all the music from the sold out, limited edition, including "Sunshine Of Your Love"

and "Born Under A Bad Sign" **** Rolling Stone.

Also available SOMETHING ELSE, CMP 1001, featuring Eric Clapton.



11.99 CD



**TORN / KARN / BOZZIO - POLYTOWN.
CMP 1006:**

David Torn, Mick Karn and Terry Bozzio map out bold new territory defined by edgy, ethereal improvisations. "Power trio music for the 90's" - CD Review, "the spirit of adventure in an age of indifference" - Alternative Press, "David Torn...returns with a vengeance" - Pulse!

11.99 CD

GLEN VELEZ - PAN EROS. CMP 63:
The world's premier frame drummer creates an exotic, jazz-infused canvas of sound with his 4th CMP recording.

"A frame drummer might not be a natural candidate for the position of soloist and band leader. But Velez has never been your typical musician" - Rhythm Music Magazine



11.99 CD



**TRILOK GURTU - CRAZY SAINTS
CMP 66:**

"Best Percussionist" in the Downbeat 1994 critic's poll. Crazy Saints is the best seller from the former drummer for John McLaughlin and Oregon. Featuring Pat Metheny and Joe Zawinul.

11.99 CD

**MICK KARN - BESTIAL CLUSTER
CMP 1002:**

The vital return of Mick Karn, formerly of the UK band Japan, with Steve Jansen, Richard Barbieri and David Torn. "The album that the ill-fated Japan reunion, Rain Tree Crow, might have been if David Sylvian had the manic musical energy of guitarist David Torn" - Jazziz



CMP RECORDS

Distributed in the USA by REP: 612.948.3700
Distributed in Canada by Fusion III: 514.738.4600

OPEN 9AM TO MIDNIGHT EVERYDAY! SALE ENDS 12/6/94

TOWER
RECORDS • VIDEO • BOOKS

**HONOLULU
KAHALA • AIEA
WAIKIKI**

1 • 800 • ASK • TOWER
SHOP BY PHONE OR FOR STORE LOCATIONS

classifieds

PERSON-TO-PERSON

If you want to place a free Person-to-Person ad

Please use the coupon at the bottom of this page. You may check to see if you have received messages by calling an 800 number. To retrieve your messages you must use a 900 number, which costs \$1.99 per minute.

You must be 18 years or older to use this service. Ads containing any material that is obscene, indecent, sexually explicit or that would constitute adult entertainment will be rejected. *Honolulu Weekly* reserves the right to edit or refuse any ad and assumes no liability for the content of or response to any ad or message.

If you want to respond to an ad

If the ad is followed by a five-digit number and a ☐, call (900) 454-4120 to listen to advertiser's greeting and leave one of your own. This costs \$1.99 per minute.

If the ad ends with "HW Box...☐" send your written response to *Honolulu Weekly* with the HW Box number written in large letters on the bottom-left corner of the envelope.

Key

- | | |
|--------------|-----------------|
| S - Single | H - Hawaiian |
| G - Gay | L - Local |
| D - Divorced | P - Filipino |
| F - Female | NS - Non Smoker |
| M - Male | ND - No Drugs |
| W - White | HWP - |
| B - Black | Height/Weight |
| J - Japanese | Proportionate |
| C - Chinese | YO - Years old |

WOMEN SEEKING MEN

PLAYMATE WANTED

Professional female seeks balance in work & love life. Scuba diver, roller blader, adventurer. 70331☐

TGIF? Would you rather share? Your choice: sunset, run, swim, roller blade, scuba dive, theatrical or musical events. Laughter & hugs a must for 40+ male. 70330☐

HAVE A ZEST FOR LIFE?

Looking for a 40+ male professional who understands the joy of living in the moment. Must be playful, loving, honest, sincere & appreciate the beauty & uniqueness of Hawaii. 70329☐

READY FOR CENTER STAGE?

Externally positive, young-minded female seeks male who can tolerate multiple activities at one time. Intend to

embrace life. Willing to share it with you. 70328☐

Pretty SWF 30-something copywriter seeks cute, kind SWM into hiking, music and art to help complete the picture. 70325☐

Beautiful, educated Redhead, 40+ seeks kind, generous, well-to-do older man for friendship - Oriental or Caucasian. 70323☐

GRACEFUL, BEAUTIFUL LADY from Japan, 40 yo, would like to meet man who loves world travel and ocean. He must be wealthy business owner with ability and will to enjoy high-quality life, 48-60 yo. Please write with your address to PO Box 61678, Honolulu, HI 96839. 70322☐

SWF SEEKS ATTRACTIVE AND PHYSICALLY FIT MALE 25-35 SENSUAL AND SHY PREF'D. 70317☐

MEN SEEKING WOMEN

Handsome nice guy, 40, 5'7", slim, cosmopolitan, introverted but friendly, seeks agreeable SWF, 20s-30s, for fun, companionship and possible amour. Enjoy reading, writing, photography, beauty. Friendly children and pets welcomed. "Mr. Right," P.O. Box 1453, Aiea, HI 96701. 70326☐

Fun, affectionate, athletic exec, 37, 6', 180 seeks slim SF, 20-30's for dining, dancing and possible romance. 70321☐

SWM, 39, seeks adventurous, self-supporting SF backpacking companion for upcoming trip to mainland National Parks. 70319☐

Potential househusband seeking feminist femme fatale, a woman whom I can look up to. Try me. 70318☐

SWM, slim, tall, sincere, educated. Seeks humorous, active, SWF, 50-65 for dancing, friendship, NS, ND. 70308☐ HW Box 330☐

FRIENDS-LOVERS-PARTNERS

Well off WM, 40, wants to share his life with caring SF, 25-40. Long hair or full figure a plus. Respond w/photo to PO Box 75393, Hon, HI 96836. I honor your being.

WOMEN SEEKING WOMEN

Full-figured Bi-curious SWF late twenties seeking similar for a best friend, must be discreet and sincere. 70324☐

MEN SEEKING MEN

WM Massage Student needs healthy slim WM 18-22 to practice Swedish massage

& relax techniques. POB 8615, Honolulu 96830

GEM, 6', 172 lb, 43, seeks average to well built GWM, or Hapa Haole, 18-43, for fun, workout partner, or whatever. Closeted welcome. PO Box 11931, Honolulu, HI 96828 70327☐

CHANGE MEETINGS

TO: Man in Safeway-Manoa in frozen food. FROM: Woman nearly 40. Re: Would like to return compliment over coffee! 70320☐

DATING SERVICES

DISCOVER THE MYSTERY OF RUSSIAN WOMEN

Beautiful, Sincere, Intelligent women waiting for your letter. Free copy of New International Picture Personals Magazine. Call Foreign Relations 206-622-4631.

help wanted

EMPLOYMENT OPPORTUNITIES

I supply names and phone numbers, you supply courage to keep dialing. Great part-time work, if you can handle rejection (I can't). Commission sales! I am the product you're marketing. Jeffrey Helberg, 595-2952.

BUSINESS OPPORTUNITIES

BUILD YOUR DREAMS
Other people dream about environmental conscious company. 623-9950, Mark.

marketplace

OWN A PIECE OF LOCAL HISTORY

Pritchett

ORIGINAL PEN & INK
CARTOONS & CARICATURES
921-2878
COMMISSIONS ACCEPTED

FOR SALE

Downsizing!

Classic longboard - 9' Thruster \$325. Polk tower speakers \$475; Sony 3-head cassette deck \$200; Denon 60-watt tuner/amp \$200; Sony CD player \$80. Full stereo system \$875. Trinitron 20" TV \$250. 5-piece Ludwig drum set \$125. Call Derek 734-1687.

MUST SELL MOVING!

'94 Mustang Convertible GT - blk/tan, leather loaded, 10K mi, mint cond. / Custom made reception desk - round, white Formica, 3 drawers, large workspace. / Stereo Sony color TV, 27xBR with stand + Sony VCR - brand new, hardly used. 523-1870, 528-1475 ext. 13.

transportation

AUTOS

82 VOLVO 240 D

Sunrf, A/C, full loaded. Needs some work. Best offer. 735-4477.

1977 BUICK SKYLARK

6 cyl, AT, p/s for parts or fix up. \$400/OBO. 732-5289.

MOTORCYCLES

92 Honda Shadow, 600cc, red. Great bike. One woman owner. \$3800. 926-0883, Call now.

art & music

MUSIC INSTRUCTION

WANT TO PLAY JAZZ PIANO?

Personal lessons David 941-7777, ext. 2702

MUSICAL INSTRUMENTS

SAX (NOT LOVE) FOR SALE

Selmer USA Tenor \$1800, Yanigasawa curved soprano \$1600. Very good condition. 521-6013 days.

mind/body/spirit

INSTRUCTION

Private English lessons. Also tutoring in many subjects. Experienced, understanding teacher. 946-3851, 6-9pm.

HEALTH & FITNESS

YOU NEED A HOLIDAY TAN

Now is the time. Our Christmas special - 6 sessions only \$25 with a.d. 2 locations: Honolulu 599-5999, Kailua 261-5594.

CHANGE YOUR LIFE!

Massage hypnosis self-hypnosis for spirit and mind. MAT #3906. 543-8729.

IT'S YOUR BODY...MASSAGE

Sports & Swedish therapeutic massage. Ph: 735-3100 or 739-0550.

ORIENTAL MASSAGE CLINIC

Shiatsu and Swedish MAE 771 Ph: 944-0457

REDUCE HIGH CHOLESTROL

in wks! Send your name, address, \$7.95 Check or Cash to PO Box 90882, Hon 96835

SEDONA
A Store for Conscious Living

Enchanting Gifts, Handcrafted Jewelry
Gemstones and Crystals, New Age Music

"PSYCHIC READINGS"
(by phone or in person)

**"Best Psychic Readings
in Honolulu"**
Honolulu Weekly 1994

SEDONA - Ward Centre
1200 Ala Moana Blvd.
591-8010

sports & recreation

Learn to Scuba Dive. Call Hawaii Sea Divers 487-7515. See our display ad in this issue of Honolulu Weekly.

travel & vacation

AIRLINE TICKETS

One way ticket to LA for male/female. Use before 12/15/94. \$150/OBO. 528-1475, x 10, lv msg.

2 low priced tickets to LA, San Fran, then back to Honolulu. Leaves mid Dec, return by Jan 1st. 735-4477.

TOURS

NORTHERN THAILAND ADVENTURE TOUR

Phone 533-5547 for free brochure.

rental/real estate

RESIDENTIAL RENTALS

DIAMOND HEAD VISTA

Fabulous 1 bd apt for lease. Just remod-

CLASSIFIED ADVERTISING RATES	DEADLINES FOR RESERVATIONS	PAYMENTS	Index
<p>CLASSIFIED LINE ADS See Classified Line Ad rates on order form below.</p> <p>CLASSIFIED DISPLAY ADS Please call 528-1475, ext. 11, for Classified Display Ad rates.</p>	<p>CLASSIFIED LINE ADS Wednesday at 4:30 p.m., 7 days before publication.</p> <p>CLASSIFIED DISPLAY ADS Monday at 4:30 p.m., 9 days before publication.</p>	<p>Prepayment is required.</p> <p>Check or money order accepted.</p> <p>Prepaid advertising is NONREFUNDABLE.</p>	<p>PERSON-TO-PERSON Women Seeking Men Men Seeking Women Women Seeking Women Men Seeking Men Other Personals Chance Meetings Just Friends Dating Services</p> <p>BILLBOARD Personal Messages Notices & Announcements Car Pool Rides Lost & Found Tickets for Sale</p> <p>HELP WANTED Employment Employment Services Employment Opportunities Business Opportunities Jobs Wanted Volunteers</p> <p>MARKETPLACE For Sale Garage Sales</p> <p>TRANSPORTATION Autos Trucks Motorcycles Mopeds Bicycles Boats</p>
<p style="text-align: center;">Classified Line Ad order form</p> <p><input type="checkbox"/> Person-to-Person Ads WITH VOICE MAIL ☐ FIRST THREE LINES FREE FREE!</p> <p><input type="checkbox"/> BOLD line (23 characters/line max)\$6.50/line x _____ = _____</p> <p><input type="checkbox"/> Standard line (38 characters/line max)\$5.00/line x _____ = _____</p> <p>Cost Per Week (2 line minimum) Subtotal = _____</p> <p>Number of Weeks x Subtotal = _____</p> <p>Additional \$15.00 = _____</p> <p>Tax (4.17%) = _____</p> <p>Total Enclosed = _____</p>			<p>ART & MUSIC Auditions Acting Workshops Dance Classes Musical Instruments Musicians Wanted Rehearsal Space</p> <p>MIND/BODY/SPIRIT Instruction Counseling & Therapy Health & Fitness Fashion & Beauty Spiritual/Metaphysics</p> <p>SPORTS & RECREATION League Announcements Equipment for Sale</p> <p>TRAVEL & VACATION Airline Tickets Bed & Breakfast Vacation Rentals</p> <p>RENTALS/REAL ESTATE Commercial Rentals Residential Rentals Shared Housing Rentals Wanted Commercial Real Estate Residential Real Estate</p> <p>SERVICES</p> <p>ADULT SERVICES</p>
<p>HONOLULU Weekly 1200 College Walk, Suite 214 Honolulu, Hawaii 96817 528-1475 528-3144 (FAX)</p> <p>Name _____</p> <p>Address _____</p> <p>City _____ State _____ Zip _____</p> <p>Home Phone _____ Daytime Phone _____</p> <p>Start here. Please include punctuation & space between words. End of BOLD line End of Standard line</p>			

eled. Great DH/ocean views. Close to library, zoo, park. Unfurnished, but includes washer/dryer, dishwasher, microwave. \$1400/month. Minimum 1 yr lease. Call 528-1475, ext 17.

Hawaii Kai. Sublet 3 bdr home. Dec 24 - Jan 6. \$2000. 523-0206.

Kaaawa: Lovely studio cottage next to fish-pool in large lush fenced yard. Private & peaceful. Pets welcome! W/D. Avail 12/1. \$695/mo + dep + util. 237-7363.

KAILUA STUDIO FOR RENT

Spacious, quiet. W/D & pkg. Avail 12/1. \$675. Call 599-3838 or 262-4747.

SHARED HOUSING

INCREDIBLY RESPONSIBLE? ABSURDLY NEAT?

Forced into some concrete box by the lack of equally-committed housemates? A comfortable, cool, spacious townside ocean-view hilltop home awaits your renewed commitment. \$525-\$575/m. HW Box 333

Alewa Hts. 3 bdrm home. Excel view & lanai. Cable/phone/10 min to town. \$520. 595-8005.

HAWAII KAI

Share in comfortable & spacious home with 3 creative & conscious females! Great location! \$450 + utils. 396-4164.

HSE 2 SHARE NR KAHALA

Rm to rent in quiet home w/yard, W/D, parking, busline nr mall. Seeking N/S, N/D, liberal working person/student. \$450 mnth + dep & share utilities. Call 739-0377.

KAILUA. QUIET FF 2/1 APT PVT ENTRNC + LG DECK + VIEW + DINING RM. NS PROF ONLY. 950 SF. \$1000+ 261-5844 EVE.

KAILUA

Own room on bus line. Furnished. \$400 includes utilities. References required 262-8603.

KAILUA ENCHANTED LAKE

Female to share w/non-smoker nice home w/ pool, washer/dryer. \$475 includes utilities. 261-1313.

Kaimuki. 1 female looking to share 3/2 home with one other NS prof. Lg yd, semi-enclosed patio, pkg, solar. Cat okay. Avail now. \$600+. 732-3423.

KAIMUKI/KAPAHULU AREA

Quiet hidden 2/1 house to share. W/D, A/C, pkg, cable. Avail now. \$550/mo. 732-7175.

Kaimuki/Wilhelmina. Lg room avail 12/1 in cozy house w/ 2 absentees. Washer/Yard/Recycling. \$440 inc all. 732-3406.

QUIET 2 BEDROOM HOUSE

Easygoing, responsible prof wanted to share Kapiolani house. Prk incl own phone. \$440 + 1/2 utl. 943-9103 eves!

Makakilo. Roommate to share lg twnhse. Private room/bath, W/D, parking, pool. Mature, non-smoker. \$625 + dep incl util. Call 672-6833.

Maunawili. 2 brs in 3 br. \$500/\$450 + 1/3 utl. Special farmer seeks N/S veg oriented pioneer spirits to share quiet acres. Make good things happen now! 566-2329.

Nuuanu/Liliha. Mstr bdrm in 2 rm apt w/1 bath. W/D, pool. Close to UH, HPU, Downtown. Pkg avail. \$450 + util + dep. Ph: 524-1006. Pg: 848-9074.

Pacific Hts. Large room. awesome view! Creative hsehold seek responsible, NS, ND, mostly vegetarian. W/D, pkg. Avl 12/1, \$575 + dep, incl utls. 523-2821.

Pacific Heights. Hardwood floors, view, clean, cool, quiet, covered pking, cable, W/D. Looking for mature NS professional. \$550. 593-3690.

Roommate wanted for clean, quiet, cool home in upper Palolo. Plenty parking. A good deal. \$435 per month. Call 732-7727.

Punchbowl. Wonderful big 30's house to share. City views, big trees, high ceilings, nice deck, W/D. Looking for responsible & easygoing. \$550. 599-1653.

UH AREA. 2/2 HOUSE

Sunny, spacious, w/lanai, view, yard, W/D, prkg. Pref clean resp N/S. Avail now. \$450 + util. Call 739-1463.

Wilhelmina Rise. Superb view of D.H. & Kahala. Lg room, furnished, share

bath & kitchen. \$600/mo + \$200 dep. 734-0933.

Wilhelmina Rise. Private room/bath/pkng. Mature female to share cable, DH view, W/D, garden. \$530 + 1/3 utl. 739-0647.

REAL ESTATE

For Sale

Gold Coast. 2B. ocn vw. \$195,000 (LH) Makiki. 2B. ocn vw, \$229,000 (LH) Waikiki. 1B, canal vw. \$170,000 (FA) Claude Heon (R) 734-7966.

services

I LIKE WEDDINGS

I shoot from the heart.

I am an experienced journalistic photographer.

I documented the moment as seen

in the LA Times, Esquire, Honolulu Magazine and RSVP.

I bring the essence beyond the traditional and yet hold the flavor of your unique day.

I like weddings.

Jeffrey Helberg Photographer 595-2952

*Recommended by moms and brides alike

"The Special Occasion Restaurant"

FRESCO

WARD CENTRE
591-8992
THREE MEETING ROOMS FROM
2 To 250

Affordable Legal Representation
Ismael D. Santellan. Attorney 524-7742
Family Law / Personal Injury / Criminal / Bankruptcy / DUI—Free Consultation

Honolulu Weekly is not responsible for checking the truth or accuracy of the information in classified ads or the backgrounds of the persons placing those ads. Accordingly, Honolulu Weekly makes no representations, promises or guarantees about the truth or accuracy of the information in the classified ads or about the backgrounds of those persons. ■

Round Trip tickets to L.A., Seattle, SF or Las Vegas \$269*

One Way Intenland Tickets from \$25*

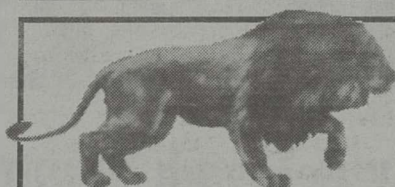
*Prices subject to change without notice



PH: (808) 942-2855 • FAX (808) 957-0056

2600 SOUTH KING STREET #204

HONOLULU, HAWAII 96826



Douglas Cooper, M.D.

Bioenergetic/Reichian Psychiatry

Chi Kung

Grounding/Breathing Exercises

Kahala • 4614 Kilauea Ave. #201

735-0264

You Are Your Body

Understand & Release chronic body tensions from childhood

FEEL MORE: ENERGETIC

EMOTIONAL

ALIVE

SEXUAL

Psychiatry of growth for healthy people.

All Your Modern Rock Favorites...



THE EDGE

97.5 FM

adult services

!! NEW !!

Wild & Uncensored

Talk Live!

1 Or 2 Girls!

Party Line

Date Line

Rec'd Fantasies

800-568-2569 Credit Card

900-745-2416 Non-Credit

Must be 18 to play!

from \$2.49 per minute

SPANK-A-GRAM

Fun BD message hand delivered by English mistress BB in full bondage costume. Embarrass a loved one. Get even with the boss. 923-6166 Today!

Multi-Line Adult BBS

Use modem & call 526-9104 to chat live with single men & women. Info 528-3404.

XXQUISITE PLEASURES!!

All lifestyles welcome
Local singles/couples waiting to chat.
1-900-378-5500 ext 43 \$2.95 min 18+
MMI (cust service) 1-213-465-1000.

Maikai Modeling

- * Personal Tour Guides
- * Bachelor Grams
- * Lingerie Modeling
- * Stress Reduction

Call Today For An Appointment

951-1058

Always Hiring

LIVE TALK

UNCENSORED TALK WITH A BEAUTIFUL PHONE MATE

1-900-745-2046

ALSO TRY 1-900-745-1080

CHAT LINE

CALL NOW JOIN IN THE ACTION OR JUST EAVESDROP

1-900-745-2057

ALSO CALL 1-900-745-1030



ADULT DATELINE

INTIMATE TALKING PERSONALS

ISLANDS • MAINLAND

80% REAL PHONE NUMBERS

1-900-435-3283

\$2-4.99/MINUTE • APE SAN RAFAEL CA • 21+ YEARS

THE NEW HUBBA HUBBA

Under New Ownership: Mama Sue

Completely Renovated



LIVE! ADULT FILM STAR

MIMI MIYAGI

NOV. 28 - DEC. 3

4 SHOWS DAILY

8:30 • 11:30 • 12:30 • 2:30

OPEN 7 DAYS 2 PM - 4 AM

NOT OFF LIMITS TO MILITARY

★ THE HOTTEST HOUSE DANCERS ★

★ DAILY DRINK SPECIALS ★

★ MON. \$1⁰⁰ DRAFT ★ TUES. \$1⁰⁰ WELL ★

Located between Smith & Nuuanu.
3 Parking Areas Within 1 Block

25 N. HOTEL ST. 536-7698

YULE SAVE AT TOWER

Tommy Dorsey & Frank Sinatra

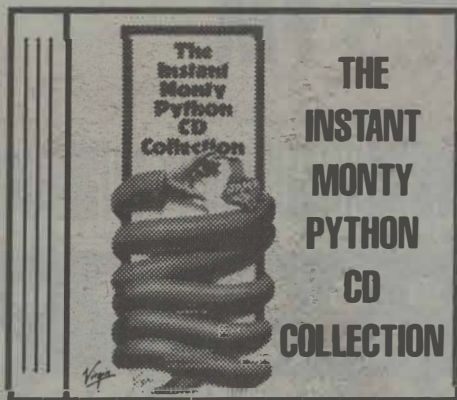


63.99 5 CD 49.99 5 CS

THE SONG IS YOU

"The Song Is You" is the most complete musical record and documentation ever of Frank Sinatra's brief but stunning career as a vocalist with the Tommy Dorsey Orchestra. This exciting 5 compact disc or cassette boxed set features a lavish 100 page book, many rare photos and memorabilia and an introduction by Frank Sinatra himself.

Monty Python

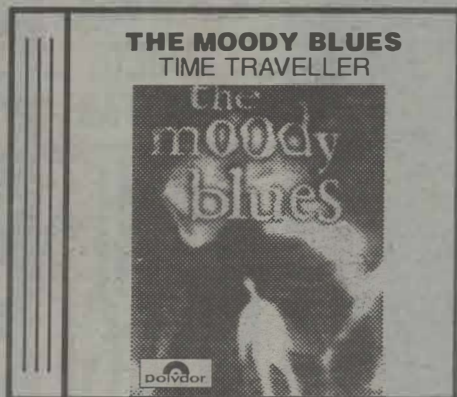


49.99 6 CD 34.99 6 CS

THE INSTANT MONTY PYTHON CD COLLECTION

With over 23,711 seconds of non-silence, over 6 1/2 hours of insanity and mayhem, "The Instant Monty Python CD Collection" includes 6 CDs/cassettes and a forty-page full color booklet featuring such immortal sketches as the Spanish Inquisition, the Parrot Sketch and the Cheese Shop plus classic songs like "Lumberjack Song" and "Every Sperm Is Sacred".

The Moody Blues

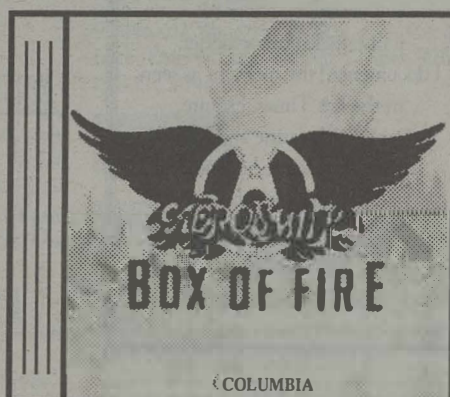


49.99 4 CD

TIME TRAVELLER

The most comprehensive Moody Blues collection ever, chronicles this extraordinary band's rich history from their 1967 singles through their ground breaking recordings to their current concert successes. Newly remastered, the set contains key selections from all of their classic albums and features non LP singles, rarities and unreleased material.

Aerosmith



93.99 13 CD

BOX OF FIRE

A one-stop definitive collection of "America's Greatest Rock & Roll Band." This 13 disc box set contains all 12 of Aerosmith's original Columbia albums—restored to pristine 20-bit sonic grandeur via state-of-the-art Super Bit Mapping. Plus, the box includes a previously unreleased bonus CD of Aero-rarities and hard to find gems!

Jimmy Buffett

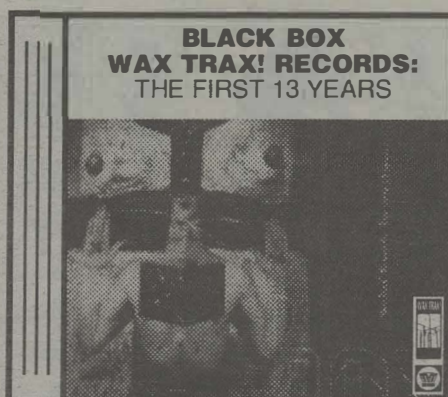


46.99 4 CD 29.99 4 CS

BOATS, BEACHES, BARS & BALLADS

- Digitally Remastered
- Buffett's 72 hand-picked favorites
- 8 Rarities
- 68-page booklet containing rare photos and stories
- "The Complete Parrothead Handbook"
- Each song personally annotated by Buffett

Wax Trax!



39.99 3 CD

BLACK BOX WAX TRAX! RECORDS: THE FIRST 13 YEARS

3 CDs, 41 tracks, 3 1/2 hours of music, many out of print tracks, hard to find 12" 's, previously unreleased material and a 76 page book featuring Ministry, Thrill Kill Kult, Revolting Cocks, The KLF, 1000 Homo DJ's, Coil, Meat Beat Manifesto and much more!

ALSO ON SALE:

Limited Edition Steel Box

56.99 3 CD LIMITED TO STOCK ON HAND.

BUY A BOX

SALE ENDS 1/3/95

IN DOUBT?...
TOWER GIFT CERTIFICATES
\$5, \$10, \$15, \$20, \$25, \$50, \$100

Great Selection Of
Christmas Music On Sale!

OPEN 9AM TO MIDNIGHT EVERYDAY!
TOP 25 ALWAYS ON SALE!

TOWER
RECORDS • VIDEO • BOOKS

HONOLULU
KAHALA • AIEA
WAIKIKI

1 • 800 • ASK • TOWER
SHOP BY PHONE OR FOR STORE LOCATIONS