

H O N O L U L U

# Weekly

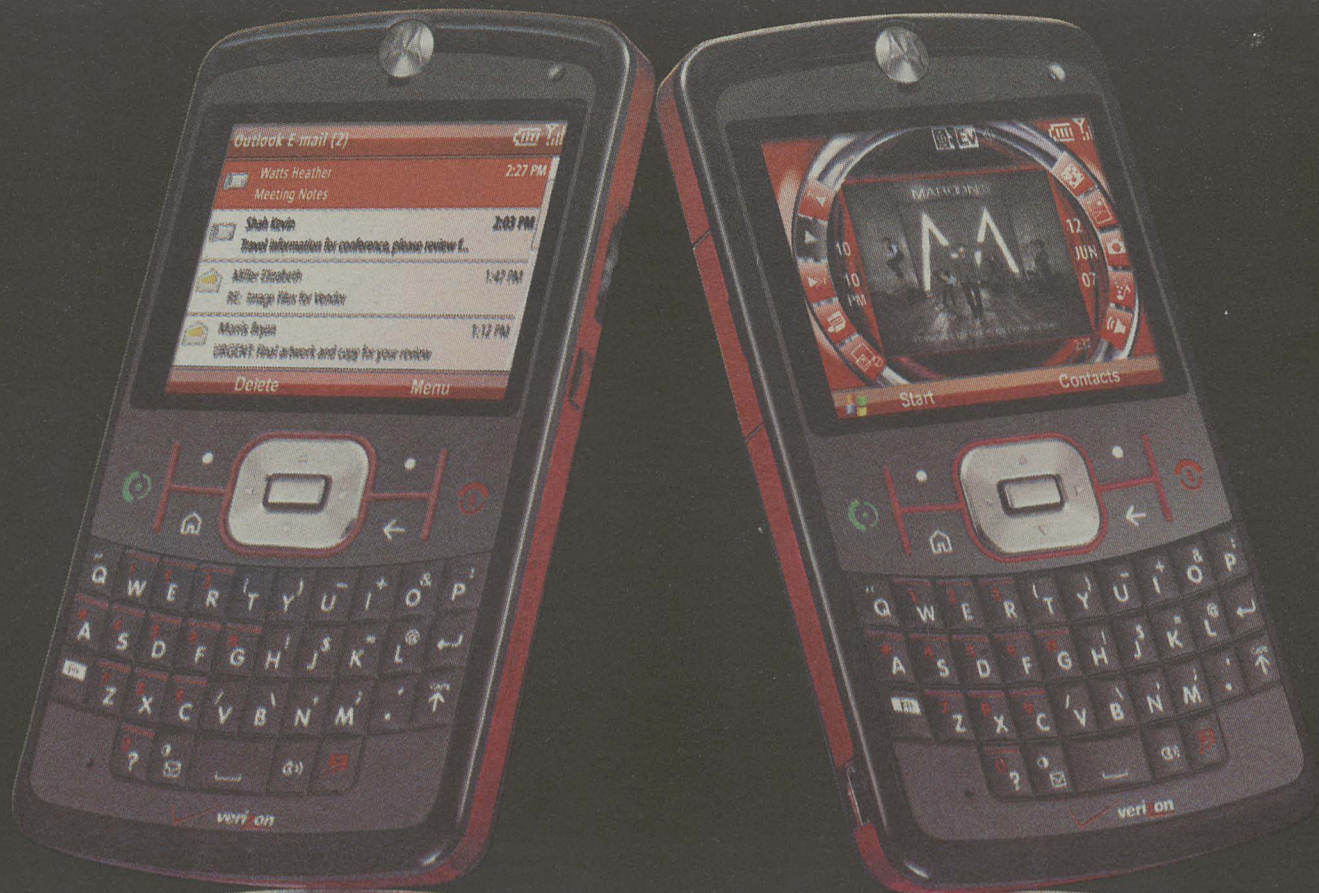
SEPTEMBER 5-11 • VOLUME 17, NUMBER 36 • WWW.HONOLULUWEEKLY.COM

NEW LEG  
LEADERS 05  
END OF  
THE RIOT 10  
CHEAP  
EATS 19



# CENSORED!

THE TOP 10 STORIES  
THE U.S. NEWS MEDIA  
MISSED IN THE  
PAST YEAR



THE FIRST SMARTPHONE THAT REALLY ROCKS.

## Introducing the MOTO Q™ music 9m.

Email, calendar, cutting-edge MP3 player. It organizes your life, and gives it a soundtrack. Because smartphones rock harder on the network.

**verizon**wireless



**1.800.2.JOIN.IN**

**VerizonLiveEvents.com**

### VERIZON WIRELESS COMMUNICATIONS STORES

#### HAWAII

**HILO**  
315 Makaala St. (808) 935-6931

**KAILUA KONA**  
75-5595 Palani Rd. (808) 326-9540

#### KAUAI

**LIHOE**  
3-2600 Kaunualii Hwy. (808) 245-6654

#### MAUI

**KAHULUI**  
Maui Marketplace (808) 877-4343  
Queen Ka'ahumanu Center Kiosk (808) 877-0937

#### OAHU

**AIEA**  
Pearlridge Center Kiosk (808) 488-8157  
Pearlridge Center Store (808) 484-1242

**HONOLULU**  
1088 Bishop St. (808) 536-5158  
1440 Kapiolani Blvd. (808) 973-4884

#### HONOLULU

930 Valkenburg St. (808) 423-9560  
Kahala Mall Kiosk (808) 734-0250

#### KANEONE

Windward Mall (808) 247-0387

#### KAPOLEI

563 Farrington Hwy. (808) 674-4290

#### PEARL CITY

1000 Kamehameha Hwy. (808) 456-0687

**BUSINESS CUSTOMERS, please call 1.866.665.1433 or click [verizonwireless.com/mybusinessrep](http://verizonwireless.com/mybusinessrep)**

IN COLLABORATION WITH

**Alcatel-Lucent**



**VISIT THE VERIZON WIRELESS STORE INSIDE CIRCUIT CITY.**  
STAFFED WITH VERIZON WIRELESS EMPLOYEES – EXCLUSIVE OFFERS AVAILABLE!

AIEA



**A built-in smoke detector**

It is unfortunate that the writer of the letter "Best letter to the editor in response to a Best of Honolulu editors' pick" (Letters, Aug. 22) had no idea that prior to Nov. 16, 2006, a full 20 percent of the bars were already non-smoking by their owners' choice.

This is not a smoking issue, it is a fundamental trampling and disregard of adults right to freedom of choice concerning a legal product that ironically can still be sold in bars, but not consumed in them. And this mania goes much farther than bars—now they are going after people's jobs and homes because they are smokers.

You already had a choice, but since Nov. 16, no one has a choice. We are all born with a built in smoking ban—it's called your nose. Don't like the smell of tobacco, fine. In America, no one is forced to endure any circum-

stance. There was no such thing as the Hawai'i Smokers Alliance, and no need for it, as the prior law was deemed equitable and reasonable. An interesting fact you already know is, Hawai'i has enjoyed one of the longest life expectancies on the planet for years, and all without a smoking ban.

We all have a choice to make. We are not a special interest group, unless you believe that fighting for our American right to these freedoms and liberties falls into a special interest category. In the words of Dr. Martin Luther King Jr, "One has a moral obligation to disobey unjust laws." This is the only "agenda" we are guilty of.

Jolyn Tenn  
Kāne'ohē

**It was supposed to be quiet**

Chris Haire's article on the direct action at Iolani palace on its 125th anniversary ("The Revolution Must Be Televised," Aug. 22-28) simply exposed the failure of independent journalism. If Haire had done his homework, he would have at least known the context in which this quiet action took place. Rewind back to the same date in 2006: 'Iolani palace grounds were occupied by those celebrating "statehood," organized by the Grass Roots Institute, whose mission is to oppose Hawaiian sovereignty. Hawaiian activists, including the youth, confronted this act of insolence in order to retain the proper meaning of the palace as a seat of governance of the Kingdom of Hawai'i, which still legally exists. With a gradual but steady growth of awareness among kanaka maoli regarding the continuing existence of the Hawaiian nation in international jurisprudence, the Hawaiian sovereignty movement has ushered in the phase of re-constructive forum in lieu of a revolution. Some of the actions in this forum go unnoticed by the mainstream media because the latter has no access to their significance other than through the matrix of "civil disobedience" and "protest." The quiet act of reclamation Haire was fortunate to witness seems to have been intended primarily for a purpose of invoking the ancestral spirits in the seat of governance. The fact that that the standoff occurred in the basement—where spirits can be sensible—could have been a rich context for Haire to launch a "thick description" of the movement as a whole. Instead, he misattributed his own deficiency of comprehension to the "failure of the sovereignty movement" which "must appeal to the American public" through the mainstream media. In other words, he inadvertently admitted the failure of independent journalism in an ostensibly independent weekly newspaper.

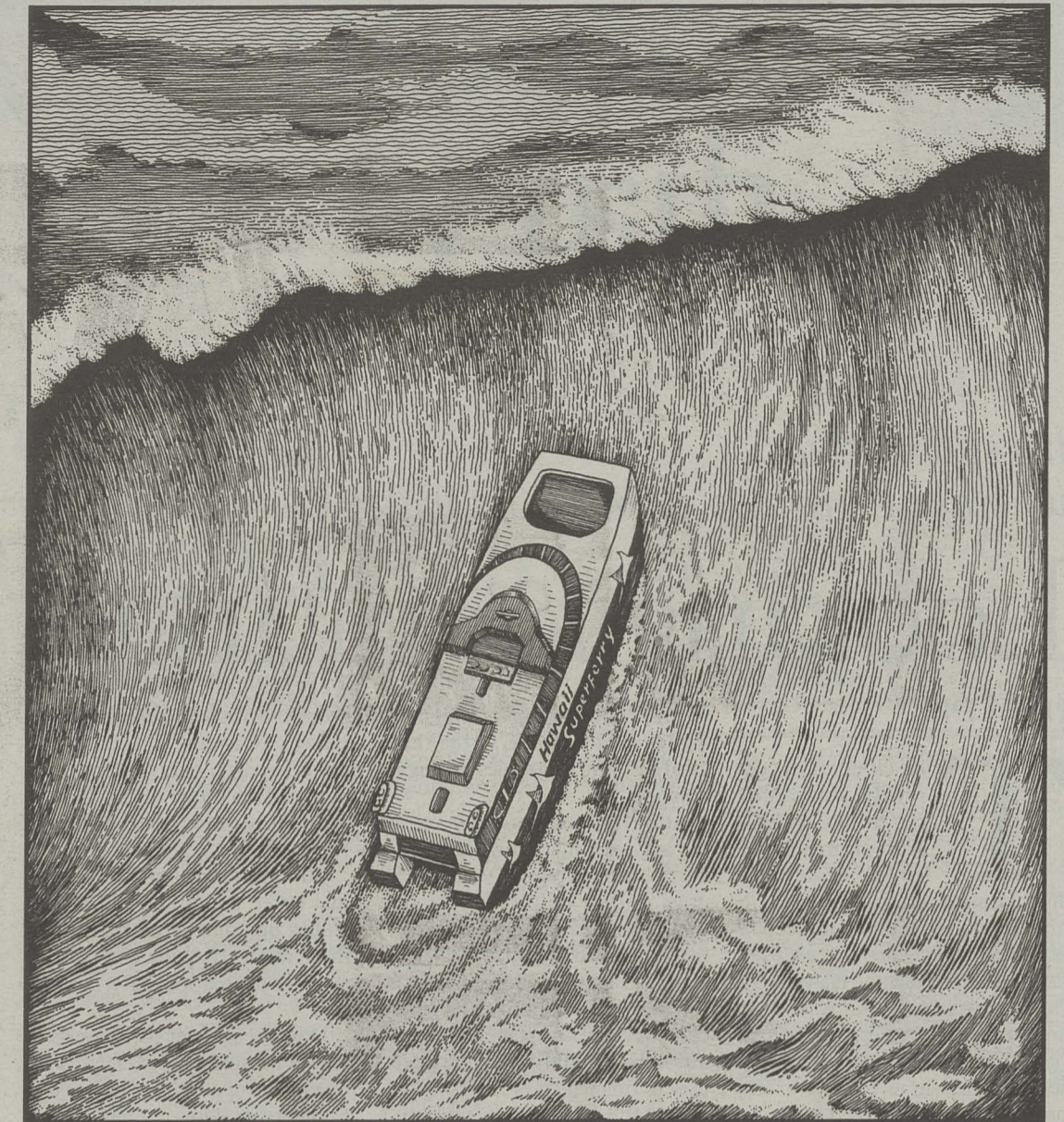
M. T. Kato,  
Kāne'ohē

**Two years on, and still clueless**

Chris Haire reveals his ignorance of local custom and people in "The Revolution Must Be Televised" (Weekly Reader, Aug. 22-28).

The actions of a few Hawaiians he describes at 'Iolani Palace was not intended to challenge, but rather to offer ho'okupu, and give cultural respect to Hawai'i's queen.

Had he taken the time to educate himself on our customs he would



COPYRIGHT JOHN S. PRITCHETT

know that asking permission is an important component of Hawaiian ritual and ceremony, as was done by participants that day.

What Mr. Haire mistook for civil disobedience was simply Hawai'i Nationals paying respect and tribute to our queen and her palace that is still to this day, the only legitimate seat of government in Hawai'i.

His misinterpretation of events clearly reveals after two years of residency, he still thinks like a foreigner.

Anybody who has been in Hawai'i for even a day should know local custom dictates shoes are removed before entering someone's home.

Furthermore, our movement is not, as Mr. Haire asserts, a well-kept secret, nor are we incapable of media strategy and tactics.

Our achievements have received extensive coverage by the likes of the *Washington Post*, *US News & World Report*, *National Geographic*, NPR, CNN as well as most major newspapers and all television and radio networks in the U.S. and throughout the world.

We can assure Mr. Haire when we desire media coverage or choose civil resistance, it will be on our terms and media throughout Hawai'i and the world will know it.

The Hawaiian Independence movement does not, as he suggests, require the services of a Hollywood public relations firm.

What we do need are people who move here taking a position of authority as Mr. Haire has done, to have sensitivity enough to notice what's really going on right under their noses.

Andre Perez  
Honolulu

**Don't believe everything she says**

With 43 Democrats out of 51 members of the House, there are bound to be differences of opinion among caucus members on legislative matters, but it's important that we correct some inaccurate statements made by Rep. Sylvia Luke in her interview with Chris Haire ("Maverick," Aug. 22-29).

She stated that representatives who did not support Speaker Calvin Say "got no chairmanships, got no bills passed or very few bills passed, no little projects in their district." That is simply not true.

As she did not name names, we won't either, but there are two chairs of major committees who did not support the speaker, and they were selected because of their expertise and knowledge of the subject matter.

It was also false of Rep. Luke to claim that leadership wanted to flex their muscles and "just override everything," and that it was the dissidents that drove the decision to override only selected bills. Not so.

While we cannot disclose what was discussed in our majority caucus, what is true is that the initial override list was developed by leadership, not the dissidents. The initial list had relatively few bills that leadership felt were of extraordinary enough importance to override. After discussion by the caucus, the list was expanded a little, not decreased as the dissidents have suggested, and presented to the Senate, which subsequently added more bills. Thus, it was not the dissidents or Republicans who drove the override decisions.

Rep. Luke's criticism is ironic because Speaker Say brought her

into his previous leadership team by appointing her vice speaker, despite concerns of some majority members. He wanted to prepare her to take a bigger role in the future as a leader of this state.

I am the youngest member of the House of Representatives, and I hope to be serving for many years so that I can help to manifest a healthy and successful vision for the future of Hawai'i. The fact that the speaker encouraged me to be the vice speaker, and appointed many new chairs, shows that he is laying the foundation for the future.

Speaker Say was selected by an overwhelming majority in the House because of his fairness, leadership and progressiveness. He takes responsibility for the entire House, including the dissidents and the minority, and he doesn't publicly criticize his own colleagues or the institution. In spite of differences, the Speaker's leadership team strives to work with everyone to create policy for a better Hawai'i. Ultimately, it should not be about the politics, but about doing good work for the people of the state.

Rep. Jon Riki Karamatsu  
Vice Speaker, House of Representatives

**Dept. of corrections**

Scott Saiki wasn't Senate Majority Leader. He was House Majority Leader. (Q+A with Sylvia Luke, "Maverick," Aug. 29-Sept. 4).

WRITE TO: *Letters to the Editor*, Honolulu Weekly, 1111 Fort Street Mall, Honolulu, HI, 96813.

Fax to 528-3144 or e-mail to [editorial@honoluluweekly.com](mailto:editorial@honoluluweekly.com). Letter writers must print and sign their name, and include a phone contact.

HONOLULU  
**Weekly**

Vol. 17, No. 34  
September 5-11, 2007

**Our Mission:**  
To create a high-quality, profitable weekly O'ahu newspaper that provides its readers with independent, entertaining, provocative coverage examining local issues, arts and events in a visually striking format.

- Publisher** Laurie V. Carlson
- Senior Editor** Kawehi Haug
- Calendar Editor** Dean Carrico
- Staff Writer** Travis Quezon
- Editorial Intern** Margot Seeto
- Film Critic** Bob Green
- Contributing Writers** Keith Bettinger, Joan Conrow, Keala Francis, Becky Maltby, Greg Mebel, Marcia Morse, Megan Rooney, Ryan Senaga, Steve Wagenseller, Kevin Whittton, Kalani Wilhem, Jamie Winpenny
- Director of New Media & Production** Joe Edmon
- Production Manager** Zak Opaskar
- Production Assistant** Elena Nakashima
- Production Intern** Andrew Bone
- Contributing Photographers** Malia Leinau, Justin Leong, Wei Ping Lum
- Cartoonists & Illustrators** Max Cannon, Lloyd Dangle, John Pritchett, Slug Signorino, Tom Tomorrow

- Sales & Marketing Manager** Laurie V. Carlson
- Senior Account Executive** Colleen Knudsen
- Account Executive** Ilma Anikow, Shauna D. Pinney
- Classifieds Sales Manager** Lei Ana E. Green
- Classifieds Representatives** Nick Baca, Lance Motogawa, Annie Zager
- Distribution Manager** Kate Paine
- Bookkeeper** Pamela Farris
- Administrative Assistants** Almond Cruz, Michelle Takiguchi

Cover: Mirissa Neff

ISSN #1057-414X  
Entire contents © 2007 by Honolulu Weekly Inc. All rights reserved.

Manuscripts should be accompanied by a self-addressed stamped envelope; Honolulu Weekly assumes no responsibility for unsolicited material. Honolulu Weekly is available free of charge, limited to one copy per reader. Additional copies may be purchased at our office. No person may, without permission of Honolulu Weekly, take more than one copy of each Honolulu Weekly issue.



[www.honoluluweekly.com](http://www.honoluluweekly.com)

Phone: (808) 528-1475  
Fax: (808) 528-3144  
Classifieds: (808) 534-7024

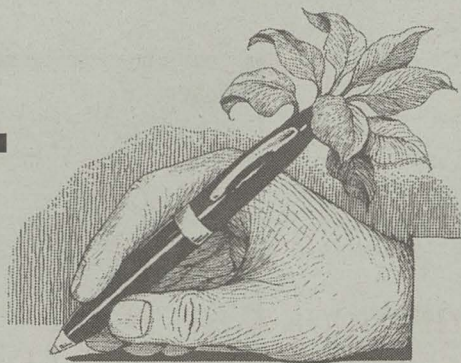
[editorial@honoluluweekly.com](mailto:editorial@honoluluweekly.com)  
[sales@honoluluweekly.com](mailto:sales@honoluluweekly.com)  
[classifieds@honoluluweekly.com](mailto:classifieds@honoluluweekly.com)

1111 Fort Street Mall, Honolulu, HI, 96813

Printed on recycled newsprint with soy-based inks

**INDEPENDENT, LOCALLY OWNED**

# honolulu diary



It's still unclear  
whether Dongbu's claims hold water

## Looking for ratings

IAN LIND

**T**he cloud of uncertainty surrounding the ability of a Korean insurer to cover large damage claims if a hurricane were to hit the islands seemed to deepen last week as the company notified its local agents that the Hawai'i office lacks a rating from A.M. Best, an international rating service relied on to compare the safety and security of insurance carriers. The problems were described in *Honolulu Weekly* last week ("Big hurricane, big problem," Aug. 29).

The notice came in an Aug. 27 letter from Hoe Min Rim, Dong-

bu Insurance Company's general manager in Hawai'i, to the three local insurance agencies selling its policies.

Atlas Insurance Agency, one of the agencies marketing Dongbu's hurricane coverage to condominiums, in turn told its clients that even Insurance Commissioner J.P. Schmidt failed to realize that a local affiliate of a foreign insurer has to be rated separately from its parent company because state law doesn't allow going after foreign assets in case of financial problems.

Dongbu is currently seeking a separate rating for its Hawai'i affiliate, according to the letter. To quell concerns about its financial reserves, the company also

produced what it described as "a Letter of Guarantee" from its parent company "which shows our head office's full legal liability for the operations in the State of Hawai'i."

But it remains unclear whether that letter, addressed to Schmidt, would be considered binding on the foreign company through layers of national and international law.

Dongbu also sought to reassure Hawai'i customers by referring to a recent rating of BBB+ assigned by Standard & Poor, but another rating agency, Weiss Ratings, currently lists Dongbu's Hawai'i affiliate among a small group of homeowners and auto insurers receiving its

lowest rating of "extremely weak" (see [weissratings.com](http://weissratings.com)).

This could signal problems ahead for condominium associations that may be violating their own governing documents, which often require insurance coverage to be acquired from rated companies. The problem could eventually hit individual owners and prospective buyers if banks shy away from existing or new financing because a condominium's insurance carrier does not meet a specific minimum rating, according to a memo circulating at Insurance Associations, a competing agency, which has raised the issue in a complaint filed with the Insurance Commissioner.

## QUOTE

"Normally, you invoke emergency powers to deal with things like tsunamis and hurricanes. This is an intriguing and, I think, clever use of executive power."

—Ira Rohter, UH political science reporter referring to Gov. Linda Lingle's use of emergency powers to award an \$11.5 billion contract to developer Stanford Carr to address homelessness on the Leeward Coast.

## FACTOID

# 18

The number of key resignations from top officials in the Bush administration since last November, as tallied by [ThinkProgress.org](http://ThinkProgress.org).

## QUICK HITS

**Kaua'i protestors cripple Superferry with a Kryptonite welcome at sea**—In a scheme that not even Lex Luthor could come up with, protestors were able to keep the long-awaited Superferry from servicing Kaua'i last week. Armed with kayaks and surfboards, protestors were able to block the Superferry's arrival in the water at Nāwiliwili Harbor after Coast Guard officials said they couldn't assure safe passage, the *Garden Island* reports. The incident left Superferry passengers who were hoping for an inexpensive voyage stranded. "If I didn't have my car, I'd be on a flight," Superferry passenger Richard Dolbear said to the *Garden Island* after wrestling through red tape to cover his expenses when the protest left him stuck in Waikiki. Superferry officials have promised stranded passengers refunds on the \$5 tickets along with a reimbursement for one night's hotel cost and meals up to \$25.

**Gabbard ready to play for the other team**—Last week, Sen. Mike Gabbard made his switch to the Democratic Party official, much to the chagrin of former Republican colleagues, the *Honolulu Star-Bulletin* reports. "His social views didn't all of a sudden change, which caused him to identify more closely with the Democrat Party. I think it's about personal power as he sees it," Gov. Linda Lingle told the *Star-Bulletin*. In the time since Gabbard publicly announced he was considering the Democratic switch, it seems like Hawai'i Republicans didn't do much to twist his arm to keep him. "My experience over at the Legislature has convinced me that in order to be more effective, it would be best if I were a part of the majority party," Gabbard told the *Star-Bulletin*. Can you blame him? Who wants to play for the Orlando Magic when you can roll with the big dogs on the L.A. Lakers? Voters will have to wait and see how long the Democrats' warm welcome will last. It's one thing to work with your buddy. It's a whole

different ballgame when you start sharing a bathroom.

**Marriage fraud lands former teacher in jail**—It's like that movie *Green Card*, only less romantic comedy and more nighttime crime drama. Former schoolteacher Bob Loren was sentenced to 10 months in federal prison for his role in a marriage fraud scheme gone amuck when documents detailing the plan were found on Chinese citizen Hang Duan by immigration officials, the *Honolulu Star-Bulletin* reports. Loren and Duan were romantically involved and shared a home in Wai'anae. They allegedly arranged a fake marriage in 2005 between Duan and female acquaintance Shara Padello, who Loren found through a barbershop that Padello's mother worked at. Instead of the \$6,000 promised to her if Duan were to receive a green card, Padello ended up getting 3 years probation and 300 hours of community service.

—Travis Quezon

**2-2-2**  
**KICKSTART THE NEW YOU!**

**2 FREE WEEKS**  
**2 FREE PERSONAL TRAINING SESSIONS**  
**2 FOR 1 MEMBERSHIP**

**949-0026**  
[www.punahoufitnessandspa.com](http://www.punahoufitnessandspa.com)

TELL YOUR FAMILY & FRIENDS

Expires 9/30/07

First and last month due upon signing. Based on 2 year memberships.  
1212 Punahou St. (corner of Punahou and Beretania)

**BALLET CLASSES FOR ADULTS**

Beginning Classes  
Tu-Th 6 p.m.  
Sat. 9 a.m.

Intermediate Classes  
M-W-F 11 a.m.  
Tu & Th 6:30 p.m.

**HAWAII STATE BALLET STUDIOS**

1418 Kapiolani Blvd. - 2nd. Fl.  
(By Ala Moana Shopping Center  
Keesumoku & Kapiolani Blvd.)

**CALL 947-2755**

**HSB**

**Kickboxers Ultimate Training**

**KUT**

**Martial Arts Family Fitness**

What Are You Waiting For?  
**GET KUTI!**

**KICKBOXERS ULTIMATE TRAINING**  
KUT is a 9-week fitness program that combines kickboxing, nutrition, flexibility and resistance training with a team of coaches, instructors and fellow teammates that will help you achieve the body that you've always wanted.

Next KUT starts on September 8th. CALL 949-0749 NOW!  
2600 S. King Street #202  
(located in Puck's Alley on the corner of King and University)  
[www.MAFFHawaii.com](http://www.MAFFHawaii.com) • 949-0749



Let's not focus on the ones who make politicians look bad. There are a few who really are in it for the public service.

# Promising new leaders in the Legislature

BRIAN SCHATZ

**O**ne hundred grand in a fridge (Rep. William Jefferson). Bathroom lewdness (Sen. Larry Craig). Page solicitation (Rep. Mark Foley). A list of requested bribes (Rep. Duke Cunningham.) It's enough to make you believe the worst clichés about politics and politicians. But instead of piling on, I want to focus on something that provides hope—a counterweight to the disappointments that we've seen over the last year.

Here is my short list of most promising young legislators. My criteria are simple: I need first-hand knowledge of their performance as a leader, they can't be a close friend

of mine, they have to be smart, honest, hard working and relatively young.

**Rep. Karl Rhoads (D-Chinatown, Makiki)**

This freshman surprised observers by beating attractive young Republican candidate Collin Wong in 2006, and was immediately thrust into one of the most difficult issues of the session—the preservation of Kukui Gardens as affordable housing. He did what many legislators are unable to do—retain his independence while remaining relevant with the insiders. Some believe that there is a fork in the road for politicians. You either choose to be an outcast rebel with no internal traction, or you have to sell your soul to the whims of party leaders. Rep. Rhoads reminds us that not

all bargains are necessarily Faustian. He had the ability and the heart to walk the line between maverick and collaborator with integrity.

**Rep. Lynn Finnegan (R-Aiea)**

The Minority Leader of the State House has had a difficult couple of years. Despite her talent for articulating the Republican philosophy and her ability to reach across the aisle, the number of her colleagues continues to dwindle. She's a thoughtful, real conservative, and while I can't think of a major issue on which we agree, she comes by her positions with integrity and clarity. Now if she can figure out a way to help her colleagues win a few elections, the GOP might be on its way back to relevance in the islands.

**Sen. Jill Tokuda (D-Kāne'ohe)**

This freshman Senator and former Mazie staffer is skilled, serious, gutsy and willing to take on unpopular issues. She helped to oust Peter Young at DLNR, and even though I didn't agree with the result, there's no doubt in my mind that she did so out of a sense of obligation to the department and her constituents. She's now taken on the unenviable task of trying to help fix the Bureau of Conveyances. She doesn't gravitate toward the easy issues—in fact, the thornier it is, the more she puts herself in the middle of the mix. This has earned the respect of her colleagues and will pay off in the long run, even though she's taking some lumps now.

**Rep. Ryan Yamane (D-Miilani)**

Ryan is the son of former Rep. Brian Yamane, and is a social worker by inclination and profession. He doesn't get caught up in internal politics, and is in political service, in my estimation, for the same reasons that he is a social worker—he wants to help people. He's smart, but does not have the politician's compulsion to prove he's the smartest guy in the room. He's ascended to the Chair of the Tourism and Culture Committee, which he's taken very seriously, and he's produced good results.

*Brian Schatz was a state representative for eight years and ran for the U.S. House in 2006. He is currently CEO of Helping Hands Hawai'i.*

## ROLL CALL

**AMNESTY INTERNATIONAL**  
SEPTEMBER 6

The human rights organization has had its hands full over the last couple of years, and unfortunately, the pace doesn't show any sign of slowing. What that means is that it's the perfect time for you to get involved. The UH-Mānoa chapter kicks off with a bang with its first meeting of the school year, with Joshua Cooper speaking on international human rights in relation to America's dismal response to Hurricane Katrina. After the presentation, a showing of heartbreaking Katrina-related films will screen, including portions of *When the Levees Broke* and *This Is My Home*, just in case you weren't motivated enough already.

UH-Mānoa, Sinclair Library viewing room 4 (downstairs) 5PM. Free.

**GEORGE W. BUSH ON O'AHU** SEPTEMBER 8

The Decider and War President has managed to take time off from his multiple vacations from Crawford Ranch to visit (apologize?) various soldiers. He's scheduled to have lunch with (and apologize?) with soldiers stationed here on our island, arriving at 11:30AM and departing by 3PM the same day. Consequently, The Hawai'i Chapter of World Can't Wait wants to let him know there are many others also awaiting an apology. Though they don't know where Bush will be or when, you can join them at Fort Shafter. Bring your favorite Bush-ism sign, but remember to keep your slogans simple—this is the same guy who, when asked what his favorite childhood book was, replied with *The Very Hungry Caterpillar*—released the same year he graduated from Yale.

Fort Shafter Gate (Army Headquarters), 11:30AM-2:30PM, [www.worldcantwait.net](http://www.worldcantwait.net)

**HAWAI'I 2050 SUSTAINABILITY SUMMIT**  
SEPTEMBER 22

Important things happen at summits. Fates are decided. What do with a post-World War II Germany? How do you bring peace to the Middle East? How many licks does it take to get to the center of a Tootsie Roll Pop? Serious stuff. Which brings us to the Hawai'i 2050 Sustainability Summit, where the Aloha State's best and brightest gather to discuss how to make sure this island chain becomes a self-sufficient state. Impossible, you say. That remains to be seen. But Hawai'i 2050 has a plan, and at the summit it, the First Sustainability Plan, will be unveiled. Registration for the summit is already underway.

Hilton-Hawaiian Village, Coral Ballroom, 8AM-12:30PM, \$20.50 (adults), \$10.25 (under 18), [www.hawaii2050.com](http://www.hawaii2050.com).

Find your style at Fina

- ART
- PILLOWS
- LIGHTING
- VASES
- FURNITURE
- SCULPTURAL
- STONES



Urn by Oscar de la Renta



M-F 10-6, Sat. 10-4 • 1600 Kapiolani Blvd. Suite 122  
947-8798 or 386-8388 • [FinaHomeAccents@yahoo.com](mailto:FinaHomeAccents@yahoo.com)

Need a new hire?



Find them

FREE and easy at

[WeeklyMarketplace.com](http://WeeklyMarketplace.com)

## ♣ HALF WAY TO ♣ ST. PATRICK'S DAY!

*We can't wait so we're celebrating half way there!*

♣ ALL WEEKEND LONG! WEAR GREEN! ♣

Friday Sept. 14th - Monday Sept. 17th

Live Irish Music

♣ DRINK SPECIALS ♣

Killians, Bushmills, Jamesons, Powers & Michael Collins



902 Nu'uuanu Avenue

311 Lewers Street

Find us at [irishpubhawaii.com](http://irishpubhawaii.com)

## Current Events

The PUC may have jumped the gun when it gave the Superferry the green light

# Free pass

IAN LIND

**T**he Public Utilities Commission appears to have jumped the gun earlier this summer when it determined the Hawai'i Superferry had fulfilled all the conditions and requirements attached to its 2004 certification allowing it to carry passengers and cargo between the islands.

One provision of the PUC's original 2004 certification required the company to be in compliance with all laws, specifically including laws relating to an environmental impact statement, before it could begin service.

Lori Abe, senior vice-president at McNeil Wilson Communications and a Superferry spokesperson, said the PUC confirmed on June 12, 2007 that all conditions had been met.

"Hawai'i Superferry has complied with all laws," Abe said in

an e-mail in response to questions from *Honolulu Weekly*.

But the Hawai'i Supreme Court's unanimous ruling two weeks ago that an environmental assessment of the entire Superferry project is required appears to contradict that conclusion.

Abe argued the Supreme Court decision does not apply directly to the Superferry.

"The decision in the Sierra Club case is that the Department of Transportation should have prepared an environmental assessment," Abe said. "No court has decided that Hawai'i Superferry had to prepare an environmental assessment or was not in compliance with laws."

But Isaac Hall, attorney for the environmental groups that brought the court challenge, disagreed.

"I think that's too narrow an interpretation of the PUC condition," Hall said in a telephone interview. "I think the commission was saying, even though we're not going to

require an environmental assessment at this time, if one is required then it's a condition of this approval, and it should be prepared before they start operating."

The PUC has decided to leave the decision as to whether the Superferry should be grounded to the courts, chief counsel Stacey Djou told the media last week. Djou is the wife of Honolulu City Councilman Charles Djou, who has already filed with the Campaign Spending Commission as a Republican candidate for lieutenant governor in 2010.

Hawai'i Superferry, Inc. originally applied for PUC approval to operate as a water carrier between the islands on July 22, 2004. During public hearings on the application, questions were raised "about the impact of the proposed ferry system on the environment and suggesting that an environmental assessment be done," according to the commission's subsequent decision and order.

The commission partially side-

stepped those issues, noting that the need for environmental studies was then being discussed by both the Department of Transportation and the Legislature, which was pressuring the PUC to act quickly.

But the commission underscored its sensitivity to environmental concerns by imposing a general condition that all laws, including environmental laws, be followed:

"We find it necessary, however, to condition our authorization in this docket upon Applicant's showing, to the satisfaction of the commission, that Applicant has complied with all applicable federal and state laws, rules and regulations, including, without limitation, matters relating to the Environmental Impact Statement Law, under Chapter 343, HRS, to the extent applicable to ensure that all such requirements are appropriately addressed."

The commission ordered the Superferry to comply with this and other conditions no later than 90 days before starting service or by

Oct. 31, 2006, "whichever comes first."

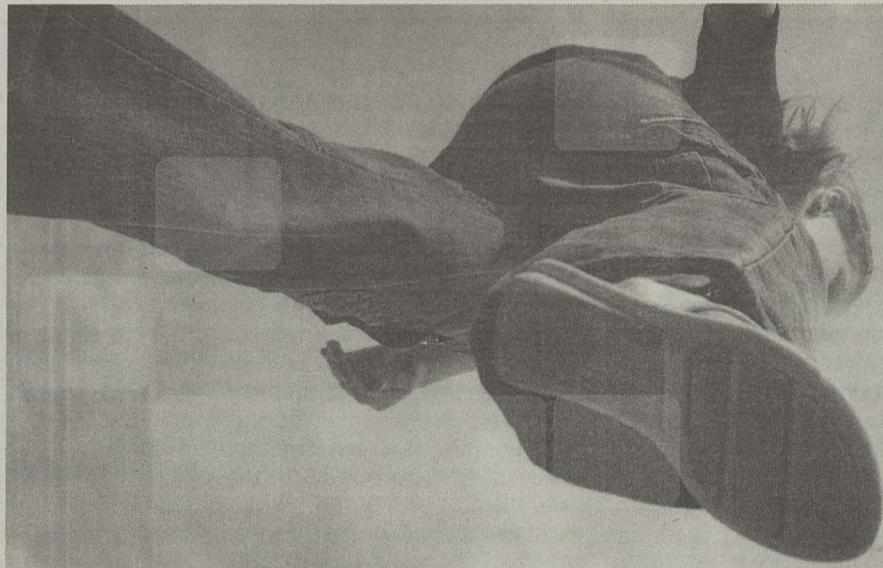
On Oct. 11, 2006, the PUC granted additional time to comply before its June 2007 ruling that the conditions had all been met.

Ron Sturtz, a spokesman for Maui Tomorrow, one of the plaintiffs in the case that went to the Supreme Court, questioned how the PUC had made its decision to stand aside.

"I have to wonder who they communicated with, what was before them, and what the understandings were among the various parties when they made that decision," Sturtz said.

Sturtz said the legal action right now is in the Maui courtroom of Circuit Court Judge Joseph Cardoza, but asked whether an appeal of the PUC certification is possible, he replied: "That is not foreclosed."

For more reports from Ian Lind, visit [www.iLind.net](http://www.iLind.net)



## Accelerated NLP Practitioner Certification<sup>®</sup> Training

### Gain Mastery in the Accelerated Human Change Technologies of NLP, Time Empowerment<sup>™</sup> Techniques, and Hypnosis.

Neuro-Linguistic Programming, Time Empowerment<sup>™</sup> Techniques and Hypnosis are innovative approaches to understanding and directing human experience, communication, and behavior. These sciences are the leading-edge technologies for accelerated human change. Thanks to these technologies, we now know that we can change our lives by controlling how we process our thoughts and emotions. • In our trainings, we will guide you in mastering and using these new technologies for your personal benefit. In addition to that, we will teach you how you can assist others in producing the changes they want for themselves.



Whatever you think you are, you're more than that.

The Empowerment Partnership 615 Piikoi St, Honolulu, HI 96814 tel: 800.800.6463

**Kona, HI: October 23-29**

**JOIN US!**

#### YOU WILL LEARN HOW TO:

- Create instant rapport with others
- Utilize the structure of language to create positive thought patterns in yourself & others
- Obtain understanding and agreement quickly, even with opposing viewpoints
- Disconnect the power of past negative experiences that block you from achieving your goals

This Seminar comes with a 100% Satisfaction Guarantee.

Call now to see if you qualify for a FREE introductory CD.

TAKE A QUANTUM LEAP TOWARDS EXCELLENCE AND ENROLL TODAY.

**Call 596-7765**  
or visit us at [www.nlp.com](http://www.nlp.com)

# CENSORED!

## THE TOP 10 STORIES THE U.S. NEWS MEDIA MISSED IN THE PAST YEAR

AMANDA WITHERELL

**T**here are a handful of freedoms that have almost always been a part of American democracy. Even when they didn't exactly apply to everyone or weren't always protected by the people in charge, a few simple but significant rights have been patently clear in the Constitution: You can't be nabbed by the cops and tossed behind bars without a reason. If you are imprisoned, you can't be incarcerated indefinitely; you have the right to a speedy trial with a judge and jury. When that court date rolls around, you'll be able to see the evidence against you.

The president can't suspend elections, spy without warrants, or dispatch federal troops to trump local cops or quell protests. Nor can the commander in chief commence a witch hunt, deem individuals "enemy combatants," or shunt them into special tribunals outside the purview of our 218-year-old judicial system.

Until now. This year's Project Censored presents a chilling portrait of a newly empowered executive branch signing away civil liberties for the sake of an endless and amorphous war on terror. And for the most part, the major news media weren't paying attention.

"This year it seemed like civil rights just rose to the top," says Peter Phillips, the director of Project Censored, the annual media survey conducted by Sonoma State University researchers and students who spend the year patrolling obscure publications, national and international Web sites, and mainstream news outlets to compile the 25 most significant stories that were inadequately reported or essentially ignored.

While the project usually turns up a range of underreported issues, this year's stories all fall somewhat neatly into two categories: the increase of privatization and the decrease of human rights. Some of the stories qualify as both.

"I think they indicate a very real concern about where our democracy is heading," writer and veteran judge Michael Parenti says.

For 31 years Project Censored has been compiling a list of the major stories that the nation's news media have ignored, misreported or poorly covered.

After 11 years at the helm of Project Censored, Phillips thinks the most bowdlerizing force is the fourth estate itself: "The corporate media is complicit. There's no excuse for the major media giants to be missing major news stories like this."

As the stories cited in this year's Project Censored selections point out, the federal government continues to provide major news networks with stock footage, which is dutifully broadcast as news. The George W. Bush administration has spent more federal money than any other presidency on public relations. Without a doubt, Parenti says, the govern-

ment invests in shaping our beliefs. "Every day they're checking out what we think," he says. "The erosion of civil liberties is not happening in one fell swoop but in increments. Very consciously, this administration has been heading toward a general autocracy."

Carl Jensen, who founded Project Censored in 1976 after witnessing the landslide reelection of Richard Nixon in 1972 in spite of mounting evidence of the Watergate scandal, agreed that this year's censored stories amount to an accumulated threat to democracy. "I'm waiting for one of our great liberal writers to put together the big picture of what's going on here," he says.

### 1 Good-bye, habeas corpus

The Military Commissions Act, passed in September 2006 as a last gasp of the Republican-controlled Congress and signed into law by Bush that Oct. 17, made significant changes to the nation's judicial system.

The law allows the president to designate any person an "alien unlawful enemy combatant," shunting that individual into an alternative court system in which the writ of



habeas corpus no longer applies, the right to a speedy trial is gone, and justice is meted out by a military tribunal that can admit evidence obtained through coercion and presented without the accused in the courtroom, all under the guise of preserving national security.

Habeas corpus, a constitutional right cribbed from the Magna Carta, protects against arbitrary imprisonment. Alexander Hamilton, writing in the Federalist Papers, called it the greatest defense against "the favorite and most formidable instruments of tyranny."

The Military Commissions Act has been seen mostly as a method for dealing with Guantánamo Bay detainees, and most journalists have reported that it doesn't have any

impact on Americans. On Oct. 19, 2006, editors at the *New York Times* wrote, in quite definitive language, "this law does not apply to American citizens."

Investigative journalist Robert Parry disagrees. The right of habeas corpus no longer exists for any of us, he wrote in the online journal *Consortium*. Deep down in the lower sections of the act, the language shifts from the very specific "alien unlawful enemy combatant" to the vague "any person subject to this chapter."

"Why does it contain language referring to 'any person' and then adding in an adjacent context a reference to people acting 'in breach of allegiance or duty to the United States?'" Parry wrote. "Who has 'an allegiance or duty to the United States' if not an American citizen?"

In a phone interview Parry said, "This loose phraseology could be interpreted very narrowly or very broadly." He said he's consulted with lawyers who are experienced in drafting federal security legislation, and they agreed that the "any person" terminology is troubling. "It could be fixed very simply, but the Bush administration put through this very vaguely worded law, and now there are a lot of differences of opinion on how it could be interpreted," Parry said.

Though US Sens. Patrick Leahy (D-Vt.) and Arlen Specter (R-Pa.) moved quickly to remedy the situation with the Habeas Corpus Restoration Act, that legislation has yet to pass Congress, which some suspect is because too many Democrats don't want to seem soft on terrorism. Until tested by time, exactly how much the language of the Military Commissions Act may be manipulated will remain to be seen.

### 2 Martial law: coming to a town near you

The Military Commissions Act was part of a one-two punch to civil liberties. While the first blow to habeas corpus received some attention, there was almost no media coverage of a private Oval Office ceremony held the same day the military act was signed at which Bush signed the John Warner Defense Authorization Act, a \$532 billion catchall bill for defense spending.

Tucked away in the deeper recesses of that act, section 1076 allows the president to declare a public emergency and dispatch federal troops to take over National Guard units and local police if he determines them unfit for maintaining order. This is essentially a revival of the Insurrection Act, which was repealed by Congress in 1878, when it passed the Posse Comitatus Act in response to Northern troops overstaying their welcome in the reconstructed South. That act wiped out a potentially tyrannical amount of power by reinforcing the idea that the federal government should patrol the nation's borders and let the states take care of their own territories.

The Warner act defines a public emergency

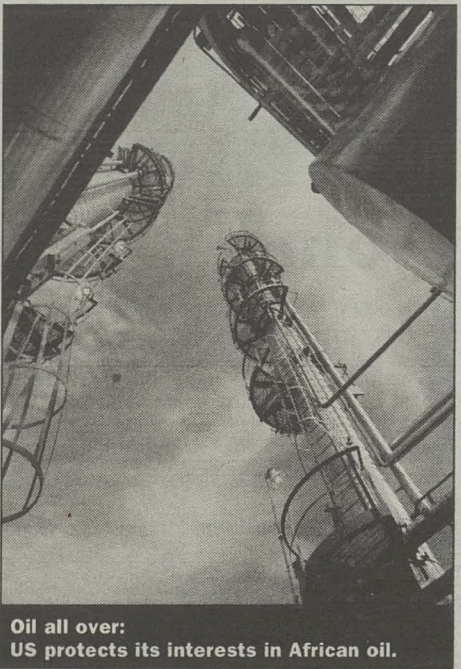
as a "natural disaster, epidemic, or other serious public health emergency, terrorist attack or incident, or other condition in any state or possession of the United States" and extends its provisions to any place where "the president determines that domestic violence has occurred to such an extent that the constituted authorities of the state or possession are incapable of maintaining public order." On top of that, federal troops can be dispatched to "suppress, in a state, any insurrection, domestic violence, unlawful combination or conspiracy."

So everything from a West Nile virus outbreak to a political protest could fall into the president's personal definition of mayhem.

The Warner act passed with 90 percent of the votes in the House and cleared the Senate unanimously. Months after its passage, Leahy was the only elected official to have publicly expressed concern about section 1076, warning his peers Sept. 19, 2006, that "we certainly do not need to make it easier for presidents to declare martial law. Invoking the Insurrection Act and using the military for law enforcement activities goes against some of the central tenets of our democracy. One can easily envision governors and mayors in charge of an emergency having to constantly look over their shoulders while someone who has never visited their communities gives the orders." In February, Leahy introduced Senate Bill 513 to repeal section 1076. It's currently in the Armed Services Committee.

### 3 AFRICOM

President Jimmy Carter was the first to draw a clear line between America's foreign policy and its concurrent "vital interest" in oil. During his 1980 State of the Union address, he said, "An attempt by any outside force to gain control of the Persian Gulf region will be regarded as an assault on the vital interests of the United States of America, and such an



assault will be repelled by any means necessary, including military force.”

Under what became the Carter Doctrine, an outpost of the Pentagon, called the United States Central Command, or CENTCOM, was established to ensure the uninterrupted flow of that slick “vital interest.”

The United States is now constructing a similar permanent base in Africa, an area traditionally patrolled by more remote commands in Europe and the Pacific. No details have been released about exactly what AFRICOM's operations and responsibilities will be or where troops will be located, though government spokespeople have vaguely stated that the mission is to establish order and keep peace for volatile governments—that just happen to be in oil-rich areas.

Though the official objective may be peace, some say the real desire is crude. “A new cold war is under way in Africa, and AFRICOM will be at the dark heart of it,” Bryan Hunt wrote on the Moon of Alabama blog. Most U.S. oil imports come from African countries—in particular, Nigeria. According to the 2007 Congressional Budget Justification for Foreign Operations, “disruption of supply from Nigeria would represent a major blow to US oil-security strategy.”

Though details of the AFRICOM strategy remain secret, Hunt has surveyed past governmental statements and reports by other independent journalists to draw parallels between AFRICOM and CENTCOM, making the case that the United States sees Africa as another “vital interest.”

#### 4 Secret trade agreements

As disappointing as the World Trade Organization has been, it has provided something of an open forum in which smaller countries can work together to demand concessions from larger, developed nations when brokering multilateral agreements.

At least in theory. The 2006 negotiations crumbled when the United States, the European Union and Australia refused to heed India's and Brazil's demands for fair farm

tariffs.

In the wake of that disaster, bilateral agreements have become the tactic of choice. These one-on-one negotiations, designed by the U.S. and the EU, are cut like backroom deals, with the larger country bullying the smaller into agreements that couldn't be reached through the WTO.

Bush administration officials, always quick with a charming moniker, are calling these free-trade agreements “competitive liberalization,” and the EU considers them essential to negotiating future multilateral agreements.

But critics see them as fast tracks to increased foreign control of local resources in poor communities. “The overall effect of these changes in the rules is to progressively undermine economic governance, transferring power from governments to largely unaccountable multinational firms, robbing developing countries of the tools they need to develop their economies and gain a favorable foothold in global markets,” states a report by Oxfam International, the antipoverty activist group.

#### 5 Shanghaied slaves construct U.S. Embassy in Iraq

Part of the permanent infrastructure the United States is erecting in Iraq includes the world's largest embassy, built on Green Zone

acreage equal to that of Vatican City. The \$592 million job was awarded in 2005 to First Kuwaiti Trading and Contracting. Though much of the project's management is staffed by Americans, most of the workers are from small or developing countries like the Philippines, India and Pakistan and, according to David Phinney of CorpWatch—a Bay Area organization that investigates and exposes corporate environmental crimes, fraud, corruption and violations of human rights—are recruited under false pretenses. At the airport, their boarding passes read *Dubai*. Their passports are stamped *Dubai*. But when they get off the plane, they're in Baghdad.

Once on site, they're often beaten and paid as little as \$10 to \$30 a day, CorpWatch concludes. Injured workers are dosed with heavy-duty painkillers and sent back on the job. Lodging is crowded and food is substandard. One ex-foreman, who's worked on five other U.S. embassies around the world, said, “I've never seen a project more fucked up. Every U.S. labor law was broken.”

These workers have often been banned by their home countries from working in Baghdad because of unsafe conditions and flagging support for the war, but once they're on Iraqi soil, protections are few. First Kuwaiti managers take their passports, which is a violation of U.S. labor laws. “If you don't have a

passport or an embassy to go to, what do you do to get out of a bad situation?” asked Rory Mayberry, a former medic for one of First Kuwaiti's subcontractors, who blew the whistle on the squalid living conditions, medical malpractice and general abuse he witnessed at the site.

The Pentagon has been investigating the slave-like conditions but has not released the names of any violating contractors or announced penalties. In the meantime, billions of dollars in contracts continue to be awarded to First Kuwaiti and other companies at which little accountability exists. As Phinney reported, “No journalist has ever been allowed access to the sprawling 104-acre site.”

#### 6 FALCON's talons

Operation FALCON, or Federal and Local Cops Organized Nationally, is, in many ways, the manifestation of martial law forewarned by Frank Morales (see story 2). In an unprecedented partnership, more than 960 federal, state and local police agencies teamed up in 2005 and 2006 to conduct the largest dragnet raids in U.S. history. Armed with fistfuls of arrest warrants, they ran three separate raids around the country that netted 30,150 criminal arrests.

The Justice Department claimed the agents were targeting the “worst of the worst” criminals, and Attorney General Alberto Gonzales said, “Operation FALCON is an excellent example of President Bush's direction and the Justice Department's dedication to deal both with the terrorist threat and traditional violent crime.”

However, as writer Mike Whitney points out on Uruknet.info, none of the suspects have been charged with anything related to terrorism. Additionally, while 30,110 individuals were arrested, only 586 firearms were found. That doesn't sound very violent either.

Though the U.S. Marshals Service has been quick to tally the offenses, Whitney says the numbers just don't add up. For example, FALCON in 2006 captured 462 violent sex-crime suspects, 1,094 registered sex offend-

The US has built the world's largest embassy in Iraq, roughly the size of Vatican City.



**“Green isn't always good.”**

Non-native plants threaten Hawaii's native species with extinction — and your membership will help us stem this tide of extinction.”

Chipper Wichman  
Director and CEO  
National Tropical Botanical Garden

**Join Us!** With memberships starting from just \$20, you can make a difference and help NTBG protect Hawaii's back yard. Go to [OurGardenOurWorld.com](http://OurGardenOurWorld.com) and join today!

CHOOSE YOUR MEMBERSHIP LEVEL: (VISIT [WWW.NTBG.ORG](http://WWW.NTBG.ORG) FOR A COMPLETE LIST OF MEMBERSHIP BENEFITS)

DISCOVERY \$20  INDIVIDUAL \$50  FAMILY \$150  SUPPORTING \$500  SILVER FELLOW \$1000

FIRST NAME \_\_\_\_\_ LAST NAME \_\_\_\_\_

ADDRESS \_\_\_\_\_ CITY \_\_\_\_\_ STATE \_\_\_\_\_ ZIP \_\_\_\_\_

PHONE \_\_\_\_\_ EMAIL \_\_\_\_\_  SUBSCRIBE TO MAILING LIST

PAYMENT TYPE:  VISA  DISCOVER  MASTERCARD  CHECK ENCLOSED (PAYABLE TO NTBG)

CARD NUMBER \_\_\_\_\_ EXP. \_\_\_\_\_

SIGNATURE \_\_\_\_\_

MAIL OR FAX COUPON TO: National Tropical Botanical Garden 3530 Papalina Rd., Kalaheo HI 96741  
Fax: (808) 332-9765 • Phone: (808) 332-7324, ext. 246

**Join the Future!**

**500 Full Color Business Cards**

**\$49 only**

**Personalize one of our existing templates or upload your own PDF.**

Orders must be placed, proofed and paid for online. Completed orders to be picked up at one of our four convenient locations.

Visit our stores or [www.bestprinting.net](http://www.bestprinting.net) for details and restrictions.

**Order Online and SAVE!**

1411 Kapiolani Blvd. 1001 Bishop St. 700 Bishop St. 900 Fort Street Mall  
949-5554 533-2967 531-3121 531-0211



ers, and 9,037 fugitives.

What about the other 7,481 people? "Who are they, and have they been charged with a crime?" Whitney asked.

The Marshals Service remains silent about these arrests. Whitney suggests those detainees may have been illegal immigrants and may be bound for border prisons currently being constructed by Halliburton.

As an added bonus of complicity, the Justice Department supplied local news outlets with stock footage of the raids, which some television stations ran accompanied by stories sourced from the Department of Justice's news releases without any critical coverage of who exactly was swept up in the dragnets and where they are now.

## 7 Blackwater

The outsourcing of war has served two purposes for the Bush administration, which has given powerful corporations and private companies lucrative contracts supplying goods and services to American military operations overseas and quietly achieved an escalation of troops beyond what the public has been told or understands. Without actually deploying more military forces, the federal government instead contracts with private security firms like Blackwater to provide heavily armed details for U.S. diplomats in Iraq, Afghanistan, and other countries where the nation is currently engaged in conflicts.

Blackwater is one of the more successful and well connected of the private companies profiting from the business of war. Started in 1996 by an ex-Navy Seal named Erik Prince, the North Carolina company employs 20,000 hired guns, training them on the world's largest private military base.

"It's become nothing short of the Praetorian Guard for the Bush administration's so-called global war on terror," author Jeremy Scahill said the on Jan. 26 broadcast of the television and radio news program *Democracy Now!* Scahill's *Blackwater: The Rise of the World's Most Powerful Mercenary Army* was published this year by Nation Books.

## 8 KIA: The neoliberal invasion of India

A March 2006 pact under which the United States agreed to supply nuclear fuel to India for the production of electric power also included a less-publicized corollary—the Knowledge Initiative on Agriculture. While it's purportedly a deal to assist Indian farmers and liberalize trade (see story 4), critics say the initiative is destroying India's local agrarian economy by encouraging the use of genetically modified seeds, which in turn is creating a new market for pesticides and driving up the overall cost of producing crops.

The deal provides a captive customer base for genetically modified seed maker Monsanto and a market for cheap goods to supply Wal-Mart, whose plans for 500 stores in the country could wipe out the livelihoods of 14 million small vendors.

Monsanto's hybrid Bt cotton has already edged out local strains, and India is currently suffering an infestation of mealy bugs, which have proven immune to the pesticides the chemical companies have made available. Additionally, the sowing of crops has shifted from the traditional to the trade friendly. Farmers

accustomed to cultivating mustard, a sacred local crop, are now producing soy, a plant foreign to India.

Though many farmers are seeing the folly of these deals, it's often too late. Suicide has become a popular final act of opposition to what's occurring in their country.

Vandana Shiva, who for 10 years has been studying the effects of bad trade deals on India, has published a report titled *Seeds of Suicide*, which recounts the deaths of more than 28,000 farmers who killed themselves in despair over the debts brought on them by binding agreements ultimately favoring corporations.

Hope comes in the form of a growing cadre of farmers hip to the flawed deals. They've organized into local *sanghams*, 72 of which now exist as small community networks that save and share seeds, skills and assistance during the good times of harvest and the hard times of crop failure.

## 9 The privatization of America's infrastructure

In 1956, President Dwight D. Eisenhower ushered through legislation the greatest public works project in human history—the interstate highway system, 41,000 miles of roads funded almost entirely by the federal government.

Fifty years later many of those roads are in need of repair or replacement, but the federal government has not exactly risen to the challenge. Instead, more than 20 states have set up financial deals leasing the roads to private companies in exchange for repairs. These public-private partnerships are being lauded by politicians as the only credible financial solution to providing the public with improved services.

But opponents of all political stripes are criticizing the deals as theft of public property. They point out that the bulk of the benefits is actually going to the private side of the equation—in many cases, to foreign companies with considerable experience building private roads in developing countries. In the United States these companies are entering into long-term leases of infrastructure like roads and bridges, for a low amount. They work out tax breaks to finance the repairs, raise tolls to cover the costs, and start realizing profits for their shareholders in as little as 10 years.

As Daniel Schulman and James Ridgeway reported in *Mother Jones*, "the Federal Highway Administration estimates that it will cost \$50 billion a year above current levels of federal, state, and local highway funding to rehab existing bridges and roads over the next 16 years. Where to get that money, without raising taxes? Privatization promises a quick fix—and a way to outsource difficult decisions, like raising tolls, to entities that don't have to worry about getting reelected."

The Indiana Toll Road, the Chicago Skyway, Virginia's Pocahontas Parkway and many other stretches of the nation's public pavement have succumbed to these private deals.

Cheerleaders for privatization are deeply embedded in the Bush administration (see story 7), where they've been secretly fostering plans for a North American Free Trade Agreement superhighway, a 10-lane route set to run through the heart of the country and connect the Mexican and Canadian borders. It's specifically designed to plug into

the Mexican port of Lázaro Cárdenas, taking advantage of cheap labor by avoiding the International Longshore and Warehouse Union, whose members are traditionally tasked with unloading cargo, and the International Brotherhood of Teamsters, whose members transport that cargo that around the country.

## 10 Vulture funds: devouring the desperate

Named for a bird that picks offal from a carcass, this financial scheme couldn't be more aptly described. Well-endowed companies swoop in and purchase the debt owed by a third-world country, then turn around and sue the country for the full amount—plus interest. In most courts, they win. Recently, Donegal International spent \$3 million for \$40 million worth of debt Zambia owed Romania, then sued for \$55 million. In February an English court ruled that Zambia had to pay \$15 million.

Often these countries are on the brink of having their debt relieved by the lenders in exchange for putting the owed money toward necessary goods and services for their citizens. But the vultures effectively initiate another round of deprivation for the impoverished countries by demanding full payment, and a loophole makes it legal.

Investigative reporter Greg Palast broke the story for the BBC's *Newsnight*, saying that "the vultures have already sucked up about \$1 billion in aid meant for the poorest nations, according to the World Bank in Washington."

With the exception of the BBC and *Democracy Now!*, no major news source has touched the story, though it's incensed several members of Britain's Parliament as well as the new prime minister, Gordon Brown. U.S. Reps. John Conyers (D-Mich.) and Donald Payne (D-N.J.) lobbied Bush to take action as well, but political will may be elsewhere. Debt Advisory International, an investment consulting firm that's been involved in several vulture funds that have generated millions in profits, is run by Paul Singer—the largest fundraiser for the Republican Party in the state of New York. He's donated \$1.7 million to Bush's campaigns. ■

Model for a financial scheme.

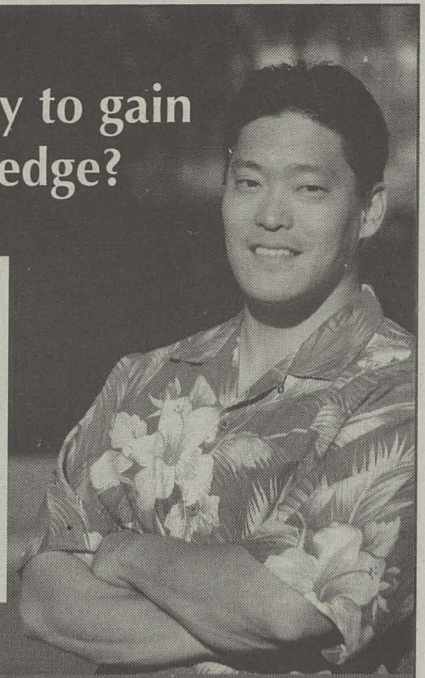


## Are you ready to gain a leading edge?

FREE INFORMATION RECEPTION

THURSDAY  
September 13, 6 p.m.

Shidler College of Business  
UH Mānoa  
2404 Maile Way  
Room A-102



## APPLY NOW FOR SPRING 2008

Part-Time MBA (evening) – Last spring admission  
Joint Juris Doctor/MBA  
Master of Accounting



- Ranked in *U.S. News & World Report*
- Hawaii's only AACSB-accredited masters program
- Scholarships and financial aid available

### Spring Deadlines

Early Action October 1, 2007 • Regular Review November 1, 2007  
Call 956-8266 or visit [www.shidler.hawaii.edu/mbaevent](http://www.shidler.hawaii.edu/mbaevent)  
to reserve your seat today.

UNIVERSITY OF HAWAII AT MĀNOA

SHIDLER COLLEGE OF BUSINESS

• International Excellence •

[www.shidler.hawaii.edu](http://www.shidler.hawaii.edu)

## L.I.V.E.

LEARNING FROM INSPIRING VOICES WITH EPILEPSY

You're invited to a FREE program with the **Epilepsy Advocates** as they share their inspiring personal stories about epilepsy. Epilepsy Advocates are people who have taken control of their epilepsy and refuse to be defined by it. Hear a local Neurologist share his expertise in treating epilepsy.

If you or someone you care about is living with seizures, this is your chance to:

- Learn More About Epilepsy
- Hear an Epilepsy Advocates' Personal Story
- Hear About Treatment Options
- Meet Others Living With Epilepsy
- Ask a Neurologist Your Questions About Epilepsy

Bring your friends, your family, and your questions. Take home a connection to others in your community and the inspiration to LIVE on your terms.

Call 1-866-865-7305 or visit [EpilepsyAdvocate.com](http://EpilepsyAdvocate.com) to reserve your spot today.

DATE / TIME: Saturday, September 15, 2007  
Registration 9:00am – Seminar Begins 9:30am

LOCATION: Hawaii State Capitol, Conference Room 329  
415 S. Beretania St.  
Honolulu, Hawaii 96813

PHYSICIAN: Dr. Alan Stein  
President, Epilepsy Foundation of Hawaii

Light refreshments will be served  
Free Parking & Admission



Epilepsy Advocate  
Strength in numbers

THE EPILEPSY COMPANY™ © 2007, UCB, Inc., Smyrna, GA 30080

All Rights Reserved.

Printed in U.S.A.

K4002-00207

# hot picks

SEPTEMBER 5-SEPTEMBER 11 Gigs 12 Concerts & Clubs/  
On Sale/Theater & Dance 13 Museums/Galleries 14  
Words 18 Learning/Keiki & 'Ohana/Botanical/Hikes  
& Excursions/Food & Drink/Whatever's 20 Volunteer/  
Sports/Neighbors/Gay/Mixed Media 21 Films 22

## Galleries

### Nature vs. structure

**P**am Longobardi, Professor of Art at Georgia State University in Atlanta, was recently named Artist in Residence for the Blue Ocean Institute and is currently involved in an environmental art project and documentary film on the island of Hawai'i. The phrase "sea of dreams" thus comes aptly to mind in describing her work, which captures a sense of a mysterious fluid environment in which a variety of elements, real and symbolic, natural and fabricated, float with elegant grace. Such images are further anchored in a ground of cyanotype, a photosensitive process that produces rich shades of blue.

Longobardi, invested in an ongoing exploration of the relationship between humans and the natural world, also combines a variety of media—gouache and collage on grounds of paper, wood and copper—that heighten the sense of layered depths in images such as "Parallel Universe" (anchored in side-by-side circular forms) and "Nearer Mirror," one of several works using images of an ornately framed mirror that seems to function as a portal between one world and another. A triptych of small, untitled panels painted on copper is one of the gems of the exhibition.

If Longobardi's work celebrates nature, **Hans Loffel's** works on paper often invoke the more measured spaces of abstract geometry, defined through rectilinear segments of carefully modulated color. Loffel, also a noted graphic designer, is a master of the monoprint, a hybrid of painting and printmaking, in which a matrix can be printed in a variety of one-of-a-kind ways. This is most evident in the "Permutation" series, in which each



## Theater

### Princess and the pea redux

**N**ot a soul in all the land may marry until the prince does! Can you imagine? We can't either, that's why we need theater to do it for us.

The **Army Community Theatre's** first production of the 2007-2008 season will bring us the comedic retelling of the one princess truly sensitive enough to marry. *Once Upon a Mattress* began off-Broadway almost a half a century ago with Carol Burnett cast as the brash and unrefined princess Winnifred.

Brash and unrefined you say? Yes, but still delicate enough to sense the jousting equipment and other sharp items stuffed into the tower of mattresses by the King and his Jester.

You see, it was just that they liked her so much, desperately wanted the prince to marry and were afraid that the devious queen's test for the princess was too shrewd. Ah, but what about when all those tools were removed... Can our heroine still sleep soundly with but a pea under 20 mattresses?

Sorry folks, we're no plot spoilers. See for yourself as veteran newscaster Tina Shelton plays the scheming queen, sports producer Lenny Klompus the King, and Renee Garcia Hartenstein the princess who could save the kingdom from celibacy.

—Megan Rooney

*Richardson Theatre, Fort Shafter, Thu. 9/6-Sat. 9/22, all performances at 7:30PM, \$15-\$20, tickets at the ACT box office, online at [squareone.org/ACT](http://squareone.org/ACT) or charge by phone at 438-5230*

matrix—like the bones of the image—is printed in two or three different color combinations. Loffel's combination of printed fields of color and

collaged elements is also effective, particularly in works like "Acropolis" and "Inclusions." Loffel is also an inventive draughtsman, as is evident in small graphite drawings such as the "Spuntino, Bologna" series (with Morandi-like bottle and glass shapes) and the "Makiki Lanai" series, which, like a number of his printed works, hint at a fusion of nature and architecture.

—Marcia Morse

Pam Longobardi and Hans Loffel: Paintings, Prints, Drawings, Books, *Café Che Pasta, 1001 Bishop St. #108, through Sat. 9/15, 524-0004*

## Clubs

### This riot's not quiet

**I**t's been a cruel, cruel summer without RIOT, and we hate to break it to you but it's the beginning of the end of an eccentric era this Thursday as the RIOT parties go out in a blaze of glory.

So we're calling all screaming queens! The popular Thursday night

mixed-crowd staple will have its last four parties starting September 6 at—where else?—Hula's Bar & Lei Stand.

The theme for Sept. 6 is "Cruel Summer" and no shirts are encouraged. On the Sept. 13 it's pop till you drop for "We Love the 90s" pop music and culture all night long. Do you believe in life after love?

Or how about putting a picture of your pet on the wall of fame for a free shot? Then the Sept. 20 "Drunk and Horny" party will get you just that.

Sept. 27 promises a grand finale with Miss RIOT The Show, where famous movie lines will be dramatized by the RIOT crew. Watch Mommy Dearest as she's Welcomed to the Dollhouse for cocktails with Serial Mom.

If you missed the closing of Mago's and the Wave then you have no excuse to miss these misses. As always, costumed firecrackers welcome and no sexual preference required.

—Megan Rooney

*Hulas Bar and Lei Stand, 134 Kapahulu Ave., 2nd floor of the Waikiki Grand Hotel, every Thursday starting Thu. 9/6, 9PM, 21+, [riothawaii.com](http://riothawaii.com), 923-0669*

## Music

### He's the guitar man

**C**lassical guitarist **Carlos Barbosa-Lima** is among the most world-renowned and respected musicians in his milieu. He brings his impeccable technique and unique interpretations to the Honolulu Academy of Arts Sunday, much to the delight of those who know his music and those who are bound to the sophisticated sensibilities of serious classical music. He has performed at Carnegie Hall and in front of the most revered symphony orchestras on earth.

But Barbosa-Lima transcends the classical genre, and has made a career out of incorporating eclectic elements into his repertoire of works by the Masters. He enjoyed a fruitful collaboration with Antonio Carlos Jobim and has crafted imaginative twists on old standards by George Gershwin, Cole Porter, Scott Joplin and Leonard Bernstein. He has



Pam Longobardi's *Nearer Mirror*.

Let's get married: Have a riot at RIOT.



dveled into Hawaiian music, performing "Fantasy of a Hawaiian Lullaby (Papa Hinu Hinu)" as written by N. Beamer and arranged by Byron Yasui. He even has his own version of "St. Louis Blues." Sunday's concert will be more than a narcissistic romp through obscure compositions, it'll be an exploration of the elements of music that can make just about anything sound like it was written by a master.

—Jamie Winpenny

Doris Duke Theatre, Honolulu Academy of Arts, 900 S. Beretania St., Sun. 9/9, 4PM, \$25 general, \$20 seniors/students/military, honoluluacademy.org.

## Post-summer high

Summer is officially over. It's time to face the simple fact and get over it.

Is watching live island music from the Mai Tai Bar on the home team not doing it for you? Cure your fix for live jams and alleviate your summertime hangover in one night with the **Winter Surf Trilogy** at Don Ho's Island Grill.

Premiering this Saturday, the eight-week concert series is out to prove two things. One, the summer afterlife isn't as miserable as you think and two, watching live performances on the tube is nothing more than a lame vibeless substitute.

The divas of Mighty J will be kicking things off with their feel good island pop grooves. As the only all-female island contemporary group around, see why Jroq, Mai and Tiki's breakout debut album *Calling Out* has been one of the surprise successes of 2007.

In the upcoming weeks expect the show-stopping rhythms of Kawao, Red Degree, Oshen, Irie Souls and Beach 5.

Do bikini clad go-go dancers mix

with live island sounds? Who knows, maybe they'll just skank the whole time. After grinding on a slice of the signature surfboard pizza, wash it down with a cold one, or two, or three. It won't even matter.

—Kalani Wilhelm

Don Ho's Island Grill, Aloha Tower Marketplace, Sat. 9/8, 10PM-2AM, \$10, 18+, 528-0807

## Whatevahs

### Valley of the stewards

The **Kalihi Ahupua'a Ulu Pono Ahahui** has long been dedicated to the preservation and perpetuation of the abundant cultural and environmental resources found in Kalihi Valley, and the grass roots organization has put together a stream clean up on Saturday that aims to galvanize the Kalihi community in an effort to undo some of the illegal dumping and encroachment of invasive species that are threatening the vital and verdant urban oasis.

Mark Twain wrote that it was his "fortunate accident" that his Hawai'i visit took him to Kalihi Valley, and he preferred Kalihi's flora and fauna to the striking panoramic views of the Pali. It's easy to forget that aspect of the urban ahupua'a, as the only news that comes from it generally involves the more unsavory aspects of city living. But KAUPA's efforts are changing that.

With a program of cultural and educational outreach, KAUPA is a driving force in the rejuvenation of the Kalihi Valley ahupua'a. Saturday's cleanup will be a comprehensive action, one that will include not only picking up trash. Water quality in Kalihi Stream will be monitored,

and invasive species will be removed from areas that have choked out Hawai'i's indigenous plants and critters.

KAUPA is a shining example of the strength of a community to unite for the cause of reclaiming beauty lost. Organizers have won institutional support from the federal Weed & Seed program, the State Attorney General's office, the State DLNR and the City's Adopt a Stream program. With a strongly educational agenda, KAUPA is more than a group of do-gooders with garbage bags. Schools and community groups are involved with planting of food crops along the newly restored banks of Kalihi Stream and KAUPA's outreach includes pollution source and water quality needs and practices education.

Volunteers are encouraged to bring everything you might need for a stroll in the country: water, sunscreen (maybe a hat), sneakers or rubber boots and an appreciation of your surroundings. Snacks and refreshments will be on hand. Plan to get your dirty for a good cause.

—J. W.

Kalihi Waena Elementary School, 1240 Gulick Avenue, Sat. 9/8, 8AM-11:30AM, KAUPA@googlegroups.com, 853-2218

### Fast fingers

Fleas. All 'ukulele players claim their dog had them at one time or another. It's the first song you master on the Portuguese "jumping flea" before moving on to bigger and better tunes.

In the spirit of great 'ukulele masters like Roy Sakuma and Jake Shimabukuro, the next generation of nimble-fingered musicians will showcase their talents at the second annual **Hanohano Ka 'Ukulele** also called The Duke's Ukes contest.

Amateurs will compete in four age categories (ages 6-10, ages 11-15, ages 16-18 and ages 19 and older). Up-and-coming strummers can also test their crafting skills with the 'ukulele building contest.

Serving as judges for the competition of strumming skill and dexterity will be Henry Kapono, Jim Heather and JR from the Liliko'i Sisters. The best of the best will be based on clarity of notes, rhythm, showmanship and overall performance.

Victorious virtuosos of each age group will win a Kamaka 'ukulele among other prizes.

—K. Wilhelm

Outrigger Hotel On the Beach, 2335 Kalakaua Ave., Sat., 9/8, 10AM-noon, free, all ages.

**The Best of Dance Hip Hop**

**hip hop hump** wednesdays

HULAS

hulas.com

134 Kapahulu Ave. 2ND FLOOR WAIKIKI GRAND HOTEL (808) 923-0669

**LOOK NO FURTHER...**

- Hand Blown Pipes
- Hookah's • Cigars
- Glass Jewelry
- All Apparel & Accessories
- Exotic Sculptures

**PIPE DREAMS smoke shop**

1409 KALAKAUA @ S.KING 942.5599

**TEMPO VALLEY**

**Jazz Minds** Art & Cafe

**& Paisley** with special guest **Quadrax**

The **NuSWING** project with **Maria Remos** & DJ Azia Wonder spinning classic breaks

a celebration of **Life, Music, and Poetry**

**Saturday September 8** & every saturday nite after

1661 Kapiolani Blvd 9:00pm-2am 21 & up

www.honolulu jazzclub.com

**HAWAIIAN HOLY SMOKES**

MOILIILI/UH 2239 S KING #UP 942-9393

PEARL CITY PLAZA 719 KAM HWY B103 454-1313

**PIPES ZIGZAGS DETOX SCALES HOOKAHS**

**ONE LOVE**

www.hawaiianholysmokes.com www.myspace.com/hawaiianholysmokes

Where's your broom?: Kalihi Ahupua'a Ulu Pono Ahahui cleans up the valley.



**Waikiki's Hottest Night Spot**

Pool Tables DJ Nightly

**MADDOG SALOON**

EVERY WEDNESDAY \$3 Heineken \$3 Stolli Vodka

THURSDAY \$3 Corona & Pacifico \$1 off all Tequilas

**WAIKIKI**

- MY EVOLUTION - Monday
- ANALOG - Wednesday
- THE COURT PROPHETS - Thursday
- UH VS LOUISIANA TECH - Saturday @ 6:05pm
- DANCING - every night until 4am
- HAPPY HOUR - 10am - 8pm

2301 Kuhio Ave 2nd Floor (At Nahua St) • 924-3400







# ★ Heineken® DRAUGHTKEG™

CHILL  
CLICK  
DRAUGHT  
DRINK



Heineken® DraughtKeg's unique carbonation system delivers perfect draught beer with an authentic tapping experience.  
Chill time: 10 hours | Fresh time: 30 days Visit [www.HeinekenDraughtKeg.com](http://www.HeinekenDraughtKeg.com)  
[www.EnjoyHeinekenResponsibly.com](http://www.EnjoyHeinekenResponsibly.com) ©2007 HEINEKEN® Lager Beer. Heineken USA Inc., White Plains, NY.

# This Friday is First Friday

## Relax for an Evening

First Fridays in the Arts District of Downtown Honolulu offers you that perfect creative opportunity. The Arts District is filled with a rich, varied assortment of art galleries, restaurants, shops featuring home furnishings and gift items, wine bars and clubs. With such a palette, you, as the artist, are free to create a monthly experience that never has to be duplicated.

**Bad Sushi!**

181  
N King St.  
open 11-7 daily  
548-SUSHI (7874)  
www.badsushihawaii.com

New Year • New Food • New Taste

Singapore and Malaysian Food  
*The only one in Town!*

**Green Door Cafe**

- Special Nonya Cooking • Fresh ingredients
- Great Taste & Great Price

2007 Hale'aina Award Winner  
Recommended by National Food & Wine Magazine

533-0606

On the corner of Maunakea & Pauahi Streets • Take out Welcome

JOIN US FOR

**MALL CAFE'S**

GRAND OPENING ON SEPTEMBER 7!!!

MALL CAFE & **Oldies 107.9** present

**SOLID GOLD FRIDAYS**

Every Friday starting September 7 • Door Prizes Giveaways  
This Week Join Ed Kanoi and The Captain from Oldies 107.9 FM

**WEEKDAYS**  
Cafeteria Style Lunch from 9AM-3PM • Heavy Pupus 5PM-2AM

**SUNDAYS & MONDAYS**  
Join us for Football Games on the Big Screen • Sundays Jam Night after 6PM

**FRIDAYS**  
(\$5 cover after 9PM) • 5PM-7PM FREE Local Style Pupus  
7PM-9PM Karaoke • 9PM-11PM SOLID GOLD FRIDAYS • 11PM-2AM In House DJ

**POOL • DART MACHINES • KARAOKE**

80 SOUTH PAUHI ST • 521-7252

**Weekly**

**Got Talent?**

Honolulu Weekly  
is seeking Graphic Artist Interns.  
Computer skills a must.  
School credit possible.

Send resume to [prodintern@honoluluweekly.com](mailto:prodintern@honoluluweekly.com)

**Café Joy**  
Thai Lao Flavors

**First Friday Special  
FREE**

Thai Iced Tea or Soft drink  
(With purchase of 2 Item Combo or more)

- Generous portions
- Open air dining in courtyard
- Available for parties
- We also cater

536-1341  
1028 Nuuanu Ave  
(Formerly Krung Thai)

**DISH OF THE MONTH**  
Sizzling Scallops

家鄉小館

**Little Village**

Open till midnight on every Friday & Saturday  
113 Smith St., 2 hours free parking in back  
545-3008

**Pamper Me**  
bath.body.home

A Modern Apothecary Boutique  
featuring these fine brands:

Lollia	Jack Black	Mistral Soap
The Thymes	Deep Steep	Lip Fusion
Archipelago	Voluspa	Tea Forte

737 Bishop St #100 Honolulu HI 96813  
536-2191 - [www.pampermehawaii.com](http://www.pampermehawaii.com)

mention *Honolulu Weekly* and receive a deluxe sample

**ROCK YOUR WORLD**

**JUNGLE GEMS**

**JOIN US FOR  
FIRST FRIDAY**

- 20% off Opal & Sapphire jewelry
- Enter drawing for Sapphire & Ruby necklace
- Pupus & refreshments

Downtown

12 S. King St. • 545-4202

**THE CATHEDRAL GALLERY**

Take a step back to old Hawaii and also see contemporary art work from featured artists!

**GALLERY HOURS**  
Tue & Fri 11:30a-1p, Sat 4:30-6p,  
Sun 7a-1p, 6-7:30p & First Fridays,  
Validated free parking at Century Square

1184 Bishop Street • (808) 536-7036 • [www.cathedralofourladypeace.com](http://www.cathedralofourladypeace.com)

**CUSTOM DESIGN  
WEDDING BAND SETS**

In 18K Gold  
& Platinum  
Made in Just 7 Days

CK Leung Jewelry  
47 Hotel Street  
Honolulu, HI 96813

524-9058 • Between Bethel & Fort St.

**FIRST FRIDAY  
PRIX FIXE MENU**

\$32/person

- Kamuela Tomato Carpaccio
- Tempura Shiso Leaf & Truffled Ahi Poke
- Epic's Style Seafood Paella
- Prime Rib & Gulf of Mexico Shrimp
- Strawberry Mascarpone Pavlova

RESTAURANT **EPIC**

EURO-ASIAN PACIFIC INTERNATIONAL CUISINE

1131 Nu'uuanu Ave. • 587-7877  
Reservations recommended • Valet available for dinner • Full service bar  
BYOB welcome (No corkage fee until 09/15)

Flavor you can see.  
Artistry you can taste.

**BLUE MOON**

Artfully Crafted.

©2007 BREWED BY BMBG TORONTO, CANADA. IMPORTED BY BLUE MOON BREWING COMPANY, GOLDEN, CO. BELGIAN WHITE BELGIAN-STYLE WHEAT ALE BREWED WITH NATURAL FLAVORS • 8100174702



# Gallery Walk

it's First Friday

A Self-Guided Tour

HONOLULU

## Galleries & Studios

1. The ARTS at Marks Garage 521-2903
2. The Art Board 536-0121
3. Bethel Street Gallery 524-3552
4. Caris M. Chee Studio/Gallery 233-8457
5. The Cathedral Gallery 536-7036
6. The Contemporary Museum at First Hawaiian Center 526-1322
7. Daspace 351-4960

8. Exhibit Space at 1132 Bishop St 599-5009
9. The Art Treasures Gallery 536-7789
10. Hawai'i State Art Museum 586-0900
11. Jeff Chang Pottery 599-2502
12. Louis Pohl Gallery 521-1812
13. Mark N. Brown Gallery 227-1710
14. New Life Gallery 531-0303
15. Nu'uani Gallery at Marks Garage 536-9828
16. Pacific Traditions Gallery 741-4612

17. Pegge Hopper Gallery 524-1160
18. Ramsay Museum 537-2787
19. Studio of Roy Venters 381-3445
20. thirtyninehotel 599-2552

## Other Venues w/ Art

1. Che Pasta Café 524-0004
2. Chinatown Boardroom 585-7200
3. Duc's Bistro 531-6325
4. Hanks Cafe Honolulu 526-1410
5. HASR Wine Company 535-9463
6. INTO 536-2211
7. Jo Fratelli's Nesting House 392-6075
8. Kaimalino Designs 537-2248
9. Keiki Photography 531-5859
10. Mercury 537-3080
11. One Night Stand in the Chinatown Courtyard 262-5930
12. Ong King Arts Center 306-7823
13. rRed Elephant 545-2468
14. Sourcing Asia 585-8505
15. Tea at 1024 521-9596
16. Upside-Down Pilates Studio 779-1934
17. Urban Nomad 391-9328

## Parking

**Most Affordable Parking: Municipal Parking Garages** • 1<sup>st</sup> 2 hr, 75¢ per 1/2 hr, \$1.50 1/2 hr thereafter • After 5pm, 50¢ per 1/2 hr or \$3 max

- A. Ali Place - Alakea bet. King & Hotel
- B. Chinatown Gateway - Bethel bet. King & Hotel
- C. Hale Pauahi - Beretania bet. Maunakea & River
- D. Harbor Court - Bethel bet. Nimitz & King
- E. Harbor Village (meters) - Nimitz Hwy bet. River & Kekaulike
- F. Kekaulike Courtyard - Maunakea bet. Nimitz & King
- G. Kukui Plaza - Kukui bet. Fort & Nuuanu  
Usually lots of parking available
- H. Martin Tower - Smith bet. Nimitz & Marin
- I. Smith-Beretania - Beretania bet. Nuuanu & Smith

Metered Parking-Street \$1.50/hr • Private Garages \$3-5 flat rate eve & wknd • THE BUS 808-848-5555



Design by theGAPPHICS.com. Reproduction by permission only. Contact: 521-2903.

Gallery Walk, Restaurant & Parking Guide available at over 30 locations downtown

**First Friday** evening of each month ~ 5-9pm ~ Opening receptions, refreshments and entertainment

This project has been partially underwritten by the following sponsors:



Where Hawaii Comes To Play!



## 2nd Annual ALOHA TOWER UKULELE CONTEST

Sunday, September 16th From 10 AM • Center Atrium

Watch Hawaii's best amateurs compete for thousands of dollars in prizes!  
FREE entertainment, ukulele booths, prizes and more fun for the whole family  
The Boat Leeward Commuter Ferry Open House • Pier 9

K'ALOHA

HONOLUA

KAMAKA UKULELE



Castle Resorts & Hotels  
Hawaii • Micronesia • New Zealand



The Hawaiian Ukulele Company

ALOHA TOWER MARKETPLACE

THE CENTER OF CELEBRATION!

BIKINI CANTINA • DON HO'S • GORDON BIRSCH • HOOTERS

VALIDATED, VALET AND ALTERNATIVE PARKING AVAILABLE

Call 566-2337 or visit [alohatower.com/specialevent.html](http://alohatower.com/specialevent.html) to enter.

## FIRST FASHION FRIDAY

AT ALOHA TOWER

## Get An Island Lifestyle

Set your designs on downtown Honolulu with fashion, food and fun at Aloha Tower Marketplace! Enjoy a series of fashion showcases, style workshops, sales, prize giveaways and more. **ADMISSION IS FREE.**



Sept. 7th • 6 PM • This Friday • Center Atrium

"Fashion Feng Shui: Dressing with Intention"

Alice Inoue

Former TV Host, Astrology & Feng Shui Consultant

HAWAII MRS MAGAZINE

October 5th • 6 PM • Aloha Tower Fashion Show

Featuring Trunk Shows, Displays, Makeovers & More.

Win Neighbor Island Air Tickets courtesy of Hawaiian Airlines!



HAWAIIAN AIRLINES

Weekly

CMCMEDI-SPA  
ADVANCED SKIN AND BODY CARE

Validated, Valet & Alternative Parking

For more information, call 566-2337 or visit [alohatower.com](http://alohatower.com)

# THE SCENE

From Page 14  
Continuing

**Albert Wendt, Le Amataga: The Beginning** Through 9/21. *Louis Pohl Gallery*, 1111 Nu'uau Ave.: 521-1812

**Behind the Scenes w/ The Association of Hawai'i Artists** Through 9/8. *Honolulu Country Club*, 1690 Ala Puumalu St.

**Charles E. Higa, Then and Now—A Retrospective** Through 9/25. *The Contemporary Museum at First Hawaiian Center*, 999 Bishop St.: 526-1322

**Chuck Davis, CHI** Through 9/20. *The Gallery at Ward Centre*, 1200 Ala Moana Blvd.: 597-8034

**Hans Loffell** Through 9/15. *Café Che Pasta*, 2500 Pali Hwy.: 595-4047

**Hawaiians on the Plantation** Ongoing through December. *Hawai'i's Plantation Village*, 94-695 Waipahu St.: 677-0110

**Herb Kane, Swingin' Tiki, Red Mahan, Sandra Blazel, Dennis Morton, Kalalani, Stefan Meini, William Horak** Ongoing. *Ipu-Kula Gallery*, 47-388 Hui'lwa St.: 239-0044

**Kelly Sueda and Mary Mitsuda, Recent Paintings** Iced Tea with Mary Mitsuda 9/20, 5:30-7:30pm. Through 9/29. *Nu'uau Gallery at Marks Garage*, 1161 Nu'uau Ave.: 536-9828

**Kim Taylor Reece** Ongoing. *Kim Taylor Reece Gallery*, 1142 Bethel St.: 546-1144

**Kuakini Health System 2007 Photo Contest: Good Times, Good Places, Great Shots** Through 9/27. *Canon Photo Gallery*, 210 Ward Ave. Suite 200: 522-5930

**Mike Lee, Bowled Over** Through 9/20. *The Gallery at Ward Centre*, 1200 Ala Moana Blvd.: 597-8034

**Pam Longobardi** Through 9/15. *Café Che Pasta*, 2500 Pali Hwy.: 595-4047

**Playing in the Islands by Hawai'i Students K-6** Ongoing through 4/1, 2008. *Hawai'i Convention Center*, room 323: 1801 Kalākaua Ave.: 943-3500

**Precious Resources: The Land & The Sea** Through 9/8. *Hawai'i State Art Museum*, 250 S. Hotel St.: 586-0900

**Richard Palmer, Conception-Complete** Through 9/21. *Gallery on the Pali*, 2500 Pali Hwy.: 595-4047

**Rujunko Pugh** Through 10/12. *The Balcony Gallery*, 442-A Uluniu St.: 263-4434

**Shaman Arts of Vietnam** Through 9/10. *East-West Center Gallery*, 1601 East-West Rd.: 944-7543

**Shingo Honda, Journey** Through 9/25. *The Contemporary Museum at First Hawaiian Center*, 999 Bishop St.: 526-1322

**Spark Chan, Midnight Bloom** Through 9/30. *Ko'olau Gallery*, Mānoa Marketplace, 988-4147

**Tagami & Powell Gallery Garden** Ongoing. *Tagami & Powell Gallery Garden*, 47-754 Lama'ula Rd.: Kāne'ohe: 239-8146

**Yesterday, Today & Tomorrow: Mission Houses Museum, Selections from the Permanent Collections** Through 9/6. *The Exhibit Space*, 1132 Bishop St.: 599-5009

to the gallery or e-mail info@artsatmarks.com. JPEGs or slides only; no original works. *The ARTS at Marks Garage*, 1159 Nu'uau Ave.: Deadline for entries 10/13, 6pm. www.artsatmarks.com, 521-2903

**FACE of Nu'uau Urban Fashion Show-down** Cash prizes available for designers, with four categories—Day wear, Hawaiian, evening and resort wear. Check with the gallery for information or e-mail sandypohl@hawaiiintel.net. Through 9/15. *Louis Pohl Gallery*, 1111 Nu'uau Ave.: \$25 per piece entered. 521-1812

**Hawai'i Craftsmen Annual Statewide Exhibit** Submit works in clay, fiber, metal, wood, glass and mixed media for the 40th annual juried exhibition running 9/29 through 10/28. On O'ahu, deliver entries on 9/18 between 1 and 7pm to the Academy Art Center. *Academy Art Center*, 1111 Victoria St.: 532-8741

**Hawai'i Star Mānoa Project** Seeking proposals for a comic and Manga series to run in an upcoming Hawai'i based comic magazine. Call 271-1402 or e-mail sales@limepub.com.

**Honolulu Hipster** Seeks online submissions from Hawai'i artists, musicians and writers. E-mail inquiries and submissions to Aleina@honoluluhipster.com.



**BACI BISTRO**  
30 Aulike Street  
Kailua 262-7555

**Lunch**  
Monday - Friday  
11:30am - 2pm

**Dinner**  
Everyday  
5:30pm - 10pm

**susan perry esthetics** 261-0690  
406 uluniu street, kailua, hi 96734

**dermatologica SPECIALIST**

no-nonsense skin care

- facials
- waxing
- body treatments
- micro dermabrasion
- light therapy
- body massage

**10% off all skin care treatments**  
mention this ad!

**Muddy Waters**  
LUNCHES & DINNER  
Homemade Soups Daily • Panini Sandwiches

- Chicken Caesar Salad \$4.75
- Turkey Avocado Cheese Sandwich \$4.25
- Properly Combined Sandwich \$3.75
- Avotillas \$3.50
- Fresh Baked Desserts \$1-\$2.75
- Coffee, Drinks and Smoothies \$1-\$4.50

Open Monday-Friday 5:30AM  
Saturday & Sunday 6:30AM

**Live Music Nightly**  
Aikahi Park Shopping Center  
25 Kaneohe Bay Drive  
**254-2004**

## Words

**First Thursdays** Kealoha hosts the monthly \$100 nationally certified poetry slam with Spartha Swa from New York City and Climbing Poe Tree. *Hawaiian Hut, Ala Moana Hotel*, 410 Atkinson Dr.: Thu 9/6, (7-45PM.) \$3 before 8:30pm; \$5 after. www.hawaiiislam.com, 387-9664

**The Niihau Incident** Patricia Beekman, daughter of author Allan, hosts a presentation on his book and the event that took place directly after the bombing of Pearl Harbor, when a Japanese Zero fighter pilot crash-landed on Niihau. *Aiea Public Library*, 99-143 Moanalua Rd.: Thu 9/6, (6:30PM.) Free. 483-7333

**Shakespeare on Sunday** The ongoing bard aficionados read *Troilus and Cressida*. Read along or just listen in. Call 394-5317 for details. *Academy of Film & Television*, 1174 Waimanu St., Suite A: Sun 9/9, (7PM.) Free. www.americanfilmactor.com. 596-8300

## Call To Artists

**Alternative Urban Futures** Artists with vision can show you the city of the future looks like, where problems are solved and solutions are obvious. Submit images of appropriate artwork

Continued on Page 20

**AGNES' PORTUGUESE BAKE SHOP**  
HAWAII'S BEST MALASSADAS AND MUCH MORE!

- FULL-LINE BAKERY
- HOT MALASSADAS & PAO DOCE
- BREADS, ROLLS & PASTRIES
- COFFEE & ESPRESSO DRINKS
- HI-SPEED INTERNET • PARTY PLATTERS
- FRUIT PLATTERS • SHEET CAKES

**\$1 off ONE DOZEN MALASSADAS**  
WITH THIS COUPON NOT VALID WITH OTHER OFFERS  
ONE COUPON PER VISIT • EXPIRES 10/15/07  
**AGNES' PORTUGUESE BAKE SHOP**

**262-5367**  
46 HO'OLAI STREET IN KAILUA  
Tuesday-Saturday: 6AM-6PM  
Sunday: 6AM-2PM  
www.agnesbakeshop.com

**GREAT FOR HOME & OFFICE MEETINGS!**

**SECOND SUNDAY Art Walk**  
Sunday, September 9  
2pm - 5pm  
Sponsored by Kaneohe Ranch, Title Guarantee, Kalapawai Cafe & Deli

1. Global Village 539 Kailua Road • 262-8183
1. Jeff Chang Pottery Kailua Village Shops • 262-4060
2. Island Treasures 629 Kailua Road • 261-8131
2. Bead It 629 Kailua Road • 263-1182
3. Coconut Grove Music 418 Kuulei Road • 262-9977
4. A Place in Time 48 Maluniu St. • 261-2882
5. Balcony Gallery 442a Uluniu St. • 263-4434
6. Kalapawai Cafe & Deli 750 Kailua Road • 262-3354
7. Nohea Island Arts 767 Kailua Road • 262-2787
7. Lanikai Bath & Body 767 Kailua Road • 262-3620
7. Mu'umu'u Heaven 767 Kailua Road • 263-3366
7. Century 21 / All Islands 767 Kailua Road • 263-2100
8. Cisco's Cantina 131 Hekili St. • 262-7337
9. Morning Brew 572 Kailua Road • 262-7770
9. Elvin's Bakery & Cafe 572 Kailua Road
9. Under a Hula Moon 572 Kailua Road • 261-4252
10. Community Massage Clinic 22 Oneawa St. • 263-2468
11. Windward Computers/Small Kine Records 45 Ho'olai St. • 262-5232

Pick-up a map from any Kailua Second Sunday Art Walk participant.

## Theater

Palikū Theatre delivers a comfy Pajama Game

# Jammy session

BECKY MALTBY

**A**s the fall theater season begins, it's time to consider *The Lion King* and its 12-week run at the Blaisdell. But not if it keeps you from supporting local productions.

Our neighbors at Palikū Theatre have volunteered weeks of their time to deliver a high-caliber *Pajama Game* without having to rely on stratospheric budgets and animal puppets. If you can afford more than one evening of live theater, great. But if that's a pocket strain, invest in the tried, true and local. Quality theater is never a guarantee but Ron Bright's Windward-side musicals are almost always worth the gamble.

*The Pajama Game*, with music and lyrics by Richard Adler and Jerry Ross, may seem dated and long (the show runs close to three hours) for some tastes, but Bright's vision is fully realized here and he's got a solid team of talent to back it up. Travel back to the pre-techno comfort zone of the 1950s where songs are reprised and composers don't worry about an audience's biological needs. If it's done well, trust us. Length is a minor grievance.

The show opens with Patrick Torres soft-shoeing his way onto the stage as Hines, the pajama factory time-keeper. He informs the audi-

ence that this is a serious drama. We don't believe him. We know we're at a musical. The playbill is full of song titles. And we see a bit of orchestra hidden underneath Palikū's newly added thrust stage. Yet as the plot begins to toy about with wage disputes, a crooked boss and infidelity, Hines' forewarning appears accurate, particularly because the show is directed with a reality often reserved for straight plays. There is an underlying foundation of seriousness here frilled up with colorful numbers and memorable songs ("Hey There" and "Hernando's Hideaway" to name a couple). Bright clearly devoted ample rehearsal time to character objectives. The show's backbone is maintained from overture to curtain call, and with it comes honesty and surprisingly little shtick.

Torres portrays Hines as a hard worker who maintains his dignity even when forced to drop his trousers and model pajama pants. Heather Ensley is equally sincere as Hines' flirtatious girlfriend Gladys, secretary to the factory boss Hasler. The two squabble believably throughout their jealousy-infused relationship though their best numbers are with other people. Torres teams up with Tracy Yamamoto—perfect as the wise secretary Mabel—for a charming and humorous "I'll Never Be Jealous Again,"

the two dancing and singing their way through a series of hypothetical situations that place Gladys in compromising positions to test Hines' trust. Sometimes actor/singers look silly when they have to dance—not so with these two. Ensley stays humble in "Her Is" when hit on by Allan J. N. Lau as Prez the union leader who can't seem to put a lid on his philandering ways. Lau is excellent in the role, slightly nerdy and later commanding in the rally song "Seven and a Half Cents."

Lance Corey Wheeler is well cast as the romantic lead Sid Sorokin, the new factory superintendent. Although his vocal range is sometimes stretched on the higher notes, his supported tone and stage presence make up for it. Wheeler's Sid is a no-nonsense, reliable guy, balanced by a sweet and smart Trisha Marciel as Babe Williams, head of the union grievance committee. Veteran musical-comedy actor Marciel has matured in this role, arguably her best to date.

While Sid and Babe attempt to navigate a relationship from opposite sides of the wage war, and Hines and Gladys drive each other batty, the dedicated ensemble is busy injecting the factory with pep and precision. Tackling the syncopated rhythms of the show's first big number "Racing With the Clock" and throughout some half



Sleep tight: Trisha Marciel as Babe Williams and Lance Corey Wheeler as Sid Sorokin in *Pajama Game*.

dozen additional songs and dances, the company is repeatedly strong. Choreography by Derek Daniels is skillfully crafted to the cast's ability and the vocal blend is top-notch thanks to Bright (credited as choral director) and his son Clarke who leads the competent orchestra. Costumes by Evette Tanouye and sets and lighting by Lloyd S. Riford III create the proper mood from pajama factory to picnic grounds to

nightclub—"a dark secluded place" where an entire number is lit only by cigarette lighters.

If you've never been to the Palikū, go. The show runs two more weeks.

Palikū Theatre, Windward Community College, 45-720 Kea'ahala Rd., through 9/16, Fri. & Sat. 7:30pm, Sun 2pm, \$18-\$26, [etickethawaii.com](http://etickethawaii.com), 235-7310

## City Wise

### Cheap eats

Da Spot

**D**a Spot is da bomb. And no apologies for da '90s lingo. For you smoothie junkies out there, this really is da spot to be (no, da jokes won't stop here). While there, you'll probably turn into an Egyptian food junkie, too. Try the Egyptian barbecue chicken or shawerma lamb on a bed of rice, accompanied by salad and a piece of homemade baklava (\$6.50 regular, \$4.50 mini). For the smoothies, go "Loco-Style,"

with strawberry, banana and guava juices with guava sorbet. Or ask the husband and wife owners, Ahmad Ramadan and Ako Kifuji, for an off-the-menu recommendation, perhaps with acai or goji juice. Smoothie or plate lunch? There's really no choice. Get both. With a 20-ounce smoothie (\$3) and a regular plate, you'll have to loosen your belt by a notch, but you won't have to empty your pocketbook. All smoothies are vegan and with the

rotating food menu, the owners ensure that there's always something for da vegetarians and vegans.

The food specials change daily, offering everything from Japanese to Italian—sometimes with some fusion action going on. Though the menu is overwhelmingly Mediterranean, Da Spot also serves sandwiches and other American bistro fare.

Business has boomed for Da Spot since it opened two and a half years ago, prompting a second location on the UH campus, now located in the Sustainability Courtyard near the Campus Center. The eatery also does catering, and look for Ramadan's or Kifuji's presence at the following farmers' markets: KCC, Mililani, Kailua and Waikīkī. In addition, Da Spot will soon start to cook Waldorf school lunches. And as if all that weren't enough, the owners plan to open two more locations of da place—one on the North Shore and one more in town. Added bonus: Da Spot will soon be switching to biodegradable cups and boxes instead of Styrofoam.

—Margot Seeto



### Da Spot

908 Pumehana St., 951-7426

### IF YOU ONLY HAVE...

- 4 minutes and 32 seconds, watch Jason Mraz sing his slack key-influenced "I'm Yours" on YouTube.com.
- 30 minutes, listen to the first installment of the 13-part series about Hawai'i architecture during HPR's *Morning Edition* (Mon. 9/10, 8AM).
- 3 hours, go see Mānoa Valley Theatre's production of *The Musical of Musicals: The Musical* (through Sun. 9/23).



### \$10 WELL SPENT

In this age of the download, who needs CDs, right? Well, yeah. Sort of. But there's something about having an album in hand, a tangible representation of the music, that can't really be replaced by a song list in your iTunes library.

Borders Books and Music sells an impressive collection of jazz CDs for \$9.99 per disc. Find remastered Ella Fitzgerald, John Coltrane and Charles Earland ("Intergalactic Love Song" alone is worth the 10 bucks). Find newer cats like Chris Botti and not-so-new ones like Chuck Mangione (hey, he was big once). Don't care for Astrud Gilberto's version of "Corcovado"? Maybe Sarah Vaughan does it right. Find both versions, plus a few others, in the bin whose selection is added to weekly.

And if you just can't say no to iTunes—the thought of actually buying a disc is so something for those no-good hipsters—the store also carries DVDs for \$9.99. Classics from *Raging Bull* to *The Way We Were*, to newer titles like *Snatch*, *Spider-Man* and *Super Size Me*.



# THE SCENE

**Transportation Meeting** Rep. Rida Cabanilla-Arakawa presents the concept of utilizing Public Private Partnerships to construct freeway lane miles such as elevated roads and underwater tunnels. Information at 586-6080. *Asing Park*, 91-1450 Renton Rd., 'Ewa: Thu 9/6, (6:30PM.)

**Vitamins and Minerals Demystified** Steve Blake explains how such supplements can benefit everything from strong bones to pregnancy. Sponsored by the Vegetarian Society of Hawai'i. *Ala Wai Golf Course Clubhouse*, 404 Kapahulu Ave.: Tue 9/11, (7PM.) Free.

**Tides Foundation** The Moloka'i Environmental Protection Fund is accepting proposals for 2007 grants cycle. Applicants must come from a non-profit organization or be fiscally sponsored by one. Send inquiries to [dchavez@tides.org](mailto:dchavez@tides.org). [www.tidesfoundation.org](http://www.tidesfoundation.org). Deadline for proposals 9/14.

**Ulupō Heiau Service Project** Help restore the ethno-botanical and cultural features of this important historical state park. *Ulupō Heiau*, by Kailua YMCA: Every Second Saturday; 9/8, (8:30PM.)

**Windward Half Marathon and 5K** Pick a race and help raise funds for The Boys and Girls Club Windward Clubhouse. Applications available at Fleet Feet Kailua, Windward Trophy, Oahu running stores and *Athletes Hi*. Keiki races available and volunteers are also needed. *Kailua Intermediate School*, 145 S. Kainalu Dr.: Sun 9/9. [www.active.com](http://www.active.com), 271-2168

**Zip Memorial All-Girls Rodeo** 15th annual Teixeira Performance Horses event features some of the finest lassies to ever take the bull by the horns. Brought to you by the Hawai'i Women's Rodeo Association. Check [www.rodeo-oahu.com](http://www.rodeo-oahu.com) for details. *Kualoa Ranch*, Ka'a'awa: Sat 9/8, (9AM.) \$7 advance; \$9 door.

## Gay

**Chemistry** 21-and-up night for women who love women. Dress to impress, enjoy the drink specials, nightly giveaways and DJ Mumbles all night. *Café Sistinas*, 1314 S. King St. (First Hawaiian Building): Every Friday, (10:30PM.)

**Cruel Summer** (See Hot Picks, pages 10 & 11.) *Hula's Bar and Lei Stand*, Waikiki Grand Hotel, 2nd floor, 134 Kapahulu Ave.: Thu 9/6, (9PM-2AM.) [www.hulas.com](http://www.hulas.com), 923-0669

**Gay Catamaran Cruise** The bus picks you up and transports you to a tropical gay paradise on the Maitai. Get tickets at Angles during the week. Every Sun, (1PM.) \$25. 923-1130

**Gay Cruise** Get wet, wicked and wild as you sail off then sail back and party on the beach. Every Sat, (2PM cruise; 5PM pau beach party.) \$20. [www.hulas.com](http://www.hulas.com), 923-0669

**Gender Bender Lip Gloss and Paper Doll Revue** Leikia Williams and Raquel G. Gregory host Waikiki's hottest drag performers, followed by the Men of Fusion revue at midnight and dancing 'til 4am. *Fusion Waikiki*, 2260 Kūhiō Ave.: Every Fri (Gender Bender) & Sat (Paper Doll), (9:30PM.) 924-2422

**Honolulu Gay Support Group** For gay or questioning individuals, their families and friends. Feel safe and promote well-being, friendship, equal rights and justice. This week's topic features an open session. *Waikiki Community Center*, 310 Paoakalani Ave.: Every Tue, (7:30PM.) 923-1802

**Pool Tournament** Winner gets all in these weekly pool tournaments. 8-ball in the side pocket, anyone? *Angles Waikiki*, 2256 Kūhiō, Ave., second floor: Every Monday and Tuesday, (10PM.) \$5 per entry. 923-1130

**Best of Monday Night Live** Hear the bands that don't get the airplay they deserve. This week: Friends of the Bride. *KTUH*, 90.3 FM Honolulu, 91.3 FM North Shore, 89.9 Windward: Mon 9/10, (10PM.) 956-5288

**Talk Story Radio** Hear the tales and tellers of Hawai'i and the Pacific Rim with host Jeff Gere. This week: "Hawai'i Spooky: Then & Now." *KIPO* 89.3. Mon 9/10, (5:30PM.) [www.talkstoryradio.com](http://www.talkstoryradio.com).

**UFF RADIO** From ABBA to Zappa, Zevon to Aerosmith: UFF Radio—unfit for format—plays "music san-o-tized for your protection." *KORL*, AM 1180: Every Sun, (9PM-1AM.) [www.korlam.com](http://www.korlam.com), 526-1180

## Volunteer

**Adopt a Stream/Adopt a Block** Sign up at [www.cleanwaterhonolulu.com](http://www.cleanwaterhonolulu.com), and look for other clean up sites around the island throughout September. Wear a hat, use sunscreen and be ready to get dirty. Sat 9/8, *Meet at Kalihī Waena Elementary School*, 8-11:30am.

**Kai Makana Work Trip** Help remove long-thorn kiawe from Mokauea Island. bring long-sleeves and pants, thick soled shoes, gloves, water, sunscreen, hat and lunch. RSVP by 9/6 at 286-4616 or e-mail [oisc@hawaii.edu](mailto:oisc@hawaii.edu). *Sand Island Park*, (end of Sand Island Access Rd.): Sat 9/8, (8:45AM-1PM.)

**Kalihī Stream Clean Up** Help pick up trash, rake out rough areas, plant native plants while weeding invasive species. Tools and gloves provided. *Kūhiō Park Terrace*, 1454 Linapuni St.: Every second and fourth Saturday, (9AM-noon.) [alohafrancesca@gmail.com](mailto:alohafrancesca@gmail.com)

**Life Foundation** The local non-profit organization working to fight AIDS in Hawai'i and the Pacific needs an outgoing personality to man the reception desk. *Life Foundation*, 677 Ala Moana Blvd., Suite 226 (2nd fl., Gold Bond Bldg.): 521-2437

**Mayor's Remembrance Walk** Meet at the HPD Alapai headquarters (801 S. Beretania St.) to honor and remember those who lost their lives in the 9/11 attacks. Sun 9/9, (6:30PM.)

**Quick 'N' Dirty Cleanup** Clean up Kawai Nui Waterways & Hamakua Stream and enjoy the after party at a nearby restaurant. Wear old clothes, closed-toe shoes and a hat; ages 11 & up. Pau Hana party follows. Sun 9/9, (12:30-2PM.)

## Sports

**Co-Ed Adult Kickball** Why should kids have all the fun? 808 Sports Leagues challenges you to think on your feet, with charity-focused competitions. See [www.808sportsleagues.com](http://www.808sportsleagues.com) for details. Games play once a week on Mon, Tue or Wed through 11/14. \$70 individuals; \$775 for a full team. Non-profit organizations should inquire about discounts.

**D.One High School Girls Basketball Progression Camp** Learn the game from a different perspective with guidance from former NCAA division 1 collegiate players. [www.d1basketballhawaii.com](http://www.d1basketballhawaii.com). *McKinley High School*, 1039 S. King St.: Eight week program beginning 9/9. \$100.

**Honolulu Polo Club** Make pony and enjoy a beautiful day in the countryside: ponies, snacks, crafts, T-shirts chukkers, and back shots and special competitive matches each week. *Waimānalo Polo Field*, Kalaniana'ole Hwy.: Every Sunday through 10/14, (1PM gates; 2:30PM start.) 533-4540, 396-0494

**Memory Walk 2007** The annual 5K run/walk/stroll down memory lane comes together as part of the Alzheimer's Association fundraiser. Register at [www.alzhi.org](http://www.alzhi.org) or call 591-2771. *Fisherman's Wharf*, 1009 Ala Moana Blvd.: Sat 9/8, (7AM.) 538-3808

**Men & Women's Doubles Volleyball** The 4th Annual Restaurant and Bar Coed 4's battles on the beach. Cheer on your favorite server. *Queen's Beach*, Waikiki: Mon 9/10, (8:30AM-5PM.)

## Neighbors

**Holistic Hawai'i Expo** Hands-on demonstrations, exhibits, speakers, hula classes, workshops, therapies, parties, music, food and more gather in celebration of wellness, beauty, fitness, personal growth and positive living. *Outrigger Keauhou Beach Resort*, Kailua-Kona: Sat 9/8 & Sun 9/8, (10AM-6PM.) (808) 887-0044

**Los Lonely Boys** The Texas Grammy-winning brothers strum through the tower. They've played with some of the all-time greats, so who kows might show up to play with these hermanos. *Castle Theater*, Maui Arts & Cultural Center: Fri 9/21. \$40-\$55. (808) 242-7469

**Lost 80s Live** Forget all those 80s-themed nostalgia fests and see the artists that inspired it. Gene Loves Jezebel, Dramarama, When In Rome and A Flock of Seagulls bring about the real "Hair-spray: The Musical." Tickets available online at [www.kingmichelconcerts.com](http://www.kingmichelconcerts.com). *Hilton Waikoloa Village*, 425 Waikoloa Beach Dr., Waikoloa, Big Island: Sun 9/23, (5:30PM.) \$35. [www.hilton-waikoloavillage.com](http://www.hilton-waikoloavillage.com), (808) 886-1234

**Taste of the Hawaiian Range** The 12th annual event features noted local chefs creating dishes from locally grown range-fed meats complemented by fresh Big Island vegetables, decadent desserts and fruits. Tickets available at [www.ctahr.hawaii.edu/taste](http://www.ctahr.hawaii.edu/taste). *Hilton Waikoloa Village*, 425 Waikoloa Beach Dr., Waikoloa, Big Island: Fri 9/28, (6-8PM.) \$35 advance; \$70 door. [www.hilton-waikoloavillage.com](http://www.hilton-waikoloavillage.com), (808) 886-1234

## Submissions

"The Scene" provides groups and individuals with free listings of community events, activities and entertainment. Submissions must include the following:

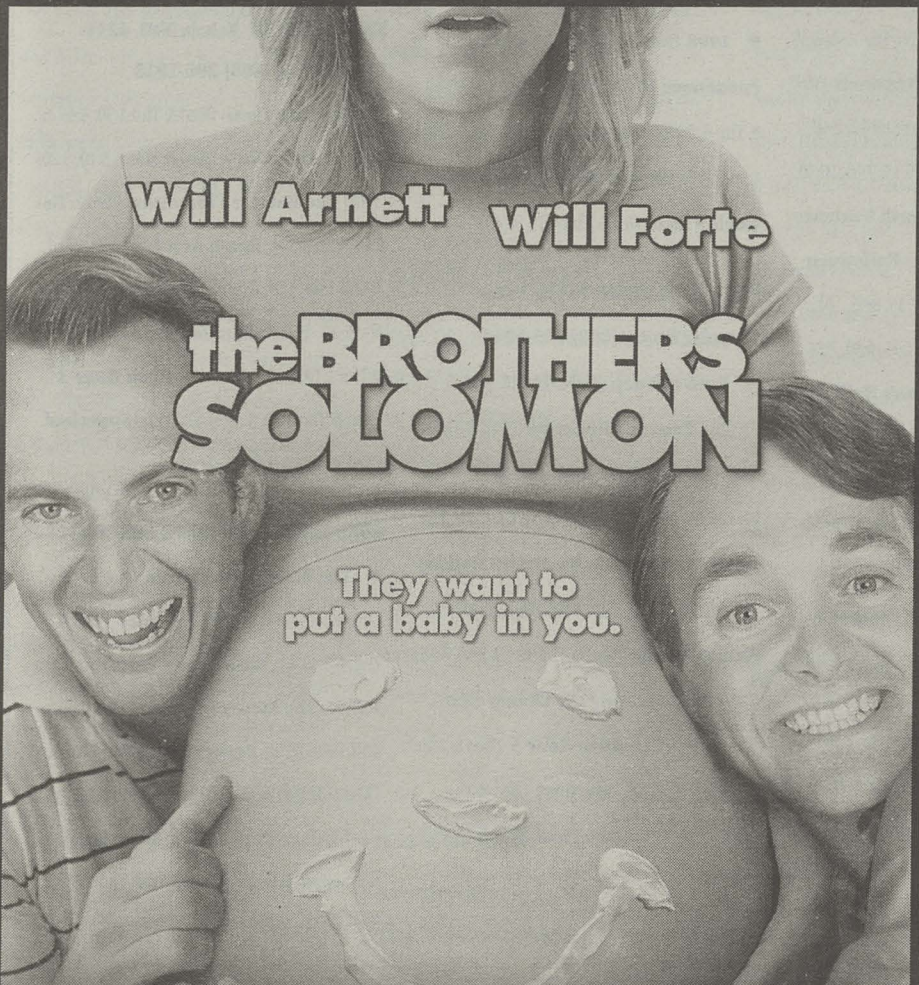
- Date and time;
- Location (include a street address);
- Cost or admission price (please note if event is free);
- Contact phone number;
- Description of the event. If submitting an entry to the music section, include the general type of music (jazz, rock, hip-hop, Hawaiian, etc.).

Deadline for "The Scene" submissions is two weeks before the listing should appear. Listings appear the last Wednesday before the event. "The Scene" is also posted each week on our Web site, at [www.honoluluweekly.com](http://www.honoluluweekly.com).

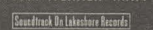
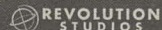
Send all submissions to Honolulu Weekly Calendar Editor, 1111 Fort Street Mall, Honolulu, HI 96813, fax to 528-3144 or e-mail [calendar@honoluluweekly.com](mailto:calendar@honoluluweekly.com). Submissions are not accepted over the phone. Please note: We welcome photographs with submissions, but cannot guarantee returns — please do not send original art.

## "It's Laugh Out Loud Funny!"

Jeffrey K. Howard, KCLV-TV, Las Vegas

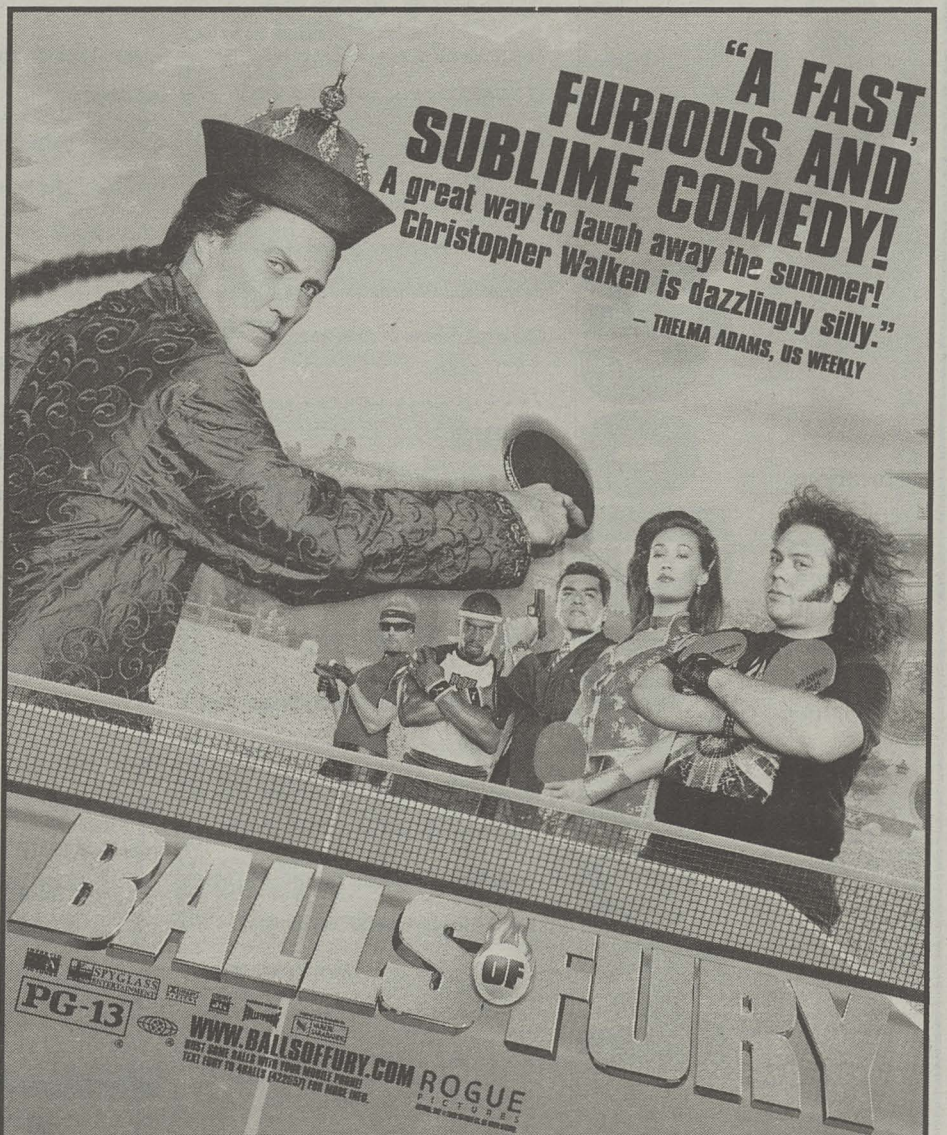


REVOLUTION STUDIOS PRESENTS A CARSEY-WERNER FILMS PRODUCTION "THE BROTHERS SOLOMON" WILL ARNETT WILL FORTÉ  
CHI MCBRIDE KRISTEN WIIG MALIN AKERMAN SUPERVISION BY G. MARO ROSWELL AND ADAM SWART MUSIC BY JOHN SWIHART  
EXECUTIVE PRODUCERS GARYN MANDABACH PADDY CULLEN WRITTEN BY WILL FORTÉ PRODUCED BY TOM WERNER MATT BERENSON DIRECTED BY BOB ODENKIRK



[sony.com/BrothersSolomon](http://sony.com/BrothersSolomon)

**STARTS FRIDAY, SEPTEMBER 7**  
CHECK LOCAL LISTINGS FOR THEATERS AND SHOWTIMES  
SORRY, NO PASSES ACCEPTED FOR THIS ENGAGEMENT



## SEE IT TODAY!

Consolidated Ward Stadium 16 808/593-3000 #892	Consolidated Pearlridge West 16 808/593-3000 #889	Consolidated Kahala 8 808/593-3000 #897	Consolidated Kapolei 16 808/593-3000 #890	Consolidated Ko'olau Stadium 10 808/593-3000 #875
Regal Cinemas Doie Cannery 18 800/FANDANGO #1718	Regal Cinemas Pearl Highlands 12 800/FANDANGO #1717	Consolidated Mililani Stadium 14 808/593-3000 #903	Regal Cinemas Windward Stadium 10 800/FANDANGO #1719	SPECIAL ENGAGEMENTS NO PASSES OR DISCOUNT COUPONS ACCEPTED

MOBILE USERS: For Showtimes - Text BALLS with your ZIP CODE to 43KIX (43549)

# Big little fall movies

BOB GREEN

**N**ever mind the big-deal movies in magazine fall previews. You'll hear enough about them—maybe ad nauseam. Let's take a gander at the alternative flicks—usually indie and often low-budget—with no advertising budgets and no coverage on *Entertainment Tonight*.

**September**

**Across the Universe** Director Julie Taymor (*Frida*) kicks over the traces with this fantasy musical that "reimagines" 33 Beatles songs in a plot line that traverses the '60s.

**Lust, Caution** The unbeatable Ang Lee returns with an espionage-thriller set in Japan-occupied Shanghai. This 1940s tale, starring Tony Leung and Joan Chen, is in Chinese. So there.

**Into the Wild** Sean Penn writes/directs his take on the true-life story

of a 22-year-old Washington, D.C. party boy who decides to risk all into a trek in the wild, ending in Alaska. Emile Hirsch (*Lords of Dogtown*) stars.

**Eastern Promises** David Cronenberg does another odd gangster film—this time it's Russian mobster immigrants—starring Viggo Mortensen, as written by the great Steven Knight (*Dirty Pretty Things*).

*Some low-profile but intriguing flicks are on your way...*

**October**

**Gone Baby Gone** Ben Affleck writes and directs his version of the novel by Dennis Lehane (*Mystic River*). Casey Affleck, Ben's bro, stars.

**Michael Clayton** George Clooney

works for scale to do this conspiracy thriller for director Tony Gilroy, writer of the *Bourne* movies. Advanced buzz says that this'll get Clooney an Oscar nom.

**Slipstream** Sir Anthony Hopkins writes/directs a sci-fier about a man who somehow slips into another dimension. Hopkins also stars, with MIA actor Christian Slater returning to the screen.

**Sleuth** Harold Pinter wrote the new script, Kenneth Branagh directed, and Jude Law and Michael Caine star in this remake of the 1972 drama.

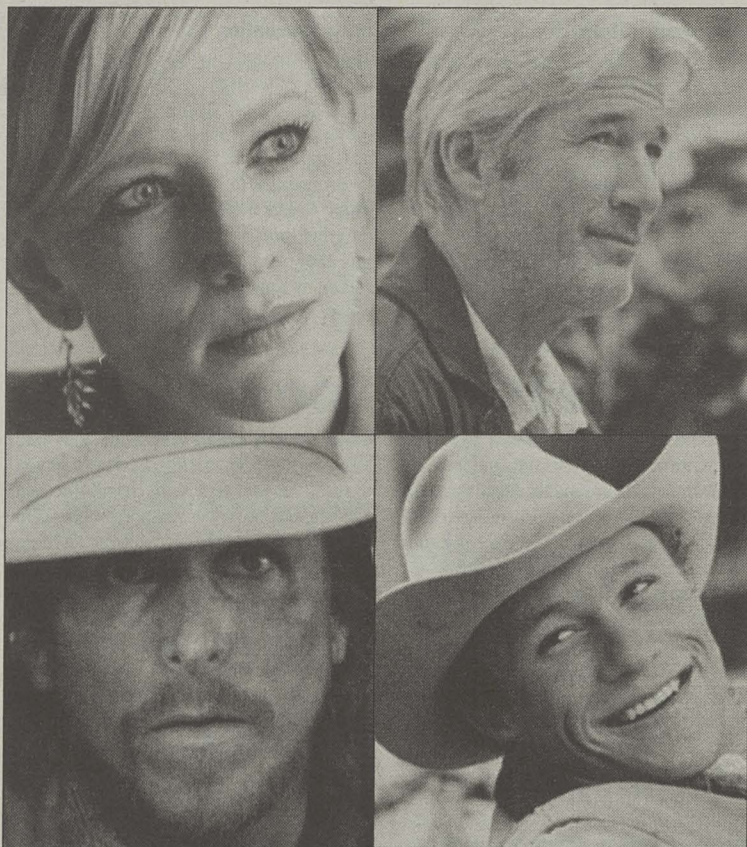
**November**

**Love in the Time of Cholera** Director Mike Newell (*Harry Potter and the Goblet of Fire*) helmed this version of the great Gabriel Garcia Marquez novel. The magic realism tale covers five decades of Latin American history and stars Javier Bardem.

**Cassandra's Dream** Woody Allen writes and directs another drama in the vein of *Match Point*. Set in London, the brother-against-brother story stars Colin Farrell, Ewan McGregor and Hayley Atwell.

**I'm Not There** A fantasy bio of Bob Dylan (which the singer says he loves) as done by writer/director Todd Haynes (*Far From Heaven, Velvet Goldmine*), who casts Richard Gere, Heath Ledger, Christian Bale and Cate Blanchett—all as Dylan, in five stages of his career.

**Margot at the Wedding** In his follow-up to *The Squid and the Whale*,



Being there: Cate Blanchett, Richard Gere, Christian Bale and Heath Ledger all play Bob Dylan in *I'm Not There*.

writer/director Noah Baumbach gives us Nicole Kidman and Jack Black in a saga of family dynamics gone very wrong.

**December**

**The Savages** Philip Seymour Hoffman and Laura Linney co-star as siblings fighting over the care of their father.

**Juno** A drama/comedy starring El-

len Page (*Hard Candy*), Michael Cera (*Superbad*) and Jennifer Garner. The good news is that the writer/director is Jason Reitman (*Thank You For Smoking*).

**There Will Be Blood** Daniel Day-Lewis returns to da silvah screen in this drama about oil men in 1927 California, as directed by Paul Thomas Anderson (*Punch-Drunk Love*). ■

# Movieclock

Film locations and times are subject to change. Please call venues for latest information

**Legend:**  
 Showing ♦  
 Closing ●  
 Opening ●

Regal Cinemas no longer releases its movie listings in time for Honolulu Weekly to publish them.

Due to the Labor Day holiday, opening titles and showtimes for Fri. 9/7 through Tue. 9/11 were unavailable at the time of publication. Please call theaters for showtimes.

**Town**

**DOLE CANNERY 735-B Iwilei Road 526-3456**

Showtimes were not available at the time of publication. Call theater for showtimes.

**RESTAURANT ROW 500 Ala Moana Blvd. 526-4171**

♦ **1408** (Wed & Thu 1:45, 4:10, 7:35, 10); **Captivity** (Wed & Thu 1:35, 4:05, 7:30, 9:55); **Evan Almighty** (Wed & Thu 1:50, 4:15, 7:45, 10:05); **I Know Who Killed Me** (Wed & Thu 1:30, 4, 7:20, 9:35); **I Now Pronounce You Chuck and Larry** (Wed & Thu 1:20, 3:55, 7:15, 9:50); **Knocked Up** (Wed & Thu 1:05, 3:45, 7, 9:40); **License to Wed** (Wed & Thu 2, 4:20, 7:50, 10:10); **Ocean's 13** (Wed & Thu 1:15, 3:50, 7:05, 9:45); **Pirates of the Caribbean: At World's End** (Wed & Thu 1, 4:30, 8);

**WARD STADIUM 1044 Auahi St. 593-3000**

♦ Fri 8/31 **Balls of Fury** (Fri-Tue 1:30, 3:55, 7:45, 10:25); **The Bourne Ultimatum** (Wed & Thu 1:30, 4:20, 7:40, 10:30, Fri-Sun 12, 2:40, 5:20, 8:10, 10:45, Mon 12, 2:35, 5:15, 7:50, 10:30, Tue 1:30, 4:20, 7:50, 10:30); **Death Sentence** (Fri-Tue 1:10, 3:45, 7:50, 10:30); **Halloween** (Fri-Tue 1:45, 2:45, 4:30, 5:40, 7:15, 8:45, 10); **Illegal Tender** (Wed & Thu 1:45, 4:30, 7:35, 10:20, Fri-Tue 10:30); **Mr. Bean's Holiday** (Wed & Thu 1:15, 3:35, 7:20, 9:45); **The Nanny Diaries** (Wed & Thu 1:15, 3:55, 7:15, 10:15); **Resurrecting the Champ** (Wed & Thu 4:30, 10:25); **Rush Hour 3** (Wed & Thu 1:20, 2:10, 3:50, 7, 8, 9:45); **The Simpsons Movie** (Wed & Thu 1:10, 3:20, 5:40, 7:45, 9:50); **Stardust** (Wed & Thu 1:25, 4:15, 7:25, 10:10); **Superbad** (Wed & Thu 1, 2:30, 3:45, 5:15, 7:30, 8:30, 10:15); **Transformers** (Wed & Thu 1, 4:15, 7:20); **War** (Wed & Thu 1:05, 2:15, 3:30, 4:45, 6, 7:30, 8:45, 10);

**Windward**

**AIKAHI TWINS 'Aikahi Park Center. (808) 593-3000**

Showtimes were not available at the time of publication. Call theater for showtimes.

**KEOLU CENTER CINEMA 1090 Keolu Dr. (808) 263-4171**

♦ **1408** (Wed & Thu 4:45, 7); **I Now Pronounce You Chuck and Larry** (Wed & Thu 4, 7:15); **License to Wed** (Wed & Thu 4:30, 7:30); **Pirates of the Caribbean: At World's End** (Wed & Thu 4:15, 7:45); **KO'OLAUI STADIUM Temple Valley Shopping Center (808) 593-3000**  
 ♦ **Balls of Fury** (Wed & Thu 12:50, 3, 5, 7); **The Bourne Ultimatum** (Wed & Thu 12:35, 2:55, 5:25, 7:50); **Halloween** (Wed & Thu 12:05, 2:25, 5:10, 7:30); **The Last Legion** (Wed & Thu 3:15, 7:50); **Mr. Bean's Holiday** (Wed & Thu 12:20, 2:30, 4:30, 7:05); **The Nanny Diaries** (Wed & Thu 12:15, 2:55, 5:15, 7:45); **Resurrecting the Champ** (Wed & Thu 12:30, 5:25); **Rush Hour 3** (Wed & Thu 1, 3:20, 5:20, 7:20); **Stardust** (Wed & Thu 12:40, 3:10, 7:10); **Superbad** (Wed & Thu 12, 2:40, 5:25, 7:55); **War** (Wed & Thu 12:20, 2:45, 5:20, 7:40);

**SIGNATURE WINDWARD STADIUM 46-056 Kamehameha Hwy., Bldg. G 234-4000**

Showtimes were not available at the time of publication. Call theater for showtimes.

**East**

**KAHALA 8-PLEX Kahala Mall, 4211 Waialae Ave. (808) 296-1818**

♦ **The 11th Hour** (Wed & Thu 1:30, 3:45, 6, 8:15); **Balls of Fury** (Wed & Thu 1, 3:10, 5:20, 7:30); **The Bourne Ultimatum** (Wed & Thu 1:50, 4:20, 7:10); **Death at a Funeral** (Wed & Thu 1:40, 3:50, 6, 8:10); **Halloween** (Wed & Thu 2:10, 4:50, 8); **Mr. Bean's Holiday** (Wed & Thu 1:10, 3:20, 5:30, 7:40); **Rush Hour 3** (Wed & Thu 1:20, 3:30, 5:40, 7:50); **Superbad** (Wed & Thu 2, 4:40, 7:20);

**KOKO MARINA STADIUM 8 593-3000**

♦ **The Bourne Ultimatum** (Wed & Thu 2:15, 4:45, 7:30); **Death Sentence** (Wed & Thu 3, 5:30, 8); **Halloween** (Wed & Thu 2, 2:10, 4:50, 7:20); **Resurrecting the Champ** (Wed & Thu 2:30, 5, 7:40); **Rush Hour 3** (Wed & Thu 2:55, 5:10, 7:15); **Superbad** (Wed & Thu 2:40, 5:20, 8); **War** (Wed & Thu 2:45, 5:15, 7:45);

**Central**

**MILILANI TOWN CENTER STADIUM 14 95-1249 Meheula Parkway (808) 593-3000**

Film

# Anthropology 101

BOB GREEN

**H**unted by the spectre of *The Devil Wears Prada* movie and bedeviled by its punches-pulled source novel, *The Nanny Diaries* movie is schizoid, if not schizophrenic. It's got a great subject—Gen X richies (old money, sense of entitlement) on the Upper East Side of NYC, waspy to the point of Stepfordness, and unreflective, let us say. Its plot—an American college-bred Jersey femme (Scarlett Johansson) gets a job (she's interested in anthropology) as nanny for the spoiled but sweet kid of an elitist couple (Laura Linney, Paul Giamatti) and enters a special kind of hell, in which she's either demeaned or patronized. The movie uses nanny voice-overs, a mistake that *Prada* avoided, and so the story is distanced from us. Too bad. It's a great cast. (Linney is a great actress, the Streep of her generation, and Giamatti just gets better and better. As for Johansson, her submerged carnality can change chick-lit into clit-lit—and does.)

The movie, written by the same team who did *American Splendor*, always seems on the brink of near-savage satire, but it looks as if someone "softened" the movie in a

later edit—some ideas go nowhere, as if they have been whacked. Linney has a field day essaying her zombie-wasp wife-and-mommy, for whom a child seems a project she doesn't particularly cozy up to, at least conventionally. Giamatti is a power hubby with steel-rimmed glasses and a mistress he doesn't much bother hiding from his mannequin-wife.

And yuppy nanny, crying out for her share of satirical assault, is handled too carefully by the movie. It looks as if her part were cut down or diluted. Johansson is terrific, as she proved in *Match Point*, but her character is largely one-dimensional.

## The Nanny Diaries has an identity crisis

We keep waiting for all this to come together, but necessary stuff seems missing. In *Prada*, Streep has her great scene in which we see her sans make-up, sans persona, tear-ridden, out of her swell clothes and down in the dumps. In *Nanny Diaries* Linney doesn't have an equivalent scene. If she's trapped in her persona, Linney could have shown us; instead, we get nada.



Does it have laughs? Yep. Are the richies despicable and ludicrous? Yep. Is the nanny—the college kid—studying her employers for signs of decadence? Yep. Is this kind of approach satirized? Nope. This is a movie—not bad, just disappointing—of missed opportunities. The best thing about it is its opening: a Museum of Natural History diorama of anthro city dwellers—like "Tribeca Fashionista," et al. Hilarious.

Want better satire? Try the little-known, brilliant *Igby Goes Down*. Or the wonderful *Six Degrees of Separation*. Get thee to a DVD emporium—that's where the real gold is.

**SHOOT 'EM UP**  
No name, no past, nothing to lose.

STARTS FRIDAY, SEPTEMBER 7

Consolidated WARD STADIUM 16	Consolidated PEARLRIDGE WEST 16	Consolidated KOKO MARINA STADIUM 8	Consolidated KAPOLEI 16	Consolidated KO'OLAU STADIUM 10
Regal Cinemas DOLE CANNERY 18	Regal Cinemas PEARL HIGHLANDS 12	Consolidated MILILANI STADIUM 14	Regal Cinemas WINDWARD STADIUM 10	NO PASSES OR DISCOUNTS CHECK THEATRE DIRECTORIES FOR SHOWTIMES

**THIS SATURDAY SEPT 8TH**

**UNIVIBE 4.0**

WITH **RICHARD VISSION**

SOLMATIC RECORDS - LOS ANGELES  
RICHARDVISSION.COM  
MYSFACE.COM/RICHARDVISSION

**DJEREK**  
WASHINGTON DC MYSFACE.COM/TREKDNB W/MCENEMY

**GSPOT** MYSFACE.COM/GSPOT08  
**IKON** MYSFACE.COM/KONZMIND  
**PSI** MYSFACE.COM/DREAMKILLERZ

HOSTED BY: **CASA** **Livewire**

AREA 1 [HOUSE, BREAKS, ELECTRO] **PAUL BRANDON, ERICK**  
AREA 2 [HOUSE, TRANCE, DRUM-N-BASS] **SOVERN C, MECALX, CRYPIC, DEV, KYOKO**  
AREA 3 [HIP HOP & NEO SOUL] **TECHNIQUE, DJ BECCY, QUIKSILVA**

MOON BOUNCE - MULTI-MEDIA PROJECTIONS - LASER LIGHT SHOW

"THE FIRST BIG!! PARTY OF THE SEMESTER"

**PIPELINE CAFE**  
805 POHUKAINA ST  
9PM-4AM - 18+ - VALET PARKING

PRESALE TICKETS: **UH BUTIGROOVE, JELLY'S HUNGRY YEAR**  
GROOVETICKETS.COM 877-71.GROOVE

INFO: **808.591.3500 DOUBLE-O-SPOT.COM**  
MYSFACE.COM/DOUBLEOSPOT

**00SPOT** **barack** **PGX** **Jedditah** **butigroove.com** **GROOVE** **FIJI WATER** **TICKETS**

◆ **Balls of Fury** (Wed & Thu 1, 3:10, 5:20, 7:30, 9:40); **The Bourne Ultimatum** (Wed & Thu 1:10, 3:45, 7:10, 9:40); **Death Sentence** (Wed & Thu 1:20, 3:55, 7:05, 9:30); **Halloween** (Wed & Thu 1, 2, 3:30, 4:40, 6, 7:15, 8:30, 9:45); **Mr. Bean's Holiday** (Wed & Thu 1:25, 3:35, 7:45, 10); **The Nanny Diaries** (Wed & Thu 1:10, 3:40, 6:50, 9:20); **Rush Hour 3** (Wed & Thu 1:15, 3:20, 5:40, 10); **The Simpsons Movie** (Wed & Thu 1:15, 3:15, 5:15, 7:15, 9:15); **Stardust** (Wed & Thu 1:05, 3:50, 6:45, 9:25); **Superbad** (Wed & Thu 1:45, 4:20, 7, 9:35); **War** (Wed & Thu 1:20, 2, 3:40, 4:30, 6:10, 7, 8:30, 9:20);

6:45, 9:10); **Resurrecting the Champ** (Wed & Thu 12:55, 3:45, 6:15, 8:45); **Rush Hour 3** (Wed & Thu 12:25, 2:40, 4:55, 7:10, 9:15); **Superbad** (Wed & Thu 12:35, 3:55, 7, 9:30); **Underdog** (Wed & Thu 12:15, 3, 5); **War** (Wed & Thu 12:10, 2:30, 4:50, 7:05, 9:20);

**North Shore**  
**IMAX POLYNESIAN CULTURAL CENTER**  
55-370 Kamehameha Hwy; (Closed on Sundays.) 293-3280  
◆ Fri 4/6 **Coral Reef Adventure** (Daily 1:30, 3, 4, 6 p.m., Japanese-language version 5 p.m.);

**LA'IE CINEMAS** 55-510 Kamehameha Hwy. (Closed on Sundays) 293-7516  
Showtimes were not available at the time of publication. Call theater for showtimes.

**Leeward**  
**KAPOLEI MEGAPLEX** 890 Kamokila Blvd. (808) 593-3000  
◆ **Balls of Fury** (Wed & Thu 1:05, 3:20, 5:35, 7:50, 10); **The Bourne Ultimatum** (Wed & Thu 1:20, 3:50, 7:10, 9:40); **Death Sentence** (Wed & Thu 1:0, 4:50, 7:30, 9:55); **Halloween** (Wed & Thu 1:25, 1:55, 3:55, 4:40, 7, 7:30, 9:30, 10); **Illegal Tender**

(Wed & Thu 4:55, 9:30); **The Last Legion** (Wed & Thu 1:30, 7); **Mr. Bean's Holiday** (Wed & Thu 1:10, 3:25, 5:30, 7:40, 9:50); **The Nanny Diaries** (Wed & Thu 1:35, 4:25, 7:05, 9:35); **Resurrecting the Champ** (Wed & Thu 7:25, 9:50); **Rush Hour 3** (Wed & Thu 1:35, 2:05, 3:40, 5:45, 7:25, 8, 10:05); **The Simpsons Movie** (Wed & Thu 2, 4:45, 7:20, 9:25); **Stardust** (Wed & Thu 1:40, 4:35, 7:15, 9:55); **Superbad** (Wed & Thu 1:15, 3:50, 7:05, 9:40); **Transformers** (Wed & Thu 3:55, 9:20); **Underdog** (Wed & Thu 1:10, 3:15, 5:20, 7:20, 9:25, Fri-Tue 1:10, 3:15, 5:20); **War** (Fri-Tue 1, 1:45, 3:15, 4:30, 5:30, 7:15, 7:45, 9:35, 10:05);

**Art House**  
**DORIS DUKE THEATRE** Honolulu  
Academy of Arts, 900 S. Beretania St.  
\$7 general, \$5 members. 532-8768  
◆ **Manufactured Landscapes** (Wed & Thu 1, 7:30, Sun & Mon 7:30);

**MOVIE MUSEUM** 3566 Harding Ave. \$5 general, \$4 members. 735-8771  
◆ **After the Wedding** (Thu 12:30, 3, 5:30, 8); **Starter for 10** (Fri & Sun 2, 4, 6, 8); **The Wind That Shakes the Barley** (Sat & Mon 12:30, 3, 5:30, 8)

**PEARL RIDGE WEST** (808) 593-3000  
◆ **Balls of Fury** (Wed & Thu 12:30, 3:05, 5:15, 7:20, 9:30); **The Bourne Ultimatum** (Wed & Thu 12:45, 3:30, 6, 8:30); **Bratz** (Wed & Thu 12:05, 6:15); **Death Sentence** (Wed & Thu 1, 3:30, 6:15, 8:35); **Halloween** (Wed & Thu 2:45, 3:45, 6:45, 9:15); **Illegal Tender** (Wed & Thu 7, 9:25); **Mr. Bean's Holiday** (Wed & Thu 12:40, 2:50, 5, 7:05, 9:10); **The Nanny Diaries** (Wed & Thu 12:20, 3:40,

Check out our sister publication:

**Hawai'i Island Journal**

Hawai'i Island's alternative newspaper  
www.hawaiiislandjournal.com

## O'ahu Films

Unattributed film synopses indicate movies not yet reviewed by HW staff

☞ Indicates films of unusual interest

### Opening

**3:10 to Yuma** A remake of the classic western, this time with Russell Crowe and Christian Bale. James Mangold directs.

**The Brothers Solomon** Two guys, bros, have to find a chick to impregnate. Another purportedly hilarious, if double-standardized, flick.

**The Hunting Party** An action-adventure flick about one of our recent wars. Richard Gere stars.

**Shoot 'Em Up** A terrifically violent movie with Clive Owen killing everyone in sight.

### Continuing

**Balls of Fury** Send-up of martial arts and Asian sports competition. The inevitable Christopher Walken is one of the stars.

☞ **The Bourne Ultimatum** *The Bourne Ultimatum* does its action right—it's not designed for appreciation as set-piece intervals but for the purposes of the film's story and tone, not slowing the momentum but enhancing it. This movie is a quest film about motion, ricocheting on the cusp of frenzy but keeping its balance, and bringing its denouement—the answer to the quest ("Who am I?")—home with satisfying philosophic resonance. It's the best action film in a long, long while. (Reviewed 8/8) —Bob Green

**Death at a Funeral** Frank Oz directs a comedy about, well, death at a funeral, and attempts to salvage his career after *The Stepford Wives* fiasco. (He had to go to the U.K. to do this one.)

**Death Sentence** Kevin Bacon does a revenge

movie. Moral outrage and violence—who could ask for anything more?

**Halloween** Goremeister Rob Zombie remakes the original film of the long-running franchise.

**Illegal Tender** Hispanic conflict story about honor and dignity in the face of prejudice and violence.

**Mr. Bean's Holiday** The "comedy" in the new Mr. Bean movie is so contrived, broad and forced that only the French could like it. Or maybe the most die-hard Bean fanatics ever, willing to follow Rowan Atkinson through thin and thin. We're watching a talented performer strain to transform lousy material into comedic gold. Any good writer could have supplied the comic with more—but all that happens in most cases is that Bean is stranded in a dead-end premise. Again. (Reviewed 8/29) —B.G.

☞ **The Nanny Diaries** See review on page 23.

☞ **No End in Sight** *The New Yorker* calls this doc the best ever made about the Iraqi occupation, and a film every conscientious citizen should see.

**Rush Hour 3** Jackie Chan and Chris Tucker in a wires-and-harness franchise entry.

**Resurrecting the Champ** Boxing saga with Sam Jackson and Josh Hartnett.

**September Dawn** Jon Voight stars in a period Utah massacre film, soundly being repudiated by the Mormon establishment.

☞ **The Simpsons Movie** Animated family fare, now out of the television box.

**Stardust** The well-cast film version of Neil Gaiman's witty, comic, tongue-in-cheek novel, *Stardust*, is a romantic-quest plot with mostly cheesy special effects and a heavy-handed visual style entirely inappropriate for its story and tone. Visually, the movie is a pound cake that thinks it's a soufflé. Read the book—and then see the movie for its performances. (Reviewed

8/22) —B.G.

☞ **Superbad** This flick makes one take notice of the Judd Apatow brand name when attached to a film (*The 40-Year-Old Virgin*, *Knocked Up*). Like a lowbrow, non-pretentious Woody Allen, any comedy project the director/writer/producer works on deserves some measure of attention. This one's hilarious—it's got a genuine heart mixed with a relentless onslaught of gloriously immature penis and vagina jokes. (Reviewed 8/22) —Ryan Senaga

**The 11th Hour** Ecology doc narrated by Leonardo DiCaprio.

**War War** What is it good for? Not quite absolutely nothing. Here, Jet Li gives his first truly forceful performance in a Western production since *Kiss of the Dragon* all the way back in 2001. His demeanor is all calm swagger and effortless chill, a convincing juxtaposition especially when considering his boyish face and high-pitched voice. Still, it's too much talk and not enough action. (Reviewed 8/29) —R. S.

### Art House & Short Runs

☞ **After the Wedding** (Denmark/Sweden, 2006) Winner of a fistful of awards, this drama concerns itself with revelations in the life of a manager of an orphanage who must return to Denmark in order to accept a much-needed cash donation from an (eccentric) billionaire, even though it interferes dramatically with his personal life. A Danish wedding brings further conflict. *Movie Museum*, 3566 Harding Ave. #4, Thu 9/6, 12:30, 3, 5:30 & 8PM, \$4 members, \$5 general, 735-8771

☞ **Manufactured Landscapes** (Canada, 2006) How industry impacts nature as photographed by Edward Burtynsky in this telling doc. *Doris*

*Duke Theatre*, 900 S Beretania St., Wed 9/5 & Thu 9/6, 1 & 7:30PM, Sun 9/9 & Mon 9/10, 7:30PM, \$7, \$6 seniors, students, military, \$5 members, 532-8768

☞ **Starter for 10** (U.K./U.S., 2006) Highly touted Brit comedy-satire (rites of passage division) about a Bristol University freshman (in 1980) trying for upward mobility, via a Brit TV show featuring college youth. *Movie Museum*, 3566 Harding Ave. #4, Fri 9/7 & Sun 9/9, 2, 4, 6 & 8PM, \$4 members, \$5 general, 735-8771

☞ **The Wind That Shakes the Barley** (Ireland/U.K./Germany/Italy/France/Spain, 2006) The Hawai'i premiere of a terrific Ken Loach film about 1920s IRA/Black-and-Tan clashes, as Brits go after the Irish. Winner of the prestigious Palme d'Or at Cannes. The cast includes Cillian Murphy (*Red Eye*), Padraic Delaney and Mary Murphy.

*Movie Museum*, 3566 Harding Ave. #4, Sat 9/8 & Mon 9/10, 12:30, 3, 5:30 & 8PM, \$4 members, \$5 general, 735-877

### Coming Soon

**10 Canoes** (Aboriginal language drama by Rolf de Heer, art house); **American Gangster** (Russell Crowe, Denzel Washington); **Bee Movie** (CGI animation); **Eastern Promises** (New David Cronenberg flick with Viggo Mortenson); **I, Legend** (Will Smith sci-fi); **Lions for Lambs** (Robert Redford directs Tom Cruise and Meryl Streep); **The Lookout** (revival); **Resident Evil IV**; **Things We Lost in the Fire** (Benicio Del Toro); **The Seeker** (mystic hitman); **Sweeney Todd: The Demon Barber** (Tim Burton, Johnny Depp)

"A TRIUMPH!" "★★★★★"  
—LA WEEKLY —THE SAN DIEGO UNION-TRIBUNE

# THE 11<sup>TH</sup> HOUR

PRODUCED & NARRATED BY LEONARDO DiCAPRIO

PG PARENTS STRONGLY CAUTIONED  
www.11thhourfilm.com

MOBILE USERS: For Showtimes - Text 11TH with your ZIP CODE to 43KIX (43549)

Consolidated Kahala 8 808/593-3000 #897  
CHECK THEATRE DIRECTORY OR CALL FOR SOUND INFORMATION AND SHOWTIMES SPECIAL ENGAGEMENT NO PASSES OR DISCOUNT COUPONS ACCEPTED  
For Group Ticket Info: 1-866-719-4407 or e-mail: groupsales@warnerindependent.com

Website: www.honoluluacademy.org/theatre  
Theatre info line: 532-8768 / General info line: 532-8700

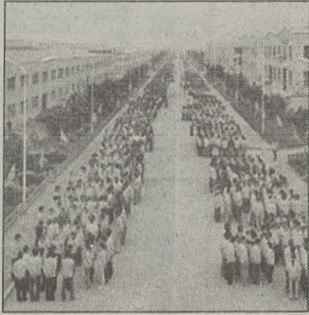
Theatre entrance on Kinau St. between Ward Ave. & Victoria St. Street parking is available. Additional parking available in the Academy Art Center parking lot on Beretania Street and during the evening at 1035 Kinau Street.

MEMBERS receive reduced rates / Call: 532-8724 to JOIN

**Doris Duke Theatre**  
AT THE ACADEMY


## Manufactured Landscapes

Director: Jennifer Baichwal Canada 2006 90 minutes  
Photographing quarries, recycling yards, factories, mines and dams, Photographer Edward Burtynsky creates stunningly - beautiful art from civilization's debris.  
September 4, 5, and 6 at 1:00 p.m. and 7:30p.m.  
September 9 and 10 at 7:30p.m.




## Hedwig and the Angry Inch

Relive a piece of history live on our stage with Otto and The 86 List as *Hedwig and the Angry Inch*. For everyone who was born on the wrong side.  
September 8 at 8:00 p.m. Admission: \$15 general, \$10 Academy Members, seniors, students, military



## Vitus


Director: Fredi M. Murer Switzerland 2007, 120minutes, Swiss German with English Subtitles  
Genius weighs heavily on a child prodigy who longs to be "normal." Kicked out of kindergarten for being too smart, Vitus is both a brilliant mathematician and a musical virtuoso.  
September 11 and 12 at 1:00 p.m. and 7:30 p.m.



HONOLULU  
**Weekly**  
Not your everyday newspaper.

Invites you and a guest to see...

FROM ACCLAIMED DIRECTOR DAVID CRONENBERG



EVERY SIN LEAVES A MARK.

VIGGO MORTENSEN NAOMI WATTS VINCENT CASSEL

## EASTERN PROMISES

For your chance to receive a complimentary advance screening pass good for two, visit our website at honoluluweekly.com and click on PERSONALS.

Screening will be held on Thursday, September 13, 7:30 PM at Dole Cannery Stadium 18, 735-B Iwilei Rd.

**EASTERN PROMISES opens September 14**

Limit one pass per person/per household, while supplies last. No purchase necessary. Employees and their agencies are not eligible. No phone calls and no walk-ins please. Envelopes will not be mailed back if not used. Seats are limited and available on a first-come, first-served basis. Pass does not guarantee seating.



## Restaurants

MALIA LEINAU

Giovanni Pastrami tries for all-American, with a streak of class

# Some of everything

KAWEHI HAUG

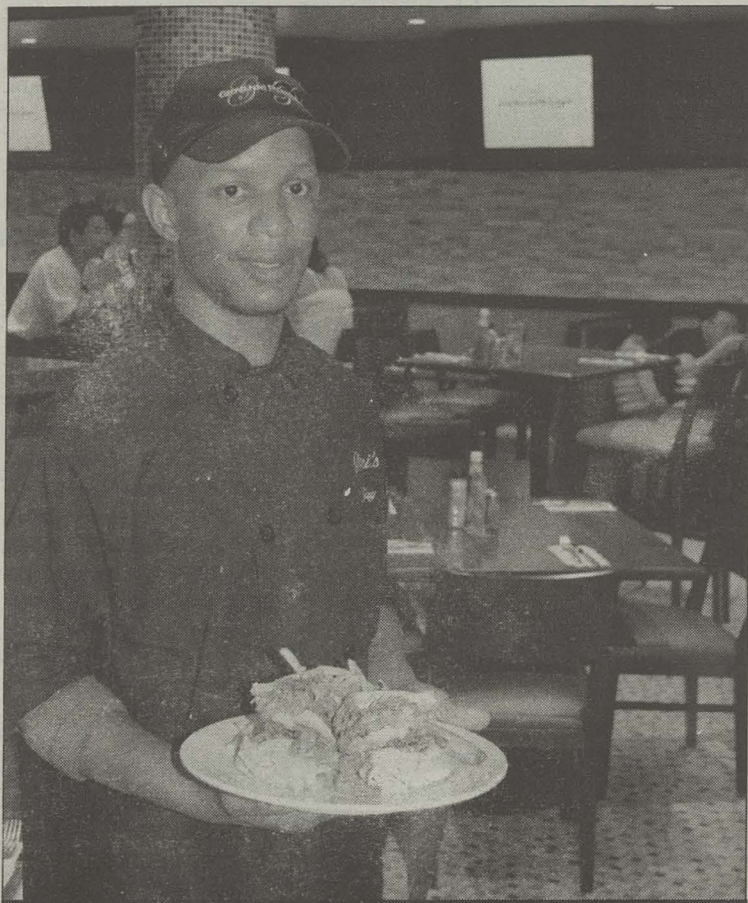
Somewhere in the blinding glare of the remade Waikiki Beach Walk, is a place that's meant to be the regular person's alternative to the Ruth's Chrisses and Alan Wongs who share the same street.

Giovanni Pastrami, "a New York style deli," that's more, well, Waikiki than New York, is the coming together of two long-time Waikiki haunts: CJ's New York Style Delicatessen and Restaurant in the Hilton Hawaiian Village and Round Table Pizza. Owner Bob Bach, who owns all three spots (he owns the 'Ohana East Hotel location of Round Table), has created a hybrid pizza-deli joint where the sandwiches are the main attraction, but the pizza—which has already made a name for itself—is the thing that rounds out a menu that can best be described as all-American sports-bar fare.

But the place, with its Peruvian glass tiles, concrete bar and golden-toned banquettes, looks more like a modern mid-scale Italian trattoria than a deli, a pizza parlor or a sports bar. So, what gives? Perhaps there's a bit of an identity crisis going on, but we suspect that it wants to be an upscale sports bar, and in that, it mostly succeeds. The 14 high-definition flat-screen televisions that hang at close intervals on all walls is a dead giveaway that this place, however shiny and uppity, wants to be your Monday-night hang-out. Table cards boast happy hour specials: free pizza when you buy \$3 Heineken—a brazen attempt at getting locals through door, because who else drinks Heineken? The servers (who, on three separate visits, were always friendly, if somewhat overwhelmed and harried) make sure to refer to the place as a sports bar, while convincing diners that Monday nights will be off the hook (our words, not theirs). But it's a hard sell. At least for sports fans who live here and can get \$7 pitchers and cheap pūpū at their favorite bar that's not in Waikiki. For the tourist who wasn't able to plan his vacation around the NFL schedule, Giovanni's is obviously the place to be on game day—it's big and comfortable, with decent food and plenty of televisions. But one gets the sense that happy tourists isn't this restaurant's only goal.

It's clear from the marketing—press releases that tout the airing of UH games, live ESPN radio broadcasts from the restaurant and "local guest appearances"—that has made its way beyond the strip into the real world, that locals are welcomed here, but will they come? Pricey food and valet parking aren't exactly a draw.

That said, there's more to the place than its television screens, and when



At Giovanni Pastrami, the signature sandwiches are a handful.

it comes to Giovanni Pastrami the restaurant, there are a few reasons to visit, the first is its roast brisket and jack cheese grilled sandwich. At \$14.95, it's hard not to give the "I could make this myself for half the price" speech, and though it might be true, you're in Waikiki, where a \$2 beach mat will set you back 10 bucks. Remind yourself that if you wanted to eat cheap, you would be at Rainbow Drive-Inn. And with that in mind, relax and indulge in the rectangular mass of melted cheese and tender meat that is the brisket sandwich. It's rich layered on rich, so eat it with alcohol (maybe it's a European myth that alcohol helps you digest fatty foods, but we'll propagate it because, well, we like alcohol). The mountain of meat and cheese, perfectly accented with green chilis between two buttery grilled pieces of light rye bread is the guiltiest pleasure Waikiki has to offer. One of them, at least. It's just a shame that same level of pleasure isn't achieved with the restaurant's signature reuben (\$14.95). It isn't bad, it's just not stellar. It lacks flavor—maybe another spoonful of the orange stuff or saltier kraut would do the trick—and if you're going to pay the price, you may as well make it worth it with one of the other sandwiches on the long menu, or substitute the big reuben with the reuben bites (\$12.95). Why four smaller versions of the same sandwich taste better is somewhat of a mystery, but we suspect that the filling to bread ratio is perfect in the tiny sandwiches that are reubens, only smaller. Baguette-sized slices of rye bread are grilled and filled with pastrami, sauerkraut and cheese and the result is the per-

fect bite.

Giovanni Pastrami takes a bit of a deli detour with a full breakfast menu that is served all day until midnight, a wise move on the part of the management who, like us, have probably been cruising Waikiki late at night, with a craving for hot cakes so strong that we might even consider trying to find parking at Eggs 'n' Things. The restaurant's signature crab cake eggs benedict (\$14.95) would have been sublime had the eggs not been overcooked, but the potential for a good twist on a classic is there. We'll chalk up to a bad day for the kitchen and try it again another time. The pancakes, at \$7.95 for three (\$8.95 for specialty cakes like banana or coconut-macadamia nut), are probably the hardest sell because you really can make these for half the price. Stay away from those and opt instead for less ubiquitous items like the latkes (\$9.95) or the cheese blintzes (\$11.95). Here, your best bet is to choose something that you can't get elsewhere—it'll make it worth the trip to the strip.

### Giovanni Pastrami

227 Lewers St. Suite 118, 923-2100

**Hours:** Daily 7AM-midnight

**Recommended:** Pastrami bites, grilled brisket and jack cheese sandwich

**Payment:** AmEx, Disc, MC, V

**Other details:** Validated valet parking (\$6 for four hours) at the Wyndham garage, entrance on Helumoa Street.

## 1132 CAFE & Catering

The downtown favorite:

**1132 Salad**  
w/ strawberries, mango, cranberries & glazed walnuts on greens.

Located inside the lobby of  
1132 Bishop Street  
(former First Hawaiian Bldg.)

m-f 7am-3pm  
ph: 521.1837 • fax: 521.1857  
www.1132cafe.com



Internet Cafe not just for geeks anymore!

- Power Point, VCD, MPEG, WMV to DVD
- Transfer Old Film to DVD
- Transfer Video Tape to DVD
- Transfer Audio Tape/LP to CD
- Convert Foreign Tapes/DVD's to American Standard
- CD/DVD Replications and more



98-064, KAM HWY, AIEA  
Across Honolulu Mitsubishi  
487-DISK  
www.808burners.com

OPEN 7 DAYS  
Late Night  
ALSO CHECK OUT OUR  
18 NETWORKED COMPUTERS FOR  
GAMING, MUSIC DOWNLOADS AND MORE

## YOU MUST SEE THE FILM "THAT HAS THE WHITE HOUSE SPOOKED."

- Sidney Blumenthal, SALON

## "PREPARE TO BE RIVETED."

NO END IN SIGHT IS WITHOUT QUESTION THE MOST IMPORTANT MOVIE YOU ARE LIKELY TO SEE THIS YEAR! - Richard Schickel, TIME

"IT IS A MIND-BLOWER. AND A KNOCKOUT. The most powerful and intelligent film I've seen this summer" - Mark Harris, ENTERTAINMENT WEEKLY

★★★★★  
- Roger Ebert, CHICAGO SUN-TIMES

★★★★★  
- Wesley Morris, BOSTON GLOBE

★★★★★  
- Mick LaSalle, SAN FRANCISCO CHRONICLE

★★★★★  
- Michael Phillips, CHICAGO TRIBUNE

## NO END IN SIGHT

THE AMERICAN OCCUPATION OF IRAQ - THE INSIDE STORY FROM THE ULTIMATE INSIDERS

WWW.NOENDINSIGHTMOVIE.COM • WWW.MAGPICTURES.COM

DOLBY DIGITAL

REPRESENTATIONAL PICTURES

The Magnolia

magnolia pictures

## NOW PLAYING!

REGAL CINEMAS  
DOLE CANNERY STADIUM 18  
(800) FANDANGO (#1718)

Presented in DOLBY DIGITAL

## EXPERIENCE A NEW DINING ADVENTURE

# 千房

CHIBO  
OKONOMIYAKI

SERVING FAMILIES  
in the Royal Hawaiian  
Shopping Center  
for 17 years

WE SPECIALIZE  
in Osaka-style  
Okonomiyaki, Yakisoba  
& Teppanyaki dishes

MONDAY-SATURDAY

Lunch: 11:30am-2pm • Dinner: 5pm-10pm  
Sundays Dinner Only

LOCATED AT  
the Royal Hawaiian Shopping Center 3rd Floor  
Free 4 Hour Parking Validation

922-9722

Honolulu Weekly restaurant reviewers dine anonymously, editorial integrity being our first priority. Reviewers may visit the establishment more than once, and any interviews with restaurant staff are conducted after the visits. We do not run photos of the reviewers, and the Weekly pays the tab. The reviews are not influenced by the purchase of advertising or other incentives.

## El Palenque Mexican Restaurant

Established 1997

Newly Remodeled

Tue-Fri 11-2 lunch 5-9 dinner  
Sat 11-9 Sun 10-3  
Closed Mondays

622-5829

Try Our Famous Handmade Corn Tortillas  
Menudo served every Sat. & Sun • BYOB

177 S. Kam Hwy Wahiawa located next to NAPA

## Plan a getaway in beautiful Volcano!

Hike in Hawaii Volcanoes National Park, golf with ducks and turkeys, and cap it all off with a relaxing dinner and overnight stay.



KILAUEA LODGE

Volcano Village • Reservations

967-7366

Dinner Nightly  
5:30 - 9:00pm

### TESTIMONIAL

Honolulu Weekly's employment section helped to attract many qualified candidates to

**CALIFORNIA PIZZA KITCHEN.**

This publication played an integral role in preparing us for our new store opening in Waikiki. Check it out!

Aloha,  
Carlos Delgado,  
Regional Director of Operations



**Dine Italian Tonight!**

Revised Menu with New Summer Specials!

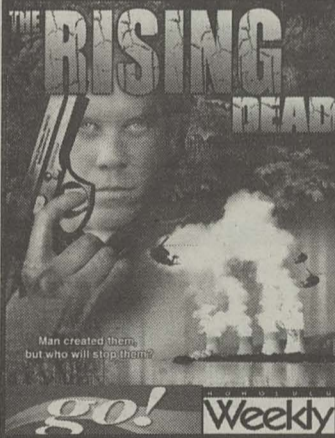
Dinner  
Sun-Thu. 5PM-9:30PM  
Fri-Sat. 5PM-10PM  
Closed Mondays

732-5999  
3605 Wai'ala'e Ave  
(Next to Coffee Talk)

## HAWAII FILMMAKER SHOWCASE

UH Manoa Spalding Auditorium

Thursday, Sept. 6 at 7 PM  
Sunday, Sept. 9 at 5 PM



**THE RISING DEAD**

\$5/\$3 UH

with Big Island Filmmakers  
The Cousins Brothers  
on Sunday

Info: 223-0130

Go, go speed racer.



WeeklyMarketplace.com

## Restaurants

### New or Noteworthy

#### American

##### Hank's Haute Dogs

324 Coral St. (532-4265). Mon.-Sat. 10AM-4PM.

A hot dog stand with class. Get a classic Chicago-style Vienna all-beef hot dog or go haute with a duck and foie gras dog.

##### Jane's Fountain

1719 Liliha St. (533-1238). Mon.-Fri. 6AM-10PM, Sat. 7AM-2:30PM, \$2.50-\$8. Cash only.

The cheeseburger deluxe is the thing to order at this retro throwback neighborhood joint. Freshly formed patties achieve a crusted char while remaining tender and so juicy that they leave a puddle on the plate.

#### Cafe & Deli

##### Daily Bread

1909 S. King St. (951-6634). Mon.-Sat. 7AM-7PM. Cash only.

With a dollop of European-style butter, something as simple as a slice of bread can be as exquisite and heartwarming as a fine chocolate truffle. Daily Bread makes a rare attempt to be a true boulangerie. Aside from baguettes, there are batards, boules, rectangular loaves of soft, sandwich bread, croissants and danishes.

##### Kalapawai Café and Deli

750 Kailua Rd. (262-3354) Daily 6:30AM-9PM, tapas after 5:30PM, \$5-\$14.95. Amex, MC, V.

It's a cute, charming and quaint surprise—part country café, part saloon-style eatery—that serves up solid picnic basket fare, from Tuscan white bean salad to hot pastrami on rye. Also on the evening menu: local fish with an ethnic flare.

##### This Is It Bakery & Deli

443 Cooke St. between Pohukaina and Auahi Sts. (597-1017). Mon.-Fri. 6AM-4PM, Sat. 7AM-3PM; This Is It Too, 1001 Bishop St and Alakea (526-2280). Mon.-Fri. 5:30AM-2:30PM. Plain bagels: 85 cents each, \$9 a dozen. AmEx, Disc, MC, V.

Bagels, sandwiches, salads and desserts are also on the menu. When it comes to bagels, well, this is it.

#### Chinese

##### Fook Lam Seafood Restaurant

Chinatown Cultural Plaza, 100 N. Beretania St. (523-9168). Daily 8AM-3PM and 5-10PM. Dim sum from \$1.90. MC, V.

The dim sum cart comes around more often than at the bigger dim sum palaces, and cheap prices mean your stomach can be as big as your eyes. Superior taro gok and shrimp gau, when hot out of the kitchen, are highlights. Augment your plate with a handful of filled look fun rolls and house specialty braised e-mein.

##### Kirin at Ala Moana Center

Ala Moana Center, street level, makai side (946-1888). Daily 10:30AM-10PM (dim sum served 10:30AM-5PM). Dim sum: \$2.75-\$3.95. Entrées: \$8.95-\$15. AmEx, Disc, JCB, MC, V.

This Kirin is the chic younger sister to the 20-year-old Kirin on Beretania. Here you order from a menu, not carts, and chef Shen King Kan (previously at Legend) updates dim sum. Try the broth-filled Shanghai juicy pork buns. For a bigger meal, there are also entrees like Peking duck and Tai Shan crab.

#### Japanese & Okinawan

##### Aki-no-no

2633 S. King St. (947-1001). Tue.-Sun. 5PM-2AM. Small dishes: \$2.50-\$9.50. Big dishes: \$9.50-\$25. AmEx, Disc, JCB, MVC, V.

Food wise, Aki-no-no is just another izakaya, but the sweet service from a small army of young women, the warm wood-and-bamboo cocoon of a room and the late-night hours make this spot worth adding to your list.

##### Dining Wataru

432 'Ena Rd. (941-4200). Tue.-Sun. 5:30-9PM. Entrées: \$7-\$20. MC, V, AmEx, JCB.

Offering an extensive menu—18 appetizers and 25 entrées—of innovative, well presented Japanese plates. The deep-fried soft-shelled crab with pepperocino sauce is a zesty choice for seafood lovers, while the simmered beef tongue in a rich demi glace will satisfy the adventurous palate.

##### Gaku Sushi Izakaya

1329 S. King St. (589-1329). Daily 5PM-11PM; dinner \$2-\$40, omakase from \$30. Disc, JCB, MC, V.

A casually festive sushi bar/izakaya hybrid. Sit at the sushi bar and choose from the catches of the day: jumbo scallops, peacock seabass, live lobster sashimi. Opt for sake and beer-friendly nibbles to share like the TNT, baked king crab or garlic ribeye and baked potato with mentaiko.

#### Mexican

##### BC Burrito

3607 Wai'ala'e Ave. (737-4700). Sun.-Thu. 10AM-9PM, Fri. & Sat. 10AM-10PM.

Burritos starting at \$4.99. MC, V. BC Burrito is no-frills fast food with plenty of choices and speedy service. Your choice of a flavored tortilla (flour, whole wheat, spinach and tomato chile) is placed in a steam press along with the cheese. Then your toppings—choice of chicken mole, chicken bay leaf, pork, beef, chile verde or veggies—are spooned on with beans, guacamole and sour cream.

##### Carnaval Las Palmas

Restaurant Row, 500 Ala Moana Blvd. (533-0129). Mon.-Fri. 10:30AM-3PM, 5-9PM, Sat. & Sun. 5-9PM. Appetizers: \$3-\$8.95. Entrées: \$7.50-\$15.95. AmEx, Disc, MC, V.

Besides tacos and echiladas, it has what-is-that dishes like carne de pernil (baked pork butt, FYI). The dishes are all well done, with fresh ingredients and lots of cilantro.

#### Southeast Asian & Indian

##### Bangkok Chef

Nu'uuanu Open Market, 1627 Nu'uuanu Ave. (585-8839). Mon.-Sat. 10AM-8:30PM. Plate lunch: \$4.95. A la carte: \$6.45-\$7.45. MC, V.

Yes, it's in a garage, but this no-frills five-table Liliha eatery is all restaurant (and market). You can order an impressive array of snapping-fresh dishes.

##### Bombay Indian Restaurant

Discovery Bay Center, 1778 Ala Moana Blvd. (942-3990). Daily 5-10PM; Entrées: \$9.95-\$21.95. JCB, MC, V.

Curry house classics are served in a pleasant, Pier 1-esque dining room. The tandoor is the basis for grilled meats, baked breads and the chef's special chicken tikka masala. The awesome rendition of gulab jamun, deceptively light spherical fried dumplings made from powdered milk and steeped in cardamom-infused honey syrup, will make you re-think Indian desserts.

##### Spices

2761 S. King St., Diamond Head of University Ave. (949-2679). Tue.-Sun. 5:30-10PM. Starters: \$4.75. Curries: \$9.45-\$11.45. JCB, MC, V.

You can get dillweed-flavored Laotian curry and Burmese khao soi noodles at this casual Pan-Southeast Asian restaurant. Chef Pony Norindr brings veteran restaurant expertise to working-class food. He uses no substitutes—the Laotian curry is packed with Lao eggplant and makheng, a pea-size eggplant cousin. The menu's pièce de résistance: housemade ice cream in flavors like lemongrass-chili and green apple-curry.

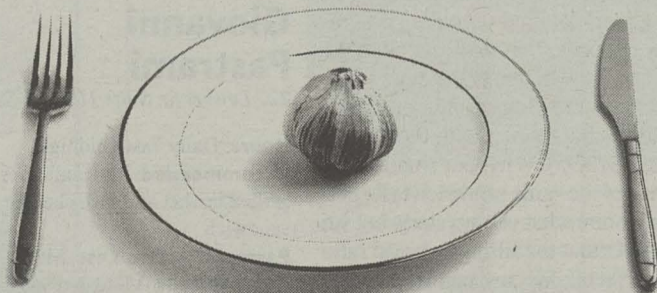
### Garlic, baby!

Auntie Pasto's kicks off its annual garlic festival tomorrow with three weeks of garlic-centric dishes served up nice and pungent at its Beretania Street and Kunia restaurants.

Open daily, both locations will showcase garlic with lunch and dinner menu items such as roasted garlic soup with goat cheese croutons; stuffed garlic bread with spicy Italian sausage, garlic, onions and bell peppers; white pizza with garlic herb schmear, caramelized onion spinach, mushroom and goat cheese; and cheeseburger meatloaf stuffed with roasted garlic cloves.

Enjoy the food. And carry mouthwash. —Kawehi Haug

Garlic Festival, Thu. 9/6-Wed. 9/26, Auntie Pasto's, 1099 S. Beretania St., 523-8855; Kunia Shopping Center in Waipahu, 680-0005



# Classified

## Career Source

### Announcements

**BUYER BEWARE**  
*Honolulu Weekly* does not warrant the fitness or merchantability of any advertised good or service, or the reliability of any advertiser. Readers are encouraged to make these determinations for themselves. We would like all of our classified readers to know that we try to screen our ads prior to publishing them. We read the ad copy for our advertisers to insure it's accuracy. We cannot, however guarantee the reliability of our advertisers. Advertisements that have been placed by the Association of Alternative Newsweeklies are indicated with the acronym, "AAN CAN" [www.aan.org](http://www.aan.org)

### Business Opportunities

**SUDDENLY SLENDER (THE BODY WRAP)**  
 Territory for sale. Territory includes Kahala, Aiea, Hahaione, Hawaii Kai & Portlock. This is a Great Business Opportunity! Training included. Call (619) 218-7853

**Wanted: Professional Cleaning Services**  
*Honolulu Weekly* is seeking weekly office cleaning services. Will exchange trade for advertising. Call 528-1475 ext. 17

1000 ENVELOPES = \$10,000. Receive \$10 for every envelope stuffed with our sales material. Guaranteed! Free information: 24 hour recording 1-800-861-9271. (AAN CAN)

\$700-\$800,000 FREE CASH GRANTS/PROGRAMS-2007! Personal bills, School, Business/Housing, Approx. \$49 billion unclaimed 2006! Almost Everyone Qualifies! Live Operators 1-800-592-0362 Ext. 235. (AAN CAN)

HOME REFUND JOBS! Earn \$3,500 - \$5,000 Weekly Processing Company Refunds Online! Guaranteed Paychecks! No Experience Needed! Positions Available Today! Register Online Now! [www.RebateWork.com](http://www.RebateWork.com) (AAN CAN)

MAKE \$150/HOUR Get Paid Cash for Your Opinion! Earn \$5 to \$75 to fill out simple surveys online. Start NOW! [www.paidchoice.com](http://www.paidchoice.com) (AAN CAN)

Movie Extras, Actors, Models! Make \$100-\$300/day. No Experience Required. Meet celebrities, Full Time/Part Time, All looks needed! Call Now! 1-800-556-6103 extension 528. (AAN CAN)

### Business Opportunities

POST OFFICE JOBS AVAILABLE. Avg. Pay \$20/hour of \$57K Annually including Federal Benefits and OT. Paid Training, Vacations. PT/FT. 1-866-616-7019 (AAN CAN)

### Business Opportunities

RELIABLE HOME TYPIST needed immediately. \$430/PT-\$825+/FT Guaranteed! Simple Data Entry. Make Own Schedule. PC Required. 1-800-757-1037. (AAN CAN)

### Career Training

**41%**  
*Honolulu Weekly* readers are 41% more likely to have enrolled in **adult education classes** in the past 12 months. We know you want to hire them! For friendly and helpful service, call the *Weekly* classifieds at 534-7024.

### Clerical / Office

**Administrative Assistant**  
 FT position with the Hawaii Bicycling League. Responsibilities include: answering phones, bookkeeping, data entry and communicating with public. 2 yrs experience, proficient in MS Office and QuickBooks. Call 735-5756 or visit [www.hbi.org](http://www.hbi.org)

### Education

**70%**  
 of *Honolulu Weekly* readers have a COLLEGE EDUCATION. Where are you spending your advertising dollars? Call *Honolulu Weekly* Classifieds 534-7024 and recruit your ideal employee today.

### General Employment

#### ACTIVIST / ORGANIZER In Hawaii

Fight for living wage jobs, civil rights, better schools. For info, visit [www.acorn.org](http://www.acorn.org) or call 1-800-796-6830 (msg line). Resume with cover letter to [recruit@acorn.org](mailto:recruit@acorn.org)

**DATA ENTRY PROCESSORS NEEDED!** Earn \$3,500-\$5,000 Weekly Working From Home! Guaranteed Paychecks! No Experience Necessary! Positions Available Today! Register Online Now! [www.BigPayWork.com](http://www.BigPayWork.com) (AAN CAN)

### General Employment

**ENTERTAINMENT LIGHTING COMPANY IS LOOKING FOR EXPERIENCED STAGE ELECTRICIANS & CDL-A DRIVERS.** F/T, P/T TEMPORARY WORK CALL 843-0383.

GOVERNMENT JOBS \$12-\$48/Hr. Full Benefits/Paid Training. Work available in areas like Homeland Security, Law Enforcement, Wildlife & More! 1-800-320-9353 x2001. (AAN CAN)

**OUTDOOR YOUTH COUNSELOR.** Do you love the outdoors and helping troubled teens? Immediate openings at Eckerd outdoor therapeutic programs in NC, TN, GA, FL, VT, NH and RI. Year-round residential position, free room & board, competitive salary/benefits. Info and apply online: [www.eckerdoutdoor.org](http://www.eckerdoutdoor.org). Or fax resume to Career Advisor/AN, 727-442-5911. EOE/DFWP (AAN CAN)

### Models Wanted

**LIPS & FACES** Will pay \$25-\$50/HR. To photograph and film your face. NO EXPERIENCE REQUIRED. Call artist Paul Kempe. 942-1771

### Healthcare

Train for a career in **MEDICAL ASSISTING**

Call today! Classes forming now! 356.5816

**Heald COLLEGE**  
 HEALTHCARE • BUSINESS • TECHNOLOGY  
[www.chooseheald.com](http://www.chooseheald.com)  
 HCMLO53007

### Nude Models Wanted

**PHOTOGRAPHY MODELS WANTED!**  
 \$100/hr. Requires tasteful nudity - NO PORN! Females 18-25. Please call 623-4574.

### Restaurant / Bar

Help wanted **Dishwasher and pantry help** day or night p/t and f/t available apply in person between 2-5 pm Chibo Restaurant Royal Hawaiian Shopping Center 2201 Kalakaua ave. A-305

**MALL CAFE** is looking for Cooks and Bartenders call 218-1333 to apply.

**\$65,846**  
**Median income of Honolulu Weekly readers**  
 \*SMS, Hawai'i Market Research  
 Want them to spend it with you?  
**Honolulu Weekly Classifieds**  
**534-7024**

### Restaurant / Bar

**Vino & Hiroshi Eurasian Tapas** at Restaurant Row is looking for kitchen help: dishwasher, line cooks and pantry. Also hiring part-time hostess. Please apply in person on Thursdays from 2-4 pm, no phone calls please.

**WAIT HELP** and Dancers wanted make \$\$\$ Daily. Hourly+ Commissions and benefits. Also hiring Bartenders and Doorman Call Mike at 847-2266

**BARTENDERS NEEDED:** Looking for part/full time bartenders. Several positions available. No experience required. With hourly wages and tips make up to \$300 per shift. Call (800) 806-0082 ext. 200. (AAN CAN)

Hire or get hired here, *Honolulu Weekly's* Career Source, or post online for FREE @ the host to make you a host: [WeeklyMarketplace.com](http://WeeklyMarketplace.com)

### Restaurant / Bar

**BARTENDERS:** Many great opportunities. Part time and full time shifts available. Make \$200-\$300 per shift. No experience is required, training provided. Call (877) 966-9266 ext. 1000. (AAN CAN)

### Retail

**Island Triathlon & Bike** The leader in high-end road and triathlon gear is seeking an exp. bicycle mechanic/service manager. Great pay, flex. schedule, & a fun work environment. Email Frank at [trybikes@hawaii.rr.com](mailto:trybikes@hawaii.rr.com)

### Work from Home

**HELP WANTED** Earn Extra income assembling CD cases from Home. Start Immediately. No Experience Necessary. 1-800-405-7619 ext.150 [www.easyworkgreatpay.com](http://www.easyworkgreatpay.com) (AAN CAN)

## General Employment

WALT DISNEY Entertainment

# AUDITIONS

*Polynesian Performers & Musical Theatre Singers & Dancers*

for shows and events at:

Walt Disney Entertainment is seeking male and female Polynesian Performers and Musical Theatre Singers and Dancers for Shows and Events at Tokyo Disney Resort, Hong Kong Disneyland, and the *Walt Disney World* Resort near Orlando, Florida.

**Kahili Suite at the Hilton Hawaiian Village**  
**2005 Kalia Road, Honolulu, Hawaii**

**Saturday, September 8, 2007**

**9 a.m.** - Female Polynesian Dancers\*: Must demonstrate four poi ball ability. Please bring your own pareau and bikini top.

**11 a.m.** - Male Polynesian Dancers\*  
 \*Audition to be presented by Kuma Hula, Sonny Ching.

**Sunday, September 9, 2007**

**9 a.m.** - Musical Theatre/Jazz Dancers: Dancers should wear comfortable dance attire and shoes. There will be a ballet combination for all dancers first. Character heels are preferred for the jazz combination.

**11 a.m.** - Musical Theatre Singers and Actors: Musical theatre singers should prepare two vocal selections of contrasting styles (best 16 bars each) and provide sheet music in the correct key. An accompanist will be provided. Actors should prepare a one-minute comedic monologue. **Special consideration for strong comedic actress to play the role of Auntie Wini. Must have good movement ability; familiarization with Polynesian dance preferred but not required. Must be a strong alto character singer.**

Applicants must be at least 18 years of age and should bring a non-returnable photo and resume. Auditions begin promptly at the time listed. Applicants should arrive early to register and may be asked to learn additional music, scripts, or a movement combination.

Please visit [www.DisneyAuditions.com](http://www.DisneyAuditions.com) for role information, descriptions, and a detailed background or call the Audition Hotline at (407) 397-3299.

EOE • Drawing Creativity from Diversity • ©Disney

### General Employment

**HONOLULU Weekly**

## Promotions Coordinator

*Honolulu Weekly* is seeking a smart, energetic, dependable and creative promotions coordinator to both oversee events and to recruit and work with our street team.

Must be able to multi-task, prioritize and work with all types of people. A sense of humor is a must. The ideal candidate will have some background in promotions and event planning.

This is a part-time position and requires availability nights and some weekends.

E-mail resume and at least 3 references to [lvc@honoluluweekly.com](mailto:lvc@honoluluweekly.com)  
 No phone calls, please.

## Classified Index

Phone: 808-534-7024  
 Fax: 808-528-3144

[classifieds@honoluluweekly.com](mailto:classifieds@honoluluweekly.com)  
 Online at [WeeklyMarketplace.com](http://WeeklyMarketplace.com)

Career Source	page 27
Adult	page 28
Music Connection	page 28
Personals	page 29
Real Estate	page 29
Services	page 29
Marketplace	page 29
Transportation	page 30
Mind Body Spirit	page 30
Back Page	page 32

## Ad Deadlines

**Line Advertising:** Copy, space reservations and payment must be submitted before Monday, 10 am.

**Display Advertising:** Copy, space reservations, art and payment must be submitted by 12 pm on the Thursday prior to publication. Call for rates.

## Placing an Ad

**By Phone:** Call the Classified Department at (808) 534-7024 Monday through Friday from 8:30 am to 5 pm.

**By Fax:** Fax your ad 24 hours a day to the Classified Department at (808) 528-3144.

**By Mail:** Mail your ad to Honolulu Weekly Classifieds, 1111 Fort Street Mall, Honolulu, HI 96813.

**By E-Mail:** Email your ad copy to [classifieds@honoluluweekly.com](mailto:classifieds@honoluluweekly.com).

**In Person:** Visit our offices Monday through Friday 9:00 am to 5 pm at 1111 Fort Street Mall, Honolulu, HI 96813.

## The 'Fine' Print

Prepayment required for all classified ads. Discounts available on extended advertising commitments. No refunds. Credit limited to reprinting one insertion. We reserve the right to edit, decline or properly classify any ad.

## Classified Line Ads

• **Private Party \$26.25**  
 (ads run for 4 weeks-25 words)

## Commercial advertising per week:

- **Real Estate \$1.60/word**  
 (Shared Rentals, Vacation Rentals, Homes for Sale)
- **Employment \$1.60/word**  
 (Business Opportunities, Help Wanted, Work from Home)
- **Mind, Body, & Spirit \$1.05/word**  
 (Health & Fitness, Massage, Spiritual, Alternative Healing)
- **Service Directory \$1.05/word**
- **Music Instruction \$1.05/word**  
 25 word minimum. Rates are per insertion.

## Frequency Discounts

The following frequency discounts for commercial advertisers are available with consecutive week schedules:

4 weeks	10%
13 weeks	15%
26 weeks	20%
52 weeks	25%

## Headlines & Enhancements

- Two words may be in caps and bold: \$2 extra for each additional bolded or capitalized word over two.
- Centering - extra \$5 per line

# The Straight Dope

By Cecil Adams

**A** speaker at a recent school board meeting claimed the vocabulary of the average American grade school student was 25,000 words in 1945 and about 10,000 today. This is pretty disturbing if true. What do you think?

—Dave Evans, Bellingham, Wash.

I'll tell you what I think: With nonsense like this spreading unchecked, we should be worried about our kids' critical reasoning, not their vocabulary. A 20 percent decline, maybe, but 60 percent? No chance.

Despite being plainly absurd, your factoid has appeared in newspapers, magazines and even science journals, each typically citing other such appearances as backup. At times it's been attributed to Gallup polls or even entomologists. I'd nearly despaired of unravelling it when I found a 1990 issue of *Harper's*. Bingo: It claimed the average written vocabulary of 6- to 14-year-olds was then 10,000 words, down from 25,000 in 1945; named as sources were a book by Henry Rinsland for the latter figure

and a report by Gary Ingersoll for the former.

Soon I found much the same information in a contemporaneous *New York Times* item. On examining the original research, however, it became clear someone had misconstrued it. Rinsland's 1945 study tabulated words used by kids in grades one through eight. But the number *Harper's* called an "average" was actually a total. Looking at 100,000 student compositions containing six million words altogether, Rinsland recorded 25,632 distinct word forms.

The 1984 monograph by Ingersoll and Carl Smith was similar, but its sample was much smaller: 5,000 students, half a million words in all. With a corpus only one-twelfth as large, of course, you'd expect a far lower count of distinct forms. Using rough estimates derived from the *American Heritage Word Frequency Book*, a 500,000-word sample should have around 60 percent fewer unique words than a six-million-word sample independent of the writers' vocabulary. As it happens, Ingersoll and Smith reported 10,265 forms—just about 60 percent fewer.

The authors never called this figure an average, nor did they match it

with Rinsland's tally of 25,000. But some magazine writer, not thinking too hard, stuck the two numbers together, and voilà: further proof of society's decline. (Contacted recently, Ingersoll recalls trying in vain to set the record straight.) It's not exactly apples and oranges, but no one paying attention could compare these two apples without noticing (a) one is 12 times bigger and (b) both of them are rutabagas.

OK, so the stat is bunk. But is the average vocabulary shrinking? Maybe; it's unclear.

The General Social Survey, conducted regularly among U.S. adults since 1972, includes a 10-question vocabulary test. Experts dispute the test's validity; that said, the high scorers through 1990 (with 6.5 correct answers) were born around 1945, the low scorers (at 5.1) around 1975. Evidence of a sizable vocabulary loss? Hang on. For one, the

test words come from a list originally compiled in the 1920s. (This longer list has been published, but the subset of words actually used is secret.) Some have doubtless grown more rarefied over time; conversely, you get no credit for knowing words coined in the last 80 years.

More important, it's hard to separate the effects of age (i.e., the subject's at the time of GSS testing), cohort (his or her birth year) and period (the year testing took place). So what looks like a cohort effect—i.e., people born in 1945 know more words than people born in 1975—may well be an age effect: We know that vocabulary knowledge peaks in middle or old age. That's why (goes the reasoning) the aging boomers of the 1945 birth cohort test better (for now) than the still-callow cohort of '75. This seems to be supported by subsequent GSS stats: Subjects born between 1969 and '76 averaged 4.9

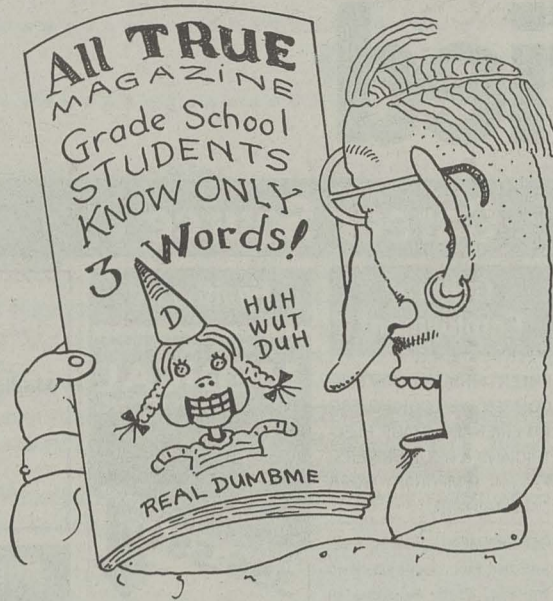


ILLUSTRATION: SLUG SIGNORINO

when tested at ages 18 to 20; others from the same group scored 5.9 a decade later.

Researchers arguing for a cohort effect don't automatically conclude worsening education is to blame. People who frequent school board meetings, showing less restraint, tend to assume schools have gone to hell since that 1945 cohort passed through. Though belief in a bygone golden age of education is widespread, there's little to support it: Federal reading-assessment scores have held steady since the first test in 1969; an Indiana study from 1976 showed virtually no change in reading skills since 1945. (Not that this is anything for schools to crow about.)

Admittedly, experts who see no cohort effect in the GSS data acknowledge some period effect—i.e., the later the vocabulary test is conducted, the lower the scores across all groups, if only slightly. Whatever it's called, researchers variously attribute this small drop to less reading overall, the dumbing down of reading material, the demise of intelligent conversation or the ascent of television.

But even if our vocabulary is dwindling, so what? English, having by some counts the largest vocabulary of any language, surely contains more words than we really need. We'd be no poorer if *desuetude*, for one, fell into a state of itself.

Comments, questions? Take it up with Cecil on the *Straight Dope Message Board*, [www.straightdope.com](http://www.straightdope.com), or write him at the Chicago Reader, 11 E. Illinois, Chicago 60611.

## Adult

### BARELY LEGAL

Hot College Student

24/7

In Call / Out Call

699-6245

### Adult

Adult advertising works! Call *Honolulu Weekly Classifieds* @ 534-7024

**TIME TO RELAX BLONDIE**  
BUSINESSMAN SPECIAL!  
9am - Midnight  
IN or OUT Calls  
497-7907

### Meet Hot Singles!

Record & Listen to personal ads **FREE!**

521-6696 code 2727

### Gay/Bi?

Meet Locals by phone!

536-6625

Access most features **FREE!** code: 8866

## Music Connection

### HAWAII MUSIC SUPPLY

BUY • SELL • TRADE

GUITARS, UKES, DRUMS, AMPS AND MORE!

Located in Wahiawa off Kam Hwy across from Zippy's

622-8000

### LP CD DVD MP3

VINYL AVENGER SEEKS YOUR OLD RECORDS...

Am currently paying \$\$\$ for Blues, Jazz, Rock, Pop, Surf, Garage, Psych, & Hawaiian - Please call 351-4398. Also buying 8 tracks, reel to reels & audio equipment.

### Musicians & Bands Wanted

**JOHNNY'S ROCK SOCIETY II** Revival seeking female singer/lead guitar/bass player/drummer/keyboards. For Disco/Rock/Top 40 variety band. Professional/non-professional okay too. Johnny 941-4306/383-3000

### Musicians & Bands Wanted

**MANAGER SEEKING** Experienced, keyboard players, Lead guitarists, singers, Bass Players, Drummers and Sound man who are looking for a band they can call home. Variety & original songs for part time gigs. Call 341-5406 or 622-5544 for info. & audition. [www.hawaiipegasis.com](http://www.hawaiipegasis.com)

### Your band sucks!

You need to form a new one. Get a drummer with rhythm and a singer with soul. You also need new band equipment. Gosh, it's just so easy when you use [WeeklyMarketplace.com](http://WeeklyMarketplace.com)

### Beautiful Oriental Girls Tokyo Relaxation

CENTURY CENTER 1750 KALAKAUA • #109 CLOSE TO WAIKIKI 946-6070

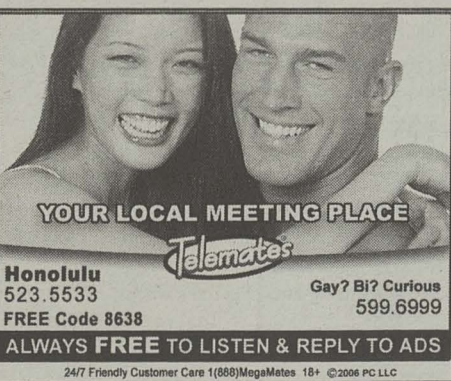


[www.AmyTaylor.net](http://www.AmyTaylor.net)  
[Amy@AmyTaylor.net](mailto:Amy@AmyTaylor.net)



ADVERTISING WORKS!

Call HONOLULU WEEKLY CLASSIFIEDS 534-7024



YOUR LOCAL MEETING PLACE

Honolulu 523.5533 FREE Code 8638

Gay? Bi? Curious 599.6999

ALWAYS FREE TO LISTEN & REPLY TO ADS

24/7 Friendly Customer Care 1(888)MegaMates 18+ ©2006 PC LLC

### Uke sale!

10% OFF GUARANTEED LOWEST PRICES!

BRING IN THIS COUPON FOR 10% OFF ANY UKULELE IN STOCK

Not valid with any other offer. Expires 9/15/08

[www.hawaiimusicupply.com](http://www.hawaiimusicupply.com)



Have You Seen It Yet?

[WeeklyMarketplace.com](http://WeeklyMarketplace.com)  
Your source for FREE Online Classifieds

Honolulu Weekly Classifieds ROCK! Want in? For innovative ad solutions, call us at 534-7024.





# Q&A

"I learned what it means to be something between a guest and a person who lives on the mainland and just takes for granted that he or she is entitled to be where they are at any given amount of time."

Neal Milner

MALIA LEINAU

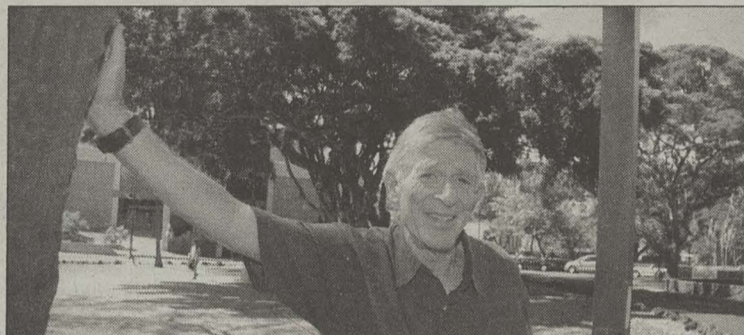
## The equalizer

### It's creativity that makes Neal Milner, head of the UH Ombuds Office, tick-on and off the job

Interview by Keoki Kerr

Neal Milner, who heads the University of Hawai'i's new Office of the Ombuds, is far from your average college official. He's a political science professor-turned-political analyst-turned actor-turned playwright-turned puppeteer-turned administrator.

A native of Milwaukee, he has three degrees from the University of Wisconsin. He joined the UH-Mānoa political science department in 1972, and since then has chaired the department and served as union negotiator, assistant dean and director of the UH Program on Conflict Resolution. Milner mainly taught courses about law and politics during his UH career. At age 66, he is no longer in the classroom because he directs a two-person staff at the university's Ombuds Office ("Ombudsman sounds sexist," he says), which opened last fall.



**You've said there's a degree of instability on campus that you don't like.**

It's a statistical minority, but you get situations where faculty members, for example, don't treat students very well—I'm not talking just about grades. It's hard at times to get people in that situation to recognize that it's a possibility what they're doing is making the student feel bad. We also get a fair amount of students who complain about their grades, and there is a process to deal with it.

**You've also been a political analyst for Honolulu newspapers and television stations. Why do you enjoy doing that?**

First of all, because I like the face time, I mean, frankly. (laughs) It's a real challenge to try to educate people in a short period of time, to quickly tell people something that they didn't know before.

**You must have gotten some weird questions from reporters over the years.**

When Linda Lingle ran for governor the first time, and the international media found out she was Jewish, I was getting calls from around the world. The Jerusalem Post wanted to find out how her stand on Israel affected her election.

**Did you set them straight?**

Oh yeah, I said, first of all, most people don't know she's Jewish. Secondly, she doesn't care. Thirdly, Israel never becomes any kind of even discussion point here. You're basically saying to them: "You've got this model of politics that's kind of east of the Mississippi. You ought to see what we eat at political rallies here and you'll see what the difference is."

**How many plays have you written?**

One and a half. (laughs) Don't get me started on that half. The completed play is called *Hovering*. It's about an elderly man and woman, both of them Jewish. It's a comedy that's about issues of death and memory. (Hawai'i Public Radio produced the play, but has yet to air it.)

**Dare I ask about the half-written play?**

To be self-reflective about it, it's character driven, and I'm not sure where it's taking me. It's about an old guy who grew up in the Midwest and then he moved to Hawai'i after he retired. I've got the guy in sufficient trouble, but it's a question about what he's going to do to get out of it.

**You also acted in this year's re-mount of Kumu Kahua's play *Kāmau*, about a young Hawaiian man torn between ties to his family and culture and his career in the visitor industry.**

I played two parts, and they both had to do with...how should we put it? Haoles with weaknesses. I play a tour company boss and a tourist from the south. Both roles have a certain kind of insensitivity for Hawaiian culture and local culture. In a very short period of time, you see there's more going on there. That's the good thing about that play, there are no easy choices. No one is 100 percent villain or hero.

**How has Hawai'i influenced your life?**

I think it changed me gradually, but in very profound sorts of ways. I learned what it means to be something between a guest and a person who lives on the mainland and just takes for granted that he or she is entitled to be where they are at any given amount of time. It translates into learning to be more quiet and more reflective and listening

**Anything else that we should know about you?**

I would love to do stand-up comedy. And I'd like to do more comedic writing, if I could.

**What's a little-known fact about Neal Milner?**

I have a collection of hand puppets. I sometimes use them for an audience of one (his wife). It's not something that you're going to keep around your ombuds office and while somebody's telling you their problems, that you're going to pull out, say a penguin and start talking in a penguin voice.

**How big is the collection?**

Probably about seven.

**Are they all animals?**

Yes they are. What do I need to do people for? I see enough people during the day!

**What does the Ombuds Office do?**

We're an informal, independent, confidential problem-solving office. We're a very low-barrier office where students, faculty or staff at UH-Mānoa can come to us with virtually any kind of issue, any kind of problem.

**What kinds of problems do you handle?**

Interpersonal stuff, harassment or discrimination, helping to untangle some complicated situation, situations where people think UHM policy has been violated, workplace disputes, bureaucratic runarounds, ethical issues, cultural misunderstandings, ways to make or seek an apology, academic freedom, housing or grade complaints.

**What kinds of problems will you not deal with?**

We don't handle anything that's already involving litigation. We don't do fact finding. Nobody appoints us to actually investigate in a formal sort of way, because we would lose our independence. We don't advocate on someone's behalf, we're more concerned about process.

**How busy is your office?**

In our first 11 months until the end of June, we handled about 323 cases. That involved things that might take an hour, to things that go on for many, many hours. About 60 percent of the complaints come from students, the other 20 percent from faculty, and the rest divided between administrators and staff.



Take your pick, sweetheart.

**TIKITIKITANGO.COM**

Where Weekly readers meet.



# FIND IT HERE Back Page

We'll sell the shirt off your back, or anything else. Call 534-7024

Creative. Visionary. Powerful. Creative. Visionary.  
**HAWAII MARKETING GROUP**  
Powerful. Since 1999. HawaiiMarketing.com

## Your milkshake not bringing the boys to the yard?

Leave the playground to the kids.  
Check out [honoluluweekly.com/personals](http://honoluluweekly.com/personals)  
Hawaii's NEWEST online personals.  
Online. Local. Personal.

Trying to get in touch with **SCOTT CLARKE**.  
This is regarding our Little Kitchens event.  
Please call *Honolulu Weekly* or come in person.  
Ask for Michelle at 528-1475 x10

Internet, E-mail, Copy, Fax, Print & more  
WikiWiki Business Center (9 am-9 pm)  
2301 Kuhio Avenue, #202 @ Waikiki  
923-9899 [wikiwikicenter.com](http://wikiwikicenter.com)

## CAREER OPPORTUNITIES

### at Honolulu Weekly

• GOT TALENT? *Honolulu Weekly* is seeking *Graphic Artist Interns*. Computer skills a must. School credit possible. Send resume to [prodjob@honoluluweekly.com](mailto:prodjob@honoluluweekly.com)

• Promotions Coordinator

*Honolulu Weekly* is seeking a smart, energetic, dependable and creative promotions coordinator to both oversee events and to recruit and work with our street team. Must be able to multi-task, prioritize and work with all types of people. A sense of humor is a must. The ideal candidate will have some background in promotions and event planning. This is a part-time position and requires availability nights and some weekends.  
E-mail resume and at least 3 references to [lvc@honoluluweekly.com](mailto:lvc@honoluluweekly.com). No phone calls, please.

GOT STICKERS? 500 full color stickers for \$139  
Custom made. [TheBumperSticker.com](http://TheBumperSticker.com)  
877 873-9626 Stick with Us!!

## Free Workshop Training

Learn how to raise private capital, understand mortgages, and create wealth through real estate.  
Friday, Sep 7, 9a-5p • Hawaii Convention Center  
To register call Jerome 954-0972 or email: [educatinginvestors@hawaiiantel.net](mailto:educatinginvestors@hawaiiantel.net)

## Tired of corporate coffee??

Drink Globally • Roast Locally

### Only at Kele's Coffee

Visit us downtown in the Pioneer Plaza Lobby  
900 Fort St. • 599-5353

**Wealth Building w/BookWise**  
[www.WinningInTheMargins.com](http://www.WinningInTheMargins.com) (Passkey = WiseOne)  
Financial Freedom Now -BookWise@hawaii.rr.com

## Support Your Local Roaster

Coffee fresh roasted on premises

### Only at Kele's Coffee

Visit us downtown in the Pioneer Plaza Lobby  
900 Fort St. • 599-5353

## PROPERTY MAINTENANCE

Gentlemen Well skilled and self motivated.  
looking for a good opportunity. Call 779-8521

## Island Triathlon & Bike

The leader in high-end road and triathlon gear is seeking an exp. bicycle mechanic/service manager. Great pay, flex. schedule, & a fun work environment. Email Frank at [trybikes@hawaii.rr.com](mailto:trybikes@hawaii.rr.com)

## Buon Amici

Great Food • Great Friends  
Join us for our NEW Summer Specials  
732-5999 • 3605 Waiialae Ave.

## BEST LOCAL BLOWN GLASS

Guaranteed best prices and selection  
PIPELINE SMOKESHOP above Magoo's 942-4700

## BackPage Rates

16 Point Bold  
\$33.75/Line/Week

12 Point Bold  
\$25/Line/Week

8 Point Regular  
\$16.75/Line/Week

Color  
\$10/Line/Week  
Centering

\$10/Line/Week

Italics

\$10/Line/Week

3 Line Minimum.

Call Honolulu Weekly Classifieds at 534-7024.

## DON'T YOU HATE THIS

Everytime you get a new job they always send you in for a urine analysis. I hate that. Anyways, Smokey's is the place for all your DETOX needs. Smokey's has it all to help you get by. Smokey's, Keeping the HI in Hawaii for 7 years 926-9099

## Vino & Hiroshi Eurasion Tapas

at Restaurant Row is HIRING kitchen help: dishwasher, line cooks and pantry. Also hiring part-time hostess. Please apply in person on Thursdays from 2-4 pm, no phone calls please.

(Ask me about solar. 224-1625)

## Real Estate Investment College

Looking for highly motivated students. 1 day Class. Sept 7 Call for details 382-6976

## HOSPITALITY & TOURISM

Train for a career in Hospitality & Tourism. Classes forming now! Call Today!

## HEALD COLLEGE

808-275-3959 • [www.chooseheald.com](http://www.chooseheald.com)

## VIP YACHT PARTY

Every Friday Night + The Circus  
8:45pm on the Makani / \$65 per person 21+  
The Ultimate Party Package 753-4970

## THE CIRCUS NIGHTCLUB

\$1 Wells & Drafts every Friday  
Night 21+  
At Cirque Hawaii 325 Seaside Ave 753-4970

## WORK FROM THE BEACH!

Start your own Business NOW!  
[www.PJKLifestyles.com](http://www.PJKLifestyles.com) or 505-896-0957

## Single? Professional?

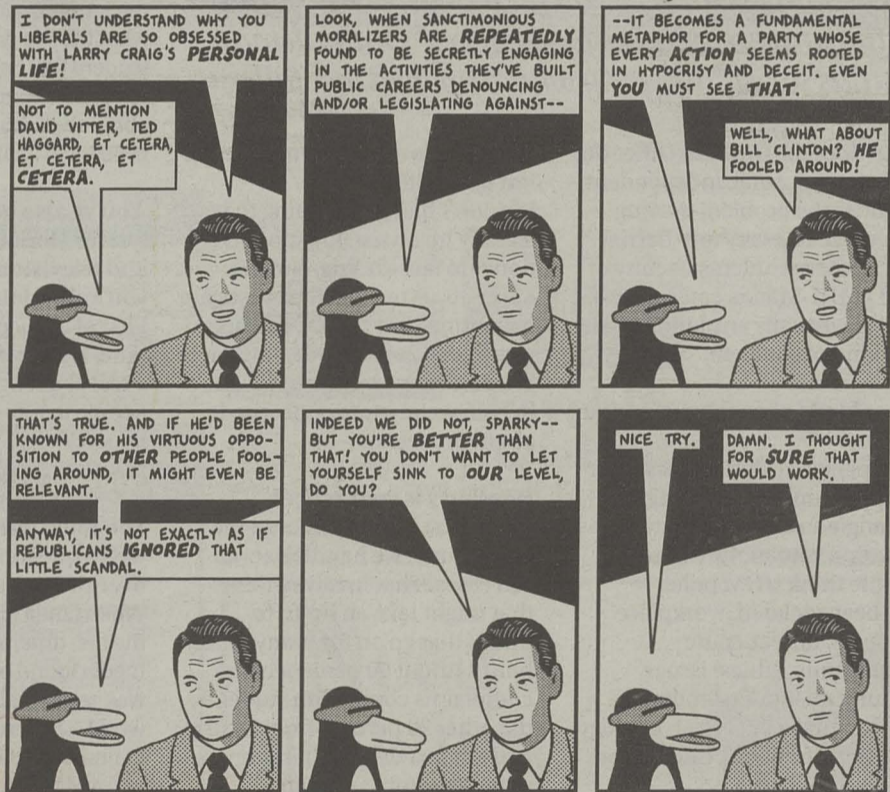
Meet Your match! Introductions, Group Dinners, Weekly Events, Coaching and Makeovers.  
[www.PartyOfSixHawaii.com](http://www.PartyOfSixHawaii.com) or call 536-4229

## Real Estate Marketplace CRAMPED?

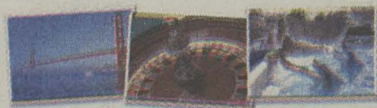
Acres of ads are ONLINE at  
[WeeklyMarketplace.com](http://WeeklyMarketplace.com)  
New ads every day at  
[WeeklyMarketplace.com](http://WeeklyMarketplace.com)  
Real Estate only at  
[WeeklyMarketplace.com](http://WeeklyMarketplace.com)

## THIS MODERN WORLD

by TOM TOMORROW



*Mainland USA*  
**Pleasant Holidays**  
Call **800-448-3333**  
or visit us at [PleasantHolidays.com](http://PleasantHolidays.com)  
OR SEE YOUR TRAVEL PROFESSIONAL



MAINLAND getaways... AIR, HOTEL & MORE!

San Francisco INCLUDES TRANSFERS . . . 3 NIGHTS from \$475

Anaheim INCLUDES CAR . . . . . 3 NIGHTS from \$450

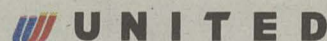
Los Angeles INCLUDES CAR . . . . . 3 NIGHTS from \$466

Reno INCLUDES TRANSFERS . . . . . 3 NIGHTS from \$755

Las Vegas INCLUDES TRANSFERS . . . 3 NIGHTS from \$637

San Diego INCLUDES TRANSFERS . . . 3 NIGHTS from \$604

Departures from HNL. Rates shown are per person, based on double occupancy for select travel 11/20/07. Call for other travel dates. Rates & inclusions are subject to change, holiday/seasonal supplements, blackout dates, availability & any restrictions. Rates shown include Alaska/Hawaii ticket tax but do not include Passenger Facility Charges up to \$18, transportation tax of \$15, per segment tax of \$3.40, or September 11th Security Fee of \$2.50 per enplanement (up to a maximum of \$5 per one-way or \$10 per round-trip). CST# 1007939-10. TAR# 5308.



No stay, try go!

**go!**

\$39\* ONE-WAY INTERISLAND

**Hawaii's Low Fare Airline**

[www.iflygo.com](http://www.iflygo.com) 1-888-IFLYGO2

\* Seats are limited and fares may not be available on all flights. Changes can be made prior to scheduled departure for a fee of \$20 per person plus any applicable difference in airfare. Fares displayed do not include September 11th Security Fees of up to \$5 each way and a Federal Segment Excise Tax of \$3.40 per segment. A segment is defined as one takeoff and one landing. All taxes and fees must be paid at the time of purchase. All flights operated by Mesa Airlines doing business as go! and Mokulele Airlines doing business as go! Express. Fares are valid for flights to or from Honolulu. One-way fares are available ten months in advance of travel date. Other restrictions may apply.