

# Honolulu Weekly

December 21-27, 2011 • Volume 21 Number 51 • www.HonoluluWeekly.com

APPAREL  
GIFT GUIDE  
PAGE 12



## The Pupule Express

BILL MAHER 5 UGLY SWEATER CONTEST 8 HALEIWA GUIDE 23

**BILL MAHER**  
**NEW YEARS EVE!**  
**LIVE IN HAWAII**  
**RICK BARTALINI PRESENTS**  
**Waikiki Shell**  
**One Night Only**  
**DECEMBER 31**  
**7:30PM**

December 31

**\$29.50 Lawn • \$49.50 • \$59.50 • \$79.50**

BILL MAHER IN ASSOCIATION WITH RICK BARTALINI PRESENTS - AN EVENING WITH BILL MAHER LIVE IN HAWAII  
 NEAL S. BLAISDELL AND THE WAIKIKI SHELL 2805 MONSARRAT AV. HONOLULU - HI

RICK BARTALINI PRESENTS RBP CONCERTS.COM BILL MAHER.COM ticketmaster

**THE SURF -N- SEA ANNIVERSARY BLOW-OUT SALE! EVERY ITEM ON SALE!**

Surfboards, Bodyboards, Stand-Up Paddleboards, Dive Gear, Clothing, Sunglasses, Leashes, Wetsuits, Watches, Shorts, Trunks, Footwear, Skateboards, T-Shirts, Jewelry, Fins, Racks, Boardbags, Snorkels, Masks, Spears, Hats, Backpacks, and ...  
**MUCH MUCH MORE!! EVERY ITEM IN THE STORE IS SALE PRICED!**

**Hawaii's Ocean Sports Headquarters!**  
 DAILY SURFING AND STAND-UP PADDLING LESSONS, INTRO DIVES (NO EXPERIENCE NECESSARY)  
 SCUBA & SNORKEL GEAR, SHARK TOURS, 3 DAY PADI CERTIFICATION  
 HAWAII'S LARGEST SELECTION OF NEW & USED SURFBOARDS, WORLDWIDE SHIPPING AVAILABLE  
 RENTAL SURFBOARDS & BODYBOARDS, SURFBOARD PACKAGING & 24 HR. DING REPAIR

**637 - DIVE (3183)** **637 - SURF (7873)**

62-535 KAM HWY HALEIWA, HI 96712 • WWW.SURFNSEA.COM

**THIS IS HOW YOU GET THERE. FIND THE OCEAN AT SURF N SEA!**

**elton john & HIS BAND**

davey johnstone bob birch john mahon kim bullard nigel olsson

**friday JANUARY 6 • 8PM**  
**saturday JANUARY 7 • 8PM**

**BLAISDELL ARENA**

[ticketmaster.com](http://ticketmaster.com)

ride the rocket  
[eltonjohn.com](http://eltonjohn.com)

*all the hits*

**Two UH Full Scholarships are available for Fall 2012, Undergraduate or Graduate, to Study Childhood Obesity**

The Children's Healthy Living Program, based at UH, Manoa, is offering 2 full scholarships to qualified undergraduate/graduate students from Hawaii who are passionate about preventing childhood obesity.

Applications due December 31, 2011.

Children's Healthy Living Program for Remote, Underserved Minority Populations in the Pacific Region  
 1955 East West Road  
 Honolulu, Hawaii 96822  
 808-956-8337

Please visit <http://www.chl-pacific.org/program-overview> for more information, the application and how to apply.

For questions, email:  
[CHLhi@hawaii.edu](mailto:CHLhi@hawaii.edu)

## Hawaiian style

[Dec. 14: "Beach Memorials"] Do what you want to on public lands. The state has neither the guts or money to stop you. Tragedy of the commons, Hawai'i style.

"oldsurfa" via  
HonoluluWeekly.com

## Public, not private

[Dec. 14: "Beach Memorials"] Beachside memorials on public land are illegal and should be removed. It's that simple. Thank you to the government officials who are working on enforcing the law.

The ocean coastline is for everybody to enjoy. These illegal memorials negatively impact the environment and put a family's personal loss onto the community. When I go to the beach, I want to enjoy the ocean. I don't want to feel like I am in a memorial park and that is what's happening.

The families who put up these illegal memorials should remember their loved ones went

to these places to enjoy their natural beauty and they weren't surrounded by illegal memorials concreted in the tide pools and built along the coastline. It takes away from the beauty of the ocean experience. I wonder if this is how they would really want to be remembered?

"Oshen73" via  
HonoluluWeekly.com

## Occupy football

The madness of "more" — "the ugliness of overdevelopment" might come to an unexpected halt. A powerful shake-quake could turn our little island into a Haiti with a million or so inhabitants waiting to an armada of rescue ships. Meanwhile, we're told we could all "go up to Wahiawā for stored disaster relief food." And how will we get there? Like Napoleon's army retreating from Moscow!

And as things are getting more and more absurd, how about diverting a few "Occupy Wall Street" people to "Occupy Football"? Do those coaches teach our kids to survive? Do they teach them to save any species, any sinking ships or the planet? Unlikely. But they emote like the Disciple and the media gives them top billing.

Rosemarie H. Tucker  
Honolulu

## Samoan grieving

[Dec. 14: "Beach Memorials"] I recently came across the memorials at Kāne'ilio and was touched by them. Most were unobtrusive. As long as they don't pose a hazard or mar the vista, where's the harm?

Legislation won't stop it. Nature will eventually deal with them in her own way. Perhaps the need for memorials of any sort, beachfront, roadside, vehicle windows, etc., is filling a human longing of recognition, remembrance and connection.

My loved one is gone but is still loved and never forgotten. The modern world warehouses its elderly in nursing homes and its dead in cemeteries. Ancient cultures often buried their dead closer to home.

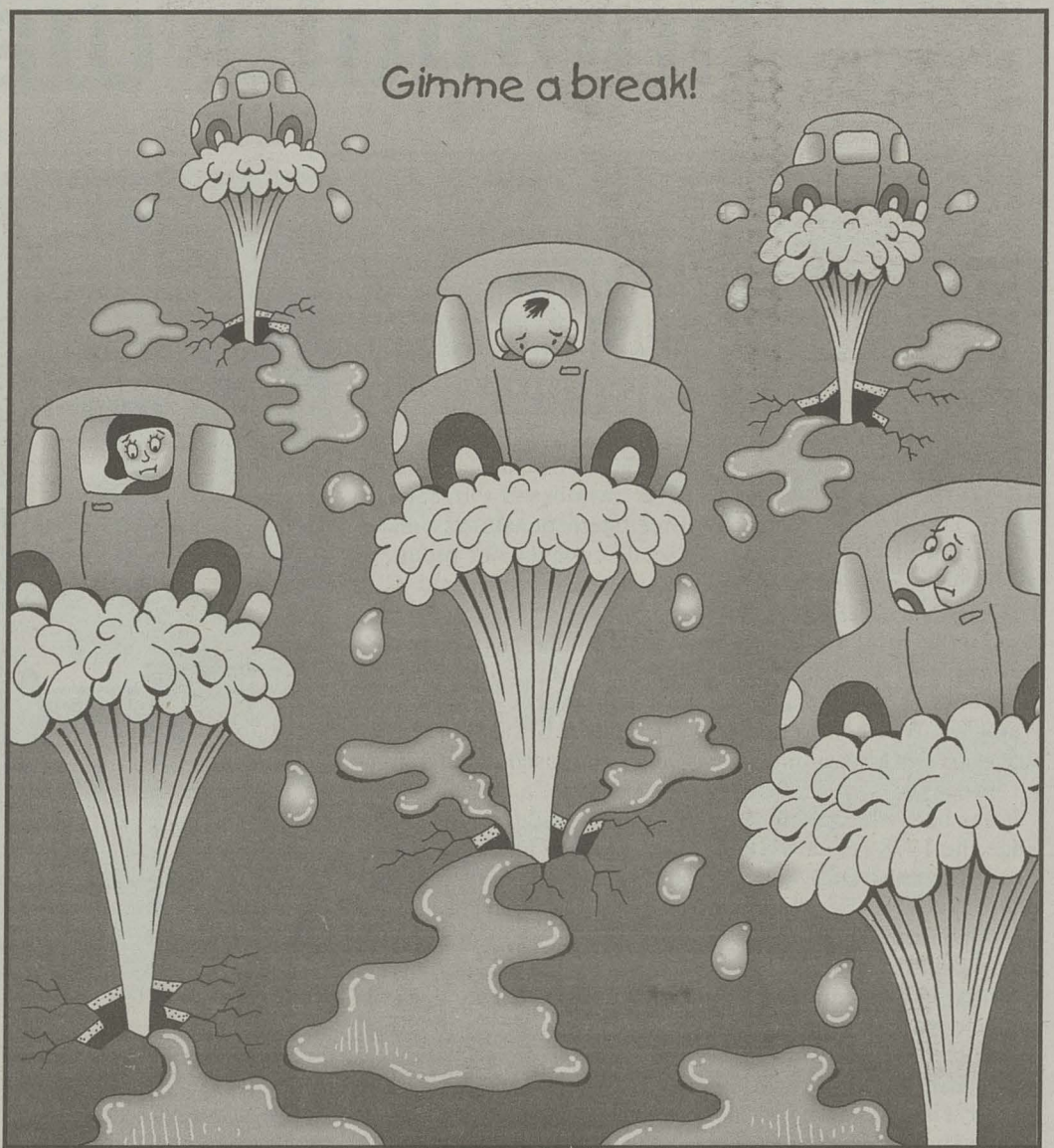
In Samoa, family graves are prominently placed in the front yards. A cemetery is for papalangi, foreigners with no family or aiga. Ancient Hawaiians believed their ancestors' akua was retained in their bones, hence their concern over treatment of nā iwi. Some cultures bury their dead in the dirt floors of their homes or display their mummified remains on special occasions.

Just because the dead are out of our sight does not mean their loved ones don't feel a need to commune with them in places that are familiar or evoke memories, both painful and happy.

Jane H. via  
HonoluluWeekly.com

## We the people

Things about Tom [Berg] being drunk at APEC is just absurd [Dec. 14: "The Conformist"]. If that was true, why on earth did the cops let him drive. That would be the negligence of HPD.



COPYRIGHT JOHN S. PRITCHETT

So, with this said, [Berg] was not drunk. The officer that was video taping and the female officer in the video would have been fired on the spot for putting the public in danger, and the host of the party would be in trouble. That is all a smear and lies because APEC needed some excuse for not doing its job or because one of its own is in trouble for the shooting incident in Waikīkī.

I am proud that Berg stood up to [APEC officials](sober) and showed them we (locals) are not pushovers, and we will stand for our rights. Let me tell you, I met Tom Berg in person, he's a cool guy and he does speak loudly. He reminds me of my Italian side of the family: They all talk loud, have unreal facial expressions and that's our culture. Now, I am wondering if Tom Berg is Italian. If he is, Kuuipo you are right, he is like Frank Fasi and he was Italian. Tom Berg can be the next Mayor or Governor, he will do what is right for the people... WE THE PEOPLE NEED TOM BERG. Semper Fi.

"Baba" via  
HonoluluWeekly.com

We love to get letters and print as many as space allows. Letters are often edited for length and clarity. Letters should be signed with the writer's full name and their town or city and state, as well as phone number for confirmation only.

WRITE TO:  
Letters to the Editor,  
Honolulu Weekly, 1111 Fort Street Mall, Honolulu, HI, 96813. Fax to 528-3144 or e-mail to editorial@honoluluweekly.com.

## Honolulu Weekly

Vol. 21, No. 51  
December 21-27, 2011

### Our Mission:

To create a high-quality, profitable weekly O'ahu newspaper that provides its readers with independent, entertaining, provocative coverage examining local issues, arts and events in a visually striking format.

**Publisher** Laurie V. Carlson  
**Editor** Mindy Pennybacker  
**Managing Editor** Shantel Grace  
**Calendar Editor** Matthew DeKneef  
**Film Critic** Bob Green  
**Copy Editor** Ashley L. Angello  
**Contributing Writers** Noelani Anderson, Joan Conrow, David A.M. Goldberg, Anna Harmon, Tiffany Hervey, Matthew Kain, Maria Kanai, Kevin O'Leary, Ryan Senaga, Kalani Wilhelm, Christa Wittmier  
**Features Writer** Niko Rivas  
**Editorial Interns** Tracey Nakama, Michael Nakasone  
**Director of New Media & Production** Joe Edmon  
**Production Assistant** Hideyo Kusano  
**Production Intern** Mary Pigao  
**Cartoonists & Illustrators** John Pritchett, Slug Signorino, Tom Tomorrow

**Cover Art** by John Pritchett, reprinted from the Weekly's first rail cover story Sept. 25, 1991. Colorized by artist.

**Sales & Marketing Manager** Laurie V. Carlson

**Senior Account Executive** Colleen Knudsen

**Distribution Manager** Kate Paine

**Bookkeepers** Pamela Farris, Bob Brooks

ISSN #1057-414X

Entire contents © 2011 by Honolulu Weekly Inc. All rights reserved.

Manuscripts should be accompanied by a self-addressed stamped envelope. Honolulu Weekly assumes no responsibility for unsolicited material. First copy of Honolulu Weekly is free at the newsstand, limited to one copy per reader. Subsequent copies are \$1 each and may be purchased at our office. No person may, without permission of Honolulu Weekly, take more than one copy of each Honolulu Weekly issue. It is unlawful to remove copies in bulk; violators will be prosecuted to the full extent of the law.

**A.A.N.** Member of the Association of Alternative Newsweeklies

www.honoluluweekly.com

Phone: (808) 528-1475

Fax: (808) 528-3144

Classifieds: (808) 528-1475 x 48

1111 Fort St. Mall, Honolulu, HI 96813

editorial@honoluluweekly.com

sales@honoluluweekly.com

classifieds@honoluluweekly.com

Printed on recycled newsprint with soy-based inks

**INDEPENDENT, LOCALLY OWNED**

KPOI 105.9 PRESENTS

SPONSORED BY KAUA'I Printing Solutions Maui Longboards

THE LIVE COMEDY SHOW  
FROM: JACKASS

**STEVE-O**

ENTIRELY TOO MUCH INFORMATION TOUR

THURS JANUARY 19  
HAWAIIAN BRIANS

THURS FEBRUARY 16  
HAWAIIAN BRIANS SHOWROOM

REGGAE AMBASSADORS FROM JAMAICA  
**THIRD WORLD**  
OPENING GUESTS  
PAULA FUGA & MIKE LOVE

Tix on sale Jan. 1 - available at hightideconcerts.net and groovetickets.com

# honolulu diary



## STATE OF OHA

**T**his is my home, this is my native land—I have no other place to go,” said former Gov. John Waihe‘e, keynote speaker for the Dec. 14 State of the Office of Hawaiian Affairs (OHA) meeting at St. Andrew’s Cathedral, to a crowd of 400, including state lawmakers and Lt. Gov. Brian Schatz. “We seem so focused on securing somebody’s recognition, we are letting these entities define us,” said Waihe‘e. “We need to recognize ourselves in defining who we are.”

It has been almost 45 years since the 1978 Hawai‘i State Constitutional Convention, where then-delegate Waihe‘e was instrumental in helping to establish OHA. More recently, in September 2011, Waihe‘e was appointed chair of the Native Hawaiian Roll Commission, which has been tasked with preparing a role of Hawaiians to participate in the organization of a Native Hawaiian government entity, so long as they meet certain requirements as defined by Act 195, signed by Gov. Abercrombie in July.

In addition to pursuing federal recognition, OHA is currently conducting due diligence on the transfer of 10 land parcels in Kaka‘ako Makai offered by the state as a settlement for ceded land receipts. The settlement would resolve \$200 million in revenue owed to OHA out of a public land trust from November 1978 to July of 2012.

OHA has been holding public meetings throughout the Islands to gauge opinions and introduce dialogue about what to use the lands for should they decide to accept the settlement. They are also accepting comments via email at [kakaako.comments@oha.org](mailto:kakaako.comments@oha.org)

—Matthew Kain

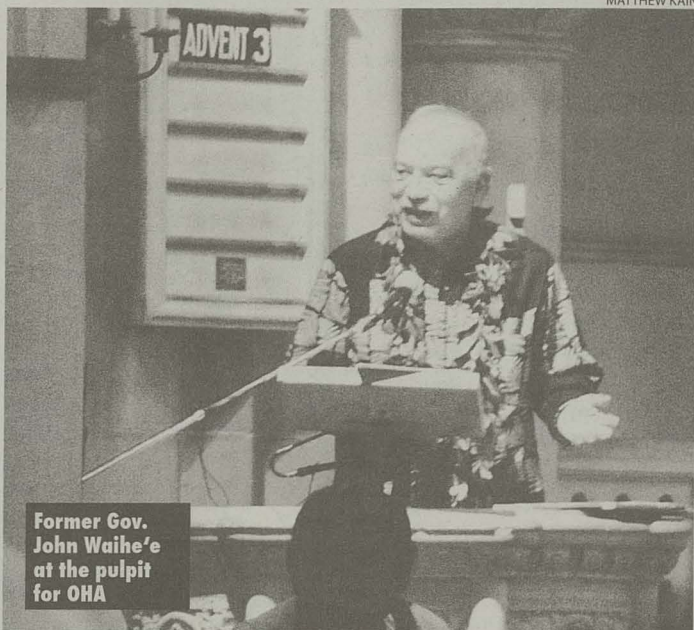
## MYSTERY DUST & GMO MISTRUST

**A** group of 150 Waimea, Kaua‘i, residents is suing Iowa-based Pioneer Hi-Bred International Inc., a major “seed” company, or producer of genetically engineered (GE) crops, over alleged pesticide-laden dust that has been blowing onto their properties for over a decade.

Pioneer, a subsidiary of Delaware-based chemical giant DuPont Co., develops GE seed and produces corn, soybeans, wheat, alfalfa, sorghum and sunflowers among its key crops. According to the lawsuit, filed last week in 5th Circuit Court, Pioneer uses dangerous pesticides during open air testing of genetically modified (GM) crops without controlling airborne pollutants as required by state and county law.

Residents say they want to know what chemicals are being used, since the dust in their homes and on their cars, streets and buildings is visibly noticeable. GE crops seem to go hand in hand with increased use of pesticides. Charles Benbrook, chief scientist at the Organic Center in Boulder, Colorado, has released a study that explored the impact of GE corn, soybean and cotton on pesticide use in the US, drawing principally on data from the USDA. The study found that GE crops have been responsible for an increase of 383 million pounds of herbicide use in the US during the first 13 years of their commercial use, which ranges from 1996 to 2008.

Public interest environmental lawyer Paul Achitoff of Earthjustice, who has been litigating against the USDA and Monsanto in Hawai‘i and elsewhere for the past eight years, gives alfalfa as an example: “A majority of conventional alfalfa acreage has been grown with-



Former Gov. John Waihe‘e at the pulpit for OHA

out the use of any herbicides,” Achitoff explains. “Alfalfa is grown on 20 million acres nationally—our fourth largest crop. With the introduction of [GE] Roundup Ready alfalfa, millions of acres that have never been exposed to herbicides are now sprayed up to four times per year with Roundup.”

The suit seeks accountability and transparency from Pioneer on what the dust is, but will not address health impacts. Nor does it specify a monetary figure, but the attorneys told the media it would be a substantial amount to address the diminished values of more than 100 homes.

—Tiffany Hervey

## KOLOA EVICTIONS

**G**rove Farm Co., owned by the family of AOL founder Steve Case, has issued eviction notices to 13 families living in a plantation camp in Koloa, where sugar got its start in Hawai‘i.

The evictions apply to multi-generational families, as well as senior citizens who’ve spent their entire lives in the century-old plantation camp. The tenants, who have been ordered to leave by March 8, 2012, called a community meeting on Dec. 15 to urge that the landowner reconsider.

“What you’re doing is destroying my childhood, the place that made me what I am today,” said Kepa Kruse, a 2011 Nā Hōkū Hanohano award-winning musician and actor who grew up in the camp. His father, John Kruse, still lives there.

Grove Farm plans to build 50 modular homes imported from China on the 24-acre site. The two- and three-bedroom houses, ranging in size from 800 to 1,200 square feet, will tentatively be priced from \$230,000 to \$485,000.

David Hinazumi, Grove Farm vice president, told those attending the meeting that the entire project satisfies the county’s guidelines for affordable housing. Hinazumi promised that Koloa Camp residents

and their families and friends would be given first priority.

But residents said they could not afford to buy at those prices. “How does a 70-year-old person qualify for a 30-year mortgage?” Kruse asked.

The Koloa community has experienced rapid changes over the past decade as the nearby Po‘ipū resort area expanded and Alexander & Baldwin began work on its 1,045-acre Kukuiula vacation housing and golf course project. Many at the meeting expressed fears that locals are being economically displaced and the historic town is losing its character.

“You’re taking Koloa out of Koloa,” one resident said.

Community members also said that, in the past, residents were evicted and old monkey pod trees cut down to make way for commercial and residential developments that never materialized. But Hinazumi replied that the company feels confident that it will be able to begin site work once residents have moved out in mid-March. The project calls for using some 8,000 cubic yards of fill to elevate a section of the parcel that lies in a flood zone.

“We feel the timing is right,” said Keith Yap, the company’s director of finance. “We could end up where you guys can’t buy it, where no one could buy it, but we’re committed to building housing.”

Others asked that Grove Farm, which owns some 40,000 acres on Kaua‘i, build elsewhere. But Hinazumi said the company wants to maximize density on the only parcel it owns in Koloa town as a way of “avoiding sprawl.”

—Joan Conrow

## RAIL TRIAL ROLLS ON

**T**he City Council has authorized \$600,000 in taxpayer money for attorney fees associated with the federal court case in which the City and County of Honolulu, the US Department of Transportation and Federal Transit Authority (FTA) are defendants. The elevated rail system

## QUOTE

“I think it’s going to create all kinds of demand. People are going to want to come here when they see the president sunning and funning in Hawai‘i.”

Former Mayor Mufi Hannemann

[huffingtonpost.com](http://huffingtonpost.com)

## FACTOID

\$260,000

Local taxpayer cost of President Obama’s stay in Kailua over Christmas

[HawaiiReporter.com](http://HawaiiReporter.com)

the city is defending, however, might be one that many taxpayers may not even want.

The plaintiffs are paying for legal fees themselves and through donations. They say that the city did not consider rapid transit alternatives, and that a Supplementary Environmental Impact Statement (SEIS) should be done. Rail opponents have enlisted the costly services of attorney Nick Yost, arguably the best environmental lawyer in the nation.

Last month, defendants tried to have four of the eight plaintiffs dismissed from the trial, citing their failure to participate in the initial administrative review process. Acting Judge A. Wallace Tashima, a US Circuit Court of Appeals justice from California who is hearing the case from which all Hawai‘i district court justices have recused themselves, denied the motion on Dec. 12. The City Department of Corporation Counsel (CDCC) issued a statement that same day expressing their intent to renew the motion once the administrative record has been compiled and submitted for examination in January.

Are the defendants using the motions as delay tactics on the taxpayers’ dime? The CDCC claims it was trying to “streamline the case,” but whether or not the plaintiffs in question are dismissed, the trial will proceed.

Meanwhile, preliminary work on the rail system has already begun in the form of archaeological surveys, soil testing and utility relocation. On Nov. 29, Honolulu Authority for Rapid Transit (HART) signed a \$1.4 billion core systems contract with Ansaldo Honolulu JV which includes the design, construction, delivery and maintenance of the whole system. According to poll results printed in the *Star Advertiser* two days later, 69 percent of the 1,200 readers who voted said “Bad move.”

—M.K.

**naish HAWAII**

**GIFT CERTIFICATES AVAILABLE**

155 C Hamakua Dr., Kailua, 262-6068 [www.naish.com](http://www.naish.com)

# Q&A

**Bill Maher** "I would say if Newt Gingrich gets elected president, I'm going to take a very serious look at the Mayan calendar."

COURTESY RICK BARTALINI

## Working Overtime

Matthew Kain

For decades Bill Maher has pushed the boundaries of political satire with TV shows like "Politically Incorrect" and his current "Real Time" on HBO. Maher is also a bestselling author, his newest book, *The New New Rules: A Funny Look at How Everybody but Me Has Their Head Up Their Ass*. The Weekly caught up with him via the phone to talk about his New Year's Eve Honolulu performance, the world ending in 2012 and, of course, politics.



Bill Maher vs the Wingnut of the week...

### Where you calling from today, LA?

Yep. Right here at home in LA. It's crummy weather, so it's making me ever more anxious to get to Hawai'i. It's ok though, it gives me more time to learn my basic phrases in Hawaiian that I'm trying to master before I get there.

### This is your first gig in Hawai'i, right? Of all places, why did you choose Honolulu for a New Year's show?

Well come on, that's what we call a no-brainer in show business. Where would you rather be on New Year's, Hawai'i or Pittsburgh?

I've been asking my agents for years to make this happen. I finally kind of put my foot down and said "Either book me in Hawai'i this year, or I'm hiring someone else." When they finally did it, it turned out it wasn't that hard to do, which is what I kept saying. I said, "There are a lot of smart people in Hawai'i; it's a state now; they get the newspaper; they watch television; I think they'd really like a show like this."

### Being as non-religious as you are, do you celebrate Christmas at all?

Well, I certainly don't celebrate it as a religious holiday, but I'm also not down with the hardcore atheists who say we shouldn't call it Christmas. That's so silly. First of all, it's a national holiday. Second of all, I have too many great memories of Christmas. I was a kid once. Christmas for me is my family; we have all those great memories of sitting home and playing our Robert Goulet Christmas records. No one is going to take that away from me because it uses the word Christ in the name, that's silly.

### Do you have any New Year's resolutions?

My resolution this year is to do the resolution I made in 1996, which I still have

not gotten around to.

### So your track record of fulfilling resolutions isn't good?

I think when you get to a certain age you just stop making them because you realize that life is really about evolution. It's certainly not about the fact that when the calendar turns from Dec. 31 to Jan. 1 you're going to somehow be a whole new person.

### Are you worried about any ancient prophecies coming true in 2012?

[Laughs] You mean the Mayan calendar?

### That's the one I'm referring to...

Well, I would say if Newt Gingrich gets elected president, I'm going to take a very serious look at the Mayan calendar.

### [Laughs] On that subject, do you have a prediction on who will be the next GOP presidential nominee?

One of the fascinating things about doing my standup act all year long was that almost every week I had to write a whole new act because it changed so quickly. One week, it was Donald Trump who was getting all the headlines. The next week it was Michelle Bachmann. Then it was Rick Perry, and then it was Herman Cain... I never thought Newt Gingrich would come from the back of the pack to lead the way, so I am not going to be making predictions.

I've been saying for the longest time that it was Mitt Romney's nomination. I thought it was a done deal, now I don't know. This Republican electorate is so cuckoo that they could just nominate a relic from the nineties like Newt Gingrich. Someone with the moral compass of an opportunistic infection could wind up leading the Republican Party, so I'm out of the predicting business at this point.

### You have been a supporter of Obama for the most part. Wouldn't you like to see him up against Newt Gingrich? Doesn't Obama seem like a shoo-in for reelection up against Gingrich?

I would say yes, except that when the economy is in the state that the economy is in—which is not Obama's fault, but people have very short memories—when unemployment is above 9 percent, it is always possible for the party out of power to win the election. So it scares me very much to think that Newt Gingrich might be the beneficiary of that bad economy. That would be a disaster. I'm not a big fan of Mitt Romney, but at least he eats with a knife and fork! He's all that stands between us and the rise of the apes. When it comes to the Republican nomination, I am definitely routing for Mitt Romney to get it.

### But aren't you worried that Romney has an actual chance of beating Obama?

It's too risky in a bad economy to have the Republican nominee be someone like Newt Gingrich, who is truly dangerous. I do not think that Mitt Romney is dangerous. He's actually a very reasonable, business-type, old-school Republican—not what my preference would be for running this country, but at least it won't destroy this country completely. Newt Gingrich? I don't know what he would do, but I sure don't want his finger on the nuclear button. Actual newts are not as slimy as this guy!

### I'm looking forward to your New Year's Eve show at the Waikiki Shell...

You're going to really like it. Bring your ass, you'll laugh it off.

Waikiki Shell, 2805 Monsarrat Ave., Sat., 12/31, 7:30PM, Tickets start at \$29.50, 768-5400

## Aisen Shiatsu School



Licensed by Dept. of Education  
Established 1977

### Classes for Professional Shiatsu Therapists

1314 S. King St., 601  
596-7354  
aisenshiatsu.com

## Eating Problems?

Starving, eating out of control, binging & purging?

NOW ACCEPTING KAISER

You're not alone ... We can help.



'AI PONO  
540-1001

1188 Bishop St. Honolulu, HI  
www.aipono.com  
HMSA & other insurance accepted

## SHIP TO HAWAI'I



YES, you can ship it to Hawai'i!

- Special 1 month \$7 membership for air freight service only
- Great for Christmas shopping
- No package too big or too small

WWW.SHIPTOHAWAII.COM • 866-226-6454

## Japanese? Caucasian?

Generations of people have helped test investigational medications by participating in clinical research studies. You could help too.

To qualify for research study 8240-537 you must be:

- 1st or 2nd generation Japanese adult
- or a Caucasian adult
- Healthy age 18-65
- Light smoker or non-smoker
- Willing to stay at Covance for two overnight stays of 3 days/2 nights and make 13 outpatient visits.



Participants will receive all study-related exams at no cost and compensation up to \$3100 for time and participation.

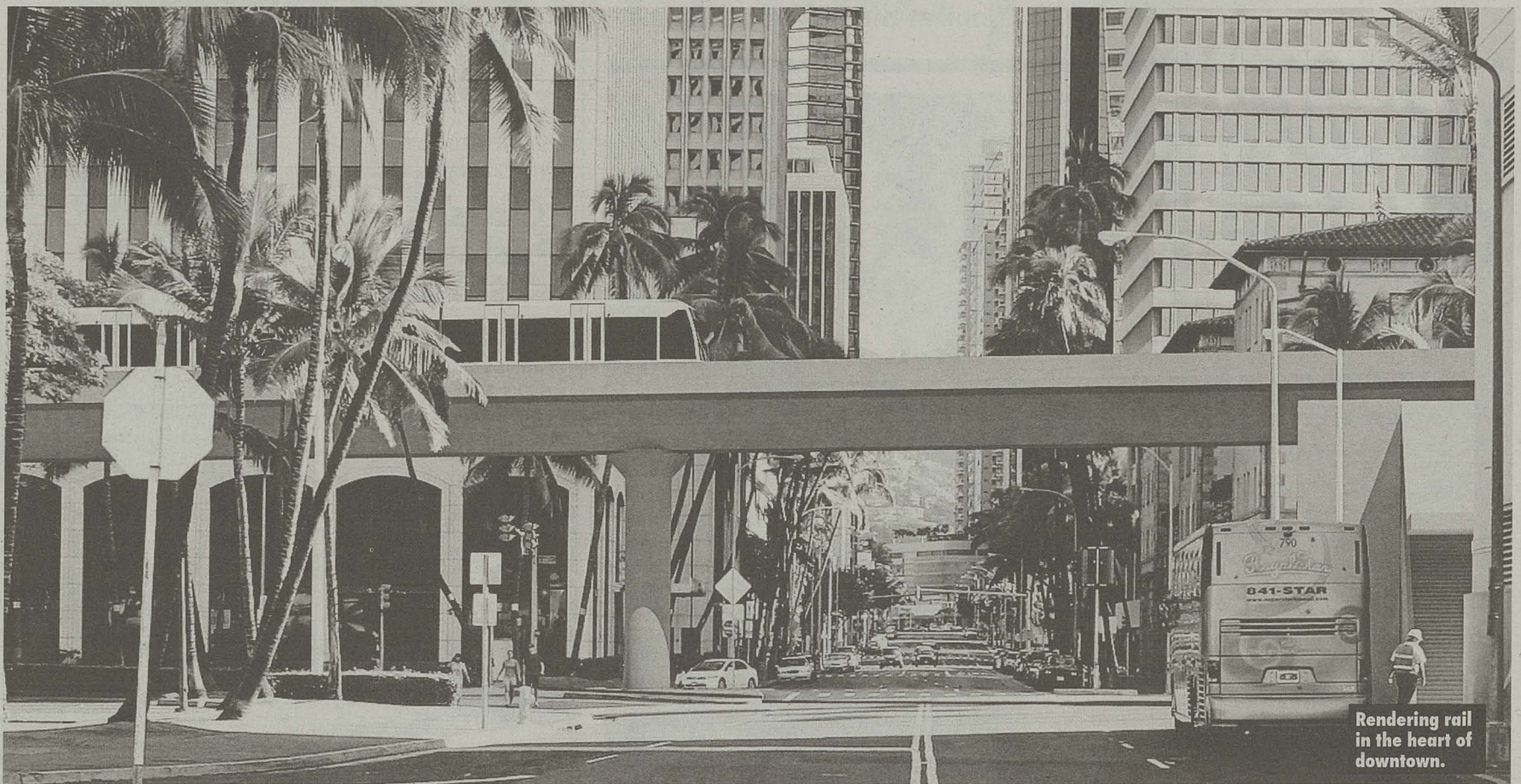
Think you can help? Great!  
Then call 877-708-6681  
(877-708-7092 for Japanese), text ALOHA to 77982 or visit TestWithTheBest.com today.

COVANCE

One Waterfront Plaza, 500 Ala + Moana Blvd., Ste., 400  
Honolulu, HI 96813

As a federal lawsuit seeks to compel a serious look at alternatives to raised rail, well, why not a subway?

COURTESY HART



Rendering rail in the heart of downtown.

# Underground Railroad

KEVIN O'LEARY

It's been a rollercoaster few weeks for Honolulu's proposed 20-mile, Kapolei-to-Ala Moana elevated railway. First, a skittish City Council asked the Honolulu Authority for Rapid Transit (HART) to delay signing of a \$1.4 billion contract with rail car company Ansaldo Honolulu JV due to concerns about its solvency. Days later, after the CEO of Ansaldo's parent company flew in from Italy, HART did sign. Next, a federal lawsuit was filed, demanding complete consideration of alternatives to raised heavy rail. What if, besides just light rail, more buses or doing nothing and saving the \$5 billion, the solution to an El roaring through the heart of the city lies right beneath our feet?

Adding to the general funhouse atmosphere, The Outdoor Circle, a grassroots environmental organization best known for stopping the proliferation of billboards in Hawai'i, joined a growing list of prominent rail critics and came out against the city's plan.

"We believe the city is vulnerable in the area of mitigating the effects of the visual aspects of the rail project," said Bob Loy, The Outdoor Circle's director of environmental programs. "Basically, elevated rail is unmitigable."

And it is this fact—that there isn't

a whole lot one can do to hide or beautify 20 miles of elevated track running through a narrow, mostly developed corridor of O'ahu—that has taken center stage in the argument over the city's proposed transit line.

We've all seen them. Artists' renditions, pro and con, of the city's proposed elevated rail line. The city's version: futuristic stations, sleek trains—promising riders a stress-free commute, as they sail into town above the congested streets. Opponents, on the other hand, recently published a full-page ad in the *Honolulu*

*Star Advertiser* featuring a simulation of a massive, five-story-high, concrete-pillared structure blocking the view of the harbor and sky at the corner of Nimitz Highway and Bishop Street downtown.

And it does seem that, of all the effects of building rail on O'ahu, it is this section of the proposed line, which will pass elevated through the heart of the city, that has given even some rail supporters pause. The Honolulu chapter of the American Institute of Architects (AIA), which created the downtown rendition used by the rail opponents, has advocated for a light-rail line running at street level through town to avoid the undeniable aesthetic shock delivered by the city's concept.

But there is one alternative that virtually no one on either side of the debate is currently talking about, and that is the possibility of putting the section of the line running through downtown and the capitol district underground. That's right, a subway.

This is the third serious attempt by the city to build a steel-on-steel, elevated rail transit system. In 1976, in 1992 and, most recently, in 2007, engineering, feasibility and cost analysis studies for rapid transit were both completed by consultants hired by the city. All three studies entertain the idea of running the railway underground from just 'ewa of Chinatown, with the train emerging on the Diamond Head side of Honolulu's Capitol/Historic district. Three underground stations, including one at Fort Street Mall, would serve the 1.3 mile-long tunnel section.

The 1976 study is fascinating in its detail. Considering a slightly longer tunnel with a different alignment than later versions, the engineering consultants explained that the Hotel Street section of the subway would be "cut and cover," while the subterranean line under A'ala Park could be a drilled tunnel. Sewer lines and storm drains would have to be realigned, the foundation of some buildings reinforced—but no major problems, such as groundwater incursion, were anticipated in the construction.

Later studies found a route mostly following King Street more geologically favorable. This plan would have the subway begin in Iwilei and resurface on Kapi'olani Boulevard near Ward Avenue.

Panos Prevedouros, a University of Hawai'i professor of civil engineering and a vocal critic of any kind of rail, considered the subway idea from an engineering standpoint, and commented: "The tunnels themselves...may not be the biggest problem. Creating subterranean stations with multiple accesses to them—elevators, escalators and stairs—can be much more problematic. With enough funds, a reliable solution can be engineered, but in a cost effectiveness analysis, tunnels may not fare well."

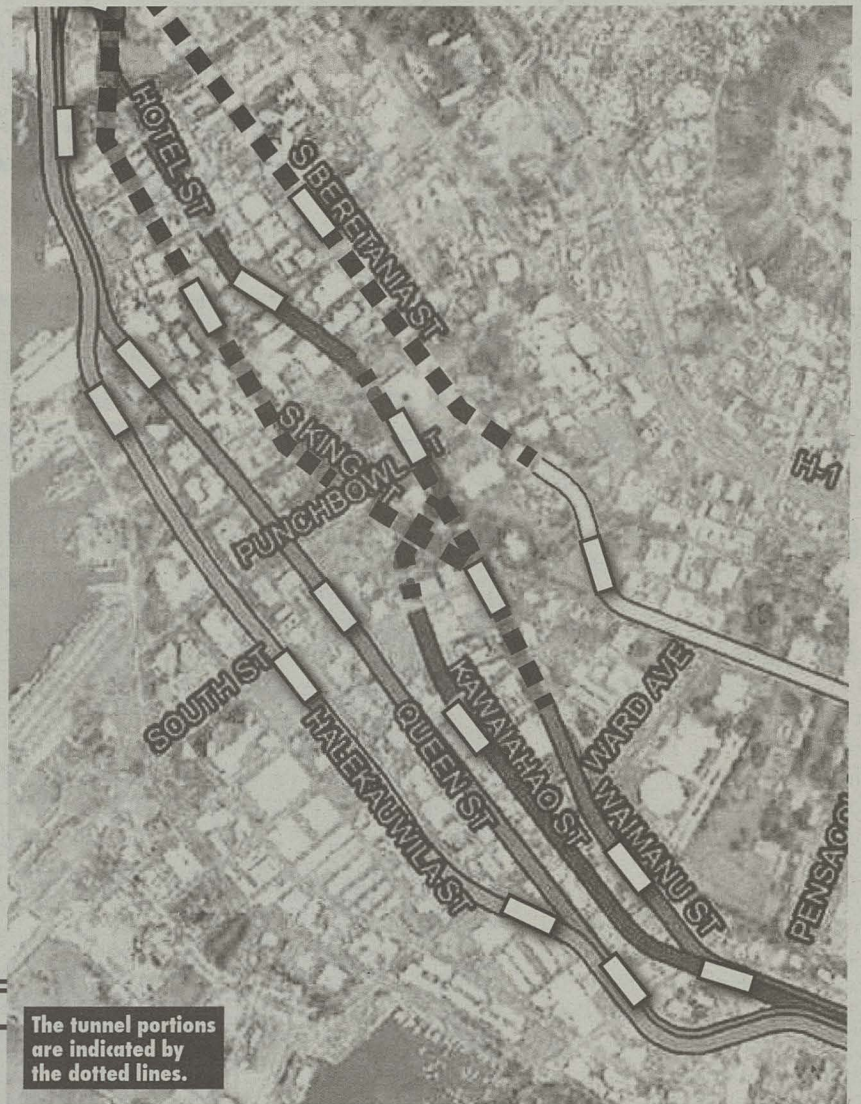
Prevedouros supports, but is not part, of the current suit being brought before a federal judge by UH law professor Randy Roth, long-time rail opponent Cliff Slater, former Gov. Ben Cayetano, and former judge and Office of Hawaiian Affairs (OHA) trustee Walter Heen. The crux of the suit, which seeks the completion of a supplemental environmental impact statement (SEIS), is the plaintiffs' claim that the city never seriously considered viable alternatives to elevated heavy rail.

Prevedouros draws a parallel between Honolulu's dilemma and what happened in his home country of Greece. "Elevated rail was considered in the 1980s in Athens, but despite the lower cost, the public was strongly against an aesthetically obtrusive, blighting and noisy elevated rail system. The final decision was for a fully underground system—despite Athens' hard rock underground and the high probability of finding antiquities. The system was completed in the 1990s."

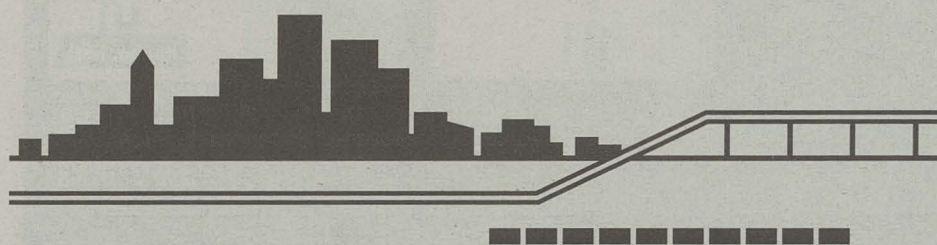
Of course, Honolulu has its own "antiquities"—nā iwi, the bones of the island's first inhabitants, buried beneath the city's streets. Kaka'ako, which stretches east of downtown and astride the proposed rail line, has yielded scores of skeletal remains in the past 20 years as it has been dug up for high-rise development. Several major construction projects (Walmart on

*“Unfortunately for [Hannemann], federal law requires that all ‘reasonably viable’ alternatives be studied and included in the Alternatives Analysis. In other words, it was not up to Mufi to decide what the law required...”*

—Former Gov. Ben Cayetano



The tunnel portions are indicated by the dotted lines.



Ke‘eaumoku Street, the Ward Village Shops on Auahi Street) have been delayed—but not stopped—as bones were discovered, disinterred and relocated, as required under state law.

The city is understandably concerned with what they will find when they dig holes 50 to 150 feet deep (depending on soil conditions) to create footings for the six-foot diameter concrete columns which will support the elevated rail-bed. They have applied for and been granted a noise variance permit in order to conduct an “archaeological inventory survey” in Kaka‘ako and elsewhere along the route.

The permit application includes a map showing the exact locations of the future footprints for the columns. Crews have already begun to dig up the streets at these spots in search of remains. As Scott Ishikawa, spokesperson for the Honolulu Authority for Rapid Transportation (HART) stated, “The idea is to have flexibility regarding the placement of the columns.”

And this, among other concerns, is where the city has a problem with the subway idea. The current spacing of the columns through downtown is expected to be approximately 125 feet apart. If you think digging a few hundred holes in anticipation of finding and avoiding iwi is a hassle, consider boring a tunnel (or excavating a trench) through the earth.

The city’s objection to going underground does not end there. Relocating utilities, the additional excavation (and subsequent disruption of surrounding properties) required for creating access to subterranean stations are additional factors they claim make the project simply too expensive to consider.

No engineer has ever argued (in 1976, 1992 or 2007) that a subway through downtown Honolulu would not cost more money than other alternatives.

The question is: Just how much more?

The 2007 engineering study found that if a 1.3-mile-long tunnel were to be included in the estimate for the 4.48-mile section of mostly elevated rail line running from Iwilei Street to Waimanu Street (near the corner of Pi‘ikoi), the cost would be \$1.9 billion. A similar length of track (4.6 miles), running elevated-only along the currently planned Nimitz-Halekuanui Street route, is priced at \$1.34 billion. This puts the cost overrun for the tunnel to be approximately \$560 million, or roughly 10.5 percent of the current \$5.3 billion price tag for the entire system.

*“When you look down any street, the view plane will be interrupted by the elevated line.”*

—City Councilperson Ann Kobayashi

Some adjustments in these cost figures are appropriate—the subway option estimate is in 2007 dollars. But cost adjustments (trending in a steadily upward direction) have dogged this project from day one.

It is worth noting that in 1992 the idea of a subway running underneath downtown was not just one of many alternatives considered by the City Council—it was their first choice. When the geological engineers gave cost estimates for the Hotel Street tunnel that caused the Council to blanch, the Council had them do test borings on King Street.

The results came back cheaper—but still not cheap enough. The Council went with an elevated line through town, although the effort was later derailed by a 5-4 no-vote on the entire project.

Even in 2007, the city’s engineering consultants, when referring to the underground routes, stated, “Tunnels were considered because they would have less long-term environmental impacts and/or better transit operations, as compared to an elevated or at-grade guideway.” This shows, Ishikawa said, that “the city did look at tunnel options for downtown...to try and avoid cultural and historic buildings in the area.”

The concept of a subway through downtown Honolulu seems, to put it mildly, far-fetched. Most experts interviewed for this story, or reached via e-mail didn’t endorse the idea or think that the city would ever agree to build an underground line through what is arguably the most iconic and beloved part of town.

But there was one thing everyone contacted for this story did have in common—they did not dismiss it as a bad idea. Cayetano, when speaking about his anti-rail group Honolulutraffic.com, stated in an e-mail, “We are aware of the underground studies, and we have no problem with the city studying underground alternatives.” Cayetano himself favors an expanded bus system (BRT), advocated by the Harris administration, which he says was never considered by Mufi Hannemann when he became mayor. “Unfortunately for [Hannemann], federal law requires that all ‘reasonably viable’ alternatives be studied and included in the Alternatives Analysis. In other words, it was not up to Mufi to decide what the law required...”

Peter Vincent, chair of the transit task force for the Honolulu chapter of the American Institute of Architects

(AIA), said, “We take no position on [the subway]. But it certainly would keep the speed and ridership [of the train] up, and answer most of the environmental questions raised concerning that section of elevated rail.”

Vincent has repeatedly stated that the AIA is “pro-rail.” They just want a different kind of train—light rail, powered by an overhead electrical source, with the flexibility to be elevated and to run at ground level, as needed. But a position such as theirs has gradually become less tenable, as the city has rejected all other forms of transit in favor of the elevated heavy-rail line.

It seems that organizations such as The Outdoor Circle,

or private citizens with misgivings about specific details of the heavy-rail concept increasingly can no longer say, “I’m pro-rail, except for...” The city has effectively driven everyone with doubts concerning their plan into the anti-rail camp.

This puts the subway idea right back where it belongs—among the mass-transit alternatives currently not being considered by the city. After all, they insist, \$560 million to go underground is a lot of money.

Undoubtedly true. But as another architect, who wished to remain anonymous, put it, “Just because it’s expensive, doesn’t mean it isn’t the right thing to do.”

### Q&A with City Councilperson Ann Kobayashi

#### What’s your main gripe with elevated rail?

We have such a beautiful city. When you stand on any corner downtown you want to see the sky. When you look down any street, the view plane will be interrupted by the elevated line.

#### Other reasons?

Cities are currently not choosing this heavy rail approach, if they are building a new system. It’s noisy, it’s ugly. Some cities are tearing them down. A 20-mile-long train line, with 21 stations? Just how fast do you think this thing is going to be?

#### How about the way it’s being implemented?

The city spent \$35,000 on a groundbreaking in Kapolei for the rail project. But this was held before we had a go-ahead for construction. We still don’t have the okay to begin. They did it because they want people to think the project is underway, and it’s too late to change things now.

#### Why not put it underground through the city center?

I was told it was not possible—that it was too close to the harbor. But Tokyo’s system is right next to the water...

#### Why did voters approve the rail project in 2008, albeit by a narrow margin?

The Hannemann Administration spent \$5 million on lobbying for the steel-on-steel rail. I opposed this. I would like to see another (O‘ahu-wide) vote on rail. I know a woman who saved for 16 years and finally was able to buy into a new condo in Kaka‘ako. She found out that the elevated line will go right by her lanai—and the trains will run between 4AM and midnight every day of the week. I think people are more cautious, more hesitant about the idea now.

—K.O.

# hot picks

## Holiday

### 10 Christmas Sweater Checklist

Shopping for a last minute gift? Even though some sUpEr CoOl PeOpLe are bragging about having finished their Christmas shopping six months ago, the rest of us normal people still have a Santa's-bag-full of empty spaces under the tree.

To the Rudolph rescue is monthly indie market of local vendors **Art & Flea's 2nd Annual Ugly Sweater Contest**. With a youthful and urban spirit, this fresh spin on the one-stop shop is like a mini North Pole of DIY and vintage clothing, handmade jewelry and crafts, retro collectables and more. Browse and barter while listening to the un-Silent Night sounds of DJs and local bands. Then remember the moment you crossed everyone off your list with a "God bless us, everyone!" smile in the flea market's photo booth.

Like its event title promises, the headliner is a ho-ho-horrific holiday-themed ugly sweater competition. Not sure if your kitschy-knitted number will make the cut? Stand in front of a mirror, use this checklist and ask yourself the following:

- Will this sweater make me look naughty *and* nice?
- If this sweater could talk, would it be reclining on a sofa, sorting out its daddy issues with a therapist for \$130 an hour?
- Does this sweater come with an "It Gets Better" campaign?
- Less than four minutes into wearing, am I foaming at the mouth, whispering, "my precious, my precious..." and crawling on my knees?
- Or am I more lying-in-a-fetal-position singing Natalie Imbruglia's "Torn"?
- Did this fashion forward light-up ensemble once belong to my kindergarten teacher?



Last year's "winner" James Ramsey.

CHEYNE GALLARDE

## Sports

### Jingle Bowl

Let's face it, nothing brings families together better than the holidays...and bickering. Thanks to football, it no longer has to be about why you don't have anyone to kiss under the mistletoe or which uncle or aunty is drinking all the booze. Instead, it's friendly fights about fumbles, lineups and getting those eyes off the Hail Mary pass to help prep dinner.

This Christmas Eve, the game is once again on our own island turf with the **Sheraton Hawai'i Bowl** celebrating its tenth anniversary at Aloha Stadium. The postseason bowl game will feature Southern Mississippi, who defeated Houston for the Conference USA championship, and University of Nevada, who tied for second in the Western Athletic Conference and boasts the fifth-ranked offense in the nation.

If the living room just isn't close enough to the action (or far enough away from the wrapping paper), pack up your Santa hats and BBQs and do kama'aina tailgating proud before settling into your stadium-seat view at kickoff.

ESPN and ESPN2 will be airing the bowl, but before



UNIVERSITY OF HAWAII

you get caught live on the JumboTron, who'll get your holiday cheer: Go Wolf Pack, Golden Eagles or Santa's Reindeer?

—Anna Harmon

Aloha Stadium, 99-500 Salt Lake Blvd., Sat., 12/24, 3PM kickoff, gates open at 10AM, \$40, [sheratonbowlhawaii.com](http://sheratonbowlhawaii.com), 483-2756

When Jesus died for our sins, did they include this sweater?

If you checked "yes" to all of the above, congratulations! Put on your Christmas worst. You passed.

—Matthew Dekneef

Fresh Cafe, 831 Queen St., Thu., 12/22, 5-10PM, \$2, [artandflea.com](http://artandflea.com)

## Concerts

### Xmas Blues

The holidays can get blue. It's been raining. It's been cold. Your wallet's empty and you're shuffling your feet through the mall like a zombie. Well, Ebenezer, **Eric Miyashiro's** got a musical voice that's telling you Christmas joy can be found if you just listen.

And you can't help to but. He "sings" with a trumpet at an absurdly high register, and I don't know anyone who can ignore that hot instrument at full blast.

Miyashiro is much loved everywhere in the world, especially in Japan (they dig his long dyed blonde hair). However, his home is right here in Honolulu.

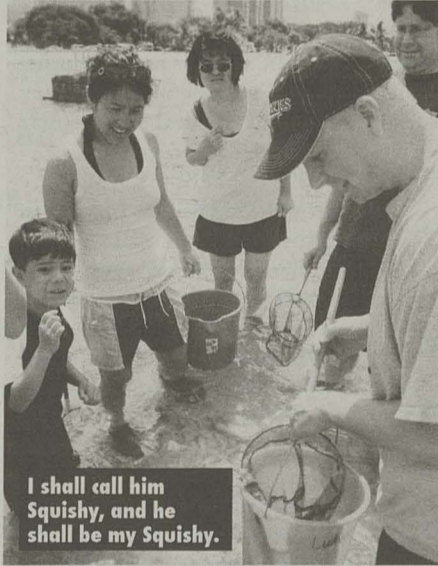
The young musician attended McKinley High School and played in the Hawaii Youth Symphony, following the footsteps of his father, Tokio, who played in the Royal Hawaiian Band. Miyashiro's long since come into his own—he's performed with big names like Stevie Wonder, Paul Anka and the Stylistics.

Now that he's back with some spirited songs, he'll have you rocking around the Christmas tree before you know it. Time to move your feet and jazz up your Christmas.

—Maria Kanai

Pearl City Cultural Center, 2100 Ho'okiekie St., Thu., 12/22, 7pm, \$30-\$35, [ericmiyashiro.com/international.html](http://ericmiyashiro.com/international.html)

LIVING MARINE ART CENTER



I shall call him Squishy, and he shall be my Squishy.

## 'Ohana

### Finding Adventure

If you call the Hawaiian Islands your home, it's easy to forget it also means you're living on the most isolated parcels of land on the entire planet. Now that you're contemplating our collectively secluded and atypical existence, imagine the multitude of bizarre underwater inhabitants that can't be found anywhere else in the world! After all, one quarter of Hawai'i's inshore fishes are endemic.

If you'd like to experience our unique marine life outside

an aquarium setting but aren't necessarily athletic, or have irrational fears you'll be taken by Jaws once your toes can't touch the ocean floor, there are four upcoming guided reef-walk tours led by **Living Art Marine Center** that are a fun and a safe alternative for the whole family. For two hours, wade through knee-deep water with expert

marine biologists who'll point out interesting underwater residents from tide pools and shallow reefs.

Expect to see brittle sea stars with psychedelic hues, marble shrimp and ghost shrimp, needlefish, prehistoric-looking eels and sea cucumbers with the propensity to either expel sticky white substances or eject their internal organs as a decoy so they can crawl away in a leisurely manner. That's just to name a few. Don't miss a chance to get to know these unique creatures.

—Niko Rivas

Reef walks from 12/21-12/30 (various locations and times), \$6.50-\$10, for holiday schedule, visit [livingartmarinecenter.com/reefwalk.htm](http://livingartmarinecenter.com/reefwalk.htm), 841-8080

## Film

### Merry Monsters

With the conclusion of Christmas, the first thing you'll want to do is destroy something. Appropriate enough. Holidays often mean tensions run high and having to play nice with your

visiting sister who turned all *Devil Wears Prada* since attending that East Coast Ivy League. Passive aggression can only get a Tiny Tim so far...

Let out your inner seasonal frustrations at **Oh my Godzilla! Week**: four days featuring the debut Japanese classic and two of the best from a franchise spanning over 30 films. Remastered and restored (remonster-ed?) to its original chaotic glory, the festival kicks, demolishes a metro skyline and laser beams a few limbs off with *Godzilla vs. The Sea Monster* (1966). The destruction doesn't end there as you force your way through *Godzilla vs. Mechagodzilla II* (1993) to the original *Godzilla* (1954) as the ultimate closer. Just when Hawai'i's Japanese tourists thought they were safe... Muahahahaha!

Don't miss a pre-Godzilla reception with sushi from Da Spot and celebratory sake for purchase. But be careful what you toast to, you don't want to accidentally resurrect Mothra for 2012.

—M.D.

Doris Duke Theatre, 900 S. Beretania St., runs 12/27-12/30, opening reception Tue. from 6-7:30PM, various screenings, \$10-\$12, [honoluluacademy.org](http://honoluluacademy.org), 532-8700



DORIS DUKE

Wrecking havoc on Ala Moana?



Sweeping landscapes  
flatten perceptions of  
Chinese painting

# Submit To Your Four Masters

DAVID A.M.  
GOLDBERG

The Honolulu Academy of Art is famous for the quality of its Asian art collection and the shows it puts together, so it's easy to take "Masterpieces of Landscape Painting from the Forbidden City" for granted. That truly definitive art from China's Forbidden City is on display for regular people in the middle of the Pacific Ocean is a kind of satisfaction in and of itself—but only if you make the visit.

This work represents the distant foundation of the utterly casual understanding and ignorance of Chinese landscape painting that most of us have. Everything from the decor of restaurants and hotels to tourist junk, advertising materials and the pursuits of Sunday painters have been influenced by the often radical and experimental aesthetics collected in this show.

We all recognize signatures of the long vertical or horizontal formats: the almost-clickable elegance of the bright red chops; the multitude of brush stroke styles of applying ink to paper or silk; ancient cloud-wrapped mountain ranges, forests, cliff-leaping waterfalls, rivers; appearances by solitary sages, fishermen and woodcutters. Think about those shots of villages, landscapes and palaces in the animated *Kung Fu Panda*, and it may be easier to consider the effect that these painters have had almost 500 years later.

Although there are no overt references to popular culture in the show, the curator and exhibition designers have put great effort into offering the audience something more than walls hung end-to-end with scrolls, culminating with gift shop postcards and a catalog. Visitors can learn how to read the paintings and put them in historical, technical and aes-

thetic context. This is a dynamic, explorative space for encountering the paintings. Whether passing through a cloud-shaped archway between sections or contemplating an idealized reconstruction of a painter's studio, the show's artfully restrained Imagineering avoids stereotypes of Chinese or art institution culture.

No scroll simply hangs or lies flat against a plain white surface. Instead, each is protectively framed in red, yellow or green, isolated from its neighbors, inviting the individual to contemplate. This is particularly useful for properly experiencing works like Wen Zhengming's "The Seven Junipers"—a startling movie-without-frames that unifies deep spiritual symbolism with a visual narrative, an experiment in depth perception and active manipulation of the viewer's perception.

One can look up from pieces like this and see samples of the painters' poetry boldly crossing some walls. This back-and-forth between images and words, plus timelines, visual guides and QR codes that link smartphones to supplemental videos, creates a rich resonance that grounds the viewer's experience in the present. The gulf of time between the painters and us is thereby crossed via design and technology. Where a collector once added a stamp and a comment at the border of a scroll, we can now carry on the conversation about these works through tweets and status updates.

But what about the work itself? Here's what viewers may want to keep in mind, especially if they lack a background in Chinese art history: 1) Though many of these paintings refer to actual places and features found in nature, all of these landscapes are imaginary. As explorations of technique and expression, they are no more



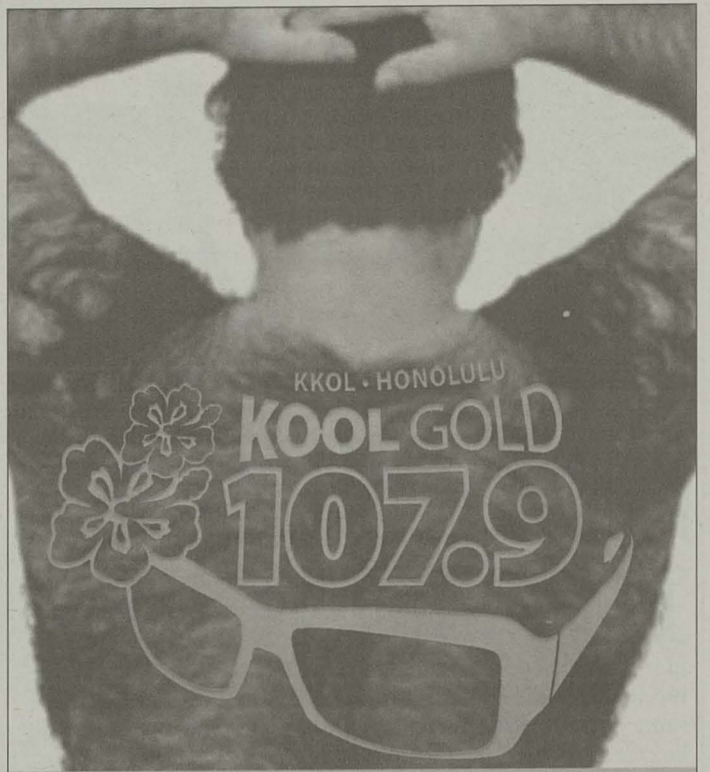
"Landscape after Wu Zhen" by Wang Yuanqi.

"real" or less compelling than the scenery created for *Avatar*; 2) The paintings frequently reference, appropriate and remix each other as part of an ongoing dialog between the artists; and 3) The painters were part of the "literati" movement of non-professional, multidisciplinary personalities that worked in painting, poetry, philosophy, calligraphy and even government.

Every painting has a story behind it and they frequently surprise with how directly they might address our current situations. Take Ni Zan's "Secluded Stream and Cold Pines," a painting the anti-political artist gave to a contemporary who was going into government service. The poem accompanying this stark, pure landscape describes the health dangers of city life and declares the painting to be a "call to retirement." How far is this from the sentiment behind idealized images forwarded between cubicle-dwellers?

"Forbidden City" is great by default, by virtue of content that, as Academy director Stephan Jost pointed out, "you will never get to see again in your lifetime...anywhere." What makes the show significant, however, are the possibilities offered to the viewer who brings an appreciation for, say, manga (Japanese comics), computer graphics, surrealism or the pleasures of close and careful observation. If that isn't enough, everyone should see Wang Yuanqi's "Landscape After Wu Zhen," and try to take home a bit of mana from a painting which once hung in the private study of the Kangxi Emperor's Hall of Mental Cultivation. ■

Exhibit runs through  
Sun., 1/8/12.



## Bart's BACK!

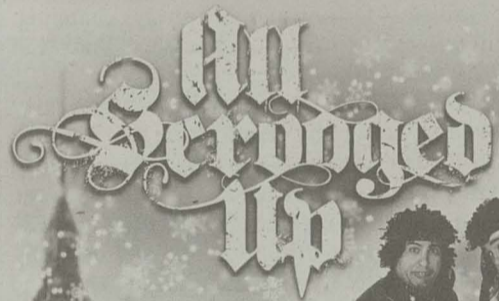
REAL RADIO RETURNS  
Weekdays Starting 1-2-12

The GREATEST hits of the past PLUS  
Beatles-Trax, Local Gold, TV Time-Trip & more...

**BART DA SILVA**  
3:00 pm - 6:00 pm on  
107.9 Hawaii's Kool Gold



You're invited to a  
Christmas Presentation For The Whole Family!



FREE  
ADMISSION  
& PARKING

Featuring  
**Da  
Braddahs**

### PERFORMANCE DATES & TIMES

Dec. 21-23, Wed. - Fri. at 7pm

Doors Open at 6:30pm

Dec. 24-25, Sat. - Sun. at 6pm

Doors Open at 5:30pm

Childcare is provided from  
**Birth - 12 Years Old!**

A special Christmas Celebration just for the  
kids with games, prizes and fun activities!

Now available...

**Reserved Seating**  
(General seating is free)

**Word of Life**  
CHRISTIAN CENTER

Tickets are just \$20 per person  
Limited seating available.  
Please call to purchase tickets.

www.wordofflifehawaii.com  
582-4044 • 544 Queen Street • Downtown Honolulu

# Socialite

with Christa Wittmier  
supercy



Setting the Standard.

## PEOPLE CODE > DRESS CODE

If you've ever worked in sales the saying "Under promise, over deliver" has probably been uttered somewhere near your cubicle or in the pit. It's a pretty good dictum to keep in mind when dealing with clients. It's not like I was expecting the old Oceans808 to re-open as another version of the same club or anything, there were just so many promises and buzz words prior to their doors opening that had me hesitant. All the modern ultra-chic sophisticated sexy sleek contemporary exclusive and even daring words could have described any one of the last five clubs to open or re-open in Honolulu. For whatever reason my expectations were a bit low, but I'm pretty sure my mouth was physically hanging wide open as I walked inside **The Standard** last week. They successfully transformed a place many of us grew up with into the future. Each of those awkwardly placed large pillars we all knew so well around the old dance floor are now individual works of art by **Slick**. Widely known for developing the **Dissizit** brand, he is a graffiti artist that has come way up in LA in the streets, on walls, trains, album covers, and even with his own Adidas shoe. Although the lighting is a bit bright for a night club, the ambiance is definitely something for people who want to be out and feel sophisticated, sexy, contemporary, modern and ultra-chic. Utilizing the other half of the **Nocturnal Sound Krew** as

**Check it out**  
thestandardhonolulu.com  
dissizit.com

their in-house residents, we now have a regular place to stalk **DJ Jami** and **DJ Logo** in to the late night. After talking to the

General Manager, industry prodigy **Dani Chu**, I decided this was going to be MY club. "We don't have a dress code, we have a people code" she told me. "Our targeted demographic is a fashionable person who loves music, cocktails and good food. Someone that utilizes social media in their everyday life." So, everyone? "That person might show up to the club with skinny jeans, a v-neck and a pair of chucks or a mini dress and Christian Louboutins. Fashion is fashion and it is always changing. A people code will reflect that." You guys had me at **Slick**. I'm sold. No buzz words needed, this spot is legit.

As for the rest of the weekend I never really got past Friday night. I still can't believe how many people made it to my **Best Ever** party. Models **Krista Alvarez**, **Courtney Arndt**, **Nalani Ravelo**, celebs **Andy South** and **Grace Park**, artists **Jasper Wong**, **Joshua Southard**, **Kamea Hadar**, **Prime**, and **ER Crew**—all the people I spend my time stalking and blogging were all together in one space! It was a dream come true. The number one comment I kept hearing over and over was how it felt like they were in Los Angeles or New York. I'm not sure why since it was all local artists that painted the warehouse, local DJs that were doing the music, local bartenders that were serving the drinks, and photos from Honolulu's nightlife that were projected on the walls. Even though I never really agreed with comparing our nightlife to those in other cities I'll go ahead and take it as a compliment. There's nothing better as a host than to see people having such a great time at your party. It was the best Birthday/Christmas present ever. Thank you.

## CHAMPAGNE TOAST ALL BARS ON NEW YEAR'S MIDNIGHT!

**IRISH ROSE SALSORIA**  
WAIKIKI  
478 Ena Road  
947-3414

**Elephant**

**O'TOOLE'S**  
Co. HONOLULU  
902 Nuuanu Ave.  
536-4138

**Doolin Rakes**

**The White Jacket**

**anna's**  
2440 S. Beretania St.  
946-5190

**An Irish New Year Eleventh Hour, Art of Whimsey, Chas Hayes and Number Brother. 21+, \$5.**

irishpubshawaii.com

# THE SCENE

## Gigs

### 21/Wednesday

#### COMEDY

**Bo Irvine and Friends**, *Comedy Polynesia at the Sheraton Princess Ka'iulani* (8PM) 531-HAHA  
**Michael Staats, Arthur Wayne, Kenny Johnson**, *Sharkey's Comedy Club at the Sheraton Princess Ka'iulani* (9:30PM) 531-HAHA

#### COUNTRY/FOLK

**Gordon Freitas & Local Folk**, *The Ground Floor* (6PM) 538-6012

#### HAWAIIAN

**Brothers Cazimero**, *Chai's Bistro* (7PM) 585-0011  
**Imua Garza**, *Diamond Head Cove Bar* (8PM) 732-8744  
**Typical Hawaiians**, *Tapa Bar* (8PM) 947-7875  
**Cyril Pahinui**, *Kani Ka Pila Grille* (6PM) 924-4990  
**Royal Hawaiian Band**, *Iolani Palace* (12PM) 523-4674  
**Kawika Trask & Friends**, *Royal Hawaiian Center Royal Grove* (6PM) 922-2299

#### JAZZ/BLUES

**TM3 & branapeles Presents Screwed Up Wednesdays**, *Jazz Minds Art & Cafe* (9PM) 945-0800  
**Johnny Williams Trio**, *Hank's Cafe* (8PM) 526-1410

#### ROCK/POP

**Chris Murphy**, *Cabanas Pool Bar (Ohana West)* (9PM) 922-3143  
**Tahiti Rey & Jason Alan**, *Apartment3* (8PM) 955-9300  
**Stuck In The '80s**, *Dragon Upstairs* (6:30PM) 526-1411

#### WORLD/REGGAE

**Ooklah the Moc**, *Tropics* (9PM) 597-8429

### 22/Thursday

#### HAWAIIAN

**Beach 5's**, *Tiki's Grill & Bar* (9PM) 923-8454  
**Sista Robi Kahakalau & Friends**, *Chai's Bistro* (7PM) 585-0011  
**Kawika Kahiapo, Del Beazley, Mike Ka'awa**, *Kani Ka Pila Grille* (6PM) 924-4990  
**Little Albert Maglimat**, *Tapa Bar* (8PM) 947-7875  
**Pakele Live! with Tony Solis**, *Willows* (6PM) 952-9200  
**Mana'o Trio**, *The Shack Waikiki* (8PM) 921-2255  
**Ka Momi**, *Aku Bone Lounge* (9:30PM) 589-2020  
**Keawe 'Ohana and Friends**, *Moana Terrace* (6:30PM) 922-6611  
**Palena'ole**, *Royal Hawaiian Center Royal Grove* (6PM) 922-2299  
**Tahiti Rey**, *Elegant Dive, Hyatt Regency Waikiki* (6PM) 923-1234  
**Sista Robi & Jeff Rasmussen**, *Chai's Bistro* (7PM) 585-0011  
**Welo**, *'Ilikai Hotel* (7PM) 949-3811  
**"Aunty Pudgie" Young and Puamelia**, *Kūhiō Beach Hula Stage* (6PM) 843-8002

#### JAZZ/BLUES

**Steve Lucas**, *Dots* (7PM) 622-4115  
**Satomi**, *Dragon Upstairs* (7PM) 526-1411  
**Rick Smith**, *Soul Cuisine* (7PM) 735-7685  
**Jazz Story**, *Jazz Minds Art & Cafe* (9PM) 945-0800  
**Sunset Street**, *Thai Sweet Basil* (6PM) 988-8811  
**Satomi Yurimizo Trio and Frank Tabata**, *Dragon Upstairs* (6PM) 526-1411

#### ROCK/POP

**Tito Berinobis**, *Chart House* (6:30PM) 941-6660  
**Mango Jam**, *Chuck's Cellar* (6PM) 923-4488  
**On-Q**, *Warrior Lounge, Hale Koa* (8PM) 955-0555  
**Otis Schaper**, *Diamond Head Cove Bar* (8PM) 732-8744  
**Jim Smart**, *Cha Cha Cha Salsaria* (6:30PM) 395-7797  
**Al Waterson & Friends**, *Don Ho's Island Grill* (6PM) 528-0807

#### WORLD/REGGAE

**Inity Collective**, *Tropics Cafe* (9PM) 591-8009  
**UnNatural**, *Tiki's Grill & Bar* (6PM) 923-8454

### 23/Friday

#### COUNTRY/FOLK

**Kelli Heath**, *Peace Cafe* (7PM) 951-7555

#### HAWAIIAN

**Harold Kama Jr.**, *Barefoot Bar, Hale Koa Hotel* (8PM) 955-9428  
**Kailua Bay Buddies**, *Jimmy Buffett's at the Beachcomber* (9:30PM) 791-1200  
**Kaukahi**, *Kani Ka Pila Grille* (6PM) 924-4990  
**Ko'olau Serenaders**, *Honey's at Ko'olau* (6PM) 236-4653  
**Ku'uipo Kumukahi & The Hawaiian Music Hall of Fame Serenaders**, *Royal Hawaiian Center Royal Grove* (6PM) 922-2299  
**Lehua Kalima from Na Leo**, *Chai's Bistro* (7PM) 585-0011  
**Mark Yim's Piliikia**, *Chart House* (6PM) 941-6660  
**Maunaula**, *Duke's Canoe Club* (4PM) 922-2268  
**Glenn Mayeda**, *Mai Tai Bar, Royal Hawaiian* (6PM) 923-7311  
**Olomana**, *Tapa Bar* (8PM) 947-7875  
**Kawika Ortiz**, *Terry's Place* (7PM) 533-2322  
**Cecilio Rodriguez**, *Tropics Bar, Hilton Hawaiian Village* (8PM) 949-4321  
**Royal Hawaiian Band**, *Iolani Palace* (12PM) 523-4674  
**Mihana Souza**, *Don Ho's Island Grill* (5PM) 528-0807  
**Kawika Trask**, *'Ilikai Hotel* (6PM) 949-3811  
**Cherie Yuen & Friends**, *Uncle's Fish Market & Grill* (6PM) 275-0063

#### JAZZ/BLUES

**Air**, *Chris Yeh Quartet, Dragon Upstairs* (7PM) 526-1411  
**Stewart Cunningham Trio**, *Hank's Cafe* (9PM) 526-1410  
**The Hot Club of Hulaville**, *Cafe Che Pasta* (6PM) 524-0004  
**Black Sand Jazz Trio**, *Chuck's Cellar* (6PM) 923-4488  
**Absolute Joy**, *Jazz Minds Art & Cafe* (9PM) 945-0800  
**Zach Shimizu**, *Chibo Okonomiyaki* (10PM) 922-9722  
**Tennyson Stephens**, *Rocky Holmes, Lewers Lounge* (8:30PM) 923-2311  
**Yoza**, *RumFire* (5PM) 921-4600

#### ROCK/POP

**MaNel**, *Pueo Restaurant at Coral Creek Golf Course* (7PM) 479-0576  
**Chris Murphy**, *Jimmy Buffett's at the Beachcomber* (6PM) 791-1200  
**Kimo Opiana**, *The Shack Waikiki* (7PM) 921-2255  
**Brian Robertshaw**, *Roy's* (6:30PM) 396-7697  
**Taimane**, *Elegant Dive, Hyatt Regency Waikiki* (6PM) 923-1234  
**Taimane**, *Hyatt Regency* (6PM) 923-1234  
**Taimane**, *Hilton Hawaiian Village* (7:45PM) 949-4321  
**Arsenio the Band**, *Beeman Center, Pearl Harbor* (9PM) 471-2581  
**Vinyl Wine**, *Lulu's Waikiki* (10PM) 926-5222

#### VARIOUS

**Hot Club of Hulaville**, *Cafe Che Pasta* (6PM) 524-0004

#### WORLD/REGGAE

**Kunoo**, *Tiki's Grill & Bar* (5PM) 923-8454

### 24/Saturday

#### COMEDY

**Bo Irvine and Friends**, *Comedy Polynesia at the Sheraton Princess Ka'iulani* (8PM) 531-HAHA

#### HAWAIIAN

**2 Point O**, *Chart House* (8PM) 941-6660  
**Danny Couch**, *Chai's Bistro* (7PM) 585-0011  
**Manoa DNA**, *Kani Ka Pila Grille* (6PM) 924-4990  
**Eric Lee**, *Peter Milo, Uncle's Fish Market & Grill* (6PM) 275-0063  
**Kailua Bay Buddies**, *Jimmy Buffett's at the Beachcomber* (9:30PM) 791-1200  
**Lawrence Kidder**, *Beach Bar, Moana Surfider* (8PM) 921-4600  
**Ellsworth Simeona**, *RumFire* (5PM) 921-4600  
**Alika Souza**, *Don Ho's Island Grill* (5PM) 528-0807

#### JAZZ/BLUES

**Jimmy Funai**, *Roy's* (6:30PM) 396-7697  
**Gina & Friends**, *Brasserie Du Vin* (9PM) 545-1115  
**Gyn & The Blue Light Funk Band!**, *Jazz Minds Art & Cafe* (9PM) 945-0800

### 25/Sunday

**Stewart & Matt Jazz and Blues Duo**, *Hank's Cafe* (8PM) 526-1410  
**Black Sand Jazz Trio featuring Betty Loo Taylor**, *Chuck's Cellar* (6PM) 923-4488  
**The Stewart and Matt Jazz and Blues Duo**, *Dragon Upstairs* (8PM) 526-1411

#### ROCK/POP

**Analog**, *Coconut Willy's* (9PM) 921-9000  
**Piranha Brothers**, *Tropics Bar, Hilton Hawaiian Village* (3PM) 949-4321  
**Mark Caldeira**, *Moana Terrace* (6:30PM) 922-6611  
**Jasmin Idica**, *The Shack Waikiki* (8:30PM) 921-2255  
**Juke Joint**, *Tropics Bar, Hilton Hawaiian Village* (6:30PM) 949-4321  
**Melveen Leed**, *International Marketplace* (11AM) 971-2080  
**Chris Murphy**, *Jimmy Buffett's at the Beachcomber* (6PM) 791-1200  
**Taimane**, *Hyatt Regency* (5PM) 923-1234

#### WORLD/REGGAE

**Guidance**, *The Shack Waikiki* (6PM) 921-2255  
**Kunoo**, *Tiki's Grill & Bar* (7:30PM) 923-8454

### 26/Monday

#### HAWAIIAN

**Beach 5**, *Tropics Bar, Hilton Hawaiian Village* (5:30PM) 949-4321  
**David Asing**, *Tropics Bar, Hilton Hawaiian Village* (3PM) 949-4321  
**Brother Noland**, *Kani Ka Pila Grille* (6PM) 924-4990  
**Kona Chang**, *RumFire* (5PM) 921-4600  
**Waipuna Duo**, *Mai Tai Bar, Royal Hawaiian* (6PM) 923-7311  
**George Kuo**, *Martin Pahinui, Aaron Mahi, Moana Terrace* (6:30PM) 922-6611  
**Hi'ikua**, *Kani Ka Pila Grille* (6PM) 924-4990  
**Ledward Ka'apana**, *Kona Brewing Co.* (6:30PM) 394-5662  
**Mike Kawa'a**, *Ocean Kaowili, Analu Aina, Paul Kim, Honey's at Ko'olau* (3:30PM) 236-4653  
**Royal Hawaiian Band**, *Kapi'olani Park Bandstand* (2PM) 523-4674  
**Sean Na'auao**, *Tapa Bar* (8PM) 947-7875  
**Ellsworth Simeona**, *Tiki's Grill & Bar* (9PM) 923-8454

#### JAZZ/BLUES

**Dr. J's Blues Review**, *Anna's* (5PM) 946-5190  
**Noly Pa'a**, *Lewers Lounge* (8:30PM) 923-2311  
**Kelly Villaverde**, *Kahala Hotel & Resort* (7:30PM)

#### ROCK/POP

**Cecilio & Kompany**, *Terry's Place* (7PM) 533-2322  
**Dean & Dean**, *Chart House* (6PM) 941-6660  
**Henry Kapono**, *Duke's Canoe Club* (4PM) 922-2268  
**Melveen Leed**, *Chai's Bistro* (6PM) 585-0011  
**Chris Murphy**, *Arnold's Beach Bar* (5PM) 924-6887  
**Jim Smart**, *Cha Cha Cha Salsaria* (6:30PM) 395-7797  
**Johnny Valentine**, *Beach Bar, Moana Surfider* (8PM) 921-4600  
**Robert Young**, *Uncle's Fish Market & Grill* (5PM) 275-0063

### 26/Monday

#### HAWAIIAN

**Na Kama**, *Hula Grill* (7PM) 923-HULA  
**Little Albert Maglimat**, *Beach Bar, Moana Surfider* (8PM) 921-4600  
**Jerry Santos & Hula**, *Chai's Bistro* (7PM) 585-0011  
**Sean Na'auao**, *Kani Ka Pila Grille* (6PM) 924-4990

#### JAZZ/BLUES

**Pau Hana Blues Band**, *OnStage Drinks & Grinds* (6:30PM) 306-7799  
**Absolute Joy**, *The Ground Floor* (6PM) 538-6012  
**Project Monday**, *Jazz Minds Art & Cafe* (9PM) 945-0800  
**JG Syndrome**, *Dragon Upstairs* (7PM) 526-1411  
**Tennyson Stephens**, *Rocky Holmes, Lewers Lounge* (8:30PM) 923-2311

#### ROCK/POP

**FVP Music All-Star Acoustic Showcase**, *Terry's Place* (8PM) 533-2322  
**Taimane**, *Royal Hawaiian Hotel* (7:45PM) 923-7311

# THE SCENE

## 27/Tuesday

### COMEDY

Bo Irvine & Friends, Hale Koa (8PM)

### HAWAIIAN

Robert Cazimero & Hula, Chai's Bistro (7PM) 585-0011

Ainsley Halemanu and Ka Liko O Kapalai, Kūhiō Beach Hula Stage (6PM) 843-8002

Weldon Kekauoha, Kani Ka Pila Grille (6PM) 924-4990

### JAZZ/BLUES

The Patrick Koh Jazz Ensemble, Jazz Minds Art & Cafe (9PM) 945-0800

Jazz M.O.G.I., Indigo (6:30PM) 521-2900

### ROCK/POP

Chris Murphy, Arnold's Beach Bar (5PM) 924-6887

Songwriters Acoustic Showcase, OnStage Drinks & Grinds (9PM) 306-7799

Vinyl Wine, Sandbox Waikiki (10PM) 923-8848

### VARIOUS

The Latin/Hip Hop R&B Night, Zanzabar (8PM) 924-3939

## 28/Wednesday

### COMEDY

Bo Irvine and Friends, Comedy Polynesia at the Sheraton Princess Ka'iulani (8PM) 531-HAHA

Michael Staats, Arthur Wayne, Kenny Johnson, Sharkey's Comedy Club at the Sheraton Princess Ka'iulani (9:30PM) 531-HAHA

### COUNTRY/FOLK

Gordon Freitas & Local Folk, The Ground Floor (6PM) 538-6012

### HAWAIIAN

Brothers Cazimero, Chai's Bistro (7PM) 585-0011

Imua Garza, Diamond Head Cove Bar (8PM) 732-8744

Typical Hawaiians, Tapa Bar (8PM) 947-7875

Cyril Pahinui, Kani Ka Pila Grille (6PM)

924-4990

Royal Hawaiian Band, Tolani Palace (12PM) 523-4674

Kawika Trask & Friends, Royal Hawaiian Center Royal Grove (6PM) 922-2299

### JAZZ/BLUES

TM3 & branapeles Presents Screwed Up Wednesdays!, Jazz Minds Art & Cafe (9PM)

945-0800

Johnny Williams Trio, Hank's Cafe (8PM)

526-1410

### ROCK/POP

Chris Murphy, Cabanas Pool Bar (Ohana West) (9PM) 922-3143

Tahiti Rey & Jason Alan, Apartment3 (8PM) 955-9300

Stuck In The '80s, Dragon Upstairs (6:30PM) 526-1411

### WORLD/REGGAE

Siaosi, Tropics (9PM) 597-8429

**White Wedding: Hula's New Year's Eve Party** Celebrate Hawaii's newly passed civil unions law to take effect in 2012. Wear white! Hula's Bar and Lei Stand, Waikiki Grand Hotel, 2nd floor, 134 Kapahulu Ave.: Sat., 12/31, (8PM) \$20. hulas.com/calendar, 923-0669

## On Sale

**♫A Prairie Home Companion** Garrison Keillor presents his enormously popular radio program with his regular cast of actors and musicians—including some local stars like Jake Shimabukuro, Led Kaapana, Jeff Peterson and Danny Carvalho. Blaisdell Concert Hall, 777 Ward Ave.: Sat., 12/31, (12:45PM and 4:45PM) \$35-\$65. ticketmaster.com, (800) 745-3000

**Andrew Bird** It's the return of the indie-rock multi-instrumentalist. Hawaii Theatre, 1130 Bethel St.: 1/12/12, (8PM) \$25-\$50. hawaii-theatre.com, 528-0506

**♫Bill Maher: Live in Honolulu** Always provocative, catch the comedian and Real Talk host lay it straight about the past year's events. Waikiki Shell, 2805 Monsarrat Ave.: Sat., 12/31, (7:30PM) \$29.50-\$79.50. ticketmaster.com

**Foster the People, Cage the Elephant, Best Coast and Mariachi El Bronx** The band names say it all: Four acts from LA to NYC hit up Honolulu for one night only. Blaisdell Arena, 777 Ward Ave.: Tue., 2/8, (6:30PM) \$37.50. 591-2211

**Neil Diamond** A living legend, this Diamond sparkles on stage with songs like "Love on the Rocks" and "Sweet Caroline." Blaisdell Arena, 777 Ward Ave.: Thu., 2/16/12 and Sat.,

Continued on Page 15

### Professional Display Graphics

Full Color Outdoor Grade

**BANNER \$24**  
2' x 4'

Print Ready File, Add \$2 per Grommet, Restrictions Apply  
Prices subject to change without prior notice

Full Color 18" x 24"  
**POSTER \$5**  
24" x 36" \$9

Use Color Wave Printer on 24# Paper  
Minimum 10 posters, limited time offer

Wholesale Pricing  
**LAMINATION**

We'll beat or match any local competitor's price

**HON** graphics

www.hongraphics.com  
ph: 596-2679 info@hongraphics.com  
417 Cooke St. Across from Fisher Hawaii

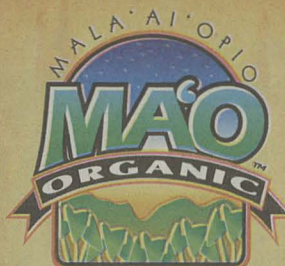
### HONOLULU

## Weekly STAY CONNECTED

Every week, the best in local Entertainment, Food and Green living, delivered by email.

Sign up now.  
honoluluweekly.com/email-signup

ACCESS HNL



FRUITS & VEGETABLES  
WAI'ANA'E, HAWAII

## Subscribe to MA'O Organic Farms CSA

Community Supported Agriculture Program

A weekly box of fresh organic produce grown by our Youth interns on our farm on Wai'anae

8-12 items per box for your 'ohana or to share

\$32 per week

2 delivery locations:  
Honolulu and West Side

www.shop.maoorganicfarms.org

Everything from tape to tires and brakes to frames, we got it all. Just for you!



Not just any bike shop.... The Bike Shop

Honolulu  
808.596.0588  
1149 S. King St.

Aiea  
808.487.3615  
98-019 Kam Hwy

Kailua  
808.261.1553  
270 Kuulei Road

www.BikeShopHawaii.com / info@BikeShopHawaii.com

### HUNDREDS OF COOL PRIZES WILL BE GIVEN AWAY...

Surfboards, Dive Gear, Bodyboards, Tees, Watches, Sunglasses, Hats, Beachwear, Surf and Dive Accessories and More!



The 23rd Annual  
Twelve Days of Christmas  
Giveaway!!

WIN!

### HERE'S HOW TO WIN...

Pick up a free sticker at Surf n Sea. Stick it on your car, bike, skateboard, etc. From Dec. 13th thru Dec. 24th we'll be cruisin' the island, and if our elf spots your sticker, YOU WIN! It's that easy! Stop by for more details!

This is how you get there... find the ocean at Surf n Sea!  
62-595 Kamehameha Hwy (Next to Old Haleiwa Bridge) Haleiwa -  
(808) 637-SURF www.surfnsea.com



# HOLLY JOLLY GARMENTS!

It's an unwritten rule: Buy someone clothing, be sure it comes with a gift receipt.

Discerning just one person's taste is half the challenge. Mentally measuring their waist size is another 25 percent. The last quarter? Three shopping days left until it's Christmas Day. Baby Jesus, that's a lot of math...

In this final Weekly gift guide, we turn our sights on apparel—gifts that can be worn all year round. Instead of fixating on specific items, we advise you think broader when shopping for clothes and about function over trends. It'll save you precious time...not to mention those gift receipts.

—Matthew Dekneef



## Cheers Couture

Diane Von Furstenberg, Aloha Rag, milk & honey

The occasion: "The Cocktail." In this economy, it's natural for someone to want to get glam and Occupy Bar once in a while, right? Go all out in high fashion style with haute shops like the new **Diane Von Furstenberg** or the exclusive boutique collections at **milk & honey** and **Aloha Rag** that are sure to turn heads (they did on the Parisian runways, anyway).

Diane Von Furstenberg, Ala Moana Shopping Center, dvf.com, 672-2840  
Aloha Rag, 1221 Kapiolani Blvd., aloharag.com, 589-1352  
milk & honey, 1128 Smith St., milkandhoneyhawaii.com, 397-4488



## T.G.I.F.F. Kicks/Hi

The occasion: "First Friday." When it comes to hitting the Chinatown bricks on First Friday, it's all about what's on their feet: They spend so much of time on them waiting to get into The Manifest, dancing at Nextdoor or cruising through art galleries. **Kicks/Hi** has a select range of unique sneakers for both guys and girls just for the artful occasion. Check out their recent Converse x Missoni line you'd be hard pressed to find elsewhere on the island. That staircase at thirtyninehotel doesn't walk up itself.

1530 Makaloa Ave., kickshawaii.com, 941-9191



## Fashion Degree

Manuheali'i, Roberta Oaks, Wahine Toa

The occasion: "The Grad Party." Give local to your little local graduate this holiday with smart designs from three local retailers offering sweet Hawaiian fashions. **Roberta Oaks** has great one-of-kind, vintage-inspired Aloha shirts in a slim contemporary fit that'll remind the family he's graduating from college and entering his own real world, not dad's closet and boardroom. For females, **Wahine Toa** and **Maunaheali'i** tread that graduation party line of young, local sophistication.

Roberta Oaks, 19 N. Pauahi St., robertaoaks.com  
Wahine Toa, Big Island, wahinetoadesigns.com, 938-3584  
Maunaheali'i, 930 Punahou St., maunahealii.com, 942-9868



CLASSIC AND INNOVATIVE FURNITURE. MADE IN HAWAII!



Honolulu Furniture Company builds high quality eco-friendly, furniture from locally sourced woods and deconstructed homes.

www.honolulu-furniture-company.com  
808-597-9193 • 527 Cummins St.

From traditional Hawaii to your dinner table.

Perishable-Keep Refrigerated

MAKAWELI POI

TARO CHUNKS

FIND TARO CHUNKS ON ALL MAJOR ISLANDS!

fresh steamed island kalo

Eat them as they are or mix them into your favorite dishes, stews and salads.

Makaweli Poi Mill | 808-338-1199



## Pan-Pacific Crooks & Castles, Levi's, Patagonia

The occasion: "The Mainland." Whether they're doing their annual trip to Vegas or going back to school, there's a bit of a learning curve when it comes to what to wear in the other 49 states. Boardshorts in 53 degree weather? Talk about a wardrobe malfunction for locals. **Patagonia**, **Crooks & Castles** and **Levi's** offer a range of unisex heavy-duty jackets that are stylishly cool, without entering frostbite territory. No matter what their final destination, at least they can feel like home. By that, we mean "warm."

Crooks & Castles, 641 Ke'eumoku St., crooksandcastles.com, 955-7007  
Patagonia, 940 Auahi St., patagonia.com, 593-7502  
Levi's, Ala Moana Shopping Center, us.levi.com, 944-4090



# Bamboo Flooring Hawaii

Bamboo Composite Decking  
Strong, Durable, Maintenance Free  
\$3 a linear foot – in two colors

Bring in this ad and receive  
**\$250 dollars off** your purchase  
of at least 500 sq ft of decking  
Offer expires 12/31/11

808-550-8080 • www.dockshawaii.com

## Soak Up The Sun

Local Motion, Pualani, Hawaiian Island Creations

The occasion: "The Beach." Okay, living in Hawaii, it's something of a strain to consider going to the beach an "occasion." That's why getting dressed for it is akin to slipping on a pair of socks. Going to the beach is like any other thing. Make the Roxy girl in your life's wardrobe shine with eclectic prints from **Pualani** in a treasure trove of styles and patterns, from convertible tops and bottoms to tankinis. For guys, any boardshort from **Local Motion** and **Hawaiian Island Creations** is always a safe bet.

Pualani, 3643 Diamond Head Rd., pualanihawaii.com, 923-3403, (Kailua) 361 Nanawale Place, 262-3253  
Both at Ala Moana Shopping Center: Local Motion, localmotionhawaii.com, 979-7378 and Hawaiian Island Creations, hicsurf.com, 973-6780

Peace on earth

The Pegge Hopper Gallery  
1164 Nuuanu Avenue • 524-1160 • Tue-Fri 11-4 Sat 11-3

soul de cuba cafe  
cuban cuisine and more

Join us for  
New Year's Day Brunch!

\$5 Mimosas & Bloody Marys All Day

www.souldecuba.com

1121 Bethel Street  
(Across from Hawaii Theatre)  
808.545.CUBA (2822)

Mon-Thurs 11AM-10PM  
Fri & Sat 11AM-11PM  
Sun 11AM-8:30PM  
New Years Day Brunch until 5pm

Authentic Cuban cuisine in the heart of downtown

Call now for  
Holiday orders  
CAKE WORKS

Custom Wedding and Specialty Cake Artists

2820 S. King St. ♦ 946-4333  
cakeworkshi.com

# Slow Food Oahu T-shirts for sale.

Look for them at Pegge Hopper Gallery, Downtown and Town restaurants.

Great garb for local foodies!

\$20 per shirt, available in small, medium, large and x-large.

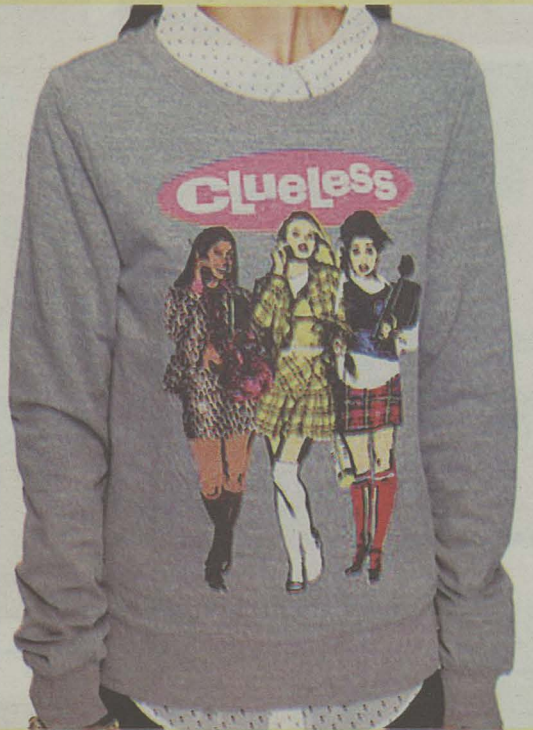
Slow Food Oahu  
slowfoodoahu.org

## Sweat Some Style

Lululemon, HNL Fight Shop,  
American Apparel

The occasion: "Da Gym." Between treadmills and bench presses, they won't really need you to look good, thankfully. But you can still help them in the process. From Brazilian jiu-jitsu to yoga stretches or just plain push-ups and sit-ups, **Lululemon**, **HNL Fight Shop** and **American Apparel** each offer sweat-embracing tops and pants, Arte Suave t-shirts or Rocky Balboa hoodies that don't mind the burn.

Both at Ala Moana Shopping Center: Lululemon, lululemon.com, 946-7220  
American Apparel, americanapparel.net, 983-3340  
HNL Fight Shop, 631 Ke'eumoku St., 943-0919



## School Supplies

The Human Imagination, Forever21

The occasion: "Back 2 Skool." Whether they're breezing through nine credits or cramming overtime at 18 a semester, a large portion of their day is spent trekking the college campus. Between hauling textbooks and all-nighter Hamilton Library study sessions, items that are comfortable and durable are vital. **The Human Imagination** and **Forever21** have a college cool selection of youthful digs—graphic tees, retro prints, classic bags—without sacrificing fun and style.

The Human Imagination, 1154 Nu'uuanu Ave., in4mants.com  
Forever21, Ala Moana Shopping Center and Waikiki, forever21.com

## Work It Overtime

J.Crew, Club Monaco

The occasion: "9 to 5." It's really not that hard to dress for that downtown job. There are two stores: **J.Crew** and **Club Monaco**. They just buy five different tops from one or the other and rotate them over the M-F workweek. For a year. Done! For contemporary job staples, both retail locations have an abundant collection of simple contemporary staples that transition nicely from the gift box to the workplace.

Both at Ala Moana Shopping Center: J.Crew on the Island, 949-5252, jcrew.com and Club Monaco, 941-4277, clubmonaco.com



## If This Sleigh is A-Rockin'...

**W**arning: Christmas spirit throughout Chinatown is about to increase with a festive dance party courtesy of DJ Wolfram.

Well versed in the euro sound, Wolfram comes bearing gifts in the form of beats assembled from a passionate place and mixed to creative perfection. On the must list: Comfortable soles for dance crazed souls. It's all about letting the hard knocking electro synths and trible riffs rip you apart like a present on Christmas morning.

Bless the folks at thirtyninehotel for making their day-before-the-Eve party a pulse pumping public affair. The holiday spirit in the air will undoubtedly pair well with the hype-a-delicious sounds of the Austria native.

Santa hat recommended, holiday spirit required.

—Kalani Wilhelm

thirtyninehotel, 39 Hotel St., Fri., 12/23, 9pm, \$10

## DJ NIGHTS GUIDE



brought to you by  
**SCION HAWAII**

### WEDNESDAY, DECEMBER 21

ACID WASH 2.0 @ Nextdoor  
COWBOYS & INDIANS @ Apartment3  
DJ ANARCHY @ Bar 35  
DJ gRAD @ Boardriders  
DJs QUIKSILVA, LOSTBOY, AUDISSEY @ Indigo  
GET RIGHT @ Manifest (10PM)  
H.U.M.P. (hip-hop) (mainstream) (pop) @ Hula's Bar & Lei Stand  
MARTINI NIGHTS @ bambuTwo  
SALSA NIGHT @ 4Play  
UNDER \$9 AT 9PM @ Giovanni Pastrami  
W.T.F. @ V-Lounge & Bar 7  
WILD WEDNESDAYS @ Zanzabar

### THURSDAY, DECEMBER 22

BROADCAST @ Nextdoor  
THE CORNER @ Visions  
FLIRT @ Paparazzi  
JET BOY, JET GIRL @ Mercury Bar  
LATIN HEAT THURSDAYS @ Blue Ocean Night Club  
SALSA AFTER HOURS @ Indigo  
THE SPEAKEASY @ Hush  
SPIN @ Hula's Bar & Lei Stand  
TAP THAT THURSDAYS @ Soho  
TGIT @ Lotus  
THIRSTY THURSDAYS @ Zanzabar

### FRIDAY, DECEMBER 23

DJ 45 REVOLVER & DJ QUIKSILVER @ Indigo  
DJ/VJ RACER-X @ Hula's (5PM)  
DJ/VJ KSM @ Hula's (9PM)  
FADED FRIDAYS @ THAI SWEET BASIL  
FRENCH TOAST FRIDAYS @ The Villa  
FUNKY FRESH FRIDAYS @ Paparazzi  
HANDLEBAR @ Soho  
LIVE @ 4PLAY FRIDAYS @ 4Play Nightclub  
POSH @ Oceans808  
PRE @ Nobu  
PUSSYCAT LOUNGE @ Apartment 3  
ROCK SOLID FRIDAYS @ Showbox  
SALSA @ Sand Island Sports Club  
THE SESSION @ Lulu's Waikiki  
SINSUAL FRIDAYS @ Zanzabar  
TOAST @ Bonsai  
VJ's Back Yard BBQ @ Fresh Cafe

### SATURDAY, DECEMBER 24

THE BOILING POINT @ RumFire  
CLUB CARIB/REGGAE NIGHTS @ Tiki's  
ENERGY @ The Warehouse  
EUROTRASH @ Lotus  
FLIRT @ Soho  
FLASHBACK SATURDAY @ T-Spot  
FLASHBACK SATURDAYS @ The House of Fortune  
GOOD LIFE SATURDAYS @ Letto  
HUGS AND KISSES @ Bonsai  
KA-BOOM SATURDAYS @ Ka NOIR @ Brasserie Du Vin  
PAPERDOLL REVUE @ Fusion Waikiki  
POPPIN @ The ClubHouse  
PRESTIGE @ Paparazzi  
SATURDAY NIGHT LIVE @ Lulu's Waikiki  
SIZZLING SALSA SUMMER NIGHTS @ Indigo  
SUGARHILL SATURDAYS @ Ige's  
SUPPER CLUB @ Apartment3  
SUPER HANDSOME SATURDAYS @ Manifest  
THE SURF SHACK @ The Shack Waikiki

### SUNDAY, DECEMBER 25

BEACH PARTY BLAST @ Hula's Bar & Lei Stand (5PM)  
DOUBLEDOUBLE SUNDAYS @ Hula's w/ DJ RACER-X (9PM)  
INDUSTRY NIGHT @ Nobu  
SIZZLIN SUNDAYS @ Zanzabar, 18+  
SPIRAL GIRL HAWAII @ The Clubhouse  
THE VITAL LOUNGE @ V Lounge

### MONDAY, DECEMBER 26

BROKE ASS MONDAYZ @ Red Lion Waikiki  
5-0 MONDAYS @ Apartment 3  
MAD HOUSE MONDAYS @ Aiea Bowl  
MOTOWN MONDAYS @ Next Door  
SWITCH MONDAYS @ V-Lounge  
UNDERGROUND PLAYGROUND @ Mercury Bar  
WII PLAY MONDAY @ Bar 35

### TUESDAY, DECEMBER 27

DIAMOND @ V Lounge  
EYE CANDY @ Hula's Bar & Lei Stand  
HAPPY HOUR @ Apartment3, 21+  
HUSH HUSH TUESDAYS @ Hush, 21+  
KALEIDOSCOPE @ thirtyninehotel (9PM)

GET YOUR EVENT LISTED! SPINZONE@HONOLULUWEEKLY.COM, TWO WEEKS IN ADVANCE.

# SCORE

2.9%\* APR OR \$100 GIFT\*\* CARD

with purchase of a new or demo  
**2012 Scion!**

Only at your Scion Hawaii dealers.

OAHU | ServcoScion.com | 564-2400

BIG ISLAND | BigIslandScion.com | 935-2920

MAUI | MauiScion.com | 877-2781



what moves you  
scionhawaii.com

\* Not combinable with any other offers. Some restrictions apply. Not all customers will qualify. See a Scion Hawaii dealer for details. On approved credit. 2.9% APR on 60-month terms on a new or demo 2012 MY Scion iC (maximum to finance: \$25,000), xB (maximum to finance: \$22,000), or xD (maximum to finance: \$19,000) in stock, purchased and delivered between 11/1/11 - 12/31/11, or while supplies last. Excludes iQ and Release Series vehicles. Program dates and details subject to change without notice. See gpp.com for gift card terms and conditions.

# THE SCENE

## From Page 11

2/18/12, (8PM) \$49-\$159. ticketmaster.com, 745-3000

## Stage

**All Scrooged Up** A classic Christmas story will be told with a local twist (courtesy of Hawaii's own Da Braddahs). Enjoy a touching story of a man's journey to recapture a love once lost. *Word of Life Christian Center*, 550 Queen Street.: Wed., 12/21-Fri., 12/23, 7PM, Sat., 12/24-Sun., 12/25, 6PM Free. wordoflifehawaii.com, 447-5529

**Cirque Wings** High-octane aerial acrobatics will shoot your senses through the stratosphere. Kama'aina receive an additional 10% discount. *circqwings.com*. *Waikiki Shell Amphitheater*, Kapi'olani Park: Saturdays 7:30PM., (7:30PM) \$10-\$20. 545-4000

**New Year's Rockin' Eve with Elvis** Welcome the New Year with performances by "Elvis" and an all-star cast including "Elton John," "Michael Jackson," "Lady Gaga," and more. *Royal Hawaiian Theater*, Royal Hawaiian Shopping Center, 2201 Kalakaua Ave.: Sat., 12/31, (11PM) \$99. legendswaikiki.com, 931-6100

**St. Clement's Recital** Recital of classical vocal music featuring Washington-based singers Rachel Evangeline Barham and James Rogers accompanied by pianist Winston Barham. *St. Clement's Church*, 1515 Wilder Ave.: Wed., 12/28, (7PM) Free. rachelbarham.com/performances, sopranorachel@gmail.com

**The Local Divas New Year's Eve Show** Star studded evening of divas featuring Melveen Leed, Nohelani Cypriano and Carole Kai. *Hilton Hawaiian Village*, Coral Ballroom, 2003 Kalia Rd.: Sat., 12/31, 544-3385

## Museums

**Bishop Museum** 1525 Bernice St. Open Wed.-Mon. (closed Tuesdays) 9AM-5PM. \$17.95 adults; \$14.95 ages 4-12; under 4 free. bishopmuseum.org, 847-3511

**Manu'unu'u Ka Welolani: The Chiefly Cultures of Polynesia** This exhibit provides an insightful expose on the ancestral connections between the Chinese and Polynesian cultures through a unique assemblage of Oceanic artifacts.

**Tradition and Transition: Stories of Hawaii's Immigrants** Semi-permanent installation focuses on the strength of the human spirit and power of change through the inspiring stories of immigrant hardships.

**Facing Mars** This exhibit focuses on the challenges of sending human explorers to Mars with 28 interactive stations featuring stunning imagery and fascinating artifacts such as a rare Mars meteorite from West Africa.

**The Astronomy of Galileo** A live interactive planetarium show. 3:30PM.

**Hawaiian Hall** The buzzed-about restoration is now a museum staple. See a reinvigorated hall that shows a Native Hawaiian worldview layered in meaning and authentic in voice. Now on display: The Pa'u of Nāhi'ena'ena, a sacred cape measured at 20 x 2.5 feet, created with an estimated one million feathers of the 'o'o bird.

**Rare Botanical Flowers: Picture Gallery** Newly revealed water colors, oil paintings and works on paper are on constant rotation.

**Planetarium Shows** "The Sky Tonight," daily 11:30AM; "Explorers of Mauna Kea," daily, 1:30PM; "Explorers of Polynesia," daily, 12:45PM, 3:30PM.

**Science on a Sphere** The museum's permanent exhibit presents wall graphics, interactive stations and the suspended 40-pound sphere, which offer insights into our ever-changing climate.

**The Sky Tonight** An hour-long, live tour of the current night sky in

the Watumull Planetarium at Bishop Museum. Presented by the Hawaiian Astronomical Society, the audience gets an overview of the planets, stars and special astronomy happenings for the month to come. Following the sky talk, the group is invited to Bishop Museum's observatory to peek through 12.5 inch telescope. First and third Fridays, 8PM. \$4-\$6. Members free.

**Children's Discovery Center** Kids can present a puppet show, dress up like a doctor, play virtual volleyball, explore the inside of a mouth, visit different cultures, play their wheelchair skills, put on a test, make crafts and much more at this interactive museum. *110 'Ohe St.*: Tue.-Fri., 9AM-1PM; Sat. & Sun., 10AM-3PM. \$8 adults, \$6.75 kids 2-17. 524-5437

**Chinatown Museum** Learn Chinatown history and Hawaiian history; tour Chinatown and downtown. *1120 Maunakea St., 2nd floor*: Open Mon.-Sat., 10AM-2PM. \$2 adults; \$1 youths. 595-3358

**Doris Duke's Shangri La** Guided tours of the 5-acre waterfront estate of the late heiress and philanthropist. All tours depart from the *Honolulu Academy of Arts*, 900 S. Beretania St. Wed-Sat, 8:30AM, 11AM & 1:30PM. \$25, \$20 to Hawai'i residents (13 & older) with proof of residency. honoluluacademy.org, (866) DUKE-TIX

**Hawai'i Heritage Center Gallery** Created in 1980 to support efforts to educate, preserve and perpetuate knowledge of the history, heritage and culture of the diverse ethno-cultural groups of Hawai'i. Open Mon-Sat, 9AM-2PM. \$1 admission. 1040 Smith St.: 521-2749

**Hawai'i Historical Tours** Departing from Waikiki every Wednesday for a full day of stops including the 'Iolani Palace, the National Memorial of the Pacific, the Historic Railway Society and a lū'au at Paradise Cove. \$109 adults; \$90 children. Call to make reservations. 677-0110

**Hawai'i Plantation Village** Thirty structures preserved in their original condition offer a glimpse of plantation life from the mid-19th century through World War II. *94-695 Waipahu St.* Guided tours Mon-Sat, 10AM-2PM. \$5-\$13. Children 3 & under free. hawaiiplantationvillage.org, 677-0110

**Hawai'i State Art Museum** No. 1 Capitol District Building, 250 S. Hotel St., 2nd Fl. Open Tue.-Sat., 10AM-4PM. Free. 586-0900

**He Alo A He Alo: Face to Face, Visions & Portraits of Hawai'i** From the Art in Public Places collection. Ongoing.

**I Love Art Gallery** An educational space on elements of art and design. Gallery is modified for each new exhibition.

**Where We Live: Places of Hawai'i** Hawai'i's environment and landscape serve as subject matter for local artists.

**Hökūlani Imaginarium** Windward Community College's state-of-the-art planetarium and multi-media facility presents shows for all ages. *Windward Community College*, 45-720 Kea'ahala Rd., Kāne'ohe: 235-7321

**Honolulu Academy of Arts** 900 S. Beretania St. Open Tue.-Sat., 10AM-4:30PM; Sun., 1-5PM. Monday closed. \$10 adults; \$5 children (ages 4-17); children 3 and under/members free. Free first Wednesday of the month. honoluluacademy.org, 532-8700

**Paul Emmert: Artist-Traveler** The late Swiss-born painter and draftsman's drawings of the geophysical beauty of O'ahu, Maui and Hawai'i Island. Runs through 1/15/12.

**Gaye Chan: Frass** Worm-eaten pages from a book of woodblock prints inspire the latest project from this photographer/conceptual artist. An inspection on globalization and free trade agreements. Runs through 2/20/12.

**Masterpieces of Landscape Paint-**

**ing from the Forbidden City** Landmark exhibition of 56 paintings from the Palace Museum, the largest collection of Chinese paintings in the world. Runs through 1/8/2012.

**Paul Gauguin: Noa Noa** Not just a painter, but a skilled printmaker and draftsmen, an exhibit of woodcut illustrations from his Tahitian journal. Based on a series of paintings and sketches chronicling his encounters through the South Seas. Runs through Sun., 4/22/2012.

**In Memoriam: Maqbool Fida Husain** India's most famous painter, who recently died last June at age 95. Runs through Sun., 4/22/2012.

**Ulana Me Ka Lokomaika'i: To Weave from the Goodness Within** This exhibition recognizes the influence of Gladys Kukana Grace, an accomplished lauhala weaver, with pāpale, or hats, skillfully woven by her and her students. Runs through 1/29/12.

**Spalding House** 2411 Makiki Heights Dr. Open Tue.-Sat., 10AM-4:30PM; Sun., Noon-4PM. Mon., closed. \$10 adults; \$5 children (ages 4-17); children 3 and under/members free. Free first Wednesday of the month. tcmhi.org, 526-1322

**Red Moon Rising** Mural on the tennis court by Eukarest.

**Battle of the Birds and the Bees** Mural on the tennis court by Ckaweeks.

**The Silent Echo Chamber** Former SNL alum Harry Shearer captures the quiet moments of media personalities before they "go live" on TV in this multi-screen video installation. Runs through 1/29/2012.

**Through the Fire, From Dirt to Dazzle: Ceramic Works from the Drewliner/Higa Gifts** Donated works on view by major mid-century American Studio Pottery members such as Beatrice Wood, Rose Cabat, Robert Turner and others. Runs through 1/29/12.

**Jennifer Steinkamp: Mike Kelley** Series of computer video projections of trees dedicated to past teachers. Runs through 1/29/12.

**Escape from the Vault: A Few Great Paintings and Sculptures** Includes a gigantic metal assemblage-relief by Frank Stella to minimalist masterpieces like a Cor-Ten steel and Plexi "stack" by Donald Judd. Runs through 1/29/12.

**The Contemporary Cafe** 2411 Makiki Heights Dr. Tue.-Sat., 11AM-2PM; Sun., Noon-2PM. Mon., closed. 237-5225

**Diverse Impressions** Works by 10 award-winning O'ahu printmakers. Tue., 11/1-Sun., 1/29.

**Gruntled Funk** A mural by local artist Ryan Higa on the Café lanai.

**O2 Art 4: A mural of Aangry Woebots** Martin's signature angry pandas resides on one of the walls outside of the Contemporary Cafe.

**Honolulu Academy of Arts at First Hawaiian Center** 999 Bishop St. Open Mon.-Thu., 8:30AM-4PM; Fri., 8:30AM-6PM. Validated parking available; enter on Merchant St. 526-1322

**Abstracted Landscapes** Multilayered, multipanel pieces from Brad Huck and woodblock prints from Jeera Rattanangkoon. Runs through Mon., 1/2/12.

**Udo Nöger: Me Water** Internationally German artist builds subtle works of mixed media. Runs through Mon., 1/2/12.

**Academy Art Center at Linekona** 1111 Victoria St. Open Tue.-Sat., 10AM-4:30PM; Sun., 1-5PM. Free admission. honoluluacademy.org, 532-8700

**Honolulu Police Department Law Enforcement Museum** Inside the Police Department is this gem about Honolulu's finest. Besides badges and weapons, you'll find interesting stories, like that of detective Chang Apana who inspired the fictional character Charlie Chan.

Continued on Page 16

# FREE WILL ASTROLOGY

by Rob Breznsny

## ARIES

(March 21-April 19):

In the fictional world of the wizard Harry Potter, muggles are people who have no magical powers. Because of their deficiency, certain sights may be literally invisible to them, and certain places inaccessible. I'm going to boldly predict that you Aries people will lose at least some of your muggleness in the coming year. A part of your life where you've been inept or clueless will begin to wake up. In ways that may feel surprisingly easy, you'll be able to fill a gap in your skill set or knowledge base.

## TAURUS

(April 20-May 20):

On Jan. 15, 1885, Wilson Bentley photographed his first snowflake. Over the course of the next 46 years, he captured 5,000 more images of what he called "tiny miracles of beauty." He was the first person to say that no two snowflakes are alike. In 2012, Taurus, I suggest that you draw inspiration from his example. The coming months will be prime time for you to lay the foundations for a worthy project that will captivate your imagination for a long time—and perhaps even take you decades to complete.

## GEMINI

(May 21-June 20):

In her memoir *Blood, Bones & Butter: The Inadvertent Education of a Reluctant Chef*, Gabrielle Hamilton suggests my horoscopes were helpful to her as she followed her dream to create her New York City restaurant, Prune. "I killed roaches, poisoned their nests, trapped rats, stuffed their little holes with steel wool and glass shards," she wrote, "while my girlfriend...walked through the place 'purifying' it with a burning sage smudge stick and read me my Rob Breznsny horoscopes in support." I would love to be of similar service to you in the coming months, Gemini, as you cleanse whatever needs to be cleansed in preparation for your next big breakthrough. Let the fumigation, purgation and expiation begin!

## CANCER

(June 21-July 22):

In 1992, 30,000 Americans signed a petition asking the governor of Hawai'i to change the name of Maui to "Gilligan's Island." Fortunately, the request was turned down, and so one of the most sublime places on the planet is not now named after a silly TV sitcom. I'm urging you to avoid getting swept up in equally fruitless causes during the coming months, Cancerian. You will have a lot of energy to give to social causes and collective intentions in 2012, but it will be very important to choose worthy outlets that deserve your intelligent passion and that have half a chance of succeeding.

## LEO

(July 23-Aug. 22):

The Palace of Versailles once served as home for French kings and their royal courts, and was the hub of the French government. To this day it remains a symbol of lavish wealth and high civilization. Set on 26 acres, it has 700 rooms, 67 staircases, 6,000 paintings and 2,100 sculptures. The grounds feature 50 fountains and 21 miles of water conduits. And yet the word "Versailles" means "terrain where the weeds have been pulled." Prior to it being built up into a luxurious center of power, it was a marsh in the wilderness. I nominate it to be your inspirational image for the coming year, Leo: a picture of the transformation you will begin.

## VIRGO

(Aug. 23-Sept. 22):

A guy named George Reiger is a certifiable Disney freak. He has covered his skin with 2,200 tattoos of the franchise's cartoon characters. If you plan to get anything like that much thematic body decoration in 2012, Virgo, I recommend that you draw your inspiration from cultural sources with more substantial artistry and wisdom than Disney. For example, you could cover your torso with paintings by Matisse, your arms with poems by Neruda and your legs with musical scores

by Mozart. Why? In the coming months it will be important for you to surround yourself with the highest influences and associate yourself with the most inspiring symbols and identify yourself with the most ennobling creativity.

## LIBRA

(Sept. 23-Oct. 22):

In the Classical Nahuatl language of the Aztecs, the word *teocuitlatl* literally meant "god poop." It was used to refer to gold, which was regarded as a divine gift that brought mixed blessings. On the one hand, gold made human beings rich. On the other hand, it could render them greedy, stingy and paranoid. So it was potentially the source of both tremendous bounty and conflict. I suspect that in 2012, Libra, you will have to deal with the arrival of a special favor that carries a comparable paradox. You should be fine—harvesting the good part of the gift and not having to struggle mightily with the tough part—as long as you vow to use it with maximum integrity.

## SCORPIO

(Oct. 23-Nov. 21):

What spell would you like to be under in 2012? Be careful how you answer that; it might be a trick question. Not because I have any interest in fooling you, of course, but rather because I want to prepare you for the trickiness that life may be expressing in your vicinity. So let me frame the issue in a different way. Do you really want to be under a spell—of any kind? Answer yes only if you're positive that being under a spell will help you manifest your biggest dream. And please make sure that whoever or whatever is the source of the spell is in the service of love.

## SAGITTARIUS

(Nov. 22-Dec. 21):

The Environmental Working Group wrote the *Meat Eater's Guide to Climate Change and Health*. It concluded that if every American avoided eating cheese and meat one day a week, emissions would be lowered as much as they would be by removing 7.6 million cars from the roads. This is the kind of incremental shift I urge you to specialize in during 2012, Sagittarius—whether it's in your contribution to alleviating the environmental crisis or your approach to dealing with more personal problems. Commit yourself to making little changes that will add up to major improvements over the long haul.

## CAPRICORN

(Dec. 22-Jan. 19):

Suzan-Lori Parks is a celebrated American playwright who has won both a Pulitzer Prize and a MacArthur Foundation "Genius" Grant. During the time between November 2002 and November 2003, she wrote a new short play every day—a total of 365 plays in 365 days. I think you could be almost as prolific as that in 2012, Capricorn. Whatever your specialty is, I believe you will be filled with originality about how to express it. You're also likely to have the stamina and persistence and, yes, even the discipline necessary to pull it off.

## AQUARIUS

(Jan. 20-Feb. 18):

Pigeons are blessed with an extraordinary ability to find home, even if they're hundreds of miles away. They have an internal compass that allows them to read the Earth's magnetic field, and they also create a "map of smells" that gives them crucial clues as they navigate. A team of scientists performed some odd experiments that revealed a quirky aspect to the birds' talent: If their right nostril is blocked, their innate skill doesn't work nearly as well. (It's OK if their left nostril is blocked, though.) What does this have to do with you? Well, Aquarius, you've been like a homing pigeon with its right nostril blocked, and it's high time you unblocked it. In the coming months, you can't afford to be confused about where home is, what your community consists of or where you belong.

## PISCES

(Feb. 19-March 20):

One of Alexander the Great's teachers was Aristotle, who was tutored by Plato, who himself learned from Socrates. In 2012, I'd love to see you draw vital information and fresh wisdom from a lineage as impressive as that, Pisces. In my astrological opinion, you need much more than a steady diet of factoids plucked from the Internet and TV. You simply must be hungry for more substantial food for thought than you get from random encounters with unreliable sources. It will be time for you to attend vigorously to the next phase of your life-long education.

Go to RealAstrology.com to check out Rob Breznsny's EXPANDED WEEKLY AUDIO HOROSCOPES and DAILY TEXT MESSAGE HOROSCOPES. The audio horoscopes are also available by phone at 1-877-873-4888 or 1-900-950-7700.

# THIS MODERN WORLD

by TOM TOMORROW

# THE SCENE

**2011**  
AN ADMITTEDLY INCOMPLETE AND UTTERLY SUBJECTIVE YEAR IN REVIEW  
**PART THE FIRST**

MONTH OF JANUARY: SENSITIVE, CARING REPUBLICANS TRY TO REDEFINE RAPE. IT DOESN'T COUNT UNLESS IT WAS **FORCIBLE!**  
OTHERWISE YOU WERE ASKING FOR IT.

JAN. 8: REP. GIFFORDS SHOT, SIX OTHERS KILLED; USUAL GUN NUT CRAP COMMENCES.  
GUN OWNERS ARE THE **REAL** VICTIMS TODAY!

JAN. 10: SOON-TO-BE-FORGOTTEN CRAZY PERSON GLENN BECK URGES SOON-TO-BE-FORGOTTEN SELF PROMOTER SARAH PALIN TO HIRE MORE SECURITY BECAUSE --  
"--AN ATTEMPT ON YOU COULD BRING THE RE-PUBLIC DOWN!"

FEBRUARY: SOUTH DAKOTA LAWMAKERS CONSIDER BILL JUSTIFYING HOMICIDE IN DEFENSE OF A FETUS.  
WE CALL IT THE "OPEN SEASON ON ABORTION DOCS" ACT!  
HAPPY HUNTING!  
(BILL IS LATER WITHDRAWN)

ALSO: HEAVY SNOWSTORMS GENERATE PREDICTABLE RESPONSE FROM RIGHT WING IGNORAMUSES.  
WHERE'S YOUR GLOBAL WARMING NOW AL GORE?  
HAW HAW HAW

AND: AS EGYPTIANS OVERTHROW MUBARAK, AMERICANS CHEER FOR DEMOCRACY!  
IT'S SO **INSPIRING** WHEN ONE OF OUR CLIENT DICTATORS IS TOPPLED!

FEB. 7: VERY SERIOUS DEFICIT COMMISSION CO-CHAIR ALAN SIMPSON CALLS SOCIAL SECURITY--  
"--A MILK COW WITH 300 MILLION **TEATS!**"

MAR. 7: ALAN SIMPSON COMPLAINS THAT YOUNG PEOPLE ARE "WALKING ON THEIR PANTS WITH THE CAP ON BACKWARDS LISTENING TO THE ENEMA MAN AND SNOOPY SNOOPY POOP DOGG!"

APRIL: G.O.P FIGHTS TO ELIMINATE GOV'T FUNDING FOR FAMILY PLANNING.  
CONDOMS ARE JUST A SNEAKY WAY OF HAVING A **VERY** EARLY TERM ABORTION!

ALSO: DONALD TRUMP STAKES HIS SHORT-LIVED PRESIDENTIAL HOPES ON OBAMA'S BIRTH CERTIFICATE.  
I THINK THERE ARE **SERIOUS QUESTIONS--**  
AHEM.

APR. 2: COMPANY THAT OPERATED DEEPWATER HORIZON AWARDS EXEC'S SAFETY BONUSES.  
IF YOU IGNORE THAT **ONE LITTLE ACCIDENT--**  
--WE HAD A **GREAT** YEAR IN 2010!

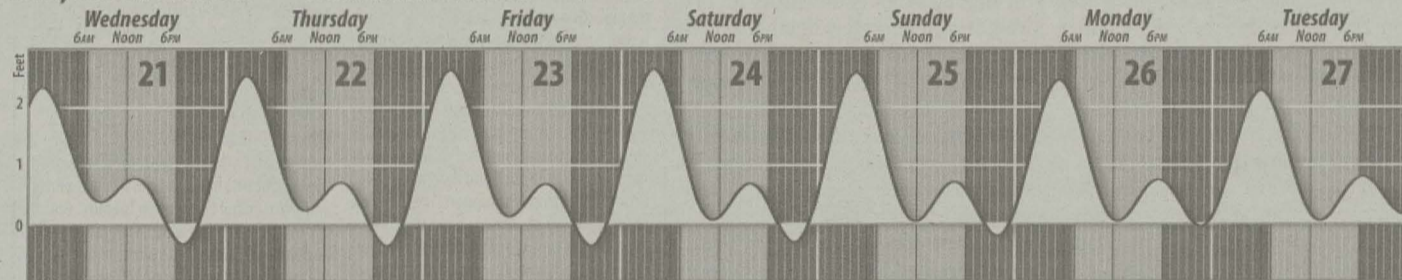
MAY 1: BIN LADEN KILLED. OBAMA DECLARES "WE CAN DO WHATEVER WE SET OUR MIND TO."  
AS LONG AS WHAT WE SET OUR MIND TO IS KILLING SOMEBODY.  
FIXING THE ECONOMY, NOT SO MUCH.

MAY 26: SENATORS WYDEN & UDALL SEEM TO BE TRYING TO WARN US ABOUT SOMETHING.  
IF YOU KNEW WHAT WE KNOW ABOUT THE PATRIOT ACT--  
--YOU'D POOP YOUR **PANTS!**  
\*SLIGHT PARAPHRASE.

MAY 26: OBAMA NONE-THELESS SIGNS FOUR YEAR EXTENSION OF SAID ACT.  
OH WELL! WE WEREN'T USING THOSE CIVIL LIBERTIES **ANYWAY!**

JUNE 16: ANDREW BREITBART ACQUIRES PICS OF ANTHONY WEINER'S PENIS; WORLD'S STUPIDEST SCANDAL ENSUES.  
I CAN NEITHER CONFIRM NOR DENY THE IDENTITY OF THAT PENIS.  
NEXT WEEK! MORE CRAZY!

## Sun, Moon & Tides — Honolulu Harbor



Moon Phases: NEW MOON-Dec 24

### From Page 15

801 S. Beretania St.: Mon-Fri, 7:45AM-4:30PM. Free. 529-3351

**Iolani Palace** The palace is the only official residence of royalty in the United States. Guided tours: Mon.-Sat., 9-11:15AM; tours in Japanese available Mon-Sat, 11:30AM, \$20 adults, \$15 kama'aina, \$5 children ages 5-12 (under 5 years not admitted). Audio tours available 11:45AM-3:30PM, \$13 adults; \$5 children ages 5-12. Galleries open: Mon.-Sat., 9AM-5PM. \$6 adults; \$3 kids ages 5-12, under 5 free.

**John Young Museum of Art** The museum displays works selected from art collector Young's private stash. Krauss Hall, UH-Mānoa: Mon.-Fri., 11AM-2PM; Sun. 1-4PM; closed on state holidays. Free. outreach.hawaii.edu/jymuseum, Call for details 956-8866

**Mission Houses Museum** Step into 19th century Hawai'i when you visit the original homes of the first missionaries to the Islands. 533 S. King St. Open Tue.-Sat., 10AM-4PM; closed Sun. & Mon. Tours available at 11AM, 1PM & 2:45PM. \$6-\$10; 50 percent kama'aina discount on last Saturday of each month. missionhouses.org, 447-3910

**North Shore Surf and Cultural Museum** View the vintage surfboard collection, photos, memorabilia, bottles, videos, posters and other cultural items on display and shop for jewelry from the bottom of the sea. North Shore Marketplace: Wed-Mon, 11AM-6PM. Free. 637-8888

**Pacific Aviation Museum** Historical artifacts and aircrafts. Pearl

Harbor, Hanger 37, Ford Island, 319 Lexington Blvd.: \$14 general (\$10 kama'aina); \$7 children (\$5 kama'aina). Keiki free on Saturdays and Sundays with each paid adult admission. Teachers free on Furlough Fridays. pacificaviationmuseum.org, 441-1000

**B-52 Nose Section** This new exhibit just arrived in February from the San Diego Air & Space Museum.

**Douglas SBD Dauntless** The World War II dive bomber that was recovered from Lake Michigan returns home to Hawai'i, where the plane flew its original missions.

**Ford Island Control Tower Dedication Ceremony** as part of the Pearl Harbor 70th Anniversary Ceremonies series. Wed., 12/7 and 11am.

**Queen Emma Summer Palace** Revel in Hawaiian history and American architecture from the Victorian period at the summer retreat. 2913 Pali Hwy.: Daily, 9AM-4PM. \$1-\$6. daughtersofhawaii.org, 595-6291

**King Kamehameha IV Cloak** The famous feathered cloak is on display at the Palace.

**Prince Albert Kauikeaoli Leiopapa Exhibit** See the prince's belongings.

**U.S. Army Museum** An extensive collection of artifacts pertaining to America's military past is housed here, including old artillery and vehicles. Guided tours available. Fort DeRussy (next to the Hale Koa Hotel) at the corner of Kalua & Saratoga roads: Open Tue.-Sun., 10AM-4:15PM. Free. hiarmymuseum.org, Call 955-9552

**U.S.S. Bowfin Submarine Museum and**

**Park** The World War II submarine will astound you with its enormity, its outdoor exhibits and the intimidating WWII Japanese Suicide Missile. Some material dates as far back as the Revolutionary War. 11 Arizona Memorial Dr. Open daily, 8AM-5PM. \$8 adults; \$3 children 4-12; children 3 and under, free. www.bowfin.org, Call 423-1341

## Galleries

### Opening

**Holiday Spirit** Paintings by Frank Oliva. Through 1/12/2012. *Gallery on the Pali*, First Unitarian Church of Honolulu, 2500 Pali Hwy.: Open weekdays 10AM-6PM, weekends 2-6PM, davidfriedmanart.com, 595-4047

### Continuing

**Perpetual Reflections: Identity in Contemporary Art** Group art exhibition on critical issues surrounding identity in art today featuring works by Oliver Coloma, Elizabeth C. Curtis, Kamea Hadar, John Hook, Vincent Ricafort, Abigail Romanchak, Boz Schurr and Kirsten Rae Simonsen. Through 12/26. *Gallery of Hawaii Artists*, 1888 Kalakaua Ave., Ste C312: info@galleryofhawaiiartists.com, 447-8908, galleryofhawaiiartists.com

**Day Dreaming** Color photography infused on aluminum by Chad Heroemus. Through 1/31. *Morning*

*Brew Coffee House*, 572 Kailua Rd.: 262-7770

**Hawaiian Legends Series** Exhibition features the artistic collaboration between Dan Merkel and Harald-M. Lehnardt. It will be the first display of the artists' new Hawaiian Legends Series. Through 2/29. *Kahala Hotel and Resort*, 5000 Kāhala Ave.: kahalaresort.com, 739-8888

**La Mirada** Phoenix-based multimedia artist Dan Diaz exhibits four site-specific murals influenced by his Mexican and Japanese heritage. Through 1/21. *thirtyninehotel*, 39 N. Hotel St.: 599-2552

**Loose Threads and Friends** Jewelry works by Mary Kamiya and Carola Wilson, fused glass by Sydney Lynch, traveling journals by Sara Oka and others. Through 12/24. *Louis Pohl Gallery*, 1111 Nu'uauu Ave.: 521-1812

**Toy Show** Rediscover the joy of toys with quirky works by Jason Teraoka, Tracy Gunn, Nicole Higa, Mark Chai, Deb Aoki and others. Through 1/7. *fishcake*, 307C Kamani St.: 593-1231

## Learning

**International Folk Dancing** For those interested in trying their hand at international folk dancing, it's never too late. And don't worry if you're not advanced—beginners are welcome and no partner is needed. *Mō'ili'ili Community Center*, 2535 S. King St.: Sundays, (7-9PM) \$4 donation. ifdhawaii@gmail.com, 941-6453

**Laughing Lunch** An improv comedy class for those searching for spontaneity and their funny bone. Especially great for shy people looking to boost their confidence. Bring your lunch! *The ARTS at Marks Garage*, 1159 Nu'uauu Ave.: Wednesdays, (12:30-1:30PM) \$20 per class, \$60 for series. artsatmarks.com, 521-2903

## 'Ohana

**Winter Program** A week's worth of exciting activities—such as crabbing and bamboo pole-fishing—for your keiki to enrich their cultural and historical knowledge. Wed., 12/21-Fri., 1/6, (8:45-4PM) \$50. 923-2311, see halekulani.com

## Botanical

**Garden Mulch** Take as much as you can carry when it comes to free mulch—reusable material used to enrich or insulate the soil. Sat., 12/24. Free. opala.org, 768-3200

**Prehistoric Plants** Visit a prehistoric glen for a look at primitive plants from around the world. *Foster Botanical Garden*, 50 N. Vineyard Blvd.: \$5 general, \$3 kama'aina; \$1 kids. 522-7064

**Holo Holo Tours** Enjoy breathtaking views on tours, that focus on Hawaiian culture, history, flora and more. *He'eia State Park*, 46-465 Kamehameha Hwy., Kāne'ohe: Wed., 12/21 and 12/28, (2-3PM) 247-3156

**Herb & Spice Gardens** Explore spice trees including cola nut, nutmeg, clove, allspice and bay rum. The herb garden is separated into islands representing herbs from different parts of the world including European, African, Mediterranean, Asian, Chinese and New World with rare varieties of gingers and edible flowers. *Lyon Arboretum*, 3860 Mānoa Rd.: Mon-Sat. Free. 988-0456

**Ecology Programs** Study the relationships between human cultures and the plant world in an ecology tour. Day use and camping programs can include ethnic, craft, botanical, horticultural and environmental activities. *Ho'omaluhia Botanical Garden*, 45-680 Luluku Rd., Kāne'ohe: Sat., 12/24, 10AM & Sun, 1PM. Free. 233-7323

**Soil Analysis Service** Learn about the soil in your backyard by collecting information on plant diseases, feed and forage analyses and insect identification analyses. The specialized service also includes pesticide residue analyses. *O'ahu Urban Garden Center*, 955 Kamehameha Highway

## Outside

**Mānoa Cliff Restoration** Meet at the trailhead on Round Top Drive to help nurture native plants and remove invasives on around the popular trail site. E-mail manoacliffnatives@gmail.com for details. First and third Sundays, (9AM)

**The Ghosts of Honolulu's Past: A Holiday Ghost Tour** Chill with the ghosts of Christmas past, present and future on this special walking tour with local historian Steve Fredrick through haunted sites in downtown. Comfortable sports shoes recommended. Free street parking on Christmas Day. Sun., 12/25, (6:30PM) \$35. filmguy54@hotmail.com, 395-0674

**Nā Pōhaku 'O Hauwahine** Help restore the ethno-botanical and cultural features of this important historical state park. Visit ahahui.wordpress.com. Meet at the Kapa'a Quarry Road. (8:30AM-12:30PM) 593-0112

**Explore Chinatown** Discover Honolulu's ever-evolving yet historical Chinatown. Party of two minimum. Call to reserve a spot. Mon.-Sat.,

# The Straight Dope

By Cecil Adams



illustration: slug signorino

**I**s setting yourself on fire a good way to treat snakebite? There's a common belief that "sucking the poison out" is an effective snakebite remedy. I also heard journalist Stephanie Nolen talk about a man in Sudan who set his foot on fire after a snake bite, which he claimed saved him from the poison. Is either of these treatments effective?

—Dyer

**I** treasure questions like yours, Dyer, because of the insight they give me into the human mind. Ninety-nine out of a hundred people, on hearing about some birdbrain who sets himself on fire to combat snakebite, think: what an amusing anecdote. Then there's you, solemnly wondering: is this something I should try?

Quick answer: no. However, I don't mean to make sport of you, for this simple reason. Although the Sudanese fellow's grasp of the fine points left a lot to be desired, the therapeutic regimen to which he evidently subscribed was the standard treatment for snakebite for more than 2,500 years. It involved both suction and cauterization, which of course is the sober medical term for setting part of yourself (or someone) ablaze. We'll refer to this overall approach as the suction method. Minus some of its more alarming features, it appeared in the Boy Scout manual until

at least 1963.

The suction method is the premier example of what I call the duct-tape school of emergency medicine. For reasons perhaps already evident, this approach to healthcare is largely the province of males. It has three defining characteristics: first, it involves dramatic—some would say foolhardy—gestures; second, there's an underlying logic to it, although this may not be evident in application; and third, it's best carried out while drunk.

The suction method, like all duct-tape techniques, addresses a genuine need. Snakes have been messing with humans since the days of Adam and Eve. Even now they bite as many as 5 million people worldwide per year (estimates vary widely), of which something like 100,000 cases are severe. In the US alone venomous snakes bite 4,000 to 6,000 people annually. Few American victims die, but the odds tilt against you elsewhere. India alone may have 30,000 deaths annually, and thousands more succumb throughout the rest of the developing world.

Given this grim reality, it's no surprise human ingenuity devised ways to deal with snakebite early on. The suction method made its way into the body of traditional Indian medical wisdom known as Ayurveda somewhere between 1000 and 600 BC, in writings attributed to the surgeon Susruta. First, you applied a

tourniquet above the wound to contain the venom. Second, you sliced the wound open, typically usually with an incision between fang punctures, to facilitate draining. Third, you sucked out the venom, by mouth if necessary, although the squeamish might opt for a suction cup. Fourth, you cauterized the wound, in hopes of destroying any toxin that remained.

Cauterization is the part that historically has charged the imagination of males opting for the suction method. Browsing through the literature we find mention of branding irons, hot coals, gunpowder, cigars and even acid to burn the venom out. A few took matters further. In an account of snakebite treatment in 19th-century Illinois, one fellow claimed to have saved 50 bite victims by stabbing the wound with a penknife until the blood flowed freely, presumably carrying the poison with it. A doctor of the era recommended cutting the wound out entirely. Amputation was occasionally recommended, with an extreme case being a Mississippi man who in 1948 shot off a bitten finger.

In the developed world, or at any rate in the US, cauterization and other radical treatments didn't much outlive the Wild West as an approved medical practice. The Boy Scout manual of my childhood,

for example, wisely refrained from advising America's youth to set one another on fire.

But drastic techniques didn't disappear. After stun guns hit the market they were touted by some hikers, hunters and others as providing an up-to-date method of snakebite cauterization. This daft idea was so widely accepted that in 1992 a research team felt obliged to put it to the test. Their conclusion: a full 90 seconds of continuous shock didn't accomplish squat.

Eventually all aspects of the suction method, not just cauterization, fell into official disfavor. True, experiments with radioactively tagged venom showed suction could remove more than 50 percent of the poison if done within three minutes. But other research found that as a practical matter suction produced no demonstrable improvement and often made matters worse. The dangers of tourniquets and incisions using unsterilized instruments require no further explanation. Merely attempting to suck out poison sounds harmless but may delay more effective measures. The recommended medical procedure nowadays is to keep snakebite victims calm and immobilized and get them to a hospital fast.

Despite professional disapproval, I don't expect the suction method to die out soon—the call of testosterone is too strong. "If this was good enough for people who were dust in Alexander the Great's day," it tells one's inner caveman, "it's good enough for you." ■

Send questions to Cecil via [straightdope.com](http://straightdope.com) or write him c/o Chicago Reader, 11 E. Illinois, Chicago 60611. Subscribe to the Straight Dope podcast at the iTunes Store.

## THE SCENE

(10:30AM–12PM) \$10 includes history book. 595-3358

**Architects Walking Tour** There are a few downtown walking tours, but none through the eyes of architects. Party of four minimum. *AIA Honolulu*, Stangenwald Bldg., Ste. 402, 119 Merchant St.: Saturdays (9–11:30AM) \$10. 545-4242

**Gay Catamaran Cruise** Buy your tickets from any bartender. Get a free mai tai or beer at *Hula's Bar and Lei Stand*, Waikiki Grand Hotel, 2nd floor, 134 Kapahulu Ave.: Saturdays, (2PM) \$20 per person. *hulas.com*, 923-0669

## Farmers' and Open Markets

**Banyan Court Mall** 800 N. King St. Open Sat., 6:15–7:30AM. [co.honolulu.hi.us/parks/programs/pom](http://co.honolulu.hi.us/parks/programs/pom), 522-7088

**Country Market & Craft Fair** *Waimanalo Homestead Community Center*, 1330 Kalaniana'ole Hwy. Open Sun., 9AM–4PM. 259-8611

**Davies Pacific Center** 841 Bishop St. Open Second and Fourth Tuesdays, 10AM–1PM.

**Hawai'i Kai Park-n-Ride** 300 Keahole St. Open Sat., 1–2PM. [co.honolulu.hi.us/parks/programs/pom](http://co.honolulu.hi.us/parks/programs/pom), 522-7088

**Hawai'i Kai Towne Center** *Kalaniana'ole Hwy at Keahole St.* Open Mon., Wed. and Sat., 7:30AM–3PM. 396-0766

**Honolulu Farmers' Market** *Neal S. Blaisdell Center, Ward Ave. and Kapi'olani Blvd.* Open Wed., 4–7PM. [hfbf.org](http://hfbf.org), 848-2074

**Kahalu'u Farmers' Market** *Windward Baptist Church, 47-528A Kamehameha Hwy, across from 7-11.* Open Fri., 3–

7PM. [mahikufarmersmarket.com](http://mahikufarmersmarket.com), 225-4002

**Kailua District Park** 21 South Kainalu Dr. Open Thu., 9–10AM. [co.honolulu.hi.us/parks/programs/pom](http://co.honolulu.hi.us/parks/programs/pom), 522-7088

**Kalani High School** 4680 Kalaniana'ole Hwy. Open Sat., 8AM–1PM. [mahikufarmersmarket.com](http://mahikufarmersmarket.com), 225-4002

**Kalihi Valley District Park** 1911 Kamehameha IV Rd. Open Sat., 10–10:45AM. [co.honolulu.hi.us/parks/programs/pom](http://co.honolulu.hi.us/parks/programs/pom), 522-7088

**Kalihi Farmers' Market** *Kapalama Elementary School, 1601 N. School St.* Open Mon., 7AM–1PM. [mahikufarmersmarket.com](http://mahikufarmersmarket.com), 225-4002

**Kāne'ohe District Park** 45-660 Kea'ahala Rd. Open Thu., 10:45–11:45AM. [co.honolulu.hi.us/parks/programs/pom](http://co.honolulu.hi.us/parks/programs/pom), 522-7088

**Palolo Valley District Park** 2007 Palolo Ave. Open Wed., 6:30–7:30AM. [co.honolulu.hi.us/parks/programs/pom](http://co.honolulu.hi.us/parks/programs/pom), 522-7088

**Queen Kapi'olani Park** *Monsarrat and Paki St.* Open Wed., 10–11AM. [co.honolulu.hi.us/parks/programs/pom](http://co.honolulu.hi.us/parks/programs/pom), 522-7088

**Queen's Medical Center** 1301 Punchbowl St. Open First Wednesdays, 10AM–2PM.

**Restaurant Row Farmers' Market** 500 Ala Moana Blvd. Open Wed., 10AM–1PM. More info, email [wfpinfo@isleconciierge.com](mailto:wfpinfo@isleconciierge.com), 537-5158

**Royal Kunia Park-n-Ride** *Kupuna Lp. and Kupohi St.* Open Sun., 9:30–11AM. [co.honolulu.hi.us/parks/programs/pom](http://co.honolulu.hi.us/parks/programs/pom), 522-7088

**Waianae Farmers' Market** *Waianae High School, 85-251 Farrington Hwy.* Open Sat., 8–11:30AM. [farmersmarketonline.com/fm/WaianaeFarmersMarket.html](http://farmersmarketonline.com/fm/WaianaeFarmersMarket.html), 388-7386

## Volunteer

**CASA Advocates** If you're concerned about child abuse and neglect in Hawai'i and want to make a difference, this is your chance to help. Call for details or visit [www.casa-hawaii.org](http://www.casa-hawaii.org), 954-8124

**Hawai'i Christmas Meals on Wheels** Deliver hot meals to homebound elderly and disabled individuals on Christmas Day. Visit [hmow.org](http://hmow.org). Donations urgently needed to meet monetary goals. Find out which way you can help.

**Institute for Human Services** O'ahu's largest emergency homeless shelter needs dedicated administrative volunteers in various departments. E-mail [volunteer@ihs-hawaii.org](mailto:volunteer@ihs-hawaii.org) or call 447-2811.

**Islands Hospice** Islands Hospice is looking for volunteers to provide support to the terminally ill and their family, or to help in the office. Contact [lpawlak@islandshospice.com](mailto:lpawlak@islandshospice.com) or call for more information. 550-2552

## Happy Holidays!

**Christmas in Polynesia** Festive canoe rides offering a local take on the traditional Holiday narrative with Christmas lights, musical performances and more. *Polynesian Cultural Center*, 55-370 Kamehameha Hwy, Lā'ie: Every Mon., Wed., Fri., Sat. from 12/12 through 12/23., (6–8PM) \$8–\$10. 293-3333

**First Annual Christmas House** Pick out some crafts and culinary creations for Christmas gifts and seasonal delights. Handicrafts, textiles and artwork from Thailand, Myan-

mar, and Vietnam share space with Hawaiian cheesecake, fresh scones, hand-made soap from the North Shore, clothing, vetiver tea, rice pillows and jewelry from Manoa. *Pacific Gateway Center, Lemongrass Cafe*, 83 N. King St.: Wed., 12/14–Fri., 12/23, (Mon.–Fri., 8:30AM–4PM; Sat., 9AM–2PM) [pacificgatewaycenter.org](http://pacificgatewaycenter.org), 851-7010

**Community Kwanzaa** Come and enjoy an evening of family fun as we learn and celebrate Kwanzaa! Please bring a dish to share as we gather to enjoy good food and music. *Kaka'ako Park, End of Ohe St.*: Sat., 12/24, (3–7PM) Free. 284-4032

**Festival of Lessons and Carols** The Cathedral Choir with Hawai'i's largest pipe organ weave carols and hymns together with scripture readings. *The Cathedral of Saint Andrew*, 229 Queen Emma Square: Sun., 12/25, (5:30PM) Free. 524-2822, ext. 217

**Neon Lights NYE Party** It's just thirty-nine steps to ringing in 2012. *thirtyninehotel*, 39 N. Hotel St.: Sat., 12/31, (8PM) 599-2552

**Starlight Ball** Think winter formal or masquerade. Dress up in your hottest evening wear without having to make a trip to town. *Hale'iwa Joe's, North Shore*, 66-011 Kamehameha Hwy.: Fri., 12/30, (11PM–2AM) \$15. 637-8005

## Whatevas

**Kaka'ako Makai Community Cultural Marketplace** Local performers, history, culture, crafters, artisans, farmers, fish and food come together on the Waterfront Park in a community village for the entire family. *Kaka'ako Waterfront Park*, 677 Ala Moana Blvd. #1001: Fri., 12/23 (4:30–8PM); Sat., 12/24 (9AM–2PM) Free.

**Pacific Gateway Center's First Annual Christmas House** Crafts, textiles and artwork from Thailand, Myanmar and Vietnam sharing space with coffee from Hilo, cranberry cookies from Honolulu and rice pillows and necklaces from Kaimuki. *Lemongrass Cafe*, 83 N. King St.: Through Sat., 12/24, (11AM) \$5–\$25. [pacificgatewaycenter.org](http://pacificgatewaycenter.org), 851-7010

**Smile Consultations** World renowned aesthetic dentist, oral health expert, and celebrity dentist to stars such as Alessandra Ambrosio, Tina Fey, and Lenny Kravitz, Dr. Jonathan B. Levine, DMD, will be giving smile evaluations and personalized regimens with his new breakthrough teeth-whitening device, GLO Brilliant. *Sephora Honolulu*, Ala Moana Center, 1450 Ala Moana Blvd.: Wed., 12/21, (10AM–3PM) Free. 944-9797, [sephora.com](http://sephora.com)

## Submissions

"The Scene" provides groups and individuals with free listings of community events, activities and entertainment. Submissions must include the following:

- Date and time;
- Location (include a street address);
- Cost or admission price;
- Contact phone number;
- Description of the event. (who, what, where, why...etc.)

Deadline for submissions is two weeks before the listing should appear. Listings appear the Wednesday before the event. "The Scene" is also posted each week on our Web site, at [honoluluweekly.com](http://honoluluweekly.com).

Send all submissions through [honoluluweekly.com/calendarsubmit](http://honoluluweekly.com/calendarsubmit). Submissions are not accepted over the phone. Please do not send original art. ■



## Film Review

# Best Films of the Year (So Far)

BOB GREEN & MATTHEW DEKNEEF

“It was the best of times, it was the worst of times...” As for films this past year, it was more a whimper in between. Within are those that actually had a voice.

Of those on our *Weekly* year-end list (in alpha order), three star Jessica Chastain, six funny women headline the only comedy worth remembering, two are understated gay romances and one was shot in our Hawaiian backyard. Due to release dates, a few have yet to be considered—*The Girl with the Dragon Tattoo*, *The Iron Lady*, *Pariah*—so here are the standouts from Jan. 1 through Dec. 21, 2011.

### Bridesmaids

Not only the funniest film of the year, it has three of the funniest scenes under one marquee: Kristen Wiig and Rose Byrne trying to one up each other's engagement party speeches; the gross-out bridal

dress fitting; Wiig's exaggerated drive-by attempts to get a police officer's attention. That much versatility in one body makes you wonder: Is Wiig this decade's Parker Posey?

### Contagion

Steven Soderbergh's ingenious story about what might happen if a pandemic struck. An all-star cast in this cautionary epic gives its all, far from the predictable “epics” of the past few years. Not some shoddy, FX-driven cartoon, but intelligent and beautifully acted.

### The Debt

Shifting back and forth in time, this drama, about the Mossad seeking out Nazi war criminals, is smart and surprising—especially in the performance standards set by an inspired Jessica Chastain and Helen Mirren. The last 15 minutes are riveting.

### The Descendants

Alexander Payne's comedy-drama about modern-day Hawai'i was selected by the

LA Film Critics Association as “Best Picture.” George Clooney gives one of his two best performances in this modestly-mounted film based on Kauai Hart Hemmings' novel.

## The Weekly's eleven to watch from 2011

### Hugo

Martin Scorsese's homage to moviemakers of yesteryear in this period piece about a turn-of-the-century orphan looking for a home. Many cameos by Brit performers. Good 3-D. A good family film.

### J. Edgar

Leonardo DiCaprio gives his best performance in this illuminating drama about the rise and fall of the FBI's J. Edgar Hoover, as directed remarkably by Clint Eastwood.



The Tree of Life: Counting down.

### Margin Call

The most human and intelligent of all the Wall Street movies, with Kevin Spacey giving his best performance in many years. It explains more than any Wall Street—narrative or doc—before it.

### Rise of the Planet of Apes

Not simply popcorn fare, Andy Serkis' surprisingly nuanced performance as Caesar injects this film with a welcome moral edge. An unconventional summer blockbuster that resurrects a dead franchise and pushes the CGI envelope. Two opposable thumbs up.

### Take Shelter

An inventive drama about a man going through the dark storms of psychological anguish, but, in addition, does he have valid precognitive dreams? Jessica Chastain and Michael Shannon star.

### The Tree of Life

Where to begin with this? Terrence Malick's magnum opus—the most ambitious, not only of the year, but the past few—is the film we thought about most. Impossible to sum up in a few sentences (ultimately what's so stunning about this cinematic love letter to...life), here's a few words: Idle. Urgent. Courageous. Confused. Self-indulgent. Sincere. Searching. Audacious. Flawed. Humble. Human.

### Weekend

This slice-of-life indie-drama about two men who meet at a bar speaks to anyone whose ever felt immediately connected to another—gay or straight. With understated acting and direction, most pioneering is its depiction of guys, in general, with doubts, insecurities and feeling. A refreshing way to say, “Welcome to the year 2011.”

## O'ahu Films

A selection of films currently playing in island theaters. Unattributed film synopses indicate movies not yet reviewed by HW staff. \* Indicates films of particular interest.

### Opening

#### \* The Girl with the Dragon Tattoo

A year after *The Social Network*, David Fincher brings us a new film based on the Swedish novel series by Steig Larsson. Daniel Craig plays Mikael Blomkvist, a journalist searching for a woman who has been missing for forty years, while Rooney Mara stars as Lisbeth, a young and eccentric computer hacker.

#### \* Mission: Impossible—Ghost Protocol in Titan XC

(See Film Review, opposite page.) **The Adventures of Tintin** Steven Spielberg crafts a CGI children's tale featuring Tintin, his dog Snowy and Captain Haddock. The group is on an adventurous treasure hunt for a sunken ship, but the menacing Mr. Sakharine makes matters difficult. **War Horse** Albert enlists to service in World War I after his treasured horse gets sold to the cavalry. Steven Spielberg's adaptation of Michael Morpurgo's stageplay shows the loving bond between man and horse.

**The Darkest Hour** Five young people band together to fight against a new race of aliens that are attacking earth.

### Continuing

**Arthur Christmas** The makers from *Flushed Away* reassure us (in 3-D) that even Santa's got comically dysfunctional family issues.

**My Week with Marilyn** To use an optimistic, partially empty descriptor from the '50s, *Marilyn* is a “swell” enough picture, but ultimately a bit forgettable. Monroe was anything but.—*Matthew Dekneef*

\* **The Descendants** A very funny film that embraces the big themes—love, death—without getting all sentimental on us...Payne delivers his best film yet, Clooney his finest role.—*Mindy Pennybacker*

**Alvin & the Chipmunks: Chipwrecked** What would the holiday season be without Alvin and his helium-voiced accomplices? This year they end up shipwrecked overseas, but discover their new home might not be so bad.

\* **Young Adult** The *Juno* writing and directing team bring us a new coming-of-age story starring Charlize Theron, a newly divorced author who returns to Minnesota to relive her adolescent glory day, which turns out to be not such a glorious idea.

**Melancholia** The film is insightful about the nature of depression, is beautifully photographed and well acted. Does this story end with a bang or a whimper? Well, one or the other.—*Bob Green*

**The Sitter** David Gordon Green (director of *Pineapple Express*) presents us with a comedy starring Jonah Hill, as said sitter. Things get progressively rowdy (and rated R) as Hill is coaxed into babysitting the kids next door.

**New Year's Eve** Isn't anywhere near as excruciatingly painful and saccharine and atrociously painful as *Valentine's Day*. Granted, the filmmakers had nowhere to go but up.—*Ryan Senaga*

\* **Hugo** A tale adapted from Brian Selznick's vivid, 526 pg. children's

cult classic, *The Invention of Hugo Cabret*. The vivid imagery in this orphan tale set in Paris was just screaming to be directed by Scorsese, in 3-D no less—it's a Christmas miracle!

**The Muppets** Chris Cooper wants to dig for oil under the muppet theater, but loyal muppet fans refuse to let this unfold.

\* **Sherlock Holmes: A Game of Shadows** Robert Downey Jr. and Jude Law reprise their roles as Sherlock Holmes and Dr. Watson in Guy Ritchie's newest gripping adventure. Holmes must outwit his fiercest rival yet, Professor Moriarty.

**The Twilight Saga: Breaking Dawn—Part 1** Thing get pretty heated for expecting parents Edward and Bella (they grow up so fast) when their unborn baby creates turmoil for the Wolf Pack.

**Happy Feet Two** Those lovable penguins are back with Brad Pitt, Elijah Wood, Pink, Robin Williams, and a slew of other celebs lending their star-studded voices.

## Doris Duke Theatre

Honolulu Academy of Arts, 900 S. Beretania St., honoluluacademy.org, 532-8768

**Women in Love** (1969) Alan Bates, Oliver Reed, Jennie Linden and Glenda Jackson star in Ken Russell's faithful adaptation of D.H. Lawrence's novel, “Women in Love,” a captivating story that explores the nature of love, romance and morality.

Wed., 12/21 & Thu., 12/22, 1 & 7:30pm



**Kahuku FARMS**

## Come Aboard A Holiday Wagon Ride At Kahuku Farms!

FRIDAY & SATURDAY  
DECEMBER 23, 24 & 30,31 2011  
SPECIAL HOLIDAY HOURS - 11AM to 3PM

Ride through one of Oahu's most beautiful farms on the North Shore. Learn about the history, people, and crops of this special place.

The tour includes a sampling of farm fruits. Visit our Farm Café for fresh and delicious Panini and smoothies too!

Adults: \$15  
Children (Ages 5-12): 50% off with paying adult - \$6 (regularly \$12 per child)  
Ages 4 and Under: Free

### ADVANCE RESERVATIONS REQUIRED

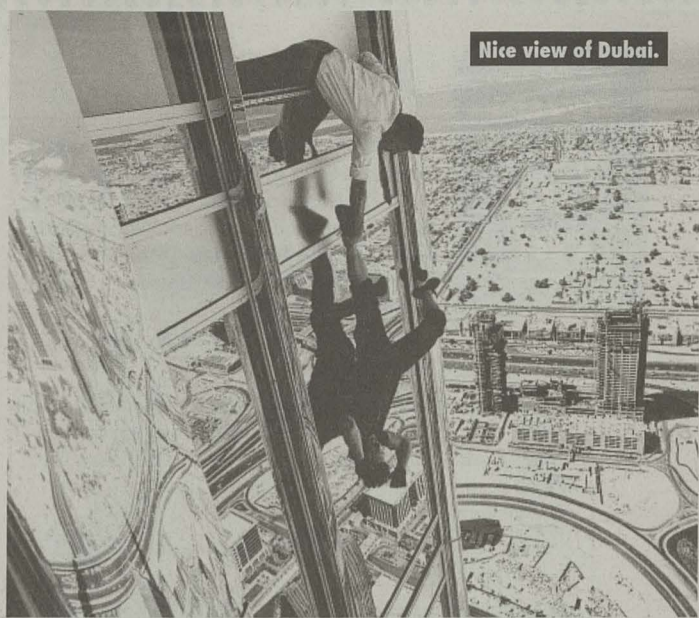
Also stop by our tent at Kapiolani Community College every Saturday from 7:30am-11am to pick up fresh produce & country gifts.

CALL 808-628-0639  
FOR RESERVATIONS & DIRECTIONS

56-800 Kamehameha Hwy, Kahuku, HI, 96731  
Open Fri., Sat., Sun. | 11am - 4pm | FREE TO VISIT

Follow us on [f](#) [t](#) [e](#) @ KahukuFarms  
Or email us at [reservations@kahukufarms.com](mailto:reservations@kahukufarms.com)  
Shop online at [www.kahukufarms.com](http://www.kahukufarms.com)

## Film Review



RYAN SENAGA

After what, surprisingly, has been over a decade, it's become a movie theater comfort to see Tom Cruise determinedly jumping off tall heights and just plain running as quickly as his almost 50-year-old legs will take him. (Can you believe he's turning 49?!) *Mission: Impossible—Ghost Protocol* is the fourth in the franchise, and, although much has been made about co-star Jeremy Renner taking over the leading action figure man reins, it's still Cruise's show all the way.

This time around, a nutball blew up the Kremlin (Michael Nyqvist, who played Mikael

Blomkvist in the original *The Girl with the Dragon Tattoo* movie) and frames the IMF (Impossible Missions Force, duh) team so Ethan Hunt (Cruise) and friends must save the planet from nuclear annihilation. "Nuclear war," the nutball says, "might have a role in the natural order."

Err...okay... Don't ask why, just appreciate the film as the perfect vehicle for some of the most kinetically exciting action sequences in years all held together with a resolutely straight face on the man who jumped on Oprah's couch.

*Ghost Protocol* is also director Brad Bird (*The Iron Giant*, *The Incredibles*)'s live-action directorial debut—what in

# Mission: Accomplished

Buddha's name took him so damn long to work with real humans? He proves himself a master at the genre here. (Frequent Bird contributor Michael Giacchino's score keeps the blood pumping as well.)

A tense Russian prison break is made funny with the use of Dean Martin's "Ain't That a Kick in the Head." Hunt infiltrates a guarded corridor by using a cloaking device that is probably technologically impossible but still gloriously clever. A routine car chase is made all the more difficult by taking place in the middle of a blinding sand storm. A fistfight on a vertical and hori-

zontal conveyor belt/platform garage is like a Mario video game come to life. The new

*The fourth Mission is the best ever*

saline-chic hybrid BMW prototype is driven here, and ironically, it reminds us of the "futuristic" vehicles from Cruise's 2002 sci-fi adventure, *Minority Report*. And of course, the much-publicized Dubai skyscraper sequence, with our hero scaling the building over

a hundred stories up using a flypaper glove-gadget on the windows like Spider-Man, is just bonkers exciting.

Arguably, this is the most entertaining *Mission* yet and it may not be time for Crazy Cruise to retire the mantle. In fact, his Hunt character may be America's long-sought version of James Bond, and taking the history of spy cinema into consideration, that's saying a helluva lot.

(Attention *Lost* fans: Your favorite Sawyer—a.k.a. Josh Holloway—is in this flick too, and though it's more of a cameo, he's still pretty badass. Give this guy an action role, stat.) ■

## O'ahu Films

☞ **Zazie Dans Le Metro** (1960) 12-year-old Zazie visits her relatives in Paris for two days so her mother can have some "alone time" with her lover. However, Zazie escapes the grips of her uncle and explores Paris alone in this smart comedy based on the novel by Raymond Queneau. *Fri., 12/23, 1 & 7:30pm, Sat., 12/24, 1pm*

☞ **Godzilla vs. The Sea Monster** (1966) An installment of the *Godzilla* series involving a young man who steals a boat, becomes shipwrecked on a volcanic island, and finds a giant crustacean the natives have named Ebirah. A moth-god (simply dubbed "Mothra") enters the mix when Godzilla awakens from his slumber. *Tues., 12/27, 1 & 6pm*

☞ **Cradle Song** (1994) In an adaptation of Gregorio Martinez Sierra's play, A circle of nuns raise a newborn baby that's left at their door. Set in a convent near a Spanish town in the 19th century, this moving drama depicts, in stunning sepia tones, how the nuns raise a girl in the secular world. *Sat., 12/24, 12, 1:45, 3:30 & 5:15pm*

☞ **A Christmas Carol** (1951) Brian Desmond-Hurst directs a heartfelt and moving adaptation of Dickens' classic. Alastair Sim stars as Scrooge, a surly old man who gets a visit from some Christmas ghosts—*Spooky*. *Sat., 12/24, 7:15pm*

☞ **Kung Fu Panda 2** (2011) Po the Panda (Jack Black) is now an esteemed martial artist, but even skilled fighters have nightmares. Shen (Gary Oldman), the hot-headed peacock and source of his bad dreams, wants to battle Po. Luckily, Po's pals—Tiger, Monkey, Mantis, Viper and Crane—help him out. *Mon., 12/26, 12, 1:45, 3:30, 5:15 & 7pm*

## Movie Museum

3566 Harding Ave. #4, \$4 members, \$5 general, 735-8771

☞ **Hand in Hand** (1961) This Golden Globe winner film, directed by Philip Leacock, revolves around themes of embracing religious tolerance and avoiding bigotry. When two seven year olds (one Jewish, one Christian) suffer the loss of their pet mouse Hector, they ponder his afterlife. *Thu., 12/22, 12 & 6:30pm*

☞ **Supermarket Woman** (1996) Juzo itami (*Tampopo* and *A Taxing Woman*) directs an uplifting comedy that's centered around Goro's Supermarket, a humble shop that's in bad shape, due to the newly opened "Bargains Galore" across the street. *Thu., 12/22, 1:45, 4 & 8pm*

☞ **Margin Call** (2011) (See Film Review, opposite page.) *Fri., 12/23, 12:30, 2:30, 4:30, 6:30 & 8:30pm*

## Movie Cafe

*The Venue, 1146 Bethel St., \$10, half price for HPU students, 528-1144*

☞ **The 5000 Fingers of Dr. T** (1953) The first feature-length film, directed by Roy Rowland, to be adapted from Dr. Seuss. With lush Technicolor and sophisticated German expressionist costumes, comes a tale about Bart and his rival, Dr. Terwilliker, who enslaves 500 young boys to practice his piano all hours of the day without any breaks. *Mon., 12/26, 7pm*

ONE OF THE TOP 10 FILMS OF THE YEAR

NATIONAL BOARD OF REVIEW AFI American Film Institute Entertainment EW.com FOX TV

"DAVID FINCHER HAS CRAFTED THE MOST DIZZYINGLY EFFECTIVE MOVIE YOU COULD IMAGINE OF 'THE GIRL WITH THE DRAGON TATTOO.' ROONEY MARA IS A REVELATION. SHE WEARS HER PIERCINGS LIKE SCARS AND ACTS WITH A QUIET POWER—A RAGE CHILLED INTO SILENCE—THAT IS ALMOST GHOSTLY. FINCHER AND HIS SPLENDID CAST TEASE OUT THE FULL MYTHOLOGICAL GRANDEUR OF THE MATERIAL."

Entertainment x OWEN GLEIBERMAN

THE GIRL WITH THE DRAGON TATTOO

COLUMBIA PICTURES AND METRO-GOLDWYN-MAXER PICTURES PRESENT A SCOTT RUDIN/YELLOW BIRD PRODUCTION A DAVID FINCHER FILM DANIEL CRAIG ROONEY MARA "THE GIRL WITH THE DRAGON TATTOO" CHRISTOPHER PLUMMER STELLAN SKARSGÅRD STEVEN BERKOFF ROBIN WRIGHT YORICK VAN WAGENINGEN JOEY RICHARDSON MUSIC BY TRENT REZNOV & ATTICUS ROSS EXECUTIVE PRODUCERS STEVEN ZALLIAN MIKHAEL WALLEN ANNI FAURBYE FERNANDEZ BASED ON THE BOOK BY STIEG LARSSON ORIGINAL SCREENPLAY BY NORSTEDTS SCREENPLAY BY STEVEN ZALLIAN PRODUCED BY SCOTT RUDIN OLE SANDBERG SOREN STERMOSE CEAN CHAFFIN DIRECTED BY DAVID FINCHER

R RESTRICTED UNDER 17 REQUIRES ACCOMPANYING PARENT OR ADULT GUARDIAN BRUTAL VIOLENT CONTENT INCLUDING RAPE AND TORTURE, STRONG SEXUALITY, GRAPHIC NUDITY, AND LANGUAGE

MGM #DRAGONTATTOO

CHECK LOCAL LISTINGS FOR THEATERS AND SHOWTIMES

SONY make.believe

## The Weekly Appetite

### Christmas Vino Eve

A very homey, comfort food style menu as only Vino can prepare it: crispy local shrimp served with homemade linguine, roasted vegetables, mushroom and pancetta lasagna with vegetable reduction, braised pork and dessert.

**Vino, Restaurant Row, 500 Ala Moana Blvd. Suite 6 D-1**  
Sat., 12/24 \$42 per person. ataketa@dkrestaurants.com, 533-4476

### Fa La La Lunch

During this busy Holiday season, Nobu will be offering special lunch treats for a limited amount of time. Treat yourself to some delectable dishes such as yellowtail sashimi with jalapeño or black cod miso.

**Nobu, 2233 Hemulua Rd.**  
Mon., 12/19–Fri., 1/13, (11AM–2PM)  
noburestaurants.com

### Azure to the World

The divine Christmas menu includes grilled coriander Pistou shrimp, Kona lobster cappuccino, roasted Hawaiian Pier 38 fresh fish selection, braised lamb “osso bucco,” butter poached filet mignon and Grand Waiialua chocolate and coffee tigreron. Beachfront dining heaven!

**Azure Restaurant, 2259 Kalākaua Ave.**  
Sat., 12/24 and Sun., 12/25, (5:30PM–close)  
\$40–\$140. Reservations at royal-hawaiian.com/dining/azure, 921-4600

### Christmas & New Year's Eve Farmers' Markets

A 'Nalo Farms production. Locally made food products like coffee, peanut butter and liliko'i jellies make perfect gifts for the foodie in the family.

**Windward Mall, 46-056 Kamehameha Hwy.**  
Sat., 12/24 and Sat., 12/31,  
(12–3PM) Free. 235-1143

### Christmas with Kai Market

This dinner on Christmas Day features carving stations of prime rib and more, hot offerings like manila clams and Kahuku prawns, cold offerings like ahi poke and island style sashimi and desserts like Portuguese sweet bread pudding. Something for the entire family.

**Kai Market, Sheraton Waikiki Hotel, 2255 Kalākaua Ave.**  
Sun., 12/25, (5–9:30PM) \$29–\$79.  
sheraton-waikiki.com, 922-4422

### Kahala Christmas Eve and Dinner

A variety of gourmet salad selections and appetizers like a roasted mushroom and artichoke salad with green lip mussels and shrimp cocktail. Includes carving stations of prime rib and roasted turkey, braised flat iron of beef smokey red wine sauce and “local style” baked island fresh catch. Desserts include liliko'i tapioca, creme caramel and more.

**Kahala Hotel and Resort, 5000 Kāhala Ave.**  
Sat., 12/24 and Sun., 12/25, (5:30–10PM)  
kahalaresort.com, 739-8888

### Ho, Ho, Nobu!

Dash into this delectable menu of superior cuisine: toro tartar with caviar, house-smoked king salmon, Ma'o Farms salad with boton ebi sashimi, a sake-braised wagyu short rib and more.

**Nobu, 2233 Hemulua Rd.**  
Sat., 12/24 and Sun., 12/25 \$130 per person. noburestaurants.com, 237-6999

### Kaimana Christmas

A prix fixe, five-course Christmas dinner offering a Tristan lobster tail, fresh island snapper with sweet island corn chowder, lamb chop on a bed of pesto risotto, a trio of entrees including fresh rainbow trout, black Angus beef and seared scallop.

**Hau Tree Lanai, 2863 Kalākaua Ave.**  
Sat., 12/24 and Sun., 12/25 \$75. kaimana.com/hautreelanai.htm, 921-7066

### Oceanarium Buffet

Dine by living snow globe—the center aquarium at the Pacific Beach Hotel—on Christmas Eve for brunch. Get the whole family together for this exciting buffet which includes seafood, an Asian station, prime rib, dungeness crab legs, omelets and desserts.

news  
you  
can  
eat

**Heaven sent desserts:** Confectionary shop Chocolate On A Mission features hand-made and locally made premium chocolates from dipped Oreos and fortune cookies to assorted gift baskets. Proceeds support the River of Life Mission, which provides services to the homeless.

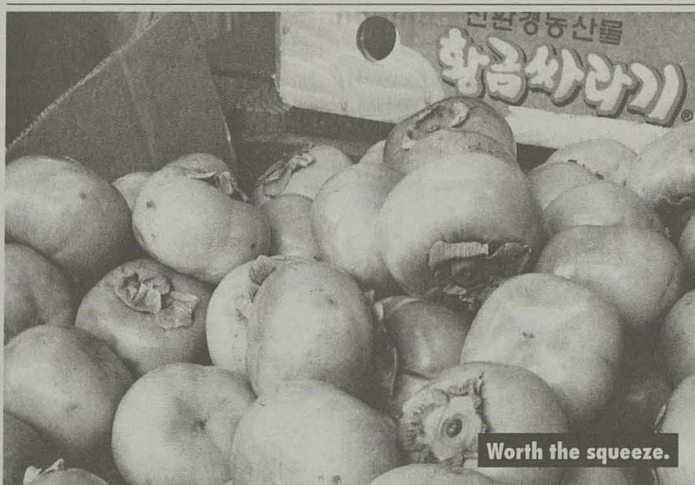
101 N. Pauahi St., 3rd floor, open showcase 8AM–5:30PM daily, chocolateonamission.com, 524-7770

**New burger joint:** Papa's Burgers in Market City grills up half-pound, zero hormone grass-fed Big Island beef: a bibimbap burger, a pork miso burger and two vegetarian options like the black bean veggie are just a few selections from their creative menu.

2919 Kapi'olani Blvd., open 11AM–9PM daily, papasburgers.com, 732-5100

**Closed for Christmas Day:** Vino's at Restaurant Row and the Saturday farmers' market at the Ala Moana Center.

Got food news? Send 'em in to [foodnews@honoluluweekly.com](mailto:foodnews@honoluluweekly.com)



## Three Persimmons A-Blooming

In season now, the persimmon comes in several varieties. Among them is the American persimmon, native to the US east coast, and the black persimmon from Mexico. In Hawai'i, we enjoy the Asian persimmon, grown at higher elevations in loamy soils, such as here in Kula, Maui.

The three types grown are local Asian persimmons, which include the fuyu, hachiya and maru cultivar. The fuyu's appearance is orange and flattened, crowned with a little green “beret.” They are crisp on the inside with a slightly tough, edible skin and a very delicately sweet flavor. The hachiyas are a deeper shade of orange, pointed at the apex, pudding-like on the inside and sugary sweet when fully ripe. The maru is rounder in appearance and more astringent.

The persimmon should be enjoyed fresh when available, but can also be purchased dried and for a sweet, sugar crusted treat. They're also sold in jams and puddings. If you're the adventurous sort, try a new recipe: wrap wedges of persimmon with prosciutto then drizzle with balsamic vinaigrette. Whichever, fresh or dried, this fruit makes a lovely gift.

—Nina Bermudez

Find the fuyus from vendors outside the Kekaulike Street market like Chan's, Maunakea Marketplace and other Chinatown locations. Both the fuyu and hachiyas are sold at Don Quixote, Times and Foodland.

## Ono to Go

Aloha Beer Company

**ALOHA BEER**

**Fresh draft BEER**

Starting at \$50/keg  
easy to order,  
easy for pickup

Order at 545-7979  
580 N. Nimitz Hwy

MERCADO DE LA RAZA

LATIN AMERICAN MARKET  
Celebrating 15 years

**DRIED CHILES, SPICES & PRODUCTS FROM MEXICO, CENTRAL AMERICA AND THE CARIBBEAN**

Fresh Tamales available second and last Saturday every month

**1315 S. Beretania St. 593-2226**

café UNIVERSE JUICE

**Supporting Island fishers and farmers**

- Juices
- Smoothies
- Fruit bowls
- Soups
- Salads
- Panini

Fresh, handmade wholesome food  
8am - 8pm | Haleiwa Town Center | 228-0491

**GET BREWING!**  
We'll help you do it...

with the island's largest selection of equipment and ingredients: hops, grains, malts, caps, yeast, carboys, bottles, kegs, wine kits, beer kits, CO2 canisters, soda flavors, recipes & more.

**2646-B Kilihaui St. 834-BREW (2739)**  
Tues.–Fri. 12–5 pm, Sat. 9 am–3 pm  
[www.homebrewinparadise.com](http://www.homebrewinparadise.com)

**GREAT GIFT FOR THE COOK IN YOUR LIFE!**

Try it in Ginger Martini, Ginger Whipped Cream

**Special \$3 off 16 oz size**

At Tamuras (Kaimuki and Aiea) & R. Field (Beretania, Kailua, Aiea Haina)  
1 per coupon Expires 12/31/11

Licious Dishes

**Raw Vegan Gourmet meals-to-go.**

[e-liciousdishes.com](http://e-liciousdishes.com)  
536-9680 / 753-0050

The Shops at Dole Cannery, 650 Iwilei Rd. Ste. 170

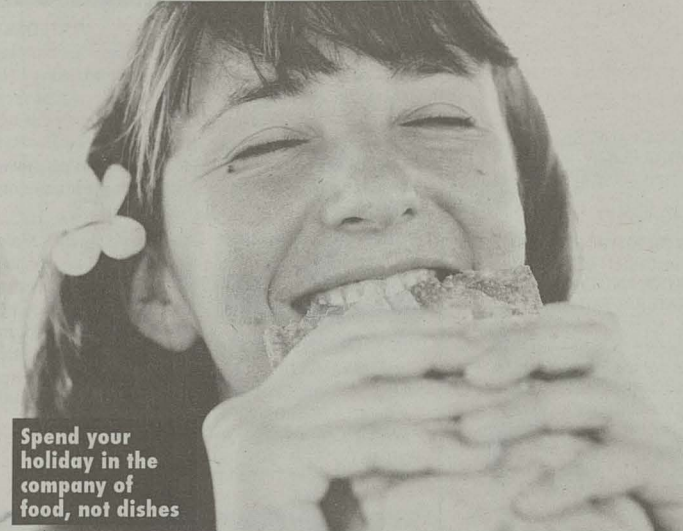
**Get Noticed. Save Money.**

Contact your ad rep to advertise.

**528-1475 ext 10**

## Food & Drink

# 'Tis the Season... To Eat Hearty



Spend your holiday in the company of food, not dishes

**"Fa la la la... But Where To Go?"** Some restaurants that will make your season bright, plus one raw takeout treat

NOELANI ANDERSON

**A**las, hurray, 'tis the season once again! The planning and execution of holiday feasts can be overwhelming (even if it may have *seemed* like a good idea two weeks ago).

We understand, which is why we've compiled a list of restaurants offering holiday dining in a range of styles.

### 3660 On the Rise

This Kaimuki classic at the base of Wilhemina off Wai'ālae Avenue will have a Christmas Eve buffet that highlights local ingredients. 'Nalo greens, lomi salmon and edamame salad with quinoa will warm up your appetite. Roast beef, baked salmon with wasabi and crabmeat and shichimi seared breast of chicken are the main attractions. Traditional dessert favorites will top you off! 3660 Wai'ālae Ave., Sat., 12/24, 5-8PM \$49.50 adults, \$20 children ages 3-10, 737-1177

### Tangö Cafe

Located between Ward Centre and Restaurant Row, the room is small but has a big heart and some ambitious offerings for both brunch and dinner Christmas Eve and Day. A few items on the festive menu—red onion duck confit tart with goat cheese, shepherd's pie with Big Island veal, Asian five spice braised beef and Hamakua mushroom risotto. Olé! 1288 Ala Moana Blvd., Sat. 12/24 & Sun., 12/25, 11AM-9:30PM, 593-7288

### The Willows

The Willows Christmas Eve and Day lunch and dinner buffets provide an outing for any local or visiting family. Classic choices include roast beef and turkey, as well as local favorites (kim chee, tako poke, poi, kiawe smoked pork loin, misoyaki butterfish and haupia cake). Wander about the tree-lined lawns, admire the carp in the meandering ponds and feel at home

in this neighborhood nest.

901 Hausten St., Sat. 12/24 & Sun. 12/25, 10AM-9PM, \$42.95 adults, \$21.50 children ages 4-10, 952-9200

### House Without a Key

Set in the Halekulani, this trendy yet understated restaurant lives up to its elusive name. On Christmas Eve and Day, they'll offer the entire regular menu as well as a three-course meal, including soup, roast wild salmon with Hamakua mushrooms, braised lamb shank and a chestnut cake with citrus anglaise. 2199 Kalia Rd., Sat. 12/24 & Sun. 12/25, 7AM-9PM, \$38, 923-2311

### Hiroshi Eurasian Tapas

Chef Hiroshi will be open for business on both days, offering a special four course holiday meal rich with local ingredients such as Big Island pork, Hau'ula tomatoes, Kahuku corn, Kona Kampachi and Kulana beef. Experience locally global cuisine without leaving a dent in your wallet. 500 Ala Moana Blvd., Sat. 12/24 & Sun. 12/25, 5:30-9:30PM, \$52 for 3-course meal, 533-4476

### Peace Cafe

Their holiday sandwich special, available until Christmas Eve, is stuffed with herbed age tofu, cranberry sauce, Dijon mustard, arugula and a macadamia nut sauce. For those on the gluten wagon, no worries, you can order it breadless, over rice or greens. There's also a holiday inspired tempeh plate, and while they won't be open Christmas Day, they will be jamming until 4PM on the Eve. For a guilt-free holiday treat try their vegan pumpkin ice cream, which will leave your palate full of holiday spices. 2239 S King St., Sat. 12/24, 11AM-4PM, \$10 meals, \$3-5 desserts, 951-7555

### Michel's at the Colony Surf

An open air, seaside atmosphere mixes subtly with refined flavors and classy service to make for an evening that's worth the price

tag. Chef Hardy's three-course prix fixe menu boasts smoked and roasted pheasant, garlic herb crusted rack of lamb, fresh island onaga, and—hold on—Christmas goose with caramelized apples. 2895 Kalākaua Ave., Sat. 12/24, Starting at 5PM, \$95, 923-6552 or 728-3463

### La Mariana Sailing Club

A quirky, random, old school little joint at the end of Sand Island Access Road, La Mariana has been around long enough to know how to do the holidays the old-fashioned way. Try their original mai tai to get your holiday buzz on. Look for indulgent appetizers such as crab cakes and calamari. Main courses include seafood, poultry and meats and a killer surf 'n' turf. And while you enjoy the live holiday music and decorations, let your gaze drift out to the harbor, where Christmas-lit masts and riggings give sea legs to the holiday spirit. 50 Sand Island Access Rd., Sat. 12/24, 11AM-9PM, 848-2800

### Roy's Waikiki

Hawai'i Kai Roy's is the original, but no matter which of the island locations you go to, Roy's is Roy's. Renowned for innovative Asian fusion menus, Roy's is the type of place that caters to each and every customer in a way that keeps 'em coming back. Roy's Waikiki will be open on Christmas Eve and is offering a prix fixe menu on Christmas Day. If you're in a rush, appetizers on the Hawai'i Kai terrace such as the steamed Manila clams, volcano roll or tempura ahi roll might be all you need to slow down and feel like you are finally on holiday.

6600 Kalaniana'ole Hwy, Sat. 12/24 & Sun. 12/25, 11AM-5PM, 396-7697

226 Lewers Street, Sat. 12/24 & Sun. 12/25 (\$60-\$90 pre fix menu), 923-7697

### Takeout from Licious Dishes

Looking for raw, vegan, gourmet this holiday? Licious Dishes is just about the only alternative, and they will be at the Kapi'olani Community College (KCC) Farmers' Market on Saturday selling ready to eat dishes, dips and desserts that might just be the perfect addition to wherever your Christmas dinner destination may be. The enzyme rich, plant-based foods of Licious Dishes are a refreshing, light alternative to heavy holiday foods. The no-bean hummus with tabouleh over flaxseed thins or not-tuna salad served with green onion flatbread, are perfect for a party platter. Heck, leave some out for Santa! KCC Farmers' market, Sat. 12/24, 8AM-1PM, \$7-\$12, e-liciousdishes.com, 536-9680 or 753-0050

Honolulu Weekly restaurant reviewers dine anonymously, editorial integrity being our first priority. Reviewers may visit the establishment more than once, and any interviews with restaurant staff are conducted after the visits. We do not run photos of the reviewers, and the Weekly pays the tab. The reviews are not influenced by the purchase of advertising or other incentives.

bambutwo  
CAFE + MARTINI LOUNGE

pau hana

\$3.50 Martinis — All Day, Every Day

1144 Bethel Street | bambutwo.com

**ComputerGeeks Hawaii.Com**  
Computer Service

**\$85 Flat Rate Repair**

2 Day Turn-around

New location:  
**1695 KAPIOLANI BLVD.**  
(corner of Atkinson & Kapiolani Blvd)  
Kiosk in 7-11 parking lot

**599-GEEK**

**BEAD IT!**  
A Bead Gallery

KAILUA  
600 Kailua Rd.  
263.1182

KAIMUKI  
1152 Koko Head Ave.  
734.1182

KAPOLEI  
590 Farrington Hwy.  
674.1192

ibeads.com

@JazzMindsHNL f JazzMinds HNL

Wed 12/21 **Screwed up Weds!**  
Thu 12/22 **Jazz Story**  
Fri 12/23 **Absolute Joy**  
Sat 12/24 **Gyn & Blue Light Funk Band**  
Mon 12/26 **Project Monday**  
Tues 12/27 **Patrick Koh Jazz Ens.**

**1661 KAPIOLANI BLVD. 945-0800**  
**HONOLULUJAZZCLUB.COM OPEN 7PM-2AM**

**Monsoon India**  
Authentic Indian Cuisine

**Celebrate the Holidays with Fine Indian Cuisine**

Featuring our Specials for the Season:

- Idli Sambar
- Crab Pakoras
- Tandoori Lobster
- Curried Lobster
- Lobster Kadhai
- Lobster Vindaloo
- Dosas

**Book Now for Your Holiday Parties and Catered Events**

Special Christmas Eve and Christmas Day Hours:  
Lunch: 11 a.m. - 2:30 p.m.  
Dinner: 4:30 p.m. - 10 p.m.

**Limited Seating... Reserve Now: 941-5111**

**B.Y.O.B. and Validated Parking**

1778 Ala Moana Blvd., Discovery Bay Center  
(next to Buffalo Wild Wings)

**Not getting it Weekly?**

Let us know where you'd like to see a **Honolulu Weekly** rack.

**Weekly**

**CALL KATE AT 528-1475 X16**

# Classified

## Announcements

RONALD W. BEALS, Chief Counsel  
DAVID GOSSAGE, Deputy Chief Counsel  
LUCILLE Y. BACA, Assistant Chief Counsel  
HELEN CRAMER, State Bar No. 238421  
595 Market Street, Suite 1700, San Francisco, CA 94105  
Telephone: (415) 904-5700, Facsimile: (415) 904-2333  
Attorneys for Plaintiff THE PEOPLE OF THE STATE OF CALIFORNIA,  
acting by and through the Department of Transportation

SUPERIOR COURT OF THE STATE OF CALIFORNIA  
FOR THE COUNTY OF SAN BENITO

THE PEOPLE OF THE STATE OF CALIFORNIA,  
acting by and through  
the Department of  
Transportation, Plaintiff,  
v. JEFFREY MERRITT WILSON,  
et al., Defendants.  
**Case No. CU-11-00119  
Parcels 11287-1, 11287-2  
SUMMONS**  
Action Filed: September 15, 2011  
Trial Date: Not Set

### NOTICE TO DEFENDANTS:

a. Jeffrey Merritt Wilson.  
b. Teresa Jean Moore.

### YOU ARE HEREBY SUED BY PLAINTIFF:

THE PEOPLE OF THE STATE OF CALIFORNIA, acting by and through the Department of Transportation.

You have 30 CALENDAR DAYS after this summons and legal papers are served on you to file a written response at this court and have a copy served on the plaintiff. A letter or phone call will not protect you. Your written response must be in proper legal form if you want the court to hear your case. There may be a court form that you can use for your response. You can find these court forms and more information at the California Courts Online Self-Help Center ([www.courtinfo.ca.gov/selfhelp](http://www.courtinfo.ca.gov/selfhelp)), your county law library, or the courthouse nearest you. If you cannot pay the filing fee, ask the court clerk for a fee waiver form. If you do not file your response on time, you may lose the case by default, and your wages, money, and property may be taken without further warning from the court.

There are other legal requirements. You may want to call an attorney right away. If you do not know an attorney, you may want to call an attorney referral service. If you cannot afford an attorney, you may be eligible for free legal services from a nonprofit legal services program. You can locate these nonprofit groups at the California Legal Service website ([www.lawhelpcalifornia.org](http://www.lawhelpcalifornia.org)), the California Courts Online Self-Help Center ([www.courtinfo.ca.gov/selfhelp](http://www.courtinfo.ca.gov/selfhelp)), or by contacting your local court or county bar association.

The name and address of the court is: Superior Court of California, County of San Benito, 440 Fifth Street, Hollister, California 95023.

Plaintiff THE PEOPLE OF THE STATE OF CALIFORNIA, acting by and through the Department of Transportation, has brought this proceeding to acquire real property, or interests in real property, for a public use, namely, for state highway purposes.

The real property, or interests in real property, are situated in the County of San Benito, State of California, and are described as follows:

That portion of Parcel 4 according to the map filed July 2, 1987 in Book 7 of Parcel Maps at Page 28 in the Recorder's Office of San Benito County, lying southerly and southeasterly of the following described lines:

PARCEL 11287-1: FEE

BEGINNING at the 3/4" iron pipe tagged "RCE 16358" found at the most southerly corner of Parcel 3 shown on the map filed August 22, 1980 in Book 5 of Parcel Maps at Page 57, records of said County, said pipe bears S 31°41'09" W, 352.41 feet from the 3/4" iron pipe tagged "RCE 16358" found at the southeasterly corner of said Parcel 3;

THENCE (1), S 64°44'44" W, 137.11 feet;

THENCE (2), S 79°59'22" W, 212.77 feet;

THENCE (3), N 63°11'19" W, 386.72 feet to the beginning of a curve concave to the south having a radius of 200.00 feet;

THENCE (4), northwesterly, along said curve a distance of 190.51 feet through a central angle of 54°34'39";

THENCE (5), S 62°14'02" W, 239.96 feet to the point that bears S 63°59'19" E, 714.82 feet from the 3/4" pipe tagged "RCE 16358" found at northwesterly corner of parcel 3 shown on the map filed July 30, 1982 in Book 6 of Parcel Maps at Page 17, records of said County;

THENCE (6), S 48°14'50" W, 465.38 feet to the point that bears S 25°20'30" E, 689.76 feet from last said 3/4" pipe.

Lands abutting said freeway shall have no right or easement of access thereto; provided, however, that part of the remaining lands shall abut upon and have access, as hereinafter provided, to an adjoining frontage road which will be connected to the main thoroughfare of the freeway only at such points as may be established by public authority.

The said right of access to said frontage road is hereby expressly limited to course 1 and the easterly 49.39 feet of course 2 described above.

TOGETHER WITH all of the existing improvements which are located partially within and partially outside the boundaries of the above described Parcel 11287-1.

ALSO TOGETHER WITH a temporary easement, to expire on December 31, 2018 over and across said Parcel 4 shown on said Book 7 of Parcel Maps at Page 28 for the purpose of removing existing improvements.

TOGETHER WITH a temporary easement for construction purposes upon, over, and across that portion of Parcel 4 according to the map filed July 2, 1987 in Book 7 of Parcel Maps at Page 28 in the Recorder's Office of San Benito County, described as follows:

PARCEL 11287-2: TEMPORARY CONSTRUCTION EASEMENT

A strip of land 10.00 feet wide, the generally northerly line of which is parallel with and 10.00 feet northwesterly of the above described courses 1 and 2.

Said temporary easement shall terminate on completion of construction, but in any event, shall terminate no later than December 31, 2018.

Bearings and distances used herein are based on the California Coordinate System of 1983, Zone 4. Multiply distances by 1.00005666 to obtain ground level distances.

END OF DESCRIPTION

YOU ARE HEREBY NOTIFIED that unless you file with the Clerk a written responsive pleading to the Complaint in Eminent Domain as required above, plaintiff will apply to the court for the relief demanded in the Complaint.

Heather M. Allan (233137)  
Eva M. Martelle (SBN 233139)  
Allan & Martelle, LLP  
1631 Willow Street, Suite 100  
San Jose, CA 95125  
Telephone (408) 264-9822  
Facsimile (408) 266-1859

Attorney for Petitioners  
Nicole Darabi and Mike Mohsen Darabi

IN THE SUPERIOR COURT OF THE STATE OF CALIFORNIA,  
IN AND FOR THE COUNTY OF SANTA CLARA  
TO: Kenson Edward Christon

In Re Adoption of  
Kayla Elise Christon,  
minor.

No. 1-11-AD-022577

CITATION ON PETITION TO DECLARE  
THE MINOR CHILD FREE FROM  
THE CUSTODY AND CONTROL  
OF THE NATURAL FATHER

By Order of the Court, you are hereby cited and required to appear on Feb. 07 2012, before the judge presiding in Department 3 of the above-entitled court, or such other department as may be assigned, at the court house located at 191 N. First Street, San Jose, CA 95113, at the hour of 10:30 a.m. of that day, then and there to show cause, if any, why the Petition of Petitioners Nicole Darabi and Mike Mohsen Darabi to declare the minor child free from your custody and control and to terminate all your parental rights and responsibilities to the minor child Kayla Elise Christon, born October 19, 2004, to birth mother Nicole Darabi, should not be granted, in accordance with the Petition filed and served herewith and incorporated herein, or a copy of which may be obtained by contacting counsel for Petitioners.

If you fail to attend, the court may determine that you are not entitled to further notice of the proceedings regarding the placement of the minor child for adoption with the Petitioners, and that the minor child Kayla Elise Christon can be declared free from your custody and control, and the said minor child to be adopted, without further notice to you.

## Service Directory



**COPACABANA Residential Cleaning**

**CLEANING HAS NEVER BEEN THIS EASY**  
One phone call, two hours later,  
your house will be spotless!

**(808) 286-3761 / [www.wemakemshine.com](http://www.wemakemshine.com)**

### Adoption

PREGNANT? CONSIDERING ADOPTION? Talk with caring agency specializing in matching Birthmothers with Families nationwide. LIVING EXPENSES PAID. Call 24/7 Abby's One True Gift Adoptions 866-413-6293 (Void in Illinois) (AAN CAN)

### Cleaning

**CLEAN WINDOWS**  
SINCE 1977  
**Ron Albert,**  
Owner  
**599-8779**

### Education / Instruction

HIGH SCHOOL DIPLOMA! Graduate in just 4 weeks!!  
FREE Brochure. Call NOW! 1-800-532-6546 Ext. 97 <http://www.continentalacademy.com> (AAN CAN)

## Adult

: AshleyMadison.com - 100% FREE for Women! Every 30 seconds another woman joins AshleyMadison.com looking to have a Discreet Affair. Try it FREE today. Featured in: TIME, New York Times & CNN

Have a Guaranteed Affair at AshleyMadison.com Stop having Sex with Escorts who've been with 1000s of other Men. Meet real women who are trapped in sexless Marriages and need to find sex on the side. Featured on: Ellen, Tyra & The View. (AAN CAN)

Have a Guaranteed Affair at AshleyMadison.com Stop having Sex with Escorts who've been with 1000s of other Men. Meet real women who are trapped in sexless Marriages and need to find sex on the side. Featured on: Ellen, Tyra & The View.

PARTY GIRL Looking for Mutually Beneficial Arrangement \$ I'm fun, bubbly, and LOVE TO PARTY! Hoping to find a mutually beneficial arrangement? Check out ArrangementFinders.com. Featured in USA Today and MAXIM

## Real Estate

### Rooms For Rent

FURNISHED ROOM for Rent. Pahoia Valley \$650/month Reduced rent for work C: 429-0800 H:521-3283

### Rentals Wanted

WANTED TO RENT House in Honolulu for mature, well-established couple. Contact us Michicat01@gmail.com

## Marketplace

### FOR SALE

OLD HAWAIIAN COINS,  
TOKENS, STAMPS  
& DOCUMENTS  
M-F 9-5 SAT 10-4

**531-6251**

Hawaiian Islands Stamp & Coin  
1111 Bishop St., Downtown

**INSTANT CASH!**  
For Anything of Value  
*Husbands, Wives, Kids and Pets Excluded*  
Open 7 Days a Week **Mon-Sat 8-6pm Sun 8-2pm**  
Family Pawn Shop & Payday Loans In Waipahu  
676-8800 94-220-C Leokane Waipahu  
(Behind HC Drive-In)

## Career Source

### Career Training

**EARN \$75 - \$200 /HR (Now 25% Off).** (Now 25% Off), Media Makeup & Airbrush Training. For Ads, TV, Film, Fashion. 1 wk class &. Portfolio. AwardMakeUpSchool.com 310-364-0665 (AAN CAN)

### Work from Home

\$\$\$HELP WANTED\$\$\$ Extra Income! Assembling CD cases from Home! No Experience Necessary! Call our Live Operators Now! 1-800-405-7619 EXT 2450 <http://www.easywork-greatpay.com> (AAN CAN)

### Nude Models Wanted

**PHOTOGRAPHY MODELS WANTED!**  
\$100/hr. Requires tasteful nudity - NO PORN! Females 18-25. Please call 623-4574.

Paid In Advance! Make \$1000 a Week mailing brochures from home! Guaranteed Income! FREE Supplies! No experience required. Start Immediately! [www.home-mailerprogram.net](http://www.home-mailerprogram.net) (AAN CAN)

## Mind Body Spirit



**JAI DEE THAI**  
Therapeutic Massage  
Thai, Deep Tissue  
Swedish, Foot  
**277-2892**  
Mon-Fri 9am-8pm  
Sat-Sun 10am-6pm  
CENTURY SQUARE  
1188 Bishop St., Suite #1105 (MAE 2546)

### Employment

**PSYCHIC READER**  
wanted. World famous Enchanted Banyan at International Market Place now has shifts available: Tarot, Astrology, Clairvoyant, and/or Palmistry. Meet wonderful people. Zabia 342-8489. [zabia@hawaii.rr.com](mailto:zabia@hawaii.rr.com)

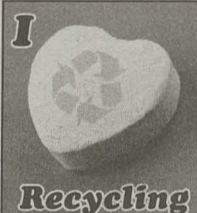
### Licensed Massage

**\$40 MASSAGE** My holiday gift to you. Finally the MASSAGE your muscles need! Not valid after 5pm, weekends, holidays. Must mention special when booking. Emma 782-5466 (mae8676)

## Transportation

### Autos

CASH FOR CARS: Any Car/Truck. Running or Not! Top Dollar Paid. We Come To You! Call For Instant Offer: 1-888-420-3808 [www.cash4car.com](http://www.cash4car.com) (AAN CAN)



## Classified Info

Phone:  
**808-528-1475 x48**  
Fax:  
**808-528-3144**  
[classifieds@honoluluweekly.com](mailto:classifieds@honoluluweekly.com)

## Deadlines

**Line Advertising:** Copy, space reservations and payment must be submitted before Friday, 10 am.

**Display Advertising:** Copy, space reservations, art and payment must be submitted by 12 pm on the Wednesday prior to publication. Call for rates.

## Biz Rates

25 word minimum. Rates are per insertion.

**Real Estate** \$1.65/word  
**Employment** \$1.65/word  
**Mind, Body, & Spirit** \$1.10/word  
**Service Directory** \$1.10/word  
**Music Instruction** \$1.10/word

## Personal Rates

**Line Ads** \$50 (Ads run for 4 weeks-25 words)  
**Personal Property Sales** \$27.50 (ads run for 4 weeks-25 words)

## Frequency Discounts

Call an Ad Rep to save money

## Enhance

Two words may be in all caps and bold: \$2 extra for each additional bolded/capitalized word.

**Centering** \$5 per line

## The 'Fine' Print

Prepayment required. Discounts available on extended advertising commitments. No refunds.

## SELL YOUR STUFF

Your couch, your cow, your Ted Nugent record collection.

Advertise for less than \$1 a day. Whadya say?

**WEEKLY CLASSIFIEDS 528-1475 X48**

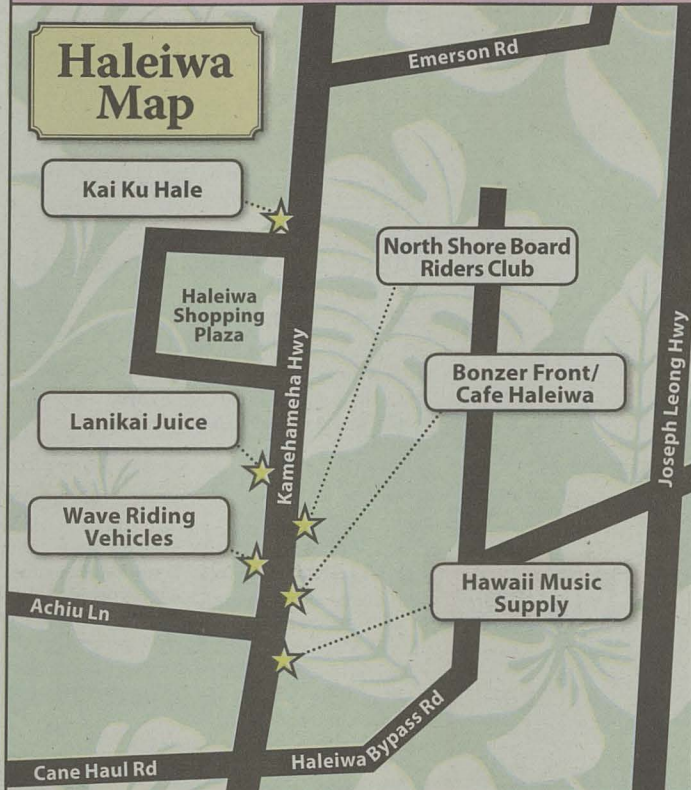


# ISLAND WISE

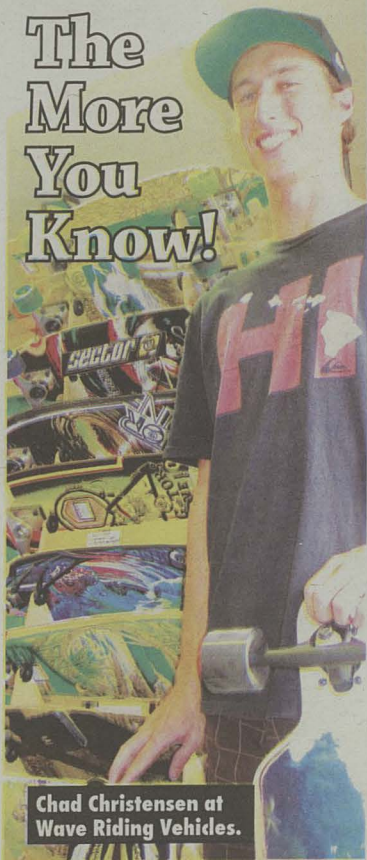
PHOTOS BY SHANTEL GRACE

## HOLIDAY GUIDE TO HALE'IWA

When's the last time you spent a day in Hale'iwa? There are gifts sprinkled throughout the town that are worth the drive, or a ride on the bus, or the wave you might miss. Nostalgia is free in this town, and charm is waiting for you inside shops filled with individual personality. Go, be merry, and give something that really moves you this year. —Shantel Grace



## The More You Know!



Chad Christensen at Wave Riding Vehicles.

Inside **Wave Riding Vehicles**, assistant manager Chad Christensen is as overwhelmingly bright as the store itself. Any company would be lucky to have this guy as an employee.

"We have three brands of skateboards," he says, grabbing a few from here and there, explaining the differences between them. "Sector 9—those are really the skateboards most stores have, but we also have Gravity Skateboards and Carver, and so if design is what you're looking for, we've got it. If technology is what you're looking for, we've got that too."

The store also sells surfboards and swim gear, tees and trucker hats, boardshorts and wetsuits, and flannels that rival any shop in Honolulu. 66-451 Kamehameha Hwy., skateboards range from \$100-\$250, waveridingvehicles.com, 637-2020



## Diversified

One of the most original stores in Hale'iwa town is **Bonzer Front**, a bikini shop/wine cellar/vintage boutique/surfboard shop. "People browse the store when they're waiting for their reservations at the café," says owner Megan Campbell. "And if they want, they can spend a little more on a nicer bottle of wine, since the café doesn't have a corkage fee."

Turns out, Campbell's also been the owner of Café Haleiwa for 30 years, and their new seasonal dinners offer some of the best North Shore ingredients and wine pairings. "We really want our menu to be bright and colorful and local," she says. "Hopefully we give people a chance to expand their knowledge about food and wine and ultimately our town."

Repurposed leather bags, from a company called Selvagem, catch my wandering eye. "These are from a local designer who was originally from Brazil," says Campbell. "She takes leather remnants and gives craftspeople in her region of Brazil steady jobs." Beautifully soft and artistically weaved, these bags are by far the most original gift I've found this season (\$75 and up). *Bonzer Front & Café Haleiwa, 66-460 Kamehameha Hwy., restaurant closed during holidays and reopens Jan. 4, reservations required, 637-5516 or 372-8593*



## Worth the squeeze.

## Smooth Snack

What is it with Hale'iwa? Everyone's so—happy? And that includes the two girls inside **Lanikai Juice**, who aren't exactly the kind of girls who would be caught dead in Christmas sweaters, but they sport their holiday gear with enthusiasm. I'm happily satisfied with my Guava Breeze smoothie (\$6), and the Pacific Passion Fruit smoothie is on my to-drink list.

If I felt like awarding stars in this guide, I'd give Lanikai Juice two thumbs up. *Lanikai Juice Haleiwa, 66-215 Kamehameha Hwy., lanikaijuice.com, 637-7774*

## For the Body

Doubt you know a single person who couldn't use a new pair of boardshorts this holiday. At **North Shore Board Riders Club**, in the Hale'iwa Shopping Center, you'll find Roxy and Quicksilver brands, North Shore pullover hoodie sweatshirts and Boardrider's kids tees. And for those more interested in walking than riding waves, there's a wall full of DVS skate shoes. 66-250 Kamehameha Hwy., northshoreboardridersclub.com, 637-5026



## The Setup

If you've been around 'ukuleles very long, you probably know Michael Aratani, aka "MGM," aka "Music Guy Mic." He's part of the **Hawaii Music Supply** package, and owner Andrew Kitakis is quick to mention how valuable MGM is in the industry. "Michael is a pretty big deal," says Kitakis over the phone while I'm standing in his shop leaning over the counter. I look back at MGM and I feel a butterfly or two, kicking me in the stomach. Kitakis continues, "A good 'ukulele isn't usually affordable, but that's something that really makes us different, besides the fact that when a person orders one from us, we set up the instrument before we ship it."

Set up the instrument? "Most companies just say they set it up," says MGM, after I hang up the phone. His arms folded, letting me know this is serious stuff. And it is.

"When you order a 'set-up' instrument, it means the shop adjusts it, and tests it, plays it before they ship it," says Kitakis. "What do you think happens when you buy an instrument from Amazon? They stuff it in the box. End of story." *Hawaii Music Supply, 66-560 Kamehameha Hwy., Suite 4, theukulelesite.com, 622-8000*



Michael Aratani and the HMS gang.

High gas prices.

Low car insurance rates.

See how much you could save.

**GEICO**  
geico.com  
1-800-947-AUTO



Some discounts, coverages, payment plans and features are not available in all states or all GEICO companies. Government Employees Insurance Co. • GEICO General Insurance Co. • GEICO Indemnity Co. • GEICO Casualty Co. These companies are subsidiaries of Berkshire Hathaway Inc. GEICO: Washington, DC 20076. GEICO Gecko image © 1999-2011. © 2011 GEICO

# FIND IT HERE Back Page

We'll sell the shirt off your back, or anything else. Call 808-528-1475

The biggest selection of garden supplies in the state



**GROW YOUR OWN**

2001 Democrat St., 46-208 Kahuhipa St.,  
KALIHI KANEHOE  
841-GROW (4769) 235-GROW (4769)  
Off of Nimitz Across from City Mill

OhanaGreenhouse.com  
NationalGardenWholesale.com

**HAVE YOU EVER WISHED YOU COULD SPEND ONE HOLIDAY SOBER?**

**ALCOHOLICS ANONYMOUS**  
808-946-1438

**DOWNTOWN COFFEE**

900 Fort Street Mall  
latte = Hawaiian espresso + local milk + ♥

Check out [honoluluweekly.com](http://honoluluweekly.com) for eats, treats and gigs brought to you every week by the Weekly's advertisers!

Shop local  
Support Hawaii's small businesses and manufacturers this holiday season

**SHIPTOHAWAII**

Tired of paying too much for Hawaii shipping?  
check out [shiptohawaii.com](http://shiptohawaii.com)

**THE WEEKLY IN NEWSSTANDS**

People are maliciously removing multiple issues of the Weekly from our boxes and racks. Help Kate our Distribution Manager identify the people who are stealing papers.

**528-1475 EXT 16**

Call with info: license #'s, photos, time/date. Theft hurts the Weekly, our advertisers, and our loyal readers. Thanks to those who have taken the time to call. **YOUR KOKUA IS APPRECIATED**

**BAREFOOT TRAINING**  
Vibram and Barefoot footwear techniques from the experts.

**SoulTrex**  
Hawaii's Outdoor Adventure Store  
Windward Mall (Kaneohe)  
UPSTAIRS, Theater Wing  
(808) 247-TREK [www.soultrexinc.com](http://www.soultrexinc.com)

Bring in the cheer with your SoulTrex family  
Wednesday December 21st 4-6pm

Mila Egg Nog  
And  
Cookies

Enjoy Huge Holiday Savings and Cool Outdoor Products

**discover the alternative**

**NEED STRESS REDUCTION?**

Try Body + Mind Spa  
2 locations--downtown, Aiea  
call 524-8588

Ono & Pono Slow Food  
tshirts now on sale  
at Downtown, Town &  
Pegge Hopper Gallery

**LIQUOR COLLECTION**

Honolulu's biggest little liquor store  
Ward Warehouse

**OLIVER**

**GREEK AND MIDDLE EASTERN**  
specialty foods  
best prices--best selection  
Next to the Olive Tree Kahala

Chai Studio for great  
Christmas gifts--local and exotic  
in the heart of Kakaako  
536-4543

**WATCH REPAIR & OVERHAUL**

(all Brand Name Watches), Battery Replacement & Reseal, (We warranty our major service repairs),  
**JEWELRY REPAIR & CUSTOM DESIGNS**  
Free Estimates • **EVELYN'S COLLECTION**  
Fine Jewelry & Watches (since 1978)  
Pacific Guardian Center  
733 Bishop St. #190 538-7400

**WARM ALOHA & MAHALO**

TO OUR READERS &  
ADVERTISERS  
**HAPPY HOLIDAYS!!!!!!!**  
FROM HONOLULU WEEKLY

**Happy Holidays**  
from American Apparel



**Meet Brenda.**

Brenda is an assistant in the creative department. She was born in Compton and moved to Texas, where she worked at a company retail store. She now lives in Downtown LA with a cat named Chicken, and is known around the office for baking award winning cheesecakes. She is wearing the Crepe De Chine Sleeveless Button-Up and The Disco Short.

Retail Location:

Aiea Moana Center  
1450 Ala Moana Blvd.  
(3rd Floor, Next to Neiman Marcus)  
Phone: (808) 983-3340

Made in USA—Sweatshop Free  
[americanapparel.net](http://americanapparel.net)

**THE RATES**

13x \$250 26x \$200  
18x \$225 52x \$185

**Tired of being curled up in that fetal position?**



**Time to get up, take action and expand your business.**

Call us at the Weekly.

We have experienced pros who will work with you & your business.

Call 528-1475: Colleen Knudsen x14  
or Laurie Carlson x17

AS ANYBODY WHO STILL BELIEVES IN SANTA CLAUS KNOWS,

**THE BEST GIFTS COME BY AIR.**

go!Mokulele is helping families connect. You can too. Donate to either Kapi'olani Medical Center for Women & Children or the Lokahi Giving Project, and get a 10% discount on any go!Mokulele flight during the holidays. Plus we'll provide free a round-trip for a local ohana so they can visit loved ones on a neighbor island.

[iflygo.com](http://iflygo.com)

KAPI'OLANI HEALTH FOUNDATION

LOKAHI

**go!Mokulele**  
Hawaii's Low Fare Airline

For terms & conditions please visit us at [www.iflygo.com](http://www.iflygo.com)