

Honolulu Weekly

December 28, 2011-January 3, 2012 • Volume 21 Number 52 • www.HonoluluWeekly.com

**NEW YEAR'S
EVE GUIDE
PAGE 10**



Jeff Peterson



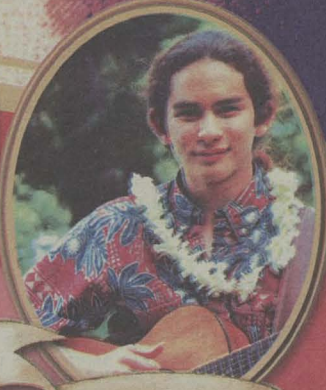
Ledward
Ka'apana



Garrison Keillor




Jake
Shimabukuro



Danny Carvalho

MAKING RADIO WAVES

DJ OF THE YEAR **11** NYE COCKTAILS **17** FICTION/POETRY WINNERS **19**



BILL MAHER
NEW YEARS EVE!
LIVE IN HAWAII
RICK BARTALINI PRESENTS
Waikiki Shell
One Night Only
DECEMBER 31
7:30PM

December 31

\$29.50 Lawn • \$49.50 • \$59.50 • \$79.50

BILL MAHER IN ASSOCIATION WITH **RICK BARTALINI PRESENTS - AN EVENING WITH BILL MAHER LIVE IN HAWAII**
NEAL S. BLAISDELL AND THE WAIKIKI SHELL 2805 MONSARRAT AV. HONOLULU - HI

RICK BARTALINI PRESENTS RBPconcerts.com BILL MAHER.COM [ticketmaster](http://ticketmaster.com)



Hawai'i Pacific University

Hawai'i Pacific University offers undergraduate degree-completion programs designed for you in the heart of downtown Honolulu. With more than 50 programs, we'll help you get started, and graduate with the degree you always wanted.

Small classes, convenient day, weekend, evening and online courses, and dedicated faculty combine for a powerful learning experience. Meet with an admissions counselor and start your educational planning now.

Attend an Information Session:

Wednesday, January 4, 5:30 p.m., 1164 Bishop Street, Suite 1100
 Free Parking Available

Apply today. Spring session begins January 23.

Call 543-8034 • www.hpu.edu/start



If you're an eligible veteran or family member interested in seeking an undergraduate degree, find out how the new Post-9/11 GI Bill's Yellow Ribbon Program can help pay for your education.

Hawai'i Pacific University admits students of any race, color, national and ethnic origin, religion, gender, age, ancestry, marital status, sexual orientation, veteran status and disability.

THE SURF-N-SEA ANNIVERSARY BLOW-OUT SALE! EVERY ITEM ON SALE!



Surfboards, Bodyboards, Stand-Up Paddleboards, Dive Gear, Clothing, Sunglasses, Leashes, Wetsuits, Watches, Shorts, Trunks, Footwear, Skateboards, T-Shirts, Jewelry, Fins, Racks, Boardbags, Snorkels, Masks, Spears, Hats, Backpacks, and ...
MUCH MUCH MORE!! EVERY ITEM IN THE STORE IS SALE PRICED!

Hawaii's Ocean Sports Headquarters!

DAILY SURFING AND STAND-UP PADDLING LESSONS, INTRO DIVES (NO EXPERIENCE NECESSARY)
 SCUBA & SNORKEL GEAR, SHARK TOURS, 3 DAY PADI CERTIFICATION
 HAWAII'S LARGEST SELECTION OF NEW & USED SURFBOARDS, WORLDWIDE SHIPPING AVAILABLE
 RENTAL SURFBOARDS & BODYBOARDS, SURFBOARD PACKAGING & 24 HR. DING REPAIR

637 - DIVE
(3183)

637 - SURF
(7873)



[62-595 KAN HWY HALEIWA, HI 96712 • www.surfensea.com](http://www.surfensea.com)

THIS IS HOW YOU GET THERE. FIND THE OCEAN AT SURF N SEA!

Advertise In Spring Arts



Issue Specials

1/2 page ads - \$1050
 9.22" w x 7.33" h

full page ads - \$1750
 9.25" w x 15" h

Rates are net. Add GET.

Deadline for space
 January 9TH

Deadline for materials
 January 11TH

Please call 528-1475 x10
 Colleen Knudsen x14
 Laurie Carlson x17

January 18th

Honolulu
 Weekly

Warning: unauthorized use of warning

We represent the Hawaiian Lifeguard Association (HLA)...In 1986, HLA created a standardized set of water safety symbols (WSS) in order to promote ocean safety.

One of its updated WSS, namely the "Strong Current" symbol, was featured verbatim on the cover of your [Nov. 30] issue of *Honolulu Weekly*... HLA is unaware of any permission for the use of the WSS having been sought or given to *Honolulu Weekly*, and no attribution to HLA was given.

Firstly, we note that our client has no specific objection to *Honolulu Weekly's* use of its Strong Current WSS to draw the public's attention to the serious nature of ocean hazards. HLA specifically asked that we relay HLA's appreciation and approval of the acknowledgement and praise given

Hawai'i's lifeguards in the context of the editorial content found on page six of the ["Hawai'i Survival Guide"]. The HLA also appreciates and approves the *Honolulu Weekly's* role in educating the public role regarding the hazards of Hawai'i's oceans.

Our client understands and agrees that the used of the WSS in the context of editorial content would in most cases amount to a fair use of the work.

Notwithstanding, the use of the symbol in large format on the cover of the newspaper is more in the nature of commercial content than editorial content.

In the future, should *Honolulu Weekly* desire to use HLA's WSS, we ask that [it] only do so after obtaining HLA's advance written permission, and in any such use, whether or not specifically authorized, be accompanied by an appropriate copyright symbol and attribution to HLA as the owner of the copyright in question.

Seth M. Reiss,
Attorney, HLA

Editor's response

We admit to using HLA's striking Strong Currents sign on our Nov. 30 "Hawai'i Survival Guide" cover in order to "draw the public's attention" to these hazards. In our minds, the more people who picked up the (free) issue, the more forewarned. We apologize for not asking permission, and will do so in the future. Although, we must point out that fair use was our intent and we promise not to put it on a t-shirt.

Overlooked treat

In your Survival Guide issue [Nov. 30], there's an article on a café called Chad Lou's, which I frequent. They do in fact carry ice cream sandwiches. If you enter from the street side, stand in front of the ice cream freezer and there's a picture of an ice cream sandwich. You can pick your flavor of Dave's ice cream and they will put it between two chocolate chip cookies! They are very delicious and it's only \$2.50!

"anrose51" via
HonoluluWeekly.com

They know best

[Dec. 21 "Rail Trail Rolls On"] Sounds like another one of those things the government says like, "We know what's better for you than you do." Just like ObamaCare.

"moki" via
HonoluluWeekly.com

Preventive measures

It seems that every day we hear of yet another traffic "accident" resulting from road rage, teenagers speeding through curves or the average citizen being in a hurry to go nowhere. Now we are seeing the results of how cell phones compromise the safety of drivers and those outside the vehicle.

People would rather experi-



COPYRIGHT JOHN S. PRITCHETT

ence the "thrill" of traveling at high velocity than consider the consequences of their actions. Now they can travel at high speed and be distracted—all at the same time.

One solution for reckless driving caused by the use of cell phones is the installment of a device allowing for hands-free cell phone use. This may not prevent all drivers from being distracted by cell phone use but it would sure be a strong attempt at keeping our attention where it belongs.

As for texting devices, we must outlaw their use in motor vehicles, period. My nephew was killed in a car accident as a result of a texting argument with his girlfriend. The autopsy confirmed there was no drugs or alcohol in his system. Studies have confirmed that texting lowers a driver's reaction time worse than alcohol.

Unfortunately, there is really no way you can stop mobile usage unless you spot someone texting. There is too much evidence to indicate that most people cannot "chew the fat" and drive at the same time.

Joe Bialek
Honolulu

We love to get letters and print as many as space allows. Letters are often edited for length and clarity. Letters should be signed with the writer's full name and their town or city and state, as well as phone number for confirmation only.

WRITE TO:
Letters to the Editor,
Honolulu Weekly, 1111 Fort Street Mall, Honolulu, HI, 96813. Fax to 528-3144 or e-mail to editorial@honoluluweekly.com.

Honolulu Weekly

Vol. 21, No. 51
Dec. 28, 2011-Jan. 3, 2012

Our Mission:

To create a high-quality, profitable weekly O'ahu newspaper that provides its readers with independent, entertaining, provocative coverage examining local issues, arts and events in a visually striking format.

Publisher Laurie V. Carlson

Editor Mindy Pennybacker

Managing Editor Shantel Grace

Calendar Editor Matthew Dekneef

Film Critic Bob Green

Copy Editor Ashley L. Angello

Contributing Writers Noelani Anderson, Anna Harmon, Tiffany Hervey, Matthew Kain, Kyle Kajihira, Maria Kanai, Don Wallace, Kalani Wilhelm, Christa Wittmier

Features Writer Niko Rivas

Director of New Media & Production Joe Edmon

Production Assistant Hideyo Kusano

Production Intern Mary Pigao

Cartoonists & Illustrators John Pritchett, Slug Signorino, Tom Tomorrow

Cover 1915 photograph courtesy of Bishop Museum, art by Hideyo Kusano

Sales & Marketing Manager

Laurie V. Carlson

Senior Account Executive

Colleen Knudsen

Distribution Manager Kate Paine

Bookkeepers Pamela Farris, Bob Brooks

ISSN #1057-414X

Entire contents © 2011 by Honolulu Weekly Inc. All rights reserved.

Manuscripts should be accompanied by a self-addressed stamped envelope. Honolulu Weekly assumes no responsibility for unsolicited material. First copy of Honolulu Weekly is free at the newsstand, limited to one copy per reader. Subsequent copies are \$1 each and may be purchased at our office. No person may, without permission of Honolulu Weekly, take more than one copy of each Honolulu Weekly issue. It is unlawful to remove copies in bulk; violators will be prosecuted to the full extent of the law.

A.A.N. A Member of the Association of Alternative Newsweeklies

www.honoluluweekly.com

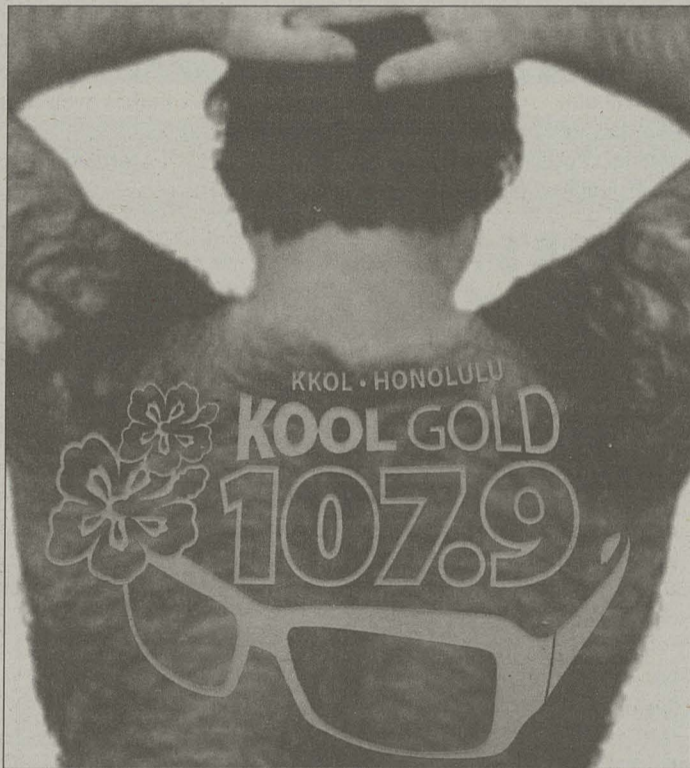
Phone: (808) 528-1475

Fax: (808) 528-3144

Classifieds: (808) 528-1475 x 48
1111 Fort St. Mall, Honolulu, HI 96813
editorial@honoluluweekly.com
sales@honoluluweekly.com
classifieds@honoluluweekly.com

Printed on recycled newsprint with soy-based inks

INDEPENDENT, LOCALLY OWNED



Bart's BACK!

REAL RADIO RETURNS
Weekdays Starting 1-2-12

The **GREATEST** hits of the past PLUS Beatles-Trax, Local Gold, TV Time-Trip & more...

BART DA SILVA
3:00 pm - 6:00 pm on

107.9 Hawaii's Kool Gold



honolulu diary



CREEPING CORN

Land Use Commission (LUC) hearings will continue January 5 about the application of D.R. Horton, a local division of Schuler Homes, to have 1500 Ho'opili acres changed from agricultural to urban use for a housing development. Critics of the proposal cite the lack of food security on O'ahu as an imminent threat that necessitates the preservation of farmland, especially when, like the acreage Ho'opili lessee Aloun Farms, it is planted in fresh produce.

But Cameron Nekota, vice-president of D.R. Horton, questions whether the food being grown is as crucial to O'ahu's food security as many opponents of the project claim.

"They're growing a lot of melons, some sweet corn, some cabbages and stuff like that," says Nekota. "But what people don't realize is that they also grow a whole bunch of GMO seed corn."

According to Nekota, Aloun Farms produces 300 to 400 acres of GMO seed corn for Pioneer, a subsidiary of DuPont. They also sublease almost 100 acres to a company growing basil to be shipped off island.

"Ho'opili, by and large, has about 800 acres of land that is being used for growing food," says Nekota.

Undaunted, adversarial interveners in the LUC hearings like Friends of Makakilo, Sen.

Clayton Hee and the Sierra Club say they are more than aware of that fact.

"Yes, they do grow seed corn there," says Sierra Club Hawaii director Robert Harris. "That's not necessarily something that many people would like to see, or want, but that doesn't make the land less valuable."

Harris continues, "I do not think Aloun Farms is a model for the types of projects that many progressives would like to see (at Ho'opili). Still, there's a large amount of produce coming from that area."

Ho'opili has also been touted as a transit-oriented, mixed-use community with a planned stop on the proposed rail system. But with the rail project currently in Federal Court, things may not turn out as planned. Nekota and the folks at D.R. Horton do not seem worried, saying the project has transportation legs to stand on—like being especially bicycle and pedestrian friendly—with or without rail.

"We're not dependant on a rail line," say Nekota. "Would we like to see it happen? Absolutely, but we're planning in a way that is not dependant on rail to be successful. Rail or no rail, I think this is going to be a great place to live."

Harris disagrees. Without rail, he says, "the rationale for the project makes even less sense than it does now."

--Matthew Kain

MILITARY CENSORED

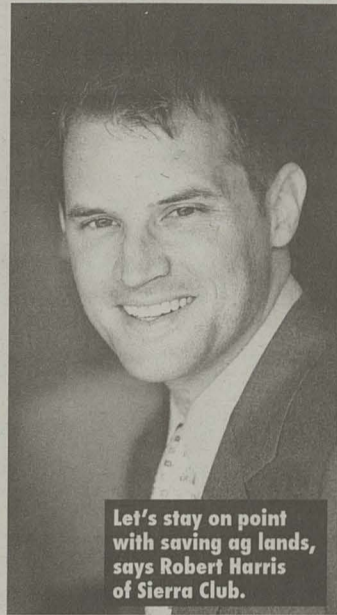
The military's getting involved in real estate business unrelated to military needs creates numerous sites that fall into a gray zone where jurisdiction is unclear. The fatal explosion in the Waikale bunkers that killed five men is an example. The land was considered 'excess' by the Navy and, under a special exemption created by Senator Inouye, was leased to a private developer. Normally City zoning laws would apply to excess military land, in which case the land would be zoned "preservation II," barring industrial uses unless permits were obtained. In this case, industrial uses, including the explosive decommissioning that caused the conflagration, were never permitted. As environmental activist Carroll Cox revealed, the City issued a notice of violation against the developer for non-permitted land uses in 2010. But the Navy sent a sharply worded message telling the City to back off. The City then withdrew its notice of violation but still claimed jurisdiction. It was in this legal no-man's land that the terrible explosion happened. No one is stepping up to take responsibility for regulatory oversight, and five men are dead.

Another story Cox followed was the radioactive Strontium 90 that leaked from the Marine Corps helicopter crash in Kaneohe Bay. Although parts of the story were eventually reported, what never made the mainstream press is that the raft where radioactive debris was being collected got loose and drifted across the bay to a residential area along the shore. Were civilians exposed to radioactive materials? The military and state have been silent.

--Kyle Kajihira

FOOD POLL

A study of more than 1,000 O'ahu shoppers reveals that the majority believe



Let's stay on point with saving ag lands, says Robert Harris of Sierra Club.

buying local food is very important, and a large percentage are willing to pay more for some local products like milk, eggs, bananas, tomatoes, romaine lettuce and beef.

Ulupono hired Honolulu market research specialist OmniTrak to study the consumer side of supply-and-demand across Hawai'i's food system. Ulupono Initiative, founded by eBay founder Pierre Omidyar and his wife Pam, invests in organizations that further its mission of more local food, more renewable energy and less waste.

While the study found that O'ahu consumers are willing to pay more for local products, they often have trouble distinguishing what's local and what's imported. Consumers said that when it comes to local foods, they value the quality, trust the farmers to grow foods that are safe to eat, and want meat free of hormones and antibiotics.

Although less than 10 percent of Hawai'i's milk market is locally produced, more than 44 percent of those surveyed say they most often buy local milk. This embodies the challenge: Consumers remain confused about which products in stores are locally produced. This also signifies that retail distribution of local food is critical as a majority of consumers on O'ahu buy their groceries predominantly from supermarkets, due mainly to

QUOTE

"Those things you see in the sky [aerial fireworks set off by private parties] are illegally purchased and used by folks without permits or licenses."

—Capt. Terry Seelig, Honolulu Fire Department

FACTOID

8461

Number of firecracker permits issued by the Honolulu fire department

the convenience of location and availability of desired brands in "One-Stop-Shopping."

According to Ulupono Initiative general partner Robin Campaniano, Ulupono believes that local food production can be increased using a variety of efforts — from partnering and collaboration to investments. "To be successful, many players must be involved, including farmers, ranchers, landowners, government officials, agricultural producers, retailers and distributors in the private sector," Campaniano explains.

The key findings of the study indicate that "Grown in Hawai'i" is sometimes more important than the price, and consumers desire to see local products clearly labeled, stocked readily and consistently in the retail stores nearest their home. Campaniano urges citizens to vote with their dollar. "You can choose local bananas and other Hawai'i-grown produce which helps support our local farmers, our economy and puts fresher healthy food on our plates," Campaniano adds. "You can choose a restaurant that serves local food. A consistent and growing demand keeps farmers in business and growing more food for our community."

--Tiffany Hervey

EDITOR'S NOTE

On the eve of the New Year, the media traditionally look back at the top news of the past 12 months. Of fresher interest are stories overlooked by the mainstream press and collected from independent publications by "Project Censored," the biannual publication of the media watchdog project at Sonoma State University. Among *Censored 2012's* top 10 stories, four involve the military, including, "More U.S. Soldiers Committed Suicide than Died in Combat." We asked Kyle Kajihira of Demilitarize Hawaii about stories from our state. See his response on this page. Other largely "censored" local stories were the merger of Honolulu's two dailies and the FCC's denial of Media Council Hawaii's challenge to television consolidation.

But independent media survives in the *Weekly*, PBS Hawaii and Hawaii Public Radio. The latter brings us *Prairie Home Companion* live on New Year's Eve. We hope you enjoy the interviews in Shantel Grace's cover story, and the celebration of all things local in this last issue of the year.

--Mindy Pennybacker




Complete in
as few as 9 months

TRAIN FOR A CAREER* as a *Massage Therapist*

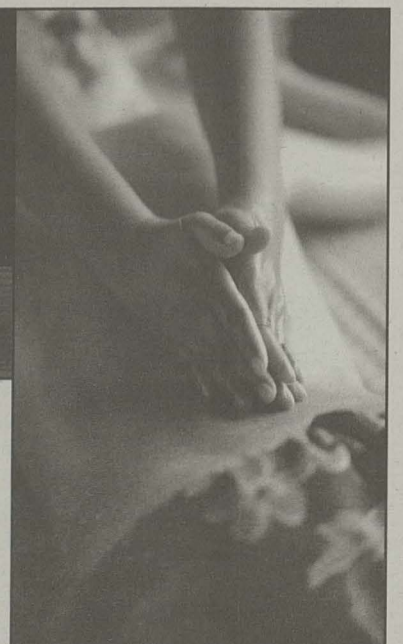
- Help make a difference in your life AND in the health and well being of others.
- Practice your skills during a clinical internship in our very own massage clinic!
- Employment of massage therapists is expected to increase by 19% from 2008 to 2018**

*Employment after graduation not guaranteed
**http://bls.gov/oco/ocos295.htm



REMINGTON COLLEGE
HONOLULU CAMPUS

1111 Bishop Street, Suite 400 • Honolulu, HI 96813
remingtoncollege.edu • 772-5975



Health



Are we caring for our seniors, or warehousing them?

The stressful, anxiety-provoking topics of aging, adaption and change

Aging (with dignity?) in Hawai'i

JANE CALLAHAN

W as a species we have always grown old and died, so why is such a time-tested scenario becoming so difficult for our society to address?

Today's average caregiver, according to Colette Browne from the Center on Aging at the University of Hawai'i, is a 57 year-old woman who is struggling to provide care to an elder while still working and raising her own children.

Families are increasingly burdened because "care for seniors is ridiculously expensive," says Scott Spallina, Deputy Prosecuting attorney supervising Hawai'i's Elder Abuse Justice Unit. The average home-care aide agency charges \$22 an hour, while senior living facilities with assisted care can run over \$120,000 a year. At the same time, availability of low-income housing for seniors and the disabled may be reduced, many fear, if already-limited Section 8 housing units become privatized. "The state doesn't want to be in the property management business," Spallina says, "and there's anxiety right now."

With Medicaid and Medicare on the chopping block, along with many other social welfare programs, the anxiety goes well beyond affordable housing. Spending has decreased over the last few years, meaning income and sales taxes are no longer dependable sources for funds allocated to provide benefits for an aging population. The 2011 fiscal year saw a \$25 million cut to Medicaid, followed by Abercrombie's proposed \$50 million in additional cuts for 2012. This past March, the governor also proposed taxing the pension funds of some retirees.

Currently, about 52,000 seniors in Hawai'i rely on Medicaid to get by, but "Medicare does not pay for long-term care," says Laurie San Nicolas, office manager for Kokua Nurses, a private organization that offers home health care services and private duty nursing to residents on O'ahu and in Hilo.

According to Lei Shimizu, information and assistance coordinator at Hawai'i's Commit-

tee on Aging, "Many states on the mainland have better services than we do... They have full-service homecare attendants, and we don't have programs like that." Part of the problem, she adds, is that funding has remained flat over the past decade despite a rise in demand due to an ever-growing population. "[The state] has felt a financial punch," Shimizu says.

Because expenses can be a determining factor when deciding how to care for aging loved

"A lot of people think of caregivers as the young taking care of the old. That's not true. These are [often] husbands taking care of their wives, or vice versa."

—Scott Spallina

ones, some leave their jobs to pursue home care rather than hire home care attendants. In addition, the alternative of institutionalization is, for many, disheartening. According to Karen Koles of Eldercare Hawaii, a community of individuals and agencies committed to eldercare planning and support, those who are put in a care facility usually die within two years due to depression or exposure to germs in an enclosed population. Seniors who remain at home can expect to live for another decade. According to the Family Caregiver Alliance, individuals who stay at home to care for their disabled parents make up for an estimated \$200 billion in caregiver services annually.

"We live in a society where it is becoming more and more acceptable to warehouse our seniors and forget about them," Spallina says. "There are resources out there, but they are scattered. There are four-star luxury retirement homes with

excessive amenities, but most people can't afford those services even in a good economy."

As of 2010, the prosecutor's office saw a 110 percent increase (from 2008) in elder abuse cases, ranging from fraud and theft to physical abuse. "Every year we get more and more cases," Spallina says. "We aren't even scratching the surface."

Spallina says he thinks the increase is associated with a lack of resources for those who are overwhelmed by and undereducated about senior care. More often than not, he says, one sibling within a family ends up caring for the aging parent or parents, but the law doesn't grant them any special portion of their parents' estates.

"Sometimes people's siblings will not contribute time or money... They won't offer anything, but as soon as the father or mother dies everyone wants in [on the estate]," says Koles. "Families break up over that."

Attempts to provide incentive for family members to care for their elders include a \$1,000 tax credit proposed by UH's Public Policy Center, but that was shot down because it was seen as an opportunity [for some] to collect while neglecting their elders.

Other homecare costs include home renovations to make homes wheelchair friendly and the installation of hospital beds, Shimizu says. Adding to renovation, medical and caregiver costs, the cost of living on O'ahu, which is home to 73 percent of the state's residents who are 60 and older, is higher than on the other islands.

"A lot of people think of caregivers as the young taking care of the old," Spallina says. "That's not true. These are [often] husbands taking care of their wives, or vice versa." The problem, he emphasizes, is that those who suddenly find themselves thrust into the role of caretaker "don't get training...in regards to how to move somebody, or how to hold somebody who [can't control him or herself]."

As one resident of Hawai'i who found herself caring for her father who is suffering from dementia wrote on a chat board, "I am doing nothing short of a miracle, and I have to say, I will be needing more miracles to come my way." ■



KAILUA
600 Kailua Rd.
263.1182

KAIMUKI
1152 Koko Head Ave.
734.1182

KAPOLEI
590 Farrington Hwy.
674.1192

ibeads.com

Professional Display Graphics

Full Color Outdoor Grade
BANNER \$24
2' x 4'

Print Ready File, Add \$2 per Grommet, Restrictions Apply
Prices subject to change without prior notice

Full Color 18" x 24"
POSTER \$5
24" x 36" \$9

Use Color Wave Printer on 24# Paper
Minimum 10 posters, limited time offer

Wholesale Pricing
LAMINATION
We'll beat or match any local competitor's price

HON graphics

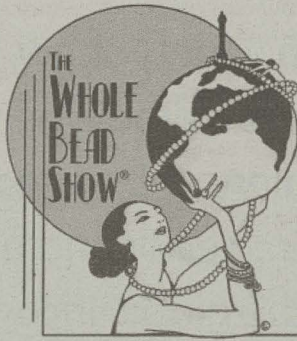
www.hongraphics.com
ph: 596-2679 info@hongraphics.com
417 Cooke St. Across from Fisher Hawaii

The Whole Bead Show

Honolulu The Blaisdell Center *Hawaii Suites*
777 Ward Avenue

January 6-8, 2012

Fri 4pm-8pm, Sat 10am-6pm & Sun Noon-5pm



Free Admission!
Open to the Public!



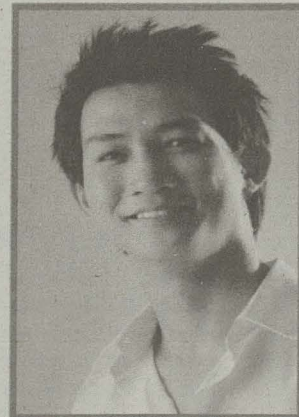
www.wholebead.com (800) 292-2577

1st-3rd Generation Japanese?

Generations of people have helped test investigational medications by participating in clinical research studies. You could help too.

To enroll for research study 8243-302 you must be:

- 1st to 3rd generation Japanese adult
- Healthy, age 24-60
- Light smoker or non-smoker
- Up to \$3,100 for time and participation
- Willing to stay at Covance for a 2-night/3-day stay and 8 outpatient visits



Think you can help? Great!
Then call 877-708-6681 (877-708-7092 for Japanese), text ALOHA to 77982, or visit TestWithTheBest.com today.

COVANCE

One Waterfront Plaza, 500 Ala Moana Blvd., Ste. 400, Honolulu, HI 96813

Garrison Keillor and local musicians mix it up in a double Honolulu New Year's Eve bash

Island Home Companions

SHANTEL GRACE

"It's a lucky man who arrives at his three-score and ten in good health, with good friends, and still loving his work, still mystified and enchanted by life," says Garrison Keillor, host of the venerable, beloved Minnesota Public Radio show, *A Prairie Home Companion*.

A sort of Midwestern variety show, it originated in Saint Paul in 1974, at a time when tickets cost a dollar and first audiences boasted a whopping 12 people. Since then, Keillor and his guests have performed around the globe, incorporating local artists and traditional sounds. This New Year's Eve, they're putting on two shows with Hawai'i musicians at the Neal Blaisdell Center.

This won't be the first time *A Prairie Home Companion* will have left the Land of 10,000 Lakes for a short stop in the Pacific. Five years ago, Keillor and his cast entranced local audiences with the show's signature intellectual wit, on-the-spot comedy, spontaneous sound effects and improvised music.

The story most of the musicians remember from that particular performance goes like this: Before the show, then-15-year-old slack-key guitarist Danny Carvalho's mother begged him to wear shoes on the stage. The boy submitted. Keillor, having overheard, walked out onto the stage and took his own shoes off.

"I remember they were red," says Carvalho, laughing. "I also remember the buzz backstage was incredible. Everyone's running around. The schedule was printed out five minutes before showtime. I like that kind of show. In fact, it might have been my favorite so far."

Commenting on the incident, "In radio, you can do as you please," says Keillor. "You can go barefoot, wear a tuxedo and tennis shoes, put a flowerpot on your head, and nobody has to know."

This time around, he plans duets with the acclaimed New York jazz singer Heather Masse, and he'll bring us *The Adventures of Guy Noir*, *Radio Private Eye* and, as usual, share the news from Lake Wobegon, a fictional town in Minnesota where "all the women are strong, all the men are good-looking and all the children are above average." Plus live sounds from Ledward Ka'apana, Danny Carvalho, Jake Shimabukuro and Jeff Peterson.

"It's a joy to return to Hawai'i and to

do not one, but two shows in one day, and send some gorgeous Island music back to the mainland," says Keillor. "Especially on New Year's Eve when people are looking for a little updraft."

About his last performance here, he adds, "I remember the party after the show, which was along a beach, under palm trees, and three Hawaiian women, two sisters and their mother, sang in Hawaiian to a small guitar, in three-part harmony, the gentlest music, and I walked down to the beach and dove in and swam out and floated and listened to the singing."

Those listening to *A Prairie Home Companion* from Honolulu on New Year's Eve will be the show's national and international fans; according to the show's marketing director, David O'Neill, they reach approximately 4 million listeners on about 600-plus public radio stations each week. "We're also heard on the Armed Forces Network," he says. "And there is a one-hour version that is aired via BBC, Australia and New Zealand." For our local musicians, this is a pretty sweet deal.

Local performers

Born on Maui, Jeff Peterson grew up on the slopes of Haleakalā where his paniolo father introduced him to Hawaiian music on the Haleakalā Ranch. Today he's considered one of the slack-key masters of Hawai'i, and his new album, with Nathan Aweau, called *Mamo*, is set to release in a few months.

"Garrison Keillor defined and has carried on traditions that have touched generations across the US and abroad," says Peterson. "I admire his dedication to literature, music, the cultural diversity that illuminates the American spirit and his great sense of humor."

Peterson landed five songs in *The Descendants* film, with the song "Hawaiian Skies" making it onto the soundtrack. Still, Peterson says that once a week, it's Keillor who inspires him.

"I listen to the show most Saturdays when I'm driving down from Mānoa to Waikiki to perform at Michel's," he says. "It always fills me with new ideas and inspiration. I absolutely love the The Guy's All-Star Shoe Band—that's the house band on the show. The diversity of music, musicianship, new songs and interplay in the band always gets me charged up to perform."

For Ka'apana, who's worked with country music giants Dolly Parton, Alison Krauss, Jerry Douglas and legendary guitarist Chet Atkins, performing with Keillor is nothing too new.

"I flew out to Minneapolis a few years ago and played on the show. It was great, saw some old friends, played with a few new ones," says Ka'apana.

In the tiny black sand bay village of Kalapana, Big Island, Ka'apana says music was everywhere. "People played in shifts," he says. "You'd fall asleep, wake up, music was still playing." Ka'apana says he's been performing for audiences of all sizes for over 40 years, including a loyal corps of "Led Heads."

For 'ukulele master Shimabukuro, playing with Keillor and *A Prairie Home Companion* is a brand-new experience. "I can't wait," he says. His newest project, *Peace Love 'Ukulele*, released last January, revolutionizes ideas about the instrument.

"The solo 'ukulele version of Queen's 'Bohemian Rhapsody' and Leonard Cohen's 'Hallelujah' have been working well on the set," says Shimabukuro, who also says he can't think of a better way to ring in the new year than being home in

Hawai'i. As for a New Year's resolution?

"I'm hoping to shape up and possibly participate in the 41st Honolulu Marathon," says Shimabukuro. "I ran it five years ago for the first time and found it to be one of the most rewarding experiences of my life."

As if a new record, touring the globe and running a marathon aren't enough, Shimabukuro also has a PBS documentary film coming out in March that will be featured in the San Francisco International Asian American Film Festival. LA-based director Tad Nakamura is editing the final project after the PBS crew followed Shimabukuro around for two years.

Grammy or not?

Besides the obvious, there's one other thing these artists have in common—they've all either won a Grammy, been nominated for a Grammy or played on an album nominated for a Grammy. Nominees for the 2011 Grammy Awards, which took place last February at Staples Center in LA, included winner Tia Carrere, Amy Hānaiali'i and Slack Key Masters of Hawai'i, Daniel Ho, Ledward Ka'apana and Jeff Peterson. These artists are the last to receive a nomination since the Recording Academy decided to drop the Hawaiian music category, as well as over 30 others.

Keillor, who received a Grammy Award in 1988 for his recording of *Lake Wobegon Days* and a nomination for Best Spoken Comedy in 1995, says, "The Grammy is, like most awards in the arts, an enormous hoax. It's all about corporate politics and back-scratching and log-rolling and not much about music at all. Awards mean a great deal to the audience, and if someone introduces me and mentions that I won a Grammy, people perk right up. But it's

VELENCHENKO
"Hawaiian music doesn't need trophies—it needs musicians to carry on the tradition."
—G.K.



"It feels good to discard. Otherwise you wind up living in a house with narrow passages between the piles of junk and 15 housecats wandering around and no friends."

—Garrison Keillor

a scam. Hawaiian music doesn't need trophies—it needs musicians to carry on the tradition.”

In 2005, at the 47th Annual Grammy Awards, Peterson and other Island artists achieved a milestone in Hawaiian music, when *Slack Key Guitar Volume 2* won the first-ever Grammy award for standout Hawaiian recording.

“The Grammys get a lot of attention around the world,” Peterson says, “but Hawaiian music has a wonderful history that’s distinct on its own, and is so valuable to our culture. Some of my favorite Hawaiian music is the kind that is played in the backyard for the pure joy of sharing aloha. Experiencing this is the true reward.”

“It didn’t surprise me,” says Ka’apana, who shrugs off the subject. “So many things were happening, all this commotion, everybody complaining. It’s sad.”

Shimabukuro, however, feels a bit more sentimental toward the accolade given by the National Academy of Recording Arts and Sciences.

Demarco of Alibi.com. Sanchez said, “The biggest problem with the Regional Roots generalization is that it tries to blur all those genres together. And the word ‘roots’ almost makes it sound like reggae. I don’t know where they came up with that. Plus, when nominations are announced, there’s a lot of exposure for musicians. Removing the category could mean fewer native artists get that spotlight.”

When asked if he felt a sense that these music styles are dying languages, Keillor replied candidly, “Nope.”

An edited life

A decade ago, Keillor was writing for everyone—advice columns, books, essays—and winning awards, all the while continuing to host *A Prairie Home Companion*. In his last column for Salon.com, written in 2001, while sitting in the hospital, he wrote: “Illness offers the chance to think long thoughts about the future (praying that we yet have one, dear God), and so I have, and so this is the last



Greetings from Wobegon.

Mary’s Hospital to sit and think, and that’s the result. Every dog has his day, and I’ve had mine and given whatever advice was mine to give, and a little more.”

That was 10 years ago, and I wondered if Keillor took his own advice and eased up a bit.

“It’s the great lesson of a person’s sixties, throwing stuff overboard. [I] shucked the Mr. Blue column. Gave up golf. Learned how to say no to invitations. Walked away from a marriage because I didn’t have time to learn how to be Danish. Dropped a couple novels-in-progress because I couldn’t see the way clear to the end.”

Seeing clearly doesn’t seem to be that big of a problem for Keillor these days. Rumor has it, he always knows what he wants, edits his shows up until the last minute and, according to O’Neill, Keillor edits scripts while the actors are still holding the pages.

“The best work is done the night before and the morning of the show,” Keillor says. “You write and write but it’s the rewriting that makes the difference, that makes the show striking and original.”

“I can look at a long manuscript and whack off whole pages of it without much hesitation. It’s not hard. You look in the closet and you know instantly which clothes you’re never going to wear again. So you put them in the Goodwill bin. It feels good to discard. Otherwise you wind up living in a house with narrow passages between the piles of junk and 15 house cats wandering around and no friends.”

For Carvalho, the now 21-year-old slack-key artist who attends the University of Hawai’i at Mānoa majoring in Hawaiian Studies and who recently joined the Polynesian Voyaging Society, Keillor is a “really, really” interesting guy.

“How do I say this?” Carvalho says. “He’s one of those people who you can tell is constantly thinking about something. You’ll be talking to him, having a completely coherent conversation, yet he’ll be looking all over the place thinking about five other things at the same time. He kind of operates like I think a genius would do. Oh—and he’s really tall.”

The 69-year old, six-foot-three storyteller doesn’t hesitate to update me on the gossip of Lake Wobegon—are there any political concerns or immigration

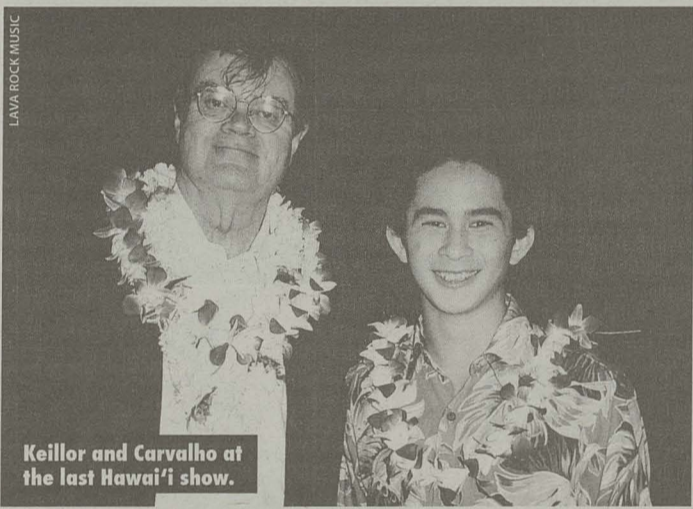
problems? Any new romances brewing?

“The new Lutheran minister, Pastor Liz, is making waves, preaching the hard gospel, and that doesn’t sit well with a lot of people,” Keillor says. “The bell tower of the Catholic church is dropping big chunks of brick and plaster, and they don’t have the money to repair it. The Whippets are losing and so are the Leonards. Mr. Berge drinks too much. Art’s Motel is a horror show. The Krebsbach’s mar-

riage is going through a rough patch and so is the Clint and Irene Bunsen marriage. Darlene, the waitress at the Chatterbox, is desperate to find a husband. I could tell you more...”

And so he will. ■

Blaisdell Concert Hall,
777 Ward Ave., Sat., 12/31
at 12:45PM (2 hr show)
and 4:45PM (3 hr show),
\$35–\$65, hawaiiipublicradio.
org, 527-5400



Keillor and Carvalho at the last Hawai'i show.

“How do I say this...He’s one of those people who you can tell is constantly thinking...”

—Danny Carvalho, musician

“It was truly a bummer when the Hawaiian category was dropped,” Shimabukuro says. “There are so many musicians in Hawai’i who I would’ve loved to have seen win that Grammy.”

When the trustees of the Recording Academy announced last spring that they were pooling music genres such as Native American, Zydeco/Cajun, and Hawaiian into a larger field called Best Regional Roots Music Album, many artists and musicians felt insulted.

In 2011, the Gathering of Nations won the last Grammy ever presented for Best Native American Music Album, they also won the first award in the category 10 years earlier.

Melissa Sanchez, who helped organize a presentation at the Gathering of Nations this year in Albuquerque, NM, expressed the feelings of many artists and organizations regarding the loss in an interview with Marisa

column of Mr. Blue, under my authorship, for Salon.”

Over the years, Keillor says, Mr. Blue’s strongest advice has come down on the side of freedom from crushing obligations and overwork and family expectations, the freedom to walk our own walk and be who we are.

He adds, “And some of the best letters have been addressed to younger readers trapped in jobs like steel suits, advising them to bust loose and go off and have an adventure.”

He says that some of the advisees have written back to inform Mr. Blue that the advice was taken and that the adventure changed their lives.

“This was gratifying,” says Keillor. “So now I am simply taking my own advice. Cut back on obligations, promote a certain elegant looseness in life. Simple as that. Winter and spring, I almost capsized from work, and in the summer, I had a week in St.

KPOI 105.9 PRESENTS
SPONSORED BY KAUI Printing Solutions
FROM THE LONGBOARDS

THE LIVE COMEDY SHOW FROM: JACKASS

STEVE-O

A NIGHT OF STAND-UP COMEDY AND STUNTS
W/ GUESTS KALEO PILANCA, JAMES MANE, JOSE DYNAMITE & MICHAEL C. HALL
JANUARY 19 - HAWAIIAN BRIANS SHOWROOM
Tix at: hightideconcerts.net, groovetickets.com, Hawaiian Brians, Hungry Ear Records, Honolulu Box Office or by phone 808-550-8457, UH Campus Center 2465 Campus Rd.

Treasure Hunt

Find unique and original shopping experiences

Shop local
Lovely, natural handmade soaps, candles, bath and body products

BookEnds
Where browsing is welcome & treasures abound

261-1996
Kailua Shopping Ctr
600 Kailua Rd

66-218 Kam. Hwy.
Haleiwa • 637-9088

hot picks

Clubs

White On, Hawai'i

New Year's Eve is a big deal in Hawai'i Nei. But for gay and lesbian couples and straight supporters across the state, Jan. 1, 2012 will stand apart from the rest. It really is a "new year" for equal rights, and Hula's Bar and Lei Stand will be ringing it in with the **Ultimate White Party**.

"Marriage" may not technically be the term for it, but a white-wedding-themed bash is what the renowned gay bar with a Waikiki view of Diamond Head will be throwing to herald the legalization of civil unions for all. Because, on Jan. 1, gay and lesbian couples will be able to walk up those courtroom steps and get the civil unions they have been fighting for for decades. Straight, gay, transgender or covered in glitter, it's a far better resolution than getting into shape (you know you'll never step on that treadmill, anyway).

In appropriate Hula's style, expect gogo dancers, shirtless men, lei, flamboyant white décor and all the booze and dancing you could ever wish for. For two honorary couples in attendance, it'll be their final night of singledom. Congrats, Mr. and Mr./Mrs. and Mrs. Newlyweds.

—Anna Harmon

Hula's Bar and Lei Stand, second floor of Waikiki Grand Hotel, 134 Kapahulu Ave., Sat., 12/31, 8PM, \$20, hulas.com, 923-0669

'Ohana

Feather-Me-Ready

How do you celebrate your birthday? A quiet family dinner or a big bash with booze and fancy flair à la Super CW? On day two of 2012, our very own Queen Emma would have been 176 years old. Since she's not around anymore, it's up to the Daughters of Hawai'i, curators of Queen Emma Summer Palace, to celebrate the beloved queen's special day. What's the party theme? Feathers. Kāhili to be exact.

The old Hawaiian tradition of feather gathering was revived by Nā Kiamanu O Hānaiakamalama (The Feather Gatherers of Hānaiakamalama) to restore the cultural practice on Queen Emma's birthday. The new kāhili feathers were

Holiday

Ignite the Night

Thanks to the recent ban on consumer fireworks, the approaching new year already feels a little smothering. No more trying to outclass the neighbors with fancy rockets that send colorful, exploding shells sky bound, where they neatly take the shape of a smiley emoticon. No longer will we align Roman candle fireworks on the street, lighting them off until smoke wraps around us like a cosmic blanket and one of us has an asthma attack.

Luckily, the second annual **Party of the Year!!** at Aloha Tower will make things a little easier for those who need to re-strategize. At midnight, one of the most impressive, hashtag-deserving fireworks show on the island will light up the Honolulu Harbor. The great view is one reason (out of several) to welcome the new year—unless you're looking for a wholesome, family-oriented event. If you're totally not looking for that, Aloha Tower beckons.

The entire area will transform into a massive entertainment Mecca where one ticket gets you into more than seven venues, with over 30 DJs and 40 bars. Each stage will spin a different style of music, featuring classics, Top 40 club hits, rock and hip-hop. Watch some fire dancers, see Natural Vibrations live, ride a mechanical bull, do who-knows-what in a foam-pit...your possibilities are endless in 2012.

—Niko Rivas

Aloha Tower, 1 Aloha Tower Dr., Fri., 12/31, 7PM-2AM, \$20-\$25, VIP \$75-\$200, nyehawaii.com, 745-3000



When you wish upon a firework.

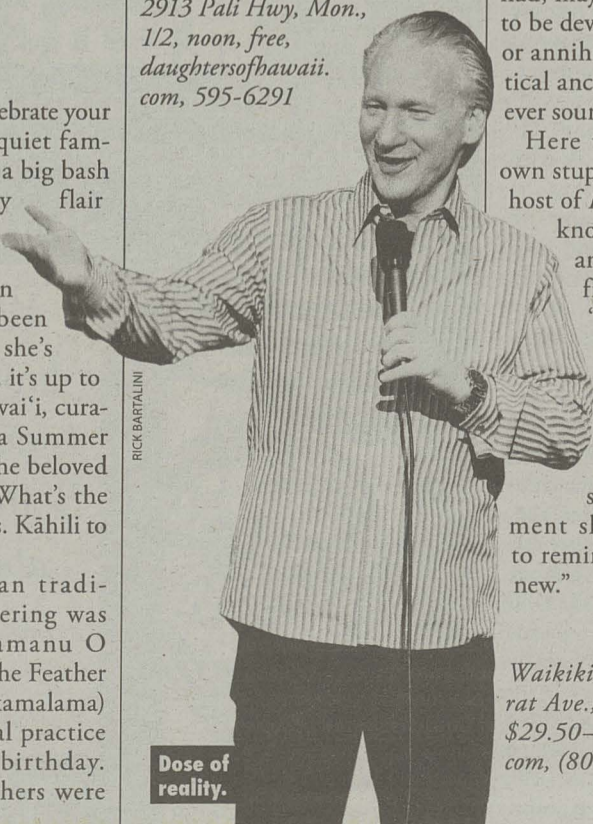
TAKUMA TANIZAKI

gathered on Midway Island and will be presented in honor and remembrance of the queen and her royal ancestors. Since it's a special day, all tours of the palace will be free and the kāhili presentation will be accompanied with refreshments. There's even a performance by the Queen Emma Ukulele Club.

Food, entertainment and culture. Seems like the perfect components of a classy birthday party to remember, as only Queen Emma could pull off.

—Maria Kanai

Queen Emma Summer Palace, 2913 Pali Hwy, Mon., 1/2, noon, free, daughtersofhawaii.com, 595-6291



RICK BARTALINI

Dose of reality.

Stage

Countdown in Real Time

Have you checked your Mayan calendar lately?

Year 2012—also known as "The Year of the Dragon" or more charmingly referred to as "The End of the World"—is right around the corner. Hey, after the 2011 we've had, maybe humanity deserves to be devoured by a giant lizard or annihilated courtesy of mystical ancient prophecy. Which ever sounds more realistic...

Here to shed light on our own stupidity is comedian and host of *Real Time* **Bill Maher**, known for his acerbic wit and inability to shy away from an opinion. He'll "throw out the old" by rehashing the past 365 days in politiculture—everything from Newt Gingrich's rise in the polls to that small little US government shutdown thing—all to remind us to "bring in the new."

—Matthew Dekneef

Waikiki Shell, 2805 Monsarrat Ave., Sat., 12/31, 7:30PM, \$29.50-\$79.50, ticketmaster.com, (800) 745-3000

This Gaga impersonator's poker face.



LEGENDS IN CONCERT WAIKIKI

Tribute to Thrillers

When we karaoke, we dream. When we dream, we believe. That's until friends begin heckling, or our voices crack on the last you-so-fine, you-blow-my-mind chorus of "Mickey."

But for a lucky few, they knock the socks off friends—and, eventually, fans—who see their imitations of artists like King Elvis or Queen Gaga. Before you know it, these tribute artists are competing in Vegas and gracing the *Ellen DeGeneres Show* stage.

...Or the Royal Hawaiian Theatre.

Revel in **New Year's Rockin' Eve with "Elvis"**—a special performance of the "Legends in Concert" Rock-a-Hula show, a

new revue that premiered this month, featuring big-name performers like "Michael Jackson," "Elton John," "Lady Gaga" and, of course, "Elvis." One of the two Elvis performers, Johnny Fortunio, is a Wahiawā boy whose cover talent took him all the way to the Ultimate Elvis Tribute Competition, winning the Vegas preliminary round. Thank him, thank him very much.

Start memorizing those tongue-twisting lyrics to "Auld Lang Syne." Show includes a midnight champagne toast, live band and all the firework visual effects a Lady Gaga imitator could need (a lot). You're gonna want to marry the night.

—A.H.

Royal Hawaiian Theatre, 2201 Kalākaua Ave., Sat., 12/31, 11PM, \$80-\$99, legendshawaii.com, 629-7469

Culture

MARIA KANAI

Glimpse into the life's work of a 92-year-old vagabond

Raising the Rafters: Bohemia in Kaimuki

MARIA KANAI

A small, red-lettered sign leads guests into a driveway where a single lantern stands, illuminating a charming pale-pink house with a white fence. Stairs traverse a wide, high-ceilinged space. Chairs face a stage where countless artists have performed since 1991. If it weren't for the regular gatherings of bohemians—gypsies, jazz musicians, improv comedians—the modest house could be any European country abode. Except it's here on O'ahu, hidden away between 15th and 16th Avenues in Kaimuki: Ward's Rafters, an underground venue that's part old-fashioned, part hipster and entirely one-of-a-kind.

Living downstairs on the first floor is Jacqueline "Jackie" Ward, owner and master organizer of its events. She is 92 years old and weighs 90 lbs. She views the world with vast wisdom, a healthy dose of humor, a touch of irony. She walks around in a bright green and yellow dress with more spritz and grace than people half her age. She can't see out of her left eye, and she can't say anything without a smile.

Born in New York into a Russian-German Jewish family, Ward began travelling in second grade, living everywhere from Los Angeles to the former Czechoslovakia. "I don't really feel I belong to any one culture or place. I'm a world citizen," she states. In fact, she's not a believer in any labels whatsoever. "I feel I am a human. A Homo sapien," she says dryly. "All of us are on this tiny little planet and we are 'different' in this place and that place... We're so primitive in the evolutionary sense. We fight each other because this tribe or that tribe wears a different color ribbon."

From the late '30s through early '40s, Ward was a dedicated modern dance student in LA, training every day to hone her skills. She also worked as a background dancer for Hollywood films. "It didn't mean anything artistically," she says, "but it was wonderful exposure." Because she was unable to pay for dance lessons, she



Mrs. Ward of the Rafters.

also worked in a defense machine shop in the mornings. One day, a piece of metal hit her left eye during her shift and by the time the doctors operated, the inflammation was too severe. The accident destroyed not only her sight in one eye, but also plans for her career. "That changed the whole course of my life," she says, "Maybe that was a good thing."

She moved to New York for a cornea transplant, where she

"I don't really feel I belong to any one culture or place. I'm a world citizen."

— Jacqueline "Jackie" Ward, owner of Ward's Rafters

met her future husband Herb, a bass player in a jazz band. Later, they moved to Europe with their son Larry, where they lived for five years. After their second son Norman was born at the turn of the 1950s, they were forced to leave Europe due to their left-wing politics. "[Americans] caught up with us during the McCarthy period. We'd signed peace petitions, marched in peace parades," she says with a smile. "They were chasing us around. Like many Americans, though, I was very naïve and had no idea of the reality of socialism and communism."

Ward moved to Hawai'i after her husband got a job in the Honolulu Symphony in 1965. She began Ward's Rafters in the '90s after being fired from her job organizing Renaissance fairs

and recreation events at parks. "I got busy with the [Honolulu] Zoo, Kapi'olani Park... all kinds of places around town where people could gather on evenings and weekends. I lasted for about five or so years until [the civil service department] didn't want to be bothered with me anymore," she says. However, she still yearned to be involved in the art community. With her husband Herb, she realized, "We don't have to have thousands of people. Just a hundred would be fine in our own place."

The events became an underground phenomenon. Ward's exclusive email list has 4,000-plus names, yet audiences are usually strangers or friends of friends. Even though she does no publicity, because of the residential neighborhood, word gets around. Interested patrons simply call or sign the on-site guestbook to be welcomed into Ward's inner circle, ranging from slam poets to Celtic dancers. "I just hug and kiss everybody who comes in," she says.

Today, Ward merely answers the phone and events come together. The Friday and Saturday music schedule is loose, planned merely two or three weeks in advance and catered to audiences from the young to the elderly. Every Sunday is devoted to live jazz from 3–6PM.

After Herb died in '94, she decided to continue booking events with the help of her son Larry. "People have met here, got married, had kids, got divorced, changed jobs," she says of Rafter's ongoing community. Looking back on her life, she sums it all up with a smile. "I feel happy to be a human being, and I know I have a good place among the people I know. I feel I'm happy anywhere in the world." ■

ALA MOANA FARMERS' MARKET

The times, they are a changin'



NEW MARKET HOURS

8AM-12PM

every Saturday!

Follow us on Facebook & Twitter (@farmlovers) for market specials & vendor information.

Saturdays

at the Ala Moana Center

Upper deck by Sears at Ala Moana Blvd & Piikoi



Slow Food Oahu T-shirts for sale.



Look for them at Downtown and Town restaurants.

Great garb for local foodies!

\$20 per shirt, available in small, medium, large and x-large.



Slow Food O'ahu
slowfoodoahu.org

The New Year's Eve Guide



How will you spend your New Year's? Getting together with old friends and creating sweet new memories? Searching for that eh, right-enough-for-the-moment person to kiss at midnight? Rebelliously lighting a sparkler in your uncle's backyard? Whatever it is, just don't stay in scooping your sorrows with a pint of Ben & Jerry's. (Just because the flavor is Karamel Sutra does not mean it's a healthy spicy relationship.) There's just too many NYE bashes going off around town to let that happen. Not to Mayan-ly mention, this may be your last... Happy 2012!

—Matthew Dekneef

An Irish New Year's Party The ole luck 'o the Irish is new again. Featuring music by 11th Hour, Chas Hayes, The Art of Whimsy and Number-Brother. Free champagne toast at midnight. *Anna O'Briens*, 2440 S. Beretania St.: Sat., 12/31, (9PM-2AM) \$5. 11th-hour.rock.com, 347-1323

Fireworks by Sea Sail into 2012. Various midnight cruises to choose from featuring different cocktails, French-style dinners, live jazz and entertainment, champagne and the best view of the fireworks shows on O'ahu. *Star of Honolulu*, Aloha Tower Marketplace, Pier 8: Sat., 12/31, (10:15PM-12:30AM) \$70. starofhonolulu.com

Friday Night Fireworks Begin your New Year's with a blast...an evening early! Ten minute firework display spectacular the day before the big one on the 31st. Simply magical. *Hilton Hawaiian Village*, 2003 Kalia Rd.: Fri., 12/30, (7:45PM) Free. 544-3385

Ignite 2012: Oceanfront End of the World Party Party like it's the last night of your life. Enter an apocalyptic world of modern mayhem with a countdown to midnight meteor ball drop from the top of the Sheraton Waikiki. Beats by DJ Betty and DJ Revise will set it off with a bang. *RumFire*, Sheraton Waikiki: Sat., 12/31, (8PM-2:30AM) \$65-\$75. 866-952-3473

Moana's Pre-Resolution Party Everything you need for a party: a dessert buffet, party favors, cocktails, pūpū and entertainment—all in a first-rate historic venue. *Moana Surfrider*, 2365 Kalakaua Ave.: Sat., 12/31, \$50-\$100. moana-surfrider.com

Neon Lights NYE Party It's just thirtynine steps to ringing in 2012. *thirtyninehotel*, 39 N. Hotel St.: Sat., 12/31, (8PM) 599-2552

New Year's Eve Fireworks Extravaganza at Ko Olina The debut New Year's Eve fireworks spectacle synchronized to popular music artists by Hawai'i's best pyrotechnicians. Stellar vantage points across all four oceanfront lagoons. *Ko Olina*, 92-1220 Aliinui Dr.: Wed., 12/28, (12AM) Free. koolina.com

White Wedding: Hula's New Year's Eve Party (See Hot Picks) *Hula's Bar and Lei Stand*, Waikiki Grand Hotel, 2nd floor, 134 Kapahulu Ave.: Sat., 12/31, (8PM) \$20. hulas.com, 923-0669

New Year's Eve Party at Longhi's Ala Moana Offering their dinner menu and a four-course feast with a spectacular view of the 2012 fireworks show. Drinking and dancing until 2AM with DJ Nalu. *Longhi's*, Ala Moana Shopping Center, 1450 Ala Moana Blvd. Ste 3001: Sat., 12/31, (4PM-2AM) \$40. longhis.com, 947-9899

New Year's Eve Pink Party Dress in all pink in a building that already is. The Pink Palace hosts a party featuring live music, DJs, a pupu menu and bar. *The Royal Hawaiian Hotel*, 2259 Kalakaua Ave.: Sat., 12/31, (9PM-12:30AM) \$50-\$100. Reservations at tdr.hawaii@starwoodshotels.com, 921-4600

NYE 2012 Year of the Dragon Unleash your inner dragon at this fierce party. Performances by ALT/AIR and GRLFRNDS. DJ Nicky Savage and DJs Kowai Kowai. Balloon drop. Champagne toast. Fireworks. Free kisses. *Nextdoor*, 43 N. Hotel St.: Sat., 12/31, (9PM-2AM) \$15-\$50. nextdoorhnl.com

Starlight Ball Think winter formal or masquerade. Dress up in your hottest evening wear without having to make a trip to town. *Hale'iwa Joe's, North Shore*, 66-011 Kamehameha Hwy.: Fri., 12/30, (11PM-2AM) \$15. 637-8005

The Local Divas New Year's Eve Show Star studied evening of divas featuring Melveen Leed, Nohelani Cypriano and Carole Kai—all reuniting for the first time in nearly ten years. A rare New Year's treat and musical opportunity. *Hilton Hawaiian Village*, 2003 Kalia Rd.: Sat., 12/31, (7:30PM-12:10AM) \$100-\$225. 544-3385

The Modern Experience: New Year's Eve 2012 Ring in the new year at this swanky posh venue with six designated party areas for a truly innovative experience. A slew of entertainment and Hawai'i's finest DJs provide the soundtrack to its picture perfect view of fireworks at midnight. *The Modern Honolulu*, 1775 Ala Moana Blvd.: Sat., 12/31, 735-8641

The Party of the Year!! at Aloha Tower (See Hot Picks) Aloha Tower will live up to its majestic glory when it becomes a giant super-sized club full of bars, live DJs and adrenaline activity. *Aloha Tower*, 1 Aloha Tower Dr.: Sat., 12/31, \$20-\$75. ticketmaster.com, (800) 745-3000

The Standard: The New 2012 Bigger, better and bolder is the new standard at The Standard. Beats by DJ Enrie, bubbly and more. Also the official New Year's Eve afterparty for the "Party of the Year!!" at Aloha Tower. *The Standard*, Waterfront Plaza, 500 Ala Moana Blvd.: Sat., 12/31, (8PM-4AM) \$20-\$50. thestandardnewyareve.eventbrite.com

Tiki Drop 2012 Overlook Waikiki on the Tiki lanai and watch the midnight fireworks with two live bands and Hawai'i's top DJs. Drink specials and a champagne toast at midnight. *Tiki's Grill & Bar*, 2570 Kalakaua Ave.: Sat., 12/31, (6PM-12AM) tikisgrill.com, 923-8454



DJ of the Year 2011

It was a case of mastery in motion in 2011 for DJ Delve. He holds wreck as one of the deck maestros at The Get Right hump day rage fest at The Manifest. His monthly contribution to SHAKE+POP ranks as one of the most "must attend" dance-a-thons around town. His opening set at the Classixx show back in July at Nextdoor—hands-down one of the most noteworthy performances of the year—more than qualifies DJ Delve as Spinzone's DJ of the Year title.

As busy as he is, the co-founder of the Architechs still finds time to show his support to hip hop friends and DJ comrades while extending friendships to talented kids on the come up. His impression on the dance music scene is a direct reflection of what keeps his shows alive, well and grounded—where dance happy folk can get straight up silly courtesy his beats. Add to that his free mixes and live recordings available to the delight of many. Goodness always has room for greatness and in Delve's case the music always speaks of the latter.

—Kalani Wilhelm

Modern Experience NYE 2012 at The Modern Honolulu, 1775 Ala Moana Blvd., Sat., 12/31, 7PM-4AM, \$75-\$125, groovetickets.com

The Get Right at The Manifest, 32 N. Hotel St., every Wed., 9PM-2AM, free, manifesthawaii.com

DJ NIGHTS GUIDE



brought to you by
SCION HAWAII

WEDNESDAY, DECEMBER 28

ACID WASH 2.0 @ Nextdoor
COWBOYS & INDIANS @ Apartment3
DJ ANARCHY @ Bar 35
DJ gRAD @ Boardriders
DJs QUIKSILVA, LOSTBOY, AUDISSEY @ Indigo
GET RIGHT @ Manifest (10PM)
H.U.M.P. (hip-hop) (mainstream) (pop) @ Hula's Bar & Lei Stand
MARTINI NIGHTS @ bambuTwo
SALSA NIGHT @ 4Play
UNDER \$9 AT 9PM @ Giovanni Pastrami
W.T.F. @ V-Lounge & Bar 7
WILD WEDNESDAYS @ Zanzabar

SUNDAY, JANUARY 1

BEACH PARTY BLAST @ Hula's Bar & Lei Stand (5PM)
DOUBLEDUPLE SUNDAYS @ Hula's w/ DJ RACER-X (9PM)
INDUSTRY NIGHT @ Nobu
SIZZLIN SUNDAYS @ Zanzabar, 18+
SPIRAL GIRL HAWAII @ The Clubhouse
THE VITAL LOUNGE @ V Lounge

THURSDAY, DECEMBER 29

BROADCAST @ Nextdoor
THE CORNER @ Visions
FLIRT @ Paparazzi
JET BOY, JET GIRL @ Mercury Bar
LATIN HEAT THURSDAYS @ Blue Ocean Night Club
SALSA AFTER HOURS @ Indigo
THE SPEAKEASY @ Hush
SPIN @ Hula's Bar & Lei Stand
TAP THAT THURSDAYS @ Soho
TGIT @ Lotus
THIRSTY THURSDAYS @ Zanzabar

MONDAY, JANUARY 2

BROKE ASS MONDAYZ @ Red Lion Waikiki
5-0 MONDAYS @ Apartment 3
MAD HOUSE MONDAYS @ Aiea Bowl
MOTOWN MONDAYS @ Next Door
SWITCH MONDAYS @ V-Lounge
UNDERGROUND PLAYGROUND @ Mercury Bar
WII PLAY MONDAY @ Bar 35

FRIDAY, DECEMBER 30

DJ 45 REVOLVER & DJ QUIKSILVER @ Indigo
DJ/VJ RACER-X @ Hula's (5PM)
DJ/VJ KSM @ Hula's (9PM)
FADED FRIDAYS @ THAI SWEET BASIL
FRENCH TOAST FRIDAYS @ The Villa
FUNKY FRESH FRIDAYS @ Paparazzi
HANDLEBAR @ Soho
LIVE @ 4PLAY FRIDAYS @ 4Play Nightclub
POSH @ Oceans808
PRE @ Nobu
PUSSYCAT LOUNGE @ Apartment 3
ROCK SOLID FRIDAYS @ Showbox
SALSA @ Sand Island Sports Club
THE SESSION @ Lulu's Waikiki
SINSUAL FRIDAYS @ Zanzabar
TOAST @ Bonsai
VJ's Back Yard BBQ @ Fresh Cafe

TUESDAY, JANUARY 3

DIAMOND @ V Lounge
EYE CANDY @ Hula's Bar & Lei Stand
HAPPY HOUR @ Apartment3, 21+
HUSH HUSH TUESDAYS @ Hush, 21+
KALEIDOSCOPE @ thirtyninehotel (9PM)

SATURDAY, DECEMBER 31

THE BOILING POINT @ RumFire
CLUB CARIB/REGGAGE NIGHTS @ Tiki's
ENERGY @ The Warehouse
EUROTRASH @ Lotus
FLIRT @ Soho
FLASHBACK SATURDAY @ T-Spot
FLASHBACK SATURDAYS @ The House of Fortune
GOOD LIFE SATURDAYS @ Letto
HUGS AND KISSES @ Bonsai
KA-BOOM SATURDAYS @ Ka
NOIR @ Brasserie Du Vin
PAPERDOLL REVUE @ Fusion Waikiki
POPPIN @ The ClubHouse
PRESTIGE @ Paparazzi
SATURDAY NIGHT LIVE @ Lulu's Waikiki
SIZZLING SALSA SUMMER NIGHTS @ Indigo
SUGARHILL SATURDAYS @ Ige's
SUPPER CLUB @ Apartment3
SUPER HANDSOME SATURDAYS @ Manifest
THE SURF SHACK @ The Shack Waikiki

GET YOUR EVENT LISTED! SPINZONE@HONOLULUWEEKLY.COM, TWO WEEKS IN ADVANCE.

SCORE

2.9%* APR OR \$100 GIFT** CARD

with purchase of a new or demo
2012 Scion!

Only at your Scion Hawaii dealers.

OAHU | ServcoScion.com | 564-2400

BIG ISLAND | BigIslandScion.com | 935-2920

MAUI | MauiScion.com | 877-2781



what moves you
scionhawaii.com

* Not combinable with any other offers. Some restrictions apply. Not all customers will qualify. See a Scion Hawaii dealer for details. On approved credit, 2.9% APR on 60-month terms on a new or demo 2012 MY Scion iC (maximum to finance: \$25,000), xB (maximum to finance: \$22,000), or xD (maximum to finance: \$19,000) in stock, purchased and delivered between 11/1/11 - 12/31/11, or while supplies last. Excludes iQ and Release Series vehicles. Program dates and details subject to change without notice. See gpp.com for gift card terms and conditions.

The Straight Dope

By Cecil Adams

As I was decorating my Christmas tree this year, I began to wonder if I was putting myself at risk from insects. I don't like spiders much, and it would be even worse to have a Lyme-diseased tick bite me. Are Christmas trees fumigated, or are we bringing termites, etc, into our homes every holiday season?

—Doug in L.A.

Honestly, Doug, what a question! Don't we have enough to stress about this time of year? Have some eggnog, sit back in your easy chair and admire that tree. Now that you're comfortable, here's something that will answer all your questions.

It's from the US Department of Agriculture. It's called *Christmas Tree Pest Manual*. It's 179 pages long.

Now, Doug, if you're going to shriek, next time wait till you finish swallowing the eggnog. You know how the feds exaggerate. Let's start with something more calming. Here's an article from the 1905 *Washington Post*. The headline reads:

"Loaded with Insects—Christmas Trees Abound with Invisible Bug Life. Form Pretty Decoration"

Now there's a positive mental attitude for you—they're not

vermin, they're a pretty decoration! The headline continues:

"More Than Twenty-five Species, All Perfectly Harmless, Infest the Trees in Countless Millions and Add Material Beauty to the Ornamentation—Their Habits Discussed by an Expert."

Doug, please, put down that kerosene. Listen to what the article says about scale insects, a type of plant lice. Though "exceedingly destructive and harmful," these bugs have the advantage of looking like white dots. "Think of it," the above-mentioned expert is quoted as saying, "of buying a Christmas tree already decorated, radiant with hundreds of little shining white specks resembling snowflakes. They should make an ideal Christmas tree."

Ah, Doug, now you've done it. It's going to be hell getting those scorch marks off the ceiling. Let's try another tack.

That 179-page USDA manual. True, it speaks in frank terms of the many insects, fungi, worms and other horrors that can invade Christmas trees. There are aphids, spiders, spider mites, weevils, bark beetles, bagworms, budworms and webworms, not to mention those scale insects.

The gypsy moth and its cousins have plagued Christmas trees for more than a

hundred years. The manual omits praying mantises, but I happen to know they like to lay their egg cases on Christmas trees, and if the tree stays inside for a few weeks the eggs can hatch, releasing a cannibalistic horde of insects who have to eat each other because there's no other food...unless...Doug, this house of yours. Is there food in it?

Sorry, I'm going off on a tangent. The point I meant to make is that the USDA manual is mainly meant for Christmas tree growers, not buyers. Most pests can be controlled on the farm. The solution may entail pesticides, fungicides or removal by hand. Trees suffering from a particularly heavy invasion of certain moths, weevils, midges, fungi or what have you may be chipped or burned. Post-harvest fumigation is sometimes required for imported trees, which can mean toxic chemicals and higher cost.

Thankfully, drastic measures aren't needed often. In a typical year perhaps one tree in 100,000 is bug-ridden. The critters are seldom harmful to humans. One grower's guide notes that with adelgids, an insect found on white pine trees, you should "educate your buyers that this is a mostly harmless pest that is found everywhere including yard trees."

Let's face it, though. That kind of advice probably went over better in 1905 than it

does today. At any rate, nobody bothered to educate Skip Magic, staff member emeritus of the Straight Dope Message Board, and his wife, Auntie Em. One year they picked out the perfect Christmas tree, carted it home, set it up and decorated it and went to bed dreaming happy holiday thoughts. The next morning they came downstairs to find their tree covered with hundreds of silver threads, which extended from the tree in the living room to the chandelier in the dining room, and from there to a dining room window. From the threads hung tiny silver beads.

Sounds pretty, doesn't it? You know what's coming next. The threads were silk, and the tiny silver beads were a brood of baby spiders that had hatched in the warmth of the house. Skip and Em suppressed the urge to put the premises to the torch and instead got out the vacuum cleaner, thereby salvaging the situation, although it's fair to say if you were a baby spider your Christmas that year sucked.

You can of course buy artificial and sidestep such issues, but you can never entirely put out of your mind the knowledge that the classic bristle-and-wire fake tree was originally devised by a manufacturer of toilet bowl brushes. Thus the eternal dilemma. You can take the antiseptic route and celebrate sterility. Or you can embrace biological reality with the knowledge that every so often you're going to think: my God, this is gross.

Send questions to Cecil via straightdope.com or write him c/o Chicago Reader, 11 E. Illinois, Chicago 60611. Subscribe to the Straight Dope podcast at the iTunes Store

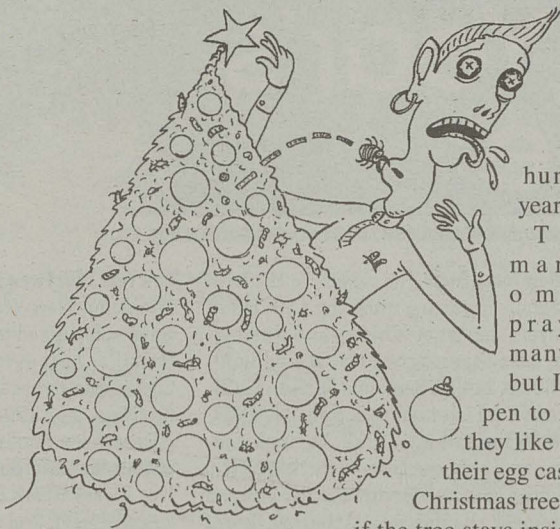
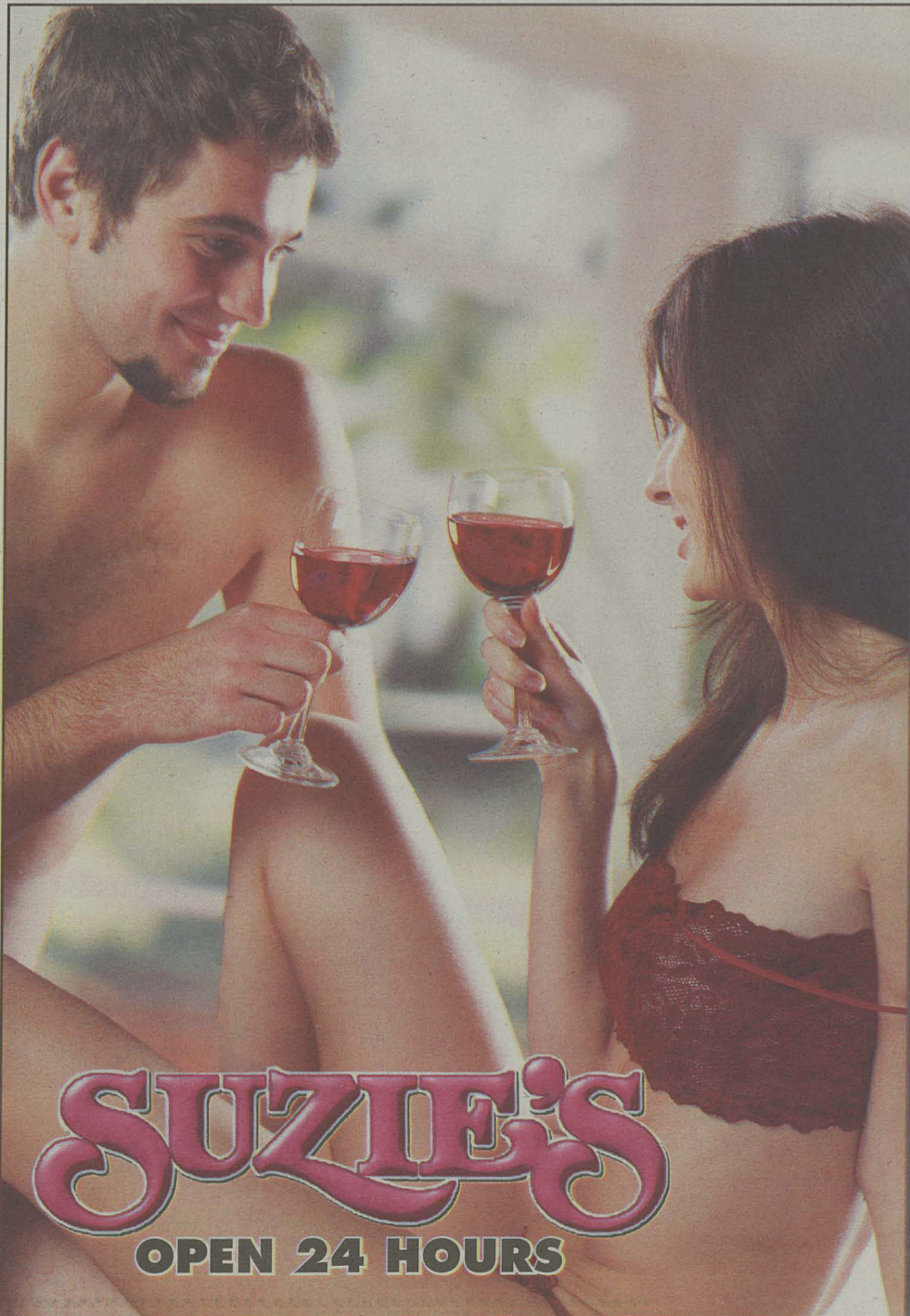


illustration: slug signorino



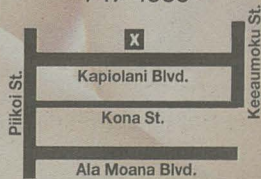
Have Yourself
a Sexy Little
New Year

Visit Suzie's
your authorized headquarters for
Adult Fun.

- Adult Novelty Toys
- Lingerie & Leather Apparel
- Books, Magazines & Gifts
- Lotions & Massage Oils

VISIT US AT OUR TWO
OAHU LOCATIONS:

1370 Kapiolani Blvd
949-4383



94-210 Leokane Street
Waipahu • 677-6950



SUZIE'S
OPEN 24 HOURS

THE SCENE

From Page 10

Lawrence Duo with Dancer, The Edge, Sheraton Waikiki (6:30PM) 922-4422
Ellsworth Simeona, RumFire (5PM) 921-4600

2/Monday

HAWAIIAN

Naluho Duo, The Edge, Sheraton Waikiki (6:30PM) 922-4422

JAZZ/BLUES

Project Monday, Jazz Minds Art & Cafe (9PM) 945-0800

ROCK/POP

Jeremy Cheng, RumFire (5PM) 921-4600
John Valentine, The Edge, Sheraton Waikiki (1:30PM) 922-4422

3/Tuesday

HAWAIIAN

Randy Allen, RumFire (5PM) 921-4600
Maunaula Duo, The Edge, Sheraton Waikiki (6:30PM) 922-4422

JAZZ/BLUES

JazzStory, Jazz Minds Art & Cafe (9PM) 945-0800

Rolando Sanchez Latin Jazz Combo, Indigo (5:30PM) 521-2900

Kelly Villaverde, The Edge, Sheraton Waikiki (1:30PM) 922-4422

Concerts & Clubs

Open Mic in Paradise Musicians, poets, comedians—whoever has a way with song, words or thoughts to share. *Da Spot Health Foods*, 2469 S. King St.: Tue., 1/3, (7-9:30PM) Free. 941-1313
A Prairie Home Companion (See Cover) *Blaisdell Concert Hall*, 777 Ward Ave.: Sat., 12/31, (12:45PM and 4:45PM) \$35-\$65. ticketmaster.com, (800) 745-3000

On Sale

5th Annual Bollywood Film Festival Three weeks of everything Bollywood has to offer. *Doris Duke Theatre*, 900 S. Bere-tania St.: Sat., 1/14-Sun., 1/29 \$48-\$60 for all seven screenings. honolu-luacademy.org, 532-8768

Andrew Bird It's the return of the indie-rock multi-instrumentalist. *Hawaii Theatre*, 1130 Bethel St.: 1/12/12, (8PM) \$25-\$50. hawaiiitheatre.com
Foster the People, Cage the Elephant, Best Coast and Mariachi El Bronx The band names say it all: Four acts from LA to NYC hit up Honolulu for one night only. *Blaisdell Arena*, 777 Ward Ave.: Tue., 2/8, (6:30PM) \$37.50. 591-2211

Larry and His Flask Oregon-based 6-piece bluegrass punk band command the crowd with six part harmonies. *Various venues and times*., On 1/5 at Hawaiian Brian's, on 1/6 at Anna O'Briens, on 1/7 at Mercury Bar: Thu., 1/5-Sat., 1/7, (Various times)
Neil Diamond A living legend, this Diamond sparkles on stage with songs like "Love on the Rocks" and "Sweet Caroline." *Blaisdell Arena*, 777 Ward Ave.: Thu., 2/16/12 and Sat., 2/18/12, (8PM) \$49-\$159. ticketmaster.com, 745-3000

Steve-O "Too Much Information" Tour Jackass star with opening guests comedians Kaleo Pilaane, Jose Dynamite and James Mane. Hosted by Michael C. Hall. *Hawaiian Brian's*, 1680 Kapi'olani Blvd.: Wed., 1/19, (7:30PM) \$35. hightideconcerts.net, hawaiianbrians.com

Stage

Bill Maher Always provocative, catch the comedian and *Real Time* host lay it straight about the past year's events. *Waikiki Shell*, 2805 Monsarrat Ave.: Sat., 12/31, (7:30PM) \$29.50-\$79.50. ticketmaster.com

Comedy Night at The Showroom Mr. Aaron's weekly comedy show featuring Hawai'i's best new stand up comedians and an improv game show. *Hawaiian Brian's*, 1680 Kapi'olani Blvd.: Tue., 1/10, (8PM) \$3-\$5. facebook.com/mraaronpresents, 728-7146
New Year's Rockin' Eve with Elvis (See Hot Picks) *Royal Hawaiian Theater*, 2201 Kalākaua Ave.: Sat., 12/31, (11PM) \$99. legendswaikiki.com
St. Clement's Recital Recital of classical vocal music featuring Washington D.C.-based singers. *St. Clement's Church*, 1515 Wilder Ave.: Wed., 12/28, (7PM) Free. rachelbarham.com/performances

Galleries

Opening

Dr. Sketchy's Anti-Art School Think dames, drinks and drawings in this not-so-average live drawing class with awesome themes, costumes and sketching atmosphere. Opens Wed 12/28, runs through 1/8. *The ARTSmith*, Chinatown Artists Lofts, 1109 Maunakea St.: \$5-\$7. drsketchy.com, 521-2903
Friends and Family with Tats...Rated PG Noreen Watanabe's special exhibit of photography. Opening reception from 11am-1pm. Opens Wed 12/28, runs through 1/30. *Canon Gallery*, Ward Plaza, 210 Ward Ave., Ste. 200: Free. 522-5930
Residual Katie Small's thesis exhibition on her experiences in post-war Kosovo. Opens Wed 12/28, runs through 1/13. *Commons Art Gallery*, UH-Mānoa: Free.

Continuing

Day Dreaming Color photography infused on aluminum by Chad Heroemus. Through 1/31. *Morning Brew Coffee House*, 572 Kailua Rd.: 262-7770
Hawaiian Legends Series Exhibition features the artistic collaboration between Dan Merkel and Harald-M. Lehnardt. It will be the first display of the artists' new Hawaiian Legends Series. Through 2/29. *Kahala Hotel and Resort*, 5000 Kāhala Ave.: kahalaresort.com, 739-8888
La Mirada Phoenix-based multimedia artist Dan Diaz exhibits four site-specific murals influenced by his Mexican and Japanese heritage. Through 1/21. *thirtyninehotel*, 39 N. Hotel St.: 599-2552
Toy Show Rediscover the joy of toys with quirky works by Jason Teraoka, Tracy Gunn, Nicole Higa, Mark Chai, Deb Aoki and others. Through 1/7. *fishcake*, 307C Kamaui St.: 593-1231

Learning

Honolulu Youth Drum Line Drum up a fun beat with a quality learning experience for all kids aged 9-13, no experience needed, all equipment provided. *Musicians' Association Bldg.*, 949 Kapi'olani Blvd.: Sat., 1/14-Sat., 3/10 \$60. honolulu-youthdrumline.com

'Ohana

Winter Program A week's worth of exciting activities—such as crabbing and bamboo pole-fishing—for your keiki to enrich their cultural and historical knowledge. Wed., 12/21-Fri., 1/6, (8:45-4PM) \$50. 923-2311, see halekulani.com

Botanical

Garden Mulch Take as much as you can carry when it comes to free mulch—reusable material used to enrich or insulate the soil. Sat., 1/7 Free. opala.org, 768-3200

Outside

Koko Crater Greet the New Year with an old hike. A 3-mile intermediate ridge hike through stone arches, steep slopes and narrow stone steps keep to keep the heart pounding as you clamber to the top of the crater for a well-deserved brunch. Sun., 1/1, (8AM) Contact coordinator for more info at laura.owens@htclub.org, 388-5373
Mānoa Cliff Restoration Meet at the trailhead on Round Top Drive to help nurture native plants and remove invasives on around the popular trail site. E-mail manoacliffnatives@gmail.com for details. First and third Sundays; 1/2, (9AM)

Neighbors

14th Annual Traditional Mochi Pounding for the New Year Continuing tradition with gratitude through the next generation in this celebratory mochi (rice cake) pounding festival. Entertainment includes musician Lito Arkangel, Hui Okinawa Kobudo Taiko Drummers and Shizuno plus surprises. *Wailea, Wailea Village*, Hakalau: Sat., 12/31, (8AM-1PM) msakiko@hawaii.rr.com, 963-6422
Chris Smither American folk/blues singer, guitarist and songwriter performs music influenced deeply by modern poets and philosophers. To be joined by artist Jorma Kaukonen. *Palace Theater*, 38 Haile St., Hilo, Big Island: Sun., 1/29, (6PM) \$25-\$35. smither.com, hilopalace.com, 934-7010
Maceo Parker The funkmeister with the impeccable musical pedigree performs with the tightest little funk orchestra on the planet. *Kahilu Theater*, Waimea, Big Island: Fri., 1/13, (7PM) \$25-\$65. kahilutheatre.org, 885-6017
Plastic Ocean Tour A book tour of Captain Charles Moore's *Plastic Ocean: How a Sea Captain's Chance Discovery Launched a Determined Quest to Save the Oceans* featuring his latest Power-Point presentation detailing his latest findings. Tue., 1/4-Fri., 1/6 julie@volcanoartcenter.org, 967-8222

Whatevas

Kaka'ako Makai Community Cultural Marketplace Local performers, history, culture, crafters, artisans, farmers, fish and food come together on the Waterfront Park in a community village for the entire family. *Kaka'ako Waterfront Park*, 677 Ala Moana Blvd. #1001: Fri., 6/24 (4:30-8PM); Sat., 6/25 (9AM-2PM) Free.
World Healing Day Happening two hours after midnight to coincide with the Noon Greenwich time zone, use this early-early morning to meditate and reflect on humanity. *Center for Spiritual Living*, 46-005 Kawa St., Kaneohe Atrium, #303: Sat., 12/31, (2AM) Free. cslwindwardoahu.org, quartus.org, 236-0950

Submissions

"The Scene" provides groups and individuals with free listings of community events, activities and entertainment. Submissions must include the following: Date and time; Location (include a street address); Cost or admission price; Contact phone number; Description of the event. (who, what, where, why...etc.) Deadline for submissions is two weeks before the listing should appear. Listings appear the Wednesday before the event. "The Scene" is also posted each week on our Web site, at honoluluweekly.com. Send all submissions through honoluluweekly.com/calendarsubmit. Submissions are not accepted over the phone. Please do not send original art. ■



Kealoha Mahone: Best Dressed of 2011

SWAGGED TO KILL

I'm savoring these last few days of the year. Everyone is home, the energy is alive and so much more accepting because people are already happy, instead of looking for other people to make them happy. It's a subtle difference but one that I'm sensitive to. This week—between Christmas and New Year's Eve—is like one big release. No more shopping to do. No more work stress. Just One Last Party.

This year's end in Chinatown welcomes back two of my favorite Los Angeles DJs' **Nicky Savage** at **Nextdoor** and **Ms. Christine Renee** at **thirtyninehotel**. Not like either place needs something too exciting to get people to Chinatown. I've spent years in that area on the eve of the New Year, never disappointed. It's more about the acquaintances than the entertainment, but don't get me wrong, both are good.

Waikiki? That's usually the scary part, but it might just be worth it this year. With large fancy-fancy glittery events at **RumFire**, **Trump**, and **The Modern**, each expecting over 600 guests—that's a lot of cabs—it's sure to be a heck of a night out. I've said it before, and I think it's worth saying again—Do Not Chase the Party. Wherever you go, that's where you are at. Stay. Enjoy it. Make the most of the night. You only get one chance to ring in the New Year then guess what? Every single night after that is another chance. We can do this.

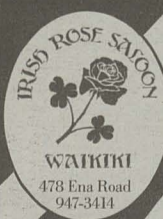
Before Saturday even happens, I have to say I'm pretty excited about **K-LUV's** only Hawai'i show

he is doing since he's been back in town. This guy had magic written all over him from the first time I saw him performing with **Lost at Sea** at the Waterpark back in like 2007. A kickass reggae surf rock band with a killer sax player, a lead singer with dreamy eyes and an even more dreamy voice, and this MC that was like a Hawaiian Zack de la Rocha made me instantly want the entire band to be my boyfriend. Five years later they are each still doing their part to contribute to the scene musically and visually. K-luv's only show will be a special treat for hip hop fans as he shows us what he's been doing in California for the past few months with all new music and a performance by the new "Supergroup" consisting of **K-LUV**, **Prie**, **Pro** and **Kwalified**. Their new project coming out called **Palm Trees and Plastic Cups** will include the track that I can't stop listening to called **Swag Set to Kill**. A wiggle-inducing track with a bouncy raw beat that's been making the college crowds in California go nuts when they perform it. The best part? A special performance by the **Hype 5-0** squad. Some might remember them from **America's Next Best Dance Crew**. If there was a show I would ever say don't miss it's this one. Do not miss this show.

K-LUV "Home for Christmas Show" featuring MOX, Pro and Prie, unveiling hip hop supergroup project "Palm Trees and Plastic Cups"

Nextdoor, 43 N. Hotel St., Thu., 12/29, 9pm-2am, 18+, 548-6398

CHAMPAGNE TOAST ALL BARS ON NEW YEAR'S MIDNIGHT!



Elephant

Doolin Rakes

The White Jacket



An Irish New Year Eleventh Hour, Art of Whimsey, Chas Hayes and Number Brother. 21+, \$5.



FREE WILL ASTROLOGY

by Rob Breznsky

ARIES

(March 21–April 19):

In North America, a farmer who grows wheat gets only 5 percent of the money earned by selling a loaf of bread made from his crop. When my band recorded an album for MCA, our contract called for us to receive just 7 percent of the net profits. I encourage you to push for a much bigger share than that for the work you do in 2012. It will be an excellent time to raise the levels of respect you have for your own gifts, skills, and products—and to ask for that increased respect, as well.

TAURUS

(April 20–May 20):

For much of the 19th century, aluminum was regarded as a precious metal more valuable than gold. It was even used for the capstone of the Washington Monument, dedicated in 1884. The reason for this curiosity? Until the 1890s, it was difficult and expensive to extract aluminum from its ore. Then a new technology was developed that made the process very cheap. In 2012, Taurus, I'm predicting a metaphorically similar progression in your own life. A goodie or an asset will become more freely available to you because of your increased ability to separate it from the slag it's mixed with.

GEMINI

(May 21–June 20):

The coming year will be a good time for you to consider investigating the Church of the Flying Spaghetti Monster. Devotees of this religion call themselves Pastafarians. Their main dogma is the wisdom of rejecting all dogma. Having such a light-hearted approach to spiritual matters would be quite healthy for you to experiment with. For extra credit, you could draw inspiration from a church member named Niko Alm. He convinced authorities to allow him to wear a pasta strainer on his head for his driver's license photo. Having a jaunty approach to official requirements and formal necessities will also serve you well.

CANCER

(June 21–July 22):

Terrence Malick's *The Tree of Life* is an ambitious work that deviates from formulaic approaches to film-making. Some observers hated its experimental invocation of big ideas, while others approved. *New York Times* critic A.O. Scott compared the movie to Herman Melville's *Moby Dick*, one of America's great works of literature. Here's what Scott wrote: "Mr. Malick might have been well advised to leave out the dinosaurs and the trip to the afterlife and given us a delicate chronicle of a young man's struggle with his father and himself. And perhaps Melville should have suppressed his philosophizing impulses and written a lively tale of a whaling voyage." Using this as a template, Cancerian, I urge you to treat 2012 as a time when you will be like Melville and Malick in your chosen field. Trust your daring, expansive vision.

LEO

(July 23–Aug. 22):

I love the way they celebrate the New Year in Stonehaven, Scotland. A procession of revelers swings big flaming baskets around on the ends of long chains. I recommend that you carry out a comparable ritual as you barge into 2012, Leo. Symbolically speaking, it would set the perfect tone. The coming months should be a kind of extended fire festival for you—a time when you faithfully stoke the blaze in your belly, the radiance in your eyes, and the brilliance in your heart. Are you ready to bring all the heat and light you can to the next phase of your master plan? I hope so. Burn, baby, burn.

VIRGO

(Aug. 23–Sept. 22):

Historian David McCullough wrote *The Greater Journey*, a book telling the stories of ambitious young American artists who relocated to Paris between 1830 and 1900. They had to move away because their home country had no museums or art schools at that time. You Virgos may want to consider seeking a similar

enlargement of your possibilities in the coming months. As you seek out the resources that will help you follow your dreams, be prepared to look beyond what you already know and what's immediately available.

LIBRA

(Sept. 23–Oct. 22):

Professional basketball player Ron Artest petitioned the court to let him change his name to "Metta World Peace." "Metta" is a Buddhist term that signifies loving-kindness and benevolence. When the new moniker finally became official, Metta World Peace sealed a radical shift away from his old way of doing things, symbolized by the time he leaped into the stands in the middle of a game to punch a fan in the head. The coming months will be an excellent time for you Libras to initiate a rite of passage that will expedite an equally dramatic transformation.

SCORPIO

(Oct. 23–Nov. 21):

Many of the questions we had as children never got resolved or answered to our satisfaction. They still remain marinating in the back of our minds. Meanwhile, fresh queries keep welling up within us as the years go by. After a while, we've got a huge collection of enigmas, riddles and conundrums. Some of us regard this as a tangled problem that weighs us down, while others see it as a sparkly delight that keeps making life more and more interesting. Where do you stand on the issue, Scorpio? If you're in the latter group, you will be fully open to the experiences that will be flowing your way in 2012. And that means you will be blessed with a host of sumptuous and catalytic new questions.

SAGITTARIUS

(Nov. 22–Dec. 21):

The first half of 2012 will be an excellent time for you to exorcise any prejudices you might be harboring toward anyone who lives or thinks differently from you. You'll be able to see your own irrational biases with exceptional clarity, and are also likely to have exceptional success at scouring yourself free of them. This will give you access to new reserves of psychic energy you didn't even realize you were shut off from. (PS I'm not saying you possess more intolerance or narrow-mindedness than any of the rest of us. It's just that this is your time to deal brilliantly with your share of it.)

CAPRICORN

(Dec. 22–Jan. 19):

In Botticelli's painting *The Birth of Venus*, the goddess of beauty and love is shown arriving on dry land for the first time after having been born in the ocean. Naked, she is trying to cover her private parts with her hand and thigh-length hair. Her attendant, a fully clothed nymph, is bringing a cloak to cover her up. Analyzing this scene, art critic Sister Wendy suggests it's actually quite sad. It symbolizes the fact that since we humans can't bear the confrontation with sublime beauty, we must always keep it partly hidden. Your assignment in the coming year, Capricorn, is to overcome this inhibition. I invite you to retrain yourself so that you can thrive in the presence of intense, amazing, and transformative beauty.

AQUARIUS

(Jan. 20–Feb. 18):

The coming months will be an excellent time to take an inventory of your life to determine whether there are any ways in which you act like a slave. Do you find it hard to defeat an addiction that saps your energy and weakens your ability to live the life you want? Are there institutions that you help sustain even though they cause harm to you and others? Is it hard for you to change or end your relationships with people who are no damn good for you? Are you trapped in a role or behavior that is at odds with your high ideals? Discover what these oppressors are, Aquarius—and then summon all your intelligence and willpower to escape them.

PISCES

(Feb. 19–March 20):

California engineer Ron Patrick put a jet engine in his silver VW Beetle. Now he's got a 1,450-horsepower vehicle—but it's not legal for him to drive on public highways. In the coming year, Pisces, I suspect you'll be tempted to try something similar: create a dynamic tool with a modest appearance or a turbo-charged source of energy in a deceptively small package. But if you do, please make sure that you can actually use it to improve your ability to get around and make your life better.

Go to RealAstrology.com to check out Rob Breznsky's EXPANDED WEEKLY AUDIO HOROSCOPES and DAILY TEXT MESSAGE HOROSCOPES. The audio horoscopes are also available by phone at 1-877-873-4888 or 1-900-950-7700.

Film Review



BOB GREEN

Until its last quarter hour, you won't find a better, more beautifully realized, more intricate film than helmer David Fincher's English-language version of writer Stieg Larsson's *The Girl with the Dragon Tattoo*—the runaway best-seller pulp potboiler made into a Swedish film (also excellent) two years ago.

The first hour is near-perfection in laying out Larsson's rather old-fashioned plot in terms of 21st-century cinematic techniques—which this film buff, anyway, thinks are well-nigh breathtaking. In that hour alone, director Fincher (*The Social Network*) looms as a giant among American movie-makers. With some intelligently streamlined plot points that differ from both the novel and Swedish film, Fincher's *Dragon* drives deep into the story and becomes hypnotically absorbing.

Aided considerably by a propulsive soundtrack, employing unconventional instruments, by Trent Reznor and Atticus Ross (who also scored *The Social Net-*

work), the story intercuts between its two leads, played by Daniel Craig and an inspired Rooney Mara. When it finally unites them, in a triumph of human chemistry, the movie soars.

It's a rough, raw movie, a pulp fiction crossed with a procedural mystery, an investigation

David Fincher has Fincherized The Girl with the Dragon Tattoo

going deep, as it turns out, into the dark recesses of the human soul—or maybe its opposite. Its violence is fierce and graphic. Its sex scenes—from rape to love—are eye-openers. Its unconventional dénouement rings true enough here with post-modern psychology.

A scandal-tainted journalist, Mikael Blomkvist (Craig), is hired by Henrik Vanger (Christo-

Pulp Friction

pher Plummer), once the greatest industrialist in Sweden, who, with his nefarious clan, inhabits a private island full of secrets. What's Vanger obsessed about after 40 years? The disappearance of his grandniece. Vanger hires Blomkvist to piece together four decades' worth of clues in this cold case. Our journalist, escaping recent public disgrace, accepts what he at first thinks preposterous.

To do research—which in the 21st century means hacking—Blomkvist takes on a highly recommended assistant, punk hacker Lisbeth Salander, darker-than-Goth, a totally alienated victim of heinous crimes but with genius computer skills. As played by Rooney Mara, who steals the film from everyone, Salander seems almost entirely a creature of our strange new century, a character we've never seen up close in a film before, at least not played with this much intensity. Mara is a shoo-in for every movie award in the book, and for the right reasons: She makes this story resonate in every possible way.

What happens next? Well, almost everything. This movie transforms pulp into something like art, that which ennobles through deepest trial. With *Benjamin Button*, *Fight Club* and *The Social Network* under his belt, Fincher caps them all with *Dragon Tattoo*. Try see. ■

O'ahu Films

A selection of films currently playing in island theaters.

Unattributed film synopses indicate movies not yet reviewed by HW staff.

☞ Indicates films of particular interest.

Opening

☞ **Tinker Tailor Soldier Spy** Swedish director Tomas Alfredson (*Let the Right One In*) crafts an espionage thriller set in the Cold War based on a novel by John Le Carre. Colin Firth, Gary Oldman and Tom Hardy star in this intelligent thriller where George Smiley, an espionage veteran, is forced out of retirement.

Continuing

☞ **The Girl with the Dragon Tattoo** (See Film Review, same page.)

☞ **Mission: Impossible—Ghost Protocol in Titan XC** Just appreciate the film as the perfect vehicle for some of the most kinetically exciting action sequences in years all held together with a resolutely straight face on the man who jumped on Oprah's couch.—*Ryan Senaga*

Arthur Christmas The makers from *Flushed Away* reassure us (in 3-D) that even Santa's got comically dysfunctional family issues.

Alvin & the Chipmunks: Chipwrecked What would the holiday season be without Alvin and his helium-voiced accomplices? This year they end up shipwrecked overseas, but discover their new home might not be so bad.

War Horse Albert enlists to service in

World War I after his treasured horse gets sold to the cavalry. Steven Spielberg's adaptation of Michael Morpurgo's stage play shows the loving bond between man and horse.

The Darkest Hour Five young people band together to fight against a new race of aliens that are attacking earth.

☞ **The Adventures of Tintin** Steven Spielberg crafts a children's tale featuring Tintin, his dog Snowy and Captain Haddock. The group is on an adventurous treasure hunt for a sunken ship, but the menacing Mr. Sakharine makes matters difficult.

Young Adult The *Juno* writing and directing team bring us a dark comedy starring Charlize Theron, a newly divorced author who returns to Minnesota to relive her adolescent glory day, which turns out to be not such a great idea.

Melancholia The film is insightful about the nature of depression, is beautifully photographed and well acted. Does this story end with a bang or a whimper? Well, one or the other.—*Bob Green*

The Sitter David Gordon Green (director of *Pineapple Express*) presents us with a comedy starring Jonah Hill, as said sitter. Things get progressively rowdy (and rated R) as Hill is coaxed into baby-sitting the kids next door.

New Year's Eve Isn't anywhere near as excruciatingly painful and saccharine and atrociously painful as *Valentine's Day*. Granted, the filmmakers had nowhere to go but up.—*Ryan Senaga*

☞ **Hugo** A tale adapted from Brian Selznick's vivid, 526 page children's cult

classic, *The Invention of Hugo Cabret*. The vivid imagery in this orphan tale set in Paris was just screaming to be directed by Scorsese, in 3-D no less—it's a Christmas miracle!

☞ **Sherlock Holmes: A Game of Shadows** (See Film Review, opposite page.)

The Twilight Saga: Breaking Dawn—Part 1 Thing get pretty heated for expecting parents Edward and Bella (they grow up so fast) when their unborn baby creates turmoil for the Wolf Pack.

Happy Feet Two Those lovable penguins are back with Brad Pitt, Elijah Wood, Pink, Robin Williams, and a slew of other celebs lending their star-studded voices.

Doris Duke Theatre

Honolulu Academy of Arts, 900 S. Beretania St., honoluluacademy.org, 532-8768

☞ **Godzilla vs. Mechagodzilla** (2003) Often hailed as one of the best second generation epics, probably because Godzilla must defeat a monster made entirely of steel. More importantly, it was the first in the series to feature the undeniably cute Baby Godzilla.

Wed., 12/28, 1 & 7:30pm

☞ **Godzilla** (1954) See the restored print of the original Japanese Godzilla, directed by Ishiro Honda. Ifkub's memorable musical score blends with classic scenes of Godzilla destroying a miniature Tokyo in a surreal grayscale.

Film Review

A Fine Bromance

DON WALLACE

That I actually enjoyed the trailers while waiting for *Sherlock Holmes: A Game of Shadows* was potentially a bad sign.

Of course the new “Borat” movie will be simply irresistible, but *Battleship*? Maybe that was why I wasn’t looking forward to seeing *SH:AGOS*, as I hereby dub this sequel.

In this case, even with the deliciously deliquescent Robert Downey Jr. playing the arch detective and Jude Law as his faithful Dr. Watson, I’d found the 2009 “steampunk” film slightly desperate, especially when springing massive set-pieces of destruction in London’s shipyards and foundries. The dead hand of Indiana Jones yanked the Arthur Conan Doyle source material toward Six Flags territory. I’m not a total purist, but the film also tittered too obviously at the Holmes-Watson partnership, with scenes that felt stilted and obvious compared to any Judd Apatow bromance.

The new *Holmes* sequel is more of the same. And yet it works—splendidly, dear chap. Director Guy Ritchie delivers a thoroughly enjoyable studio Christmas movie while managing to put some steel ribs in the old Victorian corset. By leaping

to the end of the Holmes saga, his duel of wits, quips and fists with nihilist Professor Moriarty, the film provides a worthy adversary. By disposing of the first film’s love interest, overly dimpled Rachel McAdams, in the prologue, we get to discover gypsy Noomi Rapace (the original “girl” in *The Girl with the Dragon Tattoo*) and let her glower her way into our hearts. The steampunk fling is over, substituting a satisfying historical subtext backgrounded, however fleetingly, in the politi-

Sherlock is splendid

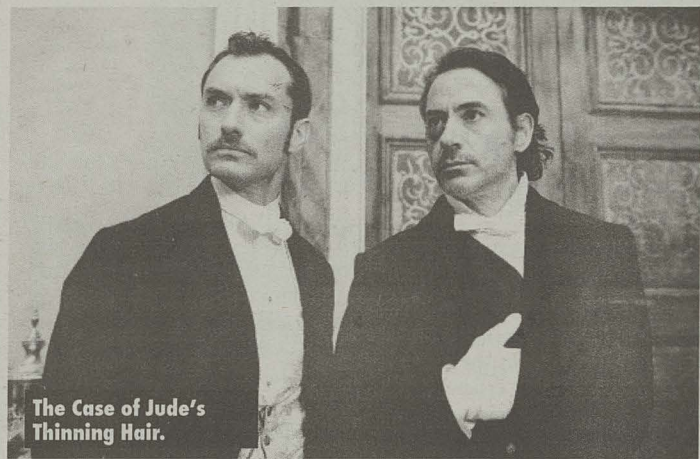
cal tinderbox that led to World War I. The climactic fight is, for once in the genre, clever and surprising.

Robert Downey Jr. continues to be the most entertaining male star of the last decade. Even when mouthing meaningless banter during pointless gun battles, there’s always something going on with the guy. His Holmes plays like a period Hunter S. Thompson with a hint of Christopher Hitchens: people whose truth-seeking mental mechanisms make them incapable of tact. His coked-up Asperger’s dialogue with Law’s Watson is a delight.

The story starts in 1891,

around the time Conan Doyle began his own plan to do away with Holmes so he could concentrate on writing “serious” novels. Because Watson is the ostensible writer of the stories, and thus a stand-in for Conan Doyle, the film puts this reluctance to use by framing everything around the phlegmatic Doctor’s upcoming marriage—after which, Watson informs Holmes, he will be done with the detective stuff and settle down for good.

“Hell Hath No Fury Like Sherlock Scorned,” may as well be director Guy Ritchie’s motto from this point on. First Holmes ruins Watson’s stag night and wedding that sets the plot in motion. Holmes gets rid of Watson’s buck-toothed bride and substitutes himself on the honeymoon, on a train. The bromance is on! And funny, this time. Then it’s off to stop



an anarchist bombing in Paris, a visual relief from London, and a significant failure by Holmes. Rapace uses her gypsy wiles to spirit our lads across the German border, where all hell breaks loose in a factory of death modeled on the Krupp armament empire.

With guns and money and war afoot, it’s only natural that the wrap-up should take place in amoral Switzerland, at a peace conference held at the summit of Reichenbach Falls—the cataract where, in Conan Doyle’s original story, Holmes met his ambiguous end.

The formula is familiar: Take two friends, one hang-loose, disreputable but highly charismatic, the other reserved, conventional and thus easily embarrassed by his buddy. Add a romantic complication or two, disperse sprigs of whatever’s in the zeitgeist these days and pour, with a heavy hand, the cinematic equivalent of 151-proof rum: chases, fights and explosions. Call it the Pineapple Express Cocktail, if you like, but when it comes to your table, don’t forget to ask for a straw. ■

O’ahu Films

Thu., 12/29 & Fri., 12/30, 1 & 7:30pm

Hawai’i Premiere: Battle for Brooklyn (2011) A documentary about Prospect Heights, a historic Brooklyn neighborhood that has been condemned to make way for a lavish basketball arena and 16 new skyscrapers. This *New York Times* Critic’s Pick provides an intimate look at the passionate protests from residents and business owners who are from this area.

Tues., 1/3 & Wed., 1/4, 1 & 7:30pm

Movie Museum

3566 Harding Ave. #4, \$4 members, \$5 general, 735-8771

Rocket Post (2004) Ulrich Thomsen, Shauna Macdonald and Gary Lewis star in a film directed by Stephen Whittaker. Shot on the Outer Hebridean isle of Taransay, this stunning scenery is paired with a moving romance that is based on a true Scottish love story.

Thu., 12/29, 6:45 & 8:45pm

Fri., 12/30, 12:30, 2:30 & 4:30pm

Supermarket Woman (1996) Juzo Itami (*Tampopo* and *A Taxing Woman*) directs an uplifting comedy that’s centered around Goro’s Supermarket, a humble shop in bad shape, due to the newly opened “Bargains Galore” across the street.

Thu., 12/29, 12, 2:15 & 4:30pm

One Last Chance (2004) A group of kids are bored with their dull, suburban existence and are

searching for more. Things get worse when they see all of their friends becoming successful, while their lives remain stagnant. This all changes when Fitz (Jamie Sives) discovers a golden nugget.

Fri., 12/30, 6:30 & 8:15pm

Swing Girls (2004) A film about a group of delinquent school girls who “accidentally” poison the schools brass band, so they are forced into filling in as quick-studies. This upbeat comedy won 11 Japanese film awards.

Sat., 12/31, 12, 2, 4 & 6pm

Sun., 1/1, 5:15 & 7:15pm

Mon., 1/2, 12, 2 & 4pm

Cafe De Los Maestros (2008)

A documentary that features some of the greatest musicians from the Golden Age of tango. The film features rare footage from 2006 when 22 maestros of tango gathered together to perform in Buenos Aires.

Sun., 1/1, 12, 1:45 & 3:30pm

Mon., 1/2, 6 & 7:45pm

Movie Cafe

The Venue, 1146 Bethel St., \$10, half price for HPU students, 528-1144

The Knowledge of Healing (1999) Franz Reichle directs the first feature to give a comprehensive look at the science, art and philosophy of Tibetan medicine, which is deeply rooted in Buddhist principles. Some featured guests include the Dalai Lama and Tenzin Choedrak, a leading Tibetan medical authority.

Mon., 1/2, 7pm

ONE OF THE BEST FILMS OF THE YEAR

Los Angeles Times NATIONAL BOARD OF REVIEW AFI Entertainment FOX TV

“LISBETH IS A MARVELOUS POP-CULTURE CHARACTER, STRANGER AND MORE COMPLEX THAN THE AVERAGE SUPERHERO AND MORE INTRIGUING THAN THE USUAL BOY WIZARDS AND VAMPIRE BRIDES. SHE IS AN OUTLAW FEMINIST FANTASY-HEROINE.”
The New York Times x A. O. SCOTT

““ THE GIRL WITH THE DRAGON TATTOO ” IS A BEAUTIFULLY TAUT AND TERRIFYING THRILLER. LISBETH SALANDER IS ONE OF THE GREAT HEROINES OF DETECTIVE FICTION, AS DIFFERENT FROM MISS MARPLE AS A TOOT OF CRANK IS TO A NICE CUP OF TEA. ON TO ‘THE GIRL WHO PLAYED WITH FIRE,’ PLEASE!”
The Philadelphia Inquirer x STEVEN REA

“UNAPOLOGETICALLY GROWN-UP AND UTTERLY ENTERTAINING.”
Newsweek x LOUISE ROUG

“FINCHER IS NOT JUST A GREAT DIRECTOR—HE’S AN ARTIST WITH THE EYES OF A VOYEUR, AND HE HAS MADE AN ELECTRIFYING MOVIE BY TURNING THE AUDIENCE INTO ADDICTS OF THE FORBIDDEN. ‘THE GIRL WITH THE DRAGON TATTOO’ IS A BRILLIANT FRANCHISE MOVIE. GRADE A.”
Entertainment EW.com x OWEN GLEIBERMAN

A DAVID FINCHER FILM

THE GIRL WITH THE DRAGON TATTOO

COLUMBIA PICTURES AND METRO-GOLDWYN-MAYER PICTURES PRESENT A SCOTT RUDIN/YELLOW BIRD PRODUCTION DANIEL CRAIG ROONEY MARRA “THE GIRL WITH THE DRAGON TATTOO” CHRISTOPHER PLUMMER STELLAN SKARSGÅRD STEVEN BERKOFF ROBIN WRIGHT YONICK VAN WAGENINGEN JOELY RICHARDSON MUSIC BY TRENT REZNIKOR & ATTICUS ROSS EXECUTIVE PRODUCERS STEVEN ZALLLIAN MIKAEL WALLEN ANNI FAURBYE FERNANDEZ BASED ON THE BOOK BY LARSSON SCREENPLAY BY STEVEN ZALLLIAN PRODUCED BY SCOTT RUDIN OLE SVINDBERG SOREN STERNHOSE CEAN CHAFFIN DIRECTED BY DAVID FINCHER

R RESTRICTED
UNDER 17 REQUIRES ACCOMPANYING PARENT OR ADULT GUARDIAN
BRUTAL VIOLENT CONTENT INCLUDING RAPE AND TORTURE, STRONG SEXUALITY, GRAPHIC NUDITY, AND LANGUAGE

MGM PICTURES SOUNDTRACK ON NUTRI/MADISON GALE RECORDS COLUMBIA PICTURES

#DRAGONTATTOO

CHECK LOCAL LISTINGS FOR THEATERS AND SHOWTIMES

SONY make.believe

The Weekly Appetite

12th Avenue's "Last Day of 2011" Specials

A culinary celebration this New Year's Eve with daily specials kicked up a notch for the last day of 2011: firecracker crusted U-10 scallops with a spicy aioli gratin, Maui Cattle Co. bone-in ribeye with black truffle and a New Zealand organically farmed-raised King Salmon oscar.

12th Ave. Grill, 1145C 12th Ave.

Sat., 12/31 12thavegrill.com, 732-9469

Azure-ly It Can't Be 2012 Already?

Five-course New Year's Eve dinner that includes an after party. Specially crafted menu includes Kona abalone "cappuccino," Kona lobster with anchovy and marrow butter, prime steak "rib eye," Hawaiian ahi with crab and lemongrass crust with Waialua Estate chocolate mousses and more for dessert.

Azure Restaurant, 2259 Kalākaua Ave.

Sat., 12/31, (5:30-9PM) \$175.

Reservations at tdr.hawaii@starwoodshotels.com, 921-4600

Champagne Wine Tasting

'Tis the season to clink champagne glasses—the theme of the last Vino winetasting event of the year. Get a glimpse at some stellar bubbly, compare and contrast different styles: Gosset Brut "Grande Reserve," Varnier Fanniere Blanc de Blancs "Grand Cru," Coquille Blanc de Noirs "Grand Cru" and Lasalle Brut Rose "Premier Cru."

Vino, Restaurant Row, 500 Ala Moana Blvd. Suite 6 D-1

Thu., 12/29, (6PM) \$39. Reservations only at ataketa@dkrestaurants.com, 533-4476

"End of the Year" BYOB Dinner

You won't need to mark your calendars—the date is easy enough to remember. The very last night of 2011 will be the ultimate bring-your-own-bottle event, the perfect time to share your knockout favorite. Here's the menu: fresh oysters, grilled marinated langoustines, roasted duck breast and roasted buttermilk marinated lamb.

Vino, Restaurant Row, 500 Ala Moana Blvd. Suite 6 D-1

Sat., 12/31, (8:45PM) \$56. Reservations only at ataketa@dkrestaurants.com, 533-4476

Five-course Prix-Fixe on the Lana'i

Special dinner menu created especially for the New Year's engagement. Start with baked crab topped jumbo scallops and a smoke ahi terrine salad, move on to either baked crab stuffed ahi steak, lobster thermidor or flame broiled black angus steak, finish with a raspberry chocolate mousse.

Hau Tree Lanai, 2863 Kalākaua Ave.

Sat., 12/31 and Sun., 1/1 \$87. Reservations at opentable.com, 921-7066

Have a Tiki New Year

A four-course, prix fixe menu of lobster Kahuku corn chowder, tuffe honey popovers, sea scal-

lop gratin, filet mignon and butter poached lobster tail, Kula strawberry and champagne profiterole and more.

Tiki's Grill & Bar, 2570 Kalākaua Ave.

Sat., 12/31 \$59. tikigrill.com, 923-8454

Kai Market Buffet

Various carving stations of steam whole local onaga Chinese-style, a'lae salt crusted slow roasted prime rib with au jus, Hawaiian lau lau and more, hot offerings like steamed Wai'anae Valley baby bok choy with garlic, cold offerings like a seafood salad with Kai Market fresh herbs and more.

Kai Market, Sheraton Waikiki Hotel, 2255 Kalākaua Ave.

Sat., 12/31, (5-10:30PM) \$90-\$120.

Reservations at 921-2254

Grand opening: The Standard, a swanky and sexy venue in Waterfront Plaza (formerly Restaurant Row), hosts an opening party of exotic cocktails, a fashion show and guest DJs.

The Standard, 500 Ala Moana Blvd., Fri., 12/30, 10PM-4AM, facebook.com/thestandardhi, 529-0010

All day, all night, 24/7: Safeway's newest 65,000 square-foot location in Honolulu is open 24 hours a day, seven days a week.

1234 S. Beretania St., safeway.com

Peace and farmers: Vegan eatery Peace Café has a new booth at the Ala Moana Farmers' Market selling mochi, musubis, iced matcha lattes and their signature Peace Cup.

Second and fourth Saturdays at Ala Moana Farmers' Market, 8AM-12PM

Specially kool saving: Through the end of the year, Cheryl To's locally produced Pacific Kool ginger syrup is \$3 off. Great for mixing sparkling ginger martinis and ginger ales for that New Year's toast.

Available at Tamura's Kaimuki or Tamura's 'Aiea

Got food news? Send 'em in to foodnews@honoluluweekly.com

IT&B GET FIT SALE



Bikes ♦ Wheels
♦ Technical Wear
♦ Classes for beginners
♦ Everything you need for a fit & fun 2012!

Sale ends Jan 8th

Island Triathlon & Bike

569 Kapahulu Ave. ♦ 732-7227 ♦ itbhawaii.com
Validated parking across Kapahulu ♦ Financing Available

Coffee, Tea & Juice Bars

Space reservation deadline January 17th

Camera ready deadline January 19th

Honolulu Weekly's special advertising section

Coming January 25th



Advertise Today!

Honolulu Weekly

CALL TODAY (808) 528-1475
COLLEEN KNUDSEN X14 LAURIE CARLSON X17



All Good Things Come to an End?

Every season comes with its flavors and recipes—those signature flavors that we look forward to every year—but we eventually must also bid a fond farewell. What is it about the pumpkin spice latte from Starbucks or an eggnog-flavored shake from Jack in the Box that tastes so good? Are they really that tasty? Or is it just the fact that they are only available for a finite period of time?

When it comes to an establishment like Bubbies, the Mō'ili'ili dessert parlor famous for its mochi ice cream, seasonal additions are amazing, and not just because they'll only be around for a couple of months. During Halloween, Bubbies made a pumpkin mochi ice cream that I could easily eat year round, complete with nutmeg, cinnamon and five spices. While I was devastated to return in December and find the pumpkin flavor gone, two new Christmas options, chocolate covered eggnog and candy cane, immediately cheered my spirits.

The chocolate covered eggnog flavor is even better than it sounds. With a hint of holiday spice, the mochi surrounding the ice cream is the perfect balance to the strong flavor of the center. The candy cane mochi ice cream is like Christmas wrapped into a ball, bursting with peppermint, but with a fresh, snowy aftertaste that lingers and will leave you wanting another! The candy cane and eggnog mochi ice cream specials at Bubbies won't be around much longer, so get 'em while they're cold, because as they say, all good things do come to an end... That is until next year!

—Noelani Anderson

Bubbies Homemade Ice Cream and Desserts, 1010 University Ave., bubbiesicecream.com, 949-8984

Luxurious Orchids

Get swept away in this garden of culinary delights. Special New Year's Eve dinner menu featuring a Kona cold lobster, diver scallop, Alaskan halibut, primer tenderloin "sous video" and a pistachio mousse.

Orchids, Halekulani Hotel, 2199 Kalia Rd.

Sat., 12/31 \$285. halekulani.com, 923-2311

New Year's Eve Dining with Bali

Choose between two different evening seating times to enjoy this prix fixe, four-course menu of foie gras terrine, prime beef carpaccio and bone-in filet mignon with Béarnaise sauce to name a few. Four-course menu also available for children.

Bali Steak & Seafood, Hilton Hawaiian Village, 2005 Kalia Rd.

Sat., 12/31, (6PM and 8PM) \$160-\$190.

Reservations at 941-2254

NYE Gala Dinner at La Mer

Exquisite menu which includes a foie gras custard, poached Maine lobster, pan searched Kona kampachi, orange and Aperol granité, degustation of Waygu and more.

La Mer Restaurant, Halekulani Hotel, 2199 Kalia Rd.

Sat., 12/31 \$385. halekulani.com, 923-2311

Pink Lū'au Dinner Buffet

A fire knife dancer, complimentary welcome cocktails and music surround you at this lū'au buffet in the Pink Palace, also known as The Royal Hawaiian. One-of-a-kind Hawaiian cuisine with a Waikiki twist.

Monarch Room, Royal Hawaiian Hotel, 2259 Kalākaua Ave.

Sat., 12/31, (6-9PM) \$109-\$209.

Reservations at tdr.hawaii@starwoodshotels.com, 921-4600

Surprise Me, Omakase!

Join chef Morimoto as he spends his holidays in Honolulu by presenting you a special and exclusively crafted menu. It's omakase style which means Morimoto comes bearing surprises—a chef's selection of light fare to heavier, richer dishes. Hopefully a reflection of your 2012 year to come.

Morimoto Waikiki, 1775 Ala Moana Blvd.

Sat., 12/31, (9PM) \$120. Reservations at morimotowaikiki.com, 943-5900

Wolfgang's Champagne Toast

A premier lunch or dinner menu that includes Wolfgang's famous surf 'n' turf. A classic champagne toast to wish good luck into a prosperous new year.

Wolfgang's Steakhouse, 2301 Kalākaua Ave., 3rd Floor

Sat., 12/31, (Until 1AM) \$69.95. Reservations at opentable.com, 922-3600

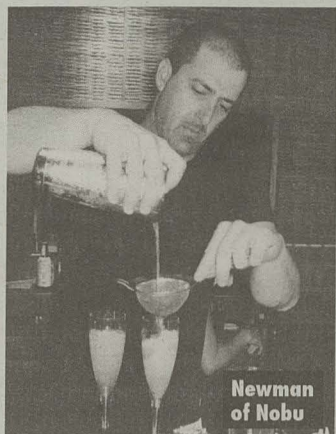
Food & Drink

CHRISTA WITTMER

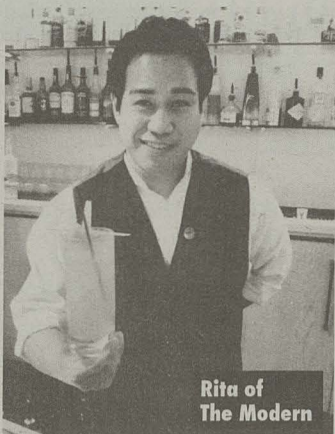
Drinking the Stars



Bonifacio of V Lounge



Newman of Nobu



Rita of The Modern

Tips from top mixologists: How to make your midnight toast truly sparkle

CHRISTA WITTMER

While Champagne may be the go-to for ringing in the new year at home, prices have some reaching for that 12-pack of Heineken. When I first started working in the beverage industry, I noticed all my co-workers' drink of choice was Champagne. "Because it's expensive," they'd say. As Dom Pérignon once described, it's like "drinking the stars."

The good news is, not everything with that much star power has to be so expensive. While the French law forbids calling sparkling wine made outside their Champagne region "Champagne," it's been argued that California's sparkling wines are strong contenders to the French bubbly. More sunlight means richer grapes. Richer grapes mean drier wines, the preferred taste for bubbles.

Whatever region or country your bubbly is coming from, taste is really in the mouth of the beholder. In blind tastings, my own palate can barely decipher between a \$75 bottle of Billecart-Salmon Brut Rosé and a \$10 bottle of Opera Prima Brut. The more expensive the Champagne, the more confused I get.

In one night of being in the right place at the right time, a friend brought out a bottle of Louis Roederer Champagne Cristal, better known as "Cristal." I couldn't get past the tartness and reached for some juice to dilute the acidity, braving the supercilious stares from the rest of our party. Sorry, guys. It tasted like a foot to me.

My advice: start with the experts. Visit some of Honolulu's own local stars—mixology geniuses' twists on both Champagne and other holiday cocktails you can attempt at home, or order at their bars.

Daniel Lucariello

Star Quality: Double duty, multi-tasking mixology
Found at: Tiki's Grill & Bar and Aulani Resort
Drink Name: Ice-Scream for Bubbles

Recipe

- 2 dashes Luxardo Maraschino liqueur
- 2 dashes pineapple juice
- 2 dashes Royal Combier
- 2 dashes brandy
- Champagne
- 1 tablespoon vanilla ice cream

Daniel Bonifacio

Star Quality: Most epic mohawk in the biz
Found at: V Lounge
Drink Name: Chip Shot

Recipe:

- 1 and ½ oz of Bailey's Irish Crème
- 1 and ½ oz of Tuaca Italian Liqueur
- 4oz dark roasted coffee
- Whipped cream
- 3 coffee beans (for good luck)
- Light sprinkle on the top of chocolate shavings

Christina Maffei

Star Quality: Winning \$10,000 for making the "World's Best Mai Tai" in 2011

Found at: Managing the bar at Wai'olu, Trump Waikiki
Drink Name: Hawaiian Holiday Hot Buttered Rum

Recipe:

- 2oz Bacardi Gold
- 2oz Perfect Purée Caramelized Pineapple
- 1tbsp butter
- hot water

Add rum, purée, and butter to a hot toddy glass and top with hot water. Use a bar spoon to stir and garnish with a pineapple wedge.

Joshua Perez

Star Quality: Vice President of the United States Bartender's Guild (USBG), Hawaii Chapter
Found at: thirtyninehotel and Brasserie Du Vin
Drink Name: El Flaco Royale

Recipe:

- 1oz of 100% Blue Agave silver tequila
- ½ oz of Rothman Pear liquor
- ½ oz of fresh pressed lemon juice
- ½ oz simple syrup
- pinch of mint
- Sparkling white wine

Shake everything but the sparkling wine. Fine strain through a tea strainer into a chilled coupe glass. Top with the sparkling white wine and garnish with a single mint leaf.

Dave Newman

Star Quality: Winning the Corzo Iron Bartender Throwdown, recently becoming President of the USBG Hawaii Chapter

Found at:

Nobu Waikiki
Drink Name: Asian 45 (a twist on the French 75)

Recipe:

- 2oz Bombay Sapphire gin
- 1oz Taylor's Velvet Falernum
- Dash of Angostura bitters
- ½ oz of fresh squeezed lemon juice
- Shiso leaf for garnish

Fine-strain ingredients over fresh ice. Top with Charles Heidsieck Champagne.

Roxanne Siebert

Star Quality: Those sexy tattoos

Found at: The Manifest and The Standard

Drink Name: Holiday Martini

Recipe:

- 2oz Sailor Jerry Spiced Rum
- 2oz of apple cider
- .5oz of honey simple syrup
- .25 oz lemon juice
- dash of Angostura bitters
- dash of cinnamon
- lemon peel for garnish

Tim Rita

Star Quality: Longevity and years behind the bar at the infamous Lewers Lounge

Found at: The Modern Honolulu

Drink: Passion

Recipe:

- ½ part Corzo tequila
- 1 part passion fruit syrup
- ½ part lime juice
- Champagne

Shake tequila, passion fruit syrup, and lime juice and top with Champagne in a Champagne flute.

Kyle Reutner

Star Quality: Cocktail catering

Found at: town restaurant, or various events with his bar catering company Imbibe
Drink Name: The Champagne Cocktail

Recipe:

- add a spoonful of sugar to a glass
- add an equal part of water and stir to dissolve the sugar
- add 3 dashes of bitters
- fill with ice
- add a goodly portion of Champagne (fill your glass, you deserve it)
- stir to incorporate ingredients
- top with strawberries and a lemon twist

So cheers to another year—We hope these drinks are inspiring!

Christa Wittmer works as the Sr. Director of Marketing & Events for Young's Market Company of Hawaii, a distributor of fine wine and spirits and is a member of the United States Bartender's Guild in the capacity of a "Cocktail Enthusiast."

bambutwo
CAFE + MARTINI LOUNGE

pau hana

\$3.50 Martinis — All Day, Every Day

1144 Bethel Street | bambutwo.com

Not getting it Weekly?

Let us know where you'd like to see a Honolulu Weekly rack.



Call Kate at 528-1475 x16

Honolulu Weekly

Ranked as one of "America's Coolest Coffeehouses" by Travel and Leisure Magazine 2011



OPEN
MON-TH 6:30AM-6:30PM
FRI 6:30AM-4PM
SAT 7AM-1PM
1088 BISHOP ST. #101 521-6699
WWW.BEACHBUMCAFE.COM

Start the New Year off Right with Kokua's help.



\$5.00 off any Vitamin/ Supplement purchase of \$25.00 or more

Valid 12/28 thru 01/08

now available at...
kokua market
NATURAL FOODS GROCERY COOPERATIVE

8:30am - 8:30pm Daily
2643 South King St
941-1922

Monsoon India
Authentic Indian Cuisine

Celebrate the New Year with Fine Indian Cuisine

Holiday Buffet \$34.95

(plus tax & gratuity)

Plus New Ala Carte Menu Specials

Special New Year's Eve and New Year's Day Hours:
Noon - 10 p.m.

Limited Seating...

Reserve Now: 941-5111

B.Y.O.B. and Validated Parking

1778 Ala Moana Blvd., Discovery Bay Center
(next to Buffalo Wild Wings)

Classified

Announcements

RONALD W. BEALS, Chief Counsel
DAVID GOSSAGE, Deputy Chief Counsel
LUCILLE Y. BACA, Assistant Chief Counsel
HELEN CRAMER, State Bar No. 238421
595 Market Street, Suite 1700, San Francisco, CA 94105
Telephone: (415) 904-5700, Facsimile: (415) 904-2333
Attorneys for Plaintiff THE PEOPLE OF THE STATE OF CALIFORNIA,
acting by and through the Department of Transportation

SUPERIOR COURT OF THE STATE OF CALIFORNIA
FOR THE COUNTY OF SAN BENITO

THE PEOPLE OF THE STATE OF CALIFORNIA,
acting by and through
the Department of
Transportation, Plaintiff,
v. JEFFREY MERRITT WILSON,

et al., Defendants.

Case No. CU-11-00119
Parcels 11287-1, 11287-2
SUMMONS

Action Filed: September 15, 2011
Trial Date: Not Set

NOTICE TO DEFENDANTS:

a. Jeffrey Merritt Wilson.
b. Teresa Jean Moore.

YOU ARE HEREBY SUED BY PLAINTIFF:

THE PEOPLE OF THE STATE OF CALIFORNIA, acting by and through the Department of Transportation.

You have 30 CALENDAR DAYS after this summons and legal papers are served on you to file a written response at this court and have a copy served on the plaintiff. A letter or phone call will not protect you. Your written response must be in proper legal form if you want the court to hear your case. There may be a court form that you can use for your response. You can find these court forms and more information at the California Courts Online Self-Help Center (www.courtinfo.ca.gov/selfhelp), your county law library, or the courthouse nearest you. If you cannot pay the filing fee, ask the court clerk for a fee waiver form. If you do not file your response on time, you may lose the case by default, and your wages, money, and property may be taken without further warning from the court.

There are other legal requirements. You may want to call an attorney right away. If you do not know an attorney, you may want to call an attorney referral service. If you cannot afford an attorney, you may be eligible for free legal services from a nonprofit legal services program. You can locate these nonprofit groups at the California Legal Service website (www.lawhelpcalifornia.org), the California Courts Online Self-Help Center (www.courtinfo.ca.gov/selfhelp), or by contacting your local court or county bar association.

The name and address of the court is: Superior Court of California, County of San Benito, 440 Fifth Street, Hollister, California 95023.

Plaintiff THE PEOPLE OF THE STATE OF CALIFORNIA, acting by and through the Department of Transportation, has brought this proceeding to acquire real property, or interests in real property, for a public use, namely, for state highway purposes.

The real property, or interests in real property, are situated in the County of San Benito, State of California, and are described as follows:

That portion of Parcel 4 according to the map filed July 2, 1987 in Book 7 of Parcel Maps at Page 28 in the Recorder's Office of San Benito County, lying southerly and southeasterly of the following described lines:

PARCEL 11287-1: FEE

BEGINNING at the 3/4" iron pipe tagged "RCE 16358" found at the most southerly corner of Parcel 3 shown on the map filed August 22, 1980 in Book 5 of Parcel Maps at Page 57, records of said County, said pipe bears S 31°41'09" W, 352.41 feet from the 3/4" iron pipe tagged "RCE 16358" found at the southeasterly corner of said Parcel 3;

THENCE (1), S 64°44'44" W, 137.11 feet;

THENCE (2), S 79°59'22" W, 212.77 feet;

THENCE (3), N 63°11'19" W, 386.72 feet to the beginning of a curve concave to the south having a radius of 200.00 feet;

THENCE (4), northwesterly, along said curve a distance of 190.51 feet through a central angle of 54°34'39";

THENCE (5), S 62°14'02" W, 239.96 feet to the point that bears S 63°59'19" E, 714.82 feet from the 3/4" pipe tagged "RCE 16358" found at northwesterly corner of parcel 3 shown on the map filed July 30, 1982 in Book 6 of Parcel Maps at Page 17, records of said County;

THENCE (6), S 48°14'50" W, 465.38 feet to the point that bears S 25°20'30" E, 689.76 feet from last said 3/4" pipe.

Lands abutting said freeway shall have no right or easement of access thereto; provided, however, that part of the remaining lands shall abut upon and have access, as hereinafter provided, to an adjoining frontage road which will be connected to the main thoroughfare of the freeway only at such points as may be established by public authority.

The said right of access to said frontage road is hereby expressly limited to course 1 and the easterly 49.39 feet of course 2 described above.

TOGETHER WITH all of the existing improvements which are located partially within and partially outside the boundaries of the above described Parcel 11287-1.

ALSO TOGETHER WITH a temporary easement, to expire on December 31, 2018 over and across said Parcel 4 shown on said Book 7 of Parcel Maps at Page 28 for the purpose of removing existing improvements.

TOGETHER WITH a temporary easement for construction purposes upon, over, and across that portion of Parcel 4 according to the map filed July 2, 1987 in Book 7 of Parcel Maps at Page 28 in the Recorder's Office of San Benito County, described as follows:

PARCEL 11287-2: TEMPORARY CONSTRUCTION EASEMENT

A strip of land 10.00 feet wide, the generally northerly line of which is parallel with and 10.00 feet northwesterly of the above described courses 1 and 2.

Said temporary easement shall terminate on completion of construction, but in any event, shall terminate no later than December 31, 2018.

Bearings and distances used herein are based on the California Coordinate System of 1983, Zone 4. Multiply distances by 1.00005666 to obtain ground level distances.

END OF DESCRIPTION

YOU ARE HEREBY NOTIFIED that unless you file with the Clerk a written responsive pleading to the Complaint in Eminent Domain as required above, plaintiff will apply to the court for the relief demanded in the Complaint.

Heather M. Allan (233137)
Eva M. Martelle (SBN 233139)
Allan & Martelle, LLP
1631 Willow Street, Suite 100
San Jose, CA 95125
Telephone (408) 264-9822
Facsimile (408) 266-1859

Attorney for Petitioners
Nicole Darabi and Mike Mohsen Darabi

IN THE SUPERIOR COURT OF THE STATE OF CALIFORNIA,
IN AND FOR THE COUNTY OF SANTA CLARA
TO: Kenson Edward Christon

In Re Adoption of
Kayla Elise Christon,
minor.

No. 1-11-AD-022577

CITATION ON PETITION TO DECLARE
THE MINOR CHILD FREE FROM
THE CUSTODY AND CONTROL
OF THE NATURAL FATHER

By Order of the Court, you are hereby cited and required to appear on Feb. 07 2012, before the judge presiding in Department 3 of the above-entitled court, or such other department as may be assigned, at the court house located at 191 N. First Street, San Jose, CA 95113, at the hour of 10:30 a.m. of that day, then and there to show cause, if any, why the Petition of Petitioners Nicole Darabi and Mike Mohsen Darabi to declare the minor child free from your custody and control and to terminate all your parental rights and responsibilities to the minor child Kayla Elise Christon, born October 19, 2004, to birth mother Nicole Darabi, should not be granted, in accordance with the Petition filed and served herewith and incorporated herein, or a copy of which may be obtained by contacting counsel for Petitioners.

If you fail to attend, the court may determine that you are not entitled to further notice of the proceedings regarding the placement of the minor child for adoption with the Petitioners, and that the minor child Kayla Elise Christon can be declared free from your custody and control, and the said minor child to be adopted, without further notice to you.

Career Source

Career Training

EARN \$75 - \$200 /HR (Now 25% Off). (Now 25% Off), Media Makeup & Airbrush Training. For Ads, TV, Film, Fashion. 1 wk class &. Portfolio. AwardMakeUpSchool.com 310-364-0665 (AAN CAN)

Work from Home

\$\$\$HELP WANTED\$\$\$ Extra Income! Assembling CD cases from Home! No Experience Necessary! Call our Live Operators Now! 1-800-405-7619 EXT 2450 <http://www.easywork-greatpay.com> (AAN CAN)

Nude Models Wanted

PHOTOGRAPHY MODELS WANTED!

\$100/hr. Requires tasteful nudity - NO PORN! Females 18-25. Please call 623-4574.

Paid In Advance! Make \$1000 a Week mailing brochures from home! Guaranteed Income! FREE Supplies! No experience required. Start Immediately! www.home-mailerprogram.net (AAN CAN)

Marketplace

FOR SALE

OLD HAWAIIAN COINS,
TOKENS, STAMPS
& DOCUMENTS
M-F 9-5 SAT 10-4

531-6251

Hawaiian Islands Stamp & Coin
1111 Bishop St., Downtown

INSTANT CASH!
For Anything of Value
Husbands, Wives, Kids and Pets Excluded
Open 7 Days a Week **Mon-Sat 8-6pm Sun 8-2pm**
Family Pawn Shop & Payday Loans In Waipahu
676-8800 94-220-C Leokane Waipahu
(Behind HC Drive-In)

Where are you spending your advertising dollars?

Honolulu Weekly Classifieds
528-1475 x48

Home & Garden

Steel Buildings
30x36 - Reg \$15,850
Now \$12,600
36x58 - Reg \$21,900
Now \$18,800
48x96 - Reg \$48,700
Now \$41,900
81x130 - Reg \$121,500
Now \$103,900
Source # 1E1 800-964-8335

Transportation

Autos

CASH FOR CARS: Any Car/Truck. Running or Not! Top Dollar Paid. We Come To You! Call For Instant Offer: 1-888-420-3808 www.cash4car.com (AAN CAN)

Find Your New Clients

HERE Call 528-1475 x48

Adult

AshleyMadison.com - 100% FREE for Women! Every 30 seconds another woman joins AshleyMadison.com looking to have a Discreet Affair. Try it FREE today. Featured in: TIME, New York Times & CNN

Lonely Single Mom. Looking for a Mutually Beneficial Arrangement. ArrangementFinders.com - Featured in USA Today and MAXIM

MEN SEEKING MEN 1-877-409-8884 Gay hot phone chat, 24/7! Talk to or meet sexy guys in your area anytime you need it.

Have a Guaranteed Affair at AshleyMadison.com Stop having Sex with Escorts who've been with 1000s of other Men. Meet real women who are trapped in sexless Marriages and need to find sex on the side. Featured on: Ellen, Tyra & The View. (AAN CAN)

Unique Arrangements. You reward Me, I'll reward You. ArrangementFinders.com - Featured in USA Today and MAXIM

Mind Body Spirit

Health & Fitness

OPEN SPACE YOGA

STUDENT SPECIAL
Bring a valid school ID & get 3 classes for \$25!

NEW TO YOGA?
2 weeks of unlimited Yoga for \$40

www.yogaopenspace.com
for more info
1111 Nuuanu Ave. #211
808-252-8851
808-216-6972
3106 Monsarai Ave

IN PAIN? Injured?

Physical therapy/massage. OAHU THERAPY CLINIC accepts insurance with physician referral. \$60/hour; 1314 S King #319. Call 596-4656. Office space for rent

Instruction

Cumbia style Salsa dance beginners class, Dream To Dance Studio, 661 Auahi Street #201, Honolulu, Mondays. 5:45-6:45 PM, www.ArtmanMoves.com, 286-5923.

Cumbia style Salsa dance beginners class, Kailua Movement Studio, 776 Kailua Road (2nd floor), Kailua Sundays, 6:00-7:00 PM, www.ArtmanMoves.com, 286-5923.

HELP PEOPLE DE-STRESS, FOR LESS. CALL 528-1475 X48

Real Estate

Rentals Wanted

WANTED TO RENT House in Honolulu for mature, well-established couple. Contact us Michicat01@gmail.com

Shared Rentals

ALL AREAS - ROOMMATES.COM. Browse hundreds of online listings with photos and maps. Find your roommate with a click of the mouse! Visit: <http://www.Roommates.com>. (AAN CAN)

Love our coverage of your event?

Support the newspaper that supports you

Honolulu Weekly
CALL 528-1475 x 10

Service Directory



COPACABANA Residential Cleaning

CLEANING HAS NEVER BEEN THIS EASY
One phone call, two hours later, your house will be spotless!

(808) 286-3761 / www.wemakemshine.com

Adoption

PREGNANT? CONSIDERING ADOPTION? Talk with caring agency specializing in matching Birthmothers with Families nationwide. LIVING EXPENSES PAID. Call 24/7 Abby's One True Gift Adoptions 866-413-6293 (Void in Illinois) (AAN CAN)

Education / Instruction

HIGH SCHOOL DIPLOMA! Graduate in just 4 weeks!! FREE Brochure. Call NOW! 1-800-532-6546 Ext. 97 <http://www.continentalacademy.com> (AAN CAN)

CLEAN WINDOWS

SINCE 1977
Ron Albert, Owner
599-8779

ISLAND WISE

ON THE BODY

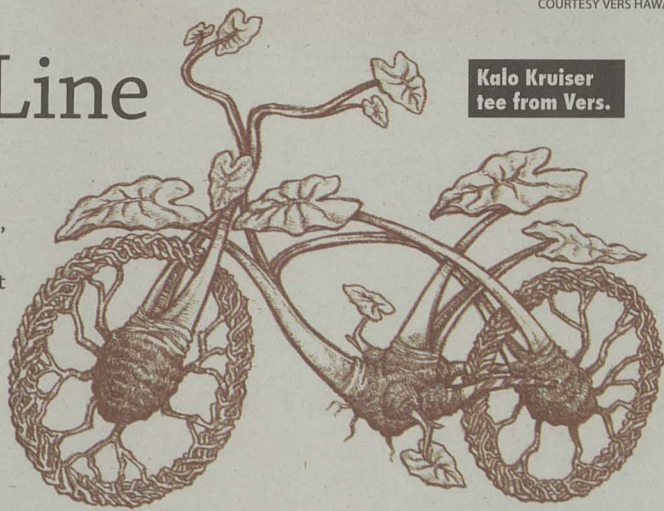
Walk the Line

"We're just continually drawing, like after surf sessions, just thinking about things. It just kind of comes," says Roxanne Ortiz of **Vers Hawaii**, a company that prints organic cotton tees. "It's the sketchbook that holds the gold."

This treasured sketchbook has documented moments in the lives of Ortiz and her husband Matt Kawika Ortiz since they met six years ago as undergrads at the University of Hawai'i. Their screen printed designs showcase the couple's island-centric, eco-friendly t-shirt line, Vers Hawaii. Wearing a Vers tee is like owning a Jack Johnson CD—it's laid back, island artsy and nobody can say no to it.

The couple's inspiration is found in everything from a wave to a song to a tree, which is how the name Vers (as in verse) was born. The prints retain a sketched-on feel that turns your body into a walking piece of artwork.

The company has taken off in the last year, and the duo has been jamming on designs for



Kalo Kruiser tee from Vers.

COURTESY VERS HAWAII

the 2011/2012 holiday season. A shaka shirt and one titled "an 'alala riding an alai'a with aloha" will be making an appearance this New Year.

—Anna Harmon

Aloha Aina Boutique at the Royal Hawaiian Shopping Ctr., Bldg. C, second level, C-213, 924-4333

Super Citizen, 22 S. Pauahi St.,

supercitizenstore.com, 599-4333

Drift Boutique, 3434 Wai'ala'e Ave

Ste. 4, driftboutique.com

More designs at www.vershawaii.com



"Splash of Aloha"

Teresa Bright belting out *Mele Kalikimaka* from speakers fore and aft, echoing between the islands in harmony with the duet beat of the outboard: submerged, then exposed—muffled, then raw bass as the bow slaps down onto each wave it meets like linebackers on the same field, opposed yet paired. Molokini drawing near, a crescent peeking out of the Pacific like stone hands cupping the sea. We barely savor it, propelling parallel with the horizon, as if in a race with the setting sun. Then Hapa's thrumming strings gently rock us like a hammock in a strong, safe wind. As we glide to a halt, guitar strings silenced, we defer our ears to the sea and focus on the horizon. We have won the race and quietly watch the sun slide behind the blue. I turn my head to take in the wide view and catch a silhouetted fluke as it slaps the surface. It echoes like a skimming stone across the warm blue green and liquefies my heart.

—MJ Manna

CONGRATULATIONS! HONOLULU WEEKLY SHORT FICTION AND POETRY WINNERS

Keep your eyes peeled for the winners' stories and poems in our Jan. 4 and Jan. 11 issues.

Fiction

Winner: James Cave, "Race Relations"
Runner-up: Donald Carreira Ching, "Da Same But Different"

Flash Fiction

Winner: MJ Manna, "Splash of Aloha"

Poetry

Winner: Mark Thiel, "Line Fishing at Maha'ulepu, Kaua'i"
Runner-up: Lilly Barels, "The Thirty-First Year"

Special thanks to our judges Kauai Hart Hemmings, Janine Oshiro and Craig Santos Perez. Don't miss performances by our winners at the next MIA Literary Series at Fresh Cafe on Mon., Jan. 16 at 7pm.



Lucky Dog

Great match.

A thunderbird in one ear, an agate tusk in the other—this is the essence of the jewelry line, **Ginger13**, founded in 2004 after Cindy Yokoyama's love of jewelry turned into a hobby. And that turned into a business, which then turned into an obsession. Named after her beloved dog and her lucky number, Ginger13 can be found in Honolulu at **Bamboo Sky, Madisson & Co., Global Village, In My Closet, Roberta Oaks** and **Ginger & Koi**, on Maui at **Kea Lani** and at locations throughout Japan.

Yokoyama says her bohemian chic aesthetic is inspired by nature, color, texture and "the constant search for new materials."

—Shantel Grace

ginger13.com

If you've got a "Made In Hawai'i" product worthy of a Weekly review, send it via snail mail to: Honolulu Weekly, C/O "Island Wise", 1111 Fort St. Mall, Honolulu, HI 96813; Shantelgrace@honoluluweekly.com



Now Open!

Eggs 'n Things
Waikiki Beach Eggspress
2464 Kalakaua Ave



The same Quality Food and Spirit of Aloha in an Eggspress Style. Visit us at www.eggsthings.com.

soul de cuba cafe®
cuban cuisine and more

Join us for
New Year's Day Brunch!

\$5 Mimosas & Bloody Marys All Day



www.souldecuba.com

1121 Bethel Street
(Across from Hawaii Theatre)
808.545.CUBA (2822)

Mon-Thurs 11AM-10PM
Fri & Sat 11AM-11PM
Sun 11AM-8:30PM
New Years Day Brunch until 5pm

Authentic Cuban cuisine in the heart of downtown

Happy New Yuzu!

NEWLY OPENED RESTAURANT

Celebrate ringing in the New Year with a **New Years Eve prix fixe menu** for just \$30.

The menu includes: Local watercress salad, Lotus root pizza, Chicken Yakitori, Sashimi, Temari sushi sampler, Mango shave ice. The bar will be dishing out \$2 Kirin drafts, Mimosas, Champagne glasses, and 10 different flavor Sake Martinis. With \$3 Edamame samplers and \$5 6-piece Yakitori skewers.

Yuzu welcomes you starting at 5pm!

Seating is limited, so reservations are strongly recommended. Call today 943-1155.

Give us a call at 943-1155 or stop by the first floor of the Ala Moana Hotel, Ground Floor. Visit us at www.yuzuhawaii.com

YUZU
japanese cuisine and bar

FIND IT HERE Back Page

We'll sell the shirt off your back, or anything else. Call 808-528-1475

KATE BECKINSALE UNDERWORLD AWAKENING IN 3D

LAKESHORE ENTERTAINMENT R IN THEATERS 01.20.12 EnterTheUnderworld.com

new school Your Local guide to ADULT EDUCATION

Coming January 4th

THIS MODERN WORLD

by TOM TOMORROW

2011
AN ADMITTEDLY
INCOMPLETE
AND UTTERLY
SUBJECTIVE
YEAR IN
REVIEW
PART THE SECOND
(YES, IT IS VERY WORDY)

MOST OF THE SUMMER: OBAMA REPEATEDLY TRIES TO STRIKE A "GRAND BARGAIN" WITH REPUBLICANS.

PLEASE, MAY I OFFER FURTHER CONCESSIONS?



AUG. 12: ALLEGEDLY SERIOUS PRESIDENTIAL CANDIDATE HERMAN CAIN TELLS CROWD--

"--A POET ONCE SAID 'LIFE CAN BE A CHALLENGE, LIFE CAN SEEM IMPOSSIBLE...'"



SEPT. 12: RON PAUL SAYS UNINSURED "TAKE (THEIR) OWN RISKS"; G.O.P. CROWD CHEERS AT THOUGHT OF HYPOTHETICAL PERSON DYING DUE TO LACK OF INSURANCE.

WHICH ACTUALLY HAPPENED TO ONE OF RON PAUL'S OWN STAFFERS IN 2008.

SEPT. 20: "DON'T ASK DON'T TELL" REPEALED; REPUBLIC FAILS TO COLLAPSE.

SEPT. 22: DEMONSTRATING THEIR UNCONDITIONAL RESPECT AND GRATITUDE FOR MILITARY SERVICE, G.O.P. CROWD BOOS SOLDIER FOR BEING GAY.

SEPT. 24: OCCUPY WALL STREET GAINS TRACTION WHEN VIDEO OF COP MACING PEACEFUL PROTESTERS GOES VIRAL.

NICE WORK, DUMBASS.



ALSO: THANKS TO THE OCCUPY MOVEMENT, PUNDITS BEGIN TO REALIZE THAT ORDINARY AMERICANS DON'T GIVE A RAT'S ASS ABOUT THE DEFICIT.

APPARENTLY THEY WANT "JOBS."



SEPT. 30: U.S. GOV'T ASSASSINATES U.S. CITIZEN ACCUSED OF TERRORISM.

I GOTCHER DUE PROCESS RIGHT HERE!



A FEW WEEKS LATER: U.S. GOV'T KILLS HIS TEENAGE SON.

OCTOBER 29: FREAK SNOWSTORM ALONG EAST COAST MEANS...OH, YOU KNOW.

YARGLE BARGLE BLARGH AL GORE!



NOV. 1: HOUSE VOTES TO REAFFIRM "IN GOD WE TRUST" AS NATIONAL MOTTO.

JUST IN CASE ANYONE THOUGHT WE HAD STARTED WORSHIPPING CTHULU!

NOV. 9: ALLEGEDLY SERIOUS CANDIDATE HERMAN CAIN DECLARES: "FOR EVERY ONE PERSON THAT COMES FORWARD WITH A FALSE ACCUSATION, THERE ARE PROBABLY THOUSANDS WHO WILL SAY NONE OF THAT SORT OF ACTIVITY EVER CAME FROM HERMAN CAIN!"

NOV. 21: "SUPER-COMMITTEE" FAILS TO ACHIEVE MAGICAL BIPARTISAN DEFICIT-REDUCING COMPROMISE.

NO ONE COULD HAVE FORESEEN THIS!



NOV. 30: MICHELE BACHMANN SAYS GAYS DO HAVE THE RIGHT TO MARRY.

"THEY CAN MARRY A MAN IF THEY'RE A WOMAN, OR THEY CAN MARRY A WOMAN IF THEY'RE A MAN!" SERIOUSLY, SHE SAID THAT.

DEC. 15: DEFENSE BILL CODIFIES INDEFINITE MILITARY DETENTION OF U.S. CITIZENS ON U.S. SOIL.

BUT THE INNOCENT HAVE NOTHING TO FEAR!



MONTH OF DECEMBER: INCREASINGLY DESPERATE G.O.P. CONTEMPLATES PRESIDENTIAL VIABILITY OF DISGRACED FORMER HOUSE SPEAKER WITH LONG HISTORY OF ADULTERY.

ON THE PLUS SIDE, HE'S NOT MITT ROMNEY!

ALL OF 2011: MORE LUNACY THAN WE COULD FIT IN AN ENTIRE YEAR'S WORTH OF CARTOONS--

--THOUGH OF COURSE WE TRIED!



Tom Tomorrow @ 2011 ... www.thismodernworld.com ... twitter.com/tomtomorrow

ATTORNEY OR PARALEGAL who is willing, for a reasonable fee, to file a complaint in US District Court against the State of Hawaii Dept. of Transportation, Airports Division, for discrimination, harassment, and civil rights violations of US Code. Please call: 637-8868

HAVE YOU EVER WISHED YOU COULD SPEND ONE HOLIDAY SOBER?
ALCOHOLICS ANONYMOUS
808-946-1438

DOWNTOWN COFFEE
900 Fort Street Mall
latte = Hawaiian espresso + local milk + ♥

NEED STRESS REDUCTION?

Try Body + Mind Spa
2 locations--downtown, Aiea
call 524-8588

LIQUOR COLLECTION

Honolulu's biggest little liquor store
Ward Warehouse

WATCH REPAIR & OVERHAUL

(all Brand Name Watches), Battery Replacement & Reseal, (We warranty our major service repairs),
JEWELRY REPAIR & CUSTOM DESIGNS
Free Estimates • EVELYN'S COLLECTION
Fine Jewelry & Watches (since 1978)
Pacific Guardian Center
733 Bishop St. #190 538-7400

GREEN DOOR CAFE

SPICY & TASTY NONYA CUISINE
Chinatown, across from Indigo

Tired of being curled up in that fetal position?

Time to get up, take action and expand your business.

Call us at the Weekly.

We have experienced pros who will work with you & your business.

Call 528-1475: Colleen Knudsen x14 or Laurie Carlson x17

AS ANYBODY WHO STILL BELIEVES IN SANTA CLAUS KNOWS,

THE BEST GIFTS COME BY AIR.

go!Mokulele is helping families connect. You can too. Donate to either Kapi'olani Medical Center for Women & Children or the Lokahi Giving Project, and get a 10% discount on any go!Mokulele flight during the holidays. Plus we'll provide free a round-trip for a local ohana so they can visit loved ones on a neighbor island.

iflygo.com

go!Mokulele
Hawaii's Low Fare Airline

For terms & conditions please visit us at www.iflygo.com

KAPI'OLANI HEALTH FOUNDATION



LOKAHI