

UNIV. OF HAWAII
HAMILTON LIBRARY
HAW'N EPHEMERA

MERRIE MONARCH FESTIVAL

20th Annual MERRIE MONARCH FESTIVAL THE CORONATION



1883 - 1983

UNIVERSITY OF HAWAII LIBRARY

*Dedicated to perpetuating the Hawaiian culture
through the spirit of friendship, cooperation, unity and the desire
to share and experience the creativity of its participants.*

UNIV. OF HAWAII
HAMILTON LIBRARY
HAW'N EPHEMERA

APRIL 3-10, 1983

HILO, HAWAII

20th Annual
Merrie Monarch Festival

COMMITTEES

| | |
|---|--|
| <i>Chairwoman</i> | Dottie Thompson |
| <i>Royal Parade</i> | Piilani Nahiwa |
| <i>Exhibits & Demonstrations</i> | Doris Nosaka Leona Kamoku Kilohana Room - Naniloa Surf Annette Sumada - Wailoa Center |
| <i>Office Help</i> | Muriel Nuuanu |
| <i>Contest Chants</i> | Agnes Cope |
| <i>Seating & Decorations</i> | Springy & Daisy Spalding |
| <i>Stage</i> | Doug Bush |
| <i>Royal Court Assistants</i> | Thomas Spencer Sadie Spencer Martha McNicoll |
| <i>Mele Ho'olaulea</i> | Mary Young Jolene Sharp |
| <i>Timers & Scorers</i> | Lily Pa |
| <i>Souvenir Programs</i> | Thomas Spencer, Jr. |
| <i>Ushers & Ticket Collectors</i> | Kiwanis |

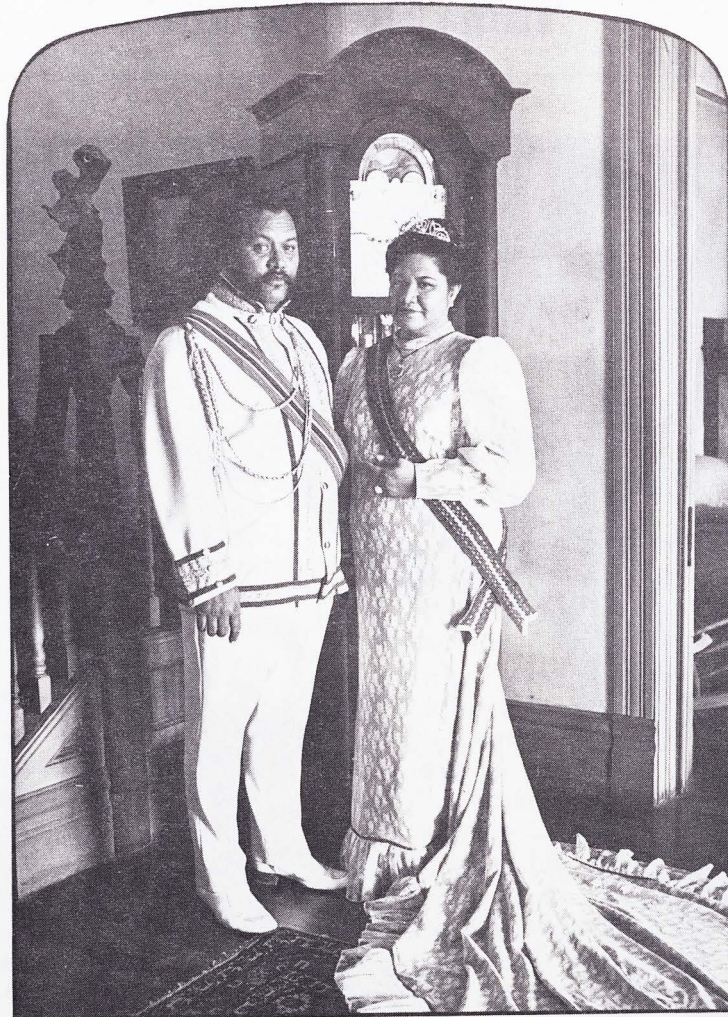
HULA JUDGES

Kai Zuttermeister
Kamamalu Kline
Kaai'kawahakekau'ilani Kalama

Joan Lindsey
Sarah Quick
Harriet Fernandez

RULERS OF THE

1983 Merrie Monarch Festival



MO'I KANE
ARTHUR A.
KEOLEWA
HOKE

*District Commander
Captain
Hilo Police Department*

MO'I WAHINE
HELEN
PUMEHANA
GRUBE
HOKE

The Coronation

The year 1883. For three days, February 9-10-11, the Islands were drenched by torrential rains. A newspaper of the day, *The Advertiser*, reported, however, that "on the morning of the 12th . . . the sun shown forth with unwonted brilliance . . . and strange to say, the morning star was seen in the heavens shining contemporaneous with the sun." The Hawaiians regard this as a happy omen.

On February 12, 1883, David Kalakaua, King of the Hawaiian Islands, placed upon his own head the crown of the Hawaiian Kingdom, and upon the head of his Queen, Kapiolani, he placed another.

The coronation took place at noon on the grounds of Iolani Palace in Honolulu. An amphitheater to accommodate 4,000 was constructed on the palace grounds, but by 9:00 a.m. the amphitheater was filled to overflowing and 4,000 more were said to be sitting on the ground. The lanais of surrounding buildings also were said to be filled to capacity.

All great countries of the world were represented by officials sent to Honolulu for the great occasion. Seated on the lanai of Iolani Palace were representatives of the United States, Great Britain, France, Portugal, Italy, Germany, Sweden, The Netherlands, Denmark, Japan, Mexico and Belgium.

In the days leading up to the coronation, *The Advertiser* reported daily on the plans and paid particular note to a request of the kind: "All classes have been invited and His Majesty does not want anyone to feel that they will not be welcomed if not expensively dressed."

In Memoriam

**LUKA KALEIKI
'Ilima Hula Studio**



She loved the Merrie Monarch Festival and will be missed very much. Her costumes of the monarchial period was her trademark. Her hula studio, 'Ilima Hula Studio, was one of the original groups participating in the Merrie Monarch Festival and has continued the tradition for the past ten years.

20th ANNUAL MERRIE MONARCH FESTIVAL

April 3-10, 1983

Schedule of Events

SUNDAY, APRIL 3

11:00 a.m. — Patrick Kahawai'ōlaa *Coconut Island*
12:00 noon — Diane Aki *Coconut Island*
1:00 p.m. — Likelike *Coconut Island*
2:00 p.m. — Randy Ioane *Coconut Island*
3:00 p.m. — Leilani Sharpe Mendez *Coconut Island*
4:00 p.m. — Dennis Pavao *Coconut Island*
5:00 p.m. — The Blah Lahs *Coconut Island*

MONDAY, APRIL 4

8:00 a.m. to 4:30 p.m. — Boone Morrison Hula Photos/
Hawaiian Quilts *Wailoa Center*
9:00 a.m. to 5:00 p.m. — Hawaiian Crafts Exhibits &
Demonstration *Kilohana Room*
Johnny Lum Ho Hula Studio *Naniloa Surf Hotel*
8:00 p.m. — Melveen Leed ... *Crown Room, Naniloa Surf Hotel*

TUESDAY, APRIL 5

8:00 a.m. to 4:30 p.m. — Boone Morrison Hula Photos/
Hawaiian Quilts *Wailoa Center*
9:00 a.m. to 5:00 p.m. — Hawaiian Crafts Exhibits &
Demonstration *Kilohana Room, Naniloa Surf Hotel*
8:00 p.m. — Melveen Leed ... *Crown Room, Naniloa Surf Hotel*

WEDNESDAY, APRIL 6

8:00 a.m. to 4:30 p.m. — Boone Morrison Hula Photos/
Hawaiian Quilts *Wailoa Center*
9:00 a.m. to 5:00 p.m. — Hawaiian Crafts Exhibits &
Demonstration *Kilohana Room Naniloa Surf Hotel*
6:30 p.m. — Hawaii County Band *Hoolulu Tennis Stadium*
7:00 p.m. — Invocation *Hoolulu Tennis Stadium*

7:05 p.m. — Enter Royal Court *Hoolulu Tennis Stadium*
7:30 p.m. — Honolulu Boy Choir *Hoolulu Tennis Stadium*
8:30 p.m. — Ho'okupu from Hula Halaus

THURSDAY, APRIL 7

8:00 a.m. to 4:00 p.m. — Boone Morrison Hula Photos/
Hawaiian Quilts *Wailoa Center*
9:00 a.m. to 5:00 p.m. — Hawaiian Crafts Exhibits &
Demonstration *Kilohana Room, Naniloa Surf Hotel*
5:00 p.m. — Enter Royal Court *Hoolulu Tennis Stadium*
5:30 p.m. — Introduction of Kumu Hula & Judges
6:00 p.m. — Miss Aloha Hula (Kahiko)
7:30 p.m. — The Men of Na Kamalei
8:00 p.m. — Miss Aloha Hula (Auwana)
9:30 p.m. — Hula Halau 'O Olana
10:00 p.m. — Announcement of Winners

FRIDAY, APRIL 8

8:00 a.m. to 4:30 p.m. — Boone Morrison Hula Photos/
Hawaiian Quilts *Wailoa Center*
9:00 a.m. to 5:00 p.m. — Hawaiian Crafts Exhibits &
Demonstration *Kilohana Room, Naniloa Surf Hotel*
5:30 p.m. — Royal Court enters *Hoolulu Tennis Stadium*
6:00 p.m. — Group Hula - Kane & Wahine (Kahiko)
..... *Hoolulu Tennis Stadium*

SATURDAY, APRIL 9

10:30 a.m. — The Royal Parade *Downtown Hilo*
5:30 p.m. — Royal Court enters *Hoolulu Tennis Stadium*
6:00 p.m. — Group Hula - Kane & Wahine (Auwana)
..... *Hoolulu Tennis Stadium*

Grogge Shoppe

SEVEN SEAS LUAU HOUSE
(Next to Hoolulu Tennis Stadium)

APRIL 6, 7, 8 / 4:30 p.m. to 12 midnight

APRIL 9 / 12 noon to 12 midnight

Ho'opii Brothers

Kipapa Rush

Paradise Band

SUNDAY, APRIL 10 / 12 noon to 8:00 p.m.

— *continuous music* —

Hilo's own
Merrie Monarch Festival
celebrates its 20th anniversary

It started in 1963 with George Naope and Gene Wilhelm while working as cabinet members in the Administration of Helene Hale, who was the Chairman of the County of Hawaii.

The original idea was to create new and greater interest in the Hilo area as a visitor destination point on the Island of Hawaii. The event would be held every year on the first Wednesday after Easter.

The first annual was held on April 1, 1964 with financial aid provided by the County of Hawaii, Hawaii Visitors Bureau and the sponsoring organization, Hawaii Island Chamber of Commerce.

After five years, the Hawaii Island Chamber of Commerce ran into a problem of finding a Chairman for the festival. By that time, George Naope and Gene Wilhelm had already left the County Administration and unfortunately were no longer with the festival. The Board of Directors of the Chamber decided to discontinue the festival in 1968.

Dottie Thompson, not wishing to see the festival discontinued, became Chairman in 1969 and brought back George Naope as Coordinator. The only source of revenue at that time was in-kind services from the County of Hawaii and very nominal financial aid from Hawaii Visitors Bureau. So, in order to help defray expenses, Merrie Monarch buttons were sold. The people were not supportive of this event and it was a struggle to raise enough money to make ends meet.

George Naope started the hula competition with nine (9) hula halau participating in 1971. The hula masters were asked to be judges. Goals and objectives were set and the format of the festival was changed and its aim was to try and duplicate as close as possible what King David Kalakaua did during his reign: to perpetuate the traditional native Hawaiian culture; to develop and augment a living knowledge of the arts and crafts through demonstrations, exhibitions and performances; to reach those who might not otherwise have the opportunity to participate; and to enrich the future lives of Hawaii's children; to bring together Hawaii's hula dancers to share a learning experience and to demonstrate the variety, the ingenuity and the creativity of the many schools and the different styles and disciplines of the hula.

In October of 1975, the Hawaii Island Chamber of Commerce decided to pull out as sponsors completely, which left Dottie Thompson to continue alone because George Naope had moved to Honolulu earlier that year. Dottie Thompson was too dedicated to give up.

A new division was added in 1976, the kane, to be included with the wahine and the Miss Aloha Hula. The festival started to pick up in popularity and in 1977 and 1978, the Hilo Civic Auditorium was bursting at its seams with spectators. The festival was then moved to its present site, Hoolulu Tennis Stadium, in 1979 to be able to accommodate the thousands of people from all over the State of Hawaii and some from the mainland. The stadium can only hold 5,000 people and therefore every year for the past three years, we have had to turn away thousands of people who wish to attend the festival.

Today, the Merrie Monarch Festival is known as one of the most prestigious events in the State of Hawaii with participants coming from Hilo, Oahu, Kauai, Maui, Lanai, Japan and San Francisco. It is George Naope's inspiration that has continued to be an integral part of the Merrie Monarch Festival.



1982 Miss Aloha Hula

DAYNA ODA
Halau O Ka Ua Kani Lehua

Hawaiian Crafts
Exhibits and Demonstrations

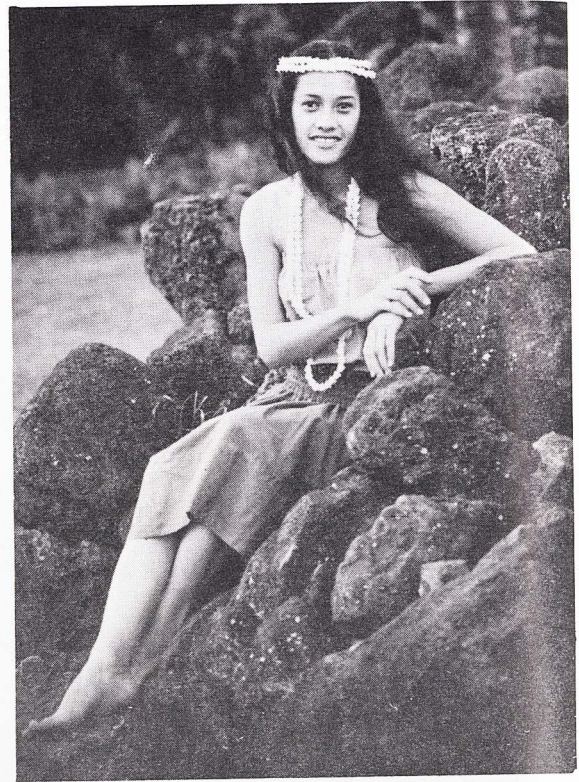
APRIL 4-8, 1983

9:00 a.m. to 5:00 p.m.

Kilohana Room, Naniloa Surf Hotel

20th ANNUAL MERRIE MONARCH FESTIVAL

*Miss Aloha Hula
Contestants*



(first row, left to right)

NALANI AKI

Na Opio 'O Ko'olau

LEINA'ALA FITZSIMMONS

Kaleo 'O Nani Loa Hula Studio

JULIETTE KAINOA KUEHU

Hula Halau O Leina'ala

(second row, left to right)

NAOMI KUBA

Pukaikapua'okalani

U'ILANI ARAKAKI

Leeward Community College

LEIMOMI FERGUSON

Pukalani Hula Hale

(bottom row)

PUALANI IWAKAMI

Hui 'O Kamalei



(top row, left to right)

GEOLA PUA

Hula Halau O Ka Ua Kani Lehua

HAUNANI BERRYMAN

Puamana Hula Studio

PAULA TAKAKI

Kona Gardens School of Hawaiian Arts

(bottom row, left to right)

MALUMALU DUNLAP

Hula Halau O Kamuela

KALEI WONG

Ladies of Kahanakealoha

DANNETTE LEOTA

Halau O Waimea

MERRIE MONARCH FESTIVAL

Past Contest Winners

| | | |
|------|------------------------------------|---|
| 1971 | 1st Solo — Miss Aloha Hula | Aloha Wong (Keolaulani Hula Studio, Kaneohe, Oahu) |
| | Group Hula (1st) | Pauline Kekahuna & Her Hauoli Group |
| 1972 | Ancient Group | Johnny Lum Ho Hula Studio (E Luna E Ka Hale Kai) |
| | Modern Group | Johnny Lum Ho Hula Studio (Kawika) |
| 1973 | Hula Kahiko | Pauline Kekahuna & Her Hauoli Group |
| | Implements | Pauline Kekahuna & Her Hauoli Group |
| | Miss Aloha Hula | Hula Auwana |
| | | Pauline Kekahuna & Her Hauoli Group |
| 1974 | Hula Kahiko | Louise Kaleiki Hula Studio |
| | Hula Implements | Louise Kaleiki Hula Studio |
| 1975 | Hula Kahiko (tied 1st place) | 'Ilima Hula Studio |
| | Hula Auwana | 'Ilima Hula Studio, Pauline Kekahuna & Her Hauoli Group |
| | Miss Aloha Hula | Keolaulani Hula Studio |
| 1976 | Hula Kahiko | 'Ilima Hula Studio |
| | Male Category | Na Kamalei o' Liliiehua |
| 1977 | | (Kane Division) |
| | Hula Kahiko | Halau o' Kekuhi |
| | Overall | Halau o' Kekuhi |
| | | (Wahine Division) |
| | Hula Kahiko | Na Pualei O' Ka Likolehua |
| | Overall | Na Pualei O' Ka Likolehua |
| | Miss Aloha Hula | Johnny Lum Ho Hula Studio |
| | | Pualani Chang (Pukaikapuaokalani Studio) |
| 1978 | | (Kane Division) |
| | Hula Kahiko | Waimapuna |
| | Overall | Waimapuna |
| | | (Wahine Division) |
| | Hula Kahiko | Johnny Lum Ho Hula Studio |
| | Overall | Na Pua Lei O' Likolehua |
| 1979 | | (Kane Division) |
| | Hula Kahiko | Na Wai Eha 'O Puna |
| | Overall | Waimapuna |
| | | (Wahine Division) |
| | Hula Kahiko | Hauoli Hula Studio |
| | Hula Auwana (tied 1st place) | Hauoli Hula Studio |
| | Miss Aloha Hula | Na Pualei 'O Likolehua, Hauoli Hula Studio |
| | | Jody Imehana Mitchell (Maui) |
| 1980 | | (Kane Division) |
| | Hula Kahiko | Waimapuna |
| | Overall (tied 1st place) | Waimapuna, Na Wai Eha O Puna |
| | | (Wahine Division) |
| | Hula Kahiko (tied 1st place) | Hauoli Hula Studio, Johnny Lum Ho Hula Studio |
| | Hula Auwana | Johnny Lum Ho Hula Studio |
| | Miss Aloha Hula | Johnny Lum Ho Hula Studio |
| | | Kaula Kamahela (Johnny Lum Ho Hula Studio) |
| 1981 | | (Kane Division) |
| | Hula Kahiko | Na Wai Eha O Puna |
| | Overall | Na Wai Eha O Puna |
| | | (Wahine Division) |
| | Hula Auwana (tied 1st place) | Johnny Lum Ho Hula Studio, Halau O Na Maoli Pua |
| | Hula Kahiko | Halau O Na Maoli Pua |
| | Miss Aloha Hula | Brenda Alidon (Johnny Lum Ho Hula Studio) |
| 1982 | | (Kane Division) |
| | Hula Kahiko | Hula Halau O Ka Ua Kani Lehua (Johnny Lum Ho Hula Studio) |
| | Hula Auwana | Hula Halau O Ka Ua Kani Lehua |
| | | (Wahine Division) |
| | Hula Kahiko | Halau Mohala Ilima |
| | Overall | Halau 'O Kahanuola |
| | Miss Aloha Hula | Hula Halau O Ka Ua Kani Lehua |
| | | Dayna Kanani Oda (Hula Halau O Ka Ua Kani Lehua) |

20th ANNUAL MERRIE MONARCH FESTIVAL

Hula Contest Songs

LEI 'O KALAPANA

(Kane Division)

(This chant is from the collection of Aunty Agnes Cope of Nanakuli and obtained from the personal collection of Grand Kumu Hula Lokalia Montgomery. Aunty Aggie wishes to contribute this mele to the men of Hawaii on behalf of her Tutu Lokalia Montgomery.)

| | |
|--|--|
| O Kalapana ho'i oe, | You are indeed Kalapana, |
| Ka hua lani o ke kapu moe, | The royal issue of the kapu moe, |
| O nene au kai holo kahakai, | O nene au kai running on the beach, |
| Ika one pookea, | In the ash colored sand, |
| Ia'u o kai, ia'u o ka uliuli, | I have the sea lands, I have the black ones, |
| Ua hina oe i Kekaha O Kamaiole, | You fell at Kekaha O Kamaiole, |
| Ino ma ka hana e, | Foul because of your deeds, |
| Make oe, e ko make e, | You will die, it will be your death, |
| A ke kai hoolono a ke kupa o Kanipahu, | The sea listens to the son of kanipahu, |
| Kuu loio Moe ho'i au, | I am indeed loio Moe, |
| O Kalapana ka inoa e, | O Kalapana is the name, |
| O Kalapana, ea la, | |

(He inoa no Kalapana)

KA MOMI HILI-O-NALU
(The Pearl Hili-O-Nalu)

(Wahine Division)

(This mele is from the collection of Aunty Agnes Cope of Nanakuli obtained from the personal collection of Grand Kumu Hula Lokalia Montgomery. Aunty Aggie wishes to contribute this mele to the women of Hawaii on behalf of her tutu Lokalia Montgomery.)

| | |
|--|--|
| Ho'omalalama ke alalai la i Hili-O-Nalu, | The daylight is brighter in the way of Hili-O-Nalu, |
| Eu ole ke kai, opulepule o ka malie, | The sea rises not, glinting in the calm, |
| Ilaila kona mai ana kakahiaka a au i ae ka la, | There she is from morning until dusk, |
| E ho'ohihi ana paha i na wai lohia, | Twisting through the sparkling waters, |
| Ke noho pu la me ka la, ho'i ka u'i o Pohaku O Kaua'i, | Sitting in the sun, the beauty of the Rock of Kauai returns, |
| Ko welo ana i ka kihi po'ohiwi o na paka wai | Fluttering the shoulders of drops of water, |
| O keia nani, o ka nani o ka noho i ke kai, | This beauty, the beauty from living in the sea, |
| He kuhihewa nau e o ka lawai'a o Anahola, | Was it your delusion o fisherman of Anahola, |
| I ka ia e ka u'i a pau ka wai, | To have consumed all the beauty, |
| Aohe one ae, aohe ho'ole, anuanu mai ne ia o ke aloha, | She neither agrees, nor refuses, cold is the pity of her love, |
| "Aloha au ia oe, aloha oe ia'u, ho'omana'o ae ia'u," | "I love you, you'll love me, you will remember me," |
| Ae, ae, ae, --- ae, ae, ae, | "Yes, yes, yes, --- yes, yes, yes." |

He inoa no o ka momi Hili-O-Nalu

20th ANNUAL MERRIE MONARCH FESTIVAL

Miss Aloha Hula
(Ancient & Modern Dances)

Thursday, April 7, 1983

KAHIKO

1. Jody Kane — Noelani Hula Studio (Noelani Canon), Honolulu, Oahu
He Nani Ha'upu
2. Kanani — Kahiko Halapai Hula Alapai (Roselle Bailey), Kaumakani, Kauai
No Na Mo'i
3. Pualani Iwakami — Hui O Kamalei (Kamalei Sataraka), Honolulu, Oahu
Mele Hula (Kalakaua)
4. Dannette Kaliko Leota — Halau O Waimea (Pilani Lua), Hau'ula, Oahu
Haku'i Ka Uahi O Ka Lua
5. Leilani Takaki — Winner Miss Maui, Kaahumanu Festival (George Naope), Kona Gardens, Kona, Hawaii
Pa Mai Kamakani 'O Kaupulehu
6. Leimomi Ferguson — Pukalani Hula Hale (Nina Maxwell), Pukalani, Maui
Kua Loloa Kea'au
7. U'ilani Arakaki — Leeward Community College (Puakea Nogelmeier), Waianae, Oahu
'O Pele Ke Akua Wahine
8. Lorilei Ichinose — No Wahine O Ke Anuenue (Kelena Vasconcellos), Hilo, Hawaii
Kahikilaulani
9. Glynnis Brown — Hula Halau O Kahikilaulani (Ray Fonseca), Hilo, Hawaii
Aia Kauku Kahi O Kamapua'a
10. Geola Pua — Hula Halau O Ka Ua Kani Lehua (Johnny Lum Ho), Hilo, Hawaii
Nanea Ku'u Maka I Ke Ahi Pele
11. Verna Medronna — Pua Ali'i 'Ilima (Vicky Holt Takamine), Aiea, Oahu
Ia Aloha Ia Kilauea
12. Naomi Kuba — Pukaikapua'okalani (Ellen Castillo), Kailua, Oahu
Kakuhihewa
13. Juliette Kainoa Kuehu — Hula Halau O Leina'ala (Lovey Apana/Beverly Muraoka), Kapaa, Kauai
Maika'i No Kauai
14. Malumalu Dunlap — Hula Halau O Kamuela (Paleka Leinaala Mattos), Honolulu, Oahu
O Pana'ewa Ohi Loloa
15. Haunani Berryman — Na Hula Puamana (Puluelo Park), Kailua, Oahu
No Luna I Ka Hale Kai
16. Tracy Keliioomalulu — Lamalani Hula Academy (Lahela Kaaihue), Honolulu, Oahu
Ahia
17. Leinaala Fitzsimmons — Kaleo O Nani Loa Hula Studio (Etua Lopes), Waianae, Oahu
Kapiolani
18. Nalani Aki — Na Opio 'O Ko'olau (Michael Dela Cruz), Kaneohe, Oahu
Kamehameha
19. Leolani Naipo — Hula Halau O Kawaili'ula (Chinky Mahoe), Kailua, Oahu
Kaulana O Waimanalo
20. Kalei Wong — Ladies of Kahanakealoha (Palani Kahala), Kahana, Oahu
Poli 'Ahu

20th ANNUAL MERRIE MONARCH FESTIVAL

Miss Aloha Hula *(Ancient & Modern Dances)*

Thursday, April 7, 1983

AUWANA

1. Jody Kane — Noelani Hula Studio (Noelani Canon), Honolulu, Oahu
Ko Hanu Ka'u E Lia Nei
2. Kanani — Kahiko Halapai Hula Alapai (Roselle Bailey), Kaunakakai, Kauai
Kauaio
3. Pualani Iwakami — Hui O Kamalei (Kamalei Sataraka), Honolulu, Oahu
He Manu'ula'ula
4. Dannette Kaliko Leota — Halau O Waimea (Piilani Lua), Hau'ula, Oahu
Akaka Falls
5. Leilani Takaki — Winner Miss Maui, Kaahumanu Festival (George Naope), Kona Gardens, Kona, Hawaii
Kawailele
6. Leimomi Ferguson — Pukalani Hula Hale (Nina Maxwell), Pukalani, Maui
Pua Be Still
7. U'ilani Arakaki — Leeward Community College (Puakea Nogelmeier), Waianae, Oahu
No Ke Aha
8. Lorilei Ichinose — No Wahine O Ke Anuenue (Kelena Vasconcellos), Hilo, Hawaii
Lei Koele
9. Glynnis Brown — Hula Halau O Kahikilaulani (Ray Fonseca), Hilo, Hawaii
Aloha Kalaniana'ole
10. Geola Pua — Hula Halau O Ka Ua Kani Lehua (Johnny Lum Ho), Hilo, Hawaii
O Oe Ka Heke O Na Pua
11. Verna Medronna — Pua Ali'i 'Ilima (Victoria Holt Takamine), Aiea, Oahu
Hanauma
12. Naomi Kuba — Pukaikapua'okalani (Ellen Castillo), Kailua, Oahu
Koke'e
13. Juliette Kainoa Kuehu — Hula Halau O Leina'ala (Lovey Apana/Beverly Muraoka), Kapaa, Kauai
Pupu O Niihau / Kahaelelani
14. Malumalu Dunlap — Hula Halau O Kamuela (Paleka Leinaala Mattos), Honolulu, Oahu
Ke Alii Hulu Mamo
15. Haunani Berryman — Na Hula Puamana (Puluelo Park), Kailua, Oahu
Kalehua I Milia
16. Tracy Kelihoomalua — Lamalani Hula Academy (Lahela Kaaihue), Honolulu, Oahu
Keawaiki
17. Leinaala Fitzsimmons — Kaleo O Nani Loa Hula Studio (Elua Lopes), Waianae, Oahu
Nani Ka'ala
18. Nalani Aki — Na Opio 'O Ko'olau (Michael Dela Cruz), Kaneohe, Oahu
He Pua Wehiwa
19. Leolani Naipo — Hula Halau O Kawaili'ula (Chinky Mahoe), Kailua, Oahu
Kamelani
20. Kalei Wong — Ladies of Kahanakealoha (Palani Kahala), Kahana, Oahu
Ka U'i O Ka Lei

20th ANNUAL MERRIE MONARCH FESTIVAL

Kane & Wahine Hula Kahiko

Friday, April 8, 1983

1. KAULILUA I KE ANU WAI'ALE'ALE

Na Wahine 'O Ke Anuenue / *Kumu Hula*: Kelena Vasconcellos, Hilo, Hawaii

2. AUHEA WALE OE E KAMAKANI INU WAI

Na Lei 'O Kauai / *Kumu Hula*: Loke Dahle/U'ilani Kaliloa, Koloa, Kauai

3. KAMAKANI UWahi PELE

Hui 'O Kamalei / *Kumu Hula*: Kamalei Sataraka, Honolulu, Oahu

4. KU'U IPO PEHI PUA HINANO

Halau 'O Na Lala Ola Ha'a / *Kumu Hula*: Kepa Maly, Volcano, Hawaii

5. E KUINI E KAPIOLANI

Noelani Hula Studio / *Kumu Hula*: Noelani Canon, Honolulu, Oahu

6. KUOLOLOA

Hula Halau 'O Kuwaila Ika Lehua / *Kumu Hula*: Peter Day (*Kane Div.*), Hilo, Hawaii

7. MAI KAHIKI KA WAHINE 'O PELE

Na Opio 'O Ko'olau / *Kumu Hula*: Michael Dela Cruz, Kaneohe, Oahu

8. KAUNO'A 'O LANA'I IMUA

Na Hula 'O La'i Kealoha / *Kumu Hula*: Elaine Kaopuiki, Lanai City, Lanai

9. 'O HILO 'OE

Halau 'O Waimea / *Kumu Hula*: Piilani Lua, Hauula, Oahu

10. O'O IHE KALANI KU'I O NAIHE

Hui Ho'oulu Aloha / *Kumu Hula*: Cy Bridges (*Kane Division*), Laie, Oahu

INTERMISSION (10 minutes)

11. KE KAI 'O WAIALUA

Pukalani Hula Hale / *Kumu Hula*: Nina Maxwell, Pukalani, Maui

12. HE ALOHA NO NA PUA

Pukaikapua'okalani / *Kumu Hula*: Ellen Castillo, Kailua, Oahu

13. 'O PAUMAKUA, KA LANI 'O MOENAIMUA

Halau Mohala Ilima / *Kumu Hula*: Mapuana De Silva, Kailua, Oahu
(Winner 1982 Hula Kahiko)

14. KUKI'I'AHU

Gentlemen of Maluikeao / *Kumu Hula*: Palani Kahala (*Kane Div.*), Kahana, Oahu

15. AIA KA WAHINE 'O LANIHULI

Hui Ho'oulu Aloha / *Kumu Hula*: Cy Bridges, Laie, Oahu

16. HALE HALE KEALOHA I HAI'KU

Halau 'O Kahikilaulani / *Kumu Hula*: Ray Fonseca, Hilo, Hawaii

17. HE MELE HULU NO KAPIOLANI I WAIMANALO

Hula Halau 'O Kamuela / *Kumu Hula*: Paleka Leina'ala Mattos, Honolulu, Oahu

20th ANNUAL MERRIE MONARCH FESTIVAL

Kane & Wahine Hula Kahiko

Friday, April 8, 1983

18. KU LANAKILA

Keola 'O Makahinu / *Kumu Hula*: Al Barcase (*Kane Div.*), Honolulu, Oahu

19. NANI WALE MOKUMANU I KA WENA

Hula Halau O Kawaili'ula / *Kumu Hula*: Chinky Mahoe, Kailua, Oahu

20. KA AWA LAU-LENA 'O HANA

Halau O Na Maoli Pua / *Kumu Hula*: Alicia Smith/Mae Loebenstein, Honolulu, Oahu

21. KE AKAKU 'O PELE OIA HE WAHINE HI'U I'A

Halau 'O Ka Ua Kani Lehua / *Kumu Hula*: Johnny Lum Ho, Hilo, Hawaii
(1982 Overall Winners)

22. A LUNA AU O WAIPIO

Men of Ka'a Mea 'O Kamakani / *Kumu Hula*: Mark Kealii Hoomalu, Jr. (*Kane Div.*), Daly City, San Francisco, California

INTERMISSION (10 minutes)

23. KA'UIKI

Ka Uakea 'O Hana Hula Kane / *Kumu Hula*: Peter Lonoae'a, Hana, Maui

24. E HO'I KEALOHA I NI'IHAU

Hauoli Hula Studio / *Kumu Hula*: Leilani Sharpe Mendez, Honolulu, Oahu

25. KU HULULU I KA HULU 'O KA MANU O'O

Ladies of Kahanakealoha / *Kumu Hula*: Palani Kahala, Kahana, Oahu

26. HE NANI HA'UPU

Hula Halau 'O Leina'ala / *Kumu Hula*: Lovey Apana, Kapaa, Kauai

27. KAWAI OPUA MAKANI 'O WAILUA

Hula Halau 'O Kawaili'ula / *Kumu Hula*: Chinky Mahoe (*Kane Division*), Kailua, Oahu

28. HE'EIA

Keolalaulani Halau Olapa 'O Laka / *Kumu Hula*: Aloha Dalire, Kaneohe, Oahu

29. I MAUNALAHILAHU

Na Hula Puamana / *Kumu Hula*: Puluelo Park, Kailua, Oahu

30. AIA I WAIMEA KU'U HAKU LEI

Na Lei 'O Kaholoku / *Kumu Hula*: Leialoha Lim Kamakawiwoole, Waianae, Oahu

31. HOLE WAIMEA / MAI KAI KE ANU 'O WAIMEA

Hula Halau 'O Kahikilaulani / *Kumu Hula*: Ray Fonseca (*Kane Division*), Hilo, Hawaii

32. KAU A HI'IAKA AO KA POHAKU 'O KAUAI

Pua Alii 'Ilima / *Kumu Hula*: Vicky Holt Takamine, Aiea, Oahu

33. MELE MANA'ONA'O 'O KAHELE

Halau 'O Ka Ua Kani Lehua / *Kumu Hula*: Johnny Lum Ho (*Kane Div.*), Hilo, Hawaii
(1982 Overall Winners)

20th ANNUAL MERRIE MONARCH FESTIVAL

Kane & Wahine Hula Auwana

Saturday, April 9, 1983

1. KOKE'E

Na Wahine 'O Ke Anuenue / *Kumu Hula*: Kelena Vasconcellos, Hilo, Hawaii

2. PUA AHIHI

Na Lei 'O Kauai / *Kumu Hula*: Loke Dahle/U'ilani Kaliloa, Koloa, Kauai

3. MAUNAWILI

Hui 'O Kamalei / *Kumu Hula*: Kamalei Sataraka, Honolulu, Oahu

4. ALOHA LANA'I

Halau 'O Na Lala Ola Ha'a / *Kumu Hula*: Kepa Maly, Volcano, Hawaii

5. MOANIKEALA

Noelani Hula Studio / *Kumu Hula*: Noelani Canon, Honolulu, Oahu

6. MOKU KIA KAHI

Hula Halau 'O Kuwaila Ika Lehua / *Kumu Hula*: Peter Day (*Kane Div.*), Hilo, Hawaii

7. PU'UHONUA NANI

Na Opio 'O Ko'olau / *Kumu Hula*: Michael Dela Cruz, Kaneohe, Oahu

8. A MEDLEY OF MAHALO — E HILO HANAKAHI/KAULANA LANA'I

Na Hula 'O La'i Kealoha / *Kumu Hula*: Elaine Kaopuiki, Lanai City, Lanai

9. 'O MAKALAPUA

Halau 'O Waimea / *Kumu Hula*: Piilani Lua, Hauula, Oahu

10. MAUNALOA

Hui Ho'oulu Aloha / *Kumu Hula*: Cy Bridges (*Kane Div.*), Laie, Oahu

INTERMISSION (10 minutes)

11. I'IWI A'O HILO / KA UA A'O HILO

Pukalani Hula Hale / *Kumu Hula*: Nina Maxwell, Pukalani, Maui

12. HUALALAE

Pukaikapua'okalani / *Kumu Hula*: Ellen Castillo, Kailua, Oahu

13. MAPUANA KA HALA 'O KAILUA

Halau Mohala 'Ilima / *Kumu Hula*: Mapuana De Silva, Kailua, Oahu

14. KA LANI KALANIANA'OLE

Gentlemen of Maluikeao / *Kumu Hula*: Palani Kahala (*Kane Div.*), Kahana, Oahu

15. WAHINE HOLOLI'O

Hui Ho'oulu Aloha / *Kumu Hula*: Cy Bridges, Laie, Oahu

16. PALISA

Halau 'O Kahikilaulani / *Kumu Hula*: Ray Fonseca, Hilo, Hawaii

20th ANNUAL MERRIE MONARCH FESTIVAL

Kane & Wahine Hula Auwana

Saturday, April 9, 1983

17. HILO MEDLEY

Hula Halau 'O Kamuela / *Kumu Hula*: Paleka Leina'ala Mattos, Honolulu, Oahu

18. MEDLEY OF HILO SONGS

Keola 'O Makahinu / *Kumu Hula*: Al Makahinu Barcase (*Kane Div.*), Honolulu, Oahu

19. POHAI KE ALOHA

Hula Halau O Kawaii'ula / *Kumu Hula*: Chinky Mahoe, Kailua, Oahu

20. AIA LA 'O PELE I HAWAII EA

Halau 'O Na Maoli Pua / *Kumu Hula*: Alicia Smith/Mae Loebenstein, Honolulu, Oahu

21. NANI KA WAHINE HA'A

Halau 'O Ka Ua Kani Lehua / *Kumu Hula*: Johnny Lum Ho, Hilo, Hawaii
(1982 Overall Winners)

22. HANO HANO NO'O HAWAII'I

Men of Ka'a Mea 'O Kamakani / *Kumu Hula*: Mark Kealii Hoomalu, Jr. (*Kane Div.*), Daly City, San Francisco, Calif.

INTERMISSION (10 minutes)

23. ANAPAU

Ka Uakea 'O Hana Hula Kane / *Kumu Hula*: Peter Lonoae'a, Hana, Maui

24. MEDLEY — AI MOLOKAI KU'I/WAIOMENA

Hauoli Hula Studio / *Kumu Hula*: Leilani Sharpe Mendez, Honolulu, Oahu

25. PA KONANE

Ladies of Kahanakealoha / *Kumu Hula*: Palani Kahala, Kahana, Oahu

26. KANANI A'O KA'U

Hula Halau O Leina'ala / *Kumu Hula*: Lovey Apana, Kapaa, Kauai

27. KA UA A'O HILO

Hula Halau 'O Kawaii'ula / *Kumu Hula*: Chinky Mahoe (*Kane Div.*), Kailua, Oahu

28. KU WILIWILI IHO AU/ALEKOKI

Keolaulani Olapa 'O Laka / *Kumu Hula*: Aloha Dalire, Kaneohe, Oahu

29. PUA MAMANE

Na Hula Puamana / *Kumu Hula*: Puluelo Park, Kailua, Oahu

30. KA LEHUA IMILIA

Na Lei 'O Kaholoku / *Kumu Hula*: Leialoha Lim Kamakawiwoole, Waianae, Oahu

31. HUALALAI

Hula Halau 'O Kahikilaulani / *Kumu Hula*: Ray Fonseca (*Kane Div.*), Hilo, Hawaii

32. HANAUMA

Pua Alii 'Ilima / *Kumu Hula*: Vicky Holt Takamine, Aiea, Oahu

33. KANI A KA PIO

Halau 'O Ka Ua Kani Lehua / *Kumu Hula*: Johnny Lum Ho (*Kane Div.*), Hilo, Hawaii
(1982 Overall Winners)



Hula Halau 'O Kawaili'ula

Kumu Hula: Chinky Mahoe

Kailua, Oahu



Hula Halau 'O Kahikilaulani

Kumu Hula: Ray Fonseca

Hilo, Hawaii



Ka Uakea 'O Hana Hula Kane

Kumu Hula: Peter Lonoa'e

Hana, Maui



Gentlemen of Maluikēao

Kumu Hula: Palani Kahala

Kahana, Oahu



Ladies of Kahanakealoha

Kumu Hula: Palani Kahala

Kahana, Oahu



Pua Alii Ilima

Kumu Hula: Vicky Holt Takamine

Aiea, Oahu



Halau 'O Ka Ua Kani Lehua

Kumu Hula: Johnny Lum Ho

Hilo, Hawaii



Noelani Hula Studio

Kumu Hula: Noelani Canon

Honolulu, Oahu



Hula Hala'u 'O Leina'ala

Kumu Hula: Lovey Apana

Kapaa, Kauai



Men of Ka'a Mea 'O Hamakani

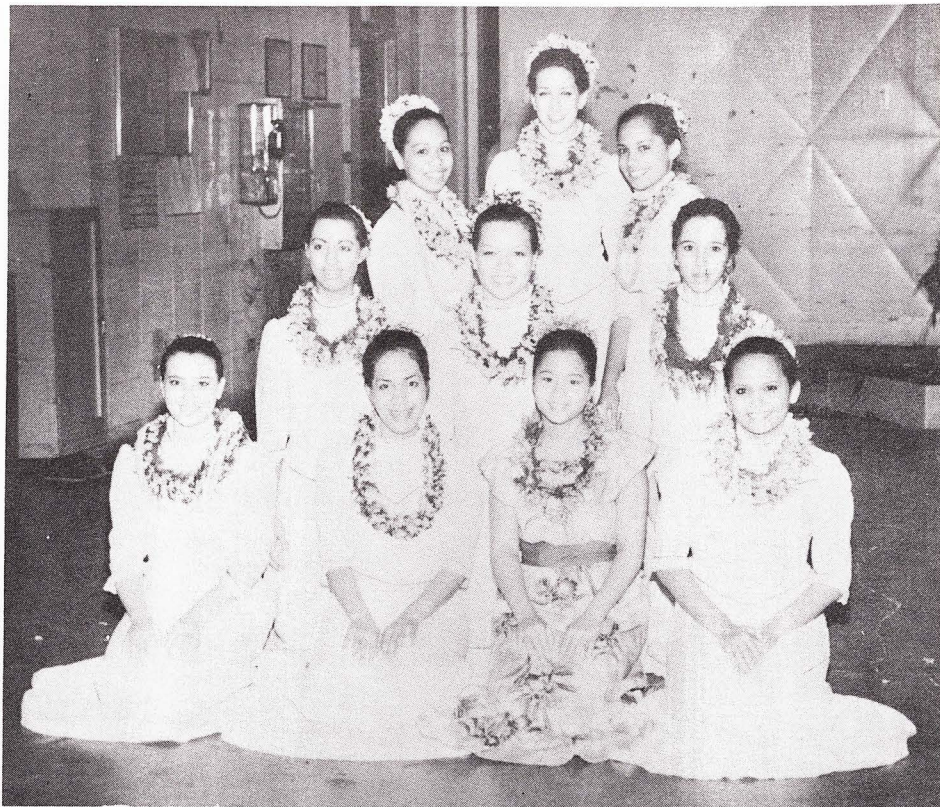
Kumu Hula: Mark Kealii Hoomalu, Jr. Daly City, S.F., California



Pukalani Hula Hale

Kumu Hula: Nina Maxwell

Pukalani, Maui



Hula Halau 'O Kawaili'ula

Kumu Hula: Chinky Mahoe

Kailua, Oahu



Halau 'O Na Maoli Pua

Kumu Hula: Alicia Smith/Mae Loebenstein

Honolulu, Oahu



Hula Halau 'O Waimea

Kumu Hula: Piilani Lua

Hauula, Oahu



Keola 'O Makahinu

Kumu Hula: Al Barcase

Honolulu, Oahu



Na Hula Puamana

Kumu Hula: Puluelo Park

Kailua, Oahu



Na Hula 'O La'i Kealoa

Kumu Hula: Elaine Kaopuiki

Lanai City, Lanai



Keolaulani Halau Olapa 'O Laka

Kumu Hula: Aloha Dalire

Kaneohe, Oahu



Halau Mohala Nima

Kumu Hula: Mapuana DeSilva

Kailua, Oahu



Hui 'O Kamalei

Kumu Hula: Kamalei Sataraka

Honolulu, Oahu



Hula Katalau 'O Kamuela

Kumu Hula: Paleka Leina'ala Mattos

Honolulu, Oahu



Hui Ho'oulu Aloha

Kumu Hula: Cy Bridges

Laie, Oahu

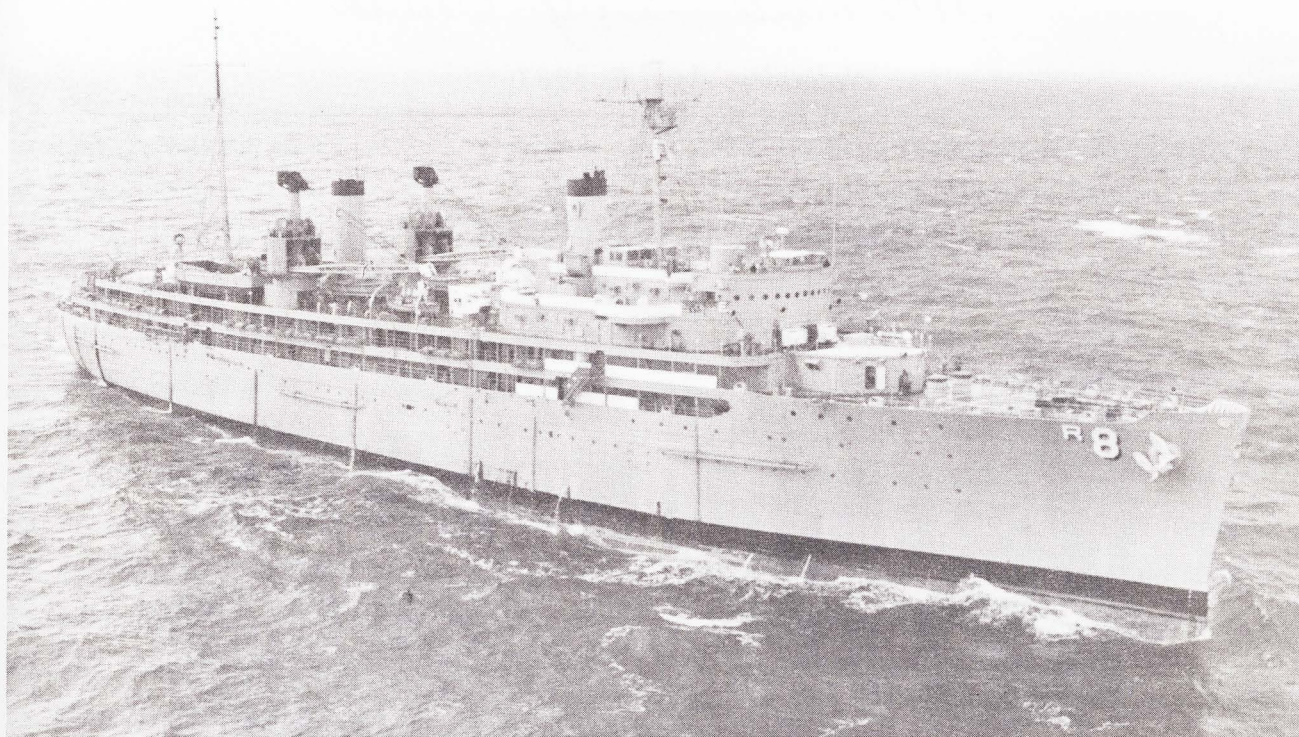


Na Opio 'O Ho'olau

Kumu Hula: Michael Dela Cruz

Kaneohe, Oahu

Visiting Ship
U.S.S. JASON



Hauoli Hula Studio

Kumu Hula: Leilani Sharpe Mendez

Honolulu, Oahu

20th ANNUAL MERRIE MONARCH FESTIVAL

Honolulu Boy Choir

Wednesday, April 6, 1983



HALAU KU AIWA KAMAEHU, the hula halau of the Honolulu Boy Choir, will participate in the exhibition portion of the prestigious Merrie Monarch Festival on Wednesday, April 6, 1983 in Hilo.

The halau, organized in 1977 to complement the Honolulu Boy Choir's program and to perpetuate the Hawaiian culture and a greater awareness of hula and its heritage as an art. The halau has grown to become an integral part of the Choir's performances. It is the youngest group of male hula dancers, starting at age 6 thru 12. They have demonstrated their skill and grace as the half-time exhibition entertainment for the King Kamehameha Hula competition, and as the half-time entertainment for the nationally-televised Pro Bowl. They have done many major concerts in Hawaii, as well as, extensive touring throughout the United States; British Columbia, Canada, and Mexico. The Halau has also participated in community and educational functions to motivate the "youths" awareness of their Hawaiian Arts. The Honolulu Boy Choir has been acclaimed as the "pride of Hawaii", surely they share this pride with you, the Honolulu Boy Choir's Halau Ku Aiwa Kamaehu.

20th ANNUAL MERRIE MONARCH FESTIVAL

Royal Parade

Saturday, April 9, 1983

1. Police Escort
2. Hawaii National Guard — Color Guards
3. Hawaii County Band
4. Mayor Herbert Matayoshi
5. Royal Float — Kuhio Chapel
6. Miss Aloha Hula 1982
7. Walter Pacheco
8. 111th Army Band
9. Senior Activities Float
10. Pa'u Unit — Hawaii
11. Boy Scouts
12. Fleet Marine Band of the Pacific
13. Pa'u Unit — Maui
14. Miss Hawaii Filipina
15. Salvation Army —
Kauluwela Mission Corps
16. Girl Scouts
17. Lionel Silva Float
18. Hilo High School Drill Team
19. Hilo High School Majorettes
20. Hilo High School Band
21. Daisy Spalding Float
22. Pa'u Unit — Oahu
23. Junior Miss Sampaguita
24. Nichiren Shoshu of America
25. Aloha Temple Motor Corps
26. Kailua High School Drill Team
27. Kailua High School Majorettes
28. Kailua High School Band
29. Norman Macomber — Keaukaha Golf Club
30. Pa'u Unit — Kauai
31. Miss Hawaii Puerto Rican
32. Tennis Club
33. Waiakea High School Drill Team
34. Waiakea High School Majorettes
35. Waiakea High School Band
36. George DeMello Float
37. Pa'u Float — Molokai
38. Corvette Club
39. Laupahoehoe High School Band
40. Campbell High School
41. Rainbeaus Belles
42. Konawaena High School Drill Team
43. Konawaena High School Majorettes
44. Konawaena High School Band
45. Life Care Center Float
46. Pa'u Unit — Kahoolawe
47. Ahulau Float
48. Pa'u Unit — Ni'ihau
49. Tammy's Float
50. Hamakua County Band
51. Pa'u Unit — Lanai
52. Blue's Float
53. Hawaiian Arabian Horse Association
54. Fire Truck



20th ANNUAL MERRIE MONARCH FESTIVAL

Acknowledgements

County of Hawaii
Hawaiian Airlines
Charles K. Robinson
Quality Inn — Hilo Lagoon Hotel
Naniloa Surf Hotel
Hukilau Hotel
Travelodge
Hilo Hawaiian Hotel
Hilo Motors
Auto Imports
Boone Morrison
Hawaii Printing Corporation
Kurohara's
Ebesu's
JCPenney
HELCO
Bob's Jewelers
Mrs. McDiarmid
International Travel
HT & T
Young Brothers
W. H. Hoffstat
Ben & Company
Agnes Cope
Kimo Turner
Roy Blackshear
Hawaii Tribune-Herald
The Honolulu Advertiser
KIPA
KPUA
KHLO
Royal Adventure Travel
Rosie's Boathouse



20th ANNUAL MERRIE MONARCH FESTIVAL

Chairwoman's Message



Congratulations are long overdue for the major role the State Council on Hawaiian Heritage has played in the revival of the native Hawaiian Arts and Crafts.

It started back in 1968 when the Council held its first workshop in Nanakuli, Oahu. Then in 1969 the Council held workshops and demonstrations in Hilo which were held by the Masters of the different arts at that time. They included Hula Kahiko, chanting in various styles, implement making, kapa making, lei (feather and foliage) making, language, and lauhala weaving. These demonstrations and workshops were held twice yearly. To provide continuity, the Culture and Arts Division of the Department of Parks and Recreation, County of Hawaii provided classes throughout the year.



In the early 70's the Hilo Community College obtained monies from the Federal Government to start a Hawaiian Studies program. This helped to broaden the base of the present cultural revival in Hilo.

It is to King David Kalakaua that we need to credit the present-day revival of Hawaiian culture and arts. This revival is a reflection of an earlier Hawaiian Renaissance that reached its greatest height during his reign. It was also during this period that 300 ancient hulas were revived. Himself an artist of great and diverse talents, Kalakaua can be likened to Michaelangelo of the great European Renaissance. This Hawaiian Renaissance Man's enthusiasm and interest in Hawaiian culture is his legacy to his people.

In this spirit the Merrie Monarch Festival has tried to duplicate what King David Kalakaua did for the arts. We extend our sincerest Mahalo A Nui Loa to the State Council on Hawaiian Heritage in initiating the start of the "Second Hawaiian Renaissance."

Me Ke Aloha Pumehana

Aunty Dottie



**YOU
ARE
Beautiful
TOO**

Best wishes for every success
here on the most beautiful
island on earth.



HAWAIIAN AIR