

UNIVERSITY OF HAWAII LIBRARY

TWENTY NINTH ANNUAL

Merrie Monarch Festival



Hula is the Language of the Heart & Therefore the
Heartbeat of the Hawaiian People.

Kalakaua Rex

A P R I L 1 9 - 2 5 , 1 9 9 2

Naun
GV
1796
.H8
M47a
29th
1992



Chairwoman's Message

King David Kalakaua was a fun loving King, and music and hula were part of the joy of life - and part of his Hawaiian heritage. He brought about the first Hawaiian renaissance, a revival of Hawaiian traditions, culture and arts, particularly music. Most especially, he revived the hula, the beautiful traditional dance which had been endangered by rampant missionary morality for decades.

His desire was to perpetuate Hawaiian cultural traditions and give his people a sense of pride in them, which led to a full flowering of the hula. To him and his people, the hula was a beautiful, joyful and significant part of their heritage.

The King was also a gifted musician and composer of songs.

This year, we wish to pay tribute to Hawaiian music and musicians.

'O au me ka ha'aha'a

Dottie Thompson

Dottie Thompson

[11th Annual Coverage by KITV]

Acknowledgements

County of Hawaii (Co-sponsor)
Hawaiian Airlines (Co-sponsor)
First Hawaiian Bank (Co-sponsor)
Abigail Kekaulike Kawanakoa Foundation
Hawaii Visitors Bureau
Bryan Robertson
Waiakea Villas Hotel
Hale Lua Hawaii
Yamada Transfer
Big Island Moving & Draying Inc.
Hawaii Printing Corporation
Doreen McDiarmid
Lehua Jaycees
Glenn V. Reflections
East Hawaii Kiwanis

Travel Women of Hawaii, Hawaii Chapter
Professional Secretaries Institute
Hawaii Tribune-Herald
West Hawaii Today
Honolulu Advertiser
Honolulu Star-Bulletin
Office of Hawaiian Affairs
KCCN
Big Island City Mazda
Orchid Isle Motors
Bragado Bus Service
Keia Cordeiro
J.C. Penneys
Kilauea Art Studio

29th ANNUAL MERRIE MONARCH FESTIVAL

The Royal Court



King William Kaleikuiwa Lyman

Queen Elaine Pomaika'inani Searle

Counselor William Kaawaloa

Kahu Rev. Minnie Kaawaloa

Chanter Fel Kahakelii

Pulo'ilo'u Mike Smith

Princess Liliuokalani (heir apparent)
Ui'lani Victor

Lady-in-Waiting Moana Victor

Kahili Bearers

Garrett Peralto

Kalani Hauanio

Kahooahano Victor

Alika Cullen

Conch Shell

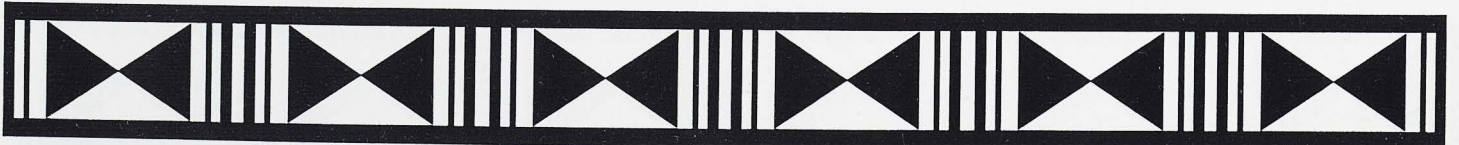
Kawika Cabebe

Mahiai Moniz

Ikaika Wakayama

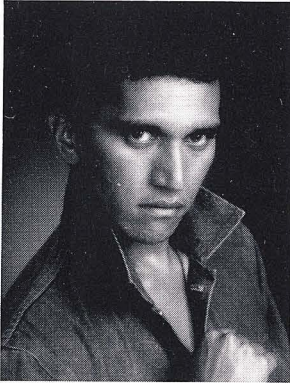
William Kaleikuiwa Lyman is a retired Police Lieutenant and owner of Lyman's Investigations, a private detective agency. He was educated at Kamehameha School for Boys, Hawaii Community College and the University of Hawaii at Hilo. He is married and has three sons.

Elaine Gwendolyn Pomaika'inani (Ke'a) Searle, Jr., is presently employed at Labor Services as Personnel Director. She was educated at St. Francis Convent School, BYU-Hawaii and graduated from Honolulu Business College. She is married to Theodore "Pump" Searle, Jr. and they have three sons, one daughter and three grandchildren.



Dedication

The 29th Annual Merrie Monarch Festival is dedicated
to the memory of our beloved *kumu hula*—



EHULANI LUM

Kaulana Nā Pua 'O Hawaii
Hayward, California

PALANI KAHALA

The Ladies of Kahanakealoha
and The Gentlemen of Maluikēao
Honolulu, Oahu



and to our dear friend
(House Musician)

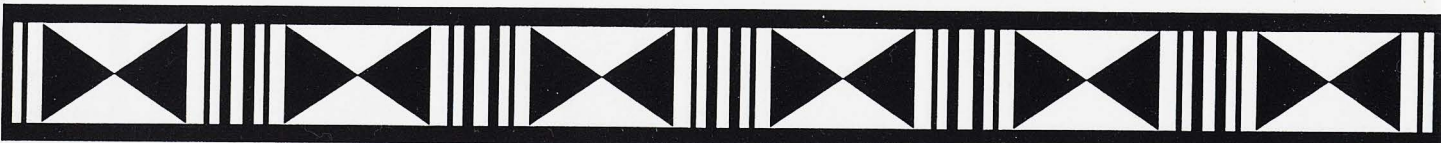
KEKUA FERNANDES



In Concert

BUNNY BROWN & SONS
HĀLAU 'O KEKUIHI
TA PAHU 'O KAHIKI

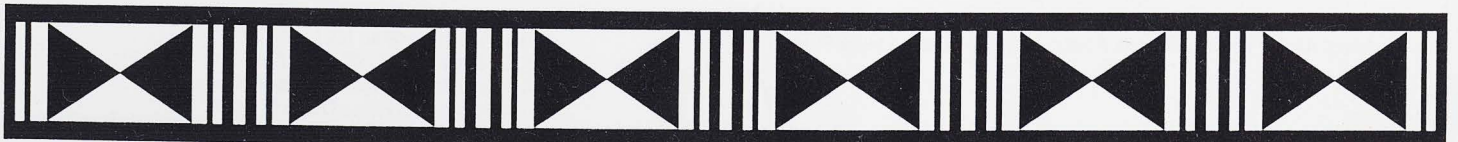
Wednesday, April 22nd, 1992
Edith Kanakaole Tennis Stadium



29th ANNUAL MERRIE MONARCH FESTIVAL

Schedule of Events

SUNDAY, APRIL 19	COCONUT ISLAND (MOKUOLA) Emcee - Keoni Fujitani 11:00 a.m. - Something Special 12:00 noon - Nawai 1:00 p.m. - Alberta & Alvin Kalima	2:00 p.m. - Darlene & J.J. Ahuna 3:00 p.m. - Kamelamela Ohana 4:00 p.m. - Kolea (The Kekaulua's)
MONDAY, APRIL 20	WAIAKEA VILLAS HOTEL (E KIPA MAI) 12:00 noon - Hālau Hula O Kahikilaulani	
TUESDAY, APRIL 21	WAIAKEA VILLAS HOTEL (E KIPA MAI) 12:00 noon - Hula Hālau O Hilo Hanakahi	
WEDNESDAY, APRIL 22	SEVEN SEAS LUAU HOUSE 9:00 a.m. - 5:00 p.m. - Hawaiian Arts & Crafts EDITH KANAKAOLE TENNIS STADIUM 6:00 p.m. - Hawaii County Band 7:00 p.m. - Royal Court enters 7:15 p.m. - National Anthem, Hawai'i Pono'i - Hawaii County Band	WAIAKEA VILLAS HOTEL (E KIPA MAI) 9:00 a.m. - 3:00 p.m. - Arts & Crafts Fair 12:00 noon - Hula Hālau Na Pua Ui 7:25 p.m. - Pule - Rev. George DeCosta 7:30 p.m. - Hālau O Kekuhi 8:00 p.m. - Bunny Brown & Sons in concert 9:00 p.m. - Ta Pahu 'O Kahiki
THURSDAY, APRIL 23	SEVEN SEAS LUAU HOUSE 9:00 a.m. - 5:00 p.m. - Hawaiian Arts & Crafts EDITH KANAKAOLE TENNIS STADIUM 6:00 p.m. - Royal Court enters 6:15 p.m. - National Anthem, Hawai'i Pono'i - Carmen Hulu Lindsey	WAIAKEA VILLAS HOTEL (E KIPA MAI) 9:00 a.m. - 3:00 p.m. - Arts & Crafts Fair 12:00 noon - Na Lima Lele O Na Kupuna 6:25 p.m. - Pule 6:30 p.m. - Miss Aloha Hula Competition
FRIDAY, APRIL 24	SEVEN SEAS LUAU HOUSE 9:00 a.m. - 5:00 p.m. - Hawaiian Arts & Crafts PIER I - NAVY SHIP 11:00 a.m. - Hula Hālau Na Pua Ui EDITH KANAKAOLE TENNIS STADIUM 6:00 p.m. - Royal Court enters 6:15 p.m. - National Anthem, Hawai'i Pono'i - Carmen Hulu Lindsey	WAIAKEA VILLAS HOTEL (E KIPA MAI) 9:00 a.m. - 3:00 p.m. - Arts & Crafts Fair 12:00 noon - Hālau Hula O Puna 6:25 p.m. - Pule 6:30 p.m. - Hula Kahiko (Kāne & Wahine) Competition
SATURDAY, APRIL 25	MOOHEAU PARK 8:00 a.m. - 4:00 p.m. - Moku O Keawe Cultural Fair SEVEN SEAS LUAU HOUSE 9:00 a.m. - 4:00 p.m. - Hawaiian Arts & Crafts EDITH KANAKAOLE TENNIS STADIUM 5:30 p.m. - Royal Court enters 5:45 p.m. - National Anthem, Hawai'i Pono'i - Carmen Hulu Lindsey	DOWNTOWN HILO 10:30 a.m. - Royal Parade WAIAKEA VILLAS HOTEL (E KIPA MAI) 9:00 a.m. - 3:00 p.m. - Arts & Crafts Fair 5:55 p.m. - Pule 6:00 p.m. - Hula 'Auana (Kāne & Wahine) Competition Introduction of Kumu Hula Presentation of Awards



Past Contest Winners

1971

Implements Div./Modern Div./Overall Winners
Pauline Kekahuna - Hauoli Hula Studio
Miss Aloha Hula Aloha Wong (Keolalaulani Hula Studio)

1972

Ancient Division / Modern Division Johnny Lum Ho Hula Studio
Implements Division Puamana Hula Studio
Miss Aloha Hula Aulani Newalu (Hālau 'O Kahealani)

1973

Hula Kahiko / Hula 'Auana / Implements / Overall Winner
Pauline Kekahuna - Hauoli Hula Studio
Miss Aloha Hula Kalani Kalawa (Louise Kaleiki Hula Studio)

1974

Hula Kahiko / Hula 'Auana / Implements / Overall Winner
Louise Kaleiki Hula Studio
Miss Aloha Hula Dee Dee Aipolani (Piilani Watkins Hula Studio)

1975

Hula Kahiko (tie)
'Ilima Hula Studio & Pauline Kekahuna - Hauoli Hula Studio
Hula 'Auana 'Ilima Hula Studio
Implements Keolalaulani Hula Studio
Miss Aloha Hula Leimomi Maria ('Ilima Hula Studio)

1976

Hula Kahiko 'Ilima Hula Studio
Hula 'Auana Alicia K. Smith Hula Studio
Kāne Division Na Kamalei 'O Lililehua / *Overall* 'Ilima Hula Studio
Miss Aloha Hula (tie) Ululani Duenas ('Ilima Hula Studio)
Sheryl Nalani Guernesey (Kaleo 'O Nani Loa Studio)

1977

(Kāne) Hula Kahiko / Overall Hālau 'O Kekuhi
Hula 'Auana Na Kamalei
(Wahine) Hula Kahiko / Overall Na Pualei 'O Likolehua
Hula 'Auana Johnny Lum Ho Hula Studio
Miss Aloha Hula Pualani Chang (Pukaikapua'okalani Studio)

1978

(Kāne) Hula Kahiko / Hula 'Auana / Overall Waimapuna
(Wahine) Hula Kahiko Johnny Lum Ho Hula Studio
Hula 'Auana / Overall Na Pualei 'O Likolehua
Miss Aloha Hula Regina Makaikai Igarashi (Keolalaulani Hula Studio)

1979

(Kāne) Hula Kahiko Nā Wai Ehā 'O Puna
Hula 'Auana / Overall Waimapuna
(Wahine) Hula Kahiko / Overall Hauoli Hula Studio
Hula 'Auana (tie) Hauoli Hula Studio & Na Pualei 'O Likolehua
Miss Aloha Hula Jody Imehana Mitchell (Ka Pa'u O Hiiaka)

1980

(Kāne) Hula Kahiko Waimapuna / *Hula 'Auana* Nā Wai Ehā 'O Puna
Overall (tie) Waimapuna & Nā Wai Ehā 'O Puna
(Wahine) Hula Kahiko (tie)
Hauoli Hula Studio & Johnny Lum Ho Hula Studio
Hula 'Auana / Overall Johnny Lum Ho Hula Studio
Miss Aloha Hula Kaula Kamahale (Johnny Lum Ho Hula Studio)

1981

(Kāne) Hula Kahiko / Hula 'Auana / Overall Nā Wai Ehā 'O Puna
(Wahine) Hula Kahiko / Overall Hālau 'O Nā Maoli Pua
Hula 'Auana (tie)
Johnny Lum Ho Hula Studio & Hālau 'O Nā Maoli Pua
Miss Aloha Hula Brenda Alidon (Johnny Lum Ho Hula Studio)

1982

(Kāne) Hula Kahiko / Hula 'Auana / Overall
Hula Hālau O Ka Ua Kani Lehua
(Wahine) Hula Kahiko Hālau Mōhala 'Ilima
Hula 'Auana Hālau 'O Kahanuola
Overall Hula Hālau O Ka Ua Kani Lehua
Miss Aloha Hula Dayna Kanani Oda (Hula Hālau Ka Ua Kani Lehua)

1983

(Kāne) Hula Kahiko / Hula 'Auana / Overall
Hula Hālau O Ka Ua Kani Lehua
(Wahine) Hula Kahiko Hālau Mōhala 'Ilima
Hula 'Auana / Overall Hula Hālau O Ka Ua Kani Lehua
Miss Aloha Hula Geola Pua (Hula Hālau O Ka Ua Kani Lehua)

1984

(Kāne) Hula Kahiko / Hula 'Auana / Overall Nā Wai Ehā 'O Puna
(Wahine) Hula Kahiko / Hula 'Auana / Overall Hālau Mōhala 'Ilima
Miss Aloha Hula Twyla Ululani Mendez (Hauoli Hula Hālau)

1985

(Kāne) Hula Kahiko / Hula 'Auana / Overall Nā Wai Ehā 'O Puna
(Wahine) Hula Kahiko / Hula 'Auana / Overall
The Ladies of Ke'ala 'O Ka Lauwa'e
Miss Aloha Hula Healani Youn (The Ladies of Ke'ala 'O Ka Lauwa'e)

1986

(Kāne) Hula Kahiko / Hula 'Auana / Overall Men of Waimapuna
(Wahine) Hula Kahiko / Overall Keolalaulani Olapa 'O Laka
Hula 'Auana Hula Hālau 'O Kamuela
Miss Aloha Hula Leimomi Nuuhiwa (The Ladies of Ke'ala 'O Ka Lauwa'e)

1987

(Kāne) Hula Kahiko / Hula 'Auana / Overall
Hula Hālau O Ka Ua Kani Lehua
(Wahine) Hula Kahiko Nā Wai Ehā 'O Puna
Hula 'Auana (tie) Hālau Mōhala 'Ilima & Hula Hālau O Kawaii'ulā
Overall Keolalaulani Olapa O Laka
Miss Aloha Hula Lisa Kuuipo Doi (Hula Hālau O Ka Ua Kani Lehua)

1988

(Kāne) Hula Kahiko / Hula 'Auana / Overall
Hula Hālau O Ka Ua Kani Lehua
(Wahine) Hula Kahiko/Overall Hula Hālau O Ka Ua Kani Lehua
Hula 'Auana Hula Hālau O Kamuela
Miss Aloha Hula Sheldeen Kaleimomi Kaleohano (Hula Hālau O Kahikilaulani)

1989

Kāne (Hula Kahiko) Hālau Hula O Kahikilaulani
Kāne (Hula 'Auana) Men of Nā Kamalei
Overall Hula Hālau 'O Kawaii'ulā
Wahine (Hula Kahiko) Hula Hālau O Nā Maoli Pua
Wahine (Hula 'Auana) Kealiikaapunihonua Ke'ena A'o Hula
Overall Hula Hālau O Nā Maoli Pua
Miss Aloha Hula Pi'ilani Smith (Hula Hālau O Nā Maoli Pua)

1990

(Kāne) Hula Kahiko / Hula 'Auana / Overall
Hula Hālau 'O Kawaii'ulā
(Wahine) Hula Kahiko / Overall Hālau 'o Nā Maoli Pua
(Wahine) Hula 'Auana Hālau Hula 'o Kahikilaulani
Miss Aloha Hula Natalie Noelani Ai (Hālau Hula Olana)

1991

(Kāne) Hula Kahiko Hālau Hula 'O Kahikilaulani
Hula 'Auana Hālau Hula O Ka Ua Kani Lehua
Overall Hālau Hula O Ka Ua Kani Lehua
(Wahine) Hula Kahiko Hula Hālau 'O Kamuela
Hula 'Auana Hālau Na Lei 'O Kaholoku
Overall Hula Hālau 'O Kamuela
Miss Aloha Hula Kapualoekoekalaniaka Dalire
(Keolalaulani Hālau Olapa O Laka)

29th ANNUAL MERRIE MONARCH FESTIVAL

Contest Songs

(Wahine)

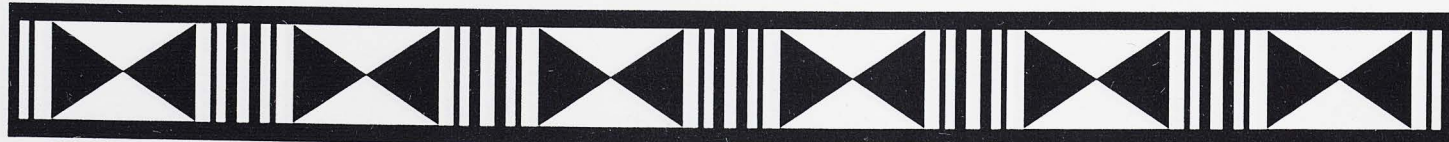
ALOHA'IA HAWAI'I E KE ALI'I NUI *Hawai'i is Loved by the Great Chief*

<i>'Auhea wale e Hawai'i</i>	Attention, Hawai'i
<i>Ka heke o na mokupuni,</i>	(You are) the crown of the Islands,
<i>Eia 'o Maui o Kama</i>	Here is Maui of Kama
<i>Kepaniwai a 'o na hono,</i>	Kepaniwai and the bays,
<i>Ho'i ka wai i 'Iao</i>	And of course the water of 'Iao
<i>Pipi ka huna i Kanaloa.</i>	The fine rain sprinkles on Kanaloa,
<i>Ke loku a'ela i Molokini</i>	However, Molokini receives a downpour
<i>Ua hiki ka hoku i Lana'i,</i>	Hoku arrives at Lana'i,
<i>Ua ana puni'ia e Kawela</i>	Completely covered by Kawela
<i>Malamalama i O'ahu,</i>	Making it clear to O'ahu
<i>'Ike'ia Kaua'i o Mano</i>	As Kaua'i of Mano is seen
<i>Ho'i iho ka mana'o i lehua,</i>	The memory of lehua also returns,
<i>Ka latitu o Ni'ihau</i>	Which is at the same latitude as Ni'ihau
<i>Holapu ke aloha i Ka'ula,</i>	Fond regards is extended to Ka'ula,
<i>Ha'ina ka inoa ka wahine</i>	Sing again the name song for nobility
<i>Kuini Pi'olani he inoa.</i>	Queen Pi'olani, this is your name song.

(Kāne)

MELE NO KALAKAUA *A Song for Kalakaua*

<i>He mele he inoa no keonaona</i>	A name song for keonaona
<i>Ka Hae kalaunu i haleali'i</i>	The crowned symbol of the royal residence
<i>He ali'i na maka o kauila</i>	The eyes of flashing lightning is a chiefly symbol.
<i>E 'anapa mai la i ka pae 'opua</i>	Flashing in the clouds
<i>Ku'u pua lilia la i Wailuku</i>	It is my lily who is there at Wailuku
<i>Ua inu i ka wai o 'Iao</i>	Who drank the water of 'Iao
<i>Ua ao ka ua e ka inuwai</i>	The rain cloud was brought by the inuwai breeze
<i>Ua pa ka makani he kilipohe</i>	The kilipohe wind blew gently
<i>He po'e mai au no Hawai'i</i>	I am indeed from Hawai'i
<i>He makahiapo kapu na Kumukahi</i>	A revered first born from Kumukahi
<i>Ho'okahi lihau pua i Kaua'i</i>	There is a special misty flower on Kaua'i
<i>Hu'e lapa koni hu'e i 'ane'i</i>	Who is pushing, throbbing, quickly moving right here
<i>la ne mai 'oe me minei</i>	It is you who must be with me
<i>He wai hau ea na ke kanaka</i>	The cool fresh water spray for man
<i>Akaka wale no Haleakala</i>	Haleakala is indeed visibly clear
<i>Ka uwe a ke kini o Ko'olau</i>	The multitudes of Ko'olau cry out
<i>Lalau i ka pua keali'i</i>	Searching aimlessly for the royal offspring
<i>La'au kunihi alo i ke kona</i>	In the forested precipice facing leeward
<i>He mea a'e ale au no ka moana</i>	I am but another wave from the ocean
<i>Alamihī o ka lae 'ili'ili</i>	Or a crab from the rocky beach
<i>Ilihia i ka pa a ka pu'ewai</i>	Overcome by the breeze of the pu'ewai
<i>Ka makani anu o ku'u 'aina</i>	The cold wind of my land
<i>Ha'ina 'ia mai ka puana</i>	This song is again sung for you
<i>E ola ku'u lani milimili.</i>	A good life to you my beloved chief.



29th ANNUAL MERRIE MONARCH FESTIVAL

Nā Kumu Hula



KAPU KINIMAKA-ALQUIZA
Nā Hula 'O Kaohikukapulani
Hanapepe, Kauai



BEVERLY HEALANI APANA MURAOKA
Kerrienne Akio Leina'ala Muraoka
Healani's Hula Hālau
Kapa'a, Kauai



AL MAKIHINU BARCARSE
Hālau Hula 'O Ka Ua Kilihune
Kaneohe, Oahu



MĀPUANA de SILVA
Hālau Mōhala 'Ilima
Kailua, Oahu



OLANA & HOWARD A'I
Hālau Hula Olana
Honolulu, Oahu



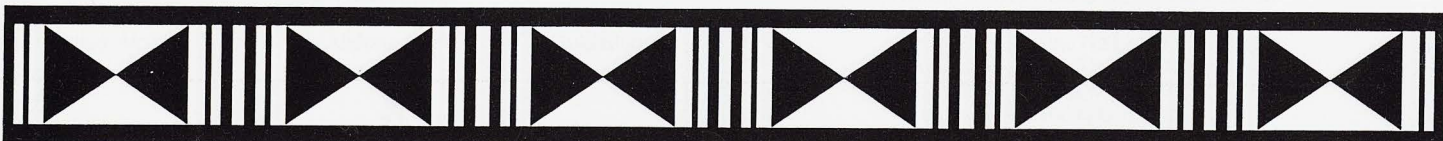
LEHUA MATSUOKA
LIKA MOON
Hālau Hula 'O Lanai Hale
Lanai City, Lanai



PALEKA LEINA'ALA MATTOS
Hula Hālau 'O Kamuela
Waimanalo / Kalihi, Oahu



KUNEWA MOOK
Hula Hālau 'O Kamuela
Waimanalo / Kalihi, Oahu



29th ANNUAL MERRIE MONARCH FESTIVAL

Nā Kumu Hula



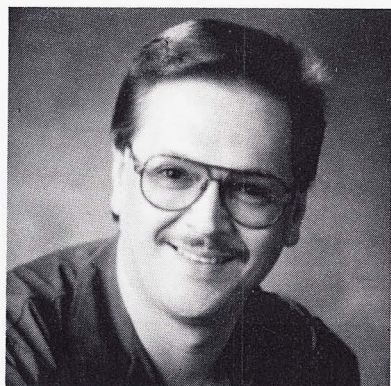
LEIMOMI HO
Keali'ika'apunihonua Ke'ena A'o Hula
Honolulu, Oahu



NINA & HI'ILEI MAXWELL
Pukalani Hula Hale
Pukalani, Maui



KAULANA KASPAROVITCH
Lehua Dance Co.
Honolulu, Oahu



GLENN KELENA VASCONCELLOS
Hālau 'O Ke Ānuenue
Hilo, Hawaii



RAY FONSECA
Hula Hālau 'O Kahikilaulani
Hilo, Hawaii



ELLEN CASTILLO
Puka'ikapuaokalani Hula Hālau
Kailua, Oahu



RAYLENE HA'ALELEA LANCASTER
Nā Huapala 'O Hawaii
Hālau 'O Ha'alelea
Fairfield, California

NOT PICTURED:

ALOHA DALIRE
Keolaulani Hālau Olapa 'O Laka
Kaneohe, Oahu

MICHAEL dela CRUZ
Na 'Opio 'O Ko'olau Hula Hālau
Kaneohe, Oahu

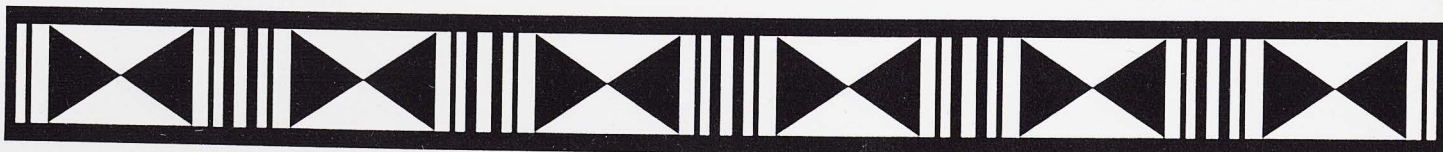
MOANA DUDOIT
Moana's Hula Hālau O Molokai
Kaunakakai, Molokai

SISSY KAIO
Hula Hālau 'O Lilinoe
Carson, California

JOHNNY LUM HO
Hula Hālau 'O Ka Ua Kani Lehua
Hilo, Hawaii

THADDIUS WILSON/O'BRIAN ESELU
Nā Wai Ehā 'O Puna
Waianae, Oahu

NANI LIM YAP/DONNA LIM AMINA
Nā Lei O Kaholoku
Waimea, Hawaii

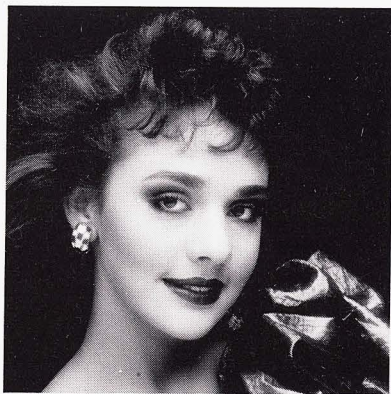


29th ANNUAL MERRIE MONARCH FESTIVAL

Miss Aloha Hula Contestants



ROXANNE LEOPOLDINO
Hula Hālau 'O Kahikilaulani
Hilo, Hawaii



I'ILANI WHITEHURST
Puka'ikapuaokalani Hula Hālau
Kailua, Oahu



LOKEANNA VIERRA
Keali'ika'apunihonua Ke'ena A'o Hula
Honolulu, Oahu



FRANCES KAHEALANI FERRARA
Healani's Hula Hālau
Kapa'a, Kauai



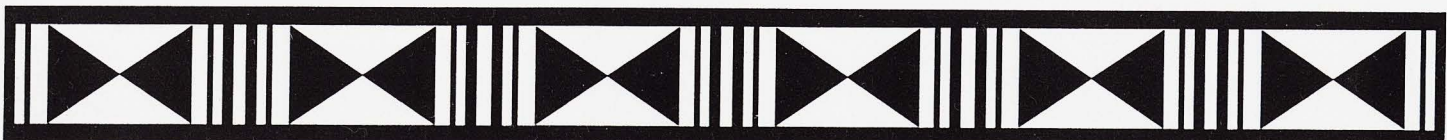
NOELANI KAMANAO
Hula Hālau 'O Kamuela
Waimanalo / Kalihi, Oahu



JODI LEHUANANI UEMURA
Pukalani Hula Hale
Pukalani, Maui



MAY HAUNANI BALINO
Nā 'Opio 'O Ko'olau Hula Hālau
Kaneohe, Oahu



29th ANNUAL MERRIE MONARCH FESTIVAL

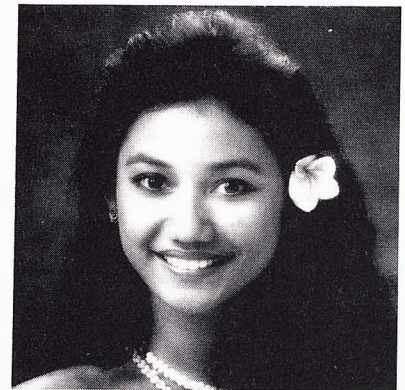
Miss Aloha Hula Contestants



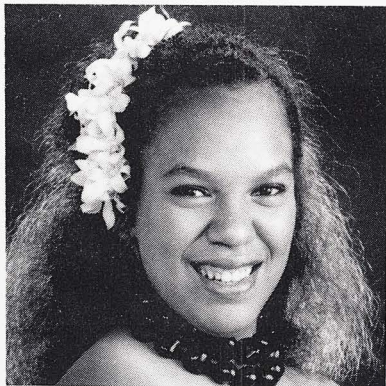
REBECCA KAHIKILANI KAY
Nā Lei O Kaholoku
Waimea, Hawaii



**KAWAIALAKAOIONAPUAOPI'ILANI
LINDSEY NAKASONE**
Hula Hālau 'O Ka Ua Kani Lehua
Hilo, Hawaii



KAUIMAIOKALANIAKEA DALIRE
Keolaulani Hālau Olapa 'O Laka
Kaneohe, Oahu



KARLA KANOLEHUA KAHAWAIOLA'A
Hālau 'O Ke Ānuenuē
Hilo, Hawaii



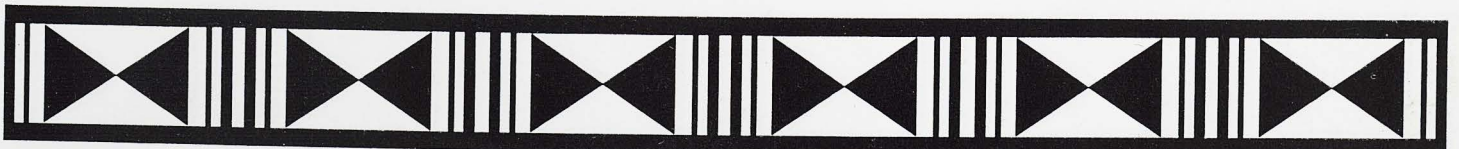
TAMI KAMAILE NAKAMURA
Hālau Hula 'O Ka Ua Kilihune
Kaneohe, Oahu



TRACIE KA'ONOHILANI FARIAS
Nā Wai Ehā 'O Puna
Waianae, Oahu



LIZ MADRONA
Hālau Mōhala 'Ilima
Kailua, Oahu

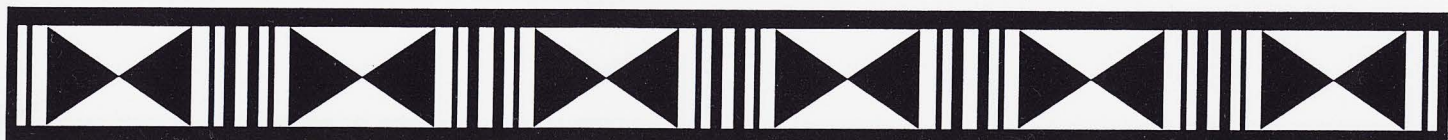


29th ANNUAL MERRIE MONARCH FESTIVAL

Miss Aloha Hula Hula Kahiko

Thursday, April 23, 1992

1. REBECCA KAHIKILANI KAY — Nā Lei O Kaholoku, Waimea, Hawaii
"KA UA 'AI AWA O KA MANANUI"
2. MAY HAUNANI BALINO — Na 'Opio 'O Ko'olau Hula Hālau, Kaneohe, Oahu
"HE NANI HAUPU"
3. TAMI KAMAILE NAKAMURA — Hālau Hula 'O Ka Ua Kilihune, Kaneohe, Oahu
"KAIMŪ"
4. KARLA KANOELEHUA KAHAWAI'OLA'A — Hālau 'O Ke Ānuenue, Hilo, Hawaii
"NA HOME O LILIUOKALANI"
5. JODI LEHUANANI UEMURA — Pukalani Hula Hale, Pukalani, Maui
"KAHIKINUI"
6. FRANCES FARRARA — Healani's Hula Hālau, Kapaa, Kauai
"PIHANAKALANI"
7. TRACIE KA'ŌNOHILANI FARIAS — Nā Wai Ehā 'O Puna, Waianae, Oahu
"KA HAE"
8. I'ILANI WHITEHURST — Puka'ikapuaokalani Hula Hālau, Kailua, Oahu
"HE MELE HULU NO KAPIOLANI I WAIMANALO"
9. LIZ MADRONA — Hālau Mōhala 'Ilima, Kailua, Oahu
"PĀ KA MAKANI"
10. ROXANNE LEOPOLDINO — Hula Hālau 'O Kahikilaulani, Hilo, Hawaii
"KE WELINA"
11. NOELANI KAMANA'O — Hula Hālau 'O Kamuela, Waimanalo / Kalihi, Oahu
"KILAEUA"
12. KAWAIALAKAOIONAPUAOPI'ILANI LINDSEY NAKASONE — Hula Hālau 'O Ka Ua Kani Lehua, Hilo, Hawaii
"E ALOHA E KA UKU I KA LAUOHO PUKALAKI"
13. LOKEANNA VIERRA — Keali'ika'apunihonua Ke'ena A'o Hula, Honolulu, Oahu
"HE MELE KEIA NO KA MAKUA MAULOA"
14. KAUIMAIOKALANIAKEA DALIRE — Keolaulani Hālau Olapa 'O Laka, Kaneohe, Oahu
"AIA I NIIHAU TUU PAWEHE"

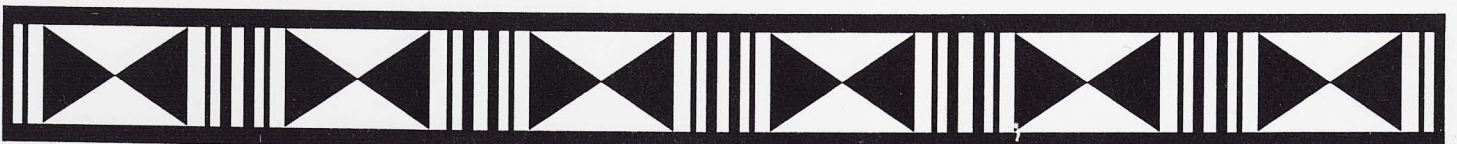


29th ANNUAL MERRIE MONARCH FESTIVAL

Miss Aloha Hula *Hula 'Auana*

Thursday, April 23, 1992

1. REBECCA KAHIKILANI KAY — Nā Lei O Kaholoku, Waimea, Hawaii
"KUKUNA O KA LA"
2. MAY HAUNANI BALINO — Na 'Opio 'O Ko'olau Hula Hālau, Kaneohe, Oahu
"KAAHUMANU ALI'I"
3. TAMI KAMAILE NAKAMURA — Hālau Hula 'O Ka Ua Kilihune, Kaneohe, Oahu
"KILOHI I KA NANI OKA MAHINA"
4. KARLA KANOELEHUA KAHAWAI'OLA'A — Hālau 'O Ke Ānuenue, Hilo, Hawaii
"KU'U PUA I PAOAKALANI"
5. JODI LEHUANANI UEMURA — Pukalani Hula Hale, Pukalani, Maui
"MOKU O KEAWE"
6. FRANCES FARRARA — Healani's Hula Hālau, Kapaa, Kauai
"KE AHI WELA"
7. TRACIE KA'ŌNOHILANI FARIAS — Nā Wai Ehā 'O Puna, Waianae, Oahu
"PO LA'I LA'I"
8. I'ILANI WHITEHURST — Puka'ikapuaokalani Hula Hālau, Kailua, Oahu
"PUA 'ALA AUMOE"
9. LIZ MADRONA — Hālau Mōhala 'Ilima, Kailua, Oahu
"HA'A HULA"
10. ROXANNE LEOPOLDINO — Hula Hālau 'O Kahikilaulani, Hilo, Hawaii
"NANI LAWA'I"
11. NOELANI KAMANA'O — Hula Hālau 'O Kamuela, Waimanalo / Kalihi, Oahu
"LEI NANI"
12. KAWAIALAKAOIONAPUAOPI'ILANI LINDSEY NAKASONE — Hula Hālau 'O Ka Ua Kani Lehua, Hilo, Hawaii
"KA'IULANI"
13. LOKEANNA VIERRA — Keali'ika'apunihonua Ke'ena A'o Hula, Honolulu, Oahu
"NA LEI HULU MAKUA"
14. KAUIMAIOKALANIAKEA DALIRE — Keolalaulani Hālau Olapa 'O Laka, Kaneohe, Oahu
"PUPU 'O NI'IHAU"

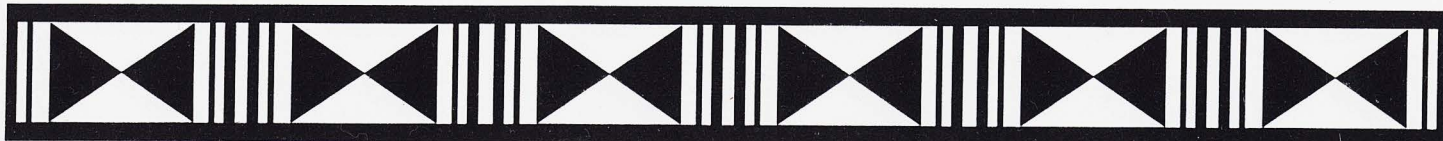


29th ANNUAL MERRIE MONARCH FESTIVAL

Hula Kahiko *Kāne & Wahine Group Hula*

Friday, April 24, 1992

1. NA 'OPIO 'O KO'OLAU HULA HĀLAU — Michael dela Cruz, Kaneohe, Oahu
"IKE KANI A'O NOHILI"
2. NĀ HUAPALA 'O HAWAII, HĀLAU 'O HA'ALELEA — Raylene Lancaster, Fairfield, California
"AUHEA 'O MANU O'Ō Ā'Ā HOALOHA O KA UKA"
3. NĀ HULA 'O KAOHIKUKAPULANI — Kapu Kinimaka-Alquiza, Hanapepe, Kauai (Kāne)
"KIHANUILULUMOKU"
4. HULA HĀLAU 'O LILINOE — Sissy Kaio, Carson, California
"KŪ I WAILUA"
5. MOANA'S HULA HĀLAU O MOLOKAI — Moana Dudoit, Kaunakakai, Molokai
"MAKANI O MAKANALUA"
6. KEALI'IKA'APUNIHONUA KE'ENA A'O HULA — Leimomi Ho, Honolulu, Oahu (Kāne)
"A KONA HEMA 'O KA LANI"
7. HULA HĀLAU 'O KA UA KANI LEHUA — Johnny Lum Ho, Hilo, Hawaii
"HANOHANO O LEHUA AU IKE KAI LA"
8. HĀLAU HULA 'O LANA'I HALE — Lehua Matsuoka / Lika Moon, Lanai City, Lanai
"MELE LANA'I"
9. HULA HĀLAU 'O KAHIKILAULANI — Ray Fonseca, Hilo, Hawaii
"KONA KAI OPUA"
10. NĀ WAI EHĀ 'O PUNA — Thaddius Wilson / O'Brian Eselu, Waianae, Oahu (Kāne)
"MALIE O MAUI"
11. HĀLAU 'O KE ĀNUENUE — Glenn Vasconcellos, Hilo, Hawaii
"KE ANU I OLA'A"
12. HEALANI'S HULA HĀLAU — Beverly Muraoka, Kapaa, Kauai
"KUIKAHI PANA'I LIKE"
13. HULA HĀLAU 'O KAMUELA — Paleka Leina'ala Mattos / Edward Kunewa Mook, Waimanalo / Kalihi, Oahu
(Kāne)
"HE MELE HULU NO KAPI'OLANI I MOLOLANI"
14. HĀLAU HULA OLANA — Olana & Howard Ai, Honolulu, Oahu
"I MAKANA NA'U IA ALOHA"



29th ANNUAL MERRIE MONARCH FESTIVAL

Hula Kahiko *Kāne & Wahine Group Hula*

Friday, April 24, 1992

15. HULA HĀLAU 'O KAHIKILAULANI — Ray Fonseca, Hilo, Hawaii (Kāne)
"NO PU TA LA LA LA HIPA"
16. HĀLAU MŌHALA 'ILIMA — Māpuana de Silva, Kailua, Oahu
"A KA LUNA 'O PU'UONIONI"
17. NĀ HULA 'O KAOHIKUKAPULANI — Kapu Kinimaka-Alquiza, Hanapepe, Kauai
"KE KAI O WAIALUA"
18. NA PUA ME KEALOHA — Sissy Kaio, Carson, California (Kāne)
"HE MELE NO KA PO'E KANE KAHIKO"
19. PUKALANI HULA HALE — Nina & Hi'ilei Maxwell, Pukalani, Maui
"KAULUWEHI"
20. LEHUA DANCE CO. — Kaulana Kasparovitch, Honolulu, Oahu
"KAULILUA I KE ANU O WAIALEALE"
21. NA 'OPIO 'O KO'OLAU HULA HĀLAU — Michael dela Cruz, Kaneohe, Oahu (Kāne)
"KOU MA'I HO EO EO"
22. KEALI'IKA'APUNIHONUA KE'ENA A'O HULA — Leimomi Ho, Honolulu, Oahu
"KA'IULANI I AINAHAU"
23. PUKA'IKAPUAOKALANI HULA HĀLAU —Ellen Castillo, Kailua, Oahu
"PI'O MAI NA LANI"
24. KEOLALAULANI HĀLAU OLAPA 'O LAKA — Aloha Dalire, Kaneohe, Oahu
"KA'OHU LEI 'ILIMA A'O HONOLULU"
25. HĀLAU HULA 'O KA UA KILIHUNE — Al Makahinu Barcarse, Kaneohe, Oahu (Kāne)
"HE MELE O NĀ KIA MANU 'O MOLOKAI"
26. HULA HĀLAU 'O KAMUELA — Paleka Leina'ala Mattos / Edward Kunewa Mook, Waimanlo / Kalihi, Oahu
"IA OE E KA LA"
27. NĀ LEI O KAHOLOKU — Nani Lim Yap / Donna Lim Amina, Waimea, Hawaii
"MAI ITALIA KO LEI NANI"
28. HULA HĀLAU 'O KA UA KANI LEHUA — Johnny Lum Ho, Hilo, Hawaii (Kāne)
"HE INOA KEIA NOU E KALANI"

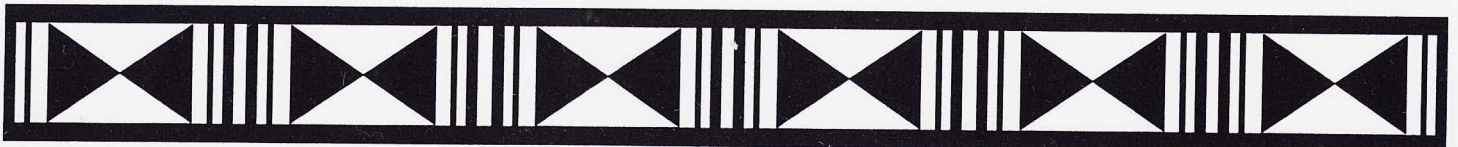


29th ANNUAL MERRIE MONARCH FESTIVAL

Hula 'Auana Kāne & Wahine Group Hula'

Saturday, April 25, 1992

1. NA 'OPIO 'O KO'OLAU HULA HĀLAU — Michael dela Cruz, Kaneohe, Oahu
"HO'OKENA"
2. NĀ HUAPALA 'O HAWAII, HĀLAU 'O HA'ALELEA — Raylene Lancaster, Fairfield, California
"KIMO HULA"
3. NĀ HULA 'O KAOHIKUKAPULANI — Kapu Kinimaka-Alquiza, Hanapepe, Kauai (Kāne)
"IPO HULA"
4. HULA HĀLAU 'O LILINOE — Sissy Kaio, Carson, California
"PUA LILILEHUA"
5. MOANA'S HULA HĀLAU O MOLOKAI — Moana Dudoit, Kaunakakai, Molokai
"LEI PUA KENI KENI"
6. KEALI'IKA'APUNIHONUA KE'ENA A'O HULA — Leimomi Ho, Honolulu, Oahu (Kāne)
"HILI HAMALE"
7. HULA HĀLAU 'O KA UA KANI LEHUA — Johnny Lum Ho, Hilo, Hawaii
"HANOHANO HALEIWA"
8. HĀLAU HULA 'O LANA'I HALE — Lehua Matsuoka / Lika Moon, Lanai City, Lanai
"PUA MĀMANE"
9. HULA HĀLAU 'O KAHIKILAULANI — Ray Fonseca, Hilo, Hawaii
"O KO'U ALOHA IA OE"
10. NĀ WAI EHĀ 'O PUNA — Thaddius Wilson / O'Brian Eselu, Waianae, Oahu (Kāne)
"MAKAHA"
11. HĀLAU 'O KE ĀNUENUE — Glenn Vasconcellos, Hilo, Hawaii
"E NIHI KA HELE"
12. HEALANI'S HULA HĀLAU — Beverly Muraoka, Kapaa, Kauai
"KA NANI 'O KAUAI"
13. HULA HĀLAU 'O KAMUELA — Paleka Leina'ala Mattos / Edward Kunewa Mook, Waimanalo / Kalihi, Oahu
(Kāne)
"KOKE'E"
14. HĀLAU HULA OLANA — Olana & Howard Ai, Honolulu, Oahu
"NONE HULA"

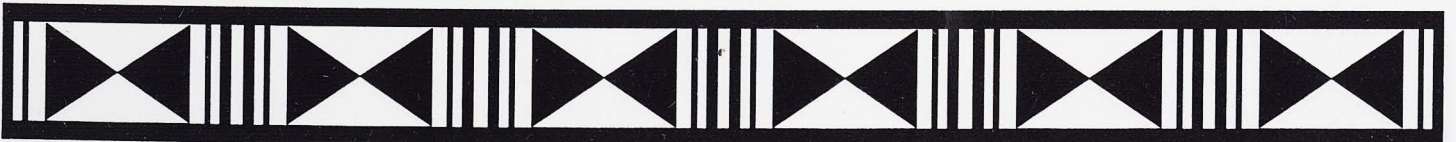


29th ANNUAL MERRIE MONARCH FESTIVAL

Hula 'Auana Kāne & Wahine Group Hula

Saturday, April 25, 1992

15. HULA HĀLAU 'O KAHIKILAULANI — Ray Fonseca, Hilo, Hawaii (Kāne)
"A 'OIA"
16. HĀLAU MŌHALA 'ILIMA — Māpuana de Silva, Kailua, Oahu
"AIA LĀ 'O PELE I HAWAII'"
17. NĀ HULA 'O KAOHIKUKAPULANI — Kapu Kinimaka-Alquiza, Hanapepe, Kauai
"KO'ULA"
18. NA PUA ME KEALOHA — Sissy Kaio, Carson, California (Kāne)
"ALIKĀ"
19. PUKALANI HULA HALE — Nina & Hi'ilei Maxwell, Pukalani, Maui
"PUAMANA / KAHUKI'AIALO"
20. LEHUA DANCE CO. — Kaulana Kasparovitch, Honolulu, Oahu
"MAKEE AILANA"
21. NA 'OPIO 'O KO'OLAU HULA HĀLAU — Michael dela Cruz, Kaneohe, Oahu (Kāne)
"KU'U TITA"
22. KEALI'IKA'APUNIHONUA KE'ENA A'O HULA — Leimomi Ho, Honolulu, Oahu
"IDA'S HULA"
23. PUKA'IKAPUAOKALANI HULA HĀLAU — Ellen Castillo, Kailua, Oahu
"KA'AHUMANU ALI'I"
24. KEOLALAULANI HĀLAU OLAPA 'O LAKA — Aloha Dalire, Kaneohe, Oahu
"PIHANAKALANI"
25. HĀLAU HULA 'O KA UA KILIHUNE — Al Makahinu Barcarse, Kaneohe, Oahu (Kāne)
"KIPIKOA"
26. HULA HĀLAU 'O KAMUELA — Paleka Leina'ala Mattos / Edward Kunewa Mook, Waimanalo / Kalihi, Oahu
"HONOLULU HARBOR"
27. NĀ LEI 'O KAHOLOKU — Nani Lim Yap / Donna Lim Amina, Waimea, Hawaii
"KA LEHUA I MILIA"
28. HULA HĀLAU 'O KA UA KANI LEHUA — Johnny Lum Ho, Hilo, Hawaii (Kāne)
"HALI'I KA MOENA"
(He Mele Kolohe)





HULA HĀLAU 'O KAHIKILAULANI

Kumu Hula: Ray Fonseca

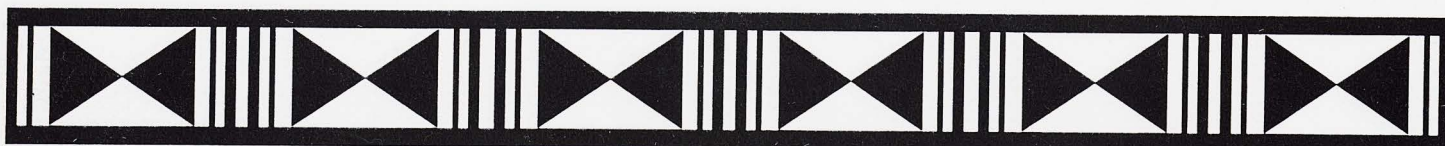
Hilo, Hawaii



HĀLAU 'O KE ĀNUENUE

Kumu Hula: Glenn Vasconcellos

Hilo, Hawaii





HULA HĀLAU 'O KAHIKILAULANI (kāne)

Kumu Hula: Ray Fonseca

Hilo, Hawaii



HĀLAU HULA 'O LANA'I HALE

Kumu Hula: Lehua Matsuoka / Lika Moon

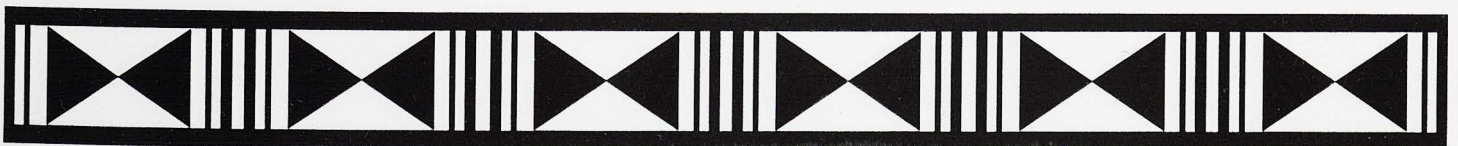
Lanai City, Lanai



NA HULA 'O KAOHIKUKAPULANI (kāne)

Kumu Hula: Kapu Kinimaka-Alquiza

Hanapepe, Kauai





KEALI'IKA'APUNIHONUA KE'ENA A'O HULA

Kumu Hula: Leimomi Ho

Honolulu, Oahu



HEALANI'S HULA HĀLAU

Kumu Hula: Beverly Muraoka

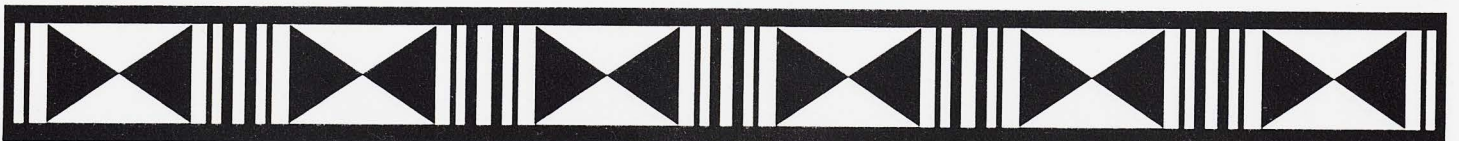
Kapaa, Kauai



NA PUA ME KEALOHA (kāne)

Kumu Hula: Sissy Kaio

Carson, California





HULA HĀLAU 'O KA UA KANI LEHUA

Kumu Hula: Johnny Lum Ho

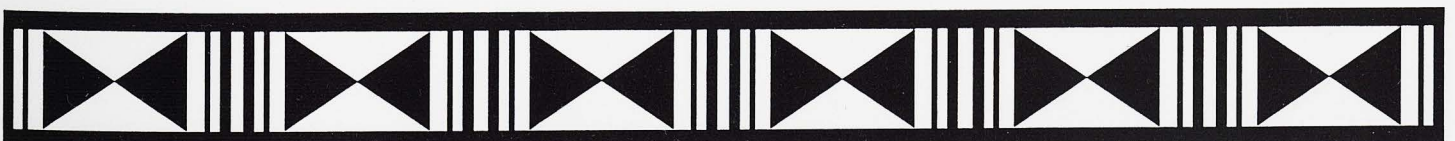
Hilo, Hawaii



HĀLAU MŌHALA 'ILIMA

Kumu Hula: Māpuana de Silva

Kailua, Oahu

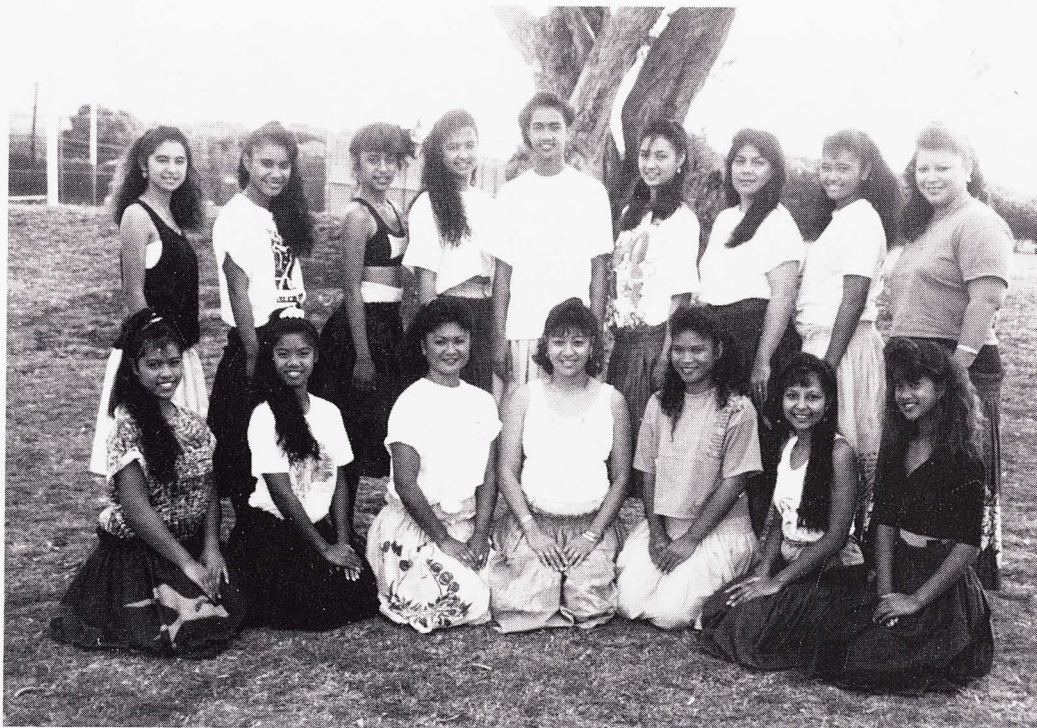




PUKA'IKAPUAOKALANI HULA HĀLAU

Kumu Hula: Ellen Castillo

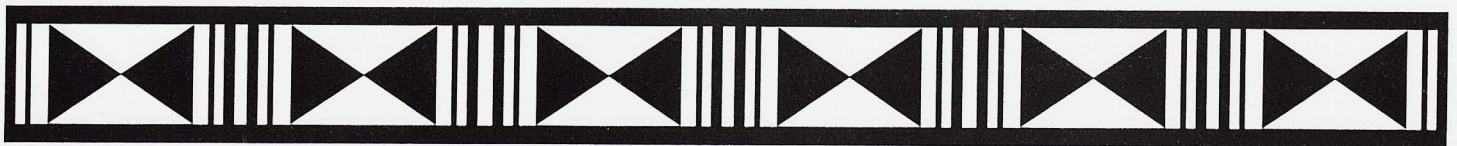
Kailua, Oahu



MOANA'S HULA HĀLAU O MOLOKAI

Kumu Hula: Moana Dudoit

Kaunakakai, Molokai





HULA HĀLAU 'O KAMUELA

Kumu Hula: Paleka Leina'ala Mattos / Edward Kunewa Mook

Waimanalo / Kalihi, Oahu



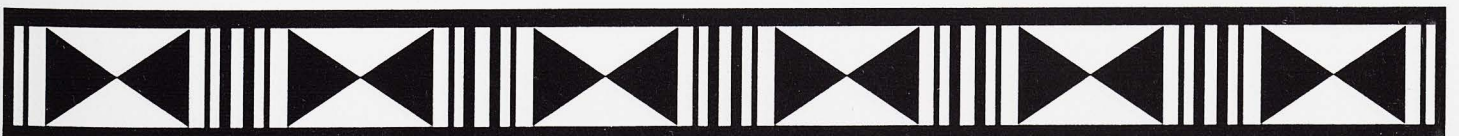
KEALI'IKA'APUNI'HONUA KE'ENA A'O HULA (kāne)

Kumu Hula: Leimomi Ho

Honolulu, Oahu

**NA HUAPALA 'O HAWAII,
HĀLAU 'O HA'ALELEA**

Kumu Hula: Raylene Lancaster
Fairfield, California





NĀ LEI 'O KAHOLOKU

Kumu Hula: Nani Lim Yap / Donna Lim Amina

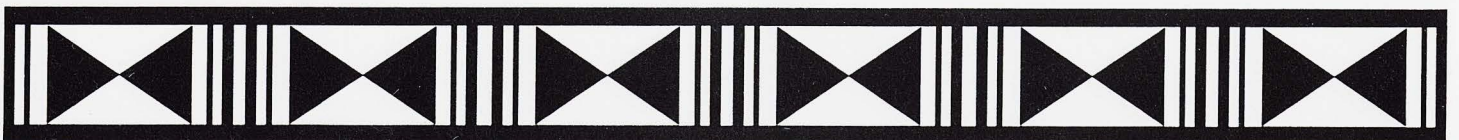
Waimea, Hawaii



LEHUA DANCE CO.

Kumu Hula: Kaulana Kasparovitch

Honolulu, Oahu





NĀ 'OPIO 'O KO'OLAU HULA HĀLAU

Kumu Hula: Michael dela Cruz

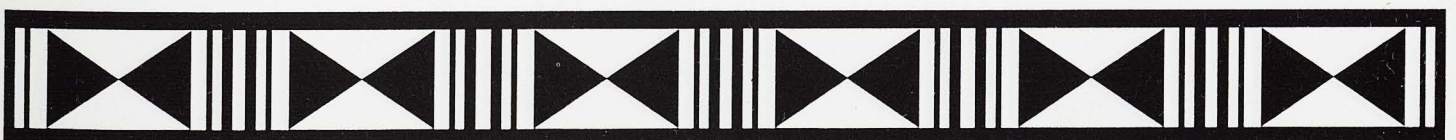
Kaneohe, Oahu



NĀ HULA 'O KAOHIKUKAPULANI

Kumu Hula: Kapu Kinimaka-Alquiza

Hanapepe, Kauai





HĀLAU HULA OLANA

Kumu Hula: Olana & Howard Ai

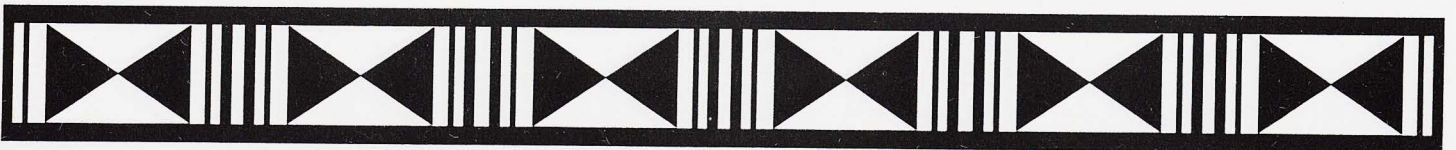
Honolulu, Oahu



HĀLAU HULA 'O KA UA KILIHUNE (kāne)

Kumu Hula: Al Makahinu Barcarse

Kaneohe, Oahu





PUKALANI HULA HALE

Kumu Hula: Nina & Hi'ilei Maxwell

Pukalani, Maui



HULA HĀLAU 'O KAMUELA

Kumu Hula: Paleka Leina'ala Mattos / Edward Kunewa Mook

Waimanalo / Kalihi, Oahu





WEBER

Grand Marshall

Mr. William R. Weber was one of the first committeemen responsible for planning the four days of the Merrie Monarch Festival and for enlisting the aid of the community.

Pa'u Queen

A *kama'āina*, Kapua W. Heuer was raised on a cattle ranch, Mahealani, in Kainaliu, Kona. Always on horseback as a child, she learned ranching at a very early age. Her father, Alan S. Wall, and her mother, Lilinoe Roy Wall, ran a small dairy and also the first hotel in Kona.

When the Merrie Monarch Festival first started, Kapua was asked by the late Slim Holt to handle the *pa'u* section. By calling on the large cattle ranches of Hawaii Island, she was able to have a wonderful selection of princesses and riders from the participating ranchers. The riders all assembled at her home where, under the tutelage of the late Lokalia Montgomery, Kapua learned to drape the *pa'u*. When the ladies were all dressed, Slim Holt had his limousines available to transport them to their waiting steeds in downtown Hilo.

She rode in many parades representing the islands, and in past years, rode in the pageantry of "Old Hawaii on Horseback", an event that Anna Perry-Fiske coordinated for the Hawaii Heart Association. She, along with her two daughters, Barbara Nobriga and Pudding Lassiter, who also rode in the pageant, helped dress and drape the beautiful ladies riding.

Kapua Heuer, at age 80, still is active in riding and looks forward to trail riding and all equestrian events.



HEUER

Visiting Ship

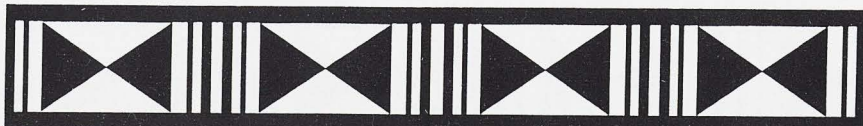


USS GOLDSBOROUGH (DDG-20)
Under Commander Michael Sarraino, USN



Royal Parade

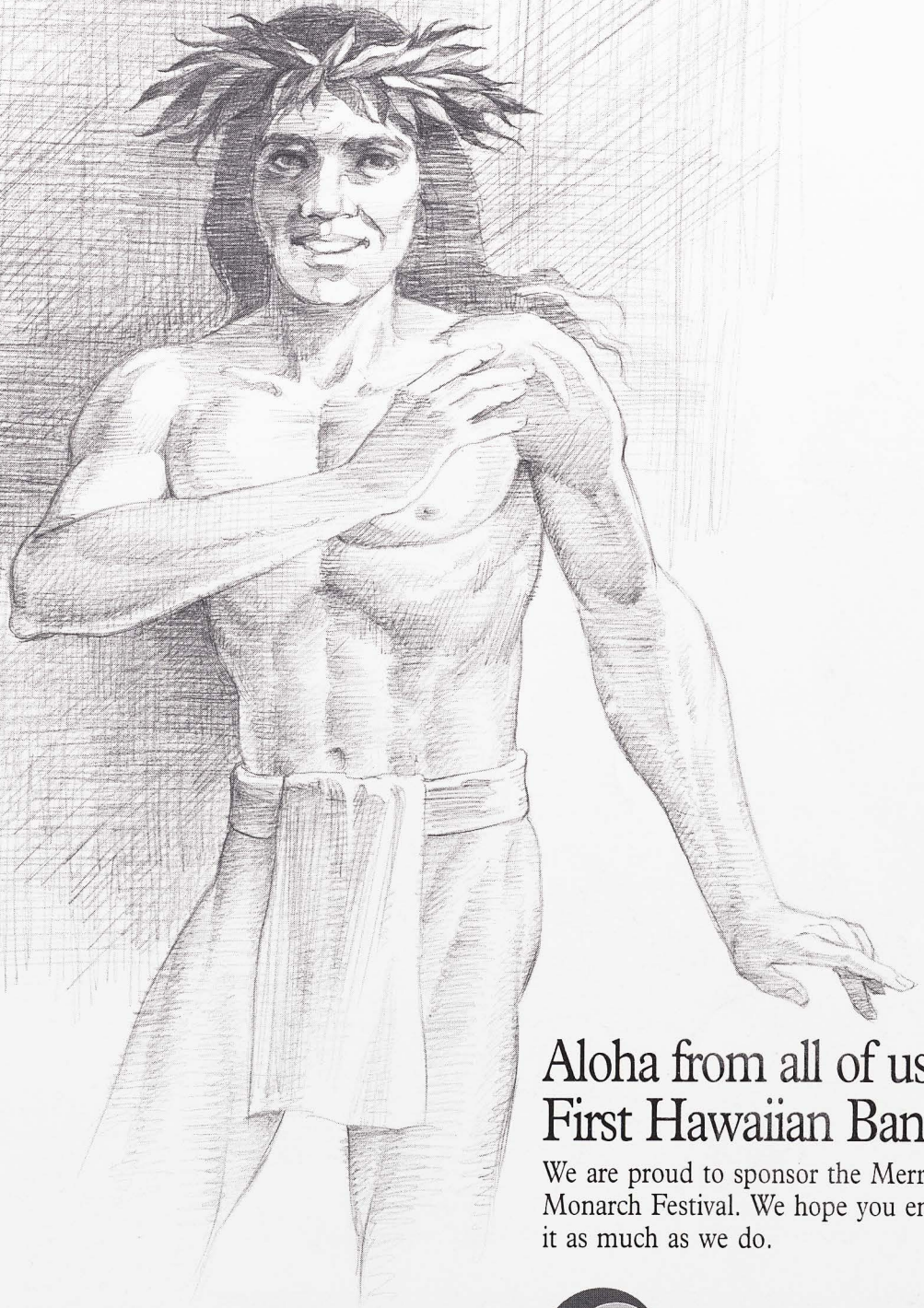
- Police Escort
- Color Guards - 2nd Battalion - 2-299th Infantry - Co. A
- The Honor Detail (Veterans)
- Grand Marshall - Bill Weber
- Hawaii County Band
- Mayor Lorraine Inouye
- Royal Court Float
- Miss Aloha Hula
- The Royal Guard
- Pa'u Queen - Kapua Heuer
- Pa'u Queen's Court
- Pooper Scoopers
- Kalaniana'ole Intermediate School Drum Corps
- Kalaniana'ole Intermediate School Pom Pom & Flag Teams
- Kalaniana'ole Intermediate School Band
- 2nd Battalion - 2-299th Infantry - Co. A
- Hilo Union School Marching Unit
- Hilo Union School Float
- Pa'u Princess of Hawaii - Tracy deAguiar
- Island of Hawaii Pa'u Unit
- Pooper Scoopers
- Bran-D Productions - Little Miss Hawaii Island
- Hula Hālau 'O Kahikilaulani Float
- USN USS Goldsborough
- Pa'u Princess - Island of Maui - Carol Ku'uleipoina Hughes
- Island of Maui Pa'u Unit
- Pooper Scoopers
- St. Joseph Elementary School Band
- Hawaii Little Miss America
- Hawaii Island Shrine Club President
- Hawaii Island Shrine Club Stretchout
- Hawaii Island Shrine Club Float
- Pa'u Princess - Island of Oahu - Margaret Hannselman
- Island of Oahu Pa'u Unit
- Pooper Scoopers
- Puna District Float
- Waiakea Intermediate School Band
- Kings Guards of Kings Village
- Princess Kapiolani School Marching Unit
- Princess Kapiolani School Float
- Pa'u Princess - Island of Kauai - Lisa Carvalho
- Island of Kauai Pa'u Unit
- Pooper Scoopers
- Food Bank Float
- Hilo Intermediate School Band
- Junior Miss Sampaguaita
- Junior Miss Sampaguaita Court
- Pa'u Princess - Island of Molokai - Harriet Mamone
- Island of Molokai Pa'u Unit
- Pooper Scoopers
- Molokai Float
- KKBG Float
- KHLO Radio
- Pa'u Princess - Island of Lanai - Nalani Longakit
- Island of Lanai Pa'u Unit
- Pooper Scoopers
- Keaukaha School Marching Unit
- Keaukaha School Float
- Hilo High School Band
- Friends of Panaewa Zoo Marching Unit
- Friends of Panaewa Zoo Float
- Kamailehihiokalani Riders
- Pooper Scoopers
- Mauna Loa Macadamia Nut Corp. Marching Unit
- 'Ohana Na Hololio
- Pooper Scoopers
- Hula Hālau 'O Kahikilaulani Float
- Waiakea High School Rifle Team
- Waiakea High School Flag Team
- Waiakea High School Band
- Big Island Filipino Community Council Float
- Miss Hawaii Filipina
- Mrs. Hawaii Filipina
- Waiakea Villas Float
- Longears of Hawaii
- Fire Truck





10 001490987

UNIVERSITY OF HAWAII



Aloha from all of us at
First Hawaiian Bank.

We are proud to sponsor the Merrie Monarch Festival. We hope you enjoy it as much as we do.



First Hawaiian Bank

The Answer is Yes.

Member FDIC



The past tells us about ourselves.
It reveals the stored secrets of generations.
And the hula is an expression of that time
when memories were passed by the teller to the told
and became the history of our people.
We celebrate the hula and the Festival.
And we treasure the stories that live
because of it.



Oahu: 537-5100, Maui: 244-9111, Lanai: 565-6429, Kauai: 245-3671, Molokai: 553-5321, Hawaii: 935-0811.

