

*Thirty First Annual*  
**Merrie Monarch Festival**



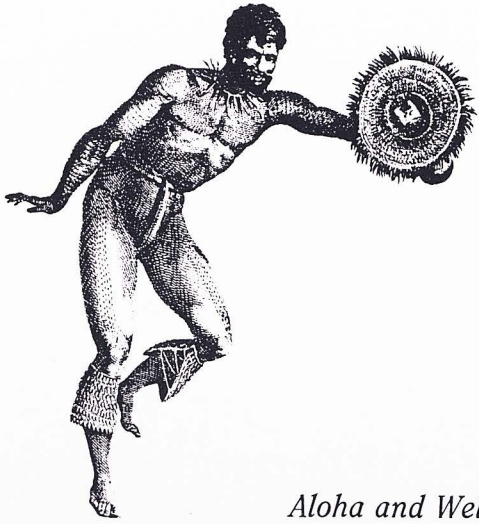
*Hula is the Language of the Heart & Therefore the  
Heartbeat of the Hawaiian People.*

*Kalakaua Rex*

*April 3 - 9, 1994*  
HILO, HAWAII

HAWN  
GV  
1796  
H8  
M47a  
31st  
1994





# The Merrie Monarch Festival

*Aloha and Welcome to the 31st Annual Merrie Monarch Festival.*

*King David Kalākaua wanted to be sure his kingdom would not lose its rich heritage; therefore, he chose to direct his people on the path back to the Old Hawaiian Traditions.*

*In honor of King Kalākaua, the Merrie Monarch set its goals to recapture the spirit which prevailed under the reign of King David Kalākaua, 1874-1891, and to perpetuate the traditional culture of old Hawaii.*

*O wau no me ka ha'a ha'a*

*Dotie Thompson*



# 31st Annual Merrie Monarch Festival

---

## The Royal Court 1994



*King:*

Warren Kaniela Dela Cruz

*Queen:*

Winona Kauanoë Kaupiko Higa

*Lady-in-Waiting:*

Keala Kaupiko

*Counselor:*

Joseph Napeahi

*Kahu:*

Sara Kaupiko Ruis

*Lili'iuokalani:*

Haunani Henry

*Lady-in-Waiting:*

Ka pio o ka pua lehua Shaw

*Chanter:*

Felward Kahakelii

*Pulo'ilo'u:*

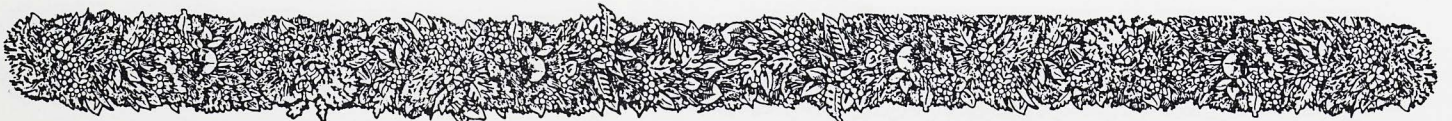
Palani Hayashida

*Pu:*

Chris Tupua  
JR Fissel  
Mahiai Moniz  
Joe Correa  
Shawn Manasas

*Kahili:*

Kahoohanohano Victor  
Alike Cullen  
Shon Santangelo  
Dylan Keahi





# 31st Annual Merrie Monarch Festival

## Committees

<i>Executive Director</i> .....	Dorothy S. Thompson	<i>Scorers</i> .....	Kalei Smith, Naomi Aguiar
<i>Hula Master</i> .....	George Naope	<i>Timers</i> .....	PSI
<i>Secretary</i> .....	Muriel Nuuanu	<i>Ushers</i> .....	Herb DeLuz-UHHC-Gail Makuakane
<i>Royal Court</i> .....	George DeMello	<i>Scripts</i> .....	Francis Saiki
<i>Ho'olaulea</i> .....	Keoni Fujitani	<i>T-Shirts, Programs</i> .....	Sister of St. Francis
<i>Ticket Sales</i> .....	Luana Kawelu	<i>Pa'u Units</i> .....	Natalie Flattes
	Lily Pa, Ronald Okamura	<i>On-Site Parade Line-up</i> .....	Lehua Jaycees
<i>Hawaiian Arts &amp; Crafts</i> .....	Mokihana Miller	<i>Facilities</i> .....	Sally Kaleohano
<i>Noon Day Shows</i> .....	Napualani Napoleon	<i>Concessions</i> .....	Bobo Brown and Travel Women of Hawaii
<i>Backstage</i> .....	Polly Grace	<i>Decorations</i> .....	Ray Fonseca
<i>Halau Practices</i> .....	Luana Kawelu	<i>Sound</i> .....	Glenn Yafuso
<i>Ticket Collectors</i> .....	East Hawaii Kiwanis	<i>Stage</i> .....	Denny Holt

## Judges

Noenoe Zuttermeister  
Leilani Sharpe Mendez  
Nalani Kanakaole  
Pualani Kanakaole Kanahele  
John Kaimikaua  
George Holokai  
Wayne Chang

## Commentator

Kimo Kahoano

## Acknowledgements

County of Hawaii (Co-Sponsor)  
Hawaiian Airlines (Co-Sponsor)  
First Hawaiian Bank (Co-Sponsor)  
Hawaii Naniloa Hotel (Co-Sponsor)  
Abigail Kekaulike Kawananaoia Foundation  
Hawaii Visitors Bureau  
Bryan Robertson  
Hale Lua Hawaii  
Kilauea Art Studio  
Yamada Transfer  
Big Island Moving & Draying Inc.  
Hawaii Printing Corporation (Ed Hara)  
Doreen McDiarmid  
Lehua Jaycees

Glenn at J.C. Penney Styling Salon  
East Hawaii Kiwanis  
Travel Women of Hawaii, Hawaii Chapter  
Professional Secretaries Institute  
Office of Hawaiian Affairs (OHA)  
KCCN Radio  
J.C. Penney  
Bragado Bus Service  
Orchid Isle Motors (Walsh Hanley)  
Hawaii Tribune-Herald  
West Hawaii Today  
Honolulu Advertiser  
Honolulu Star-Bulletin  
KITV (13th Annual Coverage)





# 31st Annual Merrie Monarch Festival

## Past Contest Winners

**1971**

*Implements Div./Modern Div./Overall Winners*

Pauline Kekahuna - Hauoli Hula Studio

*Miss Aloha Hula* Aloha Wong (Keolalaulani Hula Studio)

**1972**

*Ancient Division/Modern Division* Johnny Lum Ho Hula Studio

*Implements Division* Puamana Hula Studio

*Miss Aloha Hula* Aulani Newalu (Hälau 'O Kahealani)

**1973**

*Hula Kähiko/Hula 'Auana/Implements/Overall Winner*

Pauline Kekahuna - Hauoli Hula Studio

*Miss Aloha Hula* Kalani Kalawa (Louise Kaleiki Hula Studio)

**1974**

*Hula Kähiko/Hula 'Auana/Implements/Overall Winner*

Louise Kaleiki Hula Studio

*Miss Aloha Hula* Dee Dee Aipolani (Piilani Watkins Hula Studio)

**1975**

*Hula Kähiko (tie)*

'Ilima Hula Studio & Pauline Kekahuna - Hauoli Hula Studio

*Hula 'Auana* 'Ilima Hula Studio

*Implements* Keolalaulani Hula Studio

*Miss Aloha Hula* Leimomi Maria ('Ilima Hula Studio)

**1976**

*Hula Kähiko* 'Ilima Hula Studio

*Hula 'Auana* Alicia K. Smith Hula Studio

*Käne Division* Na Kamalei 'O Liliehua / Overall 'Ilima Hula Studio)

*Miss Aloha Hula (tie)* Ululani Duenas ('Ilima Hula Studio)

Sheryl Nalani Guernsey (Kaleo 'O Nani Loa Studio)

**1977**

*(Käne) Hula Kähiko / Overall* Hälau 'O Kekuhi

Hula 'Auana Na Kamalei

*(Wahine) Hula Kähiko / Overall* Na Pualei 'O Likolehua

*Hula 'Auana* Johnny Lum Ho Hula Studio

*Miss Aloha Hula* Pualani Chang (Pukaikapua'okalani Studio)

**1978**

*(Käne) Hula Kähiko / Hula 'Auana / Overall* Waimapuna

*(Wahine) Hula Kähiko* Johnny Lum Ho Hula Studio

*Hula 'Auana / Overall* Na Pualei 'O Likolehua

*Miss Aloha Hula* Regina Makaikai Igarashi (Keolalaulani Hula Studio)

**1979**

*(Käne) Hula Kähiko* Nā Wai Ehā 'O Puna

*Hula 'Auana / Overall* Waimapuna

*(Wahine) Hula Kähiko / Overall* Hauoli Hula Studio

*Hula 'Auana (tie)* Hauoli Hula Studio & Na Pualei 'O Likolehua

*Miss Aloha Hula* Jody Imehana Mitchell (Ka Pa'u O Hiiaka)

**1980**

*(Käne) Hula Kähiko* Waimapuna / *Hula 'Auana* Nā Wai Ehā 'O Puna

*Overall (tie)* Waimapuna & Nā Wai Ehā 'O Puna

*(Wahine) Hula Kähiko (tie)*

Hauoli Hula Studio & Johnny Lum Ho Hula Studio

*Hula 'Auana / Overall* Johnny Lum Ho Hula Studio

*Miss Aloha Hula* Kaula Kamahale (Johnny Lum Ho Hula Studio)

**1981**

*(Käne) Hula Kähiko / Hula 'Auana / Overall* Nā Wai Ehā 'O Puna

*(Wahine) Hula Kähiko / Overall* Hälau 'O Na Maoli Pua

*Hula 'Auana (tie)*

Johnny Lum Ho Hula Studio & Hälau 'O Na Maoli Pua

*Miss Aloha Hula* Brenda Alidon (Johnny Lum Ho Hula Studio)

**1982**

*(Käne) Hula Kähiko / Hula 'Auana / Overall*

Hula Hälau O Ka Ua Kani Lehua

*(Wahine) Hula Kähiko* Hälau Mōhala 'Ilima

*Hula 'Auana* Hälau 'O Kahanuola

*Overall* Hula Hälau O Ka Ua Kani Lehua

*Miss Aloha Hula* Dayna Kanani Oda (Hula Hälau O Ka Ua Kani Lehua)

**1983**

*(Käne) Hula Kähiko / Hula 'Auana / Overall*

Hula Hälau O Ka Ua Kani Lehua

*(Wahine) Hula Kähiko* Hälau Mōhala 'Ilima

*Hula 'Auana / Overall* Hula Hälau O Ka Ua Kani Lehua

*Miss Aloha Hula* Geola Pua (Hula Hälau O Ka Ua Kani Lehua)

**1984**

*(Käne) Hula Kähiko / Hula 'Auana / Overall* Nā Wai Ehā 'O Puna

*(Wahine) Hula Kähiko / Hula 'Auana / Overall* Hälau Mōhala 'Ilima

*Miss Aloha Hula* Twyla Ululani Mendez (Hauoli Hula Hälau)

**1985**

*(Käne) Hula Kähiko / Hula 'Auana / Overall* Nā Wai Ehā 'O Puna

*(Wahine) Hula Kähiko / Hula 'Auana / Overall*

The Ladies of Ke'ala 'O Ka Lauwa'e

*Miss Aloha Hula* Healani Young (The Ladies of Ke'ala 'O Ka Lauwa'e)

**1986**

*(Käne) Hula Kähiko / Hula 'Auana / Overall* Men of Waimapuna

*(Wahine) Hula Kähiko / Overall* Keolalaulani Olapa 'O Laka

*Hula 'Auana* Hula Hälau 'O Kamuela

*Miss Aloha Hula* Leimomi Nuuhiwa (The Ladies of Ke'ala 'O Ka Lauwa'e)

**1987**

*(Käne) Hula Kähiko / Hula 'Auana / Overall*

Hula Hälau O Ka Ua Kani Lehua

*(Wahine) Hula Kähiko* Nā Wai Ehā 'O Puna

*Hula 'Auana (tie)* Hälau Mōhala 'Ilima & Kawaili'ulā Hula Hälau

*Overall* Keolalaulani Olapa 'O Laka

*Miss Aloha Hula* Lisa Kuuipo Doi (Hula Hälau O Ka Ua Kani Lehua)

**1988**

*(Käne) Hula Kähiko / Hula 'Auana / Overall*

Hula Hälau O Ka Ua Kani Lehua

*(Wahine) Hula Kähiko / Overall* Hula Hälau O Ka Ua Kani Lehua

*Hula 'Auana* Hula Hälau O Kamuela

*Miss Aloha Hula* Sheldeen Kaleimomi Kaleohano (Hula Hälau 'O Kahikilaulani)

**1989**

*(Käne) Hula Kähiko* Hälau Hula 'O Kahikilaulani

*(Käne) Hula 'Auana* Men of Na Kamalei

*Overall* Kawaili'ulā Hula Hälau

*(Wahine) Hula Kähiko / Overall* Hula Hälau 'O Na Maoli Pua

*Hula 'Auana* Keali'ikaapunihonua Ke'ena A'o Hula

*Miss Aloha Hula* Pi'ilani Smith (Hula Hälau 'O Na Maoli Pua)

**1990**

*(Käne) Hula Kähiko / Hula 'Auana / Overall*

Kawaili'ulā Hula Hälau

*(Wahine) Hula Kähiko / Overall* Hälau 'O Na Maoli Pua

*Hula 'Auana* Hälau Hula 'O Kahikilaulani

*Miss Aloha Hula* Natalie Noelani Ai (Hälau Hula Olana)

**1991**

*(Käne) Hula Kähiko* Hälau Hula 'O Kahikilaulani

*Hula 'Auana / Overall* Hälau Hula O Ka Ua Kani Lehua

*(Wahine) Hula Kähiko / Overall* Hula Hälau 'O Kamuela

*Hula 'Auana* Halua Na Lei 'O Kaholoku

*Miss Aloha Hula* Kapualokeokalaniakea Dalire (Keolalaulani Hälau Olapa 'O Laka)

**1992**

*(Käne) Hula Kähiko / Hula 'Auana / Overall* Nā Wai Ehā 'O Puna

*(Wahine) Hula Kähiko / Overall* Hälau Na Lei 'O Kaholoku

*Hula 'Auana* Hula Hälau 'O Kamuela

*Miss Aloha Hula* Kauimaikalaniakea Dalire (Keolalaulani Hälau Olapa 'O Laka)

**1993**

*(Käne) Hula Kähiko / Hula 'Auana / Overall* Kawaili'ulā Hula Hälau

*(Wahine) Hula Kähiko / Overall* Hula Hälau O Ka Ua Kani Lehua

*Hula 'Auana* Hula Hälau Na Lei 'O Kaholoku

*Miss Aloha Hula* Maelia Lani Kahanuola Loebenstein

(Ka Pā Hula 'O Kauano'e 'O Wa'ahila)





# 31st Annual Merrie Monarch Festival

## Wednesday Night Extrabaganza

April 6, 1994

Edith Kanakaole Tennis Stadium



*Hula Hālau 'O Kaholoku*

*Kalake'e Serenaders*



- 6:30 p.m. .... Royal Court Enters
- 6:45 p.m. .... National Anthem - Hawaii Pono'i  
by Marlene Sai
- 6:55 p.m. .... Pule
- 7:00 p.m. .... The Merrie Monarch Glee Club
- 8:00 p.m. .... Hula Hālau O Kaholoku
- 9:00 p.m. .... Ato'oi Marama

### *The Merrie Monarchs*

The Merrie Monarchs Glee Club was formed along with the Hulihe'e Palace Band by Bandmaster Charles "Bud" Dant in 1976, for the purpose of perpetuating the music of the Hawaiian Monarchy era. This group performs in monthly concerts honoring our ali'i on the ocean lanai of the historic Hulihe'e Palace in Kailua-Kona.

The Merrie Monarchs are proud to be a part of this voluntary effort to perpetuate our Hawaiian culture. They feel especially privileged to be invited to participate in such a prestigious event as the Merrie Monarch Festival.





# 31st Annual Merrie Monarch Festival

## Schedule of Events

SUNDAY, April 3	COCONUT ISLAND (MOKUOLA) EMCEE - Keoni Fujitani 11:00 a.m. - The Moke Brothers 11:45 a.m. - Darlene & J.J. Ahuna 12:30 p.m. - Kalake'e Serenaders 1:15 p.m. - Keonaona 2:00 p.m. - Pauahi 3:00 p.m. - Bradda Smitty & Charley Mahi with Gary Haleamau	
MONDAY, April 4	HAWAII NANILOA HOTEL 12:00 noon - Hula Hālau O Hilo Hanakahi HILO HAWAIIAN HOTEL 1:00 p.m. - Hula Hālau 'O Lilinoe of California	
TUESDAY, April 5	HAWAII NANILOA HOTEL 12:00 noon - Na Pua Me Kealoha of California HILO HAWAIIAN HOTEL 1:00 p.m. - Moani Keala Onapua	
WEDNESDAY, April 6	SEVEN SEAS LUAU HOUSE 9:00 a.m. - Hawaiian Arts & Crafts HAWAII NANILOA HOTEL 9:00 a.m. - 5:00 p.m. - Arts & Crafts Exhibits 12:00 noon - Napua Hinano I Ulu A'e I Puna HILO HAWAIIAN HOTEL 9:00 a.m. - 5:00 p.m. - Arts & Crafts Exhibits 11:00 a.m. - 12:00 noon - Ke Ola Pono 'O Na Kupuna	EDITH KANAKAOLE TENNIS STADIUM 6:30 p.m. - Royal Court Enters 6:45 p.m. - National Anthem - Hawaii Pono'i by Marlene Sai 6:55 p.m. - Pule 7:00 p.m. - The Merrie Monarch Glee Club 8:00 p.m. - Hula Hālau O Kaholoku 9:00 p.m. - Ato'oi Marama
THURSDAY, April 7	SEVEN SEAS LUAU HOUSE 9:00 a.m. - 5:00 p.m. - Hawaiian Arts & Crafts HAWAII NANILOA HOTEL 9:00 a.m. - 5:00 p.m. - Arts & Crafts Exhibit 12:00 noon - Na Lima Lele O Na Kupuna HILO HAWAIIAN HOTEL 9:00 a.m. - 5:00 p.m. - Arts & Crafts Exhibit 1:00 p.m. - Na Wahine Kupuna O Kau	EDITH KANAKAOLE TENNIS STADIUM 6:00 p.m. - Royal Court Enters 6:15 p.m. - National Anthem - Hawaii Pono'i by Marlene Sai 6:20 p.m. - Pule 6:25 p.m. - Introduction of Judges 6:30 p.m. - Miss Aloha Hula Competition Presentation of Awards
FRIDAY, April 8	SEVEN SEAS LUAU HOUSE 9:00 a.m. - 5:00 p.m. - Hawaiian Arts & Crafts PIER I - KUHIO WHARF 11:00 a.m. - Greeting Navy Ship - Na Lima Lele 'O Na Kupuna HAWAII NANILOA HOTEL 9:00 a.m. - 5:00 p.m. - Arts & Crafts Exhibit 12:00 noon - Napua Hinano I Ulu A'e I Puna	HILO HAWAIIAN HOTEL 9:00 a.m. - 5:00 p.m. - Arts & Crafts Exhibit 1:00 p.m. - Hula Halau O Hilo Hanakahi EDITH KANAKAOLE TENNIS STADIUM 6:00 p.m. - Royal Court Enters 6:15 p.m. - National Anthem - Hawaii Pono'i by Marlene Sai 6:20 p.m. - Pule 6:30 p.m. - Hula Kahiko Competition
SATURDAY, April 9	MOOHEAU PARK Moku O Keawe Cultural Fair SEVEN SEAS LUAU HOUSE/HAWAII NANILOA/HILO HAWAIIAN 9:00 a.m. - 4:00 p.m. - Hawaiian Arts & Crafts DOWNTOWN HILO 10:30 a.m. - Royal Parade	EDITH KANAKAOLE TENNIS STADIUM 5:30 p.m. - Royal Court Enters 5:45 p.m. - National Anthem - Hawaii Pono'i by Marlene Sai 5:55 p.m. - Pule 6:00 p.m. - Hula 'Auana Competition Introduction of Kumu Hula Presentation of Awards
SUNDAY, April 10	PANAWEA RACE TRACK Mayor's Cup Races sponsored by Big Island Equestrian Association 10:00 a.m. - Panaewa Race Track	





# 31st Annual Merrie Monarch Festival

## Miss Aloha Hula Contestants



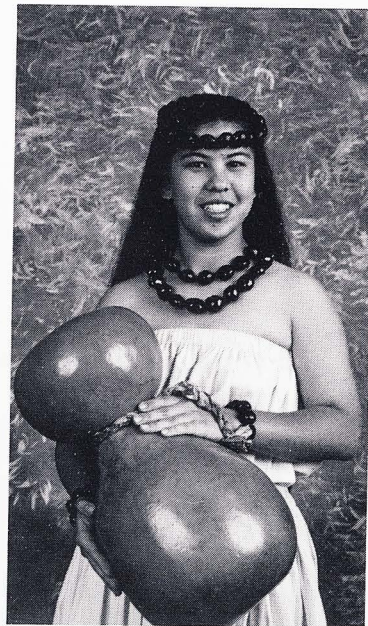
**TRACIE KA'ONOHILOANI  
FARIAS**

Nā Wai Ehā 'O Puna  
Waianae, Oahu



**KELI KAMAILEPILIALOHA  
TSUCHIYAMA**

Puka'ikapuaokalani Hula Hālau  
Kailua, Oahu



**VERONICA KAPUAHAU  
KUNITAKE**

Hālau Hula O Na Pua U'i O Hawaii  
Kailua-Kona, Hawaii



**RHONDA WAIANUHEA  
DUDOIT**

Hālau Hula 'O Kahikilaulani  
Hilo, Hawaii



**ULALIA LEILOKEOKAWIKA  
WOODSIDE**

Ka Pā Hula 'O Kauanoē 'O Wa'ahila  
Honolulu, Oahu



**LUPE FUNAKI**

Napuananionapalionakoolau  
Laie, Oahu

- Not pictured -

**JUDY MAKAHILAHILA  
CABATO**

Hālau Hula O Hokolani  
Mililani, Oahu

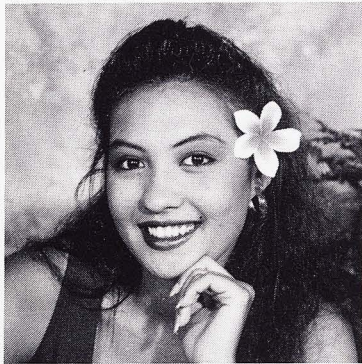




# 31st Annual Merrie Monarch Festival

---

## Miss Aloha Hula Contestants



**ELIZABETH KAILILANI  
TOLLEFSEN**  
Moana's Hula Hālau  
Kaunakakai, Molokai



**MELI HUBBARD**  
Hālau Hula Olana  
Aiea, Oahu



**CONTESSA GUALDARAMA**  
The Women of Ka Wai Kahena  
Ewa Beach, Oahu



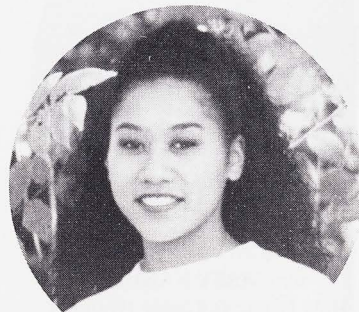
**MAILE McFARLAND**  
Pukalani Hula Hale  
Pukalani, Maui



**ALAPAI KANAUMA**  
Hula Hālau 'O Kamuela  
Kalihi/Waimanalo, Oahu



**ELENA CHANCHECK**  
Hālau Na Mamo 'O Pu'uānāhulu  
Honolulu, Oahu



**ANNETTE LILINOE KAIO**  
Hula Hālau 'O Lilinoe  
Carson, California





# 31st Annual Merrie Monarch Festival

## Nā Kumu Hula



**OLANA & HOWARD A'I**  
Hālau Hula Olana  
Pearl City, Oahu



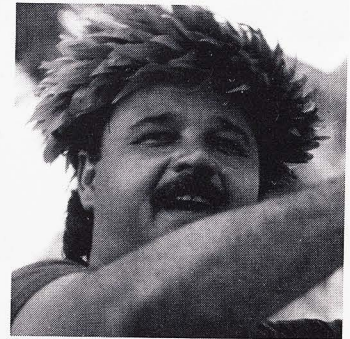
**NINA MAXWELL & HIILEI MAXWELL JUAN**  
Pukalani Hula Hale  
Pukalani, Maui



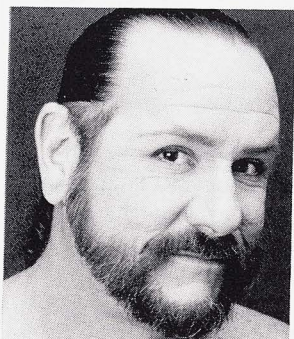
**KAPU KINIMAKA-ALQUIZA**  
Na Hula 'O Kaohikukapulani  
Hanapepe, Kauai



**CHINKY MAHOE**  
Kawaili'ulā Hula Hālau  
Kailua, Oahu



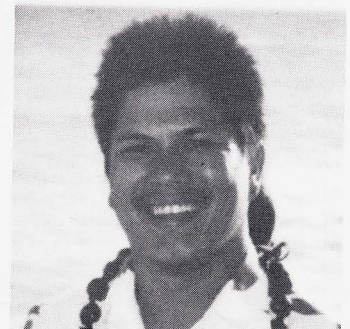
**ETUA LOPES**  
Hālau Hula Na Pua U'i O Hawaii  
Kailua-Kona, Hawaii



**KAULANA KASPAROVITCH**  
Lehua Dance Co.  
Honolulu, Oahu



**SISSY KAIO**  
Hula Hālau 'O Lilinoe (Wahine)  
Na Pua Me Kealoha (Kāne)  
Carson, California



**NO'EAU TAGALOG**  
The Men of Ka Wai Kahena  
Ewa Beach, Oahu





# 31st Annual Merrie Monarch Festival

## Nā Kumu Hula



**ALOHA DALIRE**  
Keolaulani Hālau Olapa 'O Laka  
Kaneohe, Oahu



**MAE LOEBENSTEIN**  
Ka Pā Hula 'O Kauanoē 'O Wa'ahila  
Honolulu, Oahu



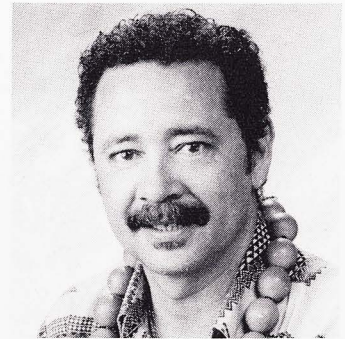
**PALEKA LEINA'ALA MATTOS**  
Hula Hālau 'O Kamuela  
Kalihi/Waimanalo, Oahu



**WILLIAM "SONNY"  
KAHUKULEIHUA CHING**  
Hālau Na Mamo 'O Pu'uānāhulu  
Honolulu, Oahu



**SUNDAY MARITERAGI  
KEITH AWAI**  
Napuanānionapalionaoolau  
Laie, Oahu



**RAY FONSECA**  
Hālau Hula 'O Kahikilaulani  
Hilo, Hawaii



**ELLEN CASTILLO**  
Puka'ikapuaokalani Hula Hālau  
Kailua, Oahu



**GLENN VASCONCELLOS**  
Hālau 'O Ke Ānuenuē  
Hilo, Hawaii



**MĀPUANA de SILVA  
& Daughter Kapalai'ula**  
Halau Mōhala 'Ilima  
Kailua, Oahu

**MOANA & RAQUEL DUDOIT**  
Moana's Hula Hālau  
Kaunakakai, Molokai

*- Not pictured -*  
**O'BRIEN ESELU & THADDIUS WILSON**  
Nā Wai Ehā 'O Puna  
Wāianae, Oahu

**HOKULANI DeREGO**  
Hālau Hula O Hokulani  
Mililani, Oahu





# 31st Annual Merrie Monarch Festival

---

## Miss Aloha Hula

### Hula Kāhiko

Thursday, April 7, 1994

1. JUDY MAKAHILAHILA CABATO—Hālau Hula O Hokulani  
*"HE MELE HULU NO KAPIOLANI I MOLOLANI"*
2. CONTESSA GUALDARAMA—The Women of Ka Wai Kahena  
*"KA UKA I HALEMANO"*
3. ANNETTE LILINOE KAIO—Hula Hālau 'O Lilinoe  
*"HULIHIA KE AU PE'E ILALO"*
4. MELI HUBBARD—Hālau Hula Olana  
*"PUA I LEHUA"*
5. VERONICA KAPUAHAU KUNITAKE—Hālau Hula Na Pua U'i O Hawaii  
*"AUHEA 'O KALANI"*
6. LUPE FUNAKI—Napuananionapalionakoolau  
*"ULA NO WEO LA"*
7. MAILE McFARLAND—Pukalani Hula Hale  
*"E HOI KA NANI I LIHAU"*
8. ELENA CHANCHECK—Hālau Na Mamo 'O Pu'uanahulu  
*"HE LEI NO KAPIOLANI"*
9. RHONDA WAIANUHEA DUDOIT—Hālau Hula O Kahikilaulani  
*"IKE I KE ONE KANI A'O NOHILI"*
10. ELIZABETH KAILILANI TOLLEFSEN—Moana's Hula Hālau  
*"I WAIALUA"*
11. TRACIE KA'ONOHILANI FARIAS—Nā Wai Ehā O Puna  
*"PU'UONIONI"*
12. KELI KAMAILEPILIALOHA TSUCHIYAMA—Puka'ikapuaokalani Hula Hālau  
*"LEHUA ULA O PANAEWA"*
13. ALAPAI KANAUMA—Hālau Hula 'O Kamuela  
*"ALEKOKI"*
14. ULALIA LEILOKEOKAWIKA WOODSIDE—Ka Pā Hula 'O Kauanoē 'O Wa'ahila  
*"LAHILAHI KAI O MAMALA"*





# 31st Annual Merrie Monarch Festival

---

## Miss Aloha Hula

### Hula 'Auana

Thursday, April 7, 1994

1. JUDY MAKAHILAHILA CABATO—Hālau Hula O Hokulani  
"NANI VENUSE"
2. CONTESSA GUALDARAMA—The Women of Ka Wai Kahena  
"MALUA KI'I WAI"
3. ANNETTE LILINOE KAIO—Hula Hālau 'O Lilinoe  
"HE IKI A'ALI'I KU MAKANI"
4. MELI HUBBARD—Hālau Hula Olana  
"HE U'I"
5. VERONICA KAPUAHAU KUNITAKE—Hālau Hula Na Pua U'i O Hawaii  
"HULIHE'E"
6. LUPE FUNAKI—Napananionapalionakoolau  
"MOANIKEALAONAPUAMAKAHIKINA"
7. MAILE McFARLAND—Pukalani Hula Hale  
"ROSELANI BLOSSOMS"
8. ELENA CHANCHECK—Hālau Na Mamo 'O Pu'uanahulu  
"PAUOA HULA"
9. RHONDA WAIANUHEA DUDOIT—Hālau Hula 'O Kahikilaulani  
"KU'U LEIALOHA"
10. ELIZABETH KAILILANI TOLLEFSEN—Moana's Hula Hālau  
"KU'ULEI"
11. TRACIE KA'ONOHILANI FARIAS—Nā Wai Ehā O Puna  
"MOKU O KEAWE"
12. KELI KAMAILEPILIALOHA TSUCHIYAMA—Puka'ikapuaokalani Hula Hālau  
"O VAIOLEKA"
13. ALAPAI KANAUMA—Hālau Hula 'O Kamuela  
"PAOAKALANI"
14. ULALIA LEILOKEOKAWIKA WOODSIDE—Ka Pā Hula 'O Kauanoē 'O Wa'ahila  
"KA LOKE"





# 31st Annual Merrie Monarch Festival

---

## Hula Kahiko Kane & Wahine Group Hula Friday, April 8, 1994

1. NAPUANANIONAPALIONAKOOLAU - Sunday Mariteragi & Keith Awai, Laie Oahu (KĀNE)  
*"KAUO PU KA IWA"*
2. NA HULA 'O KAOHIKUKAPULANI - Kapu Kinimaka-Alquiza, Hanapepe Kauai  
*"AIA I HA'ENA KO WEHI NANI"*
3. HĀLAU HULA OLANA - Olana & Howard A'i, Pearl City, Oahu  
*"KA PUA HAU O MALEKA"*
4. HĀLAU HULA O HOKULANI - Hokulani DeRego, Mililani, Oahu (KĀNE)  
*"KAUMAKAOKANE PAPALEAIAINA"*
5. HULA HĀLAU 'O LILINOE - Sissy Kaio, Carson, California  
*"HE MELE NO NA WAHINE O KA LUA"*
6. KAWAILIULĀ - Chinky Mahoe, Kailua, Oahu  
*"HE MELE NO LUNALILO"*
7. THE MEN OF KA WAI KAHENA - Noe'au Tagalog, Ewa Beach, Oahu (KĀNE)  
*"POHAKU O KAUAI"*
8. LEHUA DANCE CO. - Kaulana Kasparovitch, Honolulu, Oahu  
*"A KOOLAU AU"*
9. HĀLAU 'O KE ĀNUENUE - Glenn Vasconcellos, Hilo, Hawaii  
*"KA HO'ALEALE 'O PELE ME NAMAKAOKAHA'I"*
10. HULA HĀLAU 'O KAMUELA - Paleka Leina'ala Mattos & Kunewa Mook, Kalihi/Waimanalo, Oahu (KĀNE)  
*"HE MELE HULA NO KA MO'I KALAKAUA"*
11. PUKA'IKAPUAOKALANI HULA HĀLAU - Ellen Castillo, Kailua, Oahu  
*"LEI NO EMALANI"*
12. HĀLAU HULA 'O KAHIKILAULANI - Ray Fonseca, Hilo, Hawaii  
*"U LEI PAHU/AU A IA"*
13. HĀLAU NA MAMO 'O PU'UANAHULU - William "Sonny" Ching, Honolulu, Oahu (KĀNE)  
*"A'OLE I MANA'O IA"*

INTERMISSION





# 31st Annual Merrie Monarch Festival

---

## Hula Kāhiko

### Kane & Wahine Group Hula

Friday, April 8, 1994

14. NĀ WAI EHĀ 'O PUNA - Thaddius Wilson & O'Brien Eselu, Waianae, Oahu (KĀNE)  
*"HE KAU NO HI'IAKA"*
15. HĀLAU MŌHALA 'ILIMA - Māpuana de Silva, Kailua, Oahu  
*"NO KE ANO AHIAHI"*
16. HĀLAU HULA NA PUA U'I O HAWAII - Etua Lopes, Kailua-Kona, Hawaii  
*"E HO'I KEALOHA I NI'ITHAU"*
17. NA PUA ME KEALOHA - Sissy Kaio, Carson, California (KĀNE)  
*"MAIKA'I KE ANU O WAIMEA"*
18. MOANA'S HULA HĀLAU - Moana & Raquel Dudoit, Kaunakakai, Molokai  
*"AE A EA MOLOKA'I"*
19. PUKALANI HULA HALE - Nina Maxwell & Hiilei Maxwell Juan, Pukalani, Maui  
*"KA MAKANI KILIO'OPU O WAIHE'E"*
20. HĀLAU HULA OLANA - Howard & Olana A'i, Aiea, Oahu (KĀNE)  
*"NOHO I HILO IO MAUA HALE"*
21. HĀLAU NA MAMO 'O PU'UANAHULU - William "Sonny" Ching, Honolulu, Oahu  
*"POLI LAUA'E"*
22. KA PĀ HULA 'O KAUANOE 'O WA'AHILA - Mae Loebenstein, Honolulu, Oahu  
*"A KONA HEMA 'O KALANI"*
23. HĀLAU HULA 'O KAHIKILAULANI - Ray Fonseca, Hilo, Hawaii (KĀNE)  
*"KA PUA HAU O MALEKA"*
24. KEOLALAULANI HĀLAU OLAPA 'O LAKA - Aloha Dalire, Kaneohe, Oahu  
*"KAULILUA I KE ANU WAIALEALE"*
25. HULA HĀLAU 'O KAMUELA - Paleka Leina'ala Mattos & Kunewa Mook, Kalihi/Waimanalo, Oahu  
*"HE INOA LEI NO KA MO'I WAHINE KAPIOLANI"*
26. KAWAILIULĀ - Chinky Mahoe, Kailua, Oahu (KĀNE)  
*"HO'OLE'A IA LIHOLIHO"*





# 31st Annual Merrie Monarch Festival

---

## Hula 'Auana

### Kane & Mahine Group Hula

Saturday, April 9, 1994

1. NAPUANANIONAPALIONAKOOLAU - Sunday Mariteragi & Keith Awai, Laie, Oahu (KĀNE)  
"KA'ANO'I"
2. NA HULA 'O KAOHIKUKAPULANI - Kapu Kinimaka-Alquiza, Hanapepe, Kauai  
"KAIMANA ALOHI"
3. HĀLAU HULA OLANA - Olana & Howard A'i, Pearl City, Oahu  
"KUI TREE"
4. HĀLAU HULA O HOKULANI - Hokulani DeRego, Mililani, Oahu (KĀNE)  
"WAIOMINA"
5. HULA HĀLAU 'O LILINOE - Sissy Kaio, Carson, California  
"WELINA OAHU"
6. KAWAILIULĀ - Chinky Mahoe, Kailua, Oahu  
"KALAPAWAI KU'U HOME ALOHA"
7. THE MEN OF KA WAI KAHENA - Noe'au Tagalog, Ewa Beach, Oahu (KĀNE)  
"NA HALA O NAUE"
8. LEHUA DANCE CO. - Kaulana Kasparovitch, Honolulu, Oahu  
"ALOHA KAIMU"
9. HĀLAU 'O KE ĀNUENUE - Glenn Vasconcellos, Hilo, Hawaii  
"HE MELE NO KU'ULEIPOINA'OLE"
10. HULA HĀLAU 'O KAMUELA - Paleka Leina'ala Mattos & Kunewa Mook, Kalihi/Waimanalo, Oahu (KĀNE)  
"WAIKALOA"
11. PUKA'IKAPUAOKALANI HULA HĀLAU - Ellen Castillo, Kailua, Oahu  
"LEI PIKAKE"
12. HĀLAU HULA 'O KAHIKILAULANI - Ray Fonseca, Hilo, Hawaii  
"POLIAHU"
13. HĀLAU NA MAMO 'O PU'UANA HULU - William "Sonny" Ching, Honolulu, Oahu (KĀNE)  
"MAHAIULA"

INTERMISSION





# 31st Annual Merrie Monarch Festival

---

## Hula 'Auana

### Kane & Wahine Group Hula

Saturday, April 9, 1994

14. NĀ WAI EHĀ 'O PUNA - Thaddius Wilson & O'Brien Eselu, Waianae, Oahu (KĀNE)  
*"NOHO PAIPAI"*
15. HĀLAU MŌHALA 'ILIMA - Māpuana de Silva, Kailua, Oahu  
*"HANOHANO WAILEA"*
16. HĀLAU HULA NA PUA U'I O HAWAII - Etua Lopes, Kailua-Kona, Hawaii  
*"LEHUA PUA KEA"*
17. NA PUA ME KEALOHA - Sissy Kaio, Carson, California (KĀNE)  
*"HAU HAU E"*
18. MOANA'S HULA HĀLAU - Moana & Raquel Dudoit, Kaunakakai, Molokai  
*"MOLOKAI MEDLEY"*
19. PUKALANI HULA HALE - Nina & Hiilei Maxwell, Pukalani, Maui  
*"KU'U LEI AWAPUHI"*
20. HĀLAU HULA OLANA - Olana & Howard Ai, Aiea, Oahu (KĀNE)  
*"E HULI MAKOU/HIILAWÉ"*
21. HĀLAU NA MAMO O PUUANAHULU - William "Sonny" Ching, Honolulu, Oahu  
*"MOKUOEO"*
22. KA PĀ HULA 'O KAUAÑOÉ 'O WA'AHILA - Mae Loebenstein, Honolulu, Oahu  
*"'AHULILI"*
23. HĀLAU HULA 'O KAHIKILAULANI - Ray Fonseca, Hilo, Hawaii (KĀNE)  
*"KU'U TITA"*
24. KEOLALAULANI HĀLAU OLAPA 'O LAKA - Aloha Dalire, Kaneohe, Oahu  
*"E KU'U SWEET LEI POINA OLE"*
25. HULA HĀLAU O KAMUELA - Paleka Leina'ala Mattos & Kunewa Mook, Kalihi/Waimanalo, Oahu  
*"KA PU'ULENA"*
26. KAWAILIULĀ - Chinky Mahoe, Kailua, Oahu (KĀNE)  
*"MEA PA'ANI KINIPŌPŌ"*





# 31st Annual Merrie Monarch Festival

---



## HĀLAU HULA OLANA

*Kumu Hula:* Olana & Howard A'i  
Pearl City, Oahu



## NA HULA 'O KAOHIKUKAPULANI

*Kumu Hula:* Kapu Kinimaka-Alquiza  
Hanapepe, Kauai





# 31st Annual Merrie Monarch Festival

---



## **HĀLAU NA MAMO 'O PU'UANAHLU**

*Kumu Hula:* William "Sonny" Ching  
Honolulu, Oahu



## **HĀLAU MŌHALA 'ILIMA**

*Kumu Hula:* Māpuana de Silva  
Kailua, Oahu





# 31st Annual Merrie Monarch Festival

---



## **PUKA'IKAPUAOKALANI HULA HĀLAU**

*Kumu Hula:* Ellen Castillo

Kailua, Oahu



## **KEOLALAULANI HĀLAU OLAPA 'O LAKA**

*Kumu Hula:* Aloha Dalire

Kaneohe, Oahu





# 31st Annual Merrie Monarch Festival

---



## KA PĀ HULA 'O KAUANOE 'O WA'AHILA

*Kumu Hula:* Mae Loebenstein

Honolulu, Oahu



## HULA HĀLAU 'O KAMUELA

*Kumu Hula:* Paleka Leina'ala Mattos & Kunewa Mook

Kalihi/Waimanalo, Oahu





# 31st Annual Merrie Monarch Festival

---



**LEHUA DANCE CO.**

*Kumu Hula:* Kaulana Kasparovitch  
Honolulu, Oahu



**MOANA'S HULA HĀLAU**

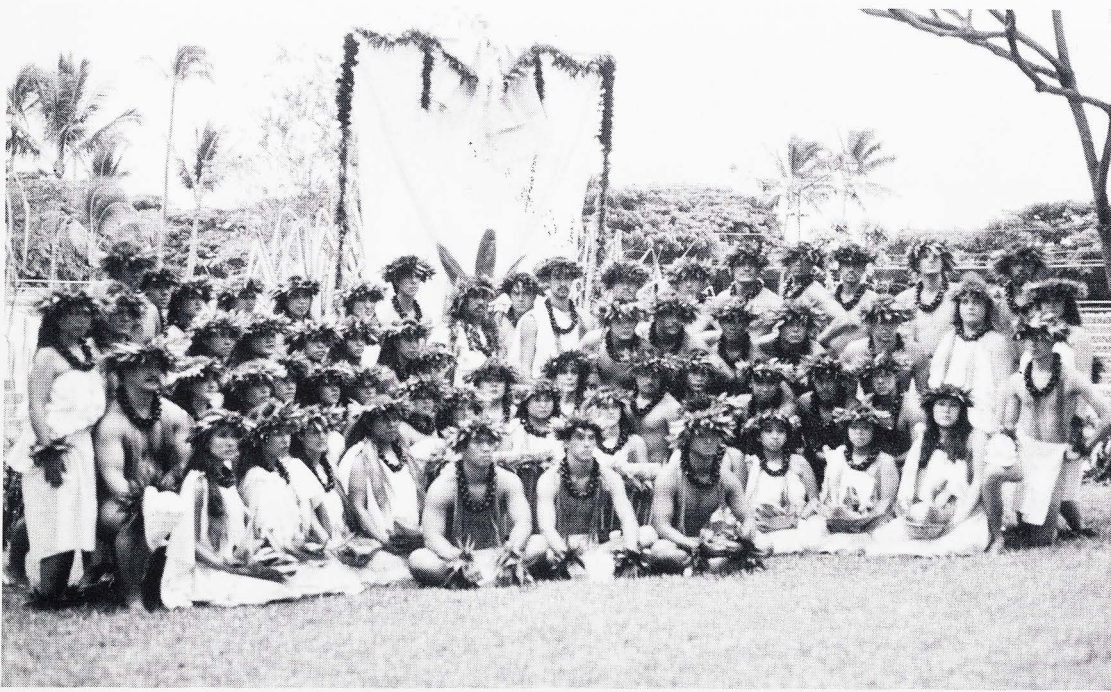
*Kumu Hula:* Moana & Raquel Dudoit  
Kaunakakai, Molokai





# 31st Annual Merrie Monarch Festival

---



**KAWAILIULĀ (Kāne & Wahine)**  
Kumu Hula: Chinky Mahoe  
Kailua, Oahu



**HĀLAU HULA 'O KAHIKILAULANI**  
Kumu Hula: Ray Fonseca  
Hilo, Hawaii





# 31st Annual Merrie Monarch Festival

---



## HĀLAU HULA NA PUA U'I O HAWAII

*Kumu Hula:* Etua Lopes  
Kailua-Kona, Hawaii



## HĀLAU 'O KE ĀNUENUE

*Kumu Hula:* Glenn Vasconcellos  
Hilo, Hawaii





# 31st Annual Merrie Monarch Festival

---



## **HULA HĀLAU 'O LILINOE**

*Kumu Hula:* Sissy Kaio  
Carson, California



## **PUKALANI HULA HALE**

*Kumu Hula:* Nina Maxwell & Hiilei Maxwell Juan  
Pukalani, Maui





# 31st Annual Merrie Monarch Festival

---



**HĀLAU HULA OLANA (Kāne)**  
*Kumu Hula:* Olana & Howard A'i  
Pearl City, Oahu



**HĀLAU HULA 'O KAHIKILAULANI (Kāne)**  
*Kumu Hula:* Ray Fonseca  
Hilo, Hawaii





# 31st Annual Merrie Monarch Festival

---



## **NAPUANANIONAPALIONAKOOLAU (Kāne)**

*Kumu Hula:* Sunday Mariteragi & Keith Awai  
Laie, Oahu



## **HULA HĀLAU 'O KAMUELA (Kāne)**

*Kumu Hula:* Paleka Leina'ala Mattos & Kunewa Mook  
Kalihi/Waimanalo, Oahu





# 31st Annual Merrie Monarch Festival

---



**NA PUA ME KEALOHA (Kāne)**

*Kumu Hula:* Sissy Kaio  
Carson, California



**THE MEN OF KA WAI KAHENA (Kāne)**

*Kumu Hula:* Noe'au Tagalog  
Ewa Beach, Oahu





# 31st Annual Merrie Monarch Festival

---



**HĀLAU NA MAMO 'O PU'UANAHLU (Kāne)**

*Kumu Hula:* William "Sonny" Ching  
Honolulu, Oahu

---



**Visiting Ship  
USS SALVOR**

*Commanding Officer:* Lieutenant Commander Howes





# Grand Marshall

*He kupa hānau o ka 'āina 'o Kaimū, Puna, Hawai'i 'o Helen Haleola Pe'a Lee Hong. 'O ke keiki helu 'ekolu 'o Haleola mai loko mai o nā keiki he 'ewalu a nā mākuā 'o Lizzie Ahua'i a me*



*Peter Kaleikini Pe'a. Hānau 'ia 'o Haleola i ka lā 20 o Nowemapa i ka makahiki 1910 i ka malu ulu niu o ia kaha kaulana i ke one 'ele'ele, 'o Kaimū, Puna Hawai'i. Male 'o ia iā Peter Lee Hong, no Kaimū a hānau mai kā lāua mau keiki he 'eono. I kēia lā, he kupunawahine 'o Haleola nāna iwakālua mo'opuna a 'umi mo'opuna kuakahi.*

A native from a family who have long roots in the land of Kaimu, Puna, Hawai'i is Helen Haleola Pe'a Lee Hong. She married Peter Lee Hong, also from Kaimu and they have six children. Haleola is currently the grandmother of twenty grandchildren and ten great-grandchildren.

In 1987, Haleola served as the Aloha Week Queen for the Island of Hawai'i.

Haleola is among the last of our *hulukupuna*—precious grandparent generation—who still has the capacity to pass on the nuances and values of our rich Hawaiian culture through fluent and eloquent Hawaiian language. She was among the first teachers to work

with our preschool age children at the Punana Leo o Hilo, a preschool conducted entirely in Hawaiian.

More recently, Haleola Lee Hong has been retired as a teacher of *lau hala* weaving at the University of Hawai'i, Hilo, Hawaiian Studies Program.

*Ia 'oe Haleola, ko makou ho'omaika'i a me ke aloha pau 'ole.*

To you Haleola, we offer our congratulations and never ending love.

## Pa'u Queen

Pa'u Queen Carol Ku'uleipoina'ole Hughes was born and raised on the Big Island. She is the daughter of Isidro "Pete" Godoy and the late Mabel Kaipiko Godoy. Ku'ulei, as she is known to many, is the mother of three sons, John Jr., Scott Kaimi and Wade Kauano DeSa. She is an Educational Assistant with the Special Education Department at Chiefess Kapiolani School.

Ku'ulei returned to the University of Hawai'i, Hilo, where she received her B.A. in Liberal Arts Elementary Education and Hawaiian Studies this past May. She is presently working towards her teaching certificate.

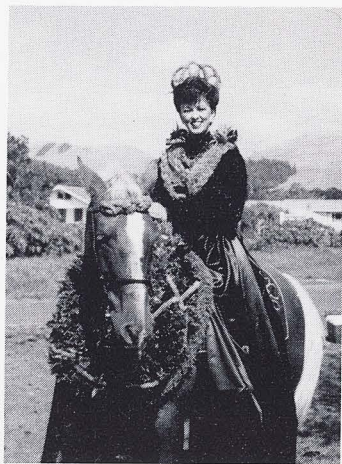
Ku'ulei's grandfather, John Kaimi Kaipiko, was a paniolo with the Shipman Ranch before retiring as a fisherman. Ku'ulei always felt her roots were entwined with his love for horses and has become an accomplished rider herself. Ku'ulei's love and pride for her people and culture have been the incentive for extensive research into the history of Pa'u riding and for her involvement in Pa'u.

Ku'ulei is the founder of her unit, Kahui Holo Lio Oka 'Olu Lehua O Hawai'i. Her Pa'u unit has received various honors in the categories of Outstanding Princess and Outstanding Unit. They have successfully entered six Merrie Monarch parades taking top honors in three of them. The unit has represented the islands of Ni'ihau, Kauai, Molokai, Kaho'olawe, Maui and Hawai'i. They've participated in the 1992 Aloha Festivals Parade in Waimea placing first in both Outstanding Princess and Outstanding Unit categories. This earned them the honor of representing the Big Island at the 1993 Aloha Festivals Parade on Oah'u. The unit captured all first place honors including the Governor's Award and the John and Lita Cook Perpetual Trophy and Pooper Scooper's Award.

Ku'ulei has ridden as Pa'u Queen for the 1990 Kona Kamehameha Day Parade and the 1993 Aloha Festivals Parade in Waimea.

Ku'ulei credits the success of her unit to the teamwork and harmony of the members and their families.

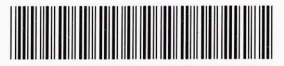
Ku'ulei accepts "this great honor of riding as Pa'u Queen in the 31st Merrie Monarch Festival Parade" and sends her "aloha to the hardworking Merrie Monarch Committee."



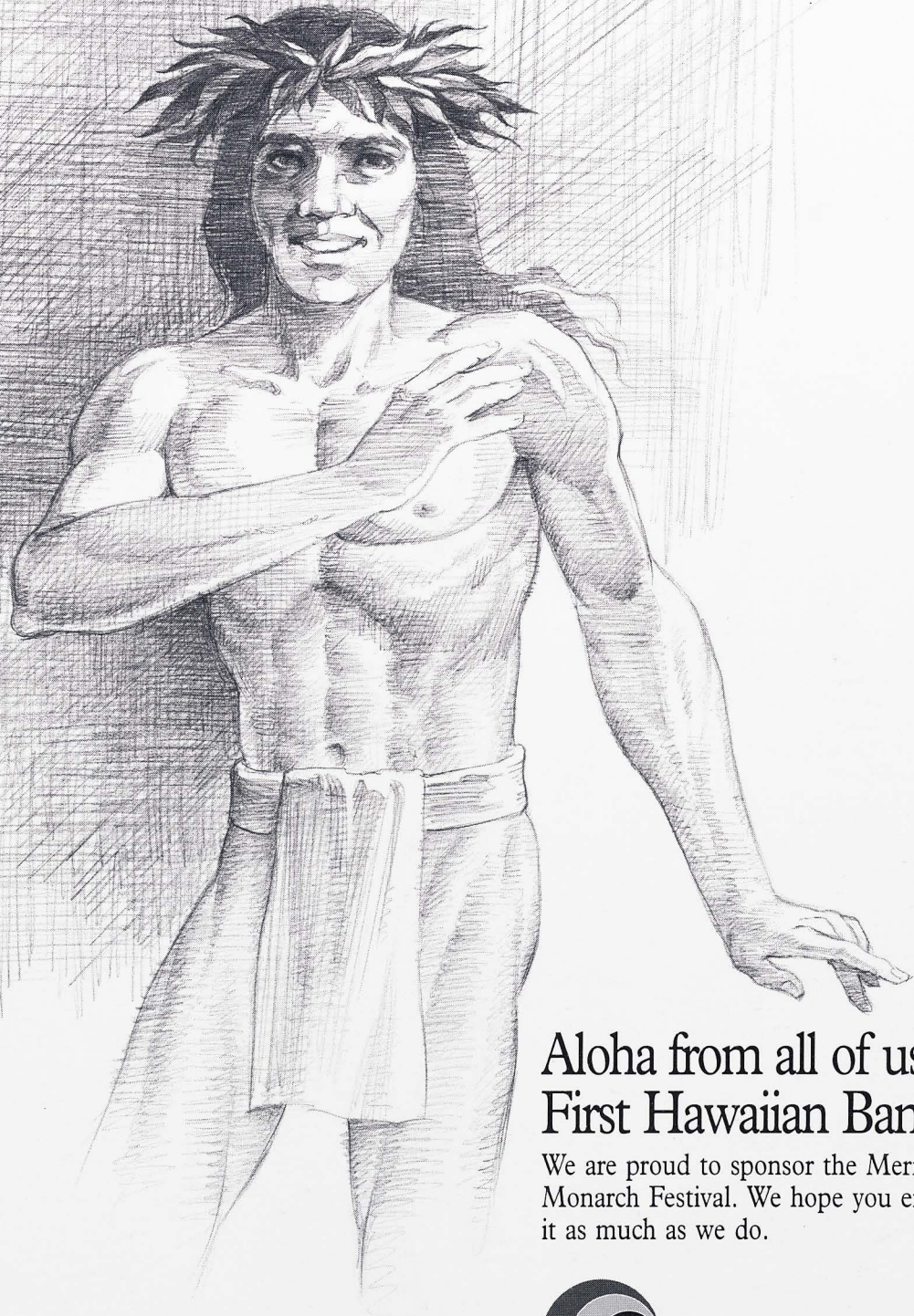
## 1994 Parade

1. Police Escort
2. Color Guards
3. Grand Marshall, Helen Haleola Lee Hong
4. "Wish Child" Chase Brown
5. Hawaii County Band
6. Mayor County of Hawaii, Stephen Yamashiro
7. Royal Guards
8. Royal Court Float
9. Pa'u Queen, Carol Ku'uleipoina'ole Hughes
10. Queen's Unit
11. Pooper Scoopers
12. Navy Color Guard - USS Salvor
13. Navy Lt. Commander R. S. Howes
14. Miss Aloha Hula
15. Puna Seniors Marching Unit
16. Puna Senior Citizen Float
17. Hawaii Island Pa'u Princess, Valerie Chiquita
18. Hawaii Island Pa'u Unit
19. Pooper Scoopers
20. Castle High School Marching Unit
21. Miss Aloha Hawaii
22. Maui Island Pa'u Princess, Margie Milar-Hanselman
23. Maui Island Pa'u Unit
24. Pooper Scoopers
25. Food Bank Float
26. Keaukaha Elementary School Marching Unit
27. Oahu Island Pa'u Princess,
28. Oahu Island Pa'u Unit
29. Kalaniana'ole Intermediate Marching Band
30. Miss Sampaguita
31. Miss Sampaguita Court
32. Miss Sampaguita Contestants
33. Kauai Island Pa'u Princess, Pearl Leimomi Leolani Hali
34. Kauai Island Pa'u Unit
35. Pooper Scoopers
36. Hilo Intermediate Spartan Band
37. Meadow Gold
38. Hilo Hatties
39. Molokai Island Pa'u Princess, Arlene Mae "Arly" Simmons
40. Molokai Island Pa'u Unit
41. Pooper Scoopers
42. Hawaii Island Shrine Club
43. Kimo's Lunch Wagon
44. Lanai Island Pa'u Princess, Ann Rapoza
45. Lanai Island Pa'u Unit
46. Pooper Scoopers
47. King's Guards
48. Halau Hula 'O Kahikilaulani Float
49. Ni'ihau Island Pa'u Princess, Wendy Mapuana Waipa
50. Ni'ihau Island Pa'u Unit
51. Pooper Scoopers
52. St. Joseph School Band
53. Hilo Grandmothers Club
54. Kahoolawe Island Pa'u Princess, Sharon Kuuipo Souza
55. Kahoolawe Island Pa'u Unit
56. Pooper Scoopers
57. Hilo High ROTC - Color Guard
58. Hilo High ROTC - Drill Team
59. Hilo High ROTC - Rifle Team
60. Hilo High School Marching Band
61. Big Island Filipino Council
62. Hilo Union School Marching Unit
63. Ka Mailehihiokalani Mounted Unit (Robert Lindsey)
64. KWXX/KPUA
65. Waiakea Intermediate Marching and Ukulele Band
66. Chic Modeling & Finishing School Marching Unit
67. Little Miss Hawaiian Island
68. Ohana Na Hololio Mounted Unit (Suse Soares)
69. Hawaii Naniloa Float
70. Girl Scouts Council Marching Unit
71. Guy Gonsalves Mounted Unit
72. KKBC/KHLO Radio Stations
73. Waiakea High School Flag Drill Team
74. Waiakea High School Rifle Team
75. Waiakea High School Marching Band
76. Hawaii Paniolo Club (Mabel Waltjen De Silva)
77. AJYC Float
78. Hilo Mardi Gras King & Queen
79. Elele O Kealoha Mai Ka Moku Aina O Hawaii (Eleneki Yuen)
80. Stanley Arujo Mounted Unit
81. Kaumana School Float
82. Gloria Kalamau Horse Mounted Unit
83. Addiction 2 Perfection
84. Long Ears of Hawaii
85. Napuahanino I Ulu A'E I Puna Float (Debbie Ryder)





10 001770475  
UNIVERSITY OF HAWAII



**Aloha from all of us at  
First Hawaiian Bank.**

We are proud to sponsor the Merrie Monarch Festival. We hope you enjoy it as much as we do.



**First Hawaiian Bank**  
*The Answer is Yes.* Member FDIC





The past tells us about ourselves.  
It reveals the stored secrets of generations.  
And the hula is an expression of that time  
when memories were passed by the teller to the told  
and became the history of our people.  
We celebrate the hula and the Festival.  
And we treasure the stories that live  
because of it.



Oahu: 537-5100, Maui: 244-9111, Lanai: 565-6429, Kauai: 245-3671, Molokai: 553-5321, Hawaii: 935-0811.

