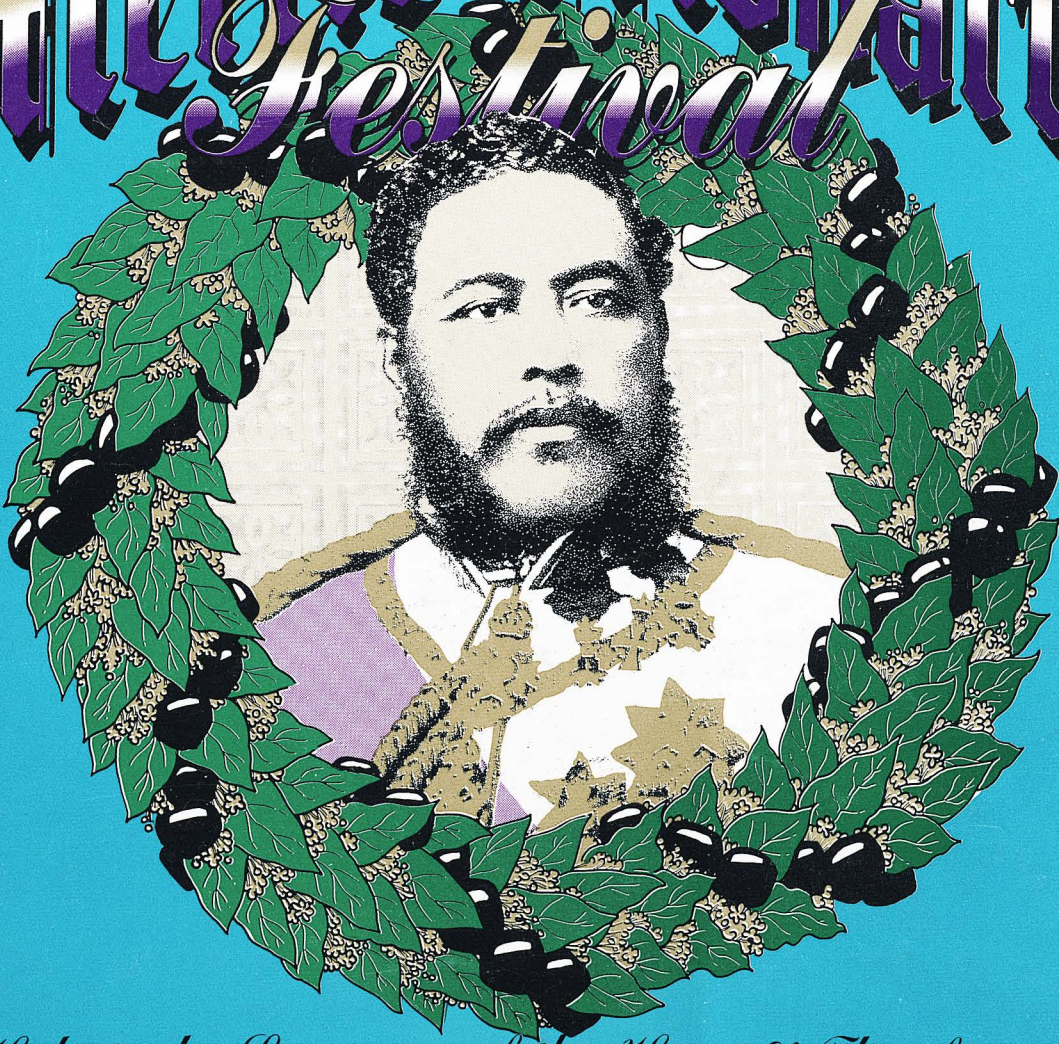


Thirty Second Annual
Merric Monarch
Festival



*Hula is the Language of the Heart & Therefore the
Heartbeat of the Hawaiian People.*

Hilo, Hawaii

April 16 - 22, 1995

Hawn
GV
1796
.H8
M47a
22nd
1995



1995 MERRIE MONARCH FESTIVAL



The Merrie Monarch Festival

Aloha and Welcome to the 32nd Annual Merrie Monarch Festival.

King David Kalakaua came to the throne of the Hawaiian Kingdom in 1874 and reigned until his death in 1891. He was a patron of the arts especially music and dance.

Kalakaua almost singlehandedly restored many of the Hawaiian people's nearly extinct cultural traditions. These included myths and legends, and the hula which had been nearly banished in the past 70 years by missionary zeal.

Ancient Hawaiians had no written language. Instead, all communications beyond the spoken word took place in the form of chants and the dance called hula - Hula and its accompanying chants - recorded Hawaiian genealogy, mythology, prayers of the heart and mind. The hula was the means by which the culture, history, stories and almost every aspect of Hawaiian life were expressed and passed down through generations.

Hula was a narrative movement designed to enhance the meaning of the songs and singing chants that contained the legends, the genealogies, the stories of origin and migration, the history of people. It was another way to acknowledge every feature of the natural world — birds and fish, trees and flowers, mountains, rivers, wind and rain. Kalakaua knew that if the hula died, the chants could die and history itself might disappear.

The Merrie Monarch Festival, is dedicated to the Memory of King David Kalakaua (known as the Merrie Monarch) and is held every April in Hilo. Though the week-long festivities include art exhibits, crafts fair, demonstrations, performances and a colorful parade, the biggest event is the hula competition, which lasts for 3 days.

O wau no me ka ha'ha'ha

Dotie Thompson



32nd ANNUAL MERRIE MONARCH FESTIVAL
THE ROYAL COURT
1995



KING Harding Fragas
QUEEN Abradine Piilani Mahuna Sanborn

LADY-IN-WAITING Kahealani Tavares
LIL'UOKALANI Greycelyn Maluo
LADY-IN-WAITING Ala'amoe Kuikahi
KAI'ULANI Jennifer DeCosta
COUNSELOR Garrett Peralto
KAHU Virginia Enos
CHANTER Ray Kahikilaulani Fonseca
PULO'ULO'U Vanagan Guy Imaikalani Sanborn
PU Mahiai Moniz, Mike Smith, Joe Correa
KAHILI August Dias, Chucky Nunes, Bronson Shelton, Nickolas Gega



In Loving Memory



AUNTY KAU'I ZUTTERMEISTER
Kumu Hula Master

Master Traditional Artist with the Folk Arts Program
of the National Endowment for the Arts.
Dedicated to preserving the cultural diversity
of the United States.

JUDGES

NOENOE ZUTTERMEISTER
NALANI KANAKA'OLE
PUALANI KANAKA'OLE KANAHELE
JOHN KAIMIKAUA
CY BRIDGES
KIMO ALAMA KEAULANA
O'BRIAN ESELU

COMMENTATOR

KIMO KAHOANO



Past Contest Winners

1971

Implements Div./Modern Div./Overall Winners
Pauline Kekahuna - Hauoli Hula Studio
Miss Aloha Hula Aloha Wong (Keolalaulani Hula Studio)

1972

Ancient Division/Modern Division Johnny Lum Ho Hula Studio
Implements Division Puamana Hula Studio
Miss Aloha Hula Aulani Newalu (Hälau 'O Kahealani)

1973

Hula Kähiko/Hula 'Auana/Implements/Overall Winner
Pauline Kekahuna - Hauoli Hula Studio
Miss Aloha Hula Kalani Kalawa (Louise Kaleiki Hula Studio)

1974

Hula Kähiko/Hula 'Auana/Implements/Overall Winner
Louise Kaleiki Hula Studio
Miss Aloha Hula Dee Dee Aipolani (Pilani Watkins Hula Studio)

1975

Hula Kähiko (tie)
'Ilima Hula Studio & Pauline Kekahuna - Hauoli Hula Studio
Hula 'Auana 'Ilima Hula Studio
Implements Keolalaulani Hula Studio
Miss Aloha Hula Leimomi Maria ('Ilima Hula Studio)

1976

Hula Kähiko 'Ilima Hula Studio
Hula 'Auana Alicia K. Smith Hula Studio
Käne Division Na Kamalei 'O Liliehua / *Overall* 'Ilima Hula Studio
Miss Aloha Hula (tie) Ululani Duenas ('Ilima Hula Studio)
Sheryl Nalani Guernesny (Kaleo 'O Nani Loa Studio)

1977

(Käne) Hula Kähiko / Overall Hälau 'O Kekuhi
Hula 'Auana Na Kamalei
(Wahine) Hula Kähiko / Overall Na Pualei 'O Likolehua
Hula 'Auana Johnny Lum Ho Hula Studio
Miss Aloha Hula Pualani Chang (Pukaikapua'okalani Studio)

1978

(Käne) Hula Kähiko / Hula 'Auana / Overall Waimapuna
(Wahine) Hula Kähiko / Overall Johnny Lum Ho Hula Studio
Hula 'Auana / Overall Na Pualei 'O Likolehua
Miss Aloha Hula Regina Makiakai Igarashi (Keolalaulani Hula Studio)

1979

(Käne) Hula Kähiko Nā Wai Ehā 'O Puna
Hula 'Auana / Overall Waimapuna
(Wahine) Hula Kähiko / Overall Hauoli Hula Studio
Hula 'Auana (tie) Hauoli Hula Studio & Na Pualei 'O Likolehua
Miss Aloha Hula Jody Imehana Mitchell (Ka Pa'u 'O Hiiaka)

1980

(Käne) Hula Kähiko Waimapuna / *Hula 'Auana* Nā Wai Ehā 'O Puna
Overall (tie) Waimapuna & Nā Wai Ehā 'O Puna
(Wahine) Hula Kähiko (tie)
Hauoli Hula Studio & Johnny Lum Ho Hula Studio
Hula 'Auana / Overall Johnny Lum Ho Hula Studio
Miss Aloha Hula Kaula Kamahale (Johnny Lum Ho Hula Studio)

1981

(Käne) Hula Kähiko / Hula 'Auana / Overall Nā Wai Ehā 'O Puna
(Wahine) Hula Kähiko / Overall Hälau 'O Na Maoli Pua
Hula 'Auana (tie)
Johnny Lum Ho Hula Studio & Hälau 'O Na Maoli Pua
Miss Aloha Hula Brenda Alidon (Johnny Lum Ho Hula Studio)

1982

(Käne) Hula Kähiko / Hula 'Auana / Overall
Hula Hälau O Ka Ua Kani Lehua
(Wahine) Hula Kähiko Hälau Mōhala 'Ilima
Hula 'Auana Hälau 'O Kahanuola
Overall Hula Hälau O Ka Ua Kani Lehua
Miss Aloha Hula Dayna Kanani Oda (Hula Hälau O Ka Ua Kani Lehua)

1983

(Käne) Hula Kähiko / Hula 'Auana / Overall
Hula Hälau O Ka Ua Kani Lehua
(Wahine) Hula Kähiko Hälau Mōhala 'Ilima
Hula 'Auana / Overall Hula Hälau O Ka Ua Kani Lehua
Miss Aloha Hula Geola Pua (Hula Hälau O Ka Ua Kani Lehua)

1984

(Käne) Hula Kähiko / Hula 'Auana / Overall Nā Wai Ehā 'O Puna
(Wahine) Hula Kähiko / Hula 'Auana / Overall Hälau Mōhala 'Ilima
Miss Aloha Hula Twyla Ululani Mendez (Hauoli Hula Hälau)

1985

(Käne) Hula Kähiko / Hula 'Auana / Overall Nā Wai Ehā 'O Puna
(Wahine) Hula Kähiko / Hula 'Auana / Overall
The Ladies of Ke'ala 'O Ka Lauwa'e
Miss Aloha Hula Healani Young (The Ladies of Ke'ala 'O Ka Lauwa'e)

1986

(Käne) Hula Kähiko / Hula 'Auana / Overall Men of Waimapuna
(Wahine) Hula Kähiko / Overall Keolalaulani Olapa 'O Laka
Hula 'Auana Hula Hälau 'O Kamuela
Miss Aloha Hula Leimomi Nuuhiwa (The Ladies of Ke'ala 'O Ka Lauwa'e)

1987

(Käne) Hula Kähiko / Hula 'Auana / Overall
Hula Hälau O Ka Ua Kani Lehua
(Wahine) Hula Kähiko Nā Wai Ehā 'O Puna
Hula 'Auana (tie) Hälau Mōhala 'Ilima & Kawaili'ulā Hula Hälau
Overall Keolalaulani Olapa 'O Laka
Miss Aloha Hula Lisa Kuuipo Doi (Hula Hälau O Ka Ua Kani Lehua)

1988

(Käne) Hula Kähiko / Hula 'Auana / Overall
Hula Hälau O Ka Ua Kani Lehua
(Wahine) Hula Kähiko / Overall Hula Hälau O Ka Ua Kani Lehua
Hula 'Auana Hula Hälau 'O Kamuela
Miss Aloha Hula Sheldeen Kaleimomi Kaleohano (Hula Hälau 'O Kahikilaulani)

1989

(Käne) Hula Kähiko Hälau Hula 'O Kahikilaulani
(Käne) Hula 'Auana Men of Na Kamalei
Overall Kawaili'ulā Hula Hälau
(Wahine) Hula Kähiko / Overall Hula Hälau 'O Na Maoli Pua
Hula 'Auana Keali'ikaapunihonua Ke'ena A'o Hula
Miss Aloha Hula Pi'ilani Smith (Hula Hälau 'O Na Maoli Pua)

1990

(Käne) Hula Kähiko / Hula 'Auana / Overall
Kawaili'ulā Hula Hälau
(Wahine) Hula Kähiko / Overall Hälau 'O Na Maoli Pua
Hula 'Auana Hälau Hula 'O Kahikilaulani
Miss Aloha Hula Natalie Noelani Ai (Hälau Hula Olana)

1991

(Käne) Hula Kähiko Hälau Hula 'O Kahikilaulani
Hula 'Auana / Overall Hälau Hula O Ka Ua Kani Lehua
(Wahine) Hula Kähiko / Overall Hula Hälau 'O Kamuela
Hula 'Auana Hälau Na Lei 'O Kaholoku
Miss Aloha Hula Kapualokeokalaniakea Dalire (Keolalaulani Hälau Olapa 'O Laka)

1992

(Käne) Hula Kähiko / Hula 'Auana / Overall Nā Wai Ehā 'O Puna
(Wahine) Hula Kähiko / Overall Hälau Na Lei 'O Kaholoku
Hula 'Auana Hula Hälau 'O Kamuela
Miss Aloha Hula Kauimaioakalaniakea Dalire (Keolalaulani Hälau Olapa 'O Laka)

1993

(Käne) Hula Kähiko / Hula 'Auana / Overall Kawaili'ulā Hula Hälau
(Wahine) Hula Kähiko / Overall Hula Hälau O Ka Ua Kani Lehua
Hula 'Auana Hula Hälau Na Lei 'O Kaholoku
Miss Aloha Hula Maelia Lani Kahanuola Loebenstein
(Ka Pā Hula 'O Kauano'e 'O Wa'ahila)

1994

(Käne) Hula Kähiko Nā Wai Ehā 'O Puna
Hula 'Auana / Overall Kawaili'ulā Hula Hälau
(Wahine) Hula Kähiko Kawaili'ulā Hula Hälau
Hula 'Auana / Overall Hälau Na Mamo 'O Pu'uanahulu
Miss Aloha Hula Tracie Ka'onohilani Frias
(Nā Wai Ehā 'O Puna)



32nd ANNUAL MERRIE MONARCH FESTIVAL
WEDNESDAY NIGHT HOIKE
April 19, 1995
Edith Kanakaole Tennis Stadium



-
- 6:30 p.m. Royal Court Enters
 - 6:45 p.m. National Anthem-Hawaii Pono'i
by Karen Keawehawaii
 - 6:55 p.m. Pule
 - 7:00 p.m. The Merrie Monarch Glee Club
 - 8:00 p.m. Kawahineali'inoho'ikeanuenue/
Keali'i O Kamalu
 - 9:00 p.m. Johnny Lum Ho's Hālau O Ka
Ua Kani Lehua presents
Tau'ati (under the direction of
Matauranui & Viriamu)
-

**Na Hālau O Ke Akua
Aloha**

**Kumu Hula: Derek & Stanette
Nuuhiwa
Honolulu, HI**

Merrie Monarch Men's Glee Club

The Merrie Monarch Men's Glee Club was organized in June, 1976, by Bandmaster Charles "Bud" Dant along with the Hulihe'e Band.

Together, this group helps perpetuate Hulihe'e Palace through monthly concerts at the historic landmark in Kailua-Kona. The monthly concerts primarily feature the music of the Hawaiian Monarch era performed in band arrangements written by Bandmaster Dant, a former producer of the famous "Hawai'i Calls" program, augmented by the voices of the Merrie Monarchs, and soprano, Grace Basque.

The Merrie Monarchs are privileged again to participate in the 32nd Annual Merrie Monarch Festival. We feel the performance of our music is a celebration of our Hawaiian heritage and culture.

We extend a 'Mahalo Nui' to Auntie Dottie Thompson, Uncle George Naope, and the Merrie Monarch Festival Committee for their gracious consideration.



**The Merrie
Monarchs**



32nd ANNUAL MERRIE MONARCH FESTIVAL SCHEDULE OF EVENTS April 16-22, 1995

Sunday - April 16

Hoolaulea

- 11:00 a.m. - 4:00 p.m. - Coconut Island (Mokuola)
- Master of Ceremony - *Keoni Fujitani*
- 11:00 - Hālau Hula O Kahikilaulani
- 12:00 - Ke Onaona
- 1:00 - Special K (Kaaihui Ohana from Kona)
- 2:00 - Pauahi
- 3:00 - Janoe Kalawa (Winner Aloha Week Falsetto)
- 4:00 - Himeni Pilialoa

Monday - April 17

- 12:00 noon - Hawaii Naniloa Hotel
Hālau Hula O Kahikilaulani
- 1:00 p.m. - Hilo Hawaiian Hotel
Nā Pua Me Kealoha of California

Tuesday - April 18

- 12:00 noon - Hawaii Naniloa Hotel
Hula Hālau O Lilinoe of California
- 1:00 p.m. - Hilo Hawaiian Hotel
Hālau Keali'i O Nalani of California

Wednesday - April 19

- 9:00 a.m. - 5:00 p.m. - Seven Seas Luau House
Hawaiian Arts & Crafts
- 12:00 noon - Hawaii Naniloa Hotel
Hālau Keali'i O Nalani of California
- 1:00 p.m. - Hilo Hawaiian Hotel
Lorlei's Hula Studio

EDITH KANAKA'OLE TENNIS STADIUM

- 6:30 p.m. - Royal Court enters
- 6:45 p.m. - National Anthem - Hawai'i Pono'i
by Karen Keawehawaii
- 6:55 p.m. - Pule
- 7:00 p.m. - The Merrie Monarch Glee Club
- 8:00 p.m. - Kawahineali'inoho'ikeanuenue/
Keali'i O Kamalu
- 9:00 p.m. - Johnny Lum Ho's, Hālau O Ka Ua Kani
Lehua presents: Tau'ati (under the direction
of Matauranui & Viriamu)

Thursday - April 20

- 9:00 a.m. - 5:00 p.m. - Seven Seas Lu'au House, Hawaii
Naniloa Hotel, Hilo Hawaiian
Hotel
Hawaiian Arts & Crafts

- 12:00 noon - Hawai'i Naniloa Hotel
Ku'ulei Hashimoto of Japan
- 1:00 p.m. - Hilo Hawaiian Hotel
Hālau Hula O Kahikilaulani

EDITH KANAKA'OLE TENNIS STADIUM

- 6:00 p.m. - Royal Court enters
- 6:15 p.m. - National Anthem - Hawai'i Pono'i
by Karen Keawehawaii
- 6:20 p.m. - Pule
- 6:25 p.m. - Introduction of Judges
Miss Aloha Hula Competition
Presentation of Awards

Friday - April 21

- 9:00 a.m. - 5:00 p.m. - Seven Seas Luau House, Hawaii
Naniloa Hotel, Hilo Hawaiian
Hotel
Hawaiian Arts & Crafts
- 11:00 a.m. - Pier 1 -- Kuhio Wharf,
USS REUBEN JAMES
TE HEI HONO - Tahitian Revue
- 12:00 Noon - Hawaii Naniloa Hotel
Hula Hālau O Hilo Hanakahi
- 1:00 p.m. - Hilo Hawaiian Hotel
Ku'ulei Hashimoto of Japan

EDITH KANAKA'OLE TENNIS STADIUM

- 6:00 p.m. - Royal Court enters
- 6:15 p.m. - National Anthem - Hawai'i Pono'i
by Karen Keawehawaii
- 6:20 p.m. - Pule
- 6:30 p.m. - Hula Kahiko Competition

Saturday - April 22

- 8:00 a.m. - 4:00 p.m. - Cultural Fair, Moku 'O Keawe
Mooheau Park
- 9:00 a.m. - 5:00 p.m. - Seven Seas Luau House, Hawaii
Naniloa Hotel, Hilo Hawaiian
Hotel
Hawaiian Arts & Crafts
- 10:30 a.m. - Royal Parade, Downtown Hilo
- EDITH KANAKA'OLE TENNIS STADIUM
- 5:30 p.m. - Royal Court enters
- 5:45 p.m. - National Anthem - Hawai'i Pono'i
by Karen Keawehawaii
- 5:55 p.m. - Pule
- 6:00 p.m. - Hula 'Auana Competition
Introduction of Kumu Hula
Presentation of Awards



Na
Kumu
Hula



PUKALANI HULA HALE
Nina Maxwell & Hiilei Maxwell Juan
Pukalani, Maui



PALEKA LEINAALA MATTOS & KUNEWA MOOK
Hula Hālau O Kamuela
Kalihi/Waimanalo, Oahu



HOWARD & OLANA AI
Hālau Hula Olana
Aiea, Oahu



LEIALOHA LIM AMINA & NANI LIM YAP
Hālau Na Lei O Kaholoku
Kohala, Hawaii



ETUA LOPES
Hālau Hula Nā Pua U'i O Hawai'i
Kailua-Kona, Hawaii



ELLEN CASTILLO
Puka'ikapuaokalani Hula Hālau
Kailua, Oahu



SISSY KAIO—Hula Hālau 'O Lilinoe (Wahine)
Nā Pua Me Kealoha (Kāne)
Carson, California



LEIMOMI HO
Keali'ika'apunihonua Ke'ena A'o Hula
Honolulu, Oahu



ALOHA DALIRE
Keolalaulani Hālau Olapa 'O Laka
Kaneohe, Oahu



CHINKY MAHOE
Hālau Hula 'O Kawaii'ulā
Kailua, Oahu



WAYNE CHANG
Halau O Keahi
Honolulu, Oahu



MAE LOEBENSTEIN
Ka Pa Hula 'O Kauano'e 'O Wa'ahila
Honolulu, Oahu



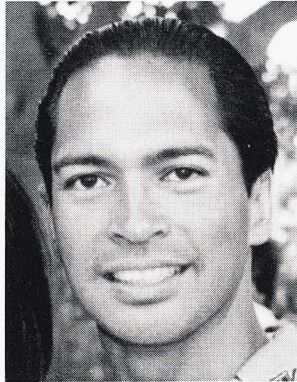
GLENN VASCONCELLOS
Halau 'O Ke Anuenue
Hilo, Hawaii



HEALANI YOUN
The Ladies of Ke'ala O Ka Laua'e
Honolulu, Oahu



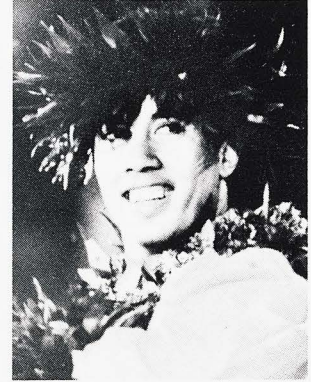
AL BARCARSE
Halau Ka Ua Kilihune
Kaneohe, Oahu



KEALI'I CEBALLOS
Keali'i O Nalani
Los Angeles, California



WM. "Sonny" CHING
Halau Na Mamo O Pu'uanahulu
Honolulu, Oahu



MICHAEL KA'ILIPUNOHU
CANOPIN
Halau Kealakupawa
Honolulu, Oahu



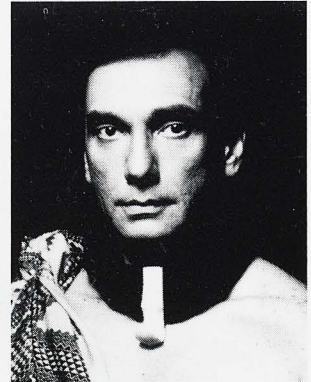
MĀPUANA de SILVA
Halau Mōhala 'Ilima
Kailua, Oahu



KAULANA KASPAROVITCH
Lehua Dance Company
Honolulu, Oahu



KAPU KINIMAKA-ALQUIZA
Nā Hula 'O Kaohikukapulani
Hanapepe, Kauai



JOHN KAHA'I TOPOLINSKI
Ka Pā Hula Hawai'i
Honolulu, Oahu

Photo by Mary Ann Chang

NOT PICTURED:

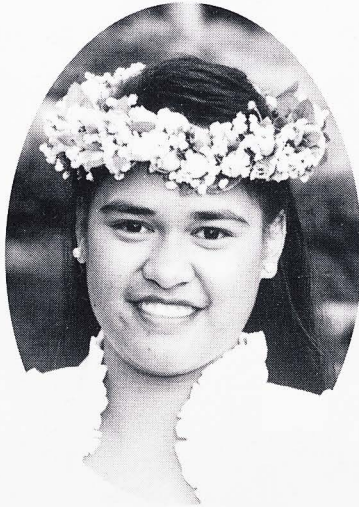
JOHNNY LUM HO, Halau O Ka Ua Kani Lehua, Hilo, Hawaii
MOANA DUDOIT & RAQUEL DUDOIT, Moana's Hula Halau, Kaunakakai, Molokai



Miss Aloha Hula Contestants



MICHELLE JOREEN KALEOLANI
CHING
Hālau Nā Mamo O Pu'uanahulu



KANOILANI KEAUNUI
Keali'ika'apunihonua Ke'ena A'o Hula



ANDREANA NADIA HAUNANI
DUDOIT
Moana's Hula Hālau



GEMMA NOELANI JONES
Lehua Dance Company



CHEYANN KAHEALANI
RODRIGUES
Pukalani Hula Hale



NAMAKA UESUGI
Keali'i O Nalani



Miss Aloha Hula Contestants



NOELANI WEAVER
Hula Hālau 'O Lilinoe



KINA'U AFONG
Hālau Hula Olana



LIANE KUUALOHA SHISHIDO
Keolalaulani Hālau Olapa O Laka



ALLISON KAILIHIWA
KAHA'IPIILANI VAUGHAN
Ka Pā Hula O Kauanoē O Wā'ahila



PUALANI CENAL
Hula Hālau O Kamuela



SHARLA KU'UALOHAPUMEHANA
ALBINIO
Puka'ikapuaokalani Hula Hālau

NOT PICTURED:
KEALOHA AINA SIMEONA
Hālau O Ka Ua Kani Lehua



32nd ANNUAL MERRIE MONARCH FESTIVAL
MISS ALOHA HULA
HULA KĀHIKO
Thursday, April 20, 1995

1. MICHELLE JOREEN KALEOLANI CHING - Hālau Nā Mamo O Pu'uanahulu
"Waipi'o Paka'alana"

This mele tells of the woman Hainakolo, who swims to Hawai'i from Tahiti after her husband leaves her. She eats the 'ulei berries and becomes mentally deranged. Her husband finds her at Waipi'o valley, and through his love she is brought back to her senses and they are reunited.

2. KANOILANI KEAUNUI - Keali'ika'apunihonua Ke'ena A'o Hula
"Ni'ihau"

Majestic is Ni'ihau in the calm. Famed by the hidden waters of the Pao'o fish. There one can see the island of Lehua as it stands alone.

3. ANDREANA NADIA HAUNANI DUDOIT - Moana's Hula Hālau
"Ula No Weo"

We honor Kauai for its beauty, its lush and lovely valleys.

4. GEMMA NOELANI JONES - Lehua Dance Company
"Mele A Na Pa'ahana I-Pua-Ka-'Ilima"

Song of the workers on Howland. Early in the reign of Kamehameha IV and Queen Emma many Hawaiian laborers were taken to the tiny islands in Micronesia, namely Howland.

5. CHEYANN KAHEALANI RODRIGUES - Pukalani Hula Hale
"Pōpō'alaea"

Through gossip which leads to jealousy, Chief Kaakea kills his wife (Pōpō-alaea) and her servant in a cavern at the pool of Wai'anapanapa.

6. NAMAKA UESUGI - Keali'i O Nalani
"Kaiko'o Kilauea"

Pele angry with Hi'iaka erupts furiously destroying the lehua groves of Hi'iaka at Puna and turns to stone the two forest maidens Hopoe and Ha'ena. This mele was written out of sorrow for the death of Hopoe.

7. NOELANI WEAVER - Hula Hālau 'O Lilinoe
"Aia Ka O Pua Kou Leinani"

This mele is a tribute to Queen Kapiolani.

8. KINA'U AFONG - Hālau Hula Olana
"Kaulana O Kohala"

Here I am visiting Kohala; Feel the snapping chill; Land of beauty beckoning before me; causes a desire that bids me to return.

9. KEALOHAAINA SIMEONA - Hālau O Ka Ua Kani Lehua
"Wahine Nui Pilikua"

This song speaks of how the Olohe's daughters, being of Huge Frame like their father, would help him kill and waylay travelers for their possessions.

10. LIANE KUUALOHA SHISHIDO - Keolalaulani Hālau Olapa O Laka
"Hanohano Kauai"

The districts of Kauai and all its beauty are described in this mele.

11. ALLISON KAILIHIWA KAHA'IPI'ILANI VAUGHAN - Ka Pā Hula O Kauano'e O Wa'ahila
"He Kihene Pua Nou E Laka"

We recognize Laka as our hula patron, and honor the splendor of her lush forest.

12. PUALANI CENAL - Hula Hālau O Kamuela
"No Luna E Ka Hale Kai"

This chant speaks of Hi'iaka (the favorite sister of Pele) to fetch Lohiau from the island of Kaua'i and to bring him to Pele on the big island. Pele so filled with jealousy, not knowing why the two had been delayed, in a fit of anger sent her fires upon Hi'iaka's friend Hopoe and her beloved forests of lehua.

13. SHARLA KU'UALOHAPUMEHANA ALBINIO - Puka'ikapuaokalani Hula Hālau
"Lili'uokalani"

This mele speaks of her fond love for the island of Kaua'i.



32nd ANNUAL MERRIE MONARCH FESTIVAL
MISS ALOHA HULA
HULA 'AUANA
Thursday 20, 1995

1. MICHELLE JOREEN KALEOLANI CHING - Hālau Nā Mamo O Pu'uanahulu
"A Ka La'i Au I Kuhiau"

Kaehu witnessed the Hetty's voyage from the cliff above the bay where stood the Heiau called Kuhiau.
"A Ka La'i Au I Kuhiau . . . I am at ease at Kuhiau". Kuhiau is a heiau at Nawiliwili bay on Kaua'i.

2. KANOILANI KEAUNUI - Keali'ika'apunihonua Ke'ena A'o Hula
"Keawaiki"

Keawaiki, home of Francis I'i Brown, is described of its beauty.

3. ANDREANA NADIA HAUNANI DUDOIT - Moana's Hula Hālau
"Pualani"

This mele speaks of one's love and desire for a very special place.

4. GEMMA NOELANI JONES - Lehua Dance Company
"Kealoha"

A love song given as an anniversary present.

5. CHEYANN KAHEALANI RODRIGUES - Pukalani Hula Hale
"Kauanoeanuhe"

The haku mele compares his sweetheart to an elusive mist.

6. NAMAKA UESUGI - Keali'i O Nalani
"Makee Ailana"

Makee island was a shaded area known to be frequented by lovers,
who while away the time listening to the sounds of the ocean.

7. NOELANI WEAVER - Hula Hālau 'O Lilinoe
"Pua 'Iliahi"

This describes a secret love affair between two lovers.

8. KINAU AFONG - Hālau Hula Olana
"Kahukiaialo"

The song tells of the beauties of Lahaina, Puamana home of the Farden Family.

9. KEALOHAAINA SIMEONA - Hālau O Ka Ua Kani Lehua
"Ke One Kaulana o Hawaii"

Dancer visits popular districts around the Island of Hawaii.

10. LIANE KUUALOHA SHISHIDO - Keolalaulani Hālau Olapa O Laka
"Lei Pua Kenikeni"

This song speaks about the beauty of the Pua Kenikeni as one watches it bloom in the iridescent moon.

11. ALLISON KAILIHIWA KAHA'IPPI'LANI VAUGHAN - Ka Pā Hula O Kauano'e O Wa'ahila
"E Nihī Ka Hele"

Upon Queen Kapiolani's departure for Queen Victoria's Jubilee in England, King Kalākaua wrote this mele . . .
"Tread softly" . . . "be careful on your journey and do not forget your Hawaii."

12. PUALANI CENAL - Hula Hālau o Kamuela
"Alekoki"

Here at 'Alekoki, Prince Lunalilo came to meet Princess Kamamalu, but the Princess never showed up.
In his disappointment, he composed the words of this song out of anger and bitterness.

13. SHARLA KU'UALOHAPUMEHANA ALBINIO - Puka'ikapuaokalani Hula Hālau
"Mi Nei"

Using her womanly charms to snare that special person this song asks the question (How about ME?)



32nd ANNUAL MERRIE MONARCH FESTIVAL HULA KAHIKO

Kāne & Wahine Group Hula

Friday, April 21, 1995

1. PUKALANI HULA HALE - Nina Maxwell-Hiilei Maxwell Juan, Pukalani, Maui
"Kunihī Kaena, Holo I Ka Malie"

Hiiaka pays her respects to her ancestral divinity Kaena.

2. THE LADIES OF KE'ALA O KA LAUA'E - Healani Youn, Honolulu, Oahu
"Ke Ola 'Ana O Ka 'Oī Loa"

This describes many native animals and their movements which our dancers will be portraying with their hula movements.

3. KEALI'IKA'APUNIHONUA KE'ENA A'O HULA - Leimomi Ho, Honolulu, Oahu (KĀNE)
"He Mele No Ku'u Pua"

"A song for my beloved flower." The truth of our Hawaiian values bestowed upon us by our ancestors will flourish and thrive through the strength and innocence of our children.

4. KA PĀ HULA HAWAI'I - John Kaha'i Topolinski, Honolulu, Oahu
"Hana Waimea"

This mele tells of the actual ascending into battle and the honors the Kipu'upu'u received upon their return home. The ocean waves reach the waters of Mahiki, where they shout at Pu'umoeawa.

5. NĀ HULA 'O KAOHIKUKAPULANI - Kapu Kinimaka-Alquiza, Hanapepe, Kauai
"He Mele Hulu No Kapiolani I Mololani"

This mele, is in honor of Queen Kapiolani, you are the woman that we praise, this lei of aloha is yours. This oli depicts Mololani as the large crater on Mokapu.

6. KEALI'I O NALANI - Keali'i Ceballos, Los Angeles, California (KĀNE)
"He Li'i Kalani"

This mele inoa was written for Kamehameha III about his trip to the island of Molokai before his return to Honolulu for the opening of the legislature.

7. HULA HĀLAU 'O LILINOE - Sissy Kaio, Carson, California
"Mele Inoa No Naienaena"

This describes a tribute to the sacred daughter of Kamehameha who is caught between two worlds— that of the missionaries and the lifestyles of old Hawaii.

8. LEHUA DANCE COMPANY - Kaulana Kasparovitch, Honolulu, Oahu
"Ia Oe E Ka La"

To honor Kalākaua on his trip around the world.

9. HĀLAU NA MAMO O PU'UANAHULU - William "Sonny" Ching, Honolulu, Oahu (KĀNE)
"Eia He'eia"

This bay in Kona, Hawaii, noted for surfing, is immortalized in chant, of one having a lover in the arms only to find him not there. The chant is also about Kalākaua and compares the problems his Kingdom faces to that of "Tight Rope Walking."

10. HĀLAU NA LEI O KAHOLOKU - Nani Lim-Yap & Leialoha Amina, Kohala, Hawaii
"Hohonu Mahiki"

Profound is Mahiki.

11. HĀLAU HULA NĀ PUA U'I O HAWAI'I - Etua Lopes,
Kailua-Kona, Hawaii
"Kā'ua I Ka Nani A'o Hilo"

This chant speaks of many different places and symbols that surround Hilo "Land of Hanakahi." A fond place of the King.

12. HULA HĀLAU O KAMUELA - Paleka Leinaala Mattos & Kunewa Mook, Kalihi/Waimanalo, Oahu (KĀNE)
"He Hula No Ka Mo'i Kalakaua"

This chant tells of Kalākaua's travels around the world. Kalākaua on this tour admired many different cultural and beautiful items and envisioned them on the islands. Kalākaua was given a royal and warm reception from the people of the places they visited.



13. HĀLAU 'O KE ANUENUE - Glenn Vasconcellos, Hilo, Hawaii
"Pu'inokolu a Hina"

Pu'inokolu a Hina (The Three Windstorms) of Hina which she kept tightly in her wind gourd, Wawahonua'aho. This mele describes these three windstorms and their destruction.

14. HĀLAU O KA UA KANI LEHUA - Johnny Lum Ho, Hilo, Hawaii
"Lauhi Pele-Wahine Piha Inaina"

Tells of how Pele in her rage and anger becomes destructive ceasing only if Hookupu offered her is appeasing to her.

15. HĀLAU O KEAHI - Wayne Chang, Honolulu, Oahu (KĀNE)
"Wailuku"

This mele recounts a journey from Maui to O'ahu aboard a steamship. Typical of the poetry of the latter 19th century, this journey expounds on the beauty of the islands as the ship sails past Moloka'i, Lana'i and the headlands of O'ahu.

INTERMISSION

16. KA PĀ HULA 'O KAUANOE 'O WA'AHILA - Mae Loebenstein, Honolulu, Oahu
"No'eno'e Maika'i Ke Aloha"

In honor of King Kalākaua, our kahiko journeys through the island of Kaua'i and her many places of beauty.

17. HĀLAU MŌHALA 'ILIMA - Māpuana de Silva, Ka'oha'o, Kailua, Oahu
"A Luna Au o 'Āhia"

Research suggests that "Āhia" has been a name chant for Kupake'i, a birth gift for Joseph 'Īlālā'ole, and a love-making song from Kahuku Ranch. Our performance is meant to acknowledge the rich history of the mele and the proud tradition of the Ka'u people from which it springs.

18. KA PĀ HULA HAWAI'I - John Kaha'i Topolinski, Honolulu, Oahu (KĀNE)
"Kau Kaha'ea"

The thick dark clouds rapidly descend as the rain from the storm drips down upon our bed. Rapidly filling are the trenches we have dug around the house of Ko'olau. Ah, the cold is so numbing as we are shaken from the gusting wind. The woman wraps her kapa tightly about her. We cling together for warmth.

19. HĀLAU HULA 'O KAWAILI'ULĀ - Chinky Mahoe, Kailua, Oahu
"Lonoikamakahiki"

Lonoikamakahiki, half crazed with grief over the death of his wife Kaikilani, wanders aimlessly in the forest of Hanalei on Kaua'i. Only one man, Kapa'ihiahilina stayed by his side through the cold, the hunger, and the rain. When Lonoikamakahiki returned to Hawai'i, Kapa'ihiahilina became a favorite in his court.

20. KEALI'IKA'APUNIHONUA KE'ENA A'O HULA - Leimomi Ho, Honolulu, Oahu,
"Aia I Lihau"

There is Lihau. In honor of Chiefess Kapi'olani, on one of her many visits to the Island of Maui. Lihau is located on the west side of Maui.

21. HĀLAU KEALAKAPAWA - Michael Canopin, Honolulu, Oahu (KĀNE)
"Nani Ka'ala Keiki Na Kama'oha"

This mele describes the majestic beauty of Mt. Ka'ala in its lush verdure. It contains many place names and poetic metaphors which allude to love.

22. MOANA'S HULA HĀLAU - Moana Dudoit & Raquel Dudoit, Kaunakakai, Molokai
"He Inoa no Hina"

In honor of Hina, this chant tells of the different places on our lovely island of Molokai.

23. PUKA'IKAPUAOKALANI HULA HĀLAU - Ellen Castillo, Kailua, Oahu
"Kaiulani i 'Ainahau"

This mele describes the beauty, of this most special place the home of Kaiulani ('Ainahau).

24. HĀLAU KA UA KILIHUNE - Al Barcarse, Kaneohe, Oahu (KĀNE)
"Hula Pa'ani Ho'oikaika"

This mele describes the various strenuous Makahiki games as they were played in Na'iwa and Manowainui on Moloka'i.



12. HULA HĀLAU O KAMUELA - Paleka Leinaala Mattos & Kunewa Mook, Kalihi/Waimanalo, Oahu (KĀNE)
"Kipahulu"

It was written for the Charles Lindberg estate on the Hana coast on the island of Maui.
 This was found to be a place so beautiful and inviting.

13. HĀLAU 'O KE ANUENUE - Glenn Vasconcellos, Hilo, Hawaii
"Ali'ipoe"

Ali'ipoe compares two lovers to the delicate Ali'ipoe blossom that is woven with the scent of the Mokihana and her companion the Maile Lau'i'ili'i. In this mele the lovers would meet during the midnight hours atop Mt. Ha'upu to woo and embrace under the shade of the Ali'ipoe shrub.

14. HĀLAU O KA UA KANI LEHUA - Johnny Lum Ho, Hilo, Hawaii
"Hula O Ka Papa Holoī"

Tells how washing clothes in the river using a stick to beat off dirt from clothes is compared to using a washboard—but now the washer takes the load off.

15. HĀLAU O KEAHI - Wayne Chang, Honolulu, Oahu (KĀNE)
"Oni A Ka Moku"

This mele, likens a couple's lovemaking to the rolling motion of a steamship. On the surface this innocent mele describes the operations of a ship's boiler room, and what could happen to the hose and pipes if there is too much pressure.

INTERMISSION

16. KA PĀ HULA 'O KAUAO 'O WA'AHILA - Mae Loebenstein, Honolulu, Oahu
"Nani Mānoa"

"Beautiful is Mānoa in the Tuahine rains." From Wa'ahila for which we are named, we pay tribute to this lush and verdant valley.

17. HĀLAU MŌHALA 'ILIMA - Māpuana de Silva, Ka'oha'o, Kailua, Oahu
"Haleakalā Hula"

Aunty Alice Namakelua uses traditional poetic descriptions to extol the beauty and fame of Haleakala, the edible tree—fungus of Makawao, and the chilly 'Ukiu rain of the uplands—but she suggests, with characteristically wry humor—that we'd be better off in Wailuku where Malu-o-ke-ao offers more protection and comfort.

18. KA PĀ HULA HAWAI'I - John Kaha'i Topolinski, Honolulu, Oahu (KĀNE)
"Laelae"

An amorous paniolo sings of his love, as great as Mauna Loa, for his sweetheart.
 "It only comes from your lips and no more", she says. Persuade her!

19. HĀLAU HULA 'O KAWAILI'ULĀ - Chinky Mahoe, Kailua, Oahu
"Ke Alaula"

"Ke Alaula" is an original composition inspired by Akua. It is an ethereal message that awakens one's spirit to understanding the mysteries of life. It invokes a sense of unity, and an appeal to keep life sacred. It is also a compassionate plea to renew and set right the promise made by the first generations of this land.

20. KEALI'IKA'APUNIHONUA KE'ENA A'O HULA - Leimomi Ho, Honolulu, Oahu
"Paniau"

In the old days the most prized gift was to receive a song composed for your home by someone. A prolific writer such as Mrs. Beamer, wrote this song describing the home of Annabelle Nako'olaniohakau Ruddle at Puakō, Hawaii.

21. HĀLAU KEALAKAPAWA - Michael Canopin, Honolulu, Oahu (KĀNE)
"Aloha Ko'olau"

Inspired by the beauty of the Ko'olau mountains with its cascading waterfalls, cooling rains, and the creeping mist high atop the cliff's edge was indeed a spectacular sight, which has been penned into this song.

22. MOANA'S HULA HĀLAU - Moana Dudoit & Raquel Dudoit, Kaunakakai, Molokai
"Hilo E"

Beautiful is Hilo and all its people.

23. PUKA'IKAPUAOKALANI HULA HĀLAU - Ellen Castillo, Kailua, Oahu
"Ka Manu"

Ka Manu, my love how I desire to love you forever, but we must part. You were my heart's desire.



24. HĀLAU KA UA KILIHUNE - Al Barcarse, Kaneohe, Oahu (KĀNE)

"Ka Pua Kiele"

(The Gardenia Blossom) is a love song of admiration for someone very special on Kaua'i, a bearer of good tidings.

25. HĀLAU HULA OLANA - Howard & Olana Ai, Aiea, Oahu

"Kau'ionalani"

"He aloha wau ia 'oe, Kau'ionalani" Love for you, Kau'ionalani. My fragrant flower I hold close to my skin.
So beautiful are you, Never fading flower.

26. HULA HĀLAU 'O KAMUELA - Paleka Leinaala Mattos & Kunewa Mook, Kalihi/Waimanalo, Oahu

"Pua Ahihi"

On the chilly heights of Nuuanu the ahihi grows in an area called Lanihuli.

27. NĀ PUA ME KEALOHA - Sissy Kaio, Carson, California (KĀNE)

"Waikiki Hula"

This is a tribute in song to the world famous beachboys who were on the beach at Waikiki in the 40's and 50's.

28. KEOLALAULANI HĀLAU OLAPA 'O LAKA - Aloha Dalire, Kaneohe, Oahu

"Hopoe"

Pele sends Hi'iaka to Kauai to fetch Lohiau her lover. The journey is filled with obstacles. Hi'iaka is late in returning to Hawaii, in her anger Pele chases Hopoe to the sea at Haena in Kalapana and turns her into stone and destroys the groves of lehua.

29. HĀLAU NĀ MAMO 'O PU'UANAHULU - William "Sonny" Ching, Honolulu, Oahu

"Pua Tuberose"

Pua Tuberose recalls an unforgettable love which is compared to the tuberose blossom. In the song it says "E Kau Mai Ana Kau Ka Hali'a, no sweet tuberose poina 'ole . . . beautiful memories come to mind for the unforgettable tuberose . . ."

30. HĀLAU HULA 'O KAWAILI'ULĀ - Chinky Mahoe, Kailua, Oahu (KĀNE)

"Nanea Ko'u Maka I Ka Le'ale'a"

Here is a delightful mele that will attract the wondrous feelings of love. It says, my eyes are fascinated with pleasure, here I am extending myself to you, grip me tight, in hopes that I might not slip away.



KA PĀ HULA HAWAI'I
Kumu Hula: John Kaha'i Topolinski
Honolulu, Oahu
(Kāne)



HĀLAU NĀ MAMO O PU'UANAHULU
Kumu Hula: William "Sonny" Ching
Honolulu, Oahu



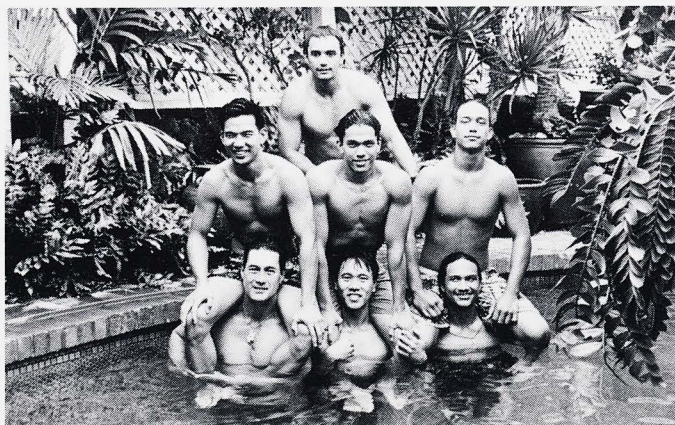
HĀLAU KEALAKAPAWA
Kumu Hula: Michael Canopin
Honolulu, Oahu
(Kāne)



NĀ PUA ME KEALOHA Kumu Hula: Sissy Kaio Carson, California (Kāne)



PUKA'IKAPUAOKALANI HULA HĀLAU Kumu Hula: Ellen Castillo Kailua, Oahu



HĀLAU O KEAHI Kumu Hula: Wayne Chang Honolulu, Oahu (Kāne)



KA PĀ HULA HAWAI'I Kumu Hula: John Kaha'i Topolinski Honolulu, Oahu



HĀLAU HULA 'O KAWAILI'ULĀ Kumu Hula: Chinky Mahoe Kailua, Oahu



HULA HĀLAU 'O LILINOE Kumu Hula: Sissy Kaio & Kanani Kalama Carson, California



THE LADIES OF KE'ALA O KA LAUA'E Kumu Hula: Healani Youn Honolulu, Oahu / Wailua, Kauai



HĀLAU 'O KE ANUENUE Kumu Hula: Glenn Vasconcellos Hilo, Hawaii



HĀLAU KA UA KILIHUNE Kumu Hula: Al Barcarse Kaneohe, Oahu (Kāne)



KA PĀ HULA 'O KAUANOE 'O WA'AHILA

Kumu Hula: Mae Loebenstein
Honolulu, Oahu

HĀLAU NA LEI 'O KAHOLOKŪ

Kumu Hula: Nani Lim-Yap
& Leialoha Amina
Kohala, Hawaii





HULA HĀLAU 'O KAMUELA
Kumu Hula: Paleka Leinaala Mattos
& Kunewa Mook
Kalihi/Waimanalo, Oahu

HĀLAU HULA OLANA
Kumu Hula: Howard & Olana Ai
Aiea, Oahu





HĀLAU MŌHALA 'ILIMA
Kumu Hula: Māpuana de Silva
Ka'ōha'o, Kailua, Oahu



MOANA'S HULA HĀLAU
Kumu Hula: Moana Dudoit
& Raquel Dudoit
Kaunakakai, Molokai

HULA HĀLAU 'O KAMUELA
Kumu Hula: Paleka Leinaala Mattos
& Kunewa Mook
Kalihi/Waimanalo, Oahu
(Kāne)





HĀLAU NĀ MAMO 'O PU'UANAHULU
Kumu Hula: William "Sonny" Ching
Honolulu, Oahu
(Kāne)



**KEALI'IKA'APUNIHONUA KE'ENA
A'O HULA**
Kumu Hula: Leimomi Ho
Honolulu, Oahu
(Kāne)

**HĀLAU HULA NĀ PUA
U'I O HAWAI'I**
Kumu Hula: Etua Lopes
Kailua-Kona, Hawaii





**KEALI'IKA'APUNIHONUA
KE'ENA A'O HULA**
Kumu Hula: Leimomi Ho
Honolulu, Oahu



PUKALANI HULA HALE
Kumu Hula: Nina Maxwell
& Hiilei Maxwell Juan
Pukalani, Maui

**HĀLAU O KA UA KANI
LEHUA**
Kumu Hula: Johnny Lum Ho
Hilo, Hawaii





KEALI'I O NALANI
Kumu Hula: Keali'i Ceballos
Los Angeles, California
(Kāne)



LEHUA DANCE CO.
Kumu Hula: Kaulana Kasparovitch
Honolulu, Oahu

HĀLAU HULA 'O KAWAILI'ULĀ
Kumu Hula: Chinky Mahoe
Kailua, Oahu
(Kāne)

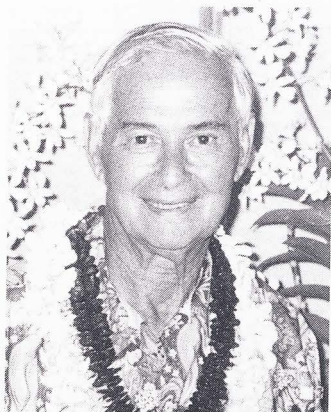




KEOLALAUANI HĀLAU OLAPA 'O LAKA Kumu Hula: Aloha Dalire Kaneohe, Oahu



NĀ HULA 'O KAOHIKUKAPULANI Kumu Hula: Kapu Kinimaka-Alquiza Hanapepe, Kauai



Merrie Monarch Royal Parade Grand Marshal "Uncle Billy" Kimi

If the fountain of youth was discovered, Uncle Billy would be the discoverer. This energetic man, young in spirit, delights in sharing his "Aloha" with everyone. A true Hawaiian entrepreneur at heart, Uncle Billy and his late beloved wife, Olive Leilani, of 50 years, started many businesses in the course of their lives. Beginning in the surplus business in Honolulu, he engaged in selling second hand furniture, peddling used shoes, clothing, billy goats, used cars and thousands of orchid plants for 99 cents each and later began opening department stores.

Uncle Billy, also a General Contractor, personally designed and built the Hilo Bay Hotel on Banyan Drive and opened the Kona Bay Hotel and the Kona Inn Shopping Village on Alii Drive. Presently he operates multiple businesses such as retail shops, art galleries, used furniture, a farmers market and post office as well as seven restaurants on the Big Island. Uncle Billy is also a collector of fine arts and antique cars.

In 1994 Uncle Billy received the "The Living Treasure" award of the Travel Industry. He became an Honorary Kamehameha Graduate in 1993 and received the O'o Award in 1981 as the Most Outstanding Hawaiian Businessman for the State of Hawaii. He has provided over 250 University Scholarships for our nine high schools. He is very active in providing books to classrooms and libraries, and is always ready to give advice to the young on their business ventures. Uncle Billy's recent business venture was being instrumental in starting the Salvation Army's Kokua Health Clinic, free for the homeless and indigent of Kona.

Uncle Billy's philosophy is to create as much work as he can for the future generation of our state. To uphold, educate and nurture the Hawaiian Hospitality and Aloha Spirit whenever he can to keep these traditions for our tomorrow. Being a member of the Kona Rotary, Hawaiian Civic Club, and an Executive Board Director for the Island YMCA, Uncle still finds the time to encourage his six children in their family business ventures as well as share those "good old time stories" with his fifteen grandchildren.

His ohana, friends and acquaintances wish him love and aloha as the Grand Marshal of the 1995 Merrie Monarch Festival. Malama Pono.

Pa'u Queen

Beverly Mona Medeiros is the daughter of the late Jarrett Kanani Ahia of Kalapana and Florinda Haleamau of Hilo. She is employed at the Bank of Hawaii as a Consumer Sales Specialist for 22 years.

Beverly has been active in the Panaewa Horse Owners Association and the Hawaii Rodeo Association for several years. She has participated in rodeos throughout the Island in the barrel racing, steer undecorating, and dally team events and has also participated in the Merrie Monarch and Kamehameha Day parades since the early 1970's representing most of the Islands as a pa'u rider. She has also served as a pa'u coordinator for the Kamehameha Day Parade which is held annually in Kailua-Kona and has served as a judge for the Merrie Monarch Parade pa'u units.





1995 ROYAL PARADE

- | | | |
|---|--|---|
| 1. Police Escort | 31. Kalaniana'ole Intermediate Marching Band | 59. Float - University of Hawaii Hawaiian Studies |
| 2. Color Guards | 32. Miss Sampaguita & Her Court | 60. Hawaii Paniolo Club - Mabel Waljien De Silva |
| 3. Grand Marshal, "Uncle Billy" Kimi | 33. Miss Sampaguita Contestants | 61. Hilo Union School Marching Unit |
| 4. Hawaii County Band | 34. Kauai Island Pa'u Princess, Arlene Mae "Arly" Simmons | 62. Waiakea High School Flag Drill Team |
| 5. Mayor County of Hawaii, Stephen Yamashiro | 35. Kauai Island Pa'u Unit | 63. Waiakea High School Rifle Team |
| 6. Royal Guards | 36. Pooper Scoopers | 64. Waiakea High School Marching Band |
| 7. Royal Court Float | 37. Float - Halau Hula O Kahikilaulani | 65. Decorated Vehicle - This Week Magazine |
| 8. Pa'u Queen, Beverly Mona Medeiros | 38. Meadow Gold and "Lani Moo" | 66. Ka Maile Hihio Kalani - Luciann Omija/Robert Kaui |
| 9. Queen's Unit | 39. Bran-D-Productions "Miss Tropical Papaya" | 67. Float - Big Island Food Bank |
| 10. Pooper Scoopers | 40. Bran-D-Productions "Little Miss Hawaii-Island" | 68. KWXX/KPUA |
| 11. Navy Color Guard- | 41. Bran-D-Productions "Miss Hawaii Island" | 69. Mounted Unit - Hawaii High School Rodeo Association |
| 12. Navy - Commander Edward J. Gilmore | 42. Hilo Intermediate Spartan Marching Band | 70. Chick Modeling & Finishing School Marching Unit |
| 13. Miss Aloha Hula | 43. Molokai Island Pa'u Princess - Pearl Leimomilani Haili | 71. Hilo High ROTC - Color Guard |
| 14. Float - Hilo Grandmother's Club | 44. Molokai Island Pa'u Unit | 72. Hilo High ROTC - Drill Team |
| 15. Waiakea Ukulele Band | 45. Pooper Scoopers | 73. Hilo High ROTC - Rifle Team |
| 16. Hawaii Island Pa'u Princes - Wendy Mapuana Waipua | 46. Hawaii Island Shrine Club | 74. Hilo High School Marching Band |
| 17. Hawaii Island Pa'u Unit | 47. Keaukaha Elementary School Marching Unit | 75. Float - Hawaii Association Education Young Children |
| 18. Pooper Scoopers | 48. Float - Kaumana Elementary School | 76. Miss Big Island Tutu 1994 (Convertible) Thelma Lisa Tripp |
| 19. Puna Seniors Marching Unit | 49. Lanai Island Pa'u Princess - Sharon Kuipo Souza | 77. Mounted Unit - Ka Maile Hihio Kalani - Luciann Omija |
| 20. Decorated Truck - Hui Na'auao | 50. Lanai Island Pa'u Unit | 78. KKBG/KHLO Radio Stations |
| 21. Band - St. Joseph High School | 51. Pooper Scoopers | 79. Mounted Unit - Mountain View 4 H - Stanley Aroujo |
| 22. Miss Aloha Hawaii | 52. Kamehameha Warrior Marching Band | 80. Float - Te Hei Hono (Tahitian Group - Arai Paheo) |
| 23. Maui Island Pa'u Princess - Doreen Baldado | 53. King's Guards | 81. Mounted Unit - Eleele O Kealoa Mai Ka Moku Aina O Hawaii |
| 24. Maui Island Pa'u Unit | 53a. Chiefess Kapiolani Elementary School | 82. Addiction 2 Perfection |
| 25. Pooper Scoopers | 54. Hawaii Little Miss of America | 83. Float - Big Island Aids Project |
| 26. Girl Scouts Council Marching Unit | 55. Kahoolawe Island Pa'u Princess - Kawailani Dudoit Isa | 84. Hawaii Horse Owners Association |
| 27. Float - Hawaii Naniloa Hotel | 56. Kahoolawe Island Pa'u Unit | 85. Fire Truck - Parade Finale |
| 28. Oahu Island Pa'u Princess - Valerie Chiquita | 57. Pooper Scoopers | |
| 29. Oahu Island Pa'u Unit | 58. Keaukaha Elementary School Marching Unit | |
| 30. Pooper Scoopers | | |



1994 Royal Parade Float --Kaumana School



Visiting Ship—USS REUBEN JAMES (FFG 57)
Commanded by Commander Edward J. Gilmore, USN



COMMITTEES

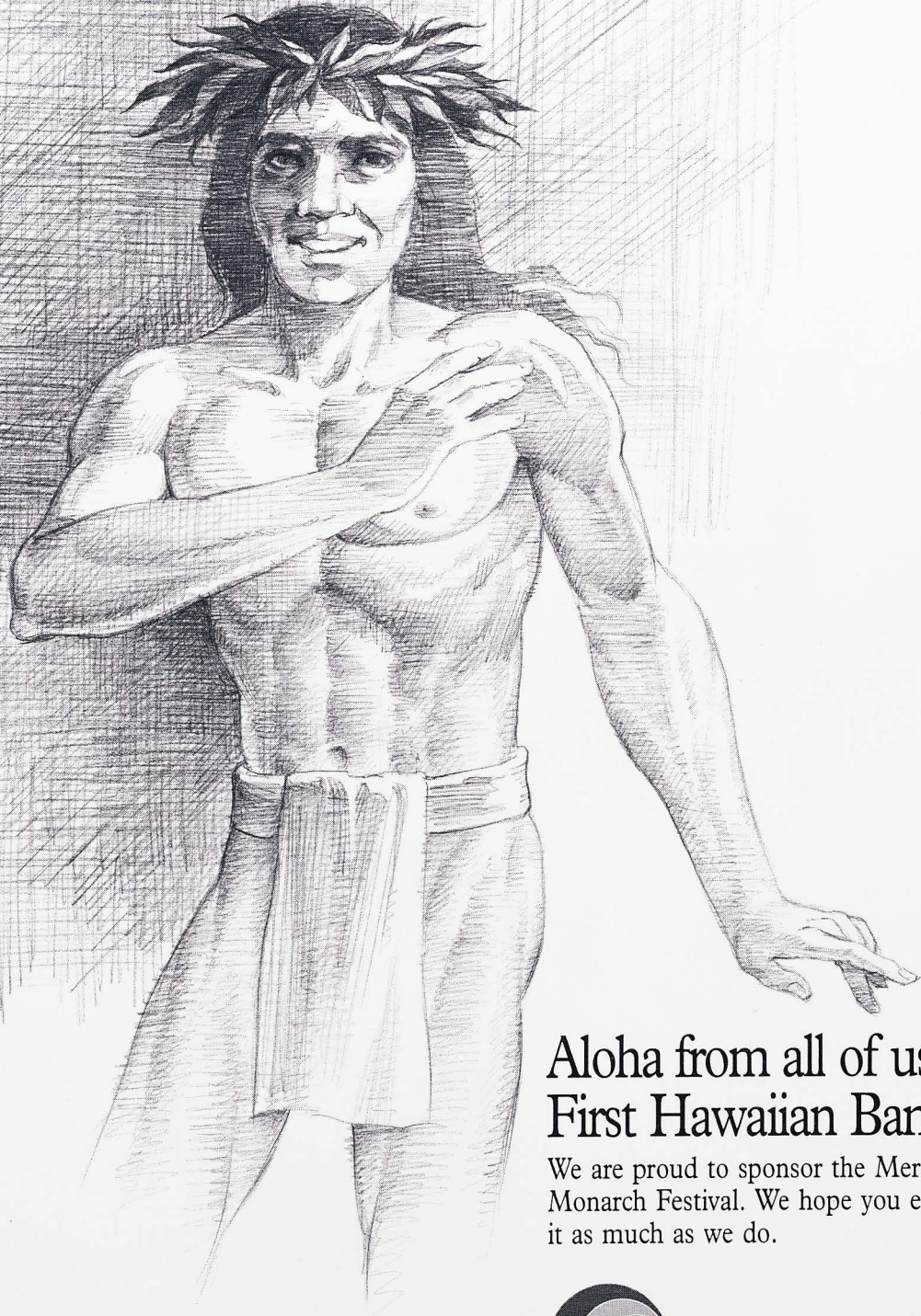
EXECUTIVE DIRECTOR	DOROTHY S. THOMPSON	USHERS	UHC-GAIL MAKUAKANE
HULA MASTER	GEORGE NAOPE		HĀLAU HULA 'O KAHIKILAUANI
SECRETARY	MURIEL NUUANU	SCRIPTS	FRANCIS SAIKI
ROYAL COURT	GEORGE DE MELLO	T-SHIRTS, PROGRAMS.....	SISTERS OF ST. FRANCIS
HO'OLAULEA	KEONI FUJITANI	FLOATS	DIANE KAHAKELII
TICKET SALES	LUANA KAWELU, RONALD OKAMURA	PA'U UNITS	KUULEI HUGHES
HAWAIIAN ARTS & CRAFTS	MOKIHANA MILLER	ON-SITE PARADE LINE-UP	LEHUA JAYCEES
NOON DAY SHOWS	MOKIHANA MILLER	FACILITIES	SALLY KALEOHANO
BACKSTAGE	POLLY GRACE	CONCESSIONS	BOBO BROWN
HĀLAU PRACTICES	LUANA KAWELU		TRAVEL WOMEN OF HAWAII
TICKET COLLECTORS	EAST HAWAII KIWANIS	DECORATIONS	RAY FONSECA
JUDGING COORDINATOR	LILY PA	SOUND	GLENN YAFUSO
(KOKUA)	SHAWNA-MARIE SHAW	STAGE	DENNY HOLT
(SCORERS)	KALEI SMITH, NAOMI AGUIAR		
(TIMERS)	PSI		

ACKNOWLEDGEMENTS

- COUNTY OF HAWAII (CO-SPONSOR)
- HAWAIIAN AIRLINES (CO-SPONSOR)
- FIRST HAWAIIAN BANK (CO-SPONSOR)
- HAWAII NANILOA HOTEL (CO-SPONSOR)
- ABIGAIL KEKAULIKE KAWANANAKOA FOUNDATION
- HAWAII VISITORS BUREAU
- BRYAN ROBERTSON
- HALE LUA HAWAII
- KILAUEA ART STUDIO
- YAMADA TRANSFER
- BIG ISLAND MOVING & DRAYING INC.
- HAWAII PRINTING CORPORATION (ED HARA)
- CREATIVE ARTS HAWAII
- DOREEN McDIARMAID
- LEHUA JAYCEES
- GLENN V. at J.C. PENNY STYLING SALON
- EAST HAWAII KIWANIS
- TRAVEL WOMEN OF HAWAII, HAWAII CHAPTER
- PROFESSIONAL SECRETARIES INSTITUTE (PSI)
- OFFICE OF HAWAIIAN AFFAIRS (OHA)
- KCCN RADIO
- J.C. PENNY
- BRAGADO BUS SERVICE
- ORCHID ISLE MOTORS (J. WALSH HANLEY)
- HAWAII TRIBUNE-HERALD
- WEST HAWAII TODAY
- HONOLULU ADVERTISER
- HONOLULU STAR-BULLETIN
- KITV (14th ANNUAL COVERAGE)
- DOWNTOWN IMPROVEMENT ASSOCIATION



10 001769435
UNIVERSITY OF HAWAII



Aloha from all of us at First Hawaiian Bank.

We are proud to sponsor the Merrie Monarch Festival. We hope you enjoy it as much as we do.



First Hawaiian Bank
The Answer is Yes. Member FDIC

Hawaii Is Everywhere Hawaiian Flies.

Hilo
Honolulu
Kahului
Kona
Lana'i
Las Vegas
Lihue
Los Angeles
Moloka'i
Pago Pago
Papeete
Portland
San Francisco
Seattle



Only one airline joins all the islands of Hawai'i, the mainland and the South Pacific. Only one airline brings you all this and American Airlines® **AAdvantage** Miles, the world's largest frequent flyer program, for all interisland travel

and select fares to and from the mainland.

Hawaiian Airlines is your local airline, Hawai'i's Flagship Airline. For information and reservations from Seattle to Samoa, call your professional travel agent.

HAWAIIAN
AIRLINES

H A W A I I ' S F L A G S H I P A I R L I N E

American Airlines and AAdvantage are registered trademarks of American Airlines, Inc. American Airlines reserves the right to change the AAdvantage program at any time without notice.