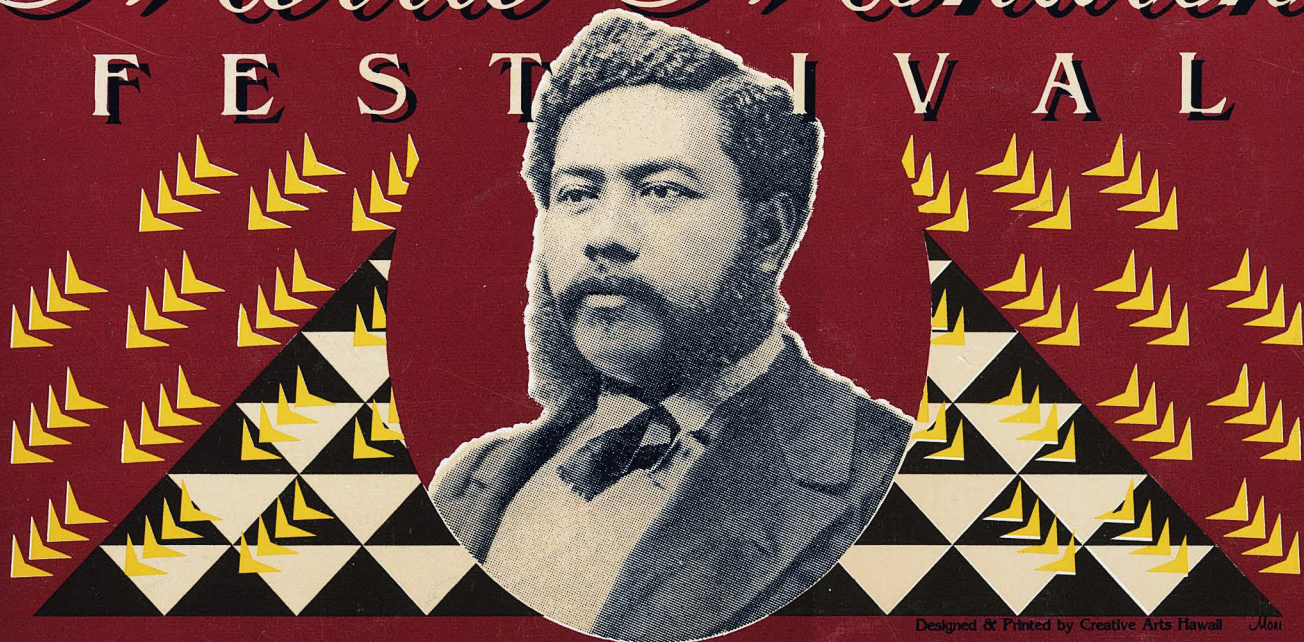




33rd Annual

Merrie Monarch

FESTIVAL



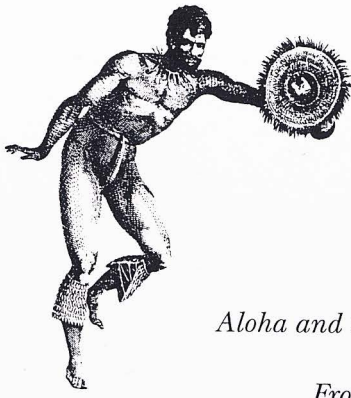
Designed & Printed by Creative Arts Hawaii Mori

Hula is the Language of the Heart & Therefore the Heartbeat of the Hawaiian People

Hilo, Hawaii

April 7 - 13, 1996

Hawn
GV
1796
.H8
m47a
33rd
1996



The Merrie Monarch Festival

Aloha and welcome to the 33rd Annual Merrie Monarch Festival.

From Hilo, for 33 years, the Merrie Monarch Festival honors King David La'amea Kalākaua, whose love of life and his love for his people are recaptured for one full week starting on Easter Sunday.

Kalākaua, last king of the Hawaiian Islands, was a ruler whose visions and aspirations put forth the well-being of the native Hawaiian people.

The revival and respect for ancient Hawaiian culture reached its height during Kalākaua's reign. This re-awakening enriched the music and revitalized the hula.

This period was not only a return to the old but a flowering of the new as shown by the members of the Kalākaua family itself (Kalākaua, Liliu'okalani, Likelike, Leleiohoku) all composers of note, and the development of new steps for the classic hula.

The intense spirit of this historic cultural re-birth is once again in predominance during this era and one of its sources of inspiration and vitality emanating from Hilo, the birthplace of Queen Kapiolani, is the Merrie Monarch Festival.

'O Wau No Me Ka Ha'a ha'a

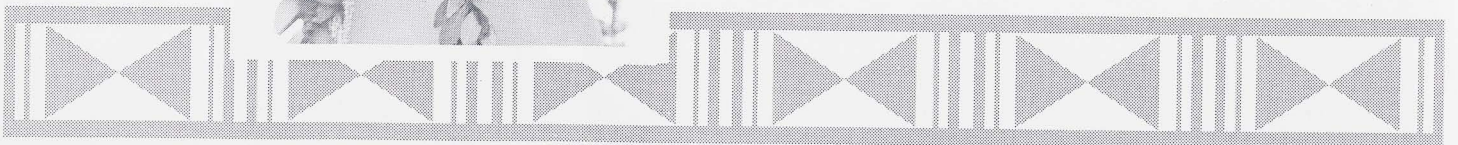
Dotie Thompson



In Memoriam

LEILANI SHARPE MENDEZ

Musician, Entertainer, Kumu Hula, and Past Merrie Monarch Judge.



33rd Annual Merrie Monarch Festival

Royal Court



King: Robert Hiolomaikalani
Makuakane

Queen: Jewel Kealanohea Todd

Lady-in-waiting: Loxley Hainrrik

Kahu: Emma Kapunohu'ula'okalani
Kauhi

Chanter: Felward Kahakelii

Counselor: John Makuakane

Pulo'ulo'u: Dupre Ekolu Dudoit III

Pu: Kalani Sanborn
Devon Yamada
Kulana Kauhi
Keoni Kaopio

Kahili: Derek Joy
Paul Thome
Roy Kupihea
Ken Coyaso

Mo'i Kane:

Robert Hiolomaikalani Makuakane

Born in Opihikao, Puna and educated first in Pahoia, then in Hilo, graduating from Hilo High School. Entered the USS Navy and graduated from the Naval Communication School, Norfolk, Virginia. Married to June Mitsuko Sunada, and they have 6 children. Served in the police department in Kau later as the representative of Kau as its Councilman. Presently employed as the Executive Assistant to Mayor Stephen Yamashiro.

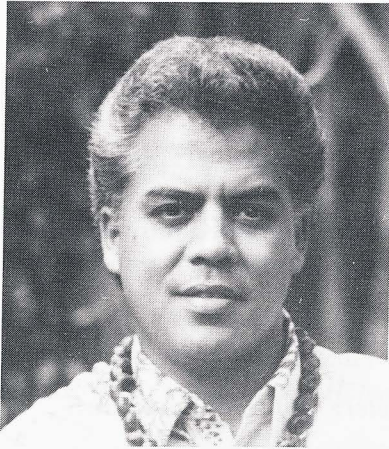
Mo'i Wahine:

Jewel Kealanohea Todd

Born in Kapoho, educated in Honolulu, graduating from Farrington High School. Married to Robert Ho'opio'okalani Todd and they have 2 sons. Flight Stewardess for Hawaiian Airlines and later retired as a Service Representative with Hawaiian Telephone Co. One of nine athletic children of the Weidemeyer family. "My Dad encouraged us to become active in sports, thus teaching us how to accept winning and how not to be discouraged at losing. I belong to several Golf Clubs and also with *Na Lima Iele o Na Kupuna*. Much time now is spent with my husband caring for our anthurium farm, Lopaka's Anthuriums."



Judges



Cy Bridges



Ed Collier



Elaine Kaopuiki



Noenoelani Zuttermeister Lewis



John Kaimikaua



Victoria Holt-Takamine



Namahana Kalama-Panui

Commentator

Kimo Kahoano



33rd Annual Merrie Monarch Festival

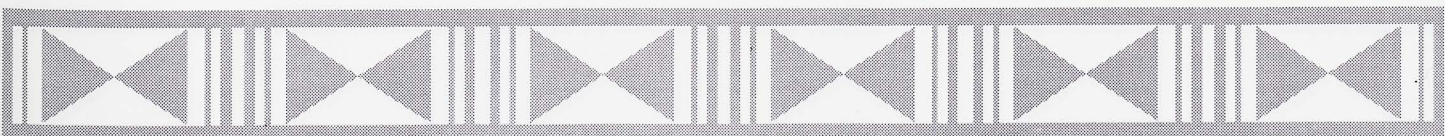
Committees

Executive Director	Dorothy S. Thompson
Hula Master	George Naope
Assistant Director/Ticket Sales	Luana Kawelu
Secretary	Muriel Nuuanu
Office Manager/Royal Court	George De Mello
Ho'olaulea	Keoni Fujitani
<i>Hawaiian Arts & Crafts/</i>	
Noon Day Shows	Mokihana Miller
Backstage	Polly Grace, Nettie Tiffany
Ticket Collectors	East Hawai'i Kiwanis
Coordinator (Scores/Timers)	Lily Pa
CPA	Honda, Tsukiji, Smith & Ass.
(kokua)	Shawna-Marie Shaw
Timers	PSI
Ushers	UHHC-Gail Makuakane
Scripts	Francis Saiki
T-Shirts, Programs	Sisters of St. Francis
Floats	Diane Kahakelii
Pa'u Units	Kuulei Hughes, Natalie Flattes
On-Site Parade Line-up	Lehua Jaycees
Facilities	Sally Kaleohano
Concessions	Bobo Brown
	Travel Women of Hawai'i
Decorations	Ho'ohalau I Ka Hale A Piha I Na Makamaka
Sound	Glenn Yafuso
Stage	Denny Holt
Security	KOA Puna

Acknowledgements

County of Hawai'i (Co-Sponsor)
 Hawaiian Airlines (Co-Sponsor)
 First Hawaiian Bank (Co-Sponsor)
 Hawai'i Naniloa Hotel (Co-Sponsor)
 Abigail Kekaulike Kawananaoia Foundation
 Hawai'i Visitors Bureau
 Bryan Robertson
 Hale Lua Hawai'i
 Yamada Transfer
 Big Island Moving & Draying Inc.
 Hawai'i Printing Corporation (Ed Hara)
 Creative Arts Hawai'i
 Doreen Mc Diarmaid
 Lehua Jaycees
 Glenn V. at J.C. Penney's Styling Salon
 East Hawai'i Kiwanis

Travel Women of Hawai'i, Hawaii Chapter
 Professional Secretaries Institute (PSI)
 Office of Hawaiian Affairs (OHA)
 KCCN Radio
 J.C. Penney
 Bragado Bus Service - Tony Aki
 Orchid Isle Motors (J. Walsh Hanley)
 Hawai'i Tribune-Herald
 West Hawai'i Today
 Honolulu Star-Bulletin
 KITV-4 (15th Annual Coverage)
 Downtown Improvement Association
 Jay Takaaze of Reed & Jay Photography
 Matson Navigation
 Kimo Alama-Keaulana



33rd Annual Merrie Monarch Festival

Wednesday Night Ho'ike

April 10, 1996

Edith Kanaka'ole Tennis Stadium



Kuuleinani Hashimoto

6:30 p.m. - Royal Court enters

6:45 p.m. - National Anthem - Hawai'i Pono'i by Darlene Ahuna

6:55 p.m. - Pule Fr. George De Costa

7:00 p.m. - Music by Lei Hulu

7:30 p.m. - Ka Leo Nahenahe o Ka'u - Director - Corey Maesaka

8:30 p.m. - Mehana o Ka La from Japan - Kuulei Hashimoto



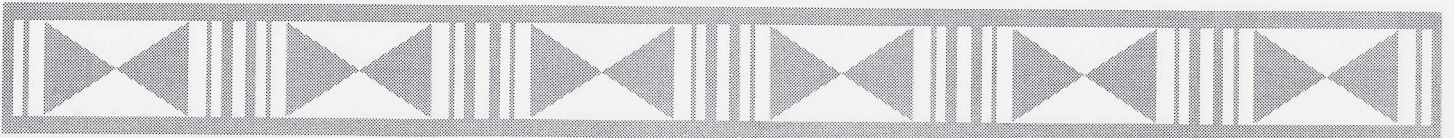
Ka Leo Nahenahe o Ka'u



Lei Hulu



Mehana o Ka La



33rd Annual Merrie Monarch Festival

Schedule of Events

April 7-13, 1996

SUNDAY, APRIL 7

Ho'olaulea

- 11:00 a.m. - 4:00 p.m. Coconut Island (Mokuola)
Emcee-Keoni Fujitani
- 11:00 a.m. - Ke Ola O Na Kupuna of Keaukaha
- 11:30 a.m. - Hālau Hula O Kahikilaulani
- 12:00 noon - Piggy Kaleohano and Friends
- 1:00 p.m. - Kalima me Ua
- 2:00 p.m. - Darlene Ahuna
- 3:00 p.m. - Free and Easy
- 4:00 p.m. - Hiti A Otera

MONDAY - APRIL 8

- 12:00 noon - Hawai'i Naniloa Hotel "*Hālau Hula 'O Kahikilaulani*"
- 1:00 p.m. - Hilo Hawaiian Hotel "*Na Pua Me Kealoha of California*"

TUESDAY - APRIL 9

- 12:00 noon - Hawai'i Naniloa Hotel "*Puanani Crumb's Hula Hālau o Hilo Hanakahi*"
- 1:00 p.m. - Hilo Hawaiian Hotel "*Keali'i O Nalani of Los Angeles*"

WEDNESDAY - APRIL 10

- 9:00 a.m. to 5:00 p.m. **Hawaiian Arts & Crafts** Seven Seas
- 12:00 noon - Hawai'i Naniloa Hotel "*Keali'i O Nalani of Los Angeles*"
- 1:00 p.m. - Hilo Hawaiian Hotel "*Hula Hālau O Lilinoe of Carson, California*"

Ho'ike...Edith Kanaka'ole Tennis Stadium

- 6:30 p.m. - Royal court enters
- 6:45 p.m. - National Anthem - Hawai'i Pono'i by Darlene Ahuna
- 6:55 p.m. - Pule Fr. George De Costa
- 7:00 p.m. - Music by Lei Hulu
- 7:30 p.m. - Na Leo Nahenahe o Ka'u - Director - Corey Maesaka
- 8:30 p.m. - Mehana o Ka La from Japan - Kuulei Hashimoto

THURSDAY - APRIL 11

- 9:00 a.m. to 5:00 p.m. - **Hawaiian Arts & Crafts** at Seven Seas, Hawai'i Naniloa Hotel, Hilo Hawaiian Hotel, S.H. Kress
- 12:00 noon - Hawai'i Naniloa Hotel "*Lorilei's Hula Studio*"

1:00 p.m. - Hilo Hawaiian Hotel "*Uncle George Naope's Hālau from Japan*"

Edith Kanaka'ole Tennis Stadium

- 6:00 p.m. - Royal Court enters
- 6:15 p.m. - National Anthem-Hawai'i Pono'i by Darlene Ahuna
- 6:20 p.m. - Pule
- 6:25 p.m. - Introduction of Judges
- 6:30 p.m. - Miss Aloha Hula Competition
Presentation of Awards

FRIDAY - APRIL 12

- 9:00 a.m. to 5:00 p.m. - **Hawaiian Arts & Crafts** at Seven Seas, Hawai'i Naniloa Hotel, Hilo Hawaiian Hotel, S. H. Kress
- 11:00 a.m. Pier 1 - Kuhio Wharf, Navy-Greetings "*Hiti a Otera*" Tahitian Group
- 12:00 noon - Hawai'i Naniloa Hotel "*Uncle George Naope's Hālau from Japan*"
- 1:00 p.m. - Hilo Hawaiian Hotel "*Mehana o Ka La from Japan*"

Edith Kanaka'ole Tennis Stadium

- 6:00 p.m. - Royal Court enters
- 6:15 p.m. - National Anthem - Hawai'i Pono'i by Darlene Ahuna
- 6:20 p.m. - Pule
- 6:30 p.m. - Hula Kāhiko Competition

SATURDAY - APRIL 13

- 8:00 a.m. - 4:00 p.m. Cultural Fair, **Moku 'O Keawe** at Mooheau Park, Keaukaha Canoe Club
- 9:00 a.m. to 5:00 - **Hawaiian Arts & Crafts** at Seven Seas, Hawai'i Naniloa Hotel, Hilo Hawaiian Hotel, S. H. Kress
- 10:30 a.m. - Royal Parade, Downtown Hilo
- 1:00 p.m. - Awards presentation of Parade - Afook-Chinen Auditorium

Edith Kanaka'ole Tennis Stadium

- 5:30 p.m. - Royal Court enters
- 5:45 p.m. - National Anthem - Hawai'i Pono'i by Darlene Ahuna
- 5:55 p.m. - Pule
- 6:00 p.m. - Hula 'Auana Competition
Introduction of Kumu Hula
Presentation of Awards



33rd Annual Merrie Monarch Festival

Past Contest Winners

1971

Implements Div./Modern Div./Overall Winners Pauline Kekahuna - Hauoli Hula Studio
Miss Aloha Hula Aloha Wong (Keolalaulani Hula Studio)

1972

Ancient Division/Modern Division Johnny Lum Ho Hula Studio
Implements Division Puamana Hula Studio
Miss Aloha Hula Aulani Newalu (Hālau 'O Kahealani)

1973

Hula Kahiko/Hula 'Auana/Implements/Overall Winner Pauline Kekahuna - Hauoli Hula Studio
Miss Aloha Hula Kalani Kalawa (Louise Kaleiki Hula Studio)

1974

Hula Kahiko/Hula 'Auana/Implements/Overall Winner Louise Kaleiki Hula Studio
Miss Aloha Hula Dee Dee Aipolani (Piilani Watkins Hula Studio)

1975

Hula Kahiko (tie)
'Ilima Hula Studio & Pauline Kekahuna - Hauoli Hula Studio
Hula 'Auana 'Ilima Hula Studio
Implements Keolalaulani Hula Studio
Miss Aloha Hula Leimomi Maria ('Ilima Hula Studio)

1976

Hula Kahiko 'Ilima Hula Studio
Hula 'Auana Alicia K. Smith Hula Studio
Kāne Division Na Kamalei 'O Lililehua / *Overall* 'Ilima Hula Studio
Miss Aloha Hula (tie) Ululani Duenas ('Ilima Hula Studio)
Sheryl Nalani Guernesny (Kaleo 'O Nani Loa Studio)

1977

(Kāne) Hula Kahiko / Overall Hālau 'O Kekuhi
(Kāne) Hula 'Auana Na Kamalei
(Wahine) Hula Kahiko / Overall Na Pualei 'O Likolehua
(Wahine) Hula 'Auana Johnny Lum Ho Hula Studio
Miss Aloha Hula Pualani Chang (Pukaikapua'okalani Studio)

1978

(Kāne) Hula Kahiko / Hula 'Auana / Overall Waimapuna
(Wahine) Hula Kahiko Johnny Lum Ho Hula Studio
(Wahine) Hula 'Auana / Overall Na Pualei 'O Likolehua
Miss Aloha Hula Regina Makaikai Igarashi (Keolalaulani Hula Studio)

1979

(Kāne) Hula Kahiko Nā Wai Ehā 'O Puna
(Kāne) Hula 'Auana / Overall Waimapuna
(Wahine) Hula Kahiko / Overall Hauoli Hula Studio
(Wahine) Hula 'Auana (tie) Hauoli Hula Studio & Na Pualei 'O Likolehua
Miss Aloha Hula Jody Imehana Mitchell (Ka Pa'u O Hiiaka)

1980

(Kāne) Hula Kahiko Waimapuna / *Hula 'Auana* Nā Wai Ehā 'O Puna
(Kāne) Overall (tie) Waimapuna & Nā Wai Ehā 'O Puna
(Wahine) Hula Kahiko (tie) Hauoli Hula Studio & Johnny Lum Ho Hula Studio
(Kāne) Hula 'Auana / Overall Johnny Lum Ho Hula Studio
Miss Aloha Hula Kaula Kamahela (Johnny Lum Ho Hula Studio)

1981

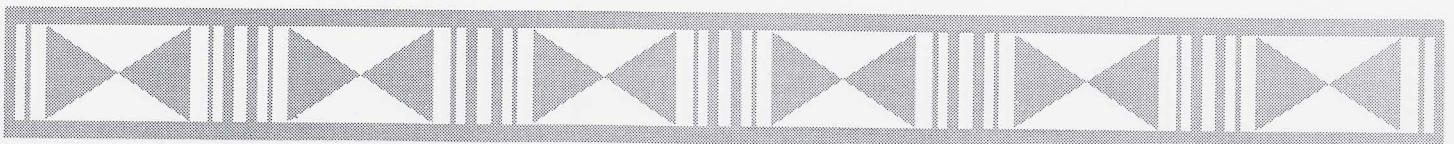
(Kāne) Hula Kahiko / Hula 'Auana / Overall Nā Wai Ehā 'O Puna
(Wahine) Hula Kahiko / Overall Hālau 'O Na Maoli Pua
Hula 'Auana (tie) Johnny Lum Ho Hula Studio & Hālau 'O Na Maoli Pua
Miss Aloha Hula Brenda Alidon (Johnny Lum Ho Hula Studio)

1982

(Kāne) Hula Kahiko / Hula 'Auana / Overall Hula Hālau O Ka Ua Kani Lehua
(Wahine) Hula Kahiko Hālau Mohala 'Ilima
(Wahine) Hula 'Auana Hālau 'O Kahanuola
(Wahine) Overall Hula Hālau O Ka Ua Kani Lehua
Miss Aloha Hula Dayna Kanani Oda (Hula Hālau O Ka Ua Kani Lehua)

1983

(Kāne) Hula Kahiko / Hula 'Auana / Overall Hula Hālau O Ka Ua Kani Lehua
(Wahine) Hula Kahiko Hālau Mōhala 'Ilima
(Wahine) Hula 'Auana / Overall Hula Hālau O Ka Ua Kani Lehua
Miss Aloha Hula Geola Pua (Hula Hālau O Ka Ua Kani Lehua)



33rd Annual Merrie Monarch Festival

1984

(Kāne) Hula Kahiko / Hula 'Auana / Overall Nā Wai Ehā 'O Puna
(Wahine) Hula Kahiko / Hula 'Auana / Overall Hālau Mōhala 'Ilima
Miss Aloha Hula Twyla Ululani Mendez (Hauoli Hula Hālau)

1985

(Kāne) Hula Kahiko / Hula 'Auana / Overall Nā Wai Ehā 'O Puna
(Wahine) Hula Kahiko / Hula 'Auana / Overall The Ladies of Ke'ala 'O Ka Lauwa'e
Miss Aloha Hula Healani Young (The Ladies of Ke'ala 'O Ka Lauwa'e)

1986

(Kāne) Hula Kahiko / Hula 'Auana / Overall Men of Waimapuna
(Wahine) Hula Kahiko / Overall Keolalaulani Olapa 'O Laka
(Wahine) Hula 'Auana Hula Hālau 'O Kamuela
Miss Aloha Hula Leimomi Nuuhiwa (The Ladies of Ke'ala 'O Ka Lauwa'e)

1987

(Kāne) Hula Kahiko / Hula 'Auana / Overall Hula Hālau O Ka Ua Kani Lehua
(Wahine) Hula Kahiko Nā Wai Ehā 'O Puna
(Wahine) Hula 'Auana (tie) Hālau Mōhala 'Ilima & Kawaili'ulā Hula Hālau
(Wahine) Overall Keolalaulani Olapa 'O Laka
Miss Aloha Hula Lisa Kuuipo Doi (Hula Hālau O Ka Ua Kani Lehua)

1988

(Kāne) Hula Kahiko / Hula 'Auana / Overall Hula Hālau O Ka Ua Kani Lehua
(Wahine) Hula Kahiko / Overall Hula Hālau O Ka Ua Kani Lehua
(Wahine) Hula 'Auana Hula Hālau O Kamuela
Miss Aloha Hula Sheldeen Kaleimomi Kaleohano (Hula Hālau 'O Kahikilaulani)

1989

(Kāne) Hula Kahiko Hālau Hula 'O Kahikilaulani
(Kāne) Hula 'Auana Men of Na Kamalei
(Kāne) Overall Kawaili'ulā Hula Hālau
(Wahine) Hula Kahiko / Overall Hula Hālau 'O Na Maoli Pua
(Wahine) Hula 'Auana Keali'ikaapunihonua Ke'ena A'o Hula
Miss Aloha Hula Pi'ilani Smith (Hula Hālau 'O Na Maoli Pua)

1990

(Kāne) Hula Kahiko / Hula 'Auana / Overall Kawaili'ulā Hula Hālau
(Wahine) Hula Kahiko / Overall Hālau 'O Na Maoli Pua
(Wahine) Hula 'Auana Hālau Hula 'O Kahikilaulani
Miss Aloha Hula Natalie Noelani Ai (Hālau Hula Olana)

1991

(Kāne) Hula Kahiko Hālau Hula 'O Kahikilaulani
(Kāne) Hula 'Auana / Overall Hālau Hula O Ka Ua Kani Lehua
(Wahine) Hula Kahiko / Overall Hula Hālau 'O Kamuela
(Wahine) Hula 'Auana Hālau Na Lei 'O Kaholoku
Miss Aloha Hula Kapualokeokalaniakea Dalire (Keolalaulani Hālau Olapa 'O Laka)

1992

(Kāne) Hula Kahiko / Hula 'Auana / Overall Nā Wai Ehā 'O Puna
(Wahine) Hula Kahiko / Overall Hālau Na Lei 'O Kaholoku
(Wahine) Hula 'Auana Hula Hālau 'O Kamuela
Miss Aloha Hula Kauimaiookalaniakea Dalire (Keolalaulani Hālau Olapa 'O Laka)

1993

(Kāne) Hula Kahiko / Overall Kawaili'ulā Hula Hālau
(Kāne) Hula 'Auana Hālau Hula 'O Kahikilaulani
(Wahine) Hula Kahiko / Overall Hula Hālau O Ka Ua Kani Lehua
Hula 'Auana Hula Hālau Na Lei 'O Kaholoku
Miss Aloha Hula Maelia Lani Kahanuola Loebenstein (Ka Pā Hula 'O Kauanoe 'O Wa'ahila)

1994

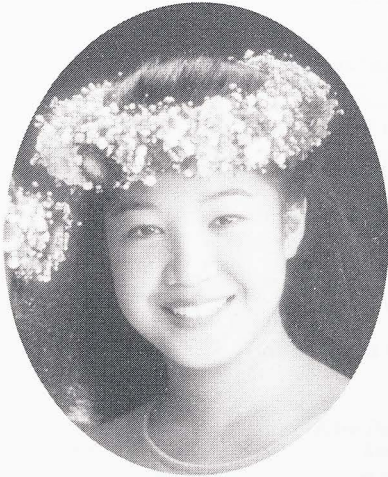
(Kāne) Hula Kahiko Nā Wai Ehā 'O Puna
Hula 'Auana / Overall Kawaili'ulā Hula Hālau
(Wahine) Hula Kahiko Kawaili'ulā Hula Hālau
Hula 'Auana / Overall Hālau Na Mamo 'O Pu'uanahulu
Miss Aloha Hula Tracie Ka'onohilani Farias (Nā Wai Ehā 'O Puna)

1995

(Kāne) Hula Kahiko Hālau Na Mamo O Pu'uanahulu
(Kāne) Hula 'Auana Hālau Hula 'O Kawaili'ulā
(Kāne) Overall Hālau Hula 'O Kawaili'ulā
(Wahine) Hula Kahiko / Hula 'Auana / Overall Hālau Na Lei 'O Kaholoku
Miss Aloha Hula Allison Kailihiwa Kaha'ipi'ilani Vaughan (Ka Pā Hula 'O Kauanoe 'O Wa'ahila)



Miss Aloha Hula



**KAWENA SACHIKO
MOANIKEALA SUGANUMA**
Ka Pā Hula Hawai'i
Honolulu, O'ahu



CHRISTY KILILEO HORITA
Na Hula 'O Kaohikukapulani
Hanapēpē, Kaua'i



**LAUA 'EKI 'EIKULA
YAMASAKI**
Hālau Kealaka'awa
Honolulu, O'ahu



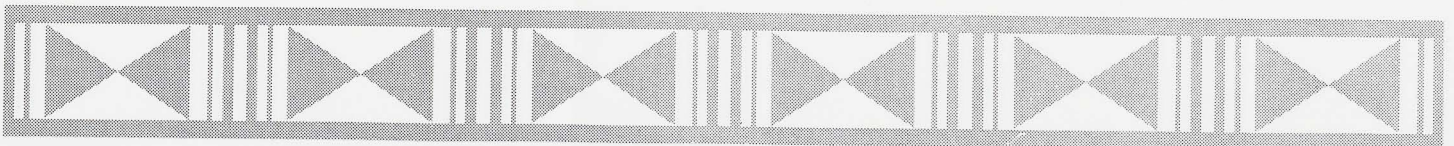
**JENNIFER KEHAULANI
WEHRSIG**
Hālau 'O Ke Ānuenuē
Hilo, Hawai'i



U'ILANI BOBBITT
Hālau Mōhala 'Ilima
Ka'oha'o - Kailua, O'ahu



KU'UKAMALANI HO
Keali'ika'apunihonua Ke'ena A'o
Hula
Honolulu, O'ahu



Miss Aloha Hula



VIOLO ALIIFUA
Hula Hālau 'O Lilinoe
Carson, California



NAMAKA UESUGI
Keali'i O Nalani
Los Angeles, California



**PAULIANE KALEONANI
KEKELA**
Hālau Ka Ua Kani Lehua
Hilo, Hawai'i



MYREL SAPINORO
Hula Hālau O Kamuela
Kalihi/Waimānalo, O'ahu



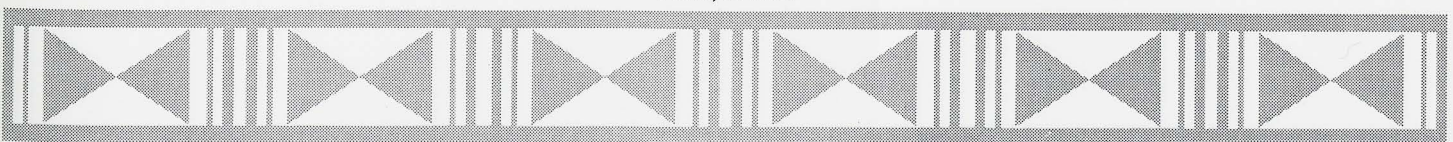
**JAYLIN KALEIOKALANI
KAHALEPUA A'O KALOLA
WINCHESTER**
Ka Pā Hula 'O Kauanoē
'O Wa'ahila
Honolulu, O'ahu



NOELANI KALAMA
Puka'ikapuaokalani Hula Hālau
Kailua, O'ahu



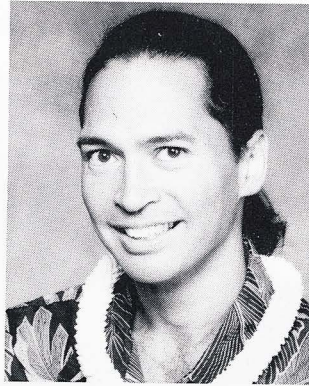
LAUREN LEIALOHA KANAE
Hālau Hula Olana
Aiea, O'ahu



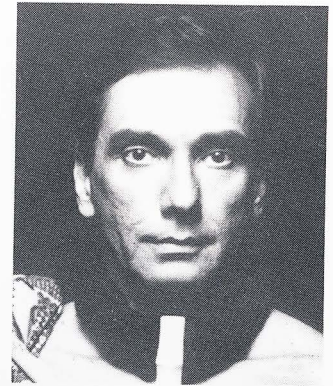
33rd Annual Merrie Monarch Festival



MICHAEL CANOPIN
Hālau Kealakupawa
Honolulu, O'ahu



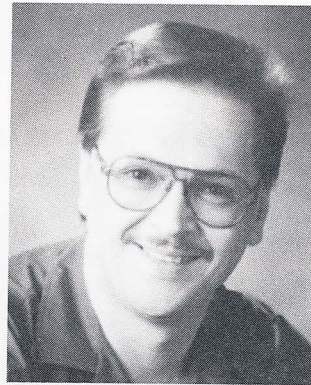
KEALI'I CEBALLOS
Keali'i O Nalani
Los Angeles, California



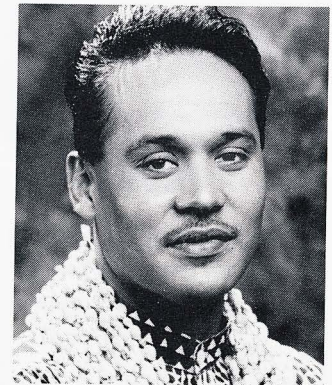
KAHA'I TOPOLINSKI
Ka Pā Hula Hawai'i
Honolulu, O'ahu



SISSY KAIO
Hula Hālau 'O Lilinoe
Carson, California



GLENN VASCONCELLOS
Hālau 'O Ke Ānuenue
Hilo, Hawai'i



SONNY CHING
Hālau Nā Mamo O Pu'uuanahulu
Honolulu, O'ahu



KAPU KINIMAKA-ALQUIZA
Na Hula 'O Kaohikukapulani
Hanapēpē, Kaua'i



RAY FONSECA
Hālau Hula 'O Kahikilaulani
Hilo, Hawai'i



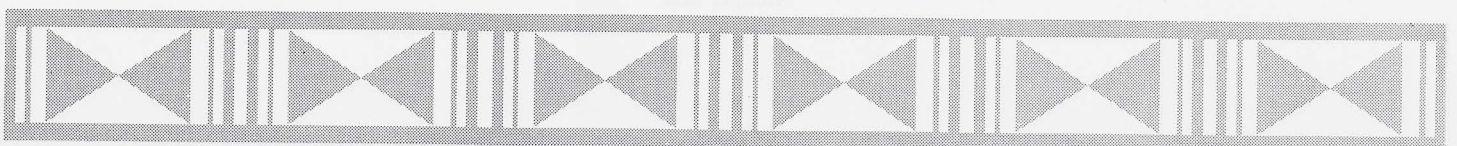
MĀPUANA de SILVA
Hālau Mōhala 'Ilima
Ka'oha'o - Kailua, O'ahu

Not Pictured:

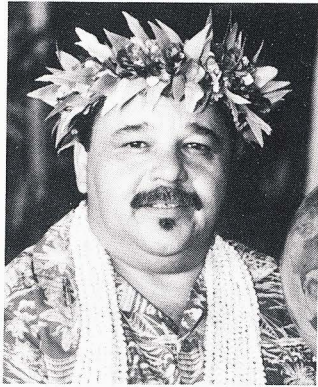
LEINAALA HEINE
Na Pualei 'O Likolehua
Honolulu, O'ahu

MOANA & RAQUEL DUDOIT
Moana's Hula Hālau
Kaunakakai, Moloka'i

JOHNNY LUM HO
Hālau Hula O Ka Ua Kani Lehua
Hilo, Hawai'i



33rd Annual Merrie Monarch Festival



ETUA LOPES
Hālau Hula Na Pua U'i O Hawai'i
Kailua-Kona, Hawai'i



LEIMOMI HO
Keali'ika'apunihonua Ke'ena A'o
Hula
Honolulu, O'ahu



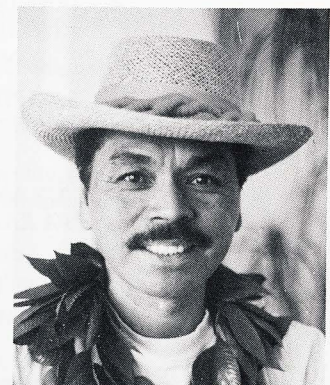
MAE LOEBENSTEIN
Ka Pā Hula 'O Kauanoe
'O Wa'ahila
Honolulu, O'ahu



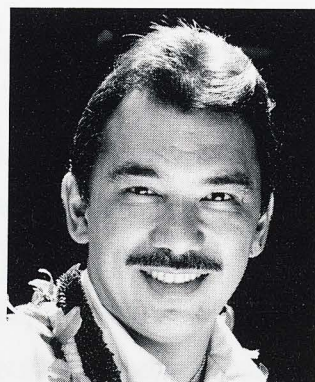
HOWARD & OLANA AI
Hālau Hula Olana
Aiea, O'ahu



PALEKA MATTOS & KUNEWA MOOK
Hula Hālau O Kamuela
Kalihi/Waimānalo, O'ahu



ALOHA DALIRE
Keolaulani Hālau 'Ōlapa
'O Laka
Kāneohe, O'ahu



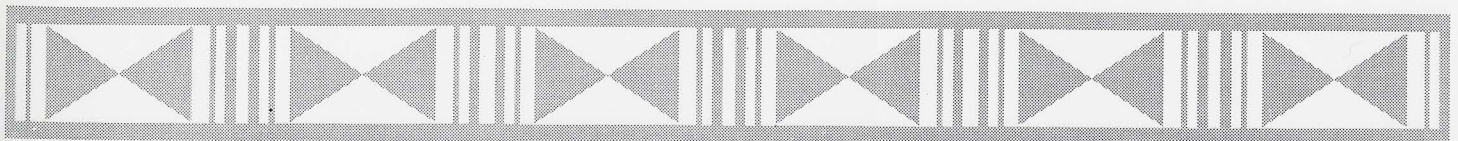
CHINKY MAHOE
Hālau Hula 'O Kawaili'ulā
Kailua, O'ahu



AL BARCARSE
Hālau Ka Ua Kilihune
Kāneohe, O'ahu



ELLEN CASTILLO
Puka'ikapuaokalani Hula
Hālau
Kailua, O'ahu

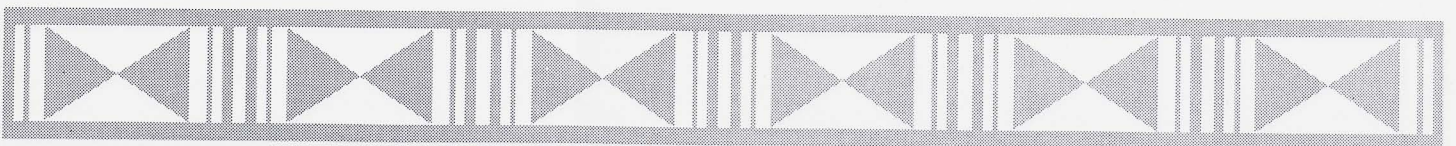


Miss Aloha Hula

KAHIKO

Thursday, April 11, 1996

1. KAWENA SACHIKO MOANIKEALA SUGANUMA - *Ka Pā Hula Hawai'i*; Honolulu, O'ahu
"NANI KĪLAUEA" - The power of Pele, the Goddess of the volcano, reveals itself
in its frightening beauty at Kilauea.
2. CHRISTY KILILEO HORITA - *Na Hula 'O Kaohikukapulani*; Hanapēpē, Kaua'i
"O KA WAI HĀLAU I WAILUA LA" - A *mele ho'oiipoipo*, a romance chant,
with the enchanting beauty of Kaua'i as it's backdrop.
3. LAUA'EKI'EIKULA YAMASAKI - *Hālau Kealakapawa*; Honolulu, O'ahu
"AIA 'O KALANI I MALEKA" - King Kalākaua has traveled to America
to seek a Reciprocity Treaty, to have Hawai'i and the United States join hands.
4. JENNIFER KEHAULANI WEHRIG - *Hālau 'O Ke Āmuenue*; Hilo, Hawai'i
"HE MELE NŌ PUEOKEA" - Born as a pale owl on Moloka'i, Pueokea
becomes estranged from her family then fate reunites them.
5. U'ILANI BOBBITT - *Hālau Mōhala 'Ilima*; Ka'oha'o-Kailua, O'ahu
"NE'ENE'E MAI 'O KA 'ULA" - David Kahalepouli Kawanānakoā's
princely ancestry is recalled in this, his chant.
6. KU'UKAMALANI HO - *Keali'ika'apunihonua Ke'ena A'o Hula*; Honolulu, O'ahu
"PĀ KAMAKANI" - The prowess of Palolo's rooster god, Ka'auhelema,
is recounted in this *mele inoa* (name song) to him.
 7. VIOLO ALIIFUA - *Hula Hālau 'O Lilinoe*; Carson, California
"KŪ I WAILOA" - An encounter between Pele and Kamapuaa is detailed
in the moods of the elements as they befall upon Ka'ū.
 8. NOELANI KALAMA - *Puka'ikapuaokalani Hula Hālau*; Kailua, O'ahu
"KA'IULANI" - A lei of golden-hued *mamane* blossoms for princess Ka'iulani
is a precious gift fit for royalty.
 9. NAMAKA UESUGI - *Keali'i O Nalani*; Los Angeles, California
"IĀ 'OE E KA LĀ" - The wonders of the world revealed their riches to
King Kalākaua in his tour of the globe in 1881.
10. MYREL SAPINORO - *Hula Hālau O Kamuela*; Kalihi/Waimānalo, O'ahu
"LILI'UOKALANI" - This *mele* expresses alliance and affection for Queen Lili'uokalani
from the island of Kaua'i using place names from the Puna district through Hanalei,
it compares her to these beautiful sights.
11. LAUREN LEIALOHA KANAE - *Hālau Hula Olana*; Aiea, O'ahu
"HANOHANO KAPULANI I KA ULU HALA" - The fragrance of *hala* blossoms
and wind-borne perfumes from the waters of Kekela honor Kalaniki'eki'e.
12. PAULIANE KALEONANI KEKELA - *Hālau Ka Ua Kani Lehua*; Hilo, Hawai'i
"WAHINE LILI UA KONAPILIAHI" - "The Jealous Woman is Powerful" This chant tells
of how powerful Pele is with her destruction when she is angry and jealous
when her requests are not met.
13. JAYLIN KALEIOKALANI KAHALEPUA A'O KALOLA WINCHESTER - *Ka Pā Hula 'O
Kauānoe 'O Wa'ahila*; Honolulu, O'ahu
"NĀNĀ IĀ PIHANAKALANI" - Ka'ililauokekoa is romanced by Kauakahiali'i's
nose flute in the magical forest of Pihanakalani.



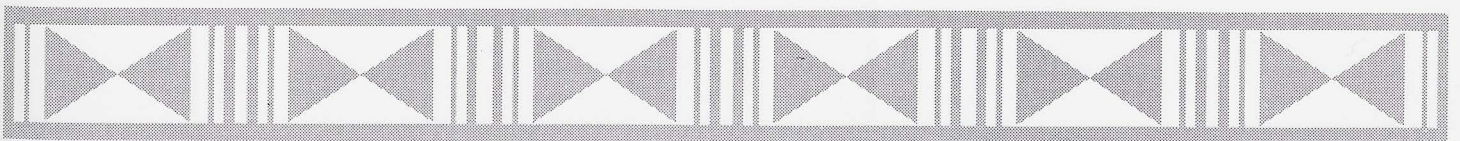
33rd Annual Merrie Monarch Festival

Miss Aloha Hula

'AUANA

Thursday, April 11, 1996

1. KAWENA SACHIKO MOANIKEALA SUGANUMA - *Ka Pā Hula Hawai'i*; Honolulu, O'ahu
"PUA 'ĀHIHI" - The scarlet red of 'āhihi blossoms is love's symbol in bloom.
2. CHRISTY KILILEO HORITA - *Na Hula 'O Kaohikukapulani*; Hanapēpē, Kaua'i
"AKAKA FALLS" - One's first visit to Akaka Falls is unforgettable for its beauty.
3. LAUA'EKI'EIKULA YAMASAKI - *Hālau Kealakupawa*; Honolulu, O'ahu
"KA LIHI KAI O KA 'ENA" - There at Cape Ka'ena on the waters edge, the warmth of the sun
is cooled by the brisk winds that swoop down from Kuaokala.
4. JENNIFER KEHAULANI WEHRSIG - *Hālau 'O Ke Ānuenuē*; Hilo, Hawai'i
"KE 'ALA O KA ROSE" - A girl named "Rosie" was the captivation of a young man's heart.
5. U'ILANI BOBBITT - *Hālau Mōhala 'Ilima*; Ka'oha'o-Kailua, O'ahu
"NANI LAWA 'I" - Alexander McBryde will always be remembered
for his love for the people of Lawa'i.
6. KU'UKAMALANI HO - *Keali'ika'apunihonua Ke'ena A'o Hula*; Honolulu, O'ahu
"KA LEHUA I MILI'A" - Love is fresh like the *lehua*, carressed by its lover, the misty rain.
 7. VIOLO ALIIFUA - *Hula Hālau 'O Lilinoe*; Carson, California
"SWEET LEI MOKIHANA" - Kaua'i's famous places are recalled along
with her pungent lei of *mokihana*.
 8. NOELANI KALAMA - *Puka'ikapuaokalani Hula Hālau*; Kailua, O'ahu
"KA 'IULANI" - "Hawai'i's last hope," Princess Ka'iulani, is as delicate and
lovely as 'ilima blossoms
 9. NAMAKA UESUGI - *Keali'i O Nalani*; Los Angeles, California
"HŌ'OLA LĀHUI HAWAI'I" - People are like flowers and with love and care,
both are robust and abloom in beauty.
 10. MYREL SAPINORO - *Hula Hālau O Kamuela*; Kalihi/Waimānalo, O'ahu
"PĪKAKE ONAONA" - "Like a dear, dear friend, the pikake is truly a prized blossom,
and I honor its beauty in the song."
 11. LAUREN LEIALOHA KANAE - *Hālau Hula Olana*; Aiea, O'ahu
"KA POLI O WAIMEA" - The splendor of Waimea, Hawai'i is praised as a favorite place.
 12. PAULIANE KALEONANI KEKELA - *Hālau Ka Ua Kani Lehua*; Hilo, Hawai'i
"OLEHALEHA KU'U MAKA I KE AHI PELE" - "My eyes are dazzled by the Fires of Pele"
This song speaks about the beautiful show Pele has put on in the past decade as she erupts on Pu'u O'o.
13. JAYLIN KALEIOKALANI KAHALEPUA A'O KALOLA WINCHESTER - *Ka Pā Hula 'O Kauanoē
'O Wa'ahila*; Honolulu, O'ahu
"NANI" - The composer imagined how beautiful a group of girls would be
when they would be all grown up.



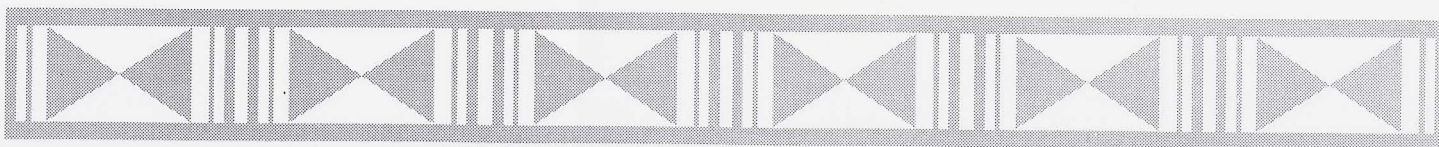
Hula Kahiko

KANE & WAHINE GROUP HULA

Friday, April 12, 1996

1. HĀLAU KEALAKAPAWA - Michael Canopin; Honolulu, O'ahu
"MELE IUBILE NO KALĀKAUA" - A mele in honor of Hawai'i's Merrie Monarch, King David Kalākaua; it beckons all from Maui island to come and join us in a gala celebration.
2. KEALI'I O NALANI - Keali'i Ceballos; Los Angeles, California
"PI'I KE KAI" - This mele tells of Pele coming from Kahiki, accidentally destroying a part of the island and enraging the wrath of her sister Namakaokaha'i who swore revenge. Believing to have destroyed Pele on Maui, Namakaokaha'i scattered Pele's bones. Pele became a spirit more powerful than ever.
3. KEALI'IKA'APUNIHONUA KE'ENA A'O HULA - Leimomi Ho; Honolulu, O'ahu (Kāne)
"PUA LAHA 'OLE" - King Kalākaua's goodwill visit to Puna around 1875 recounts his concern of the demise of the Hawaiians.
4. KA PĀ HULA HAWAI'I - Kaha'i Topolinski; Honolulu, O'ahu
"MAIKA'I KAUA'I" - The magnificence of Kaua'i is likened to the handsome king, Kaumuali'i, and the solice of love.
5. HULA HĀLAU 'O LILINOE - Sissy Kaio; Carson, California
"LELE KA'ENA" - Hi'iaka ascends Mount Ka'ala on O'ahu to look towards Hawai'i to see how her home was on her return.
6. HĀLAU KA UA KILIHUNE - Al Barcarse; Kāneohe, O'ahu (Kāne)
"KE KAPU O KA UHI" - Praises are given to Kauhio'olonoinamoku and the uhi that is sacred to this chiefly family.
7. PUKA'IKAPUAOKALANI HULA HĀLAU - Ellen Castillo; Kailua, O'ahu
"AIA I KAMAILE KO LEI NANI" - Queen Kapi'olani's visit to Kaua'i was a royal celebration and her lei presented in all dignity remembered.
8. NA PUALEI 'O LIKOLEHUA - Leina'ala Heine; Honolulu, O'ahu
"AIA I NI'HAU KU'U PĀWEHE" - Makaloa mats in magnificent pāwehe (geometrical) patterns were the pride of Ni'ihau, treasured as love is.
9. HĀLAU HULA 'O KAHIKILAULANI - Ray Fonseca; Hilo, Hawai'i (Kāne)
"KAWIKA" - King David Kalākaua is paid tribute as he is praised as one who is among the choicest in the world.
10. HĀLAU 'O KE ĀNUENUE - Glenn Vasconcellos; Hilo, Hawai'i
"LAUAAHI 'O PUNA I KE AHI'ENA'ENA" - From Makahanaloa, the destruction of Puna by Pele, the volcano goddess, can be seen.
11. HĀLAU NĀ MAMO O PU'UANAHLU - Sonny Ching; Honolulu, O'ahu
"HE LEI NO KAPI'OLANI" - Queen Kapi'olani's lei of flowers and foliage at Hāili is still fresh in this lei of poetry.
12. HĀLAU HULA OLANA - Howard & Olana Ai; Aiea, O'ahu (Kāne)
"MAIKA'I WAIP'I'O" - The steep cliffs, the sparkling waters of Hi'ilawe and the pools of Ha'iwahine are in tribute to Queen Emma.
13. NA HULA 'O KAOHIKUKAPULANI - Kapu Kinimaka-Alquiza; Hanapēpē, Kaua'i
"PAULI HIWA MAI LA KA LANI O HILO" - After a forest is covered with lava, new growth soon appears.
14. HĀLAU HULA O KA UA KANI LEHUA - Johnny Lum Ho; Hilo, Hawai'i
"AIA LA O PELE I MAUKELE PUNA" ("THERE IS PELE") - This chant speaks of how Pele puts on her fiery display as she flows down from Maukele to the sea in Puna.
15. HULA HĀLAU O KAMUELA - Paleka Mattos & Kunewa Mook; Kalihi/Waimānalo, O'ahu (Kāne)
"KA LANI KALĀKAUA" - This chant expresses Kalākaua's love for his people. His regal proudness that he shares with all. He is placed with highest honors beside the sacred torches of Iwi-Kau-I-Ka-Ua.

INTERMISSION

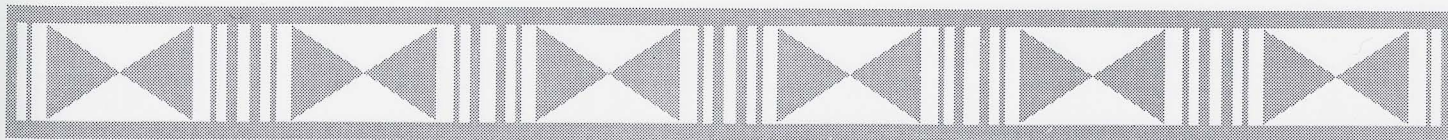


Hula Kahiko

KANE & WAHINE GROUP HULA

Friday, April 12, 1996

16. NA PUA ME KEALOHA - Sissy Kaio; Carson, California (Kāne)
"ULEI PAHU I TA MOTU" - A priest was possessed at a *heiau* in Waimea, Kaua'i and prophesized the arrival of Caucasians.
17. HĀLAU HULA 'O KAHIKILAULANI - Ray Fonseca; Hilo, Hawai'i
"KAULANA WAHINE KAPU" - Pele, in deceit, engulfed the land so precious to her sister Hi'aka due to her suspicion of betrayal between Hi'aka and Lohiau. Kaulana 'O Wahine Kapu demonstrates the imminency of Pele's wrath.
18. KEALI'I O NALANI - Keali'i Ceballos; Los Angeles, California (Kāne)
"MAI KAHIKI PELE" - Pele journeyed to Kaua'i from Kahiki, there she dug deep to create a volcanic pit for a home. Pele had dug too deep and met with the waters of the ocean. Pele had to move on.
19. HĀLAU MŌHALA 'ILIMA - Māpuana de Silva; Ka'oha'o, Kailua, O'ahu
"O KONA KAI 'ŌPUA I KA LA'I" - All is well by virtue of love among the elements and people as it is chanted to Kamehameha II.
20. HĀLAU HULA NA PUA U'I O HAWAI'I - Etua Lopes; Kailua-Kona, Hawai'i
"NOHILI" - The celebrated sounding sands of Nohili, Kaua'i, is a place that is special to the Hawaiian people.
21. HĀLAU KEALAKAPAWA - Michael Canopin; Honolulu, O'ahu (Kāne)
"HO'OHŪ KA PE'A I KA MAKANI" - The canoe sets a course and heads towards Lae'ahi, winds are favorable as we paddle towards Kawaihoa.
22. KEALI'IKA'APUNIHONUA KE'ENA A'O HULA - Leimomi Ho; Honolulu, O'ahu
"PALOLO I KA 'UHIWAI" - The rain called "Lililehua" and the lush green of Palolo Valley are metaphors for love.
23. MOANA'S HULA HĀLAU - Moana & Raquel Dudoit; Kaunakakai, Moloka'i
"I ALOHA I KE KŌ A KA WAI" - The current found in water finds its way towards a deep affection for Princess Kinoiki Kekaulike.
24. KA PĀ HULA HAWAI'I - Kaha'i Topolinski; Honolulu, O'ahu (Kāne)
"KĀKUHIIHEWA" - This mele is dedicated to Chief Kākuhihewa of O'ahu and takes us back to a time when Western pressure had taken control and influenced the workings of the Hawaiian Monarchy.
25. KA PĀ HULA 'O KAUAANO'E O WA'AHILA - Mae Loebenstein; Honolulu, O'ahu
"LAHILAH I KAI O MAMALA" - The island of Maui is honored for her grace and beauty while traveling through choice areas.
26. KEOLALAULANI HĀLAU 'ŌLAPA 'O LAKA - Aloha Dalire; Kāne'ohe, O'ahu
"KEAOMELEMELE" - The unsung heroine, Keaomelemele ("The-golden- cloud"), made the beauty of Nu'uānu her home.
27. HĀLAU NĀ MAMO O PU'UANA HULU - Sonny Ching; Honolulu, O'ahu (Kāne)
"A KONA HEMA 'O KA LANI" - This mele serves as a diary of places that were visited on King Kalākaua's tour of Hawai'i island.
28. HĀLAU HULA OLANA - Howard & Olana Ai; Aiea, O'ahu
"LAMALAMA I MAKAPU'U KE AHI O HILO" - Also known as "Kalākaua's Torch Chant," people held torches lining the beaches to welcome him home.
29. HULA HĀLAU O KAMUELA - Paleka Mattos & Kunewa Mook; Kalihi/Waimānalo, O'ahu
"KA TULANI I 'ĀINAHAU" - An estate near the sight of the present Ka'iulani Hotel given to Ka'iulani by her god-mother Princess Ruth Ke'elikolani at her baptism in 1875.
30. HĀLAU HULA 'O KAWAILI'ULĀ - Chinky Mahoe; Kailua, O'ahu (Kāne)
"MOANANUIKALEHUA" - As Māui was hooking up the islands Moananuikalehua interceded so that life in the sea would balance that on land.



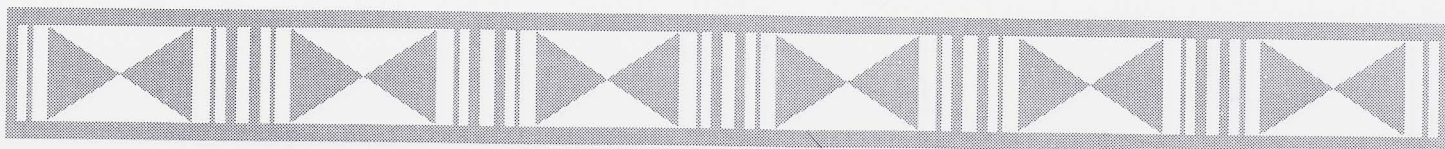
Hula Auana

KANE & WAHINE GROUP HULA

Saturday, April 13, 1996

1. HĀLAU KEALAKAPAWA - Michael Canopin; Honolulu, O'ahu
"NANEA KO'U MAKA I KA LE'ALE'A" - My eyes are dazzled with joy and
I'm delighted to be with you.
2. KEALI'I O NALANI - Keali'i Ceballos; Los Angeles, California
"KA NA'I AUPUNI" - Kamehameha the Great was called "Ka Na'i Aupuni,"
"The Conqueror," as this song is a call for unification.
3. KEALI'IKA'APUNIHONUA KE'ENA A'O HULA - Leimomi Ho; Honolulu, O'ahu (Kāne)
"TEWETEWE" - The words are from a children's chant telling of a large 'o'opu fish
but actually teasing a big stomach, 'ōpū nui.
4. KA PĀ HULA HAWAI'I - Kaha'i Topolinski; Honolulu, O'ahu
"MOANIKE'ALAONĀPUAMAKAHIKINA" - A fitting tribute to the woman who
bears this lovely name, Sally Moanike'alaonāpuamakahikina Wood Naluai.
5. HULA HĀLAU 'O LILINOE - Sissy Kaio; Carson, California
"HO'I I KE KUMU" - Throughout life's trials and tribulations, when we return to
our sources of strength we realize a new perspective
6. HĀLAU KA UA KILIHUNE - Al Barcarse; Kāneohe, O'ahu (Kāne)
"SWEET LEI ROSELANI" - "Sweet Lei Roselani" expresses the beauty and the
significance of the sweet smelling rose lei as the special flower of Maui.
7. PUKA'IKAPUAOKALANI HULA HĀLAU - Ellen Castillo; Kailua, O'ahu
"HE NANI MOKIHANA" - The spicy, sweet pungency of the *mokihana* berry is
beauty and a fond remembrance of Kaua'i.
8. NA PUALEI 'O LIKOLEHUA - Leina'ala Heine; Honolulu, O'ahu
"PUA MELIA 'ALA ONAONA" - Like the plumeria, the love for hula flourishes and
endears, and is cherished by all.
9. HĀLAU HULA O KAHIKILAUANI - Ray Fonseca; Hilo, Hawai'i (Kāne)
"BE STILL 'OE" - The magical valley of Waipi'o is the setting of the magic of the antics of love.
10. HĀLAU 'O KE ĀNUENUE - Glenn Vasconcellos; Hilo, Hawai'i
"NANI LAWA'I" - Special places are different from all others because of its people
and at Lāwa'i it is so because of Alexander McBryde.
11. HĀLAU NĀ MAMO O PU'UANAHULU - Sonny Ching; Honolulu, O'ahu
"KA'ENA" - Someone as precious as a pearl necklace is loved dearly amongst the
seaspray at Ka'ena.
12. HĀLAU HULA OLANA - Howard & Olana Ai; Aiea, O'ahu (Kāne)
"TPO HULA" - A song of love is given as a lei to adorn a special *ipo*, a sweetheart, Hawaiian style.
13. NA HULA 'O KAOHIKUKAPULANI - Kapu Kinimaka-Alquiza; Hanapēpē, Kauai
"PUA LILIA" - Certain flowers remind us of dear ones as the lily is
reminiscent of the heart of the composer.
14. HĀLAU HULA O KA UA KANI LEHUA - Johnny Lum Ho; Hilo, Hawai'i
"OHOHIA KA PAIKAU O KAMEHAMEHA" - "The delightful Kamehameha Day Parade"
This song speaks of the beautiful floats of the islands, the pa'u riders and marching units as
they compete with one another for the top honors.
15. HULA HĀLAU O KAMUELA - Paleka Mattos & Kunewa Mook;
Kalihi/Waimānalo, O'ahu (Kane)
"MAILE KALUHEA" - This fragrant maile is free to roam with the lauae atop the
Ko'olau Mountains without fear of being trampled upon as they together
greet the early morning light.

INTERMISSION



Hula Auana

KANE & WAHINE GROUP HULA

Saturday, April 13, 1996

16. NA PUA ME KEALOHA - Sissy Kaio; Carson, California (Kāne)
"TARO PATCH HULA" - The *lo'i* lands at Lāi'e, O'ahu, have long been in the Kaio family that this song honors.
17. HĀLAU HULA O' KAHIKILAULAI - Ray Fonseca; Hilo, Hawai'i
"KU'U PUA LEHUA" - The *lehua* and *maile* of Pana'ewa are exquisite jewels of the forest, wooed by the *Malanai* breeze.
18. KEALI'I O NALANI - Keali'i Ceballos; Los Angeles, California (Kāne)
"LEI ANA KAUA'I" - Honors the island of Kaua'i - Kaua'i wears as a lei, the mokihana, entwined with the maile that cherished close to the heart.
19. HĀLAU MŌHALA 'ILIMA - Māpuana de Silva; Ka'oha'o-Kailua, O'ahu
"MAIKA'I KAUA'I, AWAIĀULU KE ALOHA" - In honor of Princess Pauahi Bishop, this song is a lei of Kaua'i place names and traditional sayings.
20. HĀLAU HULA NA PUA U'I O HAWAI'I - Etua Lopes; Kailua-Kona, Hawai'i
"KU'U PUA MIKINOLIA" - "My Magnolia Blossom" is a sentimental love song that invokes sweet memories only two can share.
21. HĀLAU KEALAKAPAWA - Michael Canopin; Honolulu, O'ahu (Kāne)
"HANOHANO KA LEI PIKAKE" - 'O fragrant lei Pikake, your scent stirs a feeling so deep within me; I want to feel your loving embrace.
22. KEALI'KA'APUNIHONUA KE'ENA A'O HULA - Leimomi Ho; Honolulu, O'ahu
"AKALA'I AU I KUHIAU" - From the heights of Kuhiau, Kaua'i, the first ship the "Hetty" was sighted and caused a burst of song.
23. MOANA'S HULA HĀLAU - Moana & Raquel Dudoit; Kaunakakai, Moloka'i
"HE ONO KUHIKUHUI KE KUAHONU" - The *kuahonu* crab with its sweet, succulent meat is a delicacy on Molokai and a joy to catch.
24. KA PĀ HULA HAWAI'I - Kaha'i Topolinski; Honolulu, O'ahu (Kāne)
"KA 'Ū NUI" - Many are the intriguing sights of Ka'ū, celebrated here in song.
25. KA PĀ HULA O KAUANOE O WA'AHILA - Mae Loebenstein; Honolulu, O'ahu
"KA WAHINE LEWA I KE KAI" - Hōpoe, the dancing companion of Hi'iaka, is seen here swaying in the sea.
26. KEOLALAULANI HĀLAU 'ŌLAPA 'O LAKA - Aloha Dalire; Kāneohe, O'ahu
"UA NANI 'O NU'UANU" - The beauties of Nu'uau and the joys of love come together in this *mele* for Kamehameha IV.
27. HĀLAU NĀ MAMO O PU'UANAHULU - Sonny Ching; Honolulu, O'ahu (Kāne)
"KONA KAI 'ŌPUA" - Favorite places in Kona on the island of Hawai'i are recalled nestled about Hualalai.
28. HĀLAU HULA OLANA - Howard & Olana Ai; Aiea, Oahu
"PUNA KU'U ALOHA" - Going to visit Puna to meet the 'ohana of in-laws for the first time is commemorated in this *mele*.
29. HULA HĀLAU O KAMUELA - Paleka Mattos & Kunewa Mook; Kalihi/Waimānalo, Oahu
"A HILO MEDLEY" - This medley of Hilo songs was written with the intentions to expose hidden love, love of Hilo and two great men of Hawai'i, Kamehameha and Kalākaua. The chosen combinations illuminate the spirit for which each song brings to this *mele*.
30. HĀLAU HULA 'O KAWAILI'ULĀ - Chinky Mahoe; Kailua, Oahu (Kāne)
"THE TOAD SONG" - A toad isn't much to look at but beauty is only skin deep.



33rd Annual Merrie Monarch Festival

HĀLAU KEALAKAPAWA

Kumu Hula: Michael Canopin
Honolulu, O'ahu

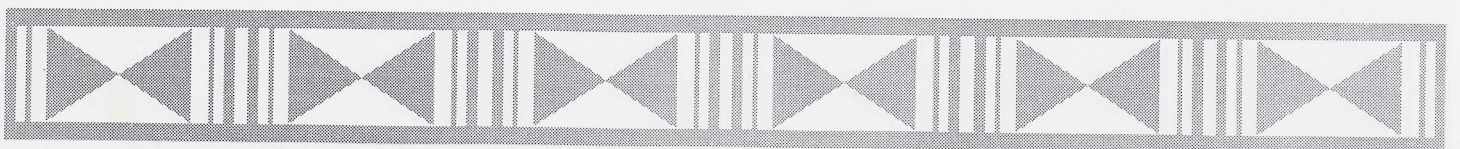


KEALI'I O NALANI

Kumu Hula: Keali'i Ceballos
Los Angeles, California

KA PĀ HULA HAWAI'I

Kumu Hula: Kaha'i Topolinski
Honolulu, O'ahu



33rd Annual Merrie Monarch Festival

HULA HĀLAU 'O LILINOE

Kumu Hula: Sissy Kaio
Carson, California



PUKA'IKAPUAOKALANI HULA HĀLAU

Kumu Hula: Ellen Castillo
Kailua, O'ahu

NA PUALEI 'O LIKOLEHUA

Kumu Hula: Leina'ala Heine
Honolulu, O'ahu



33rd Annual Merrie Monarch Festival

HĀLAU 'O KE ĀNUENUE

Kumu Hula: Glenn Vasconcellos
Hilo, Hawai'i

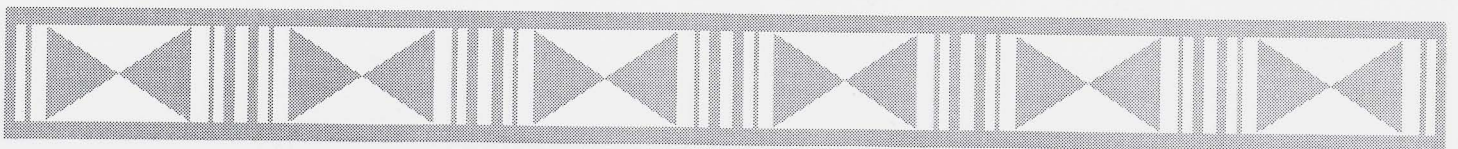


HĀLAU NĀ MAMO O PU'UANA'HULU

Kumu Hula: Sonny Ching
Honolulu, O'ahu

NA HULA 'O KAOHIKUKAPULANI

Kumu Hula: Kapu Kinimaka-Alquiza
Hanapēpē, Kaua'i



33rd Annual Merrie Monarch Festival



HĀLAU HULA 'O KAHIKILAULANI

Kumu Hula: Ray Fonseca

Hilo, Hawai'i



HĀLAU MŌHALA 'ILIMA

Kumu Hula: Māpuana de Silva

Ka'oha'o-Kailua, O'ahu



33rd Annual Merrie Monarch Festival

HĀLAU HULA NA PUA U'I O HAWAI'I

Kumu Hula: Etua Lopes
Kailua-Kona, Hawai'i



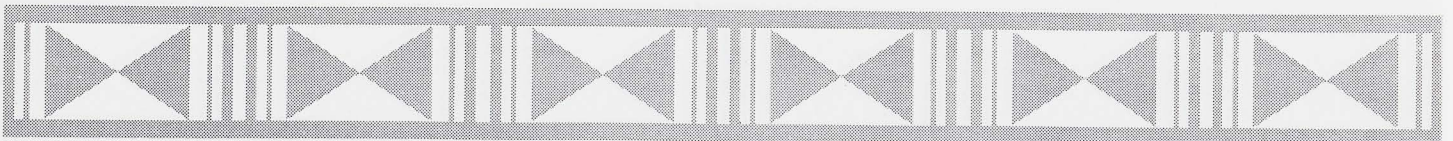
**KEALI'IKA'APUNIHONUA KE'ENA A'O
HULA**

Kumu Hula: Leimomi Ho
Honolulu, O'ahu



MOANA'S HULA HĀLAU

Kumu Hula: Moana & Raquel Dudoit
Kaunakakai, Moloka'i



33rd Annual Merrie Monarch Festival

**KA PĀ HULA 'O KAUANOE
'O WA'AHILA**

Kumu Hula: Mae Loebenstein
Honolulu, O'ahu



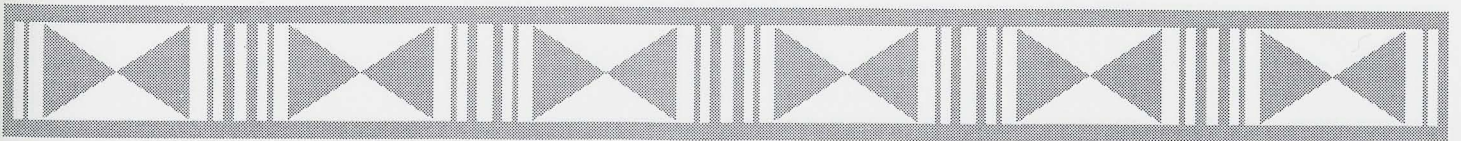
**KEOLALAULANI HĀLAU
'ŌLAPA 'O LAKA**

Kumu Hula: Aloha Dalire
Kāneohe, O'ahu



HĀLAU HULA OLANA

Kumu Hula: Howard & Olana Ai
Aiea, O'ahu



33rd Annual Merrie Monarch Festival

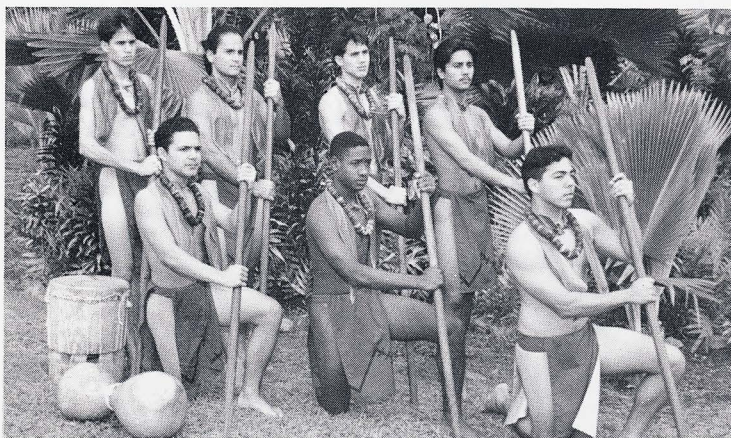
HULA HĀLAU O KAMUELA

Kumu Hula: Paleka Mattos & Kunewa Mook
Kalihi/Waimānalo, O'ahu



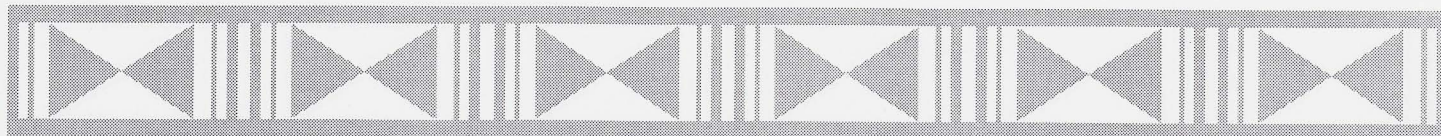
**KEALI'IKA'APUNIHONUA KE'ENA
A'O HULA (Kāne)**

Kumu Hula: Leimomi Ho
Honolulu, O'ahu



HĀLAU KA UA KILIHUNE (Kāne)

Kumu Hula: Al Barcarse
Kāneohe, O'ahu



33rd Annual Merrie Monarch Festival

HĀLAU HULA 'O KAHIKILAULANI (Kāne)
Kumu Hula: Ray Fonseca
Hilo, Hawai'i



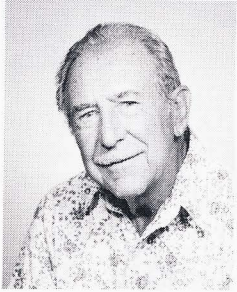
HĀLAU HULA OLANA (Kāne)
Kumu Hula: Howard & Olana Ai
Aiea, O'ahu



HULA HĀLAU O KAMUELA (Kāne)
Kumu Hula: Paleka Mattos & Kunewa Mook
Kalihi/Waimānalo, O'ahu



1996 Merrie Monarch Royal Parade



GRAND MARSHAL
MR. CARL ROHNER

Born in New Jersey and lived on the East Coast until entering the Army in 1940. This brought him to Hilo in April of 1942 where he met and married Helie Koehnen in 1944. After the war the couple took up residence in

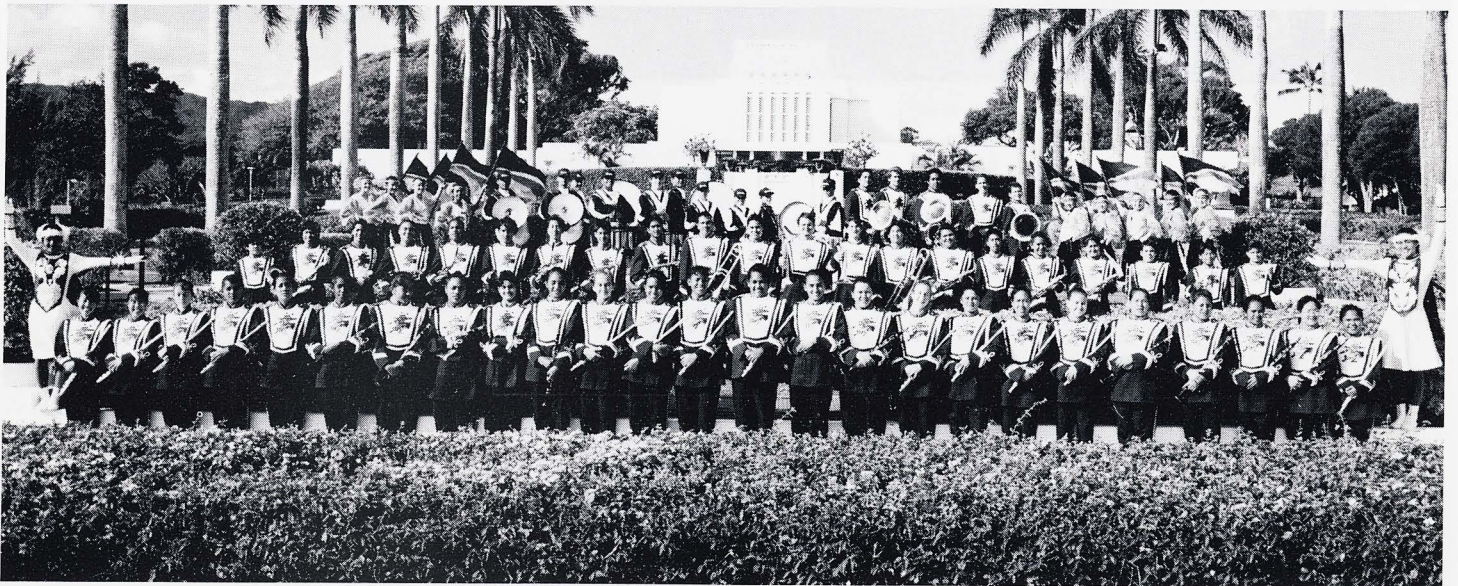
Hilo in 1946. Rohner was on the original Merrie Monarch committee with Gene Wilhelm and George Naope. He was the second chairman of the Merrie Monarch committee.



USS CIMARRON - Fleet Oiler



Minnesota's Marching 'Bassadors
Long Prairie High School Band



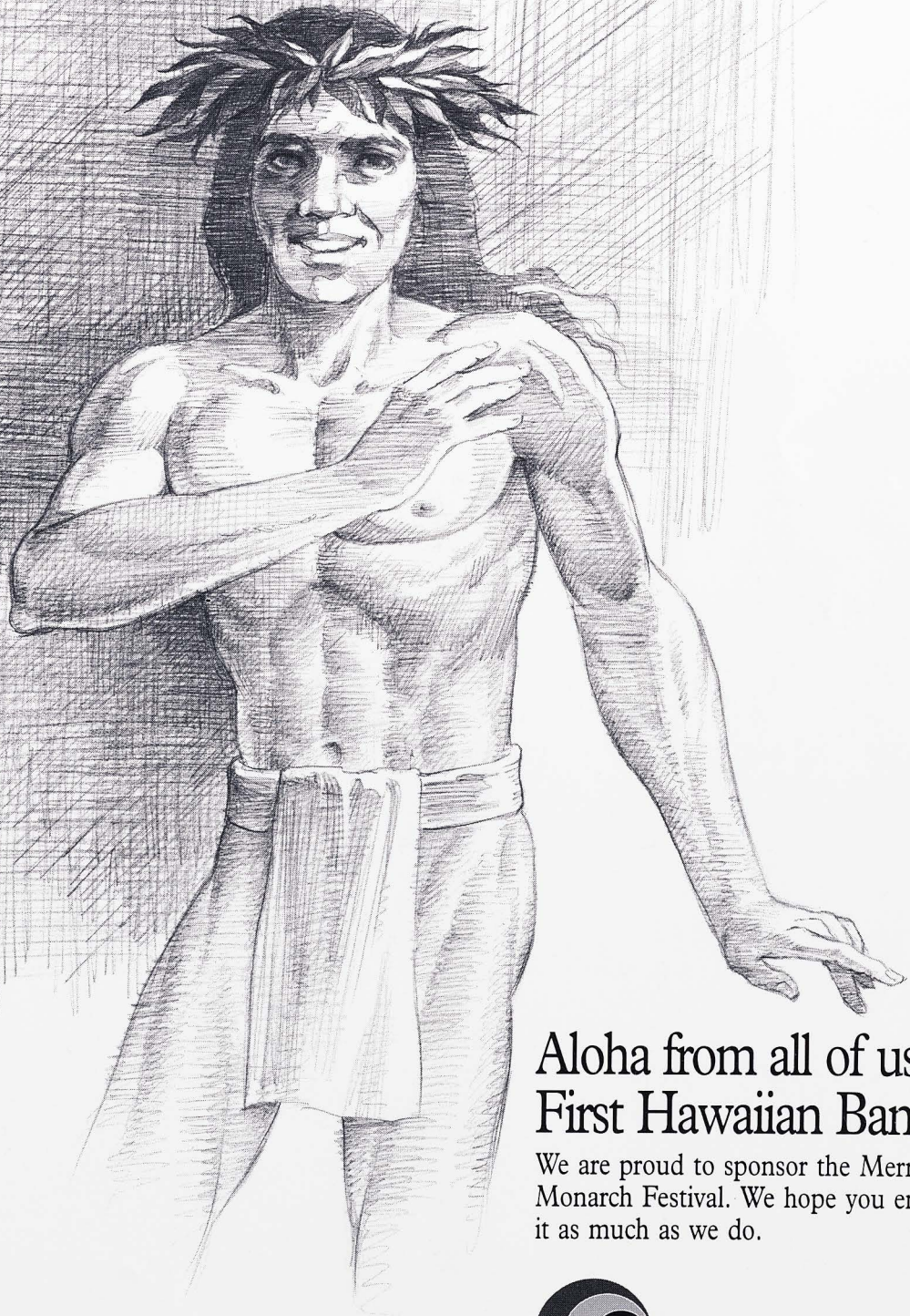
Kahuku High School "Red Raider" Marching Band and Color Guard





10 002015344

UNIVERSITY OF HAWAII



Aloha from all of us at
First Hawaiian Bank.

We are proud to sponsor the Merrie Monarch Festival. We hope you enjoy it as much as we do.



First Hawaiian Bank

The Answer is Yes.

Member FDIC

Hawai'i Is Everywhere Hawaiian Flies.

Hilo
Honolulu
Kahului
Kona
Lana'i
Las Vegas
Lihu'e
Los Angeles
Moloka'i
Pago Pago
Papeete
Portland
San Francisco
Seattle



Only one airline joins all the islands of Hawai'i, the mainland and the South Pacific. Only one airline brings you all this and American Airlines® **AAdvantage** Miles, the world's largest frequent flyer program, for all interisland travel

and select fares to and from the mainland.

Hawaiian Airlines is your local airline, Hawai'i's Flagship Airline. For information and reservations from Seattle to Samoa, call your professional travel agent.

HAWAIIAN
AIRLINES

H A W A I I ' S F L A G S H I P A I R L I N E

American Airlines and AAdvantage are registered trademarks of American Airlines, Inc. American Airlines reserves the right to change the AAdvantage program at any time without notice.