

The Garden Island.

ESTABLISHED 1904. VOL. 8. NO. 26.

LIHUE, TERRITORY OF HAWAII, TUESDAY, JULY 4 1911.

SUBSCRIPTION RATES, \$2.50 PER YEAR.

KAUAI'S BIG FOURTH!

INDEPENDENCE DAY OBSERVED IN WAIMEA

WAIMEA, July 4.—Nearly two thousand people gathered here today to participate in the celebration of the Fourth of July program, which was by far the most elaborate in the history of Waimea. Special trains conveyed the people from the outlying plantations. People began arriving before daylight and by nine o'clock, all public thoroughfares were literally strewn with happy patriots. The contestants were eager for combat, and no sooner had the program been announced as in action, than there seemed to begin so many interesting features that it was practically impossible to see everything at once.

One of the leading features of the day was the ball game between the Port Allens and a home team, the visitors coming out victorious. The prize in this contest being a gift of twenty-five dollars' worth of athletic shoes. The tug of war contest was won by the husky home black-smith team. Fernandes and Costa tied for first honors in the hundred yards dash, the judges deciding the race by splitting the purse. The first prize for the obstacle race was awarded to Keola Makina. The mule race, which surpassed anything on the program for real merriment, was won by Robert Malama's fiery steed in record-breaking time. Joe Costa bagged the sack race prize, while Robert Malama slipped the hooks into the slippery swine. Arthur Hunt, Jr., made a dive for the swimming pennant, and won out by several fathoms. Keola Makina won first prize in a second swimming contest.

There were numerous other exceedingly pleasing and very interesting numbers on the program, of which, unfortunately, we are unable to mention with any degree of accuracy, but this much we can say, however, without fear of contradiction, that never in the history of Waimea has its people more thoroughly enjoyed a day's sport. Many expressions of appreciation and admiration have been heard concerning the highly satisfactory manner in which the various committees directed such a gigantic affair.

New Wharf To Commence Soon

(Special to the Garden Island)
HANALEI, July 3.—Morse and Evans, of the Public Works Department, came down last week and are busily engaged in getting soundings for the new wharf, the contract for which will be let to bidders as soon as a report can be made and drawings completed. It is possible that the first of August will see the work under way.

A Dangerous Bit Of New Roadway

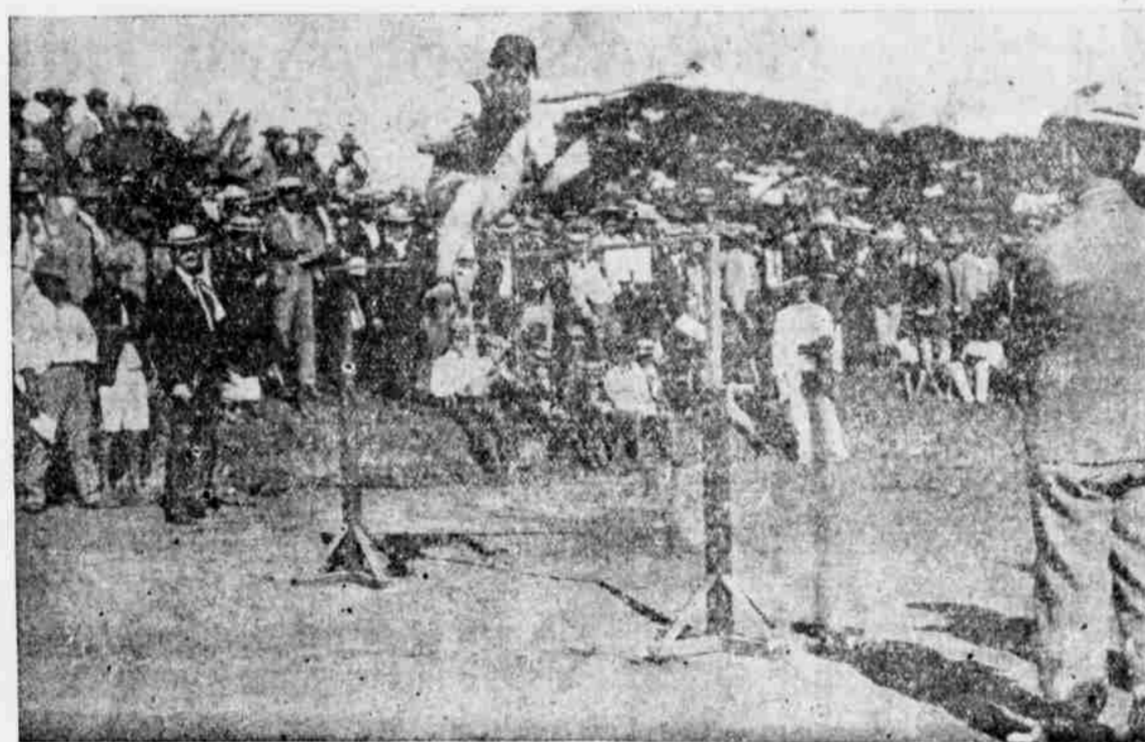
A little ways beyond Mr. A. Wilcox's house at Kilohana, where the new fills and cuts were made, is a deceptive curve which leads one on to a piece of the old road for several hundred feet, then gives you the alternative of a ten foot jump or retracing one's steps. Some dark night an automobile will make this turn; then who will pay the damages? Fifty feet of fence in time may save a few broken bones.

Mrs. E. B. Bridgewater, principal of the Hanalei School, is registered at the Fairview.

SUGAR CANE 89.83
BEETS 81.00

FULLY FOUR THOUSAND SEE KAUAI'S FIRST ATHLETIC MEET

Records Are Set At The First Field and Track Meet Ever Pulled Off On Kauai—Great Enthusiasm Prevailed Throughout The Entire Program—Pleasing Program Arranged For Children—Prominent Ladies Distribute Thousands Of Delicious Cornucopias



K. C. HOPPER IN ACTION
Making the record running high jump on the Boys' Field in Honolulu, 1906 which was beaten by Hans Fassoth at the Lihue Park today.

Today's celebration in Lihue was a tremendous success in every way, and never before has Kauai had such an entirely satisfactory and delightfully interesting day of sports. Over four thousand people representing nearly all parts of the island, enthusiastically cheered on their favorites and enjoyed themselves meanwhile. The grand stand was full to overflowing and lines of autos held crowds of interested spectators. As the sports shifted to various parts of the grounds the crowd left their places to follow.

Kodaks were in evidence everywhere and no doubt some very pretty pictures were taken.

In the 50 yd. dash J. Fernandes of Lihue carried off the first prize in 5 1-5 seconds. His place was hotly contested for by Willie Coney who came in second.

In the Broad Jump a record was made by K. C. Hopper of 9 ft. 4 in. which was closely followed by J. Fassoth.

The Hurdle Race of 120 yds. was won by Willie Oponuni, 15 3-5 seconds and here Willie Coney again took second place.

The Running High Jump's first prize was captured by Hans Fassoth who made a record of 5 ft. 8 1/2 in. K. C. Hopper came in second.

In the Shot Put J. Malina took first place at 32 ft. 10 in. and J. Maulili second.

In the 100 yds. dash J. Fernandes again came to the front for the first prize making a record in 10 2-5 seconds. Willie Coney for the third time taking second place.

The 220 yd. dash was another opportunity for J. Fernandes to make a record in 25 4-5 seconds taking his third first prize. John Akana of Kalihiwai getting second place.

In Pole Vaulting H. Fassoth made a record of 9 ft. 6 in. and won his second first prize, S. Blake coming in second.

The 440 yd. dash was hotly contested for by S. Blake who won in 1 minute and 1-5 second and J. Akana again claimed second honors.

In the Hammer Throw Paul

Kahlbaum was the champion, making a record of 103 ft. 10 1/2 in. while J. Maulili took his second prize of the day.

That the children, as well as the adults in Lihue, had a remarkably good time also, was very plainly evident to all who attended the Juvenile Sports of the morning. The exercises under the capable management of Mr. Maser began promptly at 10 a. m. As the aspirants to honors were many, prizes, such as pocket-knives, pencils, rulers, pens, dollar-watches, chocolates, etc., were lavishly distributed to the successful competitors in egg races, running matches, wrestling matches, bowl breaking contests and other youthful exercises.

Some idea of the number present can be obtained from the fact that Mrs. Rohrig and Mrs. Ralph Wilcox dealt out 3,750 ice-cream cornucopias and 600 doughnuts.

The children's prizes and refreshments were generously donated by Mrs. Doris Isenberg and Hon. G. N. Wilcox.

The enjoyment of today's sports was greatly enhanced by the delightful playing of the Lihue Band. Many people expressed their pleasure and gratification at having such a fine band on the island.

The one mile race was an opportunity for John Akana to give further evidence of his running ability and he delighted his friends by making the heat in six minutes and six seconds, taking first prize. Sanford Blake, here added another prize to the bunch which he had already won, by breasting the tape as second.

The running broad jump was won by K. C. Hopper who made a record of eighteen feet, 1 and 1-2 inches, getting first prize, while Willie Oponuni landed second.

The half-mile race was won by the Lihue team, with a good lead to spare.

The tug of war, which to many was the feature of the day, was won by the redoubtable Kawaihau Road Board team, who are the proud possessors of one of the finest cups among the many valuable ones offered the contestants,

while the Kealia team came in for second.

The ring tilting tournament, under the direction of Hon. Chas. Rice, was one of the most exciting features on the program, there being no less than a dozen competitors for honors, among whom were some of the best horsemen on Kauai. In this beautiful contest, C. Olsen captured first prize (a handsome bridle), while W. Kahlman rode in for second prize, which was also a pretty bridle, both prizes being donations from Mr. Chas. Rice.

EVENTS:

- 50 YARDS DASH
1st. prize J. Fernandes
2nd. Willie Coney
- STANDING BROAD JUMP
1st. prize K. C. Hopper
2nd. J. Fassoth
- 120 YARDS HURDLE JUMP
1st. prize Willie Oponuni
2nd. Willie Coney
- RUNNING HIGH JUMP
1st. prize Hans Fassoth
2nd. K. C. Hopper
- SHOT-PUT
1st. prize J. Malina
2nd. J. Maulili
- 100 YARDS DASH
1st. prize J. Fernandes
2nd. Willie Coney
- 220 YARDS DASH
1st. prize J. Fernandes
2nd. J. Akana
- 440 YARDS DASH
1st. prize Sanford Blake
2nd. J. Akana
- POLE VAULT
1st. prize Hans Fassoth
2nd. Sanford Blake
- HAMMER THROW
1st. prize Paul Kahlbaum
2nd. J. Maulili
- ONE MILE RACE
1st. prize J. Akana
2nd. Sanford Blake
- RUNNING BROAD JUMP
1st. prize K. C. Hopper
2nd. Willie Oponuni
- ONE-HALF MILE RELAY
Won by the Lihue team.
- TUG OF WAR
1st. prize Kawaihau Roadboard
2nd. Kealia "Circle P's"
- RING TILTING TOURNAMENT
1st. prize C. Olsen
2nd. H. Kuhlman

BOLD BURGLARS ARE KILAUEA BALL TEAM CAPTURED IN KOLOA STILL IN LEAD FOR CUP

(Special to the Garden Island)
KOLOA, July 4.—Three Filipinos, supposed to be participants in the recent Koloa Store burglary, are under arrest and further arrests are expected to follow very shortly.

School Teams Have Organized Ball League

(Special to the Garden Island)
HANALEI, July 3.—The Hanalei and Wainiha school boys have formed a baseball league, and have elected Sheriff Werner, their manager. These two teams have met on several occasions with honors rather in favor of the Hanaleis. This fact has served to get the Wainihans on their metal and in order to get a chance to "get even," their suggestion to organize a league was accepted by the Hanaleis. Some good games are predicted during the series.

Seven Disgruntled Blind Pigs Valued At \$700

(Special to the Garden Island)
HANALEI, July 4.—Deputy Sheriff Werner made a successful round-up of blind pigs in Kilauea last Saturday, and as a result, was compelled to spend his Fourth listening to their squeals. To-day's trial, however, has been postponed until next Friday, when it is very likely a value of one hundred dollars each will be placed on the offending porkers.

Koloa Celebrates Independence Day

Altho all who could do so, did their best to make "Lihue or bust," there were quite a number of grown ups and children who stayed at home. For their benefit Mgr. Wilcox placed one of the plantation trains at their disposal. Under the chaperonage of Mr. Schemmeling several hundred people took the opportunity of taking a train ride to Koloa beach and enjoying a sea bath, returning shortly after noon.

Later on Ensign Lyman held an amateur field meet for children. Over a hundred children were in this and appreciated the knives, cuff buttons and other prizes which they won, as heartily as though they had been a silver cup.

Track Meet Officials Deserving of Praise

THE GARDEN ISLAND, in unison with the members of the Kauai Athletic Association, wish to express their admiration and appreciation to the various gentlemen who so ably assisted in making the day's events run smoothly and pleasantly for all. Some of these gentlemen were serving for the first time in their various capacities, but an outsider never would have guessed this from the manner in which they conducted affairs. Lihue is to be congratulated on having such obliging citizens.

Thanks Expressed For Liberal Support

In behalf of the members of the Kauai Athletic Association, the undersigned wishes to express the sincere appreciation of the club to all those who so generously contributed the valuable prizes contested for in to-day's Field and Track meet.

E. B. BRIDGEWATER,
Secretary, K. A. A.

The Kilaueas defeated the Koloa Sunday in a game containing all kinds of b 1. From the very start it became apparent that it would be a walkover for the home team. The Makawelis put away the K. A. C's. without much of an effort, while the Lihues returned home after administering a whitewash to the Homesteaders, and look a bit more like a ball club that may have something to do with making the pennant chasers quake in the boots. The results of Sunday's League games were: Kilauea, 28; Koloa, 2; Makaweli, 11; K. A. C., 1; Lihue, 15; Homestead 0.

The Makaweli team showed up strong and played safe, making less errors than on any occasion since the beginning of the series. Toward the end of the game, however, they slackened up a bit, taking on a sort of an apologetic mood, which was instantly reflected upon the opposing team, after which there was not much life left in the game. Good batting, however, upon the part of the Makaweli's, saved the game from becoming an altogether sleepy one. The Makaweli's showed such marked improvement in their team work, that the game with the Kilauea's on next Sunday, should prove the most interesting game of the season. The only costly error Sunday, was the wild throw from Honan to the first, which permitted the K. A. C's. to make their single score.

Notice To K. A. A. Directors

All Directors of the Kauai Athletic Association are notified that a meeting of this Association will be held in the Fairview Hotel parlor, Saturday evening, July 8, 1911, at 7:30.

By order of the president,
E. B. BRIDGEWATER,
Secretary

PER CENTAGE OF TEAMS

	G	W	L	Av.
Kilauea	9	7	2	.777
Makaweli	11	8	3	.727
Eleele	10	6	4	.600
Koloa	10	5	5	.500
Lihue	10	6	4	.600
Homestead	10	2	8	.200
Kawaihau	10	1	9	.100

Next Sunday's Ball Games

July 9. K. A. C. vs. Koloa at Kapaa. Kilauea vs. Makaweli at Lihue. Eleele vs. Homestead at Makaweli.

"Awa Roots" Chewed By "Hanalei Seniors"

(Special to the Garden Island)
HANALEI, July 2.—In a game between the Hanalei Seniors and the men who are employed by Hon. J. K. Loti in gathering awa root in the mountain mauka, and who are known as the "Awa Rooters," here this afternoon, the Seniors took the wind out of the sails of the mountaineers to the tune of 13 to 5, leaving them stranded high and dry. The Awas put up a pretty fair game, considering that they had no time in which to practice, Willie Werner who is home on his vacation, pitched a pretty game for the Seniors and gained much applause—especially from the bevy of pretty young lady fans, of whom it was very apparent he is a favorite. The entire village turned out to see the game, which was, even if not professional, a very interesting one.

THE GARDEN ISLAND

TUESDAY, JULY 4, 1911

Issued-Every Tuesday.

Entered at the post office at Lihue, Kauai, as second-class matter.

SUBSCRIPTION RATES \$2.50 PER YEAR, \$1.50 FOR SIX MONTHS IN ADVANCE

ADVERTISING RATES, 50 CENTS AN INCH PER MONTH.

Front Page Advertising Rates \$3.00 Per Square Inch Each Insertion.

E. B. BRIDGEWATER, EDITOR K. C. HOPPER, MANAGER

The editor of the Hilo Tribune wants to know why we cannot secure teachers for the Hilo High School and questions the ability of the teachers of the Territory to hold such a position, defending his attitude in the matter by referring to the attempt made by the Department of Education to get teachers through a San Francisco Teachers' Agency. That our teachers are too familiar with existing conditions in the Hilo High School, and the fact that most of them are endowed with self respect, would, we believe, account in a great measure for the failure to secure teachers for the above school.

As to none of our teachers being qualified to conduct a school of the importance of the Hilo High, we will frankly admit that if the Hilo Tribune editor wishes Hilo's school affairs conducted as they have been heretofore, there are but few, if any, who would be able to come up to the requirements. The charge that the teachers have been permitted to exploit their own ideas, "presumably in the hopes that they would thereby catch the eye of those in authority and incidentally a rise on the salary list," is one which every conscientious teacher—of whom there are many—should resent in no uncertain terms.

The Department of Education is absolutely responsible for every lesson which is given in our public schools. "Term outline" and "plan" for each grade is furnished the teacher at the beginning of each term, and reports are rendered to the supervising principal who in turn forwards them to the Department. These are supposed to, and really do, show the work as it is carried on by the teacher. Under these circumstances, it is difficult indeed to see where the teacher has an opportunity to introduce any individual ideas of her own. The editor of the Tribune has only to consult the records of any of our public schools to verify these statements. He is evidently ignorant of the facts in the case and would perhaps be a little wiser were he to do some investigating before proceeding further.

Prominent educators—and some editors—from all parts of the globe, have visited our schools, and in every instance have had nothing but praise to offer on the work being done. The mixed nationalities with which a teacher must contend, present a problem that is not found elsewhere and when one considers the home environments of the children, and cares to make a fair decision in the matter, he cannot but admit that our teaching force is composed of men and women who are accomplishing very much indeed towards the education of Hawaii's youth.

If there is any criticism to be made as to the administration of our school affairs, let such criticism be levelled at the object which rightfully deserves it—the Higher-ups—and not at the teaching staff as a whole. We do not wish to be understood as defending any teacher who is guilty of misconduct, even in the slightest degree, but we will defend the teaching staff as a whole, against the attack of any one who may have a grudge against the Department and attempts to vent his spleen upon the "under dog."

"Would it not be nice," says the editor of the Tribune, "if less attention was paid to the teachers' ideas and more were paid to the pu-

pils and knowledge which would be useful to them? Then, we might get some practical results." In this respect, it is our opinion, that if "the teachers' ideas" were allowed to prevail to a greater extent, more "practical results" would obtain. As to the teacher giving more "attention to the pupils," one who is familiar with the teacher's work will readily agree that to do so would require every minute of her time outside of her actual sleeping hours, for it is a well known fact that nine-tenths of our teachers have several hours' work to perform every evening in preparing lessons for the following day. How many of us who are free to go at will when our day's work is finished, think of the teacher who is toiling over her plans for the next day's lessons? It is very evident that the editor of the Tribune does not.

In another editorial, he delivers himself of the following: "It would be well to establish a reform school for teachers." Such utterances, coming from a less intelligent individual than we know the Hilo scribe to be, would scarcely arouse comment but as it is, we feel that an insult has been thrust upon a body of men and women whose profession is inferior to none and so superior to country newspaper writers that the least the latter could do would be to help build up rather than tear down—not to condemn all for the actions of a few.

The system prevailing in public schools of the Territory is a long way from perfect, but each year finds an improvement in some one or more direction, and it is to be hoped that with the establishment of industrial schools, there will be more rapid strides in the right direction. The condition of our school affairs at present—for which the Tribune blames the teachers—is entirely due to the Department, and if the editor of the Tribune, in all his wisdom, does not know this, he is ill informed. We believe he does, but lacks the courage to say so.

The editor of the GARDEN ISLAND knows many of the teachers of the different islands, personally, has every confidence in them, stands champion for their rights, and will not permit any charge against them as a whole, to remain without challenge.

ACCIDENTS due to slippery roads are becoming of such frequent occurrence as to cause many to do some thinking as to whether, after all, the oiled road is best. The accident which occurred recently, was a costly one and proves, beyond doubt, the necessity of some sort of rough dressing for a top finish.

AUTOMOBILE drivers who fail to stop their machine when they see a horse is frightened should forfeit their license.

Weekly Report On Sugar Stocks

June 23, 1911.

The business in local securities has been very quiet during the week. The festivities of Coronation Day and the work incidental to same, together with preparations for Clean-up Day, have taken the time of many, and consequently little thought has been given the stock market.

Tariff is the chief topic of interest at present, and while this agitation continues, little improvement in sugar stock values is anticipated.

It is authoritatively stated action on the sugar schedules cannot possibly be reached during the present session of congress but that this subject will be thoroughly investigated when congress convenes again.

A very encouraging feature at present is the higher prices quoted daily for Raws. Yesterday 3.98 was the sale price, and 4¢ sugar is certain to be realized shortly.

Hawaiian Sugar declared an extra dividend of 40¢ per share, payable June 30th. As stated last week this action will probably be followed by other companies perhaps later on in the fall.

Should present sugar prices continue throughout the year, several of the plantations will show a profit of from 50% to 100% greater than present dividend requirements, and unless extras are declared will carry over large surplus balances.

Sugar prices closed as follows: Ewa 31-5/8 bid, 31-3/4 asked; Oahu 30-1/2 bid, 31 asked; H. C. & S. Co. 39 bid, 39-1/4 asked; Pioneer 202-1/2 bid, 205 asked; Waialua 112 bid, 113 asked; Olaa 4-1/2 bid, 4-5/8 asked; McBryde 6-1/2 bid, 6-5/8 asked;

Yours truly, TRENT TRUST COMPANY, LTD.

THE loss of a horse, due to slippery roads, will probably cause steps to be taken to cover the road with some sort of dry dressing.

HONOLULU can raise a dust but it takes Hilo to raise cane.

LIHUE'S Fourth of July track and field meet was the most successful event ever held on Kauai, and those responsible for its success deserve great credit for their untiring efforts in giving the public such an elaborate program.

CONGRATULATIONS to the winners of Lihue's first Track Meet prizes.

KAUAI citizens should begin at once to prepare for the next 4th.

THE most pleasing feature of today's sports was the fact that prizes were captured by either individuals or teams from each district entering.



THE HIGH IDEALS OF 70 YEARS TAKE DEFINITE FORM IN THE 1911 Knox Hats

---finest we've ever asked you to look at--- and that's saying a great deal.

There's not a break in the chain of shapes and dimensions covering a range so wide that no man can say: "you haven't just what I wanted."

Knox Soft Hats, \$5.00 BEACON HATS (Made by Knox) Knox Stiff Hats, \$5.00 Knox Silk Hats, \$8.00 \$3.50

Silva's Toggery, Ltd. HONOLULU

New Departure

to our already comprehensive line of Home-furnishings. We have added a very complete line of

High Grade Refrigerators

in latest style and construction, made of Ash, Golden Oak finish, trimmings of Solid Brass. Removable ice compartment, removable drip pipe, adjustable sliding shelves, automatic drip cup and trap.

Zinc-lined Refrigerators, \$16.00 and up. Enamel-lined " \$22.00 " "

See our window display, or better still, come in and let us show you the many advantages of this line.

J. Hopp & Co., Ltd. HONOLULU

SACHS, the "Popular Store"

Known to every resident of these islands for over a quarter of a century as the store for high class dry goods at moderate prices. Our stocks are now complete in every department.

Mail Orders entrusted to us are given careful attention and shipped by return steamer, satisfaction guaranteed.

JULY SPECIALS

Children's Dresses of imported Scotch Gingham, White Lawn and Batiste embroidered and trimmed with lace. All sizes, from 5 to 14 years.

Kenyon's "Kenreign" Auto Coats, Repp, and Pongee with silk collars and cuffs; Raglin Models with reversible collars from \$10.00 to \$25.00.

"My Initials" Album, contains 350 stamping initials for stamping Lingerie, Table and House Linen, and Handkerchiefs. Post free, 35c.

Butterick Patterns, Summer Fashions, Delinator.

N. S. Sachs Dry Goods Co., P. O. Box 566 Limited Honolulu

The July term of the Fifth Circuit Court convenes here tomorrow morning. Mr. Bergau will be up on the Kinau to act as Japanese interpreter.

A dispatch from Chicago to THE GARDEN ISLAND says that only 13 deaths occurred there yesterday as the result of careless handling of explosives today.

Bishop & Co. BANKERS

Established 1859

HONOLULU, HILO, WAIMEA KAUAI.

Transacts a General Banking and Exchange Business Commercial and Travelers' Letters of Credit issued available in all principal cities of the world.

Interest allowed at the rate of 4 1-2 per cent per annum on Saving & Fin. deposits.

Interest paid on Time Deposits at the following rates: 3 Months 3 per cent per annum. 6 Months 3 1-2 per cent per annum. 12 Months 4 per cent per annum.

All business entrusted by customers on other islands receives careful and prompt attention.

H. F. WICHMAN & CO., Ltd. JEWELERS

EVERYTHING IN THE SILVER AND GOLD LINE, RICH CUT GLASS AND ART GOODS.

MERCHANDISE OF THE BEST QUALITY ONLY.

H. F. WICHMAN & CO., Ltd.

LEADING JEWELERS P. O. Box 342 Honolulu

THE BANK OF HAWAII, Limited

LIHUE BRANCH LIHUE, KAUAI, HAWAII

Deposits are received subject to check. Certificates of deposit issued payable on demand. Loans made on approved security.

DRAFTS DRAWN ON Honolulu Bremen San Francisco Berlin New York Hong Kong London Yokohama

SAVINGS DEPARTMENT

Interest paid on Savings Deposits. 4 1-2 per cent on ordinary and 4 per cent on Term Deposits. Ordinary Savings Deposits will be received up to \$2,500 in any one account.

SAFE DEPOSIT BOXES FOR RENT \$2 AND \$3 A YEAR

Ohio Clothes Cleaning Co.

Ladies', and gent's clothes and gloves cleaned on short notice. Dyeing of every description.

Island orders given special attention.

N. Nakatani

132 Beretania St., Honolulu

EYES TESTED

Save the pieces. LENSES MATCHED AND FRAMES REPAIRED.

MAIL YOUR BROKEN LENSES AND FRAMES TO ME AND I WILL DO THE BEST.

Alfred D. Fairwithier

Manufacturing Optician Harrison Bldg. Honolulu.

If you are athirst for a real good glass of beer, ask for



You'll pronounce it the finest beer you ever drank. It's brewed especially for this climate.

The ONLY PLACE to buy your office supplies and general stationery is at our store, 951 Fort Street. Write us your want and we shall be pleased to look after it for you.

Our Repair Department for Typewriters, Cash Registers and Adding Machines is the most extensive in the Territory. Before buying a typewriter consult us. We handle exclusively the well known Remington Typewriter which is the BEST that money can buy.

Office Supply Co., Ltd. FORT STREET HONOLULU

S. OZAKI

WAIKANA

Wholesale Liquor Dealer

ALSO

Complete Line of Oriental Goods

Telephone No. 102. Branch Wahiawa, Telephone No. 7.

CRYSTAL WHITE SOAP

The kind that helps with the work.

Your Grocer has it.

H. Hackfeld & Co., Ltd.

DISTRIBUTORS

SPALDING

Baseball Goods



are the best and absolutely guaranteed.

E. O. HALL & SON, LTD. HONOLULU

carry a full line with prices the same as sold in all the large cities of the States. A postal will get you a catalogue with prices.

HONOLULU MONUMENT WORKS, LTD.

We are the only practical firm in the Islands today, strictly in the monument business. We do all our work with pneumatic tools, driven by compressed air, and the saving in labor we give to our customers in the reduced price of monuments sold. We give any class of lettering, V Sun or raised, but recommend raised letters as more artistic. We sell monuments at San Francisco prices, and as a further inducement to purchase from us, we will give the full name, and the year of birth and death, beautifully carved in raised letters, in panel work, with frosted background, absolutely free. We are direct importers of American and Scotch marble and granites.

WE PAY THE FREIGHT

HONOLULU MONUMENT WORKS, LTD. P. O. Box 491 Honolulu, T. H.

BRO. BENJAMIN REMEDIES are the BEST

PAU OPU PILIKIA

Bro. Benjamin

COMPOUND HERBALO

STOMACH, LIVER, KIDNEY AND BLOOD REMEDY

cures Rheumatism, Impure Blood, Scrofula, Indigestion, Dyspepsia, Sour Stomach, Lack of Appetite, Fluttering of the Heart, Gas and Wind on the Stomach, Bloating feeling, Pains in the Stomach after eating, Sick-headache, Dizziness, Coated Tongue, Billiousness, La Grippe, Dengue Fever, Chills and Fever, Malaria, Breakbone Fever, That Tired Feeling, Jaundice, Backache, Diabetes, Gravel, Incipient Bright's Disease, Bladder Trouble, Enuresis, (Bed-Wetting by Children,) Melancholia, Worms of All Kinds, Nervous and Female Disorders, Sleeplessness. Cures Constipation, Anaemic Condition. A great Tonic for women. Directions in English, Hawaiian, Portuguese, Spanish, Italian and French on blue carbon around the bottle. \$1.00 per bottle; 3 for \$2.50; 6 for \$5.00.

BRO. BENJAMIN WONDER LINIMENT—Greatest relief for Aches and Pains 50; 5 for \$2.00
BRO. BENJAMIN CATARRH REMEDY—for difficult breathing, catarrh, cold in head 50; 5 for \$2.00
BRO. BENJAMIN COUGH REMEDY—for throat, chest and lung troubles, asthma etc. 50; 5 for \$2.00
BRO. BENJAMIN SALVE—for cuts, bruises, burns, sores, itch, piles 25; 5 for \$1.00
BRO. BENJAMIN PILLS—Great laxative after dinner pill 25; 5 for \$1.00

Ask your Plantation Store or nearest Dealer to get these medicines for you.

DISTRIBUTORS FOR HAWAII

1024 Fort Street, Near King ODD FELLOWS' BUILDING

Trade Mark Registered in U. S. Patent Office.



The Words Bro. Benjamin and this picture must be on every package.

Just A Few Personal And Local Jottings

Miss Weber was a returning passenger on the Kinau Wednesday.

Willie and Elizabeth Werner, of Hanalei, are home from the normal on their summer vacation.

Miss Carlotta Stewart of the Anahola school, is spending her vacation with friends in Honolulu.

Misses Eva and Helen Akana of Kalihiwai, and who are attending the Normal school, arrived on the Kinau and will spend their vacation with their parents and friends in Kalihiwai.

Deputy Sheriff Werner of Hanalei, accompanied by his daughter Elizabeth and son William, both of whom are attending the Honolulu Normal, returned from Honolulu on the Hall Friday.

Notice To Carpenters

The Board of Supervisors of the County of Kauai at Lihue, Kauai, will receive sealed bids until 12 o'clock noon of July 5th 1911, for furnishing materials and constructing three school rooms at Lihue, Kauai. Plans and specifications will be furnished prospective bidders by application, accompanied by five dollars, to the undersigned.

J. H. MORAGNE, County Road Supervisor. Lihue, Kauai June 17, 1911.

Marine News

LIGHTHOUSE ESTABLISHMENT. OFFICE OF INSPECTOR 19th DIST.,

311 McCandless Building, Honolulu, T. H., June 28, 1911. Marine intelligence.

LOCAL NOTICE TO MARINERS.

HAWAIIAN ISLAND—Oahu Islands—Pearl Harbor—Kuahua Island Spit Beacon, 16, was permanently discontinued, May 22, 1911, in the course of dredging operations in its immediate vicinity.

List of Buoys, etc., 12th Sub-district, 1909, p. 18. C. & G. S. Chart, 4107.

By order of the Commissioner of Light-House:

LEO SHM, Lieutenant, U. S. N., Inspector, 19th L. H. District.

Passengers Arrived

The following passengers arrived on the S. S. Hall Friday June 30.

Miss H. Akana, Miss E. Akana, J. P. Cooke, Dr. Putman and wife, Mr. Evans, Mr. Shimada, Ah Lan, Chong Kee, R. G. Oliver, Master Oliver, G. N. Wilcox, Mrs. R. L. Wilcox, A. F. Costa, M. R. Godman, W. Werner Jr., E. Woodward, W. Werner, Miss Werner, C. K. Hanc, W. Puaoli, Dr. Kitokawa, K. Hamano and wife, M. Reis and wife, Kui Chong, Kong Lung, J. Morse, Misses Kupae, Sarah Kaleolulu, Wm. Huddy.

Squatters Returning To Their Old Haunts

(Special to the Daily Record) HONOLULU, June 29.—Squatters from the cholera infected districts who were compelled to leave their homes at the outbreak of the epidemic, are returning.

Liquor Firms May Lose License

(Special to the Daily Record) HONOLULU, June 29.—Lovejoy and Co., and four other firms may lose license which are now hanging in the balance of the License Commissioners.

Masson Will Fly For Hiloites

(Special to the Daily Record) HILO, June 29.—Aviator Masson will arrive here to-morrow and will make several flights.

Honolulu Merchants Decline To Act

(Special to the Daily Record) HONOLULU, June 29.—The Merchants Association has declined to act as Chamber of Commerce of San Francisco requests in matter of coastwise suspension and says there is no tariff on passengers.

Board Protects Outside Islands

(Special to the Daily Record) HONOLULU, June 29.—The Board of Agriculture in Honolulu has adopted resolutions protecting the other islands against the Mediterranean fly.

Japanese Carry Trash To Hawaii

(Special to the Daily Record) HONOLULU, June 29.—Many Japanese are taking back articles found in the rubbish heaps where they had been placed on clean-up day.

Volcano Experts Inspect Kilauea

(Special to the Daily Record) HONOLULU, June 28.—F. A. Perrett and Dr. Shepherd, arrived yesterday and will study the Volcano of Kilauea. They will camp at the crater and hope to get good results.

Army Officer Is Fatally Injured

(Special to the Daily Record) HONOLULU, June 28.—Lieutenant Foster of Leilehua was thrown from a horse yesterday and fatally injured.

Woman's Statements Are Much Doubted

(Special to the Daily Record) HONOLULU, June 29.—The woman who claimed to have been robbed on the last trip of the Tenyo Maru and which statement was strenuously denied by Schuffeur, says she has recovered diamonds, but not the money. Schuffeur says he gave the money and jewels to the stewardess. It is now believed that the woman was so drunk that she had spent the money and had forgotten the fact.

[From Tuesday's Daily Record]

Dr. Derby who has been on the Hanalei side of the island for several days, returned Tuesday, and is again at the Hotel Fairview. He will complete his engagements here and return to Honolulu Friday.

Deputy Sheriff Werner was a passenger for Honolulu on yesterday's Hall. He will return Friday accompanied by his daughter Elizabeth and son Willie, who are students of the Honolulu Normal School.

The following Kauai people will arrive on the Hall Friday: Miss Eva Akana, Miss Helen Akana, J. P. Cooke, Dr. Putnam, Mrs. Putnam.

Shipping News

MAILS

Inter-Island Mails Regular mail leaves Lihue on Tuesday and Saturday at 5 p. m. Regular mail arrives from Honolulu Wednesday and Friday morning. During sugar season mail is frequently sent and brought by steamers making extra trips between regular mail days. On days when the coast mail is due, the mail boat due on Friday, will lay over and come in on Saturday morning instead.

MAILS CLOSE

Registered mail closes on mail days, at four o'clock sharp. Ordinary mail, at half past four.

OVERLAND HAIL

Mail for Island offices, leaves Lihue on Monday, Wednesday and Friday mornings at six o'clock. Except, however, in cases when the coast mail delays the Friday boat, then the mail will leave on Saturday at 6 a. m.

TRANSPORT SERVICE To Manila

Sherman, July 12. Sheridan, August 12.

From Manila Sheridan, July 5. Buford, August 4.

For Vancouver. Zealandia, C.-A. R. M. S. July 18.

For China and Japan T. K. K. S. Tenyo Maru, June 27.

P. M. S. Persia, July 9.

INTER-ISLAND VESSELS.

For Kauai Ports W. G. Hall, I.-I. S. N. Co., every Thursday.

Kinau, I.-I. S. N. Co., every Tuesday.

Kau and Kona Ports Mauna Loa, I.-I. S. N. Co., alternate Tuesdays and Fridays.

For Molokai and Maui Miahala, every Tuesday.

For Maui and Hawaii Ports. Mauna Kea, I. I. S. N. Co., every Tuesday.

Claudine I.-I. S. N. Co., every Friday.

PORT ALLEN SHIPPING The Hilonian and Lurline carry passengers, leaving direct for the coast, the fare one way or round trip, being the same as that from Honolulu.

Marine Intelligence

HAWAIIAN ISLANDS—Maui island, N'y side—ahului Harbor—Kahului Breakwater Light—Characteristic changed, June 1, 1911, from fixed red to a white light showing thus:

Light Eclipse Light Eclipse 1.5 sec. 6.0 sec. 1.5 sec. 6.0 sec.

Light is unwatched. Without other change.

N. to E. No. 15, 1911, par. 465. C. & G. S. Charts 4105, 4116, 4100.

List of Lights, etc., Pacific Coast, 1909, p. 50, after No. 242.

List of Buoys, etc., 12th Sub-district, 1909, p. 13.

By order of the Commissioner of Light-house: LEO SAHM, Lieutenant, U. S. N., Inspector, 19th L. H. District.

POST CARDS

In a large and choice assortment Hawaii & South Seas Curio Co Young Bldg., Honolulu.

R. W. A. REDHOUSE

Practical Watchmaker and Jeweler

All work strictly first-class and guaranteed Island trade will receive prompt attention

Honolulu - - T. H.

Howard Not Yet Out Of Prison

(Special to the Daily Record) Honolulu, June 28.—Smuggler Howard has taken the "Poor man's Oath" but remains in prison.

California Feed Co.

Dealers in HAY, BRAN, ROLLED BARLEY, OATS, WHEAT, MIDDINGS Sole agents for INTERNATIONAL STOCK AND POULTRY FOOD P. O. Box 452, Honolulu

P. AKANA

DRESSMAKER Formerly with P. On Tai, of Honolulu, is now located at KAPAIA STORE Ladies' Garments made in the latest prevailing fashions.

HOTEL BAY VIEW

WAIKANA, KAUAI

The Commercial Man's Favorite Hostelry

DICK OLIVER, Manager

Hawaiian News Co., Ltd.

Headquarters for PAPER BAGS WRAPPING PAPER TWINE, ETC.

Hawaiian News Co., Ltd.

Young Bldg. Honolulu

MILTON & PARSONS

Formerly with Dunn's Hat Shop Millinery Parlors Hotel Street, Honolulu Opp. Young Hotel

Miss Power

Fashionable Millinery Parlor 210-211 Boston Bldg. Fort Street Honolulu

Koloa Plantation Store

Wholesale and Retail Groceries. Dry Goods of all Descriptions, General Plantation Supplies.

R. W. Perkins

PHOTOGRAPHER Honolulu

Up-to-Date Portraiture

Kodak Developing and Printing

Mail Orders Given Special Attention

STUDIO: 110 Hotel St. Honolulu

Waimea Stables

LIMITED

Up-to-date Livery, Draying and Boarding Stable and Auto-Livery Business.

AUTOMOBILE STAGE-LINE

BETWEEN LIHUE and KEKAHA

Leaving Lihue every Monday, Wednesday and Friday.
Leaving Kekaha every Tuesday, Thursday and Saturday.
ARRIVING AT THEIR DESTINATION IN THREE HOURS.
W. WEBER, Manager.

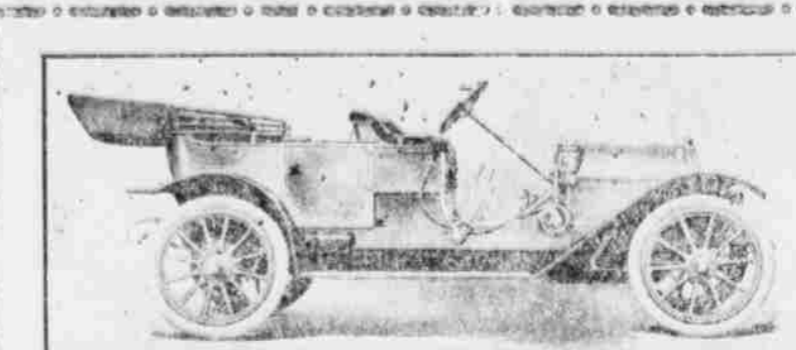
Telephone 4 W Waimea P. O. Box 48

Notice Of Dissolution Of Copartnership.

The undersigned who have heretofore carried on the business of planting, cultivating and growing rice, etc., under the firm name and style of Chong Sing Wai Co., with its chief place of business at Waialua, in Lihue, Kauai, do hereby give notice to all persons that they have by mutual agreement and consent, dissolved the said company and copartnership, said dissolution taking effect as of the first day of May, A. D. 1911.

Hoolaha Hoopau Hui.

O ka poe no lakou ma inoa malalo iho nei ka poe hoi e lawelawe ana i ka oihana mahiua a kama hoi iho, etc. mamua aku nei malalo o ka inoa hui o chong sing wai co., ma waialua, lihue, kauai nei, ma keia ke hoike aku nei i na mea apau, ma hoopau loa lakou i na mea maunani no ka lakou hoolaha like ma paha, a oia hoopau ana ma inoa malalo nei. 1911, mai nei.
waialua, lihue, kauai.
June 6, 1911.



The Hudson for 1911

BODY STYLES AND PRICES
Roadster, two passenger, 25 gal. tank, \$1600
Standard, closed passenger, single tank, 25 gal., \$1900
Runabout, four passenger, double tank, 25 gal., \$1025

Horzpower—33.
Wheel Base—40 inches.
Tires—32 x 3 1/2 inches, front and rear.
Weight—1800 pounds.
Motor—Renault type, 4-cylinder, cast in bloc, 3 3/4-inch bore and 4 1/2-inch stroke.
Transmission—Selective sliding gear type. Three speeds forward and reverse.
Fan Pack of Radiator Cooling System—Forced circulation splash system, vertical tube radiator, centrifugal water pump.
Axles—Semi-floating rear; I-beam front.
Springs—Semi and three-quarter elliptic front and rear respectively.
Capacity—Ten gallons.
Water Capacity—Four gallons.
Control—Strictly standard and internal; secured to rear wheels.
Clutch—Leather-faced cone with slip springs under leather.

Bearings—Front wheels: large size, ball type. Rear wheels: roller, with ball thrusts.
Frame—Pressed steel; best open hearth stock; drop sub-frame, to which transmission and motor are secured.
Radiator—Extra large; vertical tubes; horizontal fins; very efficient.
Dash—Rich mahogany, with coil box to match. Protected on edges with brass moulding, channelled out to fit over edges of the woodwork, providing protection from the weather.
Equipment—Two gas head lights; generator; two side oil lamps; tail lamps; horn; full set of tools and jack.
Runabout—Price \$1000 F. O. B. Detroit. Price \$1350 F. O. B. Honolulu with top, glass front and Pres O. Lite tank.
Touring Car—Price \$1600 F. O. B. Honolulu including top, glass front and Pres O. Lite tank.

ASSOCIATED GARAGE, LTD., Frank E. Howes, Manager HONOLULU

Kauai Garage Company

Agents For

Packard, Peerless, Locomobile, Stevens-Duryea, Buick, Cadillac, Maxwell, Autocar, Buick, Tomos, etc.
GASOLINE TRUCKS: Packard, Pope-Hartford, Buick, Atterbury.
We have on hand, 1 Model 17 Buick, 3 passenger touring car. This car is rated at 37 h. p. but develops actual 48. Price \$2,100. One second hand 1910 Cadillac, 37 1/2 passenger touring car, fully equipped. This car was formerly owned by C. H. Wilcox, is in good condition. Price \$1,500. One model "Dr" Maxwell 2 cylinder, 20 h. p. Runabout in good order. Price \$300.
We carry a full line of auto supplies. Our garage is fully equipped for first-class work. We respectfully solicit a Trial.

Coney Garage Co., Ltd.

J. H. CONEY, Manager
AUTOMOBILES TO ALL PARTS OF KAUAI DAY OR NIGHT.
Telephone 104
Automobiles and Light Machinery Repaired, Plumbing and Gas Fitting, Automobile Supplies. Agents for the Kissel Car, Franklin, Chalmers, Detroit, Hudson, Gram, Logan Truck, and Colt Acetylene Lighting Plant.
Agents for the U. S. STEAM NAVY CO., Ltd., Nawiliwili, Kauai

Coyne Furniture Company, Limited

Alexander Young Building, Honolulu
FURNITURE OF ALL DESCRIPTIONS
Bureaus, Chiffoniers, Sideboards, Box Couches, Mattresses, Etc.
UPHOLSTERING AND REPAIRING

Combination Offer

Garden Island--Hawaiian Star
Both of these papers offered at slightly more than the price of one. Everybody on Kauai knows the Garden Island. It is improving with each issue, and is becoming more and more important to readers and advertisers. Its subscription rate is two dollars and fifty cents per year, postage paid.
The Hawaiian Star is now edited by Walter G. Smith and is under an energetic management. It has lately established cable connections with San Francisco and Washington, while its facilities for handling Honolulu and island news are unsurpassed. The rate for the Daily is eight dollars per year.
Our Clubbing Rate For Both One Year, is \$9.15; Six Months, \$4.85 Or, the GARDEN ISLAND and SEMI-WEEKLY STAR One Year, For \$3.95c
Address: THE GARDEN ISLAND, Lihue Kauai.

TELEPHONE 942 P. O. Box 54
HONOLULU SCRAP IRON CO.
C. H. BROWN, Manager
Dealer in
SCRAP IRON, BRASS, COPPER, AND SECOND-HAND MACHINERY
HARRISON ST., NEAR ELECTRIC POWER STATION.

Deputy Sheriff Joins In A Fatal Orgy

[Special to the Daily Record]
HONOLULU, June 28. A deputy sheriff joined in a drunken orgy last night which resulted in the death of a Hawaiian. It is the same deputy who failed to call an inquest in the case of the Scott suicide on another island.

Withdraw Message Pronounced A Fake

[Special to the Daily Record]
HONOLULU, June 28. The cable to the afternoon papers requesting local chamber to induce Kaho to withdraw coastwise suspension bill because sugar would likely be no free list, is pronounced a fake.

HAVE YOU READ THE ADS?

THE Garden Island \$2.50

Notice Of Formation Of Copartnership.

The undersigned hereby give notice that they have formed themselves into a copartnership under the firm name and style of the Waialua Rice Mill Co., and Rice Factory, for the purposes of carrying on the business of planting, growing, and cultivating of rice and taro, the milling and cleaning of paddy or rice, the manufacture of taro, and dealing in paddy, rice and taro, and in the selling and buying of nourishing fruits, and the doing of things incidental thereto, having for its chief place of business at Waialua, in Lihue, Kauai nei.

Hoolaha Hui.

O ka poe no lakou ma inoa malalo iho nei ka poe hoi e lawelawe ana i ka oihana mahiua a kama hoi iho, ma ke ano, he hui malalo o ka inoa hui o waialua rice mill company and rice factory no ka lawelawe ana i ka oihana mahiua a kama hoi iho, no hoi, ka hoomaemae a ika ika i ka raike, ke kalamu a na, ika ika lawelawe ana i na hana apau i pili i ka oihana mahiua a kama hoi iho, a me ke kama hoi i na hana, a me ke lawelawe ana no hoi i na hana apau i pili i keia mau hana apau, a ma kona wahi lawelawe oihana ma waialua, lihue, kauai nei.
waialua, lihue, kauai.
June 1st, 1911.

- Leong Chung.
- Hee Sun.
- Luke Honne.
- Ong Yit Kwai.
- Ching Moi.
- Chang Chip.
- Chang Kim.
- Chung Chin.
- Fong Tai Ram.
- Chung Ting.

Flags & Fire Works

A big stock received by
Wail-Nichols & Co., Ltd.
HONOLULU
Send in your orders early.

S. E. LUCAS

PARISIAN OPTICIAN
Eyes Examined and Tested
Satisfaction Guaranteed
Prices Moderate
Masonic Temple, Honolulu

Mrs. Annie Berg

Nawiliwili, Kauai
Ladies' and Gents' Clothes
Dry Cleaned and Pressed.
Ladies Fancy Clothes a Specialty.

MISS KATE WOODARD

1141 Fort Street
Stamping, Embroidery, Notions, Dressmaking, Fancy Work, Shirt Waists and Underwear
Gloves Cleaned

JAS. F. MORGAN

Stocks, Bonds and Real Estate
No. 857 Kahaumanu Street
HONOLULU
Passengers Arrived

The following passengers arrived on the Kinohi Wednesday Miss Purvis, Miss Holdsworth, Mrs. W. Frear, Miss Christian, Miss Helen Schimmelfennig, Martha Hobson, Mrs. Day, Miss Carrie Bettencourt, Mrs. Muscott, Miss Rya Heatie, Mrs. W. Mengler, Miss Alice Chong, Miss Mary Bryant, Miss Helen Bryant, Miss B. Weillie, Miss M. Grote, D. Grote, A. Grote, Hon. Kee, Henry Wengler, H. Bryant, L. Dausse, J. Dausse, Wong Sing Kee, Ah Kew, Francis Gay, Mrs. Gay, Mrs. G. Hansen, Miss Whittington, J. Schmidt, Mrs. Schmidt, Miss Lizale Demart, Ethel James, Miss H. Von Arnswaldt, Mrs. B. D. Baldwin, Douglas Baldwin, Miss Dora Stewart, Mrs. Nordmeyer, Miss Nordmeyer, Miss Blackstadt, K. C. Aluna, L. Aluna, M. J. Petrova.

Educator \$4 Shoes



Are a treat for the feet. Made on a broad toe last with room for all five toes. This gives perfect rest for the foot at all times.
They come in Black Gun Metal, Calf, Vici Kid and Tan Russia, both in high and low cuts.
When ordering, add 25c to cover freight.

Manufacturers' Shoe Co., LIMITED

1051 FORT STREET HONOLULU

Send us your OLD FADED PHOTOGRAPHS to be reproduced or enlarged. Satisfactory workmanship guaranteed. Artistic Picture Framing. Kodak Developing and Printing.

Ye Arts and Crafts Shop

HONOLULU

REACH Baseball Goods

are sold by all the leading stores in Hawaii

Theo. H. Davies & Co., Ltd.

Sole Agents for the Territory of Hawaii

The Reach Cork Center Ball was the Official Ball of Worlds Series

REACH GOODS GUARANTEED

Direct Senate Bill Rejected By House

[Special to the Daily Record]
WASHINGTON, June 28. The direct election Senate bill has been rejected by the House now in conference committee.

Storm Leaves Death In Its Furious Trail

[Special to the Daily Record]
TOKIO, June 29.—Many lives were lost in a storm which swept this country about ten days ago.

MAIL ORDERS

to us receive better attention than if sent to the mainland, and we have a large stock of materials from which you may select.

Our prices are low and the value as good as are to be had anywhere in the world. We have a large clientele on Kauai which we are serving all the time. The satisfaction expressed by old will be enjoyed by new patrons of this store.

A. BLOM

Fort Street opposite Catholic Church.

WE ARE SELLING

Regular \$18.00 Suits	for \$12.50
" 22.00 "	" 16.00
" 27.00 "	" 18.00
" 30.00 "	" 20.00

Get one of these suits while they last. Send size and color desired together with money order.

THE LEADER, CLOTHIERS

FORT STREET, NEAR BERETANIA

HONOLULU

Victor Talking Machines

The FIBRE NEEDLE

The Fibre Needle is a new invention which permits the running of many records with the same needle without the least damage to records or decrease in the tone. They do away with that scraping sound.

The FIBRE NEEDLE

Our Eleele store, Kalihiwai and Koloa branch stores can supply you with these new needles.

The Latest Records

We have just received new records which includes the very latest pieces.

FROM \$10.00 UP

Eleele Store Kauai Agents
J. I. SILVA, Proprietor.



TRADE MARK REGISTERED
THE ANVIL

Indicates a steel shod shoe for children. A substantial school shoe; a stylish well made dress shoe. High or low cut, Kid or Calf stock; button, one-strap, or lace.

Steel shod anvil brand means "made to wear." Prices, in sizes 9 to 11, \$2.25 to \$2.50; in sizes 11 1-2 to 2, \$2.50 to \$3.00. Try a pair and prove what we contend.

McINERNEY SHOE STORE
HONOLULU

The job department of the GARDEN ISLAND office turned out some handsome programs for the Fourth of July exercises in Waimea and the field meet at the Lihue Park. The program is an artistic piece of color work and the subject of much admiration.

Miss Florence Deverill of the Hualai School teaching staff is spending a few days in Makaweli, the guest of Miss Lee. Mr. R. Ogilvie, representing Dunn's Mercantile Agency returned to Honolulu Friday, after a week's work in compiling the mercantile statistics of Kauai.

LETTER FROM OLD JAPAN

By J. M. Lydgate

The cream of old Japan is to be found in the Ancient Capital, Kyoto and there we have spent a good deal of our time. The city has a population of half a million or so and I should judge that there is about a temple and a quarter apiece, all around. After you have seen half a dozen of them your soul loathes them as the children of Israel did manna, at least mine does and I have learned to scent them from afar and flee as from the touch of plague. They are mostly musty, frowzy old affairs, full of trumpety and gewgaws, and pervaded by an inevitable odor of ancient incense, which may be very welcome to the Gods, but which is very nauseating to me. In most of these temples there is a striking lack of dignity and of all else that ministers to inspiration and religious up, but a fact that is still further emphasized by the effort, in many places, to turn them to commercial account by means of cheap catch-penny schemes which obtrude upon the attention of the visitor.

Far more interesting to my mind is the life in the streets. The shops are usually about the size of an ordinary bath-room, very low in the ceiling, and narrow in the beam, with all the goods on the threshold, a stock so small that a few dollars would buy out the whole establishment. Each shop confines itself as a rule, to a single narrowly specialized product which is often times manufactured on the spot, on a very small scale. The streets are narrow and congested in proportion.

Up and down these narrow streets, throngs a busy earnest crowd, in all kinds of strange costumes, buying all kinds of strange products. Some are afoot, some in rick shaws, some in the coarsest of garb, some in the richest of silks. The dandy lady in paint and powder, jostled by the rough laborer drawing a load of tiles or a towering pile of bamboo baskets. Strange cries fall on the ear as a hurrying rick shaw man seeks a passage, or a peripatetic vegetable man cries his wares.

As we wander through these streets, absorbed in the novelties about us, we forget that we ourselves are the greatest wonders there, and are gradually drawing a staring, wondering crowd which hangs on our heels with now and then a critical comment, but mostly in attentive silence as though we were performing bears and they might lose some important act of the show. There are very few resident foreigners in Kyoto, and they haven't yet become familiar figures to the common people.

One of the principal charms of Japan is the National Scenery, and it is always a delight to take a day off in the country. One of the interesting trips adjacent to Kyoto is the descent of the Hodzu River, which is like running the St. Lawrence rapids, on a small scale.

A suitable boat and boatmen are secured in the quiet water above and casting off we drift slowly to the swifter current down which we shoot through a series of foaming swirling rapids, beset with threatening rocks, from which we are warded off by the long poles of

the deft boatmen. At times the pliable boat grounds and scrapes, barely slides over some ledge or reef, but before we have time to hold our breath we are over it and in deep water again. When there is time and quiet for it, the retiring mountain walls of the river, rich in flower and foliage, challenge attention and interest.

Another interesting trip is that on Lake Biwa a few miles away beyond the mountains. We reach the lake by rail and there take a small steamer on which we are honored, at the cost of 2 cents apiece, with chairs on which we may sit on the forward deck, the Japanese passenger sitting on the floor. On this little steamer we make the circuit of the lake, stopping every mile or two at primitive village landings where a passenger or two, umbrellas, or a bundle of bamboo baskets is put ashore. At one point a Yale-Harvard boat race is in progress—one crew in red and the other in green with attendant steamer's umfries launch etc. and a great demonstration of flags, fireworks, band and soda water—a little sake perhaps—as the Reds come in ahead. We leave them to their rejoicing and pass on to the entrance of the famous Biwa Lake Canal which pierces the mountains and constitutes a busy thoroughfare to Kyoto 6 or 8 miles away. For a considerable portion of the distance the canal passes under the mountain range, and the traffic is carried on in an Egyptian darkness, only emphasized by the tiny lights, set too far apart to be even distant neighbors. Into this darkness we shot as into Dante's Inferno whose impressive portal almost breathed the warning "A Blandon hope ye who enter here." Borne on the current we swept downwards keeping close to the left wall, our boatman constantly crying out a warning to up coming boats which hugged the other wall and were pulled up hand over hand along a wire cable. The infrequent lights as we passed them gave the wierdest and most beautiful lavender and purple effects on the black water and gave an added touch of the uncanny to the wierd cries of the boatmen.

We were, perhaps, half an hour in this tunnel—it seemed half a life time—but we would not have missed it for the world and we don't want to go through any more. Emerging into the light of day the canal skirts the mountain slopes, overlooking the country below, and at length terminates in the heights above Kyoto, where a drop of about 300 ft. generates electric power to supply the city and operate an incline railway by which the boats are raised and lowered to and from the canal.

Hon. Geo. N. Wilcox was a returning passenger on the all Friday morning. Chester Doyle, who was reported to have been kid-napped by a Japanese Sampan, has been located and was sent home on last Friday's Kinau.

Hon. Geo. N. Wilcox was a returning passenger on the all Friday morning. Chester Doyle, who was reported to have been kid-napped by a Japanese Sampan, has been located and was sent home on last Friday's Kinau.

The Largest and Finest Stock of

WALL PAPER

in the Territory is carried by

LEWERS & COOKE, Ltd.

Honolulu

Books of samples of Foreign and Domestic Wall Papers may be seen at the LIHUE STORE or at the store of C. B. HOFGAARD, Waimea.

If you wish samples will be sent to you from Lewers & Cooke, Limited.

Honolulu Electric Co.

EXPERT ELECTRICAL INFORMATION

Batteries, Lamps and all kinds of Electrical Supplies

Estimates cheerfully given on Electrical Installation of all kinds

Honolulu Electric Co.

Pajamas

From

\$1.50 up

Special Line of
NEGLIGEE
SHIRTS

at

\$.150



No man's under-wardrobe is complete without a suit of Pajamas. It's a night gown, bath robe and lounging robe all in one.

"FAULTLESS" PAJAMAS
SINCE 1881

are as precisely made as an outer garment. They are drafted with scientific care and made of thoroughly dependable fabrics in white and colors.

M. McInerney Ltd.

HONOLULU

Holeproof Hose

Guaranteed for Six Months
Six Pair to the Box

- Ladies' Lisle, in black, white and tan, \$3.00 box
- Children's Ribbed, black only, \$2 box
- Men's Cotton, black and tan, \$1.75 box
- Men's Lisle, black and tan, \$3 box
- Men's Cotton, white and assorted colors, \$2 box.

B. F. Ehlers & Co.

Sole Agents, Honolulu

STANDARD GAS ENGINES

FOR ALL PURPOSES

Marine, Stationary, Pumping,
Hoisting, Etc.

Honolulu Iron Works Company

Agents for Hawaiian Islands.



Agent

Alexander Young Hotel Laundry

Address all laundry to the Messenger Service Union and Hotel Sts., Honolulu.

LET US DO YOUR SHOPPING

TRENT TRUST CO., Ltd.

HONOLULU

Member Honolulu Stock and Bond Exchange

Real Estate, Insurance, Trusts

WANTED--Two or three first-class agents on Kauai.

ISLAND SCHOOLS' CLOSING EXERCISES

Beautiful and Excellently Rendered Programs Marked The Closing of Kauai's Public and Private Schools On Last Day of School—Hundreds of Parents Among Visitors

HANALEI, June 26.—The following program was rendered at the closing exercises of the Hanalei school last Wednesday:

A. M.
Regular work and Map contest at the board. Grade 3 drew map of the Hawaiian Islands.

Grade 4.....Map of Pacific Ocean
Grade 5.....Map of the World
The parents decided that Ah Kam Ho Chock had the best map among the girls, and that Joseph Lima the best among the boys. All the maps were excellent with a few exceptions. There were prizes given for the best.

P. M.
Song—"We Meet Again Tonight Boys"
A welcome.....by Joaquin Louis
Dialogue—"The Sick Doll"—Sarah Aalona, Rosie Werner, Goon Chock.

Song—"Land of The Summer Sea"—by Jane Lima, Ah Kam Ho Chock, Julia Aalona, Adell Kum Ing.

Story—"How the Robin Got Her Red Breast"—by Julia Aalona
"A Little School"—Sarah Keawechu
"The Dragon Fly"—Kinchi Tasaka
"Fairy Folks"—Otomi Ogawa, Herbert Deverill.

"An Acrostic Vacation"—Amelia Daniels, Kam Mew Chock, Mabel Puakiki, Kam Hoon, Chezn Fugita, Ah Sun, Omio Shirashi, Ah Yau Cut.

Song—"O, Give Me a House By The Sea."

"Better Than Gold"—Sam Werner, Au Lim, Kong Vai
"The Robin"—Hajime Murakami
"A Recipe For An April Day"—Tomaiyo Hashizumi

"Little Boy Blue"—Ah Miu-Hoy
Song—"No Beautifula Place"—Entire School.

"Life"—Lucy Kahaieiki
"We Love Our flag"—Goon Fong Cheekau, Hong Chong, Soo Kui, Stanford Deverill

Song and recitation—"Receiving Room"—"Spring-Time"
"A Hint of Life"—Ah Hoo Chock
"If I knew"—by John Peter and Ah Nian.

"Glad to be a little Girl"—Juliet Kahaieki
Song—"Hawaii, Hawaii."
"Washington's Life"—Ichiro Hasegawa, Joseph Lima, Wm. Aalona, Ah Nian, Geo. Winkle

"Little Red Stamp"—Seege Nakatsuji
"Doll Mothers"—Juliet Kahaieki, Sarah Aalona, Violet James, Daisy Kum Ing, Miu Ah Hoy.

The play of "Mother Gosse"—Receiving Room.
"Recitation"—Herbert Mossman.

Dialogue—"Little Foxes and Hunters"—Hisaiyo Hong Tai, Masa, Ah Kiau, Quon Sung, Ah Kong, Miu Ah Hoy, Ah Yau, Violet James.

"The Little Word"—by Hattie
"Grandma's Letter"—Daisy Kum Ing.

Song—"Dip The Oar"—Adell Kum Ing, Lucy Kahaieiki, Julia Aalona, Mary Werner, Jane Lima, Hattie Daniels, Iwikau Lima, Sam Werner.

"Two Little Hands"—Ida Kahai
"The Little Girl"—Ester Afong
Song—"There's A Wee Little Nest"—Receiving Room.

"The Four Sunbeams"—Ah Tuck.
"The Boy For Me"—Iwikau Lima.

"Daisies"—Ah Wonget
"I Have a Little Pony"—Monchow.

Song—"Receiving Room."
"Columbia's Party"—[Uncle Sam] Ichiro Hasegawa, [Chinese girl] Hi Sun, [Japanese girl] Seege Nakatsuji, [German girl] Annie Deverill, [Hawaiian girl] Mary Werner, [Spanish girl] Ah Kam Mew.

Song—"Columbia The Gem Of The Ocean."
Song—"Aloha Oe."

Washington, July 4.—Twenty-six deaths from heat occurred here today. It is predicted by the officials of the Weather Bureau, that the heat wave will continue for 24 hours.

KEALIA-KAPAA SCHOOL

The following very interesting program was carried out by the teachers and pupils of the Kealia-Kapaa Schools last Thursday to an audience numbering nearly seven-hundred, inclusive of the pupils:

PROGRAM

9. a. m. Wand Drill—Grade 4
9. a. m. to 10:45, Upper Grades—regular work.

9. a. m. 10:42, lower grade program of songs.

10:45—Grades 2 and 3, Scarf Drill.

11:00 a. m. to 1. p. m. Upper Grades held exercises consisting of Flag salute, and Calisthenics, with opening song [Columbia.]

Address of Welcome by Charlie Lizama, Grade 7

Recitation, First Aloha by Grade 3, with musical accompaniment.

Chorus of Flower Girls.—Grade 5
Dialogue [Columbia] Grade 6 and 7

Lady Clare, Grade 5 recite.

Song—"Moonlight Dance, Upper Grades.

Indian Club Drill—Grades 6 and 7

Dialogue—[June and the children] Grade 4

Song [Swispering Hope]—Chorus by Portuguese Children.

Manual work [making chairs] Grades 6 and 7

Humanagraphone, Grades 6-7

Song [In the star light] Chorus by Hawaiian Children.

Hawaiian Life—Grade 5

Song [Sweet Lei Lehua] Upper Grades.

Japanese Fan Drill [in costume.] Grade 5

Recitation, [The last Aloha] Grade 3

Song [Lullaby] Upper Grades.

Song [Hawaii-po-no-i.]

KALAHEO SCHOOL

Kalaheo public school, terminated the year's work with the following very interesting program which was pleasingly rendered on last Wednesday:

Program for Closing Exercises Kalaheo School, June 22, 1911.

1. "Welcome Kind Friends"—Seven Little Girls.

2. "The Boating Song"—Miss McClymont's Room.

3. "June"—Recitation—by Jane Jacinth.

4. "Hiawatha"—Recitation—by Miss McClymont's Room.

5. "Lady Moon"—Song—Miss Abbey's Children.

6. "I'm Glad Vacation is Coming"—Manuel Cambra.

7. "Wand Drill"—Miss Abbey's Room.

8. "Mrs. Pussy's Dinner"—Miss Silva's Children.

9. "Barbarn Freitchie"—Theres Jerves.

10. "The Gleaners"—Song—Miss Abbey's Room.

11. "A Tiny Little Fellow"—Tsune Imada.

12. "The Brooklet"—Song—Miss Silva's Children.

13. "Joys of Vacation"—Manuel Medeiros.

14. "Indian Clubs"—Miss McClymont's Boys.

15. "Moonlight"—Song—Miss McClymont's Room.

16. "Lessons"—Recitation—Miss McClymont's Children.

17. "Vacation"—Song—Miss McClymont's Room.

18. "America"—Entire School.

KOLOA SCHOOL

The closing exercises of Koloa School took place on Wednesday June 21. There was a large attendance of the parents and friends of the pupils. The following pro-



and the correct and quick filling of them is one of our hobbies. You will get the same attention as if you called in person. When you are ready, ring up:

- 141 Office & Manager
- 142 Grocery & Hardware
- 143 Drygoods Department
- 144 Japanese Department
- 354 Hanamaulu Branch.



gram was carried out very creditably by the pupils.

Koloa School Wed. June 21st 1911.

PROGRAM

Grades.

1 Chorus—"With cheerful Hearts" 4, 5, 6, 7

2 Concert Rec.—"Welcome" 4, 5, 6, 7

3 Rec.—"Tom speaks a speech" 3

4 Rec.—"The Arrow" 2

5 Song—"Morning" 1

6 Rec. and Song R. R.

7 Song—"Summer Time" 3

8 Concert—"Sweetest" 2

9 Rec.—"Address" 1

10 Dia—"The Two Sisters" 4, 5

11 Rec.—"The Clock" 3

12 Rec.—"The boy that laughed" 2

13 Song—"Little Raindrops" 1

14 Dia—"The Secret" 5, 6

15 Song—"The happy Cotager" 4, 5, 6

16 Rec.—"Vacation Time" 3

17 Rec.—"Little Boy" 1

18 Concert—"Boys be up" 4

19 Song—"The Wanderer" 3

20 Dia—"Grandpa and Grandma" 2

21 Song "Hide and Seek" R. R.

22 Rec. "A Little Boy's Trouble" 3

23 Song "Under the tree" 3

24 Dia. "Keeping your eyes open" 5

25 Rec. "What would you do" 3

26 Rec. "When our teacher etc." 2

27 Song "The Frog" 7

28 Dia. "The Seasons" 4

29 Rec. "My rival" 3

30 Cho. "The blue and the grey" 3

31 "Mamma's Helper" 2

32 Rec. "Vacation" 1

33 Song "Happy Children" R. R.

LIHUE PRIVATE SCHOOL

Song: "Tramp, Tramp, Tramp" School

Recitation: "Little Juliet's Story" Juliet Rice

Recitation: "Into Pussy's Claws" Josephine Moragne, Homer L. Lydgate, Paul Rice

Essay: "The Panama Canal" Frank Broadbent

Song: "Lullaby Ball Song" Mildred Hogg, Edith Rice, Juliet Rice, Blanche Wishard, Helen Fountain, Dora Broadbent, Catherine Coney

Recitation: "The Singing Lesson" [Jean Ingelow] Catherine Coney

Recitation: "A Chicken's Rights Appeal" Juliet Rice, Henry Gandall

Recitation: "The Blind Man and the Elephant" [John G. Saxe] Helen Fountain

Recitation: "On the Sunny Side" [James Whitcomb Riley] William Wolters

Recitation: "The Doves" Josephine Moragne

Recitation: "The Funny Little Fellow" [James Whitcomb Riley] George Hogg

Recitation: "Tubal Cain" [Charles Mackay] Blanche Wishard

Song: "Marching Song" School

Recitation: "Cassius's Speech" [From Julius Caesar] Ashton Hogg

Recitation: "The Swallow and I" Juliet Rice, Alexander Hogg

Recitation: "The Fish I Didn't Catch" [John Greenleaf Whittier] Harrison Rice

Recitation: "In School Days" [John Greenleaf Whittier] Edith Rice

Recitation: "Going On An Errand" Mortimer Lydgate

Recitation: "The Isle of Long Ago" Dora Broadbent

Song: "Slumber Song" School

A. R. GLAISYER, D. V. M.

Will make monthly headquarters as per schedule below
1-10, 13-14 - - Lihue
11-12 - - - - Kilauea
15-17 - - - - Kekaha
18-21 - - - - McBryde
22-30 - - - - Makaweli

The Garden Island \$2.50

A Pretty Card Party In Kalihiwai Valley

(Special to the Garden Island)

KALIHUAI, July 4.—Miss Helen Akana, who recently returned from the Normal School gave a card party on Monday evening, the guest of honor being Maj. Robert Mahikoa of the Kamehameha Cadets, who is a recent graduate and who has a host of friends both in Honolulu and Kauai. Light refreshments were served and a very enjoyable evening was the expression of all those who enjoyed the hospitality of the very charming hostess.

Winter Once More Wins Silver Trophy

The annual bowling contest which takes place each year on the Fourth of July, at the Kegel Club's headquarters, was pulled off last Sunday, and proved to be one of the most interesting contests ever held. Mr. Winter, for the second time, captured the cup.

An offer from Manager Rohrig of the Lihue Store, to present the one obtaining the highest score with a handsome old Mission-Style rocking chair, caused a lively contest. Mr. Winter also coming in for another piece of good luck, by making the winning. Other prizes which were won by different members were meerschau pipe and three beautiful steins.

The rules governing the cup which is the object of these annual contests, is that it shall be won by the same person for three times before he is entitled to it. Mr. Winter has now to make but one more winning to become the owner.

Some Interesting Wireless Reports

(Special to the Garden Island)

Honolulu, July 4.—Today's celebration is a tremendous success. Cannons boomed from British Battlements and our batteries at noon.

Honolulu, July 4.—The Oahu won the polo tournament here today in a contest with Fifth Cavalry the score being 4 to 3 1-2 and 4 1-2 to 3 1-2.

Honolulu, July 4.—The Keios defeated the St Louis team here today in a five inning game, the delay in the arrival of the steamer not permitting them to arrive in time to play nine innings.

Honolulu, July 4.—Berger holds the motorcycle record. He made 10 miles in 11 minutes and 54 sec. at the Kapiolani Park today.

A Valuable Horse Is Fatally Injured

An accident which resulted in the loss of a horse belonging to C. W. Spitz occurred on the road a little below THE GARDEN ISLAND office about half past four Friday afternoon. The mail truck, in charge of Willie Ellis was en route to the post office, while at the same time a Japanese was returning to Nawiliwili on horseback. The two met and had partly passed each other when the horse shied. The road being slippery, the horse fell in such a way as to place one of his front legs beneath the car, the rider escaping by falling in the opposite direction. The horse's leg was so badly broken that it was found necessary to shoot the animal. There seems no reason to attach any blame to negligence upon any of the parties concerned. The horse was valued at from one hundred to one hundred and twenty-five dollars.

Holy Ghost Feast In Kapaa Church

(Special to the Garden Island)

KAPAA, July 2.—This town was the scene of gay decorations last Saturday and Sunday, the occasion being the celebration of the Holy Ghost Feast. Flags of all nations waved from every gate pass throughout Main Street. This is a custom observed by our citizens each year, and is one which is greatly admired by everyone.

Among the many teachers who left for Honolulu Friday were Miss Chang, Miss Lee, Miss McClymont, Miss Ellis, Miss Daisy Sheldon, Miss Hannah Sheldon, and Mrs. Chamberlaine. The latter will leave for San Francisco by the next steamer and will spend her vacation among friends and relatives in different parts of California.

Mr. and Mrs. Menefoglio of the Power House, were over to Kilauea last Sunday to witness the game of ball between the Kilaueas and Koloas.

BY AUTHORITY

OMAO HOMESTEAD DRAWING

Notice is hereby given to Isabella K. Telles, Joe Wala, Denis Luhi, Louis McKeague, Henry Charman, Kalawaia, John Nobriga, George Charman, Joseph Valent, Fred Phillip, David Hulihce, Joe Telles, George Kaeha, James Mannaka, M. S. Valente, Jr., Antone C. Baptita, G. K. Hoopii, Lui Hoopii, Kaluna Ainaike, R. K. Ainaike, John Nunes, Manuel Nunes, Jr., Manuel Nunes, Louisa Hellum, Frank Medeiros, Manuel Medeiros, Antone Perry, John Kahaule, Joe Souza, Chas. K. Lewis, Victor Opeka, James K. Kula, Frank Souza, Geogianna Souza, John Medeiros, Jr., Joe M. Ventura, John Medeiros, Manuel J. Medeiros, Louis Medeiros, Frank Vasconcellos, M. Lucas Carmara, Mary Medeiros, H. G. Spalding, Augusta Vasconcellos, Antone Vasconcellos, Ida Melekula, Wm. Elliot, N. Blake, J. K. Cockett, Joe J. Carvalho, and others, if any, members of the Omao Settlement Association, that Lots Nos. 1 to 51, both inclusive, in the Omao Tract, District of Kona, Island of Kauai, will be opened for homesteading in the following manner, in accordance with the laws relating to public lands in the Territory of Hawaii, subject to withdrawal of any such lots prior to their selection; such opening shall be in the manner set forth in the advertisement of public lands dated May 12, 1911, in respect to method of application, drawing, selection, and other matters, except as follows:

The lots may be taken only by the Right of Purchase Lease or the Cash Freehold Agreement method. Application for participating in the drawing may be made only by members of said Omao Settlement Association, and shall be presented to the Commissioner of Public Lands by ordinary mail on or before Monday, August 21, 1911; the drawing and assignment of the order of selection of lots will take place at the office of the Commissioner of Public Lands, Honolulu, at 9 o'clock A. M., Tuesday, August 22, 1911; the selection of lots will take place at the pineapple cannery at Lawai, District of Kona, County of Kauai, at 9 o'clock A. M., Wednesday, August 23, 1911.

Exceptions and reservations will be made for roads, railroad, ditch and pipe lines, reservoir sites and streams. For further information, forms, maps, etc., apply to the Commissioner of Public Lands at Honolulu, or to W. D. McBryde, Sub-Agent of the 6th Land District, Waikawa, Kauai. Dated at Honolulu, June 13, 1911.

JOSHUA D. TUCKER Acting Commissioner of Public Lands.

Approved: W. F. FREAR Governor of Hawaii.

BY AUTHORITY

IN THE CIRCUIT COURT OF THE FIFTH CIRCUIT, TERRITORY OF HAWAII.

At Chambers—in Probate.

In the matter of the Estate of Leong Mook, of Hanalei, Kauai, Deceased.

Order of Notice of Hearing Petition for Administration.

On reading and filing the petition of Leong Yuen Shee, of Hanalei, County of Kauai, wife of said Leong Mook, deceased, alleging that he, the aforesaid Leong Mook, of Hanalei, Kauai, died intestate at said Hanalei, on the 20th day of May, A. D. 1911, leaving property in the Hawaiian Islands necessary to be administered upon, and praying that letters of administration issue to Y. Akau, of Honolulu, Territory of Hawaii.

It is ordered that Friday the 28th day of July, A. D. 1911, at 10 o'clock A. M., be and hereby is appointed for hearing said Petition in the Court Room of this Court at Lihue, County of Kauai, at which time and place all persons concerned may appear and show cause, if any they have, why said petition should not be granted, and that notice of this order be published in the English language for three successive weeks in THE GARDEN ISLAND a weekly newspaper in Lihue.

Dated at Lihue, Kauai, June 22nd, 1911. (Seal) (Sgd.) JACOB HANBY, Judge of the Circuit Court of the Fifth Circuit.

Attest: (Sgd.) PHILIP L. RICE, Clerk of the Circuit Court of the Fifth Circuit.

C. S. DOLE, Attorney for Petitioner. (June 27, July 4, 11, 18.)

San Francisco, July 4.—Kuhio declares that he will back the Republican party if Frear does not resign.