

The Garden Island.

ESTABLISHED 1904. VOL. 8. NO. 36.

LILUÉ, TERRITORY OF HAWAII, TUESDAY, SEPTEMBER 12 1911.

SUBSCRIPTION RATES, \$2.50 PER YEAR.

COUNTY DADS HOLD THEIR MONTHLY MEETING

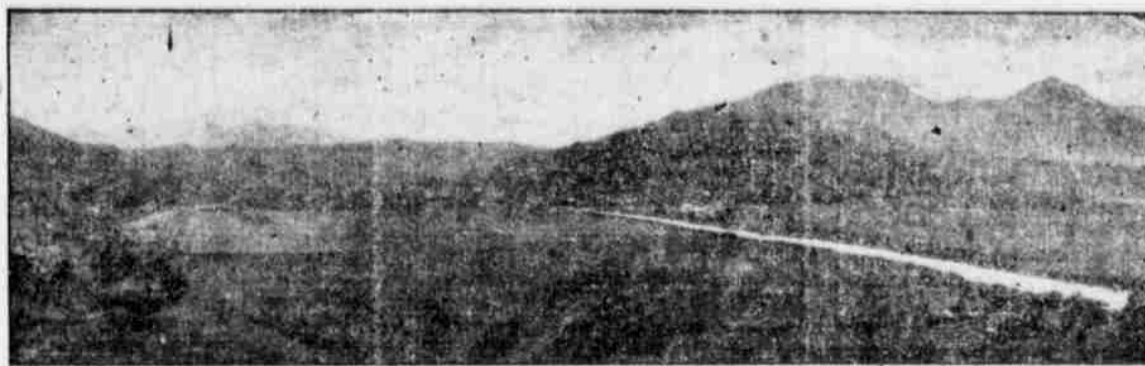
The Board of Supervisors of the County of Kauai, T. H., held its regular business meeting for the month of September, 1911, at its office in Lihue, on Wednesday, September 6, at 10:30 o'clock A. M. Present: Mr. W. D. McBryde, chairman pro tem.

Mr. Francis Gay
Mr. James K. Lota
Mr. Joe Rodrigues was absent in Honolulu, having been summoned there as a jury in the Federal District Court in Hawaii nei.

The minutes of the last meeting were read and approved. The Board, after having examined the several demands presented to it, approved them all against the following Appropriations:-

Salary County Road Supervisor	\$ 225 00
Pay of Police: Specials	\$200 00
Waimea	240 00
Koloa	140 00
Lihue	150 00
Kawaihau	90 00
Hanalei	135 00
County Jail	955 00
District Courts & Jails:	330 62
Waimea	49 25
Koloa	22 30
Kawaihau	40 00
Hanalei	11 00
Expenses of Witnesses	122 55
Expenses of Election	20 00
Furniture & Office Supplies	22 75
Hospitals:	42 93
Eleele	50 00
Koloa	50 00
Lihue	125 00
Waimea	100 00
Incidentals:	325 00
Attorney	22 70
Auditor	70 40
County Clerk	11 10
Sheriff	84 50
Supervisors	25 25
Treasurer	45
License Collections	4 00
Rd. Supervisor	108 40
Office Rent	326 80
Repairs Schools etc:	35 00
Waimea	313 50
Lihue	900 00
Special Deposits Schools:	1213 50
Waimea	\$ 325 46
Lihue	453 42
Kawaihau	20 80
Support of Prisoners	799 68
Water Works: Waimea	47 75
Kalaheo	7 50
Koloa	10 00
Kawaihau	14 25
Weights & Measurers	79 50
County Road Machinery	3 00
Road Work: Waimea District.	5 15
Hanapepe Bridge (Genl Fund)	892 83
(Spec Deposit)	-161 89
Oiling Roads (Genl Fund)	376 60
Roads & Bridges (Genl Fund)	826 95
Roads & Bridges (Spec Deposit)	50 05
Koloa District.	2096 38
Macadamizing (Genl Fund)	211 94
Oiling Roads (Genl Fund)	15 07
Roads & Bridges (Genl Fund)	425 15
Roads & Bridges (Spec Deposit)	805 37
Lihue District.	3094 48
Macadamizing (Genl Fund)	208 05
Regrading Puhi-Opeula (Genl Fund)	737 50
Roads & Bridges (Genl Fund)	898 60
Roads & Bridges (Spec Deposit)	205 25
Kawaihau District.	1841 35
Roads & Bridges (Genl Fund)	487 20
Roads & Bridges (Spec Deposit)	470 20
Hanalei District.	
Hanalei Hill (Genl Fund)	780 37

OUR BUSINESS MEN AND WHO THEY ARE



A BIRDSEYE VIEW OF HANAIEI VALLEY.

(Continued from last week) Up, out of Kalihiwai Valley, we find ourselves on a vast plain of pasture land comprising a thousand or more acres. Here we see one of the most extensive stock ranches on Kauai. It is known as the Princeville Plantation, the property of Hon. A. S. Wilcox, and is under the management of Mr. W. F. Sanborn, whose beautiful residence we found nestled on the hill side as we dropped down the Hanalei hill into Hanalei valley, the most fertile and extensive valley on Kauai.

Here we spent a delightful night, the guest of Mr. and Mrs. Sanborn, from whose charming hospitality, we found great difficulty in taking our leave. In addition to managing this large and extensive stock ranch, Mr. Sanborn has charge of hundreds of acres of rice land which is also a part of the Princeville Plantation holdings. He is at present engaged in conducting experiments growing different grasses which if successful, will

mean much to the Kauai stock growers.

Like many other of Kauai's leading men, Mr. Sanborn takes great interest in sports, and his college days' experiences make him a valuable asset to the local sports. He was the most prominent member in the Kilauea team during this series, and will probably enter into the soccer team which is to be formed in Kilauea.

Hanalei:

On arriving in Hanalei, we find a number of prosperous looking Oriental business houses, including Lin On, See Wo and Chock Chin.

Hanalei Hotel:

After delving for several hours among the grandest scenery that nature ever produced, we head our way toward the Hanalei Hotel, where we are most cordially received by Mrs. Deverill, who hustles us right off for a dip in a surf its equal of which yet remains to be discovered. We return to the hotel where we find that in the meantime, a tempting dinner including plover

pot-pie, has been carefully prepared under the personal supervision of our charming hostess, whose prowess as a chef, is too well known to "everybody," to require additional comment.

In addition to looking after the details of the hotel, Mrs. Deverill is postmistress, notary, humane officer and agent for the Inter-Island S. S. Co. Her hotel enjoys a good patronage of tourist trade, being situated on one of the best bathing beaches on Kauai. It is, for this reason also, the setting for many delightful picnic parties from Honolulu and different points on this island.

Hanalei Garage:

Hon. J. K. Lota, has the only garage here and as a consequence does a prosperous business. His big cars are kept constantly busy. Mr. Lota, besides being proprietor of this garage, is identified with the Wainiha Hui, being one of its officers. He also enjoys the distinction of representing his district as its Supervisor.

KALIHUAI YOUNG LADIES' HOSTESSES AT PICNIC PARTY

KALIHUAI, September 3.—Misses Helen Akana and Julia Mahikoa, were hostesses at an enjoyable picnic party here to-day, having as their guests, several members of the Kilauea baseball team, and six other young ladies besides the hostesses.

A boat, manned by the gentlemen of the group, conveyed the party up the river until they had reached a suitable spot for landing, when they disembarked and indulged in a regular old-time picnic. A plunge in the cool, refreshing mountain water was the first number on the program and not one of the party reneged. Following the swim, a tooth-some lunch was spread, which all declared to be the best they had ever eaten.

Considerable time was spent by the girls, after luncheon, in making pretty leis for the young men. Among those present were Misses Julia Mahikoa, Daisy Hopps, (of Molokai,) Julia Kai, Amy Mahikoa, Mary Ann Kelai, Deborah Mahikoa and Miss Helen Akana. Messrs. George Akana, Robert Mahikoa, Master Kanaloa, Mr. Wood, (Kilauea's favorite player.)

NEW PRESIDENT NAMED FOR MCBRYDE SUGAR CO.

J. P. Cooke has been formally appointed to succeed the late H. P. Baldwin as president of McBryde Sugar Co. The appointment of Mr. Cooke is a move natural to expect since his connection with business interests were so closely allied to those in which Mr. Baldwin was chiefly concerned.

Roads & Bridges (Genl Fund)	25 00
	805 37
Total	\$ 13,851 82

Mr. Gay as Standing Committee reported on the Financial Reports Nos. 98, 98a, 98aa, and 98b, for the month of July 1911, and upon his recommendation the reports were duly approved.

Financial Reports Nos. 99, 99a, 99aa, 99b, for the month of August last, were duly received and referred to the Standing Committee for report.

A requisition (P 602) from the County Clerk Kanakua for an appropriation of \$2000.00 for the purchase of steel fire-proof filing cabinets for the use of his office, and for an appropriation of \$75.00 per month for pay of an assistant to the County Clerk, was duly received and both the requests, by a unanimous vote, were granted.

A requisition (P 603) for supplies for

(Continued on page 6)

The Isenberg Monument and Memorial

We owe our readers an explanation and apology. Through the courtesy of the Rev. Hans Isenberg we have been told that our correspondent of last week gave very scant credit to Mrs. C. M. Cooke who performed the chief act of dedication, because that lady was also a one third donor of the beautiful monument. We therefore passed on this information to our correspondent who has replied in the letter printed below, and which, we do not doubt, will be fully satisfying to all interested.

EDITOR, "THE GARDEN ISLAND"
Dear Sir:

I thank you for information received in regard to "The Isenberg Monument and Memorial." This information is the more welcome because it gives me opportunity to publicly express regret for having, all unwittingly, paid poor tribute to an estimable lady whose sympathetic and practical benevolence, I now learn, so largely helped to forward the good work to successful conclusion.

I have not the happy fortune of personal acquaintance with Mrs. C. M. Cooke, but I have lived long enough in Hawaii Nei to fully realize with what high regard and esteem this community holds her name and person. Therefore I will venture to say, that to Mrs. Cooke the failure to make proper mention of her full share in a worthy undertaking will matter little, if any, for to one of her broad and generous mind it is certain that "virtue is her own reward."

—G.

LILUÉ GAMBLING JOINT YIELDS RICH RETURNS

About mid-night last Tuesday night, Deputy Ellis and four or five of his assistants, raided a gambling joint in one of the Lihue camps and succeeded in landing eighteen of the thirty or more sports. Bail was secured from the eighteen to the amount of one hundred and eighty dollars which was forfeited next day the County thereby becoming duly possessed of the jack-pot.

ANNUAL MEETING OF THE WAINIHA HUI

The Wainiha Hui held its regular annual meeting at the Hui Hall, Wainiha, Thursday Sept. 7th.

Originally this Hui consisted of 71 equal shares—but through process of time, by transfer and inheritance, these shares have been variously combined and broken up, until now there are over 200 participants varying in ownership from 933 to a dozen shares. As these minor interests run through all kinds of irregular fractions the calling of the roll and making up the attendance is a matter of complicated mathematics, requiring a good deal of time, and no small amount of patience and energy.

On this particular occasion the combined energies of the committee of 3 finally solved the problem and reported an attendance of 56 549-2197 although everyone looked wise, as though they understood fully how this result was arrived at, no one ventured to question it, for fear he might be called upon to make the fractional additions—Only the members of the committee knew how uncertain the ground was beneath the apparent accuracy of these figures—This being a generous quorum, with a large margin of safety, the Hui was now declared to be duly in session for all legitimate business, prayer was then offered by the president, who rejoiced in the mercy of the Lord who had brought together so many full shares and so many small pieces and who would surely hold them all together in this annual meeting in the spirit of unity and courtesy as became brethren for brethren they were thought of various skins.

Hanalei Garage:

Meantime the pig was in the imu, a shapely mound, with steaming cracks, and suggestive fragrance, and during the prayer, the word was passed quietly in through the open door "ua moa ka puua"—"the pig is cooked, adjourn!" Whereupon a resolution was passed to that effect and the ground was cleared for action. Not since the Tower of Babel have mortals seen such confusion nor such a heterogeneous combination of pig and poi and portliness.

After lunch there was a marked falling off in the interest and a marked reluctance in the resumption of business. Reports of the officers showed the company affairs to be in good condition. The Treasurers report showed dividends paid during the year \$1518.29 expenses \$665.18, balance on hand \$536.00.

Sundry land allotments were reported favorably by the directors and approved by the meeting. Several new applications were discussed, and amended, and approved and condemned, with ever increasing warmth and volubility until there was a hopeless tangle of acres and rods and perches and poles, so that the whole matter was finally referred back to the directors, with power to act and the door was opened for fresh air to clear the hall.

(Continued on page five.)

Supervising Principal of schools H. H. Brodie, returned Saturday from a trip to the coast. Contractor L. M. Whitehouse came up from Honolulu on the Hall Saturday. Eddie Fernandes of moving picture fame arrived Saturday and exhibited some very good films to an appreciative audience at the Hall Saturday night.

LOCAL AND PERSONAL

Mrs. Josephine Chamberlaine, Principal of the Kilauea School, and who has been visiting California friends during her vacation returned on the Seira. Miss Lottie Jordan, one of Lihue's popular school mams was a returning passenger on the Hall Saturday.

Mrs. Hodge, Principal of the Kekaha School, returned from Honolulu, Saturday morning.

HONOLULU ELECTRIC MAN HERE

H. S. Martinez, president and manager of the Honolulu Electric Company, arrived on the Hall Saturday and is interviewing our plantation and automobile men concerning things electrical. Mr. Martinez brought his machine with him and says it is a pleasure to motor over our roads.

Edwin Fernandez and J. J. Sullivan arrived on the Hall Saturday with the Jeffries-Johnson Fight pictures which they will show over the island during the week.

MEETING OF THE LOAN FUND COMMISSION

Meeting called to order at 1:30 P. M. Those present being Second Vice Chairman Francis Gay, James K. Lota, W. D. McBryde, Secretary and J. H. Moragne, Engineer. Absent Marston Campbell and W. D. Wishard.

Minutes of the previous meeting read and approved. The Secretary stated that he had written the Chairman in Honolulu, Marston Campbell, as instructed, relative to the matter of the erection of the new Hanapepe School and read the reply received, in which it was stated that the plans and specifications were now in the hands of the Superintendent of Schools and Instruction.

The Secretary read a communication from the Territorial Auditor, informing the Board of the fact that \$100,000 was now available for work in the "Belt Road" and \$20,000 for the new Hanapepe School. The Secretary was instructed to acknowledge same.

Bids for the New Steel Bridge Hanalei were then opened. Three bids being received. One from the Honolulu Iron Work, L. M. Whitehouse and the Hawaiian Iron Fence and Monument Works, Ltd., respectively. Motion was made to refer the bids to the Engineer, he to report back on same at the Special meeting to be held on Sept. 20th. Motion carried.

The report of the Engineer was then read and ordered filed.

CONTRACT FITZGIBBON.

The contract between P. Fitzgibbon, Contractor Lawai-Koloa road, and the Loan Fund Commission being presented for approval and signature, the same, upon motion, was passed upon and duly signed.

BOND FITZGIBBON.

Upon motion, the bond furnished by P. Fitzgibbon, was approved.

CONTRACT MAHIKOA.

The contract between George W. Mahikoa, Contractor Hanalei Hill road, and the Loan Fund Commission was approved and upon motion was entered into and duly signed.

BOND MAHIKOA.

The bond furnished by George [Continued on page 6]

A FRIGHTENED HORSE CREATES EXCITEMENT

About half past two o'clock Thursday afternoon, a horse belonging to Sugar Boiler Schultz, and attached to a light sulky, became suddenly frightened and dashed down Main street toward THE GARDEN ISLAND office which place, in spite of the efforts of the "devil" to stop him, he passed at a Nancy Hank speed. As the frightened animal passed Elite Avenue, John Malina, the famous polo player, sizing up the situation, charged with his trusty lariat and succeeded in securing a hold on one of the fast fleeing legs. At this point evidently John seemed more engrossed with the possible five spot in store for him rather than the business at hand, for as the rope became taut, it slipped from his hands and disappeared in the trail of the pursued.

Nearly a block below Elite Avenue, the horse connected with the curbing, and came to a stand. Malina came up with another rope which he used to a better advantage as the horse was standing still. When the horse was extricated from the wreck, the damage sustained was comparatively small, being a very slight cut on one fore leg, and a little burn on the right hind hock, the latter resulting from the rope in some manner becoming rapped around it. The sulky was slightly damaged, a shaft being broken.

It seems that Mr. Schultz had driven up to the butcher shop, alighted and a Japanese had slipped the bridle off preparatory to putting on the halter, when the horse suddenly shied and was away and gone before he could regain control of it.

RECEPTION TO MR. AND MRS. MIA

A reception was given at the Japanese School Lihue by the patrons of the school for Mr. and Mrs. Mia on Sunday afternoon. Mr. and Mrs. Mia have recently come to Lihue, on appointment from the Japanese Consul in Honolulu, to conduct this school. They have served some years in a similar capacity on Maui and give every indication of being satisfactory. Various short speeches were made in Japanese and Mr. Isenberg bespoke a large measure of success for the new teachers, who had been so carefully chosen.

At the close cake and ice-cream of excellent quality, as well as packages of Japanese cakes, were dispensed to the crowd, whose interests were divided between these good things and the day fireworks which were shot into the air to great height.

THE GARDEN ISLAND

TUESDAY SEPTEMBER 12 1911

Issued Every Tuesday.
Entered at the post office at Lihue, Kauai, as second-class matter.
SUBSCRIPTION RATES \$2.50 PER YEAR, \$1.50 FOR SIX MONTHS IN ADVANCE
ADVERTISING RATES, 50 CENTS AN INCH PER MONTH.

Front Page Advertising Rates \$3.00 Per Square Inch Each Insertion.

E. B. BRIDGEWATER, EDITOR
K. C. HOPPER, MANAGER

ONCE the Mediterranean Fly gets aboard ship, the officers will have a "fly" time finding it.

They say that there is no evil that has not some good in it and we notice flies do not bite at night.

HON. GEO. H. FAIRCHILD has again said "no" to the gang who have offered him the gubernatorial seat.

It begins to look as though there would be as much interest taken in "soccer" as there has been in baseball.

A daughter was born to Mr. and Mrs. "Teddy" Roosevelt, Jr., at San Francisco Thursday, and Grandpa is "delighted."—E.K.

A case of one more Teddy, "bare." Yes?

THE GARDEN ISLAND received a "Black hand" letter the other day, but it didn't scare us a little bit. It was from a colored subscriber enclosing money to pay his subscription.

CHAMP CLARK'S smokehouse at Bowling Green caught fire Monday and made quite a smoke.—Pike County News.

But that isn't a circumstance to Champ's smoke at Washington.

SOMEBODY must have thought of Ye Editor's long felt want the other day, as a basket of delicious alligator pears found its way into THE GARDEN ISLAND office. The long felt want was soon filled.

PRESIDENT TAFT, will designate Thursday, November 30th., as Thanksgiving day this year. It always has been the custom to fix the last Thursday in the month. This year there had been some doubt because November has five, instead of four, Thursdays.

At a meeting of the Wellsville City Council last night the deaths for the month covering the period from July 15th., numbered twenty-four.—Wellsville Mo. Democrat.

Any one endowed with less nerve than a Missourian, would be more likely to call such a "dodgasted" old sickly place by the name of Sickville.

WHEN you spend your money away from home, do you stop to reason on the possibility of getting that money back again? Do you not realize that every dollar which leaves your island decreases our circulation just that much? Think it over and get together and boost for home industry.

THERE are several things lacking in Lihue to make it the most desirable of all places to live in, and the most crying of these needs, is a steam laundry. Why should we be put to the expense of sending our laundry to the city when, by a very little effort, we might have our own steam laundry. It is only a question of water, and it seems strange that this little obstacle can not be easily overcome.

A LOCAL man in Honolulu is to try an aerial flight with a machine of his own construction.—Wireless

That's tame 'long side of what we have accomplished on Kauai. For instance, it is not an unusual thing to see a horse fly and even to see a house fly, attracts but little attention unless one is in touch of it. Some, there are, however, who say that a house cannot fly but that a tomato can.

IN assigning the teachers for the ensuing year, the Department of Education has done more towards placing teachers in accordance with the desires of the latter than on any previous occasion.

A DRUNKEN man isn't the safest proposition in the world even under ordinary circumstances, and when one of them is in charge of an automobile, he becomes an absolute menace and ought to be hauled in and made short work of.

MISS LENA ALLEY, of Muskogee, Ok., is advertising for a husband. She wants a man from 21 to 28 years old who doesn't drink or play cards.—Press-Journal.

Lena doesn't want a husband. She wants an angel.

Now comes a suggestion from a prominent Lihueite, to the effect that a gymnasium should be established in Lihue. He is right, and every reader of this paper feels as we do on the subject.

Beneath the grand stand at the Lihue Park would be an excellent location for it. There is a m.p.l.e room for it, and would be less cost in establishing the necessary apparatus here than in any other place so far suggested. A swimming pool might be added after it became well established.

THERE is already talk of the formation of the ball teams for next season, which shows how well the interest has continued in a sport which was considered dead. In the Track and Field meet which takes place in Honolulu on the 30th., Kauai will probably be represented by Messrs. Hopper, Fernandes and Fassoth, all of whom have records to defend. They'll do it too, if they have to bust a suspender.

THE beauty editor of the Holton, Kansas, Signal was asked by a girl who wasn't of much account around the house what she should do to make her hands white. The beauty editor answered with wasted sarcasm that the best thing the young woman could do would be to soak her hands in dishwater three times a day. It never touched her. She went home and gravely asked her mother to save the dishwater after she got through.

"COUNTY CARPENTERS?" Yes, that is what we said, and does it not sound as pleasant as the "County Engineer," the "County Supervisor?" With all the school buildings to keep in repair—to say nothing about bridges etc.—it doesn't seem a bad idea to at least suggest such an official. An officer of this kind would be subject to instructions from the County Engineer, who upon learning of necessary repairs to a school building or bridge, could have the "carpenter" attend to it at once. As

it is to-day, there are cases where a shortage of carpenters compels the occupation of teachers' cottages which are everything but sanitary. Shingles are dropping off the roof of one of the most prominent school buildings, while the floors in another, are worn through in places.

We are not criticising the County in its efforts to do all it can under the circumstances, but that a man whose duty it would be to devote his entire, or greater part of his time to "County Repairs," would save the Engineer the trouble of trusting these little odd jobs to some jack-legged, one-horse wood butcher, who would take his sweet time in doing the job.

The Market

We are publishing the following stock-market report by special request:

East St. Louis live stock market, Wednesday, Aug. 23.—Hogs—Receipts 8500; 10¢ to 15¢ off.
Mixed, 7.55 @ 7.85.
Heavy, 7.60 @ 7.70.
Rough, 6.90 @ 7.50.
Light, 7.60 @ 7.80.
Pigs, 6.50 @ 7.50.
Cattle—Receipt 4500; including 1500 Texans.
Native market slow and steady.
Calves, 4.00 @ 5.50.
Native beef steers, 4.50 @ 8.15.
Cows and heifers, 3.00 @ 7.25.
Stockers and feeders, 3.00 @ 4.75.
Texas market, steady.
Vealers, 5.00 @ 7.00.
Texas steers, 4.00 @ 6.25.
Texas cows and heifers, 3.00 @ 6.00.
Sheep—Receipts, 5000, steady.
Native sheep and mutton, 3.25 @ 3.75.
Lambs, 4.00 @ 4.75.

Miss Eva Akana, one of Kalihiwai's most popular young ladies, was visiting in Lihue one day last week.

R. W. Perkins

PHOTOGRAPHER
Honolulu
Up-to-Date Portraiture
Kodak Developing and Printing
Mail Orders Given Special Attention
STUDIO:
110 Hotel St. Honolulu



THE HIGH IDEALS OF 70 YEARS TAKE DEFINITE FORM IN THE 1911 Knox Hats

--finest we've ever asked you to look at-- and that's saying a great deal.

There's not a break in the chain of shapes and dimensions covering a range so wide that no man can say: "you haven't just what I wanted."

Knox Soft Hats, \$5.00
Knox Stiff Hats, \$5.00
Knox Silk Hats, \$8.00
BEACON HATS (Made by Knox) \$3.50

Silva's Toggery, Ltd. HONOLULU

SACHS DRY GOODS CO.

Honolulu's Old Established Mail Order House

You Can Always Do a Little Better at

SACHS'

Announcement

Tuesday, August 1st, we inaugurate our second annual

August Clearance Sale

of Furniture, Rugs and Draperies 20 to 50 per cent Reductions

Mail Orders Carefully Filled

THE HOUSE OF QUALITY

J. HOPP & CO., Ltd.

185 King St., Honolulu

FINE JOB PRINTING AT THE GARDEN ISLAND OFFICE. PHONE 24L

Bishop & Co. BANKERS

[Established 1859]

HONOLULU, HILO, WAIMEA KAUAI.

Transacts a General Banking and Exchange Business Commercial and Travelers' Letters of Credit issued available in all principal cities of the world.

Interest allowed at the rate of 4 1-2 per cent per annum on Savings Bank deposits.

Interest paid on Time Deposits at the following rates:
3 Months 3 per cent per annum.
6 Months 3 1-2 per cent per annum.
12 Months 4 per cent per annum.

All business entrusted by customers on other islands receives careful and prompt attention.

H. F. WICHMAN & CO., Ltd. JEWELERS

EVERYTHING IN THE SILVER AND GOLD LINE, RICH CUT GLASS AND ART GOODS.

MERCHANDISE OF THE BEST QUALITY ONLY.

H. F. WICHMAN & CO., Ltd. LEADING JEWELERS P. O. Box 342 Honolulu

THE BANK OF HAWAII, Limited

LIHUE BRANCH LIHUE, KAUAI, HAWAII

Deposits are received subject to check. Certificates of deposit issued payable on demand. Loans made on approved security.

DRAFTS DRAWN ON Honolulu Bremen San Francisco Berlin New York Hong Kong London Yokohama

SAVINGS DEPARTMENT Interest paid on Savings Deposits. 4 1-2 per cent on ordinary and 4 per cent on Term Deposits. Ordinary Savings Deposits will be received up to \$2,500 in any one account. SAFE DEPOSIT BOXES FOR RENT \$2 AND \$3 A YEAR

A. R. GLAISYER, D. V. M.

Will make monthly headquarters as per schedule below

1-10, 13-14 - - - Lihue
11-12 - - - - - Kilauea
15-17 - - - - - Kekaha
18-21 - - - - - McBryde
22-30 - - - - - Makaweli

JAS. F. MORGAN

Stocks, Bonds and Real Estate

No. 857 Kaahumanu Street

This year's Kona coffee crop is said to be the best on record. English as adopted as the second official language in China,

If you are athirst for a real good glass of beer, ask for



You'll pronounce it the finest beer you ever drank. It's brewed especially for this climate.

IT IS SAID

That Lihue is to have a steam laundry.

That if the plantation could furnish the water supply, we would soon have it.

That the Makawelis are easy winners.

That it is too bad there were not cups to go 'round.

That they deserve a cup a piece.

That Soccer is now all the talk.

That Doc. Glaisry may play with the Lihue team.

That wherever he plays, he is bound to carry considerable weight.

That a certain married man came home too late to suit the opinion of his spouse recently.

That she didn't say much, but what she did say was to a lawyer.

That hubby will not go out any more.

That a house servants' employment agency should be established in Lihue.

That through this agency it would be easier for those who would pay more to get hold of our servants.

That the servant problem could be solved by a united, honest effort on the part of the employers.

That the K. A. C. team proved good, clean sports.

That Kilauea also played a heady game.

That they had some swift runners.

That the K. A. C. played the game like true sports regardless of the odds against them.

That all the league teams played the game to win.

That the Lihue team lacked practice.

That for this reason they lost out.

That Honan is certainly a "classy" pitcher.

That Makaweli's battery is the strongest on Kauai.

That the Waimea bridge is receiving more than passing attention.

That the traveling men are said to be responsible.

That C. B. Hofgaard returned from his European trip looking twenty years younger.

That he had a fine trip but was glad to get "home" again.

That Fernandes will make those Honolulu sports look like "has-beens" at the track meet this month.

That the road will be extended to the Haena caves.

That there is much kicking because it has not been done.

That Kana'i has a bunch of athletes.

That Hopper may make another hop.

That Passoth may also take another turn at records.

That a team of ball tossers to be composed of strictly ex-St. Louis boys will be organized on Kauai.

That they will play any old team that comes their way.

That vacation days are drawing to a close.

That some of our boys are wondering what the "new teacher" looks like.

That a certain prominent school marm will return, but not to teach.

That congratulations are in order.

That a certain young man will be happy as a result.

That he is a lucky dog.

That the cards are not out yet.

That when they do make their appearance, they will come from THE GARDEN ISLAND office.

That J. I. Silva's fiber Victor graphophone needles, sell like hot cakes when known.

That the Haena Hui had a great meeting.

That the luau was still greater.

That the Wainiha Hui also stuck a pig.

That both Huis are prosperous and officered by men of ability.

That the Hanalei Junior League is composed of three mighty good teams.

That Hanalei will enter a team in the big League next season.

That she is also ready to put in a soccer team this season.

That Pitcher Wood of the Kilauea team, is a favorite among the fair sex.

That it is especially so in Kalaehiwi.

That Kaliahiwai is becoming noted for its pretty girls.

That its a shame they must soon hustle off to school.

That a picnic was given by two of these popular girls last week.

That the "ball tosser" was the favorite guest.

That "Bob" was a close rival in the popularity contest.

That Manager White of the Kilauea team is an excellent manager.

That "he is little but mighty."

That Manager Myers of the Kilauea Plantation, is one of our live supporters of sports.

That Governor Frear turns into a goat sometimes when mountaineering—according to Honolulu scribes.

CHALMERS 1911

SPECIFICATIONS

Asse (front)—Single piece drop forging, I-beam section, large annular ball bearings.

Asse (rear)—Full floating type, heat-treated, nickel steel shafts. Large annular ball bearings.

Drives—Contracting band on drive shaft, 7-inch diameter, 3-inch face. Internal expanding on rear wheels, 14-inch diameter, 2-inch face. All breaks double acting.

Bearings—Full type annular ball bearings throughout running gear; silent type annular ball bearings in transmission and crank shaft.

Carburetor—Float feed, automobile type, hot water jacketed.

Clearance—10 inches.

Clutch—Multiple disc running in oil.

Colors—Chassis and underbody black with body and stripping English Vermilion, Napier Green or Chalmers Blue.

Drive—Bevel gear, two universal joints. Pressed steel torque arm.

Frame—Pressed steel, channel section.

Gear Ratio—Standard 3 3/4 to 1.

Ignition—Bosch Magneto.

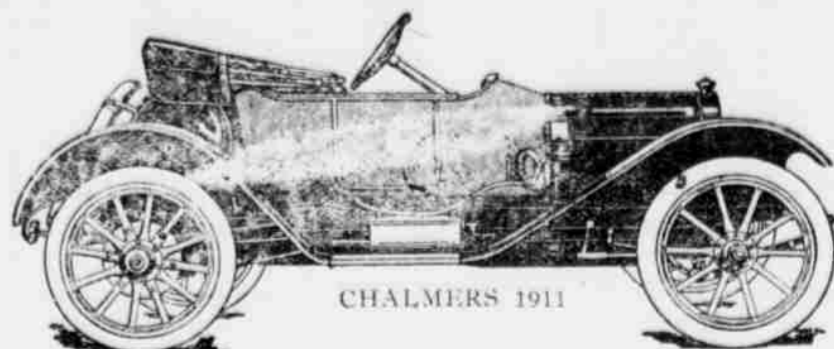
Lubrication—Constant level splash system operated by pump.

Light—Lead on dash.

Horse power—26-30.

Motor—Four cylinders cast in bloc; 4 inch bore, 4 1/2-inch stroke.

Rims—Universal quick detachable.



Springs—Front, half elliptic; rear, three-quarter elliptic.

Steering gear—Worm and gear type.

Tread—36 inches.

Tires—34x3 1/2 inch all around. Option of Morgan & Wright or Continental.

Transmission—Selective sliding gear type, three speeds forward and reverse.

Valves—Nickel steel, large diameter. Exhaust valves at side; inlet valves at top of cylinders.

Wheels—34 inch diameter, wood, utility type. Rear wheel spokes bolted to brake drums.

Wheel base—104 inches.

Seat—Width, 37 inches; depth, 19 inches.

Leg Room—35 inches.

Price—\$1500, f. o. b. Detroit, including Bosch magneto, gas lamps, two extra tire irons, Prest-O-Lite tank and Chalmers top with side curtains and storm front.

ASSOCIATED GARAGE, LTD.

FRANK E. HOWES, MANAGER
HONOLULU

Bro. Benjamin Compound Herbs

Stomach, Liver, Kidney and Bladder Remedy.

BLOOD PURIFIER

THE WORDS BRO. BENJAMIN AND THIS PICTURE MUST BE ON EVERY PACKAGE



Cases Indigestion, Dyspepsia, Sour Stomach, Lack of Appetite, Heartburning, Gas, Wind or Straining, Bloating Feeling, Pains in Stomach after Eating, Sick Headache, Dizziness, Colic, Tension, Ulcers, La Grippe, Dengue Fever, Slight and Fever, Malaria, Breakdown, Fevers, Tired Feeling, Jaundice, Backache, Diarrhea, Gravel, Inflammation of the Lungs, Shingles, Trembling, Emaciation, Rheumatism, Impure Blood, Catarrh, Scrophulous, Melancholia, Nervous Disorders, Sleeplessness, Removers, Cuts, Cancers, Scapular, Astringent, Condiments, A Great Tonic for Women.

\$1.00 per bottle; 3 for \$2.50, 6 for \$5.00

Notice—Bro. Benjamin's Compound Herbs contains no alcohol. Therefore the taste of some bottles may vary slightly.

All Plantation Stores and Dealers
Honolulu Drug Co.

The MAJESTIC

Cor. Fort & Ber. Sts., Honolulu
Rooms by the day, week or month—single or in suite.

REASONABLE RATES
OPEN DAY and NIGHT

Kauai trade solicited
MRS. C. BLAISDELL,
Proprietor

Koloa Plantation Store

Wholesale and Retail Groceries.
Dry Goods of all Descriptions,
General Plantation Supplies.



Workmanship

The custom process of making Packard Shoes allows individual attention to each pair. Every pair of

THE Packard SHOE FOR MEN

Stays on the lasts at least one month—sometimes longer. This insures permanent shape. Examine carefully any part of a Packard Shoe. Note the perfection of workmanship. There is the finest possible construction by the most expert workmen—and that means service built into the shoe.



LET US SHOW YOU
McINERNEY SHOE Co., Ltd.
Honolulu

K. W. Kinney, the McBryde sugar boiler, returned from Honolulu Wednesday, where land matters concerning a boundary dispute between a couple of land hui on the north side engaged his attention.

Now Read the Ads.

The latest Books of fiction received by every steamer. Don't forget we carry a full line of Tennis and Base Ball Goods.

Wall-Nichols & Co., Ltd.
HONOLULU

HARRY ARMITAGE

Stock and Bond Broker
Member Honolulu Stock and Bond Exchange
In Campbell Block
HONOLULU

THE FIRST NATIONAL BANK OF HAWAII

AT HONOLULU
Capital \$500,000 Surplus \$175,000

DIRECTORATE:
Cecil Brown, Pres.; M. P. Robinson, Vice-pres.; L. T. Peck, Cashier.
Geo. N. Wilcox, Geo. P. Castle, H. M. von Holt,
Kauai Accounts Invited

STEAMER TIME-TABLE

Steamers To Arrive

DATE	NAME	FROM
Sept. 8	Nippon Maru	Hongkong
" 8	Sierra	San Francisco
" 12	Tenyo Maru	"
" 12	U. S. T. Buford	"
" 12	Makura	San Francisco
" 13	Marama	Sydney
" 25	Kiyo Maru	Vancouver
" 17	Siberia	Hongkong
" 20	Lurline	San Francisco
" 22	China	Hongkong
" 25	Korea	San Francisco
" 29	Manchuria	Hongkong
" 29	Sierra	San Francisco

U. S. A. Transports will leave for San Francisco and Manila, and will arrive from same ports at irregular intervals.

Steamers To Depart

DATE	NAME	FOR
Sept. 8	Nippon Maru	San Francisco
" 12	Tenyo Maru	Hongkong
" 12	U. S. T. Buford	Manila
" 12	Makura	Vancouver
" 13	Sierra	San Francisco
" 13	Honolulu	"
" 13	Marama	Sydney
" 15	Kiyo Maru	Valparaiso
" 17	Siberia	San Francisco
" 20	Persia	Hongkong
" 22	China	San Francisco
" 25	Korea	Hongkong
" 26	Lurline	San Francisco
" 29	Manchuria	"

[x] Calling at Manila.
[x] Calling at Fanning Island uncertain

That the Homestead baseball team may amalgamate with the Elgele team next season.

That they may give the others a trouncing the likes of which they have not experienced this season.

That the piece of wedding cake promise. Ye Editor but which never came, was excellent.

That it must have been angel cake.

That the Lihue police are onto their job.

That eighteen gamblers hit the limit last Tuesday night.

That the county made one hundred and eighty dollars in about fifteen minutes thereof.

That it is really alarming to listen to those alarm clocks in the Lihue Store. Sousa's Band isn't in it.

SHIPPING AND MAIL

MAILS

Inter-Island Mails
Regular mail leaves Lihue on Tuesday and Saturday at 5 p. m.
Regular mail arrives from Honolulu Wednesday and Friday morning. During sugar season mail is frequently sent and brought by steamers making extra trips between regular mail days. On days when the coast mail is due, the mail boat due on Friday, will lay over and come in on Saturday morning instead.

MAILS CLOSE

Registered mail closes on mail days, at four o'clock sharp. Ordinary mail, at half past four.

OVERLAND MAIL

Mail for Island offices, leaves Lihue on Monday, Wednesday and Friday mornings at six o'clock. Except, however, in cases when the coast mail delays the Friday boat, then the mail will leave on Saturday at 6 a. m.

INTER-ISLAND VESSELS.

For Kauai Ports
W. G. Hall, I.-I. S. N. Co., every Thursday.
Kinat, I.-I. S. N. Co., every Tuesday.

Kau and Kona Ports
Mauna Loa, I.-I. S. N. Co., alternate Tuesdays and Fridays.

For Molokai and Maui
Mikahala, every Tuesday.
For Maui and Hawaii Ports.
Mauna Kea, I. I. S. N. Co., every Tuesday.
Claudine I.-I. S. N. Co., every Friday.

PORT ALLEN SHIPPING

The Hilonian and Lurline carry passengers, leaving direct for the coast, the fare one way or round trip, being the same as that from Honolulu.

Oceanic Steamship Co's. Time-table

The favorite S. S. SIERRA, 10,000 tons displacement, sails from Honolulu September 13, October 4, October 25, November 15, Dec. 6, Dec. 27. First-class, single to San Francisco, \$65; round trip, \$110.

C. Brewer & Co. Ltd.,
GENERAL AGENTS

Educator \$4 Shoes



Are a treat for the feet. Made on a broad toe last with room for all five toes. This gives perfect rest for the foot at all times.

They come in Black Gun Metal, Calf, Vici Kid and Tan Russia, both in high and low cuts.

When ordering, add 25c to cover freight.

Manufacturers' Shoe Co.,

1051 FORT STREET LIMITED HONOLULU

New Stenciled Articles

Artistic in Designs Low in Price
Cushion covers, Curtains, Laundry bags, Shoe bags, Work bags, Table Covers, Belts, etc.

SPECIAL ATTENTION GIVEN TO ALL MAIL ORDERS

Ye Arts and Crafts Shop

HONOLULU

REACH Baseball Goods

are sold by all the leading stores in Hawaii

Theo. H. Davies & Co., Ltd.

Sole Agents for the Territory of Hawaii

The Reach Cork Center Ball was the Official Ball of Worlds Series

REACH GOODS GUARANTEED

The ONLY PLACE to buy your office supplies and general stationery is at our store, 951 Fort Street. Write us your want and we shall be pleased to look after it for you.

Our Repair Department for Typewriters, Cash Registers and Adding Machines is the most extensive in the Territory. Before buying a typewriter consult us. We handle exclusively the well known Remington Typewriter which is the BEST that money can buy.

Office Supply Co., Ltd. FORT STREET HONOLULU

S. OZAKI

WAIMEA

Wholesale Liquor Dealer

ALSO

Complete Line of Oriental Goods

Telephone No. 102. Branch Wahiawa, Telephone No. 7.

Red Label
KAMEHAMEHA BRAND

Pure Kona Coffee

Insist upon your grocer giving you this most delicious of Kona's Coffees. It's the kind that makes you want another cup.

Whole Roasted and Ground

H. Hackfeld & Co., Ltd.

DISTRIBUTORS

Kauai Garage Company

Tel 600 SUB-AGENTS FOR VON HAM-YOUNG CO. Tel 600 Agents For

Packard, Peerless, Lozier, Pope-Hartford, Stevens-Duryea, Buick, Cadillac, Stoddard-Dayton, Overland, Hupmobile, Oldsmobile, Baker Electric, Maxwell, Autocar, Everett, Thomas Flier.

GASOLINE TRUCKS: Packard, Pope-Hartford, Buick, Atterbury.

We have on hand, 1 Model 17 Buick, 5 passenger touring car. This car is rated at 30 h. p. but develops actual 48. Price \$2,100. One second-hand 1910 Cadillac "30" 5 passenger touring car, fully equipped. This car was formerly owned by C. H. Wilcox, is in good condition. Price \$1,500. One model "Dr" Maxwell 2 cylinder, 20 h. p. Runabout in good order. Price \$500.

We carry a full line of auto supplies. Our garage is fully equipped for first-class work. We respectfully solicit a Trial.

HONOLULU MONUMENT WORKS, LTD.

We beg to say, that we have just received from the eastern states, a large consignment of monuments both in marble and granite.

We do all our work by machines driven by compressed air and will guarantee our lettering and workmanship to be the best, and our prices the lowest. Call or write to us and be convinced.

WE PAY THE FREIGHT

HONOLULU MONUMENT WORKS, LTD.

P. O. Box 491 Honolulu, T. H.



The Talk of the Town



Our line of smart new Regal Shoe styles has won a lot of praise among the best-dressed men in town. These new Regal models are smarter than ever, and they show genuine custom style in every line and curve.

REGAL SHOES

Well-known New York and London custom bootmakers designed the models from which every one of these Regal Styles is built. They have a distinctive custom appearance found in no other ready-to-wear shoes. Moreover, they are made in quarter-sizes, insuring you an exact fit and perfect comfort.

Regal Shoe Store HONOLULU HAWAII

LOCAL and PERSONAL

E. W. Sutton, First Deputy Attorney General, arrived on the Kinau last Wednesday.

Hon. A. S. Wilcox and Mrs. Wilcox, returned from Honolulu on the Kinau.

Miss Onokea, of Hanapepe, returned from Honolulu on the Kinau last Wednesday.

Miss Maria Ellis, daughter of Deputy Sheriff Ellis, and who has been attending the Summer School in Honolulu, returned home last Wednesday.

Miss Alice M. Harper of the Kapaa teaching staff, returned from Honolulu last Wednesday morning.

Mrs. Cunningham and children were arriving passengers on the Kinau.

A. V. Peters, President of the A. V. Peters Drug Co., Honolulu, arrived on the Kinau.

Wilhelm Von Holt, assistant chemist for the Wailua Sugar Co. arrived on the Kinau Wednesday.

Auditor J. H. Fisher came up on the Kinau last week for a few days' vacation, returning to the city Saturday.

Hon. Geo. N. Wilcox returned from a business trip to the Capital on the Kinau.

G. P. Wilder was an arriving passenger on the Kinau Wednesday.

Mr. and Miss Glade were among the passengers arriving on Wednesday's steamer.

Miss Albright, a private instructor in the Lihue Private School, arrived on the Kinau last Wednesday.

Mr. C. H. Brown of Waimea was an arrival from Honolulu Wednesday.

Mrs. H. Kuhlman, of Lihue, returned from a trip to Honolulu, last Wednesday morning.

E. B. Bridgewater is transacting business in the Metropolis.

Passengers Arrived

Passengers arriving on the Steamer Kinau, Wednesday morning September 6: E. W. Sutton and wife, Hon. A. S. Wilcox and wife, Miss Onokea, Miss Maria Ellis, Miss A. Harper, Mrs. Cunningham and children, A. V. Peters, W. Holt, Mrs. E. Victor, J. H. Fisher, T. Christianson, Hon. G. N. Wilcox, Mr. Glade, Miss Glade, Miss Roscoe, Miss F. Albright, Mrs. Schultz, Mrs. Putterfield, C. H. Brown, Mrs. H. Kuhlman, Mrs. S. Cox, E. Kahale, A. Robinson, S. G. Cohn, K. W. Kinney, J. K. Apolo.

S. E. LUCAS
PARISIAN OPTICIAN

Eyes Examined and Tested
Satisfaction Guaranteed
Prices Moderate

Masonic Temple, Honolulu

Your Bath

will be luxurious if taken in Sun-heated water. It will cost nothing for heat.

Sun-light is Free

Call and see me about—

Sun Water Heaters

W. B. CRAW, care Emmeluth & Co., or Box 599, Honolulu

Mrs. Annie Berg

Nawiliwili, Kauai

Ladies' and Gents' Clothes
Dry Cleaned and
Pressed.

Ladies Fancy Clothes a
Specialty.

POST CARDS

In a large and choice assortment
Hawaii & South Seas Curio Co
Young Bldg., Honolulu.

Waimea Stables

LIMITED

Up-to-date Livery, Draying and Boarding Stable and Auto-Livery Business.

AUTOMOBILE STAGE-LINE

BETWEEN LIHUE and KEKAHA

Leaving Lihue every Monday, Wednesday and Friday.
Leaving Kekaha every Tuesday, Thursday and Saturday.
ARRIVING AT THEIR DESTINATION IN THREE HOURS

W. WEBER Manager.

Telephone 4 W Waimea P. O. Box 48

TRENT TRUST CO., Ltd.
HONOLULU

Member Honolulu Stock and Bond Exchange

Real Estate, Insurance, Trusts

WANTED--Two or three first-class agents on Kauai.

Coyne Furniture Company, Limited

Alexander Young Building, Honolulu
FURNITURE OF ALL DESCRIPTIONS
Bureaus, Chiffoniers, Sideboards, Box
Couches, Mattresses, Etc.
UPOLSTERING AND REPAIRING

TELEPHONE 642 P. O. Box 54

HONO ULU SCRAP IRON CO.

C. H. BROWN, Manager

Dealer in
SCRAP IRON, BRASS, COPPER, AND
SECOND-HAND MACHINERY

ALEKAUULA ST., NEAR ELECTRIC POWER STATION.

Coney Garage Co., Ltd.

J. H. CONEY, Manager

AUTOMOBILES TO ALL PARTS OF KAUAI
DAY OR NIGHT.

Telephone 104

Autos and Light Machinery Repaired, Plumbing and Gas Fitting. Automobile Supplies. Agents for the Kissel Kar, Franklin, Chalmers Detroit, Hudson, Gramm, Logan Truck, and Colt Acetylene Lighting Plant.

Agents for the I. I. STEAM NAV. CO., Ltd., Nawiliwili, Kauai

Nawiliwili, Kauai

SPALDING

Baseball Goods

are the best and absolutely guaranteed.



WITH A SPALDING MITT

E. O. HALL & SON, LTD.

HONOLULU

carry a full line with prices the same as sold in all the large cities of the States. A postal will get you a catalogue with prices.

The Largest and Finest Stock of

WALL PAPER

in the Territory is carried by

LEWERS & COOKE, Ltd.

Honolulu

Books of samples of Foreign and Domestic Wall Papers may be seen at the LIHUE STORE or at the store of C. B. OFGAARD, Waimea.

If you wish samples will be sent to you from Lewers & Cooke, Limited.

READ THE GARDEN ISLAND \$2.50

California Feed Co.

Dealers in

HAY, BRAN, ROLLED BARLEY,
OATS, WHEAT, MIDDINGS

Sole agents for

INTERNATIONAL STOCK AND
POULTRY FOOD

P. O. Box 452, Honolulu

P. AKANA

DRESSMAKER

Formerly with P. On Tai, of Honolulu, is now located at

KAPAIA STORE

Ladies' Garments made in the latest prevailing fashions.

HOTEL BAY VIEW

WAIMEA, KAUAI

The Commercial Man's
Favorite Hostelry

DICK OLIVER, Manager

Hawaiian News Co., Ltd.

Headquarters
for

PAPER BAGS

WRAPPING PAPER

TWINE, ETC.

Hawaiian News Co., Ltd.

Young Bldg. Honolulu

MILTON & PARSONS

Formerly with Dunn's Hat Shop

Millinery Parlors

Hotel Street, Honolulu
Opp. Young Hotel

Miss Power

Fashionable Millinery

Parlors
210-211 Boston Bldg.
Fort Street Honolulu

\$15
15
30

DOUBLE YOUR SALARY

Don't spend spare time thinking what you might be if your salary were doubled! Doing not thinking will make your wish a reality. Our free booklet, "Are Your Hands Tied?" tells you what to do and how to do it. Thousands have already doubled or largely increased their salaries by following our plan. Under our guidance you can do the same. Act today! J. C. S. Text-books make it easy for those already at work to

Learn By Mail

Bookkeeping, Stenography, Dictation, English, Spanish, French, German, Italian, Japanese, Russian, Latin, Greek, Hebrew, Arabic, Persian, Hindustani, Urdu, Malay, Tagalog, and other languages. Also: Bookbinding, Printing, Stationery, Penmanship, and other subjects.

INTERNATIONAL CORRESPONDENCE SCHOOLS,
Hawaiian Agency Honolulu

MISS KATE WOODARD

1141 Fort Street
Stamping, Embroidery, Notions,
Dressmaking, Fancy Work,
Shirt Waists and Underwear
Gloves Cleaned



Baseball Season Closes

With last Sunday's games, Kauai's first baseball series was terminated. There are none who can gainsay that it was a success in every respect. No protest, no serious accident, no failure to come through with every game scheduled up to the last games, and in fact scarcely a ripple disturbed the surface of almost perfect harmony which prevailed.

The schedule was shortened chiefly on account of financial considerations, and not that there was the least intimation upon the part of the players to become quitters. Our detailed reports of the games this season have been a short of what we hope to accomplish next year. With but one reporter and three games going it is impossible to cover the ground.

Next season however, arrangements will be made to cover the field more thoroughly. The past ball series has done much more than give to Kauai the first real baseball she ever had.

It has served to bring the people of our island closer together, to weave them together, as it were, as well as to cause them to realize more fully, the value of a united citizenship for the advancement of the welfare of a community. Greater contentment exists among the plantations' employees than has ever been known before, which fact in itself is ample reward for those who are responsible for the successful administration of our first series. The various managers of Kauai's plantations have given their personal aid to the organization, with a view to aiding a proposition which means contentment to those upon whom they must depend for the successful operation of their vast holdings.

There have been a number of suggestions for next seasons program, but as it is so far off, there will be ample time to consider the question thoroughly.

Makaweli vs. Kilauea

A large and appreciative crowd witnessed, what is probably the last game of the season, in Kilauea Sunday. Fully twenty automobiles carrying loads all the way from Kekaha to Kapaa made the trip, which ended in deep mud about two miles outside of Kilauea. They were rewarded, however, by seeing a beautifully played game.

There were errors, mostly due to slippery ground, but in spite of this the Kilaueas won out 4-2.

Wood was in the best of condition, stringing up goose eggs for the Makawelis after the second inning. The Makawelis scored in the opening, with two down Honan reached first, a couple of singles bringing him home.

In the second, Thompson scored with a single, a base on balls and another single which brought him home.

In the fourth, with one down, a single with an error scored once for Kilauea, a single and an error put the runner on third, the latter scoring on a passed ball. In the fifth they forged ahead, scoring two more runs which settled the game for good. After this, the pitchers had the batters at their mercy.

Eddie Fernandez, the crack first baseman of the Oahu league, was in attendance and was invited to umpire the game, which he did in a manner that showed he is a master of the rules and the game.

Eleele vs. Homesteads

This game started with a few showers of rain, the Farmers were out to win and they tried very hard

to take the last game of the season. But the Eleeles artist kept them down for only one hit and 21 strike outs and walked one.

The Farmers never reached the third bag until the last round and made a run on a wild throw to home for there was two outs when this run was made, this saved the Farmers from a whitewash.

The Farmers' left fielder P. Palama did some good fielding which saved the Eleeles from making more runs. It was an errorless game from start to finish.

I. Akana the slab artist of the Eleeles did some good pitching and was in the best of form.

Johnnie Fernandez the champion fifty yards runner of the Territory returned to school to-day.

PER CENTAGE OF TEAMS

	G	W	L	Av.
Makaweli	18	14	4	.778
Lihue	18	11	7	.611
Kilauea	18	11	7	.611
Eleele	18	10	8	.556
Koloa	18	7	11	.429
Kawaihau	18	5	13	.278
Homestead	18	5	13	.278

Since the Kauai Baseball League has completed its series, the Kapaa Athletic Club intends to keep up the ball tossing spirit of the Garden Islanders. For the initial step in their determination, they will have a match with the Koloa picked team this coming Sunday. Gabriel, the coming twirler of Kapaa is really a wonder, he can strike almost any of the boys out at will, and with the crack catcher Ahana receiving the horsehide for him, it will make a solid battery. C. Aefong Ai, another crackerjack and old timer, is at the game again, and is said to be the best outfielder and batter in the crowd.

The Koloas also have good men, and to pick out the winner would be a difficult task. A hard and exciting game will doubtless be the outcome of this meet.

Meeting Notice.

The Directors of the Kauai Athletic Association are hereby notified that a Directors meeting will be held in the parlor of the Fairview Hotel Saturday evening Sept. 16 at 7:30. The meeting is to close the business of the 1911 baseball series and all Directors are especially request to be present.

All those having bills against said Association, please fill same with the secretary prior to this meeting.

By order of the President,
E. B. BRIDGEWATER, Secretary.

On Friday evening last a party of Hawaiian singers under the head of Mr. Lydgate serenaded Mr. and Mrs. R. L. Wilcox at Grove Farm where they were spending the evening. The serenade was an expression of appreciation and regard and was accompanied with best wishes for a pleasant trip and a safe trip.

WAINIHA HUI

At this juncture the decrepit coal oil box which was serving as secretary's chair showed signs of speedy collapse under the 200 lbs. of official dignity and proceedings came to a temporary halt until a stronger box could be found to take its place. Then followed a long and fruitless discussion about the awa which grew in the mountains as to whether it belonged to the man who planted it, or the hui or the Lord, a question which became more uncertain the longer it was

Striking Value In Alarm Clocks



The Ironclad Alarm
It Rings to Beat the Band
Sold at Factory Price
\$1.50



discussed and was finally turned over to the directors to settle.

The day was wearing on, everyone had had his say, some many times over and often all at once the pig was reduced to a few scraps and bones in the yard; it was time to go home; but suddenly someone remembered that the annual dividend had not been declared, which was immediately done \$10 a share the old officers were reelected,—it was the easiest way—the president made his final goody-goody speech and prayer and the meeting was adjourned—Wainiha's great field day was over and silence and solitude settled down on the valley once again.

Makaweli Notes

Mrs. B. D. Baldwin is spending the summer at the Mountain House. Mrs. Schultz of Makaweli arrived Wednesday from the coast.

It is said that Waimea will have a ball team next season.

All the Makaweli sports took in the game at Kilauea.

C. H. Brown, manager of the Honolulu Scrap Iron Co. has been on Kauai the past week superintending the loading and shipping of old machinery at Makaweli.

LOAN FUND COM.

W. Mahikoa, upon motion was duly approved by the Board.

BILLS APPROVED.
Upon motion the following bills were approved by the Board, J. H. Moragne Engineer Salary August 75.

Broadbent Jr. Rodman 7.50
Thomas Onokea Jr. Type-writing etc. 3.10
Office Supply Co. Files etc. 10.80
RESOLUTION AUTHORITY TO SECOND VICE CHAIRMAN.

The following resolution was then presented in conformity with suggestion of the Territorial Auditor, who was present at the meeting, the said resolution passing unanimously.

Resolved that the Second Vice Chairman be and is hereby authorized to sign and approve, in the name of the Kauai Loan Fund Commission, all bills as passed upon and ordered paid by them.

DISCUSSION RE CONTRACTS.

Much discussion ensued as to the rights of the Commission to enter into certain contracts and subdivisions of same and valuable information and advice was furnished by the Territorial Auditor.

HANAHEI-HAENA ROAD APPROPRIATION \$1000.

Motion that \$1000 be appropriated and expended for the Hanahei-Haena Section of road and that the Engineer be authorized to consummate contract or contracts for same, duly passed.

MAHINAULI CONCRETE BRIDGE APPROPRIATION \$1000.

Motion was made and passed that \$1000 be appropriated for the Mahinauli Concrete Bridge and that the Engineer be authorized to arrange for a contract for the erection of same.

RECORDING OF MOTIONS RE HANAHEI-HAENA ROAD GRADES.

A motion, that a motion passed on August 2nd appropriating \$1000 for work on the Hanahei-Maka-

weli grade and the cut on the Mahinauli Gulch, east side, recinded as also the motion passed on Aug. 17th relative to the same piece of work, was agreed to and passed accordingly.

CONDEMNATION RIGHT OF WAY KEALIA BRIDGE STATEMENT OF J. H. MORAGNE.

The Engineer, Mr. Moragne, made a statement to the Board relative to the delay in the matter of the condemnation proceedings for the acquiring of the right of way from the Makee Sugar Co. for the new steel bridge across the Kealia River, and warned the Board as to the danger of the present structure being carried away during the winter floods. The Second Vice Chairman, to whom this matter had been referred, stated that he was endeavoring to avoid the necessity of condemnation proceedings and that the case, with the consent of the County Attorney, was now in the hands of the Attorney General for adjudication.

ADJOURNMENT.
Meeting adjourned subject to the call of the chair.

W. D. MCBRYDE,
Secretary.

COUNTY DADS MEET

The Kalahooe School was duly received and referred to the County's Special School Inspector Mr. J. H. Moragne, with full power to act in the matter.

A requisition (P 604) for the accommodation of three teachers to be appointed for the Lihue School was also received and referred to the said County's Special School Inspector who was fully authorized to furnish a two-room cottage for the teachers mentioned.

A communication dated the 2nd. inst., from Mr. Willis T. Pope Superintendent of Public Instruction, enclosing a list of teachers appointed for the Kauai Schools for the next ensuing school term, was duly received and placed on file. In connection with the same however, Mr. J. H. Moragne, was authorized to make satisfactory arrangements for the Evans cottage in Hanalei for the use of the Hanapepe School teachers.

A communication from one Mr. Chin Sai, manager of Lin Sing Co. dated the 31st. ult. and addressed to Mr. J. K. Lota, requesting for the cleaning up of a ditch leading to the rice fields of the writer in Hanalei was duly received and referred to the County Road Supervisor, Mr. J. H. Moragne, with full authority to act in the matter.

A communication dated the 31st. ult., from one Mr. John Carvalho a laborer of the County of Kauai in the Koloa District, who sustained a broken leg while in the employ of the said County of Kauai, inquiring if he is entitled to any pay or wages for the space of time he was laid up, was duly received, and after a fair consideration of the matter, and upon motion of Mr. Gay, seconded by Mr. Lota, the Board voted to pay Mr. John Carvalho for his time he was thus laid up, the sum of \$25.00, besides his Doctor's bill.

A communication dated the 2nd. inst., from County Auditor Maser inquiring as to what the Board would propose to do in the future with the record detail work, was duly received and action deferred until County Auditor Maser could be present.

The resignation (P 605) of Mr. Geo. W. Mahikoa as Roadman for the Hanalei District, dated August 17th, last, was duly received and accepted.

A communication dated the 22nd. ult., from Mr. A. J. Caldeira, Superintendent of the Kalahooe Water Work, complaining for the small supply of water and suggesting for the laying of a larger main pipe that the present one, was duly received and referred to Mr. J. H. Moragne, for investigation and report, at next meeting.

The report (P 606) of the County Road Supervisor for the month of July and August last, was duly received and placed on file. This report is in substance as follows:

Road Work:—Waimea District: Only ordinary up-keep work and oiling has been done in Waimea District. Considerable oiling of macadam was done. Another thin coat of oil is being applied where the macadam was oiled before and with good results.

Hanapepe Bridge: Foundation work has been going on; considerable trouble and delay has been met with on account of the cylinders going down over old nests of piles of the original bridge, the stumps of which piles had to be removed. The cylinders are now all concrete and work is now being done on foundation for the west abutments and will be ready for concrete within a week.

Koloa District: Macadamizing was finished to a point 600 feet on Lihue end of the Halfway Bridge early in August. The crusher finished work about the 10th. of August and was removed to Lihue District. The new macadam throughout the new grade across the divide was worked and dressed over and is now in good shape.

Some regrading was done with wheel scrapers between Koloa and Lawai in July. Repairing of the Homestead roads has been going on during most of August. A stone wall was built at the top of Koloa grade near the new culvert.

Lihue District: Work of filling in at washout and over new culvert at Kahoakaha has been carried on with wheel scrapers and is now within about a week of completion. At this place considerable improvement of grades, each way from Hill is made. A concrete siphon for irrigation water was put in at the top of grade on Lihue side of above fill. A concrete culvert was put in at stream just Koloa side of Mr. A. S. Wilcox's place and regrading at same place mostly done. The culvert at next stream to Koloa near the bamboos was lengthened in preparation for regrading.

Some oiling was done on Kapaa: Hanalei and Koloa roads in readiness to begin work next year. The machinery a n d wagons were all housed over as a protection from the weather.

Kawaihau District: The new grade at Thronas' place was completed early in August and is now being used; it is in good shape and a great improvement on the old road.

During August the work of rounding up and properly sanding the main road through Kapaa was carried on and is now nearly finished to the old smoke-stack.

The fifth and last large tunnel at Molokaa stream is well under way; the big fill at this place is in good shape, a great improvement has been made here.

Hanalei District: Some work was done on Hanalei Valley Homestead road but it was not completed.

On Hanalei Hill work was carried on during July and the first part of August when the contractor continued the work under the Loan Fund Commission. Considerable general repair work was done during the two months.

SCHOOLS.
The teachers cottage at Kekaha was repaired by extending the veranda and closing same with mosquito netting converting it into sleeping quarters; the floors to cottage were painted also a little other painting.

At Waimea School the teachers cottage was overhauled. Considerable carpenter work and painting was done.

A new open air school room like the one already there was put up at Waimea School; other small repairs to school house was done.

The old Hanapepe landing house was moved on to the new school lot and is now being erected; this building will be enlarged so as to make two 20' x 20' school rooms.

The new 3 room school house at Lihue is nearing completion. The Principal's cottage at Lihue School was thoroughly overhauled, one of the rooms enlarged and a new back veranda put up; the whole house was repainted outside and inside; the other teachers cottage is being painted inside.

The teachers cottage at Anahola was painted outside.

Small repair work at other schools has been done and other small jobs now under way.

WATER WORKS.
No new work was done.

A petition (P 997) from Hanalei signed by 45 of the residents of that District, praying for the building of a road from Hanalei to Kaliahiki, and a communication on the same matter, dated the 31st. inst. from Mr. W. E. Sanborn, Manager of the Princeville Plantation Co., were duly received and referred to Mr. J. H. Moragne, for investigation and report at a future meeting.

At 12:30 o'clock P. M. the Board took a recess until 3:30 P. M.

AFTERNOON SESSION.
At 3:30 P. M. the Board again resumed its meeting.

Mr. Gay moved that the sum of \$6250.00 be appropriated as Additional Appropriations out of moneys in the General Fund of the Treasury of the County of Kauai for work on Roads and Bridges in the different districts named below, viz:—

Waimea District:
Hanapepe Bridge \$2500 00
Oiling Roads 250 00
Roads and Bridges 500 00
Koloa District:—Macadamizing 800 00
Lihue District:—
Oiling Roads 200 00
Regrading Puh-Opeula 1000 00
Kawaihau District:—
Roads and Bridges 1000 00
Hanalei District:—
Roads and Bridges 100 00
and being seconded by Mr. Lota, was carried.

Upon a verbal request of Mr. G. W. Mahikoa, the Board by a unanimous vote allowed him to use three of the County's mules, now in the Hanalei District, on his contract work in Hanalei, he paying \$1.00 per day for each animal, and feeding the said animals at his own cost.

Upon motion of Mr. Gay seconded by Mr. Lota, the County Road Supervisor was authorized to let out when necessary, the county's mules now in Koloa District, to the contractor, to be used on the said contractors' road work in Koloa, at the rate of \$1.00 per day for each animal.

At 5:00 o'clock P. M. upon motion of Mr. Gay seconded by Mr. Lota, the meeting was adjourned but subject to the call of the chair.

Arleigh & Company School Supplies

School books and supplies of all kinds can be bought to better advantage at A. B. Arleigh & Co., Honolulu, than elsewhere in the islands, because this firm makes a specialty of school supplies.

Send for complete printed price list. Mailed free on request. All mail orders given special attention.

Lihue Church Calendar

Lihue Union Church, Foreign—Rev. J. M. Lydgate, pastor.

Church Service 11 a. m. Except the last Sunday of the month. Sunday School 10:30 a. m.

Lihue First Church, Hawaiian. Rev. Wm. Kam-u, pastor.

Church Service 11 a. m. Sunday School 10 a. m.

Tender, Concrete Bridge

Sealed bids will be received by the Kauai Loan Fund Commission until 12:00 o'clock noon of September 6th., 1911, for furnishing all labor, tools and materials, and constructing a 200 foot four span reinforced Concrete Bridge, on foundation already prepared, at Hanapepe, Kauai, according to Plans a n d Specifications which will be furnished upon application [accompanied by \$5.00] to the undersigned.

A part of the machinery and material for doing the work is at hand and it will be necessary for bidders to visit the site in order to familiarize themselves with conditions to be met.

A certified check for 5 per cent of the amount bid must accompany each proposal.

J. H. MORAGNE,

Engineer for the

Kauai Loan Fund Commission, Lihue, Kauai, Aug. 4th., 1911.

Calling in of tenders for construction of Hanapepe Bridge postponed until Wednesday, Sept. 20th. 1911.

Court Notice

IN THE CIRCUIT COURT OF THE FIFTH CIRCUIT, TERRITORY OF HAWAII

At Chambers—In Probate.
In the Matter of the Estate of Kamaka Kankau (w), of Waimea, Kauai, Intestate, Deceased.

Order of Notice of Hearing Petition for Administration.

On reading and filing the petition of Elizabeth Hart Mearwa of Waimea, Kauai, alleging that Kamaka Kankau (w) of Waimea, Kauai, died intestate at Waimea, Kauai, on the 20th. day of August, A. D. 1911, leaving property in the Hawaiian Islands necessary to be administered upon, and praying that Letters of Administration issue to T. Brandt, of said Waimea.

It is ordered that Saturday, the 7th. day of October, A. D. 1911, at 10 o'clock A. M., be and hereby is appointed for hearing said Petition in the Court Room of this Court at Lihue, Kauai at which time and place all persons concerned may appear and show cause, if any they have, why said Petition should not be granted, and that notice of this order be published in the English language for three successive weeks in THE GARDEN ISLAND, a newspaper published in said Lihue. Dated at Lihue, Kauai, September 2, 1911. JACOB HARDY,

Judge of the Circuit Court of the Fifth Circuit.

Attest: EDWARD WOODWARD,

Clerk of the Circuit Court of the Fifth Circuit. Sept. 5, 12, 19 and 26.

FOR SALE

One second-hand Piano. In good condition. Call up McBryde Sugar Co., warehouse.

W. J. DE VRIES.

FOR SALE

One well bred horse, 15 1/2 hands high, 1,000 pounds, stylish and broken to harness and saddle. One strong and well made sulky will seat two. One set single harness, hand-made. One new, Kama-made cow-boy style saddle.

S. W. MAAGE,
McBryde Mill.

Ohio Clothes Cleaning Co.

Ladies', and gent's clothes and gloves cleaned on short notice. Dyeing of every description.

Island orders given special attention.

N. Nakatani

132 Beretania St., Honolulu



Agent
Alexander Young Hotel Laundry

Address all laundry to the Messenger Service Union and Hotel Sts., Honolulu.

LET US DO YOUR SHOPPING