

# The Garden Island.

ESTABLISHED 1904. VOL. 8. NO. 48.

LIHUE, TERRITORY OF HAWAII, TUESDAY, DECEMBER 5 1911.

SUBSCRIPTION RATES, \$2.50 PER YEAR.

## SLIPPERY ROADS CAUSE OF PILIKIA

Three horses down within a few hours, was the record one rainy day last week, the accidents being due to the slippery condition of the road between the Lihue Store and the Fairview Hotel. The cause given for so much slipping lies in the fact that instead of the road being perfectly flat, it declines each direction from the center, making it almost impossible for a horse to hold its footing when the surface is wet. The road is perfect as to appearance, and in dry weather, is a success in every respect. But it loses much of its attractiveness when one scrambles in his saddle, fearing every moment to be thrown headlong with possible fatal results. If no other means can be found to overcome this menace to life, it might be well to level the road bed. A pretty public highway is an indication of a community's prosperity, but to maintain such a highway at the expense of injury to animal life without making an effort to remedy conditions is inconsistent with the best considerations for that which is far more important than the community itself—the lives of our citizens.

## IDEAL DAY FOR THANKSGIVING

From every part of the Island came expressions of appreciation of the ideal Thanksgiving weather. Luncheons here, dinners there, outing parties and appropriate church services occupied the people throughout the day and evening. The Lihue Union Church service was especially pleasing, being greatly enhanced by a violin solo by Mrs. F. L. Putman which was performed in a highly pleasing and masterful manner.

## THROWN FROM A COW PONY

A cow boy in the employ of W. H. Rice, Sr., met with what came near being a fatal accident last Wednesday forenoon about half past eleven o'clock. He had roped a cow, and before he could make fast, a collision occurred between the horse and cow. The horse reared and the rider was thrown between the two animals. Falling head first he struck the ground with a terrific force, his shoulder and head sharing in the impact. The result was a dislocated shoulder and a serious blow on the head, the latter from which he did not recover full consciousness until the following morning. He was taken to the hospital immediately after the accident, where his injuries were attended by Dr. Putman. No complication is feared.

## LIBRARY FAIR ON THURSDAY

The fair for the benefit of the Lihue Library, will be held on Thursday, on the church grounds at 3 p. m. There is every assurance of a beautiful display of reasonable articles, useful, dainty and artistic. Prices will be reasonable. Values will be pressed down, full and running over. Don't miss the chance! Its on the "inside" with Santa Claus!

The Library Fair will open sharp at 3 p. m. You had better be there 5 minutes in advance and lay your hands on what you want or you won't get it. Things vanish like morning dew!

## BAND IS SUBJECT OF GOOD SUPPORT

The annual appeal to the public for volunteer contribution to the support of the Lihue Band, is meeting with generous giving, the treasurer reporting the receipt of quite a few very substantial checks, and numerous small amounts.

Among the donations by the last mail was the following from Mrs. C. M. Cooke of Honolulu:

Treasurer, Lihue Band,  
Lihue, Kauai.

Dear Sir:

At the request of Mrs. Chas. M. Cooke, we enclose a check here-with towards the support and maintenance of the Lihue Band.

Mrs. Cooke also wishes to express her appreciation and to congratulate you on the marked improvement you have made during the past year.

Yours very truly,  
CHARLES M. COOKE LTD.

## THANKSGIVING FOR SCOUTS

The Lydgate contingent of the "Boy Scouts" by way of a Thanksgiving Outing, climbed to the top of the Haupu ridge the other afternoon. They report finding a fine healthy pear tree which was planted there by a party of Lihue Ladies some 15 years ago. The boys report that Uluhi—Stag Horn Fern—"is bum stuff."

## HULEIA AVENUE IS UNEXCELLED

A broad avenue of Norfolk Island pines grace the Huleia Plantation. We believe there isn't another avenue like it on the Islands—when the trees grow up it will be beautiful as well as unique.

Huleia also has a Venetian Villa set upon a fairy island in the midst of shimmering waters. The Lute, the Lover and the Gondola we didn't see, but doubtless they will follow.

## KULEANAS ARE BEING MARKED

W. F. Sanborn of Princeville Plantation Hanalei, is showing much wisdom and forethought in having the Kuleanas in the Princeville Estate carefully located and thoroughly marked. Kamaaina information will be absolutely unattainable in a few years—it is very scarce now. To locate and mark these claims now will prevent much litigation in the future. Concrete posts are being put in at all the corners.

## LIHUE CHURCH THANKSGIVING

After the manner of good old New England, Thanksgiving Day was duly observed in Lihue by a special service. The church was very effectively decorated with a profusion of Bouganvillea artistically combined with ti leaves and cane blossoms. A special choir had been made up for the occasion which in addition to the usual hymns, rendered a chant and a responsive service. The music was very much enhanced by the violin accompaniment of Mrs. Putman, and her violin solo was most enjoyable. In his brief address Mr. Lydgate commended the wisdom of Huckleberry Finn who didn't believe in looking all the time for evil signs and bad omens. Look for the sunshine rather than the shadow was his advice.

## LOCAL TALENT IN A PRETTY PLAY DEC 16

Lihue Children to Render "Mary Queen of Scots," an Original Play Written by Rev. J. M. Lydgate -- Big Crowd is Expected

## FOR THE BENEFIT OF THE LIHUE LIBRARY

Wine improves with age. The "Mary Queen of Scots" play has been ripening and mellowing down cellar for over a year now. Most of the actors have out grown their clothes and some of them have out grown their parts, and some have moved away to other lands but a mature second wind has come to those who remain and its a case of see it through or bust!

Mr. Lydgate's Historic Play "Mary Queen of Scots," is set for the evening of Dec. 16. The play presents in graphic form the leading events in the life of that beautiful and unhappy woman.

The characters will be taken mostly by Lihue children, who have been in training a long time, and who will undoubtedly give a very charming and impressive presentation of a very interesting theme—we have been looking forward with a glance behind the scenes, and we venture to assure the public that a surprise is in store for them. Such Juvenile acting. And such royal costumes have never been seen on this stage before. Not if we know it!

Through the courtesy of Rev. J. M. Lydgate we are enabled to produce the synopsis and program.

## Synopsis of the Play

- Scene 1—The Coronation of the Infant Queen.
- Scene 2—Mary leads the dance in our Scotland.
- Scene 3—Rizzio Playing at the Court of Mary.
- Scene 4—The Arrest of Rizzio.
- Scene 5—The Queen Conspires with Bothwell to do away with Darnley.
- Scene 6—Paris repairs to the Queen of Black Arts.
- Scene 7—Darnley at Kirk-a-field on the eve of the tragedy.
- Scene 8—Paris reports to his master after the tragedy.
- Scene 9—Lady Bothwell consents to the divorce.
- Scene 10—The Earl of Murray prefers charges against Mary at the Court of Elizabeth.
- Scene 11—Elizabeth Signs the Death Warrant.
- Scene 12—Mary at her Devotions. Tableau.
- Scene 13—The Execution. Tableau.

## Cast of Characters

- |                              |                                       |
|------------------------------|---------------------------------------|
| Mary Stuart.....             | Edith Rice                            |
| Bothwell.....                | Mortimer Lydgate                      |
| Darnley.....                 | Harrison Rice                         |
| Rizzio.....                  | Mildred Hogg                          |
| Lady Bothwell.....           | Dora Broadbent                        |
| Ruthven.....                 | Homer Lydgate                         |
| Robert Hamilton.....         | Juliet Rice                           |
| Faldonside.....              | Frank Broadbent                       |
| Lady Argyle.....             | Dora Broadbent                        |
| Murray.....                  | Wm. N. Stewart                        |
| Paris.....                   | J. M. Lydgate                         |
| The Queen of Black Arts..... | Mrs. J. M. Lydgate                    |
| The Cardinal.....            | J. M. Lydgate                         |
| Queen Elizabeth.....         | Helen Fountain                        |
| Lord Burleigh.....           | H. Vincent                            |
| Mary's Maids.....            | { Josephine Moragne,<br>Thelma Hopper |
| The Bishop of Ross.....      | J. M. Lydgate                         |
| George Douglass.....         | Henry Wiedemyer                       |
| Morton.....                  | Willie Wolters                        |
| Lord Robert Stuart.....      | Alexander Hogg                        |
| Lindsay.....                 | Henry Gandall                         |
| Pages.....                   | { Richard Sloggett,<br>Percy Lydgate  |
- Guards, Attendants, etc.

## WISHARDS HOME FROM LONG TRIP

Returning from a trip abroad which covered a period of nearly five months, our well-known townsman, and chairman of the Board of Supervisors, H. D. Wishard, accompanied by Mrs. Wishard, arrived on the Hall last Saturday morning.

Mr. and Mrs. Wishard are both looking remarkably well and it was not difficult to believe Mrs. Wishard when she said "we have enjoyed every minute of our travels."

Their trip was over a route which included about all the places of importance throughout the states, going via Portland, Oregon and returning to the Pacific Coast over the Southern Pacific from New Orleans. Mr. Wishard reports business throughout the states, generally prosperous.

## NEWLY WEDS RETURN HOME

Among the prominent passengers arriving last Wednesday were Mr. and Mrs. Bole who returned from the coast following their marriage which was consummated at the brides home in Illinois.

The bride is well-known and extremely popular, having been for the past year a teacher in the Hanapepe School. The bridegroom is head book-keeper for the McBryde Plantation, and is considered one of Kauai's most thorough business men.

THE GARDEN ISLAND joins the many friends of the happy couple, in wishing them health, wealth, happiness and prosperity.

T. W. Greig, who has occupied the position as head-bookkeeper for the Lihue Plantation Co. during Mr. Wishard's absence, returns to Honolulu today.

## THE KAUAI-MAUI BOWLING TEAMS

The Kauai-Maui Bowling Contest will take place Saturday afternoon and evening, the Maui team, owing to a water carnival taking place in Waikuku during the evening, being compelled to play in the afternoon, word to this effect being received in a communication from their secretary by the last mail.

The Maui game will start at three o'clock and it is hoped will finish in time to wireless the score before the station closes for the day.

The Kauai team will bowl in the evening. The boys are doing some good practice work and from scores made in the last few trials they should prove easy winners.

## JUDGE HARDY IS EIGHTY-FIVE

Hon. Jacob Hardy, is receiving the congratulations of his numerous friends to-day on the eighty-fifth anniversary of his birthday.

## Hanalei Items

Mr. and Mrs. White of Kealawa were at Hanalei Sunday visiting Mr. and Mrs. Ridel.

Leon A. Quonson, representing Hackfeld's hardware firm, was at Hanalei last week.

J. M. Lydgate of Lihue was over again surveying for Mr. Wilcox.

Mrs. C. B. Makee returned home last Thursday after being at the hospital for about three weeks where she underwent a successful operation for appendicitis.

Saturday night Hanalei had quite a festive appearance. A troop of Philippino acrobats, which had been on the Island for several days giving exhibitions of their gymnastic feats, performed at Hanalei in the Chinese club house. The villagers were well entertained, both by the Philipinos and by the Hanalei orchestra.

Thursday November 30th, Mr. Ridel and his daughter left here on the steamer for Honolulu. His daughter is to remain at Honolulu for some time while Mr. Ridel (Continued on page 6)

## ARTISTIC 1912 CALENDAR

The GARDEN ISLAND begs to acknowledge receipt of one of the Lihue Stores 1912 calendars. It is neat, artistic and not marred in the least by an over display of objectionable advertising.

## 27 DIE WHILE COMING HERE

According to late advices from Honolulu, the immigrant Steamer Willesdon arrived in Honolulu last Saturday, laden with a human cargo consisting of 1306 Portuguese and 543 Spanish subjects.

Twenty-seven deaths occurred during the trip, mostly among children, who died from measles, small-pox and chicken-pox.

Dr. Victor S. Clark's advice that future shipments be attended with more frequency to avoid crowding, would suggest the idea that much of the fatality on this trip, was due to such a condition.

The band concert at the Lihue Park last Sunday was attended by an appreciative audience. This was the first concert since Director Souza's enforced illness, and his friends whom he numbers by scores, were there to greet him and appreciate the efforts of his aggregation of splendid assistants.

## A YEAR BRINGS BIG DIFFERENCE

The history of the GARDEN ISLAND within the last twelve months is partly shown in the following facts which speak volumes for Kauai's progressive, fast growing newspaper, published in a live progressive, fast growing community. The Garden Island is read by intelligent, prosperous people who live in modern homes and enjoy the best there is going.

It is one of the oldest and best papers in the Territory and stands without a peer in the advertising field. That our advertisers realize the value of its advertising medium, is shown by the enormous increase in its advertising patronage.

## Some Data

Advertising	Inches
December 1st, 1910	68
December 1st, 1911	834

This shows a gain of 766 inches of advertising within the year. The present firm took over the plant on Jan. 1st, this year and despite the fact that their plant was entirely destroyed by fire, came out with a six page paper. It has grown steady until now it comes forth with ten pages.

The following is a list of the enterprising business houses using this paper as an advertising medium which bespeaks its popularity:

- E. O. Hall & Son Ltd.
- California Harness shop.
- Theo. Davies & Co. Ltd.
- The Majestic Hotel.
- Dr. A. R. Glaisyer.
- Wall-Nichols & Co. Ltd.
- M. McInerney & Co. Ltd.
- J. Hopp & Co. Ltd.
- Honolulu Brewery Co. Ltd.
- Sach's Dry Goods Co.
- California Feed Co.
- Thrum's Santa Claus Headquarters
- Silva's Toggery.
- Waimea Stables Ltd.
- S. Ozaki.
- Benson Smith & Co.
- Territorial Messenger Service.
- Trent Trust Co. Ltd.
- Honolulu Scrap Iron Co.
- Coyne Furniture Co. Ltd.
- H. Hackfeld & Co. Ltd.
- Honolulu Monument Works Ltd.
- Honolulu Electric Co.
- The Hawaiian Electric Co.
- Henry May & Co. Ltd.
- Koloa Plantation Store.
- McBryde Sugar Co. Store.
- McInerney Shoe Co.
- Bishop & Co. Bankers
- The First National Bank.
- Bank of Hawaii (Lihue.)
- Bishop's Bank (Waimea.)
- Hawaiian Star.
- C. Brewer & Co. Ltd.
- Hock Shee.
- Associated Garage.
- Manufacturer's Shoe Co. Ltd.
- American Hawaiian Paper Co. Ltd.
- Bro. Benjamin.
- Ye Arts & Crafts shop.
- T. E. Davis & Co.
- Jas. F. Morgan.
- South Sea Curio Co.
- Curio Den.
- Harrison Mutual Association.
- Y. Shido.
- McChesney Coffee Co.
- Coney Garage Co.
- Harry Armitage.
- The Leader.
- Elele Store.
- Honolulu Vulcanizing Works.
- J. Carlo.
- B. F. Ehlers & Co.
- Hawaiian News Co., Ltd.
- The Clarion.
- Honolulu Iron Works.
- Hotel Bayview.
- Hotel Fairview.
- Lewers & Cooke Ltd.
- Regal Shoe Store.
- Palm Cafe.
- Lihue Store (Kauai's Emporium)
- C. B. Hofgaard & Co., Ltd.
- Home Insurance Co. Ltd.
- Hawaiian Sugar Co's. Makaweli Store.

Legal Notices. (Two Columns)

The above advertising totals 834 inches or forty-one and one-half columns, proving THE GARDEN ISLAND to be the most popular advertising medium in the Islands.

Now Read the Ads.

## LITTLE WILLIE DIES FROM SERUM TREATMENT

Once upon a time, not so very long ago, a boy was born and they named him Willie. It not being cultured or fashionable and it being detrimental to the wearing of corsets and participation in social functions, this boy's mother did not nurse him, but he was put on the bottle. Fortunately, a learned scientist had discovered how to pasteurize milk, so that the boy did pretty well on most any old cow's milk.

When this boy was two years old, he caught the whooping cough. Fortunately, Professor Bordet, of Brussels, had discovered that anti-toxin serum from a cat would cure whooping cough, and some cat serum was injected into Willie.

Soon after Willie got about again he was taken with the measles. Fortunately, Dr. John P. Anderson, of Washington, had discovered that anti-toxin serum from a monkey would cure the measles. So, they pumped the monkey serum into the boy, and the measles didn't kill him.

One day Willie was playing with his pet terrier, when the dog scratched him. So his folks, fearing hydrophobia in its worse form, rushed him down to New Jersey, where there is a great institute in honor of Professor Pasteur, who, fortunately, discovered that anti-toxin serum from a dog was a fine thing for rabies. They pumped dog serum into little Willie for two months.

Willie pulled through nicely, but on the way home, rode a Pullman sleeper in which a smallpox case had been discovered. Fortunately, Dr. Jenner had discovered that anti-toxin serum from a cow would cure smallpox, and so, on getting

home, they shot some cow serum into Willie's arm.

Well, Willie lived along until he was ten years old when, one night, his folks were sent into a panic by discovering that he had black diphtheria. Fortunately, a noted physician had discovered that anti-toxin serum from a horse would cure diphtheria, if anything would, and so they gave Willie some horse serum, hypodermically.

Finally, at 40 years of age, Willie was taken with a mysterious malady. None of the doctors could tell definitely what it was. At last, as Willie was very low, a very learned scientist from a great eastern institute visited him and pronounced it "general debility." "But, cheer up, my man!" said the scientist. "I have here an anti-toxin from—"

"No more menagerie in mine," sighed Willie. "Life has been but one blamed serum after another." Whereupon he turned over and died, much to the regret of the scientist, who felt sure that he was to enrich medical science with another great discovery, since he was about to try serum from a hen and from an alligator on "general debility."

We don't know that there's any moral to this story. There is a lot of God's truth to it anyhow. — TOLEDO NEWS-BEE

## SOME CURIOUS OLD FACTS OF YE OLD TYME

Old records brought to light give some interesting figures of many years ago. Cows were quoted in 1837 at \$7 to \$10; horses, \$25 to \$40; hogs, a head, \$1.25 to \$1.50; a nice veal calf sold for 75 cents; eggs, 3 cents a dozen, and deer hams at 25 cents each. You could get a man to work for you from sunup till dark at from 10 to 12 cents a day, and he accepted pay in pelts, hides, twists of tobacco, wild honey or yarn mitts.—Louisiana Mo., Press-Journal.

R. F. Dempsey, a well-known machinist of Honolulu came up on the Kinaiu Wednesday.

W. H. Hoogs, president and manager of the Honolulu Construction and Draying Co., arrived on the Kinaiu Wednesday morning.

J. H. Bole, book keeper for the McBryde Plantation, accompanied by Mrs. Bole, returned from a trip to the coast on Wednesday's Kinaiu.

## CHALMERS 1911

### SPECIFICATIONS

**Axle (front)**—Single piece drop forging, 1.5-in. section, large annular ball bearings.

**Axle (rear)**—Full floating type, heat-treated nickel steel shafts. Large annular ball bearings.

**Wheels**—Contracting band on drive shaft, 7-inch diameter, 3-inch face. Internal expanding on rear wheels, 14-inch diameter, 2-inch face. All breaks double acting.

**Bearings**—Full type annular ball bearings throughout running gear; silent type annular ball bearings in transmission and crank shaft.

**Carburetor**—Flat bed, automobile type, hot water jacketed.

**Clearance**—10 inches.

**Clutch**—Multiple disc running in oil.

**Colors**—Chassis and underbody black with body and stripping English Vermilion, Napier Green or Chalmers Blue.

**Drives**—Bevel gear, two universal joints. Pressed steel torque arms.

**Frame**—Pressed steel, channel section.

**Gear Ratio**—Standard 3.34 to 1.

**Ignition**—Bosch Magneto.

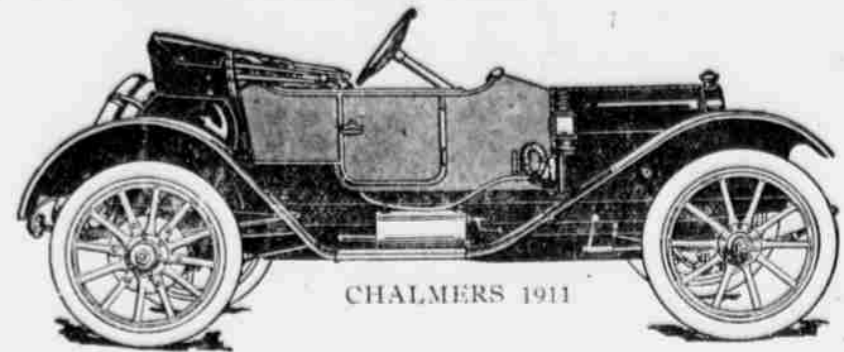
**Lubrication**—Constant level splash system operated by pump.

**Light**—Ford on dash.

**Horse power**—26-30.

**Motor**—Four cylinders cast on bloc; 4 inch bore, 4 1/2-inch stroke.

**Rims**—Universal quick detachable.



CHALMERS 1911

**Springs**—Front, half elliptic; rear, three-quarter elliptic.  
**Steering gear**—Worm and gear type.  
**Tread**—36 inches.  
**Tires** 34x3 1/2 inch all around. Option of Mozan & Wright or Continental.  
**Transmission** Selective sliding gear type, three speeds forward and reverse.  
**Valves** Nickel steel, large diameter. Exhaust valves at side; inlet valves at top of cylinders.  
**Wheels** 34 inch diameter, wood, artillery type. Rear wheel spokes bolted to brake drums.  
**Wheel base** 104 inches.  
**Seat** Width, 37 inches; depth, 19 inches.  
**Leg Room** 35 inches.  
**Price** \$1500, f. o. b. Detroit, including Bosch magneto, gas lamps, two extra tire irons, Prest-O-Lite tank and Chalmers top with side curtains and storm front.

## ASSOCIATED GARAGE, LTD.

FRANK E. HOWES, MANAGER  
HONOLULU

## S. OZAKI

WAIWEEA

Wholesale Liquor Dealer

ALSO

Complete Line of Oriental Goods

Telephone No. 102. Branch Wahiawa, Telephone No. 7.

## McChesney Coffee Co.

16 MERCHANT STREET, HONOLULU

Coffee Roasters Exclusively

LTD KONA COFFEE

Green or Roasted. Any Quantity.

In bulk or packed in any style.

Coffee of 1908-9 Crop, or New Crop.

Try Us For Good Coffee

## HOCK SHEE

TAILOR

Four years with W. Ahana, Honolulu, is now located at

KAPAIA STORE

Garments cleaned and pressed  
Latest prevailing fashions.  
Workmanship Guaranteed

## Oceanic Steamship Co's. Time-table

The favorite S. S. SIERRA, 10,000 tons displacement, sails from Honolulu December 27, Jan. 17, 1912. First-class single to San Francisco, \$65; round trip, \$110.

C. Brewer & Co. Ltd  
GENERAL AGENTS

## ARTISTIC GIFTS FOR CHRISTMAS

GIFTS FOR EVERYONE

EVERY YEAR, we make a special effort to have the largest and most attractive display of suitable gifts for Christmas Holiday trade on Kauai.

This year we have so far, surpassed all previous efforts in this respect and can boast of the greatest collection of Christmas goods ever offered to the public.

## TOYS?

Why, bless the girls and boys, old Santa's home is right in our store. Bring the children in and let them get acquainted with the good old soul. He loves them all, and has everything their dear little hearts' desire.

DECEMBER 1911

SANTA'S BIG HOME

HAWAIIAN SUGAR CO'S. MAKAWELI STORE

## PAPER

Paper Bags, Twines, Stationery

HONOLULU'S LARGEST PAPER HOUSE

AMERICAN HAWAIIAN PAPER & SUPPLY CO., LTD.  
Fort and Queen Streets

GEO. G. GUILD, Vice-Pres & Mgr

## PIKE CO. TEACHERS AVERAGE \$340 PER YEAR

The estimate value of the 115 school building in the county is \$163,110. There are 96 buildings for white pupils, 18 for colored pupils containing 162 rooms, making 162 teachers who are engaged in teaching the children in the public schools of Pike. Last year \$12, 115.62 was paid to the male teachers, \$41,991.75 to the female teachers, an average of \$340 to each teacher.

Many of the schoolhouses were repaired last year and three new buildings erected.

As a rule there is harmony and interest among directors and where this exists, progress in the school is inevitable. In 66 districts there are fair libraries and the pupils are pursuing some kind of valuable reading, but these need increasing and if the boards fail to appropriate the amount as specified each year, that board is not complying with the provisions of the law. This year there will be but few schools of less than eight months' duration and enrollment should be greater because of the new features of the compulsory law. Prosecuting Attorney Blair will investigate violations of this statute which requires pupils between 8 and 16 to attend school the first three-fourths of the school term.

The schools belong to every citizen and should have his attention as well as his stock, his lands and even his church.—Louisiana Press Journal.

S. B. Crosby, is a Kauai visitor. Dr. P. P. Osborne and Mrs. Osborne, were Kinaiu arrivals last Wednesday morning.

Roman, the hat dealer, Beretania Street Honolulu, will clean your hat and pay return freight. Charges reasonable and workmanship is guaranteed.—9-19-11.

## Educator \$4 Shoes



Are a treat for the feet. Made on a broad toe last with room for all five toes. This gives perfect rest for the foot at all times.

They come in Black Gun Metal, Calf, Vici Kid and Tan Russia, both in high and low cuts.

When ordering, add c.s. to cover freight.

## Manufacturers' Shoe Co.,

1051 FORT STREET LIMITED HONOLULU

## New Stenciled Articles

Artistic in Designs Low in Price

Cushion covers, Curtains, Laundry bags, Shoe bags, Wor bags, Table Covers, Belts, etc.

SPECIAL ATTENTION GIVEN TO ALL MAIL ORDERS

Ye Arts and Crafts Shop

HONOLULU

## EXCELSIOR DIARIES 1912

Office and pocket diaries of all sizes bound in cloth or leather. Mail orders promptly filled.

Hawaiian News Co., Ltd.  
Young Bldg. Honolulu

## JEWELERS

EVERYTHING IN THE SILVER AND GOLD LINE. RICH CUT GLASS AND ART GOODS.

MERCHANDISE OF THE BEST QUALITY ONLY.

H. F. WICHMAN & CO., Ltd.  
LEADING JEWELERS  
P. O. Box 342 Honolulu

Job Printing a Specialty

## JAS. F. MORGAN

Stocks, Bonds and Real Estate

No. 857 Kaahumanu Street

## POST CARDS

In a large and choice assortment Hawaii & South Seas Curio Co  
Young Bldg., Honolulu.

## Curio Den

1119 Fort Street, Honolulu  
Has a fine line of Cut Glass. Hawaiian Scenes painted on China Always Popular Prices

D. L. AUSTIN, representing Davies & Co., is on his regular call upon Kauai's Commercial Class.

Henry Spaulding, of Koloa returned from a two weeks' vacation to Honolulu, last Wednesday.

Rev. S. Kaulili, returned Wednesday from a brief visit to Honolulu.

Dr. Irwin J. Sheppard, of Honolulu arrived by the last Kinaiu from Honolulu.

## CONTRACTOR SEES FORTUNE IN HULEIA

### NATURAL ROCK FOR FENCE-POSTS

"Speaking of concrete posts" said a prominent contractor the other day, "why, on the W. H. Rice ranch in Huleia, there are thousands of tons of some of the best material for fence posts I ever saw. Great ledges of rock hang from the cliff-side-rock which by very little trimming would be ready for use. There's a mountain of wealth in that locality, awaiting to be dug out and realized. Many pieces of this magnificent stone have been taken out and used in the construction of various bridges as well as gate posts. I believe they will some day be used for just such purpose as Manager Broadbent's concrete posts."

The speaker cited instances where in the Northwestern States, concrete posts had been successfully used for years, and believed they were just the thing for the Islands. "In Dakota" said he, "a friend of mine built a fence on land which was so rocky that it was impossible to dig post holes, so he simply drilled out a small depression in the rock, poured in his concrete, jobbed down his post and in ten minutes had his post as solidly set as Gibraltar."

"While the initiative cost will be somewhat more, I am of the opinion that the concrete post will eventually replace the present post as the up-keep will amount to so little in comparison with the posts that necessarily must be exchanged owing to decay."

## HOW LINDA COOKED

Oh, when I married Linda I asked her:

"Can you cook?"

She just looked wise and answered: "I know my little book."

And since that time she's fed me on dishes a la France, With Sweden, Spain and India, thrown in when there's a chance.

I've breakfasted on waffle with jam and mayonnaise, For lunch I've see spaghetti cooked in fifty different ways; And when I'm called to dinner quite often there will be Hungarian goulash on the board — Scotch scones and Russian tea.

My appetite is hearty, and I dote on simple food,

But if I should confess it my wife would call me "crude."

So all my meats are stuffed and braised croquetted and saute-d.

My vegetables an gratin-ed my desserts are glace-d.

I'm steeped in spice and curry, I'm filled with crumbs and paste

(I'm pretty sure that nothing in our kitchen goes to waste.)

An' when, with all my hungry soul, I yearn for Irish stew.

I hear the carol of the cook: "Just taste this Swiss ragout!"

I sigh for beefsteak simple, but my sighing is in vain.

I'd give a whole week's salary to see an egg cooked plain.

I love a boiled potato, but always 'pon my soul,

There're minced with peppers, nuts or cheese, or served en casserole!

How I would relish pork and beans!

And O' what a relief

'Twould be to find upon my plate a hunk of good corned beef.

## THE HANAIEI WHARF SHIPPING AND MAIL PLANS OUT AGAIN

### "LORD" CAMPBELL MESSING THINGS UP

The new plans and specifications for the Hanalei wharf are at last completed and tenders are out, calling for bids. The tenders are not advertised in THE GARDEN ISLAND, for two reasons, probably the first being the fact that the peanut-headed individual at the head of the Department of Public Works objected to our criticism of his mediocre method of doing business and second, apparently, for the reason that he does not wish our local contractors to learn too many facts.

Our local contractors are already in possession of more facts than is healthy for the Big Chief if he but only knew it, one of which is that which brands him as entirely incapable of his position, being the mess he made of the first plans for the wharf and the continual putting up of school-boy excuses. When the Head of a Department of the importance as that of the Public Works is incapable of estimating the cost, and drawing plans for small contracts such as the Hanalei wharf, it then becomes the duty of any self-respecting public do a little investigating.

But hark! A voice calls: "Dinner, John! Come see what I have made;

Here's a shrimp soufflé with Creole sauce, and mushroom marinade!"

whisper: "Put her in buck-wheat!"—Puck.

### MAILS

Inter-Island Mails  
Regular mail leaves Lihue on Tuesday and Saturday at 5 p. m. Regular mail arrives from Honolulu Wednesday and Friday morning. During sugar season mail is frequently sent and brought by steamers making extra trips between regular mail days. On days when the coast mail is due, the mail boat due on Friday, will lay over and come in on Saturday morning instead.

### MAILS CLOSE

Registered mail closes on mail days, at four o'clock sharp. Ordinary mail, at half past four.

### OVERLAND MAIL

Mail for Island offices, leaves Lihue on Monday, Wednesday and Friday mornings at six o'clock. Except, however, in cases when the coast mail delays the Friday boat, then the mail will leave on Saturday at 6 a. m.

### INTER-ISLAND VESSELS.

For Kauai Ports  
W. G. Hall, I.-I. S. N. Co., every Thursday.

Kinai, I.-I. S. N. Co., every Tuesday.

Kau and Kona Ports  
Mauna Loa, I.-I. S. N. Co., alternate Tuesdays and Fridays.

For Molokai and Maui  
Mikahala, every Tuesday.

For Maui and Hawaii Ports.  
Mauna Kea, I. I. S. N. Co., every Tuesday.

Claudine I.-I. S. N. Co., every Friday.

### PORT ALLEN SHIPPING

The Hilonian and Lurline carry passengers, leaving direct for the coast, the fare one way or round trip, being the same as that from Honolulu.

### Miss Power

Fashionable Millinery

Parlors  
210-211 Boston Bldg.  
Fort Street Honolulu

For the SOCCER Football Season just commencing, we have just received a full line of

**Soccer Shoes**  
**Stockings**  
**Shinguards**  
**Footballs**

*E. O. All & Son, Honolulu*

## California Harness & Trimming Shop

Merchant and King Street, Honolulu.

We manufacture harness, saddles and all accessories to order. Island orders promptly and neatly executed. Workmanship guaranteed and our prices are reasonable.

**AUTOMOBILE TRIMMING OUR SPECIALTY**

P. O. Box 791

D. HAMMAN & SON Prop.

Phone 2505

## Coney Garage Co., Ltd.

J. H. CONEY, Manager

AUTOMOBILES TO ALL PARTS OF KAUAI  
DAY OR NIGHT.

Telephone 104

Autos and Light Machinery Repaired, Plumbing and Gas Fitting. Automobile Supplies. Agents for the Kissel Kar, Franklin, Chalmers Detroit, Hudson, Gramm, Logan Truck, and Colt Acetylene Lighting Plant.

Agents for the I. I. STEAM NAV. CO., Ltd., Nawiliwili, Kauai

Nawiliwili,

Kauai

# Grand Christmas Display

THE largest and most up-to-date line of Christmas goods on Kauai is on display at our store and ready for your inspection. Before making your final selection elsewhere it will pay you to visit our store and inspect our different lines.

We have just put on display a beautiful and complete line of the famous

## Norwegian Enameled Ware

in Jewelry and Spoons, as well as Japanese Jewelry and fancy articles, Hawaiian Jewelry, Cut Glass, Books, and many other articles too numerous to mention.

# TOYS

Our space is too limited to enumerate the different articles we have in this line---so we will simply say we are Santa Claus headquarters. Make the children happy by bringing them to see the display.

## C. B. HOFGAARD & COMPANY, LTD.

Waimea, Kauai

THE GARDEN ISLAND

TUESDAY DECEMBER 5, 1911

Issued Every Tuesday.  
Entered at the post office at  
Lihue, Kauai, as second-class  
matter.  
Subscription Rates \$2.50 PER  
YEAR, \$1.50 FOR SIX MONTHS  
IN ADVANCE.  
ADVERTISING RATES, 50 CENTS  
AN INCH PER MONTH.

Front Page Advertising  
Rates \$3.00 Per Square Inch  
Each Insertion.

E. B. BRIDGEWATER, EDITOR  
K. C. HOPPER, MANAGER

It is said that most everybody  
got full on Thanksgiving eve  
editor excepted.

"It is wonderful the way people give  
different replies. One day it is W. T.,  
the next J. T., and the next something  
else. —Limeric started in state's small  
talk.

Kauai believes in appropriate-  
ness, therefore the people here re-  
write it "M." (and) Storrett.

"SOCIALISM," says an exchange  
"does not end the need to toll."  
This is a sad blow to us as we  
were beginning to feel real "social"  
ourselves, but if it is not going to  
put us on "easy street," we'll be-  
ding-busted if we'll ride the goat.

Now that the McNamaras have  
confessed to the taking of life in  
cold-blooded murder, let us hope  
the numerous labor organiza-  
tions throughout the country that  
did so much to prove the murder-  
ers innocent, will employ like en-  
ergy in providing for the orphans,  
widows, dependent mothers and  
relatives of the score or more lives  
which their dastardly work snuffed  
out.

J. N. Eberhardt of Paris  
Arkansas, is being criticised be-  
cause he has the following printed  
on his envelope return card:

"We will not believe McNamara guilty  
even if convicted."

"This reminds us very forcibly of  
the story of the man who died and  
had been buried during the absence  
of a friend, who upon being told  
of his friend's burial exclaimed,  
"What, is he dead?"

What does it all mean when  
Taft intimates that the election of  
a republican president next year is  
not altogether a  
What Does certainty, and  
It All Mean suggests a possi-  
bility of a new  
government, and such a noted  
democrat as Wm. Jennings Bryan  
using the following words: "Al-  
though prospects for a democratic  
victory in the next national elec-  
tion are bright, I have seen them  
brighter. If the republicans must  
elect a president I want to see  
them elect a progressive," such a  
man as La Follette. If I were  
right, sure the democrats would  
elect their candidate for president  
the next time, I would not care  
about the republican candidate."

So it seems that Mr. Bryan is  
uncertain about the election of a  
democratic president, while Mr.  
Taft is equally dubious as to  
whether a republican will be elect-  
ed.

In its issue of December 8, 1910  
the Bulletin called the Public  
Land Department and the GARDEN  
ISLAND down in  
Oh, What A the following  
Difference sarcastic com-  
ment, endeavor-  
ing to show indications of a com-  
pact between this paper and the  
department in managing the sale  
of the Kapua Homestead lots:

According to the various Island  
land sale of the Kapua lots, was well  
advised—necessity imposed. Some-  
thing the people was required with a  
re-arrangement, and to come from the land  
commissioners and Hawaii's available  
public land is, accordingly, to be disposed  
throughout the Territory, but the de-  
partment is so well so that all people  
might know of the offering for home-  
steads in these islands. Any man who  
the Kapua land sale took place.

This was particularly a step in which  
the small business man is particu-  
larly interested. This splendid opportunity was  
published to the world through Kauai  
County's weekly paper, and possibly  
by papers.

If that is to be the advertising cam-  
paign of the public lands department, if  
that is to be the method by which the  
world is to know that a profitable garden  
on Kapua is awaiting someone's develop-  
ing hand, the future will be far  
distant when the garden will bloom with  
anything but lanterns.

Judging from appearances the method  
followed in handling the Kapua land  
business is the shortest route for dis-  
crediting homesteading and foresting a  
renewance to the old idea that nothing  
but big capital and service labor can ever  
develop anything in the Territory of  
Hawaii.—Evening Bulletin, Dec. 8, 1909.

Now comes the public works  
department with a card which  
strictly belongs to the Kauai paper  
(the Hamalei wharf tender) and  
passes it up to the Bulletin which  
smiles and forgets the fit it threw  
two years ago, when the Kauai  
paper was only getting that to  
which it was rightfully entitled.  
"Oh, what a difference!"

Mr. Campbell to the Evening  
Bulletin Manager: "Does your  
paper circulate so far as the island  
known as Kauai?"

On The "Sometimes," replied  
Stage the manager, "but  
what if it does?"

"Well, it amounts to this," says  
Campbell. "I have here a notice  
to publish, calling for bids on the  
construction of a wharf at a little  
place called Hamalei, and as it is a  
document which has taxed my  
skill for nearly a year, during part of  
which time my office staff has also  
devoted hours of its valuable time,  
and as it has caused me no little  
embarrassment for the inhabitants  
of that island are entirely too in-  
quisitive, I am particularly  
anxious to give it as little further  
publicity as possible on the Gar-  
den Island."

"You certainly display excellent  
judgments," said the Bulletin man,  
"in selecting our advertising me-  
dium, as at present we are not con-  
ducting one of our famous contests  
and therefore the chance of any  
one on Kauai reading the ad. in  
the Bulletin is extremely small."  
—Curtain.

It all the county officials would co-  
operate with my department like the  
Sheriff of Kauai, illicit stills would more  
easily be discovered.—Collector Cottrell.

The difference in the article re-  
cently published in the Bulletin  
concerning Kauai's officials and  
their duties relative to blind pigs  
etc., and the statement of Collector  
Cottrell, lies in the fact that the  
latter knows whereof he speaks  
while the Bulletin doesn't.

The Holiday supply of  
Books, Fine Leather Goods,  
Xmas Paperies, Diaries and  
Calendars, "Character" Dress  
ed Kid, Unbreakable, Baby,  
Jointed, "Campbell Kid" and  
other Dolls and Doll sundries,  
Toys, Games and Blocks in  
variety, Choice Xmas and  
New Year Cards including  
Aloha season Greetings (to  
mail abroad) and other local  
products, with lots of other  
good things are to hand at

Thrum's Santa Claus  
Headquarters  
HONOLULU.

QUALITY not quantity being  
the feature of the above  
supply insures confidence, and  
suggests the desirability of  
early selections of orders  
which will have prompt at-  
tention.

Orders listed for the com-  
ing Hawaiian Annual, a spe-  
cially strong historic number,  
to issue about Dec. 15. Mail-  
ed to any address 70 cts.

California Feed Co.  
Dealers in  
HAY, BRAN, ROLLED BARLEY,  
OATS, WHEAT, MIDDINGS  
Sole agents for  
INTERNATIONAL STOCK AND  
POULTRY FOOD  
P. O. Box 152, Honolulu

Now Read the Ads

## Thanksgiving

will soon be here. Look now to your din-  
ing room wants. Our extensive line of  
dining room furniture will certainly appeal  
to your artistic taste.

Here you will find the very latest designs  
in Golden Oak, Early English, Fumed  
Oak and Mahogany, in suites and odd pieces.

### Dining Room Chairs

In wood, cane and upholstered seats, \$1.60 to \$15.00 each.

### Dining Tables

Round and square tops, five-leg and pedestal styles, \$7.50  
to \$125.00.

### Buffets and China Closets

\$25.00 to \$135.00.

### INSURE YOUR TABLE

from injury by heat and moisture by using a

### Peerless Asbestos Table Mat


Table Mats, Favorite Grade.		Luncheon Mats, Round or Oval	
45 in. round	\$4.50	5 in.	5 cts. each
48 in. round	5.00	6 1/2 in.	10 cts. each
54 in. round	5.50	8 1/2 in.	15 cts. each
60 in. round	6.50	10 in.	20 cts. each

**THE HOUSE OF QUALITY**

## J. HOPP & CO., Ltd.

185 King St., Honolulu

If you are athirst for  
a real good glass of  
beer, ask for



The Beer That's Brewed  
To Suit The Climate

You'll pronounce it  
the finest beer you  
ever drank. It's  
brewed especially  
for this climate.

## SACHS' STORE

For  
**CHRISTMAS SHOPPING**

Every steamer arriving in Honolulu is bringing new  
merchandise to our store. Chiffon and Net Dresses in the very  
latest style, Evening Coats, Shirtwaists and Tailored Suits.

A handsome hand-bag is a most appropriate gift for a lady.  
We have a very choice selection to offer—Beaded bags, Irish  
Crochet, Velvet and Leather bags in the latest styles.

Pure Irish Linen—soft bleached and hand-embroidered  
initials six in a box at \$2.00 and \$2.50 per box.

### ONYX HOSIERY

Ladies stockings in lisle and silk—hand embroidered Black  
Silk Stockings at \$3.50 a pair.

Madeira embroidered linen centerpieces—plate and tumbler  
doilies to match—sold in sets and separate dozens—also in  
venise and cluny. Mail orders entrusted to our care will receive  
prompt and careful attention. Instructions as to shipping,  
mailing and marking of packages will be attended to in such a  
way that there will be no disappointment.

## SACHS DRY GOODS CO.



## THE HIGH IDEALS OF 70 YEARS TAKE DEFINITE FORM IN THE 1911 Knox Hats

---finest we've ever asked you to look at---  
and that's saying a great deal.

There's not a break in the chain of shapes  
and dimensions covering a range so wide  
that no man can say: "you haven't just  
what I wanted."

Knox Soft Hats,	\$5.00	BEACON HATS
Knox Stiff Hats,	\$5.00	(Made by Knox)
Knox Silk Hats,	\$8.00	\$3.50

## Silva's Toggery, Ltd.

HONOLULU

## Waimea Stables

LIMITED

Up-to-date Livery, Draying and Boarding Stable and Auto-  
Livery Business.

### AUTOMOBILE STAGE-LINE

BETWEEN LIHUE and KEKAHA

Leaving Lihue every Monday, Wednesday and Friday.  
Leaving Kekaha every Tuesday, Thursday and Saturday.

ARRIVING AT THEIR DESTINATION IN THREE HOURS

W. WEBER Manager.

Telephone 4 W Waimea P. O. Box 48

OUR ASSORTMENT  
OF  
**Christmas Gifts**  
INCLUDES THE BEST  
**TOILET REQUISITES**  
BENSON, SMITH & CO.  
Fort and Hotel Sts. Honolulu

## THE REXALL STORE

Agent  
**Alexander Young Hotel Laundry**

We do first class work on all dry clean-  
ing and fancy dresses. Give us a trial.

OFFICE TERRITORIAL MESSENGER SERVICE

Honolulu.



## The HAWAIIAN ELECTRIC CO. LIMITED

Honolulu

AGENTS FOR  
**WESTINGHOUSE ELECTRIC &  
MANUFACTURING CO., LTD.**

AND  
**PELTON WATER WHEEL CO.**

Electrical Supplies and Repairs of All  
Kinds are Handled.

**Hanalei Items**

(Continued from page 1)  
goes on to Kipahulu, Maui, to superintend the manufacture of sugar.

On Thanksgiving day services were held in the church both in the afternoon and evening. In the afternoon an interesting Thanksgiving program was carried out at the Junior Christian Endeavor meeting.

Hans H. Gittel, representing Hofschlaeger & Co., was at Hanalei last week on his farewell trip as a traveling salesman. He has been traveling for the past eight years in the interest of the company, and will now enter the firm as assistant business manager. Mr. Jacobs will take his place on the road.

The second and third grades of the Hanalei school have caught the spirit of gardening, and for some weeks past have been preparing beds for seeding. A week ago last Friday the third grade boys planted their garden, and last week the second grade boys got their seeds all into the ground. The first garden planted is doing as well as could be expected; the beans are blossoming, and some of the radishes are large enough for the market.

Monday night the Phillippinos gave another exhibition in the Chinese club house, and the performance was even better than the previous one. The show was well attended each night, especially by the school boys, who were not only entertained by the acrobats but were instructed as well, and the free shows they have been giving on the school grounds during the week, and the way they made their Indians and Pilgrims dance the rope and cut other didos, when illustrating their Thanksgiving story, would indicate that they are apt scholars in other things as well as their books.

**Woman's Suffrage**

The adoption of woman suffrage in California is likely to disturb the balance of power throughout the entire United States. There are now six states in the union in which equal suffrage prevails. This provision has added to the vote men cast, votes by women as follows: California, 500,000; Colorado, 160,000; Idaho, 48,000; Utah, 65,000; Washington, 120,000; Wyoming, 35,000; total 928,000.

This vote of nearly 1,000,000 makes the result in the presidential election very uncertain. It is seldom that any president receives a plurality as great as this. If the women should unite on one candidate, or if they should throw their vote almost solidly to the Socialists, there would be such a tremendous political change as would amount practically to a revolution.

Although the Socialist party is the only one in the United States that has persistently from the first declared for equal suffrage for women, suffrage is coming by leaps and bounds. There are now only nineteen states in the union which have no form of suffrage for women, although some cities in some of these states have that suffrage.

Kentucky was the first state in the country to give women limited suffrage; that was in 1836. Now all the states in the union, except Nevada, Texas, Missouri, Arkansas, Mississippi, Indiana, Tennessee, Alabama, Florida, Georgia, South Carolina, North Carolina, Virginia, Maryland, Pennsylvania, Rhode Island and Maine have some of woman suffrage. In addition, limited suffrage is granted in the Isle of Man, New Zealand, South and West Australia, New South Wales, Tasmania, Queensland, Finland, Norway and Iceland.

It is estimated that the total number of women in the world who now enjoy a measure of suffrage is 15,514,647. This is bigger than any party in any country of the

**Good Road Stories**

A couple of good-roads stories are going the rounds of the Pacific Coast at present, which are opportune, in view of the fact that everybody in this section of the country is interested in the good roads movement.

John Doe was on his road home. His two-horse rig was plugging along with its load. The barn was only a quarter of a mile off, when flop goes the front wheel into a big bog hole and John went off his seat into the mud. Spattered with mud, and the axle of his wagon broken, John reached home in due time, and after cooling down sufficiently, wrote his opinion of Supervisors, in general, to the county clerk, and asked when the board was going to get busy and put some gravel on his road.

Two or three days afterwards, with no wagon, John had to saddle one of the horses in order to go to town. Returning homewards, the horse stepped into a similar hole and John left the saddle for the more stable ground. Arriving home he wrote a second letter to the supervisors with stronger opinions on the condition of roads, only this time he did not want gravel on the road at all. He wanted it upholstered.

This is a Mexican good road story that may have a local flavor: The American came back to the states, a total wreck from its efforts to construct a main highway from one town to another. Said he, "They seem to have time to burn all the time down there, yet nothing is done and no one can get anything done." The fial shock came when he tried to argue the subject with a native official.

"How long does it take you to bring a load into town?"

"About three days, senor."

"Well, if you had a good road like I propose, you could do it in less than a day."

"Si, senor, but what would we do with those other two days?"

world. Woman suffrage is coming, and Socialism, because of being the only party in America that advocates it, will receive a strong vote from the women of America.

# Grand Opening Tomorrow

at

## Y. Shido's Big Store

Kapaa

# Christmas Packages

should be done up neatly---and to do them up neatly you will need a supply of

## TISSUE PAPER

We have in stock a quantity of pure white tissue and will be pleased to supply you with any quantity.

**5 sheets for 5c**

Make that school boy or girl a Christmas present of one of our extremely neat **COMPOSITION BOOKS AND SPELLING TABLETS**. These books are made of a good quality of bond paper and are very popular with the children.

The Composition Book has a place on the front cover for the name and grade of the student, and on the back a map of the Hawaiian Islands. On the inside of the back cover there is printed the tables of multiplication and the different measures.

The Spelling Tablet has each page numbered from 1 to 25, with blanks for the number of correct and misspelled words. Each page is perforated at the top so it can be detached when full. Every child in the county should have these books.

Price 5c each.

We pay freight on orders for 100 or more books.

## Garden Island Office

**THE FIRST NATIONAL BANK OF HAWAII**  
AT HONOLULU

Capital \$500,000 Surplus \$175,000

**DIRECTORATE:**

Cecil Brown, Pres.; M. P. Robinson, Vice-pres.; L. T. Peck, Cashier.  
Geo. N. Wilcox, Geo. P. Castle, H. M. von Holt.  
Kauai Accounts Invited

**Bishop & Co. BANKERS**

Established 1859  
HONOLULU, HILO, WAIMEA, KAUAI.

Transacts a General Banking and Exchange Business Commercial and Travelers' Letters of Credit issued available in all principal cities of the world.

Interest allowed at the rate of 4 1/2 per cent per annum on Savings Bank deposits.

Interest paid on Time Deposits at the following rates:  
3 Months 3 per cent per annum.  
6 Months 3 1/2 per cent per annum.  
12 Months 4 per cent per annum.

All business entrusted by customers on other islands receives careful and prompt attention.

**Koloa Plantation Store**

Wholesale and Retail Groceries. Dry Goods of all Descriptions, General Plantation Supplies.

**HARRY ARMITAGE**

Stock and Bond Broker  
Member Honolulu Stock and Bond Exchange

**In Campbell Block HONOLULU**

The GARDEN ISLAND has a large supply of spelling blanks which we are selling at five cents each. These books have a blank space in which to write your name, class and date. They have also lines at the bottom for filling in the number of correct and misspelled words while on the back of each page are lines upon which are to be written all the misspelled words. Ring up 24L.

**T. E. DAVIS & CO. HONOLULU, T. H.**

Blacksmith supplies, Wagons, Buggies, Harness, Bicycle Sundries.  
Prompt and careful attention given to mail orders.

**Agents For Kauai, In The Harrison Mutual Association**

J. M. Kaneakua on membership, Lihue  
W. H. Klee, Merchandise, Lihue  
Rev. J. A. Akina membership, Waimea  
C. B. Hofgaard & Co. Ltd., Merchandise, Waimea

**The Lihue Store Display**

One of the most fascinating places on Kauai just now, is the Lihue Store, dressed in its Christmas holiday attire. Beautiful show cases filled with pretty Christmas presents, busy clerks (but not too much so to be extremely polite) and an artistically decorated Christmas tree over which Santa Claus himself stands guard, combine to impress one with the fact that Christmas is nearing.

The management has very thoughtfully placed the display in the most convenient manner possible for his patrons. To the right as one enters, a beautiful, extensive line of pictures and calendars are prettily displayed. Directly in the center, stands for new glass show cases which contain an excellent assortment of specially selected Christmas goods four special tastes. Toward the rear, and to the left, stands a magnificent glass show case wherein is displayed an exquisite line of silverware, cut glass and valuable China.

Through a door to the right, one passes into the toy department where one of the greatest assortment of toys on the island is receiving the scrutiny of scores of happy little souls.

Mrs. A. Klussman, wife of Luna Klussman of the Lihue Plantation, returned Wednesday from a visit among friends in Honolulu.

**Marine Intelligence**

HAWAIIAN ISLANDS—Main Island—N'ly side—Wailuku Coast—Spartan Reef Bell Buoy, 1, out of position, 1200 feet to windward of Kahului Breakwater, will be replaced as soon as practicable.

List of Buoys, etc., 12th Sub-district, 1909, p. 13. C. & G. S. Chart, 4116.

By order of the Commission of Lighthouses:

LEO SAHM, Lieutenant, U. S. N., Inspector, 19th L. H. District.

**Of Course you'll read the STAR sometime, -- why not NOW?**

When your Subscription may help a friend win a valuable Prize?

Here's the list of Kauai's workers in the STAR'S Great \$3000 PRIZE CONTEST—

- Miss Virginia Silva, Waimea.
- Henry G. Sheldon, Kealia.
- Miss Adeline Corea, Lihue.
- Miss Mabel Hastie, Eleele.
- Geo. Akana, Kilauea.
- Ed. Deverill, Makaweli.
- Harold Morgan, Lihue.
- Miss Stella Padgett, Makaweli.
- Miss Ethel Edwards, Kilauea.
- Miss Meta Reidell, Hanalei.
- Miss Mary Huddy, Kealia.
- Miss Sato, Koloa.
- Miss Stewart, Kalaheo.
- Richard Oliver, Waimea.
- D. K. Sheldon, Waimea.
- C. Achong Ai, Lihue.
- Miss Agnes Scharsch, Kealia.
- H. Wilgrot, Waimea.

**It's a business proposition YOU need the STAR**

It's worth what it costs. Our Contestants are our Agents who want to sell it to you. If you don't know the GREATER STAR they will be glad to make you acquainted.

A. G. Hime, head book-keeper for Kekaha, returned from a business trip to the city on the Kinau,

**YELLOW FEVER NEAR KAUAI?**

It was early morn on the good ship Kokua, Captain Swanson, and as she rode the mighty billows which separated her from the Garden Island, she glided along with the speed of an Atlantic greyhound. The doughty captain was busily pacing the bridge in a manner which at once indicated that he had received a premonition and that the mysterious enveloped his thoughts.

It was plainly evident to the passengers that he had scented trouble and many were the surmises among them on that memorable morning. "The captain may be expecting the Japane fleet," said a military man. "Or, a Chinese revolution," chimed in another, while the third who had been deeply engrossed in a treatise on "Small Farming," by one Starret, raised his eyes until they met the captain's gaze and noted therein the positive doom of the ship. "Captain" said he, "how far is it to land?" "Heaven only knows, my man," sighed the captain, "and what's more the ship's a loo-doo. Why man, can't you see the ship's running away? She's making at least six knots per hour, and if she keeps up this speed, we're liable to land where your vegetable seeds will suffer from excessive heat."

The captain had not said so much at one time in all his forty years on the "flag ship" and being a very modest man felt so much grieved at himself for such an outburst of prattle that for a short time he disappeared from the bridge. A streak of grey on the eastern horizon greeted his watchful eye when he resumed his position on the bridge and taking up his usual "pace" he became wrapt in a deep reminiscent mood when finally "Ship Ahoy!" came from the watch. The captain with the aid of his glass discerned at some distance to the left, a large dark object which loomed out of the water and gradually assumed the appearance of a wrecked vessel.

Feeling that his premonition was about to materialize, he pointed his vessel full steam ahead towards the object. "Could it be that Hanalei wharf?" thought he.

But now the good ship had shortened the distance so much as to allow a better view of the situation. Taking another look, he discovered a number of small red flags fluttering in the breeze. "Yes," thought the brave captain, "it must be a wreck, else why the flags of distress?" Those were certainly trying moments for the skipper as well as for the now excited crew and passengers who had crowded about, eager to be in on the finish.

The finish came however, sooner than expected, for old Sol who had apparently been awakened by the excitement, came quietly out of the watery horizon, and after a blink or so, smiled on the "wreck," which proved to be nothing less than a large shipment of Honolulu bananas.

"How about the red flags? Oh," said the captain, "an investigation proved that each had been held by yellow fever mosquitos. They had evidently been adrift for sometime and were in their death struggles when discovered their distress signal." "But how did you know they were yellow fever mosquitos," asked the curious man. "Couldn't have made a mistake," replied the captain, "for one of them possessed a gold watch with Curries monogram on it, another held a photograph of Dr. Ramus in his deathly grasp, while another held injunction papers. Nope! you can't fool me, they were the real things."

The Garden Island \$2.50

**Bro. Benjamin Compound Herbal**  
Stomach, Liver, Kidney and Bladder Remedy.  
**BLOOD PURIFIER**  
THE WORDS BRO. BENJAMIN AND THIS PICTURE MUST BE ON EVERY PACKAGE



TRADE MARK  
OF THE  
BRO. BENJAMIN REMEDY CO  
REG. U. S. PAT. OFFICE

Cures Indigestion, Dyspepsia, Sour Stomach, Lack of Appetite, Heart Fluttering, Gas and Wind on Stomach, Bloating Feeling, Pains in Stomach after Eating, Sick Headache, Diarrhea, Colic, Cholera, Biliousness, La Grippe, Dengue Fever, Chills and Fever, Jaundice, Backache, Dropsy, Gravel, Incurable Bright's Disease, Bladder Trouble, Neuritis, Rheumatism, Impure Blood, Catarrh, Scalding, Itchings, Nervous Disorders, Sleeplessness, Removes Worms, Cures Constipation, Anemic Condition.  
A Great Tonic for Women.  
\$1.00 per bottle; 3 for \$2.50, 6 for \$5.00  
Nepcos-Bro. Benjamin Compound Herbal contains no alcohol. Therefore the taste of some bottles may vary slightly.  
All Plantation Stores and Dealers Honolulu Drug Co.

**FACTS FOR TOURISTS**

**Distance To Points Of Interest From Lihue**

To	MILES	To	MILES
Nawiliwili	1	Hanalei	34
Koloa	11	Wainiha	40
Spout'g Horn	13	Haena	43
Eleele	20	Kalalau	60
Hanapepe	21	From Waimea P	
Makaweli	25	O to Olokele	
Waimea	28	Ditch	6
Kekaha	33	End of Canyon Road	4
Nohili	43	Hanapepe fall	16
Hanamaulu	2	Puu Kapele	11
Wailua River	6	From Lihue to	
Kapua landing	9	Wailua Falls	4
Kealia	11	From Hanalei to	
Anahola	15	Wainiha P. H.	7
Kilauea	24	Haena caves	11
Kilauea landing	26	Kalalau	72

To	MILES
Nawiliwili	98
Koloa	102
Waimea	120
Hanalei	125

**Some Descriptive Pointers**

**Waimea—The Canyon**, wonderful scenic masterpiece, easily accessible on horseback.

**The Olokele Ditch**, great engineering feat amid cliffs and crags of exquisite beauty, accessible by carriage. **The Russian Fort**, on the bluff overlooking the harbor, an interesting relic. **The Hanapepe Falls**, "Manawaiopuna," at the head of the Hanapepe canyon—carriages go half-way, thence by easy trail on horseback. **The Barking Sands** at Nohili, an interesting freak of nature, excellent roads for carriage.

**The Marine Drive, Boating** on the Wailua river.

**The Pole-line Trail**, most interesting ride or tramp into the tropical forests.

**Hanalei**—The most wonderful coloring in the world. Hawaiian scenery includes all the colors of the rainbow, and the rainbow as well.

**Splendid sea bathing**. Driving and riding trips to **Lumahai beach surf**. **Wainiha power house** and up the canyon. **THREE LARGE HAENA caves**. **H nakapiai**, a most satisfactory tramp.

**HOTELS**

Simple accommodations, but good food is the rule in all country districts. Hotels are to be found at Lihue, Waimea, and Hanalei. Board may be obtained at almost any village on inquiry.

**Lihue**.—Hotel Fairview; W. H. Rice, Jr., prop. Rates, \$3.00 per day, or by agreement.

**Waimea**.—Bay View Hotel; C. W. Spitz, prop. Rates, \$3.00 per day.

**Hanalei**.—Deverill's Hotel, Mrs. S. B. Deverill, prop. Rooms for 15. Rates, \$3.00 per day, \$65.00 per month, or by agreement.  
**Lihue**.—The Wailua Falls, up

**Automobile Batteries**  
The Best Ignition Batteries on the Market  
In Any Quantity  
Electrical Supplies of All Kinds  
**Honolulu Electric Co., Ltd.**  
HONOLULU

TELEPHONE 642 P. O. Box 54  
**HONOLULU SCRAP IRON CO.**  
C. H. BROWN, Manager  
Dealer in  
SCRAP IRON, BRASS, COPPER, AND SECOND-HAND MACHINERY  
ALEKAUULA ST., NEAR ELECTRIC POWER STATION.

**Coyne Furniture Company, Limited**  
Alexander Young Building, Honolulu  
FURNITURE OF ALL DESCRIPTIONS  
Bureaus, Chiffoniers, Sideboards, Box Couches, Mattresses, Etc.  
UPOLSTERING AND REPAIRING

**TRENT TRUST CO., Ltd.**  
HONOLULU  
Member Honolulu Stock and Bond Exchange  
**Real Estate, Insurance, Trusts**  
WANTED—Two or three first-class agents on Kauai.

**S & W**  
The label that has gained the confidence of the discriminating consumer.  
Fruits, Vegetables, Fish, Catsup, Sauces, Olives, Preserves, Jellies and Sap syrup.  
**S & W**  
**TABLE DELICACIES**  
YOUR DEALER WILL SUPPLY YOU

**HOTEL BAY VIEW**  
WAIMEA, KAUAI  
The Commercial Man's Favorite Hostlery  
DICK OLIVER, Manager

**The MAJESTIC**  
Cor. Fort & Ber. Sts., Honolulu  
Rooms by the day, week or month—single or in suite.  
REASONABLE RATES  
OPEN DAY and NIGHT  
Kauai trade solicited  
MRS. C. A. BLAISDELL, Proprietor

**THE BANK OF HAWAII, Limited**  
LIHUE BRANCH  
LIHUE, KAUAI, HAWAII  
Deposits are received subject to check. Certificates of deposit issued payable on demand. Loans made on approved security.  
DRAFTS DRAWN ON  
Honolulu Bremen  
San Francisco Berlin  
New York Hong Kong  
London Yokohama  
SAVINGS DEPARTMENT  
Interest paid on Savings Deposits. 4 1/2 per cent on ordinary and 4 per cent on Term Deposits. Ordinary Savings Deposits will be received up to \$2,500 in any one account.  
SAFE DEPOSIT BOXES FOR RENT \$2 AND \$3 A YEAR

per and lower, both repay a visit. **Kilohana**, the extinct crater—splendid panorama of plains, mountains and sea.  
D. B. Murdock, was an arrival on Wednesday's Kinau.  
It is reported that deer is plentiful on Molokai this year and many have been shot. There are quite a number of deers on Kauai too, but the boys don't kill 'em. They marry 'em.  
WANTED: a bright boy to learn the printing trade. Call at this office.

## Is Bovine Tuberculosis Given to Man?

Two reasons have been urged for combating tuberculosis in cattle. The veterinarian has urged the necessity of eliminating the disease from infected herds because experience has shown that in the long run such herds will prove unprofitable. The sanitarian and physician have claimed that the disease might be transmitted to man through the milk or meat, and have sought to eliminate the possibility of transfer. The views of both groups of men have been vigorously opposed by many stock farmers and dairymen, who have contended that the transmission of the disease was not proved. The past ten years have been a period of contention, but it may truthfully be said that at present we are in a far better position to judge than ever before. Is there any real danger of man contracting the disease from cattle? Does the same germ cause the disease in both cow and man?

When Dr. Robert Koch, the great German bacteriologist, in 1883 first described the germs of tuberculosis, he regarded those from cattle and from man as being the same, and supposed that the diseases were identical. For many years this was accepted as truth, and elaborate systems of meat and milk inspection were instituted in Europe and America. About 1896 an American bacteriologist, Dr. Theobald Smith caused a little flurry by announcing as a result of careful study that he believed that the bacteria from cattle differed from those from man sufficiently to enable one to tell them apart when they were growing in the laboratory under suitable conditions, and even to see differences under the microscope. The

bovine bacteria he found to be a little shorter and thicker than those from cases of consumption in man. Dr. Koch saw the importance of these statements and carried on a series of experiments and observations. As a result of these in the year 1901 he startled the medical world by declaring that the disease could not be transmitted from man to cattle, and that probably the reverse was also true, that is, man could not be infected from cattle; at any rate, the number of infections from such a source was so small as to be wholly negligible. It may be well to examine his reasons for such conclusions.

In the first place, he was able to demonstrate tubercle bacteria in the milk supplies of several German cities. He asked, why do we have so few cases of tuberculosis in children in which the bowels are affected? Here was ample opportunity for the children to become infected, but statistics failed to reveal that any considerable proportion ever had the disease. He argued further that tuberculosis of the lungs, or consumption, was far more common than diseases of the intestines. Why should this be so if the bacteria infected through the intestinal tract? He also emphasized the fact that the injection of bacteria from human cases into calves, rarely if ever produced the disease. While not proof, this he believed to be good circumstantial evidence pointing to differences between the diseases and confirmed him in the belief that the germs from cattle could not infect man. He completely substantiated Dr. Smith's findings relative to differences in the microscopic appearances of the organisms from the two sources.

It seemed certainly at first sight that he had made out a very strong case. The acceptance of these statements meant a complete re-

## Tribune Offers Pope A Square Deal

The Tribune is sorry to report the fact that it has been asked by a great number of people to "keep on roasting Pope." We are sorry that we have been thus misunderstood that it is thought this paper is after the scalp of the superintendent of public instruction. While it is gratifying to see that so many people in Hawaii, as well as the papers on Maui and Kauai, are taking an interest in such rottenness in the school administration as

we have pointed out, we wish to repeat that this has not been a campaign primarily to oust Pope. Pope, as we have learned, is not infallible, nor is he always truthful, nor does he obey the rules which he should enforce. But Pope is merely an incident, a detail, he may reform, perhaps. The main thing is to see to it that the present rules are carried out and that such new rules are made as will tend to do away with the injustice and favoritism which is now rife in the department.

In this connection we are indebted to The Herald for a text. That paper says that it "has no sympathy for attacks made upon the Department of Public Instruction for employing malihini teachers, if those attacks are made simply on the ground that they are malihinis and not kamaainas." Passing lightly over the fact that it is but natural for one malihini to defend others, we go on to state that one thing the Tribune does condemn Pope for is for employing these just because they are malihinis.

The Territory is paying big sums annually for the support of a normal school and for the College of Hawaii. Presumably these institutions should turn out teachers with sufficient qualifications to fill the comparatively simple positions in the public school system. If they do provide qualified teachers, such should be given the first chance for the good positions here. The department should send abroad for teachers only where it could find no competent pedagogues in the Islands. The best positions should be filled by promotion, and not by importation, provided always that the local teachers are competent. The normal school has been running for many years, the College of Hawaii has been open for several years. If, particularly the former, these institutions

cannot supply competent teachers, let us then close them, save the money spent on them and let Pope send to Timbuktoo, if he pleases.

We may add that we sincerely appreciate The Herald's suggestion that Pope be forced to reply to the direct charges made against him. That is all we asked.

To be absolutely fair, the Tribune offers to give Mr. Pope all the space he wants in this paper, and to apologize publicly in case he can prove that we were wrong in saying:

1. That he told an untruth when he said (if correctly reported in the Advertiser) that "supervising principals are not appointed on certificates at all."

2. That he was violating the rules of his department by appointing as supervising principals persons who did not have the qualifications required by the rules.

Can Pope possibly have a fairer show for proving himself right and his critics wrong? But can he do it?

Continued next week.

## Educator \$4 Shoes



Are a treat for the feet. Made on a broad toe last with room for all five toes. This gives perfect rest for the foot at all times.

They come in Black Gun Metal, Calf, Vici Kid and Tan Russia, both in high and low cuts.

When ordering, add 5c to cover freight.

## Manufacturers' Shoe Co.,

1051 FORT STREET

LIMITED

HONOLULU

## Danger From Heedless Auto Driving

The Kapaia hill is becoming a dangerous place for pedestrians and drivers of vehicles, through the thoughtlessness of "speed fiends," who seem to think, that the power to stop their car suddenly, gives them ample grounds for exceeding the speed limit. We have a law which should be adhered to by owners of palatial cars with the same degree of consciousness as owners of small cars. The man who wantonly disregards such laws is a menace to public safety. It doesn't matter how easily a car is controlled nor what knowledge the driver has of his car, he has absolutely no right to disregard the law by going entirely contrary to its dictations. The Kapaia hill—on the Lihue side—contains several sharp curves and the fool-hardiness of some of our wise guineas some day, will likely be responsible for some disastrous smash-up.

# Christmas Packages

should be done up neatly---and to do them up neatly you will need a supply of

## TISSUE PAPER

We have in stock a quantity of pure white tissue and will be pleased to supply you with any quantity.

5 sheets for 5c

Make that school boy or girl a Christmas present of one of our extremely neat COMPOSITION BOOKS AND SPELLING TABLETS. These books are made of a good quality of bond paper and are very popular with the children.

The Composition Book has a place on the front cover for the name and grade of the student, and on the back a map of the Hawaiian Islands. On the inside of the back cover there is printed the tables of multiplication and the different measures.

The Spelling Tablet has each page numbered from 1 to 25, with blanks for the number of correct and misspelled words. Each page is perforated at the top so it can be detached when full. Every child in the county should have these books.

Price 5c each.

We pay freight on orders for 100 or more books.

Garden Island Office

**EXCELSIOR DIARIES 1912**

Office and pocket diaries of all sizes bound in cloth or leather. Mail orders promptly filled.

**Hawaiian News Co., Ltd.**  
Young Bldg. Honolulu

**JAS. F. MORGAN**

Stocks, Bonds and Real Estate

No. 857 Kaahumanu Street

WHEN IN NEED OF

**paper**

Paper Bags, Twines, Stationery

HONOLULU'S LARGEST PAPER HOUSE

AMERICAN HAWAIIAN PAPER & SUPPLY CO., LTD.  
Fort and Queen Streets

GEO. G. GUILD, Vice-Pres & Mgr.

**HOCK SHEE**

TAILOR  
Four years with W. Ahana, Honolulu, is now located at  
**KAPAIA STORE**  
Garnments cleaned and pressed  
Latest prevailing fashions.  
Workmanship Guaranteed

**Oceanic Steamship Co's. Time-table**

The favorite S. S. SIERRA, 10,000 tons displacement, sails from Honolulu December 27, Jan. 17 19-12. First class single to San Francisco, \$65; round trip, \$110.

**C. Brewer & Co. Lt**  
GENERAL AGENTS

**Hanaiei Items**

The "S. S. Noeau," from Honolulu, arrived Thursday morning, bringing a general cargo of freight for the Hanaiei side. She also brought a good sized foreign mail.

Several tickets were sold at Hanaiei for the Haena concert which was given Saturday night by the Haena School for the benefit of the basket ball team.

Mr. and Mrs. Menefoglio and Mr. Giacomette from Wainiha, visited the Maikes Saturday.

Mr. and Mrs. Craymer, took the Noeau last week for Honolulu. Mr. Graymer was head-luna for the Kilanea Plantation.

Mrs. White of Kilanea, came over Sunday and took her mother, Mrs. Ridel, home with her to visit a few days with Mrs. White's family.

Chew Wai is building a new tailor shop not far from Mr. Werner's. When the building is completed he is going to have a dressmaker come from Honolulu to help with the dressmaking.

Mr. and Mrs. Clapper of Kealia, were guests of the Deverill Hotel from Friday to Sunday afternoon.

The flag has been waving several times over the Hanaiei court house during the past week. The case tried Saturday was for larceny.

Mr. Brodie, Supervising Principal of Kanaia, spent Monday, December 4, with the Hanaiei School. Owing to the bad condition of the roads, he was unable to go farther in his automobile, so he procured a horse and buggy for the trip next day to Haena.

**China's Throne in State of Collapse**

The latest advices from China tell of the complete abdication of the throne, the power of authority being placed in the keeping of two nobles who were nominated by the general assembly.

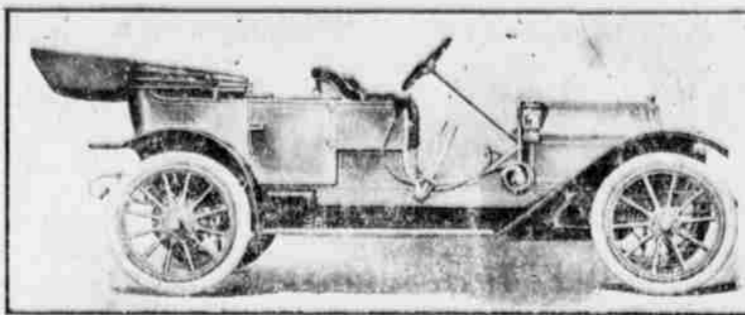
That the Prince Regent has been provided for, is indicated by the annual pension which has been allowed him, amounting to \$32,650 per annum.

The "S. S. Honolulu," will arrive in Port Allen the latter part of this week.

For some time the people of Hanaiei have been planning for a new church, to be erected near the old one. Last week the Noeau brought the first consignment of lumber for the new building.

After the new church, the next thing in order will be the much-needed wharf at Hanaiei. When the last shipment of rice was made, not more than ten bags of rice could be carried at one time in the small boats, as the sea was running high on the beach and the boats had to come into the river over the sand bar.

On Friday, December 1, a party of teachers, Miss May Akeo, Miss Amy Wong, Miss Alice Harper, all of the Kapaa School, and Miss Stuart of the Kalaheo School, started on an excursion around the island in an automobile. As they passed through Hanaiei they called on Mrs. Ahi and Mrs. Newman, and visited the school house and grounds. In the afternoon they went to see the Haena caves.



**The Hudson for 1911**

**BODYS YLES AND PRICES**

Roadster, two passenger, 25 gal. tank, \$1000  
Roadster, three passenger, single rumble Seat, \$1000  
Roadster, four passenger, double rumble Seat, \$1025

**Horsepower**—33.  
**Wheel Base**—100 inches.  
**Tires**—32 x 3 1/2 inches, front and rear.  
**Weight**—1800 pounds.  
**Motor**—Renault type, 4-cylinder, cast en bloc, 3 3/4-inch bore and 4 1/2-inch stroke.  
**Transmission**—Selective sliding gear type. Three speeds forward and reverse.  
**Fan Back of Radiator Cooling System**—Forced circulation splash system, vertical tube radiator, centrifugal water pump.  
**Axles**—Semi-floating rear; I-Beam front.  
**Springs**—Semi and three-quarter elliptic front and rear respectively.  
**Gasoline Capacity**—Ten gallons.  
**Water Capacity**—Four gallons.  
**Control**—Strictly standard and internal; secured to rear wheels.  
**Clutch**—Leather-faced cone with slip springs under leather.

**Bearings**—Front wheels; large size, ball type. Rear wheels; roller, with ball thrusts.  
**Frame**—Pressed steel; best open hearth stock; drop sub-frame, to which transmission and motor are secured.  
**Radiator**—Extra large; vertical tubes; horizontal fins; very efficient.  
**Dash**—Rich mahogany, with coil box to match. Protected on edges with brass moulding, channeled out to the fit over edges of the woodwork, providing protection from the weather.  
**Equipment**—Two gas head lights; generator; two side oil lamps; tail lamps; horn; full set of tools and jack.  
**Runabout**—Price \$1000 F. O. B. Detroit. Price \$1350 F. O. B. Honolulu with top, glass front and Pres O. Lite tank.  
**Touring Car**—Price \$1600 F. O. B. Honolulu including top, glass front and Pres O. Lite tank.

**ASSOCIATED GARAGE, LTD.,** Frank E. Howes, Manager HONOLULU

**Here and There**

Paul Schmidt, one of Hackfeld's popular traveling men, came up Wednesday morning.

M. Andrade, with Silva's Toggery, is making his regular call on the Kanaian merchants.

A. P. Robinson, returned from Honolulu Wednesday.

Supervisor W. D. McBryde, was a Wednesday arrival from Honolulu where he had been on a brief business trip.

Judge C. S. Dole, who had made a trip to Honolulu chiefly for the purpose of greeting his uncle and aunt on their return from abroad, returned on the Kinau.

County Attorney Sam Kaeo, is back from Honolulu, having been down on business connected county affairs in general.

Miss Mahlum, was an arriving passenger on Wednesday's boat.

Hon. J. W. Sheldon of Waimea, was a county seat visitor last Thursday.

M. Jardin, book-keeper for the Elele Store, was here Thursday appearing as plaintiff in a civil case before Judge Hardy's court. Supervising Principal H. H. Brodie, spent last week among the schools of Lihue and the Hanaiei District.

Both Lihue and Hanamaulu Plantations began grinding last week, the former on Friday, the latter on Thursday.

Gunther's celebrated Chicago Candies, Home-made Chocolates and Candies. Wholesale and retail. Palm Cafe, 116 So. Hotel St. Telephone 2011. Honolulu.

Advices from Manila are to the effect that the Moros are again on the war-path, a clash having occurred between the government troops and the Moros on the 16th, inst. which resulted in the death of twenty Moros. It is thought that the up-rising will be easily put down.

**MISSOURI FIGHTS TUBERCULOSIS**

Jefferson City Mo. Nov., 13.—At the meeting here to-day of the State Anti-tuberculosis association it was decided to attempt to raise \$100,000 or more to carry on its work in Missouri next year. The association now owes about \$100.

Governor Hadley in an address before the meeting said that money is needed for doing effective work.

Dr. E. W. Schauffer, chairman of the board of managers of the state tuberculosis sanitarium, said that with \$1,200 appropriated by the legislature last winter for educational work upon the subject of tuberculosis a booklet has been placed in the hands of every school-teacher in Missouri and that leaflets would be given to every child.



**The Talk of the Town**



Our line of smart new Regal Shoe styles has won a lot of praise among the best-dressed men in town. These new Regal models are smarter than ever, and they show genuine custom style in every line and curve.

**REGAL SHOES**

Well-known New York and London custom bootmakers designed the models from which every one of these Regal Styles is built. They have a distinctive custom appearance found in no other ready-to-wear shoes. Moreover, they are made in quarter-sizes, insuring you an exact fit and perfect comfort.

**REGAL SHOE STORE**

Honolulu

**ARTISTIC GIFTS FOR CHRISTMAS**

GIFTS FOR EVERYONE

EVERY YEAR, we make a special effort to have the largest and most attractive display of suitable gifts for Christmas Holiday trade on Kanaia.

This year we have so far, surpassed all previous efforts in this respect and can boast of the greatest collection of Christmas goods ever offered to the public.

**TOYS?**

OPEN SATURDAY NIGHTS

Why, bless the girls and boys, old Santa's home is right in our store. Bring the children in and let them get acquainted with the good old soul. He loves them all, and has everything their dear little hearts' desire.

DECEMBER 1911

SANTA'S BIG HOME

**HAWAIIAN SUGAR CO'S. MAKAWELI STORE**

**McChesney Coffee Co.**

16 MERCHANT STREET, HONOLULU

Coffee Roasters Exclusively

**LTD KONA COFFEE**

Green or Roasted. Any Quantity.

In bulk or packed in any style.

Coffee of 1908-9 Crop, or New Crop.

Try Us For Good Coffee

**KAMAAINA WRITES**

Dr. Ferd Goodfellow of Pierre, S. D., writes to the Hawaii Promotion Committee under date of November 11 in part as follows: "We have just passed through a pretty stiff storm and I am hankering for Hawaii. I shall certainly return to your paradise before many moons. Send me a big supply of folders. A number of my friends and neighbors are getting very much interested in Hawaii."—BURLETTIN.

**Curio Den**

1119 Fort Street, Honolulu

Has a fine line of Cut Glass. Hawaiian Scenes painted on China Always Popular Prices

The Garden Island \$2.50



**100 MEN WANTED**

On the island of Kauai, to wear **The Leader Clothing**. We sell the latest up-to-date goods at reasonable prices. And save you from 40 to 65 per cent or every suit prices from \$10 to \$25. Mail orders promptly attended to. Wanted parties to sell and represent our goods on the island of Kauai.

**THE LEADER CLOTHIERS**

FORT STREET, NEAR BERETANIA

**XMAS!**

**H**appy **G**ifts

**L**oads and loads of Xmas Goods have arrived at this store. From all points of the compass come most beautiful creations designed exclusively for our trade and manufactured under the personal supervision of Proprietor J. I. Silva who has been east especially for the purpose of procuring Christmas goods. Mr. Silva returns home tomorrow accompanied by an additional supply of the prettiest Christmas goods obtainable.

WATCH THIS SPACE NEXT WEEK

**Eleele Store**  
J. I. SILVA, Proprietor.



TRADE MARK REGISTERED  
**THE ANVIL**

Indicates a steel shod shoe for children. A substantial school shoe; a stylish well made dress shoe. High or low cut, Kid or Calf stock; button, one-strap, or lace. Steel shod anvil brand means "made to wear." Prices, in sizes 9 to 11, \$2.25 to \$2.50; in sizes 11 1-2 to 2, \$2.50 to \$3.00. Try a pair and prove what we contend.

**McINERNEY SHOE STORE**  
HONOLULU

**HONOLULU VULCANIZING WORKS**

V. V. NEWELL, Manager.  
Kapiolani Building, Honolulu.

Our shop employes only skilled workmen, is supplied with every modern appliance and is the only up-to-date vulcanizing plant in the Islands.

Our **RETREADING** is done by experienced men from reputable factories.

All We Ask Is A Trial      Kauai Orders Solicited

**Diamonds, Watches, Jewelry**  
and Musical Instruments

ON CREDIT. No security. Wear while paying. Kauai Trade solicited.

J. CARLO : : : Honolulu

**Kauai's Young People**

An Indian Story      Edited By Master Harrison Rice.

The children of every people in the world like to listen to stories told by their elders, and each race has its list of childhood tales. The following is often told to little Indian folks:

Mr. Deer and his tribe dwell in the woods. Mr. Antelope and his large family live on the plains. Both animals are great runners, and each one thinks himself the fleetest.

One day Mr. Antelope was walking along the plain just at the edge of the forest, when Mr. Deer happened to be walking in the woods near the plain, and they saw each other. "Good morning, neighbor Antelope," called out Mr. Deer. "Are your legs in good condition?"

"Good morning, good morning; yes I feel very well indeed this morning, Brother Deer," said Mr. Antelope. "The dew of the grass has bathed my legs, and I assure you that they feel very supple."

"Now that is good news," said the deer. "Would you like to take a little exercise? I can beat you from here to the lake." (The lake was at the other side of the wood.)

"No, you can not," said the antelope. "I'll give you my dew-claws if I do not beat you."

"That suits me," said the deer. The gray squirrel gave the starting signal by dropping a nut. Away they went.

The deer had one great advantage. He was used to running among bushes and trees, and knew how to avoid them. So he ran swiftly and soon reached the lake. But the antelope, accustomed to running only on the open plain, found the trees and bushes great hindrances; and, therefore, he failed to show his best speed. Hence he was not much surprised when, after having picked his way with considerable trouble through the thickets, he saw the deer waiting for him on the bank of the lake.

"Ah, brother!" said the deer, "you see you can not run so fast as I. You have lost your dew-class."

So it came that the antelope lost his dewclass, and has never had any since, while the deer has kept his.

Time passed by, and the antelope, who was not satisfied with the race, longed for another trial. He watched and watched at the edge of the wood, until one afternoon the deer came out. "Ah! Brother Deer," he exclaimed; "shall we try another race?"

"Of course I am willing," said the deer; "indeed, if I do not beat you again, I will give you my horns."

"Well, I am ready," said the antelope.

"Now," queried the deer, "where shall the race be run?"

"On this plain. We will run to yonder hillock," replied the antelope. "He who first stands upon its top wins the race."

The jaybird screamed for them as a signal to start, and then away they went. On the plain the antelope felt at home, and could do his best. He flew like the wind, and soon left the deer behind. Reaching the top of the little hill, he ate some of the grass, and was quietly chewing the cud when the deer came up. And from that day to this the deer loses his horns every year and has to grow a new pair.

**WHY MR. BILLY-GOAT'S TAIL IS SHORT**

"They tell me," remarked Mr. Rabbit suddenly, "that things have got to that pass in the country we came from that even Mr. Billy-Goat, who used to eat meat, has dwindled away in mind and body till he hangs around the stable doors and eats straw for a living. That's what Mr. Thimble-finger says, and he ought to know. I suppose Billy is still bob-tailed? I remember the very day he had his tail broken off."

"Tell us about it," remarked Buster John.

"Well, one Saturday afternoon Mr. Billy-Goat and Mr. Dog were walking arm in arm along the road, talking and laughing in a sociable way, when all of a sudden a big rain came up. Mr. Billy-Goat said he was mighty sorry he left his parasol at home, because the rain was apt to make his horns rust. Mr. Dog shook himself and said he didn't mind water, because when he gets wet the fleas quit biting.

"But Mr. Billy-Goat hurried on and Mr. Dog kept up with him until they came to Mr. Wolf's house, and they ran into the front porch for shelter. The door was shut tight, but Billy-Goat had on his high-heel shoes that day, and he made so much noise as he tramped about that Mr. Wolf opened his window and looked out. When he saw who it was, he cried out:

"Hallo! this is not a nice day to pay visits, but since you are here, you may as well come in out of the wet."

"But Mr. Dog shook his head and flirtd up dirt by scratching on the ground with his feet. He had smelt blood. Mr. Billy-Goat saw how Mr. Dog acted, and he was afraid to go in. So he shook his horns.

"You'd just as well come in and sit by the fire," said Mr. Wolf, unlatching the door.

But Mr. Dog and Mr. Billy-Goat thanked him kindly, and said they didn't want to carry mud into the house. They said they would just stand in the porch till the shower passed over. Then Mr. Wolf took down his fiddle, tuned it up and began to play. In his day and time few could beat him playing the fiddle. And this time he played his level best, for he knew if he could start Mr. Billy-Goat to dancing he'd have

**Holeproof Hose**

Guaranteed for Six Months  
Six Pair to the Box

Ladies' Lisle, in black, white and tan, \$3.00 box  
Children's Ribbed, black only, \$2 box  
Men's Cotton, black and tan, \$1.75 box  
Men's Lisle, black and tan, \$3 box  
Men's Cotton, white and assorted colors, \$2 box.

**B. F. Ehlers & Co.**

Sole Agents, Honolulu

Red Label  
**KAMEHAMEHA BRAND**

Pure Kona Coffee

Insist upon your grocer giving you this most delicious of Kona's Coffees. Its the kind that makes you want another cup.

Whole Roasted and Ground  
**H. Hackfeld & Co., Ltd.**

DISTRIBUTORS

**Lest We Forget**

For the best work and lowest prices call on or write the

**HONOLULU MONUMENT WORKS, LTD.**

P. O. Box 491

Honolulu, T. H.

**REACH**  
Baseball Goods

are sold by all the leading stores in Hawaii

**Theo. H. Davies & Co., Ltd.**

Sole Agents for the Territory of Hawaii

The Reach Cork Center Ball was the Official Ball of Worlds Series

REACH GOODS GUARANTEED

**CLEVELAND**

Twist Drills and Reamers

This drill is the only one made that has a flute of equal area flute to shank. The common-sense expansion reamer is simple, durable and substantial. Any defective tool will be replaced free of charge

**HONOLULU IRON WORK CO.**

AGENTS FOR THE HAWAIIAN ISLANDS

him for dinner.

"I don't see how," said Buster John.

"Well," exclaimed Mr. Rabbit, "if Mr. Billy-Goat began to dance near the edge of the porch that he would be likely to dance until the rain drifted in on his horns he got tired, and then it would be an easy matter for Mr. Wolf to outrun him."

"Of course," said Sweetest Susan.

"Well," Mr. Rabbit continued: "Mr. Wolf kept on playing the fiddle but Mr. Billy-Goat didn't dance. Not only that, he kept so near the edge of the porch that he would be likely to dance until the rain drifted in on his horns and ran down his long beard. But he kept his eye on Mr. Wolf. After playing the fiddle till he was tired, Mr. Wolf asked: (Continued next week.)"

# Have You Visited Our Store Lately?

If not, we invite you to come and see our **FINE DISPLAY OF CHRISTMAS GOODS**

which consists of the following: Japanese embroidered kimonos in silk and crape, emb. shawls, silk, kanka and cotton crape jackets, silk scarfs, baby kimono jackets, in silk and crape, embr. gauze table centers & doilies, satin embr. silk cushions, covers, embr. silk shirtwaist patterns, silk pincushions, embr. photo frames, etc.

Linen embr. centerpieces & doilies, bureau covers & scarfs, Japanese flower vases, fern dishes, jardiners, jars, etc.

An elegant line of Japanese lacquer ware such as: Trays, Glove and Handkerchief Boxes, Stands and Cabinets.

**CUT GLASS, HAWAIIAN JEWELRY, AND CURIOS.**

A Large Selection of Toys.

## THE McBryde Sugar Co's Store

Please note that the store will be open every Saturday night until 9 o'clock.

### IMPORTANT REPORT

The final report of the tuberculosis commission has at length been issued after ten years of patient research, and it decides a question which has been actively canvassed for twenty years. Ever since Dr. Koch enunciated his famous theory differentiating human from bovine tuberculosis in 1891, the discussion has gone on and ten years ago the conflict of evidence led to the appointment of the royal commission of England which has issued its final report.

It was obviously an important matter for the state to decide if Dr. Koch's theory was sound, in which case a number of regulations against diseased meat and impure meat might safely be abolished.

The first report of the commission, issued in 1904, made it clear that the regulations had better be maintained. The commission's experiments at that stage showed conclusively that human and bovine tuberculosis were not entirely disconnected, and that animals could be infected from man.

The converse proposition has now been demonstrated, and the present report definitely states that both intestinal tuberculosis and tuberculosis of the lungs can be transmitted from animals to man. The report points out that the chief danger to health lies in diseased cow's milk and beef, as none of the animals that multiply the human tubercle bacillus are in common use for man's food. The commissioners found that in a number of cases of children who died from tuberculosis of the intestines, the bovine bacillus was alone the cause in nearly one half the cases.

They recommend that measures should be taken to exclude from the food supply the milk of all diseased cows, or cows that cannot be certified irrespective of disease.

### Those Coming In

The following passengers arrived on the Kinau Wednesday morning, Nov. 29: Mrs. T. Brandt, Mrs. A. Klussman, R. F. Dempsey, W. H. Hoogs, J. H. Bole and wife, H. Schultz, D. L. Austin, W. Young, H. Spaulding, Rev. S. Kaulili, Shindo, Dr. Sheppard, Miss Purvis, A. G. Hime, D. B. Murdoch, S. B. Crosby, E. de Lacy, Dr. P. P. Osborne and wife, Mrs. Aubie Robinson, Miss E. Robinson, Miss Mathew, Charles Gay and servant, Y. Ogawa.

Per steamer W. G. Hall December 2.—C. Jacobson, S. F. Chillingworth, E. Morgan, H. D. Wishard and wife, Kwong Tai Jan, Gen Sao.

### Did You Know

That the Pacific end of the Panama canal is further east than the Atlantic end?

That Venice, Italy, and Montreal, Canada, are in about the same latitude?

That if an express train had started out for the planet Neptune at the birth of Christ, and had traveled 60 mile an hour day and night ever since it would not yet be half way there?

That Cuba would reach from New York to Chicago?

That the mouth of the Amazon river is as near to Europe as it is to New York?

That Texas is larger than Germany and as large as 212 Rhode Islands?

That when measured in degrees of longitude, San Francisco is about in the middle of the United States, including Alaska?

Herman O. Schultz, the Hanamaulu sugar-boiler was a returning passenger on the Kinau, Wednesday morning.

### TO PIKE COUNTIANS

In view of the possibility of a successful organization of the "Pike County Day," projected by the Y. M. C. A. in Honolulu, we reproduce herewith an extract from the Louisiana Press-Journal, a paper published in Louisiana, Mo., right in the heart of "Old Pike." If it does not create a burning desire in the heart of every "Piker," to hot foot it for old pike that he might there bask in the pleasure (?) of its incomparable climate, then we miss our guess.

### Grim Winter Knocks Out Sunday Summer In 18 Hours.

That was certainly a great stunt that Old Boreas pulled off Saturday afternoon. The thermometer at noon registered 80 degrees and people were sweltering in their heavy clothing. A rain storm came up about 3 p. m. and then the fun commenced. Old Boreas started his bellows and the frigid air changed the rain to sleet and at six o'clock Sunday morning the thermometer registered 9 above—a change of 71 degrees in 18 hours.

It was the coldest weather on record for the first half of November and the sudden change was very hard on stock and on apples that were left out.

The storm raged in six states and the telegraph dispatches tell of death and destruction in its wake.

### A. R. GLAISYER, D. V. M.

Will make monthly headquarters as per schedule below

1-10, 13-14	Lihue
11-12	Kilauea
15-17	Kekaha
18-21	McBryde
22-30	Makaweli

The latest Books of fiction received by every steamer. Don't forget we carry a full line of Tennis and Base Ball Goods.

Wall-Nichols & Co., Ltd.  
HONOLULU

### "Benjamin Clothes"

Let this be your thought when you have made up your mind to purchase a Suit or Overcoat. Men in all stages of life who want to be correctly dressed wear



### "Benjamin Clothes"

They possess every feature necessary in the making of good garments for men.

## The Clarion

HONOLULU

Agents for Phoenix Pure Silk Hose for Men and Women. The Men's 50c the pair, the Women's 75c the pair.

### Auto Talk

Every motor car manufacturer in America has probably tried to satisfy himself, times without number, as to the precise motives which inspire the average man when he buys an automobile.

Strange as it may seem the motor car industry, with its staggering money totals running into the billions of dollars, has been built up without any scientific attempts to secure an adequate answer to this question.

Manufacturers and dealers alike ascribe to certain cars, certain qualities which they believe explain the success of those cars; but no attempt had ever been made to gather satisfactory statistics on the subject, until the Cadillac Motor Car Company set about it a short time ago to secure this information from owners of Cadillac cars throughout the country.

The results of this investigation are full of surprises and of the most intense human interest, as indicating the great variety of reasons which inspire the average buyer.

The Cadillac inquiry may safely be accepted as representative of the trend of the public mind, and is for that reason, of course, almost invaluable.

In response to the Cadillac inquiry a great numbers of answers were received.

Twenty-six per cent of those who responded said that they were impelled to their purchase by absence of repair trouble and repair expense.

Twenty-one per cent replied that they had bought the car because they had driven the Cadillac in previous seasons.

Fourteen per cent assigned reliability and durability as the essential which they considered first; while nine per cent bought because of general economy.

## WALL PAPER

In the Territory is carried by

## LEWERS & COOE, Ltd.

Honolulu

Books of samples of Foreign and Domestic Wall Papers may be seen at the LIHUE STORE or at the store of C. B. HOFGAARD, Waimea.

If you wish samples will be sent to you from Lewers & Cooe, Limited

### DAINTY HOLIDAY PACKAGES

## For Thanksgiving and Christmas

### Choice Candies

(Gunther's, Chicago; and our own make)

### Mince Pies

### Cakes

### Pasteries of Every Description

### ICE CREAM—all flavors

(Specially packed and shipped to all Islands)

## PALM CAFE

Hotel St., near Fort, Honolulu

# Do Your Shopping Early

You Can Do It Safely By Mail With This Store

## Men's Hats



Our stock of mens hats reflects all that is good in the Stetson output. For the cattleman or ranchman we are stocked with the best broad brim style in all shades and made of the finest grade of wool. The beauty of our Stetsons is their lightness in weight and their excellent wearing quality. No other hat on sale equals a genuine Stetson because as good a hat is not made outside the Stetson factory.

**T**HERE'S SURE to be something to please. ¶ We have confidence in the goods we offer the public, and the public have confidence in us. ¶ We have been here fifty-five years-- long enough to get acquainted with you, and for you to know us. ¶ Let us have your order for a Christmas Gift for one of the family.

## Straw Hats

Baltimore is headquarters for the finest grade of straw braids for hats for men and boys. Even lauhala from Hawaii is sent there to be sewn into hats that bring high prices in the cities on the mainland. We have the genuine Baltimore braids in the straws we sell. Also we have the high standard Panama hats, woven in the Canal Zone and sewn and finished by Christy in London.

## Men's Shirts



For obvious reasons we prefer the Manhattan shirts, one of which is the beautiful materials, the superior weaves of cloth that wear well. We prefer them because the shirt is so much longer than the average ready-to-wear shirt that a Manhattan is comfortable where the other makes, most of them, are annoying. The Cluett is a good shirt but there are features about a Manhattan not found in any other.

We have these for negligee as well as dress. In the latter there is the plaited bosom for the dinner coat or the full dress.

## Underwear

Like every other department in the store, that in which is displayed the underwear is full to the brim with high grade and cheaper goods for men and boys. There is no make we do not sell and as low in price as anyone in the Territory.

## Raincoats

Those we have are useful in dry as well as wet weather and they are not over-weighted. The materials are, in every instance, water-proof. They are cut full with plenty of length. Just the garment to wear on a night trip from home. Some are London made.

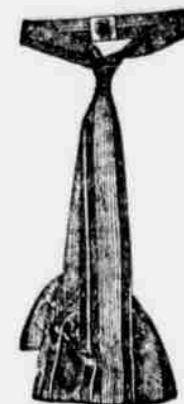
## Handkerchiefs

Genuine Irish linen, many in pure white and some with the fashionable narrow border. We have ties to match the handkerchiefs and socks to match both. The prices are very low for these goods.

## Buttons and Pins

While not a jewelry store in the sense that we carry diamonds, we have a line of stick pins for men that compares well with the stock in many of the jewelry stores. The swellest sort of buttons for shirts are here as well as stick pins.

## Neckwear



We have recently bought in New York a line of the most beautiful cravats and string ties we have ever had from the Keiser factory. Also we secured a line of the Wilson Brother's goods that will appeal to the average man. In both there is a wide range of styles and shades, from the rich colors in solids to the patterned materials adapted to the wear of less conservative men and young men. Every taste can be satisfied here. We have the very latest and the very best.

## A Word About Your Clothing



If you've never worn a suit of Stein-Bloch clothing you have never known exactly what clothes-comfort is. At least you have never seen it except in the man who wears Stein-Bloch. We carry a large stock of these goods and can fit fat men or thin ones whether they be short or tall. If we do not strike the exact fit the first time we have a staff of cutting and sewing tailors to make suits to order and they know how to alter. We want you to get a Stein-Bloch because we know then we have a new customer. These clothes are made of all wool, not a particle of cotton anywhere about them, and the patterns in many cases are exclusive to this firm of manufacturers. You will find the styles just the same they are wearing on Broadway or Bond Street for the British tailor copies now-days from the Stein-Bloch model and a third of the best dressed men over there who wear ready to wear clothing have taken to Stein-Bloch because it has class, individuality and fit. No suit of clothes made in England ever fitted as well as an American made suit. It's history and the British tailor has never been able to deny it with truth. We have business suits for the business man and society clothes for the men who dance or dine and who wish to be correctly dressed for any occasion. The prices, in any instance, are low enough to be inviting to the careful man who could dress as well as the next fellow and better than many at less cost. We have all shades and all weights of materials. In our clothing department we can fit you with an overcoat that will be good for show and as good for wear.



## Pajamas

The day, or night, for the nightie for men is out distanced by the desire people have for garments which permit their being seen without bringing blush to cheek. The Chinese are responsible for the innovation. Englishmen in Hongkong knew a good thing and adopted it. The brandy-and-soda chap out in India was not long behind his brother in China and as facilities for crossing the continent grew and men traveled the most comfortable of men's garments came through the U. S. and there to stay. We have a large assortment.

## Boys' Clothing

We want to give a word to mothers. It is cheaper for you to buy clothing for your boy in this store than it is to make it and it matters little how inexpensive that suit is to be. We have everything from a linen wash suit to finest wool. Order a suit from us.

## Caps

The celebrated Heidcap is the invention of Frank Heid and is worn by young men and old who like something better than usual. We have many beautiful patterns.

## Men's Gloves

If you ride a horse you need gloves. Also if you are the owner of a machine you cannot run one with a degree of comfort with bare hands. Our stock of gloves is complete. We have the auto glove that fits snug at the wrist and shuts out dust.

## Suspenders

There is nothing more acceptable to a man for a gift than a pair of suspenders or a belt. We have wide range to select from at prices from three quarters to three dollars.

## Bath Robes

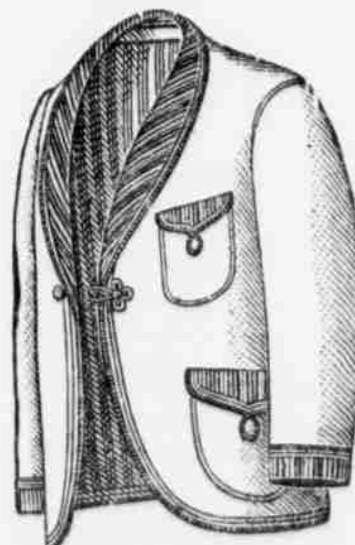
There should be a bath robe in every home just as there should be a bath tub.

If, as it sometimes happens, the bath must be taken in a tub out side, the greater the necessity for the robe. It becomes at once a more useful wrap in the walk from the bath to the bed-room and is a mighty comfortable wrap to put over your shoulders when you are resting after the exertion. We have very pretty patterns in robes fifty four inches long which we sell at four fifty. The material is excellent.



## House Coats

No man who cares how his coat looks when it is on will loiter around the house in one after meals. If he has an eye to economy he will wear a house coat because it will stand the wear of lounging and will not wrinkle. We have a large assortment in beautiful shades and neatly trimmed. They are inexpensive and an absolute necessity. You will want one for CHRISTMAS.



## Now is the Time to Order

**T**HIS IS not a season for delay; Christmas goods should be in the house by Christmas rather than a day after. Our goods for the season are all here now, and we offer you no old stock to select from. Residents of Kauai known to us may order with the privilege of returning, remitting the price after an inspection of the goods. We guarantee everything, and the responsibility is upon us. If goods are not satisfactory in every respect they may be returned on the first steamer and others sent in their place. You have time to do that by ordering now.

## Interwoven Hose

It has been very clearly demonstrated all over the United States that the inter woven hose is so nearly perfect that there is not a kick coming and not a hole in the socks. We are sole agents for this make of mens hosiery. We have a number of shades beside black and white and sell them for thirty-five cents a pair. Three pairs for a dollar.



**M. McINERNEY, Ltd.,**

Fort and Merchant Sts.  
HONOLULU

**Notice of Konohiki Fishery Rights**

NOTICE OF THE ESTABLISHMENT OF THE KONOHIKI OF RIGHT OF FISHERY IN AND TO THE WATERS APPURTENANT TO THE AHUPUAAS OF NAWILIWILI AND NIUMALU, ISLAND AND COUNTY OF KAUAI.

Notice is hereby given by the undersigned, lessee of the Konohiki rights of fishery in and to the waters appurtenant to the Ahupuaas of Nawiliwili and Niualu, that on the 11th. day of October, A. D. 1911, a judgment was made and entered in the Circuit Court of the First Judicial Circuit of the Territory of Hawaii in that certain action entitled, "Cecil Brown, Trustee of the Estate of Kaleipua Kanoa, deceased, plaintiff, vs. The Territory of Hawaii, defendant," action to establish fishing rights, ordering, adjudging and decreeing that the said Cecil Brown, Trustee of the said Estate of Kaleipua Kanoa, deceased, had lawfully established an exclusive, private, Konohiki right of taking, appropriating, and setting aside and apart for his sole use, benefit and enjoyment, in the manner provided by law, one particular kind, variety, or species of fish in each of the waters appurtenant to the Ahupuaas of Nawiliwili and Niualu, on the Island and in the County of Kauai, Territory of Hawaii, which said waters and fisheries were and are in said judgment aforesaid, bounded and described as follows, to wit:

All of that portion of the waters of Nawiliwili Bay and harbor, on the Island and in the County of Kauai, Territory of Hawaii, comprised and contained within the following boundaries, to wit:

Commencing at a certain rock or stone in said Nawiliwili Bay, situate and lying opposite to and near the mouth of the Nawiliwili River, also known as Kawailaau River, which said rock or stone is marked with a cross [ X ] and v [ V ], thence running in a straight line to that certain rocky point or headland on said Nawiliwili Bay commonly known and designated as Kukii Point, thence running in a straight line from said Kukii Point to a certain point or headland on said Nawiliwili Bay known and designated as Carter Point, also known as Makole Point, thence running along and following the shore line of said Nawiliwili Bay, irrespective of indentures caused by streams and the mouths thereof, to the point of commencement.

LEE KUN, Lessee.

**Bridge Tender**

Bids will be received by the Kauai Loan Fund Commission for the construction of a re-enforced concrete culvert at the Mahinauli Stream, up to 2 o'clock p. m. Wednesday, December 6th., 1911. About 60 yards of concrete will be required.

Plans and specifications will be furnished upon application to the undersigned, said application to be accompanied by five dollars (\$5.00).

J. H. MORAGNE, Engineer Kauai Loan Fund Commission. Dec. 5.

**NOTICE**

NOTICE TO DEPOSITORS IN BISHOP & COMPANY'S SAVINGS BANK.

In accordance with the printed Conditions of Agreement issued by Bishop & Company's Savings Bank, notice is hereby given that the rate of interest paid on savings deposits will be reduced from four and one-half per cent (4½%) per annum to four per cent (4%) per annum. This reduction will come into effect on the first day of January, 1912.

(Signed) Bishop & Co. Dated at Waimea, Kauai, September 20, 1911.—Jan. 1-1912.

**TO LEASE**

The comfortable and spacious dwelling, property of the late J. B. Hanaike, situated near the Lihue court house, is offered for lease for a term of two years. Reasonable to responsible party. For particulars call or address, Judge C. S. Dole, Fairview Hotel, Lihue.

**NOTICE**

The Board of License Commissioners for the County of Kauai will hold a meeting at the County Office Building on Friday December 29th., 1911, at 10 o'clock A. M. to consider the application of J. K. Cockett for a renewal of the wholesale license now held by him to sell intoxicating liquors at Koloa, Kauai, under the provision of Act 199, Session Laws of 1911.

All protests or objections against the issuance of a license under said application should be filed with the secretary of the Board not later than the date set for said hearing.

W. D. McBRIDE,

Secretary Board of License Commissioners. Nov. 14-4t.

**NOTICE**

NOTICE TO DEPOSITORS IN THE BANK OF HAWAII, LTD. (Lihue Branch) SAVINGS DEPARTMENT.

In accordance with the printed Conditions of Agreement issued by Bank of Hawaii Ltd. (Lihue Branch) Savings Department, notice is hereby given that the rate of interest paid on savings deposits will be reduced from four and one-half per cent (4½%) per annum to four per cent (4%) per annum. This reduction will come into effect on the first day of January, 1912.

(Signed) Bank of Hawaii (Lihue Branch.) Dated at Lihue, Kauai, September 20, 1911.—Jan 1-1912.

**LEGAL NOTICE**

IN THE CIRCUIT COURT OF THE FIFTH CIRCUIT, TERRITORY OF HAWAII.

AT CHAMBERS—IN PROBATE.

In the matter of the Estate of Francisco Rapozo, Deceased.

Order of Notice of Hearing Petition for Administration.

On reading and filing the petition of Manuel Rapozo, of Makaweli, Kauai County, alleging that Francisco Rapozo, of Oaonano, District of Waimea, died intestate at said Oaonano on the 19th day of October A. D. 1911, leaving property in the Hawaiian Islands necessary to be administered upon, to wit, cash, to the amount of \$722.50, more or less, and praying that letters of administration issue to said Manuel Rapozo.

It is ordered that Saturday the 23rd. day of December, A. D. 1911, at 10 o'clock A. M., be and hereby is appointed for hearing said petition in the court room of this court at Lihue, County of Kauai, at which time and place all persons concerned may appear and show cause, if any they have, why said petition should not be granted, and that notice of this order shall be published once a week for three successive weeks in "THE GARDEN ISLAND," a newspaper printed and published in said Lihue. Dated November 17th., 1911.

(Seal) (Signed) JACOB HANBY, Judge of the Circuit Court of the Fifth Circuit.

Attest: (Signed) PHILIP L. RICE, Clerk of the Circuit Court of the Fifth Circuit. Nov. 21, 28; Dec. 5, 12.



HEAD OFFICE—HONOLULU  
96 King St., cor. Fort. Tel. 552

**Church Calendar**

Lihue Union Church, Foreign—Rev. J. M. Lydgate, pastor. Church Service 11 a. m. Except the last Sunday of the month. Sunday School 10:30 a. m.  
Lihue First Church, Hawaiian Rev. Wm. Kamau, pastor. Church Service 11 a. m. Sunday School 10 a. m.

**X - M A S**

**The Gladdest Season of All the Year**

Christmas is always a time of happiness and cheeriness. Help to make the young folks happy, and the old folks happy, and all the rest of the folks happy; and you'll be the happiest of all yourself.

We've studied the whole problem of gift selecting carefully. We sent to Europe for Toys; to America for staple goods and holiday novelties. Our Mr. de Lacy has just returned from Honolulu where he ransacked the largest and finest stores for the best they have in Holiday Goods. Now the whole stock is on display and ready for your choosing.

We have kept in mind that it is not necessary for all gifts to be expensive—though we have expensive ones, too—but they must all be pleasing, attractive and USEFUL. Note these:



**For the Ladies**

A complete line of bits of daintiness for the ladies including pieces of fancy needle work, Handkerchiefs, Ribbons, Neckwear, Jewelry, Hosiery, Fancy China, Laces, Toilet Sets, Stationery, Fancy Jewelry Cases, Hand Bags, Etc.

**Hawaiian Jewelry**

A highly seasonable line of unusually attractive Hawaiian Jewelry will delight any one to whom it is given, and for all its beauty and worth, it is very moderately priced.

**Arts and Crafts**

A very choice assortment of artistic goods that are always very acceptable holiday gifts. We have a special line of Miss Furbur's Hand Painted China.

**For the Gentlemen**

There are many suitable gifts, including everything their hearts could desire. Meerchaum Pipes, Smoking Sets in craft work, Ash Trays in cut glass, Desk Sets in brass, Letter Openers and Paper Shears, Steins, Etc. In wearing apparel we have the niftiest gift in the market, in specially prepared combination boxes, containing a pair of Sox and a tie to match.

**Cut Glass**

Our Cut Glass is perfect, being absolutely flawless, and some of the most exquisite pieces ever shown to our patrons.

**Books**

A very choice assortment embracing picture and painting books for the little folks, up-to-date novels and standard books for grown-ups. Special gift books for all.

**Toys Toys Toys**

Our holiday toy department is overflowing with all new and unique holiday goods. All the various kinds and sizes of dolls. Dressed dolls and undressed dolls, rag dolls, dolls with big blue eyes that close when they lie down, dolls with beautiful hair and eyelashes, character dolls, dolls with unbreakable faces, in fact almost anything a little girl could wish for in a dolly.

You are cordially invited to bring the children in to see our beautiful toys.

We could give you more suggestions, and when you come we will show you other things.



**SOCIETY**

Miss McClymont and Miss Jordan, spent Thanksgiving vacation with Mrs. J. H. Coney.

Mr. and Mrs. Wishard returned Saturday from a five month's tour of the United States.

Miss Passig, one of the Kealia teachers, spent Thanksgiving vacation with Mr. and Mrs. Brodie in Hanapepe.

Hon. J. I. Silva and Mrs. Silva, of Eleele, will return on tomorrow's Kinau, from an extended trip throughout California.

Richard Oliver and Mr. Bailey, were hosts at a dancing party in the Waimea Hall last Saturday night to about fifty couples from Makaveli, Kekaha and Waimea.

Mr. and Mrs. Tom King, who have been the guests of Mr. and Mrs. C. A. Rice, for the past two weeks, returned to Honolulu Saturday.

Mr. and Mrs. C. A. Rice, with their guests, Mr. and Mrs. King, motored over to Mrs. Aubrey's home last Friday, where they were joined by a number of others, and together mounted horses and made a trip up the Olokele Ditch. On their return, they were invited to the home of Mrs. Sandow, for dinner.

Delightful musical selections both vocal and instrumental, was one of the chief features of the afternoon dinner party. Mrs. Sandow's guests were, Mr. and Mrs. C. A. Rice, Mr. and Mrs. Cropp, Mr. and Mrs. King and others.

The many friends of Mrs. Hans Isenberg will be pleased to learn of her recovery from the recent accident which she sustained through being thrown from her horse.

Mrs. Herman Rohrig was hostess at a pretty afternoon tea last Friday at three o'clock, to the following guests: Mrs. Purvis, Miss Purvis, Mrs. Sloggett Miss Mabel Wilcox, Mrs. Wm. Rice, Jr. Miss Girvin, Mrs. Lydgate, Miss Mumford, Mrs. Weber, Mrs. A. Rice and Mrs. P. Rice.

The Lihue teachers were hostesses at a very pleasant little dinner party at the home of Miss Mumford last Friday evening. Those present were Miss Mumford, Miss Aver, Miss Roscoe, Miss Wells, Miss Laube, Miss Haffley, Mr. Harry Vincent and Dr. Glaisyer.

At the regular monthly meeting of the members of the Mokihana Club tomorrow afternoon, Mrs. Rohrig and Mrs. Wm. Rice, Jr., will act as hostesses while Mrs. Lydgate will take the part of leader. The subject for discussion will be "Medieval History."

Little Miss Martha Helena Wolters has invited a host of her little friends to a birthday party at her home in Hanamaulu at two o'clock this afternoon. A very elaborate program consisting chiefly of delightful surprises, dainty refreshments and juvenile contests has been carefully planned.

Thursday, November 30, Mrs. Deverill was hostess to Hanalei friends at an excellent turkey dinner, which was highly enjoyed by all present. The dining room and table were beautifully decorated with ferns and flowers, the center piece of the table consisting of a large Hawaiian calabash filled with a variety of choice fruits.

Dr. and Mrs. Putman entertained a dinner last evening, in honor of the guests of Mr. and Mrs. Spalding. A pleasing feature was the place cards which were admittedly unique, being composed of a deck of cards. As bridge followed the dinner, the appropriateness of the cards, were pleasingly noticeable. Those present were, Miss Holmes, Mr. Behr, Mr. and Mrs. Spalding, Mr. and Mrs. Coney, Mr. and Mrs. C. A. Rice, Mr. Frank Crawford, Mr. C. O. Smith and Dr. and Mrs. Putman.

Mrs. Francis Gay's luncheon at the Young Hotel was a very elaborate function. Twenty-one guests enjoyed Mrs. Gay's hospitality. The table was beautifully decorated in violets and tulle.—STAR.