

Daily Maui News

A Republican Paper Published in the Interests of the People
 Issued Daily Except Sunday.
MAUI PUBLISHING COMPANY, LIMITED
 Proprietors and Publishers
 M. R. PEREIRA, Manager
 SUBSCRIPTION RATES: \$6.00 PER YEAR IN ADVANCE

Entered at the Post Office at Wailuku, Maui, Hawaii, as second-class matter.

MEMBER OF THE ASSOCIATED PRESS—The Associated Press is exclusively entitled to the use for republication of all news dispatches credited to it or not otherwise credited in this paper and also the local news published herein.

JOSEPH H. GRAY : : : : EDITOR
 TUESDAY : : : : DECEMBER 12, 1922

BUYING AT HOME

Honolulu merchants have decided to meet "barrage with barrage" and have issued a "Mail Order Catalog" to counter the inroads made upon their trade by Mainland mail order houses. The catalog is issued by F. R. Heath, Limited, which announces it has opened a "Mail Order Service Bureau."

On the cover of the catalog is the slogan "Buy at Home" but within it says that it is designed to show the "buyers of the Territory" that mail order houses competition is met with better prices and a second slogan is sounded, "Patronize the Merchants of Honolulu." Copies have been received on Maui.

In the capital city there have been signs of an awakening for some time past. More advertising space is used in the daily papers than formerly and prices are quoted liberally, which was not done to any great extent until recently.

No good reason can be advanced why the Honolulu houses should not reach out for and take business from the other Islands—if they can get it. They want that business and they show it.

This paper always advocates and will advocate buying at home where the goods are obtainable and an even break or nearly an even break can be secured in home buying but it has not had cooperation from some sources where it might expect it.

Some of the concerns that benefit most from home buying and suffer worst from loss of trade that leaves Maui do nothing to help themselves. They do not tell the home folk what they have and what are the prices. They do not recognize that the first thing to do is to get possible customers into the stores and that such customers will then see and buy goods that attract. They take an "every

one knows we are here and if they want anything they'll come in" attitude. They do not advertise. They do not tell the public when they have new lines of goods and what those lines are priced at. They appear to be satisfied to get the trade of those who come into their stores. They do not even try to tell those who habitually buy by telephone that there is something in those stores that is worth while to come in and see.

The course of such concerns is like a restaurant that went broke at St. Louis exposition in the early stages of that big show. It spent a lot of money for attractive signs announcing viands and prices and put them up inside the building.

Newspaper advertising space is much cheaper than circular and catalog advertising. A Honolulu concern brings lines of goods over here and uses a page or a half page of newspaper display advertising space. It gets the business or it would not come again. Honolulu houses use newspaper space in all the papers of the other Islands constantly.

If Maui concerns want to meet Honolulu competition they can do so by taking the general public into their confidence through the newspapers and telling them from time to time what they have and what the prices are. They get buyers in to see those goods and those buyers see other things they want.

"John Jones Sells Shoes" is advertising of a sort but when his ad says "John Jones has a new line of shoes to sell at \$4 the kind that usually sell at \$5" then he is saying something worth his while.

Home concerns that are satisfied to take what happens to come their way have no legitimate kick if some one more wide awake grabs their customers and sells the goods.

It is good news for the children that is carried today in the story of the community trees for more than 7000 Maui kiddies.

Wailuku and Paunene are running neck and neck in the start of the 1923 sugar campaign.

When the United States in war days brought anything in Europe it paid cash. For its road building in France and all construction work it paid cash. For supplies purchased it paid cash. For transportation it paid cash. What it sold the Allies was on credit, mostly. It therefore its pretty hard to have the cash buyer asked to cancel the debt of its credit customer.

Wailuku post office had a waiting line yesterday afternoon seeking to get bundles away in time to reach mainland friends by Christmas. There is always the sentiment to get presents to the recipients just before Christmas day and that sentiment always clogs the postal service.

When one looks over the requests of the department of public instruction for the next bi-ennial period there are two words that suggest themselves. "Some Budget."

Your Daily Need Is Protection
 Against fire in your home or place of business, accident or sickness to yourself, dependency when you're old and for wife and family in case of your death. All lines of insurance protection in the strongest companies.
The Baldwin Bank, Ltd.
 Kahului Insurance Department Wailuku

FOR CHRISTMAS
Weaver Aluminum
 THIS IS REAL ALUMINUM
PUUNENE STORE

WE ARE PLEASED TO ANNOUNCE THAT
The Wailuku Hardware & Grocery Co., Ltd.
 WAILUKU, MAUI
 HAVE BEEN APPOINTED AGENTS FOR
 EAST MAUI, FOR
A. G. Spalding & Bros.
 FAMOUS
 TENNIS, BASEBALL AND ATHLETIC GOODS
E. O. Hall & Son, Ltd.
 Distributors for the Territory.

HOW ABOUT THE JAPANESE?
 Are you getting all the business from them you want? If not, you can reach them in only one sure way, in their own language. Tell them what you have that they want in advertisements and in hand-bills.
 Issued Semi-Weekly **MAUI RECORD** N. K. Otsuka, Prop.
JOB PRINTING
 Translations from English to Japanese and Japanese to English

TAKE IT FROM SANTA CLAUS
 You can't choose better when selecting your gifts than in buying something useful and best of all is something to wear.
 No where on Maui can you find so wide a range of choice as in the **BOSTON STORES**.
 No where on Maui can you buy at such low prices.
 For him: Buy shirts or neckties or underwear, collars, something he will use every day.
 For her: There are waists and blouses, laces ribbons and two whole stores full of other things.
THE BOSTON STORE
 Orpheum Building Wailuku Open Nights Pioneer Garage, Lahaina



CIRCUIT COURT, SECOND CIRCUIT
 TERRITORY OF HAWAII
 At Chambers—In Probate No. 1945
 Estate of ARTHUR W. COLLINS,
 Deceased.
 BISHOP TRUST COMPANY, LIMITED, having filed a document purporting to be the Last Will and Testament of said deceased with a petition praying for probate thereof and issuance of Letters Testamentary to it.
 All parties interested or concerned are notified to appear in the Court Room of Hon. D. H. Case, in the Judiciary Building, Wailuku, Maui, T. H., Thursday, December 28th, 1922, at 10 o'clock, A. M., to show cause, if any they have, why said petition should not be granted.
 BY ORDER OF THE COURT:
 Wailuku, Maui, T. H., November 20th, 1922.
 MANUEL ASUE,
 Clerk of Said Court.
 (Seal of Court.)
 (Nov. 21, 28, Dec. 5, 12.)

IN THE CIRCUIT COURT OF THE
 SECOND JUDICIAL CIRCUIT,
 TERRITORY OF HAWAII
 At Chambers: _____ In Probate:
 In the Matter of the Estate of Louis
 von Tempsky, Deceased.
 Probate No. 1946.

ORDER OF NOTICE.
 Petition of ERNEST H. WODEHOUSE alleging that Louis von Tempsky, a resident of Makawao, Maui, died at said Makawao on or about November 26th, 1922, leaving a last Will and Testament and praying that Letters Testamentary issue to H. A. Baldwin and Letters of Administration with the Will Annexed to Barton J. Bridgeford having this day been filed.
 IT IS ORDERED that Thursday, the 11th day of January, 1923, at 10 o'clock, A. M., be and hereby is appointed for hearing said Petition in the Court Room of this Court in the Judiciary Building in Wailuku, Maui, T. H.
 Dated at Wailuku, Maui, T. H., this 5th day of December, 1922.
 By the Court,
 MANUEL ASUE,
 (Seal of Court) Clerk.
 (Dec. 5, 12, 19, 26.)

ICHIKI HOTEL
 ROOMS \$1.00 PER NIGHT
 Reasonable rates by the week or month.
 Wailuku, Phone 136-A Maui, T. H.

Paia Mercantile Co.
 GENERAL MERCHANDISE
 Groceries, Cigars, Refreshments
 Lower Paia, Maui.

Honolulu Paper Co., Ltd.
 Everything in paper, stationery and supplies. Prices quoted on application and samples submitted

Certain-teed Roofing

Buy Roofing by the Year
 —Not by the Roll
 Quality is necessary if you expect long service. You get quality at the right price when you buy Certain-teed Roofing. Vast resources and great economies in Certain-teed manufacturing and distribution enables us to sell you Certain-teed quality at practically the same price you would pay for lower quality in other brands.
 For Hawaii climate, Certain-teed Roofing is ideal—rain does not affect it, sun does not melt it and sparks will not ignite it.
 Certain-teed Roll Roofing comes smooth or slate surfaced—shingles come red or green, either individual or 4 width.
PAN-PACIFIC TRADERS, LTD.
 WHOLESALE DISTRIBUTORS FOR HAWAII
 HOTEL AND BETHEL STS., HONOLULU
N. SANO, WAILUKU
 Retail Dealer on Maui

To Los Angeles

S. S. City of Los Angeles
 Sails Saturday, Dec. 16
From Honolulu
 Famous for luxuriousness of appointments, excellence of service and variety of entertainment features—the palatial liner City of Los Angeles is the largest ocean liner under the American flag. Everything possible is done to promote your comfort and enjoyment.
Via the Great Circle Route of Sunshine
 When you travel to the mainland, sail by way of the delightful southern route—the route of sunlit seas and balmy zephyrs—straight to Los Angeles. This is the best time of the year to visit Southern California.
 FORTNIGHTLY SAILINGS DIRECT BETWEEN
 HONOLULU AND LOS ANGELES
S. S. President Harrison Sails Saturday, Dec. 30
 For reservations, fares and full particulars address:
 B. F. Dillingham Co., Ltd., Fort and Queen Streets, Honolulu
 Agents for Hawaiian Islands
LOS ANGELES STEAMSHIP CO.
 Managing Operators for
UNITED STATES SHIPPING BOARD
 DEPENDABLE FREIGHT SERVICE
 —for automobiles and general merchandise—direct between Honolulu and Los Angeles.


MATSON NAVIGATION COMPANY
 DIRECT SERVICE BETWEEN HONOLULU, MAUI AND SAN FRANCISCO
 FOR SAN FRANCISCO:
 MATSONIA December 13, 10 a. m., Pier 15
 MANOA December 20, 10 a. m., Pier 15
 For particulars apply to—
CASTLE & COOKE, LTD.
 FORT AND MERCHANT STS. AGENTS, HONOLULU

SOMEBODY'S STENOG—Parking Permitted on Vine

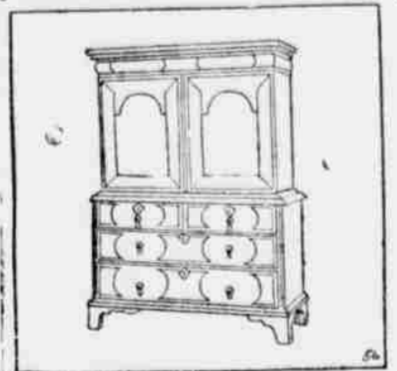
Registered U. S. Patent Office

By Hayward



Like Broiled Lobster?
GET IT AT
CHOCK'S CAFE
WHEN IN HONOLULU

THE HOME IN GOOD TASTE
By Harold Donaldson Eberlein
Joint Author of "Practical Book of Interior Decoration," Etc.



No. 56—William and Mary Presses

William and Mary highboys, and also the cabinets set on stands and closely resembling the highboys in their general outline, have already been described. Likewise their exceedingly practical and decorative values have both been noted. Now we come to another piece of furniture, characteristic of the period, equally good looking and even more useful, especially in an age when cupboard room in the ordinary house extremely limited, or even almost non-existent. This piece is the high press, such as that shown in the illustration.

These presses were usually made in two sections, the top and the bottom, which were not fastened together and could be taken apart when it was necessary to move the piece. The upper part has two doors, which concealed either shallow shelves or else tiers of small drawers. The lower part was really a capacious chest of drawers standing on ball or bun feet. It can readily be seen how much holding capacity such a piece of furniture possessed. Sometimes, instead of having doors for the upper part, the front was made in one piece, hinged at the bottom so as to let down and afford a convenient place to write. In this way the press became the parent of a certain type of tall secretary. Reproductions are especially useful in libraries and bedrooms.

and the central dividing line. These bases may be numbered in sequence according to the number on base in each court, the highest number marking captain's base.

In each team is a captain, a baseman for each circle, two fielders and a guard for each baseman, including the captain. Guards stand outside opponents' bases and try to prevent the enemy basemen from getting the ball or from throwing it to the captain. Also they try to get possession of it in order to throw it to the basemen and captain in their own court. The fielders stand in their opponents' court, put the ball in play at the outset and pick it up whenever it goes out of bounds. No other player is allowed to do this.

The objects of the game are to send the ball around the bases and to the captain, as in regulation captain ball. The difference in this game is that after each point scored a fielder from each team moves to first base as baseman and guard, the previous first baseman and guard moving up to base No. 2 and so on until the captain's base is reached, the captain and guard becoming infielders in opposite courts. Each ball thrown from a baseman to his captain scores one point. A ball completing the circuit of the bases scores two. The side with high score when time is called wins the game.

The Sportfolio

Who holds the major-league record for unassisted plays? (R. J.)
What is the greatest distance a man has ever covered in a broad-jump, either with or without weights? (E. P. W.)
Has any one ever won the Intercollegiate golf championship two years in succession? (S. T. D.)
After the hands are dealt in poker one player picks up four cards and the man next to him picks up six. What is the rule? (H. McA.)

Answers To Yesterday's Queries
The recognized record for the 220-yard three-legged race is 27 1-5 seconds, held by C. Cassasa and S. C. Northridge.
The gate receipts of the Jeffries-Johnson fight were \$270,755.
McCormick, who pitched for Chicago in the eighties, never won twenty-

four straight games. His best record was sixteen straight in 1886. The blackboards in basketball should be six feet wide and four feet high. They may be made of any material that is permanently flat and rigid.

The ice-scating record for the mile is 2 minutes 8 seconds, held by Bap-tle and Johnson.

Honolulu Music Co.

The Latest Rolls Now On Sale
At Wailuku Branch
Phone 250-A

Listed below are the records released during December. Come in and hear them played.

- 18906 Vocal—"Stumbling," Billy Murray; "Coo Coo," Charles Harrison.
- 18942 Vocal—"Away Down South," Peerless Quartet; "Way Down Yonder in New Orleans," Peerless Quartet.
- 18943 Vocal—"All Over Nothing at All," Alleen Stanley and Billy Murray; "I'll Stand Beneath Your Window Tonight and Whistle," Alleen Stanley and Billy Murray.
- 18944 Vocal—"Call Me Back, Pat O'Mine," Charles Harrison; "For the Sake of Auld Lang Syne," Lewis James.
- 18945 Fox Trot—"Zenda," by Zez Confrey and his Orchestra; "When the Leaves Come Tumbling Down," by Clyde Doerr and Orchestra.
- 18946 Fox Trot—"Chicago," by Paul Whiteman and Orchestra; "Early in the Morning Blues," the Virginians.
- 18947 Fox Trot—"I Wish I Knew" and "Suez," by Clyde Doerr and his Orchestra.
- 18948 Fox Trot—"Stuttering" by the Benson Orchestra of Chicago; "Those Longing For You Blues," Benson Orchestra of Chicago.
- 18949 Fox Trot—"I'll Build a Stairway to Paradise" and "You Remind Me Of My Mother," by Paul Whiteman and his Orchestra.
- 18950 Fox Trot—"I Found a Four Leaf Clover" and "Two Little Ruby Rings," by Paul Whiteman and his Orchestra.

THE ABILITY TO PAY

depends upon the Companies whose financial and moral standing guarantees the reliability of their insurance contracts, both under ordinary conditions and in settling claims which have arisen in conflagrations.

Why Stand In Jeopardy?

We represent leading companies of the world.
C. Brewer & Company (Limited)
Insurance Department

P. O. Box 347 Honolulu, T. H.

OF COURSE

We don't need to tell you that. Just wanted you to form the good habit of asking your grocer for the Kona Coffee with the red label in one pound packages or five pound cans.



Hawaiian Kona is the Best THE CHOICE OF THE PICK

AMERICAN FACTORS, LTD.
WHOLESALE DISTRIBUTORS

LAHAINA ICE CO., LTD.

MANUFACTURERS OF ICE, PURE SUGAR SYRUPS, DELICIOUS AND REFRESHING SODA WATER

SODA WATER PER CASE, MIXED FLAVORS, 90 CENTS.

DISTRIBUTORS OF ELECTRIC POWER AND LIGHT

Reasonable Estimates on Housewiring and Housewiring Supplies.

IT'S A PLEASURE TO SHOP

In the handsomest store on Maui, where one finds a complete stock of Dry Goods, Furnishings, Notions, Groceries and general merchandise, where service and attention are the best

THE LAHAINA STORE

Phone 27-B, Lahaina. Branch at Puukolii.

It's Time To Start Your Christmas

buying. Thanksgiving Day has come and gone and there's no excuse to wait longer.

PAIA STORE

PAIA, MAUI

Thousands Are Using It

B. B. C.

(Body Building Compound) is a formula of medicinal Roots and Herbs, combined with Iron, that working with Nature, cleanse and strengthen the entire interior machinery of the body, throwing off sickness and disease and making it tingle with youthful vigor and reserve power. Weak, anaemic, run-down and nervous people are benefited after only a few weeks' use in many instances. Liquid or Tablets. All Maui Drugists and Plantation Stores. Price \$1.00.

WILLIAM D'ESMOND
Engineer and Architect

(Member American Association Engineers)

Designer and Builder of Homes for Particular People

Opposite Maui Book Store
WAILUKU, MAUI

Best Service

We are able to and do give the most dependable, prompt and efficient service in cleaning, repairing and pressing men's and women's clothing.

Satisfaction guaranteed

MAUI CLOTHES CLEANING SHOP

Market Street, opp. Kalua Ave.

ALEXANDER & BALDWIN LIMITED

Sugar Factors
Commission Merchants
and
Insurance Agents

AGENTS FOR—

- Hawaiian Commercial & Sugar Co.
- Maui Agricultural Company
- Hawaiian Sugar Company
- Kahuku Plantation Company
- McClyde Sugar Company
- Kahului Railroad Company
- Kauai Railroad Company
- Honolulu Ranch
- Kauai Fruit & Land Company

WHAT ARE YOU DOING?

DO YOU KNOW—
Who is the present Pope?
Why are some plants always green?
What river is called the "Father of Waters?"
When are the tides strongest, at the time of the full moon or the new moon?
Where is the gall located?

Answers To Yesterday's Queries
Hannibal Hamlin was Vice President during Lincoln's first term.
"Bunk" is a shortening of "buncombe," derived from the remark of a member of Congress from Buncombe County, North Carolina, that he was "talking only for Buncombe."
Nostalgia is another name for homesickness.
Winter commences this year at 9:57 A. M., Eastern standard time, on December 22.
The largest library in the world is the Bibliotheque National, in Paris.

The Daily Fun Hour

Captain Sun Ball

In this game, sometimes called progressive ball, the ground is divided into two courts, with small circles arranged in each court around a larger circle for the captain. These little circles are bases. There should be no circle between the captain's circle

HOW FAST CAN YOU PUMP GAS?

When a motorist stops for gasoline he usually wants it in a hurry. If you have a Milwaukee gasoline pump you can give him fifteen gallons a minute. This is just one of the many handy features of the Milwaukee. There is, for instance, a little valve that drains the hose when pumping stops. If you want the gasoline business in your district get a Milwaukee.

HONOLULU IRON WORKS CO.

WHOLESALE DISTRIBUTORS

JEWELRY PLEASES

And what you want at Christmas time is to give pleasure to your relatives and friends

MAKE YOUR CHOICE

from the largest stock of Jewelry on Maui and at the lowest prices. Rings, diamonds and other precious and semi-precious stones. Watches, open face, hunting case and wrist in gold and silver.



Necklaces, gold, coral and bead, Jade articles, Novelties
Bargain Sale, December 9th to 30th.

H. KANESHIGE

Puunene Ave. JEWELRY Kahului

TIME TABLE—KAHULUI RAILROAD CO.

Daily Passenger Train Schedule (Except Sunday)

The following schedule went into effect November 18, 1918.

TOWARDS WAILUKU						TOWARDS HAIKU							
9	7	5	3	1	Distance	STATIONS							
Miles						Miles							
P	M	P	M	A	M	A	M	A	M	P	M	P	M
5 35	3 30	1 25	8 35	6 35	15.3	A. Wailuku..L	6 40	8 40	1 30	3 35	5 38	8 40	1 40
5 23	3 20	1 15	8 25	6 25	15.3	L. Kahului..A	6 50	8 50	1 40	3 45	5 48	8 50	1 50
5 20	3 17	1 12	8 20	6 20	12.0	L. Kahului..L	6 52	8 52	1 42	3 47	5 50	8 52	1 52
5 10	3 07	1 02	8 10	6 10	8.0	L. Kahului..A	7 02	9 02	1 52	3 57	6 00	9 02	2 02
5 09	3 05	1 00	8 08	6 08	8.4	L. Spreck..L	7 03	9 03	1 53	3 58	6 01	9 03	2 03
5 00	2 55	0 50	8 00	6 00	5.5	L. A. Sisville..L	7 12	9 12	2 05	4 10	6 03	9 03	2 05
4 58	2 53	0 47	7 57	5 57	5.5	L. Paia..L	7 15	9 15	2 07	4 12	6 03	9 03	2 07
4 52	2 47	0 41	7 52	5 52	5.5	L. Paia..A	7 20	9 20	2 14	4 19	6 03	9 03	2 14
4 51	2 46	0 40	7 50	5 50	3.4	L. Hamama..L	7 22	9 22	2 15	4 20	6 03	9 03	2 15
4 45	2 40	0 34	7 45	5 45	1.4	L. A. Kuapoko..L	7 30	9 30	2 23	4 28	6 03	9 03	2 23
4 44	2 39	0 33	7 44	5 44	1.4	L. Pauwela..L	7 32	9 32	2 25	4 30	6 03	9 03	2 25
4 40	2 35	0 29	7 40	5 40	0	L. Haiku..L	7 36	9 36	2 30	4 35	6 03	9 03	2 30

PUUNENE DIVISION

TOWARDS PUUNENE			TOWARDS KAHULUI		
3	1	Distance	STATIONS		
Miles			Miles		
Passenger	Passenger	Distance	Distance	Passenger	Passenger
P	M	Miles	Miles	A	M
2 50	6 00	0	L. Kahului..A	2 5	6 22
3 00	6 10	2.5	A. Puunene..L	0	6 18

- All trains daily except Sundays.
 - A Special Train (Labor Train) will leave Wailuku daily, except Sundays, at 5:30 a. m., arriving at Kahului at 5:50 a. m., and connecting with the 6:00 a. m. train for Puunene.
 - BAGGAGE RATES: 150 pounds of personal baggage will be carried free of charge on each whole ticket, and 75 pounds on each half ticket, when baggage is in charge of and on the same train as the holder of the ticket. For excess baggage 25 cents per 100 pounds or part thereof will be charged.
- For Ticket Fares and other information see Local Passenger Tariff I. C. C. No. 12 or inquire at any of the D. spots

ALL MAUI READS MAUI NEWS WANT ADS.

Personal Mention

Harrison Rice was over from Lahaina last night. Supervisor Drummond returned to Hana this morning. Dr. and Mrs. J. C. Fitzgerald were down from Makawao yesterday. John Maxim and W. R. Ouderirk were passengers on the Kilaua this morning for Hana. Joe Meinecke of Paia went to Honolulu last night and expects to return on Saturday. Lorrin K. Smith has gone to Honolulu to attend a meeting of the Hawaii Tourist Bureau. W. H. "Pop" Hutton is reported as making improvement but still carries his arm in a sling. Leon A. Quonsan departed on the Kilaua for Hana this morning and will return tomorrow. Lawrence A. Kerr was a business visitor from Honolulu this morning to register at the Grand. Leon Tobiner, representing L. Rubenstein & Son of Honolulu, is a guest at the Wailuku Hotel. O. H. Swezey of the Sugar Planters' Association departed on the Mauna Kea for Honolulu last night. Henry Robinson Jr. motored over from Lahaina to attend the meeting of the football committee last night. J. E. Phillips, manager of the Royal Hawaiian Sales Co. was an arrival from Honolulu this morning. He is registered at the Grand.

Pertinent Paragraphs

Forfeits His Bail.—T. Tanaka accused of catching prohibited fish at Kihel forfeited bail of \$50 in the Wailuku district court by failure to appear when the case was called. Tentative Budget Drawn.—Yesterday afternoon the board of supervisors completed a tentative budget which will come up for final approval on Friday when the board meets for that purpose. For Heedless Driving.—Hazimi Kazita who is held responsible for the four car mixup at the entrance to the Fair Grounds after the football game on December 3, was fined \$75 in the Wailuku district court. Farewell Dinner.—For H. W. Wong, who will leave Maui about the middle of the month to take up the practice of law in Honolulu, a dinner was given on Sunday evening at the Cling How restaurant in Wailuku. About 40 friends of the departing lawyer were present to extend parting aloha and wish him all success. Hospital For Molokai.—Plans for a 12 bedroom hospital for Molokai are to be drawn by the county engineer and presented to the board of supervisors at their January meeting. Two of the beds are to be private beds and in addition to the main ward and hospital rooms there are to be nurses' quarters, kitchen and dining room. New Manager Arrives.—L. S. Keeler has arrived to take the management of the Maui Branch of the Royal Hawaiian Sales Co. and will soon return to his Honolulu home. Manager J. E. Phillips came over this morning with the new manager. Keeler is a recent arrival in the Islands and for several years past has been engaged in the automobile business in Phoenix, the capital and largest city of Arizona. Not West Point.—Stephen O. Fuqua, Lieutenant Colonel of the General Staff of the Hawaiian department writes and calls attention to a dispatch published in this paper on December 4 which said the Marines beat West Point 13-12. Colonel Fuqua says the Marines did not play West Point but the game was probably with the enlisted contingent at Fort Meade. The message read "Marines 13—Army 12" and as in press dispatches of sport events West Point is always referred to as "Army" it was natural to assume that the Army referred to was West Point.

Law Partnership To End On December 31

At the end of the year the law partnership between Eugene Murphy and Philip L. Weaver will be dissolved. Weaver will remain on Maui and will occupy the same office he has now. Murphy will also continue his practice here and occupy the same offices. In speaking of the dissolution, Weaver said yesterday that there is need of more law offices on Maui rather than fewer. There are cases that arise, in estates for instance, where interests of parties differ and where the counsel for the administrator or executor cannot well represent the legatee, or some of them as well. There are other instances where it is advisable to have larger number of counsel available. Both Murphy and Weaver say that there has been no misunderstanding between them and that they are agreed that the interests of both of them and of their clientele will best be conserved by two offices.

Siki and Georges May Fight Again

(ASSOCIATED PRESS) PARIS, Dec. 12—The French Boxing Federation announced today that it will authorize a fight between 'Balding' Siki and Georges Carpentier on the condition that the receipts go to the aid of the Rome national fund. There will be no free seats and SIKI will appear before an investigating committee to justify the charges he made.

The Stock Market

Table with 2 columns: Stock Name and Price. Includes Ewa, H. C. & S. Co., McByde, Oahu, Pioneer, Wailuku, Engels, Hailku, Sugar, Honolulu Oil, San Carlos.

Today's Quotation on RAW SUGAR: 5.78 CENTS PER POUND. WATERHOUSE TRUST CO., LTD. PHONE 5701.

HUGE WINE CROP

(ASSOCIATED PRESS) PARIS, Dec. 12—France has produced the largest wine harvest this year since 1875. Total production is sixty-eight million hectoliters. That amount would equal approximately 1,800,000,000 gallons.

Maui Theaters

TONIGHT Wailuku Hipp—Goldwyn presents Reginald Barker's production of "Bunty Pulls the Strings"; also "Bullet Proof," a comedy. Kahului Theater—Special Feature Attraction, Rudolph Valentino in "Blood and Sand," also "Be Careful," a comedy, and Fox News. Puunene Theater—Japanese show, M. A. Theater, Paia—Jackie Coogan in "Trouble," and also "Winners of the West." WEDNESDAY NIGHT Wailuku Hipp—Wallace Reid and Bebe Daniels in "Nice People"; second chapter of "Winners of the West." Kahului Theater—Japanese Pictures. Puunene Theater—Tom Mix in "The Night Horseman," also a Comedy. M. A. Theater, Paia—A great Western play, "Squarin' It"; "Adventures of Tarzan" and a Comedy.

HOTEL ARRIVALS

Grand Hotel—W. H. Scott, O. S. Orriek, L. A. Kerr, A. S. Keeler, J. E. Phillips, V. E. Hicks, J. A. Good, Mrs. T. E. Barber, Miss L. Thayer, Miss Jean L. Roosevelt, Dr. Howard van Rensselaer.

Three Year Swimmer Has Four Medals

LOS ANGELES, (By A. P. Mail)—Mickey McBan, 3 years old, is a Los Angeles claimant to the title of fastest baby swimmer of the Pacific Coast. Mickey has already won four medals—for the fifty yard backstroke, the Australian crawl, the 10-foot dive and for the fastest baby swimmer on the coast when he was 2 years old—and he is looking for more.

Coming Events

Tuesday, Dec. 12—Ladies Aid of Wailuku Union Church meets with Mrs. Martensen. Thursday, December 14—Directors of Maui County Fair and Racing Association meet at Chamber of Commerce rooms 3 p. m. Friday, Dec. 15—Championship basketball games at Wailuku Gym at 7:30. Saturday, Dec. 16—Puka Nani Hui, High School Dramatic Club, presents "At the Movies" and "Maker of Dreams," Paia Community House, 8 o'clock. Dancing after program. Sunday, Dec. 17—Luau at Keahua Catholic Church immediately after mass. Football, Kahului vs Lahaina at Lahaina, 2:30. Tuesday, Dec. 19—Meeting of Football Committee, Chamber Rooms at 7 p. m.

WANT ADS

FOR SALE—My three bed room home. Has solar water heater and all other modern conveniences. For information call on or phone me at the Bank of Maui, Wailuku, P. H. Ross. t.f. FOR SALE—A 1922 model Ford Sedan, in excellent condition. Phone or address P. H. Ross, Bank of Maui, Wailuku. t.f. FOR SALE—Corona typewriter. Practically new, in fine condition. Can be seen at Maui News office. Price \$10. Can be seen at Maui News office. t.f. WANTED—Partner for large scale bee and honey industry. Mail inquiry to P. O. Box 2387, Honolulu.

Before Mailing Your XMAS GIFTS Insure Them With Us. RATES: Value \$ 25.00 Premium 5c; Value \$ 50.00 Premium 10c; Value \$100.00 Premium 25c. INSURANCE DEPT. Bank of Maui, Ltd.

MAILE BUTTER 70 CENTS A POUND. You'll enjoy its fresh and delicious flavor. It is the brand for New Zealand's choicest product, the finest in this Territory. Maui Soda & Ice Works, Limited. "We Serve Your Needs" Phone, 128 Wailuku

For Christmas ELECTRICAL. Curling Irons, Grills, Waffle Irons, Percolators, Tea Pots, Toasters, Emersion Heaters, Wizard Lamps, Warming Pads, Radio Sets. Christmas Strings for the Trees All at Mainland Prices. Maui Electric Co. A Home Company For Home Folk

People's Comment

Basketball Fans: S. and A. R. raised the question of holding the ball in bounds which is answered under Rule 7, Section 4. Question: How long may a player in bounds who is not closely guarded hold the ball without violating the rule? Answer: Indefinitely; the length of time he may hold it depends upon the activity of his opponent. We trust this will clear the situation for the fans in question. BASKETBALL OFFICIAL.

DO YOUR XMAS SHOPPING HERE You'll Be Satisfied The Maui Drug Co. "The Home of Service" PHONE 232-A WAILUKU, MAUI

MAUI TWENTY YEARS AGO

(From Maui News of Dec. 13, 1902) Judge A. N. Kepoikai has been offered the post of treasurer of the territory. Wailuku Mill started its 1903 grind last Tuesday. Honolulu won the polo championship from Maui 14 3/4 to 4 3/4. Louis von Tempsky has been elected president of the Inter-Island Polo Association. Fifty four Japanese were refused landing in Honolulu because they were found suffering from Trachoma. Circuit Court is in session in Lahaina. The gripe is still prevalent in Maui but abating. The jury at Lahaina will draw no pay till the legislature meets. The department of public works is planning to enforce the wide tire ordinance on Maui. Vineyard street from the cemetery to Market street is a bog-hole. Captain Clement Crowell's Wailuku football team defeated Lahaina 10 to 0 Sunday. According to reports it was rather a brutal affair although the Wailuku players say that they started to play a square, gentlemanly game during the first half. Antonio Dorego brought over the local mail from Lahaina on horseback yesterday and reports bridges out and the road in deplorable state.

SAVE YOUR SIGHT. Dr. A. Robarts, optometrist has opened an office at his residence just off Central Avenue, Wailuku. Spectacles and Eye Glasses That Satisfy. Muscular treatments and diagnosis of the eyes. Phone For Appointments Wailuku 43-A

CHRISTMAS BUYING TIME. Yes, the holidays are right on you and you haven't started shopping. All right, come on. TOYS. You will find all sorts of them, for the little tots and the bigger kiddies a large fine assortment. CHINESE GOODS. We have them and there is lovely pottery and other things. Get Chinese things at a Chinese store. Useful gifts, things to wear are always acceptable. TAM CHONG LOWER PAIA, MAUI

KAHULUI RAILROAD CO.'S MERCHANDISE DEPARTMENT. MAUI DISTRIBUTOR OF The Parafine Co.'s A. & B. ROOFING PRODUCTS. TELEPHONES NOS. 201-202-203. KAHULUI, MAUI, T. H.

For Christmas Gifts. We are displaying a new line of Chinese Articles such as Chinese Linens, Necklaces, Mandarin Coats and Novelty Goods. Also we have a greater line of Toys, Christmas Stationery and Cards from which you may select. Maui Gift and Art Shop Agents for the Baby Shop Market Street, across from the Wailuku Hipp.

When You Think of Butter for Holiday Eating or Cooking, Think of Maile (Pronounced "My Lei") A high standard New Zealand butter of unvarying good quality and flavor. Use it freely, with absolute faith in its purity. Ask Your Nearest Grocer. METROPOLITAN MEAT MARKET Distributors—Honolulu