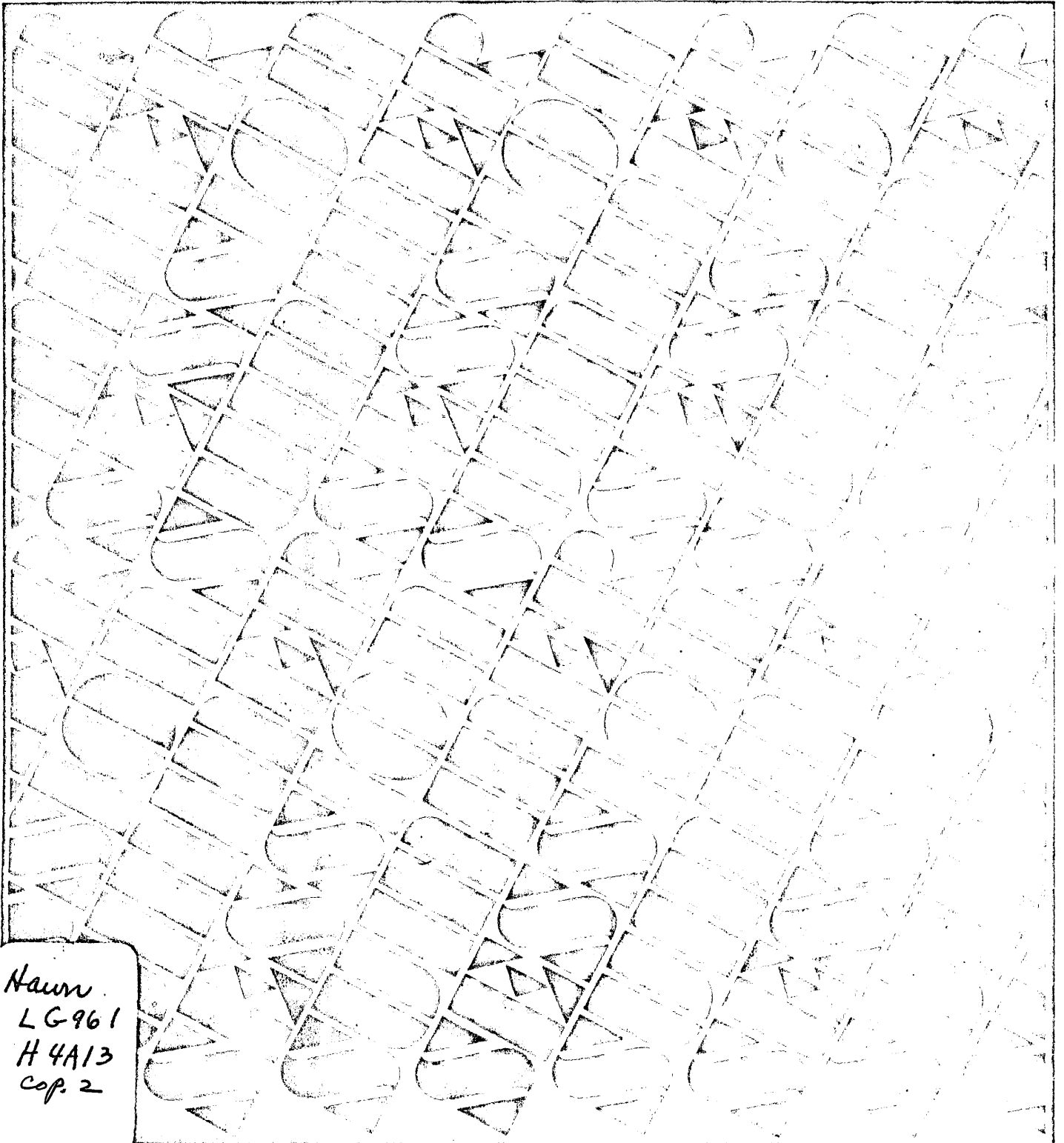
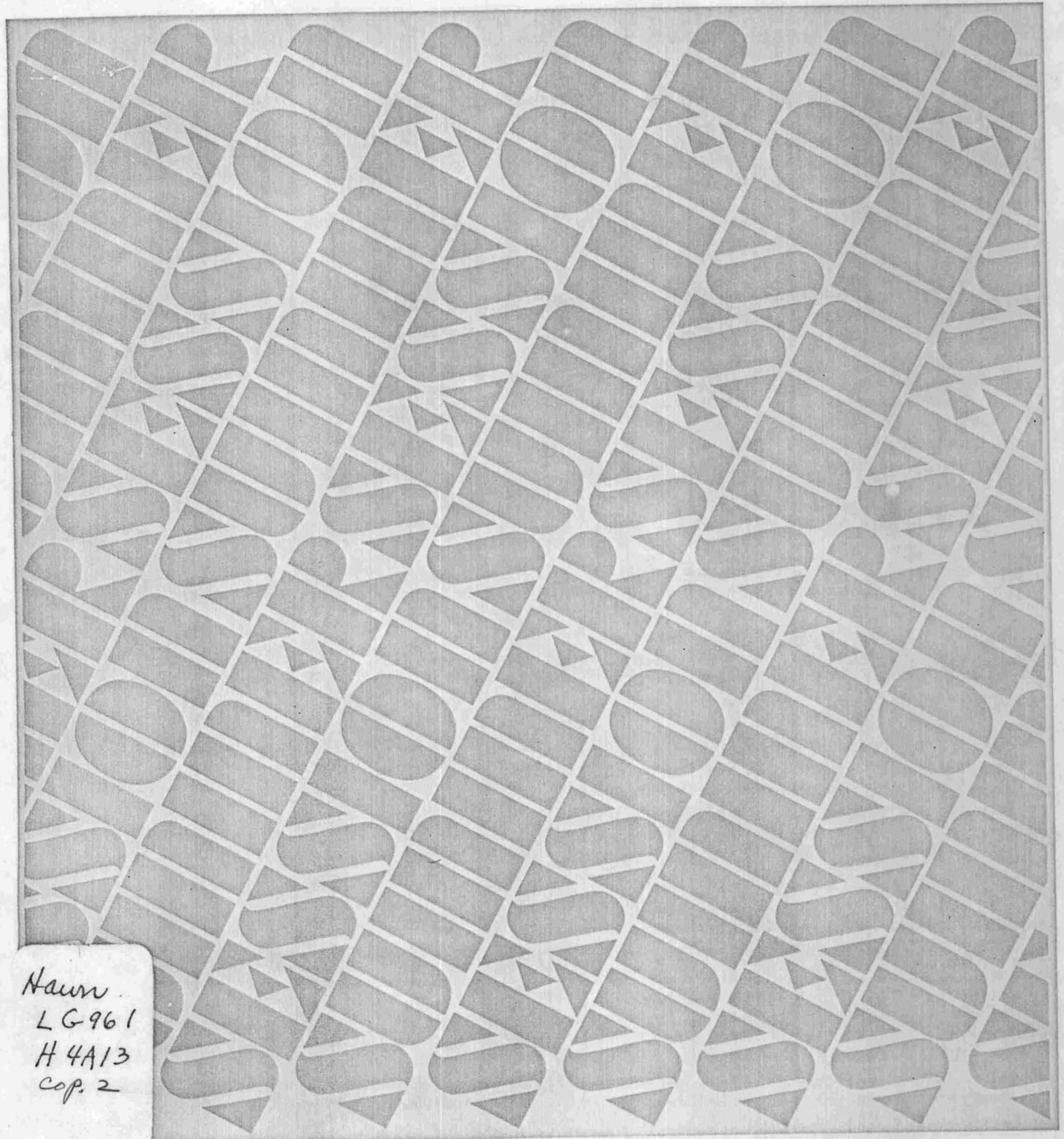


UNIVERSITY OF HAWAII
LIBRARY



Hawn
LG 961
H 4A13
cop. 2

UNIVERSITY OF HAWAII
LIBRARY



Hawn
LG 961
H 4A13
cop. 2

UNIVERSITY OF HAWAII. The University of Hawaii is a federal land-grant and state university. It has colleges of Arts and Sciences, Business Administration, Continuing Education and Community Service, Education, Engineering, Health Sciences and Social Welfare (including schools of Medicine, Nursing, Public Health and Social Work), and Tropical Agriculture; the Graduate Division; the School of Law; the School of Library Studies; and a system of Community Colleges. It offers the bachelor's degree in 69 fields, the master's degree in 73 and the doctorate in 34.

ADMISSION. Applicants who fit any one of the following categories need not apply for admission to the summer session ahead of time, but will be required to complete the summer Self-Certification Form (see last page of this Announcement):

1. Graduate of an accredited college or university.
2. Student currently in good standing at an accredited college or university.
3. Student who was in good standing at the last accredited college or university attended.
4. Student who was placed on scholastic suspension or was dismissed after the spring semester of 1974 from the University of Hawaii.
5. Student on scholastic probation, but eligible for continued registration at an accredited college or university.
6. Student who has never attended college or university before, but who has been accepted for admission at an accredited college or university.
7. Student currently in good standing at a local community college and enrolled in the transfer curriculum.

Applicants who do not fit any of the categories listed above are required to submit official transcripts and SAT scores along with a regular Admissions Form by April 15, 1974, to the Office of Admissions and Records, 125 Bachman Hall, 2444 Dole Street, University of Hawaii, Honolulu, Hawaii 96822. Admissions Forms are attached at the back of this Announcement.

Admission to the summer session does not imply admission to the fall or spring semester.

TUITION AND FEES. The tuition is \$20 per (semester) credit hour for resident students and \$30 per credit hour for out-of-state students. An activity fee and a campus center fee are charged every student. There are no laboratory or other course fees except for applied music, institutes, and other special programs. All fees must be paid in full at registration time. No money should be sent in advance.

STUDENT HOUSING. Single and double residence hall accommodations will be available to summer session students for both summer sessions on a first-come first-served basis. Interested students should return the card attached in the center of this Announcement. A weekday board program is included which offers a choice of a 10 meal or 15 meal per week plan.

The residence halls are newly completed facilities with reasonable student rates and feature an on-campus location convenient to the Waikiki area. Since students come from all over the mainland and from many foreign countries residents can benefit from the experience of cross-cultural contacts within a group setting.

Because of rapid changes, listings of off-campus accommodations cannot be mailed out. However, students, upon arrival in Honolulu, are invited to visit the Special Housing Office in Bachman Annex 5 to obtain information on off-campus housing; negotiations with landlords of such accommodations must be made by the student.

Special seminar or conference groups can be accommodated in on-campus residence halls; address inquiries to the Conference Coordinator, Student Housing Office, Johnson Hall A, 2555 Dole St., Honolulu, Hawaii 96822.

CHANGES. The University reserves the right to make changes in curriculum and fees.

OTHER INFORMATION. Full details will be given in the 1974 summer session catalog, to be published in the spring. For a copy of the catalog, enclose \$1.25 money order (for surface mail) or \$2.00 money order (for air mail) and send your request to the Bookstore, University of Hawaii, 1760 Donaghho Road, Honolulu, Hawaii 96822. A final list of courses and other information will be available on registration day. Inquiries may be addressed to:

Summer Session Office
2500 Dole Street, Krauss 101
University of Hawaii
Honolulu, Hawaii 96822

UNIVERSITY OF HAWAII BULLETIN

Volume LIII December 1973 Number 1
The University of Hawaii Bulletin is published four times a year at the University of Hawaii at Manoa, Honolulu, Hawaii, U.S.A. Entered as second-class matter at the Post Office at Honolulu, Hawaii, November 14, 1921, under Act of Congress of August 24, 1912.

1974 SUMMER SESSION CALENDAR

FIRST TERM (May 28—July 5)

May 28, Tuesday	Instruction begins
June 11, Tuesday	Holiday
July 4, Thursday	Holiday
July 5, Friday	First term ends

SECOND TERM (July 8—August 15)

July 8, Monday	Instruction begins
August 15, Thursday	Second term ends



1974 SUMMER SESSION CALENDAR

FIRST TERM (May 28—July 5)

May 28, Tuesday Instruction begins
June 11, Tuesday Holiday
July 4, Thursday Holiday
July 5, Friday First term ends

SECOND TERM (July 8—August 15)

July 8, Monday Instruction begins
August 15, Thursday Second term ends



AGRICULTURE, TROPICAL

Agriculture (Ag)

FIRST TERM

- 200 Agricultural Practice (2)
- 399 Agricultural Thesis (v)

Agricultural Economics (AgEc)

FIRST TERM

- 699 Directed Research (v)
- 800 Thesis (v)

SECOND TERM

- 699 Directed Research (v)
- 800 Thesis (v)

Agricultural Engineering (AgEng)

FIRST TERM

- 499 Directed Research (v)
- 699 Directed Research (v)
- 800 Thesis (v)

SECOND TERM

- 499 Directed Research (v)
- 699 Directed Research (v)
- 800 Thesis (v)

Agronomy (Agron)

FIRST TERM

- 499 Directed Study (v)
- 699 Directed Research (v)
- 799 Directed Research (v)
- 800 Thesis Research (v)

SECOND TERM

- 499 Directed Study (v)
- 651 Advanced Techniques in Plant and Soil Analysis (3)
- 699 Directed Research (v)
- 799 Directed Research (v)
- 800 Thesis Research (v)

Animal Sciences (AnSc)

FIRST TERM

- 499 Directed Research (v)
- 699 Directed Research (v)
- 800 Thesis (v)

SECOND TERM

- 499 Directed Research (v)
- 699 Directed Research (v)
- 800 Thesis (v)

Entomology (Ento)

FIRST TERM

- 699 Directed Research (v)
- 800 Thesis Research (v)

SECOND TERM

- 699 Directed Research (v)
- 800 Thesis Research (v)

Food Science and Technology (FdSc)

FIRST TERM

- 699 Directed Research (v)
- 800 Thesis (v)

SECOND TERM

- 699 Directed Research (v)
- 800 Thesis (v)

Horticulture (Hort)

FIRST TERM

- 499 Directed Study (v)
- 699 Directed Research (v)
- 800 Thesis Research (v)

SECOND TERM

- 499 Directed Study (v)
- 699 Directed Research (v)
- 800 Thesis Research (v)

Plant Pathology (PPath)

FIRST TERM

- 499 Directed Research (v)
- 699 Directed Research (v)

SECOND TERM

- 499 Directed Research (v)
- 699 Directed Research (v)

AMERICAN STUDIES (AmSt)

FIRST TERM

- 201 Introduction to American Civilization (3)
- 301 American Perspectives (3)
- 422 Black Americans (3)
- 429C The Asian-American Family (3)
- 439B Communication in America: Forms and Media (3)
- 610C The American City (3)

SECOND TERM

- 202 Introduction to American Civilization (3)
- 302 American Perspectives (3)
- 310 Japanese Americans (3)
- 420 American Subcultures: Survey (3)
- 421 American Indians (3)
- 620 The Ethnic Middleman (3)
- 630 The Family in America (3)

ANATOMY AND REPRODUCTIVE BIOLOGY (Anat)

FIRST TERM

- 634 Experimental Methods in the Study of Reproductive Behavior (v)
- 699 Directed Research (v)
- 800 Thesis Research (v)

SECOND TERM

- 634 Experimental Methods in the Study of Reproductive Behavior (v)
- 699 Directed Research (v)
- 800 Thesis Research (v)

ANTHROPOLOGY (Anth)

FIRST TERM

- 150 Introduction to Anthropology (3)
- 200 Cultural Anthropology (3)
- 215 Physical Anthropology (3)
- 385B Undergraduate Proseminar (3)
- 460B Regional Archaeology: Asia and Pacific (3)



SECOND TERM

- 150 Introduction to Anthropology (3)
- 200 Cultural Anthropology (3)
- 210 Archaeology (3)
- 380 Archaeological Field Techniques (3)
- 414 Introduction to Linguistic Anthropology (3)
(Identical with Ling 414)

ART (Art)

FIRST TERM

- 101 Introduction to the Visual Arts (3)
- 105 Elementary Studio- Ceramics (3)
- 106 Elementary Studio--Sculpture (3)
- 107 Elementary Studio Photography (3)
- 108 Elementary Studio—Drawing and Painting (3)
- 113 Introductory Studio "A" (3)
- 114 Introductory Studio "B" (3)
- 115 Introductory Studio "C" (3)
- 116 Introductory Studio "D" (3)
- 207 Photography A (3)
- 213 Life Drawing (3)
- 215 Printmaking Intaglio (3)
- Painting "A" (3)
- Painting "B" (3)
- Textile Design (3)
- Ceramics A (3)
- Ceramics B (3)
- Sculpture (3)
- Intermediate Sculpture A (3)

- 270 Aspects of European and American Art (3)
- 330 Advanced Textile Design (3)
- 341 Advanced Ceramics (3)
- 353 Advanced Sculpture (3)
- 399 Directed Work (v)
- 402 Glass Blowing (3)
- 630 Textile Design (3)
- 647 Ceramics (v)
- 699 Directed Work (v)

SECOND TERM

- 214 Life Drawing (3)
- 216 Printmaking -Lithography (3)

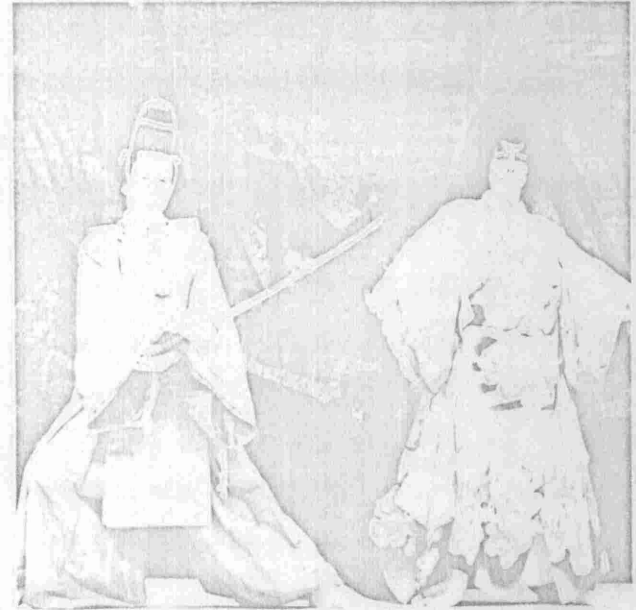
ASIAN STUDIES (Asian)

FIRST TERM

- 241 Civilizations of Asia (3)
(Identical with Hist 241)
- 242 Civilizations of Asia (3)
(Identical with Hist 242)
- 601 Contemporary China Studies Seminar (3)
(Identical with Hist 725)
- 603 Contemporary Japanese Studies Seminar:
Big Business and Politics (3)

SECOND TERM

- 410 Symbolism in Chinese Literature and Art (2)
- 411 The Principle and Technique of Chinese
Calligraphy (2)



SECOND TERM

- 150 Introduction to Anthropology (3)
- 200 Cultural Anthropology (3)
- 210 Archaeology (3)
- 380 Archaeological Field Techniques (3)
- 414 Introduction to Linguistic Anthropology (3)
(Identical with Ling 414)

ART (Art)

FIRST TERM

- 101 Introduction to the Visual Arts (3)
- 105 Elementary Studio—Ceramics (3)
- 106 Elementary Studio—Sculpture (3)
- 107 Elementary Studio—Photography (3)
- 108 Elementary Studio—Drawing and Painting (3)
- 113 Introductory Studio "A" (3)
- 114 Introductory Studio "B" (3)
- 115 Introductory Studio "C" (3)
- 116 Introductory Studio "D" (3)
- 207 Photography A (3)
- 213 Life Drawing (3)
- 215 Printmaking—Intaglio (3)
- Painting "A" (3)
- Painting "B" (3)
- Textile Design (3)
- Ceramics A (3)
- Ceramics B (3)
- Sculpture (3)
- Intermediate Sculpture A (3)

- 270 Aspects of European and American Art (3)
- 330 Advanced Textile Design (3)
- 341 Advanced Ceramics (3)
- 353 Advanced Sculpture (3)
- 399 Directed Work (v)
- 402 Glass Blowing (3)
- 630 Textile Design (3)
- 647 Ceramics (v)
- 699 Directed Work (v)

SECOND TERM

- 214 Life Drawing (3)
- 216 Printmaking—Lithography (3)

ASIAN STUDIES (Asian)

FIRST TERM

- 241 Civilizations of Asia (3)
(Identical with Hist 241)
- 242 Civilizations of Asia (3)
(Identical with Hist 242)
- 601 Contemporary China Studies Seminar (3)
(Identical with Hist 725)
- 603 Contemporary Japanese Studies Seminar:
Big Business and Politics (3)

SECOND TERM

- 410 Symbolism in Chinese Literature and Art (2)
- 411 The Principle and Technique of Chinese
Calligraphy (2)

BIOCHEMISTRY (Bioch)

FIRST TERM

241 Fundamentals of Biochemistry (3)

SECOND TERM

341 Elements of Biochemistry (3)
441 Basic Biochemistry (3)

BOTANY (Bot)

FIRST TERM

105 Ethnobotany (3)
399 Botanical Problems (v)
426 History of Biology (3)
(Identical with Sci 426)
466 Botany of Cook's Voyages (2)
(Identical with Sci 466)
612 Advanced Botanical Problems (v)
699 Directed Research (v)
799 Directed Research (v)
800 Thesis (v)

SECOND TERM

160 Identification of Tropical Plants (2)
181 Plant Life of the Sea (4)
399 Botanical Problems (v)
612 Advanced Botanical Problems (v)
699 Directed Research (v)
799 Directed Research (v)
800 Thesis (v)

BUSINESS ADMINISTRATION

Accounting (Acc)

FIRST TERM

201 Elementary Accounting I (3)
202 Elementary Accounting II (3)
307 Income Tax Problems (3)
321 Financial Accounting I (3)
325 Financial Accounting III (3)
331 Auditing (3)

SECOND TERM

201 Elementary Accounting I (3)
202 Elementary Accounting II (3)
305 Cost Accounting (3)
323 Financial Accounting II (3)
331 Auditing (3)

Business (Bus)

FIRST TERM

501 Accounting (3) (May 28-July 19)
502 Economic Analysis (3) (May 28-July 19)
503 Introduction to Quantitative Analysis (3)
(May 28-July 19)
601 Managerial Accounting (3) (May 28-July 19)
611 Statistical Methods of Business Analysis (3)
(May 28-July 19)
621 Managerial Economics (3) (May 28-July 19)
631 Finance (3) (May 28-July 19)
641 Management: A Systems Analysis (3)
(May 28-August 2)
642 Behavioral Science for Business (3)
(May 28-August 2)
651 Marketing (3) (May 28-August 2)
796 Business Policy (3) (May 28-August 2)

Business Analysis and Statistics (BAS)

FIRST TERM

122 Mathematics for Decision Making II (3)
301 Business Statistics (3)
302 Business Statistics (3)
305 Accelerated Business Statistics (3)
321 Introduction to Quantitative Analysis (3)
351 Introduction to Computers and Data
Processing (3)

SECOND TERM

122 Mathematics for Decision Making II (3)
301 Business Statistics (3)
302 Business Statistics (3)
351 Introduction to Computers and Data
Processing (3)

Business Economics (BEc)

FIRST TERM

201 Economic Environment in Business and
Economics (3)
341 Economic Analysis for Decision Making (3)
343 Business Conditions Analysis (3)
345 Money, Credit and the Capital Market (3)
349 Managerial Economics (3)

SECOND TERM

201 Economic Environment in Business and
Economics (3)
341 Economic Analysis for Decision Making (3)
343 Business Conditions Analysis (3)
349 Managerial Economics (3)

Finance (Fin)

FIRST TERM

300 Business Finance (3)
305 Problems of Business Finance (3)
734 Investment Analysis and Management (3)
(May 28-July 19)

SECOND TERM

300 Business Finance (3)
311 Investments (3)

Law (Law)

FIRST TERM

300 Legal Environment of Business I (3)

SECOND TERM

300 Legal Environment of Business I (3)

Management (Mgt)

FIRST TERM

301 Management and Organizational Behavior (3)
302 Operations Management I (3)
322 Operations Management Control (3)
341 Human Relations in the Organization (3)
345 Business Policy (3)

SECOND TERM

301 Management and Organizational Behavior (3)
302 Operations Management I (3)
321 Facilities and Productivity Management (3)
341 Human Relations in the Organization (3)
345 Business Policy (3)

Marketing (Mkt)

FIRST TERM

300 Principles of Marketing (3)
315 Marketing Management (3)

SECOND TERM

300 Principles of Marketing (3)

Personnel and Industrial Relations (PIR)

FIRST TERM

- 200 Career Placement (1)
- 351 Personnel Administration (3)

SECOND TERM

- 361 Labor Problems and Trade Unionism (3)

Real Estate (RE)

FIRST TERM

- 300 Principles of Real Estate and Urban Land Economics (3)
- 330 Property Valuation (3)
- 773 Real Estate (3)
(May 28-July 19)

SECOND TERM

- 300 Principles of Real Estate and Urban Land Economics (3)
- 310 Real Estate Law (3)

Travel Industry Management (TIM)

FIRST TERM

- 100 Internship (0)
- 200 Internship (0)
- 300 Internship (1)
- 400 Internship (1)

SECOND TERM

- 100 Internship (0)
- 200 Internship (0)
- 300 Internship (1)
- 400 Internship (1)

CHEMISTRY (Chem)

FIRST TERM

- 114 General Chemistry (3)
- 114L General Chemistry Laboratory (1)
- 133 Elementary Quantitative Analysis (2)
- 133L Elementary Quantitative Analysis Laboratory (2)
- 243 Organic Chemistry (3)
- 243L Organic Chemistry Laboratory (1)
- 399 Directed Reading or Research (v)
- 799 Directed Research (v)

SECOND TERM

- 100 Chemistry and Man (3)
- 100L Chemistry and Man Laboratory (1)
- 244 Organic Chemistry (3)
- 244L Organic Chemistry Laboratory (1)
- 399 Directed Reading or Research (v)
- 799 Directed Research (v)

COMMUNICATION

Communication (Comun)

FIRST TERM

- 145 Interpersonal Communication (3)
- 200 Introduction to Theories of Communication (3)
- 261 Broadcasting (3)
- 263B Broadcast Laboratory—Radio Production (3)
- 384 Communication Among Cultural Groups (3)

SECOND TERM

- 145 Interpersonal Communication (3)
- 221 Communication Contexts for Creative Learning (3)
- 263C Broadcast Laboratory—Television Production (3)
- 384 Communication Among Cultural Groups (3)

Speech-Communication (SpCom)

FIRST TERM

- 651 Seminar in Rhetoric and Public Address (3)

SECOND TERM

- 785 Seminar in Speech-Communication in Innovation (3)

DRAMA AND THEATRE (Drama)

FIRST TERM

- 160 Introduction to Drama and Theatre (3)
- 201 Introduction to the Art of the Film (3)
- 221 Beginning Acting (3)
- 281 Beginning Modern Dance (3)
- 283 Beginning Ballet (3)
- 299 Theatre Practice (3)
- 381 Intermediate Modern Dance (3)
- 383 Intermediate Ballet (3)
- *365 Contemporary Drama and Theatre (3)
- 481 Advanced Modern Dance (3)
- 483 Advanced Ballet (3)
- 499 Directed Work (v)
- 799 Directed Work (v)
- 800 Thesis Research (v)

SECOND TERM

- 221 Beginning Acting (3)
- 382 Intermediate Modern Dance (3)
- 384 Intermediate Ballet (3)

*Pending Approval

EAST ASIAN LANGUAGES

Chinese (Chnse)

FIRST TERM

- 101 Elementary Chinese (3)
- 103 Accelerated Elementary Chinese (6)
- 105 Special Elementary Chinese (3)
- 201 Intermediate Chinese (4)
- 301 Third Level Chinese (4)

SECOND TERM

- 102 Elementary Chinese (3)
- 202 Intermediate Chinese (4)
- 204 Accelerated Intermediate Chinese (8)
- 206 Special Intermediate Chinese (4)
- 302 Third Level Chinese (4)

Japanese (Jpnse)

FIRST TERM

- 101 Elementary Japanese (3)
- 103 Accelerated Elementary Japanese (6)
- 201 Intermediate Japanese (4)

Japanese (continued)

- 301 Third Level Japanese (4)
- 401 Fourth Level Japanese (4)

SECOND TERM

- 102 Elementary Japanese (3)
- 202 Intermediate Japanese (4)
- 204 Accelerated Intermediate Japanese (8)
- 302 Third Level Japanese (4)
- 402 Fourth Level Japanese (4)

EAST ASIAN LITERATURE

Chinese (ChLit)

FIRST TERM

- 262 Chinese Literature in Translation: Modern (3)

ECONOMICS (Econ)

FIRST TERM

- 120 Introduction to Economics (3)
- 150 Principles of Economics: Macro (3)
- 220 Mathematics for Social Scientists (3)
- 300 Intermediate Economic Theory: Macroeconomic Analysis (3)
- 404 History of Economic Thought (3)
- 460 International Economics (3)

SECOND TERM

- 120 Introduction to Economics (3)
- 151 Principles of Economics: Micro (3)
- 301 Intermediate Economic Theory: Price Theory (3)
- 321 Introduction to Statistics (3)
- 415 Asian Economic Development (3)
- 461 International Monetary Economics (3)
- 700 Seminar: Macroeconomic Theory (3)

8

EDUCATION

Curriculum and Instruction (EdCI)

FIRST TERM

- 312B Foundations in Curriculum and Instruction: Elementary Education (3)
- 312C Foundations in Curriculum and Instruction: Secondary Education (3)
- 319 Children's Literature (3)
- 320 Language Arts: Elementary (3)
- 321 Reading: Elementary (3)
- 322 Social Studies: Elementary (3)
- 323 Science: Elementary (3)
- 324 Mathematics: Elementary (3)
- 326 Creative Art: Elementary (3)
- 330 Language Arts: Secondary (3)
- 332 Social Studies: Secondary (3)
- 345 Literature for Adolescents (2)
- 399 Directed Reading (v)
- 540I Practicum in Curriculum Development: Mathematics: Implementing the Metric System in the Elementary School (1) (June 17-July 5)
- 540J Practicum in Curriculum Development: Science (FAST Project) (v)

- 540N Practicum in Curriculum Development: General Curriculum and Teaching Problems: IOTA and Application of Child Development Principles in Elementary School Teaching (v) (June 17-July 5)
- 595 Aerospace Education Workshop (4) (June 24-July 26)

SECOND TERM

- 441 Education of the Slow Learners (3)
- 442 Curriculum Development and Instruction for the Slow Learners (3)
- 498 Poetry in the Elementary School Curriculum (3)
- 527 Methods and Materials for the Study of Hawaii (3)
- 540D Practicum in Curriculum Development: English Language Arts (3)
- 540Q Practicum in Curriculum Development: Speech (3)
- 619 Children's Literature in the Elementary Curriculum (3)
- 620 Teaching Reading in the Elementary School (3)
- 621 Modern Language Arts Program, Elementary (3)
- 622 Elementary School Curriculum (3)
- 623 Elementary Science Curriculum (3)
- 624 Elementary Mathematics Curriculum (3)
- 626 Art in the Elementary Curriculum (3)
- 635 Middle School Curriculum (3)
- 636 Secondary School Curriculum (3)
- 646 Reading Difficulties (3)
- 699 Directed Reading Research (v)
- 722 Seminar in Elementary Curriculum Foundations (3)
- 733 Seminar in Curriculum Secondary (3)

Industrial Education (EdIE)

FIRST TERM

- 300 Industrial Crafts—Jewelry and Lapidary Processes (2)
- 402 Improvement of Instruction, Industrial Education (v)

Educational Administration (EdEA)

SECOND TERM

- 601 Introduction to Educational Administration (3)
- 606 Student Personnel Services in Higher Education (3) (Identical with EdEP 606)
- 610 School-Community Relations (3)
- 645 Principles of School Management (3)
- 699 Directed Reading and/or Research (v)
- 780I Seminar in Administration of Higher Education (3)
- 800 Thesis (v)

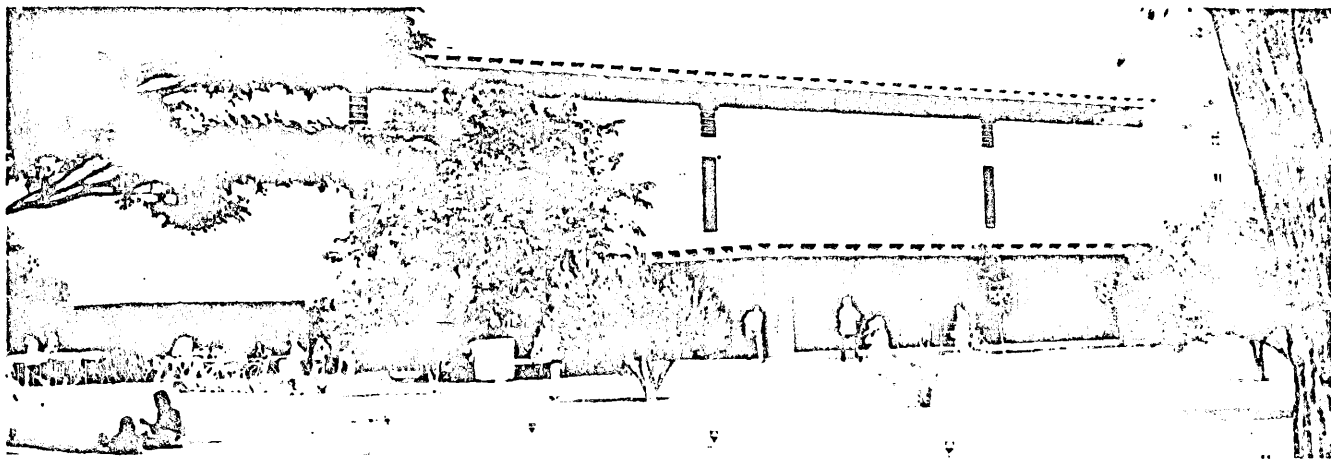
Educational Communications (EdEC)

FIRST TERM

- 314 Audio-Visual Techniques (3)
- 639 Mass Media and Education (3)
- 690 Seminar in Media Leadership (3)

SECOND TERM

- 314 Audio-Visual Techniques (3)
- 640 Programmed Learning (3) (Identical with EdEP 640)



Educational Foundations (EdEF)

FIRST TERM

- 310 Foundations of American Education (3)
- 399 Directed Reading & Research (v)
- 409 Ethnicity, Poverty, & Education (3)
(Identical with SpEd 409)
- *444 Gaming Techniques for Educators (2)
(June 17-July 5)
- *453 History of Education of American Women (3)
- 699 Directed Reading & Research (v)
- 800 Thesis Research (v)

SECOND TERM

- 310 Foundations of American Education (3)
- 399 Directed Reading & Research (v)
- 409 Ethnicity, Poverty, & Education (3)
(Identical with SpEd 409)
- *460 Children's Rights: School and Society (3)
- 490 Zen and Education (3)
- 650 History of Western Education (3)
- 651 History of American Education (3)
- 652 History of Education in Hawaii (3)
- 660 Philosophy of Education (3)
- 664 Seminar in Problems in Education (2)
- *672 Education in China: Theory & Practice (3)
- 683 Social Foundations of Education (3)
- 699 Directed Reading & Research (v)
- 751 Recent History of American Education (3)
- 800 Thesis Research (v)

*Pending Approval

Educational Psychology (EdEP)

FIRST TERM

- 311 Psychological Foundations (3)
- 416 Tests and Measurements (3)
- 429 Introduction to Statistics (3)
- 601 Guidance in the School (3) (June 17-July 5)
- 605 Problems of School Adjustment (3)
(June 17-July 5)

SECOND TERM

- 311 Psychological Foundations (3)
- 416 Tests and Measurements (3)
- 601 Guidance in the School (3)
- 602 Elementary School Guidance (3)
- 603 Introduction to Practicum (3)
- 604 Occupation Information in Guidance (3)
- 605 Problems of School Adjustment (3)

- 606 Student Personnel Services in Higher
Education (3) (Identical with EdEA 606)
- 608 Introduction to Educational Research (3)
- 609 Tests and Inventories in Guidance (3)
- 610 Counseling: Theory and Practice (3)
- 640 Programmed Learning (3)
(Identical with EdEC 640)
- 701 Seminar in Guidance: Rehabilitation (3)

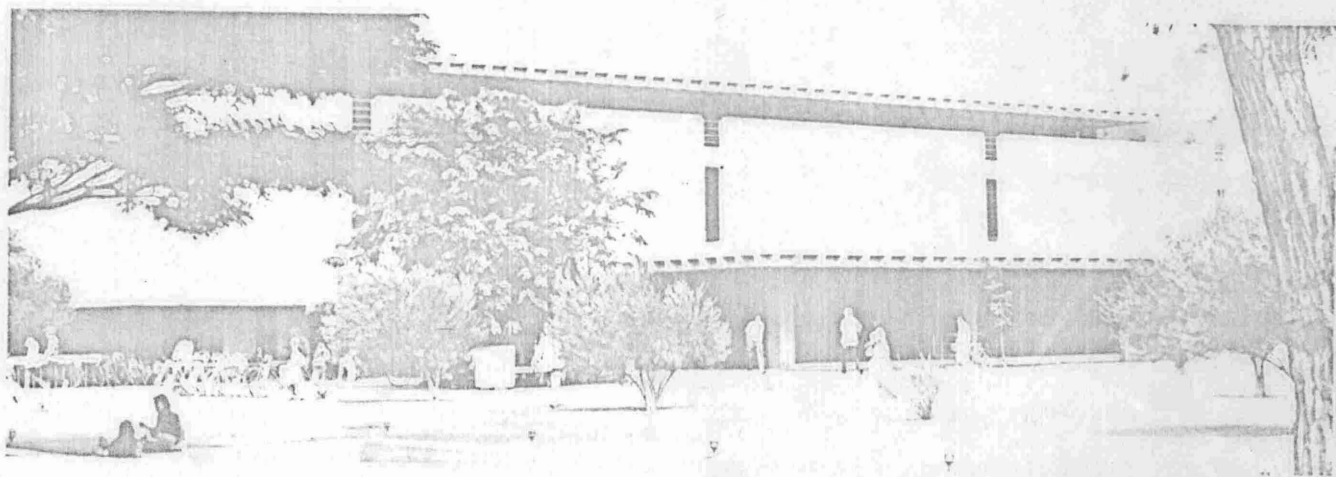
Health and Physical Education (HPE)

FIRST TERM

- 103 Swimming: Beginning (1)
- 104 Swimming: Intermediate (1)
- 107 Tennis: Beginning (1)
- 110 Golf: Beginning (1)
- 124 Dances of Hawaii (1)
- 135 Volleyball (1)
- 160 Judo (1)
- 162 Karate (1)
- 232 Safety Procedures and Accident
Prevention (2)
- 233 Physical Education: Elementary (3)
- 335 Coaching of Track and Field (2)
(June 17-June 28)
- 476 Motor Learning and Performance (3)
(June 17-July 5)

SECOND TERM

- 103 Swimming: Beginning (1)
- 107 Tennis: Beginning (1)
- 110 Golf: Beginning (1)
- 111 Golf: Advanced (1)
- 123 Folk and National Dances (1)
- 124 Dances of Hawaii (1)
- 161 Aikido (1)
- 162 Karate (1)
- 163 Tai Chi Chuan (1)
- 233 Physical Education: Elementary (3)
- 332 Emergency Care and First Aid Instructor
Training (2) (July 8-July 26)
- 433 Music and Rhythms in Physical Education (2)
- 436 Methods and Materials of Aquatics and Life
Saving (2) (July 8-July 26)
- 454 Physiology in Physical Education (3)
(July 8-July 26)
- 463 Kinesiology (3)
- 531 Family Life and Sex Education (3)
- 699 Directed Reading and Research (v)



Educational Foundations (EdEF)

FIRST TERM

- 310 Foundations of American Education (3)
- 399 Directed Reading & Research (v)
- 409 Ethnicity, Poverty, & Education (3)
(Identical with SpEd 409)
- *444 Gaming Techniques for Educators (2)
(June 17-July 5)
- *453 History of Education of American Women (3)
- 699 Directed Reading & Research (v)
- 800 Thesis Research (v)

SECOND TERM

- 310 Foundations of American Education (3)
- 399 Directed Reading & Research (v)
- 409 Ethnicity, Poverty, & Education (3)
(Identical with SpEd 409)
- *460 Children's Rights: School and Society (3)
- 490 Zen and Education (3)
- 650 History of Western Education (3)
- 651 History of American Education (3)
- 652 History of Education in Hawaii (3)
- 660 Philosophy of Education (3)
- 664 Seminar in Problems in Education (2)
- *672 Education in China: Theory & Practice (3)
- 683 Social Foundations of Education (3)
- 699 Directed Reading & Research (v)
- 751 Recent History of American Education (3)
- 800 Thesis Research (v)

*Pending Approval

Educational Psychology (EdEP)

FIRST TERM

- 311 Psychological Foundations (3)
- 416 Tests and Measurements (3)
- 429 Introduction to Statistics (3)
- 601 Guidance in the School (3) (June 17-July 5)
- 605 Problems of School Adjustment (3)
(June 17-July 5)

SECOND TERM

- 311 Psychological Foundations (3)
- 416 Tests and Measurements (3)
- 501 Guidance in the School (3)
- 502 Elementary School Guidance (3)
- 503 Introduction to Practicum (3)
- 504 Occupation Information in Guidance (3)
- 605 Problems of School Adjustment (3)

606

- Student Personnel Services in Higher Education (3) (Identical with EdEA 606)
- 608 Introduction to Educational Research (3)
- 609 Tests and Inventories in Guidance (3)
- 610 Counseling: Theory and Practice (3)
- 640 Programmed Learning (3)
(Identical with EdEC 640)
- 701 Seminar in Guidance: Rehabilitation (3)

Health and Physical Education (HPE)

FIRST TERM

- 103 Swimming: Beginning (1)
- 104 Swimming: Intermediate (1)
- 107 Tennis: Beginning (1)
- 110 Golf: Beginning (1)
- 124 Dances of Hawaii (1)
- 135 Volleyball (1)
- 160 Judo (1)
- 162 Karate (1)
- 232 Safety Procedures and Accident Prevention (2)
- 233 Physical Education: Elementary (3)
- 335 Coaching of Track and Field (2)
(June 17-June 28)
- 476 Motor Learning and Performance (3)
(June 17-July 5)

SECOND TERM

- 103 Swimming: Beginning (1)
- 107 Tennis: Beginning (1)
- 110 Golf: Beginning (1)
- 111 Golf: Advanced (1)
- 123 Folk and National Dances (1)
- 124 Dances of Hawaii (1)
- 161 Aikido (1)
- 162 Karate (1)
- 163 Tai Chi Chuan (1)
- 233 Physical Education: Elementary (3)
- 332 Emergency Care and First Aid Instructor Training (2) (July 8-July 26)
- 433 Music and Rhythms in Physical Education (2)
- 436 Methods and Materials of Aquatics and Life Saving (2) (July 8-July 26)
- 454 Physiology in Physical Education (3)
(July 8-July 26)
- 463 Kinesiology (3)
- 531 Family Life and Sex Education (3)
- 699 Directed Reading and Research (v)

Special Education (SpEd)

FIRST TERM

- 404 Introduction to Special Education (3)
- 405 Curriculum & Instruction in Special Education (3)
- 409 Ethnicity, Poverty, and Education (3)
(Identical with EdEF 409)
- 410 Methods & Materials in Teaching the Child with Learning and Behavior Disorders (3)
- 418 Methods & Materials in Teaching the Educable Mentally Retarded (3)
- 485 Behavior Modification of Handicapped Children (3)
- 611 Advanced Curriculum & Instruction in Special Education (3)

SECOND TERM

- 200 Mental Retardation & Mental Health Work-Study Program (6)
- 404 Introduction to Special Education (3)
- 409 Ethnicity, Poverty, and Education (3)
(Identical with EdEF 409)
- 485 Behavior Modification of Handicapped Children (3)
- 615B Clinical Assessment of Exceptional Children—LD (3)
- 616D Seminar on the Learning Disabled (3)
- 619B Theory & Practice of Clinical Teaching—LD (3)

ENGINEERING

10

Civil Engineering (CE)

FIRST TERM

- 270 Applied Mechanics I (3)
- 699 Directed Research (v)
- 800 Thesis (v)

SECOND TERM

- 271 Applied Mechanics II (3)
- 699 Directed Research (v)
- 800 Thesis (v)

Electrical Engineering (EE)

FIRST TERM

- 699 Directed Reading Research (v)
- 800 Thesis (v)

General Engineering (GE)

FIRST TERM

- 251 Introductory Computer Methods in PL/I (3)
- 253 Introductory Computer Methods in FORTRAN (3)
- 255 Introductory Computer Methods in COBOL (3)

Mechanical Engineering (ME)

FIRST TERM

- 311 Thermodynamics (3)
- 499 Project (v)
- 699 Directed Reading or Research (v)
- 800 Thesis (v)

SECOND TERM

- 499 Project (v)
- 699 Directed Reading or Research (v)
- 800 Thesis (v)

Ocean Engineering (OE)

FIRST TERM

- 601 Ocean Engineering Laboratory (3)
- 699 Directed Reading or Research (v)

SECOND TERM

- 699 Directed Reading or Research (v)

ENGLISH (Eng)

FIRST TERM

- 100 Expository Writing (3)
- 251 Major Works of British and American Literature (3)
- 252 Major Works of British and American Literature (3)
- 253 World Literature (3)
- 254 World Literature (3)
- 255 Types of Literature (3)
- 256 Types of Literature (3)
- 309 Written Communication (3)
- 315 Advanced Expository Writing (3)
- 320 Introduction to Language (3)
- 331 Introduction to Poetry (3)
- 335 Backgrounds of World Literature (3)
- 336 Introduction to Literary Problems (3)
- 399 Directed Reading (v)
- 402 History of the English Language (3)
- 413 Form and Theory of Fiction (3)
- 442 Chaucer (3)
- 445 Shakespeare (3)
- 469 Studies in British Literature (3)
- 472 American Literature (3)
- 476 The American Novel (3)
- 479 Studies in American Literature (3)
- 480 Literature of the Pacific (3)
- 488 20th Century British and American Poetry (3)
- 489 The Modern Movement in Western Literature (1870-1970) (3)
- 660 Major Authors (3)
- 675 Literary Genres and Problems (3)
- 699 Directed Reading (v)
- 775 Seminar in English Literature (3)
- 799 Directed Reading (v)

SECOND TERM

- 100 Expository Writing (3)
- 251 Major Works of British and American Literature (3)
- 252 Major Works of British and American Literature (3)
- 253 World Literature (3)
- 254 World Literature (3)
- 255 Types of Literature (3)
- 256 Types of Literature (3)
- 309 Written Communication (3)
- 315 Advanced Expository Writing (3)
- 399 Directed Reading (v)
- 401 Modern English Grammar (3)
- 405 Workshop in Teaching Problem Writers (3)
- 405L Workshop in Teaching Problem Writers Lab (1)
- 433 20th Century British Novel (3)
- 446 Shakespeare (3)
- 469 Studies in British Literature (3)
- 476 The American Novel (3)
- 479 Studies in American Literature (3)
- 480 Literature of the Pacific (3)
- 483 Modern Dramatic Literature (3)

- 487 20th Century British and American Poetry (3)
- 489 Studies in Comparative Literature (3)
- 630 Seminar in Research Methods (3)
- 675 Literary Genres and Problems (3)
- 699 Directed Reading (v)
- 775 Seminar in English Literature (3)
- 799 Directed Reading (v)

French (Fr)

FIRST TERM

- 101 Elementary French (4)
- 102 Elementary French (4)
- 103 Intensive Elementary French (8)
- 201 Intermediate French (3)
- 202 Intermediate French (3)
- 301 Phonetics and Pronunciation Practice (3)
- 361 French Civilization (3)

German (Ger)

FIRST TERM

- 101 Elementary German (4)
- 102 Elementary German (4)
- 201 Intermediate German (3)

Latin (Latin)

FIRST TERM

- 101-102 Elementary Latin (6)

Russian (Rus)

FIRST TERM

- 101-102 Elementary Russian (8)
- 201-202 Intermediate Russian (6)

Spanish (Span)

FIRST TERM

- 101 Elementary Spanish (4)
- 102 Elementary Spanish (4)
- 110 Accelerated Elementary Spanish (8)
- 201 Intermediate Spanish (3)
- 202 Intermediate Spanish (3)

ENGLISH LANGUAGE INSTITUTE (ELI)

All ELI classes will meet daily for nine weeks
(May 28-July 26)

- 70 Intermediate Oral English for Foreign Students (0)
- 71 Intermediate English Structure for Foreign Students (0)
- 72 Intermediate Reading Program for Foreign Students (0)
- 73 Intermediate Writing Program for Foreign Students (0)
- 80 Advanced Oral English for Foreign Students (0)
- 81 Advanced English Structure for Foreign Students (0)
- 82 Advanced Reading Program for Foreign Students (0)
- 83 Advanced Writing Program for Foreign Students (0)
- ESL 100 Expository Writing: A Guided Approach (3)

ENGLISH AS A SECOND LANGUAGE (ESL)

FIRST TERM

- 600B Topics in ESL: History of Language Teaching (3)

SECOND TERM

- 410 Introduction to TESL (3)
- 450 English Phonology (3)
- 600C Topics in ESL: Historical Linguistics: English Syntax (3)
(Identical with Ling 660E)

ETHNIC STUDIES (ES)

FIRST TERM

- 320 Hawaii and the Pacific (3)

SECOND TERM

- 320 Hawaii and the Pacific (3)

EUROPEAN LANGUAGES AND LITERATURE

General (EL)

FIRST TERM

- 112 Greek and Roman Mythology (3)
- 374 Literature and Thought of European Renaissance (3)
- 375 French Literature since 1800 (3)

GENETICS (Genet)

FIRST TERM

- 499 Genetical Problems (v)
- 699 Directed Research (v)
- 800 Thesis (v)

SECOND TERM

- 499 Genetical Problems (v)
- 699 Directed Research (v)
- 800 Thesis (v)

GEOGRAPHY (Geog)

FIRST TERM

- 101 Elements of Physical Geography (3)
- 102 World Regional Geography (3)
- 151 Geography and Contemporary Society (3)
- 201 Atmospheric Pollution (3)
- 326 Conservation and Resource Management (3)
- 368 Geography of Hawaii (3)
- 369 Geography of Honolulu (3)
- 452 Geography of Japan (3)
- 456 Geography of Southeast Asia (3)
- 700C Seminar in Geography (3)

SECOND TERM

- 101 Elements of Physical Geography (3)
- 102 World Regional Geography (3)
- 151 Geography and Contemporary Society (3)
- 368 Geography of Hawaii (3)
- 453 Geography of China (3)

GEOLOGY AND GEOPHYSICS (GG)

FIRST TERM

- 614 Field Projects (v)
- 799 Directed Research (v)
- 800 Thesis Research (v)

SECOND TERM

- 200 Geology of Hawaii (4)
- 614 Field Projects (v)
- 799 Directed Research (v)
- 800 Thesis Research (v)

HISTORY (Hist)

FIRST TERM

- 151 World Civilization (3)
- 152 World Civilization (3)
- 241 Civilizations of Asia (3)
(Identical with Asian 241)
- 242 Civilizations of Asia (3)
(Identical with Asian 242)
- 281 Introduction to American History (3)
- 406 History of Southeast Asia (3)
- 409 History of China (3)
- 410 History of China (3)
- 413 History of Japan (3)
- 424 History of Hawaiian Islands (3)
- 438 French Revolution (3)
- 446 History of France (3)
- 447 History of England (3)
- 457 Russian Revolution (3)
- 475 Constitutional History of the United States (3)
- 480 Black Americans (3)
- 481 American Thought and Culture (3)
- 496 Senior Tutorial (4)
- 725 Contemporary China Seminar (3)
(Identical with Asian 601)

SECOND TERM

- 151 World Civilization (3)
- 152 World Civilization (3)
- 282 Introduction to American History (3)
- 342 East Asian Civilizations (3)
- 407F Modern Indonesia (3)
- 412 Local History of China (3)
- 414 History of Japan (3)
- 418 History of Korea (3)
- 425 United States in the Pacific (3)
- 458 Britain in 20th Century (3)
- 466 America and World Leadership: U.S. Since
1941 (3)
- 471 History of United States Foreign Policy (3)
- 482 American Thought and Culture (3)

HONORS PROGRAM

Honors Courses (Hon)

FIRST TERM

- 493 Senior Honors Thesis (2)
- 494 Senior Honors Thesis (2)

SECOND TERM

- 493 Senior Honors Thesis (2)
- 494 Senior Honors Thesis (2)

Interdisciplinary Studies (IS)

FIRST TERM

- 311 Independent Study Tutorial (v)
- 312 Independent Study Tutorial (v)
- 345 Literature of Women (3)

SECOND TERM

- 311 Independent Study Tutorial (v)
- 312 Independent Study Tutorial (v)
- 347 Sex and Law (3)

HUMAN RESOURCES DEVELOPMENT

Fashion Design, Textiles and Merchandising (FDM)

FIRST TERM

- 111 Aesthetics of Clothing (3)
- 125 Fashion Analysis (3)
- 329 Field Experience (3)

Food and Nutritional Sciences (FNS)

FIRST TERM

- 499 Directed Research (v)
- 699 Directed Research (v)
- 800 Thesis (v)

SECOND TERM

- 377 Pacific Foods (3)
- 480 Nutrition Education for School Teachers (3)
- 499 Directed Research (v)
- 699 Directed Research (v)
- 800 Thesis (v)

Home Economics (HE)

FIRST TERM

- 499 Directed Reading & Research (v)
- 699 Directed Reading & Research (v)

Human Development (HD)

FIRST TERM

- 231 Introduction to Human Development (3)
- 232 Introduction to Human Development (3)
- 345 Group Leadership (3)

INDO-PACIFIC LANGUAGES

General (IP)

FIRST TERM

- 103 Directed Elementary Language Study (6)
- 499 Directed Studies (v)
- 690 Directed Reading (v)

SECOND TERM

- 204 Directed Intermediate Language Study (6)
- 499 Directed Studies (v)
- 690 Directed Reading (v)

Burmese (Burm)

NINE-WEEK TERM May 28-July 26

- 111 Elementary Burmese (6)
- 112 Intermediate Burmese (6)

Hawaiian (Haw)

FIRST TERM

- 101 Elementary Hawaiian (3)
- 201 Intermediate Hawaiian (4)
- 301 Third-Level Hawaiian (3)

SECOND TERM

- 102 Elementary Hawaiian (3)
- 202 Intermediate Hawaiian (4)
- 302 Third-Level Hawaiian (3)

Ilokano (Ilo)

FIRST TERM

- 111 Elementary Ilokano (6)

SECOND TERM

- 204 Intermediate Ilokano (6)

Indonesian (Ind)

FIRST TERM

- 103 Elementary Indonesian (6)

SECOND TERM

- 204 Intermediate Indonesian (6)

Lao (Lao)

NINE-WEEK TERM May 28-July 26

- 103 Elementary Lao (6)
- 112 Intermediate Lao (6)

Samoa (Sam)

NINE-WEEK TERM May 28-July 26

- 111 Elementary Samoan (6)

Tagalog (Tag)

FIRST TERM

- 101 Elementary Tagalog (3)
- 201 Intermediate Tagalog (3)
- 297 Philippine Language and Culture (3)

SECOND TERM

- 102 Elementary Tagalog (3)
- 202 Intermediate Tagalog (3)

Tahitian (Tah)

FIRST TERM

- 111 Elementary Tahitian (6)

Thai (Thai)

NINE-WEEK TERM May 28-July 26

- 103 Elementary Thai (6)
- 204 Intermediate Thai (6)
- 303 Third-Level Thai (6)
- 404 Fourth-Level Thai (6)

Vietnamese (Viet)

NINE-WEEK TERM May 28-July 26

- 111 Elementary Vietnamese (6)
- 112 Intermediate Vietnamese (6)
- 303 Third-Level Vietnamese (6)
- 404 Fourth-Level Vietnamese (6)

INFORMATION SCIENCES (ISc)

FIRST TERM

- 466 Computer Organ (3)
- 693 Special Topics (3)

LIBRARY STUDIES (LS)

FIRST TERM

May 28-June 14

- 615 Building Library Collections (3)
- 642 Audio-visual Services (3)

June 19-July 5

- 601 Bibliography and Reference Sources (3)
- 681 Reading Materials for Children (3)
- 683 Service for Children and Young People (3)
- 696 Field Seminar (3)
- 705 Asian Reference Sources (3)

SECOND TERM

July 8-July 26

- 602 Advanced Reference Sources (3)
- 605 Basic Cataloging and Classification (3)
- 685 Traditional Literature and Oral Narration (3)
- 693 Special Topics (Biblio-Linguistics) (3)

July 31-August 15

- 696 Field Seminar (Asian Information Industry—East Asia) (3)

Note: Enrollment in Library Studies courses requires approval of the Dean of Graduate School of Library Studies

LINGUISTICS (Ling)

FIRST TERM

- 102 Introduction to the Study of Language (3)

SECOND TERM

- 200 Languages of the World (3)
- 320 General Linguistics (3)
- 414 Introduction to Linguistic Anthropology (3)
(Identical with Anth 414)
- 470 Introduction to the Study of Children's Speech (3)
- 660E Historical Linguistics: English Syntax (3)
(Identical with ESL 600C)

MATHEMATICS (Math)

FIRST TERM

- 100 Survey of Mathematics (3)
- 111 Introduction to Mathematics (3)
- 201 Finite Mathematics (3)
- 232 Calculus IV (3)
- 251 Informal Geometry (3)
- 371 Elementary Probability Theory (3)
- 402 Partial Differential Equations (3)
- 403 Methods of Applied Mathematics (3)

May 28-August 2

- 134 Pre-Calculus Mathematics (4)
- 205 Calculus I (3)
- 206 Calculus II (3)
- 231 Calculus III (3)
- 311 Introduction to Linear Algebra (3)
- 412 Introduction to Abstract Algebra (3)

SECOND TERM

- 097 Intermediate Algebra (0)
- 100 Survey of Mathematics (3)
- 111 Introduction to Mathematics (3)
- 232 Calculus IV (3)
- 371 Elementary Probability Theory (3)
- 373 Elementary Statistics (3)
- 402 Partial Differential Equations (3)

MEDICAL TECHNOLOGY (MT)

FIRST TERM

- 366 Internship (3)
- 495 Special Topics in Medical Technology (1)
- *695 Special Topics in Medical Technology (2)

*Pending Approval

METEOROLOGY (Met)

SECOND TERM

- 101 Climate, Weather, Atmosphere (4)

MICROBIOLOGY (Micro)

FIRST TERM

- 130 General Microbiology (3)
- 130L Microbiology Laboratory (1)
- 699 Directed Research (v)
- 795 Special Topics—Biochemistry of Marine Bacteria (3)

SECOND TERM

- 130 General Microbiology (3)
- 351 Prokaryotic Biology (4)
- 699 Directed Research (v)

MUSIC (Mus)

FIRST TERM

- 125 Elementary Piano Class (1)
- 129 Elementary Classical Guitar Class (1)
- 131, 231, 431 Applied Music (1)
- 140 Recreational Music (1)
- 160 Introduction to Music Literature (3)
- 170 Music in World Culture (3)
- 265 History of Western Music to 1750 (3)
- 370 Music in Modern America (3)
- 407 University Javanese Gamelan (1)
- 660F Studies in Music Literature: Romantic (3)

SECOND TERM

- 125 Elementary Piano Class (1)
- 126 Elementary Piano Class (1)
- 129 Elementary Classical Guitar Class (1)
- 131, 231, 431 Applied Music (1)
- 160 Introduction to Music Literature (3)
- 170 Music in World Culture (3)
- 180 Fundamentals of Western Music (3)
- 190 Dance in World Cultures (3)
- 325 Conducting (1)
- 402E Korean Music Ensemble (1)
- 403E Korean Dance Ensemble (1)
- 403H Javanese Dance Ensemble (1)
- 403C Japanese Dance Ensemble (1)
- 407 University Javanese Gamelan (1)
- 457 Asian and Pacific Music in Education (2)
(July 8-26)
- 519 Music for Elementary Teachers (3)
- 557 Institute on Polynesian Music in Music Education (3) (July 29-August 15)
- 600F Seminar: Music Education (3)
- 657 World Musics in Undergraduate Education (2)

NURSING (Nurs)

FIRST TERM

- 399 Directed Reading/Research (v)
- 790 Directed Study or Research (v)

OCEANOGRAPHY (Ocean)

FIRST TERM

- 201 Science of the Sea (3)
- 699 Directed Research (v)
- 800 Thesis Research (v)

SECOND TERM

- 201 Science of the Sea (3)
- 699 Directed Research (v)
- 800 Thesis Research (v)

PACIFIC ISLANDS PROGRAM (PIP)

FIRST TERM

- 699 Directed Reading and Research (v)
- 800 Thesis Research (v)

SECOND TERM

- 699 Directed Reading and Research (v)
- 800 Thesis Research (v)

14

PHARMACOLOGY (Pharm)

FIRST TERM

- 641 Pharmacological Techniques (v)
- 699 Directed Research (v)

SECOND TERM

- 641 Pharmacological Techniques (v)
- 699 Directed Research (v)

PHILOSOPHY (Phil)

FIRST TERM

- 100 Introduction to Philosophy (3)
- 210 Introduction to Logic (3)
- 435 Philosophy of Religion (3)
- 449G Topics: Zen (3)
- 450 Indian Philosophy (3)
- 460 Buddhist Philosophy (3)
- 700G Individual Western Philosophers: Heidegger (3)

SECOND TERM

- 100 Introduction to Philosophy (3)
- 200 History of Philosophy I (3)
- 445 Symbolic Logic I (3)
- 448E Comprehensive Philosophical Systems: Yoga (3)

PHYSICS (Phys)

FIRST TERM

- 100 Survey of Physics (3)
- 100L Survey of Physics Laboratory (1)
- 110 Astronomy (3)
- 151 College Physics (3)
- 151L College Physics Laboratory (1)
- 170 General Physics I (4)
- 170L General Physics I Laboratory (1)
- 274 General Physics III (3)

SECOND TERM

- 111 Astronomy (3)
- 152 College Physics (3)
- 152L College Physics Laboratory (1)
- 272 General Physics II (3)
- 272L General Physics II Laboratory (1)

PHYSIOLOGY (Physl)

FIRST TERM

- 699 Directed Research (v)
- 800 Thesis Research (v)

SECOND TERM

- 699 Directed Research (v)
- 800 Thesis Research (v)

POLITICAL SCIENCE (PoISc)

FIRST TERM

- 110 Introduction to Political Science (3)
- 300 Political Thought (3)
- *305 Topics in Political Thought (3)
- *390 Colloquium in Political Science (3)
- 320 International Relations (3)
- *325 Topics in International Relations (3)
- 330 Policy Formation (3)
- 331 Policy Formation (3)
- 333 American Government (3)
- *335 Topics in Policy Formation (3)
- 340 Comparative Government and Politics (3)
- 341 Comparative Government and Politics (3)
- *345 Topics in Comparative Government and Politics (3)
- 350 Public Administration (3)
- 600 Scope and Methods of Political Science (3)
- *640 Comparative Government and Politics (3)

SECOND TERM

- 110 Introduction to Political Science (3)
- 301 Political Thought (3)
- 321 International Relations (3)
- *325 Topics in International Relations (3)
- 330 Policy Formation (3)
- 331 Policy Formation (3)
- *335 Topics in Policy Formation (3)
- 341 Comparative Government and Politics (3)
- 351 Public Administration (3)
- *391 Colloquium in Political Science (3)
- 630 International Relations (3)
- 640 Comparative Government and Politics (3)
- *670 Politics (3)

*Specific topics to be announced. Past topics have included electoral politics, ocean politics, Asian political thought, etc.

PSYCHOLOGY (Psy)

FIRST TERM

- 100 Survey of Psychology (3)
- 110 Psychology of Adjustment (3)
- 113 Statistical Techniques (3)
- 214 Learning and Motivation (3)
- 215 Sensory Processes (3)
- 230 Social Behaviorism (3)
- 317 Physiological Psychology (3)
- 318 Animal Psychology (3)
- 319 Experimental Psychology (3)
- 320 Developmental Psychology (3)
- 321 Psychology of Personality (3)
- 322 Social Psychology (3)
- 401 Experimental Analysis of Behavior (3)
- 424 Abnormal Psychology (3)
- 427 The Exceptional Child (3)
- 428 Social Development of Children (3)
- 429 Advanced Undergraduate Seminar (3)
- 471 Environmental Psychology (3)
- 601 Introduction to Quantitative Methods (3)
- 671 Advanced Environmental Psychology (3)

SECOND TERM

- 100 Survey of Psychology (3)
- 110 Psychology of Adjustment (3)
- 113 Statistical Techniques (3)
- 214 Learning and Motivation (3)
- 215 Sensory Processes (3)
- 216 Individual Differences and Measurement (3)
- 317 Physiological Psychology (3)
- 318 Animal Psychology (3)
- 320 Developmental Psychology (3)
- 321 Psychology of Personality (3)
- 322 Social Psychology (3)
- 423 History of Psychology (3)
- 424 Abnormal Psychology (3)
- 427 The Exceptional Child (3)
- 429 Advanced Undergraduate Seminar (3)
- 665 Cross-Cultural Psychology (3)

PUBLIC HEALTH (PH)

FIRST TERM

- 791B Adv PH Practice: Biostatistics (3)
- 791C Adv PH Practice: Comp Hlth Planning (3)
- 791D Adv PH Practice: Env Management (3)
- 791E Adv Ph Practice: Env Sanitation (3)
- 791F Adv PH Practice: Epidemiology (3)
- 791G Adv PH Practice: Gerontology (3)
- 791H Adv Ph Practice: Hlth Svc Admin (3)
- 791I Adv Ph Practice: International Hlth (3)
- 791J Adv Ph Practice: Maternal & Child Health (3)
- 791K Adv PH Practice: Mental Health (3)
- 791M Adv PH Practice: Pop & Family Plan Studies (3)
- 791N Adv PH Practice: Public Hlth Admin (3)
- 791O Adv PH Practice: Public Hlth Education (3)
- 791P Adv PH Practice: Public Hlth Engineering (3)
- 791Q Adv PH Practice: Public Hlth Laboratory (3)
- 791R Adv PH Practice: Public Hlth Nutrition (3)
- 791S Adv PH Practice: Mental Retardation (3)
- 799 Directed Reading/Research (v)
- 800 Thesis Research (v)

Note: PH 791 and 800V are open ONLY to Public Health students. PH 799 requires consent of instructor.

SECOND TERM

- 635 Concepts and Practices in Hospital Dietetics (3)
 791B Adv PH Practice: Biostatistics (3)
 791C Adv PH Practice: Comp Hlth Planning (3)
 791D Adv PH Practice: Env Management (3)
 791E Adv PH Practice: Env Sanitation (3)
 791F Adv PH Practice: Epidemiology (3)
 791G Adv PH Practice: Gerontology (3)
 791H Adv PH Practice: Hlth Svc Admin (3)
 791I Adv PH Practice: International Hlth (3)
 791J Adv PH Practice: Maternal & Child Health (3)
 791K Adv PH Practice: Mental Health (3)
 791M Adv PH Practice: Pop & Family Plan Studies (3)
 791N Adv PH Practice: Public Hlth Admin (3)
 791O Adv PH Practice: Public Hlth Education (3)
 791P Adv PH Practice: Public Hlth Engineering (3)
 791Q Adv PH Practice: Public Hlth Laboratory (3)
 791R Adv PH Practice: Public Hlth Nutrition (3)
 791S Adv PH Practice: Mental Retardation (3)
 799 Directed Reading/Research (v)
 800 Thesis Research (v)

Note: PH 635, 791 and 800V are open ONLY to Public Health students. PH 799 requires consent of instructor.

RELIGION (Rel)**FIRST TERM**

- 150 Introduction to World Religions (3)
 151 Meaning of Existence (3)
 480 History of Religion in Russia (3)
 495 Seminar in Religion (3)

SECOND TERM

- 150 Introduction to World Religions (3)
 151 Meaning of Existence (3)
 481 History of Religion in Russia (3)

**SCIENCE, GENERAL (Sci)****FIRST TERM**

- 121 Introduction to Science: Biological Sciences (4)
 426 History of Biology (3)
 (Identical with Bot 426)
 466 Botany of Cook's Voyages (2)
 (Identical with Bot 466)

SOCIAL WORK (SW)**FIRST TERM**

- 300 Field of Social Work (3)
 603 General Social Work Practice (3)
 660 Practicum (v)
 703 General Social Work Practice (3)
 755E Experiential Training in Human Relationships (3)
 760 Practicum (v)
 796 Directed Individual Study (v)
 797 Directed Individual Study (v)

SECOND TERM

- 301 Field of Social Work (3)
 320 Juvenile and Adult Offenders (3)
 604 General Social Work Practice (3)
 661 Practicum (v)
 704 General Social Work Practice (3)
 761 Practicum (v)
 796 Directed Individual Study (v)
 797 Directed Individual Study (v)

SOCIOLOGY (Soc)**FIRST TERM**

- 100 Survey of General Sociology (3)
 312B Survey of Urban Society (3)
 312C Survey of Society and Population (3)
 322B Survey of Social Stratification (3)
 322J Survey of Social Change (3)
 322K Survey of Sociology of the Future (3)
 332D Survey of Criminology (3)
 352B Survey of the Family (3)
 432C Analysis in Organized Crime (3)
 472D Analysis in Methodology (3)
 472H Analysis in Evaluation Research (3)
 472I Analysis in Computer Simulation (3)
 714E Seminar in Evaluation Research (3)
 714F Seminar in Computer Simulation (3)

SECOND TERM

- 100 Survey of General Sociology (3)
 322E Survey of Industrial Sociology (3)
 322G Survey of Race Relations (3)
 332B Survey of Juvenile Delinquency (3)
 342C Survey of Social Psychology (3)
 352D People and Institutions of Japan (3)
 362C Survey of Social Problems (3)
 422D Analysis in Social Institutions: Racism and American Legal Process I (3)
 432D Analysis in Social Institutions: Racism and American Legal Process II (3)
 442D Analysis in Collective Behavior (3)

SECOND TERM

- 635 Concepts and Practices in Hospital Dietetics (3)
 791B Adv PH Practice: Biostatistics (3)
 791C Adv PH Practice: Comp Hlth Planning (3)
 791D Adv PH Practice: Env Management (3)
 791E Adv PH Practice: Env Sanitation (3)
 791F Adv PH Practice: Epidemiology (3)
 791G Adv PH Practice: Gerontology (3)
 791H Adv PH Practice: Hlth Svc Admin (3)
 791I Adv PH Practice: International Hlth (3)
 791J Adv PH Practice: Maternal & Child Health (3)
 791K Adv PH Practice: Mental Health (3)
 791M Adv PH Practice: Pop & Family Plan Studies (3)
 791N Adv PH Practice: Public Hlth Admin (3)
 791O Adv PH Practice: Public Hlth Education (3)
 791P Adv PH Practice: Public Hlth Engineering (3)
 791Q Adv PH Practice: Public Hlth Laboratory (3)
 791R Adv PH Practice: Public Hlth Nutrition (3)
 791S Adv PH Practice: Mental Retardation (3)
 799 Directed Reading/Research (v)
 800 Thesis Research (v)

Note: PH 635, 791 and 800V are open ONLY to Public Health students. PH 799 requires consent of instructor.

RELIGION (Rel)**FIRST TERM**

- 150 Introduction to World Religions (3)
 151 Meaning of Existence (3)
 480 History of Religion in Russia (3)
 495 Seminar in Religion (3)

SECOND TERM

- 150 Introduction to World Religions (3)
 151 Meaning of Existence (3)
 481 History of Religion in Russia (3)

**SCIENCE, GENERAL (Sci)****FIRST TERM**

- 121 Introduction to Science: Biological Sciences (4)
 426 History of Biology (3)
 (Identical with Bot 426)
 466 Botany of Cook's Voyages (2)
 (Identical with Bot 466)

SOCIAL WORK (SW)**FIRST TERM**

- 300 Field of Social Work (3)
 603 General Social Work Practice (3)
 660 Practicum (v)
 703 General Social Work Practice (3)
 755E Experiential Training in Human Relationships (3)
 760 Practicum (v)
 796 Directed Individual Study (v)
 797 Directed Individual Study (v)

SECOND TERM

- 301 Field of Social Work (3)
 320 Juvenile and Adult Offenders (3)
 604 General Social Work Practice (3)
 661 Practicum (v)
 704 General Social Work Practice (3)
 761 Practicum (v)
 796 Directed Individual Study (v)
 797 Directed Individual Study (v)

SOCIOLOGY (Soc)**FIRST TERM**

- 100 Survey of General Sociology (3)
 312B Survey of Urban Society (3)
 312C Survey of Society and Population (3)
 322B Survey of Social Stratification (3)
 322J Survey of Social Change (3)
 322K Survey of Sociology of the Future (3)
 332D Survey of Criminology (3)
 352B Survey of the Family (3)
 432C Analysis in Organized Crime (3)
 472D Analysis in Methodology (3)
 472H Analysis in Evaluation Research (3)
 472I Analysis in Computer Simulation (3)
 714E Seminar in Evaluation Research (3)
 714F Seminar in Computer Simulation (3)

SECOND TERM

- 100 Survey of General Sociology (3)
 322E Survey of Industrial Sociology (3)
 322G Survey of Race Relations (3)
 332B Survey of Juvenile Delinquency (3)
 342C Survey of Social Psychology (3)
 352D People and Institutions of Japan (3)
 362C Survey of Social Problems (3)
 422D Analysis in Social Institutions: Racism and American Legal Process I (3)
 432D Analysis in Social Institutions: Racism and American Legal Process II (3)
 442D Analysis in Collective Behavior (3)

SPEECH (Sp)

FIRST TERM

- 151 Introduction to Speech (3)
- 231 Interpretative Reading (3)
- 321 Speech for the Classroom Teacher (3)
- 333 Storytelling (3)

SECOND TERM

- 151 Introduction to Speech (3)
- 231 Interpretative Reading (3)
- 251 Principles of Effective Speaking (3)
- 333 Storytelling (3)
- 492 Non-Verbal Communication (3)

SPEECH PATHOLOGY AND AUDIOLOGY (SPA)

FIRST TERM

- 315 Hearing and Habilitation and Rehabilitation (3)
- 320 Speech and Hearing Science (3)
- 411 Practicum Audiology (1)
- 603 Advanced Audiology (3)

- 710 Advanced Practicum in Speech Pathology (1)
- 720 Seminar in Functional Disorders of Speech (2)

SECOND TERM

- 300 Introduction to Speech Correction (3)
- 301 Introduction to Audiology (3)
- 410 Practicum in Speech Pathology (1)
- 710 Advanced Practicum in Speech Pathology (1)

ZOOLOGY (Zool)

FIRST TERM

- 101 Principles of Zoology (4)
- 420 Embryology (4)
- 439 Animal Ecology (3)
- 439L Laboratory in Ecology (1)
- 499 Directed Research (v)
- 699 Directed Research (v)

SECOND TERM

- 499 Directed Research (v)
- 699 Directed Research (v)

UNIVERSITY OF HAWAII AT MANOA

