

# The Garden Island.

ESTABLISHED 1904. VOL. 15. NO. 38.

LIHUE, KAUAI, TERRITORY OF HAWAII, TUESDAY, SEPT. 23, 1919

SUBSCRIPTION RATES, \$2.50 PER YEAR 5 CENTS PER COPY

## FIRE AT WAIPOULI FINE HORSES LOST

Fire destroyed the stables and three well-known race horses, Kapaia Girl, Kuyana and Wai-pouli, Jr. owned by John B. Fernandez, at Waipouli, between the hours of one and two o'clock Sunday morning. That it was the work of an incendiary there can be no doubt, as the fire started from the roof, and as the stable was entirely isolated from other buildings there was no chance of it catching afire from sparks.

The fire was discovered by a Japanese neighbor, who awoke the Fernandez stableman, but by the time they got to the scene, the fire was beyond control and the animals all dead.

The mare "Kapaia Girl" recently won a \$1200 purse against a field of horses owned mostly by Japanese, and it is thought that one of these, in a fit of jealousy, was the perpetrator of the outrage.

Deputy Sheriff Hano, of Kapaa, returning from Lihue, passed the stable about one o'clock and everything was alright at that time.

The police have the case in hand and Sheriff Rice has offered a reward of \$200.00 for information which will lead to the conviction of the person or persons who set the fire.

## Kauai at College of Hawaii

Among the students entering the College of Hawaii this fall are the following from Kauai:

Dora Broadbent, Lihue (General Science.)  
Dorothy Kam Men Chock, Hanalei, (Arts.)  
Kiyoshi Fukushima, Makaweli, (Special.)  
Zenichi Okabe, Elelele, (General Science.)  
Tai Sool Park, Koloa, (Civil Engineering.)  
William Wolters, Kealia, (Sugar Technology.)  
In the Junior class, Frank Walton Broadbent of Lihue, is taking the course in Sugar Technology.

## Wailua Bridge Finished

The last section of the old Wailua Bridge was removed on Thursday, and the new concrete bridge stands out clear and unobstructed in its artistic grace and dignity. The dismantled sections of the old bridge are disposed along the side of the road awaiting removal to some needy spot where they may serve for small bridge trusses, coverings for culverts, etc. Some of them will probably be used on the homestead roads.

## Rainfall for the Week

| Rainfall for week ending Sept. 21st: |              |
|--------------------------------------|--------------|
| Wainiha Intake                       | 0.08         |
| Wainiha Power House                  | only a trace |
| Hanalei                              | 0.56         |
| Kilauea                              | 0.35         |
| Kealia                               | 0.21         |
| Lihue                                | 0.34         |
| Koloa                                | 0.09         |
| Makaweli                             | 0.00         |
| Kekaha                               | 0.00         |

## Lihue Ball Team Gets Treat

The members of the Lihue ball team were present in a body at the Tip Top theatre last Sunday evening as the guests of W. A. Fernandez.

## Personals

Walter D. McBryde is visiting in Honolulu.

Mrs. Dr. Kuhns, of Kealia, returned from Honolulu this morning.

Herman Rohrig returned from a visit to Honolulu last Friday morning.

The Lihue school is short four teachers with no immediate relief in sight.

Harry Brown, of the Immigration Service, visited Kauai on official business last week.

C. S. Judd, superintendent of forestry, is on Kauai looking over water conditions on the island.

James Spalding, of Kealia, a member of the Kauai polo team, returned from Honolulu Friday morning.

Sinclair Robinson, accompanied by his mother and sister, arrived by the Kinaiu last Friday morning.

W. N. Stewart, who has been in town for some time in connection with the A. S. Wilcox estate, returned this morning.

Henry Aki, examiner of chauffeurs for the County of Kauai, was a visitor to the metropolis last week, returning Friday morning.

Thos. J. Abreu, stenographer, late of the Quartermaster's Department, is working in the office of attorney P. L. Rice, in Lihue.

J. H. Moragne returned by the Kinaiu this morning. The main impression made upon him by Honolulu was that it was very hot—and very dry.

Mrs. Gawnie, wife of J. Stanley Gawnie, deputy collector of U. S. Internal Revenue, arrived Friday morning to join her husband in Lihue.

C. A. Baggot, manager of Nawiliwili Garage, went to town on the Mauna Loa last Thursday to attend the water carnival. He returned this morning.

Mr. G. L. Samson, vice-president of the Advertiser Publishing Company, arrived by the Kinaiu last Friday morning and will spend a week visiting with friends in Lihue.

Rev. T. Mori, of the Japanese Christian Church, Honolulu, arrived this morning in company with the famous Japanese evangelist, Kanamori. They will tour the island together.

F. W. Thrum was down for a couple of days last week in connection with the condemnation proceedings. He is in the employ of the Public Works Department.

Rev. J. P. Erdman of the Hawaiian Board, came over from Honolulu Friday morning and returns today. He was here mainly in the interest of the Filipino work of the Board, and visited Kilauea, Koloa and the vicinity of Lihue.

Mr. Wm. White representing the Waterhouse Trust Company, handling the Kanoa estate, came over from town on Friday, and returned Saturday evening. He was looking over the tract to be condemned for the proposed new harbor, and arranging certain land exchanges which seemed desirable.

## A Cane Disease of Our Own

It seems that now Hawaii has a new cane disease of its own. Generally these evils, like so many others, have come to us from abroad, and we could charge it up to some other cane growing country. It is a fungus growth that effects the end of the cane, stunting and destroying the stalk. Fortunately it has not yet assumed alarming proportions. Being our very own, it is named *Phyllosticta Hawaiiensis*. Its nearest relatives are on the Congo, and in the Argentine.

## New Bridge Luau at Wailua

All hands who were involved in the building of the fine new concrete bridge at Wailua are celebrating the completion of the same by giving a grand luau this afternoon at the coconut grove near the bridge.

## Y. M. C. A. Notes

Lihue night school boys held a social in the armory last Tuesday night with such good success that many of the kind will probably be featured during the fall and winter term. A lively program of games, with ice cream to cool off with between acts, characterized the evening. Mr. Corey and Mr. Warner introduced a number of new games that kept everybody merry until ten o'clock. The official opening of the fall term of night school will be on October 1st. The enrollment promises to be larger than ever.

The Kalaheo club held a meeting on Saturday night after a suspension of activities of one month. Electric lights are to be installed in their social hall and the boys plan for more activities in the immediate future on that account.

Lihue Sunday evening club an inspiring talk on "The Fight of Life" last Sunday by Mr. A. E. Cory of the Army and Navy Y. M. C. A., Honolulu. Mr. Cory also entertained with a number of whistling solos that were skillfully and pleasantly rendered. Forty-eight young men were present.

The Koloa Filipino club held an enthusiastic meeting in Koloa social hall last Sunday night. By a happy coincidence Rev. John P. Erdman and Theodore Samonte met Mr. Watworth and his Y boys just in time for a combination service. Mr. Erdman spoke to the profit of all. Fifty-three were present.

The three Kauai secretaries met Mr. Cory in conference at Lawai beach place Tuesday noon. Mr. Cory is returning to Honolulu today.

## McBryde Boys to Give Dance

The young men of McBryde Plantation are preparing to give a dance at Elelele Hall on the evening of Saturday, October 11th. The dances given by the McBryde Boys are famous and this coming event will be looked forward to with a great deal of pleasure.

## Dance Called Off

The dance being arranged by the Lihue Baseball Club for the evening of October 4th, has been called off on account of other social events taking place at the same time.

## High School Growing

The High School opens with large accessions which nearly double the size of its enrollment. The freshman class numbers 35, which is far larger than any class yet, proving that the school is finding its place and commanding the confidence of the young people and their parents. It is worthy of note that the enrollment comes from all over the island, some of the other districts contributing more than Lihue. The numbers are Lihue 6, Koloa 7, Elelele 3, Waimea 8, Kapaa 4, Hanalei 2.

The Lihue High and Grammar School is without a teacher for the fifth and sixth grades and there seems to be no assurance when there will be one. In the meantime the children of these grades are in with the lower grades.

We make RUBBER STAMPS. Send us your order.

## Old Landmark Gone

The Princeville plantation brick chimney, for long years an outstanding landmark at Hanalei, is a thing of the past. It was demolished on Saturday last by means of dynamite administered at the base, which brought it down with a great crash, that was heard all over the Valley. The bricks are to be sold to Kilauea Sugar Company—there are about 90,000 of them, and they are a very superior, well made brick, imported "round the Horn" in the early days when there were no bricks to be had nearer at hand. No one in that neighborhood knows just how old the historic chimney was, but those best fitted to say, think about 65 or 70 years. It was about 120 feet high.

## Kawaihau Organizes Athletics

The Kawaihau Athletic Association is the latest booster club to be organized by that live and growing community. This association will promote all the different sports in their season and see to it that Kawaihau is properly represented at all island athletic games.

The association has organized a four-team baseball league, which is to play two series of three games each, with a double header each Sunday.

The season was opened last Sunday afternoon with a big parade headed by the local band. There was a large attendance of fans on hand to root for their favorite teams. The results were as follows: Farmers 14, Hawaiis 3; Stars 16, Asahis 13.

## Frost at Kokee

W. V. Hardy, engineer in charge of U. S. Geological Survey, for Kauai, reports a white frost at Kokee on the nights of Sept. 14 and 15, with the thermometer registering 39 and 38 degrees respectively. About a dozen people were in the region at the time and enjoyed the bracing effect of the cold weather exceedingly. Mr. Hardy states that a couple of men to shovel out the dust holes and pick the top off ridges could keep the road to the park in fairly good condition.

## A Great Improvement

Goe Gomez and the Nawiliwili Garage people have made good at Nawiliwili. They said they were going to clean things up down there and put in proper show rooms and parking sheds that would be a credit and not an eyesore. They have certainly made a great improvement there, and we believe the public appreciates it.

## Noted Evangelist Here

The Japanese Evangelist, Dr. Kanamori, who has been conducting an evangelistic campaign throughout the islands, arrived on the Kinaiu this morning, in company with Rev. T. Hori, of Honolulu, and will devote two weeks to a similar campaign here. He will begin his work at Waimea and will thereafter visit all the leading Japanese communities of the island, returning to Lihue for the last meeting of the series.

He is a man of superior intelligence and education, a graduate of the Doshisha University at Kyoto, and thoroughly familiar



Dr. Kanamori

with the currents of Christian conviction and experience; a thinker as well as an enthusiast, and a very convincing speaker. He has exerted a great influence in Japan upon the higher classes, and at Okayama built up a very large and successful church to which he ministered for years. His campaign on these islands, thus far, has been attended by very gratifying results, and doubtless he will meet with the same success here.

## New Pastor for Lihue Church

Rev. Mr. Bayliss, who made a flying visit to Kauai to look over the ground a few weeks ago, has accepted the position succeeding Mr. Lydgate as agent of the Hawaiian Board and pastor of the Lihue Union Church. The exact date of the change is not yet settled. In the meantime Mr. Bayliss is supplying the Hilo Foreign Church, which is without a pastor, owing to the resignation of Dr. Shaw. Mr. Bayliss gives every assurance of being a very acceptable man for these positions.

It is reported as exceedingly dry at Hanalei, with a shortage of water in wells and tanks. When Wainiha reports only a trace of rainfall during a whole week, it is a phenomenal state of things.

The Lihue public school opens this year with an enrollment of 636 actually on hand, and more to come. This makes it undoubtedly the largest school on the island.

## THE WAILUA HOMESTEADS

Final preparations are being made for the opening of the first series of the Wailua homesteads—those adjoining the North Branch of the Wailua River, both above and below Puu Pilo, and also immediately adjoining present series. They have just been appraised and the report has gone forward. They will now have to be advertised for 60 days, after which the drawing will take place.

There are 31 lots, varying in size from 28 acres to 66 acres. The larger lots being generally of less value. They are carefully arranged with view to easy access to roads and railroad, and the roads are being put in in advance of the sale, so that homesteaders may drive up to their prospective front doors just as soon as they have selected the lots. This is a great improvement over anything we have had heretofore, where in many cases a sure-footed pack mule, or a light landing aeroplane was the only means of getting near some of them.

There is quite a range in the quality of the lots. Those makai of Puu Pilo are exceptionally fine lots,—smooth, level, clear, fine-lying land, and apparently excellent soil. These lots will be prizes for those who draw them. The lots mauka of Puu Pilo are of a distinctly inferior quality,—broken up by ravines and hill sides, and with much less fertile soil.

Five per cent of the purchase price must be paid down at the start, five per cent more the first year and ten per cent each succeeding year allowing ten years for the completion of the payments. This money goes towards paying for the roads and bridges.

At present it is not easy to get about over them in a vehicle, and long detours have to be made to avoid swampy bottoms. But as soon as the roads, now in process of construction, are finished and the bridges are in, it will be a most delightful place for an outing, especially the lower end, where the scenery is superb, overlooking the Wailua valley on one side and the Opaekaa falls on the other, with the Wailua sea-shore in the distance. Sometime a road should be constructed up the dividing ridge between the Opaekaa and the main Wailua, back of the Eggerking place and part of the region above should be reserved for a park. A very famous large heiau up there adds to the interest of the region.

## Dance at Lihue Hotel

The guests at Lihue Hotel gave a dance last Friday evening to which were invited the young folks of the neighborhood. A jolly time was had by all and the hope that these little dances coverings for culverts, etc. Some was generally expressed.

Mr. H. T. Tong of Honolulu, who has recently purchased the Tip Top Tailor Shop, is an expert cutter. He took a course of expert cutting in the States and is now the proud holder of a cutter's diploma. He is ready to serve anyone who needs a good suit of clothes.

The Kipu school is short two teachers out of three, which is a high percentage of delinquents. Pretty hard to run a school with two thirds of the teachers missing.

The passenger list by the Kinaiu this morning was an unusually light one.

## CROPS OF KAUAI PLANTATIONS

|                              | 1917           | 1918           | 1919           |
|------------------------------|----------------|----------------|----------------|
| Lihue Plantation Co.         | 20,174         | 18,424         | 17,93          |
| Grove Farm Plantation        | 3,836          | 3,790          | 3,757          |
| Koloa Sugar Co.              | 9,206          | 9,400          | 9,200          |
| McBryde Sugar Co.            | 17,407         | 14,639         | 17,605         |
| Hawaiian Sugar Co.           | 23,534         | 22,673         | 20,061         |
| Gay & Robinson               | 4,510          | 5,661          | 4,339          |
| Waimea Sugar Co.             | 1,965          | 2,203          |                |
| Kekaha Sugar Co.             | 18,354         | 17,986         | 14,700         |
| Estate V. Knudsen            | 825            | 960            |                |
| Kilauea Sugar Plantation Co. | 5,924          | 5,335          | 5,000          |
| Makee Sugar Co.              | 13,509         | 11,641         | 15,128         |
| <b>Totals</b>                | <b>119,244</b> | <b>113,712</b> | <b>111,322</b> |



# THE GARDEN ISLAND

Issued Every Tuesday

KENNETH C. HOPPER

Managing Editor

TUESDAY

SEPT. 23

## GOOD WATER FOR EVERY BODY.

The communication in another column, on the contamination of the water supply, emphasizes the increasing need for pure and sanitary water systems for our growing rural communities. More and more, with the extension of homesteading, and the development of the back country, the water supply sources will be subject to such contamination.

There is no factor of life more absolutely vital than an adequate and reliable supply of pure water; no more serious menace to public health than a meagre, unsanitary and impure supply. A single epidemic of contagious disease, consequent on bad water, will often cost a community more than the whole expense of installing a safe and sanitary system. To put in such a system is the best possible money investment, to say nothing of the saving of life, and the domestic and horticultural purposes.

As a rule the plantations, with wise and humanitarian foresight, have installed such systems, so that their people are pretty well provided for, but there are, outside of the plantations, a good many small communities that are constantly exposed to the menace of bad water.

We have been conducting a County Road campaign for years, with most gratifying results. Now we need to get after the water supply, and as fast as possible, provide for the other rural communities such water systems as have been put in for Kapaa, Anahola, and Kalaheo.

## WHAT TO DO AT NAWILIWILI

The increasing steamer-day traffic, with the automobile congestion consequent thereon at Nawiliwili, impresses people more and more with the necessity for some adequate provision for the same—and that pretty soon.

The temporary wooden bridge there is about gone, and something will have to be done about it very soon. We beg to make the following suggestion with the hope that it may help toward the solution of the two problems involved—what to do about the bridge and what to do about more parking space:

Put in a rock fill in place of the bridge, and face it up, if need be, on the mauka side with a masonry wall. This will divert the stream into its old bed, so that it will flow under the substantial concrete bridge built for that purpose.

Then on the makai side of the road run a sea wall along the line of the Breakwater road concession, and fill in the intervening space. This will give additional parking space for upwards of a hundred more automobiles, without encroaching on the roadway. And even if the day comes when the steamer traffic goes elsewhere, this rescued building space will always be in demand.

## THE SUNDAY MOVIE

If Manager W. A. Fernandez keeps the standard of his Sunday movies up to the first exhibition at the Tip Top last Sunday evening he will have our hearty support. The entire program was refreshing, clean and wholesome, and a good sized audience enjoyed it.

## A RESIDENT TICKET AGENT

With the ever increasing passenger traffic between Nawiliwili and Honolulu, it would seem as though we had about reached that stage of development where we would be entitled to the dignity and convenience of a resident ticket agent.

## LETTERS FROM THE PEOPLE

To the Editor of the Garden Island:—I see that the Board of Health in Honolulu is very much exercised over the criminal carelessness of some indifferent camper up in the Kokee region, who has gone away leaving garbage lying about and, by means of unsanitary or unsuitable toilet appliances, threatens to contaminate the little trickle of a stream that runs by his camp site; and that, in turn, may contaminate the Waimea water-shed, and threaten the purity of the whole Waimea community water supply. And hereafter the camper is not going to be allowed to come anywhere near the water-shed with his tin cans, and dead goat, and improvised cracker-box toilet.

Yea, verily the Board of Health is waking up in its old age! But why begin so far away with ordinances and restrictions, and why single out the inoffensive camper, 20 miles away from anywhere, and a bird of passage at worst, there today and gone tomorrow.

Everyone knows, including presumably the Board of Health, that almost every water shed on the Island of Kauai is a recurrent series of household drainage above, seeping or flowing down into the stream or ditches below, whence the people farther down draw their domestic water-supply. Furthermore it is a well known cardinal principle of Oriental agriculture that all human, as well as animal, excrement shall be carefully preserved and restored to the land in the form of high grade liquid manure. That means that it goes into the rice fields where the ever-flowing water carries it on down to the streams and ditches below. What is the menace of a lone cracker-box toilet, far away at Kokee, compared with that?

Take the village of Nawiliwili for instance—where does its water supply come from? Perhaps some ultra-particular household-er may take a demijohn and go far mauka to an uncontaminated source of supply for his drinking water, but the rank and file of the Nawiliwilians get their water, for all purposes, from the ditch which takes its supply from the stream about half a mile above and after it has come through and drained all the camps and rice patches and market gardens, and sink holes above. And what is true of Nawiliwili is true of almost every village and hamlet situated on any running stream.

There are, to be sure, a good many communities that are blessed with fine water systems, reasonably free from any danger of contamination; but there are scores of other communities whose water systems must be fairly foul with contamination;—and you don't have to go clear up to Kokee to find it.

It is quite right for the Board of Health to make a fuss about the campers at Kokee, and that piece of dead goat up there, but how on earth did they ever get by the sights and smells and contaminations nearer at hand? While a hue and cry is being made about the menace at Kokee let us not forget the infinitely worse menace all about us here at home.

Editor Garden Island.—An article appearing in your paper entitled "After Lihue's Goat" seems to me more like a black mark on the district of Kawaihau and more particularly on the members of the Kawaihau Improvement Club.

The writer of the article has been misinformed in this matter. The writer of the article will please be informed that the citizens of Kawaihau are free and loyal Americans. To prove this it is only necessary to look into the records of the Hawaiian National Guard at the Liliuokalani Camp, Kawaihau, Oahu in Nov. 1917.

That the revolutionary character as mentioned in said article does not exist in the Kawaihau Improvement Club. The Club is an organization founded over two years ago, and its principles are for the betterment of the Kawaihau district, both socially and industrially.

If the correspondent is sore against some people of Kawaihau or members of the Kawaihau Improvement Club, the club, through its president cordially invites said person to appear before its body and present his grievance. KAWAIHAU CITIZEN. Kapaa, Sept. 22, 1919.

We are now Hawaiian

representatives for the

products of

85% Magnesia

Blocks

CEMENT

Pipe Covering

Asbestos Cement

Mineral Products Co.

and within two weeks from now

will be able to make deliveries

from our warehouses

Catton, Neill & Co., Ltd.

Queen and Alakea Sts.

Honolulu

## Waimea Stables

LIMITED

Up-to-date Livery, Draying and Boarding Stable and Auto-Livery Business.

## AUTOMOBILE STAGE-LINE

BETWEEN LIHUE and KEKAHA

Leaving Lihue every Monday, Wednesday and Friday.

Leaving Kekaha every Tuesday, Thursday and Saturday.

ARRIVING AT THEIR DESTINATION IN THREE HOURS

ALFRED GOMEZ, Manager.

Telephone 43 W

Waimea

P. O. Box 71

## TERRITORIAL MESSENGER SERVICE

TAKES ORDERS FOR ALL OF

## Dry Cleaning and Laundry Work

SEND BY PARCEL POST

1112 UNION ST.

HONOLULU

## "A Suit is no older than it looks"

There is every evidence of HIGHER CLOTHING prices—The very reason why you should not discard a garment until worn out.

## Let us fix it up!

Cleaning — Mending — Pressing and Dyeing by experts, is our specialty.

Particular attention to mail orders

## French Laundry

J. ABADIE, Prop.

Honolulu.

## TIP TOP TAILORS

Makers of Dress Suits and Business Suits, Summer Suits and Uniforms

Clothes Neatly Cleaned and Pressed.

TIP TOP BLDG.

LIHUE

## Honolulu Music Co. Ltd.

JAMES W. BERGSTROM, Manager

Ampico Reproducing Pianos, Knabe, Fisher, Haines and Kroeger Pianos, Victor and Columbia Machines and Records.

Latest Sheet Music and Player music rolls, Pianos and Player Pianos on all monthly payments. Pianos tuned and repaired and rented by Jack Bergstrom, Kauai agent.

## Honolulu Music Co. Ltd.

Telephone

Lihue Hotel.

## Order It By Mail!

Our MAIL ORDER DEPARTMENT is exceptionally well equipped to handle all your Drug and Toilet wants thoroughly and at once.

We will pay postage on all orders of 50¢ and over, except the following:

Mineral Waters, Baby Foods, Glassware and articles of unusual weight and small value.

Non-Mailable: Alcohol, Strychnine, Rat poisons, Iodine, Ant poison, Mercury Antiseptic Tablets, Lysol, Carbolic Acid, Gasoline, Turpentine, Benzine and all other poisonous or inflammable articles.

If your order is very heavy or contains much liquid, we suggest that you have it sent by freight.

## Benson, Smith & Co., Ltd.

"Service Every Second"

The Rexal Store

Box 426 Honolulu

## FULLER'S

Rubber -- cement

## FLOOR PAINT

An elastic and tough floor coating which dries with a firm hard gloss.

Spreads easily

Covers well

Extremely durable

The finished surface can be washed innumerable times and the paint will not crumble or lose its gloss.

Send for card of colors

## Lewers & Cooke, Ltd.

Lumber and Building Materials  
169-177 So. King Street

Honolulu

## Theo. H. Davies & Co., Ltd.

HONOLULU and HILO

## Sugar Factors and Commission Merchants

IMPORTERS OF GENERAL MERCHANDISE

## GENERAL HARDWARE

|                    |                |             |             |
|--------------------|----------------|-------------|-------------|
| Builders' Hardware | Crockery       | Glassware   | Silverware  |
| Sporting Goods     | Fishing Tackle | Firearms    | Ammunition  |
| Saws               | Refrigerators  | Spark Plugs | Flashlights |
| Paints             | Varnishes      | Brushes     | Oils        |
| Harness            | Saddlery       | Roofing     | Trunks      |
|                    | etc.           | etc.        | Suit Cases  |

## GROCERIES

Fancy and Staple Lines, Feed, etc.

## DRY GOODS

Shoes Toilet Supplies Stationery etc. etc.

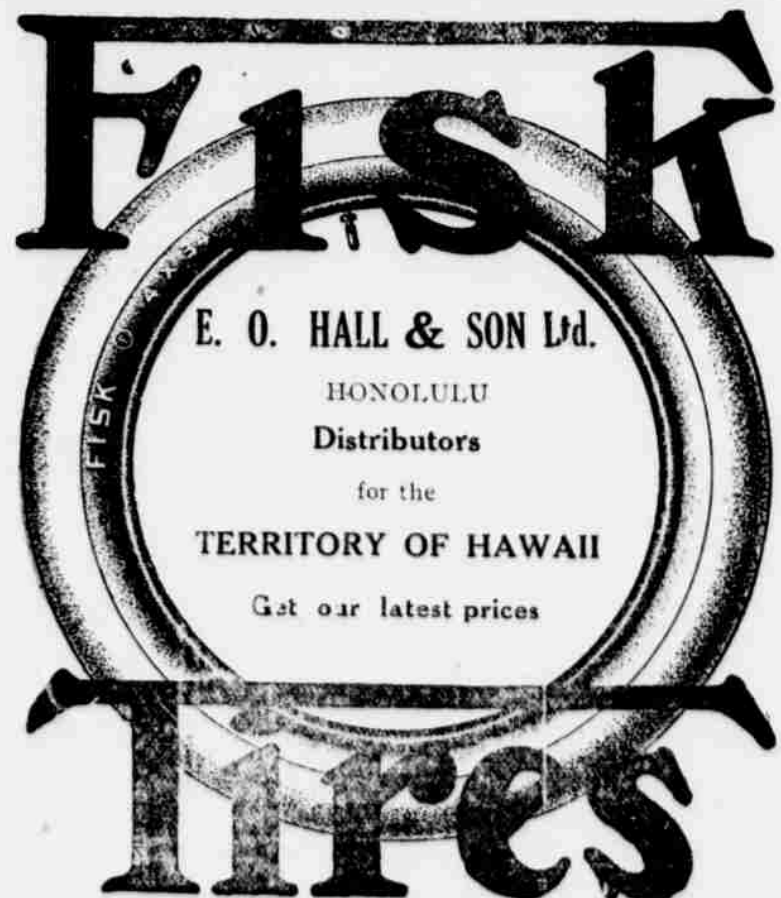
## INSURANCE AGENTS

Writers of Fire, Marine, Compensation, Automobile and Miscellaneous Insurance Policies.

## AGENTS FOR

Canadian-Australian Royal Mail Steamship Line

Upon application information will be cheerfully furnished in regard to any of our lines in which you may be interested.





## CORONA

For the busy man of affairs the  
Standard Folding  
Typewriter

is an indispensable necessity

Efficient & Practicable

With all its compactness and durability it does the same high class work as the most expensive machine.

Hawaiian News Co., Ltd.

Agents for the Territory  
Young Hotel Bldg. Honolulu

## CALIFORNIA FEED CO

LIMITED.  
Dealers in

HAY, GRAIN AND CHICKEN  
SUPPLIES.

Sole Agents for  
International Stock, Poultry Food  
and other specialties. Arabic for  
cooling Iron Roofs, Petaluma In-  
cubators and Brooders.

KING'S SPECIAL CHICK FOOD  
P. O. Box 452, Honolulu

## HOTEL LIHUE

(The Fairview)

Twenty-two elegant rooms  
In Main Building  
Three Airy Cottages  
Cuisine unexcelled in country  
districts

W. H. Rice, Jr.,  
Proprietor

## Koloa Plantation Store

Wholesale and Retail Groceries  
Dry Goods of all Descriptions.  
General Plantation  
Supplies.

"We have not studied  
cost nor economy as  
we should, either as  
organizers of indus-  
try, statesmen, or as  
individuals."

---President Wilson.

But there is yet time  
to start to save--and  
that time is NOW.

## Bishop & Company

Savings Department  
WAIMEA BRANCH  
KAUAI

The kindest shoe to  
tender feet  
Dr. Edison  
Cushion Shoe  
Made of soft kid with cush-  
ion insole

\$10

Regal  
Shoe  
Store

Fort And Hotel!  
HONOLULU

## MORE WORK

A Boston banker when asked the other day how to reduce high prices said "work another hour a day." His idea was to increase production and, thus, by catching up with demand bring prices down.

Of course the Boston banker might have amplified his advice but if he didn't, he is a poor economist. His advice would stand if everyone would work an extra hour a day without pay but now-a-days no one will work without pay.

If everyone worked an extra hour and was paid for the extra hour, it would, no doubt, increase production but there would hardly be a reduction of prices unless the workers saved their pay for that extra hour. That is the nub of the whole question of prices.

Either production must be increased and demand held at the present point, or production held at its present level and demand decreased. If production is increased by working an extra hour a day and the fruits of the extra toil are spent the situation is not changed one whit.

There is just one way to lower prices. Stop buying things that are not vitally necessary and save regularly. The United States Government recognizes that and asks the people of the United States to help force prices down by purchasing War Savings Stamps and Treasury Savings Certificates bringing in four per cent interest compound every three months.

## Burning Money

Life is gay and blithe and sunny since the peace dove hit the breeze; every one is burning money just as though it grew on trees. I insist on thrift and saving, but there's none to heed my words; Johnnies say that I am raving, and throw money to the birds. Men are drawing princely wages, and their breasts are filled with mirth, and they jeer foreboding sages who predict a day of dearth; but that day will come as surely as tomorrow's sun will rise; things will then be going poorly with the giddy spending thrift guys. Things won't boom along forever as they're booming now, my friends; and the man who's truly clever saves as ably as he spends. It is patent to the knowing, in expensive times like these, that the kopecks won't be growing always on the shrubs and trees. There will come a day of trouble, when this boom is left behind, and the kepeck and the ruble will be mighty hard to find; happy then the lads whose wages have been safely placed in brine, who obeyed the seers and sages, when the saving graft was fine. And how sick will be the mortals who like spendthrifts now behave, who reply with jeers and chortles when we call on them to save!

WALT MASON.

The above, one of Walt Mason's famous prose poems, although copyrighted, is printed through special permission given by Mr. Mason to the United States War Loan Organization. Buy War Savings Stamps.

## ELECTION OF OFFICERS

At the Annual Meeting of the share holders of the Hui Kual Aina o Wainiha on the 4th day of September, 1919, the following officers were elected for the following year:

|                                    |                     |
|------------------------------------|---------------------|
| James K. Apolo,                    | President and Dir.  |
| Wm. Hyde Rice,                     | Vice-Pres. and Dir. |
| Hiram K. Kanehe                    | Secretary and Dir.  |
| A. Menefoglio                      | Treasurer and Dir.  |
| Wm. Werner                         | Manager and Dir.    |
| Henry Birkmyre                     | Auditor and Dir.    |
| S. K. Kapua                        | Director            |
| R. W. K. Kahea                     | Director            |
| HIRAM K. KANEHE,                   |                     |
| Secretary Hui Kual Aina o Wainiha. |                     |

2t.

## At the Theatres

### 'Kultur' Got on Actors' Nerves

Who started the World War?—The Kaiser? The German Junkers? Very likely both. Yet the strange part played by a woman in the greatest crime of the ages is graphically portrayed in the William Fox photodrama, "Kultur," in which Gladys Brockwell will appear at the Tip Top theatre on Wednesday.

They say that behind every great event in history it is possible to find a woman. So in "Kultur" it is shown that when the Serbian Danilo slew the Austrian Archduke on that fateful June day in 1914, and thereby plunged the world into sorrow and bloodshed, the beautiful Countess Griselda (Gladys Brockwell), favorite of the aged Emperor Franz Josef, was the person who instigated the crime.

The Archduke, heir to the Austrian throne, is jealous of the influence of the Countess over the Emperor and seeks to have her removed from Vienna. But instead of banishing the old monarch's mistress, he himself is slain through her machinations.

In the meantime, the Countess has lost her heart to a young French secret service agent, and the scenes that follow are replete with plotting, intrigue and war preparations in the Tueton capitals.

When the Frenchman is trapped by German officials and faces death as a spy, Griselda comes to his rescue, aids him to escape, renounces her former connections with the secret diplomacy of the Teutons, and redeems herself by giving her life for her lover and for the cause of democracy.

If you wish to know the part a woman played in starting the Great War, together with the intrigues and private scandals of the Imperial Courts at Berlin and Vienna, see Gladys Brockwell in "Kultur" at the Tip Top theatre tomorrow.

\*\*\*

### DOROTHY DALTON'S GOWNS IN HER NEW PICTURE ARE RICH

A small army of designers and dressmakers was employed at the Thomas H. Ince studios to make gowns for Dorothy Dalton who interprets the part of a New York social aspirant in the Paramount picture, "Extravagance," which will be presented at the Tip Top theatre Thursday.

The story, which was written by John Lynch, tells of a woman who revels in sham and pretense and with her little private fortune tucked snugly away, wrecks her husband by the gratification of her vanity. Little does she realize the consequences that attend financial ruin, little does she think of the awful abyss to which the lust for gold leads until a terrible dream awakens her.

Then the better woman asserts itself. She runs to her husband with great resolution only to find that he already has gone down in the crash of a Wall Street panic. There, before the gaze of speculators, she makes the supreme sacrifice—she endures the abuse of her husband, his open proclamation that she is the woman who has taken all and given nothing, even to his threats of blows. When he returns to his home that night, a ruined man, she greets him, not with rebuke, but with loving arms. Her own fortune is at his command, not for Wall Street to gamble, but to take her into some new country to start a new life of sincerity and plain clothes.

As may be surmised the picture is filled with beautiful and spectacular scenes, as well as gowns for women to rave about. It was directed by Victor Cserizinger. The support is excellent, the leading man being Charles Clary.

TIP TOP THEATRE  
Wed. Sept. 24

HANAMAULU HALL  
Thur. Sept. 25

HOMESTEAD HALL  
Fri. Sept. 26

KEKAHA  
Saturday, Sept. 27

WAIMEA  
Sunday, Sept. 28

KOLOA HALL  
Tues. Sept. 30

## Special Picture

## Gladys Brockwell

## "KULTUR"

Behind the man behind the gun that killed the heir to the Austrian throne and launched the greatest war in history -- stood a woman -- who was she? This if NOT A WAR PLAY. Be sure to see it.

Two Reels Comedy Screen

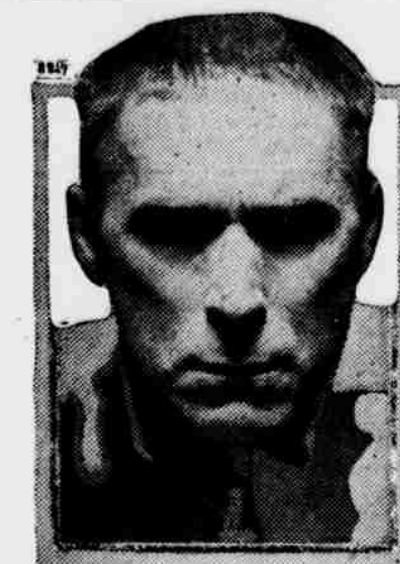
Latest Weekly News

-- PRICES --

General Admission 35c  
Reserved Seats 50c

Children 15c

GLADYS BROCKWELL in "KULTUR"  
WILLIAM FOX PRODUCTIONS



Wm. S. HART  
in "The Poppy Girl's Husband"  
An ARTCRAFT Picture

## TONIGHT

TIP TOP THEATRE

WM. S. HART

In His New Type of Character in

## The Poppy Girl's Husband

A Startling Sensational "Boston Blackie" Story

2 Reels---Comedy Screens

Pathe Weekly News Pictorial

THURSDAY, SEPTEMBER 25

## DOROTHY DALTON

A Fascinating Movie Actress in

## "EXTRAVAGANCE"

A Great Dramatic Photoplay Masterpiece

2 Reels Comedy Screen --- Pathe Weekly News Pictorial

SATURDAY, SEPTEMBER 27

Chas. Ray

## "The Sheriff's Son"

Another Ray picture that is sure to please. He was a coward through and through--just born scared--until the strange event came to pass. Be sure and do not miss this feature.

ALSO

Fifth Chapter of "The Brass Bullet"  
Pathe weekly News Pictorial



SUNDAY SEPTEMBER 28.

John Barrymore

## 'The Test of Honor'

A dramatic and sensational photoplay of the season.

Ford Weekly --- Brays Cartoon

Pathe Weekly News Pictorial



JOHN BARRYMORE  
in "The Test of Honor"  
A Paramount Picture

## Announcement

## Queen's Hospital Training School For Nurses

Offers a three years' course of training to young women with two years' high school or its equivalent.

Course includes surgical, medical and obstetrical nursing.

Maintenance and small compensation furnished.

For further information apply to

Superintendent of Nurses

Queen's Hospital, Honolulu



# VALVOLINE

## Lubricating OILS

For all kinds  
of Engines  
and  
Machinery

are Petroleum Lubrica-  
tion Oils refined espe-  
cially for designs of gas  
and steam cylinders

A Special  
grade  
for your  
Engine

Your dealer has it or can get it

**Honolulu Iron Works Co.**

Wholesale Distributors

Honolulu

## Kapaia Garage Co.

EXPERT

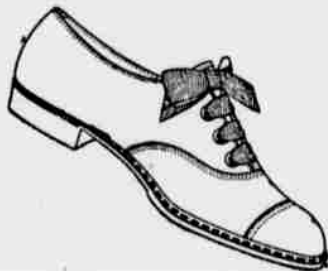
### Automobile Repairing And Machine Work

STORAGE BATTERIES REPAIRED AND RECHARGED  
VULCANIZING

Telephone 258 L

P. O. Box 236

## Ladies' White Canvas Oxfords



White Neolin Soles with low  
Rubber Heels

**\$6.50**

These shoes are neat and fashionable and one of the best shoes  
for general wear on the market today.

**Manufactures' Shoe Store**  
1051 Fort Street, Honolulu, T. H.

When in Honolulu  
stop at

**The Blaisdell**  
EUROPEAN PLAN

Running water in every room; rooms  
singly or with baths; comfortable beds;  
close to best restaurants and all car-  
lines. Highest class service.  
Centrally located in the theatre and shopping centers.

**J. F. CHILD, Proprietor**



## ELEELE STORE

J. I. SILVA, Prop.

ALWAYS LEADS IN LOWEST PRICES ON

Dry Goods, Boots and Shoes,  
Mens Furnishings, Cigars and  
Tobacco, Notions of all kinds.

MAIN STORE, ELEELE,  
PHONE 72 W.

BRANCH, STORE  
KALAHEO HOMESTEAD

## - From the Other Islands -

### Anti-Saloon League Praises Officials

Since the enforcement of the prohibition law there have been fewer cases of drunkenness in 38 districts in the islands out of 40, according to reports made at a meeting of the Anti-Saloon league, held recently at the Y. M. C. A. In the other two districts the consumption of liquor has increased during the past year.

The work of Judge Horace W. Vaughan, S. C. Huber, United States district attorney, and J. J. Smiddy, United States marshal, in enforcing the law preventing sale and manufacture of liquor, was highly commended by the society, but the opinion was expressed that the funds provided by the federal government for arresting offenders was not sufficient. The society decided to make an effort to secure a larger appropriation from Washington for this purpose.

The Anti-Saloon league will meet with the Inter-Church federation on Monday next, to discuss the possibility of the latter organization carrying on the work of the league. The officials feel that there is still much to be done and that some provision should be made to continue the effort to stop the use of liquor. The society was of the opinion that there are still a great many violations of the prohibition laws, and that these should be stopped. —Star-Bulletin.

Fish that make their home in Honolulu harbor are soon to be treated with a morning's morning consisting of slugs of copper and chasers of various brands of strong waters, for Col. Howard Hathaway, collector of internal revenue, has ordered that all stills his office has on hand must be destroyed, also liquor that has been cached away in the evidence room.

There are stills and stills, but the revenue office probably has the finest collection in the islands, due to the vigilance of the deputies and agents. There are tin stills and iron stills and valuable copper stills; there are coils and worms and old disphans, and felt strainers and lengths of rubber hose.

Within a few days the revenue agents are going to take them down to the waterfront, break them up with sledge hammers, and toss the mutilated remains to the sharks. Along with the metal will go several hundred gallons of "swipes," okolehao, pineapple gin and other liquors which have accumulated in the evidence room since war was declared on the manufacturers of illicit booze.

### The College of Hawaii

The College of Hawaii is entering upon a year of large expansion and prospects for a most successful session are seen by all connected with the institution. Over one hundred students are registered as candidates for degrees and all seem to be starting in with earnestness and fine purpose.

Many are entering the Liberal Arts course begun this year and leading to the degree of Bachelor of Arts to be granted by the University of Hawaii. The pre-medical course has attracted a considerable number also. A large part of the student enrollment is in the established lines of engineering, agriculture and sugar technology.

Several changes in the faculty are of importance. New members have been added this year, some of them representing additions and other substitutions. The chemistry department has been strengthened by the coming of Professor Richard Wrenshall from Yale University. In Agriculture John Midkiff is a valuable addition to the staff.

The engineering department is glad to have Professor Keller back from the army service. Professor Furer is still retained, affording three engineers on the College faculty.

The biological science department shows much change with Professors MacCaughy (botany) and Bryan (zoology) gone and new men to fill their places. Dr. Herbert Bergman comes to take charge of the botany work, while Professor Bryan's successor has not yet been named.

The department of Romance languages is now up to par, with Professor Pecker ably teaching

### Kokoiki Water Pilikia Settled

Kokoiki homesteaders are to be supplied with water for domestic use from the Kohala ditch Company's works at the same rate plantations have been paying, that is, between \$9.50 and \$10 per million gallons. Arrangements were made on this basis yesterday by the Public Utilities Commission, which went to Kohala with County Attorney Beers last Thursday afternoon.

The County will lay about two miles of 2-inch pipe—already on the ground—and attend to its maintenance and also install meters, subject to the approval of the Commission. Mr. Beers said that it is improbable the County will use the full million gallons. The amount will more likely be about 500,000 gallons, he said, but what the County does will be at the same rate as to the homesteads.

The commission went over the ditch Friday morning and subsequently held a meeting in the Kapaau Courthouse, Henry Hind representing the Ditch Company. Yesterday afternoon the intake and outlets for the homesteads were inspected. While the rate agreed upon is a tenth less than the Ditch Company originally asked, there was no friction in adjusting the trouble and the commission expressed itself as highly pleased with the attitude of the Ditch company. —Tribune.

Spanish and French.

Military instruction this year is being given to all freshmen and sophomore men by Captain Wilford C. A. C. A coast artillery unit is being formed among the College students, the training to be partly on the campus and partly at local Coast Defense batteries.

The students are much gratified at the bright prospects for good athletic teams. An abundance of football material is seen among the men and other sports and games will be equally well named.

Miss Marie Payne has left with the Garden Island a number of excellent books to be sold at ridiculously low prices, among which is a set of Teachers' Cyclo-pedia, in 8 volumes, and works of fiction by prominent authors. The books may be seen at this office.

"Tell it with Flowers"

Prompt  
attention  
given  
Mail Orders

## Floral Designs

for all  
occasions

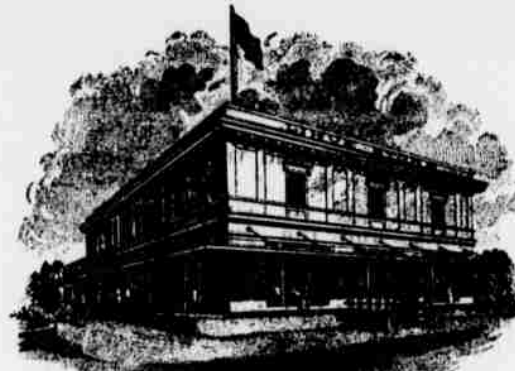
1120  
Fort Street  
Honolulu

**Straus Flowers**

Honolulu's Best Floral Shop  
Successive to Eli Snyder

## Announcement

H. T. Tong wishes to announce to the public that he has taken over the Tip Top Tailor Shop formerly owned by Ma Lum and Chang Yuk and from now on the said business will be run under his own management and under his direct supervision.



KAUAI'S EMPORIUM

## ICE HOUSE GOODS

Direct from San Francisco  
Upon arrival of the S. S. "Hyades" at  
Port Allen we will have on sale in our  
**MEAT MARKET**

FRESH SALMON FRESH HALIBUT FRESH SMELT  
FRESH OYSTERS FRESH BELGIAN HARE  
FRESH MILK FED CHICKEN (Capon)  
HEADCHEESE, WESTPHALIAN, POLISH, TONGUE,  
LIVER AND HAM SAUSAGE  
SMOKED SALMON SMOKED EEL  
SCOTCH STYLE HERRING

—AND—

—If the Goods were seasonable and in market at the time—  
our order was shipped,  
On sale at the

## TIP TOP FRUIT STORE

—FRESH—

CANTELOUPES GRAPES RHUBARB PEACHES  
PLUMS CAULIFLOWER PRUNES  
HONEY DEW MELONS CURRANTS BLACKBERRIES  
LOGANBERRIES

Also, as usual, in our Grocery Department,  
ORANGES LEMONS GRAPE FRUIT APPLES ETC.

## LIHUE STORE



## Notice to Teachers

All successful teachers, like successful physicians or other professional people, keep up-to-date by reading professional publications.

Here are a few educational publications that teachers will find to be of great value and interest:

- Agricultural Student
- American Education
- American Journal of Education
- American Journal of Mathematics
- American Mathematical Monthly
- American Physical Education Rev.
- American School
- American School Master
- American School Board Journal
- Current Events
- Educational Administration and Supervision
- Educational Exchange
- Educational Review
- Educator Journal
- High School Quarterly
- Historical Outlook
- Journal of Education
- Journal of Hygiene
- School Bulletin
- School News and Practical Educator
- School Review
- School Science and Math.
- Teacher's Journal
- Teacher's Monographs
- Normal Instructor—Prim. Plans

Make up your list from these and we will secure them for you much cheaper than you can get them from the publishers direct.

THE

K. C. HOPPER NEWS AGENCY

LIHUE, KAUAI

Tel. 22 L. P. O. Box H

## Advices From Business Man to Business Men

The city editor of the Los Angeles Examiner sent a reporter to interview the head of a business firm which is making a great success with its trade in South America, China and India.

The reporter got three minutes of the man's time and a column story.

Into that three minutes and that column was crowded a good deal of worth-while information and sound advice.

The soundest of the advice was this: "When there is a big thing to go after and you can't go yourself, send a better man."

One of the great mistakes of business is trying to save money. Trying to make a cheap man do a good man's job.

Many a sale has been lost; many a profit has been thrown away because the man sent to do job wasn't as big as the job required.

In the ordinary walks of life you hire a man to do something because of one of two reasons: Either you do not want to do it yourself or the other man can do it better than you can.

The man you pay to cobble your shoes is a better shoemaker than you are.

The man who paints your house is a better painter.

The man who drives your automobile is a better driver.

Why, then, should you hire a man to do business for you who knows less about it than you do?

This does not mean that young men should not be taken in and trained in your business. That is a necessity. But one of New York's best known business men coined for himself and his associates this advice: "You must suit the man to the job not the job to the man."

The Los Angeles merchant was right, and he has proved it by his success, when he said: "When there is a big thing to go after and you can't go yourself, send a better man."

## War Savings Stamps

Lihue Branch

Bank of Hawaii, Ltd.

## Thrift Stamps

IN THE CIRCUIT COURT OF THE FIFTH JUDICIAL CIRCUIT, TERRITORY OF HAWAII JANUARY TERM, 1919.

THE TERRITORY OF HAWAII BY LYMAN H. BIGELOW, SUPERINTENDENT OF PUBLIC WORKS, Plaintiff & Petitioner

v. HENRY WATERHOUSE TRUST COMPANY, LIMITED, TRUSTEES UNDER THE WILL AND OF THE ESTATE OF KALEIPUA KANOA, LIHUE PLANTATION CO. LTD., G. N. WILCOX, MRS. ELIZA HOLT, S. K. KAE, JOHN DOE, MARY DOE, AND RICHARD ROE, Unknown owners and claimants.

Defendants & Respondents.

TERM SUMMONS

THE TERRITORY OF HAWAII TO THE HIGH SHERIFF OF THE TERRITORY OF HAWAII, OR HIS DEPUTY, THE SHERIFF OF THE COUNTY OF KAUAI, OR HIS DEPUTY.

You are commanded to summon Henry Waterhouse Trust Company, Limited, Trustees under the Will and of the Estate of Kaleipua Kanoa, Lihue Plantation Co., Ltd., G. N. Wilcox, Mrs. Eliza Holt, S. K. Kae, John Doe, Mary Doe, and Richard Roe, unknown owners and claimants, defendants and respondents, in case they shall file a written answer within twenty days after service hereof, to be and appear before the said Circuit Court at the term thereof pending, immediate after the expiration of twenty (20) days after service hereof. PROVIDED, HOWEVER, if no term be pending at such time, then to be and appear before the said Circuit Court at the next succeeding term thereof, to wit, the January 1920 term to be held at Lihue, County of Kauai in the second Wednesday of January next at ten o'clock A. M., to show cause why the claim of the Territory of Hawaii, by Lyman H. Bigelow, Superintendent of Public Works, Plaintiff and Petitioner, should not be awarded to it pursuant to the tenor of this annexed complaint, and have you then and there this writ with a full return of your proceedings thereon.

WITNESS, the Honorable Presiding Judge of the Circuit Court of the Fifth Judicial Circuit, at Lihue aforesaid, this 8th day of September, A. D. 1919.

(Sgd.) J. A. THOMPSON.

Clerk Supreme Court Territory of Hawaii, and Ex Officio Clerk Circuit Court 5th Circuit.

COUNTY OF KAUAI.

TERRITORY OF HAWAII } ss. I, JOSEPH ANDRE SOUSA, Clerk of the Circuit Court of the Fifth Judicial Circuit, Territory of Hawaii, do hereby certify that the foregoing is a full, true, and correct copy of the original summons in the case of the TERRITORY OF HAWAII v. HENRY WATERHOUSE TRUST COMPANY, LTD., et al, as the same appears of record and on file in the office of the clerk of said Court.

I further certify that the petition herein prays the condemnation for use for public rights-of-way and warehouse sites for the Nawiliwili Harbor projects, of the following described lands and its appurtenances situate at Nawiliwili, Island and County of Kauai, Territory of Hawaii, to wit:

"Beginning at a + cut in a large boulder at Low Water mark, near 'Carter's Point', the coordinates of said point of beginning referred to the Government Triangulation Station 'Nawiliwili' being 4197.3 feet South and 2105.6 feet East, and running thence by true azimuths:

1. 81° 27' 4147.0 feet to a rock marked by a + and pile of stones, (From this point the Triangulation Station 'Nawiliwili' bears N. 22° 29' 30" E)
2. 156° 50' 2031.0 feet, crossing the Huleia river to a concrete post marking the Southeast corner of the Kanihewa Reservation.
3. 238° 31' 145.8 feet to a peg on the Northwest side of main road.
4. 205° 29' 503.0 feet along the West side of road to bend in fence at gateway to Kaiwi's.
5. 253° 18' 985.9 feet.
6. 214° 15' 201.6 feet along the upper edge of pali
7. 243° 40' 20" 299.7 feet along the the upper edge of pali
8. 236° 13' 412.6 feet along the upper edge of pali
9. 226° 29' 30" 206.8 feet along the upper edge of pali
10. 208° 13' 391.3 feet to bend in

11. 219° 47' 918.4 feet to South corner of Kaeo's kulepa (L.C.A. 5415:3)
12. 231° 18' 30" 217.8 feet along Kaeo's seawall.
13. 199° 32' 257.5 feet to an iron bolt marking the Southwest corner of the Lihue Plantation's wharf lot.
14. 217° 17' 30" 110.0 feet.
15. 313° 17' 30" 21.3 feet along remainder of said lot.
16. 10° 20' 121.0 feet along remainder of said lot.
17. 307° 17' 30" 94.0 feet along remainder of said lot to low water mark
18. 50° 04' 260.2 feet along low water mark.
19. 51° 18' 30" 217.8 feet along low water mark.
20. 30° 47' 87.7 feet along low water mark.
21. 31° 06' 284.8 feet along low water mark.
22. 40° 45' 550.0 feet along edge of coral ledge at low water mark. (At 184 feet this line crosses over a concrete pier.)
23. 34° 12' 30" 125.4 feet along edge of coral ledge at low water mark.
24. 25° 32' 144.5 feet along edge of coral ledge at low water mark.
25. 4° 49' 104.8 feet along the shore line at low water mark.
26. 45° 02' 140.4 feet along the shore line at low water mark.
27. 65° 45' 140.7 feet along the shore line at low water mark.
28. 60° 21' 691.0 feet along the shore line at low water mark.
29. 38° 53' 30" 159.4 feet along the shore line at low water mark.
30. 29° 00' 234.9 feet along the shore line at low water mark.
31. 97° 21' 227.0 feet along the shore line at low water mark.
32. 65° 17' 117.6 feet along the shore line at low water mark.
33. 69° 10' 30" 547.2 feet along the shore line at low water mark.
34. 26° 45' 121.7 feet along the shore line at low water mark.
35. 355° 23' 291.8 feet along the shore line at low water mark.
36. 333° 42' 1125.5 feet along the shore line at low water mark.
37. 327° 17' 331.0 feet along the shore line at low water mark.
38. 298° 04' 30" 324.0 feet along the shore line at low water mark.
39. 275° 50' 462.4 feet along the shore line at low water mark.
40. 267° 40' 30" 606.2 feet along the shore line at low water mark.
41. 260° 52' 899.5 feet along the shore line at low water mark.
42. 250° 53' 30" 223.0 feet along the shore line at low water mark.
43. 267° 43' 30" 480.8 feet along the shore line at low water mark.
44. 239° 28' 146.9 feet along the shore line at low water mark.
45. 267° 31' 516.4 feet along the shore line at low water mark.
46. 276° 30' 172.2 feet along the shore line at low water mark.
47. 291° 03' 230.8 feet along the shore line at low water mark to point of beginning

Containing an area of 43.41 acres, more or less.

All persons having any interest in or claim to the land and its appurtenances sought to be condemned, are hereby warned that unless they appear at the said Circuit Court at Lihue, Island and County of Kauai, Territory of Hawaii, on or before the 16th day of January, A. D. 1920, they will be forever barred from contesting said petition or any judgment thereon.

IN WITNESS WHEREOF, I have hereunto set my hand and affixed the seal of said Circuit Court this 13th day of September, A. D. 1919.

SEAL

(Sgd.) JOSEPH ANDRE SOUSA, Clerk.

## CHEVROLET

### For Economical Transportation

You are urged to investigate the economy records, the reputation and the performance of Chevrolet cars because to know all about them is to be convinced that their purchase reflects favorably on the good judgment of their thousands of owners.

Chevrolet "Four-Ninety" Touring Car, equipped with electric lights and starter, highest type two-unit system, single wiring used. Complete lamp equipment, mohair tailored one-man top, top cover and side curtains; tilted windshield; speedometer; electric horn; extra rim and carrier on rear; complete tool equipment, including pump and jack. Foot rest, robe rail, pockets in each door.

Royal Hawaiian Sales Co. Ltd.  
DEALERS

## Kuraoka & Co.

### CONTRACTOR AND CARPENTER

Building, Painting, Moving Buildings and General Carpentering.

Manufacturer of All Kinds of Furniture.

P. O. Box 265 - Lihue, Kauai

## JEWELERS

EVERYTHING IN THE SILVER AND GOLD LINE, RICH CUT GLASS AND ART GOODS.

MERCHANDISE OF THE BEST QUALITY ONLY.

H.F. WICHMAN & CO., LD.

LEADING JEWELERS.

P. O. Box 342 Honolulu

## JAS. F. MORGAN

Co. Ltd.

Stocks, Bonds,

Real Estate and Insurance

NO. 125-131 MERCHANT ST.

P.O. Box No 594 Honolulu

## Dinnerware From Open Stock

You can buy one piece of dinnerware at the same price it would cost in a 100 piece set. Thus with open stock dinnerware the problem of replacement is solved.

You can start set with a few pieces and then add to them from time to time as your needs remand or your purse permits.

Sample plates for selection sent at your expense

Fifty patterns to choose from at

W. W. Dimond & Co., Ltd

"The House of Housewares"

53-65 King Street Honolulu



Silva's Toggery, Honolulu.

## Better performance— longer life

Correct lubrication with Zerolene will mean better performance and longer life for your car.

Zerolene is the product of the combined resources, experience and equipment of the Standard Oil Company.

By exhaustive study and actual tests the Standard Oil Company Board of Lubrication Engineers has determined the correct consistency of Zerolene for your make of automobile. Their recommendations are available for you in the Zerolene Correct Lubrication Charts. There is a chart for each make of car. Get one for your car. At your dealer's or our nearest station.

STANDARD OIL COMPANY (California)

A grade for each type of engine



Read the Garden Island



## ANNUAL MEETING

The annual meeting of the Kauai Branch of the Hawaiian Chapter of the American Red Cross will be held at three o'clock in the afternoon, Wednesday, October 1st, 1919, at Eleel Hall.

The meeting is open to the public. All members of the American Red Cross resident on Kauai are entitled to vote.

LYLE A. DICKEY,  
Chairman and Secretary.

The public is hereby notified that Moses Rodriguez is no longer in our employ.

GOMEZ GARAGE

## \$200.00 Reward

For information which will lead to the conviction of the person or persons who set fire to the stables of John B. Fernandez at Waipouli on the morning of September 21st, 1919.

Wm. HENRY RICE,  
Sheriff County of Kauai.

## BORN

LEVILL—At Nawiliwili, Sept. 22, 1919, to Mr. and Mrs. Enoka Lovell, Jr. a son.

RUBBER STAMPS made at this office on Wednesdays and Saturdays.

## Classified Advertisements

## WANTED

Girl or woman to cook and do light house work for family of two and help with care of baby. \$25 per month with board and room. Box 63, Makaweli. tf.

## FOR SALE

A KROEGER Upright Piano. In first-class condition. Call at the home of Martin Dreier, Nawiliwili. tf.

Four-burner blue flame oil stove. Just the thing for teachers' cottage. Enquire Garden Island office.

Second-hand sewing machine. \$15.00. A bargain. Enquire Garden Island office.

## LOST

Black hand bag, containing lady's shoes and wearing apparel, and comb with letter "C" on it. Taken by mistake from Nawiliwili landing last Friday morning. Please return to Garden Island office. tf.

IN THE CIRCUIT COURT OF THE FIFTH JUDICIAL CIRCUIT, TERRITORY OF HAWAII At Chambers—In Divorce

Toshiko Takata Matsuoaka, Libellant, vs. Tsunio Matsuoaka, Libellee.

## LIBEL FOR DIVORCE.

## Order and Notice of Pending Libel.

Upon reading and filing the libellant's Motion and Affidavit attached thereto to the effect that the address, and, or, residence of the said libellee is not known and that libellant has been unable to ascertain the same after reasonable search and inquiry for more than six months after the filing of the Libel herein.

It is Hereby Ordered that notice be given to the libellee above named to appear at my Chambers in the Court Room of this Court in the County Building in LIHUE, Kauai County, Territory of Hawaii, on Saturday, the 22nd day of November, 1919, at the hour of 9:30 o'clock a. m. of said day, and show cause, if any he has, why the prayer of the libellant for a decree of divorce absolutely may not be granted.

It is Further Ordered that notice hereof and of the pendency of the Libel herein be published in the GARDEN ISLAND, a newspaper printed and published at LIHUE aforesaid, at least once a week for six (6) successive weeks.

Dated Lihue, September 9th, 1919. (SEAL) LYLE A. DICKEY, Judge, Circuit Court, 5th Circuit, Territory of Hawaii.

Attest: (Sgd.) JOSEPH A. SOUSA, Clerk.

Sept. 9, 16, 23, 30, Oct. 7, 14, 21, 1919.

IN THE CIRCUIT COURT OF THE FIFTH JUDICIAL CIRCUIT, TERRITORY OF HAWAII In Chambers.

Henrietta Paumano Jimenez (w), Libellant,

vs.

Anacleto Jimenez (Male Filipino) Libellee.

## LIBEL FOR DIVORCE

## Order and Notice of Pendency of Libel

Upon reading and filing the libellant's Motion and Affidavit attached thereto to the effect that the address, or, residence of said libellee is not known and that libellant has been unable to ascertain the same after reasonable search and inquiry for more than six months after the filing of the Libel herein.

It is Hereby Ordered that notice be given to the libellee above named to appear at my Chambers in the Court Room of this Court in the County Building in LIHUE, Kauai County, Territory of Hawaii, on Saturday, the 22nd day of November, 1919, at the hour of 9:30 o'clock a. m. of said day, and show cause if any he has, why the prayer of libellant for a decree of divorce absolute may not be granted.

It is Further Ordered that notice hereof and of the pendency of the Libel herein be published in the Garden Island a newspaper printed and published in LIHUE, County of Kauai, Territory of Hawaii, at least once a week for six (6) successive weeks.

Dated Lihue, September 5th, 1919. (Sgd.) LYLE A. DICKEY, Judge, Circuit Court, 5th Circuit, Territory of Hawaii.

Attest: (Seal) JOSEPH ANDRE SOUSA, Clerk.

Sept. 9, 16, 23, 30.

IN THE CIRCUIT COURT OF THE FIFTH CIRCUIT, TERRITORY OF HAWAII—AT CHAMBERS IN—PROBATE.

In the Matter of the Estate of ALBERT SPENCER WILCOX, Deceased.

## NOTICE TO CREDITORS

NOTICE is hereby given that Letters Testamentary have been issued to Emma Napoleon Wilcox, William N. Stewart, H. H. Walker and Hawaiian Trust Company, Limited, as executrix and executors of the Will and Codicil of Albert Spencer Wilcox, late of Lihue, County of Kauai, Territory of Hawaii, deceased. All creditors of said Albert Spencer Wilcox are hereby notified to present their claims, with proper vouchers, or duly authenticated copies thereof, even if the claim is secured by mortgage upon real estate, to the said Executrix and Executors at the office of said Hawaiian Trust Company, Limited, in the Kaulaolani Building, 120 South King street, Honolulu, Territory of Hawaii, within six months from the date of the first publication of this notice or they will be forever barred. All persons indebted to the said Albert Spences Wilcox the hereby notified to make immediate payment to the undersigned, the said Executrix and Executors.

Dated at Lihue, T. H., August 26th, 1919.

EMMA NAPOLEON WILCOX  
WILLIAM N. STEWART  
H. H. WALKER  
HAWAIIAN TRUST COMPANY, LIMITED

Executrix and Executors of the Will and Codicil of Albert Spencer Wilcox, Deceased.

Frear, Prosser, Anderson & Marx, Attorneys for Executrix and Executors.

Aug. 26, Sept. 2, 9, 16, 23.

## NOTICE

To the Public and Stockholders of the Congress Consolidated Mining Company:

You are hereby notified that E. A. Richards, Jr., is no longer connected with the Company and has no authority to act in any capacity for the Company.

Congress Consolidated Mining Company,

By J. R. WATSON, JR.,

Pres. and Manager.

Honolulu, Sept. 8, 1919.

Sept. 16, 23.

## BY AUTHORITY NOTICE

The Waimea Water Supply is liable to pollution at any time and every one using water from the above supply should boil the water before using it.

K. B. PORTER,

Acting President, Territorial Board of Health.

September 1919. Sept. 9, 16, 23.

IN THE CIRCUIT COURT OF THE FIFTH JUDICIAL CIRCUIT, TERRITORY OF HAWAII AT CHAMBERS—IN PROBATE

Probate No. 788.

In the Matter of the Estate of ROBERT MANTHEI, deceased.

## NOTICE TO CREDITORS

Notice is hereby given that Letters of Administration have been issued to BISHOP TRUST COMPANY, LIMITED, as administrator of the Estate of Robert Manthel, late of Makaweli, County of Kauai, Territory of Hawaii, deceased.

All creditors of the deceased, or of his estate, are hereby notified to present their claims, with proper vouchers or duly authenticated copies thereof, even if the claim is secured by mortgage upon real estate, to the said Bishop Trust Company, Limited, at its place of business, No. 924 Bethel Street, Honolulu, City and County of Honolulu, Territory aforesaid, within six months from the date of this notice, which is the date of the first publication hereof; otherwise such claims, if any, shall be forever barred.

And all persons indebted to the said estate are hereby notified to make payment to the said Bishop Trust Company, Limited, at the above address.

Dated at Lihue, T. H., September 2, 1919.

BISHOP TRUST COMPANY, LIMITED,

Administrator of the Estate of Robert Manthel, deceased.

Philip L. Rice, Attorney for Administrator.

Sept. 2, 9, 16, 23, 30, 1919.

IN THE CIRCUIT COURT OF THE FIFTH CIRCUIT, TERRITORY OF HAWAII—AT CHAMBERS—IN PROBATE.

In the Matter of the Estate of Anna Kapuniai, late of Waimea, Kauai, Deceased.

## NOTICE TO CREDITORS

Notice is hereby given that Letters Testamentary have been issued to Isaac K. Kapuniai, as Executor of the Will of Anna Kapuniai, late of Waimea, County of Kauai, Territory of Hawaii, deceased. All creditors of said Anna Kapuniai are hereby notified to present their claims, with proper vouchers or duly authenticated copies thereof, even if the claim is secured by mortgage upon real estate, to the said Executor at Waimea aforesaid, within six months from the date of the first publication of this notice or they will be forever barred. All persons indebted to the said Anna Kapuniai are hereby notified to make payment to the undersigned, the said Executor.

Dated at Lihue, September 15, 1919.

ISAAC K. KAPUNIAI, Executor of the Will of Anna Kapuniai, Deceased.

A. G. KAULUKOU,

Attorney for the Executor.

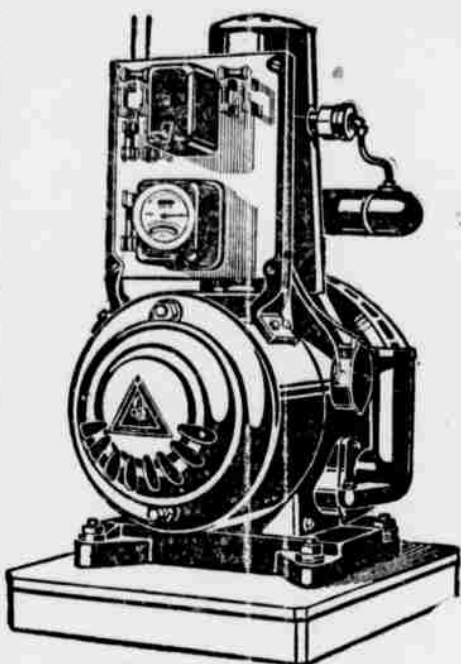
Sept. 16, 23, 30, Oct. 7.

## DELCO-LIGHT

ELECTRICITY FOR EVERY HOME

## A COMPLETE ELECTRIC PLANT

—for every suburban or country home.



It combines in one compact unit, gas engine and dynamo for generating current.

It will furnish 40 to 50 lights and also provide power for small machines such as churn, cream separator, pump, washing machine, sewing machine, etc.

Expense for lighting the ordinary home is not more than 5 cents per kilowatt hour. A child can operate it—nothing to get out of order—self-starting and stops automatically when batteries are full.

Ask us for detailed information.

DELCO-LIGHT

The Hawaiian Electric Co., Ltd.

HONOLULU

MASTER

OF

KAUAI

ROADS

GOODYEAR

CORD TIRES

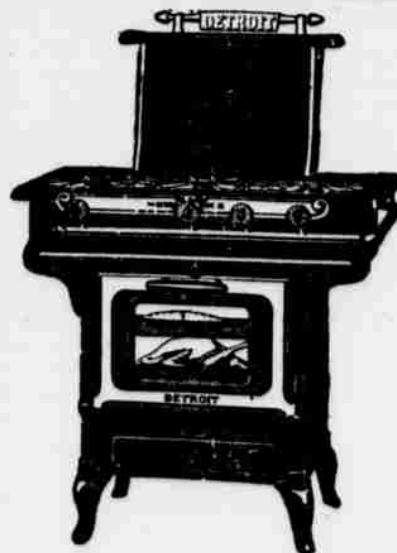
NAWILIWILI GARAGE,

Ching Sai Kee

Waimea

Shido's Store

Kapaa



This Stove Burns OIL or GASOLINE

The Detroit-Vapor Stove brings city gas stove convenience into your kitchen no matter where you live.

Simply light the burners and put the cooking on at once—just like a city gas stove. No piping or pressure tanks. Our patented giant burners are wonders. No wicks, asbestos rings or anything that looks like wick. Ten different styles. Write us for further information.

E. O. Hall & Son Ltd.  
Honolulu

The K. C. Hopper News Agency  
Lihue, Kauai

Subscriptions received for  
Magazines, Newspapers and Periodicals  
from all parts of the world.

All Languages  
Foreign and Domestic

Patronize Home Industry and Save Money

High Quality



"Red Crown" quality is proved by its performance. Look for the Red Crown sign before you fill.

STANDARD OIL COMPANY (California)

The Gasoline of Quality

