

# HAWAIIAN STAR

Telephone 365 Star Business Office

SECOND EDITION

VOL. XVII.

HONOLULU, HAWAII, TUESDAY, FEBRUARY 15, 1910.

No. 5574

## LAW MUST BE PASSED HERE

### SPRECKELS' WIDOW DEAD

(Associated Press Cable to The Star.)

SAN FRANCISCO, Feb. 15.—Mrs. Claus Spreckels, widow of the late capitalist, died in this city today.

### THANKS FOR FAR NORTH

(Associated Press Cable to The Star.)

WASHINGTON, D. C., Feb. 15.—The award of a gold medal and the thanks of Congress to Commander Peary are proposed by a bill now before the House.

### WATERWAYS BILL PASSES

(Associated Press Cable to The Star.)

WASHINGTON, D. C., Feb. 15.—The Rivers and Harbors measure has passed the House of Representatives.

### M'CARTY GETS TWO BOARDS

(Associated Press Cable to The Star.)

SAN FRANCISCO, Feb. 15.—Judge Startevant sustains Mayor McCarthy in his reorganization of the boards of health and education.

### TRUST CLAUSE HELD INVALID

SAN FRANCISCO, Feb. 15.—Judge Coffey renders opinion in which he declares to be invalid the trust clause in the will of the late Claus Spreckels, sustaining the demurrer of John D. Spreckels to the petition of Rudolph Spreckels for the partial distribution of the estate.

SAN PEDRO, Feb. 15.—One man injured in the explosion aboard the torpedo destroyer Hopkins yesterday has died. An inquiry has been ordered.

LONDON, Feb. 15.—Parliament convened today.

(Special Cable to The Star.)

CHATTSWORTH, Ill., Feb. 15.—Burglars attacked the bank today, bound two men in charge, dynamited the safe and escaped with \$10,000.

NEW YORK, Feb. 15.—John C. Stubbs, official in numerous railways is testifying in the government suit to dissolve the Union Pacific and Southern Pacific merger.



Accident Insurance WITH

Indemnity For Life

The Standard Accident Insurance Company's New Policies grant indemnity without limit as to time. This is away the most liberal Accident Policy issued by a reputable Company. See us about it.

INSURANCE DEPARTMENT.

Hawaiian Trust Co., Ltd.  
923 Fort Street.

### BIRD CATCHERS ARE INDICTED

### ALSO EIGHT ALLEGED OPIUM SMUGGLERS

Indictments were returned in the Federal Court this morning against the twenty-three Japanese captured on Laysan and Lisianski islands by the revenue cutter Thetis.

Eight persons were indicted for smuggling opium. Several were indicted for violation of social laws. One was indicted for breaking into a post office. Of nineteen indictments presented and ordered on the secret file, District Attorney Breckons at noon released nineteen.

(Continued on Page Eight.)

### DOLE RETAINS TRUST CASES

Judge Dole retains charge of the so-called lumber trust and meat trust cases among others, in the division of work between him and Judge Robertson announced by order of court, signed by both judges, in the U. S. District Court this morning.

Besides the cases above referred to—U. S. vs. Allen & Robinson et al and U. S. vs. Metropolitan Meat Co., et al.—Judge Dole shall have charge of and try Fujiyama's appeal from the Board of General Appraisers at New York, Sorenson & Lyle vs. United States, U. S. vs. Lorrin Andrews, H. G. Spencer vs. Jiro, Spencer vs. Neke-moto, U. S. vs. Joseph Whitmarsh, et al., U. S. vs. Haiku Sugar Co. et al., U. S. vs. John H. Estate, U. S. for Lewers & Cooke vs. Burrell Construction Co., in re Shigematsu Umeno, in re Maru Suzuki, Lawellill vs. Hind, Roiph & Co. Pope & Talbot vs. The Pacific, J. M. Little et al vs. J. D. Spreckels & Bros. Co.

### CASTLE AND COOKE AND WALL NICHOLS ARE TO MOVE

Another big change in the location of prominent business establishments is to be made, the deal this time having to do with Castle & Cooke and the Wall, Nichols Company.

Negotiations have been going on for some time but the news was not out until after the last details had been finished up this morning.

The whole thing started from the Castle & Cooke side of the proposition. This big concern has for a long time felt crowded in the Stangenwald building. The office space there has not proved large enough, and, worst of all, the departments are separated by the hallway into the building.

In casting about for another and a more suitable location, the Cummins block, at Fort and Merchant streets, occupied by Wall, Nichols Company, was decided upon. The Wall Nichols lease, running five years more,

(Continued on Page Five.)

### DELAWARE DELIVERED

(Special Cable to The Star.)

NORFOLK, Feb. 15.—The first American battleship of the Dreadnought class, U. S. S. Delaware, built by the Newport News Shipbuilding & Drydock Co., has just been delivered to the government. She is one of the two battleships provided for in the 1907 estimates, the other vessel being the North Dakota. The Delaware was laid down in 1907 and launched February 6, of last year. Her dimensions are: length 515; beam, 85; normal draft, 27; normal displacement, 20,000 tons. She carries ten 12-inch

### SMALLPOX ON CRUISER

(Special cable to The Star.)

SEATTLE, Feb. 15.—U. S. cruisers Washington and Tennessee arrived at the navy yard today from Honolulu. There are five cases of smallpox aboard the Washington and she is quarantined.

MANAGUA, Feb. 15.—The government troops have recaptured the city of Matagalpa from the rebels.

guns in her main battery. She has attained a speed of 21.56 knots per hour for four hours.

### CABLE FROM DELEGATE KUHIO SAYS CONGRESS WILL CALL JULY ELECTION

WASHINGTON, D. C., Feb. 15, 1910.

"Governor,

"Honolulu,

"Joint Resolution proposes election July twenty-six expense appropriation include vote on following question, 'shall the Legislature be instructed to pass at next session a law prohibiting manufacture or sale of intoxicating liquors, etc., except medicinal and scientific purposes.'

"Congress sentiment opposes joining provision authorizing women vote, please publish.

"KUHIO."

The above cable was received by Governor Frear this morning. It again put a new phase on the Prohibition discussion. The former cables had been understood by many as indicating that Hawaii was to be asked to vote on whether Congress should pass the so-called Prohibition laws. It appears from the above message that Congress will call a vote on whether the people of Hawaii shall instruct their legislature to pass such laws.

Governor Frear, commenting on the cablegram, said that the instruction to the Legislature to pass a prohibitory liquor law if the people so voted was unusual. He could not recollect a case that was exactly parallel. According to the joint resolution a popular vote for prohibition would seem to be mandatory on the Legislature, the Governor thought, and if such a mandate were disobeyed the question might be whether Congress should not then pass a prohibitory law for the Territory.

Governor Frear said the possible situation might be like the case of the Legislature of Oregon which, though controlled by the Republicans, elected as United States Senator a Democrat in obedience to the choice of the voters at the primaries.

### VIEWS ON PROHIBITION

BY ELEANOR RIVENBURGH

A reform wave is breaking over the islands at present, and carrying the debris of hundreds of wrecked homes in its powerful wake. And should it come to pass, the pitiful sights which are thrust upon us, of drawn sad faces of women in useless persuasion of mauling husbands and fathers who in time come to fill our jails, or mar the beauty of our city's thoroughfares will be no more.

Business men will tell you that from two to three hundred thousand dollars per annum will be withdrawn from circulation (and they are men, by the way, for whom prohibition is not intended) while hundreds of women who have lost their youth and beauty, their homes and companionship of friends through the ravages of liquor are tensely awaiting the issue.

I interviewed five people representative of various phases of the question of prohibition. One was a noted physician.

"Yes, I think intoxicants should be regarded seriously, but it is Tommyrot to include it in the category of prescriptions. It is not needed as a medicine any more than molasses taffy. There is nothing for which I should be obliged to prescribe liquor, that I know of. They can cut it out entirely if the medical profession is the only argument in its favor. Do I think it dangerous? Most decidedly, if Morphine or Nux Vomica are dangerous. It will kill as surely as they, but requires a larger quantity. There are a great many diseases caused by liquor—of course you understand I mean too much liquor, especially in the liver and kidneys. It makes human wrecks of erstwhile brainy men. In large cities today there are college graduates, sweeping out offices for the price of a drink. These men are irresponsible and should be treated as such. They have started out right, but hanging over a bar is a dangerous pastime and in time the drug has got them and has fiendishly scourged them into slavery. Physicians generally agree that this form of addiction to drink is a disease, and hundreds of sanatoriums all over the mainland have been erected for the cure of it.

(Continued on Page Eight.)



The only baking powder made with Royal Grape Oregan of Tartar No Alum, No Lime Phosphate

DO YOU WANT RELIEF? Are you frequently hoarse? Do you have that annoying tickling in your throat? Does your cough annoy you at night, and do you raise mucus in the morning? Do you want relief? If so, take Chamberlin's Cough Remedy and you will be pleased. For sale by all dealers. Benson, Smith & Co., Agents for Hawaii.

FINAL CLEARANCE SALE. Ready-to-wear apparel will be sacrificed at Sachs Dry Goods Co. ad this week. Such a chance to buy will be a long time coming again. See Sachs' window display.

Have your typewriter, cash registers and adding machines repaired by the Office Supply Co. They have a complete repair department for this work.

NEW RICE MILL. The K. Yamamoto Rice Mill is the largest as well as the neatest in the islands. All the machinery is of the very latest pattern. The famous Tengu Rice is cleaned at this mill. are able to handle considerable outside particular work which they guarantee.

Fine Job Printing, Star Office.

### Rubber Heels

For 15cts.

the regular price is 50c The Genuine "Footers" with the non-slip insert. They are good heels too. Come in before the right sizes are gone. Both Mens' and Women's Sizes

THE PLACE

Manufacturer's Shoe Company, Limited

1051 Fort Street

# Oceanic Steamship Company Alameda Schedule

LEAVE S. F.	ARRIVE HON.	LEAVE HON.	ARRIVE S. F.
FEB. 12.....	FEB. 18.....	FEB. 23.....	MAR. 1.....
MAR. 5.....	MAR. 11.....	MAR. 16.....	MAR. 22.....
MAR. 26.....	APR. 1.....	APR. 6.....	APR. 12.....
APR. 16.....	APR. 22.....	APR. 27.....	MAY 3.....
MAY 7.....	MAY 13.....	MAY 18.....	MAY 24.....

\*Connects at Honolulu with C. A. Line for Sydney. C. A. Line leaves Honolulu for Australia Jan. 8, 10 and every 28 days.  
\*Arrives in Honolulu a week in advance of C. A. Line steamer en route to Sydney.

RATES from Honolulu to San Francisco—First Class, \$65; Round Trip, \$110. Family Room, extra.

FOR PARTICULARS, APPLY TO

**C Brewer & Co., Ltd.**  
GENERAL AGENTS.

## Canadian-Australian Royal Mail Steamship Co

Steamers of the above line running in connection with the CANADIAN-PACIFIC RAILWAY COMPANY between Vancouver, B. C., and Sydney, N. S. W., and calling at Victoria, B. C., Honolulu and Brisbane, Q.

FOR FIJI AND AUSTRALIA.  
MAKURA.....MAR. 4 MAITAI.....MAR. 2  
MAIKAI.....APR. 2 MARAMA.....MAR. 29  
\*Calls at Fanning Island.

CALLING AT SUVA, FIJI, ON BOTH UP AND DOWN VOYAGES.  
Theo. H. Davies & Co., Ltd., Gen'l Agents

## Pacific Mail Steamship Co. Toyo Kisen Kaisha S. S. Co.

Steamers of the above Companies will Call at HONOLULU and Leave this Port on or about the Dates mentioned below:

LEAVE HONOLULU FOR ORIENT.	LEAVE HONOLULU FOR S. F.
1910.	1910.
CHIYO MARU.....FEB. 22	MONGOLIA.....FEB. 18
ASIA.....MAR. 2	TENYO MARU.....FEB. 25
MONGOLIA.....MAR. 14	KOREA.....MAR. 5
TENYO MARU.....MAR. 22	NIPPON MARU.....MAR. 19
KOREA.....MAR. 28	SIBERIA.....MAR. 26
NIPPON MARU.....APR. 12	CHINA.....APR. 2
SIBERIA.....APR. 18	MANCHURIA.....APR. 9
CHINA.....APR. 26	CHIYO MARU.....APR. 16
MANCHURIA.....MAY 2	ASIA.....APR. 23
CHIYO MARU.....MAY 10	MONGOLIA.....MAY 7
ASIA.....MAY 17	
MONGOLIA.....MAY 30	

FOR FURTHER INFORMATION APPLY TO  
**H. HACKFELD & CO. LTD**

## Matson Navigation Co.'s Schedule, 1910 Direct Service between San Francisco and Honolulu

From San Francisco.	For San Francisco.
S. S. Lurline.....Jan. 12	S. S. Lurline.....Jan. 15
" Hilonian.....Jan. 19	" Hilonian.....Jan. 25
" Lurline.....Feb. 9	" Lurline.....Feb. 15
" Wilhelmina.....Feb. 16	" Wilhelmina.....Feb. 24
" Lurline.....Mch. 9	" Lurline.....Mch. 15
" Wilhelmina.....Mch. 18	" Wilhelmina.....Mch. 26
" Lurline.....April 6	" Lurline.....April 12

For further particulars apply to

**Castle & Cooke, Ltd., - - General Agents**

## American-Hawaiian Steamship Co.

From New York to Honolulu, via Tehuantepec, every sixth day. Freight received at all times at the Company's Wharf, 41st Street, South Brooklyn.

FROM SAN FRANCISCO TO HONOLULU:  
S. S. ALASKAN, via Puget Sound, to sail January 20th, 16 days in transit.  
S. S. NEVADAN, direct, to sail February 10th, 7 days in transit.  
S. S. ARIZONAN, via Puget Sound, to sail February 11th, 16 days in transit.  
S. S. VIRGINIAN, via Puget Sound, to sail February 23rd, 16 days in transit.

FROM SEATTLE AND TACOMA TO HONOLULU DIRECT:  
S. S. ARIZONAN, to sail.....February 19th  
VIRGINIAN.....March 3rd  
S. S. MEXICAN.....March 15

FROM HONOLULU TO SAN FRANCISCO DIRECT:  
S. S. NEVADAN—Carrying Passengers—to sail.....Feb. 21st  
For further information apply to

**H. HACKFELD & CO., LTD., Agents, Honolulu.**  
**C. P. MORSE, General Freight Agent.**

**UNION-PACIFIC  
TRANSFER CO. LTD**  
126 KING ST. FURNITURE AND PIANO MOVING  
BAGGAGE, SHIPPING,  
STORAGE, WOOD,  
PACKING, COAL.  
PHONE 85

## Firewood and Coal

Best Grades Always On Hand

Concrete Brick, Crushed  
Rock and Sand

**Hustace-Peck Co. LTD.**  
Phone 295 63 Queen Street

# Shipping Page

EDITED BY J. M. OAT

## Mail Steamers to Arrive

Name.	From	Due
Wilhelmina	San Francisco	Feb. 16
Alaskan	Seattle	Feb. 16
Nevadan	San Francisco	Feb. 17
Mongolia	Yokohama	Feb. 17
Alameda	San Francisco	Feb. 18
Chiyo Maru	San Francisco	Feb. 21
Hongkong Maru	Manzanillo	Feb. 24
Tenyo Maru	Yokohama	Feb. 24
Arizonan	Seattle	Feb. 28
Asia	San Francisco	Mar. 1
Maitai	Colonies	Mar. 2
Korea	Yokohama	Mar. 4
Makura	Victoria	Mar. 4
Lurline	San Francisco	Mar. 9
Alameda	San Francisco	Mar. 11
Virginian	Seattle	Mar. 12
Mongolia	San Francisco	Mar. 14
Wilhelmina	San Francisco	Mar. 18
Nippon Maru	Yokohama	Mar. 18
Tenyo Maru	San Francisco	Mar. 21
Mexican	Seattle	Mar. 24
Korea	San Francisco	Mar. 28
Siberia	Yokohama	Mar. 28
Marama	Colonies	Mar. 29

## Mail Steamers to Depart

Name.	For	Depart
Lurline	San Francisco	Feb. 15
Mongolia	San Francisco	Feb. 17
Columbian	Salina Cruz via Hilo	Feb. 17
Chiyo Maru	Yokohama	Feb. 21
Nevadan	San Francisco	Feb. 21
Alameda	San Francisco	Feb. 23
Wilhelmina	San Francisco	Feb. 24
Hongkong Maru	Yokohama	Feb. 24
Tenyo Maru	San Francisco	Feb. 24
Asia	Yokohama	Mar. 1
Maitai	Victoria	Mar. 2
Korea	San Francisco	Mar. 4
Makura	Colonies	Mar. 4
Arizonan	Salina Cruz from Hilo	Mar. 12
Mongolia	Yokohama	Mar. 14
Lurline	San Francisco	Mar. 15
Alameda	San Francisco	Mar. 16
Nippon Maru	San Francisco	Mar. 18
Tenyo Maru	San Francisco	Mar. 21
Siberia	San Francisco	Mar. 28
Virginian	Salina Cruz from Hilo	Mar. 25
Wilhelmina	San Francisco	Mar. 26
Korea	Yokohama	Mar. 28
Marama	Victoria	Mar. 29

## Vessels on the way to or from the Islands

Vessels	At or from	For	Sailed
Annie Johnson bk	San Francisco	Hilo	Jan. 12
Alameda ss	Honolulu	San Francisco	Feb. 12
Alaskan ss	Seattle	Honolulu	Feb. 12
Albert bk	Kaunapali	Sound	Feb. 1
Alden Beattie	Honolulu	San Pedro	Feb. 10
Ariel, sch.	Mukilteo	Pearl Harbor	Feb. 10
Andrew Welch	Honolulu	San Francisco	Feb. 7
Allee Cooke sch	Honolulu	Port Ludlow	Jan. 11
Aloha sch	Port Gamble	Hilo	Jan. 3
Arizonan ss	San Francisco	Seattle	Jan. 14
Asia ss	Honolulu	San Francisco	Feb. 11
Borealis, sch.	Honolulu	Grays Harbor	Jan. 29
Bushu Maru, ss	Mojil	Honolulu	Feb. 5
Columbian ss	Honolulu	Kahului	Feb. 8
Chiyo Maru	Honolulu	San Francisco	Feb. 3
Cleveland	Honolulu	Yokohama	Feb. 13
Churchill sch	Honolulu	Coos Bay	Jan. 10
China, ss	Honolulu	Yokohama	Feb. 8
Carrier Dove	Honolulu	Grays Harbor	Jan. 27
Concord sch	Fanning's Island	Honolulu	Jan. 31
Coronado bktn	Honolulu	San Francisco	Feb. 3
Dauntless sch	Honolulu	Gray's Harbor	Jan. 9
Dunedin, ss	Honolulu	Shanghai	Jan. 27
E. K. Wood sch	Gray's Harbor	Honolulu	Jan. 24
Eva sch	Mahukona	Humboldt	Jan. 28
Enterprise, ss	San Francisco	Hilo	Feb. 13
E. M. Phelps	Honolulu	Philadelphia	Feb. 12
Edward Sewall sp	Newport News	Honolulu	Oct. 2
Foohng Suey bk	New York	Honolulu	Nov. 4
Falls of Clyde sp	Gaviota	Honolulu	Jan. 20
Flaurence Ward sch	Honolulu		
Glenshiel	Norfolk	Honolulu	
Hongkong Maru	Salina Cruz	Honolulu	Feb. 10
Hartford ss	New Castle	Honolulu	
H. D. Bendixsen sch	Mukilteo	Honolulu	
Hawaii bktn	New Castle	Honolulu	
Helene sch	Ludlow	Honolulu	Jan. 6
Hilonian ss	Seattle	Honolulu	Feb. 14
Hyades ss	Kahului	San Francisco	Jan. 6
H. Hackfeld	Honolulu	Sydney Heads	Feb. 3
Jroquois	Honolulu	San Francisco	Jan. 13
Jas. Rolph sch	San Francisco	Hana	Jan. 23
Jean Baptiste bk	Leith	Honolulu	Feb. 10
Koko Head bk	New Castle	Honolulu	
Korea	Honolulu	Yokohama	Jan. 21
Kona sch	Hilo	Winslow	Jan. 9
Koan Maru	Mojil	Honolulu	Feb. 6
Lahaina bk	New Castle	Honolulu	
Lurline	Honolulu	San Francisco	
Lausang ss	Honolulu	Port San Luis	Jan. 15
Logan	Honolulu	San Francisco	Jan. 12
Muriel sch	San Francisco	Hana	Jan. 30
Mongolia, ss	Yokohama	Honolulu	Feb. 8
Makura	Honolulu	Victoria	Jan. 10
Makawell bk	Kahului	Mukilteo	Jan. 12
M. Turner	Iquique	Honolulu	
Mexican	Hilo	Salina Cruz	Jan. 27
Missourian ss	Hilo	Salina Cruz	Feb. 5
Moana S. S.	Honolulu	Sydney	Feb. 5
Manchuria	Honolulu	Yokohama	Feb. 14
Manchu Maru ss	Honolulu	Manzanillo	Feb. 10
M. Chilcott sp	Gaviota	Honolulu	Feb. 3
M. E. Foster sch	Olympia	Honolulu	Feb. 12
Nevadan	San Francisco	Honolulu	Feb. 10
Nippon Maru	Honolulu	Yokohama	Jan. 18
Ninfa sp	Nitrate Port	Honolulu	
Nuanu bk	Kaunapali	New York	Feb. 4
Olympic bk	Hilo	Port Townsend	Feb. 12
R. P. Rithet bk	Honolulu	San Francisco	Jan. 28
Rosebank, ss	Norfolk	Honolulu	

Robert Lewers sch	Port Gamble	Honolulu	Feb. 3
Renee Rickmers sp	Leith	Honolulu	Jan. 23
Rosecrans	Honolulu	Gaviota	Jan. 27
Santa Rita	Kahului	Port San Luis	Jan. —
Santa Maria ss	Honolulu	Port San Luis	Jan. 7
S. G. Wilder bktn	Mahukona	San Francisco	Jan. 13
S. C. Allen bk	Eureka	Honolulu	Feb. 3
Siberia	Honolulu	Yokohama	Jan. 11
St. Katherine bk	Hilo	San Francisco	Feb. 3
Sheridan, U. S. A. T.	Honolulu	Manila	Feb. 14
South Bay ss	San Francisco	Honolulu	Jan. 31
Soyo Maru	Honolulu	Yokohama	Jan. 18
Thetis	Honolulu	Cruise	Feb. 15
Virginian ss	Salina Cruz	San Francisco	Feb. 8
W. B. Olsen	Grays Harbor	Honolulu	Jan. 16
W. H. Marston sch	Mare Island	Honolulu	Feb. 4
Wilhelmina	San Francisco	Honolulu	Feb. 10
Zambesi ss	New Castle	Honolulu	

(Later Shipping News on Page Five)

## TIDES, SUN AND MOON.

First quarter of the moon, Feb. 16th.

Date	P. M.	High Tide	Low Tide	P. M.	High Tide	Low Tide	Sun Rises	Sun Sets	Moon Rises	Moon Sets
Feb. 14	7:57	1.4	6:47	7:30	1:06	6:30	5:59	11:03		
15	9:11	1.5	7:32	8:18	1:30	6:59	5:59			
16	10:30	1.6	8:27	9:06	2:43	6:29	6:00	0:05		
17	11:42	1.8	9:46	9:56	3:43	6:28	6:00	1:06		
18	—	—	11:29	11:33	4:45	6:27	6:01	2:05		
19	A. M.	0:45	1:0	12:53	5:32	6:27	6:03	3:09		
20	1:09	2.0	1:50	1:50	6:33	6:26	6:02	4:09		

Times of the tide are taken from the U. S. Coast and Geodetic Survey tables. The tides at Kahului and Hilo occur about one hour earlier than at Honolulu. Honolulu standard time is 10 hours 30 minutes slower than Greenwich time, being that of the meridian of 157 degrees 30 minutes. The time whistle blows at 1:30 p. m. which is the same as Greenwich, 0 hours, 0 minutes. The Sun and Moon are for local time for the whole group.

## Shipping in Port

(Army and Navy.)  
U. S. R. C. Thetis, cruise.  
(Merchant Vessels.)  
Celtic Chief, Br. ship, Henry, Hamburg, Dec. 5.  
Lurline, S. S., San Francisco.  
Flaurence Ward, Midway Is.  
Manchuria, S. S., San Francisco.  
THE TRANSPORTS.  
Buford, ar. S. F., from Hon., Oct. 15.  
Dix is at Manila.

Logan arrived at San Francisco from Honolulu Feb. 12.

Thomas, from Hon. for Manila, Jan. 13.

Sheridan sailed from Honolulu for Manila Feb. 14.

## PENNY FOR YOUR THOUGHTS.

You cannot have your mind on your business and your suffering at the same time. Your business or pleasure may claim all your thoughts if you take Dr. Stantly relieve every form of pain and Miles' Anti-Pain Pills, which almost in a dose. One dose usually cures. 25 misery in head or stomach. One penny doses, 25 cents. Never sold in bulk.

## HAWAIIAN TOBACCO PLANTATION CO., Limited

Capital Stock \$100,000.00  
6000 Shares.....Par Value \$20.00

Subscription list now open at the office of

**HARRY ARMITAGE**  
Stock and Bond Broker  
Campbell Block, Merchant Street.  
Prospectus may be had on application.

## JAMES F. MORGAN

**STOCK and BOND BROKER**

Member of Honolulu Stock and Bond Exchange.  
Stock and Bond Orders receive prompt attention.  
Information furnished relative to all STOCKS AND BONDS.  
LOANS NEGOTIATED.  
Phone 72. P. BOX 894.

## HAWAIIAN Macaroni Manufacturing Co., LIMITED

Beretania Street near Aala Street.

MANUFACTURERS OF  
**MACARONI (HOSHI UDON)**  
—AND—  
**BUCKWHEAT (HOSHI SOBA)**

The Largest and Only Incorporated Concern of Its Kind in Honolulu.

A New Enterprise Launched by Enterprising Merchants.

**K. Yamamoto**  
SALES AGENT.

Tel. 399. Hotel Street near Nuuanu. P. O. Box 819.

It will make your mouth water just to taste

**HEINZ**  
APPLE BUTTER

Put up in the new style crocks and every crock guaranteed. New shipment just in.

ASK YOUR GROCER FOR IT.

## CORPORATION NOTICES.

## ANNUAL MEETING.

**MAKAWAO PLANTATION CO., LTD.**  
The annual meeting of the stockholders of the Makawao Plantation Co., Ltd., will be held at the office and principal place of business of the Company, No. 208 Stangenwald Building, Honolulu, T. H., on Monday, the 28th day of February, 1910, at 11:10 o'clock a.m.

**E. E. PAXTON,**  
Secretary Makawao Plantation Co., Ltd.

## ANNUAL MEETING.

**KAHULUI RAILROAD COMPANY.**  
The Annual Meeting of the stockholders of the Kahului Railroad Company will be held at the principal branch office of the Company, 208 Stangenwald Building, Honolulu, T. H., on Wednesday, the 23rd day of February, 1910 at 2 o'clock p. m.

**E. E. PAXTON,**  
Secretary Kahului Railroad Co.

## ANNUAL MEETING.

**WAIALUA AGRICULTURAL CO., LTD.**

Notice is hereby given that the Annual Meeting of the stockholders of the Waialua Agricultural Company, Limited, will be held at the office of Castle & Cooke, Limited, in the Stangenwald Building, Honolulu, on Friday, February 25th, 1910, at 10 o'clock a. m.

**T. H. PETRIE,**  
Secretary, Waialua Agricultural Co., Ltd.  
Honolulu, February 9th, 1910.

## ANNUAL MEETING.

**KOHALA SUGAR COMPANY.**  
Notice is hereby given that the Annual Meeting of the stockholders of the Kohala Sugar Company will be held at the office of Castle & Cooke, Limited, in the Stangenwald Building, Honolulu, on Monday, February 28th, 1910, at 9:30 a. m.

**R. E. BOND,**  
Secretary, Kohala Sugar Company.  
Honolulu, February 9, 1910.

## ANNUAL MEETING.

**EWA PLANTATION COMPANY.**  
Notice is hereby given that the Annual Meeting of the stockholders of the Ewa Plantation Company will be held at the office of Castle & Cooke, Limited, in the Stangenwald Building, Honolulu, on Saturday, February 26th, 1910, at 10 o'clock a. m.

**T. H. PETRIE,**  
Secretary, Ewa Plantation Company  
Honolulu, February 9th, 1910.

## ANNUAL MEETING.

**WAIHAWA WATER COMPANY, LTD.**  
Notice is hereby given that the Annual Meeting of the stockholders of the Waihawa Water Company, Limited, will be held at the office of Castle & Cooke, Limited, in the Stangenwald Building, Honolulu, on Friday, February 25th, 1910, at 11 o'clock a. m.

**T. H. PETRIE,**  
Secretary, Waihawa Water Company, Limited.  
Honolulu, February 9, 1910.

## ANNUAL MEETING.

**KAHUKU PLANTATION CO.**  
The annual meeting of the stockholders of the Kahuku Plantation Co. will be held at the office and principal place of business of the company, No. 208 Stangenwald Building, Honolulu, T. H., on Wednesday, the 23rd day of February, 1910, at 10:30 o'clock a. m.

**E. E. PAXTON,**  
Secretary Kahuku Plantation Co.

## ANNUAL MEETING.

**HAWAIIAN SUGAR CO.**  
The annual meeting of the stockholders of the Hawaiian Sugar Co. will be held at the office and principal place of business of the Company, No. 208 Stangenwald Building, Honolulu, T. H., on Saturday, the 26th day of February, 1910, at 10:00 a. m.

**E. E. PAXTON,**  
Secretary Hawaiian Sugar Co.

## ANNUAL MEETING.

**ALEXANDER & BALDWIN, LTD.**  
The annual meeting of the stockholders of Alexander & Baldwin, Ltd., will be held at the office and principal place of business of the Company, No. 208 Stangenwald Building, Honolulu, T. H., on Monday, the 28th day of February, 1910, at 9:00 o'clock a. m.

**E. E. PAXTON,**  
Secretary Alexander & Baldwin, Ltd.

Fine Job Printing, Star Office.

## CORPORATION NOTICES.

## ANNUAL MEETING.

**THE WAIHEA SUGAR MILL CO.**  
Notice is hereby given that the Annual Meeting of the stockholders of the Waiheea Sugar Mill Company, will be held at the office of Castle & Cooke, Limited, in the Stangenwald Building, Honolulu, on Thursday, February 24th, 1910, at 11 o'clock a. m.

**T. H. PETRIE,**  
Secretary, The Waiheea Sugar Mill Company.  
Honolulu, February 9th, 1910.

## ANNUAL MEETING.

**KALIALINUI PLANTATION CO., LTD.**  
The annual meeting of the stockholders of the Kallalainui Plantation Co., Ltd., will be held at the office and principal place of business of the Company, No. 208 Stangenwald Building, Honolulu, T. H., on Monday, the 28th day of February, 1910, at 10:40 o'clock a. m.

**E. E. PAXTON,**  
Secretary Kallalainui Plantation Co., Ltd.

## ANNUAL MEETING.

**WAIANAE COMPANY.**  
The annual meeting of the stockholders of Waianae Company will be held at the office of J. M. Dowsett, Merchant street, on Thursday, February 24, 1910 at 11 o'clock a. m.

**J. M. DOWSETT,**  
Secretary Waianae Co.  
Honolulu, T. H., February 11, 1910.

## ANNUAL MEETING.

**MAKAHA COFFEE COMPANY, LTD.**  
The annual meeting of the stockholders of the Makaha Coffee Co., Ltd., will be held at the office of J. M. Dowsett, Merchant street, on Thursday, February 24, 1910, at 11:30 o'clock a. m.

**A. S. WILCOX,**  
Secretary Makaha Coffee Co., Ltd.  
Honolulu, T. H., February 11, 1910.

## ELECTION OF OFFICERS.

**MUTUAL TELEPHONE CO., LTD.**  
At the adjourned annual meeting of the stockholders of the Mutual Telephone Co., Ltd., held February 10th, 1910, the following officers were elected to serve for the ensuing year:

Mr. E. F. Bishop.....President  
Mr. J. A. Balch.....Vice President  
Mr. J. R. Galt.....Treasurer  
Mr. C. H. Atherton.....Secretary  
Mr. John Waterhouse.....Auditor  
The above named gentlemen, together with Messrs. L. A. Thurston and A. N. Campbell, also constitute the Board of Directors.

**C. H. ATHERTON,**  
Secretary.  
Honolulu, T. H., Feb. 12, 1910.

## ELECTION OF OFFICERS.

**HAWAIIAN AGRICULTURAL CO.**  
At the annual meeting of Shareholders of the Hawaiian Agricultural Co., held this day in the offices of C. Brewer & Co., Ltd., Honolulu, the following named gentlemen were duly elected to serve for the ensuing year:

C. H. Cooke.....President  
E. F. Bishop.....Vice President  
G. H. Robertson.....Treasurer  
W. W. North.....Secretary  
T. R. Robinson.....Auditor  
A. F. Judd.....Director  
F. W. Macfarlane.....Director  
J. R. Galt.....Director

**W. W. NORTH,**  
Secretary.  
Honolulu, T. H., February 11, 1910.

## ELECTION OF OFFICERS.

**ONOMEA SUGAR CO.**  
At the annual meeting of shareholders of the Onomea Sugar Co., held this day in the offices of C. Brewer & Co., Ltd., Honolulu, the following named gentlemen were duly elected to serve for the ensuing year:

E. F. Bishop.....President  
C. H. Cooke.....1st Vice President  
O. M. Vesper.....2nd Vice President  
G. H. Robertson.....Treasurer  
W. W. North.....Secretary  
Jas. Greig.....Asst. Treasurer  
T. R. Robinson.....Auditor  
Ed. Pollitz.....Director  
Richard Ivers.....Director

**W. W. NORTH,**  
Secretary.  
Honolulu, T. H., February 11, 1910.

## PENNY FOR YOUR THOUGHTS.

You cannot have your mind on your business and your suffering at the same time. Your business or pleasure may claim all your thoughts if you take Dr. Miles' Anti-Pain Pills, which almost instantly relieve every form of pain and misery in head or stomach. One penny a dose. One dose usually cures.

25 doses, 25 cents. Never sold in bulk.

PROHIBITION  
DOES PROHIBIT

**EDITOR STAR:** What nonsense to hear that prohibition does not prohibit the sale of liquor. The worse kind of a lie sometimes is that which looks most like the truth, and to hear that prohibition does not stop the sale of liquor is the worse kind of falsehood because to some people it looks most like the truth.

And to hear that prohibition in these islands would not stop the sale of liquor should be an insult to the police of this city. When it is positively proven that liquor is one of the causes of this fine race of people not only in the Hawaiian Islands, but in the whole South Seas dying fast it should be the pride of every policeman in Honolulu to make this city so dry once prohibition is made a law that the very roofs of drachm holes will cry out vengeance.

If you think prohibition does not stop the sale of liquor go to Burlington, Vermont or Portland, Maine. How did Burlington stop the sale of liquor? It was Dr. Buckham the president of the University of Vermont who did it. How did he accomplish that? By spending his own money hiring detectives, to watch things. Now watch the results. Today the running expenses of the county of Vannesse without the saloons is one fourth what it was with the saloons, and today also the jail of Burlington, is nearly empty when it was crowded while the saloons were open. If you want illustrations of this kind visit every prohibition town in the United States. You know the crimes committed under the influence of liquor. I will stop right here on that point.

Here is the American nation who gives the best of its manhood to the navy for the protection of these islands, no man can enter the navy nowadays without good credentials of excellent character and what do you do when they visit here? You make them a disgrace with your "rot gut" whiskey. Some will say we did not coax them to drink. Is it not human nature for men away from home and on restraint for weeks on board ships of the navy to fall in your dirty pitfalls—as long as they are open? You will say they will spend their money in worse places. Did you ever hear that two wrongs made one right?

If the outside world would do as much for the protection of its young men as the discipline of the navy does for the blue jackets every man of the navy would be regarded as a gentleman. Collectively the man in uniform is respected as a matter of national feeling; individually he is not respected as much as he should be, and the saloons in port cities are largely responsible for that and the want of better places of entertainments ashore.

One hears the word liberty thrown in as an excuse for open saloons. What right have we to dictate to a person what he should put into his mouth? On the same lines of reasoning what right have we to examine food on the public market to see if it will cause ptomaine poisoning or not? If liberty means the right of open saloons and the non-restraint of nature on the part of men then I have a right to say that because a man has two legs and a goose

has two legs therefore a man is a goose. What is logical to some is not always good reasoning. This should be a fight to a finish against the saloons. People must be educated on the subject by public lectures and heart to heart talks. Once you know you are right go ahead.

Prohibition anywhere does not mean the absolute impossibility of "blind pigs" to get liquor in some way. Of the two evils, namely selling liquor on the sly and the open saloon it means to choose the lesser of the two evils—namely the closed saloons.

We are bound to hear a lot of nonsense in favor of saloons, and perhaps in the sight of some I am no wiser but if the surface of the earth were all level the country would not be half so picturesque and so interesting. So we must be thankful to those on the opposite side of the question to make life interesting in Honolulu just now. A great many know that liquor is a curse, but a lawyer who wants to win his case for his client, even though he knows in his heart he has a rotten case, he will continue, in spite of vengeance judge and jury, to make black appear white as newly fallen snow. And so are the saloon-keepers and their friends.

Just look at Germany today. You say they are big drinkers of beer and it does them no harm. Well if it does them no harm, why is it that many towns in Germany are now begging for prohibition? Read the papers.

In conclusion I will say that if Doctor Buckham of the University of Vermont, at least while I was there a student, can stop the sale of liquor in Burlington for the sake of college students, then why can't the millionaires of Honolulu hire detectives to prove to the world once more that prohibition does prohibit the sale of liquor, not only for the sake of the natives but for those of the navy who are the strength of a nation? If a blue jacket is discovered with liquor on board his ship, no matter if he receives fifty or one hundred dollars per month, as some do the discipline of the navy is such for the protection of the men and the nation that he will forfeit three months pay and get one month in the brig. The splendid discipline of the United States navy in this direction is most worthy of imitation. Make the fine for selling liquor under prohibition so high it will make the seller tremble. The fine will more than pay the hiring of honest detectives. Some will say honest men can't be hired in this. Such people talk their own characters. This government should not allow even the drug stores to sell liquor for medicine. This privilege would certainly be abused. The tourists do not need the saloons. They carry their own best brand of liquors. Better living and less crime with closed saloons never made less progress. Men who should leave the city because of the closed saloon Honolulu can well do without.

## AN AMERICAN CITIZEN.

## DISEASED HEARTS.

transform the rich, red, gushing blood of health into a sluggish stream of thin, impoverished fluid of impurities, which carry death and decay to every organ, and tissue of the body. Restore the heart action with Dr. Miles' New Heart Cure. If first bottle fails to benefit money back.

## NOTICE OF INTENTION TO FORECLOSE MORTGAGE AND OF SALE.

Under power of sale contained in a mortgage dated December 5, 1899 made by Nancy K. Eldredge and A. K. Eldredge, her husband, Mortgagees, to Mrs. C. H. Banning, Mortgagee, recorded in the office of the Registrar of Conveyances in Honolulu, in Book 199 pages 369-70 and in additional security mortgage dated July 6, 1908 recorded in said office in Book 201, page 382 the undersigned, as assignee of said Mortgagee hereby gives notice that he intends to foreclose the said mortgage for conditions broken, to-wit: non-payment of principal and interest when due. Notice is likewise given that the lands covered by the said mortgage will be sold at public auction at the auction rooms of James F. Morgan, Kaahumanu street, Honolulu, on Saturday, the 5th day of March, 1910, at 12 o'clock noon of the said day. Terms Cash U. S. Gold Coin—deed at the expense of the purchaser.

**B. R. BANNING,**  
Assignee of Mortgagee.  
Honolulu, T. H., February 8, 1910.  
Magoon & Weaver, Attorneys for Assignee.

The property covered by the said mortgage and to be sold as aforesaid consists of:

1. All the lands and premises situated at Hawi, N. Kona, aforesaid, being a portion of the land described in R. P. No. 4395 to Lot Kamehameha, described in deed of Helen U. Parker dated October 22, 1886 and recorded in said Office in Book 102 page 386, containing an area of 10 acres.

2. All the lands and premises situated at Hawi, said conveyed to said Nancy K. Eldredge by deed of Kimo (pake) dated November 6, 1899, recorded in said office in Book 200, pages 239-40, and described as follows: Commencing on the government road leading to Mahukona, opposite Hind's Mill at its intersection with road leading to residence of Filder and Brode, the boundary runs along government roads in a southerly direction 330 feet thence at right angles in an easterly direction 15 feet along remaining portion of land, thence at right angles in a northerly direction 330 feet along remaining portion of this land to road leading to Filder and Brode's residence, thence in a westerly direction along said road 66 feet to place of commencement, and containing an area of 1-2 an acre more or less.

3. All that land and premises situated at said Hawi, conveyed to mortgagee by deed of Hawi Mill and Plantation Company, Ltd., dated November 11, 1905 recorded in said office in Book 286 page 174.

3ts—Feb. 8, 15, 22.

## NOTICE.

Parties owing overdue accounts to the Kash Clothing Co., will please settle with J. M. Camara, 302 and 303 Judd Building.

**J. COOPER.**  
Honolulu, Feb. 11, 1910.

The Metropolitan Market serves a superior quality of meat without charging extra for the quality. Everything sold there is first quality. Tel. 45.

**Pioneer Shingle Stain**



**W. P. FULLER & CO.**  
MANUFACTURERS  
SAN FRANCISCO.

It makes an attractive roof coat in soft, subdued coloring. It is made from pure pigments and refined creosote; the most effective wood preservative known.

If you wish a durable and richly colored velvet finish for all exposed woodwork, use our creosote shingle stain. It is unsurpassed as an ornamental, protective and preservative coating. There are many handsome shades to select from.

Wood samples on application.

**Lewers & Cooke, Ltd**  
177 South King Street. Honolulu

**ALEXANDER & BALDWIN LTD**

**OFFICERS and DIRECTORS.**  
H. P. BALDWIN.....President  
J. B. CASTLE.....1st Vice-President  
W. M. Alexander.....2nd Vice-President  
J. P. Cooke.....3rd Vice-Pres. & Mgr.  
J. Waterhouse.....Treasurer  
E. E. Paxton.....Secretary  
W. O. Smith.....Director  
J. R. Galt.....Director  
W. R. Castle.....Director

**SUGAR FACTORS  
COMMISSION MERCHANTS  
AND  
INSURANCE AGENTS.**

**AGENTS FOR**  
Hawaiian Commercial & Sugar Company.  
Halekula Sugar Company.  
Paia Plantation.  
Maui Agricultural Company.  
Hawaiian Sugar Company.  
Kahuku Plantation Company.  
Kahului Railroad Company.  
Halekula Ranch Company.  
Honolulu Ranch.

## If You Want

To Borrow Money  
On Real Estate

SEE

## "PRATT THE LAND MAN"

125<sup>1</sup>/<sub>2</sub> Merchant Street

## If You Want

To Buy, Sell or  
Rent REAL  
ESTATE

**Castle & Cooke,**  
LIMITED  
Honolulu, T. H.

**SHIPPING AND COMMISSION MERCHANTS:**  
SUGAR FACTORS and GENERAL INSURANCE AGENTS.

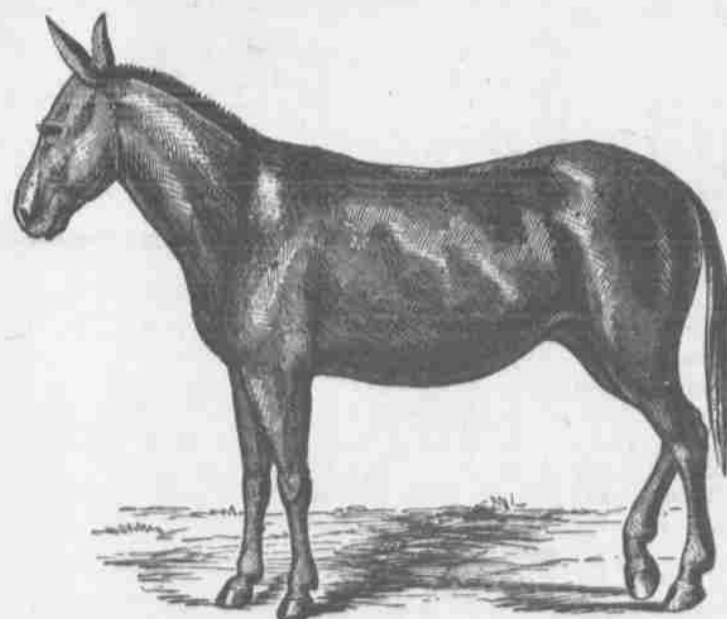
—representing—  
Ewa Plantation Co.  
Waialua Agricultural Co., Ltd.  
Kohala Sugar Co.  
Waiheea Sugar Mill Co.  
Apokaa Sugar Co., Ltd.  
Fulton Iron Works of St. Louis.  
Blake Steam Pumps.  
Westons Centrifugals.  
Babcock & Wilcox Boilers.  
Green's Fuel Economiser.  
Marsh Steam Pumps.  
Matson Navigation Co.  
Planters Line Shipping Co.  
New England Mutual Life Insurance Company of Boston.  
Aetna Insurance Co.  
National Fire Insurance Co.  
Citizens Insurance Co. (Hartford Fire Insurance Co.)  
The London Assurance Corporation.

## JOHN K. COOK

Practical Tailor, Busheler and Presser.  
Gentlemen's Own Cloth Made Up.  
Thirty-five Years Experience. Give Me a Call.

Room 4, Oregon Block upstairs.  
Hotel and Union, Entrance 111 Union.

Fine Job Printing, Star Office.

CALIFORNIA MULES!  
Twenty-five fine animals just arrived by Steamship Lurline.

Orders are now being taken and delivery will be given in a few days. Call at once and see them.

**Schuman Carriage Co., Ltd.,**

Merchant Street  
Foot of Bishop.

# The Hawaiian Star

DAILY AND SEMI-WEEKLY.

Published every afternoon (except Sunday) by the HAWAIIAN STAR NEWSPAPER ASSOCIATION.

THE STAR ACCEPTS NO LIQUOR ADVERTISEMENTS.

## SUBSCRIPTION RATES:

Local, per annum .....\$ 8.00  
Foreign, per annum ..... 12.00

Payable in Advance.

Entered at Post Office at Honolulu, Hawaii, as second class mail matter.  
Subscribers who do not get their papers regularly will confer a favor by notifying the Star Office; Telephone 365.

The Supreme Court of the Territory of Hawaii has declared both THE HAWAIIAN STAR (Daily) and THE SEMI-WEEKLY STAR newspapers of general circulation throughout the Territory of Hawaii, (suitable for advertising proceedings, orders, judgments and decrees entered or rendered in the Courts of the Territory of Hawaii.)

Letters to THE HAWAIIAN STAR should not be addressed to any individual connected with the office, but simply to THE HAWAIIAN STAR, or to the Editorial or Business Departments, according to tenor or purpose.

GEORGE F. HENSHALL, EDITOR.

TUESDAY FEBRUARY 15, 1910

## INSIST ON LOCAL SELF-GOVERNMENT.

The indications now are that the Congress of the United States is again to be controlled in the liquor matter by the proposition referred to locally by some as a "herring across the trail." It seems now that the national legislature will probably appropriate money to pay the expenses of an election at which the people of Hawaii may instruct their own legislature what to do in the matter in which Congress was asked directly to interfere here. Delegate Kuhio cables today that Congressional sentiment opposes the proposition of authorizing women to vote in the special election contemplated. Possibly woman suffrage is regarded in Washington as a local question too. The amendment of election laws to allow woman suffrage on this or any other question is within the powers given to the legislature of the Territory of Hawaii.

## FOURTH AMERICAN CITY IS IN SOUTH AMERICA.

Some time ago attention was called in these columns to the lack of American knowledge of the importance of their southern neighbors, Brazil being cited, for example, as a country almost as large in area as the United States, but little appreciated. Now comes a United States consular report showing that the fourth city in the new world is Buenos Aires, and that her population is very close to that of Philadelphia, third city in the United States. Consul Charles Lyon Chandler, as quoted by the Christian Science Monitor, gives the following striking facts and reflections on the growth going on in the southern part of America:

"United States Consul Charles Lyon Chandler has forwarded recently to the state department some very interesting information with regard to the city to which he is assigned, Buenos Aires, Argentine Republic. That city now ranks fourth among the cities of these continents in point of population. New York, Chicago and Philadelphia only take the precedence. The last census was taken on October 22 of last year and showed that the inhabitants numbered 1,189,662. This total represented an increase over the figures of the census taken five years earlier (Sept. 18, 1904) of 238,771, or 5 1-2 per cent per annum. This is much like metropolitan growth in our own country, and it is rendered still more interesting by the calculations that it has invited. For instance, if Buenos Aires shall maintain the rate of increase of the last five years, it will have a population of 1,300,000 on Jan. 1, 1911, and of 2,400,000 in 1924, but the probabilities are that its growth will be much more rapid in the future than in the past.

"American and European travelers who in recent years have visited Buenos Aires and committed their impressions to the press are in complete agreement as to the advantageous and attractive situation of the city, its commercial importance, its well-planned and well-cared-for streets and avenues, its perfect sanitation, the beauty of its architecture and the excellence of its municipal government. Buenos Aires, however, is not the only South American city that is forcing itself upon our notice, despite our apparent disposition to look everywhere rather than toward Latin America for progress. Lima, in Peru, Santiago, and Valparaiso in Chile, and Rio Janeiro and Bahia in Brazil, especially, are flourishing and progressive modern communities.

"Perhaps the wonderful growth of Buenos Aires will serve to force upon our attention the advisability of acquainting ourselves more thoroughly with the splendid progress of our neighbors to the south."

It may be added that all the South American countries are also making vast progress. Their cities are as modern as any in North America. Buenos Aires has been declared to have the finest theater in the world. And these countries are practically strangers to North America. Their commerce is with Europe, their sympathies with European countries. And while they are developing strength that begins to seem likely to match that of the United States, they never see an American seaman and buy practically no American goods.

We assumed that the proposed plebiscite on the liquor issue would be to settle whether the people here wished Congress to pass an anti-liquor law such as the Curtis bill now pending. It appears from Delegate Kalaniana'ole's cable of today that this assumption is wrong. The question to be submitted is whether the legislature here shall pass a bill. This is a less satisfactory form of submission,—except that it exemplifies the strong tendency in Washington to keep hands off matters which it is the duty of the people here to settle for themselves. A federal law on the subject, passed by vote of the people of Hawaii, would be no interference with local citizenship rights,—in fact the method of passing it would be a fine precedent,—and it would work more satisfactorily than could be expected of a local law.

# Commercial News

BY L. D. TIMMONS.

This was a rather sleepy stock day, which was not entirely unexpected. On the streets there was a little doing, but the session was uninteresting from almost any view point.

As is not unusual on dull days, bonds came in for attention. Between boards \$4,000 Hilo Railway sixes sold at \$100.25, while during the session this morning \$1000 Olua sixes and \$1000 Hilo Railway sixes at \$100.25.

Between boards 125 and 100 shares McBryde sold at \$7.25. For the stock \$7.125 was bid and \$7.375 asked.

A sale of 20 Hawaiian Commercial was made at \$38.875, although on 'Change only \$38.50 was bid and \$38.75 asked.

One large sale of Honokaa was made 250 shares changing hands at \$23. For the stock \$22.75 bid and \$23.25 asked.

On the boards a sale of 10 Paia was made at \$134. For the stock however,

only \$130 was bid this morning, holders standing out for \$134.

Another sale on the boards was 70 shares Olua at \$6.875. The same was offered for more, but holders demanded \$7.

Wailua seemed a trifle weak, \$126.50 being the official bid, while \$128 was asked. Oahu was \$35.50 bid and \$35.75 asked. Ewa was \$33.75 bid and \$34. asked.

## CLOUDBURST AT PAHALA.

C. Brewer & Company received a letter this morning from the manager of Hawaiian Agricultural Co. at Pahala Kau, telling of an immense cloudburst which visited that place Saturday afternoon. A wireless came in Saturday morning stating that an inch of rain had fallen all around that side of Hawaii. Following the wireless, the letter states that at 2 o'clock in the afternoon the great downpour came

## HOUSES FOR RENT

Wahiawa 2 B. R. ....\$20.00  
729 Kinau, 2 B. R. .... 30.00  
Kaimuki, 3 B. R. .... 35.00  
66 School St., 3 B. R. .... 40.00  
1286 Beretania St., 5 B. R. .... 40.00  
1020 Beretania St., 6 B. R. .... 45.00

## FURNISHED

Wahiawa, 4 B. R. ....\$30.00  
Waikeiki, 4 B. R. .... 45.00  
Aiea, 3 B. R. .... 50.00  
Pacific Heights, 4 B. R. .... 50.00  
Kaimuki, 3 B. R. .... 50.00  
Manoa Valley, 2 B. .... 60.00

We Still Have a Couple of Those Choice Kaimuki Lots. Price \$400.00, \$50.00 Cash and \$10.00 Monthly.

TRENT TRUST CO., LIMITED

and in less than an hour 2.65 inches had fallen. This was at the plantation office, and the indications from there were that the fall had been even heavier across the Chong gulch. There were just a few drops at Punaluu and none at Hutchinson. A good deal of damage was done to roads by washing but fortunately the railroad escaped any serious injury.

## LINK JOINS IMPROVERS.

The lot at the corner of Pauahi and Nuanuu streets, next to Love's bakery which has stood vacant since the great fire of January 20, 1900, will soon carry a handsome, two-story store building, to be put up by the owner, L. L. McCandless. Architect H. L. Kerr is preparing plans for the structure. The building will be of brick and attractively finished.

## MERCHANTS' ASSOCIATION.

As announced yesterday afternoon, an important business meeting of the Merchants' Association will be held at 3:30 this afternoon. Several matters are to be taken from the table and acted upon. It is expected also, that there will be a report from the committee on trading stamps and existing express rates. The trade and finance committee has been working on these two subjects for several weeks.

## ATLANTIC CITY BAZAR.

W. H. Hoogs, one of the committee having in charge the matter of arranging for business at Atlantic City for supplying information and selling certain Hawaiian products—has reported to the Promotion Committee that about half of the money required has already been subscribed. This is regarded as a very encouraging start.

## WAILUA DIVIDEND.

This is "dividend day" for Wailua at the offices of Castle & Cooke. Three fourths per cent is being paid out, the total footing up \$33,750.

## ALAMEDA COMING.

The Alameda, bound from San Francisco to Honolulu, sent in a wireless last night, saying that she was 124 miles out and all well. She has 1000 tons freight, 86 cabin passengers, six steerage, 124 bags mail and Wells, Fargo express. If all goes well she will arrive here Friday morning.

## STOCK EXCHANGE REPORT.

Dividends Feb. 15, 1910—Hawaiian Sugar Co., 40c share; Oahu Sugar Co., 30c share; O. R. & L. Co., 75c share; Pepeekeo \$1.00 share; Wailua 75c share; Honokaa 10c share.

Session Sales—10 Paia \$134.00; 1000

Olua 6s, \$95.00; \$1000 Hilo 1901 6s, \$100.25; 70 Olua \$6.875.

Between Sessions—\$4,000 Hilo R. 6s, 1901 \$100.25; 125 McBryde \$7.25; 100 McBryde \$7.25; 15 Hon. B. & M. Co. \$19.25 20 Haw. C. & S. Co. \$38.875; 250 Honokaa \$23.00.

Stock.	Bid.	Asked.
C. Brewer & Co.	\$350.00	.....
Ewa Plant. Co.	33.75	34.00
Hawaiian Agri.	.....	255.00
Haw. C. & S. Co.	38.50	38.75
Hawaiian Sugar	.....	53.00
Honolulu Sugar Co.	160.00	.....
Honokaa Sug. Co.	22.75	23.25
Hauku Sugar Co.	130.00	140.00
Hutchinson	.....	18.25
Kahuku Plant.	32.00	.....
Kekaha Sugar Co.	200.00	225.00
Koloa Sugar Co.	.....	155.00
McBryde	7.125	7.375
Oahu Sugar Co.	35.50	35.75
Onomea Sugar Co.	53.00	54.75
Olua Sugar Co.	6.875	7.00
Pauahau	.....	29.25
Pacific Mill Co.	170.00	.....
Paia Plant. Co.	130.00	134.00
Pepeekeo	161.00	.....
Pioneer Mill	.....	220.00
Wailua Agri.	126.50	128.00
Waimanalo	.....	275.00
Waimea Sugar Co.	.....	170.00
I. I. S. N. Co.	116.00	.....
Haw. Electric Co.	160.00	.....
Hon. R. T. Co. ptd.	102.00	.....
Hon. R. T. Co. com.	100.00	.....
Mutual Tel. Co.	10.125	.....
Nahiku Rub. Co.	40.00	.....
O. R. & L. Co.	145.00	.....
Hilo R. R. Co.	12.00	13.00
Hon. B. & M. Co.	19.00	19.25
Haw. Pine. Co.	29.00	29.50
Hilo R. R. 1901 6s	100.25	.....
Hilo R. R. Ex. 6s	96.50	98.00
Honokaa 6s	103.00	.....
McBryde 6s	99.75	.....
O. R. & L. Co. 5s	102.00	.....
Oahu Sug. Co. 6s (Re-deemable at 103 at maturity)	.....	102.00
Olua Sugar 6s	.....	96.00
Pacific Mill 6s	103.00	.....
Pioneer Mill 6s	103.00	.....

## THE IDEAL SPOT.

Every one is looking for it and everyone feels he has discovered it when he has spent a day or two at Haleiwa. It is the pleasantest and most restful spot in the Territory. Broad lanai, pleasant climate, delightful surroundings and good meals. The distance from Honolulu makes Haleiwa easy of access to motor car or train over the Oahu Railway.

## Fine Job Printing, Star Office.

Sugar 4.11c  
Beets 12s 9d

Members Honolulu Stock and Bond Exchange.

FORT AND MERCHANT STS.  
TELEPHONE 754

Island Fruit Co.  
Expert Shippers  
Selected Tropical Fruits

72 King Street. Phone 15

# Masquerade and Carnival Costumes

The finest and most elaborate costumes ever brought to this city will arrive in the Wilhelmina Feb. 16. Call early and make your reservation.

Hawaiian News Company, Ltd.,  
Alexander Young Building.

# OPERA HOUSE

FEBRUARY 17th, 18th, and 19th,

# American Boys

DRAMATIC, MUSICAL AND ATHLETIC PROGRAM.

Prices \$1.00, 75c, 50c, and 25c.

Seats on sale at Bergstrom Music Co.

# Lots In Fruitvale

## One Cent Per Square Foot

Or a trifle over for home sites of more than one acre each, adjoining the celebrated Fukele Homestead in PALOLO VALLEY, ten minutes' walk from the car line.

These lots are adjoining the beautiful homes of Owen Williams, William A. Rideout, Charles J. Schoening, Edward F. Patten and others. The rear of these lots extends to the hill slopes, from which grand views are to be had. Correct soil for all kinds of fruit.

Let me show you this property.

\$500—per acre and up.

Map in my window.

Chas. S. Desky  
FORT STREET

## Hygienically Clean

Are the clothes returned to you from

French Laundry : : : J. Abadie  
258 Beretania Street. Proprietor

# Ladies

WHO FIND SHOPPING IN THE MORNING MORE CONVENIENT AND PROFITABLE, WILL FIND THE LUNCHEONS AT THE PALM CAFE, HOTEL STREET, NEAR UNION.

## PALM CAFE

Hotel Street, near Union. Phone 311

# Toilet Articles

For every purpose are to be had here. Our perfumery is perfect in its fragrance and exquisite in its delicacy. Every article for the boudoir toilet is to be had here.

Benson, Smith & Co., Ltd.  
HOTEL and FORT STS.

# The Westinghouse Electric Iron

Saves the trouble of changing irons.  
Saves the trouble of attending to fires.  
Does away with the heat from a stove.  
Does away with smut ordinarily deposited on the iron.  
Has no delicate parts to get out of order.  
Has no clumsy attachments to catch the clothing.  
The ironing can be done wherever electricity is available.

# The Hawaiian Electric Co.,

# Play Ball

and be sure you are playing with a SPALDING ball.

Top notchers in the game demand Spalding Base ball goods because they know that they are the best and as the game is their living they take no chances with the "just as good as Spaldings" kind.

We are Spaldings distributors for these islands and carry a big stock of their goods. Come in and get your equipment, go to it, and may the best team win.



E. O. HALL & SON, LTD.

# THE ART THEATER

Feature Film

Love and War

Do Not Forget The Children's Prize Matinee Saturday.

## Orpheum Theatre BIG BILL

Beginning Thursday Evening

Special Important Engagement—The European Sensation

MISS ATHMORE GRAY

In Her Great Presentation of The Classical

SALOME DANCE

WALKER AND STURM

Jugglers, Tennis Racquet Spinners.

Original, Humorous, Artistic Novel.

VALDARE AND VARN

Sensational Comedy Cyclists.

ETHEL LESLIE,

Prima Donna Contralto.

SCHWARTZ.

The Young Hungarian Violinist.

BEATTIE GALARD

Australian Serio Comic.

DICK STEAD

Honolulu's Favorite Baritone.

THE ORPHEOGRAPH

In latest

MOVING PICTURES.

Coming by Alameda to be added

Next Week

CHAS. T. CASTLEMAN

and

MAY MONTGOMERY

Sketch Artists

and

MISS TOBY CLAUDE

The Tiny Comedienne

BIG HEADLINER OF

THE ORPHEUM CIRCUIT

15, 25 and 50 Cents.

## Princess SKATING RINK

New Seamless Floor Smooth as Glass

Good Music

FANCY SKATING BY

MISS WIENER

ADMISSION ..... 15c

SKATES ..... 15c Extra

## Empire Theater

HOTEL STREET

VAUDEVILLE

MISS EVA ALVA

SONG

And ACROBATIC DANCE

ARTIST

HARRY WEIL

Returning from a two years' engagement in China and Russia.

Premier pianists of the Far East.

MOTION PICTURES

The Knights of Pythias of this city will celebrate the anniversary of their order on Friday evening at K. P. Hall.

All Knights and their families are invited to attend.

Fine Job Printing, Star Office

TOM SHARP, The Painter  
Elite Building  
Phone 397

# SHARP SIGNS

Signs Of All Kinds. Scenic Work, Decorating, Graining Paper Hanging, Etc., Etc.

## SHIPPING INTELLIGENCE

(For News of Mail Steamers, etc., see Page 2).

### ARRIVED.

Tuesday, Feb. 15.  
Am. S. S. Lurline, from Kahului.  
Am. S. S. Mauna Loa, from Maui and Hawaii ports.  
Am. S. S. Lakelike, from Waimea.

### Monday, Feb. 14.

Am. S. S. Niihau, for Mahukona and Kawaihae.  
Am. S. S. Kinau, for Kauai ports.  
Am. S. S. Manchuria, for Yokohama.

### Tuesday, Feb. 15.

U. S. R. C. Thetis, for cruise.  
Am. S. S. Iwakani, for Hamakua ports.  
Am. S. S. Mauna Kea, for Maui and Hawaii ports.

### PASSENGERS ARRIVED.

Per S. S. Mauna Loa, Feb. 15, from Kona and Kauai ports. Oscar Edwards, F. W. Carp and wife, Mrs. Williams, F. M. Meade, J. F. Kelduff, T. C. Edwards and wife, L. W. Moody, Mrs. F. Baxter, Mrs. P. Morrison, Mrs. M. H. Gibson, S. J. Jones and wife, S. Jones, Miss R. A. Jones, R. F. Forrest, Carl Smith, J. S. Jones and wife, Sam Kauhane, Mrs. W. W. Chamberlain, S. Schuman, C. Bolt, J. A. Maguire E. Henriques, F. Gouveia Jr., H. Bertelman and wife, Miss C. Aliu, G. Akona, Keau Akalikini, G. F. Renton, J. Sakai, T. R. Robinson, F. A. Borman, Mrs. H. Keoloha, Mrs. G. Gibb, Miss E. Gibb, H. D. Sloggett.

## AT THE THEATERS

By far the greatest card ever put on the Orpheum stage is a dainty little soubrette who will arrive either on the Wilhelmina or the Alameda, no less a stage personage than Toby Claude, a charming bit of femininity, who is making a tour of the world. Her manager is here and he has consented that she shall stop off in Honolulu for a while. She is a headliner on the Orpheum circuit on the mainland, and was brought over to New York from England a few years ago by the Schuberts to appear in "A Chinese Honeymoon" as a slavey, in which she made a big hit. The San Francisco notices of her appearances at the Orpheum are the best. She is said to be the size of a healthy peanut and emanates joy. She has a cozier song that makes a hit, is most generous with her encores and is a speaking proof that the best goods come in small packages. As for wardrobe there is a sufficiency and a verisimilitude. Only because her manager has not asked for \$450 a week, her usual salary, but just expenses, was Mr. Cohen able to book the brilliant little comedienne. She may be put on the latter part of this week or the first of next.

Jack Goden's company of funmakers left the Orpheum dark for about a week, but the vaudeville company now at the Orpheum is equally successful in pleasing the Orpheum audiences, and for an evening of enjoyment the Orpheum is just the place. The members of the company have a few numbers there which are some of the finest Joe Cohen has brought to Honolulu. The trick bicycle riders are probably the best that have ever appeared here. It is a pretty exhibition of the equilibrium of art. The man takes off a humorous stunt throughout, never speaking, while the pretty little woman who assists is a clever artist. Their trick is worth seeing.

Dick Stead, the Australian baritone, sings with his oldtime fervor. Miss Leslie and Miss Galardi, whom Mr. Cohen secured while they were en route to San Francisco from the Orient, are excellent singers, the former's ballads being beautifully rendered. Miss Galardi added a dance last evening that was prettily done. Schwartz, the violinist was encored repeatedly last evening.

On Thursday Mr. Cohen will add the far-famed Salome dancer, Walker and Stern, the jugglers; and Castleman and Montgomery, a sketch team, all of whom are at present on quarantine island.

This will be one of the best programs put on at the Orpheum in months. The sale of seats has already begun to look like the Golden company days, and Thursday is certain to be a big opening night.

## CASTLE AND COOKE

(Continued From Page One.)

was purchased, and a separate extension procured.

The shipping department of Castle & Cooke will go into the corner section of the building, the place formerly occupied by Roth's tailoring establishment and lately by the sporting goods department of the Wall, Nichols Company. This will also be headquarters of the Matson line of steam and sailing vessels.

The big main section of the building will be occupied by the various depart-

ments of the Castle & Cooke business. Ample room is there found for all purposes.

This deal of Castle and Cooke entails an important change for the Wall, Nichols Company. In brief, this concern will move back to the premises now occupied as a branch in King street near Fort. Before doing so, however, great changes will be made in the latter building. In the first place, it will be extended back straight forty feet, or, to the barber shop near Cunha's reception parlors. This will almost double the ground floor space. Then the Yokohama Specie Bank will move to its new building fronting the police station, and Wall, Nichols Company will occupy all of the second floor of the Republic building as well, really giving them nearly as much room as they now have at Merchant and Fort streets.

The work of fitting up these respective places will take time. The contract for the addition to the King street premises mentioned will be let as soon as the workmen, now engaged upon the Union Grill addition are out of elbow reach of the new gang.

To the question "When will these things be?" it may be stated that June 1 has been decided upon as the date for the changes to be made. This will give time for the addition to the Wall, Nichols Company building in King street and such remodeling as Castle & Cooke may find necessary in the premises at Fort and King streets.

## THE AMERICAN BOYS' TOUR

Major Sidney S. Peixotto under whose direction the American Boys are touring Australia, as president of the Pacific Athletic Association, and also, as President of the Public Schools Athletic League of San Francisco, became interested in the Australian game of football and entered into correspondence with J. J. Simons, secretary of the Western Australian Football League of Perth to consider the advisability of a party of young Australian footballers visiting America for the purpose of coaching American boys in the game. This project could not be financed, so Major Peixotto determined to bring 40 members of the Columbia Park boys' club of which he is the founder, to the Commonwealth to learn the Australian game.

The Australian Football Council sanctioned the idea of such a tour, and the American party landed in Sydney on the 2nd of July, at which city the boys witnessed their first match of football, Australian rules.

They took to it at once and in four months' time they have become most clever exponents of the game. By their hard work they have qualified themselves to introduce the game into the public schools of the United States. They are well developed athletes and the way in which they have mastered the game has been a surprise to all who have seen them play.

Major Peixotto is a champion of clean amateur sport, and he believes that introduction of the Australian game into the American schools will be most opportune. Professionalism or semi-professionalism is a difficult problem on the Pacific Coast, but he feels assured that the present tour of his club boys will mean much for the future of American sport.

Aside from the sports interest, education by travel has proven itself to be the very best means of not only enlightening the youth of the civilized world, but the heads and official bodies of nations agree that it is only by visiting different countries that a real

knowledge of its resources, activities, and institutions can be obtained. The visit of the young Americans to Australia has been rich in experience for them, and no amount of study from books could have given them the accurate knowledge they have obtained of our Commonwealth.

This will not only be of great benefit to themselves and their own state, but Australia, as a result of their visit will be better known to the world. The American Boys will appear in the Hawaiian Opera House Thursday, Friday and Saturday evenings of this week.

## WITTY WITTE TO SPIEL FOR ELKS

Walter S. Witte, not so long from New York, now cashier at Honolulu plantation is to spiel for the Elks at Ye Olde Curiosity Shoppe on the Elks' Trail on the carnival evenings of February 21 and 22. Witte is witty and a wonder and has had experience in Dreamland, Coney Island, and at Coney's Bowery. He is possessed of an unlimited fund of rapid-fire humor.

Another spieler who is bound to attract large crowds by the power of his voice and the eloquence of his expression is Ches Irwin, concerning whom his friends say he is a bullfighter by profession and a good fellow by habit.

## ALLEGED SCORCHER ATCHERLEYS

Summons is out for appearance at 9 a. m. tomorrow, before Judge Andrade, of Richard Cooke, Auto 248, complained against by Officer Scully as violating the City speed ordinance, exceeding fifteen miles an hour in city limits, said scorching said to have occurred between Alapai and Kapiolani streets.

## SUFFRAGETTES ACTIVE HERE

NEW YORK, Feb. 5.—The headquarters of the American Suffragettes here has received an application from Hawaii for an application from an organization of women in Hawaii which is planning a crusade throughout the Archipelago with the object of obtaining votes for women in the islands.

## IS SALOME SAFE?

EDITOR STAR:—Can you find room in your valuable paper for a few words of inquiry concerning his much advertised "Salome dance" which Mr. Cohen says he's going to put on the Orpheum stage on Thursday night? I have heard Salome on the phonograph and have seen the dance in moving pictures and am worried lest the exhibition of the living dance on the stage will be just right for me to go and see. A gentleman friend has invited me to go to the Orpheum with him on Thursday. Will Mr. Cohen assure me that I may attend without having to wear a veil to hide my blushes?

TOURIST LADY.

The next meeting of the Agricultural Seminar will be held at the College of Hawaii on Tuesday afternoon, February 15 at 3 o'clock. Professor McCaughey will speak at this meeting on "The Physical and Biological Features of Little-Known Regions in Hawaii."

Fine Job Printing, Star Office

### ANNUAL MEETING.

INTER-ISLAND STEAM NAVIGATION CO. LTD.

The annual meeting of the stockholders of the Inter-Island Steam Navigation Company, Ltd., will be held at the office of the company on Queen street on Thursday, February 24, 1910, at 10 o'clock a. m.

The stock books of the company will be closed to transfers from Feb. 21 to 28 both dates inclusive.

NORMAN E. GEDGE,

Secretary.

6th—Feb. 14, 15, 19, 21, 22, 23.

## WHY ECZEMA PATIENTS SUFFER No Wonder They Despair—But Cure Has Now Been Found.

It is a strange thing about eczema. After wasting money on nostrums, dosing the stomach or smearing on greasy salves for years, many a skin sufferer gives up in despair. He says:

"What is the use, some may be cured, but my case is hopeless."

But a trial of the simplest remedy—just a little oil of wintergreen properly compounded (as in D. D. D. Prescription) will wash away that itch. In fact, it will take away the itch immediately the instant D. D. D. is applied.

Read this letter from Thomas Chapman, U. P. Passenger Agent at Ellis, Kan.:

"I cannot delay any longer writing to tell you how grateful I feel for the great benefit I have received from your marvelous skin remedy, D. D. D. Prescription. Besides finding it a wonderful cure for itching eczema, I have used it for burns, fever sores, Cuban itch, chafing around certain parts of the body caused by perspiration, etc., and the instant I have applied it, the trouble ceases."

Now, if there is any one in your town suffering with eczema, ringworm, tetter, psoriasis or poison ivy, tell the sufferer not to sit back and say, "I have tried everything, there is no cure for me."

Call at our store and we shall explain. Honolulu Drug Co.

## ATCHERLEYS MISSED THE BOAT

Dr. Atcherley and his wife, Mary, who recently left Honolulu for Tahiti, by way of San Francisco, missed the S. S. Mariposa at San Francisco and have to wait over in that great city for thirty days. Meanwhile the Atcherleys have written to Honolulu to have certain personal property forwarded including the doctor's medical instruments.

### FIGHT IN RICE MILL.

There was a fight in a Chinese rice mill at Hanula on Saturday night when Sam Logan, deputy sheriff of Hale went over on Dan Paa's territory and complained to the Orientals that they had been gambling. They tore his clothes and threw him out, and they declare that he wanted a present which they were unwilling to give. Dan Paa is deputy for Hanula. Honolulu police headquarters will investigate the row.

## New Advertisements BY AUTHORITY

### Bridge Closed

Until further notice the Haleiwa bridge on the belt road will be closed for repairs.

G. H. GERE,  
City and County Engineer.

### SEALED TENDERS.

Sealed Tenders will be received by the Superintendent of Public Works until 12 m. of Friday, February 18, 1910, for the construction of a shed at the Beretania street pumping station.

Plans and proposal blanks are on file in the office of the Superintendent of Public Works.

The Superintendent reserves the right to reject any or all bids.

MARSTON CAMPBELL,  
Superintendent of Public Works.

Honolulu, February 5, 1910.

### RESOLUTION 282.

Honolulu, T. H., January 18, 1910  
BE IT RESOLVED by the Board of Supervisors of the City and County of Honolulu, Territory of Hawaii, that the sum of EIGHT HUNDRED (\$800.00) DOLLARS be and the same is hereby appropriated out of the General Fund for the purchase of a team of horses for the Honolulu Fire Department.

Presented by Supervisor Wm. A. Kane.

Seconded by Supervisor, William Ahia.

Approved this 8th day of February A. D. 1910.

JOSEPH J. FERN,  
Mayor.

10th—Feb. 9, 10, 11, 12, 14, 15, 16, 17, 18, 19.

## WATERHOUSE TRUST REAL ESTATE FOR SALE

### KAIMUKI.

Half acre lot, well planted in trees, with two bedrooms, stable, servants' quarters, etc. All in good condition. On the car line. Price \$4750.00

### MAKIKI DISTRICT.

Story and a half house, modern in every particular, suitable for small family a bargain either as a home or for an investment. Price \$3250.00  
Acreage property in Pololo Valley, Manoa Valley and Kaimuki.

### For Rent.

Five bedroom house on Thurston ave. Price \$60.00

## "Waterhouse Trust"

Corner Fort and Merchant Streets.

Space and time have been annihilated by the  
**WIRELESS**  
On Sunday morning the office is open from eight until ten o'clock.

## Classified Advertising

### FOR RENT.

Furnished residence, 1017 Beretania Ave., 4 B. R., all mosquito proof, glass lanai 20x20; piano, electric light, gas, hot water, shower, etc., also to right party a new bungalow on Palolo Heights, Tel. 181. Office 202 McCandless Bldg., W. L. Howard.

### DRAMATIC.

MARIE KENNY, Dramatic Studio from San Francisco, 175 Beretania. Practical 3-months' private course. Acting, Elocution, Monologues, Vaudeville, Dancing, Reading, Grace Culture. Phone 33.

### FOR SALE.

Six room cottage with servants quarters, Keeaumoku Street. Four room Cottage, big lanais, servants quarters and baths. Piikoi street. Six room Cottage with servants quarters, baths and garage. Wilder avenue. Must be sold. Terms to suit. Address: J. James, Box 527, City.

Men's Clothing on credit—\$1.00 a week. Suit given at once. Francis Levy, Outfitting Co., Sachs Bldg., Fort Street.

### BUY AND SELL.

Diamonds and jewelry bought, sold and exchanged. Bargain in musical instruments. J. Carlo, Fort St.

### WANTED.

I want you to experience the pleasure of a first class shave in the most elaborately fitted up Barber Shop in Honolulu. We sterilize the razor before shaving you. Jeffs, 942 Bethel St.

### WANTED TO BUY

Old books, magazines, Hawaiian stamps and curios. Books exchanged. Weedon Carlo Bazaar. Fort Street, above Pauahi.

### NOTICE TO CREDITORS.

The undersigned, having been duly appointed Executor of the Estate of Maria da Luz Carvalho, late of Honolulu, deceased, notice is hereby given to all persons having claims against said estate to present same, with proper vouchers, if any exist, whether secured by mortgage or otherwise, to him at the Bank of Hawaii, Ltd., Honolulu, Oahu, within six months from the date hereof, or they will be forever barred. And all persons indebted to said estate are hereby requested to make immediate payment to the undersigned.

Dated Honolulu, January 25, 1910.

J. D. MARQUES,

Executor of the Estate of Maria da Luz Carvalho.

Judd & Lindsay, attorneys for Executor.

5th—Jan. 25, Feb. 1, 8, 15, 22.

## Park Theater

Fort St. opp. Convent.

MAY WALLACE

and

BOBBIE WAY.

Melnette Sisters Vienna's Orchestra.

MOTION PICTURES.

Admission.....5c, 10c 15c



Wealth of hair is wealth indeed, especially to a woman. If your hair falls out, is too thin, or is losing its color, use

## Ayer's Hair Vigor

It will remove all dandruff, and will give you thick, long, glossy, and beautiful hair.

Accept no substitute. Be sure you get Ayer's Hair Vigor, and preserve the richness and luxuriance of your hair to an advanced period of life.

Prepared by Dr. J. C. Ayer & Co., Lowell, Mass., U.S.A.



Your best negatives deserve and your poorer negatives need

### VELOX

Velox is the only paper that is made with sole reference to the requirements of the amateur.

HONOLULU PHOTO SUPPLY COMPANY.  
1059 Fort Street.

## Empire Chop House

(Lately Palace Grill.)  
Bethel St. Opp. Empire Theatre.  
Open Day and Night. Cuisine Unsurpassed.

BEST MEALS AT ALL PRICES!

## Cotton, Neill & Co.

Engineers, Machinists, Blacksmiths and Boiler-makers.  
First class work at reasonable rates.

## Y. Yoshikawa

163 King Street, opp. Young Building.

Good, new bicycles \$25; second hand, any kind, cheap. Tricycles for sale. Motorcycles repaired and refitted.

## Honolulu Iron Works

STEAM ENGINES, SUGAR MILLS, BOILERS, COOLERS, IRON, BRASS AND LEAD CASTINGS.

Machinery of Every Description Made to Order. Particular Attention Paid to Ship's Blacksmithing. Job Work Executed on Short Notice.

## High-Class

MUNICIPAL IRRIGATION.  
And  
PUBLIC UTILITY BONDS  
Real Estate Investments and Loans.

## CHAS. A. STANTON

Room 38 Alexander Young Building  
Honolulu, T. H.

## Oat & Mossman

STATIONERS AND  
BOOK SELLERS.  
Merchant Street near Post Office.

## PARAGON PAINT AND ROOFING CO

PETER HIGGINS, Manager.  
Estimates Free of Charge.  
PHONE 60.  
Office No. 939 Bethel St. near Hotel

## USE Sweet Violet BUTTER

C. Q. YEE HOP TEL. 251

The luncheons served at the Palm Cafe, Hotel street near Union, are considered by the ladies who shop in the morning, to be the best and most satisfactory because of the careful cooking and prompt service.

Fine Job Printing, Star Office.

# SPORTS

## JACKSON NAMES DAY FOR BIG RACE

Nigel Jackson is putting in some hard work gathering up prizes for his coming Marathon race to Wai'alua, and it really looks as though he will make a success of the project. His last night showed a large number of names, and the prizes seem to be of an attractive character. The promoter is still working, however, and expects in a day or two to have prizes sufficient to tempt a very large number of competitors into the long run.

Jackson states that the date finally set for the race is March 27, a Sunday. It is intended to have it start from Aala Park and to be straightaway over the road to Wai'alua. Mayor Fess is taking an active interest in the race and will probably be starter for it.

## THE LINCOLN CLUB HAS SOCIAL TIME

The Lincoln Club, a kind of social-sports organization of Portuguese young men for a starter gave a smoker last Saturday night at its new hall on Luau street.

According to post notice, the affair was a most enjoyable one. It was given in commemoration of the birth anniversary of Abraham Lincoln, after whom the club was named.

The following were among those present by invitation: Mayor Fern Representatives A. D. Castro and J. C. Cohen, Senators Charles F. Chillingworth and J. C. Lane, L. L. McCandless, Supervisor McClellan and John C. Anderson.

The Lincoln Club is a new organization and starts out with fifty members. The officers are: M. S. Deponce president; Frank Souza, vice president; M. R. Freitas, secretary; J. R. Freitas, treasurer.

## FINE CUP PUT UP FOR FIELD SPORTS

The Floral Parade committee decided yesterday afternoon to put up a cup to be competed for by the Columbia boys and High School at the Boys' Field on Washington's Birthday. These field events will take place in the afternoon and should attract a large number of city people. The program will give the visiting boys their one big chance of participating in a regular field program locally, the other events being meets for single stunts.

The contests will be decided on points, and the cup will go to the side having the greatest number. While the Columbia boys are known to be well up on everything in the way of field sports, the High School athletes believe they will be close around at the finish.

Preparations are being made for pitching the tents on the Boys' Field for use of the visitors after they come over from Maunaloa on Thursday. If the weather remains fine the youngsters will have a really excellent place of it.

## HANDBALL GAMES OVER TO SUNDAY

So many of the games in the handball tournament at the Y. M. C. A. have been played that there will be no more until tomorrow afternoon. At that time however, there will be two fast matches. The first one will be between Sing Hung and Gertz, and the second between Purvis and Ewaliko. All of these players run well together, and the games are certain to be warm numbers.

On the 13th or Friday, there will be one make Fook On trying conclusion with Nott. This contest will start at 5 o'clock.

According to the rules adopted for the series, all games must be finished prior to February 19, so that next Friday will be the last day.

Dr. Hand expresses himself as well satisfied with the results thus far, and has every hope for a highly successful tournament.

## BOAT CLUB RACES SET FOR SUNDAY

Next Sunday afternoon the Healanies and Myrtles will meet in the harbor for one of the fiercest aquatic struggles witnessed here in years. The races will begin at 2 o'clock. Thus far no officers for the day have been selected although this will be attended to in ample time. At present the program is in the hands of officers of the two boat clubs.

The first race will be a pair-oar stunt. It will start at Buoy No. 8 and finish opposite the Healan boat house.

Next will come the four-oar shell race, starting from the Hackfield wharf and finishing at Buoy No. 10, off the Myrtle boat house. This will probably be the most exciting event of the day.

The third race will be a six-oar barge event for "strawberry" crews. This will start at the spar buoy and finish at the Healan boat house.

Each of the boat clubs will keep open house during the afternoon and it is expected that large crowds of people will be present to witness the events.

## BIG GOLF DOINGS ON FEBRUARY 22

Next Sunday there will be nothing special doing on the links at the Country Club, although open house will be kept for the members and their friends. On Washington's Birthday, however, there will be the biggest kind of a golf rally. It will be novelty playing and will begin at 2 o'clock in the afternoon. As this will be the first important event of the year on the links it is expected that most of the golfers will be out.

The change in the ninth hole on the links has been made, and all is now in good shape except for the grass, which is being teased out gradually.

A new, stone bunker has been started near the ninth hole this completing another of the improvements decided on for the new year.

## INTERNATIONAL TUG OF WAR PULL

A. K. Vierra is working up an international tug-of-war match to take place at Athletic Park on Sunday, the 27th. Six teams, it is expected will enter, composed of Japanese, Chinese, Portuguese, Hawaiians and a couple of haole teams one civilian and one military.

It is intended to limit the weight of the contestants to 200 pounds. This is on account of the Japanese and Chinese, who are never so heavy as that.

Vierra has raised the sum of \$300 which will be given out as prizes, thusly: First prize, \$150; second, \$100; third, \$50. As this is enough for expenses and a little high life on the side it is not thought there will be any difficulty in getting full teams of first class men.

Paul S. Junkin, of Creston, Iowa, representing the Creston Advertiser-Gazette, Abila Republican, Chariton Herald-Patriot and Bedford Times-Republican is a passenger aboard the excursion steamer Cleveland on the present "round-the-world" tour. Mr. Junkin is a cousin of Harry G. and Rolla D. Junkin, pioneers of the Olaa section of Hawaii and now located at Mountain View, on the Volcano road. The traveler gathers material here for a series of articles to be printed in the several papers represented by him.

Mr. Junkin was particularly well pleased with Hawaiian pineapples, which he characterized as the best he had ever seen. He believes that a big trade in them could be worked up in the Middle West.

### SCOTT FIGHTS JUDGEMENT.

M. F. Scott comes again, as defendant and plaintiff in error, in the Supreme Court in the suit of B. F. Dillingham against him, with Kona Development Co., Ltd., and F. B. McStocker, garnishees. In person he files a motion to set aside entry of judgment for plaintiff and to order entry of judgment for defendant.

Fine Job Printing, Star Office.

**FITS.**  
Those awful agonizing, dangerous fits are the result of an aggravated condition of nervous debility. Dr. Miles Nerveine has made many remarkable cures by restoring health and strength to the nervous system. Sold by druggists under a guarantee that the first bottle will benefit or your money returned.

### NOTICE OF INTENTION TO FORECLOSE MORTGAGE AND OF SALE.

Under power of sale contained in mortgage dated July 6, 1908, made by Amos K. Eldredge and Nancy K. Eldredge, Mortgagees, to J. Alfred Magoon, Trustee for Susie F. Cartwright, Mortgagee, recorded in the office of the Registrar of Conveyances in Honolulu, in Book 301, pages 397-9, notice is hereby given that the said Mortgagee intends to foreclose said mortgage for conditions broken, to-wit: non-payment of principal and interest when due.

Notice is likewise given that the lands covered by the said mortgage will be sold at public auction at the auction rooms of James F. Morgan, Kishumani Street, Honolulu, on Saturday, the 5th day of March, 1910 at 12 o'clock noon of said day.

Terms: Cash, U. S. Gold Coin, deed at the expense of the purchaser.

J. ALFRED MAGOON,  
Trustee for Mortgagee Susie F. Cartwright.  
Honolulu, T. H., February 8, 1910.  
Magoon & Weaver, Attorneys for Mortgagee.

The property covered by said mortgage and to be sold as aforesaid, consists of:

All the respective rights, title, and interest of said Mortgagees in and to the property described as follows:

1. All the land situated at Kaunahu, Kohala, County and Territory of Hawaii, being Lot No. 19, described in Land Patent (Grant) 5036 to said A. K. Eldredge, area 13 30-100 acres;

2. All the lands situated at Kaunahu aforesaid, being Lot No. 18 described in Land Patent (Grant) 4825 to Kalaawa, area 14.7 acres.

3. All the lands situated at Kapaau, Kohala, aforesaid, being a portion of the land conveyed to said A. K. Eldredge by deed of the Star Mill Company dated December 31, 1890, recorded in the Register Office, Oahu, in Liber 136, pages 243-4 and being apana 1 of said land as plotted by said A. K. Eldredge, and described in map attached to mortgage dated September 27, 1900, and recorded in said Office in Book 214, pages 307-8-9;

4. All the land conveyed to said A. K. Eldredge by deed of D. Heanu dated June 29, 1900, recorded in said Office in Liber 210, pages 351-2, and therein described as follows:

(1) "The Kuleana of Kaupulehu, situated in the Ili of Lanikele, Honomakau, Kohala, aforesaid, L. C. A. 8086 area 12 acres 7 square chains 93 square fathoms and 27 square feet, excepting three acres reserved.

(2) That piece of land situated at Honomakau, N. Kohala, Hawaii, R. P. (Grant) 2463, containing 21 acres, excepting four acres; area conveyed, 17 acres, total area 26 acres, 7 square chains 93 square fathoms, 27 square feet.

5. All the land situated at Hawi, Kohala, aforesaid described in mortgage of said Nancy K. Eldredge to C. H. Banning, dated December 5, 1899, recorded in said office in Book 129, pages 369-70, being a portion of the land described in R. P. No. 4395 to Lot Kamehameha, described in deed to Helen U. Parker dated October 22, 1889, recorded in the Register Office, Oahu, in Liber 102, page 356-7;

6. All the land situated at Hawi, aforesaid described in a deed from Hawi Mill and Plantation Co., Ltd., to said Nancy K. Eldredge, dated November 11, 1905, recorded in the said office in Liber 286, page 174, described as follows:

"Commencing at the corner of a lot formerly owned by Aholo and now (November 11, 1905) occupied by Mr. and Mrs. A. K. Eldredge, at a point 66 feet makal of Government road leading to Honouliuli, the boundary running along said lot in a westerly direction 330 feet thence at right angles in a northwesterly direction 66 feet along land belonging to said Hawi Mill and Plantation Co., Ltd., then at right angles in a westerly direction, 330 feet along said land owned by said Company, thence 66 feet in a southerly direction to the point of commencement, containing an area of 1-2 acre. Being a portion of the land described to R. P. No. 4395 to Lot Kamehameha.

7. All the crops of sugar and all sugar produced therefrom that may be grown on any or all of the above described lands.

The lands fifthly and sixthly described being subject to prior mortgage.

318-Feb. 8, 15, 22.

**AVOIDED.**  
Diphtheria is usually contracted when the child has a cold. The cold prepares the child's system for the reception and development of the diphtheria germs. When there are cases of diphtheria in the neighborhood children that have colds should be kept at home and off the street until recovered. Give them Chamberlain's Cough Remedy and they will not have to remain at home long. It also cleans out the culture beds, which form in a child's throat when it has a cold, and minimizes the risk of contracting infectious diseases. For sale by all dealers. Benson, Smith & Co., Agents for Hawaii.

**Somma's Special Salve For Piles**  
Guaranteed to contain nothing injurious. Cures chronic sores, cuts, burns and all skin diseases of the human race.  
Prepared by  
**G. SOMMA,**  
Secret Salve Specialist  
No. 10 King St. Honolulu, T. H.

## C. Brewer & Co. Ltd., Fire and Marine Insurance Agencies

Royal Insurance Co. of Liverpool.  
London Assurance Corporation.

Commercial Union Assurance Co. of London.

Scottish Union and National Insurance Co. of Edinburgh.

Caledonian Insurance Co. of Edinburgh.

Upper Rhine Insurance Co., (Marine).

## Rubber Stamps We Make Rubber Stamps Of All Kinds

WALL, NICHOLS, CO.,  
Fort and Merchant

## OHIO CLOTHES CLEANING CO.

Beretania Street, Near Fort.

We clean and press suit of clothes every week at \$1.50 a month, payable in advance. Ladies clothes cleaned and pressed. Work guaranteed.

## 7 SEATED STODDARD DAYTON

By Trip or Hour.

**JOE LEAL**  
Chauffeur.

Telephone 191. Royal Hawaiian Garage.

## FOR SALE

Bridge and Beach Stoves for Coal or Wood.  
Quick Meal Blue Flame Oil Stoves.  
Perfection Oil Stoves.  
Giant Burner Gasoline Stoves.

EMMELUTH & CO., LTD.

Phone 211. No. 145 King St.

## American Steam Laundry

W. D. MCINTYRE, Manager.

FIRST CLASS LAUNDRY WORK.

1382 Liliha Street, corner Vineyard.

## FIRE INSURANCE

ATLAS ASSURANCE COMPANY OF LONDON.

NEW YORK UNDERWRITERS AGENCY.

PROVIDENCE WASHINGTON INSURANCE COMPANY.

The B. F. Dillingham Co., Ltd.

General Agents for Hawaii.

Fourth Floor, Stangenwald Building.

DR. F. SCHURMANN

OSTEOPATHIC PHYSICIAN, OSTEO-PATHIC OCULIST

Hours:—Consulting, 2-3 p. m. Saturdays Excepted. Operating, 8-12 a. m., 3-6 p. m.

Telephone 33. Omce, corner Beretania and Union streets.

HONOLULU, T. H.

IF YOU WISH TO ADVERTISE IN NEWSPAPERS

ANYWHERE AT ANYTIME

Call on or Write

**C. C. DAVIS'S ADVERTISING AGENCY**

215 Sansome Street

SAN FRANCISCO, CALIF.

### Fraternal Meetings

**HONOLULU LODGE No. 632, B. P. O. ELKS**

Meets in their hall on King Street, near Fort, every Friday evening. Visiting Brothers are cordially invited to attend.

E. A. DOUTHITT, E. R.

H. C. EASTON, Secretary.

**HARMONY LODGE, No. 3, I. O. O. F.**

Meets every Monday evening at 7:30 in Odd Fellows' Hall, Fort street. Visiting brothers cordially invited to attend.

H. E. MCCOY, N. G.

E. R. HENDRY, Sec.

**DIVISION No. 1, A. O. H.**

Meets every first and third Wednesday, at 8 p. m., in C. B. U. Hall, Fort Street. Visiting brothers are cordially invited to attend.

FRANK C. CREEDON, Pres.

JAMES T. CAREY, Sec.

### J. W. KERSHNER

## AUTO TIRE REPAIRING

1177 Alakea St. Phone 434

## BEAUTIFUL ROCKERS

Chairs, Bureaus and Furniture of all kinds made from select Koa.

**Wing Chong Co.,**  
Corner King and Bethel.

## PAPER

All kinds WRAPPING PAPER and TWINES, PRINTING and WRITING PAPERS.

AMERICAN-HAWAIIAN PAPER & SUPPLY CO., LTD.

GEO. G. GUILD, General Manager.

Fort and Queen Streets.

Honolulu. PHONE 419

**CENTENNIAL'S BEST FLOUR**  
The Standard.

**HENRY MAY & CO., LTD**  
Phone 22

## Territorial Board of Immigration

OFFICE: 405 Stangenwald Bldg. HONOLULU.

## CONSOLIDATED SODA WATER

IS ABSOLUTELY PURE.

PHONE 71.

## SUN CHUNG KWOCK BO LTD

CHINESE NEWSPAPER

PUBLISHING AND

JOB PRINTING.

No. 49 Cor. of Smith and Hotel Sts.

WE INVITE INSPECTION OF OUR GOODS

K. FUKURODA

Hotel near Nuuanu. Honolulu

**EUREKA PERFECTION ROOF PAINT**

The Best Roof Paint for use in Hawaii. Postal to P. O. Box 93 brings booklet.

THEO. H. DAVIES & CO. Agts.

**S. E. LUCAS**

PARISIAN OPTICIAN.

Telephone, 226.

Masonic Bldg. cor. Hotel and Alakea.

**Y. WO SING CO.**

GROCERIES, FRUITS,

VEGETABLES, ETC.

California Butter, 40c lb.; Cooking

Butter, 35c lb.; Fresh Dried Fruits.

1186-1188 Nuuanu Street.

Telephone Main 238. Box 553

## FURNITURE

Your Credit Is Good

J. HOPP & CO. - King St

## Don't Wait Until YOU HAVE

Ten or twenty dollars before opening a Saving Account. Deposit one dollar and get your book, you will find it easier to save the other nine or nineteen dollars if you have a Savings Account. Interest is paid at the rate of four and one-half per cent per annum, compounded semi-annually.

## BANK OF HAWAII, LTD.

Judd Building, Fort and Merchant Sts.  
Capital and surplus \$1,000,000

## CLAUS SPRECKELS & CO. BANKERS

HONOLULU : : : : : T. M.

San Francisco Agents—The Nevada National Bank of San Francisco.

DRAW EXCHANGE ON

SAN FRANCISCO—The Nevada National Bank of San Francisco.

LONDON—Union of London & Smith's Bank, Ltd.

NEW YORK—American Exchange National Bank.

CHICAGO—Corn Exchange National Bank.

PARIS—Credit Lyonnais.

BERLIN—Dresdner Bank.

HONGKONG AND YOKOHAMA—The Hongkong and Shanghai Banking Corporation.

NEW ZEALAND AND AUSTRALIA—Bank of New Zealand, and Bank of Australasia.

VICTORIA AND VANCOUVER—Bank of British North America.

TRANSACT A GENERAL BANKING AND EXCHANGE BUSINESS.

Deposits Received, Loans Made on Approved Security, Commercial and Travellers' Credits Issued. Bills of Exchange Bought and Sold.

COLLECTING PROMPTLY ACCOUNTED FOR.

ESTABLISHED IN 1830.

## BISHOP & CO.

### BANKERS

Commercial and Travellers' Letters of Credit issued on the Bank of California and The London Joint Stock Bank, Limited, London.

Correspondents for the American Express Company, and Thos. Cook & Son.

Interest allowed on term and Savings Bank Deposits.

## The Yokohama Specie Bank Ltd.

Capital (Paid Up).....Yen 24,000,000  
Reserve Fund.....Yen 15,940,000

### HEAD OFFICE, YOKOHAMA.

The bank buys and receives for collection bills of exchange, issues Drafts and Letters of Credit, and transacts a general banking business.

The Bank receives Local deposits and Head Office Deposits for fixed periods.

Local Deposits \$25 and upwards for one year at rate of 4% per annum.

Head Office Deposits Yen 25 and upwards for one-half year, one year, two years or three years at rate of 4 1/2% per annum.

Particulars to be obtained on application.

Honolulu Office—87 S. King Street.  
P. O. Box 168.

M. TOKIEDA, Manager.

## C. BREWER & CO. LIMITED.

QUEEN STREET Honolulu, T. M.

AGENTS FOR

Hawaiian Agricultural Company, Onomea Sugar Company, Honoumuli Sugar Company, Wailuku Sugar Company, Pepeekeo Sugar Co., Kapapala Ranch, Thomas Pineapple Co.

E. F. Bishop.....President.

Geo. H. Robertson, V. Pres. & Mgr.

W. W. North.....Treas. & Secy.

George R. Carter.....Auditor

P. C. Jones.....Director

C. H. Cooke.....Director

J. R. Galt.....Director

R. A. Cooke.....Director

All of the above named constitute the Board of Directors.

## SOUTH POLE BUG BITES ROOSEVELT

Professor McMillan Thinks Former President Ambitious to Become Great Discoverer.

NO MONEY FOR AEROPLANES.

Six Steamers Hurrying to Save Lives.

Bill For Two New

National Parks.

(Associated Press Morning Service.)

PORTLAND, Maine, February 15.—

Former President Roosevelt may lead an expedition in search of the South Pole, according to Professor McMillan of this city.

The professor last night stated that the former President is greatly interested in polar explorations and that there are good grounds for believing that he may conclude to undertake the task of placing the American flag on the south end of the earth.

Professor McMillan was a member of the Peary expedition and himself is a man of recognized achievements in exploration work.

NO AIR DRAGONS.

WASHINGTON, February 15.—The Army will get no aeroplanes yet awhile.

President Bishop of the Aero Club of America's committee on aeronautical societies yesterday called on the President and urged that appropriations be made for the purchase of aeroplanes for the use of the military service.

Mr. Taft expressed regret that the strict economy necessary from now on until the end of the year will make it impossible to provide the necessary appropriation this session.

RACING TO RESCUE.

ANCUD, Chile, February 15.—Six steamers are now racing toward the Strait of Magellan in the hope of saving eighty-eight survivors of the wreck of the British steamer Lima.

The unfortunates are clinging to the battered bulk and are in momentary danger of going to their deaths. The steamer Hatumet, which went to the assistance of the shipwrecked ones, managed to take off 205, but the lives of five members of its crew were lost in the work of mercy.

VITOR METCALF MARRIED.

OAKLAND, February 15.—Victor Metcalf was married here yesterday to Miss Marie Butters.

NATIONAL PARKS.

WASHINGTON, February 15.—The bill providing for the nationalizing of the Sequoia and General Grant big tree parks was favorably reported yesterday.

## HARD LIVES OF TWO WIVES

Harriet K. Beringer has brought a libel for separation against Frederick L. Beringer. She alleges that he fails to provide support for herself and their eight month old daughter, although receiving \$150 a month in the customs service. They were married at Kapaa on June 7, 1905, and the complaint says that at all times during their marriage her husband has habitually squandered his salary in drunkenness and debauchery. Before the birth of their child she was reduced to such straits that she pawned her engagement ring valued at \$150, which he had given her, for \$60 with which to purchase necessary food. Furthermore she accuses him of habitual and gross cruelty to her in word and deed since a few weeks after they were married. They occupy a home at Punui purchased in her name for \$1100 on which they have made improvement at an expense of about \$670. There is a mortgage debt of \$600 on the premises, while \$400 is owing for improvements. Mrs. Beringer desires to be permitted to live at said home and to add to its improvements. She also seeks protection of the court from molestation by her husband, and prays for alimony, suit money and separation in perpetuity or otherwise as to the court may seem provident and reasonable.

Mary Gomes has brought a bill for maintenance against her husband M. Gomes on behalf of herself and their two young children. She says that on February 3, 1910, he packed his clothes and other belongings in a trunk and took them away. Moreover on leaving he stopped her credit at the store where they had been getting supplies, also with the milkman, and on the evening before abandoning her burned her hat, shoes and clothing. He informed her he would not support her but would rather go to jail instead.

## BY AUTHORITY

BILL NO. 20.

AN ORDINANCE PROVIDING FOR THE INSPECTION OF MILK AND DAIRIES AND DAIRY COWS, AND REGULATING THE SALE OF MILK, AND PROHIBITING AND PUNISHING THE DISTRIBUTION OF UNWHOLESALE, IMPURE OR ADULTERATED MILK IN THE CITY AND COUNTY OF HONOLULU.

Be it ordained by the People of the City and County of Honolulu:

SECTION 1. No milk producer or milk vendor shall after this Ordinance becomes operative, either himself or through his agents, servants or employees, offer or expose for sale or sell or deliver for sale, use or consumption within the City and County of Honolulu, any milk without first having obtained from the Board of Supervisors of the City and County of Honolulu a permit so to do as hereinafter provided:

SECTION 2. To procure such a permit, the applicant therefor shall present to the Board of Supervisors a written application, and shall state therein the name and business and residence addresses of the applicant, the source or sources from which said applicant obtains or will obtain supplies of milk, the number of cows in the possession of said applicant, the daily average quantity of milk produced, and the daily average quantity of milk disposed of by said applicant, and the manner and character of such disposition. He shall within four months after the filing of such application furnish a certificate from a veterinary surgeon showing that all such cows are free from tuberculosis. The Board of Supervisors shall provide for the testing of cows and the furnishing of such certificate without charge to the applicant. Such application shall be made to the Board of Supervisors upon printed blanks to be furnished by said Board for such purpose. Such application shall further state the specific brand or business name, if any, under which said milk is to be sold, exchanged or distributed.

SECTION 3. If the Board of Supervisors, upon such application, shall determine that the statements therein made are true and satisfactory, it shall be the duty of the Board of Supervisors to direct the City and County Clerk to issue, and said City and County Clerk shall thereupon issue to said applicant a permit to sell, expose or offer for sale, exchange, deliver or distribute milk within the City and County of Honolulu.

SECTION 4. One such permit shall be required for each place of production, general sale or storage of milk. Such permits shall be issued only in the names of the owners of the supply of milk thus on storage or for sale, and shall for the purpose of this Ordinance be conclusive evidence of such ownership. No such permit shall be sold or assigned or transferred. Such permit shall be subject at any time to revocation by said Board of Supervisors in its discretion upon sufficient cause therefor shown; provided, however, that no permit shall be revoked until after a hearing given by the Board of Supervisors in the matter of the revocation of such permit after (5) five days' notice in writing has been served on the owner of such permit, which notice shall state the ground of complaint against such owner, and the time and place of such hearing; and provided further, that no permit shall be revoked by said Board of Supervisors for the first offense without the unanimous consent of all the members of said Board.

At least once each year every person or persons, firm or corporation holding such permit shall register with the City and County Clerk his or their name and permit number, and shall make a written statement to said Board of Supervisors containing all the information required to be given by applicants for permits in their written applications for permits as hereinbefore provided; and all applications for permits and all such written statements required as aforesaid shall be registered in a register to be kept by the City and County Clerk for that purpose.

SECTION 5. No person or persons, firm or corporation shall sell or expose for sale or exchange or deliver or distribute, within the limits of the City and County of Honolulu, milk from any wagon or vehicle, unless such wagon or vehicle shall have exposed on both sides thereof the permit number of the person or persons, firm or corporation selling or offering or exposing for sale, or distributing or delivering or exchanging such milk. Such permit number shall be

painted on said wagon or vehicle in Arabic numerals not less than three (3) inches in height, and shall be placed on said wagon or vehicle under the direction of a duly appointed milk inspector, and in case milk is sold from cans or vessels (not carried in any wagon or vehicle), then the permit number as aforesaid shall be put in a conspicuous place on such can or vessel immediately below the opening thereof, so as to be plainly visible on superficial inspection; or if such milk is sold or exposed or offered for sale, delivery, distribution or exchange within a store or house, or on the sidewalk of any street in the City and County of Honolulu, then such permit number shall also be constantly exposed in some conspicuous manner at the place where such milk is sold or kept, so as to be plainly visible.

SECTION 6. It shall be unlawful for any person or persons, firm or corporation, by themselves or by their agents, servants or employees, in the City and County of Honolulu to render or manufacture, sell, offer for sale or exchange, deliver, distribute, or have in his, their or its possession with intent to sell, expose or offer for sale or exchange, or distribute for human consumption, any impure, adulterated, unhealthful or unwholesome milk, or any milk from which the cream has been skimmed or separated unless the same is specifically and openly stated to be skimmed milk.

SECTION 7. Milk shall be deemed to be impure, adulterated, unhealthful and unwholesome within the meaning of this ordinance under the following stated conditions, viz:

1st—Milk containing less than eight and one-half per centum (8 1/2%) of milk solids, excluding milk fat.

2nd—Milk containing less than three per centum (3 per cent.) of milk fat.

3rd—Milk drawn from cows within fifteen days before or within five days after parturition.

4th—Milk drawn from cows fed on any unhealthful or unwholesome feed.

5th—Milk drawn from cows kept in an unhealthy or unsanitary condition, or from cows affected with any form of infectious, contagious or transmissible disease, or milk which contains more than one million bacteria per cubic centimeter.

6th—Milk from which any part of the cream has been removed, and milk which immediately upon being drawn from the cow shall not have been cooled by submerging the vessel in which the milk is contained in cool water to a depth equal to that of said milk in the vessel, or else cooled by a process of aeration, and kept in a cool place at a temperature of not higher than seventy-seven degrees (77 deg.) Fahrenheit until removed for delivery thereof.

7th—Milk which has been diluted with water or with any other fluid, or to which has been added or into which has been introduced any foreign substance whatever.

8th—Milk drawn from cows or by milkers that are themselves in a condition of filth or uncleanness.

9th—Milk which is shown by analysis to contain any substance or substances of any character whatsoever not natural or normal constituents of milk, or to have been deprived either wholly or in part of any constituent naturally or normally contained in milk.

10th—Milk containing any preservative or antiseptic.

SECTION 8. It shall be unlawful for any person or persons, firm or corporation to have or carry on any wagon or vehicle upon or from which milk or cream is being or is brought, carried, stored, deposited, sold, exchanged, delivered or distributed, or offered or exposed for sale or distribution as food for any human being, any swill, garbage, refuse or any decaying or fermenting, putrefying, foul unwholesome, noxious or filthy matter, or any cans or receptacles containing any material or substance with which cream or milk might be diluted, adulterated or rendered impure, unwholesome or unhealthful.

SECTION 9. The Board of Supervisors of the City and County of Honolulu shall appoint one or more milk inspectors as may be necessary to carry into effect the provisions of this ordinance. The salaries of such inspectors shall be fixed by the Board of Supervisors. Said inspectors shall have all the powers and shall perform all of the duties provided in this ordinance, and shall have such other powers and perform such other duties as may be hereafter prescribed by the Board of Supervisors.

SECTION 10. It shall be the duty of the City and County Physician to exercise practical supervision in respect to such milk inspectors, and said milk inspectors shall be subject to the direction at all times of said City and County Physician. Said milk inspectors shall make weekly reports to the said City and County Physician of their official doings.

SECTION 11. In order to carry out the purposes and provisions of

this ordinance the City and County Physician, the milk inspector or inspectors and any other duly authorized officers of the City and County of Honolulu, and any member of the health and sanitation committee of the Board of Supervisors, shall have the right at any and all times to enter upon or into the premises of any producer or vendor or distributor of milk authorized under the provisions of this Ordinance, and any refusal on the part of such producer or vendor or distributor to allow such entry and such inspection as may be required by such City and County Physician, milk inspector or other officers, may be punished by the revocation of the permit of such producer, vendor or distributor by the said Board of Supervisors. And it shall be unlawful for any person or persons, firm or corporation to obstruct or interfere with the City and County Physician, a milk inspector or any other duly authorized officer or employee of the said City and County in the performance of any of the duties required by this Ordinance.

SECTION 12. It shall be the duty of the milk inspector or inspectors to inspect from time to time all dairies and other milk establishments in the City and County of Honolulu, for the purpose of satisfying himself or themselves that the provisions and requirements of this Ordinance are being observed and obeyed.

SECTION 13. The City and County Physician, the milk inspector or inspectors and other officers of the City and County as hereinbefore described shall have the right to enter and have free access, egress and ingress to all places where milk is stored or kept for sale, and to all wagons, carriages or other vehicles, railroad cars, steamboats, or conveyances of every kind used for the carrying or transportation or delivery of milk for the purpose of consumption in the City and County of Honolulu.

SECTION 14. The City and County Physician and the milk inspector or inspectors shall have the right at any time to take samples of milk from any person, persons or concern selling or exposing for sale or exchanging or delivering or distributing milk in the City and County of Honolulu not exceeding one quart for each sample, such sample to be taken in full view and in the presence of the person from whom said sample is taken, and shall then and there furnish to the person from whom such milk is taken one-half of such sample sealed, and shall retain and seal the other half of said sample. Such sample so retained shall have written thereon an identification number, the date of the taking of the sample and the name of the person by whom it was taken, and a memorandum thereof shall be made by the person taking such sample in a book to be kept for that purpose, showing the name of the owner or driver from whom taken, the date when the same was taken and the number of the dealer's permit.

SECTION 15. Nothing herein contained shall be construed to prevent the use, sale or manufacture of what is known as condensed milk, or what is known as buttermilk, or what is known as sour milk, provided the same are made, compounded or prepared from pure, clean, fresh, wholesome and unadulterated milk within the meaning of this Ordinance, and are in sound and wholesome condition; and provided also that in the case of condensed milk the proportion of milk solids shall be not less than twenty-eight per cent. (28 per cent.), of which not less than twenty-seven and one-half per cent. (27 1/2 per cent.) shall be milk fat.

SECTION 16. Pure skimmed milk shall be permitted for sale or delivery, provided that the cans or vessels containing it shall be distinctly labeled "Skimmed Milk" in letters one and one-half inches high.

SECTION 17. Any person who shall violate any of the provisions of this ordinance shall be deemed guilty of a misdemeanor, and upon conviction thereof shall be punished by a fine of not less than five dollars (\$5.00) and not more than one hundred dollars (\$100.00), or by imprisonment for a term of not exceeding three months, or by both such fine and imprisonment.

SECTION 18. This Ordinance shall take effect thirty days after the date of its approval.

INTRODUCED BY SUPERVISOR R. W. AYLETT.

Date of Introduction Feb. 8th, A. D., 1910.

The foregoing Bill was, at a regular meeting of the Board of Supervisors of the City and County of Honolulu held on Tuesday, February 8th, 1910, ordered pass to print on the following vote of said Board:

Ayes: Ahia Aylett, Cox, Kane, Logan McClellan, Quinn. Total 7.

Noes: None.

D. KALAUOKALANI, Jr., City and County Clerk of Honolulu.

5 ts—Feb. 12, 14, 15, 16, 17.

## MASKS AND CONFETTI

Ready for the carnival at

A. B. ARLEIGH & CO., LTD.  
Hotel St., opp. Union.

## PACHECO'S



## It Is a Mistake

to think that hair will remain healthy, lustrous and luxuriant without care.

## Pacheco's Dandruff Killer

feeds and nourishes the hair and makes it grow thick and heavy.

Sold by all druggists and at Pacheco's Barber Shop. Phone 232.

## Auto Fenders, \$2.50 up. Will

Examine Gutter free of charge also do Plumbing Work. Lowest Prices. Work Guaranteed.

JOHN MATTOS.

Telephone 657. 1175 Alakea St.

## Manila Cigars

Finest Quality and Every Variety.

Large Stock Now on Hand.

## LEE TOMA

33 N. King St. Phone 640.

## STYLISH

### NECKWEAR

Four-in-hands and bows 50c

## SILVA'S TOGGERY

## Forcegrowth

WILL DO IT.

## REAL ESTATE FOR SALE.

### IMPROVED

Wildier & Alexander St.,

6 rooms.....\$3,500

Lanahuli Drive Manoa Valley 6 rooms.....\$4,500

College St., trim house with cottage in rear.....\$5,200

Artesian St., nice lot and small cottage.....\$1,000

Pensacola & Wildier Ave., 6 rooms.....\$3,500

### UNIMPROVED.

4 lots in Block No. 42, Kaimuki.....\$1,400

2 lots in Block No. 26, Kaimuki.....\$ 800

2 lots in Block No. 30, Kaimuki at your own figure.

Beautiful lot in Manoa Valley.....\$ 900

SEE US FOR THESE AND OTHER BARGAINS

## Bishop Trust Co.

LIMITED

Bethel Street

## Oahu Railway TIME TABLE

### OUTWARD.

For Waianae, Waiatua, Kabuku and

Way Stations—9:15 a. m., \*8:20 p. m.

For Pearl City, Ewa Mill and Way Stations—7:30 a. m., \*9:15 a. m., \*11:15 a. m., \*2:15 p. m., \*5:15 p. m., \*9:30 p. m., \*11 p. m.

For Wahiawa—9:15 a. m. and \*5:15 p. m.

### INWARD.

Arrive Honolulu from Kahuku, Waiatua and Waianae—\*8:26 a. m., 5:31 p. m.

Arrive Honolulu from Ewa Mill and Pearl City—7:46 a. m., \*8:36 a. m., \*10:38 a. m., \*1:40 p. m., \*4:31 p. m., 5:31 p. m., \*7:30 p. m.

Arrive Honolulu from Wahiawa—\*8:36 a. m., and \*5:31 p. m.

The Haleiwa Limited, a two-hour train (only first-class tickets honored), leaves Honolulu every Sunday at 8:22 a. m.; returning, arrives in Honolulu at 10:10 p. m. The Limited stops only at Pearl City and Waianae.

\*Daily. \*Ex. Sunday. \*Sunday Only.

G. P. DENISON, F. C. SMITH, Superintendent. G. P. & T. A.

Fine Job Printing, Star Office.

## Curios of all Descriptions

### Woman's Exchange

Hotel Street near Union.

## BEFORE

taking a policy of life insurance in any other company ask to see the

### CONTRACT

- IN THE -

**New England Mutual Life Insurance Company Of Boston, Mass.**

and compare the many advantages it offers with those of other companies

**Castle & Cooke, Ltd**  
GENERAL AGENTS

\$1.00 Short Silk Knit Gloves 35c pair.  
\$1.25 Long Milanese Lisle Gloves, 50c pair.  
\$1.50 Long Silk Gloves, broken lines, 75c pair.  
\$2.25 Long Silk Gloves broken lines, \$1.00 pair.  
Odds and Ends of various kinds of gloves, greatly reduced in price.  
On Sale Monday, Feb. 14 and following days.

## Ehlers

**Coyne Furniture Company**

**For Good Furniture**

Young Building - Honolulu

### DRAWN WORK.

Exquisite Covers and Doilies from Swatow, Oriental Fabrics, Brasses, Coppers and Antimony. Largest Pacific Curio Store in the World.

HAWAII & SOUTH SEA CURIO CO.

**\$1.00 per week will buy you a Gold Watch for Lady or Gent. See us now**

**A. R. VIEIRA & CO,**  
Jewelers.  
Phone 512. 13 Hotel St.

**M. OHTA**  
CONTRACTOR & BUILDER  
Estimates given on all kinds of work  
526 South Hotel St. between Punchbowl & Alapai.

**Iwakami & Co**  
Japanese Silks, Dry Goods and Hats of All Kinds.  
Robinson Block Hotel Street.

**BUY REGAL SHOES**

**Pau ka Hana**  
There Is No Other SOAP AS GOOD  
SOLD BY GROCERS

Toilet articles are advertised by Benson, Smith & Co., today and they are for men as well as women. The assortment is large and the quality unexcelled.

### NEW ADVERTISEMENTS.

Orpheum Theater.....Page 5  
Hawaiian Trust Co.....Page 1  
Wireless Tel. Co.....Page 5  
Metropolitan Meat Co.....Page 8  
Palm Cafe.....Page 5  
Benson Smith & Co.....Page 4  
H. Hackfeld & Co.....Page 2  
Hawaiian News Co.....Page 4

### THE WEATHER.

Local Office, U. S. Weather Bureau, Young Building.  
Honolulu, T. H., Feb. 15, 1910.  
Temperature, a. m.; 8 a. m.; 10 a. m.; and morning minimum.  
64; 68; 70; 74; 62.  
Barometer reading: Absolute humidity (grains per cubic foot); relative humidity and dew point at 8 a. m.: 29.98; 5.086; 68; 57.  
Wind, velocity and direction at 6 a. m.; 8 a. m.; 10 a. m.; and noon: 21 NW; 8 N; 12 N; 9 NW.  
Rainfall during 24 hours ending 8 a. m.: .10 inch.  
Total wind movement during 24 ended at noon 152 miles.

W. B. STOCKMAN,  
Section Director.

### NEWS IN A NUTSHELL

Paragraphs That Give Condensed News of the Day.

There is 26 feet 6 inches of water in the big Nuuanu reservoir today.

Pay cash when you buy at the store and ask for Green Cash Stamps.  
Agnes Kalohi sues Sam Kalohi for divorce on the grounds of desertion and non-support.

Miss Rose Davison, the humane officer, may be found daily from eleven to twelve o'clock at the office of the Associated Charities.

Wanted to buy fresh cow, Jersey preferred; also donkey suitable for child. McVeagh, Star office.

C. E. Stone, member of the Minnesota Legislature and a railroad man, arrived in the Manchuria and put up at the Young.

The business men of Honolulu meet at Nolte's to enjoy the best meals in town for the price, and discuss the happenings of the day.

C. E. Chapin, manager of the New York World, is staying at the Young.  
Ernest R. Willard, a Detroit newspaperman, and his wife are registered at the Young.

Fine lot of Panamas to select from. Call and see them. The Expert Hat cleaners, opposite Club Stables.

You can save your money if you have a saving account at the Bank of Hawaii, Ltd. Open an account today and try it.

Nolte's is in the busi-ess center, is commodious, cool and up-to-date in every respect. Get the Nolte habit and you will not regret it.

It is hard to realize how nearly time and space have been annihilated by the Wireless proves it is so. A message to your friends at sea will be delivered to them without delay.

Eighteen Chinese will be tried on Thursday in police court for running a play in the Liliha Chinese theater last Sunday.

The best staples of the Hawaiian market are served in the most satisfactory manner at Nolte's. Open from 5:30 a. m. to 7:30 p. m.

Cable advices have been received to the effect that there are 22 EEs on board the steamer Alameda on the way here, as members of an excursion party at the Salt Lake lodge.

Henry Van Gleson's claim against J. Alfred Magoon on account of expenses of the appeal of the Maile land case to Washington was resumed on trial by jury before Judge Whitney this morning.

Judge Robinson has filed a written decision in the divorce case of Jennie W. Roberts against John E. Roberts, dismissing the libel for insufficient evidence to support its allegations.

Holders of Floral Parade finance pledge cards are now urged by the committee to send in responses at once. The total of \$2500 absolutely necessary for the expense of the day must be in hand by the end of the week.

St. Andrews Men's Club accepted the offer of Drs. Hodgins and Ramus to take direction of a tuberculosis class under the auspices of the club. A committee holding office one year will have charge of the class, employing a trained nurse at once.

George Robert Davis, a topographer of the United States Geological Survey, arrived from Washington yesterday to take a hand in the territorial conservation work. He will go to Kanae on Thursday to join the staff of Mr. Birdseye.

A directors' meeting of the Merchants' Association will be held at 3:30 tomorrow afternoon, the object being to clear the desk of accumulated business. President Waldron decided late today on tomorrow, as inward and outward steamers are liable to interfere at the weekend.

Charles Furneaux, who was U. S.

consular agent at Hilo before annexation, is in town with Mrs. Furneaux to see the floral parade. Many years ago Mr. Furneaux was one of a group of artists in Honolulu including Jules Tavernier and Joe Strong. Removing to the big island he became one of the Olan coffee pioneers and now has a beautiful home in that section.

## VIEWS ON PROHIBITION

(Continued from Page One.)

If you are going to restrict the free use of drugs, you should restrain the promiscuous dispensation of liquor.

I then approached a business man.

"It will eventually ruin Honolulu,"

he said. "When you come to realize what the revenues from the liquor

licenses amount to annually and the money that is spent in this town by

tourists, and that expended by the soldiers if the posts you cannot fail

to realize and see the danger to our commercial side. There are now ju-

vestors or rather intending investors awaiting the result. And if prohibition passes, they will depart to in-

vest elsewhere. Surely they can fore-see the result financially. The only

money that is spent in Honolulu by the posts is for cigars, tobacco and

liquor. All else is furnished by the government. That means after prohibition passes, we can look for nothing

from that quarter. The money that the boys spend circulates through the town and keeps business moving. Of

all the movements which could be advocated for Honolulu's disparagement,

this is the worst. No, I do not believe there will be tourist traffic after

this movement comes into effect. There is little enough now in Honolulu,

without taking that away. This cry of the poor Hawaiian is rather

inane, and comes at a pretty late day. After the Hawaiian has nothing more

to lose, they are afraid he will lose it. If they are so interested in "The

Poor Hawaiian," let them remove from the streets the blind Hawaiian

beggar, a spectacle never seen before here. I make you a safe bet what

coins he does get are dropped into his palm from the chaps who have

come from the bar."

The next on my list was a society woman of Honolulu, and as it did not

affect her greatly, her opinion was neutral.

"I should be very glad to see every

saloon in this city with closed doors. I have nothing to gain or lose, but I

cannot see that the humiliating position of the native Hawaiian today is

due to spending his honest wages within those doors. He has lost everything, even his sense of pride, and

seems an outcast in his own land. Most Hawaiians mortgaged their

homes for gin, and now there is no home left, but a tenement in some

fool oriental lodging house. I think the soldier boys should have their

canteen. Society? Ah well, society cannot be affected in any way I am

sure by prohibition."

And then I spoke with an intelligent wife and mother.

Prohibition? Well, I am sure it

cannot come too quickly for some of us," she said. "Men may prate of

business affairs and the loss of money, but money cannot buy happiness, and what is the loss of it compared to the forfeiting of respect and

refinement of the home? Men talk somewhat idly of women staying at home to mind their children, when

approached about the ballot, but what can they answer when you tell them, that many a woman has no home

through having no voice in the affairs which controlled it. I believe that

that many a woman has no home on of voting on the question of prohibition, there will be no more

saloons. I myself so not advocate total prohibition, for there are many

men who are temperate in their consumption of liquor, but what I do say is this—that the licenses granted to

saloon men should be high. Not only if Congress grants the right to women

would fewer be able to pay it, but it higher grade article. They could not

afford to sell a good article cheaply. And naturally, the men who require

a good standard would get it, while those who are selling their souls for

a polluted grade of liquor, and squandering the wages which belong to the

wives and children would be deprived of the home-breaking stuff which now

saloon men sell them. I think, too, that the number of saloons should be

restricted, and that those few with licenses should be under the strict

surveillance of the authorities. And also there should be a list of incompetent

men in whose behalf their wives have pleaded, to whom if liquor

were sold in an intoxicated condition, the license would be forfeited. There

seems to be a law concerning this now, but I have proved it to be very

lax.

"A man, as my wife will tell you,

who has had experience, is entirely transformed by liquor, and many a gentle and loving husband and father is changed to an inhuman brute, under the influence of intoxicating stimulants. You know Bishop Simpson of New York once told Mrs. Cady Stanton there would never be prohibition till the great army of suffering wives and mothers and sisters marched in a body to demand it at the polls. I am glad the women are coming to the front. Were there no liquor, there would be fewer jails and poor-houses."

Taking this as a suggestion I visited the Police Station, where I obtained the following hard facts:

### ASSAULT AND BATTERY.

Jan.	27
Feb.	8
Mar.	27
Apr.	22
May	32
June	23

Total for 6 months .....139

July	42
Aug.	18
Sept.	27
Oct.	33
Nov.	39
Dec.	25

Total for 6 months .....184

Total for 12 months .....323

### DRUNKENNESS.

Jan.	68
Feb.	55
Mar.	64
Apr.	74
May	54
June	57

Total for 6 months .....372

July	60
Aug.	76
Sept.	64
Oct.	65
Nov.	57
Dec.	34

Total for 6 months .....356

Total for 12 months .....728

"What percentage of the cases of assault and battery can be justly attributed to intoxication?" I asked a judge of this city.

"I think I am perfectly safe in saying fifty per cent," he answered.

There are two thousand one hundred and ninety-five other convictions

for various crimes for which it is possible that liquor may have been

responsible either directly or through inheritance, so those who may quarrel

at the material harm which can be averted by prohibition will have ample

opportunity for speculation.

## BIRD CATCHERS ARE INDICTED

(Continued from Page One.)

teen for publication. They are as follows:

Masayoshi Houme and twenty-two others, killing birds on United States reservation. This is the Thetis batch. Kurahana, violation internal revenue regulation.

John Kekahuna, smuggling opium.

Vincent Kaumi, smuggling opium.

Ching Kim Hee, smuggling opium.

Charlie Park, smuggling opium.

Charlie Ah Foo, smuggling opium.

Kai Pal, smuggling opium.

Leong Lai, smuggling opium.

Ah Fook, smuggling opium.

Leong Hee Yen, smuggling opium.

Hirakichi Yoki, violation Edmunds Act.

Charles Kekoa, bigamy.

Eloy Atienza, bigamy.

Noohookula, breaking into a post office with intent to commit depredations.

Later, in addition to the above list, Carl On Tai was arrested for unlawfully purchasing property of the United States, meaning the buying of clothes, etc., from soldiers.

After setting a number of cases for trial this morning U. S. Judge Robertson, at the instance of Assistant District Attorney Rawlins, ordered a recess until 11:45 to await a report of the grand jury.

The grand jury came out of District Attorney Breckons' office, however, at 11:30 and Judge Robertson having been sent for resumed the session at once.

Norman Watkins, foreman, presented a partial report of the grand jury containing nineteen indictments, which Mr. Rawlins moved be placed on the secret file and that bench warrants be issued for the persons indicted. It was so ordered.

The indemnity period of the Standard Accident Insurance Company's new accident policies makes them practically grant indemnity for life. If you carry or intend to carry accident insurance you should investigate this.

Hawaiian Trust Co., Ltd., agents.

"A man, as my wife will tell you,

## Second Week of Stock-Taking Clearance Bargains

TREMENDOUS REDUCTIONS ON BROKEN LINES TO EFFECT IMMEDIATE SALE.

CLEARANCE OF LADIES' PARASOLS.

Pongee, Fancy Checked and Striped, Solid Colors and Dresden effects.

\$1.75 Parasols.....	\$1.00	\$3.75 Parasols.....	\$2.50
2.25 ".....	1.35	4.00 ".....	2.90
2.75 ".....	1.90	4.50 ".....	3.25
3.00 ".....	2.00	5.75 ".....	4.50
		6.00 ".....	4.90

### LADIES' SILK WAISTS.

Ladies Black Silk Waists Original Price, \$7.50—Sale Price \$2.50.

### LADIES' SILK WAISTS.

Black and white Polka Dot, Original Price, \$6.75—Sale Price \$1.50.

### LADIES CREPE DE CHINE WAISTS.

Cream Color, Original Price \$8.00—Sale Price, \$1.90.

## SACHS' DRY GOODS CO.,

CORNER FORT AND BERETANIA STS.

## People

Who like meat of quality and who overlook quantity in their purchases will do well to try buying at this market. Quality is first with us, and we do not charge for it.

## Metropolitan Market

W. F. Heilbron, Proprietor. Phone 45.

## Mr. Merchant!

Have you learned our prices for hauling freight to and from the wharves? We will be pleased to quote rates.

**Honolulu Construction & Draying Co., Ltd.**

OFFICE FORT STREET BELOW MERCHANT.

Phone 281.

## We Use No Preservatives In Our Cream

Special care to keep it cold and protect it from contamination assure ample keeping qualities.

Many believe, too, that

PURE CREAM IS MORE HEALTHFUL.

We sell direct to our customers, or through May, Day or Lewis the grocers.

**The Pond Dairy**

PHONE 890

P. O. BOX 162.

## EXCLUSIVE PATTERNS IN HANDSOME GREYS

English and American Weaves. Made to your order with fit and style unequalled.

W. W. AHANA

62 South King Street



Of modern and antique designs in large assortment. Never before has there been such a display. In dull or bright finish.

A few suggestions:

9-in Jardinieres .....	\$3.75 each
Hanging Fern Baskets .....	2.00 each
Book Racks .....	3.00 each
Fern Dishes (lined) .....	2.25 each
Historic Plaques .....	3.00 each
Finger Bowls .....	3.75 doz.
Smoking Sets .....	6.50 each

We invite your early inspection.

**W. W. DIMOND & CO., LTD**

53-57 King Street,

Honolulu