

## The Latest In Sports

What the Wrestlers, Boxers and Base  
Ball Artists Are Doing.

The world's best mark for bowling, although not standing as a record, was moved 13 points higher on January 3, when Lindgren and W. Richter dropped 1421 pins in three games in doubles. A few days previously Lindgren and Bangart scored 1408 pins. The marks in the games were phenomenal, each man bowling well above the 200 mark in each trial. Lindgren's total was 717 and Richter's 704.

That Battling Nelson, the former lightweight champion, is fighting his way into the grave was an opinion expressed in Gotham the other day by sporting men who saw Nelson outpointed by One Round Hogan of California. Tommy Ryan, the former middleweight champion, declared that Nelson is about all in. "He is only a shell of his former self, although he still has the heart of a lion," said Ryan. "Nelson ought to quit the game now and settle down. He cannot last much longer."

Joe Thomas, the former welterweight champion of the world and a San Francisco pugilistic product, has retired from the boxing game. Thomas was advised to take this step after he was beaten recently in Oakland, but insisted at the time that he was able to get into condition. More recently, however, he has been thinking over the matter and stated that he would try for no more bouts. Thomas was a popular fighter in the days just before and after the fire. He was regarded as the welter-weight champion, but met defeat, first of all, at the hands of Stanley Ketchel. Ketchel was an unknown quantity when he got that match with Thomas in Marysville. It was regarded as easy picking for Thomas, but much to the surprise of the pugilistic fans, Ketchel gave Thomas the fight of his life, and almost whipped him. Thomas was given a shade the best of it in the decision, and the two men were immediately rematched by Coffroth for his Colma arena. They put up the most spectacular match ever held at that arena, Ketchel finally winning in the thirty-second round. That bout gave Ketchel a reputation and he rapidly worked himself into the front ranks. Thomas claimed that he was bothered doing the weight, which was unquestionably true, but from that time on the Californian was on the down grade, never fully recovering from the punishing blows administered by the late middleweight champion of the world.

### Trouble at Hana.

Word comes that some of the men working on the bridges in the Hana district are dissatisfied and gone on strike. It seems that the contractors wanted to finish up the bridges on the Kailua side first. They brought the Hana men to work there but as the others thought that work belonged to them, they persuaded the Hana men to return. These men were therefore laid off, and now the others have struck out of sympathy. It seems to be a case of the men trying to dictate to the contractors how they shall do their work. The gang working at the Pawelo end are not in sympathy with the strikers and have told them to return to work.

## Storm Brewing

Board of Education Relieve Pope Of  
Much Authority.

A resolution taking much of the administrative authority out of the hands of Superintendent Pope of the department of public instruction and placing it in the hands of the teachers themselves, or at least of the supervising principals, was passed at the last session of the school commissioners.

This resolution provides for an annual meeting of the supervising principals just prior to the summer meeting of the school commissioners themselves, and the former will take up all matters relating to their work and the schools in general and make recommendations to the legislative board.

Considerable criticism was aimed at Superintendent Pope last week by Commissioner Stanley and others for presenting proposed courses of study to the supervising principals in the manner in which he did. This was, Stanley claimed, to present a regularly drawn up course to the principals at the eleventh hour and ask them to pass it as their own recommendations, whereas the object of the school commissioners, when they had ordered that meeting, had been to have the principals fully discuss courses of study and make their recommendations from that discussion.

Commissioner Aiken also thought that Mr. Pope was lax in keeping in touch with the commissioners over matters relating to the schools, and referred to numerous incidents where he had been approached by principals and teachers for information and was unable to give any.

The resolution which effects such material change in the administration of the department was introduced by Commissioner Aiken of Maui, and as amended and passed, reads as follows:

"Resolved, That the supervising principals shall hold a regular annual meeting each year in Honolulu, just prior to the summer meeting of the commissioners of public instruction for the consideration and discussion of various educational problems and to formulate recommendations thereon.

"School principals and teachers may send in suggestions for consideration at these meetings and may be present to take part in the discussion by invitation.

"In case of a minority vote on any subject under discussion, minority reports shall receive due consideration by the commissioners.

"The questions to be discussed and voted upon at these meetings may include the following:

"(a) Changes and adoption of text books.

"(b) Changes in course of study and their adoption.

"(c) Changes in the form of principals' reports.

"(d) Changes in the forms of supervising principals' reports and in the work required of them.

"(e) Changes desired in the methods of instructions and training in the Honolulu Normal School of cadets destined to come under their supervision.

"(f) Any and all other matters relating to the proper conduct of the schools of the Territory."

A fine new ambulance arrived last week for the Paia hospital. This ambulance is the first one to arrive on Maui, and is from the factory of the White Automobile Company.

"THE HEATHEN CHINEE IS PECULIAR."



Italian Officer (reading news from China): "A war with a battle That looks like bad management." —Partridge in Punch.

## Honolulu News.

HONOLULU, Jan. 19.—The grand jury has returned "no bill" in the Murray case.

Thurston has a proposition for building a large theatre for stock and visiting companies.

James Cowan died here yesterday.

HONOLULU, Jan. 18.—Frear will soon reply the charges against him.

The school commissioners say that a general advance in the educational system of the islands is needed.

Wilson has rested his case, and the other side will be heard today.

The Murray case is up before the grand jury. The territory is represented by Lindsay. Cathcart requested the change.

The Hilo wharf tangle is before the committee again. This time over the rules and regulations.

H. Gooding Field, late chief accountant of the Panama commission, before the Chamber of Commerce yesterday, said there must be scientific management of territorial affairs looking towards government economy, or government by commission must follow.

## Telegraphic News. Preparing For Trouble.

PEKIN, Jan. 19.—The forces guarding the foreign legations are preparing for an outbreak of the populace tomorrow, when the matter of the abdication of the Emperor is brought up. Yuen Shi Kai will attend the conference tomorrow. He has been openly charged with disloyalty to the throne. The legation guards are prepared for any eventuality. The three men who threw the bomb at the premier have been strangled to death.

WOO SUNG, Jan. 19.—Transports carrying 4,000 republican troops have sailed for Chee Foo.

TRIPOLI, Jan. 19.—Twenty Italian transports are in the harbor unloading. They will build railroads into the interior after the plans of Lord Kitchener in the Sudan.

BUFFALO, Jan. 19.—The National Executive Committee of the democratic party has decided upon Baltimore as the convention city.

ABERDEEN, Jan. 19.—The British ship Westernall went down off this coast yesterday. Fifty-four out of a crew of 56 were drowned.

NEW YORK, Jan. 19.—Abe Attell knocked out Brown in the tenth round.

## Fires In New York.

NEW YORK, Jan. 18.—The Terminal Company's warehouse was burned today. Loss about \$1,250,000. A fire in the Knickerbocker Trust Company caused a loss of \$100,000.

HAVANA, Jan. 17.—This city is tranquil since the note received from Secretary Knox. The Spanish favor intervention.

WASHINGTON, Jan. 18.—A dispatch from the gunboat Yorktown yesterday, announces the illness of her commander from yellow fever.

NANKING, Jan. 18.—The treaty of peace awaits the signatures of the principals. Sun Yet Sen has congratulated the prime minister.

PEKIN, Jan. 18.—The Manchu princes declare in favor of accepting the terms of peace offered by the republic.

## Important Capture

Thief Taken Who Has Been System-  
atic Stealer.

A son of Nippon who has been a sort of jack of all trades, living at Lahaina and who has been systematically robbing all his employers came to grief yesterday. He became bold, and when his sweetheart spoke of getting her picture taken, he volunteered to loan her his watch, so as to make a good showing. The Japanese beauty started gaily for the photographers, with the watch dangling from her best kimono. On the way she met another Jap who thought he saw a resemblance between the watch on the fair ones breast and one he had lost. He notified the deputy sheriff, and together they interviewed the girl. She said she had been loaned the watch by her sweetheart. The sweetheart was found and as his answers were unsatisfactory to the sheriff, and as the other Jap identified the watch, he was taken into custody.

The great surprise was to come, however, when the police seized the effects of the thief. There they found tools of all description. Carpenter's tools, blacksmith's tools, plumber's tools, and garden tools. Anything from a crowbar to file. When everything had been unloaded, the stuff covered four tables twelve feet long. If this fellow should serve time for all the charges now against him, his girl will have to hunt up another sweetheart, as this one will be lost to her for some time.

### Dedication Services.

Those invited to take part in the different services during Saturday and Sunday are as follows:

Central Union Church of Honolulu, Rev. Doremus Scudder, D. D., Pastor; Portuguese, Honolulu, Rev. A. V. Soares, Pastor; Bishop Memorial, Honolulu, Rev. John L. Hopwood, Pastor; Lihue Union, Lihue, Rev. John M. Lydgate, Pastor; Kahului Union, Kahului, Maui, Rev. Henry P. Judd, Pastor; Makawao, Maui, Rev. E. B. Turner, Pastor; Wainee, Lahaina, Maui, Rev. D. W. K. White, Pastor; Kahanu, Wailuku, Maui, Rev. D. B. Kaunehewa, Pastor; Paia Portuguese, Paia, Maui, Rev. M. G. Santos, Pastor; Hilo Foreign, Hilo, Hawaii, Rev. August Drahms, Pastor; Haili, Hilo, Hawaii, Rev. S. L. Desha, Pastor; Hilo Portuguese, Hilo, Hawaii, Rev. Ernest G. Da Silva, Pastor; Kealahou, Central Kona, Rev. A. S. Baker, M. D., Pastor; Kohala Union, Kohala, Hawaii, Rev. J. F. Cowan, D. D., Pastor; and three ministers appointed by the committee of nine of the Maui Association of Churches to represent that association.

Delegates from the following Maui churches; Wailuku Japanese Church, Wailuku; Hailu Chinese Church, Wailuku; Paia Japanese Church, Paia.

The following individuals invited are Rev. C. G. Burnham, Rev. A. B. Weymouth, M. D., Lahaina, Maui; Rev. A. S. Short, Rev. Father Maximin, Wailuku, Maui; Rev. R. E. Smith, Rev. W. B. Oleson, Rev. H. H. Chamberlain, Rev. John P. Erdman, Rev. Frank S. Scudder, Rev. O. H. Gulick, Rev. J. W. Wadman, D. D., Rev. Wm. D. Westervelt, Rev. Henry K. Poepee, Rev. H. H. Parker, Honolulu.

As announced fully in last week's

## Chamber Of Commerce

Holds Annual Meeting and Elects  
Officers.

The annual meeting of the Maui Chamber of Commerce was held in the town hall last Friday afternoon. The Trustees held a meeting previous to the meeting of the chamber.

Besides the election of officers the business taken up by the chamber was a change in the by-laws relative to the membership of the chamber.

The matter of selecting a princess to represent Maui in the Floral Parade, was left in the hands of a committee composed of D. C. Lindsay, W. T. Robinson and H. B. Weller. The committee was also allowed \$150 for the expenses of the princess.

A petition requesting the belt road commission to macadamize the Maliko gulch road, and to keep it closed until it is macadamized, was read to the chamber and received unanimous endorsement.

The officers and committees elected were as follows: President, F. F. Baldwin; vice-president, R. A. Wadsworth; secretary, D. H. Case; treasurer, C. D. Luffin. Board of Directors: F. F. Baldwin, R. A. Wadsworth, D. H. Case, C. D. Luffin, W. F. Pogue, W. A. McKay, E. B. Carley, D. C. Lindsay, Edgar Morton, L. von Tempeky, H. B. Penhallow, J. N. S. Williams, Wm. Henning, W. T. Robinson and W. Weinheimer.

### Good Things.

Wailuku will have plenty of entertainment Saturday evening. The basket ball games begin at 7 o'clock, then at 8 o'clock the moving picture show at the Orpheum. These picture shows are becoming very popular, and some extra good pictures will be shown Saturday evening. After the picture show there will be a dance and concert at the town hall by the Hilo Glee Club.

Dr. and Mrs. Fred Irwin of Olat, Hawaii, are visiting on Maui for three weeks. Both the doctor and Mrs. Irwin are enthusiastic over the Maui weather. They have their auto with them, and are enjoying our good roads also. Dr. Irwin says it takes him 40 minutes to go from Olat to Hilo a distance of nine miles.

paper the complete program for Sunday, and the days before and after for the dedication of the new Wailuku Union Church is as follows: Saturday at 3.00 p. m., the council for the theological examination of Rev. R. B. Dodge. On Sunday, at 3.00 p. m., services for the dedication of the Church. Sunday evening a union service of all nationalities at the church, to which the public are cordially invited. Monday evening, at 7.45, the lecture by Robert Elmer Smith, Pastor First Methodist Church, Honolulu, his subject be "The Philosophy of the Hustler," admission to the lecture being 50c. The tickets are now on sale by Mr. V. A. Velleisen, Mr. W. H. Engle, at the Gymnasium; First National Bank, Mrs. A. J. Gossin, at the Library; and Mr. E. J. Walker, at the Puunene Store. The proceeds of this lecture will be used in meeting the expenses in connection of the erection of the Henry Perrine Baldwin Memorial Organ, which the Maui Aid Association is to donate to the church in memory of its first and life-long president. He was also a charter member of the church, and joined the same in 1866.



# THE MAUI NEWS

Entered at the Post Office at Wailuku, Maui, Hawaii, as second-class matter

A Republican Paper Published in the Interest of the People  
Issued Every Saturday.

Maui Publishing Company, Limited.

Proprietors and Publishers

SUBSCRIPTION RATES, IN ADVANCE \$2.00 per Year, \$1.25 Six Months  
\$2.50 per year when not in advance

Chas. C. Clark Editor and Manager

SATURDAY, JANUARY 20, 1912

## The Panama Canal.

PRESIDENT Taft in his message on December 21st to Congress, in treating the subject of tolls to be levied on ships passing through the Panama Canal, said:

"I am very confident that the United States has the power to relieve from the payment of tolls any part of our shipping that Congress deems wise. We own the canal. We have the right to charge for its use. Those tolls must be the same to every one; but when we are dealing with our own ships the practice of many governments of subsidizing their own merchant vessels is so well established in general that a subsidy equal to the tolls, an equivalent remission of tolls, cannot be held to be a discrimination in the use of the canal. The practice in the Suez canal makes this clear. The experiment in tolls to be made by the President would doubtless disclose how great a burden of tolls the coastwise trade between the Atlantic and the Pacific coasts could bear without preventing its usefulness in competition with the transcontinental railroads. One of the chief reasons for building the canal was to set up this competition and to bring the two shores closer together as a practical trade problem."

These expressions are attracting much dissatisfied attention in England, as English ships will be the principal users of the canal, and the newspapers are quoting the first clause of the third article of the canal treaty between the United States and Great Britain, as follows:

"The canal shall be free and open to the vessels of commerce and of war of all nations observing the rules on terms of entire equality, so that there shall be no discrimination against any such nations, or its citizens or subjects, in respect of the conditions and charges of traffic shall be just and equitable."

It is astonishing in view of the fact that the canal is not in British territory, that the United States has to go to England for permission to build it, and that before that permission could be obtained the United States government felt itself compelled to submit to the terms dictated by England.

But recognizing that Great Britain is the mistress not only of the seas, but apparently the dictating power over all lands in any hemisphere that lie between two seas, our government went on its knees and signed a treaty acknowledging England's right to dictate every condition concerning the canal.

That is all of the matter. Great Britain allowed the United States to spend \$500,000,000 in the construction of the canal, and then we acknowledge her right to boss it and dictate the terms upon which our own merchant and warships may use it.

Truly, we need an arbitration treaty, so that we may also get some use out of the canal which we have built, under the astonishing submission we make to the foreign "mistress of the seas."

At the meeting held last week in Honolulu, the Board of Education sat down pretty heavily on Messrs. Pope, Gibson & Co. for their evident attempt at bulldozing the supervising principals. When the MAUI NEWS opened the fight against the present system of education as practiced by those in power in Honolulu, about a year ago, and showed up the shortcomings of Mr. Pope and his advisers, we were ridiculed by almost every paper in the Territory. Recent developments have proven that we were right, and there is no doubt but that the next meeting of the commissioners will be even more strenuous than the last one.

Some months ago the Sheriff announced his intention of enforcing the curfew law. The Sheriff no doubt gave his officers their instructions, but they have either gone unheeded or been forgotten. The gangs of juvenile hoodlums who congregate on the streets should be suppressed, however, as they are becoming a genuine nuisance.

## The Juggernaut.

(By Will Carleton, in Every Where.)

TEN men walking along the street,  
Hailing the joys that mortals meet;  
Comes an auto of swift design—  
Now, alas, there are only nine.

Nine men crossing the public way,  
Full of the joy of the day;  
Sound, the whistle a bit too late—  
Now, dear me, there are only eight.

Eight young children upon the road,  
Playing in front of their abode;  
Comes a smart recruiter of heaven—  
Now, you note, there are only seven.

Seven men crossing the busy street,  
Little knowing what they will meet;  
Comes a craft of the River Styx—  
Now, if you count, there are only six.

Six men running a touring car,  
Ponder not how safe, but far;  
One of them reaches home alive—  
Hospitals shelter the other five.

Five joy riders unsafe to meet,  
Riding amuck in the midnight street,  
Fifty miles per hour or more;  
Now there are merely part of four.

One poor fellow who stays at home,  
Never abroad in the streets to roam;  
He is in the invalid ranks—  
But he as yet is living, thanks.

## Scrap Book

### God Bless Our Wives.

One of the best known lawyers in Cleveland attended a banquet of his fraternity the other night and responded to the toast, "Our Wives." On this classic and congenial theme he expanded and fairly glowed. But even after his eloquence fades from the memories of those present one personal note will remain. He said in part:

"God bless our wives. They know us from alpha to omega, our secret faults and virtues. But they rise in arms against him who would expose the former or belittle the latter. How well I remember an occasion upon which my own dear wife had me paged in a restaurant where I was eating. She said to the waiter, 'Is Mr. Dashblank here?' 'Mr. Dashblank?' asked the waiter. 'Is he that fat old man with a red nose and bald head?'"

"Yes, that's the man," answered my wife. 'But I want you to understand that he isn't fat and he isn't old. And he's not very bald, either. I shall report you for your insolence. His nose isn't a bit red. Get him for me at once. You evidently know him.'"

"God bless our wives."—Cleveland Plain Dealer.

### Two Ways Hath Life.

Two ways hath life. One as a stream  
With flowers environed quite the source.  
The even tenor of its course,  
Hardly betrayed by transient gleam.  
No echo marks the onward roll.  
Of waves that without plaint or sigh,  
Winning scant glance from passerby,  
Unhasting reach the appointed goal.

One as a torrent unconfined  
Bursts forth headlong with frenzied will.

No agency its rage can still,  
Nor barriers curb, nor forces bind.  
The first achieves, the second aims;  
One limits hath, the other none.  
With every day its task begun—  
Patience, ambition, are their names.

—Alfred de Musset.

### Jogged His Memory.

Here is the story of an actual experience in buying socks in London:

A wealthy but peppery American went into an expensive Bond street haberdasher's the other day, and when he stated his object the clerk carefully measured the visitor's right foot, and the purchase was made. On his way out the visitor's attention was caught by some hosiery near the door. To the clerk, who was obsequiously following him out, he said, "I'll take a pair of those too."

"Yes, sir," said the clerk. "What size do you wear, sir?"

"Why, you pinheaded ass," reminded the other, "do you think my foot has grown since you measured it?"

Then the clerk remembered.—New York Sun.

### Bungled It, After All.

Here's one of Will Irwin's stories, told in that quiet, drawing fashion which scores every point. Two of his feminine friends, it appears, were walking down the street the other day, when they noticed another woman just in front of them. "That lady's waist is unbuttoned in the back," said one to the other. "I believe I'll speak to her about it."

The other looked over the unconscious subject of comment. Then she shook her head. "I don't believe that I would say anything to her," said she. "I doubt if she is the kind of person who would appreciate your kindness. She isn't very neatly got up, don't you see? Her shoes are horribly run down at the heel."

"I don't care," said Mr Irwin's acquaintance. "Any woman would be glad of a warning that her waist is unbuttoned. I don't care if she doesn't seem to be a very nice person. I shall call her attention to it."

"And so," said Mr Irwin, "she walked up to the stranger and tapped her on the shoulder. As the woman turned she said, just as sweetly as she knew how: 'Pardon me. But did you know that your shoes are run down at the heel?'"—Herbert Corey in Cincinnati Times-Star.

## SUBSCRIBE FOR THE MAUI NEWS COMBINATION

## Honolulu Music Co.

Jas. W. Bergstrom, Manager.

88 King Street, Honolulu.

Latest Hawaiian Records,  
Victor and Columbia Talking  
Machines, Primatone and  
Autopiano Players, Knabe  
Pianos. Latest Popular Music,  
etc.

### FOR SALE.

One Model to Buick Runabout, in first  
class condition. Enquire  
C. D. LUFKIN.

## Brief History of the Wailuku Church.

The first building of the Wailuku Union Church was erected in the early part of 1867. Mr. Christopher H. Lewers, Mr. Edward H. Bailey and several others then living in Wailuku were interested in its erection, and assisted in the work. "The Friend" of a somewhat earlier date speaks of the work of the ladies of Wailuku in raising nearly \$400 toward the new building.

Rev. Thomas Gairdner Thurston, second son of Asa and Lucy G. Thurston, of Kailua, Hawaii, was the first pastor of this Church. He was ordained in the Kaahumanu Church, and ministered to both the English-speaking and Hawaiian congregations, beginning his work in the month of October, 1866.

The Wailuku Union Church was organized, January 15th, 1867. Rev. W. P. Alexander was moderator of that council, Rev. S. E. Bishop, D. D., was the scribe. The papers of incorporation were issued the year before, on October 10th.

Those who formed themselves into a body desiring recognition and hence charter members of the new Church were, in the order given in the old record book: Thomas G. Thurston, H. F. Thurston, Wm. H. Bailey, Ellen R. Everett, Chas. T. Kittredge, M. C. Kittredge, Edward Bailey, H. P. Baldwin, Caroline H. Bailey and Mary A. Alexander.

The first Board of Trustees of the Church was chosen as follows: Christopher H. Lewers, H. Cornwell, S. Peck. The succeeding board consisted of Samuel T. Alexander, Edward H. Bailey and T. W. Everett.

On September 13th, 1868, Rev. Mr. Thurston resigned his charge, having decided to leave the country for the Mainland. Rev. W. P. Alexander, the honored Wailuku missionary, was the next pastor of the Church. Succeeding him were Rev. D. Dole, who had previously ministered on Kauai, Rev. F. H. Robinson, Rev. N. W. Lane, Rev. D. Bissel, Rev. John M. Lewis, Rev. Edward G. Beckwith, D. D. The latter preached while pastor of the Makawao Church.

Some of the interesting facts connected with the history of the Church are that, on April 4th, 1880, Mr. Edward H. Bailey united with the Church; that from that date to the time of his death, on November 5th, 1910, he faithfully served the Church in many ways, and for a time was the only living member of the organization; that for a long period Mr. C. B. Wells served as Trustee, and Judge Wm. A. McKay, as Treasurer; that on the first Sunday in November, 1905, the house of worship was opened after it has been closed for several years, and that at the request of many of the former attendants of the Church, Rev. Rowland B. Dodge, the Agent for the Hawaiian Board, for Maui County, was engaged to hold service.

On August 30th, 1906, those interested in reviving the organization met and voted to join the Church, on September 6th. At that time five people united on confession of faith and ten by letter.

In December, 1910, the property of the Church was condemned by the County; land and buildings were appropriated for Government use.

The work on the new edifice began in February, 1911. The Corner Stone was laid with fitting ceremonies on May 7th, 1911. The address on that occasion was delivered by Hon. Selden B. Kingsbury.

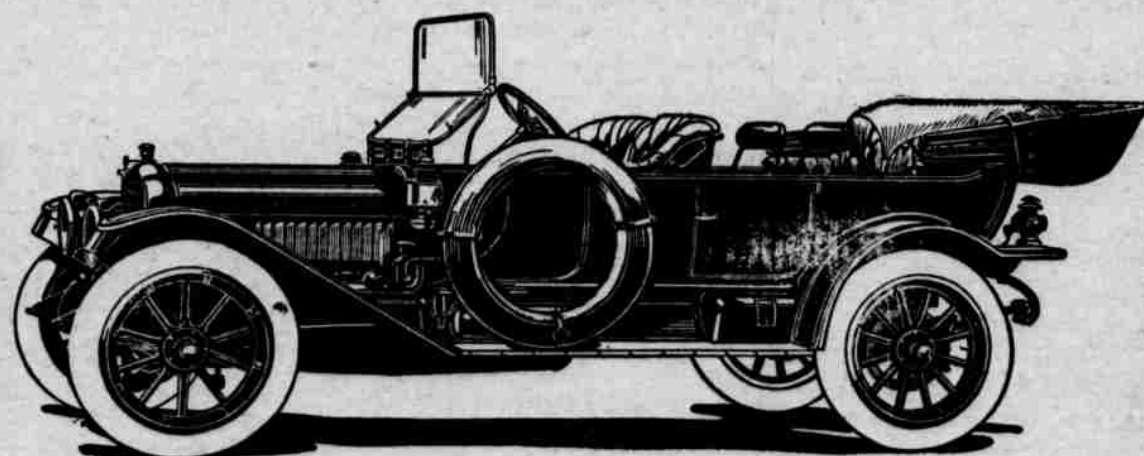
The new Church building is the result of the hard and united work of the members of the Church and the Board of Trustees, who have spent much time on the details of the structure and in raising the money. The floor plan was first worked out by the Minister of the Church, with a view to increasing the seating capacity by the use of the Sunday School rooms, when necessary. The elevation and general design of the outside of the structure, the Gothic arch, uniform throughout the building, and the truss are the result of the careful work of Mr. W. R. Patterson, who, from the very day the Board of Trustees of the Church accepted his liberal offer has put his whole heart into the work of the erection of a suitable building for the worship of the Church and congregation of which he has been a member since July 1st, 1911. The firm of Emory & Webb, of Honolulu, very generously reviewed the plans, making slight alterations in the building which have added to its beauty and usefulness; they also furnished the blueprints. Mr. Hugh Howell acted as consulting engineer, and has done faithful and efficient service.

The furniture was selected by the Minister while in New York last winter. It was purchased through the firm of Alexander & Baldwin. Mr. R. E. Smith, the New York buyer, chose the color scheme for the windows assisting the maker, Mr. Chas. E. Hogeman, in the selection of the designs. The gas equipment was also secured through the same firm.

The stone for the Church was found on the fields of the Wailuku Sugar Company and in the lao Valley. The cross was cut by Japanese workman out of a single stone from the land of Mr. and Mrs. W. H. Field in lao. The asbestos shingles and ohia flooring were furnished the firm of Lewers & Cooke; other materials by the Kahului Railroad Company.

The many gifts to the Church from loving friends, the memorials yet to be added, make the building in every sense a true monument to the work of the early missionaries, their sons and daughters, and those who in noble lives have now passed from service here.

The gifts in money from people in Hawaii and away show how deep an interest many have taken in the progress of God's Kingdom on Maui.



THE WHITE "SIX"

A man doesn't have to be a mechanic to recognize the simplicity of the WHITE motor. If he is at all familiar with the appearance of motors he will be likely to think, looking at a WHITE, that some parts are missing. It is all there, however, and whatever parts have been eliminated result in its efficiency, simplicity and economy of operation. To the average man the WHITE motor is the most attractive part of the car; because its probability to need repairs is minimized, and, if it does need adjusting its construction is not so bewildering that he cannot make minor repairs himself, however little he may know of mechanics.

## Five Important Features of White Motors

First of all, the four cylinders are cast en bloc—that is in one piece. This construction gives a rigidity to the crank case and keeps the bearings in alignment.

The cylinders each have a three and three-fourth inch bore and five and one-eighth inch stroke. The stroke is very long in proportion to the bore, resulting in increased power with less effort, which means maximum efficiency and gasoline economy.

There are four forward speeds, with direct drive on the third, which means a speed for every condition, giving greater road efficiency, and making it unnecessary to overtax the engine at any time.

WHITE motors are equipped with a honeycomb radiator in which the cooling surface is practically twice that of any ordinary kind. This radiator is the most efficient of which we know, and, because of its high cost, is used only in the better grade of cars.

A double oiling system is used. After lubricating the connecting rod bearings, the oil drops into the crank case, where it is used in the regular splash system. Besides being a very effective means of lubrication, the economy of using the oil twice is apparent. The crank shaft casing and the side plates on the motor, which when removed make the crank shaft accessible, confine the oil to the inside of the motor, preventing a general beaming with oil which would otherwise occur.

## VOLCANO STABLES & TRANSPORTATION CO., LTD.

AGENTS HILO, HAWAII



## THE FIRST NATIONAL BANK OF WAILUKU.

## Statement of Condition.

Wailuku, Maui., T. H., Sept. 30th, 1911.

RESOURCES		LIABILITIES	
Loans, Discounts, Overdrafts	\$186,130 47	Capital Stock	\$ 35,000 00
United States Bonds	25,000 00	Surplus & Profits	37,045 48
Other Bonds	72,726 25	Due to Other Banks	9,688 68
Real Estate Owned	1,160 85	Circulation	24,997 50
Cash & Due from Banks	87,743 83	Deposits	274,117 74
Banking House, Furniture, etc.	6,838 00		
Five Per cent. Fund	1,250 00		
	\$380,849 40		\$380,849 40

R. &amp; O. E.

C. D. LUFKIN, Cashier.

TERRITORY OF HAWAII, ss  
County of Maui,

I, C. D. Lufkin, Cashier of the above named bank, do solemnly swear that the above statement is true to the best of my knowledge and belief.

C. D. LUFKIN, Cashier.

## VALVOLINE

The oil that lubricates.

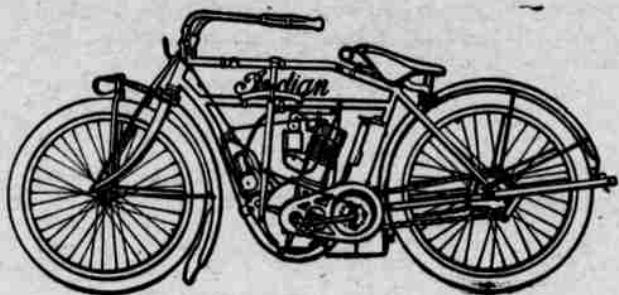
## HONOLULU IRON WORKS CO.

Agents for the Hawaiian Islands.

## E. O. HALL &amp; SON LTD.

Agents for the celebrated

## INDIAN MOTORCYCLE



The 1911 INDIAN with its free engine and clutch is the most up-to-date motorcycle made and the greatest hill climber known. Send to us for Catalogue and Prices.

## E. O. HALL &amp; SON, Ltd.

HONOLULU.

## Time Table--Kahului Railroad Co.

The following schedule will go into effect July 1st, 1911.

CLASS	Pass.	Pass.	Pass.	Pass.	Pass. & Frt.	Freight	Freight
STATIONS	No. 1	No. 2	No. 3	No. 4	No. 5	No. 6	No. 7
Kahului	Lv. 6 15	A. M.	P. M.	P. M.	A. M.	P. M.	A. M.
Puunene	Ar. 6 25			3 10			9 45
	Lv. 6 30			3 20			10 00
Kahului	Ar. 6 40			3 25			10 30
	Lv. 6 50		2 00	3 35			10 45
Wailuku	Ar. 7 02		2 12				
	Lv. 7 10		2 20				
Kahului	Ar. 7 22		2 32				
	Lv. 7 25		2 40	9 30			
Spreckelsville	Ar. 7 37		2 52	10 00			
	Lv. 7 50		3 05	10 15			
Paia	Ar. 8 00		3 15	10 45			
	Lv. 8 15		3 30				
Spreckelsville	Ar. 8 27		3 42	11 15			
	Lv. 8 30		3 45		1 00		
Kahului	Ar. 8 45		4 00		1 15		
	Lv. 9 00		4 05		1 45		
Wailuku	Ar. 9 15		4 17		2 15		
	Lv. 9 20		4 20				
Spreckelsville	Ar. 9 32		4 32				
	Lv. 9 45		4 45				
Paia	Ar. 9 50		4 50				
	Lv. 10 00		5 03				
Spreckelsville	Ar. 10 15		5 15				
Kahului	Ar. 10 30						

\*This train from Puunene connects with trains leaving Kahului for Wailuku at 3:45 P. M.

## Kahului Railroad Co.

AGENTS FOR

ALEXANDER &amp; BALDWIN, LTD.;

ALEXANDER &amp; BALDWIN, LTD., Line of Sailing Vessels between San Francisco and Hawaiian Ports; AMERICAN-HAWAIIAN STEAMSHIP CO.

Subscribe for the

Maui News Combination

## TELEGRAPHIC NEWS

## Trouble In Cuba.

WASHINGTON, Jan. 17.—The State department has threatened intervention in Cuba unless there is a change in the political situation. President Gomez has replied that the Cuban authorities are in full control.

TUNIS, Jan. 17.—A French steamer has been seized by an Italian torpedo boat destroyer. Part of her cargo are aeroplanes for the Turkish army.

OSAKA, Jan. 17.—A fire in this city has rendered about 30,000 people homeless.

BOSTON, Jan. 17.—The loss in the Revere House fire is about \$100,000.

[The Revere House Boston was one of the famous old land marks of the early days. Situated in the equally famous Scollay square.—Ed.]

## Manchus Massacred.

PEKIN, Jan. 16.—Reports from surrounding districts are to the effect that 10,000 Manchus have been massacred and the towns looted.

HARBIN, Jan. 16.—The Mongolians have entered the town of Kailan and forced the Manchus to evacuate. They joined with the citizens in declaring their independence from the Chinese empire.

PEKIN, Jan. 16.—An attempt was made yesterday to kill Yuen Shi Kai, by throwing a bomb. Two soldiers acting as a body guard were instantly killed.

NANKING, Jan. 16.—The birth of the new republic, and the inauguration of Sun Yet Sen was celebrated today.

## Church Goers Killed.

PHILADELPHIA, Jan. 15.—Five women, and two men were killed by a locomotive, while crossing the railroad tracks on their way to church.

PASSADENA, Jan. 15.—The hotel Pasadena was burned last night. The guests are safe.

SAN FRANCISCO, Jan. 15.—Gipsy Smith headed a monster church parade here yesterday. Many thousands in line.

SHANGHAI, Jan. 15.—An unofficial announcement has been made that the armistice has been extended two weeks.

MADRID, Jan. 15.—The cabinet has tendered its resignation.

NANKING, Jan. 15.—Dr. Sun Yet Sen in a published statement says he is dissatisfied with conditions. He demands the abdication of the emperor to prevent further hostilities.

TOLEDO, Jan. 15.—A fast train speeding through the town of Carey, Ohio, left the rails. The coaches were overturned, and 50 people seriously injured. None were killed.

BOSTON, Jan. 15.—One fireman was burned to death in a hotel fire here today. Many guests are supposed to have lost their lives.

LAWRENCE, Jan. 15.—Rioting took place here today by the striking operatives. A dozen people have been injured. The militia has been called out.

## Troops For China.

MANILA, Jan. 13.—The transport Logan has sailed for Chingwu with a battalion of the Fifteenth Infantry.

ROME, Jan. 13.—Seven Turkish gunboats and an armed yacht, have been sunk in the Red Sea.

BERLIN, Jan. 13.—The Socialist vote is over four millions. The party has gained nineteen members.

WASHINGTON, Jan. 13.—Gen. Carter made the statement before the committee yesterday that over 35,000 Japanese in the Philippines and Hawaii were subject to war demands, and that the government must increase its military plans or loose its insular possessions.

TACOMA, Jan. 13.—The Strathalden was rammed yesterday by the Virginian. The latter has a hole in her bow.

SAN FRANCISCO, Jan. 13.—Collector of the Port Stratton has been ordered to collect \$100,000 in fines from captains on whose ships opium has been found. He will grant no clearance papers to these ships till a settlement has been made.

## Honolulu News.

HONOLULU, Jan. 17.—A nuisance bureau has been established by the sanitary committee. Those who offend will be prosecuted.

John Loo, the burglar who was in the habit of leaving the Chain gang to burglarize houses, has escaped from jail together with Chun Duck Soon.

The belt road commission remains hostile to the open meeting proposition because they do not like the attitude of the newspapers.

The garbage department threaten to arrest those who leave tin cans in the street. The sanitary committee is thus up against it.

Ernest Bishoff, of Davies &amp; Co., died suddenly yesterday from blood poisoning.

Gertrude MacFarlane has sued Capt. Green for breach of promise. The Japanese murderer was quietly hanged yesterday. He confessed.

HONOLULU, Jan. 16.—Gov. Frear says he will be glad to have an investigation of his official acts.

There was a reception tendered to the son of Sun Yet Sen yesterday.

The belt road case is now up in the Circuit Court. Wilson is on the stand. It is believed he will get the contract or the bids will be thrown out.

A dispatch from Washington is to the effect that President Taft has held up the appointment of Gov. Frear, at the request of the delegate, and will send a special agent to make an investigation.

HONOLULU, Jan. 15.—The cruiser Maryland left yesterday on a secret mission. It is believed she has gone to Galapagos island in connection with the fortifications of the Panama canal.

Sheba says the Japanese here would pay no attention to a demand to take up arms in case of war, and that they are well satisfied with present conditions.

The Board of Education surprised the Wailae school by a visit and found everything ship shape.

HONOLULU, Jan. 13.—Private advices say that Taft is in no hurry to act in the appointment of a governor. He may not act until March.

Doubt is expressed as to what Frear intends to do with the appropriation bill for the county.

Future fines of captains with opium found on their ships will be based on the price of the drug in the Orient.

Three sailors on the Koko Head deny any cruelty on the part of mate Weybus.

## MATSON NAVIGATION CO.

## SCHEDULE FOR 1911

## HONOLULU-KAHULUI-HILO and HAWAIIAN PORTS

Steamer	Leave S. F.	PUGET SOUND Arrive	Leave	Hawaiian Islands Arrive	Leave	Arrive S. F.	Voyage
Lurline	Sept. 13			Sept. 20	Sept. 26	Oct. 4	36
*Hilonian	Sept. 14	Sept. 17	Sept. 23	Oct. 2	Oct. 19	Oct. 11	55
Honolulu	Sept. 20			Sept. 26	Oct. 3	Oct. 10	8
Wilhelmina	Sept. 27			Oct. 3	Oct. 11	Oct. 17	22
*Enterprise	Oct. 5	Oct. 8	Oct. 14	Oct. 24	Nov. 8	Nov. 11	87
Lurline	Oct. 11			Oct. 18	Oct. 24	Nov. 1	39
Honolulu	Oct. 17			Oct. 23	Oct. 31	Nov. 7	9
Wilhelmina	Oct. 25			Oct. 31	Nov. 1	Nov. 14	23
*Hilonian	Oct. 26	Oct. 29	Nov. 4	Nov. 13	Nov. 22	Nov. 30	56
Lurline	Nov. 8			Nov. 15	Nov. 21	Nov. 29	40
*Hyades			Nov. 25	Dec. 5	Dec. 13	Dec. 10	24
Honolulu	Nov. 15			Nov. 21	Nov. 29	Dec. 6	10
*Enterprise	Nov. 17			Nov. 25	Dec. 1	Dec. 23	88
Wilhelmina	Nov. 22			Nov. 28	Dec. 6	Dec. 12	21
Lurline	Dec. 6			Dec. 13	Dec. 19	Dec. 24	41
*Hilonian	Dec. 7	Dec. 16	Dec. 16	Dec. 25	Jan. 3	Jan. 11	57
Honolulu	Dec. 13			Dec. 19	Dec. 27	Jan. 3	11
*Enterprise	Dec. 15			Dec. 23	Dec. 29	Jan. 8	89
Wilhelmina	Dec. 20			Dec. 26	Jan. 3	Jan. 9	25
*Hyades	Dec. 28	Dec. 31	Jan. 6	Jan. 16	Jan. 24	Feb. 3	25

Wilhelmina calls at Honolulu and Hilo. Lurline calls at Honolulu and Kahului.

Honolulu calls at Honolulu and Kahului on Sept. and Oct. trips. Lurline calls at Honolulu and Kahului on Nov. and Dec. trips.

Hyades via Puget Sound to Honolulu, Port Allen, Kahului Hilo and Kaanapali.

Hilonian via Puget Sound to Honolulu, Port Allen, Kahului, Hilo and Kaanapali.

Enterprise on voyage No. 87 to Honolulu, Kahului, Port Allen, Hilo and Kaanapali via Puget Sound.

Enterprise except on Voyage No. 87 to Hilo direct.

\*Indicates that steamer carries freight and combustibles only (no passengers)

Subject to Change

Educator  
\$4.00 shoe

A Home for the Feet—not a Prison.  
Has room for all five toes to lie perfectly in their natural positions.

## MANUFACTURER'S SHOE COMPANY, Ltd.

1051 FORT STREET, HONOLULU.

Crystal  
White  
Soap

A white laundry soap that will prove the most satisfactory of any laundry soap you have used.

Your grocer has it.

Get Ready  
For Christmas:

New Photography Outfits and Materials Received.

Handsome Designs and Shapes in Woodwork for Burning. Beautiful Colored Leathers. Island Orders Promptly Filled.

## HONOLULU PHOTO SUPPLY CO.

'EVERYTHING PHOTOGRAPHIC'



## Estimate of Receipts and Expenditures for the Six Months of 1912, From Jan. 1st to June 30th, Inclusive.

### GENERAL OR MAINTENANCE FUND.

#### PERSONAL AND PROPERTY TAXES.

Carried over from 1911	41,800
To be collected during this period	79,800
Gross estimated amount available from taxes	\$ 121,600
Less amount carried forward to next period	50,000
	\$ 71,600.00

#### MISCELLANEOUS COUNTY RECEIPTS.

Carried over from 1911	5,500
Licenses (other than liquor)	2,000
Liquor licenses	4,875
Fines & Costs (All Courts)	8,000
Waterworks Receipts (All Districts)	5,000
Sundry Receipts	2,125
	27,500.00

Total estimated available for General or Maintenance % for term	99,100.00
---	-----------

### SPECIAL FUNDS.

#### PERMANENT IMPROVEMENTS ACCOUNT.

#### PERSONAL AND PROPERTY TAXES.

Carried over from 1911, say	23,800
To be collected during this period	26,600
Gross estimated amount available from Taxes	50,400
Less amount carried forward to next period	15,000
	35,400
Road Taxes available, say	23,000
School Fund	4,500
Hunting Permits	350
	63,250.00
Total estimated for Special Funds for period	63,250.00
Total estimated available receipts for the period Jan. 1st to June 30	162,350.00

## ESTIMATED MAINTENANCE EXPENSES OF THE COUNTY OF MAUI FOR THE PERIOD FROM JAN. 1ST TO JUNE 30TH, 1912.

#### DEPARTMENT OF SUPERVISORS.

Salary of Supervisors	1,500
Incidentals Supervisors	1,420
S & M of Indigents	100
Total for Department of Supervisors	3,020.00

#### DEPARTMENT OF COUNTY CLERK.

Salary of County Clerk	900
Salary Deputy County Clerk	560
Salary Assistant Clerk	540
Incidentals County Clerk	125
Furniture & Office Supplies	1,000
Bonds County Officers	750
Telephones & Wireless	1,750
Rents	1,200
Printing	1,100
Total for Department of County Clerk	7,925.00

#### DEPARTMENT OF FINANCE.

Salary of County Auditor	1,050
Salary Deputy Auditor	660
Incidentals County Auditor	125
Salary County Treasurer	1,050
Salary Deputy Treasurer	660
Incidentals County Treasurer	125
Examiner of Chauffeurs	75
Expenses Liquor Commission	625
Total for Department of Finance	4,370.00

#### DEPARTMENT OF JUSTICE.

Salary County Attorney	1,200.00
Salary Deputy County Attorney	900.00
Salary Clerk County Attorney	540.00
Salary Steno County Attorney	540.00
Incidentals County Attorney	750.00
Salary District Magistrates	2,940.00
Incid. & Witnesses District Courts	150.00
Salary Circuit Courts's Clerk	900.00
Salary Stenographer Circuit Court	900.00
Expenses Circuit Court	5,152.23
Library Circuit Court	235.40
Witnesses Circuit Court	925.00
Expenses Juvenile Court	245.50
Total for Department of Justice	15,378.13

#### DEPARTMENT OF PUBLIC HEALTH.

Salary County Physicians	890.00
Salary Food & Sanitary Inspectors	1,200.00
Incidentals Sanitation	300.00
C & M of Malulani Hospital	3,000.00
Salary District Nurses	700.00
Total for Department of Public Health	6,090.00

#### DEPARTMENT OF POLICE.

Salary County Sheriff	1,200
Salary Deputy Sheriffs	2,940
Salary Clerk to Sheriff	540
Salary Prison Guards & Jailors	1,500
Pay of Police Wailuku	5,500
Pay of Police Makawao	2,250
Pay of Police Lahaina	2,610
Pay of Police Hana	2,010
Pay of Police Molokai	1,230
Coroners Inquest	250
S & M of Prisoners	2,500
Incidentals Sheriff	2,000
Detective Funds Wailuku	625
Detective Funds Makawao	150
Detective Funds Lahaina	100
Detective Funds Hana	75
Detective Funds Molokai	50
Total for Department of Police	25,530.00

#### DEPARTMENT OF PUBLIC WORKS.

Salaries District Overseers	3,480
C & M of County Buildings	2,500
C & M of County Parks	750
C & M of Rds Bridges & Waterworks	
Wailuku	1,000
C & M of Rds Bridges & Waterworks	
Makawao	6,500
C & M of Rds Bridges & Waterworks	
Lahaina	4,000
C & M of Rds Bridges & Waterworks	
Hana	3,500
C & M of Rds Bridges & Waterworks	
Molokai	400
Incidentals Department of Public Works	1,500
Total Maintenance Department of Public Works	23,630.00

#### SUBSIDIES.

Militia	300
Fire Department	150
County Farm & Sanitarium	1,800
Total for Subsidies	2,250.00
Total for Maintenance County of Maui, for six months January 1st to June 30th, inclusive	88,193.13

#### RECAPITULATION.

Department of Supervisors	3,020.00
Department of County Clerk	7,925.00
Department of Finance	4,370.00
Department of Justice	15,378.13
Department of Public Health	6,090.00
Department of Police	25,530.00
Department of Public Works	23,630.00
Subsidies	2,250.00
Total estimated cost for maintenance of County of Maui, for period from January 1st to June 30th, inclusive	88,193.13
Balance for Improvements, &c	10,906.87
Total estimated for General Maintenance for Term	\$99,100.00

## ESTIMATED EXPENSES PAYABLE FROM THE GENERAL OR MAINTENANCE FUNDS FOR IMPROVEMENTS IN MAUI COUNTY, FROM JANUARY 1ST TO JUNE 30TH, 1912, INCLUSIVE.

Machinery & Stock Account	9,000
County Farm & Sanitarium	1,906
Total estimated for improvements payable from General Fund	\$10,906.00

#### SPECIAL FUNDS.

#### ESTIMATED EXPENDITURES OF IMPROVEMENT FUND.

Recon & relocation Rds Brdgs & Ww	
Hana	4,550
Water Investigation	100
Total for Improvement Fund Hana District	4,650.00
Recon & relocation Rds Brdgs & Ww	
Makawao	4,000
Branches Kula Pipe Line etc	2,500
Macadamizing & Oiling Roads, etc	3,400
Total for Improvement Fund Makawao District	9,900.00
Recon & Oiling Roads Wailuku	6,000
Extension & Imps Wailuku-Kahului	
Waterworks	4,000
Public Buildings & Park (Improvements)	2,000
Total for Improvement Fund Wailuku District	12,000.00
Recon & Oiling Rds. Sts. etc. Lahaina	4,000
Extension, etc. Lahaina Waterworks	1,500
Public Buildings (Improvements)	
Lahaina	750
Total for Improvement Fund, Lahaina District	6,250.00
Recon Old Rds etc Molokai District	2,000.00

#### RECAPITULATION OF SPECIAL IMPROVEMENT FUND.

Hana District	4,650
Makawao District	9,900
Wailuku District	12,000
Lahaina District	6,250
Molokai District	2,000
Total Appropriated for Improvement Fund	34,800.00
Unappropriated from Improvement Fund	600.00
Total estimated for Special Improvement Fund for period from January 1st to June 30th, 1912, inclusive	\$35,400.00

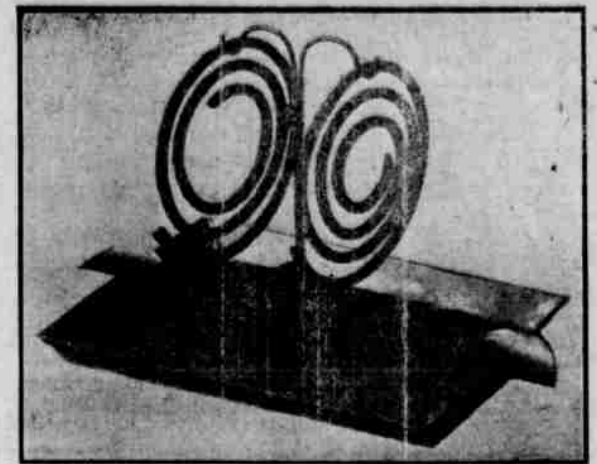
#### DIVISION OF SCHOOL FUND.

Hana Schools	600
Makawao Schools	1,800
Wailuku Schools	1,000
Lahaina Schools	500
Molokai Schools	600
Total for Maintenance, etc., of Schools for period January 1st to June 30th, 1912, inclusive	4,500.00
Care & Maintenance of Game	400.00

#### SUMMARY OF PROPOSED EXPENDITURES BY FUNDS.

General or Maintenance Fund	88,193.13
Improvements from General or Maintenance Fund	11,090.00
Special Improvement Fund	34,800.00
Special School Fund	4,500.00
Special Hunting Fund	400.00
Total proposed Expenditure of all funds for the period from January 1st to June 30th, 1912, inclusive	138,983.13
Special Road Tax	23,000.00
Unappropriated	366.87
Total estimated available receipts as per estimate of Receipts	162,350.00

## COMBINATION CIGAR TRAY and BUHACK BURNER



Burning the Celebrated Japanese Buhack.

For Sale at all Stores.

Price 75 cents.

## ORDERS FOR Rexall Remedies

Amounting to Five Dollars and accompanied with cash will be delivered to any port on Maui free.

**Benson, Smith & Co., Ltd.**

HONOLULU

This Space for

## THE LAHAINA STORE

## THE HENRY WATERHOUSE TRUST CO. Ltd

BUYS AND SELLS—REAL ESTATE, STOCKS & BONDS

WRITES FIRE AND LIFE INSURANCE

NEGOTIATES LOANS AND MORTGAGES

SECURES INVESTMENTS.

A List of High Grade Securities mailed on application

CORRESPONDENCE SOLICITED

HONOLULU, HAWAII

P. O. Box 346

## PAPER

OF EVERY DESCRIPTION

PAPER BAGS . . . STATIONERY

The Largest Exclusively Paper House in the Territory.

American-Hawaiian Paper and Supply Co., Ltd.

CORNER FORT AND QUEEN STREETS  
HONOLULU

GEO. G. GUILD, Vice Pres. and Mgr.



## Locals

Mrs. H. P. Baldwin and Mrs. H. M. Alexander were visitors in Wailuku this week.

Mrs. S. B. Kingsbury, who has been ill since her arrival from Honolulu, is improving.

Marston Campbell stopped off last Friday on his way from Hilo to attend the Loan Fund Commission meeting.

The monthly meeting of the Maui Ministers' School will be held at the Union Church on Tuesday at 9 o'clock.

Mr. J. B. Stewart of the Geological Survey, and C. E. Meyers, made a trip around the windward side of the island last week.

Mrs. Keapo Manukeokeo and Mrs. Edward H. Bailey have furnished the new Wailuku Union Church with two dozen beautiful Hawaiian fans.

The Woman's Guild of the Church of the Good Shepherd will hold its Social meeting on Wednesday, January 24th with Mrs. Dale, Kahului, at 2:30 p. m.

Mr. J. R. Bergstrom of Honolulu is spending some time on Maui. Anyone wishing to have their pianos tuned can reach Mr. Bergstrom at the Maui Hotel.

Sheriff Crowell has picked out a big seven seater Pope-Hartford as the car best suited to the needs of the department in rounding up the law breakers.

Mr. Dolim of the firm of Dolim and Coelho has bought out the interest of his partner, and will hereafter run the business alone. Mr. Dolim will collect all outstanding accounts.

On Tuesday the ministers of central and west Maui will meet at the church for their regular monthly session. To this meeting the public are invited. Rev. Dr. Scudder and other visiting ministers and missionaries will speak that morning.

There will be no service at the Makawao Union Church on Sunday, the 21st, on account of the renovation of the interior of the building. It is expected, however, that there will be service on the last Sunday of the month.

The management of the Kahului Railroad Company has kindly arranged special trains from Paia, Sprecklesville, Pounene and Kahului for Monday evening at excursion rates, so people can attend the lecture of Rev. Robert Elmer Smith at the new Wailuku Union Church.

The Basket Ball games at the Gymnasium on Saturday evening promise to be the most interesting of the season. Two teams of Wailuku girls play against one another. The Wailuku boys meet the Kahului boys in a game that promises to be exciting. The games are called at 7 o'clock so that people can go directly from the Gym to the Orpheum to the Saturday night show.

Arrivals Maui Hotel: W. Thielen, P. Schmidt, Jack Bergstrom, Marston Campbell, S. G. Cohn, D. L. Austin, Honolulu; Dr. and Mrs. F. Irwin, Hawaii; Frank E. Harvey, Makawao; Mrs. J. M. De Rochebrune, San Jose, Cal.; J. G. Serrao, S. S. Schmitt, Hilo; J. B. Stewart, Philadelphia; F. Cowell, Kent, England; Mr. and Mrs. Hutton, New Zealand; Dr. and Mrs. W. L. Wood, Mrs. R. B. Larson, Portland, Oregon.

There is "some class" to our new barber shop as well as to our new barber. It is certainly gratifying to the male population to note the thorough manner in which the place is being renovated and painted and made sanitary throughout. The shop is going to be a credit to the place and deservedly popular. Mr. Fox evidently knows his business, as those who have already patronized him are ready to affirm, and if he is hereafter allowed to grow in Wailuku, beyond the prescribed limit, it will not be his fault. It is rumored that in his scheme for an up-to-date tonsorial parlor Mr. Fox has not neglected the ladies and is having a room prepared for their special benefit where they may have a shampoo or facial massage whenever desired.

## SEALED TENDERS.

Sealed tenders will be received at the office of the Maui Loan Fund Commission, Wailuku, Maui, until 10:00 A. M., Wednesday, January 31, 1912, for furnishing pipe and fittings to be delivered on Kahului wharf.

Specifications and list of pipe and fittings required, and other information, may be had upon application to F. E. Harvey, Secretary, Makawao, Maui.

Tenders to be based upon the quantity stated, but the Maui Loan Fund Commission will not bind itself to purchase the whole or any particular part of the quantities stated; and reserves the right to reject any and all bids.

Tenders must be made on forms furnished by the Maui Loan Fund Commission, and accompanied by a certified check in amount equal to 5% of the tender.

F. E. HARVEY,  
Secretary.

Jan. 20, 57.

## BY AUTHORITY.

Notice is hereby given that a County Pound has been established at Waihee, in the District of Wailuku; the same is situated on the Makai side of the Kahakuloa horse trail and adjoining the milk pen now owned by Antone Pombo about 250 yards from the 5 mile post towards Kahakuloa.

Manuel Gouveia of said Waihee has been duly appointed and commissioned by the Board of Supervisors, of the County of Maui, Pound-master for the above described pound on the 11th day of January, 1912.

WM. FRED KAAE,  
County Clerk.

Jan. 20, 27, Feb. 3.

IN THE CIRCUIT COURT OF THE SECOND CIRCUIT, TERRITORY OF HAWAII.

At Chambers—In Probate.

In the Matter of the Estate of JACINTHO DE SOUZA, Late of Kaupakulua, Maui, Deceased.

On Reading and Filing the Petition of Antonio de Souza Medeiros, an heir and creditor of said deceased, alleging that Jacintho de Souza of Kaupakulua, Maui, died intestate at Kaupakulua, Maui, on the day of September, A. D. 1906, leaving property in the Territory of Hawaii necessary to be administered upon, and praying that Letters of Administration issue to W. I. Wells.

It is Ordered, that Monday, the 26th day of February, A. D. 1912, at 10 o'clock A. M., be and hereby is appointed for hearing said Petition in the Court Room of this Court at Wailuku, Maui, at which time and place all persons concerned may appear and show cause, if any they have, why said Petition should not be granted, and that notice of this order shall be published once a week for three successive weeks in the MAUI NEWS, a weekly newspaper printed and published in Wailuku, Maui.

Dated January 13, 1912.

(Sd.) S. B. KINGSBURY,  
Judge of the Circuit Court of the 2nd Circuit.

Attest:  
(Seal) (Sd.) EDMUND H. HART,  
Clerk Circuit Court of the 2nd Circuit.  
Jan. 20, 27, Feb. 3, 10.

IN THE CIRCUIT COURT, OF THE SECOND CIRCUIT, TERRITORY OF HAWAII.

At Chambers—In Probate.

In the Matter of the Estate of MINERVA K. McLEAN, Late of Makawao, Maui, Deceased.

On Reading and Filing the Petition of Mary A. Soule, daughter of said deceased of Makawao, Maui, alleging that Minerva K. McLean of Makawao, Maui, died intestate at Kahaupali, Makawao, Maui, on the 25th day of November, A. D. 1911, leaving property in the Territory of Hawaii necessary to be administered upon, and praying that Letters of Administration issue to James L. McLean.

It is Ordered, that Monday, the 26th day of February, A. D. 1912, at 10 o'clock A. M., be and hereby is appointed for hearing said Petition in the Court Room of this Court at Wailuku, Maui, at which time and place all persons concerned may appear and show cause, if any they have, why said Petition should not be granted, and that notice of this order shall be published once a week for three successive weeks in the MAUI NEWS, a weekly newspaper printed and published in Wailuku, Maui.

Dated January 13, 1912.

(Sd.) S. B. KINGSBURY,  
Judge of the Circuit Court of the 2nd Circuit.

Attest:  
(Seal) (Sd.) EDMUND H. HART,  
Clerk Circuit Court of the 2nd Circuit.  
Jan. 20, 27, Feb. 3, 10.

IN THE CIRCUIT COURT OF THE SECOND CIRCUIT, TERRITORY OF HAWAII.

NOTICE OF DRAWING OF GRAND AND TRIAL JURORS.

Notice is hereby given that the drawing of Grand and Trial Jurors to serve and act as such during the March, 1912, Term of the Circuit Court of the Second Circuit, Territory of Hawaii, will take place in the Court Room of the said Court, at Wailuku, Island and County of Maui, Territory of Hawaii, on Tuesday, the 6th day of February, A. D. 1912, at 10 o'clock in the forenoon of said day.

S. B. KINGSBURY,  
Judge of the Circuit Court of the Second Circuit, T. H.

Jan. 20, 27.

## NOTICE.

The regular annual meeting of stockholders of the Maui Soda and Ice Works, Ltd., will be held at the office of the Company, Monday, January 29th, at 2 p. m.

J. J. WALSH,  
Secretary.

Jan. 20, 27.

# Kahului Railroad Co.

MERCHANDISE DEPARTMENT

DEALERS IN

## Gasoline and Distillate in Drums

Northwest Lumber, Redwood, Hardwoods, Wood and Coal, Blinds, Doors, Sash, Sash Weights, Glass, single and double thick, Bricks, Lime and Cement, Cotton and Wool Waste, Pipe and Pipe Fittings, Steam Packings, Gaskets, Cocks and Valves, etc.. etc.

EXPECTED IN JANUARY

## Hilonian

50 M 2x12 Northwest Lumber  
50 Tons Blacksmith Coal

## Honolulan

50 M 1x12 Northwest Lumber  
A large consignment of Oak

## Lurline

25 cases Window Glass  
25 bales of Wool Waste  
50 Rolls Tarred Felt  
1000 Pairs Window Sash  
2000 Bbls Redwood Battens

## Enroute from New York

1 Carload of Roofbestos  
3 Carloads of Galvanized Pipe  
1 Ton of Pipe Fittings  
5 Tons of Plain Galvanized Iron

## Kahului Railroad Co.

Merchandise Department



**Public Library.**

The following list of magazines have been sent for and donated to the Maui Library Association, and can be found at the library rooms: The American, Cosmopolitan, Everybodys, Harpers, Ladies' Home Journal, Literary Digest, McClures, St. Nicholas, Scientific American, Youth's Companion, and the following papers: Evening Bulletin, and Weekly Star. These are donated to the library by either the publishers or friends.

The membership to the Maui Library Association is steadily increasing. If you have not joined yet, you should send your membership in at once. A full membership entitles you to two books at a time as often as you want them. The circular membership means that if you live away from the library you can have your books sent in the circle membership and as the custom has been in vogue at Makawao, the books will be sent from house to house, by the members. In addition to this method of circulating the books, every circle member can have the privilege of obtaining books directly from the library at any time. This circle membership costs \$2.00 a year. By also paying the additional \$2.00 a year if you wish, you so have the privilege of circle membership, and also of more books drawn directly from the library than circle membership would give you. There are some 300 new books, and those that are practically new in the library now which are ready for distribution. There are some 400 books in addition. These 400 are not new books, but they are in good condition, and ready for circulation. Lists of both classes of books can be obtained from the library, also lists of juvenile books, of which the library has a good collection. As soon as new books are added from time to time the library will be prepared to issue new bulletins of acquisition, to all members of the Maui Library Association.

The Librarian has a copy of the rules of the library on file which can be read at any time by those desiring to join. The hours are from 9 to 12 A. M.; 3 to 5 P. M.; and 7 to 9 P. M. every day except Sundays and holidays, and books can be drawn during these hours.

**Kula News.**

As all the corn of the farmers who were willing to dispose of their crops at \$1.35 per cwt. has been sold, there was another advance of 15 cents per cwt. this week. The tendency of the farmers now is to hold on to their crops until they get top notch prices. Two farmers who have approximately one thousand bags, say that they will not sell their corn until the \$2.00 mark is reached.

As the weather still continues dry, it is probable that the potato crop will be seriously affected.

The price of Kula-produce is quoted by the farmers as follows: Corn, \$1.50 per cwt.; beans, \$2.00 per cwt.; potatoes, \$2.00 per cwt.; eggs, 30 cents per dozen.

Last summer when the epidemic of whooping cough broke out, it appeared only in the homes of a few families but when the school was reopened it spread very rapidly to almost every home in Kula, and as a result three infants have died from it. It is evident that the school is responsible for the spreading of the disease and the death of the youngsters. During the last two sessions of the legislature, Superintendent Pope of the Department of Public Instruction, repeatedly called the attention of the legislators to the epidemics of infectious or contagious diseases, that frequently break out and their results and asked for an appropriation for medical inspection of our schools, but the wise Solons have never seen their way clear to grant it.

The Keokea and the Kealahou schools are very crowded. There are over 80 children crowded into one of the rooms of the Kealahou school.

Mr. H. M. Wells was in Kula this week to visit the schools.

**BY AUTHORITY.****Notice of Opening of Public Lands in the District of Hamakualoa, Island of Maui.**

Notice is hereby given to Will J. Wiseman, Carlton C. James, S. T. Starrett, Florence Wood, Lucia Shephardson, J. S. Walker, J. Latimer, F. G. Krauss, Edward B. Blanchard, Mrs. Frank Hamilton, H. I. Sauters, C. B. Estle, S. A. Pawley, Walter Hamilton, D. B. Newell, R. R. Bray, and Paul Parent, and others, if any, members of the California Settlement Association, that Lots Nos. 3, 4, 5, 6, 8, 9, 10, 12, 13, 14, 22, 23, 24, 25, 26, 27, 27a and 28, in the Kuiaha-Pauwela Tract, Hamakualoa, County of Maui, Territory of Hawaii, will be opened for homesteading in the following manner, in accordance with the laws relating to public lands in the Territory of Hawaii, subject to withdrawal of any of such lots prior to their selection—such opening shall be in the manner set forth in the advertisement of public lands dated May 12, 1911; in respect to the method of application, drawing, selection, and other methods, except as follows:

The lots may be taken only by the Right of Purchase Lease or Cash Freehold Agreement method. Application for participating in the drawing may be made only by members of said California Association, and shall be presented to the Commissioner of Public Lands by ordinary mail, on or before Thursday, February 1, 1912; the drawing and assignment of the order of the selection of lots shall take place at the office of the Commissioner of Public Lands, Honolulu, at 9 o'clock A. M., on Friday, February 2, 1912; the selection will take place at Circuit Court House, Wailuku, Maui, at 9 o'clock A. M., Monday, February 5, 1912.

The right is reserved to grant to the Kahului Railroad a right-of-way across any of said lots, the purchase price thereof to be reduced in proportion to the area so taken or the Railroad Company to compensate the homesteader for the right-of-way so taken.

For further information, forms, maps, etc., apply at the office of the Commissioner of Public Lands, Honolulu, or at the office of the Sub-Agent of the Fourth Land District, W. O. Aiken, Makawao, Maui.

CHARLES S. JUDD,

Commissioner of Public Lands.  
Dated at Honolulu, November 21, 1911.

Approved: (Sd.) W. F. FREAR,  
Governor of Hawaii.  
Dec. 2, 9, 16, 23, 30, Jan. 6, 13, 30.

**Notice of Opening of Public Lands in the District of Hamakualoa, Island of Maui.**

Notice is hereby given to E. C. Mellor, Elizabeth J. Lindsay, T. R. Hinckley, James Lindsay, Isabella C. A. Lindsay, Marguerite Naughan, Matilda K. Smith, W. I. Wells, and H. M. Wells, and others, if any, members of the Lindsay Settlement Association, that Lots No. 7, 11, 15, 16, 17, 18, 19, 20 and 21, in the Kuiaha-Pauwela Tract, Hamakualoa, County of Maui, Territory of Hawaii, will be opened for homesteading in the following manner, in accordance with the laws relating to public lands in the Territory of Hawaii, subject to withdrawal of any such lots prior to their selection; such opening shall be in the manner set forth in the advertisement of public lands dated May 12, 1911, in respect to the method of application, drawing, selection, and other methods, except as follows:

The lots may be taken only by the Right of Purchase Lease or Cash Freehold Agreement method. Application for participating in the drawing may be made only by members of said Lindsay Settlement Association, and shall be presented to the Commissioner of Public Lands by ordinary mail, on or before Thursday, February 1, 1912; the drawing and assignment of the order of selection of lots shall take place at the office of the Commissioner of Public Lands, Honolulu, at 9 o'clock A. M., on Friday, February 2, 1912; the selection will take place at the Circuit Court House, Wailuku, Maui, at 9 o'clock A. M., Monday, February 5, 1912.

The right is reserved to grant to the Kahului Railroad a right-of-way across any of said lots, the purchase price thereof to be reduced in proportion to the area so taken or the Railroad Company to

compensate the homesteader for the right-of-way so taken.

For further information, forms, maps, etc., apply at the office of the Commissioner of Public Lands, Honolulu, or at the office of the Sub-Agent of the Fourth Land District, W. O. Aiken, Makawao, Maui.

CHARLES S. JUDD,

Commissioner of Public Lands.  
Dated at Honolulu, November 21, 1911.

Approved: (Sd.) W. F. FREAR,  
Governor of Hawaii.  
Dec. 2, 9, 16, 23, 30, Jan. 6, 13, 20.

LODGE MAUI, No. 984, A. F. & A. M.



Stated meetings will be held at Masonic Hall, Kahului, on the first Saturday night of each month at 7 30 P. M.

Visiting brethren are cordially invited to attend.

HUGH HOWELL, R. W. M.

BENJAMIN WILLIAMS,

Secretary

IN THE CIRCUIT COURT OF THE SECOND JUDICIAL CIRCUIT, TERRITORY OF HAWAII.

At Chambers.

EMILA WELAKAILI KAAIMOKU, Libellant, vs. WILLIAM KAAIMOKU, Libellee, Libel for Divorce No. 330.

NOTICE.

TERRITORY OF HAWAII:  
To WILLIAM KAAIMOKU, Libellee.

You are hereby notified that the above entitled suit, the same being for a divorce from you on the grounds of desertion and non-support, and is now pending in the above entitled Court, and that the same will be heard and determined on Wednesday, the 7th day March, 1912, at 10 o'clock in the forenoon of said day, or as soon thereafter as may be, by the Judge of said Court, at Chambers.

Dated at Wailuku, Maui, this 20th day of December, A. D. 1911.  
(Seal) (Sd.) EDMUND H. HART, Clerk

JOHN W. KALUA,  
Attorney for Libellant.  
Dec. 30, 1911. Jan. 6, 13, 20, 27, Feb. 1912

ALOHA LODGE NO. 3 KNIGHTS OF PYTHIAS.



Regular meetings will be held at the Knights of Pythias Hall, Wailuku, on the second and fourth Saturdays of each month.

All visiting members are cordially invited to attend.

E. F. DEINERT, C. C.  
C. C. CLARK, K. OF R. & S.

**JUST ARRIVED****Dixon's Graphite Productions****Flake Graphite**

1 and 5 lb. Cans

Motor Graphite, 1 lb. cans

**GRAPHITE GREASES**

Graphite Pipe Compound,

1 and 10 lbs. cans

Graphite for motor cycle chains.

**KAHULUI STORE**

Kahului, Maui.

**We Sell These.**

You want the best. Are you ready for it this season?

We are prepared as never before to meet your wants in vehicles and harness. There is nothing superior to what we are showing, in taste, style and service. Absolute honesty in make and material. You will agree when we tell you

**IT'S THE FAMOUS Studebaker Line WE CARRY.**

No matter what you want—if it's a harness or something that runs on wheels, we've got it or will quickly get it.

Come in and figure with us. Everybody knows the place.

**DAN T. CAREY**  
WAILUKA, MAUI, T. H.

P. S. The Studebaker nameplate on a vehicle is its guarantee. Don't forget this.



Subscribe For The

Maui News Combination