

STEAMER TABLE.

From San Francisco:
Alameda.....Feb. 26
China.....Mar. 4
For San Francisco:
Alameda.....Mar.
Siberia.....Mar.
From Vancouver:
Mowara.....Mar.
For Vancouver:
Moana.....Mar.

VOL. XV. No. 2695

COLORED COMIC SUPPLEMENT

EVENING BULLETIN

3:30 O'CLOCK

TOMORROW

EDITION

HONOLULU, TERRITORY OF HAWAII, FRIDAY, FEBRUARY 19, 1904

PRICE 5 CENTS

Driven By a Storm And Leaking Water Ada Returns Home

The schooner Ada arrived from French Frigate Shoal at about 1:45 o'clock this afternoon, having still failed to connect with the French bark Connetable de Richmond, which she went to float.

Captain Weisbarth stated that the Ada, after leaving this port on December 15, arrived at French Frigate Shoal December 27 after a passage of twelve days. There the wreck was found to be in the same condition as when they left it. Diver Ellison and the man left with him were living aboard. Ellison says that he quite enjoyed his experience.

The crew of the Ada immediately started to work on the stranded bark under the superintendence of Weisbarth and Ellison. The main job was the battening of the hatches. It was hard work, as the hatches were very large and the rest of the month of December and all of January was consumed in doing it.

The men then rigged up their pump and connected it with the Connetable's donkey boiler. The caulking of leaks in the vessel's bow was left to the last. According to Ellison there are merely two cracks, one on each side of the vessel's bow, which could be repaired in about three days.

The men, after all this hard work, thought that the end was almost in sight and were looking forward to the time when they could begin the actual pumping out of the vessel, when a storm crushed their hopes.

On February 9 a terrible wind struck the Shoal. Blowing from the southwest and west, it raged with hurricane force, making it impossible to continue the work. The Ada found a snug harbor behind the reef, where the Connetable was stranded and rode out the storm in safety.

The fury of the elements was, however, not the only trouble she had to contend with. The water supply ran short and as there was no rain, it could not be replenished.

After raging for four days, the storm abated somewhat and the Ada put to sea for home on February 14, forced to do so on account of the lack of water.

Before leaving an attempt was made to get up to the French bark but the heavy seas prevented her from going even near her. The pumps and other gear had to be left on board. It could not be seen whether the storm had injured the Connetable but the men are of the opinion that it has not.

Ellison says that when he last saw the vessel she was in the same state as when first found, with the exception that the poop deck was stove in. The trip back from the Shoal was

CONCERTED ACTION IS WANTED BY HOME RULERS

It was stated in yesterday's Bulletin that the Home Rulers had met during the forenoon and decided on a mass meeting in support of resolutions petitioning Congress to enact a county law for the islands. It has been learned since that this meeting is not to be confined to Home Rulers alone but will take in both the Republican and Democratic parties. One of the members of the Central Committee of the Home Rule party had the following to say last night about the matter:

"We do not intend this to be a party movement. Of course, we inaugurated it but we mean to take no credit. We are asking the Republicans and Democrats who want county government to join hands with us and be present at the big mass meeting it is proposed shall be called very soon."

"Governor Carter has been preaching county government all over Hawaii and the people on the Big Island are now more anxious than ever to get local self-government. People in Washington are asking what it is our intention to do and I think it is about time for all of us to get together and do something. We are going to send invitations to the chairmen of the central committees of the Republican and Democratic parties in a day or so."

WEDAY TO REFEREE IN TWO BIG ONES

Jack Weday will referee the two principal contests on Saturday evening at the Orpheum boxing carnival. Arrangements were concluded yesterday afternoon with Jack, who is perfectly satisfactory to both the men and has a big reputation with the general public for fairness. Larry Dee will act as timekeeper.

Fire Claim Bonds Sold

The Hawaiian Trust Company, Ltd., has sold \$130,000 of Hawaiian Fire claims bonds in New York.

When asked of the matter today Mr. Abrams acknowledged that the sale had been made to a New York broker but did not give the name.

The bonds were sold at par and accrued interest, which gives a very good idea of what the New York financiers think of this security.

The total issue of fire claims bonds was \$326,000 and it is estimated that the larger part of these bonds are now held by eastern financial men.

Cannot Prevent PROSECUTED Debtor's Departure

Supreme Court rendered two decisions at 3 o'clock this afternoon, in Oahu Lumber & Building Co. vs. C. Ding Sing as trustee for Oy Shock Kee Co. and C. T. Akana and in W. L. Austin vs. R. W. Holt et al.

In the former matter the court holds there was no error in the ruling of Circuit Judge De Bolt and overrules the exception of plaintiff. Says the opinion, written by Galbraith, J., "The writ of ne exeat is not now available, in an action of assumpsit, to prevent a defendant from going away from the Territory or to compel him to give security, for the payment of the judgment that may be recovered. The execution of the writ would subject the defendant to imprisonment for debt contrary to the provisions of the Organic Act."

Deputy Attorney General W. S. Fleming represented defendant in this case and maintained the point sustained by the Supreme Court.

Writ of error and appeals are sustained in the second named case. This was a bill to declare a trust and enforce a charge on real estate.

"A gratuity made a charge on real estate by will is taken subject to the payment of the debts against the estate. If the entire estate is consumed in paying debts the beneficiary takes nothing."

C. F. Peterson and T. McCants Stewart for plaintiff; Robertson & Wilder and Kinney, McClanahan & Cooper for defendants.

WINTER ON DECK.

Deputy United States Marshal F. L. Winter will doubtless welcome the return of Marshal Hendry from the Adachi extradition trip to Japan for more than one reason. Winter is doing duty for two and the business of the office is by no means light at present.

It is reported that the Japanese Emperor will remove his Imperial headquarters to Kyoto, the old capital of Japan up to the time of the Meiji Restoration.

SENDS 5,000 MILES FOR ANTI-GRIPPE TABLETS.

IF YOU HAVE A COLD,
READ THIS LETTER.

Indianapolis, Ind., Oct. 18, '02.
Hobron Drug Co., Ltd.,
Honolulu, T. H.

Gentlemen:
While in Honolulu last February I purchased a bottle of your Anti-Grippe Tablets, finding them the very best thing I ever tried for a cold and grippe. Would like to have you send me two bottles, for which I enclose stamps.

Respectfully,
MRS. H. F. WOOD.

There is no guesswork about this remarkable cold cure. People would not send 5,000 miles to get Anti-Grippe Tablets if they had not proved they were worth sending for. Mrs. Wood found them the "very best thing she ever tried for colds and grippe." So will you.

25 CENTS.

Hobron Drug Co.

Have your Goods Shipped by
WELLS, FARGO & CO.
EXPRESS.

Masonic Temple. Tel. Blue 581.

LIKE NOAH'S ARK IN A KONA STORM

For the first time in several days Superintendent of Public Instruction A. T. Atkinson received word this morning from the Industrial School for Boys at Waialeale, on the windward side of this island.

Usually Mr. Atkinson hears daily from Superintendent Gibson of the progress and general condition of things in regard to the Waialeale Boys' School. Lately, as may have been noticed, the weather has been inclement. This inclemency has extended to practically isolating the Industrial institution from the rest of civilization.

Floods have swept windward Oahu as well as the leeward side of the island. Incidentally, the windward side has been the leeward side during the apparently not yet finished Kona storm.

Waialeale still has floods to the right and floods to the left; from behind, from the mountains, come the raging torrents that cause the deluge; in front the sea is chocolate colored with mud and very angry tossing on its troubled service the remains of rice crops and other souvenirs of Oahu's agricultural resources.

Some anxiety had been felt concerning the Waialeale school. No word was secured for several days. The telephone was stormed out of order.

Today anxiety was relieved. Word came from the weather-bound boys and their masters. The message was full of interest.

It seems that Superintendent Gibson may well be likened to one Noah who

built an ark when rumors of deluge were afloat.

In this case a barn played the role of the ark.

Gibson saw the rain and the flood and he saw that it was not good to be out in. He is a humane man and he felt for the beasts of the field as well as for the boys of the school.

Straightway, while the rain descended and the waters rose, and the rice floated out to sea and the mountains were obscured by sheets of mist, Gibson, like unto Noah, called his children around him and bade them go gather in the horses and the cows and the pigs and the chickens, yea! even the little dogs, and drive them into the large barn that a thoughtful Board of Education and an indulgent Legislature had provided.

And the boys did all this, and the

(Continued on Page 4.)

ASSOCIATION FOOTBALL

A game of Association football will be played between the Iolani and the Punahou on the Makiki grounds tomorrow afternoon at 4 o'clock. The teams will be lined up as follows:

Punahou—Goal, A. A. Catton; backs, Soper, McCorriston; halves, Ryeroff, Gleason, Thayer; forwards, Birkmyre, Cooke, Waterhouse, Clarke, Cockburn.

Iolani—Goal, Noley; backs, Kellett, Keawe; halves, M. Anderson, J. Anderson, Sherwood; Forwards, Wilms, Woo, Simpson, Macfarlane, Kia.

Spaulding and Harrison will be referees for the Punahou and H. Clark and Desha for the Iolani. Cockburn will be the captain of the Punahou and Simpson of the Iolani.

Merchants Ask Why Of Treasurer They Get No Money

At the request of prominent merchants in the city interested in the matter of warrants registered on account of a lack of funds in the Government Treasury, a committee from the Chamber of Commerce and the Merchants' Association, consisting of the following, met with Treasurer Kepoikai in the legislative hall at 11 o'clock this morning: Geo. W. Smith, James Wakefield, Jas. F. Morgan, F. J. Lowrey and Robert Catton. During the discussion Auditor Fisher was sent for and he gave his ideas on the situation.

After talking for about an hour on the registered warrants of January and the likelihood of money being obtained by the material and supply men for goods furnished the Government, it was decided to hold another meeting as soon as practicable after the return of the Governor.

One result of the meeting was the criticism of Attorney General Andrews by the merchants and particularly by Mr. Smith, who presided for the committee. The heads of departments present admitted that Mr. Andrews had been remiss in his duty since the Senators in their meetings of January 17 and 18 had adopted a resolution calling for an immediate test case in the Supreme Court as to the matter of the appropriation bill under which the Government should act. The Governor had also requested the bringing of a test case. A whole month had passed and Mr. Andrews had not done a thing, leaving the business men in a serious dilemma and the Government in a dilemma as serious.

However, it was reported by Treasurer Kepoikai that he had been called on by Mr. Peters, who was anxious to bring the case right away. After consultation, it had been decided to leave the matter until the return of the Governor.

At this forenoon's meeting, previous to a general discussion, Mr. Smith stated for the merchants present that they desired to learn the standing of warrants from the Treasury. The position of the merchants was that the banks had declined to take Treasury warrants that had been registered. The times were very hard and it was understood that these warrants would not be paid until November. By that

time there would be in the neighborhood of a million dollars' worth of registered warrants.

Mr. Kepoikai said he had warned the various departments to curtail their expenses and had explained that the expenditures of the Government for the present year would have to be within \$500,000, this being the estimated receipts on the 1903 basis. To be exact, there would probably be \$528,000 to the end of the year for general expenses.

Mr. Lowrey asked if a lot of money was not expected soon from fall taxes.

(Continued on Page 4.)

A SECRET COMMISSION

Japanese of the city have it on good authority that Baron Suematsu and K. Koneka are on their way to England and the United States, respectively. It is further stated that they have a secret official commission to explain to both countries why Japan went to war with Russia.

The Japanese government seems to have been very grateful for the sympathy shown by the people of the two countries and is trying to increase the favorable feeling. It is understood that the government is attempting to dispel any doubts that may have arisen in consequence of the outbreak of the war.

Just Opened Up

A FINE LINE OF

PAJAMAS

For the Spring and Summer.

"MONARCH" AND CLUETT BRANDS.

These Names Stand for the BEST

Levingston's. Young Building

1071 BISHOP ST.

RAILROADS ARE BLOCKED

[Associated Press Special Cable.]

HARBIN, Siberia, Feb. 19.—The Russians have concentrated their forces along the lower courses of the Yalu river. The railroads are blocked and the officials are having the greatest difficulty in moving men and supplies.

RUSSIA PROTESTS AGAINST OUR DALNY CONSUL.

WASHINGTON, D. C., Feb. 19.—Russia has protested against the presence of the American Consul at Dalny. This port was recently declared an open port.

CENSORSHIP ABOLISHED.

ST. PETERSBURG, Russia, Feb. 19.—The censorship on all cables sent from Russia has been abolished.

Is Empress Dowager Dead?

CANTON, China, Feb. 19.—An unconfirmed report was received here today of the death of the Empress Dowager of China at Peking.

RUSSIA'S REPLY RESPONSIVE.

WASHINGTON, D. C., Feb. 19.—Russia's reply to Secretary Hay's proposal to preserve the integrity of China has been received. While its language is carefully diplomatic the reply is considered responsive.

PHILIPPINE CERTIFICATE PROPOSALS.

WASHINGTON, D. C., Feb. 19.—The Government has called for proposals for the purchase of three millions of Philippine certificates.

GERMANY'S POLICE SYSTEM.

SHANGHAI, China, Feb. 19.—Germany has secured the right to inaugurate a police system in the Shantung peninsula.

SENATOR HANNA'S FUNERAL.

CLEVELAND, Ohio, Feb. 19.—The funeral ceremonies of the late Senator Hanna were held today. The business of the city was suspended during the early part of the day and until the body was taken to the cemetery.

TROOPS HELD BACK FROM PORT ARTHUR.

[SPECIAL CABLE TO THE BULLETIN.]

HARBIN, Siberia, Feb. 19.—Owing to a lack of provisions, no soldiers have been ordered to leave for Port Arthur. The situation in the transportation of troops and provisions over the trans-Siberian Railway is becoming serious. It is practically impossible to render assistance to the Port Arthur forces.

JAPAN CAPTURES TWO MORE STEAMERS.

PORT ARTHUR, Manchuria, Feb. 19.—The Japanese forces have captured the Russian steamers Kolik and Babrik.

ST. PETERSBURG, Russia, Feb. 19.—M. Kokovzoff has been appointed Minister of Finance.

電海報戰露日

○露兵集合
露軍は鴨綠江の下流に當りて其の兵を集注せり
○清國皇太后薨去
本日清國皇太后薨去の報ありたり。但し確言ならず
○露國の通信條例
露國は露國特務機關より電報制限制規則を擬回せり
○露國の抗議
露國は大連に於ける米國領事の駐在に就き抗議せり
○獨逸の山東警察權
獨逸は山東省に於て警察權を使用するの權を得たり

HANDSOME STREET SHOE

Because you have been wearing \$5 and \$6 Shoes is all the more reason why you should wear this one at

\$4.00

It is made of patent soft skin, with dull kid top, low buttons, welt oxford, with military heel. Is perfect in style, workmanship and materials.



MANUFACTURERS' SHOE CO. 1051 FORT STREET

The Old Ready-Made

versus

The New Ready-To-Wear

Before the advent of

ALFRED BENJAMIN & CO.

30 years ago there were more old ready-made clothes than any other kind. The fabrics were inferior; the designs were commonplace; the pieces were thrown together with cheap cotton thread; the whole garment had a hang-dog look that no amount of pressing could get rid of. What little shape it first had was soon lost. At a glance you could tell this ready-made from custom-made—just as you can now.

When BENJAMIN Clothes were first marketed the other fellows shook their heads and predicted failure. "Where is the profit," they asked "in retailing garments that cost so much to tailor as custom-made?" Thirty years of success have shown the wisdom of producing fine clothes at reasonable prices. Today the highest type of ready-for-service apparel bears this famous trade-mark.

The Kash Co. Ltd.

NEW ENGLAND BAKERY



In Baking Bread

there is a great deal of discomfort. The hot fires make it unpleasant, and the chance of having bad bread makes it very trying. We take all the work and worry off your hands, and you have first-class bread as a result.

When you make your will name HENRY WATERHOUSE TRUST CO., LTD., as your executor. Then place the paper in one of its safe deposit boxes—and in peace. Your estate will be administered competently and economically.

MASONIC TEMPLE



WEEKLY CALENDAR.

MONDAY
Eastern Star—Regular.

TUESDAY
Chapter—Mark Master—5 p. m.
Kadosh—Important Business—7:30.

WEDNESDAY
Pacific—First Degree.

THURSDAY
Honolulu Chapter—Regular and Degree Work.

FRIDAY
Le Progress—First Degree.

SATURDAY
Perfection—Fourteenth Degree.

All visiting members of the order are cordially invited to attend meetings of local lodges.

HARMONY LODGE, No. 3, I. O. O. F.

Meets every Monday evening at 7:30 in Harmony Hall, King street.
W. F. HALL, N. G.,
E. R. HENDRY, Secretary.
All visiting brothers very cordially invited.

MYSTIC LODGE, No. 2, K. of P.

Meets every Tuesday evening at 7:30 o'clock in Harmony Hall, King street. Visiting brothers cordially invited to attend.
JOHN WALKER, C.C.
F. WALDRON, K.R.S.

OAHU LODGE, No. 1, K. of P.

Meets every Friday evening at Harmony Hall, King street, at 7:30. Members of Mystic Lodge, No. 2, Wm. McKinley Lodge, No. 8, and visiting brothers cordially invited.
C. M. WHITE, C.C.,
E. M. COLEMAN, K.R.S.

HONOLULU LODGE 616, B. P. O. E.

Honolulu Lodge No. 616, B. P. O. E., will meet in their new hall, on Miller and Beretania streets, every Friday evening.
By order of the E. R.
HARRY H. SIMPSON,
Secretary.

F. E. THOMPSON, E.R.

Wm. M'KINLEY LODGE No. 8, K. of P.

Meets every Saturday evening at 7:30 o'clock in Harmony Hall, King street. Visiting brothers cordially invited to attend.
H. T. MOORE, C.C.,
A. S. PRESCOTT, K.R.S.

HONOLULU HARBOR, No. 54, A. A. of M. & P.

Meets on first and third Sunday evenings of each month at 7 o'clock at Harmony Hall. All sojourning brethren are cordially invited to attend.
By order Worthy Captain:
FRED. MOSHER, C.C.

WHITE BRONZE MONUMENTS

Are endorsed by the Scientific American as being strictly everlasting. They are also more artistic and 40 per cent. cheaper than any stone. Call at office, corner King and Bethel Sts., and see samples, with some 500 beautiful designs. H. Cannon, agent for Haw. Is.



DR. ARCHIBALD N. SINCLAIR.

Offices—Rooms 208-209 Boston building, Fort Street.
Telephones—Office Main 385; Residence, White 2861.
Hours—11 a. m. to 1 p. m.; 4 to 5 p. m.; 7 to 8 p. m.; Sundays, 12 to 2 p. m. P. O. Box 801.

"For Rent" cards on sale at Bulletin office.

LOCAL AND GENERAL

Read "Wants" on page 6.
J. P. Ball, lawyer, 74 S. King St.
Have your old Panama hat made like new. Globe Clothing House.
Per S. S. Ventura, fancy fresh prunes 6 pounds for 25 cents. Gertz Bros.,
Canadian apples ex Aorangi—fine quality. C. J. Day & Co., Fort street.
A. N. Sanford, optician, Boston Building, Fort Street, over May & Co.
Honolulu Investment Co., Ltd., now located at their new offices, 932 Fort street.

Nearly furnished rooms at the Popular. \$1, \$1.50 and \$2 per week. 1249 Fort street.
A few second hand sewing machines cheap for cash. Watson & Sons, Oregon building.

Blank books of all sorts, ledgers, etc., manufactured by the Bulletin Publishing Company.
The Weekly Edition of the Evening Bulletin gives a complete summary of the news of the day.

The inconveniences incurred by the inclement weather may be alleviated by Pantheon O. P. S.

Oahu Lodge, No. 1, K. of P., will meet tonight at 7:30 o'clock in Harmony Hall, King street.

PUNCH AND JUDY up-to-date, or what will happen at the Orpheum Saturday night—in BULLETIN'S SATURDAY SUPPLEMENT.

Metropolitan Meat Co. have just received a large assortment of choice smoked and salt fishes for the Lenten season. Telephone Main 45.

B. F. Ehlers & Co. are offering their handsome assortment of steamer shawls at greatly reduced prices. Get one early while the lot is complete.

"Arabic" is now so well and favorably known here on the Hawaiian Islands that anyone purchasing it can not but be satisfied with the results.

Judge De Bolt yesterday granted Irene Howard a decree of divorce against Henry Howard on the ground of non-support. F. M. Brooks for plaintiff.

Treasurer Kepolikal states that nearly \$12,000 are still due the Territory from the United States on account of the \$1,000,000 of Hawaiian debt assumed at annexation.

Woods & Sheldon will open their new store tomorrow at 91 King street, formerly occupied by Whitman & Co. The new firm will conduct an up-to-date sporting goods house.

H. Hackfeld & Co., agents for the owners of the British bark Ivanhoe, which was yesterday morning attached under libel in admiralty, gave bond of \$5,500 and the vessel was released.

Take your kodak films to Honolulu Photo-Supply Co. if you wish to have them properly developed and printed. This company has the best facilities for doing that work and make a specialty of it.

The Koreans who beat Agent Taylor at Ewa and who were "committed" by Judge Hookano, were tried by Judge Lindsay yesterday afternoon and sentenced to three months' imprisonment at hard labor each.

The ladies of the Guild and Auxiliary of St. Andrew's Cathedral will meet in the Sunday school rooms this afternoon at 2 o'clock. It is particularly requested that all the ladies be present as the Lenten work is to be prepared.

Judge Dickey gave an address last evening in the rooms of the Y. M. C. A. on "Human Nature." Next Thursday evening P. C. Jones will speak on the "Use and Abuse of the Sabbath." A hearty vote of thanks was tendered Judge Dickey for his address.

A. Magill Robinson, father of Attorney Harry W. Robinson, formerly of this city, died in Louisville on the 3d inst. He had completed his 83d year and was attentive to his business right up to the time of his last illness. His wife, who survives, is a niece of General Zachary Taylor, President of the United States.

A couple of crossed electric wires caused a fire in the alley back of King street, near Palama chapel, at about 8:30 o'clock last night. The wires came into contact with some clothes belonging to a Chinese and these took fire. An alarm was turned in, the wires were severed and the trouble was at an end. There was quite a lot of smoke issuing from the roof of the tenement house in which the blaze took place, causing a great lot of excitement.

A clay bird shoot or the Honolulu Gun Club will take place at the club grounds in Manoa valley on Washington's birthday, February 22. A class shoot with good prizes in which the members will be classed according to their previous performances, will be the event of the day. There will also be pool shooting. All members can compete in the first class for the prizes in that class. Third class members can compete in the second, but neither first nor second class members can compete in the third class. This gives the poor shots an incentive to practice and win prizes.

MAUI FROM HAWAII.

The steamer Maui arrived from Hawaii ports this morning at 7:55 o'clock with 3,180 bags Ookaia, 5600 Panahau and 2832 Mahukona sugar and 62 head cattle.

Purser Kekuewa reports as follows: "The bark Olympic was at Kaunapali. The schooner Rosamond was at Kahului discharging lumber. The steamer Oregonian was at Kahului. Weather fair on the outward trip. Rough weather with wind and rain on inward trip."

WORLD NEWS BY CABLE

(Associated Press Cable.)

REPAIRING WARSHIPS.
Port Arthur, Feb. 19.—Three of the damaged Russian warships are being repaired by the caisson method.

KURINO'S STATEMENT.
Berlin, Feb. 19.—Baron Kurino states that if Japan is victorious in this war it will respect the sovereignty of China and Korea.

GENERAL WAR TALK.
St. Petersburg, Feb. 19.—Diplomats are discussing the possibilities of Germany, France and Russia declaring war on Great Britain.

JAPANESE DENY IT.
London, Feb. 19.—The Japanese legation issues an official denial from Tokyo that any Japanese warships have been destroyed. The fleet is still intact.

ENGLAND PREPARING.
London, Feb. 19.—There is a marked increase of naval activity in Great Britain. Ammunition factories are working day and night, and the dockyards are busy modernizing old warships.

ALEXIEFF REPORTS.
St. Petersburg, Feb. 19.—Viceroy Alexieff reports that the casualties in the bombardment of the 5th were: Killed 20; wounded 75. No damage to the fleet is mentioned.

FORTIFICATIONS BILL.
Washington, Feb. 19.—The House has passed the Insular Fortifications bill.

INSURANCE \$35,000,000.
Baltimore, Feb. 19.—The loss of insurance companies by the fire will not exceed \$35,000,000.

SERIOUS IN BALKANS.
Rome, Feb. 19.—The situation in the Balkans is serious. An army of 30,000 Austrians are ready to invade Albania, but Italy is opposed.

JUTEOPOLIS IS SAFE.
New York, Feb. 19.—The British ship Juteopolis from Iloilo has arrived. The British four-masted ship Juteopolis, laden with 4382 tons of Philippine sugar, called at Honolulu on September 5, 1903, to replenish her supply of provisions. She was then one hundred and twenty-eight days from Iloilo. She left Iloilo on April 30th of last year and her arrival now makes the trip one of about 300 days.

DRAWBACK ON COAL

The Collector of the Port yesterday received the following advice: Treasury Department, Office of the Secretary, Washington, Feb. 2, 1904. The Collector of Customs, Honolulu, Hawaii.

Sir:—The Department is in receipt of your letter of the 13th ultimo, transmitting a copy of a letter of the same date addressed to you by Wm. G. Irwin & Company, Limited, in which they inquire if under the provisions of paragraph 415 of the Act of July 24, 1897, a drawback will be allowed upon imported coal used as fuel on United States army transports engaged in trade between San Francisco, Honolulu, Guam and Manila.

The drawback of duties provided by said paragraph applies only to vessels engaged in trade with foreign countries, or in trade between the Atlantic and Pacific ports of the United States. As none of the ports mentioned are foreign and none are Atlantic ports of the United States, vessels plying between the same are neither engaged in trade with foreign countries, nor between the Atlantic and Pacific ports of the United States. The provisions of said paragraph 415 of the act of July 24, 1897, therefore, cannot be applied to such vessels.

(Signed) R. B. ARMSTRONG,
Assistant Secretary.
J. L. G.

WORK ON ROADS

The men of the Road Department are having a very hard time with the weather. Every little lull in the storm is being taken advantage of but when discouraging spells such as the one of last night comes along, they are set back and find it necessary to do much of the work over again. Today, a large force of men is out, every one soaked to the skin.

The places where the largest gangs are at work are as follows: Palama, King street, near Alapai, Wyllie street, Manoa, Hackfeld street and Kewalo. There is a great deal of damage of all kinds in Palama and in Manoa the gang there is working on bulkheads and bridges. On Hackfeld street, there is a large and dangerous hole and the road in Paoa is full of holes. There are eight men at work on the Kewalo ditch.

LIQUEUR SPOKEN.

The Chronicle of February 6, contains the following item: The British ship Iquique, now 101 days out from Leith for Honolulu, was spoken on January 5th in latitude 51 deg. south, longitude 62 deg. west, and is therefore considered as in good condition and making fairly good time.

Before leaving Leith the ship was on fire and sustained some damage.



"Eyes tested" or "eyes tested free" are claims easily made, but honest, competent advice is what you most desire.

Ability to discern between apparent eye defects and the real is only possessed by one of practical experience.

We fit you right if we fit you at all, and advise as judgment and honor dictate.

Our glasses MUST be satisfactory—to US as well as to you.

A. N. SANFORD,
OPTICIAN.

BOSTON BUILDING, 107 STREET,
Over May & Co.

Eyesight Testing and Spectacle Fitting
are our Exclusive Work.

Bamboo Furniture

—AND—
PICTURE FRAMES.

All kinds of fancy work made to order.

S. SAIKI.

536 South Beretania St., nr. Punchbowl

T. Masuda

Hats cleaned; Clothes cleaned and dyed.

Employment Office.

1416 FORT ST. NEAR VINEYARD.

Yokomizo & Kashiwabara,

Contractors as follows: Stone and cement work of all kinds.
Firewood and second-hand lumber.
Macadam, sands and all kinds of solid materials for fillings.
Office Emma Hall, cor. Nuuanu and Beretania St.; Tel. Blue 1211.

France Is True To Russian Ally

Paris, Feb. 9.—Temps, which is frequently used as a mouthpiece by the French Foreign Office, publishes an important article, which is ascribed to Government inspiration. It contains the following: "The whole world knows that France desires with a single heart the success of her ally. Existing treaties do not oblige France to participate in the present war, but France is an ally of Russia, and the alliance is close and general, implying a moral union, which under the stress of events might lead to fresh agreements."

"Consequently, while the Russians and Japanese fight their quarrel out, our silent immobility will paralyze all attempts that may be made by one quarter or another to profit by the struggle at the expense of our ally, and, in accord with those who wish to see the conflict localized, we shall, by our presence alone, effectively bar the way against any who may wish to extend it. Such is our duty to our ally, and we shall fulfill it. It is necessary that this be known at St. Petersburg and elsewhere, as it will constitute a guarantee for the limitation of the war to its present area."

"At the conclusion of the struggle, the issue of which, despite the illusions of the Japanese, is beyond doubt, France, disappointing the hopes of her rivals, will receive the reward of her fidelity to her plighted word."

Temps says Russia is about to take energetic measures. In the course of a conversation a military attaché of the Russian Embassy said: "Since they want war, they shall have it with a vengeance."

The Japanese Legation announces that Japan has requested China to declare coal a contraband of war. The effect of this would be to cut off the main coal supply of the Russian fleet at Port Arthur. The legation officials add that China's continuance of supplying the Russians with coal would be a breach of neutrality.

TRANSPORT THOMAS FAST.

According to the following extract from the Chronicle of February 3, the transport Thomas has recently gained a record for speed:

Captain Lynam of the big transport Thomas has taken the vessel across the Pacific to Manila in record time, according to information received yesterday afternoon. The troopship was reported as arriving at Manila on the 26th, twenty-six days from this port. The trip was by way of Honolulu and Guam. The Hancock, sailing by the mercantile route, three or four years ago, reached Manila in about twenty-three days, but no vessel sailing by way of Hawaii and Guam has ever before equaled the Thomas' time.

The Right Rev. Thomas Fielding Scott, the first Bishop of the Episcopal Church in Oregon, was elected to that office in 1853. The fiftieth anniversary of his consecration occurred in Portland on January 8th.

The Standard Gas Engine

Marine and Stationary.

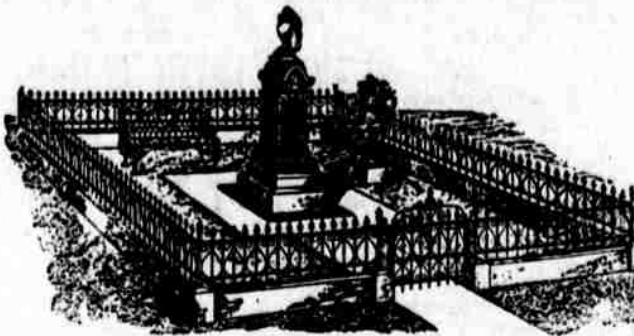
The "STANDARD" is all that its name implies. It is the most perfect Gas Engine that has been placed on the market today. It possesses all of the best features to be found in other Gas Engines, besides many advantages peculiar to itself that will be appreciated as soon as seen.

ACCESSIBILITY. Every part of the Standard Gas Engine is readily removable and accessible with the aid of an ordinary wrench and screw-driver—no special tools required. This is a fact that will be fully appreciated by those who have skinned their knuckles and been tempted to profanity by trying to get at the parts of other Gas Engines. Can use either gasoline or distillate. Absolutely safe; always ready and willing to run. Makes no noise and easy to start and keeps going, and the same can be said of the Stationary. We will install our Marine and Stationary Engines and guarantee to run them and will do all kinds of repair work. For full particulars inquire of

Washington Light Co.,

Sole Agents for the Standard Gas Engines. C. W. Macfarlane, Mgr.

GRANITE BRONZE MONUMENTS



Hawaiian Iron Fence and Monument Works, Ltd.

176-180 KING STREET.

NOW WE'RE OFF?

We are prepared to supply the People of Honolulu with Freshest of

ISLAND MEATS

Also, GARDEN PRODUCE of all kinds. BUTTER, EGGS, CHICKENS, TURKEYS, SUCKLING PIGS, BACON, HAM, in fact everything that

A FIRST CLASS MARKET

is called upon to furnish.

The ISLAND MEAT CO.,

HERBERT E. GARES, Manager. FORT ST., OPP. LOVE BLDG.
TELEPHONE MAIN 76. HIND, ROLPH & CO., AGENTS.

Territory Harness Shop,

554 SOUTH KING STREET. E. L. NEWMAN, Manager.

This shop has a reputation of manufacturing extra fine harness, saddles and the very latest and up-to-date Tuff Goods and Horse Boots.

TELEPHONE 35.

BISMARCK STABLE CO., LTD.

WAILUKU, MAUI.

TELEPHONE 226.

BISMARCK BRANCH STABLES

LAHAINA, MAUI.

Hacks, Carriages, Buggies and Saddle Horses on short notice.

Carriages meet all steamers. Competent drivers, reasonable rates, new vehicles and live stock.

THE CLUB STABLES,

518 FORT STREET.

NOTICE TO DOCTORS.

Hacks all night; Main 109.
Hacks Nos. 3, 7, 24, 32, 53, 87, 124 and 182.

Stable Phone: 109 Main.

Hack-stand Phone: 319 and 32.

C. H. BELLINA.

BUILDING MATERIALS

OF ALL KINDS.

Dealers in Lumber and Coal

ALLEN & ROBINSON,
Queen St., Honolulu.

Weekly Edition of the Bulletin, \$1 per year.

\$50.00 for \$1.00

AT THE

Ladysmith Shooting

Gallery,

TOP OF PUNCHBOWL.

Alakes street cars run within five minutes' walk of the range. If you can shoot come and try your hand. Live stock will be shot at next Sunday. If you can make five bull's-eyes in succession you will be entitled to a

Cash Prize of \$50

DAVID DAYTON

137 MERCHANT STREET.

Lots for Sale

in KAPIOLANI PARK ADDITION, KALIHU, and other desirable localities.

Also 1 JUMP-SEAT BUCKBOARD, second-hand; good as new.

W. M. Campbell

Can Build You a House Anywhere in Honolulu or Its Suburbs. " " " " " "

1634 YOUNG STREET near Punahou.

M. Phillips & Co.

Wholesale Importers and Jobbers.

EUROPEAN AND AMERICAN DRY GOODS.

Fort and Queen Sts.

Now Ready Our New Spring Goods

Every department resplendent in a bounteous display of the latest spring fashions.



The "Alameda" brought these beautiful new goods and also replenished our regular stock of standard materials. Early spring goods contain many new ideas which can be seen in various departments of this store. Some attractive new things just opened are now shown in

Ready-To-Wear Apparel

Dress Skirts, in cloth, etamines and chevrons. Walking Skirts, in up-to-date styles, black and colored. Ladies' Cloth Raglans, newest, sweet cut, light and dark colors. Alpaca and Linen Raglans, sample line, one of each kind; style, appearance and price irresistible. Children's Coats and Reefers, sample line; no two alike; ages 3 years upward. Low priced. Misses' and Children's Cloth Skirts, all sizes and length, in navy, black and grey.

New Spring Wash Materials

Don't miss these new goods; they're full of surprises. Perhaps the most surprising thing about them is the quantity we are selling these rainy days. The pretty new patterns are very tempting. The assortment consists of COTTON ETAMINES, MADRAS and OXFORDS, suitable for SHIRTWAIST SUITS; PERCALES, full yard wide in new designs; GINGHAMS, in handsome new patterns.

New Worsted Dress Goods

ETAMINES and ALPACAS in all the newest shades; TWEED SUITING, very stylish. OUR SUIT DEPARTMENT has also been replenished through-out. Many new silks for Shirtwaist Suits. New line of Dress Linens, Homespun, Linen Crash and Indian Head. WASHABLE NECKWEAR in beautiful assortment. New style stocks and collar and cuff combinations. New Lace Collars; new Spangle Collars.

N. S. Sachs Dry Goods Company, Ltd.

Upholstering and Renovating

There are many pieces of furniture seemingly ready to be thrown away that can be made as good as new in our upholstering and repair department.

Mattresses, Couches, Pillows, etc., made to order on short notice. Nothing in that line that we cannot do.

PORTER FURNITURE COMPANY,
YOUNG BUILDING, HOTEL STREET.

DO YOU WANT A FINE, DELICIOUS

**GINGER ALE, LEMON SODA,
ROOT BEER,
CREAM SODA or ORANGE CIDER?**
THEN RING UP TELEPHONE MAIN 71

Our goods are known everywhere as being the most palatable and the best manufactured in the Territory

Consolidated Soda Water Works Co.,
LIMITED. Tel. Main 71

WHY THE

U. S. Washing Machine Is the Best.

BECAUSE

It is the only Rotary Washer that has revolving steel ball gearing, reducing the friction and thus making the machine light running and almost noiseless.

The gear wheel turns right or left, the pin wheel or dasher reverses automatically, turning the clothes back and forth through the hot soap suds and cleaning them without rubbing them to pieces. Over One Hundred Thousand in use. The U. S. Machine have no equal because they wash clean.

THEO. H. DAVIES & Co., Limited,

SOLE AGENTS FOR HAWAIIAN ISLANDS.

THE AYER MEMORIAL



Mrs. Harriet Hubbard Ayer, the recently-deceased brilliant and world-famous writer for the press, in whose honor a twenty-thousand-dollar home for working girls will be established, after the manner of Mrs. Ayer's favorite Dickens story, "The Seven Poor Travellers." The idea has many unique features.

OFFICIAL REPORT FROM TAKAHIRA

The following official cables were received by Consul Miki Saito yesterday: Washington, 5:15 p. m. To Saito, Honolulu.

The Times' Peking correspondent reports that Alexieff, on February 14, sent the following: "Disabled—Tsarevitch, Pallada, Retvisan, Askold, Novik, Sevastopol, Petroplovsk. The Japanese have been driven from the railway near Chensow. Russians admit seventy killed and claim 150 Japanese prisoners. Russians have eleven ships out of action and declare that fifteen Japanese ships are disabled. The Boyarin is slightly damaged. "A Japanese surveying party is reported to have landed at Pigeon Bay and been destroyed."

So far as the Japanese are concerned the above information is untrue. No attempt was made for landing, hence no prisoners possible. Absolutely no Japanese ships have been disabled.

TAKAHIRA. Washington, Feb. 18, 1904. To Saito, Honolulu:

The following statement was made by a Japanese refugee who arrived at Chefoo from Port Arthur on the Wenchow, a British steamer:

On the night of February 8th, Japanese were prohibited from embarking on the British steamer Kaseo, Alexieff prohibiting all Japanese residents of Port Arthur from going out of the harbor.

The Japanese who embarked on board the British steamer Wenchow were put under a strict military surveillance of eight Russian guards. Their landing was prohibited and the ship was also detained.

More than 200 Japanese refugees on board the steamer were on the verge of starvation.

At last, on the night of February 10th after earnest appeal to Alexieff for succor ten bales of rice and half a dozen of biscuits were given to them. On February 11th we signaled to the fort that we were in want of drinking water, to which no answer was given.

On the 12th we again appealed for some nutritious food for the babies and pregnant women in the party. On the same day 103 Japanese refugees arrived from Harbin. On the way they were robbed of their money and other belongings.

There are now more than 300 Japanese refugees on board the Wenchow. They are all in extreme distress. On the 14th at 4 p. m. the ship was allowed to set sail and she reached Chefoo in the morning of the 15th of February. Anarchy reigns at Port Arthur.

"Bazoku" (a Chinese robber band) and Russian soldiers are pillaging; and the authorities ignore them. The condition is indescribable. The Russian merchants have armed their clerks and employees to protect their shops from the pillage of the soldiers.

TAKAHIRA.

A RAPID TRANSIT EPISODE.

This morning about half past ten, a tall lady with a half-sized husband, boarded a King street car. The lady was wearing her husband on her right hand, when they entered the husband looked up, and said to his wife: "You're tall enough to reach a strap, but what can I hold," she said, "If I was as short as you are, I'd hold my tongue," so he took hold of his tongue, the car started and he fell down, whereupon his dutiful spouse hollored, "What's the matter, can't you stand up?" "Said hubby, 'They both alighted.'" "Both what," said the wife. "Both my feet and my tongue," said the little husband, but let's get off the car and go and see Bath the plumber and have a look at that new line of Douglas Patent Closets that have just arrived. His telephone is 61 Mala.

BENJAMIN SEWALL MAY BE DERELICT

The Manila Cablenews of January 9 contains the following concerning the ship Benjamin Sewall, which was reported by Oriental papers to have been sunk:

A strange story of the sea has come to Manila. During the early part of October last it was reported through the Hongkong papers that the square-rigged ship Benjamin Sewall, of Boston, had gone down off the coast of Formosa. It was also stated that the captain and crew had escaped to the shore, where they fell into the hands of friendly natives, and finally reached a Japanese settlement.

The captain, himself, reported that he had seen his ship sink beneath the waves. Now comes the information that the Benjamin Sewall still floats; that she has been sighted by various craft plying in the China Sea, and that apparently she is still capable of weathering many storms. An extract from the log report of the British steamer Ora gives the following details of the sighting of the Sewall on October sixth:

"Sighted dismasted vessel which proved to be the American ship Benjamin Sewall, of Boston, three lower masts alone standing with the remains of fore and main yards, all other spars either on deck or alongside. We found her totally abandoned, and after making two attempts to tow her, which were unsuccessful owing to the heavy swell prevailing at the time, we decided to abandon her. At this time her position was 21 degrees, 36 minutes north; 122 degrees and 15 minutes east. I consider her to be a menace to navigation. Her chronometers were still going when I left her deck, and at the time I judged that they had been wound forty-eight hours previous."

The above report has been placed with Captain Chase, the harbormaster of Manila, who will inform masters of all outgoing craft of the presence of the dangerous derelict in the near vicinity of the Philippine coast.

The story of the wreck of the Sewall as told by the Hongkong press was to the effect that she had left Hongkong in ballast, bound for Boston; that while off the Formosan coast she encountered a typhoon blowing northward from the Sulu Sea and became unmanageable. Believing their ship to be in a sinking condition, captain and crew took to the boats and made for the shore; but before they could reach the beach, they claim to have seen the vessel go down.

BORN.

CAMPBELL—In Honolulu, February 18, 1904, to the wife of A. J. Campbell, a daughter.

PUNCH AND JUDY up-to-date, or what will happen at the Orpheum Saturday night—in BULLETIN'S SATURDAY SUPPLEMENT.

Don't forget, 35 loaves of bread for \$1.00 at the New England Bakery.

FORMIDABLE ARMY OF RUSSIA'S EMPIRE

In the army of the Russian Empire there are, estimating the strength on a war basis, three and a half million men in rank and file and more than 65,000 officers. This number includes the soldiers in all of the branches of the service, those of the regulars and reserves, those in fortress, the national defense force, the customs contingent and the available recruits. The list follows:

War Strength.	Officers.	Rank & File.	Horses.	Guns.
Regulars	28,300	1,311,000	330,000	3,850
Reserves	15,470	832,300	163,000	1,370
Fortresses	4,500	252,000	3,700	128
Recruits	6,640	373,700	50,500	458
National Defense	10,500	740,000	40,000	1,000
Customs	1,000	40,000	15,000
Grand total	66,410	3,549,000	562,200	5,818

Japan's Success Surprised the World

New York, Feb. 9.—A cablegram to the Sun from London says: Japan's daring coup in opening the war on the strong Russian position at Port Arthur has astounded Europe. Not only is it indicative of the tremendous energy with which Japan will force the campaign, but it is regarded as almost a decisive blow, so far as the naval operations are concerned.

Naval experts here are of the opinion that the disablement of three of the best ships of the Russian fleet is sufficiently important to assure the Japanese of victory upon the seas. All acquainted with the personnel of the Japanese navy and army agree that the war will be a constant series of dare-devil exploits, even riskier in character than the bold dash at Port Arthur last night. The best officers of the navy have been begging for torpedo-boat service, in which they could undertake enterprises involving almost certain death. The real difficulty will be to restrain men from flinging away their lives unnecessarily. This quality is so well understood that the wild story of the attack on Port Arthur and the sinking of eleven Japanese warships found ready credence in European capitals.

The European public is already gaining the impression that the war will be short, sharp and decisive. There is even an impression that Russia, if driven from the sea, might be induced to make peace.

In official circles the greatest interest is felt in the efforts of the United States to secure a careful restriction of the conflict within prescribed areas. The proposal will be strongly supported by all the powers, except, perhaps, Germany. The latter country is the danger point of the whole situation. It is everywhere believed that she will do her utmost to profit, territorially and otherwise, by the Far Eastern struggle.

TEXAN'S BIG CARGO.

The Chronicle of Feb. 9, contains the following about the A. H. boat Texan:

Fifty-two days and eighteen hours were occupied by the American-Hawaiian steamer Texan on the trip from New York, the huge freighter arriving yesterday. The run from Coronel, the Chilean coaling port, consumed nineteen days. Good weather was the rule throughout the long voyage, until the Texan was off this coast, when the high southwest winds kicked up a sea that occasionally flooded her decks. But through it the huge steamer plowed her way with scarcely any variation in her steadiness. Laden with a cargo exceeding 10,000 tons in weight, the Texan, like the other monster vessels of the American-Hawaiian line, is said to be as steady in the ordinary tempestuous sea as a fixed rock.

The Texan's cargo filled her to the very hatches and consisted of machinery and a great array of merchandise. Discharging began immediately at Greenwich street wharf.

On her last trip to New York the Texan made the run from Puget Sound to the Delaware Breakwater in fifty-six days, without a stop, the trip being the record for the big freighter. In the South Atlantic, during that run, the Texan logged 312 knots one day. She had coal to spare upon reaching her destination. On the present trip the steamer's best day's run was 298 knots.

JAPAN TO EXHIBIT.

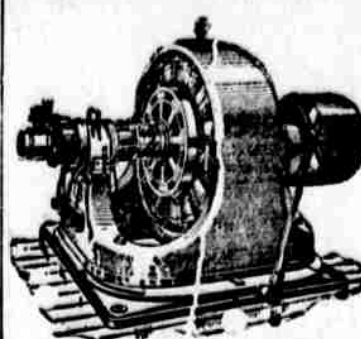
St. Louis, Feb. 9.—Nanjing Ota, Japanese Commissioner to the Louisiana Purchase Exposition, received a cablegram from the president of the Japanese Commission, Kipoura, today, which said that the war would make no difference with the exhibits of Japan at the fair. Kiyoura is the Minister of Commerce and Agriculture of Japan.

The engagement at Port Arthur is looked upon by Kanazaki, acting commissioner, as a Japanese victory.

"It makes no difference whether it is a victory or not," he said. "The Japanese will never give up. They will fight always to the end. We are a peculiar people in that a victory encourages us much, while a defeat encourages us still more."

The C. C. steamship company seems to have reached a firm footing, judging from the following item in the Chronicle of February 8:

The China Commercial Company's steamer Clavering reached Salina Cruz last Saturday from Hongkong and will be due here within the next two weeks. She will be the last of the China steamers to call here with Oriental freight, an arrangement having been made with the Pacific Mail Company for the vessels of this line to omit San Francisco on the route and call only at Portland for outbound freight.



WESTINGHOUSE MOTORS

The advantages of electric power for machine driving are numerous, but the more important may be treated under the following heads, viz.:

1. Reliability.
2. Convenience and Flexibility.
3. Saving of Power.
4. Sanitary Improvement.
5. Increased Output.
6. Decreased Cost of Maintenance.

We are agents for WESTINGHOUSE ELECTRIC AND MANUFACTURING CO., and supply all kinds of electric machinery on short notice. Write for booklets.

Hawaiian Electric Company, Limited.

OFFICE KING STREET, NEAR ALAKEA.

Nature freshens up outdoors in the spring time. The good housekeeper follows suit indoors. Here are some helps:

Linoleum

Large Shipment. Inlaid and Printed. All Grades.

Window Shades

All Sizes.

Our Rug Department

Is Complete in every detail.

Wicker Chairs, Rockers and Settees

A Large Assortment.

Don't overlook our REPAIR and UPHOLSTERING DEPARTMENTS. It is our aim to keep a Furniture Stock COMPLETE in all lines.

J. HOPP & CO.,
KING AND BETHEL STREETS, 'PHONE MAIN 111.



HEINZ PICKLES

Once you try them your pickle appetite will never be satisfied.

OLD BY ALL GROCERS.

H. Hackfeld & Co., Ltd.,
Agents.

Choice Fishes For the Lenten Season

A new supply of the following dainties just received: Smoked and Salt Salmon; Salmon Bellies; Smoked Hamburg Eels; Bloaters; Smoked and Salt Herring; Norway Anchovies; Codfish in blocks, strips and pickled. Codfish Tongues and Sounds. Smoked Haddock and Finnan Haddies.

Metropolitan Meat Company,

Tel. Main 45 Limited. Tel. Main 45

ASK YOUR GROCER FOR

LEWIN-MEYER CO.'S

Palace and Epicurean Goods.

Represented by

E. J. Walker.

J. LANDO

Is now established in the Oregon Block, Hotel Street, where he will be pleased to welcome his friends. His stock of Gents' Furnishings is complete and he will assist in selling his goods, by making the prices fit the times.

C. Brewer & Co., Ltd.

Queen Street, Honolulu, T. H.

Agents for—

Hawaiian Agricultural Co., Ooakala Sugar Plant, Co., Onomea Sugar Co., Honoum Sugar Co., Wailuku Sugar Co., Makee Sugar Co., Haleakala Ranch Co., The Planters' Line of San Francisco Packets, Chas. Brewer & Co.'s line of Boston Packets.

List of Officers:

C. M. Cooke, President; George Robertson, Manager; E. F. Bishop, Treasurer and Secretary; Col. W. F. Allen, Auditor; P. C. Jones, H. Waterhouse and Geo. R. Carter, Directors.

Weekly Edition of the Bulletin, 81 per year.

TO NUUANU PROPERTY OWNERS.

We will do your sewer connections for Thirty Cents a Foot. See us on the work.

Lord & Belser, GENERAL CONTRACTORS.

Mrs. C. L. Dickerson,
1181 ALAKEA STREET.

The leading Milliner of Honolulu, gets more goods and new styles by every steamer.

EVENING BULLETIN

Published Every Day Except Sunday,
at 120 King Street, Honolulu,
T. H., by the

BULLETIN PUBLISHING CO., LTD.

WALLACE R. FARRINGTON, Editor

Entered at the Postoffice at Honolulu as second-class matter.

SUBSCRIPTION RATES.

Evening Bulletin.
Per month, anywhere in U. S. . . . \$.75
Per quarter, anywhere in U. S. . . . 2.00
Per year, anywhere in U. S. . . . 8.00
Per year, postpaid, foreign . . . 11.00
Weekly Bulletin.
Six months \$.50
Per year, anywhere in U. S. . . . 1.00
Per year, postpaid, foreign . . . 1.50

Telephone 256
Postoffice Box 718

FRIDAY, FEB. 19, 1904.

According to all accounts Korea opened the port of Wiju just in time to allow Russia to enter for war purposes.

Having failed in its war strategy the Advertiser is passing the time by publishing daily fakes about the prize fighters.

Board of Agriculture's executive session is followed by Board of Education executive session, as evidence no doubt of Thurston's glorious example.

Business men throughout the Territory join in seconding the Bulletin's motion for a definite financial policy in the administration of the Territory.

Rockefeller is to retire from business and devote his time to the construction of a new \$500,000 home. This is doubtless the signal for another advance in oil.

The morning paper's fake story of Dave Barry in the role of Jean Valjean was a good second to the paper's struggle to lift itself out of war strategy muddles by the boot straps.

Bulletin extras, like the regular editions, are always popular with the newsboys and the people. Contemplation of Bulletin street sales invariably causes the morning paper to feel as if it were lost in a blizzard.

Home Rulers who at one time were reported as contemplating opposition to Congressional action on the County law, have come to the very sensible conclusion that Governor Carter is in earnest in his support of County government and his administration plan is the best.

The dispatch from Harbin goes to confirm anti-bellum reports of Russia's difficulty in moving men and supplies over the Siberian railway. There is little doubt that Russia was not prepared for war, and must remain on the defensive until reinforcements and supplies can be secured.

A combination of Russia, France and Germany against Great Britain is one of the events in the world's history that awaits only a favorable opportunity. The friendship of France and Germany for the British has found expression in calling courtesies, but has never been deep set in the heart of the populace.

Charges of cruelty laid against the Russians are likely to contain much truth. The sudden attack of the Japanese naturally gave the Russians all they wanted to do in caring for themselves; with no spare time for refugees. War is hell, and when a nation's prestige is at stake there's no time to think of men.

Japan has at least succeeded in giving the torpedo boats a good name. These little tin pot affairs have been characterized by some experts as coffin ships that must certainly meet destruction themselves if successful in destroying the enemy's vessel. Though Russians are not noted as high class sailors it is certain that gunners of the fleet were not asleep during the torpedo attack. Henceforth the torpedo boat will be regarded as having a chance for life.

AMERICAN DIPLOMACY.

American diplomacy is winning many peaceful battles these days while the belligerent powers in the Far East are anxious to make friends. We stand a good chance of winning more before the final battle is fought and the treaty of peace is drawn. There is no nation on the face of the earth whose cooperation and good offices have been more assiduously sought, but even to this day Europe has small conception of the true purpose of our diplomacy. It is difficult for European diplomats to understand that Americans mean just what they say—no more.

The Far Eastern problem as it relates to the unoccupied portion of China is one of the international games in which the United States has taken a very active and somewhat vigorous hand. Europe and Africa are beyond our field of action. South America is accepted as one of our special preserves. China, tottering China, practically in the grasp of the first one to grab, has been the particular object of American diplomacy, to preserve her from destruction and yet free to the traders with their goods.

Far from objecting to the attitude of the United States the interested

Powers have been constantly seeking its friendship. When the situation in the Orient first assumed critical phases, Russia sought the assistance of the United States and was informed that our country was and must remain strictly neutral. Advances were made by Japan with the same result. The United States was indeed interested in the maintenance of a principle in dealing with Oriental problems but it could not enter into any combinationsavoring of an alliance with either of the belligerent powers.

The situation is gratifying to Americans as evidence of a recognition of their power. It is mystifying to the European who cannot understand the proposition of a nation refusing to follow up an advantage certain to be gained by taking sides. Europe looks for an ulterior motive other than what is stated in the American stand and is surprised when none is found.

In the discussion of a general war which is now a leading topic, there is much speculation of where the United States will be found. Will it join with Great Britain or Japan and make common cause with them in event of hostilities? There is much to suggest gain for our country by some such course, but the probability of such a result is infinitesimal. If the United States is attacked it will unquestionably fight, otherwise it will hold to its old time principle of neutrality.

Even our own countrymen sometimes forget that with Congress alone rests the authority to declare war.

MERCHANTS ASK WHY

(Continued from Page 1.)
Mr. Kepoikai replied that this was so, but that the receipts were coming in very slowly. Of the estimated receipts for February (\$77,000) there was \$40,000 still to come and it was already past the middle of the month. For the past ten years, the receipts for February had never fallen below \$75,000 but he was afraid that they would go below this for the present year.

Continuing, Mr. Kepoikai said he could see why the bankers had refused to take the registered warrants. The question of the validity of the appropriations had naturally arisen. There was a vast difference of opinion as to what basis should be taken for the appropriations and was natural for the bankers to ask: "Where are we at?"

"There is but one course to pursue," said Mr. Kepoikai. "A test case must be brought and when a basis is decided on the banks will be willing to advance the money. I can then go to them and get \$150,000 in cash and \$150,000 through a treasury warrant, as the law provides. I can always borrow that amount, providing the governor gives his sanction."

With the \$300,000 and curtailed expenses in the department there would not be as much as \$200,000 in registered warrants at the end of the year, taking it for granted that the heads of departments will take my advice and curtail their expenses. I believe the only course left is to secure an immediate test in the Supreme Court.

"There is one bad feature about this whole thing. Heads of departments might not heed my warning. They might authorize expenditures up to the limit designated by the legislature. The warrants would be issued and I would have to register them. There would be nothing else to do. Thus the country could be placed in a terrible dilemma."

Mr. Lowrey asked the Treasurer if he would accept the registered warrants in payment for taxes and Mr. Kepoikai replied that he would under certain circumstances and that he had so instructed the Assessor. When taxes came up to the amounts indicated in the warrants, it was all right but if a man had a warrant for \$250, he could hardly expect to pay \$5 for his taxes and get the change. The merchants shared this view of the Treasurer.

Mr. Lowrey asked further what the expenditures during the year would probably amount to. Mr. Kepoikai replied that he could not say as to that. Heads of departments could go ahead and authorize the expenditure of something over \$1,000,000 although he had given warning to keep within \$500,000. Mr. Lowrey wanted to know if there was any reason to suppose that the receipts of 1904 would be as large as those of 1903. He did not think this could be and therefore, the \$525,000 estimate of the Treasurer could hardly be relied on. He gave as his reason for being sceptical the depreciation in real estate and other values. Mr. Morgan agreed with Mr. Lowrey, saying that there would be more appeals in the Tax Appeal Court on account of the hard times and the anxiety of the people to pay only what they absolutely had to.

Mr. Fisher said this was largely guess-work and that he did not believe there would be much of a falling off. Mr. Lowrey came back with statement

that a decision had recently been made by means of which merchandise stocks were subject to a discount rather than being assessed at the value at which they might stand. This would make a considerable difference in valuation and hence in the taxes paid in. Mr. Wakefield asked about the receipts from income taxes and Mr. Fisher replied that he did not believe there would be much of a change.

Continuing, Mr. Fisher stated that the present financial condition of the Government was due to over appropriations by the Legislature. For years back, on the first day of January there was always a substantial balance on hand to start in on. The Legislature had appropriated beyond the estimated revenues of the country and the present year started out with nothing in the Treasury. One thing the Legislature did was to insert an appropriation of \$130,000 for the Hackfield wharf in the Current Expense Bill instead of putting it in the Loan Bill, where it properly belonged. This shortened the balance at the beginning of the year by just so much.

Mr. Fisher, continuing, stated that the Governor was the only brake on the heads of departments. If warrants from different departments, in strict accordance with the appropriation law, were sent to him, there was no alternative. He would have to sign them.

Asked a question as to the nature of the warrants being issued, Mr. Fisher stated that so far as expenses were concerned, he was not issuing any warrants except for money authorized by the Eighteen Months' Bill. This he would persist in until the return of Governor Carter, when the test case matter could be brought up.

As to payment under the six months bill, the Auditor replied that he was going according to the authorization of the Governor and Senators who met with him, the understanding being that the Attorney General should bring a test-case into the Supreme Court as soon as possible.

Mr. Smith, reporting on what he had done with reference to the banks, said that he had demanded payment at the treasurer's office on a warrant for a considerable amount. He had been told that there was no money. The warrant was thereupon registered and he went to Mr. Damon at Bishop & Co.'s. He attempted to get the warrant cashed but was unsuccessful. The banks seemed to feel that they had to keep a considerable amount of money on hand for the general business of the city. Nothing was said as to the validity of the warrants.

It was explained by both Messrs. Kepoikai and Fisher that warrants under such departments as the Board of Health and Board of Education should certainly be accepted by the banks since they were perfectly good, coming as they did under the eighteen months' bill.

Mr. Smith stated that the four banks had come together at a meeting not long since and had come to the conclusion to furnish money for pay warrants for the present month. Next month they would meet again and decide then what to do.

Mr. Fisher said he could not see why the banks should refuse to take warrants under the 18 months' bill as collateral security just as the notes of the business men present would be taken as security. He felt that the bankers did not fully understand the situation. At this stage the meeting adjourned to come together again when Governor Carter should return.

LIKE NOAH'S ARK

(Continued from Page 1.)
animals, two by two, presumably, went into the barn, where they will remain until dry land appears where they were wont to graze and root and scratch.

And Gibson also went into the barn, for, behold, his cottage has not been completed and there was no other place wherein he might lay his head. If the animals had not been thus housed, some would probably have been drowned.

Gibson reports that the buildings of the school are intact. Owing to his foresight and the timely action of himself and the boys in his charge, in caring for the animals and otherwise guarding against the flood which surrounded the immediate neighborhood of the school, no damage has been done.

Yesterday the waters subsided enough to allow a wagon to be sent to Kahuku for meat for the school. The Kahuku butcher usually sends meat to the school, but the weather forbade. At last Gibson ventured the watery journey and secured the beef and mutton.

It seemed for awhile that the whole school would be forced to observe Lent in the meat matter, unintentionally. During the meat famine there was a great onslaught on poi and salmon.

Wilder S. S. Co. vs. W. H. Pain, assumpsit, continues before Judge Gear.



STANDARD FLOOR DRESSING.—The Dust Exterminator; Protects Health; Preserves Floors; Saves Labor; Saves Money.
STANDARD OILER.—For applying the above Dressing; the flow of oil regulated; economical and labor-saving. Call and examine the above.

Pacific Hardware Company, Limited.
Fort and Merchant Streets

BARGAIN SALE 2nd HAND VEHICLES for 10 Days Only



BUGGIES
PHAETONS
SURREYS
\$25.00

At prices never before offered to the public

FIRST COME, FIRST SERVED
Call Early and Take Your Pick

Schuman Carriage Co.,
Limited
YOUNG BUILDING

A SURE SIGN

that's sure to attract attention and draw business is the kind we paint. Shall we tell you how little we'll paint it for?

S. STEPHENSON, Sign Painter, King Street.

THREE INDICTMENTS RUMORED

IN RE VOUCHERS

Territorial grand jury failed to make a partial report to Judge Robinson this morning, although it had been expected that this body would today return a number of indictments in miscellaneous matters and the findings and recommendations as the result of its thorough investigation of the George Robertson fire at Panahou.

Shortly after 10 o'clock the members of the grand jury were assembled in the court room of Judge Robinson, using this chamber for their deliberations instead of the room of the court stenographers, where they have been in the habit of gathering.

It was soon given out that no report was forthcoming today.

Tuesday is now set for the presentation of the jury's opinions, Monday being the anniversary of the birth of the Father of his Country.

It was said this morning that unforeseen complications had arisen in the matter of one or two of the indictments which were to have been returned and that further investigation was necessary before a report could be made. There were varying rumors as to the nature of these complications, one was to the effect that several material witnesses were unobtainable and information was not complete in relation to some cases; another, that a surprise had been sprung on the jury in the form of a statement by some knowing one, implicating additional parties in a criminal affair.

It is stated with considerable assurance that there will be more than one indictment in the matter of the House of Representatives vouchers.

Now it is intimated that indictments in this connection will be returned on Tuesday next, although the full report on the vouchers affair will not be ready until the grand jury makes its final report to Judge Robinson.

Three indictments are hinted at in re House vouchers; at the same time this hint conveys with it the fact that true bills were found only after the greatest difficulty.

All the morning was taken up, it is understood, with alteration in the report, alteration necessitated by the unforeseen complications above referred to.

SUPPLY SAILS TOMORROW.
The U. S. S. Supply will sail for San Francisco tomorrow morning. When the vessel arrived here the health of Governor Sewall of Guam, who is on board, was in such poor state that it was deemed too risky for him to continue the voyage to San Francisco.

During the stay in port Governor Sewall has improved considerably and it is now thought that he can stand the voyage to San Francisco, where he will seek the best of expert medical aid.

HOLLOWAY READY AT ONCE

TO BUILD STABLES

As soon as possible, work will be started on the new government stables in Kakaako, the site chosen being close to Lord & Belser's stables. The plans have all been prepared and all that hinders now is the state of the weather.

The stables are to be 353-150 feet and provision will be made for 140 stalls for mules and horses, besides sheds and other necessary buildings.

It is the present plan of the Superintendent of Public Works to join the garbage and road department stables into one just as he has combined the two offices running these respective departments. Mr. Holloway is certain that this will result in a great saving of money to the government.

Mr. Holloway stated to a Bulletin reporter this morning that he had planned to have the hall of records placed where the road department stables now stand. He does not think that this is a proper place for the armory of the N. G. H. and that the hall of records is much more important and therefore should receive the very first consideration. The plans for this building are now being prepared by Architect Traphagen.

As to a site for the new armory, Mr. Holloway said he was living in hopes that the government would be given back the present site for the military. It was perfectly adapted to the purposes and should the matter be viewed in the proper light at Washington, the land would very probably be returned.

PUNCH AND JUDY up-to-date, or what will happen at the Orpheum Saturday night—in BULLETIN'S SATURDAY SUPPLEMENT.

LOANS!

We have money to loan on improved real estate. Repayment in monthly installments to suit small incomes.

For particulars see

PHOENIX SAVINGS, BLDG.,
AND LOAN ASS'N.,
JUDD BUILDING, HONOLULU.

Guarantee Capital against loss \$ 200,000 00
Subscribed Capital \$5,000,000 00
Paid-up Capital \$1,000,000 00
R. CAMPBELL, Cashier.
H. E. POOCK, General Agent

OLD ASSESSMENT CAN BE SUED ON

Unanimous decision of the Territorial Supreme Court, handed down this morning, sustains the judgments of the Wailuku District Court and the Circuit Court rendered for plaintiff in James N. K. Keola, deputy assessor of taxes for the District of Wailuku, Maui, vs. Solomon Hale, overruling the defendant's exceptions.

Syllabus and opinion are as follows and are written by Associate Justice Perry:

An assessor of taxes may sue for unpaid taxes assessed by his predecessor in office as well as for those assessed during his incumbency.

Assessment books or tax rolls are admissible in evidence in support of an assessor's claim for delinquent taxes assessed prior to the plaintiff's incumbency.

An action of assumpsit for delinquent taxes may be brought by an assessor or deputy assessor in his own name on behalf of the Territory of Hawaii. In the declaration and summons in this case it sufficiently appears that the action is so brought.

This is an action of assumpsit, commenced in the District Court of Wailuku, for \$192.78 for taxes assessed against the defendant for the years 1895, 1897, 1898, 1899, 1900 and 1901.

EDUCATION BOARD DISCUSSES TEACHERS

A meeting of the Board of Education was held in the offices of the department in the Judiciary building this morning, those present being Mrs. Jordan, Mrs. Hall, Prof. Alexander, Messrs. Von Holt and Wood, Superintendent Atkinson and Secretary Rodgers.

The committee went into an executive session which lasted half an hour. In open meeting J. N. Bell was transferred from Kahuku to Honolulu to take the place of Mr. Wishard.

Miss Agusta Bruce, assistant in the Honolulu school, transferred to Kahuku.

Mrs. J. N. Bell, assistant at Kalaupapa, transferred to Honolulu, vice Miss Bruce.

Miss Mary France, assistant in Wailuku, transferred to Kalaupapa, vice Mrs. Bell.

Miss Adeline France, appointed to Wailuku, vice Miss France.

Miss Mary Rasmussen, teacher at Waimanalo school, Kooloapoko, resigned, left on the Sierra on account of sickness of her mother.

Death of Miss Susie Akamuhou, assistant in the Lihue school, Kauai, reported, Miss Mabel Wilcox appointed in her place.

Mrs. Kawena Kaulili, appointed as teacher at the Koolau School, Hanalei, Kauai.

Miss Matilda Napaipai, appointed teacher at Honokowai, Lahaina, vice W. Kalaokini, resigned.

Miss Susie Aki, appointed teacher Mahukona, Kohala, Hawaii, vice Mrs. Amy Irish, resigned.

D. P. Halemanu, appointed teacher at Kalaupapa school, N. Kona.

Resignation of Miss Etta Loebenstein, asst. in Papaikou school, reported.

Superintendent Atkinson reported on his inspection of Lahainaluna and Wailuku.

FOR A SCHOOL EXHIBIT

Upon the return of Governor Carter from Hawaii, expected tomorrow, Superintendent of Public Instruction Atkinson will urge the sending of Hawaii's exhaustive and splendid educational exhibit to the St. Louis World's Fair. Even should Hawaii contribute nothing else, Mr. Atkinson believes the school exhibit should be given to the world.

Governor Carter has frequently spoken in praise of the showing made and it is believed that he favors having the collection of school products sent on. It is not unlikely that some person familiar with school work will accompany the exhibit.

The case of Tishima, the Japanese who shot his wife at Ewa some time ago, was called in the Police Court this morning. He is charged with assault with a weapon. The case was continued for a week owing to the fact that the woman is still in the hospital and unable to appear in court.

THOSE FRENCH DINNERS.

The seventh in the regular course of those exquisitely delicious Continental French Dinners will be served at the Royal Hawaiian Hotel, tomorrow evening at half-past 6 o'clock. So largely and rapidly has the patronage increased, additional space has been reserved on the Ewa fanaal for these Saturday evening repasts. Their success being assured, beyond highest anticipations, the management wishes to announce their permanency as an assured recurrence and will no longer make weekly reference to same. The desirability of securing table or seat reservations before noon Saturdays is well impressed upon the numerous patrons.

Get your "To Let" signs at the Bulletin office.

B. F. EHLERS & CO.

Reduced Prices

ON

STEAMER

SHAWLS

Our stock of imported all-wool STEAMER SHAWLS at greatly Reduced Prices. This lot comprises many beautiful patterns in light and dark plaids and Scotch mixtures. Every shawl a rare bargain.

\$8 Shawls, \$5.25
\$6 Shawls, \$4.00

B. F. EHLERS & CO.

CASTLE & COOKE, Ltd
HONOLULU.

Commission Merchants
Sugar Factors

AGENTS FOR

The Ewa Plantation Co.
The Wailuku Agricultural Co.
The Kohala Sugar Co.
The Waimoa Sugar Mill Co.
The Fulton Iron Works, St. Louis, Mo.
The Standard Oil Co.
The Geo. F. Blake Steam Pumps.
Weston's Centrifugals.
The New England Life Insurance Co. of Boston.
The Aetna Fire Ins. Co. of Hartford, Conn.
The Alliance Assurance Co. of London

Wm. G. Irwin & Co., Ltd.

WM. G. IRWIN, President and Manager
CLAUS SPRACKELS, Vice President
J. M. GIFFARD, Second Vice President
H. M. WHITNEY, Jr., Treasurer and Sec.
GEO. J. ROSS, Auditor

SUGAR FACTORS

AND COMMISSION AGENTS

Agents for the
SCOTTISH UNION & NATIONAL INSURANCE COMPANY OF EDINBURGH.
WILHELM OF MAGDEBURG GENERAL ASSURANCE COMPANY.
ASSOCIATED INSURANCE COMPANY of Munich and Berlin.
ALLIANCE MARINE & GENERAL ASSURANCE CO., Ltd., of London.
ROYAL INSURANCE COMPANY OF LIVERPOOL.
ALLIANCE ASSURANCE CO. OF LONDON.
ROCHESTER GERMAN INSURANCE COMPANY OF NEW YORK.

AGENTS OF THE
Oceanic Steamship Company
OF SAN FRANCISCO, CAL.

JEWETT

He
Makes
Signs

Jewett's signs are landmarks of sign excellence.

New office on Hotel Street, former location of King Bros. Art Store.

The Densmore Typewriter.

Does more than any other typewriter on account of its great speed. Is more than any other machine on account of its great excellence. Has more practical devices for convenience than any other typewriter.

HAWAIIAN NEWS CO., LTD.
Alexander Young Building.

Friedenthal Sheet Music

The Gavotte Antique by Corelli and Gypsies Procession, arranged by Friedenthal, can be procured in sheet music at Bergstrom Music Company, Ltd.

WAR EXTRA.

General - Arthur

TO THE FRONT!

Japs and Russians are making lots of smoke while Americans are smoking the General Arthur Cigar everywhere.

GUNST - EAKIN CIGAR COMPANY,
Distributors.

RATES FOR WANT ADS.

Ads in this column will be inserted at—
 Per line, one insertion ...15c
 Per line, two insertions ...25c
 Per line, one week30c
 Per line, two weeks40c
 Per line, one month60c

This is the cheapest advertising ever offered the people of Honolulu.

EVERYDAY WANTS AND BUSINESS DIRECTORY

HAWAII'S GREATEST OPPORTUNITY FOR LARGE RETURNS ON SMALL INVESTMENTS

BULLETIN
 AD.
 IS A
 BUSINESS
 LIFE-PRESERVER.

WANTS

See Page 8, NEW TO-DAY, for New Ads.

SITUATIONS WANTED.

By young man as clerk or asst. book-keeper; can furnish good references. Address A. L. Bulletin. 2668-1M

SPECIAL NOTICES.

Bicycles and all light machinery repaired at short notice. Pioneer Motor Car Co., Merchant and Alakea Streets. 2639-1f

WANTED

Small house; good bath; centrally located; desirable neighborhood; low rental. Address Room 2, Elite Bldg. 2677-1f

A sound and gentle driving horse for use in a family surrey. Address P. M. L., this office. 2688-1W

A cottage for housekeeping, with all improvements; good locality. Address Box 674. 2691-1f

FOR SALE.

\$1500 house and barn with 4 lots, 100x200, all fenced; frontage on three streets; fine sea and mountain view; \$2400, one-third cash; \$25 per month or lease, if preferred. "D.A." Bulletin. 2677-1f

Fine corner lot in Makiki. Curbing, water, fruit and ornamental trees and all improvements. Two minutes' walk from cars and Punahou College. Address R. F., this office. 2616-1f

TO LET.

A two-story residence at 1286 Beretania St., between Piko and Koa-moku Sts. Rent \$45.00 per month. Apply to C. J. McCarthy. 2650-1f

One of the Peck cottages, 327 Vineyard St. Apply at 307 Vineyard, betw. 12 and 1 and after 5 p. m. 2686-1f

Furnished room in private family; Piko near Lunalilo. Address M. S., this office. 2689-1W

Fine Job Printing at the Bulletin

PARTNER WANTED.

TO LET.

At Kaimuki, the cottage lately occupied by J. W. A. Redhouse, on Eighth Avenue, near Kaimuki Avenue, and near the property of Mrs. Hendricks. A few minutes' walk from the Electric Cars. For information, apply to Cecil Brown, Merchant Street. 2669-1f

Brick building, suitable for manufacturing plant; store in connection if desired. Rent very reasonable. Bishop & Co., bankers. 2621-1f

A nice front mosquito-proof room in a private family; on car line; rent reasonable. Apply N. E. corner Victoria and Lunalilo Sts. 2656-1f

Furnished Rooms—Nice, cool, mosquito-proof rooms. Alakea House, Alakea St. bet. Hotel and King. 2265-1f

2 cottages on River street, four rooms, kitchen and bath room. J. W. Podmore, Bethel and King. 2621-1f

Furnished Rooms, all modern conveniences, with or without board, 727 Lunalilo St. 2639-1W

Nicely furnished rooms, all modern conveniences. At No. 84 Vineyard St. 2657-1f

Furnished rooms at No. 9 Garden lane. Mrs. McConnell. 2563

ROOM AND BOARD.

Room and board can be had at 1490 Nuuanu St. between Vineyard and School. 2670-1f

Room and Board for gentleman; private family; Makiki. Apply Box 652. 2656-1f

LOST.

Many thousands of dollars through neglecting to have stock sufficiently insured. Honolulu Investment Co., represent four of the strongest fire insurance companies.

LAZARRE

...By... MARY HARTWELL CATHERWOOD

(Based Upon the Mystery Surrounding the Fate of the Dauphin, Son of Louis XVI. and Marie Antoinette)

Copyright, 1901, by the BOWEN-MERRILL COMPANY

Then the old servant gathered wall to wall for us, and she sent some in his hand to Paul. Through a festooned arch of the pavilion giving upon the terrace we saw a bird dart down to the fountain, tilt and drink, tilt and drink again and flash away. Immediately the multitudinous rejoicing of a skylark dropped from upper air. When men would send thanks to the very gate of heaven their envoy should be a skylark.

Eagle was like a little girl as she listened. "This is the first day of September, sire."

"Is it? I thought it was the first day of creation."

"I mention the date that you may not forget it. Because I am going to give you something today."

My heart leaped like a conqueror's. Then her face went grave, like a child's when it is surprised in wickedness.

"But our fathers and mothers would have us forget their suffering in the festival of coming home, wouldn't they, Lazarre?"

"Surely, Eagle."

"Then why are you looking at me with reproach?"

"I'm not."

"Perhaps you don't like my dress?"

I told her it was the first time I had ever noticed anything she wore, and I liked it.

"I used to wear my mother's clothes. Ernestine and I made them over. But this is new, for the new day and the new life here."

"And the day," I reminded her, "is the 1st of September."

She laughed and opened her left hand, showing me two squat keys, so small that both had lain concealed under two of her finger tips.

"I am going to give you a key, sire."

"Will it unlock a woman's mind?"

"It will open a padlocked book. Last night I found a little blank leaved book with wooden covers. It was fastened by a padlock, and these keys were tied to it. You may have one key; I will keep the other."

"The key to a padlocked book with nothing in it?"

Her eyes tantalized me.

"I am going to put something in it. Sophie Saint-Michel said I had a gift for putting down my thoughts. If the gift appeared to Sophie when I was a child it must grow in me by use. Every day I shall put some of my life into the book, and when I die I will bequeath it to you!"

"Take back the key, madame. I have no desire to look into your coffin."

She extended her hand.

"Then our good and kind friend, Count de Chaumont, shall have it."

"He shall not!"

I held to her hand and kept the key. She slipped away from me. The laughter of the child yet rose through the dignity of the woman.

"When may I read this book, Eagle?"

"Never, of my free will, sire. How could I set down all I thought about you, for instance, if the certainty was hanging over me that you would read my candid opinions and punish me for them?"

"Then of what use is the key?"

"You would rather have it than give it to another, wouldn't you?"

"Decidedly."

"Well, you will have the key to my thoughts!"

"And if the book ever falls into my hands?"

"I will see that it doesn't!"

"I will say, years from now—"

"Twenty?"

"Twenty? Oh, Eagle!"

"Ten."

"Months? That's too long!"

"No, ten years, sire."

"Not ten years, Eagle. Say eight."

"No, nine."

"Seven. If the book falls into my hands at the end of seven years may I open it?"

"I may safely promise you that," she laughed. "The book will never fall into your hands."

I took from my pocket the gold snuffbox with the portraits on the lid and placed my key carefully therein. Eagle leaned forward to look at them. She took the box in her hand and gazed with long reverence, drooping her head.

Turning my head I saw an old man come out on the terrace.

He tried to search in every direction, his gray head and faded eyes moving anxiously. Mme. de Ferrier was still. I heard her lay the snuffbox on the

stone seat. I knew, though I could not let myself watch her, that she stood up against the wall, a woman of stone, her lips chiseled apart.

"Eagle, Eagle!" the old man cried from the terrace.

She whispered, "Yes, Cousin Philippe!"

CHAPTER XIX.

Swiftly as she passed between the tree columns, more swiftly her youth and vitality died in that walk of a few yards.

We had been girl and boy together a brief half hour, heedless and gay. When she reached the arbor end our chapter of youth was ended.

I saw her bloodless face as she stepped upon the terrace.

The man stretched his arms to her. As if the blight of her spirit fell upon him, the light died out of his face, and he dropped his arms at his sides.

He was a courtly gentleman, cadaverous and shabby as he stood, all the breeding of past generations appearing in him.

"Eagle?" he said. The tone of piteous apology went through me like a sword.

She took his hands and herself drew them around her neck. He kissed her on both cheeks.

"Oh, Cousin Philippe!"

"I have frightened you, child! I

A "RESTAURANT" GOWN



This beautiful gown is made of white crepe de chine, the lace being appliqued into the material, and the seams all fastened together. The lace is of cream silk, with some motifs of embroidery introduced, and Chantilly edgings. The yoke and cuffs are of tuck white mousseline de sole, with fitted ruffles of the same trimming as the waist and sleeves. The under-ship is of salmon pink taffeta, the folded belt of satin ribbon being of same shade.

meant to send a message first. But I wanted to see you—I wanted to come home!"

"Cousin Philippe, who wrote that letter?"

"The notary, child. I made him do it."

"It was cruel." She gave way and brokenly sobbed, leaning helpless against him.

The old marquis smoothed her head and puckered his forehead under the sunlight, casting his eyes around like a culprit.

"It was desperate. But I could do nothing else. You see it has succeeded. While I lay in hiding the sight of the child and your youth has softened Bonaparte. That was my intention, Eagle."

"The peasants should have told me you were living."

"They didn't know I came back. Many of them think I died in America. The family at Les Rochers have been very faithful, and the notary has held his tongue. We must reward them, Eagle. I have been hidden very closely. I am tired of such long hiding."

He looked toward the chateau and lifted his voice sharply:

"Where's the baby? I haven't seen the baby!"

With gracious courtesy, restraining an impulse to plunge up the steps, he gave her his arm, and she swayed against it as they entered.

When I could see them no more I rose and put my snuffbox in my breast. The key rattled in it.

I was beyond the gates, bareheaded, walking with long strides, when an old mill caught my eye, and I turned toward it as we turn to trifles to relieve us from unendurable tension.

The water dripped over the wheel, and long green beard trailed from his chin down the sluice. In this quieting company Skenedonk spied me as he rattled past in the post carriage, and, considering my behavior at other times, he was not enough surprised to waste any good words of Onelda.

He stopped the carriage and I got in.

BUSINESS DIRECTORY

ATTORNEYS.

G. C. Hewitt, Waiohine, Kau, Hawaii.—Collections made, all business attended to; licensed to practice law in District Courts. 2669-3M

BALLASTING.

Hawaiian-Japanese Ballasting Co.—Best black sand from \$2 to \$3 a load according to distance hauled. Coral rocks for stable, roads and sidewalks. Third door below King, Maunakea St.; P. O. box 820. Telephone Main 396.

CLEANING AND DYEING.

T. Hayashi—Clothes cleaned, repaired and dyed. 537 Beretania St.

DENTISTS.

Dr. A. B. Clark and P. F. Frear—McIntyre Bldg., King and Fort Sts.

Dr. Derby—Dentist; Fort and Hotel Sts.; Hours, 9 to 4.

Fine Job Printing at the Bulletin office.

He pointed ahead toward a curtain of trees which screened the chateau.

"Paris," I answered.

"Paris," he repeated to the postillon, and we turned about. I looked from hill to stream, from the fruited brambles of blackberry to reaches of noble forest, realizing that I should never see those lands again or the neighboring crest where my friend the marquis slept.

We posted the distance in two days. Paris was horrible, with a lonesomeness no one could have foreseen in its crowded streets. A taste of war was in the air. Troops passed to review.

Our post carriage met the dashing coaches of gay young men I knew, who stared at me without recognition. Marquis du Plessy no longer made way for me and displayed me at his side.

I drove to his hotel in the Faubourg St. Germain for my possessions. It was closed, the distant relative who inherited after him being an heir with no Parisian tastes. The caretaker, however, that gentle old valet like a woman, who had dressed me in my first Parisian finery, let us in and waited upon us with food I sent him out to buy. He gave me a letter from my friend, which he had held to deliver on my return in case any accident befell the marquis. He was tremulous in his mourning, and all his ardent care of me was service rendered to the dead.

I sat in the garden with the letter spread upon the table where we had dined. Its brevity was gay. The

writer would have gone under the knife with a jest. He did not burden me with any kind of counsel. We had touched. We might touch again. It was as if a soul had sailed by, waving its hat.

My Dear Boy—I wanted you, but it was best you should not stay and behold the depravity of your elders. It is about a woman.

May you come to a better throne than the unsteady one of France. Your friend and servant.

ETIENNE DU PLESSY.

Garlic is the spice of life, my boy! (To be Continued.)

TO CURE A COLD IN ONE DAY

Take Laxative Bromo Quinine Tablets All druggists refund the money if it fails to cure. E. W. Grove's signature is on each box; 25 cents.

PUNCH AND JUDY up-to-date, or what will happen at the Orpheum Saturday night—in BULLETIN'S SATURDAY SUPPLEMENT.

"For Rent" cards on sale at Bulletin office.

EXPRESS.

Moana Express, 910 Alakea St.; Tel. 511 Blue; good service; moderate rates. 2655-1f

MUSIC.

Piano and organ tuning and repairing. Mr. Jas. Sheridan, resident piano tuner, for many years an expert in this business. All orders carefully attended to if left at Hawaiian News Co., Young building, or Wall, Nichols Co. Residence 343 King street, near Opera House.

Annis Montague Turner—Vocal Instructor; "Mignon," 1024 Beretania St.

Ernest Kaal—Music Teacher. Studio, Room 69 Young Bldg.

MESSENGERS.

Territorial Messenger Service—Union St. near Hotel; Tel. 361 Main.

MASSAGE.

S. Ochiai—Expert massage treatment for sick people. 64 Kukui lane.

BISHOP & CO.

BANKERS.

Established in 1858.

BANKING DEPARTMENT. Transact business in all departments of Banking.

Collections carefully attended to. Exchange bought and sold.

Commercial and Travelers' Letters of Credit issued on The Bank of California and N. M. Rothschild & Sons, London.

Correspondents—The Bank of California, Commercial Banking Co. of Sydney, Ltd., London.

Drafts and cable transfers on China and Japan through the Hongkong & Shanghai Banking Corporation and Chartered Bank of India, Australia and China.

Interest allowed on term deposits at the following rates per annum, viz:

Seven days' notice, at 2 per cent. Three months, at 3 per cent. Six months, at 3 1/2 per cent. Twelve months, at 4 per cent.

TRUST DEPARTMENT. Act as Trustees under mortgages. Manage estates (real and personal). Collect rents and dividends.

Valuable papers, Wills, Bonds, etc., received for safe-keeping.

ACCOUNTANT DEPARTMENT. Auditors for Corporations and Private Firms.

Books examined and reported on. Statements of Affairs prepared.

Trustees on Bankrupt or Insolvent Estates.

OFFICE, 924 BETHEL ST. SAVINGS DEPARTMENT.

Deposits received and interest allowed at 4 1/2 per cent per annum, in accordance with Rules and Regulations, copies of which may be obtained on application.

INSURANCE DEPARTMENT. Agents for Fire, Marine, Life, Accident and Employers' Liability Insurance Companies.

Insurance Office, 924 Bethel St.

The First AMERICAN SAVINGS AND TRUST CO.

OF HAWAII, LTD.

CAPITAL, \$250,000.00.

President.....Cecil Brown Vice President.....M. P. Robinson Cashier.....W. G. Cooper

Office: Corner Fort and King Sts. SAVINGS DEPOSITS received and interest allowed for yearly deposits at the rate of 4 1/2 per cent per annum.

Rules and regulations furnished upon application.

The Yokohama Specie Bank, Ltd.

ESTABLISHED 1880.

Capital Subscribed.....Yen 24,000,000 Capital Paid Up.....Yen 18,000,000 Reserved Fund.....Yen 9,210,000

HEAD OFFICE, YOKOHAMA. BRANCHES—Bombay, Hongkong, Honolulu, Kobe, London, Lyons, Nagasaki, Newchwang, New York, Peking, San Francisco, Shanghai, Tientsin, Tokio.

The bank buys and receives for collection Bills of Exchange, issues Drafts and Letters of Credit and transacts a general banking business.

HONOLULU BRANCH, 67 KING ST.

Fine Job Printing at the Bulletin office.

BRAVE FIRE CHIEF MARTIN COLEMAN



One of the youngest and best-known fire fighters in the country was Martin M. Coleman, whose tragic death at a sensational fire in New York, attracted widespread attention. Coleman had won much celebrity and many medals for his rapid rise, due to extraordinary bravery.

CLEARING THE RUINS.

Baltimore, Feb. 9.—The ruins of the fire have been cooled sufficiently to permit the handling of debris. The work of clearing some portions of the burned district began today. Hundreds of laborers engaged by the Department of Street Cleaning were put to work at the eastern end of the ruins. The task is a hard one and the work will necessarily be slow. Many weeks will elapse before all the streets within the fire territory will be open to traffic. Bricks to the depth of four feet, large marble and granite blocks, great girders, bent or broken, and net works of telegraph, telephone and electric light wires cover the streets. On both sides of the thoroughfares in many places are towering walls that

will have to come down before any attempt can be made to clear the streets at those points.

There are still scores of small fires burning and many great heaps of smoldering ruins that are sending up clouds of smoke. No effort has been made to extinguish these, since they can do no further damage.

The BUSINESS MAN'S HANDY INDEX, published in the Saturday Bulletin and the Weekly Edition, gives a concise and complete resume of all legal notices, calls for tenders, judgments, building permits and real estate transactions. Evening Bulletin, 75 cents per month. Weekly Bulletin, 1 per year.

"For Rent" cards on sale at Bulletin

Commendador Port Wine

This wine is guaranteed by the shipper, Messrs. D. M. FEUERHEERD, JR. & CO., of Oporto, to have been 25 years in wood.
It is light, delicate and of exquisite bouquet and flavor.
Its quality is always maintained.
It is dry and forms no crust, and therefore is always ready for use.
It is especially valuable as a restorative and stimulant in cases of sickness.
Imported and for sale by

W. C. PEACOCK & CO. LD.

HONOLULU, H. T.

Telephone Main 72 P. O. BOX 565

VOLCANO MINERAL WATER

ALL ORDERS DELIVERED FREE OF CHARGE.
Represented by
R. L. SCOTT.
MAIN OFFICE 857 KAHUMANU STREET

Claus Spreckels. Wm. G. Irwin.

Claus Spreckels & Co.
BANKERS.

HONOLULU, T. H.

San Francisco Agents — The Nevada National Bank of San Francisco.
Draw Exchange on the Nevada National Bank of San Francisco.
London — The Union of London and Smith's Bank, Ltd.
New York — American Exchange National Bank.
Chicago — Corn Exchange National Bank.
Paris — Credit Lyonnais.
Berlin — Dresdner Bank.
Hongkong and Yokohama — Hongkong-Shanghai Banking Corporation.
New Zealand and Australia — Bank of New Zealand and Bank of Australasia.
Victoria and Vancouver — Bank of British North America.
Deposits received. Loans made on approved security. Commercial and Travelers' Credits issued. Bills of Exchange bought and sold.
Collections Promptly Accounted For.

Alexander & Baldwin
LIMITED.

OFFICERS.

J. B. Castle.....First Vice President
W. M. Alexander.....Second Vice Pres.
J. P. Cooke.....Treasurer
W. O. Smith.....Secretary
Geo. R. Carter.....Auditor

Sugar Factors and
Commission Agents

AGENTS for Hawaiian Commercial & Sugar Co., Haiku Sugar Co., Paia Plantation Co., Naliu Sugar Co., Kihel Plantation Co., Hawaiian Sugar Co., Kahului Railroad Co.

CASILL & COOK
IMPORTERS

LIFE and FIRE
Insurance - Agents

—AGENTS FOR—
NEW ENGLAND MUTUAL LIFE INSURANCE CO. OF BOSTON.

AETNA FIRE INSURANCE COMPANY OF HARTFORD.

FIRE INSURANCE
The B. F. DILLINGHAM CO., Ltd.

General Agent for Hawaii
Atlas Assurance Company of London.
Phoenix Assurance Co. of London.
New York Underwriters' Agency.
Providence Washington Insurance Co.
Phoenix Insurance Co. of Brooklyn.

ALBERT RAAS
MANAGER INSURANCE DEPTMT.
Office 4th floor, Stangenwald Bldg.

COTTON BROS. & CO.
ENGINEERS AND
GENERAL CONTRACTORS.
Plans and estimates furnished for all classes. Contracting work.
Tel. Main 245.
ROOM 300, BOSTON BLK., Honolulu.

"For Rent" cards on sale at Bulletin office.

PROBLEMS FOR THE CHESS ENTHUSIASTS

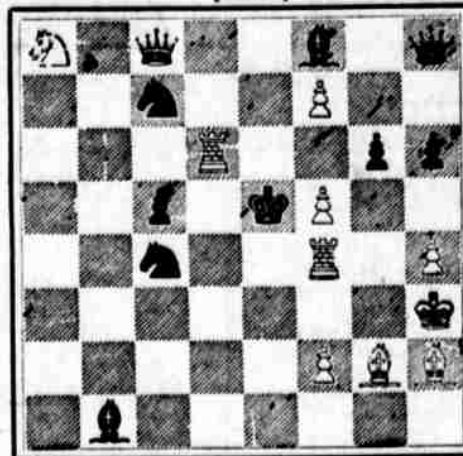
To Correspondents:—Correct solution of Problem No. 81: 1. Q—Q Kt 4.

PROBLEM NO. 82.

By P. F. BLAKE.

1st Prize, "Hampstead & Highgate Express" Tourney.

[BLACK]



[WHITE]
White Moves in Two Moves.

Glucose Piano.
[From The British Chess Magazine.]
Notes by F. J. Marshall.

White. Black.
R. F. B. Jones. W. H. Gunston.
1 P—K4 1 P—K4
2 Kt—KB3 2 Kt—QB3
3 B—B4 3 B—B4

.....In my opinion the Two Knights' Defence is preferable to 3... B—B4.

4 P—B3 4 Kt—KB3
.....Better is P—Q3.
5 P—Q4 5 P—P
6 P—K5 is the correct move here; then if P—Q4 (best); 7 B—Q

Kt 5—not P—Kt—Kt—K5; 8 P—P, B—Kt 5 ch; 9 Q—Kt 2 or B—Q2, White gets the better position.

7 Kt—B3 7 P—Q4
.....A simple and effective move. If instead 9... Kt x P, White Castles.

8 P—P 8 Kt x P
9 Castles 9 B x Kt
10 P—B 10 Castles
.....Not 10... Kt x P, because 11 Q—K5 ch wins the Kt.

11 R—Ksq 11 Kt—Kt3
P: 12 Q—Kt 3 causes trouble.
12 B—Q2
Kt 3 is the proper square for this Bishop to work from in conjunction with Q B at B3.

13 B—K3
After playing R—Ksq, it was injudicious to block the file. 13 B—R3 was the obvious and better move.

14 Q—Bsq 13 B—K3
15 Kt—Kt5 14 Q—B3
Very ingenious, but Kt—K5 would have been more in unison with a position of this kind, especially in view of Black's obvious rejoinder, B—B4. Black cannot now play 15... P x Kt, as 16 B x P wins the Queen.

16 Kt—K4 15 B—B4 (best)
17 B—B4 16 Kt—Kt3
18 Q—B2 17 Kt—Ksq
19 B—Q2 18 Kt—Q4
As a consequence of his 15th move Kt—Kt 5, White has now a very difficult defensive game.

19 Kt (Q4)—Kt5
.....Brilliant and to the point.
20 P x Kt
Forced, as Kt x B and B x Kt wins a piece.

21 Q—Ksq 20 Kt x QP
There seems nothing better.
22 B x R 21 R x Kt
23 B—Kt5 22 B x B
This Bishop has evidently been the cause of all White's trouble.

23 B—Kt5
.....Brilliant and to the point.
20 P x Kt
Forced, as Kt x B and B x Kt wins a piece.

21 Q—Ksq 20 Kt x QP
There seems nothing better.
22 B x R 21 R x Kt
23 B—Kt5 22 B x B
This Bishop has evidently been the cause of all White's trouble.

23 B—Kt5
.....Brilliant and to the point.
20 P x Kt
Forced, as Kt x B and B x Kt wins a piece.

21 Q—Ksq 20 Kt x QP
There seems nothing better.
22 B x R 21 R x Kt
23 B—Kt5 22 B x B
This Bishop has evidently been the cause of all White's trouble.

23 B—Kt5
.....Brilliant and to the point.
20 P x Kt
Forced, as Kt x B and B x Kt wins a piece.

21 Q—Ksq 20 Kt x QP
There seems nothing better.
22 B x R 21 R x Kt
23 B—Kt5 22 B x B
This Bishop has evidently been the cause of all White's trouble.

23 B—Kt5
.....Brilliant and to the point.
20 P x Kt
Forced, as Kt x B and B x Kt wins a piece.

21 Q—Ksq 20 Kt x QP
There seems nothing better.
22 B x R 21 R x Kt
23 B—Kt5 22 B x B
This Bishop has evidently been the cause of all White's trouble.

23 B—Kt5
.....Brilliant and to the point.
20 P x Kt
Forced, as Kt x B and B x Kt wins a piece.

21 Q—Ksq 20 Kt x QP
There seems nothing better.
22 B x R 21 R x Kt
23 B—Kt5 22 B x B
This Bishop has evidently been the cause of all White's trouble.

23 B—Kt5
.....Brilliant and to the point.
20 P x Kt
Forced, as Kt x B and B x Kt wins a piece.

21 Q—Ksq 20 Kt x QP
There seems nothing better.
22 B x R 21 R x Kt
23 B—Kt5 22 B x B
This Bishop has evidently been the cause of all White's trouble.

23 B—Kt5
.....Brilliant and to the point.
20 P x Kt
Forced, as Kt x B and B x Kt wins a piece.

BY AUTHORITY PUBLIC LANDS NOTICE

On Friday, February 19th, 1904, at 12 o'clock noon, at the front entrance to the Judiciary Building, Honolulu, T. H., there will be offered for sale at Public Auction, a License for a period of fifty (50) years, for the privilege of entering upon certain public lands on the island of Hawaii, Territory of Hawaii, to confine, conserve, collect, impound, divert and sell all the RUNNING NATURAL SURFACE WATER, and power produced therefrom, (subject to existing vested rights of private parties in such water, and to the rights of the United States thereon), upon and from all the said public lands situated on the island of Hawaii, in the Territory of Hawaii, within the following described area, to-wit:

Bound on the North by the sea, on the East by Waipio Valley, on the South by Waipio Valley, the Puukapu-Laupahoehoe boundary until such boundary line reaches an elevation of 4,200 feet, from which point the contour line of 4,200 feet elevation shall form the balance of the South boundary, and on the West by the Honokane-Awini boundary as shown by green border on the sketch plan submitted to license, the whole of such area being hereafter called the Kaha-Hamakua Water-Shed.

Stated Annual Fee, \$500.00.
Upset 24 per cent. of Gross Revenue, but in no event, after expiration of 2 years from date of license, shall the revenue received by the Government through this clause amount to less than \$2,500.00 per annum.

Any bid other than on percentage of Gross Revenue will be rejected.
Upon fall of the hammer the successful bidder will signify his acceptance of the license and of all the terms thereof by his written endorsement thereon, and the payment of the First Five Hundred (\$500) Dollar Fee.

For full particulars, in regard to conditions of said license, apply at the office of Commissioner of Public Lands, Honolulu, or at the office of Sub-Agent of Public Lands, Hilo.

JAS. W. PRATT,
Commissioner of Public Lands,
Honolulu, T. H., January 23rd, 1904.

PUBLIC LANDS NOTICE.
It having been found necessary to insert an additional condition in above mentioned License, the sale of the same is hereby postponed to Friday, February 26th, 1904, at 12 o'clock noon at the front entrance to Judiciary Building, Honolulu, T. H.

For full particulars in regard to conditions of said License apply at the office of the Commissioner of Public Lands, Honolulu.

JAS. W. PRATT,
Commissioner of Public Lands,
Honolulu, February 17th, 1904.
2670-4f

NOTICE TO
Individuals, Firms, and Corporations furnishing supplies and rendering services to the Department of Public Works.

You are cautioned to furnish supplies and render services only upon WRITTEN ORDERS from the following persons:

C. S. HOLLOWAY, Superintendent of Public Works.
J. H. HOWLAND, Assistant Superintendent of Public Works.
C. M. WHITE, Chief Clerk.

ANDREW BROWN, Superintendent Honolulu Water Works.
SAMUEL JOHNSON, Road Supervisor, Honolulu.

SAMUEL JOHNSON, Superintendent Garbage and Excavator Service.
W. L. FRAZEE, Superintendent Electric Lights, Honolulu.

C. H. THURSTON, Chief Engineer Honolulu Fire Department.
W. VANNATTA, Superintendent Hilo Water Works.

W. E. BAL, Superintendent Walluku and Kahului Water Works.
R. P. HOSE, Superintendent Lahaina Water Works.

HENRY BLAKE, Superintendent Koloa Water Works.
And by the CHAIRMEN of the VARIOUS ROAD BOARDS of the TERRITORY, acting under and within the limits of authorizations granted by the Superintendent of Public Works.

C. S. HOLLOWAY,
Superintendent of Public Works,
Department of Public Works, February 17, 1904. 2691-3t

WARRANT NOTICE.
Notice is hereby given that payment will be deferred, of all warrants outstanding and warrants to be issued by the Auditor after this date, excepting warrants for salaries and payroll.

All deferred warrants will have to be presented at this office to be registered, and will draw interest from date of registration at the rate of five per cent. per annum.

A. N. KEPOKAI,
Treasurer, Territory of Hawaii,
Treasurer's Office, Honolulu, Oahu,
February 2, 1904. 2693-4f

Oceanic Steamship Company TIME TABLE

The steamers of this line will arrive and leave this port as hereunder:

FROM SAN FRANCISCO.	FOR SAN FRANCISCO.
VENTURA . . . FEB. 17	ALAMEDA . . . MAR. 3
ALAMEDA . . . FEB. 26	VENTURA . . . MAR. 10
VENTURA . . . MAR. 6	ALAMEDA . . . MAR. 13
ALAMEDA . . . MAR. 13	VENTURA . . . MAR. 20
VENTURA . . . MAR. 20	ALAMEDA . . . MAR. 27
ALAMEDA . . . MAR. 27	VENTURA . . . APR. 3

In connection with the sailing of the above steamers, the agents are prepared to issue, to intending passengers, coupon through tickets, by any railroad from San Francisco to all points in the United States, and from New York by any steamship line to all European ports.

FOR FURTHER PARTICULARS APPLY TO
Wm. G. Irwin & Co., Ltd.
OCEANIC S. S. CO. GENERAL AGENTS.

Pacific Mail Steamship Co. Occidental and Oriental Steamship Co. and Toyo Kisen Kaisha

Steamers of the above companies will call at Honolulu and leave this port on or about the dates below mentioned.

FOR JAPAN AND CHINA.	FOR SAN FRANCISCO.
HONGKONG MARU . . . FEB. 24	DORIC . . . FEB. 19
CHINA . . . MAR. 4	NIPPON MARU . . . FEB. 27
DORIC . . . MAR. 12	SIBERIA . . . MAR. 5
NIPPON MARU . . . MAR. 22	COPTIC . . . MAR. 15
	AMERICA MARU . . . MAR. 23

For general information apply to
H. Hackfeld & Co., Ltd., Agents.

AMERICAN-HAWAIIAN S. S. CO.

Direct Service between New York and Hawaiian Islands, via Pacific Coast
From New York

S.S. "CALIFORNIAN" . . . to sail about FEB. 19
S.S. "ARIZONAN" . . . to sail about MAR. 5
Freight received at all times at the Company's Wharf, 41st Street, South Brooklyn.

From San Francisco
S.S. "NEVADAN" . . . to sail FEB. 19
S.S. "NEVADAN" . . . to sail MAR. 18
and each month thereafter.

Freight received at Company's Wharf, Greenwich Street.
From Honolulu to San Francisco.
S.S. "NEVADAN" . . . to sail JAN. 27
From Seattle and Tacoma
S.S. "TEXAN" . . . to sail about FEB. 25

For further information apply to
C. P. MORSE, H. Hackfeld & Co., Ltd.
General Freight Agent, AGENTS, HONOLULU.

Canadian-Australian Royal Mail Steamship Company.

Steamers of the above line, running in connection with the CANADIAN-PACIFIC RAILWAY CO. between Vancouver, B. C., and Sydney, N. S. W., and calling at Victoria, B. C., Honolulu, Suva, Fiji and Brisbane, are DUE AT HONOLULU on or about the dates below stated, viz:

From Vancouver and Victoria, B. C.
(For Brisbane and Sydney.)
MOWERA . . . MAR. 12
MOANA . . . APR. 9
AOHANGI . . . MAY 7

From Sydney and Brisbane.
(For Victoria and Vancouver, B. C.)
MOANA . . . MAR. 18
AOHANGI . . . APR. 6
MOWERA . . . MAY 4

Through Tickets issued from Honolulu to Canada, United States and Europe. For Freight and Passage and all general information, apply to
Theo. H. Davies & Co., Ltd. General Agents.

O. R. & L. Co. TIME TABLE

May 1st, 1903.
OUTWARD.
For Wailanae, Wailanae, Kahuku and Way Stations—8:15 a. m., 8:30 p. m.
For Pearl City, Ewa Mill and Way Stations—7:30 a. m., 8:15 a. m., 8:30 a. m., 8:45 a. m., 9:15 a. m., 9:30 a. m., 9:45 a. m., 10:15 a. m., 10:30 a. m., 10:45 a. m., 11:15 a. m., 11:30 a. m., 11:45 a. m., 12:15 p. m., 12:30 p. m., 12:45 p. m., 1:15 p. m., 1:30 p. m., 1:45 p. m., 2:15 p. m., 2:30 p. m., 2:45 p. m., 3:15 p. m., 3:30 p. m., 3:45 p. m., 4:15 p. m., 4:30 p. m., 4:45 p. m., 5:15 p. m., 5:30 p. m., 5:45 p. m., 6:15 p. m., 6:30 p. m., 6:45 p. m., 7:15 p. m., 7:30 p. m., 7:45 p. m., 8:15 p. m., 8:30 p. m., 8:45 p. m., 9:15 p. m., 9:30 p. m., 9:45 p. m., 10:15 p. m., 10:30 p. m., 10:45 p. m., 11:15 p. m., 11:30 p. m., 11:45 p. m., 12:15 p. m., 12:30 p. m., 12:45 p. m., 1:15 p. m., 1:30 p. m., 1:45 p. m., 2:15 p. m., 2:30 p. m., 2:45 p. m., 3:15 p. m., 3:30 p. m., 3:45 p. m., 4:15 p. m., 4:30 p. m., 4:45 p. m., 5:15 p. m., 5:30 p. m., 5:45 p. m., 6:15 p. m., 6:30 p. m., 6:45 p. m., 7:15 p. m., 7:30 p. m., 7:45 p. m., 8:15 p. m., 8:30 p. m., 8:45 p. m., 9:15 p. m., 9:30 p. m., 9:45 p. m., 10:15 p. m., 10:30 p. m., 10:45 p. m., 11:15 p. m., 11:30 p. m., 11:45 p. m., 12:15 p. m., 12:30 p. m., 12:45 p. m., 1:15 p. m., 1:30 p. m., 1:45 p. m., 2:15 p. m., 2:30 p. m., 2:45 p. m., 3:15 p. m., 3:30 p. m., 3:45 p. m., 4:15 p. m., 4:30 p. m., 4:45 p. m., 5:15 p. m., 5:30 p. m., 5:45 p. m., 6:15 p. m., 6:30 p. m., 6:45 p. m., 7:15 p. m., 7:30 p. m., 7:45 p. m., 8:15 p. m., 8:30 p. m., 8:45 p. m., 9:15 p. m., 9:30 p. m., 9:45 p. m., 10:15 p. m., 10:30 p. m., 10:45 p. m., 11:15 p. m., 11:30 p. m., 11:45 p. m., 12:15 p. m., 12:30 p. m., 12:45 p. m., 1:15 p. m., 1:30 p. m., 1:45 p. m., 2:15 p. m., 2:30 p. m., 2:45 p. m., 3:15 p. m., 3:30 p. m., 3:45 p. m., 4:15 p. m., 4:30 p. m., 4:45 p. m., 5:15 p. m., 5:30 p. m., 5:45 p. m., 6:15 p. m., 6:30 p. m., 6:45 p. m., 7:15 p. m., 7:30 p. m., 7:45 p. m., 8:15 p. m., 8:30 p. m., 8:45 p. m., 9:15 p. m., 9:30 p. m., 9:45 p. m., 10:15 p. m., 10:30 p. m., 10:45 p. m., 11:15 p. m., 11:30 p. m., 11:45 p. m., 12:15 p. m., 12:30 p. m., 12:45 p. m., 1:15 p. m., 1:30 p. m., 1:45 p. m., 2:15 p. m., 2:30 p. m., 2:45 p. m., 3:15 p. m., 3:30 p. m., 3:45 p. m., 4:15 p. m., 4:30 p. m., 4:45 p. m., 5:15 p. m., 5:30 p. m., 5:45 p. m., 6:15 p. m., 6:30 p. m., 6:45 p. m., 7:15 p. m., 7:30 p. m., 7:45 p. m., 8:15 p. m., 8:30 p. m., 8:45 p. m., 9:15 p. m., 9:30 p. m., 9:45 p. m., 10:15 p. m., 10:30 p. m., 10:45 p. m., 11:15 p. m., 11:30 p. m., 11:45 p. m., 12:15 p. m., 12:30 p. m., 12:45 p. m., 1:15 p. m., 1:30 p. m., 1:45 p. m., 2:15 p. m., 2:30 p. m., 2:45 p. m., 3:15 p. m., 3:30 p. m., 3:45 p. m., 4:15 p. m., 4:30 p. m., 4:45 p. m., 5:15 p. m., 5:30 p. m., 5:45 p. m., 6:15 p. m., 6:30 p. m., 6:45 p. m., 7:15 p. m., 7:30 p. m., 7:45 p. m., 8:15 p. m., 8:30 p. m., 8:45 p. m., 9:15 p. m., 9:30 p. m., 9:45 p. m., 10:15 p. m., 10:30 p. m., 10:45 p. m., 11:15 p. m., 11:30 p. m., 11:45 p. m., 12:15 p. m., 12:30 p. m., 12:45 p. m., 1:15 p. m., 1:30 p. m., 1:45 p. m., 2:15 p. m., 2:30 p. m., 2:45 p. m., 3:15 p. m., 3:30 p. m., 3:45 p. m., 4:15 p. m., 4:30 p. m., 4:45 p. m., 5:15 p. m., 5:30 p. m., 5:45 p. m., 6:15 p. m., 6:30 p. m., 6:45 p. m., 7:15 p. m., 7:30 p. m., 7:45 p. m., 8:15 p. m., 8:30 p. m., 8:45 p. m., 9:15 p. m., 9:30 p. m., 9:45 p. m., 10:15 p. m., 10:30 p. m., 10:45 p. m., 11:15 p. m., 11:30 p. m., 11:45 p. m., 12:15 p. m., 12:30 p. m., 12:45 p. m., 1:15 p. m., 1:30 p. m., 1:45 p. m., 2:15 p. m., 2:30 p. m., 2:45 p. m., 3:15 p. m., 3:30 p. m., 3:45 p. m., 4:15 p. m., 4:30 p. m., 4:45 p. m., 5:15 p. m., 5:30 p. m., 5:45 p. m., 6:15 p. m., 6:30 p. m., 6:45 p. m., 7:15 p. m., 7:30 p. m., 7:45 p. m., 8:15 p. m., 8:30 p. m., 8:45 p. m., 9:15 p. m., 9:30 p. m., 9:45 p. m., 10:15 p. m., 10:30 p. m., 10:45 p. m., 11:15 p. m., 11:30 p. m., 11:45 p. m., 12:15 p. m., 12:30 p. m., 12:45 p. m., 1:15 p. m., 1:30 p. m., 1:45 p. m., 2:15 p. m., 2:30 p. m., 2:45 p. m., 3:15 p. m., 3:30 p. m., 3:45 p. m., 4:15 p. m., 4:30 p. m., 4:45 p. m., 5:15 p. m., 5:30 p. m., 5:45 p. m., 6:15 p. m., 6:30 p. m., 6:45 p. m., 7:15 p. m., 7:30 p. m., 7:45 p. m., 8:15 p. m., 8:30 p. m., 8:45 p. m., 9:15 p. m., 9:30 p. m., 9:45 p. m., 10:15 p. m., 10:30 p. m., 10:45 p. m., 11:15 p. m., 11:30 p. m., 11:45 p. m., 12:15 p. m., 12:30 p. m., 12:45 p. m., 1:15 p. m., 1:30 p. m., 1:45 p. m., 2:15 p. m., 2:30 p. m., 2:45 p. m., 3:15 p. m., 3:30 p. m., 3:45 p. m., 4:15 p. m., 4:30 p. m., 4:45 p. m., 5:15 p. m., 5:30 p. m., 5:45 p. m., 6:15 p. m., 6:30 p. m., 6:45 p. m., 7:15 p. m., 7:30 p. m., 7:45 p. m., 8:15 p. m., 8:30 p. m., 8:45 p. m., 9:15 p. m., 9:30 p. m., 9:45 p. m., 10:15 p. m., 10:30 p. m., 10:45 p. m., 11:15 p. m., 11:30 p. m., 11:45 p. m., 12:15 p. m., 12:30 p. m., 12:45 p. m., 1:15 p. m., 1:30 p. m., 1:45 p. m., 2:15 p. m., 2:30 p. m., 2:45 p. m., 3:15 p. m., 3:30 p. m., 3:45 p. m., 4:15 p. m., 4:30 p. m., 4:45 p. m., 5:15 p. m., 5:30 p. m., 5:45 p. m., 6:15 p. m., 6:30 p. m., 6:45 p. m., 7:15 p. m., 7:30 p. m., 7:45 p. m., 8:15 p. m., 8:30 p. m., 8:45 p. m., 9:15 p. m., 9:30 p. m., 9:45 p. m., 10:15 p. m., 10:30 p. m., 10:45 p. m., 11:15 p. m., 11:30 p. m., 11:45 p. m., 12:15 p. m., 12:30 p. m., 12:45 p. m., 1:15 p. m., 1:30 p. m., 1:45 p. m., 2:15 p. m., 2:30 p. m., 2:45 p. m., 3:15 p. m., 3:30 p. m., 3:45 p. m., 4:15 p. m., 4:30 p. m., 4:45 p. m.,

